

**ASSESSMENT REPORT**

describing

**PROSPECTING**

on the:

**LEAGUE PROPERTY**

League Claims 9, 21-34, 59-68,  
72-78, 96, 127, 129-131, 133-138  
141-146, 153-162, 164, 170-171, 173

Claims are 100% owned by Yukon Zinc Corporation.

NTS Sheet 105G/10  
Latitude 61°31'N and Longitude 130°45'W

In the Watson Lake Mining District  
Yukon Territory

Prepared by

David Legault, B.Sc.

February 2006

## **Table of contents**

	Page
Introduction	1
Accessibility, Climate, and Physiography	1
List of Claims by name and by grant number being renewed	1
Description of Undertakings	4
Results	4
Discussion and Recommendations	4

### **Tables**

Table 01 – List of claims by name and grant number being renewed	1
--	---

### **Appendixes**

- Appendix A - List of Personal
- Appendix B - Statement of Expenditures
- Appendix C - Statement of Qualification
- Appendix D – Assays Certificates

### **Figures**

- Figure 1 – Location of the Goalie Property
- Figure 2 – Goalie Property, YT Claim Map and Sample Location
- Figure 3 – Goalie Property, YT Soil Geochemistry Zn (ppm)
- Figure 2 – Goalie Property, YT Soil Geochemistry Pb (ppm)
- Figure 2 – Goalie Property, YT Soil Geochemistry Cu (ppm)

## **1. Introduction**

The League property is 100% owned by Yukon Zinc Corporation (“Yukon Zinc”). The claims subject to this report (Table 1) were worked on between June 18-22, 2005 by a ten-person crew working from fly camps on the property. Prospecting and soil sampling were the primary undertakings during this time.

## **2. Accessibility, Climate and Physiography**

The League property is located in the Watson Lake Mining District in southeast Yukon on NTS sheet 105G/10 at coordinate: NTS Sheet 105G/10 latitude 61°31’N and longitude 130°45’W (Figure 01). Access into site is 275km by fixed wing charters from Whitehorse to Wolverine airstrip (61°01’N, 131°20’W) and then 31 km via helicopter from Wolverine airstrip to the League Property. In 2005, air transportation was provided by Trans North Helicopter (Astar 350B2) and Alkan Air (Single Turbo Otter).

The League property is situated in the Campbell Mountain Range in the sub-alpine at an elevation of 900m to 1100m. The property drains into Finlayson Lake Watershed. Black spruce, alder, willow, buck brush, moss and lichen make up the vegetation on the property. The property is overlain by Pleistocene colluviums and glacial till.

## **3. List of claims by name and grant number being renewed**

Table 1. List of claims being renewed in this assessment report.

<b>Claim Name</b>	<b>Grant Number</b>	<b>New Expiry Date</b>
YB59143	LEAGUE 1	2008/03/17
YB59144	LEAGUE 2	2008/03/17
YB59145	LEAGUE 3	2008/03/17
YB59146	LEAGUE 4	2008/03/17
YB59147	LEAGUE 5	2008/03/17
YB59148	LEAGUE 6	2008/03/17
YB59149	LEAGUE 7	2008/03/17
YB59150	LEAGUE 8	2008/03/17
YB59151	LEAGUE 9	2008/03/17
YB59152	LEAGUE 10	2008/03/17
YB59153	LEAGUE 11	2008/03/17
YB59154	LEAGUE 12	2008/03/17
YB59155	LEAGUE 13	2008/03/17
YB59156	LEAGUE 14	2008/03/17
YB59157	LEAGUE 15	2008/03/17
YB59158	LEAGUE 16	2008/03/17
YB59159	LEAGUE 17	2008/03/17
YB59160	LEAGUE 18	2008/03/17
YB59161	LEAGUE 19	2008/03/17
YB59162	LEAGUE 20	2008/03/17
YB60204	LEAGUE 21	2008/03/17

YB60205	LEAGUE 22	2008/03/17
YB60206	LEAGUE 23	2008/03/17
YB60207	LEAGUE 24	2008/03/17
YB60208	LEAGUE 25	2008/03/17
YB60209	LEAGUE 26	2008/03/17
YB60210	LEAGUE 27	2008/03/17
YB60211	LEAGUE 28	2008/03/17
YB60212	LEAGUE 29	2008/03/17
YB60213	LEAGUE 30	2008/03/17
YB60214	LEAGUE 31	2008/03/17
YB60215	LEAGUE 32	2008/03/17
YB60216	LEAGUE 33	2008/03/17
YB60217	LEAGUE 34	2008/03/17
YB60236	LEAGUE 53	2008/03/17
YB60237	LEAGUE 54	2008/03/17
YB60240	LEAGUE 57	2008/03/17
YB60855	LEAGUE 59	2009/03/17
YB60856	LEAGUE 60	2008/03/17
YB60857	LEAGUE 61	2008/03/17
YB60858	LEAGUE 62	2008/03/17
YB60859	LEAGUE 63	2008/03/17
YB60860	LEAGUE 64	2008/03/17
YB60861	LEAGUE 65	2008/03/17
YB60862	LEAGUE 66	2008/03/17
YB60863	LEAGUE 67	2008/03/17
YB60864	LEAGUE 68	2008/03/17
YB60866	LEAGUE 70	2008/03/17
YB60868	LEAGUE 72	2008/03/17
YB60869	LEAGUE 73	2008/03/17
YB60870	LEAGUE 74	2008/03/17
YB60871	LEAGUE 75	2008/03/17
YB60872	LEAGUE 76	2008/03/17
YB60873	LEAGUE 77	2008/03/17
YB60874	LEAGUE 78	2008/03/17
YB60890	LEAGUE 94	2008/03/17
YB60892	LEAGUE 96	2008/03/17
YB61588	LEAGUE 115	2008/03/17
YB61589	LEAGUE 116	2008/03/17
YB61590	LEAGUE 117	2008/03/17
YB61591	LEAGUE 118	2008/03/17
YB61592	LEAGUE 119	2009/03/17
YB61593	LEAGUE 120	2008/03/17
YB61594	LEAGUE 121	2009/03/17
YB61595	LEAGUE 122	2009/03/17
YB61596	LEAGUE 123	2009/03/17
YB61597	LEAGUE 124	2009/03/17
YB61598	LEAGUE 125	2009/03/17
YB61599	LEAGUE 126	2009/03/17

YB61600	LEAGUE 127	2008/03/17
YB61601	LEAGUE 128	2008/03/17
YB61602	LEAGUE 129	2008/03/17
YB61603	LEAGUE 130	2008/03/17
YB61604	LEAGUE 131	2008/03/17
YB61605	LEAGUE 132	2008/03/17
YB61606	LEAGUE 133	2008/03/17
YB61607	LEAGUE 134	2008/03/17
YB61608	LEAGUE 135	2008/03/17
YB61609	LEAGUE 136	2008/03/17
YB61610	LEAGUE 137	2008/03/17
YB61611	LEAGUE 138	2008/03/17
YB61612	LEAGUE 139	2008/03/17
YB61613	LEAGUE 140	2008/03/17
YB61614	LEAGUE 141	2008/03/17
YB61615	LEAGUE 142	2008/03/17
YB61616	LEAGUE 143	2008/03/17
YB61617	LEAGUE 144	2008/03/17
YB61618	LEAGUE 145	2008/03/17
YB61619	LEAGUE 146	2008/03/17
YB61620	LEAGUE 147	2008/03/17
YB61621	LEAGUE 148	2008/03/17
YB61622	LEAGUE 149	2008/03/17
YB61623	LEAGUE 150	2008/03/17
YB61626	LEAGUE 153	2008/03/17
YB61627	LEAGUE 154	2008/03/17
YB61628	LEAGUE 155	2008/03/17
YB61629	LEAGUE 156	2008/03/17
YB61630	LEAGUE 157	2008/03/17
YB61631	LEAGUE 158	2008/03/17
YB61632	LEAGUE 159	2008/03/17
YB61633	LEAGUE 160	2008/03/17
YB61634	LEAGUE 161	2008/03/17
YB61635	LEAGUE 162	2008/03/17
YB61636	LEAGUE 163	2008/03/17
YB61637	LEAGUE 164	2008/03/17
YB61638	LEAGUE 165	2008/03/17
YB61639	LEAGUE 166	2008/03/17
YB61640	LEAGUE 167	2008/03/17
YB61641	LEAGUE 168	2008/03/17
YB61642	LEAGUE 169	2008/03/17
YB61643	LEAGUE 170	2008/03/17
YB61644	LEAGUE 171	2008/03/17
YB61646	LEAGUE 173	2008/03/17
YB61649	LEAGUE 176	2008/03/17
YB61651	LEAGUE 178	2008/03/17
YB61653	LEAGUE 180	2008/03/17
YB61655	LEAGUE 182	2008/03/17

#### **4. Description of Undertakings**

##### ***Prospecting and Soil Sampling***

Field crews consisted of four Geologists and six Field Assistants. Soil samples were taken on each claims. Soil samples were collected by removing top soil using steel spades and sampling the unweathered material at a depth of one foot below ground surface interpreted to be the "B"-horizon. Each sample was packaged in a Kraft soil sample bag (4"x6" folded) and transported to Wolverine Camps for drying.

##### **5. Results**

All soil samples (129) were sent for assay at ALS-Chemex, 212 Brooksbank Avenue, North Vancouver, British Columbia, V6J 2C1. Analyses of the samples were by a 27 element ICP-AES after a 4-acid digestion process. Please see Appendix D for assay certificates and figures 2 through 5 for plotted results.

##### **6. Discussion and Conclusions**

Soil geochemistry reveals overlapping anomalies in zinc, and lead over League claims 23 to 28 (See Figure 3, and Figure 5).

The League Property should be maintained in good standing and warrants further geological, geochemical, and drilling for VMS exploration.

Respectfully Submitted,

---

David Legault, B.Sc.  
Project Geologist

Vancouver, B.C., February 1<sup>st</sup>, 2006

## **Appendix A – List of Personal**

<b>Name</b>	<b>Position</b>	<b>Period</b>
David Legault	Geologist	June 22-24, 2005
Justin Laberge	Geologist	June 22-24, 2005
Matthew Jodrey	Geologist	June 22-24, 2005
Lorraine Tam	Geologist	June 22-24, 2005
Kyioko Nakano	Field Assistant	June 22-24, 2005
Scott Blevings	Field Assistant	June 22-24, 2005
Tyler Caswell	Field Assistant	June 22-24, 2005
Anthony Peter	Field Assistant	June 22-24, 2005
Vashti Etzel	Field Assistant	June 22-24, 2005
Matthew Williams	Field Assistant	June 22-24, 2005

## STATEMENT OF EXPENDITURES

I, David Legault, as agent for Yukon Zinc Corporation, #701-475 Howe Street, Vancouver, B.C. do solemnly declare that geological examination, prospecting, and soil geochemistry survey sampling carried out on the League Claims (see attached list) From June 22<sup>nd</sup>, 2005 to June 24<sup>th</sup>, 2005.

Geochemical assays	\$1635.24
Materials & Supplies	\$3952.32
Accommodations & Meals	\$1635.24
Fixed Wing	\$1516.25
Communications & Phone	\$678.50
Printing & Reproduction	\$24.51
Travel Costs	\$857.23
WCB	\$212.48
Geological Consultants	\$8090.95
Writing Report	\$560.00
<b>Total</b>	<b>\$19162.72</b>

I make this solemn declaration conscientiously believing it to be true and knowing that it is of the same force and effect as if made under oath and by virtue of the Canada Evidence Act.

Declared before me at Vancouver in the Province of British Columbia this 17<sup>th</sup> day of January 2006.

---

David Legault, B.Sc.

## **Appendix C – Statement of Qualifications**

I, David Legault, resident of Vancouver, British Columbia, do certify that:

1. I graduated from Université du Québec À Montréal in May 2001 with a B.Sc. in Geology;
2. From 1998 to present, I have been actively engaged in mineral exploration in Québec, Ontario, and Yukon Territory and am presently employed with the Expatriate Group of Companies to which Yukon Zinc Corporation is part of;
3. I have personally participated in the logistical support during the fieldwork and analysis of data for the filed undertakings herein.

Respectfully Submitted,

---

David Legault, B.Sc.

# Assay Certificates



# ALS Chemex

**EXCELLENCE IN ANALYTICAL CHEMISTRY**

ALS Canada Ltd.

212 Brooksbank Avenue

North Vancouver BC V7J 2C1

Phone: 604 984 0221 Fax: 604 984 0218 www.alschemex.com

YUKON ZINC CORPORATION

701-475 HOWE ST

VANCOUVER BC V6C 2B3

Page: 1

Finalized Date: 11-JUL-2005

Account: MPO

## CERTIFICATE VA05052776

Project: 1637

P.O. No.:

This report is for 129 Soil samples submitted to our lab in Vancouver, BC, Canada on 30-JUN-2005.

The following have access to data associated with this certificate:

JASON DUNNING

## SAMPLE PREPARATION

ALS CODE	DESCRIPTION
WEI-21	Received Sample Weight
LOG-22	Sample login - Rcd w/o BarCode
SCR-41	Screen to -180um and save both

## ANALYTICAL PROCEDURES

ALS CODE	DESCRIPTION	INSTRUMENT
ME-ICP61	27 element four acid ICP-AES	ICP-AES

To: YUKON ZINC CORPORATION  
ATTN: JASON DUNNING  
701-475 HOWE ST  
VANCOUVER BC V6C 2B3

This is the Final Report and supersedes any preliminary report with this certificate number. Results apply to samples as submitted. All pages of this report have been checked and approved for release.

Signature:



# ALS Chemex

EXCELLENCE IN ANALYTICAL CHEMISTRY

ALS Canada Ltd.

212 Brooksbank Avenue

North Vancouver BC V7J 2C1

Phone: 604 984 0221 Fax: 604 984 0218 www.alschemex.com

YUKON ZINC CORPORATION

701-475 HOWE ST

VANCOUVER BC V6C 2B3

Page: 2 - A  
 Total # Pages: 5 (A - B)  
 Finalized Date: 11-JUL-2005  
 Account: MPO

Project: 1637

## CERTIFICATE OF ANALYSIS VA05052776

Sample Description	Method Analyte Units LOR	WEI-21	ME-ICP61	ME-ICP61	ME-ICP61	ME-ICP61	ME-ICP61	ME-ICP61	ME-ICP61	ME-ICP61	ME-ICP61	ME-ICP61	ME-ICP61	ME-ICP61	ME-ICP61	ME-ICP61
		Recvd Wt. kg	Ag ppm	Al %	As ppm	Ba ppm	Be ppm	Bi ppm	Ca %	Cd ppm	Co ppm	Cr ppm	Cu ppm	Fe %	K %	Mg %
		0.02	0.5	0.01	5	10	0.5	2	0.01	0.5	1	1	0.01	0.01	0.01	
A083632		0.54	<0.5	7.32	38	1820	2.3	<2	0.74	0.6	17	78	29	3.78	2.45	0.74
A083633		0.38	<0.5	6.35	43	1690	1.9	<2	1.08	0.8	14	93	28	3.25	2.26	0.56
A083634		0.18	<0.5	3.31	6	920	0.6	2	3.95	0.6	4	7	26	0.79	0.89	0.28
A083635		0.40	0.5	7.83	47	1640	2.1	<2	1.43	0.8	17	143	26	3.96	2.75	0.87
A083636		0.34	0.6	8.10	35	1930	2.4	<2	1.06	1.5	20	192	27	4.28	3.19	0.74
A083637		0.20	0.8	8.31	36	1300	2.6	<2	1.10	1.9	18	148	47	3.97	3.59	0.56
A083638		0.66	<0.5	9.12	54	1710	3.4	<2	0.40	1.1	33	213	44	4.78	4.20	0.72
A083639		0.88	<0.5	8.78	54	940	3.1	<2	0.77	0.8	29	216	44	4.33	4.10	1.07
A083640		0.42	0.5	8.01	49	1250	2.7	<2	0.72	0.5	18	135	37	3.74	3.68	0.75
A083641		0.26	<0.5	7.09	14	1080	2.3	<2	0.96	<0.5	8	43	10	2.67	2.84	0.70
A083642		0.54	0.6	6.14	21	1250	1.6	<2	1.08	<0.5	13	76	16	3.15	1.82	0.94
A083643		0.42	<0.5	5.97	15	1030	1.8	<2	1.08	<0.5	9	59	11	2.62	2.22	0.68
A083644		0.50	<0.5	6.95	20	1290	2.1	<2	0.76	<0.5	9	67	17	2.76	2.48	0.70
A083645		0.60	<0.5	6.82	33	1470	1.9	<2	1.07	0.6	13	75	25	3.76	2.09	0.75
A083646		0.32	0.5	5.45	26	1490	1.4	<2	2.14	0.9	11	73	33	2.23	1.47	0.73
A083647		0.36	<0.5	6.65	15	1160	1.5	<2	1.69	0.9	10	63	35	2.69	1.82	0.80
A083648		0.56	<0.5	6.51	26	1230	1.7	<2	0.95	<0.5	15	85	26	3.34	1.80	1.07
A083649		0.50	0.5	5.76	57	1270	1.5	<2	1.36	0.8	18	112	31	4.64	1.39	0.95
A083650		0.58	<0.5	5.93	33	1190	1.5	<2	1.16	<0.5	14	100	22	3.28	1.61	1.02
A083776		0.30	<0.5	7.09	24	1110	2.1	<2	1.54	<0.5	14	81	21	4.49	2.08	1.35
A083777		0.32	<0.5	6.95	30	1050	1.9	<2	1.50	<0.5	14	87	22	4.85	1.74	1.41
A083778		0.32	0.6	7.41	184	1100	2.0	<2	1.44	<0.5	20	105	45	5.55	2.20	1.41
A083779		0.36	<0.5	7.49	20	1170	2.1	<2	0.72	<0.5	10	75	15	3.79	2.39	0.96
A083780		0.22	0.6	7.58	8	920	1.3	<2	1.85	<0.5	6	12	19	2.05	2.23	0.61
A083781		0.32	<0.5	6.74	21	1140	1.9	<2	1.21	<0.5	15	82	32	4.67	1.87	1.30
A134407		0.50	<0.5	6.79	62	1370	1.9	<2	0.98	0.5	14	98	37	4.14	1.87	1.13
A134408		0.32	<0.5	6.93	52	1720	2.0	<2	1.28	<0.5	13	102	32	4.08	1.83	1.03
A134409		0.72	<0.5	6.40	41	1380	1.8	<2	1.09	1.1	16	97	39	3.68	1.76	0.99
A134410		0.40	<0.5	6.57	7	1250	1.9	<2	1.16	<0.5	10	74	15	2.73	1.57	0.91
A134411		0.56	<0.5	5.52	17	1150	1.5	<2	1.22	0.6	11	81	20	2.79	1.48	0.85
A134412		0.42	<0.5	6.95	41	1520	2.1	<2	1.26	<0.5	15	76	23	3.84	1.68	0.88
A134413		0.46	<0.5	6.17	26	1490	1.6	<2	1.02	<0.5	14	96	25	3.31	1.66	0.93
A134414		0.60	<0.5	6.00	33	1270	1.5	<2	1.25	<0.5	13	84	18	3.25	1.63	0.99
A134415		0.42	<0.5	6.20	31	1190	1.6	<2	1.23	<0.5	14	97	28	3.82	1.58	1.06
A134416		0.60	<0.5	6.10	61	900	2.0	<2	1.15	0.6	21	85	42	4.26	1.66	1.21
A134473		0.30	<0.5	5.54	36	1150	1.5	<2	0.88	0.5	13	78	30	3.45	1.35	0.84
A134474		0.44	<0.5	5.12	29	950	1.4	<2	1.24	<0.5	11	79	22	2.96	1.44	0.86
A134475		0.38	<0.5	6.22	25	1400	1.8	<2	1.52	<0.5	12	89	20	3.31	1.64	1.07
A134476		0.40	<0.5	4.95	13	840	1.2	<2	0.96	<0.5	10	107	17	2.60	1.20	0.79
A134477		0.36	<0.5	5.97	38	840	1.8	<2	1.02	<0.5	14	72	18	4.68	1.56	0.78



# ALS Chemex

**EXCELLENCE IN ANALYTICAL CHEMISTRY**

ALS Canada Ltd.

212 Brooksbank Avenue

North Vancouver BC V7J 2C1

Phone: 604 984 0221 Fax: 604 984 0218 www.alschemex.com

YUKON ZINC CORPORATION

701-475 HOWE ST

VANCOUVER BC V6C 2B3

Page: 2 - B

Total # Pages: 5 (A - B)

Finalized Date: 11-JUL-2005

Account: MPO

Project: 1637

## CERTIFICATE OF ANALYSIS VA05052776

Sample Description	ME-ICP61	ME-ICP61	ME-ICP61	ME-ICP61	ME-ICP61	ME-ICP61	ME-ICP61	ME-ICP61	ME-ICP61	ME-ICP61	ME-ICP61	ME-ICP61	ME-ICP61
	Mn ppm	Mo ppm	Na %	Ni ppm	P ppm	Pb ppm	S %	Sb ppm	Sr ppm	Ti %	V ppm	W ppm	Zn ppm
Method Analyte Units LOR	5	1	0.01	1	10	2	0.01	5	1	0.01	1	10	2
A083632	864	<1	1.09	37	1100	23	0.03	<5	144	0.34	118	<10	149
A083633	578	1	0.68	30	1120	26	0.07	<5	140	0.34	135	<10	164
A083634	584	<1	1.02	10	770	4	0.18	<5	342	0.08	15	<10	38
A083635	708	<1	0.92	39	980	34	0.06	<5	170	0.44	147	<10	243
A083636	523	<1	0.56	42	860	71	0.05	<5	94	0.45	174	10	434
A083637	954	1	0.44	34	860	170	0.08	<5	92	0.35	138	<10	460
A083638	1175	<1	0.18	74	720	42	0.01	<5	28	0.56	188	<10	373
A083639	1420	<1	0.35	68	660	9	0.01	<5	33	0.51	182	<10	206
A083640	862	1	0.21	42	650	24	0.03	<5	51	0.45	105	<10	347
A083641	608	<1	0.81	17	800	17	0.03	<5	152	0.29	64	10	82
A083642	358	1	0.82	29	770	29	0.02	<5	126	0.36	134	<10	128
A083643	404	<1	0.70	18	1040	23	0.02	<5	119	0.37	85	10	100
A083644	280	<1	0.62	20	900	25	0.02	<5	92	0.33	112	<10	99
A083645	625	1	0.74	30	1040	20	0.04	<5	154	0.37	134	<10	131
A083646	830	<1	0.72	30	1320	17	0.15	7	199	0.29	136	<10	116
A083647	473	1	1.64	28	1020	10	0.07	<5	327	0.31	95	<10	100
A083648	422	1	1.07	38	1010	11	0.01	<5	133	0.50	150	<10	87
A083649	1185	2	0.88	52	1420	21	0.04	<5	136	0.39	126	<10	112
A083650	422	1	1.07	42	1340	10	0.01	<5	135	0.48	138	<10	102
A083776	467	<1	1.38	25	1200	32	0.04	<5	147	0.58	134	<10	203
A083777	400	<1	1.38	29	1530	17	0.06	<5	132	0.60	142	<10	232
A083778	663	1	0.75	43	1300	15	0.10	<5	135	0.48	174	10	139
A083779	326	1	1.54	18	570	14	0.01	<5	97	0.63	150	<10	77
A083780	400	<1	2.71	5	580	8	0.03	<5	565	0.24	51	<10	56
A083781	535	<1	1.39	30	1200	58	0.02	<5	142	0.58	120	<10	147
A134407	505	1	0.91	46	1260	11	0.01	<5	126	0.45	148	<10	123
A134408	655	1	1.08	38	1390	14	0.04	<5	132	0.44	158	<10	110
A134409	901	1	1.07	58	1330	12	0.01	<5	146	0.44	143	<10	125
A134410	304	<1	1.19	25	2120	12	0.11	<5	166	0.38	112	<10	142
A134411	374	<1	1.12	40	1110	11	0.01	<5	172	0.40	111	<10	84
A134412	1050	<1	1.34	35	1260	16	0.05	<5	160	0.45	118	<10	112
A134413	680	1	1.01	45	990	14	0.02	5	158	0.38	138	<10	134
A134414	591	<1	1.09	34	1260	12	0.01	<5	144	0.46	135	<10	95
A134415	539	<1	1.03	46	1260	18	0.02	<5	140	0.41	131	<10	156
A134416	1005	1	1.04	44	1450	29	0.01	<5	120	0.59	144	<10	142
A134473	794	<1	1.00	41	780	18	0.02	<5	142	0.36	110	<10	94
A134474	536	<1	1.05	29	1280	15	0.01	<5	151	0.48	107	<10	102
A134475	467	<1	0.92	30	1220	18	0.03	<5	176	0.41	142	<10	120
A134476	451	<1	1.09	30	530	7	0.01	<5	160	0.34	92	<10	63
A134477	751	1	1.17	24	1580	28	0.02	<5	172	0.47	144	<10	90



# ALS Chemex

EXCELLENCE IN ANALYTICAL CHEMISTRY

ALS Canada Ltd.

212 Brooksbank Avenue

North Vancouver BC V7J 2C1

Phone: 604 984 0221 Fax: 604 984 0218 www.alschemex.com

YUKON ZINC CORPORATION

701-475 HOWE ST

VANCOUVER BC V6C 2B3

Project: 1637

## CERTIFICATE OF ANALYSIS VA05052776

Sample Description	Method Analyte Units LOR	WEI-21	ME-ICP61	ME-ICP61	ME-ICP61	ME-ICP61	ME-ICP61	ME-ICP61	ME-ICP61	ME-ICP61	ME-ICP61	ME-ICP61	ME-ICP61	ME-ICP61	ME-ICP61	
		Recvd Wt.	Ag	Al	As	Ba	Be	Bi	Ca	Cd	Co	Cr	Cu	Fe	K	Mg
		kg	ppm	%	ppm	ppm	ppm	ppm	%	ppm	ppm	ppm	ppm	%	%	%
		0.02	0.5	0.01	5	10	0.5	2	0.01	0.5	1	1	1	0.01	0.01	0.01
A134478		0.36	<0.5	6.73	7	1140	1.8	<2	1.71	<0.5	12	101	12	3.15	1.80	1.16
A134479		0.32	<0.5	4.85	23	820	1.0	<2	0.66	<0.5	7	68	9	2.17	1.31	0.50
A134480		0.30	<0.5	7.20	40	940	1.8	<2	1.12	<0.5	13	86	22	4.51	1.63	0.93
A134481		0.34	<0.5	5.22	22	780	1.4	<2	0.89	<0.5	9	72	12	3.37	1.27	0.71
A134482		0.34	<0.5	5.27	26	810	1.5	<2	0.96	<0.5	11	82	12	3.30	1.24	0.84
A134483		0.40	<0.5	5.83	12	930	1.6	<2	1.55	<0.5	13	93	9	3.24	1.47	1.20
A134484		0.42	<0.5	5.24	19	990	1.4	<2	1.39	<0.5	13	100	22	3.06	1.32	1.05
A134485		0.36	<0.5	5.55	15	1040	1.6	<2	1.05	<0.5	13	80	16	3.11	1.36	0.97
A134486		0.34	<0.5	5.20	14	990	1.5	<2	1.05	<0.5	10	77	14	2.89	1.22	0.89
A134487		0.30	<0.5	5.85	<5	730	1.7	<2	1.32	<0.5	9	84	10	3.57	1.40	0.92
A134488		0.26	<0.5	4.87	17	770	1.2	<2	0.92	<0.5	9	73	12	3.45	1.16	0.70
A134489		0.28	<0.5	6.55	17	900	3.7	<2	1.27	<0.5	14	91	18	4.44	1.34	1.27
A134490		0.32	0.8	7.03	33	1590	2.0	<2	0.93	0.8	19	112	58	4.42	2.18	1.43
A134491		0.42	<0.5	5.70	17	1170	1.5	<2	1.23	0.6	13	82	24	3.30	1.43	1.04
A134492		0.34	<0.5	5.88	21	1110	1.5	<2	0.77	<0.5	13	92	27	3.45	1.45	0.87
A134493		0.42	<0.5	6.54	31	1100	1.8	<2	0.79	<0.5	15	83	38	4.10	1.90	1.15
A134494		0.34	<0.5	6.75	32	1070	1.7	<2	0.50	<0.5	11	73	36	4.02	1.77	0.96
A134495		0.34	<0.5	6.43	29	1370	1.9	<2	0.76	0.6	17	91	65	4.25	1.96	1.20
A134496		0.42	<0.5	6.91	20	1380	2.2	<2	1.14	1.0	16	78	63	4.12	2.23	1.26
A134497		0.54	<0.5	7.49	39	890	2.3	<2	0.91	<0.5	27	91	47	5.90	2.03	1.33
A134498		0.34	1.5	7.13	57	1130	2.5	<2	1.36	<0.5	21	81	113	5.44	2.00	1.16
A134499		0.24	0.6	7.10	73	670	1.8	<2	2.60	0.6	20	45	35	5.84	1.62	1.44
A134500		0.32	<0.5	7.75	38	1120	2.4	<2	0.78	<0.5	11	80	26	4.53	2.58	1.08
A139551		0.42	<0.5	8.34	81	1000	2.6	<2	1.80	<0.5	25	93	53	6.15	2.05	1.77
A139552		0.60	0.5	7.44	43	1500	2.0	<2	0.67	<0.5	16	96	45	4.24	2.12	1.15
A139553		0.58	0.5	6.22	50	1000	1.7	<2	1.00	<0.5	14	76	34	3.80	1.61	0.90
A139554		0.42	0.5	6.84	33	1160	1.7	<2	1.45	<0.5	15	79	28	4.04	1.64	1.02
A139555		0.32	1.0	7.20	89	1670	2.2	<2	0.38	<0.5	12	96	126	4.47	2.10	0.51
A139556		0.36	0.6	6.34	63	1100	1.6	<2	0.74	<0.5	16	101	125	4.94	1.62	0.83
A139557		0.28	<0.5	5.07	12	700	0.9	<2	3.05	0.5	6	14	25	1.57	1.32	0.46
A139558		0.22	<0.5	3.70	<5	550	0.7	2	2.49	<0.5	3	7	18	1.03	0.95	0.29
A139559		0.28	<0.5	3.64	12	520	0.7	<2	3.57	<0.5	8	19	23	1.59	0.81	0.48
A139560		0.44	<0.5	7.15	26	1180	2.2	<2	1.55	<0.5	15	74	16	4.12	2.53	1.28
A139751		0.80	<0.5	6.15	31	1220	1.6	<2	1.15	<0.5	14	99	25	3.36	1.69	1.13
A139752		0.44	0.5	6.56	20	1210	1.5	<2	1.57	1.1	15	61	38	3.30	1.71	0.86
A139753		0.24	<0.5	4.07	292	650	0.7	<2	1.90	0.5	5	10	22	3.37	0.99	0.40
A139754		0.48	<0.5	6.89	34	1170	1.9	<2	0.78	<0.5	11	76	37	3.97	2.08	1.08
A139755		0.48	0.5	6.33	31	1000	1.7	<2	0.69	<0.5	10	80	21	3.31	1.61	0.82
A139756		0.32	0.7	7.62	6	1230	1.5	<2	1.49	<0.5	10	37	26	2.70	2.11	0.76
A139757		0.50	<0.5	5.56	23	970	1.5	<2	1.07	<0.5	9	61	17	2.60	1.56	0.86



# ALS Chemex

**EXCELLENCE IN ANALYTICAL CHEMISTRY**

ALS Canada Ltd.

212 Brooksbank Avenue

North Vancouver BC V7J 2C1

Phone: 604 984 0221 Fax: 604 984 0218 www.alschemex.com

YUKON ZINC CORPORATION

701-475 HOWE ST

VANCOUVER BC V6C 2B3

Page: 3 - B

Total # Pages: 5 (A - B)

Finalized Date: 11-JUL-2005

Account: MPO

Project: 1637

## CERTIFICATE OF ANALYSIS VA05052776

Sample Description	Method Analyte Units LOR	ME-ICP61	ME-ICP61	ME-ICP61	ME-ICP61	ME-ICP61	ME-ICP61	ME-ICP61	ME-ICP61	ME-ICP61	ME-ICP61	ME-ICP61	ME-ICP61	
		Mn	Mo	Na	Ni	P	Pb	S	Sb	Sr	Ti	V	W	Zn
		ppm	ppm	%	ppm	ppm	ppm	%	ppm	ppm	%	ppm	ppm	ppm
		5	1	0.01	1	10	2	0.01	5	1	0.01	1	10	2
A134478		359	<1	1.11	31	1180	13	0.02	<5	256	0.46	130	<10	187
A134479		283	1	0.95	13	370	11	0.01	<5	122	0.40	120	<10	43
A134480		437	<1	1.35	28	610	22	0.01	<5	196	0.43	124	10	84
A134481		428	1	1.08	21	630	18	0.01	<5	129	0.42	129	<10	81
A134482		489	<1	1.08	26	920	13	0.01	<5	130	0.39	112	<10	87
A134483		370	<1	1.30	33	1300	9	0.01	<5	150	0.50	120	<10	84
A134484		495	<1	1.10	41	1320	11	0.01	<5	139	0.48	120	<10	93
A134485		398	<1	1.10	34	890	14	<0.01	<5	134	0.40	116	<10	74
A134486		382	<1	1.10	33	790	12	0.01	<5	134	0.39	105	<10	64
A134487		422	<1	1.38	26	730	13	0.01	<5	144	0.52	108	10	70
A134488		520	<1	1.00	23	1440	19	0.01	<5	142	0.37	119	<10	56
A134489		419	<1	1.28	31	470	12	0.01	<5	198	0.50	150	10	80
A134490		727	1	0.90	69	1180	20	0.01	<5	134	0.41	197	<10	154
A134491		411	<1	1.03	37	970	15	0.03	<5	168	0.39	118	<10	94
A134492		351	1	0.91	42	860	11	0.01	<5	132	0.39	134	<10	77
A134493		481	<1	0.98	33	1210	22	0.01	<5	112	0.46	153	<10	129
A134494		340	1	1.00	26	660	38	0.01	<5	86	0.52	170	<10	122
A134495		520	1	0.92	40	1120	36	0.02	<5	93	0.45	175	<10	211
A134496		673	<1	1.17	40	1110	42	0.01	<5	145	0.50	139	<10	215
A134497		850	<1	1.07	40	1040	9	0.02	<5	124	0.63	152	<10	146
A134498		824	1	0.70	41	1730	41	0.12	<5	128	0.37	153	<10	215
A134499		804	<1	1.27	19	1580	26	0.08	<5	257	0.76	196	<10	160
A134500		387	1	1.07	18	550	47	0.01	<5	102	0.53	130	10	152
A139551		843	<1	1.38	48	770	29	0.01	<5	234	0.52	126	<10	122
A139552		475	1	1.08	33	740	35	<0.01	<5	111	0.53	188	<10	161
A139553		535	<1	1.10	29	910	30	0.01	<5	133	0.47	122	<10	138
A139554		682	<1	1.33	33	1180	22	0.01	<5	229	0.46	122	<10	138
A139555		246	11	0.64	66	1020	17	0.02	<5	158	0.31	299	<10	38
A139556		510	1	0.93	51	1360	14	0.02	<5	156	0.41	176	<10	86
A139557		593	<1	1.58	9	1060	6	0.15	<5	428	0.17	39	<10	53
A139558		188	1	1.19	7	780	6	0.15	<5	358	0.10	21	<10	38
A139559		571	1	0.97	10	900	6	0.15	5	351	0.18	43	<10	46
A139560		636	<1	1.30	26	930	22	0.01	<5	170	0.54	134	<10	120
A139751		488	<1	1.11	39	1220	16	0.01	<5	144	0.49	150	<10	100
A139752		1225	1	1.53	39	1060	21	0.04	<5	300	0.35	107	<10	106
A139753		226	6	1.32	10	1110	7	0.21	<5	347	0.14	40	<10	43
A139754		379	<1	1.20	24	660	98	0.01	<5	110	0.55	134	<10	212
A139755		308	<1	1.05	26	550	34	0.01	<5	109	0.46	128	<10	114
A139756		452	1	2.11	17	560	22	0.01	<5	430	0.28	88	<10	100
A139757		286	<1	1.14	24	1060	24	0.01	<5	143	0.42	96	<10	134



# ALS Chemex

**EXCELLENCE IN ANALYTICAL CHEMISTRY**

ALS Canada Ltd.

212 Brooksbank Avenue

North Vancouver BC V7J 2C1

Phone: 604 984 0221 Fax: 604 984 0218 www.alschemex.com

YUKON ZINC CORPORATION

701-475 HOWE ST

VANCOUVER BC V6C 2B3

Page: 4 - A

Total # Pages: 5 (A - B)

Finalized Date: 11-JUL-2005

Account: MPO

Project: 1637

## CERTIFICATE OF ANALYSIS VA05052776

Sample Description	Method	WEI-21	ME-ICP61	ME-ICP61	ME-ICP61	ME-ICP61	ME-ICP61	ME-ICP61	ME-ICP61	ME-ICP61	ME-ICP61	ME-ICP61	ME-ICP61	ME-ICP61	ME-ICP61	ME-ICP61
	Analyte	Recvd Wt.	Ag	Al	As	Ba	Be	Bi	Ca	Cd	Co	Cr	Cu	Fe	K	Mg
Units		kg	ppm	%	ppm	ppm	ppm	ppm	%	ppm	ppm	ppm	ppm	%	%	%
LOR		0.02	0.5	0.01	5	10	0.5	2	0.01	0.5	1	1	1	0.01	0.01	0.01
A139758		0.52	<0.5	5.84	24	1140	1.7	<2	0.94	<0.5	11	68	30	2.95	1.77	0.97
A139759		0.50	<0.5	4.79	<5	680	1.1	<2	1.73	<0.5	6	13	18	1.34	1.77	0.48
A139760		0.44	<0.5	5.58	8	1100	1.7	<2	1.66	0.6	13	76	24	2.86	1.45	1.05
A139761		0.58	<0.5	5.18	12	1080	1.4	<2	1.18	0.7	12	67	41	2.86	1.48	0.87
A139762		0.44	<0.5	6.83	20	1020	1.5	<2	2.02	0.5	11	71	24	3.19	1.77	0.93
A139763		0.40	0.6	5.71	46	1530	1.5	<2	2.27	2.2	15	58	37	3.03	1.44	0.81
A139764		0.34	0.6	6.21	49	1250	1.4	<2	2.22	1.1	11	33	40	2.97	1.63	0.62
A139765		0.22	<0.5	5.99	17	1530	1.7	<2	1.40	1.2	10	81	32	2.75	1.79	1.08
A139766		0.28	<0.5	5.61	17	880	1.1	<2	0.95	<0.5	11	67	19	2.88	1.28	0.78
A139767		0.48	<0.5	5.94	26	800	1.5	<2	1.05	<0.5	15	115	16	4.58	1.46	1.06
A139768		0.38	0.7	5.23	7	720	1.2	<2	1.50	<0.5	4	10	19	1.52	2.04	0.41
A139769		0.30	<0.5	4.56	14	900	0.7	<2	3.89	2.5	6	22	15	1.55	1.04	0.58
A139770		0.46	<0.5	5.73	27	1600	1.5	<2	0.93	0.5	13	83	23	3.31	1.53	0.93
A139771		0.28	<0.5	2.03	6	1180	0.7	<2	3.48	1.3	5	14	31	0.99	0.31	0.26
A139772		0.50	<0.5	5.25	15	960	1.0	<2	0.46	<0.5	8	73	12	3.08	1.24	0.73
A139773		0.44	0.5	5.61	9	820	1.2	<2	2.00	<0.5	5	8	20	1.60	1.84	0.45
A139774		0.36	<0.5	4.56	14	970	1.2	<2	2.34	10.5	7	56	27	2.11	1.12	0.71
A139775		0.44	<0.5	4.93	7	690	1.1	<2	2.28	1.2	5	10	25	1.68	1.72	0.60
A139776		0.46	<0.5	5.10	40	1640	1.3	<2	2.16	4.2	11	52	27	3.68	1.22	0.76
A139777		0.32	0.7	6.92	<5	1040	1.2	<2	2.00	<0.5	7	17	17	1.86	1.94	0.56
A139778		0.56	<0.5	5.59	21	1390	1.4	<2	1.02	<0.5	9	76	26	2.73	1.54	0.88
A139851		0.42	<0.5	5.77	8	1310	1.5	<2	0.87	<0.5	10	75	23	2.77	1.60	0.93
A139852		0.40	0.7	6.36	<5	1360	1.4	<2	1.32	1.3	9	68	25	2.31	1.65	0.81
A139853		0.36	2.0	6.74	32	1750	1.5	<2	0.98	<0.5	5	74	25	2.24	1.79	0.68
A139854		0.42	1.0	6.45	35	1920	1.7	<2	0.88	1.0	12	93	29	2.78	1.84	0.84
A139855		0.34	0.6	6.05	44	1730	1.5	<2	1.47	3.7	8	70	29	2.50	1.94	0.61
A139856		0.34	<0.5	5.52	15	1130	1.4	<2	1.03	0.6	9	67	11	2.44	1.53	0.76
A139857		0.32	0.5	7.06	<5	940	1.2	<2	1.74	<0.5	6	12	16	1.68	2.12	0.51
A139858		0.44	<0.5	5.83	10	1190	1.3	<2	0.89	<0.5	10	81	13	2.72	1.58	0.81
A139859		0.36	1.0	6.96	8	980	1.3	<2	1.30	0.9	6	26	20	1.95	2.08	0.51
A139860		0.40	<0.5	7.20	38	1220	2.4	<2	0.52	<0.5	10	55	14	2.86	3.19	0.65
A139861		0.56	3.6	10.45	87	910	2.9	<2	0.05	0.6	7	99	19	3.70	5.45	0.35
A139862		0.46	2.3	9.22	229	1000	2.7	<2	0.29	3.3	23	182	35	4.41	4.31	0.75
A139863		0.34	0.6	8.60	63	2400	2.1	<2	0.90	2.4	29	252	30	4.74	3.48	0.72
A139864		0.32	0.8	8.58	41	1740	3.2	<2	1.36	1.1	14	116	35	3.98	3.88	0.53
A139865		0.32	0.6	8.80	54	2090	2.8	<2	0.39	<0.5	13	167	44	4.68	3.67	0.68
A139866		0.42	1.0	9.01	53	2350	2.7	<2	0.49	0.6	14	183	48	5.09	3.43	0.58
A139867		0.48	<0.5	6.43	31	1080	1.8	<2	1.25	<0.5	13	94	29	3.47	1.81	0.91
A139868		0.26	<0.5	6.83	14	950	1.7	<2	0.66	<0.5	8	56	8	2.57	1.95	0.64
A139869		0.28	<0.5	6.39	36	900	1.6	<2	0.62	<0.5	10	77	25	4.35	1.58	0.52



# ALS Chemex

EXCELLENCE IN ANALYTICAL CHEMISTRY

ALS Canada Ltd.

212 Brooksbank Avenue

North Vancouver BC V7J 2C1

Phone: 604 984 0221 Fax: 604 984 0218 www.alschemex.com

YUKON ZINC CORPORATION

701-475 HOWE ST

VANCOUVER BC V6C 2B3

Page: 4 - B

Total # Pages: 5 (A - B)

Finalized Date: 11-JUL-2005

Account: MPO

Project: 1637

## CERTIFICATE OF ANALYSIS VA05052776

Sample Description	Method Analyte Units LOR	ME-ICP61	ME-ICP61	ME-ICP61	ME-ICP61	ME-ICP61	ME-ICP61	ME-ICP61	ME-ICP61	ME-ICP61	ME-ICP61	ME-ICP61	ME-ICP61	ME-ICP61
		Mn	Mo	Na	Ni	P	Pb	S	Sb	Sr	Ti	V	W	Zn
		ppm	ppm	%	ppm	ppm	ppm	%	ppm	ppm	%	ppm	ppm	ppm
		5	1	0.01	1	10	2	0.01	5	1	0.01	1	10	2
A139758		395	<1	1.08	24	1040	29	<0.01	<5	128	0.44	111	<10	154
A139759		299	1	2.33	6	490	7	0.04	<5	363	0.21	35	<10	39
A139760		538	<1	1.14	33	1180	19	0.02	<5	208	0.38	108	<10	122
A139761		509	<1	1.06	34	1200	29	0.01	<5	144	0.41	107	<10	120
A139762		486	<1	1.61	19	860	15	0.05	<5	360	0.34	90	<10	120
A139763		1790	3	1.01	51	1540	16	0.28	<5	251	0.28	97	<10	191
A139764		2240	2	1.50	36	1520	7	0.16	<5	347	0.20	72	<10	120
A139765		229	1	0.68	42	1200	24	0.20	<5	134	0.31	136	<10	190
A139766		283	<1	1.15	29	520	12	0.01	<5	141	0.39	111	<10	71
A139767		610	1	1.13	30	1100	11	0.01	<5	127	0.64	135	<10	77
A139768		327	<1	2.59	4	760	6	0.02	<5	397	0.19	34	<10	43
A139769		702	1	1.32	9	2170	5	0.30	<5	392	0.16	41	<10	61
A139770		885	1	0.87	41	990	15	0.02	<5	132	0.34	127	<10	105
A139771		1155	1	0.30	16	2190	2	0.28	<5	180	0.05	22	<10	30
A139772		287	1	0.68	24	420	15	0.01	<5	83	0.32	132	<10	75
A139773		426	1	2.43	5	980	5	0.07	<5	420	0.18	34	<10	50
A139774		216	<1	0.79	24	1600	10	0.24	<5	184	0.27	84	<10	176
A139775		322	1	2.41	6	890	6	0.14	<5	404	0.23	45	<10	82
A139776		2720	27	0.73	32	1450	17	0.40	5	165	0.26	96	<10	302
A139777		912	1	2.27	9	860	10	0.06	<5	483	0.22	52	<10	64
A139778		470	1	0.83	34	930	16	0.04	<5	137	0.34	128	<10	90
A139851		300	1	0.84	37	880	18	0.01	<5	124	0.38	132	<10	91
A139852		541	1	1.20	28	1080	27	0.07	<5	229	0.33	133	<10	135
A139853		283	2	0.90	17	1690	20	0.07	<5	273	0.37	164	<10	72
A139854		1250	1	0.72	37	1240	30	0.03	<5	156	0.37	217	<10	136
A139855		281	1	0.55	34	1600	21	0.08	<5	168	0.34	120	<10	403
A139856		304	1	0.75	23	780	21	0.05	<5	120	0.34	111	<10	397
A139857		320	1	2.33	6	480	10	0.04	<5	489	0.21	40	<10	51
A139858		396	<1	0.82	24	830	17	0.04	<5	136	0.36	113	<10	104
A139859		333	1	2.10	13	740	78	0.03	<5	409	0.25	56	<10	456
A139860		471	1	0.54	28	670	33	0.01	<5	68	0.30	68	<10	137
A139861		314	5	0.34	22	740	166	0.46	<5	88	0.35	106	<10	238
A139862		546	2	0.29	54	570	509	0.03	<5	31	0.51	156	<10	591
A139863		1325	3	0.43	65	1150	82	0.05	<5	82	0.53	188	<10	373
A139864		1115	3	0.26	38	840	44	0.11	<5	87	0.30	129	<10	264
A139865		495	3	0.33	39	1060	38	0.02	<5	66	0.38	186	<10	213
A139866		630	3	0.41	32	1060	49	0.04	<5	91	0.36	232	<10	146
A139867		596	2	1.27	39	1000	21	0.01	<5	146	0.54	126	<10	88
A139868		314	1	1.10	14	1860	15	0.07	<5	128	0.45	108	<10	60
A139869		1130	4	0.75	28	5680	28	0.14	<5	132	0.38	160	<10	96



# ALS Chemex

**EXCELLENCE IN ANALYTICAL CHEMISTRY**

ALS Canada Ltd.

212 Brooksbank Avenue

North Vancouver BC V7J 2C1

Phone: 604 984 0221 Fax: 604 984 0218 www.alschemex.com

YUKON ZINC CORPORATION

701-475 HOWE ST

VANCOUVER BC V6C 2B3

Page: 5 - A

Total # Pages: 5 (A - B)

Finalized Date: 11-JUL-2005

Account: MPO

Project: 1637

<b>CERTIFICATE OF ANALYSIS VA05052776</b>
---

Sample Description	Method Analyte Units LOR	WEI-21 Recvd Wt. kg	ME-ICP61 Ag ppm	ME-ICP61 Al %	ME-ICP61 As ppm	ME-ICP61 Ba ppm	ME-ICP61 Be ppm	ME-ICP61 Bi ppm	ME-ICP61 Ca %	ME-ICP61 Cd ppm	ME-ICP61 Co ppm	ME-ICP61 Cr ppm	ME-ICP61 Cu ppm	ME-ICP61 Fe %	ME-ICP61 K %	ME-ICP61 Mg %
		0.02	0.5	0.01	5	10	0.5	2	0.01	0.5	1	1	1	0.01	0.01	0.01
A139870		0.36	<0.5	6.93	28	830	1.6	<2	1.04	<0.5	13	90	30	4.21	2.04	0.94
A139871		0.34	<0.5	7.36	<5	720	1.4	<2	1.66	<0.5	7	22	16	2.31	1.84	0.72
A139872		0.34	<0.5	6.94	25	770	2.0	<2	0.64	<0.5	6	49	12	2.86	1.83	0.55
A139873		0.38	<0.5	5.92	7	920	1.3	<2	0.89	<0.5	7	58	9	2.44	1.65	0.66
A139874		0.42	<0.5	5.43	82	1260	1.3	<2	5.24	<0.5	31	771	12	6.25	1.29	5.53
A139875		0.34	<0.5	7.19	115	780	2.1	<2	1.24	<0.5	19	79	25	4.61	2.16	1.34
A139876		0.26	<0.5	6.25	51	1040	1.4	<2	0.66	<0.5	16	100	70	4.21	1.58	0.89
A139877		0.26	0.9	7.40	23	970	1.3	<2	1.56	<0.5	9	34	19	2.76	1.86	0.71
A139878		0.38	0.6	7.07	13	780	1.2	<2	1.39	<0.5	8	43	13	2.56	1.70	0.77



# ALS Chemex

EXCELLENCE IN ANALYTICAL CHEMISTRY

ALS Canada Ltd.

212 Brooksbank Avenue

North Vancouver BC V7J 2C1

Phone: 604 984 0221 Fax: 604 984 0218 www.alschemex.com

YUKON ZINC CORPORATION

701-475 HOWE ST

VANCOUVER BC V6C 2B3

Page: 5 - B

Total # Pages: 5 (A - B)

Finalized Date: 11-JUL-2005

Account: MPO

Project: 1637

## CERTIFICATE OF ANALYSIS VA05052776

Sample Description	Method	ME-ICP61	ME-ICP61	ME-ICP61	ME-ICP61	ME-ICP61	ME-ICP61	ME-ICP61	ME-ICP61	ME-ICP61	ME-ICP61	ME-ICP61	ME-ICP61	
	Analyte	Mn	Mo	Na	Ni	P	Pb	S	Sb	Sr	Ti	V	W	Zn
	Units LOR	ppm	ppm	%	ppm	ppm	ppm	%	ppm	ppm	%	ppm	ppm	ppm
		5	1	0.01	1	10	2	0.01	5	1	0.01	1	10	2
A139870		482	2	1.22	31	1250	29	0.03	<5	158	0.57	148	<10	106
A139871		331	1	2.21	8	1400	14	0.06	<5	453	0.33	69	<10	49
A139872		255	2	0.92	13	2020	19	0.06	<5	97	0.55	127	<10	49
A139873		295	1	1.34	19	1020	11	0.02	<5	146	0.49	112	<10	47
A139874		1155	<1	0.57	252	560	14	0.01	<5	144	1.25	232	<10	106
A139875		628	<1	1.28	34	1280	20	0.01	<5	118	0.64	160	<10	88
A139876		530	2	0.92	44	620	24	0.02	<5	96	0.48	150	<10	91
A139877		443	1	2.09	17	1040	16	0.03	<5	423	0.29	77	<10	64
A139878		341	1	1.89	12	930	18	0.03	<5	328	0.44	94	<10	53

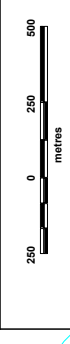


Figure 01. Location Map of the League Property.

**Yukon Zinc Corporation**

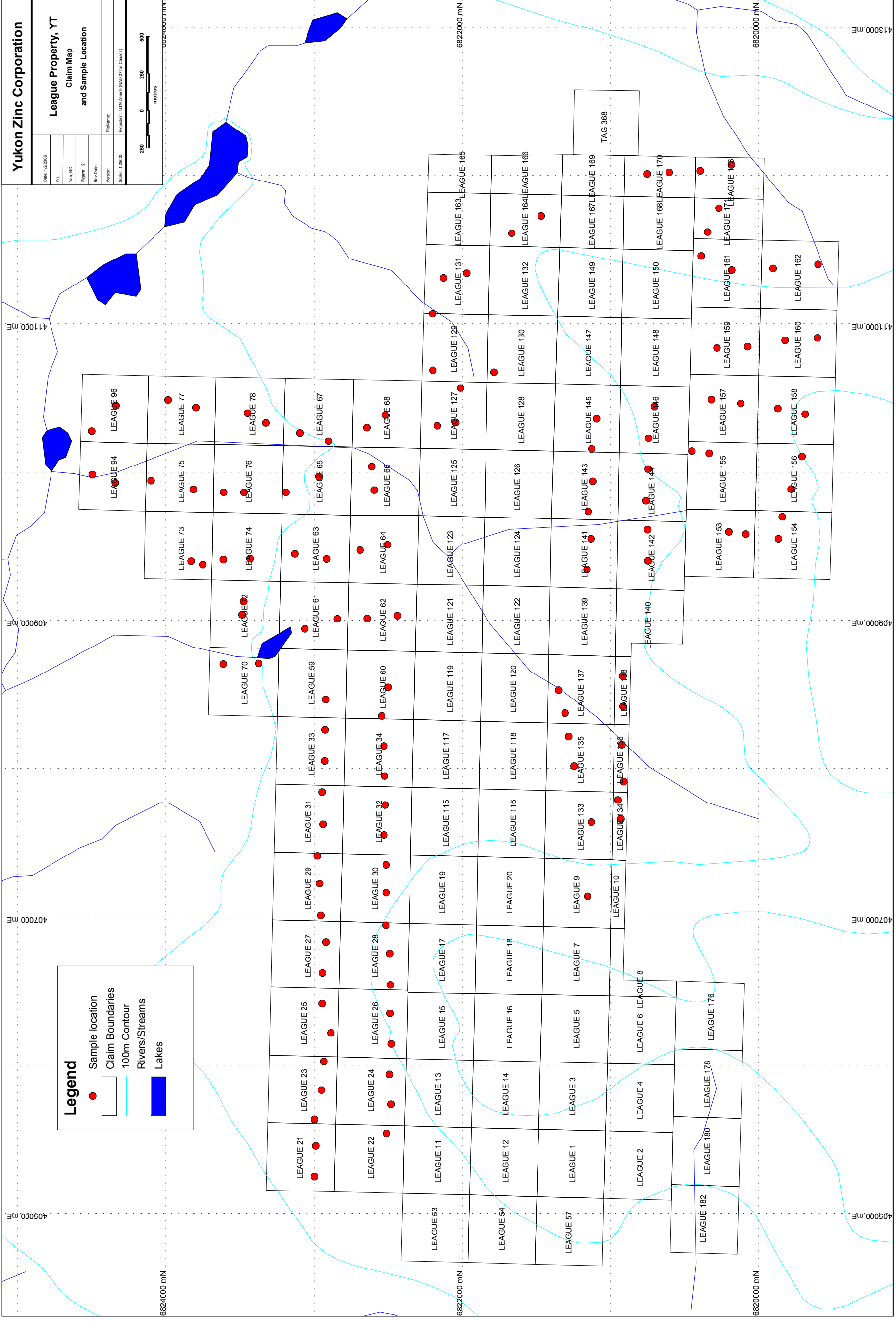
**League Property, YT  
Claim Map  
and Sample Location**

Date: 12/2008
D.L.
Map BC
Figure: 2
Rev/Date:
File Name:
Version:
Scale: 1:25000
Projection: UTM Zone 9 (NAD 27 for Canada)



**Legend**

- Sample location
- Claim Boundaries
- 100m Contour
- Rivers/Streams
- Lakes



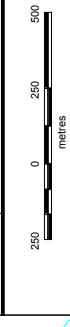
# Yukon Zinc Corporation

## League Property, YT

Soil Chemistry  
Zinc (ppm)

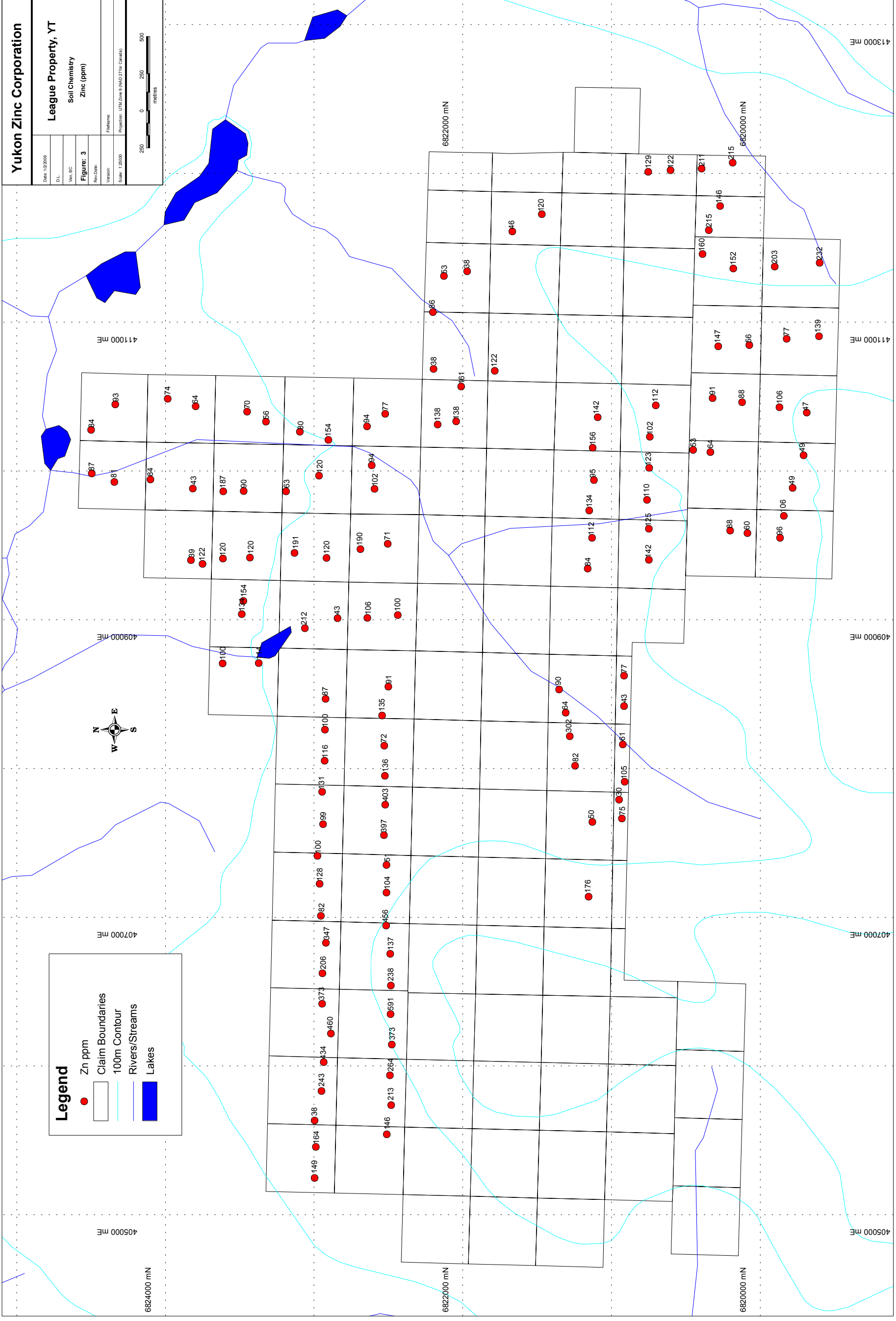
Figure: 3

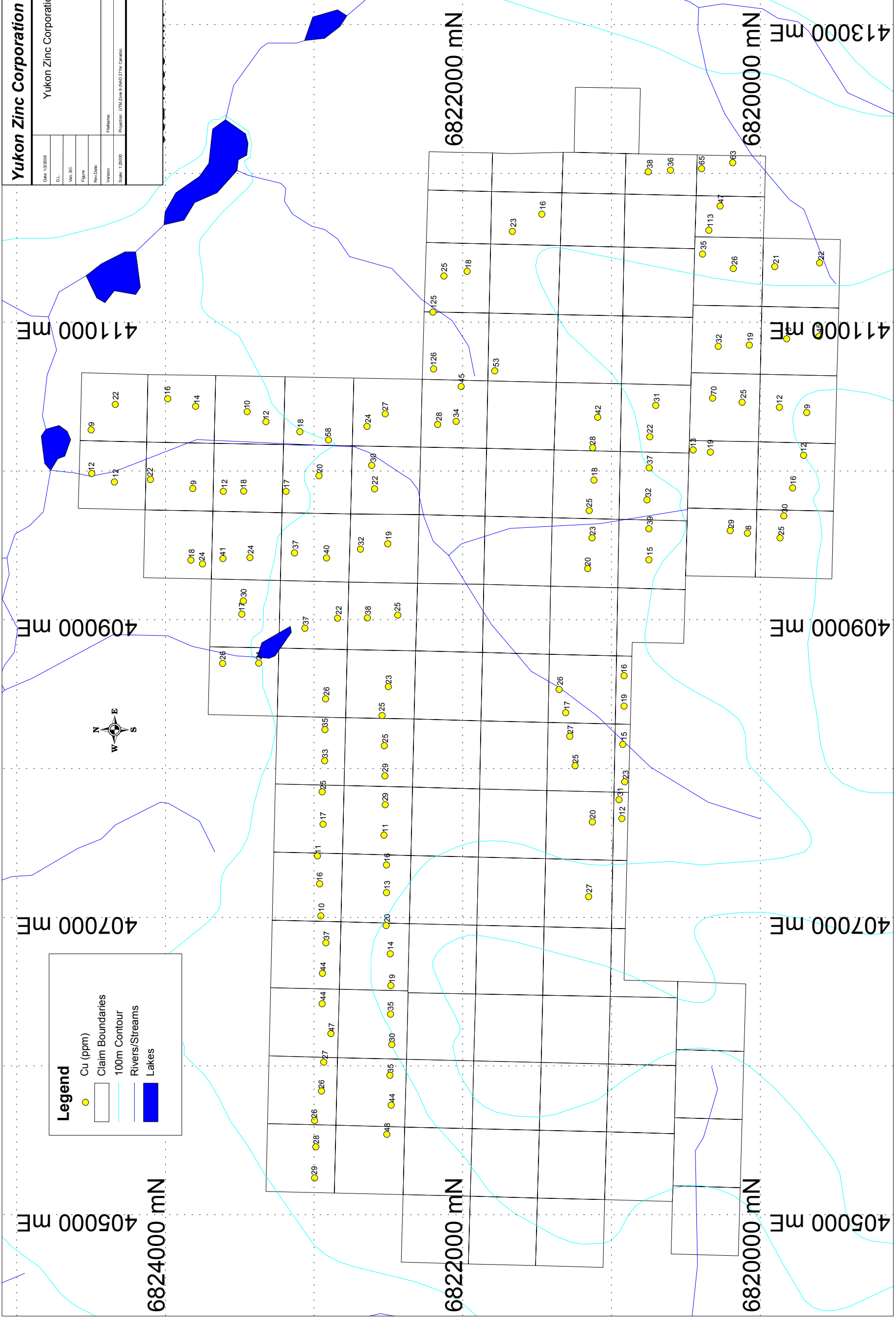
Date: 1/2/2008  
D.L.  
Map BC  
Rev Date:  
File Name:  
Version:  
Scale: 1:25000  
Projection: UTM Zone 9 (NAD 27 for Canada)



### Legend

- Zn ppm (Red dot)
- Claim Boundaries (Black outline)
- 100m Contour (Cyan line)
- Rivers/Streams (Blue line)
- Lakes (Blue polygon)





# Yukon Zinc Corporation

## League Property, YT

Soil Chemistry  
Lead (ppm)

Figure: 5

Date: 12/2008  
D.L.  
Map BC  
Rev Date:  
Version:  
File Name:  
Projection: UTM Zone 9 (NAD 27 for Canada)

Scale: 1:25000

0 250 500  
metres

### Legend

- Pb (ppm)
- Claim Boundaries
- 100m Contour
- Rivers/Streams
- Lakes

