

094684

**CLAIM STAKING, MAGNETOMETER, AND SOIL SAMPLING  
2005**

**CAM CLAIMS, LIVINGSTONE AREA**

WHITEHORSE MINING DISTRICT, YUKON

NTS 105E/8

By

Larry W. Carlyle, F.G.A.C., P. Geol.

Whitehorse, Yukon

November, 2005

Costs associated with this report have been  
approved in the amount of \$ 16,000.00  
for assessment credit under Certificate of Work  
No. QU 27908

A. Zaitnick

Mining Recorder  
Whitehorse Mining District

# TABLE OF CONTENTS

	<b>Page</b>
Introduction	1
Location, Access and Claims	3
Claim Information	4
Regional Geology	4
Property Geology	5
Magnetometer Surveys	
49 Pup	6
South Fork Livingstone	7
Soil Sampling	
Summit Creek	8
Livingstone Creek	8
Lake Creek	8
Conclusions	8
Recommendations	8
Statement of Costs	10
References	10
Statement of Qualifications	11

## **FIGURES**

	<b>Following Page</b>
Claim Map NTS 105 E/8	3
Property Geology	4
2005 Work Areas Map	5
49 Pup Magnetometer Plan and Profiles	6
South Fork Livingstone Magnetometer Plan and Profiles	7

## **APPENDICES**

### **Appendix A -- Soil Sample Maps**

- Appendix A – 1 49 Pup Soil Sample Maps
- Appendix A – 2 Summit Creek Soil Sample Maps
- Appendix A – 3 Livingstone Creek Soil Sample Maps
- Appendix A – 4 Lake Creek Soil Sample Maps

### **Appendix B – Magnetometer Survey Tables**

- Appendix B – 1 Headwaters 49 Pup
- Appendix B – 2 South Fork Livingstone Creek
- Appendix B – 3 South Fork Livingstone Creek Yukon Engineering  
Magnetometer Surveys

### **Appendix C – GPS Waypoint Coordinates**

### **Appendix D – Analytical Certificates**

### **Appendix E – Invoices Supporting Statement of Costs**

## INTRODUCTION:

The 2005 exploration program was developed to advance the writer's belief that the gold mineralization found on the six creeks in the Livingstone placer camp was generated in a manner similar to the Thermal Aureole Gold (TAG) model described by Dr. Victor Wall.

In the Thermal Aureole Gold model, intrusive rocks penetrate calcareous sediments or meta-sediments. The intrusive rocks provide acidic fluids which react chemically with the calcareous sediments and precipitate minerals. In the case of the Livingstone camp, the main mineral is native gold with lesser amounts of copper, lead and zinc minerals.

Dr. Wall's TAG model is described as having magnetite mineralization near the intrusive-sediment contact with hematite and base metal mineralization occurring further from the contact. Previous work on Livingstone Creek in an area referred to as "the adit area" had located quartz, galena and sphalerite boudins in the nose of folds within the meta-sediments near the contact of a granodiorite containing hematite fracture fillings. Samples of the boudin material average around 0.2 opt in gold. Samples of the hematitic granodiorite average about 0.2 gram per tonne.

Area mapping done by Maurice Colpron in 2004 indicated the intrusive-sediment contact extended across the headwaters of all the creeks which produce placer gold. Max Fuerstner Jr., Carlyle's partner in the CAM Claims, succeeded his father in placer mining in the Livingstone camp. Together they have about 30 years of experience in the camp. Round pieces of magnetite skarn the size of hard balls have been recovered during placer mining from Livingstone Creek with smaller pieces recovered from the other creeks.

Carlyle was aware of magnetometer surveys done near the headwaters of Lake Creek and along what is known locally as the South Fork of Livingstone. The surveys along the South

Fork of Livingstone were of particular interest because this creek runs parallel to the intrusive-sediment contact mapped by Colpron. The magnetic anomalies located by these surveys were of greater interest because many of them were situated on the hillsides above the creeks. This fact indicated that they could be produced by magnetite skarn in place within the bedrock.

Carlyle's prime interest for the 2005 exploration program was to stake the central portion of the intrusive-sediment contact. 65 full and fractional claims were staked adjoining the east and southeast edge of the original CAM Claims. These claims extend from the headwaters of Lake Creek to the headwaters of the South Fork of Livingstone (See Claim Map).

Four lines of magnetometer surveying were done in two areas along the intrusive-sediment contact; one along the South Fork of Livingstone and another at the headwaters of a small, south flowing tributary of Livingstone Creek, locally known as 49 Pup. Both surveys outlined magnetic anomalies. Soil samples taken along two of the magnetometer survey lines at 49 Pup indicate two potential structures parallel the contact. Soil sampling was not done at the South Fork of Livingstone site because seismic surveying done by previous operators indicates overburden depths of 40 – 50 metres.

Additional lines of soil sampling were done east of the known showings on Livingstone Creek, Lake Creek, and Summit Creek. Two lines were done at each location with 100 metre spacing between sample locations and 100 metres between lines. This sampling was done in an attempt to locate additional mineralized zones east of the known showings on the three creeks.

This report has been prepared to describe the 2005 work program and provide conclusions and recommendations for further work on the CAM Claims.

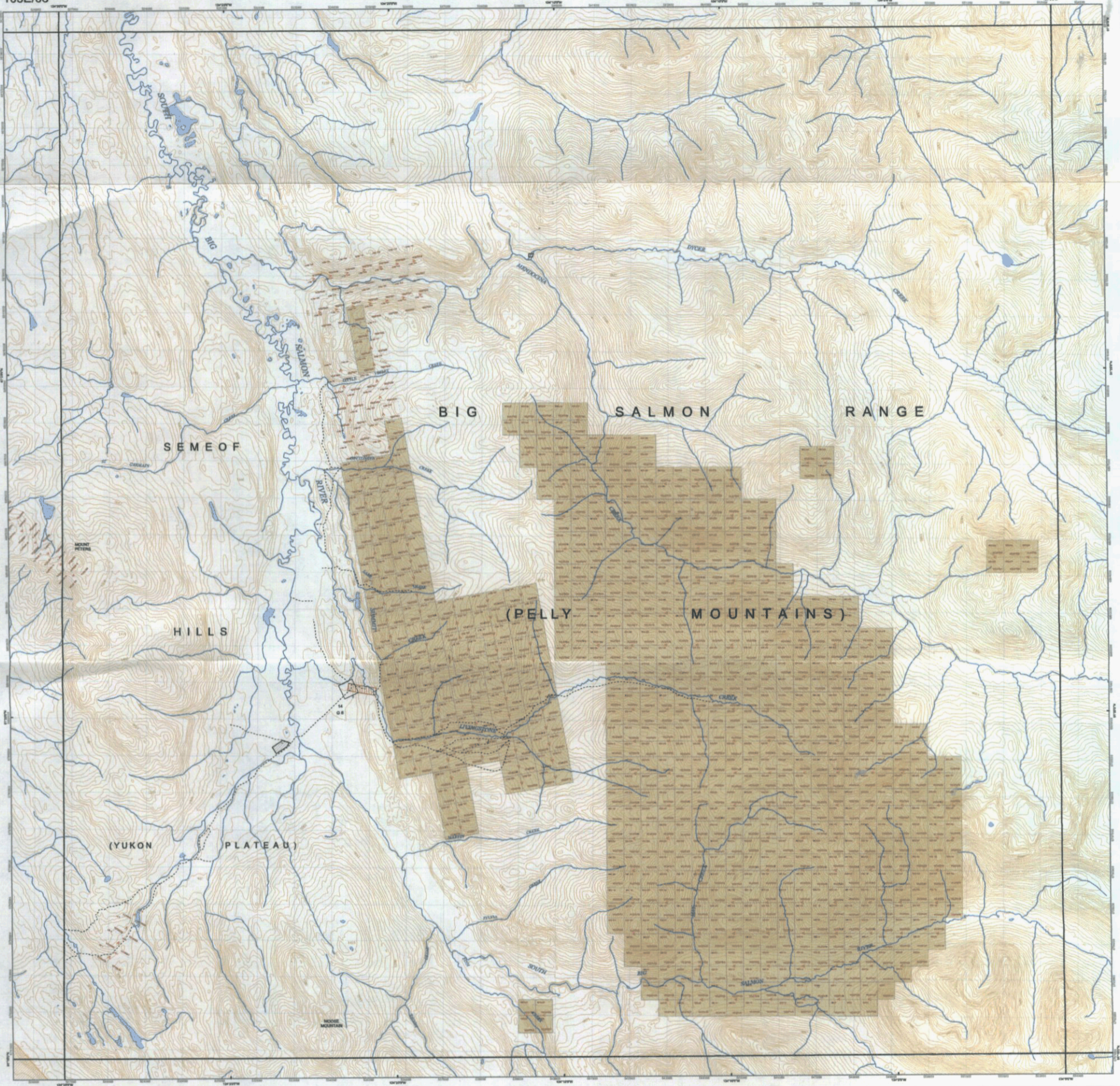
## LOCATION, ACCESS AND CLAIMS:

The original 142 CAM Claims were staked in 1997 to cover 5 of the 6 placer creeks which make up the Livingstone placer camp. Mining of these creeks is still occurring 100 years after it began. The CAM Claims are located on NTS Map Sheet 105 E/8 at approximately Latitude  $61^{\circ} 19' N$ ; Longitude  $134^{\circ} 17' W$ ; within the Whitehorse Mining District, Yukon (See Claim Map 105 E/8 Quartz). An additional 4 claims were staked just east of the main block in May, 1998.

Poor exploration results between 1998 and 2000 resulted in more than 50 claims north of Cottoneva Creek being let lapse in the spring of 2005. During the summer of 2005, 65 full and fractional claims were staked adjoining the east and southeast edge of the original CAM Claims (See Claim Map).

A 75-mile winter road from Lake Laberge, just north of Whitehorse, provides access to the Livingstone Creek area. The Livingstone area has several airstrips so access is usually via fixed-wing aircraft from Whitehorse; approximately 50 air miles (80 kilometers) to the south-southwest. The main Livingstone airstrip is 4000 feet (1220 metres) long and has had DC-3 and Caribou aircraft landed on it. The extensive placer mining in the area has resulted in the presence of cat trails up most of the creeks within the claim block. These trails have become heavily over grown since 2000, but still offer fairly good access to many areas with all-terrain vehicles.

The claims cover areas extending from the fault escarpment near the eastern edge of the Big Salmon Fault at an elevation of approximately 900 metres (2,950 ft.) to the top of the hills above the headwaters of the creeks at an elevation of approximately 1500 metres



This map is a compilation of data obtained from many sources. An error in Mining Claims does not constitute an endorsement by Yukon, Northwest, or Yukon. Mining claims are shown on this map as they appear on the ground. The ground location has precedence.

**Category A Land - Collected Prior Notice for Mining**  
 Category B Land - Collected Mining Research's Office for Mining  
 For mining claim information, please contact the Mining Research's Office for the appropriate mining district.

**Whitehorse District Office:**  
 Box 100, 1000-10th St.  
 Whitehorse, YT Y1A 0B5  
 Tel: (867) 333-2100 Fax: (867) 333-2101  
 email: mra@yukon.ca

**Dawson District Office:**  
 Box 100  
 Dawson City, YT Y0B 1G0  
 Tel: (867) 333-2333 Fax: (867) 333-2337  
 email: dawson@yukon.ca

**Wetland District Office:**  
 Box 100  
 Whitehorse, YT Y1A 0B5  
 Tel: (867) 333-2333 Fax: (867) 333-2337  
 email: wetland@yukon.ca

**Maple District Office:**  
 Box 10  
 Maple, YT Y0B 1G0  
 Tel: (867) 333-2333 Fax: (867) 333-2337  
 email: maple@yukon.ca

**Source:**  
 Mining claim locations obtained from digital elevation model for Global Positioning System (GPS) located claims.  
 1:50,000 scale digital topography obtained from Natural Resources Canada National Topographic System Data.  
 Survey data obtained from Natural Resources Canada Legal Surveys Division. For more information, please contact:  
 Natural Resources Canada Legal Surveys Division, Whitehorse  
 Box 100 - 300 Main St.  
 Whitehorse, YT Y1A 0B5  
 Tel: (867) 333-2333 Fax: (867) 333-2337

**Land Information obtained from Energy, Mines and Resources Lands Branch:**  
 Branch, For more information, please contact:  
 Energy, Mines and Resources Lands Branch  
 Box 100 - 300 Main St.  
 Whitehorse, YT Y1A 0B5  
 Tel: (867) 333-2333 Fax: (867) 333-2337

**Aggregated information obtained from Energy, Mines and Resources Agriculture Branch:**  
 Branch, For more information, please contact:  
 Energy, Mines and Resources Agriculture Branch  
 Box 100 - 300 Main St.  
 Whitehorse, YT Y1A 0B5  
 Tel: (867) 333-2333 Fax: (867) 333-2337

**Source of Protected Land Claims information obtained from Indian and Northern Affairs Canada, Claims and Indian Government Mapping:**  
 For more information, please contact:  
 Claims and Indian Government Mapping  
 Box 100 - 300 Main St.  
 Whitehorse, YT Y1A 0B5  
 Tel: (867) 333-2333 Fax: (867) 333-2337

**Other Resources:**  
 For more information, Mining Assessment Reports, and geology publications:  
 Yukon Energy, Mines and Resources Library  
 Box 100 - 300 Main St.  
 Whitehorse, YT Y1A 0B5  
 Tel: (867) 333-2333 Fax: (867) 333-2337  
 email: library@yukon.ca

**Yukon Geological Survey:**  
 Box 100 - 300 Main St.  
 Whitehorse, YT Y1A 0B5  
 Tel: (867) 333-2333 Fax: (867) 333-2337

**1:50,000 Scale Data:**  
 Whitehorse, YT Y1A 0B5  
 Tel: (867) 333-2333 Fax: (867) 333-2337

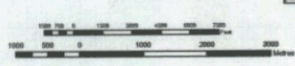
**Yukon Geological Survey Maps and Publications are available for downloading:**  
 http://www.gns.gov.yk.ca  
 or see the information sheet:  
 www.gns.gov.yk.ca

**Yukon Resources:**  
 Mining claim maps are also available online at the Yukon Mining Research Website:  
 www.yukonminingresearch.ca  
 or see the information sheet:  
 Yukon Geological Survey Maps, Website, and Publications are also available at the Yukon Geological Survey Website:  
 www.gns.gov.yk.ca



# 105E/08 MINING CLAIMS

LITH ZONE UTM Zone 8  
 Datum: NAD 83  
 Mining District: Whitehorse  
 Map Creation Date: Sep 19, 2005



105E10	105E20	105E30
105E40	105E50	105E60
105E70	105E80	105E90

- Mining**
- Mining Claims
  - Priority Locations
  - Mineral Potential
  - Claims Status
  - Active Prior Claim
  - Expired Claim
  - Claim
  - Coal Production License
  - Coal Mining Lease
  - Expired License or Lease
  - Areas Withdrawn from Staking
  - Prior Notice Under Prohibited Lands
  - Parks and Special Management Areas

- First Nations Settlement Land**
- Category A
  - Category B
  - Category C
- First Nations Surveyed Lands**
- Category A
  - Category B
  - Category C
- Other Legal Survey Categories**
- First Nations Community Use
  - Special Access Rights through First Nations
  - Mineral Claims
  - Community Land Transfers (Under In Claims)
  - Land Acquisition (Land)
  - Reserves

- EMR Lands**
- Land Designation
  - Land Application
  - Application Classification
  - Application Application
  - Priority Control Order
- Mapsheet Index**
- 1:50,000 Sheet Index
  - 1:250,000 Sheet Index
- Base Map Features**
- Hydrography
  - Watercourses
  - Wetlands
  - Unconsolidated Deposits
  - Underlain Land
  - Dry River Bed

- Topography**
- Contours
  - Transportation Features
  - Highway
  - Main
  - Secondary
  - Stream
  - Underlain Land
  - Rail
  - Car Bus
  - Trail
  - Water
  - Field



(4,920 ft.). The claims are on rounded to steeply sloping hills; the creek canyons have the steepest slopes. Vegetation consists of black spruce, pine, willow and buckbrush.

**Claim Information:**

<u>CLAIM NAME</u>	<u>GRANT NUMBERS</u>	<u>EXPIRY DATE</u>
CAM 1 – 22	YB 97530 – YB 97551	May 16, 2008
CAM 23 – 52	YB 97552 – YB 97581	May 16, 2006
CAM 53 – 86	YB 97582 – YB 97615	May 16, 2008
CAM 99	YB 97628	May 16, 2006
CAM 110	YB 97639	May 16, 2006
CAM 112	YB 97641	May 16, 2006
CAM 114	YB 97643	May 16, 2006
CAM 117	YB 97646	May 16, 2006
CAM 143 – 146	YC 08748 – YC 08751	May 19, 2008
CAM 147 – 154	YC 40011 – YC 40018	July 22, 2006
CAM 157 – 183	YC 40019 – YC 40045	July 22, 2006
CAM 185 – 214	YC 40046 – YC 40075	July 22, 2006

**REGIONAL GEOLOGY:**

McConnell was the first to describe the geology and the placer gold deposits of the Livingstone Creek area in 1901. Cockfield, Lees, and Bostock carried out regional geological mapping between 1929 and 1934. This work resulted in Map 372 A being issued in 1936.

The regional geology was reinterpreted by Tempelman-Kluit in 1977-1979. This interpretation identified the Big Salmon Fault, into which the placer creeks drain. He also identified the Teslin Fault (4 – 6 miles west of the Livingstone camp) as the ancient western margin of North America. Tempelman-Kluit postulated that the rocks west of the Teslin Fault (also known as the Teslin Suture) were pressed against and over the original North America during the Early Cretaceous.

Several geologists such as R.A. Stevens; P. Erdmer; R.A. Creaser; C.S. Gallagher; and M. de Keijzer have been reinterpreting Tempelman-Kluit's work since the mid-1980's. Maurice

posed by  
olds  
Regional  
composed  
ick-arc  
segment of  
n-Tanana  
ad structural

After Colpron, YEG, 2004

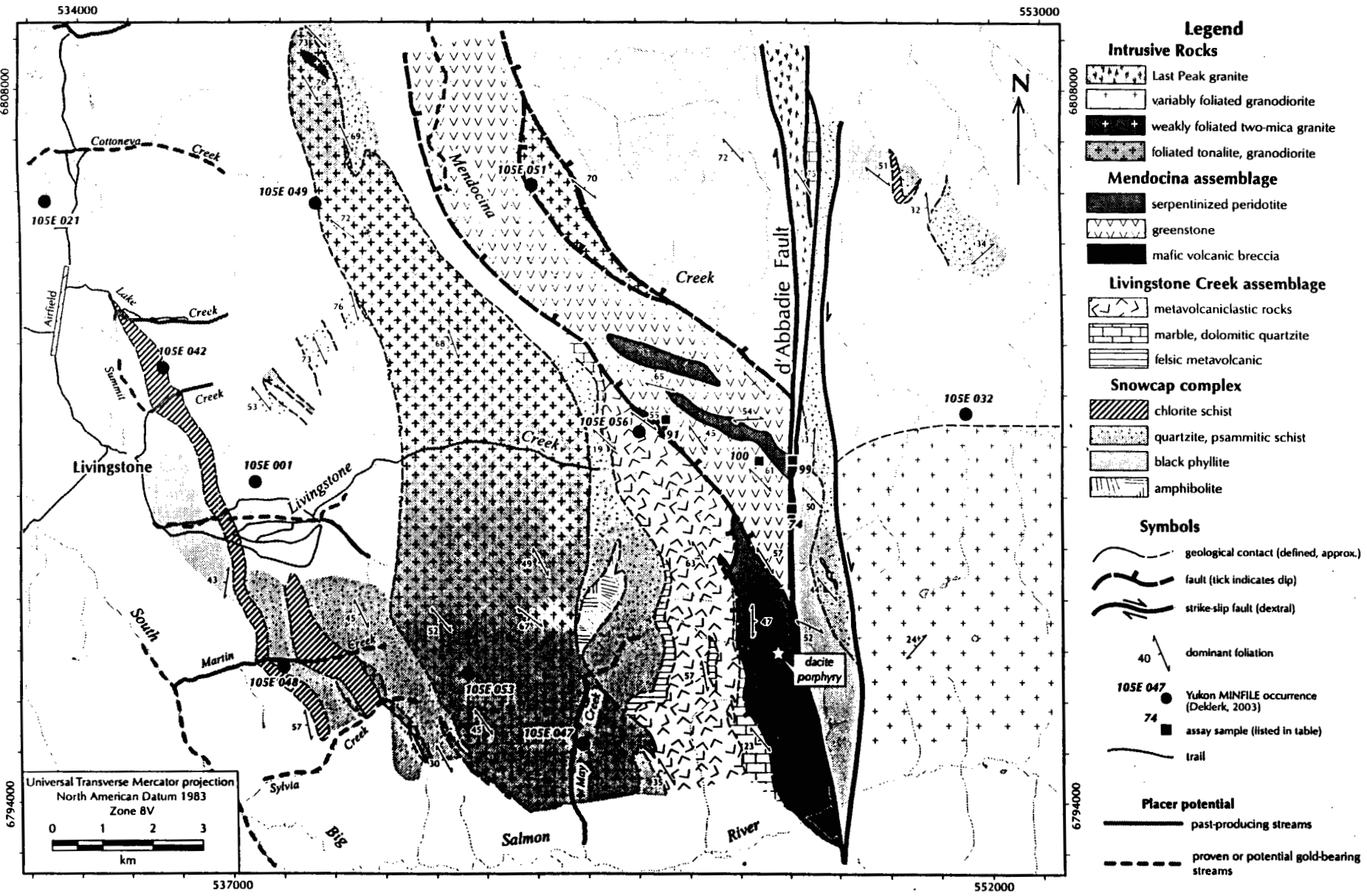


Figure 2. Preliminary bedrock geology map of the Livingstone Creek area. Placer potential from Lipovsky et al. (2001).

ing the  
rea with  
son Lake  
(, 1991).

YUKON EXPLORATION AND GEOLOGY 2004

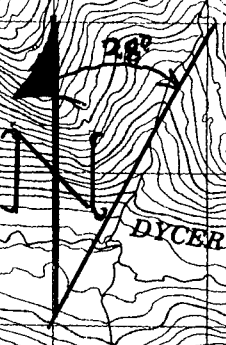
COLPRON - BEDROCK GEOLOGY, LIVINGSTONE CREEK A

Colpron of the Yukon Geological Survey started geological mapping in the Livingstone area in 2004 and continued in 2005. His mapping has significantly modified the geological understanding of the region and is probably most relevant to the CAM Claims.

### **PROPERTY GEOLOGY:**

A 345-355 Ma old tonalite-granodiorite intrusive dips westerly under the calcareous and graphitic metasediments included as part of the Devonian Snowcap complex by Colpron. The intrusive – metasediment contact extends along the headwaters of all six creeks which have produced placer gold. A similar situation to that described by Dr. Wall in his Thermal Aureole Gold (TAG) model. The placer gold is believed to have come from three possible sources. Much of the placer gold is associated with magnetite. This suggests that there are magnetite skarn deposits along the western contact of the intrusive and near the headwaters of the creeks. No magnetite skarn or mineralization has been located in bedrock; this is probably due to thick overburden cover. It is for this reason that magnetometer surveys were performed in these areas in 2005. Some of the placer gold has eroded from quartz veins along faults paralleling the Big Salmon Fault (BSF). This gold was originally from the intrusive but was reconcentrated by movement and friction associated with the Big Salmon Faulting (approx. 100 Ma). This is the expected source of most of the placer gold recovered from the creeks as well as the gold found in the old Lake Creek campsite area. The third source of gold is that found associated with galena and chalcopyrite as boudins within the noses of folds as located in the adit area of Livingstone Creek. The hematite mineralization found as fracture fillings in the granodiorite and the strong iron oxide mineralization found in the boudins indicate this is distal mineralization as described in Dr. Wall's TAG model.

2005 Work Areas  
CAM Claims  
Part of Topo. Map  
NTS 105 E/8  
Scale: 1: 50,000



B I G S A L M O N R

P E L L Y M O U N T A I N

Lake Creek Camp

Lake Creek Soil Sampling

Summit Creek Soil Sampling

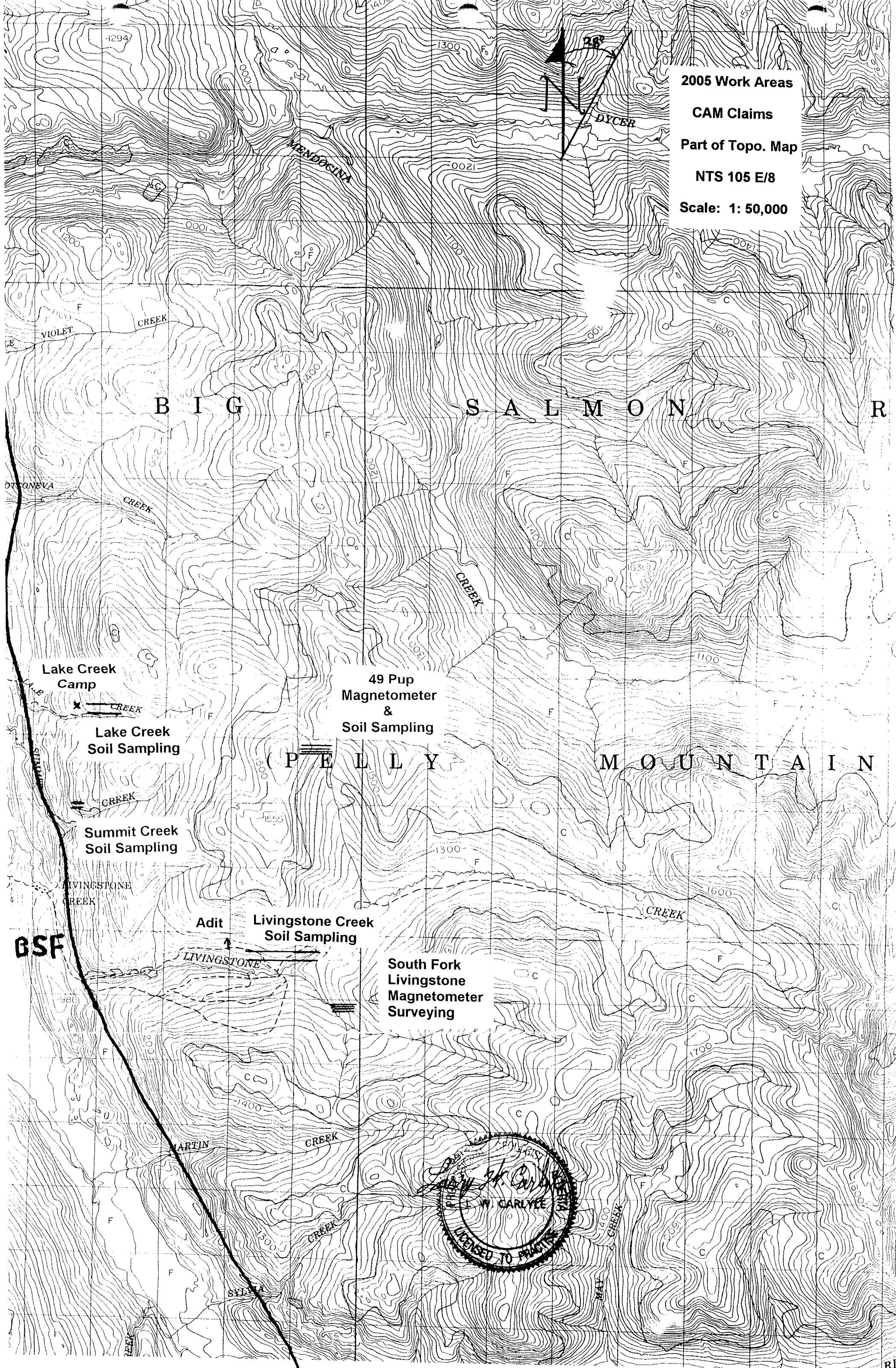
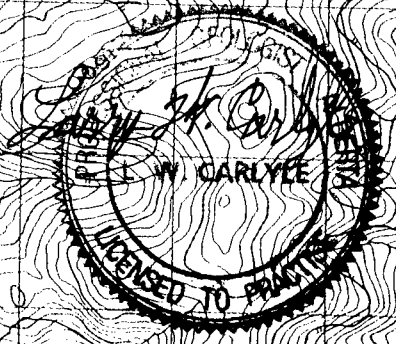
49 Pup Magnetometer & Soil Sampling

Livingstone Creek Soil Sampling

South Fork Livingstone Magnetometer Surveying

Adit

BSF



## MAGNETOMETER SURVEYS:

Four lines of magnetometer surveying were done in two areas along the intrusive-sediment contact; one along the South Fork of Livingstone and another at the headwaters of a small, south flowing tributary of Livingstone Creek, known locally as 49 Pup. Both surveys outlined magnetic anomalies (See Figures).

### 49 Pup

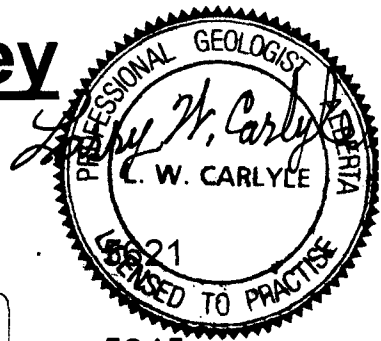
Each of the four lines of magnetometer surveying near the headwaters of 49 Pup were 400 metres long with readings taken at 25 metre intervals along lines which were 50 metres apart. A total of 1600 line-metres of surveying were done. Line 4, the most northerly line, produced the highest readings. Two areas at approximately 175 metres east and 400 metres east gave readings over 55,800 gammas (See Figures). These higher readings may be due to reduced overburden cover since that line was just south of the creek headwaters. The high readings could just as easily indicate magnetite mineralization at these locations.

It is also worth noting that magnetic lows appear more pronounced than the magnetic highs. Prominent magnetic lows occur at the starting point, 100 metres east, 200 metres east, 300 metres east, and at 375 metres east (See Figures). The highest gold assay in the whole program (149.3 ppb) was obtained at 300 metres east along Line 1 at one of these magnetic lows.

Magnetic profiles from the survey indicate a magnetic high at approximately 175 east on Lines 2, 3, and 4. All four lines show magnetic increases at the eastern end of the lines. There seem to be indistinct magnetic lows at 100 metres east on Lines 2, 3, and 4. Another magnetic low exists between 250 and 275 metres east on all four lines (See Figures).

# Magnetometer Survey

## 49 Pup



4 + 00 E

3 + 75

3 + 50 E

3 + 25

3 + 00 E

2 + 75

2 + 50 E

2 + 25

2 + 00 E

1 + 75

1 + 50 E

1 + 25

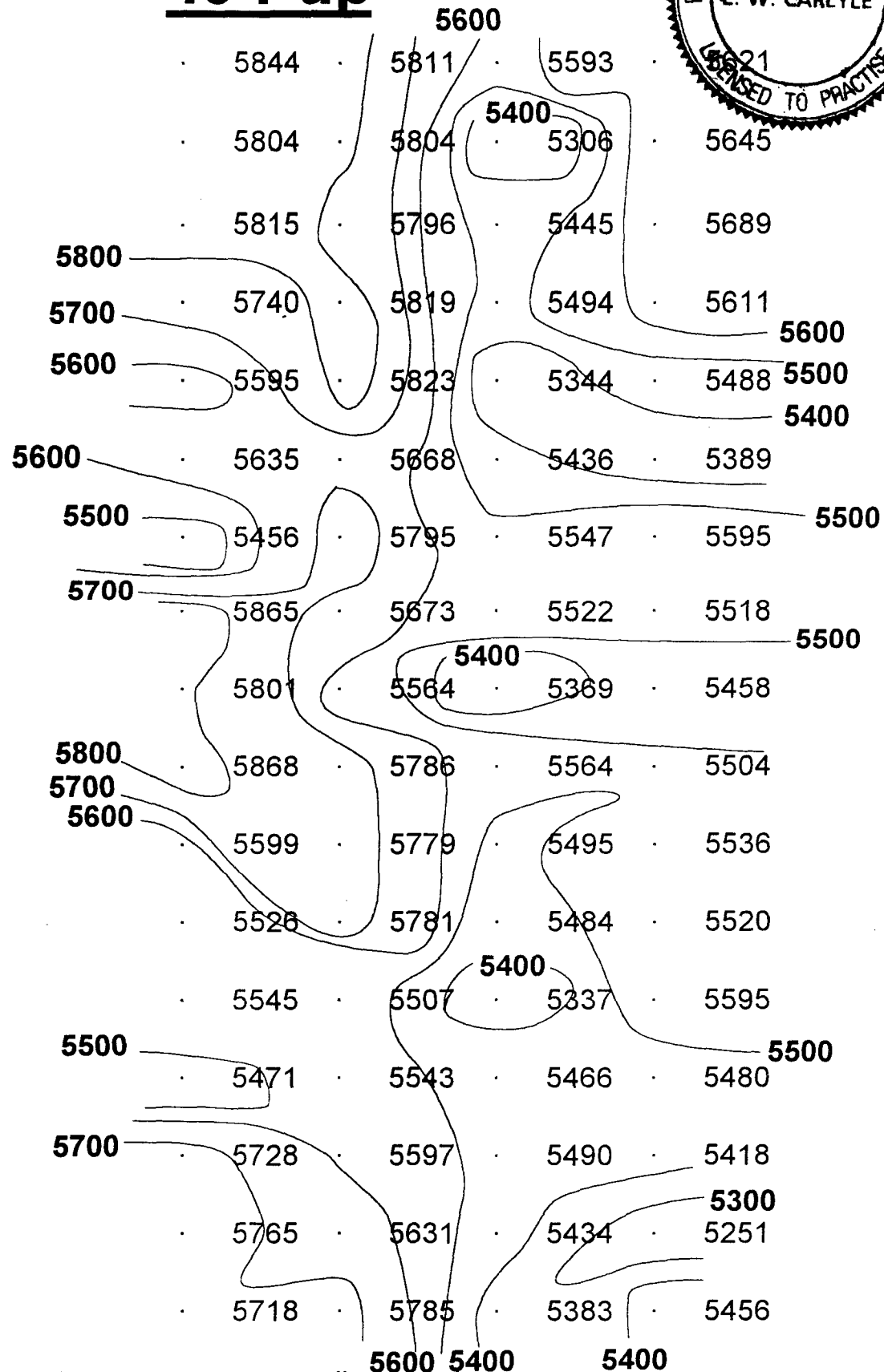
1 + 00 E

0 + 75

0 + 50 E

0 + 25

0 + 00



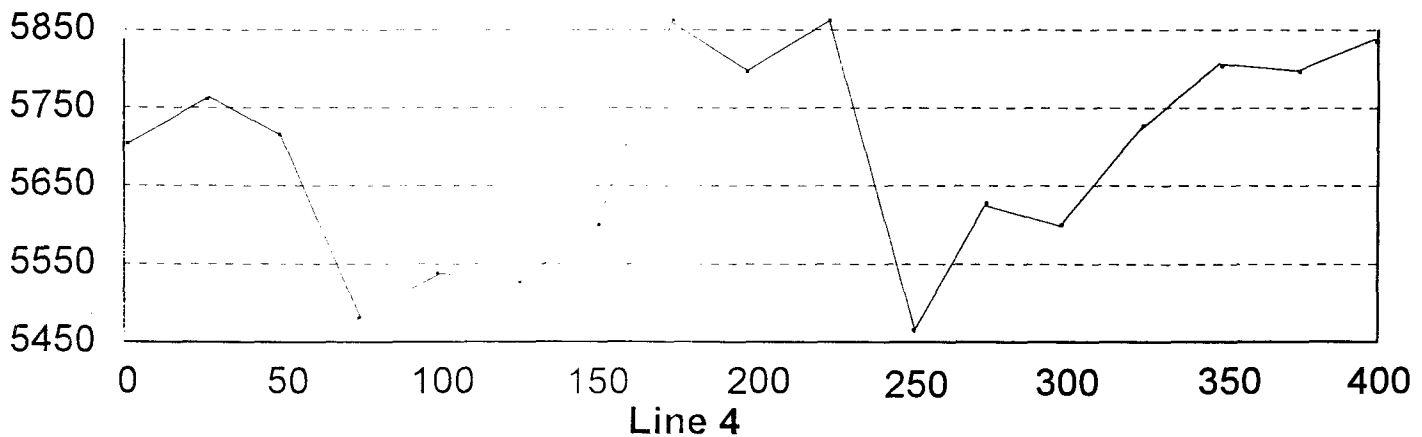
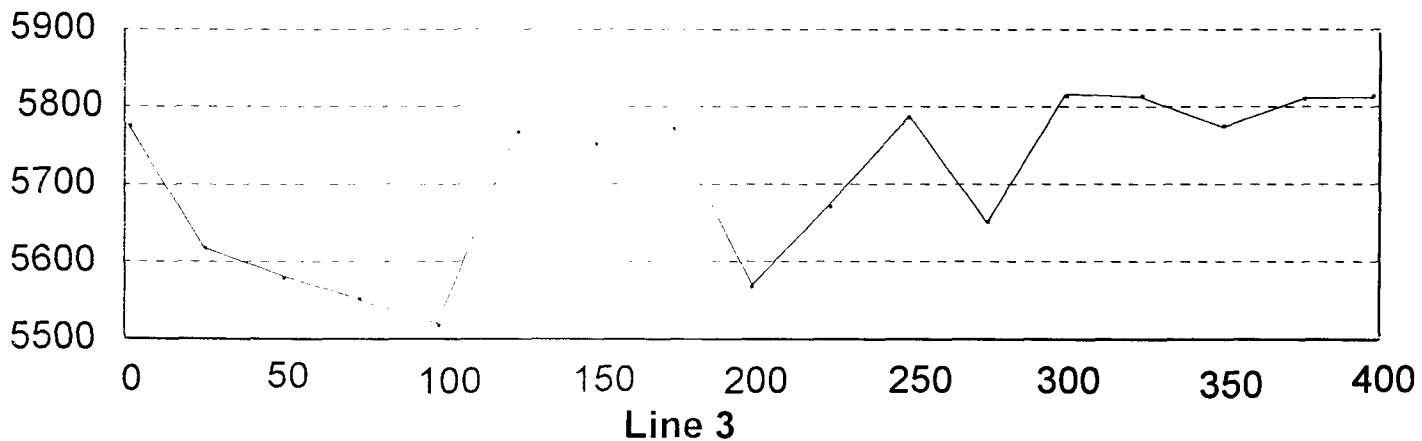
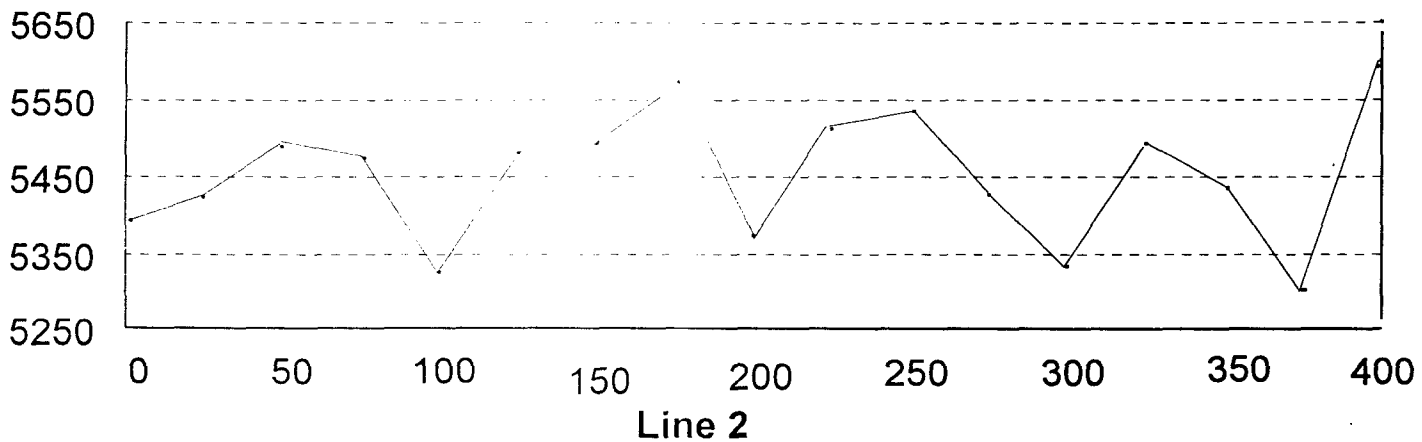
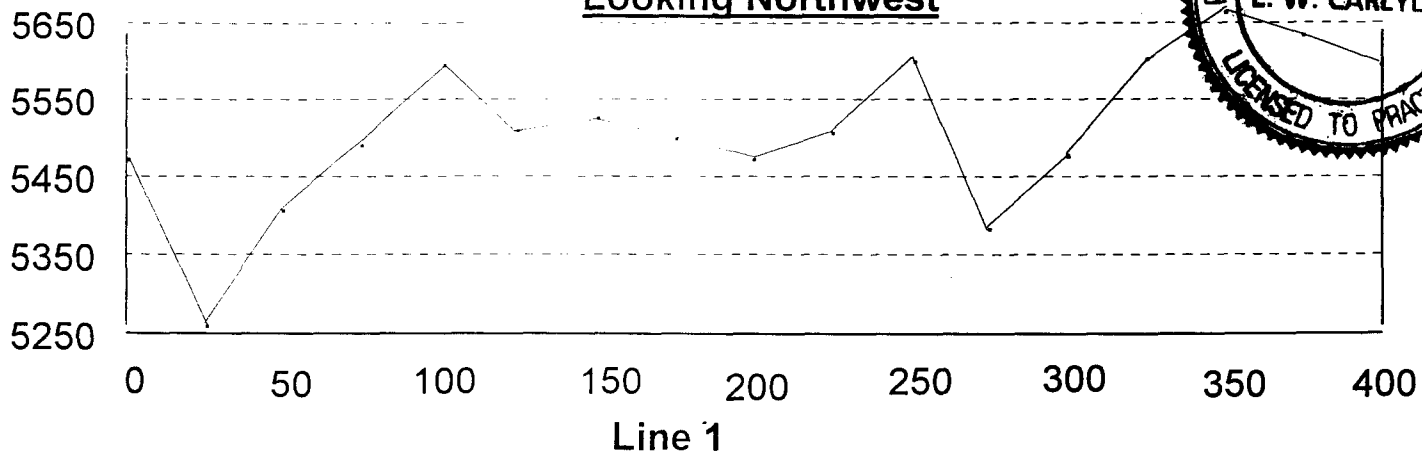
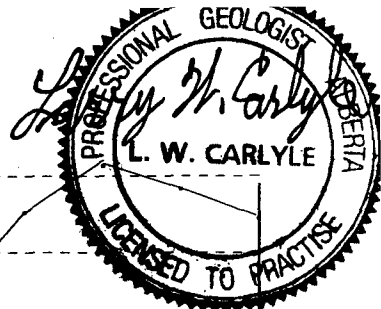
50 metre line spacings    25 metre reading spacings

Lines along 80 degrees Azimuth    Readings reduced by 50,000 gammas

100 Gamma Contours    Line 4    Line 3    Line 2    Line 1

# 49 Pup Magnetic Profiles

## Looking Northwest



Magnetometer Readings reduced by 50,000 gammas

### South Fork Livingstone

Each of the four lines of magnetometer surveying along South Fork Livingstone were 300 metres long with readings taken at 25 metre intervals along lines which were 50 metres apart. A total of 1200 line-metres of surveying were done.

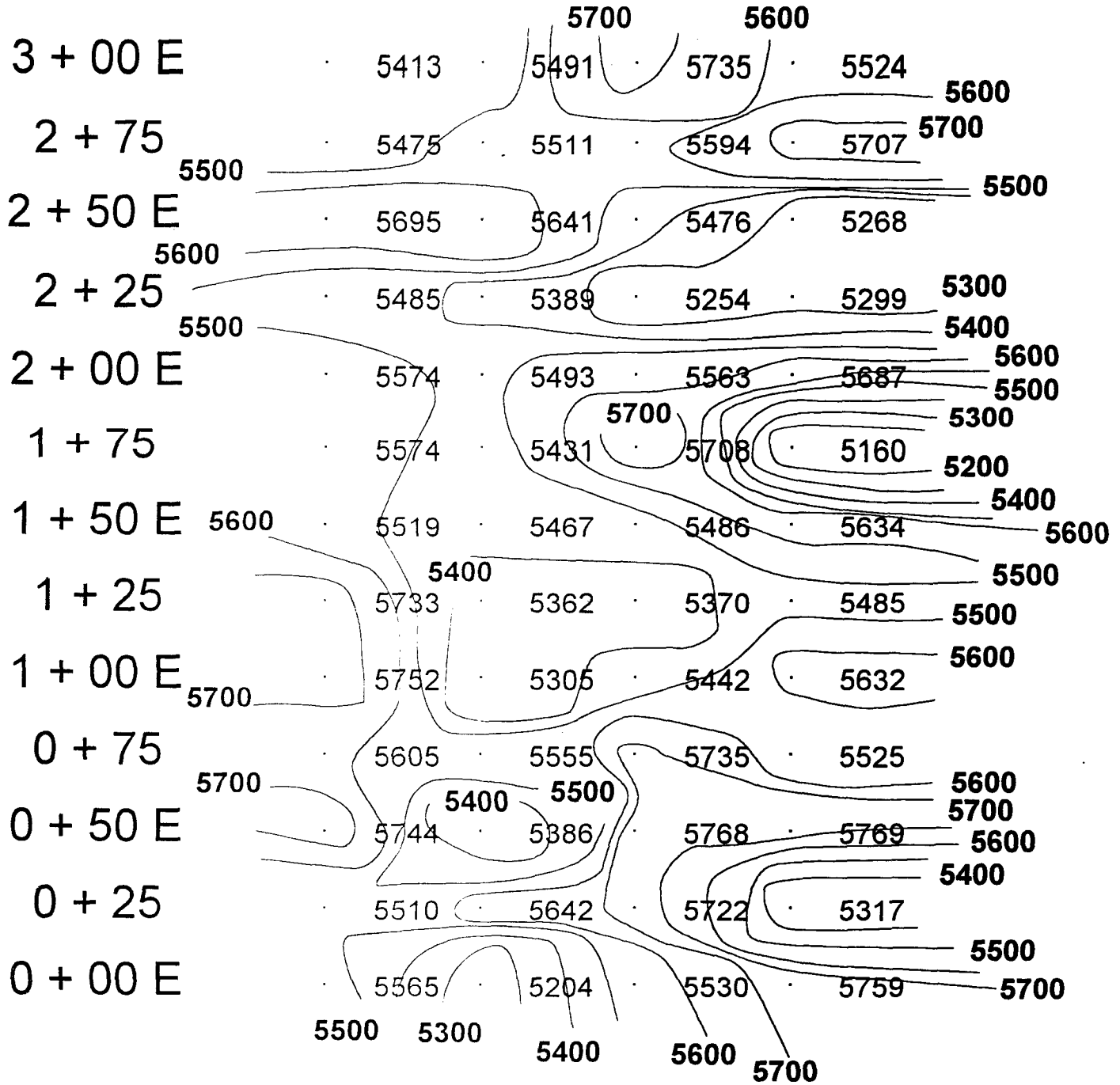
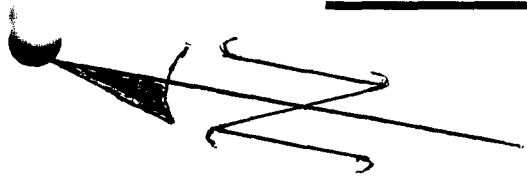
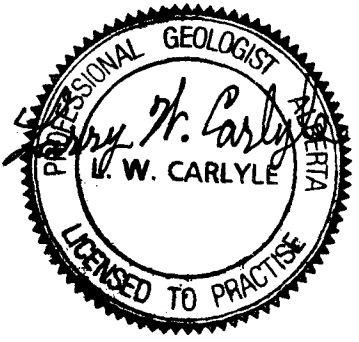
All four lines began or ended at the east side of South Fork Creek. Approximately the first 100 metres east from the creek was up a steep bank to the cat road which goes along the east side of the creek. The cat road is probably located near the top of the overburden cover in the creek. From the cat road to the east, the lines went up a fairly steep west sloping hillside. The anomalies located up the hillside are probably not too strongly affected by overburden.

Magnetic anomalies of over 55,700 gammas were located on Line 3 at 175 metres east and 300 metres east. Similar anomalies were located on Line 1 at 50 metres east and from 100 to 125 metres east (See Figures).

However, in this survey too, the magnetic lows were more pronounced than the magnetic highs. Magnetic lows occur at 50 metres east and 100 to 125 metres east on Line 2. The second anomaly extends south to include 125 metres east on Line 3. Prominent magnetic low anomalies occur at 25 metres east and at 175 metres east on Line 4 (See Figures).

Magnetic profiles for this survey are quite erratic. But magnetic highs appear at about 50 metres east and between 250 and 300 metres east on all four lines. Magnetic lows appear at about 125 metres east on Lines 1, 2, and 3. Magnetic lows also occur at approximately 225 metres east on all four lines (See Figures).

# Magnetometer Survey South Fork Livingstone



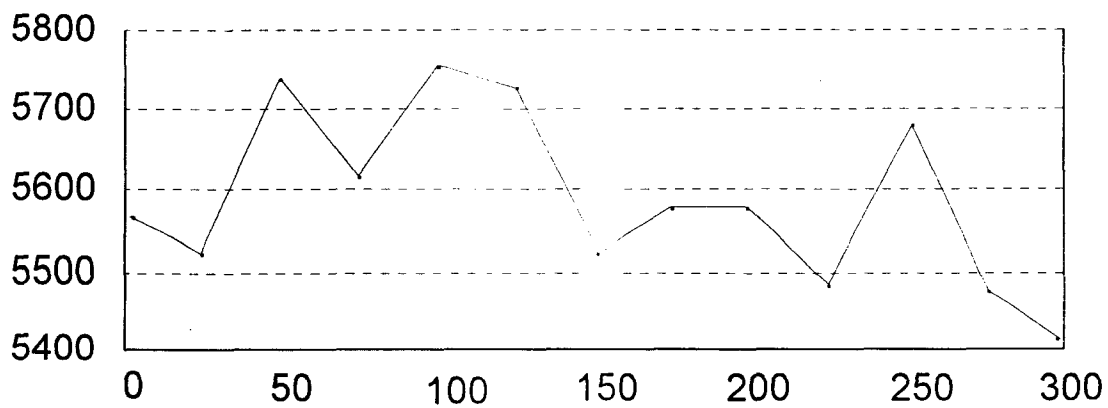
50 metre line spacings 25 metre reading spacings Lines along 80 degrees Azimuth  
Readings reduced by 50,000 gammas 100 Gamma Contours

Line 1 Line 2 Line 3 Line 4

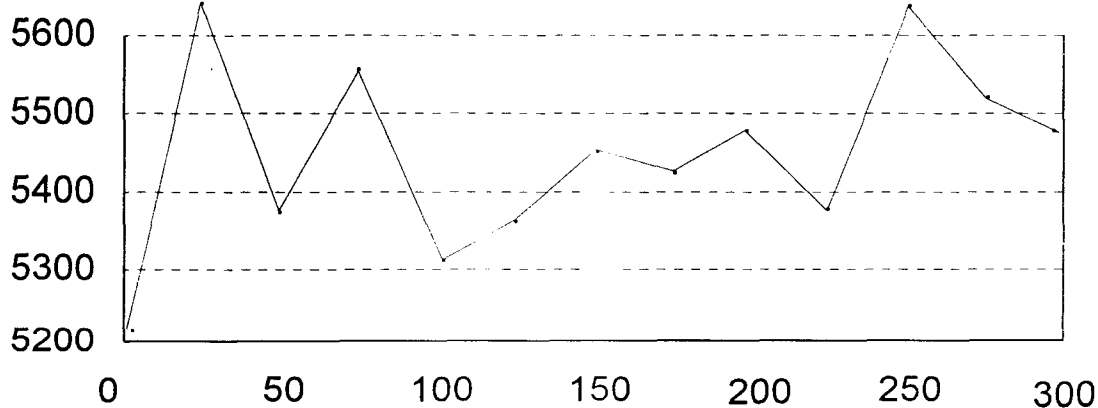
South Fork Magnetometer Profiles

Looking Northwest

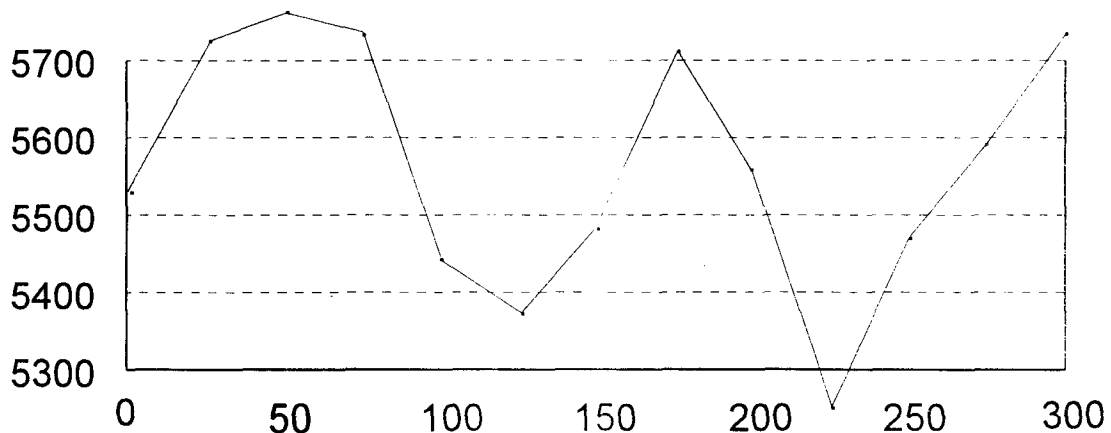
Horizontal -- Distances in metres



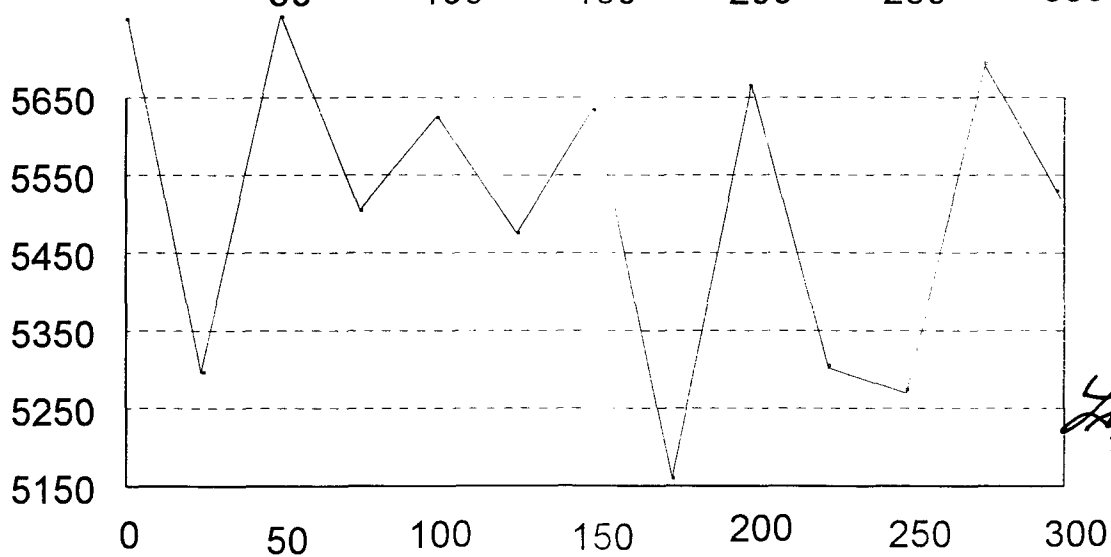
Line 1



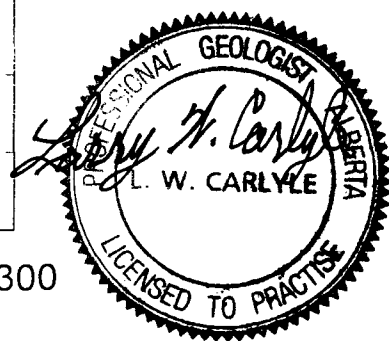
Line 2



Line 3



Line 4



## SOIL SAMPLING:

### Summit Creek

The Summit Creek samples were started too far south. This resulted in their being located along the top of the very steep north bank of the creek. For this reason, only six samples were taken. These samples confirm mineralization located by previous sampling.

### Livingstone Creek

Samples taken at Livingstone Creek examined a one-kilometre distance east of the Adit Showing. Two or possibly three potential zones of mineralization exist at approximately 300, 600, and 800 metres east of the beginning of the lines (See Figures).

### Lake Creek

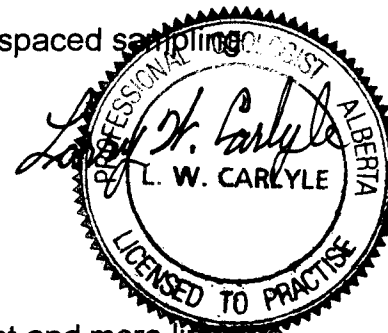
Samples taken at Lake Creek examined a one half-kilometre distance east of the showings known to exist on this creek. Two potential zones of mineralization exist at approximately 100 and 400 metres east of the beginning of the lines (See Figures).

## CONCLUSIONS:

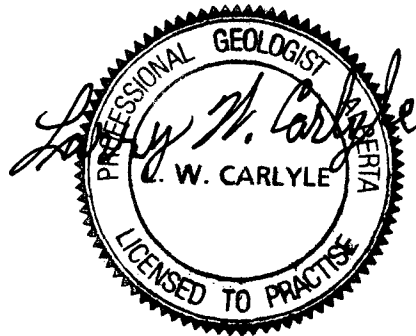
1. Magnetometer surveying in areas near the contact between the Mississippian tonalite-granodiorite intrusive and the Devonian Snowcap metasediments can locate both magnetic highs and lows, which may warrant further work.
2. Soil sampling with lines at 100 metre spacing and sample intervals at 100 metres along the lines can locate mineralized zones which warrant more closely spaced sampling and possible excavation.

## RECOMMENDATIONS:

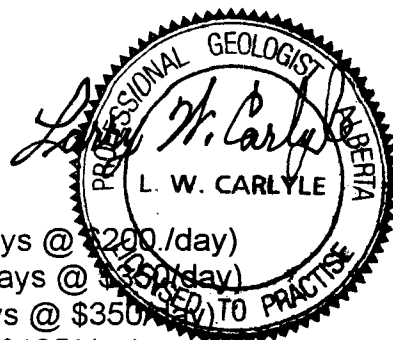
1. The magnetometer survey lines at 49 Pup be lengthened to the east and more lines be surveyed further north to investigate the high magnetic anomalies developing there.



2. Soil sampling be done along Lines 3 and 4 at 49 Pup at the 50 metre intervals done on Lines 1 and 2. Soil sampling at the same intervals should also cover eastern extensions of the existing lines and along any new magnetic survey lines.
3. More magnetometer survey lines, at the present reading intervals, be done at South Fork Livingstone south of Line 4. Such surveying would extend the magnetic highs and lows located and allow for better target delineation.
4. Soil sampling at line spacing and sample intervals of 50 metres should be done up the west sloping hillside. This sampling should start near the east side of the cat road described earlier. Starting the sampling at this location should avoid most of the deep overburden nearer the creek. Sampling should include the existing magnetometer lines and any additional survey lines.
5. Do follow up soil sampling and prospecting in new areas of potential mineralization discovered by large grid soil sampling. East of the Adit Showing on the north side of Livingstone Creek (300, 600, and 800 metres east of the beginning of the lines). East of the old campsite on Lake Creek (100 and 400 metres east of the beginning of the lines).



## STATEMENT OF COSTS:



Geologist Field Work (July 9 to 19/05 -- 11 days @ \$200./day)	\$ 2,200.00
(July 26 to 30/05 – 5 days @ \$350./day)	\$ 1,750.00
(Aug. 4 to 9/05 – 6 days @ \$350./day)	\$ 2,100.00
Field Assistant (July 9 to 19/05 – 11 days @ \$125/day)	\$ 1,380.00
Assaying	\$ 716.50
Sample Shipment	\$ 40.11
Satellite Phone Rental	\$ 191.53
Aircraft Charters: Helicopter	\$ 1,070.66
Fixed Wing	\$ 1,767.22
Room & Board (July 9 to 19/05 – 22 person/days @ \$35/day)	\$ 770.00
(July 26 to 30/05 – 5 person/days @ \$35/day)	\$ 175.00
(Aug. 4 to 9/05 – 6 person/days @ \$35/day)	\$ 210.00
ATV Rental	\$ 1,679.95
Miscellaneous Fuels & Oil	\$ 210.02
Magnetometer Rental (6 days @ \$100/day)	\$ 600.00
Field Supplies (Flagging, bags, gloves, etc.)	\$ 200.00
Office Supplies (Photocopying, paper, pens, etc.)	\$ 200.00
Report Writing	\$ 1,500.00
<b>TOTAL:</b>	<b>\$16,760.99</b>

## REFERENCES:

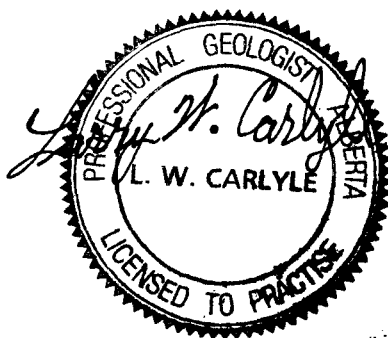
- Carlyle, L.W., (2000) **VLF – EM Surveys, Rock and Soil Sampling, and Backhoe Trenching, 2000 CAM Claims 1 – 146, Livingstone Area, Whitehorse Mining District, Yukon, NTS 105 E/8**
- Carlyle, L.W., (1999) **Bedrock Geology, VLF-EM Surveying, Rock, Soil, and Stream Sediment Sampling, 1999 CAM Claims 1 – 146, Livingstone Area, Whitehorse Mining District, Yukon, NTS 105 E/8**
- Carlyle, L.W., (1998) **Report on the 1998 Work Program CAM Claims 1 – 146, Livingstone Area, Whitehorse Mining District, Yukon, NTS 105 E/8**
- Carlyle, L.W., (1997) **Report on the 1997 Work Program CAM Claims 1 – 142, Whitehorse Mining District, Yukon. NTS 105 E/8**
- Colpron, Maurice (2004) **Preliminary investigation of the bedrock geology of the Livingstone Creek area (NTS 105E/8), south-central Yukon, Yukon Exploration and Geology 2004; p. 95 – 107.**
- Gladwin, K.; Colpron, M.; Black, R.; and Johnston, S.T.; (2003) **Bedrock geology at the boundary between Yukon-Tanana and Cassiar terranes, Truitt Creek map area (NTS 105L/1), south-central Yukon, Yukon Exploration and Geology 2002; p. 135 – 148.**

## STATEMENT OF QUALIFICATIONS

I, LARRY W. CARLYLE, do certify:

1. That I am a professional geologist; resident at 74 Tamarack Drive, Whitehorse, Yukon Y1A 4Y6.
2. That I hold a B. Sc. Degree in geology from the University of British Columbia (1970).
3. That I am a Fellow of the Geological Association of Canada (F – 4355).
4. That I am a Registered Professional Geologist in the Association of Professional Engineers, Geologists, and Geophysicists of the Province of Alberta (41097).
5. That I have practiced my profession as a mine and exploration geologist for over twenty years.
6. The conclusions and recommendations in the attached report are based on work I performed or supervised on the property, and on a review of the references cited.

DATED at Whitehorse, Yukon, this 30<sup>th</sup> day of November, 2005.



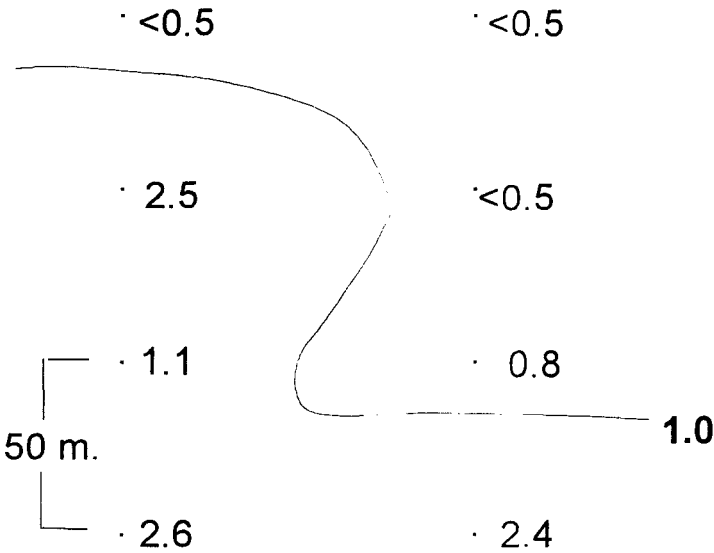
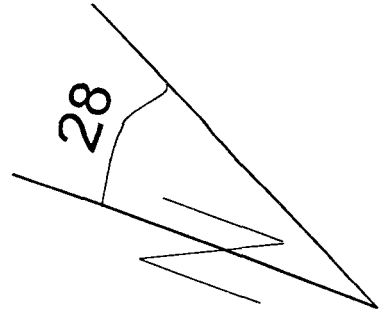
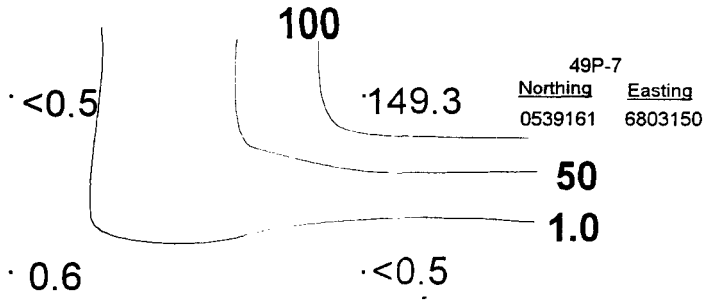
**APPENDIX A**  
**SOIL SAMPLE MAPS**

**APPENDIX A -- 1**

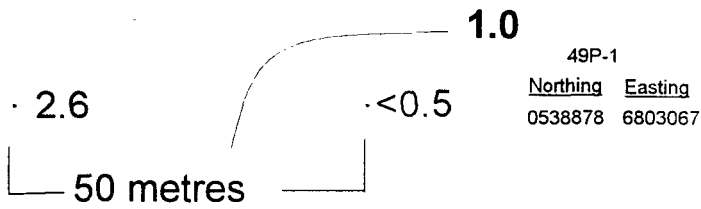
49 PUP

SOIL SAMPLE MAPS

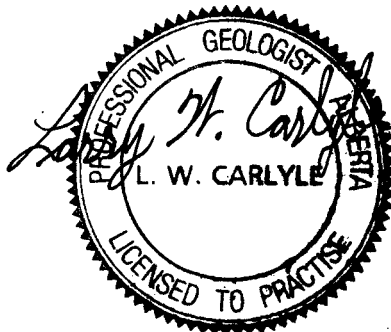
49P-8  
Northing Easting  
0539149 6803194



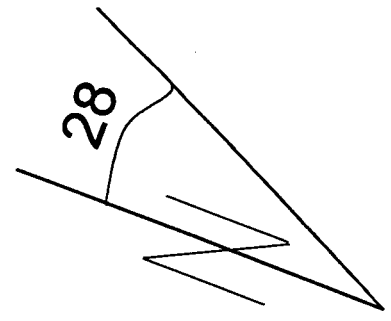
49P-14  
Northing Easting  
0538856 6803129



49P-1  
Northing Easting  
0538878 6803067

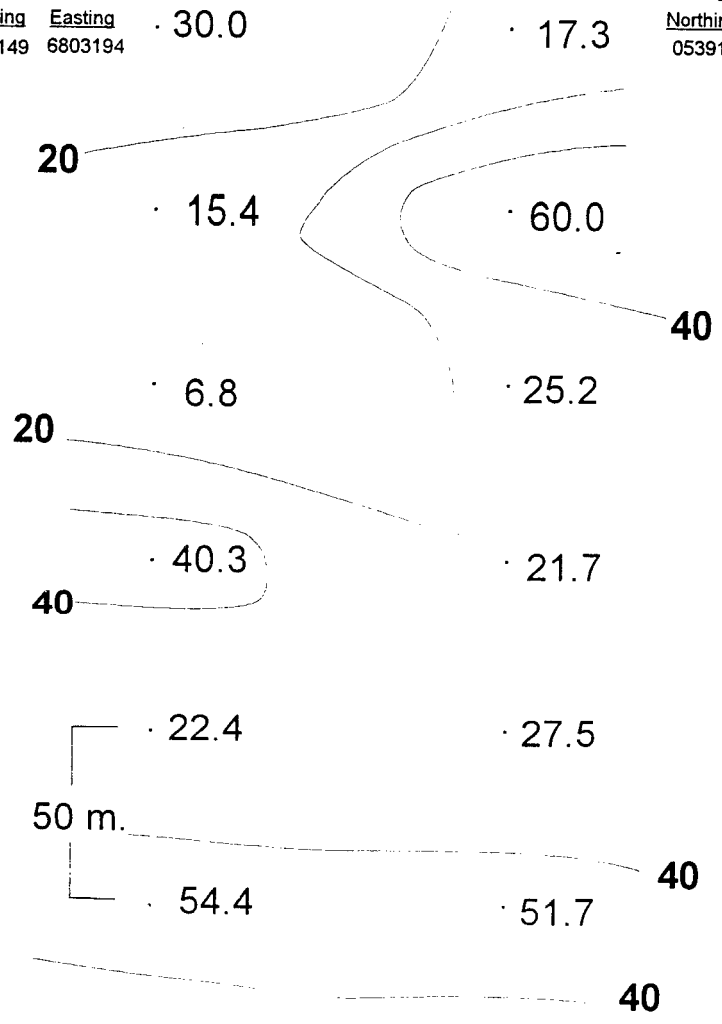


**49 Pup  
Gold (ppb)**



49P-8  
 Northing Easting  
 0539149 6803194

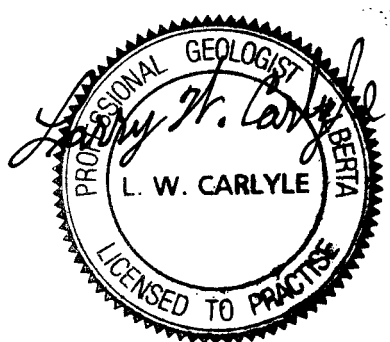
49P-7  
 Northing Easting  
 0539161 6803150



49P-14  
 Northing Easting  
 0538856 6803129

49P-1  
 Northing Easting  
 0538878 6803067

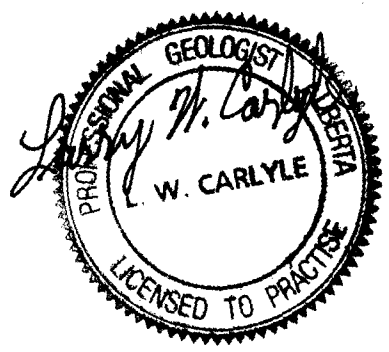
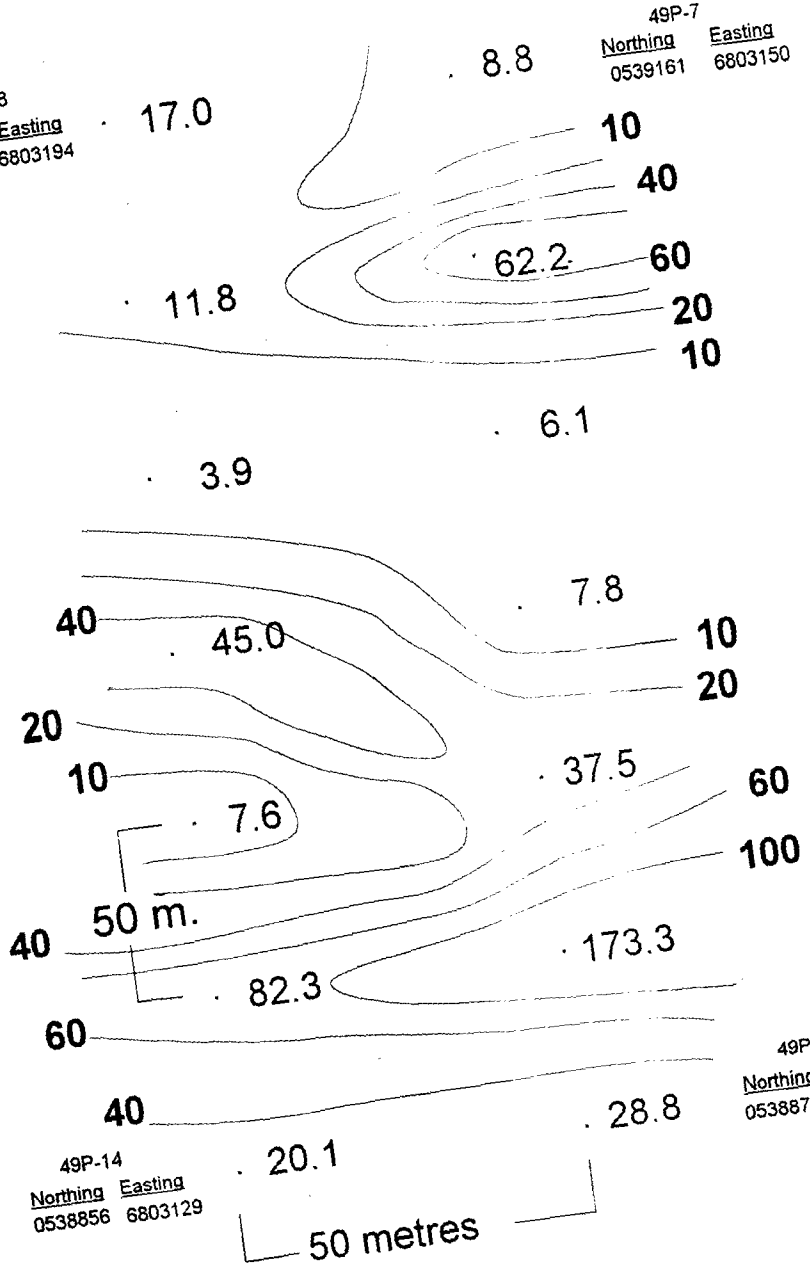
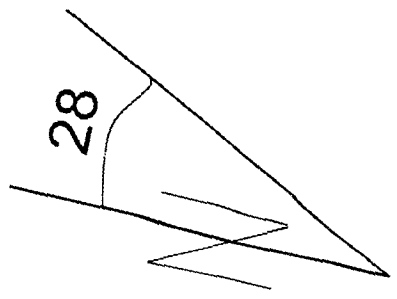
50 metres



**49 Pup  
 Copper (ppm)**

49P-8  
Northing Easting  
0539149 6803194

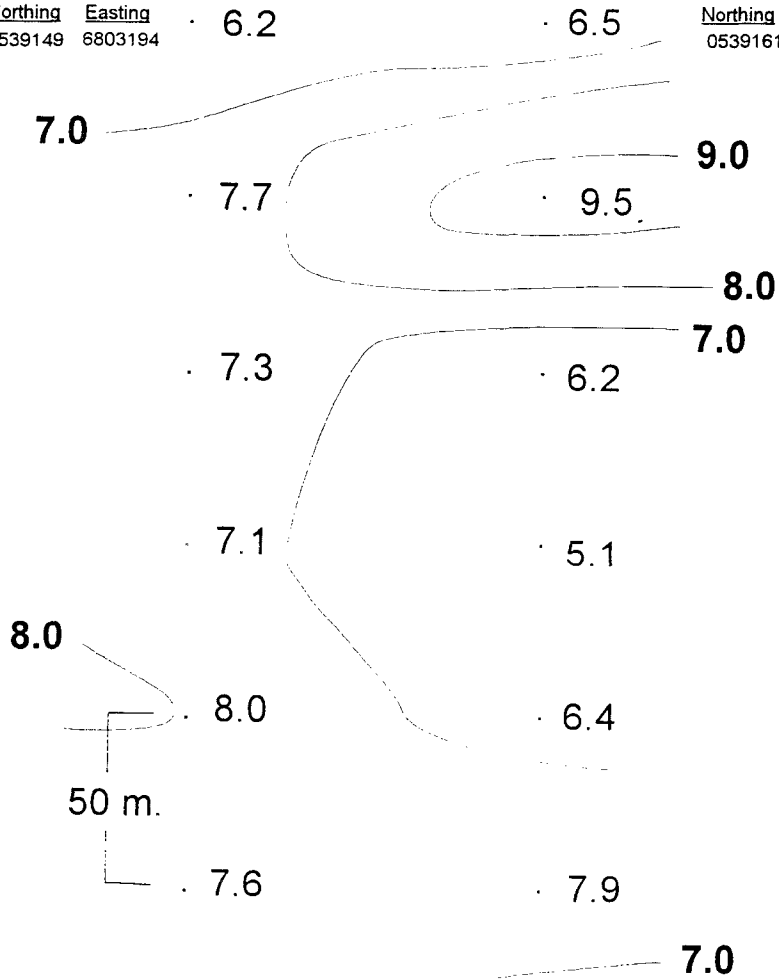
49P-7  
Northing Easting  
0539161 6803150



49 Pup  
Arsenic (ppm)

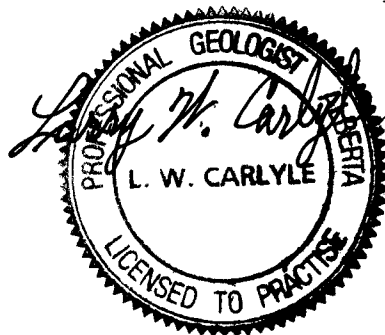
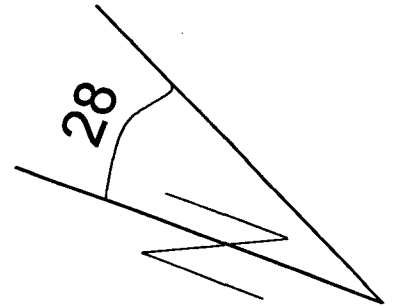
49P-8  
Northing Easting  
0539149 6803194

49P-7  
Northing Easting  
0539161 6803150



49P-14  
Northing Easting  
0538856 6803129

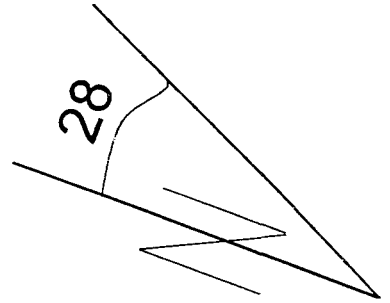
49P-1  
Northing Easting  
0538878 6803067



**49 Pup  
Lead (ppm)**

49P-8  
Northing Easting  
0539149 6803194

49P-7  
Northing Easting  
0539161 6803150



0.01

<0.01

0.01

0.02

0.02

0.02

0.01

0.01

0.04

0.03

0.01

0.01

0.02

50 m.

0.01

0.06

0.05

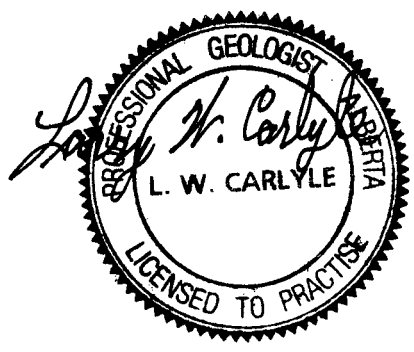
49P-14  
Northing Easting  
0538856 6803129

49P-1  
Northing Easting  
0538878 6803067

0.01

0.01

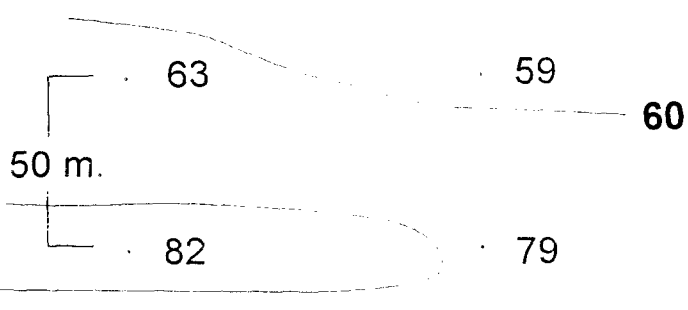
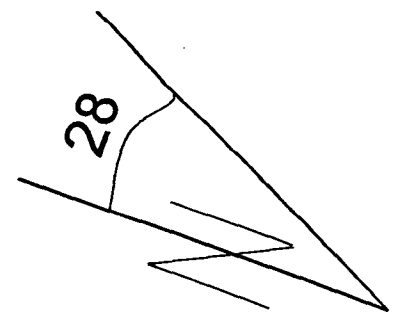
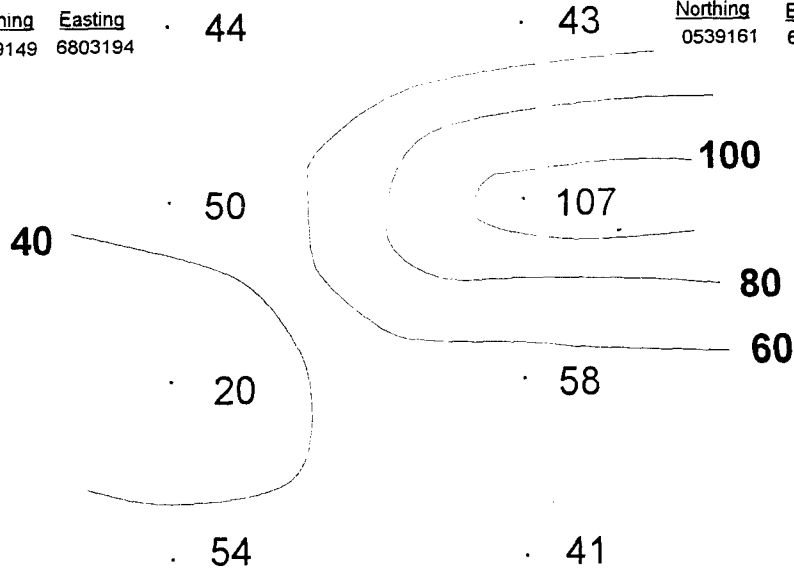
50 metres



49 Pup  
Mercury (ppm)

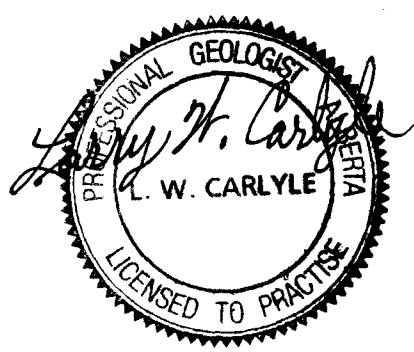
49P-8  
Northing Easting  
0539149 6803194

49P-7  
Northing Easting  
0539161 6803150



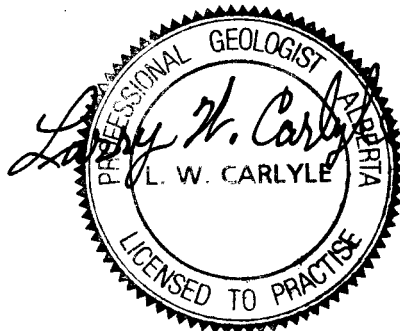
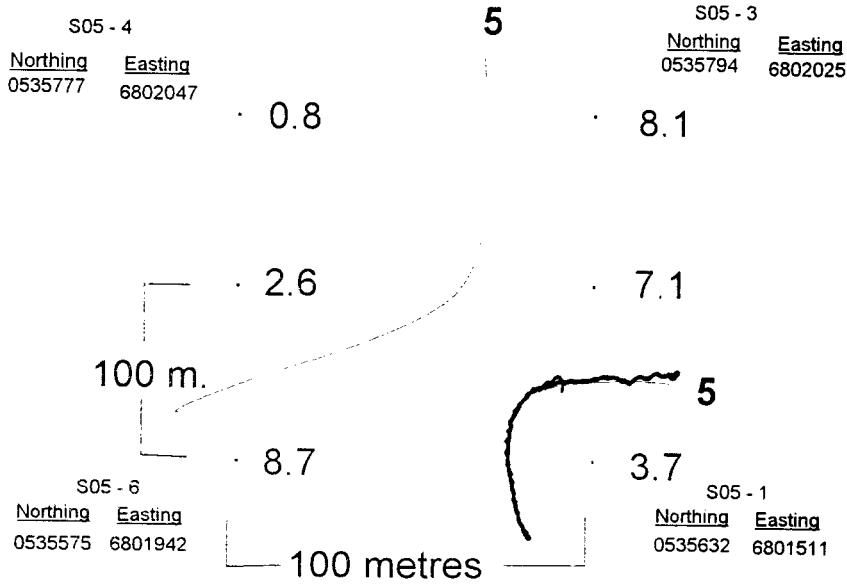
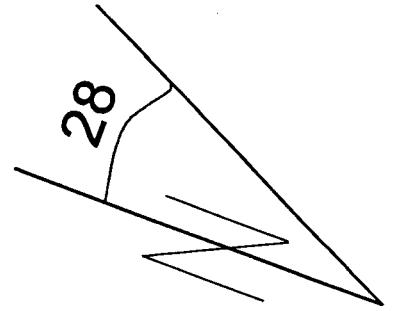
49P-14  
Northing Easting  
0538856 6803129

49P-1  
Northing Easting  
0538878 6803067

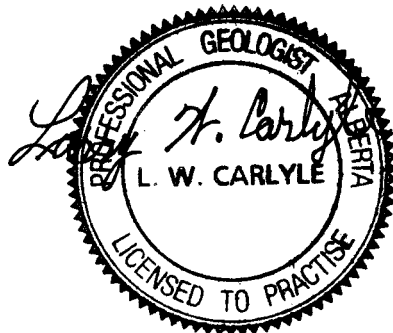
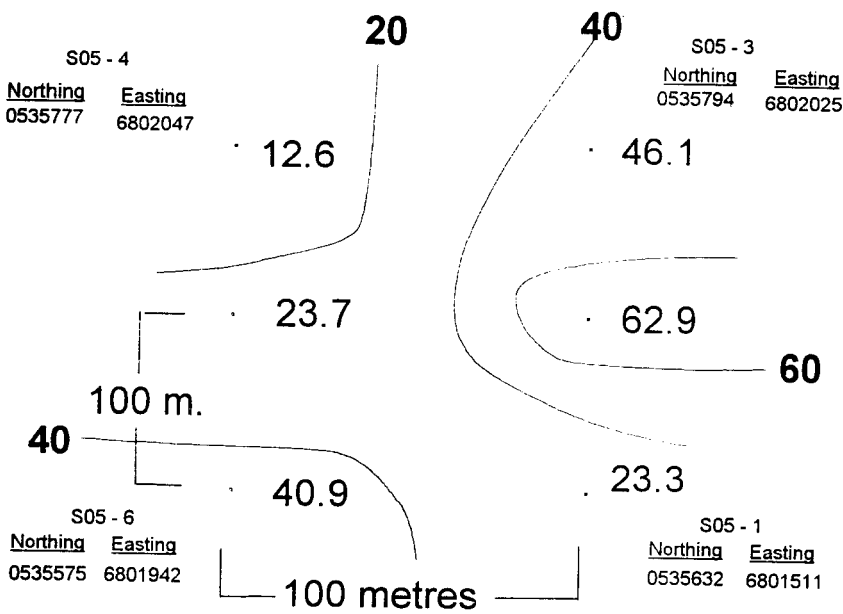
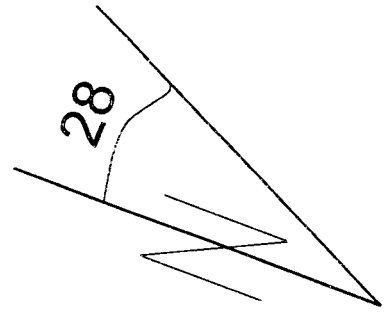


**49 Pup  
Zinc (ppm)**

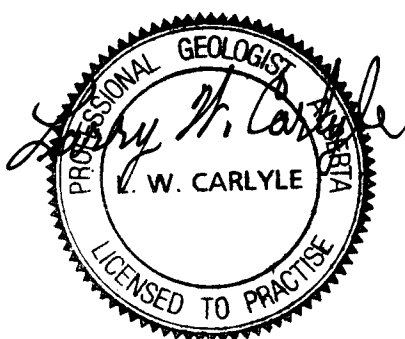
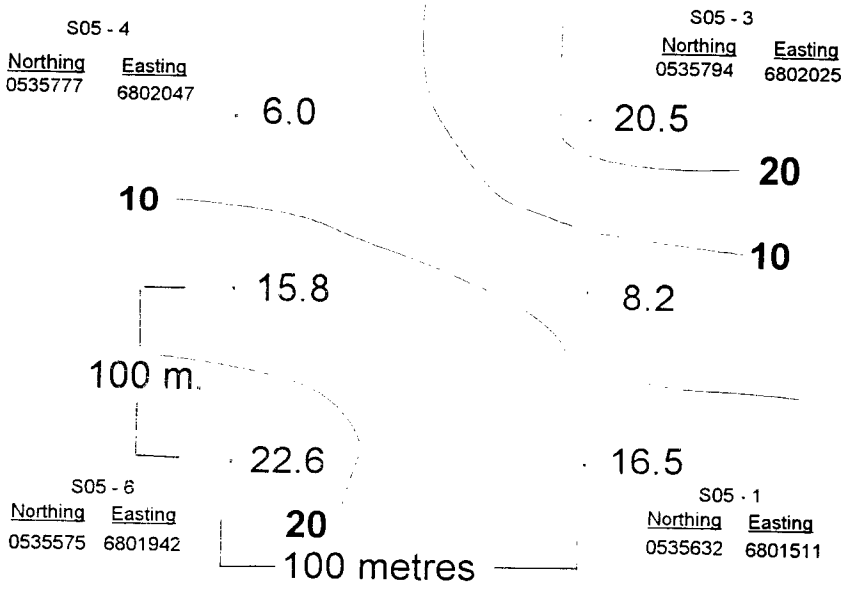
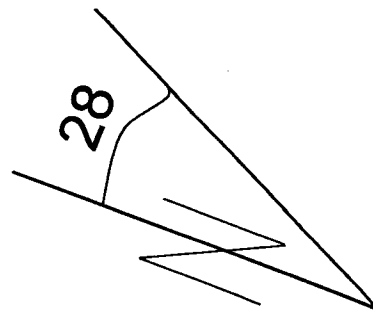
**APPENDIX A -- 2**  
**SUMMIT CREEK**  
**SOIL SAMPLE MAPS**



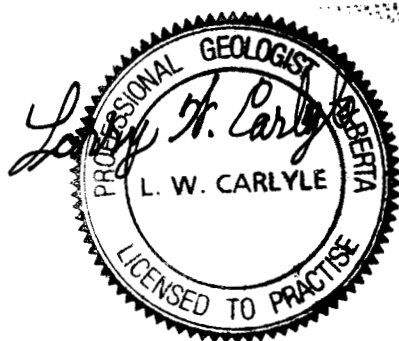
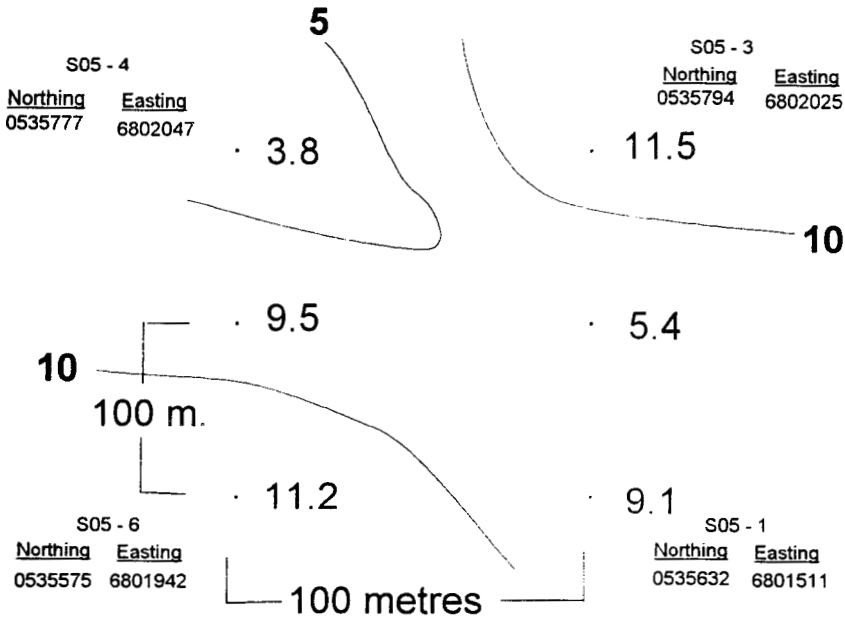
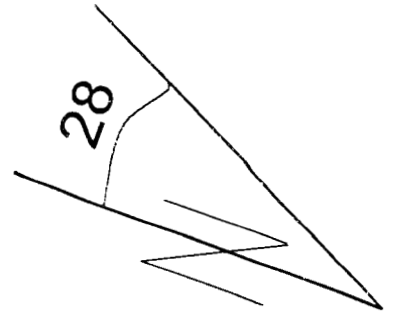
**Summit Creek  
 East of Road  
 Gold (ppb)**



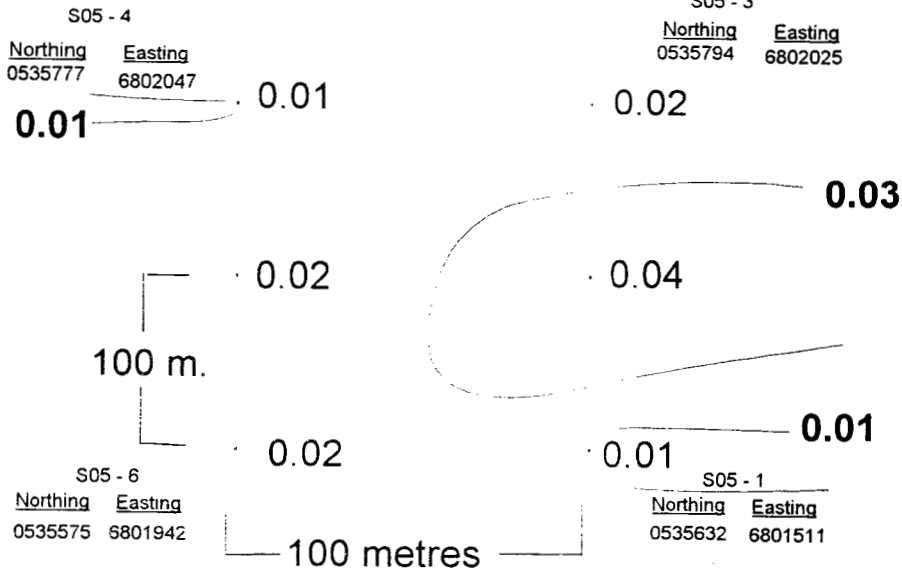
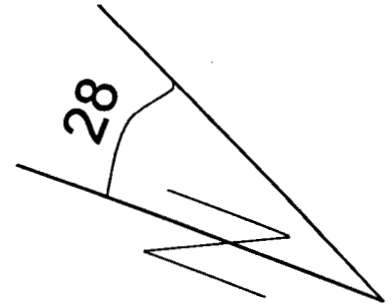
**Summit Creek  
East of Road  
Copper (ppm)**



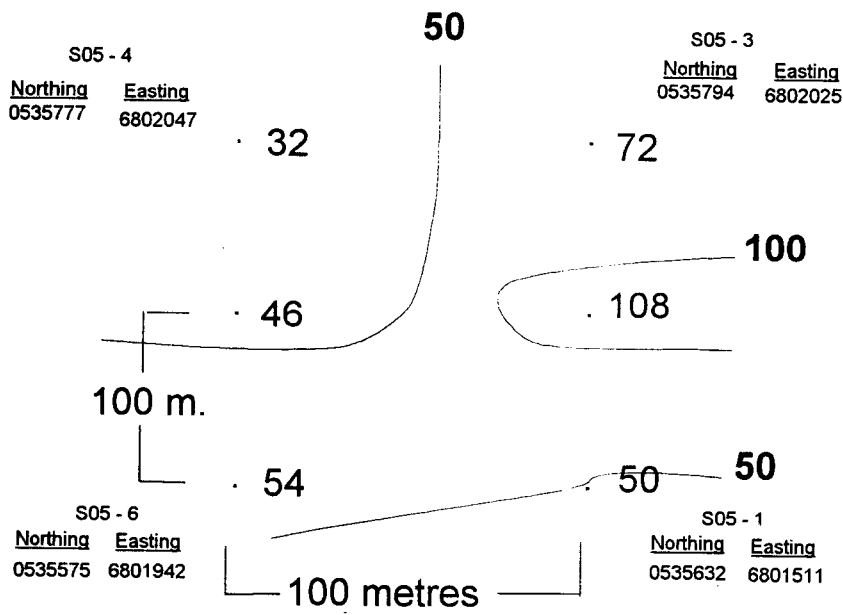
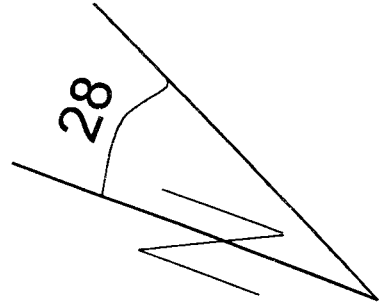
**Summit Creek  
East of Road  
Arsenic (ppm)**



**Summit Creek  
East of Road  
Lead (ppm)**



**Summit Creek  
East of Road  
Mercury (ppm)**



**Summit Creek  
 East of Road  
 Zinc (ppm)**

**APPENDIX A -- 3**  
**LIVINGSTONE CREEK**  
**SOIL SAMPLE MAPS**

L05-12  
Northing 0537792 Easting 6799740

7.7

<0.5

L05-11  
Northing 0538724 Easting 6800026

5

3.1

3.2

5

7.5

8.7

5

2.4

2.4

3.4

2.9

4.6

2.0

3.8

5.0

5

100 m.

3.0

6.6

1.2

5.9

<0.5

4.8

5

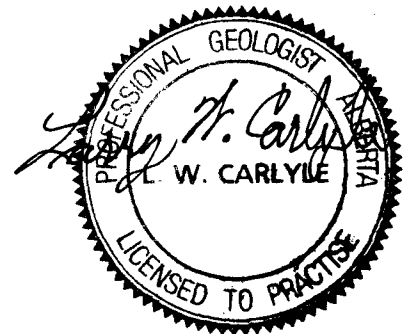
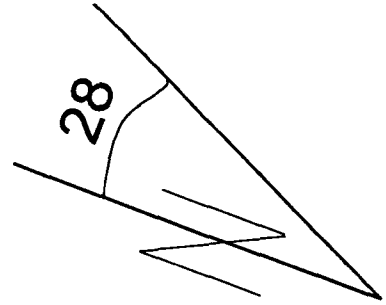
L05-22  
Northing 0538511 Easting 6799919

0.7

6.2

100 metres

L05-1  
Northing 0537763 Easting 6799846



# Livingstone 2005 East Extension Gold (ppb)

L05-12

Northing 0537792 Easting 6799740

10

L05-11

Northing 0538724 Easting 6800026

· 28.6

· 2.9

· 23.4

· 13.2

20

· 15.7

· 17.0

· 19.0

· 9.7

10

· 16.0

· 16.1

· 16.9

· 15.7

· 19.3

· 15.9

· 19.5

· 21.2

20

100 m.

· 12.0

· 15.2

· 11.0

· 21.7

20

· 10.8

· 24.9

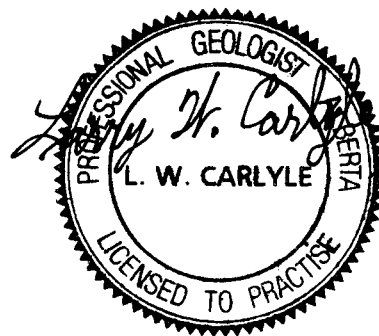
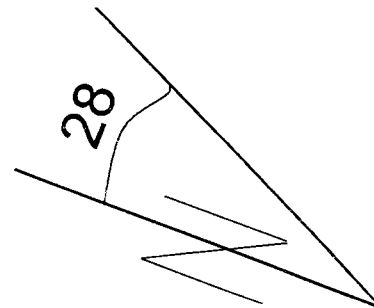
L05-22

Northing 0538511 Easting 6799919

L05-1

Northing 0537763 Easting 6799846

100 metres



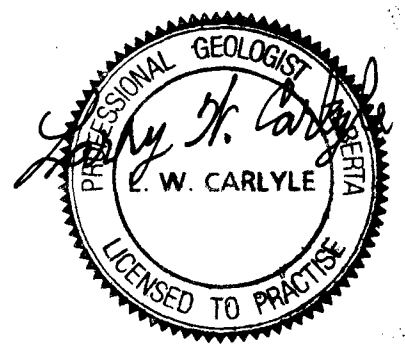
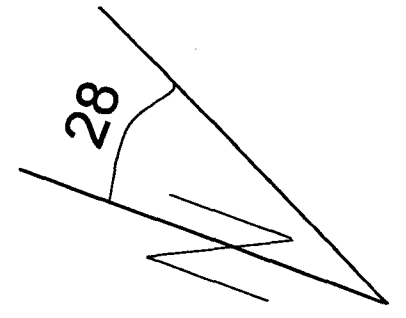
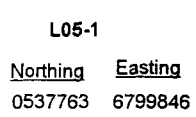
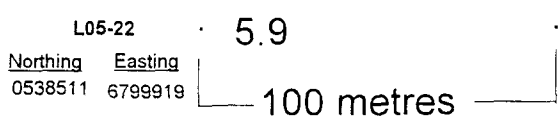
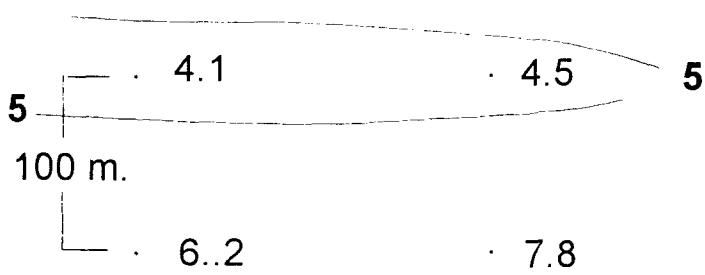
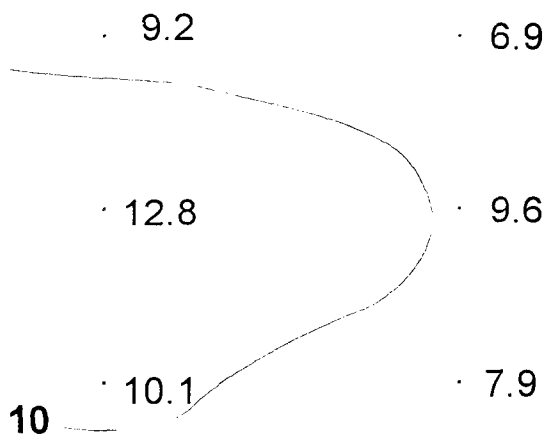
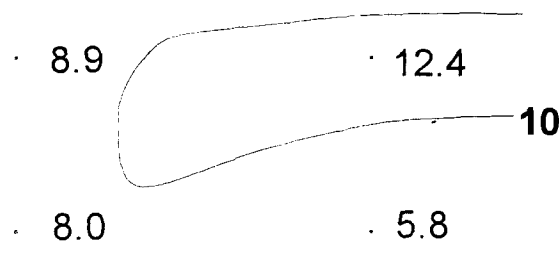
# Livingstone 2005 East Extension Copper (ppm)

L05-12

Northing	Easting	Value
0537792	6799740	11.6

L05-11

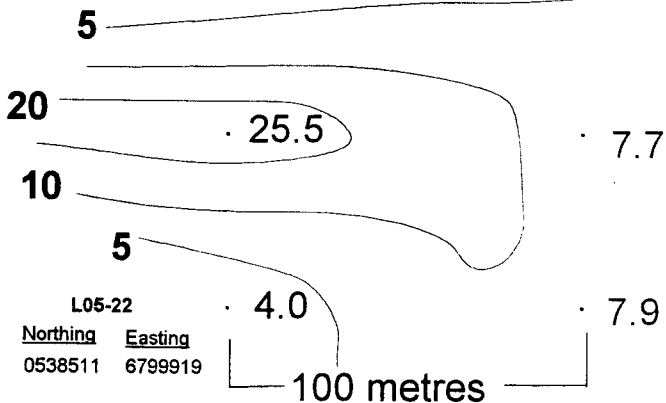
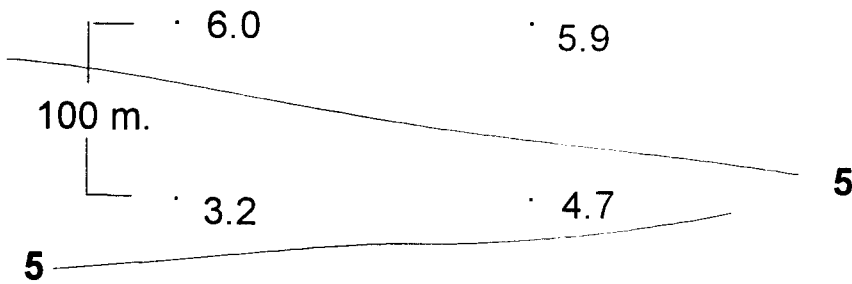
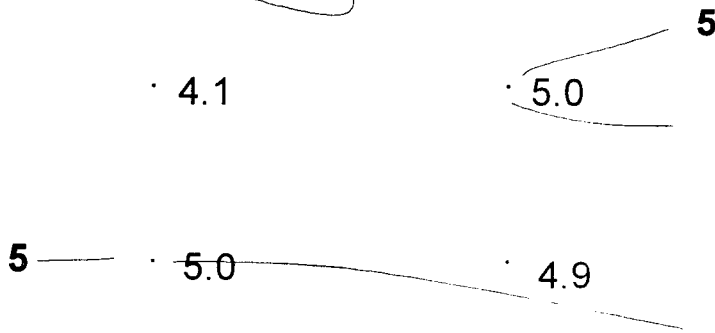
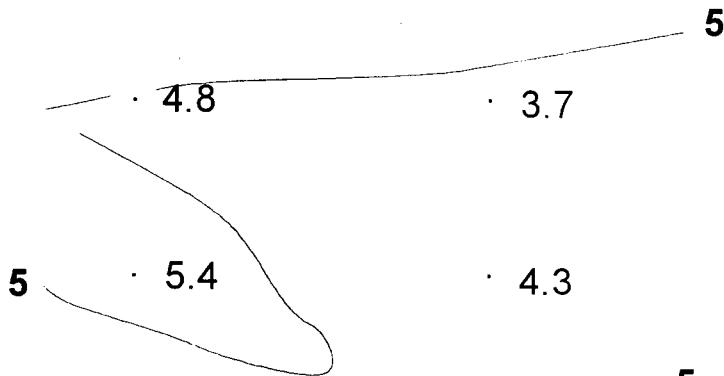
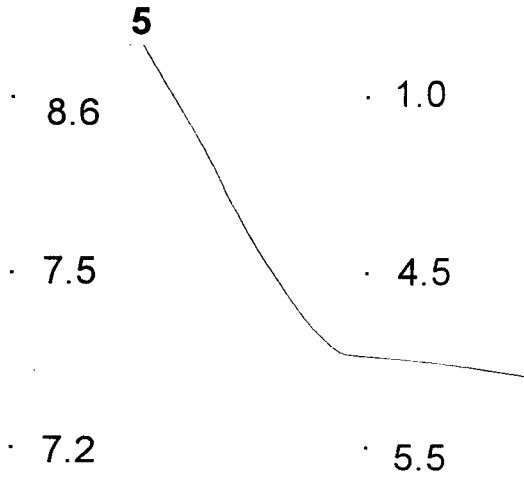
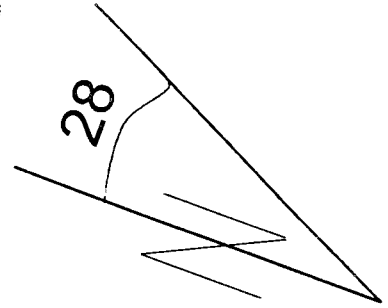
Northing	Easting	Value
0538724	6800026	<0.5



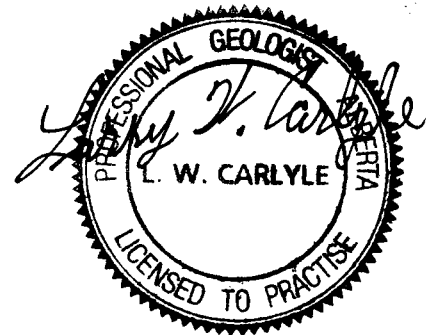
# Livingstone 2005 East Extension Arsenic (ppm)

L05-12  
 Northing Easting  
 0537792 6799740

L05-11  
 Northing Easting  
 0538724 6800026



L05-1  
 Northing Easting  
 0537763 6799846



# Livingstone 2005 East Extension Lead (ppm)

L05-22  
 Northing Easting  
 0538511 6799919

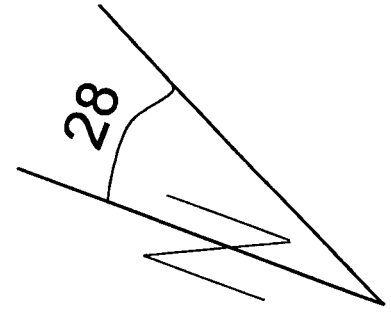


L05-12

Northing Easting  
0537792 6799740

L05-11

Northing Easting  
0538724 6800026



0.05

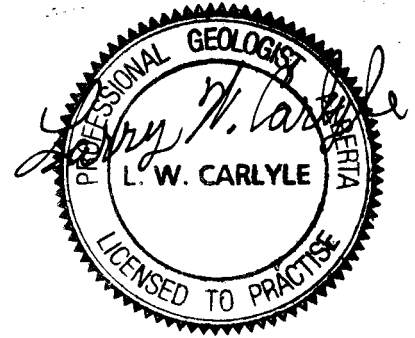
0.04  
0.01  
0.03  
0.02  
0.03  
0.02  
0.03  
0.02  
0.05  
0.02

0.04  
0.03  
0.02  
0.04  
0.03  
0.05  
0.04

100 m.

0.05

0.05  
0.02  
0.06  
0.03  
0.05



L05-22

Northing Easting  
0538511 6799919

0.01  
0.04  
100 metres

L05-1

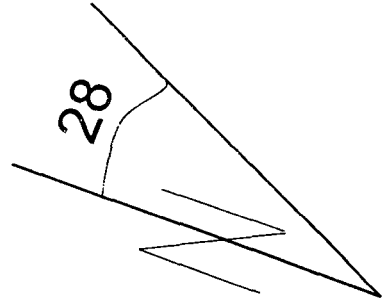
Northing Easting  
0537763 6799846

# Livingstone 2005 East Extension Mercury (ppm)

L05-12  
 Northing Easting · 67  
 0537792 6799740  
 60

L05-11  
 Northing Easting  
 0538724 6800026

· 10 · 20  
 · 36 · 40  
 · 45



· 55 · 36 · 40  
 · 51 · 45  
 · 50 · 34 · 40  
 · 36 · 40

· 31 · 41  
 · 43 · 41  
 · 54 · 49

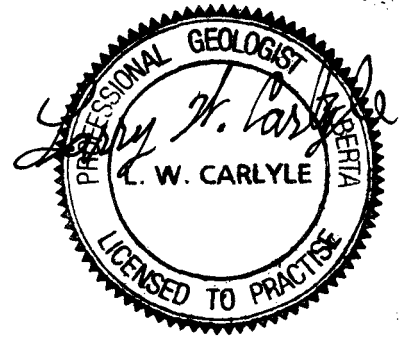
· 25 · 38 · 40  
 100 m.  
 · 50 · 61 · 60

40 · 31 · 51

L05-22  
 Northing Easting  
 0538511 6799919

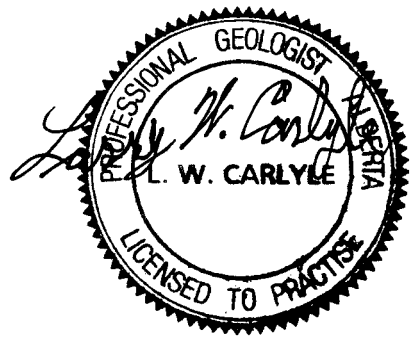
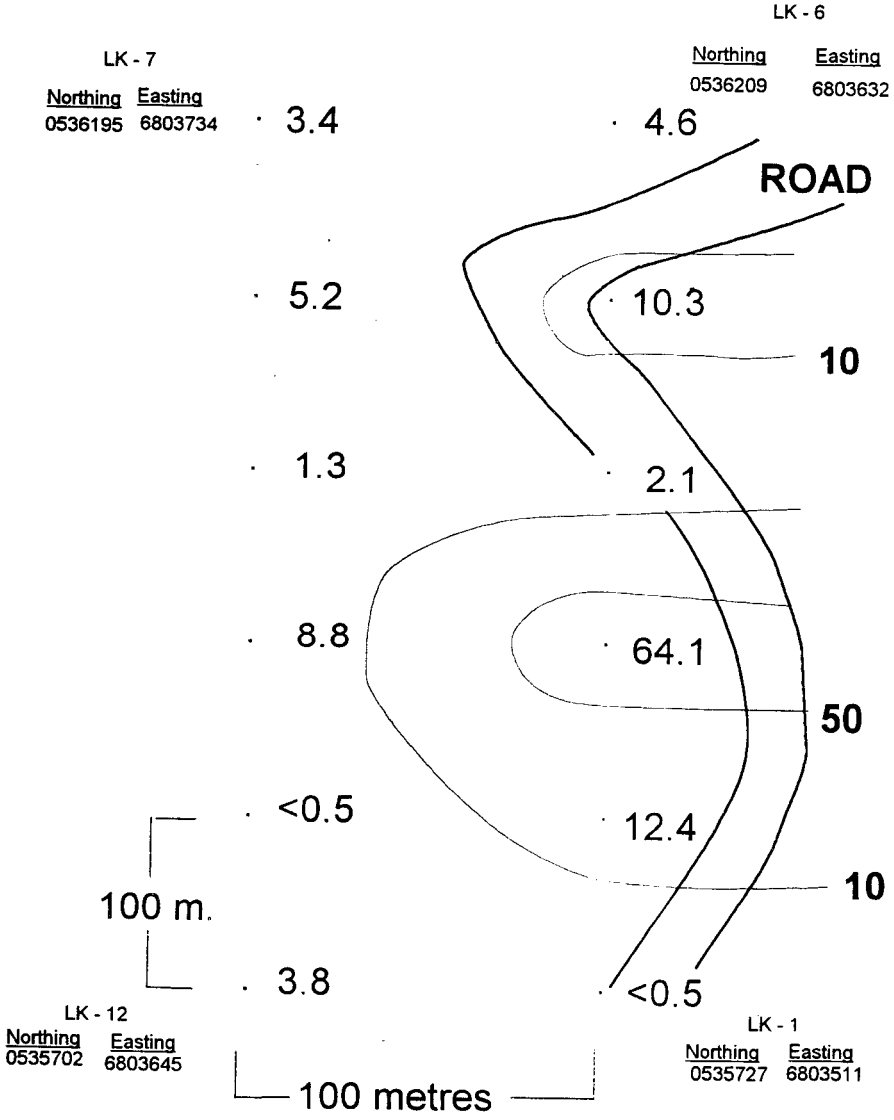
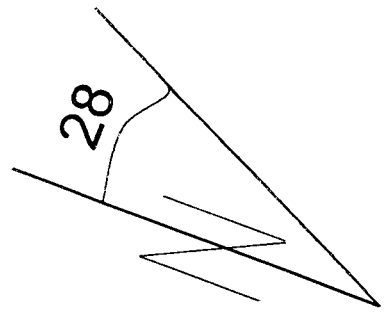
100 metres

L05-1  
 Northing Easting  
 0537763 6799846

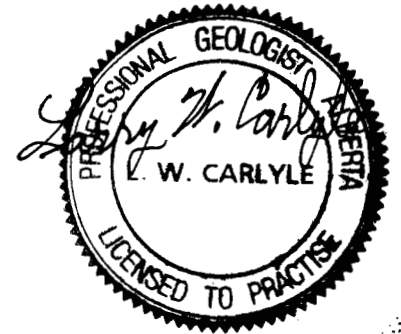
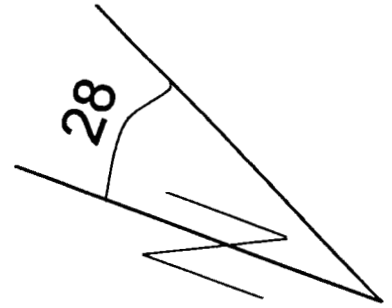
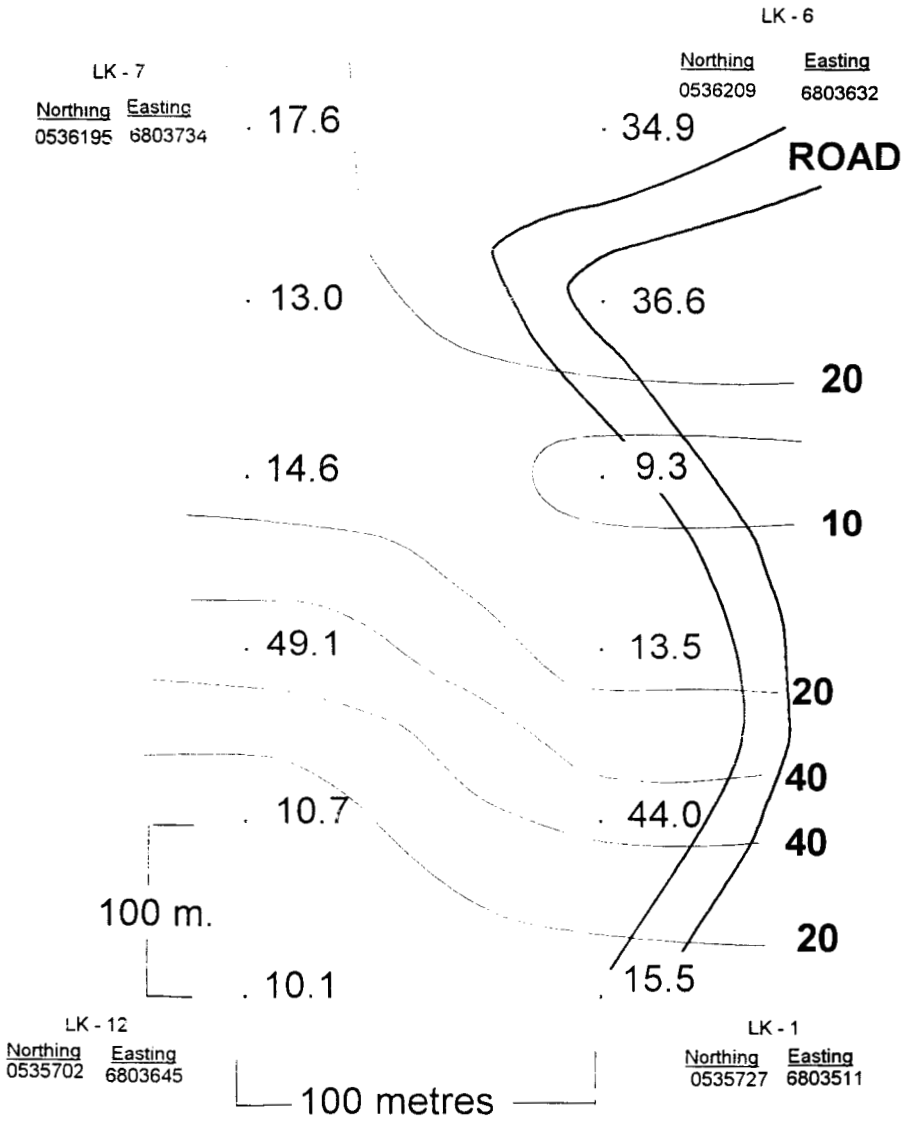


# Livingstone 2005 East Extension Zinc (ppm)

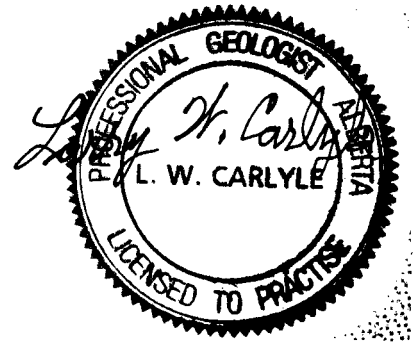
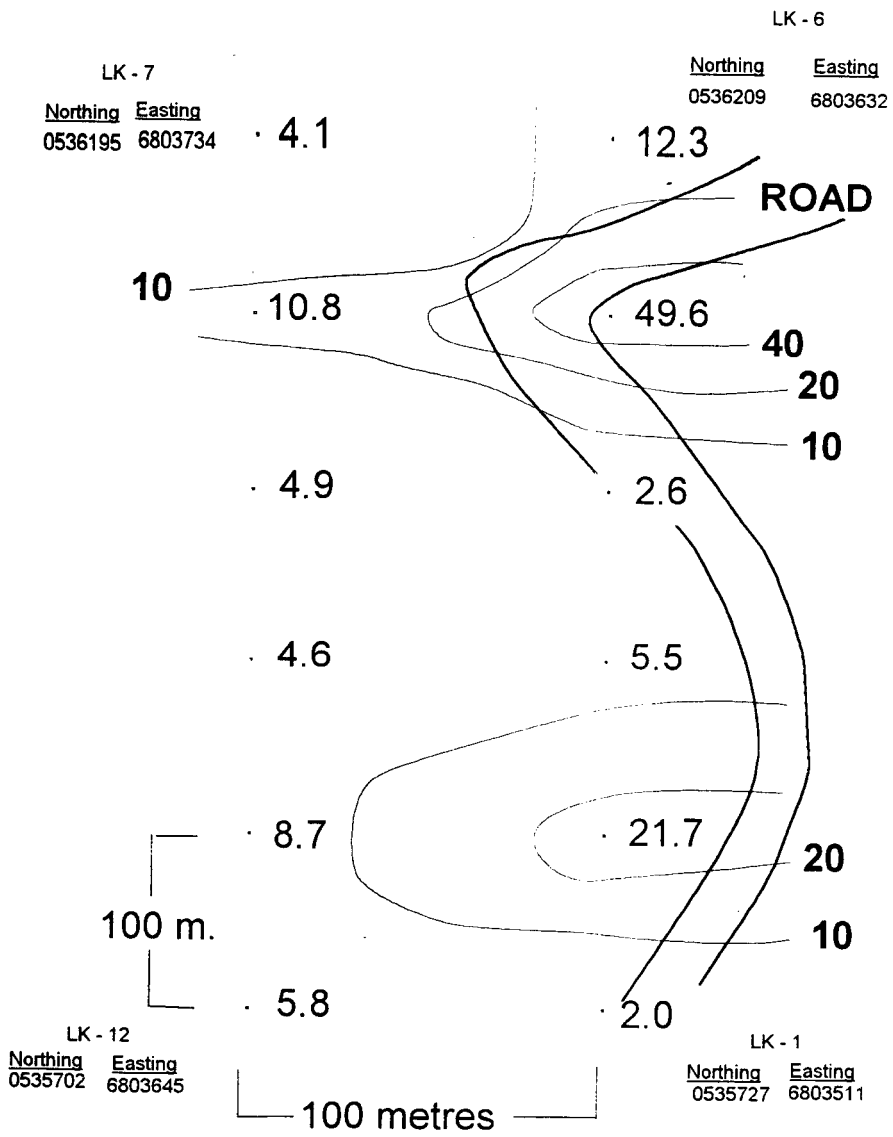
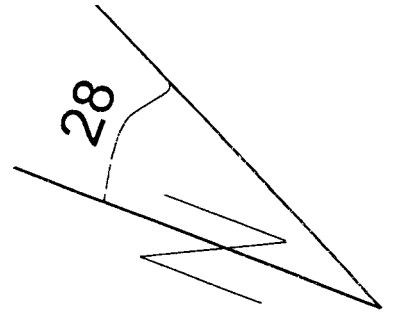
**APPENDIX A -- 4**  
**LAKE CREEK**  
**SOIL SAMPLE MAPS**



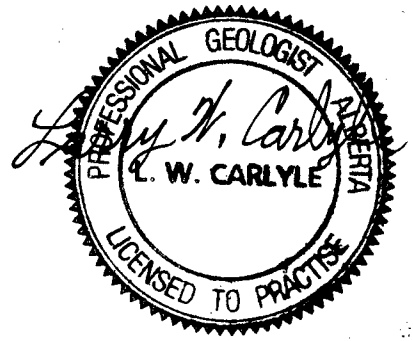
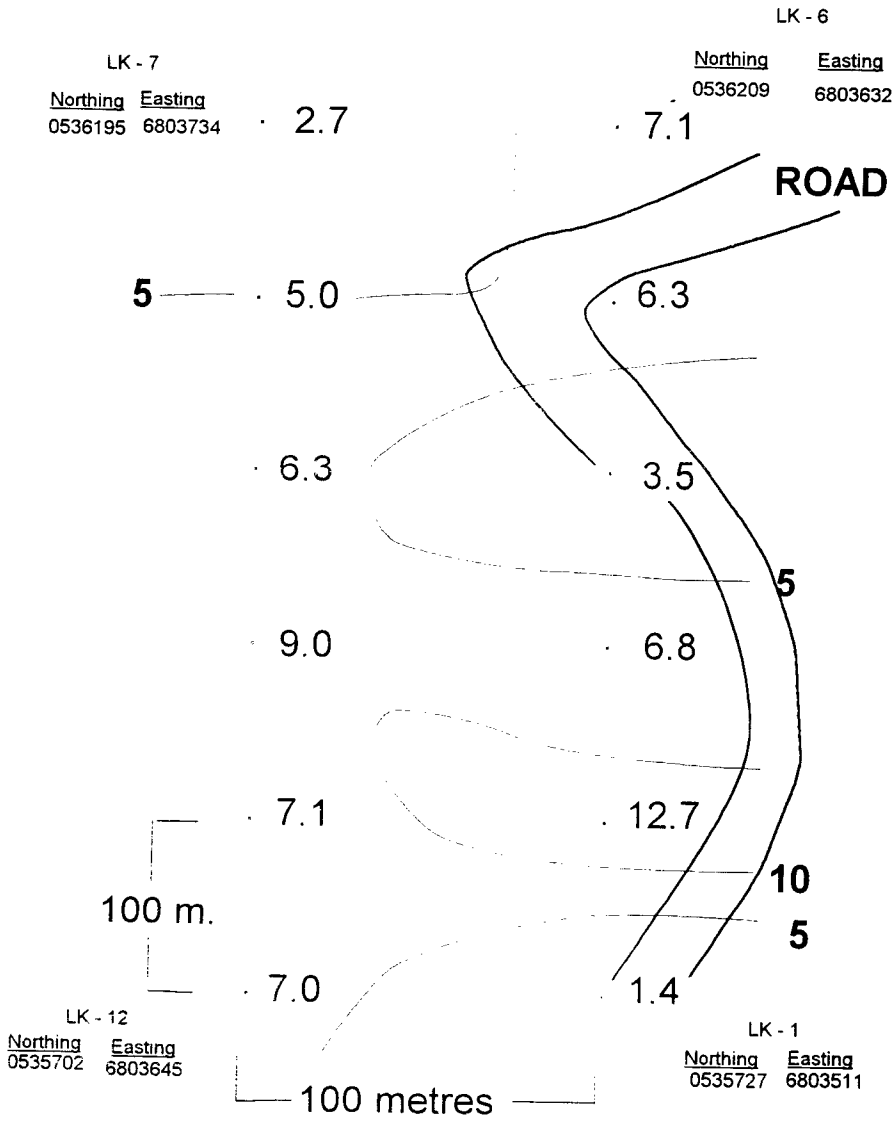
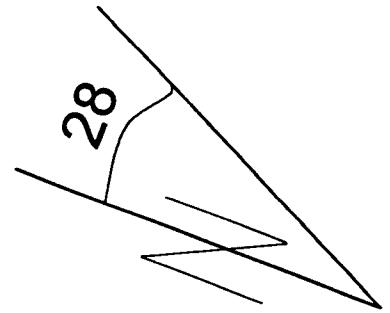
# Lake Creek East Extension Gold (ppb)



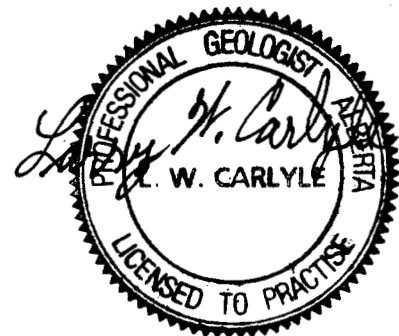
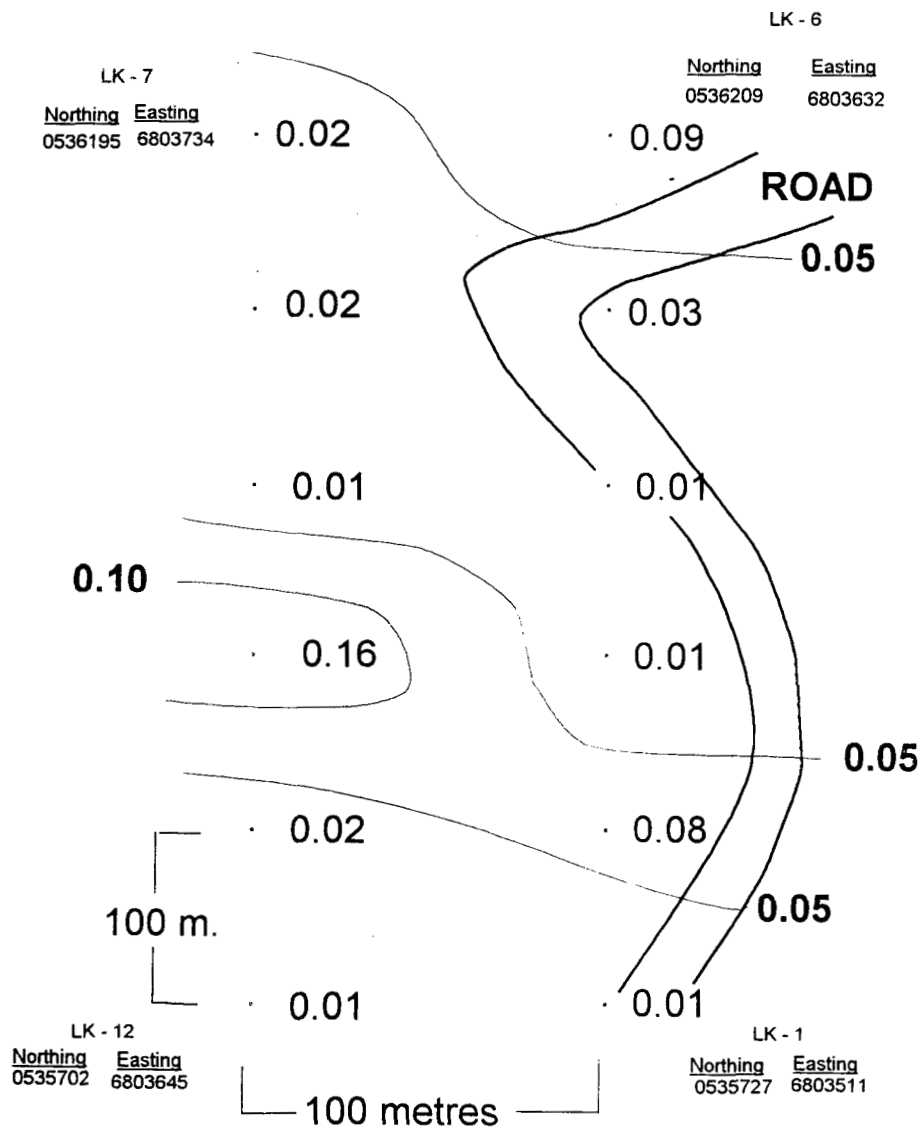
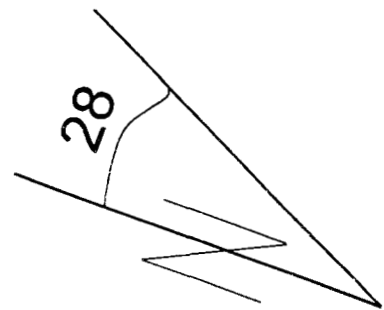
# Lake Creek East Extension Copper (ppm)



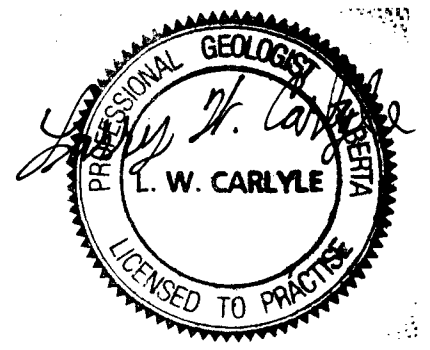
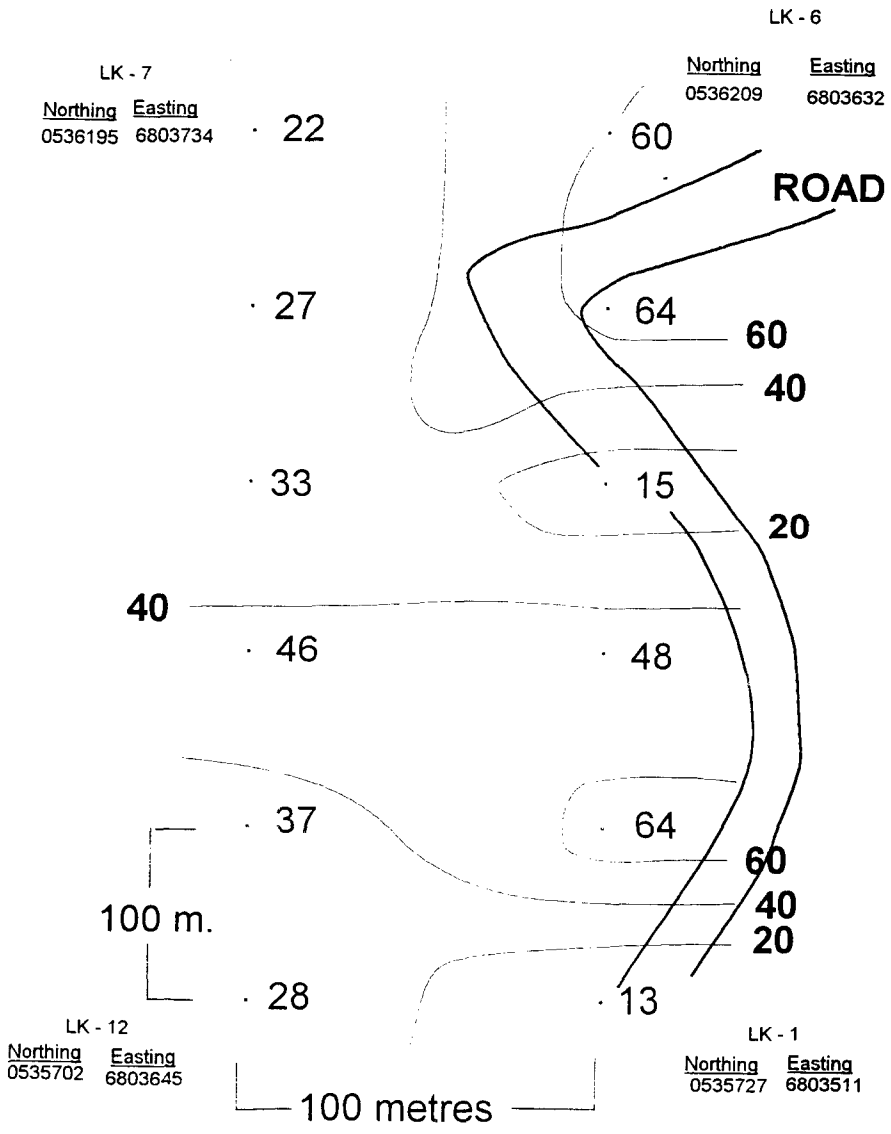
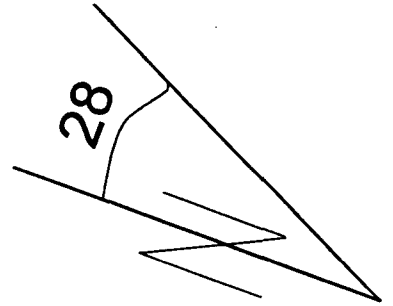
# Lake Creek East Extension Arsenic (ppm)



# Lake Creek East Extension Lead (ppm)



# Lake Creek East Extension Mercury (ppm)



# Lake Creek East Extension Zinc (ppm)

**APPENDIX B**

**MAGNETOMETER SURVEY TABLES**

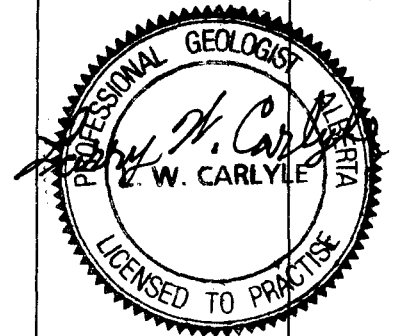
**APPENDIX B -- 1**

HEADWATERS 49 PUP

**Magnetometer Survey  
Headwaters 49 Pup**

**August 7, 2005**

Line	Station	Time	Readings	Reading Average	Corrected Reading	Miscellaneous Information
1	0 + 00 (49P - 1)	9:19	5752	5456	5456	<b>538878</b> <b>6803067</b>  <b>Readings</b> <b>reduced by</b> <b>50,000 gammas</b>  <b>Change:</b> $-173 = .54 \text{ ga}$ <b>68 min. minute</b>
			5346			
			5269			
	0 + 25	9:21	5206	5256	5251	
			5376			
			5185			
	0 + 50 E (49P - 2)	9:23	5461	5428	5418	
			5341			
			5482			
	0 + 75	9:25	5554	5495	5480	
			5488			
			5443			
	1 + 00 E (49P - 3)	9:26	5585	5605	5595	
			5654			
			5577			
	1 + 25	9:28	5493	5542	5520	
			5508			
			5625			
	1 + 50 E (49P - 4)	9:29	5508	5561	5536	
			5492			
5684						
1 + 75	9:31	5527	5534	5504		
		5515				
		5560				
2 + 00 E (49P - 5)	9:32	5474	5490	5458		
		5475				
		5521				
2 + 25	9:33	5491	5553	5518		
		5565				
		5604				
2 + 50 E (49P - 6)	9:36	5610	5637	5595		
		5579				
		5721				
2 + 75	9:38	5418	5436	5389		
		5345				
		5545				
3 + 00 E (49P - 7)	9:39	5578	5538	5488		
		5539				
		5497				
1	3 + 25	9:41	5711	5666	5611	
			5637			
			5651			

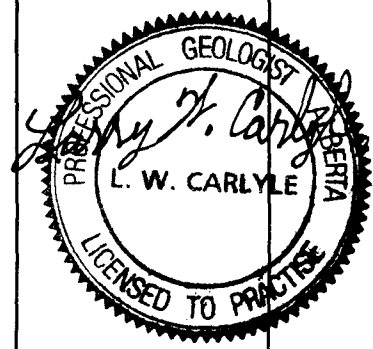


Magnetometer Survey  
Headwaters 49 Pup

Line	Station	Time	Readings	Reading Average	Corrected Reading	Miscellaneous Information
1	3 + 50 E	9:46	5763	5756	5689	
			5753			
	3 + 75	9:48	5753	5717	5645	
			5744			
1	4 + 00 E (49PM - 1)	9:53	5752	5706	5621	
			5654			
2	4 + 00 E (49PM - 2)	9:58	5770	5690	5593	
			5659			
	3 + 75	10:01	5711	5411	5306	
			5625			
	3 + 50 E	10:03	5735	5555	5445	
			5358			
	3 + 25	10:04	5490	5606	5494	
			5386			
	3 + 00 E (49P - 8)	10:07	5465	5464	5344	
			5619			
	2 + 75	10:08	5580	5558	5436	
			5475			
	2 + 50 E (49P - 9)	10:09	5490	5672	5547	
			5438			
	2 + 25	10:11	5463	5652	5522	
			5620			
	2 + 00 E (49P - 10)	10:12	5587	5501	5369	
			5468			
	1 + 75	10:14	5674	5701	5564	
			5677			
	1 + 50 E (49P - 11)	10:15	5666	5635	5495	
			5669			
2			5717			
			5569			
			5425			
			5529			
			5550			
			5630			
			5737			
			5735			
			5659			
			5624			
			5623			
			5623			

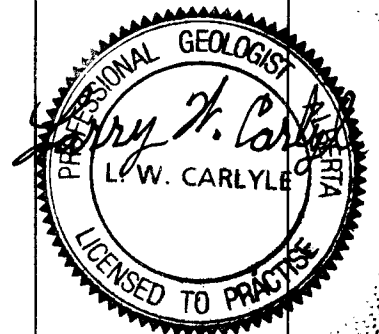
**539251**  
**6803199**  
**539238**  
**6803242**

**539149**  
**6803194**



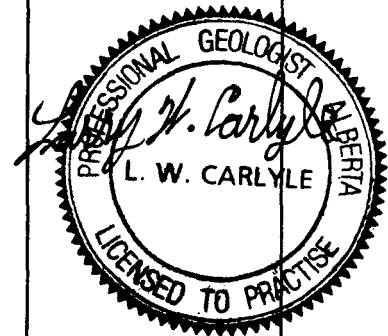
**Magnetometer Survey**  
**Headwaters 49 Pup**

Line	Station	Time	Readings	Reading Average	Corrected Reading	Miscellaneous Information
2	1 + 25	10:16	5638	5626	5484	
			5674			
			5565			
	1 + 00 E (49P - 12)	10:18	5439	5484	5337	
			5424			
			5590			
	0 + 75	10:19	5676	5616	5466	
			5556			
			5616			
	0 + 50 E (49P - 13)	10:20	5643	5642	5490	
			5705			
			5579			
	0 + 25	10:23	5677	5594	5434	
			5625			
			5481			
2	0 + 00 E (49P - 14)	10:25	5641	5548	5383	538856 6803129
		5548				
		5456				
1	0 + 00 E (49P - 1)	10:27	5695	5629	5459	538878 6803067
		5593				
		5599				
2	0 + 00 E (49P - 14)	10:29	5451	5548	5548	538856 6803129
			5608			
			5584			
3	0 + 00 E (49PM - 3)	10:35	5770	5774	5785	538845 6803185
			5773			
			5780			
	0 + 25	10:38	5610	5615	5631	
			5548			
			5687			
	0 + 50 E	10:39	5679	5579	5597	
			5566			
			5492			
	0 + 75	10:42	5241	5520	5543	
			5673			
			5645			
3	1 + 00 E	10:43	5476	5482	5507	
		5538				
		5433				



**Magnetometer Survey**  
**Headwaters 49 Pup**

Line	Station	Time	Readings	Reading Average	Corrected Reading	Miscellaneous Information
3	1 + 25	10:45	5759	5752	5781	
			5735			
			5762			
	1 + 50 E	10:47	5726	5747	5779	
			5761			
			5753			
	1 + 75	10:48	5751	5752	5786	
			5755			
			5749			
	2 + 00 E	10:50	5731	5526	5564	
			5486			
			5361			
	2 + 25	10:52	5594	5632	5673	
			5641			
			5660			
	2 + 50 E	10:53	5739	5752	5795	
			5758			
			5759			
	2 + 75	10:55	5621	5621	5668	
			5615			
5626						
3 + 00 E	10:57	5773	5773	5823		
		5772				
		5775				
3 + 25	10:58	5767	5767	5819		
		5765				
		5768				
3 + 50 E	11:00	5723	5740	5796		
		5750				
		5748				
3 + 75	11:02	5747	5745	5804		
		5736				
		5751				
3	4 + 00 E (49PM - 4)	11:05	5754	5746	5811	
			5746			
			5739			
4	4 + 00 E (49PM - 5)	11:09	5759	5772	5844	
			5780			
			5777			
3 + 75	11:12	5723	5727	5804		
		5753				
		5704				

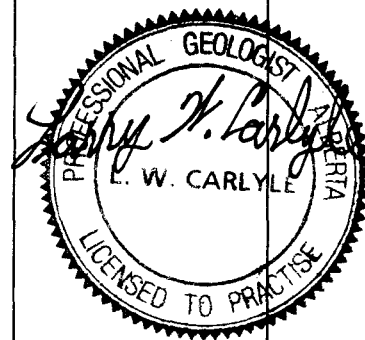


**539244**  
**6803302**

**539228**  
**6803355**

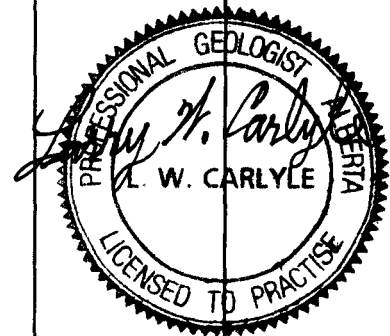
**Magnetometer Survey**  
**Headwaters 49 Pup**

Line	Station	Time	Readings	Reading Average	Corrected Reading	Miscellaneous Information
4	3 + 50 E	11:14	5717	5734	5815	
			5760			
			5725			
	3 + 25	11:15	5696	5657	5740	
			5679			
			5596			
	3 + 00 E	11:16	5457	5510	5595	
			5553			
			5521			
	2 + 75	11:18	5506	5547	5635	
			5527			
			5609			
	2 + 50 E	11:22	5457	5361	5456	
			5337			
			5289			
	2 + 25	11:24	5768	5766	5865	
			5776			
			5755			
	2 + 00 E	11:26	5733	5698	5801	
			5730			
5632						
1 + 75	11:29	5738	5760	5868		
		5762				
		5779				
1 + 50 E	11:32	5347	5486	5599		
		5510				
		5601				
1 + 25	11:33	5334	5411	5526		
		5523				
		5377				
1 + 00 E	11:36	5378	5424	5545		
		5403				
		5492				
0 + 75	11:38	5223	5347	5471		
		5392				
		5425				
0 + 50 E	11:40	5583	5600	5728		
		5621				
		5597				
4	0 + 25	11:42	5627	5634	5765	
			5619			
			5657			



**Magnetometer Survey**  
**Headwaters 49 Pup**

Line	Station	Time	Readings	Reading Average	Corrected Reading	Miscellaneous Information
4	0 + 00 E (49PM - 6)	11:44	5649 5570 5531	5583	5718	<b>538840</b> <b>6803258</b>
2	0 + 00 E (49P - 14)	11:49	5394 5266 5556	5405	5549	<b>538856</b> <b>6803129</b>



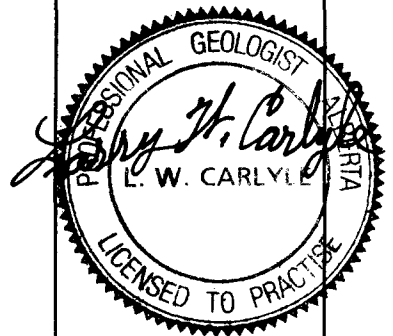
**APPENDIX B -- 2**

**SOUTH FORK LIVINGSTONE CREEK**

**Magnetometer Survey  
South Fork Livingstone Creek**

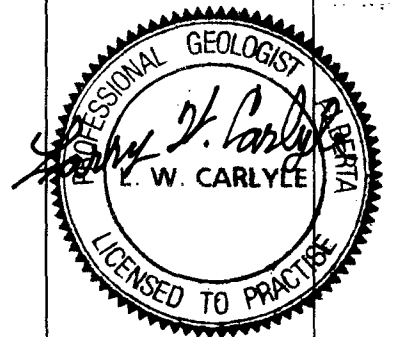
**Aug. 8, 2005**

Line	Station	Time	Readings	Reading Average	Corrected Reading	Miscellaneous Information
1	0 + 00 E (SFM - 1)	10:26	5507	5565	5565	<b>539358</b> <b>6799156</b>  <b>Readings</b> <b>reduced by</b> <b>50,000 gammas</b>  <b>Change:</b> <u>0.87 gamma</u> <b>89 minutes</b> <b>equals</b> <u>0.98 gammas</u> <b>minute</b>
			5716			
			5473			
	0 + 25	10:29	5447	5513	5510	
			5559			
			5534			
	0 + 50 E	10:36	5753	5754	5744	
			5755			
			5754			
	0 + 75	10:38	5583	5617	5605	
			5662			
			5607			
	1 + 00 E	10:43	5770	5769	5752	
			5768			
			5768			
	1 + 25	10:44	5769	5751	5733	
			5749			
			5736			
1 + 50 E	10:49	5579	5542	5519		
		5410				
		5637				
1 + 75	10:51	5607	5599	5574		
		5576				
		5615				
2 + 00 E	10:56	5561	5603	5574		
		5654				
		5594				
2 + 25	10:58	5513	5516	5485		
		5527				
		5508				
2 + 50 E	11:03	5714	5731	5695		
		5749				
		5731				
2 + 75	11:06	5597	5514	5475		
		5465				
		5481				
1	3 + 00 E (SFM - 2)	11:09	5377	5455	5413	
			5569			
			5418			
2	3 + 00 E (SFM - 3)	11:18	5561	5542	5491	
			5509			
			556			



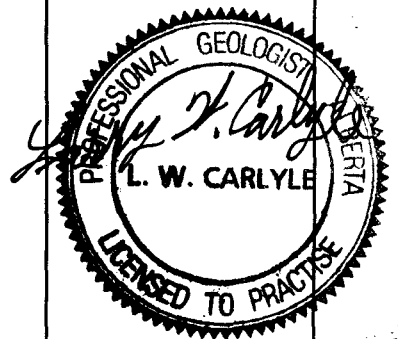
**Magnetometer Survey  
South Fork Livingstone Creek**

Line	Station	Time	Readings	Reading Average	Corrected Reading	Miscellaneous Information
2	2 + 75	11:20	5547	5564	5511	
			5641			
			5504			
	2 + 50 E	11:25	5750	5699	5641	
			5659			
			5687			
	2 + 25	11:27	5430	5449	5389	
			5459			
			5459			
	2 + 00 E	11:29	5568	5555	5493	
			5515			
			5582			
	1 + 75	11:32	5483	5496	5431	
			5525			
			5481			
1 + 50 E	11:35	5576	5535	5467		
		5492				
		5538				
1 + 25	11:38	5447	5433	5362		
		5353				
		5499				
1 + 00 E	11:41	5483	5379	5305		
		5392				
		5263				
0 + 75	11:43	5668	5630	5555		
		5636				
		5586				
0 + 50 E	11:47	5496	5465	5386		
		5258				
		5641				
0 + 25	11:50	5730	5724	5642		
		5674				
		5769				
2	0 + 00 E (SFM - 4)	11:55	5239	5291	5204	539384 6799124
			5296			
			5339			
1	0 + 00 E (SFM - 1)	11:57	5694	5652	5563	539358 6799156
			5653			
			5608			



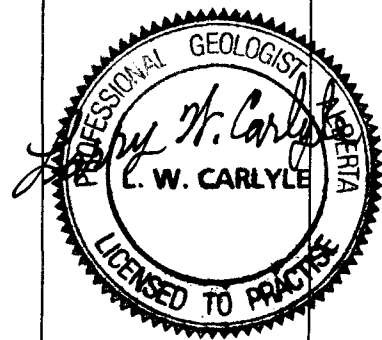
**Magnetometer Survey  
South Fork Livingstone Creek**

Line	Station	Time	Readings	Reading Average	Corrected Reading	Miscellaneous Information
2	0 + 00 E (SFM - 4)	12:13	5767	5767	5767	<b>539384 6799124</b>
			5768			
			5767			
3	0 + 00 E (SFM - 5)	12:19	5522	5530	5530	<b>539426 6799094</b>
			5495			
			5572			
	0 + 25	12:24	5735	5721	5722	
			5706			
			5721			
	0 + 50 E	12:28	5762	5767	5768	
			5769			
			5771			
	0 + 75	12:30	5778	5734	5735	
			5658			
			5766			
	1 + 00 E	12:34	5463	5441	5442	
			5370			
			5489			
	1 + 25	12:37	5387	5368	5370	
			5512			
			5204			
	1 + 50 E	12:41	5617	5484	5486	
			5384			
			5451			
1 + 75	12:44	5695	5706	5708		
		5711				
		5713				
2 + 00 E	12:48	5590	5561	5563		
		5545				
		5549				
2 + 25	12:52	5199	5251	5254		
		5370				
		5183				
2 + 50 E	12:55	5615	5473	5476		
		5268				
		5535				
2 + 75	12:57	5489	5591	5594		
		5665				
		5620				
3	3 + 00 E (SFM - 6)	1:03	5791	5731	5735	<b>539713 6799213</b>
			5653			
			5748			



**Magnetometer Survey  
South Fork Livingstone Creek**

Line	Station	Time	Readings	Reading Average	Corrected Reading	Miscellaneous Information
4	3 + 00 E (SFM - 7)	1:11	5453	5520	5524	<b>539734</b> <b>6799169</b>
			5582			
			5524			
	2 + 75	1:14	5771	5703	5707	
			5625			
	2 + 50 E	1:18	5713	5263	5268	
			5096			
			5399			
	2 + 25	1:20	5293	5294	5299	
			5332			
	2 + 00 E	1:24	5185	5682	5687	
			5364			
			5731			
	1 + 75	1:26	5670	5155	5160	
			5644			
			5397			
	1 + 50 E	1:29	5079	5629	5634	
			4988			
5777						
1 + 25	1:33	5780	5479	5485		
		5331				
		5376				
1 + 00 E	1:37	5485	5626	5632		
		5575				
		5591				
0 + 75	1:39	5702	5519	5525		
		5585				
		5474				
0 + 50 E	1:42	5495	5763	5769		
		5589				
		5763				
0 + 25	1:45	5763	5311	5317		
		5174				
		5387				
4	0 + 00 E (SFM - 8)	1:51	5373	5752	5759	<b>539455</b> <b>6799057</b>
			5728			
			5780			
2	0 + 00 E (SFM - 4)	1:57	5748	5760	5767	<b>539384</b> <b>6799124</b>
			5762			
			5750			
			5767			

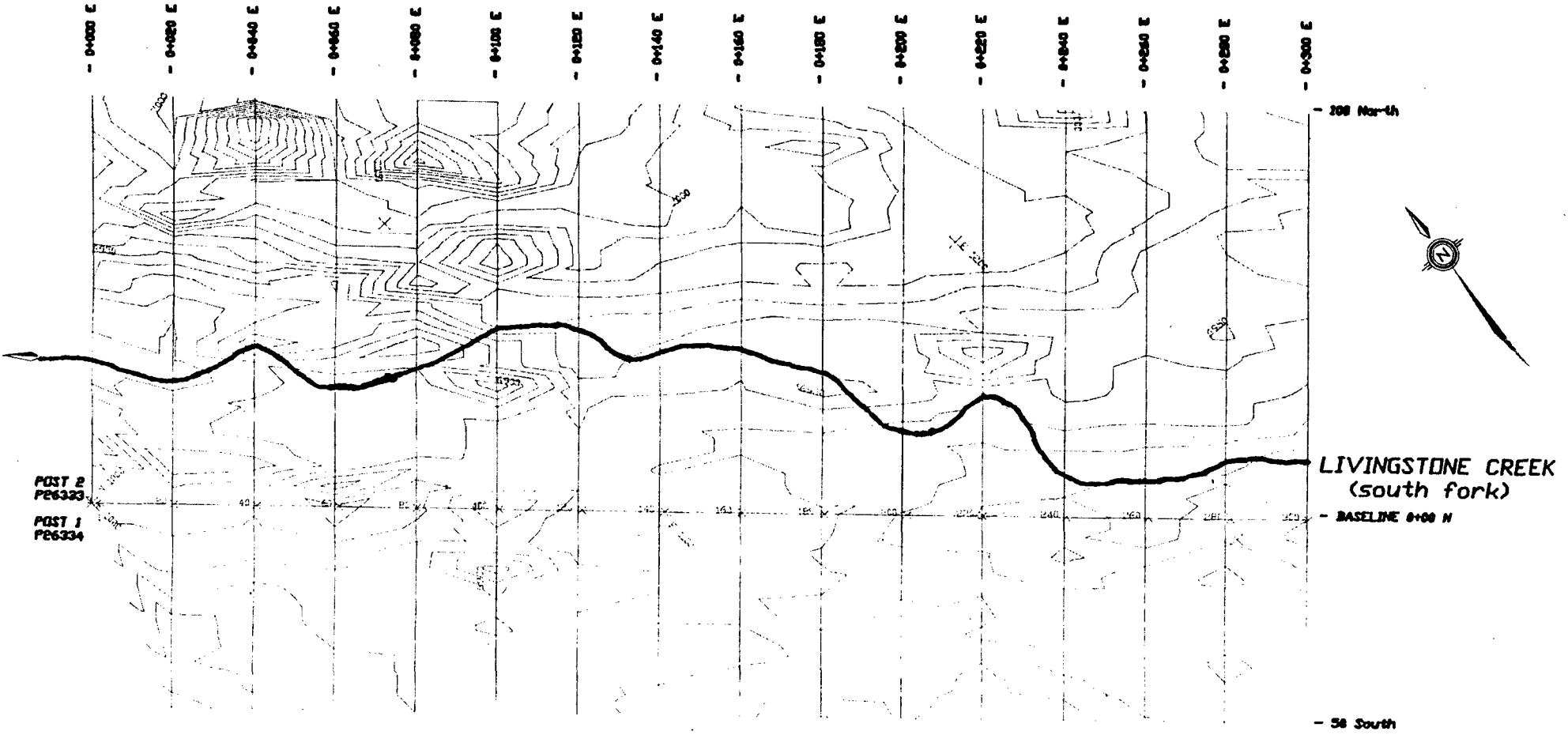


**APPENDIX B -- 3**

**SOUTH FORK LIVINGSTONE CREEK**

**YUKON ENGINEERING**

**MAGNETOMETER SURVEYS**

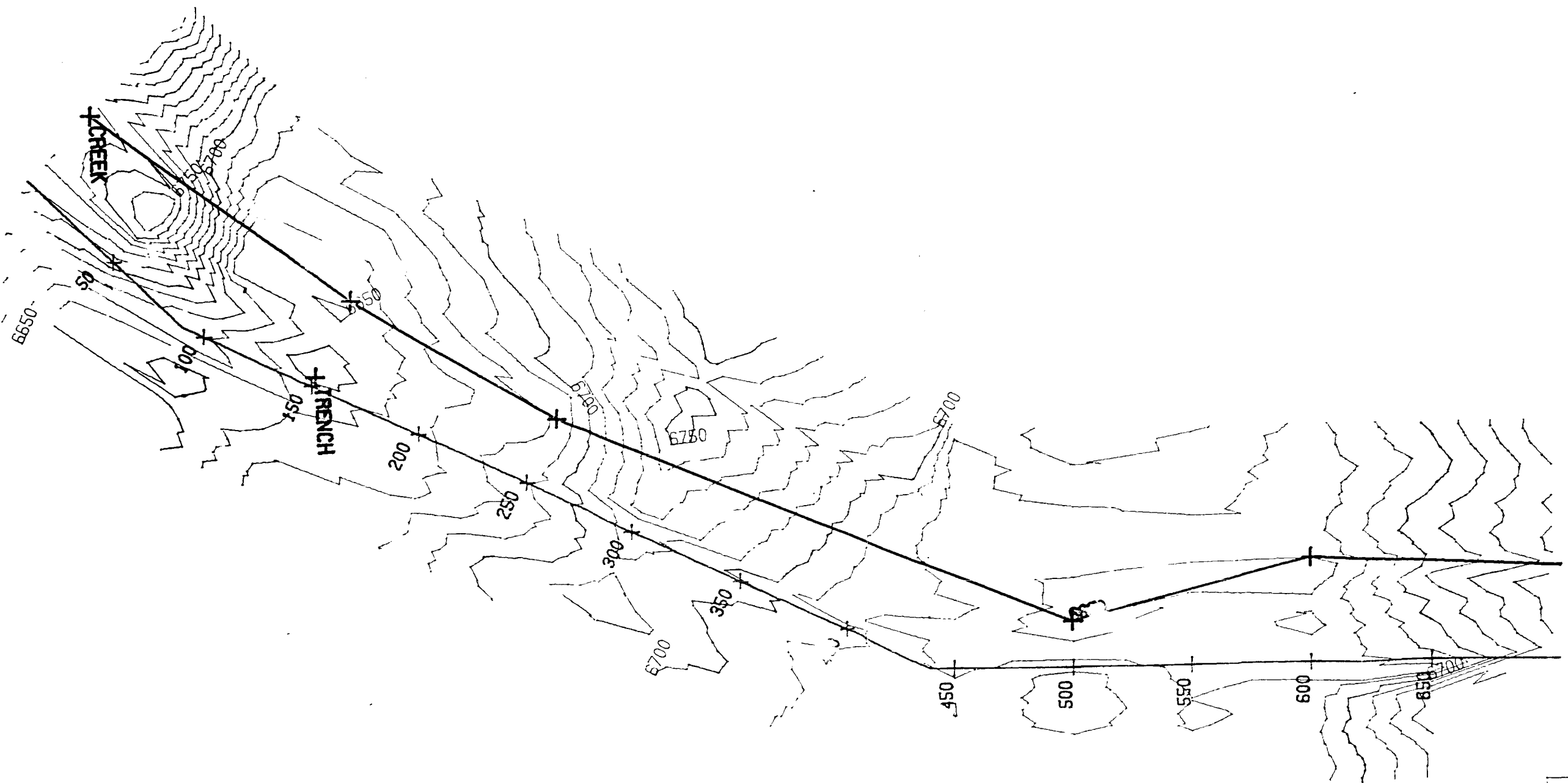


**NOTES**

1. Contour interval: 10 GAMMAS TOTAL FIELD
2. Datum subtracted: 50,000 GAMMAS
3. Grid parameters: Line Spacing: 20 Metres; Readings @ 5 metre intervals

<b>LIVINGSTONE CREEK</b>		
SCALE: 1:1000	APPR. BY: R.L. MCINTYRE, C.E.T.	DRAWN BY: R.L.M.
DATE: 09/09/21		REV: 1
<b>TOTAL FIELD MAGNETOMETER SURVEY</b>		
YUKON ENGINEERING SERVICES		DRAWING NO. 1

Assessment Report # 120122  
 South Fork Livingstone for J. Ziehe 1990



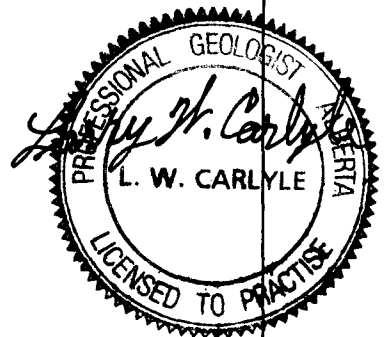
Livingstone Creek		
Magnetometer Survey		
Computed Total Field		
DATE	SCALE	DRAWN BY
11-28-1988	1:2000	
Yukon Engineering Services		

**APPENDIX C**

**GPS WAYPOINT COORDINATES**

**2005 Livingstone Creek GPS Waypoints**

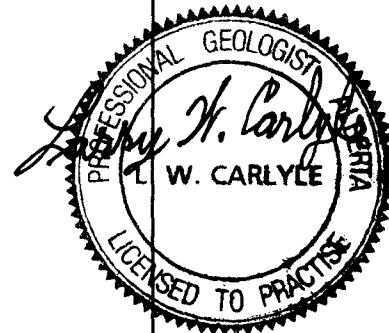
Point	UTM Coordinates		Latitude & Longitude		Miscellaneous Information
	Northing	Easting	Latitude	Longitude	
<b>Claim Post Locations</b>					
CAM 147	537104	6798757	61° 19' N	134° 18' W	Lat. & Long. in NAD 27
CAM 149	537256	6798349	61° 19' N	134° 18' W	
CAM 151	537396	6797908	61° 19' N	134° 18' W	UTM in NAD 83
CAM 153	537552	6797476	61° 19' N	134° 18' W	
CAM 155	537723	6797038	61° 18' N	134° 18' W	
C 157 F	538001	6801153	61° 21' N	134° 17' W	
C 159 F	537777	6801578	61° 21' N	134° 18' W	
C 161 F	537593	6802107	61° 21' N	134° 18' W	
CAM 163	537520	6802557	61° 21' N	134° 18' W	
CAM 165	537423	6803007	61° 22' N	134° 18' W	
C 165 - 2	537331	6803444	61° 22' N	134° 18' W	
CAM 167	538213	6803682	61° 22' N	134° 17' W	
CAM 169	538275	6803220	61° 22' N	134° 17' W	
C 171 F	538384	6802764	61° 21' N	134° 17' W	
C 173 F	538490	6802279	61° 21' N	134° 17' W	
C 175 F	538590	6801826	61° 21' N	134° 17' W	
CAM 177	538752	6801391	61° 21' N	134° 17' W	
CAM 179	538904	6800991	61° 21' N	134° 16' W	
CAM 181	539055	6800563	61° 20' N	134° 16' W	
CAM 183	539239	6800122	61° 20' N	134° 16' W	
CAM 185	539415	6799704	61° 20' N	134° 16' W	
CAM 187	539561	6799272	61° 20' N	134° 16' W	
CAM 189	539752	6798875	61° 19' N	134° 15' W	
C 189 - 2	539911	6798454	61° 19' N	134° 15' W	
CAM 191	539093	6803940	61° 22' N	134° 16' W	
CAM 193	539213	6803493	61° 22' N	134° 16' W	
CAM 195	539351	6803058	61° 22' N	134° 16' W	
CAM 197	539488	6802614	61° 21' N	134° 16' W	
CAM 199	539634	6802164	61° 21' N	134° 16' W	
CAM 201	539788	6801742	61° 21' N	134° 15' W	
CAM 203	539919	6801324	61° 21' N	134° 15' W	
CAM 205	540045	6800880	61° 20' N	134° 15' W	
CAM 207	540160	6800438	61° 20' N	134° 15' W	
CAM 209	540347	6800029	61° 20' N	134° 15' W	
CAM 211	540496	6799615	61° 20' N	134° 15' W	
CAM 213	540629	6799182	61° 20' N	134° 14' W	
C 213 - 2	540734	6798720	61° 19' N	134° 14' W	





**2005 Livingstone Creek GPS Waypoints**

Point	UTM Coordinates		Latitude & Longitude		Miscellaneous Information
	Northing	Easting	Latitude	Longitude	
<b><u>Mag Survey and Soil Sample Survey Points</u></b>					
L05 - 1	537763	6799846			Livingstone Creek Soil Samples
L05 - 2	537862	6799867			
L05 - 3	537965	6799882			
L05 - 4	538060	6799897			
L05 - 5	538155	6799917			
L05 - 6	538263	6799937			
L05 - 7	538350	6799912			
L05 - 8	538446	6799971			
L05 - 9	538534	6799996			
L05 - 10	538657	6799997			
L05 - 11	538724	6800026			
L05 - 12	537792	6799740			
L05 - 13	537880	6799761			
L05 - 14	537956	6799780			
L05 - 15	538005	6799717			
L05 - 16	538041	6799822			
L05 - 17	538088	6799807			
L05 - 18	538173	6799851			
L05 - 19	538266	6799885			
L05 - 20	538343	6799902			
L05 - 21	538423	6799909			
L05 - 22	538511	6799919			



**APPENDIX D**

**ANALYTICAL CERTIFICATES**

From ACME ANALYTICAL LABORATORIES LTD. 852 E. HASTINGS ST. VANCOUVER BC V6A 1R6 PHONE(604)253-3158 FAX(604)253-1716 @ CS

To Carlyle, Larry W. PROJECT Livingstone

Acme file # A505823 Page 1 Received: SEP 21 2005 \* 57 samples in this disk file.

Analysis: GROUP 1DX - 0.50 GM SAMPLE LEACHED WITH 3 ML 2-2-2 HCL-HNO3-H2O AT 95 DEG. C FOR ONE HOUR, DILUTED TO 10 ML, ANAL

ELEMEN	Mo	Cu	Pb	Zn	Ag	Ni	Co	Mn	Fe	As	U	Au	Th	
SAMPLE	ppm	ppm	ppm	ppm	ppm	ppm	ppm	ppm	%	ppm	ppm	ppb	ppm	
G-1	0.6	1.9	2.3	45 <.1			6.5	4.1	518	1.76 <.5		2.5	0.7	3.4
L05-1	0.6	24.9	7.9	51 <.1			41.6	14.2	445	2.76	6.7	1.2	6.2	4.5
L05-2	1	21.7	7.7	61 <.1			35.8	14	558	2.85	7.8	0.9	4.8	4.4
L05-3	0.4	15.2	4.7	38 <.1			20.7	9.1	405	1.93	4.5	1.4	5.9	3
L05-4	0.5	21.2	5.9	49 <.1			28.4	10.2	376	2.29	8.7	0.9	6.6	4.5
L05-5	0.6	15.9	4.9	41 <.1			23.3	8.4	278	2.11	7.9	0.8	5	4.5
L05-6	0.3	15.7	5	41 <.1			25.1	9.5	369	1.83	9.6	1.1	2	3.1
L05-7	0.6	16.1	4.3	40 <.1			21.1	11.3	547	1.96	6.9	0.6	2.9	1
L05-8	0.3	9.7	3.7	34 <.1			18.5	6.7	185	1.6	5.8	0.5	2.4	3.1
L05-9	0.8	17	5.5	45 <.1			29.1	10.2	218	2.63	12.4	0.5	8.7	5
L05-10	0.4	13.2	4.5	36 <.1			20.3	6.7	199	1.62	4.9	0.9	3.2	1.6
L05-11	0.1	2.9	1	10 <.1			2.8	1.2	38	0.45 <.5		0.1 <.5		0.1
L05-12	0.6	28.6	8.6	67		0.1	42.6	14.2	497	3.07	11.6	0.7	7.7	6.1
L05-13	0.5	23.4	7.5	55 <.1			29.2	10.3	353	2.22	10.6	0.6	3.1	4.8
L05-14	0.7	15.7	7.2	51		0.2	28.4	11.5	422	2.62	8.9	1	7.5	4.7
L05-15	0.6	19	4.8	50 <.1			30.4	9.4	294	2.14	8	0.8	2.4	3.5
L05-16	0.5	16	5.4	36 <.1			22.3	8.7	332	1.87	9.2	0.8	3.4	3.7
RE L05-1	0.5	17.4	5.4	39 <.1			23.1	8.6	340	1.93	9.3	0.9	6.8	3.8
L05-17	0.4	16.9	4.1	31		0.1	17.9	6.7	326	1.59	12.8	0.8	4.6	2
L05-18	0.5	19.3	5	43 <.1			24.8	9.3	326	2.07	10.1	1	3.8	3.7
L05-19	0.5	19.5	6	54 <.1			28.4	12.1	841	2.23	9	1.1	3	3.6
L05-20	0.4	12	3.2	25 <.1			12.8	4.8	161	1.21	4.1	0.4	1.2	1.6
L05-21	0.6	11	25.5	50 <.1			14	17	1977	1.96	6.2	1 <.5		1.6
L05-22	0.5	10.8	4	31 <.1			16.5	6.1	190	1.68	5.9	0.4	0.7	1.5
49P-1	1.2	30.6	6.1	63 <.1			38.5	13.1	417	2.31	28.8	0.9 <.5		5
49P-2	1.8	51.7	7.9	79		0.4	33.8	8.9	296	3.05	173.3	1.7	2.4	0.8
49P-3	1.1	27.5	6.4	59 <.1			32.6	10.6	351	2.76	37.5	0.9	0.8	3
49P-4	1.1	21.7	5.1	41		0.1	22.2	7.5	226	1.88	7.8	1 <.5		0.6
49P-5	0.9	25.2	6.2	58 <.1			34.4	9.4	253	1.82	6.1	1 <.5		1
49P-6	3	60	9.5	107		0.1	90	20.5	595	3.31	62.2	1.3 <.5		3.8
49P-7	0.9	17.3	6.5	43		0.1	45.1	10.3	280	2.6	8.8	0.6	149.3	2.9
49P-8	0.8	30	6.2	44 <.1			33.3	10.8	343	1.96	17	0.9 <.5		4.4
49P-9	0.9	15.4	7.7	50 <.1			22.5	7.9	236	2.39	11.8	0.6	0.6	4.3
49P-10	1.3	6.8	7.3	20 <.1			5.5	2.2	50	0.85	3.9	0.6 <.5		0.5
49P-11	3.5	40.3	7.1	54		0.2	29.5	8.3	205	2.8	45	1.6	2.5	3.1
STANDA	11.7	123.3	29.2	143		0.3	25.2	10.9	710	2.82	21.3	6.6	45.1	3
49P-12	0.9	22.4	8	63 <.1			28.9	10.3	250	2.18	7.6	0.9	1.1	3.9

ELEMEN SAMPLE	Mo ppm	Cu ppm	Pb ppm	Zn ppm	Ag ppm	Ni ppm	Co ppm	Mn ppm	Fe %	As ppm	U ppm	Au ppb	Th ppm
49P-13	1.3	54.4	7.6	82	0.2	47.4	14.5	489	3.76	82.3	2.3	2.6	8.3
49P-14	1.1	24.6	7	49 <.1		29.4	10.6	292	2.23	20.1	1.2	2.6	1.6
LK-1	0.2	15.5	1.4	13 <.1		5.8	2.9	102	0.63	2	0.5 <.5		0.2
LK-2	1.2	44	12.7	64	0.1	62.5	19.9	784	3.24	21.7	0.8	12.4	8.1
LK-3	0.4	13.5	6.8	48 <.1		17.3	8.8	466	1.76	5.5	0.7	64.1	3.6
RE LK-3	0.3	12.6	6.6	48 <.1		17.2	8.7	456	1.71	5.2	0.7	2.1	3.5
LK-4	0.4	9.3	3.5	15 <.1		6.6	4.1	159	0.95	2.6	0.3	1.1	0.6
LK-5	1.1	36.6	6.3	64 <.1		42.8	18.7	988	3.25	49.6	1.1	10.3	19.6
LK-6	0.8	34.9	7.1	60 <.1		34.4	12.6	588	2.52	12.3	3.5	4.6	3.9
LK-7	0.4	17.6	2.7	22 <.1		13.9	5.7	435	1.13	4.1	0.7	3.4	0.5
LK-8	0.7	13	5	27 <.1		18.8	6.4	150	1.77	10.8	0.5	5.2	4.2
LK-9	0.8	14.6	6.3	33 <.1		14.1	6.1	288	1.66	4.9	0.4	1.3	1.3
LK-10	0.9	49.1	9	46	0.4	39.1	15.2	1747	2.09	4.6	7.2	8.8	4.5
LK-11	0.8	10.7	7.1	37 <.1		17.4	7.2	286	2.14	8.7	0.4 <.5		2.5
LK-12	0.6	10.1	7	28 <.1		15	5.8	194	1.71	5.8	0.4	3.8	2.5
S05-1	1.2	23.3	9.1	50 <.1		47.8	16.4	348	2.95	16.5	0.5	3.7	4.4
S05-2	0.8	62.9	5.4	108	0.1	194.8	39.1	1181	5.6	8.2	0.3	7.1	2.6
S05-3	1	46.1	11.5	72	0.1	86.3	22.3	697	3.54	20.5	0.5	8.1	5.3
S05-4	0.5	12.6	3.8	32 <.1		49	11.9	196	2.31	6	0.2	0.8	1.1
S05-5	1.2	23.7	9.5	46 <.1		51.3	16.3	365	3.29	15.8	0.5	2.6	3.9
S05-6	1.2	40.9	11.2	54 <.1		60.6	18.6	596	3.33	22.6	0.6	8.7	5.2
STANDA	11.6	124.6	28.7	145	0.3	25.3	10.7	715	2.83	21.5	6.5	44.1	2.9

V TEXT FORMAT

SED BY ICP-MS.

ELEMEN SAMPLE	Sr ppm	Cd ppm	Sb ppm	Bi ppm	V ppm	Ca %	P %	La ppm	Cr ppm	Mg %	Ba ppm	Ti %	B ppm	
G-1		46 <.1	<.1		0.1	34	0.43	0.079	6	69.5	0.59	213	0.123 <1	
L05-1		47	0.1	0.5	0.2	37	0.98	0.11	24	49	0.81	77	0.029	1
L05-2		29	0.2	0.7	0.2	38	0.57	0.114	25	40.7	0.65	69	0.027 <1	
L05-3		29 <.1		0.5	0.1	25	0.6	0.076	19	26.1	0.47	107	0.018 <1	
L05-4		30	0.1	0.8	0.2	32	0.65	0.105	23	35.9	0.59	87	0.029 <1	
L05-5		19	0.1	0.5	0.1	29	0.33	0.08	21	30.6	0.49	82	0.025 <1	
L05-6		32	0.2	0.5	0.2	26	0.82	0.096	16	29.2	0.54	76	0.029 <1	
L05-7		17	0.1	0.5	0.1	34	0.27	0.09	14	27	0.44	76	0.029 <1	
L05-8		14	0.1	0.3	0.1	30	0.24	0.069	15	25.2	0.44	65	0.038 <1	
L05-9		15	0.1	0.7	0.1	38	0.21	0.085	24	33.9	0.57	62	0.034 <1	
L05-10		18	0.1	0.3	0.1	31	0.34	0.073	12	27.2	0.46	93	0.031 <1	
L05-11		6 <.1	<.1	<.1		13	0.05	0.018	2	4.8	0.07	28	0.025 <1	
L05-12		35	0.1	0.6	0.2	44	0.73	0.108	26	51	0.82	105	0.035 <1	
L05-13		26	0.1	1	0.2	30	0.54	0.104	20	31.9	0.6	59	0.036 <1	
L05-14		27	0.1	0.5	0.2	38	0.53	0.077	21	40.4	0.7	98	0.029 <1	
L05-15		31	0.1	0.5	0.1	31	0.61	0.091	20	37.3	0.63	84	0.027 <1	
L05-16		25	0.1	0.7	0.1	29	0.51	0.095	19	29	0.46	74	0.029 <1	
RE L05-1		25	0.1	0.8	0.1	29	0.51	0.093	20	29.3	0.47	76	0.029 <1	
L05-17		22	0.1	0.7	0.1	27	0.4	0.074	14	21.9	0.41	166	0.033 <1	
L05-18		30	0.1	0.7	0.1	27	0.72	0.093	18	29.4	0.54	85	0.024 <1	
L05-19		43	0.2	0.7	0.1	29	1.16	0.101	18	35.5	0.66	135	0.031	1
L05-20		12	0.1	0.3	0.1	24	0.19	0.046	9	16.2	0.28	51	0.035 <1	
L05-21		11	0.2	0.2	0.2	28	0.23	0.089	9	12	0.41	90	0.03 <1	
L05-22		8	0.1	0.4	0.2	31	0.1	0.05	12	21.9	0.35	43	0.038 <1	
49P-1		18	0.2	1	0.1	39	0.35	0.131	15	45.4	0.69	130	0.067	1
49P-2		22	0.2	7.6	0.2	48	0.22	0.112	19	44.7	0.47	277	0.019 <1	
49P-3		22	0.1	1.5	0.2	49	0.33	0.121	14	45.4	0.72	149	0.056 <1	
49P-4		11	0.2	0.5	0.1	42	0.15	0.069	10	35.1	0.4	130	0.036 <1	
49P-5		15	0.3	0.5	0.2	40	0.3	0.108	14	41.1	0.65	85	0.043 <1	
49P-6		27	0.8	2	0.1	70	0.35	0.118	15	78.6	1.13	170	0.072 <1	
49P-7		12	0.3	0.4	0.2	56	0.2	0.06	10	103.6	0.76	57	0.082 <1	
49P-8		20	0.1	0.6	0.2	37	0.44	0.125	17	42	0.6	102	0.067	1
49P-9		11	0.3	0.5	0.2	50	0.2	0.061	12	38.5	0.53	73	0.071 <1	
49P-10		7	0.1	0.3	0.2	43	0.07	0.033	8	15.7	0.08	99	0.06 <1	
49P-11		17	0.2	1.6	0.2	59	0.18	0.122	13	41.5	0.52	65	0.062 <1	
STANDA		40	6.2	3.1	5	56	0.87	0.079	14	190.2	0.59	166	0.08	16
49P-12		17	0.1	0.4	0.2	51	0.33	0.109	13	39.8	0.8	90	0.077	2

ELEMEN SAMPLE	Sr ppm	Cd ppm	Sb ppm	Bi ppm	V ppm	Ca %	P %	La ppm	Cr ppm	Mg %	Ba ppm	Ti %	B ppm	
49P-13	28	0.2	1.9	0.2	50	0.44	0.193	37	45.4	0.84	260	0.042	1	
49P-14	14	0.2	1	0.2	42	0.24	0.105	11	34	0.5	72	0.042	<1	
LK-1	23	<.1	0.1	<.1	16	0.52	0.052	5	6.3	0.16	56	0.026	<1	
LK-2	21	0.1	1	0.3	46	0.38	0.094	28	58.7	0.9	103	0.051	2	
LK-3	20	<.1	0.2	0.2	33	0.38	0.043	12	28.9	0.48	72	0.061	<1	
RE LK-3	20	<.1	0.2	0.2	33	0.38	0.046	12	28.5	0.47	70	0.062	1	
LK-4	10	<.1	0.2	0.1	19	0.13	0.02	12	8.8	0.16	49	0.028	<1	
LK-5	16	0.1	1.7	0.3	27	0.25	0.066	60	26.6	0.59	91	0.014	<1	
LK-6	37	0.2	0.8	0.2	35	1.24	0.095	25	36.4	0.64	170	0.023	<1	
LK-7	16	0.1	0.2	0.1	24	0.38	0.055	15	14.7	0.23	60	0.024	<1	
LK-8	8	<.1	0.3	0.2	27	0.11	0.039	14	21.2	0.31	52	0.026	<1	
LK-9	10	0.1	0.2	0.2	38	0.14	0.03	11	20.9	0.3	70	0.048	<1	
LK-10	118	0.2	0.7	0.2	28	2.01	0.136	69	30	0.57	176	0.019	2	
LK-11	14	0.1	0.4	0.2	49	0.18	0.027	12	26.3	0.38	66	0.07	<1	
LK-12	9	<.1	0.3	0.2	40	0.13	0.025	11	24.7	0.38	63	0.06	<1	
S05-1	15	0.1	1.3	0.2	44	0.21	0.054	19	50.7	0.77	123	0.042	<1	
S05-2	73	0.2	0.4	0.1	137	1.82	0.246	18	163.4	2.29	623	0.166	1	
S05-3	44	0.2	1	0.2	59	1.56	0.113	20	103.3	1.42	152	0.055	<1	
S05-4	13	<.1	0.2	0.1	53	0.21	0.033	7	64.7	0.59	159	0.069	<1	
S05-5	15	0.1	0.7	0.2	53	0.25	0.023	13	65.9	0.75	105	0.053	<1	
S05-6	23	0.1	1.7	0.2	50	0.46	0.073	21	57.5	0.93	104	0.063	<1	
STANDA	40	6.1	3.2	5	55	0.87	0.079	14	191.3	0.58	164	0.08	16	

ELEMENT	Al SAMPLES %	Na %	K %	W ppm	Hg ppm	Sc ppm	Tl ppm	S %	Ga ppm	Se ppm
G-1	0.89	0.05	0.53	0.1	<.01		1.8	0.4 <.05		5 <.5
L05-1	1.04	0.008	0.06	0.1	0.04		3.1 <.1	<.05		4 0.5
L05-2	1.02	0.008	0.1	0.2	0.05		3	0.1 <.05		4 <.5
L05-3	0.93	0.014	0.05	0.1	0.06		2.3 <.1	<.05		3 <.5
L05-4	0.92	0.009	0.08	0.2	0.04		2.8 <.1	<.05		4 <.5
L05-5	0.9	0.009	0.06	0.1	0.02		2.2 <.1	<.05		3 <.5
L05-6	0.79	0.007	0.06	0.1	0.03		2.2 <.1	<.05		3 <.5
L05-7	0.8	0.014	0.05	0.1	0.02		1.9 <.1	<.05		4 <.5
L05-8	0.78	0.013	0.05	0.1	0.02		1.8	0.1 <.05		3 <.5
L05-9	1.09	0.006	0.05	0.1	0.02		2.1 <.1	<.05		5 <.5
L05-10	0.94	0.018	0.04	0.1	0.02		2.2 <.1	<.05		4 <.5
L05-11	0.2	0.033	0.02 <.1		0.01		0.5 <.1	<.05		1 <.5
L05-12	1.18	0.007	0.09	0.1	0.04		4 <.1	<.05		5 0.6
L05-13	0.87	0.007	0.09	0.2	0.03		2.6	0.1 <.05		3 <.5
L05-14	1.19	0.009	0.08	0.2	0.03		3.1	0.1 <.05		5 <.5
L05-15	1.07	0.009	0.07	0.1	0.03		2.7	0.1 <.05		4 <.5
L05-16	0.81	0.01	0.06	0.2	0.05		2.4 <.1	<.05		3 <.5
RE L05-16	0.8	0.01	0.06	0.1	0.05		2.3 <.1	<.05		3 <.5
L05-17	0.82	0.02	0.06	0.1	0.04		2.3	0.1 <.05		3 <.5
L05-18	0.88	0.01	0.08	0.6	0.03		2.5 <.1	<.05		3 <.5
L05-19	1.06	0.011	0.09	0.2	0.05		3.1	0.1 0.06		3 0.7
L05-20	0.54	0.022	0.05	0.3	0.02		1.5 <.1	<.05		2 <.5
L05-21	0.76	0.011	0.04	0.2	0.03		1.3 <.1	<.05		3 <.5
L05-22	0.7	0.019	0.05	0.2	0.01		1.4	0.1 <.05		4 <.5
49P-1	0.94	0.007	0.13	0.1	0.01		2.8	0.1 <.05		3 0.5
49P-2	1.06	0.007	0.13	0.1	0.06		2.7	0.1 0.11		4 1
49P-3	1.16	0.007	0.1 <.1		0.02		3.3	0.1 <.05		4 <.5
49P-4	0.88	0.006	0.07	0.2	0.03		1.8	0.1 <.05		4 0.5
49P-5	1.13	0.007	0.08	0.3	0.01		2	0.1 <.05		4 0.5
49P-6	1.65	0.008	0.11	0.2	0.02		3.8	0.1 <.05		5 0.9
49P-7	1.22	0.007	0.07	0.2	0.01		2.2	0.1 <.05		5 <.5
49P-8	0.87	0.008	0.09	0.1 <.01			2.6	0.1 <.05		3 <.5
49P-9	1.32	0.007	0.08	0.3	0.02		2.5	0.1 <.05		5 <.5
49P-10	0.57	0.005	0.03	0.1	0.02		0.9	0.1 <.05		5 <.5
49P-11	1.32	0.007	0.1	0.3	0.04		2.6	0.1 <.05		5 2.1
STANDAR	1.96	0.074	0.17	3.4	0.23		3.3	1.8 <.05		6 4.3
49P-12	1.33	0.008	0.13	0.2	0.01		2.8	0.1 <.05		4 <.5

ELEMENT AI SAMPLES %	Na %	K %	W ppm	Hg ppm	Sc ppm	Tl ppm	S %	Ga ppm	Se ppm	
49P-13	1.4	0.006	0.19	0.1	0.01	4.8	0.2	0.06	5	0.7
49P-14	0.96	0.005	0.06	0.2	0.01	2.1	0.1 <.05		3	0.5
LK-1	0.41	0.038	0.03	0.1	0.01	0.5 <.1	<.05		1 <.5	
LK-2	1.34	0.007	0.12	0.1	0.08	4.3	0.2 <.05		5 <.5	
LK-3	0.97	0.015	0.08	0.2	0.01	2.5 <.1	<.05		4 <.5	
RE LK-3	0.95	0.015	0.08	0.2	0.01	2.5 <.1	<.05		4 <.5	
LK-4	0.52	0.028	0.07	0.1	0.01	0.8 <.1	<.05		2 <.5	
LK-5	1.3	0.007	0.08	0.1	0.03	3.4	0.1 <.05		4 <.5	
LK-6	1.43	0.012	0.1	0.2	0.09	4.4	0.1 <.05		4	0.7
LK-7	0.65	0.025	0.04	0.1	0.02	1.3 <.1	<.05		3 <.5	
LK-8	0.76	0.008	0.05	0.1	0.02	1.6 <.1	<.05		3 <.5	
LK-9	0.9	0.012	0.06	0.1	0.01	1.7	0.1 <.05		4 <.5	
LK-10	1.18	0.014	0.04	0.1	0.16	4 <.1		0.12	3	1.9
LK-11	0.96	0.006	0.09	0.1	0.02	1.9	0.1 <.05		5 <.5	
LK-12	1.04	0.006	0.06	0.1	0.01	2	0.1 <.05		4 <.5	
S05-1	1.33	0.005	0.11	0.1	0.01	3	0.1 <.05		5 <.5	
S05-2	2.54	0.008	1 <.1		0.04	8.8	0.2	0.06	14	0.6
S05-3	1.6	0.007	0.17	0.1	0.02	5.3	0.1 <.05		6 <.5	
S05-4	1.15	0.022	0.12	0.1	0.01	2.7	0.1 <.05		5 <.5	
S05-5	1.47	0.006	0.15	0.1	0.02	3.6	0.1 <.05		5 <.5	
S05-6	1.47	0.008	0.28	0.1	0.02	4.5	0.1 <.05		5 <.5	
STANDAR	1.92	0.074	0.16	3.4	0.23	3.3	1.8 <.05		7	4.6

**APPENDIX E**  
**INVOICES SUPPORTING**  
**STATEMENT OF COSTS**



# PowerTech Yukon

3209 - 3rd Avenue  
 Whitehorse, Yukon  
 Y1A 5J5 (867) 668-2776  
 GST # R120965744

ORDER NO. <b>LARRY CARLUK</b>	DEPT.	DATE <b>AUG 17-05</b>
SOLD TO <b>74 TAHARAK DR.</b>	SHIP TO	
ADDRESS <b>WHITEHORSE, YUKON</b>	ADDRESS <b>VIA 476.</b>	<b>667-5084</b>

SHIPPING DATE	VIA	TERMS	TAX REG. NO.	SALESPERSON <b>[Signature]</b>
---------------	-----	-------	--------------	--------------------------------

**BAZ OF ATV RENTAL (KVF-360)**

PERIOD ~~AUG 7-05~~ **AUG 7-05 → AUG 17-05**  
 (10 DAYS) @ **43<sup>00</sup> / DAY**

**LISS REAR KIT  
 RETURNED**

**430<sup>00</sup>**

**5995**

**370<sup>05</sup>**

GST **25<sup>80</sup>**

**395<sup>95</sup>**

**Paid  
 #058  
 Aug 18-05**

Another \$1284.00  
 Paid with cheque #051  
 on July 7/05

GST  
 PST

**395<sup>95</sup>**

039182

SIGNATURE

LIC.NO

TOTAL

SALES ORDER

David Taylor  
180 Goldenhorn Subdivision  
Whitehorse, YT Y1A 7A1  
867-668-7556

July 19, 2005

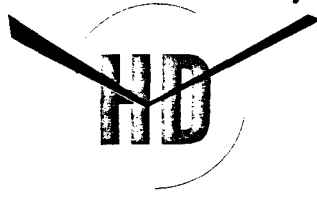
I, David Taylor, worked as Geological Field Assistant for Larry Carlyle of Whitehorse, from July 8, 2005 (1:00 PM) to July 19, 2005 (noon):

10 days @ \$125.00	\$1,250.00
2 half days @ \$65.00	\$ 130.00
Total:	\$1,380.00

I have received cheque #054 dated July 19, 2005 for \$1,380.00 from Larry Carlyle, 74 Tamarack Drive, Whitehorse, YT Y1A 4Y6, tel. #867-633-3910.

David Taylor

*David Taylor*



Heli Dynamics Ltd.

Heli Dynamics Ltd.

Helicopter Charter Services

Phone : (867) 668-3536 or 667-4971

Fax : (867) 668-5637

P.O. Box 4

Whitehorse, Yukon Y1A 5X9

E-mail: helidyn@internorth.com

INVOICE No.

5568

Charterer Billing Address			Customer P.O. #		
LARRY CARLYLE					
74, TAMARACK DR.					
WHITEHORSE, YT, Y1A 4Y6			Flight Authorized By:		
			Larry H. Carlyle		
Aircraft:	Type	Rate/Hour:	Pilot:		
C-GTVE	206	975. <sup>00</sup>	THIERRY BRUAND		
Date:	Fuel:		Base:		
July 08/05	[X] HD	[ ] Customer	WHITEHORSE		
From:	To:	Time Up	Time Down	Flight Time	
WHITEHORSE	LIVINGSTONE	7:45	08:40	0.9	
PAID BY CHEQUE # 052					
July 08/05					
T.B.					

Fuel Costs/Litre \$	1.20	TOTAL REV HOURS	0.9
FUEL @ 114	Litres/hr		

GST # 10232 0090

SUMMARY	AMOUNT	G.S.T.	TOTAL
0.9 Hours FLYING	877.50	61.42	938.92
0.9 Hours FUEL & OIL Expenses	123.12	8.62	131.74
Misc			
<b>TOTALS</b>			
<b>GRAND TOTAL</b>			<b>1070.66</b>

Payments must be made monthly on accounts, or 2% interest will be charged.  
 We appreciate your business.

# INVOICE



510 Elliott Street  
Whitehorse, Yukon T. Y1A 2A5

Ph 867-668-5803  
Fx 867-668-5804

No. 9767  
Date 10-AUG-05  
Page 1

**Sold**  
To: Carlyle, Larry  
74 Tamarack  
Whitehorse, Yukon T.  
Y1A 4Y6

**Ship**  
To: Carlyle, Larry  
Whitehorse, Yukon T.

Business No.: 101392850RP0001

Item No.	Quantity	Unit	Description			Unit Price	Amount
1	1	Rent	987 927 0415	0		179	179.00
2	22	Min	Airtime	0		1.79	39.38
	0			0		0	0.00
Subtotal:							218.38
G - GST 7.00%							
GST							15.29
Comments						Freight	0.00
						Total Amount	

*Cheque # 134*

# Big Salmon Air

60 Lodestar Lane  
Whitehorse, Yukon, Canada Y1A 6E6  
Tel: (867) 668-4608

## CHARTER TICKET

### Nº 003760

AC CESSNA 206 SSR DATE Aug 4, 04  
NAME LARY CARLYLE  
ADDRESS WHITEHORSE

From	Miles	Hours	Cargo	Passenger - Remarks
<u>XY</u>				
<u>LIU</u>				
<u>XY</u>				

<b>Special Instructions</b> <u>spitt charter</u>  <u>Cheque # 130</u>	at	Per Hour	<u>162</u>	<u>50</u>
	at	Per Mile		
	Waiting Time	at	Per Hour	
	Fuel	gals @	Per Gallon	<u>11.37</u>
	<b>TOTAL CHARGES</b>			<u>173</u>

Dick Young  
Pilot's Signature Base Charterer's Authorization

# Big Salmon Air

60 Lodestar Lane  
Whitehorse, Yukon, Canada Y1A 6E6  
Tel: (867) 668-4608

## CHARTER TICKET

### Nº 003810

AC CESSNA 206 SSR DATE July 26, 05  
NAME LARY CARLYLE  
ADDRESS WHITEHORSE

From	Miles	Hours	Cargo	Passenger - Remarks
<u>XY</u>				
<u>LIU</u>				
<u>XY</u>				
<u>XY</u>				
<u>LIU</u>				
<u>XY</u>				

<b>Special Instructions</b> <u>spitt charter</u>	at	Per Hour		
	at	Per Mile		
	Waiting Time	at	Per Hour	
	Fuel	gals @	Per Gallon	
	<b>TOTAL CHARGES</b>			<u>363.</u>

Dick Young  
Pilot's Signature Base Charterer's Authorization

# Big Salmon Air

60 Lodestar Lane  
Whitehorse, Yukon, Canada Y1A 6E6  
Tel: (867) 668-4608

CHARTER TICKET

Nº 003806

AC CESSNA 206 JSR DATE July 19, 05  
NAME LARY CARLYLE  
ADDRESS WHITEHORSE.

From	Miles	Hours	Cargo	Passenger - Remarks
<u>XY</u>				
To <u>LIVINGSTON</u>				
<u>XY</u>				<u>2 passengers</u>
				<u>+ gear.</u>
				<u>Paid</u>

Special Instructions

at Per Hour

100 at 3.40 Per Mile 340.00

Waiting Time at Per Hour

Fuel gals @ Per Gallon

G.S.T. # R126985522

28.80

TOTAL CHARGES

368.80

Pd. Cheque  
#105

Jurien  
Pilot's Signature

Base

Larry M. Carlyle  
Charterer's Authorization

# Big Salmon Air

60 Lodestar Lane  
Whitehorse, Yukon, Canada Y1A 6E6  
Tel: (867) 668-4608

CHARTER TICKET

Nº 003751

AC CESSNA 180 J60 DATE July 9, 05  
NAME LARY CARLYLE  
ADDRESS WHITEHORSE.

From	Miles	Hours	Cargo	Passenger - Remarks
<u>XY</u>				
To <u>LIV</u>	<u>100</u>			
<u>XY</u>				
				<u>Paid</u>
				<u>Charge 053</u>

Special Instructions

at Per Hour

100 at 3.25 Per Mile 325.00

Waiting Time at Per Hour

Fuel gals @ Per Gallon

G.S.T. # R126985522

55.00

26.00

TOTAL CHARGES

406.00

Young  
Pilot's Signature

Base



**Magnetometer Rental:**

Geometrics – Model G – 816  
August 4 to 9, 2005 (6 days @ \$100/day)

\$ 600.00

**ACME ANALYTICAL LABORATORIES LTD.**

852 East Hastings,, Vancouver, B.C., CANADA V6A 1R6

Phone: (604) 253-3158 Fax: (604) 253-1716

Our GST # 100035377 RT

**CARLYLE, LARRY W.**74 Tamarack Drive  
Whitehorse, YT  
Y1A 4Y6Inv.#: **A505823**

Date: Oct 14 2005

QTY	ASSAY	PRICE	AMOUNT
54	GROUP 1DX @	10.75	580.50
54	SS80 - SOIL @	1.65	89.10
			<hr/> 669.60
		GST Taxable	669.60
		7.00% GST	46.87
			<hr/> 716.47
	RECEIVED CHEQUE #060 - THANK YOU.		-716.50
		CAD \$	<hr/> -0.03
	Credit Balance		<del>0.03</del>

Project: Livingstone  
Samples submitted by Larry W. Carlyle

COPIES 1

TERMS: Net two weeks. 1.5 % per month charged on overdue accounts.

[ COPY 2 ]

NET WEIGHT FOR LOSS, DAMAGE OR DELAY IS LIMITED BY CARRIER. LOSS LIMITED TO \$50 PER LOSS OR DAMAGE HOWEVER OCCASIONED. CLAIMS MUST BE FILED WITHIN 90 DAYS OF RECEIPT OF GOODS. REFER TO CARRIER'S TARIFF FOR DETAILS OR CONSULT AGENT.



# GREYHOUND CDA TRANS CORP

GST NO. 891646655RT1 WAYBILL NO. 71497610844

## VANCOUVER BC

PREPAID VISA

CONSIGNEE 0320892

REF:

ACMF ANALYTICAL LAB LTD

857 E HASTINGS ST

VANCOUVER BC V6A1R6

SHIPPER

UNIDENTIFIED

WHITEHORSE YT  
REFERENCE:

867-635-3910

SEAL ON THE DOOR

WHITEHORSE 197 330969  
09/19/05 11:00 AM 21  
ACTUAL WEIGHT 28.7 LBS  
DECLARED VALUE NDV

EXPENSE 37.49  
GST 3.62

TOTAL 40.11

SHIPPER RECEIPT