

**REPORT ON THE 2005
GEOCHEMICAL AND GEOLOGICAL WORK
ON THE
HEN PROPERTY**

Claims	Grant Numbers
HEN 01 to HEN 02	YC21990 to YC21991
HEN 23 to HEN 30	YC22012 to YC22019
HEN 37 to HEN 46	YC22026 to YC22035
HEN 53 to HEN 60	YC22042 to YC22049
HEN 61 to HEN 68	YC22253 to YC22260
HEN 81 to HEN 98	YC22273 to YC22290
HEN 113 to HEN 128	YC22301 to YC22316
HEN 139 to HEN 148	YC22321 to YC22330
HEN 155 to HEN 164	YC22331 to YC22340
HEN 191 to HEN 200	YC22367 to YC22376

DAWSON MINING DISTRICT, YUKON TERRITORY
NTS: 115O/06

Latitude 63° 23'
Longitude 129° 25'

Work conducted:
June 27 – June 29, 2005

Owner
Shawn Ryan, Dawson City

Operator



COPPER RIDGE
EXPLORATIONS INC.

COPPER RIDGE EXPLORATIONS INC.
Suite 500-625 Howe Street
Vancouver, British Columbia
Canada, V6C 2T6
Tel: 604-688-0833

Prepared by:
J. Greg Dawson M.Sc, P.Geo.
February, 25, 2006

SUMMARY

This assessment report summarizes the geochemical work carried out on the HEN property in the Dawson Mining District, Yukon Territory between the dates June 27 and June 29, 2005. The work was done to follow up in specific areas work conducted on the claims by Kennecott Canada in 2003 and Copper Ridge Explorations in 2004. This work had identified coincident airborne and soil geochemical anomalies similar to those that define Copper Ridge's Lucky Joe bulk tonnage copper-gold immediately to the northwest.

The Lucky Joe copper-gold mineralization is spatially associated with amphibolite and an aeromagnetic high. The HEN property became a focus of exploration activity in 2002 when prospector Shawn Ryan following up on a recently released low level airborne geophysical survey recognized the potential for other copper-gold occurrences on strike with the Lucky Joe occurrence. The HEN property was staked to cover positive aeromagnetic anomalies and associated possible amphibolite units.

Paleozoic metamorphic rocks of the Yukon Tanana Terrane underlie the HEN property. Amphibolite pebbles found while soil sampling on northwesterly trending ridges represent an amphibolite unit(s) within more felsic schist or gneiss. Recent mapping by the Geological Survey of Canada shows the property to be surrounded predominantly by gray orthogneiss. A small body of marble is mapped on the central eastern side of the property.

Work in 2005 consisted of prospecting and soil sampling. A total of 51 soil samples and 3 rock samples were collected on the property over 6 man days. The total cost of the program was \$10,643.

While the soil sampling did confirm a localized spot copper and zinc anomaly, it did not define a robust and consistent target worthy of follow-up. Reconnaissance prospecting did not find any significant mineralization, but was hampered general lack of outcrop in the property area.

No further work is recommended on the HEN property.

TABLE OF CONTENTS

SUMMARY	i
TABLE OF CONTENTS	ii
1.0 INTRODUCTION	1
1.1 Location and Access.....	1
1.2 Topography, Vegetation and Climate.....	2
1.5 Claim Status.....	2
1.3 History.....	3
1.4 Copper Ridge Explorations 2005 Work Program	5
2.0 REGIONAL GEOLOGY	5
3.0 PROPERTY GEOLOGY	7
3.1 Alteration and Mineralization.....	7
4.0 GEOCHEMISTRY	7
4.1 Soil Geochemistry	7
4.2 Rock Geochemistry.....	11
5.0 CONCLUSION AND RECOMMENDATIONS.....	11
7.0 STATEMENT OF COSTS.....	12
8.0 STATEMENT OF QUALIFICATIONS.....	13
9.0 REFERENCES	14

LIST OF FIGURES

Figure 1. Location.....	1
Figure 2. Claim Location and Location of 2005 Work.....	4
Figure 3. Regional Geology.....	6
Figure 4. Soil Sample ocations.....	8
Figure 5. Copper Soil Geochemistry.....	9
Figure 6. Gold Soil Geochemistry.....	10

LIST OF TABLES

Table 1. List of Claims	3
Table 2. Statement of Costs	12

LIST OF APPENDICES

Appendix A: Soil Sample Locations and Analysis	
Appendix B: Rock Sample Locations, Descriptions and Analysis	

1.0 INTRODUCTION

This assessment report summarizes the geochemical work carried out on the HEN property located in the Dawson Mining District, Yukon Territory between the dates June 27 and June 29, 2005. The work was done to follow up in specific areas work conducted on the claims by Kennecott Canada in 2003 and 2004. This work had identified coincident airborne and soil geochemical anomalies similar to those that define Copper Ridge's Lucky Joe bulk tonnage copper-gold immediately to the northwest.

The Lucky Joe mineral occurrence copper-gold mineralization spatially associated with amphibolite and an aeromagnetic high. The HEN property became a focus of exploration activity in 2002 when prospector Shawn Ryan following up on a recently released low level airborne geophysical survey recognized the potential for other copper-gold occurrences on strike with the Lucky Joe occurrence. The HEN property was staked to cover positive aeromagnetic anomalies and associated possible amphibolite units.

1.1 Location and Access

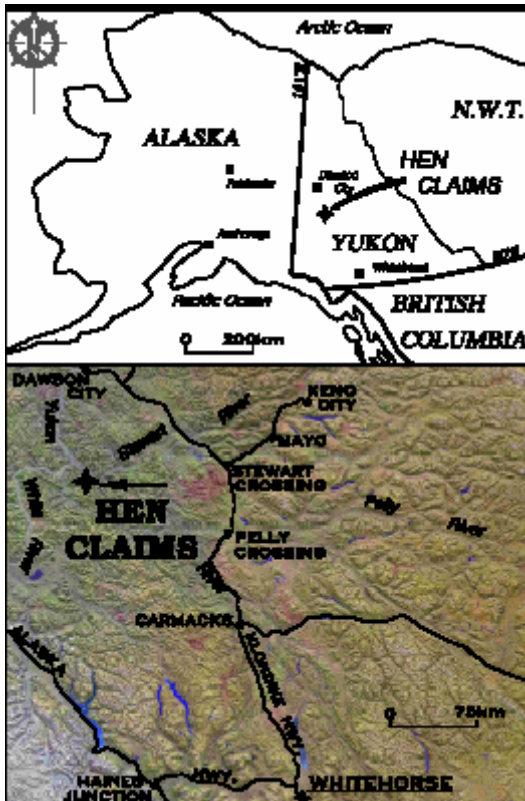


Figure 1: Location

The HEN property is located approximately 75 kilometers south of Dawson City in west central Yukon Territory, within the Dawson Mining District (Figure 1). The property covers a ridge located east of the Yukon River, straddling Henderson Creel and west of North Henderson Creek. The property is located on map sheet NTS 1150/6.

Access to the claims is by helicopter. Helicopters are based year round in Dawson City. The 2005 helicopter supported work was carried out from a road accessible camp on Quartz Creek, approximately 40 kilometers north-northeast of the property. Alternatively access can be gained by boat via the Yukon River and then by a road up Henderson Creek.

Daily plane and bus service can be gained in Dawson City to Whitehorse, where there is daily jet airplane service to Vancouver, British Columbia. Dawson City

also has scheduled flights to Fairbanks, Alaska where jet service is available to the 'lower 48'.

1.2 Topography, Vegetation and Climate

Topography in the region is typical of an incised peneplain with steep hillsides and rounded crests. The area was beyond the limits of the last two continental glacial events and evidence of glaciation in the region is a result of localized alpine glaciers. Alluvium in the valleys is locally derived. Hill slopes are covered with a veneer of colluvium also locally derived. Elevation ranges from 670 m in a valley on the east side to 1130 m atop the north trending ridge on the HEN 1-38 claims. Patches and large areas of permafrost can be found throughout the property, especially on north and west facing slopes.

Rock outcrop is restricted to ridges, small cliffs and creek bottoms. Outcrop exposure represents approximately 5 percent of the property. Soils consist of talus fines and colluvium. Colluvium veneer is the most common cover on the property, averages 1-2 m thick while colluvium blanket material averages >3 m thick. Colluvium conforms to bedrock topography and is composed of diamicton, rubble, and organic-rich silt and sand derived from bedrock sources by a variety of slope processes.

Vegetation in the valley bottoms consists of alder, dwarf birch, balsam fir, white and black spruce. Ground cover in areas of thin tree cover consists of alpine plants, 'buckbrush' (alder), dwarf willow and moss. Most of the vegetation was burnt in a forest fire within the last few years. The property is mostly below treeline at approximately 1200 m in the area although the ridge tops are covered with brush. Vegetation is generally more abundant on east and south facing slopes.

Low precipitation and a wide temperature range characterize climate. Winters are cold and temperatures of -30°C to -45°C are common. Summers are moderately cool with daily highs of 10°C to 25°C . Thunder showers are a common occurrence. Smoke from forest fires can be thick during the summer. The seasonal window for prospecting is from June to mid-late September.

1.5 Claim Status

The HEN property currently consists of 286 quartz claims for a total of 5977.4 hectares as shown on Figure 2. All of these claims are valid until March 31, 2006. Pending the acceptance of the assessment work that is the subject of this report the HEN property will consist of two non contiguous blocks of 44 and 50 claims for a total of 94 claims covering 1965 hectares and valid until March 31, 2007. These claim blocks are outlined on Figure 2 and the individual claims are listed in Table 1.

Table 1. List of Claims

Claim	Grant Number	Expiry*
HEN 01 to HEN 02	YC21990 to YC21991	March 31 2007
HEN 23 to HEN 30	YC22012 to YC22019	March 31 2007
HEN 37 to HEN 46	YC22026 to YC22035	March 31 2007
HEN 53 to HEN 60	YC22042 to YC22049	March 31 2007
HEN 61 to HEN 68	YC22253 to YC22260	March 31 2007
HEN 81 to HEN 98	YC22273 to YC22290	March 31 2007
HEN 113 to HEN 128	YC22301 to YC22316	March 31 2007
HEN 139 to HEN 148	YC22321 to YC22330	March 31 2007
HEN 155 to HEN 164	YC22331 to YC22340	March 31 2007
HEN 197 to HEN 200	YC22373 to YC22376	March 31 2007

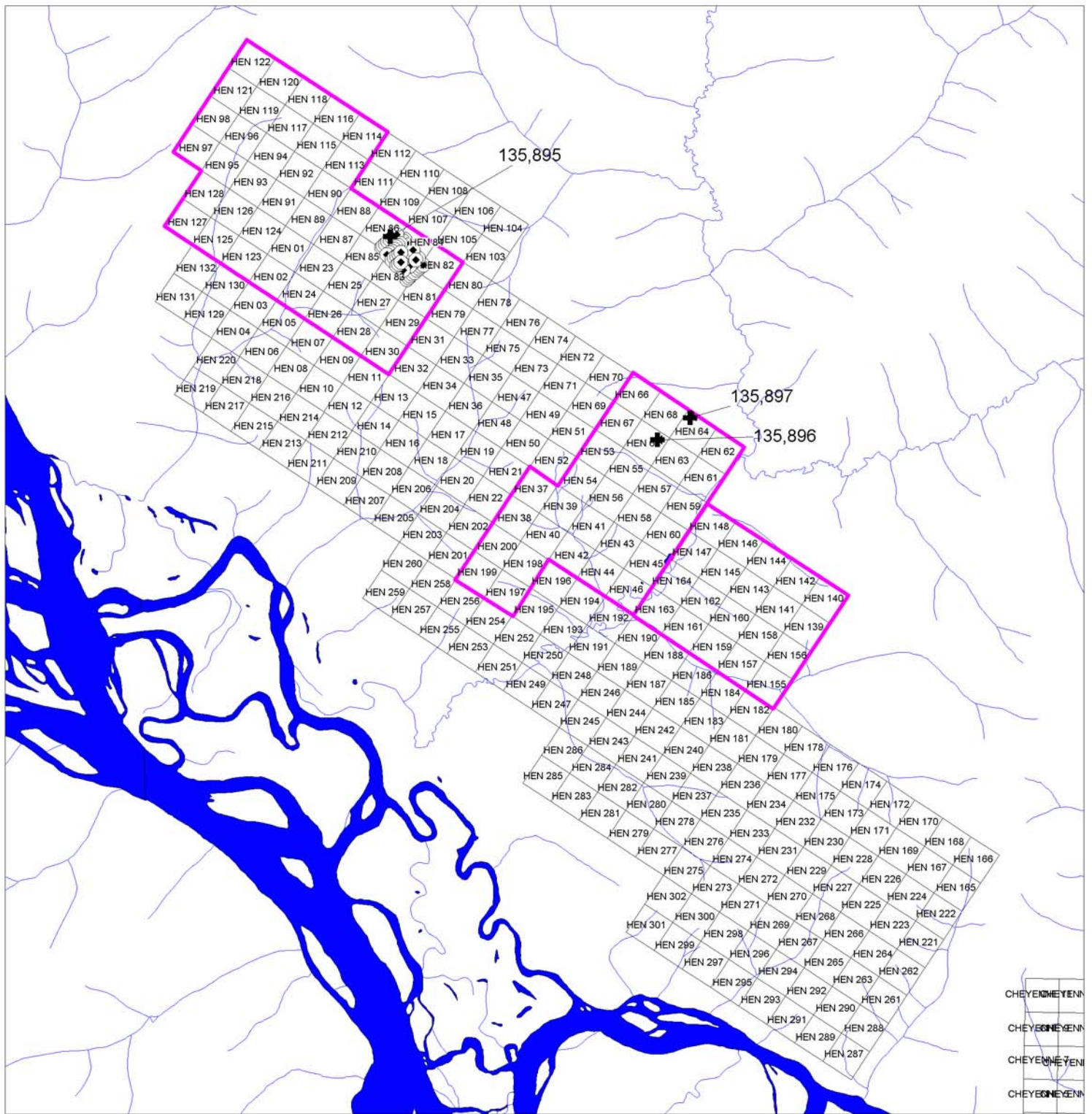
*Subject to this report being accepted as fulfilling assessment requirements.

1.3 History

There is no record of claims having been staked previously on what is now the HEN property. Two mineral occurrences (numbers 115O 008 and 115 009) located off the southwest and southeast side of the property were staked in the early 1900's, likely over quartz veins (Yukon Minfile, 2003). It is likely the area was explored as part of regional exploration programs in the 1970's when the Lucky Joe property, located 15 km to the north, was being actively explored.

In 2001 Yukon prospector Shawn Ryan, guided by a recent low level airborne aeromagnetic survey, conducted jointly by the Geological Survey of Canada and the Yukon Geology Program, staked 285 mineral claims that make up the HEN property. The property covers a positive aeromagnetic anomaly that represents possible extensions of the showings discovered and drilled on the nearby Lucky Joe property.

In 2001 Copper Ridge Explorations Inc. optioned the HEN property from Shawn Ryan. In January 2003 Kennecott Canada Exploration Inc. optioned the HEN property as part of a larger land package, the Lucky Joe Project, from Copper Ridge Explorations Inc. In the summer 2003, Kennecott conducted a program prospecting and soil sampling (Hulstein, 2003). The program identified several areas of elevated copper soil geochemistry, but Kennecott returned the property to Copper Ridge in 2004. In 2004 Copper ridge conducted a program of focused soil sampling and more detailed prospecting (Zuran, 2004). This program identified. This work identified localized copper, gold and arsenic soil anomalies in three areas: Hen North, Mid Hen and Hen South (Figure 2).



CHEYENNE
CHEYENNE
CHEYENNE
CHEYENNE

SA 502 2005 Soil Sample
 HED-C800 2004 Soil Sample
 NA13846 2003 Soil Sample

Copper Ridge Explorations Inc.	
Shamrock Project	
Date: 10/2/2006	Property Outline, Claims and Location of 2005 work
Author:	
Office:	
Figure 2	
Scale: 1:75,000	NAD 83 Zone 7

1.4 Copper Ridge Explorations 2005 Work Program

Copper Ridge's 2005 program was designed to follow up on the targets on North Hen, Mid Hen and Hen south identified during the 2004 season. This work involved soil sampling and prospecting on Hen North and prospecting on Mid Hen and Hen South.

The soil sampling and prospecting was carried out by Greg Dawson and Peter Cooper of Copper Ridge exploration. A total of 6 man days were spent on all three areas and the cost of the program was \$10,643. Two man days were spent soil sampling and prospecting the HEN North Target while while two man days each were spent prospecting the Mid Hen and Hen South targets.

Data for all the samples were noted on standardized sample cards. Hand-held GPS receivers (Garmin Map 76) were used to plot locations of samples and outcrops (approximate +/- 5m accuracy). Samples were shipped to Acme Analytical Labs Ltd. for analysis in Vancouver, B.C The sample location, description and analytical results were entered Microsoft Excell and displayed in MAPINFO, a GIS program.

2.0 REGIONAL GEOLOGY

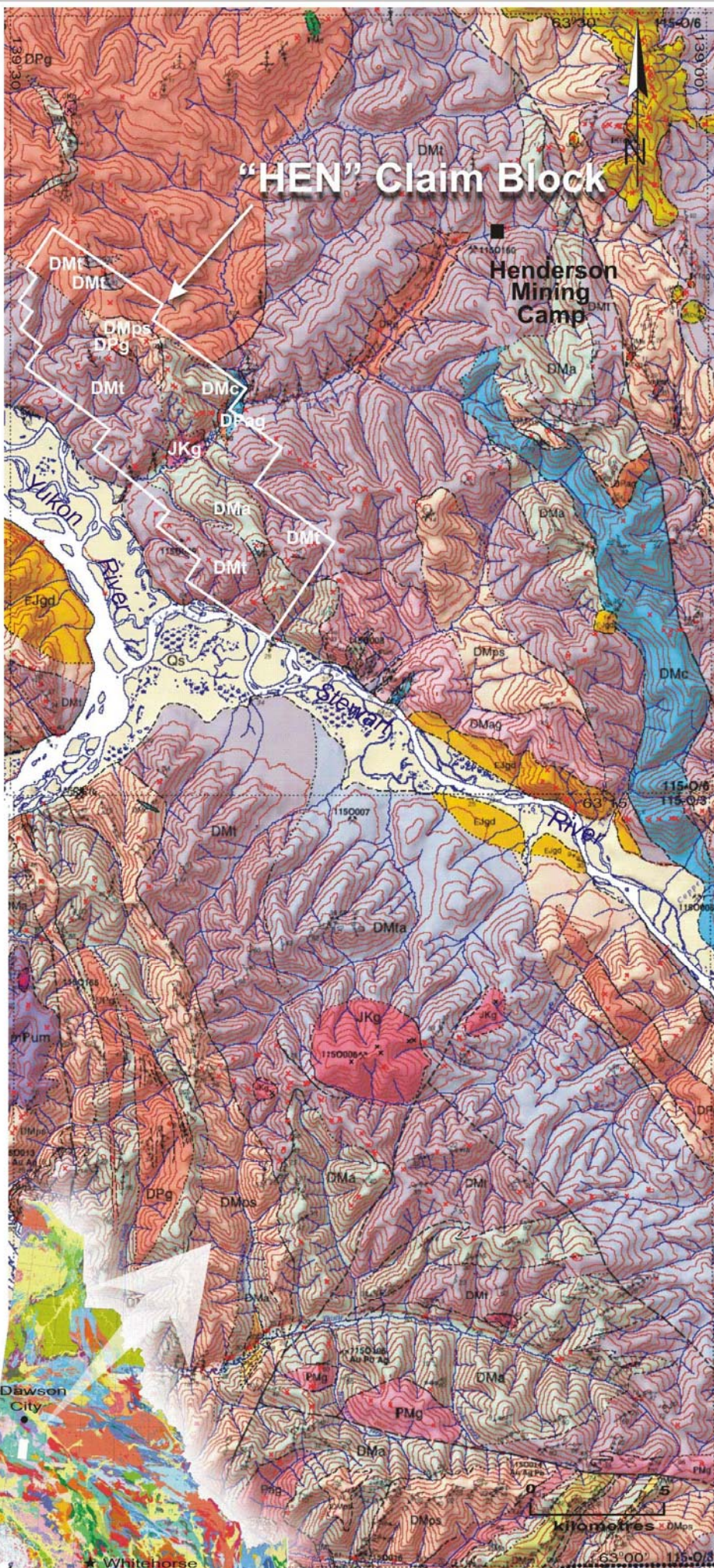
The first geological investigation in the area of the Lucky Joe Property area was by H.S. Bostock starting in 1935 (Bostock, 1942). More recently the area around the property was mapped at 1:100,000 scale as part of a Geological Survey of Canada NATMAP project (Figure 3, after Ryan et al, 2002).

Regionally the property lies between the Tintina and Denali Faults within the Ominica Belt (Wheeler and McFeely, 1991). They are found to the northeast and southwest of the property respectfully, trend northwest and are major crustal-scale transcurrent dextral faults of Tertiary (?) age.

The area is underlain by the lithotectonic (pre-accretion) Yukon-Tanana Terrane (YTT) assemblage: a medium to high grade, polydeformed metasedimentary and meta-igneous rocks. The YTT is mainly Paleozoic in age and was juxtaposed by regional scale thrust faults in early Mesozoic time, a period of terrane accretion that affected much of the northern Cordillera.

More locally, the YTT consists of two main assemblages of supracrustal rocks, the Devonian-Mississippian Pelly Gneiss, orthogneiss, including granitic augen gneiss and lower YTT terrane rocks composed of Devonian and older quartz-rich rocks, amphibolite, mica schists and minor marble.

"HEN" Claim Block



LEGEND

QUATERNARY

Qs Fluvial silt, sand and gravel deposits

EOCENE

Er PORPHYRY: Smokey quartz and K-feldspar phric rhyolite to rhyodacite stocks and dykes, and possible rare flows

UPPER CRETACEOUS

uKcV CARMACKS GROUP: rhyodacite and dacite, commonly biotite and hornblende phric, dominated by lesser andesite and basalt; minor rhyolite

LOWER CRETACEOUS

lKTcg TANTALUS(?) FORMATION: clast-supported pebble to cobble conglomerate with clasts of vein quartz and foliated quartzite

JURASSIC? OR CRETACEOUS

JKg GRANITE: pink to grey, locally porphyritic, syenogranite to monzogranite plutons and dykes

PALEOZOIC AND/OR MESOZOIC

PMg FOLIATED GRANITE: deformed (foliated to gneissic), felsic to intermediate monzogranite, granodiorite and quartz monzonite

PMd GABBRO: foliated to unfoliated metagabbro (locally garnet-bearing); diabase, metabasite

MID(?) - TO LATE PALEOZOIC

mFum mFums ULTRAMAFIC-GABBRO: foliated to unfoliated amphibolite facies metagabbro, metapyroxenite, serpentinite and talc-*siderite* schist; mFums, dominantly serpentinite

PERMIAN

Pv FOLIATED VOLCANIC: chlorite-altered weakly foliated intermediate to mafic aphanitic volcanic flows and tuffs, locally with clastic textures preserved

PKs KLONDIKE SCHIST: muscovite-chlorite-quartz-feldspar schist, chlorite schist, chlorite phyllonite; local cleaved lapilli tuff with preserved primary texture, probably derived from Pv

Pag AUGEN GNEISS (YOUNGER): K-feldspar augen granite; exhibits various states of strain including porphyroclastic straight gneiss

Pfs FELSIC SCHIST: quartz-sericite schist or metafelsite, possibly derived from felsic volcanic or hypabyssal intrusive rocks, e.g. rhyolite or quartz-feldspar porphyry

DEVONIAN AND/OR PERMIAN

DPag AUGEN GNEISS (UNDIVIDED): K-feldspar augen granite orthogneiss undivided; may include bodies of Devono-Mississippian and Permian age (i.e. DMag or Pag)

DPg FELSIC GNEISS (UNDIVIDED): pink to orange K-feldspar rich felsic orthogneiss; banded to layered; vained and/or segregated; commonly includes, or associated with, K-feldspar augen orthogneiss; may include bodies of Devono-Carboniferous and Permian age

DEVONIAN TO MISSISSIPPIAN

DMnq DMNI NASINA ASSEMBLAGE: DMnq, fine-grained, dark-grey to black carbonaceous quartzite and metapelite; DMNI, marble

DMag, DMg AUGEN GNEISS (OLDER): mainly K-feldspar augen orthogneiss; DMg includes granite to granodiorite orthogneiss, opposite mouth of Reindeer Creek.

DMta Undivided GREY GNEISS / AMPHIBOLITE (DMt / DMA)

DMt GREY GNEISS: intermediate to mafic orthogneiss; generally grey, banded to layered; commonly vained; derived from intermediate granitoid (tonalite to diorite) sheets; usually interlayered with amphibolite schist and gneiss

DMA AMPHIBOLITE: amphibolite schist and gneiss; metabasite; probably derived from mafic to intermediate volcanic or volcaniclastic rocks; locally associated with psammite or interlayered with orthogneiss

DMm MAFIC SCHIST: biotite-hornblende+f-plagioclase+f-quartz metabasite?; generally associated with amphibolite, main locality on Thistle Mountain

DMc MARBLE: marble (metacarbonate) derived from pure to impure limestone; associated calc-silicate schist derived from calcareous metapelite

DMps QUARTZ-MICA SCHIST: undivided metasedimentary rocks dominated by metapsammite, semipelite and metapelite; commonly quartz-garnet-biotite-muscovite schist possibly derived from siliceous siltstone; commonly finely interlayered with garnet metapelite; commonly contains members of micaceous quartzite; rare conglomerate; grades locally to paragneiss

DMcg METACONGLOMERATE: pebble- to cobble-sized rounded clasts; mainly massive white vein quartz, but including some granitoid clasts (tonalite?); has an arkosic matrix; grades into quartzite; matrix supported

DMq QUARTZITE: banded to massive, grey to white quartzite; apparently clastic in origin, or in part, possibly derived from metachert

NOTE: Relative ages of many units are unknown; superimposed hillshade may darken colours on map from those shown on legend above



COPPER RIDGE EXPLORATIONS INC.

REGIONAL GEOLOGY

Jurassic and Cretaceous granitoid, predominantly quartz monzonite, bodies intrude the YTT and Mortenson (1996) noted that field relationships indicate that some were intruded prior to both Early (?) Jurassic regional thrust imbrication and Early Cretaceous normal faulting.

3.0 PROPERTY GEOLOGY

Very little outcrop was found on the HEN property, so more detailed mapping was not attempted. Evidence from a few rare outcrops and from rock chips found when soil sampling basically confirmed the overall pattern as shown by the regional geology.

3.1 Alteration and Mineralization

No significant alteration or mineralization was noted on the HEN property. Evidence of calc silicate alteration was observed in an interlayered felsic schist – marble unit near the junction of Henderson and North Henderson Creeks.

4.0 GEOCHEMISTRY

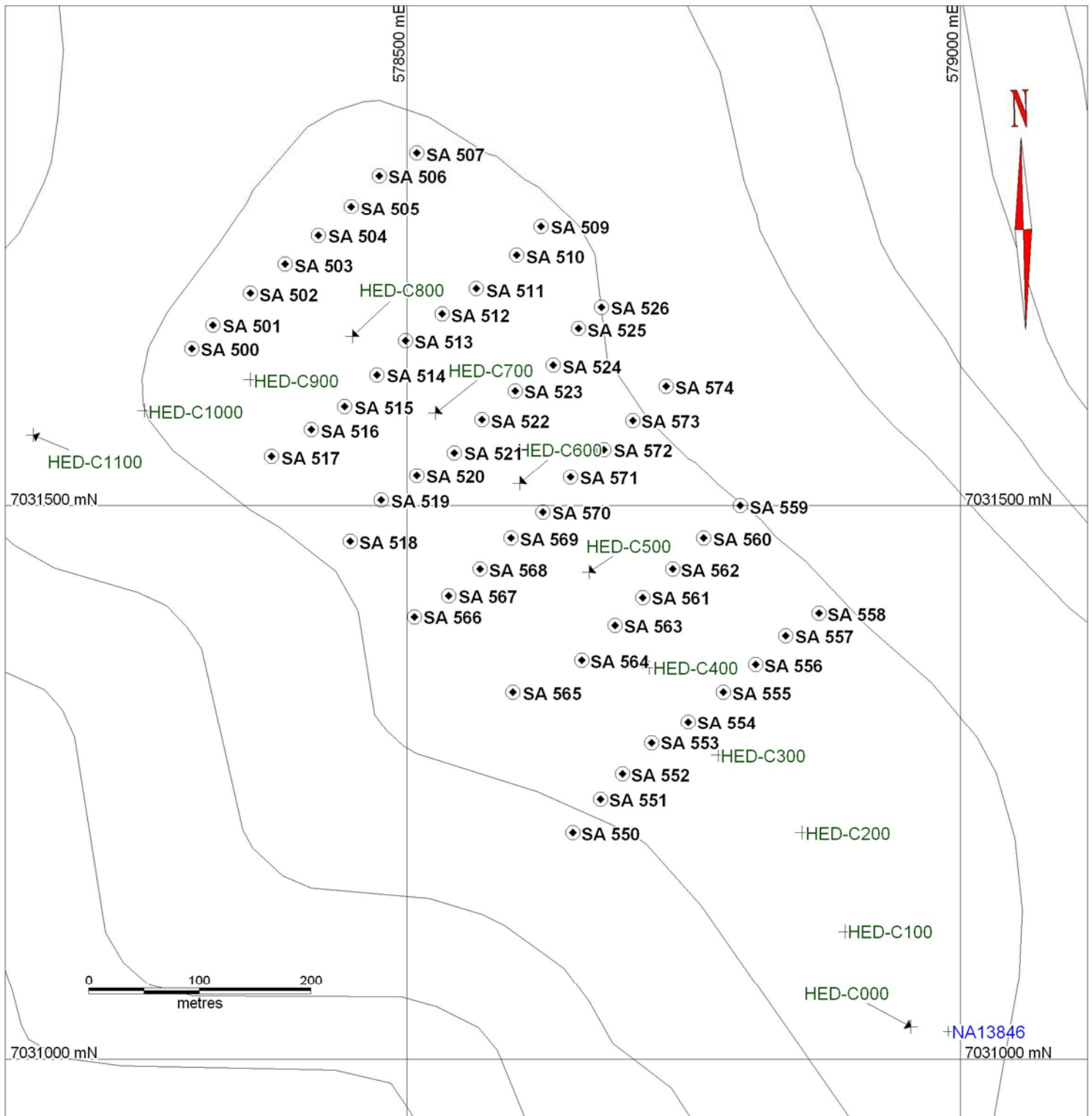
Geochemical sample analysis was executed by Acme Labs Ltd. of Vancouver, B.C. Both rock and soil samples were analyzed by the 1DX ICP MS method using a 15 gram sub-sample. This method gives analytical results for 36 elements including gold. This method provides a 0.1 ppm detection limit for copper, molybdenum, lead, silver, and arsenic, a 1 ppm detection limit for zinc and a 0.5 ppb detection limit for gold. Full analytical results together with the method of sample digestion and analysis are given in Appendix A.

Soil sample locations with respect to the entire property are shown in Figure 2. Detailed sample locations with sample numbers are shown on Figure 4. Bubble plots with copper values are shown on Figure 5 and with gold values on Figure 6. The location of rock samples are shown on Figure 2.

4.1 Soil Geochemistry

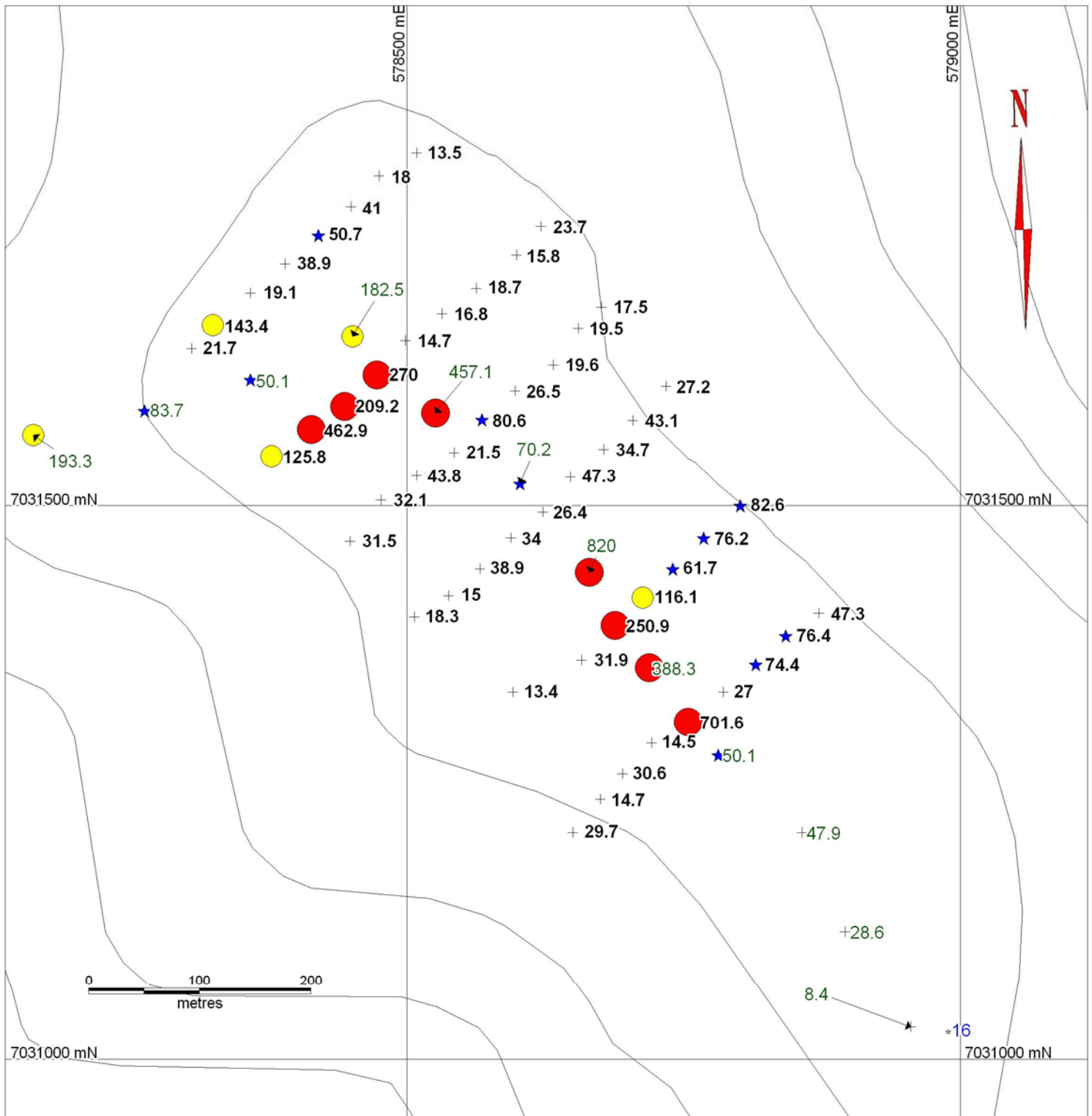
A total of 51 soil samples were collected at the North HEN target in 2005. Six lines of lines of about 320 m each were laid out 100 m apart trending in a northeast - southwest direction. Samples were collected at 25 m intervals along the lines. Samples were collected using a mattock and sample depth ranged from 10 to about 30 centimetres. Soil collected was generally considered to be from the “B” horizon.

Results ranged from 13.4 ppm to 701.6 ppm copper and from below detection (0.5 ppb) to 14.2 ppb gold. The 701.6 copper value and the 14.2 ppm gold value

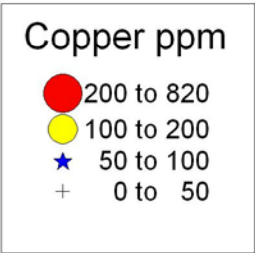


SA 502 2005 Soil Sample
 HED-C800 2004 Soil Sample
 NA13846 2003 Soil Sample

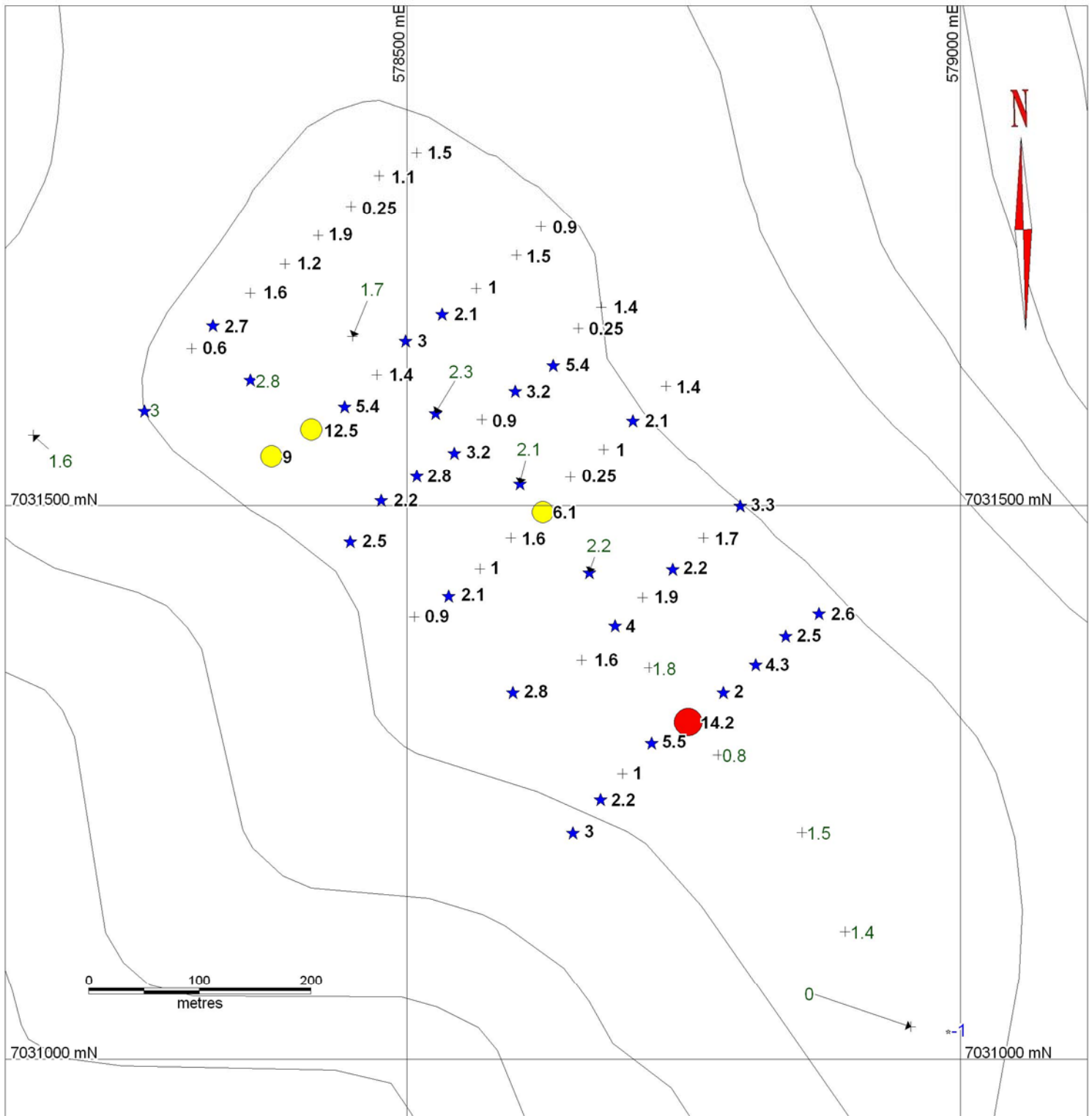
Copper Ridge Explorations Inc.	
Date: 10/2/2006	Shamrock Project Soil Sample Locations
Author:	
Office:	
Figure 4	
Scale: 1:50000	NAD 83 Zone 7



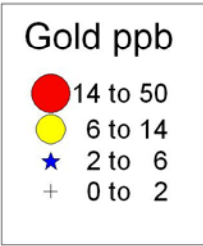
2005 Soil Sample
 2004 Soil Sample
 2003 Soil Sample



Copper Ridge Explorations Inc.	
Date: 10/2/2006	Shamrock Project Copper Soil Geochemistry
Author:	
Office:	
Figure 5	
Scale: 1:50000	NAD 83 Zone 7



2005 Soil Sample
 2004 Soil Sample
 2003 Soil Sample



Copper Ridge Explorations Inc.	
Date: 10/2/2006	Shamrock Project Gold Soil Geochemistry
Author:	
Office:	
Figure 6	
Scale: 1:50000	NAD 83 Zone 7

were returned from the same sample. This sample also contained the highest zinc value at 230 ppm and the highest nickel sample at 117.1 ppm.

These results confirmed the modest copper anomaly identified at Mid HEN, but failed to expand the the anomaly into a robust and consistent target worthy of follow up

4.2 Rock Geochemistry

At total of 3 rock samples were collected while prospecting on the HEN property. One was collected on the North Hen group while two were collected on the Mid HEN group (Figure 2). Descriptions and analytical results for these samples are included in Appendix B. None of the rock samples returned any significant metal values.

5.0 CONCLUSION AND RECOMMENDATIONS

The HEN property covers a northwesterly trending aeromagnetic high, likely due to amphibolite unit(s) within more felsic schist and gneiss, over a series of northwesterly trending ridges. Reconnaissance geochemical sampling on the property in the years 2003 and 2004 had identified several areas with scattered base metal anomalies, particularly copper. The 2005 soils sampling and prospecting program was designed to follow-up three of the areas: North HEN, Mid HEN and South HEN

While the soil sampling did confirm the spot copper and zinc anomaly at Mid HEN, it did not define a robust and consistent target worthy of follow-up. Reconnaissance prospecting did not find any significant mineralization, but was hampered general lack of outcrop in the property area.

No further work is recommended on the HEN property

7.0 STATEMENT OF COSTS

A total of \$10,643 was spent on the Shamrock property in 2005. Based on the time spent on each area, \$5,143 of these expenditures are assigned to the Mid HEN and HEN south target areas and \$5,500 is assigned to the North HEN target area.

Table 2. Statement of Costs

Item	Units		Cost/unit	Cost	Total
Aircraft Support					
Helicopter - Prism	4	hours	\$881	\$3,524	
Fuel - Prism	2	drums	\$300	\$600	
					\$4,124
Personnel					
G Dawson	3	days	\$450	\$1,350	
P. Cooper	3	days	\$300	\$900	
					\$2,250
Analysis					
Soils	51	samples	\$15	\$765	
Rocks	3	samples	\$18	\$54	
					\$819
Miscellaneous					
Room and Board	6	man days	\$75	\$450	
Misc. supplies				\$250	
Communications				\$250	
					\$950
Report					
					\$2,500
Grand Total					\$10,643

8.0 STATEMENT OF QUALIFICATIONS

I, John Gregory Dawson, do hereby declare that;

1. I am currently a self-employed as Vice President Exploration for by Copper Ridge Explorations Inc. of 500 - 625 Howe Street Vancouver, British Columbia V3J 3G8.
2. I graduated with a Bachelor Science degree from the University of British Columbia in 1987 and a Masters of Science degree from Queens' University in 1991.
3. I am a member of the Association of Professional Engineers and Geoscientists of British Columbia, Registration Number 19882.
4. I have worked as a geologist for a total of 19 years since graduation from University, and prior to graduation, as a student and or geotechnician for a period of 11 additional years.
5. I have read the definition of "Qualified Person" set out in National Instrument 43-101("NI 43-101") and certify that by reason of my education, affiliation with a professional association and past relevant work experience, I fulfill the requirements to be a "Qualified Person" for the purposes of NI 43-101.
6. I am not aware of any material fact or material change with respect to the subject matter of this report, the omission to disclose which makes this report misleading.
7. I am not independent of the issuer applying all tests in Section 1.5 of NI 43-101 in that I am an Employee of Copper Ridge Explorations Inc and hold shares and options in the Company.

Dated this 1st day of March, 2006

John Gregory Dawson, P. Geo.

9.0 REFERENCES

- Bostock, H.S., 1942. Ogilvie, Yukon Territory; Geological Survey of Canada, Map 711A, scale 1:250,000.
- Gordy, S.P. and Ryan, J.J. 2003 Geology, Stewart River Area (Parts of 115N/1,2,7,8 and 115O/2-7,12), Yukon Territory; Geological Survey of Canada, Open File 1772, scale 1:100,000.
- Hulstein, Roger, 2003: Report on the 2003 Geochemical and Geological Work on the HEN Property. Assessment report prepared for Kennecott Explorations Canada Ltd.
- Mortenson, J.K., 1996. Geological Compilation Maps of the Northern Stewart River Map Area, Klondike and Sixtymile Districts, 1:50,000 scale. Indian and Northern Affairs Canada, Northern Affairs: Yukon Region, Open File 1996-1G
- Ryan, J.J. and Gordy, S.P., 2002: Bedrock geology of Yukon-Tanana terrane in southern Stewart River map area, Yukon Territory: Geological Survey of Canada, Current Research 2002-A1, 11p.
- Shives, R.B.K., Carson, J.M., Ford, K.L., Holman P.B., Gordey, S.P., and Abbott, G., 2001. Airborne multisensor geophysical survey, Stewart River area, Yukon, Phase 1 (portable document format (PDF) files); Geological Survey of Canada, Open File GSC D4009 (*also* Yukon Geological Survey, Open File 2001-30D).
- Wheeler, J.O. and McFeely, P. 1991. Tectonic assemblage map of the Canadian Cordillera and adjacent parts of the United States of America; Geological Survey of Canada, Map 1712A, scale 1:20,000,000.
- Yukon Minfile, 2003. Yukon Geology Survey, Yukon, Canada.
- Zuran, Rick 2004: Assessment Report Geochemistry on the HEN Claims. Assessment report for Copper Ridge Explorations by Aurum Geological Consultants.

APPENDIX A

Soil Sample Locations and Results

Soil Sample Locations

Sample Number	Easting	Northing
SA-500	578306	7031642
SA-501	578325	7031663
SA-502	578359	7031692
SA-503	578390	7031718
SA-504	578420	7031744
SA-505	578450	7031770
SA-506	578475	7031798
SA-507	578509	7031819
SA-509	578621	7031752
SA-510	578599	7031726
SA-511	578563	7031696
SA-512	578532	7031673
SA-513	578499	7031649
SA-514	578473	7031618
SA-515	578444	7031590
SA-516	578414	7031569
SA-517	578378	7031545
SA-518	578449	7031468
SA-519	578477	7031505
SA-520	578509	7031527
SA-521	578543	7031548
SA-522	578568	7031578
SA-523	578598	7031604
SA-524	578632	7031627
SA-525	578655	7031660
SA-526	578676	7031679

Sample Number	Easting	Northing
SA-527	578339	7031644
SA-550	578650	7031205
SA-551	578675	7031235
SA-552	578695	7031258
SA-553	578721	7031286
SA-554	578754	7031305
SA-555	578786	7031332
SA-556	578815	7031357
SA-557	578842	7031383
SA-558	578872	7031403
SA-559	578801	7031500
SA-560	578722	7031475
SA-561	578740	7031443
SA-562	578713	7031417
SA-563	578688	7041392
SA-564	578658	7031361
SA-565	578596	7031332
SA-566	578507	7031400
SA-567	578538	7031419
SA-568	578566	7041443
SA-569	578594	7041471
SA-570	578623	7041494
SA-571	578648	7041526
SA-572	578678	7041551
SA-573	578704	7041577
SA-574	578734	7041608

From ACME ANALYTICAL LABORATORIES LTD. 852 E. HASTINGS ST. VANCOUVER BC V6A 1R6 PHONE(604)253-3158 FAX(604)253-1716 @ CSV TEXT FORMAT
 To Copper Ridge Exploration Inc. PROJECT Shamrock/Thistle

Acme file # A503379 Page 1 Received: JUL 11 2005 * 181 samples in this disk file.

Analysis: GROUP 1DX - 15 GM SAMPLE LEACHED WITH 90 ML 2-2-2 HCL-HNO3-H2O AT 95 DEG. C FOR ONE HOUR, DILUTED TO 300 ML, ANALYSED BY ICP-MS.

ELEMENT	Mo	Cu	Pb	Zn	Ag	Ni	Co	Mn	Fe	As	U	Au	Th	Sr	Cd	Sb	Bi	V	Ca	P	La	Cr	Mg	Ba	Ti	B	Al	Na	K	W	Hg	Sc	Tl	S	Ga	Se			
SAMPLES	ppm	ppm	ppm	ppm	ppm	ppm	ppm	ppm	%	ppm	ppm	ppb	ppm	ppm	ppm	ppm	ppm	ppm	%	%	ppm	ppm	%	ppm	%	ppm	%	%	%	ppm	ppm	ppm	ppm	%	ppm	ppm			
G-1	0.7	2.4	2.4	46	<1		6.7	4.5	547	1.77	<5		2	<5		4	44	<1	<1	0.1	38	0.41	0.073	8	82.8	0.59	223	0.125	2	0.95	0.059	0.53	0.1	<0.1	2.3	0.4	<0.5	5	<5
SA 500	1.8	21.7	9.1	72	0.1	10.9	9.7	306	3.08	5.2	0.3	0.6	1.5	14	0.3	0.2	0.1	89	0.23	0.03	7	21.7	0.64	130	0.117	1	1.49	0.015	0.09	0.1	0.01	3.1	0.1	<0.5	7	<5			
SA 501	2.5	143.4	11.2	96	0.2	70	10.2	295	3.26	10	1	2.7	4.1	18	0.2	0.4	0.3	80	0.22	0.038	19	46.6	0.72	169	0.089	1	2.14	0.008	0.08	0.1	0.03	4	0.1	<0.5	7	0.7			
RE SA 501	2.5	141.9	10.6	96	0.2	67.1	9.8	274	3.05	9.7	1	2.4	4	17	0.2	0.4	0.3	79	0.21	0.037	18	43.5	0.67	165	0.087	2	2.05	0.008	0.08	0.1	0.02	4	0.1	<0.5	6	0.7			
SA 502	0.9	19.1	8.3	42	0.1	20.7	9	215	2.49	8.1	0.5	1.6	1.6	14	0.1	0.4	0.1	58	0.16	0.037	11	31.3	0.44	173	0.054	1	1.63	0.008	0.03	0.1	0.01	2.7	0.1	<0.5	5	<5			
SA 503	0.8	38.9	7.6	44	0.1	17.3	7.8	220	2.55	6.2	0.5	1.2	2.6	17	<1	0.3	0.1	60	0.18	0.025	11	29.7	0.47	155	0.075	1	1.59	0.007	0.05	0.1	0.01	2.6	0.1	<0.5	5	<5			
SA 504	0.7	50.7	5.2	51	0.1	10	9.1	449	2.73	4.9	0.5	1.9	2.3	21	0.1	0.2	0.1	65	0.22	0.047	8	19.6	0.72	119	0.132	1	1.83	0.007	0.35	0.1	0.01	2.1	0.2	<0.5	6	<5			
SA 505	0.6	41	6.1	63	0.1	10.8	6.9	390	2.49	3.8	0.5	<5	1.9	24	0.1	0.2	0.1	61	0.21	0.04	8	18.6	0.61	95	0.097	1	1.48	0.007	0.22	0.1	0.02	2.9	0.1	<0.5	6	<5			
SA 506	1.1	18	9.1	44	0.1	18.8	7.2	221	2.67	8.4	0.4	1.1	2.2	18	0.1	0.4	0.2	64	0.18	0.029	9	33	0.44	175	0.068	2	1.73	0.008	0.05	0.1	0.02	2.5	0.1	<0.5	6	<5			
SA 507	0.8	13.5	8.8	35	0.1	12.5	4.7	142	2.07	6.8	0.3	1.5	0.9	13	0.1	0.3	0.2	58	0.14	0.024	9	22.5	0.27	137	0.065	1	1.37	0.007	0.04	0.1	0.01	2	0.1	<0.5	6	<5			
SA 508	0.8	13	8.9	36	0.1	14.4	5.9	165	2.42	8.7	0.3	1.3	2.1	15	0.1	0.3	0.1	64	0.16	0.017	10	29.4	0.35	145	0.072	1	1.52	0.007	0.03	0.1	0.01	2.4	0.1	<0.5	6	<5			
SA 509	1	23.7	8.3	44	0.1	12	6.8	232	2.75	6.7	0.4	0.9	2.6	22	0.1	0.3	0.2	63	0.12	0.037	9	25.1	0.37	134	0.067	1	1.63	0.008	0.08	0.1	0.01	2.1	0.1	<0.5	7	<5			
SA 510	0.8	15.8	7.5	41	0.1	18.4	9.9	224	2.61	9.9	0.4	1.5	2.5	11	0.1	0.4	0.2	58	0.11	0.025	9	31	0.41	137	0.062	1	1.7	0.006	0.05	0.1	0.02	2.2	0.1	<0.5	5	<5			
STANDARD DS6	11.9	121.7	30	146	0.3	26	10.4	725	2.95	21.6	6.5	47.8	3	38	6.2	3.5	5	58	0.85	0.082	16	192.1	0.59	161	0.083	17	1.9	0.072	0.16	3.4	0.23	3.5	1.6	<0.5	6	4.5			
SA 511	1	18.7	8	47	0.1	18.2	9.2	267	3.01	9.9	0.4	1	2.7	16	0.1	0.5	0.2	65	0.16	0.026	10	32.5	0.45	194	0.07	1	1.92	0.008	0.06	0.1	0.01	2.4	0.1	<0.5	5	<5			
SA 512	1.1	16.8	9.6	41	0.1	18	7.5	199	2.69	7.9	0.7	2.1	3	16	<1	0.4	0.2	66	0.17	0.02	14	34.6	0.38	191	0.068	1	1.83	0.009	0.04	0.1	0.01	3.6	0.1	<0.5	6	<5			
SA 513	0.8	14.7	8.1	41	0.1	7.3	4.4	190	2.11	5.8	0.4	3	1.5	15	0.1	0.3	0.2	63	0.14	0.035	10	19.7	0.34	91	0.087	<1	1.37	0.007	0.08	0.1	0.01	2	0.1	<0.5	7	<5			
RE SA 513	0.8	14.5	8.4	42	0.1	6.8	4.1	197	2.11	5.9	0.4	<5	1.5	15	0.1	0.2	0.2	61	0.13	0.036	10	19.5	0.35	92	0.081	1	1.32	0.007	0.08	0.1	0.01	1.8	0.1	<0.5	7	<5			
SA 514	1.4	270	7.7	77	0.1	18	10.7	341	3.68	6.4	0.5	1.4	2.8	19	0.1	0.4	0.1	76	0.25	0.02	11	29.1	0.91	209	0.126	1	2.39	0.01	0.21	0.1	0.01	3.5	0.2	<0.5	7	<5			
SA 515	1.9	209.2	11.7	55	0.2	24.9	9.7	224	2.64	8.5	1.5	5.4	3.6	24	0.1	0.4	0.5	85	0.34	0.077	18	41.4	0.57	162	0.091	1	1.84	0.01	0.07	0.1	0.03	3.9	0.1	<0.5	5	0.9			
SA 516	3.5	462.9	21	79	1	39	16.6	623	4.23	20.2	3.4	12.5	4.2	32	0.5	0.4	1.1	112	0.43	0.064	26	46.3	0.62	301	0.069	1	2.73	0.01	0.09	0.1	0.12	7.4	0.2	<0.5	8	0.7			
SA 517	1.1	125.8	16	67	0.3	19.4	8.3	404	2.26	6.5	1.6	9	3.5	23	0.3	0.3	0.4	54	0.41	0.084	18	28.2	0.67	160	0.076	2	1.66	0.013	0.06	0.1	0.06	4.3	0.1	<0.5	5	0.5			
SA 518	1.1	31.5	9.3	70	0.1	18.5	13.3	1118	3.13	8.4	0.5	2.5	2.5	35	0.2	0.4	0.2	79	0.35	0.035	11	30.1	0.53	373	0.082	2	1.95	0.013	0.06	0.1	0.02	4.8	0.1	<0.5	6	<5			
SA 519	0.5	32.1	12.4	61	0.1	21.8	7.7	323	2.17	6.8	0.8	2.2	2.7	21	0.1	0.3	0.2	49	0.43	0.065	12	27.3	0.58	227	0.062	1	1.44	0.013	0.04	0.2	0.02	3.4	0.1	<0.5	5	0.5			
SA 520	1.4	43.8	9.3	44	0.4	15.3	7.4	205	2.63	8.8	0.5	2.8	1.8	14	0.1	0.4	0.2	64	0.16	0.03	9	30.7	0.37	159	0.049	<1	1.59	0.007	0.04	0.1	0.01	2.4	0.1	<0.5	6	<5			
SA 521	0.6	21.5	9.1	41	0.1	18.3	7.3	176	2.55	7.2	0.6	3.2	2.8	16	<1	0.4	0.2	56	0.17	0.014	13	33.5	0.45	180	0.063	<1	1.76	0.008	0.04	0.1	0.01	3.7	0.1	<0.5	5	<5			
SA 522	1.1	80.6	9.5	36	0.5	9.1	5.1	199	2.21	6.1	0.4	0.9	1.8	17	0.1	0.3	0.2	60	0.14	0.028	10	24.1	0.29	127	0.049	<1	1.58	0.007	0.04	0.1	0.01	2.1	0.1	<0.5	6	<5			
SA 523	0.9	26.5	9.1	46	0.2	17.4	7.5	192	2.67	8.3	0.6	3.2	2.9	20	0.1	0.4	0.2	63	0.18	0.02	14	33.5	0.42	206	0.059	<1	1.88	0.009	0.04	0.1	0.03	4.1	0.1	<0.5	6	<5			
SA 524	1.2	19.6	9.5	45	0.1	17.4	7.1	220	2.69	8.8	0.8	5.4	2.9	17	<1	0.4	0.2	63	0.16	0.023	14	33.9	0.44	174	0.062	1	1.81	0.008	0.04	0.1	0.02	4	0.1	<0.5	6	<5			
SA 525	1	19.5	6.8	54	0.1	11.5	8	386	3.32	8.3	0.5	<5	2.1	21	0.1	0.4	0.2	79	0.19	0.06	8	22.8	0.65	109	0.089	1	1.77	0.007	0.11	0.2	0.01	2.4	0.1	<0.5	7	<5			
SA 526	1	17.5	9.5	47	0.1	16.4	7.6	508	2.63	8.4	0.4	1.4	2.5	16	0.1	0.4	0.2	66	0.18	0.022	10	32.8	0.38	206	0.065	1	1.7	0.007	0.05	0.1	0.01	2.5	0.1	<0.5	6	<5			
SA 550	0.9	29.7	6.4	66	0.1	17.5	9.7	261	3.42	7.4	0.4	3	2.3	17	0.1	0.4	0.1	79	0.37	0.074	8	27.4	0.73	137	0.097	<1	1.92	0.019	0.11	0.1	<0.1	4	0.1	<0.5	7	<5			
SA 551	1	14.7	7.3	61	0.1	13.6	5.9	317	2.32	5.7	0.4	2.2	2.2	18	0.1	0.3	0.2	57	0.25	0.041	11	22.6	0.5	176	0.08	1	1.22	0.01	0.15	0.2	0.01	2.5	0.1	<0.5	6	<5			
SA 552	1.5	30.6	8	83	0.2	23.5	9.9	469	3.1	7.6	0.3	1	1.8	16	0.1	0.3	0.2	69	0.25	0.023	8	46.8	0.74	198	0.077	1	1.79	0.014	0.11	0.1	0.01	4.5	0.1	0.07	6	0.5			
SA 553	1.3	14.5	8	58	0.1	14.4	7.5	343	2.47	9	0.3	5.5	2	13	0.2	0.4	0.1	60	0.25	0.021	9	28.9	0.47	194	0.066	1	1.3	0.009	0.08	0.1	<0.1	2.8	0.1	<0.5	5	<5			
SA 554	1.7	701.6	16.2	230	0.6	117.1	9.9	849	3.31	10.3	1.2	14.2	4.2	30	0.8	0.3	0.6	76	4.07	0.21	24	38.8	3.18	211	0.092	1	2.29	0.009	0.08	0.1	0.09	7	0.2	<0.5	8	0.7			
SA 555	1.2	27	9.3	49	0.2	26.1	10.7	280	2.87	10.6	0.6	2	3	15	<1	0.6	0.2	64	0.16	0.026	11	37.3	0.51	197	0.065	<1	2.05	0.008	0.04	0.1	<0.1	3.2	0.1	<0.5	5	0.5			

ELEMENT	Mo	Cu	Pb	Zn	Ag	Ni	Co	Mn	Fe	As	U	Au	Th	Sr	Cd	Sb	Bi	V	Ca	P	La	Cr	Mg	Ba	Ti	B	Al	Na	K	W	Hg	Sc	Tl	S	Ga	Se
SAMPLES	ppm	ppm	ppm	ppm	ppm	ppm	ppm	ppm	%	ppm	ppm	ppb	ppm	ppm	ppm	ppm	ppm	ppm	%	%	ppm	ppm	%	ppm	%	ppm	%	%	%	ppm	ppm	ppm	ppm	%	ppm	ppm
SA 556	1.7	74.4	10.8	57	0.2	24.6	9.9	226	3.29	8.8	0.9	4.3	5.6	19	0.1	0.6	0.2	73	0.18	0.015	14	44.8	0.59	221	0.082	<1	2.47	0.01	0.04	0.1	0.02	4.5	0.1	<0.5	6	<5
SA 557	1.2	76.4	9.4	51	0.2	20.3	8.7	245	3.18	8.8	0.5	2.5	3.5	15	<1	0.4	0.1	65	0.16	0.014	11	35	0.55	176	0.086	1	2.21	0.009	0.04	0.1	0.01	3.1	0.1	<0.5	6	<5
SA 558	1	47.3	9.6	41	0.2	13.6	6.2	162	2.42	7.7	0.7	2.6	2.3	19	0.1	0.3	0.2	60	0.25	0.032	12	27	0.42	190	0.07	1	1.62	0.01	0.04	0.1	0.02	3	0.1	<0.5	6	0.5
SA 559	1	82.6	9.1	56	0.1	16.1	7.4	229	2.95	8.3	0.6	3.3	3.3	20	<1	0.4	0.2	65	0.23	0.028	13	30.9	0.56	155	0.093	1	2.09	0.009	0.05	0.1	0.01	3.5	0.1	<0.5	7	<5
SA 560	0.8	76.2	7.4	53	0.2	14.7	7	217	2.33	6.1	0.6	1.7	2.9	21	0.1	0.4	0.1	57	0.25	0.037	13	24.7	0.54	131	0.099	<1	1.55	0.01	0.09	0.1	0.01	2.7	0.1	<0.5	5	<5
SA 562	1.3	61.7	9.6	35	0.5	12.3	5.6	178	2.69	10	0.3	2.2	2.1	11	0.1	0.4	0.2	66	0.1	0.028	8	25.3	0.35	118	0.057	1	1.5	0.006	0.03	0.1	0.01	1.9	0.1	<0.5	6	<5
SA 561	1.8	116.1	10.1	50	0.2	19.6	9.6	211	3.52	8.9	0.4	1.9	2.7	19	0.1	0.4	0.1	76	0.11	0.021	8	32.2	0.72	205	0.097	<1	2.37	0.008	0.11	0.1	0.02	3.1	0.1	<0.5	6	1
SA 563	1.3	250.9	15.2	55	0.3	31.7	15	261	2.87	12.8	1	4	3.3	13	0.1	0.5	0.3	82	0.11	0.048	10	54.4	0.51	127	0.064	1	2.86	0.006	0.04	0.1	0.02	4	0.1	<0.5	7	0.7
SA 564	0.8	31.9	12.5	66	0.2	26.9	13.7	385	3.8	5.9	0.4	1.6	2	17	0.1	0.3	0.2	98	0.31	0.021	7	47.3	1.53	230	0.206	1	2.54	0.009	0.12	0.1	<0.1	5.1	0.1	<0.5	8	<5
SA 565	0.9	13.4	8.8	73	0.1	17.1	10.2	669	2.7	6.6	0.3	2.8	1.9	19	0.1	0.3	0.2	63	0.27	0.046	9	31	0.47	237	0.065	1	1.73	0.008	0.08	0.1	<0.1	2.6	0.1	<0.5	6	<5
SA 566	0.7	18.3	7.2	40	0.1	16.9	8.2	500	2.06	5.5	0.4	0.9	2.4	18	<1	0.3	0.1	49	0.21	0.024	9	26.7	0.41	223	0.057	<1	1.27	0.009	0.04	0.1	<0.1	3	<1	<0.5	4	<5
STANDARD DS6	12	124.9	29.1	146	0.3	26	11.1	700	2.91	21.9	6.6	47.4	3	38	5.9	3.7	4.8	58	0.88	0.08	16	185.3	0.56	161	0.085	14	1.95	0.071	0.16	3.3	0.22	3.5	1.7	<0.5	6	4.6
SA 566A	0.8	18.8	13.2	48	0.2	12.5	6.3	232	2.32	7.2	0.4	0.5	2	19	0.1	0.3	0.2	62	0.19	0.023	9	24.7	0.41	223	0.079	1	1.43	0.011	0.07	0.1	0.01	3.3	0.1	<0.5	5	<5
SA 567	1	15	11.9	61	0.1	15.1	9.9	677	3.11	8.8	0.3	2.1	2	17	0.1	0.5	0.2	72	0.2	0.047	8	31.5	0.47	247	0.077	1	1.65	0.009	0.09	0.1	<0.1	3	0.1	<0.5	6	<5
SA 568	1.5	38.9	33.5	87	0.2	23.4	13.9	968	2.87	5.4	0.8	1	2.9	20	0.1	0.3	0.3	70	0.44	0.041	12	35.3	1	287	0.101	1	1.92	0.011	0.04	0.1	0.02	5.6	0.1	<0.5	7	<5
SA 569	1	34	9.3	52	0.1	21.9	10.4	250	2.77	7.9	0.7	1.6	3.4	14	0.1	0.5	0.2	65	0.15	0.016	13	39.2	0.46	240	0.06	1	1.83	0.008	0.03	0.1	0.02	3.3	0.1	<0.5	5	<5
SA 570	1	26.4	10.2	54	0.1	19.8	10.8	286	3.11	9.1	0.8	6.1	4.2	15	<1	0.6	0.2	70	0.13	0.025	13	38	0.5	221	0.075	1	2.1	0.008	0.04	0.2	0.02	3.6	0.1	<0.5	6	<5
SA 571	0.8	47.3	5.9	59	<1	10.1	8.3	297	2.95	5.5	0.5	<5	2.4	35	0.1	0.2	0.1	73	0.15	0.017	6	19.9	0.67	112	0.149	1	1.98	0.008	0.31	0.1	0.01	2	0.2	<0.5	7	<5
SA 572	1.3	34.7	7.5	54	0.1	12.7	7.8	339	4.42	13.3	0.7	1	3.7	21	0.1	0.5	0.2	104	0.14	0.106	9	27.7	0.62	100	0.112	1	1.98	0.006	0.15	0.1	0.01	2.7	0.1	<0.5	7	<5
SA 573	1	43.1	5.8	53	0.1	15.3	10.2	379	3.28	6.4	0.6	2.1	4.5	24	0.1	0.4	0.1	81	0.21	0.034	13	29.4	0.8	116	0.127	1	2.16	0.009	0.23	0.1	0.02	3.1	0.1	<0.5	6	0.5
SA 574	0.8	27.2	5.4	49	0.1	11	7.8	292	2.48	4.1	0.4	1.4	2.2	22	0.1	0.2	0.1	67	0.18	0.02	8	20.5	0.76	89	0.147	<1	1.75	0.008	0.16	0.1	0.02	2.1	0.1	<0.5	6	<5
STANDARD DS6	12	125.9	31.3	146	0.3	25.6	10.8	722	2.93	22.1	6.9	48.9	3.1	37	6.3	3.8	5.2	58	0.86	0.082	15	197.6	0.6	165	0.078	18	1.93	0.074	0.16	3.5	0.24	3.5	1.8	<0.5	6	4.6

APPENDIX B

Rock Sample Locations, Descriptions and Analytical Results

Rock Sample Descriptions

Sample	Location (NAD 83)		Description
	Easting	Northing	
135895	578423	7031789	grab sample of abundant angular boulders of equigranular subcrop quartz-biotite occur over a 200 sq m area
135896	582050	9029032	grab sample of feldspar porphyry intrusive: 0.5 to 1 cm kspar crystals in fine sugary quartz feldspar matrix. Local 1 to 2 mm white qz veinlets
135897	5822337	7029478	grab sample of subcrop of coarse grained quartz - biotite feldspar schist

Rock Sample Analysis

From ACME ANALYTICAL LABORATORIES LTD. 852 E. HASTINGS ST. VANCOUVER BC V6A 1R6 PHONE(604)253-3158 FAX(604)253-1716 @ CSV TEXT FORMAT

To Copper Ridge Exploration Inc. PROJECT Shamrock/Thistle

Acme file # A503378 Received: JUL 11 2005 * 12 samples in this disk file.

Analysis: GROUP 1DX - 15 GM SAMPLE LEACHED WITH 90 ML 2-2-2 HCL-HNO3-H2O AT 95 DEG. C FOR ONE HOUR, DILUTED TO 300 ML, ANALYSED BY ICP-MS.

ELEMENT	Mo	Cu	Pb	Zn	Ag	Ni	Co	Mn	Fe	As	U	Au	Th	Sr	Cd	Sb	Bi	V	Ca	P	La	Cr	Mg	Ba	Ti	B	Al	Na	K	W	Hg	Sc	Tl	S	Ga	Se
SAMPLES	ppm	ppm	ppm	ppm	ppm	ppm	ppm	ppm	%	ppm	ppm	ppb	ppm	ppm	ppm	ppm	ppm	ppm	%	%	ppm	ppm	%	ppm	%	ppm	%	%	%	ppm	ppm	ppm	ppm	%	ppm	ppm
135895	1.6	2.2	4.9	19	<.1	1.7	0.9	65	0.87	0.7	0.1	<.5	0.3	43	<.1	0.1	<.1	8	0.09	0.01	1	11	0.06	71	0.017	<.1	0.23	0.063	0.06	0.1	0.01	1.4	<.1	<.05	1	<.5
135896	0.3	3.3	14.3	19	<.1	2.4	0.6	128	0.36	2.3	0.2	<.5	2.5	5	<.1	0.1	<.1	2	0.07	0.008	2	7.3	0.03	47	0.004	<.1	0.19	0.037	0.07	0.8	<.01	0.9	<.1	<.05	1	<.5
135897	1.5	4.3	1.9	85	<.1	2	4.9	538	2.19	<.5	0.5	<.5	4.1	56	<.1	<.1	<.1	43	0.46	0.107	15	10.6	0.78	369	0.165	1	1.35	0.054	1.04	<.1	<.01	1.2	0.3	<.05	5	<.5
STANDARD	11.7	124.8	29.6	146	0.3	24.8	11.1	728	2.88	21.9	6.7	48.5	3.1	37	6	3.5	4.9	56	0.87	0.08	14	191.9	0.59	166	0.076	17	1.96	0.074	0.16	3.5	0.24	3.4	1.7	<.05	6	4.4