

LEGEND

Helicopter Type: Eurocopter AS350B2
Helicopter Registration: C-GTNT
Survey Period: September-October, 2006

SURVEY PARAMETERS:

Mean Terrain Clearance: 85 m (Helicopter)
Traverse Line Spacing: 100 m
Traverse Line Direction: 90°
Control Line Spacing: 1000 m
Control Line Direction: 180°

AIRBORNE MAGNETOMETER SYSTEM:

Geometrics G822A Cesium magnetometer
Sensitivity: 0.0005 nT
Noise Level: +/- 0.001 nT
Sensor Height: Nominally 60 m above ground level
Sensor Location: Mounted in aerofol towed 25 m beneath the helicopter
Sampling Rate: 10 readings/second

AIRBORNE ELECTROMAGNETIC SYSTEM:

T.H.E.M. Helicopter-borne Digital Time-domain Electromagnetic System

Receiver:

Three axis (X, Y and Z) dipole coils with coplanar configuration
Sensor Height: Nominally 60 m above ground level
Sensor Location: Mounted in aerofol towed 25 m beneath the aircraft
Sampling Rate: 10 readings/second

Transmitter:

Horizontal transmitter loop of 7.5 m diameter
Sensor Height: Nominally 36 m above ground level
Sensor Location: Horizontal loop towed 49 m beneath the aircraft
Frequency: 30 Hz; 60 half-sine pulses per second

DATA ACQUISITION SYSTEM:

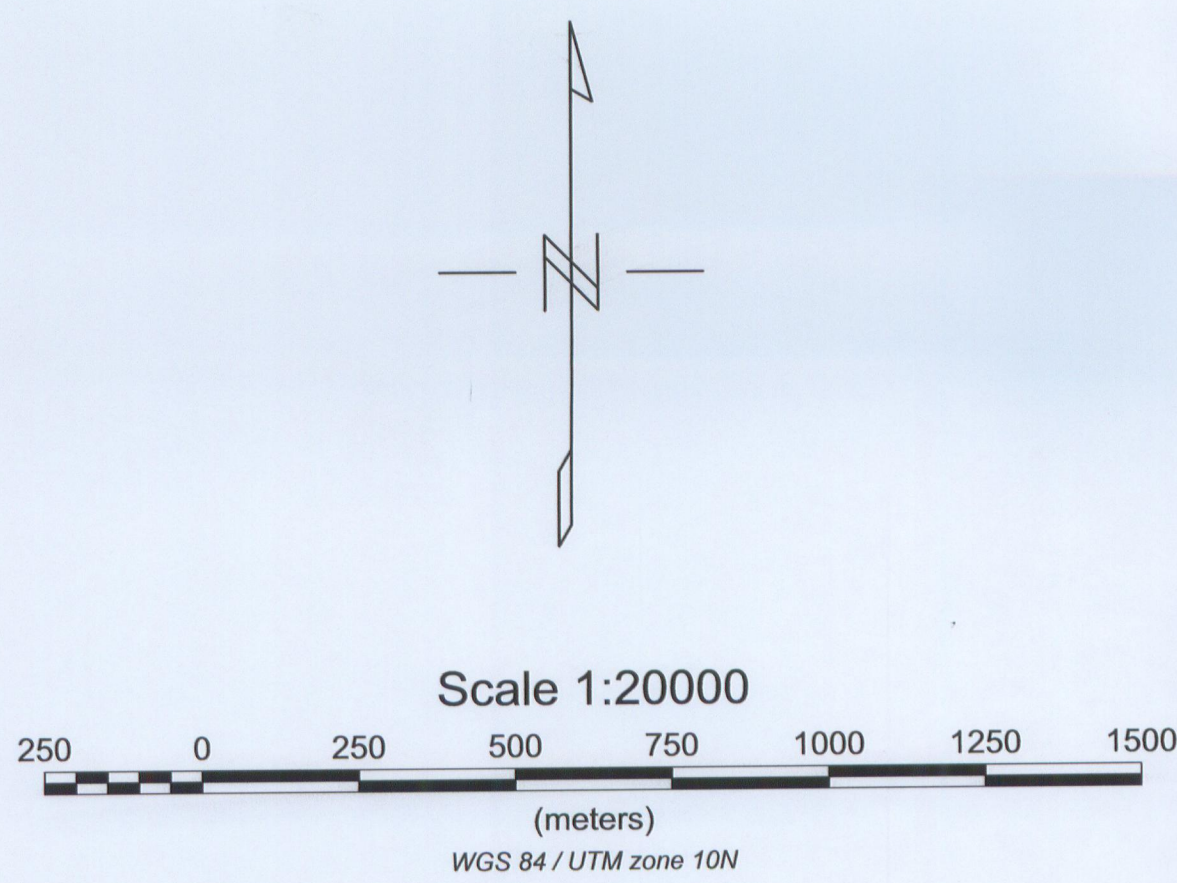
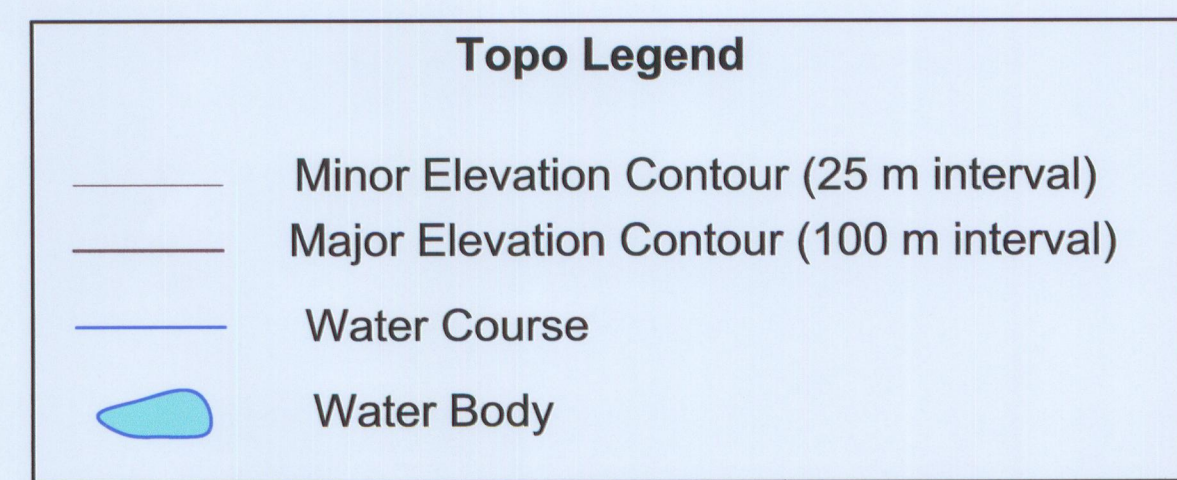
T.H.E.M. Data Collector

AIRBORNE NAVIGATION SYSTEM:

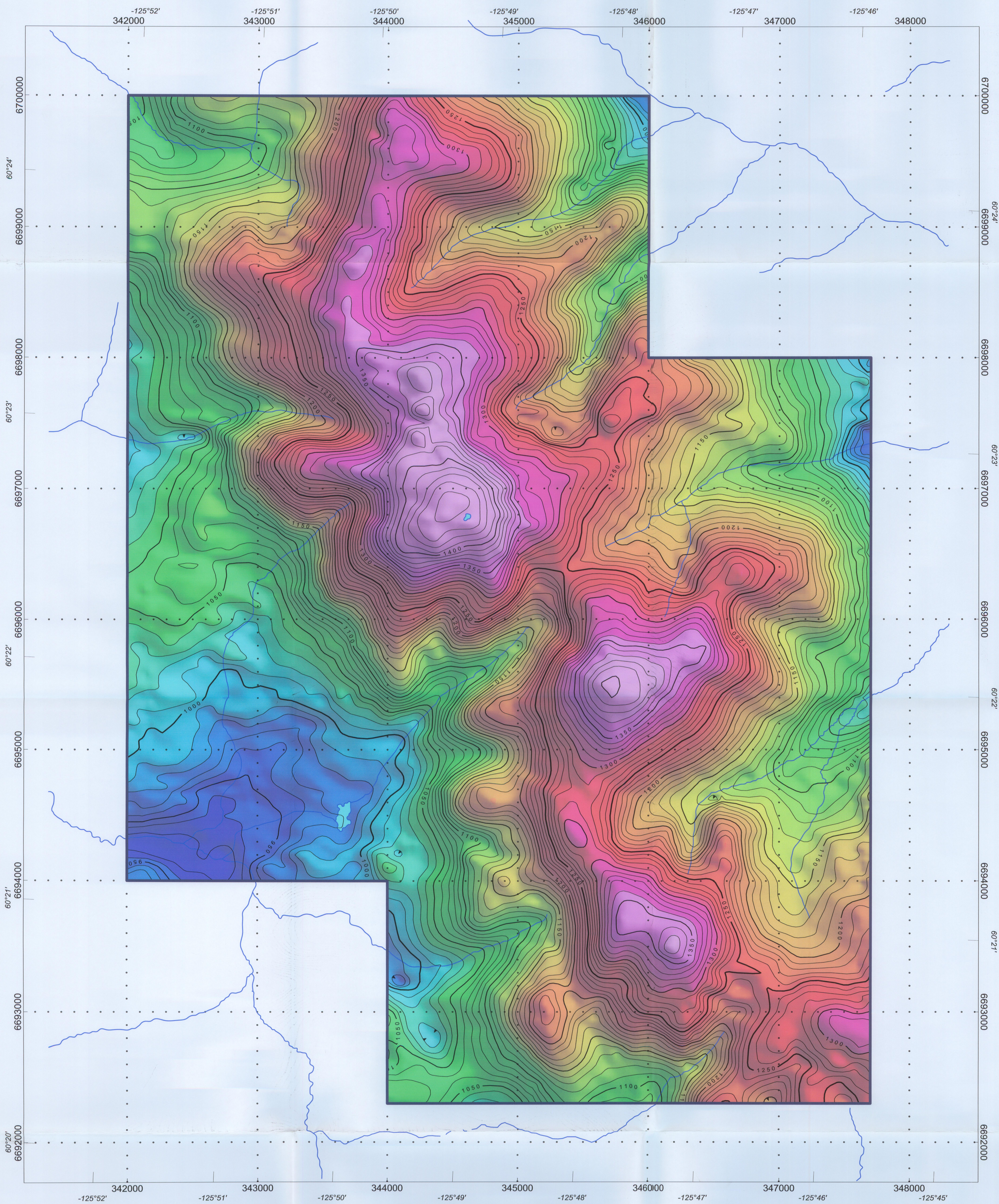
T.H.E.M. navigation system
OmniSTAR 3000LR DGPS receiver.
Pilot steering and navigation computer.

BASE STATIONS SYSTEMS:

GEM GSM-19 Overhauser Magnetometer
Sample Interval: 1 second
Sensitivity: 0.001 nT



True North Gems Inc.
Differentially Corrected GPS Flight Path Bandito Project
Airborne TDEM and Magnetic Survey
McPhar Geosurveys Ltd.



LEGEND

Helicopter Type: Eurocopter AS350B2
Helicopter Registration: C-GTNT
Survey Period: September-October, 2006

SURVEY PARAMETERS:

Mean Terrain Clearance: 85 m (Helicopter)
Traverse Line Spacing: 100 m
Traverse Line Direction: 90°
Control Line Spacing: 1000 m
Control Line Direction: 180°

AIRBORNE MAGNETOMETER SYSTEM:

Geometrics G822A Cesium magnetometer
Sensitivity: 0.0005 nT
Noise Level: +/- 0.001 nT
Sensor Height: Nominally 60 m above ground level
Sensor Location: Mounted in aerofoil towed 25 m beneath the helicopter
Sampling Rate: 10 readings/second

AIRBORNE ELECTROMAGNETIC SYSTEM:

T.H.E.M. Helicopter-borne Digital Time-domain Electromagnetic System

Receiver:

Three axis (X,Y and Z) dipole coils with coplanar configuration
Sensor Height: Nominally 60 m above ground level
Sensor Location: Mounted in aerofoil towed 25 m beneath the aircraft
Sampling Rate: 10 readings/second

Transmitter:

Horizontal transmitter loop of 7.5 m diameter
Sensor Height: Nominally 36 m above ground level
Sensor Location: Horizontal loop towed 49 m beneath the aircraft
Frequency: 30 Hz; 60 half-sine pulses per second

DATA ACQUISITION SYSTEM:

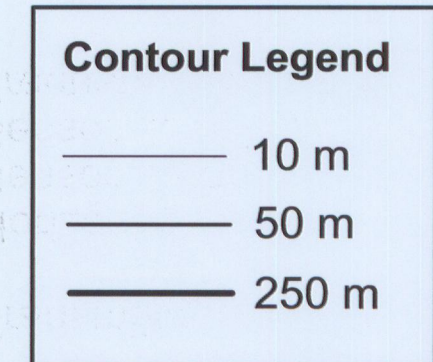
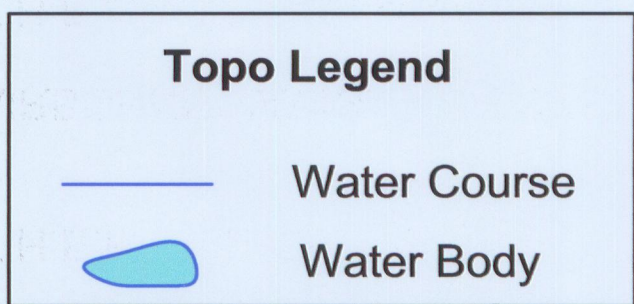
T.H.E.M. Data Collector

AIRBORNE NAVIGATION SYSTEM:

T.H.E.M. navigation system
OmniSTAR 3000LR DGPS receiver.
Pilot steering and navigation computer.

BASE STATIONS SYSTEMS:

GEM GSM-19 Overhauser Magnetometer
Sample Interval: 1 second
Sensitivity: 0.001 nT

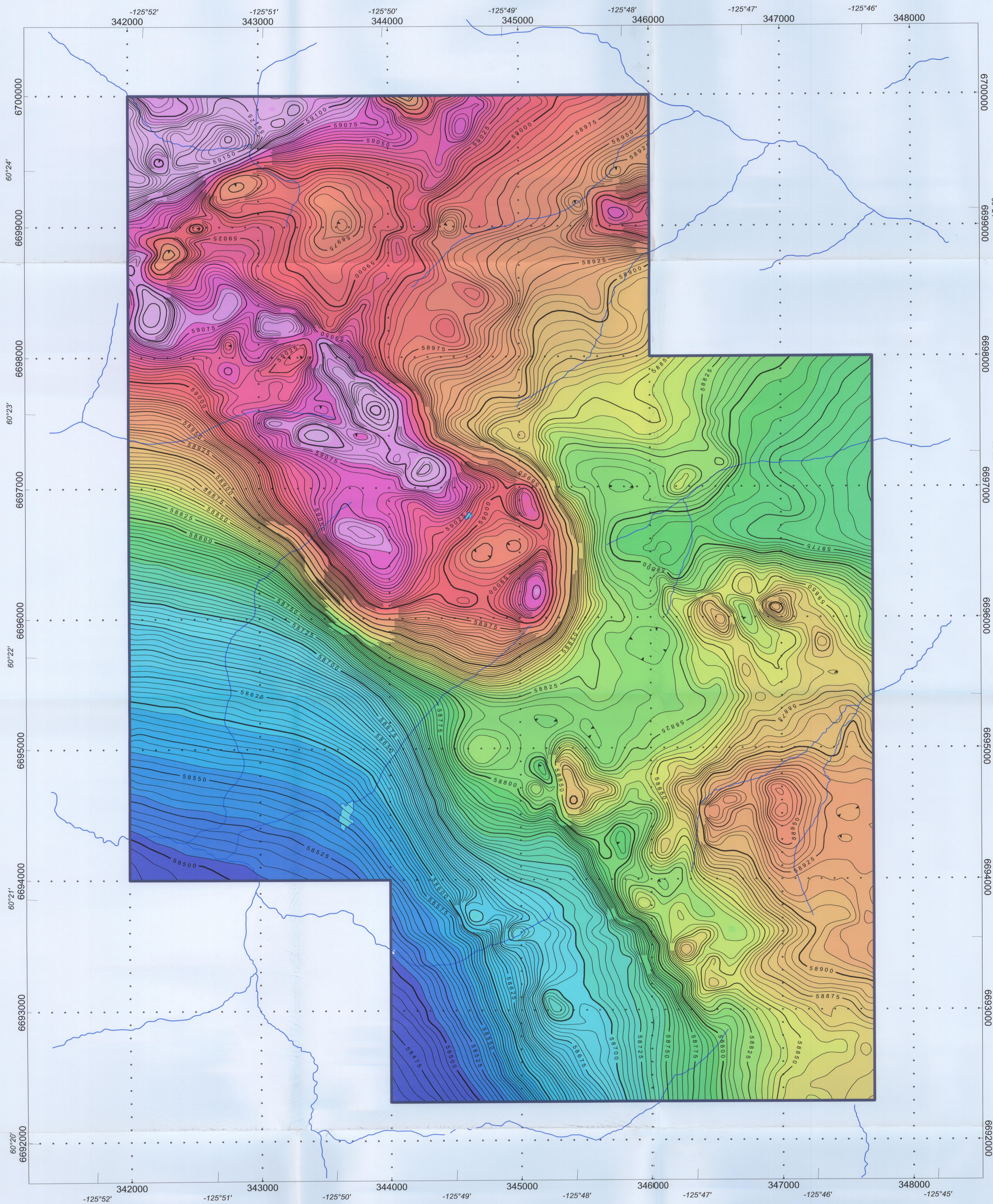


True North Gems Inc.

Digital Terrain Model Calculated from Survey Data
Bandito Project

Airborne TDEM and Magnetic Survey

McPhar Geosurveys Ltd.



LEGEND

Helicopter Type: Eurocopter AS350B2
Helicopter Registration: C-GTNT
Survey Period: September-October, 2006

SURVEY PARAMETERS:

Mean Terrain Clearance: 85 m (Helicopter)
Traverse Line Spacing: 100 m
Traverse Line Direction: 90°
Control Line Spacing: 1000 m
Control Line Direction: 180°

AIRBORNE MAGNETOMETER SYSTEM:

Geometrics G822A Cesium magnetometer
Sensitivity: 0.0005 nT
Noise Level: +/- 0.001 nT
Sensor Height: Nominally 60 m above ground level
Sensor Location: Mounted in aerofoil towed 25 m beneath the helicopter
Sampling Rate: 10 readings/second

AIRBORNE ELECTROMAGNETIC SYSTEM:

T.H.E.M. Helicopter-borne Digital Time-domain Electromagnetic System
Receiver:

Three axis (X,Y and Z) dipole coils with coplanar configuration
Sensor Height: Nominally 36 m above ground level
Sensor Location: Mounted in aerofoil towed 25 m beneath the aircraft
Sampling Rate: 10 readings/second

Transmitter:

Horizontal transmitter loop of 7.5 m diameter
Sensor Height: Nominally 36 m above ground level
Sensor Location: Horizontal loop towed 49 m beneath the aircraft
Frequency: 30 Hz; 60 half-sine pulses per second

DATA ACQUISITION SYSTEM:

T.H.E.M. Data Collector

AIRBORNE NAVIGATION SYSTEM:

T.H.E.M. navigation system
OmniSTAR 3000LR DGPS receiver.
Pilot steering and navigation computer.

BASE STATIONS SYSTEMS:

GEM GSM-19 Overhauser Magnetometer
Sample Interval: 1 second
Sensitivity: 0.001 nT

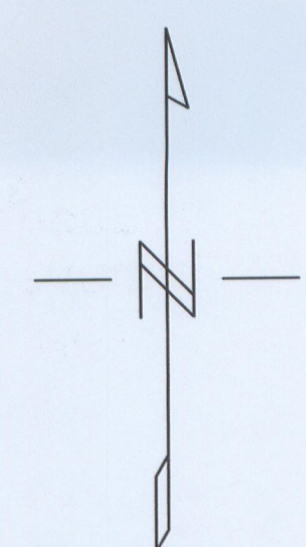
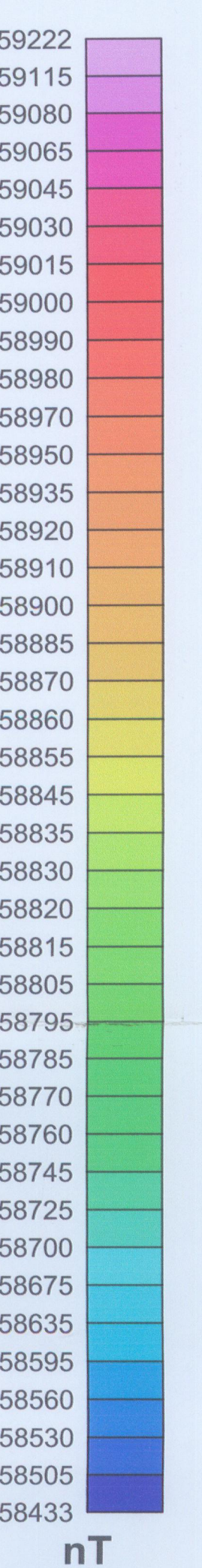


Topo Legend

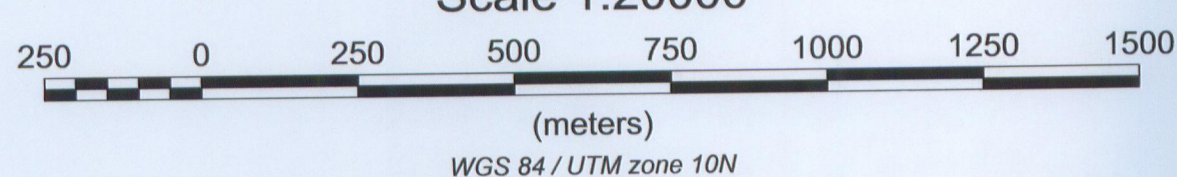
Water Course
Water Body

Contour Legend

5 nT
25 nT
100 nT



Scale 1:20000

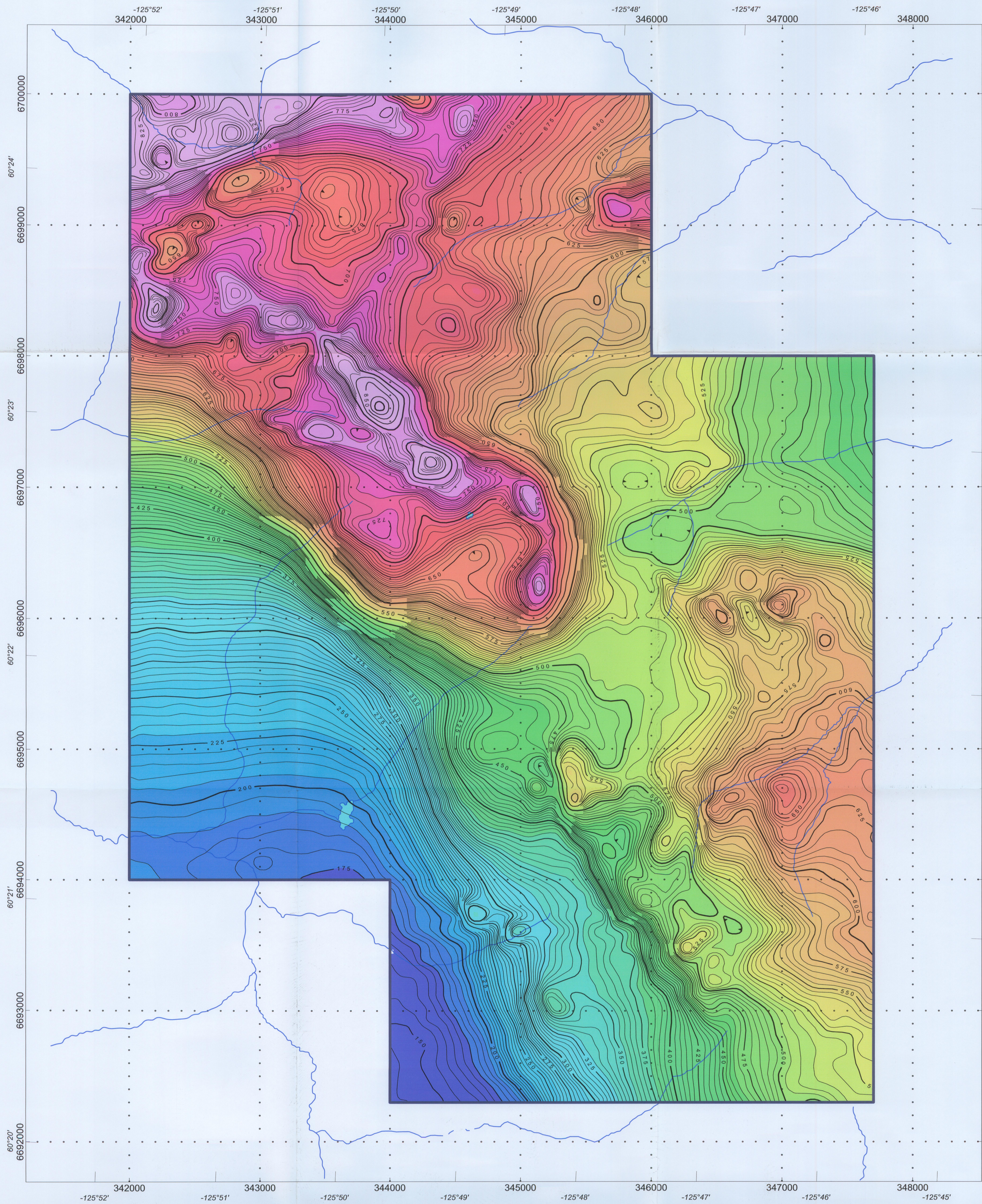


True North Gems Inc.

Total Magnetic Intensity
Bandito Project

Airborne TDEM and Magnetic Survey

McPhar Geosurveys Ltd.



LEGEND

Helicopter Type: Eurocopter AS350B2
Helicopter Registration: C-GTNT
Survey Period: September-October, 2006

SURVEY PARAMETERS:

Mean Terrain Clearance: 85 m (Helicopter)
Traverse Line Spacing: 100 m
Traverse Line Direction: 90°
Control Line Spacing: 1000 m
Control Line Direction: 180°

AIRBORNE MAGNETOMETER SYSTEM:

Geometrics G822A Cesium magnetometer
Sensitivity: 0.0005 nT
Noise Level: +/- 0.001 nT
Sensor Height: Nominally 60 m above ground level
Sensor Location: Mounted in aerofoil towed 25 m beneath the helicopter
Sampling Rate: 10 readings/second

AIRBORNE ELECTROMAGNETIC SYSTEM:

T.H.E.M. Helicopter-borne Digital Time-domain Electromagnetic System

Receiver:

Three axis (X,Y and Z) dipole coils with coplanar configuration
Sensor Height: Nominally 60 m above ground level
Sensor Location: Mounted in aerofoil towed 49 m beneath the aircraft
Sampling Rate: 10 readings/second

Transmitter:

Horizontal transmitter loop of 7.5 m diameter
Sensor Height: Nominally 36 m above ground level
Sensor Location: Horizontal loop towed 49 m beneath the aircraft
Frequency: 30 Hz; 60 half-sine pulses per second

DATA ACQUISITION SYSTEM:

T.H.E.M. Data Collector

AIRBORNE NAVIGATION SYSTEM:

T.H.E.M. navigation system
OmniSTAR 3000LR DGPS receiver.
Pilot steering and navigation computer.

BASE STATIONS SYSTEMS:

GEM GSM-19 Overhauser Magnetometer
Sample Interval: 1 second
Sensitivity: 0.001 nT



IGRF Model 2005

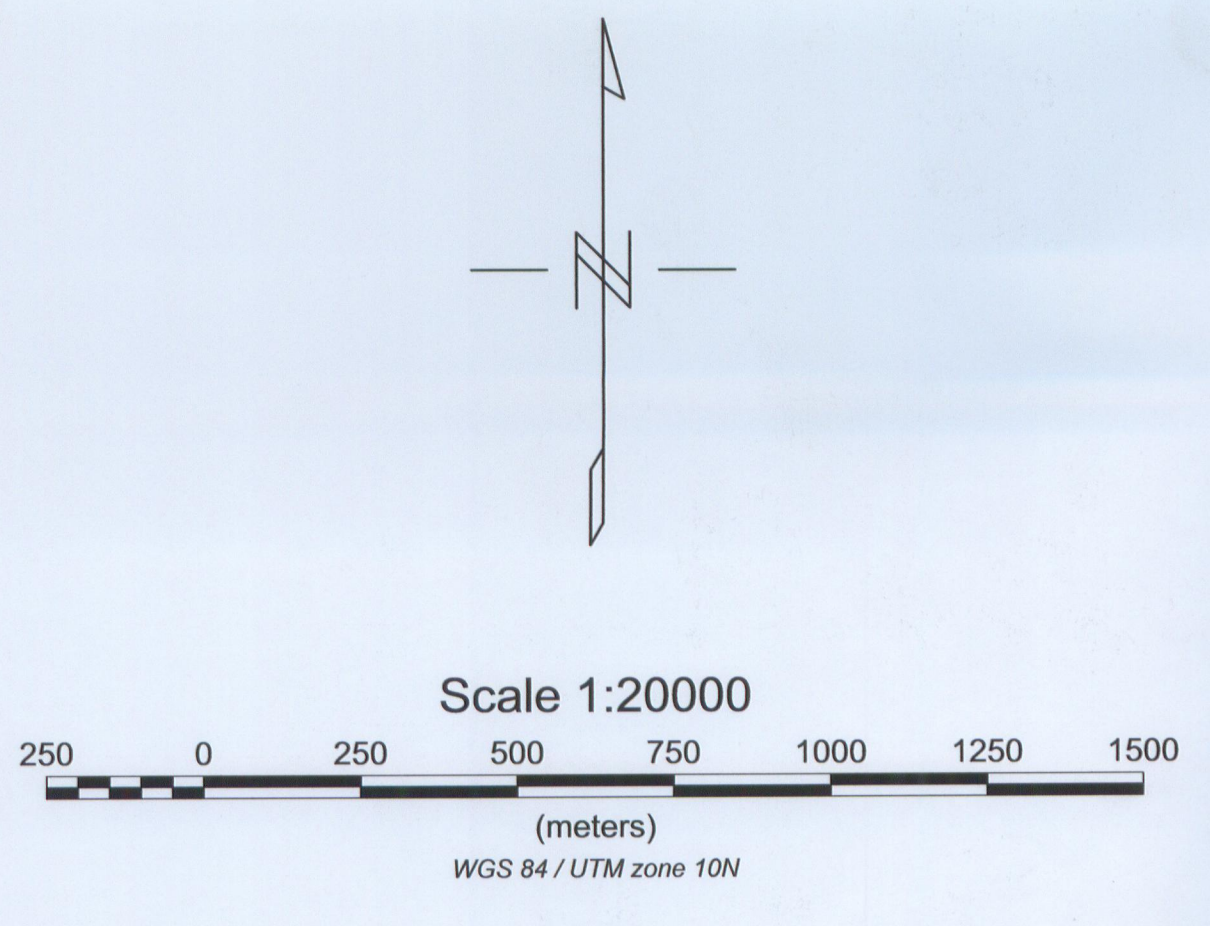
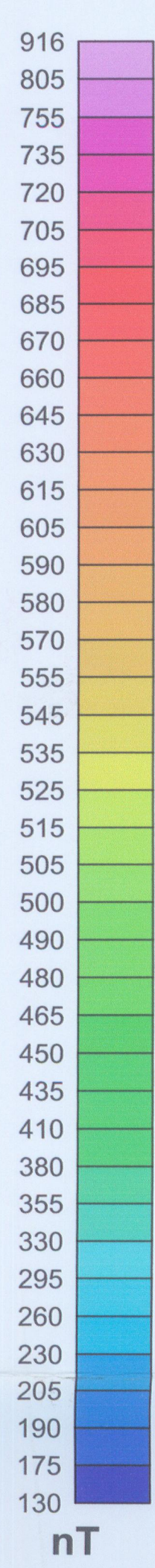
Date : 20 September 2006
Elevation : DTM - Survey Data

Topo Legend

Water Course
Water Body

Contour Legend

5 nT
25 nT
100 nT



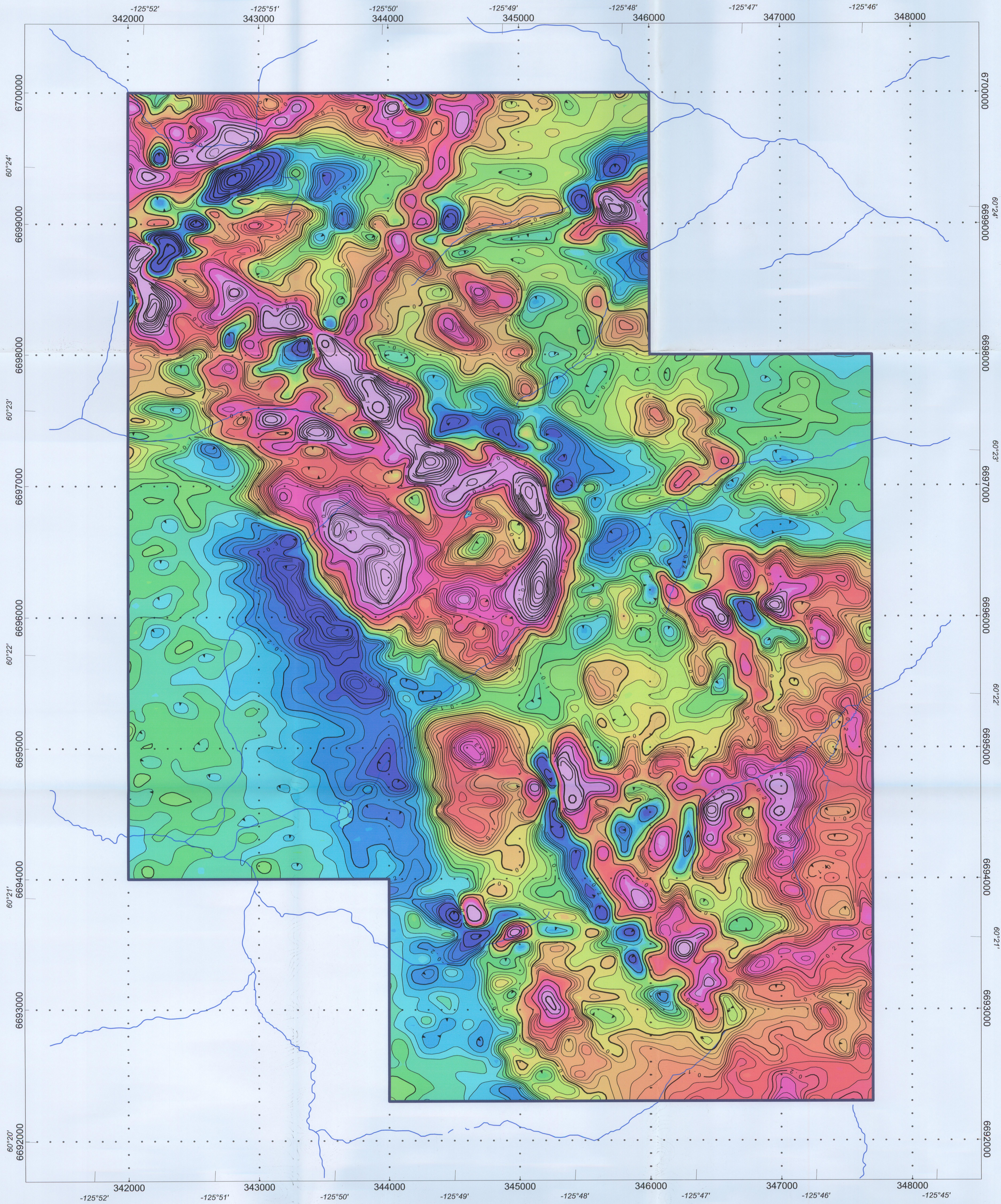
True North Gems Inc.

Total Magnetic Intensity Reduced to the Magnetic Pole
(IGRF Removed)

Bandito Project

Airborne TDEM and Magnetic Survey

McPhar Geosurveys Ltd.



LEGEND

Helicopter Type: Eurocopter AS350B2
Helicopter Registration: C-GTNT
Survey Period: September-October, 2006

SURVEY PARAMETERS:

Mean Terrain Clearance: 85 m (Helicopter)
Traverse Line Spacing: 100 m
Traverse Line Direction: 90°
Control Line Spacing: 1000 m
Control Line Direction: 180°

AIRBORNE MAGNETOMETER SYSTEM:

Geometrics G822A Cesium magnetometer
Sensitivity: 0.0005 nT
Noise Level: +/- 0.001 nT
Sensor Height: Nominally 60 m above ground level
Sensor Location: Mounted in aerofoil towed 25 m beneath the helicopter
Sampling Rate: 10 readings/second

AIRBORNE ELECTROMAGNETIC SYSTEM:

T.H.E.M. Helicopter-borne Digital Time-domain Electromagnetic System

Receiver:

Three axis (X,Y and Z) dipole coils with coplanar configuration
Sensor Height: Nominally 60 m above ground level
Sensor Location: Mounted in aerofoil towed 25 m beneath the aircraft
Sampling Rate: 10 readings/second

Transmitter:

Horizontal transmitter loop of 7.5 m diameter
Sensor Height: Nominally 36 m above ground level
Sensor Location: Horizontal loop towed 49 m beneath the aircraft
Frequency: 30 Hz; 60 half-sine pulses per second

DATA ACQUISITION SYSTEM:

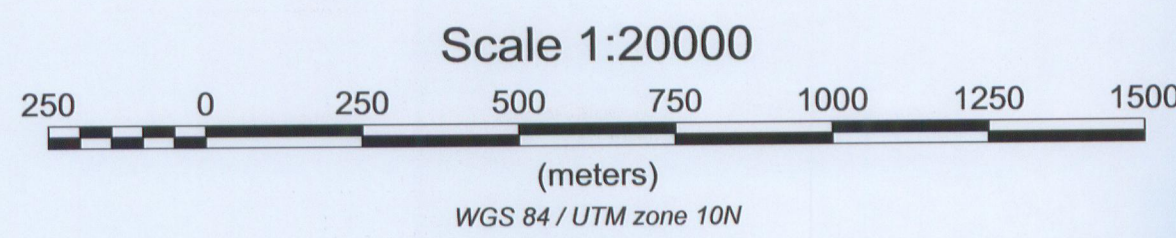
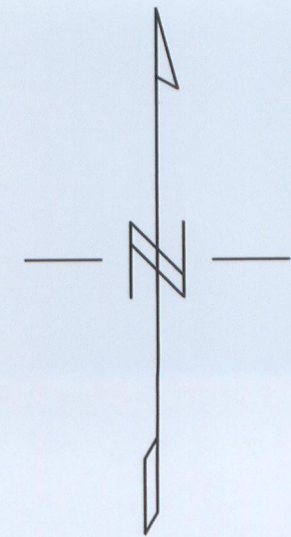
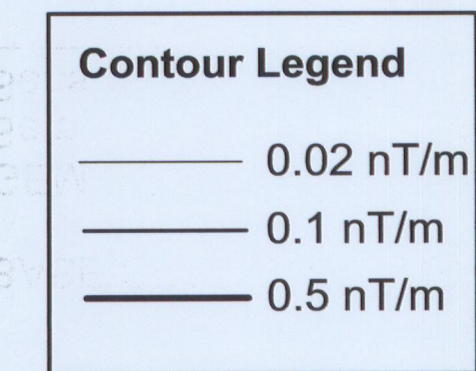
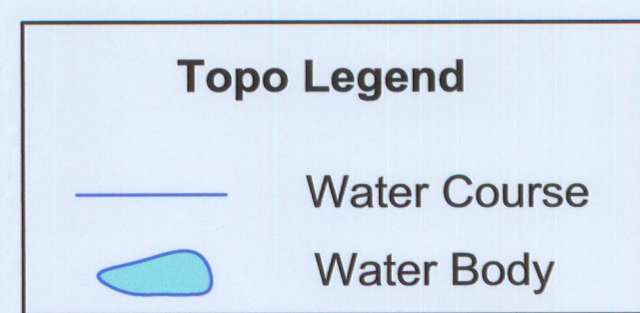
T.H.E.M. Data Collector

AIRBORNE NAVIGATION SYSTEM:

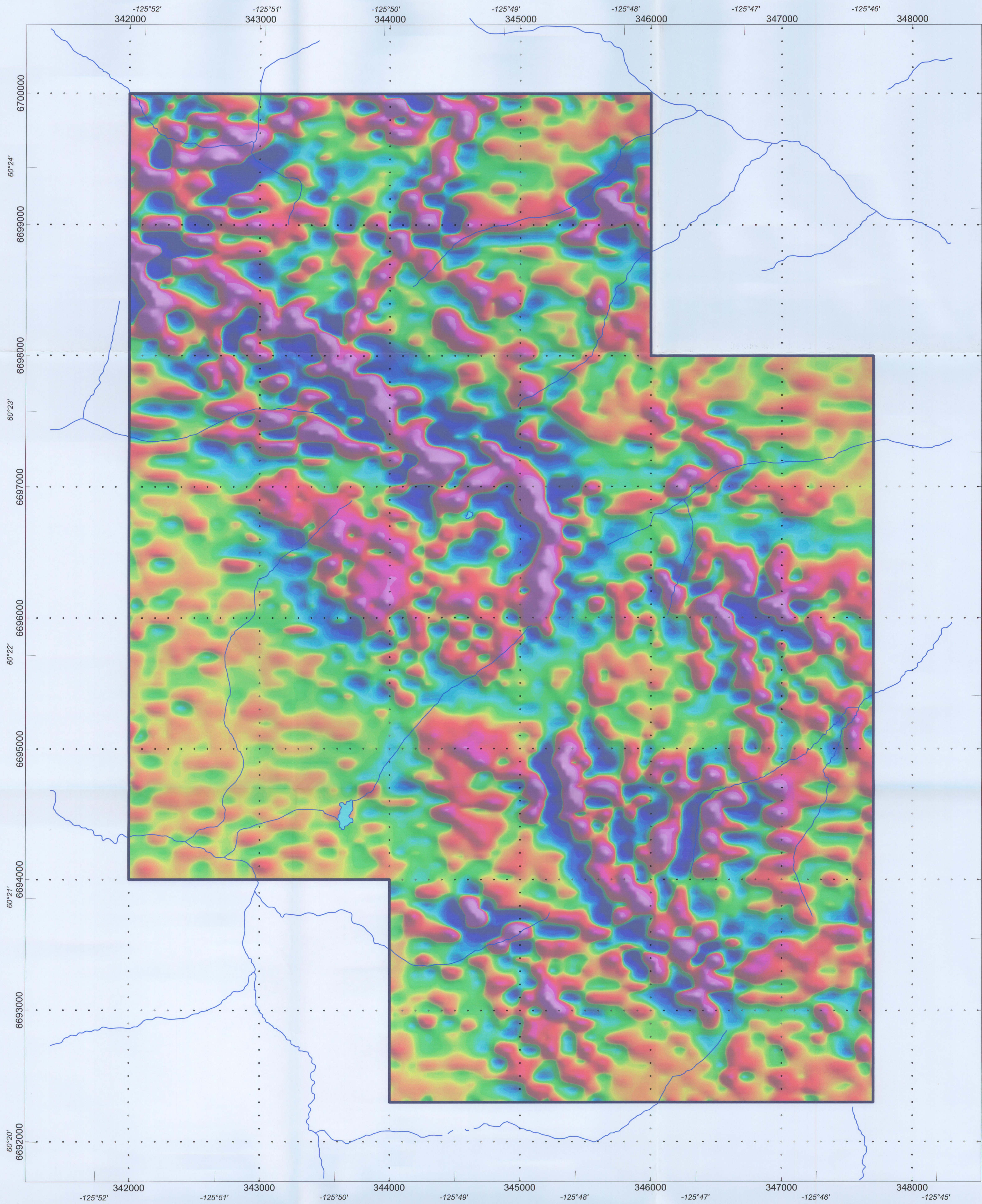
T.H.E.M. navigation system
OmniSTAR 3000LR DGPS receiver.
Pilot steering and navigation computer.

BASE STATIONS SYSTEMS:

GEM GSM-19 Overhauser Magnetometer
Sample Interval: 1 second
Sensitivity: 0.001 nT



True North Gems Inc.
Calculated First Vertical Derivative of TMI Bandito Project
Airborne TDEM and Magnetic Survey
McPhar Geosurveys Ltd.



LEGEND

Helicopter Type: Eurocopter AS350B2
Helicopter Registration: C-GTNT
Survey Period: September-October, 2006

SURVEY PARAMETERS:

Mean Terrain Clearance: 85 m (Helicopter)
Traverse Line Spacing: 100 m
Traverse Line Direction: 90°
Control Line Spacing: 1000 m
Control Line Direction: 180°

AIRBORNE MAGNETOMETER SYSTEM:

Geometrics G822A Cesium magnetometer
Sensitivity: 0.0005 nT
Noise Level: +/- 0.001 nT
Sensor Height: Nominally 60 m above ground level
Sensor Location: Mounted in aerofoil towed 25 m beneath the helicopter
Sampling Rate: 10 readings/second

AIRBORNE ELECTROMAGNETIC SYSTEM:

T.H.E.M. Helicopter-borne Digital Time-domain Electromagnetic System

Receiver:

Three axis (X,Y and Z) dipole coils with coplanar configuration
Sensor Height: Nominally 60 m above ground level
Sensor Location: Mounted in aerofoil towed 25 m beneath the aircraft
Sampling Rate: 10 readings/second

Transmitter:

Horizontal transmitter loop of 7.5 m diameter
Sensor Height: Nominally 36 m above ground level
Sensor Location: Horizontal loop towed 49 m beneath the aircraft
Frequency: 30 Hz; 60 half-sine pulses per second

DATA ACQUISITION SYSTEM:

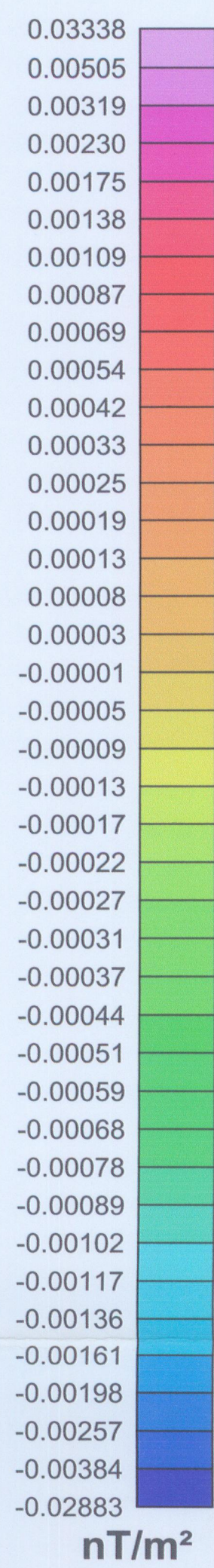
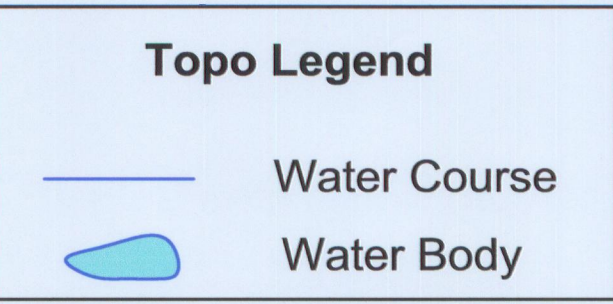
T.H.E.M. Data Collector

AIRBORNE NAVIGATION SYSTEM:

T.H.E.M. navigation system
OmniSTAR 3000LR DGPS receiver.
Pilot steering and navigation computer.

BASE STATIONS SYSTEMS:

GEM GSM-19 Overhauser Magnetometer
Sample Interval: 1 second
Sensitivity: 0.001 nT

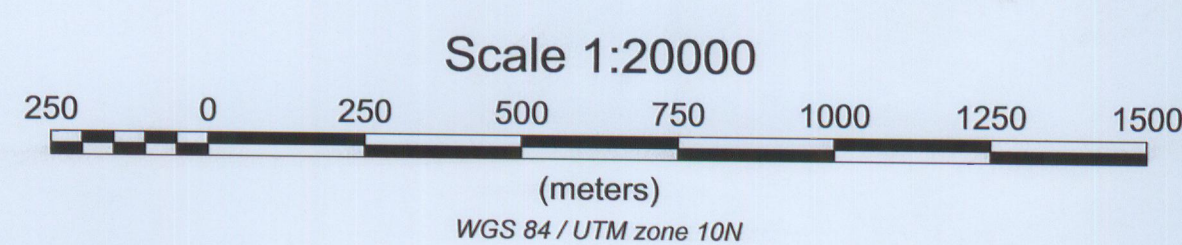
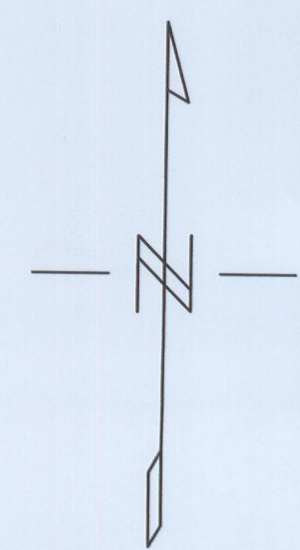
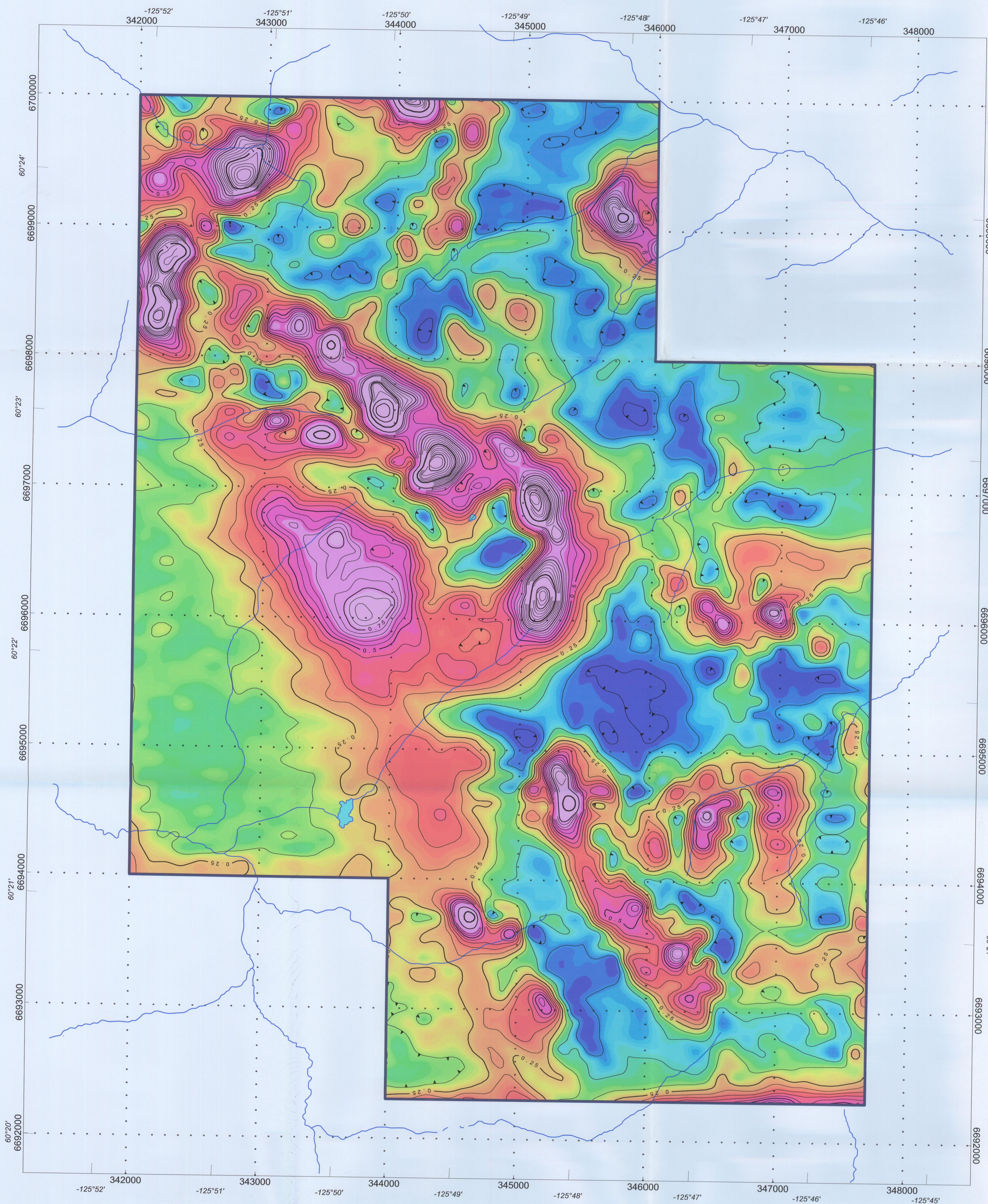


True North Gems Inc.

Calculated Second Vertical Derivative of TMI
Bandito Project

Airborne TDEM and Magnetic Survey

McPhar Geosurveys Ltd.



LEGEND

Helicopter Type: Eurocopter AS350B2
Helicopter Registration: C-GTNT
Survey Period: September-October, 2006

SURVEY PARAMETERS:

Mean Terrain Clearance: 85 m (Helicopter)
Traverse Line Spacing: 100 m
Traverse Line Direction: 90°
Control Line Spacing: 1000 m
Control Line Direction: 180°

AIRBORNE MAGNETOMETER SYSTEM:

Geometrics G822A Cesium magnetometer
Sensitivity: 0.0005 nT
Noise Level: +/- 0.001 nT
Sensor Height: Nominally 60 m above ground level
Sensor Location: Mounted in aerofoil towed 25 m beneath the helicopter
Sampling Rate: 10 readings/second

AIRBORNE ELECTROMAGNETIC SYSTEM:

T.H.E.M. Helicopter-borne Digital Time-domain Electromagnetic System

Receiver:

Three axis (X,Y and Z) dipole coils with coplanar configuration
Sensor Height: Nominally 60 m above ground level
Sensor Location: Mounted in aerofoil towed 49 m beneath the aircraft
Sampling Rate: 10 readings/second

Transmitter:

Horizontal transmitter loop of 7.5 m diameter
Sensor Height: Nominally 36 m above ground level
Sensor Location: Horizontal loop towed 49 m beneath the aircraft
Frequency: 30 Hz; 60 half-sine pulses per second

DATA ACQUISITION SYSTEM:

T.H.E.M. Data Collector

AIRBORNE NAVIGATION SYSTEM:

T.H.E.M. navigation system
OmniSTAR 3000LR DGPS receiver.
Pilot steering and navigation computer.

BASE STATIONS SYSTEMS:

GEM GSM-19 Overhauser Magnetometer
Sample Interval: 1 second
Sensitivity: 0.001 nT

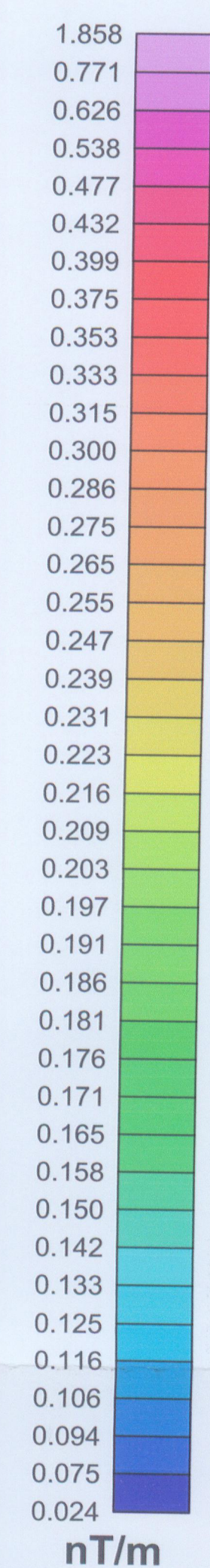


Topo Legend

Water Course
Water Body

Contour Legend

0.05 nT/m
0.25 nT/m
1 nT/m

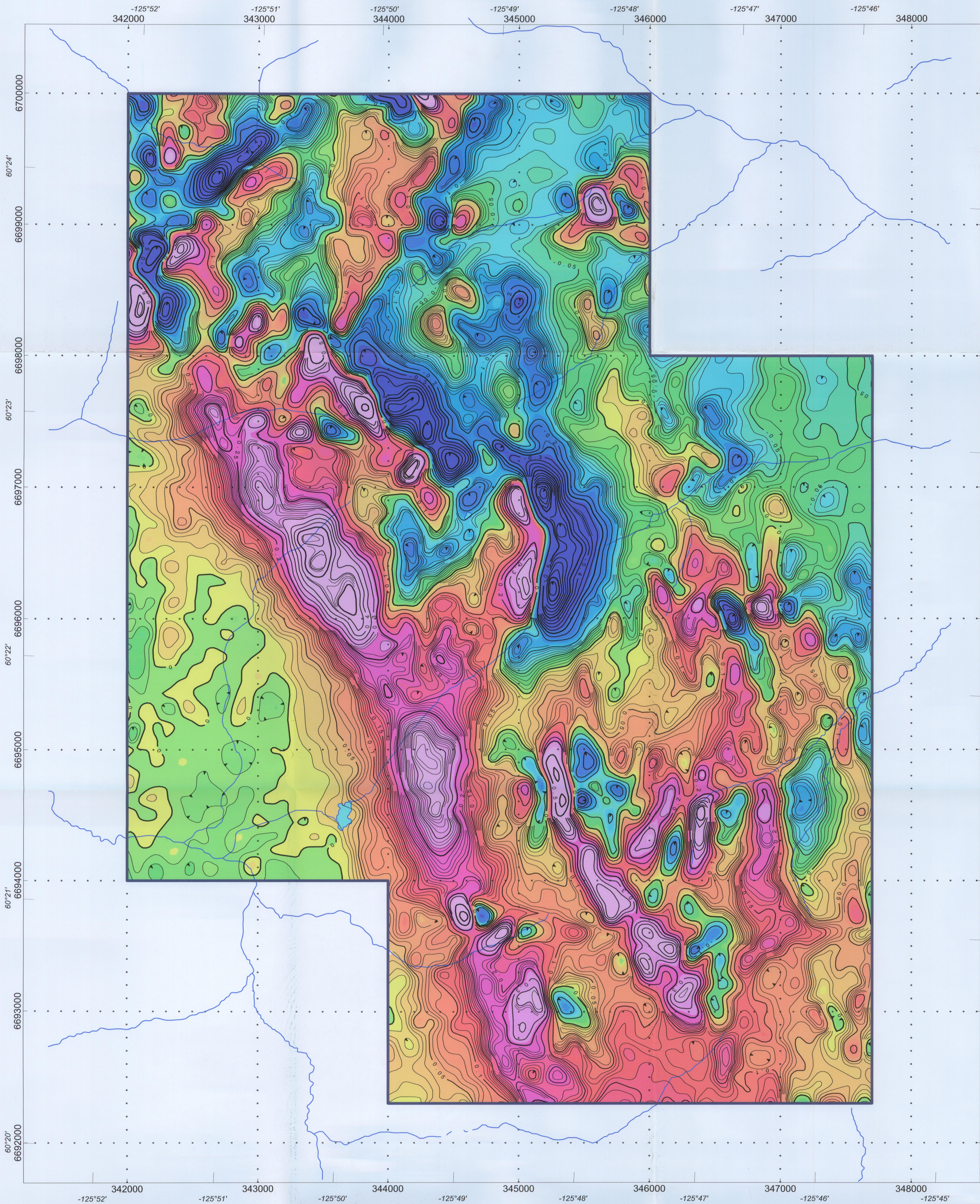


True North Gems Inc.

Calculated Analytical Signal of TMI
Bandito Project

Airborne TDEM and Magnetic Survey

McPhar Geosurveys Ltd.



LEGEND

Helicopter Type: Eurocopter AS350B2
Helicopter Registration: C-GTNT
Survey Period: September-October, 2006

SURVEY PARAMETERS:

Mean Terrain Clearance: 85 m (Helicopter)
Traverse Line Spacing: 100 m
Traverse Line Direction: 90°
Control Line Spacing: 1000 m
Control Line Direction: 180°

AIRBORNE MAGNETOMETER SYSTEM:

Geometrics G822A Cesium magnetometer
Sensitivity: 0.0005 nT
Noise Level: +/- 0.001 nT
Sensor Height: Nominally 60 m above ground level
Sensor Location: Mounted in aerofoil towed 25 m beneath the helicopter
Sampling Rate: 10 readings/second

AIRBORNE ELECTROMAGNETIC SYSTEM:

T.H.E.M. Helicopter-borne Digital Time-domain Electromagnetic System

Receiver:

Three axis (X,Y and Z) dipole coils with coplanar configuration
Sensor Height: Nominally 60 m above ground level
Sensor Location: Mounted in aerofoil towed 25 m beneath the aircraft
Sampling Rate: 10 readings/second

Transmitter:

Horizontal transmitter loop of 7.5 m diameter
Sensor Height: Nominally 36 m above ground level
Sensor Location: Horizontal loop towed 49 m beneath the aircraft
Frequency: 30 Hz; 60 half-sine pulses per second

DATA ACQUISITION SYSTEM:

T.H.E.M. Data Collector

AIRBORNE NAVIGATION SYSTEM:

T.H.E.M. navigation system
OmniSTAR 3000LR DGPS receiver.
Pilot steering and navigation computer.

BASE STATIONS SYSTEMS:

GEM GSM-19 Overhauser Magnetometer
Sample Interval: 1 second
Sensitivity: 0.001 nT



Topo Legend

Water Course

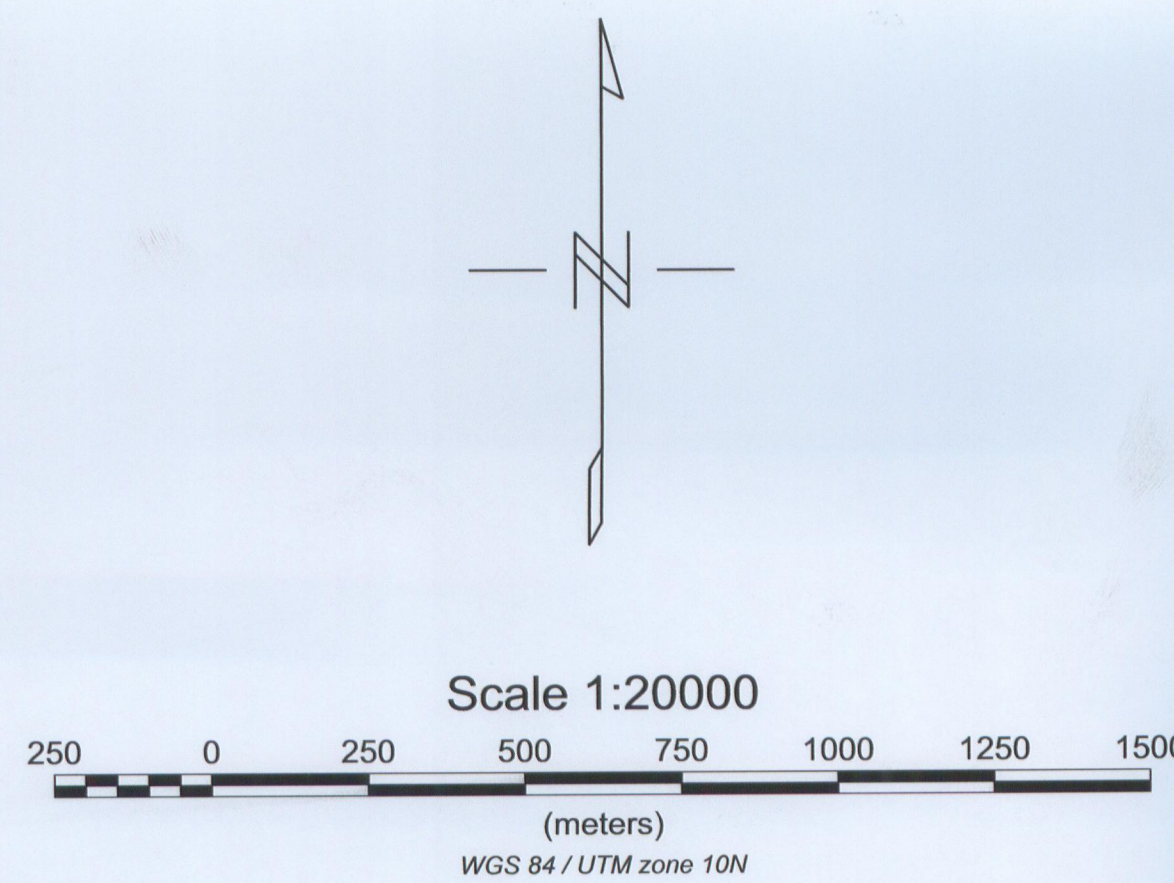
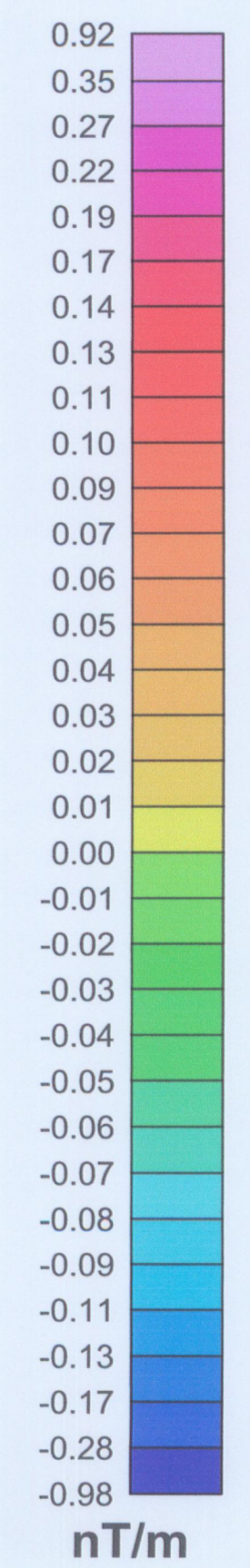
Water Body

Contour Legend

0.01 nT/m

0.05 nT/m

0.25 nT/m



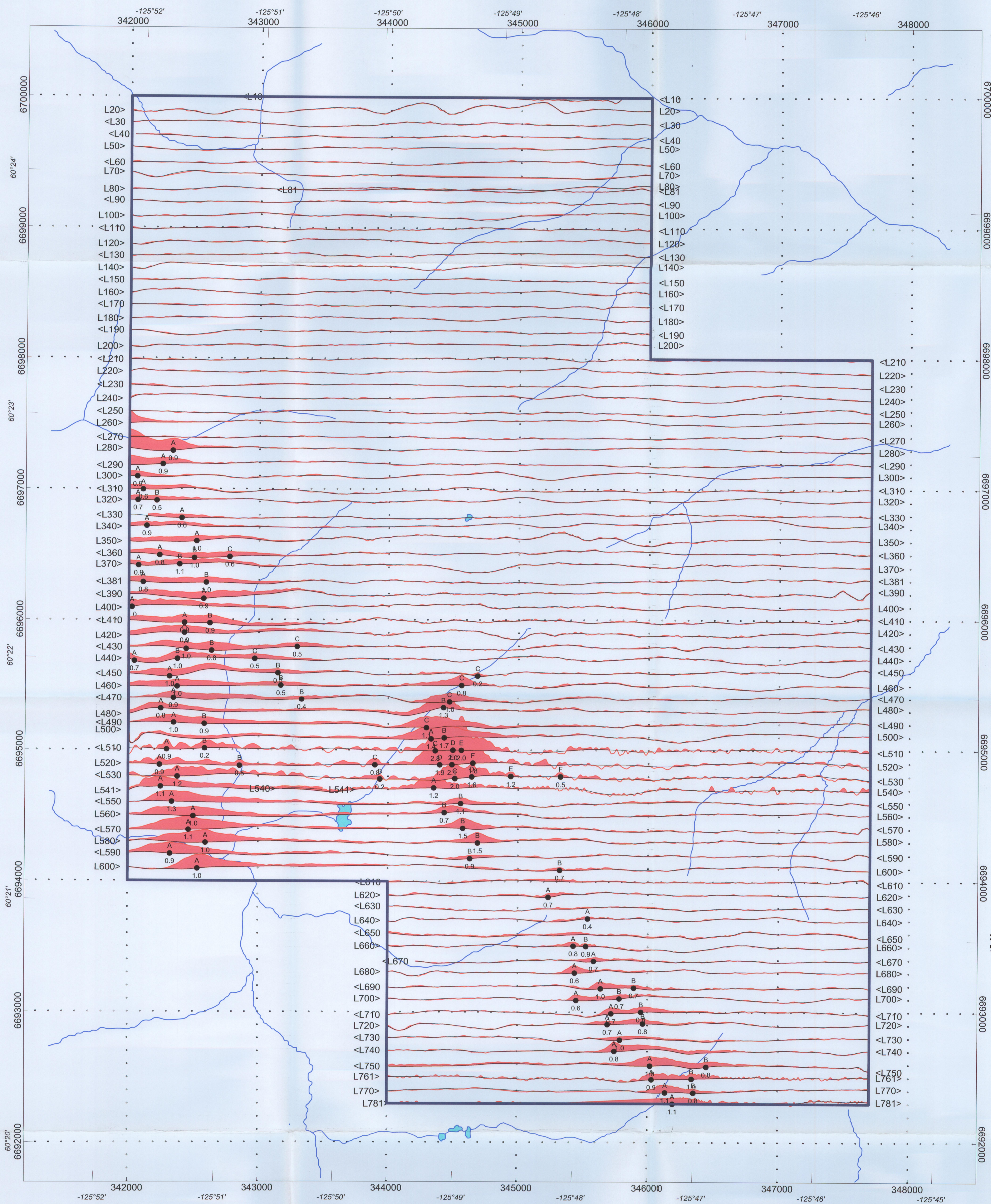
True North Gems Inc.

Calculated Horizontal Gradient of TMI

Bandito Project

Airborne TDEM and Magnetic Survey

McPhar Geosurveys Ltd.



LEGEND

Helicopter Type: Eurocopter AS350B2
Helicopter Registration: C-GTNT
Survey Period: September-October, 2006

SURVEY PARAMETERS:

Mean Terrain Clearance: 85 m (Helicopter)
Traverse Line Spacing: 100 m
Traverse Line Direction: 90°
Control Line Spacing: 1000 m
Control Line Direction: 180°

AIRBORNE MAGNETOMETER SYSTEM:

Geometrics G822A Cesium magnetometer
Sensitivity: 0.0005 nT
Noise Level: +/- 0.001 nT
Sensor Height: Nominally 60 m above ground level
Sensor Location: Mounted in aerofail towed 25 m beneath the helicopter
Sampling Rate: 10 readings/second

AIRBORNE ELECTROMAGNETIC SYSTEM:

T.H.E.M. Helicopter-borne Digital Time-domain Electromagnetic System

Receiver:

Three axis (X,Y and Z) dipole coils with coplanar configuration
Sensor Height: Nominally 60 m above ground level
Sensor Location: Mounted in aerofail towed 25 m beneath the aircraft
Sampling Rate: 10 readings/second

Transmitter:

Horizontal transmitter loop of 7.5 m diameter
Sensor Height: Nominally 36 m above ground level
Sensor Location: Horizontal loop towed 49 m beneath the aircraft
Frequency: 30 Hz; 60 half-sine pulses per second

DATA ACQUISITION SYSTEM:

T.H.E.M. Data Collector

AIRBORNE NAVIGATION SYSTEM:

T.H.E.M. navigation system
OmniSTAR 3000LR DGPS receiver.
Pilot steering and navigation computer.

BASE STATIONS SYSTEMS:

GEM GSM-19 Overhauser Magnetometer
Sample Interval: 1 second
Sensitivity: 0.001 nT



Topo Legend

Water Course
Water Body

EM Profiles Legend

base level 0 ppm
Vertical scale : 200 ppm / mm

EM Anomaly Legend

Anomaly label
3.4 Conductance in Siemens

Settings of Time Windows of THEM System

Window #	Start at sample	# of samples in window	Start Time	End Time	Window Centre
			in milliseconds		
1	44	2	0.114	0.130	0.1221
2	44	1	0.116	0.136	0.1261
3	69	1	1.123	1.123	1.1230
4	69	1	1.481	1.481	1.4811
5	108	2	1.758	1.774	1.7659
6	131	1	2.132	2.132	2.1322
7	157	1	2.555	2.555	2.5553
8	197	2	3.295	3.298	3.2964
9	219	1	3.564	3.564	3.5644
10	227	3	3.699	3.727	3.7109
11	228	3	3.727	3.760	3.7435
12	231	3	3.760	3.782	3.7706
13	233	5	3.792	3.857	3.8249
14	238	5	3.874	3.939	3.9062
15	242	5	3.938	4.004	3.9713
16	246	11	4.004	4.167	4.0853
17	249	17	4.053	4.313	4.1829
18	258	23	4.199	4.557	4.3782
19	265	29	4.313	4.760	4.5410
20	272	35	4.427	4.990	4.7038
21	283	41	4.606	5.257	4.9316
22	298	47	4.860	5.569	5.2146
23	312	53	5.078	5.824	5.45013
24	328	59	5.339	6.293	5.81605
25	345	65	5.615	6.657	6.1360
26	364	71	5.924	7.064	6.4941
27	382	77	6.217	7.454	6.8359
28	400	83	6.510	7.845	7.1777
29	415	89	6.755	8.187	7.4707
30	432	95	7.011	8.561	7.7862
31	452	101	7.357	8.984	8.1705
32	476	107	7.747	9.473	8.6100
33	495	113	8.057	9.850	8.9551
34	520	119	8.484	10.384	9.4288
35	540	125	8.982	10.867	9.9241

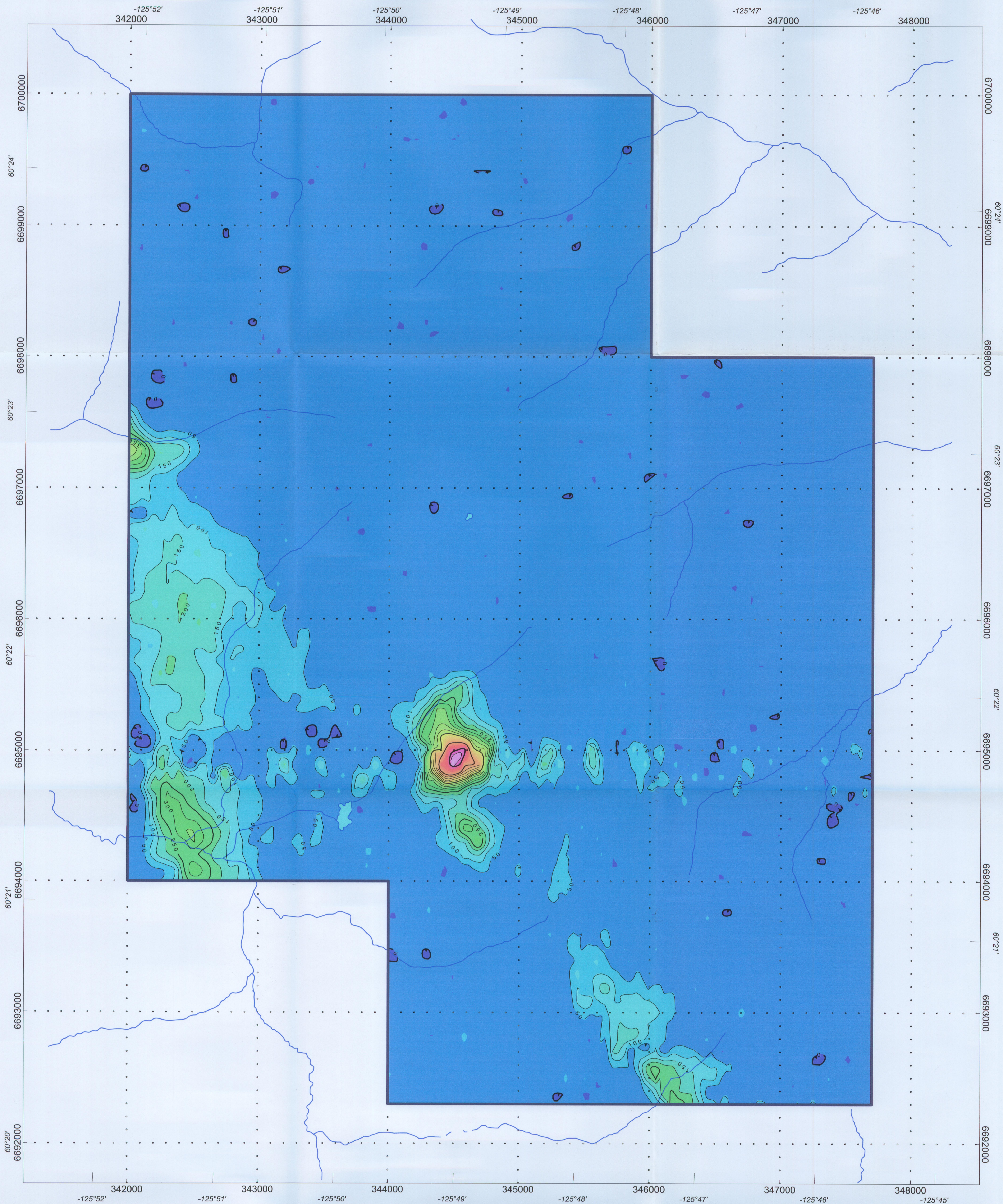
McPHAR

True North Gems Inc.

EM Offset Profiles with Picked Anomalies
dB/dt - Z-channel - Time Window No. 12
Bandito Project

Airborne TDEM and Magnetic Survey

McPhar Geosurveys Ltd.



LEGEND

Helicopter Type: Eurocopter AS350B2
Helicopter Registration: C-GTNT
Survey Period: September-October, 2006

SURVEY PARAMETERS:

Mean Terrain Clearance: 85 m (Helicopter)
Traverse Line Spacing: 100 m
Traverse Line Direction: 90°
Control Line Spacing: 1000 m
Control Line Direction: 180°

AIRBORNE MAGNETOMETER SYSTEM:

Geometrics G822A Cesium magnetometer
Sensitivity: 0.0005 nT
Noise Level: +/- 0.001 nT
Sensor Height: Nominally 60 m above ground level
Sensor Location: Mounted in aerofoil towed 25 m beneath the helicopter
Sampling Rate: 10 readings/second

AIRBORNE ELECTROMAGNETIC SYSTEM:

T.H.E.M. Helicopter-borne Digital Time-domain Electromagnetic System

Receiver:

Three axis (X,Y and Z) dipole coils with coplanar configuration
Sensor Height: Nominally 60 m above ground level
Sensor Location: Mounted in aerofoil towed 25 m beneath the aircraft
Sampling Rate: 10 readings/second

Transmitter:

Horizontal transmitter loop of 7.5 m diameter
Sensor Height: Nominally 36 m above ground level
Sensor Location: Horizontal loop towed 49 m beneath the aircraft
Frequency: 30 Hz; 60 half-sine pulses per second

DATA ACQUISITION SYSTEM:

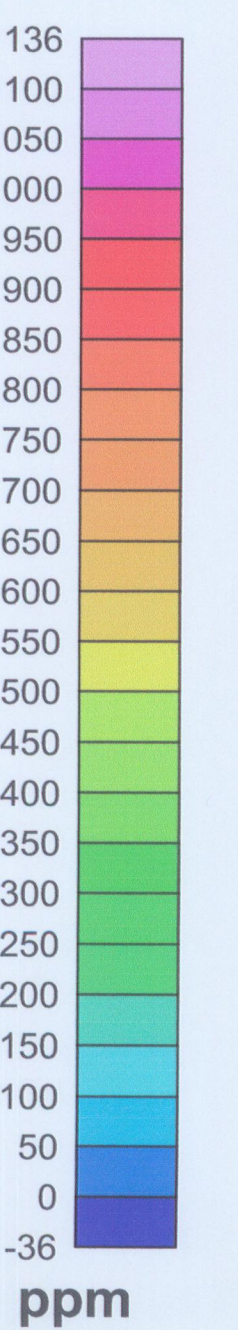
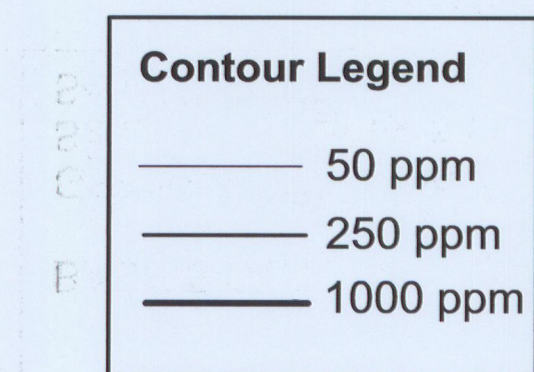
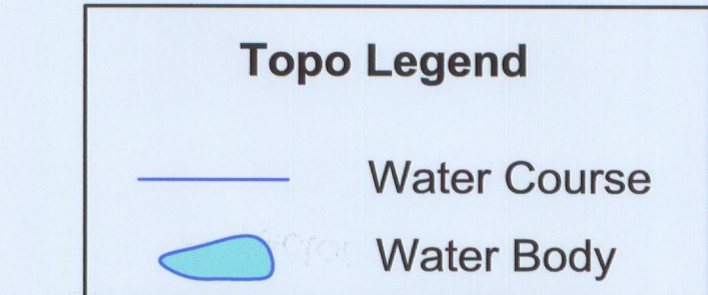
T.H.E.M. Data Collector

AIRBORNE NAVIGATION SYSTEM:

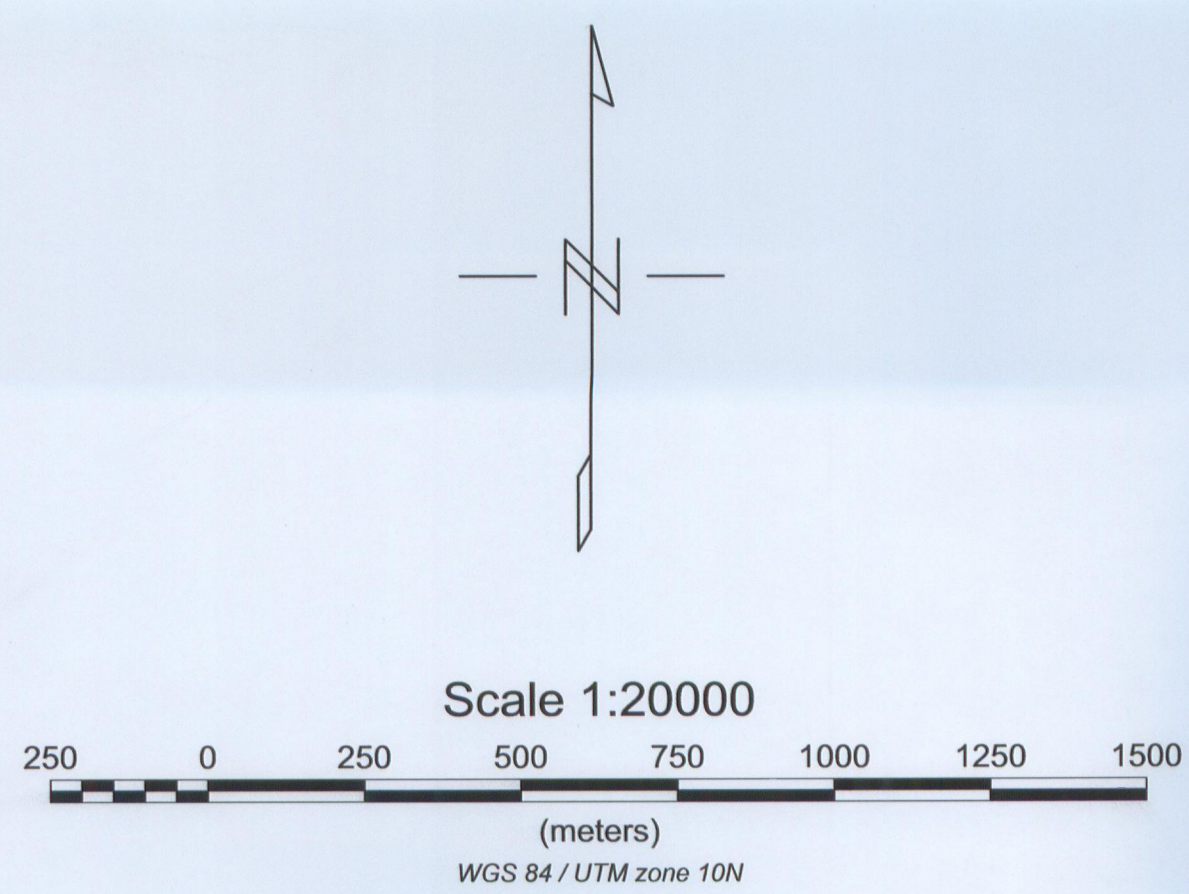
T.H.E.M. navigation system
OmniSTAR 3000LR DGPS receiver.
Pilot steering and navigation computer.

BASE STATIONS SYSTEMS:

GEM GSM-19 Overhauser Magnetometer
Sample Interval: 1 second
Sensitivity: 0.001 nT



Settings of Time Windows of THEM System					
Window #	Start of sample	# of samples in window	Start Time	End Time	Window Centre
in milliseconds					
1	7	2	0.114	0.130	0.1221
2	44	1	0.716	0.716	0.7161
3	49	1	1.123	1.123	1.1230
4	81	1	1.481	1.481	1.4813
5	108	2	1.758	1.774	1.7660
6	131	1	2.132	2.132	2.1322
7	157	1	2.209	2.209	2.2093
8	197	1	3.208	3.208	3.2084
9	219	1	3.964	3.964	3.9644
10	227	3	3.965	3.773	3.7189
11	229	3	3.727	3.769	3.7456
12	231	3	3.762	3.752	3.7570
13	233	5	3.792	3.857	3.8249
14	238	5	3.874	3.938	3.9062
15	242	5	3.939	4.004	3.9713
16	246	11	4.004	4.197	4.0953
17	249	17	4.053	4.315	4.1829
18	258	23	4.198	4.457	4.3282
19	265	29	4.313	4.768	4.5410
20	272	35	4.437	4.980	4.7088
21	283	41	4.606	5.257	4.9318
22	298	47	4.850	5.589	5.2198
23	312	53	5.078	5.924	5.5013
24	326	59	5.339	6.253	5.7916
25	345	65	5.615	6.657	6.1360
26	364	71	5.904	6.954	6.4841
27	382	77	6.217	7.454	6.8359
28	410	83	6.510	7.945	7.2277
29	432	89	6.755	8.187	7.4707
30	452	95	7.031	8.561	7.7962
31	462	101	7.307	9.084	8.1935
32	476	107	7.747	9.473	8.6180
33	495	113	8.057	9.880	8.9681
34	520	119	8.464	10.388	9.4238
35	545	125	8.789	10.800	9.7981

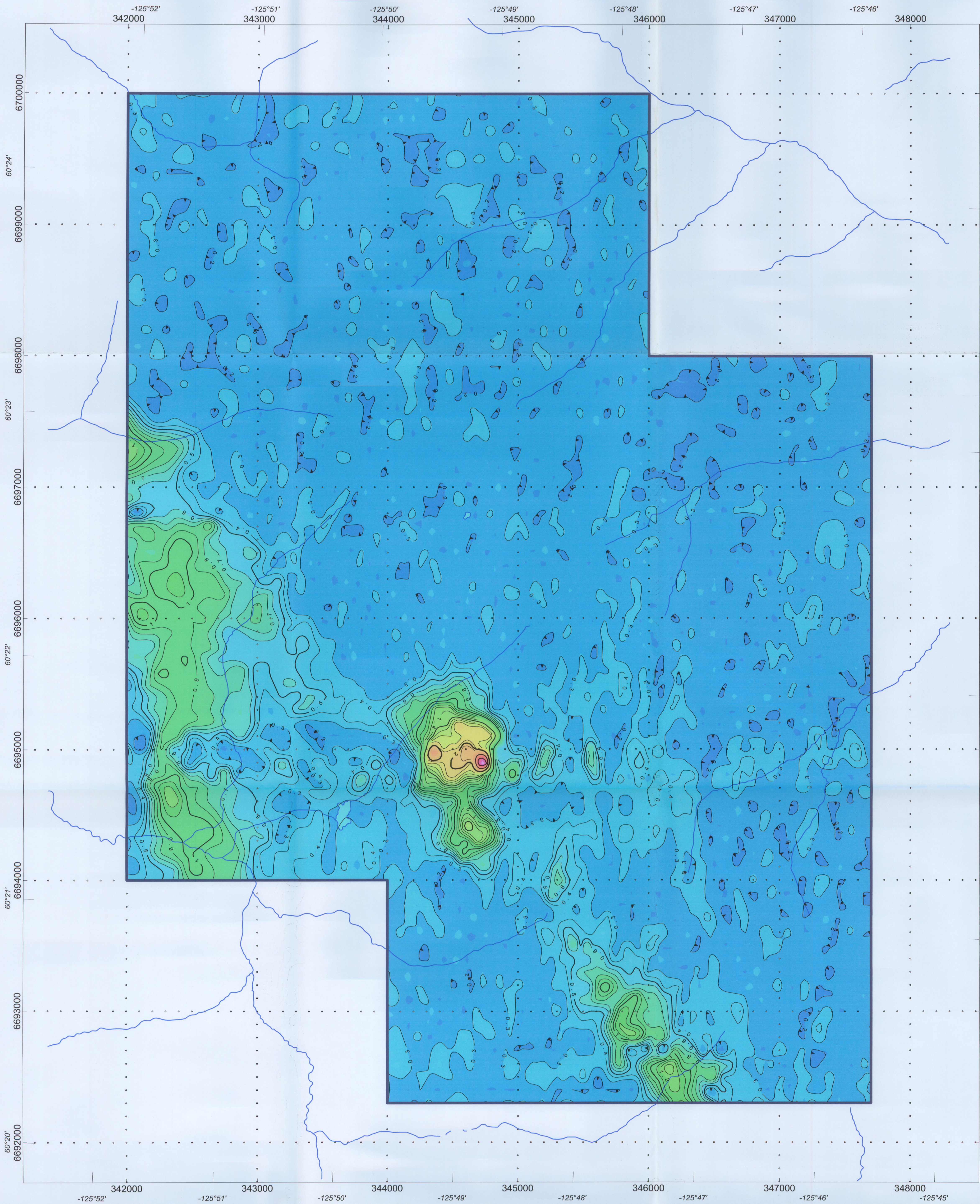


True North Gems Inc.

EM Anomaly Map
dB/dt - Z-channel - Window No. 15
Bandito Project

Airborne TDEM and Magnetic Survey

McPhar Geosurveys Ltd.



LEGEND

Helicopter Type: Eurocopter AS350B2
Helicopter Registration: C-GTNT
Survey Period: September-October, 2006

SURVEY PARAMETERS:

Mean Terrain Clearance: 85 m (Helicopter)
Traverse Line Spacing: 100 m
Traverse Line Direction: 90°
Control Line Spacing: 1000 m
Control Line Direction: 180°

AIRBORNE MAGNETOMETER SYSTEM:

Geometrics G822A Cesium magnetometer
Sensitivity: 0.0005 nT
Noise Level: +/- 0.001 nT
Sensor Height: Nominally 60 m above ground level
Sensor Location: Mounted in aerofoil towed 25 m beneath the helicopter
Sampling Rate: 10 readings/second

AIRBORNE ELECTROMAGNETIC SYSTEM:

T.H.E.M. Helicopter-borne Digital Time-domain Electromagnetic System

Receiver:

Three axis (X,Y and Z) dipole coils with coplanar configuration
Sensor Height: Nominally 60 m above ground level
Sensor Location: Mounted in aerofoil towed 25 m beneath the aircraft
Sampling Rate: 10 readings/second

Transmitter:

Horizontal transmitter loop of 7.5 m diameter
Sensor Height: Nominally 36 m above ground level
Sensor Location: Horizontal loop towed 49 m beneath the aircraft
Frequency: 30 Hz; 60 half-sine pulses per second

DATA ACQUISITION SYSTEM:

T.H.E.M. Data Collector

AIRBORNE NAVIGATION SYSTEM:

T.H.E.M. navigation system
OmniSTAR 3000LR DGPS receiver.
Pilot steering and navigation computer.

BASE STATIONS SYSTEMS:

GEM GSM-19 Overhauser Magnetometer
Sample Interval: 1 second
Sensitivity: 0.001 nT

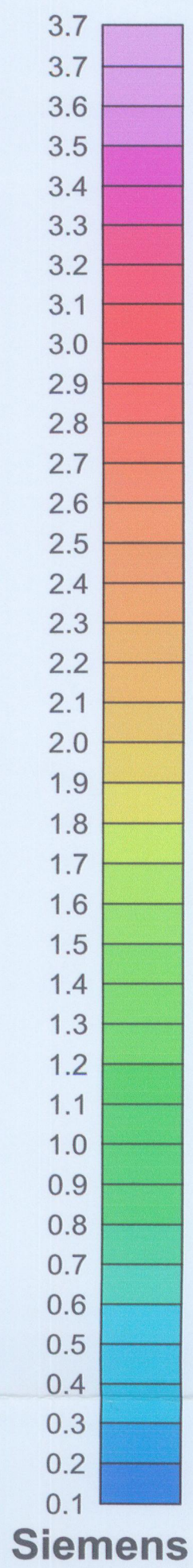


Topo Legend

Water Course
Water Body

Contour Legend

0.1 siemens
0.5 siemens
2 siemens



Scale 1:20000

0 250 500 750 1000 1250 1500
(meters)
WGS 84 / UTM zone 10N

Settings of Time Windows of THEM System					
Window #	Start at sample	# of samples in window	Start Time in milliseconds	End Time in milliseconds	Window Centre in milliseconds
1	7	2	0.114	0.132	0.1231
2	44	1	0.716	0.716	0.7161
3	89	1	1.123	1.123	1.1230
4	91	1	1.481	1.481	1.4813
5	188	2	1.756	1.774	1.7650
6	131	1	2.132	2.132	2.1322
7	157	1	2.505	2.505	2.5053
8	187	1	3.206	3.206	3.2064
9	219	1	3.664	3.664	3.6644
10	227	3	3.695	3.727	3.7109
11	229	3	3.727	3.760	3.7435
12	231	3	3.760	3.792	3.7760
13	233	5	3.792	3.857	3.8249
14	238	5	3.814	3.939	3.8762
15	242	5	3.939	4.004	3.9713
16	246	11	4.004	4.167	4.0853
17	249	17	4.053	4.313	4.1839
18	258	23	4.199	4.557	4.3782
19	265	29	4.313	4.769	4.5410
20	272	35	4.427	4.985	4.7038
21	283	41	4.606	5.257	4.9316
22	298	47	4.850	5.589	5.2246
23	312	53	5.078	5.924	5.5013
24	328	59	5.339	6.283	5.8105
25	345	65	5.618	6.657	6.1380
26	364	71	5.924	7.064	6.4941
27	385	77	6.217	7.494	6.8559
28	400	83	6.510	7.845	7.1777
29	415	89	6.755	8.187	7.4707
30	432	95	7.031	8.561	7.7962
31	452	101	7.357	8.984	8.1705
32	476	107	7.747	9.475	8.6100
33	495	113	8.057	9.980	9.0681
34	520	119	8.464	10.384	9.4238
35	540	125	8.789	10.807	9.7961

True North Gems Inc.

Apparent Conductance for Selected Time Window No. 15
dB/dt - Z-channel
Bandito Project
Airborne TDEM and Magnetic Survey
McPhar Geosurveys Ltd.