

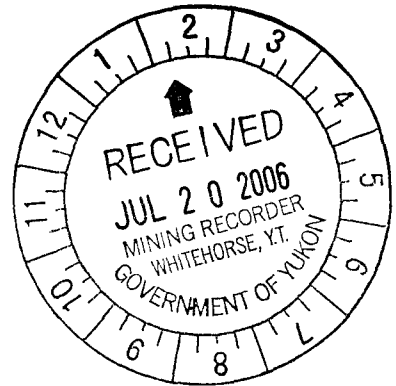
094594

ASSESSMENT REPORT – 2005

FYDB 1 – 16 CLAIMS

YB46593 – YB46604

YB46665 - YB46668



WHITEHORSE MINING DISTRICT

NTS 105D/11

Latitude – 60 38' 00" N

Longitude – 135 03' 30" W

2005 Auger Drill Program - July 12 – 15 2005

Magnetic Separation Testwork - Nov. 14 – 15 2005

Report Prepared By - Brian Scott

Costs associated with this report have been
approved in the amount of \$ 5000.00
for assessment credit under Certificate of Work
No. QW 27855

M. S. Sweeney

Mining Recorder
Whitehorse Mining District

TABLE OF CONTENTS	PAGE
Introduction	1
Claim Information	2
History	3
Location and Access	3
2005 Work Program	3
Auger Drill Program	4
Magnetic Separation Tests	4 – 5
Re – processing Study	6
Prospecting	6
Exploration Results	6
Conclusions and Recommendations	7
References	8
Figure 1 – Claim Map	
Figure 2 – Drill Program and Rock Sample Location	
Figure 3 - Borehole Location	
Figure 4 - Whitehorse Copper Tailings – Satellite View	
Appendices	
Statement of Qualifications	
Statement of Costs	
Assay Results and Method	
Foremost Mobile Drill Specifications	
Drill Logs	
MOU – Institute of Microbiology – Tashkent Uzbekistan	
Preliminary Report – Tashkent	

The FYDB 1 – 16 claims cover the millsite and tailings impoundment of the now defunct Whitehorse Copper Mine. The principal claimholder and author of this report staked the property to assess the potential re-processing of the tailings. The accumulated tailings total 10,000,000 tonnes, and have been identified as a potential source of magnetite as well as residual gold and copper. Magnetite is used as a dense media agent in coal cleaning plants, and for pre-concentrating ore in some milling operations. It is also used in heavy aggregate concrete which is required for certain pipeline applications (i.e. lake crossing, areas of muskeg). Preliminary discussions have been held with Cash Resources Inc. (Division Mt. Coal project) and Yukon Zinc Corp.(Wolverine and Howards Pass lead – zinc project). Considerable interest in the Whitehorse Copper tailings has been expressed over the last year from several junior mining companies .

In August 2005, a Memorandum of Understanding was signed with the Institute of Microbiology at the Academy of Sciences at Tashkent, Uzbekistan. The institute has developed and patented new bioleaching technology to recover copper, gold and silver from copper sulphide tailings.

CLAIM INFORMATION

2

Claim Name	Grant #	Owner	Expiry Date *
FYDB-1	YB46593	A. Greetham	2011-01-25
FYDB-2	YB46594	Brian Scott	2011-01-25
FYDB-3	YB46595	!!	!!
FYDB-4	YB46596	!!	!!
FYDB-5	YB46597	!!	!!
FYDB-6	YB46598	!!	!!
FYDB-7	YB46599	!!	!!
FYDB-8	YB46600	!!	!!
FYDB-9	YB46601	!!	!!
FYDB-10	YB46602	!!	!!
FYDB-11	YB46603	!!	!!
FYDB-12	YB46604	!!	!!
FYDB-13	YB46665	!!	2011-03-08
FYDB-14	YB46666	!!	!!
FYDB-15	YB46667	!!	!!
FYDB-16	YB46668	!!	!!

* with acceptance of this work report

The Whitehorse Copper Mine, was owned and operated by Hudson Bay Mining and Smelting from 1967 to 1982. Production numbers state that 267,490,930 pounds of copper, 224,565 ounces of gold, and 2,837,631 ounces of silver were recovered from 11,017,738 tonnes of ore milled.

LOCATION & ACCESS

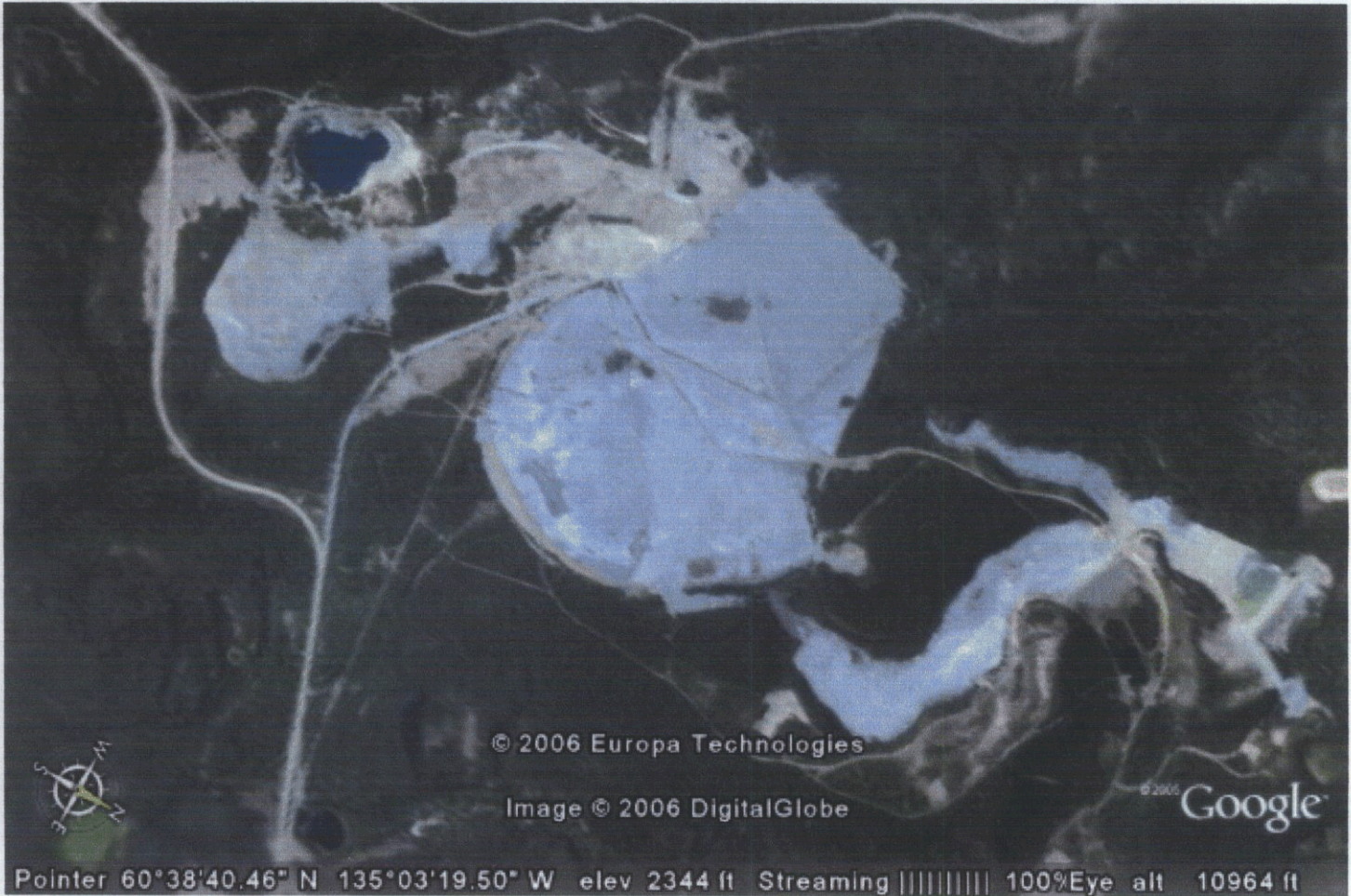
The Whitehorse Copper Mine millsite and tailings impoundment are located within the municipal boundaries of the city of Whitehorse, approximately 8 km. from the downtown core. It is readily accessible by a 2 km. paved road from the Alaska Highway. A powerline runs through the southern end of the FYDB claim block and water is available from the now flooded Little Chief Open Pit.

2005 WORK PROGRAM

The 2005 work program at Whitehorse Copper consisted of several different components.

- 1 Auger drilling of 12 holes and subsequent assaying
(sample # BH1-05 to BH12-05 Metallic Ag-Au-1 pound (450 gm) sample)
- 2 Magnetic separation of select samples from auger program to determine magnetic content.
- 3 Acquisition and shipment of 20 kg. composite sample to new technology partner for bench scale bioleach test work.
- 4 Sampling of bedrock exposure at new quarry pit - one sample submitted for assay. (WC-RP-1)

FIG. 4.



WHITEHORSE COPPER TAILINGS IMPOUNDMENTS.
(GREY AREAS)

AUGER DRILL PROGRAM

4

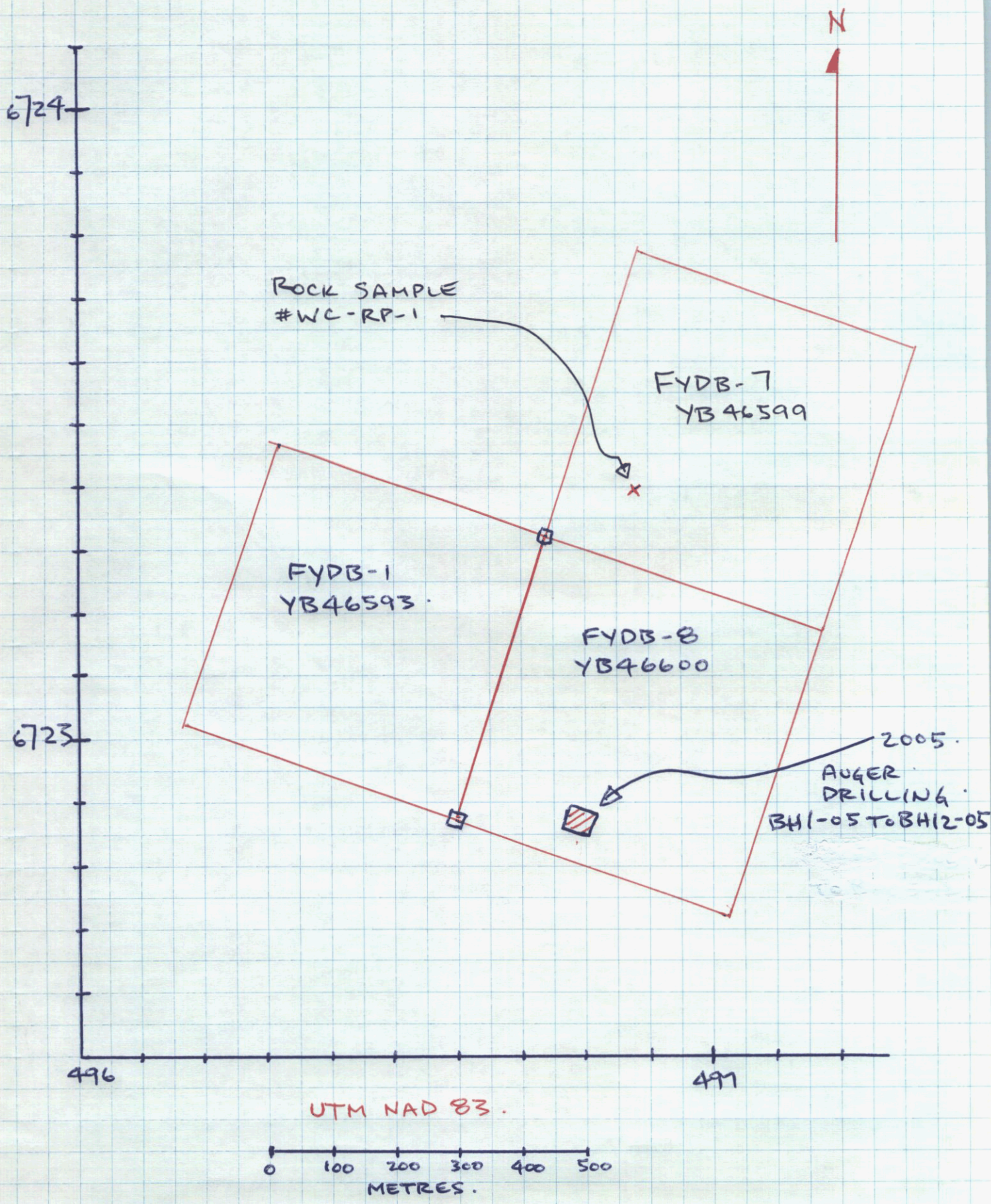
A 12 hole auger drilling program was carried out on the tailings July 12 to July 15 on FYBD8 (YB46600) which is located close to the former Whitehorse Copper millsite. The holes were closely spaced (10 meter centers) as this area would be the starter pit for a tailings re-processing operation. A Foremost Minuteman Mobile drill with 3 in.O.D. auger was used. All holes were drilled to 30 ft. or refusal, the maximum depth capability of this drill. See drill logs and location sketch for details. A one kilogram composite sample from each hole was submitted to Acme Analytical Inc. for metallics fire assay (Au – Ag on 500 gm. sample).

MAGNETIC SEPARATION TESTS OF BOREHOLE SAMPLES

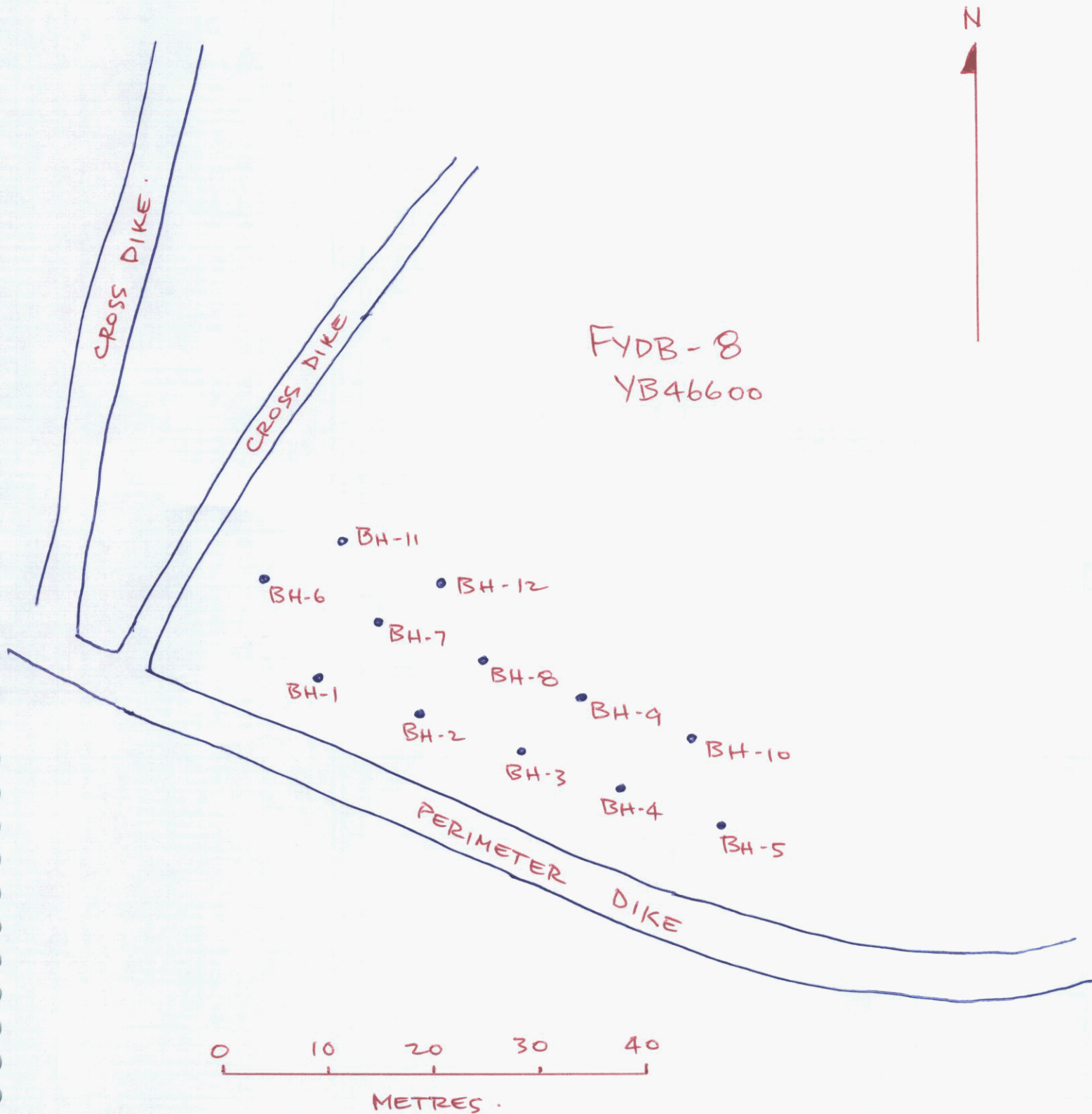
After discussions with geo-scientists at Acme Analytical Inc., it was determined that simple magnetic separation was appropriate to determine magnetite content of the samples. A dip magnet was used to separate magnetics from tailings samples in a wet bath, then both portions (magnetic & non-magnetic) were dried and weighed. Two samples, each weighing approx. 1 kg. were tested from each borehole. Results are as follows:

Sample#	Total weight (grams)	Non-magnetic (grams)	Magnetics (grams)	% Magnetics
BH1-05	1130	856	274	24.7
	1052	850	202	19.2
BH2-05	974	802	172	17.6
	1129	913	216	19.1
BH3-05	1097	942	155	14.1
	987	811	176	17.8
BH4-05	1168	924	244	20.9
	1092	824	268	24.5
BH5-05	1226	1084	142	11.6
	1033	864	169	16.4
BH6-06	943	756	187	19.8
	1071	879	192	17.9
BH7-06	1150	907	243	21.1
	1098	832	266	24.2
BH8-06	910	729	181	19.9
	1112	913	199	17.9
BH9-06	1210	934	276	22.8
	1002	710	292	29.1
BH10-06	1055	821	234	22.1
	980	779	201	20.5
BH11-06	1105	917	188	17.0
	1129	967	162	14.3
BH12-06	1241	952	289	23.3
	1066	856	210	19.7

DRILL PROGRAM & ROCK SAMPLE LOCATION



BOREHOLE LOCATION - 2005.



RE – PROCESSING STUDY – INSITUTE OF MICROBIOLOGY TASHKENT UZBEKISTAN

A 20 kilogram composite sample of tailings from previous drill programs was shipped to Tashkent in Aug. 2005. After delays in customs, the shipment finally reached its destination in late Nov. Bio-leaching testwork is ongoing and initial results are very encouraging. A final report is expected in Aug. 2006.

PROSPECTING

A new quarry pit located on claim FYDB 7 (YB46599) gave an opportunity to prospect a fresh bedrock exposure. One sample of rusty diorite was submitted for ICP analysis (sample # WC – RP - 1).

EXPLORATION RESULTS

Assay results for 12 composite tailings samples from auger holes BH1-05 to BH12-05 ranged from .20 g/t Au to 1.21 g/t Au. and averaged .44 g/t. Silver values varied from less than 2 g/t to 4g/t. The magnetic separation tests gave magnetite values ranging from 11.6% to 24.7%, and averaged 19.7%.The rusty diorite sample from the new quarry site submitted for multi-element ICP analysis did not return any anomalous values.

CONCLUSIONS AND RECOMMENDATIONS

Gold values obtained from tailings in the 2005 drill program averaged .44 gm/mt, almost double the historic average from previous drill samples. Metallic fire assay on a 500 gm. sample should be the preferred testing method for future programs. Silver values were low, in the 3gm/mt range.

Magnetite content in the 24 samples tested by magnetic separation in 2005 averaged 19.7%. This is consistent with an historic estimated average of 19% (Kilborn Report – Recovery of Magnetite from Whitehorse Copper Tailings - 1984).

Future work should focus on processing of a bulk sample by magnetic separation while testing various integrated gold recovery systems (i.e. jig, centrifugal concentrator, etc.). Discussions with personnel at the Institute of Microbiology at Tashkent indicates that removal of magnetite and free gold from the tailings prior to bio-leaching for copper recovery would be the preferred method of processing.

REFERENCES:

- 1 Recovery of Magnetite from Whitehorse Copper Tailings –
Kilborn Engineering Ltd. – 1984
- 2 Gold in Skarns Of The Whitehorse Copper Belt
L. Meinert – Washington State University – 1985
- 3 Hudson Bay Mining & Smelting Ltd. – Internal Report
A. Hureau – 1985
- 4 Yukon Minfile - Occurrence # 105D053
- 5 Industrial Minerals, Gems And Minor Metals In The Yukon –
G. V. White - 2003

APPENDICES

STATEMENT OF QUALIFICATIONS

Brian Scott completed the basic prospectors course in Whitehorse in 1977. From 1978 to 1985 he placer mined in the Atlin and Stewart River area. In 1988 he completed the advanced prospectors course, and the petrology short course in 1994. He has prospected in northern B.C. and the Yukon for over 25 years.

STATEMENT OF COSTS

Auger Drilling July 12 – 15

Driller (Brian Scott) @ \$ 350 / day	\$ 1400
Helper (Barry Scott) @ \$ 300 / day	\$ 1200
Drill Rental @ \$ 250 / day	\$ 1000
4 WD Truck @ \$ 75 / day	\$ 300
Fuel, Sample Bags, etc.	\$ 266

Magnetic Separation Tests Nov. 14 – 15

Brian Scott @ \$ 300 / day	\$ 600
----------------------------	--------

Assaying – 13 Samples	\$ 381.66
-----------------------	-----------

Bio – leaching Testwork

Shipment of 20 kilogram Sample to Tashkent Uzbekistan	\$ 148
--	--------

Report Preparation	\$ 450
--------------------	--------

TOTAL **\$ 5745.66**

ASSAY CERTIFICATE

Scott, Brian File # A507852
 Box 77, Tagish YT Y0B 1T0 Submitted by: Brian Scott

SAMPLE#	S.Wt gm	NAu mg	-Au gm/mt	DupAu gm/mt	TotAu gm/mt
BH1-05	455	.02	.27	-	.31
BH2-05	500	.02	.26	-	.30
BH3-05	458	<.01	.20	-	.20
BH4-05	450	.01	.32	-	.34
BH5-05	454	<.01	.50	-	.50
BH6-05	504	<.01	.39	-	.39
BH7-05	493	.01	.24	-	.26
BH8-05	462	.03	.26	-	.32
BH9-05	455	.31	.53	.43	1.21
BH10-05	493	.03	.17	-	.23
BH11-05	462	.07	.69	-	.84
BH12-05	484	.02	.30	-	.34
STANDARD OxL34	-	-	5.74	-	5.74

-AU : -150 AU BY FIRE ASSAY FROM 1 A.T. SAMPLE. DUPAU: AU DUPLICATED FROM -150 MESH. NAU - NATIVE GOLD, TOTAL SAMPLE FIRE ASSAY.
 - SAMPLE TYPE: SAND M150

Data ___ FA WNG

DATE RECEIVED: DEC 5 2005

DATE REPORT MAILED: Jan 16/06

REVISED COPY



AA
LL

AA
LL

ASSAY CERTIFICATE

Scott, Brian File # A507852
Box 77, Tagish YT Y0B 1T0 Submitted by: Brian Scott

SAMPLE#	S.Wt gm	NAg mg	-Ag gm/mt	DupAg gm/mt	TotAg gm/mt
BH1-05	455	<.06	3	-	3
BH2-05	500	<.06	<2	-	<2
BH3-05	458	<.06	<2	-	<2
BH4-05	450	<.06	2	-	2
BH5-05	454	<.06	3	-	3
BH6-05	504	<.06	4	-	4
BH7-05	493	<.06	<2	-	<2
BH8-05	462	<.06	<2	-	<2
BH9-05	455	<.06	4	4	4
BH10-05	493	<.06	2	-	2
BH11-05	462	<.06	2	-	2
BH12-05	484	<.06	<2	-	<2
STANDARD OxL34	-	-	156	-	156

-AG : -150 AG BY FIRE ASSAY FROM 1 A.T. SAMPLE. DUPAG: AG DUPLICATED FROM -150 MESH. NAG - NATIVE SILVER, TOTAL SAMPLE FIRE ASSAY.
- SAMPLE TYPE: SAND M150

Data FA VINS DATE RECEIVED: DEC 5 2005 DATE REPORT MAILED: Jan 16/06



AA
LL

ASSAY CERTIFICATE

Scott, Brian File # A507853
Box 77, Tagliah YT Y08 1T0 Submitted by: Brian Scott

AA
LL

SAMPLE#	Hg	Cu	Pb	Zn	Ag	Hf	Co	Mn	Fe	As	U	Th	Sr	Cd	Sb	Bi	V	Ca	P	La	Cr	Mg	Ba	Ti	Al	Na	K	W	Zr	Ce	Sn	Y	Nb	Ta	Be	Sc	L1	S	Rb	Hf
	ppm	ppm	ppm	ppm	ppm	ppm	ppm	ppm	%	ppm	ppm	ppm	ppm	ppm	ppm	ppm	ppm	%	%	ppm	ppm	%	%	%	%	%	ppm	ppm	ppm	ppm	ppm	ppm	ppm	ppm	ppm	ppm	ppm	%	ppm	ppm
G-1	<.5	7.7	24.1	52	<.5	7.8	4	910	2.28	<.5	3.7	8.2	785	<.5	<.5	<.5	55	2.58	.09	24	10.2	.67	1018	.253	8.36	2.72	2.93	<.5	11.2	47	1.2	15.3	22.8	1.4	<.5	6	45.4	<.5	123.1	.6
JM-05-1	24.5	13432.5	3.1	229	9.9	14.0	105	3078	26.01	13	6.8	<.5	<.5	3.5	<.5	18.3	<10	17.69	<.01	<.5	6.5	.18	6	.007	.09	.02	.01	132.1	9.2	<.5	434.9	4.3	.6	<.5	<.5	1.0	4.1	<.5	<.5	
JM-05-2	.7	4282.8	3.6	102	1.6	55.4	162	4201	39.22	<.5	1.1	<.5	<.5	<.5	7.5	<10	8.45	.02	<.5	4.7	.53	<.5	.036	.29	.02	.01	106.4	24.9	5	32.8	3.9	3.5	<.5	<.5	<.5	3.4	9.4	.5	<.5	
JM-05-3	3.9	4939.6	3.9	84	1.5	252.8	356	462	28.66	<.5	<.5	<.5	14	.7	<.5	1.5	<10	7.12	.01	<.5	10.0	3.50	<.5	.036	.14	<.01	.01	<.5	6.3	<.5	2.2	3.0	1.7	<.5	<.5	.5	15.3	<.5	<.5	
* WC-RP-1	1.1	40.9	12.5	111	<.5	24.0	19	715	5.18	8	4.1	15.2	722	<.5	.5	2.8	108	1.40	.11	39	34.7	1.66	1872	.246	9.73	5.47	.46	2.0	12.8	74	.7	12.9	5.0	<.5	<.5	11	16.8	<.5	20.5	.6
STANDARD SF-2t	311.9	7048.3	8451.0	12745	62.8	3427.9	118	4438	8.02	25	2.5	3.7	366	50.4	45.3	3.9	68	3.02	.06	15	2290.1	4.41	323	.200	5.05	1.89	2.02	1.2	9.2	26	5.4	13.1	12.8	.8	<.5	8	23.7	2.1	70.4	.5

GROUP 7TX - 0.500 GM SAMPLE, 4 ACID (HF-HClO4-HNO3-HCL) DIGESTION TO 100 ML, ANALYSIS BY ICP-ES/ICP-MS.
- SAMPLE TYPE: ROCK R150

Data *Sf* FA _____

DATE RECEIVED: DEC 5 2005 DATE REPORT MAILED: *Dec 21/05*



WC-RP-1 - GRAB SAMPLE FROM
KEARAH RIP-RAP DIGGINGS (FYDB-7
YB46599)

JM-05-1
-3 GRAB - JUBILEE SHOWINGS AS PER
1966 ASSESS. REPORT (GOOD MOLY)

ASSAYS - Precious Metals

GROUP 4X WHOLE ROCK BY XRF

LiBO₂ fusion followed by XRF analysis for major oxides and LOI. Analysis is conducted by an affiliated lab. Requires a 25 g sample pulp.

	Det. Lim.		Det. Lim.
SiO ₂	0.02 %	K ₂ O	0.04 %
Al ₂ O ₃	0.03 %	MnO	0.01 %
Fe ₂ O ₃	0.04 %	TiO ₂	0.01 %
CaO	0.01 %	P ₂ O ₅	0.01 %
MgO	0.01 %	LOI	0.1 %
Na ₂ O	0.01 %		

Group 4X	Cdn	U.S.
Full Suite	\$25.00	\$22.00

GROUP 5A NEUTRON ACTIVATION

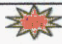
Total determination of Au plus 34 elements by gamma ray analysis after nuclear irradiation. Analysis by an affiliated laboratory. Requires 5 - 30 g pulp.

	Det. Lim.		Det. Lim.		Det. Lim.
Au	2 ppb	Hf	1 ppm	Se	3 ppm
Ag	5 ppm	Hg	1 ppm	Sm	0.1 ppm
As	0.5 ppm	Ir	5 ppb	Sn	0.01 %
Ba	50 ppm	La	0.5 ppm	Sr	0.05 %
Br	0.5 ppm	Lu	0.05 ppm	Ta	0.5 ppm
Ca	1 %	Mo	1 ppm	Th	0.2 ppm
Ce	3 ppm	Na	0.01 %	Tb	0.5 ppm
Co	1 ppm	Nd	5 ppm	U	0.5 ppm
Cr	5 ppm	Ni	100 ppm	W	1 ppm
Cs	1 ppm	Rb	15 ppm	Yb	0.2 ppm
Eu	0.2 ppm	Sb	0.1 ppm	Zn	50 ppm
Fe	0.01 %	Sc	0.1 ppm		

Group 5A	Cdn	U.S.
Full Suite	\$18.00	\$15.30

GROUP 6 PRECIOUS METALS ASSAY BY FIRE ASSAY

Highly precise determinations for Au, Ag, Pt, Pd and Rh by classical lead-collection fire assay on a 1 assay-ton sample (29.2 g). Massive sulphide or Cr-rich matrix will require a reduced sample weight. Analysis is by ICP-ES after digestion of the dore bead. Gravimetric analysis is available. Request a metallics assay (500 gm sample) if coarse precious metals are suspected.

Element	Detection	Method	Cdn	U.S.
Au	0.001 oz/t	Fire Assay on 29.2 g (1 Assay-Ton) sample	\$12.95	\$11.40
		Metallics Fire Assay on 500 g sample	\$23.65	\$20.80
Au, Ag*	0.001 oz/t	Fire Assay on 29.2 g sample (Ag by Group 7AR)*	\$17.35	\$15.25
		Metallics Fire Assay on 500 g sample	\$28.10	\$24.75
Au, Pt, Pd	0.001 oz/t	Fire Assay on 29.2 g sample	\$16.80	\$14.80
		Metallics Fire Assay on 500 g sample	\$27.55	\$24.25
Au, Ag*, Pt, Pd	0.001 oz/t	Fire Assay on 29.2 g sample (Ag by Group 7AR)*	\$21.00	\$18.50
		Metallics Fire Assay on 500 g sample	\$31.50	\$27.70
Rh	0.001 oz/t	Fire Assay on 29.2 g, Au inquant	\$15.75	\$13.85
Au		Precious metal bead (return to client)..... per 50 g	\$16.80	\$14.80
		Analysis of bead for % Au	\$11.05	\$9.70
		2 Assay-Ton sample (58.3 g) add	\$4.20	\$3.70
		*Include all Group 7AR elements add	\$5.25	\$4.60
		Gravimetric Finish  add	\$2.50	\$2.20



Gasoline-Powered Portable Minuteman®

DRILLS

Savings on a single project can more than pay for the MINUTEMAN®.

Applications include:

- Pre-bid drilling for general construction, earth or rock moving.
- Test drilling for structural foundations, roads, runways.
- Shallow prospecting for ores, minerals, aggregates, clays, chemicals.
- Drilling in concrete and soils for installation of guard rails, fences, signs, parking meters, drainage systems and well points.
- Concrete/asphalt core drilling.
- Plus...Soil testing with standard sampling tools and procedures.

Feed:

44" (1.1 m) stroke.
Recirculating ball bearing screw with continuous or intermittent feed. Manual plus power retract standard.



Goes anyplace a man can go.
Weighs only 265 lbs. (120.2 kg)

Environmental
Geotechnical

MINUTEMAN® is the first of its kind with "Big Rig" Rotary Drive. Uses solid stem and hollow stem augers.

Drilling Capacities:*

Auger Drilling
(Low-Speed Shaft):
Diameters:

- 30' with 3" augers (9.1 m with 76.2 mm)
- 3' with 12" augers .91 m with 305 mm)

Core Drilling (high-Speed Shaft):**

- Size Core: EX-NX
- Depth: 50' (15.2 m)
- Concrete/Asphalt Core Drilling: 1" to 8" (25.4 to 203.2 mm)

* Will vary with soil conditions. Consult factory for local ratings.
** Diamond drilling depth may be extended through use of optional tripod and hoist assembly

Gasoline-Powered Portable Minuteman® Specifications

Dimensions

Height	67.5 in.	(1.7 m)
Width	28 in.	(711.2 mm)
Length	28 in.	(711.2 mm)
Weight	265 lbs.	(120.2 kg)
Shipping Weight:		
Less Tools - Domestic or Export	426 lbs.	(193.2 kg)

Transmission

3 speed forward, 1 reverse	
1st Gear	3.3:1
2nd Gear	1.7:1
3rd Gear	1:1
Reverse	3.3:1

Low-Speed Shaft @ 3,600 R.P.M.

8 Horsepower Engine

3 speed forward, 1 reverse	
1st Gear	105 R.P.M. (11 rad/s)
2nd Gear	200 R.P.M. (20.9 rad/s)
3rd Gear	345 R.P.M. (36.1 rad/s)
Reverse	105 R.P.M. (11 rad/s)

Maximum Spindle Torque 350 ft. - lbs. (48 kg-m)
Maximum Spindle R.P.M. 1,100

MINUTEMAN® is a registered trademark of Mobile Drilling Co., Inc., Indianapolis, IN. U.S.A.

Unless otherwise stated, specifications are for a standard unit and are subject to change without notice. Performance specifications are theoretical maximums and do not include mechanical or other efficiency losses. Actual performance may vary.

FOREMOST **Mobile**

~~BLANK~~ DRILL LOG

DATE: JULY 12 TIME: 8AM-6PM DRILLER: BRIAN SCOTT HELPER: BARRY SCOTT
 2005
 TYPE OF DRILL: MINUTEMAN MOBILE INSIDE DIAMETER OF DRILL: 3" O.D. AUGER
 LOCATION: WHITEHORSE COPPER LEASE OR GRANT NUMBERS: FYDB 8 - YB46600

DRILL HOLE NUMBER	TOTAL FOOTAGE	BREAKDOWN IN FEET (of materials encountered)	REMARKS: SAMPLES/RESULTS
8AM-11AM		MOBILIZATION FROM TAGISH TO WHITEHORSE COPPER	
BH1-05	0-14 FT.	FINE GREY SAND - DRY	SAMPLE # BH1-05
	14-24 FT.	DAMP GREY SAND	
BH2-05	0-16 FT.	FINE DRY GREY SAND	SAMPLE # BH2-05
	16-17 FT.	DAMP CLAY	
	17-29 FT.	WET GREY SAND	
BH3-05	0-14 FT.	FINE DRY GREY SAND	SAMPLE # BH3-05
	14-15 FT.	DAMP CLAY	
	15-30 FT.	WET GREY SAND	

DATE: July 12 / 05

SIGNED (Driller or Representative)

Brian Scott

LEADER DRILL LOG

DATE: JULY 13 ²⁰⁰⁵ TIME: 8AM-6PM DRILLER: BRIAN SCOTT HELPER: BARRY SCOTT
 TYPE OF DRILL: MINUTEMAN INSIDE DIAMETER OF DRILL: 3" O.D. AUGER
 LOCATION: WHITEHORSE COPPER LEASE OR GRANT NUMBERS: YB 46600

DRILL HOLE NUMBER	TOTAL FOOTAGE	BREAKDOWN IN FEET (of materials encountered)	REMARKS: SAMPLES/RESULTS
BH4-05	0-17 FT.	FINE DRY GREY SAND	
	17-17.5 FT.	WET CLAY	SAMPLE # BH4-05
	17.5-30 FT	DAMP GREY SAND	
BH5-05	0-14 FT.	FINE DRY GREY SAND	
	14-15 FT.	DAMP CLAY	SAMPLE # BH5-05
	15-27 FT.	GREY SAND	
BH6-05	0-18 FT.	FINE DRY GREY SAND	SAMPLE # BH6-05
	18-18.5 FT.	CLAY	
	18.5-30 FT.	DAMP GREY SAND *	
	* LOST LEAD SECTION OF AUGER BIT IN HOLE		
	MUCH TIME SPENT FISHING IT OUT		

DATE: July 13/05 SIGNED (Driller or Representative) Brian Scott

REAGER DRILL LOG

DATE: JULY 14 2005 TIME: 8AM-6PM DRILLER: BRIAN SCOTT HELPER: BARRY SCOTT
 TYPE OF DRILL: MINUTEMAN MOBILE INSIDE DIAMETER OF DRILL: 3" O.D. AUGER
 LOCATION: WHITEHORSE COPPER LEASE OR GRANT NUMBERS: YB 46600

DRILL HOLE NUMBER	TOTAL FOOTAGE	BREAKDOWN IN FEET (of materials encountered)	REMARKS: SAMPLES/RESULTS
BH7-05	0-15 FT.	FINE GREY SAND	
	15-15.5 FT.	DAMP CLAY	SAMPLE # BH7-05
	15.5-30 FT.	DAMP GREY SAND FINE	
BH8-05	0-16 FT.	FINE GREY SAND DRY	
	16-17 FT.	WET CLAY	SAMPLE # BH8-05
	17-30 FT.	DAMP GREY FINE SAND	
BH9-05	0-16 FT.	FINE GREY DRY SAND	SAMPLE BH9-05
	16-16.5 FT.	DAMP CLAY	
	16.15-26 FT.	DAMP GREY SAND	
BH10-05	0-18 FT.	FINE GREY SAND	SAMPLE # BH10-05
	18 FT.	REFUSAL - WOOD CHIPS	

DATE: July 14 / 05 SIGNED (Driller or Representative) Brian Scott

PLACER DRILL LOG

DATE: JULY 15/05 · TIME: 8AM-6PM · DRILLER: BRIAN SCOTT · HELPER: BARRY SCOTT
 TYPE OF DRILL: MINUTEMAN MOBILE · INSIDE DIAMETER OF DRILL: 3" O.D. AUGER
 LOCATION: WHITEHORSE COPPER · LEASE OR GRANT NUMBERS: YB 46600

DRILL HOLE NUMBER	TOTAL FOOTAGE	BREAKDOWN IN FEET (of materials encountered)	REMARKS: SAMPLES/RESULTS
BH 11-05	0-15 FT.	FINE DRY GREY SAND	
	15-16 FT.	WET CLAY	SAMPLE # BH 11-05
	16-24 FT.	DAMP GREY SANDS	
BH 12-05	0-16 FT.	FINE DRY GREY SAND	
	16-17 FT.	WET CLAY	SAMPLE # BH 12-05
	17-18 FT.	DAMP GREY SAND	
		DEMOS TO TAGISH	

DATE: July 15/05

SIGNED (Driller or Representative)

Brian Scott

PROTOCOL of INTENTIONS

Organization of joint scientific research for purpose of extraction of valuable components from tailings of Whitehorse Copper (Yukon, Canada)

Parties: Institute of Microbiology of Academy of Sciences of Republic of Uzbekistan, hereafter referred to as **IMB AS RU** and owner of Whitehorse Copper tailings (Yukon, Canada) Mr. Brian Scott, hereafter referred to as **OWNER**

after discussion and exchange of opinions decided to conduct joint research in the field of biohydrometallurgical processing of tailings of Whitehorse Copper (Yukon, Canada) with the purpose of extraction of valuable components:

OWNER agrees:

- 1) By August 01, 2005 provide **IMB AS RU** with the following information:
 - a) technology of copper production;
 - b) quantitative, chemical, granulometric, mineralogical composition of copper tailings;
 - c) chemical analyses and distribution of copper, gold, silver and other valuable components of flotation in tailings;
 - d) climatic conditions of the region where the tailings are situated (number of days during the year with a temperature above the freezing mark);
 - e) quantity of tailings and annual capacity of the processing plant.
- 2) Pick a bulk sample weighting 20-25 kg and deliver to Tashkent by September 01, 2005.

IMB AS RU agrees: (guidance of researches Dr. Muyassar G. Sagdieva) :

- 1) Make research through its own technology and methods during 6 months upon the receiving of the ore sample;
- 2) After having the research completed give a brief information about results of this research to **OWNER**;
- 3) In case of positive result compile within 3 months feasibility report on reasonableness of the processing of tailings of Whitehorse Copper.

Parties are responsible for their own expenses and do not have financial claims to each other.

The Protocol of Intention is made in duplicate in Russian and English languages possessing equal legal force.

IMB AS RU:
B. Kadyriy str., building 7^B,
Tashkent, 700128,
Republic of Uzbekistan

OWNER:
Tagish,
Yukon,
Canada,
Y0B 1T0

Director, academician



T.F. Aripov

(signature)

Brian Scott

(signature)

(stamp)

August 2005

"Aug" 05 . 2005

THE BRIEF REPORT

on preliminary results of research and predesign study of processing of Whitehorse Copper tailings.

The work is executed by group of experts: Anvar Baymuhamedov (PhD of Geology), Sergey Borminski (PhD of Chemical Science), Dina Ermekbayeva (PhD of Geology), Lolita Kakharova (PhD of Technical Science), Maya Sagdieva (PhD of Biological Science) under a management and with participation of professor Abrol Kaharov

The goal of a study is: the search of the technical ways of processing of Whitehorse Copper tailings meeting the requirements of the environmental protection and ensuring economic profitability.

Practical value of work consists in research and introduction of modern methods of treatment of copper containing tailings in specific conditions of the North (Yukon) with obtaining of conditional concentrates and materials for the subsequent processing and use, and also the cleaning of the territory covered with tailings dumps from the saturated concentration of iron and other metals, that will allow the mentioned area to be useful in the future.

Practical value will increase in view of opening of new workplaces for Whitehorse residents.

Technique of research. As a result of preliminary study, the complex scheme of processing and upgrading of tailings of copper-enrichment manufacture as "Know-How" has been developed and approved and a combined way of extraction and processing with use of technology of the processing, patented in republic Uzbekistan # 02800 (Authors: Aronovich V.L., Borminskiy S. I., Sagdiyeva M.G., Sanakulov C.C.) is offered.

Studies were carried out on sample (kindly presented by Brian Scott from Whitehorse) by Alotila Minerals Ltd , by laboratories of Institute of Microbiology of the Academy of Sciences of Uzbekistan, and in University in Toronto. Analyses were made in Lakefield, Ontario and some laboratories of research centers in city of Tashkent

Results of preliminary research and predesign study. The total volume of tailings is estimated as 10 million tons and the value of containing in it commodities comprises "X" millions of dollars. Researches have shown an opportunity of effective extraction of the basic valuable components and associated elements from tailings of copper-enrichment manufacture, and also satisfactory recultivation of the by-products of secondary processing. The group of authors makes selection of the equipment and technology for development and enrichments, and also necessary materials for extraction of useful components from tailings.

The plan and the schedule of work on processing of all volume of tailings is developed. The number and qualification of workforce, quantity of shifts and workdays in a year are determined.. Period of the activity of the enterprise and a recoupmen are defined. The calculated value of extracted commodities comprises "Y" million dollars.

Conclusions and the recommendation:

1. Preliminary results of research and predesign study of tailings processing of Whitehorse Copper show a technical opportunity and economic feasibility of involvement above mentioned tailings into production

2. To continue research works in view of the report of scientific session of experts of institute of Microbiology of the Academy of Sciences of Uzbekistan and Alotila Minerals Ltd. from February 10, 2006 on specification of the rules of offered technological process.
3. With the purpose of verification of technical parameters of the technology of processing of stale tailings of Whitehorse Copper in large scale to consider as expedient the creation of the project of a pilot plant directly on the place with capacity of 100-1000 tons (to determine by project).
4. To inform all interested persons and organizations about preliminary results of research and predesign study of processing of tailings of Whitehorse Copper.
5. To register due hereunder Canada protection of the rights and authorships of the offered proposal on involvement of tailings of Whitehorse Copper in processing.