

ASSESSMENT REPORT

describing

PROSPECTING

on the:

HAT TRICK PROPERTY

HAT TRICK CLAIMS

Claims are 100% owned by Yukon Zinc Corporation.

NTS Sheet 105G/02
Latitude 61°10'N and Longitude 130°20'W

In the Watson Lake Mining District
Yukon Territory

Prepared by

David Legault, B.Sc.

February 2006

Table of contents

	Page
Introduction	1
Accessibility, Climate, and Physiography	1
List of Claims by name and by grant number being renewed	1
Description of Undertakings	2
Results	2
Discussion and Recommendations	3

Tables

Table 01 – List of claims by name and grant number being renewed	1
--	---

Appendixes

- Appendix A - List of Personal
- Appendix B - Statement of Expenditures
- Appendix C - Statement of Qualification
- Appendix D – Assays Certificates

Figures

- Figure 1 – Location of the Hat Trick Property
- Figure 2 – Hat Trick Property, YT Claim Map and Sample Location
- Figure 3 – Hat Trick Property, YT Soil and Silt Geochemistry Zn (ppm)
- Figure 4 – Hat Trick Property, YT Soil and Silt Geochemistry Pb (ppm)
- Figure 5 – Hat Trick Property, YT Soil and Silt Geochemistry Cu (ppm)
- Figure 6 – Hat Trick Property, YT Rock Geochemistry Zn (ppm)
- Figure 7 – Hat Trick Property, YT Rock Geochemistry Pb (ppm)
- Figure 8 – Hat Trick Property, YT Rock Geochemistry Cu (ppm)

1. Introduction

The Hattrick property is 100% owned by Yukon Zinc Corporation (“Yukon Zinc”). The claims subject to this report (Table 1) were worked on between July 25-28, 2005 by a ten-person crew working from fly camps on the property. Prospecting and soil sampling were the primary undertakings during this time.

2. Accessibility, Climate and Physiography

The Hattrick property is located in the Watson Lake Mining District in southeast Yukon on NTS sheet 105G/02 at coordinate: latitude 61°10’N and longitude 130°40’W (Figure 01). Access into site is 275km by fixed wing charters from Whitehorse to Wolverine airstrip (61°10’N, 131°20’W) and then 40 km via helicopter from Wolverine airstrip to the Hattrick Property. In 2005, air transportation was provided by Trans North Helicopter (Astar 350B2) and Alkan Air (Single Turbo Otter).

The Hattrick property is situated in the Pelly Mountain, 2 km west of Fire Lake. The property drains into Liard River Watershed. Elevation ranges from 1100m to 1900m. Topographic relief is steep, with numerous impassable cliffs. The property lies above treeline and vegetation consists of thick buckbrush and willow.

3. List of claims by name and grant number being renewed

Table 1. List of claims worked on for the assessment report.

claim_name	grant_number	claim_expiry_date
Hat Trick 7	YC27924	2010/04/19
Hat Trick 9	YC27926	2010/04/19
Hat Trick 11	YC27928	2010/04/19
Hat Trick 14	YC27931	2010/04/19
Hat Trick 15	YC27932	2010/04/19
Hat Trick 16	YC27933	2010/04/19
Hat Trick 17	YC27934	2010/04/19
Hat Trick 18	YC27935	2010/04/19
Hat Trick 29	YC27938	2010/04/19
Hat Trick 30	YC27939	2010/04/19
Hat Trick 31	YC27940	2010/04/19
Hat Trick 32	YC27941	2010/04/19
Hat Trick 33	YC27942	2010/04/19
Hat Trick 34	YC27943	2010/04/19
Hat Trick 35	YC27944	2010/04/19
Hat Trick 36	YC27945	2010/04/19
Hat Trick 37	YC27946	2010/04/19
Hat Trick 38	YC27947	2010/04/19
Hat Trick 39	YC27948	2010/04/19
Hat Trick 40	YC27949	2010/04/19
Hat Trick 42	YC27951	2010/04/19

Hat Trick 46	YC27953	2010/04/19
Hat Trick 48	YC27955	2010/04/19
Hat Trick 51	YC27958	2010/04/19
Hat Trick 52	YC27959	2010/04/19
Hat Trick 61	YC27960	2010/04/19
Hat Trick 62	YC27961	2010/04/19
Hat Trick 63	YC27962	2010/04/19
Hat Trick 64	YC27963	2010/04/19
Hat Trick 69	YC27964	2010/04/19
Hat Trick 71	YC27965	2010/04/19
Hat Trick 73	YC27966	2010/04/19
Hat Trick103	YC27967	2010/04/19
Hat Trick 104	YC27968	2010/04/19
Hat Trick 105	YC27969	2010/04/19
Hat Trick 106	YC27970	2010/04/19
Hat Trick 107	YC27971	2010/04/19
Hat Trick 108	YC27972	2010/04/19
Hat Trick 109	YC27973	2010/04/19
Hat Trick 111	YC27975	2010/04/19
Hat Trick 112	YC27976	2010/04/19
Hat Trick 113	YC27977	2010/04/19

4. Description of Undertakings

Prospecting and Soil Sampling

Field crews consisted of four Geologists and six Field Assistants. Soil samples were taken on each claims. Soil samples were collected by removing top soil using steel spades and sampling the unweathered material at a depth of one foot below ground surface interpreted to be the “B”-horizon. Each sample was packaged in a Kraft soil sample bag (4"x6" folded) and transported to Wolverine Camps for drying.

5. Results

All soil and silt samples (49) and rock samples (33) were sent for assay at ALS-Chemex, 212 Brooksbank Avenue, North Vancouver, British Columbia, V6J 2C1. Analyses of the samples were by a 27 element ICP-AES after a 4-acid digestion process. Analyses also included gold assay by AAS for rock samples. Please see Appendix D for assay certificates and figures 2 through 8 for plotted results.

6. Discussion and Conclusions

Several outcrops and rock types were observed on the Hattrick property. Their description is as follows:

1. Biotite-chlorite schist: fine-grained, dark green in fresh fractures, orange-green on weathered surface containing 55% chlorite, 30% biotite. 3% garnet, 5% magnetite, 2% hornblende and 5% disseminated pyrite. The different minerals from this rock form bands where they are concentrated. The magnetite, garnet, and pyrite are coarse-grained.
2. Quartz-muscovite-biotite schist: lightly magnetic, medium-grained, rusty-yellow on weathered surfaces, containing up to 10%, boudinaged 10cm thick quartz veins. 1% coarse-grained pyrrhotite.
3. Foliated granitoid: medium-grained, whitish grey, 7% biotite, foliation defined by flattened crystals forming bands in the rock.

The alignment of micas and ferro-magnesian minerals defines a fabric that varies in strike from southeast to northwest and the dip is both steep and shallow. Bands of minerals are parallel to the fabric. Locally, a crenulation cleavage is observed within the dominant fabric. The crenulation cleavage strikes southwest and dips steeply to the northwest.

The Hattrick Property should be maintained in good standing and warrants further geological, geochemical, and drilling for VMS exploration.

Respectfully Submitted,

David Legault, B.Sc.
Project Geologist

Vancouver, B.C., February 21st, 2006

Appendix A – List of Personal

Name	Position	Period
David Legault	Geologist	July 25-28, 2005
Justin Laberge	Geologist	July 25-28, 2005
Matthew Jodrey	Geologist	July 25-28, 2005
Lorraine Tam	Geologist	July 25-28, 2005
Kyioko Nakano	Field Assistant	July 25-28, 2005
Scott Blevings	Field Assistant	July 25-28, 2005
Tyler Caswell	Field Assistant	July 25-28, 2005
Anthony Peter	Field Assistant	July 25-28, 2005
Vashti Etzel	Field Assistant	July 25-28, 2005
Matthew Williams	Field Assistant	July 25-28, 2005

STATEMENT OF EXPENDITURES

I, David Legault, as agent for Yukon Zinc Corporation, #701-475 Howe Street, Vancouver, B.C. do solemnly declare that geological examination, prospecting, and soil geochemistry survey sampling carried out on the Hat trick Claims (see attached list) From July 25th, 2005 to July 28th, 2005.

Geochemical assays	\$447.24
Materials & Supplies	\$3952.32
Accommodations & Meals	\$1635.24
Fixed Wing	\$2992.50
Helicopter	\$11182.50
Communications & Phone	\$678.50
Printing & Reproduction	\$24.51
Travel Costs	\$857.23
WCB	\$299.71
Geological Consultants	\$8090.95
Writing Report	\$560.00
Total	\$30720.70

I make this solemn declaration conscientiously believing it to be true and knowing that it is of the same force and effect as if made under oath and by virtue of the Canada Evidence Act.

Declared before me at Vancouver in the Province of British Columbia this 17th day of January 2006.

David Legault, B.Sc.

Appendix C – Statement of Qualifications

I, David Legault, resident of Vancouver, British Columbia, do certify that:

1. I graduated from Université du Québec À Montréal in May 2001 with a B.Sc. in Geology;
2. From 1998 to present, I have been actively engaged in mineral exploration in Québec, Ontario, and Yukon Territory and am presently employed with the Expatriate Group of Companies to which Yukon Zinc Corporation is part of;
3. I have personally participated in the logistical support during the fieldwork and analysis of data for the filed undertakings herein.

Respectfully Submitted,

David Legault, B.Sc.



ALS Chemex

EXCELLENCE IN ANALYTICAL CHEMISTRY

ALS Canada Ltd.

212 Brooksbank Avenue
North Vancouver BC V7J 2C1

Phone: 604 984 0221 Fax: 604 984 0218 www.alschemex.com

YUKON ZINC CORPORATION
701-475 HOWE ST
VANCOUVER BC V6C 2B3

Page: 1
Finalized Date: 29-AUG-2005
Account: MPO

CERTIFICATE VA05067087

Project: 1641

P.O. No.:

This report is for 33 Rock samples submitted to our lab in Vancouver, BC, Canada on 15-AUG-2005.

The following have access to data associated with this certificate:

JASON DUNNING

SAMPLE PREPARATION

ALS CODE	DESCRIPTION
WEI-21	Received Sample Weight
LOG-24	Pulp Login - Rcd w/o Barcode
LOG-22	Sample login - Rcd w/o BarCode
CRU-31	Fine crushing - 70% <2mm
SPL-21	Split sample - riffle splitter
PUL-31	Pulverize split to 85% <75 um

ANALYTICAL PROCEDURES

ALS CODE	DESCRIPTION	INSTRUMENT
Au-AA23	Au 30g FA-AA finish	AAS
ME-ICP61	27 element four acid ICP-AES	ICP-AES

To: YUKON ZINC CORPORATION
ATTN: JASON DUNNING
701-475 HOWE ST
VANCOUVER BC V6C 2B3

This is the Final Report and supersedes any preliminary report with this certificate number. Results apply to samples as submitted. All pages of this report have been checked and approved for release.

Signature: _____



ALS Chemex

EXCELLENCE IN ANALYTICAL CHEMISTRY

ALS Canada Ltd.

212 Brooksbank Avenue

North Vancouver BC V7J 2C1

Phone: 604 984 0221 Fax: 604 984 0218 www.alschemex.com

YUKON ZINC CORPORATION

701-475 HOWE ST

VANCOUVER BC V6C 2B3

Page: 2 - A

Total # Pages: 2 (A - B)

Finalized Date: 29-AUG-2005

Account: MPO

Project: 1641

CERTIFICATE OF ANALYSIS VA05067087

Sample Description	Method Analyte Units LOR	WEI-21	Au-AA23	ME-ICP61	ME-ICP61	ME-ICP61	ME-ICP61	ME-ICP61	ME-ICP61	ME-ICP61	ME-ICP61	ME-ICP61	ME-ICP61	ME-ICP61	ME-ICP61	
		Recvd Wt.	Au	Ag	Al	As	Ba	Be	Bi	Ca	Cd	Co	Cr	Cu	Fe	K
		kg	ppm	ppm	%	ppm	ppm	ppm	ppm	%	ppm	ppm	ppm	ppm	%	%
		0.02	0.005	0.5	0.01	5	10	0.5	2	0.01	0.5	1	1	1	0.01	0.01
A134131		1.10	<0.005	<0.5	8.29	9	2870	2.0	<2	3.48	<0.5	17	90	64	5.82	2.28
A134132		0.90	<0.005	<0.5	8.21	<5	850	1.6	<2	6.87	<0.5	33	153	32	6.53	3.00
A134133		0.90	<0.005	<0.5	2.37	<5	280	<0.5	<2	0.45	<0.5	10	36	95	28.0	0.91
A134134		0.88	<0.005	<0.5	6.86	5	2000	3.5	<2	0.24	<0.5	1	60	4	1.23	1.06
A134135		0.84	<0.005	<0.5	10.15	6	1560	2.0	<2	4.28	<0.5	44	34	10	8.58	3.71
A134136		0.74	<0.005	<0.5	9.21	<5	1890	1.2	<2	0.79	<0.5	28	66	24	7.33	3.93
A134137		0.78	0.044	38.8	7.49	8	290	1.3	<2	0.73	20.3	28	120	410	4.68	3.19
A134138		0.94	<0.005	1.2	9.83	35	3460	1.9	<2	1.21	<0.5	17	80	33	7.80	3.57
A134139		0.54	<0.005	0.6	11.00	7	790	1.6	<2	2.26	1.4	73	229	229	5.98	5.79
A134140		0.32	<0.005	1.3	10.80	17	160	1.8	<2	2.50	0.5	110	98	78	14.00	3.37
A134507		0.70	<0.005	<0.5	7.58	<5	800	4.2	<2	10.70	<0.5	18	61	230	5.21	1.64
A134508		0.46	<0.005	<0.5	4.37	11	1010	1.3	<2	17.10	<0.5	12	40	118	3.53	1.38
A134509		0.88	0.021	0.7	2.62	6	470	0.6	<2	26.2	<0.5	7	24	1825	2.03	0.41
A134510		1.20	<0.005	<0.5	8.20	<5	2430	1.2	<2	12.40	<0.5	23	60	283	5.52	1.92
A134511		0.44	<0.005	<0.5	2.31	<5	100	<0.5	<2	30.8	<0.5	3	3	143	1.41	0.12
A134512		1.54	<0.005	<0.5	9.46	<5	2890	2.8	<2	10.00	<0.5	20	64	37	4.14	1.60
A134513		0.66	<0.005	<0.5	8.34	<5	3450	13.2	<2	1.75	<0.5	13	7	6	4.07	1.55
A134514		0.66	<0.005	<0.5	8.99	<5	670	3.9	<2	3.30	<0.5	24	143	43	6.33	2.98
A134515		0.96	<0.005	0.5	9.77	5	590	190.5	<2	10.85	0.5	32	149	74	5.57	2.04
A134559		0.58	<0.005	<0.5	8.84	<5	1290	2.3	<2	1.04	<0.5	16	36	4	11.50	3.49
A134560		0.74	<0.005	<0.5	7.34	<5	1630	1.6	<2	1.78	<0.5	6	99	22	3.78	1.54
A134561		0.84	<0.005	<0.5	7.48	<5	2130	1.4	<2	1.33	<0.5	15	94	32	4.57	2.83
A134562		0.92	<0.005	<0.5	6.18	8	1240	2.0	<2	0.04	<0.5	3	9	3	1.62	2.95
A134773		0.50	<0.005	<0.5	7.15	<5	1530	2.2	<2	0.30	<0.5	3	85	3	2.13	5.15
A134774		0.70	<0.005	<0.5	8.30	<5	820	1.6	<2	8.30	<0.5	13	56	98	5.00	1.09
A134775		0.62	<0.005	<0.5	4.63	<5	330	0.7	<2	4.51	<0.5	35	500	11	5.76	1.12
A134776		0.60	0.012	0.6	9.45	<5	1240	2.9	5	4.37	<0.5	41	41	232	6.71	1.32
A134777		0.54	0.018	<0.5	8.57	22	400	4.3	<2	6.07	<0.5	34	138	208	7.71	0.66
B373201		0.78	<0.005	<0.5	5.79	<5	2490	1.2	<2	0.07	<0.5	1	116	4	1.26	5.41
B373202		0.70	<0.005	<0.5	7.12	<5	4160	2.6	<2	0.52	<0.5	2	97	4	1.84	4.42
B373203		0.70	<0.005	<0.5	7.55	<5	1870	1.6	<2	2.30	<0.5	15	58	3	4.80	3.16
B373204		0.74	<0.005	<0.5	0.73	17	460	<0.5	<2	0.04	<0.5	1	206	11	1.10	0.29
B373205		0.84	<0.005	<0.5	6.84	8	2290	1.3	<2	0.19	<0.5	1	11	9	2.08	2.76



ALS Chemex

EXCELLENCE IN ANALYTICAL CHEMISTRY

ALS Canada Ltd.

212 Brooksbank Avenue

North Vancouver BC V7J 2C1

Phone: 604 984 0221 Fax: 604 984 0218 www.alschemex.com

YUKON ZINC CORPORATION

701-475 HOWE ST

VANCOUVER BC V6C 2B3

Page: 2 - B

Total # Pages: 2 (A - B)

Finalized Date: 29-AUG-2005

Account: MPO

Project: 1641

CERTIFICATE OF ANALYSIS VA05067087

Sample Description	Method	ME-ICP61	ME-ICP61	ME-ICP61	ME-ICP61	ME-ICP61	ME-ICP61	ME-ICP61	ME-ICP61	ME-ICP61	ME-ICP61	ME-ICP61	ME-ICP61	ME-ICP61	
	Analyte	Mg	Mn	Mo	Na	Ni	P	Pb	S	Sb	Sr	Ti	V	W	Zn
	Units LOR	%	ppm	ppm	%	ppm	ppm	ppm	%	ppm	ppm	%	ppm	ppm	ppm
		0.01	5	1	0.01	1	10	2	0.01	5	1	0.01	1	10	2
A134131		2.39	772	2	0.67	46	860	22	0.43	<5	341	0.60	213	<10	145
A134132		5.14	1125	<1	1.12	97	1100	36	<0.01	<5	617	0.65	282	<10	70
A134133		0.28	202	<1	0.05	9	1970	33	0.01	<5	12	0.10	234	<10	218
A134134		0.13	73	<1	4.30	1	190	8	0.04	<5	60	0.11	10	<10	16
A134135		1.85	4600	<1	0.69	14	1180	108	0.77	<5	133	1.46	317	<10	450
A134136		1.26	1310	<1	0.61	10	1080	112	0.21	<5	80	1.37	325	<10	240
A134137		0.41	556	35	0.74	24	880	4520	2.41	19	65	0.56	208	<10	3540
A134138		0.99	1375	<1	1.02	13	1420	83	0.36	<5	120	1.41	352	<10	157
A134139		1.06	583	<1	0.52	37	1010	76	2.56	<5	136	0.44	217	<10	453
A134140		1.54	3620	1	1.25	31	3730	152	3.60	<5	214	1.52	450	<10	230
A134507		1.58	1685	<1	1.77	25	900	55	0.12	<5	351	0.30	207	<10	86
A134508		1.10	2960	<1	0.89	21	230	15	0.04	<5	471	0.15	101	<10	54
A134509		0.69	3760	<1	0.53	12	200	18	0.11	<5	777	0.11	145	<10	29
A134510		2.36	1945	1	1.27	32	670	24	0.02	<5	1080	0.39	244	<10	97
A134511		0.43	3950	<1	0.79	7	420	20	<0.01	<5	778	0.07	63	<10	11
A134512		2.38	1960	<1	2.34	39	1900	26	0.03	<5	671	0.42	250	<10	120
A134513		3.17	528	<1	1.36	5	510	28	0.01	<5	465	0.40	60	<10	78
A134514		3.18	760	<1	2.24	59	1620	17	0.06	<5	237	0.87	184	<10	185
A134515		1.86	1240	1	1.46	95	2190	30	1.51	<5	362	1.06	215	10	122
A134559		2.28	823	<1	0.41	10	1190	46	0.02	<5	81	1.27	230	<10	132
A134560		1.32	499	<1	2.00	8	530	24	0.06	<5	413	0.32	39	<10	79
A134561		2.08	598	<1	2.26	30	1060	14	0.01	<5	189	0.59	154	10	86
A134562		0.12	60	2	0.13	5	330	27	0.01	<5	120	0.16	18	<10	45
A134773		0.42	175	<1	1.64	5	280	28	<0.01	<5	66	0.18	17	<10	42
A134774		1.57	1750	<1	2.17	23	970	24	0.01	<5	785	0.33	249	<10	70
A134775		8.54	1390	<1	0.26	587	230	4	<0.01	<5	67	0.25	115	<10	109
A134776		2.88	692	<1	1.28	45	760	13	1.98	<5	339	0.54	327	<10	59
A134777		4.05	1165	<1	2.47	76	980	16	1.29	<5	395	1.19	313	<10	74
B373201		0.12	105	1	0.57	5	50	24	0.01	<5	57	0.07	4	<10	52
B373202		1.20	226	<1	0.68	6	160	24	<0.01	<5	123	0.13	13	<10	67
B373203		1.65	935	<1	3.11	18	900	14	0.02	<5	378	0.54	108	<10	91
B373204		0.07	75	1	0.03	10	100	<2	0.01	<5	11	0.03	23	<10	9
B373205		0.60	342	<1	2.31	1	190	23	0.24	<5	75	0.14	9	<10	48



ALS Chemex

EXCELLENCE IN ANALYTICAL CHEMISTRY

ALS Canada Ltd.

212 Brooksbank Avenue

North Vancouver BC V7J 2C1

Phone: 604 984 0221 Fax: 604 984 0218 www.alschemex.com

YUKON ZINC CORPORATION

701-475 HOWE ST

VANCOUVER BC V6C 2B3

Page: 1
Finalized Date: 18-AUG-2005

Account: MPO

CERTIFICATE VA05067088

Project: 1641

P.O. No.:

This report is for 49 Soil samples submitted to our lab in Vancouver, BC, Canada on 12-AUG-2005.

The following have access to data associated with this certificate:

JASON DUNNING

SAMPLE PREPARATION

ALS CODE	DESCRIPTION
WEI-21	Received Sample Weight
LOG-22	Sample login - Rcd w/o BarCode
SCR-41	Screen to -180um and save both

ANALYTICAL PROCEDURES

ALS CODE	DESCRIPTION	INSTRUMENT
ME-ICP61	27 element four acid ICP-AES	ICP-AES

To: YUKON ZINC CORPORATION
ATTN: JASON DUNNING
701-475 HOWE ST
VANCOUVER BC V6C 2B3

This is the Final Report and supersedes any preliminary report with this certificate number. Results apply to samples as submitted. All pages of this report have been checked and approved for release.

Signature:



ALS Chemex

EXCELLENCE IN ANALYTICAL CHEMISTRY

ALS Canada Ltd.

212 Brooksbank Avenue

North Vancouver BC V7J 2C1

Phone: 604 984 0221 Fax: 604 984 0218 www.alschemex.com

YUKON ZINC CORPORATION

701-475 HOWE ST

VANCOUVER BC V6C 2B3

Page: 2 - A

Total # Pages: 3 (A - B)

Finalized Date: 18-AUG-2005

Account: MPO

Project: 1641

CERTIFICATE OF ANALYSIS VA05067088

Sample Description	Method Analyte Units LOR	WEI-21	ME-ICP61	ME-ICP61	ME-ICP61	ME-ICP61	ME-ICP61	ME-ICP61	ME-ICP61	ME-ICP61	ME-ICP61	ME-ICP61	ME-ICP61	ME-ICP61	ME-ICP61	ME-ICP61
		Recvd Wt. kg	Ag ppm	Al %	As ppm	Ba ppm	Be ppm	Bi ppm	Ca %	Cd ppm	Co ppm	Cr ppm	Cu ppm	Fe %	K %	Mg %
		0.02	0.5	0.01	5	10	0.5	2	0.01	0.5	1	1	0.01	0.01	0.01	
A083901		0.44	<0.5	5.44	<5	1350	1.2	<2	0.54	<0.5	8	112	35	3.64	1.62	0.66
A083902		0.56	<0.5	3.55	152	250	<0.5	<2	0.66	<0.5	78	974	25	5.98	0.63	13.70
A083903		0.42	<0.5	7.75	<5	1470	1.9	<2	1.53	<0.5	10	85	22	3.19	2.48	1.58
A083904		0.42	<0.5	7.97	<5	1580	2.0	<2	1.37	<0.5	6	58	20	2.93	2.57	1.42
A083905		0.40	0.5	7.55	<5	1280	1.6	<2	1.53	<0.5	10	128	34	5.10	1.26	1.98
A083906		0.42	<0.5	7.83	5	1400	1.7	<2	1.74	0.6	13	122	32	5.75	1.44	1.95
A083907		0.42	<0.5	6.60	16	1730	1.5	<2	0.42	<0.5	5	94	43	4.89	2.00	1.22
A083908		0.44	<0.5	6.95	<5	1240	1.3	<2	1.13	<0.5	8	80	17	3.56	1.80	1.20
A083909		0.42	<0.5	7.12	10	2330	1.9	<2	0.74	1.2	6	92	30	3.65	2.68	1.34
A083910		0.32	<0.5	6.76	8	1140	1.4	<2	1.44	<0.5	18	68	29	2.95	1.76	1.15
B372776		0.60	<0.5	2.31	104	20	<0.5	<2	1.92	<0.5	68	897	20	4.73	0.04	15.40
B372785		0.38	<0.5	8.11	<5	2240	3.5	<2	1.47	<0.5	12	74	26	4.67	2.39	2.68
B372786		0.36	<0.5	8.11	<5	930	5.9	<2	1.34	<0.5	13	53	29	4.20	2.37	2.09
B372787		0.32	<0.5	7.92	<5	2140	5.6	7	1.21	<0.5	18	118	143	4.80	2.35	1.76
B372788		0.40	<0.5	7.57	<5	1710	3.9	<2	0.99	<0.5	8	39	25	3.25	2.82	1.28
B372789		0.22	<0.5	7.16	<5	590	2.1	<2	2.79	<0.5	16	45	17	3.98	1.20	1.96
B372790		0.28	<0.5	7.84	<5	580	2.6	<2	2.24	<0.5	13	51	16	5.21	1.06	1.85
B372791		0.26	<0.5	7.44	<5	690	1.8	<2	2.26	<0.5	17	80	29	4.82	1.31	2.09
B372792		0.36	<0.5	7.14	6	780	4.4	<2	1.55	<0.5	8	53	22	4.14	1.92	1.44
B372793		0.32	<0.5	7.80	<5	1610	3.0	<2	1.81	<0.5	9	43	10	3.57	2.39	1.40
B372794		0.48	<0.5	7.56	<5	1060	2.8	<2	2.15	<0.5	19	83	67	5.25	1.76	2.23
B372795		0.42	<0.5	7.52	<5	380	2.2	<2	3.41	<0.5	30	79	44	6.89	0.87	3.69
B372796		0.30	<0.5	7.26	<5	320	2.8	<2	2.10	<0.5	27	124	85	5.11	1.03	3.57
B372797		0.42	0.5	7.47	<5	990	2.4	<2	1.37	<0.5	20	62	65	4.43	1.77	1.48
B372798		0.30	<0.5	6.99	<5	940	2.1	<2	2.00	<0.5	14	93	29	5.18	1.36	1.98
B372799		0.22	<0.5	5.84	5	2080	1.9	<2	0.70	<0.5	3	42	9	2.05	2.10	0.78
B372800		0.38	<0.5	7.67	<5	910	2.8	<2	2.37	<0.5	15	66	23	4.93	1.36	1.95
B372980		0.46	<0.5	7.40	7	2130	1.8	<2	1.03	<0.5	5	51	22	2.79	2.17	0.95
B372981		0.30	<0.5	7.57	<5	1260	1.7	<2	1.78	<0.5	10	90	19	3.37	1.59	1.38
B372982		0.40	<0.5	7.39	37	1940	2.3	<2	0.65	<0.5	14	60	38	5.36	2.36	1.46
B372983		0.44	<0.5	6.59	7	970	1.6	<2	1.17	<0.5	15	204	32	4.65	1.24	2.10
B372984		0.36	<0.5	6.61	<5	1340	1.6	<2	1.11	<0.5	5	71	19	3.17	1.54	0.84
B372985		0.30	<0.5	6.46	<5	1280	1.5	<2	0.91	<0.5	7	80	21	3.39	1.82	0.98
B373044		0.16	<0.5	6.40	<5	720	1.2	<2	1.82	<0.5	6	19	13	2.34	1.52	0.79
B373045		0.24	<0.5	5.97	<5	480	1.9	<2	2.28	1.8	25	39	140	4.50	1.18	2.13
B373046		0.34	<0.5	7.14	<5	1510	2.6	<2	0.89	<0.5	7	43	11	2.91	2.86	1.14
B373047		0.54	<0.5	7.49	<5	1460	2.0	<2	1.27	<0.5	13	89	24	4.39	1.65	1.64
B373048		0.22	<0.5	5.57	11	840	1.4	<2	1.30	<0.5	17	80	46	4.12	1.26	1.13
B373049		0.28	<0.5	6.52	<5	1280	1.5	<2	1.10	<0.5	11	100	38	3.50	1.90	1.32
B373050		0.48	<0.5	5.78	8	570	0.8	2	3.01	<0.5	50	451	108	7.06	1.55	6.77



ALS Chemex

EXCELLENCE IN ANALYTICAL CHEMISTRY

ALS Canada Ltd.

212 Brooksbank Avenue

North Vancouver BC V7J 2C1

Phone: 604 984 0221 Fax: 604 984 0218 www.alschemex.com

YUKON ZINC CORPORATION

701-475 HOWE ST

VANCOUVER BC V6C 2B3

Page: 2 - B

Total # Pages: 3 (A - B)

Finalized Date: 18-AUG-2005

Account: MPO

Project: 1641

CERTIFICATE OF ANALYSIS VA05067088

Sample Description	Method	ME-ICP61	ME-ICP61	ME-ICP61	ME-ICP61	ME-ICP61	ME-ICP61	ME-ICP61	ME-ICP61	ME-ICP61	ME-ICP61	ME-ICP61	ME-ICP61	
	Analyte	Mn	Mo	Na	Ni	P	Pb	S	Sb	Sr	Ti	V	W	Zn
	Units LOR	ppm	ppm	%	ppm	ppm	ppm	%	ppm	ppm	%	ppm	ppm	ppm
		5	1	0.01	1	10	2	0.01	5	1	0.01	1	10	2
A083901		467	2	0.66	43	2460	22	0.11	<5	105	0.42	162	<10	129
A083902		1085	<1	0.03	1925	330	4	0.01	<5	45	0.21	102	<10	99
A083903		522	2	2.04	53	910	37	0.03	<5	383	0.40	85	<10	106
A083904		613	1	1.73	19	690	53	0.03	<5	306	0.34	69	<10	123
A083905		719	2	1.24	47	870	32	0.09	<5	187	0.63	172	<10	121
A083906		1235	2	1.44	42	1580	31	0.09	<5	210	0.80	208	<10	157
A083907		680	3	0.46	26	590	25	0.08	<5	75	0.52	171	<10	90
A083908		471	1	1.20	27	920	18	0.03	<5	229	0.50	123	<10	69
A083909		397	<1	1.12	42	1010	73	0.06	<5	124	0.39	96	<10	202
A083910		2410	3	1.78	44	1670	24	0.08	<5	337	0.31	73	<10	83
B372776		510	<1	0.03	1360	40	2	0.02	<5	13	0.05	58	<10	52
B372785		588	1	1.10	40	1210	28	0.05	<5	146	0.61	110	<10	101
B372786		750	2	1.11	26	1260	31	0.07	<5	152	0.44	107	<10	153
B372787		840	1	0.76	62	790	35	0.05	<5	145	0.38	158	<10	127
B372788		629	2	1.42	19	680	43	0.04	<5	149	0.35	81	<10	124
B372789		780	<1	2.17	22	1470	13	0.10	<5	265	0.87	156	<10	79
B372790		881	<1	2.07	21	1940	18	0.05	<5	221	0.84	174	<10	186
B372791		838	1	1.70	27	2250	17	0.07	<5	215	0.65	170	<10	120
B372792		734	1	1.76	18	1870	115	0.08	<5	169	0.60	127	<10	142
B372793		497	1	1.54	12	980	34	0.03	<5	168	0.61	122	<10	84
B372794		981	1	1.70	39	1510	44	0.04	<5	168	0.70	178	<10	322
B372795		1060	<1	1.99	42	1360	8	0.02	<5	249	0.80	247	<10	110
B372796		902	<1	2.02	33	2410	8	0.04	<5	131	0.51	190	<10	372
B372797		882	1	1.56	22	1380	39	0.05	<5	176	0.62	136	<10	204
B372798		801	<1	1.14	34	2150	21	0.06	<5	182	0.77	176	<10	109
B372799		268	2	1.08	12	910	25	0.09	<5	128	0.30	74	<10	99
B372800		898	1	1.96	30	920	23	0.02	<5	206	0.79	154	<10	98
B372980		453	1	1.68	21	900	28	0.04	<5	278	0.36	90	<10	80
B372981		694	1	2.58	40	1040	30	0.02	<5	310	0.50	100	<10	74
B372982		917	2	1.34	42	1030	43	0.06	<5	155	0.50	129	<10	126
B372983		598	1	0.98	122	1220	21	0.04	<5	152	0.37	130	<10	98
B372984		506	<1	1.64	24	1800	22	0.05	<5	213	0.46	100	<10	71
B372985		539	1	1.44	29	1670	20	0.07	<5	194	0.38	93	<10	79
B373044		375	1	2.03	8	1370	14	0.07	<5	442	0.33	72	<10	52
B373045		1350	1	0.96	20	1730	17	0.14	<5	124	0.54	137	<10	671
B373046		382	<1	1.32	19	570	26	0.02	<5	142	0.34	72	<10	88
B373047		682	<1	1.39	44	890	25	0.02	<5	176	0.47	114	<10	106
B373048		668	2	1.08	50	2880	27	0.16	<5	200	0.64	120	<10	71
B373049		501	2	1.19	53	990	14	0.09	<5	274	0.30	122	<10	103
B373050		1400	<1	0.66	423	790	12	0.02	<5	108	0.56	192	20	111



ALS Chemex

EXCELLENCE IN ANALYTICAL CHEMISTRY

ALS Canada Ltd.

212 Brooksbank Avenue

North Vancouver BC V7J 2C1

Phone: 604 984 0221 Fax: 604 984 0218 www.alschemex.com

YUKON ZINC CORPORATION

701-475 HOWE ST

VANCOUVER BC V6C 2B3

Page: 3 - A

Total # Pages: 3 (A - B)

Finalized Date: 18-AUG-2005

Account: MPO

Project: 1641

CERTIFICATE OF ANALYSIS VA05067088

Sample Description	Method Analyte Units LOR	WEI-21	ME-ICP61	ME-ICP61	ME-ICP61	ME-ICP61	ME-ICP61	ME-ICP61	ME-ICP61	ME-ICP61	ME-ICP61	ME-ICP61	ME-ICP61	ME-ICP61	ME-ICP61	
		Recvd Wt. kg	Ag ppm	Al %	As ppm	Ba ppm	Be ppm	Bi ppm	Ca %	Cd ppm	Co ppm	Cr ppm	Cu ppm	Fe %	K %	Mg %
		0.02	0.5	0.01	5	10	0.5	2	0.01	0.5	1	1	1	0.01	0.01	0.01
B373141		0.40	1.3	7.16	13	2220	2.5	18	1.02	0.7	24	276	87	5.19	3.25	3.54
B373142		0.34	<0.5	6.36	<5	1170	1.3	<2	1.15	<0.5	7	106	22	4.41	1.32	1.38
B373143		0.38	<0.5	7.39	<5	2170	2.1	<2	1.24	<0.5	7	83	16	3.53	2.68	1.53
B373144		0.22	<0.5	6.57	5	1300	1.6	3	1.10	<0.5	14	126	32	4.55	1.73	1.86
B373145		0.40	<0.5	7.60	12	1600	1.9	<2	1.35	<0.5	21	130	45	5.00	1.82	2.18
B373146		0.28	<0.5	7.33	5	950	2.0	<2	1.95	<0.5	19	110	39	6.23	1.20	2.24
B373147		0.32	<0.5	7.31	<5	720	1.8	<2	2.23	<0.5	15	67	16	5.24	1.56	1.53
B373148		0.30	<0.5	7.61	<5	540	2.2	<2	3.20	<0.5	26	86	36	6.21	1.12	2.91
B373149		0.38	<0.5	7.43	<5	990	2.4	<2	2.16	<0.5	12	63	15	5.26	1.70	1.62



ALS Chemex

EXCELLENCE IN ANALYTICAL CHEMISTRY

ALS Canada Ltd.

212 Brooksbank Avenue

North Vancouver BC V7J 2C1

Phone: 604 984 0221 Fax: 604 984 0218 www.alschemex.com

YUKON ZINC CORPORATION

701-475 HOWE ST

VANCOUVER BC V6C 2B3

Page: 3 - B

Total # Pages: 3 (A - B)

Finalized Date: 18-AUG-2005

Account: MPO

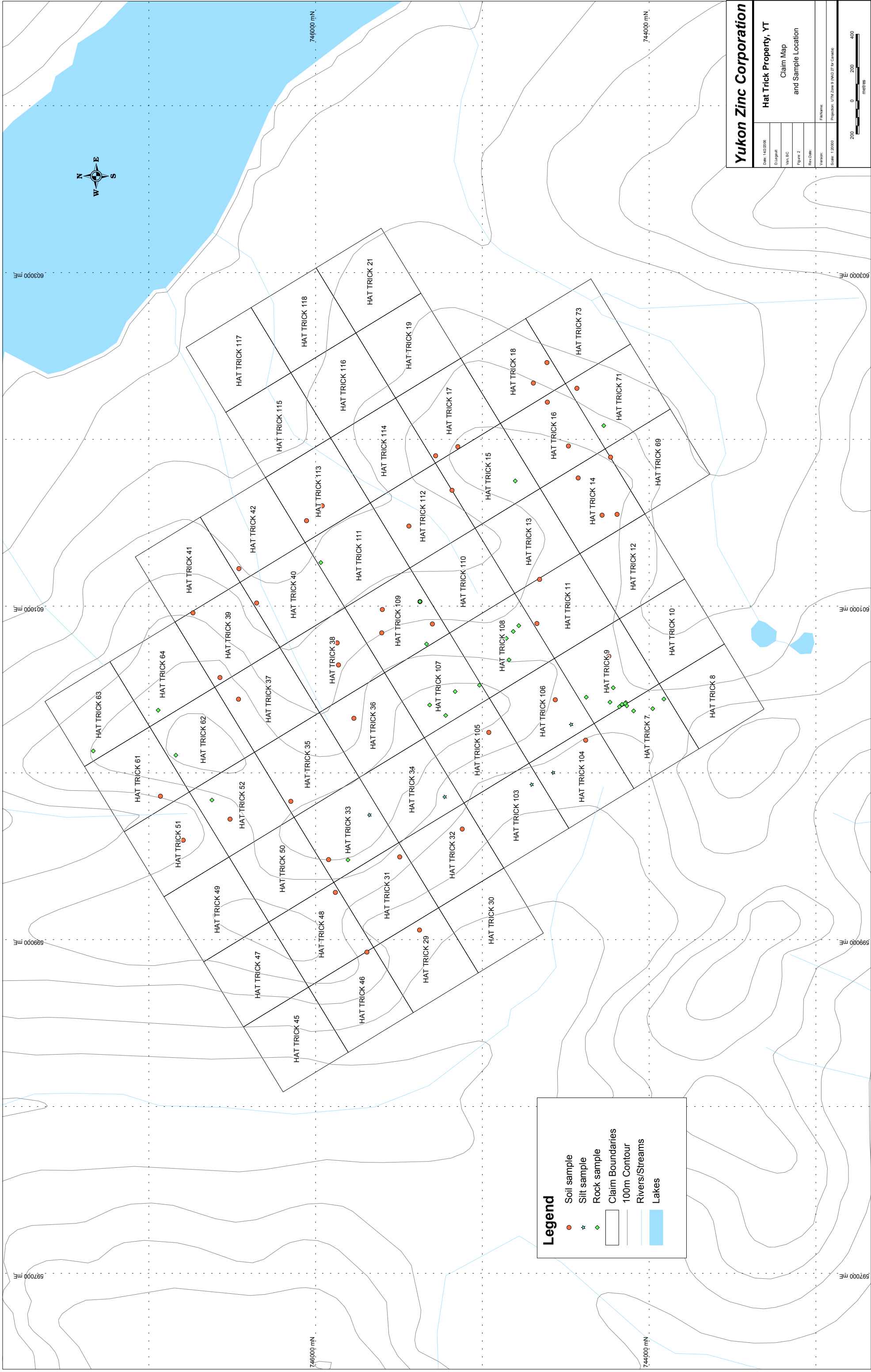
Project: 1641

CERTIFICATE OF ANALYSIS VA05067088

Sample Description	Method	ME-ICP61	ME-ICP61	ME-ICP61	ME-ICP61	ME-ICP61	ME-ICP61	ME-ICP61	ME-ICP61	ME-ICP61	ME-ICP61	ME-ICP61	ME-ICP61	
	Analyte	Mn	Mo	Na	Ni	P	Pb	S	Sb	Sr	Ti	V	W	Zn
	Units LOR	ppm	ppm	%	ppm	ppm	ppm	%	ppm	ppm	%	ppm	ppm	ppm
		5	1	0.01	1	10	2	0.01	5	1	0.01	1	10	2
B373141		1085	1	0.81	217	740	48	0.12	<5	114	0.35	106	<10	151
B373142		519	1	1.24	40	950	24	0.06	<5	182	0.46	116	<10	81
B373143		428	<1	1.20	22	850	58	0.05	<5	162	0.41	92	<10	99
B373144		679	1	1.25	64	870	25	0.05	<5	145	0.48	136	<10	99
B373145		807	<1	1.44	67	820	25	0.02	<5	152	0.48	132	<10	105
B373146		773	<1	1.42	44	780	29	0.04	<5	192	0.81	212	<10	106
B373147		1465	1	1.70	23	1840	27	0.03	<5	205	0.89	198	<10	95
B373148		1155	<1	2.08	44	1810	21	0.05	<5	264	0.81	204	<10	128
B373149		817	<1	1.72	18	1490	29	0.02	<5	185	0.93	188	<10	99



Figure 01. Location Map of the League Property.



Legend

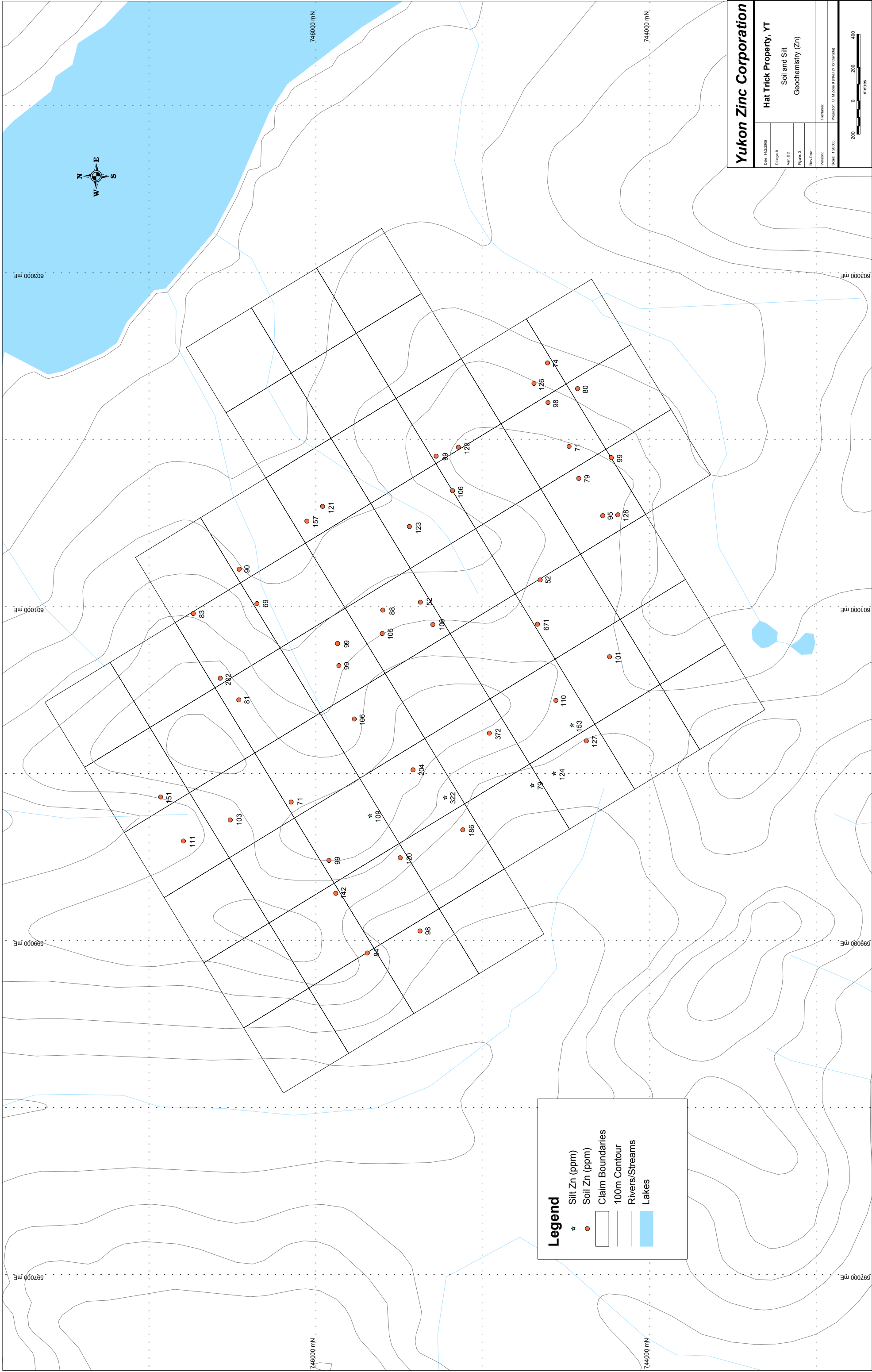
- Soil sample
- ★ Silt sample
- ◆ Rock sample
- ▭ Claim Boundaries
- 100m Contour
- Rivers/Streams
- Lakes

Yukon Zinc Corporation

Hat Trick Property, YT
Claim Map
and Sample Location

Date: 1/12/2006	Drawn by: MJC
Scale: 1:20000	Version: 1.0
Figure 2	Rev. Date:
Filename: \\server\GIS\Projects\UTM\Zone 9 NAD27 for Canada	

200 0 200 400
meters



Yukon Zinc Corporation

Hat Trick Property, YT

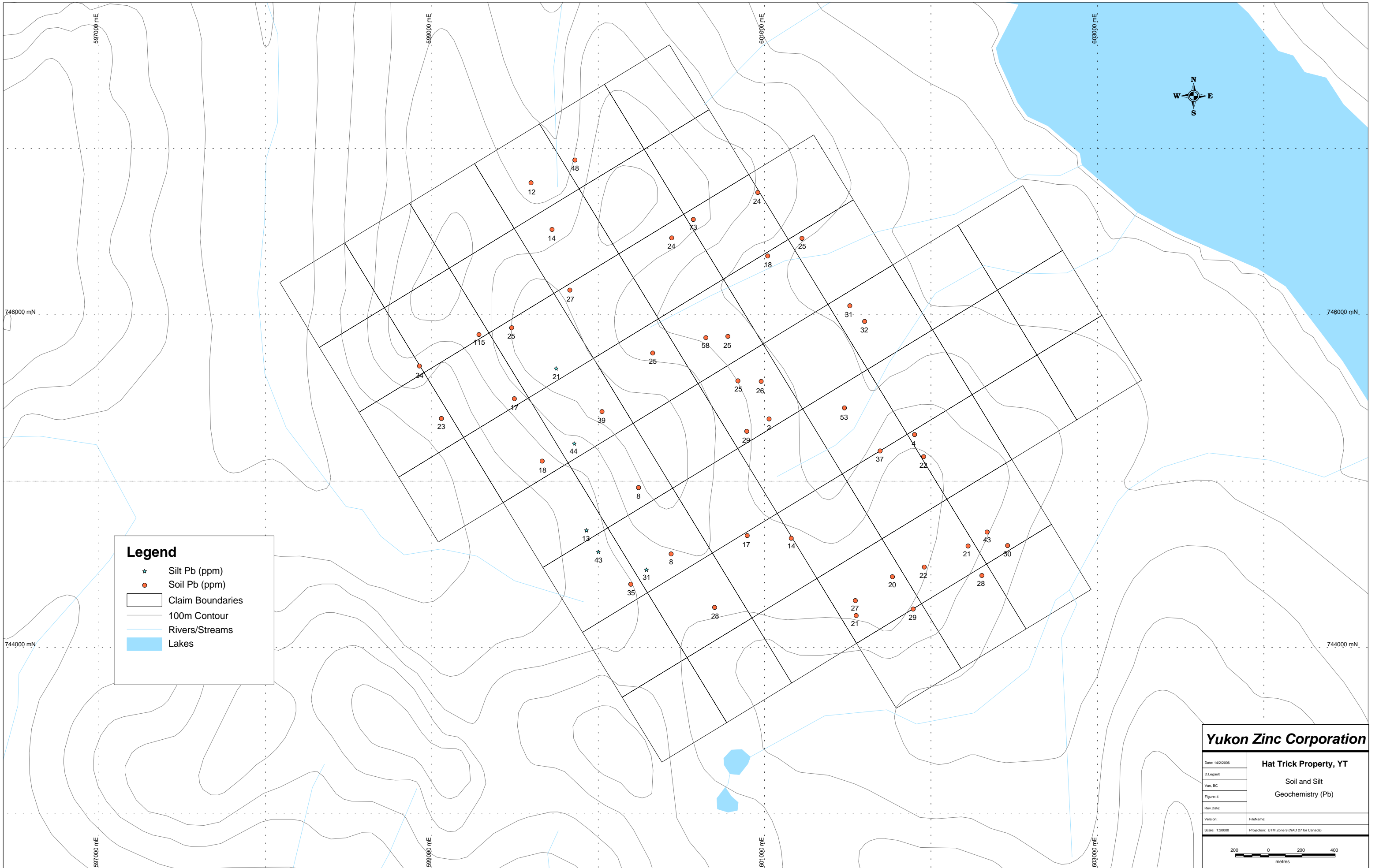
Soil and Silt
Geochemistry (Zn)

Date:	1/12/2008
D. Legend:	
Map BC:	
Figure 3:	
Rev. Date:	
Version:	
Scale:	1:20000
Filename:	
Projection:	UTM Zone 9 NAD 27 for Canada

200 0 200 400
meters

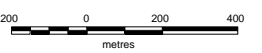
Legend

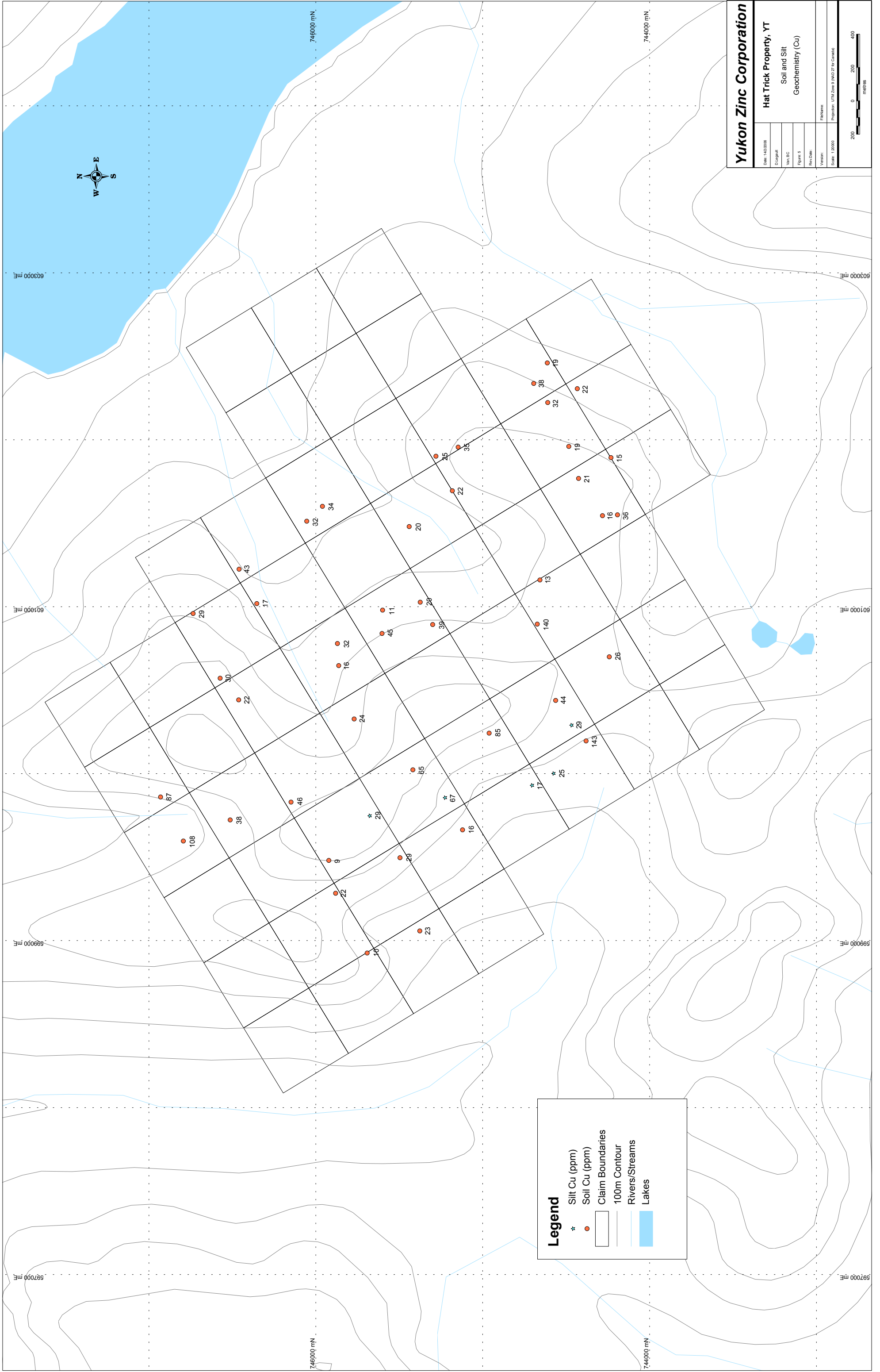
- * Silt Zn (ppm)
- Soil Zn (ppm)
- ▭ Claim Boundaries
- 100m Contour
- Rivers/Streams
- Lakes



Yukon Zinc Corporation

Date: 14/2/2006	Hat Trick Property, YT Soil and Silt Geochemistry (Pb)
D. Legault	
Van, BC	
Figure: 4	
Rev. Date:	
Version:	FileName:
Scale: 1:20000	Projection: UTM Zone 9 (NAD 27 for Canada)





Yukon Zinc Corporation

Hat Trick Property, YT

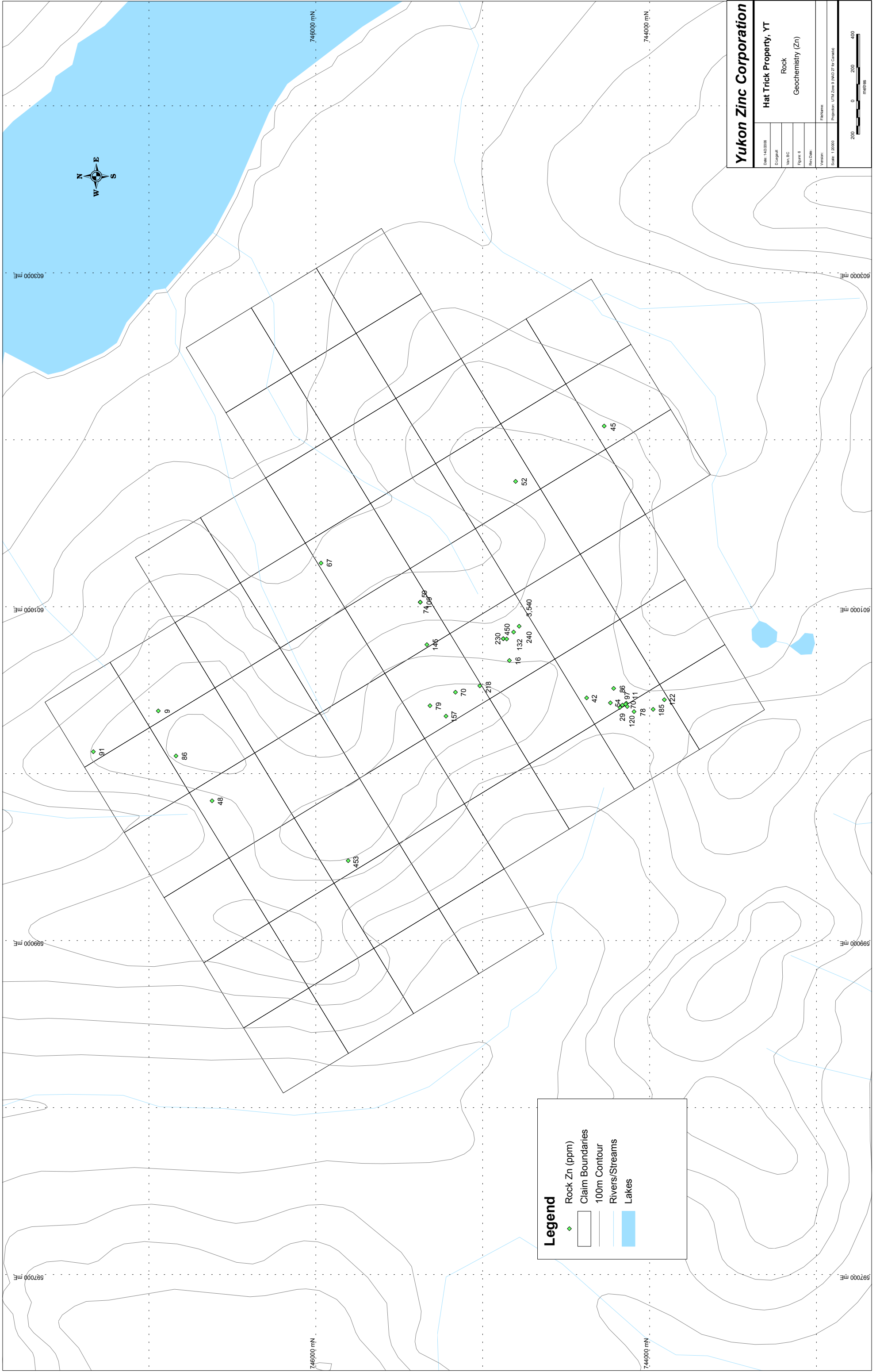
Soil and Silt
Geochemistry (Cu)

Date:	1/12/2006
D. Loggatt	
Map BC	
Figure 5	
Rev. Date:	
Version:	
Scale:	1:20000
Filename:	
Projector:	UTM Zone 9 NAD 27 for Canada

200 0 200 400
meters

Legend

- * Silt Cu (ppm)
- Soil Cu (ppm)
- ▭ Claim Boundaries
- 100m Contour
- Rivers/Streams
- Lakes



Yukon Zinc Corporation

Hat Trick Property, YT

Rock Geochemistry (Zn)

Date:	1/12/2006
D. Legend:	
Map BC:	
Figure #:	6
Rev. Date:	
Version:	
Scale:	1:20000
Filename:	
Projection:	UTM Zone 9 NAD 27 for Canada

200 0 200 400
meters

Legend

- ◆ Rock Zn (ppm)
- ▭ Claim Boundaries
- 100m Contour
- Rivers/Streams
- Lakes

91 9 86 48

453

79 157 70

145 74,085

230 450 16 132 240

42 29 54 86 120 97 101 78

185 122

67

52

45

746000 mN

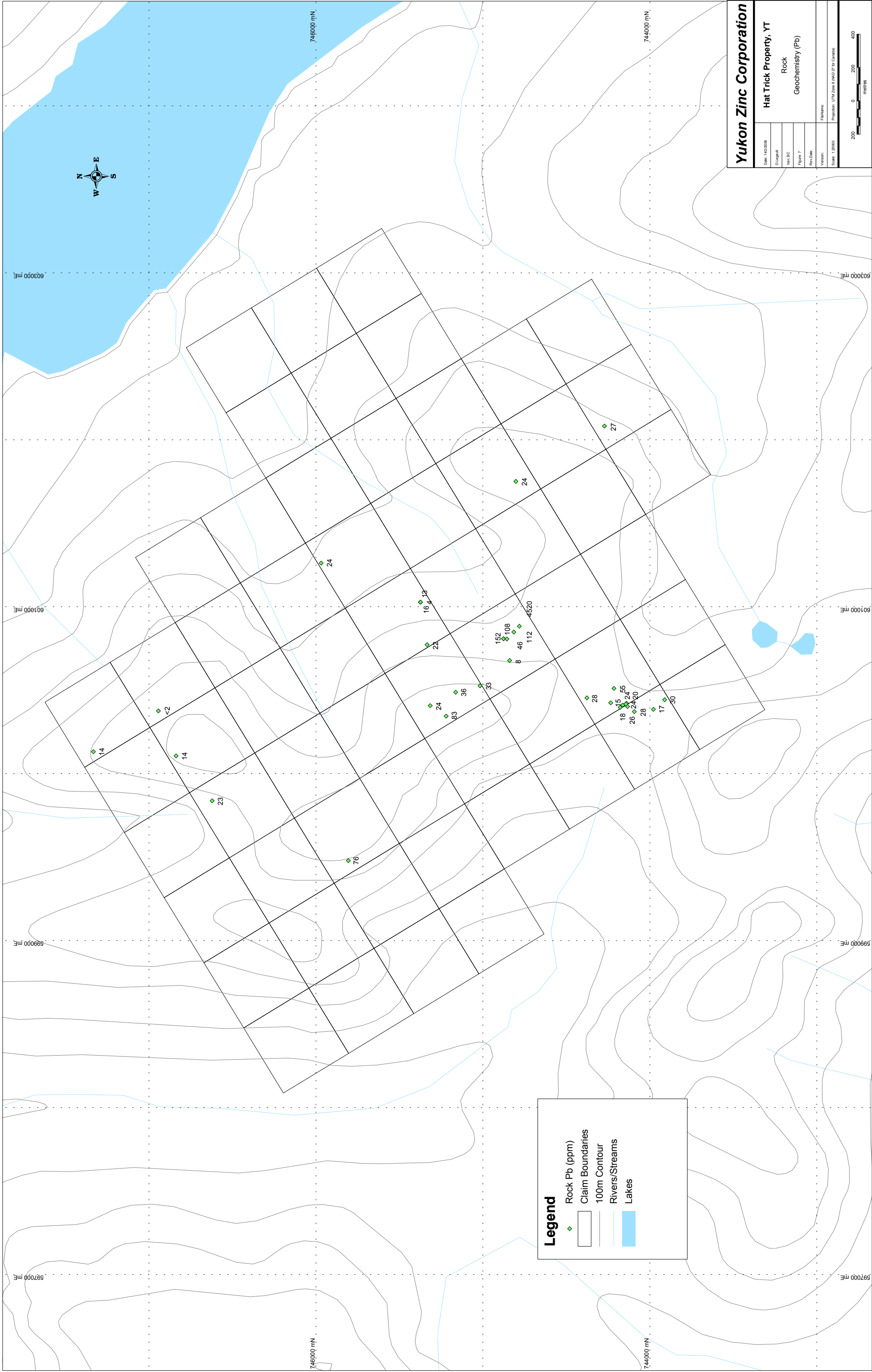
744000 mN

597000 mE

599000 mE

601000 mE

603000 mE



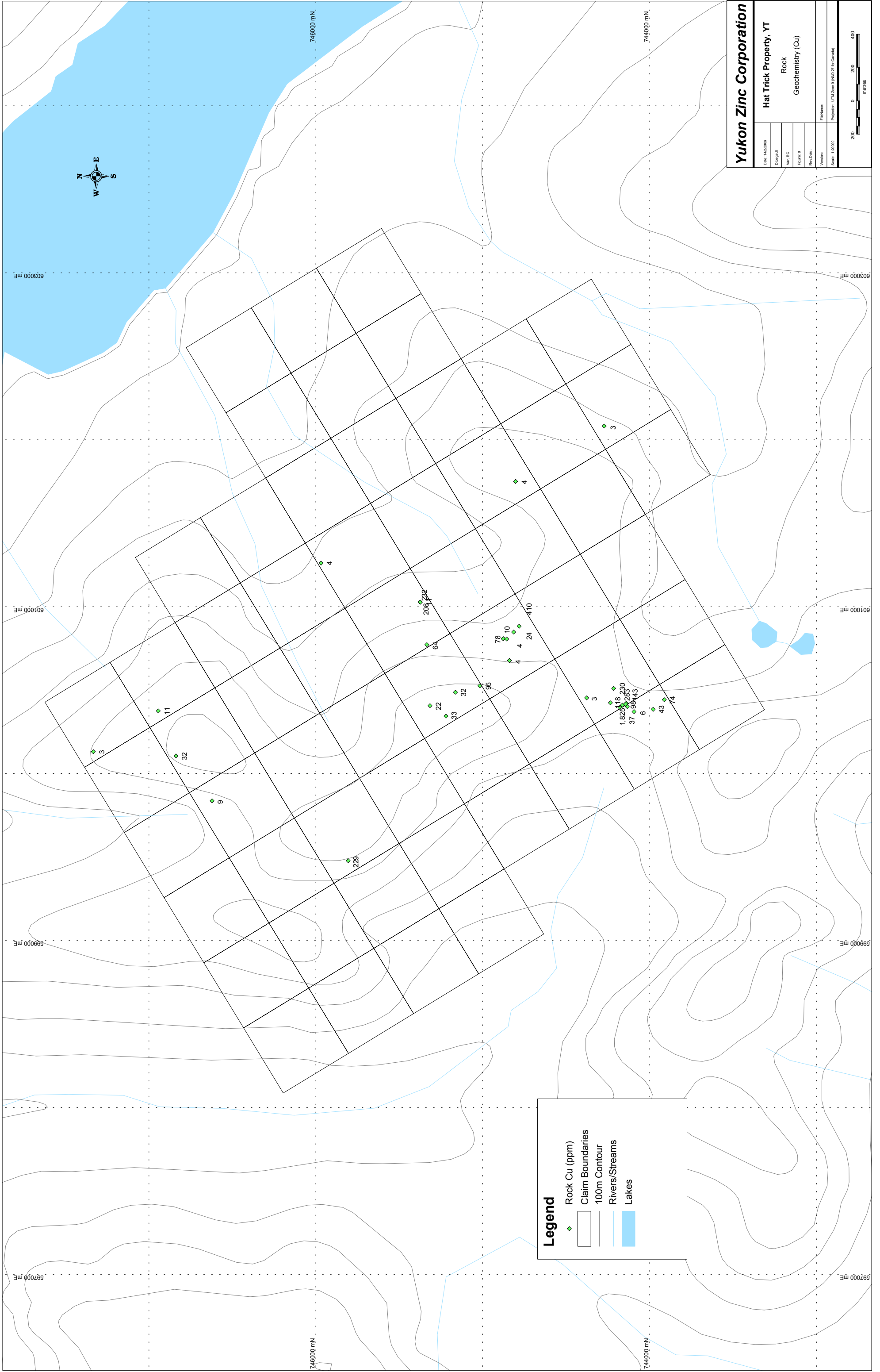
Legend

- Rock Pb (ppm)
- Claim Boundaries
- 100m Contour
- Rivers/Streams
- Lakes

Yukon Zinc Corporation
Hat Trick Property, YT
 Rock Geochemistry (Pb)

Date: 1/12/2006
 D:\Lupatt
 Map BC
 Figure 7
 Rev. Date:
 Version:
 Scale: 1:20000
 Filename:
 Projector: UTM Zone 9 NAD 27 for Canada

200 0 200 400
 metres



Legend

- ◆ Rock Cu (ppm)
- Claim Boundaries
- 100m Contour
- Rivers/Streams
- Lakes

Yukon Zinc Corporation

Hat Trick Property, YT

Rock Geochemistry (Cu)

Date:	1/12/2008
D. Loggitt	
Map BC	
Figure 8	
Rev. Date:	
Version:	
Scale:	1:20000
Filename:	
Projector:	UTM Zone 9 NAD 27 for Canada

200 0 200 400 meters