

SOILS SURVEY

FOR THE

TOSHINGERMANN LAKE PROJECT 115G13/14

KR 1-14 + KR-17-32, YC26710 - YC26739

Latitude 61°47' N

Longitude 139°25' W

Whitehorse Mining District

Yukon Territory

115 G / 13 - 14

094576

For work performed between June 24-27 and August 23-27, 2004

By: **R. S. Berdahl**
Box 11250
Whitehorse, YT
Y1A 6N4

January 2005

TABLE OF CONTENTS

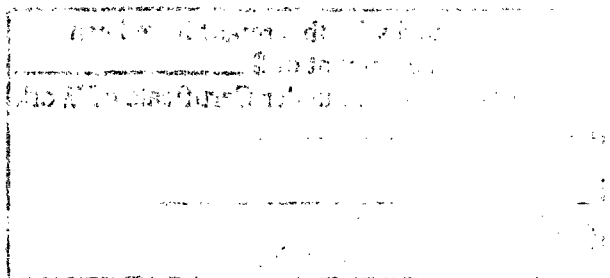
Summary	1
Location and Access	1
Physiography, Climate and Vegetation	1
Regional Geology	2
Project Area Geology	2
Past Work Results	3
Current Program	4
Results	4
Conclusion	5
Recommendations	6
References	7

List of Figures:

Figure 1: Location Map: 1:1,000,000 scale

Appendices:

- A) Toshingermann Lake Project Sample Description
- B) Assays
- C) Sample Location Map
- D) Statement of Costs
- E) Statement of Qualifications
- F) Project Personnel



Costs associated with this report have been approved in the amount of \$ 15000.00 for assessment credit under Certificate of Work No. QW27758

A. Southwick
Mining Recorder
Whitehorse Mining District

SUMMARY

The Toshingermann Lake Project area covers the thrust fault contact between accreted Windy-McKinley Terrane and displaced ancestral North America continental Nisling Terrane. The earliest work on the property was follow-up prospecting of a 1986 regional geochem release.

Several styles of gold mineralization were discovered. Placer gold is not uncommon in the general area. Gold is also found associated with liwistenite alteration in shears and with arsonopyrite/pyrite in schist. Cu and Ag have been found in pyrrhotite skarn. High Zn values have also been found in skarn in the area.

The 2004 work was directed at a 4-kilometre-square area of limited outcrop between two of the main gold showings. A flagged GPS grid was established with lines every 100 m and stations at 50 m intervals. Four hundred and ninety-nine soil samples were collected; 10% of the samples were anomalous for gold (greater than 10 ppb). The highest soil value was 1.932 g Au.

LOCATION AND ACCESS

The project area is located in the Ruby Range, 265 km northwest of Whitehorse in the southwest Yukon (figure 1). It is located on NTS map sheets 115G13/14 and is within the Whitehorse Mining District. The property is adjacent to the Kluane River and about 18 miles north of the Alaska Highway at Milepost 1118.

The project area can be accessed with canoe or riverboat from Mile 1118 (Kluane Wilderness Lodge) on the Alaska Highway. Alternatively, float-equipped airplanes (Cessna 206 or Beaver) have landed on the river near the claims, or on Toshingermann Lake. Helicopter, currently only available from Haines Junction, was employed during the 2004 season. A "tote road" is mapped (DIAND Tote Road Map) down the east side of the Kluane River and passes through the area. The trail is now overgrown and impassable.

PHYSIOGRAPHY, CLIMATE & VEGETATION

The area is located in the Ruby Range, part of the Kluane Plateau (Geological Survey of Canada, map 1701A). Elevations in the area range from 670 to 1950 m above sea level and topography is rugged to steep. Hills, local cliffs and tallus are cut by glaciated valleys up to two kilometres wide. The northerly flowing Kluane River forms a broad braided river valley. Toshingermann and Tincup Lakes occupy similar glacial valleys.

The climate in the area is variable: summers are warm and dry with common afternoon rainstorms, and the winters are cold. Precipitation amounts to 30 cm annually.

Vegetation at this latitude is stunted except along stream valleys. White spruce is the common variety of coniferous trees; black spruce, poplar and balsam are also widespread. Tree line is generally below 1200 m (4000 ft.) elevation. Scrub willow, alder and dwarf birch grow above the tree line to about 1675 m (5000 ft.) elevation and, above this, only mosses, lichens and alpine flowers are found.

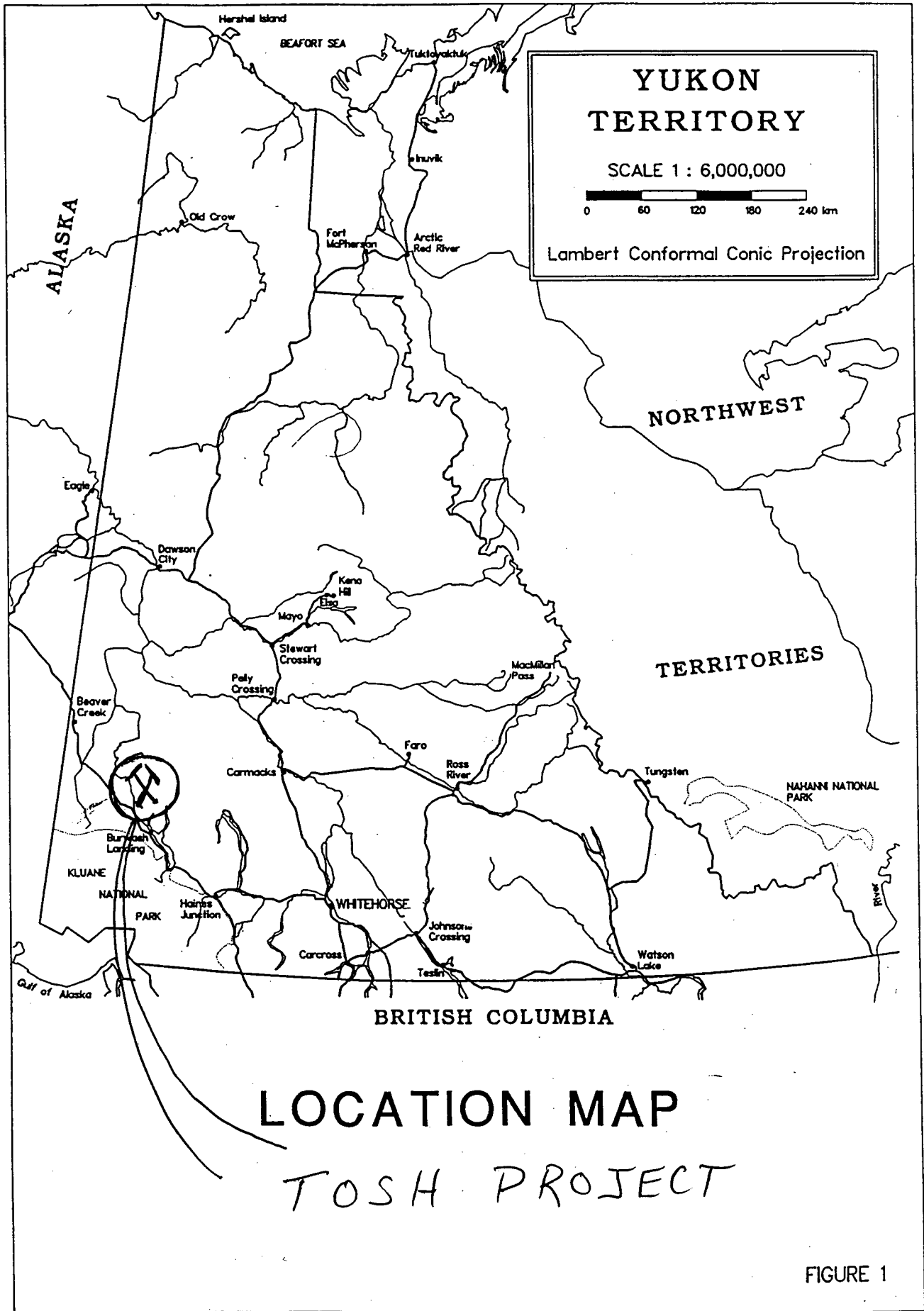


FIGURE 1

REGIONAL GEOLOGY

The project area is located within the accreted Windy McKinley Terrane (Wheeler and McFeely, 1987) part of the intermontane super terranes amalgamated by latest Triassic time and accreted to ancestral North America in the Jurassic. The terrane is composed of mixed Devonian to Cretaceous oceanic sedimentary and volcanic rocks cut by late Cretaceous to Tertiary intrusions. The Windy McKinley Terrane is thrust over Cambrian-Devonian rocks of the Nisling Terrane. The Nisling Terrane is displaced ancestral North America continental margin. To the southwest, the Windy McKinley Terrane is bounded by the Shakwak Fault, a major fault believed to have at least 300 km of relative dextral movement. (Hulstein, 1991.)

PROJECT AREA GEOLOGY

The oldest rocks exposed in the project area are Cambrian - Devonian quartz-biotite schists, in places carrying garnet, quartz-feldspar-biotite gneiss, amphibolite and minor recrystallized limestone (map unit CDN). Rocks of this unit are exposed in a northwest trending belt approximately three kilometres wide between Tincup and Toshingermann Lakes and underlie the JIB JSB claims, and all but the south corner of the MPS claims. Fault contacts have been mapped by Ron Berdahl (Hulstein, 1991) along the southern contact of this unit on the MPS claims.

The most common rock unit found underlying the properties are Devonian - Cretaceous White River Group (map unit DKWR) quartz-chlorite-cerussite schists, epidote-actinolite greenschist and limestone. According to Muller (1965), quartzite, slate, quartz-mica schists are found within the White River Group.

Recrystallized limestone bands and bodies of the White River Group (map unit DKWRc) are exposed within the White River schists and associated rocks. This unit is exposed in the central portion of the MPS claims and south of a tertiary alaskite body located east of Tincup Lake.

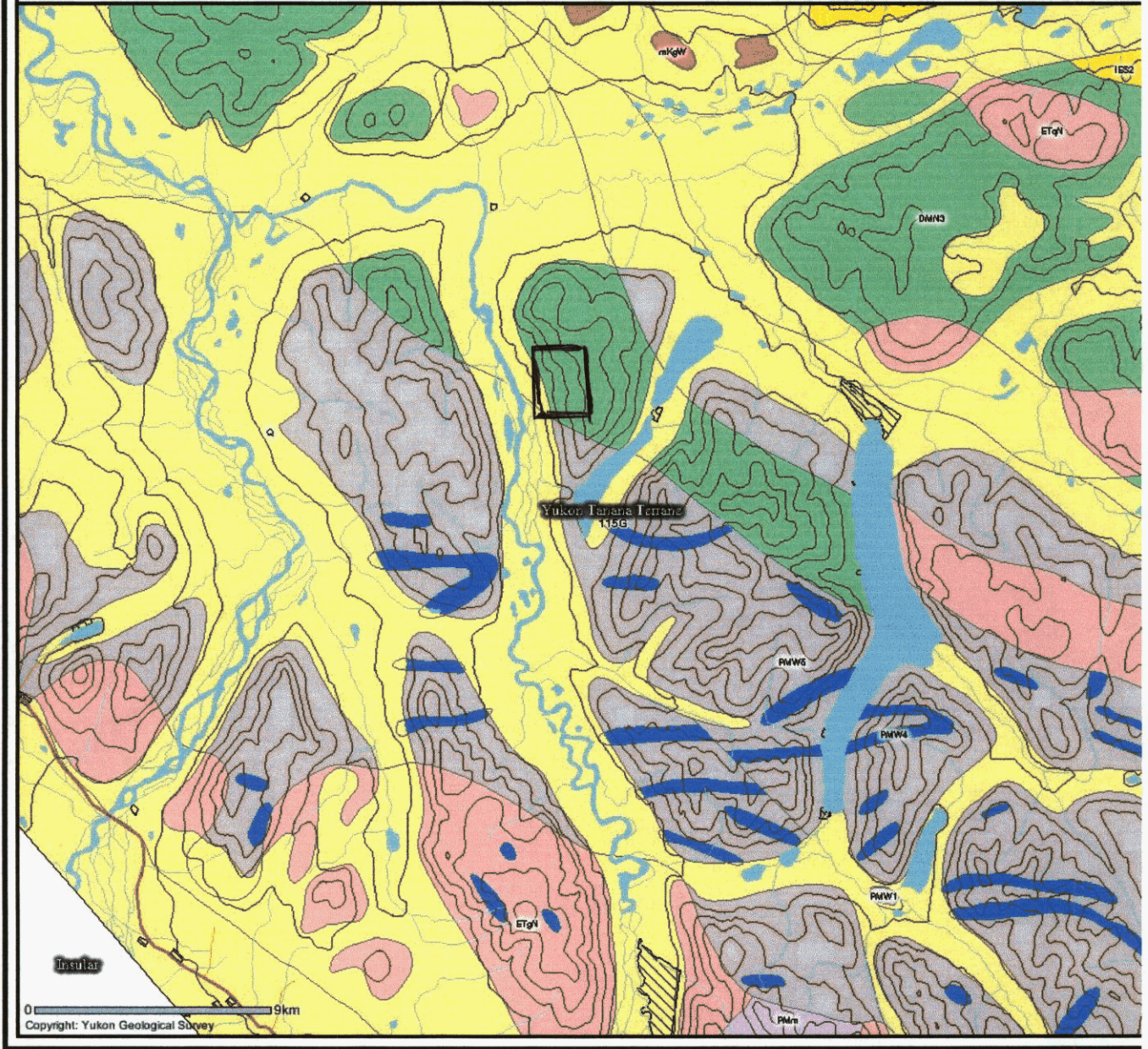
The above units are intruded by small bodies of diorite-granodiorite (map unit Tgd) that are probably part of the Ruby Range batholith exposed approximately 20 km to the east.

The youngest rocks found in the area belong to a Tertiary high level alaskite body (map unit ETqB) exposed east of Tincup Lake. The alaskite is yellowish-orange and contains smoky quartz.

The dominant structural fabric parallels the northwest trend of the cordillera. The deformation history of the metamorphic rocks is complex. Limestone beds serve as local marker units and sometimes display bedding features.

Northwest trending fault structures or shear zones, up to 15 m wide or wider, have been traced by Ron Berdahl for over distances of 3000 to 5000 m. These zones are commonly graphitic, and may include mariposite and argillic altered rocks, plus siderite and/or quartz-carbonate veining. Exposures of these recessive zones are generally restricted to steep slopes and stream cuts.

Yukon Geological Survey - Regional Stream Geochemistry



TOSH 2004

GRID

LOCATION



PAST WORK RESULTS

No records of mineral occurrences prior to Ron Berdahl's (RSB) 1990 discoveries (Hulstein, 1991) and no sign of exploration work have been found to date in the area. The mineral potential of the area came to the attention of RSB when he noted anomalous stream sediment geochemical data reported in Geological Survey of Canada Open File 1362. Follow-up ground work by RSB located mineralized fault structures and skarns, the most important of which being a NNW trending, commonly graphitic fault/shear zone that may be related to the trust fault contact between the Windy McKinley - Nisling terranes.

Prospecting, mapping and geochemical sampling carried out in 1990 by RSB (Hulstein, 1991) returned encouraging values: geochemical results include a chip sample of quartz - carbonate stockwork in sheared schist that returned up to 5347 ppm gold over a one meter width. Au-anomalous samples of all types (rock, soil, stream sediment) also returned anomalous values for silver, arsenic, lead, zinc and cadmium. Highly anomalous stream sediment samples from streams draining the former JIB, JSB and MPS claim blocks returned up to 302 ppb Au. Soil sampling returned anomalous values from samples collected in and over northwest trending shear zones on the MPS claims.

In an attempt to better understand property geology and geochemical anomaly patterns and showing locations, a VLF survey was conducted by RSB in 1994 over 19 km of grid lines across known mineralized shear zones. Six and possibly seven conductors attributed to breaks in slope were delineated by data interpretation, the largest of which corresponded to Malachite Creek; until further investigation, however, it is unknown if these particular breaks in slope are related to shears or other structures. Rock and soil samples collected that same year during grid preparation and consisting mostly of quartz and pyritic schists were all subanomalous in gold.

Westman ran a contour soil program at a low elevation paralleling the river. Results were disappointing.

A two-phase program was designed for 1999, concentrating on the southern and northwestern sides of Lake Toshingermann.

South of Lake Toshingermann, general prospecting was carried out to determine if placer Au in creeks, swamps and moss-mats was glacially derived or locally sourced. Glacial float-mapping, moss-mat panning, and rock, silt and soil sampling were conducted near often mineralized NW-striking structures.

Northwest of the lake, general prospecting and stream sediment sampling were aimed at locating extensions to structurally controlled Tosh Claims shear zone mineralizations.

Gold in moss mats, especially in lower regions, was very fine grained, with one colour per pan on average. Many areas did not have water for panning; thus, coverage was not systematic. Glacial relics were present at all elevations where gold was panned. Moss was not present above treeline (4,800 ft.), an area missed during the most recent glaciation.

In the second area, north and west of the lake, three new showings were identified. Two rock samples were anomalous in Au: R-91 (350ppb) and R-93 (505ppb). One soil sample returned 95ppb Au. Several samples #'s 95,96,99,100, were pyrrhotite rich, and anomalous in Cu and Ag.

All claims were allowed to lapse. The central block of 32 claims was restaked for Berdahl in the spring of 2004.

CURRENT PROGRAM

A 32-km soils grid was flagged using hand-held GPS equipment. The grid consisted of sixteen 2-km-long lines spaced at 100 m over 2 km north to south. Stations were at 50-m intervals. Picks, shovels and one soil auger were used to sample the 'B' horizon material.

The Tosh field program started on June 24, 2004 with crew mobilization from Whitehorse to Mile 1118 on the Alaska Highway (Kluane Wilderness Lodge). A Trans North Bell 206 helicopter with work in the area was employed to ferry the four-man crew to the top of 'Tosh Mountain' and pick up the crew on the Kluane River at the end of the day. The very large 'Grace Lake Fire' was burning 10 km to the northwest and intermittently filled the valley with thick smoke. After the first day of grid work and soil collecting, the helicopter was unable to fly into the area due to the heavy smoke. After waiting several days for an expected wind shift, the program was called off until later in the season. The same crew was remobilized on August 23. A 32-km soils grid was established and sampled using hand-held GPS equipment. The crew was demobilized to Whitehorse on August 27.

The grid consisted of 16 – 2-km-long lines spaced at 100 m over 2 km, with stations at 50-m intervals. Lines at the north end of the grid were more widely spaced. Picks, shovels and one soil auger were used to sample the 'B' horizon material. This was complicated at times by several feet of frozen ash and permafrost. (The Mt. Churchill volcanic eruption of 1200 years ago is well represented in this portion of the Southwest Yukon.) The grid covered a little explored area between a series of three showings to the south and schist-hosted gold occurrences at the north extreme of the grid. The three showings 500 m to the south of the grid are exposed in distinct east/west striking faults that expose quartz carbonate/mariposite alteration and graphite-rich north/south (?) striking shears. The best chip sample, from the most easterly showing, is 3.073 g over 2 m.

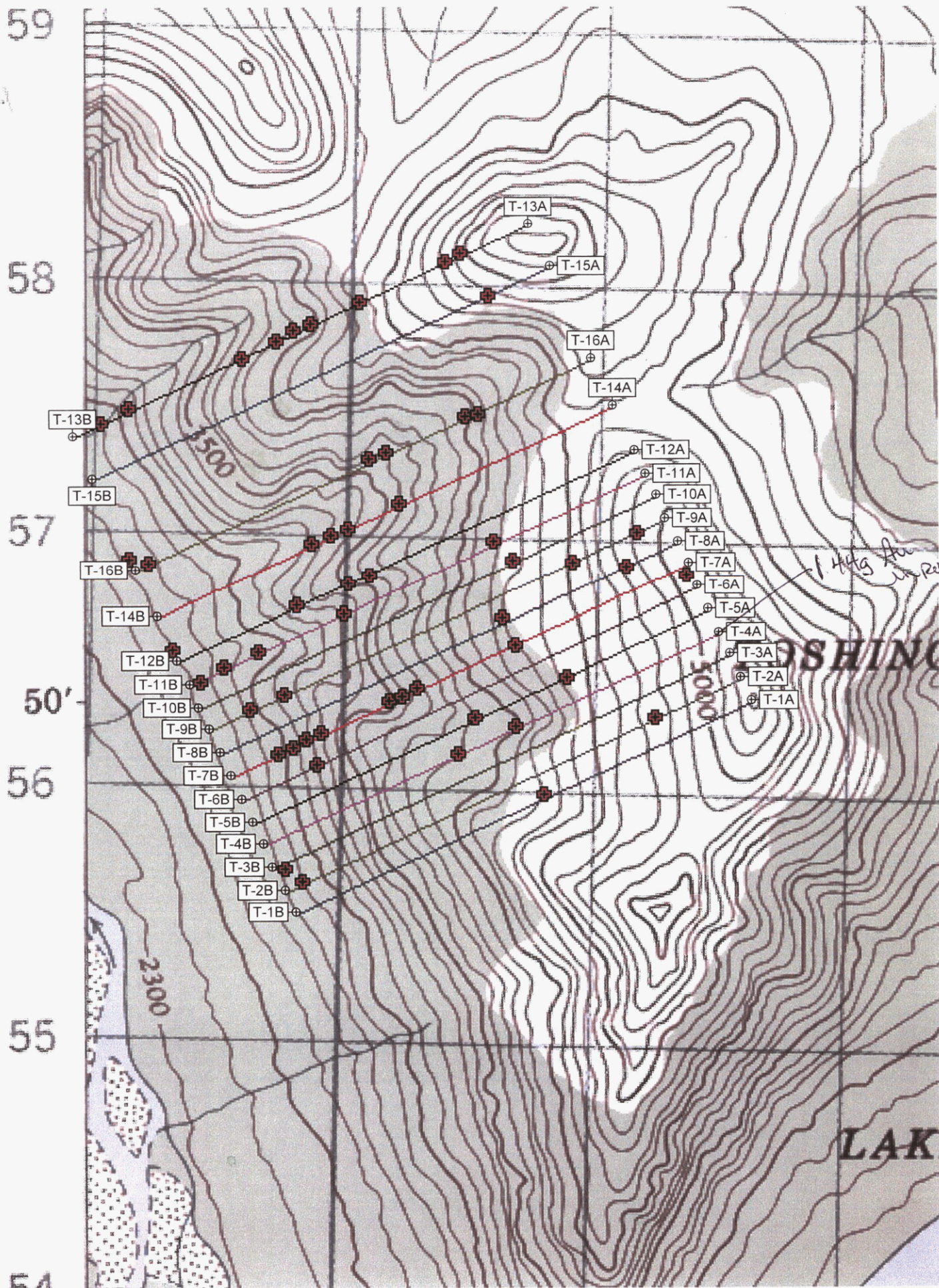
Weather in the Yukon was unseasonably warm. Other than the previously mentioned smoke from fires, it was ideal, if somewhat warm, for field work. Despite the heat and the late August program, permafrost was still common on all north-facing slopes and on some steep west-facing slopes and lower areas.

RESULTS

A total of 499 soil and 11 rock samples were sent for assay at ACME Labs in Vancouver using their multi-element IDX package with a 15-g sample. Rocks were run with a 30-g sample and total metallics. Of the 499 samples sent for assay, 10.29% were anomalous (greater than 10 ppb Au). The highest soil value was 1932.1 ppb Au. Due to permafrost, extensive volcanic ash and budget considerations, only 499 of the 902 potential sites within the grid area were sent for analysis, leaving 44% of the area untested. The grid is oriented with 0 at the east (uphill) side. With a goal of 41 quality samples per man per day, little time was spent prospecting.

The cluster of soil anomalies near the midpoint of line 13 (most northerly line) is in the general area of an auriferous pyrite-rich schist showing, which runs up to 3.14 g Au in a grab sample. (A second, off-grid gold showing is a couple of hundred metres to the north and consists of 1 to 2 mm quartz stringers in rusty grey, siliceous pyritic shales, and assays 1.56 g.) This correlation confirms the usefulness of soils at Tosh. Sb numbers and As numbers both correlate with Au values. The anomaly is 150 m long, with the highest gold value at 70.6 ppb (38.9 Sb and 310.5 As).

Line 14 has a 150-m Au anomaly that is enveloped within a 250-m Sb anomaly (TL14 1100 – 1350). Au values range from 10.5 to 26.9 ppb with corresponding weighty anomalous Sb (2.7 – 2 ppm) and As (14.5 – 84 ppm) values.



TOSH SOILS >10 ppb Au 1:20,000 ↗

Line 16 has three 100-m weak anomalies. The lower anomaly at 1950 – 2000 (38.8 and 23.8 Au) may be related to an Sb anomaly of 1.3 Sb at Station 1700. There were no samples collected between 1700 and 1950. Between Stations 500 and 1000 only 6 samples were collected; four were anomalous (500, 550, 850, 950).

Line 11 has a 250-m long spot anomaly in its lower reaches (1700 – 1950) with poor correlation of pathfinder elements.

Line 12 has three weak anomalies with one gold value of 148.2 at Station 2000 with weak Sb (0.6) and As (14.4).

Line 9 has only two anomalies but again strength is shown near the end of the line. Station 1800 has a gold value of 65.6 with no samples taken below that point (Stations 1850 – 2000) due to permafrost.

Line 7 has two mildly anomalous clusters of 150-m anomalies between 1600 and 1750 and 1200 and 1350. These may underestimate the size of the anomalies as no samples were taken below 1750 or at 1250 due to permafrost.

One new showing was discovered along line 16 at 960 metres. The showing consists of a 1-inch north northeast striking, vertically dipping, massive pyrite vein enveloped in 1 m of 'rusty' horizontal schists. Two soil anomalies mark the location (TL 16850 – 950) with 19.3 ppb and 14 ppb respectively. The massive pyrite was sub-anomalous in gold.

Four new claims were staked along the ridge top contiguous and east of the main block.

CONCLUSION

Anomalous gold values are widespread on the claim block. However, most gold soil anomalies are unexplained by known showings. No easily defined trends emerge from the greater than 10 ppb kicks.

Given the persistence of permafrost in the lower reaches (west) of the grid and, thus, few samples taken, there seems to be a preponderance of anomalous values there.

While no statistical analysis was done, there seems to be a positive correlation between Sb and Au. The As/Au correlation is less consistent.

Previous to the 1999 prospecting, it was ascertained that a series of parallel north/south striking graphite sheers might be present on the property and genetically related to at least some of the mineralization.

In 1999 'pyrrhotite-rich sediment' with anomalous Ag and Cu values was discovered. It extended potential mineralization by 1 km to the south. This showing strikes perpendicular to the regular north/south strike of most showings. It also represents another style of mineralization on the property.

Gold soil anomalies indicated the presence of the known north showing with three consecutive values of 19.0, 70.6, and 28.3 (line 13950 – 1050). One rock that ran 1.4 g showed no corresponding soil signature (line 4 – 0).

Possible deposit types at Tosh, based on current known showings, include orogenic (motherlode), skarn, "shear-hosted", VMS (Windy McKinley Terrane hosts VMS deposits in Alaska), and a schist-hosted morentow type.

RECOMMENDATIONS

- The current results warrant more work on the property. Work should proceed in order that a series of drill targets may be chosen.
- In order to better understand the smattering of showings and anomalies, detailed (1:5000?) mapping should be done. Current 'off-claim' showings should be staked and incorporated into the property. Mapping should also include these showings. Special attention needs to be applied to known (by prospector) but unmapped intrusives and dykes.
- A detailed mag survey may help the mapping in areas of heavy cover as well as locate mineralization.
- The Tosh area is large enough to warrant an airborne mag/EM survey if a budget is available.
- Prospecting should continue to follow up soil anomalies and any geophysics anomaly found.
- The soil program should be expanded to the north and south for at least 1 km either way.
- Statistical analysis of soil results should be done to determine potential pathfinder elements to Au, specifically for Sb, As, Hg, and Bi.

REFERENCES

Berdahl, R.S. 1995. *Geophysical and Geochemical Report on the Tosh Property 115G13/14.*

Berdahl, R.S. 1999. *Prospecting Report on the Tosh Property 115G13/14.*

Hornbrooke, E.H.W. and Fiske, P.W.B. 1986. *Regional Stream Sediment and Water Geochemical Reconnaissance, 115F(E1/2) & 115G, Geol. Surv. Can., Open File 1362.*

Hulstein, R.W. 1991. *Summary Report on the Tosh Project, Whitehorse M.D., Y.T., Aurum Geological Consultants Inc, AR#093021.*

Muller, J.E. 1966. *Kluane Lake Map Area-Area, Yukon Territory (115G, 115F East Half). Geol. Surv. Can., Mem. 340.*

Wheeler, J.O. and McFeely, P. 1987. *Tectonic Assemblage Map of the Canadian Cordillera and Adjacent Parts of the United States of America, Geol. Surv. Of Can., Open File 1565.*

*Soils Survey for the
Toshingermann Lake Project 115G13/14
January 2005*

APPENDIX A

TOSHINGERMANN LAKE PROJECT SAMPLE DESCRIPTION

TOSHINGERMANN LAKE PROJECT SAMPLE DESCRIPTION

- 139071 L20 – 150: greyish limonitic rich quartz float (in schist)
- 139072 L20 – 750: greyish vein quartz
- 139073 L20 – 1500: glossy orange to clear quartz with minor vugs of limonite
- 139074 Line 16: 500± float of Mg-stained quartz breccia with limonite. Tourmaline and 'grophit shear' float at same location (creek crossing)
- 139075 Line 4 – 0: orange-stained quartz in limonitic schist
- 139095 Line 16 – 1050: Fe stained grey quartz
- 139096 Line 12 – 887: grey to clear, yellow-stained glossy quartz with trace Mg
- 139097 Line 16 – 1000: grey to white quartz in 2" veins
- 139098 Line 16 – 800: sheared material, mildly graphitic sediment with minor yellow limonitic limonite and quartz pieces
- 139099 Tosh WP109: non-glacial, orange-stained quartz float
- 139100 Line 16 – 960: 1" pyrite vein, strikes N, dips vertical cross cutting meter and of rusty schist

APPENDIX B

ASSAYS



SAMPLE#	Mo ppm	Cu ppm	Pb ppm	Zn ppm	Ag ppm	Ni ppm	Co ppm	Mn ppm	Fe %	As ppm	U ppm	Au ppb	Th ppm	Sr ppm	Cd ppm	Sb ppm	Bi ppm	V ppm	Ca %	P %	La ppm	Cr ppm	Mg %	Ba ppm	Ti %	B ppm	Al %	Na %	K %	W ppm	Hg ppm	Sc ppm	Tl ppm	S %	Ga ppm	Se ppm
TL1 50	3.2	47.8	10.1	104	.1	38.3	14.1	491	3.76	14.3	1.0	2.7	1.3	40	.3	1.1	.2	89	.41	.072	13	49.8	.80	202	.077	2	1.65	.017	.09	.1	.04	3.2	.1	<.05	8	1.0
TL1 100	2.5	63.7	13.5	126	.2	66.5	21.7	689	4.15	31.3	1.4	7.7	4.4	46	.4	.8	.3	98	.44	.082	22	62.7	.98	271	.124	<1	2.09	.024	.26	.2	.03	5.1	.2	<.05	8	.9
TL1 150	1.6	55.9	5.9	104	.1	22.3	11.3	406	2.67	10.2	.8	2.8	.8	42	.4	.5	.1	69	.59	.084	11	29.0	.47	146	.078	1	1.19	.029	.08	.1	.04	2.1	.1	.07	6	.5
TL1 200	2.6	50.9	6.6	121	.1	159.2	19.7	496	3.60	14.0	1.6	3.5	3.7	61	.3	.4	.1	81	.68	.062	19	165.7	1.58	212	.144	<1	2.29	.063	.20	.1	.03	5.0	.2	<.05	9	.5
TL1 250	2.7	52.2	7.1	112	.1	103.5	18.8	573	3.27	18.5	1.3	4.5	2.0	60	.2	.5	.1	77	.84	.078	16	117.5	1.32	216	.116	1	2.14	.045	.17	.1	.04	4.5	.2	<.05	8	.8
TL1 300	2.1	45.4	5.8	99	.1	73.6	15.8	470	2.93	18.3	1.1	6.9	2.0	58	.2	.4	.1	68	.98	.069	15	79.5	1.02	161	.105	1	1.75	.046	.16	.1	.03	4.0	.2	<.05	7	.7
TL1 350	2.3	57.4	6.9	110	.1	83.1	18.2	531	3.48	21.6	1.4	7.5	2.4	66	.3	.6	.1	74	1.38	.071	17	95.0	1.26	176	.106	1	1.98	.064	.23	.1	.04	5.6	.2	<.05	8	.7
TL1 400	1.9	63.0	7.7	104	.1	64.9	16.7	365	3.53	18.8	1.9	3.9	2.0	60	.2	.5	.2	85	1.12	.077	17	81.7	1.13	178	.119	2	2.29	.050	.23	.1	.03	6.1	.2	.09	8	.7
RE TL1 400	1.9	61.8	7.2	100	.1	63.3	16.1	350	3.41	18.4	1.9	5.7	2.0	58	.2	.6	.1	80	1.06	.072	17	77.0	1.08	180	.119	1	2.26	.044	.22	.1	.03	5.7	.2	<.05	8	.6
TL1 450	2.0	43.2	6.6	85	.1	37.5	14.3	453	2.89	12.8	1.2	6.2	1.5	54	.2	.5	.2	57	.94	.063	14	48.5	.77	163	.089	2	1.79	.036	.13	.1	.03	3.9	.1	<.05	6	<.5
TL1 500	2.2	43.1	6.6	95	.1	39.9	15.1	554	3.07	13.4	1.2	2.8	1.5	47	.3	.5	.2	67	.73	.074	14	52.2	.79	156	.086	1	1.84	.028	.12	.1	.03	3.7	.1	<.05	7	.6
TL1 550	2.1	38.5	6.5	84	.1	31.8	13.6	512	2.73	13.3	1.1	1.7	1.1	43	.2	.5	.2	57	.70	.077	14	42.6	.71	153	.068	1	1.67	.028	.10	.1	.03	3.3	.1	<.05	6	.5
TL1 600	2.2	37.1	8.1	99	.1	45.9	17.3	526	3.85	13.6	1.1	2.9	3.5	34	.1	.5	.3	75	.49	.056	16	65.8	1.12	174	.115	1	2.18	.020	.18	.1	.03	4.9	.2	<.05	8	<.5
TL1 650	1.4	37.1	6.8	94	.1	64.7	19.0	521	3.62	9.9	1.1	3.9	4.7	34	.1	.4	.2	77	.50	.058	18	115.7	1.32	175	.126	<1	2.16	.020	.27	.1	.02	5.0	.2	<.05	8	<.5
TL1 700	1.6	38.6	6.1	81	.2	32.4	13.2	463	2.65	10.3	1.2	3.2	1.5	45	.3	.5	.2	53	.65	.079	21	50.2	.75	154	.069	1	1.66	.026	.14	.1	.03	3.5	.1	.06	6	<.5
TL1 750	1.5	36.1	6.7	95	.1	34.1	13.8	441	3.00	11.7	1.2	3.2	1.9	40	.3	.5	.2	55	.53	.071	17	50.1	.80	149	.068	<1	1.75	.024	.15	.1	.03	3.5	.2	<.05	7	<.5
TL1 800	1.2	37.6	6.3	81	.1	35.2	13.5	397	2.99	13.8	1.4	1.8	2.5	38	.1	.6	.2	60	.55	.062	25	49.7	.78	136	.089	<1	1.76	.026	.21	.1	.03	4.0	.2	<.05	6	<.5
TL1 850	.9	34.7	5.7	82	.2	32.2	11.3	339	2.51	14.1	1.4	2.6	1.7	47	.2	.7	.2	50	.76	.069	24	41.7	.71	136	.075	1	1.56	.031	.17	.1	.03	3.5	.1	<.05	5	<.5
TL1 900	4.9	43.4	7.8	137	.3	51.1	19.4	775	3.08	65.4	1.4	11.3	2.0	39	.5	19.1	.6	66	.46	.079	14	70.4	.89	204	.094	1	1.85	.024	.10	.2	.03	4.4	.1	<.05	7	<.5
TL1 950	1.2	42.2	5.5	100	.2	39.9	15.3	569	2.92	13.4	1.1	3.6	1.9	38	.9	.6	.3	80	.55	.079	14	47.6	.66	186	.110	1	1.43	.029	.09	.1	.03	3.2	.1	.07	6	<.5
TL1 1000	.9	56.7	7.5	109	.1	58.7	17.1	436	3.22	16.2	2.0	3.3	2.9	59	.4	.7	.3	59	1.31	.068	23	71.0	1.02	171	.101	1	1.87	.031	.24	.1	.02	4.3	.2	.13	7	.7
TL1 1050	1.2	65.6	7.6	163	.2	123.9	24.4	713	3.49	14.3	1.8	6.9	2.3	60	1.3	.6	.4	67	1.08	.085	21	133.5	1.21	175	.094	2	2.10	.028	.13	.1	.05	4.4	.2	.07	6	.7
TL1 1200	.9	62.8	7.9	66	.1	32.4	14.3	372	2.95	13.2	1.4	2.5	2.3	91	.1	.4	.2	66	1.19	.053	23	46.7	.63	135	.089	1	1.85	.028	.06	.1	.03	3.8	.2	<.05	6	<.5
TL1 1250	.8	87.2	7.8	69	.1	99.3	34.3	441	3.71	15.3	.9	3.7	2.3	78	.1	.5	.4	73	1.58	.073	15	101.5	1.26	159	.133	<1	1.64	.026	.29	<1	.02	4.8	.3	.10	7	<.5
TL1 1350	.6	58.1	6.0	62	.1	42.4	14.2	378	2.08	10.5	.9	4.2	1.1	85	.3	.4	.2	43	2.22	.080	12	48.2	.76	117	.061	2	1.16	.026	.14	.1	.04	2.8	.1	.16	4	.6
TL1 1400	2.2	96.3	21.5	142	.2	85.3	39.5	831	4.89	17.4	1.4	1.5	3.7	39	.8	.9	.4	85	.76	.050	30	64.2	1.07	152	.152	<1	2.48	.028	.31	.1	.02	4.4	.2	<.05	9	<.5
TL1 1450	1.3	44.5	9.3	67	.1	57.7	19.2	354	3.84	18.7	.6	3.4	3.5	42	.1	.7	.2	86	.64	.025	13	73.4	1.01	134	.128	1	2.29	.025	.13	.1	.01	4.5	.2	<.05	7	<.5
TL1 1500	.6	55.2	8.5	75	.1	71.6	21.2	484	3.56	17.7	.7	2.7	4.3	51	.2	.7	.2	79	1.10	.069	19	75.7	1.13	146	.137	2	1.92	.032	.23	<1	.01	5.0	.2	<.05	6	<.5
TL1 1550	.7	69.7	8.9	67	.2	58.6	20.6	555	3.69	31.2	.8	7.4	4.2	48	.2	1.0	.2	72	.86	.054	21	71.8	1.08	139	.111	1	1.89	.025	.32	.1	.02	4.8	.2	<.05	6	<.5
TL1 1600	.7	46.7	7.4	75	.3	54.9	19.4	507	3.30	20.9	.8	4.2	4.2	76	.1	1.1	.2	69	1.82	.088	19	67.3	1.15	108	.118	1	1.55	.024	.25	.1	.01	4.7	.2	<.05	5	<.5
TL1 1650	2.9	57.4	5.1	145	.1	150.8	22.9	571	4.32	10.7	1.3	3.2	6.1	80	.1	.2	.1	112	.81	.036	20	200.5	1.99	248	.218	<1	3.42	.083	.37	.1	.01	8.0	.3	<.05	12	<.5
TL2 0	1.7	39.0	7.3	113	.1	41.7	18.3	716	3.68	9.1	.7	2.3	2.4	25	.5	.7	.2	92	.30	.049	11	42.0	.74	157	.118	1	1.76	.020	.11	.1	.03	3.7	.1	.07	6	<.5
TL2 50	2.7	53.7	9.1	140	.1	54.2	19.5	626	4.20	10.7	1.1	6.7	2.0	29	.4	.8	.2	103	.28	.057	16	50.6	.79	211	.098	1	2.00	.015	.09	.1	.02	3.4	.1	.10	7	<.5
STANDARD DS5	12.8	138.4	24.5	137	.3	24.2	12.6	813	3.12	18.8	6.4	42.8	2.9	51	5.8	3.9	6.5	63	.77	.105	13	188.2	.69	148	.097	17	1.98	.034	.15	4.9	.19	3.6	1.0	<.05	7	4.7

Sample type: SOIL SS80 60C. Samples beginning 'RE' are Reruns and 'RRE' are Reject Reruns.



SAMPLE#	Mo ppm	Cu ppm	Pb ppm	Zn ppm	Ag ppm	Ni ppm	Co ppm	Mn ppm	Fe %	As ppm	U ppm	Au ppb	Th ppm	Sr ppm	Cd ppm	Sb ppm	Bi ppm	V ppm	Ca %	P %	La ppm	Cr ppm	Mg %	Ba ppm	Ti %	B ppm	Al %	Na %	K %	W ppm	Hg ppm	Sc ppm	Tl ppm	S %	Ga ppm	Se ppm
G-1	1.5	3.1	2.0	49	<.1	4.0	4.3	560	2.00	<.5	1.8	.8	4.1	84	<.1	<.1	.1	41	.57	.073	8	12.4	.60	260	.138	2	.94	.070	.50	1.2	<.01	2.2	.3	<.05	5	<.5
TL2 100	4.5	81.5	8.3	217	.3	80.8	28.4	746	4.58	18.8	1.5	3.0	4.0	35	1.6	.9	.2	101	.41	.090	22	55.3	.96	288	.109	2	2.31	.019	.19	.2	.02	4.2	.2	.09	7	1.0
TL2 150	3.8	66.6	7.0	121	.3	287.2	25.5	472	3.25	14.4	1.6	4.2	1.7	37	.4	.7	.2	74	.45	.067	18	122.7	1.69	238	.080	3	1.93	.024	.12	.1	.03	3.6	.1	.07	6	.6
TL2 200	4.3	43.3	6.5	110	.1	383.1	32.8	583	3.91	15.4	1.0	2.7	2.4	31	.3	.5	.1	80	.39	.054	13	220.9	2.99	192	.097	4	1.89	.025	.13	.2	.02	4.6	.2	<.05	5	.5
TL2 250	1.8	47.1	5.6	83	.1	410.9	25.1	438	2.70	9.1	1.1	7.5	1.2	40	.4	.4	.1	52	.64	.061	12	119.5	1.81	254	.068	2	1.65	.026	.09	.1	.04	3.5	.2	<.05	5	.5
TL2 300	1.8	37.3	4.9	85	.1	300.3	25.4	457	3.05	6.4	1.1	2.3	2.0	40	.2	.3	.1	65	.73	.059	14	282.0	2.23	323	.121	2	2.05	.026	.17	.1	.01	4.6	.3	<.05	7	.6
TL2 350	2.1	50.1	7.3	105	.1	270.1	24.7	470	3.47	10.4	1.2	24.7	2.7	35	.2	.4	.2	77	.67	.057	16	290.0	1.88	205	.121	2	2.24	.022	.17	.1	.02	4.7	.3	<.05	7	.5
TL2 400	1.8	48.0	6.2	102	.1	152.0	17.9	579	2.66	10.8	1.1	1.9	1.0	45	.3	.4	.1	61	.70	.067	16	133.7	1.14	212	.078	2	1.87	.030	.08	.1	.02	3.0	.2	<.05	5	.5
TL2 450	1.8	43.8	6.3	119	.2	130.5	15.9	495	2.61	10.2	1.2	3.1	1.1	47	.3	.4	.2	53	.73	.067	14	121.1	1.08	191	.066	1	1.81	.027	.07	.1	.03	3.2	.2	<.05	6	<.5
TL2 500	2.0	42.6	7.5	98	.1	71.3	16.6	565	3.07	16.1	1.1	2.3	.9	38	.1	2.8	.2	66	.54	.066	14	64.8	.90	169	.074	2	1.95	.025	.09	.1	.02	3.2	.1	<.05	6	<.5
TL2 550	1.8	41.9	8.7	107	.1	51.4	17.5	583	3.75	38.4	1.5	2.5	2.2	46	.2	2.4	.2	73	.81	.057	17	64.3	1.08	175	.108	1	2.33	.022	.14	.1	.02	4.9	.2	<.05	8	<.5
TL2 600	1.5	30.8	5.8	90	.1	38.6	14.0	464	2.75	18.9	1.1	2.1	1.3	51	.3	1.1	.1	53	.91	.059	14	45.3	.73	154	.078	1	1.68	.024	.14	.1	.02	3.1	.2	<.05	6	.5
TL2 650	1.1	37.1	5.3	85	.1	76.4	17.1	392	3.01	14.7	1.1	3.0	3.0	43	.1	.7	.2	68	.80	.048	28	134.3	1.31	182	.128	2	1.99	.028	.27	.1	.01	3.9	.2	<.05	7	<.5
TL2 700	1.1	33.6	6.0	85	.1	38.2	13.5	398	2.95	15.7	1.2	2.2	2.0	53	.2	.5	.2	59	.91	.055	20	52.6	.81	162	.091	2	1.77	.025	.18	.1	.03	3.9	.2	<.05	6	<.5
TL2 750	1.0	33.3	6.1	97	.1	38.7	14.2	413	2.82	12.0	1.1	2.8	2.1	44	.2	.6	.2	53	.83	.050	17	57.9	.93	155	.095	2	1.91	.025	.20	.1	.02	3.7	.2	<.05	7	<.5
TL2 800	1.1	35.3	6.0	95	.1	38.9	13.7	426	2.77	15.2	1.1	2.4	2.0	75	.6	.8	.2	54	1.43	.055	20	61.2	.91	153	.093	2	1.77	.025	.22	.1	.04	4.2	.2	<.05	6	<.5
TL2 850	.8	32.6	5.9	91	.1	35.1	13.0	391	2.51	13.8	1.1	9.0	2.1	57	.3	.7	.2	51	1.08	.048	18	55.6	.83	144	.095	2	1.72	.025	.21	.2	.02	3.9	.2	<.05	6	<.5
TL2 900	.5	35.5	5.5	81	.1	29.7	11.6	371	2.23	9.8	.9	2.5	1.6	67	.3	.7	.2	45	1.57	.054	15	43.0	.69	123	.071	2	1.42	.024	.17	.1	.02	3.2	.2	.07	5	.6
TL2 950	.7	30.6	5.9	95	.1	34.7	15.6	587	3.03	13.4	1.1	1.8	3.0	46	.2	.8	.2	68	1.01	.066	19	51.8	.85	129	.109	1	1.66	.024	.22	.2	.03	3.8	.2	<.05	6	<.5
TL2 1000	1.2	51.4	8.0	116	.2	72.4	22.6	712	3.80	14.3	1.3	3.0	3.3	50	.3	1.1	.4	73	1.02	.077	19	84.4	1.19	182	.121	2	2.07	.028	.21	.1	.03	5.1	.3	<.05	7	.6
TL2 1100	.8	49.7	5.9	129	.2	49.8	13.5	496	2.34	10.2	1.7	4.6	1.3	79	.8	.7	.3	42	1.86	.066	13	54.5	.72	136	.060	3	1.36	.031	.10	.1	.04	2.9	.2	.11	4	.6
TL2 1150	.6	22.3	4.1	77	.1	19.2	8.8	302	1.46	4.3	.5	.9	.8	33	.2	.4	.1	26	.53	.051	7	23.4	.40	80	.047	1	.86	.029	.06	<.1	.02	1.5	.1	<.05	3	<.5
TL2 1250	.3	19.1	3.1	73	<.1	9.0	6.2	179	1.39	2.6	.3	<.5	.5	31	.1	.2	.1	40	.70	.034	6	12.0	.22	44	.064	1	.65	.041	.04	<.1	.01	1.3	<.1	<.05	3	<.5
TL2 1350	.7	41.0	5.1	71	.1	31.8	11.5	331	2.04	7.8	.9	2.2	1.0	92	.2	.5	.1	35	2.21	.054	12	36.6	.60	102	.058	1	1.22	.028	.11	.1	.04	2.4	.1	.11	4	<.5
RE TL2 1550	.6	36.7	5.3	71	.1	34.5	12.6	384	2.15	7.5	.9	1.5	1.4	83	.2	.5	.1	39	2.03	.051	11	39.3	.63	123	.072	2	1.23	.038	.13	.1	.03	2.6	.1	.07	4	<.5
TL2 1400	.6	39.5	5.9	73	.1	31.1	12.7	322	2.04	8.0	.9	1.6	1.0	87	.2	.6	.1	37	2.12	.061	11	35.5	.61	121	.058	1	1.27	.031	.11	.1	.03	2.4	.1	.09	4	<.5
TL2 1450	.4	37.5	5.2	77	.1	35.7	11.7	370	2.15	8.5	1.0	5.3	1.7	69	.2	.5	.1	42	1.70	.066	12	38.5	.66	117	.072	1	1.16	.029	.12	.1	.01	2.5	.1	<.05	4	<.5
TL2 1550	.6	33.0	5.7	68	.1	30.8	11.5	344	2.01	7.6	.9	2.6	1.6	79	.2	.6	.1	38	1.90	.050	10	37.0	.61	117	.069	2	1.17	.037	.12	.1	.03	2.3	.1	<.05	4	<.5
TL2 1600	.4	40.8	5.1	68	.1	32.3	11.3	361	2.02	9.8	.9	2.1	1.1	88	.2	.5	.1	36	2.18	.056	11	35.2	.64	118	.059	2	1.15	.033	.15	.1	.03	2.2	.1	.07	4	<.5
TL2 1650	.6	38.9	4.8	70	.1	29.8	10.5	336	1.74	9.9	.8	2.3	.8	91	.2	.5	.1	31	2.00	.050	9	31.9	.51	95	.046	3	.97	.031	.10	.1	.02	2.1	.1	.09	3	<.5
TL2 1700	.6	48.6	6.0	71	.2	40.6	12.8	409	2.02	17.6	1.5	3.8	.9	106	.2	.9	.1	36	2.39	.058	11	39.4	.59	137	.055	3	1.10	.026	.14	.1	.03	2.4	.1	.10	3	.9
TL2 1750	.6	42.7	6.5	89	.2	46.3	15.1	441	2.31	24.1	.8	4.2	1.5	97	.2	.9	.1	42	2.27	.053	11	43.9	.73	112	.069	2	1.24	.028	.18	.1	.03	2.8	.1	.09	4	.7
TL2 1800	.5	54.1	6.9	76	.2	52.3	15.9	490	2.47	28.1	1.0	11.3	1.3	109	.2	1.0	.1	42	2.44	.052	13	47.3	.64	128	.064	2	1.12	.023	.15	<.1	.03	2.8	.1	.08	4	.6
TL2 1950	.6	45.2	8.2	89	.2	55.5	19.7	506	3.31	27.3	.7	4.1	3.1	71	.2	.8	.2	59	1.43	.056	16	54.2	.94	114	.096	1	1.47	.023	.19	.1	.01	4.0	.2	<.05	5	<.5
STANDARD DS5	12.7	142.5	24.6	139	.3	24.1	11.9	784	3.04	18.3	6.0	43.1	2.9	49	5.6	3.8	6.5	63	.76	.088	13	187.5	.68	143	.097	17	2.11	.034	.14	4.8	.19	3.4	1.1	<.05	6	4.6

Sample type: SOIL SS80 60C. Samples beginning 'RE' are Reruns and 'RRE' are Reject Reruns.



SAMPLE#	Mo ppm	Cu ppm	Pb ppm	Zn ppm	Ag ppm	Ni ppm	Co ppm	Mn ppm	Fe %	As ppm	U ppm	Au ppb	Th ppm	Sr ppm	Cd ppm	Sb ppm	Bi ppm	V ppm	Ca %	P %	La ppm	Cr ppm	Mg %	Ba ppm	Ti %	B ppm	Al %	Na %	K %	W ppm	Hg ppm	Sc ppm	Tl ppm	S %	Ga ppm	Se ppm
G-1	1.7	3.0	2.3	47	<.1	4.7	4.4	598	2.11	<.5	1.7	1.5	4.1	98	<.1	<.1	.1	44	.58	.088	9	13.4	.63	282	.138	2	1.01	.105	.54	1.3	<.01	4.4	.3	.07	6	<.5
TL3 0	2.4	42.2	8.5	120	.2	42.5	16.2	744	3.90	16.5	1.2	2.5	2.5	27	.6	.8	.2	110	.28	.077	15	51.9	.78	194	.108	2	1.88	.015	.18	.1	.04	3.0	.2	.15	8	<.5
TL3 050	1.1	28.8	4.1	106	.1	15.0	10.6	533	2.16	4.2	.6	.8	.3	40	.8	.5	.1	60	.51	.103	8	19.5	.35	117	.065	3	.97	.026	.06	.1	.05	1.2	.1	.27	5	<.5
TL3 100	4.1	73.0	8.8	148	.5	49.7	17.1	554	3.57	16.5	1.8	6.3	1.5	35	1.7	.9	.2	90	.39	.101	21	45.2	.68	296	.073	1	1.88	.021	.13	.1	.05	3.1	.2	.17	8	1.1
TL3 150	2.5	52.9	7.0	269	.2	91.9	16.5	474	3.47	23.4	1.3	7.6	4.9	32	1.3	.7	.2	82	.38	.092	20	47.6	.86	270	.116	1	1.68	.019	.16	.1	.01	3.3	.1	.09	5	.7
TL3 200	1.6	49.2	6.4	121	.1	62.4	14.9	479	3.66	13.2	1.1	3.0	4.3	45	.5	.6	.2	87	.57	.057	19	60.3	1.05	205	.153	2	1.86	.047	.20	.1	.02	4.6	.2	<.05	7	.6
TL3 250	2.3	56.6	8.7	146	.2	90.4	19.8	656	4.27	17.7	1.4	5.8	3.5	39	.5	.8	.2	98	.47	.061	19	76.2	1.03	195	.136	3	2.39	.029	.18	.1	.03	5.3	.2	<.05	10	<.5
TL3 300	1.6	54.5	6.1	110	.2	101.1	18.1	499	3.22	16.3	1.3	4.2	1.8	46	.3	.6	.2	75	.79	.077	16	85.0	1.11	173	.106	2	1.90	.039	.13	.1	.03	4.2	.2	.07	7	.5
TL3 350	1.5	63.5	5.1	68	.2	125.6	12.8	387	2.36	12.4	1.7	4.2	.6	49	.3	.5	.1	52	.74	.100	17	65.6	.78	168	.052	2	1.51	.033	.06	.1	.05	2.8	.1	.13	6	.6
TL3 400	1.9	46.8	5.0	71	.2	119.8	12.9	474	2.00	10.9	1.2	2.5	.3	48	.4	.6	.1	40	.82	.128	12	35.7	.66	166	.030	3	1.28	.030	.04	<.1	.02	1.6	.1	.17	5	.6
TL3 450	1.6	37.0	5.2	75	.1	137.3	14.4	450	2.27	12.3	1.0	1.9	.5	36	.4	.4	.1	47	.51	.088	10	46.1	.74	140	.047	2	1.37	.037	.06	<.1	.02	2.3	.1	.09	5	<.5
TL3 500	2.7	46.4	6.7	89	.2	151.5	17.1	500	2.90	14.4	1.1	1.9	.7	43	.4	.6	.2	61	.57	.106	13	58.0	.95	173	.059	1	1.61	.024	.09	.1	.02	3.4	.1	.09	6	<.5
TL3 550	1.6	29.6	5.6	63	.2	106.6	11.7	424	2.28	15.6	.9	2.2	.7	37	.2	.6	.1	45	.48	.083	11	35.7	.71	148	.050	2	1.37	.031	.08	<.1	.02	2.5	.1	<.05	5	<.5
TL3 600	.9	38.8	5.5	79	.2	137.9	12.5	371	2.19	12.1	1.2	2.3	1.0	67	.7	15.4	.1	44	1.43	.083	13	45.0	.82	183	.055	3	1.40	.028	.07	.1	.04	2.8	.1	.09	5	<.5
TL3 650	1.0	41.3	5.7	94	.2	103.7	12.3	392	2.47	14.6	1.1	4.6	1.0	54	.7	13.3	.1	54	1.08	.070	14	49.9	.86	146	.068	2	1.52	.030	.11	.1	.04	3.2	.1	.06	5	<.5
TL3 700	.9	35.6	7.0	90	.1	65.7	16.7	426	3.15	15.6	.9	5.4	2.8	49	.3	6.4	.2	60	.85	.046	15	66.4	1.02	156	.113	2	1.96	.031	.18	.1	.02	4.6	.2	<.05	7	<.5
TL3 750	.8	36.4	6.2	90	.1	53.6	15.1	398	3.42	12.2	1.1	2.7	4.3	42	.2	2.2	.2	71	.75	.061	20	73.1	1.14	127	.130	2	1.87	.030	.25	.1	.02	5.3	.3	<.05	7	<.5
TL3 800	.7	42.2	6.1	83	.2	55.9	14.0	709	2.75	10.2	1.1	3.7	2.2	65	.1	1.7	.2	50	1.22	.065	17	81.8	1.02	181	.086	3	1.91	.023	.21	.1	.03	4.1	.2	<.05	7	.5
TL3 850	1.0	51.5	8.2	100	.2	73.1	21.0	346	3.75	16.1	1.5	3.8	5.8	42	.2	1.8	.3	73	.71	.065	26	103.3	1.34	145	.141	1	2.20	.022	.27	.1	.03	6.3	.3	<.05	8	<.5
TL3 900	.8	46.3	6.6	88	.2	54.7	17.1	601	3.14	14.9	1.0	4.4	2.6	61	.3	1.4	.2	61	1.34	.078	19	71.0	1.09	177	.105	2	1.99	.028	.19	.1	.03	4.6	.2	<.05	6	<.5
TL3 950	.8	37.2	7.0	83	.1	47.3	17.1	472	3.10	14.4	.9	2.6	2.7	55	.2	.9	.3	66	1.22	.058	14	68.2	1.06	138	.112	2	1.82	.026	.18	.1	.03	4.8	.2	<.05	6	<.5
TL3 1000	.6	46.8	9.0	73	.1	49.0	15.0	464	2.64	15.2	1.1	5.0	2.3	69	.2	.7	.2	53	1.54	.064	21	57.5	.96	131	.090	2	1.68	.025	.18	.1	.04	3.8	.2	<.05	5	<.5
TL3 1050	.9	33.8	7.1	87	.1	50.6	16.0	452	3.00	14.1	1.0	2.6	3.8	52	.3	1.0	.2	58	1.02	.078	19	68.5	1.08	161	.120	2	1.74	.024	.22	.1	.02	4.1	.2	<.05	6	<.5
TL3 1100	.8	45.4	7.2	103	.2	56.0	16.8	430	2.92	12.9	1.2	2.6	2.9	51	.3	.7	.3	57	1.00	.074	16	62.4	.93	133	.103	1	1.82	.030	.15	.1	.02	4.3	.2	<.05	6	.5
TL3 1150	.6	50.8	8.7	104	.2	54.8	15.6	325	2.84	10.2	1.8	4.4	2.1	65	.4	.8	.3	56	1.46	.079	19	68.1	.94	148	.086	3	1.82	.032	.13	.1	.03	4.4	.2	.08	6	.5
TL3 1250	1.1	80.7	7.0	54	.1	18.5	10.1	210	1.84	7.8	.6	1.6	1.0	35	.2	.4	.2	42	.52	.035	11	24.2	.35	81	.069	1	.81	.019	.08	.1	.02	1.4	.1	<.05	6	<.5
TL3 1300	.9	69.0	9.5	77	.1	71.2	22.7	636	3.75	32.9	2.0	6.5	3.9	81	.1	.6	.2	74	1.21	.056	43	72.1	1.00	171	.107	2	2.26	.021	.14	.1	.03	5.4	.3	<.05	7	<.5
TL3 1350	1.0	78.4	8.1	70	.1	57.8	18.9	496	3.05	33.1	7.7	6.2	3.3	86	.2	.8	.2	65	1.68	.075	50	60.6	.92	150	.098	2	1.72	.019	.20	.1	.05	4.4	.2	.06	6	.9
TL3 1400	.6	34.7	5.3	70	.1	26.5	10.1	436	1.67	6.3	1.1	2.2	.9	72	.2	.7	.2	32	1.50	.065	11	29.7	.50	163	.057	2	1.15	.039	.11	.1	.03	2.1	.1	.09	4	.6
TL3 1450	.5	34.1	6.5	61	.1	31.5	12.7	439	2.47	7.8	1.2	1.7	1.8	62	.1	.6	.1	52	1.32	.059	13	40.1	.66	178	.091	1	1.51	.050	.19	.1	.02	2.8	.2	.06	5	.6
RE TL3 1450	.6	36.1	6.6	61	.1	33.4	13.7	458	2.49	7.5	1.2	4.7	2.0	65	.2	.6	.1	51	1.34	.056	14	43.0	.66	186	.092	1	1.49	.053	.19	.2	.03	2.7	.2	<.05	5	.5
TL3 1500	.7	41.6	9.0	80	.2	58.7	19.5	369	3.53	16.9	1.2	2.6	4.5	39	.1	.8	.2	75	.65	.029	28	77.8	1.02	145	.127	1	2.07	.019	.10	.1	.02	5.0	.2	<.05	8	<.5
TL3 1550	.5	41.2	6.0	65	.1	37.3	13.1	420	2.24	8.2	1.3	2.6	1.9	66	.2	.6	.1	46	1.39	.054	20	42.2	.62	130	.075	1	1.31	.033	.14	<.1	.03	2.9	.1	.07	5	<.5
TL3 1600	.6	41.5	6.8	70	.1	42.4	13.7	397	2.35	9.6	1.2	2.2	1.9	83	.2	.6	.1	44	1.63	.052	14	47.9	.68	112	.075	1	1.27	.033	.12	.1	.03	2.9	.1	.07	5	.6
STANDARD DS5	13.1	143.7	24.4	137	.3	24.6	12.1	809	3.02	18.7	6.2	42.2	3.1	51	5.6	4.0	6.5	65	.78	.102	14	194.9	.72	146	.104	18	2.13	.034	.14	5.0	.18	3.6	1.1	<.05	7	4.8

Sample type: SOIL SS80 60C. Samples beginning 'RE' are Reruns and 'RRE' are Reject Reruns.



SAMPLE#	Mo ppm	Cu ppm	Pb ppm	Zn ppm	Ag ppm	Ni ppm	Co ppm	Mn ppm	Fe %	As ppm	U ppm	Au ppb	Th ppm	Sr ppm	Cd ppm	Sb ppm	Bi ppm	V ppm	Ca %	P %	La ppm	Cr ppm	Mg %	Ba ppm	Ti %	B ppm	Al %	Na %	K %	W ppm	Hg ppm	Sc ppm	Tl ppm	S %	Ga ppm	Se ppm
G-1	1.7	2.8	2.0	48	<.1	4.6	4.3	585	2.00	.5	1.9	.6	3.9	90	<.1	<.1	.1	44	.60	.084	9	13.3	.62	284	.136	<.1	.95	.072	.50	1.4	<.01	2.1	.3	<.05	5	<.5
TL3 1650	.5	48.2	5.3	64	.1	37.4	12.0	373	1.97	8.0	.9	1.9	.8	123	.1	.5	.1	37	2.60	.052	11	34.3	.52	105	.053	2	.93	.021	.13	.1	.02	2.2	.1	.08	4	.5
TL3 1700	.2	42.6	4.5	56	.1	32.1	11.7	244	1.80	11.2	.6	3.1	.8	106	.2	.6	.1	33	2.42	.055	10	30.7	.48	95	.051	2	.89	.032	.11	.1	.02	2.1	.1	.08	3	<.5
TL3 1750	.5	59.6	5.8	69	.2	44.8	14.0	375	2.16	14.1	1.0	5.5	1.2	119	.2	.9	.2	37	2.54	.062	11	37.8	.65	110	.052	3	1.08	.025	.14	.1	.03	2.6	.1	.08	4	.5
TL3 1800	.6	55.1	7.9	81	.2	64.1	21.1	494	2.99	18.1	.9	5.1	2.2	122	.3	1.0	.2	56	2.72	.069	15	54.7	.89	135	.084	3	1.33	.022	.20	.1	.01	3.8	.2	.06	5	.7
TL3 1850	.4	44.3	4.9	63	.1	34.2	12.3	396	2.08	11.8	1.4	2.6	1.0	117	.2	.6	.1	41	2.57	.069	10	35.3	.55	115	.053	3	.96	.020	.11	.1	.02	2.1	.1	.10	4	<.5
TL3 1900	.6	27.6	5.6	64	.2	47.7	14.1	385	2.83	17.3	.6	40.4	3.6	66	.2	.7	.1	62	1.70	.102	16	59.2	1.25	99	.106	1	1.34	.023	.22	.1	.01	4.2	.2	<.05	5	<.5
TL3 1950	.6	43.6	7.4	79	.2	58.0	19.8	434	3.08	17.8	.8	4.4	3.3	125	.2	.8	.1	51	2.72	.077	17	52.4	1.01	108	.094	1	1.39	.019	.22	.1	.02	3.9	.2	<.05	5	.5
TL3 2000	.6	52.3	9.4	72	.2	60.2	17.6	554	3.10	23.4	1.1	5.3	3.3	126	.2	1.0	.2	50	2.65	.076	18	48.5	.97	117	.083	2	1.37	.021	.22	.1	.03	4.2	.2	<.05	5	.7
TL4 0	6.8	59.0	14.6	322	.2	70.8	14.0	348	3.79	12.1	2.2	5.1	4.6	39	1.8	.8	.3	105	.34	.103	31	43.8	.79	310	.110	1	1.67	.026	.23	.1	.03	3.6	.2	.17	6	2.9
TL4 50	4.2	50.0	8.8	135	.5	33.9	10.7	312	2.72	9.1	1.7	2.8	.7	37	.9	.9	.2	69	.36	.097	16	29.8	.50	217	.051	2	1.33	.020	.10	.1	.07	2.0	.1	.09	6	1.0
TL4 100	3.1	61.9	9.3	144	.5	45.2	10.2	284	2.84	8.1	2.2	3.6	2.3	31	1.2	.6	.2	70	.38	.079	24	38.4	.63	363	.075	1	1.76	.024	.14	.1	.03	3.2	.2	<.05	6	.8
TL4 150	2.7	52.2	7.5	128	.4	34.4	9.3	275	2.47	7.2	1.8	9.5	1.4	33	1.1	.5	.2	61	.44	.077	21	31.8	.55	323	.070	1	1.60	.025	.12	.1	.04	2.7	.1	<.05	6	1.0
TL4 200	1.6	42.9	8.1	124	.2	47.1	14.3	482	3.11	5.6	1.2	3.2	2.8	44	.5	.4	.2	74	.61	.063	19	47.1	.87	279	.130	1	2.22	.048	.22	.1	.02	4.0	.2	<.05	7	.5
TL4 250	1.5	44.8	5.9	100	.2	164.2	12.5	422	2.14	6.4	1.7	2.6	1.0	47	.3	.4	.1	47	.77	.077	22	33.0	.55	233	.060	1	1.58	.032	.09	.1	.05	2.7	.1	<.05	5	.8
TL4 300	1.7	42.1	7.1	91	.3	138.8	20.4	618	2.66	10.0	1.6	2.4	1.3	45	.3	.4	.2	62	.75	.078	19	52.2	.82	223	.078	1	1.87	.032	.11	.1	.05	3.3	.2	.06	6	.7
TL4 350	1.4	46.7	8.6	120	.2	230.1	24.4	541	3.52	13.2	1.6	2.3	2.5	41	.3	.4	.2	73	.56	.061	16	77.2	1.31	217	.104	1	2.33	.037	.13	.1	.02	4.2	.2	<.05	7	.6
TL4 400	1.3	42.2	7.1	128	.1	275.3	25.0	586	3.69	14.4	1.4	3.4	3.1	39	.4	.4	.2	78	.57	.043	17	94.5	1.63	237	.135	2	2.18	.034	.19	.1	.03	5.1	.2	<.05	6	.6
TL4 450	1.7	47.2	8.4	123	.2	111.5	18.4	562	3.50	15.3	1.9	3.0	1.4	42	.3	.6	.2	71	.65	.088	21	58.8	1.09	246	.073	2	2.22	.023	.11	.1	.03	4.1	.2	<.05	7	.6
TL4 500	1.3	41.3	8.1	124	.1	116.3	19.7	583	3.60	13.4	1.2	2.8	2.2	40	.4	.6	.2	75	.62	.066	16	69.3	1.18	238	.094	1	2.16	.021	.16	.1	.02	4.5	.2	<.05	7	.8
TL4 550	1.2	58.0	7.9	114	.3	102.0	16.6	546	3.29	12.5	1.5	2.6	1.6	49	.3	.5	.2	68	.84	.091	22	61.4	1.09	205	.073	2	2.08	.025	.12	.1	.04	4.3	.2	.07	7	.6
TL4 600	1.0	35.6	6.6	90	.2	97.4	13.8	416	2.72	8.8	1.1	2.3	1.5	50	.3	.5	.2	59	.93	.070	16	53.4	.94	193	.080	1	1.80	.028	.14	.1	.02	3.7	.2	.06	5	.6
TL4 650	.8	35.9	6.2	96	.1	96.0	16.5	430	3.06	8.3	1.0	2.7	2.3	41	.4	.4	.2	66	1.38	.074	17	61.5	1.28	166	.092	1	1.72	.028	.18	.1	.02	4.0	.2	<.05	6	.6
TL4 700	.6	33.0	5.8	77	.1	76.7	10.8	299	2.05	5.2	.7	1.6	1.6	60	.4	.3	.2	41	5.63	.094	12	41.2	3.09	120	.067	2	1.21	.022	.15	.1	.03	3.0	.2	.07	4	.7
TL4 750	.6	39.2	7.0	111	.1	99.1	17.6	379	2.99	9.5	1.0	2.3	3.2	46	.4	.5	.2	56	1.26	.080	17	62.8	1.17	125	.086	1	1.57	.027	.20	.1	.03	4.2	.2	<.05	6	.5
RE TL4 750	.6	39.2	7.6	108	.2	97.4	16.4	377	2.83	10.0	1.1	2.5	3.3	46	.4	.7	.2	56	1.28	.085	18	62.2	1.23	138	.092	2	1.62	.029	.20	.1	.02	4.2	.2	<.05	5	.7
TL4 800	.6	28.7	6.2	88	.1	41.0	12.8	381	2.51	9.7	1.0	1.8	2.7	51	.2	2.6	.1	52	1.14	.070	15	46.5	.90	119	.095	1	1.55	.033	.17	.1	.02	3.8	.2	<.05	5	.5
TL4 850	.4	31.3	4.7	71	.1	39.2	12.9	393	2.69	8.0	.8	64.3	3.6	49	.2	1.0	.2	63	1.12	.083	16	49.7	.86	107	.101	2	1.38	.032	.15	.2	.01	3.4	.1	<.05	5	.6
TL4 950	.8	41.9	7.4	74	.1	48.7	16.0	454	3.00	14.8	.8	2.5	3.7	53	.1	1.1	.3	64	1.02	.075	17	63.5	1.04	126	.117	2	1.76	.035	.17	.1	.01	4.8	.2	<.05	6	.5
TL4 1000	.5	32.8	5.7	82	.1	42.4	15.3	429	2.82	10.3	.8	2.4	3.3	55	.1	.7	.2	59	1.25	.067	15	56.0	.87	112	.100	2	1.46	.027	.15	.1	.02	3.9	.2	<.05	5	.6
TL4 1050	.4	30.0	7.5	82	.1	48.4	17.2	494	3.25	9.3	.8	1.1	5.1	83	.2	.4	.1	54	1.50	.068	19	65.1	1.09	126	.132	1	1.89	.027	.34	.1	.01	4.3	.3	<.05	6	.5
TL4 1100	1.0	24.7	5.9	86	.3	40.3	14.2	361	2.92	12.2	.8	1932.1	4.0	43	.2	.9	.2	61	1.02	.083	15	54.5	1.07	108	.111	1	1.50	.023	.26	.1	.02	3.6	.2	<.05	6	.5
TL4 1250	.8	44.4	8.2	108	.2	53.5	19.0	602	3.43	14.7	1.3	2.7	2.8	61	.2	.7	.2	75	1.34	.085	17	69.5	1.07	129	.109	3	1.81	.028	.12	.2	.02	4.7	.2	.07	6	.6
TL4 1300	.8	38.7	8.1	87	.1	52.3	19.0	517	3.30	14.5	1.4	4.2	2.7	54	.1	.7	.2	71	1.09	.083	15	67.3	1.05	113	.103	1	1.77	.029	.12	.1	.02	4.2	.2	<.05	6	.7
STANDARD DS5	12.5	144.0	24.8	139	.3	23.8	11.9	799	3.00	18.4	6.6	43.5	2.9	49	5.4	3.8	6.3	64	.78	.095	13	190.0	.69	143	.095	17	1.99	.034	.14	4.8	.18	3.4	1.1	<.05	6	4.7

Sample type: SOIL SS80 60C. Samples beginning 'RE' are Reruns and 'RRE' are Reject Reruns.



SAMPLE#	Mo ppm	Cu ppm	Pb ppm	Zn ppm	Ag ppm	Ni ppm	Co ppm	Mn ppm	Fe %	As ppm	U ppm	Au ppb	Th ppm	Sr ppm	Cd ppm	Sb ppm	Bi ppm	V ppm	Ca %	P %	La ppm	Cr ppm	Mg %	Ba ppm	Ti %	B ppm	Al %	Na %	K %	W ppm	Hg ppm	Sc ppm	Tl ppm	S %	Ga ppm	Se ppm
G-1	1.7	3.6	2.0	44	<.1	4.6	4.2	541	1.95	.7	1.8	.7	4.3	84	<.1	<.1	.1	43	.55	.091	7	14.5	.55	224	.127	<1	.93	.088	.51	1.3	<.01	3.0	.3	.06	5	<.5
TL4 1400	.7	34.8	8.9	100	.1	45.0	17.8	468	3.40	12.0	1.1	2.2	3.9	49	.3	.8	.2	65	.92	.070	15	52.6	.91	128	.115	1	1.63	.047	.22	.1	.02	3.3	.3	.07	6	.6
TL4 1500	.6	50.3	8.0	84	.3	63.2	19.9	502	3.60	21.7	.8	5.7	5.9	62	.2	1.0	.2	75	1.25	.083	22	76.7	1.32	130	.145	<1	1.90	.024	.27	.1	.01	5.8	.3	<.05	7	<.5
TL4 1700	.7	58.0	15.3	96	.2	67.1	23.1	534	3.82	24.0	1.4	5.4	4.5	75	.2	1.0	.2	68	1.50	.049	27	69.5	.95	131	.117	2	1.92	.021	.19	.1	.03	5.1	.2	<.05	7	.8
TL4 1800	.4	45.1	6.0	91	.1	41.5	13.9	380	2.21	16.0	1.4	3.6	1.8	88	.2	.7	.1	43	1.91	.073	14	42.8	.70	92	.072	1	1.15	.033	.16	.1	.03	2.5	.1	.11	4	.5
TL5 0	1.3	48.2	4.9	44	.1	12.3	6.0	274	1.49	6.4	.6	3.8	.2	18	.2	.4	.1	37	.16	.060	6	16.4	.23	81	.036	2	.76	.023	.03	.1	.01	1.0	.1	.06	3	<.5
TL5 50	3.9	52.1	10.3	118	.1	43.8	10.8	335	4.07	9.0	1.6	3.1	3.9	28	.5	.7	.2	116	.25	.080	22	49.0	.71	243	.132	1	1.79	.014	.19	.1	.03	2.9	.2	.08	8	1.3
TL5 100	2.3	47.7	17.8	107	.1	42.1	14.9	497	3.52	10.7	.8	2.6	3.4	25	.5	.7	.3	90	.28	.043	14	43.6	.72	172	.130	1	1.61	.014	.16	.2	.02	2.9	.1	<.05	7	.5
TL5 150	2.3	20.2	9.2	53	.1	14.3	7.5	366	2.09	9.9	.6	2.9	1.4	24	.1	.6	.2	66	.24	.026	8	21.4	.31	93	.075	1	.98	.016	.07	.1	.02	1.6	.1	<.05	6	<.5
TL5 200	1.3	41.1	9.9	90	.2	33.4	13.1	534	2.80	6.3	1.2	4.1	1.8	38	.5	.3	.2	63	.66	.068	16	40.1	.68	182	.102	1	1.79	.037	.20	.1	.03	2.7	.2	<.05	6	.5
TL5 250	1.5	41.4	9.3	90	.1	33.1	12.6	509	2.55	6.6	1.2	1.6	1.3	38	.4	.4	.2	56	.65	.066	13	35.5	.63	163	.086	2	1.73	.038	.14	.1	.03	2.5	.1	<.05	6	.5
TL5 300	1.4	41.0	8.5	94	.2	52.0	12.9	559	2.71	6.6	1.2	2.2	1.1	46	.3	.4	.2	63	.74	.076	14	67.7	.83	207	.090	1	1.98	.043	.17	.1	.03	2.7	.2	<.05	7	.7
TL5 350	1.4	42.1	11.3	117	.2	58.9	18.8	676	3.89	7.2	1.2	1.5	2.7	52	.2	.4	.2	89	.85	.059	16	74.4	1.21	291	.167	<1	2.84	.075	.30	.1	.03	5.1	.3	<.05	10	.7
RE TL5 350	1.3	41.0	11.3	109	.1	53.7	16.8	678	3.78	7.4	1.2	1.6	2.8	53	.2	.4	.2	86	.79	.057	16	73.0	1.18	288	.159	1	2.75	.074	.27	.1	.03	4.7	.3	<.05	9	.6
TL5 400	1.2	37.7	8.1	95	.2	38.0	13.4	533	2.90	6.8	1.3	2.6	1.4	48	.4	.4	.2	68	.88	.073	14	48.9	.84	235	.103	1	2.09	.047	.17	.1	.03	3.4	.2	<.05	7	.8
TL5 450	1.2	35.3	8.6	95	.2	39.6	13.6	519	2.98	7.2	1.2	2.2	1.5	40	.2	.4	.2	69	.65	.067	15	49.7	.81	210	.100	<1	1.99	.038	.15	.1	.03	3.3	.2	<.05	7	.6
TL5 500	1.1	38.8	8.9	97	.1	48.7	15.8	581	3.48	8.2	1.1	1.3	2.3	37	.2	.4	.2	70	.66	.058	15	60.6	.97	229	.114	1	2.22	.036	.20	.1	.02	4.1	.2	<.05	7	.5
TL5 550	1.2	41.5	9.7	91	.1	45.3	15.2	531	3.40	9.2	1.6	1.9	1.9	46	.1	.4	.2	74	.77	.069	18	57.2	.98	185	.112	1	2.23	.037	.19	.1	.04	4.3	.2	<.05	7	.5
TL5 600	.8	35.4	7.7	95	.1	45.8	14.4	476	3.32	6.5	1.0	24.4	3.0	39	.3	.4	.2	69	.71	.065	18	58.4	.96	180	.115	1	1.93	.039	.23	.1	.02	4.6	.2	<.05	7	.5
TL5 650	.8	34.7	7.1	88	.1	35.9	11.9	410	2.68	7.1	1.1	2.1	1.7	36	.2	.4	.2	58	.72	.063	16	48.4	.83	164	.090	1	1.76	.032	.18	.1	.02	3.5	.2	<.05	6	.5
TL5 700	.8	35.2	7.7	80	.1	37.5	13.0	460	2.88	7.6	1.2	2.4	2.0	39	.2	.4	.1	61	.90	.066	17	47.7	.85	166	.100	2	1.72	.032	.16	.1	.02	3.8	.2	<.05	6	<.5
TL5 750	.4	58.4	8.9	74	.1	41.8	14.8	395	2.82	9.8	1.2	2.4	1.8	61	.1	.4	.2	59	1.62	.075	15	53.1	1.02	137	.094	1	1.67	.028	.20	.1	.03	3.9	.2	.06	6	.7
TL5 800	.5	30.2	8.5	77	.1	41.3	13.5	376	2.94	8.8	.8	2.7	3.7	53	.2	.4	.2	56	1.44	.093	18	55.6	1.22	115	.110	2	1.59	.029	.31	.2	.02	4.2	.3	<.05	5	<.5
TL5 950	.5	36.8	7.9	87	.1	60.7	18.3	414	3.36	8.1	.8	57.1	5.5	74	.2	.7	.2	62	1.74	.084	24	70.5	1.40	130	.140	1	1.86	.024	.37	.1	.01	4.5	.3	<.05	7	<.5
TL5 1000	.3	41.3	7.7	82	.1	47.5	14.8	441	2.67	7.6	.8	4.5	2.8	63	.2	.6	.2	61	1.56	.096	15	62.2	1.18	133	.109	1	1.56	.022	.25	.1	.02	4.6	.2	<.05	6	.6
TL5 1050	.5	50.8	8.6	96	.2	62.4	19.1	555	3.65	12.5	.7	2.8	4.5	49	.2	.7	.2	71	1.05	.082	18	72.3	1.18	166	.150	2	1.90	.031	.25	.1	.02	5.5	.3	<.05	7	<.5
TL5 1100	.6	44.3	7.5	76	.2	71.9	19.5	439	3.64	17.5	.9	3.9	5.0	160	.2	.7	.1	74	4.07	.102	16	93.2	1.46	126	.159	2	1.74	.027	.24	.1	.01	6.3	.3	<.05	6	<.5
TL5 1150	.4	35.3	4.8	56	.1	33.4	11.3	338	2.02	8.3	.8	2.1	1.8	65	.1	.4	.1	46	1.45	.068	11	37.0	.59	99	.076	1	1.04	.030	.10	.1	.02	2.9	.1	<.05	4	.5
TL5 1250	.5	39.0	6.6	59	.1	43.5	13.7	406	2.67	12.0	.6	2.6	3.1	40	.1	.5	.1	54	.67	.074	11	49.8	.81	120	.102	1	1.49	.025	.09	.1	.01	4.0	.1	<.05	5	<.5
TL5 1350	.8	40.5	10.4	89	.1	54.4	19.9	578	3.90	14.1	1.4	3.7	3.8	46	.1	.6	.2	71	.69	.057	18	61.3	1.01	154	.127	1	2.02	.031	.10	.1	.02	4.7	.2	<.05	7	<.5
TL5 1450	1.1	44.0	11.3	103	.1	56.2	21.1	723	3.63	10.7	1.5	2.8	4.5	54	.2	.6	.2	68	.98	.082	17	63.2	1.04	116	.129	1	1.86	.045	.25	.6	.02	4.4	.3	<.05	7	.5
TL5 1650	.4	44.2	7.1	80	.2	47.9	16.4	507	2.75	16.4	.8	4.9	3.2	82	.2	.8	.1	48	1.87	.065	15	54.7	.93	103	.100	2	1.32	.024	.23	.1	.02	3.7	.2	<.05	5	.7
TL5 1800	.4	42.1	7.3	79	.2	49.5	15.9	372	2.56	24.8	1.2	5.1	2.4	97	.2	.9	.1	50	2.16	.060	13	53.5	.82	106	.085	2	1.28	.020	.16	.1	.02	3.7	.2	.08	5	.8
TL5 1850	.5	35.7	6.4	58	.1	33.8	14.6	326	2.23	16.6	1.3	3.3	1.5	94	.1	.7	.1	42	1.96	.064	12	43.5	.62	102	.062	2	1.30	.027	.09	.1	.03	2.7	.1	.09	4	.6
STANDARD D	13.2	144.1	25.4	138	.3	24.2	11.9	766	2.97	19.0	6.4	45.0	2.9	47	5.8	3.8	6.3	61	.73	.100	13	188.9	.69	145	.099	19	1.99	.034	.14	5.0	.18	3.4	1.1	<.05	6	5.2

Standard is STANDARD DS5. Samples beginning 'RE' are Reruns and 'RRE' are Reject Reruns.



SAMPLE#	Mo ppm	Cu ppm	Pb ppm	Zn ppm	Ag ppm	Ni ppm	Co ppm	Mn ppm	Fe %	As ppm	U ppm	Au ppb	Th ppm	Sr ppm	Cd ppm	Sb ppm	Bi ppm	V ppm	Ca %	P %	La ppm	Cr ppm	Mg %	Ba ppm	Ti %	B ppm	Al %	Na %	K %	W ppm	Hg ppm	Sc ppm	Tl ppm	S %	Ga ppm	Se ppm
G-1	1.4	3.1	2.4	43	<.1	4.5	3.6	497	1.85	.6	1.7	.9	3.9	85	<.1	<.1	.1	40	.54	.081	7	13.1	.52	213	.116	<1	.87	.098	.47	1.3	<.01	4.5	.3	<.05	5	<.5
TL5 1950	.6	53.0	7.2	77	.1	43.0	13.8	382	2.35	18.1	1.3	4.4	1.5	97	.3	.7	.1	44	1.93	.062	14	42.3	.69	114	.064	2	1.27	.024	.15	.1	.02	3.3	.1	.10	5	.6
TL5 2000	.4	57.6	7.7	72	.2	47.3	15.7	498	2.76	22.4	1.0	5.2	2.4	100	.1	.7	.1	45	2.01	.055	16	47.0	.74	117	.075	2	1.28	.022	.13	.1	.03	3.5	.2	.07	5	.8
TL6 0	2.7	38.1	18.8	124	.2	30.4	10.5	354	4.06	19.2	.9	8.2	1.9	26	.5	.9	.2	99	.26	.046	12	39.9	.53	135	.100	1	1.45	.012	.10	.1	.04	2.9	.1	<.05	8	.7
TL6 050	1.4	54.2	15.3	161	.2	53.6	19.2	536	3.94	9.2	1.3	5.9	3.3	27	.6	.7	.2	74	.29	.055	18	48.7	.84	212	.097	1	2.19	.016	.15	.1	.03	4.4	.1	<.05	7	1.2
TL6 100	1.8	30.7	10.5	107	.2	21.0	11.8	524	1.95	9.0	.8	2.2	.7	35	.9	.5	.1	45	.46	.069	11	20.7	.37	131	.051	1	1.01	.019	.09	.1	.08	1.8	.1	<.05	4	.6
TL6 150	2.3	71.2	17.3	166	.6	57.0	15.3	622	3.43	10.2	2.5	3.8	2.2	31	.8	.6	.2	73	.52	.091	32	41.2	.66	287	.070	<1	1.94	.022	.17	.1	.05	3.9	.1	<.05	7	1.2
TL6 200	1.4	42.3	10.5	91	.4	29.2	8.0	337	2.28	7.7	1.6	2.3	1.5	33	.3	.5	.2	52	.51	.067	17	28.6	.50	171	.061	<1	1.38	.029	.12	.1	.03	2.7	.1	<.05	5	.8
TL6 250	1.3	41.8	8.7	91	.3	27.2	9.7	413	2.21	6.1	1.6	2.6	.9	37	.3	.5	.1	46	.79	.073	16	27.7	.52	187	.057	<1	1.48	.033	.11	.1	.02	2.1	.1	<.05	5	.8
TL6 300	1.5	41.9	8.9	112	.2	30.8	10.0	474	2.49	5.4	1.6	3.0	1.2	45	.8	.5	.1	56	.99	.075	16	37.5	.60	205	.078	2	1.55	.041	.14	.1	.03	2.7	.1	<.05	5	1.1
TL6 350	1.7	46.3	12.2	135	.3	49.7	17.1	714	3.73	9.2	1.8	2.2	2.4	46	.4	.5	.2	83	.86	.072	21	59.3	1.02	253	.120	1	2.32	.038	.22	.1	.03	4.7	.2	<.05	8	.8
TL6 400	1.6	39.7	14.6	114	.2	53.5	16.5	574	3.65	9.0	1.6	1.9	4.5	34	.2	.5	.2	76	.60	.053	25	65.5	1.14	220	.134	1	2.34	.027	.25	.1	.02	5.3	.2	<.05	8	.5
TL6 450	1.2	39.9	11.6	117	.2	55.2	16.4	564	3.83	8.4	1.4	2.3	5.1	31	.2	.4	.2	76	.54	.039	26	75.2	1.11	199	.143	1	2.15	.026	.28	.1	.02	5.1	.2	<.05	8	.6
TL6 500	1.4	38.6	10.3	109	.2	52.4	16.4	526	3.66	8.5	1.5	1.2	3.7	33	.1	.5	.1	77	.55	.055	25	72.9	1.11	203	.126	1	2.17	.024	.21	.1	.02	4.8	.2	<.05	7	<.5
TL6 550	1.2	35.5	9.0	103	.2	43.6	14.2	509	3.23	8.6	1.2	1.9	2.5	33	.1	.4	.1	65	.54	.059	17	64.2	.97	188	.106	1	1.90	.025	.18	.1	.03	4.2	.2	<.05	7	.5
TL6 600	.9	43.1	8.5	106	.1	56.6	16.7	450	3.73	9.0	1.4	3.3	4.3	32	.1	.5	.1	75	.57	.053	22	75.7	1.11	196	.130	2	2.08	.024	.26	.1	.03	5.4	.2	<.05	7	<.5
TL6 650	.9	34.6	7.6	95	.1	36.4	11.0	346	2.63	8.0	1.1	2.7	1.8	38	.1	.4	.1	61	.74	.065	15	52.8	.85	183	.090	1	1.71	.030	.16	.1	.02	3.9	.2	<.05	6	<.5
TL6 700	.7	38.2	7.7	96	.1	57.0	16.4	437	3.45	12.5	.8	6.3	4.6	40	.2	.6	.1	70	.72	.075	18	74.4	1.11	157	.131	2	1.80	.030	.23	.1	.01	5.1	.2	<.05	7	<.5
RE TL6 700	.7	40.1	7.5	94	.1	56.7	16.2	465	3.57	12.4	.8	2.9	4.6	41	.2	.6	.1	71	.80	.077	18	74.4	1.20	160	.144	1	1.93	.033	.24	.1	.02	5.5	.2	<.05	6	<.5
TL6 750	.6	39.7	6.7	93	.1	40.5	15.0	512	2.72	8.9	.9	3.1	2.6	48	.3	.4	.1	57	.93	.062	14	51.6	.79	149	.088	1	1.42	.027	.18	.1	.03	3.6	.2	<.05	5	.5
TL6 800	.7	41.2	7.0	93	.1	43.2	13.3	539	2.74	8.3	1.2	5.2	2.5	48	.2	.4	.1	58	1.06	.068	16	54.4	.86	141	.096	1	1.48	.028	.17	.1	.03	3.8	.2	<.05	5	<.5
TL6 850	.5	42.1	8.6	98	.2	52.3	16.0	490	3.09	11.6	.7	3.8	3.5	50	.3	.6	.2	63	1.33	.079	17	68.2	1.09	135	.117	4	1.66	.030	.22	.1	.03	4.8	.2	<.05	6	.5
TL6 950	.5	43.8	9.5	95	.2	56.4	18.7	529	3.36	17.4	.7	4.4	3.9	52	.2	.6	.2	67	1.16	.076	18	72.3	1.17	134	.130	3	1.83	.031	.22	.1	.03	5.4	.2	<.05	6	<.5
TL6 1000	.4	45.3	7.2	83	.2	44.7	14.3	464	2.66	9.7	.7	2.7	2.2	66	.2	.5	.1	49	1.52	.063	15	53.1	.84	121	.082	1	1.35	.027	.18	.1	.02	3.6	.2	<.05	5	.5
TL6 1050	.6	36.1	9.5	85	.1	60.5	19.6	530	3.53	17.5	.7	2.5	5.5	39	.1	.7	.2	68	.71	.050	19	71.1	1.13	127	.122	2	2.20	.022	.12	.1	.02	6.1	.2	<.05	7	<.5
TL6 1100	1.1	33.5	11.5	83	.1	59.3	19.6	344	4.14	19.3	.7	1.8	4.3	35	.1	.8	.2	83	.48	.018	12	70.1	.98	71	.126	2	2.57	.019	.18	.1	<.01	5.0	.1	<.05	8	<.5
TL6 1250	.6	37.5	5.8	106	.1	24.0	10.4	301	1.90	7.5	.8	2.2	.9	40	.2	.4	.1	38	.51	.059	11	26.4	.37	91	.055	2	1.01	.029	.05	.1	.02	2.0	.1	.08	4	<.5
TL6 1300	.5	33.2	6.1	97	.1	42.1	14.9	500	2.71	10.4	1.1	2.6	2.6	67	.2	.6	.1	57	1.41	.081	14	51.1	.76	103	.094	2	1.28	.023	.14	.1	.02	3.6	.2	.08	5	<.5
TL6 1350	.7	46.0	10.7	105	.2	63.5	22.2	674	3.65	9.2	1.0	1.7	4.7	60	.2	.6	.2	67	1.02	.077	23	67.7	1.02	131	.106	2	1.85	.028	.11	.1	.03	5.7	.2	<.05	7	<.5
TL6 1400	.6	34.8	11.0	91	.1	63.6	19.4	423	3.83	12.6	.9	3.5	7.6	42	.1	1.0	.2	64	.60	.070	23	78.0	1.29	109	.124	2	2.16	.032	.23	.1	.01	4.9	.3	<.05	7	<.5
TL6 1450	.3	25.4	5.6	63	.1	21.5	11.6	311	1.96	6.3	.5	1.3	1.1	80	.1	.3	.1	38	.96	.066	9	29.1	.34	81	.067	1	1.45	.047	.07	<.1	.02	2.5	.1	.06	4	<.5
TL6 1550	.6	39.3	8.8	97	.3	49.4	18.3	592	3.53	21.7	.8	5.1	4.0	68	.2	1.4	.2	59	1.40	.094	17	55.6	1.03	108	.107	2	1.51	.027	.20	.1	.03	4.7	.2	<.05	6	<.5
TL6 1600	.5	47.2	6.4	77	.2	44.3	15.6	460	2.44	36.7	.9	8.2	1.6	104	.2	1.1	.1	40	2.40	.071	11	45.7	.74	90	.067	4	1.08	.024	.14	.1	.03	3.1	.1	.14	4	.5
TL6 1650	.6	55.3	9.3	102	.4	53.9	18.7	513	2.96	59.0	.9	13.1	2.1	105	.2	1.6	.1	48	2.36	.062	15	61.7	.86	100	.072	2	1.24	.025	.16	.1	.03	3.4	.2	.08	5	.7
STANDARD D	12.3	144.3	24.8	139	.3	25.2	12.2	794	3.07	18.6	6.5	42.0	2.8	48	5.6	3.9	6.3	58	.71	.094	12	184.3	.68	137	.099	17	1.94	.035	.14	5.4	.16	3.4	1.0	<.05	6	5.2

Standard is STANDARD DS5. Samples beginning 'RE' are Reruns and 'RRE' are Reject Reruns.



SAMPLE#	Mo ppm	Cu ppm	Pb ppm	Zn ppm	Ag ppm	Ni ppm	Co ppm	Mn ppm	Fe %	As ppm	U ppm	Au ppb	Th ppm	Sr ppm	Cd ppm	Sb ppm	Bi ppm	V ppm	Ca %	P %	La ppm	Cr ppm	Mg %	Ba ppm	Ti %	B ppm	Al %	Na %	K %	W ppm	Hg ppm	Sc ppm	Tl ppm	S %	Ga ppm	Se ppm
G-1	1.6	3.7	2.3	43	<.1	4.7	3.9	528	1.91	<.5	1.6	1.0	4.0	90	<.1	<.1	.1	41	.50	.080	8	14.3	.51	225	.121	1	.94	.099	.46	1.2	<.01	3.6	.3	.06	5	<.5
TL6 1750	.7	47.2	6.7	80	.2	38.2	13.4	402	2.09	30.0	.8	7.6	1.3	96	.2	1.0	.1	36	2.25	.061	11	34.7	.62	101	.055	3	1.03	.025	.13	.1	.05	2.6	.1	.20	3	.7
TL6 1850	.5	42.8	6.1	69	.2	34.9	12.0	361	2.09	20.4	1.1	4.2	1.5	81	.2	.6	.1	40	1.67	.053	12	36.9	.57	102	.063	2	1.06	.023	.11	.1	.03	2.6	.1	.14	4	.6
TL7 0	2.9	71.1	84.0	1022	1.3	42.3	12.2	525	3.38	54.4	1.4	16.0	2.3	34	5.6	1.2	.9	89	.38	.077	19	38.8	.54	240	.069	1	1.39	.011	.11	.1	.06	3.0	.1	.13	6	1.0
TL7 50	1.5	47.0	9.6	116	.2	50.1	19.1	516	3.54	8.0	.8	2.1	2.8	25	.6	.5	.2	102	.32	.048	11	45.0	.92	342	.146	1	2.25	.015	.16	.1	.03	4.4	.2	<.05	7	.7
TL7 100	3.3	42.5	14.8	122	.2	31.4	10.4	309	3.53	11.9	.9	1.2	2.0	24	1.4	.7	.2	99	.26	.053	12	42.5	.63	159	.101	2	1.51	.011	.10	.1	.03	3.0	.1	<.05	7	.6
TL7 150	2.6	45.2	17.2	210	.3	54.8	15.4	501	3.74	17.7	1.3	5.2	4.8	24	1.3	.7	.2	82	.33	.080	19	42.8	.78	207	.101	1	1.93	.014	.17	.1	.01	3.5	.2	<.05	6	.7
TL7 200	1.6	55.2	20.2	176	.4	65.3	18.5	655	4.20	11.2	1.7	7.5	5.8	40	.7	.7	.2	90	.81	.080	25	67.4	1.25	295	.189	1	2.56	.045	.43	.1	.03	4.7	.4	<.05	7	.5
TL7 250	1.2	39.7	15.5	138	.2	58.6	17.6	589	3.98	6.7	.9	5.3	4.6	38	.4	.5	.1	82	.81	.068	13	67.6	1.27	215	.191	2	2.39	.052	.48	.1	.01	4.5	.4	<.05	8	.6
TL7 300	.9	50.8	38.4	156	.5	71.3	22.4	608	4.43	23.8	1.0	7.4	4.9	46	1.1	.9	.3	87	.89	.131	24	89.8	1.39	184	.176	1	2.37	.040	.35	.1	.04	7.2	.3	<.05	8	<.5
TL7 350	1.4	52.6	15.8	138	.3	58.6	18.5	617	4.14	8.3	1.8	3.8	2.9	46	.5	.5	.2	86	.88	.076	21	74.0	1.24	218	.141	1	2.38	.043	.20	.1	.03	5.1	.3	<.05	8	.7
TL7 400	1.7	41.0	13.6	125	.2	50.6	18.1	702	3.95	13.3	1.8	3.5	2.8	41	.3	.5	.2	86	.76	.069	21	68.8	1.11	231	.118	2	2.38	.034	.17	.1	.03	5.0	.2	<.05	8	.8
TL7 450	1.2	37.0	14.4	109	.1	56.4	17.8	562	3.79	12.1	1.4	3.7	5.5	32	.2	.4	.1	76	.58	.041	24	70.8	1.16	189	.146	2	2.27	.029	.27	.1	.02	5.0	.3	<.05	8	.5
TL7 500	1.1	41.1	19.0	108	.2	54.6	17.6	520	3.48	9.7	1.7	2.6	4.3	33	.2	.4	.2	69	.55	.053	32	64.2	1.08	153	.122	2	2.07	.023	.23	.1	.03	4.9	.3	<.05	7	<.5
TL7 550	1.1	42.4	9.2	99	.1	51.0	17.8	499	3.55	9.2	1.1	2.3	3.7	34	.2	.4	.2	75	.59	.053	22	66.9	1.11	169	.132	2	2.13	.024	.24	.1	.01	4.6	.2	<.05	8	<.5
TL7 650	.8	33.0	7.7	92	.2	34.3	13.2	373	2.70	8.0	1.0	2.1	2.6	31	.1	.3	.1	59	.54	.050	18	46.3	.82	140	.104	2	1.60	.024	.13	.1	.02	3.6	.2	<.05	6	<.5
TL7 700	.8	44.0	8.6	100	.2	56.7	18.1	596	3.32	10.3	.9	3.4	4.9	37	.2	.5	.1	70	.63	.075	19	73.7	1.13	155	.126	2	1.98	.024	.23	.1	.02	5.2	.2	<.05	7	<.5
TL7 750	.6	43.9	7.8	90	.2	53.5	17.2	635	3.27	11.9	1.4	12.8	4.6	42	.3	.5	.1	67	.73	.081	19	68.8	1.06	142	.120	1	1.77	.028	.18	.1	.02	5.2	.2	<.05	6	<.5
TL7 800	.8	47.7	7.7	95	.2	53.3	16.6	562	3.15	13.7	1.0	2.9	3.9	43	.3	.6	.2	68	.88	.081	19	72.5	1.10	136	.120	1	1.86	.027	.18	.1	.02	5.3	.2	<.05	6	<.5
TL7 850	.5	37.0	9.3	98	.2	50.3	15.9	613	3.07	12.0	1.0	5.0	4.1	44	.2	.5	.2	61	.94	.077	17	62.1	.98	115	.112	1	1.56	.028	.15	.1	.02	4.5	.2	<.05	6	<.5
TL7 900	.6	35.0	11.9	97	.2	45.0	14.5	520	2.76	12.1	.8	3.2	3.3	47	.4	.6	.2	58	1.27	.076	15	55.9	1.02	114	.096	3	1.40	.026	.15	.1	.02	4.1	.2	<.05	5	<.5
TL7 950	.5	31.1	7.0	83	.1	43.3	15.0	445	2.88	11.1	.9	8.4	3.9	44	.2	.4	.1	57	.88	.079	17	59.7	.92	105	.103	2	1.47	.024	.18	.1	.02	3.9	.2	<.05	5	<.5
TL7 1150	.5	32.3	7.0	80	.1	44.6	14.0	353	2.95	9.4	.8	4.3	4.1	46	.2	.4	.1	67	.91	.078	19	51.9	.82	89	.114	2	1.34	.023	.19	.2	.01	3.7	.2	<.05	5	.5
TL7 1200	1.9	90.0	22.4	111	.2	97.1	48.5	523	6.08	152.9	2.0	42.7	6.9	36	.2	.8	.4	61	.46	.046	32	55.5	1.43	113	.139	1	2.26	.029	.45	.1	.01	4.6	.4	<.05	8	.7
TL7 1300	.6	57.1	15.0	116	.2	76.9	25.2	588	4.17	65.7	1.6	12.3	11.8	41	.2	1.4	.2	57	.76	.068	38	78.3	1.35	114	.106	1	1.97	.017	.27	.1	.01	5.7	.3	<.05	8	<.5
TL7 1350	.7	39.0	86.6	152	.6	50.5	25.6	805	3.98	302.2	1.5	33.3	7.6	43	.7	5.7	.3	46	.73	.070	29	52.8	.76	95	.056	1	1.41	.015	.10	.1	.04	5.0	.2	<.05	5	<.5
RE TL7 1350	.8	42.2	90.0	163	.6	54.1	26.2	867	4.09	308.1	1.6	42.9	7.9	43	.8	5.6	.3	44	.75	.071	30	50.8	.77	96	.055	2	1.37	.015	.09	.1	.04	5.0	.2	<.05	5	<.5
TL7 1450	.9	46.8	10.3	80	.1	68.6	23.4	384	4.42	25.8	.9	3.2	5.4	49	.1	1.8	.2	84	.52	.029	23	93.3	1.10	100	.131	1	2.80	.029	.05	.1	.01	8.7	.2	<.05	8	<.5
TL7 1550	1.0	88.4	22.0	85	.1	100.7	30.3	379	4.64	25.9	2.6	3.8	10.2	86	.1	.7	.3	66	1.40	.040	55	69.4	.92	124	.104	1	2.34	.019	.15	.1	.02	6.1	.2	<.05	7	<.5
TL7 1600	.7	46.7	10.6	91	.3	54.1	18.2	455	3.42	55.3	1.0	13.8	5.2	85	.2	1.8	.2	49	2.08	.081	20	56.9	1.10	97	.091	2	1.42	.019	.25	.1	.03	4.3	.2	<.05	5	<.5
TL7 1650	.6	40.6	10.4	90	.3	52.0	18.1	459	3.31	62.6	.9	29.4	4.6	94	.2	1.6	.1	50	2.13	.072	19	54.2	1.03	90	.090	<1	1.35	.018	.23	.1	.02	4.3	.2	<.05	5	.6
TL7 1700	.7	56.5	11.7	93	.3	66.7	21.4	563	3.49	41.9	1.0	10.0	4.0	144	.2	1.3	.2	57	3.13	.077	19	59.2	1.16	129	.097	3	1.62	.023	.25	.1	.02	5.1	.2	<.05	5	.6
TL7 1750	.5	53.3	8.9	76	.2	63.3	20.4	532	3.39	60.2	1.0	11.8	4.2	110	.2	.9	.1	60	2.61	.069	18	62.5	1.07	122	.109	2	1.49	.025	.25	.1	.01	4.6	.2	.06	5	.7
TL8 0	3.1	50.4	14.7	284	.6	50.2	13.8	592	3.66	16.8	1.7	4.2	1.8	28	2.6	.8	.3	95	.50	.097	21	44.9	.69	248	.088	2	2.07	.012	.09	.1	.06	4.0	.1	<.05	8	.6
STANDARD DS5	12.8	145.3	25.5	136	.3	24.6	11.8	802	3.01	18.9	6.4	44.1	2.9	49	5.6	3.8	6.0	62	.70	.098	13	192.6	.70	136	.098	18	2.05	.034	.13	5.2	.19	3.6	1.0	<.05	6	5.1

Sample type: SOIL SS80 60C. Samples beginning 'RE' are Reruns and 'RRE' are Reject Reruns.



SAMPLE#	Mo ppm	Cu ppm	Pb ppm	Zn ppm	Ag ppm	Ni ppm	Co ppm	Mn ppm	Fe %	As ppm	U ppm	Au ppb	Th ppm	Sr ppm	Cd ppm	Sb ppm	Bi ppm	V ppm	Ca %	P %	La ppm	Cr ppm	Mg %	Ba ppm	Ti %	B ppm	Al %	Na %	K %	W ppm	Hg ppm	Sc ppm	Tl ppm	S %	Ga ppm	Se ppm
G-1	1.6	3.2	1.9	41	<.1	4.7	4.1	530	1.88	<.5	1.5	.5	3.8	89	<.1	<.1	.1	43	.50	.087	7	13.3	.53	235	.130	1	.92	.094	.49	1.2	<.01	3.1	.3	<.05	4	<.5
TL8 100	3.9	60.1	11.8	95	.5	27.8	9.2	275	3.26	15.0	1.1	2.8	.8	24	1.1	1.0	.2	88	.20	.049	12	34.0	.39	148	.054	1	1.48	.009	.05	.1	.03	2.2	.1	.09	7	.9
TL8 200	1.5	41.4	23.2	197	.5	38.2	12.9	649	2.98	49.1	1.2	13.1	2.3	40	1.9	.8	.7	66	.64	.066	15	41.2	.71	180	.096	2	1.88	.032	.17	.1	.04	3.4	.1	.09	6	.8
TL8 250	1.1	28.0	6.7	67	.2	17.8	7.6	265	1.90	9.6	.8	5.3	.8	28	.5	.5	.1	44	.49	.050	9	21.9	.38	107	.065	1	1.10	.033	.08	.1	.03	1.9	.1	.07	4	.6
TL8 300	1.1	42.9	11.8	142	.2	60.6	17.2	627	3.66	10.8	1.2	5.5	3.1	50	.5	.4	.2	83	.94	.060	14	80.8	1.16	223	.167	1	2.37	.056	.30	.1	.02	4.0	.3	<.05	8	.7
TL8 350	1.0	41.5	10.0	111	.2	52.8	14.1	518	2.71	9.3	1.1	4.0	1.6	59	.7	.4	.2	61	1.28	.073	14	61.4	.89	210	.093	2	1.90	.040	.22	.1	.04	3.2	.2	.08	6	1.1
TL8 400	1.0	37.5	10.1	122	.2	44.8	15.3	491	3.09	9.9	1.3	2.8	2.6	47	.4	.4	.2	69	.93	.060	18	59.8	.94	185	.118	1	2.02	.037	.24	.1	.03	3.9	.2	<.05	7	.9
TL8 450	1.0	36.5	13.7	127	.3	47.9	14.7	490	3.32	13.8	1.3	6.6	2.6	40	.3	.6	.2	74	.68	.057	17	58.9	1.09	197	.127	2	2.26	.037	.18	.1	.03	4.2	.2	<.05	6	.8
TL8 500	1.1	39.4	13.5	112	.3	39.1	12.3	447	3.00	12.7	1.9	8.5	1.9	49	.3	1.3	.2	65	.98	.081	20	50.0	.91	189	.088	3	1.93	.028	.10	.1	.04	4.1	.1	<.05	6	.7
TL8 550	1.1	45.3	12.6	88	.2	27.7	13.3	589	2.40	10.2	1.4	4.2	1.1	49	.3	.9	.2	54	.98	.102	21	35.2	.70	171	.061	2	1.70	.029	.09	.1	.04	2.8	.1	.06	5	.8
TL8 600	.6	36.1	11.9	98	.1	39.6	13.1	383	2.96	9.3	1.1	3.3	3.3	38	.3	.7	.2	65	.66	.062	16	55.0	.97	165	.119	3	1.99	.030	.20	.1	.02	4.2	.2	<.05	6	.6
TL8 650	.8	32.3	9.0	85	.2	32.1	11.0	311	2.60	10.5	1.3	9.1	1.9	40	.3	.6	.1	60	.73	.062	15	44.2	.75	137	.095	1	1.58	.029	.14	.1	.02	3.2	.1	<.05	5	.6
TL8 700	.8	30.2	11.6	98	.2	45.4	15.7	876	3.27	16.2	1.1	4.1	4.5	40	.3	.5	.2	73	.76	.074	18	60.1	1.03	159	.128	1	1.95	.032	.21	.1	.02	4.9	.2	<.05	6	.6
TL8 750	1.0	48.3	11.6	96	.2	62.1	18.9	692	3.48	18.8	1.8	12.8	5.0	38	.2	.8	.2	78	.74	.087	25	73.7	1.16	146	.136	1	2.01	.029	.21	.1	.03	5.8	.2	<.05	7	.5
TL8 800	.6	32.1	8.0	80	.1	46.9	15.7	528	2.86	14.4	.8	5.1	4.1	39	.3	.6	.1	66	.89	.096	16	61.0	.98	115	.118	1	1.62	.027	.23	.1	.02	4.4	.2	<.05	5	.6
TL8 850	.6	30.7	10.1	85	.2	46.3	16.9	387	3.05	19.0	.9	5.4	3.6	48	.1	.6	.2	73	1.02	.086	17	59.1	.93	126	.113	2	1.73	.027	.20	.1	.02	4.4	.2	<.05	5	.8
TL8 900	.6	41.9	9.2	84	.2	49.1	15.1	509	2.92	15.2	1.2	4.7	3.5	51	.3	.6	.1	64	1.03	.078	18	62.1	.97	124	.110	2	1.67	.026	.19	.1	.03	4.7	.2	<.05	6	.6
TL8 950	.5	36.7	6.8	75	.1	42.3	13.4	423	2.51	10.5	.9	1.8	2.6	55	.1	.5	.1	55	1.20	.063	14	50.9	.81	121	.093	1	1.51	.029	.13	.1	.02	3.8	.1	<.05	5	.6
TL8 1000	.6	34.2	8.7	81	.2	71.1	17.4	528	3.14	17.5	.8	6.1	5.2	40	.2	.8	.1	68	.92	.102	16	78.2	1.30	118	.136	1	1.82	.023	.24	.1	<.01	4.8	.2	<.05	6	<.5
TL8 1050	.6	42.5	7.1	86	.1	61.8	16.6	446	3.29	16.2	.7	4.4	4.4	49	.2	.8	.1	79	1.32	.096	16	76.7	1.33	120	.142	2	1.77	.026	.28	.1	.01	5.5	.2	<.05	6	<.5
TL8 1100	.5	31.1	12.0	81	.1	53.2	16.2	566	3.28	13.5	.8	3.0	6.1	42	.2	.8	.2	65	.99	.081	22	59.6	1.14	122	.118	2	1.82	.028	.23	.1	.01	4.7	.2	<.05	6	<.5
RE TL8 1100	.6	31.4	10.9	78	.1	56.1	16.9	557	3.21	12.8	.8	5.2	5.8	40	.2	.7	.1	67	.97	.079	22	59.9	1.14	123	.123	<1	1.90	.028	.24	.1	.01	4.7	.2	<.05	6	<.5
TL8 1200	.6	37.7	9.6	79	.1	58.6	19.1	605	3.40	16.5	1.0	2.9	4.3	62	.2	.6	.2	71	1.11	.065	22	72.9	1.08	146	.129	1	2.01	.026	.31	.1	.02	5.2	.2	<.05	6	.5
TL8 1250	.9	41.9	10.5	80	.2	58.6	20.1	527	4.01	15.9	.9	2.2	4.9	43	.2	1.0	.2	84	.64	.027	22	68.5	.99	134	.111	1	2.20	.019	.13	.1	.01	5.4	.1	<.05	7	<.5
TL8 1500	.6	49.1	11.2	89	.1	56.8	21.5	626	3.03	12.0	.8	1.7	4.0	119	.2	.8	.2	46	2.48	.098	23	49.7	1.02	137	.075	2	1.75	.018	.12	.1	.02	4.1	.2	<.05	5	.5
TL8 1600	.3	61.9	7.2	70	.2	48.6	15.8	398	2.52	14.1	.9	4.1	2.8	133	.2	.8	.1	43	2.59	.067	17	46.3	.77	126	.076	2	1.42	.020	.20	.1	.04	3.7	.2	.12	5	.8
TL8 1700	.6	63.9	8.3	86	.2	67.4	19.9	462	3.33	23.4	.9	5.1	5.1	87	.2	1.1	.1	60	1.93	.074	21	64.2	1.09	121	.112	2	1.66	.020	.27	.1	.02	4.8	.2	.06	6	.8
TL8 1800	.5	39.1	7.5	76	.2	46.0	16.6	403	3.08	36.4	.7	4.7	4.8	69	.1	.9	.1	64	1.60	.073	18	56.6	1.04	97	.118	1	1.56	.021	.29	.1	.02	4.5	.2	<.05	5	.5
TL9 0	2.7	41.9	11.5	191	.1	41.7	13.9	485	4.01	14.9	1.0	2.4	2.4	21	.8	.7	.8	105	.29	.061	13	53.7	.84	136	.122	2	2.03	.012	.11	.1	.03	3.7	.1	<.05	7	.8
TL9 50	2.6	36.8	9.4	162	.1	42.3	14.8	475	3.50	16.8	.9	7.9	1.4	24	.6	1.0	.3	88	.28	.054	11	39.2	.70	121	.091	1	1.82	.014	.09	.1	.03	3.2	.1	<.05	7	.5
TL9 100	2.7	83.0	22.9	1179	1.0	92.8	24.6	963	4.30	201.6	2.1	29.8	5.4	35	8.7	1.5	5.7	123	.56	.139	42	52.2	1.07	342	.094	2	2.55	.017	.20	.1	.05	5.4	.2	<.05	7	1.1
TL9 150	3.3	87.5	11.7	597	.5	59.4	14.7	672	3.59	10.4	2.7	2.2	3.9	34	3.8	.8	1.1	115	.86	.112	40	56.5	1.00	366	.097	2	2.09	.014	.24	.1	.05	4.6	.3	.07	6	1.9
TL9 200	1.9	52.1	16.6	202	.2	61.6	18.7	890	3.82	12.9	1.4	3.7	5.6	31	1.0	.8	.4	94	.52	.057	19	54.2	1.02	230	.150	2	2.26	.032	.22	.1	.01	4.6	.2	<.05	7	.8
TL9 250	1.3	41.1	12.3	156	.2	52.1	15.5	552	3.73	8.5	1.0	2.0	4.1	39	.5	.5	.3	85	.70	.041	15	62.0	1.14	234	.175	1	2.29	.041	.42	.1	.01	4.1	.3	<.05	7	.5
STANDARD DS5	12.3	143.7	25.1	138	.3	24.7	11.6	782	3.03	17.9	6.4	42.0	2.7	48	5.4	3.9	6.0	61	.73	.097	12	186.0	.68	135	.097	18	2.07	.033	.14	5.0	.19	3.4	1.0	<.05	7	5.2

Sample type: SOIL SS80 60C. Samples beginning 'RE' are Reruns and 'RRE' are Reject Reruns.



SAMPLE#	Mo ppm	Cu ppm	Pb ppm	Zn ppm	Ag ppm	Ni ppm	Co ppm	Mn ppm	Fe %	As ppm	U ppm	Au ppb	Th ppm	Sr ppm	Cd ppm	Sb ppm	Bi ppm	V ppm	Ca %	P %	La ppm	Cr ppm	Mg %	Ba ppm	Ti %	B ppm	Al %	Na %	K %	W ppm	Hg ppm	Sc ppm	Tl ppm	S %	Ga ppm	Se ppm
G-1	1.6	3.4	2.0	43	<.1	4.5	3.7	515	1.87	<.5	1.7	.7	3.9	86	<.1	<.1	.1	43	.53	.082	7	13.8	.54	213	.119	1	.90	.100	.47	1.5	<.01	3.3	.3	.14	5	<.5
TL9 300	1.2	40.2	10.4	142	.2	68.5	17.7	567	3.52	8.7	1.2	2.7	3.4	54	.8	.6	.2	88	1.07	.099	18	84.5	1.22	217	.141	1	2.12	.042	.28	.1	.03	5.5	.2	.19	7	.6
TL9 350	.8	40.7	11.1	122	.2	60.5	16.7	508	3.62	6.8	1.3	2.5	4.5	45	.5	.4	.1	77	.86	.057	23	72.4	1.13	222	.134	<1	1.98	.031	.25	.1	.02	5.3	.3	.14	7	<.5
TL9 400	1.0	38.0	10.1	119	.2	59.6	16.8	506	3.54	7.4	1.3	6.5	4.0	50	.5	.5	.1	80	.91	.072	20	71.0	1.14	264	.149	<1	1.99	.042	.26	.1	.03	5.0	.3	.14	7	.6
TL9 450	.8	39.8	9.5	119	.1	55.4	16.6	386	3.47	8.8	1.0	11.4	4.4	34	.3	.5	.1	76	.59	.060	15	63.6	1.11	293	.153	<1	2.15	.032	.27	.1	.02	4.9	.3	.07	7	<.5
TL9 500	.7	40.4	9.6	89	.1	55.0	15.5	496	3.36	10.5	.8	3.5	4.3	44	.2	.7	.1	79	.79	.089	16	72.9	1.14	182	.149	1	1.93	.041	.23	.1	.01	5.1	.2	.09	6	<.5
TL9 550	1.0	35.0	11.6	99	.1	52.1	18.5	349	3.70	13.8	1.0	2.9	5.6	38	.3	.5	.1	79	.68	.066	17	71.5	1.15	151	.151	1	2.06	.035	.21	.1	.02	5.4	.3	.07	7	<.5
TL9 600	.6	39.5	10.4	99	.2	53.8	16.9	455	3.52	11.5	.8	3.3	4.3	48	.3	.6	.1	82	.78	.070	16	74.5	1.19	167	.151	1	2.04	.040	.21	.1	.03	5.7	.2	.06	7	<.5
TL9 650	.8	57.3	10.8	106	.2	52.1	15.0	350	3.30	11.5	2.6	3.8	4.3	45	.3	.7	.2	72	.82	.072	23	62.6	1.07	163	.130	<1	1.90	.032	.21	.1	.03	5.5	.2	<.05	6	.5
TL9 700	.6	37.4	9.6	103	.2	51.8	16.2	816	2.92	8.7	1.8	3.6	3.9	49	.3	.6	.1	63	.99	.078	20	62.0	1.03	168	.115	2	1.82	.030	.21	.1	.03	5.2	.2	<.05	6	<.5
TL9 750	.7	31.3	8.1	88	.1	50.0	15.6	612	3.26	12.2	.7	3.6	4.9	37	.3	.8	.1	69	.76	.096	16	68.6	1.12	123	.134	<1	1.61	.028	.21	.1	.01	5.2	.2	<.05	6	<.5
TL9 800	.6	43.2	8.9	93	.2	57.3	16.2	528	3.15	14.0	.8	3.0	4.0	42	.3	.6	.2	67	.87	.085	19	62.9	1.04	135	.109	<1	1.64	.024	.22	.1	.02	5.1	.2	<.05	6	<.5
TL9 900	.6	36.6	6.7	77	.1	40.5	12.7	665	2.53	12.1	1.1	4.4	2.4	48	.2	.5	.1	58	1.00	.072	14	48.9	.77	128	.088	1	1.37	.029	.13	.1	.02	3.7	.1	<.05	5	.6
RE TL9 900	.7	33.9	6.9	76	.1	35.3	11.8	671	2.37	11.5	1.1	4.6	2.6	50	.2	.6	.1	53	.99	.073	13	48.5	.76	122	.084	1	1.34	.028	.12	.1	.02	3.6	.2	<.05	5	<.5
TL9 1000	.6	39.6	7.8	81	.1	49.1	15.3	637	3.01	14.7	.9	2.4	3.4	54	.3	.6	.1	60	1.09	.074	16	68.4	1.01	124	.105	1	1.60	.026	.15	.2	.02	4.6	.2	<.05	5	.6
TL9 1050	.3	35.9	8.0	75	.1	44.9	15.6	683	2.78	14.5	1.0	4.0	2.8	70	.2	.6	.1	57	1.56	.076	15	57.7	.93	140	.096	2	1.46	.026	.14	.1	.03	4.4	.2	.06	5	.7
TL9 1100	.4	34.4	8.4	80	.1	44.4	14.5	589	2.76	9.6	.7	1.7	3.7	66	.2	.4	.1	54	1.78	.081	15	54.8	1.14	112	.104	3	1.45	.022	.17	.1	.02	3.7	.2	.08	5	<.5
TL9 1200	.5	34.2	7.9	74	.1	42.9	14.6	514	2.89	14.8	.8	3.4	3.2	57	.1	.6	.1	60	1.16	.069	16	56.5	.93	110	.090	2	1.51	.022	.15	.1	.03	4.1	.2	.06	5	.5
TL9 1250	.3	46.2	7.8	83	.2	54.8	16.0	582	2.95	13.2	.8	2.9	3.2	77	.2	.7	.1	57	1.71	.082	18	63.5	1.10	128	.105	1	1.55	.024	.18	.1	.02	4.7	.2	<.05	6	.6
TL9 1450	.7	41.5	7.6	78	.1	52.1	13.8	410	2.70	20.9	1.4	2.8	3.5	92	.3	.9	.1	54	1.38	.076	19	53.8	1.07	109	.096	1	1.40	.022	.20	.3	.03	3.6	.2	<.05	5	<.5
TL9 1500	.9	44.0	10.3	77	.1	56.9	19.8	485	3.84	16.7	.7	2.7	3.4	49	.1	.8	.2	75	.77	.074	12	63.8	.92	111	.095	1	1.89	.019	.05	.1	.02	4.7	.1	<.05	7	<.5
TL9 1550	.6	44.7	7.2	71	.1	37.2	15.3	361	2.93	12.5	.8	5.0	2.8	57	.2	.6	.1	59	1.07	.079	13	49.6	.87	113	.090	1	1.40	.021	.12	.1	.02	4.2	.1	<.05	5	.5
TL9 1650	.4	59.2	7.7	65	.1	50.6	17.4	359	2.80	146.7	.8	12.4	3.2	54	.2	.7	.1	57	.94	.044	11	53.1	.82	108	.099	2	1.47	.028	.18	.1	.01	3.8	.2	<.05	5	.5
TL9 1750	1.2	27.0	10.3	84	.1	50.6	22.4	454	4.24	39.6	.4	1.8	2.6	21	.5	.9	.2	83	.36	.021	9	53.1	.83	148	.107	2	2.29	.023	.11	.1	.01	4.1	.1	<.05	6	<.5
TL9 1800	.5	50.3	7.0	63	.1	45.1	15.5	448	2.92	210.4	.8	65.6	3.3	165	.2	1.4	.1	54	6.69	.070	16	45.7	1.05	117	.082	2	1.38	.023	.20	.1	.02	4.1	.2	<.05	4	.8
TL10 0	3.9	60.9	9.0	139	.2	39.9	12.7	299	3.62	9.6	1.3	2.4	3.1	35	1.0	1.1	.4	89	.34	.088	19	36.7	.66	193	.093	2	1.61	.027	.11	.1	.03	3.3	.1	.17	6	1.8
TL10 50	1.7	49.4	9.0	141	.2	43.2	15.0	427	3.85	10.4	1.0	2.7	3.3	28	.8	.7	.2	82	.34	.060	14	42.9	.74	211	.119	1	1.80	.016	.14	.1	.03	3.9	.1	.07	6	1.0
TL10 100	1.2	42.4	4.9	197	.2	28.1	9.1	441	1.80	7.7	.9	7.9	1.4	22	1.2	.4	.6	46	.28	.058	15	21.9	.32	118	.055	<1	.99	.034	.09	.1	.02	2.0	.1	<.05	3	.7
TL10 150	2.1	54.4	11.9	449	.4	62.5	20.9	637	3.79	15.4	1.4	3.2	4.0	31	3.1	.9	1.2	92	.37	.098	20	48.9	.84	241	.103	1	2.10	.021	.13	.1	.03	4.1	.1	<.05	6	1.0
TL10 200	2.1	62.9	11.7	306	.4	36.6	15.3	525	2.59	15.6	1.3	4.3	1.4	30	2.6	.8	.8	62	.47	.077	19	31.5	.50	170	.058	1	1.35	.022	.09	.1	.04	2.4	.1	<.05	5	1.0
TL10 250	1.7	51.9	8.0	172	.2	32.5	12.5	608	2.29	8.3	1.3	2.5	1.2	44	1.7	.4	.4	50	.77	.083	21	32.3	.54	172	.070	2	1.32	.026	.13	.1	.05	2.5	.1	.07	4	.9
TL10 350	1.2	40.8	9.1	175	.2	60.8	18.1	701	3.12	8.5	1.4	7.4	3.6	46	1.0	.5	.3	72	.81	.076	25	80.8	1.04	187	.123	1	1.84	.032	.20	.1	.03	4.6	.2	<.05	6	.6
TL10 400	1.0	40.9	7.8	139	.2	49.8	14.4	489	2.78	9.8	1.0	2.7	2.1	47	.7	.4	.3	63	.78	.061	18	59.7	.89	206	.108	2	1.68	.033	.17	.1	.03	3.8	.2	.06	5	1.0
TL10 450	1.0	38.5	7.9	130	.2	48.1	12.1	405	2.77	9.3	1.2	4.2	2.2	39	.3	.4	.2	64	.66	.066	20	57.8	.84	165	.100	2	1.63	.030	.15	.1	.03	3.5	.2	.06	5	.9
STANDARD D	13.1	139.9	25.2	139	.3	24.9	11.9	790	3.00	18.2	6.4	45.0	2.9	50	5.6	4.0	6.0	62	.72	.094	12	188.2	.68	139	.100	17	1.96	.035	.14	5.2	.18	3.4	1.1	<.05	6	5.1

Standard is STANDARD DS5. Samples beginning 'RE' are Reruns and 'RRE' are Reject Reruns.



SAMPLE#	Mo ppm	Cu ppm	Pb ppm	Zn ppm	Ag ppm	Ni ppm	Co ppm	Mn ppm	Fe %	As ppm	U ppm	Au ppb	Th ppm	Sr ppm	Cd ppm	Sb ppm	Bi ppm	V ppm	Ca %	P %	La ppm	Cr ppm	Mg %	Ba ppm	Ti %	B ppm	Al %	Na %	K %	W ppm	Hg ppm	Sc ppm	Tl ppm	S %	Ga ppm	Se ppm
G-1	1.6	2.9	2.3	42	<.1	3.9	3.9	517	1.82	<.5	1.8	1.3	4.2	82	<.1	<.1	.1	41	.56	.073	9	14.3	.48	203	.108	3	.90	.087	.43	1.7	<.01	3.0	.3	.12	5	<.5
TL10 500	.8	44.2	7.7	116	.2	48.0	15.9	513	3.35	10.1	1.0	2.9	3.0	48	.3	.6	.2	78	.98	.079	20	70.7	.99	170	.116	4	2.04	.037	.19	.1	.03	5.1	.2	.14	7	<.5
TL10 550	.8	44.3	8.2	114	.2	51.3	18.9	642	3.46	11.0	1.3	2.3	3.4	46	.3	.6	.2	71	.93	.072	18	65.5	.95	187	.122	4	1.98	.039	.17	.1	.02	5.1	.2	.12	6	.7
TL10 600	.7	40.3	7.4	104	.2	46.9	16.5	638	2.90	9.6	1.2	11.1	3.0	54	.2	.5	.1	72	1.24	.074	17	62.3	.88	172	.104	4	1.78	.033	.16	.1	.02	4.5	.2	.13	6	.6
TL10 650	.7	30.2	6.4	105	.1	36.9	15.5	528	2.74	7.7	1.1	8.2	3.6	45	.1	.5	.1	65	.91	.065	17	55.7	.79	189	.104	3	1.61	.033	.14	.2	.02	3.7	.2	.08	5	.6
TL10 700	.6	50.9	6.8	93	.2	54.9	20.6	739	3.52	13.2	.7	3.3	3.6	57	.3	.6	.1	82	1.09	.098	16	87.9	1.19	163	.142	5	1.92	.030	.26	.1	.02	4.9	.2	<.05	6	<.5
TL10 750	.8	36.0	8.4	100	.1	49.2	18.6	589	3.36	12.4	.9	7.4	4.4	46	.2	.5	.1	80	.95	.080	18	73.1	1.26	113	.130	4	2.00	.034	.17	.1	.02	5.2	.2	<.05	7	<.5
TL10 800	.4	36.1	7.2	94	.1	51.1	15.6	448	3.00	12.1	.7	4.1	4.1	48	.2	.6	.1	69	1.21	.088	17	69.7	1.09	117	.114	3	1.62	.029	.20	.2	.02	5.1	.2	<.05	6	.5
TL10 850	.5	31.7	6.8	77	.1	42.4	15.9	512	2.83	10.9	.8	3.6	3.5	46	.1	.5	.1	67	1.01	.068	15	62.2	.87	111	.103	3	1.58	.031	.15	.2	.02	3.9	.2	<.05	5	<.5
TL10 1150	.2	21.5	1.7	44	<.1	7.7	3.6	171	.64	2.5	.3	1.2	.3	32	.1	.1	.1	15	.73	.032	4	9.3	.14	49	.021	4	.43	.046	.05	.1	.01	.9	<.1	.09	1	<.5
TL10 1200	.9	38.7	16.7	102	.1	62.4	21.4	660	3.86	15.9	1.1	3.3	8.1	41	.2	.7	.2	63	.75	.080	27	83.2	1.00	136	.093	3	1.83	.023	.28	.2	.01	5.5	.3	<.05	6	<.5
TL10 1300	.4	46.7	7.9	93	.2	52.4	18.0	495	3.15	12.2	.9	3.6	3.6	70	.1	.8	.1	64	1.80	.069	21	64.4	1.05	129	.100	4	1.74	.029	.19	.1	.03	4.8	.2	<.05	6	<.5
TL10 1350	.7	52.6	9.9	91	.2	55.7	20.9	518	3.21	11.0	1.3	5.4	5.6	57	.1	.8	.2	56	1.25	.058	32	60.8	.96	113	.081	3	1.68	.022	.19	.1	.03	4.8	.2	<.05	6	.6
TL10 1500	.7	30.9	8.7	101	.1	46.0	14.8	385	2.51	22.7	1.0	7.1	4.3	75	.2	1.0	.1	53	1.48	.066	18	50.4	1.06	105	.087	2	1.47	.023	.21	.2	.01	3.5	.2	<.05	5	<.5
RE TL10 1600	.4	37.8	9.2	86	.2	50.0	16.5	421	2.77	49.5	1.0	10.3	7.6	43	.1	1.2	.1	49	1.01	.084	28	55.7	1.06	109	.089	2	1.61	.021	.27	.1	.02	4.3	.2	<.05	6	<.5
TL10 1600	.4	37.6	8.8	87	.2	50.6	17.5	451	2.87	47.1	.9	7.4	8.2	41	.1	1.2	.2	50	.97	.086	28	55.9	1.08	109	.088	2	1.76	.019	.28	.1	.01	4.0	.2	<.05	5	<.5
TL10 1750	.4	33.7	3.2	50	.1	16.6	5.9	169	1.33	6.1	.8	2.5	.9	90	.2	.4	.1	28	1.77	.048	9	20.0	.31	82	.046	3	.91	.030	.06	.1	.03	1.6	.1	.09	3	.5
TL10 1800	.4	49.0	14.0	96	.1	53.0	19.4	371	3.24	25.0	1.0	3.7	8.2	55	.1	1.7	.2	40	1.06	.052	26	53.2	.89	111	.045	3	2.10	.012	.36	.1	.01	4.3	.3	<.05	6	<.5
TL11 0	3.4	55.0	14.3	123	.3	27.8	11.0	342	3.42	15.3	2.4	6.4	1.5	32	.5	1.2	.9	77	.36	.098	20	40.9	.55	182	.060	3	1.62	.013	.14	.1	.06	3.2	.2	.13	6	1.5
TL11 50	2.3	54.0	11.2	202	.2	54.0	18.6	754	3.64	9.6	1.4	4.1	4.0	31	1.1	.7	.4	98	.38	.071	19	61.8	.90	214	.113	3	2.30	.017	.18	.1	.04	4.8	.2	.06	7	1.0
TL11 100	2.4	58.5	12.3	418	.5	70.5	16.9	563	3.52	11.0	2.7	3.1	4.7	44	2.3	.6	1.0	116	1.17	.189	31	54.0	1.09	374	.095	3	2.16	.024	.19	.6	.03	5.3	.2	<.05	6	1.3
TL11 150	1.8	46.8	13.1	317	.3	56.3	16.8	419	3.11	14.2	1.8	7.4	4.6	39	1.8	.9	.7	84	.79	.115	23	47.4	.73	235	.107	3	1.58	.033	.17	.2	.03	4.1	.2	<.05	5	1.1
TL11 200	2.1	46.5	9.7	186	.3	28.8	12.9	399	2.97	15.6	1.0	3.4	1.9	27	1.4	.7	.8	78	.43	.065	13	33.5	.48	179	.077	2	1.59	.022	.10	.1	.04	2.6	.1	<.05	6	.7
TL11 250	1.6	49.7	8.3	214	.2	40.7	14.8	435	2.89	10.9	1.6	3.1	3.2	36	1.2	.5	.5	76	.64	.077	21	47.1	.79	215	.106	1	1.85	.030	.20	.1	.03	3.5	.2	<.05	6	1.1
TL11 300	1.5	56.7	8.7	198	.3	62.6	15.3	552	2.84	9.4	1.6	4.3	2.0	51	1.6	.4	.4	68	1.08	.083	21	73.7	.86	207	.084	3	1.84	.031	.13	.1	.04	4.1	.2	.06	6	.8
TL11 350	1.2	46.3	10.9	180	.2	68.2	21.0	676	3.35	8.5	1.6	5.8	3.4	48	1.0	.4	.3	79	.91	.072	22	86.9	1.02	179	.115	4	2.07	.030	.17	.1	.04	5.2	.2	<.05	7	.9
TL11 400	1.0	35.1	8.4	137	.1	39.3	15.1	503	3.07	40.9	1.0	9.6	3.4	36	.3	.4	.3	75	.69	.069	18	51.9	.81	202	.119	2	1.81	.033	.19	.1	.03	3.7	.2	<.05	6	.8
TL11 450	1.2	41.4	7.3	146	.2	48.3	15.3	377	2.63	5.4	1.3	7.3	2.3	38	.6	.4	.2	60	.64	.067	22	61.3	.78	170	.094	2	1.86	.032	.14	.1	.04	4.0	.2	<.05	6	.7
TL11 500	1.2	40.7	8.0	125	.2	49.0	16.1	475	3.11	8.4	1.2	4.1	2.9	41	.3	.5	.3	69	.69	.064	21	65.1	.93	181	.109	2	2.03	.035	.15	.1	.03	4.6	.2	<.05	6	.6
TL11 550	.6	50.5	9.6	129	.1	55.2	16.5	332	3.09	7.2	1.5	3.5	5.0	39	.4	.6	.2	86	.68	.077	24	82.7	1.12	170	.142	2	2.21	.030	.22	.1	.03	6.6	.2	<.05	6	.5
TL11 600	.9	36.7	6.6	94	.1	45.9	16.0	798	2.78	9.8	1.2	3.2	2.7	45	.2	.5	.1	66	.88	.075	17	56.2	.87	149	.095	3	1.72	.034	.11	.1	.04	4.6	.2	<.05	5	.6
TL11 650	.3	33.0	6.9	90	.1	45.5	13.1	259	2.49	7.3	1.3	10.3	3.0	52	.2	.5	.1	61	1.12	.058	16	59.7	.88	137	.103	2	1.59	.030	.14	.1	.02	4.5	.2	<.05	5	<.5
TL11 700	.4	30.9	6.5	98	.1	44.8	15.2	527	2.77	8.2	1.0	3.0	3.3	55	.2	.4	.1	67	1.33	.072	16	62.9	.94	136	.107	3	1.72	.034	.17	.1	.02	4.6	.2	<.05	6	.6
TL11 800	.5	28.0	6.5	82	.1	42.2	14.8	591	2.74	9.1	.9	3.1	3.3	50	.2	.6	.1	69	1.27	.080	15	60.5	.90	117	.103	3	1.56	.030	.15	.1	.02	4.1	.1	<.05	5	<.5
STANDARD DS5	12.4	139.5	25.3	136	.3	25.5	12.7	790	2.97	18.3	6.2	45.0	3.0	51	5.3	3.9	6.0	64	.79	.087	14	187.1	.68	141	.101	17	2.14	.035	.16	4.7	.18	3.8	1.1	<.05	7	4.9

Sample type: SOIL SS80 60C. Samples beginning 'RE' are Reruns and 'RRE' are Reject Reruns.



SAMPLE#	Mo ppm	Cu ppm	Pb ppm	Zn ppm	Ag ppm	Ni ppm	Co ppm	Mn ppm	Fe %	As ppm	U ppm	Au ppb	Th ppm	Sr ppm	Cd ppm	Sb ppm	Bi ppm	V ppm	Ca %	P %	La ppm	Cr ppm	Mg %	Ba ppm	Ti %	B ppm	Al %	Na %	K %	W ppm	Hg ppm	Sc ppm	Tl ppm	S %	Ga ppm	Se ppm
G-1	1.9	2.9	1.9	40	<.1	4.0	3.7	472	1.80	<.5	1.5	.5	3.8	84	<.1	<.1	.1	40	.52	.073	7	13.8	.53	206	.108	1	.85	.070	.41	1.8	<.01	2.4	.3	<.05	4	<.5
TL11 850	.5	38.6	7.2	84	.1	61.8	18.2	655	3.37	12.8	.5	4.4	3.8	51	.2	.8	.1	66	1.61	.090	16	65.4	1.41	133	.118	2	1.87	.028	.15	.1	.02	5.9	.2	<.05	6	<.5
TL11 900	.7	48.7	8.4	88	.1	73.5	21.4	402	3.90	17.5	.9	1.9	5.8	52	.1	.8	.1	80	.63	.045	18	86.6	1.30	86	.126	<1	2.98	.026	.07	.1	.01	7.0	.2	<.05	7	<.5
TL11 950	1.5	32.1	10.2	80	.1	49.1	20.1	508	4.21	13.2	.6	5.5	4.1	19	.1	.8	.2	88	.30	.020	12	62.7	1.00	74	.089	1	2.49	.016	.07	.1	<.01	4.1	.1	<.05	8	<.5
TL11 1000	1.1	47.6	9.6	70	.1	59.2	19.4	341	3.42	12.1	.8	2.2	3.5	76	.1	.6	.2	67	1.06	.036	16	73.2	.94	87	.093	2	2.16	.018	.11	.1	.01	4.4	.2	<.05	6	<.5
TL11 1050	1.2	63.9	14.2	106	.4	107.6	36.1	851	6.02	29.1	1.3	6.0	8.4	61	.2	1.8	.3	92	1.04	.084	39	140.6	1.44	136	.054	1	2.86	.013	.15	.1	.03	12.9	.3	<.05	8	<.5
TL11 1100	.6	35.4	13.5	86	.1	67.1	19.9	530	3.71	16.6	1.2	3.1	6.8	83	.2	3.5	.2	49	1.32	.057	23	78.6	.98	110	.079	2	1.77	.022	.16	.1	.02	5.3	.2	<.05	5	<.5
TL11 1150	.5	42.7	12.1	72	.2	51.9	18.2	646	3.39	32.2	1.2	6.4	4.4	91	.2	1.7	.2	42	1.73	.053	23	45.7	.62	110	.045	2	1.40	.014	.10	.2	.04	5.0	.1	.07	4	.5
TL11 1250	.6	37.4	7.5	84	.1	37.5	15.0	591	2.62	9.1	1.2	2.3	2.3	81	.2	.6	.2	46	1.40	.058	18	46.7	.70	119	.065	2	1.40	.023	.13	.1	.03	3.2	.2	<.05	5	<.5
TL11 1300	.5	38.6	7.8	85	.1	48.9	17.6	479	3.29	10.1	1.3	292.8	5.1	59	.1	1.0	.3	57	1.22	.068	21	59.1	1.05	104	.099	2	1.60	.021	.18	.1	.02	4.7	.2	<.05	6	<.5
TL11 1450	.8	67.9	14.8	96	.1	74.0	28.5	792	4.03	30.1	1.8	3.8	7.8	81	.2	4.0	.2	42	1.72	.055	29	45.3	.88	95	.035	2	1.43	.015	.16	.1	.03	4.9	.2	.07	4	<.5
TL11 1650	.6	40.0	6.7	76	.1	45.6	14.0	436	2.88	15.7	.9	3.0	4.8	92	.2	.7	.1	61	3.24	.074	15	44.9	1.22	104	.097	4	1.37	.027	.18	.1	.01	4.6	.1	<.05	4	<.5
TL11 1700	.5	42.7	9.2	81	.5	57.9	17.7	455	3.27	67.2	.7	16.6	6.9	120	.1	1.9	.2	51	2.96	.080	19	64.3	1.26	104	.084	2	1.59	.015	.28	.1	.01	4.6	.2	<.05	5	<.5
TL11 1750	.4	35.3	6.2	63	.2	37.8	12.3	351	2.41	20.4	.8	3.5	3.4	52	.1	.8	.1	42	1.05	.042	14	42.3	.70	106	.069	2	1.25	.021	.16	.1	.02	3.5	.1	<.05	4	<.5
TL11 1800	.4	38.6	8.4	80	.5	52.8	15.1	455	3.14	36.5	.7	47.7	7.5	158	.1	1.9	.1	48	4.32	.079	22	64.1	1.22	119	.085	2	1.53	.017	.28	.1	.02	5.2	.2	<.05	5	<.5
TL11 1850	.5	52.9	6.9	63	.2	55.6	16.6	423	2.92	32.6	.6	6.5	4.6	109	.2	1.0	.1	53	2.59	.076	18	60.6	1.00	129	.088	3	1.54	.019	.31	.1	.01	4.7	.2	<.05	5	<.5
TL11 1950	.8	42.5	9.1	81	.3	62.0	17.6	498	3.51	35.9	1.0	4.6	5.1	53	.3	1.5	.3	62	1.04	.062	16	72.2	1.15	127	.095	3	1.70	.019	.22	.2	.02	5.3	.2	<.05	6	.5
RE TL11 1950	.8	40.2	8.9	81	.3	60.2	17.5	508	3.54	35.1	.9	16.6	5.3	55	.2	1.5	.2	62	1.01	.064	17	72.9	1.18	124	.099	2	1.80	.021	.22	.1	.01	5.3	.2	<.05	6	<.5
TL11 2000	.6	33.3	5.5	73	.2	37.1	11.5	388	2.53	19.9	.9	4.5	2.7	71	.1	.9	.1	54	1.73	.076	12	42.4	.86	82	.080	3	1.13	.023	.14	.2	.01	3.1	.1	<.05	4	<.5
TL12 0	3.5	68.1	10.9	324	.2	62.6	18.3	443	3.98	10.0	2.8	8.6	7.1	40	1.1	1.0	1.4	87	.49	.135	32	48.4	.87	252	.091	1	1.77	.018	.23	.1	.02	3.9	.2	.08	5	1.9
TL12 100	2.0	57.3	10.5	212	.3	42.7	15.2	595	3.65	5.6	2.6	2.1	4.6	32	.7	.5	.4	91	.51	.115	23	51.7	.82	267	.086	1	1.83	.015	.24	.1	.03	4.3	.3	.06	6	1.3
TL12 200	1.9	48.9	9.7	293	.2	48.5	14.6	427	3.41	12.6	1.4	7.1	4.4	31	1.2	.9	.5	74	.61	.099	20	49.6	.82	199	.106	1	1.62	.022	.23	.1	.02	4.0	.2	<.05	5	<.5
TL12 250	1.1	47.4	10.8	151	.2	41.4	14.1	492	3.35	8.7	1.3	8.9	4.0	38	.6	.5	.4	73	.84	.083	20	51.4	1.04	191	.131	1	2.02	.044	.29	.2	.02	4.1	.2	<.05	6	.5
TL12 300	1.1	44.4	9.9	130	.2	48.0	14.4	501	3.58	8.8	1.1	3.7	4.8	37	.3	.4	.3	77	.73	.071	18	62.7	1.14	193	.153	1	2.17	.043	.27	.2	.02	4.8	.2	<.05	7	<.5
TL12 350	1.0	48.0	8.6	126	.2	53.6	16.7	565	3.53	10.0	1.1	4.4	3.9	34	.4	.5	.2	78	.73	.086	19	65.4	1.06	197	.134	<1	2.01	.029	.23	.1	.03	5.5	.2	<.05	7	<.5
TL12 450	1.0	38.8	7.7	140	.2	43.9	14.9	538	3.17	8.8	1.1	3.8	3.0	36	.5	.4	.2	76	.68	.079	17	53.8	.89	190	.116	1	1.81	.028	.19	.1	.03	4.1	.2	<.05	6	<.5
TL12 500	.8	37.8	7.3	127	.1	48.8	15.0	402	3.16	8.8	.9	4.9	3.4	40	.4	.4	.2	67	.78	.078	15	60.6	1.04	176	.113	3	1.92	.031	.18	.1	.02	4.7	.2	<.05	6	<.5
TL12 600	.6	38.1	7.9	100	.1	50.0	15.3	719	2.98	11.0	.8	2.3	3.8	43	.3	.5	.2	69	.87	.090	15	58.4	.98	150	.115	1	1.63	.030	.15	.1	.02	4.4	.2	<.05	5	<.5
TL12 650	.6	33.5	9.5	98	.1	47.6	15.5	507	3.37	10.8	.9	2.0	4.9	40	.2	.6	.2	72	.85	.098	18	68.0	1.07	137	.128	1	1.81	.029	.22	.1	.02	5.4	.2	<.05	5	<.5
TL12 800	.4	24.7	5.4	87	.1	31.7	11.6	395	2.57	6.3	.7	1.7	2.6	30	.2	.3	.1	65	.80	.073	12	43.3	.72	86	.094	1	1.16	.022	.13	.1	.02	2.8	.1	<.05	5	<.5
TL12 850	.4	34.8	10.5	86	.1	50.4	15.4	591	3.10	13.6	.7	4.5	3.6	43	.2	.9	.1	58	1.06	.117	17	56.2	.88	129	.092	2	1.55	.027	.11	.1	.02	4.9	.1	<.05	5	<.5
TL12 900	.7	42.6	7.7	83	.1	52.3	17.1	501	3.43	13.9	.7	3.7	4.2	41	.1	.6	.1	71	.78	.081	17	70.9	1.06	139	.120	1	1.88	.026	.13	.1	.03	5.6	.2	<.05	6	<.5
TL12 950	.6	56.0	7.8	78	.2	53.2	17.8	566	3.50	15.2	1.1	3.1	3.5	50	.3	.6	.2	71	1.04	.092	21	61.0	1.04	155	.099	1	2.04	.023	.11	.1	.03	6.0	.2	<.05	6	<.5
TL12 1000	2.0	40.6	15.4	95	.5	35.1	15.0	511	4.01	25.9	.8	3.4	2.9	33	.5	.8	.3	83	.35	.032	12	48.8	.74	202	.078	1	1.89	.014	.11	.1	.02	3.9	.1	<.05	7	<.5
STANDARD DS5	13.2	143.0	24.2	138	.3	24.8	12.0	786	2.99	18.7	6.3	45.2	2.7	49	5.7	3.8	6.5	60	.78	.085	12	186.0	.68	141	.088	19	2.00	.032	.13	5.2	.17	3.4	1.1	<.05	7	5.0

Sample type: SOIL SS80 60C. Samples beginning 'RE' are Reruns and 'RRE' are Reject Reruns.



SAMPLE#	Mo ppm	Cu ppm	Pb ppm	Zn ppm	Ag ppm	Ni ppm	Co ppm	Mn ppm	Fe %	As ppm	U ppm	Au ppb	Th ppm	Sr ppm	Cd ppm	Sb ppm	Bi ppm	V ppm	Ca %	P %	La ppm	Cr ppm	Mg %	Ba ppm	Ti %	B %	Al %	Na %	K %	W ppm	Hg ppm	Sc ppm	Tl ppm	S %	Ga ppm	Se ppm
G-1	1.7	2.6	1.9	40	<.1	4.0	3.4	459	1.68	<.5	1.6	<.5	3.7	84	<.1	<.1	.1	37	.50	.075	6	13.0	.48	202	.115	<.1	.79	.090	.43	1.4	<.01	2.8	<.2	<.05	4	<.5
TL12 1050	1.8	38.8	9.7	90	.2	38.4	14.7	406	3.52	12.3	.7	1.7	3.6	25	.2	.8	.2	77	.29	.036	15	48.3	.76	126	.089	<.1	1.96	.013	.14	.1	.01	3.2	<.2	<.05	6	<.5
TL12 1100	1.7	44.4	21.5	145	.1	45.0	16.6	509	3.70	21.6	.9	6.9	6.2	27	.4	1.0	.2	83	.37	.062	16	51.3	.88	257	.122	1	1.98	.015	.28	.1	.01	4.0	<.2	<.05	6	<.5
TL12 1200	8.1	88.0	69.8	484	.8	95.6	18.6	414	3.96	35.6	2.9	11.6	10.7	32	1.4	7.8	.3	122	.56	.127	29	54.4	.87	225	.075	<.1	1.57	.008	.34	.1	.02	4.3	.3	.06	5	2.5
TL12 1250	6.3	74.2	169.7	310	.8	64.2	15.4	346	3.96	57.0	1.1	12.7	5.2	30	1.3	2.6	.2	86	.33	.052	17	56.7	.87	285	.065	<.1	2.05	.020	.11	.1	.01	4.0	<.1	<.05	6	1.9
TL12 1300	2.4	70.1	9.4	206	.3	75.6	17.1	401	3.02	19.4	1.3	4.7	5.1	123	.9	1.6	.2	112	4.12	.138	19	70.9	1.28	279	.087	<.1	1.65	.017	.23	.1	.03	4.3	<.2	<.05	6	.8
TL12 1350	.9	56.3	8.7	84	.1	62.9	22.4	436	3.90	24.2	.7	4.8	6.4	49	.1	.9	.2	80	1.00	.052	19	77.1	1.18	132	.143	<.1	2.22	.023	.40	.1	.02	5.6	.3	<.05	8	<.5
TL12 1400	1.2	35.9	7.7	94	.1	42.1	16.3	339	3.23	17.6	.5	7.8	3.1	34	.2	.7	.1	69	.47	.026	13	52.8	.81	87	.093	1	1.86	.018	.08	.1	.01	3.8	<.1	<.05	6	<.5
TL12 1450	7.9	138.6	17.5	248	.6	80.6	25.5	1459	5.29	128.4	3.1	17.3	6.0	52	1.4	3.6	.3	86	.57	.134	17	54.5	.85	171	.069	1	1.81	.019	.18	.2	.03	3.9	.2	.08	7	1.6
TL12 1500	15.7	242.0	38.3	700	1.1	202.6	31.3	1247	5.56	16.4	6.0	5.5	9.3	129	4.3	7.2	.5	58	1.88	.285	27	25.0	.54	185	.017	2	1.00	.007	.16	.2	.03	3.4	.2	.13	3	4.6
TL12 1550	1.1	58.8	8.8	91	.2	52.0	18.7	479	3.18	20.6	.8	3.8	4.8	98	.2	1.2	.2	53	3.25	.062	18	49.4	1.03	118	.086	1	1.50	.021	.32	.1	.02	3.9	<.2	<.05	5	.6
TL12 1600	1.3	42.9	6.0	73	.1	36.1	12.1	324	2.34	13.8	.9	2.2	2.7	82	.2	.7	.1	45	2.54	.047	12	35.8	.75	117	.075	1	1.27	.033	.18	.1	.02	3.1	<.1	<.05	5	1.2
TL12 1650	1.1	50.0	7.2	94	.1	53.1	18.9	746	3.33	16.9	.7	2.7	3.9	37	.3	.8	.2	73	.66	.052	14	61.0	.93	160	.109	1	1.93	.024	.20	.1	.01	4.7	<.1	<.05	6	<.5
TL12 1700	.6	46.3	7.3	64	.1	51.5	15.6	260	3.05	14.9	.6	2.9	5.3	45	.2	.7	.1	64	1.70	.035	17	68.5	1.03	84	.126	1	1.62	.022	.13	.1	.02	5.0	<.2	<.05	5	<.5
RE TL12 1700	.7	49.1	6.5	67	.1	56.2	15.1	264	3.03	14.9	.6	5.4	5.3	47	.2	.6	.1	65	1.75	.036	17	70.2	1.04	81	.126	2	1.68	.027	.14	.1	.01	5.2	<.2	<.05	6	<.5
TL12 1750	.7	50.2	6.1	66	.1	42.2	14.0	343	2.67	14.0	.6	5.5	4.3	104	.2	.7	.1	58	2.82	.070	15	51.9	1.02	79	.100	2	1.49	.023	.18	.1	.02	5.1	<.1	<.05	5	<.5
TL12 1800	.5	36.7	6.1	63	.1	40.5	14.1	357	2.49	20.9	.7	4.1	5.7	400	.1	1.3	.1	41	9.35	.071	17	41.1	1.00	97	.094	2	1.14	.018	.20	.1	.01	3.6	<.2	<.05	4	<.5
TL12 1850	.5	44.7	5.8	48	.1	43.0	13.2	289	2.61	20.0	.6	3.9	4.4	131	.1	.7	.1	50	4.15	.056	14	54.0	1.07	76	.100	1	1.48	.043	.19	.1	.01	3.8	<.1	<.05	5	<.5
TL12 1900	.7	54.3	8.5	73	.1	63.0	18.2	365	3.17	15.5	.8	2.1	7.2	53	.1	.7	.2	59	1.14	.055	26	69.3	1.13	71	.117	2	1.76	.029	.17	.1	.01	5.3	<.2	<.05	6	<.5
TL12 1950	1.0	37.7	6.7	64	.1	38.0	14.0	319	2.94	13.7	.4	2.8	2.8	42	.1	.7	.1	61	.72	.032	8	49.5	.69	156	.095	1	1.52	.021	.14	<.1	<.01	3.3	<.1	<.05	5	<.5
TL12 2000	.4	50.5	7.8	75	.2	65.2	17.8	507	3.21	14.4	.7	148.2	6.6	43	.1	.6	.1	65	.99	.063	19	77.3	1.25	165	.150	2	1.79	.025	.23	.1	.03	7.9	<.2	<.05	7	<.5
TL13 0	1.8	65.9	11.4	130	.1	34.2	19.0	1247	3.53	13.2	1.0	4.0	1.7	27	.2	.8	.2	79	.35	.090	12	46.4	.77	263	.102	1	1.86	.016	.12	.1	.08	4.1	<.1	<.05	7	<.5
TL13 50	2.3	75.5	10.7	195	.1	54.4	22.1	1740	3.80	12.1	.9	3.7	2.9	28	.5	1.0	.2	73	.34	.080	13	41.6	.91	430	.128	2	1.79	.014	.30	.1	.02	3.2	<.2	<.05	7	.5
TL13 100	3.0	40.7	11.7	109	.1	28.5	10.9	409	3.66	13.5	.8	3.8	.8	24	.5	1.2	.2	81	.26	.058	10	38.6	.58	119	.076	1	1.51	.011	.06	.1	.04	2.8	<.1	<.05	8	<.5
TL13 150	3.6	42.9	11.9	112	.1	32.8	15.4	693	4.21	14.4	.9	6.8	.8	24	.5	1.3	.3	90	.19	.058	11	46.5	.71	145	.075	3	1.78	.013	.09	.1	.03	2.6	<.1	<.05	8	<.5
TL13 200	1.6	60.8	10.5	172	.1	40.0	19.1	830	3.75	19.7	.8	4.4	1.5	22	1.0	1.1	.3	81	.28	.060	11	47.5	.87	146	.098	2	2.11	.014	.14	.1	.04	3.0	<.1	<.05	7	.5
TL13 250	2.3	52.8	12.5	134	.1	40.6	19.4	720	4.29	17.3	.9	2.5	1.6	22	.4	.9	.3	85	.23	.047	12	51.4	.93	166	.119	2	2.03	.013	.15	<.1	.02	3.2	<.2	<.05	9	<.5
TL13 300	2.1	44.5	13.9	202	.3	32.0	14.7	474	3.90	40.6	.9	10.3	1.7	25	2.2	1.2	.4	72	.29	.051	11	40.0	.68	131	.096	2	1.61	.013	.15	.1	.04	2.6	<.2	<.05	8	<.5
TL13 350	1.2	49.6	10.5	173	.4	38.6	14.5	527	3.31	33.2	.9	11.8	3.3	24	1.1	1.3	.5	67	.30	.045	12	38.8	.79	161	.119	2	1.65	.017	.21	<.1	.03	3.4	.2	.06	6	<.5
TL13 400	1.5	73.9	10.0	150	.4	59.0	19.3	528	4.04	22.8	1.0	7.3	2.7	27	1.1	1.0	.3	90	.57	.066	12	81.6	1.22	323	.161	1	1.99	.019	.27	.1	.03	4.0	<.2	<.05	8	.6
TL13 450	1.0	68.0	9.5	140	.4	53.8	19.3	459	3.42	14.1	1.3	8.8	2.8	38	.7	.8	.4	72	.89	.069	12	73.4	1.14	305	.137	3	1.77	.024	.29	.1	.05	4.5	<.2	<.05	7	.8
TL13 500	.4	69.2	3.4	83	.1	85.4	28.9	513	4.15	6.2	.4	1.4	1.8	25	.2	.3	.1	121	.91	.139	8	159.8	2.24	216	.288	1	2.34	.021	.51	.1	.01	3.7	<.1	<.05	9	<.5
TL13 550	1.0	69.6	10.1	114	.2	56.0	20.1	301	3.86	14.7	1.2	5.3	3.2	29	.4	1.0	.2	95	.72	.091	14	100.8	1.44	238	.171	2	2.08	.023	.30	.1	.04	5.3	<.2	<.05	8	.7
TL13 600	1.2	47.6	11.1	110	.2	49.9	18.8	301	3.83	13.6	.7	5.7	3.0	29	.3	.9	.2	79	.63	.067	10	76.2	1.24	203	.152	1	2.04	.020	.25	.1	.03	4.8	<.2	<.05	8	.5
STANDARD DS5	12.9	140.6	24.6	138	.3	23.8	11.8	780	3.03	17.7	6.2	43.9	2.8	48	5.5	4.0	6.2	61	.71	.096	12	190.9	.68	139	.099	16	1.97	.034	.14	4.8	.18	3.4	1.0	<.05	6	4.9

Sample type: SOIL SS80 60C. Samples beginning 'RE' are Reruns and 'RRE' are Reject Reruns.



SAMPLE#	Mo ppm	Cu ppm	Pb ppm	Zn ppm	Ag ppm	Ni ppm	Co ppm	Mn ppm	Fe %	As ppm	U ppm	Au ppb	Th ppm	Sr ppm	Cd ppm	Sb ppm	Bi ppm	V ppm	Ca %	P %	La ppm	Cr ppm	Mg %	Ba ppm	Ti %	B ppm	Al %	Na %	K %	W ppm	Hg ppm	Sc ppm	Tl ppm	S %	Ga ppm	Se ppm
G-1	1.9	3.0	2.3	44	<.1	4.5	4.6	570	2.22	<.5	1.7	1.0	4.5	87	<.1	<.1	.1	45	.57	.087	7	15.7	58	247	.136	<.1	.99	.093	.49	1.6	<.01	3.3	.3	<.05	5	<.5
TL13 650	1.0	56.9	12.1	97	.6	89.7	25.0	521	4.25	18.2	1.1	6.0	2.8	34	.4	1.2	.2	93	.79	.102	16	124.2	1.39	285	.148	<.1	2.25	.024	.13	.1	.04	6.3	.2	<.05	7	.8
TL13 700	.7	78.0	35.0	224	.8	81.2	27.1	759	3.88	18.3	1.4	8.4	2.2	50	3.2	2.6	.3	90	1.37	.133	14	104.9	1.28	420	.137	<.1	2.08	.024	.20	.1	.07	5.1	.2	<.05	8	.9
TL13 750	.5	46.5	25.4	302	.8	36.6	14.4	487	2.84	31.1	1.2	19.6	1.3	52	4.4	3.7	.3	66	1.38	.107	10	49.3	.77	222	.080	1	1.35	.023	.11	.1	.10	3.7	.1	.06	5	1.2
TL13 800	1.2	32.5	5.8	114	.3	18.2	8.6	243	1.86	15.6	.6	4.3	.5	23	1.7	1.2	.2	44	.32	.050	6	20.5	.28	87	.044	<.1	.82	.025	.07	.1	.03	1.0	.1	<.05	4	.9
TL13 900	2.1	90.5	35.3	650	1.1	92.5	22.4	726	3.57	43.7	2.4	19.0	4.3	54	4.4	5.7	.2	72	1.49	.108	16	51.2	1.25	227	.102	1	1.68	.023	.17	.1	.06	6.1	.2	<.05	6	1.7
TL13 950	22.3	182.5	53.5	1395	3.4	221.2	34.1	704	7.72	310.5	4.3	70.6	6.2	58	7.9	38.9	.5	64	.83	.215	22	20.3	.63	213	.033	<.1	.88	.011	.11	.3	.08	6.6	.1	.27	3	13.3
TL13 1000	2.5	63.8	54.4	418	2.1	74.2	19.8	620	3.83	53.5	1.1	28.3	3.6	46	3.4	10.4	.6	80	.89	.190	14	68.4	1.13	297	.118	1	1.57	.029	.27	.1	.07	4.6	.1	<.05	5	2.0
TL13 1050	7.5	206.3	35.5	302	1.2	138.6	35.5	1176	8.02	52.2	3.0	35.0	13.2	104	1.1	14.5	.7	52	.53	.163	34	44.7	.62	642	.023	<.1	1.17	.008	.17	.1	.07	4.7	.2	.25	4	7.2
TL13 1150	1.4	60.3	13.9	132	.2	56.6	23.2	1083	4.01	18.9	1.2	9.3	3.6	36	.4	.8	.2	94	.52	.100	13	85.2	1.22	432	.142	<.1	1.98	.020	.26	.1	.03	5.3	.2	<.05	7	.7
TL13 1200	1.9	63.5	11.8	143	.3	56.0	24.5	864	3.82	22.3	1.5	7.5	2.9	36	.5	.8	.2	87	.54	.086	15	76.7	1.16	649	.140	<.1	2.00	.021	.21	.1	.04	5.2	.2	<.05	8	1.0
TL13 1250	1.3	70.8	10.1	112	.4	57.1	19.8	773	3.43	20.5	1.5	10.8	2.3	50	.4	.9	.1	77	.96	.093	14	68.1	1.05	592	.117	1	1.83	.024	.23	.2	.04	4.7	.2	<.05	6	1.0
TL13 1450	.7	97.2	10.2	89	.2	78.4	27.6	813	4.11	10.2	1.9	4.4	2.0	60	.3	.5	.1	96	1.87	.105	16	118.5	1.49	387	.164	1	2.11	.024	.31	.1	.04	5.5	.2	<.05	8	.8
RE TL13 1450	.7	92.2	10.9	84	.2	74.1	25.8	760	3.93	10.1	1.7	3.4	2.1	60	.3	.5	.1	90	1.85	.106	16	108.6	1.46	386	.162	1	2.07	.024	.30	.1	.05	5.5	.2	<.05	8	1.0
TL13 1500	.9	71.7	10.6	85	.2	56.3	20.9	721	3.42	10.6	1.5	4.4	2.0	73	.4	.5	.1	72	2.00	.094	14	71.9	1.02	339	.114	3	1.56	.024	.24	.1	.05	4.0	.2	<.05	6	1.1
TL13 1550	1.3	74.2	17.6	112	.4	56.5	21.3	802	3.76	37.1	2.2	21.0	2.6	85	.5	1.0	.2	79	1.98	.076	12	69.3	1.04	347	.102	2	1.49	.019	.32	.1	.05	4.5	.3	<.05	6	1.9
TL13 1600	2.2	41.0	16.5	116	.4	42.8	19.5	497	3.53	30.9	1.7	8.1	3.9	35	.5	1.4	.2	57	.36	.078	14	55.3	.90	123	.083	1	1.47	.017	.20	.1	.04	3.6	.2	<.05	5	.8
TL13 1650	1.5	48.1	9.1	92	.3	32.9	12.5	512	2.56	19.2	1.5	5.5	2.5	36	.5	.9	.1	49	.65	.052	11	34.2	.62	141	.076	1	1.28	.032	.13	.1	.02	2.8	.1	<.05	4	.7
TL13 1700	1.3	85.3	11.1	130	.6	62.5	19.3	724	3.39	22.0	2.1	8.2	4.0	65	1.0	1.4	.2	55	1.39	.074	17	63.3	.97	366	.091	<.1	1.66	.027	.20	.1	.06	4.6	.2	<.05	6	1.2
TL13 1750	1.3	76.3	11.6	89	.2	75.6	20.7	490	3.82	51.2	1.3	10.2	8.7	68	.4	2.1	.2	68	1.36	.087	26	76.8	1.16	162	.083	2	2.03	.020	.17	.1	.02	6.1	.2	<.05	6	1.1
TL13 1800	2.5	87.9	13.0	115	.2	68.9	25.3	973	4.53	12.8	2.0	4.6	6.6	41	.3	.9	.2	86	.72	.069	21	67.1	1.37	167	.167	2	2.25	.034	.80	.1	.02	5.7	.4	<.05	8	.9
TL13 1850	2.0	41.2	6.9	110	.2	45.4	14.4	467	3.19	11.9	.9	15.2	4.3	52	.6	.8	.1	67	1.01	.107	15	52.3	1.00	142	.110	2	1.46	.030	.19	.1	.01	4.3	.2	<.05	5	.9
TL13 1900	1.4	42.1	8.1	97	.1	48.7	19.0	461	4.04	16.5	.8	6.0	4.0	40	.2	.9	.2	84	.54	.031	16	64.9	.92	160	.110	<.1	2.28	.021	.10	.1	.01	5.1	.1	<.05	7	.5
TL13 1950	.9	38.7	7.2	72	.1	29.6	11.5	214	2.75	13.5	.5	3.2	1.8	41	.2	.6	.1	58	.62	.033	7	36.1	.55	100	.074	1	1.48	.025	.07	.1	.01	2.8	.1	<.05	6	<.5
TL14 0	.9	71.0	8.3	99	.2	69.9	17.5	472	3.86	17.5	.9	7.5	3.7	35	.2	.7	.2	78	.58	.077	17	85.6	1.22	183	.122	2	2.34	.022	.09	.1	.04	6.6	.2	<.05	8	<.5
TL14 50	.7	48.4	9.1	106	.1	81.8	27.6	804	4.92	14.9	1.0	5.0	5.4	32	.2	.6	.2	104	.70	.101	19	111.1	1.72	146	.193	1	2.77	.028	.17	.1	<.01	7.4	.2	<.05	10	.6
TL14 100	1.1	41.9	10.0	83	.2	72.9	19.5	417	3.86	23.9	.8	5.1	3.5	35	.2	1.0	.2	74	.57	.079	13	80.9	1.23	142	.116	3	2.07	.020	.12	.1	.02	4.4	.2	<.05	7	.6
TL14 150	.8	40.7	7.4	89	.1	55.3	16.0	408	3.34	12.1	.7	4.6	4.1	31	.2	.7	.1	71	.52	.081	14	75.7	1.13	162	.128	1	1.82	.022	.12	.1	.03	4.7	.2	<.05	6	.6
TL14 200	.8	39.1	9.0	107	.2	45.8	12.6	352	3.12	12.8	1.5	6.2	3.1	37	.3	.7	.2	69	.58	.066	14	61.7	1.05	201	.103	2	1.88	.022	.09	.1	.04	4.9	.1	<.05	6	.6
TL14 250	1.0	47.3	8.9	127	.2	49.5	13.9	362	3.42	11.0	1.4	6.0	4.0	38	.4	.9	.2	71	.71	.084	14	64.1	1.09	180	.115	2	1.80	.025	.13	.1	.02	5.1	.2	<.05	6	.5
TL14 300	.8	44.2	8.7	137	.2	55.7	17.4	634	3.34	14.3	1.6	3.9	2.8	50	.6	.7	.2	69	.92	.081	15	64.7	1.04	193	.101	2	1.76	.025	.10	.1	.03	4.8	.1	<.05	6	.7
TL14 350	.6	41.2	6.5	112	.2	49.2	12.8	458	2.68	10.0	1.1	4.4	2.1	48	.5	.6	.1	56	1.10	.077	13	55.4	.92	149	.086	2	1.53	.028	.09	.1	.03	3.8	.1	<.05	5	.8
TL14 400	.6	39.7	7.8	114	.2	64.9	18.3	737	3.32	23.2	.9	5.4	5.8	35	.4	.4	.1	65	.86	.092	24	74.0	1.16	128	.119	1	1.67	.023	.27	.1	.01	4.6	.3	<.05	6	<.5
TL14 450	.6	36.8	6.8	108	.1	50.5	15.6	431	3.14	8.3	1.0	2.4	4.9	33	.3	.5	.2	61	.74	.094	24	59.2	.96	134	.117	1	1.46	.022	.23	.1	.02	4.2	.2	<.05	6	<.5
STANDARD DS5	12.6	142.4	24.8	132	.3	23.0	11.4	749	2.99	18.0	6.4	43.7	2.9	46	5.5	3.9	6.0	57	.70	.089	11	179.0	.67	136	.091	16	1.91	.033	.13	4.7	.19	3.3	1.1	<.05	6	4.7

Sample type: SOIL SS80 60C. Samples beginning 'RE' are Reruns and 'RRE' are Reject Reruns.



SAMPLE#	Mo	Cu	Pb	Zn	Ag	Ni	Co	Mn	Fe	As	U	Au	Th	Sr	Cd	Sb	Bi	V	Ca	P	La	Cr	Mg	Ba	Ti	B	Al	Na	K	W	Hg	Sc	Tl	S	Ga	Se
	ppm	ppm	ppm	ppm	ppm	ppm	ppm	ppm	%	ppm	ppm	ppb	ppm	ppm	ppm	ppm	ppm	ppm	%	%	ppm	ppm	%	ppm	%	ppm	%	%	%	ppm	ppm	ppm	ppm	%	ppm	ppm
G-1	1.8	3.6	2.2	46	<.1	4.6	3.9	498	1.75	<.5	1.6	1.1	4.1	94	<.1	<.1	.1	37	.54	.088	7	13.1	.55	246	.121	1	.91	.100	.51	1.3	<.01	3.1	.3	<.05	4	<.5
TL14 500	1.0	39.7	8.7	115	.1	45.9	19.7	835	3.67	19.0	1.4	8.5	3.7	41	.3	.6	.2	67	.77	.080	22	58.1	.95	160	.104	2	1.76	.026	.25	.1	.02	4.2	.2	<.05	6	.6
TL14 750	1.0	22.5	5.3	67	.1	22.7	11.4	384	1.53	7.1	.4	2.1	1.2	18	.2	1.0	.1	33	.24	.070	7	26.6	.42	78	.056	1	.89	.027	.08	.1	.01	1.7	.1	<.05	3	<.5
TL14 800	1.4	68.7	9.5	95	.6	63.6	19.5	459	3.88	19.5	1.0	8.0	4.3	37	.3	1.7	.2	67	.62	.100	15	62.7	1.01	309	.098	1	2.03	.024	.08	.1	.03	4.7	.1	<.05	6	.8
TL14 850	1.5	88.0	10.7	124	.5	47.3	15.4	437	3.01	10.1	2.0	4.7	3.7	49	1.0	1.5	.2	52	.83	.073	17	45.6	1.73	182	.073	1	1.35	.023	.20	.1	.03	3.2	.2	<.05	5	1.1
TL14 900	5.0	109.9	15.6	149	.5	42.4	6.5	370	3.26	5.0	3.6	12.5	4.4	80	.7	1.1	.3	114	.74	.116	17	54.8	1.19	335	.087	1	1.69	.017	.36	.1	.03	3.1	.3	.07	7	2.1
TL14 950	.5	36.4	6.9	95	.1	44.3	14.2	458	2.56	10.6	.8	3.5	3.1	57	.5	.8	.1	50	3.44	.089	15	45.2	1.98	112	.084	1	1.18	.025	.15	.1	.02	3.3	.1	<.05	5	.6
TL14 1000	2.1	43.2	15.6	165	.6	43.4	22.7	1024	3.72	18.5	1.8	7.1	4.5	19	.6	.8	.4	55	.25	.083	25	40.7	.58	148	.053	<1	1.50	.010	.12	<.1	.04	3.3	.2	<.05	5	.9
TL14 1100	2.1	75.7	18.0	131	.3	59.0	18.4	2025	2.97	81.0	1.5	7.0	9.7	26	.4	2.7	.3	49	.48	.092	21	31.3	.83	218	.029	1	1.08	.007	.18	.1	.02	2.4	.2	<.05	5	.6
TL14 1150	1.9	61.7	23.8	171	.5	66.1	17.5	630	3.69	84.0	2.3	26.9	6.0	83	1.0	2.7	.2	50	2.41	.154	17	48.5	1.20	142	.072	<1	1.11	.019	.20	.2	.03	3.8	.2	.20	4	2.1
TL14 1200	1.9	67.4	30.3	212	.4	65.2	15.2	749	3.30	38.5	1.9	17.2	5.8	88	1.2	2.9	.2	50	2.54	.132	19	47.7	1.24	169	.073	1	1.18	.019	.22	.1	.02	3.3	.2	<.05	4	1.1
TL14 1250	1.4	48.2	9.3	98	.2	46.5	16.0	619	3.06	14.2	1.0	4.5	3.8	111	.4	1.1	.1	63	3.53	.098	14	47.4	1.19	150	.115	3	1.41	.036	.20	.1	.02	4.8	.1	<.05	5	.5
TL14 1300	7.3	208.4	21.8	523	.7	147.6	28.4	1811	4.50	14.5	5.0	10.5	7.3	108	3.9	2.0	.3	83	1.06	.233	38	55.9	1.12	305	.075	2	1.57	.021	.29	.2	.04	4.3	.3	<.05	5	3.6
TL14 1350	1.7	52.8	16.8	142	.3	54.2	13.9	465	3.08	23.7	1.2	7.2	4.5	119	.8	2.1	.2	58	3.48	.122	14	50.3	1.15	157	.084	1	1.08	.020	.21	.1	.02	3.1	.1	<.05	4	1.4
TL14 1500	.5	41.4	8.1	82	.2	77.7	17.3	454	2.86	17.4	.8	5.6	5.6	148	.3	1.5	.2	51	4.38	.086	17	80.5	1.25	124	.085	1	1.45	.022	.29	.1	.02	4.3	.2	<.05	5	.8
TL14 1550	1.1	51.5	8.8	94	.4	70.8	16.9	550	3.19	27.2	.8	6.4	6.2	184	.4	1.8	.2	59	6.15	.097	19	76.8	1.40	138	.099	2	1.51	.023	.30	.1	.02	5.0	.2	<.05	5	.8
TL14 1600	4.0	109.4	13.1	252	.5	70.8	13.3	435	3.82	41.3	2.6	4.9	8.0	104	1.6	2.1	.2	85	1.75	.172	23	42.8	1.06	490	.089	<1	1.39	.017	.31	.1	.02	4.1	.3	<.05	4	1.3
TL14 1650	1.0	58.5	8.4	98	.2	59.0	17.4	526	3.20	17.0	1.0	4.3	4.3	63	.5	.9	.2	60	1.06	.096	16	61.1	.99	137	.091	1	1.59	.028	.18	.1	.02	4.2	.2	<.05	5	.6
TL14 1750	.8	170.8	12.5	154	.2	86.4	16.1	815	2.95	14.7	2.0	8.2	2.8	99	2.1	1.3	.2	51	1.92	.120	18	50.0	.91	255	.069	1	1.27	.021	.23	.1	.02	3.7	.2	<.05	4	1.4
RE TL14 1750	.9	166.4	13.1	145	.2	79.5	14.4	772	2.80	15.9	2.1	9.1	2.8	98	2.3	1.3	.2	53	1.97	.124	17	46.9	.91	248	.068	4	1.29	.020	.23	.1	.02	3.6	.2	<.05	4	1.5
TL14 1800	1.3	45.5	15.1	133	.2	51.6	13.4	507	2.79	18.8	1.3	7.0	4.1	122	.7	2.0	.2	53	3.82	.112	14	49.5	1.20	141	.086	1	1.16	.021	.19	.1	.01	3.4	.1	<.05	4	1.3
TL14 1850	1.3	39.9	9.7	67	.1	32.9	12.2	274	3.16	13.7	.4	2.4	1.9	37	.1	.9	.2	65	.49	.026	8	43.6	.70	112	.084	<1	1.77	.021	.06	.1	<.01	2.6	.1	<.05	5	<.5
TL14 1950	1.1	31.4	8.1	80	.1	33.1	13.0	461	2.87	14.3	.7	2.7	2.6	39	.2	.7	.2	59	.58	.037	9	39.6	.72	164	.087	1	1.60	.026	.08	.1	.01	3.3	.1	<.05	5	<.5
TL15 0	1.9	64.5	12.2	214	.1	41.7	19.1	1142	4.11	26.1	.8	3.1	1.8	27	1.0	1.2	.3	73	.30	.071	11	44.6	.90	242	.103	<1	1.98	.013	.21	.1	.02	3.3	.1	<.05	7	.5
TL15 50	2.3	50.5	12.8	140	.2	35.7	20.6	1020	3.93	16.9	.9	2.5	1.6	28	.9	1.1	.3	82	.30	.057	11	46.9	.83	232	.102	2	1.99	.014	.15	.1	.02	3.2	.1	<.05	7	.5
TL15 100	2.2	51.6	13.4	128	.1	32.9	14.2	622	3.45	19.2	.9	6.9	1.5	25	.6	1.1	.3	71	.27	.058	10	39.2	.72	158	.090	<1	1.63	.014	.14	.1	.01	2.8	.1	<.05	8	.6
TL15 150	2.5	67.3	13.3	157	.2	38.9	16.6	640	3.74	21.8	1.0	5.1	2.0	27	.9	1.3	.4	74	.26	.049	14	43.9	.74	274	.107	1	1.71	.011	.21	.1	.02	2.8	.2	<.05	7	.6
TL15 200	1.9	70.4	12.0	143	.1	35.0	14.8	643	3.60	26.8	1.0	6.0	1.3	30	.7	.9	.3	69	.30	.072	13	42.0	.73	224	.086	1	1.93	.017	.19	.1	.02	3.0	.2	<.05	7	.6
TL15 250	1.0	103.0	32.2	312	.4	85.9	27.7	869	4.40	29.0	.8	10.4	2.9	47	2.4	1.4	.6	97	.81	.135	12	133.4	1.87	636	.219	<1	2.49	.023	.58	.1	.01	6.4	.2	<.05	9	.6
TL15 300	1.0	49.9	9.2	116	.1	41.1	13.5	458	2.99	12.6	.7	4.1	2.2	32	.4	.6	.2	72	.53	.053	11	62.2	.98	243	.130	<1	1.73	.024	.22	.1	.02	3.5	.1	<.05	6	.6
TL15 350	1.0	56.8	10.0	127	.1	51.5	15.6	483	3.47	12.2	.9	5.1	2.5	37	.6	.7	.2	77	.64	.058	11	77.3	1.17	293	.150	1	2.03	.025	.29	.1	.02	4.2	.2	<.05	7	.9
TL15 400	.7	66.1	8.6	117	.1	61.5	18.3	372	3.51	10.6	.7	5.8	2.5	29	.3	.6	.1	84	.73	.106	10	104.2	1.61	274	.186	<1	2.14	.022	.39	.1	.02	4.8	.1	<.05	7	.6
TL15 450	1.0	63.7	10.9	109	.2	51.0	16.5	559	3.34	11.7	1.0	7.1	2.6	29	.5	1.1	.2	77	.57	.077	12	80.0	1.28	243	.149	<1	2.08	.021	.28	.1	.03	4.7	.2	<.05	7	.6
TL15 500	1.2	63.2	15.3	117	.3	53.0	19.4	444	3.60	14.2	1.3	7.0	2.4	28	.4	1.4	.3	82	.64	.095	12	87.2	1.34	273	.140	2	2.16	.019	.27	.1	.04	5.2	.2	<.05	6	.9
STANDARD D55	12.8	146.3	25.2	139	.3	24.4	11.8	813	2.99	18.0	6.2	43.5	2.7	48	5.5	3.9	6.0	57	.72	.093	12	192.6	.65	141	.093	15	1.94	.033	.15	4.8	.18	3.3	1.0	<.05	6	4.9

Sample type: SOIL SS80 60C. Samples beginning 'RE' are Reruns and 'RRE' are Reject Reruns.



SAMPLE#	Mo ppm	Cu ppm	Pb ppm	Zn ppm	Ag ppm	Ni ppm	Co ppm	Mn ppm	Fe %	As ppm	U ppm	Au ppb	Th ppm	Sr ppm	Cd ppm	Sb ppm	Bi ppm	V ppm	Ca %	P %	La ppm	Cr ppm	Mg %	Ba ppm	Ti %	B ppm	Al %	Na %	K %	W ppm	Hg ppm	Sc ppm	Tl ppm	S %	Ga ppm	Se ppm
TL15 550	.6	60.8	7.2	102	.2	64.7	19.6	367	3.50	11.5	.8	4.4	2.7	24	.2	.6	.2	91	.75	.109	12	109.2	1.52	277	.186	1	2.12	.018	.42	.1	.02	5.4	.1	<.05	8	.7
TL15 600	1.3	44.1	9.3	205	.3	54.1	19.3	473	3.74	13.0	.9	3.4	3.0	31	.9	1.5	.2	86	.63	.099	13	63.4	1.10	316	.113	1	1.87	.019	.23	<.1	.03	5.9	.2	<.05	7	1.1
TL15 650	1.8	79.5	11.1	141	.2	45.7	24.3	775	4.14	17.1	1.1	3.5	1.7	39	1.4	.9	.2	97	.56	.067	12	45.3	1.02	316	.095	<1	2.02	.017	.17	.1	.02	4.6	.1	<.05	8	.6
TL15 700	1.4	46.6	9.4	205	.2	48.3	17.1	576	3.13	12.1	1.2	2.8	2.0	35	1.7	1.4	.2	73	.79	.082	12	38.8	1.30	283	.085	2	1.99	.021	.14	.1	.03	4.7	.1	<.05	7	1.1
TL15 750	1.3	47.5	9.9	180	.2	24.3	34.2	949	5.95	5.3	1.1	2.8	1.7	51	.3	.5	.2	290	.78	.043	11	16.4	2.36	834	.267	1	3.82	.025	.30	.2	.02	16.1	.2	<.05	15	1.5
TL15 800	1.3	43.8	8.0	79	.1	47.7	21.8	572	3.73	15.4	.7	3.7	3.1	26	.2	1.0	.1	102	.43	.048	11	46.9	1.14	389	.122	2	2.53	.019	.11	.1	.01	5.8	.1	<.05	8	.6
TL15 900	.8	38.8	8.2	69	.1	67.2	18.7	470	3.50	16.5	.9	6.0	4.0	40	.1	.7	.2	68	.78	.112	17	70.5	1.16	188	.113	2	2.09	.025	.10	.1	.02	5.5	.2	<.05	7	.5
TL15 950	.8	39.5	8.0	70	.2	56.6	18.0	533	3.15	17.5	.9	8.4	2.8	40	.3	.8	.1	61	.72	.074	16	54.6	.95	220	.065	1	1.85	.017	.07	.1	.03	4.5	.1	<.05	6	.7
TL15 1000	.6	46.9	7.9	86	.1	71.3	17.3	489	3.38	22.2	.7	6.4	5.1	41	.4	1.1	.1	73	.77	.103	18	81.6	1.23	224	.129	2	1.83	.027	.23	.1	.01	5.4	.2	<.05	7	.6
TL15 1050	.9	38.6	6.5	84	.1	50.2	15.0	709	2.88	17.6	.6	3.0	3.2	38	.3	.8	.1	70	.77	.111	13	59.1	.93	258	.108	2	1.54	.025	.15	.1	.01	4.1	.2	<.05	6	.6
TL15 1100	.9	40.9	7.2	79	.2	51.4	17.7	563	3.19	19.0	.6	4.1	3.7	40	.4	.7	.1	73	.84	.096	14	67.0	1.11	307	.121	1	1.85	.024	.18	.1	.01	5.3	.2	<.05	7	.6
TL15 1150	1.2	31.8	5.2	85	.1	47.5	30.3	321	5.82	12.1	.4	3.6	1.5	19	.1	.4	.1	138	.32	.081	6	43.2	2.54	747	.276	1	4.28	.013	.62	.2	<.01	4.8	.1	<.05	15	.5
TL15 1200	.7	47.9	7.6	85	.1	81.2	29.6	571	4.33	15.3	.8	3.2	4.4	42	.1	.5	.2	104	.85	.102	15	105.4	1.60	291	.179	1	2.48	.025	.35	.1	.02	6.5	.3	<.05	9	.8
TL15 1300	1.0	54.9	5.3	94	.1	50.5	21.8	550	4.00	7.7	1.3	1.9	2.1	47	.2	.3	.1	103	1.30	.188	12	67.2	1.45	374	.178	2	2.36	.021	.49	.1	.03	5.4	.2	<.05	9	.9
TL15 1450	1.5	58.5	6.9	119	.3	161.7	39.9	1332	5.97	8.7	.6	7.1	1.0	37	1.1	.3	.1	194	1.42	.208	7	252.5	3.35	670	.372	1	4.01	.018	1.36	.1	.02	12.4	.3	<.05	14	.6
TL15 1600	1.1	51.8	8.8	66	.2	53.3	18.3	575	3.60	22.7	1.0	5.2	3.3	42	.2	.8	.2	71	.84	.036	19	51.6	.84	155	.097	3	1.95	.024	.23	.1	.03	6.0	.1	<.05	6	.6
TL15 1700	.8	50.2	7.6	71	.2	60.8	18.7	435	3.33	21.8	.8	5.4	4.1	94	.2	.8	.2	67	2.50	.079	19	61.3	1.11	122	.119	3	1.69	.023	.37	.1	.03	5.4	.3	<.05	6	.5
TL15 1750	1.4	47.7	10.0	75	.2	57.3	18.8	623	3.65	22.2	.8	4.1	4.6	30	.4	1.1	.2	75	.56	.045	16	55.5	.95	166	.098	2	2.16	.022	.32	.1	.01	5.8	.2	<.05	7	.6
TL15 1800	1.3	57.3	8.4	86	.2	55.0	17.9	544	3.33	19.2	.8	6.8	3.6	50	.3	.8	.2	68	1.03	.075	19	53.4	1.06	181	.108	3	1.85	.028	.31	.1	.03	5.6	.2	<.05	6	<.5
TL16 0	1.5	52.6	9.0	128	.1	64.4	18.6	806	3.79	14.2	.9	4.1	4.1	26	.4	.8	.2	83	.42	.083	13	63.1	1.13	282	.129	2	2.30	.014	.19	.1	.01	5.0	.2	<.05	8	.8
TL16 50	1.7	37.5	9.0	76	.1	59.6	17.5	421	4.08	16.2	.7	3.2	3.0	28	.3	.8	.2	84	.39	.067	11	51.9	.89	184	.106	2	2.60	.017	.08	<.1	.03	4.8	.2	<.05	8	.8
TL16 100	5.0	78.7	10.8	288	.3	85.0	17.3	590	3.53	12.4	2.6	4.5	5.9	64	1.7	2.8	.4	64	.51	.210	25	36.0	.54	242	.042	1	1.56	.010	.12	.2	.02	3.9	.1	<.05	4	1.7
TL16 150	1.9	41.4	8.5	78	.2	42.3	12.8	430	3.19	16.9	.8	5.1	1.9	28	.5	.9	.2	74	.41	.072	12	49.1	.73	134	.090	1	1.80	.017	.13	.1	.02	3.8	.1	<.05	7	.8
RE TL16 150	1.8	38.4	9.4	77	.2	41.2	12.5	402	3.16	16.6	.7	2.5	1.9	25	.4	.8	.2	73	.36	.069	11	46.9	.70	132	.083	3	1.76	.015	.12	.1	.01	3.4	.1	<.05	7	.6
TL16 200	2.1	72.2	9.2	128	.3	60.7	18.1	561	3.31	13.1	1.5	5.6	3.5	30	.9	.8	.2	81	.39	.087	20	55.4	.93	261	.092	2	2.10	.016	.23	.1	.02	3.9	.2	<.05	7	.8
TL16 300	3.7	75.7	11.8	271	.4	73.0	23.1	454	3.47	13.0	2.8	2.5	4.4	49	1.5	1.6	.4	78	.46	.158	28	47.9	.78	436	.077	1	1.74	.018	.19	.1	.04	3.4	.2	<.05	6	2.1
TL16 400	1.7	61.3	11.7	262	.4	56.6	15.3	712	2.90	19.4	1.6	5.9	2.6	34	2.2	1.5	.3	58	.57	.093	23	43.4	.66	150	.058	1	1.44	.025	.12	<.1	.02	3.4	.1	<.05	5	1.3
TL16 500	3.8	104.8	39.9	849	1.4	103.3	22.8	646	3.97	43.8	2.8	13.2	2.2	60	5.9	7.2	1.3	85	1.19	.201	14	57.9	1.12	691	.093	3	1.83	.026	.36	.2	.07	5.4	.2	.18	6	3.6
TL16 550	4.9	109.2	138.4	582	1.2	63.9	20.2	1150	3.65	85.3	4.8	26.9	2.5	74	3.0	9.6	1.6	83	1.50	.146	16	38.6	1.04	1344	.081	3	1.62	.018	.26	.1	.08	5.3	.2	.16	6	6.8
TL16 650	1.4	83.5	15.8	299	.4	95.8	21.1	853	3.34	19.2	1.4	9.4	2.3	47	3.6	2.0	.5	80	1.40	.140	18	91.1	1.21	394	.107	3	2.01	.022	.36	.1	.04	4.8	.2	.07	6	1.8
TL16 850	2.4	141.6	29.4	414	.7	98.7	29.8	1070	4.15	50.9	2.6	19.3	3.8	58	3.5	6.8	.4	104	1.30	.148	19	58.4	1.31	690	.112	3	2.24	.021	.31	.1	.06	7.8	.2	<.05	8	2.1
TL16 900	1.1	61.5	6.1	97	.1	52.7	17.9	512	3.21	12.5	.7	6.9	2.9	64	.4	1.3	.1	82	2.10	.138	13	58.1	1.21	281	.129	2	1.78	.030	.36	.1	.01	5.2	.1	<.05	6	.7
TL16 950	4.1	148.6	15.2	226	.9	86.4	20.2	534	4.01	38.4	1.7	14.0	5.3	97	1.5	4.4	.3	79	3.28	.176	20	63.6	1.40	365	.107	3	1.74	.020	.40	.2	.11	5.2	.3	.06	6	1.9
STANDARD DS5	12.3	137.7	24.5	131	.2	23.1	11.4	742	2.83	18.5	6.2	42.1	2.9	50	5.7	3.8	6.5	59	.77	.102	12	180.5	.64	144	.090	19	2.01	.032	.14	5.1	.18	3.7	1.2	<.05	7	5.3

Sample type: SOIL SS80 60C. Samples beginning 'RE' are Reruns and 'RRE' are Reject Reruns.



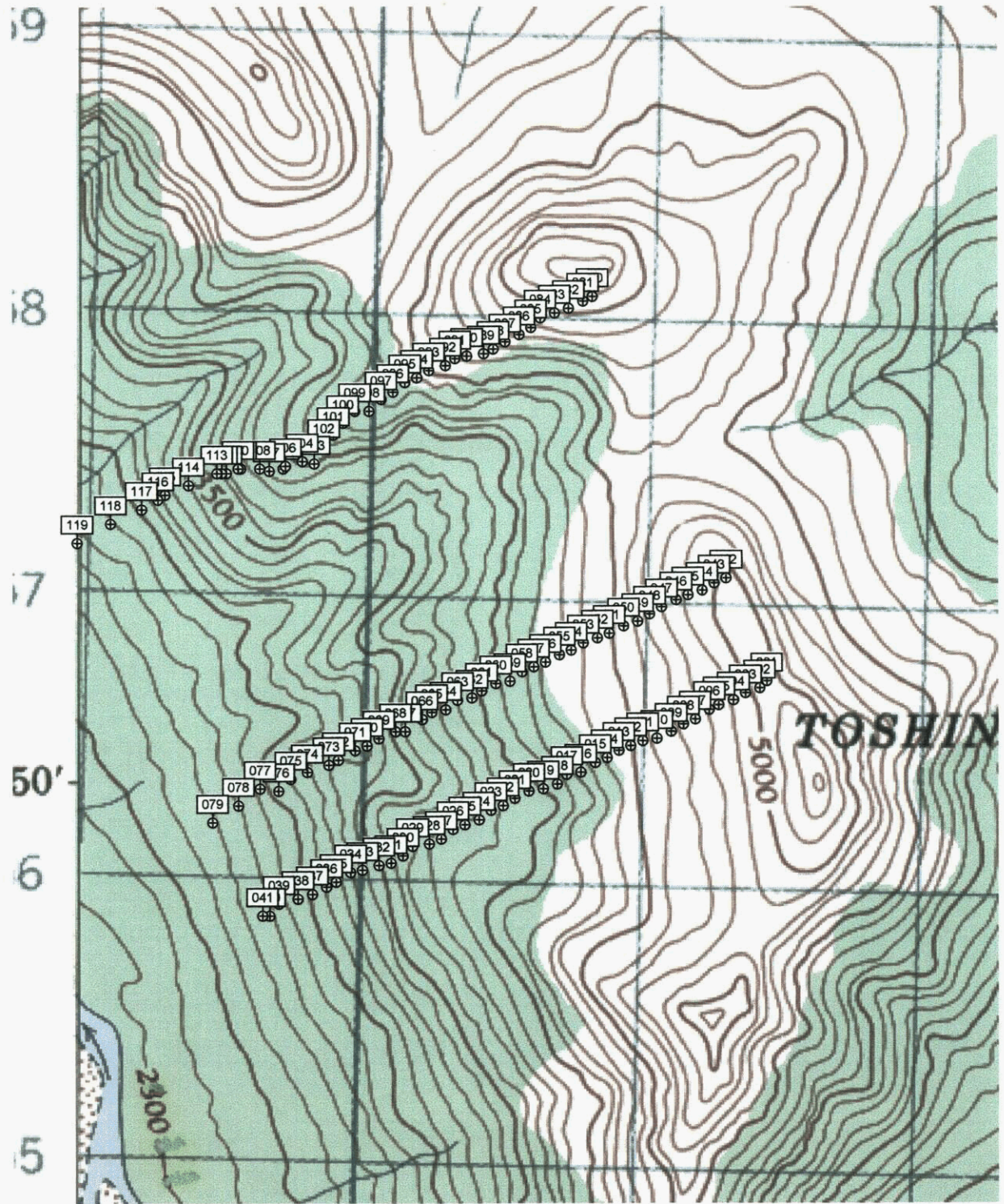
SAMPLE#	Mo ppm	Cu ppm	Pb ppm	Zn ppm	Ag ppm	Ni ppm	Co ppm	Mn ppm	Fe %	As ppm	U ppm	Au ppb	Th ppm	Sr ppm	Cd ppm	Sb ppm	Bi ppm	V ppm	Ca %	P %	La ppm	Cr ppm	Mg %	Ba ppm	Ti %	B ppm	Al %	Na %	K %	W ppm	Hg ppm	Sc ppm	Tl ppm	S %	Ga ppm	Se ppm
G-1	1.6	2.9	2.4	38	<.1	4.1	3.6	499	1.79	.5	1.8	1.4	4.2	81	<.1	<.1	.1	40	.55	.081	8	14.4	.47	211	.121	1	.85	.077	.40	1.5	<.01	2.6	.3	<.05	4	<.5
TL16 1050	2.4	41.7	20.7	198	.2	58.7	21.1	727	4.29	130.6	1.1	3.6	5.7	28	.7	2.0	.4	71	.43	.028	16	76.7	1.05	206	.096	1	2.29	.015	.28	.1	.01	4.9	.3	<.05	7	<.5
TL16 1100	.9	44.8	9.1	76	.5	62.1	18.7	577	3.60	17.4	1.0	3.7	6.0	36	.3	1.0	.2	76	.65	.073	22	74.9	.97	169	.126	1	1.98	.024	.21	.1	.02	6.5	.2	<.05	6	<.5
TL16 1150	1.5	66.0	9.4	90	.3	59.1	17.2	649	3.34	15.4	1.0	4.9	4.6	51	.3	.9	.2	79	1.10	.096	16	64.5	1.14	154	.130	2	1.88	.033	.20	.1	.02	5.4	.2	<.05	6	<.5
TL16 1200	1.2	67.6	64.4	101	.3	56.8	19.0	441	3.50	8.4	1.3	5.5	3.2	47	.4	1.0	.1	83	1.20	.131	13	74.1	1.39	320	.149	2	1.78	.028	.40	.1	.03	4.8	.2	<.05	7	.7
TL16 1250	3.3	64.1	11.3	123	.5	54.2	16.1	345	3.66	13.2	1.1	3.4	3.5	34	.6	1.6	.2	83	.39	.048	13	51.2	.92	210	.129	<1	1.76	.020	.18	.1	.01	3.6	.2	<.05	6	.5
TL16 1300	4.0	96.8	13.6	178	.3	95.6	21.4	811	4.18	17.0	2.2	7.7	5.6	46	.7	1.6	.2	96	.62	.077	22	68.5	1.18	237	.128	2	1.85	.024	.31	.2	.02	6.0	.3	<.05	6	1.1
TL16 1350	7.8	122.6	17.2	269	.7	98.7	27.0	991	4.59	13.3	3.4	2.6	5.5	66	1.3	1.1	.3	103	.46	.093	24	52.7	1.13	384	.117	1	2.29	.031	.34	.2	.03	4.3	.3	.12	6	1.6
TL16 1400	3.0	49.9	34.3	150	.6	59.1	17.9	694	3.68	15.4	1.2	2.8	4.2	31	1.0	1.3	.2	83	.43	.043	15	49.8	.81	200	.107	2	2.03	.024	.20	.1	.01	4.8	.2	<.05	6	.6
TL16 1450	5.7	86.7	15.2	305	1.0	86.2	21.2	582	4.01	23.0	1.4	4.4	3.7	38	1.6	6.7	.2	104	.42	.086	15	58.9	.81	130	.086	2	2.23	.020	.12	.1	.02	5.4	.1	<.05	7	2.1
RE TL16 1450	5.9	87.0	14.9	295	1.0	88.7	21.7	557	3.96	22.1	1.4	2.8	3.6	37	1.4	6.2	.2	96	.41	.086	14	56.0	.80	120	.079	1	2.26	.019	.11	.1	.03	5.0	.1	<.05	7	2.1
TL16 1500	2.4	58.6	19.5	110	.7	56.8	16.8	335	3.97	14.4	.8	2.5	4.0	26	.2	1.0	.2	96	.28	.024	12	67.1	.96	90	.133	1	2.60	.017	.10	<.1	.01	4.8	.2	<.05	8	.7
TL16 1600	.9	49.4	8.9	76	.2	56.7	17.4	494	3.42	19.3	.8	4.8	4.2	77	.3	.8	.2	70	1.77	.079	16	66.1	1.09	119	.136	1	1.80	.029	.31	.1	.02	5.8	.2	<.05	6	.5
TL16 1700	1.6	74.6	10.4	101	.6	57.5	17.4	568	3.48	19.1	1.0	5.1	5.0	91	.4	1.3	.2	64	2.16	.074	20	53.0	1.06	159	.119	1	1.72	.025	.26	.1	.03	4.7	.2	<.05	6	.7
TL16 1950	.7	31.8	7.4	75	.1	42.3	15.6	487	3.13	13.4	.8	38.8	3.9	54	.2	.6	.1	67	1.24	.123	14	58.0	1.06	103	.126	2	1.58	.025	.19	.1	.02	4.2	.2	<.05	5	<.5
TL16 2000	.6	29.4	5.1	63	.1	39.1	13.9	355	2.85	10.9	.6	23.8	3.2	53	.2	.5	.1	69	1.24	.085	13	53.0	.94	88	.126	3	1.35	.024	.15	.1	.02	4.1	.1	<.05	5	<.5
SSA	4.9	59.3	14.3	926	.4	77.4	11.3	417	2.63	19.0	1.4	2.8	2.6	90	12.5	3.2	.2	41	.62	.082	9	12.5	.33	868	.005	3	.67	.004	.07	.1	.33	2.4	.2	.14	2	3.8
SSB	4.4	39.1	15.6	387	.3	69.5	19.1	1983	6.11	47.7	1.3	2.1	3.3	84	3.4	1.9	.2	29	1.56	.075	10	16.8	.65	492	.007	2	.72	.004	.08	.1	.35	2.7	.2	<.05	2	2.1
STANDARD DS5	12.5	145.8	25.8	140	.3	24.3	12.2	797	3.09	18.7	6.5	41.4	3.1	52	5.6	3.8	6.1	63	.77	.096	13	188.6	.70	146	.112	16	2.03	.035	.14	5.0	.18	3.7	1.1	<.05	7	4.7

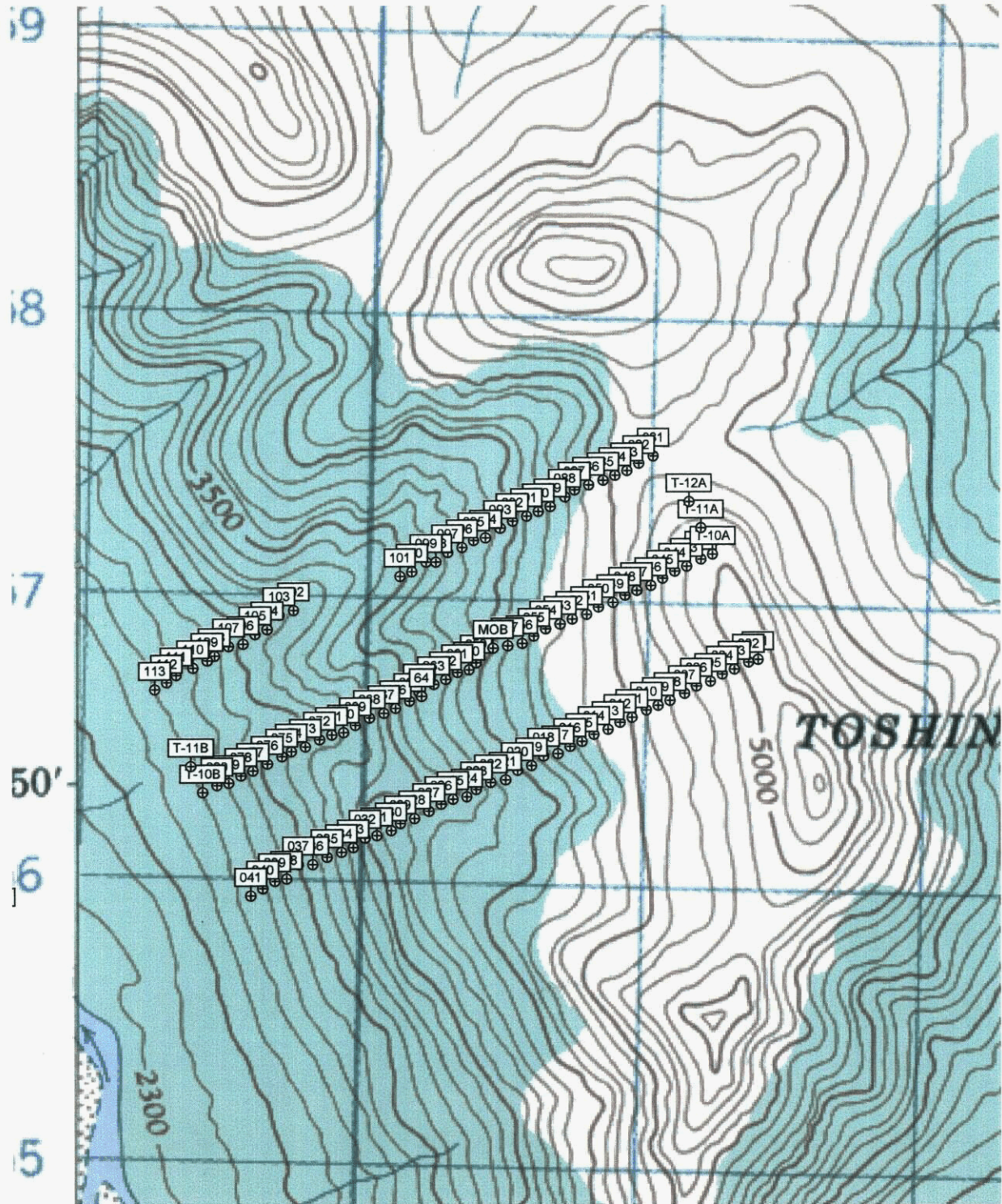
Sample type: SOIL SS80 60C. Samples beginning 'RE' are Reruns and 'RRE' are Reject Reruns.

*Soils Survey for the
Toshingermann Lake Project 115G13/14
January 2005*

APPENDIX C

SAMPLE LOCATION MAP





19

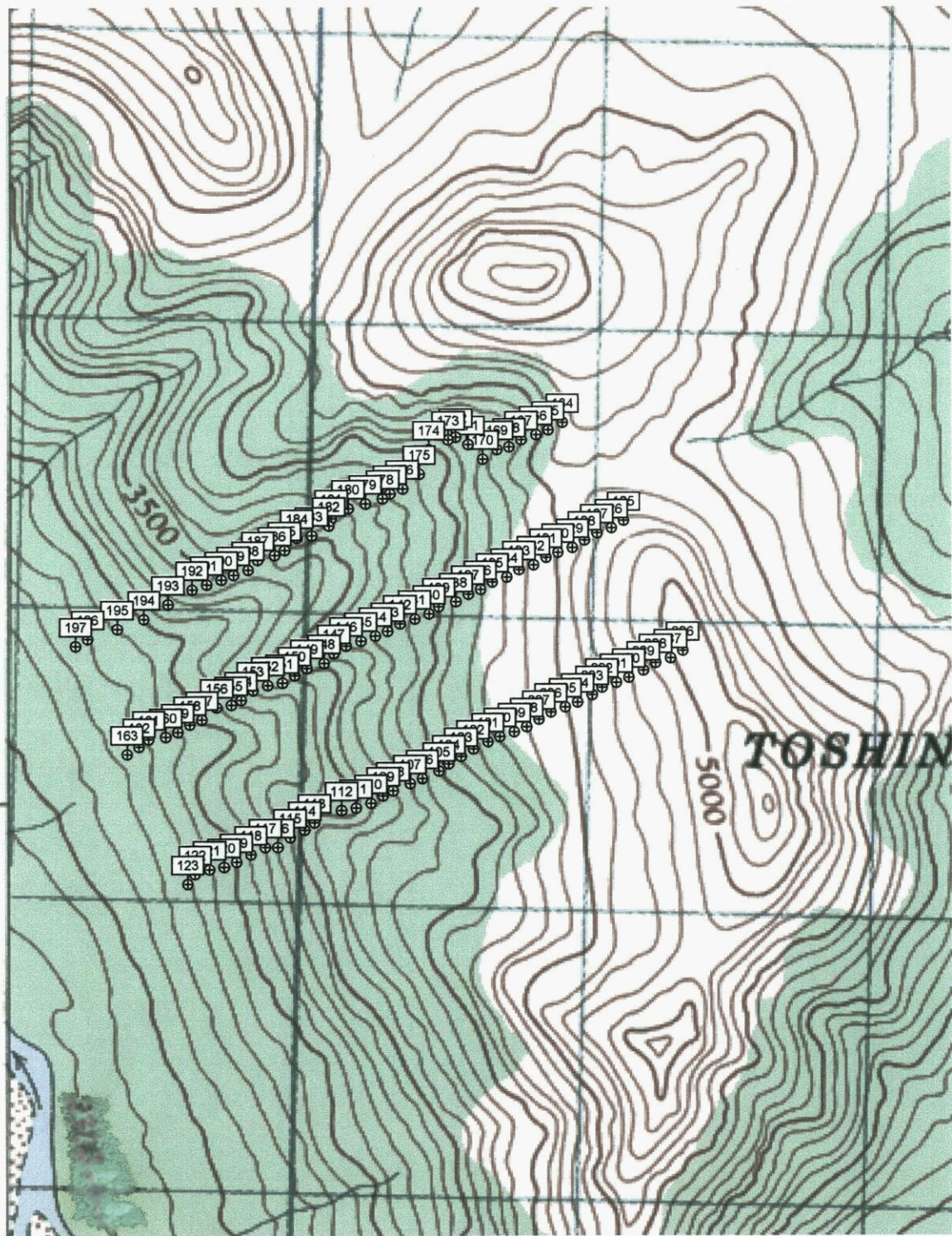
18

17

50'

6

5

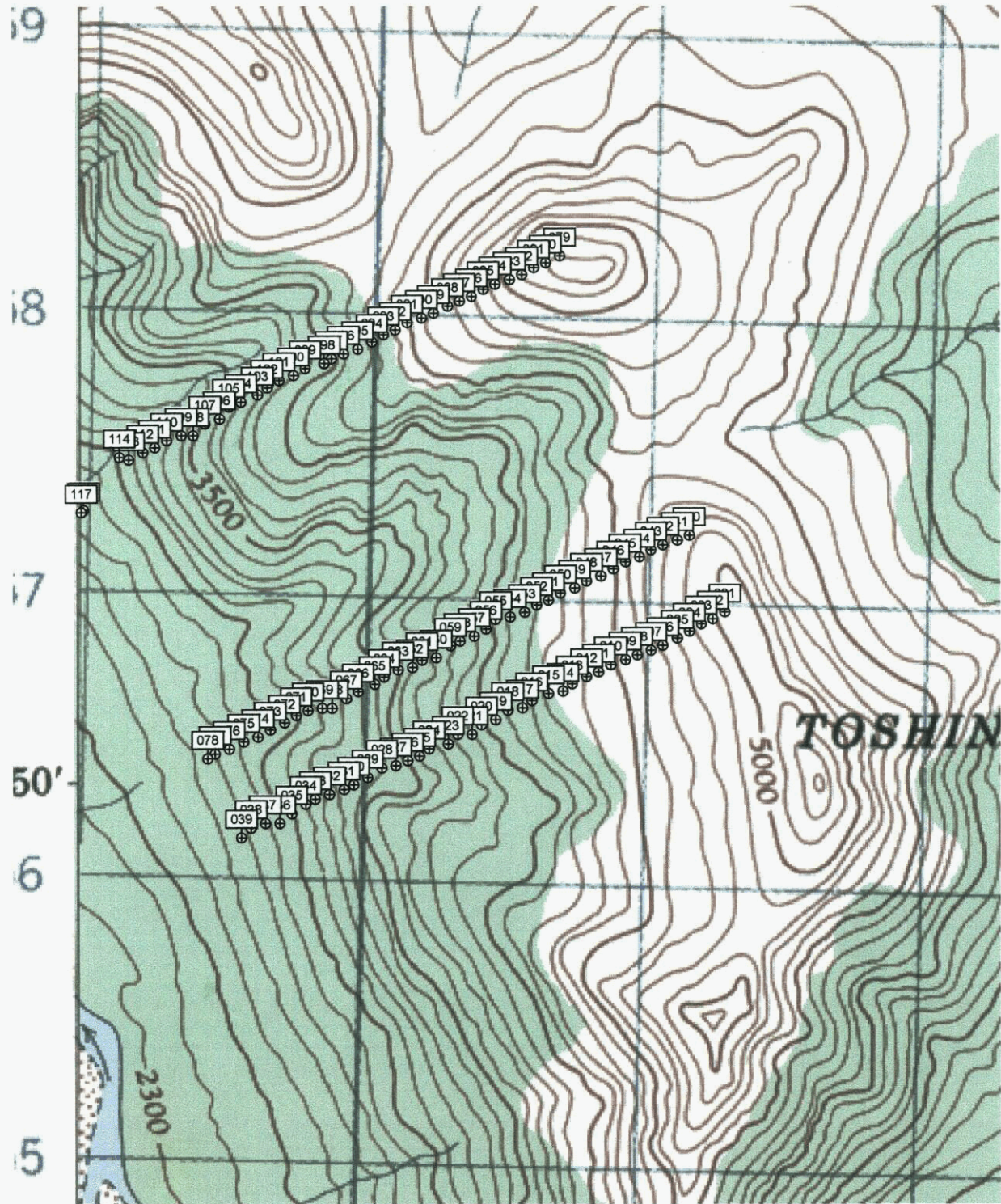


3500

5000

TOSHIN

- 197
- 195
- 194
- 193
- 192
- 191
- 190
- 189
- 188
- 187
- 186
- 185
- 184
- 183
- 182
- 181
- 180
- 179
- 178
- 177
- 176
- 175
- 174
- 173
- 172
- 171
- 170
- 169
- 168
- 167
- 166
- 165
- 164
- 163
- 162
- 161
- 160
- 159
- 158
- 157
- 156
- 155
- 154
- 153
- 152
- 151
- 150
- 149
- 148
- 147
- 146
- 145
- 144
- 143
- 142
- 141
- 140
- 139
- 138
- 137
- 136
- 135
- 134
- 133
- 132
- 131
- 130
- 129
- 128
- 127
- 126
- 125
- 124
- 123
- 122
- 121
- 120
- 119
- 118
- 117
- 116
- 115
- 114
- 113
- 112
- 111
- 110
- 109
- 108
- 107
- 106
- 105
- 104
- 103
- 102
- 101
- 100



APPENDIX D

STATEMENT OF COSTS

Soils Survey for the
Toshingermann Lake Project 115G13/14
January 2005

STATEMENT OF COSTS

Dates of Field Work: June 24–27 and August 23–27 (inclusive), 2004 (9 days)

Crew: Ron Berdahl, Andrew Berdahl, Scott Berdahl, David Quincey

Wages:

Prep time (includes hiring, administration, program set up, etc. 4 man/days)	\$	1,000.00
Field Days: 16 man days @ \$250/man/day		4,000.00
Smoke and travel days: 5 @ \$125/man/day		2,500.00

Analysis: ACME Labs 1DX pkg., 494 soils, 11 rocks @ \$18 w/freight 9,090.00

Helicopter: Trans North 13,232.82

Vehicles (2): Whse to M 1118 rtn. 352 km/leg x 4 legs x \$0.48/km (gov't. rate) 1,351.68

Per Diem: Food and Kluane Wilderness Village @ \$52/man/day
9 x 52 x 4 men 1,872.00

Rental of radios (4), sat phone, GPS (4), consumables, flags, sample bags,
notebooks, Workers' Compensation, batteries, claim posts, etc. 1,200.00

TOTAL: \$ 34,246.50

*Soils Survey for the
Toshingermann Lake Project 115G13/14
January 2005*

APPENDIX E

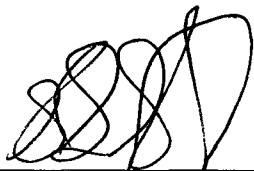
STATEMENT OF QUALIFICATIONS

STATEMENT OF QUALIFICATIONS

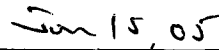
I, Ron Berdahl, declare I am an independent prospector who has worked in the Tosh area during the 2004 field season.

I have worked several years in the Southwest Yukon and taken several courses related to prospecting, and in addition make the bulk of my living from prospecting.

The data contained herein is true and correct to the best of my knowledge.



Ron S. Berdahl



Date

*Soils Survey for the
Toshingermann Lake Project 115G13/14
January 2005*

APPENDIX F

PROJECT PERSONNEL

Soils Survey for the
Toshingemann Lake Project 115G13/14
January 2005

PROJECT PERSONNEL

Ron Berdahl	Soil Sampling / Supervisor
Andrew Berdahl	Soil Sampling
Scott Berdahl	Soil Sampling
David Quincey	Soil Sampling