

ASSESSMENT REPORT

describing

PROSPECTING

on the:

LEAGUE PROPERTY

League Claims 31-34,
53-54, 57, 59, 60-68,
70, 72-78, 94, 96, 115-182

Claims are 100% owned by Yukon Zinc Corporation.

NTS 105G/10

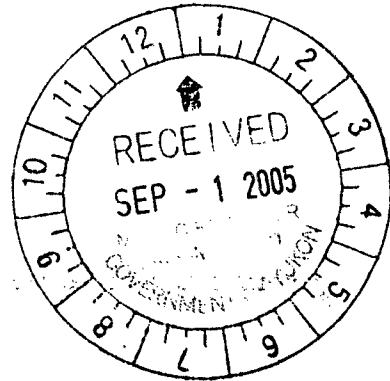
Latitude 61°31'N and Longitude 130°45'W

In the Watson Lake Mining District
Yukon Territory

Prepared by

Phu Van Bui, B.Sc., G.I.T.

August 2005



YUKON ENERGY, MINES
& RESOURCES LIBRARY
PO. BOX 2703
WHITEHORSE, YUKON Y1A 2C6

This report has been examined by
the Geological Evaluation Unit
under Section 53 (4) Yukon Quartz
Mining Act and is allowed as
repayment work in the amount
of \$ 13,000.

for *M. B. W.*
Regional Manager, Exploration and
Geological Services for Commissioners
of Yukon Territory.

Costs associated with this report have been
approved in the amount of \$ 13,000.00
for assessment credit under Certificate of
Work No. QL 35785

[Signature]

A/ Mining Recorder
Watson Lake Mining District

Table of Contents

	Page
Introduction	1
Accessibility, Climate and Physiography	1
List of claims by name and grant number being renewed	1
Description of Undertakings	3
Results	4
Discussion and Conclusions	4

Tables

	Page
Table 1 – List of claims by name and grant number being renewed.	1
Table 2 – Station location and sample number for rock samples collected.	4
Table 3 – Station location and sample number for soil samples collected.	4
Table 4 – Peak values for copper, lead and zinc for rock and soil chemistry.	5

Appendixes

Appendix A – List of Personnel	i
Appendix B – Statement of Expenditures	ii
Appendix C – Statement of Qualification	iii
Appendix D – Assay Certificates	iv

Figures

Figure 01 – Location Map of the League Property	
Figure 02 – League Property, YT Claim Map and Sample Location	
Figure 03 – League Property, YT Rock Chemistry by Copper (Cu_ppm)	
Figure 04 – League Property, YT Rock Chemistry by Lead (Pb_ppm)	
Figure 05 – League Property, YT Rock Chemistry by Zinc (Zn_ppm)	
Figure 06 – League Property, YT Soil Chemistry by Copper, Lead and Zinc (Cu, Pb, & Zn, ppm)	

1. Introduction

The League property is 100% owned by Yukon Zinc Corporation (“Yukon Zinc”). Initially, 302 mineral claims were staked by Archer, Cathro and Associates (1981) Ltd. between 1995 and 1996. In the same years, extensive geochemical, geophysical, geological, and diamond drilling work was conducted on the League property. These results may be found in the Archer, Cathro and Associate (1981) Ltd. League Assessment Report on work conducted in 1995 (Wengzynowski, April 1996). Included in Wengzynowski’s report is background information, regional and property geology, geochemistry, and geophysics which will not be repeated in this report.

In November 2004, Expatriate Resources Ltd. (“EXPATRIATE”) changed its name to Yukon Zinc Corporation. The claims subject to this report (Table 01) were worked on between September 13-16, 2004 by a three-person crew working from fly camps on the property. Prospecting and soil sampling were the primary undertakings during this time.

2. Accessibility, Climate and Physiography

The League property is located in the Watson Lake Mining District in southeast Yukon on NTS sheet 105G/10 at coordinate 61°31’N, 130°45’W (Figure 01). Access into site is 275km by fixed wing charters from Whitehorse to Wolverine airstrip (61°01’N, 131°20’W) and then 32 km via helicopter from Wolverine airstrip to the League Property. In 2004, air transportation was provided by Trans North Helicopter (Astar 350B) and Alkan Air (Single Turbo Otter).

The League property is situated in the Campbell Mountain Range in the sub-alpine at an elevation of 1100m to 1640m. The property drains into Big and Little Campbell Creek and is part of the Yukon River Watershed. Black spruce, alder, willow, back brush, alpine grass, moss and lichen make up the vegetation on the property. The property is overlain by Pleistocene colluviums and glacial till and outcropping rocks are only found in the southwest corner of the claim block. As such, much of the undertaking was focused on these areas of rock outcrop.

3. List of claims by name and grant number being renewed

Table 01. List of claims being renewed in this assessment report.

Claim Name	Grant #	Expiry Date
LEAGUE 31	YB60214	March 17, 2006
LEAGUE 32	YB60215	March 17, 2006
LEAGUE 33	YB60216	March 17, 2006
LEAGUE 34	YB60217	March 17, 2006
LEAGUE 53	YB60236	March 17, 2009
LEAGUE 54	YB60237	March 17, 2009
LEAGUE 57	YB60240	March 17, 2008
LEAGUE 59	YB60855	March 17, 2006
LEAGUE 60	YB60856	March 17, 2006
LEAGUE 61	YB60857	March 17, 2006

LEAGUE	62	YB60858	March 17, 2006
LEAGUE	63	YB60859	March 17, 2006
LEAGUE	64	YB60860	March 17, 2006
LEAGUE	65	YB60861	March 17, 2006
LEAGUE	66	YB60862	March 17, 2006
LEAGUE	67	YB60863	March 17, 2006
LEAGUE	68	YB60864	March 17, 2006
LEAGUE	70	YB60866	March 17, 2006
LEAGUE	72	YB60868	March 17, 2006
LEAGUE	73	YB60869	March 17, 2006
LEAGUE	74	YB60870	March 17, 2006
LEAGUE	75	YB60871	March 17, 2006
LEAGUE	76	YB60872	March 17, 2006
LEAGUE	77	YB60873	March 17, 2006
LEAGUE	78	YB60874	March 17, 2006
LEAGUE	94	YB60890	March 17, 2006
LEAGUE	96	YB60892	March 17, 2006
LEAGUE	115	YB61588	March 17, 2007
LEAGUE	116	YB61589	March 17, 2007
LEAGUE	117	YB61590	March 17, 2007
LEAGUE	118	YB61591	March 17, 2007
LEAGUE	119	YB61592	March 17, 2007
LEAGUE	120	YB61593	March 17, 2007
LEAGUE	121	YB61594	March 17, 2007
LEAGUE	122	YB61595	March 17, 2007
LEAGUE	123	YB61596	March 17, 2007
LEAGUE	124	YB61597	March 17, 2007
LEAGUE	125	YB61598	March 17, 2007
LEAGUE	126	YB61599	March 17, 2007
LEAGUE	127	YB61600	March 17, 2006
LEAGUE	128	YB61601	March 17, 2007
LEAGUE	129	YB61602	March 17, 2006
LEAGUE	130	YB61603	March 17, 2007
LEAGUE	131	YB61604	March 17, 2006
LEAGUE	132	YB61605	March 17, 2007
LEAGUE	133	YB61606	March 17, 2006
LEAGUE	134	YB61607	March 17, 2006
LEAGUE	135	YB61608	March 17, 2006
LEAGUE	136	YB61609	March 17, 2006
LEAGUE	137	YB61610	March 17, 2006
LEAGUE	138	YB61611	March 17, 2006
LEAGUE	139	YB61612	March 17, 2006
LEAGUE	140	YB61613	March 17, 2006
LEAGUE	141	YB61614	March 17, 2006
LEAGUE	142	YB61615	March 17, 2006
LEAGUE	143	YB61616	March 17, 2006
LEAGUE	144	YB61617	March 17, 2006
LEAGUE	145	YB61618	March 17, 2007

LEAGUE	146	YB61619	March 17, 2007
LEAGUE	147	YB61620	March 17, 2007
LEAGUE	148	YB61621	March 17, 2007
LEAGUE	149	YB61622	March 17, 2007
LEAGUE	150	YB61623	March 17, 2007
LEAGUE	153	YB61626	March 17, 2006
LEAGUE	154	YB61627	March 17, 2006
LEAGUE	155	YB61628	March 17, 2006
LEAGUE	156	YB61629	March 17, 2006
LEAGUE	157	YB61630	March 17, 2006
LEAGUE	158	YB61631	March 17, 2006
LEAGUE	159	YB61632	March 17, 2006
LEAGUE	160	YB61633	March 17, 2006
LEAGUE	161	YB61634	March 17, 2006
LEAGUE	162	YB61635	March 17, 2006
LEAGUE	163	YB61636	March 17, 2007
LEAGUE	164	YB61637	March 17, 2007
LEAGUE	165	YB61638	March 17, 2007
LEAGUE	166	YB61639	March 17, 2007
LEAGUE	167	YB61640	March 17, 2007
LEAGUE	168	YB61641	March 17, 2006
LEAGUE	169	YB61642	March 17, 2007
LEAGUE	170	YB61643	March 17, 2006
LEAGUE	171	YB61644	March 17, 2006
LEAGUE	173	YB61646	March 17, 2006
LEAGUE	176	YB61649	March 17, 2008
LEAGUE	178	YB61651	March 17, 2008
LEAGUE	180	YB61653	March 17, 2008
LEAGUE	182	YB61655	March 17, 2008

Please note the expiry dates include 2004 assessment credits

4. Description of Undertakings

Prospecting and Soil Sampling

Crews consisted of one project geologist and two field assistants. Soil samples were taken at locations where significant staining is expressed in the soil, suggestive of iron and sulphide "rusting". Soil samples were collected by removing top soil using steel spades and sampling the unweathered material at a depth of one foot below ground surface. Each sample was packaged in a Kraft soil sample bag (4"x6" folded) and transported to Wolverine Camps for drying.

Rock samples were collected where outcrops expressed iron-oxide and sulphide mineralization. Hand samples approximately 1-1.5 kg were collected and stored in properly labeled plastic sample bags. Please refer to table 02 and 03 for all rock and soil sample GPS data. Note that coordinates were collected in NAD27 Zone 9 datum.

Table 02. Station location, and samples numbers for rock samples collected.

Target	Station	Geologist	Date	Easting	Northing	CODE	SAMPLE	CERTIFICATE
LEAGUE	L-01	DL	14-Sep-04	405906	6821726	ARHO	M243023	VA04070776
LEAGUE	L-02	DL	14-Sep-04	405848	6821737	BSSI	M243024	VA04070776
LEAGUE	L-03	DL	14-Sep-04	406382	6822064	ARHO	M243025	VA04070776
LEAGUE	L-04	DL	14-Sep-04	406618	6822005	ARHO	M243026	VA04070776
LEAGUE	L-05	DL	14-Sep-04	406537	6822351	ARHO	M243027	VA04070776
LEAGUE	L-06	DL	14-Sep-04	406555	6822578	ARHO	M243028	VA04070776
LEAGUE	L-07	DL	14-Sep-04	406639	6822705	CHS	M243029	VA04070776
LEAGUE	L-08	DL	14-Sep-04	406757	6822685	CHS	M243030	VA04070776
LEAGUE	L-09	DL	15-Sep-04	406795	6822693	MIVOL	M243031	VA04070776
LEAGUE	L-10	DL	15-Sep-04	406816	6822770	MIVOL	M243032	VA04070776
LEAGUE	L-11	DL	15-Sep-04	406848	6822741	MIVOL	M243033	VA04070776
LEAGUE	L-12	DL	15-Sep-04	406915	6822762	MIVOL	M243034	VA04070776
LEAGUE	TR-01-04	DL	15-Sep-04	406919	6822776	MIVOL	M243035	VA04070776
LEAGUE	TR-01a-04	DL	15-Sep-04	406919	6822776	MIVOL	M243036	VA04070776

Table 03. Station location, and samples numbers for soil samples collected.

Target	Station	Geologist	Date	Easting	Northing	CODE	Assay #	CERTIFICATE
LEAGUE	LS-04	DL	14-Sep-04	406550	6822531	SOIL	M180852	VA04070775
LEAGUE	LS-01	DL	14-Sep-04	405716	6821914	SOIL	M243199	VA04070775
LEAGUE	LS-02	DL	14-Sep-04	406469	6821986	SOIL	M243200	VA04070775

5. Results

All soil samples and rock samples with potential for hosting sulphide mineralization were sent for assay at ALS-Chemex, 212 Brooksbank Avenue, North Vancouver, British Columbia, V6J 2C1. Those collected for archives were documented and stored at the Wolverine Lake camp. Please see Appendix D for assay certificates and figures 2 through 6 for plotted results.

6. Discussion and Conclusions

The 2004 prospecting program was focused on investigating outcrops of rhyolitic composition. Such rocks are commonly associated with and proximal to volcanic massive sulphide (VMS) mineralization according to the Kuroko-type VMS deposit model. Rhyolitic to intermediate volcanic rocks and sedimentary rocks were encountered and described as follows:

ARHO White, aphyric, flow-banded to massive rhyolite with conchoidal fracturing. Generally 15-30% fine sericite, 70-80% silica, and weakly carbonate altered. Variations include green, aphanitic but also massive to clastic (30-40cm feldspar-

phyric clasts in an aphanitic groundmass) rhyolites with 1-2% porphyritic feldspars, 1-2% epidote, and 3-4% chlorite alteration.

MIVOL Porphyritic Andesites. Green, porphyritic with 10-15% euhedral to subhedral plagioclase crystals and porphyroblasts of chlorite. Overall 50% chlorite and 30-35% sericite in the matrix with 5% siderite+limonite.

CHS Light green, fine grained chlorite schist with 5% porphyroblastic chlorite. 25-40% chlorite, 55-70 % quartz.

BSSI Grey to black, fine-grained, siliceous with concoidal fracturing. 1-2% graphite.

Peak values for rock and soil geochemistry are presented in table 04 and compared with regional background geochemistry.

Table 04. Peak values for copper, lead and zinc for rock and soil chemistry.

	Rock - Peak Values	Claims	Soil - Peak Values	Claims	Regional Background Geochemistry (Soil)
Copper (Cu)	60-80 ppm	League 28	54 ppm	League 15	25 ppm
Lead (Pb)	300-400 ppm	League 28	79 ppm	League 15	30 ppm
Zinc (Zn)	300-450 ppm	League 28	227 ppm	League 28	80 ppm

From table 04, League 15 & 28 contain soil and rock chemistry values greater than the reported regional background geochemistry values published by the Geological Survey of Canada in 1988 (Wengzynowski, April 1996). One point of interest is that the high values are associated with the CHS rock types (light green chlorite schists), which may represent the foot wall alteration mineralization proximal a mineralized horizon, particularly when these sediments are associated with aphyric rhyolites.

It is recommended that data collected between 1995 to 2004 be compiled to formulate diamond drill targets that will explore areas of high values of coincident geophysical, geochemical and geological data. Attention should be given to data surrounding the League 15 & 28 claims.

End of Report.



Appendix A - List of Personnel

Name	Position	Period
David Legault	Geologist	September 13-16, 2004
Anthony Peter	Field Assistant	September 13-16, 2004
Robert Savard	Field Assistant	September 13-16, 2004



Appendix B - Statement of Expenditures

I, Phu Van Bui, an agent for Yukon Zinc Corporation, #701-475 Howe Street, Vancouver, B.C., do solemnly declare that geological prospecting, soil sampling, and logistical support costs for undertakings carried out on the aforementioned claims (see Table 01) between the dates of September 13-16th, 2004 were as follows:

Assays/Geochemical Analysis	\$1,084.78
Helicopter	\$7,904.90
Communications/Telephone	\$183.93
Geological Consultants	\$3,810.06
Workers' Compensation	\$81.86
Total	\$13,065.53
Expenditures used for Assessment Filing:	\$13,000.00
Excess Expenditures not used for Assessment Filing:	\$65.53

I make this solemn declaration conscientiously believing it to be true and knowing that it is of the same force and effect as if made under oath and by virtue of the Canada Evidence Act.

Declared before me at Vancouver in the Province of British Columbia this 23rd of August 2005.

Respectfully Submitted,



Phu Van Bui, B.Sc., G.I.T.

Appendix C – Statement of Qualification

I, Phu Van Bui, resident of Vancouver, British Columbia, do certify that:

1. I graduated from the University of British Columbia in May 2004 with a B.Sc. in Earth and Ocean Sciences;
2. From November 2004, I have been registered as a Geologist In Training, G.I.T., with the Association of Professional Engineers and Geosciences of British Columbia (Reg. No. 143538);
3. From 2002 to present, I have been actively engaged in mineral exploration in British Columbia and the Yukon Territory and am presently employed with the Expatriate Group of Companies to which Yukon Zinc Corporation is part of;
4. I have personally participated in the logistical support during the fieldwork and analysis of data for the filed undertakings herein.

Respectfully Submitted,



Phu Van Bui, B.Sc., G.I.T.



Appendix D – Assay Certificates

Please note that there are more assay results presented here than reported in the League Property Assessment Report for work in 2004. These assay results belong to a set of League claims that lapsed and do not apply to this report.





ALS Chemex

EXCELLENCE IN ANALYTICAL CHEMISTRY

ALS Canada Ltd.

212 Brooksbank Avenue

North Vancouver BC V7J 2C1 Canada

Phone: 604 984 0221 Fax: 604 984 0218



EXPATRIATE RESOURCES LTD.

701-475 HOWE ST

VANCOUVER BC V6C 2B3



Finalized Date: 25-OCT-2004

Page: 1

Account: MPO

CERTIFICATE VA04070775

Project: 1637

P.O. No.:

This report is for 3 Soil samples submitted to our lab in Vancouver, BC, Canada on 12-OCT-2004.

The following have access to data associated with this certificate:

JASON DUNNING

ACCOUNTS PAYABLE

SAMPLE PREPARATION

ALS CODE	DESCRIPTION
WEI-21	Received Sample Weight
LOG-22	Sample login - Rcd w/o BarCode
SCR-41	Screen to -180um and save both

ANALYTICAL PROCEDURES

ALS CODE	DESCRIPTION	INSTRUMENT
Au-AA23	Au 30g FA-AA finish	AAS
ME-ICP61	27 element four acid ICP-AES	ICP-AES

To: EXPATRIATE RESOURCES LTD.
ATTN: JASON DUNNING
701-475 HOWE ST
VANCOUVER BC V6C 2B3

This is the Final Report and supersedes any preliminary report with this certificate number. Results apply to samples as submitted. All pages of this report have been checked and approved for release.

Signature:



ALS Chemex

EXCELLENCE IN ANALYTICAL CHEMISTRY

ALS Canada Ltd.

212 Brooksbank Avenue

North Vancouver BC V7J 2C1 Canada

Phone: 604 984 0221 Fax: 604 984 0218



EXPATRIATE RESOURCES LTD.

701-475 HOWE ST

VANCOUVER BC V6C 2B3



Page: 2 - A

Total # Pages: 2 (A - B)

Finalized Date: 25-OCT-2004

Account: MPO

Project: 1637

CERTIFICATE OF ANALYSIS VA04070775

Sample Description	Method Analyte Units LOR	WEI-21	Au-AA23	ME-ICP61	ME-ICP61	ME-ICP61	ME-ICP61	ME-ICP61	ME-ICP61	ME-ICP61	ME-ICP61	ME-ICP61	ME-ICP61	ME-ICP61	ME-ICP61	ME-ICP61
		Recvd Wt.	Au	Ag	Al	As	Ba	Be	Bi	Ca	Cd	Co	Cr	Cu	Fe	K
		kg	ppm	ppm	%	ppm	ppm	ppm	ppm	%	ppm	ppm	ppm	ppm	%	%
		0.02	0.005	0.5	0.01	5	10	0.5	2	0.01	0.5	1	1	1	0.01	0.01
M180852		0.32	0.008	0.5	7.02	44	920	1.9	<2	0.69	1.0	10	112	23	3.33	2.56
M243199		0.42	0.007	<0.5	9.03	26	1520	3.5	<2	0.51	<0.5	11	57	21	3.76	4.54
M243200		0.56	0.098	1.3	9.91	138	6410	3.5	<2	0.15	<0.5	7	297	54	3.88	4.46



ALS Chemex
EXCELLENCE IN ANALYTICAL CHEMISTRY

ALS Canada Ltd.
 212 Brooksbank Avenue
 North Vancouver BC V7J 2C1 Canada
 Phone: 604 984 0221 Fax: 604 984 0218



EXPATRIATE RESOURCES LTD.
 701-475 HOWE ST
 VANCOUVER BC V6C 2B3



Page: 2 - B
 Total # Pages: 2 (A - B)
 Finalized Date: 25-OCT-2004
 Account: MPO

Project: 1637

CERTIFICATE OF ANALYSIS VA04070775

Sample Description	Method Analyte Units LOR	ME-ICP61	ME-ICP61	ME-ICP61	ME-ICP61	ME-ICP61	ME-ICP61	ME-ICP61	ME-ICP61	ME-ICP61	ME-ICP61	ME-ICP61	ME-ICP61	ME-ICP61	ME-ICP61
		Mg	Mn	Mo	Na	Ni	P	Pb	S	Sb	Sr	Ti	V	W	Zn
		%	ppm	ppm	%	ppm	ppm	ppm	%	ppm	ppm	%	ppm	ppm	ppm
		0.01	5	1	0.01	1	10	2	0.01	5	1	0.01	1	10	2
M180852		0.81	375	1	0.74	28	480	145	0.07	<5	93	0.46	110	<10	277
M243199		0.49	1115	3	0.10	25	930	28	0.03	<5	29	0.29	93	<10	113
M243200		0.63	410	6	0.18	55	510	79	0.26	17	71	0.42	326	<10	108



ALS Chemex

EXCELLENCE IN ANALYTICAL CHEMISTRY

ALS Canada Ltd.

212 Brooksbank Avenue

North Vancouver BC V7J 2C1 Canada

Phone: 604 984 0221 Fax: 604 984 0218



EXPATRIATE RESOURCES LTD.

701-475 HOWE ST

VANCOUVER BC V6C 2B3



Page: 1

Finalized Date: 25-OCT-2004

Account: MPO

QC CERTIFICATE VA04070775

Project: 1637

P.O. No.:

This report is for 3 Soil samples submitted to our lab in Vancouver, BC, Canada on 12-OCT-2004.

The following have access to data associated with this certificate:

JASON DUNNING

ACCOUNTS PAYABLE

SAMPLE PREPARATION

ALS CODE	DESCRIPTION
WEI-21	Received Sample Weight
LOG-22	Sample login - Rcd w/o BarCode
SCR-41	Screen to -180um and save both

ANALYTICAL PROCEDURES

ALS CODE	DESCRIPTION	INSTRUMENT
Au-AA23	Au 30g FA-AA finish	AAS
ME-ICP61	27 element four acid ICP-AES	ICP-AES

To: **EXPATRIATE RESOURCES LTD.**
ATTN: JASON DUNNING
701-475 HOWE ST
VANCOUVER BC V6C 2B3

This is the Final Report and supersedes any preliminary report with this certificate number. Results apply to samples as submitted. All pages of this report have been checked and approved for release.

Signature: _____



ALS Chemex
EXCELLENCE IN ANALYTICAL CHEMISTRY
 ALS Canada Ltd.
 212 Brooksbank Avenue
 North Vancouver BC V7J 2C1 Canada
 Phone: 604 984 0221 Fax: 604 984 0218



EXPATRIATE RESOURCES LTD.
 701-475 HOWE ST
 VANCOUVER BC V6C 2B3



Page: 1
 Finalized Date: 25-OCT-2004
 Account: MPO

CERTIFICATE VA04070776

Project: 1637
 P.O. No.:
 This report is for 17 Rock samples submitted to our lab in Vancouver, BC, Canada on 12-OCT-2004.
 The following have access to data associated with this certificate:
 JASON DUNNING ACCOUNTS PAYABLE

SAMPLE PREPARATION

ALS CODE	DESCRIPTION
WEI-21	Received Sample Weight
LOG-22	Sample login - Rcd w/o BarCode
CRU-31	Fine crushing - 70% <2mm
SPL-21	Split sample - riffle splitter
PUL-31	Pulverize split to 85% <75 um

ANALYTICAL PROCEDURES

ALS CODE	DESCRIPTION	INSTRUMENT
ME-XRF05	Trace Level XRF Analysis	XRF
Au-AA23	Au 30g FA-AA finish	AAS
ME-ICP61	27 element four acid ICP-AES	ICP-AES
Hg-CV41	Trace Hg - cold vapor/AAS	FIMS

To: EXPATRIATE RESOURCES LTD.
 ATTN: ACCOUNTS PAYABLE
 701-475 HOWE ST
 VANCOUVER BC V6C 2B3

This is the Final Report and supersedes any preliminary report with this certificate number. Results apply to samples as submitted. All pages of this report have been checked and approved for release.

Signature:



ALS Chemex

EXCELLENCE IN ANALYTICAL CHEMISTRY

ALS Canada Ltd.
 212 Brooksbank Avenue
 North Vancouver BC V7J 2C1 Canada
 Phone: 604 984 0221 Fax: 604 984 0218



EXPATRIATE RESOURCES LTD.
 701-475 HOWE ST
 VANCOUVER BC V6C 2B3



Page: 2 - A
 Total # Pages: 2 (A - C)
 Finalized Date: 25-OCT-2004
 Account: MPO

Project: 1637

CERTIFICATE OF ANALYSIS VA04070776

Sample Description	Method Analyte Units LOR	WEI-21	Au-AA23	ME-ICP61	ME-ICP61	ME-ICP61	ME-ICP61	ME-ICP61	ME-ICP61	ME-ICP61	ME-ICP61	ME-ICP61	ME-ICP61	ME-ICP61	ME-ICP61	ME-ICP61
		Recvd Wt. kg	Au ppm	Ag ppm	Al %	As ppm	Ba ppm	Be ppm	Bi ppm	Ca %	Cd ppm	Co ppm	Cr ppm	Cu ppm	Fe %	K %
		0.02	0.005	0.5	0.01	5	10	0.5	2	0.01	0.5	1	1	1	0.01	0.01
M243023		1.58	<0.005	<0.5	1.62	5	3850	0.6	<2	0.01	<0.5	2	55	14	1.34	0.81
M243024		1.70	0.012	1.1	0.93	6	3570	0.7	<2	0.02	<0.5	<1	42	15	1.30	0.52
M243025		1.06	<0.005	<0.5	8.54	<5	400	<0.5	<2	5.89	<0.5	35	249	30	6.47	0.40
M243026		0.86	<0.005	<0.5	5.40	<5	700	2.8	<2	1.11	<0.5	2	28	4	1.15	2.72
M243027		2.58	<0.005	<0.5	8.84	11	1770	4.6	<2	0.01	<0.5	<1	27	2	0.86	4.73
M243028		2.30	0.015	0.9	4.98	35	1730	0.5	<2	0.02	<0.5	<1	15	4	1.18	5.57
M243029		1.34	<0.005	<0.5	9.18	<5	400	0.8	<2	6.20	1.4	37	234	26	6.68	0.91
M243030		1.20	<0.005	<0.5	8.55	<5	330	0.5	<2	5.90	<0.5	30	252	76	7.13	0.80
M243031		2.24	<0.005	<0.5	7.52	9	1700	2.3	<2	0.08	<0.5	2	23	3	2.04	4.89
M243032		1.48	0.008	<0.5	8.47	<5	300	<0.5	<2	5.56	<0.5	18	182	30	7.31	0.72
M243033		1.50	<0.005	<0.5	7.44	7	1590	2.4	<2	0.17	<0.5	2	26	2	1.67	5.91
M243034		1.10	<0.005	<0.5	7.85	21	1570	3.5	<2	0.96	<0.5	<1	15	4	1.63	4.87
M243035		0.68	<0.005	<0.5	8.05	6	1380	3.1	<2	0.12	<0.5	2	5	3	3.05	5.58
M243036		0.78	<0.005	<0.5	7.22	6	1070	3.2	<2	0.47	<0.5	2	29	2	3.46	4.52
M243037		1.20	<0.005	<0.5	7.85	<5	1330	3.9	<2	0.93	<0.5	4	5	3	2.32	4.52
M243038		1.46	<0.005	<0.5	4.84	8	560	1.9	<2	1.98	<0.5	2	2	7	18.25	2.89
M243039		1.62	<0.005	<0.5	8.78	9	1530	3.3	<2	0.50	<0.5	4	17	2	2.79	5.14



ALS Chemex

EXCELLENCE IN ANALYTICAL CHEMISTRY

ALS Canada Ltd.
 212 Brooksbank Avenue
 North Vancouver BC V7J 2C1 Canada
 Phone: 604 984 0221 Fax: 604 984 0218



EXPATRIATE RESOURCES LTD.
 701-475 HOWE ST
 VANCOUVER BC V6C 2B3



Page: 2 - B
 Total # Pages: 2 (A - C)
 Finalized Date: 25-OCT-2004
 Account: MPO

Project: 1637

CERTIFICATE OF ANALYSIS VA04070776

Sample Description	Method Analyte Units LOR	ME-ICP61	ME-ICP61	ME-ICP61	ME-ICP61	ME-ICP61	ME-ICP61	ME-ICP61	ME-ICP61	ME-ICP61	ME-ICP61	ME-ICP61	ME-ICP61	ME-ICP61	ME-ICP61	Hg-CV41
		Mg	Mn	Mo	Na	NI	P	Pb	S	Sb	Sr	Tl	V	W	Zn	Hg
		%	ppm	ppm	%	ppm	ppm	ppm	%	ppm	ppm	%	ppm	ppm	ppm	ppm
		0.01	5	1	0.01	1	10	2	0.01	5	1	0.01	1	10	2	0.01
M243023		0.14	95	<1	0.01	14	60	3	0.02	<5	4	0.07	80	<10	24	0.01
M243024		0.07	41	1	0.03	4	180	15	0.37	<5	31	0.05	47	<10	7	0.03
M243025		4.48	1135	<1	3.19	123	440	3	0.01	<5	108	0.62	175	<10	84	<0.01
M243026		0.28	285	<1	0.02	7	280	62	0.02	<5	52	0.12	8	<10	57	<0.01
M243027		0.16	48	3	0.24	5	350	23	0.09	<5	20	0.19	18	<10	22	0.01
M243028		0.02	27	1	0.09	1	160	339	0.35	6	35	0.10	7	<10	26	0.38
M243029		4.07	1155	<1	1.68	104	670	6	0.03	<5	203	0.84	228	<10	409	0.01
M243030		3.86	1060	<1	2.62	35	630	6	0.03	<5	184	1.02	262	<10	74	0.01
M243031		0.26	210	2	0.07	3	510	22	0.04	<5	46	0.18	14	<10	106	<0.01
M243032		4.66	1155	<1	2.44	39	650	7	0.06	<5	154	0.78	195	<10	68	<0.01
M243033		0.23	312	1	0.07	3	470	10	0.02	<5	35	0.20	13	<10	85	<0.01
M243034		0.39	383	1	0.23	2	510	14	0.03	<5	50	0.22	15	<10	65	<0.01
M243035		0.37	261	1	0.04	3	580	17	<0.01	<5	21	0.27	13	<10	31	<0.01
M243036		0.39	814	1	0.03	3	550	10	<0.01	<5	20	0.23	13	<10	59	<0.01
M243037		0.53	388	2	0.04	1	510	15	0.01	<5	39	0.25	15	<10	51	<0.01
M243038		0.63	5390	<1	0.01	<1	280	15	0.57	<5	49	0.14	9	<10	86	<0.01
M243039		0.47	448	1	0.05	3	630	19	<0.01	<5	37	0.27	17	<10	53	<0.01



ALS Chemex
EXCELLENCE IN ANALYTICAL CHEMISTRY

ALS Canada Ltd.
212 Brooksbank Avenue
North Vancouver BC V7J 2C1 Canada
Phone: 604 984 0221 Fax: 604 984 0218



EXPATRIATE RESOURCES LTD.
701-475 HOWE ST
VANCOUVER BC V6C 2B3



Page: 2 - C
Total # Pages: 2 (A - C)
Finalized Date: 25-OCT-2004
Account: MPO

Project: 1637

CERTIFICATE OF ANALYSIS VA04070776

Sample Description	Method Analyte Units LOR	ME-XRF05 Se ppm 2
M243023		<2
M243024		2
M243025		<2
M243026		<2
M243027		<2
M243028		<2
M243029		<2
M243030		<2
M243031		<2
M243032		<2
M243033		<2
M243034		<2
M243035		<2
M243036		<2
M243037		<2
M243038		<2
M243039		<2



ALS Chemex

EXCELLENCE IN ANALYTICAL CHEMISTRY

ALS Canada Ltd.

212 Brooksbank Avenue

North Vancouver BC V7J 2C1 Canada

Phone: 604 984 0221 Fax: 604 984 0218



EXPATRIATE RESOURCES LTD.

701-475 HOWE ST

VANCOUVER BC V6C 2B3



Page: 1

Finalized Date: 25-OCT-2004

Account: MPO

QC CERTIFICATE VA04070776

Project: 1637

P.O. No.:

This report is for 17 Rock samples submitted to our lab in Vancouver, BC, Canada on 12-OCT-2004.

The following have access to data associated with this certificate:

JASON DUNNING

ACCOUNTS PAYABLE

SAMPLE PREPARATION

ALS CODE	DESCRIPTION
WEI-21	Received Sample Weight
LOG-22	Sample login - Rcd w/o BarCode
CRU-31	Fine crushing - 70% <2mm
SPL-21	Split sample - riffle splitter
PUL-31	Pulverize split to 85% <75 um

ANALYTICAL PROCEDURES

ALS CODE	DESCRIPTION	INSTRUMENT
ME-XRF05	Trace Level XRF Analysis	XRF
Au-AA23	Au 30g FA-AA finish	AAS
ME-ICP61	27 element four acid ICP-AES	ICP-AES
Hg-CV41	Trace Hg - cold vapor/AAS	FIMS

To: **EXPATRIATE RESOURCES LTD.**
ATTN: ACCOUNTS PAYABLE
701-475 HOWE ST
VANCOUVER BC V6C 2B3

This is the Final Report and supersedes any preliminary report with this certificate number. Results apply to samples as submitted. All pages of this report have been checked and approved for release.

Signature: _____



ALS Chemex

EXCELLENCE IN ANALYTICAL CHEMISTRY

ALS Canada Ltd.
 212 Brooksbank Avenue
 North Vancouver BC V7J 2C1 Canada
 Phone: 604 984 0221 Fax: 604 984 0218



EXPATRIATE RESOURCES LTD.
 701-475 HOWE ST
 VANCOUVER BC V6C 2B3



Page: 2 - A
 Total # Pages: 3 (A - B)
 Finalized Date: 25-OCT-2004
 Account: MPO

Project: 1637

QC CERTIFICATE OF ANALYSIS VA04070776

Method Analyte Units LOR	Au-AA23 Au ppm	ME-ICP61 Ag ppm	ME-ICP61 Al %	ME-ICP61 As ppm	ME-ICP61 Ba ppm	ME-ICP61 Be ppm	ME-ICP61 Bi ppm	ME-ICP61 Ca %	ME-ICP61 Cd ppm	ME-ICP61 Co ppm	ME-ICP61 Cr ppm	ME-ICP61 Cu ppm	ME-ICP61 Fe %	ME-ICP61 K %	ME-ICP61 Mg %	
Sample Description	0.005	0.5	0.01	5	10	0.5	2	0.01	0.5	1	1	1	0.01	0.01	0.01	
STANDARDS																
BM-10	4.9	0.84	812	100	<0.5	185	0.14	118.0	349	1490	1755	10.90	0.05	0.25		
Target Range - Lower Bound	4.6	0.72	755	70		183	0.12	117.5	301	845	1600	9.24		0.20		
Upper Bound	6.7	0.90	933	110		228	0.17	144.5	370	1035	1955	11.30		0.27		
G2000																
G2000	3.8	5.04	484	2360	1.3	<2	0.59	7.2	23	99	301	3.82	1.25	0.73		
Target Range - Lower Bound	2.7	4.52	431	2110	0.8	<2	0.51	6.3	22	90	272	3.41	1.16	0.67		
Upper Bound	4.4	5.54	537	2610	2.0	4	0.65	8.9	29	112	334	4.19	1.44	0.85		
GXR-1																
Target Range - Lower Bound																
Upper Bound																
GXR-4																
Target Range - Lower Bound																
Upper Bound																
OXF28	0.821															
OXF28	0.810															
Target Range - Lower Bound	0.741															
Upper Bound	0.863															
OXX18	3.66															
OXX18	3.62															
Target Range - Lower Bound	3.22															
Upper Bound	3.71															
BLANKS																
BLANK	0.005															
BLANK																
BLANK	<0.005															
BLANK																
BLANK																
BLANK																
Target Range - Lower Bound	<0.005	<0.5	<0.01	<5	<10	<0.5	<2	<0.01	<0.5	<1	<1	<1	<0.01	<0.01	<0.01	
Upper Bound	0.010	1.0	0.02	10	20	1.0	4	0.02	1.0	2	2	2	0.02	0.02	0.02	



ALS Chemex
EXCELLENCE IN ANALYTICAL CHEMISTRY
 ALS Canada Ltd.
 212 Brooksbank Avenue
 North Vancouver BC V7J 2C1 Canada
 Phone: 604 984 0221 Fax: 604 984 0218

EXPATRIATE RESOURCES LTD.
 701-475 HOWE ST
 VANCOUVER BC V6C 2B3

Page: 2 - B
 Total # Pages: 3 (A - B)
 Finalized Date: 25-OCT-2004
 Account: MPO

Project: 1637

QC CERTIFICATE OF ANALYSIS VA04070776

Sample Description	Method	ME-ICP61	ME-ICP61	ME-ICP61	ME-ICP61	ME-ICP61	ME-ICP61	ME-ICP61	ME-ICP61	ME-ICP61	ME-ICP61	ME-ICP61	ME-ICP61	Hg-CV41	ME-XRF05	
	Analyte	Mn	Mo	Na	Ni	P	Pb	S	Sb	Sr	Tl	V	W	Zn	Hg	Se
	Units	ppm	ppm	%	ppm	ppm	ppm	%	ppm	ppm	%	ppm	ppm	ppm	ppm	ppm
	LOR	5	1	0.01	1	10	2	0.01	5	1	0.01	1	10	2	0.01	2
STANDARDS																
BM-10		2710	96	0.04	1460	60	2440	1.29	272	16	0.06	44	<10	3210		
Target Range - Lower Bound		2410	90		1205	40	1980	1.27	199					2890		
Upper Bound		2950	112		1475	70	2430	1.57	255					3530		
G2000															0.72	
G2000															0.76	
G2000		554	6	0.14	277	970	681	0.26	32	118	0.35	102	<10	1280		
Target Range - Lower Bound		508	4	0.13	256	840	601	0.23	24	103	0.31	96	<10	1130	0.68	
Upper Bound		630	8	0.18	316	1050	739	0.30	40	129	0.40	120	20	1385	0.81	
GXR-1																16
Target Range - Lower Bound																13
Upper Bound																21
GXR-4																5
Target Range - Lower Bound																3
Upper Bound																9
OXF28																
OXF28																
Target Range - Lower Bound																
Upper Bound																
OXX18																
OXX18																
Target Range - Lower Bound																
Upper Bound																
BLANKS																
BLANK																
BLANK																
BLANK																
BLANK																
BLANK																
BLANK		<5	<1	<0.01	<1	<10	<2	<0.01	<5	<1	<0.01	<1	<10	<2		<0.01
Target Range - Lower Bound		<5	<1	<0.01	<1	<10	<2	<0.01	<5	<1	<0.01	<1	<10	<2		<0.01
Upper Bound		10	2	0.02	2	20	4	0.02	10	2	0.02	2	20	4		0.02



ALS Chemex
EXCELLENCE IN ANALYTICAL CHEMISTRY
 ALS Canada Ltd.
 212 Brooksbank Avenue
 North Vancouver BC V7J 2C1 Canada
 Phone: 604 984 0221 Fax: 604 984 0218

EXPATRIATE RESOURCES LTD.
 701-475 HOWE ST
 VANCOUVER BC V6C 2B3

Page: 3 - B
 Total # pages: 3 (A - B)
 Finalized Date: 25-OCT-2004
 Account: MPO

Project: 1637

QC CERTIFICATE OF ANALYSIS VA04070776

Sample Description	Method Analyte Units LOR	ME-ICP61	ME-ICP61	ME-ICP61	ME-ICP61	ME-ICP61	ME-ICP61	ME-ICP61	ME-ICP61	ME-ICP61	ME-ICP61	ME-ICP61	ME-ICP61	Hg-CV41	ME-XRF05	
		Mn ppm	Mo ppm	Na %	Ni ppm	P ppm	Pb ppm	S %	Sb ppm	Sr ppm	Tl %	V ppm	W ppm	Zn ppm	Hg ppm	Se ppm
		5	1	0.01	1	10	2	0.01	5	1	0.01	1	10	2	0.01	2
ORIGINAL DUP Target Range - Lower Bound Upper Bound		DUPLICATES														
ORIGINAL DUP Target Range - Lower Bound Upper Bound																
ORIGINAL DUP Target Range - Lower Bound Upper Bound																
M243029 DUP Target Range - Lower Bound Upper Bound		1155 1180 1100 1235	<1 1 <1 2	1.68 1.76 1.61 1.83	104 114 102 116	670 710 640 740	6 5 2 10	0.03 0.04 <0.01 0.06	<5 <5 5 10	203 216 197 222	0.84 0.87 0.79 0.92	228 242 221 249	<10 <10 <10 20	409 431 395 445		
M243031 DUP Target Range - Lower Bound Upper Bound														<0.01 <0.01 <0.01 0.02		
M243032 DUP Target Range - Lower Bound Upper Bound															<2 <2 4	



ALS Chemex
EXCELLENCE IN ANALYTICAL CHEMISTRY
 ALS Canada Ltd.
 212 Brooksbank Avenue
 North Vancouver BC V7J 2C1 Canada
 Phone: 604 984 0221 Fax: 604 984 0218

EXPATRIATE RESOURCES LTD.
 701-475 HOWE ST
 VANCOUVER BC V6C 2B3

Page: 1
 Finalized Date: 8-NOV-2004
 Account: MPO

CERTIFICATE VA04076028

Project: 1637
 P.O. No.:
 This report is for 31 Soil samples submitted to our lab in Vancouver, BC, Canada on 1-NOV-2004.
 The following have access to data associated with this certificate:

JASON DUNNING	ACCOUNTS PAYABLE
---------------	------------------

SAMPLE PREPARATION

ALS CODE	DESCRIPTION
WEI-21	Received Sample Weight
LOG-22	Sample login - Rcd w/o BarCode
SCR-41	Screen to -180um and save both

ANALYTICAL PROCEDURES

ALS CODE	DESCRIPTION	INSTRUMENT
Au-AA23	Au 30g FA-AA finish	AAS
ME-ICP61	27 element four acid ICP-AES	ICP-AES

To: **EXPATRIATE RESOURCES LTD.**
ATTN: JASON DUNNING
701-475 HOWE ST
VANCOUVER BC V6C 2B3

This is the Final Report and supersedes any preliminary report with this certificate number. Results apply to samples as submitted. All pages of this report have been checked and approved for release.

Signature: 



ALS Chemex

EXCELLENCE IN ANALYTICAL CHEMISTRY

ALS Canada Ltd.
 212 Brooksbank Avenue
 North Vancouver BC V7J 2C1 Canada
 Phone: 604 984 0221 Fax: 604 984 0218



EXPATRIATE RESOURCES LTD.
 701-475 HOWE ST
 VANCOUVER BC V6C 2B3



Page: 2 - A
 Total # Pages: 2 (A - B)
 Finalized Date: 8-NOV-2004
 Account: MPO

Project: 1637

CERTIFICATE OF ANALYSIS VA04076028

Method Analyte Units LOR	WEI-21	Au-AA23	ME-ICP61	ME-ICP61	ME-ICP61	ME-ICP61	ME-ICP61	ME-ICP61	ME-ICP61	ME-ICP61	ME-ICP61	ME-ICP61	ME-ICP61	ME-ICP61	ME-ICP61	ME-ICP61
	Recvd Wt.	Au	Ag	Al	As	Ba	Be	Bi	Ca	Cd	Co	Cr	Cu	Fe	K	
Sample Description	kg	ppm	ppm	%	ppm	ppm	ppm	ppm	%	ppm	ppm	ppm	ppm	%	%	
	0.02	0.005	0.5	0.01	5	10	0.5	2	0.01	0.5	1	1	1	0.01	0.01	
M243246	0.24	<0.005	<0.5	6.40	9	1010	1.7	<2	1.64	0.6	6	32	20	2.63	2.29	
M243247	0.14	<0.005	<0.5	5.76	32	1010	1.4	<2	1.97	0.7	6	59	24	2.19	1.81	
M243248	0.22	<0.005	<0.5	5.23	17	1250	1.3	<2	1.46	1.2	7	70	37	2.11	1.40	
M243249	0.26	<0.005	<0.5	5.80	40	1290	1.4	<2	1.44	1.4	9	74	26	2.78	1.54	
M243250	0.34	<0.005	<0.5	5.37	10	1110	1.1	<2	0.87	0.6	4	62	11	2.28	1.47	
M243251	0.16	<0.005	<0.5	4.28	25	1120	0.8	<2	2.47	1.9	6	20	26	2.25	0.91	
M243252	0.26	<0.005	<0.5	4.74	19	950	1.2	<2	1.04	0.6	5	69	10	2.31	1.32	
M243253	0.48	0.005	<0.5	5.72	20	1290	1.7	<2	1.51	<0.5	8	69	23	3.17	1.48	
M243254	0.36	<0.005	<0.5	6.77	14	960	1.2	<2	1.60	0.6	5	25	28	2.00	1.84	
M243255	0.46	<0.005	<0.5	5.10	8	1100	1.2	<2	1.16	<0.5	6	95	9	2.30	1.32	
M243256	0.40	<0.005	<0.5	6.20	13	850	1.5	<2	1.16	<0.5	5	73	10	2.66	1.47	
M243257	0.14	<0.005	<0.5	6.78	10	780	1.1	<2	1.70	<0.5	3	11	17	1.53	1.82	
M243258	0.40	<0.005	<0.5	5.97	10	780	1.5	<2	1.23	<0.5	4	58	12	3.37	1.54	
M243259	0.34	<0.005	<0.5	4.89	9	1030	1.2	<2	1.26	<0.5	5	79	9	2.13	1.30	
M243260	0.18	<0.005	<0.5	5.76	<5	810	0.9	<2	2.69	0.5	4	11	15	1.73	1.54	
M243261	0.24	<0.005	0.7	4.01	11	1180	1.2	<2	3.71	1.2	5	37	76	1.92	0.97	
M243262	0.36	<0.005	<0.5	5.59	9	1050	1.4	<2	1.52	<0.5	11	58	21	2.43	1.46	
M243263	0.42	0.006	<0.5	6.32	11	750	2.0	<2	1.46	<0.5	9	70	10	3.42	1.48	
M243340	0.26	<0.005	<0.5	5.80	6	940	1.2	<2	0.68	<0.5	5	57	17	2.33	1.56	
M243341	0.24	<0.005	<0.5	6.91	8	960	1.2	<2	1.03	<0.5	9	47	14	2.15	1.94	
M243342	0.24	0.019	1.3	6.89	32	1730	1.8	<2	1.12	0.7	10	86	44	3.62	1.60	
M243343	0.22	<0.005	<0.5	4.61	24	1040	1.2	<2	0.81	<0.5	12	80	20	2.31	1.32	
M243344	0.24	<0.005	<0.5	6.36	52	830	1.3	<2	0.46	<0.5	6	75	11	3.28	1.65	
M243345	0.48	<0.005	<0.5	6.24	26	910	1.7	<2	0.96	<0.5	9	70	16	3.05	1.64	
M243346	0.26	<0.005	<0.5	7.00	21	950	2.0	<2	1.18	<0.5	11	66	16	3.21	1.93	
M243347	0.22	<0.005	<0.5	6.70	11	860	1.8	<2	1.17	<0.5	8	66	11	2.84	1.79	
M243348	0.20	<0.005	<0.5	6.59	12	870	1.6	<2	1.18	<0.5	9	75	13	2.98	1.84	
M243349	0.28	<0.005	<0.5	6.86	10	890	1.4	<2	1.22	<0.5	5	58	12	2.43	1.88	
M243350	0.30	<0.005	<0.5	6.45	37	820	1.5	<2	1.23	<0.5	15	101	22	4.07	1.52	
M243433	0.24	<0.005	<0.5	6.46	16	900	1.4	<2	0.80	<0.5	6	66	7	2.24	1.90	
M243434	0.22	<0.005	<0.5	7.04	53	880	1.9	<2	1.14	<0.5	17	86	25	4.52	1.88	



ALS Chemex

EXCELLENCE IN ANALYTICAL CHEMISTRY

ALS Canada Ltd.
 212 Brooksbank Avenue
 North Vancouver BC V7J 2C1 Canada
 Phone: 604 984 0221 Fax: 604 984 0218



EXPATRIATE RESOURCES LTD.
 701-475 HOWE ST
 VANCOUVER BC V6C 2B3



Page: 2 - B
 Total # Pages: 2 (A - B)
 Finalized Date: 8-NOV-2004
 Account: MPO

Project: 1637

CERTIFICATE OF ANALYSIS VA04076028

Sample Description	Method	ME-ICP61	ME-ICP61	ME-ICP61	ME-ICP61	ME-ICP61	ME-ICP61	ME-ICP61	ME-ICP61	ME-ICP61	ME-ICP61	ME-ICP61	ME-ICP61	ME-ICP61	ME-ICP61
	Analyte	Mg	Mn	Mo	Na	Ni	P	Pb	S	Sb	Sr	Tl	V	W	Zn
Units	%	ppm	ppm	%	ppm	ppm	ppm	ppm	%	ppm	ppm	%	ppm	ppm	ppm
LOR	0.01	5	1	0.01	1	10	2	0.01	5	1	0.01	1	10	2	
M243246	0.55	946	2	1.04	14	970	16	0.07	<5	229	0.21	58	<10	94	
M243247	0.64	455	1	1.00	24	830	12	0.09	<5	251	0.24	85	<10	84	
M243248	0.78	348	1	0.83	32	1070	14	0.09	<5	168	0.30	116	<10	126	
M243249	0.87	436	3	0.94	34	1370	12	0.12	<5	169	0.35	118	<10	172	
M243250	0.67	300	1	1.10	17	620	10	0.01	<5	159	0.37	104	<10	60	
M243251	0.48	2060	3	1.14	14	1420	9	0.38	<5	310	0.17	43	<10	79	
M243252	0.71	350	1	0.99	27	780	17	0.02	<5	128	0.37	97	10	74	
M243253	0.85	587	1	0.99	25	890	22	0.04	<5	174	0.41	110	<10	76	
M243254	0.58	452	2	2.17	11	620	18	0.02	<5	442	0.27	56	<10	70	
M243255	0.83	544	1	0.90	23	1190	7	0.03	<5	144	0.42	106	<10	78	
M243256	0.74	507	1	1.42	19	390	11	0.01	<5	162	0.61	128	<10	66	
M243257	0.51	337	2	2.40	4	880	3	0.03	<5	508	0.25	39	<10	38	
M243258	0.81	414	2	1.46	16	510	12	0.01	<5	166	0.65	130	10	59	
M243259	0.87	731	<1	1.06	25	1120	13	0.02	<5	152	0.37	98	<10	82	
M243260	0.62	401	1	2.06	8	730	2	0.07	<5	501	0.22	46	<10	46	
M243261	0.56	736	1	0.87	40	1230	9	0.13	<5	259	0.21	56	<10	52	
M243262	0.72	737	1	1.35	25	760	18	0.04	<5	256	0.30	84	<10	67	
M243263	1.01	377	1	1.46	25	790	24	<0.01	<5	156	0.56	113	<10	75	
M243340	0.61	299	<1	1.07	17	940	17	0.02	<5	166	0.35	114	<10	78	
M243341	0.66	1060	2	1.78	14	780	16	0.02	<5	315	0.34	94	<10	86	
M243342	0.84	1280	3	0.75	49	1800	19	0.09	<5	164	0.31	152	<10	155	
M243343	0.70	525	1	0.87	40	1020	14	0.01	<5	126	0.37	99	<10	75	
M243344	0.56	273	1	0.98	19	970	19	0.02	<5	95	0.49	146	<10	49	
M243345	0.86	394	1	1.22	25	930	15	0.01	<5	128	0.47	116	<10	64	
M243346	0.90	477	1	1.47	21	870	17	<0.01	<5	153	0.59	127	<10	66	
M243347	0.87	343	1	1.55	20	780	22	0.01	<5	157	0.57	117	<10	58	
M243348	0.87	411	1	1.37	18	840	16	0.01	<5	159	0.54	122	<10	63	
M243349	0.73	350	1	1.64	13	440	14	0.01	<5	262	0.47	104	<10	55	
M243350	1.29	530	<1	1.20	35	910	22	0.03	<5	137	0.65	150	<10	97	
M243433	0.64	301	1	1.24	12	550	19	0.02	<5	132	0.76	142	<10	44	
M243434	1.28	741	1	1.23	34	1080	25	0.01	<5	113	0.65	152	<10	100	



ALS Chemex

EXCELLENCE IN ANALYTICAL CHEMISTRY

ALS Canada Ltd.

212 Brooksbank Avenue

North Vancouver BC V7J 2C1 Canada

Phone: 604 984 0221 Fax: 604 984 0218



EXPATRIATE RESOURCES LTD.

701-475 HOWE ST

VANCOUVER BC V6C 2B3



Page: 1

Finalized Date: 8-NOV-2004

Account: MPO

QC CERTIFICATE VA04076028

Project: 1637

P.O. No.:

This report is for 31 Soil samples submitted to our lab in Vancouver, BC, Canada on 1-NOV-2004.

The following have access to data associated with this certificate:

JASON DUNNING

ACCOUNTS PAYABLE

SAMPLE PREPARATION

ALS CODE	DESCRIPTION
WEI-21	Received Sample Weight
LOG-22	Sample login - Rcd w/o BarCode
SCR-41	Screen to -180um and save both

ANALYTICAL PROCEDURES

ALS CODE	DESCRIPTION	INSTRUMENT
Au-AA23	Au 30g FA-AA finish	AAS
ME-ICP61	27 element four acid ICP-AES	ICP-AES

To: **EXPATRIATE RESOURCES LTD.**
ATTN: JASON DUNNING
701-475 HOWE ST
VANCOUVER BC V6C 2B3

This is the Final Report and supersedes any preliminary report with this certificate number. Results apply to samples as submitted. All pages of this report have been checked and approved for release.

Signature:



ALS Chemex

EXCELLENCE IN ANALYTICAL CHEMISTRY

ALS Canada Ltd.
 212 Brooksbank Avenue
 North Vancouver BC V7J 2C1 Canada
 Phone: 604 984 0221 Fax: 604 984 0218



EXPATRIATE RESOURCES LTD.
 701-475 HOWE ST
 VANCOUVER BC V6C 2B3



Page: 2 - A
 Total # Pages: 3 (A - B)
 Finalized Date: 8-NOV-2004
 Account: MPO

Project: 1637

QC CERTIFICATE OF ANALYSIS VA04076028

Method Analyte Units LOR	Au-AA23	ME-ICP61	ME-ICP61	ME-ICP61	ME-ICP61	ME-ICP61	ME-ICP61	ME-ICP61	ME-ICP61	ME-ICP61	ME-ICP61	ME-ICP61	ME-ICP61	ME-ICP61	ME-ICP61	ME-ICP61
Sample Description	Au ppm	Ag ppm	Al %	As ppm	Ba ppm	Be ppm	Bi ppm	Ca %	Cd ppm	Co ppm	Cr ppm	Cu ppm	Fe %	K %	Mg %	
	0.005	0.5	0.01	5	10	0.5	2	0.01	0.5	1	1	1	0.01	0.01	0.01	
STANDARDS																
BM-10		5.4	0.83	814	100	<0.5	185	0.14	156.0	340	1495	1695	10.40	0.05	0.26	
BM-10		4.9	0.76	818	90	<0.5	186	0.16	121.5	345	1435	1615	10.20	0.04	0.26	
Target Range - Lower Bound		4.6	0.72	755	70		183	0.12	117.5	301	845	1600	9.24		0.20	
Upper Bound		6.7	0.90	833	110		228	0.17	144.5	370	1035	1955	11.30		0.27	
G2000		4.1	5.11	486	2430	1.3	2	0.58	6.9	22	102	307	3.82	1.31	0.75	
G2000		3.9	4.96	475	2300	1.3	<2	0.55	6.5	24	96	302	3.70	1.26	0.73	
Target Range - Lower Bound		2.7	4.52	431	2110	0.8	<2	0.51	6.3	22	90	272	3.41	1.16	0.67	
Upper Bound		4.4	5.54	537	2810	2.0	4	0.65	8.9	29	112	334	4.19	1.44	0.85	
OXF28	0.788															
OXF28	0.833															
Target Range - Lower Bound	0.741															
Upper Bound	0.863															
OXX18	3.56															
OXX18	3.54															
Target Range - Lower Bound	3.22															
Upper Bound	3.71															
BLANKS																
BLANK		<0.5	<0.01	<5	<10	<0.5	<2	<0.01	<0.5	<1	<1	<1	<0.01	<0.01	<0.01	
BLANK		<0.5	<0.01	<5	<10	<0.5	<2	<0.01	<0.5	<1	<1	<1	<0.01	<0.01	<0.01	
BLANK	<0.005															
BLANK	<0.005															
Target Range - Lower Bound	<0.005	<0.5	<0.01	<5	<10	<0.5	<2	<0.01	<0.5	<1	<1	<1	<0.01	<0.01	<0.01	
Upper Bound	0.010	1.0	0.02	10	20	1.0	4	0.02	1.0	2	2	2	0.02	0.02	0.02	
DUPLICATES																
ORIGINAL		<0.5	6.12	17	80	1.8	<2	0.50	0.5	16	117	51	4.52	2.50	1.06	
DUP		<0.5	5.81	5	110	1.6	<2	0.48	0.6	14	110	46	4.27	2.28	1.01	
Target Range - Lower Bound		<0.5	5.65	<5	70	0.6	<2	0.45	<0.5	12	106	44	4.16	2.25	0.96	
Upper Bound		1.0	6.28	22	120	2.8	4	0.53	1.0	18	121	53	4.63	2.53	1.11	



ALS Chemex

EXCELLENCE IN ANALYTICAL CHEMISTRY

ALS Canada Ltd.
 212 Brooksbank Avenue
 North Vancouver BC V7J 2C1 Canada
 Phone: 604 984 0221 Fax: 604 984 0218



EXPATRIATE RESOURCES LTD.
 701-475 HOWE ST
 VANCOUVER BC V6C 2B3



Page: 2 - B
 Total # Pages: 3 (A - B)
 Finalized Date: 8-NOV-2004
 Account: MPO

Project: 1637

QC CERTIFICATE OF ANALYSIS VA04076028

Sample Description	Method Analyte Units LOR	ME-ICP61	ME-ICP61	ME-ICP61	ME-ICP61	ME-ICP61	ME-ICP61	ME-ICP61	ME-ICP61	ME-ICP61	ME-ICP61	ME-ICP61	ME-ICP61	
		Mn	Mo	Na	Ni	P	Pb	S	Sb	Sr	Tl	V	W	Zn
		ppm	ppm	%	ppm	ppm	ppm	%	ppm	ppm	%	ppm	ppm	ppm
		5	1	0.01	1	10	2	0.01	5	1	0.01	1	10	2
STANDARDS														
BM-10		2750	93	0.04	1405	60	2310	1.50	266	15	0.05	42	<10	3130
BM-10		2630	92	0.04	1435	50	2290	1.41	259	15	0.06	44	<10	3220
Target Range - Lower Bound		2410	90		1205	40	1980	1.27	199					2890
Upper Bound		2950	112		1475	70	2430	1.57	255					3530
G2000		574	5	0.15	279	990	660	0.27	33	120	0.36	104	10	1265
G2000		558	6	0.13	271	960	669	0.26	33	117	0.34	101	10	1220
Target Range - Lower Bound		506	4	0.13	256	840	601	0.23	24	103	0.31	96	<10	1130
Upper Bound		630	8	0.18	316	1050	739	0.30	40	129	0.40	120	20	1385
OXF28														
OXF28														
Target Range - Lower Bound														
Upper Bound														
OXX18														
OXX18														
Target Range - Lower Bound														
Upper Bound														
BLANKS														
BLANK		<5	<1	<0.01	1	<10	<2	<0.01	<5	1	<0.01	<1	<10	<2
BLANK		<5	<1	<0.01	1	<10	<2	<0.01	<5	<1	<0.01	<1	<10	<2
BLANK														
BLANK														
Target Range - Lower Bound		<5	<1	<0.01	<1	<10	<2	<0.01	<5	<1	<0.01	<1	<10	<2
Upper Bound		10	2	0.02	2	20	4	0.02	10	2	0.02	2	20	4
DUPLICATES														
ORIGINAL		168	13	0.70	66	450	8	2.75	<5	53	0.38	128	<10	135
DUP		159	13	0.68	58	430	11	2.60	<5	52	0.36	117	<10	118
Target Range - Lower Bound		145	10	0.64	57	400	5	2.52	<5	48	0.33	114	<10	116
Upper Bound		182	16	0.74	67	480	14	2.83	10	57	0.41	131	20	137



ALS Chemex

EXCELLENCE IN ANALYTICAL CHEMISTRY

ALS Canada Ltd.
 212 Brooksbank Avenue
 North Vancouver BC V7J 2C1 Canada
 Phone: 604 984 0221 Fax: 604 984 0218



EXPATRIATE RESOURCES LTD.
 701-475 HOWE ST
 VANCOUVER BC V6C 2B3



Page: 3 - B
 Total # Pages: 3 (A - B)
 Finalized Date: 8-NOV-2004
 Account: MPO

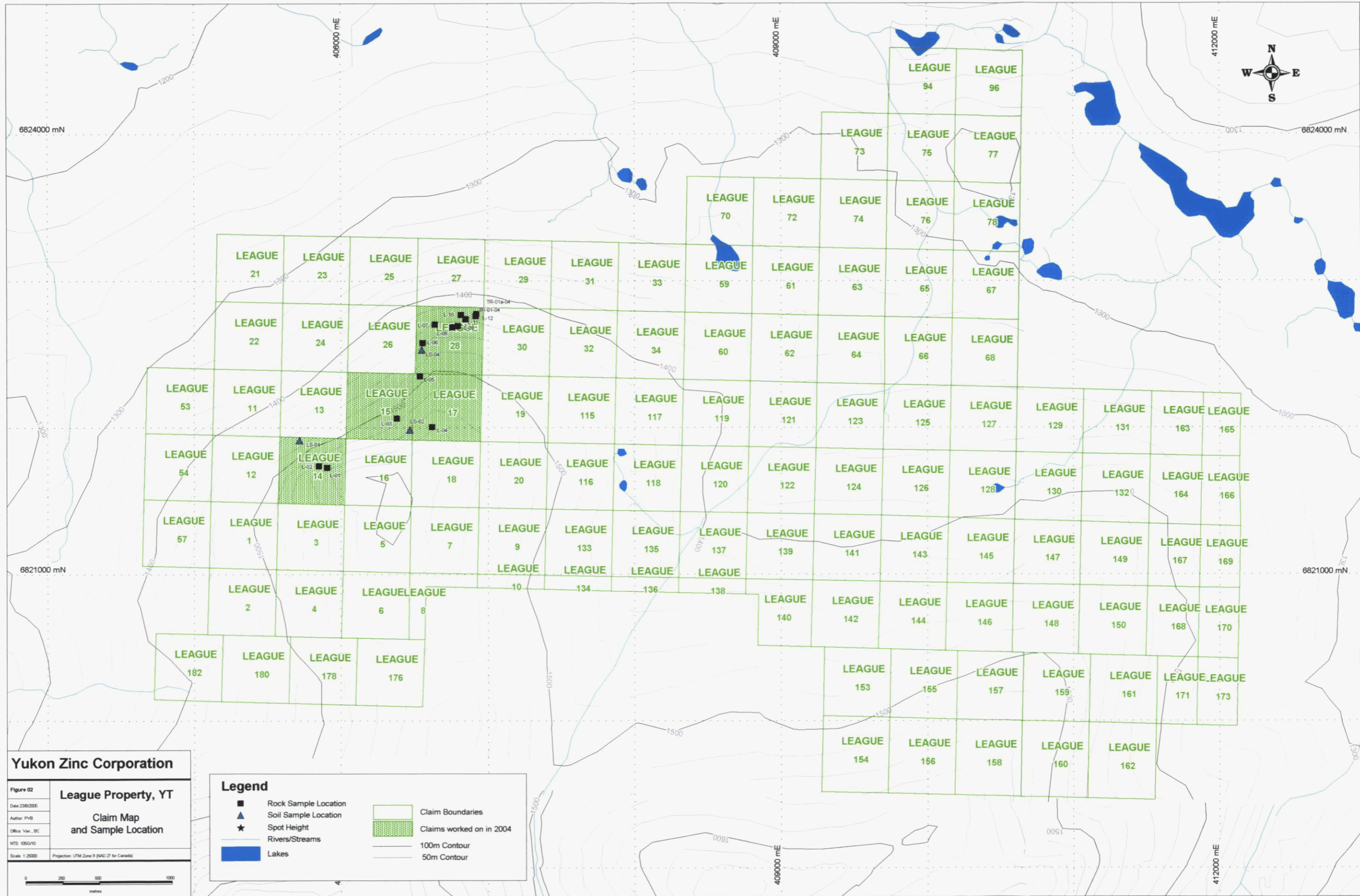
Project: 1637

QC CERTIFICATE OF ANALYSIS VA04076028

Sample Description	Method	ME-ICP61	ME-ICP61	ME-ICP61	ME-ICP61	ME-ICP61	ME-ICP61	ME-ICP61	ME-ICP61	ME-ICP61	ME-ICP61	ME-ICP61	ME-ICP61	ME-ICP61
	Analyte Units	Mn ppm	Mo ppm	Na %	NI ppm	P ppm	Pb ppm	S %	Sb ppm	Sr ppm	Tl %	V ppm	W ppm	Zn ppm
	LOR	5	1	0.01	1	10	2	0.01	5	1	0.01	1	10	2
ORIGINAL DUP Target Range - Lower Bound Upper Bound		DUPLICATES												
ORIGINAL DUP Target Range - Lower Bound Upper Bound														
ORIGINAL DUP Target Range - Lower Bound Upper Bound														
ORIGINAL DUP Target Range - Lower Bound Upper Bound														
ORIGINAL DUP Target Range - Lower Bound Upper Bound														
M243347 DUP Target Range - Lower Bound Upper Bound		343 340 314 369	1 1 ≤1 2	1.55 1.51 1.43 1.63	20 17 16 21	780 780 720 840	22 14 13 23	0.01 0.01 ≤0.01 0.02	<5 <5 <5 10	157 152 145 164	0.57 0.58 0.53 0.62	117 118 110 125	<10 <10 <10 20	58 58 51 65
M243433 DUP Target Range - Lower Bound Upper Bound														



Figure 01. Location Map of the League Property.



Yukon Zinc Corporation

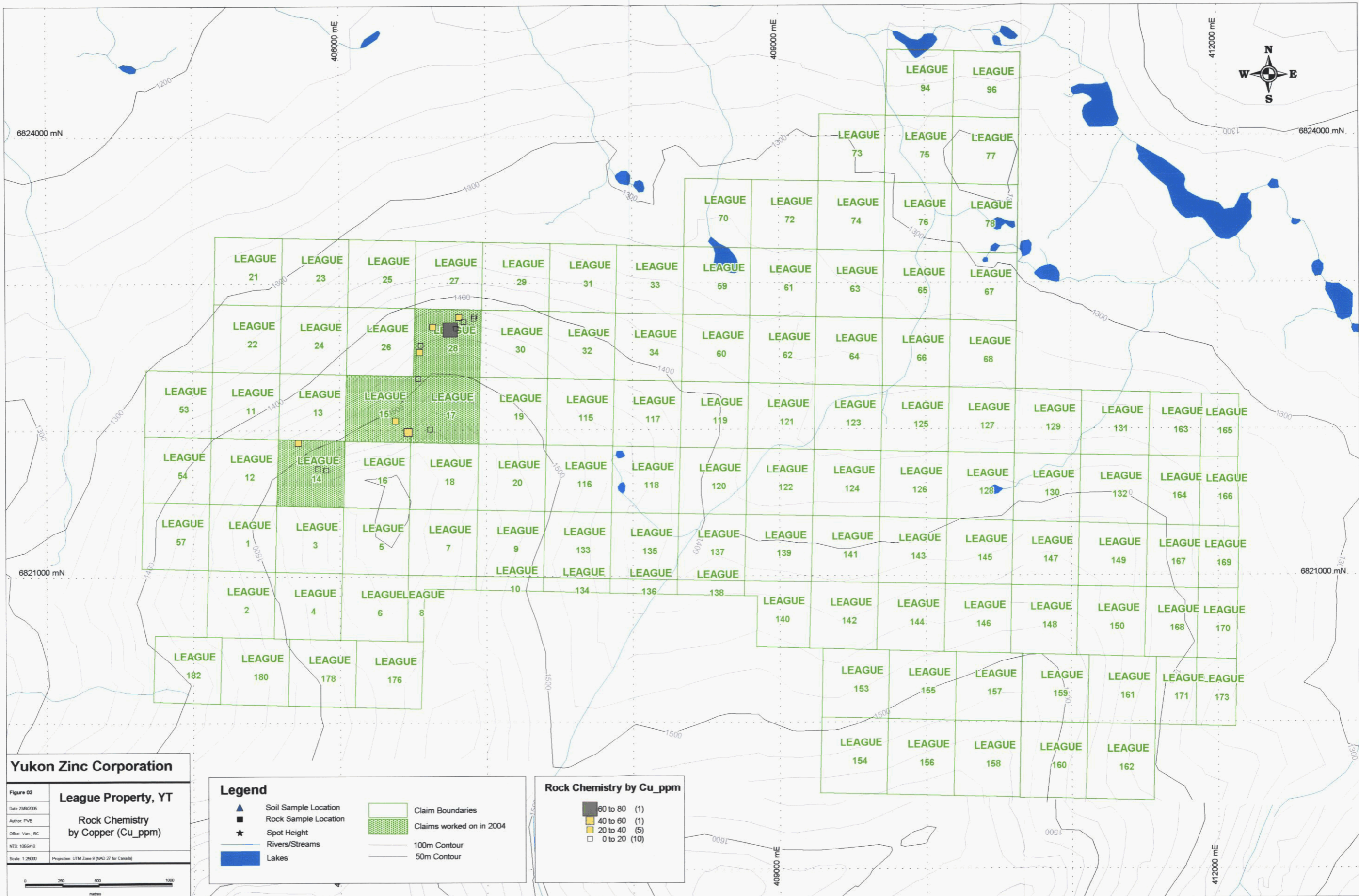
Figure 02
 Date: 2/6/2005
 Author: PVB
 Office: Van., BC
 NTS: 1056/10
 Scale: 1:25000
 Projection: UTM Zone 9 (NAD 27 for Canada)

League Property, YT
Claim Map
and Sample Location

Legend

- Rock Sample Location
- ▲ Soil Sample Location
- ★ Spot Height
- Rivers/Streams
- Lakes
- Claim Boundaries
- ▨ Claims worked on in 2004
- 100m Contour
- 50m Contour





Yukon Zinc Corporation

Figure 03
 Date: 23/6/2006
 Author: PVE
 Office: Van., BC
 NTS: 1066/10
 Scale: 1:25000
 Projection: UTM Zone 9 (NAD 27 for Canada)

League Property, YT
Rock Chemistry
by Copper (Cu_ppm)

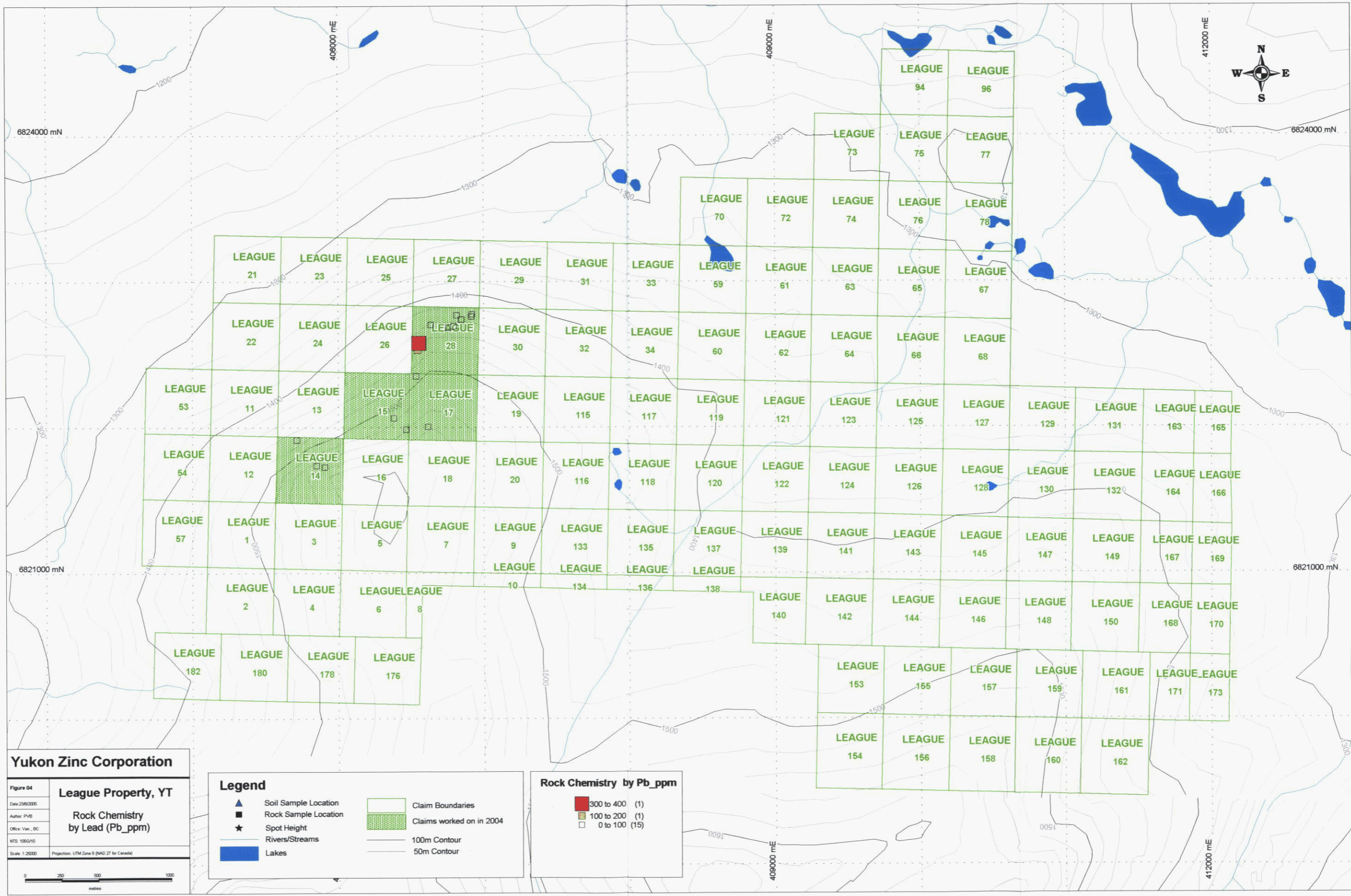


Legend

▲	Soil Sample Location	□	Claim Boundaries
■	Rock Sample Location	■	Claims worked on in 2004
★	Spot Height	—	100m Contour
—	Rivers/Streams	—	50m Contour
■	Lakes		

Rock Chemistry by Cu_ppm

■	60 to 80	(1)
■	40 to 60	(1)
■	20 to 40	(5)
□	0 to 20	(10)



Yukon Zinc Corporation

Figure 04
 Date: 23/6/2006
 Author: PVB
 Office: Vancouver, BC
 NTS: 1065/10
 Scale: 1:25000
 Projection: UTM Zone 9 (NAD 27 for Canada)

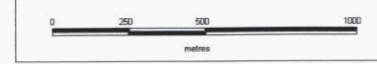
League Property, YT
Rock Chemistry by Lead (Pb_ppm)

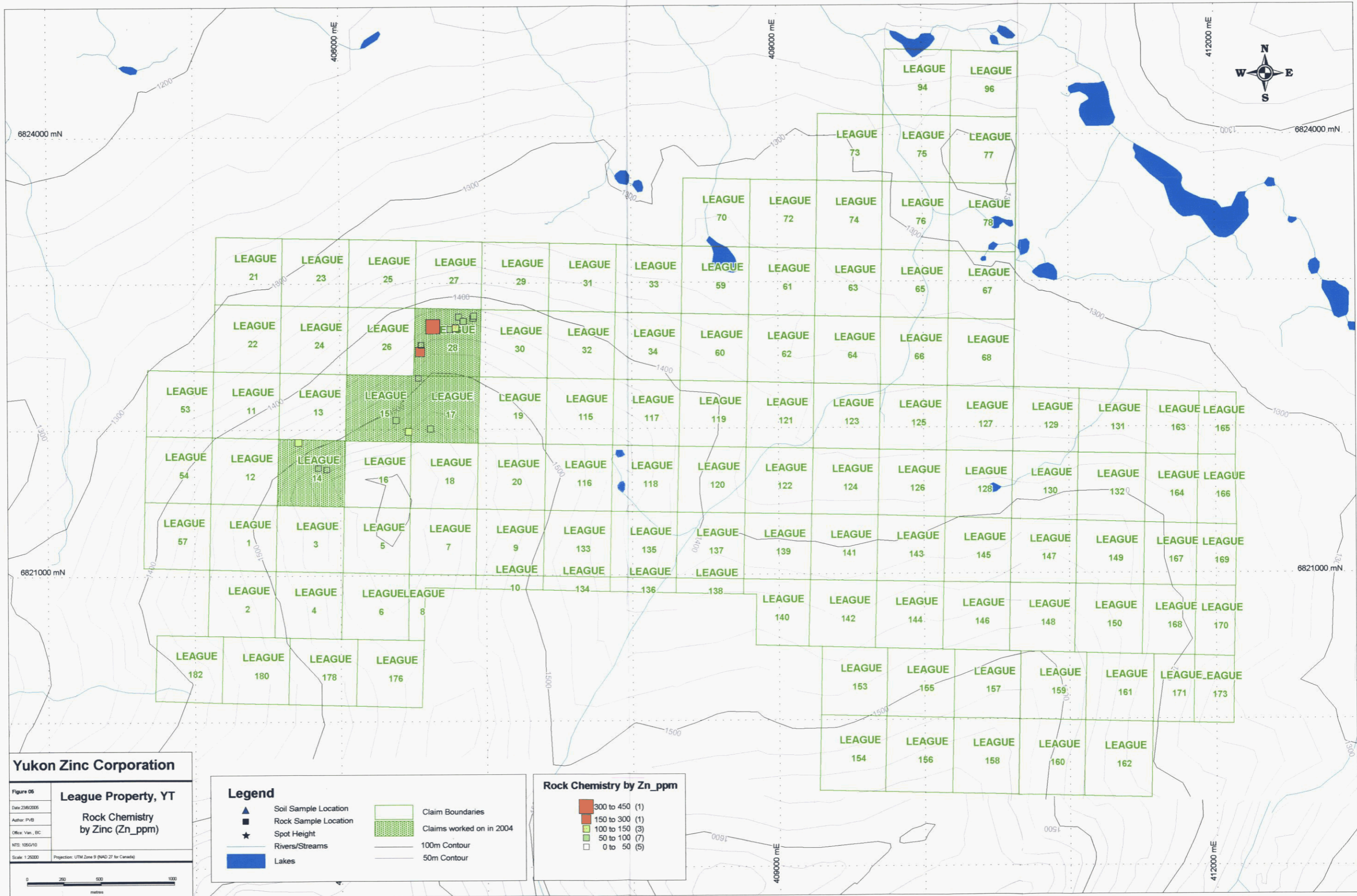
Legend

- ▲ Soil Sample Location
- Rock Sample Location
- ★ Spot Height
- Rivers/Streams
- Lakes
- Claim Boundaries
- Claims worked on in 2004
- 100m Contour
- 50m Contour

Rock Chemistry by Pb_ppm

- 300 to 400 (1)
- 100 to 200 (1)
- 0 to 100 (15)





Yukon Zinc Corporation

Figure 06
 Date: 23/02/05
 Author: PVB
 Office: Van., BC
 NTS: 105G/10
 Scale: 1:25000
 Projection: UTM Zone 9 (NAD 27 for Canada)

League Property, YT
Rock Chemistry
by Zinc (Zn_ppm)

Legend

- ▲ Soil Sample Location
- Rock Sample Location
- ★ Spot Height
- Rivers/Streams
- Lakes
- Claim Boundaries
- ▨ Claims worked on in 2004
- 100m Contour
- 50m Contour

Rock Chemistry by Zn_ppm

- 300 to 450 (1)
- 150 to 300 (1)
- 100 to 150 (3)
- 50 to 100 (7)
- 0 to 50 (5)

