

GEOCHEMICAL REPORT

OG 1-12 CLAIMS

GRANT # YC25491-YC25502

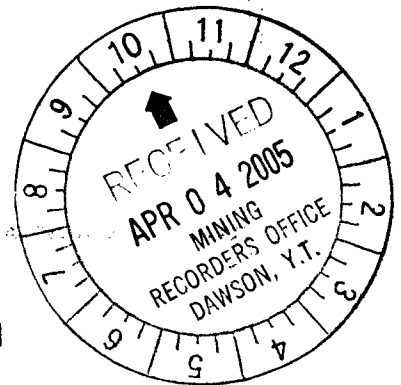
094501

NTS # 116 B \ 13

LAT: 64° 49' N

LONG: 139° 58' W

DAWSON MINING DISTRICT



AUTHOR OF REPORT SHAWN RYAN

WORK PERFORMED AUGUST 19, 2004

DATE OF REPORT MARCH 31, 2005

This report has been examined by
the Geological Evaluation Unit
under Section 53 (4) Yukon Quartz
Mining Act and is allowed as
representation work in the amount
of \$ 3600.

M. B. B.

fw Regional Manager, Exploration and
Geological Services for Commissioner
of Yukon Territory.

Costs associated with this report have been
approved to the amount of \$ 3,600
for assessment credit under Certificate of
WORK NO. 200550

K. Leroy

Mining Recorder
Dawson City Mining District

Table of Content

Summary	P.3
1.0 Introduction	P.3
2.0 Locations and Access	P.3
3.0 Property Description	P.3
4.0 Physiography	P.3
5.1 Regional Geology	P.4
5.2 Property Geology	P.4
6.0 Work Methods	P.5
6.1 Soil Work	P.5
7.0 Interpretation	P.5
8.0 Recommendation	P.5
9.0 References Cited	P.5
10.0 Qualification	P.6
11.0 Cost	P.6
Claim Location Map	P.7
Zinc Soil Anomaly Map	Figure 1
Lead Soil Anomaly Map	Figure 2
Sample Location Map	Figure 3
Assay Data	Appendix
GPS Soil Location Data	Appendix

SUMMARY

The Og Property was visited for one day during the 2004 field season. A three men crew performed a small soil survey and I prospected the area. There was a total of 50 soils taken. The soil survey revealed very anomalous values in zinc, lead, copper and silver.

1.0 INTRODUCTION

The Og claims were staked to cover an old Hudson Bay Showing. Hudson Bay Company held the claims for the last 25 years and has just dropped the claims during the last couple of years. I re staked the claims with the intention of trying a gravity survey over the known mineralized area.

2.0 LOCATIONS AND ACCESS

The Og claims are located 90 kilometers north northwest of Dawson City. The claims can be reached via helicopter from Dawson City.

3.0 PROPERTY DESCRIPTION

The Og Property consists of 12 full quartz claims all recorded and registered in the Dawson Mining District.

4.0 PHYSIOGRAPHY

The Og Property is located in the tundra between the elevation of 4000 ft and 4600 ft.

5.0 REGIONAL AND PROPERTY GEOLOGY

5.1 REGIONAL GEOLOGY (Excerpts from GSC Open file 2849)

The southern Ogilvie Mountains lie within the northwestern extremity of the the Cordilleran fold-thrust belts. The Dawson Thrust marks a major tectonostratigraphic boundary between carbonate-dominated platform rocks to the north (the Mackenzie Platform) and generally finer clastics to the south (Selwyn Basin). All rock units were displaced northward in middle Jurassic to Cretaceous time and most have been tectonically thickened. The Sewyn Basin strata were thrust northward in three overlapping structural sheets. Subcircular syenitic intrusions of about 90-110 Ma age cut these thrusts.

The Mackenzie Platform in the southern Ogilvies consists of thickly bedded Cambrian to Devonian dolostone near Mount Harper. Beneath this Paleozoic carbonates a tripartite succession of Middle and Upper Proterozoic strata are well exposed in an erosional inlier (the Coal Creek Dome of Green, 1972, termed the Coal Creek Inlier). In descending order, the Mount Harper Group consists of thick volcanic and carbonate units separated by thinner or wedge-shaped clastic units; the Fifteenmile group, an informal name, consists of stromatolitic and cherty dolostones; and the Wernecke Supergroup consists of fine-grained clastic rocks. These three groups are bounded by unconformities whose ages can be estimated from spatially related intrusions (Wernecke breccias; about 1280 Ma, as in Parrish and Bell (1987) and the ca. 750 Ma Mount Harper Group volcanics). They were deposited during periods of repeated extension, including late Proterozoic continental rifting. These middle to late Proterozoic events formed structural features, which to some extent controlled, and are reflected in, the early Paleozoic evolution of the Cordilleran miogeocline.

5.2 PROPERTY GEOLOGY

The Og claims are sitting in between two Wernecke Breccia bodies and lying in Gillespie Lake Group limestone.

6.0 WORK PROGRAM / METHODS

6.1 SOIL WORK

A one-day soil program was conducted on the Og Claims. In all there was 50 soil collected using one-meter soil augers. Soils were collected at an average depth of 60-70 centimeters, all samples were placed in paper kraft soil bags with sample site marked in the field with orange flagging. All sample sites were GPS as to exact ground position and GPS numbers were downloaded into excel format. A area of 800 meters by 300 meters was covered (25.5 Hectares), samples were collected on line spacing of 100 meter and station spacing of 50 meters.

7.0 INTERPRETATION

The soil sample indicated a lead-zinc soil anomaly 1000 meters by 400 meters centered on Og claim number four. Values peaked over the 10,000 ppm in both lead and zinc. The soil anomaly is high lighting Hudson Bay old showing.

8.0 RECOMMENDATION

I would recommend a larger soil program covering all claims followed with a ground gravity and magnetic survey.

9.0 REFERENCES CITED

Thompson R.I. GSC Open File 3223, Geological Compilation (1-250,000) of Dawson Map Area (116B,C) (northeast of Tintina Trench)

10.0 QUALIFICATION

I Shawn Ryan located in Dawson City, Yukon work as a professional prospector. I run a small exploration company located in Dawson city.

I have worked in the exploration business for the last 23 years. I worked the first 15 years as a contractor working on numerous project in the NWT, Ontario, Quebec and the Yukon. I have worked for the last 8 years as a local prospector for myself.

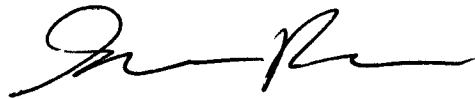
I have being train to run various geophysical instrument and surveys such as magnetic surveys, max-min surveys, induce polarity surveys and Vlf surveys.

I have overseen the whole OG Project and was the party chief in charge.

I own 100 % of the OG claims.

Dated this 1 of April, 2005 in Dawson City, Yukon.

Respectfully submitted



Shawn Ryan

11.0 Cost

Assay 50 soils @ \$16.20 per sample	\$810.00
4 men @ \$250.00 per day	\$1,000.00
Helicopter Cost 2.1 hours @ \$1150.00	\$2,415.00
Report	\$300.00
Total	\$4,525.00

OG 2004 Soil Survey

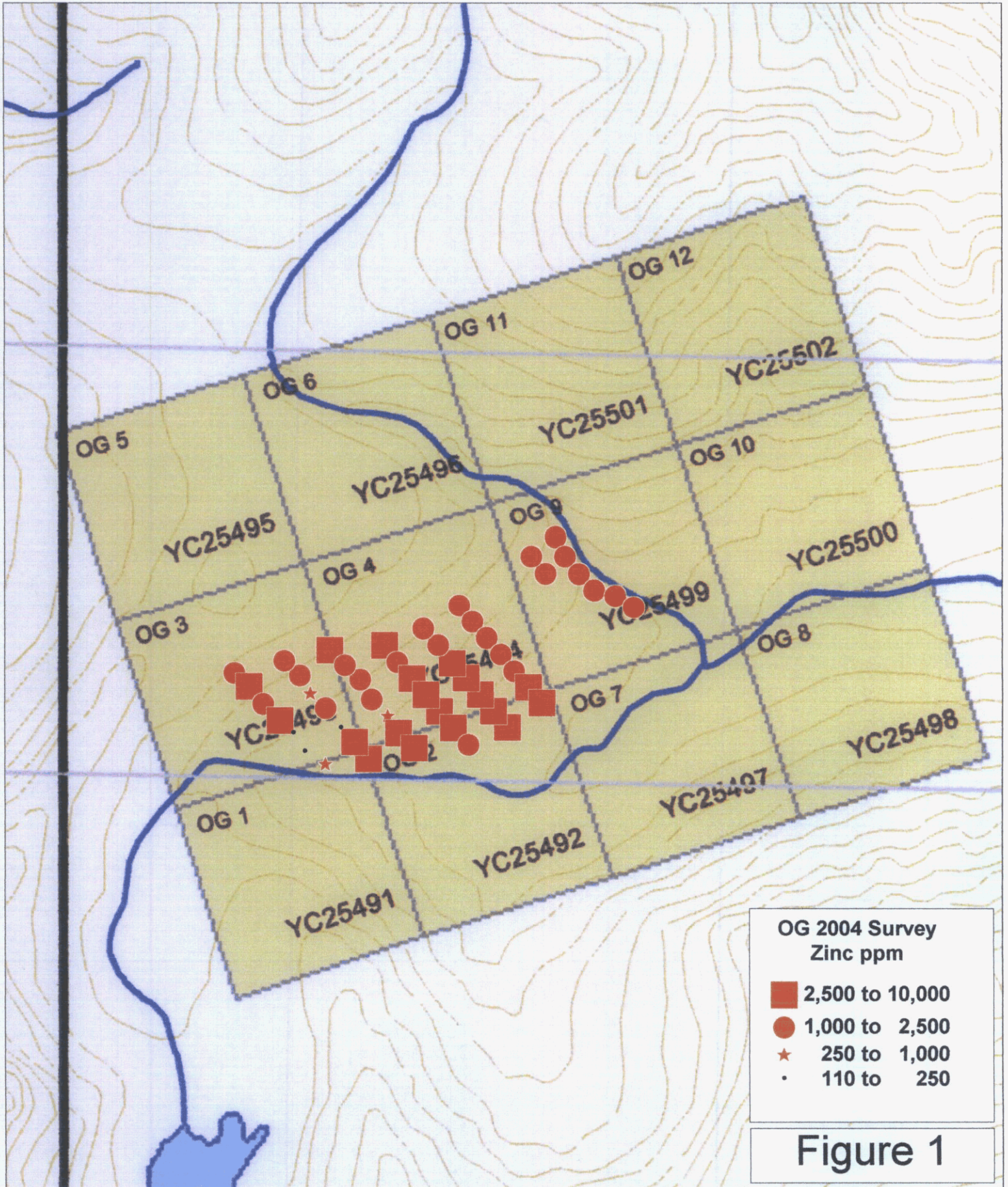
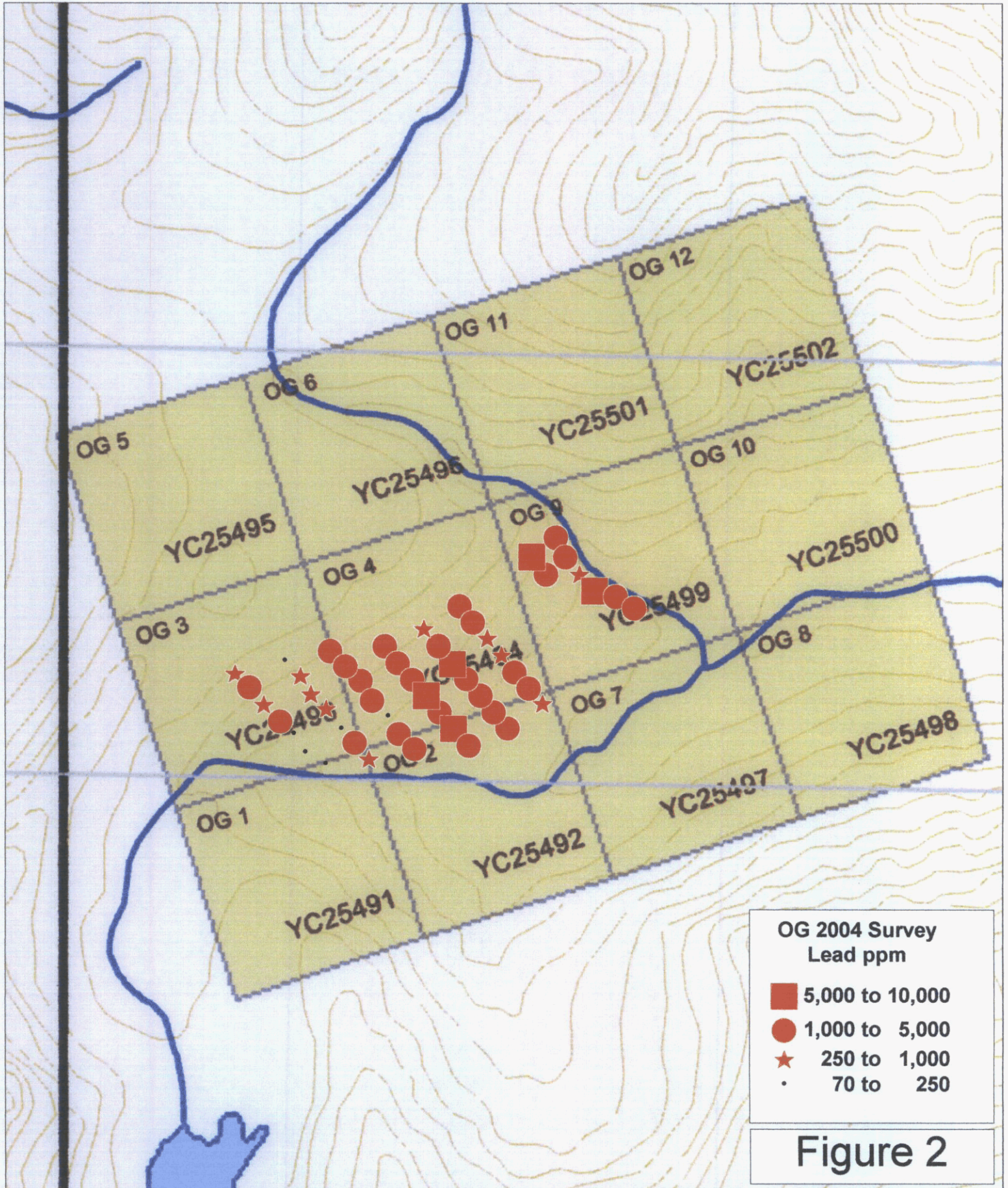
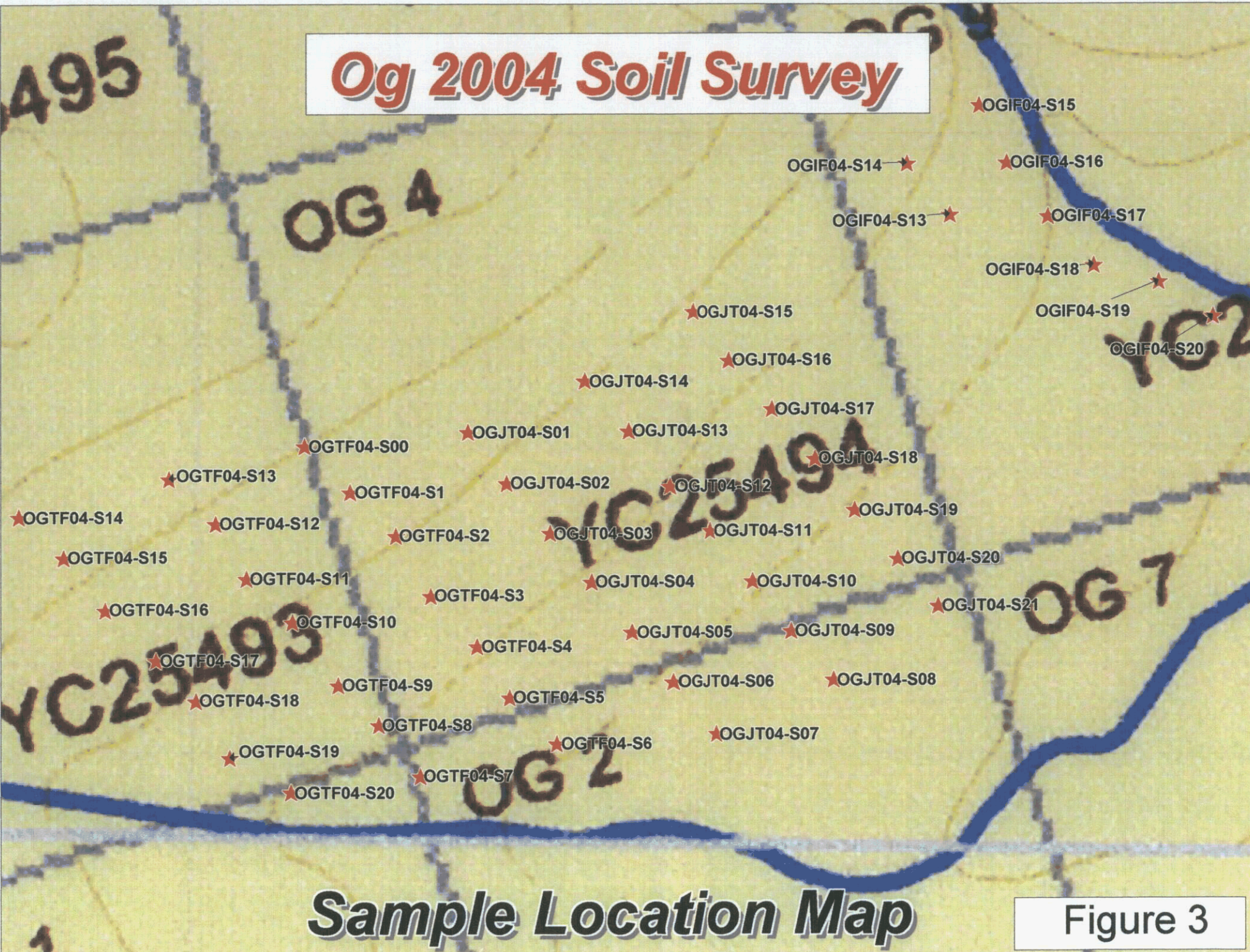


Figure 1

OG 2004 Soil Survey



Og 2004 Soil Survey



Sample Location Map

Figure 3

Sample	UTM	Easting	Northing	Date	Elevation
0GTF04-S1	NAD83-7W	548120	7189269	19-AUG-04 11:07	1335
0GTF04-S10	NAD83-7W	548077	7189168	19-AUG-04 12:21	1307.6
0GTF04-S11	NAD83-7W	548041	7189201	19-AUG-04 12:26	1318.3
0GTF04-S12	NAD83-7W	548016	7189243	19-AUG-04 12:34	1335.9
0GTF04-S13	NAD83-7W	547979	7189277	19-AUG-04 12:42	1360.6
0GTF04-S14	NAD83-7W	547863	7189246	19-AUG-04 12:55	1372.2
0GTF04-S15	NAD83-7W	547898	7189215	19-AUG-04 13:02	1350
0GTF04-S16	NAD83-7W	547931	7189175	19-AUG-04 13:08	1335.3
0GTF04-S17	NAD83-7W	547971	7189137	19-AUG-04 13:15	1320.4
0GTF04-S18	NAD83-7W	548003	7189106	19-AUG-04 13:22	1309.7
0GTF04-S19	NAD83-7W	548030	7189063	19-AUG-04 13:29	1297.5
0GTF04-S2	NAD83-7W	548156	7189236	19-AUG-04 11:14	1311.2
0GTF04-S20	NAD83-7W	548078	7189037	19-AUG-04 13:36	1282.9
0GTF04-S3	NAD83-7W	548184	7189190	19-AUG-04 11:21	1295.4
0GTF04-S4	NAD83-7W	548221	7189152	19-AUG-04 11:28	1282.6
0GTF04-S5	NAD83-7W	548247	7189113	19-AUG-04 11:35	1272.8
0GTF04-S6	NAD83-7W	548284	7189078	19-AUG-04 11:41	1262.8
0GTF04-S7	NAD83-7W	548178	7189051	19-AUG-04 11:55	1278.9
0GTF04-S8	NAD83-7W	548145	7189090	19-AUG-04 12:05	1284.4
0GTF04-S9	NAD83-7W	548113	7189120	19-AUG-04 12:14	1289.6
OGIF04-S01	NAD83-7W	548444	7189494	19-AUG-04 10:48	1320.1
OGIF04-S02	NAD83-7W	548479	7189462	19-AUG-04 11:02	1307.9
OGIF04-S03	NAD83-7W	548510	7189424	19-AUG-04 11:12	1289.9
OGIF04-S04	NAD83-7W	548543	7189383	19-AUG-04 11:22	1271
OGIF04-S05	NAD83-7W	548579	7189346	19-AUG-04 11:33	1259.4
OGIF04-S06	NAD83-7W	548610	7189307	19-AUG-04 11:42	1250.9
OGIF04-S07	NAD83-7W	548642	7189272	19-AUG-04 11:51	1238.4
OGIF04-S08	NAD83-7W	548745	7189306	19-AUG-04 12:10	1228.3
OGIF04-S09	NAD83-7W	548721	7189345	19-AUG-04 12:01	1240.2
OGIF04-S10	NAD83-7W	548683	7189377	19-AUG-04 12:19	1234.1
OGIF04-S11	NAD83-7W	548651	7189417	19-AUG-04 12:27	1246.3
OGIF04-S12	NAD83-7W	548619	7189453	19-AUG-04 12:37	1254.3
OGIF04-S13	NAD83-7W	548584	7189491	19-AUG-04 12:49	1276.2
OGIF04-S14	NAD83-7W	548550	7189530	19-AUG-04 12:58	1288.1
OGIF04-S15	NAD83-7W	548606	7189576	19-AUG-04 13:09	1288.4
OGIF04-S16	NAD83-7W	548628	7189532	19-AUG-04 13:20	1271.6
OGIF04-S17	NAD83-7W	548661	7189491	19-AUG-04 13:28	1257.9
OGIF04-S18	NAD83-7W	548697	7189454	19-AUG-04 13:35	1250
OGIF04-S19	NAD83-7W	548747	7189442	19-AUG-04 13:43	1240.5
OGIF04-S20	NAD83-7W	548790	7189416	19-AUG-04 13:49	1236.3
OGJT04-S01	NAD83-7W	548211	7189317	19-AUG-04 10:52	1326.8
OGJT04-S02	NAD83-7W	548242	7189278	19-AUG-04 11:00	1312.5
OGJT04-S03	NAD83-7W	548276	7189240	19-AUG-04 11:07	1289.9
OGJT04-S04	NAD83-7W	548309	7189203	19-AUG-04 11:14	1274.7
OGJT04-S05	NAD83-7W	548341	7189165	19-AUG-04 11:21	1266.4
OGJT04-S06	NAD83-7W	548374	7189127	19-AUG-04 11:28	1256.1
OGJT04-S07	NAD83-7W	548410	7189088	19-AUG-04 11:36	1247.5
OGJT04-S08	NAD83-7W	548500	7189131	19-AUG-04 11:44	1246.6
OGJT04-S09	NAD83-7W	548467	7189168	19-AUG-04 11:55	1250.9
OGJT04-S10	NAD83-7W	548436	7189206	19-AUG-04 12:02	1263.7
OGJT04-S11	NAD83-7W	548402	7189244	19-AUG-04 12:08	1264.3
OGJT04-S12	NAD83-7W	548369	7189278	19-AUG-04 12:15	1274.4
OGJT04-S13	NAD83-7W	548336	7189320	19-AUG-04 12:22	1283.8
OGJT04-S14	NAD83-7W	548301	7189358	19-AUG-04 12:31	1307
OGJT04-S15	NAD83-7W	548384	7189413	19-AUG-04 12:41	1307
OGJT04-S16	NAD83-7W	548415	7189376	19-AUG-04 12:51	1288.4
OGJT04-S17	NAD83-7W	548449	7189339	19-AUG-04 12:59	1275.9
OGJT04-S18	NAD83-7W	548483	7189301	19-AUG-04 13:06	1264.6
OGJT04-S19	NAD83-7W	548514	7189262	19-AUG-04 13:14	1256.1
OGJT04-S20	NAD83-7W	548548	7189225	19-AUG-04 13:21	1244.2
OGJT04-S21	NAD83-7W	548580	7189189	19-AUG-04 13:29	1238.4
OGTF04-S00	NAD83-7W	548084	7189304	19-AUG-04 10:58	1350.9

GEOCHEMICAL ANALYSIS CERTIFICATE

Ryanwood Exploration Inc. File # A405765 Page 1

Box 213, Dawson City YT Y0B 1G0

SAMPLE#	Mo ppm	Cu ppm	Pb ppm	Zn ppm	Ag ppm	Ni ppm	Co ppm	Mn ppm	Fe %	As ppm	U ppm	Au ppb	Th ppm	Sr ppm	Cd ppm	Sb ppm	Bi ppm	V ppm	Ca %	P %	La ppm	Cr ppm	Mg %	Ba ppm	Ti %	B ppm	Al %	Na %	K %	W ppm	Hg ppm	Sc ppm	Tl ppm	S %	Ga ppm	Se ppm
G-1	1.0	2.0	2.2	48	<.1	4.3	4.1	600	1.88	.7	1.5	<.5	3.9	75	<.1	<.1	.1	41	.45	.081	6	11.0	.57	270	.129	<.1	.95	.087	.58	.8	<.01	2.6	.3	<.05	5	<.5
OGIF04-S13	.6	102.6	2085.0	1645	1.4	19.3	9.8	1253	2.30	11.9	.7	.5	1.4	19	3.4	2.0	.7	29	8.94	.058	12	14.1	4.81	115	.017	20	.62	.011	.08	.1	.24	2.9	.1	.11	2	.5
OGIF04-S14	.6	137.1	>10000	2348	4.2	20.7	14.1	1388	3.10	22.7	.9	1.1	.7	19	3.7	5.3	.6	26	8.54	.080	10	12.3	4.60	50	.011	22	.63	.011	.07	.1	.35	2.2	.2	.43	2	.8
OGIF04-S15	.7	176.9	2795.2	1480	2.0	19.4	13.3	1920	2.57	13.1	.6	<.5	.7	20	3.8	2.2	1.5	30	9.16	.075	12	15.7	4.97	73	.014	23	.76	.012	.07	.1	.20	1.9	.1	.18	2	<.5
OGIF04-S16	.8	174.8	2664.0	2498	1.9	22.7	14.9	2421	2.97	14.9	.7	.9	.6	17	5.5	2.3	.9	33	7.51	.086	14	16.4	3.83	109	.011	16	.78	.011	.06	.1	.27	2.0	.2	.18	2	.7
OGIF04-S17	.8	82.2	971.7	1006	1.0	19.7	10.3	910	3.29	14.1	.8	.7	1.5	20	2.9	2.4	.8	27	7.94	.062	12	15.6	4.43	125	.013	10	.72	.011	.10	<.1	.15	2.7	.3	.13	2	.8
OGIF04-S18	.9	76.9	8064.7	1673	4.7	27.8	16.7	1642	3.72	24.0	1.1	<.5	1.3	19	6.5	5.4	1.8	38	6.07	.082	14	17.4	3.39	307	.015	11	.85	.010	.10	.1	.35	3.1	.5	.18	2	.7
OGIF04-S19	.7	80.9	1780.9	2067	1.8	18.8	12.5	1982	3.07	17.7	.9	1.1	1.0	23	5.7	3.3	.7	29	11.22	.046	10	11.9	6.39	75	.015	8	.61	.011	.05	.1	.34	2.1	.3	.12	2	.6
OGIF04-S20	.9	58.6	1654.0	1231	1.4	21.6	13.5	1930	3.37	14.9	.6	.9	1.2	14	3.7	2.5	.9	38	3.84	.058	16	19.8	2.23	118	.017	6	.93	.010	.07	.1	.22	3.3	.2	.06	3	.6
OGJT04-S01	.8	132.1	1628.2	3580	1.3	21.5	12.7	2494	3.11	15.7	.9	1.0	.6	17	4.5	2.0	1.1	39	6.48	.089	17	18.1	3.66	146	.012	13	.92	.011	.06	.1	.14	2.0	.3	.10	3	.9
OGJT04-S02	.8	107.1	2432.8	2347	3.3	19.0	10.7	2033	3.48	15.9	.7	<.5	.6	21	4.5	2.5	1.5	24	10.90	.063	12	11.4	5.96	120	.010	31	.56	.021	.05	.1	.22	2.0	.9	.27	2	<.5
OGJT04-S03	.6	127.5	4845.2	4090	2.5	16.4	10.6	1973	3.10	9.8	1.4	1.3	.6	22	15.8	1.6	1.2	31	13.61	.040	9	10.1	7.90	57	.011	14	.52	.025	.03	.1	.18	1.6	.9	.21	2	.7
OGJT04-S04	1.7	381.9	>10000>10000	29.5	25.7	19.0	2512	13.51	51.1	1.9	<.5	1.3	16	48.9	13.3	3.8	25	10.41	.036	10	8.2	5.91	57	.011	24	.36	.009	.03	.4	3.25	2.4	2.6	1.44	4	1.0	
OGJT04-S05	.8	60.3	2815.5	3997	2.4	17.8	10.3	1700	3.59	14.5	1.1	.6	1.0	20	9.1	2.4	.5	32	10.95	.056	11	12.4	5.99	62	.012	12	.63	.011	.06	.1	.29	2.1	.3	.12	2	.7
OGJT04-S06	.8	57.9	>10000>10000	3.7	28.6	11.5	1136	3.23	14.6	1.3	.9	1.3	22	17.4	2.6	.5	33	6.91	.076	9	17.1	3.89	68	.027	10	1.05	.014	.06	.1	.56	2.4	.5	.41	4	1.1	
OGJT04-S07	.7	36.4	1102.1	1908	.8	16.1	8.3	1162	1.96	9.9	.9	.5	.9	27	4.5	1.6	.5	28	12.57	.047	9	10.8	6.81	51	.013	8	.59	.015	.06	<.1	.17	1.9	.3	.07	2	<.5
RE OGJT04-S07	.8	35.8	1080.4	1946	.8	16.3	8.7	1224	2.05	9.9	.9	.7	.9	26	4.6	1.4	.5	29	13.48	.048	8	11.7	7.31	51	.012	8	.61	.015	.06	<.1	.17	2.0	.3	.10	2	.5
OGJT04-S08	.8	81.8	1332.4	4667	1.7	21.7	10.2	1326	2.88	11.3	1.2	1.5	.8	17	7.4	1.6	.8	44	5.99	.084	12	18.9	3.26	100	.020	13	1.17	.012	.06	.1	.17	2.0	.3	.10	3	.5
OGJT04-S09	.7	103.6	1932.4	5542	2.1	21.6	8.2	901	3.09	12.3	.8	1.2	1.3	20	7.0	2.0	.9	35	7.70	.062	12	16.5	4.28	84	.022	9	.93	.012	.05	.1	.24	2.4	.2	<.05	3	.9
OGJT04-S10	.7	195.1	3558.7	6069	2.9	18.8	8.5	1300	3.16	11.8	.9	.5	.9	20	7.8	2.6	1.5	30	13.25	.047	9	12.4	7.33	54	.016	10	.70	.012	.04	<.1	.28	2.0	.2	.18	2	.8
OGJT04-S11	.8	318.6	3680.0	3561	4.1	18.2	11.7	2231	4.73	20.5	.9	<.5	1.0	21	7.0	4.5	3.4	28	12.49	.055	12	12.6	6.98	82	.012	27	.61	.020	.05	.1	.32	2.5	.3	.26	2	.7
OGJT04-S12	1.4	1032.8	8005.6>10000	16.5	20.3	18.6	2562	8.31	36.9	1.3	.9	.9	16	25.2	11.3	9.0	26	10.37	.052	10	10.7	5.73	99	.011	18	.52	.012	.04	<.1	3.13	2.5	.5	.83	3	.9	
OGJT04-S13	.8	138.7	2755.6	2201	2.9	19.1	11.7	1641	3.63	24.4	.9	.8	1.2	22	3.8	3.3	1.4	32	12.59	.048	9	9.9	7.14	88	.012	33	.40	.011	.04	.1	.21	2.4	.4	.28	1	.7
OGJT04-S14	.6	134.9	917.9	1959	.8	17.4	9.7	2297	2.66	12.2	.7	1.5	.5	20	9.1	2.0	.9	32	10.02	.068	12	14.4	5.44	174	.011	18	.65	.011	.06	.1	.13	1.7	.2	.11	2	.6
OGJT04-S15	.7	108.6	1626.5	1713	1.2	15.6	9.1	1765	2.32	11.5	.7	1.8	.6	20	3.0	2.1	.6	27	10.52	.059	13	13.4	5.69	80	.012	26	.68	.017	.06	.1	.14	1.8	.2	.10	2	.5
OGJT04-S16	.6	92.0	1096.3	1740	.8	16.3	8.7	1879	2.45	10.7	.8	1.8	.7	18	3.3	1.7	.7	38	9.57	.064	15	16.3	5.47	65	.014	17	.78	.011	.05	.1	.12	2.1	.2	<.05	2	<.5
OGJT04-S17	.6	82.5	808.6	1385	.9	20.0	10.0	1246	2.68	11.9	.6	1.4	1.4	17	3.3	1.4	.6	37	5.04	.066	15	19.7	3.00	105	.016	10	1.05	.009	.09	.1	.12	2.6	.2	<.05	3	<.5
OGJT04-S18	.5	71.7	503.8	1319	.8	17.7	8.5	1275	2.19	7.7	.8	1.0	.8	24	1.9	1.2	1.2	32	10.07	.056	10	16.0	5.83	93	.016	11	.88	.028	.06	<.1	.07	1.9	.1	.09	3	.5
OGJT04-S19	.5	123.9	1115.4	2154	1.1	13.3	7.5	1299	2.13	8.3	1.0	<.5	.7	22	4.7	1.4	1.0	34	11.73	.052	10	12.4	6.52	61	.017	8	.78	.014	.04	.1	.22	1.8	.1	.07	2	.7
OGJT04-S20	.6	109.6	1045.8	3175	1.1	12.7	6.1	1176	2.07	8.7	.9	.9	.8	21	5.0	1.4	.9	32	11.63	.045	9	11.8	6.50	51	.017	5	.73	.012	.03	<.1	.16	1.7	.2	.09	2	.7
OGJT04-S21	.6	103.9	860.2	3068	.9	19.3	8.7	1270	2.42	9.0	.8	1.4	.9	19	3.9	1.4	.8	37	8.39	.074	12	18.4	4.60	129	.020	8	1.05	.011	.05	.1	.12	2.2	.2	.11	3	.5
OGTF04-S00	.8	53.7	1475.6	2628	1.1	17.9	10.1	1725	2.79	15.3	.9	1.3	.5	21	3.9	2.1	.3	31	6.33	.102	14	17.1	3.50	109	.011	14	1.00	.016	.06	.1	.19	1.5	.3	.12	3	.5
OGTF04-S1	.8	85.9	1424.7	1943	1.3	21.3	12.4	2636	2.91	17.9	.6	3.7	1.0	24	3.7	2.0	1.3	27	11.47	.058	13	14.2	6.03	146	.013	29	.74	.029	.06	.1	.18	2.8	.4	.16	2	.5
OGTF04-S2	.7	73.8	1412.0	2202	1.3	22.2	14.6	2850	3.22	15.5	.6	1.2	1.1	17	4.4	2.1	.9	32	8.16	.066	17	16.1	4.43	127	.012	21	.86	.011	.06	.1	.22	2.4	.3	.10	2	.6
OGTF04-S3	.7	34.6	2357.2	1878	2.0	12.7	9.1	1713	2.38	14.8	.9	.6	.7	23	4.7	2.5	.2	22	14.61	.033	7	8.1	8.18	48	.011											



SAMPLE#	Mo	Cu	Pb	Zn	Ag	Ni	Co	Mn	Fe	As	U	Au	Th	Sr	Cd	Sb	Bi	V	Ca	P	La	Cr	Mg	Ba	Ti	B	Al	Na	K	W	Hg	Sc	Tl	S	Ga	Se
	ppm	ppm	ppm	ppm	ppm	ppm	ppm	ppm	%	ppm	ppm	ppb	ppm	ppm	ppm	ppm	ppm	ppm	%	%	ppm	ppm	%	ppm	%	%	%	%	ppm	ppm	ppm	ppm	%	ppm	ppm	
G-1	1.2	2.5	2.6	49	<.1	3.9	4.3	550	1.79	<.5	1.7	<.5	4.0	77	<.1	<.1	.1	41	.49	.074	6	11.2	.56	266	.126	1	.89	.084	.54	.9	<.01	2.6	.4	<.05	4	<.5
OGTF04-S4	.8	19.0	195.2	511	.3	24.7	13.4	963	4.24	12.7	.8	2.3	1.7	13	1.1	.9	.3	52	1.38	.075	18	28.8	.98	195	.014	2	1.57	.008	.10	.1	.07	3.2	.3	<.05	4	<.5
OGTF04-S5	.9	55.0	3536.4	4337	2.1	17.1	12.3	1452	4.81	17.7	1.0	1.1	1.1	20	6.6	2.5	.3	25	13.41	.038	9	10.9	7.00	53	.014	29	.47	.012	.03	.2	.48	2.1	.4	.08	1	.6
OGTF04-S6	.9	74.2	3964.7	6149	2.3	24.9	13.0	1187	4.54	18.3	.9	.6	1.5	21	7.7	2.3	.4	36	8.31	.064	12	18.4	4.41	102	.022	9	.93	.012	.05	.1	.46	3.1	.4	.08	3	.8
OGTF04-S7	.8	36.0	601.5	3186	.5	25.3	12.5	1082	3.32	12.6	.7	.9	1.5	17	4.7	1.3	.3	39	4.38	.075	13	20.7	2.47	139	.019	4	1.10	.010	.07	<.1	.13	3.1	.3	<.05	3	<.5
OGTF04-S8	.7	198.4	3198.2	9047	1.0	24.8	9.9	861	3.29	10.7	.7	1.8	.9	16	7.7	1.3	1.1	38	4.18	.076	11	22.5	2.06	152	.019	8	1.26	.013	.07	<.1	.27	2.5	.5	.11	3	1.0
OGTF04-S9	.6	21.3	71.2	162	.2	23.6	10.2	498	3.34	7.3	.7	<.5	4.2	11	.4	.4	.2	30	1.33	.062	20	21.3	.95	152	.006	6	1.15	.006	.18	<.1	.02	4.4	.2	<.05	3	<.5
OGTF04-S10	1.1	36.7	451.4	1214	1.3	30.9	22.6	2133	4.21	19.8	.8	1.2	1.2	17	2.0	3.3	.3	39	6.70	.071	15	18.9	3.69	164	.015	15	.81	.010	.06	<.1	.18	3.2	.6	.08	2	<.5
OGTF04-S11	.7	27.9	278.9	991	.7	23.6	17.2	2478	2.91	15.0	.7	1.1	.7	20	1.8	2.1	.2	31	12.14	.058	11	13.8	6.38	132	.012	16	.64	.011	.04	.1	.13	2.0	.4	.07	2	.7
OGTF04-S12	.9	28.1	307.5	1035	.9	21.6	16.2	2051	2.61	13.1	.7	1.0	.8	18	1.8	2.1	.2	28	10.43	.052	12	12.5	5.74	89	.012	17	.56	.011	.04	<.1	.16	2.1	.3	<.05	2	.5
RE OGTF04-S12	.8	26.6	307.1	1002	.9	19.6	16.2	2029	2.41	12.1	.6	<.5	.8	19	1.9	1.8	.2	27	10.64	.053	12	12.3	5.30	85	.012	17	.57	.010	.05	<.1	.15	2.1	.3	.09	2	.5
OGTF04-S13	1.2	28.6	217.2	1063	1.0	25.4	17.7	2683	3.32	18.9	.5	.7	.7	24	1.6	2.6	.2	26	10.42	.059	14	13.1	5.18	90	.009	39	.53	.012	.05	<.1	.14	2.2	.6	.09	2	.7
OGTF04-S14	8.5	55.5	734.9	2028	2.7	65.9	49.3	2579	10.95	117.7	.6	.9	1.0	29	4.7	19.5	.1	24	14.35	.031	9	6.1	7.34	250	.006	52	.22	.011	.03	<.1	.77	2.4	5.5	.21	1	.6
OGTF04-S15	8.5	44.6	1679.7	3023	2.7	66.4	47.6	2922	11.21	111.7	.6	.8	1.1	26	6.2	16.2	.1	20	12.42	.027	9	5.4	6.38	359	.005	44	.21	.010	.02	<.1	.86	2.6	7.9	.59	1	.7
OGTF04-S16	3.2	44.2	937.7	2479	2.1	44.4	35.9	2007	5.53	53.1	.6	1.8	1.0	26	4.0	8.2	.2	23	12.22	.040	10	8.1	6.72	113	.008	60	.35	.012	.04	.2	.56	2.5	3.1	.09	1	.8
OGTF04-S17	3.9	43.2	1009.9	2562	2.3	46.8	35.9	2137	6.57	61.4	.6	.6	1.0	21	5.1	10.0	.1	29	9.32	.052	13	11.8	4.86	212	.009	37	.50	.010	.04	<.1	.47	2.7	2.8	.07	1	.5
OGTF04-S18	.7	15.5	75.6	117	.2	19.4	8.5	510	2.46	9.1	.8	.9	1.2	14	.3	.5	.2	43	1.10	.062	15	21.6	.87	127	.020	1	1.36	.012	.06	.1	.04	2.6	.2	<.05	4	.6
OGTF04-S19	.8	14.8	76.9	176	.2	21.1	11.3	636	3.00	9.2	.8	.8	1.8	8	.4	.7	.2	40	.56	.076	14	23.4	.54	155	.010	4	1.41	.006	.11	.1	.02	3.1	.3	<.05	4	.5
OGTF04-S20	.8	22.6	237.1	750	.5	23.2	13.6	984	2.69	13.7	.5	.7	1.3	24	1.5	1.7	.2	24	9.54	.054	8	11.7	5.14	83	.015	11	.54	.011	.06	.1	.10	2.4	.4	.08	2	.5
STANDARD DS5	12.9	144.9	25.3	137	.3	24.7	12.6	810	3.06	18.9	6.2	42.4	2.6	48	5.3	3.5	6.2	61	.75	.102	12	190.5	.70	134	.089	15	1.99	.034	.14	4.7	.18	3.3	1.0	<.05	7	5.1

Sample type: SOIL SS80 60C. Samples beginning 'RE' are Reruns and 'RRE' are Reject Reruns.