

ARCHER, CATHRO & ASSOCIATES (1981) LIMITED
1016 - 510 West Hastings Street
Vancouver, B.C. V6B 1L8

Telephone: 604-688-2568

Fax: 604-688-2578

ASSESSMENT REPORT

describing

SOIL GEOCHEMISTRY

on the

RED PROPERTY

Red 1-9 YC10948-YC10956

located at

NTS 105M/14

Latitude 62°54'N; Longitude 135°04'W

in the

Mayo Mining District
Yukon Territory

prepared by

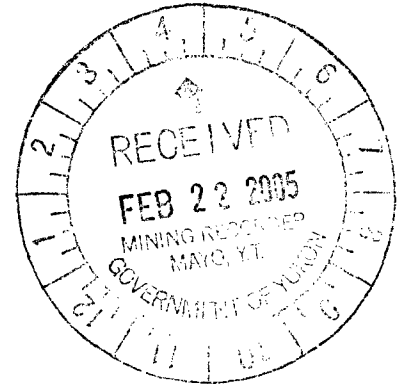
Archer, Cathro & Associates (1981) Limited

for

YUKON GOLD CORPORATION, INC.

by

R.C. Carne, M.Sc., P.Geol.
February 2005



094549

TABLE OF CONTENTS

| | <u>PAGE</u> |
|--|--------------------|
| INTRODUCTION | 1 |
| PROPERTY, LOCATION AND ACCESS | 1 |
| 2004 EXPLORATION PROGRAM | 1 |
| TOPOGRAPHY, VEGETATION AND CLIMATE | 1 |
| GEOLOGY | 2 |
| HISTORY AND ECONOMIC POTENTIAL OF NEARBY OCCURRENCES | 2 |
| MINERALIZATION | 3 |
| SOIL GEOCHEMISTRY | 5 |
| CONCLUSIONS AND RECOMMENDATIONS | 5 |
| REFERENCES | 7 |

APPENDICES

- I AUTHOR'S STATEMENT OF QUALIFICATIONS
- II LIST OF FIELD PERSONNEL
- III CERTIFICATES OF ANALYSIS

FIGURES

| <u>Figure</u> | | <u>Location</u> |
|----------------------|----------------------------|------------------------|
| 1 | Location | Following Page 1 |
| 2 | Claim Map | Following Page 1 |
| 3 | Claim and Sample Locations | Following Page 1 |
| 4 | Keno Hill Mining Camp | Following Page 2 |
| 5 | Geology | Following Page 2 |
| 6 | Geochemistry | Following Page 5 |

INTRODUCTION

Archer, Cathro & Associates (1981) Limited was retained by Yukon Gold Corporation, Inc. to conduct preliminary exploration work on the Red property in central Yukon in August 2004. The author supervised the exploration program and prepared this report.

PROPERTY, LOCATION AND ACCESS

The Red property consists of nine mineral claims located in central Yukon, immediately southeast of Keno City at latitude 62°54'N and longitude 135°04'W on NTS 105M/14 (Figure 1). The claims were staked under the Yukon Quartz Mining Act and are registered in the Mayo Mining District in the name of Yukon Gold Corp. The claims are part of the larger Mount Hinton property (Figure 2). Detailed claim locations are shown on Figure 3. Claim tenure information is summarized below:

| <u>Claim</u> | <u>Grant Numbers</u> | <u>Expiry Date*</u> |
|--------------|----------------------|---------------------|
| Red 1-9 | YC10948–YC10956 | September 09, 2005 |

*Expiry date includes 2004 work filed for assessment credit but not yet accepted.

Claims have not been surveyed but claim tags have been affixed. The claim locations shown on Figures 2 and 3 are derived from government claim maps.

Access to the property is by foot from the headwaters of McNeil Creek. Exploration in 2004 was conducted from a camp in the upper Duncan Creek valley which is connected by 4x4 road to the headwaters of McNeil Creek.

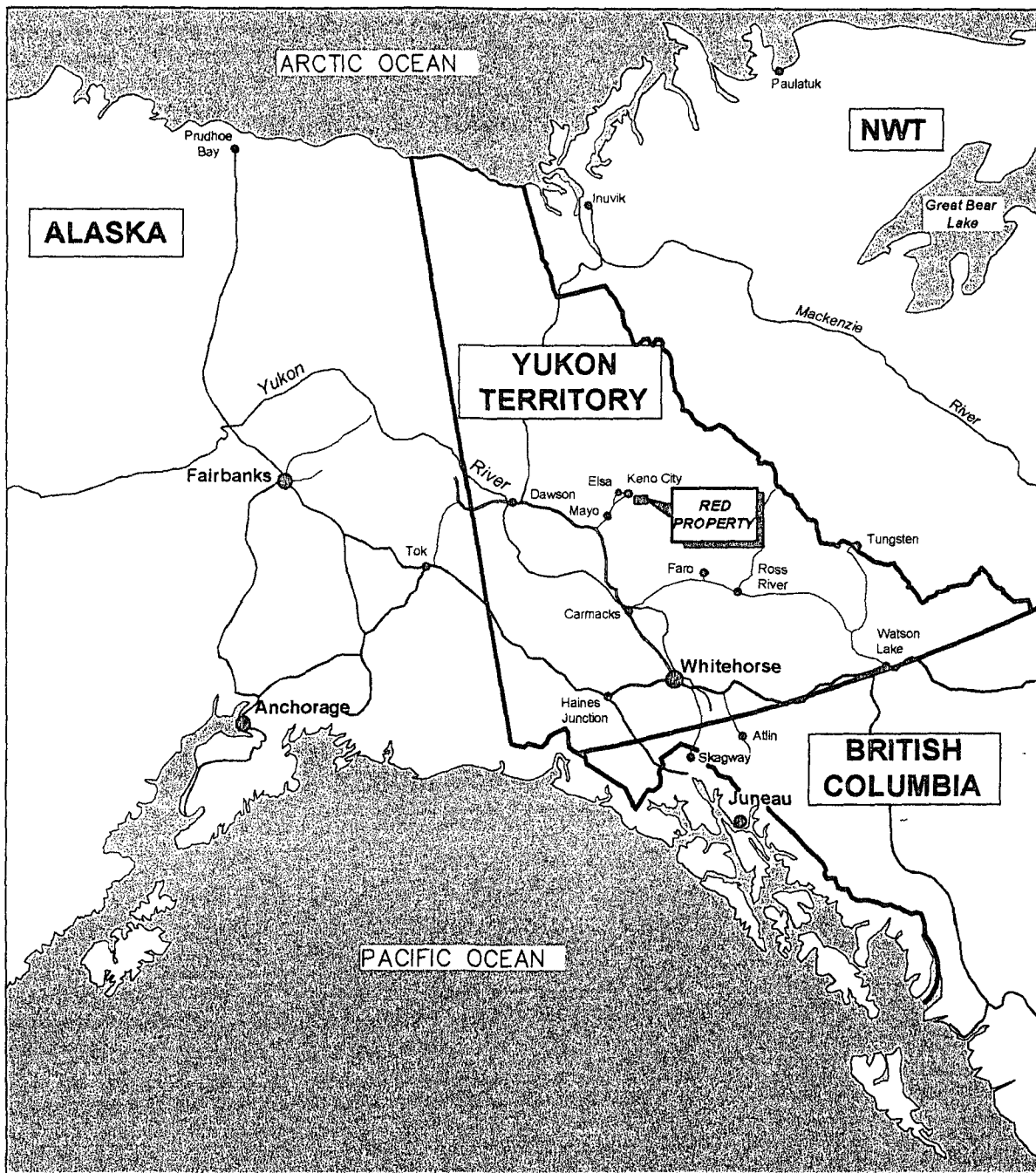
2004 EXPLORATION PROGRAM

The 2004 exploration was funded by Yukon Gold and consisted of prospecting and soil sampling carried out on August 13. Exploration personnel were supplied by Archer Cathro. All work was carried out under provisions of Land Use Permit LQ00106. The Author's Statement of Qualifications is included as Appendix I while a List of Personnel who worked on the project appears in Appendix II.

TOPOGRAPHY, VEGETATION AND CLIMATE

The Red property straddles a mountain peak that lies at the divide between McNeil, Erickson and Granite Creeks. Elevations on the property range from 1500 to over 2000 m on the ridge crest. Tree line is locally about 1500 m elevation and above this buckbrush (arctic black birch in drier areas and willow in wet areas) predominates with scattered clumps of alpine fir. Higher elevations on the property are unvegetated. Continuous permafrost probably underlies the entire property.

The lower parts of the property are normally explorable from late May until early October. Higher elevations on the claim block are snow free from late June to late September. The area



YUKON GOLD CORPORATION, INC.

Figure 1

ARCHER, CATHRO & ASSOCIATES (1981) LIMITED

LOCATION

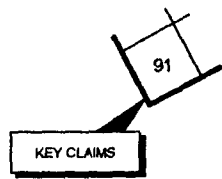
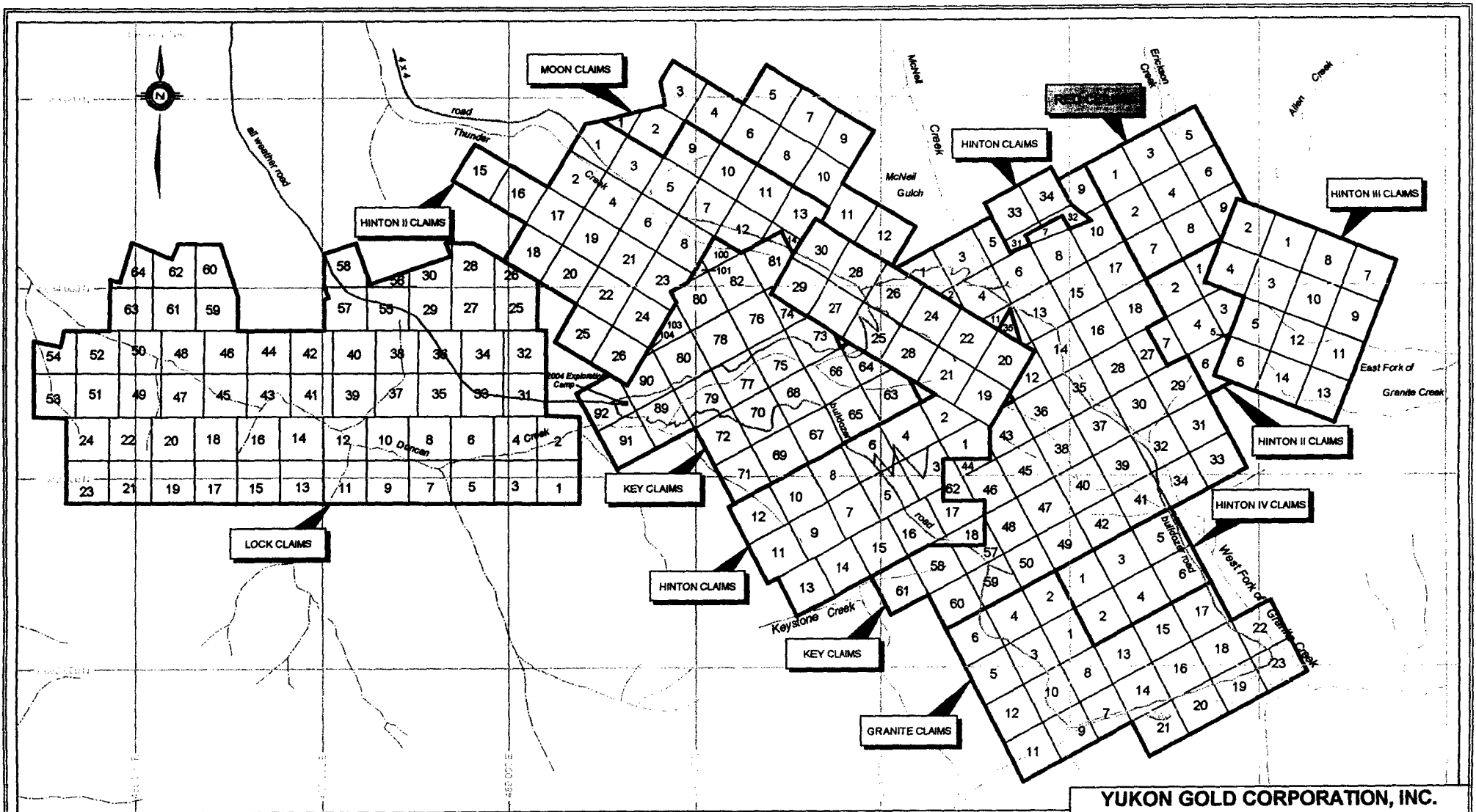
RED PROPERTY

Drawn By: RCC

Project: Mount Hinton

File: location.dwg

Date: January 2005



Claim name and number, see text for grant number and expiry date

YUKON GOLD CORPORATION, INC.

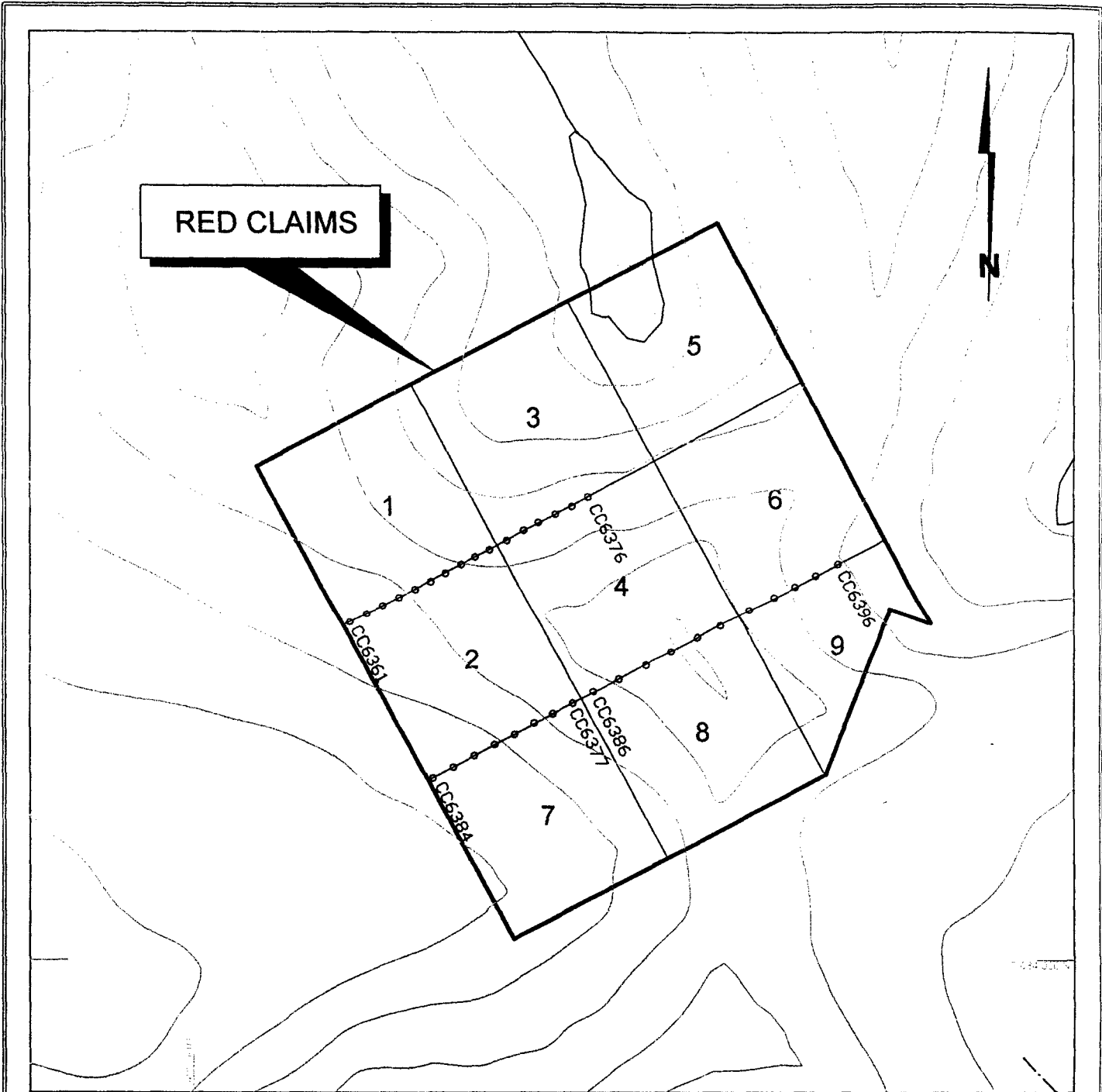
Figure 2
ARCHER, CATHRO & ASSOCIATES (1981) LIMITED

CLAIM MAP

RED PROPERTY

0 1 mile
0 2 km

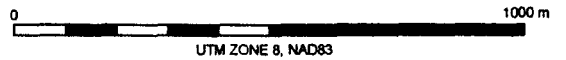
| | |
|--------------------|-----------------------|
| Drawn By: RCC | Project: Mount Hinton |
| File: claimmap.dwg | Date: January 2005 |



CC6361
 ○ Soil sample location

YUKON GOLD CORPORATION, INC.

FIGURE 3
 ARCHER, CATHRO & ASSOCIATES (1981) LIMITED
**CLAIM AND SAMPLE
 LOCATIONS**
 RED PROPERTY



DRAWN / REVISED BY: MRD

PROJECT: RED

FILE: ...2004/RED/CLAIM.dwg

DATE: JANUARY 2006

climate is typical of northern continental regions with long, cold winters and relatively temperate summers. Average temperatures in January are about -20°C and in July about 10°C . Total annual precipitation is approximately 90 cm, mostly occurring as rain in the summer months. Maximum snow pack averages less than 100 cm. Although summers are temperate, arctic cold fronts often cover the area and snowfall can occur in any month at higher elevations. Sunlight ranges from about 20 hours per day in late June to approximately 4 hours per day in late December.

GEOLOGY

The Red property lies along the southwest margin of Selwyn Basin, a region of deep water, off shelf sedimentation that persisted from late Precambrian to Middle Devonian time. The property is largely underlain by interbedded Mississippian phyllitic quartzite, chloritic and carbonaceous phyllite and massive to well foliated quartzite with lesser limestone (Figures 4 and 5) of the informally named Keno Hill Quartzite or "Central Quartzite" (Roots, 1997). An underlying carbonaceous phyllite sequence, informally called the "Lower Schist", is assigned to the Middle to Late Devonian Earn Group. Triassic amphibole-chlorite metadiorite and metagabbro sills locally termed "greenstone" intrude the layered strata.

The metamorphic rocks are intruded by the Roop Lakes Pluton, a 100 km^2 elliptical stock that lies about 8 km east of the property. Igneous petrology is dominated by medium grained granodiorite with lesser quartz monzonite. A marginal phase composed of quartz diorite to quartz gabbro is present. Granitic rocks have not been located on the Red property.

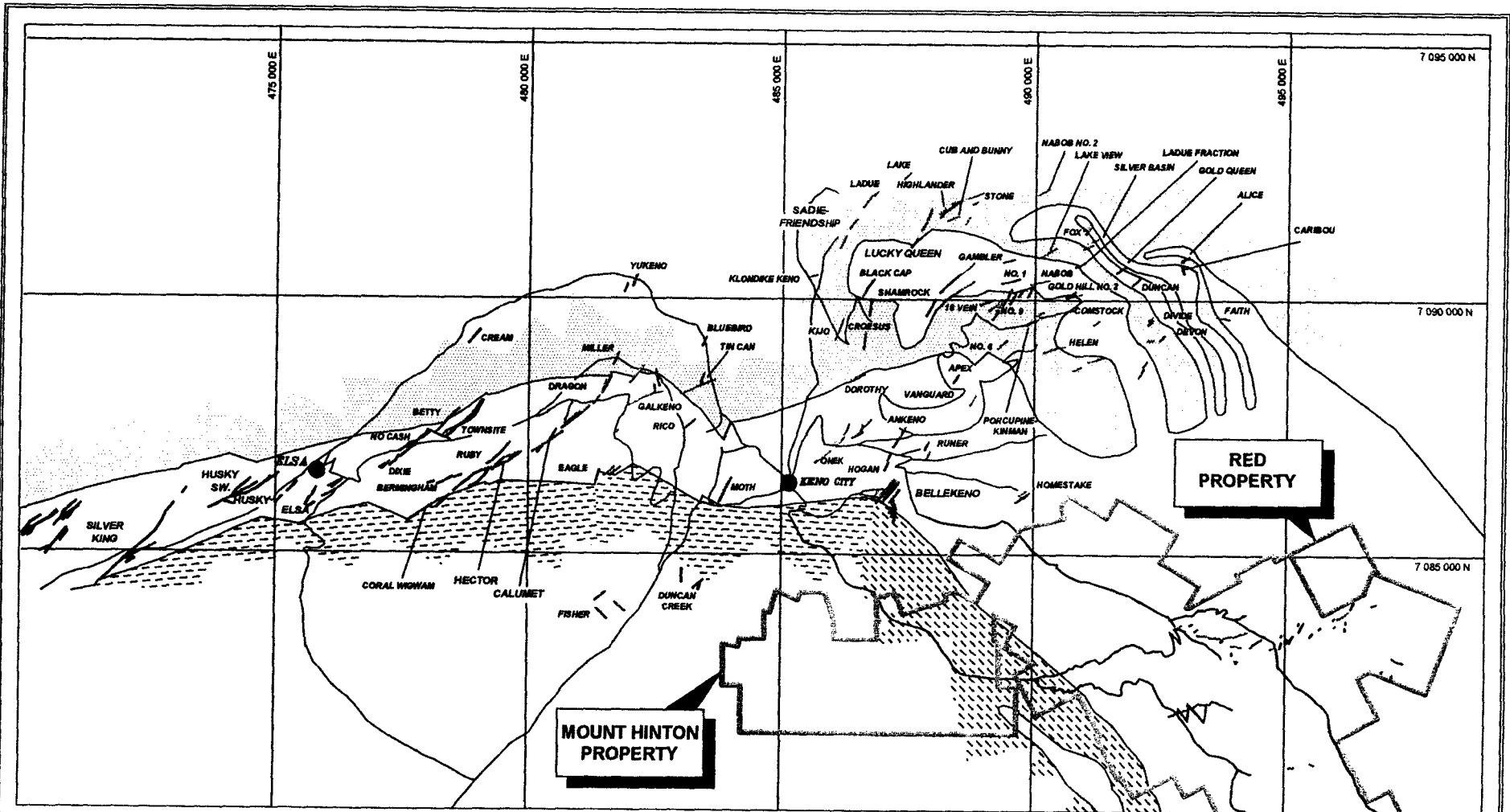
The Mount Hinton area lies in the southeast part of the Keno Hill mining camp, part of the 550 km long Tombstone Gold Belt. Between 1913 and 1989, over 6,600 tonnes of silver, 35,000 tonnes of lead and 21,000 tonnes of zinc were extracted from the extensive and numerous vein faults in the Keno Hill area (Murphy, 1997).

The Tombstone Gold Belt is coincident with, and genetically related to, mid-Cretaceous plutonism of the 92 Ma Tombstone Plutonic Suite (Hart and Burke 2002). A 92.8 ± 0.5 Ma age for the Roop Lakes quartz monzonite pluton has been determined by isotopic dating. This age as well as its petrology places the intrusion within the Tombstone Plutonic Suite.

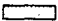




Tombstone Gold Belt proximal mineralization occurs within or adjacent to the mineralizing pluton as replacements, disseminations, stockworks, skarns and discrete veins with a gold-bismuth or tungsten-copper association (Hart and Burke 2002). Distal mineralization occurs at some distance from the associated pluton either as disseminations or veins that are dominated by a gold-arsenic-antimony-mercury association or a lead-zinc-silver association. Precious metal bearing veins on the Mount Hinton property probably belong to the distal suite.

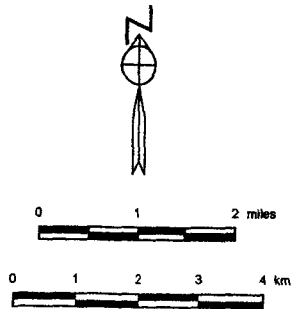
HISTORY AND ECONOMIC POTENTIAL OF NEARBY OCCURRENCES

The geological setting and style of mineralization defined to date on the Mount Hinton property are the same as those for the vein faults that supplied silver-lead zinc ore to a number of successful underground and surface mines in the nearby Keno Hill mining camp.



LEGEND

-  LOWER SCHIST
-  CENTRAL QUARTZITE
-  UPPER SCHIST
-  VEIN FAULT
-  SIGNIFICANT SILVER-LEAD OR GOLD-SILVER VEIN OCCURRENCE



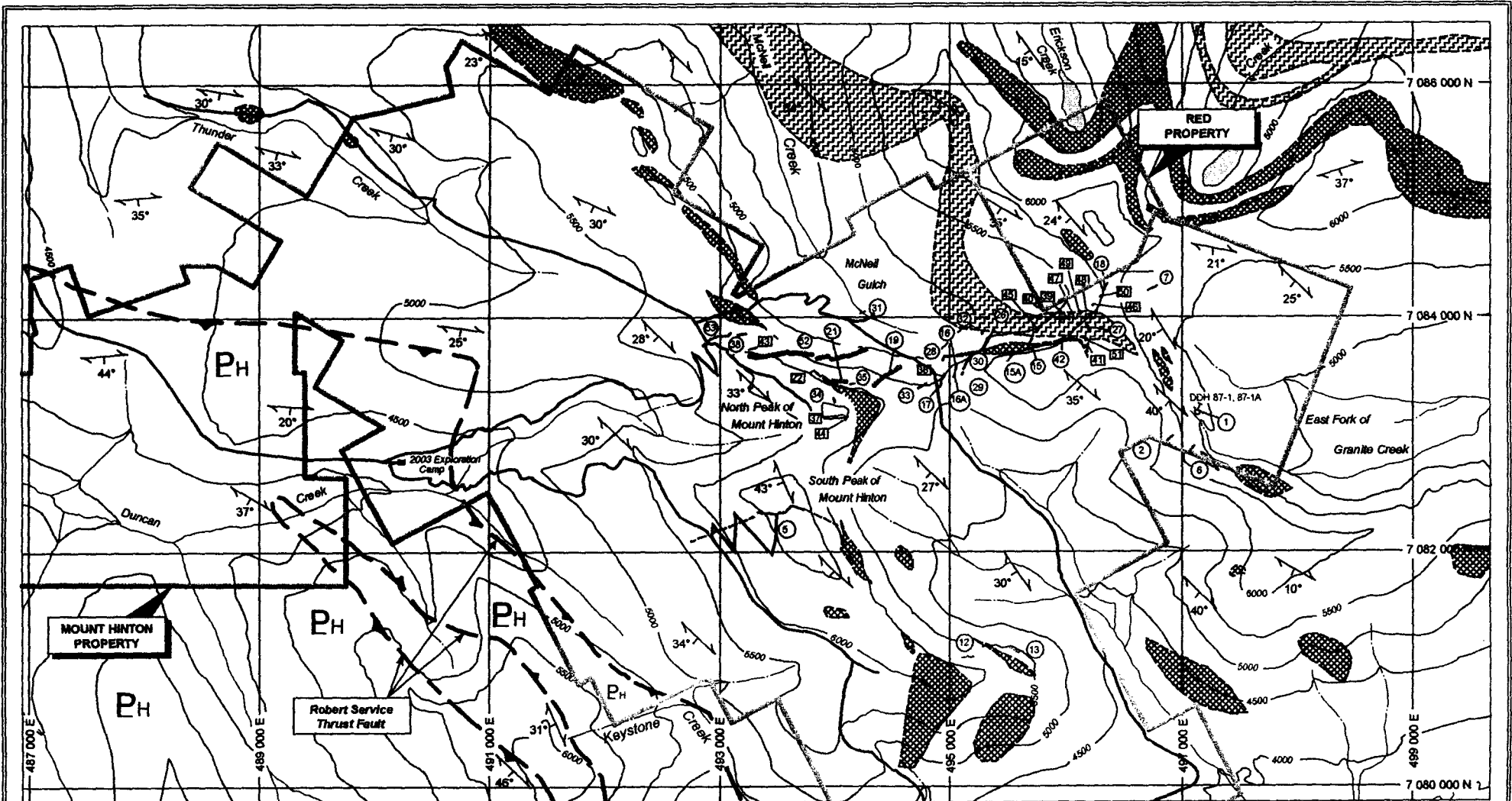
DATUM: NAD 27

YUKON GOLD CORPORATION, INC.

Figure 4
 ARCHER, CATHRO & ASSOCIATES (1981) LIMITED
KENO HILL MINING CAMP
 RED PROPERTY

| | |
|------------------------|-----------------------|
| Drawn By: RCC | Project: Mount Hinton |
| File: KenoHillCamp.dwg | Date: January 2005 |

After Boyle (1965) and Smith (1998)



SYMBOLS

LEGEND



- MAJOR MINERALIZED VEIN FAULT
- MINERALIZED VEIN FAULT
- MINERALIZED VEIN FLOAT SOURCE AREA
- ATTITUDE OF FOLIATION
- THRUST FAULT
- CONTOUR INTERVAL 500 FEET

- UPPER PROTEROZOIC
 - "UPPER SCHIST" (HYLAND GROUP)
Carbonaceous phyllite
 - ROBERT SERVICE THRUST
- TRIASSIC
 - "GREENSTONE"
Foliation concordant bodies of fine to medium grained green metadiorite or metagabbro
- MISSISSIPPIAN
 - "CENTRAL QUARTZITE" (KENO HILL QUARTZITE)
Light or dark grey vitreous quartzite; subordinate black carbonaceous phyllite or schist
- DEVONO-MISSISSIPPIAN
 - "LOWER SCHIST" (EARN GROUP)
Foliated quartz-ericite-chlorite phyllite; inferred to be of felsic metavolcanic origin; subordinate carbonaceous phyllite

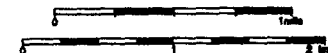
DATUM: NAD 83

Geology after Zimmer (1968) and Murphy and Roots (1996)

YUKON GOLD CORPORATION, INC.

Figure 5
ARCHER, CATHRO & ASSOCIATES (1981) LIMITED

GEOLOGY
RED PROPERTY



Drawn By: RCC

File: 50kgeology.dwg

Project: Mount Hinton

Date: January 2005

Two types of vein mineralization are represented in the district (Boyle, 1965). The earliest stage was characterized by deposition of hydrothermal silica, which precipitated as quartz lenses in dilatant zones within northeast trending faults. In addition to this constituent, considerable amounts of sulphur, arsenic, and iron with lesser antimony, lead, copper, gold and silver were introduced. This is the most common type of precious metal mineralization on the Mount Hinton property.

The second type of vein mineralization in the Keno Hill mining camp is a later stage of iron, manganese, sulphur, antimony, lead, zinc, silver and cadmium enrichment hosted by siderite rather than quartz gangue. This style of vein fault is responsible for the bulk of the historical silver-lead-zinc production from the Keno Hill area. Ore shoots comprise less than 2% of the vein faults but this density locally increases to 20% within productive areas. The 1 Vein is the only showing of this type that has been discovered to date at the Mount Hinton property.

Boyle (1965) notes that the most favourable host rocks for vein formation are thick bedded quartzites and greenstones. The principal economic lodes are located in three structural settings:

- at the junction of two or more vein faults,
- at the junction of a fault and subsidiary fracture, and
- in massive quartzites and greenstones at or near where the vein faults pass into phyllite or thin bedded quartzite.

MINERALIZATION

No mineralization has been discovered to date on the Red claims although there are numerous gold-silver showings nearby elsewhere on the Mount Hinton property.

According to Ouellette (1985) there are three types of faults in the Mount Hinton area that affect the distribution of gold and silver bearing quartz veins. **Transverse faults** are the main host for mineralized quartz veins on the property although some mineralization has been observed to extend into intersecting **bedding plane faults**. Transverse structures strike east-northeast and dip steeply to the southeast. Displacement is apparently dip-slip with little or no lateral movement. Zimmer (1967) observed that transverse faults are largely limited to competent units (quartzite) while the less well mineralized bedding plane faults are generally confined to intervening ductile phyllite members. In most cases transverse faults do not penetrate the thicker greenstone sills. Instead they deflect into bedding plane faults that lie in underlying rocks. **Cross faults** appear to be younger than the mineralizing episode and offset the mineralized transverse or bedding plane faults in a left lateral sense.

Open space in quartzite caused by movement on the transverse/bedding plane fault systems provided corridors for incoming hydrothermal fluids and formed the locus for vein deposition. Precious metal mineralization on the Mount Hinton property typically occurs within a variably wide zone of milky white vein quartz flanked by brecciated wallrock in the hanging wall and/or footwall that may be partially or entirely cemented by quartz. This material is, in turn, often

re-brecciated or crushed by continued movement on the structure. The vein faults are often bordered (especially in quartzite) by parallel quartz stringer zones up to 5 m wide. One or both walls of the zones may be defined by an abrupt break and a mineralized quartz vein associated with the overall structure can occur on either or both walls.

Veins appear to pinch and swell both along the strike and dip of the fault structure. Width and continuity is largely controlled by host lithology. Where both walls of the vein fault are relatively ductile phyllite, a narrow zone of fault gouge may be the only expression of the structure. Widest and strongest quartz veins occur where one or both walls are brittle quartzite or greenstone.

Vein mineralogy is summarized by Oullette (1985), based primarily on work by Zimmer (1967). The Mount Hinton area veins consist of fractured milky white quartz hosting, in order of occurrence: arsenopyrite, galena, jamesonite, pyrite, sphalerite, siderite and gold as well as the weathering products scorodite (after arsenopyrite), limonite (after pyrite) and anglesite (after galena).

- Arsenopyrite is present in all mineralized veins as well developed crystals and fracture fillings.
- Galena is also present to some degree in all veins although in poorly mineralized structures it is sparse and erratic, occurring as irregular fracture fillings in yellowish quartz that may carry high silver values (up to 1700 g/t in pure galena) and as small disseminations in white to yellow quartz that seldom carry more than 500 g/t silver. In high grade quartz veins, galena occurs as sheeted zones that parallel overall vein attitudes.
- Jamesonite is abundant only in the southwest part of the McNeil Gulch vein zone and in the 5 Vein on the south peak of Mount Hinton. In the 21 Vein, jamesonite is the primary sulphide mineral and it occurs as finely fibrous, sheared masses that contain minor sphalerite and pyrite.
- Pyrite is present in nearly all veins and it is usually found as disseminated crystals as opposed to veinlets. Pyrite is particularly associated with arsenopyrite and nearly massive jamesonite in the 21 Vein.
- Sphalerite was observed in small quantities in the 5, 15, 21, 31, 35 and 52 Veins. It occurs as irregular masses without an apparent association with other metallic minerals.
- Oxidation affects all but the most massive metallic sulphide mineral mineralization. Murphy (1997) notes that oxidation can extend to depths up to 150 m in the Keno Hill area.
- In 1967 UKHM used a mortar, pestle and gold pan to visually test samples taken from gold veins as they were exposed by hand trenching. There was little correlation between the quantity of free gold particles liberated by the mortar and pestle and the assay grade,

especially in samples that assayed less than 1 oz/ton (34.3 g/t) gold. Boyle (1965) suggests that metallic sulphide minerals carry the bulk of the gold in the Keno Hill mining camp as a lattice substitution, explaining the generally observed paucity of free gold. For example, a selected grab sample of massive jamesonite and scorodite collected from the 21 Vein in 2002 assayed 210.1 g/t Au and 1754 g/t Ag although no visible gold was present. Zimmer (1967) noted that at Mount Hinton:

- high gold values are always associated with metallic sulphide minerals,
- gold has a particular association with jamesonite, and
- gold and silver values usually parallel each other.

All creeks draining the property contain anomalous placer gold concentrations to some degree (D. Ewing, personal communication 2003). Duncan Creek and Thunder Gulch, in particular, have supported long term placer mining operations.

SOIL GEOCHEMISTRY

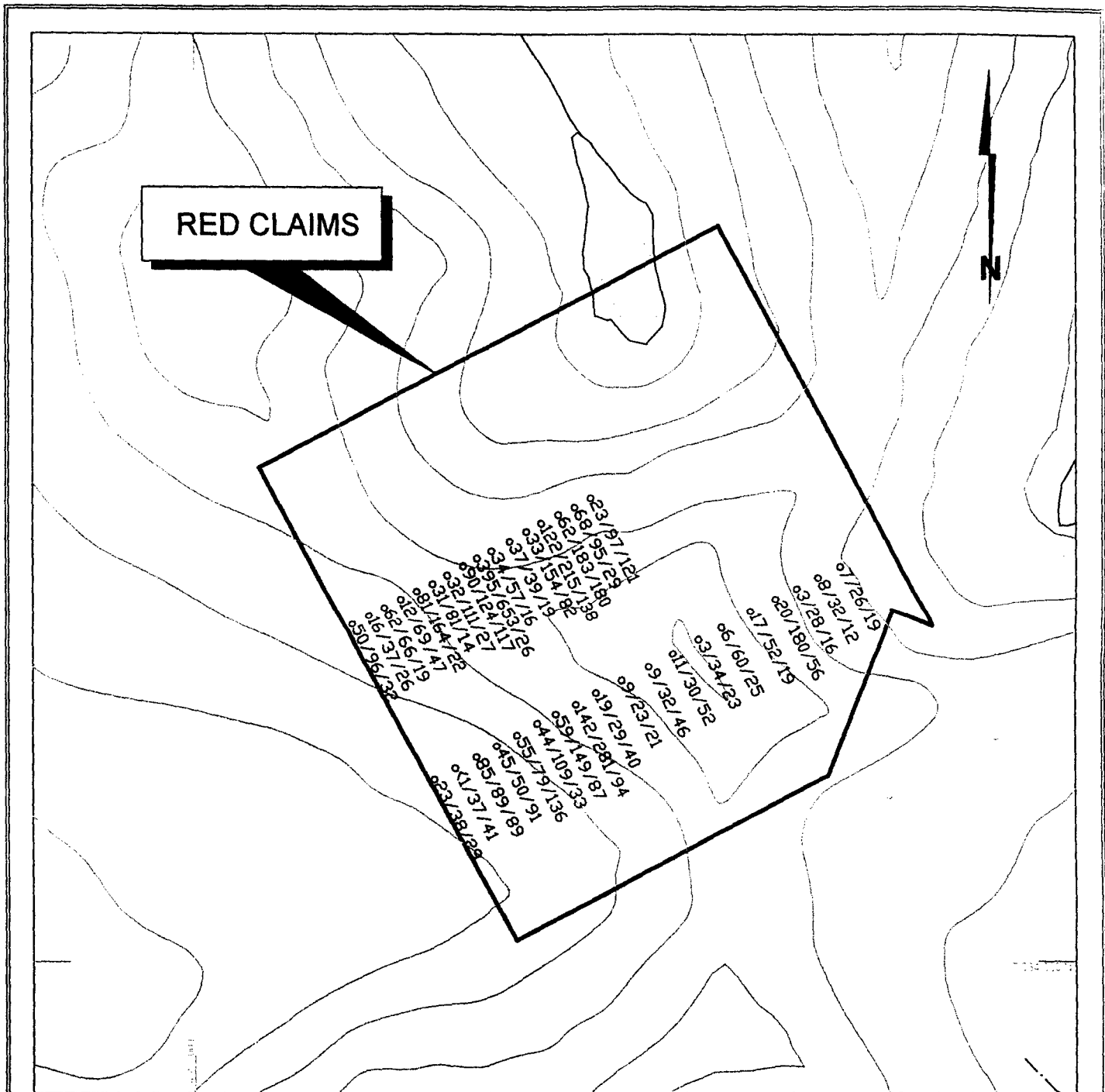
UKHM carried out systematic soil sampling over much of the current Mount Hinton property in 1965, 1966 and 1968 and this work included the west and north part of the present Red claims. Samples were only analyzed for copper and lead. Yukon Gold carried out orientation geochemical sampling in 2004 with B or C Horizon soil samples collected along the claim lines at 50 m intervals. Analyses were carried out at the ALS Chemex laboratory in North Vancouver, B.C. on an aqua regia digestion of a 50 gram, minus 180 micron sieved split using a Fire Assay-Atomic Absorption Spectroscopy procedure for gold and an ICP-AES procedure for 34 additional elements.

Moderate to strong lead results (25 to 356 ppm) were identified by the UKHM survey along a 1400 m long, northeast linear trend that crosses the divide between McNeil and Erickson Creeks on the Red 1 and 3 claims. There are no known vein occurrences that correspond to this feature although Costin and Zimmer (1966) note that old hand trenches with vein quartz float are associated with the strongest part of the anomaly. A moderate strength anomaly (25 to 200 ppm Pb) also lies downslope of an area with no known veins along the Red 7 claim location line.

Results of the 2004 geochemical survey are documented for gold, arsenic and lead on Figure 6. Samples along the Red 1-4 claim line all returned at least weakly anomalous values of gold, arsenic and lead. This area lies along the south edge of the UKHM lead anomaly. Samples collected along the Red 7 claim line also returned anomalous results for gold, arsenic and lead. This area was also anomalous for lead as a result of the UKHM survey.

CONCLUSIONS AND RECOMMENDATIONS

The Red claims lie at the northeast corner of the much larger Mount Hinton property. Quartz veins that occupy east-west trending vein faults in the McNeil Gulch headwall, just west of the Red claims, are well mineralized with gold and silver.

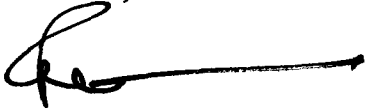


Only limited prospecting and geochemical sampling has been carried out on the Red claims. No mineralization was found as a result of this work although many of the soil samples returned moderately anomalous values of gold and other elements that are typically associated with the McNeil Gulch veins.

Detailed prospecting and grid soil sampling at 25 m spacing should be carried out to evaluate the potential for precious metal mineralization on the Red claims.

Respectfully submitted,

ARCHER, CATHRO & ASSOCIATES (1981) LIMITED

A handwritten signature in black ink, appearing to read 'R.C. Carne', with a long horizontal stroke extending to the right.

R.C. Carne, M.Sc., P.Geo.

REFERENCES

Adams, J.H.

1986: Geological mapping, geochemical sampling and geophysical surveying, Kac and Dana claims, Mount Hinton area, Yukon Territory;

Adams, J.H.

1988: Diamond drill logs dated July 1987- submitted for assessment credit by Orex Resources Ltd., Kac and Dana claims, Mount Hinton area.

Boyle, R.W.

1965: Geology, geochemistry, and origin of the lead-zinc-silver deposits of the Keno Hill-Galena Hill area, Yukon Territory (with short descriptions of the tin, tungsten, and gold deposits); Geological Survey of Canada, Bulletin 111, 302 p.

Carne, R. C.

2003: Assessment report describing 2003 geological surveys, geochemical sampling and excavator trenching, Mount Hinton property; assessment report prepared for Yukon Gold Corp. Ltd.

Costin, C.P. and Zimmer, G. S.

1966: Geological and geochemical report on the T (36-220) and VU (174-191) mineral claims; assessment report prepared for United Keno Hill Mines Ltd.

Hart, C.J.R. and Burke, M.

2002: The Tombstone Gold Belt: an emerging gold camp; poster display, Yukon Geology Program.

Junior Mine Services

2003: Mount Hinton gold property, 2002 exploration program; private unpublished report prepared for Yukon Gold Corp. Ltd.

Minfile 2002

2002: Yukon Minfile 2002; Exploration and Geological Services Division, Yukon Region, Indian and Northern Affairs Canada.

Murphy, D.C.

1997: Geology of the McQuesten River region, northern McQuesten and Mayo map areas, Yukon Territory (115P/14, 15, 16: 105M/13, 14). Exploration and Geological Services Division, Yukon Region, Indian and Northern Affairs Canada, Bulletin 6, 122 p.

Murphy, D.C. and Roots, C.F.

1996: Geological map of Keno Hill area, Central Yukon (105M/14). Exploration and Geological Services Division, Yukon, Indian and Northern Affairs Canada, Map 1996-1, scale 1:50,000.

Oullette, D.J.

1985: Report on the Mount Hinton area, 1984; assessment report prepared for United Keno Hill Mines Ltd.

Roots, C.F.

1997: Geology of the Mayo Map Area, Yukon Territory (105M). Exploration and Geological Services Division, Yukon Region, Indian and Northern Affairs Canada, Bulletin 7, 82 p.

Smith, J.

1998: Report on extensive gold bearing system associated with the Tombstone Suite of granitic intrusions; private unpublished summary report prepared for the Hinton Syndicate, updated October 2000.

Van Tassel, R.E.

1965: Geological and geochemical report on the T (1-35) mineral claims; assessment report prepared for United Keno Hill Mines Ltd.

Zimmer, G.S.

1967: Geological report on the McNeil Gulch area, June 22-August 31, 1967; assessment report prepared for United Keno Hill Mines Ltd.

Zimmer, G.S.

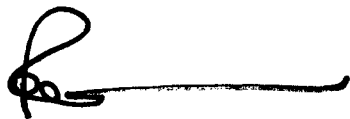
1968: Report on the 1968 exploration program in the McNeil Gulch area; assessment report prepared for United Keno Hill Mines Ltd.

APPENDIX I
AUTHOR'S STATEMENT OF QUALIFICATIONS

STATEMENT OF QUALIFICATIONS

I, Robert C. Carne, geologist, with business addresses in Whitehorse, Yukon Territory and Vancouver, British Columbia and residential address in Burnaby, British Columbia, hereby certify that:

1. I graduated from the University of British Columbia in 1974 with a B.Sc. and in 1979 with an M.Sc. majoring in Geological Sciences.
2. I am a Professional Geoscientist registered with the Association of Professional Engineers and Geoscientists of the Province of British Columbia (registration number 19868).
3. From 1974 to present, I have been actively engaged as a geologist in mineral exploration in British Columbia and Yukon Territory and on June 1, 1981 became a partner of Archer, Cathro & Associates (1981) Limited.
4. I have personally participated in or supervised the field work reported herein and have interpreted all data resulting from this work.



Robert C. Carne, M.Sc., P. Geo.

APPENDIX II
LIST OF FIELD PERSONNEL

LIST OF FIELD PERSONNEL

| <u>Name</u> | <u>Date</u> | <u>Position</u> |
|--------------------|--------------------|------------------------|
| Dirk Moraal | August 11 | Prospector |
| Brian Lailey | August 11 | Junior Assistant |

Both were employed by Archer, Cathro & Associates (1981) Limited with address at:
1016-510 West Hastings Street
Vancouver, B.C.
V6B 1L8

APPENDIX III
CERTIFICATES OF ANALYSIS



ALS Chemex

EXCELLENCE IN ANALYTICAL CHEMISTRY

ALS Canada Ltd.

212 Brooksbank Avenue

North Vancouver BC V7J 2C1 Canada

Phone: 604 984 0221 Fax: 604 984 0218



MOUNT HINTON PROJECT
C/O ARCHER, CATHRO & ASSOCIATES (1981)
LIMITED
1016 - 510 W. HASTINGS ST.
VANCOUVER BC V6B 1L8



Page: 1
Finalized Date: 14-SEP-2004
Account: MOUHIN

CERTIFICATE VA04060352

Project: Mt. Hinton

P.O. No.:

This report is for 83 Soil samples submitted to our lab in Vancouver, BC, Canada on 2-SEP-2004.

The following have access to data associated with this certificate:

AL ARCHER
BILL WENGZYNOWSKI

DOUG EATON

JOAN MARIACHER

SAMPLE PREPARATION

| ALS CODE | DESCRIPTION |
|----------|--------------------------------|
| WEI-21 | Received Sample Weight |
| LOG-22 | Sample login - Rcd w/o BarCode |
| SCR-41 | Screen to -180um and save both |

ANALYTICAL PROCEDURES

| ALS CODE | DESCRIPTION | INSTRUMENT |
|----------|-------------------------------|------------|
| ME-ICP41 | 34 Element Aqua Regia ICP-AES | ICP-AES |
| Au-ICP21 | Au 30g FA ICP-AES Finish | ICP-AES |

To: MOUNT HINTON PROJECT
ATTN: JOAN MARIACHER
C/O ARCHER, CATHRO & ASSOCIATES (1981) LIMITED
1016 - 510 W. HASTINGS ST.
VANCOUVER BC V6B 1L8

This is the Final Report and supersedes any preliminary report with this certificate number. Results apply to samples as submitted. All pages of this report have been checked and approved for release.

Signature:



ALS Chemex
EXCELLENCE IN ANALYTICAL CHEMISTRY
 ALS Canada Ltd.
 212 Brooksbank Avenue
 North Vancouver BC V7J 2C1 Canada
 Phone: 604 984 0221 Fax: 604 984 0218

MOUNT HINTON PROJECT
C/O ARCHER, CATHRO & ASSOCIATES (1981)
LIMITED
1016 - 510 W. HASTINGS ST.
VANCOUVER BC V6B 1L8

Page: 2 - A
 Total # Pages: 4 (A - C)
 Finalized Date: 14-SEP-2004
 Account: MOUHIN

Project: Mt. Hinton

CERTIFICATE OF ANALYSIS VA04060352

| Sample Description | Method Analyte Units LOR | WEI-21 | Au-ICP21 | ME-ICP41 | ME-ICP41 | ME-ICP41 | ME-ICP41 | ME-ICP41 | ME-ICP41 | ME-ICP41 | ME-ICP41 | ME-ICP41 | ME-ICP41 | ME-ICP41 | ME-ICP41 | ME-ICP41 |
|--------------------|--------------------------|--------------|----------|----------|----------|----------|----------|----------|----------|----------|----------|----------|----------|----------|----------|----------|
| | | Recvd Wt. kg | Au ppm | Ag ppm | Al % | As ppm | B ppm | Ba ppm | Be ppm | Bi ppm | Ca % | Cd ppm | Co ppm | Cr ppm | Cu ppm | Fe % |
| | | 0.02 | 0.001 | 0.2 | 0.01 | 2 | 10 | 10 | 0.5 | 2 | 0.01 | 0.5 | 1 | 1 | 1 | 0.01 |
| CC6311 | | 0.38 | 0.006 | 0.4 | 1.48 | 35 | <10 | 140 | <0.5 | <2 | 0.18 | 0.6 | 15 | 30 | 61 | 3.93 |
| CC6312 | | 0.14 | 0.003 | 0.2 | 1.88 | 20 | <10 | 200 | <0.5 | <2 | 0.26 | 0.5 | 12 | 39 | 104 | 3.34 |
| CC6313 | | 0.16 | 0.005 | 0.2 | 1.99 | 16 | <10 | 180 | <0.5 | <2 | 0.26 | <0.5 | 16 | 41 | 236 | 3.93 |
| CC6314 | | 0.24 | 0.002 | <0.2 | 1.42 | 11 | <10 | 130 | <0.5 | <2 | 0.32 | 0.5 | 13 | 32 | 172 | 3.04 |
| CC6315 | | 0.24 | 0.004 | <0.2 | 1.39 | 14 | <10 | 90 | <0.5 | <2 | 0.33 | 0.5 | 17 | 36 | 218 | 2.96 |
| CC6316 | | 0.18 | 0.004 | <0.2 | 0.91 | 11 | <10 | 90 | <0.5 | <2 | 0.13 | 0.5 | 7 | 18 | 77 | 2.80 |
| CC6317 | | 0.24 | 0.010 | <0.2 | 1.59 | 9 | <10 | 170 | <0.5 | <2 | 0.35 | <0.5 | 13 | 25 | 250 | 3.63 |
| CC6318 | | 0.24 | 0.002 | 0.2 | 1.44 | 11 | <10 | 110 | <0.5 | <2 | 0.17 | 0.5 | 9 | 27 | 77 | 2.92 |
| CC6319 | | 0.26 | 0.015 | <0.2 | 1.52 | 7 | <10 | 120 | <0.5 | <2 | 0.24 | <0.5 | 10 | 28 | 156 | 2.68 |
| CC6320 | | 0.26 | 0.002 | 0.2 | 1.20 | 5 | <10 | 70 | <0.5 | <2 | 0.13 | <0.5 | 9 | 26 | 42 | 2.72 |
| CC6321 | | 0.46 | 0.002 | <0.2 | 1.62 | 14 | <10 | 190 | <0.5 | <2 | 0.38 | 0.5 | 13 | 22 | 311 | 3.60 |
| CC6322 | | 0.26 | 0.022 | 0.2 | 1.42 | 7 | <10 | 100 | <0.5 | <2 | 0.18 | 0.6 | 10 | 24 | 35 | 2.66 |
| CC6323 | | 0.28 | 0.006 | <0.2 | 1.30 | 6 | <10 | 90 | <0.5 | <2 | 0.24 | 0.6 | 11 | 22 | 63 | 2.38 |
| CC6324 | | 0.24 | 0.012 | 0.2 | 1.48 | 29 | <10 | 120 | 0.5 | <2 | 0.23 | 0.6 | 15 | 35 | 89 | 2.92 |
| CC6325 | | 0.48 | 0.131 | 1.0 | 0.35 | 659 | <10 | 60 | <0.5 | <2 | 0.30 | 0.9 | 12 | 6 | 24 | 3.13 |
| CC6326 | | 0.30 | 0.014 | 0.4 | 0.99 | 90 | <10 | 80 | <0.5 | <2 | 0.10 | 0.5 | 5 | 20 | 18 | 2.25 |
| CC6327 | | 0.28 | 0.003 | <0.2 | 1.00 | 12 | <10 | 100 | <0.5 | <2 | 0.23 | <0.5 | 8 | 19 | 16 | 1.78 |
| CC6328 | | 0.34 | 0.004 | <0.2 | 1.07 | 12 | <10 | 140 | <0.5 | <2 | 0.28 | <0.5 | 7 | 24 | 31 | 1.98 |
| CC6329 | | 0.24 | <0.001 | <0.2 | 1.26 | 7 | <10 | 110 | <0.5 | <2 | 0.21 | <0.5 | 7 | 25 | 30 | 2.17 |
| CC6330 | | 0.28 | 0.016 | 0.3 | 1.26 | 12 | <10 | 100 | <0.5 | <2 | 0.29 | 0.6 | 9 | 25 | 53 | 2.51 |
| CC6331 | | 0.32 | 0.013 | <0.2 | 1.32 | 12 | <10 | 130 | <0.5 | <2 | 0.32 | 0.5 | 12 | 27 | 85 | 2.57 |
| CC6332 | | 0.22 | 0.001 | <0.2 | 0.75 | 6 | <10 | 50 | <0.5 | <2 | 0.08 | <0.5 | 5 | 17 | 20 | 1.98 |
| CC6333 | | 0.18 | 0.001 | <0.2 | 1.39 | 12 | <10 | 70 | <0.5 | <2 | 0.08 | <0.5 | 5 | 24 | 14 | 2.81 |
| CC6334 | | 0.30 | <0.001 | <0.2 | 1.20 | 8 | <10 | 60 | <0.5 | <2 | 0.07 | <0.5 | 6 | 21 | 13 | 2.45 |
| CC6335 | | 0.26 | <0.001 | 0.2 | 0.66 | 13 | <10 | 40 | <0.5 | <2 | 0.08 | <0.5 | 6 | 16 | 17 | 2.49 |
| CC6336 | | 0.14 | 0.007 | <0.2 | 0.68 | 9 | <10 | 100 | <0.5 | <2 | 0.14 | <0.5 | 4 | 14 | 12 | 2.04 |
| CC6337 | | 0.26 | <0.001 | <0.2 | 1.07 | 11 | <10 | 90 | <0.5 | 2 | 0.10 | <0.5 | 6 | 19 | 12 | 2.47 |
| CC6338 | | 0.16 | 0.003 | <0.2 | 0.94 | 15 | <10 | 160 | <0.5 | <2 | 0.27 | <0.5 | 7 | 17 | 12 | 2.01 |
| CC6339 | | 0.40 | 0.003 | 0.2 | 1.24 | 12 | <10 | 150 | <0.5 | <2 | 0.26 | 0.5 | 7 | 21 | 20 | 2.30 |
| CC6340 | | 0.28 | 0.003 | <0.2 | 1.02 | 20 | <10 | 60 | <0.5 | <2 | 0.17 | <0.5 | 4 | 17 | 13 | 1.80 |
| CC6341 | | 0.24 | 0.007 | <0.2 | 1.04 | 24 | <10 | 70 | <0.5 | <2 | 0.18 | <0.5 | 4 | 17 | 15 | 1.89 |
| CC6342 | | 0.26 | 0.005 | 0.2 | 0.90 | 26 | <10 | 70 | <0.5 | <2 | 0.09 | <0.5 | 4 | 17 | 14 | 2.01 |
| CC6343 | | 0.34 | 0.022 | 0.4 | 0.97 | 36 | <10 | 140 | <0.5 | <2 | 0.20 | 0.7 | 6 | 20 | 22 | 2.36 |
| CC6344 | | 0.30 | 0.008 | 0.4 | 1.23 | 30 | <10 | 110 | <0.5 | <2 | 0.16 | 0.6 | 9 | 22 | 27 | 2.77 |
| CC6345 | | 0.30 | <0.001 | 0.3 | 0.81 | 13 | <10 | 130 | <0.5 | <2 | 0.20 | <0.5 | 6 | 16 | 17 | 1.86 |
| CC6346 | | 0.42 | 0.015 | 0.6 | 1.07 | 30 | <10 | 190 | <0.5 | <2 | 0.27 | 0.6 | 9 | 23 | 26 | 2.73 |
| CC6347 | | 0.46 | 0.005 | 0.2 | 1.02 | 11 | <10 | 140 | <0.5 | <2 | 0.16 | <0.5 | 5 | 19 | 15 | 1.79 |
| CC6348 | | 0.32 | 0.006 | <0.2 | 0.84 | 10 | <10 | 160 | <0.5 | <2 | 0.18 | <0.5 | 6 | 15 | 16 | 1.80 |
| CC6349 | | 0.40 | 0.008 | <0.2 | 1.09 | 16 | <10 | 100 | <0.5 | <2 | 0.18 | 0.5 | 7 | 19 | 21 | 2.08 |
| CC6350 | | 0.20 | 0.008 | 0.5 | 1.37 | 53 | <10 | 240 | <0.5 | <2 | 0.14 | 0.7 | 10 | 24 | 21 | 2.90 |



ALS Chemex
EXCELLENCE IN ANALYTICAL CHEMISTRY
 ALS Canada Ltd.
 212 Brooksbank Avenue
 North Vancouver BC V7J 2C1 Canada
 Phone: 604 984 0221 Fax: 604 984 0218

MOUNT HINTON PROJECT
 C/O ARCHER, CATHRO & ASSOCIATES (1981)
 LIMITED
 1016 - 510 W. HASTINGS ST.
 VANCOUVER BC V6B 1L8

Page: 2 - B
 Total # Pages: 4 (A - C)
 Finalized Date: 14-SEP-2004
 Account: MOUHIN

Project: Mt. Hinton

CERTIFICATE OF ANALYSIS VA04060352

| Sample Description | Method Analyte Units LOR | ME-ICP41 | ME-ICP41 | ME-ICP41 | ME-ICP41 | ME-ICP41 | ME-ICP41 | ME-ICP41 | ME-ICP41 | ME-ICP41 | ME-ICP41 | ME-ICP41 | ME-ICP41 | ME-ICP41 | ME-ICP41 | ME-ICP41 |
|--------------------|--------------------------|-----------|----------|----------|-----------|-----------|----------|----------|-----------|----------|----------|----------|----------|----------|----------|----------|
| | | Ga ppm 10 | Hg ppm 1 | K % 0.01 | La ppm 10 | Mg % 0.01 | Mn ppm 5 | Mo ppm 1 | Na % 0.01 | Ni ppm 1 | P ppm 10 | Pb ppm 2 | S % 0.01 | Sb ppm 2 | Sc ppm 1 | Sr ppm 1 |
| CC6311 | | <10 | <1 | 0.05 | 10 | 0.48 | 879 | 1 | 0.02 | 26 | 830 | 13 | 0.04 | 2 | 3 | 13 |
| CC6312 | | 10 | <1 | 0.05 | 10 | 0.66 | 452 | 1 | 0.02 | 30 | 910 | 10 | 0.06 | 2 | 3 | 17 |
| CC6313 | | 10 | <1 | 0.06 | 10 | 0.76 | 513 | 1 | 0.02 | 31 | 1010 | 8 | 0.07 | <2 | 3 | 18 |
| CC6314 | | <10 | <1 | 0.05 | 10 | 0.64 | 439 | 1 | 0.02 | 28 | 890 | 6 | 0.02 | <2 | 4 | 17 |
| CC6315 | | <10 | <1 | 0.04 | 10 | 0.68 | 444 | 1 | 0.02 | 29 | 890 | 7 | 0.03 | <2 | 3 | 16 |
| CC6316 | | <10 | <1 | 0.04 | 10 | 0.29 | 257 | 1 | 0.02 | 13 | 700 | 8 | 0.08 | <2 | 1 | 11 |
| CC6317 | | <10 | <1 | 0.06 | 10 | 0.61 | 545 | 1 | 0.02 | 25 | 1100 | 6 | 0.03 | <2 | 4 | 20 |
| CC6318 | | 10 | <1 | 0.04 | 10 | 0.46 | 357 | 1 | 0.02 | 21 | 590 | 7 | 0.05 | <2 | 2 | 12 |
| CC6319 | | <10 | 1 | 0.04 | 10 | 0.56 | 296 | 1 | 0.02 | 24 | 780 | 8 | 0.03 | <2 | 4 | 15 |
| CC6320 | | 10 | 1 | 0.03 | 10 | 0.46 | 267 | 1 | 0.02 | 18 | 390 | 7 | 0.04 | <2 | 2 | 11 |
| CC6321 | | <10 | 1 | 0.06 | 10 | 0.59 | 483 | 1 | 0.02 | 21 | 1140 | 6 | 0.02 | <2 | 4 | 19 |
| CC6322 | | <10 | <1 | 0.03 | 10 | 0.43 | 342 | 1 | 0.02 | 22 | 410 | 5 | 0.03 | <2 | 2 | 12 |
| CC6323 | | <10 | 1 | 0.04 | 10 | 0.46 | 371 | 1 | 0.02 | 24 | 600 | 6 | 0.03 | <2 | 2 | 14 |
| CC6324 | | <10 | <1 | 0.04 | 10 | 0.52 | 590 | 1 | 0.02 | 37 | 800 | 9 | 0.03 | 2 | 4 | 13 |
| CC6325 | | <10 | <1 | 0.05 | <10 | 0.02 | 1485 | 1 | 0.02 | 41 | 1320 | 25 | 0.02 | 11 | 3 | 20 |
| CC6326 | | <10 | <1 | 0.03 | 10 | 0.19 | 74 | 1 | 0.02 | 17 | 730 | 18 | 0.02 | 4 | 2 | 12 |
| CC6327 | | <10 | <1 | 0.04 | 10 | 0.31 | 149 | <1 | <0.01 | 22 | 690 | 12 | <0.01 | 2 | 2 | 15 |
| CC6328 | | <10 | 1 | 0.03 | 20 | 0.38 | 160 | <1 | <0.01 | 22 | 810 | 6 | <0.01 | 2 | 3 | 17 |
| CC6329 | | <10 | <1 | 0.03 | 10 | 0.38 | 252 | <1 | <0.01 | 20 | 680 | 6 | 0.01 | <2 | 2 | 14 |
| CC6330 | | <10 | <1 | 0.03 | 20 | 0.39 | 383 | <1 | <0.01 | 26 | 890 | 8 | <0.01 | <2 | 2 | 17 |
| CC6331 | | <10 | <1 | 0.04 | 30 | 0.44 | 633 | <1 | <0.01 | 32 | 1160 | 9 | <0.01 | <2 | 3 | 18 |
| CC6332 | | <10 | <1 | 0.02 | 10 | 0.22 | 121 | 1 | <0.01 | 19 | 520 | 5 | 0.02 | <2 | <1 | 8 |
| CC6333 | | <10 | 1 | 0.03 | 10 | 0.31 | 212 | <1 | <0.01 | 16 | 460 | 11 | 0.03 | <2 | 2 | 9 |
| CC6334 | | <10 | <1 | 0.03 | 10 | 0.31 | 200 | 1 | <0.01 | 18 | 370 | 10 | 0.01 | <2 | 2 | 8 |
| CC6335 | | <10 | <1 | 0.03 | 10 | 0.13 | 154 | 1 | <0.01 | 20 | 690 | 12 | 0.03 | 2 | <1 | 6 |
| CC6336 | | <10 | <1 | 0.04 | 10 | 0.13 | 165 | 1 | <0.01 | 13 | 680 | 9 | 0.07 | 2 | 1 | 16 |
| CC6337 | | <10 | <1 | 0.04 | 10 | 0.27 | 259 | 1 | <0.01 | 17 | 420 | 12 | 0.02 | 2 | 1 | 10 |
| CC6338 | | <10 | <1 | 0.03 | 10 | 0.21 | 445 | <1 | <0.01 | 15 | 700 | 11 | 0.04 | 2 | 1 | 15 |
| CC6339 | | <10 | <1 | 0.05 | 20 | 0.36 | 508 | <1 | <0.01 | 21 | 890 | 6 | <0.01 | 2 | 3 | 18 |
| CC6340 | | <10 | 1 | 0.03 | 10 | 0.27 | 124 | <1 | <0.01 | 13 | 680 | 11 | 0.01 | 2 | 2 | 12 |
| CC6341 | | <10 | 1 | 0.04 | 10 | 0.28 | 158 | <1 | <0.01 | 17 | 740 | 12 | 0.01 | 2 | 2 | 13 |
| CC6342 | | <10 | <1 | 0.04 | 10 | 0.22 | 150 | <1 | <0.01 | 13 | 490 | 38 | 0.03 | 3 | 1 | 11 |
| CC6343 | | <10 | <1 | 0.04 | 20 | 0.31 | 251 | 1 | <0.01 | 21 | 900 | 21 | 0.01 | 3 | 3 | 17 |
| CC6344 | | <10 | <1 | 0.04 | 10 | 0.35 | 244 | 1 | <0.01 | 28 | 1010 | 17 | 0.02 | 3 | 3 | 14 |
| CC6345 | | <10 | <1 | 0.03 | 10 | 0.24 | 194 | <1 | <0.01 | 20 | 700 | 10 | <0.01 | <2 | 2 | 14 |
| CC6346 | | <10 | <1 | 0.04 | 10 | 0.28 | 328 | <1 | <0.01 | 30 | 980 | 12 | <0.01 | 3 | 4 | 16 |
| CC6347 | | <10 | <1 | 0.03 | 10 | 0.28 | 154 | <1 | <0.01 | 21 | 640 | 8 | <0.01 | <2 | 3 | 15 |
| CC6348 | | <10 | <1 | 0.04 | 10 | 0.23 | 230 | 1 | <0.01 | 20 | 630 | 6 | <0.01 | <2 | 3 | 16 |
| CC6349 | | <10 | <1 | 0.04 | 20 | 0.30 | 331 | <1 | <0.01 | 23 | 660 | 11 | <0.01 | <2 | 3 | 14 |
| CC6350 | | <10 | <1 | 0.06 | 10 | 0.28 | 845 | 1 | <0.01 | 26 | 930 | 44 | 0.06 | 3 | 2 | 20 |



ALS Chemex
EXCELLENCE IN ANALYTICAL CHEMISTRY
 ALS Canada Ltd.
 212 Brooksbank Avenue
 North Vancouver BC V7J 2C1 Canada
 Phone: 604 984 0221 Fax: 604 984 0218

MOUNT HINTON PROJECT
 C/O ARCHER, CATHRO & ASSOCIATES (1981)
 LIMITED
 1016 - 510 W. HASTINGS ST.
 VANCOUVER BC V6B 1L8

Page: 2 - C
 Total # Pages: 4 (A - C)
 Finalized Date: 14-SEP-2004
 Account: MOUHIN

Project: Mt. Hinton

CERTIFICATE OF ANALYSIS VA04060352

| Sample Description | Method Analyte Units LOR | ME-ICP41 | ME-ICP41 | ME-ICP41 | ME-ICP41 | ME-ICP41 | ME-ICP41 |
|--------------------|-----------------------------------|-----------|-----------|-----------|----------|-----------|----------|
| | | Tl | Tl | U | V | W | Zn |
| | | % 0.01 | ppm 10 | ppm 10 | ppm 1 | ppm 10 | ppm 2 |
| CC6311 | | 0.05 | <10 | <10 | 48 | <10 | 71 |
| CC6312 | | 0.06 | <10 | <10 | 61 | <10 | 76 |
| CC6313 | | 0.07 | <10 | <10 | 65 | <10 | 78 |
| CC6314 | | 0.09 | <10 | <10 | 53 | <10 | 66 |
| CC6315 | | 0.09 | <10 | <10 | 51 | <10 | 61 |
| CC6316 | | 0.08 | <10 | <10 | 52 | <10 | 46 |
| CC6317 | | 0.10 | <10 | <10 | 57 | <10 | 75 |
| CC6318 | | 0.08 | <10 | <10 | 60 | <10 | 57 |
| CC6319 | | 0.08 | <10 | <10 | 55 | <10 | 63 |
| CC6320 | | 0.10 | <10 | <10 | 69 | <10 | 45 |
| CC6321 | | 0.15 | <10 | <10 | 72 | <10 | 76 |
| CC6322 | | 0.14 | <10 | <10 | 63 | <10 | 68 |
| CC6323 | | 0.12 | <10 | <10 | 51 | <10 | 63 |
| CC6324 | | 0.08 | <10 | <10 | 57 | <10 | 72 |
| CC6325 | | <0.01 | <10 | <10 | 10 | <10 | 75 |
| CC6326 | | 0.02 | <10 | <10 | 27 | <10 | 43 |
| CC6327 | | 0.05 | <10 | <10 | 32 | <10 | 60 |
| CC6328 | | 0.08 | <10 | <10 | 39 | <10 | 49 |
| CC6329 | | 0.06 | <10 | <10 | 41 | <10 | 46 |
| CC6330 | | 0.10 | <10 | <10 | 52 | <10 | 73 |
| CC6331 | | 0.09 | <10 | <10 | 49 | <10 | 68 |
| CC6332 | | 0.02 | <10 | <10 | 31 | <10 | 32 |
| CC6333 | | 0.05 | 10 | <10 | 46 | <10 | 45 |
| CC6334 | | 0.05 | <10 | <10 | 43 | <10 | 46 |
| CC6335 | | 0.02 | <10 | <10 | 30 | <10 | 57 |
| CC6336 | | 0.04 | <10 | <10 | 53 | <10 | 56 |
| CC6337 | | 0.05 | <10 | <10 | 52 | <10 | 53 |
| CC6338 | | 0.03 | <10 | <10 | 40 | <10 | 49 |
| CC6339 | | 0.06 | <10 | <10 | 41 | <10 | 76 |
| CC6340 | | 0.05 | <10 | <10 | 32 | <10 | 52 |
| CC6341 | | 0.05 | <10 | <10 | 34 | <10 | 54 |
| CC6342 | | 0.03 | <10 | <10 | 39 | <10 | 50 |
| CC6343 | | 0.05 | <10 | <10 | 36 | <10 | 74 |
| CC6344 | | 0.04 | <10 | <10 | 38 | <10 | 85 |
| CC6345 | | 0.04 | <10 | <10 | 28 | <10 | 50 |
| CC6346 | | 0.04 | <10 | <10 | 32 | <10 | 77 |
| CC6347 | | 0.05 | <10 | <10 | 33 | <10 | 59 |
| CC6348 | | 0.05 | <10 | <10 | 30 | <10 | 61 |
| CC6349 | | 0.05 | <10 | <10 | 35 | <10 | 65 |
| CC6350 | | 0.04 | <10 | <10 | 49 | <10 | 108 |



ALS Chemex
EXCELLENCE IN ANALYTICAL CHEMISTRY
 ALS Canada Ltd.
 212 Brooksbank Avenue
 North Vancouver BC V7J 2C1 Canada
 Phone: 604 984 0221 Fax: 604 984 0218

MOUNT HINTON PROJECT
C/O ARCHER, CATHRO & ASSOCIATES (1981)
LIMITED
1016 - 510 W. HASTINGS ST.
VANCOUVER BC V6B 1L8

Page: 3 - A
 Total # Pages: 4 (A - C)
 Finalized Date: 14-SEP-2004
 Account: MOUHN

Project: Mt. Hinton

CERTIFICATE OF ANALYSIS VA04060352

| Sample Description | Method | WEI-21 | Au-ICP21 | ME-ICP41 | ME-ICP41 | ME-ICP41 | ME-ICP41 | ME-ICP41 | ME-ICP41 | ME-ICP41 | ME-ICP41 | ME-ICP41 | ME-ICP41 | ME-ICP41 | ME-ICP41 | ME-ICP41 |
|--------------------|---------|-----------|----------|----------|----------|----------|----------|----------|----------|----------|----------|----------|----------|----------|----------|----------|
| | Analyte | Recvd Wt. | Au | Ag | Al | As | B | Ba | Be | Bi | Ca | Cd | Co | Cr | Cu | Fe |
| Units | | kg | ppm | ppm | % | ppm | ppm | ppm | ppm | ppm | % | ppm | ppm | ppm | ppm | % |
| LOR | | 0.02 | 0.001 | 0.2 | 0.01 | 2 | 10 | 10 | 0.5 | 2 | 0.01 | 0.5 | 1 | 1 | 1 | 0.01 |
| CC6351 | | 0.22 | 0.021 | <0.2 | 0.78 | 26 | <10 | 70 | <0.5 | <2 | 0.11 | <0.5 | 5 | 16 | 15 | 2.03 |
| CC6352 | | 0.30 | 0.004 | 0.2 | 1.03 | 12 | <10 | 90 | <0.5 | <2 | 0.15 | <0.5 | 5 | 19 | 18 | 2.03 |
| CC6353 | | 0.22 | 0.005 | <0.2 | 0.81 | 12 | <10 | 60 | <0.5 | <2 | 0.07 | <0.5 | 3 | 17 | 11 | 2.10 |
| CC6354 | | 0.10 | 0.001 | 0.2 | 0.94 | 15 | <10 | 100 | <0.5 | <2 | 0.05 | <0.5 | 3 | 17 | 12 | 1.89 |
| CC6361 | | 0.20 | 0.050 | 0.5 | 1.32 | 96 | <10 | 160 | <0.5 | <2 | 0.10 | 0.6 | 9 | 23 | 27 | 3.06 |
| CC6362 | | 0.26 | 0.016 | 0.2 | 1.06 | 37 | <10 | 50 | <0.5 | <2 | 0.06 | <0.5 | 5 | 19 | 15 | 2.72 |
| CC6363 | | 0.28 | 0.062 | 0.5 | 1.14 | 66 | <10 | 80 | <0.5 | <2 | 0.16 | 0.6 | 10 | 18 | 24 | 2.24 |
| CC6364 | | 0.18 | 0.012 | 0.5 | 1.33 | 69 | <10 | 60 | <0.5 | <2 | 0.07 | 0.5 | 5 | 24 | 25 | 3.26 |
| CC6365 | | 0.30 | 0.081 | 0.2 | 0.99 | 164 | <10 | 100 | <0.5 | <2 | 0.11 | 0.5 | 8 | 18 | 28 | 2.50 |
| CC6366 | | 0.40 | 0.031 | 0.4 | 0.97 | 81 | <10 | 90 | <0.5 | <2 | 0.15 | 0.6 | 7 | 17 | 29 | 2.18 |
| CC6367 | | 0.38 | 0.032 | 0.4 | 0.77 | 111 | <10 | 70 | <0.5 | <2 | 0.12 | 0.8 | 11 | 14 | 33 | 2.50 |
| CC6368 | | 0.32 | 0.090 | 1.8 | 0.93 | 124 | <10 | 70 | <0.5 | <2 | 0.20 | 1.1 | 10 | 18 | 31 | 2.60 |
| CC6369 | | 0.30 | 0.395 | 0.5 | 1.10 | 653 | <10 | 60 | <0.5 | <2 | 0.10 | 1.6 | 17 | 15 | 51 | 3.50 |
| CC6370 | | 0.28 | 0.034 | 0.2 | 0.81 | 57 | <10 | 50 | <0.5 | <2 | 0.06 | <0.5 | 6 | 20 | 16 | 2.72 |
| CC6371 | | 0.26 | 0.037 | 0.2 | 1.06 | 39 | <10 | 90 | <0.5 | <2 | 0.11 | <0.5 | 8 | 20 | 16 | 2.55 |
| CC6372 | | 0.30 | 0.033 | 1.3 | 0.54 | 154 | <10 | 50 | <0.5 | <2 | 0.20 | 0.6 | 13 | 12 | 31 | 2.89 |
| CC6373 | | 0.44 | 0.122 | 2.4 | 0.33 | 215 | <10 | 30 | <0.5 | <2 | 0.21 | 1.1 | 11 | 8 | 27 | 2.42 |
| CC6374 | | 0.32 | 0.062 | 2.4 | 0.48 | 183 | <10 | 30 | <0.5 | <2 | 0.19 | 0.8 | 11 | 11 | 27 | 2.52 |
| CC6375 | | 0.30 | 0.068 | 1.0 | 0.45 | 95 | <10 | 20 | <0.5 | <2 | 0.23 | 0.5 | 10 | 11 | 24 | 2.08 |
| CC6376 | | 0.34 | 0.023 | 3.9 | 0.31 | 97 | <10 | 10 | <0.5 | 2 | 0.16 | 0.8 | 9 | 7 | 19 | 1.66 |
| CC6377 | | 0.26 | 0.142 | 1.9 | 0.42 | 281 | <10 | 60 | <0.5 | <2 | 0.22 | 1.6 | 9 | 9 | 24 | 2.32 |
| CC6378 | | 0.36 | 0.059 | 1.9 | 0.57 | 149 | <10 | 70 | <0.5 | <2 | 0.26 | 1.5 | 13 | 12 | 27 | 2.75 |
| CC6379 | | 0.32 | 0.044 | 0.8 | 0.42 | 109 | <10 | 50 | <0.5 | <2 | 0.12 | 0.7 | 8 | 8 | 21 | 2.12 |
| CC6380 | | 0.34 | 0.055 | 2.2 | 0.67 | 79 | <10 | 60 | <0.5 | <2 | 0.12 | 1.4 | 7 | 14 | 24 | 2.14 |
| CC6381 | | 0.36 | 0.045 | 1.3 | 0.59 | 50 | <10 | 40 | <0.5 | <2 | 0.15 | 0.8 | 7 | 14 | 17 | 1.88 |
| CC6382 | | 0.34 | 0.085 | 2.1 | 0.76 | 89 | <10 | 60 | <0.5 | <2 | 0.09 | 1.0 | 10 | 15 | 22 | 2.44 |
| CC6383 | | 0.30 | <0.001 | 0.5 | 0.49 | 37 | <10 | 30 | <0.5 | <2 | 0.04 | <0.5 | 6 | 14 | 33 | 2.06 |
| CC6384 | | 0.22 | 0.023 | 0.3 | 0.99 | 38 | <10 | 80 | <0.5 | <2 | 0.12 | 0.5 | 6 | 20 | 18 | 2.16 |
| CC6386 | | 0.38 | 0.019 | 1.0 | 0.52 | 29 | <10 | 50 | <0.5 | <2 | 0.14 | 0.7 | 7 | 12 | 27 | 1.91 |
| CC6387 | | 0.26 | 0.009 | 0.5 | 0.38 | 23 | <10 | 30 | <0.5 | <2 | 0.15 | 0.6 | 6 | 9 | 25 | 1.60 |
| CC6388 | | 0.32 | 0.009 | 0.6 | 0.66 | 32 | <10 | 40 | <0.5 | <2 | 0.05 | 0.6 | 6 | 14 | 16 | 2.15 |
| CC6389 | | 0.40 | 0.011 | 1.0 | 0.59 | 30 | <10 | 70 | <0.5 | <2 | 0.15 | 1.8 | 8 | 15 | 58 | 2.70 |
| CC6390 | | 0.36 | 0.003 | 0.9 | 0.43 | 34 | <10 | 30 | <0.5 | <2 | 0.24 | 0.9 | 10 | 10 | 26 | 2.29 |
| CC6391 | | 0.34 | 0.006 | 0.8 | 0.69 | 60 | <10 | 30 | 0.5 | <2 | 0.28 | <0.5 | 14 | 14 | 40 | 2.31 |
| CC6392 | | 0.36 | 0.017 | 0.5 | 0.60 | 52 | <10 | 30 | <0.5 | <2 | 0.23 | <0.5 | 10 | 13 | 24 | 2.18 |
| CC6393 | | 0.34 | 0.020 | 0.8 | 0.36 | 180 | <10 | 30 | <0.5 | <2 | 0.19 | <0.5 | 8 | 9 | 17 | 2.12 |
| CC6394 | | 0.28 | 0.003 | 0.9 | 0.32 | 28 | <10 | 20 | <0.5 | <2 | 0.10 | <0.5 | 9 | 9 | 29 | 2.56 |
| CC6395 | | 0.34 | 0.008 | 0.5 | 0.34 | 32 | <10 | 20 | <0.5 | <2 | 0.25 | <0.5 | 8 | 8 | 19 | 1.89 |
| CC6396 | | 0.36 | 0.007 | 0.5 | 0.62 | 26 | <10 | 10 | <0.5 | <2 | 0.18 | <0.5 | 14 | 13 | 30 | 2.23 |
| CC6397 | | 0.30 | 0.005 | 0.9 | 0.83 | 33 | <10 | 40 | <0.5 | <2 | 0.19 | 0.6 | 17 | 17 | 42 | 3.04 |



ALS Chemex
EXCELLENCE IN ANALYTICAL CHEMISTRY
 ALS Canada Ltd.
 212 Brooksbank Avenue
 North Vancouver BC V7J 2C1 Canada
 Phone: 604 984 0221 Fax: 604 984 0218

MOUNT HINTON PROJECT
C/O ARCHER, CATHRO & ASSOCIATES (1981)
LIMITED
1016 - 510 W. HASTINGS ST.
VANCOUVER BC V6B 1L8

Page: 3 - B
 Total # Pages: 4 (A - C)
 Finalized Date: 14-SEP-2004
 Account: MOUHIN

Project: Mt. Hinton

CERTIFICATE OF ANALYSIS VA04060352

| Sample Description | Method Analyte Units LOR | ME-ICP41 | ME-ICP41 | ME-ICP41 | ME-ICP41 | ME-ICP41 | ME-ICP41 | ME-ICP41 | ME-ICP41 | ME-ICP41 | ME-ICP41 | ME-ICP41 | ME-ICP41 | ME-ICP41 | ME-ICP41 | ME-ICP41 |
|--------------------|-----------------------------------|-----------------|----------------|----------------|-----------------|-----------------|----------------|----------------|-----------------|----------------|----------------|----------------|----------------|----------------|----------------|----------------|
| | | Ga ppm 10 | Hg ppm 1 | K % 0.01 | La ppm 10 | Mg % 0.01 | Mn ppm 5 | Mo ppm 1 | Na % 0.01 | Ni ppm 1 | P ppm 10 | Pb ppm 2 | S % 0.01 | Sb ppm 2 | Sc ppm 1 | Sr ppm 1 |
| CC6351 | | <10 | <1 | 0.03 | 10 | 0.21 | 218 | <1 | <0.01 | 20 | 440 | 11 | <0.01 | <2 | 1 | 12 |
| CC6352 | | <10 | <1 | 0.04 | 10 | 0.28 | 267 | <1 | <0.01 | 17 | 620 | 10 | <0.01 | <2 | 2 | 12 |
| CC6353 | | <10 | <1 | 0.03 | 10 | 0.14 | 133 | 1 | <0.01 | 10 | 520 | 10 | 0.04 | <2 | 1 | 9 |
| CC6354 | | <10 | <1 | 0.04 | 10 | 0.13 | 117 | 1 | <0.01 | 9 | 920 | 12 | 0.04 | 2 | 1 | 9 |
| CC6361 | | <10 | <1 | 0.05 | 10 | 0.33 | 575 | 1 | <0.01 | 26 | 810 | 32 | 0.04 | <2 | 1 | 13 |
| CC6362 | | <10 | 1 | 0.03 | 10 | 0.21 | 244 | 1 | <0.01 | 16 | 370 | 26 | 0.01 | 2 | 1 | 7 |
| CC6363 | | <10 | <1 | 0.04 | 10 | 0.28 | 480 | <1 | <0.01 | 31 | 780 | 19 | 0.01 | <2 | 2 | 12 |
| CC6364 | | <10 | <1 | 0.03 | 10 | 0.26 | 258 | 1 | <0.01 | 17 | 390 | 47 | 0.03 | <2 | 2 | 8 |
| CC6365 | | <10 | <1 | 0.03 | 10 | 0.24 | 314 | 1 | <0.01 | 27 | 710 | 22 | 0.02 | 3 | 1 | 11 |
| CC6366 | | <10 | <1 | 0.04 | 20 | 0.25 | 383 | 1 | <0.01 | 26 | 810 | 14 | 0.01 | <2 | 2 | 11 |
| CC6367 | | <10 | <1 | 0.02 | 20 | 0.13 | 302 | 1 | <0.01 | 45 | 820 | 27 | <0.01 | 3 | 2 | 9 |
| CC6368 | | <10 | <1 | 0.03 | 20 | 0.22 | 395 | <1 | <0.01 | 38 | 1030 | 117 | 0.01 | 6 | 2 | 13 |
| CC6369 | | <10 | <1 | 0.02 | 10 | 0.07 | 273 | 1 | 0.01 | 76 | 1140 | 26 | 0.03 | 5 | 1 | 8 |
| CC6370 | | <10 | <1 | 0.03 | 10 | 0.17 | 222 | 1 | 0.01 | 19 | 560 | 16 | 0.05 | 2 | 1 | 7 |
| CC6371 | | <10 | <1 | 0.03 | 10 | 0.29 | 310 | 1 | 0.01 | 26 | 560 | 19 | 0.03 | <2 | 1 | 10 |
| CC6372 | | <10 | <1 | 0.02 | 10 | 0.08 | 413 | 2 | 0.01 | 46 | 980 | 82 | 0.04 | 4 | 1 | 16 |
| CC6373 | | <10 | <1 | 0.02 | 10 | 0.04 | 335 | 2 | 0.01 | 36 | 1000 | 138 | 0.04 | 5 | 1 | 13 |
| CC6374 | | <10 | <1 | 0.02 | 10 | 0.07 | 281 | 1 | 0.01 | 38 | 840 | 180 | 0.02 | 3 | 1 | 9 |
| CC6375 | | <10 | <1 | 0.01 | 10 | 0.06 | 211 | 1 | <0.01 | 31 | 880 | 29 | 0.02 | 3 | 1 | 11 |
| CC6376 | | <10 | <1 | 0.01 | 10 | 0.05 | 188 | 1 | <0.01 | 28 | 690 | 121 | 0.03 | 3 | 1 | 8 |
| CC6377 | | <10 | <1 | 0.02 | 10 | 0.09 | 312 | 1 | 0.01 | 38 | 870 | 94 | 0.02 | 3 | 2 | 12 |
| CC6378 | | <10 | <1 | 0.04 | 10 | 0.10 | 478 | 1 | 0.01 | 41 | 1140 | 87 | 0.04 | 3 | 2 | 13 |
| CC6379 | | <10 | <1 | 0.02 | 10 | 0.07 | 366 | 1 | <0.01 | 30 | 730 | 33 | 0.02 | 2 | 1 | 7 |
| CC6380 | | <10 | <1 | 0.02 | 10 | 0.16 | 274 | 1 | 0.01 | 26 | 670 | 136 | 0.02 | 3 | 1 | 9 |
| CC6381 | | <10 | <1 | 0.02 | 10 | 0.16 | 291 | 1 | 0.01 | 19 | 810 | 91 | 0.02 | <2 | 1 | 9 |
| CC6382 | | <10 | <1 | 0.03 | 10 | 0.14 | 532 | 1 | <0.01 | 27 | 850 | 89 | 0.02 | 2 | 1 | 8 |
| CC6383 | | <10 | <1 | 0.03 | 10 | 0.09 | 172 | 1 | 0.01 | 15 | 1270 | 41 | 0.08 | 2 | <1 | 6 |
| CC6384 | | <10 | <1 | 0.03 | 10 | 0.27 | 134 | 1 | 0.01 | 20 | 690 | 29 | 0.02 | <2 | 1 | 10 |
| CC6386 | | <10 | <1 | 0.02 | 10 | 0.10 | 240 | 4 | <0.01 | 25 | 550 | 40 | 0.02 | 2 | 1 | 12 |
| CC6387 | | <10 | <1 | 0.01 | 10 | 0.08 | 186 | 3 | <0.01 | 22 | 530 | 21 | 0.02 | 2 | 1 | 9 |
| CC6388 | | <10 | <1 | 0.02 | 10 | 0.08 | 196 | 2 | <0.01 | 18 | 870 | 46 | 0.03 | <2 | 1 | 7 |
| CC6389 | | <10 | <1 | 0.02 | 10 | 0.14 | 302 | 11 | <0.01 | 38 | 680 | 52 | 0.04 | 2 | 2 | 35 |
| CC6390 | | <10 | <1 | 0.02 | 10 | 0.07 | 235 | 1 | <0.01 | 33 | 870 | 23 | 0.02 | <2 | 2 | 10 |
| CC6391 | | <10 | <1 | 0.02 | 20 | 0.08 | 186 | 1 | <0.01 | 41 | 1100 | 25 | 0.02 | 4 | 2 | 14 |
| CC6392 | | <10 | <1 | 0.02 | 10 | 0.08 | 179 | 1 | <0.01 | 34 | 880 | 19 | 0.01 | <2 | 2 | 11 |
| CC6393 | | <10 | <1 | 0.02 | 10 | 0.05 | 251 | 1 | 0.01 | 23 | 850 | 56 | 0.03 | <2 | 1 | 10 |
| CC6394 | | <10 | <1 | 0.02 | 10 | 0.04 | 286 | 4 | 0.01 | 31 | 840 | 16 | 0.06 | 4 | 1 | 14 |
| CC6395 | | <10 | <1 | 0.01 | 10 | 0.07 | 317 | 1 | <0.01 | 30 | 770 | 12 | 0.04 | 2 | 1 | 9 |
| CC6396 | | <10 | <1 | 0.01 | 10 | 0.10 | 196 | 2 | <0.01 | 36 | 1060 | 19 | 0.04 | 2 | 2 | 13 |
| CC6397 | | <10 | <1 | 0.02 | 10 | 0.10 | 357 | 2 | 0.01 | 49 | 1140 | 28 | 0.05 | 2 | 2 | 21 |



ALS Chemex
EXCELLENCE IN ANALYTICAL CHEMISTRY
 ALS Canada Ltd.
 212 Brooksbank Avenue
 North Vancouver BC V7J 2C1 Canada
 Phone: 604 984 0221 Fax: 604 984 0218



MOUNT HINTON PROJECT
C/O ARCHER, CATHRO & ASSOCIATES (1981)
LIMITED
1016 - 510 W. HASTINGS ST.
VANCOUVER BC V6B 1L8



Page: 3 - C
 Total # Pages: 4 (A - C)
 Finalized Date: 14-SEP-2004
 Account: MOUHN

Project: Mt. Hinton

CERTIFICATE OF ANALYSIS VA04060352

| Sample Description | Method Analyte Units LOR | ME-ICP41 | ME-ICP41 | ME-ICP41 | ME-ICP41 | ME-ICP41 | ME-ICP41 |
|--------------------|-----------------------------------|----------|-----------|----------|----------|----------|-----------|
| | | Ti % | Ti ppm | U ppm | V ppm | W ppm | Zn ppm |
| | | 0.01 | 10 | 10 | 1 | 10 | 2 |
| CC6351 | | 0.04 | <10 | <10 | 36 | <10 | 59 |
| CC6352 | | 0.05 | <10 | <10 | 36 | <10 | 56 |
| CC6353 | | 0.04 | <10 | <10 | 50 | <10 | 39 |
| CC6354 | | 0.03 | <10 | <10 | 45 | <10 | 34 |
| CC6361 | | 0.04 | <10 | <10 | 49 | <10 | 82 |
| CC6362 | | 0.05 | <10 | <10 | 50 | <10 | 51 |
| CC6363 | | 0.05 | <10 | <10 | 37 | <10 | 84 |
| CC6364 | | 0.06 | <10 | <10 | 55 | <10 | 61 |
| CC6365 | | 0.04 | <10 | <10 | 37 | <10 | 83 |
| CC6366 | | 0.05 | <10 | <10 | 35 | <10 | 84 |
| CC6367 | | 0.02 | <10 | <10 | 21 | <10 | 143 |
| CC6368 | | 0.03 | <10 | <10 | 33 | <10 | 126 |
| CC6369 | | 0.01 | <10 | <10 | 16 | <10 | 271 |
| CC6370 | | 0.04 | <10 | <10 | 44 | <10 | 71 |
| CC6371 | | 0.03 | <10 | <10 | 39 | <10 | 72 |
| CC6372 | | <0.01 | <10 | <10 | 12 | <10 | 170 |
| CC6373 | | <0.01 | <10 | <10 | 7 | <10 | 160 |
| CC6374 | | <0.01 | <10 | <10 | 10 | <10 | 168 |
| CC6375 | | <0.01 | <10 | <10 | 9 | <10 | 96 |
| CC6376 | | <0.01 | <10 | <10 | 6 | <10 | 110 |
| CC6377 | | 0.01 | <10 | <10 | 12 | <10 | 225 |
| CC6378 | | 0.01 | <10 | <10 | 15 | <10 | 172 |
| CC6379 | | 0.01 | <10 | <10 | 11 | <10 | 112 |
| CC6380 | | 0.02 | <10 | <10 | 21 | <10 | 214 |
| CC6381 | | 0.02 | <10 | <10 | 24 | <10 | 104 |
| CC6382 | | 0.02 | <10 | <10 | 21 | <10 | 140 |
| CC6383 | | 0.01 | <10 | <10 | 17 | <10 | 76 |
| CC6384 | | 0.03 | <10 | <10 | 34 | <10 | 78 |
| CC6386 | | 0.01 | <10 | <10 | 13 | <10 | 122 |
| CC6387 | | 0.01 | <10 | <10 | 11 | <10 | 98 |
| CC6388 | | 0.01 | <10 | <10 | 16 | <10 | 91 |
| CC6389 | | <0.01 | <10 | <10 | 13 | <10 | 167 |
| CC6390 | | <0.01 | <10 | <10 | 9 | <10 | 123 |
| CC6391 | | <0.01 | <10 | <10 | 12 | <10 | 96 |
| CC6392 | | <0.01 | <10 | <10 | 11 | <10 | 69 |
| CC6393 | | <0.01 | <10 | <10 | 8 | <10 | 57 |
| CC6394 | | <0.01 | <10 | <10 | 7 | <10 | 67 |
| CC6395 | | <0.01 | <10 | <10 | 7 | <10 | 64 |
| CC6396 | | <0.01 | <10 | <10 | 11 | <10 | 77 |
| CC6397 | | <0.01 | <10 | <10 | 15 | <10 | 97 |



ALS Chemex
EXCELLENCE IN ANALYTICAL CHEMISTRY
 ALS Canada Ltd.
 212 Brooksbank Avenue
 North Vancouver BC V7J 2C1 Canada
 Phone: 604 984 0221 Fax: 604 984 0218



MOUNT HINTON PROJECT
 C/O ARCHER, CATHRO & ASSOCIATES (1981)
 LIMITED
 1016 - 510 W. HASTINGS ST.
 VANCOUVER BC V6B 1L8



Page: 4 - A
 Total # Pages: 4 (A - C)
 Finalized Date: 14-SEP-2004
 Account: MOUJIN

CERTIFICATE OF ANALYSIS VA04060352

| Sample Description | Method Analyte Units LOR | WEI-21 | Au-ICP21 | ME-ICP41 | ME-ICP41 | ME-ICP41 | ME-ICP41 | ME-ICP41 | ME-ICP41 | ME-ICP41 | ME-ICP41 | ME-ICP41 | ME-ICP41 | ME-ICP41 | ME-ICP41 | ME-ICP41 |
|--------------------|-----------------------------------|-----------------|-----------|-----------|----------|-----------|----------|-----------|-----------|-----------|----------|-----------|-----------|-----------|-----------|----------|
| | | Recvd Wt. kg | Au ppm | Ag ppm | Al % | As ppm | B ppm | Ba ppm | Be ppm | Bi ppm | Ca % | Cd ppm | Co ppm | Cr ppm | Cu ppm | Fe % |
| | | 0.02 | 0.001 | 0.2 | 0.01 | 2 | 10 | 10 | 0.5 | 2 | 0.01 | 0.5 | 1 | 1 | 1 | 0.01 |
| CC6398 | | 0.44 | 0.005 | 0.4 | 0.39 | 29 | <10 | 20 | <0.5 | <2 | 0.37 | <0.5 | 9 | 10 | 20 | 1.79 |
| CC6399 | | 0.40 | 0.008 | 0.9 | 1.51 | 21 | <10 | 40 | <0.5 | <2 | 0.34 | 0.9 | 23 | 56 | 129 | 3.70 |
| CC6400 | | 0.38 | 0.021 | 0.8 | 0.99 | 24 | <10 | 30 | <0.5 | <2 | 0.11 | <0.5 | 15 | 30 | 51 | 2.90 |



ALS Chemex

EXCELLENCE IN ANALYTICAL CHEMISTRY

ALS Canada Ltd.

212 Brooksbank Avenue

North Vancouver BC V7J 2C1 Canada

Phone: 604 984 0221 Fax: 604 984 0218



MOUNT HINTON PROJECT
C/O ARCHER, CATHRO & ASSOCIATES (1981)
LIMITED
1016 - 510 W. HASTINGS ST.
VANCOUVER BC V6B 1L8

Project: Mt. Hinton



Page: 4 - B

Total # Pages: 4 (A - C)

Finalized Date: 14-SEP-2004

Account: MOUHN

CERTIFICATE OF ANALYSIS VA04060352

| Sample Description | Method Analyte Units LOR | ME-ICP41 | ME-ICP41 | ME-ICP41 | ME-ICP41 | ME-ICP41 | ME-ICP41 | ME-ICP41 | ME-ICP41 | ME-ICP41 | ME-ICP41 | ME-ICP41 | ME-ICP41 | ME-ICP41 | ME-ICP41 | ME-ICP41 |
|--------------------|-----------------------------------|----------|----------|----------|----------|----------|----------|----------|----------|----------|----------|----------|----------|----------|----------|----------|
| | | Ga | Hg | K | La | Mg | Mn | Mo | Na | Ni | P | Pb | S | Sb | Sc | Sr |
| | | ppm | ppm | % | ppm | % | ppm | ppm | % | ppm | ppm | ppm | % | ppm | ppm | ppm |
| | | 10 | 1 | 0.01 | 10 | 0.01 | 5 | 1 | 0.01 | 1 | 10 | 2 | 0.01 | 2 | 1 | 1 |
| CC6398 | | <10 | <1 | 0.02 | 10 | 0.06 | 281 | 1 | <0.01 | 30 | 750 | 13 | 0.04 | <2 | 1 | 12 |
| CC6399 | | <10 | <1 | 0.01 | 20 | 0.80 | 711 | 1 | 0.01 | 61 | 990 | 39 | 0.02 | <2 | 4 | 15 |
| CC6400 | | <10 | <1 | 0.02 | 20 | 0.38 | 394 | 2 | 0.01 | 38 | 990 | 23 | 0.04 | <2 | 2 | 12 |



ALS Chemex

EXCELLENCE IN ANALYTICAL CHEMISTRY

ALS Canada Ltd.

212 Brooksbank Avenue

North Vancouver BC V7J 2C1 Canada

Phone: 604 984 0221 Fax: 604 984 0218



MOUNT HINTON PROJECT
C/O ARCHER, CATHRO & ASSOCIATES (1981)
LIMITED
1016 - 510 W. HASTINGS ST.
VANCOUVER BC V6B 1L8

Project: Mt. Hinton



Page: 4 - C

Total # Pages: 4 (A - C)


Finalized Date: 14-SEP-2004

Account: MOUHN

CERTIFICATE OF ANALYSIS VA04060352

| Sample Description | Method Analyte Units LOR | ME-ICP41 | ME-ICP41 | ME-ICP41 | ME-ICP41 | ME-ICP41 | ME-ICP41 |
|--------------------|-----------------------------------|----------|----------|----------|----------|----------|----------|
| | | Tl | Tl | U | V | W | Zn |
| | | % | ppm | ppm | ppm | ppm | ppm |
| | | 0.01 | 10 | 10 | 1 | 10 | 2 |
| CC6398 | | <0.01 | <10 | <10 | 8 | <10 | 56 |
| CC6399 | | 0.03 | <10 | <10 | 43 | <10 | 130 |
| CC6400 | | <0.01 | <10 | <10 | 28 | <10 | 80 |

Costs associated with this report have been approved in the amount of \$ 900.00 for assessment credit under Certificate of Work No. Q10057E



Mining Recorder
Mayo Mining District

This report has been examined by the Geological Evaluation Unit under Section 53 (4) Yukon Quartz Mining Act and is allowed as representation work in the amount of \$ 900.00.



for Regional Manager, Exploration and Geological Services for Commissioner of Yukon Territory.

ARCHER, CATHRO & ASSOCIATES (1981) LIMITED
1016 – 510 West Hastings Street
Vancouver, B.C. V6B 1L8

Telephone: 604-688-2568

Fax: 604-688-2578

AFFIDAVIT


I, Joan Mariacher, of Vancouver, B.C. make oath and say:

That to the best of my knowledge the attached Statement of
Expenditures for exploration work on the Red 1-12
mineral claims on Claim Sheet 105M/14 is accurate.


Joan Mariacher

Sworn before me at Vancouver, B.C.

this 29th day of November, 2004


Notary Public, Yukon Territory

Gregory P. Bruce
Barrister & Solicitor
1030 - 510 West Hastings
Vancouver, B.C. V6B 1L8

Statement of Expenditures
Red 1-9 Mineral Claims
November 27, 2004

Labour

| | |
|--|---------------|
| D. Moraal – field assistant – August 13 at \$336/day | \$ 359.52 |
| B. Lailey – field assistant – August 13 at \$224/day | <u>239.68</u> |
| | 599.20 |

Expenses

| | |
|--------------------------------------|-------------------|
| Room and board – 2 days at \$125/day | 267.50 |
| ALS Chemex | <u>771.67</u> |
| | 1,039.17 |
| | <u>\$1,638.37</u> |

ARCHER, CATHRO & ASSOCIATES (1981) LIMITED

In Account With

Project MOUNT HIXTON PROJECT
Date AUGUST 1-31, 2004

LABOUR

| | | | |
|-------|------------------------------------|---------|--|
| Field | R. CARNE - 24 HRS AT 99.20/HR | 2380.80 | |
| | - 8 HRS AT 60/HR | 480.00 | |
| | D. EATON - 1 HR AT 70/HR | 70.00 | |
| | M. PHILLIPS - 7 DAYS AT 480/DAY | 3360.00 | |
| | D. MOLARK - 23 1/2 DAYS AT 336/DAY | 7896.00 | |
| | L. BRIDGE - 8 1/2 DAYS AT 224/DAY | 1904.00 | |
| | B. LAKEY - 25 DAYS AT 224/DAY | 5600.00 | |
| | E. NELSON - 8 1/2 DAYS AT 224/DAY | 1904.00 | |
| | B. HUNT - 7 DAYS AT 357/DAY | 2464.00 | |

| | | | |
|---------------------------|---|---------|----------|
| Accounting and Expediting | J. Mariacher - 27 hrs at \$58/hr | 1566.00 | |
| | EXPEDITING K. CORBETT - 15 HRS AT 40/HR | 600.00 | 28224.80 |

OTHER SERVICES

| | | | |
|-------------------------------|-------------------------------------|---------|---------|
| Room and Board in Whitehorse | 13 1/2 days at \$90/day | 1215.00 | |
| Field equipment from AC stock | 85 DAYS AT 50/DAY | 4250.00 | |
| Printing | Photocopies 114 @ .15 | 17.10 | |
| Rentals from AC | | | |
| | LOOMIS COURIER - 2 @ 14.75 + 2 @ 70 | 69.50 | 5551.60 |

EXPENSES

| | | | |
|------------|--|---------|----------|
| Petty Cash | 72.41 DI + 50.00 DV | 122.41 | |
| Telephone | | | |
| | SID MCKEOWN | 25.00 | |
| | TRANS NORTH HELICOPTERS | 1680.64 | |
| | QUILDELL SUPPLYLAND - 1063.42 + 276.00 | 1339.42 | |
| | MACHHEON RENTALS - 173.45 + 251.25 | 424.70 | |
| | GREYHOUND COURIER - 2 + 24 + 225.37 | 249.61 | |
| | INTEGRAPHICS | 16.95 | |
| | RIVERDALE SUPER A | 204.99 | |
| | EWING TRANSPORT - 5040.00 + 1370.00 ED JOHNSON | 6360.00 | |
| | SUNDEL DRY MART | 59.99 | |
| | PHARMASAVE - POST OFFICE | 17.82 | |
| | SUNRISE SERVICE | 95.29 | |
| | MAYO PETROLEUM | 119.78 | |
| | GRIFFITHS HEATING | 292.30 | 11008.80 |

| | | | |
|------------|-----------------------------|--------|----------|
| Management | 6% on Expenses on Field A/C | 660.53 | |
| | | 92.47 | 753.00 |
| | | | 45538.70 |

| | | | |
|------------------|----------------|---------|----------|
| GST (R100247667) | 7% on 45538.70 | 2087.67 | |
| | | | 48725.87 |



ALS Chemex
EXCELLENCE IN ANALYTICAL CHEMISTRY
 ALS Canada Ltd.
 212 Brooksbank Avenue
 North Vancouver BC V7J 2C1 Canada
 Phone: 604 984 0221 Fax: 604 984 0218

To: **MOUNT HINTON PROJECT**
C/O ARCHER, CATHRO & ASSOCIATES (1981)
LIMITED
1016 - 510 W. HASTINGS ST.
VANCOUVER BC V6B 1L8

INVOICE NUMBER 1131917

| BILLING INFORMATION | |
|---------------------|---|
| Certificate: | VA04060352 |
| Account: | MOUHIN |
| Date : | 14-SEP-2004 |
| Project: | Mt. Hinton <i>JH</i> |
| P.O. No.: | |
| Quote: | |
| Terms: | Due on Receipt C1 |
| Comments: | |

| ANALYSED FOR | | | UNIT | TOTAL |
|--------------|----------|---|-------|--------|
| QUANTITY | CODE | DESCRIPTION | PRICE | |
| 1 | BAT-01 | Administration Fee | 22.50 | 22.50 |
| 83 | PREP-41 | Dry, Sieve (180 um) Soil | 0.94 | 78.02 |
| 24.76 | PREP-41 | Weight Charge (kg) - Dry, Sieve (180 um) Soil | 1.31 | 32.44 |
| 83 | Au-ICP21 | Au 30g FA ICP-AES Finish | 10.13 | 840.79 |
| 83 | ME-ICP41 | 34 Element Aqua Regia ICP-AES | 4.88 | 405.04 |
| 83 | GEO-AR01 | Aqua regia digestion | 1.88 | 156.04 |

To: **MOUNT HINTON PROJECT**
ATTN: ACCOUNTS PAYABLE
C/O ARCHER, CATHRO & ASSOCIATES (1981)
LIMITED
1016 - 510 W. HASTINGS ST.
VANCOUVER BC V6B 1L8

MOON - 44 SAMPLES

\$870.60

RED - 39 SAMPLES

\$771.67

SUBTOTAL (CAD) \$ 1,534.83
 GST R100938885 \$ 107.44
TOTAL PAYABLE (CAD) \$ 1,642.27

Please Remit Payments To :
ALS Chemex
 212 Brooksbank Avenue
 North Vancouver BC V7J 2C1