

GEOCHEMICAL REPORT

Steward 1-32 CLAIMS

GRANT # YC23698-YC23729

NTS # 115 O \ 3

LAT: 63° 13' N

094486

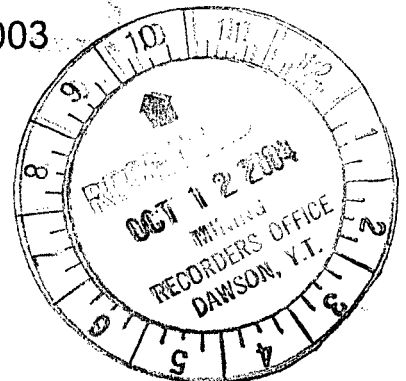
LONG: 139°16' W

DAWSON MINING DISTRICT

AUTHOR OF REPORT SHAWN RYAN

WORK PERFORMED JULY 22 - JULY 30, 2003

DATE OF REPORT MAY 25, 2004



Costs associated with this report have been
approved to the amount of \$ 3,200
for assessment credit under Certificate of
work No. 2000489

Kathryn Perry

Mining Recorder
Dawson City Mining District

Table of Content

Summary	P.2
1.0 Introduction	P.2
2.0 Locations and Access	P.2
3.0 Property Description	P.2
4.0 Physiography	P.2
5.1 Regional Geology	P.3
5.2 Property Geology	P.3
6.0 Work Methods	P.3
6.1 Soil Work	P.3
7.0 Interpretation	P.4
8.0 Recommendation	P.4
9.0 References Cited	P.4
10.0 Cost	P.4
11.0 Qualification	P.5
Assay Data	P.6-13
Sample Location Map	Figure 1
Copper Anomaly Map	Figure 2
Zinc Anomaly Map	Figure 3
Claim Map Location Map	Figure 4
Claim Map	Figure 5

SUMMARY

The Steward 1-32 were staked to cover similar geology and magnetic signature as the Lucky Joe target found 25 miles to the north. A regional soil survey undertaken during the summer field season of 2003 covered the ridge top on the Stewart 1-32 claims. Soil sample indicated a zinc halo found on the south part of the claim block with copper anomalies found at the contact of the magnetic high and low area.

1.0 INTRODUCTION

The Steward 1-32 YC23698-YC23729 claims will be renewed for one year.

2.0 LOCATIONS AND ACCESS

The Steward 1-32 claims are located on NTS 115 O / 3 in the Dawson Mining District. The Property lies 84 kilometers south of Dawson City, Yukon. The claim block covers a large north-facing ridge overlooking the Stewart River. Access is via helicopter from Dawson City, Yukon.

3.0 PROPERTY DESCRIPTION

The Property consists of 32 full Quartz mining claims, which are registered in the Dawson Mining District. The Property is 1.8 kilometers wide by 3.6 kilometers long and covers 659.2 hectares or 1651.2 acres.

4.0 PHYSIOGRAPHY

The property lies between the elevations of 1700 feet and 2700 feet. The entire property is covered with boreal forest vegetation such as white spruce and poplar on well-drained soil and black spruce on poorly drained frozen north facing slope.

5.0 REGIONAL AND PROPERTY GEOLOGY

REGIONAL GEOLOGY

The Yukon-Tanana Terrane in the Stewart River area consists of twice transposed, amphibolite-facies gneiss and schist of mostly of (?) Paleozoic age. Quartz-rich metaclastic rocks (quartzite, quartz-mica schist, psammite, conglomerate) appear to have deposited during the mid-Paleozoic, rather than the Proterozoic as previously suspected. Broadly contemporaneous amphibolite of intermediate to mafic composition interdigitates with, and lies structurally (and possibly stragraphically) above, the metaclastic rocks. Extensive orthogneiss (including augen granite) intrudes both. The orthogneiss and amphibolite formed the subvolcanic root and volcanic cover, respectively, of a Devono-Mississippian island arc. These rocks served in turn as basement to a Permian magmatic arc, manifested as the Klondike schist and related plutons. A co-magmatic Permian orogeny resulted in extensive transposition and metamorphism of the mid- and late Paleozoic rocks. The Lucky Joe Cu-Au occurrence, of recent interest in the area, occurs generally within the complex, possibly structurally modified interface between metaclastic and amphibolite successions. (Geology exert from Ryan @ Gordey 2003)

5.2 PROPERTY GEOLOGY

According to the GSC geology map Open File 3690 Thistle Creek Area, Yukon Territory by Jim Ryan and Steve Gordey the Stewart 1-32 claims lie in two rock types. One is Unit 9, a grey gneiss and the second unit is 6/9 an amphibolite and mafic gneiss units that's undivided.

6.0 WORK PROGRAM / METHODS

6.1 SOIL WORK

The soil work consists of flying out to the property and getting let off at the top of the ridge system. Soil sample where taken with soil augers at an average depth of 60 centimeter. Field sample sites where marked with an orange flagging tape with sample number. Aluminum metal tag was also tied to a tree next to the sample site with the sample number imprinted on the tag. Soil sample where place in cotton or Kraft soil bags. A sample description of the color, depth, slope, horizon and UTM location was noted in field notes. A Garmin 76 GPS was used to get the exact UTM location. All GPS soil sample location where electronically downloaded every evening back in base camp. Soil sample where taken at 200 meter intervals on soil traverse. All soil where sent to Chemex Lab in Vancouver and fire assayed for gold and ICP MS for all other elements.

7.0 INTERPRETATION

The Steward claim block soil samples indicate zinc anomalies found on the south end of the claim block and in the central part of the claims. The anomalies cover both soil lines. A settle copper anomalies was also located on the south part of the claim block. Interesting copper anomalies where found at the north end of the claim block. These copper anomalies are showing up at the edge of the magnetic high low contact. The geochemical signature is very close to the same pattern as the Lucky Joe showing. The similarities are a zinc halo with copper found at the magnetic high low contact. The zinc geochemical signature found on the Steward claim is over top of the magnetic high area. I view this geochemical response as indicating the zinc soil anomalies areas are found high above the copper horizon kind of like an alteration pattern and as we walk further down the ridge moving northeast we are slowly dropping in elevation. The highest copper soil anomalies appear right at the magnetic contact areas just where one would expect it.

8.0 RECOMMENDATION

I would recommend a detail soil survey covering the northern copper soil anomaly. I would advise a soil grid on 100 meter line spacing and soil sample taken every 50 meters. I would also recommend detail mapping for a couple of days by a geologist to determine what kind of rock unit is producing the anomalous copper horizon is coming. If detail soil grid produce favorable results and would then recommend a small trenching program.

9.0 REFERENCES CITED

Ryan, J.J., Gordey, S.P., Glombick, P., Piercey, S.J., and Villeneuve, M.E., 2003: Update on Bedrock geological mapping of the Yukon-Tanana terrane, southern Stewart River map are, Yukon Territory. Current Research 2003.

Ryan, J.J. and Gordey, S.P. 2001. GSC Open File 3690 Geology of Thistle Creek Area, Yukon Territory.

10.0 COST

Assay Cost 53 samples @ \$22.00 per sample	\$1160.00
Wage 3 man days @ \$300.00 per day includes food	\$900.00
Helicopter travel two trips, 2 hours @\$1130	\$2260.00
Report Cost	\$500.00

Total	\$4820.00

11.0 QUALIFICATION

I Shawn Ryan located in Dawson City, Yukon work as a professional prospector. I run a small exploration company located in Dawson city.

I have worked in the exploration business for the last 22 years. I worked the first 12 years as a contractor working on numerous projects in the NWT, Ontario, Quebec and the Yukon. I have worked for the last 8 years as a local prospector for myself.

I have being trained to run various geophysical instruments and surveys such as magnetic surveys, max-min surveys, induce polarity surveys and Vlf surveys.

I have overseen the whole Stewart Regional Soil Project and was the party chief in charge.

I own 100 % of the Stewart claims and have now option the claims to Copper Ridge exploration.

Dated this 25 of May 2004 in Dawson City, Yukon.

Respectfully submitted

Shawn Ryan

A handwritten signature in black ink, appearing to read 'Shawn Ryan', with a long horizontal flourish extending to the right.

MAPINFO_ID	SAMPLEID	PROPERTY	GEOLOGIST	SAMPLEDA	Au_ppb	Ag_ppm	Al	As_ppm	B_ppm	Ba_ppm	Be_ppm	Bi_ppm	Ca	Cd_ppm	Co_ppm
926	NA12070	STEWART	FLEMING	06/11/2003	3	0.5	1.52	13	-10	750	-0.5	-2	0.22	2.4	5
927	NA12071	STEWART	FLEMING	06/11/2003	2	0.4	2.85	9	-10	10,000	1.4	-2	0.26	1.1	3
928	NA12072	STEWART	FLEMING	06/11/2003	4	0.2	1.6	6	-10	440	0.9	-2	0.08	0.6	13
929	NA12073	STEWART	FLEMING	06/11/2003	-1	0.3	1.68	6	-10	250	0.5	-2	0.14	0.7	6
930	NA12074	STEWART	FLEMING	06/11/2003	2	-0.2	1.76	2	-10	410	0.5	-2	0.27	-0.5	9
931	NA12075	STEWART	FLEMING	06/11/2003	1	-0.2	1.54	-2	-10	80	-0.5	-2	0.36	-0.5	23
932	NA12076	STEWART	FLEMING	06/11/2003	2	-0.2	2.84	-2	-10	470	0.6	-2	0.23	-0.5	12
933	NA12077	STEWART	FLEMING	06/11/2003	1	-0.2	2.45	-2	-10	320	0.8	-2	0.16	-0.5	12
934	NA12078	STEWART	FLEMING	06/11/2003	2	-0.2	1.45	3	-10	210	-0.5	-2	0.25	-0.5	7
935	NA12079	STEWART	FLEMING	06/11/2003	2	0.2	2.42	3	-10	350	0.7	-2	0.22	-0.5	11
936	NA12080	STEWART	FLEMING	06/11/2003	-1	0.2	2.29	5	-10	250	0.6	-2	0.13	-0.5	6
937	NA12081	STEWART	FLEMING	06/11/2003	-1	-0.2	1.7	-2	-10	270	0.5	-2	0.12	-0.5	4
938	NA12082	STEWART	FLEMING	06/11/2003	-1	0.7	1.38	-2	-10	170	0.5	-2	0.38	-0.5	3
939	NA12083	STEWART	FLEMING	06/11/2003	1	0.4	1.64	12	-10	270	0.6	-2	0.58	-0.5	3
940	NA12084	STEWART	FLEMING	06/11/2003	2	-0.2	3.35	-2	-10	450	0.6	-2	0.74	-0.5	14
941	NA12085	STEWART	FLEMING	06/11/2003	-1	-0.2	1.48	-2	-10	170	-0.5	-2	0.69	-0.5	15
942	NA12086	STEWART	FLEMING	06/11/2003	-1	-0.2	1.04	-2	-10	120	-0.5	2	0.75	-0.5	27
943	NA12087	STEWART	FLEMING	06/11/2003	-1	-0.2	1.8	3	-10	200	0.5	-2	0.2	-0.5	9
945	NA12089	STEWART	FLEMING	06/11/2003	-1	-0.2	1.85	2	-10	200	0.5	-2	0.27	-0.5	12
3,443	NA14800	STEWART	LINLEY	07/22/2003	1	0.2	2.27	5	-10	260	-0.5	-2	0.45	-0.5	16
3,442	NA14801	STEWART	LINLEY	07/22/2003	5	-0.2	1.98	9	-10	410	-0.5	-2	0.45	-0.5	11
951	NA11972	STEWART	RYAN	06/11/2003	1	-0.2	2.42	-2	-10	740	-0.5	-2	0.13	0.6	10
952	NA11973	STEWART	RYAN	06/11/2003	1	-0.2	2.31	9	-10	220	-0.5	-2	0.11	0.8	10
953	NA11974	STEWART	RYAN	06/11/2003	-1	-0.2	2.1	3	-10	140	-0.5	-2	0.55	-0.5	20
954	NA11975	STEWART	RYAN	06/11/2003	-1	-0.2	2.02	7	-10	140	-0.5	-2	0.31	-0.5	15
955	NA11976	STEWART	RYAN	06/11/2003	-1	-0.2	2.67	10	-10	300	0.7	-2	0.26	-0.5	18
956	NA11977	STEWART	RYAN	06/11/2003	1	-0.2	1.94	5	-10	230	0.6	-2	0.18	-0.5	8
957	NA11978	STEWART	RYAN	06/11/2003	2	-0.2	1.96	8	-10	250	-0.5	-2	0.19	-0.5	10
3,441	NA14802	STEWART	LINLEY	07/22/2003	3	0.2	2.97	2	-10	570	-0.5	-2	0.31	-0.5	19
3,440	NA14803	STEWART	LINLEY	07/22/2003	-1	-0.2	2.47	5	-10	330	-0.5	-2	0.48	-0.5	16
3,439	NA14804	STEWART	LINLEY	07/22/2003	2	-0.2	2.81	3	-10	400	0.5	-2	1.03	-0.5	13
3,438	NA14805	STEWART	LINLEY	07/22/2003	1	-0.2	1.84	7	-10	240	0.5	-2	0.27	-0.5	10
3,434	NA14809	STEWART	LINLEY	07/22/2003	2	0.2	1.74	4	-10	370	-0.5	-2	0.41	-0.5	10
3,433	NA14810	STEWART	LINLEY	07/22/2003	3	-0.2	2.5	12	-10	220	-0.5	-2	0.16	-0.5	12
3,432	NA14811	STEWART	LINLEY	07/22/2003	3	-0.2	1.97	8	-10	220	-0.5	-2	0.18	-0.5	6
3,431	NA14812	STEWART	LINLEY	07/22/2003	1	-0.2	2.53	7	-10	200	0.5	-2	0.33	-0.5	21
3,430	NA14813	STEWART	LINLEY	07/22/2003	2	-0.2	2.25	5	-10	300	0.5	-2	0.19	-0.5	6
3,429	NA14814	STEWART	LINLEY	07/22/2003	2	-0.2	2.04	11	-10	260	-0.5	-2	0.3	-0.5	10
3,428	NA14815	STEWART	LINLEY	07/22/2003	2	-0.2	2.44	6	-10	440	0.6	-2	0.46	-0.5	6
3,427	NA14816	STEWART	LINLEY	07/22/2003	4	-0.2	1.51	8	-10	160	-0.5	-2	0.16	-0.5	5
3,426	NA14817	STEWART	LINLEY	07/22/2003	6	-0.2	2.83	5	-10	620	-0.5	-2	0.65	-0.5	13
3,425	NA14818	STEWART	LINLEY	07/22/2003	3	-0.2	2.68	6	-10	660	-0.5	-2	0.47	-0.5	18
3,424	NA14819	STEWART	LINLEY	07/22/2003	3	-0.2	2.85	3	-10	470	-0.5	-2	0.55	-0.5	20
3,423	NA14820	STEWART	LINLEY	07/22/2003	4	0.2	1.68	6	-10	370	-0.5	-2	0.46	-0.5	9
3,422	NA14821	STEWART	LINLEY	07/22/2003	3	-0.2	3.81	5	-10	350	-0.5	-2	1.52	-0.5	14
4,321	NA15662	STEWART	ROBINSON	07/30/2003	2	-0.2	1.41	5	-10	520	-0.5	-2	1.18	-0.5	10
4,320	NA15663	STEWART	ROBINSON	07/30/2003	4	0.2	2.31	4	-10	380	-0.5	-2	1.08	-0.5	26
4,319	NA15664	STEWART	ROBINSON	07/30/2003	3	-0.2	2.05	5	-10	250	-0.5	-2	0.82	-0.5	16
4,318	NA15665	STEWART	ROBINSON	07/30/2003	2	-0.2	2.18	-2	-10	480	-0.5	-2	1.02	-0.5	17
4,317	NA15666	STEWART	ROBINSON	07/30/2003	1	-0.2	2.48	2	-10	450	-0.5	-2	0.87	-0.5	17
4,316	NA15667	STEWART	ROBINSON	07/30/2003	3	-0.2	1.84	8	-10	450	-0.5	-2	0.54	-0.5	9
4,315	NA15668	STEWART	ROBINSON	07/30/2003	1	-0.2	1.86	3	-10	400	-0.5	-2	0.34	-0.5	10
4,314	NA15669	STEWART	ROBINSON	07/30/2003	2	-0.2	2.03	3	-10	640	-0.5	-2	0.41	-0.5	12
4,313	NA15670	STEWART	ROBINSON	07/30/2003	3	-0.2	2.3	12	-10	1,130	-0.5	-2	0.81	-0.5	20
4,312	NA15671	STEWART	ROBINSON	07/30/2003	3	-0.2	1.48	6	-10	440	-0.5	-2	0.81	-0.5	11
4,311	NA15672	STEWART	ROBINSON	07/30/2003	1	-0.2	1.51	4	-10	250	-0.5	-2	0.28	-0.5	9

Cr_ppm	Cu_ppm	Fe	Ga_ppm	Hg_ppm	K	La_ppm	Mg	Mn_ppm	Mo_ppm	Na	Ni_ppm	P_ppm	Pb_ppm	S	Sb_ppm	Sc_ppm
38	51	3.18	-10	1	0.2	30	0.47	199	18	0.02	21	1,590	132	0.38	-2	2
29	80	3.44	10	-1	0.05	20	0.34	281	16	0.01	74	1,510	26	0.03	-2	4
20	94	3.69	10	-1	0.1	40	0.4	158	8	-0.01	17	1,170	21	0.05	-2	2
63	37	4.08	-10	-1	0.09	20	0.57	223	2	0.01	23	950	13	0.1	-2	3
33	17	2.95	-10	1	0.32	30	0.76	188	-1	0.01	24	510	7	-0.01	-2	9
63	137	2.14	-10	-1	0.03	10	1.51	197	-1	0.02	110	180	2	-0.01	2	3
36	46	4.72	10	-1	1.12	20	1.74	606	1	0.01	19	580	9	-0.01	3	13
44	34	4.87	10	1	0.83	60	0.9	202	1	0.02	27	500	5	0.07	-2	5
22	16	2.53	-10	-1	0.17	20	0.45	328	1	0.01	14	370	7	-0.01	-2	4
4	67	5.7	10	-1	0.7	20	0.83	527	1	0.02	6	440	6	-0.01	3	8
7	40	5.4	10	-1	0.81	10	0.53	625	-1	0.01	5	270	4	0.01	3	9
7	28	4.09	10	-1	0.6	10	0.35	535	-1	0.01	5	150	4	-0.01	2	8
6	41	3.6	10	-1	0.05	30	0.27	335	-1	0.01	6	230	10	-0.01	3	12
4	46	4.33	10	-1	0.25	50	0.47	254	-1	0.01	3	1,700	14	0.01	3	7
25	161	4.13	10	1	0.96	10	2.25	524	-1	0.01	20	320	6	-0.01	4	4
24	21	2.57	-10	1	0.13	10	0.9	260	-1	0.05	15	1,500	3	-0.01	-2	4
20	252	2.15	-10	-1	0.1	10	0.73	257	-1	0.05	33	1,560	2	-0.01	2	9
22	14	2.88	-10	1	0.53	20	0.94	535	-1	0.01	11	230	9	-0.01	2	4
12	68	3.78	-10	-1	0.69	30	1.08	702	-1	0.01	11	460	6	-0.01	2	6
58	50	3.3	-10	-1	0.57	10	1.78	393	-1	0.02	28	490	3	-0.01	-2	5
52	30	2.94	-10	-1	0.08	20	0.88	263	-1	0.02	23	530	5	-0.01	-2	4
12	98	6.4	10	-1	0.79	20	0.8	563	1	0.04	7	500	8	0.29	-2	15
18	47	4.85	10	-1	0.38	10	0.54	518	1	0.01	10	420	7	0.01	-2	4
6	10	4.81	10	-1	0.18	10	1.07	260	-1	0.04	4	790	4	-0.01	-2	8
17	99	3.43	10	-1	0.04	10	0.8	274	-1	0.03	10	560	6	-0.01	-2	5
178	42	4.12	10	-1	0.09	30	1.12	383	1	0.01	49	360	9	-0.01	-2	11
18	11	3.04	10	-1	0.15	50	0.65	390	1	0.01	8	130	5	-0.01	-2	7
27	46	2.9	10	-1	0.04	10	0.58	354	-1	0.01	16	290	6	0.01	-2	4
26	166	5.67	10	-1	1.24	10	1.58	830	6	0.02	11	560	10	0.07	5	10
82	34	3.58	10	-1	0.78	-10	1.62	498	-1	0.02	29	440	5	0.01	4	4
25	50	3.75	10	-1	0.22	10	1.08	493	-1	0.05	16	570	6	-0.01	2	12
35	25	2.97	-10	-1	0.11	10	0.58	300	-1	0.02	20	180	7	-0.01	-2	4
30	78	2.54	-10	-1	0.1	10	0.8	247	-1	0.04	16	250	2	-0.01	2	6
23	122	5.01	10	-1	0.18	10	0.73	429	3	0.01	9	620	7	0.01	3	18
37	18	2.93	10	-1	0.05	20	0.5	227	1	0.02	15	170	8	-0.01	-2	6
22	13	3.81	10	-1	0.08	20	0.95	363	-1	0.01	12	530	6	-0.01	-2	9
20	24	3.9	10	-1	0.4	10	0.7	426	-1	0.01	14	180	6	-0.01	-2	8
162	46	2.79	10	-1	0.07	10	0.88	299	-1	0.01	31	340	6	-0.01	2	4
18	35	4.83	10	-1	0.43	20	0.63	425	-1	0.01	8	1,180	12	0.01	2	11
26	12	2.43	10	1	0.04	10	0.33	160	-1	0.01	11	220	7	-0.01	2	3
56	55	4.09	10	-1	0.85	10	1.24	472	-1	0.03	24	1,480	2	0.01	3	5
57	164	4.91	-10	-1	0.73	20	1.29	651	2	0.03	23	550	3	0.06	-2	12
28	60	4.56	10	-1	1.18	10	1.81	706	1	0.03	15	810	-2	0.01	-2	6
32	41	2.68	-10	-1	0.07	20	0.66	342	-1	0.02	21	560	6	0.01	-2	5
27	89	3.73	10	-1	0.31	10	1.26	621	-1	0.03	16	550	5	-0.01	-2	6
26	36	2.59	-10	-1	0.17	10	0.62	577	1	0.03	23	620	12	0.01	-2	5
49	194	4.21	10	-1	0.18	10	1.13	442	1	0.06	35	2,280	10	0.01	-2	14
41	84	3.37	10	-1	0.14	20	0.77	366	1	0.04	29	1,950	8	0.01	-2	8
58	110	3.37	10	-1	0.37	20	1.43	364	-1	0.06	24	1,600	3	-0.01	-2	12
14	49	4.61	10	-1	0.8	10	1.09	547	1	0.04	10	1,160	11	0.01	-2	10
28	28	3.21	10	-1	0.1	10	0.83	436	1	0.03	24	500	13	0.02	-2	7
20	38	3.5	10	-1	0.25	10	0.59	342	1	0.02	16	690	6	0.01	-2	7
26	31	3.11	10	-1	0.31	10	1.03	374	-1	0.02	14	480	7	0.01	-2	5
52	88	4.51	10	-1	0.21	20	1.04	371	2	0.04	30	1,280	7	0.02	-2	9
31	60	2.65	-10	-1	0.08	10	0.58	294	1	0.03	23	1,380	8	0.01	-2	5
28	30	2.39	10	-1	0.08	10	0.47	291	1	0.01	17	520	9	0.01	-2	4

Sr_ppm	Ti	Ti_ppm	U_ppm	V_ppm	W_ppm	Zn_ppm	SAMPLETYF	S_COLO	S_COLORM	S_DEPTH	S_DUNIT	S_ORGANIC	S_HORIZO	S_CLA	S_MOISTUR	S_SLOP	S_ENVIRONMEI	S_FROZE	S_DOM_F
72	0.06	-10	-10	169	-10	118	SL	BN	QE	0.2	M	5	C	M	M	G	BDR	N	
45	0.06	-10	-10	179	-10	253	SL	OR	QB	0.3	M		C	L	L	G	BDR	N	
62	0.04	-10	-10	39	-10	130	SL	OR	QB	0.5	M		C	L	L	M	BDR	N	
61	0.1	-10	-10	60	-10	106	SL	OR	QE	0.3	M	10	B	M	H	M	BDR	S	
17	0.12	-10	-10	78	-10	45	SL	BN	QE	0.5	M		C	M	L	G	BDR	N	
15	0.14	-10	-10	39	-10	22	SL	GN	QD	0.5	M		C	L	L	G	BDR	N	
12	0.25	-10	-10	104	-10	120	SL	OR	QU	0.4	M		C	L	L	F	BDR	N	
20	0.2	-10	-10	76	-10	70	SL	BN	QE	0.4	M		C	L	L	F	BDR	N	
17	0.08	-10	-10	42	-10	63	SL	BN	QE	0.4	M	0	C	L	H	G	BDR	N	
12	0.2	-10	-10	78	-10	190	SL	OR	QU	0.4	M		C	L	L	G	BDR	N	
11	0.16	-10	-10	21	-10	192	SL	OR	QU	0.5	M		C	L	L	G	BDR	N	
12	0.16	-10	-10	13	-10	114	SL	OR	QU	0.4	M		C	L	L	G	BDR	N	
26	0.01	-10	-10	20	-10	87	SL	OR	QB	0.5	M		C	L	M	G	BDR	N	
27	0.06	-10	-10	33	-10	155	SL	OR	QL	0.5	M		C	L	M	G	BDR	N	
52	0.26	-10	-10	112	-10	56	SL	BN	QE	0.5	M		C	L	L	F	BDR	N	
15	0.08	-10	-10	70	-10	50	SL	BK		0.4	M		C	L	L	G	BDR	N	
18	0.07	-10	-10	60	-10	24	SL	BK		0.5	M		C	L	L	M	BDR	N	
14	0.16	-10	-10	58	-10	45	SL	OR	QE	0.4	M		C	L	L				
17	0.18	-10	-10	69	-10	122	SL	BN	QE	0.6	M		C	L	L	G	BDR	N	
24	0.22	-10	-10	89	-10	52	SL	OR	QD	0.45	M		C	L	L	G	BDR	N	
27	0.15	-10	-10	70	-10	47	SL	BN	QE	0.4	M		C	L	L	M	BDR	N	
21	0.2	-10	-10	42	-10	268	SL	OR		0.5	M		C	L	L	M	COL	N	SCH
11	0.11	-10	-10	35	-10	301	SL	BN		0.5	M		C	L	L	M		N	
20	0.21	-10	-10	159	-10	38	SL	BK		0.5	M		C	L	L	F	BDR	N	AMP
11	0.16	-10	-10	125	-10	34	SL	BK		0.4	M		C	L	L	F	BDR	N	AMP
22	0.08	-10	-10	98	-10	66	SL	OR		0.5	M		C	L	L	F	BDR	N	QZT
18	0.08	-10	-10	46	-10	53	SL	OR		0.5	M		C	L	M	F	BDR	N	SCH
15	0.08	-10	-10	67	-10	66	SL	BN		0.5	M		C	L	L	F	BDR	N	AMP
35	0.23	-10	-10	146	-10	91	SL	OR	QD	0.5	M		C	L	L	M	BDR	N	
31	0.23	-10	-10	92	-10	68	SL	BN	QE	0.25	M		C	L	L	G	BDR	N	
69	0.09	-10	-10	83	-10	52	SL	OR	QE	0.4	M		C	L	L	M	BDR	N	
19	0.11	-10	-10	65	-10	57	SL	BN	QE	0.35	M		C	L	L	G	BDR	N	
20	0.1	-10	-10	64	-10	47	SL	BN	QE	0.45	M		C	L	L	G	BDR	N	
8	0.05	-10	-10	81	-10	102	SL	OR	QB	0.45	M		C	L	L	M	BDR	N	
18	0.1	-10	-10	64	-10	45	SL	BN	QE	0.35	M		C	M	M	G	BDR	N	
24	0.12	-10	-10	63	-10	53	SL	OR	QE	0.25	M		C	L	L	G	BDR	N	
16	0.14	-10	-10	35	-10	102	SL	OR	QE	0.4	M		C	L	L	G	BDR	N	
24	0.14	-10	-10	68	-10	56	SL	GY	QE	0.45	M		C	L	L	M	BDR	N	
25	0.1	-10	-10	43	-10	140	SL	OR	QE	0.4	M		C	L	L	G	BDR	N	
15	0.1	-10	-10	59	-10	33	SL	BN	QL	0.45	M		C	M	L	G	BDR	N	
22	0.27	-10	-10	91	-10	78	SL	OR	QE	0.5	M		C	L	L	M	BDR	N	
37	0.17	-10	-10	104	-10	77	SL	OR	QB	0.5	M		C	L	L	M	BDR	N	
23	0.27	-10	-10	112	-10	104	SL	BN	QE	0.45	M		C	L	L	M	BDR	N	
31	0.11	-10	-10	57	-10	54	SL	BN	QE	0.45	M		C	H	H	G	BDR	N	
95	0.24	-10	-10	95	-10	66	SL	BN	QE	0.35	M		C	L	L	G	BDR	N	
52	0.1	-10	-10	57	-10	65	SL	BN	QD	0.65	M	5	C	L	L	G	COL	N	
29	0.17	-10	-10	116	-10	58	SL	GN	QU	0.65	M	5	C	L	L	M	COL	N	
29	0.12	-10	-10	92	-10	50	SL	OL	QU	0.6	M	5	C	L	L	M	COL	N	
29	0.19	-10	-10	118	-10	48	SL	OL	QD	0.75	M	5	C	L	L	M	COL	N	
29	0.21	-10	-10	153	-10	88	SL	BN	QD	0.65	M	5	C	L	L	M	COL	N	
34	0.12	-10	-10	61	-10	71	SL	BN	QL	0.85	M	5	C	M	L	M	COL	N	
20	0.12	-10	-10	82	-10	99	SL	BN	QL	0.7	M	5	C	L	L	M	COL	N	
30	0.19	-10	-10	88	-10	61	SL	BN	QL	0.9	M	5	C	L	L	M	COL	N	
33	0.21	-10	-10	144	-10	62	SL	BN	QL	0.75	M	5	C	M	L	M	COL	N	
31	0.1	-10	-10	66	-10	44	SL	GY	QL	0.75	M	5	C	L	L	G	COL	N	
19	0.09	-10	-10	65	-10	39	SL	YW	QU	0.5	M	5	C	L	L	G	COL	N	

S_QUALIT	NOTES	Abs_As_ppm	Abs_Pb_ppm	UTM_EAST	UTM_NORTH
M		13	132	585,060	7,009,707
H		9	26	585,024	7,009,893
H		6	21	585,115	7,010,085
M		6	13	585,277	7,010,268
H		2	7	585,414	7,010,434
H		1	2	585,544	7,010,609
H		1	9	585,685	7,010,758
H		1	5	585,766	7,010,945
H		3	7	585,879	7,011,135
H		3	6	585,952	7,011,322
H		5	4	586,070	7,011,494
H		1	4	586,178	7,011,660
H		1	10	586,292	7,011,820
H		12	14	586,376	7,012,013
H		1	6	586,508	7,012,192
H		1	3	586,620	7,012,323
H		1	2	586,775	7,012,437
H		3	9	586,963	7,012,578
H		2	6	587,132	7,012,693
H		5	3	587,354	7,011,477
H		9	5	587,548	7,011,529
H	RUSTY QUARTZ MICA SCH	1	8	585,587	7,009,387
H		9	7	585,778	7,009,463
H	AMPHIBOLITE? SOIL BLUISH/BROWN SOME ORANGE RUST COLOUR	3	4	585,941	7,009,581
H	AMPHIBOLITE SOIL IS BLUISH/BROWN	7	6	586,145	7,009,592
H	QUARTZ ROCK IN HOLE ORANGE/BROWN SOIL	10	9	586,321	7,009,713
H	QUARTZ MUSCOVITE SCH	5	5	586,492	7,009,832
H	QUARTZ - AMPHIB	8	6	586,689	7,009,834
H		2	10	587,714	7,011,638
H		5	5	587,908	7,011,693
H		3	8	588,063	7,011,817
H		7	7	588,220	7,011,943
H		4	2	588,669	7,009,905
H		12	7	586,756	7,010,100
M		8	8	586,817	7,010,294
H		7	6	586,815	7,010,498
H		5	8	586,946	7,010,648
H		11	8	586,969	7,010,849
H		6	12	587,070	7,011,021
M		8	7	587,178	7,011,192
H	AND GREY TONES	5	2	587,360	7,011,683
H		6	3	587,374	7,011,883
H		3	1	587,461	7,012,065
M		6	6	587,596	7,012,218
H		5	5	587,718	7,012,376
H		5	12	587,004	7,012,386
H		4	10	586,934	7,012,312
H		5	8	586,863	7,012,239
H		1	3	586,797	7,012,164
H		2	11	586,722	7,012,077
H		8	13	586,617	7,011,971
H		3	6	586,315	7,012,204
H		3	7	586,379	7,012,288
H		12	7	586,446	7,012,361
H		6	8	586,505	7,012,443
H		4	9	586,579	7,012,515

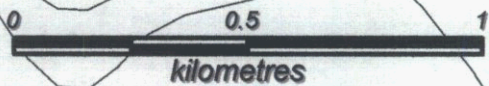
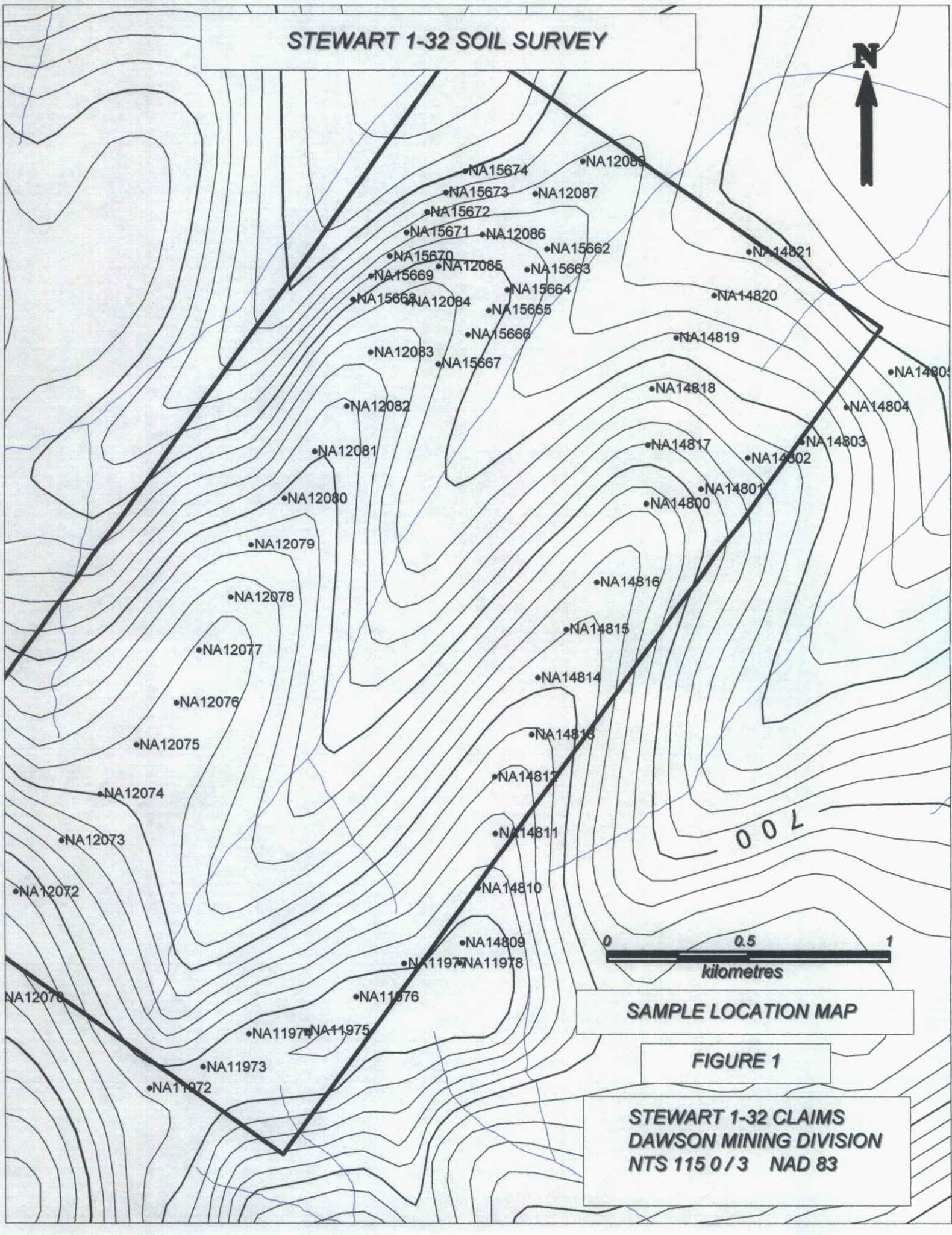
MAPINFO_ID	SAMPLEID	PROPERTY	GEOLOGIST	SAMPLEDA	Au_ppb	Ag_ppm	Al	As_ppm	B_ppm	Ba_ppm	Be_ppm	Bi_ppm	Ca	Cd_ppm	Co_ppm
4.310	NA15673	STEWART	ROBINSON	07/30/2003	3	-0.2	2.21	3	-10	200	-0.5	-2	0.52	-0.5	12
4.309	NA15674	STEWART	ROBINSON	07/30/2003	1	-0.2	1.92	3	-10	350	-0.5	-2	0.4	-0.5	11

Cr_ppm	Cu_ppm	Fe	Ga_ppm	Hg_ppm	K	La_ppm	Mg	Mn_ppm	Mo_ppm	Na	Ni_ppm	P_ppm	Pb_ppm	S	Sb_ppm	Sc_ppm
39	69	3.4	10	-1	0.04	10	0.74	242	1	0.03	17	940	8	-0.01	-2	8
24	54	2.9	10	-1	0.18	10	0.84	291	1	0.02	15	670	6	0.01	-2	6

Sr_ppm	Tl	Tl_ppm	U_ppm	V_ppm	W_ppm	Zn_ppm	SAMPLETY	S_COLO	S_COLOR	S_DEPTH	S_DUNIT	S_ORGANIC	S_HORIZO	S_CLA	S_MOISTUR	S_SLOP	S_ENVIRONMET	S_FROZE	S_DOM_F
23	0.12	-10	-10	103	-10	45	SL	YW	QU	0.55	M	5	C	L	L	G	COL	N	
24	0.15	-10	-10	78	-10	59	SL	GY	QU	0.6	M	5	C	L	L	G	COL	N	

S_QUALIT	NOTES	Abs_As_ppm	Abs_Pb_ppm	UTM_EAST	UTM_NORTH
H		3	8	586,646	7,012,583
H		3	6	586,714	7,012,659

STEWART 1-32 SOIL SURVEY



SAMPLE LOCATION MAP

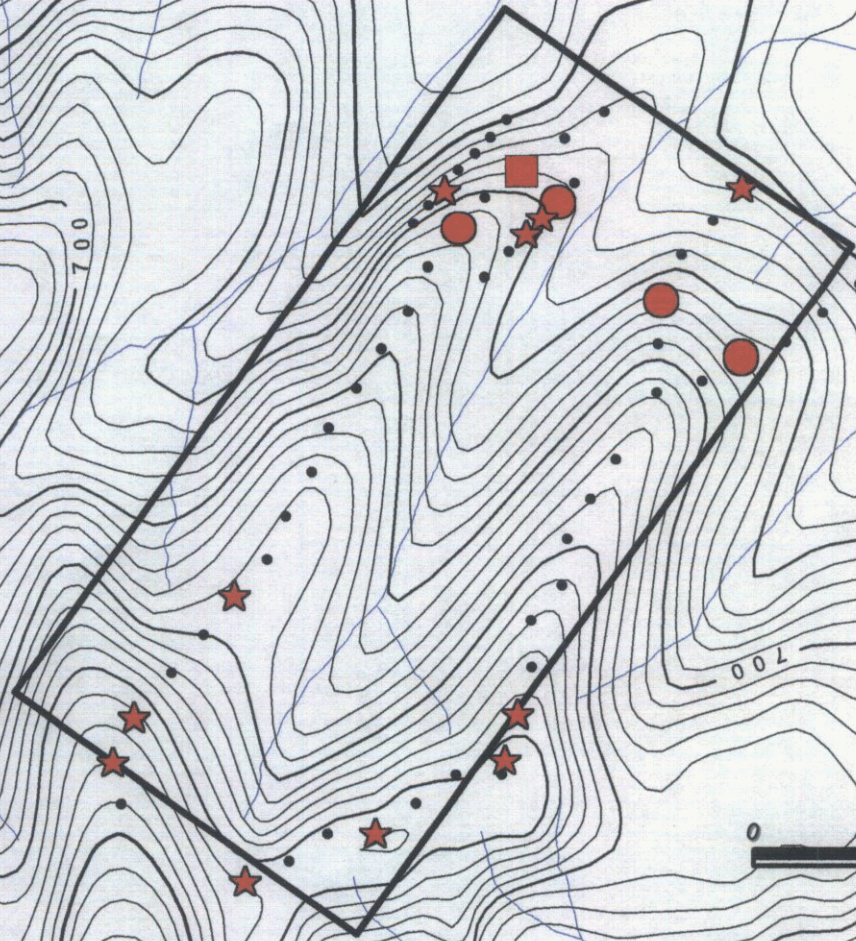
FIGURE 1

**STEWART 1-32 CLAIMS
DAWSON MINING DIVISION
NTS 115 0 / 3 NAD 83**

STEWART 1-32 SOIL SURVEY

Stewart Soil Survey Copper ppm

- 200 to 252 (1)
- 150 to 200 (4)
- ★ 75 to 150 (11)
- 10 to 75 (42)



COPPER ANOMALY MAP

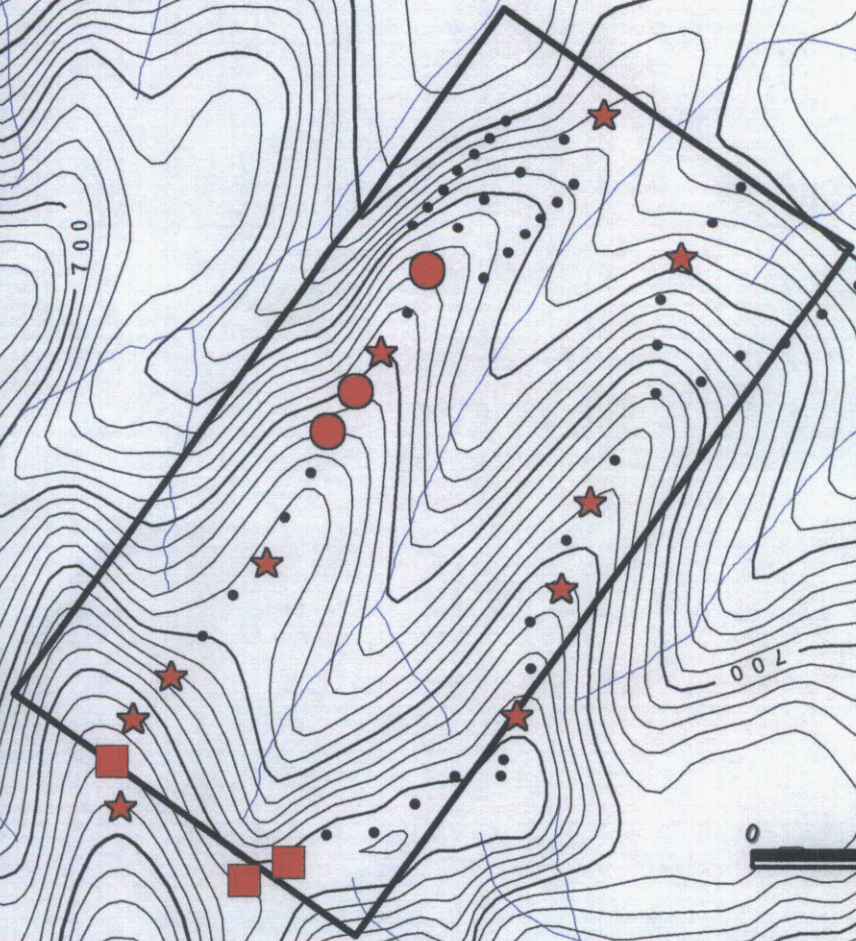
FIGURE 2

**STEWART 1-32 CLAIMS
DAWSON MINING DIVISION
NTS 115 0/3 NAD 83**

STEWART 1-32 SOIL SURVEY

**STEWART 2003 SOIL SURVEY
ZINC PPM**

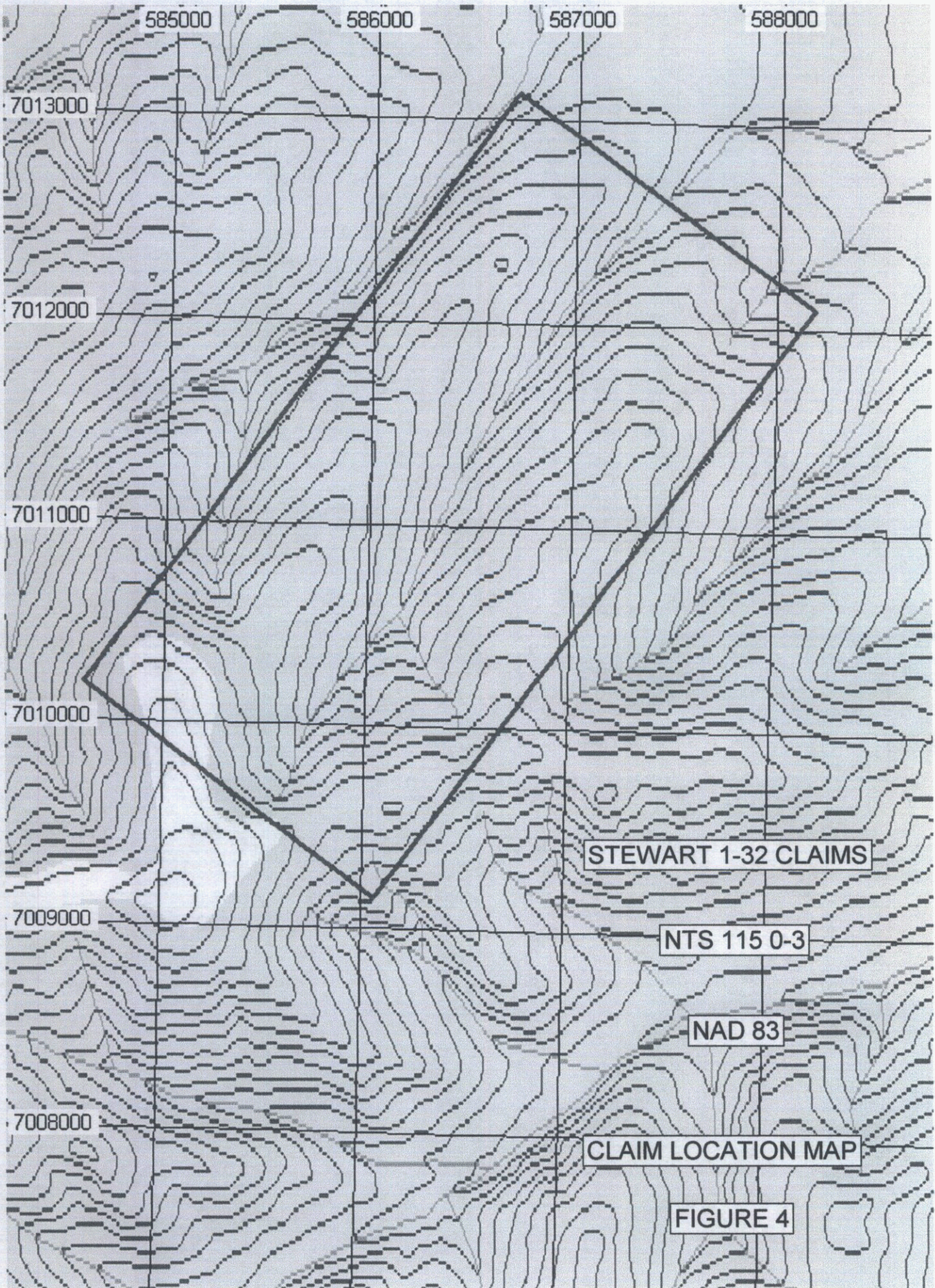
- 200 to 827 (3)
- 150 to 200 (3)
- ★ 100 to 150 (10)
- 10 to 100 (42)

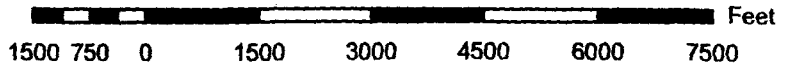


ZINC ANOMALY MAP

FIGURE 3

**STEWART 1-32 CLAIMS
DAWSON MINING DIVISION
NTS 115 0/3 NAD 83**





Interval = 100 feet
7 - NAD 83

May 9, 2003

139°20'0"W
584000

585000

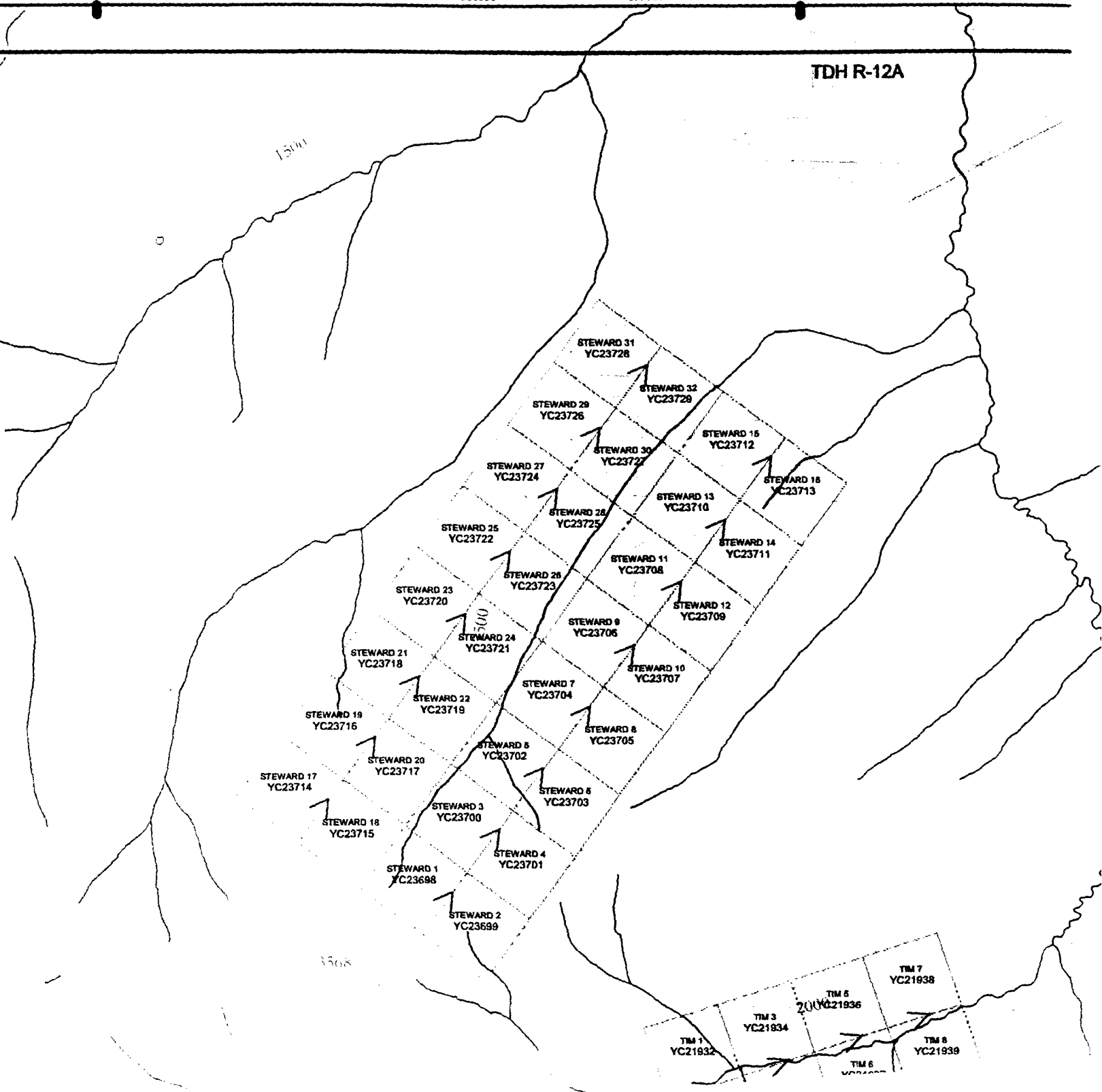
586000

587000

139°15'0"W
588000

589000

TDH R-12A



- STEWARD 31 YC23728
- STEWARD 32 YC23729
- STEWARD 29 YC23726
- STEWARD 30 YC23727
- STEWARD 15 YC23712
- STEWARD 16 YC23713
- STEWARD 27 YC23724
- STEWARD 28 YC23725
- STEWARD 13 YC23710
- STEWARD 14 YC23711
- STEWARD 25 YC23722
- STEWARD 26 YC23723
- STEWARD 11 YC23708
- STEWARD 12 YC23709
- STEWARD 23 YC23720
- STEWARD 24 YC23721
- STEWARD 9 YC23706
- STEWARD 10 YC23707
- STEWARD 21 YC23718
- STEWARD 22 YC23719
- STEWARD 7 YC23704
- STEWARD 8 YC23705
- STEWARD 19 YC23716
- STEWARD 20 YC23717
- STEWARD 5 YC23702
- STEWARD 6 YC23703
- STEWARD 17 YC23714
- STEWARD 18 YC23715
- STEWARD 3 YC23700
- STEWARD 4 YC23701
- STEWARD 1 YC23698
- STEWARD 2 YC23699
- TIM 1 YC21932
- TIM 3 YC21934
- TIM 5 YC21936
- TIM 6 YC21937
- TIM 7 YC21938
- TIM 8 YC21939