

ARCHER, CATHRO & ASSOCIATES (1981) LIMITED
1016 - 510 West Hastings Street
Vancouver, B.C. V6B 1L8

Telephone: 604-688-2568

Fax: 604-688-2578

094460

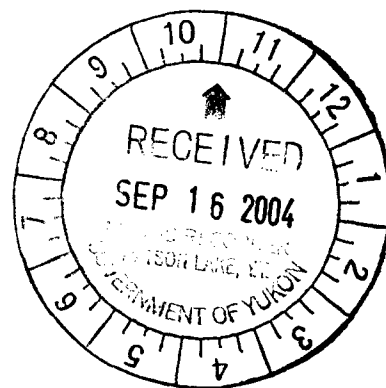
ASSESSMENT REPORT
describing
PROSPECTING AND SOIL SAMPLING
at the
WW PROPERTY

NTS 105G/06
Latitude 61°27'N and Longitude 131°09'W

in the
Watson Lake Mining District
Yukon Territory

Prepared by
Archer, Cathro & Associates (1981) Limited
for
TRUE NORTH GEMS INC.

by
William A. Wengzynowski, P.Eng.
March 2004



Costs associated with this report have been
approved in amount of \$ 3000.00
for the purpose of the Certificate of
Work No. Q.L. 25657



Mining Recorder
Watson Lake Mining District

TABLE OF CONTENTS

	<u>PAGE</u>
INTRODUCTION	1
PROPERTY, LOCATION AND ACCESS	1
HISTORY	1
GEOMORPHOLOGY	2
GEOLOGY	2
MINERALIZATION	3
GEOCHEMISTRY	3
DISCUSSION AND RECOMMENDATIONS	4
REFERENCES	6

APPENDICES

- I AUTHOR'S STATEMENT OF QUALIFICATIONS
- II CERTIFICATE OF ANALYSIS

FIGURES

<u>NO.</u>	<u>DESCRIPTION</u>	<u>LOCATION</u>
1	Property Location	Following Page 1
2	Claim Map	Following Page 1
3	Regional Geology	Following Page 2
4	Property Geology	Following Page 2
5	Sample Locations	Following Page 3
6	Be/Cr Geochemistry	Following Page 3

INTRODUCTION

The WW property is 100% owned by True North Gems Inc. The claims were staked to cover an area that is prospective for emerald based on its geological and mineralogical similarities to the Regal Ridge emerald prospect, located 30 km to the southeast.

Exploration activities in 2003 focussed on the emerald potential of the property. Work consisted of prospecting, soil sampling and claim surveys. It was done by a two person crew using helicopter setouts from a tent camp on a nearby property. The author supervised the work and his Statement of Qualifications appears in Appendix I.

PROPERTY, LOCATION AND ACCESS

The WW property is located in south-central Yukon at latitude 61°27'N and longitude 131°09'W on NTS map sheet 105G/06 (Figure 1). It is comprised of six mineral claims (120 hectares) registered with the Watson Lake Mining Recorder in the name of Archer, Cathro & Associates (1981) Limited (Archer Cathro), which holds them in trust for True North. Claim data are listed below while the locations of individual claims are shown on Figure 2.

<u>Claim Name</u>	<u>Grant Number</u>	<u>Expiry Date*</u>
WW 1-6	YC23184-YC23189	January 6, 2010

* Expiry dates include 2003 work that has been filed for assessment credit but not yet accepted.

The claims lie within the Finlayson Lake District approximately 90 km southeast of Ross River and 235 km northeast of Whitehorse. The property is 20 km south of the Robert Campbell Highway. A 45 km long winter tote trail extends from the highway to within 1 km of the claim group. Access in 2003 was by helicopter from a seasonal base at Finlayson Lake. The closest lake suitable for float equipped fixed-wing aircraft is Lampman Lake 1 km south-southwest of the property.

HISTORY

Exploration in the 1950s and 1960s identified several showings (105G21-A, B and C) in the general area occupied by the WW claims which consisted of galena, sphalerite, chalcopyrite and pyrrhotite bearing lenses and quartz veins within the underlying gneissic stratigraphy (Deklerk, 2002). Grass Project funded by Chevron Canada Ltd and managed by Archer Cathro, previously staked the area as part of a much larger Boot claim block in August 1977. The Boot claims were staked to cover tungsten showings that were discovered during exploration for uranium. The area now covered by the WW property was explored by a variety of surface methods including prospecting, reconnaissance soil geochemical sampling, pan sampling and geological mapping during the 1977 to 1980 field seasons.

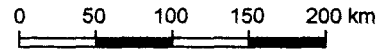
TRUE NORTH GEMS INC.

Figure 1

ARCHER, CATHRO & ASSOCIATES (1981) LIMITED

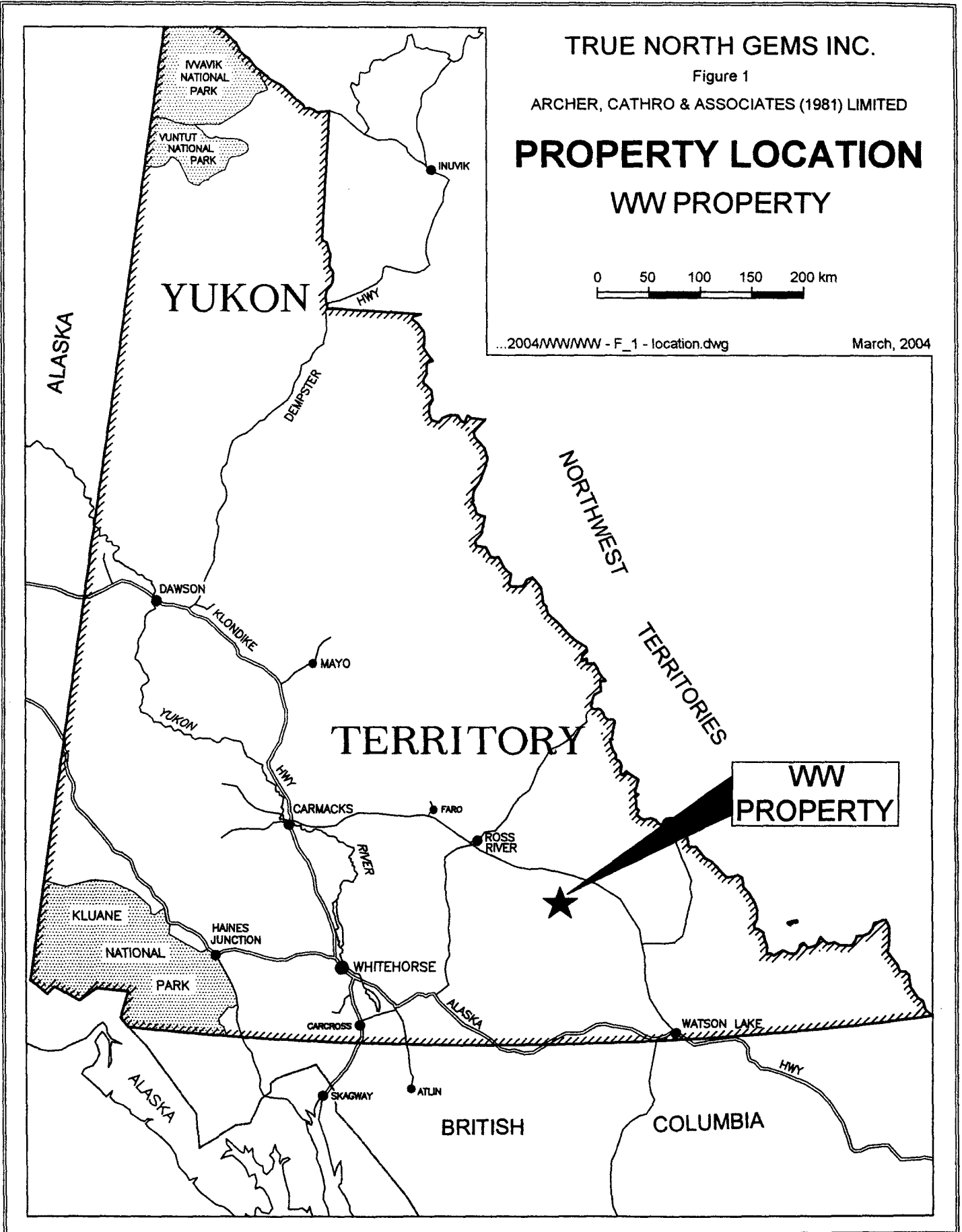
PROPERTY LOCATION

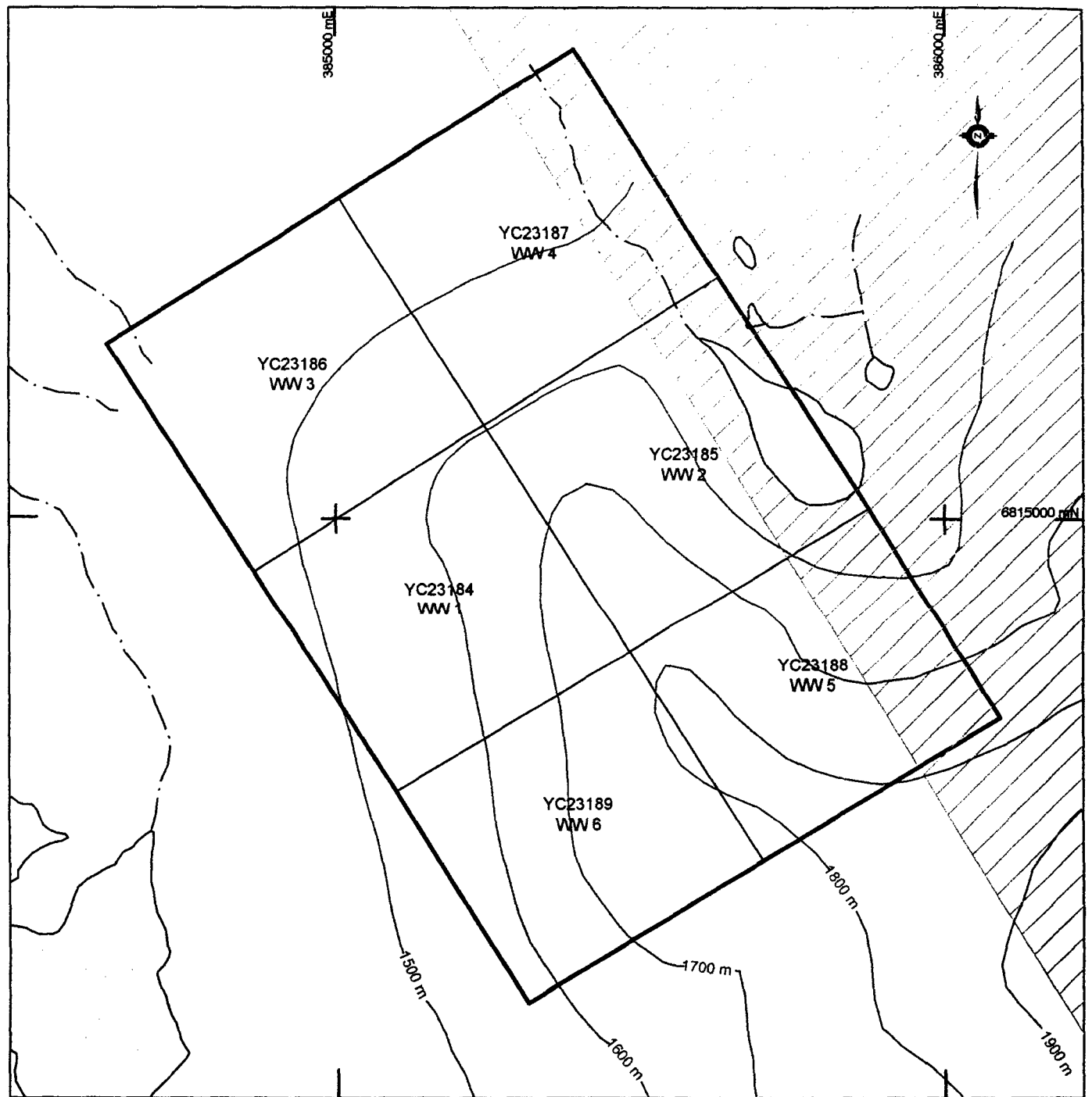
WW PROPERTY



...2004/WWW/WW - F_1 - location.dwg

March, 2004





First Nations land claim

TRUE NORTH GEMS INC.

FIGURE 2
 ARCHER, CATHRO & ASSOCIATES (1981) LIMITED

CLAIM MAP

WW PROPERTY

0 100 200 300 400 500m



Drawn By: MRD

Project: WW

... \2004\WW\WW-F2-Claim Map.DWG

DATE: March, 2004

GEOMORPHOLOGY

The WW property lies within the Pelly Mountains and is drained by creeks that flow into the Hoole River, part of the Yukon River watershed. The claims cover a northwest trending ridge. Elevations locally range from 1400 to 1950 m. Tree line is at 1550 m. Vegetation is limited to stunted spruce and buckbrush at lower elevations giving way to lichen at higher elevations.

The Pelly Mountains were glaciated during the Pleistocene. Although the area is mountainous, bedrock exposure is restricted to ridge crests, steep north facing slopes and creek cuts. Geological mapping is mostly restricted to interpretation of talus and frost heaved suboutcrop.

GEOLOGY

The property lies within Yukon-Tanana Terrane which in the Finlayson Lakes District is composed of foliated and lineated greenschist to lower amphibolite grade metasedimentary, metavolcanic and metaplutonic rocks (Piercy, et al, 2001). Although the area has been strongly deformed and metamorphosed, regional mapping has identified a stratigraphically intact sequence consisting of three Middle to Late Paleozoic unconformity bound sequences called the Grass Lakes, Wolverine and Campbell Range Successions (Figure 3).

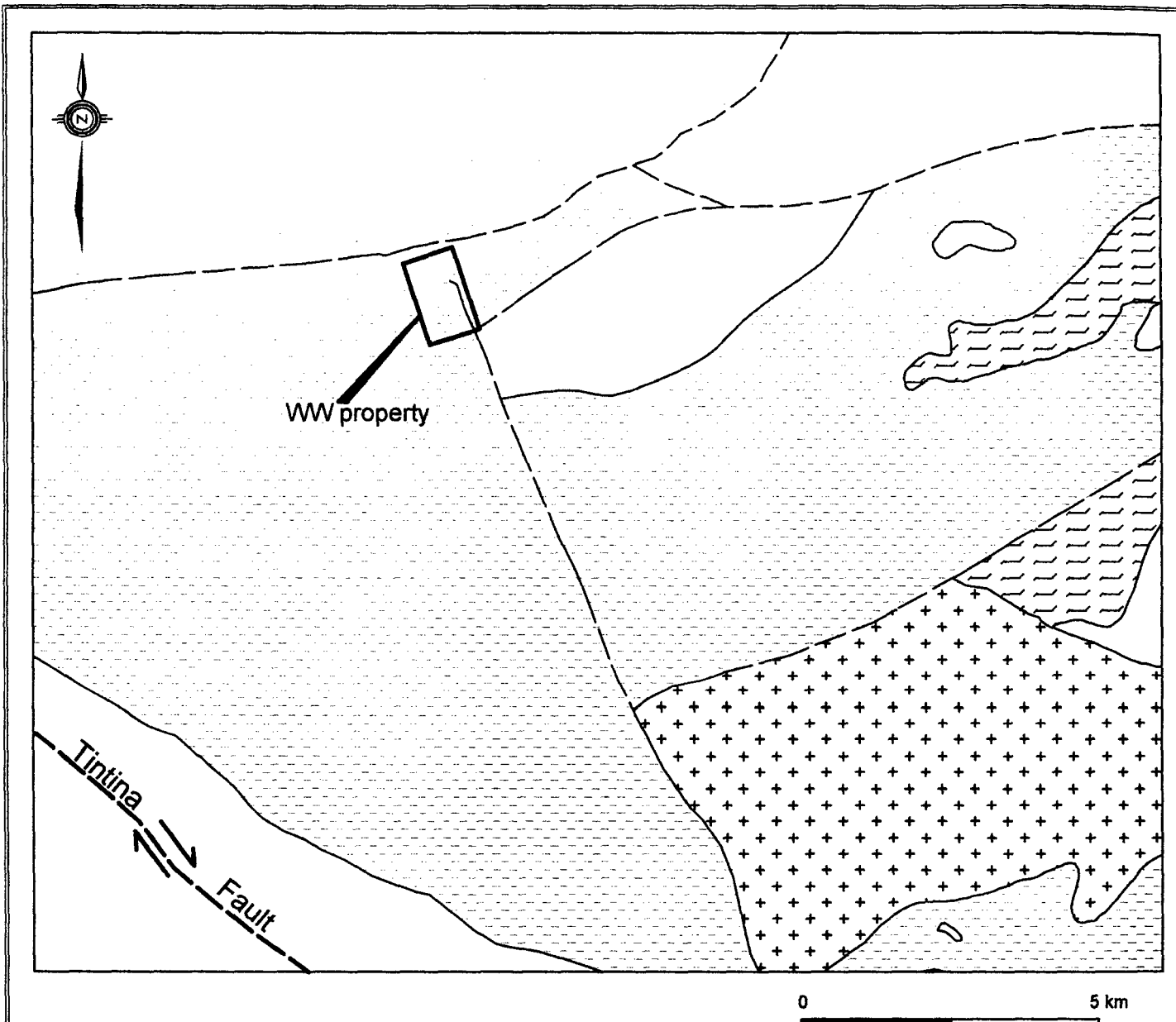
The immediate area is underlain by the oldest sequence in the district, the Grass Lakes Succession, which is comprised of three formations: predominantly clastic sediments (Units Dq and Dqm), Fire Lake mafic metavolcanics (Unit DF) and, Kudz Ze Kayah felsic metavolcanics (Unit DK).

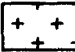
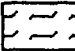


Geology of the claims on Figure 4 is based on Grass Project detailed mapping (Schmidt and Cathro, 1981). Unit DF metamorphic country rocks are intruded by the Grass Lakes Plutonic Suite (Unit Dg). Serpentinite and peridotite float (Unit Dum) was discovered immediately east of the property however, no outcrop has been located. The nearest known Cretaceous age intrusion (Unit Kg) is located approximately 3 km south of the property. The following paragraphs contain brief descriptions of the various lithologies from oldest to youngest. Nomenclature and correlation have been modified to conform to that of recent regional government mapping (Murphy, et al, 2001 and 2002).

Unit DF is the Fire Lake mafic metavolcanics. These rocks are predominantly chlorite schist but grade locally to biotite schist and occasionally to golden muscovite schist. They range from weakly to strongly foliated.

Unit Dum is ultramafic rock which is usually strongly serpentinized. It tends to weather rusty brown and has mottled rounded surfaces. This unit has not been mapped in bedrock on the property. The nearest exposure is a small body along a northwest trending fault immediately southeast of the property.

Unit Dg is the Grass Lakes Plutonic Suite. These rocks are foliated, medium to coarse porphyroblastic feldspar-quartz (biotite-muscovite) augen gneiss and leucocratic gneiss.



-  Cretaceous granitic intrusion (Kg)
-  Chlorite schist (DF) and ultramafic rocks (Dum)
-  Metaclastic, metavolcanic, metaplutonic, metasedimentary and carbonate rocks (primarily Dq and Dg)
-  Fault

TRUE NORTH GEMS INC.

FIGURE 3
 ARCHER, CATHRO & ASSOCIATES (1981) LIMITED

REGIONAL GEOLOGY

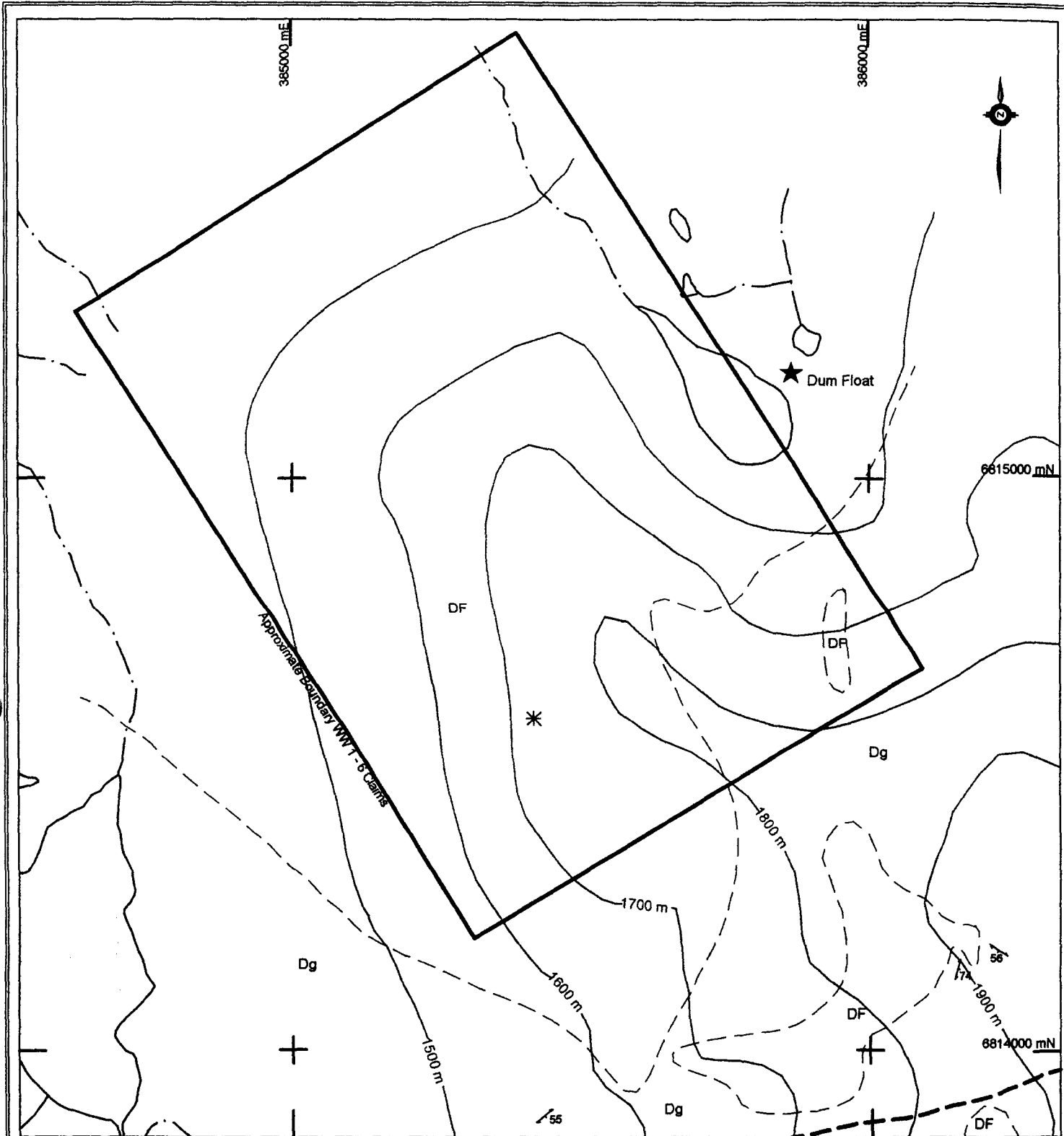
WW PROPERTY

DRAWN/REVISED BY: MRD

PROJECT: WW

.../2004/WW/WW - F_3 - regional geology.dwg

DATE: March, 2004



**LATE DEVONIAN
GRASS LAKES PLUTONIC SUITE**

Dg foliated, medium to coarse porphyroblastic feldspar-quartz (biotite-muscovite) augen gneiss, leucocratic gneiss

UPPER DEVONIAN AND OLDER (?)

Dum ultramafic rocks

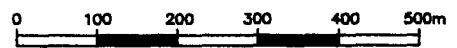
DF biotite-plagioclase-actinolite-chlorite schist

SYMBOLS

- geological contact (approximate)
- fault (approximate)
- foliation (inclined)
- tourmaline

TRUE NORTH GEMS INC.

**FIGURE 4
ARCHER, CATHRO & ASSOCIATES (1981) LIMITED
PROPERTY GEOLOGY
WW PROPERTY**



<small>DRAWN/REVISED BY: MFD FILE: 2004\WW\WW - F4 - 2004 - Property Geology.DWG</small>	<small>PROJECT: WW DATE: March, 2004</small>
--	--

*modified after Schmidt & Cathro (1981)

Detailed structural mapping has not been carried out in the WW claims area. However the recent intensive exploration for volcanogenic massive sulphide deposits (VMS) in the nearby Kudz Ze Kayah and Wolverine camps has included detailed structural studies by industry, academic and government researchers. This work has demonstrated that the tectonic history in the region is complicated. A Mississippian event of uncertain kinematics has affected the Grass Lakes Succession, including Unit DF. The region was also subjected to Cretaceous ductile deformation resulting in low displacement, but relatively large scale, southwest-verging isoclinal folding and related thrust faulting (Piercy, et al, 2001).

MINERALIZATION

Previous exploration efforts have reported limited mineralization around the WW property. Northgate identified three lead-copper-zinc showings near the property in 1966. The northern most of these showings lies at the southeastern corner of the property and is described as a small swarm of cross cutting quartz veins containing minor arsenopyrite and traces of pyrrhotite, chalcopyrite, bornite, galena and sphalerite. The showing is also reported to be surrounded by a large gossan caused by weathering of pyrite and pyrrhotite in a granitoid gneiss.

Beryl has not yet been discovered on the property. Tourmaline bearing quartz vein float was located along the ridge crest in the south-central part of the property including some material with felted tourmaline bloom occurring along the selvage. Minor lenses of rusty muscovite schist were also noted and massive pale green actinolite was found along the eastern slope of the main ridge.

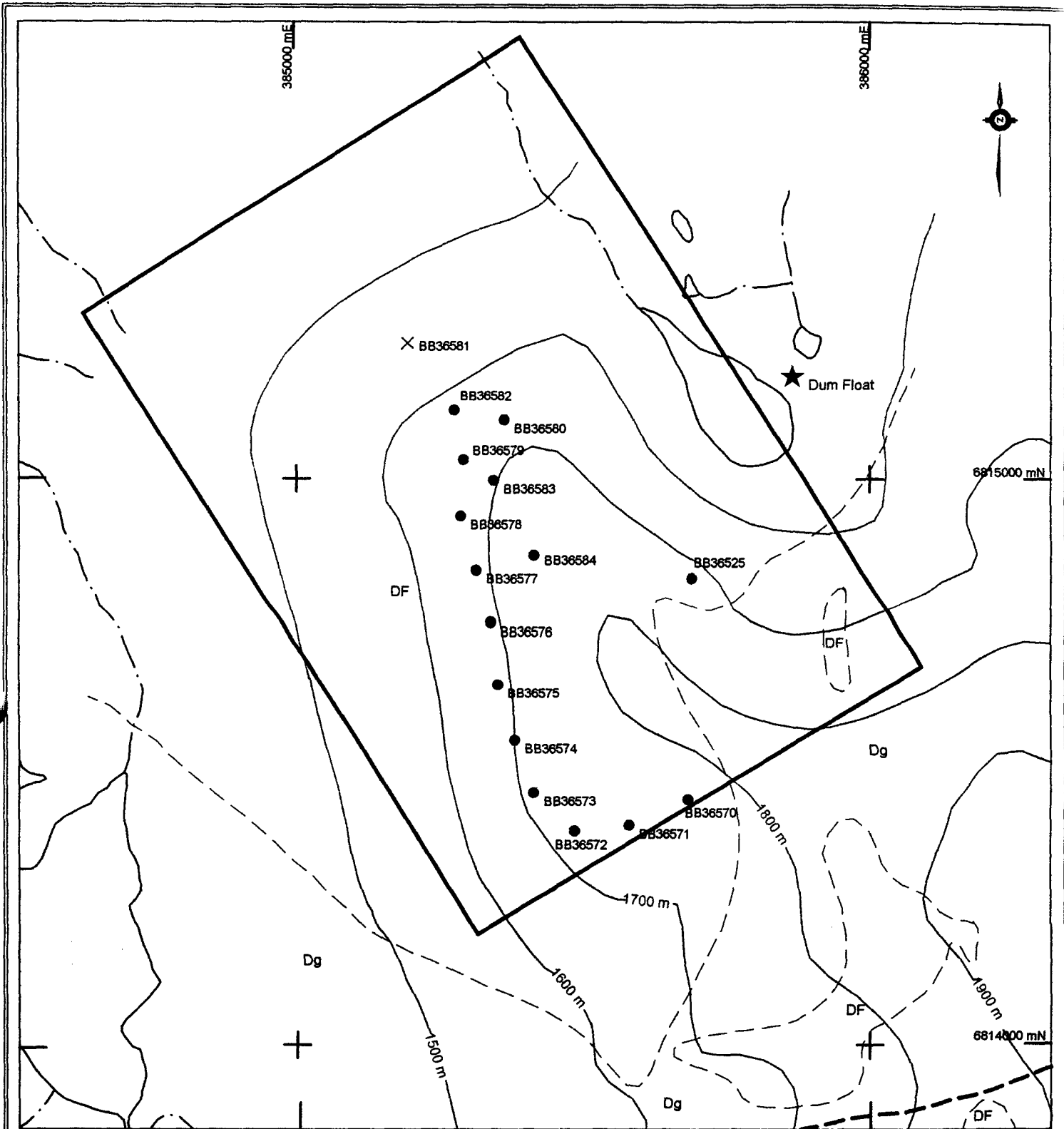
GEOCHEMISTRY

Prior to 2003, soil geochemical sampling was carried out around the perimeter of the property and consisted of two contour lines spaced 100 m apart. One sample taken immediately southwest of a small unnamed lake returned 70 ppm tungsten and 6 ppm tin (Schmidt and Archer, 1980). Five samples taken along the west slope also returned elevated tungsten values (between 8 and 20 ppm).

Soil panning identified two main areas of anomalous scheelite, which coincide with the tungsten geochemical anomalies. The first area extends approximately 450 m along the western slope of the main ridge. The second area is located near the Unit Dum float. Due to the limited soil sample coverage the full extent of these anomalies is not known.

During 2003 sampling consisted of 15 soils taken at 100 m intervals along the west slope of the main ridge and one stream sediment sample (Figure 5). These samples returned weakly to strongly anomalous beryllium geochemical values ranging from 1.96 to 7.84 ppm. Chromium values were only weakly anomalous (30 to 97 ppm). The higher beryllium values are clustered near the centre of the claim block (Figure 6) and one isolated sample taken in the southeast corner of the claim block returned the highest beryllium value (7.84 ppm) on the property.

All but three of the tungsten results were below 4 ppm. Two of the anomalous values (13.7 and 21.8 ppm) were taken in the centre of the property. The highest value (43.9 ppm) was from the isolated soil sample site taken in the southeast corner of the claim block.



LATE DEVONIAN
GRASS LAKES PLUTONIC SUITE

Dg foliated, medium to coarse porphyroblastic feldspar-quartz (biotite-muscovite) augen gneiss, leucocratic gneiss

UPPER DEVONIAN AND OLDER (?)

Dum ultramafic rocks

DF biotite-plagioclase-actinolite-chlorite schist

SYMBOLS

--- geological contact (approximate)

- - - fault (approximate)

X stream sediment sample
 BB36581

● soil sample
 BB36573

TRUE NORTH GEMS INC.

FIGURE 5

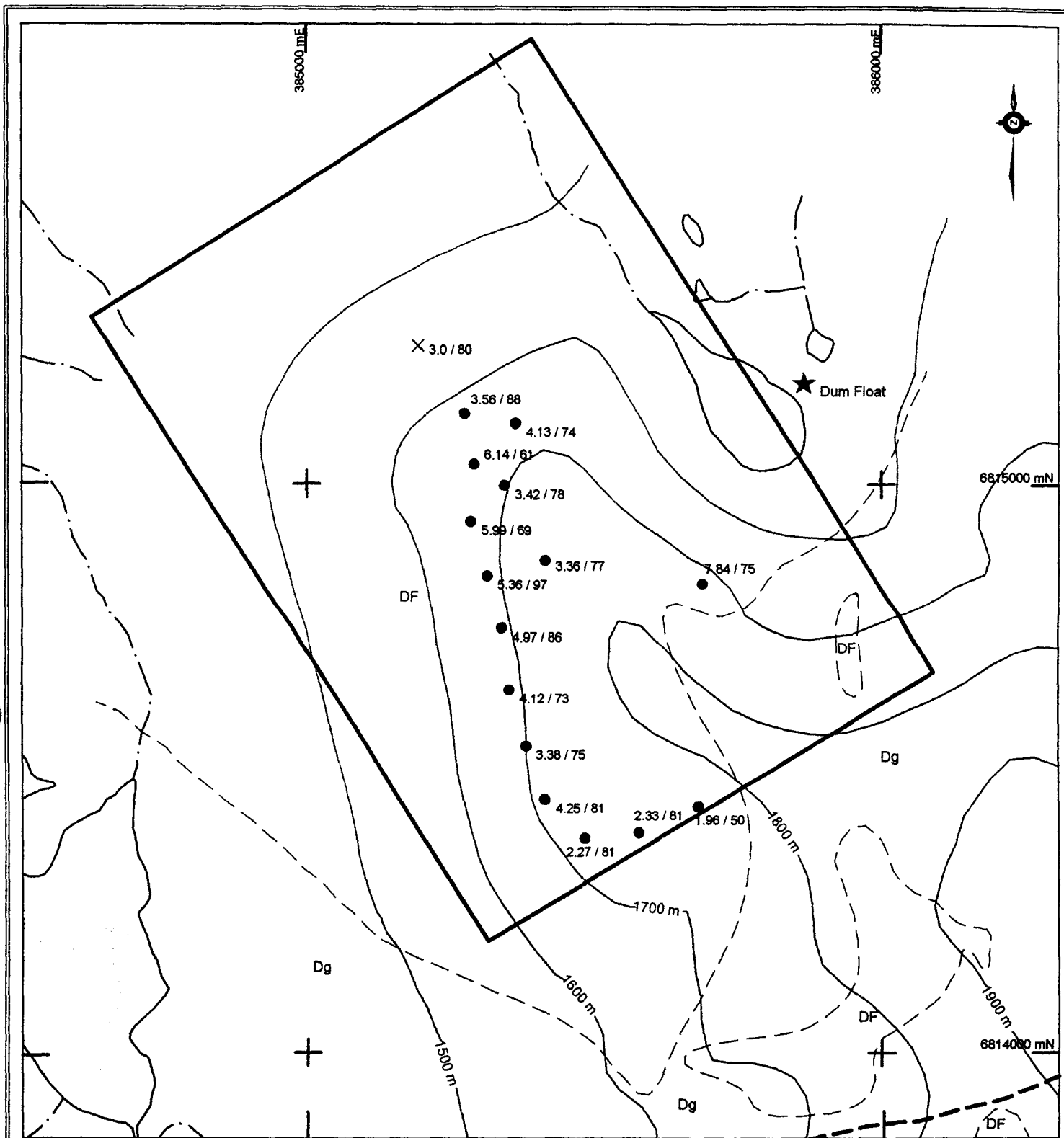
ARCHER, CATHRO & ASSOCIATES (1981) LIMITED

SAMPLE LOCATIONS

WW PROPERTY

0 100 200 300 400 500m

DRAWN/REVISED BY: MFD	PROJECT: WW
FILE: ...2004\WW\WW - F8 - 2004 - Sample Locations.DWG	DATE: March, 2004



**LATE DEVONIAN
GRASS LAKES PLUTONIC SUITE**

Dg foliated, medium to coarse porphyroblastic
feldspar-quartz (biotite-muscovite) augen
gneiss, leucocratic gneiss

UPPER DEVONIAN AND OLDER (?)

Dum ultramafic rocks

DF biotite-plagioclase-actinolite-chlorite
schist

SYMBOLS

--- geological contact (approximate)

- - - fault (approximate)

X
3.0 / 80
stream sediment sample
(Be/Cr ppm)

●
1.96 / 50
soil sample (Be/Cr ppm)

TRUE NORTH GEMS INC.

**FIGURE 6
ARCHER, CATHRO & ASSOCIATES (1981) LIMITED**

Be/Cr GEOCHEMISTRY

WW PROPERTY



DRAWN/REVISED BY: MWD

PROJECT: WW

FILE: ...3004\WW\WW - F6 - 2004 - Be-Cr Geochemistry.DWG

DATE: March, 2004

DISCUSSION AND RECOMMENDATIONS

During 2003 exploration focussed on the emerald potential of the WW property using the model for the Regal Ridge emerald prospect located 36 km to the southeast. At Regal Ridge chromium rich emerald crystals occur within quartz veins and in layers and pockets within altered selvages developed along the margins of the veins. At least 13 mineralized veins occur in a 2 sq km area on either side of a prominent ridge. The mineralized veins cut chlorite schist of the Fire Lake mafic metavolcanic Unit DF near the contact with a granitic stock of the Anvil Plutonic Suite (Kg). The veins typically range between 0.2 and 1 m in width. The emerald crystals are up to 4 cm long and are typically surrounded by fine dark tourmaline with minor scheelite and chalcopyrite. Emerald is developed adjacent to the veins where they cut and hydrothermally alter mica rich layers within the chlorite schist, and occasionally in the veins themselves.

Fundamentally emeralds are the gem variety of green beryl. The green colour is caused by chromium or less commonly vanadium impurities. The source of the beryllium needed to form the beryl at Regal Ridge is thought to be a nearby Unit Kg granitic stock. Fluids derived from that beryllium reservoir presumably migrated outward and upward through the adjoining Unit Dum ultramafic rocks and Unit DF mafic metavolcanic schist, which are chromium reservoirs. Interaction between the beryllium enriched vein fluids and chromium bearing wallrocks resulted in formation of emeralds along the margin of the veins.

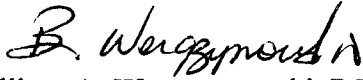
The WW property is underlain predominantly by Units Dq and Dg, while Unit Dum has not been discovered in outcrop but has been identified in float immediately east of the property. No intrusions have been identified on the property. Previously described chlorite schist believed to be associated with the Fire Lake Unit DF is more likely altered intermediate horizons within Unit Dq. The nearest known intrusion (Unit Kg) is located approximately 3 km south.

Based on a statistical analysis of soil geochemical results collected during the 2001 and 2002 field programs at Regal Ridge, thresholds for moderate and strong anomalous values were determined to be 5.3 and 29.0 ppm tungsten and 1.45 and 3.78 ppm beryllium, respectively using near total digestion (Gaboury, 2002). Four of the samples collected from the WW property in 2003 returned moderately anomalous beryllium values. Tungsten values were weakly anomalous except for three moderately anomalous and one strongly anomalous value. Chromium responses were only weakly anomalous.

The beryllium geochemical signature found on the property is weakly to moderately elevated above background when compared to Regal Ridge. Beryl has not been discovered on the property and conditions are not favourable for the formation of emerald due to the poor chromium response. No further emerald exploration is warranted.

Respectfully submitted,

ARCHER, CATHRO & ASSOCIATES (1981) LIMITED



William A. Wengzynowski, P.Eng.

REFERENCES

- Deklerk, R. (compiler)
2002 Yukon MINFILE 2002 entry 105G21-A, B and C. Indian and Northern Affairs Canada, Yukon Region: CD-ROM.
- Gaboury, B.E.
2002 Report on Field Activities for the Regal Ridge Emerald Project, Yukon Territory, Canada, True North Gem Inc., Internal Company Report
- Murphy, D.C., Colpron, M., Gordey, S.P., Roots, C.F., Abbott, J.G. and Lipovsky, P.S.
2001 Preliminary bedrock geological map of northern Finlayson lake area (105G), Yukon Territory. Exploration and Geological Services Division, Yukon Region, Indian and Northern Affairs Canada, Open File 2001-33.
- Murphy, D.C., Colpron, M., Roots, C.F., Gordey, S.P. and Abbott, J.G.
2002 Finlayson Lake Targeted Geoscience Initiative (southeastern Yukon), Part 1: Bedrock geology. *In*: Yukon Exploration and Geology 2001, Exploration and Geological Services Division, Yukon Region, Indian and Northern Affairs Canada, p. 189-207.
- Piercy, S.J., Paradis, S., Murphy, D.C. and Mortensen, J. K.
2001 Geochemistry and paleotectonic setting of felsic volcanic rocks in the Finlayson Lake volcanic-hosted massive sulphide district, Yukon, Canada. *Economic Geology*, Vol. 96, p. 1877-1905.
- Schmidt, U. and Archer, A.R.
1980 Final Report, Grass Project 1979, Private Company Report, Archer, Cathro & Associates (1981) Limited
- Schmidt, U. and Cathro, R.J.
1981 Final Report, Grass Project 1980, Private Company Report, Archer, Cathro & Associates (1981) Limited

APPENDIX I

AUTHOR'S STATEMENT OF QUALIFICATIONS

STATEMENT OF QUALIFICATIONS

I, William A. Wengzynowski, geological engineer, with business addresses in Vancouver, British Columbia and Whitehorse, Yukon Territory and residential address in Garibaldi Highlands, British Columbia, do hereby certify that:

1. I am President of Archer, Cathro & Associates (1981) Limited.
2. I graduated from the University of British Columbia in 1993 with a B.A.Sc in Geological Engineering, Option I, mineral and fuel exploration.
3. I registered as a Professional Engineer in the Province of British Columbia on December 12, 1998 (Licence Number 24119).
4. From 1983 to present, I have been actively engaged in mineral exploration in the Yukon Territory, Northwest Territories and northern British Columbia.
5. I have personally participated in and supervised the fieldwork reported herein.



William A. Wengzynowski, P. Eng.

APPENDIX II
CERTIFICATE OF ANALYSIS



ALS Chemex

EXCELLENCE IN ANALYTICAL CHEMISTRY

ALS Canada Ltd.

212 Brooksbank Avenue

North Vancouver BC V7J 2C1 Canada

Phone: 604 984 0221 Fax: 604 984 0218



O: EP

C/O ARCHER CATHRO & ASSOCIATES (1981) LIMITED

1016-510 W HASTINGS ST

VANCOUVER BC V6B 1L8



Page # : 1

Date : 7-Aug-2003

Account: EMP

CERTIFICATE VA03027932

Project : Finlayson

P.O. No:

This report is for 36 SOIL samples submitted to our lab in North Vancouver, BC, Canada on 29-Jul-2003.

The following have access to data associated with this certificate:

AL ARCHER
JOAN MARIACHER

ROB CARNE
BILL WENGZYNOWSKI

DOUG EATON

SAMPLE PREPARATION

ALS CODE	DESCRIPTION
WEI-21	Received Sample Weight
LOG-22	Sample login - Rcd w/o BarCode
SCR-41	Screen to -180um and save both

ANALYTICAL PROCEDURES

ALS CODE	DESCRIPTION
ME-MS61	47 element four acid ICP-MS

To: EP
C/O ARCHER CATHRO & ASSOCIATES (1981) LIMITED
1016-510 W HASTINGS ST
VANCOUVER BC V6B 1L8

This is the Final Report and supersedes any preliminary report with this certificate number. Results apply to samples as submitted. All pages of this report have been checked and approved for release.

Signature:



ALS Chemex
EXCELLENCE IN ANALYTICAL CHEMISTRY
 ALS Canada Ltd.
 212 Brooksbank Avenue
 North Vancouver BC V7J 2C1 Canada
 Phone: 604 984 0221 Fax: 604 984 0218



O:EP
 C/O ARCHER CATHRO & ASSOCIATES (1981) LIMITED Total # of pages : 2 (A - D)
 1016-510 W HASTINGS ST
 VANCOUVER BC V6B 1L8
 Page # : 2 - A
 Date : 7-Aug-2003
 Account: EMP

Project : Finlayson

CERTIFICATE OF ANALYSIS VA03027932

Sample Description	Method Analyte Units LOR	WEI-21	ME-MS61	ME-MS61	ME-MS61	ME-MS61	ME-MS61	ME-MS61	ME-MS61	ME-MS61	ME-MS61	ME-MS61	ME-MS61	ME-MS61	ME-MS61	ME-MS61
		Recvd Wt kg 0.02	Ag ppm 0.01	Al % 0.01	As ppm 0.2	Ba ppm 10	Be ppm 0.05	Bi ppm 0.01	Ca % 0.01	Cd ppm 0.02	Co ppm 0.01	Co ppm 0.1	Cr ppm 1	Cs ppm 0.05	Cu ppm 0.2	Fe % 0.01
02	BB36522	0.24	0.21	8.60	10.8	690	8.78	3.05	0.85	1.42	282	30.9	39	41.6	42.7	5.51
	BB36523	0.42	0.22	14.10	7.5	1740	10.25	0.85	0.31	0.56	255	33.6	87	65.2	60.2	6.98
	BB36524	0.36	0.08	12.90	272	1050	10.15	0.90	0.46	0.19	268	42.3	100	109.5	79.0	8.20
	BB36525	0.40	0.27	7.45	56.2	720	7.84	0.51	1.56	1.24	83.6	36.9	75	18.80	147.0	5.10
	BB36526	0.48	0.44	11.10	19.3	880	8.83	9.43	0.94	0.35	151.0	21.7	84	34.9	59.4	6.79
02	BB36527	0.42	0.23	9.96	17.9	670	10.10	2.16	0.84	0.57	323	34.6	135	73.5	48.7	5.55
	BB36562	0.20	0.16	7.35	6.4	750	3.07	2.03	1.06	0.10	85.3	6.7	24	18.55	20.1	2.52
	BB36563	0.30	0.17	9.53	8.7	730	3.73	4.14	2.04	0.18	142.5	12.2	21	22.0	24.1	3.17
	BB36564	0.32	0.20	12.25	9.7	1070	6.46	6.04	0.39	0.05	220	18.8	50	55.3	44.4	6.10
	BB36565	0.46	0.42	10.55	7.4	770	5.71	5.62	1.00	0.41	325	27.2	45	54.5	53.8	5.64
02	BB36566	0.38	0.51	8.36	51.7	480	48.4	28.5	3.50	1.65	79.1	113.0	219	89.6	323	9.69
	BB36567	0.34	0.21	10.15	8.5	920	8.01	6.96	1.22	0.64	293	81.9	190	78.8	173.5	8.62
	BB36568	0.30	0.68	11.20	14.3	730	7.51	19.35	0.57	0.57	366	28.9	63	60.9	82.0	7.09
	BB36569	0.38	0.59	8.77	10.4	750	8.86	13.65	0.96	0.48	291	33.4	68	64.6	82.1	5.74
	BB36570	0.32	0.17	6.35	64.6	980	1.96	0.46	1.79	0.43	66.2	14.0	50	9.54	42.6	3.05
02	BB36571	0.24	0.13	6.69	15.7	770	2.33	0.27	1.34	0.38	115.0	18.2	81	8.18	31.3	4.57
	BB36572	0.24	0.10	6.82	22.2	890	2.27	0.36	1.27	0.42	106.5	17.1	81	12.90	29.9	4.32
	BB36573	0.32	0.22	8.49	26.7	690	4.25	0.58	1.20	0.47	>500	113.5	81	32.4	87.1	5.71
	BB36574	0.26	0.18	8.28	53.5	900	3.38	0.47	0.90	0.17	175.5	35.9	75	15.85	93.6	5.08
	BB36575	0.30	0.12	9.71	17.6	820	4.12	0.52	0.88	0.19	170.5	33.6	73	23.9	73.3	5.58
W/W	BB36576	0.32	0.25	9.75	26.8	820	4.97	0.50	0.73	0.18	249	76.4	86	33.8	92.7	5.62
	BB36577	0.26	0.31	7.26	17.9	510	5.36	4.75	2.62	0.30	153.5	52.2	97	44.0	136.0	6.40
	BB36578	0.18	0.56	6.36	48.8	620	5.99	1.82	2.29	0.34	167.5	37.9	69	33.9	114.5	5.39
	BB36579	0.28	0.13	8.46	18.9	720	6.14	2.67	1.86	0.25	133.0	36.0	61	33.9	51.0	5.18
	BB36580	0.38	1.39	10.10	448	750	4.13	4.94	1.10	0.76	159.0	38.3	74	25.7	250	8.74
02	BB36581	0.34	0.09	10.20	42.6	970	3.00	1.29	1.77	0.26	115.5	27.0	80	18.95	50.8	6.42
	BB36582	0.30	0.16	10.55	21.0	810	3.56	0.93	1.36	0.24	167.5	42.4	88	24.2	72.6	6.53
	BB36583	0.28	0.07	7.81	35.9	850	3.42	0.78	1.07	0.21	107.0	28.3	78	17.35	47.6	5.44
	BB36584	0.30	0.09	8.33	42.0	910	3.36	0.93	0.96	0.16	148.5	40.6	77	17.85	64.4	4.69
	BB36585	0.36	0.14	12.95	24.5	770	5.91	3.35	0.47	0.13	304	54.9	66	63.7	81.4	7.61
02	BB36586	0.32	0.15	13.65	13.4	890	8.45	1.08	0.43	<0.02	286	57.3	83	91.1	80.2	8.35
	BB36587	0.28	0.15	12.85	54.0	720	7.73	1.28	0.34	<0.02	268	160.0	88	81.5	126.0	9.29
	BB36588	0.26	0.58	10.20	18.9	660	5.81	6.99	0.74	0.47	216	22.1	48	118.5	54.4	4.82
	BB36589	0.32	0.23	11.50	28.2	380	10.80	2.88	0.92	0.26	167.5	9.1	11	113.5	15.6	3.81
	BB36590	0.40	0.14	10.40	11.8	700	8.08	0.70	0.64	0.58	347	46.8	59	47.7	56.4	6.71
BB36591	0.30	0.14	8.94	9.1	800	3.79	0.54	0.59	0.12	237	20.3	63	48.6	133.5	5.67	

Comments: REE's may not be totally soluble in MS61 method.



ALS Chemex
EXCELLENCE IN ANALYTICAL CHEMISTRY
 ALS Canada Ltd.
 212 Brooksbank Avenue
 North Vancouver BC V7J 2C1 Canada
 Phone: 604 984 0221 Fax: 604 984 0218



0: EP

C/O ARCHER CATHRO & ASSOCIATES (1981) LIMITED Total # of pages : 2 (A - D)
 1016-510 W HASTINGS ST
 VANCOUVER BC V6B 1L8

Page #: 2 - B

Date : 7-Aug-2003

Account: EMP

Project : Finlayson

CERTIFICATE OF ANALYSIS VA03027932

Sample Description	Method Analyte Units LOR	ME-MS61	ME-MS61	ME-MS61	ME-MS61	ME-MS61	ME-MS61	ME-MS61	ME-MS61	ME-MS61	ME-MS61	ME-MS61	ME-MS61	ME-MS61	ME-MS61	ME-MS61
		Ga ppm 0.05	Ge ppm 0.05	Hf ppm 0.1	In ppm 0.005	K % 0.01	La ppm 0.5	Li ppm 0.2	Mg % 0.01	Mn ppm 5	Mo ppm 0.05	Na % 0.01	Nb ppm 0.1	Ni ppm 0.2	P ppm 10	Pb ppm 0.5
BB36522 BB36523 BB36524 BB36525 BB36526	D2	29.7	0.45	0.5	0.094	3.43	193.5	128.5	0.88	1145	3.49	0.97	21.0	70.3	1590	43.3
		45.9	0.41	0.3	0.132	4.52	146.5	161.0	1.18	1040	4.90	0.54	3.7	69.7	860	52.0
		40.7	0.44	0.3	0.126	4.17	132.5	150.0	1.49	1165	1.52	0.49	13.0	62.7	1460	33.3
		20.0	0.25	1.0	0.093	1.65	40.5	78.7	1.73	1135	1.26	1.29	8.8	59.4	900	18.3
		30.2	0.31	0.7	0.106	3.57	82.3	124.0	1.30	1100	3.02	0.88	5.6	49.1	1200	38.4
BB36527 BB36562 BB36563 BB36564 BB36565		37.5	0.51	0.9	0.126	3.31	181.5	234	2.03	1450	1.94	0.58	26.2	158.5	1390	46.9
		24.8	0.24	0.5	0.062	2.37	46.3	40.1	0.53	345	4.51	1.57	9.8	11.3	1020	22.2
		29.2	0.31	2.8	0.071	2.71	89.6	60.3	0.99	493	2.42	1.92	14.2	16.8	980	24.3
		43.8	0.39	0.6	0.153	4.93	111.0	165.5	0.96	981	2.85	0.85	24.8	29.3	1280	48.6
		36.9	0.43	1.7	0.128	3.78	122.5	123.5	1.19	1235	4.02	1.41	24.3	59.2	1290	72.4
BB36566 BB36567 BB36568 BB36569 BB36570	D2	35.8	0.34	0.8	0.192	2.27	36.8	319	4.30	1960	53.2	0.91	28.3	345	1410	24.5
		36.8	0.37	0.4	0.131	3.51	94.1	224	3.35	1225	13.70	0.74	14.0	248	1430	30.7
		40.7	0.50	0.8	0.155	4.28	160.0	134.0	1.18	1320	9.18	1.06	27.1	62.3	1320	87.5
		33.0	0.36	1.2	0.128	3.39	101.5	142.5	1.34	1125	14.05	1.08	16.9	73.7	1430	69.2
		16.90	0.23	0.3	0.070	1.94	32.0	42.6	1.14	545	1.14	1.41	8.9	34.1	900	17.3
BB36571 BB36572 BB36573 BB36574 BB36575		19.00	0.22	0.7	0.064	1.53	39.3	56.1	1.41	606	1.32	1.08	10.0	54.4	1290	15.9
		21.7	0.27	1.0	0.063	1.81	40.9	60.4	1.28	588	1.44	1.13	11.0	50.0	830	19.9
		26.3	0.43	0.8	0.087	2.02	121.0	123.5	1.42	2070	1.42	0.74	15.8	273	1180	35.1
		24.4	0.40	0.9	0.071	1.99	161.5	86.7	1.25	1165	1.59	1.10	14.2	70.2	1160	26.3
		27.3	0.36	1.1	0.087	2.30	92.1	116.0	1.36	1485	1.13	1.05	3.0	83.4	1040	30.7
BB36576 BB36577 BB36578 BB36579 BB36580	WW	30.5	0.41	1.0	0.103	2.60	99.2	118.5	1.29	1225	1.18	0.86	8.3	132.0	890	37.0
		23.3	0.49	0.8	0.081	1.68	145.0	122.0	1.91	1270	0.91	0.76	17.0	147.0	1110	24.6
		22.1	0.43	0.7	0.081	1.64	134.5	125.5	1.22	1425	1.04	0.59	13.8	94.2	1800	29.3
		26.3	0.29	1.1	0.092	2.04	51.4	116.5	1.30	1105	1.19	0.81	19.4	115.0	870	23.1
		28.7	0.37	1.3	0.104	2.77	89.1	118.5	1.15	2070	0.91	1.05	18.0	67.8	990	107.5
BB36581 BB36582 BB36583 BB36584 BB36585		24.5	0.19	0.9	0.094	2.56	52.8	96.8	1.80	1475	0.99	1.26	4.0	66.2	1460	22.8
		28.1	0.26	1.0	0.093	2.57	80.2	113.5	1.57	1280	0.83	1.03	13.2	114.5	1270	35.0
		23.4	0.19	1.3	0.080	1.94	51.6	81.8	1.43	809	1.44	1.05	5.8	70.9	920	24.0
		22.4	0.20	1.5	0.079	2.25	65.7	67.6	1.13	1040	1.06	1.16	3.1	87.5	920	24.8
		39.1	0.40	0.5	0.129	4.28	145.0	181.0	1.27	1405	3.32	0.64	18.4	102.0	1130	35.9
BB36586 BB36587 BB36588 BB36589 BB36590	D2	47.5	0.38	0.3	0.300	4.97	130.0	273	1.30	1410	1.60	0.45	25.8	89.4	1430	31.0
		42.7	0.39	0.3	0.205	4.12	121.0	241	1.30	2020	1.53	0.45	22.1	150.5	1440	35.9
		36.8	0.40	1.0	0.122	3.23	153.5	128.5	0.89	927	18.60	0.60	16.4	45.1	1420	57.8
		43.3	0.38	1.4	0.177	4.23	141.5	220	0.65	814	2.89	0.85	25.6	10.0	1020	48.3
		30.4	0.51	1.0	0.122	2.91	200	120.5	1.00	1205	2.77	0.69	18.6	81.9	1950	28.9
BB36591		26.2	0.34	1.5	0.098	2.72	106.0	80.3	1.07	621	2.79	0.85	21.0	54.9	2210	32.7

Comments: REE's may not be totally soluble in MS61 method.



ALS Chemex

EXCELLENCE IN ANALYTICAL CHEMISTRY

ALS Canada Ltd.

212 Brooksbank Avenue

North Vancouver BC V7J 2C1 Canada

Phone: 604 984 0221 Fax: 604 984 0218



C/O

ARCHER CATHRO & ASSOCIATES (1981) LIMITED Total # of pages : 2 (A - D)

1016-510 W HASTINGS ST

VANCOUVER BC V6B 1L8

Date : 7-Aug-2003

Account: EMP

Project : Finlayson

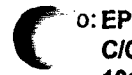
CERTIFICATE OF ANALYSIS VA03027932

Sample Description	Method Analyte Units LOR	ME-MS61	ME-MS61	ME-MS61	ME-MS61	ME-MS61	ME-MS61	ME-MS61	ME-MS61	ME-MS61	ME-MS61	ME-MS61	ME-MS61	ME-MS61	ME-MS61	ME-MS61
		Rb ppm 0.1	Re ppm 0.002	S % 0.01	Sb ppm 0.05	Se ppm 1	Sn ppm 0.2	Sr ppm 0.2	Ta ppm 0.05	Te ppm 0.05	Th ppm 0.2	Tl % 0.01	Tl ppm 0.02	U ppm 0.1	V ppm 1	W ppm 0.1
BB36522 } oZ		279	0.006	0.05	0.26	3	15.9	123.0	0.97	0.07	51.0	0.48	1.24	14.2	86	104.5
		358	0.005	0.05	0.09	2	10.9	165.5	0.07	<0.05	38.0	0.50	1.60	7.4	191	5.7
		312	0.005	0.05	0.12	1	11.5	136.5	0.19	0.06	38.0	0.67	1.48	5.7	165	33.1
		120.0	0.004	0.02	0.79	1	7.0	176.5	0.24	<0.05	11.6	0.50	0.69	2.9	151	43.9
		259	0.004	0.05	0.19	1	18.4	150.0	0.07	0.13	26.3	0.54	0.97	6.1	147	26.9
BB36527 } oZ		358	0.006	0.03	0.25	4	14.1	98.1	1.56	0.06	75.1	0.52	1.75	95.5	101	9.7
		134.0	0.005	0.05	0.61	1	10.5	307	0.12	0.06	12.2	0.35	0.67	3.1	79	12.3
		198.5	0.003	0.03	0.46	2	7.9	521	0.89	0.08	32.2	0.35	0.80	6.5	86	6.9
		440	0.004	0.08	0.22	2	20.3	121.5	1.16	0.14	45.6	0.39	1.88	15.8	122	17.3
		299	0.004	0.06	0.44	3	11.9	251	1.23	0.17	72.0	0.50	1.28	11.8	109	20.4
BB36566 } oZ		381	0.007	0.06	0.28	2	65.7	152.5	0.94	0.28	10.1	0.81	2.06	3.4	199	132.5
		260	0.006	0.06	0.13	3	14.8	142.0	0.33	0.14	29.8	0.77	1.32	7.2	204	82.9
		364	0.006	0.15	0.33	4	18.4	123.5	1.44	0.43	76.4	0.51	1.66	22.7	118	17.4
		328	0.004	0.10	0.48	3	23.6	131.5	0.39	0.30	71.0	0.56	1.57	15.0	125	32.2
		136.5	0.004	0.02	1.09	1	5.5	189.5	0.12	<0.05	10.3	0.34	0.69	4.3	114	3.4
BB36571 } oZ		83.6	0.003	0.04	0.58	1	2.5	166.5	0.21	<0.05	12.2	0.62	0.47	2.8	136	2.2
		128.0	0.005	0.03	0.77	1	3.0	206	0.15	<0.05	12.9	0.51	0.61	2.7	135	3.1
		126.0	0.005	0.05	0.48	2	2.9	235	0.58	0.06	27.2	0.52	0.66	4.2	123	4.0
		138.0	0.004	0.04	0.52	2	3.1	197.0	0.34	0.06	18.6	0.50	0.65	5.1	138	3.3
		146.5	0.003	0.04	0.28	1	3.2	213	0.09	<0.05	19.0	0.50	0.68	4.2	142	0.6
BB36576 } WW		145.0	0.005	0.03	0.32	1	3.6	200	0.10	0.05	21.3	0.48	0.72	4.5	156	2.3
		120.5	0.004	0.08	0.55	2	4.0	428	0.77	0.13	19.0	0.49	0.72	4.8	119	6.6
		134.0	0.005	0.14	0.59	3	5.1	319	0.51	0.08	19.6	0.38	0.80	4.6	107	4.0
		127.0	0.005	0.06	0.90	1	14.0	564	0.80	0.06	15.0	0.42	0.66	3.1	110	13.7
		185.5	0.003	0.10	0.34	2	20.0	359	0.85	0.15	18.6	0.52	1.04	3.6	122	21.8
BB36581 } oZ		141.5	0.003	0.03	0.21	1	6.8	435	0.08	<0.05	13.9	0.66	0.64	2.9	155	0.8
		161.5	0.003	0.04	0.33	2	5.9	443	0.20	<0.05	19.4	0.52	0.84	3.9	156	2.2
		131.0	0.004	0.04	0.33	1	4.4	175.5	0.10	<0.05	13.0	0.58	0.64	2.7	165	0.9
		130.0	0.003	0.03	0.34	1	3.4	190.5	0.06	<0.05	15.4	0.48	0.66	3.3	139	0.4
		368	0.004	0.03	0.16	2	10.8	121.0	0.51	0.13	51.6	0.50	1.44	13.6	132	13.2
BB36586 } oZ		460	0.003	0.07	0.17	2	103.5	97.1	1.30	<0.05	51.1	0.59	1.73	9.9	145	26.0
		372	0.004	0.08	0.15	2	59.9	96.6	1.04	0.05	46.6	0.53	1.52	8.6	149	18.5
		321	0.004	0.10	0.50	3	15.5	138.0	0.78	0.18	49.3	0.35	1.50	9.4	116	15.6
		630	0.004	0.05	0.41	4	26.3	149.0	2.10	<0.05	68.5	0.31	2.82	164.5	62	10.8
		207	0.005	0.07	0.31	4	10.9	126.0	0.65	<0.05	49.7	0.57	0.95	56.2	128	4.2
BB36591		160.5	0.003	0.07	0.64	3	4.8	133.0	0.91	<0.05	29.0	0.52	0.83	16.4	133	3.7

Comments: REE's may not be totally soluble in MS61 method.



ALS Chemex
EXCELLENCE IN ANALYTICAL CHEMISTRY
 ALS Canada Ltd.
 212 Brooksbank Avenue
 North Vancouver BC V7J 2C1 Canada
 Phone: 604 984 0221 Fax: 604 984 0218



O:EP
 C/O ARCHER CATHRO & ASSOCIATES (1981) LIMITED
 1016-510 W HASTINGS ST
 VANCOUVER BC V6B 1L8

Page #: 2 - D
 Total # of pages : 2 (A - D)
 Date : 7-Aug-2003
 Account: EMP

Project : Finlayson

CERTIFICATE OF ANALYSIS VA03027932

Sample Description	Method Analyte Units LOR	ME-MS61	ME-MS61	ME-MS61
		Y ppm 0.1	Zn ppm 2	Zr ppm 0.5
BB36522 BB36523 BB36524 BB36525 BB36526	OZ	77.8	244	10.6
		31.9	198	6.7
		30.0	144	6.5
		24.1	225	29.1
		26.9	190	18.2
BB36527 BB36562 BB36563 BB36564 BB36565	OZ	84.7	281	24.2
		15.9	89	15.1
		37.9	96	91.2
		46.3	120	13.2
		62.0	165	51.5
BB36566 BB36567 BB36568 BB36569 BB36570		42.0	503	20.7
		32.6	280	8.2
		74.9	203	16.9
		52.2	199	32.1
		17.8	90	8.4
BB36571 BB36572 BB36573 BB36574 BB36575		18.0	96	24.9
		16.5	100	34.1
		28.5	253	23.4
		27.4	124	28.9
		21.2	183	33.5
BB36576 BB36577 BB36578 BB36579 BB36580	WW	20.2	205	27.7
		49.5	160	20.1
		46.8	115	20.4
		26.0	151	34.2
		30.1	226	40.3
BB36581 BB36582 BB36583 BB36584 BB36585		20.6	158	26.5
		23.8	174	29.3
		15.5	130	38.3
		16.8	139	47.8
		47.7	207	11.2
BB36586 BB36587 BB36588 BB36589 BB36590	OZ	38.3	201	5.8
		39.4	301	4.7
		51.7	150	28.8
		93.2	192	37.6
		112.0	482	24.4
BB36591		38.0	146	51.4

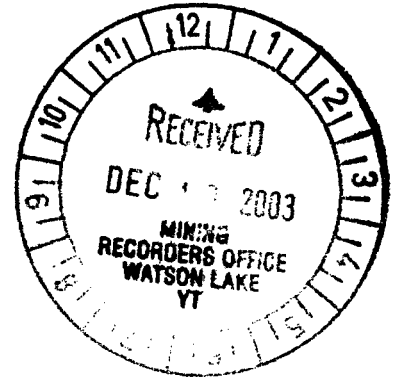
Comments: REE's may not be totally soluble in MS61 method.

ARCHER, CATHRO & ASSOCIATES (1981) LIMITED
1016 - 510 West Hastings Street
Vancouver, B.C. V6B 1L8

Telephone: 604-688-2568

Fax: 604-688-2578

AFFIDAVIT



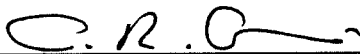
I, Joan Mariacher, of Vancouver, B.C. make oath and say:

That to the best of my knowledge the attached Statement of Expenditures for exploration work on the WW 1-6 mineral claims on 105G/6 Claim Sheet is accurate.


Joan Mariacher

Sworn before me at Vancouver, B.C.

this 1st day of December, 2003



Notary Public, Yukon Territory

Statement of Expenditures
WW 1-6 Mineral Claims
December 8, 2003

Labour

B. Wengzynowski – (geologist) July 20 plus 2 days December – total 3 days at \$480/day	\$1,540.80
S. Eaton (fieldman) July 20 at \$224/day	<u>239.68</u>
	1,780.48

Expenses

Field room and board – 2 days at \$115/day	246.10
Kluane Airways Hughes 500	<u>1,355.69</u>
	1,601.79
	<u>\$3,382.27</u>

In Account With

Project **EMERALD PROJECT**
 Date **JULY 31, 2003**

LABOUR			
Field			
	D. EATON - 27 HRS AT 60/HAL	1620.00	
	B. WENZLYNOWSKI - 248 HRS AT 60/HAL	14880.00	
	L. GREAT - 24 DAYS AT 800/DAY	19200.00	
	H. NEUFELD - 8 DAYS AT 351/DAY	2816.00	
	G. BOWNS - 2 DAYS AT 288/DAY	576.00	
	D. KELLETT - 26 1/2 DAYS AT 288/DAY	7632.00	
	S. EATON - 7 DAYS AT 224/DAY	1568.00	
	A. GILLIS - 2 DAYS AT 224/DAY	448.00	
	C. CARLETON - 14 DAYS AT 208/DAY	2912.00	
Accounting and Expediting	J. Mariacher - 66 hrs at \$ 55/hr	3630.00	55287.00
OTHER SERVICES			
Room & Board in Whitehorse	34 days at \$90/day	3060.00	
Field equipment from AC stock	114 1/2 MAX/DAY AT 20/DAY	2290.00	
Printing	Photocopies 197 @ .15	29.55	
Rentals from AC JULY 1-31	- 4 COM AT 21.33/DAY + SAT SYSTEM AT 30/DAY + SBX II AT 10/DAY + 2 VI LAMP AT 2/DAY	1963.23	
LOOMIS COURIER	- 3 AT 13.85	41.55	7384.33
EXPENSES			
Petty Cash	45.09 DIT 9.20 CV	52.29	
Telephone	1747 + 48.07 + 6.65	72.19	
B. WENZ X PENSES	- 17.60 DIT 31.56 DV + 23.36 DV + 43.19 DV	110.71	
ATLAS DEV CORP		833.34	
GOVT QUON	- SHARK OLS	529.50	
INTEGRAPHICS		108.73	
SUNRISE SERVICE		59.73	
ROSS RIVER SERVICE	- 43.22 DV + 174.04 DV	167.26	
GREYHOUND COURIER		177.34	
TRANS NORTH HELICOPTERS		20346.07	
CORPORATE COURIER		18.56	
NORTH CO PETRO	- 84.45 DV + 1298.90 DV	1383.35	
EDWEN'S		121.81	
KLUANE AIRWAYS		783.00	
SPORTS LODGE		180.36	
MACPHERSON RENTALS	- 22.43 DV + 336.52 DV	359.35	
NORGAN LEASING		2047.70	
RIVERDALE SURELA		1914.83	
MAYO BIRWAY		13.44	
MILLS GASCO		5.02	
MAR'S FIREWOOD		203.23	
BILBEA SUPPLYLAND		477.45	
HOLWOOD'S OFFICE		1.75	
GREAT SLAVE HELICOPTERS		5580.00	
JOAN M X PENSES	- 341.11 DV + 1678.16 DV	2019.27	44539.68
MANAGEMENT	6% on Expenses on Field A/C	2672.38	
		25.00	2797.38
			110003.39
GST (R100247667)	7% on 110003.39		7700.24
E-GST exempt			117703.63

KLUANE AIRWAYS LTD.

BOX 31489
WHITEHORSE, YUKON Y1A 6K8

Archer Cathro
CHARTERER

072093			
INVOICE DATE			
H500			
AIRCRAFT TYPE		REGISTRATION	

Nº 5144

BILLING ADDRESS _____
PHONE: _____

FROM	MILES	HOURS	REMARKS/PASSENGER/CARGO
Finlayson		.3	
TO Bills Camp			
Grams		.1	Bill + Sarah
Set out		.1	Lampman L
Finlayson		.3	Finlayson
Lampman			
Bills camp		.3	Pickup
Finlayson		.3	

SPECIAL INSTRUCTIONS	1.4 @ 810 PER HOUR	1134
	@ PER MILE	
EP Bills Camp	WAITING TIME @ /HR	
	FUEL 140 @ .95 / GAL.	133
	PILOT'S EXPENSES	
	OTHER	
<u>B. Cathro</u>		SUB-TOTAL 1267.00
CHARTERER'S SIGNATURE		GST 88.65
<u>[Signature]</u>	2 nd PER MONTH CHARGES ON ACCOUNTS OVER 30 DAYS	TOTAL \$ 1355.65
PILOT'S SIGNATURE	WHITE - OFFICE YELLOW - OFFICE COPY RECORD PINK - CUSTOMER COPY GOLD - BASE COPY (Stays in book.)	



105-G-06

