

GEOPHYSICAL AND GEOCHEMISTRY REPORT

PRUNE 1-12, AND JWHITE 1-4 CLAIMS

YC # 19918-YC19929

YC # YC21145-YC21147

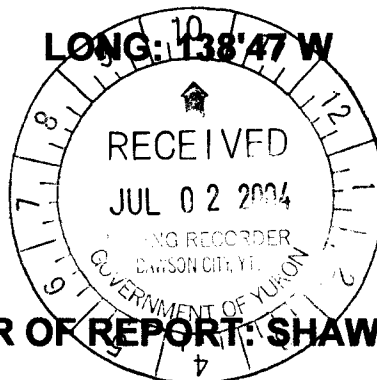
094459

DAWSON MINING DISTRICT

NTS # 116 B\7

LAT: 64' 29 N

LONG: 138' 47 W



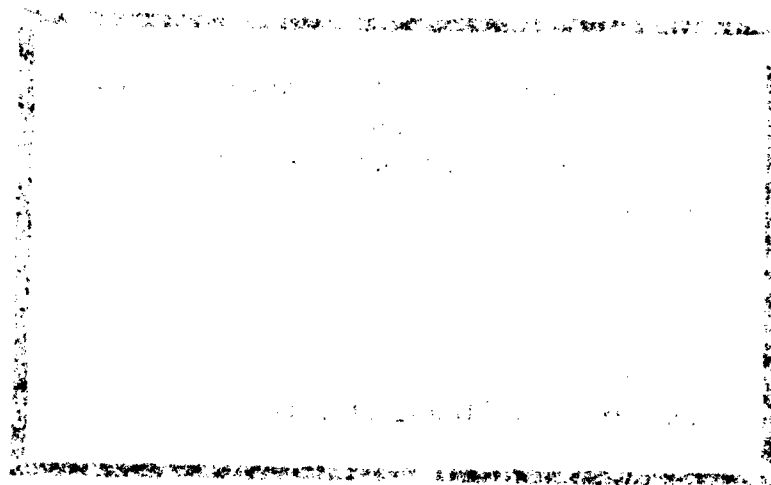
AUTHOR OF REPORT: SHAWN RYAN

WORK PERFORMED AUGUST-SEPTEMBER 2003

DATE OF REPORT JANUARY 22, 2004

Table of Content

Summary	P.3
Introduction	P.3
Location	P.3
Access	P.3
Geology	P.4
Work Performed / Methods	P.4
Interpretation	P.5-6
Recommendation	P.6
Qualification	P.7
Cost	P.7
Prune Magnetic Map	Figure 1
Prune Gradient Map	Figure 2
Prune Anomalous Soil Map Gold	Figure 3
Assay Results	appendix



This report has been examined by
the Geological Evaluation Unit
under Section 53 (4) Yukon Quartz
Mining Act and is allowed as
representation work in the amount
of \$ 8000.

M.B.R.

M.B.R. Regional Manager, Exploration and
Geological Services for Commissioner
of Yukon Territory.

Costs associated with this report have been
approved in the amount of \$ 8,000
for assessment credit under Certificate of
Work No. 21000463

D. W. Lerdw

Mining Recorder
Dawson City Mining District

SUMMARY

During the Field season of 2003 Klondike Exploration conducted a magnetic and soil survey on the Prune (Marn) and Brenner claims. Geophysical magnetic targets were generated on both properties with anomalous soil (Au, As, Cu, Zn) found on the Marn Grid.

Introduction

The Prune (Marn) claims cover the old Marn showing which consist of a gold – bearing massive sulphide zone occurs in a 30 m thick band of pyroxene skarn containing minor garnet and scheelite. Noranda Exploration drilled the Marn showing in the early 1980's. Its resource was calculated to be about 300,000 tons at 8.6 grams, 1% Cu, 0.1%W and 17 gram Ag (Minfile 116B 147). A detail magnetic geophysical survey conducted on the Prune (Marn) claims outlined new magnetic targets with soil anomalies

Location

The project area is located in the Fireweed Creek area. The Claim block is located in the Dawson Mining division on NTS # 116 B / 7. The Latitude for the Prune 1-12 and Jwhite 1-4 claims is at 64' 29 N and longitude 138' 47 W.

Access

The main access method is via helicopter from Dawson City. The property is located 35 miles north of Dawson City. It usually takes about a .7 hour of helicopter time to get drop off or pick up.

GEOLOGY

PRUNE CLAIM GEOLOGY (Marn)

The property area is located in the Selwyn Basin. Within this large Basin setting we have Cretaceous Tombstone Intrusion granodiorite called the Mount Brenner Stock. This stock intrudes four sedimentary units; the Ordovician to Silurian Road River Formation; a Formation of probable Devonian or Carboniferous age called the DMSc; a Permian Tahkandit Limestone; and a unit of Jurassic age called the Jurassic schist.

The main type of mineralization located on the Jwhite (Marn) claims is an iron rich Skarn, that was formed at the contact of the Tahkandit limestone and the Mount Brenner Stock. The Jurassic Schist seem to have acted as a cap and has contained the mineralization to the Tahkandit limestone and also into the DMSc rock unit.

WORK PERFORMED / METHODS

Grid Work

The work performed on the Prune (Marn) claims was a flagged grid with lines every 50 meters and station on lines every 25 meters. The grid station where position using Garmin GPS. All station location where marked with orange artic flagging tape and station number where marked with permanent black markers. In total there was 986-station position on the Prune (Marn) claims.

Geophysical Survey

A magnetic and gradient survey was conducted on the flagged grid. A Scintrex Envi-Mag was used to conduct both surveys. Reading where taken at 12.5 meter spacing on every line plus base lines. In total 1972 magnetic reading and 1972 gradient reading where taken on the Prune (Marn) grid.

The magnetic survey used a base magnetometer to correct the earth natural daily magnetic drift. The base station takes reading every 10 seconds at a fixed position threw out the whole survey. Both magnetometer are plugged in together and correction are performed internally. The corrected data is the final product printed in color maps form.

Geochemical Survey

A soil survey was conducted on the Prune (Marn) claims. Soil samples were taken in two different areas using one meter soil augers where possible, in some areas very little soil was available and fine dirt was dug out of the shale rocky slope. Both areas were located on magnetic anomalies. In total there was 39 soil samples and 6 rock samples. All samples were processed at Acme labs in Vancouver. Soil was processed using the Acme Group 1DX – 1.0 Gm packages, and rocks were processed using Group 1DX-15 Gm for elements and Fire assay for gold.

Interpretation

Geophysical Survey

Prune (Marn) Magnetic Survey

Anomaly A is the Marn deposit, which shows up as a magnetic high that's 60 meters by 100 meters. It is located on line 600 E station 550 N.

Anomaly B is a new pyroxene skarn showing with minor sulphides. The magnetic anomaly is about 20 meter wide and is situated between line 450 E and line 750 E at about 100 S.

Anomaly C is a large magnetic high that measures about 150 meter by 150 meters and is sitting between L 950E and L 1150E between station 150 N and station 250 N. This anomaly has strong indication to a satellite deposit to the Marn deposits. It has very strong soil anomalies in Cu, Au, Zn, and As.

Anomaly D is a narrow magnetic high situated just north of magnetic Anomaly C. The anomaly is sitting between L 1200 and L 1350 E at around ST 400 N.

Anomaly E is a long magnetic high sitting on the northwest edge of the grid. It's sitting between line 700 E and L 1200 E around ST 825 N. This anomaly indicates anomalous soil values in Cu and Au and could be a satellite ore body to the Marn deposits

Prune (Marn) Gradient Survey

The gradient survey mimics the magnetic survey very closely. Anomaly C had the best definition. The gradient survey broke the anomaly up into two parallel gradients high with gradient low in between the two highs.

Soil Survey Results

The results of the soil survey were very interesting. They point to the same type of geochemistry found on the Marn deposit. Copper values of 1 % have been noted in the Minfile Reports. The copper soil anomaly average 174 ppm on 39-soil sample with values as high as 691 ppm. Gold Values range from 4.5 to 40.6 ppb. Arsenic values range from 7.3 to 103.8 ppm and zinc range from 25 to 420 ppm. These elements are all pathfinders to the Marn deposit and I feel the soils, which are strategically, located over the magnetic and gradient highs are indicating possible Marn type showings.

Recommendation

I would recommend taking more soil across the entire grid. I restricted the soil survey to cover just the main magnetic Anomaly C and E. While the magnetic anomalies are the prime targets I should have taken more sample in the flat magnetic background areas. This would have given me some info on the background geochemical average of the area.

Cost

Magnetic Survey 24.6 KL @ \$250.00 per KL	\$6150.00
Grid Work 24.6 KL @ \$150.00 KL	\$3690.00
Helicopter Access 2 Hours @ \$1130.00	\$2260.00
Report Writing	\$500.00

Total	\$12,600.00

Qualification

I Shawn Ryan located in Dawson City, Yukon work as a professional prospector. I run a small exploration company located in Dawson City.

I have worked in the exploration business for the last 22 years. I worked the first 12 years as a contractor working on numerous projects in the NWT, Ontario, Quebec and the Yukon. I have worked the last 8 years as a local prospector for myself.

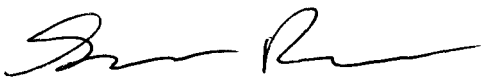
I have being trained to run various geophysical instruments and surveys such as magnetic surveys, max-min surveys, induce polarity surveys and VLF surveys.

I have overseen the entire Prune Project and was party chief in charge.

I am co-owner of Canadian United Minerals Inc. owner of the Prune Claims.

Dated this 01 of July 2004 in Dawson City, Yukon.

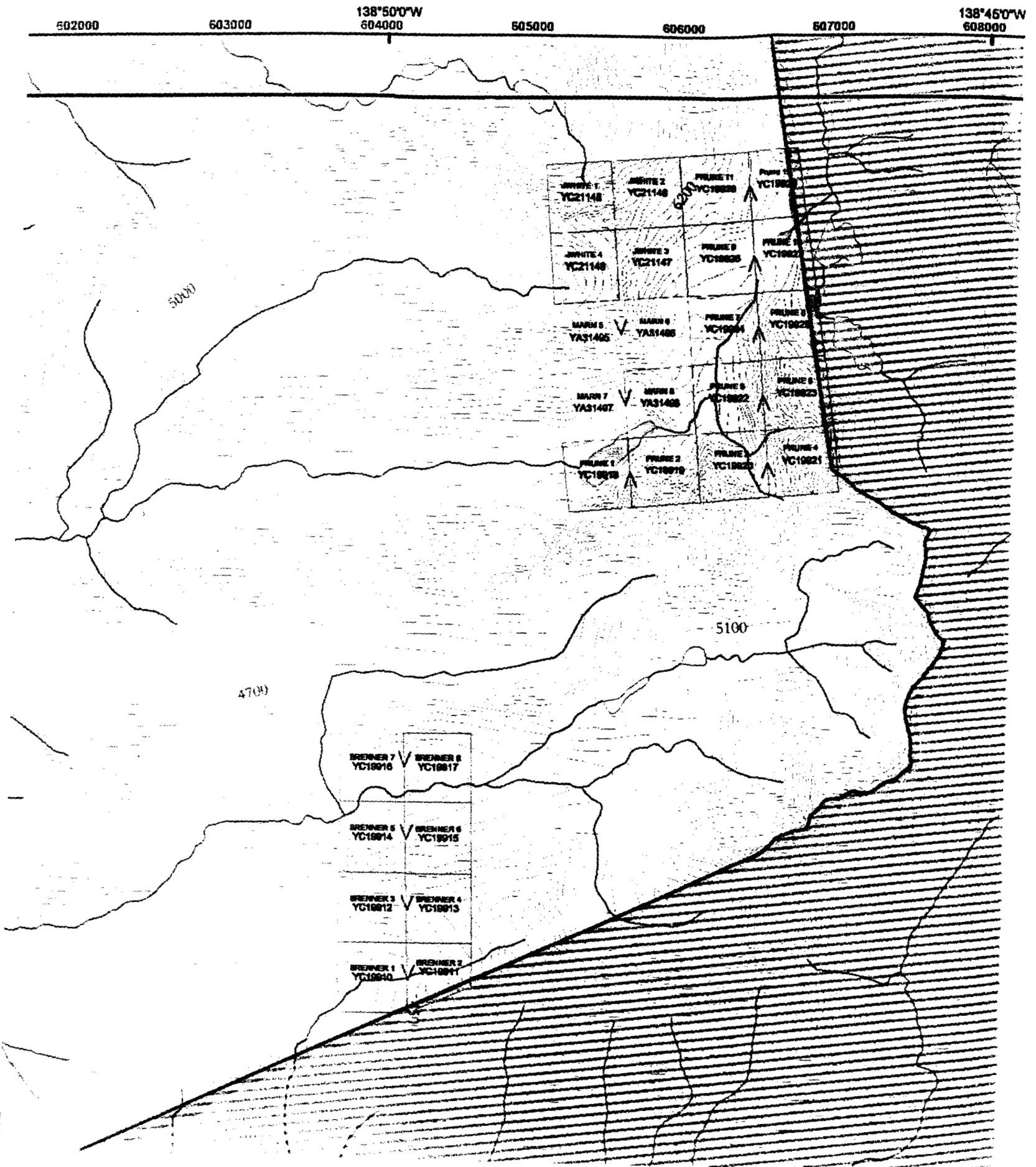
Respectfully submitted



Shawn Ryan

12/11/11

Claim map



Magnetic Anomaly Map 2003 survey

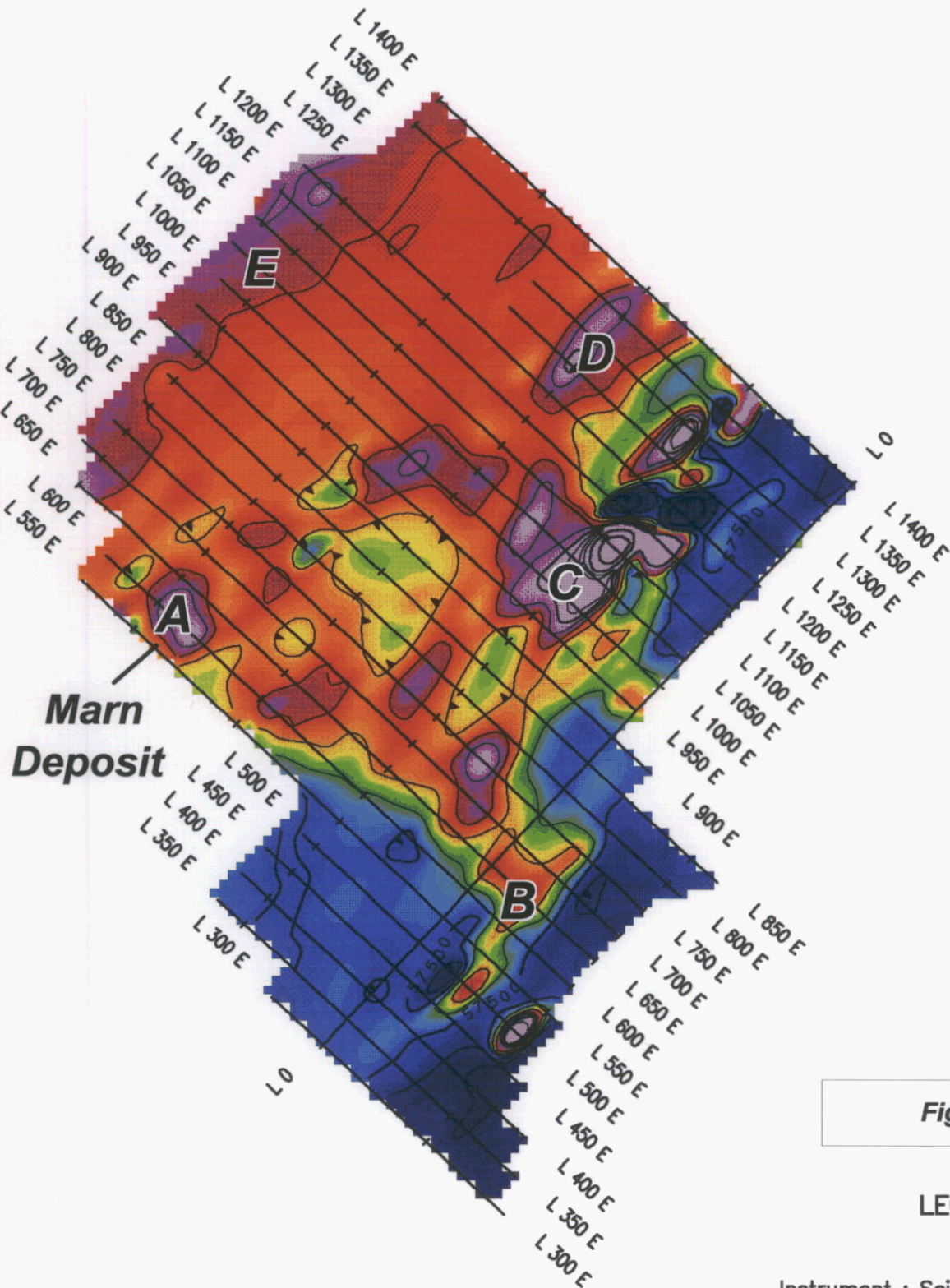
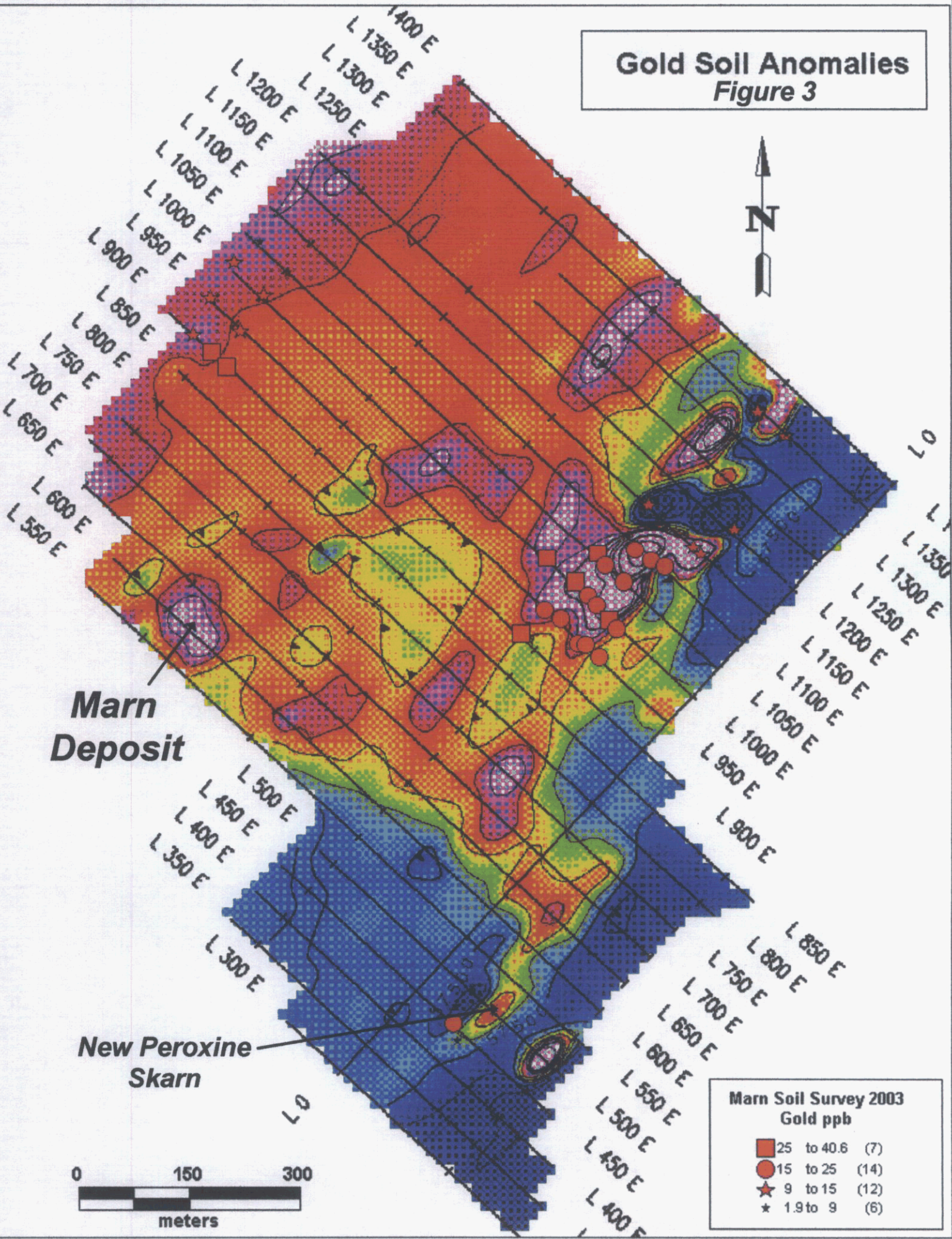


Figure 1

LEGEND

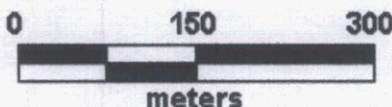
Instrument : Scintrex ENVI
Type : Total Field Proton Precession
Gridded By : Geosoft Bigrid
Cell Size : 12.5 metres
Filter : 1 Pass 9 Point Hanning

Gold Soil Anomalies Figure 3



**Marn
Deposit**

**New Peroxine
Skarn**



Prune Gradient Survey

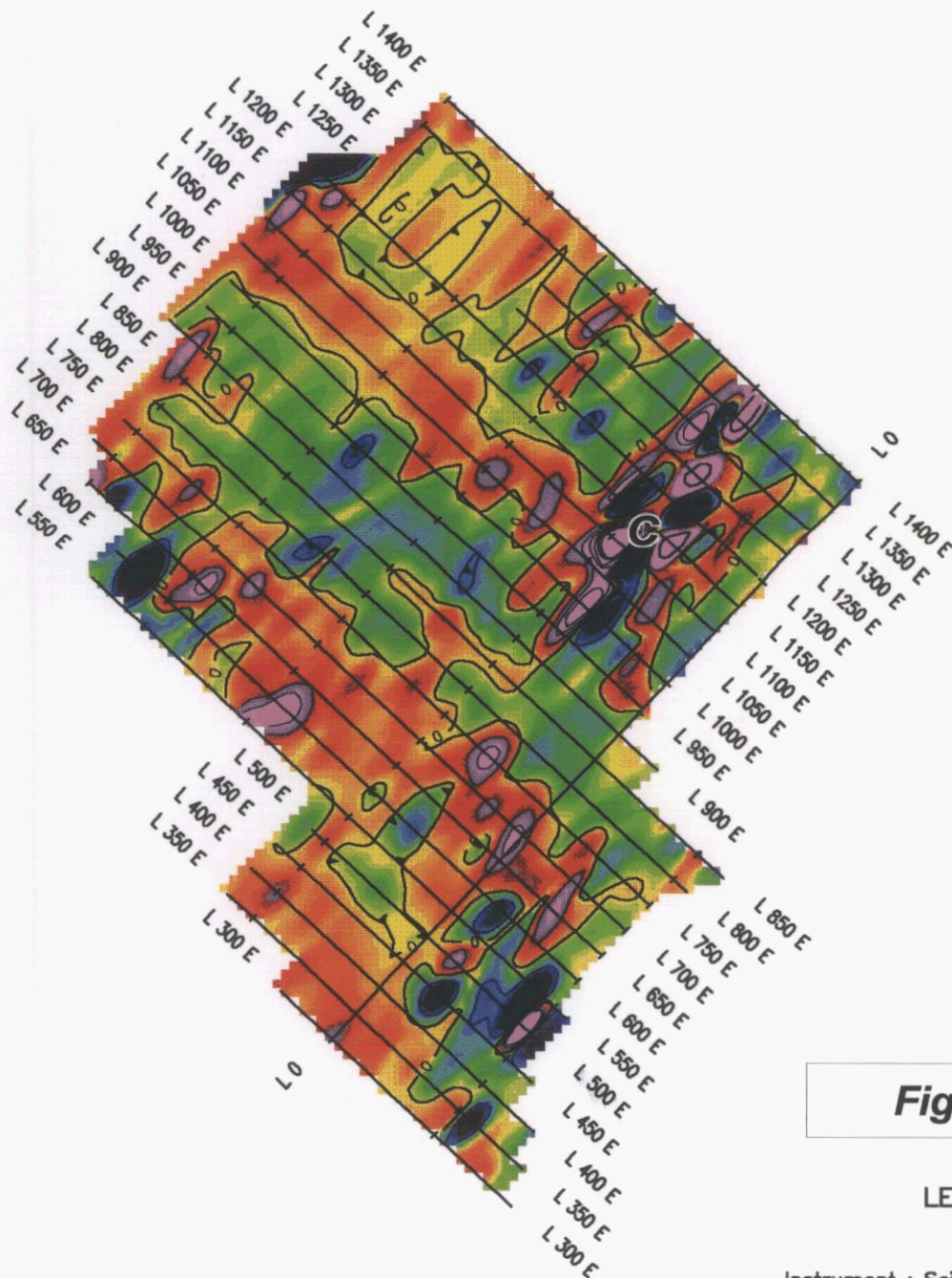
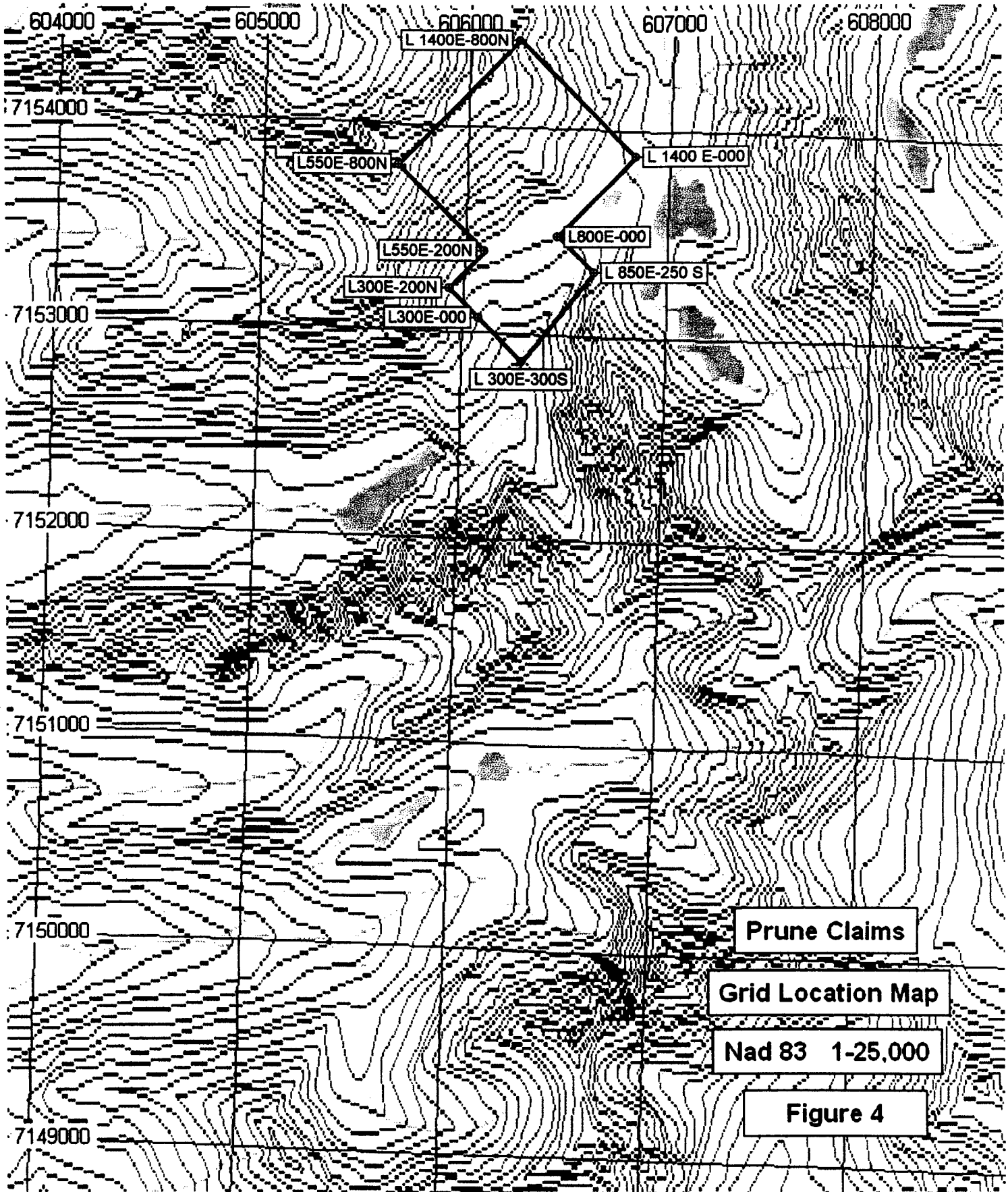


Figure 2

LEGEND

Instrument : Scintrex ENVI
Type : Total Field Proton Precession
Gridded By : Geosoft Bigrid
Cell Size : 12.5 metres
Filter : 1 Pass 9 Point Hanning
Contour Interval : 10 nT/m

Scale : 1:10,000



/-----S C I N T R E X-----
 // Revision: 5.0F
 // Line: 900 E
 // Date: 3/8/2005
 // Job: 0
 // Operator:
 // Serial: 0
 // BaseId: 57500
 // Duration: 2
 // Mag_Data XY/TotFid/Noise/Hours/0=Uncorr/Grad

900	0	57516	0.18	10.79639	1	5.8
900	12.5	57494.3	0.14	10.80528	1	-7.4
900	25	57487.4	0.15	10.81333	1	-9.1
900	37.5	57494.7	0.15	10.82472	1	-7.7
900	50	57498.4	0.15	10.84417	1	-7.5
900	62.5	57518.6	0.17	10.8525	1	-8.2
900	75	57615.1	0.17	10.86333	1	-5.8
900	87.5	57683.9	0.16	10.87361	1	-0.3
900	100	57713.2	0.15	10.88063	1	3.3
900	112.5	57691.9	0.15	10.89	1	-3.8
900	125	57676.5	0.15	10.89778	1	-8
900	137.5	57730.1	0.16	10.90778	1	-7.1
900	150	57800.5	0.18	10.91722	1	5.2
900	162.5	57710.5	0.16	10.9275	1	-4.5
900	175	57686.1	0.16	10.93528	1	-4.3
900	187.5	57653.5	0.16	10.95111	1	-4
900	200	57652.6	0.16	10.96306	1	3.7
900	212.5	57578.9	0.17	10.96833	1	-11.9
900	225	57674.4	0.17	11.00026	1	-11.2
900	237.5	57808	0.16	11.01389	1	1.5
900	250	57880.6	0.13	11.05839	1	-18
900	262.5	57650.9	0.15	11.08167	1	-6.6
900	275	57680.7	0.16	11.10361	1	-5.4
900	287.5	57804.6	0.15	11.14722	1	-4.5
900	300	57788	0.17	11.16722	1	-21.2
900	312.5	57694.3	0.17	11.19111	1	-13.6
900	325	57670.8	0.16	11.20694	1	-6
900	337.5	57680.2	0.15	11.22139	1	-3.7
900	350	57650.2	0.16	11.23583	1	-7
900	362.5	57653.2	0.15	11.25278	1	-7.2
900	375	57655.2	0.16	11.26694	1	-7.5
900	387.5	57681.4	0.16	11.29083	1	-4.8
900	400	57656.2	0.17	11.31056	1	-10.8
900	412.5	57683.7	0.16	11.32944	1	-5.9
900	425	57873.9	0.16	11.35917	1	-6.4
900	437.5	57878.9	0.16	11.38417	1	-7
900	450	57873.9	0.16	11.40278	1	-9.5
900	462.5	57733.1	0.15	11.43	1	-10.6
900	475	57822	0.14	11.455	1	-1.3
900	487.5	57829.2	0.13	11.47	1	-1.5
900	500	57699.8	0.17	11.48528	1	5.1
900	512.5	57492.8	0.17	11.49861	1	-13.1
900	525	57587.3	0.15	11.51444	1	-12.6
900	537.5	57655.9	0.16	11.52861	1	-9.8
900	550	57705.5	0.16	11.54083	1	-5.5
900	562.5	57728.3	0.16	11.55583	1	-7.1
900	575	57750.7	0.17	11.57111	1	-3.4
900	587.5	57734.7	0.15	11.58111	1	-6
900	600	57741	0.15	11.59556	1	-6
900	612.5	57743	0.13	11.60778	1	-2.5
900	625	57722.3	0.16	11.62278	1	-9.8
900	637.5	57753.3	0.14	11.63558	1	0.1
900	650	57741.7	0.14	11.64808	1	-3.1
900	662.5	57740.6	0.16	11.66583	1	-5
900	675	57745.3	0.16	11.6825	1	-4.4
900	687.5	57751.8	0.16	11.70056	1	-4.6
900	700	57761.8	0.15	11.71833	1	3.1
900	712.5	57754	0.15	11.73333	1	-4.9
900	725	57787.8	0.15	11.75917	1	-2.8
900	737.5	57831.5	0.14	11.78687	1	13.3
900	750	57768.5	0.16	11.83306	1	-7.2
900	762.5	57776.7	0.16	11.86417	1	-5
900	775	57790.4	0.16	11.88944	1	-3
900	787.5	57795.8	0.16	11.91194	1	-2.6
900	800	57871.8	0.17	11.83306	1	20
900	812.5	57777	0.17	12.48278	1	-40.4
900	825	58071.3	0.18	12.49472	1	75.7
900	837.5	57853.4	0.16	12.50778	1	-9.7
900	850	57802.6	0.16	12.52111	1	-6.8
900	862.5	57791.6	0.15	12.53056	1	-2.7
900	875	57811.7	0.16	12.54139	1	0

/-----S C I N T R E X-----
 // Revision: 5.0F
 // Line: 850 E
 // Date: 3/8/2005
 // Job: 0
 // Operator:
 // Serial: 0
 // BaseId: 57500
 // Duration: 2
 // Mag_Data XY/TotFid/Noise/Hours/0=Uncorr/Grad

850	812.5	57720.6	0.17	13.33	1	14.6
850	800	57788	0.17	13.34639	1	2.4
850	787.5	57780.6	0.16	13.36139	1	1.1
850	775	57777.7	0.16	13.37472	1	1.8
850	762.5	57772.2	0.16	13.38806	1	-0.1
850	750	57770.3	0.16	13.39894	1	1.6

850	737.5	57768	0.16	13.41139	1	1.2
850	725	57765.6	0.16	13.42861	1	2.5
850	712.5	57757.8	0.15	13.44083	1	-0.4
850	700	57754.3	0.16	13.44917	1	0.7
850	687.5	57754.7	0.16	13.48917	1	2.7
850	675	57742.6	0.16	13.50389	1	-3.1
850	662.5	57738.1	0.16	13.51194	1	-2.6
850	650	57735	0.16	13.5275	1	-3.8
850	637.5	57742.9	0.16	13.53889	1	-2.5
850	625	57747.9	0.17	13.54861	1	-1.3
850	612.5	57736.5	0.16	13.55917	1	-3.1
850	600	57728.7	0.15	13.57306	1	-2.3
850	587.5	57724.2	0.16	13.58222	1	-3.6
850	575	57732.4	0.16	13.59222	1	-2.2
850	562.5	57706.5	0.13	13.60278	1	-3.1
850	550	57913.5	0.13	13.61278	1	-15.6
850	537.5	57897.5	0.16	13.62661	1	-3.4
850	525	57894.6	0.16	13.63694	1	-4.8
850	512.5	57772.8	0.14	13.65028	1	1.6
850	500	57816.4	0.18	13.66278	1	6.5
850	487.5	57719.2	0.17	13.67472	1	-8
850	475	57677.5	0.14	13.68417	1	-9.3
850	462.5	57959.3	0.16	13.69222	1	-7.8
850	450	57840.6	0.15	13.69889	1	-6.2
850	437.5	57830.4	0.16	13.70944	1	-3.3
850	425	57835.3	0.15	13.72333	1	-5.4
850	412.5	57836	0.16	13.73472	1	-4.8
850	400	57846	0.15	13.74472	1	1.9
850	387.5	57650.2	0.17	13.75583	1	3.1
850	375	57657.4	0.15	13.765	1	3.2
850	362.5	57674.1	0.15	13.80687	1	2.5
850	350	57895.4	0.16	13.81528	1	2.5
850	337.5	57744.6	0.16	13.83056	1	4
850	325	57744.3	0.16	13.83694	1	4.4
850	312.5	57805.5	0.14	13.84639	1	-3.3
850	300	57731.6	0.16	13.85944	1	24.4
850	287.5	57764.2	0.17	13.87556	1	8.6
850	275	57794.9	0.17	13.88778	1	6.3
850	262.5	57814.9	0.16	13.90222	1	4.4
850	250	57778.1	0.17	13.91889	1	2.8
850	237.5	57748.3	0.16	13.92722	1	2.9
850	225	57710.5	0.16	13.93389	1	3
850	212.5	57673.7	0.15	13.945	1	2.7
850	200	57635.8	0.14	13.95528	1	1.4
850	187.5	57632.6	0.16	13.96994	1	2.1
850	175	57637.5	0.14	13.97894	1	2.6
850	162.5	57678.5	0.16	13.98917	1	6.4
850	150	57690.5	0.16	14.02972	1	-0.6
850	137.5	57693.6	0.17	14.04139	1	-3.8
850	125	57710.8	0.15	14.05111	1	0.9
850	112.5	57680.5	0.17	14.06028	1	-2.9
850	100	57648.1	0.14	14.06778	1	-3.8
850	87.5	57602	0.17	14.07444	1	-4.7
850	75	57585.6	0.15	14.0825	1	-6.2
850	62.5	57536.8	0.17	14.09056	1	-4.3
850	50	57527.8	0.14	14.0975	1	-3.3
850	37.5	57511.7	0.16	14.10472	1	-3.1
850	25	57507.8	0.17	14.11444	1	-3.8
850	12.5	57517.7	0.17	14.12056	1	-2.8
850	0	57525.8	0.15	14.12917	1	-8.6

----- S C I N T R E X -----
 // Revision: 5.0F
 // Line: 800 E
 // Date: 3/8/2005
 // Job: 0
 // Operator:
 // Serial: 0
 // Basefid: 57500
 // Duration: 2
 // Mag_Data X/Y/TotFld/Noise/Hours/0=Uncon/Grad

800	0	57493.6	0.17	14.16687	1	-7.7
800	-12.5	57515	0.16	14.17194	1	-4.3
800	-25	57535.3	0.16	14.17961	1	-3.6
800	-37.5	57580.8	0.16	14.18806	1	-0.8
800	-50	57523.5	0.17	14.19887	1	-4.5
800	-62.5	57507.6	0.17	14.20722	1	-5.9
800	-75	57481.7	0.17	14.21389	1	-6.3
800	-87.5	57455.4	0.16	14.22111	1	-5.3
800	-100	57442.6	0.18	14.22806	1	2.6
800	-112.5	57409.2	0.16	14.23583	1	-5.9
800	-125	57422.3	0.16	14.24056	1	-5.8
800	-137.5	57441.3	0.17	14.25111	1	-4.6
800	-150	57438.6	0.17	14.25833	1	-3.6
800	-162.5	57431.7	0.17	14.26811	1	-2.8
800	-175	57428.7	0.17	14.27417	1	-2.8
800	-187.5	57428.1	0.17	14.28306	1	-3.1
800	-200	57439	0.16	14.28194	1	4
800	-212.5	57430.2	0.17	14.30639	1	2.7
800	-225	57430.2	0.17	14.32306	1	1

----- S C I N T R E X -----
 // Revision: 5.0F
 // Line: 850 E
 // Date: 3/8/2005
 // Job: 0
 // Operator:
 // Serial: 0
 // Basefid: 57500
 // Duration: 2

// Mag_Data X/Y/TotFid/Noise/Hours/O=Uncon/Grad

850	-250	57458.9	0.17	14.43417	1	-4.4
850	-237.5	57445.9	0.18	14.48528	1	-9.5
850	-225	57450.4	0.17	14.48028	1	-7.1
850	-212.5	57443.5	0.17	14.50722	1	-6.1
850	-200	57533.9	0.19	14.5175	1	19.9
850	-187.5	57432.7	0.17	14.52889	1	-8
850	-175	57416	0.15	14.54139	1	-9.5
850	-162.5	57408.7	0.18	14.54861	1	-13.3
850	-150	57435.3	0.17	14.55611	1	-3.9
850	-137.5	57499.6	0.18	14.56333	1	8.6
850	-125	57468.8	0.19	14.5725	1	-2
850	-112.5	57489.8	0.17	14.5775	1	0.4
850	-100	57468.4	0.15	14.58556	1	-7
850	-87.5	57482.4	0.17	14.62278	1	1.3
850	-75	57486.8	0.17	14.98722	1	-2.4
850	-62.5	57505.9	0.17	14.97444	1	-3.4
850	-50	57539.8	0.19	14.9825	1	-0.8
850	-37.5	57578.2	0.17	14.98633	1	0.5
850	-25	57578	0.17	14.995	1	0.4
850	-12.5	57549	0.19	15.00308	1	-1.5

// S C I N T R E X

// Revision: 5.0F
 // Line: 800 E
 // Date: 3/8/2005
 // Job: 0
 // Operator:
 // Serial: 0
 // Basefid: 57500
 // Duration: 2
 // Mag_Data X/Y/TotFid/Noise/Hours/O=Uncon/Grad

800	12.5	57497.7	0.15	15.03139	1	-4.7
800	25	57509	0.18	15.04083	1	-6.2
800	37.5	57529.7	0.17	15.0475	1	-5.9
800	50	57541.9	0.17	15.05389	1	-7.3
800	62.5	57582.4	0.15	15.06444	1	-8
800	75	57634.3	0.18	15.07333	1	-9.2
800	87.5	57708.9	0.18	15.08167	1	-2.6
800	100	57780.1	0.17	15.09083	1	-0.3
800	112.5	57773.6	0.18	15.10083	1	-1.1
800	125	57771.8	0.17	15.11056	1	-1.2
800	137.5	57735.8	0.18	15.12083	1	-0.6
800	150	57701.4	0.18	15.13	1	-2.3
800	162.5	57699.1	0.17	15.14	1	-5.1
800	175	57846.6	0.17	15.15139	1	-8.9
800	187.5	57858.9	0.17	15.16278	1	-5.7
800	200	57873.6	0.19	15.17308	1	-0.6
800	212.5	57891.4	0.18	15.18417	1	-8
800	225	57748.5	0.18	15.25083	1	-4.5
800	237.5	57811.1	0.17	15.26028	1	-4.2
800	250	57887.5	0.18	15.27111	1	0.7
800	262.5	57887.3	0.18	15.28472	1	4.3
800	275	57787.6	0.16	15.3	1	-1.9
800	287.5	57712.8	0.17	15.31361	1	-2.6
800	300	57854.6	0.17	15.33417	1	-5.1
800	312.5	57843.6	0.18	15.34972	1	-5.4
800	325	57831.9	0.18	15.36167	1	-8
800	337.5	57840.1	0.17	15.38556	1	-7.7
800	350	57851.5	0.17	15.40944	1	-6.3
800	362.5	57868.4	0.17	15.43083	1	-7.2
800	375	57889.4	0.17	15.45222	1	-5.4
800	387.5	57702.8	0.17	15.46891	1	-3.1
800	400	57889.9	0.17	15.48472	1	-6.8
800	412.5	57895.4	0.18	15.5	1	-4.3
800	425	57893.3	0.17	15.51333	1	-5.8
800	437.5	57887.7	0.18	15.52808	1	-3.8
800	450	57704.9	0.17	15.5425	1	-2.9
800	462.5	57881.4	0.18	15.56639	1	-42.5
800	475	57890.1	0.18	15.59583	1	53.2
800	487.5	57224.8	0.17	15.61778	1	-44
800	500	57498.2	0.18	15.63417	1	-18.8
800	512.5	57703.9	0.17	15.65194	1	-9
800	525	57796	0.17	15.66222	1	-2
800	537.5	57848.2	0.17	15.67308	1	0
800	550	57813.5	0.17	15.6875	1	2.1
800	562.5	57808.8	0.17	15.70167	1	-0.7
800	575	57774.4	0.15	15.71556	1	-3.9
800	587.5	57742.8	0.18	15.72972	1	-7.3
800	600	57750.3	0.15	15.74583	1	0.7
800	612.5	57745	0.17	15.77222	1	-2.9
800	625	57738.1	0.17	15.78444	1	-4.2
800	637.5	57733.2	0.17	15.80056	1	-2.6
800	650	57730.3	0.17	15.82111	1	-5.1
800	662.5	57733.2	0.17	15.83528	1	-4.1
800	675	57737.8	0.18	15.85583	1	-3.3
800	687.5	57741	0.17	15.87444	1	-4.5
800	700	57750.7	0.17	15.89556	1	-5.6
800	712.5	57760.2	0.17	15.91861	1	-3.2
800	725	57764.8	0.17	15.93833	1	-2.1
800	737.5	57767.7	0.17	15.96167	1	-3.4
800	750	57778.3	0.17	15.97811	1	-4.5
800	762.5	57788.9	0.17	15.99417	1	0.1
800	775	57778.9	0.15	16.01083	1	-2.4
800	787.5	57785.6	0.15	16.03083	1	-4.5
800	800	57795.9	0.17	16.04889	1	-3.9
800	812.5	57804.7	0.18	16.0625	1	-2.2

// S C I N T R E X

// Revision: 5.0F
 // Line: 700 E
 // Date: 3/8/2005
 // Job: 0
 // Operator:
 // Serial: 0
 // BaseId: 57500
 // Duration: 2
 // Mag_Data X/Y/TotFld/Noise/Hours/0=Uncorr/Grad

700 812.5 57512.9 0.18 18.25917 1 -112.3

// S C I N T R E X
 // Revision: 5.0F
 // Line: 650 E
 // Date: 3/8/2005
 // Job: 0
 // Operator:
 // Serial: 0
 // BaseId: 57500
 // Duration: 2
 // Mag_Data X/Y/TotFld/Noise/Hours/0=Uncorr/Grad

650	800	58030.1	0.19	18.29611	1	38.9
650	787.5	58006	0.18	18.32687	1	7.5
650	775	58018.7	0.2	18.35083	1	35.8
650	762.5	57735.9	0.19	18.3875	1	-108.6
650	750	57736.7	0.17	18.52687	1	-13.8
650	737.5	57893.8	0.17	18.54833	1	4.2
650	725	57705.1	0.18	18.57194	1	-14
650	712.5	57732.4	0.17	18.58833	1	2.7
650	700	57730.7	0.17	18.63528	1	-1.6
650	687.5	57742.8	0.17	18.68583	1	-0.8
650	675	57771.9	0.18	18.69139	1	12.3
650	662.5	57680.7	0.13	18.71639	1	-32.6
650	650	57732.2	0.14	18.73333	1	-1.7
650	637.5	57722	0.15	18.7925	1	-4.2
650	625	57777.3	0.17	18.86139	1	4.9
650	612.5	57831.4	0.17	18.88083	1	5
650	600	57834.3	0.17	18.90839	1	5.3
650	587.5	57844.5	0.18	18.92167	1	-0.4
650	575	57938.2	0.2	18.93583	1	85.1
650	562.5	57850.9	0.17	18.95583	1	2.2
650	550	57777.4	0.17	18.97306	1	-1.8
650	537.5	57872.9	0.18	18.9975	1	-8.8
650	525	57859	0.19	17.01139	1	-10.4
650	512.5	57899.6	0.15	17.03472	1	-8.9
650	500	57840.1	0.14	17.04472	1	18.7
650	487.5	57754.4	0.15	17.06028	1	2.8
650	475	57697.7	0.17	17.14111	1	-2
650	462.5	57715.6	0.17	17.15528	1	1.8
650	450	57747.9	0.13	17.17083	1	4.9
650	437.5	57899.7	0.14	17.18333	1	-3.1
650	425	57736.3	0.13	17.19389	1	11.5
650	412.5	57725.5	0.17	17.20778	1	1.1
650	400	57727.6	0.16	17.21917	1	5.7
650	387.5	57729.4	0.16	17.23056	1	2.8
650	375	57782.2	0.15	17.24308	1	4.1
650	362.5	57873.8	0.18	17.26528	1	11
650	350	57842.1	0.15	17.29058	1	2.7
650	337.5	57806.7	0.17	17.30058	1	2.4
650	325	57815.9	0.17	17.31472	1	5.9
650	312.5	57827.6	0.15	17.32722	1	7.7
650	300	57792.2	0.17	17.33808	1	5.8
650	287.5	57713.7	0.16	17.48167	1	1.7
650	275	57683.5	0.17	17.49556	1	1
650	262.5	57885.2	0.16	17.50633	1	3.6
650	250	57889.7	0.16	17.51833	1	2.4
650	237.5	57880.8	0.17	17.5325	1	-1.7
650	225	57726.2	0.14	17.54556	1	5.6
650	212.5	57773.6	0.17	17.55556	1	9.3
650	200	57752.5	0.15	17.5675	1	2
650	187.5	57723.1	0.17	17.58058	1	3.9
650	175	57719	0.16	17.59167	1	7.3
650	162.5	57890.3	0.17	17.60472	1	1.3
650	150	57870.3	0.18	17.61833	1	1.9
650	137.5	57842.1	0.19	17.63839	1	-6
650	125	57831.8	0.18	17.64417	1	-4.8
650	112.5	57868.8	0.17	17.65917	1	0.4
650	100	57728.8	0.13	17.6675	1	6.4
650	87.5	57821.2	0.16	17.67684	1	10.8
650	75	57733.7	0.19	17.68417	1	-0.4
650	62.5	57742.6	0.16	17.6925	1	8.6
650	50	57888.4	0.15	17.70139	1	1.7
650	37.5	57834.2	0.16	17.71111	1	-5.8
650	25	57811.6	0.17	17.71811	1	-9.9
650	12.5	57890.8	0.19	17.7225	1	1.9
650	0	57868.8	0.17	17.73058	1	48.1
650	-12.5	57784.8	0.16	17.74808	1	-11.5
650	-25	57831.1	0.17	17.75808	1	28.8
650	-37.5	57780.4	0.17	17.76472	1	0.8
650	-50	57842	0.19	17.77361	1	22.4

// S C I N T R E X
 // Revision: 5.0F
 // Line: 750 E
 // Date: 3/8/2005
 // Job: 0
 // Operator:
 // Serial: 0
 // BaseId: 57500

950	12.5	57663.7	0.16	10.17	1	-3.7
950	25	57665.1	0.17	10.17699	1	22.5
950	37.5	57727.6	0.16	10.19222	1	15
950	50	57522	0.17	10.215	1	1.6
950	62.5	57662	0.17	10.25556	1	23.1
950	75	57572.3	0.16	10.27639	1	-26.7
950	87.5	57713.8	0.16	10.28333	1	5.3
950	100	57702.6	0.17	10.29222	1	0.1
950	112.5	57627.5	0.16	10.30556	1	-4.9
950	125	57586.9	0.17	10.33361	1	-5.8
950	137.5	57592.2	0.16	10.34917	1	-14.9
950	150	57832.6	0.15	10.36472	1	5.3
950	162.5	58012.7	0.19	10.37972	1	49.8
950	175	57662.9	0.15	10.39444	1	1.1
950	187.5	57662.8	0.18	10.41028	1	-7.4
950	200	57643.2	0.16	10.44472	1	-13.5
950	212.5	57917.5	0.15	10.4875	1	7.5
950	225	57839.1	0.17	10.56833	1	0.1
950	237.5	58005.2	0.16	10.585	1	18.8
950	250	57890.9	0.16	10.59306	1	4
950	262.5	57750.7	0.17	10.60994	1	-6.5
950	275	57699.4	0.17	10.61944	1	-6.5
950	287.5	57699.2	0.16	10.63417	1	-4.1
950	300	57702.2	0.16	10.65417	1	2.3
950	312.5	57725.5	0.17	10.72278	1	-13.8
950	325	57725.6	0.16	10.73389	1	-14.7
950	337.5	57696.1	0.16	10.75778	1	-4.5
950	350	57697.3	0.16	10.76906	1	-2
950	362.5	57684.4	0.17	10.77972	1	-3.6
950	375	57662.8	0.17	10.89063	1	-4.8
950	387.5	57674.6	0.16	10.89967	1	-5.2
950	400	57883.1	0.16	10.91833	1	-7.4
950	412.5	57700.6	0.16	10.93806	1	-3.7
950	425	57699.6	0.16	10.95667	1	-6
950	437.5	57713.8	0.17	10.97139	1	-4.9
950	450	57759.5	0.17	10.98906	1	-4.2
950	462.5	57784.9	0.17	11.00639	1	-5.1
950	475	57861.2	0.17	11.02639	1	-0.7
950	487.5	57882.4	0.17	11.04333	1	-0.1
950	500	57856.6	0.18	11.06528	1	-9.7
950	512.5	57990	0.17	11.08278	1	0.1
950	525	57822.8	0.17	11.10967	1	-4.2
950	537.5	57748.2	0.17	11.13864	1	2.1
950	550	57592	0.19	11.14917	1	-44.3
950	562.5	57754.2	0.16	11.16278	1	-3.7
950	575	57759.1	0.17	11.17444	1	-1.8
950	587.5	57747.9	0.16	11.18556	1	-1.9
950	600	57746.7	0.17	11.19667	1	4.3
950	612.5	57741.7	0.18	11.20806	1	-3.3
950	625	57757.8	0.16	11.22139	1	1.1
950	637.5	57748.9	0.17	11.23833	1	-3.6
950	650	57741.2	0.16	11.25028	1	-3.9
950	662.5	57739.7	0.16	11.26056	1	-2.7
950	675	57740.6	0.17	11.26861	1	-2.2
950	687.5	57743.2	0.17	11.27869	1	-1.7
950	700	57748	0.16	11.29028	1	1.9
950	712.5	57748	0.15	11.30869	1	-4.1
950	725	57752.8	0.16	11.31944	1	-3.8
950	737.5	57761.6	0.17	11.33417	1	-3.2
950	750	57762.6	0.17	11.35028	1	-4.7
950	762.5	57771.4	0.16	11.365	1	-3
950	775	57763.3	0.17	11.3775	1	-0.7
950	787.5	57762.6	0.16	11.39167	1	-3.5
950	800	57786.9	0.17	11.4025	1	-3.3
950	812.5	57793.9	0.17	11.41806	1	-2.3
950	825	57807.3	0.16	11.4275	1	-1.8
950	837.5	57821	0.16	11.43583	1	-2.5
950	850	57830.3	0.16	11.44917	1	-1.7
1000	860	57851	0.17	11.46833	1	-2.2
1000	837.5	57834.1	0.17	11.50828	1	-2.4
1000	825	57822.3	0.17	11.51111	1	-1.9
1000	812.5	57819.7	0.17	11.51694	1	0.6
1000	800	57796.7	0.17	11.52556	1	-4.6
1000	787.5	57802.6	0.17	11.53369	1	-2.8
1000	775	57787.6	0.17	11.53861	1	-2.7
1000	762.5	57780.2	0.16	11.54444	1	-1.9
1000	750	57773.1	0.17	11.55528	1	-2.9
1000	737.5	57774.3	0.16	11.56417	1	-1.2
1000	725	57773.2	0.16	11.57111	1	-1.3
1000	712.5	57747.3	0.16	11.58222	1	-2.3
1000	700	57751.7	0.17	11.5925	1	-0.1
1000	687.5	57748.9	0.17	11.6	1	-1.4
1000	675	57745.7	0.16	11.61056	1	-2
1000	662.5	57740.9	0.16	11.62028	1	-2.1
1000	650	57738	0.16	11.62917	1	-2.2
1000	637.5	57736.8	0.16	11.64028	1	-2.9
1000	625	57739.5	0.16	11.64667	1	-1.4
1000	612.5	57740.3	0.17	11.65361	1	-1.2
1000	600	57739	0.17	11.66111	1	0.6
1000	587.5	57736.4	0.16	11.67028	1	-1.4
1000	575	57733.6	0.16	11.67667	1	-1.8
1000	562.5	57728.5	0.16	11.68444	1	-2.1
1000	550	57731.2	0.16	11.69333	1	-1.4
1000	537.5	57723.5	0.16	11.70139	1	-3.3
1000	525	57723.7	0.16	11.70806	1	-6.7
1000	512.5	57749.1	0.16	11.72361	1	-3.5
1000	500	57786.2	0.17	11.73222	1	-7
1000	487.5	57806.7	0.19	11.7475	1	5.7

1000	475	58025.8	0.18	11.76222	1	18.3
1000	482.5	57985.1	0.18	11.77139	1	4.6
1000	450	57849.4	0.17	11.78056	1	-4.3
1000	437.5	57811.5	0.18	11.78889	1	-3.1
1000	425	57808.1	0.18	11.79972	1	-2.5
1000	412.5	57817	0.17	11.80972	1	-3.8
1000	400	57835.2	0.17	11.81864	1	4.9
1000	387.5	57818.9	0.18	11.82361	1	-3.1
1000	375	57832.6	0.18	11.82917	1	-1.3
1000	362.5	57858.8	0.17	11.83958	1	2.7
1000	360	57760.8	0.18	11.8475	1	-3.1
1000	337.5	57752.2	0.18	11.85828	1	-2.8
1000	325	57748.9	0.18	11.86444	1	-5
1000	312.5	57761.8	0.17	11.87972	1	-6.4
1000	300	57807.3	0.18	11.88972	1	0.2
1000	287.5	58008.7	0.18	11.90583	1	-0.4
1000	275	57957.1	0.17	11.91528	1	2.2
1000	262.5	57876.4	0.17	11.925	1	-8.1
1000	250	57917	0.18	11.93778	1	1.5
1000	237.5	57983.2	0.18	11.94778	1	9.8
1000	225	58036.9	0.18	11.95806	1	7.1
1000	212.5	58101.2	0.18	11.97381	1	-4.1
1000	200	58020.7	0.18	11.98811	1	-2.8
1000	187.5	58113.6	0.19	12.00222	1	-4.4
1000	175	58173.5	0.25	12.01308	1	11.5
1000	162.5	58212.4	0.24	12.02639	1	87.7
1000	150	58120.9	0.19	12.04308	1	46
1000	137.5	57548.1	0.17	12.07444	1	-72.1
1000	125	57787.7	0.18	12.0825	1	-28.4
1000	112.5	57887.7	0.17	12.10722	1	-11.1
1000	100	57718.8	0.17	12.11806	1	-5.4
1000	87.5	57896	0.19	12.15194	1	0.2
1000	75	57382.4	0.18	12.18583	1	-53.8
1000	62.5	57852.8	0.17	12.18111	1	40.8
1000	50	57581.1	0.17	12.20894	1	8
1000	37.5	57809.6	0.17	12.22139	1	2
1000	25	57800.4	0.13	12.22889	1	-8.8
1000	12.5	57619.5	0.17	12.23472	1	-2.4
1000	0	57885.5	0.15	12.24444	1	-3.2
1100	0	57417	0.17	12.50806	1	-7
1100	12.5	57415.5	0.17	12.52083	1	-5.9
1100	25	57478.3	0.16	12.5325	1	-11
1100	37.5	57548.6	0.17	12.54389	1	0.5
1100	50	57536.1	0.17	12.54944	1	9.4
1100	62.5	57388.2	0.18	12.55972	1	-17.8
1100	75	57485.5	0.18	12.56194	1	-11
1100	87.5	57703.1	0.17	12.56972	1	11.9
1100	100	57778.5	0.17	12.58889	1	34.4
1100	112.5	57824.8	0.18	12.61139	1	-3.8
1100	125	57533.5	0.17	12.62381	1	-0.2
1100	137.5	57382.8	0.18	12.63889	1	1.5
1100	150	58781.7	0.22	12.65583	1	-81.9
1100	162.5	58137.9	0.85	12.6875	1	-413.7
1100	175	61857.5	4.29	12.71611	1	408.7
1100	187.5	60112.1	0.57	12.72917	1	89.8
1100	200	58123.4	0.21	12.73381	1	130.2
1100	212.5	58187.9	0.19	12.7825	1	57.8
1100	225	57884.3	0.15	12.79528	1	3.4
1100	237.5	57801.9	0.18	12.81278	1	-0.9
1100	250	57907.8	0.19	12.83333	1	10
1100	262.5	57834.2	0.18	12.85083	1	6.6
1100	275	57829.5	0.19	12.85194	1	9.1
1100	287.5	57778.8	0.18	12.87333	1	-5.9
1100	300	57904.8	0.19	12.88333	1	16.2
1100	312.5	58007	0.19	12.8925	1	22.8
1100	325	57951.8	0.18	12.9025	1	15.4
1100	337.5	57829.2	0.18	12.91111	1	3.1
1100	350	57784.8	0.18	12.91972	1	5.3
1100	362.5	57774.4	0.17	12.92722	1	3.8
1100	375	57772.2	0.18	12.9325	1	2.5
1100	387.5	57782.4	0.18	12.94028	1	7.7
1100	400	57738.4	0.17	12.9525	1	-1.5
1100	412.5	57718.9	0.17	12.96556	1	3.2
1100	425	57882.7	0.17	12.97389	1	-1.2
1100	437.5	57871.3	0.18	12.98333	1	-3.8
1100	450	57705.8	0.18	12.99028	1	1.7
1100	462.5	57728.4	0.18	13.00187	1	-3.1
1100	475	57757.9	0.17	13.00872	1	1.4
1100	487.5	57780	0.17	13.01844	1	5.4
1100	500	57790.3	0.17	13.03187	1	11.8
1100	512.5	57788.1	0.17	13.03917	1	4.6
1100	525	57754.9	0.17	13.05389	1	3
1100	537.5	57786.9	0.17	13.06389	1	3.6
1100	550	57789.2	0.17	13.07308	1	4.6
1100	562.5	57786.7	0.18	13.08194	1	3.1
1100	575	57785.3	0.17	13.09187	1	4.1
1100	587.5	57753	0.17	13.105	1	0.8
1100	600	57783.4	0.17	13.1175	1	8.7
1100	612.5	57713.8	0.19	13.12889	1	-8.1
1100	625	57757.6	0.17	13.13894	1	1.9
1100	637.5	57789.1	0.18	13.14881	1	2.3
1100	650	57772.8	0.17	13.15528	1	3.1
1100	662.5	57777	0.17	13.16308	1	3.9
1100	675	57773.6	0.17	13.17167	1	2.9
1100	687.5	57776.2	0.17	13.18472	1	3.2
1100	700	57782.5	0.18	13.19583	1	8.3
1100	712.5	57783.2	0.17	13.21083	1	3.9
1100	725	57792.4	0.17	13.22187	1	2
1100	737.5	57782.4	0.17	13.23556	1	1.6
1100	750	57802.1	0.17	13.24894	1	2.9
1100	762.5	57837.3	0.17	13.25833	1	4.5

1100	775	57848.3	0.2	13.28917	1	18.6
1100	787.5	57785.2	0.13	13.28	1	-2.5
1100	800	57815.7	0.14	13.29	1	6.4
1100	812.5	57824.4	0.17	13.30111	1	3.2
1100	825	57835.7	0.17	13.30778	1	3.4
1100	837.5	57844.5	0.17	13.31417	1	5.1
1100	850	57874.1	0.17	13.32194	1	5.8
1100	862.5	57903.4	0.16	13.33058	1	21.9
1100	875	57839.1	0.16	13.33917	1	-0.5
1050	875	57871.9	0.16	13.43308	1	5.4
1050	882.5	57858.3	0.17	13.43917	1	5.1
1050	890	57847.5	0.17	13.44417	1	4
1050	837.5	57843.4	0.18	13.44972	1	3.9
1050	825	57877.3	0.19	13.45808	1	22.2
1050	812.5	57822.5	0.19	13.47333	1	2.4
1050	800	57827.1	0.18	13.48058	1	11.5
1050	787.5	57812.1	0.18	13.48722	1	2.9
1050	775	57803.3	0.18	13.49308	1	3
1050	762.5	57792.5	0.17	13.49972	1	1.2
1050	750	57793.9	0.17	13.50722	1	2.5
1050	737.5	57793	0.17	13.51444	1	2.8
1050	725	57792.9	0.17	13.52028	1	3.8
1050	712.5	57778.6	0.18	13.52833	1	0.6
1050	700	57778	0.18	13.53694	1	8.2
1050	687.5	57767.1	0.17	13.5425	1	2.3
1050	675	57765	0.17	13.54722	1	2.1
1050	662.5	57758	0.17	13.55381	1	1
1050	650	57754.2	0.17	13.55944	1	1.9
1050	637.5	57754.1	0.17	13.56639	1	1.7
1050	625	57750.7	0.18	13.57333	1	1.1
1050	612.5	57751.9	0.17	13.57778	1	2.8
1050	600	57756	0.17	13.58222	1	4.8
1050	587.5	57754.6	0.17	13.58861	1	0.9
1050	575	57751.6	0.17	13.59444	1	0.4
1050	562.5	57756	0.17	13.6	1	2.8
1050	550	57760	0.17	13.60628	1	3
1050	537.5	57778.7	0.19	13.61111	1	6
1050	525	57778.9	0.17	13.61722	1	4.9
1050	512.5	57777.9	0.18	13.62778	1	3.8
1050	500	57781.7	0.18	13.63867	1	8.1
1050	487.5	57809.5	0.18	13.64472	1	6.3
1050	475	57822.3	0.17	13.65278	1	6.5
1050	462.5	57806.7	0.18	13.66	1	2.3
1050	450	57834.4	0.17	13.66722	1	5.8
1050	437.5	57800.8	0.18	13.67444	1	10.3
1050	425	57777.9	0.21	13.68333	1	-10.3
1050	412.5	57861.7	0.15	13.6925	1	13.2
1050	400	57862.5	0.18	13.69908	1	19.3
1050	387.5	57912	0.18	13.705	1	19.1
1050	375	57911.8	0.2	13.7125	1	22.4
1050	362.5	57731.9	0.18	13.71889	1	3.3
1050	350	57716.5	0.17	13.72558	1	-5.7
1050	337.5	57772.6	0.2	13.73393	1	2.6
1050	325	57728.9	0.17	13.74111	1	-3.8
1050	312.5	57804	0.14	13.74808	1	-5.3
1050	300	58183.8	0.19	13.75639	1	40.1
1050	287.5	58137.8	0.2	13.76583	1	22
1050	275	57825.1	0.2	13.77583	1	-12.2
1050	262.5	57842.1	0.21	13.78278	1	5.1
1050	250	57839.4	0.18	13.79222	1	-1.9
1050	237.5	57898.2	0.18	13.80308	1	-7.1
1050	225	58101	0.21	13.81083	1	29.4
1050	212.5	58162	0.19	13.81972	1	14.1
1050	200	58092.8	0.19	13.82833	1	6.7
1050	187.5	58099.3	0.22	13.84333	1	-4.1
1050	175	58118.3	0.22	13.85308	1	16.1
1050	162.5	57931.9	0.19	13.86278	1	31.3
1050	150	58568.7	0.18	13.87139	1	47.6
1050	137.5	57866.5	0.21	13.87975	1	-33.9
1050	125	57399.9	0.22	13.88361	1	-20.5
1050	112.5	57495.2	0.2	13.88939	1	-4.5
1050	100	57581.2	0.2	13.89683	1	12.5
1050	87.5	57700.4	0.19	13.90444	1	31.9
1050	75	57695.6	0.18	14.00308	1	17.7
1050	62.5	57593.2	0.19	14.01194	1	-0.5
1050	50	57491.8	0.18	14.01833	1	0.5
1050	37.5	57308	0.19	14.02722	1	-16.6
1050	25	57454.8	0.19	14.04389	1	-1.4
1050	12.5	57543.5	0.17	14.05308	1	2.3
1050	0	57420.2	0.15	14.06194	1	-37.9
1150	0	57417.6	0.18	14.305	1	4.2
1150	12.5	57434.3	0.21	14.31389	1	-3.6
1150	25	57472.6	0.21	14.32187	1	-1.5
1150	37.5	57433.7	0.2	14.33989	1	-11.9
1150	50	57470	0.19	14.33944	1	7.3
1150	62.5	57537.3	0.19	14.36361	1	20.3
1150	75	57448.4	0.21	14.38417	1	-3.3
1150	87.5	57392.1	0.19	14.375	1	6.2
1150	100	57193.3	0.22	14.385	1	-1
1150	112.5	57623.2	0.2	14.40187	1	-77.5
1150	125	60288.2	0.31	14.41687	1	212.2
1150	137.5	59238	0.2	14.42778	1	111.2
1150	150	58398.7	0.18	14.47972	1	55
1150	162.5	57887.5	0.17	14.48389	1	1.2
1150	175	57636.2	0.2	14.50944	1	22.7
1150	187.5	57186.3	0.23	14.52417	1	25
1150	200	57308.1	0.17	14.54361	1	17.4
1150	212.5	57001.4	0.23	14.55722	1	-19.7
1150	225	59632.3	0.24	14.57944	1	-137.1
1150	237.5	57881.1	0.27	14.60139	1	127.5
1150	250	57546.4	0.18	14.61889	1	-8.4

1150	282.5	57578.9	0.15	14.62972	1	-13.6
1150	275	57638.2	0.15	14.64	1	-4.4
1150	287.5	57872.1	0.18	14.65389	1	-4.8
1150	300	57990.2	0.19	14.66839	1	-1.7
1150	312.5	57703.6	0.2	14.67987	1	-8.7
1150	325	57739.5	0.16	14.68806	1	4.4
1150	337.5	57790.3	0.22	14.70028	1	2.8
1150	350	57782.5	0.19	14.71028	1	-1.8
1150	362.5	57789.7	0.18	14.72083	1	0.8
1150	375	57766.9	0.19	14.73028	1	-2.9
1150	387.5	57752	0.2	14.74083	1	-4.1
1150	400	57753.2	0.19	14.74861	1	-0.8
1150	412.5	57769.6	0.2	14.75611	1	-1.9
1150	425	57778.6	0.19	14.76611	1	-1.2
1150	437.5	57791.5	0.19	14.77639	1	-1
1150	450	57821	0.19	14.78566	1	0.7
1150	462.5	57780.3	0.22	14.79664	1	0
1150	475	57760.2	0.19	14.80566	1	-0.7
1150	487.5	57749.3	0.2	14.81222	1	-2.7
1150	500	57780.5	0.19	14.82056	1	0.3
1150	512.5	57777.3	0.19	14.82869	1	-0.3
1150	525	57805.8	0.19	14.83444	1	1.5
1150	537.5	57778.5	0.2	14.84472	1	-3.8
1150	550	57794.9	0.19	14.855	1	0.6
1150	562.5	57806.2	0.19	14.86722	1	3.1
1150	575	57776.8	0.19	14.8625	1	-0.5
1150	587.5	57791.5	0.19	14.86933	1	-5.3
1150	600	57785.2	0.19	14.90472	1	-0.5
1150	612.5	57804	0.16	14.91917	1	2.9
1150	625	57785.3	0.18	14.93472	1	0.3
1150	637.5	57776.4	0.2	14.94806	1	0.1
1150	650	57774.2	0.19	14.98194	1	0.1
1150	662.5	57773	0.18	14.97306	1	-1.1
1150	675	57773.5	0.19	14.98626	1	-1.9
1150	687.5	57777	0.18	14.99583	1	-1.9
1150	700	57783.4	0.18	15.01111	1	-4.1
1150	712.5	57786.8	0.18	15.02861	1	-1.8
1150	725	57789.3	0.18	15.05472	1	-2.2
1150	737.5	57787.7	0.18	15.07528	1	-2.7
1150	750	57790.2	0.18	15.09389	1	-3.3
1150	762.5	57801.9	0.18	15.10806	1	-1.3
1150	775	57806.8	0.18	15.12	1	-3.8
1150	787.5	57827.7	0.19	15.13167	1	1.1
1150	800	57879.3	0.17	15.14306	1	6.2
1150	812.5	57831	0.17	15.15611	1	-1.4
1150	825	57839.8	0.18	15.16333	1	-1.1
1150	837.5	57853	0.19	15.17111	1	-1.5
1150	850	57887.6	0.18	15.17806	1	0.1
1150	862.5	57970.5	0.19	15.18806	1	64.4
1150	875	57893.4	0.2	15.19872	1	10.8
1200	875	57961.7	0.2	15.26899	1	-7.0
1200	882.5	57853.9	0.17	15.28306	1	-6.8
1200	890	57755.5	0.16	15.29664	1	-22.4
1200	837.5	57988.9	0.2	15.3075	1	-6.2
1200	825	58223.5	0.24	15.31806	1	77.5
1200	812.5	57772.6	0.18	15.33083	1	-2.2
1200	800	57823.3	0.19	15.34417	1	3.5
1200	787.5	57814.1	0.18	15.35639	1	0.3
1200	775	57811.4	0.18	15.37028	1	-0.9
1200	762.5	57813.4	0.18	15.38583	1	-0.2
1200	750	57813.4	0.19	15.40139	1	1
1200	737.5	57804.2	0.18	15.41833	1	-0.1
1200	725	57782	0.19	15.43167	1	-2.9
1200	712.5	57802.4	0.18	15.44361	1	4.9
1200	700	57810	0.19	15.45472	1	4.2
1200	687.5	57799.1	0.18	15.46889	1	3.1
1200	675	57781.1	0.18	15.47444	1	-1.2
1200	662.5	57787	0.18	15.48222	1	-0.4
1200	650	57782.9	0.18	15.49194	1	-1.1
1200	637.5	57775	0.18	15.50139	1	0.2
1200	625	57773.2	0.18	15.50669	1	-0.9
1200	612.5	57785.4	0.18	15.52278	1	0.3
1200	600	57806.9	0.17	15.53222	1	5.8
1200	587.5	57774.8	0.2	15.53944	1	-1.4
1200	575	57770.5	0.18	15.54583	1	-1.4
1200	562.5	57774.4	0.19	15.55194	1	-0.4
1200	550	57773.9	0.18	15.56167	1	-1.9
1200	537.5	57784.6	0.18	15.56889	1	0
1200	525	57789	0.19	15.57444	1	-0.7
1200	512.5	57736.5	0.19	15.57944	1	-4.8
1200	500	57788.5	0.18	15.58633	1	2.5
1200	487.5	57775.7	0.18	15.59606	1	1.5
1200	475	57753.9	0.18	15.60633	1	-1.5
1200	462.5	57755.2	0.18	15.61778	1	0.5
1200	450	57572.2	0.22	15.625	1	-36.4
1200	437.5	57744.7	0.15	15.63528	1	4.1
1200	425	57817	0.19	15.64306	1	-0.7
1200	412.5	57813.6	0.18	15.65028	1	-2.5
1200	400	57845.8	0.19	15.65566	1	8.5
1200	387.5	57838.9	0.18	15.66417	1	1.1
1200	375	57835.1	0.18	15.67361	1	-0.2
1200	362.5	57782.4	0.22	15.68306	1	-3.6
1200	350	57718.8	0.18	15.6925	1	-2.6
1200	337.5	57591.1	0.2	15.70306	1	-38.7
1200	325	57619.8	0.17	15.70889	1	-9.4
1200	312.5	57684.7	0.17	15.71444	1	1.4
1200	300	57696.6	0.18	15.72472	1	-6.7
1200	287.5	57620.1	0.18	15.73278	1	-2.3
1200	275	57607.4	0.19	15.73944	1	-4.3
1200	262.5	57641.6	0.18	15.74833	1	3.6
1200	250	57699.6	0.19	15.75611	1	3

1200	237.5	57979.9	0.23	15.76776	1	43
1200	225	57826.3	0.19	15.77669	1	1.3
1200	212.5	57322.4	0.18	15.78633	1	-31.8
1200	200	57405.4	0.19	15.78944	1	-16.9
1200	187.5	57380.3	0.18	15.80861	1	-3.9
1200	175	57503.9	0.18	15.82667	1	19.1
1200	162.5	57042.8	0.21	15.83606	1	-56.6
1200	150	55826.9	0.24	15.84633	1	-164.7
1200	137.5	54803.5	0.32	15.86139	1	-164.9
1200	125	56931.7	0.2	15.87361	1	52.9
1200	112.5	57372.8	0.16	15.89417	1	15.2
1200	100	57566.2	0.22	15.89626	1	-27.8
1200	87.5	57509	0.21	15.90626	1	-15.1
1200	75	57718	0.17	15.91444	1	41.9
1200	62.5	57512.4	0.16	15.92333	1	-2.8
1200	50	57900.5	0.19	15.93626	1	-3.3
1200	37.5	57483.2	0.19	15.94472	1	0
1200	25	57465.9	0.17	15.95444	1	-2.8
1200	12.5	57446	0.19	15.96306	1	-2.7
1350	0	57536.9	0.19	16.37333	1	-4.5
1350	12.5	57387.8	0.17	16.38276	1	13.5
1350	25	57346.2	0.17	16.38672	1	-12.3
1350	37.5	57451.9	0.16	16.39606	1	9.6
1350	50	57443.7	0.18	16.40583	1	0.1
1350	62.5	57440	0.2	16.41222	1	-4.9
1350	75	57493.9	0.16	16.4175	1	2.9
1350	87.5	57496.8	0.16	16.42333	1	2.8
1350	100	57359.5	0.17	16.43026	1	-34.1
1350	112.5	57462.7	0.18	16.4375	1	4.4
1350	125	57372.6	0.17	16.44361	1	-11.7
1350	137.5	57403.6	0.19	16.44944	1	4
1350	150	57394.3	0.15	16.46066	1	-13
1350	162.5	57591.2	0.16	16.4725	1	-25.9
1350	175	56261.1	0.18	16.48194	1	31.6
1350	187.5	58916.4	0.56	16.48222	1	367.5
1350	200	55922.4	0.42	16.50111	1	-267.4
1350	212.5	57321.1	0.18	16.51056	1	50.9
1350	225	57463.2	0.19	16.51778	1	31.2
1350	237.5	57482.8	0.2	16.52917	1	-10.4
1350	250	57612.1	0.19	16.53661	1	9.3
1350	262.5	57549.2	0.18	16.54722	1	0.1
1350	275	57534.1	0.2	16.55944	1	-5.6
1350	287.5	57543	0.18	16.56899	1	-7.7
1350	300	57589.6	0.18	16.57806	1	-3.9
1350	312.5	57848.3	0.18	16.58778	1	-8.1
1350	325	57832.4	0.17	16.60361	1	6.3
1350	337.5	57820.1	0.2	16.61333	1	1.6
1350	350	57837.9	0.2	16.62417	1	0.6
1350	362.5	57861.8	0.19	16.63222	1	1.8
1350	375	57896.3	0.21	16.64361	1	6.4
1350	387.5	57846.7	0.2	16.65944	1	-2.7
1350	400	57931.3	0.2	16.67111	1	0.9
1350	412.5	58027	0.21	16.68276	1	17
1350	425	57935.9	0.18	16.695	1	11.5
1350	437.5	57832.8	0.2	16.71056	1	2.4
1350	450	57763.7	0.19	16.72056	1	1
1350	462.5	57864.7	0.18	16.73606	1	-17.3
1350	475	57738.5	0.19	16.7475	1	-0.3
1350	487.5	57756.1	0.18	16.76056	1	0.4
1350	500	57784.7	0.19	16.77278	1	1.7
1350	512.5	57771.6	0.19	16.78194	1	0.8
1350	525	57786.9	0.19	16.78944	1	-0.1
1350	537.5	57799	0.19	16.79661	1	-1.7
1350	550	57786.6	0.2	16.80606	1	-0.8
1350	562.5	57890	0.2	16.81833	1	24.1
1350	575	57781.8	0.19	16.83056	1	-1.4
1350	587.5	57783.2	0.19	16.84139	1	-0.6
1350	600	57786.2	0.19	16.85139	1	4.8
1350	612.5	57783.6	0.2	16.8625	1	-0.1
1350	625	57784.2	0.19	16.87306	1	0.6
1350	637.5	57787	0.19	16.88333	1	0.1
1350	650	57786.8	0.18	16.89	1	-0.6
1350	662.5	57791.3	0.19	16.89606	1	0.6
1350	675	57792.3	0.19	16.90694	1	0.6
1350	687.5	57792	0.19	16.91661	1	-1
1350	700	57786.3	0.19	16.93167	1	-1.9
1350	712.5	57790.8	0.19	16.94026	1	-0.4
1350	725	57793.9	0.2	16.95222	1	-1.3
1350	737.5	57794.9	0.21	16.96222	1	-0.5
1350	750	57797.7	0.2	16.97026	1	-0.4
1350	762.5	57800.6	0.19	16.98417	1	0
1350	775	57805.8	0.19	17.00563	1	-2.5
1350	787.5	57810.9	0.19	17.01563	1	-1.3
1350	800	57835.8	0.22	17.02944	1	9.5
1400	800	57805	0.19	17.07444	1	-0.4
1400	787.5	57804.6	0.19	17.06361	1	2.2
1400	775	57803.6	0.19	17.06063	1	2.7
1400	762.5	57806.6	0.19	17.10222	1	3
1400	750	57842.7	0.2	17.11639	1	23
1400	737.5	57795.2	0.19	17.14026	1	0.4
1400	725	57786.5	0.19	17.15026	1	0.5
1400	712.5	57787.1	0.19	17.15778	1	0
1400	700	57791.3	0.19	17.165	1	4.5
1400	687.5	57784.9	0.19	17.1725	1	1.5
1400	675	57783	0.2	17.17833	1	0.3
1400	662.5	57781.2	0.19	17.18606	1	0.2
1400	650	57781.3	0.2	17.19669	1	0.2
1400	637.5	57783.4	0.19	17.20633	1	2.1
1400	625	57780.1	0.19	17.21369	1	0.7
1400	612.5	57779.9	0.19	17.22111	1	1.9
1400	600	57792.7	0.2	17.22944	1	4.6

1400	587.5	57774.1	0.19	17.23472	1	0
1400	575	57790.7	0.23	17.24167	1	2.7
1400	562.5	57762.3	0.19	17.24861	1	0.6
1400	550	57757.5	0.18	17.25528	1	1
1400	537.5	57762.9	0.19	17.26139	1	0.7
1400	525	57774.8	0.19	17.26633	1	1.1
1400	512.5	57817	0.21	17.27722	1	5.5
1400	500	57826.1	0.2	17.28369	1	6.5
1400	487.5	57791.6	0.2	17.29111	1	2.4
1400	475	57703.4	0.19	17.29633	1	-3.7
1400	462.5	57714.7	0.19	17.30667	1	-1.8
1400	450	57710.1	0.18	17.31563	1	-1.5
1400	437.5	57704.7	0.19	17.32611	1	-3.5
1400	425	57699.7	0.2	17.33472	1	-9.5
1400	412.5	57868.2	0.2	17.34306	1	7.2
1400	400	57856.6	0.2	17.35083	1	1.9
1400	387.5	57797.9	0.2	17.35633	1	-0.9
1400	375	57699	0.19	17.36369	1	-16.9
1400	362.5	57536.7	0.18	17.37111	1	-20.3
1400	350	57462.2	0.19	17.37869	1	-12.2
1400	337.5	57694.6	0.21	17.38611	1	20.3
1400	325	57873.5	0.19	17.39278	1	2.7
1400	312.5	57761.7	0.19	17.40028	1	-1.5
1400	300	57732.5	0.19	17.41417	1	-0.2
1400	287.5	57610	0.19	17.42111	1	-8.8
1400	275	57588.2	0.19	17.42869	1	-4.9
1400	262.5	57590.4	0.18	17.43556	1	-1.9
1400	250	57814.1	0.19	17.44306	1	6.9
1400	237.5	57687.6	0.19	17.44972	1	-11.8
1400	225	57962.3	0.21	17.45722	1	36.3
1400	212.5	57862.5	0.2	17.46444	1	-1.5
1400	200	58139.4	0.19	17.47194	1	55.4
1400	187.5	58457.5	0.22	17.47778	1	115.2
1400	175	57473.6	0.18	17.48683	1	-41.5
1400	162.5	57328.3	0.19	17.50806	1	-22.7
1400	150	57278.7	0.19	17.52194	1	-19.6
1400	137.5	57376.3	0.18	17.53063	1	-0.4
1400	125	57416.6	0.19	17.54361	1	-2.8
1400	112.5	57475.8	0.18	17.54944	1	5.1
1400	100	57460.8	0.18	17.55583	1	2.8
1400	87.5	57450.6	0.18	17.56063	1	1.3
1400	75	57367.3	0.18	17.56611	1	-4
1400	62.5	57417.9	0.18	17.57472	1	-2.4
1400	50	57415.4	0.18	17.58028	1	-0.5
1400	37.5	57379	0.19	17.58833	1	-2.3
1400	25	57346.3	0.19	17.59444	1	-9.6
1400	12.5	57329.6	0.18	17.60333	1	-16.6
1400	0	57503.1	0.19	17.61583	1	-11.3
1387.5	0	57473.6	0.18	17.64667	1	-12.9
1375	0	57500.8	0.18	17.65167	1	-13.7
1362.5	0	57482.9	0.19	17.65661	1	-23.4
1350	0	57544.4	0.18	17.66667	1	-9.4
1337.5	0	57531.1	0.18	17.67222	1	-4.3
1325	0	57487.5	0.18	17.6775	1	-10.2
1312.5	0	57556.6	0.19	17.68276	1	2.3
1300	0	57620.5	0.18	17.68833	1	6.5
1287.5	0	57661.1	0.19	17.69444	1	4.6
1275	0	57651.3	0.2	17.70028	1	34.9
1262.5	0	57516.3	0.2	17.705	1	-65.5
1250	0	57460.8	0.18	17.71194	1	7.6
1237.5	0	57464.3	0.18	17.71972	1	-1.9
1225	0	57453.3	0.17	17.72528	1	-3.8
1212.5	0	57457.6	0.19	17.73063	1	-5.5
1200	0	57443.9	0.18	17.73917	1	-2.1
1187.5	0	57467.9	0.18	17.74633	1	-1.9
1175	0	57456.8	0.17	17.75369	1	-0.1
1162.5	0	57436.1	0.18	17.7625	1	-5
1150	0	57416.9	0.19	17.77083	1	3.1
1137.5	0	57428.1	0.18	17.77694	1	-5.3
1125	0	57461.6	0.19	17.78222	1	3.6
1112.5	0	57460.4	0.18	17.78776	1	-1.2
1100	0	57414.4	0.19	17.79633	1	-5.6
1087.5	0	57395.1	0.18	17.80606	1	-9.8
1075	0	57430.6	0.17	17.81722	1	-24.9
1062.5	0	57503.4	0.19	17.82444	1	16.5
1050	0	57419	0.18	17.83306	1	-38.8
1037.5	0	57664.4	0.19	17.83633	1	14.3
1025	0	57505.9	0.18	17.84361	1	-17.3
1012.5	0	57524.1	0.19	17.84869	1	-25.5
1000	0	57669.6	0.18	17.85444	1	-0.2
987.5	0	57642.2	0.19	17.86111	1	-6
975	0	57775	0.2	17.875	1	-36.5
962.5	0	58064.1	0.23	17.88361	1	53
950	0	57611.5	0.18	17.89361	1	-4.8
937.5	0	57576.7	0.19	17.90276	1	-7
925	0	57529.4	0.19	17.91276	1	-6.3
912.5	0	57500	0.18	17.92194	1	-5.8
900	0	57520.1	0.17	17.93167	1	9

750	0	57570.7	0.19	10.16672	1	2.8
750	12.5	57642.4	0.17	10.1775	1	7
750	25	57664.8	0.16	10.17899	1	7.3
750	37.5	57683.5	0.15	10.185	1	10.3
750	50	57648.9	0.16	10.19139	1	1.3
750	62.5	57649.5	0.15	10.19699	1	-4
750	75	57709.1	0.16	10.20444	1	-3.7
750	87.5	57882.3	0.17	10.21139	1	0.7
750	100	58111.2	0.19	10.22028	1	23.5
750	112.5	58155.1	0.19	10.22899	1	49.8
750	125	58036.4	0.19	10.23566	1	24.2
750	137.5	57852.7	0.17	10.24194	1	7.8
750	150	57711.5	0.17	10.25194	1	0.1
750	162.5	57679.2	0.15	10.2625	1	-3.5
750	175	57698.5	0.16	10.27194	1	1
750	187.5	57700.2	0.17	10.28059	1	-0.1
750	200	57732.4	0.17	10.29008	1	7.5
750	212.5	57750.9	0.17	10.30361	1	0.4
750	225	57786.5	0.17	10.3175	1	1
750	237.5	57843	0.16	10.32833	1	-0.7
750	250	57955.8	0.16	10.34399	1	12.1
750	262.5	57911.7	0.17	10.35611	1	15.8
750	275	57787.3	0.17	10.37028	1	6
750	287.5	57706.1	0.16	10.38333	1	-0.6
750	300	57661.7	0.17	10.39361	1	1.4
750	312.5	57666.6	0.16	10.40694	1	-3
750	325	57674.5	0.16	10.4225	1	0.1
750	337.5	57684.2	0.16	10.44059	1	-1.8
750	350	57710.8	0.16	10.46111	1	1.8
750	362.5	57729	0.16	10.48399	1	-8.5
750	375	57704.6	0.16	10.50628	1	-6.6
750	387.5	57769.8	0.17	10.51633	1	3.3
750	400	57761.7	0.17	10.5325	1	8.4
750	412.5	57741.8	0.17	10.54999	1	3.5
750	425	57734.2	0.16	10.55833	1	1.1
750	437.5	57743.4	0.16	10.56961	1	3.7
750	450	57751.4	0.17	10.57722	1	2.2
750	462.5	57761.8	0.16	10.5875	1	0.6
750	475	57779.2	0.16	10.59917	1	-1.9
750	487.5	57672.2	0.16	10.61417	1	1.4
750	500	57895.4	0.17	10.62417	1	0.4
750	512.5	57833	0.19	10.635	1	-1.6
750	525	57794	0.16	10.64306	1	-9
750	537.5	57777.2	0.16	10.65472	1	-8.2
750	550	57815.1	0.16	10.66563	1	6.9
750	562.5	57824.2	0.16	10.67899	1	4.1
750	575	57833.4	0.16	10.69	1	5.7
750	587.5	57828.5	0.16	10.70063	1	1.3
750	600	57779.8	0.16	10.72111	1	5.9
750	612.5	57698.6	0.17	10.7375	1	-0.2
750	625	57854.6	0.16	10.75939	1	-0.7
750	637.5	57714.5	0.16	10.78972	1	-2.6
750	650	57783.2	0.16	10.78417	1	2.8
750	662.5	57740.7	0.16	10.80306	1	0.3
750	675	57817.4	0.17	10.82556	1	9.9
750	687.5	57833.6	0.16	10.86333	1	28.2
750	700	57734.4	0.17	10.87694	1	-5.3
750	712.5	57789.3	0.17	10.89167	1	1.1
750	725	57702.6	0.17	10.90222	1	2.6
750	737.5	57782.9	0.16	10.91306	1	4.8
750	750	57777	0.16	10.92776	1	-0.1
750	762.5	57895.5	0.17	10.93861	1	3.4
750	775	57835.3	0.16	10.95139	1	6.3
750	787.5	57797.5	0.17	10.965	1	3.1
750	800	57820.9	0.16	10.97444	1	2.9
750	812.5	57846.4	0.16	10.98333	1	3.6
750	825	57898.4	0.16	10.99222	1	7.1
700	825	57856.8	0.19	11.49961	1	11
700	837.5	57821.9	0.18	11.50361	1	5.4
700	812.5	57823.7	0.18	11.51278	1	5.5
700	800	57812.5	0.18	11.51917	1	-10.5
700	787.5	57776.3	0.18	11.52722	1	-1.6
700	775	57818.7	0.19	11.53472	1	5.1
700	762.5	57823.6	0.19	11.54399	1	19.7
700	750	57801.7	0.19	11.55167	1	-18.6
700	737.5	57746.1	0.18	11.56	1	-1.1
700	725	57729.1	0.19	11.56967	1	-1.1
700	712.5	57714.2	0.19	11.57472	1	0.3
700	700	57733.4	0.19	11.58222	1	9.8
700	687.5	57761.7	0.18	11.59139	1	11.6
700	675	57792.6	0.19	11.60111	1	1.1
700	662.5	57707.3	0.14	11.60861	1	-8.9
700	650	57699	0.18	11.61667	1	2
700	637.5	57662	0.19	11.62917	1	-5
700	625	57690	0.19	11.63722	1	0.9
700	612.5	57701.1	0.18	11.64399	1	1
700	600	57712.3	0.18	11.64944	1	2.5
700	587.5	57703.7	0.15	11.65699	1	-2.3
700	575	57704.4	0.18	11.665	1	-0.2
700	562.5	57672.9	0.18	11.67197	1	-3
700	550	57695.6	0.18	11.67944	1	-3.7
700	537.5	57687	0.19	11.685	1	3.6
700	525	57820.3	0.17	11.70278	1	59.5
700	512.5	57718.1	0.19	11.71083	1	2.6
700	500	57776.2	0.18	11.72028	1	11.9
700	487.5	57644.9	0.18	11.72972	1	7.5
700	475	57727.1	0.18	11.73639	1	-5.4
700	462.5	57741.7	0.18	11.74908	1	12.4
700	450	57702.5	0.18	11.75994	1	11.1
700	437.5	57639.6	0.18	11.76972	1	-1.4
700	425	57641.7	0.18	11.77833	1	-0.5
700	412.5	57644.4	0.18	11.78833	1	1.3
700	400	57667.8	0.18	11.79472	1	1.4
700	387.5	57727.4	0.18	11.80699	1	3.4
700	375	57804	0.18	11.81633	1	7.5
700	362.5	57835.1	0.19	11.83111	1	5.9
700	350	57752.7	0.17	11.84833	1	-2

700	337.5	57752.4	0.19	11.865	1	-4.2
700	325	57908.3	0.17	11.8656	1	33.4
700	312.5	57738.9	0.18	11.8767	1	-3.5
700	300	57865.4	0.18	11.86444	1	0.8
700	287.5	57722.9	0.19	11.91056	1	4.3
700	275	57755.3	0.18	11.92083	1	2.7
700	262.5	57738	0.18	11.93167	1	-3.9
700	250	57769	0.18	11.93833	1	5
700	237.5	57780.2	0.2	11.94583	1	4.3
700	225	57817.2	0.19	11.9525	1	6.4
700	212.5	57806.4	0.19	11.96063	1	2.7
700	200	57785.6	0.18	11.96867	1	-2.1
700	187.5	57735.3	0.17	11.97308	1	-0.2
700	175	57714.2	0.18	11.97861	1	-3
700	162.5	57775	0.18	11.98333	1	7.6
700	150	57803.2	0.19	11.98778	1	10.6
700	137.5	57769.1	0.18	11.99278	1	7.2
700	125	57736.7	0.18	11.99808	1	-3.6
700	112.5	57738.3	0.18	12.00361	1	-2.8
700	100	57862.3	0.21	12.01026	1	22
700	87.5	57827.4	0.19	12.01839	1	-0.5
700	75	57807.1	0.2	12.02139	1	8.5
700	62.5	57877.9	0.2	12.02633	1	27.8
700	50	57767.9	0.19	12.03417	1	3.4
700	37.5	57717.8	0.19	12.03869	1	5.5
700	25	57866.7	0.18	12.04369	1	3.2
700	12.5	57788.1	0.19	12.05056	1	45.6
700	0	57882.9	0.18	12.05667	1	22.9
800	0	57865.9	0.18	12.13194	1	6
800	12.5	57866.7	0.17	12.13722	1	2.6
800	25	57866.5	0.18	12.14194	1	1.7
800	37.5	57864.1	0.18	12.14722	1	1.2
800	50	57867.2	0.17	12.1525	1	2.5
800	62.5	57864.4	0.17	12.15722	1	2.5
800	75	57806.2	0.18	12.16472	1	3.5
800	87.5	57422.1	0.18	12.17056	1	-8.6
800	100	57846.6	0.18	12.17869	1	15.3
800	112.5	57840.5	0.18	12.18444	1	-33.6
800	125	57821.7	0.17	12.19361	1	-5.4
800	137.5	57839.9	0.18	12.20563	1	-14.7
800	150	57824.5	0.18	12.21972	1	-2.5
800	162.5	57852.7	0.18	12.23194	1	5.6
800	175	57859.4	0.17	12.24444	1	2.7
800	187.5	57835.4	0.18	12.2575	1	-5.2
800	200	57819.9	0.19	12.27869	1	-4.3
800	212.5	57806.2	0.17	12.29278	1	1.8
800	225	57805	0.18	12.29861	1	3.9
800	237.5	57866.4	0.18	12.30806	1	0
800	250	57823.8	0.18	12.32056	1	5.1
800	262.5	57846.7	0.17	12.3325	1	2.1
800	275	57867.5	0.19	12.33972	1	3
800	287.5	57717.5	0.18	12.36333	1	12.9
800	300	57894.1	0.18	12.36994	1	2.9
800	312.5	57869.3	0.19	12.38026	1	-4.5
800	325	57748.3	0.18	12.3925	1	3.6
800	337.5	57819.1	0.19	12.41083	1	2.9
800	350	57865.8	0.19	12.42611	1	34.1
800	362.5	57810.5	0.18	12.43972	1	12.3
800	375	58046.6	0.24	12.45611	1	77
800	387.5	57863.4	0.22	12.47361	1	21.7
800	400	57723.1	0.19	12.48972	1	-2
800	412.5	57792.5	0.2	12.50806	1	4.8
800	425	57820.8	0.21	12.52611	1	12
800	437.5	57779.9	0.2	12.54083	1	9.7
800	450	57746.6	0.2	12.56778	1	11.2
800	462.5	57865.5	0.19	12.59	1	1.1
800	475	57848.8	0.18	12.61167	1	-4.9
800	487.5	57872.3	0.18	12.63444	1	-2.4
800	500	57896	0.19	12.65361	1	-3
800	512.5	57772.4	0.2	12.67917	1	4.1
800	525	58196.6	0.18	12.70611	1	19.6
800	537.5	58107.7	0.18	12.8275	1	-53.1
800	550	58130.7	0.19	12.86722	1	28.6
800	562.5	57864.2	0.19	12.89194	1	-6.6
800	575	58029.7	0.24	12.92278	1	-41.9
800	587.5	58181.1	0.2	12.95167	1	26.6
800	600	57819.4	0.19	12.97222	1	12.8
800	612.5	57860.2	0.19	13.00026	1	9.2
800	625	57792.9	0.19	13.18778	1	4.4
800	637.5	57874.7	0.18	13.21026	1	-45.5
800	650	57840.4	0.2	13.23556	1	-96.6
800	662.5	57892.9	0.21	13.27167	1	-81.2
800	675	57802.2	0.17	13.31626	1	-9.3
800	687.5	57790.1	0.19	13.33333	1	1.2
800	700	57772.7	0.19	13.37369	1	-9.3
850	700	57731.7	0.19	13.68222	1	-1.1
850	687.5	57715.5	0.2	13.73694	1	-3.9
850	675	57733.7	0.2	13.76083	1	-3.1
850	662.5	57762.4	0.21	13.78194	1	11
850	650	57828.8	0.21	13.80667	1	-4.1
850	637.5	57876.8	0.18	13.835	1	-14.7
850	625	57943.3	0.2	13.8625	1	5.2
850	612.5	57470.9	0.19	13.97111	1	-21.9
850	550	57817.2	0.18	13.98869	1	-6.5
850	600	57480.2	0.19	14.00861	1	-21.2
850	587.5	57833.8	0.2	14.03417	1	-21.4
850	575	57710.6	0.19	14.05472	1	2.4
850	562.5	57730.1	0.19	14.08994	1	1.7
850	550	57730.4	0.19	14.07583	1	-2.5
850	537.5	57710.5	0.19	14.08944	1	-7.2
850	525	57896.2	0.2	14.12361	1	0.1
850	512.5	57852.1	0.23	14.16861	1	-1.3
850	500	57850.8	0.19	14.19778	1	4.3
850	487.5	57864.1	0.19	14.22167	1	5.9
850	475	57855.5	0.19	14.24611	1	0.4
850	462.5	57846.7	0.19	14.27417	1	-5.3
850	450	57840.9	0.21	14.29722	1	-3.5
850	437.5	57834	0.18	14.31083	1	1.2
850	425	57805.6	0.18	14.32844	1	-8.2

550	412.5	57725.6	0.17	14.36306	1	23.2
550	400	57848.5	0.22	14.38056	1	65.1
550	387.5	57353.1	0.18	14.40778	1	-4.1
550	375	57618.4	0.18	14.43056	1	7.3
550	362.5	57634.3	0.19	14.44222	1	4.2
550	350	57579.4	0.18	14.45028	1	-0.2
550	337.5	57599	0.18	14.46944	1	4.2
550	325	57568.7	0.18	14.47222	1	0.8
550	312.5	57551.3	0.17	14.48444	1	1.2
550	300	57552	0.18	14.48444	1	-1.1
550	287.5	57531.6	0.18	14.50944	1	2.6
550	275	57510.1	0.18	14.52139	1	-0.1
550	262.5	57489.3	0.18	14.54222	1	-0.4
550	250	57467.5	0.18	14.55167	1	-1.5
550	237.5	57501.7	0.18	14.55908	1	0.3
550	225	57502.4	0.17	14.56389	1	-0.6
550	212.5	57513.1	0.18	14.57028	1	3.8
550	200	57524	0.19	14.57669	1	3.5
550	187.5	57530.8	0.18	14.58222	1	0.8
550	175	57542.4	0.19	14.6	1	1.4
550	162.5	57529.4	0.18	14.60639	1	2.7
550	150	57522.4	0.19	14.61308	1	-0.1
550	137.5	57515.2	0.19	14.62056	1	1.3
550	125	57509.4	0.19	14.62808	1	3.2
550	112.5	57506.3	0.18	14.63389	1	0.7
550	100	57512.9	0.2	14.64	1	-1
550	87.5	57520.7	0.19	14.64639	1	3.7
550	75	57517.7	0.19	14.65167	1	0.7
550	62.5	57526	0.18	14.65839	1	2
550	50	57538.7	0.18	14.66111	1	3.5
550	37.5	57548.2	0.19	14.66911	1	5.6
550	25	57539.8	0.2	14.67222	1	2.6
550	12.5	57536.3	0.18	14.67661	1	2.3
550	0	57545.7	0.19	14.686	1	13.8
550	-12.5	57516	0.18	14.69633	1	-2.4
550	-25	57492.5	0.18	14.84308	1	-1.7
550	-37.5	57418.7	0.18	14.86583	1	-13.1
550	-50	57536.9	0.19	14.88639	1	-17.3
550	-62.5	57822.6	0.19	14.89417	1	5.4
550	-75	57885.2	0.19	14.89917	1	1.2
550	-87.5	57860.5	0.2	14.90639	1	-8.2
550	-100	57619.4	0.19	14.91722	1	-19.6
550	-112.5	57670.9	0.19	14.93333	1	4.4
550	-125	57534.5	0.19	14.98	1	-1
550	-137.5	57558.6	0.19	14.97722	1	3.5
550	-150	57461.5	0.19	14.98939	1	-10.8
550	-162.5	57382.8	0.19	15.01333	1	-84.4
550	-175	57333	0.2	15.02194	1	-30.7
550	-187.5	57629	0.19	15.02691	1	10.3
550	-200	57618.6	0.17	15.03906	1	-12.1
550	-212.5	57375.7	0.19	15.04611	1	-19.5
550	-225	57374.8	0.19	15.05391	1	-9.9
500	-225	57191.1	0.3	15.15472	1	-15.8
500	-212.5	57160.4	0.21	15.16639	1	-55.3
500	-200	58063.8	0.2	15.18139	1	-48.3
500	-187.5	58895.1	0.5	15.19444	1	247.1
500	-175	57770.6	0.27	15.21028	1	-122.2
500	-162.5	57499.1	0.16	15.22278	1	-31.5
500	-150	57506	0.19	15.25111	1	-6.6
500	-137.5	57493.4	0.16	15.26308	1	-7.3
500	-125	57472.2	0.19	15.27556	1	-14.9
500	-112.5	57484.5	0.2	15.29889	1	-23.2
500	-100	58045.6	0.24	15.32083	1	-11.5
500	-87.5	57898.6	0.23	15.33167	1	24.2
500	-75	57454.9	0.2	15.34222	1	-14.1
500	-62.5	58972.7	0.21	15.38444	1	20.4
500	-50	57490.9	0.19	15.37639	1	49.8
500	-37.5	57528.4	0.19	15.395	1	-1.1
500	-25	57515.7	0.19	15.40083	1	0.6
500	-12.5	57520	0.2	15.40722	1	1.3
500	0	57510.9	0.19	15.41391	1	-2.3
500	12.5	57515.5	0.19	15.41917	1	-1.4
500	25	57518.6	0.19	15.42472	1	0.4
500	37.5	57519.4	0.19	15.43056	1	-1.9
500	50	57527.2	0.2	15.43611	1	0.3
500	62.5	57525	0.19	15.44444	1	-0.3
500	75	57509.9	0.19	15.45056	1	-5.5
500	87.5	57521.1	0.19	15.4575	1	-2.8
500	100	57518.9	0.19	15.46661	1	-10
500	112.5	57534.8	0.19	15.50444	1	-2.9
500	125	57530.4	0.19	15.52389	1	-3.3
500	137.5	57525.2	0.19	15.53417	1	-2.4
500	150	57516.1	0.2	15.54399	1	-4
500	162.5	57515	0.19	15.55722	1	-0.3
500	175	57507.6	0.19	15.56661	1	-3.6
500	187.5	57506.1	0.19	15.57944	1	-0.8
500	200	57523.4	0.19	15.58056	1	14.8
500	212.5	57506.4	0.19	15.60528	1	3.9
500	225	57501.3	0.2	15.61861	1	-3.8
450	250	57501.9	0.2	15.77722	1	-0.1
450	237.5	57499.2	0.2	15.80111	1	-2.9
450	225	57498.1	0.2	15.81	1	3
450	212.5	57485.3	0.2	15.82333	1	-1.4
450	200	57492.9	0.2	15.84139	1	0
450	187.5	57481.5	0.2	15.85944	1	1.9
450	175	57483.4	0.2	15.87056	1	0
450	162.5	57505.3	0.2	15.87833	1	5.5
450	150	57511.3	0.21	15.88639	1	2.9
450	137.5	57531	0.2	15.8925	1	3.9
450	125	57533.3	0.19	15.89994	1	2.5
450	112.5	57532	0.19	15.90139	1	1.3
450	100	57533.7	0.2	15.90611	1	5.3
450	87.5	57519.6	0.2	15.915	1	1.9
450	75	57514	0.21	15.92306	1	1
450	62.5	57512.4	0.2	15.92972	1	1.5
450	50	57503.7	0.21	15.93994	1	-0.6
450	37.5	57490.9	0.2	15.94778	1	0.6
450	25	57501.2	0.2	15.95222	1	0.8
450	12.5	57501.8	0.2	15.95694	1	-3.5

450	0	57510.9	0.15	15.98333	1	6.1
450	-12.5	57502.6	0.2	15.98861	1	1.4
450	-25	57503.6	0.19	15.97361	1	1.8
450	-37.5	57518.4	0.19	15.98139	1	-15.6
450	-50	57488.1	0.18	15.9925	1	-2
450	-62.5	57257.7	0.23	16.00806	1	-44.1
450	-75	57731.3	0.35	16.0275	1	-89.2
450	-87.5	57595.5	0.22	16.56333	1	-4.4
450	-100	57615.5	0.21	16.5725	1	10.1
450	-112.5	57512.5	0.21	16.58889	1	6.7
450	-125	57448.5	0.21	16.60611	1	-20.3
450	-137.5	57404	0.22	16.61722	1	-9.2
450	-150	57436.5	0.21	16.6275	1	-2.3
450	-162.5	57381.6	0.21	16.63972	1	-7.2
450	-175	57325.4	0.21	16.64944	1	-4.6
450	-187.5	57275.7	0.22	16.65808	1	-3.8
450	-200	57241.3	0.22	16.66528	1	-7.2
450	-212.5	57187.1	0.24	16.68	1	-10
450	-225	57241.9	0.27	16.68972	1	-1.3
450	-237.5	57278.5	0.28	16.69811	1	2.1
450	-250	57279.2	0.21	16.7025	1	-3.9
400	-300	57314.2	0.17	16.73778	1	-12.5
400	-267.5	57339.1	0.21	16.74972	1	4.2
400	-275	57317.6	0.21	16.75472	1	-1.1
400	-262.5	57309.7	0.22	16.76111	1	-1.4
400	-250	57307.5	0.22	16.76944	1	-0.9
400	-237.5	57303.9	0.21	16.77278	1	0
400	-225	57298.8	0.22	16.77833	1	-1.2
400	-212.5	57291.6	0.21	16.78361	1	-1.7
400	-200	57271.6	0.22	16.79028	1	1.8
400	-187.5	57261.6	0.19	16.80083	1	-10.6
400	-175	57305.1	0.21	16.80861	1	1.8
400	-162.5	57319.3	0.22	16.81944	1	-3.2
400	-150	57321.8	0.23	16.82778	1	-13.6
400	-137.5	57442.2	0.21	16.86	1	-9
400	-125	57483.2	0.22	16.89308	1	1.7
400	-112.5	57458.3	0.22	16.90333	1	3.4
400	-100	57449.2	0.22	16.95111	1	-5.9
400	-87.5	57494.4	0.23	16.96891	1	4.4
400	-75	57545.9	0.21	16.9825	1	5.5
400	-62.5	57543.6	0.21	16.98889	1	-2.3
400	-50	57543	0.21	16.995	1	4.3
400	-37.5	57527.3	0.21	17	1	3.5
400	-25	57502.9	0.21	17.00722	1	3.1
400	-12.5	57486.4	0.21	17.01361	1	0.4
400	0	57488.7	0.22	17.01833	1	2.2
400	12.5	57489.4	0.21	17.02722	1	0.1
400	25	57516.1	0.22	17.04139	1	1.8
400	37.5	57538.1	0.22	17.05222	1	3.3
400	50	57537.1	0.23	17.06811	1	3.4
400	62.5	57524.6	0.22	17.07566	1	3.2
400	75	57514.8	0.22	17.08111	1	4.2
400	87.5	57505.1	0.22	17.08722	1	2.9
400	100	57505.7	0.21	17.095	1	3.7
400	112.5	57504.4	0.22	17.10194	1	0.1
400	125	57504.8	0.22	17.11194	1	2.4
400	137.5	57506.8	0.22	17.11833	1	6.7
400	150	57498.8	0.21	17.13111	1	2.6
400	162.5	57492.5	0.22	17.13861	1	1.2
400	175	57488.1	0.22	17.14639	1	-0.4
400	187.5	57492.5	0.22	17.15528	1	3.3
400	200	57517.2	0.21	17.17222	1	32.5
400	212.5	57515.2	0.22	17.18889	1	5.3
400	225	57510.4	0.22	17.20444	1	3
400	237.5	57520.9	0.22	17.21889	1	4.3
400	250	57528.9	0.22	17.24444	1	3.4
350	250	57511.9	0.21	17.42811	1	1.8
350	237.5	57518.1	0.23	17.43889	1	6.1
350	225	57516.6	0.2	17.44722	1	3.6
350	212.5	57516.7	0.21	17.45722	1	3
350	200	57501.4	0.21	17.46917	1	2.3
350	187.5	57498.2	0.2	17.47806	1	1.9
350	175	57489.2	0.21	17.48778	1	-2
350	162.5	57461.7	0.21	17.49917	1	2.9
350	150	57498.5	0.21	17.51187	1	0.8
350	137.5	57495.2	0.21	17.52187	1	2
350	125	57483.2	0.21	17.53361	1	-3.7
350	112.5	57491.7	0.2	17.54222	1	3.4
350	100	57505.5	0.21	17.54806	1	9.6
350	87.5	57504	0.2	17.55361	1	3.8
350	75	57505.6	0.2	17.55889	1	3.1
350	62.5	57512.3	0.21	17.56444	1	3.1
350	50	57520.1	0.21	17.56972	1	4.2
350	37.5	57530.9	0.22	17.57528	1	5.2
350	25	57537.1	0.21	17.57972	1	5.6
350	12.5	57533.1	0.23	17.58472	1	3.8
350	0	57528.4	0.21	17.59056	1	5.5
350	-12.5	57526.9	0.21	17.59778	1	4.6
350	-25	57499.9	0.22	17.605	1	-0.8
350	-37.5	57533.4	0.2	17.61306	1	7.9
350	-50	57548.3	0.21	17.62417	1	3.3
350	-62.5	57559.9	0.17	17.63187	1	13.7
350	-75	57518.3	0.2	17.65611	1	-5.6
350	-87.5	57499.9	0.22	17.67306	1	2.7
350	-100	57505.6	0.21	17.72306	1	2.7
350	-112.5	57486.1	0.21	17.73844	1	7.1
350	-125	57447.7	0.21	17.74872	1	0.4
350	-137.5	57371.7	0.21	17.76194	1	-4.6
350	-150	57330.3	0.2	17.77639	1	-10.7
350	-162.5	57364.5	0.22	17.78222	1	-0.9
350	-175	57367.5	0.21	17.78722	1	3.6
350	-187.5	57408.3	0.21	17.79139	1	4
350	-200	57440	0.24	17.8	1	10.4
350	-212.5	57333.8	0.2	17.80556	1	4.7
350	-225	57143.3	0.26	17.81194	1	-89.9
350	-237.5	57352.5	0.17	17.81861	1	7
350	-250	57357.4	0.21	17.82472	1	1.8
350	-262.5	57379.6	0.2	17.83028	1	5
350	-275	57327.7	0.21	17.83639	1	-3

350	-287.5	57337	0.21	17.8425	1	-4.5
350	-300	57350.3	0.23	17.84972	1	-3.7
350	-312.5	57286.6	0.21	17.855	1	-4.6
350	-325	57314.4	0.21	17.86222	1	-2.5
300	-360	57513.1	0.18	17.91389	1	17.4
300	-337.5	57379.2	0.23	17.92528	1	9.4
300	-325	57310.3	0.21	17.93306	1	-1.7
300	-312.5	57291.2	0.2	17.94053	1	-1.8
300	-300	57261.9	0.21	17.945	1	-3.5
300	-287.5	57307.8	0.17	17.95167	1	22.2
300	-275	57359.9	0.21	17.9575	1	8.1
300	-262.5	57356.7	0.21	17.96528	1	5.8
300	-250	57352	0.22	17.97306	1	5.4
300	-237.5	57347.8	0.21	17.97917	1	0.5
300	-225	57353.3	0.2	17.985	1	1.2
300	-212.5	57370.8	0.23	17.99111	1	-4.8
300	-200	57389.1	0.2	17.99722	1	5.9
300	-187.5	57371	0.2	18.00278	1	4.3
300	-175	57377.4	0.2	18.00972	1	4.2
300	-162.5	57367.8	0.22	18.01528	1	1.8
300	-150	57366.7	0.21	18.02139	1	4.2
300	-137.5	57366.1	0.21	18.02891	1	3.7
300	-125	57343.5	0.22	18.03611	1	-0.7
300	-112.5	57362.6	0.23	18.04356	1	-0.6
300	-100	57429.1	0.22	18.05091	1	1
300	-87.5	57449.9	0.21	18.07222	1	-8.2
300	-75	57527.1	0.22	18.085	1	7.8
300	-62.5	57505.4	0.22	18.11111	1	4.9
300	-50	57513.5	0.21	18.12083	1	4.4
300	-37.5	57507.1	0.21	18.12778	1	8.3
300	-25	57499	0.2	18.13389	1	5.2
300	-12.5	57495.9	0.21	18.1425	1	4.4
300	0	57520	0.22	18.15278	1	35.2
300	12.5	57495.9	0.21	18.15933	1	5
300	25	57488.7	0.21	18.165	1	5.8
300	37.5	57483.8	0.21	18.17028	1	4.1
300	50	57486.8	0.2	18.17583	1	4.5
300	62.5	57480.7	0.2	18.18167	1	-0.6
300	75	57472.8	0.19	18.18778	1	3.2
300	87.5	57480.9	0.2	18.19381	1	-0.9
300	100	57479.5	0.19	18.20028	1	5.1
300	0	57514.6	0.23	18.24306	1	35.2
312.5	0	57521.6	0.2	18.25139	1	5.9
325	0	57525.7	0.21	18.25563	1	3.7
337.5	0	57534.7	0.2	18.25972	1	5.4
350	0	57531.7	0.21	18.26528	1	5.5
362.5	0	57528.3	0.21	18.27028	1	4.7
375	0	57531.8	0.21	18.27444	1	7.1
387.5	0	57477.9	0.2	18.28306	1	-0.3
400	0	57486.8	0.2	18.28869	1	2.3
412.5	0	57503.3	0.2	18.29306	1	3.5
425	0	57502.8	0.2	18.29778	1	1.4
437.5	0	57502.7	0.2	18.30167	1	2.8
450	0	57510	0.22	18.30806	1	7.7
462.5	0	57507.4	0.21	18.31194	1	3
475	0	57513.1	0.2	18.31639	1	3.7
487.5	0	57515.9	0.2	18.32111	1	2.2
500	0	57514.7	0.2	18.32694	1	1.7
512.5	0	57523.1	0.19	18.33139	1	2.1
525	0	57530.8	0.2	18.33583	1	3.6
537.5	0	57534.2	0.17	18.34222	1	7.9
550	0	57550.2	0.24	18.34699	1	16.5
562.5	0	57542.5	0.19	18.35444	1	4.1
575	0	57555.5	0.21	18.36	1	3.8
587.5	0	57560.8	0.2	18.365	1	3.3
600	0	57570.9	0.21	18.37028	1	8.4
612.5	0	57565.4	0.2	18.37722	1	-2.3
625	0	57622.5	0.2	18.38167	1	-8.2
637.5	0	57903.9	0.25	18.39167	1	33.9
650	0	57971.2	0.23	18.405	1	50.6
662.5	0	57895.6	0.22	18.415	1	12.9
675	0	57835.2	0.2	18.42139	1	56.2
687.5	0	57735.5	0.23	18.42583	1	66.9
700	0	57679.3	0.21	18.43167	1	21.3
712.5	0	57509.4	0.2	18.43611	1	-15.7
725	0	57541.3	0.2	18.44139	1	-6.8
737.5	0	57599.7	0.2	18.44583	1	-3.8
750	0	57572.4	0.2	18.45083	1	2.7
762.5	0	57551.9	0.19	18.455	1	-0.5
775	0	57541.8	0.19	18.45972	1	1.1
787.5	0	57541.8	0.2	18.46444	1	3.5
800	0	57500	0.21	18.47028	1	-3.1
812.5	0	57501	0.2	18.47667	1	0.4
825	0	57508.3	0.2	18.48194	1	1.8
837.5	0	57520.5	0.2	18.48667	1	1.6
850	0	57533.9	0.2	18.49194	1	0.3
862.5	0	57544.4	0.2	18.49694	1	3.5
875	0	57540.8	0.21	18.50139	1	3.3
887.5	0	57529.5	0.2	18.50611	1	2.6
900	0	57528.5	0.22	18.51222	1	13.4
1300	0	57621.2	0.2	19.10583	1	8.8
1300	12.5	57443.1	0.2	19.11472	1	-12.3
1300	25	57483.5	0.19	19.11872	1	-12.4
1300	37.5	57450.4	0.2	19.1275	1	-6
1300	50	57479.1	0.19	19.13058	1	0.2
1300	62.5	57497.4	0.19	19.13444	1	-2.4
1300	75	57629.2	0.19	19.1425	1	7.4
1300	87.5	57578.9	0.19	19.14806	1	2.9
1300	100	57452.3	0.19	19.15444	1	-9.1
1300	112.5	57456	0.2	19.16111	1	-5.1
1300	125	57488.2	0.2	19.16694	1	1
1300	137.5	57506.2	0.19	19.17333	1	-0.8
1300	150	57529.8	0.2	19.18167	1	3.2
1300	162.5	57410.2	0.2	19.18806	1	5.4
1300	175	57310.1	0.2	19.19094	1	-8
1300	187.5	57002.4	0.22	19.20389	1	-62.1
1300	200	57781.4	0.19	19.21778	1	-13.5
1300	212.5	58521.5	0.21	19.22556	1	78
1300	225	58532.8	0.22	19.23278	1	85.3

1300	237.5	57989.1	0.21	19.24028	1	17
1300	250	57874.3	0.2	19.24872	1	-5.5
1300	282.5	57594.7	0.2	19.2575	1	-2.5
1300	275	57550.8	0.19	19.26861	1	-8.2
1300	287.5	57578	0.19	19.27833	1	-5.8
1300	300	57810.8	0.19	19.28994	1	-4
1300	312.5	57640.4	0.2	19.29417	1	-4
1300	325	57698.8	0.19	19.30528	1	-3.2
1300	337.5	57757.1	0.2	19.31556	1	-3.6
1300	350	57834.9	0.21	19.32861	1	5.2
1300	362.5	57753.8	0.21	19.34167	1	-10.9
1300	375	57827.8	0.21	19.35194	1	-1.7
1300	387.5	57850.9	0.21	19.36306	1	-0.9
1300	400	57883.5	0.22	19.37333	1	-1.1
1300	412.5	57967.4	0.2	19.38639	1	-33.9
1300	425	58071.6	0.24	19.39556	1	67.1
1300	437.5	57794.9	0.21	19.41028	1	-0.8
1300	450	57785.9	0.2	19.42139	1	0
1300	462.5	57785.5	0.2	19.43083	1	0
1300	475	57770	0.2	19.44083	1	0.8
1300	487.5	57771.4	0.21	19.45	1	0.3
1300	500	57784	0.19	19.46139	1	9
1300	512.5	57778.2	0.2	19.46917	1	-0.3
1300	525	57787.2	0.21	19.47889	1	-0.3
1250	525	57781.9	0.2	19.50072	1	-1.2
1250	512.5	57813.9	0.2	19.56611	0	0.7
1250	500	57788.1	0.2	19.57333	0	-2.7
1250	487.5	57818.9	0.21	19.58167	0	5.1
1250	475	57789.8	0.21	19.58972	0	-0.4
1250	462.5	57791.7	0.2	19.59611	0	1.4
1250	450	57781.3	0.2	19.60333	0	-2.5
1250	437.5	57803.3	0.2	19.61	0	-1.7
1250	425	57836.1	0.21	19.61722	0	-21.4
1250	412.5	58148	0.17	19.625	0	6
1250	400	58263.8	0.2	19.63278	0	31
1250	387.5	57886	0.2	19.63869	0	-6.6
1250	375	57790.5	0.2	19.64833	0	-13.3
1250	362.5	57850.3	0.2	19.6575	0	1
1250	350	57858.1	0.2	19.666	0	0.9
1250	337.5	57800.1	0.2	19.67194	0	-1.4
1250	325	57752.4	0.21	19.67722	0	-3.6
1250	312.5	57720.8	0.2	19.68278	0	0.4
1250	300	57878.2	0.19	19.68972	0	0.8
1250	287.5	57843.4	0.2	19.69694	0	-2.8
1250	275	57818.3	0.19	19.7025	0	-5.8
1250	262.5	57847.3	0.2	19.70833	0	-5.3
1250	250	57745	0.2	19.71417	0	3.2
1250	237.5	57868.6	0.24	19.72556	0	14.6
1250	225	58175.3	0.16	19.73333	0	-6.8
1250	212.5	57854.5	0.21	19.74194	0	3.7
1250	200	57732.9	0.2	19.75167	0	6.2
1250	187.5	57863.7	0.15	19.75917	0	-10.7
1250	175	58172.4	0.43	19.77811	0	255.6
1250	162.5	57926.4	0.19	19.78583	0	6.7
1250	150	57492.7	0.19	19.835	0	2.4
1250	137.5	57534.8	0.22	19.84472	0	12.9
1250	125	57488.8	0.19	19.85139	0	1.1
1250	112.5	57401.5	0.18	19.85967	0	-8.7
1250	100	57557	0.18	19.86417	0	20.8
1250	87.5	57539.7	0.18	19.87	0	7.7
1250	75	57515.2	0.21	19.87472	0	28
1250	62.5	57339.9	0.16	19.88083	0	-24.3
1250	50	57397	0.18	19.88894	0	-4.1
1250	37.5	57387.1	0.19	19.89222	0	-0.2
1250	25	57366.7	0.19	19.89633	0	3
1250	12.5	57344.3	0.19	19.905	0	-3.8
1250	0	57358.8	0.19	19.91139	0	8.9
11150	-50	57358.5	0.19	19.97944	0	23.8
22150	-200	57304.4	0.23	20.06472	0	-20.1
750	0	57534.9	0.2	20.23444	0	0.9
750	-12.5	57540.9	0.2	20.23944	0	1.2
750	-25	57561.2	0.19	20.24333	0	-1
750	-37.5	57830.8	0.19	20.25028	0	3.8
750	-50	57808.8	0.2	20.25556	0	-13.5
750	-62.5	57833.5	0.19	20.25972	0	0.8
750	-75	57819.9	0.22	20.26697	0	25.6
750	-87.5	57862.3	0.2	20.27167	0	7.9
750	-100	57481.3	0.19	20.27697	0	-10.7
750	-112.5	57368.8	0.2	20.28194	0	-10.7
750	-125	57355.7	0.19	20.28639	0	-9.2
750	-137.5	57378.5	0.19	20.29083	0	1.8
750	-150	57385.2	0.2	20.29633	0	-1
750	-162.5	57387	0.19	20.30333	0	3.8
750	-175	57376.2	0.2	20.30806	0	2.7
750	-187.5	57357.5	0.19	20.31556	0	-3.7
750	-200	57364	0.19	20.32006	0	6.1
700	-200	57337.8	0.19	20.38528	0	-1.4
700	-187.5	57343.5	0.19	20.40028	0	-3.2
700	-175	57351.2	0.19	20.41167	0	-2.5
700	-162.5	57364.3	0.19	20.4175	0	-1.9
700	-150	57353.6	0.19	20.42278	0	-3
700	-137.5	57384.6	0.2	20.43139	0	6.4
700	-125	57328.6	0.2	20.44139	0	-0.6
700	-112.5	57328.3	0.21	20.45278	0	-35.4
700	-100	57671	0.21	20.46611	0	72.6
700	-87.5	57464	0.18	20.47694	0	-21.1
700	-75	57782.5	0.21	20.485	0	19.8
700	-62.5	57885.3	0.19	20.49833	0	-4.5
700	-50	57828.3	0.2	20.49839	0	-1.4
700	-37.5	57828.3	0.19	20.50222	0	1.2
700	-25	57837.1	0.19	20.50556	0	4.2
700	-12.5	57803.4	0.19	20.51	0	-0.8
700	0	57843.9	0.17	20.51722	0	18.7
650	0	57835.7	0.2	20.54528	0	48.7
650	-12.5	57732	0.2	20.55139	0	-20
650	-25	57804.9	0.22	20.55833	0	31.6
650	-37.5	57730.9	0.19	20.56361	0	1.4

850	-50	57811.2	0.19	20.57083	0	21.3
850	-62.5	57855	0.21	20.57558	0	18.2
850	-75	57880.9	0.22	20.58011	0	10.2
850	-87.5	57856.6	0.19	20.58225	0	-31.6
850	-100	57818.5	0.28	20.60194	0	58.2
850	-112.5	57593.3	0.19	20.61333	0	21.5
850	-125	57335.3	0.2	20.63528	0	2.2
850	-137.5	57384.8	0.18	20.65194	0	3.8
850	-150	57424.2	0.19	20.66111	0	1.3
850	-162.5	57399.6	0.19	20.66889	0	-5.8
850	-175	57401.3	0.2	20.67994	0	-2.9
850	-187.5	57411.3	0.19	20.68194	0	2.2
850	-200	57384.2	0.19	20.69111	0	-0.7
800	-200	57400.7	0.19	20.82139	0	-0.6
800	-187.5	57409.7	0.19	20.83139	0	-0.4
800	-175	57425.5	0.19	20.83722	0	1.9
800	-162.5	57431.1	0.19	20.84994	0	0.8
800	-150	57392.9	0.19	20.855	0	-8.7
800	-137.5	57421.1	0.19	20.86722	0	3.5
800	-125	57405.3	0.2	20.87972	0	1.8
800	-112.5	57619.2	0.2	20.93528	0	32.1
800	-100	57453.5	0.19	20.94333	0	-15
800	-87.5	57488.3	0.2	20.94833	0	-30.9
800	-75	57810.9	0.22	20.95722	0	39.8
800	-62.5	57770.1	0.19	20.96722	0	-39.6
800	-50	57488.7	0.19	20.97333	0	-37.4
800	-37.5	57493.9	0.2	20.98058	0	-12.2
800	-25	57499.9	0.19	21.00167	0	-0.7
800	-12.5	57533.4	0.2	21.015	0	-2.1
800	0	57577	0.2	21.02111	0	6.3
900	0	57532.8	0.22	21.06994	0	10.2
900	-12.5	57527.5	0.19	21.10083	0	0.4
900	-25	57529.3	0.19	21.10389	0	0.1
900	-37.5	57529.9	0.2	21.10806	0	0.7
900	-50	57521.7	0.2	21.11278	0	1.5
900	-62.5	57492.8	0.19	21.1175	0	-1
900	-75	57484.5	0.19	21.12194	0	-0.1
1111	0	57472.6	0.17	21.13967	0	1.6
1111	12.5	57903.3	0.19	21.14111	0	7.6
1111	25	57501.9	0.19	21.14556	0	1.2
1111	37.5	57514.9	0.19	21.14944	0	5.7
1111	50	57497.4	0.19	21.15333	0	2.9