

Submitted digitally
Digital copy exists.

**2003 EXPLORATION PROGRAM
ON THE
ROCK RIVER COAL LICENSES**

**License Numbers
CYL0005 to CYL0008**

NTS: 95D/11 and 95D/14

094452

**Latitude: 60° 30' to 61° 00' N
Longitude: 127° 00' to 127° 15' W**

By :

AURORA GEOSCIENCES LTD

Scott Casselman, B. Sc., P. Geo

**Location: Rock River Area, Southeast Yukon
Mining District: Watson Lake
Date: October, 2003**

**YUKON ENERGY, MINES
& RESOURCES LIBRARY
P.O. Box 2703
Whitehorse, Yukon Y1A 2C8**

This report has been examined by
the Geological Evaluation Unit
under Section 53 (4) Yukon Quartz
Mining Act and is allowed as
representation work in the amount
of \$ 21,081.29.

fr *M. Barb*
Regional Manager, Exploration and
Geological Services for Commissioner
of Yukon Territory

SUMMARY

The Rock River Coal Licenses are located along the Rock River, centered roughly 110 km northeast of Watson Lake, in southeastern Yukon Territory. They cover the eastern half of NTS sheets 95D/11 and 95D/14. From July 18 to July 25, 2003 a two-person crew consisting of Scott Casselman (geologist) and Kel Sax (geological engineer) traversed the property by canoe down the Rock River and conducted numerous foot traverses to examine the area.

The area of the Rock River Coal Licenses has been explored for coal since 1980, when coal float was discovered along the Rock River by St. Joseph Explorations Ltd. Following the discovery, St. Joseph conducted a mapping and prospecting program and discovered a 10 m exposure of coal on the south bank of an eastward flowing tributary of the Rock River. St. Joseph later changed their name to Sulpetro Minerals Limited. The following year, Sulpetro conducted 717.8 of diamond drilling in 5 holes and down-hole geophysical logging. Significant thicknesses of coal (up to 4.7 m thick) were intersected in 2 holes spaced 900 m apart near the area of the coal outcrop. The following spring, Sulpetro conducted a program of line cutting and geophysical gravity surveying on wide-space (1.5 to 2 km), reconnaissance lines across the licenses for a total of 110 line-km. The survey identified 9 low-density gravity responses, possibly caused by coal beds.

The 2003 exploration program on the property involved prospecting traverses across each of the 9 gravity anomalies. The crew prospected in the area to determine the cause of the anomalies, looking for coal outcrop or float. Occasional coal float and coal sand was observed on many of the gravel bars in the Rock River and on the occasional tributary. The only coal outcrop observed was that discovered in 1980 by St. Joseph. At all other anomalies, bedrock was masked by variable, but significant thickness of Quaternary glacio-fluvial sediments estimated to be up to 40-50 m thick.

Recommendations for future work on the property are to delineate the coal beds more thoroughly, and collect samples of the coal over wider areas to determine its quality. This can be accomplished best by re-doing the gravity survey in the area with better topographic control using differential GPS surveying techniques and a tighter line spacing. This should allow for better interpretation of the overburden (till) cover and coal seam thickness and continuity. This would be followed by diamond drilling of the coal seams, down-hole geophysical surveys and sampling of the coal in drill core.

TABLE OF CONTENTS

Introduction 1
 Location and Access..... 1
 License Status..... 1
 Property History 4
 Regional Geology 4
 Property Geology 7
 2003 Exploration Program 12
 Conclusions and Recommendations..... 14
 References 15

LIST OF FIGURES

Figure 1 Property Location 2
 Figure 2 License Location Map 3
 Figure 3 Regional Geology 6
 Figure 4 Property Geology Map, North Sheet In Pocket
 Figure 5 Property Geology Map, South Sheet In Pocket

LIST OF PHOTOGRAPHS

Photo 1 Coal outcrop on tributary of Rock River..... 7
 Photo 2 Coal float on tributary of Rock River at north end of property..... 8
 Photo 3 Abundant coal float where coal outcrop tributary flows in to Rock River 9
 Photo 4 Varved glacial clay on Rock River (License CYL0006) 9
 Photo 5 Varved glacial clay on Tributary of Rock River (License CYL0007)..... 10
 Photo 6 Camp on Rock River 12
 Photo 7 Dead-fall on tributary of Rock River at north end of coal licenses..... 13
 Photo 8 Overgrowth on cut line on line 12 N and line 17 N (looking down the line) 13

APPENDICES

Appendix I Statement of Qualifications
 Appendix II Statement of Expenditures
 Appendix III Daily Crew Log

INTRODUCTION

This report documents the 2003 exploration program on the Rock River Coal Property. From July 18 to July 25, 2003 a two-person crew consisting of Scott Casselman (geologist) and Kel Sax (geological engineer) traversed the property by canoe down the Rock River and conducted numerous foot traverses to examine the area.

LOCATION AND ACCESS

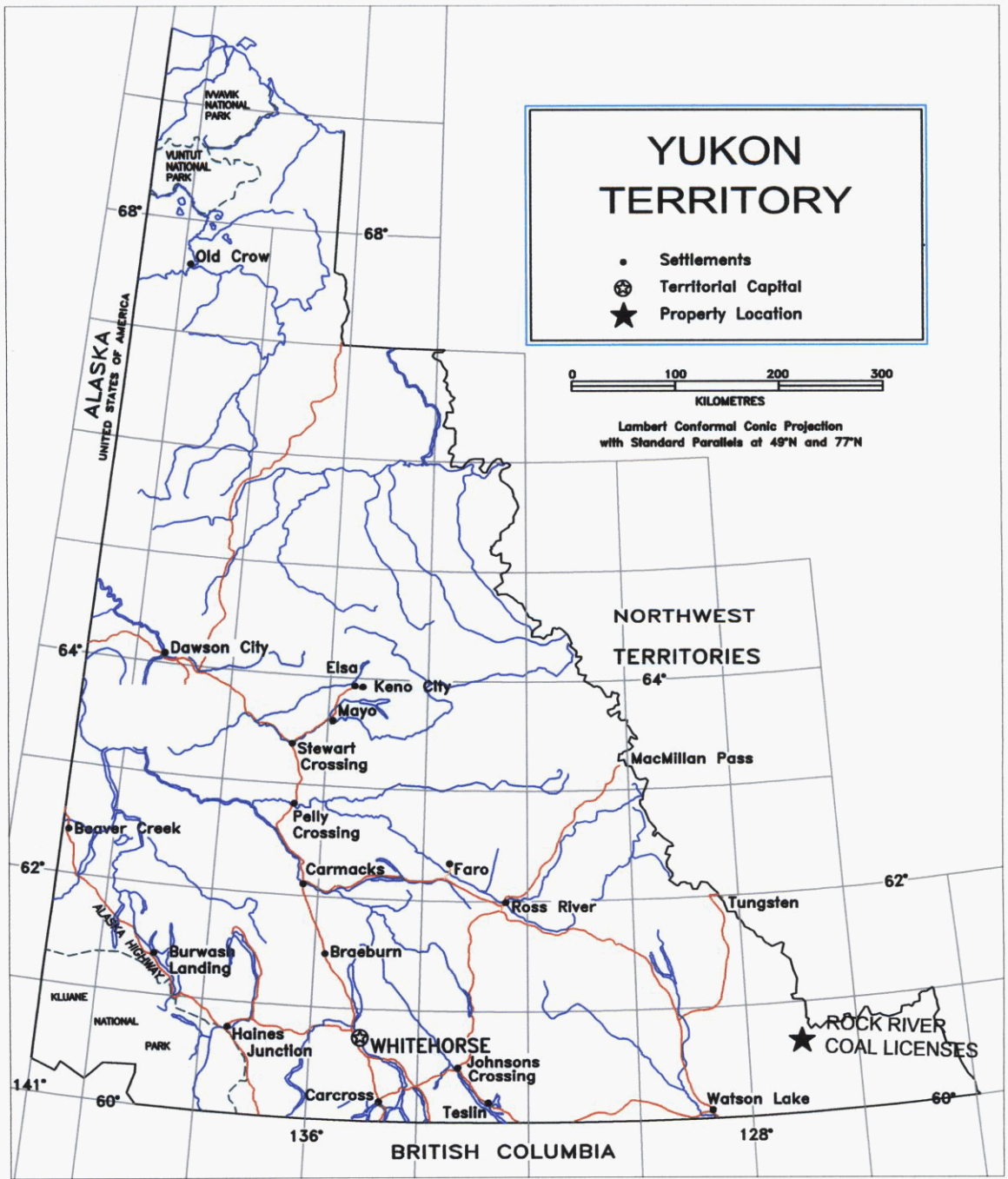
The Rock River Coal Licenses are located along the Rock River, centered roughly 110 km northeast of Watson Lake, in southeastern Yukon Territory. The property covers the eastern half of NTS sheets 95D/11 and 95D/14 from latitude 60° 30' to 61° 00' N and longitude 127° 00' to 127° 15' W.

The property is accessible by helicopter from Watson Lake. For the 2003 program, Cessna 185 float plane access to the river was scouted, but very few landing places were located. The Alaska Highway comes within 82 km of the southern boundary of the license block and the Nahanni Range Road that leads to the Cantung tungsten mine comes within 78 km of the northwestern corner of the block. Logging roads lead from the Alaska Highway, approximately 30 kilometers, to the Coal River, from there a cat trail continues another 15 km to the Otter River, 20 km south of the southern property boundary.

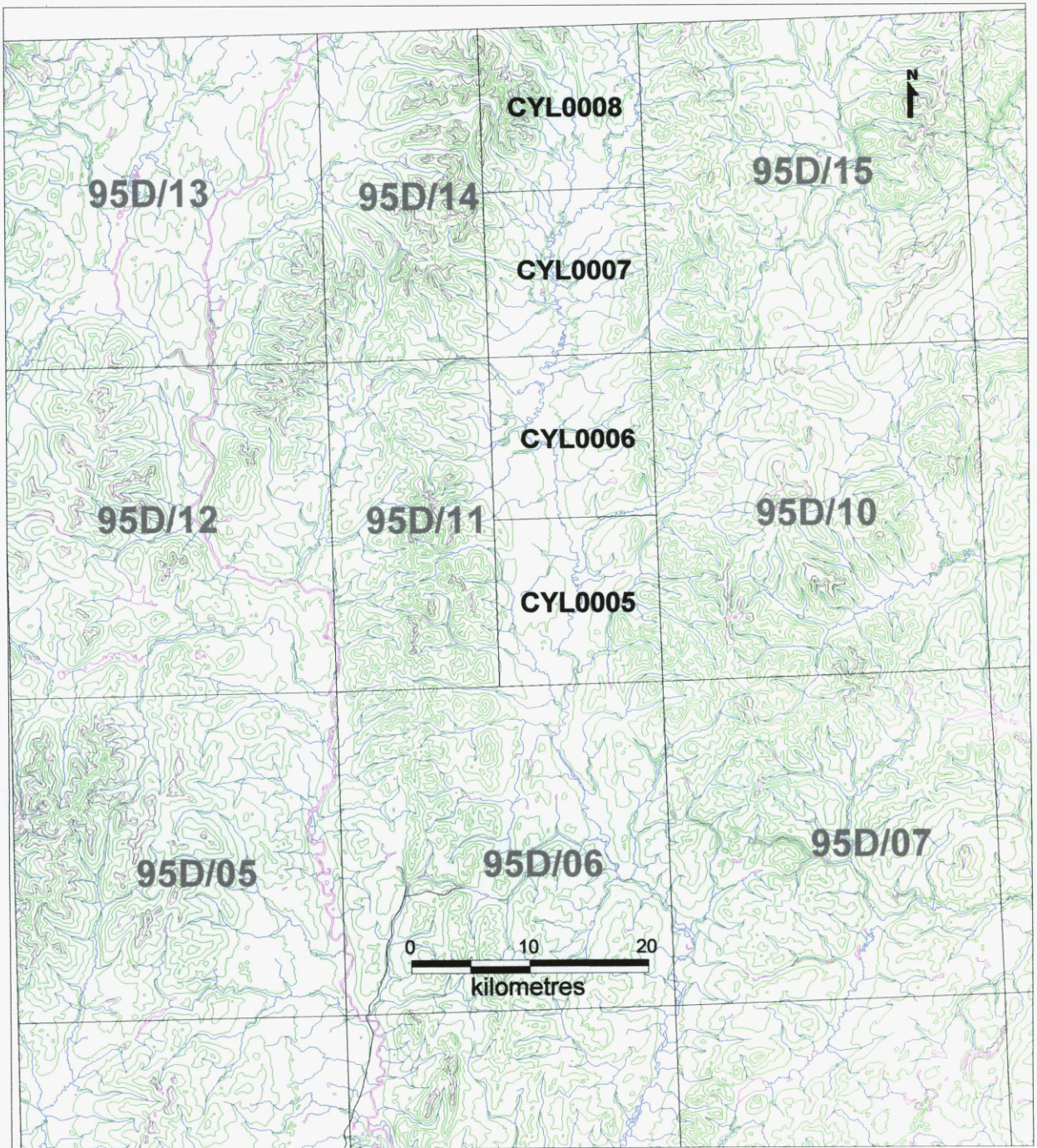
LICENSE STATUS

The Rock River Coal Property consists of 4 Coal Licenses in accordance with the Territorial Coal Regulations. Each license covers one-quarter (1/4) of a 1:50,000 NTS map sheet. The licenses are in the second (2nd) year of the 3-year license period. The sole registered owner of the licenses is Duane Poliquin of Vancouver, BC. License data is as follows:

License #	NTS Map Sheet	Acres
CYL0005	95D/11 SE	47,107
CYL0006	95D/11 NE	47,107
CYL0007	95D/14 SE	46,742
CYL0008	95D/14 NE	46,742



DUANE POLIQUIN	ROCK RIVER COAL LICENSES	
	MINING DISTRICT: WATSON LAKE	
	NTS: 95D/11, 14	SCALE 1: 6 000 000
	DRAWN BY: SGC	
PROPERTY LOCATION		
<i>Aurora Geosciences Ltd.</i>	DATE: 9 Oct 03	FIGURE: 1



**ROCK RIVER COAL PROPERTY
LICENSE LOCATION MAP
FIGURE 2**

AURORA GEOSCIENCES LTD

PROPERTY HISTORY

The first documented exploration for coal in the Rock River drainage basin was in 1980 by St. Joseph Explorations Ltd. On July 13, 1980, a St. Joseph exploration crew discovered coal float in the riverbed and later discovered a 10 m exposure of coal on the south bank of an eastward flowing tributary of the Rock River. Following this discovery, St Joseph applied for 8 coal licenses covering all of NTS sheets 95D/11 and 95D/14, which they received in July of 1980. In August of that year they undertook a mapping and prospecting program on the eastern portion of the property, along the Rock River. St. Joseph later changed their name to Sulpetro Minerals Limited.

The following year, Sulpetro conducted 717.8 m of diamond drilling in 5 holes and down-hole geophysical logging (density, gamma ray and neutron logs). Significant thicknesses of coal (up to 4.7 m thick) were intersected in 2 holes spaced 900 m apart near the area of the coal outcrop. Analysis of the coal found it to have a thermal content of 6,645 Btu/lb with 17.6% ash and 1.09% sulphur at equilibrium moisture (26.3%), suitable for a mine-mouth coal fired electric power generation plant. A rough reserve estimate based on the 2 drill holes and outcrop exposure was estimated at 60,000,000 tonnes (Miller, 1982).

The following spring, Sulpetro conducted a program of line cutting and geophysical gravity surveying on wide-space (1.5 to 2 km), reconnaissance lines across the licenses for a total of 110 line-km. The survey identified nine low-density gravity responses, three of which were large anomalies and thought to represent substantial volumes of carbonaceous material. Of the remaining six anomalies, three were moderately anomalous and three were weakly anomalous. However, economic conditions for pursuing the project were deemed unfavorable at the time, no further work was done and the permits were allowed to lapse.

In 2001, the current owner, Duane Poliquin, applied for and was granted 4 licenses, which comprise the current Rock River Property.

REGIONAL GEOLOGY

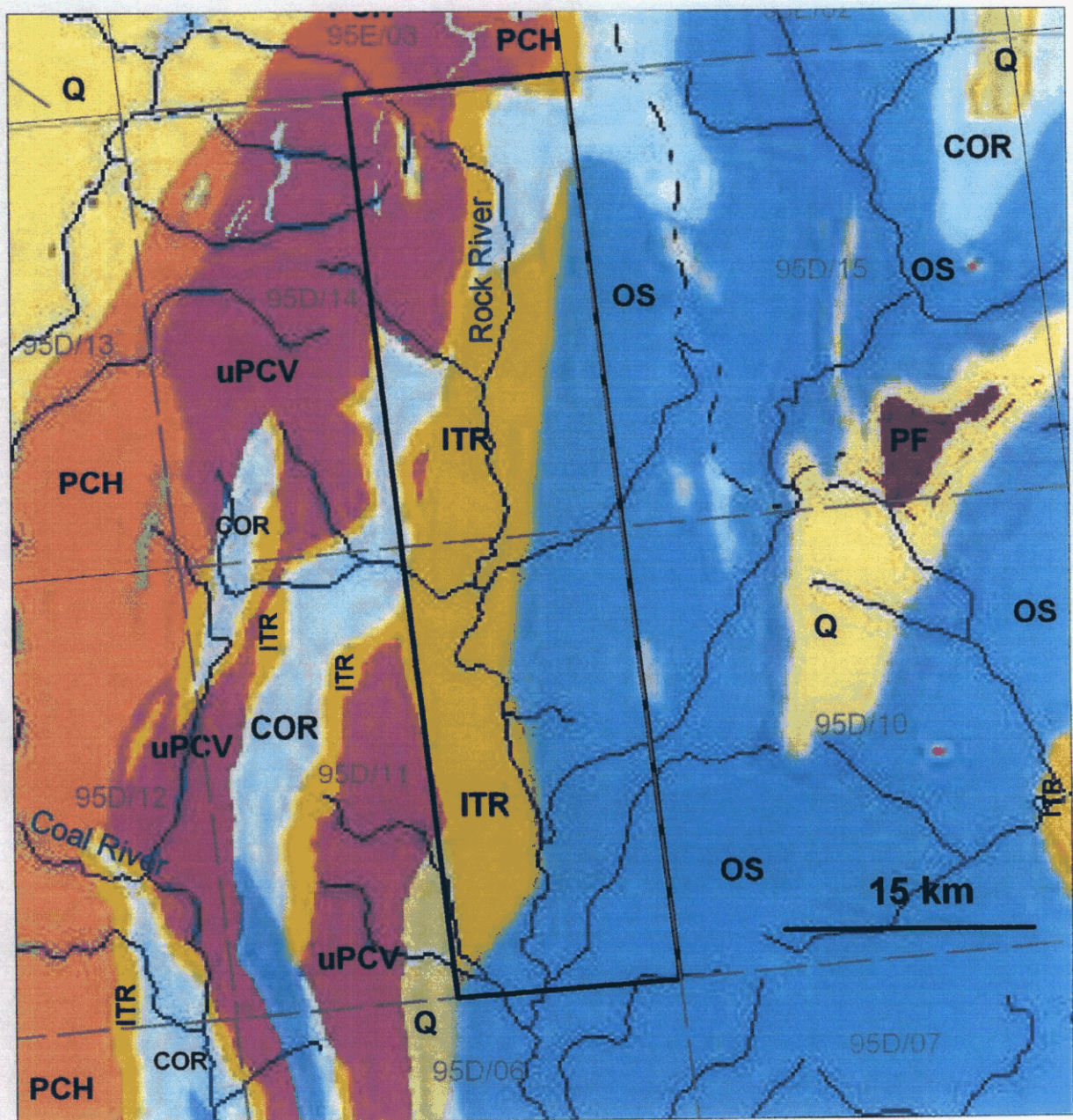
The coal licenses are within the Coal River Map Area (Gabielse and Blusson, 1969). The area is underlain by marine sediments deposited from Proterozoic to Carboniferous time. These are overlain by coal-bearing continental sediments deposited in restricted basins in the Upper Rock River and Coal River during Tertiary time (Figure 3). The sedimentary strata in the area were deformed during Late Jurassic to Upper Cretaceous Columbian Orogeny and again during the late Upper Cretaceous to Early Oligocene Laramide Orogeny. Major thrust faults in the area strike north-south and were directed eastward. The following descriptions and the Regional Geology Map (Figure 3) were taken from the Yukon Digital Geology by Gordey and Makepeace (1999).

The Oldest rocks in the area are Upper Proterozoic to Lower Cambrian Hyland Group turbiditic clastics, limestone and shale (PCH) and the Upper Proterozoic to Lower Cambrian Vampire Formation (uPCV). The Vampire Formation consists of dark brown weathering, thin bedded,

argillaceous fine-grained sandstone and siltstone, minor interbedded medium- to coarse grained white to grey orthoquartzite, phyllite, slate and argillite. These are overlain by Upper Cambrian and Ordovician Rabbitkettle Formation (COR), which consists of basal limestone and basal pelitic strata.

Overlying the Rabbitkettle Formation is the Middle Ordovician Sunblood Formation (OS), which consists of buff, rouge and light grey weathering, platy dolomite and limestone. The Permian Fantasque Formation (PF) unconformably overlies the Sunblood Formation east of the property. The Fantasque Formation consists of grey to black chert in medium to very thick beds separated by thin beds of shale, grey sandstone and mudstone.

The Coal River and Rock River basins are filled with Tertiary sediments and coal of the Ross Formation (ITR). This formation consists of moderately consolidated, brown, thin-bedded claystone, siltstone, shale and coal. All of the above units are overlain by Quaternary, unconsolidated glacial, glaciofluvial and glaciolacustrine deposits of silt, sand and gravel (Q).



- Q Quaternary - unconsolidated glacial silt, sand and gravel
- ITR Lower Tertiary - Ross Formation
- PF Permian - Fantasque Formation
- OS Middle Ordovician - Sunblood Formation
- COR Upper Cambrian and Ordovician - Rabbitkettle Fm
- uPCV Upper Proterozoic to Lower Cambrian - Vampire Fm
- PCH Upper Proterozoic to Lower Cambrian - Hyland Group

**ROCK RIVER COAL PROPERTY
REGIONAL GEOLOGY MAP**

Figure 3

AURORA GEOSCIENCES LTD

PROPERTY GEOLOGY

The Rock River coal property is underlain by Tertiary aged coal bearing sediments and Quaternary clay, silt, sand and gravel deposits. The Tertiary rocks are bounded by Paleozoic age rocks on all sides. Figures 4 and 5 illustrate the geology of the property and the photos below show some of the geological features observed during the 2003 program. The Table of Formations, below, is taken from Miller and Harrison and lists the formations in Figures 4 and 5.

The thickness of Tertiary rocks is unknown as there are very few exposures. Only one outcrop of coal has been discovered on the property to date. This is on License CYL0006, on the south bank of an eastward flowing tributary of Rock River (Photo 1). The outcrop is a 10 m thick coal seam dipping 15° westward. The coal is dull, dark brown to black with minor resinous material. It contains about 3% amber pellets in the lower part of the exposure. The 1981 drill program on the property traced this seam over 900 m in two drill holes. The seam is overlain by 10 m of glacial clay and a further 15 m of sand and gravel (Miller and Harrison, 1981).



Photo 1. Coal outcrop on tributary of Rock River.

Although this is the only coal outcrop on the property, coal float is observed along the Rock River and some tributaries indicating coal underlies substantial areas within the basin. Coal float was observed on the gravel bars from the helicopter set-out spot at Camp 1 (Photo 2) on the north end of the property, to the southern end of the property. The float is not continuous, but is concentrated in certain areas, mostly north of the coal outcrop. Abundant coal float was observed on the tributary with the coal outcrop and, in the Rock River where this tributary flows in (Photo 3). The distribution of coal float is shown on Figures 4 and 5.



Photo 2. Coal float on tributary of Rock River at north end of property.

Quaternary rocks overlying the Tertiary include glacio-fluvial sediments and fluvial sediments divided into six units (Miller and Harrison, 1981). The Quaternary deposits can reach significant thickness, especially in the valley bottoms as seen in eroded banks along the Rock River (Photos 4 and 5). The total thickness of Quaternary sediments is estimated to range from 15 to 80 m.

The Rock River thrust fault (Gabrielse and Blusson, 1969) occurs along the western side of the Tertiary basin and may be responsible for the development of the basin, which occurs on the down-faulted block east of the fault. Miller and Harrison interpreted north and northeast trending faults on the property based on topographic features such as escarpments, lineations and basin margins.



Photo 3. Abundant coal float where coal-outcrop tributary flows in to Rock River.



Photo 4. Varved glacial clay on Rock River (License CYL0006).



Photo 5. Varved glacial clay on Tributary of Rock River (License CYL0007).

Table of Formations
(to accompany Figures 4 and 5)

Cenozoic**Quaternary** (total thickness 15-80 m)

Rfl	Rock River fluvial gravels
Qtb	Till blanket
Qtk	Kame and kettle terrace
Qfp	Proximal ice marginal alluvial plain
Qfd	Distal marginal alluvial plain
Qlm	Lacustrine silt and clay
Qlv	Ice marginal lacustrine varved silt and clay
Fe	Ferruginous clay, iron seep

Tertiary

Tc	Coal outcrop
Tcf	Coal float
Tlb	Limestone breccia, carbonate regolith

Paleozoic**Devonian**

Db	Besa River Formation: shale, concretionary limestone
-----------	--

Ordovician

Osd	Sunblood Formation: dolomite, weathered dolomite, andesite breccia (Ot)
------------	---

Cambrian to Ordovician

Cor	Rabbit Kettle Formation: wavy banded silty, weathered limestone
------------	---

2003 EXPLORATION PROGRAM

The 2003 exploration program on the Rock River Coal Licenses consisted of prospecting the gravity anomalies identified by the 1982 gravity survey. The crew consisted of two geologists equipped with a minimal camp, a canoe and necessary mapping, sampling and safety equipment. The crew traveled down the Rock River by canoe and conducted day trips by foot into the area of each of the anomalies to look for outcrop and possible the causes of the gravity lows.



Photo 6. Camp on Rock River.

Prior to commencing the program, a float-equipped fixed-wing aircraft was sent from Watson Lake to scout potential set-out and pick-up spots on or near the river. At the north end of the property, the Rock River and its tributaries area quite narrow with numerous bends and dead fall across the water (see Photo 7). A suitable set-out spot for fixed-wing aircraft could not be located and the crew was set-out by helicopter from Watson Lake. At the south end of the property, a few possible spots were identified, but the pilot requested the crew to test water depths when traveling by in the canoe. Upon arrival at the south end of the property, the crew deemed the possible pick-up spots not suitable. Thus, the helicopter was required for the demobilization, as well.



Photo 7. Dead-fall on tributary of Rock River at north end of coal licenses.

The crew spent 7 days on the property. Traverses were planned to explore through the center of each of the gravity anomalies and in any creek beds cutting the anomaly to look for possible outcrop exposure. In most instances, the cut-lines from the 1982 geophysical survey were located, however, they were fairly overgrown and difficult to follow in places (Photo 8). In general, these cut lines were plotted fairly accurately.



Photo 8. Overgrowth cut line on line 12 N and line 17 N (looking down the line).

Due to the pervasive, thick cover of Quaternary sediments throughout the property the crew was not able to locate the cause of the gravity anomalies nor any new outcrop of Tertiary strata. In fact, the only Tertiary outcrop observed was the coal outcrop identified in the 1980 survey.

CONCLUSIONS AND RECOMMENDATIONS

The Rock River coal basin has the potential for a significant tonnage of thermal coal as indicated by previous mapping, drilling and gravity surveying in the area. Analysis of samples collected during the 1981 drill program on the property return a thermal content of 6,645 BTU/lb from unoxidized coal. This thermal content was deemed sufficient for a mine-mouth coal-fired electrical generation plant. The coal is also of sufficient hydrocarbon content to be considered for synthetic fuel extraction (Miller, 1982).

The 2003 exploration program on the property focused on exploring for coal outcrop and the cause of the nine gravity low anomalies identified in 1981. However, Significant thickness of Quaternary sediments were found to blanket the Tertiary rocks throughout the property, including any possible coal seams. To date only one outcrop of coal has been found on the property and it is located on a tributary of the Rock River on License CYL0006. Abundant coal float is found on many of the tributaries and in the Rock River from the northern to southern extent of the property indicating widespread and extensive sources.

The only gravity anomaly to be tested for a coal source is the anomaly over the coal outcrop on CYL0006. Drilling there indicates the seam to be at least 900 m long and up to 4.7 m thick. It is probable that most of the remaining gravity anomalies are caused by coal measures or carbonaceous mudstones in the Tertiary rocks.

Recommendations for future work on the property are dependent on establishing the economics of developing a coal mine for shipment of the product outside, a mine-mouth generating plant, or synthetic fuel extraction. Should this be viable the following program is recommended for establishing the reserves and determining quality of the coal:

- 1) Re-do the gravity survey on the property with tighter line-spacing and differential GPS surveying techniques to better define the anomalies and determine areas where there may be greater thickness of low-density coal. This should allow for better interpretation of the overburden (till) cover and coal seam thickness and continuity and will help to prioritize targets for drilling.
- 2) Drill test the gravity anomalies, conduct down-hole geophysical surveying and sample the coal intercepts to determine the thickness, extent and quality of coal.
- 3) Consider a seismic survey to help define quality coal measures for further exploration definition and potential mine reserve calculation.

Respectfully submitted

Scott Casselman, B. Sc., P. Geo.

REFERENCES

- Gabrielse, H and Blusson, S. L., 1969. Geology of the Coal River Map-Area, Yukon Territory and District of Mackenzie (95D), Geological Survey of Canada, Paper 68-38.
- Gordey, S. P. and Makepeace, A. J., 1999. Yukon Digital Geology. Exploration and Geological Services Division, Yukon , Indian and Northern Affairs Canada, Open File 1999-1 (D).
- Miller, D. C., 1982. Diamond Drilling Report, Coal Licence 118. Yukon Government Assessment Report # 062134.
- Miller, D. C. and Harrison, J. C., 1981. Geological Report on Coal Licences 115 to 122. Yukon Government Assessment Report # 062104.
- Wright, J. L., 1982. Rock River Coal Geophysics, Spring 1982, on Coal Licences 117, 118, 121 and 122. Yukon Government Assessment Report # 062132.

Appendix I

Statement of Qualifications

I, Scott Casselman, residing at 33 Firth Road, Whitehorse, Yukon Territory, Y1A 4R5, certify that:

- 1) I graduated from Carleton University in Ottawa, Ontario with a Bachelor of Science Degree in Geology in 1985.
- 2) I am a geologist employed by Aurora Geosciences Ltd. of Whitehorse, Yukon Territory.
- 3) I am a member of the Association of Professional Engineers and Geoscientists of British Columbia, Registration No. 20032.
- 4) I conducted the fieldwork described in this report on the Rock River Coal Property between July 18 and 26, 2003.

Dated this ___th day of _____, 2003, at Whitehorse, Yukon Territory.

Scott G. Casselman, BSc., P.Geol.

Appendix II

STATEMENT OF EXPENDITURES

Coal Licenses CYL0005 to CYL0008
NTS 95D/11 and 14

Contracting Costs		
Aurora Geosciences Ltd	- mobilization and demobilization	\$2,140.00
	- Daily survey costs incl. camp, food and canoe rental (\$1,025 x 7 days)	\$7,677.25
	- Report Preparation	\$2,354.00
	- Administrative charges	\$424.29
Helicopter Charter	- 6.7 hrs @ \$ 1132.38	7,586.95
Fixed Wing Charter		898.80
	Total	<u>21,081.29</u>

Appendix III

DAILY CREW LOG

**Crew: Scott Casselman
Kel Sax**

- July 16 Angus Air flies from Watson Lake to Rock River to scout out possible Drop-off points on north end of licenses, to check suitability of river for canoe travel and to look for a pick-up spot on the south end of the licenses.
- July 17 Scott reviews Sulpetro Assessment Reports from EMR library and delivers to Integraphics for photocopying. Contact Trans North Helicopters and Angus Air to arrange drop-off and pick-up. Pack gear and prepare maps. Kel arrives in Whitehorse at 1:00 PM and purchases food and supplies and arranges gear. Pack-up truck in late afternoon.
- July 18 Clear, sunny and hot. Scott and Kel leave Whitehorse for Watson Lake at 8:30 AM. Arrive in Watson Lake at 1:30 PM. Go to Trans North hanger to pick-up drum of fuel, go to Mining Recorder (Patti McLeod) to discuss program, go to Angus Air to arrange for pick-up on Saturday July 26. Drive up the Nahanni Range Road (Cantung Mine Road) and wait for helicopter to mob-in. Thunder heads and wind build in late afternoon and Helicopter gets stuck in Watson Lake due to bad weather. Scott and Kel camp in campground overnight.
- July 19 Clear, sunny and hot. Helicopter not available to mob in until afternoon. Pack-up gear in morning and read Sulpetro reports and prepare maps and traverses. Helicopter arrives at 3:00 PM and mobs us to Camp 1 at north end of Licences on small tributary of Rock River. On the way in we check-out the gravity anomaly on line 23N. The anomaly is in a swampy area with no outcrop and is in an area covered by glacial clays. Last load of gear arrives at 6:00 PM. Set-up camp and prepare dinner. Some small pieces of coal float noted on the gravel bar. Collect sample RR03-001 of float. After dinner traverse to gravity anomaly on line 21N. Area covered by abundant glacial clay and no outcrop observed. We are able to find the old cut line from 1981 gravity survey. Traverse south of the anomaly in a small creek bed looking for bedrock exposure with no luck, area appears to be covered by thick sequence of glacial clays. Return to camp at 9:30 PM.
- July 20 Clear, sunny and hot. Tear down camp and paddle down to Rock River. Lots of deadfall in creek and must line canoe and/or lift over logs with occasional small portage. Arrive at Camp 2 at 3:00 PM. Unpack gear and set-up tents. Traverse to gravity anomaly on line 19N. Spend some time looking for line with no luck. Traverse eastward to center of anomaly and locate line. Line is

plotted incorrectly on Sulpetro 1:50,000 compilation map, but is correct on 1:10,000 map. Traverse in creek beds in the area of the anomaly – no outcrop, only thick accumulations of very oozy, wet glacial clay. Return to camp at 7:00 PM.

July 21

Starts drizzling rain at about 4:00 AM and overcast and drizzly in morning. Stops raining around 11:00 AM and clears through day with a small shower at 3:00 PM. Pack-up camp in morning and paddle down Rock River to line 17N. Arrive in area around 11:30 AM. Have lunch and start traverse to gravity anomaly on line 17N. Traverse along creek on north side of anomaly – no outcrop, creek bed lined with glacial clay. Traverse to top of ridge, which is along a small esker. Kel continues along creek bed to the west and Scott traverses southwest looking for the old cut line. No outcrop found. Meet-up on west side of anomaly and swing southwards and east on way back to canoe. On return to Rock River encounter a cliff with approximately 15 m thick sequence of varved clay. Canoeing downstream from there, encounter a number of high cliffs of varved glacial clay in numerous bends in the river. The cliffs are as high as 25 to 30 m (took a few photos). Paddle down to Camp 3 at line 12N and set-up camp.

July 22

Clear, sunny and very hot. Traverse from Camp 3 to gravity anomaly on line 12N. Go up slope from river in area covered by silty-sandy till. On top of hill have similar material. From there Kel traverses up creek on north side of anomaly and Scott traverses in small stream flowing from south to north. Both streams cut through till with no outcrop. On way back to canoe locate the cut line and take a photo showing the condition of the old line. Mark the line with flagging where it comes out on river. Return to Camp 3 at 2:30, pack-up gear and paddle to Camp 4, arriving at 4:30. Note a marked increase of coal float along the river bed and in the tributary that leads to the coal outcrop in the area.

July 23

Clear, sunny and hot. Traverse up the creek with the coal outcrop and take a few photographs. Cliff with coal outcrop is approximately 13 m high and consists of predominantly coal with minor mudstone partings. Floor of creek is underlain by coal. The outcrop is topped by muddy till. Collect sample RR03-002 at outcrop, but only able to get weathered, soft and wet coal sample. Look for more coal exposed on north bank of stream, which is approximately 100 m north – none exposed. Continue upstream to the western edge of the gravity anomaly then traverse north into the next creek valley. Traverse down the creek back towards the Rock River. No outcrop observed, only clayey glacial till in creek bed and very little coal float. Return to camp at 2:30. Continue traverse to gravity anomaly on creek 2 km south of the coal outcrop to look for any possible exposure there. Stream is filled with glacial clays, no outcrop observed and very little to no coal float observed. Return to camp.

July 24

Very foggy in morning. Fog lifts by 10:00 AM. Pack-up camp and canoe down to southern most gravity anomaly on lines 4N and 5N. Arrive at north

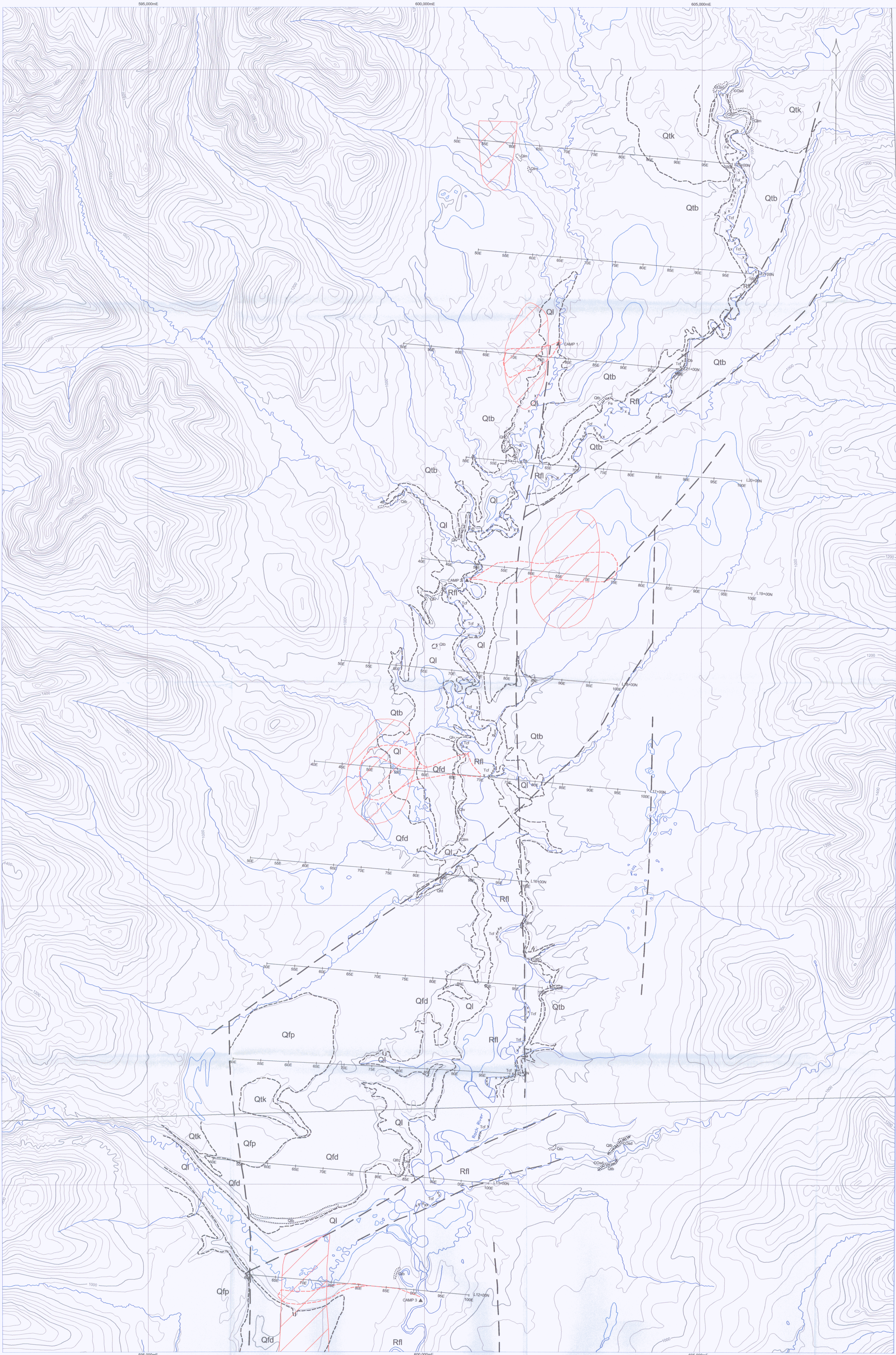
end of anomaly at 2:30 and traverse in area looking for outcrop. Observe only glacial clays. Canoe to southern end of anomaly and traverse there, observing only clays. Set-up camp on river.

July 25

Clear, sunny and hot. Pack-up camp in morning and paddle down stream to pick-up spot. Arrive at first possible pick-up spot around 1:00 PM. Spot is not adequate due to shallow water. Go to second spot, approximately 2 km down stream, still not adequate. Continue down stream and river gets narrower with small canyons and increasing number and severity of rapids. Have to line canoe through a few places. Finally find a spot that looks adequate at 5:30 PM. Set-up camp and wait for pick-up in morning.

July 26

Clear, sunny and hot. Fixed wing aircraft arrives in area at 7:00 AM, but does not land. Does about 4 passes then flies upstream and returns a few minutes later and flies downstream. It becomes apparent that he cannot land at this spot. We wait ½ hour and call the float base to discuss the situation. Fixed wing could not land at the spot because it was too short and he did not locate and adequate spot nearby. It is decided to call in the helicopter from Watson Lake and he arrives at 10:00 AM. Demob crew and camp to Watson Lake. Pick-up truck and load gear and depart for Whitehorse at 3:30 PM. Arrive in Whitehorse at 8:30 PM.

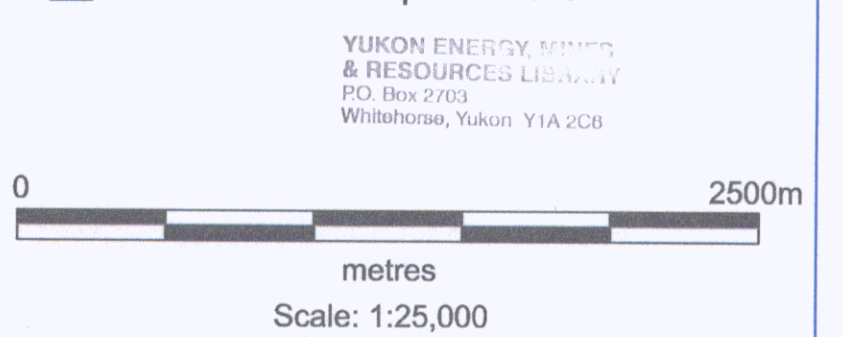


GEOLOGY LEGEND

- CENOZOIC**
- QUATERNARY RECENT**
- Rfl** Rock River fluvial gravels (possible coal subcrop)
 - Qtb** Till blanket, till veneer
 - Qtk** Kettle and kame terrace
 - Qfp** Proximal ice marginal, alluvial fan
 - Qfd** Distal ice marginal, alluvial plain
 - Ql** Qlm - lacustrine silt and clay
Qlv - ice marginal lacustrine varved silt and clay
 - Fe** Ferruginous clay Fe seep
- TERTIARY**
- Tc** Coal, Tcf - coal float
 - Tib** Limestoned breccia, carbonate regolith, weathered Paleozoic basement
- PALEOZOIC**
- DEVONIAN**
- Db** Besa River Formation
Shale, concretionary limestone
- ORDOVICIAN**
- Cosd** Sunblood Formation
Dolomite, weathered dolomite
 - Ot** Andesite, andesite breccia
- CAMBRIAN AND ORDOVICIAN**
- Cor** Rabbit Kettle Formation
Wavy, banded, silty weathered limonitic limestone

LEGEND

- X Coal float location
- Outcrop
- - - Geological contact
- - - Fault
- - - 2003 Traverse Locations
- ▲ 2003 Camp Locations



094452

DUANE POLIQUIN
ROCK RIVER COAL PROJECT
PROPERTY GEOLOGY MAP
North Sheet
Figure 4

NTS: 95 D/14 Datum: NAD 83, Zone 9
 Mining District: Watson Lake
 Date: 03 Oct 27 Job: AMH-03-001-YT
 Aurora Geosciences Ltd.

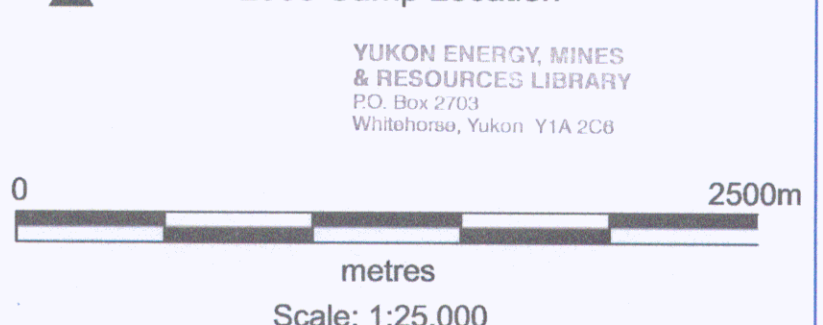


GEOLOGY LEGEND

- CENOZOIC**
- QUATERNARY RECENT**
- Rfl** Rock River fluvial gravels (possible coal subcrop)
 - Qtb** Till blanket, till veneer
 - Qtk** Kettle and kame terrace
 - Qfp** Proximal ice marginal, alluvial fan
 - Qfd** Distal ice marginal, alluvial plain
 - Ql** Qlm - lacustrine silt and clay
Qlv - ice marginal lacustrine varved silt and clay
 - Fe** Ferruginous clay Fe seep
- TERTIARY**
- Tc** Coal, Tcf - coal float
 - Tib** Limestoned breccia, carbonate regolith, weathered Paleozoic basement
- PALEOZOIC**
- DEVONIAN**
- Db** Besa River Formation Shale, concretionary limestone
- ORDOVICIAN**
- Cosd** Sunblood Formation Dolomite, weathered dolomite
 - Ot** Andesite, andesite breccia
- CAMBRIAN AND ORDOVICIAN**
- Cor** Rabbit Kettle Formation Wavy, banded, silty weathered limonitic limestone

LEGEND

- X** Coal float location
- Outcrop
- - -** Geological contact
- - - - -** Fault
- - - - -** 2003 Traverse Locations
- ▲** 2003 Camp Location



DUANE POLIQUIN
 ROCK RIVER COAL PROJECT
 PROPERTY GEOLOGY MAP
 South Sheet
 Figure 5

NTS: 95 D/11 Datum: NAD 83, Zone 9
 Mining District: Watson Lake
 Date: 03 Oct 27 Job: AMH-03-001-YT
 Aurora Geosciences Ltd.

6,710,000mN 6,720,000mN 6,730,000mN 6,740,000mN 6,750,000mN

595,000mE 600,000mE 605,000mE

094452