

**GEOCHEMICAL REPORT
ON THE
OC CLAIMS**

Watson Lake Mining District, Y.T.
NTS 105G/11
(61°31'75"N, 131°03'W)

for

094427

ENTOURAGE MINING LTD.
212 - 525 Seymour Street
Vancouver, B.C. V6C 3H7
(604)688-8286

&

EXPATRIATE RESOURCES LTD
701 - 525 Howe Street
Vancouver, B.C. V6C 2B3
(604)682-5474

by

CARL G. VERLEY, P.Geo.
Amerlin Exploration Services Ltd.
2150 - 1851 Savage Road
Richmond, B.C. V6V 1R1
(604)821-1088

December 17, 2003

CLAIMS: OC 1 - 62 GRANT No's: YB94385-YB94400
OC 17 - 62 YC22501-YC22546
LOCATION: 203 kilometres north of Watson Lake, Y.T.
DATE: September 19, 2003

YUKON ENERGY, MINES
& RESOURCES LIBRARY
P.O. BOX 2703
WHITEHORSE, YUKON Y1A 2C6

TABLE OF CONTENTS

SUMMARY & CONCLUSIONS	2
INTRODUCTION	3
Location & Access	3
History	3
PROPERTY	4
GEOLOGY	5
Regional	5
Property	11
SOIL GEOCHEMISTRY	13
REFERENCES	16
APPENDICES:	
A. Geochemical Data	
B. Writer's Certificate	

Figures

Figure:

1 Property Location Map	1
2 Claim Map	4
3 Regional Tectonic and Stratigraphic Relationships, Finlayson Lake area	8
4 Geology Legend	9
5 Regional Geology	10
6 Property Geology	12
7 Soil Sample Location Plan	14
8 Be in Soils	15

Tables

Table:

1 Mineral Claims	4
2 Ranges of Analytical Results	13

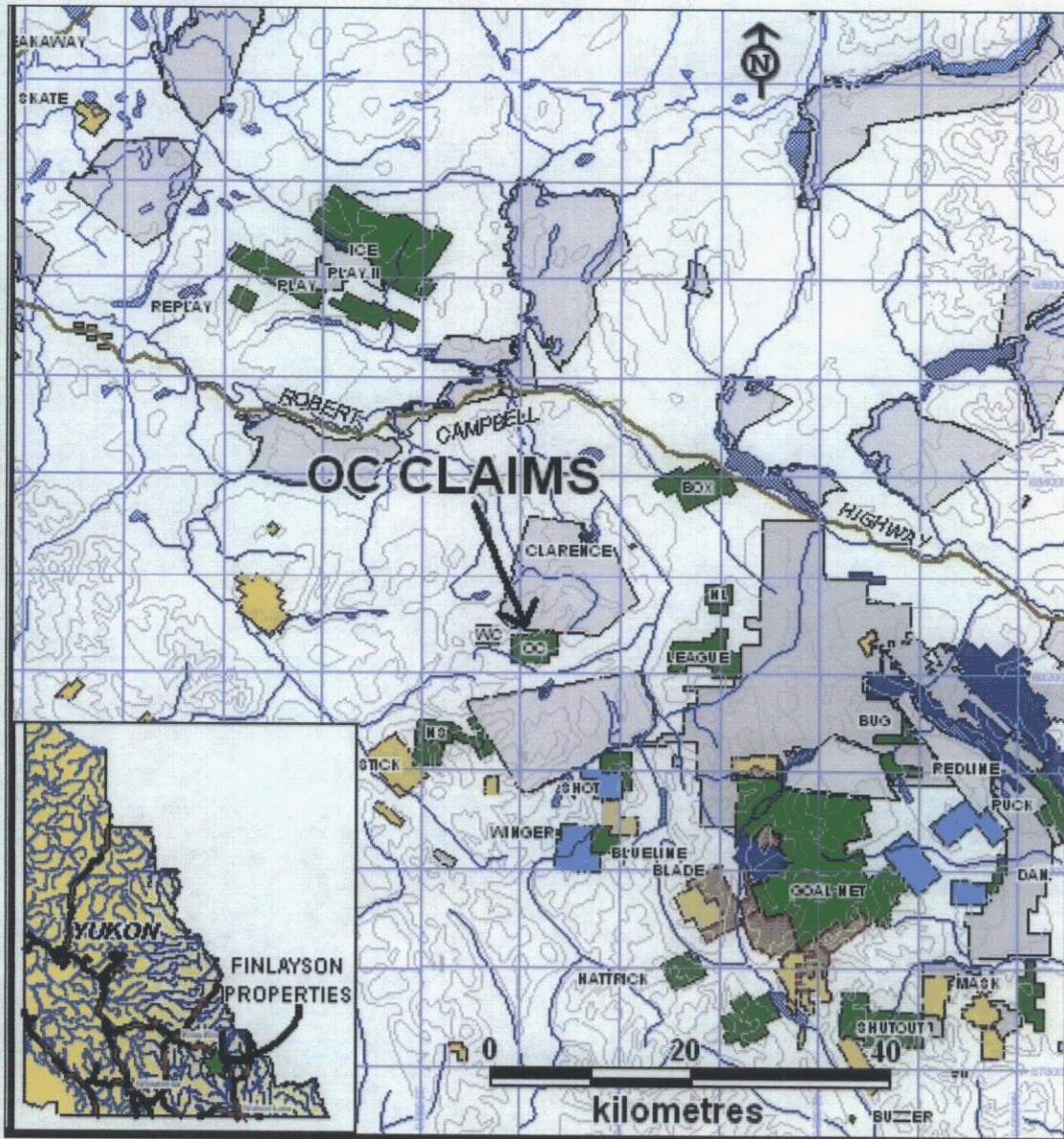


Figure 1: PROPERTY LOCATION MAP

SUMMARY & CONCLUSIONS

Entourage Mining Ltd. has an option to earn an interest in gem materials on 62 contiguous mineral claims centered 203 kilometres north of Watson Lake, in the Pelly Mountains, Watson Lake Mining District (105G/11), Yukon Territory. The property is accessible by helicopter.

The claims are underlain by Paleozoic metasediments and volcanics of the Grass Lakes succession of the Yukon-Tanana terrain. Intrusive into the metamorphic rocks on west side of the property are Cretaceous granitic rocks on the east side of the property a lens of ultramafic rocks occur in the metamorphic succession.

During the 2003 field season a program of soil sampling (72 samples) was conducted on the claim group. The results of this work suggest that only background levels of the elements analysed (Be, Cu, Mo, Ni, Cr) are present in the soils on the claims. It is unlikely that at these levels beryl-mineralized areas are reflected in the sample results. On the assumption that the sampling and analytical techniques produce reliable Be data, it is concluded that there is only a very low probability for locating emerald on that part of the property which was tested. The eastern part of the claim block, where ultramafics have been mapped, should be prospected and sampled.

Respectfully submitted,
Amerlin Exploration Services Ltd.

S/n "Carl G. Verley"

Carl G. Verley, P.Geo.

Richmond, B.C.
December 17, 2003.

INTRODUCTION

This report describes the results of a work program conducted by the writer for Entourage Mining Ltd. on September 19, 2003. The object of this work was to collect soil samples and test these for elevated levels of beryllium. The fieldwork was conducted by the writer, Kenneth Hicks, P.Ge., Marcus Vanwermuskerkin, P. Geo. and Gregory B. Sinitsin. Helicopter support was provided by Kluane Airways Ltd.

LOCATION & ACCESS

The claims are centered 203 kilometres north of Watson Lake in the Logan Mountains, Watson Lake Mining District, Y.T. at latitude 61°31'75"N and longitude 131°03'W. The property is situated on map-sheet 105G/11. The ground covers terrain of low rolling hills: it is predominantly alpine, however lower elevations have a sparse cover of boreal forest growth consisting of sparse pine and spruce. Elevations on the claims range from 1400 to 1750 metres above sea level.

The property is 30 km to the southwest of the Robert Campbell highway, but is best accessed by helicopter.

HISTORY

There are no records of work having been conducted directly for emerald exploration on property in the past. However, to the east on the LEAGUE claims, considerable exploration of base metals has been undertaken (Eaton, 1997 and Wengzynowski, 2000).

PROPERTY

Entourage Mining Ltd. has an option to earn a 60% interest in any gem materials it finds on 62 full sized mineral claims, located in 1 contiguous block as tabulated below and illustrated on Figure 2. The claims are located in the Mink Creek area, Watson Lake Mining District, Y.T. (NTS 105G/11).

Table 1. MINERAL CLAIMS

Claims	Grant Numbers	Expiry Date*
OC 1 to 16	YB94385-YB94400	November 21/2005
OC 17 to 62	YC22501-YC22546	November 21/2005

*Pending acceptance of assessment work.

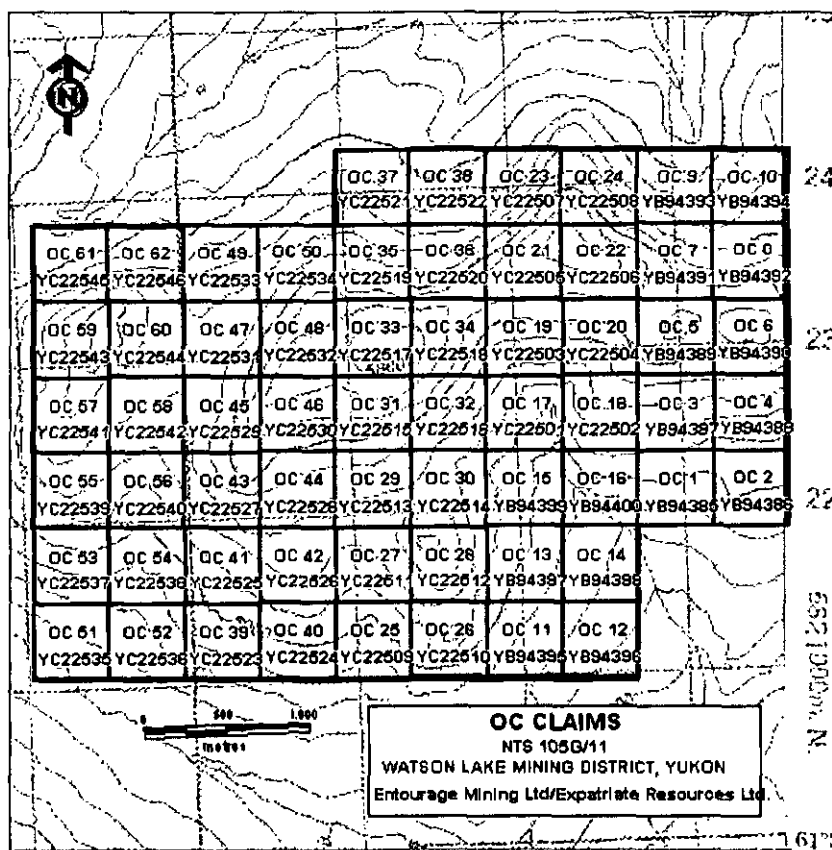


Figure 2: CLAIM LOCATION MAP

GEOLOGY

Regional:

Geological mapping on a regional scale has been conducted in the Finlayson Lake area by Wheeler *et. al.* (1960) and Tempelman-Kluit (1977). A reinterpretation of the regional geology by Mortensen and Jilson (1985) clarified the significance of the complex metamorphosed stratigraphy and demonstrated that rocks in the area could host volcanogenic massive sulphide mineralization. Following the recent discoveries at Kudz Ze Kayah and Wolverine Lake, a 1:50,000 scale mapping program was completed covering the Grass Lakes map sheet (105 G/7) (Murphy, 1997) and Wolverine Lake (105 G/8) (Murphy and Piercey, 1998). Murphy and Piercey (1999) describe a unified stratigraphy for the Finlayson Lake area and identify horizons favourable for volcanogenic massive sulphide mineralization. Mortensen (1992) summarizes the dominant view of the tectonic evolution of the Yukon-Tanana Terrane in this study area. The most recent synthesis of the bedrock geology was compiled in 2002 (Murphy et al, 2002) and this compilation is used as the framework for geological descriptions herein. A schematic illustration of stratigraphic and some structural relationships is illustrated in Figure 3; a geology map legend is found in Figure 4; lastly regional geology is illustrated in Figure 5.

The oldest rocks in the project area make up the Devonian to Mississippian Grass Lakes succession. The Inconnu thrust has juxtaposed this package of rocks against North American miogeoclinal sequences to the east. The base of the Grass Lakes succession consists of Upper Devonian and older(?) psammitic schist and marble (Dq, Dqm). To the southeast of the OC claims, beryl mineralization is located in float on the LIGHT claim block in what has been mapped as Dq unit schists. Overlying this are mafic metavolcanic rocks of the Upper Devonian Fire Lake unit (DF). Fire Lake rocks contain emerald (beryl) mineralization at Regal Ridge – just to the south of one of the Finlayson Properties (GOAL NET claim block). Besshi style copper-zinc mineralization also occurs in mafic metavolcanic rocks of the Fire Lake unit. The overlying Upper Devonian Kudz Ze Kayah unit (DK) consists of felsic meta volcanics. It hosts Kuroko-style Cu-Zn mineralization at the Kudz Ze Kayah and satellite deposits, which are found in the upper portion of the unit, in a sequence of marine clastic rocks overlain by felsic volcanic,

volcaniclastic and submarine sedimentary rocks. Widespread exhalite deposition (DMcp), extending from Upper Devonian to lower Mississippian time, at the top of the Kudz Ze Kayah was derived from hydrothermal activity at a number of centers during the waning stages of a regional volcanic event. Rock units of the Grass Lakes succession are found on the OC claims.

The lower Mississippian Wolverine succession unconformably overlies Grass Lakes units. The Wolverine succession is marked by the deposition of immature marine clastic rocks (MWf) that are evidence of uplift, deformation and erosion. This was followed by renewed pelagic sedimentation preceding a second pulse of felsic volcanism, which is preserved near Wolverine Lake. Carbonaceous argillites are capped by rhyolite and subvolcanic feldspar porphyry, which developed in centres throughout a small basin. Volcaniclastic, pelagic sediments and interbedded exhalite rock units in turn overlie these volcanic centres. At the Wolverine deposit volcanic-sediment hosted massive sulphide mineralization is preserved at the contact between volcaniclastics and overlying sediments (Bradshaw et al., 2003) All significant massive sulphide mineralization located to date in the Finlayson Lake area occurs within either the felsic volcanic rock sequences preserved as Unit DK or associated with the carbonaceous shales of Unit MWf.

Overlying Grass Lakes and Wolverine succession rocks and in thrust contact along the Money Creek thrust, are rocks of the lower Mississippian to Pennsylvanian Tuchitua succession. Tuchitua rocks consist of intermediate volcanics at the base overlain by limestone and quartzite. A sequence of Pennsylvanian dark grey phyllite, chert and clastic rocks unconformably overlies the Tuchitua. Carboniferous age Finlayson succession rocks, consisting of dark grey phyllite, chert, clastic rocks and marble are inferred to be situated as a thrust wedge between the Jules Creek and Inconnu thrusts. Unconformably overlying Finlayson and Pennsylvanian age rocks are Lower Permian Campbell Range basalts. Middle Permian to Triassic age conglomerate, siltstone and basalt unconformably overlie the Campbell Range basalts.

Rocks of the North American Miogeocline consist primarily of carbonates and clastics ranging in age from Silurian to Triassic.

Intrusive into Yukon-Tanana and to a lesser extent the miogeoclinal rocks of the North American platform are a variety of intrusives ranging in age from late Devonian to Tertiary and varying in composition from ultramafic to granite. Locally, in the northwestern part of the project area extrusive equivalents of the Cretaceous and Tertiary intrusives are exposed as tuffs

and basalts respectively. Late Devonian mafic and ultramafic rocks, previously mapped as imbricated thrust slices (Tempelman-Kluit, 1979) are now, in many instances, believed to be intrusive into Yukon-Tanana rocks as sills and stocks. These units are believed to be the primary source for chromium in the emerald located at Regal Ridge. Mid-Cretaceous granites that also intrude Yukon-Tanana are known to be associated with tungsten, molybdenum, copper and tourmaline mineralization. These intrusives are also the prime source for beryl found in quartz-tourmaline veins and in pegmatite to aplite apophyses adjacent to the granites. Tertiary age quartz-feldspar-biotite porphyry sills and dykes may also be implicated by proximity in the emerald story.

Rocks in the study area have been affected by several deformational events and the structure is locally complex. On the whole, rocks dip northeast, exposing progressively older rocks in the Pelly Mountains, southwest of Finlayson Lake. Units 1 through 4 are affected by two deformational events. An initial F1 foliation, subparallel to bedding, is restricted to Units 1 through 4. The subsequent F2 foliation is associated with upright northeast to northwest striking folds and is most apparent in the axial zones of minor folds. The F2 foliation is found in all Yukon-Tanana Terrane rocks in the project area. Widespread east and northeast trending normal faults with minor displacement are present across the project area .

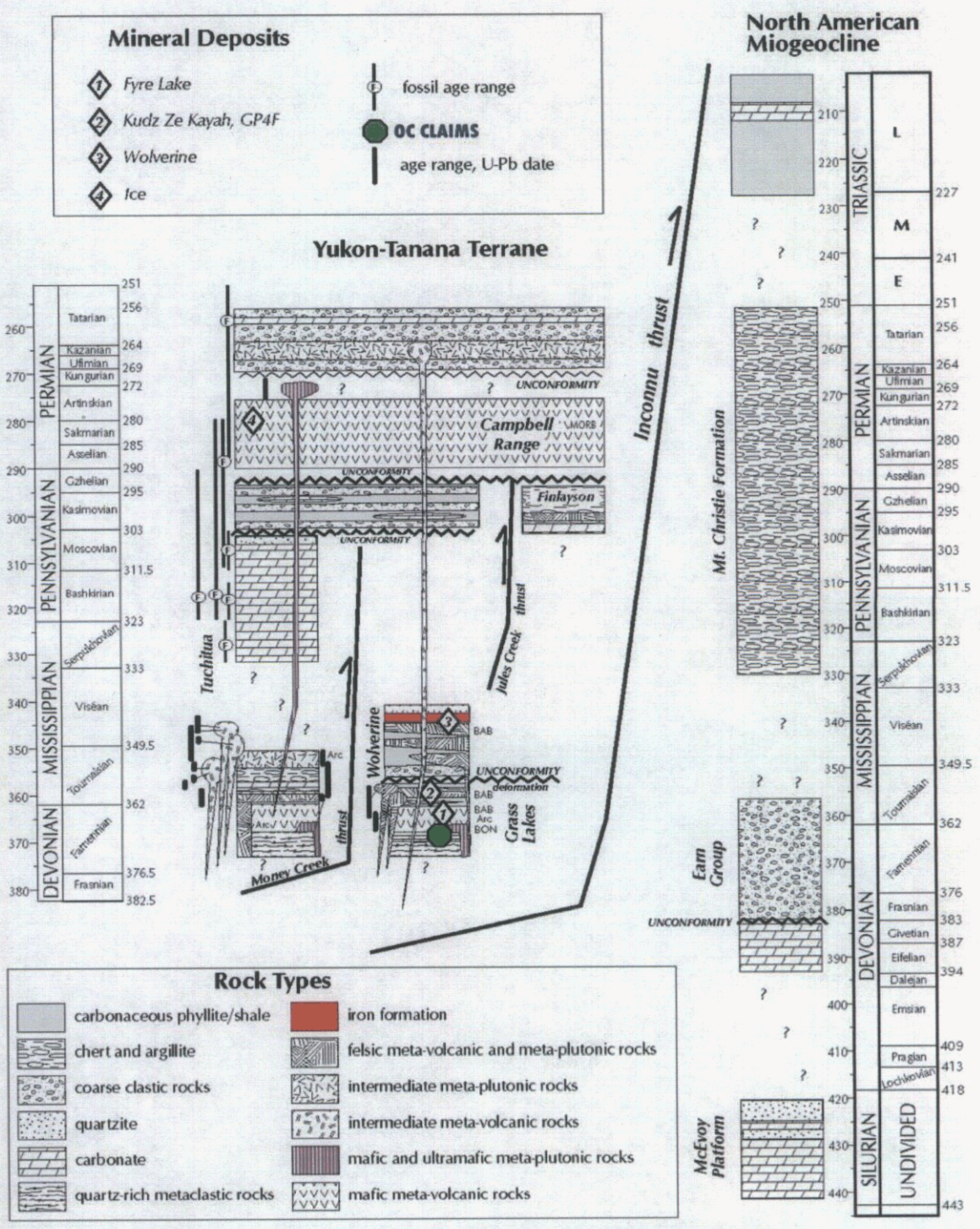
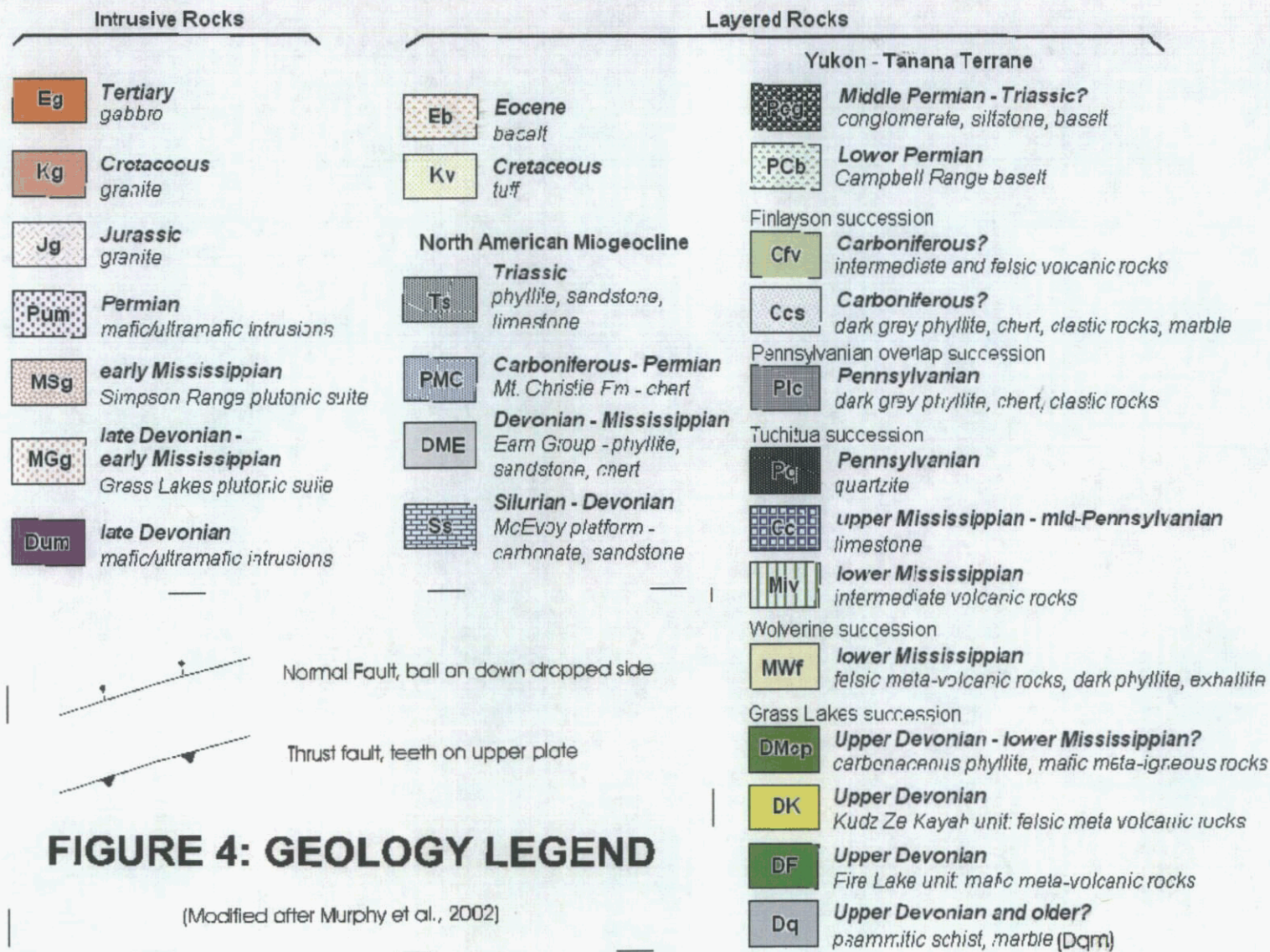


Figure 3: Stratigraphic and tectonic relationships



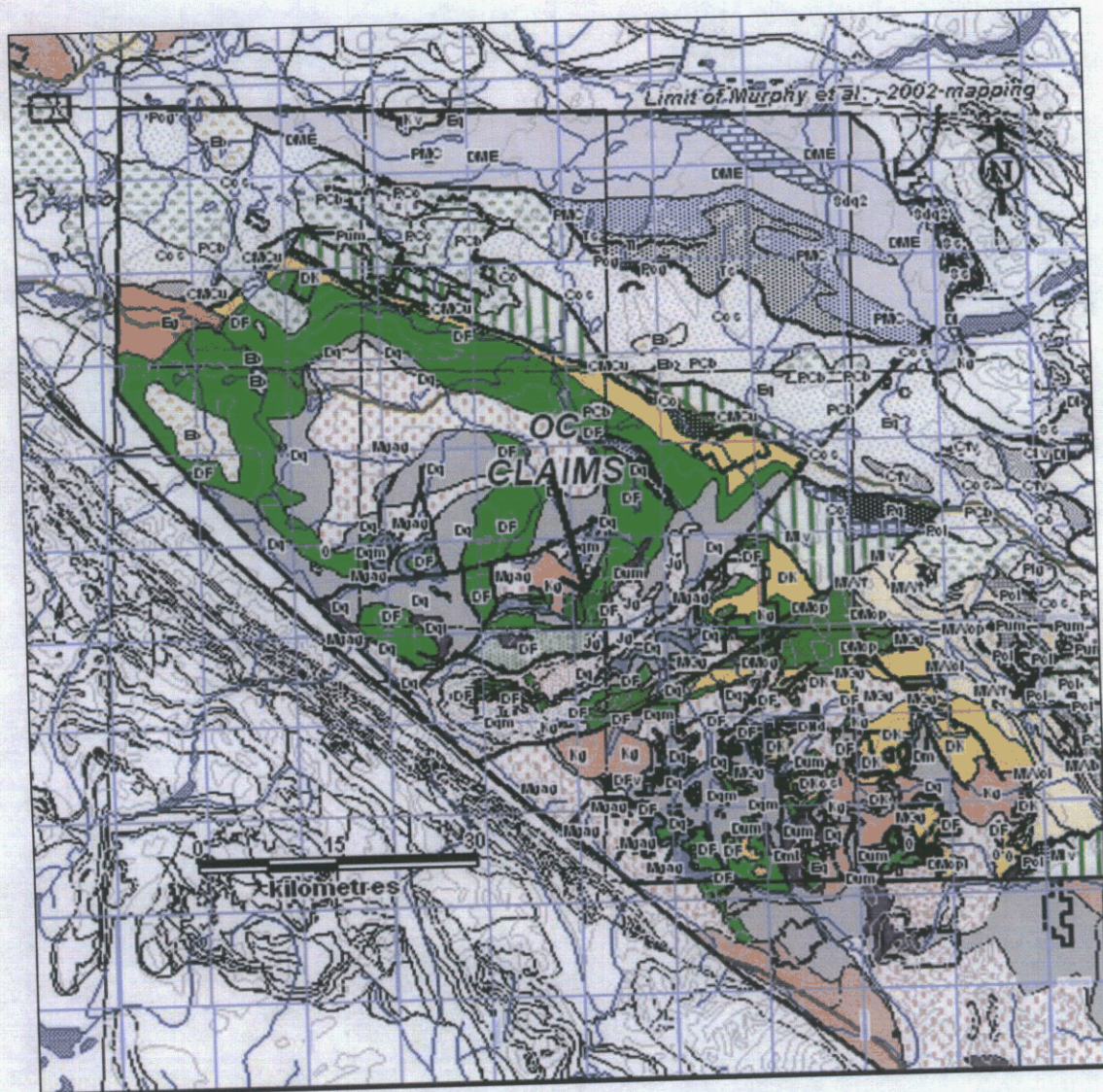
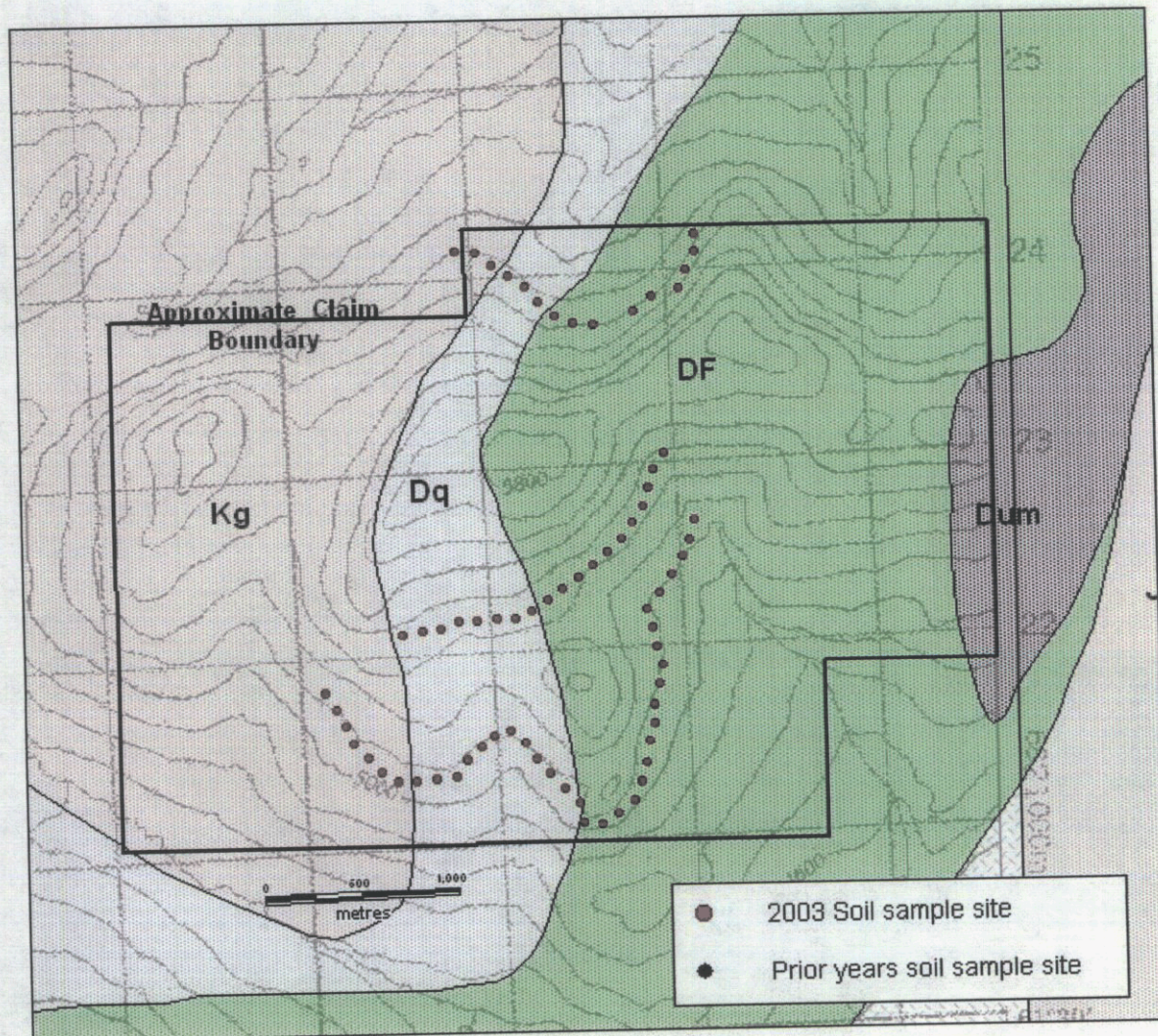


Figure 5: Regional geological setting OC claims

Property:

Geology of the OC claims as illustrated in Figure 6 is taken from Murphy et al.(2002). The property is underlain mainly by basal units of the Grass Lakes succession; namely, metapsammities (Dq) and Fire Lake metavolcanics. Also occurring within the metamorphic succession on the east side of the ground is a lens of ultramafic rocks. Intrusive into the succession on the west side of the claim block a Cretaceous granitic body is mapped.

The Fire Lake metavolcanics host emerald at Regal Ridge. The proximity of this unit to granitic intrusives is also thought to be favourable for the formation of emerald. It was on this basis that the OC claims were staked and that soil lines were laid out to test the area for elevated beryllium levels that might be indicative of beryl and therefore emerald.



LEGEND:

- Kg Cretaceous granite
- Jg Jurassic granitic pluton
- DUM Devono-Mississippian Ultramafic and mafic metavolcanics
- DF Fire Lake metavolcanics
- Dq metapsammitic rocks

**Entourage Mining Ltd.
Geology - OC Claims**

Mink Lake map-sheet, NTS 105G/11
Watson Lake Mining District, Yukon

Figure 6.

SOIL GEOCHEMISTRY

A total of 72 soil samples were collected along lines following elevation contours at 1550, 1585 and 1630 metres ASL that weave through the central part of the claim block, in areas underlain by metasediments and metavolcanics close to the intrusive contact. The samples were collected at 100 metre intervals. Samples sites were flagged and locations were recorded with global positioning instruments.

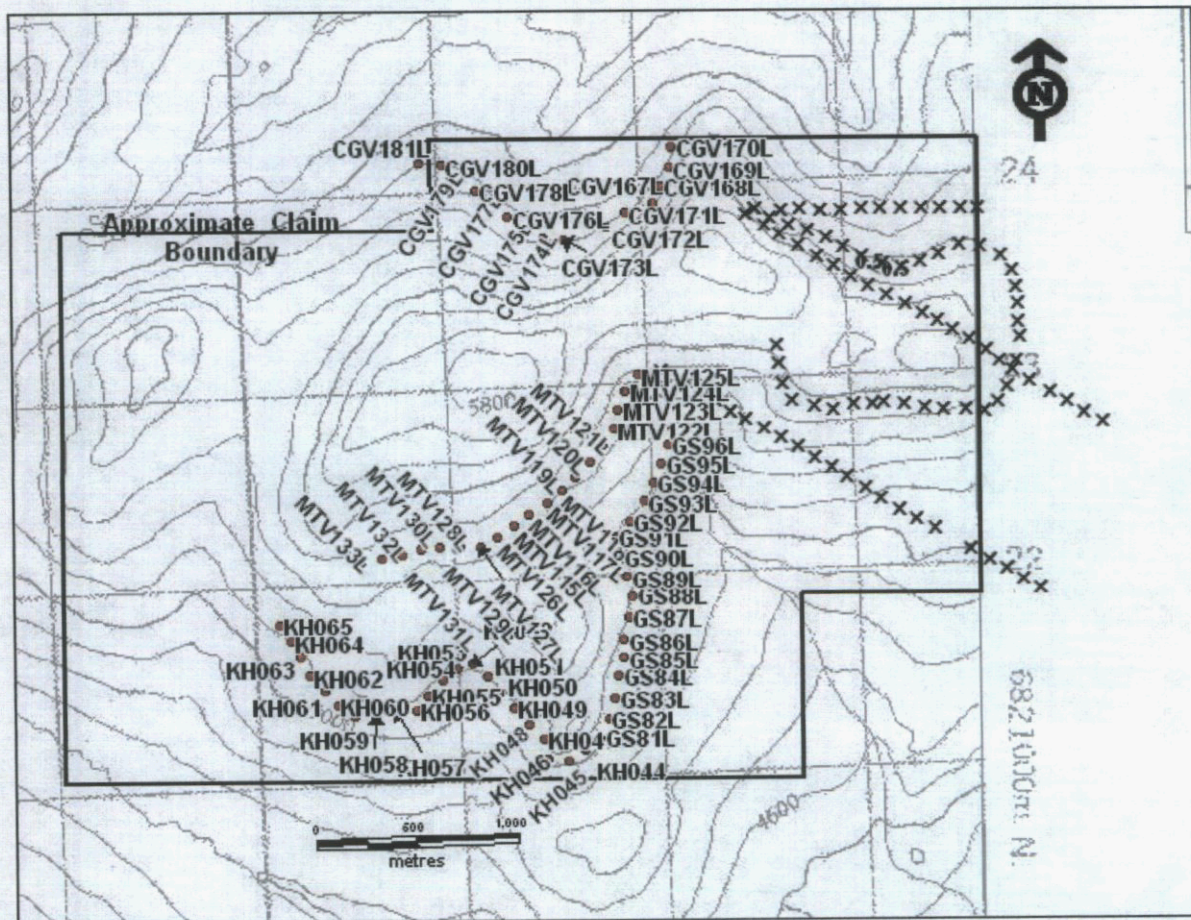
Samples were dried at the camp and then shipped to Pioneer Laboratories in Richmond, B.C. There the samples were sieved. A 0.25 gm aliquot the -80 mesh fraction was digested with HCl-HNO₃-HF. The resulting solution was analysed by ICP/ES for Be, Cr, Cu, Mo and Ni. The digestion is not total and therefore results can only be viewed as semi-quantitative. However, the solution used was stronger than that used for the digestion of samples and subsequent ICP analysis by previous explorers of the LEAGUE claims and therefore should give a better idea of relative levels of the elements analyzed.

Ranges of the analytical results are tabulated below. Sample locations are plotted on Figure 7 and beryllium results are plotted on Figure 8. Data for other elements is found in Appendix A.

Table 2: Ranges of Analytical Results

Element	Range (in ppm)
Be	1 – 7
Mo	1 – 6
Cu	2 – 75
Ni	2 – 152
Cr	10 – 428

The ranges are interpreted to represent variations that would be expected for background levels of the elements in question.

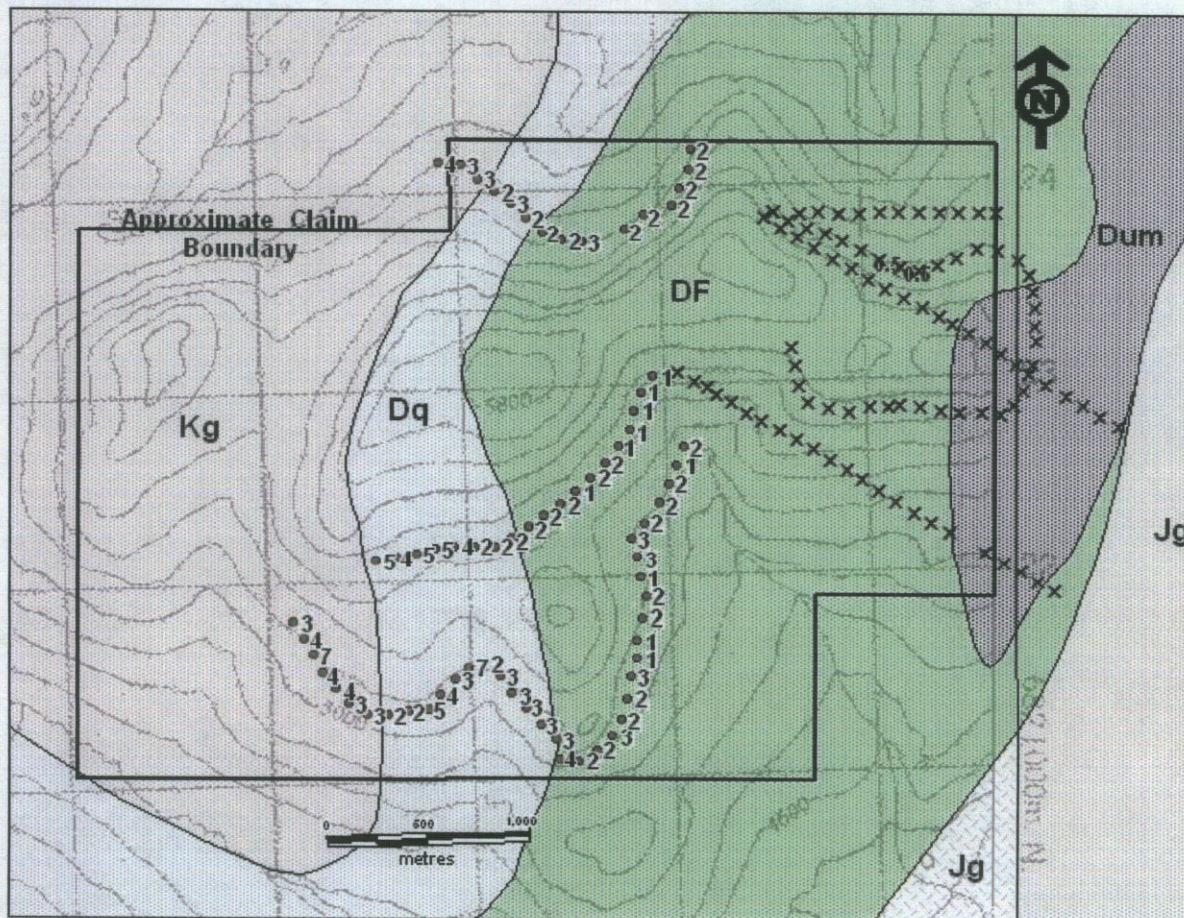


EXPLANATION:

- 2003 Soil sample site with Be values in ppm
- × Prior years soil sample site

Entourage Mining Ltd.
Sample Locations - OC Claims
 Mink Creek map-sheet, NTS 105G/11
 Watson Lake Mining District, Yukon

Figure 7.



EXPLANATION:

- 3 2003 Soil sample site with Be values in ppm
- × Prior years soil sample site

Entourage Mining Ltd.

Be in Soils - OC Claims

Mink Creek map-sheet, NTS 105G/11
Watson Lake Mining District, Yukon

Figure 8.

REFERENCES

- Eaton, W.D. 1997: Assessment report (#93587 and 93571) describing geological mapping, soil sampling, geophysical surveys and diamond drilling at the **League Property**, Watson Lake Mining District, YT. Archer, Cathro & Associates (1981) Limited: unpublished report.
- Mortensen, J.K. and Jilson, J.A. 1985: Evolution of the Yukon-Tanana Terrane; evidence from southeastern Yukon Territory; *Geology* Vol. 13. p. 806-810.
- Mortensen, J.K. 1992: Pre-Mid-Mesozoic tectonic evolution of the Yukon-Tanana Terrane, Yukon and Alaska. *Tectonics*, Vol. 11, p. 836-853.
- Murphy, D.C. 1997: Preliminary geological map of Grass Lakes area, Pelly Mountains, southeastern Yukon (NTS 105 G/7). Exploration and Geological Services Division, Yukon, Indian and Northern Affairs Canada, Open File 1997-3 (1:50,000 scale).
- Murphy, D.C. and Piercey, S.J. 1998: Preliminary geological map of Wolverine Lake area, Pelly Mountains, southeastern Yukon (NTS 105 G/8, north half). Exploration and Geological Services Division, Yukon, Indian and Northern Affairs Canada, Open File 1998-4 (1:50,000 scale).
- Murphy, D.C. and Piercey, S.J. 1999: Finlayson Project: Geological evolution of Yukon-Tanana Terrane and its relationship to Campbell Range belt, northern Wolverine Lake map area, southeastern Yukon. In: *Yukon Exploration and Geology 1998*, C.F. Roots and D.S. Emond (ed.), Exploration and Geological Services Division, Yukon, Indian and Northern Affairs Canada, p. 47-62.
- Murphy, D.C., Colpron, M., Roots, C.F., Gordey, S.P. and Abbott, J.G., 2002: Finlayson Lake Targeted Geoscience Initiative (southeastern Yukon), Part 1: Bedrock geology. In: *Yukon Exploration and Geology 2001*, D.S. Emond, L.H. Weston and L.L. Lewis (ed.), Exploration and Geological Services Division, Yukon Region, Indian and Northern Affairs Canada, p. 189-207.
- Tempelman-Kluit, D.J. 1977: Quiet Lake (105F) and Finlayson Lake (105G) map areas, Yukon Territory. Geological Survey of Canada, Open File 486.
- Tempelman-Kluit, D.J., 1979: Transported cataclasite, ophiolite and granodiorite in Yukon: evidence of arc-continent collision, *Geol. Surv. Can.*, Paper 79-14.
- Wengzynowski, 2000: Assessment Report describing Geological mapping, prospecting and soil sampling on the **League Property**, Archer, Cathro & Associates (1981) Limited: Unpublished report.
- Wheeler, J.O., Green, L.H. and Roddick, J.A.. 1960: Finlayson Lake map area, Yukon Territory. Geological Survey of Canada Map 8-1960.

APPENDIX A
ANALYTICAL DATA

PIONEER LABORATORIES INC #103-2691 VISCOUNT WAY RICHMOND, BC
CANADA V6V 2R5 TEL.(604)231-8165

P.1

GEOCHEMICAL ANALYSIS CERTIFICATE

AMERLIN EXPLORATION

Project:

Report No. 2036003

Sample Type: Soils

Date: December 13, 2003

SAMPLE	Mo ppm	Cu ppm	Ni ppm	Cr ppm	Be ppm
CGV167L	1	68	137	326	2
CGV168L	1	66	135	352	2
CGV169L	1	63	116	275	2
CGV170L	2	68	116	242	2
CGV171L	1	71	152	383	2
CGV172L	1	61	152	428	2
CGV173L	1	30	58	141	3
CGV174L	1	35	47	105	2
CGV175L	1	32	36	92	2
CGV176L	2	34	32	86	2
CGV177L	2	41	45	131	3
CGV178L	1	23	9	32	2
CGV179L	2	36	44	129	3
CGV180L	1	41	56	142	3
CGV181L	1	49	45	136	4
GS81L	1	44	63	154	3
GS82L	1	35	25	87	2
GS83L	2	42	24	65	2
GS84L	1	38	44	122	3
GS85L	1	23	2	12	1
GS86L	1	21	7	10	1
GS87L	1	24	32	100	2
GS88L	2	29	36	107	2
GS89L	1	20	12	26	1
GS90L	1	32	44	123	3
GS91L	1	18	29	88	3
GS92L	1	23	32	86	2
GS93L	1	30	54	123	2
GS94L	1	24	43	132	2
GS95L	1	40	94	219	1
GS96L	1	41	91	209	2
KH044	1	47	51	143	2
KH045	1	33	59	161	2

P.2

SAMPLE	Mo ppm	Cu ppm	Ni ppm	Cr ppm	Be ppm
KH046	1	75	53	143	4
KH047	1	37	56	158	3
KH048	1	59	78	172	3
KH049	1	63	56	135	3
KH050	1	40	55	144	3
KH051	1	25	34	104	3
KH052	1	23	32	108	2
KH053	2	20	14	42	7
KH054	1	16	19	96	3
KH055	1	9	23	104	4
KH056	1	17	29	73	5
KH057	1	5	12	70	2
KH058	1	11	17	64	2
KH059	1	12	21	77	3
KH060	1	10	13	62	3
KH061	1	2	6	30	4
KH062	4	9	12	57	4
KH063	4	22	17	58	7
KH064	2	9	14	54	4
KH065	1	8	12	47	3
MTV115L	3	39	35	99	2
MTV116L	1	34	39	99	2
MTV117L	1	30	48	101	2
MTV118L	1	19	21	61	1
MTV119L	1	34	36	76	2
MTV120L	1	25	26	78	2
MTV121L	1	47	40	54	1
MTV122L	1	32	49	93	1
MTV123L	1	33	35	75	1
MTV124L	1	40	51	111	1
MTV125L	1	31	37	86	1
MTV126L	1	44	40	102	2
MTV127L	1	50	44	103	2
MTV128L	1	20	28	89	2
MTV129L	1	42	35	96	4
MTV130L	2	36	42	94	5
MTV131L	6	28	7	20	5
MTV132L	6	37	18	68	4
MTV133L	6	44	13	41	5

APPENDIX B
WRITER'S CERTIFICATE

AMERLIN EXPLORATION SERVICES LTD.

2150 - 1851 Savage Road, Richmond, B.C. V6V 1R1 Tel.: (604)821-1088

WRITER'S CERTIFICATE

I, Carl G. Verley of Vancouver, British Columbia hereby certify that:

1. I am a geologist with business office at 2150 - 1851 Savage Road, Richmond, B.C.
2. I am a graduate of the University of British Columbia, B.Sc. in 1974, and have practiced my profession since that time.
3. I am a registered member of the Association of Professional Engineers and Geoscientists of the Province of B.C.
4. I am the author of this report which is based on work supervised by me on the OC claims and conducted during on September 19, 2003.

Amerlin Exploration Services Ltd.

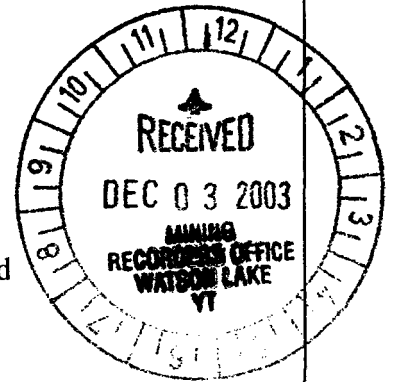
S/n "Carl G. Verley"

Carl G. Verley, P.Geo.

December 17, 2003.
Richmond, B.C.

Q25655

STATUTORY DECLARATION



CANADA) In the matter of a geological, geochemical and geo-
) physical report on behalf of Entourage Mining Ltd. and
TO WIT:) Expatriate Resources Ltd.

I, Carl G. Verley, agent for Entourage Mining Ltd. of 212 - 525 Seymour Street, Vancouver, B.C. V6B 3H7

do solemnly declare, - that soil geochemical work was conducted on the OC 1 - 62 mineral claims, Watson Lake Mining District, Yukon, on September 19, 2003. Expenditures for this work include:

Assay and analytical	\$612.00
Camp rental	325.00
Field supplies	457.50
Fixed Wing Aircraft Charter	625.75
Food	143.80
Freight	47.50
Fuel	133.25
Helicopter charter	1,791.00
Hotel	45.80
Travel	219.20
Vehicle rental	65.80
Wages	1,850.00
Total	\$6,316.60

And I make this declaration conscientiously believing it to be true and knowing that it is of the same force and effect as if made under oath and by virtue of The Canada Evidence Act.

Declared before me at VANCOUVER)
) in the Province of B.C. this
) 20th (day of November 2003.)

Carl G. Verley

[Signature]
Notary Public.

094427

KJELD WERBES
Barrister & Solicitor
708 - 1111 West Hastings Street
Vancouver, B.C. V6E 2J3
(604) 669-3233