

**GEOCHEMICAL REPORT  
ON THE  
NS CLAIMS**

**Watson Lake Mining District, Y.T.**  
NTS 105G/6  
(61°26'30"N, 131°14"W)

094426

for

**ENTOURAGE MINING LTD.**  
212 - 525 Seymour Street  
Vancouver, B.C. V6C 3H7  
(604)688-8286

&

**EXPATRIATE RESOURCES LTD**  
701 - 525 Howe Street  
Vancouver, B.C. V6C 2B3  
(604)682-5474

by

**CARL G. VERLEY, P.Geo.**  
**Amerlin Exploration Services Ltd.**  
2150 - 1851 Savage Road  
Richmond, B.C. V6V 1R1  
(604)821-1088

**December 16, 2003**

**CLAIMS:** NS 1 - 40    **GRANT No's:** YC22547-YC22586  
**LOCATION:** 202 kilometres northwest of Watson Lake, Y.T.  
**DATE:** September 21, 2003.

## TABLE OF CONTENTS

SUMMARY & CONCLUSIONS.....	2
INTRODUCTION .....	3
Location & Access.....	3
History .....	3
PROPERTY .....	5
GEOLOGY .....	6
Regional .....	6
Property.....	12
SOIL GEOCHEMISTRY .....	14
REFERENCES .....	17
APPENDICES:	
A. Geochemical Data	
B. Writer's Certificate	

### Figures

#### Figure:

1 Property Location Map .....	1
2 Claim Map .....	5
3 Regional Tectonic and Stratigraphic Relationships, Finlayson Lake area .....	9
4 Geology Legend.....	10
5 Regional Geology .....	11
6 Property Geology .....	13
7 Soil Sample Location Plan.....	15
8 Be in Soils .....	16

### Tables

#### Table:

1 Mineral Claims .....	5
2 Ranges of Analytical Results.....	14

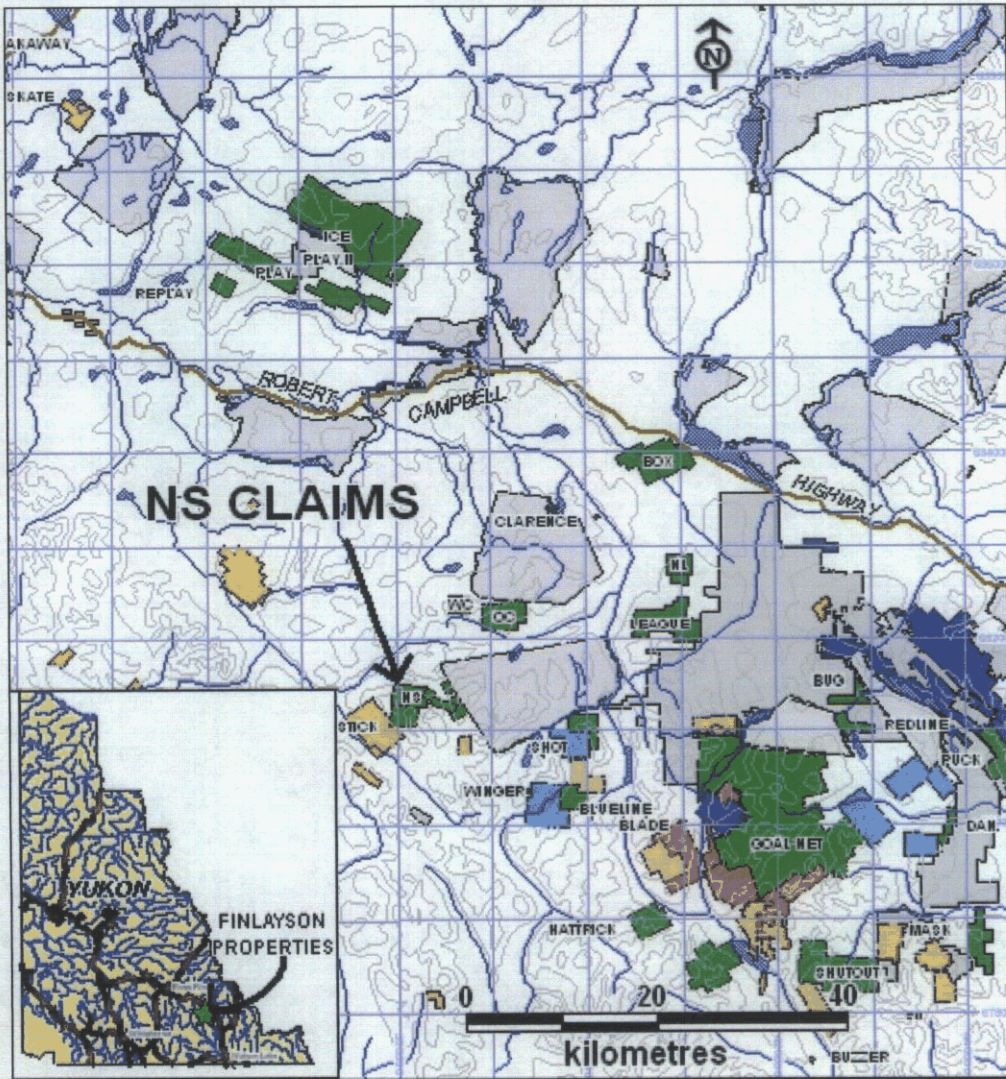


Figure 1: PROPERTY LOCATION MAP

## SUMMARY & CONCLUSIONS

Entourage Mining Ltd. has an option on 40 contiguous mineral claims centered 202 kilometres northwest of Watson Lake, in the Pelly Mountains, Watson Lake Mining District (105G/6), Yukon Territory. The property is accessible by helicopter.

The claims are underlain by Paleozoic metasediments and volcanics of the Grass Lakes succession of the Yukon-Tanana terrain. Intrusive into the metamorphic rocks on the property are Early Mississippian granitic rocks of the Grass Lakes plutonic suite.

During the 2003 field season a program of soil sampling (81 samples) was conducted on the claim group. The results of this work suggest that only background levels of the elements analysed (Be, Cu, Mo, Ni, Cr) are present in the soils on the claims. It is unlikely that at these levels beryl-mineralized areas are reflected in the sample results. On the assumption that the sampling and analytical techniques produce reliable Be data, it is concluded that there is only a very low probability for locating emerald on the claims.

Respectfully submitted,  
**Amerlin Exploration Services Ltd.**

*S/n "Carl G. Verley"*

Carl G. Verley, P.Geo.

Richmond, B.C.  
December 16, 2003.

## **INTRODUCTION**

This report describes the results of a work program conducted by the writer for Entourage Mining Ltd. on September 21, 2003. The object of this work was to collect soil samples and test these for elevated levels of beryllium. The fieldwork was conducted by the writer, Kenneth Hicks, P.Geo., Marcus Vanwermuskerkin, P. Geo. and Gregory B. Sinitsin. Kluane Airways Ltd provided helicopter support.

## **LOCATION & ACCESS**

The claims are centered 202 kilometres north of Watson Lake in the Logan Mountains, Watson Lake Mining District, Y.T. at latitude 61°26'30"N and longitude 131°14'W. The property is situated on map-sheet 105G/6. The ground lies in mountainous alpine terrain. Elevations on the property range from 1400 to 1960 metres above sea level.

The property is best accessed by helicopter.

## **HISTORY**

Mineral exploration in the vicinity of the NS claims was first initiated in the 1950's by Pelly River Exploration Limited, who apparently located several base metal showings in the area. In 1966, Northlake Mines Limited staked the first claims in the area for base metals veins. Northlake conducted airborne magnetic and EM surveys, prospecting, mapping and grid soil sampling.

In the 1970's and 1980's several groups conducted regional mineral exploration directed toward the location of base metals, uranium and gold in the area. The Firth project (Archer Cathro/Chevron Minerals) discovered some tungsten anomalies as a result of this work. A further program – the Grass Project - was conducted from 1978 to 1980 with much of the work focused on a large block of claims covering the area now held by the Light claims. The

exploration work consisted of soil sampling, heavy mineral sampling, geological mapping, prospecting and hand trenching. The work identified a number of float occurrences and three main showings where scheelite was reported to occur in skarn horizons and/or quartz-tourmaline veins. The best samples returned values of up to 5.4% WO<sub>3</sub> (Cathro, 1978). The occurrences were concluded to be too small and discontinuous to warrant further work.

In 1994 Cominco Ltd. staked the LAMP claims to the west of Lampman Lake. Cominco undertook exploration consisting of soil geochemical surveys on these claims. The results were apparently discouraging as the property was dropped. Expatriate Resources Ltd. later staked the area as the LIGHT and STICK claims. A prospecting and soil geochemical program was carried out in 1999. This work resulted in the discovery of quartz vein float containing pale beryl crystals up to 5 mm long (Wengzynowski, 2000). In 2002, Expatriate Resources Ltd. conducted a small property examination to reconfirm the location of the beryl occurrence and collected further soil samples near the showing (Duncan, 2003). On the STICK claims which border the NS to the south, geological mapping and geochemical sampling have been undertaken in recent years, again in the search for VMS deposits (Burgert, 1997 and Wengzynowski, 1997). However, no previous work has been conducted in the search for emerald or gem materials on the NS claims.

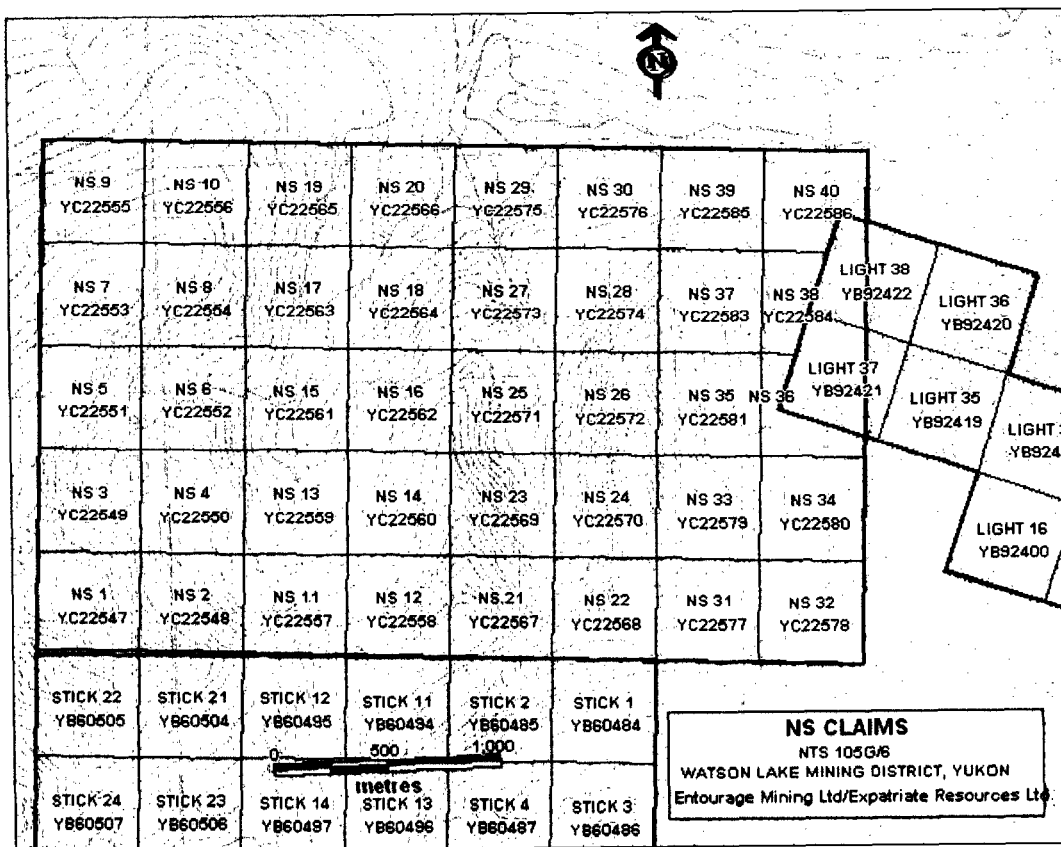
### PROPERTY

Entourage Mining Ltd. has an option to earn a 60% interest in any gem materials It finds on 40 full sized mineral claims, located in 1 contiguous block as tabulated below and illustrated on Figure 2. The claims are located in the Mt Resistance area, Watson Lake Mining District, Yukon (NTS 105G/6).

**Table 1. MINERAL CLAIMS**

Claims	Grant Numbers	Expiry Date*
NS 1 to 40	YC22547-YC22586	November 21/2005

\*Pending acceptance of assessment work.



**Figure 2: CLAIM LOCATION MAP**

## GEOLOGY

### **Regional:**

Geological mapping on a regional scale has been conducted in the Finlayson Lake area by Wheeler *et. al.* (1960) and Tempelman-Kluit (1977). A reinterpretation of the regional geology by Mortensen and Jilson (1985) clarified the significance of the complex metamorphosed stratigraphy and demonstrated that rocks in the area could host volcanogenic massive sulphide mineralization. Following the recent discoveries at Kudz Ze Kayah and Wolverine Lake, a 1:50,000 scale mapping program was completed covering the Grass Lakes map sheet (105 G/7) (Murphy, 1997) and Wolverine Lake (105 G/8) (Murphy and Piercey, 1998). Murphy and Piercey (1999) describe a unified stratigraphy for the Finlayson Lake area and identify horizons favourable for volcanogenic massive sulphide mineralization. Mortensen (1992) summarizes the dominant view of the tectonic evolution of the Yukon-Tanana Terrane in this study area. The most recent synthesis of the bedrock geology was compiled in 2002 (Murphy et al, 2002) and this compilation is used as the framework for geological descriptions herein. A schematic illustration of stratigraphic and some structural relationships is illustrated in Figure 3; a geology map legend is found in Figure 4; lastly regional geology is illustrated in Figure 5.

The oldest rocks in the project area make up the Devonian to Mississippian Grass Lakes succession. The Inconnu thrust has juxtaposed this package of rocks against North American miogeoclinal sequences to the east. The base of the Grass Lakes succession consists of Upper Devonian and older(?) psammitic schist and marble (Dq, Dqm). Immediately east of the NS claims, beryl mineralization is located in float on the LIGHT claim block in what has been mapped as Dq unit schists. Overlying this are mafic metavolcanic rocks of the Upper Devonian Fire Lake unit (DF). Fire Lake rocks contain emerald (beryl) mineralization at Regal Ridge – just to the south of one of the Finlayson Properties (GOAL NET claim block). Besshi style copper-zinc mineralization also occurs in mafic metavolcanic rocks of the Fire Lake unit. The overlying Upper Devonian Kudz Ze Kayah unit (DK) consists of felsic meta volcanics. It hosts Kuroko-style Cu-Zn mineralization at the Kudz Ze Kayah and satellite deposits, which are found in the upper portion of the unit, in a sequence of marine clastic rocks overlain by felsic volcanic,

volcaniclastic and submarine sedimentary rocks. Widespread exhalite deposition (DMcp), extending from Upper Devonian to lower Mississippian time, at the top of the Kudz Ze Kayah was derived from hydrothermal activity at a number of centers during the waning stages of a regional volcanic event. Rock units of the Grass Lakes succession are found on the NS claims.

The lower Mississippian Wolverine succession unconformably overlies Grass Lakes units. The Wolverine succession is marked by the deposition of immature marine clastic rocks (MWf) that are evidence of uplift, deformation and erosion. This was followed by renewed pelagic sedimentation preceding a second pulse of felsic volcanism, which is preserved near Wolverine Lake. Carbonaceous argillites are capped by rhyolite and subvolcanic feldspar porphyry, which developed in centres throughout a small basin. Volcaniclastic, pelagic sediments and interbedded exhalite rock units in turn overlie these volcanic centres. At the Wolverine deposit volcanic-sediment hosted massive sulphide mineralization is preserved at the contact between volcaniclastics and overlying sediments (Bradshaw et al., 2003) All significant massive sulphide mineralization located to date in the Finlayson Lake area occurs within either the felsic volcanic rock sequences preserved as Unit DK or associated with the carbonaceous shales of Unit MWf.

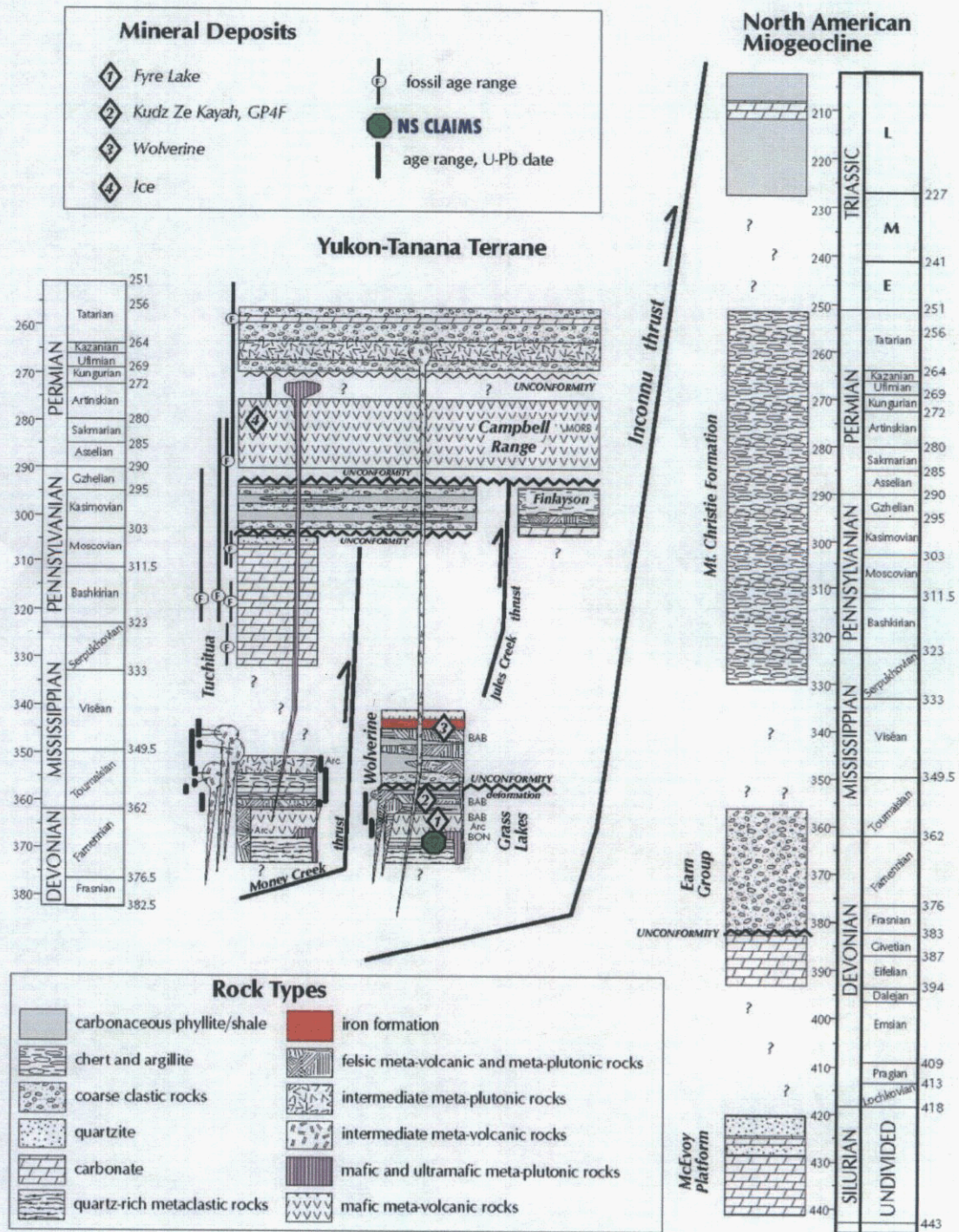
Overlying Grass Lakes and Wolverine succession rocks and in thrust contact along the Money Creek thrust, are rocks of the lower Mississippian to Pennsylvanian Tuchitua succession. Tuchitua rocks consist of intermediate volcanics at the base overlain by limestone and quartzite. A sequence of Pennsylvanian dark grey phyllite, chert and clastic rocks unconformably overlies the Tuchitua. Carboniferous age Finlayson succession rocks, consisting of dark grey phyllite, chert, clastic rocks and marble are inferred to be situated as a thrust wedge between the Jules Creek and Inconnu thrusts. Unconformably overlying Finlayson and Pennsylvanian age rocks are Lower Permian Campbell Range basalts. Middle Permian to Triassic age conglomerate, siltstone and basalt unconformably overlie the Campbell Range basalts.

Rocks of the North American Miogeocline consist primarily of carbonates and clastics ranging in age from Silurian to Triassic.

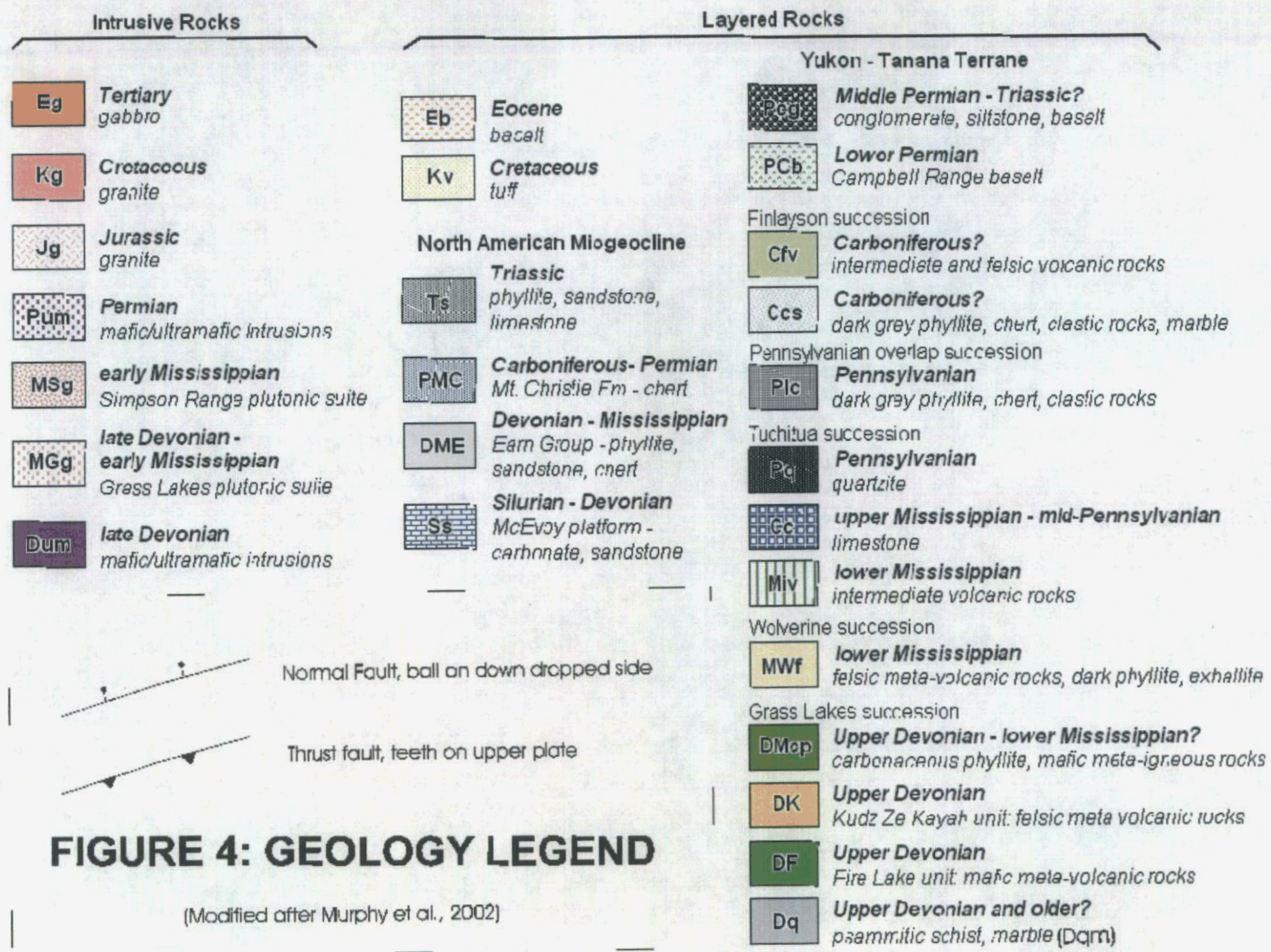
Intrusive into Yukon-Tanana and to a lesser extent the miogeoclinal rocks of the North American platform are a variety of intrusives ranging in age from late Devonian to Tertiary and varying in composition from ultramafic to granite. Locally, in the northwestern part of the project area extrusive equivalents of the Cretaceous and Tertiary intrusives are exposed as tuffs

and basalts respectively. Late Devonian mafic and ultramafic rocks, previously mapped as imbricated thrust slices (Tempelman-Kluit, 1979) are now, in many instances, believed to be intrusive into Yukon-Tanana rocks as sills and stocks. These units are believed to be the primary source for chromium in the emerald located at Regal Ridge. Mid-Cretaceous granites that also intrude Yukon-Tanana are known to be associated with tungsten, molybdenum, copper and tourmaline mineralization. These intrusives are also the prime source for beryl found in quartz-tourmaline veins and in pegmatite to aplite apophyses adjacent to the granites. Tertiary age quartz-feldspar-biotite porphyry sills and dykes may also be implicated by proximity in the emerald story.

Rocks in the study area have been affected by several deformational events and the structure is locally complex. On the whole, rocks dip northeast, exposing progressively older rocks in the Pelly Mountains, southwest of Finlayson Lake. Units 1 through 4 are affected by two deformational events. An initial F1 foliation, subparallel to bedding, is restricted to Units 1 through 4. The subsequent F2 foliation is associated with upright northeast to northwest striking folds and is most apparent in the axial zones of minor folds. The F2 foliation is found in all Yukon-Tanana Terrane rocks in the project area. Widespread east and northeast trending normal faults with minor displacement are present across the project area .



**Figure 3: Regional stratigraphic and tectonic relationships.**



**FIGURE 4: GEOLOGY LEGEND**

(Modified after Murphy et al., 2002)

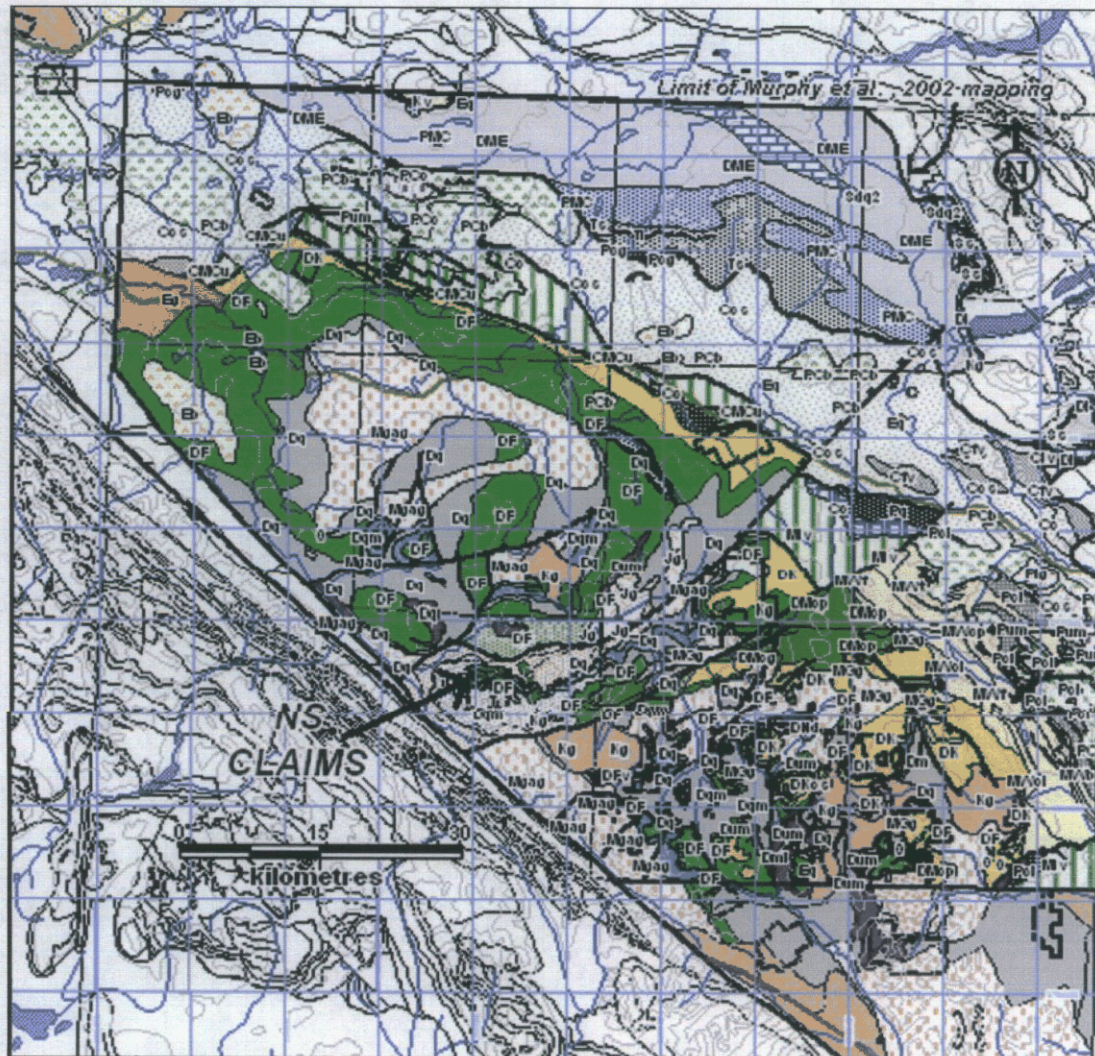
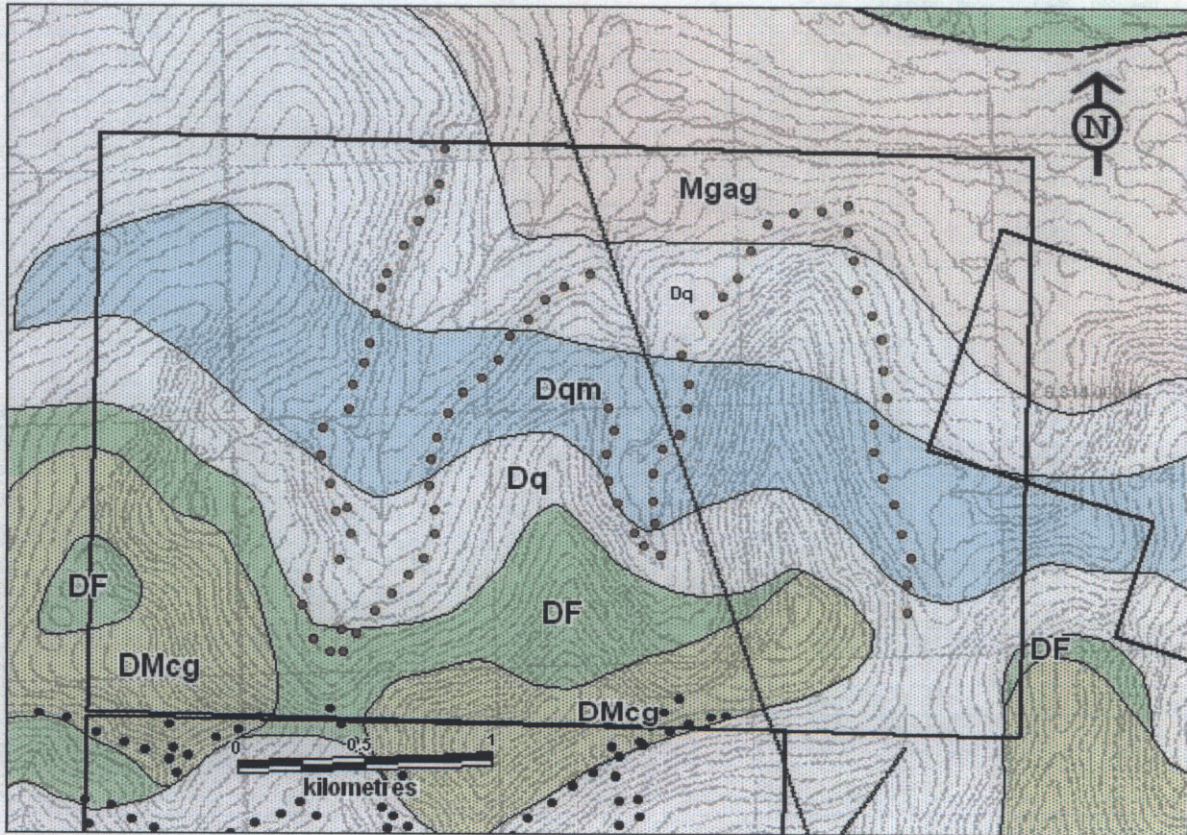


Figure 5: Regional geological setting NS claims

**Property:**

Geology of the NS claims as illustrated in Figure 6 is taken from Murphy et al.(2002). The property is underlain mainly by an east-west trending belt of rocks of the Grass Lakes succession; namely, Fire Lake metavolcanics and other metasedimentary map units. Intrusive into this succession on the northern part of the claim block is mapped an Early Mississippian granitic body of the Grass Lakes plutonic suite.

The Fire Lake metavolcanics host emerald at Regal Ridge. The proximity of this unit to granitic intrusives is also thought to be favourable for the formation of emerald. It was on this basis that the NS claims were staked and that soil lines were laid out to test the area for elevated beryllium levels that might be indicative of beryl and therefore emerald.



**LEGEND:**

- |      |  |
|------|--|
| Mgag | Early Mississippian: Grass Lakes<br>Plutonic suite: granitic intrusives  |
| DMcg | Devono-Mississippian: carbonaceous<br>phyllite, mafic meta-igneous rocks |
| DK   | Kudz Ze Kayah unit: felsic<br>metavolcanics                              |
| DF   | Fire Lake metavolcanics  |
| Dq   | metapsammitic rocks  |

- 2003 Soil sample site
- ◆ Prior years soil sample site

**Entourage Mining Ltd.**  
**Geology - NS Claims**  
 Mink Lake map-sheet, NTS 105G/10  
 Watson Lake Mining District, Yukon

Figure 6.

## SOIL GEOCHEMISTRY

A total of 81 soil samples were collected along lines following elevation contours between 1500 and 1700 metres ASL that zigzag through the central part of the claim block. The samples were collected at 100 metre intervals. Samples sites were labeled and flagged. Locations were recorded with global positioning instruments.

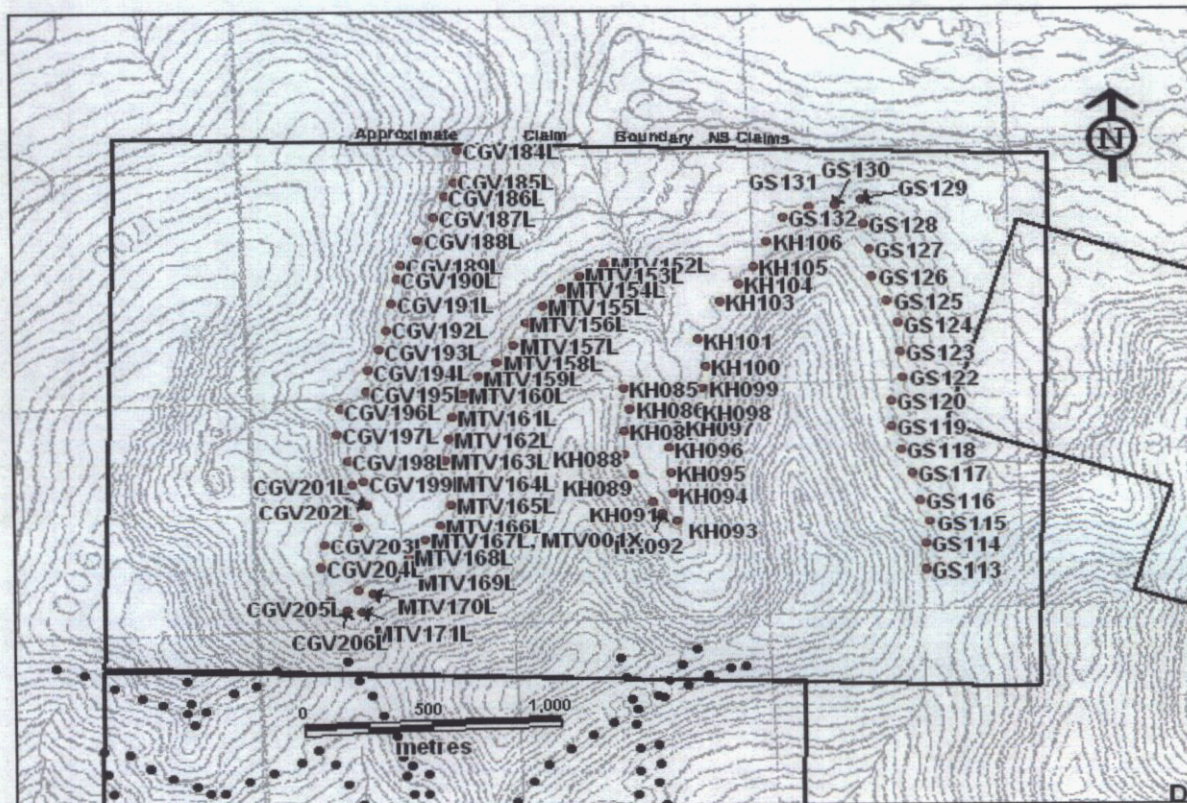
Samples were dried at the camp and then shipped to Pioneer Laboratories in Richmond, B.C. There the samples were sieved. A 0.25 gm aliquot the –80 mesh fraction was digested with HCl-HNO<sub>3</sub>-HF. The resulting solution was analysed by ICP/ES for Be, Cr, Cu, Mo and Ni. The digestion is not total and therefore results can only be viewed as semi-quantitative. However, the solution used was stronger than that used for the digestion of samples and subsequent ICP analysis by previous explorers of the League claims and therefore should give a better idea of relative levels of the elements analyzed.

Ranges of the analytical results are tabulated below. Sample locations are plotted on Figure 7 and beryllium results are plotted on Figure 8. Data for other elements is found in Appendix A.

**Table 2: Ranges of Analytical Results**

Element	Range (in ppm)
Be	1 – 5
Mo	1 – 3
Cu	15 – 69
Ni	7 – 122
Cr	19 – 309

The ranges are interpreted to represent variations that would be expected for background levels of the elements in question.



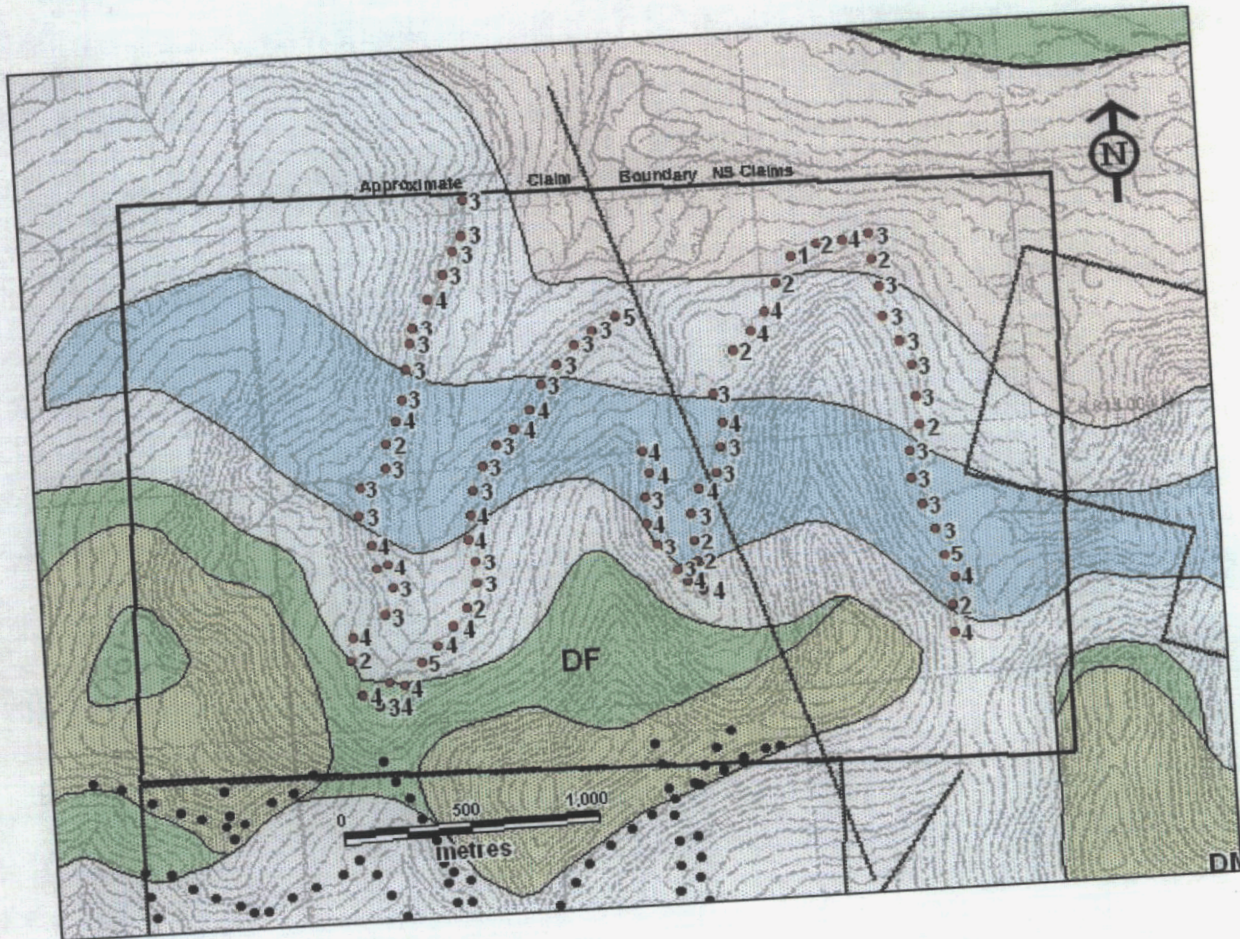
**EXPLANATION:**

- 2003 Soil sample site with sample number
- Prior years soil sample site

**Entourage Mining Ltd.  
Soil Sample Location Plan  
NS Claims**

**Mt Resistanced Lake map-sheet, NTS 105G/6  
Watson Lake Mining District, Yukon**

**Figure 7.**



**EXPLANATION:**

- 3 2003 Soil sample site with Be values in ppm
- Prior years soil sample site

**Entourage Mining Ltd.**  
**Be in Soils - NS Claims**  
Mt Resistance map-sheet, NTS 105G/6  
Watson Lake Mining District, Yukon

Figure 8.

## REFERENCES

- Burgert, A. 1997: Assessment report (#93654) describing prospecting, mapping and geochemical surveys on the **Stick Property**, Watson Lake Mining District, Yukon Territory. Archer, Cathro & Associates (1981) Limited: unpublished report.
- Mortensen, J.K. and Jilson, J.A. 1985: Evolution of the Yukon-Tanana Terrane; evidence from southeastern Yukon Territory; *Geology* Vol. 13. p. 806-810.
- Mortensen, J.K. 1992: Pre-Mid-Mesozoic tectonic evolution of the Yukon-Tanana Terrane, Yukon and Alaska. *Tectonics*, Vol. 11, p. 836-853.
- Murphy, D.C. 1997: Preliminary geological map of Grass Lakes area, Pelly Mountains, southeastern Yukon (NTS 105 G/7). Exploration and Geological Services Division, Yukon, Indian and Northern Affairs Canada, Open File 1997-3 (1:50,000 scale).
- Murphy, D.C. and Piercey, S.J. 1998: Preliminary geological map of Wolverine Lake area, Pelly Mountains, southeastern Yukon (NTS 105 G/8, north half). Exploration and Geological Services Division, Yukon, Indian and Northern Affairs Canada, Open File 1998-4 (1:50,000 scale).
- Murphy, D.C. and Piercey, S.J. 1999: Finlayson Project: Geological evolution of Yukon-Tanana Terrane and its relationship to Campbell Range belt, northern Wolverine Lake map area, southeastern Yukon. In: *Yukon Exploration and Geology 1998*, C.F. Roots and D.S. Emond (ed.), Exploration and Geological Services Division, Yukon, Indian and Northern Affairs Canada, p. 47-62.
- Murphy, D.C., Colpron, M., Roots, C.F., Gordey, S.P. and Abbott, J.G., 2002: Finlayson Lake Targeted Geoscience Initiative (southeastern Yukon), Part 1: Bedrock geology. In: *Yukon Exploration and Geology 2001*, D.S. Emond, L.H. Weston and L.L. Lewis (ed.), Exploration and Geological Services Division, Yukon Region, Indian and Northern Affairs Canada, p. 189-207.
- Tempelman-Kluit, D.J. 1977: Quiet Lake (105F) and Finlayson Lake (105G) map areas, Yukon Territory. Geological Survey of Canada, Open File 486.
- Tempelman-Kluit, D.J., 1979: Transported cataclasite, ophiolite and granodiorite in Yukon: evidence of arc-continent collision, *Geol. Surv. Can.*, Paper 79-14.
- Wengzynowski, 2000: Assessment Report (#94111) describing Geochemical sampling and prospecting on the **Light Property**, Archer, Cathro & Associates (1981) Limited: Unpublished report.

Wengzynowski, B. 1997: Assessment report (#93809) describing geological mapping, prospecting and geochemical surveys on the **Stick Property**, Watson Lake Mining District, Yukon Territory. Archer, Cathro & Associates (1981) Limited: unpublished report.

Wheeler, J.O., Green, L.H. and Roddick, J.A.. 1960: Finlayson Lake map area, Yukon Territory. Geological Survey of Canada Map 8-1960.

**APPENDIX A**  
**ANALYTICAL DATA**

PIONEER LABORATORIES INC #103-2691 VISCOUNT WAY RICHMOND, BC  
CANADA V6V 2R5 TEL.(604)231-8165

P.1

GEOCHEMICAL ANALYSIS CERTIFICATE

AMERLIN EXPLORATION

Project:

Report No. 2036003

Sample Type: Soils

Date: December 13, 2003

SAMPLE	Mo ppm	Cu ppm	Ni Ppm	Cr ppm	Be ppm
CGV184L	1	30	67	202	3
CGV185L	1	28	53	143	3
CGV186L	1	25	43	131	3
CGV187L	1	37	50	120	3
CGV188L	1	39	69	126	4
CGV189L	1	26	40	127	3
CGV190L	1	26	50	120	3
CGV191L	1	35	44	118	3
CGV192L	1	32	43	143	3
CGV193L	1	53	50	122	4
CGV194L	1	26	29	102	2
CGV195L	1	32	49	124	3
CGV196L	1	28	35	130	3
CGV197L	1	25	33	96	3
CGV198L	1	62	113	260	4
CGV199L	1	53	104	304	4
CGV201L	1	46	54	167	3
CGV202L	1	42	51	144	3
CGV203L	1	32	43	108	4
CGV204L	2	28	10	19	2
CGV205L	1	19	16	29	4
CGV206L	1	15	9	40	3
GS113L	1	52	55	147	4
GS114L	1	43	59	157	2
GS115L	1	48	59	140	4
GS116L	1	50	60	149	5
GS117L	1	40	83	198	3
GS118L	1	32	48	119	3
GS119L	1	43	50	135	3
GS120L	1	31	47	120	3
GS122L	1	32	17	32	2
GS123L	1	28	45	109	3
GS124L	1	28	45	102	3

P.2

<b>SAMPLE</b>	<b>Mo ppm</b>	<b>Cu ppm</b>	<b>Ni Ppm</b>	<b>Cr ppm</b>	<b>Be ppm</b>
GS125L	1	31	45	104	3
GS126L	1	43	50	100	3
GS127L	1	17	30	83	3
GS128L	1	33	49	110	2
GS129L	1	46	58	89	3
GS130L	1	49	66	122	4
GS131L	1	43	34	60	2
GS132L	1	26	14	26	1
KH085	1	31	45	128	4
KH086	1	34	55	140	4
KH087	1	32	46	106	3
KH088	1	51	69	152	4
KH089	1	56	77	151	3
KH091	1	40	69	172	3
KH092	1	53	56	122	4
KH093	2	64	56	128	4
KH094	1	32	39	100	2
KH095	1	25	40	105	2
KH096	1	22	45	126	3
KH097	1	40	55	147	4
KH098	1	36	56	144	3
KH099	1	35	59	147	3
KH100	1	38	52	126	4
KH101	1	20	35	105	3
KH103	1	20	35	97	2
KH104	1	53	78	124	4
KH105	1	55	71	128	4
KH106	1	37	62	92	2
MTV152L	1	69	46	157	5
MTV153L	1	33	42	84	3
MTV154L	1	27	37	109	3
MTV155L	1	26	33	105	3
MTV156L	1	43	67	145	3
MTV157L	1	40	44	116	4
MTV158L	1	50	66	140	4
MTV159L	1	37	53	141	3
MTV160L	1	38	122	301	3
MTV161L	1	23	83	224	3
MTV162L	1	41	97	264	4
MTV163L	1	37	119	309	4
MTV164L	1	26	58	160	3
MTV165L	1	26	89	233	3
MTV166L	1	19	7	22	2
MTV167L	1	16	9	35	4

MTV168L	1	21	13	45	4
<b>SAMPLE</b>	<b>Mo ppm</b>	<b>Cu ppm</b>	<b>Ni Ppm</b>	<b>Cr ppm</b>	<b>Be ppm</b>
MTV169L	1	30	24	57	5
MTV170L	2	16	9	23	4
MTV171L	3	15	8	21	4

P.3

**APPENDIX B**  
**WRITER'S CERTIFICATE**

**AMERLIN EXPLORATION SERVICES LTD.**

2150 - 1851 Savage Road, Richmond, B.C. V6V 1R1 Tel.: (604)821-1088

---

**WRITER'S CERTIFICATE**

I, Carl G. Verley of Vancouver, British Columbia hereby certify that:

1. I am a geologist with business office at 2150 - 1851 Savage Road, Richmond, B.C.
2. I am a graduate of the University of British Columbia, B.Sc. in 1974, and have practiced my profession since that time.
3. I am a registered member of the Association of Professional Engineers and Geoscientists of the Province of B.C.
4. I am the author of this report which is based on work supervised by me on the NS claims and conducted during on September 21, 2003.

**Amerlin Exploration Services Ltd.**

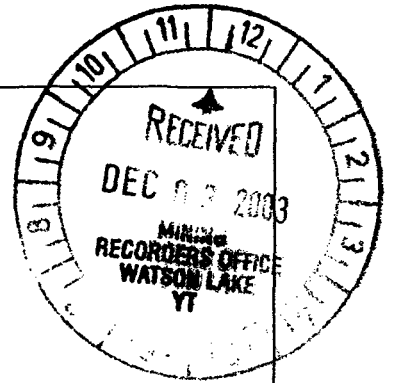
*S/n "Carl G. Verley"*

Carl G. Verley, P.Geo.

December 16, 2003.  
Richmond, B.C.

094426

Q105655



**STATUTORY DECLARATION**

**CANADA)**

) In the matter of a geological, geochemical and geo-  
) physical report on behalf of Entourage Mining Ltd. and

**TO WIT:)** Expatriate Resources Ltd.

I, Carl G. Verley, agent for Entourage Mining Ltd. of 212 - 525 Seymour Street, Vancouver, B.C. V6B 3H7

do solemnly declare, - that soil geochemical work was conducted on the NS 1 - 40 mineral claims, Watson Lake Mining District, Yukon, on September 21, 2003. Expenditures for this work include:

Assay and analytical	\$586.50
Camp rental	325.00
Field supplies	457.50
Fixed Wing Aircraft Charter	625.75
Food	143.80
Freight	47.50
Fuel	133.25
Helicopter charter	1,990.00
Hotel	45.80
Travel	219.20
Vehicle rental	65.80
Wages	1,850.00
<b>Total</b>	<b>\$6,490.10</b>

And I make this declaration conscientiously believing it to be true and knowing that it is of the same force and effect as if made under oath and by virtue of The Canada Evidence Act.

Declared before me at VANCOUVER)

in the Province of B.C. this

25th day of November 2003.)

Carl G. Verley

Notary Public **KJELD WERBES**

*Barrister & Solicitor*  
708 - 1111 West Hastings Street  
Vancouver, B.C. V6E 2J3  
(604) 669-3233