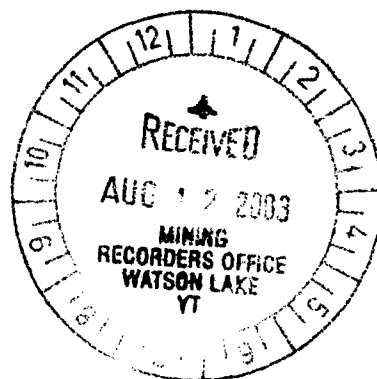


Geological Report

On The

Winger Property



Watson Lake Mining Division

WINGER: 8, 15, 16

NTS: 105G 06, 07

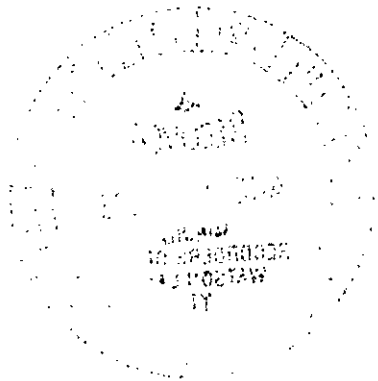
	CENTRAL UTM EASTING	CENTRAL UTM NORTHING
WINGER	393,210.43	6,803,814.59

August 6th, 2003

Prepared For:
Expatriate Resources Ltd.
701-475 Howe St.
Vancouver, British Columbia
Canada V6C 2B3

Prepared By:
R. Duncan, B.Sc. M.Sc. Geology

094420



Costs associated with this report have been approved in the amount of \$ 1500.00 for assessment credit under Certificate of Work No. QL 25639

[Handwritten Signature]

Mining Recorder
Watson Lake Mining District

05-1-2006

Table of Contents

I. Executive Summary	3
II. Location and Access	4
Table 1 Winger property UTM locations.....	4
Figure 1 Winger location map.....	5
III. Topography and Physiography	6
IV. Claim Details	7
Table 2 Winger claims information.....	7
Figure 2 Claim Location Map.....	8
V. History	9
VI. Regional Geology	9
Figure 3 Regional Tectonic Setting	10
A. Yukon-Tanana Terrane	11
B. Intrusive Activity	12
C. Structure	12
D. Metamorphism	12
E. Mineralization	12
Table 3 Finlayson District Resources.....	13
VII. Regional Mineralization	14
A. Introduction	14
B. Volcanic Massive Sulfide Deposits	14
C. Emerald Mineralization – Regal Ridge	14
VIII. Property Geology	16
A. Winger Property Scale Geology	16
1. Introduction.....	16
3. Biotite-Muscovite Granite	16
4. Gneiss	16
5. Mafic Schist.....	16
Figure 4 Winger Geology Map.....	17
6. Granitic Dykes	18
7. Metasediments	18
8. Gossan.....	18
IX. 2002 Field Program.....	19

X. Statement of Expenditures	19
XI. 2002 Field Program Results.....	20
XII. Recommendations.....	20
XIII. Statement of Qualifications.....	21
XIV. References	22

I. Executive Summary

The following report includes Expatriate Resources Ltd. wholly owned property called Winger. This property is located in the Watson Lake Mining District in the Yukon, Canada. Using the National Topographic System, they encompass 105G06 and 07.

Geologically, the Winger property is located within the Yukon-Tanana geologic terrane. Mineralization in these geologic terranes is primarily volcanogenic in origin, however, veins, skarns and asbestos occur. The volcanogenic occurrences are primarily Kuroko-type, although there is Besshi- and Cyprus-type deposits. The exploration model is aimed primarily towards volcanic-hosted massive sulfides; however, in 2002 the Winger property was evaluated for possible emerald mineralization due to similarities in geologic setting to the Regal Ridge property owned by True North Gems.

Previous exploration has completed a first pass phase of exploration on the Winger property; this consisted of soil geochemistry, outcrop geologic mapping, and prospecting.

The 2002 exploration program consisted of geological mapping augmenting previous work and confirming outcrop lithologies.

II. Location and Access

The Winger property is located in the Watson Lake Mining District in the Yukon, Canada. Using the National Topographic System, they encompass 105G06 and 105G07. The geographic location of the properties is in Figure 1. The property coordinates, in Universal Transverse Mercator (UTM) and North American Datum (NAD) Zone 9 projection and coordinate system, as well as the size in square kilometres are summarized in Table 1.

	Central UTM Easting	Central UTM Northing	Total Square Kilometres
Winger	393,210.43	6,803,814.59	3.64

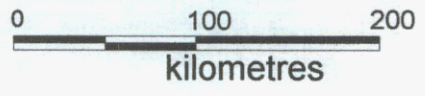
Table 1 Winger property UTM locations.

The center of the Winger claim group, is located at 393,210.43mE and 6,803,814.59mN in NAD 27 Zone 9 UTM projection. The claim group is located 190 kilometres northwest of the Watson Lake, Yukon and 92 kilometers almost due west of town of Frances Lake. By road, Winger is located approximately 45 kilometres south of the Robert Campbell Highway (Figure 1).

Regional infrastructure, proximal to the Winger claims, is the cities of Frances Lake, Whitehorse and Watson Lake. All cities have airports, medical facilities and local ground transportation systems.

70°
140°

-130°



Winger Property

60°

Figure 1 Winger property location map.

III. Topography and Physiography

The Winger property is geographically situated on the Yukon Plateau and approximately 8 kilometres northeast of the Tintina Trench. The claims are centered in a glacial cirque, the relief is moderate with elevations ranging from 1360 m to 1920 m with 25-40 degree slopes and some impassable cliffs. Creeks drain to the west into Grass Lakes and eventually into Big Campbell Creek and further to the Pelly River.

During Pleistocene time, a continental ice sheet covered the entire property. The general direction of ice movement was from east to west but pre-existing topographic relief locally controlled flow directions. Till cover is patchy to absent at higher elevations but almost completely blankets the valleys.

The vegetation is starkly contrasted by tree line, which occurs at approximately 1400 metres in elevation. Vegetation in the main valleys alternates between mature stands of spruce and aspen where drainage is good to grassy meadows with broad fringes of dense buckbrush and stunted black spruce in swampy areas. South-facing slopes are well treed to 1350 metres with buckbrush, slide alder, and scattered trees at higher elevations give way to grasses and lichens above 1400 metres. Vegetation transitions occur about 150 metres lower on north-facing slopes.

Climate in the Winger property area is categorized as continental. It is characterized by relatively long, cold winters with warm dry summers. Annual precipitation averages about 450 millimetres and occurs mostly as rain in summer. Snow cover rarely exceeds 60 centimetres. Permafrost is common in the area, however it is not pervasive. The local streams and water bodies usually break-up in late May and freeze over in early November. The weather conditions imply that winter drilling or ground geophysics done on snow and ice can be done at reasonable temperatures from February to April, summer drilling and ground exploration programs can be done from post break-up in late May until late October.

IV. Claim Details

The Winger property was acquired by staking in 1996 by Archer, Cathro and Associates on behalf of Expatriate Resources Ltd. Claim posts were surveyed in using a Trimble Geoexplorer GPS unit; field readings were corrected using base station data obtained from the Department of Renewable Resources (Forestry) in Whitehorse. This survey is not considered a legal survey. The Winger claims are listed below in Table 2. Figure 2 shows the claims location and topography.

CLAIM GROUP	CLAIM NUMBER	FRACTIONS	NUMBER OF CLAIMS	RECORD NUMBER
Winger	8		1	YB77138
Winger	15		1	YB77145
Winger	16		1	YB77146

Table 2 Winger claims information.

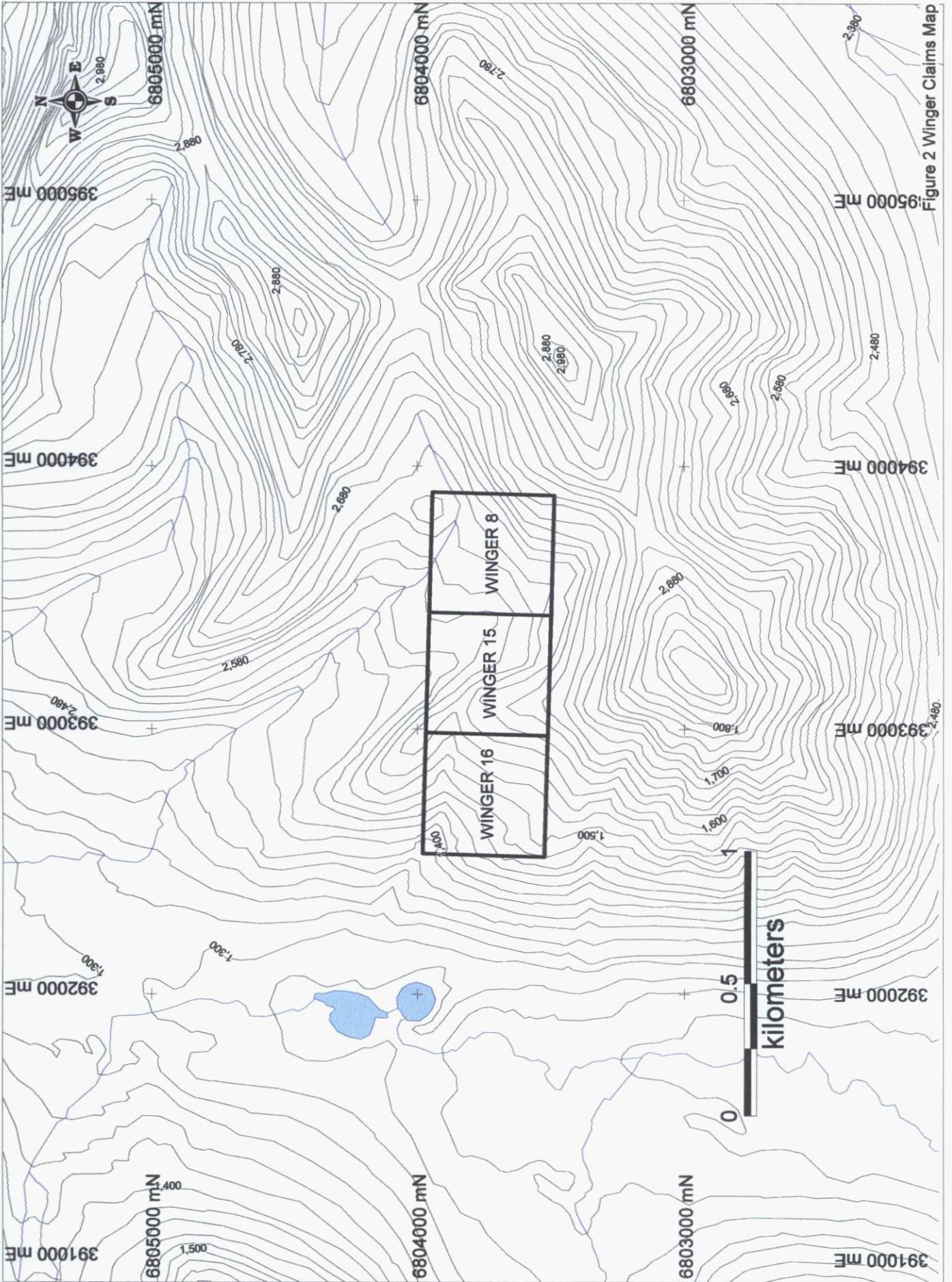


Figure 2 Winger Claims Map

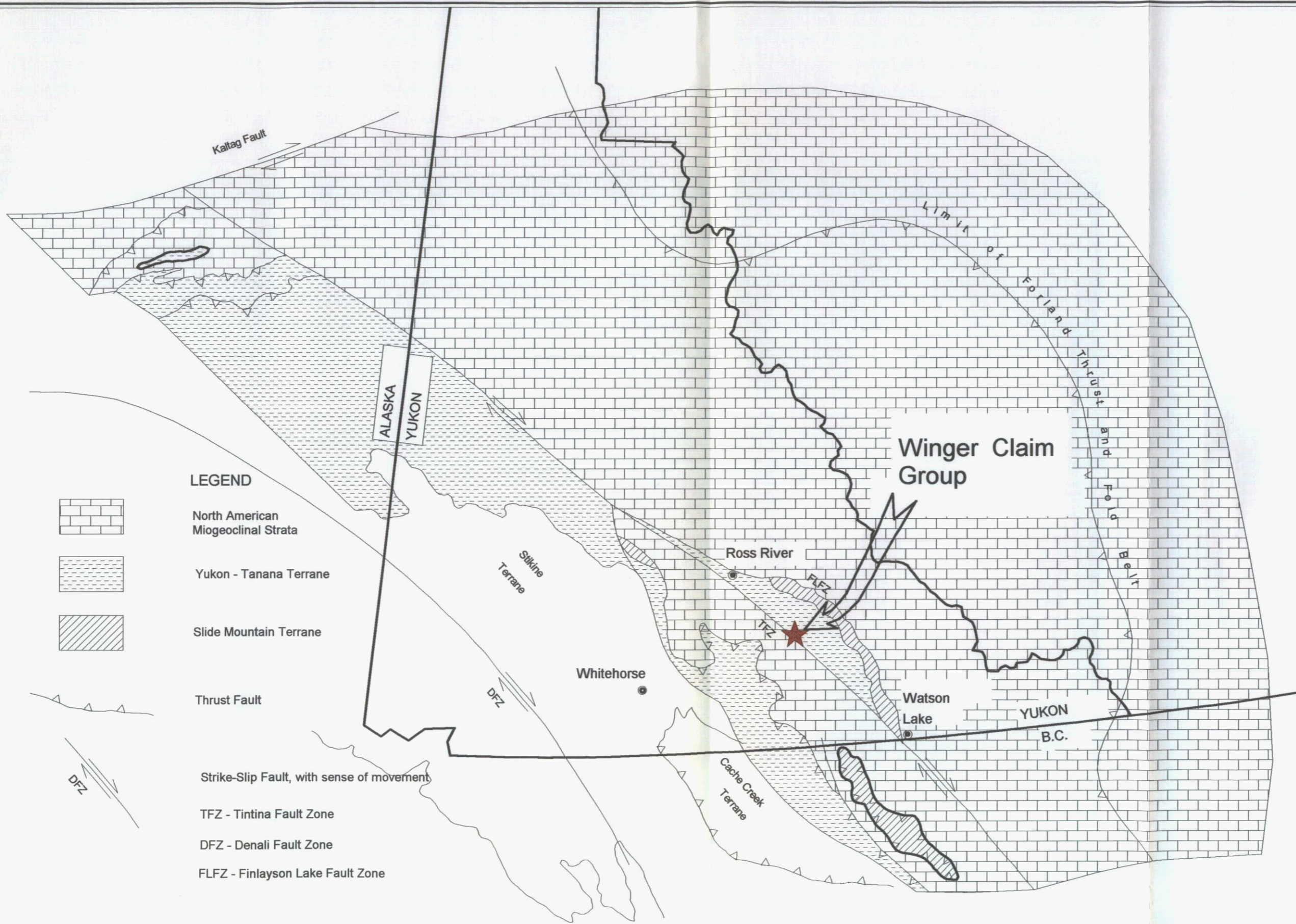
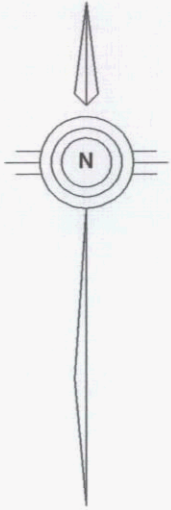
V. History

Exploration on this claim group dates back to 1966, when the Faro lead-zinc deposit was discovered 100 kilometres to the northwest. Archer, Cathro and Associates staked this property on behalf of Expatriate Resources Ltd. in 1996 to cover scattered soil sample sites that had yielded weakly to strongly anomalous copper, lead and zinc values. The Winger property history is briefly summarized below.

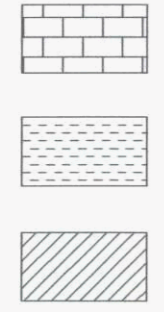
- ◆ In 1973, Archer, Cathro and Associates Ltd. completed a regional geochemical data base, which documented anomalous geochemical samples in the vicinity of the Winger property. Prospecting in 1973 also located a gossan associated with pyrrhotite and chalcopyrite mineralization. The claims were staked in 1996 for Expatriate Resources Ltd. to protect this exploration target area.
- ◆ In 1996 a field crew completed reconnaissance soil geochemistry, geological mapping and prospecting.

VI. Regional Geology

Tempelman-Kluit of the Geological Survey of Canada (1977; 1979) completed regional mapping of the Finlayson Lake area. Mortensen and Jilson (1985) and Mortensen (1992) have completed more recent geological studies. The Winger property is located within the Finlayson Block, a 380 by 60 km area comprised primarily of the Yukon-Tanana and Slide Mountain geologic terranes (Figure 3). These terranes represent the innermost of the accreted or "suspect" terranes in the Canadian Cordillera (Mortensen and Jilson, 1985). Generalized regional geology is described in the following paragraphs.



LEGEND



North American Miogeoclinal Strata

Yukon - Tanana Terrane

Slide Mountain Terrane



Thrust Fault



Strike-Slip Fault, with sense of movement

TFZ - Tintina Fault Zone

DFZ - Denali Fault Zone

FLFZ - Finlayson Lake Fault Zone

A. YUKON-TANANA TERRANE

The Yukon-Tanana Terrane is comprised largely of Palaeozoic continental margin and/or arc stratigraphy deposited on a continental basement of uncertain origin (Mortensen, 1992). The Yukon-Tanana Terrane in the Finlayson District contains three major units collectively referred to as the Layered Metamorphic Sequence. The lower unit is comprised of garnet-mica schist with interbedded marble, calc-silicate and calcareous schist near the top. The middle unit is composed of carbonaceous quartzite, schist and phyllite with rare conglomerate and locally extensive felsic and mafic volcanic interbands. The upper unit consists of marble and quartzite. Radiometric dating of felsic metavolcanics in the middle unit has consistently resulted in Late Devonian to Mississippian crystallization ages (Mortensen, 1992). Immediately south of Finlayson Lake, large isolated outcrops of marble and quartzite are dated as Early Pennsylvanian to Early Permian rocks (Templeman-Kluit, 1979). These form the uppermost unit of the Yukon-Tanana Terrane.

This sequence of units is generally correlative with a similar stratigraphic sequence in ancestral North America (Mortensen and Jilson, 1985). The lowermost sequence is correlated with the Lower Cambrian Atan Group and the middle carbonaceous assemblage is correlated with the offshelf, Silurian-Devonian Nasina quartzite assemblage. The felsic volcanic rocks are most similar to locally extensive Mississippian siliceous volcanic rocks in the North American stratigraphy. Local calcareous phyllite and massive greenstone near the top of the lower unit are lithologically similar to the Kechika Group and Lower Palaeozoic alkalic greenstone rocks, respectively.

Gneiss and augen gneiss invariably occur low in the Yukon-Tanana Terrane succession beneath either the lowermost calcareous unit or the middle carbonaceous unit. Mortensen and Jilson (1985) considered the gneisses to be metamorphosed Mid-Palaeozoic plutonic rocks. Conversely, Templeman-Kluit (1997) considers these gneisses to be at least in part recrystallization of earlier stratigraphy. Radiometric dating of the gneisses has consistently resulted in Late Devonian to Mississippian ages (Mortensen, 1992). The gneisses occur in structural culminations with diameters on the order of 10 kilometres and structural relief up to about 1 kilometre.

The Devonian-Mississippian Simpson Suite (Mortensen, 1992) includes thick intervals of hornblende granodiorite and quartz monzonite higher in the Yukon-Tanana Terrane stratigraphic sequence. Mortensen and Jilson (1985) interpreted this suite as intrusive. Templeman-Kluit (1979) mapped the suite as an allochthonous slice emplaced on top of the structural pile.

B. INTRUSIVE ACTIVITY

Intrusive activity within the Finlayson District includes: relatively undeformed Devonian to Permian mafic dykes and plugs within the Slide Mountain Terrane; sheet-like Devonian to Mississippian intermediate to felsic gneiss and foliated granitic rocks; relatively unfoliated Early Jurassic mafic to intermediate plutons; and, unfoliated Late Cretaceous two-mica granite stocks and dykes, all of which are found within the Yukon-Tanana Terrane. Isolated patches of Late Cretaceous to Tertiary felsic volcanic flows and pyroclastic rocks cap both the Slide Mountain and Yukon-Tanana Terranes (Mortensen and Jilson, 1985).

C. STRUCTURE

Structurally, Yukon-Tanana Terrane schists and gneisses contain a pervasive, flat- to gentle-dipping foliation. Close examination of this fabric indicates that it commonly is a close-spaced crenulation cleavage. Large-scale folds related to this fabric can rarely be mapped in the field. In most cases bedding and earlier fabrics are transposed into near parallelism with this dominant fabric. Later crenulation cleavages are present only locally. Some of the Cretaceous intrusions have a mild deformation fabric, others are massive and do not contain a foliation.

Thrust faults within the Finlayson District juxtapose lithologic sequences with similar deformation fabrics. Thrusting postdates the Late Palaeozoic Slide Mountain Terrane lithologies and predates the Cretaceous intrusive. Recent mapping also suggests, but does not definitively prove, the presence of major late extensional faults juxtaposing differing sequences (Templeman-Kluit, 1997). East to northeast trending, steep, normal faults disrupt all earlier deformation fabrics.

D. METAMORPHISM

Metamorphic grades range from lower greenschist facies to middle amphibolite facies. Contact hornfels around plutonic units occur locally. Metamorphism and deformation are tentatively correlated with transpressive suturing of these suspect terranes with ancestral North America. Suturing is restricted to the time interval of post-Triassic continuing into the Cretaceous. Whether deformation is continuous or sporadic has not been fully verified at present.

E. MINERALIZATION

The discovery of the Kudz Ze Kayah, GP4F, Fyre Lake, and Wolverine deposits within the Finlayson District in the last few years (Johnston and Mortensen, 1994) has re-focused exploration activities in the area. The deposits occur within metasedimentary and metavolcanic sequences of the Yukon-Tanana Terrane and are associated with

felsic volcanic rocks present in the middle unit of that terrane. Grades and tonnages of these deposits are in Table 3.

FINLAYSON DISTRICT RESOURCES						
	TONNES	ZINC	LEAD	COPPER	SILVER	GOLD
KUDZ ZE KAYAH ^{1,4}						
INDICATED	13,720,000	6.0%	1.61%	0.90%	139.2 G/T	1.38 G/T
WOLVERINE – MAIN LENS						
INDICATED ¹	4,941,000	13.00%	1.58%	1.43%	379.4 G/T	1.76 G/T
INFERRED ¹	498,000	13.61%	1.70%	1.36%	365.3 G/T	1.51 G/T
UPPER LENS ₂ – INFERRED	343,000	13.11%	1.85%	0.80%	354.2 G/T	1.39 G/T
GP4F ³						
INFERRED	1,500,000	6.40%	3.10%	0.10%	90 G/T	2.00 G/T
TOTAL INDICATED RESOURCE	18,661,000	7.85%	1.60%	1.04%	202.8 G/T	1.48 G/T
TOTAL INFERRED RESOURCE	2,341,000	8.92%	2.62%	0.47%	187.3 G/T	1.81 G/T
¹ RESOURCE ESTIMATES FOR KUDZ ZE KAYAH AND MAIN LENS OF WOLVERINE BY HATCH ASSOCIATES LTD., NOVEMBER 2000.						
² INFERRED RESOURCES FOR UPPER LENS BY WESTMIN RESOURCES LTD, 1998						
³ INFERRED RESOURCE FOR GP4F ESTIMATED BY COMINCO LTD., 1998 ANNUAL REPORT						
⁴ KUDZ ZE KAYAH & GP4F ARE OWNED BY TECK COMINCO METALS LTD.						

Table 3 Finlayson District Resources.

VII. Regional Mineralization

A. INTRODUCTION

Two types of regional mineralization is widely recognized, these include: 1.) volcanic massive sulfide deposits, which include three type varieties; and 2.) emerald mineralization. Brief explanations of the deposit types are described in the following paragraphs.

B. VOLCANIC MASSIVE SULFIDE DEPOSITS

Volcanic-associated massive sulfide (VMS) deposits occur in terranes dominated by volcanic rocks. Volcanic or sedimentary strata host the deposit; all of which form integral parts of a volcanic complex. The deposits are comprised of two parts: massive sulfide that formed immediately below the seafloor, the second part is vein and disseminated ore that immediately underlies the massive sulfide ore. Deposits of the volcanic-associated massive sulfide type are important sources of copper, zinc, and lead; many deposits contain economically recoverable gold and silver. Byproducts are commonly cadmium, tin, indium, bismuth, and selenium (Franklin, 1996, p. 158). 1.

C. EMERALD MINERALIZATION – REGAL RIDGE

While exploring a base metal geochemical soil anomaly on one of its Yukon properties in the autumn of 1998, Expatriate Resources' field geologist, Bill Wengzynowski, discovered an occurrence of emeralds. About one kilogram of emeralds were collected from float and outcrop during a two-hour examination within a 30 x 100 m area. This emerald showing at Regal Ridge occurs in complexly deformed metamorphic rocks of greenschist to lower amphibolite grade in the Yukon-Tanana Terrane, near their contact with mid-Cretaceous granitic pluton. Northeast of the Tintina Fault, where the showing occurs, the Yukon-Tanana Terrane is composed of mainly pre-Late Devonian quartz-rich metaclastic rocks and carbonates and Late Devonian and Mississippian *metavolcanic and metaplutonic rocks*. The emerald crystals occur where quartz veins cut mica-rich layers in shallowly dipping mica schist of the Upper Devonian Fire Lake Mafic Metavolcanic unit. The Fire Lake unit is comprised of metabasalt of boninitic composition and overlies a thick, laterally tapering slab of variably serpentinized mafic and ultramafic metaplutonic rocks. The quartz veins associated with the emerald mineralization range in width from approximately 0.5 to 1.0 metres. At least ten such veins have been found on the north side of the ridge. Most are surrounded by a much

more extensive, overlapping mass of fine, dark tourmaline crystals. The emeralds occur in the tourmaline zones and rarely in the quartz veins. On the Regal Ridge showing emeralds occur where quartz veins cut mica-rich layers in a shallow dipping mica-chlorite schist of the Upper Devonian Fire Lake mafic meta volcanic unit. The oldest volcanic unit in the arc/back-arc succession, the Fire Lake unit is laterally extensive and hosts the Fyre Lake Cu-Co-Au massive sulphide deposit about six kilometres southeast of the Crown showing. It is compositionally diverse, including boninite and low tholeiite, NMORB, and transitional LREE enriched tholeiite. In the area of the Regal Ridge showing, the schist is well foliated and dips gently to the north. The strata are isoclinally folded; vergence is to the south and the fold axis plunges to the west approximately 10 degrees. The quartz veins associated with the emerald mineralization are slightly discordant to the bedding planes. At least eight such veins have been found on the north side of the ridge. In most cases they are surrounded by a zone of yellow sulfate mineralization and a much more extensive, overlapping mass of fine tourmaline crystals that locally contain minor amounts of scheelite. Emeralds occur in both the sulfate and tourmaline zones and (rarely,) in the quartz veins. Where the quartz veins cut mica-poor chlorite schist there are no sulfate or tourmaline zones and no emeralds (although there may be tourmaline in the quartz veins), implying that mica-poor strata are unreactive with respect to the hydrothermal system. All quartz veins seem contemporaneous, and the presence or absence of emeralds is influenced strongly by the geochemistry of the host rock. The quartz veins seem to be genetically linked to a large body of mid-Cretaceous granite that is exposed 600 metres east of the emerald mineralization. The outcrop closest to the showing is apparently marginal muscovite granite that grades (over a surprisingly small distance) to a reddish-weathering, biotite-muscovite granite. Regal Ridge is a Type 2a: Emeralds associated with granitic pegmatitic rocks interacting with ultramafic rocks in a recent suture zone. Roughly half the volume and a quarter the value of annual global emerald production is derived from this class of deposit (Groat et al., 2002).

VIII. Property Geology

A. WINGER PROPERTY SCALE GEOLOGY

1. Introduction

The Winger claims contain strongly hornfelsed metasediments of the Layered Metamorphic Sequence that are intruded by Cretaceous granite stock as shown on Figure 4.

3. Biotite–Muscovite Granite

The lowest exposed unit is unfoliated, megacrystic, medium crystalline biotite-muscovite granite (Figure 4). The granite generally weathers light grey to white. Euhedral megacrysts of white feldspar are up to 5 cm long and 2 cm wide. Biotite constitutes 5 to 10% and quartz about 20% of the unit. Muscovite occurs in much lesser amounts than biotite. Locally the granite is altered to a pale tan colour. This altered variant contains only muscovite; biotite is absent. The tan colour corresponds to feldspar alteration.

4. Gneiss

Immediately overlying the granite is a mixed granite-gneiss zone consisting dominantly of biotite-quartz gneiss containing numerous granitic dykes (Figure 4). The gneisses weather grey to rusty brown; minor pyrrhotite is commonly present as disseminated grains. This unit extends for about 180 m along the ridge top, corresponding to a thickness of about 115 m

Overlying the calcareous sequence is a muscovite-biotite gneiss with lesser interbands of muscovite gneiss. Locally these gneisses become micaceous enough to be considered schists. They are thinly laminated and weather light silvery brown. Locally, especially towards the base they contain thin interbands of marble or dark green hornblende calc-silicate. Portions of the uppermost sequence within the gneiss unit are extremely rusty weathering and consist of muscovite-quartz gneiss to schist. The rusty weathering colour is caused by fine disseminated sulphides within the unit.

5. Mafic Schist

A mafic schist unit is mapped within the gneiss unit. This unit is a chlorite-biotite-carbonate schist and is interpreted as a mafic volcanic unit.

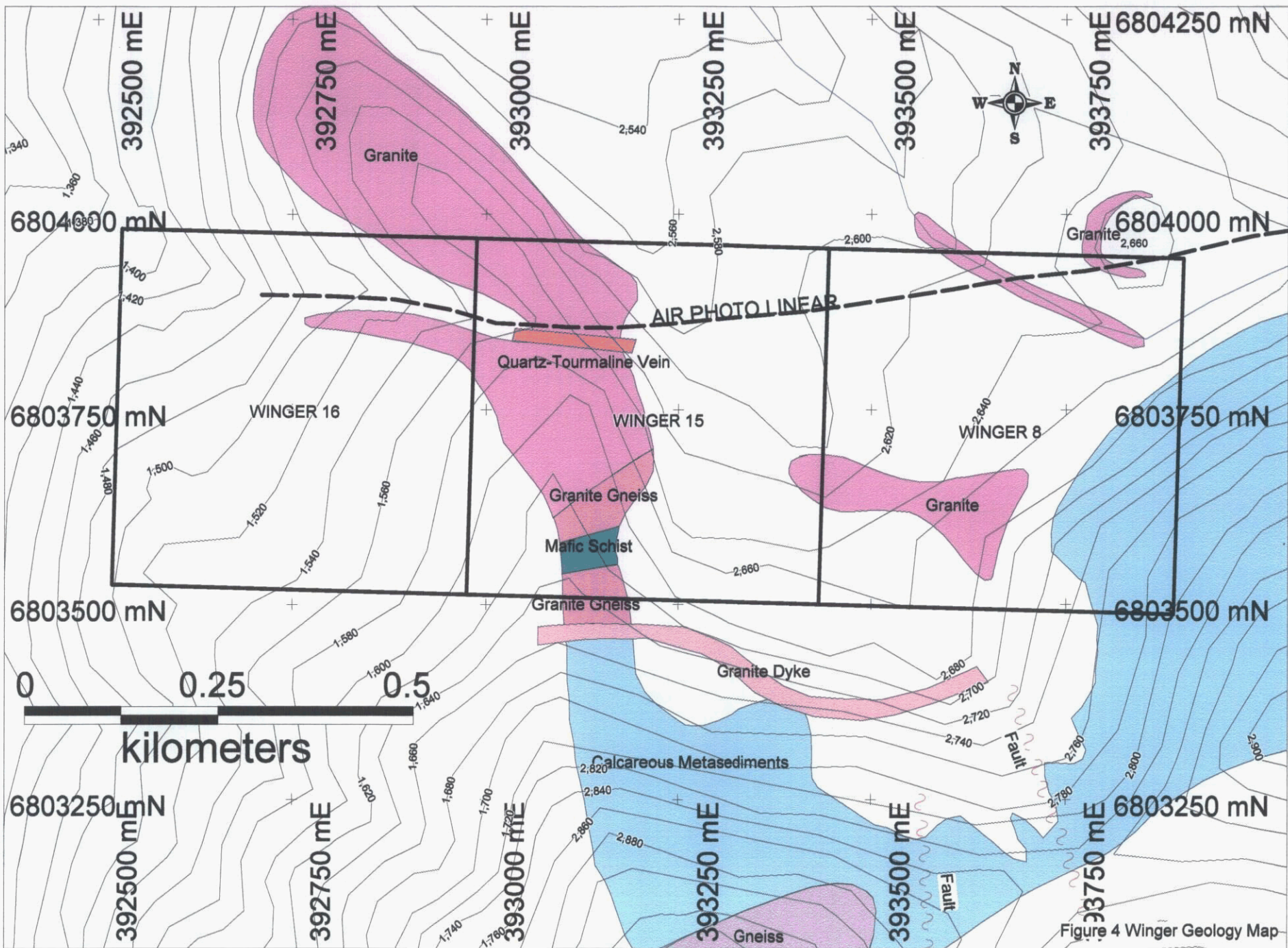


Figure 4 Winger Geology Map

6. Granitic Dykes

Granitic dykes are generally less than 2 m thick although they locally are thicker than 10 m (Figure 4). Rare quartz-tourmaline veins are genetically related to the granite intrusive are also present.

7. Metasediments

The metasediments strike northeast and dip moderately to the southeast. The dominant planar fabric is a pervasive foliation (S1) which is subparallel to S0 bedding. This S0/S1 fabric is locally deformed into open folds with an axial plane cleavage which is essentially flat-lying (S2). These folds trend northwest-southeast.

Above the mixed unit is a thick sequence of calcareous metasediments including interlayered calc-silicate gneiss, silicated marble, skarn and biotite amphibolite with lesser biotite gneiss.

Interbanded with the skarn are beds of dark green biotite amphibolite and calc-silicate gneiss which is interpreted to be a metamorphosed mafic flow. Locally these units weather a deep rust-brown because of pyrrhotite occurring as small disseminated grains. This unit is interpreted to be mafic volcanic flows.

The silicated marbles form thick units at the top and bottom of the calcareous sequence. The marbles are medium to coarsely crystalline and weather off-white to grey. Silicate bands within the marble are up to 5 cm thick and constitute between 20 and 70% of the unit. Commonly the silicate bands consist of quartz with disseminated hornblende, garnet, and biotite. Locally the marbles contain extensive high temperature garnet-diopside skarn with pale pink garnet and pale green diopside forming individual bands. The skarns are generally devoid of sulphides.

The calcareous sequence extends for 350 m along the ridge. Allowing for the elevation difference, this corresponds to an approximate thickness of 320 m.

8. Gossan

A small gossan is located within the lowermost metasediment unit at the southeast head of the cirque. It forms a bright orange to rust-brown outcrop within 30 m of the granitic intrusion. The gossan extends for a vertical distance of about 15 m up the steep cirque wall; it could not be traced laterally along strike (Burget, 1997). The bottom half consists of a carbonaceous micaceous quartzite with abundant fine pyrite streaks. The upper half is a pale cream muscovite-quartz schist (felsic volcanic). A 1996 sample of finely banded sulphides collected from skarn float at the head of the cirque returned an extremely anomalous lead value of 2700 ppm, as well as 212 ppm zinc and 1.6 ppm silver. Grab rock samples of carbonaceous quartzite and rusty muscovite-quartz schist from the gossan returned moderately anomalous lead values and background values for all other metals.

IX. 2002 Field Program

Fieldwork was completed in 2002 over a period of 1 day on September 5th. The program focused on prospecting for quartz-tourmaline veins associated with emerald mineralization at Regal Ridge as well as geological mapping.

Present on the Winger property was Rob Duncan, Geologist and Terry Tucker, Geologist.


X. Statement of Expenditures

I, Robert A. Duncan, as agent for Expatriate Resources Limited, #701-475 Howe Street, Vancouver, B.C. do solemnly declare that field mapping and was carried out on the Winger claim block on September 2nd 2002.

Drafting	\$90.00
Helicopter	\$829.98
Equipment Rentals	\$88.00
Wages	\$885.71
Report	\$500.00
Total	\$2393.69

I make this solemn declaration conscientiously believing it to be true and knowing that it is of the same force and effect as if made under oath and by virtue of the Canada Evidence Act.

Declared before me at Vancouver in the Province of British Columbia this 27th day of February, 2003.



Robert A. Duncan
Project Geologist

XI. 2002 Field Program Results

The single day of prospecting on Winger led to the confirmation of rock units described in previous reports and the discovery of rare quartz-tourmaline veins (Figure 4). Various calc-silicate skarn units and chlorite-biotite schists have been identified as possible mafic rocks and as a source of chromium for the emeralds. Rare quartz-tourmaline veins were encountered that are genetically related to beryllium enriched felsic intrusions on the property. No beryls or emeralds were encountered.

XII. Recommendations

Recommendations for further exploration work should include prospecting and soil sampling. Significant time should be spent prospecting for quartz tourmaline veins especially where they intersect mafic units on the property.

XIII. Statement of Qualifications

I, Robert A. Duncan of #10 2151 Banbury Rd. North Vancouver in the Province of British Columbia, DO HEREBY CERTIFY:

1. THAT I am a Geologist in the employ of Expatriate Resources Limited with offices at #701-475 Howe Street, Vancouver, British Columbia.
2. THAT I have practiced my profession with various mining companies in North West Territories, Nunavut, Manitoba, Saskatchewan, British Columbia, Yukon Territory, and the United States of America, for twelve years.
3. THAT I am a graduate of the University of British Columbia and hold a Honours Bachelor of Science in Geology (1996) and a Master of Science in Geology (1999).
4. THAT this report is based upon work which I completed on September 5st, 2002.
5. THAT I have no direct interest in the property described herein, nor do I expect to receive any interest.

Dated Aug 6th 2003

Signed 
Robert A. Duncan, M.Sc.

XIV. References

- Burget, A. 1997, Assessment Report Describing Prospecting, Mapping, and Geochemical Surveys on the Winger Property. Prepared by Archer, Cathro and Associates Ltd. for Expatriate Resources Ltd.
- Franklin, J.M., 1996, Volcanic-associated massive sulphide base metals: *in* O.R. Eckstrand, W.D. Sinclair and R.I. Thorpe (eds.), *Geology of Canadian Mineral Types*, Geological Survey of Canada, Geology of Canada, No. 8, p.158-183.
- Galley, A.G. and Koski, R.A., 1997, Setting and characteristics of ophiolite-hosted volcanogenic massive sulphide deposits: *in* Barrie, C.T. and Hannington, M.D. (eds), *Volcanic-Associated Massive Sulphide Deposits: Process and Examples in Modern and Ancient Settings*, GAL-MMD-SEG p.253-280.
- Groat, L.A., Marshall, D.D., Giuliani, G., Murphy, D.C., Piercey, S.J., Jambor, J.L., Mortensen, J.K., Ercit, T.S., Gault, R.A., Matthey, D.P., Schwartz, D.P., Maluski, H., Wise, M.A., Wengzynowski, W., and Eaton, W.D. (2002) Mineralogical and geochemical study of the Regal Ridge showing emeralds, southeastern Yukon. *Canadian Mineralogist*, 40, 1313-1338.
- Johnston, S.T. and Mortensen, J.K., 1994, Regional setting of porphyry Cu-Mo deposits, volcanogenic massive sulphide deposits, and mesothermal gold deposits in the Yukon-Tanana Terrane, Yukon; *Yukon Metallogeny: Recent Developments*, Canadian-Yukon Economic Development Agreement, p.30-34.
- Mortensen, J.K. and Jilson, G.A., 1985, Evolution of the Yukon-Tanana Terrane: evidence from southeastern Yukon Territory: *Geology*, v.13, p.806-810.
- Mortensen, J.K., 1992, Pre-Mid-Mesozoic Tectonic Evolution of the Yukon-Tanana Terrane, Yukon and Alaska: *Tectonics*, Vol.11, No.4, p.836-853.
- Plint, H.E. and Gordon, T.M., 1997, The Slide Mountain Terrane and the structural evolution of the Finlayson Lake Fault Zone, southeastern Yukon: *Canadian Journal of Earth Sciences*, v.34, p.105-126.

Robert, F., 1995, Quartz-Carbonate Vein Gold: *in* Eckstrand, O.R. Sinclair, W. D., Thorpe, R.I. (eds.), *Geology of Canadian Mineral Deposit Types*. Ottawa, Canada, CCG Publishing, p. 1-640.

Templeman-Kluit, D.J., Gordey, S.P. and Read, B.C., 1976, Stratigraphic and structural studies in the Pelly Mountains, Yukon Territory: *Geological Survey of Canada Paper 76-1A*, p.97-106.

Templeman-Kluit, D.J., 1977, Quiet Lake (105F) and Finlayson Lake (105G) map areas: *Geological Survey of Canada, Open File 486*.

Templeman-Kluit, D.J., 1979, Transported Cataclasite, Ophiolite and Granodiorite in Yukon: Evidence of Arc-Continent Collision: *Geological Survey of Canada, Paper 79-14*, 27 pages.