

2002 Report of Field Activities

On the MEG Claims

Prepared

For

TRUE NORTH GEMS INC.

Prepared by

**BERNARD E. GABOURY
PRESIDENT, C.O.O.
TRUE NORTH GEMS INC
608-602 WEST HASTINGS ST.**



094417

May 9, 2003

Costs associated with this report have been
approved in the amount of \$ 12,900-
for assessment credit under Certificate of
Work No. QL 25604



.....
Mining Recorder
Watson Lake Mining District

INTRODUCTION

The Meg Claim Group was staked in the summer of 2001 by True North Gems Inc. The area was selected on the basis of proximity and geological similarity to the emerald bearing Regal Ridge property on the east side of the North River Valley.

Initial activities on the Meg claims consisted of rudimentary geochemical sampling and prospecting on fairly wide line spacing (approximately 3000 ft). Stacked Beryllium, Tungsten, and Tin anomalies analogous to what is observed on Regal Ridge, is seen on the East portion of the Meg Claim Block. There is generally sparse outcrop coverage, but the areas where outcrop was seen consisted of chloritic schists similar to Regal Ridge.

A two phase program is proposed in order to follow-up on the results of the 2002 program. Careful attention must be paid to what is to be deemed anomalous since the greater overburden thicknesses on the Meg claim group would result in dilution and subsequently more subdued response in the geochemical indicator elements. This effect can be overcome to some extent by focussing geochemical sampling and prospecting efforts in stream valleys as per the traverses proposed in **Figure 4**.

PROPERTY, LOCATION AND ACCESS

The property is located in southeastern Yukon at Latitude 61°20'N and longitude 130°32'W on NTS map sheets 105G/7 & 8 (Figure 1).

The area covered in this report is located 42 km south of the Robert Campbell Highway and 230 km northeast of Whitehorse in the Pelly Mountains, southeastern Yukon. Supplies have been brought to the Regal Ridge camp via the Robert Campbell Highway from Whitehorse or alternatively by aircraft to the airstrip at Finlayson L.

There is a private, all weather access road from the Robert Campbell Highway at Finlayson Lake south to the Kudz Ze Kayah Deposit. Access to the property was gained by helicopter staged from the Kudz Ze Kayah Deposit or from Finlayson Lake staging area on the Robert Campbell Highway. Heavy equipment and supplies are mobilized into the camp by a winter access trail beginning from the Kudz Ze Kayah camp.

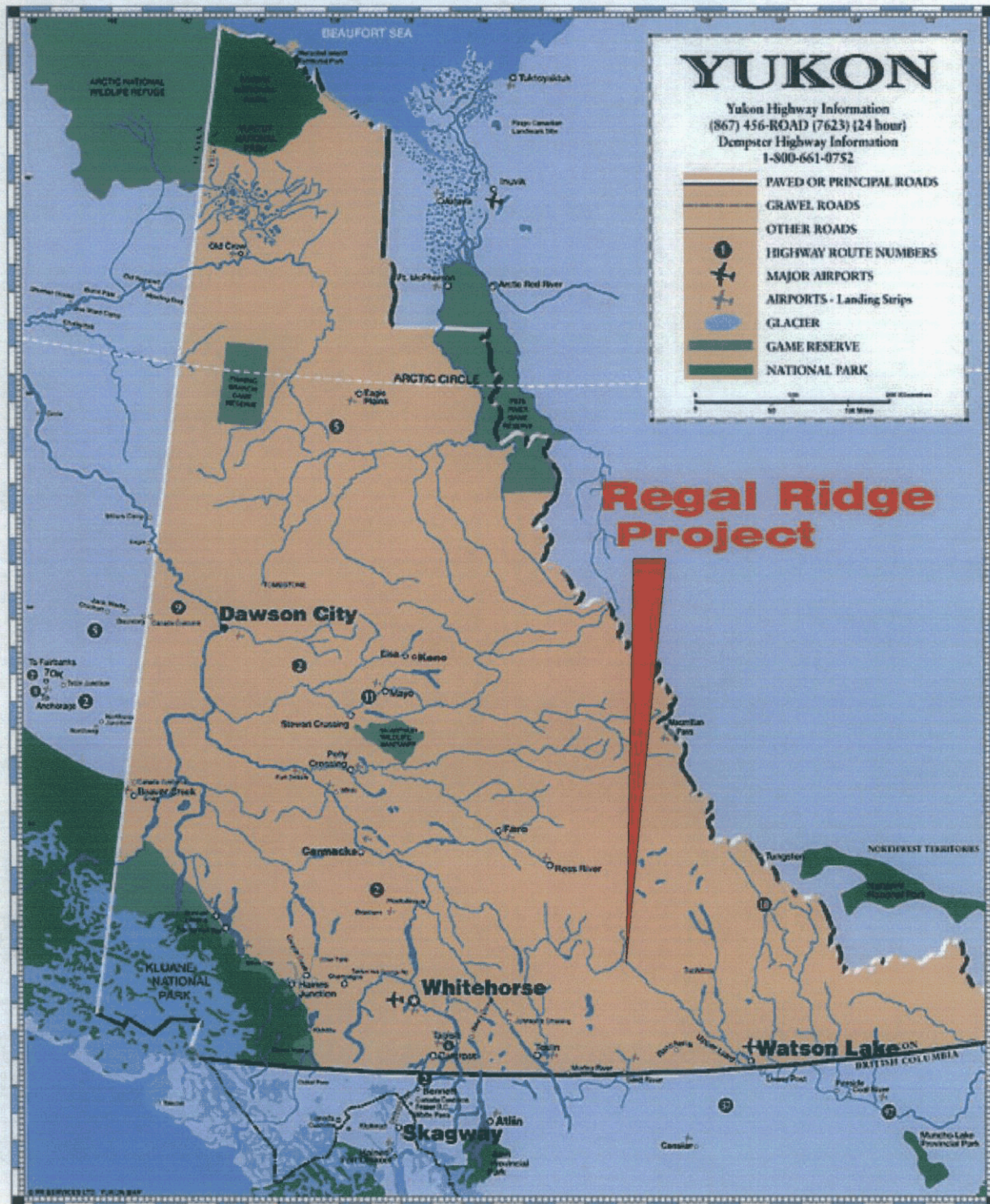


Figure 1 Location Map

TARGET AREA

The Meg claims are located 5 km from Regal Ridge, and consist of 108 claims.

The MEG group consists of a total of 108 claims (YB93395 to YB93506 inclusive and the YIR group: YB93280 to YB93285 inclusive). They were staked by True North Gems Inc. over ground with favourable geology to the west of the Regal Ridge Project claims during the 2001 field season. All pertinent claim information is summarized below.

Figure 2 is a map of the Meg Claim Group.

TABLE 1							
Claim Group	Claim Number from	Claim Number to	Number of Claims	Record Number from	Record Number to	Expiry Date	Mining District
MEG	1	56	56	YB93395	YB93450	12-Sept-03	Watson L.
MEG	58		1	YB93451		12-Sept-04	Watson L.
MEG	60		1	YB93452		12-Sept-04	Watson L.
MEG	62		1	YB93453		12-Sept-04	Watson L.
MEG	64		1	YB93454		12-Sept-04	Watson L.
MEG	66		1	YB93455		12-Sept-04	Watson L.
MEG	68	74	7	YB93456	YB93462	12-Sept-03	Watson L.
MEG	77	86	10	YB93465	YB93474	12-Sept-04	Watson L.
MEG	87		1	YB93475		12-Sept-03	Watson L.
MEG	88		1	YB93476		12-Sept-04	Watson L.
MEG	89	94	6	YB93477	YB93482	12-Sept-03	Watson L.
MEG	101	122	22	YB93485	YB93506	12-Sept-03	Watson L.
TOTAL			108				

GEOLOGICAL AND TOPOGRAPHIC SETTING

The Meg Property is underlain by the same biotite-plagioclase-actinolite-chlorite schist which hosts the emerald mineralization at Regal Ridge. There are also occasional small bodies of serpentinized ultramafic intrusive, again similar to those which occur at Regal Ridge. Elevations range from 1200 meters in North River Valley to about 1800 meters on the mountains that run along the north edge of the property.

REGIONAL GEOLOGY

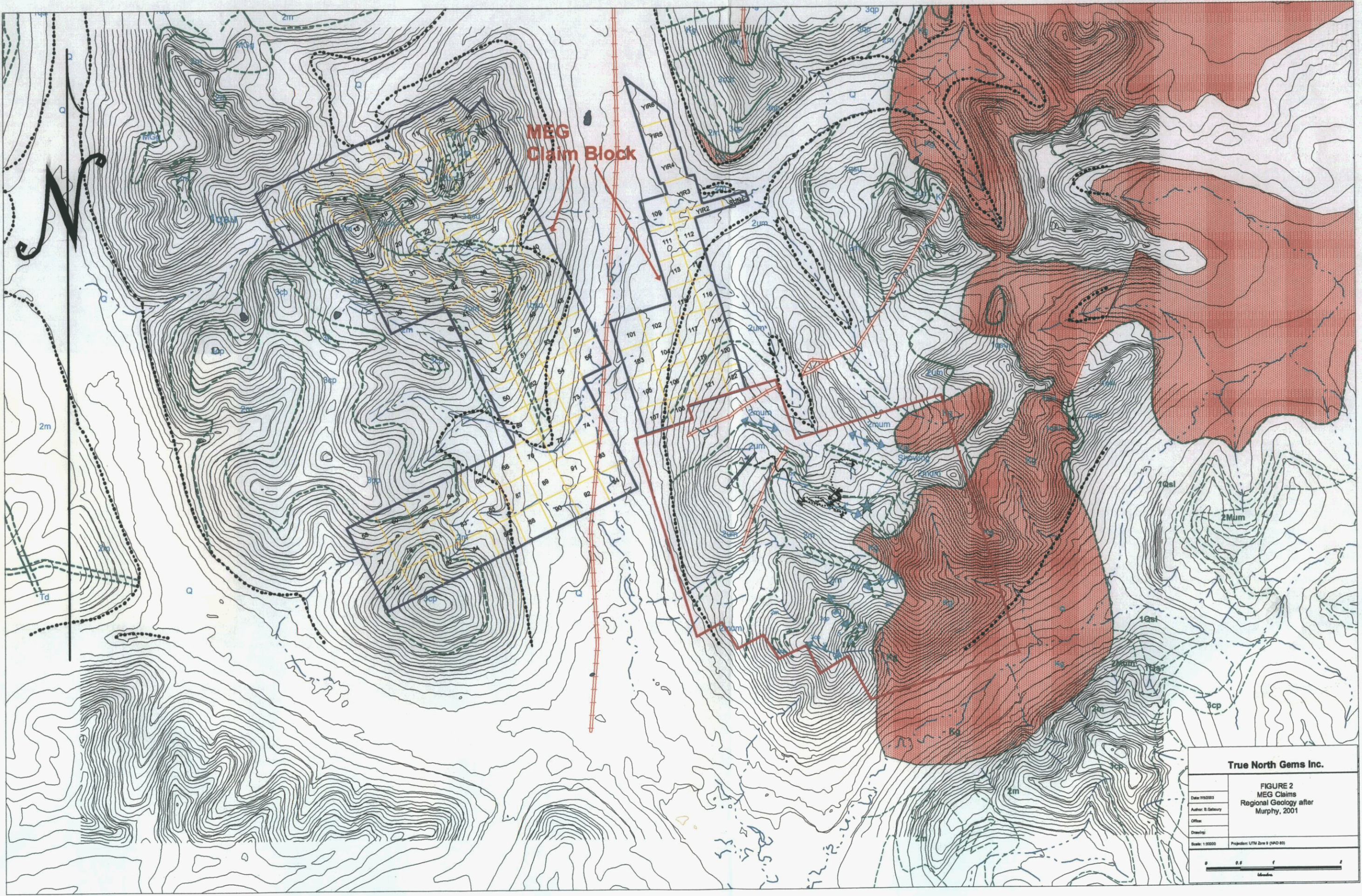
Murphy (1997) has compiled the regional geology underlying the area covered in this report. The main lithotypes involved include Paleozoic metasedimentary and metavolcanic rocks of Murphy's Layered Metamorphic Rocks (LMR) and a variety of intrusive rocks. The pertinent units of Murphy's LMR include members of units 1, 2, and 3. These are listed in **Table 2**, a stratigraphic section for the area, and **Figure 2** also depicts the regional geology for the area peripheral to the project area.

The oldest recognized rock in the area is an upper Quartzose metaclastic unit (1qsu) of probably Pre-Mississippian age, which appears to grade upwards into a predominantly Chloritic schist unit with minor intercalations of Quartzite and Phyllites (2m). This in turn is overlain by a felsic to mafic volcanic sequence with minor intercalations of Quartzite and argillaceous Marbles (unit 3). This entire package is intruded by several igneous rocks ranging from Mississippian age (Metagabbros and Metapyroxenite sills of unit 2mum) to Cretaceous (the highly evolved Be-bearing Granitic rocks of unit Kg) and finally Tertiary Feldspar Porphyry dikes (unit Td).

Unit 2 of Murphy's LMR hosts Beryl mineralization where Quartz veins cut mica-rich layers. These volcanic rocks of arc-backarc succession include Boninite, low Ti Tholeiite, Normal Mid-Ocean Ridge Basalt, and transitional Light Rare Earth Element (LREE)-enriched Tholeiite. In the area of the showing, Boninites predominate and overlie a thick wedge of variably serpentinized mafic and ultramafic Meta-plutonic rocks interpreted to be a co-magmatic sill (Murphy, 1998a,b)(Murphy and Piercey, 2001).

The project area falls into the tectonic setting of the Yukon-Tenana terrane, the main body of which lies within the Tintina and Denali Fault Zones. Both of these are northwesterly-trending right lateral faults of large displacement. The Finlayson Lake segment is a lozenge-shaped body on the northeast side of the Tintina Fault Zone, interpreted to be displaced from the main body of the Yukon-Tanana terrane by 450 km of right lateral movement (Hunt, 1997).

Murphy's LMR described above has been subjected to two phases of deformation, bringing the rocks to Greenschist to lower Amphibolite facies metamorphism. A near flat-lying foliation subparallel to the compositional layering is the dominant structural fabric. It is related to Phase 1 deformation and is preserved as crenulation cleavage developed parallel to the axial planes of recumbent isoclinal folds. These isoclinal folds manifest themselves in numerous locations in the project area in quartz sweats and silicious horizons. The foliation itself strikes west to northwest and dips gently to the north and northeast. The folds are locally north verging and the axes plunge gently to the west between 5° and 10°. One regional scale fault occurs on the east edge of the project area and juxtaposes the ultramafic unit, 2mum, against the LMR. Smaller scale late stage faults, associated with Quartz ± Tourmaline ± Carbonate veins are widespread in the project area. They commonly exhibit two orientations. One set is steeply dipping striking northwesterly or northeasterly while the other set strikes northeast and is gently northwest



True North Gems Inc.	
FIGURE 2 MEG Claims Regional Geology after Murphy, 2001	
Date: 11/02/03	
Author: B. Galtsoy	
Office:	
Drawing:	
Scale: 1:50000	Projection: UTM Zone 9 (NAD 83)

TABLE 2 REGIONAL STRATIGRAPHY

UNIT	NAME	AGE	DESCRIPTION	MINERALIZATION
QUATERNARY				
Q		Quaternary	Unconsolidated alluvium, colluvium and lacustrine and glacial deposits	
INTRUSIVE ROCKS				
Td	Quartz-Feldspar porphyry	Tertiary	Pale green-gray to tan unfoliated intrusive rock consisting of Biotite, Hornblende, Plagioclase Feldspar, and Quartz phenocrysts up to 1cm across, in a Quartzofeldspathic groundmass. Comprises dikes and plugs	
Kg	Biotite-Muscovite Granite	Cretaceous	Massive, gray to brown, medium to coarse grained, generally equigranular forms a large stock along the eastern edge of the property. Margin zone <100 m thick, somewhat more muscovite rich. QFBM Pegmatitic	fg. purple fluorite & garnet; common pegmatite accessory minerals
2um	Pyroxenite Ultramafic	Mississippian?	Massive to layered metamorphosed ultramafic rocks including Dunite and dark brown to green Pyroxenite; strongly magnetic and locally serpentized, occurs on the western and northern flanks of the property.	
2mum	Metagabbro	Mississippian	(North Lakes Metadiorite) Weakly to moderately foliated, medium to dark green rock composed of Biotite, Actinolite and Plagioclase. Some Chlorite development and minor stubby Tourmaline crystals along foliation planes.	
Layered Metamorphic Rocks				
3cp	Sandy Marble	Mississippian	dark grey, carbonaceous Muscovite-Quartz schist, quartzite thinly laminated with argillaceous partings and Quartzite, tuff and schist	minor foliaform pyrite
3f	Felsic Metatuff	Mississippian	The bulk of Unit 3 comprises Quartzite, but it does locally contain schistose metavolcanic subunits varying from felsic to mafic composition. Felsic end members are tan to yellow weathering subunits 0.5 to 5.0 m thick, consisting of Quartz, Muscovite and S	some disseminated sulfide mineralization associated with skarnification in more intermediate members
2t	Muscovite-Tourmaline Schist	Mississippian	Well foliated and friable "golden-rusty weathering" schist composed of Muscovite, Tourmaline and minor Quartz. Tourmaline occurs along foliation as dull black masses and as "bird's foot" textured layers. Was recognized as occurring as interbands within the	Green Beryl and Emerald found at the contact of 2t units and Quartz-Tourmaline vein and pods
2m	Chlorite Schist	Mississippian?	Olive green, pervasively foliated rock composed of Chlorite, Biotite, Actinolite and minor Calcite. It represents the main lithotype in the project area. May contain local intercalations of calcareous Phyllite, Quartzite, and "Golden Schist". Interpreted	Tourmaline as masses or "bird's foot" textured layers; Quartz, garnet and epidote accessories.
1qsu	Quartzite	Pre-Miss.?	The Lower Quartzose Metaclastic Unit; A pale orange -grey to tan, non-calcareous and moderately micaceous meta-arenite composed of sucrosilica with biotite and white Mica in equal amounts. May also contain lesser	May contain heavy disseminations of pyrite and pyrrotite.

Work done on Regal Ridge up to 1999 indicated that only the shallow dipping set had associated Quartz-Tourmaline veins which could produce Beryl mineralization but subsequent work there indicated that oblique veins can also have emerald potential.

MEG CLAIM RECONNAISSANCE

The MEG group consists of a total of 118 claims (YB93395 to YB93506 inclusive and the YIR group: YB93280 to YB93285 inclusive). They were staked over ground with prospective geology to the west of the Regal Ridge Project claims during the 2001 field season.

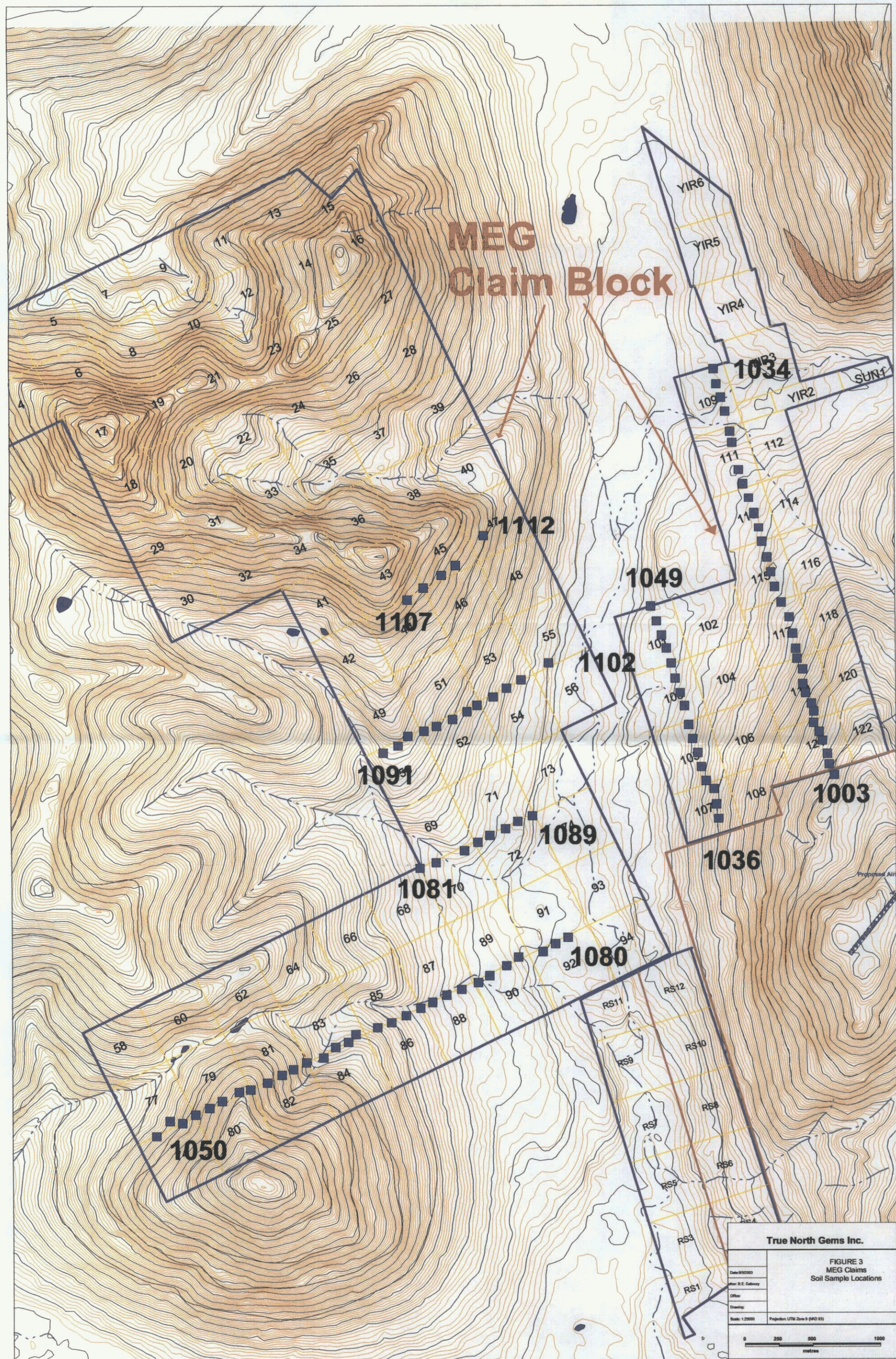
Reconnaissance soil sampling and prospecting were carried out on the Meg Group. Soil sample locations were collected in conjunction with claim maintenance. There were 106 soil samples taken. The location of these soil samples is depicted in **Figure 3**. Based on the statistical analysis of geochemical data executed on the Regal Ridge data, anomalous soils collected in the Meg Group reconnaissance have been flagged as shown in **Figure 3b**. The larger squares represent anomalous Beryllium while the diamonds represent anomalous Tungsten. The small circles represent anomalous Tin.. Prospecting along claim lines led to very little outcrop encountered, but chlorite schists with minor quartz veining similar to those encountered on Regal Ridge were observed.

It is apparent that most of the anomalous soils encountered in the Meg Group reconnaissance occur on the smaller block of claims that adjoin the Regal Ridge Goalnet Group. This may be an extension of the broad geochemical anomaly developing over airport ridge. It is suspected by some Yukon Government geologists that the valley containing the North Lakes contains a N-S trending fault which may truncate the prospectively Beryllium mineralised package of Fire Lake Chlorite Schists. This could mean that the offset portion of this block may not continue to the western claims of the Meg Group. Additional reconnaissance is required to verify or discount this possibility.

PROPOSED PLANS

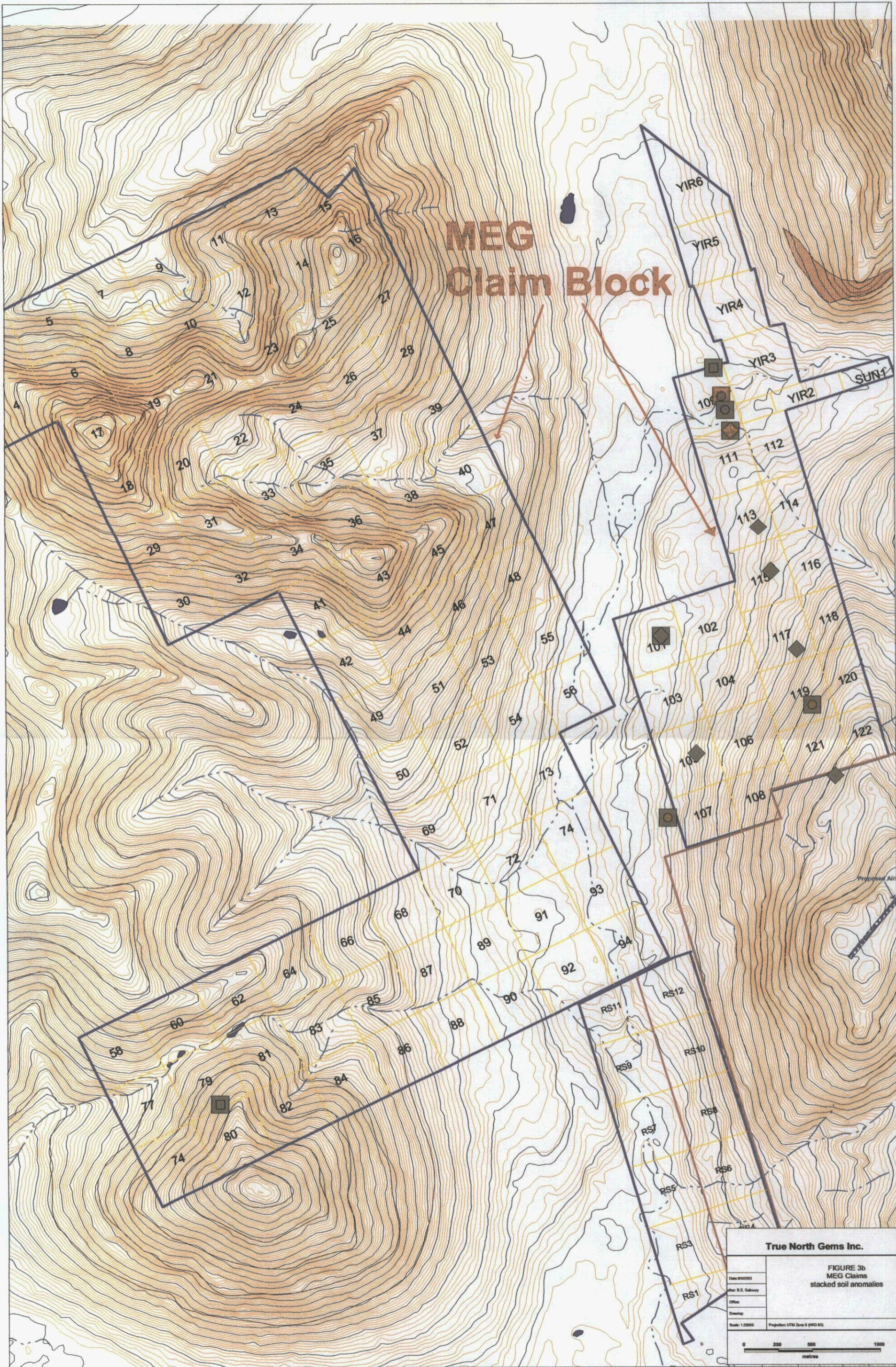
True North intends to begin the field work early in the season with basic geochemical work and prospecting, with follow-up later in the season. The initial work will be carried out by a three person team who will be responsible for taking soil samples along proposed traverses indicated in **Figure 4**, and doing basic geological mapping of the area. Plans for the second phase will be dependent upon results from the geochemical work, and will help focus the team to the areas most highly prospective for emeralds.

MEG Claim Block



True North Gems Inc.	
FIGURE 3 MEG Claims Soil Sample Locations	
Date: 9/20/03	
By: B.E. Galloway	
Office:	
Drawn:	
Scale: 1:25000	Projection: UTM Zone 9 (NAD 83)
0 250 500 1000 metres	

MEG Claim Block



True North Gems Inc.	
Date: 9/20/03	
By: B.E. Gabrey	
Office:	
Drawing:	
Scale: 1:25000	Projection: UTM Zone 18 (NAD 83)
0 250 500 1000 metres	

FIGURE 3b
MEG Claims
stacked soil anomalies

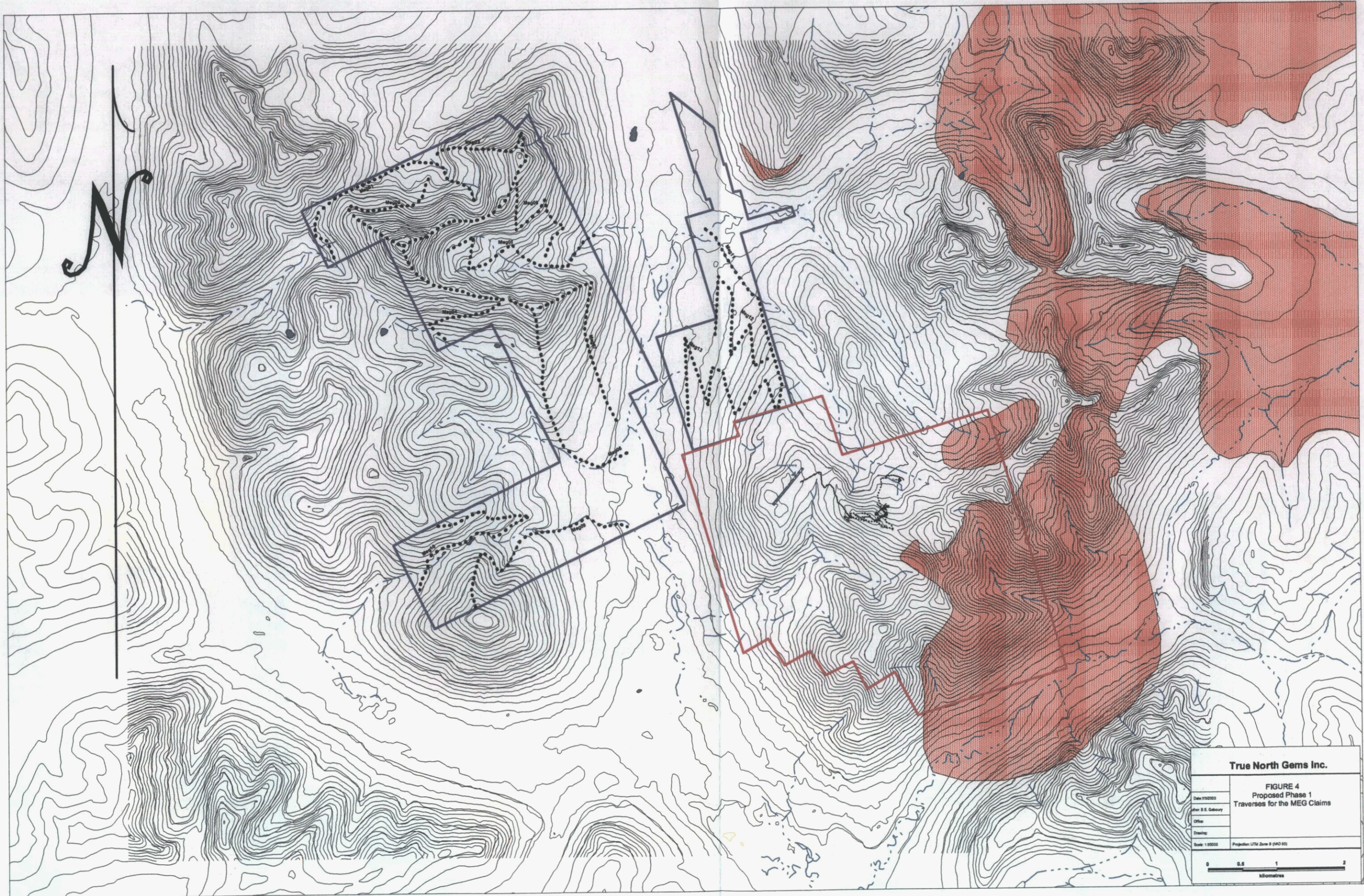
Reconnaissance soil sampling and prospecting were carried out on a large portion of the Meg Group in 2002. Soil sample locations were collected in conjunction with claim maintenance. There were 106 soil samples taken. Based on the statistical analysis of geochemical data executed on the Regal Ridge data, anomalous soils collected in the Meg Group reconnaissance have been flagged as shown in **Figure 3b**. The larger squares represent anomalous Beryllium while the diamonds represent anomalous Tungsten. The small circles represent anomalous Tin. Prospecting along claim lines led to very little outcrop encountered, but chlorite schists with minor quartz veining similar to those encountered on Regal Ridge were observed.

It is apparent that most of the anomalous soils encountered in the Meg Group reconnaissance occur on the smaller block of claims that adjoin the Regal Ridge Goalnet Group. This may be an extension of the broad geochemical anomaly developing over airport ridge. It is suspected by some Yukon Government geologists that the valley containing the North Lakes contains a N-S trending fault which may truncate the prospectively Beryllium mineralized package of Fire Lake Chlorite Schists. This could mean that the offset portion of this block may be displaced to the north, south, or in the vertical direction. The geology underlying the larger block of claims to the west is highly prospective being very similar to Regal Ridge. Outcrop exposure is not as pronounced and closer attention should be paid to weaker anomalies as they will probably reflect more dilution through greater overburden coverage.

It is expected that the traverses proposed in **Figure 4** will be more fruitful in terms of encountering more bedrock and / or thinner overburden, since they focus on the drainages. The drainages are useful aids to the geochemical sampling as they represent materials derived from a more extensive area. These are particularly useful in concentrating the heavier greisen style minerals such as scheelite (Tungsten), and cassiterite (Tin). Both Tin and Tungsten are known to have strong correlation with Beryllium and so are useful indicator elements which are less readily dispersed. A greater traverse density is proposed for the portion of the Meg claims on the east side of the valley due to the soil anomalies there which appear to be an extension of the soil anomaly which exists nearby on Regal Ridge.

SCHEDULE

A three person team will arrive on the Meg property June 8th, 2003. Phase 1 activities are intended to focus on areas interpreted to cross favourable stratigraphy and encounter minimal overburden thicknesses. Activities should be completed by June 23rd. These time estimates take into consideration a contingency for inclement weather.



True North Gems Inc.

FIGURE 4
Proposed Phase 1
Traverses for the MEG Claims

Date: 17/02/2010
Author: B.E. Galsbury
Office:
Drawing:
Scale: 1:50000

Projection: UTM Zone 9 (NAD 83)

0 0.5 1 2
Kilometres

Phase 2 would conceivably be initiated on or around August 1st. It is expected that geochemical analyses and mapping data from Phase 1 will have been processed and an interpretation made. An interim progress report will be prepared immediately following processing of all the Phase 1 data. Phase 2 activities will focus on more detailed delineation of prospective targets from the Phase 1 interpretation. In analogy to the techniques utilized to delineate targets at Regal Ridge, closer sample spacing, and detailed boulder prospecting would be employed to locate emerald in float and trace the float occurrences back to their bedrock sources. Hand trenching and minimal blasting would then be employed to open up the bedrock sources to further assessment as much out of the influence of surface compromising by weathering and frost-shattering.

BUDGET

Helicopter.....	15 hrs @ \$1200 / hr =	\$18,000
Senior Geologist	15 days @ \$450 / day =	\$6,750
Junior Geologist	15 days @ \$200 / day =	\$3,000
Junior Geologist	15 days @ \$200 / day =	\$3,000
Field Supplies (notebooks, flagging tape, sampling bags).....		\$2,000
Communication, shipping and processing of samples.....		\$2,000
Per diems		\$2,000
Mobe – demobe		\$3,000
Total.....		\$39,750
Contingency.....		\$4,000
Office overhead.....		\$4,000
GRAND TOTAL PHASE 1.....		<u>\$47,750</u>

12,900.00 used

BUDGET PHASE 2

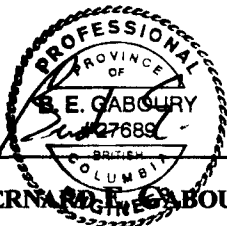
Helicopter.....	7 hrs @ \$1200 / hr =	\$8,400
Senior Geologist.....	7 days @ \$450 / day =	\$3,150
Junior Geologist.....	7 days @ \$200 / day =	\$1,400
Junior Geologist.....	7 days @ \$200 / day =	\$1,400
Blaster.....	4 days @ \$350 / day =	\$1,400
Additional supplies (includes trenching equipment and explosives).....		\$ 2,500
Communication, shipping and processing of samples.....		\$1,000
Per diems		\$1,000
Mobe-Demobe.....		\$3,000
Total.....		\$23,250
Contingency.....		\$2,000
Office overhead.....		\$2,000
Final report.....		\$4,000
GRAND TOTAL PHASE 2.....		<u>\$31,250</u>

CERTIFICATE OF QUALIFICATIONS

I, **BERNARD E. GABOURY** of Nanaimo, British Columbia do hereby certify as follows:

1. I am a geologist residing at 1935 Richardson Rd, Nanaimo, British Columbia, V9X 1C1.
2. I graduated from the University of Manitoba in Winnipeg, Manitoba in 1975 with a B.Sc (Hons, first class) in Chemistry.
3. I graduated from the University of Manitoba in Winnipeg, Manitoba in 1985 with a M.Sc. in Economic Geology.
4. I have practised my profession since 1978.
5. I am a registered Professional Engineer with the APEGM in Manitoba since 1984 and with the APEGBC since Oct 29th, 2002.
6. I am the owner operator of Cinnabar Valley Gems and Minerals, in British Columbia since 1990, where I have been engaged in the custom cutting and marketing of coloured gemstones to the retail jewellery sector.
7. I am the author of this technical report on the 2002 *Report on Field Activities for the Regal Ridge Emerald Project, Yukon Territory, Canada*. It is based on information collected either by myself or under my supervision during the 2002 field season.
8. This report may be utilized for the development of the property provided that no portion is used out of context in such a manner as to convey a meaning that differs from that set out in the whole.

Dated in Nanaimo, British Columbia this 22nd of April, 2003

The seal is circular with a double-line border. The outer ring contains the text "PROFESSIONAL ENGINEER" at the top and "BRITISH COLUMBIA" at the bottom. The inner circle contains "PROVINCE OF" at the top, "B. E. GABOURY" in the center, and "27689" below it. A signature is written across the seal. Below the seal, the name "BERNARD E. GABOURY" is printed in a bold, sans-serif font.
BERNARD E. GABOURY



ALS Chemex

EXCELLENCE IN ANALYTICAL CHEMISTRY

ALS Canada Ltd.

212 Brooksbank Avenue

North Vancouver BC V7J 2C1 Canada

Phone: 604 984 0221 Fax: 604 984 0218

To: TRUE NORTH GEMS
701 KENWOOD RD.
WEST VANCOUVER BC V7S 1S7

Page #: 1
Date : 30-Oct-2002
Account: THR

CERTIFICATE VA02003155

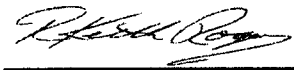
Project : Regal Ridge
P.O. No:
This report is for 92 ROCK samples submitted to our lab in North Vancouver, BC, Canada on 12-Sep-2002.
The following have access to data associated with this certificate:
ANDY SMITH
DAVID GABOURY

SAMPLE PREPARATION	
ALS CODE	DESCRIPTION
WEI-21	Received Sample Weight
LOG-22	Sample login - Rcd w/o BarCode
CRU-31	Fine crushing - 70% <2mm
SPL-21	Split sample - riffle splitter
PUL-31	Pulverize split to 85% <75 um

ANALYTICAL PROCEDURES		
ALS CODE	DESCRIPTION	
ME-MS61	47 element four acid ICP-MS	
ME-ICP61i	ICP-AES elements for ME-MS61	ICP-AES
ME-MS61i	ICP-MS elements for ME-MS61	ICP-MS

To: TRUE NORTH GEMS
ATTN: ANDY SMITH
701 KENWOOD RD.
WEST VANCOUVER BC V7S 1S7

This is the Final Report and supersedes any preliminary report with this certificate number. Results apply to samples as submitted. All pages of this report have been checked and approved for release.

Signature: 



ALS Chemex

EXCELLENCE IN ANALYTICAL CHEMISTRY

ALS Canada Ltd.

212 Brooksbank Avenue
North Vancouver BC V7J 2C1 Canada
Phone: 604 984 0221 Fax: 604 984 0218

10: TRUE NORTH GEMS
701 KENWOOD RD.
WEST VANCOUVER BC V7S 1S7

Page #: 2 - A
Total # of pages : 4 (A - D)
Date : 30-Oct-2002
Account: THR

Project : Regal Ridge

CERTIFICATE OF ANALYSIS VA02003155

Sample Description	Method	WEI-21	ME-MS61	ME-MS61	ME-MS61	ME-MS61	ME-MS61	ME-MS61	ME-MS61	ME-MS61	ME-MS61	ME-MS61	ME-MS61	ME-MS61	ME-MS61	ME-MS61
	Analyte	Recvd Wt	Ag	Al	As	Ba	Be	Bi	Ca	Cd	Ce	Co	Cr	Cs	Cu	Fe
Units		kg	ppm	%	ppm	ppm	ppm	ppm	%	ppm	ppm	ppm	ppm	ppm	ppm	%
LOR		0.02	0.01	0.01	0.2	0.5	0.05	0.01	0.01	0.02	0.01	0.1	1	0.05	0.2	0.01
1003		0.22	0.10	4.71	5.1	250	0.96	0.21	4.58	0.08	11.85	47.7	586	3.59	16.5	4.32
1004		0.24	0.07	3.18	2.3	90.0	0.38	0.19	2.78	0.11	4.58	69.5	1180	2.76	14.0	5.92
1005		0.34	0.09	4.60	1.3	380	0.32	0.09	4.32	0.04	2.88	59.1	790	2.78	31.4	5.87
1006		0.10	0.17	3.02	4.7	430	0.66	0.11	1.36	0.44	19.40	8.2	147	5.39	16.0	1.15
1007		0.08	0.37	3.95	5.9	710	1.05	0.13	1.62	0.43	44.1	12.0	109	6.39	33.8	1.51
1008		0.12	0.45	4.07	2.2	1550	1.85	0.34	1.99	1.00	35.5	17.0	203	10.80	87.7	2.21
1009		0.14	0.19	5.25	1.8	1160	1.14	0.29	2.39	0.22	26.6	18.6	238	4.27	18.8	2.88
1010		0.10	0.52	4.85	2.3	840	2.69	0.31	2.58	0.89	31.8	32.8	286	6.48	32.6	3.12
1011		0.18	0.29	4.90	2.8	650	1.26	0.27	2.50	0.39	26.8	36.6	203	13.45	34.8	3.42
1012		0.10	0.38	3.12	1.8	680	0.82	0.11	3.22	0.95	21.0	8.2	83	3.01	41.4	1.12
1013		0.14	0.51	2.92	1.8	720	1.13	0.21	2.95	1.16	34.4	8.9	54	5.80	93.3	1.37
1015		0.22	0.25	4.76	1.8	830	1.29	0.23	2.71	0.21	27.6	58.8	474	8.53	61.2	3.91
1016		0.14	0.38	5.04	2.7	750	1.41	0.17	1.79	0.46	34.0	11.1	160	6.08	44.2	1.90
1017		0.04	0.24	0.78	1.6	300	0.32	0.04	1.56	0.80	8.55	3.9	113	1.84	18.0	0.41
1018		0.12	0.24	5.18	2.7	720	1.20	0.14	1.71	0.19	33.6	14.0	217	3.70	24.9	2.00
1019		0.34	0.06	3.93	2.4	330	0.95	0.19	4.56	0.09	6.22	41.6	782	3.41	17.1	5.28
1020		0.30	0.06	3.99	1.3	230	1.11	0.23	4.73	0.06	6.52	47.1	649	5.58	12.8	5.14
1022		0.14	0.16	5.36	19.7	590	1.12	0.14	1.70	0.15	26.0	22.7	431	5.06	22.5	2.53
1023		0.14	0.16	4.74	1.6	430	1.10	0.16	3.48	0.12	17.05	31.6	438	7.62	12.5	3.83
1024		0.20	0.23	4.75	2.1	550	1.33	0.21	3.07	0.14	21.2	22.5	437	6.39	18.7	3.15
1025		0.10	0.25	5.05	1.3	570	1.18	0.17	2.31	0.13	24.6	18.3	327	5.32	15.8	2.44
1026		0.12	0.48	1.78	1.3	310	0.64	0.08	0.66	0.21	12.65	5.2	54	1.40	23.8	0.64
1027		0.10	0.06	4.95	2.7	520	1.26	0.37	2.43	0.15	25.6	20.4	406	5.26	14.5	3.68
1028		0.06	0.45	2.09	0.6	350	0.51	0.06	0.65	0.20	11.90	3.7	38	2.33	10.3	0.69
1029		0.14	0.11	4.20	0.7	600	1.51	0.20	3.09	0.11	13.20	32.0	628	5.44	13.2	3.89
1030		0.34	0.04	4.60	0.4	580	2.57	0.28	4.93	0.19	12.10	38.0	517	6.22	33.8	4.55
1031		0.18	0.04	4.91	1.4	1660	2.63	0.33	1.30	0.22	36.7	11.2	218	7.64	17.2	2.45
1032		0.20	0.14	5.63	2.2	1660	3.64	0.67	1.98	0.32	49.8	26.2	352	13.80	50.4	3.94
1033		0.10	0.09	5.41	1.3	780	1.23	0.23	2.37	0.08	21.0	13.0	303	3.84	11.4	2.51
1034		0.14	0.03	5.11	20.9	1010	2.50	0.28	1.11	0.10	20.7	22.8	564	3.62	24.2	3.40
1035		0.12	0.39	6.40	3.0	720	1.92	0.20	0.46	0.17	61.1	7.7	197	3.53	21.0	3.00
1036		0.08	0.47	1.86	1.1	590	0.85	0.06	1.73	0.89	62.9	6.2	39	1.45	34.6	0.74
1037		0.12	1.10	4.63	3.3	970	2.20	0.36	2.77	1.22	100.0	16.0	138	14.65	104.0	2.60
1038		0.08	0.54	3.52	1.4	840	1.08	0.14	2.64	0.91	39.8	5.5	49	2.17	81.9	1.15
1039		0.14	0.24	4.54	2.3	1050	1.00	0.13	1.22	0.30	17.50	9.6	224	3.52	17.9	1.92
1040		0.08	0.67	3.86	1.8	1230	1.58	0.15	1.93	0.91	80.9	9.4	186	3.40	58.7	1.78
1041		0.28	0.06	4.83	1.5	1010	1.37	0.20	2.50	0.12	14.90	22.4	381	4.31	20.4	3.22
1042		0.28	0.14	5.43	4.3	800	1.76	0.25	2.14	0.13	32.1	18.3	358	7.54	14.3	3.63
1043		0.18	0.21	5.05	0.6	720	1.20	0.22	2.98	0.12	17.05	23.2	425	5.66	11.8	3.68
1045		0.04	0.15	1.91	2.0	450	0.51	0.10	2.15	1.84	10.50	9.3	193	2.90	19.3	1.49

Comments: REE's may not be totally soluble in MS61 method.



ALS Chemex

EXCELLENCE IN ANALYTICAL CHEMISTRY

ALS Canada Ltd.

212 Brooksbank Avenue
North Vancouver BC V7J 2C1 Canada
Phone: 604 984 0221 Fax: 604 984 0218

TO: TRUE NORTH GEMS
701 KENWOOD RD.
WEST VANCOUVER BC V7S 1S7

Page #: 3 - A
Total # of pages : 4 (A - D)
Date : 30-Oct-2002
Account: THR

Project : Regal Ridge

CERTIFICATE OF ANALYSIS VA02003155

Method Analyte Units LOR	WEI-21 Recvd Wt kg 0.02	ME-MS61 Ag ppm 0.01	ME-MS61 Al % 0.01	ME-MS61 As ppm 0.2	ME-MS61 Ba ppm 0.5	ME-MS61 Be ppm 0.05	ME-MS61 Bi ppm 0.01	ME-MS61 Ca % 0.01	ME-MS61 Cd ppm 0.02	ME-MS61 Ce ppm 0.01	ME-MS61 Co ppm 0.1	ME-MS61 Cr ppm 1	ME-MS61 Cs ppm 0.05	ME-MS61 Cu ppm 0.2	ME-MS61 Fe % 0.01
1046	0.10	0.70	5.22	2.2	540	2.71	0.29	1.12	0.15	34.4	10.9	184	5.18	58.5	2.62
1047	0.12	0.20	5.24	1.1	730	1.54	0.29	2.02	0.49	31.2	14.8	250	11.55	39.3	2.45
1048	0.16	0.03	5.31	2.2	770	2.40	0.37	2.39	0.09	24.3	28.1	427	7.79	22.0	4.01
1049	0.18	0.06	5.01	1.3	680	1.67	0.30	3.32	0.13	20.00	30.9	515	6.57	15.6	4.44
1050	0.20	0.27	6.34	2.6	730	1.86	0.26	0.38	0.24	48.7	9.8	177	3.47	23.9	3.31
1051	0.22	0.05	7.02	2.0	650	1.95	0.20	0.25	0.25	50.4	16.4	172	3.94	21.3	3.69
1052	0.20	0.09	7.22	1.4	490	2.17	0.21	0.19	0.34	55.0	16.4	152	4.00	26.0	3.95
1053	0.22	0.07	5.61	1.7	610	1.65	0.20	0.13	0.20	40.8	10.2	188	3.64	25.5	2.90
1054	0.16	0.36	7.59	1.0	790	2.48	0.25	0.28	0.70	81.0	15.9	173	4.64	41.7	3.89
1055	0.18	0.27	7.12	1.1	810	2.71	0.20	0.22	0.52	64.3	11.5	205	4.44	45.6	3.54
1058	0.10	0.11	5.97	1.0	780	1.63	0.24	0.23	0.16	28.2	7.8	172	3.55	22.3	3.36
1059	0.18	0.15	7.03	1.6	890	2.22	0.25	0.20	0.13	28.8	6.1	216	4.45	23.3	3.28
1061	0.16	0.15	5.47	1.4	680	1.47	0.16	0.33	0.11	33.8	5.5	153	3.93	12.4	1.92
1065	0.20	0.13	5.43	1.1	760	1.55	0.20	0.14	0.07	20.5	5.2	176	3.66	13.1	1.95
1066	0.12	0.30	4.99	1.9	630	1.36	0.25	0.16	0.12	32.0	6.7	170	3.83	18.8	2.48
1067	0.10	0.22	5.56	1.5	590	1.44	0.14	0.63	0.13	34.5	5.8	164	3.14	17.2	2.08
1068	0.18	0.59	5.59	1.3	670	1.12	0.14	0.91	0.19	32.1	6.0	139	3.21	14.9	1.98
1069	0.20	0.71	6.93	4.5	840	1.86	0.30	1.52	1.31	71.2	15.5	140	4.45	43.5	3.75
1070	0.08	0.37	6.13	3.2	740	1.87	0.26	1.45	1.83	52.2	12.6	173	4.00	32.9	3.15
1071	0.14	0.27	6.99	2.8	640	1.21	0.16	2.01	2.07	43.5	10.4	138	2.82	27.3	2.64
1072	0.10	0.31	1.55	2.3	280	0.65	0.09	3.49	2.52	32.4	6.4	36	1.01	46.7	0.88
1073	0.10	0.21	5.76	2.4	730	1.51	0.24	0.70	0.61	48.8	12.8	287	3.43	28.4	3.28
1074	0.08	0.31	4.07	1.7	600	1.18	0.19	2.53	1.91	43.5	9.6	94	3.06	33.6	2.31
1075	0.12	0.37	6.91	1.2	1130	1.79	0.19	1.09	0.28	40.4	4.8	132	4.89	13.0	1.40
1076	0.14	0.11	4.74	1.6	1220	1.12	0.17	1.16	0.13	25.2	11.2	531	3.23	13.6	2.32
1077	0.10	0.06	5.21	6.0	1120	2.48	0.39	1.74	0.17	32.1	20.7	391	4.20	18.8	3.50
1078	0.14	0.04	4.62	2.5	1260	1.71	0.30	1.17	0.15	25.9	15.1	294	3.06	14.8	3.05
1079	0.10	0.53	3.58	1.4	880	1.08	0.13	0.84	0.15	25.5	5.7	263	1.83	15.5	1.50
1080	0.22	0.06	6.62	9.4	340	0.68	0.05	3.31	0.24	21.0	21.3	155	0.78	44.5	5.00
1081A	0.24	0.06	5.13	3.6	1010	1.29	0.18	1.40	0.13	28.2	29.0	507	3.39	20.6	4.52
1081B	0.26	0.19	4.07	5.9	1840	1.46	0.26	2.24	1.20	41.1	16.3	218	4.69	37.8	3.30
1082	0.08	0.04	4.63	4.8	1180	1.53	0.16	0.83	0.10	23.7	13.7	309	3.55	19.8	2.95
1083	0.08	0.34	6.12	3.6	1200	1.44	0.28	1.24	0.20	38.9	12.2	158	6.28	25.6	2.85
1084	0.28	0.11	5.31	3.4	1390	2.03	1.77	1.21	0.14	34.0	16.4	392	4.96	17.7	2.61
1085	0.10	0.31	6.12	1.5	1030	1.43	0.20	1.47	0.17	31.4	7.8	138	3.96	16.7	1.89
1086	0.08	0.62	2.52	2.4	740	0.85	0.26	1.39	0.44	53.5	12.1	114	3.33	39.6	1.69
1087	0.10	0.26	5.33	2.1	750	1.18	0.13	1.29	0.40	34.3	6.2	111	2.18	19.2	1.61
1088	0.04	0.23	0.75	0.8	470	0.40	0.05	1.85	1.11	14.20	2.2	31	0.91	18.1	0.41
1089	0.10	0.15	5.39	1.7	1070	1.88	0.14	0.91	0.72	51.7	16.0	160	3.12	24.5	2.06
1090	0.20	0.14	5.57	3.8	1300	1.56	0.41	1.79	0.27	31.9	19.5	347	4.58	41.1	3.87

Comments: REE's may not be totally soluble in MS61 method.



ALS Chemex

EXCELLENCE IN ANALYTICAL CHEMISTRY

ALS Canada Ltd.

212 Brooksbank Avenue

North Vancouver BC V7J 2C1 Canada

Phone: 604 984 0221 Fax: 604 984 0218

TO: TRUE NORTH GEMS
701 KENWOOD RD.
WEST VANCOUVER BC V7S 1S7

Page #: 4 - A
Total # of pages : 4 (A - D)
Date : 30-Oct-2002
Account: THR

Project : Regal Ridge

CERTIFICATE OF ANALYSIS	VA02003155
--------------------------------	-------------------

Method Analyte Units LOR	WEI-21 Recvd Wt kg 0.02	ME-MS61 Ag ppm 0.01	ME-MS61 Al % 0.01	ME-MS61 As ppm 0.2	ME-MS61 Ba ppm 0.5	ME-MS61 Be ppm 0.05	ME-MS61 Bi ppm 0.01	ME-MS61 Ca % 0.01	ME-MS61 Cd ppm 0.02	ME-MS61 Ce ppm 0.01	ME-MS61 Co ppm 0.1	ME-MS61 Cr ppm 1	ME-MS61 Cs ppm 0.05	ME-MS61 Cu ppm 0.2	ME-MS61 Fe % 0.01
1091	0.18	0.08	5.52	4.4	1310	1.42	0.23	2.05	0.29	36.8	27.4	377	4.39	29.5	4.16
1092	0.10	0.16	3.96	0.8	570	0.72	0.08	2.68	0.41	22.2	15.3	99	2.43	14.1	1.43
1093	0.18	0.04	4.19	4.1	2050	1.03	0.26	1.21	0.13	21.6	14.6	375	3.18	11.3	2.82
1094	0.14	0.15	5.36	2.6	960	1.07	0.17	1.74	0.60	30.8	16.3	317	4.42	21.1	1.95
1095	0.22	0.11	4.58	4.2	1470	1.32	0.21	1.48	0.15	26.2	21.2	518	5.23	13.0	3.31
1096	0.04	0.19	2.48	5.3	750	0.63	0.09	3.16	1.43	15.85	8.4	174	3.36	27.6	1.20
1097	0.06	0.49	3.60	2.9	1130	1.00	0.13	1.63	0.61	40.1	7.4	218	2.68	30.1	1.59
1098	0.04	0.13	0.77	0.6	470	0.20	0.04	1.25	0.76	5.74	1.6	42	0.59	8.5	0.35
1099	0.12	0.36	4.38	3.8	1290	1.33	0.18	2.31	0.66	38.6	15.6	244	3.88	44.1	2.77
1100	0.06	0.48	1.14	1.4	1100	0.48	0.06	3.97	1.28	22.9	3.0	48	0.95	127.0	0.58
1101	0.10	0.26	4.50	4.5	1210	1.41	0.23	2.09	2.38	53.6	18.9	215	5.90	52.6	3.02
1102	0.16	0.05	6.07	1.5	1020	1.14	0.17	2.12	1.49	33.6	22.8	209	3.68	19.4	4.33

Comments: REE's may not be totally soluble in MS61 method.



ALS Chemex

EXCELLENCE IN ANALYTICAL CHEMISTRY

ALS Canada Ltd.
 212 Brooksbank Avenue
 North Vancouver BC V7J 2C1 Canada
 Phone: 604 984 0221 Fax: 604 984 0218

TO: TRUE NORTH GEMS
 701 KENWOOD RD.
 WEST VANCOUVER BC V7S 1S7

Page #: 2 - B
 Total # of pages : 4 (A - D)
 Date : 30-Oct-2002
 Account: THR

Project : Regal Ridge

CERTIFICATE OF ANALYSIS VA02003155

Sample Description	Method	ME-MS61	ME-MS61	ME-MS61	ME-MS61	ME-MS61	ME-MS61	ME-MS61	ME-MS61	ME-MS61	ME-MS61	ME-MS61	ME-MS61	ME-MS61	ME-MS61	ME-MS61
	Analyte	Ga	Ge	Hf	In	K	La	Li	Mg	Mn	Mo	Na	Nb	Ni	P	Pb
Units		ppm	ppm	ppm	ppm	%	ppm	ppm	%	ppm	ppm	%	ppm	ppm	ppm	ppm
LOR		0.05	0.05	0.1	0.005	0.01	0.5	0.2	0.01	5	0.05	0.01	0.1	0.2	10	0.5
1003		9.20	0.18	1.0	0.015	0.73	6.0	20.3	7.52	804	0.53	1.11	1.9	293	180	4.7
1004		6.25	0.21	0.2	0.021	0.18	2.1	15.7	12.20	991	0.21	0.37	1.0	644	70	2.9
1005		8.72	0.21	0.1	0.025	0.14	1.3	29.6	9.72	972	0.23	0.99	0.7	448	60	3.0
1006		8.70	0.16	0.7	0.013	0.86	10.2	11.1	0.92	198	1.22	1.08	2.5	59.7	880	5.5
1007		11.40	0.24	0.4	0.017	1.07	42.1	13.1	0.75	1115	1.66	1.34	2.6	70.7	1570	7.2
1008		12.50	0.24	0.4	0.031	1.04	37.3	22.4	1.23	837	3.31	0.99	6.2	81.7	2040	11.6
1009		14.25	0.22	1.7	0.023	1.37	14.2	18.4	2.98	520	1.84	1.63	6.9	108.0	560	8.5
1010		11.60	0.38	1.1	0.029	0.90	20.8	19.5	2.81	1935	4.13	1.25	6.0	113.0	1230	11.4
1011		12.60	0.24	1.4	0.027	0.90	17.8	34.5	3.47	1180	1.96	1.24	4.3	156.0	1310	6.9
1012		8.06	0.18	0.6	0.013	0.75	19.5	9.9	0.71	695	1.52	1.01	2.0	46.0	1020	5.0
1013		8.17	0.25	0.5	0.018	0.60	54.2	12.4	0.60	516	1.44	0.74	2.8	55.9	1370	5.0
1015		12.35	0.22	0.8	0.031	0.83	17.8	32.4	4.85	697	1.37	1.08	6.8	195.0	400	7.4
1016		15.10	0.21	2.2	0.020	1.32	23.3	18.3	1.29	336	1.65	1.77	5.1	56.0	500	8.4
1017		2.01	0.16	0.2	<0.005	0.22	7.4	2.8	0.29	144	1.19	0.20	0.7	24.3	570	2.3
1018		14.95	0.21	2.4	0.019	1.46	20.2	17.3	1.14	414	1.69	1.96	5.5	64.9	370	7.7
1019		10.35	0.20	0.4	0.034	0.40	3.1	22.1	6.76	922	1.10	0.72	2.5	232	80	4.4
1020		10.05	0.20	0.4	0.033	0.36	3.3	25.9	7.56	1065	0.51	0.76	2.6	257	80	3.9
1022		14.00	0.21	2.1	0.017	1.45	13.7	19.1	3.77	447	1.82	1.98	4.1	267	380	6.8
1023		12.35	0.18	1.0	0.026	0.79	8.8	22.8	5.37	703	0.89	1.22	3.7	192.0	180	5.0
1024		12.50	0.20	1.4	0.026	1.02	11.2	19.6	4.34	613	1.35	1.37	4.6	154.0	260	7.3
1025		14.30	0.21	1.9	0.019	1.30	12.8	22.9	2.80	478	1.40	1.71	4.2	105.0	340	7.3
1026		3.87	0.08	0.2	0.010	0.38	7.0	5.3	0.52	117	0.77	0.46	1.1	37.1	1410	4.1
1027		15.25	0.13	1.4	0.029	0.92	13.9	22.0	3.46	546	1.26	1.11	6.7	118.0	330	11.9
1028		5.29	0.08	0.4	0.007	0.66	6.8	7.1	0.35	213	0.76	0.74	1.6	16.6	870	4.4
1029		10.15	0.12	0.8	0.025	0.75	7.1	22.8	5.62	790	0.98	0.95	3.6	221	390	7.5
1030		9.44	0.13	0.4	0.028	0.52	6.1	25.7	6.83	982	1.08	0.97	3.5	228	220	7.1
1031		13.30	0.12	1.0	0.033	1.79	18.5	48.5	1.21	705	1.42	1.16	9.2	54.9	490	20.3
1032		16.30	0.15	1.2	0.046	1.53	26.1	80.1	2.92	812	2.73	0.96	10.1	146.0	590	27.7
1033		14.20	0.10	1.6	0.021	1.27	11.6	21.7	2.15	508	2.56	1.66	5.7	65.0	370	11.9
1034		15.50	0.12	1.1	0.035	1.78	10.7	30.3	3.56	651	3.21	1.22	7.9	258	640	18.3
1035		17.10	0.14	1.5	0.046	1.55	31.1	26.9	0.79	293	5.06	1.02	9.6	29.2	680	15.2
1036		4.55	0.15	0.3	0.009	0.42	51.3	5.6	0.26	913	1.62	0.46	1.2	31.4	1280	3.6
1037		13.05	0.27	1.3	0.036	0.98	112.5	39.7	1.02	1130	2.11	0.80	5.4	89.2	1560	14.8
1038		8.84	0.16	0.9	0.015	0.89	58.3	11.8	0.37	365	1.58	1.12	2.3	37.9	890	6.5
1039		10.90	0.10	0.8	0.019	1.03	9.7	20.8	1.27	352	1.26	1.55	4.5	55.3	530	9.9
1040		8.89	0.17	0.9	0.024	0.86	57.0	15.5	0.72	586	4.74	0.82	3.5	77.6	1160	7.9
1041		11.50	0.11	0.7	0.026	1.16	7.9	23.4	3.45	618	1.46	1.16	5.4	136.0	270	8.0
1042		14.05	0.11	1.4	0.034	1.22	17.7	23.7	2.66	611	2.91	1.38	9.8	101.0	360	12.5
1043		13.35	0.12	1.1	0.031	1.00	9.3	18.6	3.82	751	2.06	1.45	7.0	128.0	210	8.1
1045		4.96	0.07	0.4	0.011	0.40	8.1	8.5	1.16	308	3.44	0.48	2.4	67.4	530	3.9

Comments: REE's may not be totally soluble in MS61 method.



ALS Chemex

EXCELLENCE IN ANALYTICAL CHEMISTRY

ALS Canada Ltd.

212 Brooksbank Avenue
North Vancouver BC V7J 2C1 Canada
Phone: 604 984 0221 Fax: 604 984 0218

TO: TRUE NORTH GEMS
701 KENWOOD RD.
WEST VANCOUVER BC V7S 1S7

Page #: 3 - B
Total # of pages : 4 (A - D)
Date : 30-Oct-2002
Account: THR

Project : Regal Ridge

CERTIFICATE OF ANALYSIS VA02003155

Sample Description	Method	ME-MS61	ME-MS61	ME-MS61	ME-MS61	ME-MS61	ME-MS61	ME-MS61	ME-MS61	ME-MS61	ME-MS61	ME-MS61	ME-MS61	ME-MS61	ME-MS61	ME-MS61
	Analyte	Ga	Ge	Hf	In	K	La	Li	Mg	Mn	Mo	Na	Nb	Ni	P	Pb
Units		ppm	ppm	ppm	ppm	%	ppm	ppm	%	ppm	ppm	%	ppm	ppm	ppm	ppm
LOR		0.05	0.05	0.1	0.005	0.01	0.5	0.2	0.01	5	0.05	0.01	0.1	0.2	10	0.5
1046		10.55	0.12	1.4	0.028	0.90	18.8	19.7	1.26	312	1.91	1.02	3.6	84.4	2060	14.9
1047		13.20	0.12	1.6	0.027	1.13	17.8	29.4	2.06	476	2.61	1.20	6.0	102.0	1010	11.3
1048		12.80	0.15	0.9	0.031	1.12	12.7	40.5	4.33	656	1.35	1.13	5.7	182.0	230	14.2
1049		12.25	0.15	0.9	0.035	0.84	10.6	37.7	5.15	771	1.78	1.02	5.8	199.0	200	10.4
1050		16.65	0.14	1.1	0.054	1.77	22.7	28.2	0.95	473	4.53	1.03	7.8	38.3	590	18.9
1051		18.60	0.14	1.1	0.062	1.60	22.5	30.5	0.99	665	6.56	0.97	9.7	43.2	620	16.7
1052		19.35	0.15	1.0	0.065	1.51	27.0	34.2	0.94	602	3.75	0.78	10.2	43.4	560	16.2
1053		15.65	0.13	1.0	0.050	1.48	19.3	24.8	0.89	403	7.30	0.56	5.3	42.7	480	14.2
1054		20.2	0.18	1.3	0.067	1.88	41.5	32.9	1.21	585	10.95	0.79	5.9	63.0	710	17.7
1055		18.80	0.17	1.1	0.059	1.80	27.1	30.6	1.12	381	8.71	0.77	5.5	65.7	610	17.1
1058		16.40	0.13	1.0	0.051	1.48	12.2	27.2	1.17	304	5.59	0.59	3.4	34.5	570	13.5
1059		20.8	0.14	1.5	0.058	1.74	15.0	28.0	0.91	271	5.40	0.73	6.7	25.1	730	16.9
1061		14.95	0.11	1.2	0.046	1.49	17.8	17.6	0.42	232	3.78	0.85	6.8	19.7	470	12.1
1065		16.30	0.11	1.0	0.046	1.50	10.1	16.2	0.54	184	4.08	0.69	6.5	20.0	260	11.0
1066		14.30	0.11	0.9	0.045	1.30	16.4	18.9	0.45	246	5.16	0.58	4.8	23.3	550	13.4
1067		14.25	0.12	1.6	0.039	1.45	18.8	17.1	0.36	211	3.48	1.14	6.2	19.5	1250	12.1
1068		13.75	0.12	1.7	0.030	1.42	18.1	16.5	0.62	273	3.80	1.47	5.5	25.6	1150	10.1
1069		17.25	0.22	1.4	0.058	1.55	44.3	32.3	1.16	735	4.78	0.99	7.2	51.2	1060	20.0
1070		15.25	0.18	1.1	0.050	1.39	36.2	27.0	0.96	461	3.98	0.80	6.2	41.8	850	15.9
1071		16.80	0.16	0.7	0.037	1.14	28.0	23.3	0.83	788	3.37	1.86	4.1	31.9	750	29.5
1072		4.20	0.18	0.2	0.011	0.29	43.2	6.0	0.35	561	2.47	0.23	1.1	41.8	1130	6.5
1073		14.75	0.14	1.0	0.048	1.27	27.1	26.5	1.13	410	5.21	0.86	5.9	43.8	710	14.3
1074		10.40	0.17	0.8	0.034	0.93	35.0	19.2	0.85	735	5.61	0.50	3.8	38.5	880	10.6
1075		19.30	0.14	1.9	0.044	1.85	22.1	22.6	0.62	249	4.81	1.36	7.8	31.0	420	15.3
1076		13.20	0.12	1.3	0.030	1.31	13.3	18.9	1.51	493	4.16	1.30	7.3	85.6	480	13.6
1077		13.35	0.14	0.9	0.040	1.22	16.5	29.5	2.68	755	6.17	1.31	8.0	152.0	470	18.1
1078		12.85	0.13	0.7	0.037	1.38	12.5	20.9	2.07	798	1.61	0.87	7.6	112.0	360	13.3
1079		9.61	0.10	0.3	0.021	0.97	15.4	14.4	0.93	294	3.63	1.15	3.7	57.9	900	8.8
1080		15.65	0.17	1.4	0.058	0.65	10.2	19.6	2.03	957	2.36	2.35	6.4	64.8	1050	10.7
1081A		13.80	0.15	0.9	0.043	0.97	14.5	26.1	4.46	711	2.34	1.15	7.6	303	460	14.1
1081B		11.85	0.14	0.9	0.037	0.99	23.7	27.9	1.47	7930	5.35	0.77	6.8	130.0	950	13.7
1082		12.35	0.12	0.9	0.041	1.43	11.8	23.6	1.82	543	2.66	1.06	7.9	114.0	350	17.3
1083		18.10	0.14	2.0	0.036	1.78	21.3	30.2	1.52	553	2.77	1.45	9.0	80.1	810	15.1
1084		15.70	0.13	1.1	0.035	1.61	17.4	34.1	1.30	628	21.1	1.30	9.4	145.0	320	19.2
1085		16.55	0.12	2.3	0.028	1.78	17.2	21.5	0.71	383	5.31	1.97	8.3	43.0	460	12.5
1086		7.25	0.13	0.3	0.022	0.54	28.3	14.7	0.56	748	7.54	0.51	2.2	106.0	1660	12.4
1087		13.60	0.11	2.3	0.018	1.48	19.0	14.3	0.44	377	2.74	1.88	4.9	29.7	700	10.2
1088		1.93	0.09	0.1	0.005	0.20	15.3	2.7	0.61	187	1.79	0.17	0.8	92.2	810	2.9
1089		15.95	0.13	1.3	0.034	1.80	27.2	16.5	0.67	1270	4.58	1.34	10.0	62.3	1040	16.1
1090		13.85	0.14	0.9	0.055	1.19	16.2	30.3	2.58	730	3.21	1.32	9.0	131.0	440	18.7

Comments: REE's may not be totally soluble in MS61 method.



ALS Chemex

EXCELLENCE IN ANALYTICAL CHEMISTRY

ALS Canada Ltd.
 212 Brooksbank Avenue
 North Vancouver BC V7J 2C1 Canada
 Phone: 604 984 0221 Fax: 604 984 0218

To: TRUE NORTH GEMS
 701 KENWOOD RD.
 WEST VANCOUVER BC V7S 1S7

Page #: 4 - B
 Total # of pages : 4 (A - D)
 Date : 30-Oct-2002
 Account: THR

Project : Regal Ridge

CERTIFICATE OF ANALYSIS	VA02003155
-------------------------	------------

Sample Description	Method	ME-MS61	ME-MS61	ME-MS61	ME-MS61	ME-MS61	ME-MS61	ME-MS61	ME-MS61	ME-MS61	ME-MS61	ME-MS61	ME-MS61	ME-MS61	ME-MS61	ME-MS61
	Analyte	Ga	Ge	Hf	In	K	La	Li	Mg	Mn	Mo	Na	Nb	Ni	P	Pb
	Units LOR	ppm 0.05	ppm 0.05	ppm 0.1	ppm 0.005	% 0.01	ppm 0.5	ppm 0.2	% 0.01	ppm 5	ppm 0.05	% 0.01	ppm 0.1	ppm 0.2	ppm 10	ppm 0.5
1091		14.30	0.14	0.8	0.048	1.02	14.5	28.6	3.16	951	2.01	1.27	10.8	204	470	21.2
1092		9.97	0.09	1.2	0.016	1.06	12.2	10.9	1.43	523	2.07	1.31	3.0	73.1	560	10.3
1093		13.20	0.12	1.0	0.029	1.19	10.9	19.1	2.38	1170	1.83	0.99	5.8	123.0	250	16.9
1094		14.85	0.11	2.2	0.022	1.49	16.2	15.6	0.89	1880	22.2	1.84	6.2	145.0	480	22.0
1095		11.85	0.13	1.0	0.035	1.11	12.8	21.3	3.48	599	3.03	1.15	8.0	193.0	330	21.0
1096		6.05	0.10	0.2	0.014	0.59	11.7	8.3	0.98	576	4.08	0.73	1.9	243	1260	7.2
1097		9.97	0.14	0.1	0.022	1.05	37.8	14.5	0.83	451	2.47	1.14	2.7	165.0	870	10.8
1098		2.00	0.06	0.1	0.005	0.22	3.8	2.4	0.34	79	2.06	0.23	0.9	30.9	460	2.2
1099		11.15	0.15	1.1	0.033	1.01	32.7	21.8	1.63	669	2.49	1.13	6.6	156.0	880	13.0
1100		3.83	0.16	0.2	0.006	0.20	73.2	3.9	0.53	370	2.38	0.18	0.9	297	920	3.6
1101		11.55	0.15	1.0	0.035	1.01	37.4	29.0	1.62	1065	2.13	1.01	6.0	187.0	1470	13.3
1102		17.40	0.15	0.9	0.053	1.08	19.1	32.5	2.45	978	2.08	1.40	2.7	60.4	360	13.5

Comments: REE's may not be totally soluble in MS61 method.



ALS Chemex

EXCELLENCE IN ANALYTICAL CHEMISTRY

ALS Canada Ltd.
 212 Brooksbank Avenue
 North Vancouver BC V7J 2C1 Canada
 Phone: 604 984 0221 Fax: 604 984 0218

TO: IRUE NORTH GEMS
 701 KENWOOD RD.
 WEST VANCOUVER BC V7S 1S7

Page #: 2 - C
 Total # of pages : 4 (A - D)
 Date : 30-Oct-2002
 Account: THR

Project : Regal Ridge

CERTIFICATE OF ANALYSIS VA02003155

Sample Description	Method	ME-MS61	ME-MS61	ME-MS61	ME-MS61	ME-MS61	ME-MS61	ME-MS61	ME-MS61	ME-MS61	ME-MS61	ME-MS61	ME-MS61	ME-MS61	ME-MS61	ME-MS61
	Analyte	Rb	Re	S	Sb	Se	Sn	Sr	Ta	Te	Th	Tl	Tl	U	V	W
Units	ppm	ppm	%	ppm	ppm	ppm	ppm	ppm	ppm	ppm	ppm	%	ppm	ppm	ppm	ppm
LOR	0.1	0.002	0.01	0.05	1	0.2	0.2	0.2	0.05	0.05	0.2	0.01	0.02	0.1	1	0.1
1003		22.1	0.003	0.02	0.17	1	2.2	173.0	0.13	<0.05	1.7	0.10	0.14	0.6	118	12.9
1004		8.0	0.003	0.01	0.13	1	1.3	29.2	0.06	<0.05	0.6	0.07	0.07	0.2	142	3.2
1005		8.0	0.002	0.01	0.06	1	1.0	45.6	<0.05	<0.05	0.4	0.07	0.04	0.1	169	1.7
1006		28.7	0.003	0.12	0.26	1	0.6	206	0.14	<0.05	2.9	0.10	0.15	1.0	28	1.0
1007		30.5	0.003	0.13	0.29	1	0.6	274	0.13	<0.05	4.5	0.13	0.27	2.0	35	2.4
1008		42.8	0.004	0.15	0.23	3	3.8	202	0.18	<0.05	8.1	0.22	0.40	4.3	86	2.1
1009		41.7	0.003	0.03	0.25	1	2.2	292	0.39	<0.05	4.4	0.24	0.26	1.6	100	2.3
1010		31.9	0.004	0.09	0.36	2	8.6	235	0.26	0.05	5.0	0.23	0.37	2.3	118	2.2
1011		32.1	0.004	0.07	0.25	1	1.8	249	0.28	<0.05	4.4	0.16	0.32	2.1	106	1.8
1012		22.2	0.006	0.14	0.23	4	0.6	265	0.10	<0.05	2.7	0.09	0.22	3.8	30	0.7
1013		20.9	0.008	0.16	0.24	4	0.6	214	0.16	<0.05	3.7	0.10	0.23	4.4	32	0.9
1015		38.4	0.004	0.01	0.14	1	2.1	138.0	0.37	<0.05	4.4	0.21	0.26	1.5	133	10.5
1016		42.4	0.003	0.04	0.39	1	1.1	333	0.34	<0.05	4.6	0.17	0.25	2.1	52	2.6
1017		8.3	0.004	0.12	0.15	2	0.3	107.0	<0.05	<0.05	0.7	0.02	0.07	0.5	11	0.8
1018		41.5	0.005	0.04	0.35	2	0.7	397	0.38	<0.05	4.9	0.20	0.24	1.8	43	1.1
1019		21.1	0.004	0.01	0.12	1	2.1	52.0	0.16	<0.05	1.4	0.12	0.15	0.4	174	23.0
1020		22.2	0.003	0.01	0.10	1	3.0	47.8	0.17	<0.05	1.0	0.12	0.14	0.3	183	11.1
1022		39.2	0.004	0.03	0.93	1	1.1	352	0.32	<0.05	3.8	0.15	0.22	1.5	54	2.2
1023		30.1	0.003	0.01	0.24	1	2.3	156.0	0.34	<0.05	2.5	0.15	0.20	0.8	131	6.8
1024		35.3	0.004	0.01	0.20	1	2.5	193.0	0.31	<0.05	3.3	0.17	0.23	1.2	109	7.0
1025		39.5	0.003	0.02	0.29	1	1.4	280	0.31	<0.05	3.6	0.16	0.23	1.4	75	3.0
1026		10.0	<0.002	0.20	0.22	1	0.4	98.0	0.05	<0.05	1.9	0.05	0.06	1.5	19	1.8
1027		31.6	<0.002	0.02	0.38	1	2.3	164.0	0.46	<0.05	4.2	0.24	0.21	1.2	137	5.6
1028		17.8	<0.002	0.06	0.20	<1	0.5	139.0	0.07	<0.05	1.7	0.07	0.07	0.7	17	0.8
1029		30.2	0.002	0.02	0.15	1	2.4	120.0	0.22	<0.05	2.5	0.13	0.16	0.9	120	4.4
1030		24.7	0.002	0.01	0.09	1	2.1	96.1	0.26	<0.05	2.1	0.19	0.16	0.6	151	55.0
1031		90.1	0.002	0.01	0.14	1	3.1	152.0	0.53	<0.05	7.4	0.27	0.54	2.2	85	2.3
1032		90.3	0.003	0.02	0.26	1	4.8	139.0	0.83	<0.05	9.7	0.30	0.70	11.4	123	3.1
1033		41.6	0.002	0.01	0.26	1	4.8	262	0.35	<0.05	3.9	0.22	0.27	1.5	89	2.4
1034		80.9	0.002	0.03	0.78	1	3.3	144.0	0.67	<0.05	4.5	0.24	0.53	1.5	99	7.2
1035		80.6	0.002	0.01	0.24	2	2.2	162.0	0.69	0.07	10.1	0.31	0.48	2.2	116	1.1
1036		14.5	<0.002	0.16	0.28	1	0.4	211	0.06	<0.05	2.8	0.05	0.15	2.4	16	0.5
1037		58.4	0.007	0.16	0.39	6	1.4	358	0.35	<0.05	10.6	0.16	0.33	10.4	73	1.9
1038		26.4	0.003	0.13	0.35	3	0.5	347	0.13	<0.05	4.7	0.09	0.31	3.8	24	0.8
1039		38.1	<0.002	0.03	0.19	1	1.4	226	0.27	<0.05	4.1	0.13	0.22	1.0	59	1.3
1040		29.5	0.003	0.13	0.30	2	1.0	234	0.16	<0.05	5.9	0.13	0.24	4.5	58	1.8
1041		46.7	0.002	0.01	0.15	1	2.2	236	0.31	<0.05	3.0	0.16	0.23	0.9	108	6.2
1042		58.9	0.002	0.01	0.47	1	2.5	190.0	0.66	<0.05	5.6	0.30	0.32	1.5	122	4.0
1043		42.7	<0.002	0.01	0.22	1	2.5	199.0	0.50	<0.05	3.0	0.27	0.19	0.9	142	5.3
1045		16.1	<0.002	0.15	0.24	1	0.9	149.0	0.07	<0.05	1.6	0.09	0.07	0.9	50	2.0

Comments: REE's may not be totally soluble in MS61 method.



ALS Chemex

EXCELLENCE IN ANALYTICAL CHEMISTRY

ALS Canada Ltd.
 212 Brooksbank Avenue
 North Vancouver BC V7J 2C1 Canada
 Phone: 604 984 0221 Fax: 604 984 0218

10: TRUE NORTH GEMS
 701 KENWOOD RD.
 WEST VANCOUVER BC V7S 1S7

Page #: 3 - C
 Total # of pages : 4 (A - D)
 Date : 30-Oct-2002
 Account: THR

Project : Regal Ridge

CERTIFICATE OF ANALYSIS VA02003155

Sample Description	Method Analyte Units LOR	ME-MS61	ME-MS61	ME-MS61	ME-MS61	ME-MS61	ME-MS61	ME-MS61	ME-MS61	ME-MS61	ME-MS61	ME-MS61	ME-MS61	ME-MS61	ME-MS61	ME-MS61
		Rb ppm 0.1	Re ppm 0.002	S % 0.01	Sb ppm 0.05	Se ppm 1	Sn ppm 0.2	Sr ppm 0.2	Ta ppm 0.05	Te ppm 0.05	Th ppm 0.2	Ti % 0.01	Tl ppm 0.02	U ppm 0.1	V ppm 1	W ppm 0.1
1046		30.2	0.002	0.09	0.30	1	1.2	186.0	0.24	<0.05	8.0	0.12	0.22	4.4	51	2.9
1047		48.3	0.004	0.14	0.31	3	1.9	213	0.32	<0.05	6.7	0.19	0.36	2.9	80	4.6
1048		66.5	0.002	0.01	0.20	1	3.0	113.0	0.36	<0.05	5.5	0.19	0.41	1.4	116	5.2
1049		44.4	0.002	0.01	0.20	1	2.9	109.0	0.39	<0.05	3.9	0.20	0.26	1.0	149	5.7
1050		90.2	0.002	0.01	0.16	3	2.2	124.0	0.51	0.07	9.7	0.24	0.47	1.9	95	0.9
1051		90.6	0.002	0.01	0.10	3	2.6	125.0	0.59	0.06	9.6	0.26	0.50	1.8	98	1.1
1052		100.0	0.002	<0.01	0.05	2	2.6	130.0	0.60	0.05	10.6	0.29	0.46	1.9	94	0.9
1053		89.4	0.002	0.01	0.11	2	2.1	87.9	0.32	0.05	6.6	0.17	0.47	1.3	108	1.2
1054		110.0	0.004	0.02	0.10	3	2.5	144.0	0.34	0.09	12.3	0.21	0.62	2.6	141	1.0
1055		90.6	0.003	0.02	0.10	3	2.4	153.0	0.30	0.06	11.0	0.18	0.61	2.0	120	1.3
1058		80.6	0.002	0.01	0.09	2	1.8	116.0	0.22	0.06	7.4	0.14	0.58	1.6	109	0.8
1059		100.0	0.002	0.02	0.18	2	2.7	159.0	0.42	0.07	7.8	0.24	0.70	1.6	128	1.2
1061		80.0	0.002	0.01	0.12	1	2.0	143.0	0.24	<0.05	5.6	0.27	0.49	1.4	87	0.8
1065		88.6	0.002	<0.01	0.10	1	2.3	100.0	0.31	0.05	4.3	0.23	0.50	1.1	102	1.1
1066		79.0	0.002	0.01	0.11	1	1.9	101.0	0.20	0.07	5.8	0.18	0.44	1.3	89	0.8
1067		68.4	0.002	0.03	0.24	1	1.8	228	0.28	<0.05	5.9	0.20	0.35	1.6	65	1.1
1068		56.4	<0.002	0.03	0.29	1	1.3	262	0.35	<0.05	5.2	0.20	0.31	1.7	58	0.8
1069		80.8	0.073	0.09	0.32	10	2.0	198.0	0.48	0.07	12.2	0.22	0.54	9.7	106	1.2
1070		87.8	0.025	0.11	0.51	7	1.9	175.0	0.38	0.05	9.7	0.18	0.49	4.9	88	1.0
1071		57.3	0.026	0.07	0.17	8	1.3	370	0.25	<0.05	6.7	0.17	0.36	7.1	72	0.9
1072		15.0	0.018	0.29	0.41	17	0.4	143.0	<0.05	<0.05	2.8	0.04	0.09	12.3	20	0.3
1073		69.5	0.005	0.03	0.15	3	2.0	130.0	0.32	0.06	8.7	0.22	0.43	2.5	103	1.2
1074		55.5	0.030	0.22	0.19	10	1.3	156.0	0.21	<0.05	6.9	0.12	0.34	5.1	70	0.7
1075		88.6	0.003	0.03	0.28	1	2.5	267	0.34	<0.05	5.7	0.26	0.52	2.0	98	1.5
1076		53.7	0.002	0.01	0.27	1	1.8	187.0	0.31	<0.05	4.3	0.34	0.23	1.4	93	1.2
1077		66.6	0.003	<0.01	0.24	1	2.4	155.0	0.40	<0.05	6.4	0.31	0.29	1.4	107	1.7
1078		65.6	0.002	<0.01	0.15	1	2.4	95.2	0.26	<0.05	5.8	0.27	0.27	1.1	98	1.0
1079		29.9	0.002	0.07	0.26	1	1.3	180.0	0.08	<0.05	4.4	0.15	0.18	2.1	40	1.4
1080		17.7	0.006	0.15	1.01	7	1.0	287	0.38	<0.05	1.8	0.63	0.13	1.2	150	0.6
1081A		44.0	0.002	0.01	0.29	1	1.9	156.0	0.35	<0.05	5.2	0.37	0.24	1.3	122	2.0
1081B		57.2	0.004	0.12	0.30	2	2.0	178.0	0.29	<0.05	7.6	0.23	0.33	2.8	81	1.3
1082		66.5	0.002	0.01	0.18	1	2.5	101.0	0.28	<0.05	6.1	0.26	0.29	1.3	81	1.5
1083		76.8	0.002	0.02	0.33	1	2.3	252	0.53	<0.05	7.0	0.28	0.44	1.8	86	1.7
1084		79.6	0.005	<0.01	0.18	1	3.1	178.0	0.34	<0.05	7.2	0.28	0.40	1.6	90	2.5
1085		66.1	0.003	0.02	0.34	1	1.8	348	0.49	<0.05	6.0	0.24	0.31	2.2	56	1.3
1086		24.2	0.002	0.17	0.53	1	0.7	138.0	0.08	<0.05	6.9	0.09	0.21	4.4	35	0.9
1087		39.8	<0.002	0.06	0.39	1	0.9	390	0.29	<0.05	4.9	0.17	0.18	2.4	36	0.7
1088		8.4	0.002	0.17	0.17	1	0.3	95.0	<0.05	<0.05	1.4	0.03	<0.02	1.1	9	0.2
1089		65.8	0.002	0.07	0.30	1	7.2	146.0	0.41	<0.05	10.5	0.18	0.25	3.4	46	1.6
1090		58.3	0.002	0.02	0.25	1	2.4	146.0	0.56	<0.05	6.3	0.31	0.31	1.4	124	1.7

Comments: REE's may not be totally soluble in MS61 method.



ALS Chemex
EXCELLENCE IN ANALYTICAL CHEMISTRY
 ALS Canada Ltd.
 212 Brooksbank Avenue
 North Vancouver BC V7J 2C1 Canada
 Phone: 604 984 0221 Fax: 604 984 0218

To: TRUE NORTH GEMS
 701 KENWOOD RD.
 WEST VANCOUVER BC V7S 1S7

Page #: 4 - C
 Total # of pages : 4 (A - D)
 Date : 30-Oct-2002
 Account: THR

Project : Regal Ridge

CERTIFICATE OF ANALYSIS VA02003155

Sample Description	Method Analyte Units LOR	ME-MS61	ME-MS61	ME-MS61	ME-MS61	ME-MS61	ME-MS61	ME-MS61	ME-MS61	ME-MS61	ME-MS61	ME-MS61	ME-MS61	ME-MS61	ME-MS61	
		Rb ppm	Re ppm	S %	Sb ppm	Se ppm	Sn ppm	Sr ppm	Ta ppm	Te ppm	Th ppm	Ti %	Tl ppm	U ppm	V ppm	W ppm
		0.1	0.002	0.01	0.05	1	0.2	0.2	0.05	0.05	0.2	0.01	0.02	0.1	1	0.1
1091		51.8	0.002	0.01	0.26	1	2.0	174.0	0.62	<0.05	5.5	0.39	0.25	1.3	137	1.3
1092		27.1	<0.002	0.05	0.28	1	0.6	406	0.15	<0.05	3.2	0.13	0.12	1.2	38	0.5
1093		51.7	0.002	<0.01	0.21	1	2.1	164.0	0.17	<0.05	3.9	0.28	0.20	1.1	105	1.0
1094		45.0	0.004	0.03	0.41	1	1.1	392	0.33	<0.05	4.8	0.21	0.22	1.7	52	1.6
1095		51.2	0.002	<0.01	0.19	1	1.7	184.0	0.38	<0.05	4.7	0.28	0.23	1.1	100	2.0
1096		19.6	0.002	0.16	0.62	3	0.5	310	0.05	<0.05	2.6	0.10	0.11	6.4	33	0.9
1097		34.0	0.002	0.08	0.33	1	0.8	255	0.05	<0.05	4.7	0.13	0.17	3.9	36	0.7
1098		6.9	<0.002	0.11	0.16	1	0.3	103.0	<0.05	<0.05	1.0	0.03	<0.02	0.7	9	0.3
1099		49.7	0.004	0.09	0.28	3	1.5	229	0.29	<0.05	6.3	0.25	0.25	7.9	81	1.2
1100		9.1	0.005	0.20	0.94	5	0.3	200.0	<0.05	<0.05	2.0	0.03	0.09	15.5	13	0.5
1101		66.8	0.003	0.12	0.29	2	1.4	195.0	0.21	<0.05	10.7	0.22	0.37	3.2	78	1.1
1102		53.0	0.002	0.01	0.12	1	1.5	246	<0.05	<0.05	6.3	0.46	0.17	1.7	158	0.1

Comments: REE's may not be totally soluble in MS61 method.



ALS Chemex

EXCELLENCE IN ANALYTICAL CHEMISTRY

ALS Canada Ltd.

212 Brooksbank Avenue
North Vancouver BC V7J 2C1 Canada
Phone: 604 984 0221 Fax: 604 984 0218

To: TRUE NORTH GEMS
701 KENWOOD RD.
WEST VANCOUVER BC V7S 1S7

Page #: 2 - D

Total # of pages : 4 (A - D)

Date : 30-Oct-2002

Account: THR

Project : Regal Ridge

CERTIFICATE OF ANALYSIS VA02003155

Sample Description	Method Analyte Units LOR	ME-MS61	ME-MS61	ME-MS61
		Y ppm 0.1	Zn ppm 2	Zr ppm 0.5
1003		3.1	51	37.2
1004		2.6	57	8.9
1005		3.8	56	4.2
1006		3.5	41	28.3
1007		15.1	42	19.4
1008		21.9	64	23.3
1009		7.4	53	63.5
1010		11.3	64	40.3
1011		9.5	60	48.9
1012		9.8	34	25.6
1013		36.3	36	17.3
1015		9.2	59	27.9
1016		9.0	46	72.5
1017		2.8	31	5.7
1018		8.1	51	82.0
1019		5.7	58	11.8
1020		5.1	53	11.7
1022		4.8	56	77.1
1023		5.4	53	37.0
1024		6.2	49	48.9
1025		5.1	50	67.6
1026		2.6	20	8.1
1027		6.5	46	50.6
1028		2.2	32	16.6
1029		5.5	52	27.6
1030		8.0	63	11.3
1031		11.5	78	36.4
1032		15.8	169	40.0
1033		6.9	41	58.5
1034		8.5	80	36.6
1035		12.8	83	49.8
1036		35.4	28	9.8
1037		100.0	96	42.3
1038		44.8	42	35.9
1039		5.8	38	29.6
1040		39.3	41	33.3
1041		6.3	49	22.2
1042		8.8	48	46.6
1043		8.1	50	37.5
1045		4.8	52	14.0

Comments: REE's may not be totally soluble in MS61 method.



ALS Chemex

EXCELLENCE IN ANALYTICAL CHEMISTRY

ALS Canada Ltd.
 212 Brooksbank Avenue
 North Vancouver BC V7J 2C1 Canada
 Phone: 604 984 0221 Fax: 604 984 0218

To: TRUE NORTH GEMS
 701 KENWOOD RD.
 WEST VANCOUVER BC V7S 1S7

Page #: 3 - D
 Total # of pages : 4 (A - D)
 Date : 30-Oct-2002
 Account: THR

Project : Regal Ridge

CERTIFICATE OF ANALYSIS VA02003155

Sample Description	Method Analyte Units LOR	ME-MS61	ME-MS61	ME-MS61
		Y ppm 0.1	Zn ppm 2	Zr ppm 0.5
1046		6.9	41	49.9
1047		9.1	58	57.8
1048		6.9	57	30.0
1049		6.9	57	28.9
1050		12.3	96	39.8
1051		14.0	92	38.9
1052		16.5	85	37.5
1053		10.5	90	35.5
1054		20.2	126	46.5
1055		17.5	112	42.0
1058		9.7	111	36.6
1059		10.5	87	51.4
1061		9.0	45	43.3
1065		6.8	51	36.3
1066		8.5	56	33.4
1067		8.1	38	58.0
1068		7.2	49	64.2
1069		25.5	118	49.2
1070		20.3	119	39.3
1071		16.0	91	24.1
1072		22.6	37	5.8
1073		16.6	94	35.8
1074		19.1	67	26.9
1075		10.4	39	69.3
1076		8.7	47	49.8
1077		12.1	73	29.8
1078		11.6	55	24.7
1079		7.3	31	19.2
1080		19.2	84	52.6
1081A		11.7	62	31.1
1081B		14.8	152	30.6
1082		10.0	54	29.6
1083		9.5	77	73.4
1084		9.9	51	40.5
1085		8.0	47	81.8
1086		12.3	44	9.9
1087		7.6	38	81.0
1088		5.7	56	4.6
1089		12.3	54	46.6
1090		12.8	105	31.5

Comments: REE's may not be totally soluble in MS61 method.



ALS Chemex

EXCELLENCE IN ANALYTICAL CHEMISTRY

ALS Canada Ltd.

212 Brooksbank Avenue

North Vancouver BC V7J 2C1 Canada

Phone: 604 984 0221 Fax: 604 984 0218

To: TRUE NORTH GEMS
701 KENWOOD RD.
WEST VANCOUVER BC V7S 1S7

Page #: 4 - D

Total # of pages : 4 (A - D)

Date : 30-Oct-2002

Account: THR

Project : Regal Ridge

CERTIFICATE OF ANALYSIS VA02003155

Sample Description	Method Analyte Units LOR	ME-MS61	ME-MS61	ME-MS61
		Y ppm 0.1	Zn ppm 2	Zr ppm 0.5
1091		13.9	91	28.2
1092		5.0	41	52.7
1093		9.1	47	34.8
1094		6.2	53	79.8
1095		10.1	65	38.5
1096		5.7	61	6.1
1097		15.1	43	6.7
1098		1.6	94	4.5
1099		20.1	82	39.2
1100		36.5	32	5.4
1101		26.4	244	36.6
1102		18.5	132	31.2

YUKON REGIONAL LIBRARIES
& PRESERVATION LIBRARY
1000
WHITEHORSE, Y.T. X1A 2L8

Comments: REE's may not be totally soluble in MS61 method.