

**ASSESSMENT REPORT ON  
REGENT VENTURES LTD  
JB CLAIMS** 094371

Mayo Mining District, Yukon

**Location:** 1. 380 km NE of Whitehorse, Yukon  
2. NTS Map Area 115 P/15 and 116A/2  
3. Latitude: 63° 58'N  
Longitude: 136° 45'W

**Claims:** JB 1-8 YC01668-YC01675  
JB 21-28 YC01688-YC01695  
JB 41-46 YC01708-YC01713  
JB 61-46 YC01728-YC01731  
JB 75-80 YC01742-YC01747  
JB 91-96 YC01758-YC01763

**For:** **Regent Ventures Ltd.**  
Penthouse #8 – 1060 Alberni Street  
Vancouver, B.C.  
V5T 4K2

**By:** R. Allan Doherty, P.Geo.  
**Aurum Geological Consultants Inc.**  
3151B 3<sup>rd</sup> Avenue  
Whitehorse, Yukon  
Y1A 1G1

aurum@yknet.ca

September 24, 2002



## TABLE OF CONTENTS

	Page
Table of Contents -----	i
1. Summary -----	1
2. Introduction And Terms Of Reference -----	2
3. Property Description and Location -----	2
4. Accessibility, Climate, Local Resources, Infrastructure and Physiography -----	6
5. History -----	7
6. Geological Setting -----	8
7. Mineralization -----	14
8. 2001 Exploration -----	10
9. Sample Preparation, Analyses and Security -----	14
10. Interpretation and Conclusions -----	15
11. References -----	16
12. Certificate of Qualifications -----	19
13. Statement of Costs -----	20

### LIST OF FIGURES

Figure 1: Location Map, Scale 1:6,000,000-----	4
Figure 2: Claim Location Map, Scale 1: 50,000 -----	5
Figure 3: Soil Lines C-1 & D-1 Scale 1:7500 -----	12
Figure 4: Soil Lines E-1 & F-1 Scale 1:7500 -----	13

### LIST OF TABLES

Table I: Red Mountain Property - Claim Data-----	3
--	---

### LIST OF APPENDICES

Appendix A. Geochemical Analyses Certificate and Sample Logs

## 1. SUMMARY

Regent Ventures Ltd., Red Mountain property consists of 205 contiguous mineral claims centred on a quartz monzonite stock, within the McQuesten map area, Yukon. The claims are accessible by helicopter, from Mayo (55 km SE) or Dawson City (135 Km W). A rough four-wheel drive road leads from the Clear creek road to placer gold workings on Hobo Creek, which flows northwest from the property to the South Klondike River. The property is a target for Tintina Gold Belt – Tombstone Suite ( $91 \pm 1$  Ma) intrusion related gold deposits. These can range between low-grade disseminated gold, to high-grade vein and vein breccia breccia gold mineralization.

The claims cover three and possibly more exposures of Tombstone Suite plugs or dykes of biotite granite to quartz monzonite composition. The intrusions cut mid-Proterozoic Hyland Group quartzite, phyllites and shales with minor limestone. The area has been prospected intermittently since the turn of the century. A short adit, the “Treadwell Adit” was the focus of most attention and has been continuously staked ground since the mid 1970’s.

Stream sediment geochemistry and soil sampling completed by Amax of Canada Inc., in 1979, indicated that most of the creeks draining the property were anomalous in gold. Placer gold workings are found on Gem Creek and Hobo Creek both of which drain the Red Mountain area. Rock samples collected by Amax returned up to 14,200 ppb (0.414 opt) gold from quartz - sulfide vein material collected from the Treadwell adit. The adit is on a prominent gossan over hornfelsed metasedimentary rocks below a quartz monzonite sill on the west ridge of Red Mountain, just south of Regent Ventures Ltd.’s claim boundary with the ICE Claims.

Renewed interest in the ground developed in 1991 when significant gold mineralization was discovered at Dublin Gulch, Yukon using the Fort Knox, Alaska deposit model. In 1992, Brian Lueck and Bob Wondga staked the BX 1-8 claims based on gold silt anomalies in Hobo creek, reported in GSC Open File 1650. Regent Ventures Ltd. optioned the claims in 1993 and has held them since, completing a 35 line-kilometres of gridding, soil sampling, magnetometer and VLF-EM surveys. Results were encouraging and included a 100 m by 70 m area of  $>100$  ppb Au in soils on a prominent saddle northeast of the headwaters of Hobo Creek.

In 1994 and 1995 Regent drilled 18 NQ core drill holes totalling 2158 m, and nine reverse circulation holes totalling 1232 m. Drilling in the same area produced more encouraging results with drill core intercepts in holes DD94-1 and 2 including 1,83 meter grading 27.98 gm/T Au and three other intercepts of  $>1$  gm/T Au. The RC holes in 1995 returned weighted averages of 5.38 gm/T Au over 6.10 m and 8.65 gm/T Au over 3.05 m at 33 m and 72 m depth respectively in holes RC95-1 and RC95-5. Drilling in 2001 produced similar results and compilation of the data reveals a distinct northwest trending cluster of drill intercepts in seven holes (RC95-4, 5, 6; DD95-1,10; DD01-28, and DD95-1) over a 100 m strike length on a distinct  $320^\circ$  strike. The strike of the trend is coincident with a mapped fault and intrusive hornfelsed contact.

## 2. INTRODUCTION AND TERMS OF REFERENCE

This report was prepared at the request of Ed Mueller, President of Regent Ventures Ltd. Its purpose is to fulfil the assessment filing requirements for work done on the BJ Claims. through a description of the property work completed on the BJ Claims in 2001.

Exploration work, carried out in 2001, consisted of three soil sample lines on the JB claims and a five hole NQ drill program (1280.77 m) on the BX 5 and 7 claims. This work was carried out during August and September 2001 at a cost of approximately \$ 285,000. Previous work by prior claim owners, on the adjoining ICE Claims and on the southern portion of Regents claims, is summarized in assessment reports by Kidlark (1980), Potter (1988), Davidson (1988), Doherty and Hulstein (1992), Doherty and vanRanden (1993, 1994, 1995), and a summary geological report by Crys Exploration (1992), and published reports and maps. Reports for the Regent property were completed by Lueck (1993), Lueck and Phillip (1994) and Penner (1996)

## 3. PROPERTY DESCRIPTION AND LOCATION

The claims are located 135 km east-southeast of Dawson City, Yukon and 55 km northwest of Mayo (Figure 1). The claims, covering an area of approximately 4284 hectares, are centred at approximately 63° 59' 30" N latitude and 136° 43' 30" W longitude within NTS map area 115 P/15 and 106A-2.

The property consists of 201 contiguous unsurveyed two-post quartz claims (Figure 2), staked in accordance with the Yukon Quartz Mining Act. The claim block straddles the Dawson-Mayo Mining District boundary, which follows the height of land between the McQuesten River and the Klondike River drainage.

There are 137 claims registered in the Dawson Mining District and 68 in the Mayo Mining District. Current claim status is shown on Yukon Quartz Sheet 115 P-15. All 205 claims are 100% owned by Regent Ventures Ltd. The BX 1-68 Claims are subject to a 1% Net Smelter Return held by the original claim owners.

A Yukon Land Use Permit (#YA2F895) was submitted by Tintina Consultants of

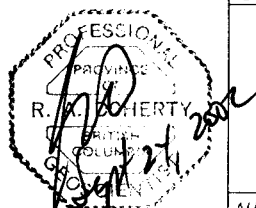
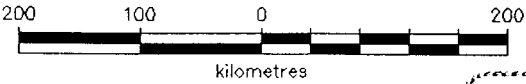
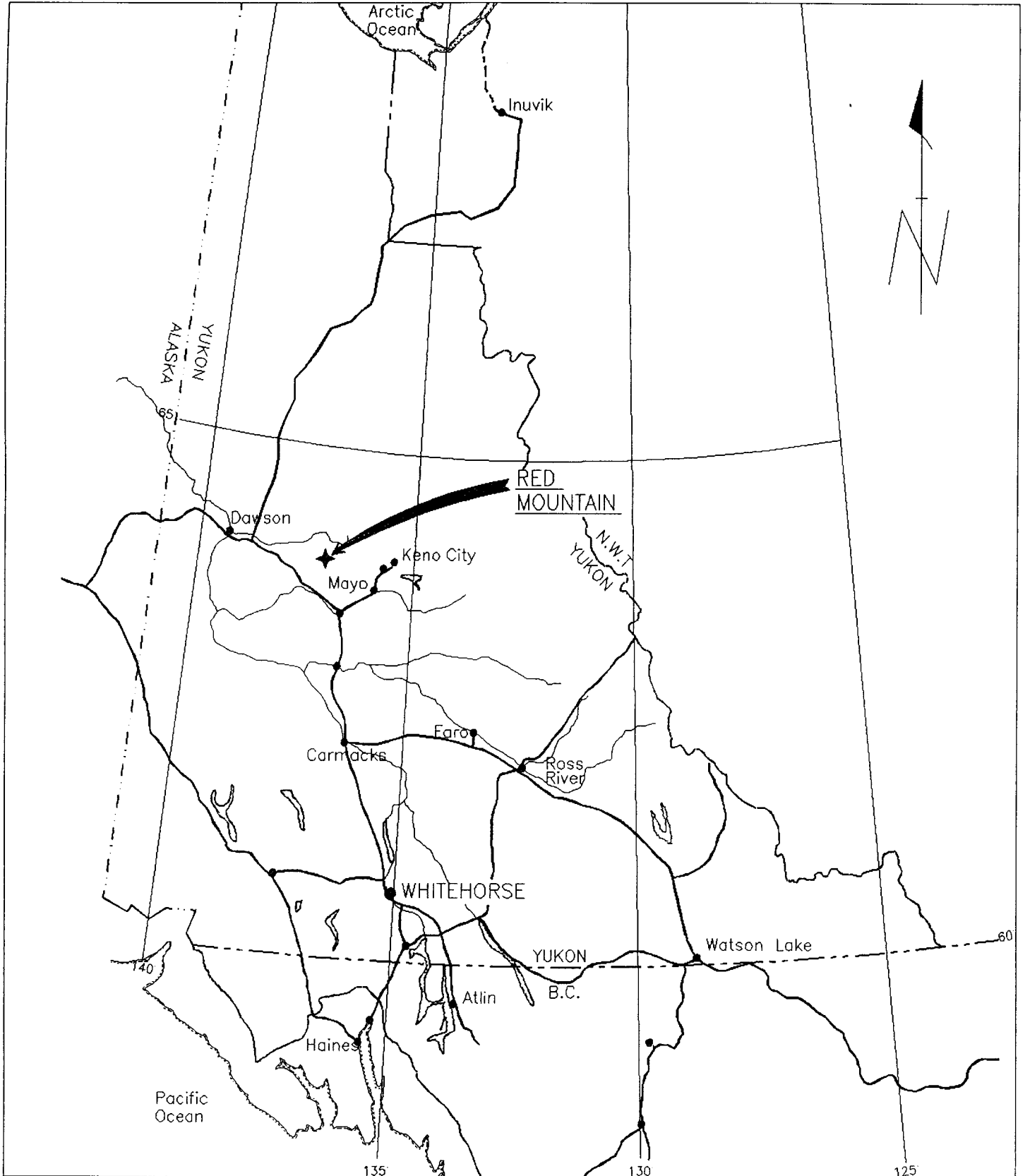
Whitehorse in February 2002 and approved on April 24, 2002 to re-route part of the tote trail away from Hobo Creek. This trail upgrade will considerably shorten the distance and time required to reach the property from the Clear Creek road with runs east off the Klondike highway at kilometer post 612. In previous years travel time from the Klondike highway to the property could take up to four hours or more.

Claim data and expiry dates for the JB Claims are listed in Table I.

**TABLE 1** **Red Mountain Claim Data**

<b>CLAIM NAME</b>	<b>GRANT NUMBERS</b>	<b>Number of Claims</b>	<b>MINING DISTRICT</b>	<b>EXPIRY DATE*</b>
JB 1-8	YC01668-YC01675	8	MAYO	2004/03/31 *
JB 21-28	YC01688-YC01695	8	MAYO	2004/03/31 *
JB 41-46	YC01708-YC01713	6	MAYO	2004/03/31 *
JB 61-64	YC01728-YC01731	4	MAYO	2004/03/31 *
JB 75-80	YC01742-YC01747	6	MAYO	2004/03/31 *
B 91-96	YC01758-YC01763	6	MAYO	2004/03/31 *

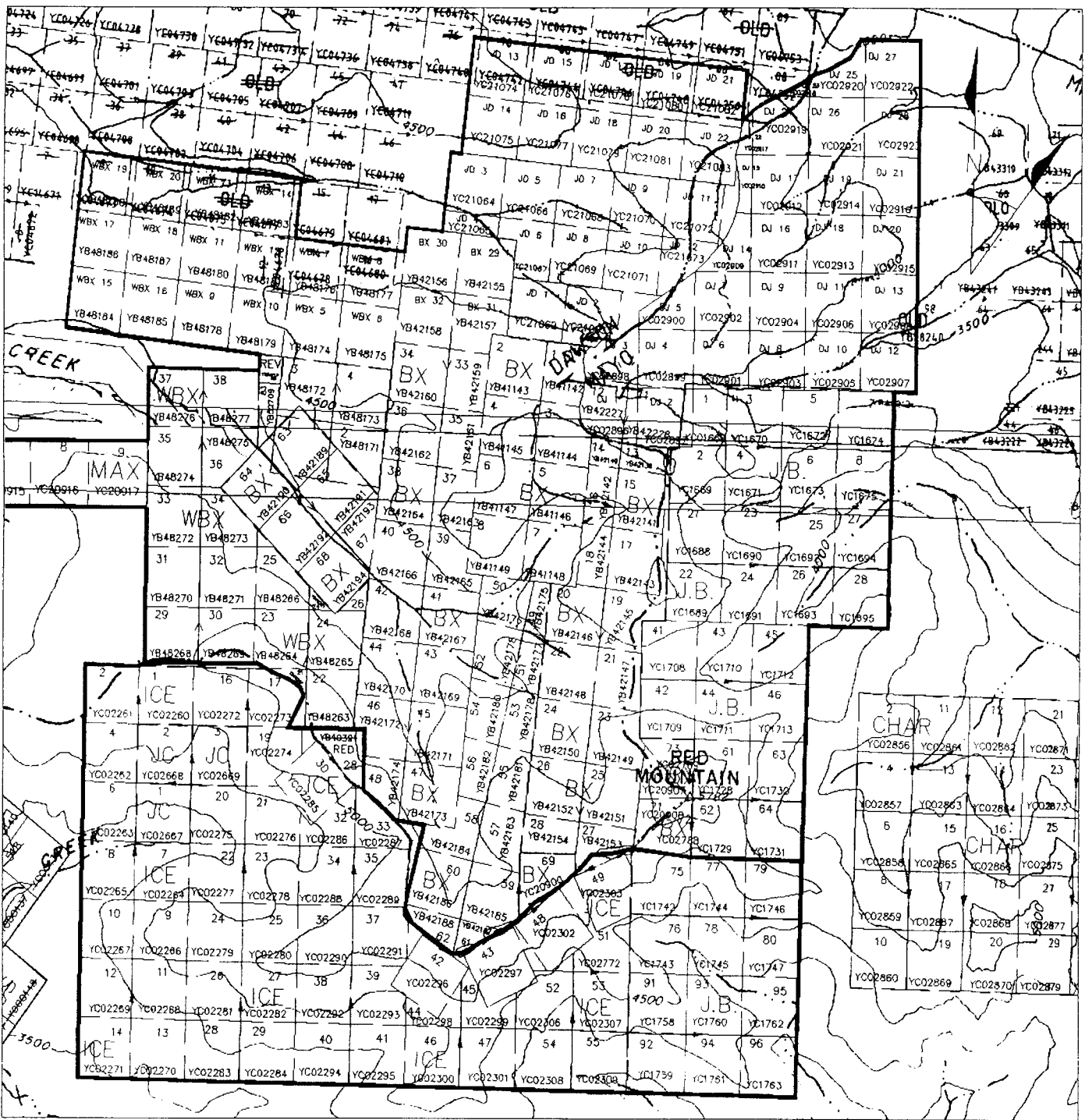
\* Expiry dates subject to approval of 2001 assessment work.



REGENT VENTURES LTD. - JB CLAIMS  
 DAWSON AND MAYO MINING DISTRICTS, YUKON TERRITORY

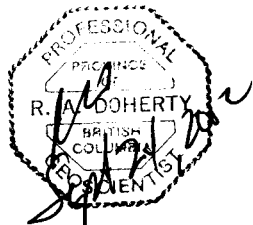
# PROPERTY LOCATION MAP

AURUM GEOLOGICAL CONSULTANTS INC.	DATE: AUGUST, 2002
115 P/15 116 A/2	DRAWN BY:JC SCALE: 1:6,000,000 FIGURE 1



LEGEND

- 15 CLAIM #
- YB26526 GRANT#



REGENT VENTURES LTD. - JB CLAIMS  
 DAWSON AND MAYO MINING DISTRICTS, YUKON TERRITORY

CLAIM  
LOCATION  
MAP

AURUM GEOLOGICAL CONSULTANTS INC. | DATE: AUG, 2002  
 115 P/15 116 A/2 | DRAWN BY: JC | SCALE: 1:50,000 | FIGURE 2

#### **4. ACCESSIBILITY, CLIMATE, LOCAL RESOURCES, INFRASTRUCTURE AND PHYSIOGRAPHY**

Access to the property for the 2001 work program was by helicopter, based in Mayo 55 km to the southeast. Alternatively, helicopters are available in Dawson City. The Clear Creek Road, coming in from the Klondike highway (#2), provides road access to the area crossing from the Clear Creek drainage into Josephine and Hobo creeks. From the Left Clear placer operation, a rough four wheel drive road leads to the placer workings on Hobo Creek which drains the western side of the property. The Clear Creek Road is not maintained and is usable only during the summer months. Regent Ventures Ltd., applied for the necessary permits and constructed a 21 Km access trail from the Mayo side, up Ballard Creek from the existing Duncan Creek/McQuesten River Road (George Cross Newsletter, 1994). This road is only useable as a winter trail. Future use would require appropriate approvals and permits.

The Red Mountain property is situated in the partly unglaciated Stewart Plateau. Although Pleistocene glaciation scoured the major drainages in the area such as Sprague Creek, most of the property, higher elevations in particular, escaped the effects of glaciation. Topography is moderate to rugged and is characterized by rounded hills, ridges and a dendritic drainage system. The claims cover the ridge west of Red Mountain. Elevations on the property range from 1100 m (3500') at Gem Creek to approximately 1670 m (5500') near Red Mountain. Outcrop exposure is poor to fair (approximately 10%) with almost no exposures on lower ridge slopes and forested areas. Most of the property is covered by felsenmeer and talus fines.

An interior continental climate with precipitation of about 40 cm annually, warm summers and cold winters typifies the area. Permafrost is common, especially on the steeper north and east facing slopes and lower forested areas. Most of the property is above treeline. Below 1200 m (4000') elevation ground cover consists of alpine fur, sparse spruce forest, alder, dwarf willow and birch. The area above treeline is mostly lichen covered rock with sparse moss and alpine plant cover.

The Town of Mayo is 55 km southeast of the claims and is the closest centre for obtaining groceries, fuel, accommodation and some limited rental and contracted exploration services. Trans North Helicopters maintains a summer helicopter base at the Mayo airport and there is normally a Twin Otter on floats working out of Mayo. Mayo is also the location of the Mayo District Mining Records office, and Mining Land Use Inspections and Land Use and Resource Management Officer. The property is within the Nacho Nyak Dun First Nation traditional territory. There is a 4 Kilowatt Power station just north of Mayo and a transmission line is under construction between Mayo and Dawson.

## 5. HISTORY

According to Yukon Minfile (1993), the Red Mountain area was probably first staked as the Hobnail, etc., claims in October 1923. Presumably the area was prospected for placer gold prior to this. The adjoining ICE claims were explored by Treadwell Yukon Company Limited in the late 1920's by hand trenching and a short adit on a prominent gossan. Various individuals restaked the ground around the original Treadwell showings between 1933 and 1947. Asarco restaked the property as the Red claims in 1974 and carried out geological mapping. Amax Potash restaked the property as the Hi claims in April 1979 for its molybdenum potential and explored the property with geological mapping and a geochemical survey. Parts of the property was restaked by Walhalla Exploration Ltd. in August, 1987 as the Hobo claims. The claims were mapped and a soil geochemical survey was completed (Davidson 1988). In 1988 Walhalla optioned the property to Welcome North Mining Ltd. in December 1988 who completed grid soil sampling and limited rock sampling. Most of these programs were focused on the Treadwell adit area and the prominent east-west trending ridges of Red Mountain. Most work reported very anomalous gold in soils, often up to 1 gm/T Au as well as good values from rock outcrops.

The area became a more attractive target in the late early 1900's for its gold potential after the discovery of the Fort Knox gold deposit, located near Fairbanks, Alaska, and the discovery of similar intrusive hosted gold at Brewery Creek and Dublin Gulch, Yukon. The prominent intrusive bodies along the McQuesten belt were all being explored by the mid 1990's.

In 1993, the BX 1-8 claims were staked by Brian Lueck and Bob Wondga of Whitehorse. The claims were north of the traditional Red Mountain claim blocks, ground that had been intermittently staked since 1923. An assessment report on the BX 1-8 claims (Lueck, 1993) reported the results of a 550 sample grid soil program that defined anomalous gold in soils over a broad area. The soil grid was following up on previous prospecting and anomalous GSC RGS silt sampling data (OF 1650). Samples were collected on a 100 m x 25 m spacing over a 1600 m long by 750 m wide NNW oriented grid. The claims were optioned to Regent Ventures Ltd in 1993. Regent has held the main claim block continuously since that time.

Work in 1994 consisted of expanding the 1993 soil grid by adding an additional 3100 by 1200 meter grid. Some trenching was completed on the top of the saddle. Prospecting, and additional claim staking. Favourable results from soil sampling and prospecting prompted a decision to complete a small NQ diamond drill program consisting of a six hole 533.4 m drill program. Results included 1.52 m of 1.30 gm/T Au in hole DD94-01 and 1.83 m of 27.98 gm/T Au from an intersection in altered metasediments, between 101.8-103.6 m depth in hole DD94-02, (Lueck and Phillips, 1994)

During the summer of 1995, a magnetometer and VLF-EM survey was completed over the BX grid by SJ Geophysics Ltd (Visser, 1995). In his report, Visser reports “*The magnetic data indicates 2 structural directions with the main structures striking in an easterly direction and minor structures in a northwest (grid east) direction.*” At the same time, SJ Geophysics prepared contoured soil anomaly maps of the BX grid. Unfortunately, the database and plot files from this work have been lost.

An orthophoto and ortho-topographic map was prepared by The Orthoshop in Calgary at a 1:5000 scale with 5 m contour intervals. Paper copies of the topography are available and have been scanned into a TIF file, but the original digital topography has been lost. The orthophoto mosaic is still archived in digital form.

Between 1995 and 2001 only limited work to maintain the claims was performed. An exploration program was conducted in the summer of 2001 consisting of five NQ drill holes (1280.77 m).

The current exploration model is focused on Tombstone suite intrusive related vein and disseminated gold mineralization focused on east-west and northwest trending structures.

## 6. GEOLOGICAL SETTING

### Regional Geology

The Red Mountain property is situated within the Selwyn Basin, part of the Ominica Belt (Wheeler, et al., 1991). The geology of the McQuesten map area has been mapped by H.S. Bostock (1964) at a scale of 1:253,440. More recently the area has been mapped at 1:50,000 scale by the Canada\Yukon Geoscience Office (Murphy et al. 1993; Murphy and Heon, 1994).

The Selwyn Basin as described by Abbott et. al. (1986) is used here to define the part of the cordilleran miogeocline comprised of Precambrian to Jurassic sedimentary rocks, deposited along the western margin of ancient North America. The eastern margin of the basin is marked by the Paleozoic shale - carbonate contact while the western margin is defined by the Teslin fault or suture. The sedimentary basin was active from the late Proterozoic to Middle Jurassic time (Abbott, 1986). All of the large stratabound, sediment hosted lead - zinc deposits in the northern Canadian Cordillera are found within the Selwyn Basin.

The Tombstone suite felsic intrusives ( $91 \pm 1$  Ma) are a widely recognized source of gold mineralization in a belt extending 2000 km from Alaska and through the Yukon. The monzonite to granodiorite and gabbro intrusions of the suite are associated with gold, mineralization in various styles from intrusive hosted vein quartz, disseminated gold in surrounding reactive sedimentary rocks, and as vein and breccia and replacement mineralization along favourable structures. The Eastern or Selwyn Plutonic Suite of granitoid intrusives are distributed along a northwest trending arcuate belt within the Selwyn Basin. The granitoids are mainly granitic in composition and are associated with tin, tungsten, and molybdenum mineralization.

### Property Geology

The geology of part of the Regent Venture Ltd's property has been mapped over a very small part of the property at a scale of 1:10,000 by Amax of Canada Ltd. (Kidlark, 1980) and more recently Lueck and Philip (1995) produced some limited mapping on the BX grid area. There is no outcrop detail shown on any map, partly because outcrop is limited. The entire property requires detailed grid level mapping.

The property covers three or more biotite granite to quartz monzonite intrusions into Mid-Proterozoic quartzite, green yellow and maroon phyllite and shale of the Hyland Group. These rocks have been subdivided into quartzite with minor interbeds of varicoloured phyllite. At the eastern end of the property these rocks appear to be in fault contact with a sequence of green phyllite and mafic volcanic rocks. The phyllite and quartzite units locally contain up to 3% disseminated pyrite.

Four dikes of diorite gabbro up to 120 m wide intrude the phyllite and quartzite units north and northwest of two mapped quartz monzonite stocks on Regent Ventures Ltd's claims. The dikes are slightly magnetic and contain minor disseminated pyrrhotite (Kidlark, 1980).

A biotite granitic sill outcrops along the boundary of the Regent claims and the adjoining ICE claims held by ASC Industries Ltd. The intrusion is overall megacrystic with quartz and orthoclase crystals up to 5 cm, and contains up to 10% locally chloritized biotite. Contact metamorphism is limited to narrow bands of biotite hornfels along the eastern contact and one small point along the northern contact (Kidlark, 1980).

The bedding of the unnamed Lower to Middle Cambrian host units strike approximately northwest and dip  $20^{\circ}$  to  $44^{\circ}$  east. Northeast of the Saddle zone grid, an enigmatic tourmaline rich breccia and related volcanic rocks outcrops. These units appear to have a weak geochemical signature for gold.

## 7. MINERALIZATION

Known mineralization is spatially and temporally related to the granitic stocks sills and dykes intruding quartzite and phyllite. It occurs in veins, brecciated veins, fractures, and disseminated in both the quartz monzonite and, in hornfelsed quartzite. Hornfels is moderately well developed adjacent to the granitic intrusion. The hornfels commonly contains disseminated and blebby pyrite and pyrrhotite, local quartz - sulfide veins and quartz vein stockworks.

Arsenopyrite-pyrite-pyrrhotite-chalcopyrite minerals have been noted quartz veins and fractures are found within the quartz monzonite stock and adjacent to it in locally developed hornfelsed zones. Brecciated and tourmalinized zones are common in the hornfels and to a lesser degree in the quartz monzonite. Pyrite is disseminated locally within the stock and is ubiquitous in the surrounding hornfels

Arsenopyrite, pyrite and pyrrhotite are common in 1-2 cm round clots on dry fractures in the quartz monzonite. High grade (>1 oz/T Au) values are reported from quartz –arsenopyrite veins and Low grade (>0.5gm/T Au) gold assays are associated with thin quartz veins or arsenopyrite blebs on dry fractures in the intrusions.

Structurally controlled mineralized vein and alteration zones, ranging from 0.2 to 0.5 m wide individual veins to sheeted veins of < 1 cm width , along NW trending 330° and east-west 090° trending faults. The presence of these faults is indicated by mapping and the fact that anomalous gold geochemistry reflects a strong E-W and NW trend, extending more than one kilometre parallel to both mapped structures, indicating that they may control the location of vein and stockwork mineralization. These veins commonly contain arsenopyrite, pyrite, stibnite, and chalcopyrite. Disseminated and vein controlled gold mineralization in hornfelsed sedimentary rocks adjacent to the quartz monzonite sills, extending as much as 10-20 m from intrusive contacts.

## 8. 2001 EXPLORATION

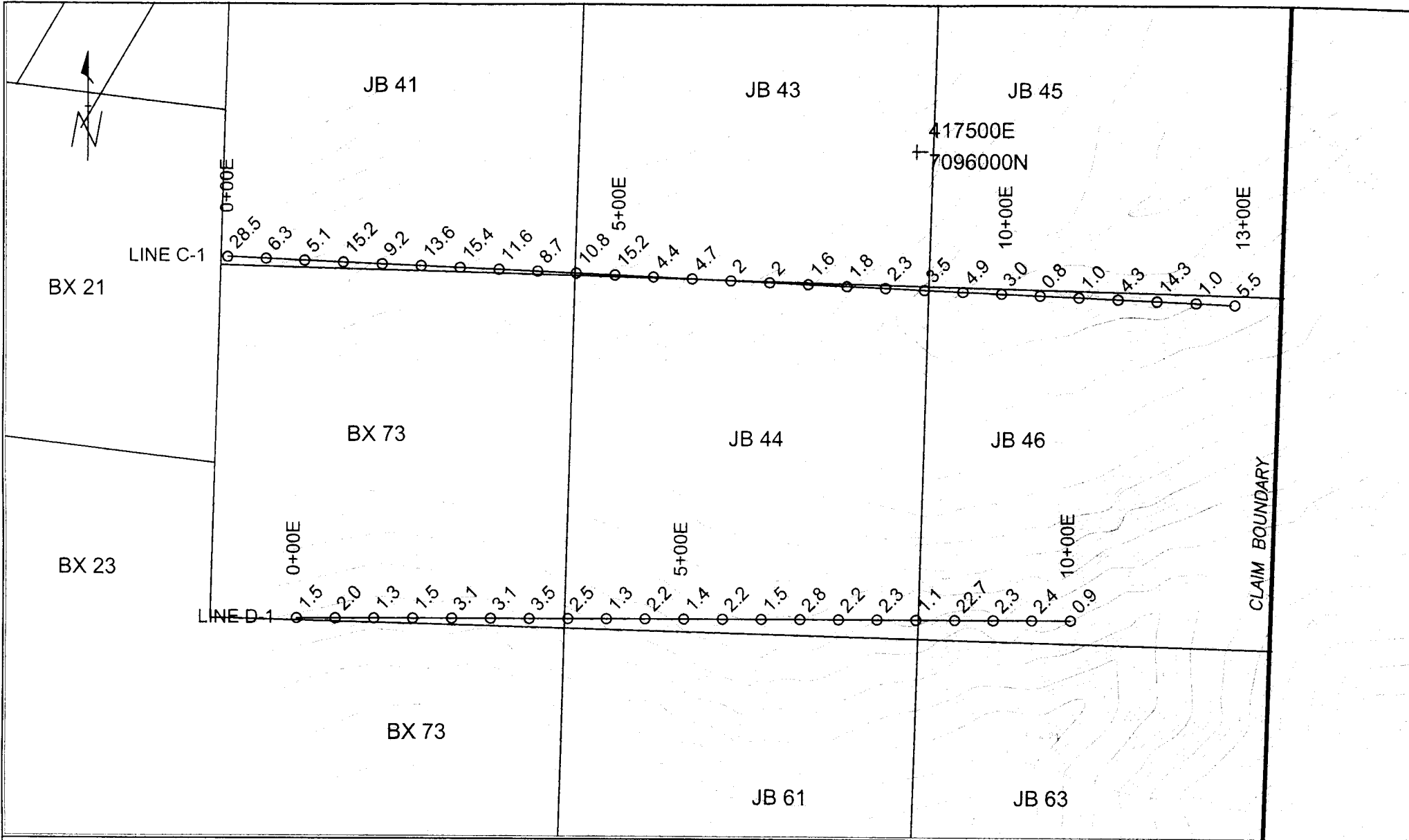
### Soil Geochemistry

Four soil sample lines were completed on the JB Claims in 2001. A total of 101 samples were collected at 50 m intervals along each line. Figures 3 and 4 show the soil sample line locations with gold values in ppb plotted along the line.

An Acme Analytical Laboratories Ltd geochemical Analysis Certificate # A102481 is found in Appendix A along with the field sample log for each site.

The highest gold value reported is 28.5 ppb Au from Line C-1 sample site 0+00 E. Six additional samples on the JB 41 and 43 claims, from the first 500 m of line C-1 (Figure 3), returned values between 10-15 ppb Au. Line D-1 approximately 500 m south of Line C-1 returned one sample of 22.7 ppb Au..

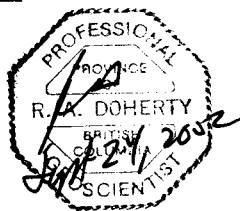
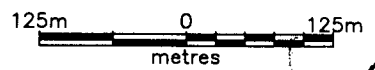
The best sample returned from lines E and F was 13.6 ppb Au. These lines are located approximately 2000 m and 3000 m respectively south of the C and D lines.



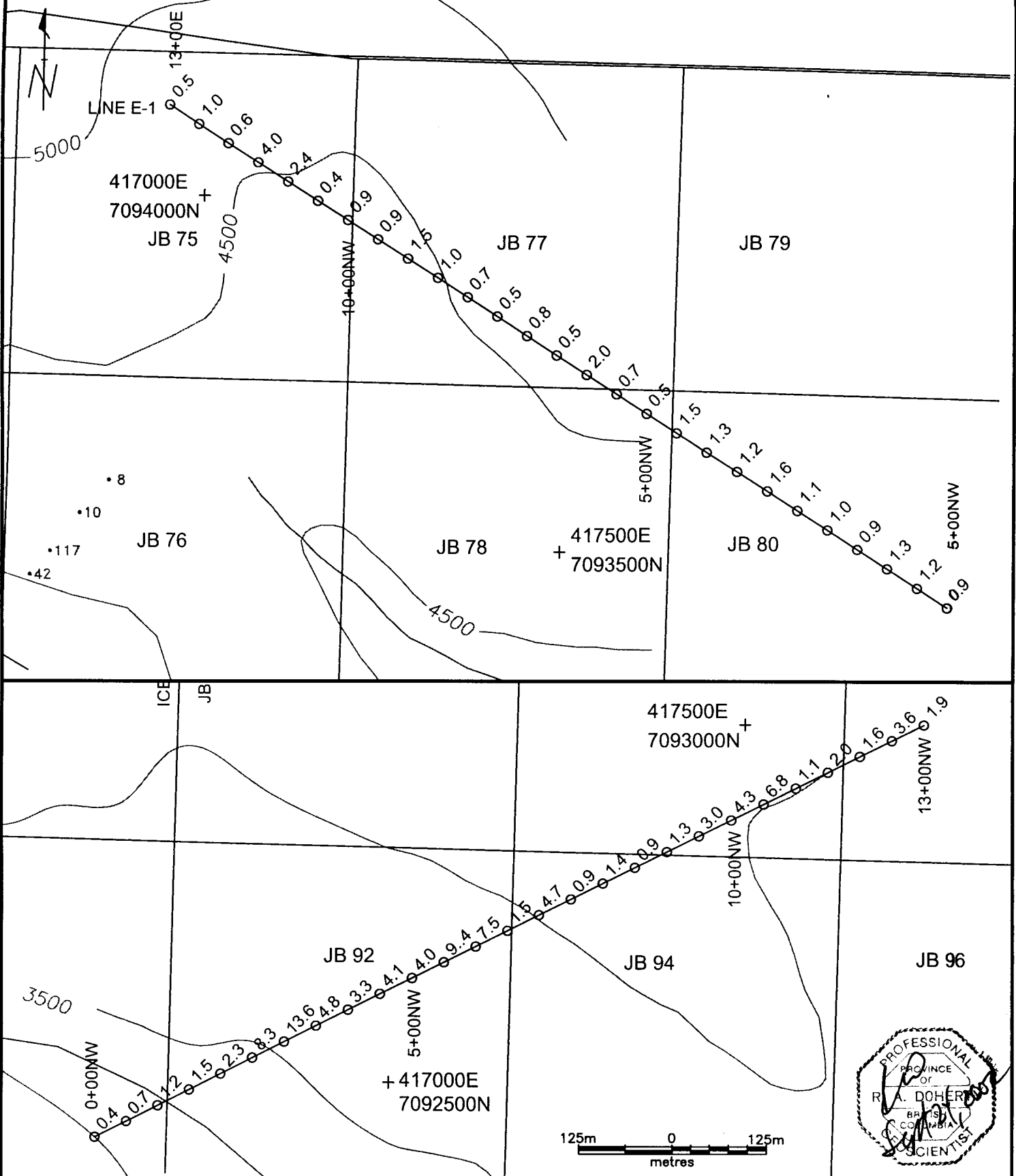
**LEGEND**

○ 3.7  
 2002 SOIL SAMPLE  
 Au ppb

CONTOUR INTERVAL = 5m  
 UTM ZONE 8, NAD 27



REGENT VENTURES LTD. - RED MOUNTAIN PROPERTY DAWSON AND MAYO MINING DISTRICTS, YUKON TERRITORY		
<b>SOIL LINES C-1 AND D-1 Au GEOCHEMISTRY</b>		
AURUM GEOLOGICAL CONSULTANTS INC.	DATE: AUGUST, 2002	
NTS 115 P/15 118 A/3	DRAWN BY: JC	SCALE: 1: 7500
		FIGURE: 3



**LEGEND**

- <sup>3</sup> 2002 SOIL SAMPLE  
Au ppb
- 52 SOIL SAMPLE BY OTHERS  
Au ppb

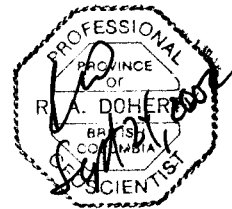
CONTOUR INTERVAL = 100 feet  
UTM ZONE 8, NAD 27

REGENT VENTURES LTD. - RED MOUNTAIN PROPERTY  
DAWSON AND MAYO MINING DISTRICTS, YUKON TERRITORY

**SOIL LINES  
E-1 AND F-1  
Au GEOCHEMISTRY**

AURUM GEOLOGICAL CONSULTANTS INC. DATE: AUGUST, 2002

NTS 115 P/15 118 A/4 DRAWN BY: JC SCALE: 1: 7500 FIGURE: 4



## 9. SAMPLE PREPARATION, ANALYSES AND SECURITY

All rock and soil samples collected in 2001 were prepared and analyzed by Acme Analytical Laboratories (Acme) in Vancouver, B.C. All final assay certificates received were approved and signed by C. Leong, a certified B.C. assayer. Prior to dispatch from the property, all samples were placed in rice bags by Regent Venture's personnel and secured with tamper resistant ties. The samples were then transported to Whitehorse, under the supervision of Regent Venture's personnel to Whitehorse, where they were shipped via Air Canada to Acme in Vancouver.

### Preparation and Analytical Techniques

All rock samples were crushed to  $-1/4''$  using a jaw crusher and then riffle split to obtain a 250 gram sub sample. The sub sample was then pulverized to  $-150$  mesh using a ring and puck pulverizer. 0.5 grams of the original pulp underwent aqua regia digestion for one hour at  $95^{\circ}\text{C}$  and then underwent a 32 element ICP analysis. A further 10 grams was also acid leached and analysed for Au using the ICP analytical method.

Preparation of soil samples involved air drying and sieving to  $-80$  mesh. Analytical techniques for soils were identical to the method used for rocks described above.

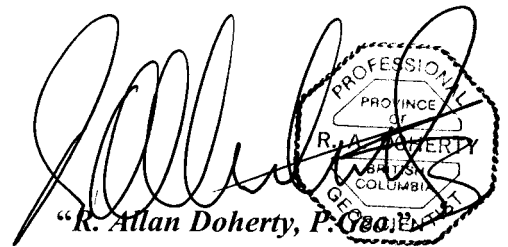
### Quality Control

Quality control procedures on soil and rock analytical data consisted of nine Acme internal check assays on soils and one check assay on a pulp from a rock sample. Check assays are included within the same assay certificate (Appendix C) as originals and are pre-fixed by the letters "RE". Correlation between original and check assays was generally very good ( $\pm 10\%$ ) for drill core.

## 10. INTERPRETATION AND CONCLUSIONS RECOMMENDATIONS

The property should be considered prospective for a number of styles of gold mineralization. Evidence for bulk tonnage, low grade-gold mineralization and higher grade vein controlled mineralization along a NW trending structure is present. Gold in breccia zones and within the hornfels has also been confirmed in drill programs. Most gold enriched zones are found within the intrusions or in nearby hornfelsed and vein-fractured and brecciated hornfelsed quartzite's. Evidence from magnetometer surveys, mapping, and geochemical surveys on the Red Mountain-Hobo and adjoining ICE Claims indicate that the gold mineralization is largely controlled by the intrusives and the structures.

As with similar targets in the McQuesten Mineral belt, low grade >50 ppb gold in soil anomalies are often significant targets once bedrock has been well exposed and sampled. The areas sampled on the BJ claims returned generally low values for gold.



*R. Allan Doherty, P. Geotechnical Engineer*

September 24, 2002

## 11. REFERENCES

- Abbott, J.G., Gordey, S.P., Tempelman-Kluit D.J.**, 1986. Setting of stratiform, sediment - hosted lead - zinc deposits in Yukon and Northeastern British Columbia; *in* Mineral Deposits of Northern Cordillera, ed. J.A. Morin, The Canadian Institute of Mining and Metallurgy, Special volume 37, p.1-18.
- Aho, A.E.**, 1962. Prospecting and Mineral Development in Yukon: *in* Western Miner & Oil Review, Vol. 35, No.2, p. 32.
- Bostock, H.S.**, 1964. Geology, McQuesten, Yukon Territory; NTS 115P, scale 1:253,440. Geological Survey of Canada, Map 1143A.
- Crysi Exploration**, 1992. Intrusive Hosted Gold Targets, Yukon and British Columbia, Canada. A private report prepared *for* Kokanee Explorations Ltd., Vancouver, B.C.
- Davidson, G.S.**, 1988. Assessment Report on the Hobo 1-52 Claims, YA89922-YA89936, YA 83709-YA83744, NTS 115P-15 Mayo and Dawson Mining Districts, *for*: Walhala Explorations Co. Ltd.
- Doherty, R.A.**, 2002. Qualifying Report on the Ice & JC Claims, Red Mountain area. *For* ASC Industries Ltd.
- Doherty, R.A. and Hulstein, R.**, 1993. Report on the 1992 Geological and Geochemical Assessment Work on the Red Mountain Property, Private report *for* Kokanee Exploration Ltd. *by* Aurum Geological Consultants Inc.
- Doherty, R.A. and vanRanden, J.**, 1994. Report on the 1993 Geological and Geochemical Assessment Work on the Red Mountain Property, Private report *for* Consolidated Ramrod Gold Corporation *by* Aurum Geological Consultants Inc.
- Doherty, R.A. and vanRanden, J.**, 1995. Report on the 1994 Geological and Geochemical Work on the Red Mountain Property, Private report *for* Consolidated Ramrod Gold Corporation *by* Aurum Geological Consultants Inc.
- Emond, D.S.**, 1986. Tin and Tungsten Veins and Skarns in the McQuesten River Area, Central Yukon: *in* Yukon Geology, Vol.1; Exploration and Geological Services Division, Yukon,

Indian and Northern Affairs Canada, p. 113-118

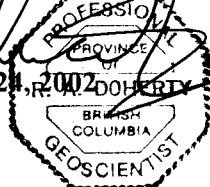
- Goldfarb, R. C. Hart, M. Miller, L. Miller C.L. Farmer, and D. Groves,** 2000. The Tintina Gold Belt – A Global Perspective in Tucker, T.L., and Smith, M.L. technical chairs, The Tintina Gold Belt: Concepts, Exploration, and Discoveries, Special Volume 2, British Columbia and Yukon Chamber of Mines.
- Kidlark, P.G.,** 1980. Geological and Geochemical Assessment Report on the HI 1-3 and 5-97 claims; by Amax of Canada Ltd. Department of Indian and Northern Development.
- Lueck, B.A.,** 1993. Geological and Geochemical Assessment on the BX 1-8 Claims. Assessment Report #
- Lueck, B.A. and D.W. Phillip,** 1994. Geological and Geochemical Assessment Report for the Red Mountain Group Claims, Dawson and Mayo Mining Districts, Yukon. Assessment Report 093315.
- Murphy, D.C., Heon, D., and Hunt, J.,** 1993. Geology of Clear Creek map area, Yukon (NTS 115P/14). Exploration and Geological Services Division, Yukon, Indian and Northern Affairs Canada, Open-File 1993-1, scale 1:50000.
- Murphy, D.C. and Heon, D.,** 1994. Geological overview of Sprague Creek map area, Western Selwyn Basin. *in* Yukon Exploration and Geology 1993; Exploration and Geological Services Division, Yukon, Indian and Northern Affairs Canada.
- Penner, D.F.,** 1996. Report on the Drilling and Geochemical Work on the Red Mountain Property, Dawson and Mayo Mining Divisions, Yukon Territory. Assessment Report # 093450
- Potter, R.G.,** 1988. Geological and Geochemical Report on the Hobo Claims. Assessment Report *for* Welcome North Mines Ltd.
- Tempelman-Kluit, D.J.,** 1979. Transported Cataclasite, Ophiolite and Granodiorite in Yukon: Evidence of Arc-Continent Collision; Geological Survey of Canada, Paper 79-14.
- Visser, S.,** 1995 Magnetometer and VLF-EM Survey Geophysical Report & Geochemical Plots on the Red Mountain Property, Yukon Territory, NTS 115 P/15 & 116 A/2, prepared for Regent Ventures Ltd. Assessment report # 093451
- Wilson, R.,** 1994. Regent Ventures Ltd., Red Mountain Project Summary; George Cross News Letter Ltd. NO. 231, December 2, 1994, page 5.

**Wheeler, J.O. and McFeely, P., 1991.** Tectonic Assemblage Map of the Canadian Cordilleras and Adjacent parts of the United States of America; Geological Survey of Canada, Map 1712A, scale 1:2,000,000.

## 12. CERTIFICATE OF QUALIFICATIONS

I, R. Allan Doherty, hereby certify that:

1. I am a consulting mineral exploration geologist with AURUM GEOLOGICAL CONSULTANTS INC., 3151 3<sup>rd</sup> Avenue, Whitehorse, Yukon, Y1A 1G1.
2. I am a graduate of the University of New Brunswick, with a degree in geology (Hons. B.Sc., 1977). I attended graduate school at Memorial University of Newfoundland, 1978-80. I have been involved in geological mapping and mineral exploration continuously since 1980.
3. I am a "Qualified Person" as defined in Sec 1.2 of National Instrument 43-101.
4. I am a member in good standing of the Association of Professional Engineers and Geoscientists of the Province of British Columbia, Registration No. 20564.
5. I am author of this report on the JB Claims. The report is based on data provided by Cory Coe from sampling completed by Roy Mueller between July 19-23, 2001.
6. I am the author of all sections of this report.
7. I am not aware of any material fact or material change with respect to the subject matter of this technical report, which is not reflected in the technical report, the omission to disclose makes the technical report misleading.
8. I am independent of the Issuer and have no direct or indirect interest in the properties or securities of Regent Ventures Ltd., or affiliated companies, nor do I expect to receive any.
9. I have had direct involvement with the exploration programs conducted on the area discussed in this report. I have also worked and reported on the adjoining claims for previous owners and for ASC Industries Ltd., the current owners. I am familiar with the Tombstone gold deposit model and have experience writing Qualifying Reports and conducting evaluations of mineral properties.

R. Allan Doherty, P. Geo.  
September 24, 2002  


## STATEMENT OF COSTS

### Assessment work on JB Claims completed between July 19 and July 23, 2001.

#### 1. Geological and Geochemical

##### A. Fieldwork

Cory Coe

July 19-23; 5 days @ \$300.00/day: \$1,500.00

Roy Mueller,

July 19-23; 5 days @ \$250.00/day: \$1,250.00

##### B. Geochemical Analysis

106 soil samples @ \$18.45 ea: \$1,934.50

##### C. Support Costs

Meals & Accommodation: \$ 1,022.65

Field Expenses: \$ 188.20

Gasoline: \$ 117.51

Sample shipping: \$ 159.90

Helicopter: \$3,167.19

##### D. Research and Report Preparation

\$600.00

\$9,339.95

**Total Valuation of 2001 Assessment Work: \$9,339.95**

**APPENDIX A**

**ACME ANALYTICAL LABORATORIES LTD.**

**Geochemical Analysis Certificate A102481  
Field Sample Logs**



GEOCHEMICAL ANALYSIS CERTIFICATE

Regent Ventures File # A102481 Page 1  
8 - 1060 Alberni St., Vancouver BC V6E 4K2 Submitted by: C. Coe

P. 02

FAX NO. 6042531716

AUG-15-2001 WED 03:47 PM ACME ANALYTICAL LAB

SAMPLE#	Mo	Cu	Pb	Zn	Ag	Ni	Co	Mn	Fe	As	U	Au*	Th	Sr	Cd	Sb	Bi	V	Ca	P	La	Cr	Mg	Ba	Ti	B	Al	Na	K
	ppm	ppm	ppm	ppm	ppm	ppm	ppm	ppm	%	ppm	ppm	ppb	ppm	ppm	ppm	ppm	ppm	ppm	%	%	ppm	ppm	%	ppm	%	ppm	%	%	%
L C-1 0+00E	1	24	37	50	.3	17	8	287	2.79	207	<8	28.5	8	15	<.5	6	<3	48	.16	.100	26	24	.29	58	.04	<3	.90	.01	.05
L C-1 0+50E	1	19	16	55	<.3	18	7	261	3.12	124	<8	6.3	6	8	<.5	<3	<3	41	.05	.034	17	27	.34	51	.04	<3	1.24	.01	.04
L C-1 1+00E	1	18	21	34	1.1	10	4	151	3.08	126	<8	5.1	7	7	<.5	5	<3	45	.03	.039	23	22	.17	43	.03	<3	.96	<.01	.05
L C-1 1+50E	1	65	46	56	.7	19	18	547	5.10	1594	<8	15.2	6	31	<.5	16	26	89	.09	.127	34	25	.59	111	.05	<3	1.76	.02	.07
L C-1 2+00E	1	37	42	67	.4	26	14	404	3.94	270	<8	9.2	6	15	.9	13	4	54	.09	.087	30	25	.33	77	.04	<3	1.10	.01	.05
L C-1 2+50E	1	30	45	49	.3	14	8	383	3.97	401	<8	13.6	2	19	.8	6	11	66	.06	.081	18	22	.37	126	.03	<3	1.35	.01	.07
L C-1 3+00E	1	34	50	65	.3	20	13	378	4.12	360	<8	15.4	12	18	<.5	13	6	53	.05	.080	29	26	.33	84	.02	<3	1.43	.01	.06
L C-1 3+50E	1	38	88	68	.3	20	9	239	3.28	409	<8	11.6	5	18	.5	20	5	38	.05	.071	29	20	.24	104	.03	<3	.91	.01	.06
L C-1 4+00E	1	23	47	34	<.3	9	4	117	2.39	196	<8	8.7	6	9	<.5	10	3	58	.03	.037	27	15	.07	139	.05	<3	.76	<.01	.04
L C-1 4+50E	2	21	29	41	<.3	12	5	198	3.25	121	<8	10.8	6	7	<.5	8	<3	57	.04	.041	19	27	.21	58	.04	<3	1.33	<.01	.05
L C-1 5+00E	1	33	49	45	.3	13	6	233	3.15	261	<8	15.2	5	8	<.5	21	<3	36	.04	.050	31	21	.20	108	.04	<3	.95	<.01	.07
L C-1 5+50E	1	18	16	55	<.3	14	6	353	3.72	81	<8	4.4	2	8	<.5	4	<3	62	.06	.053	17	29	.29	63	.06	<3	1.14	<.01	.05
L C-1 6+00E	1	21	15	54	.3	15	7	268	2.51	88	<8	4.7	<2	7	<.5	3	<3	40	.05	.073	16	23	.28	85	.02	<3	1.24	<.01	.05
L C-1 6+50E	1	18	18	46	<.3	14	6	302	2.10	61	<8	2.0	2	7	<.5	3	<3	34	.06	.045	17	21	.30	94	.03	<3	.98	<.01	.05
L C-1 7+00E	1	15	11	51	<.3	16	7	248	2.09	59	<8	2.0	2	8	<.5	3	<3	32	.07	.050	17	21	.31	74	.02	<3	.97	<.01	.05
L C-1 7+50E	1	18	10	52	<.3	17	9	369	2.23	47	<8	1.6	2	8	<.5	3	<3	37	.07	.053	18	23	.32	76	.03	<3	1.04	<.01	.05
L C-1 8+00E	1	18	14	53	<.3	15	6	278	2.55	53	<8	1.8	<2	7	<.5	3	<3	35	.04	.047	16	25	.32	66	.01	<3	1.27	<.01	.05
L C-1 8+50E	1	21	16	60	<.3	18	8	265	2.14	187	<8	2.3	4	10	<.5	9	<3	26	.10	.065	19	18	.29	49	.03	<3	.93	<.01	.04
L C-1 9+00E	1	13	32	45	<.3	12	5	209	2.27	42	<8	3.5	<2	8	<.5	6	<3	42	.05	.052	16	24	.29	73	.03	<3	1.22	<.01	.04
L C-1 9+50E	1	18	24	51	<.3	16	8	357	2.45	33	<8	4.9	<2	7	<.5	4	<3	40	.06	.050	17	24	.33	68	.03	<3	1.21	<.01	.04
L C-1 10+00E	1	14	10	31	<.3	10	4	118	1.60	21	<8	3.0	<2	7	<.5	<3	<3	31	.06	.058	14	19	.24	55	.01	<3	.82	<.01	.03
RE L C 1 10+00E	1	15	10	32	<.3	10	4	108	1.53	21	<8	1.3	<2	7	<.5	<3	<3	28	.05	.056	13	18	.23	52	.01	<3	.78	<.01	.03
L C-1 10+50E	1	9	7	20	<.3	7	3	123	1.58	172	<8	.8	3	4	<.5	<3	<3	33	.02	.016	13	11	.11	27	.04	<3	.46	<.01	.02
L C-1 11+00E	1	14	8	27	<.3	10	6	411	1.84	277	<8	1.0	<2	6	<.5	4	<3	38	.04	.047	16	16	.13	34	.02	<3	.55	<.01	.04
L C-1 11+50E	1	38	16	55	<.3	21	19	1148	2.96	291	<8	4.3	3	12	<.5	10	<3	35	.05	.081	26	24	.33	90	.02	<3	1.22	<.01	.07
L C-1 12+00E	1	64	12	36	.6	16	7	239	2.29	100	<8	14.3	<2	9	<.5	6	<3	30	.06	.092	47	20	.26	100	.02	<3	1.13	<.01	.06
L C-1 12+50E	1	32	31	67	.3	18	11	519	3.37	196	<8	1.0	4	20	<.5	22	<3	17	.02	.077	41	14	.16	34	.01	<3	.67	<.01	.04
L C-1 13+00E	1	26	42	65	<.3	18	12	733	3.22	54	<8	5.5	3	10	<.5	24	<3	22	.02	.084	40	15	.12	46	.01	<3	.62	<.01	.04
L D-1 0+00E	1	21	17	58	<.3	17	7	260	2.36	13	<8	1.5	<2	12	<.5	3	<3	33	.07	.075	24	20	.30	145	.01	<3	1.02	.01	.04
L D-1 0+50E	1	22	15	70	<.3	20	13	551	2.63	14	<8	2.0	3	13	<.5	4	<3	38	.13	.083	27	23	.35	125	.02	<3	1.06	<.01	.04
L D-1 1+00E	1	18	14	58	<.3	17	7	280	2.28	15	<8	1.3	2	14	<.5	<3	<3	34	.10	.072	21	23	.35	120	.01	<3	1.04	<.01	.04
L D-1 1+50E	1	20	15	66	<.3	18	11	524	2.53	20	<8	1.5	4	13	<.5	4	<3	34	.11	.079	27	21	.34	106	.01	<3	.99	<.01	.04
L D-1 2+00E	1	22	15	48	<.3	13	6	261	2.51	18	<8	3.1	<2	10	<.5	5	<3	34	.04	.096	29	21	.20	60	.01	<3	.92	<.01	.04
STANDARD DS3	9	125	33	157	.3	37	12	806	3.11	30	<8	22.3	4	26	5.7	5	5	77	.50	.096	17	187	.58	143	.09	<3	1.66	.03	.16

GROUP 1D - 0.50 GM SAMPLE LEACHED WITH 3 ML 2-2-2 HCL-HNO3-H2O AT 95 DEG. C FOR ONE HOUR, DILUTED TO 10 ML, ANALYSED BY ICP-ES.  
UPPER LIMITS - AG, AU, HG, W = 100 PPM; MO, CO, CD, SB, BI, TH, U & B = 2,000 PPM; CU, PB, ZN, NI, MN, AS, V, LA, CR = 10,000 PPM.  
AU\* BY ACID LEACHED, ANALYZE BY ICP-MS. (10 gm)  
- SAMPLE TYPE: SOIL SS80 60C Samples beginning 'RE' are Reruns and 'RRE' are Reject Reruns.

REVISED COPY

for Ag

DATE RECEIVED: JUL 30 2001 DATE REPORT MAILED: Aug 15/01 SIGNED BY: C. Coe D. TOYE, C. LEONG, J. WANG; CERTIFIED B.C. ASS.

All results are considered the confidential property of the client. Acme assumes the liabilities for actual cost of the analysis only.

Data



P. 03  
FAX NO. 5042531716  
AUG-15-2001 WED 03:49 PM ACME ANALYTICAL LAB

SAMPLE#	Mo ppm	Cu ppm	Pb ppm	Zn ppm	Ag ppm	Ni ppm	Co ppm	Mn ppm	Fe %	As ppm	U ppm	Au* ppb	Th ppm	Sr ppm	Cd ppm	Sb ppm	Bi ppm	V ppm	Ca %	P %	La ppm	Cr ppm	Mg %	Ba ppm	Ti %	B ppm	Al %	Na %	K %
L D-1 2+50E	1	23	28	75	<.3	22	22	789	3.17	24	<8	3.1	6	13	<.5	8	<3	29	.07	.081	41	22	.32	89	.02	<3	1.04	<.01	.04
L D-1 3+00E	1	24	17	64	<.3	19	15	527	2.93	20	<8	3.5	6	13	<.5	8	<3	31	.08	.073	35	20	.29	61	.02	<3	.89	<.01	.04
L D-1 3+50E	1	30	20	72	<.3	22	19	645	3.52	22	<8	2.5	12	17	<.5	16	<3	26	.07	.083	54	21	.35	66	.03	<3	1.13	<.01	.04
L D-1 4+00E	1	27	36	87	<.3	22	20	1078	3.64	57	<8	1.3	2	13	<.5	9	<3	52	.05	.102	40	21	.42	89	.01	<3	1.32	<.01	.04
L D-1 4+50E	1	25	11	40	<.3	13	5	186	2.33	11	<8	2.2	<2	13	<.5	4	<3	39	.08	.096	21	25	.24	48	.03	<3	1.10	.01	.04
L D-1 5+00E	1	33	52	103	<.3	25	17	744	3.92	70	<8	1.4	6	15	<.5	19	<3	32	.03	.087	53	21	.30	44	<.01	<3	1.16	.01	.04
L D-1 5+50E	1	33	106	194	.4	30	26	1103	3.82	55	<8	2.2	9	22	1.0	28	<3	44	.09	.089	56	20	.44	78	.01	<3	1.27	<.01	.05
L D-1 6+00E	1	20	15	53	<.3	17	7	267	2.19	18	<8	1.5	2	10	<.5	4	<3	39	.08	.061	17	23	.28	60	.02	<3	.92	<.01	.03
L D-1 6+50E	1	29	43	87	.3	24	19	838	3.35	100	<8	2.8	9	19	<.5	13	<3	28	.07	.093	48	22	.34	63	.01	<3	1.13	<.01	.05
L D-1 7+00E	1	31	46	92	<.3	26	22	859	3.29	45	<8	2.2	6	19	<.5	14	<3	33	.08	.092	46	23	.34	74	.02	<3	1.18	<.01	.06
L D-1 7+50E	1	21	28	82	<.3	22	13	571	2.85	21	<8	1.1	7	19	<.5	13	<3	24	.10	.073	45	18	.26	94	.01	<3	.88	<.01	.05
L D-1 8+00E	1	23	49	90	<.3	23	14	540	2.65	19	<8	22.7	4	17	.6	8	<3	30	.08	.074	42	21	.29	60	.01	<3	.96	<.01	.05
L D-1 8+50E	1	27	35	73	<.3	20	15	478	2.78	23	<8	2.3	3	15	<.5	7	<3	29	.07	.079	33	21	.26	45	.01	<3	.93	<.01	.04
L D-1 9+00E	1	38	38	82	<.3	29	24	667	3.99	28	<8	2.4	9	21	<.5	28	<3	29	.07	.097	51	22	.27	50	.02	<3	.98	<.01	.04
L D-1 10+00E	1	21	12	46	<.3	23	17	1520	3.11	22	<8	.9	3	14	<.5	12	<3	34	.03	.073	44	18	.12	44	.01	5	.72	<.01	.04
RE L D-1 10+00E	1	22	12	49	<.3	24	17	1597	3.15	22	<8	.9	3	14	<.5	12	<3	30	.03	.074	44	18	.12	44	.01	6	.72	<.01	.04
L E-1 13+00NW	1	22	37	67	<.3	18	11	578	3.20	11	<8	.5	2	9	<.5	<3	<3	45	.07	.050	19	26	.32	81	.02	<3	1.26	<.01	.06
L E-1 12+50NW	1	15	30	48	<.3	12	6	350	2.27	9	<8	1.0	<2	7	<.5	<3	<3	35	.04	.060	17	21	.24	49	.01	<3	.99	<.01	.04
L E-1 12+00NW	1	15	23	46	<.3	13	7	330	2.23	10	<8	.6	<2	9	<.5	<3	<3	38	.08	.046	16	21	.30	75	.01	<3	.97	<.01	.04
L E-1 11+50NW	1	28	19	55	<.3	24	9	385	1.97	10	<8	4.0	3	17	<.5	<3	<3	34	.21	.088	16	21	.35	84	.03	<3	.94	<.01	.05
L E-1 11+00NW	1	19	25	57	<.3	16	10	642	2.43	9	<8	2.4	<2	8	<.5	<3	<3	33	.07	.049	15	21	.27	64	.02	<3	1.01	<.01	.05
L E-1 10+50NW	1	17	20	53	<.3	14	8	421	2.14	9	<8	.4	<2	13	<.5	<3	<3	37	.09	.050	18	21	.28	98	.01	<3	1.08	<.01	.04
L E-1 10+00NW	1	23	38	67	<.3	18	11	633	2.63	10	<8	.9	3	10	<.5	<3	<3	20	.03	.068	40	17	.26	42	<.01	<3	.90	<.01	.04
L E-1 9+50NW	1	19	49	43	<.3	13	7	335	2.11	9	<8	.9	2	8	<.5	<3	<3	31	.07	.057	16	19	.26	58	<.01	<3	.98	<.01	.03
L E-1 9+00NW	1	21	22	65	<.3	21	18	632	2.73	10	<8	1.5	3	9	<.5	<3	<3	32	.07	.066	22	25	.39	66	.02	<3	1.39	<.01	.04
L E-1 8+50NW	1	22	29	58	<.3	17	15	610	2.26	10	<8	1.0	2	10	<.5	<3	<3	33	.09	.055	20	22	.34	88	.01	<3	1.11	<.01	.04
L E-1 8+00NW	1	15	20	41	<.3	13	7	304	2.45	11	<8	.7	3	9	<.5	<3	<3	36	.04	.036	14	22	.26	48	.01	<3	1.08	<.01	.03
L E-1 7+50NW	1	13	19	39	<.3	11	6	346	2.66	11	<8	.5	<2	6	<.5	<3	<3	41	.04	.050	15	22	.24	44	.02	<3	.94	<.01	.03
L E-1 7+00NW	1	16	27	51	<.3	15	10	403	2.27	11	<8	.8	4	7	<.5	<3	<3	34	.05	.038	15	22	.34	76	.02	<3	1.06	<.01	.04
L E-1 6+50NW	1	15	18	40	<.3	12	6	324	2.07	10	<8	.5	<2	8	<.5	<3	<3	39	.05	.040	14	20	.26	65	.01	<3	.88	<.01	.04
L E-1 6+00NW	1	15	19	31	<.3	10	5	253	2.06	8	<8	2.0	2	7	<.5	<3	<3	36	.05	.048	12	18	.19	64	.01	<3	.93	<.01	.03
L E-1 5+50NW	1	13	16	45	<.3	14	8	393	2.15	11	<8	.7	3	7	<.5	<3	<3	36	.06	.037	11	22	.31	90	.03	<3	1.05	<.01	.03
L E-1 5+00NW	1	9	13	26	<.3	8	4	201	1.67	8	<8	.5	<2	6	<.5	<3	<3	36	.04	.046	8	19	.18	58	.02	<3	.78	<.01	.02
STANDARD DS3	9	125	34	156	.3	36	12	793	3.10	30	<8	23.6	4	27	5.6	5	5	75	.50	.095	17	193	.58	139	.09	<3	1.66	.03	.16

Sample type: SOIL SS80 60C. Samples beginning 'RE' are Reruns and 'RRE' are Reject Reruns.

REVISED COPY

for Ag



P. 04

FAX NO. 6042531716

AUG-15-2001 WED 03:50 PM ACME ANALYTICAL LAB

SAMPLE#	Mo ppm	Cu ppm	Pb ppm	Zn ppm	Ag ppm	Ni ppm	Co ppm	Mn ppm	Fe %	As ppm	U ppm	Au* ppb	Th ppm	Sr ppm	Cd ppm	Sb ppm	Bi ppm	V ppm	Ca %	P %	La ppm	Cr ppm	Mg %	Ba ppm	Ti %	B ppm	Al %	Na %	K %
L E-1 4+50NW	1	14	18	56	<.3	12	7	449	2.28	9	<8	1.5	<2	7	<.5	<3	<3	42	.05	.038	10	23	.30	77	.02	<3	1.17	<.01	.04
L E-1 4+00NW	1	15	20	54	<.3	14	8	382	2.65	10	<8	1.3	3	8	<.5	<3	<3	42	.05	.044	11	24	.35	68	.01	<3	1.25	<.01	.04
L E-1 3+50NW	1	21	27	76	<.3	18	15	451	2.72	9	<8	1.2	2	12	<.5	<3	<3	26	.05	.066	11	22	.40	63	.01	<3	1.10	<.01	.05
L E-1 3+00NW	1	16	20	52	<.3	12	10	606	2.24	8	<8	1.6	<2	8	<.5	<3	<3	38	.04	.064	12	20	.25	88	<.01	<3	1.09	<.01	.05
L E-1 2+50NW	1	20	31	105	<.3	23	11	556	4.49	8	<8	1.1	7	11	<.5	<3	<3	32	.03	.100	9	32	.60	91	.01	<3	1.80	<.01	.04
L E-1 2+00NW	1	14	16	52	<.3	15	8	325	2.35	8	<8	1.0	4	8	<.5	<3	<3	33	.04	.029	13	23	.33	72	.02	<3	1.11	<.01	.04
L E-1 1+50NW	1	9	13	34	<.3	9	4	168	1.88	7	<8	.9	2	6	<.5	<3	<3	31	.04	.032	13	17	.22	64	.02	<3	.85	<.01	.03
L E-1 1+00NW	1	13	13	44	<.3	12	5	208	1.90	7	<8	1.3	3	7	<.5	<3	<3	33	.05	.032	11	21	.31	85	.03	<3	1.06	<.01	.03
L E-1 0+50NW	1	14	12	50	<.3	14	7	247	2.20	9	<8	1.2	4	7	<.5	<3	<3	38	.05	.029	11	24	.36	115	.01	<3	1.29	<.01	.03
L E-1 0+00NW	1	16	17	67	<.3	15	8	321	3.04	7	<8	.9	5	6	<.5	<3	<3	31	.02	.046	8	21	.34	69	.01	<3	1.26	<.01	.04
L F-1 13+00NW	1	9	16	35	<.3	9	4	170	1.86	9	<8	1.9	<2	6	<.5	<3	<3	42	.05	.037	13	22	.25	63	.02	<3	1.00	<.01	.03
L F-1 12+50NW	1	40	28	109	<.3	37	18	695	3.40	14	<8	3.6	4	63	<.5	3	<3	90	.46	.084	23	68	.73	271	.03	<3	1.42	.01	.11
L F-1 12+00NW	1	20	24	53	<.3	14	9	466	2.13	10	<8	1.6	<2	15	<.5	3	<3	46	.11	.076	16	26	.26	115	.01	<3	.98	<.01	.05
L F-1 11+50NW	1	18	30	54	<.3	16	13	740	2.51	11	<8	2.0	2	9	<.5	<3	<3	40	.09	.074	14	24	.30	55	.03	<3	.94	<.01	.04
L F-1 11+00NW	1	14	14	47	<.3	13	6	293	2.73	12	<8	1.1	3	8	<.5	<3	<3	49	.06	.035	13	27	.33	63	.03	<3	1.04	<.01	.04
L F-1 10+50NW	1	35	27	104	<.3	39	15	502	3.25	10	<8	6.8	3	36	.5	4	<3	87	.38	.098	27	70	.56	278	.03	<3	1.23	.01	.04
L F-1 10+00NW	1	37	26	108	<.3	41	19	870	3.83	12	<8	4.3	5	21	.7	4	<3	81	.16	.090	26	59	.51	176	.03	<3	1.24	<.01	.01
RE L F-1 10+00NW	1	36	27	108	<.3	41	19	867	3.87	12	<8	3.3	5	21	.7	5	<3	82	.16	.096	26	60	.51	173	.02	<3	1.24	.01	.01
L F-1 9+50NW	1	17	33	41	<.3	12	6	376	2.08	10	<8	3.0	<2	10	<.5	<3	<3	58	.06	.043	16	23	.19	76	.02	<3	.87	<.01	.04
L F-1 9+00NW	1	12	19	50	<.3	12	6	322	2.98	10	<8	1.3	2	8	<.5	<3	<3	56	.06	.036	13	24	.24	50	.03	<3	1.27	<.01	.04
L F-1 8+50NW	1	18	19	59	<.3	24	15	707	2.32	7	<8	.9	3	9	<.5	<3	<3	25	.05	.049	28	17	.23	59	<.01	<3	.72	<.01	.04
L F-1 8+00NW	1	8	14	22	<.3	7	2	78	.95	6	<8	1.4	<2	10	<.5	<3	<3	30	.03	.036	15	11	.08	44	.01	<3	.63	<.01	.04
L F-1 7+50NW	1	18	23	62	<.3	16	14	1534	2.57	10	<8	.9	<2	7	<.5	<3	<3	49	.05	.050	14	26	.30	92	.03	<3	1.31	.01	.05
L F-1 7+00NW	1	27	19	77	<.3	25	14	545	2.68	12	<8	4.7	3	15	<.5	<3	<3	51	.13	.070	21	39	.41	114	.03	<3	.96	<.01	.04
L F-1 6+50NW	1	29	13	68	<.3	22	13	622	3.29	10	<8	1.5	3	17	<.5	<3	<3	97	.11	.065	17	57	.48	138	.06	<3	1.17	<.01	.05
L F-1 6+00NW	1	40	19	71	<.3	38	18	654	3.42	8	<8	7.5	3	44	<.5	<3	<3	112	.35	.070	24	89	.85	207	.06	<3	1.35	<.01	.04
L F-1 5+50NW	1	62	13	92	<.3	58	24	877	4.23	9	<8	9.4	5	62	<.5	<3	<3	137	.49	.086	29	95	1.08	247	.06	<3	1.60	.01	.01
L F-1 5+00NW	1	62	19	79	<.3	44	22	903	3.76	12	<8	4.0	3	111	<.5	<3	<3	143	.63	.083	21	91	1.07	228	.07	<3	1.57	.01	.01
L F-1 4+50NW	1	58	27	140	<.3	58	23	808	4.60	13	<8	4.1	3	186	.7	6	<3	137	1.73	.126	33	117	1.03	323	.02	<3	1.57	.01	.01
L F-1 4+00NW	1	69	18	73	<.3	43	25	828	3.91	17	<8	3.3	3	77	<.5	3	<3	127	.53	.086	30	87	.78	250	.06	<3	1.35	.01	.04
L F-1 3+50NW	1	34	12	51	<.3	26	12	427	2.66	7	<8	4.8	<2	28	<.5	<3	<3	89	.18	.063	20	59	.44	113	.05	<3	.99	.01	.05
L F-1 3+00NW	1	27	19	60	<.3	27	13	392	2.83	14	<8	13.6	3	15	<.5	<3	<3	64	.12	.058	22	44	.43	90	.03	<3	.99	.01	.04
L F-1 2+50NW	1	18	18	50	<.3	16	8	309	2.54	12	<8	8.3	2	9	<.5	<3	<3	58	.06	.049	17	30	.28	56	.03	<3	.88	<.01	.05
STANDARD DS3	9	125	33	156	.3	36	12	781	3.06	30	<8	21.9	4	27	5.6	5	5	73	.50	.092	16	183	.57	146	.08	<3	1.63	.03	.11

Sample type: SOIL SS80 60C. Samples beginning 'RE' are Reruns and 'RRE' are Reject Reruns.

REVISED COPY for Ag



P. 05

FAX NO. 6042531716

AUG-15-2001 WED 03:52 PM ACME ANALYTICAL LAB

SAMPLE#	Mo ppm	Cu ppm	Pb ppm	Zn ppm	Ag ppm	Ni ppm	Co ppm	Mn ppm	Fe %	As ppm	U ppm	Au* ppb	Th ppm	Sr ppm	Cd ppm	Sb ppm	Bi ppm	V ppm	Ca %	P %	La ppm	Cr ppm	Mg %	Ba ppm	Ti %	B ppm	Al %	Na %	K %
L F-1 2+00NW	1	22	21	37	<.3	9	3	72	1.03	4	<8	2.3	<2	10	<.5	<3	<3	38	.06	.077	10	22	.06	74	.01	<3	.48	.01	.04
L F-1 1+50NW	1	14	13	42	<.3	14	5	140	1.72	7	<8	1.5	<2	11	<.5	<3	<3	48	.08	.037	15	29	.28	88	.03	<3	.82	<.01	.04
L F-1 1+00NW	1	15	13	44	<.3	15	6	175	2.12	10	<8	1.2	2	9	<.5	<3	<3	48	.07	.032	14	29	.31	94	.03	<3	1.00	<.01	.04
L F-1 0+50NW	1	15	19	61	<.3	14	7	264	2.56	10	<8	.7	4	7	<.5	<3	<3	50	.05	.037	14	26	.32	81	.03	<3	1.58	<.01	.04
L F-1 0+00NW	1	14	18	59	<.3	13	6	294	2.51	8	<8	.4	<2	8	<.5	<3	<3	51	.06	.046	13	23	.23	93	.02	<3	1.31	<.01	.04
RE L F-1 0+50NW	1	15	19	61	<.3	15	7	270	2.67	10	<8	1.5	4	7	<.5	<3	<3	49	.05	.039	14	26	.32	85	.02	<3	1.52	<.01	.04
STANDARD DS3	9	128	34	152	.3	36	12	792	3.04	30	<8	19.7	4	27	5.7	5	6	80	.53	.096	17	191	.59	146	.09	<3	1.68	.03	.16

Sample type: SOIL SS80 60C. Samples beginning 'RE' are Reruns and 'RRE' are Reject Reruns.

REVISED COPY for Ag

PROJECT J.B. CLAIMS

START  
 ↓ C-1 - 0+00E  
 ACT. 4850  
 416610  
 UTM 7095868

R.M.  
 OPERATOR

DATE: JULY 20/01

ACTIVITY Soil

SAMPLE NO. OR LINE	SLOPE DIRECTION	SLOPE DEGREES	HORIZON SAMPLED	COLOR	DESCRIPTION					VEGETATION					COORDINATES LONG / LAT OR UTM	COMMENTS
					SILT	CLAY %	ORGANICS	SAND	GRAVEL	WILLOWS	TREES	ALPINE	TALUS	SWAMP		
0+00E	S	30	B	BR				✓	✓			✓				QUARTZ
50E	S	25	B	BR				✓	✓			✓				"
1+00E	S	25	B	GR. OR.				✓	✓			✓				"
1+50E	S	10	B	GR OR				✓	✓			✓				"
2+00E	S	5	B	BR				✓	✓			✓				"
2+50E	S	5	B	BR				✓	✓			✓				"
3+00E	S	5	B	OR BR				✓	✓			✓				"
3+50E	S	5	B	L. BR OR BR				✓	✓			✓				"
4+00E	S	5	B	BR GRAM				✓	✓			✓				Rock Sample
4+50E	S	5	B	OR BR				✓	✓			✓				"
5+00E	S	5	B	RUSKY				✓	✓			✓				"
5+50E	S	20	B	GRAM				✓	✓			✓				"
6+00E	S	20	B	BR				✓	✓			✓				"
6+50E	S	20	B	OR				✓	✓			✓				"
7+00E	S	20	B	BR				✓	✓			✓				"
7+50E	S	20	B	BR				✓	✓			✓				"
8+00E	S	20	B	BR				✓	✓			✓				"
8+50E	S	15	B	BR				✓	✓			✓				"
9+00E	S	10	B	BR				✓	✓			✓				QUARTZ
9+50E	S	5	B	OR GRAM				✓	✓			✓				"
10+00E	S	1	B					✓	✓			✓				"

CREEK 5M. SOUTH  
 = SILT RM #1  
 10+40E

PROJECT JB CLAIMS

RM OPERATOR

C-1 0+00E

DATE: JULY 20/01

ACTIVITY SOIL

SAMPLE NO. OR LINE	SLOPE DIRECTION	SLOPE DEGREES	HORIZON SAMPLED	COLOR	DESCRIPTION					VEGETATION					COORDINATES		COMMENTS		
					SILT	CLAY %	ORGANICS	SAND	GRAVEL	WILLOWS	TAGES	ALPINE	TALUS	SWAMP	PERMAFROST	LONG		PLAT OR UTM	
10+50E	NE	5	B	BR															
11+00E	NNE	1	B	GRAY BLACK															
11+50E	NE	10	B	BR															
12+00E	NNE	20	B	GRAY BLACK															
12+50E	N	20	B	BR															
13+00E	N	25	B	BR															

10M' NORTH IS CREEK  
SHALE

0417904  
7095810  
EL  
4215

PROJECT JB

C.C. OPERATOR

DATE: July 20 101

ACTIVITY SOIL SAMPLING

SAMPLE NO. OR LINE	SLOPE DIRECTION	SLOPE DEGREES	HORIZON SAMPLED	COLOR	DESCRIPTION					VEGETATION					COORDINATES		DEPTH CM	COMMENTS	
					SILT	CLAY %	ORGANICS	SAND	GRAVEL	WILLOWS	TREES	ALPINE	TALUS	SWAMP	PERMAFROST	LONG			PLAT OR UTM
L D 10+00E	E-W	35N	B	G												0416700E	30	QTZITE	
L D 10+50E	E-W	35N	A-B	G												2095400N	30	TALUS QTZITE	
1+00E	E-W	30N	A-B	G													40	"	
1+50E	E-W	30N	B	G													30	"	
2+00E	SE	30N	B	G													30	FRACTURES PY, LIMONITE	
2+50E	S-E	35N	B	G													30	"	
3+00E	S-E	35N	B	G													30	"	
3+50E	S-E	35N	B	G													30	"	
4+00E	SE	35N	B	G													30	"	
4+50E	SE	35N	B	BR													10	"	
* R200101																			FRACTURED, MINERALIZED QTZ VEIN IN QTZITE, RED HEMATITE STAINING, LARGE BOULDER. (ROCK SAMPLE)
5+00E	E	35N	B	G													10	"	
5+50E	E	40N	B	G													30	"	
6+00E	E	35N	B	G/BR													10	"	
6+50E	E	35N	B	G													10	"	
7+00E	E	40N	B	G													20	"	
7+50E	E	40N	B	G													30	"	
8+00E	E	40N	B	G													25	"	
8+50E	E	50N	B	G													20	"	
9+00E	E	60N	B	G													20	"	
9+50E	No SAMPLE	(BLUFF)																	SAMPLE 10 METERS SOUTH BECAUSE ROCK BLUFF
10+00E	RIDGE TOP		B	G															SAMPLE MOSTLY GROUND MUDSTONE (SILTSTONE)

PROJECT JB

C.C.  
OPERATOR

DATE: July 22/01

ACTIVITY Soil Sampling

SAMPLE NO. OR LINE LE 1	SLOPE DIRECTION	SLOPE DEGREES	HORIZON SAMPLED	COLOR	DESCRIPTION					VEGETATION					COORDINATES LONG, LAT OR UTM	COM
					SILT	CLAY %	ORGANICS	SAND	GRAVEL	WILDS	TREES	ALPINE	TALUS	SWAMP		
10+50 NW	E-W	-30S	B	G	QZITE +	SILTSTONE				✓	✓	✓	✓			
11+00 NW	E-W	-40S	A-B	BR	"		✓	"		✓	✓	✓	✓		POOR B HORIZON (ok)	
11+50 NW	N.W	-40S	AB	BR	SILTSTONE	SHALE	✓			✓	✓	✓	✓		" "	
12+00 NW	N	-40W	B	BR	"		✓			✓	✓	✓	✓		"	
12+50 NW	N	-30W	B	BR	QZITE +	SILTSTONE				✓	✓	✓	✓			
13+00 NW	NE	-35S	B	BR	"	"				✓	✓	✓	✓		0416960E } 7094121N } 13+00 NW 1425 m }	

PROJECT J.B.

OPERATOR

DATE: JULY 22/01

L.F.-1

10+50NW TO 13+00NW ACTIVITY

SVIC

SAMPLE NO. OR LINE	SLOPE DIRECTION	SLOPE DEGREES	HORIZON SAMPLED	COLOR	DESCRIPTION					VEGETATION					COORDINATES		COMMENTS	
					SILT	CLAY %	ORGANICS	SAND	GRAVEL	WILLOWS	TREES	ALPINE	TALUS	SWAMP	PERMAFROST	LONG		PLAT OR UTM
10+50 NW	NW-B	-25N	B	BR OR BR				✓	✓		✓	✓					SHALE	
11+00 NW	NW	-25N	B	BR				✓	✓		✓	✓					QUARTITE	
11+50 WL	NW	-25N	B	BR				✓	✓		✓	✓					SHALE	
12+00 NW	NW	-25N	B	BR				✓	✓		✓	✓					QUARTITE	
12+50 NW	N.W	-10N	B	BR				✓	✓		✓	✓					QUARTITE	12+75
13+00 NW	N.W	-10S	B	BR				✓	✓		✓	✓					SHALE, QUART.	CREEK CROSSING