

**2002 Platinum-Group-Element Sampling of Ultramafic Rocks,
HF Claim Group, Lue Lake Area, Yukon**

Whitehorse Mining District, Yukon Territory, Canada
NTS 105D/9

Latitude 60° 34' North, Longitude 134° 01' 30" West

Prepared For: Gordon McLeod, Whitehorse, YT
Author: Mike Beauregard, Yellowknife, NT
Date: September 20, 2002



094340

Frontispiece Photo
Unnamed brook near Lou Lake, Yukon.

This report has been examined by
the Geological Evaluation Unit
under Section 53 (4) Yukon Quartz
Mining Act and is allowed as
representation work in the amount
of \$ 2400.00.

M. B. ...
for Regional Manager, Exploration and
Geological Services for Commissioner,
of Yukon Territory.

Table of Contents

	<u>Page</u>
Cover Page	1
Summary	3
Introduction	3
Location and Access	3
Location Map	4
Previous Exploration	5
Geology	5
Quaternary Geology	5
Work Performed	6
Results	6
Conclusions	9
Recommendations	9
For The Record	10
References	11

Appendices

Appendix 1: Photos	At End
Appendix 2: Grab Sample Table	At End
Appendix 3: Analytical Results	At End
Appendix 4: Stream Pan Concentrate Results	At End

YUKON ENERGY, MINES
& RESOURCES LIBRARY
P.O. BOX 2703
WHITEHORSE, YUKON Y1A 2C6

Summary

An asbestos occurrence in ophiolitic peridotite was staked and tested for its PGE potential. Thorough grab sampling of a small ultramafic body returned negligible PGE values. A stream pan concentrate showed the presence of PGE indicator minerals derived from an area to the south of the HF property. A minor amount of follow-up work is recommended for the locale. Exploration for platinum group elements in Alpine-type ultramafic rocks of the south-central Yukon is promoted.

Introduction

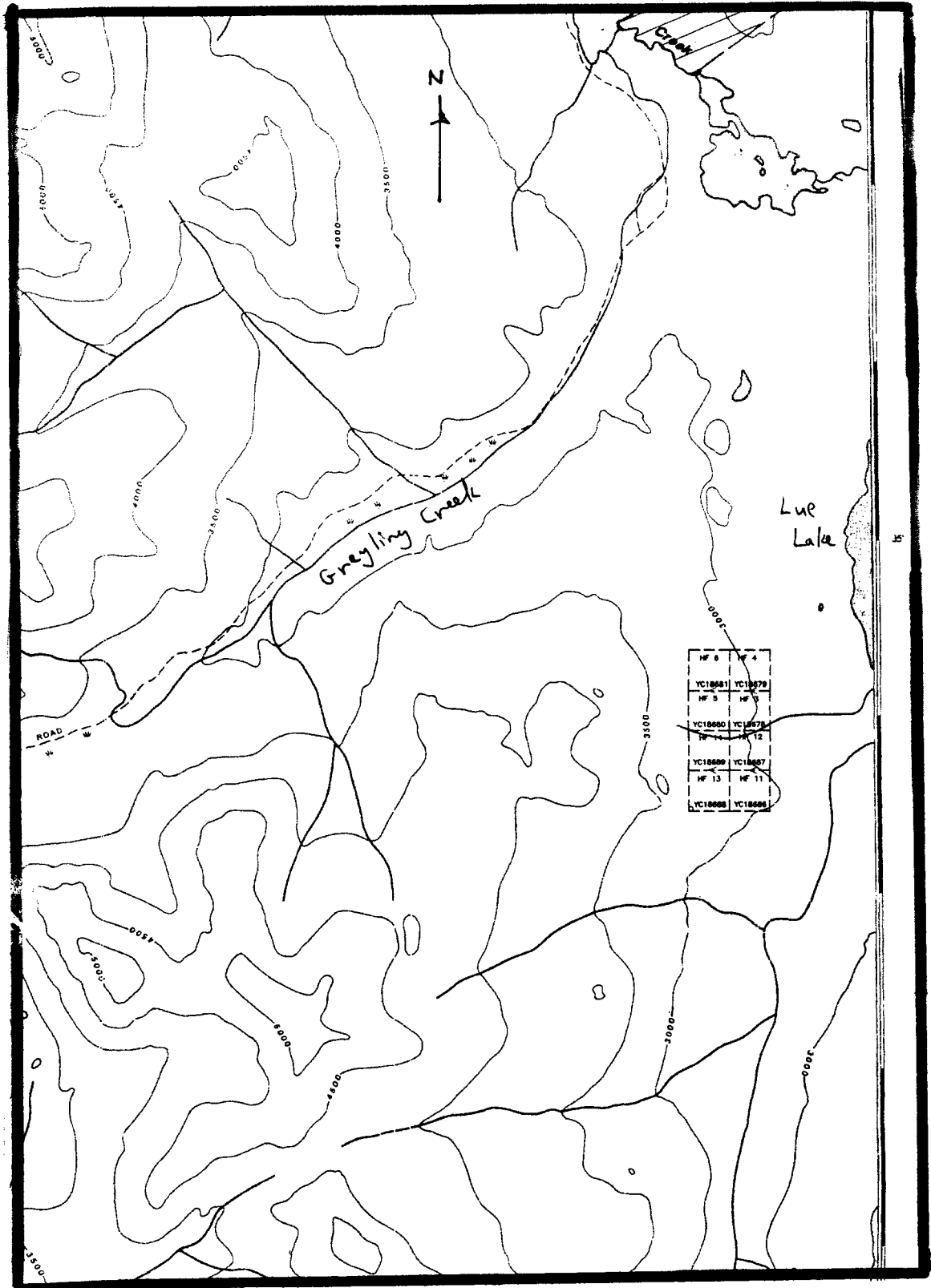
During June 2002, exploration for platinum group elements (PGEs) was performed on several properties staked upon ultramafic rocks in the southern Yukon. The properties are owned by Gordon McLeod of Whitehorse. This particular report details work done on the HF claim group for quartz mineral claim assessment accreditation.

Location and Access

The HF property, consisting of eight adjoining quartz mineral claims, is 100% owned by Mr. G. McLeod of Whitehorse. The property, 184.5 hectares (403.2 acres) in size, lies two kilometres west of Lue Lake. The mineral claim block is centred at 60° 34' North latitude and 134° 01' 30" West longitude on National Topographic System (NTS) mapsheet 105D/9. Expiry dates for all claims are November 11, 2002. Claims and tag numbers are given below.

HF 3	YC18678	HF 11	YC18686
HF 4	YC18679	HF 12	YC18687
HF 5	YC18680	HF 13	YC18688
HF 6	YC18681	HF 14	YC18689

The property is 60 kilometres (36 miles) southeast of the city of Whitehorse. It is accessible by floatplane or helicopter. A tote trail, possibly usable by all-terrain-vehicles, runs along Grayling Creek to within three kilometres north of the claim block. Access to the tote trail is from the Alaska Highway at Marsh Lake. The property lies below the tree line and within the northern boreal forest ecozone. The claim group straddles a north-trending ridge rising some 150 metres above Lue Lake, with the lake at an elevation of 810 metres (2650 feet). Vertical relief in the locale is on the order of 1000 metres.



Location Map
1 Inch = 1 Mile Scale

Previous Exploration

Minor exploration has been performed in the Lue Lake area. An asbestos occurrence of low-grade chrysotile fibre in ultramafic rocks has seen mapping, geophysical surveying, trenching and diamond drilling (Parker, 1970). The Lavalee asbestos showing is listed as #105D-070 in the Yukon MINFILE.

Government products include reconnaissance-level stream sediment sampling plus geological compilation at 1:250,000 scale (Friske et al, 1985). Several anomalous nickel values in stream sediments (>90 percentile) occur up drainage from Lue Lake to the south. The GSC stream sediment samples were not analysed for platinum group elements or chromite.

Geology

The FH ultramafic body is not shown on the 1:250,000 scale compilation. Instead, the FH property lies near a north-trending contact between mafic volcanics of the Triassic Lewes River Group to the east and mafic volcanics of Carboniferous-Permian age to the west (Friske et al, 1985). The nearest ultramafic rocks at 1:250,000 scale are the Fox Lake ophiolite centered 10 km to the northwest and a smaller unnamed body centered 7 km to the southeast.

Nonetheless, the claim block consists of ophiolitic peridotite rocks belonging to the Cache Creek Terrane that are late Paleozoic in age (Parker, 1970).

A sample of fresh peridotite collected northeast of Streak Mountain gave a Permian-Triassic age of circa 245 Ma (Gordey, 1998). The Cache Creek Terrane, in turn, is part of a larger package of accreted, intermontane supracrustal rocks of Mesozoic age within the northern Cordillera. Suites of younger plutonic intrusions are common.

Quaternary Geology

A veneer of lodgement and ablation till covers the claim group. Several drumlinoid features adjacent to Lue Lake suggest that ice last advanced from the south-southeast (Klassen, 1978).

Work Performed

Three mandays were spent examining the HF claim group. Grab sampling, stream pan concentrate sampling and geological observations were performed. All sites were measured to within five metres accuracy with a Garmin 12XL GPS instrument. Photos make up Appendix 1.

Grab Samples

Twenty-six grab rock samples were collected. All rocks examined were first wetted with hydrochloric acid followed by liquid dimethyl-glyoxime (DMG), also known as nickel zap or nickel stain. A red to pink coloration indicated the presence of nickel. Grab samples are tabulated as well as plotted at 1:1000 scale. Table and plot are found in Appendix 2.

Rock samples were submitted to Northern Analytical Laboratories Ltd of Whitehorse. They were geochemically digested then analysed by ICP for 30 elements plus gold, platinum and palladium by fire assay with AAS finish. The pulps from three selected samples were sent to ALS Chemex in North Vancouver for nickel fusion followed by ICP-MS analysis for six platinum group elements plus gold. All analytical results are in Appendix 3. The assay labs used "HR" instead of "HF" for sample identifiers.

Stream Pan Concentrate

A single pan concentrate sample was collected from a small stream of moderate flow at UTM coordinates 0554637 East and 6715290 North. Ten litres (2.5 gallons) of material sieved through a -12 mesh screen was panned down to a concentrate weighing 664.5 grams.

The pan concentrate was sent to Overburden Management Drilling Limited of Nepean, Ontario. The magnetic and non-magnetic heavy mineral fractions were separated, the heavy mineral fractions shaker-tabled for gold and platinum and a MMSIS (metamorphic or magmatic massive sulphide indicator minerals) analysis was performed upon selected heavy mineral grains. Results form Appendix 4.

Results

Grab Samples

Fourteen out of the twenty-six grab sample sites responded positively to nickel staining. The ultramafic rock samples were collected from peridotite except for three samples collected from a plagioclase-rich phase or porphyritic ultramafic dyke. One sample (HF-R19) contained minor magnetite in irregular fractures.

ICP-generated values ranged from 1371 to 2035 ppm Ni, 50 to 105 ppm Co and 458 to 1714 ppm Cr. Nickel values are somewhat less than the average value of 2500 ppm Ni reported for alpine peridotite (Naldritt, 1981). Other anomalous values include arsenic (singular 237 ppm As in HF-R25), barium (up to 35 ppm Ba in Hr-R14), manganese (singular 1351 ppm Mn in Hr-R24), and strontium (up to 29 ppm Sr in HF-R6) which were sporadic/inconclusive, save for HF-R25.

Fire assaying followed by AAS of the 26 grab samples returned precious metal values ranging from <2 to 97 ppb Au, <5 to 11 ppb Pt and <15 to 47 ppb Pd.

Alpine Peridotite Element Averages = 6% Fe, 2500 ppm Ni, 73 ppb Pt, 18 ppb Pd, 6 ppb Ir. (Naldritt, 1981)

Nickel fusion analysis of three samples returned negligible PGE values and a singular gold value of 121 ppb for sample HF-R25. Sample HF-R25 is a rusty, serpentitized peridotite, which also contained anomalous arsenic and gold by ICP analysis. Sample HF-R10, with 97 ppb Au returned by ICP, did not generate a corresponding anomalous gold value by nickel fusion analysis.

Stream Pan Concentrate

Grains of gold, forsterite, chromite and andradite (garnet) were recovered from the stream pan concentrate. The four grains of gold, while yielding an estimated value of 1124 ppb for the heavy mineral concentrate, reflect background or regional concentration.

"From a Ni-Cu-PGE perspective, the MMS indicator minerals of interest are forsterite and chromite, which are indicative of cumulus settling in a mafic/ultramafic magma. The andradite, although not plentiful, is enticing because it is visually identical to the variety found in glacial sediments at the major Lac des Iles Ni-Cu-PGE deposit in Ontario."

Stuart Averill, 2002 OBMD cover letter (appended)

Property Geology Notes

A north-trending ridge of ultramafic rocks is exposed by glaciation in an area of moderate to heavy overburden. The ridge has the form of a large whaleback indicating that the last glacial movement came from the south.

Minor amounts of fracture-filling short-fibre chrysotile occur in an area measuring 50 m by 30 m. The best concentration of asbestos mineralization is centered near UTM coordinates 0553582 East and 6714687 North. Collars for two diamond drillholes (Parker, 1970) were located at 0553566 East/6714630 North

(short hole drilled north at -50° inclination) and 0553580 East/6714670 North (longer hole drilled north at -40° inclination).

Grab sample HF-R2 was taken from a coarse-grained serpentitized peridotite, blasted from an old test pit, that showed weak cumulate layering (see Photo 1).

The ultramafic rocks, for the most part, are comprised of highly magnetic, serpentitized peridotite. Foliation-parallel, light green serpentine is common. The ophiolitic rocks outcrop in a north-trending band up to 300 m wide and at least 1000 m long. The ultramafic rock unit continues to the north and is covered by thick overburden to the south. The rock unit is bounded by north-trending lineaments with much of the deformation presumed to have been taken up by the foliated to sheared ultramafic rocks. The degree of shearing certainly increases when approaching the eastern contact. A thin, intermittent plagioclase-rich phase or ultramafic porphyritic dyke occurs near the eastern contact.

Supracrustal rocks were observed on either side of the ophiolitic package. A single outcrop of fine-grained sedimentary rocks was found at UTM coordinates 0553078 East/6714783 North, immediately west of the ridge of ultramafic rocks. The arenitic rocks in this small, valley-bottom outcrop were rusty, non-magnetic and weakly calcareous. Sedimentary rocks occur east of the ophiolite, including an outcrop of chert at 0553597 East/6714900 North; an outcrop of fissile black shale at 0553599 East/6714958 North and an outcrop of fine-grained, calcareous sandstone intruded by biotite granite at 0553457 East/ 6715400 North. The eastern contact between ultramafic and sedimentary rocks is a stepped series of 10 metre-wide overburden-filled lineaments, trending 140° , on an east-facing hillside with ultramafic rocks uphill and sedimentary rocks downhill.

Additional ultramafite rocks occur close by Lue Lake. Grab sample HF-R26 was collected from weakly magnetic, plagioclase-bearing ultramafic rock at UTM coordinates 0554705 East/6715290 North.

Conclusions

A small ridge of ultramafic rocks in the Lue Lake area returned negligible PGE values from a reconnaissance-level grab sampling program. The peridotitic rocks are from the upper part of an ophiolitic sequence. Ultramafic rocks indicative of a transition zone or basal zone were not found.

Grab sample HR-R25, with weakly anomalous gold and arsenic values in rusty peridotite, suggest the possibility of gold-in-listwaenite.

A stream pan concentrate, collected from a brook south of the HF property, returned a variety of PGE heavy mineral grains, four grains of gold and no platinum. The amount of gold recovered is reflective of regional values. The PGE indicator minerals of interest are forsterite, chromite and Cr-free to Cr-bearing andradite garnet, indicative of cumulate settling in an ultramafic/mafic magma. The PGE indicator minerals could not have come from the HF claims due to topography and the fact that glaciation last advanced from the south.

Recommendations

A minor amount of work is recommended for the HF property, providing the tote trail along Grayling Creek is accessible by all-terrain vehicle. The ridge within the HF claims should be prospected to the northern termination of the ultramafic rock unit.

The follow-up of PGE indicator minerals to the south of the HF claim block would be difficult due to the lack of ground access, scarcity of mapped ultramafic rocks and thick overburden. However, anomalous nickel in several GSC stream sediments samples taken up-drainage south of Lue Lake warrant follow-up with several days of helicopter traverses.

The Alpine-type ultramafic bodies in the south-central Yukon remain virtually untested for PGEs. Significant stream sediment geochemical values correlate with various ultramafic bodies scattered across several mapsheets. A 1:50,000 scale compilation from Michie Creek to Teslin Lake should be undertaken combining data from government geological, geochemical and geophysical surveys. Selected pulps from the GSC regional stream sediment sampling programs performed upon the 105C and 105D mapsheets should be reanalyzed for chromite and PGEs.

Such functions could be performed by government geologists or contracted out under the Prospector Assistance program.

For The Record

I, Mike Beauregard, a geologist residing in Yellowknife, wrote this report for mineral claim assessment accreditation per the Mining Act of Canada on behalf of Gordon McLeod of Whitehorse. I have no interest in, nor liens against, the HF claim group, located on NTS mapsheet 105D/9, Yukon Territory, Canada. All work reported herein was performed under my supervision. G. McLeod provided the statement of expenditures.

A Mining Technologist Diploma was granted to me by Haileybury School of Mines in 1980. A Bachelor of Science Degree in Geological Engineering was granted to me by South Dakota School of Mines and Technology in 1985.

I have worked as a full-time employee of Canadian mining companies and consulting firms or as a self-employed contractor, for exploration of mineral commodities throughout seven provinces and three territories since 1978. I am not registered as a Professional Geologist.

SIGNED:

Mike Beauregard
Mike Beauregard
September 20, 2002
Yellowknife, NWT

REFERENCES

Averill, S.A. (2001)

The Application of Heavy Indicator Mineralogy in Mineral Exploration with Emphasis on Base Metal Indicators in Glaciated Metamorphic and Plutonic Terrains, in Drift Exploration in Glaciated Terrain, McClenaghan M.B. et al (eds), Geological Society, London, Special Publications 185, pg 69-81.

Craig, J.R., Burke, M. and Stronghill, G. (2001)

Yukon Platinum Occurrences and Potential, Exploration and Geological Services Division, Indian and Northern Affairs Canada, Yukon Region, Open File 2001-2, 12 pg and 1:1,000,000 map.

Friske, P.W.B. et al (1985)

Regional Stream and Water Geochemical Reconnaissance Data, NTS 105D, Geological Survey of Canada Open File 1218, 1:250,000 scale maps.

Gordey, S.P., McNicoll, V.J. and Mortensen, J.K. (1998)

New U-Pb Ages From the Teslin Area, Southern Yukon, and Their Bearing on Terrane Evolution in the Northern Cordillera, in Radiogenic Age and Isotopic Studies: Report 11; Geological Survey of Canada, Current Research 1998-F, pg 129-148.

Gordey, S.P. and Makepeace, A.J. (1999)

Yukon Digital Geology, Geological Survey of Canada Open File D3826; Exploration and Geological Services Division, Yukon Region, Indian and Northern Affairs Canada, Open File 1999-1(D), 2 CD-ROMs.

Klassen, R.W. (1978)

Surficial Geology, Southern Yukon, Geological Survey of Canada Open File 539, preliminary maps at 1:250,000 scale.

Lipovsky, P.S. (2001)

Yukon MINFILE - Mineral Occurrence Map: 105D - Whitehorse, Exploration and Geological Services Division, Yukon Region, Indian and Northern Affairs Canada, 1:250,000 scale coloured map.

Naldrift, A.J. (1981)

Platinum Group Element Deposits, in Platinum Group Elements, Mineralogy, Geology and Recovery, Cabri, L.J. (ed), Canadian Institute of Mining and Metallurgy, CIM Special Volume 23, pg 199.

Parker, A.R. (1970)

Geological and Geophysical Report on the CUB Claim Group, Whitehorse Mining District, Yukon (NTS 105D/9), unpublished assessment report #060890 written by Ace R. Parker and Associates Ltd. for Argo Petroleum Ltd., Exploration and Geological Services Division, Yukon, Indian and Northern Affairs Canada.

Appendix 1
Photographs



Photo 1

Mechanical pencil is pointing to weak cumulate layering in asbestos-bearing serpentized peridotite, Lavalee asbestos showing, grab sample site HR-R2, UTM coordinates 0553582 East, 6714687 North.



Photo 2

Example of fracture-filling magnetite in serpentitized peridotite, 50 m west of grab sample site HR-R2, UTM coordinates 0553582 East, 6714687 North. Note abundant green serpentine.

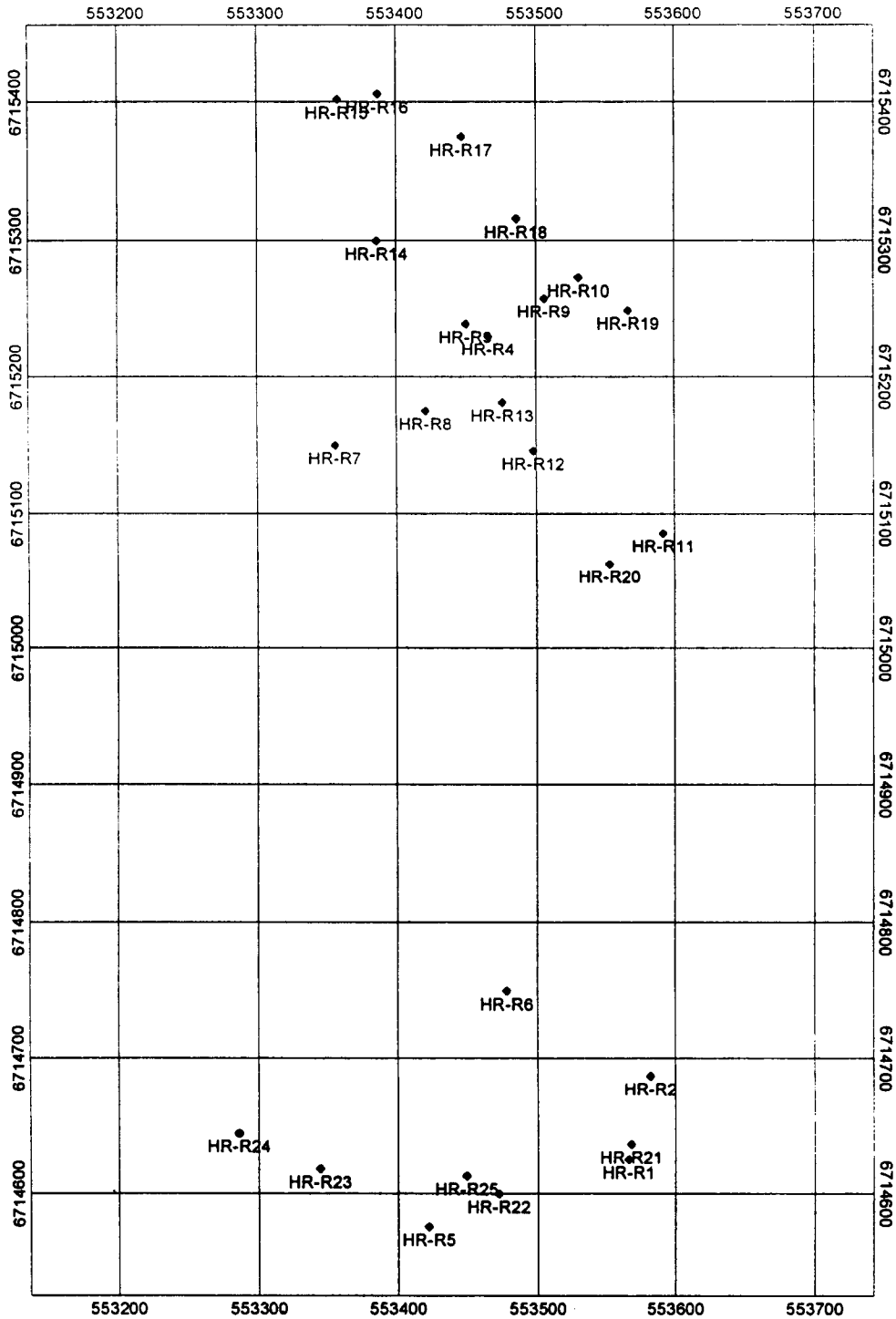


Photo 3

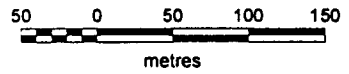
Details of stream pan concentrate site, 2.5 gallon pail with -12 mesh sieve and shovel in streambed, UTM coordinates 0554637 East, 6715290 North.

Appendix 2
Grab Sample Table and Plot

Identifier	UTM Easting	UTM Northing	Nickel Zap	Remarks
HF-R1	553566	6714625	Weak	Short diamond drillhole test pit
HF-R2	553582	6714687	Mod.	Long diamond drillhole test pit
HF-R3	553450	6715239	Weak	Plagioclase phase or dyke
HF-R4	553466	6715230	Weak	Plagioclase phase or dyke
HF-R5	553422	6714576		
HF-R6	553478	6714750	Weak	Serpentitized with minor asbestos
HF-R7	553356	6715150		
HF-R8	553421	6715175		Serpentitized
HF-R9	553506	6715258		Foliated, serpentitized
HF-R10	553531	6715273	Weak	
HF-R11	553592	6715086		
HF-R12	553498	6715146		
HF-R13	553476	6715181	Weak	Plagioclase phase or dyke
HF-R14	553386	6715300	Weak	
HF-R15	553358	6715402		
HF-R16	553387	6715406	Weak	
HF-R17	553447	6715375	Mod.	
HF-R18	553486	6715316	Weak	
HF-R19	553567	6715249		Magnetite seam or fracture
HF-R20	553553	6715063		
HF-R21	553568	6714636	Weak	
HF-R22	553472	6714600	Weak	
HF-R23	553344	6714618		
HF-R24	553286	6714644		
HF-R25	553449	6714613		
HF-R26	554705	6715290	Weak	Off-property ultramafite sample, weakly magnetic
All grab samples strongly magnetic peridotite unless otherwise noted.				



LUE LAKE, Yukon
 Claims
 GRAB SAMPLE PLOT



Appendix 3
Analytical Results

HR

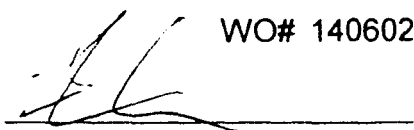
07/09/2002

Certificate of Analysis

of pages (not including this page): 2

Gord McLeod

WO# 140602

Certified by 
 Justin Lemphers (Senior Assayer)

Date Received: 06/14/02

SAMPLE PREPARATION:

Code	# of Samples	Type	Preparation Description (All wet samples are dried first.)
r	40	rock	Crush to -10 mesh; riffle split 200g; pulverize to -100 mesh Duplicate split 200g and pulverize

ANALYTICAL METHODS SUMMARY:

Symbol	Units	Element	Method (A:assay) (G:geochem)	Fusion/Digestion	Lower Limit	Upper Limit
Au	ppb	Gold	Assay	30g FA/AAS	2	10000
Pd	ppb	Palladium	Assay	30g FA/AAS	5	10000
Pt	ppb	Platinum	Assay	30g FA/AAS	15	10000

1 oz/ton = 34.286 g/mt
 1000ppb = 1ppm = 1g/mt = 0.0001% = 0.029166oz/ton

W 0# 140602

Sample #	Ag ppm	Cu ppm	Pb ppm	Zn ppm	As ppm	Sb ppm	Hg ppm	Mo ppm	Ti ppm	Bi ppm	Cd ppm	Co ppm	Ni ppm	Ba ppm	W ppm	Cr ppm	V ppm	Mn ppm	La ppm	Sr ppm	Zr ppm	Sc ppm	Ti %	Al %	Ca %	Fe %	Mg %	K %	Na %	P %
HR - R 1	<0.1	11	5	13	<5	9	<3	5	<10	<2	<0.1	51	1401	<2	<5	747	20	542	<2	<1	<1	6	<0.01	0.44	0.72	1.84	13.29	<0.01	0.02	<0.01
HR - R 2	<0.1	7	4	14	<5	10	<3	5	<10	<2	<0.1	51	1573	<2	<5	805	16	534	<2	1	<1	4	<0.01	0.37	0.25	1.66	14.04	<0.01	0.02	<0.01
HR - R 3	<0.1	18	5	18	<5	8	<3	4	<10	2	<0.1	53	1501	4	<5	722	22	496	<2	2	<1	5	<0.01	0.52	0.16	2.1	16.23	<0.01	0.02	<0.01
HR - R 4	<0.1	22	6	14	<5	5	<3	4	<10	<2	<0.1	64	1520	<2	<5	593	19	618	<2	1	<1	5	<0.01	0.45	0.14	2.84	16.87	<0.01	0.02	<0.01
HR - R 5	<0.1	19	4	14	<5	7	<3	3	<10	<2	<0.1	80	1503	5	<5	694	18	524	<2	<1	<1	5	<0.01	0.38	0.31	2.35	13.36	<0.01	0.02	<0.01
HR - R 6	<0.1	14	6	47	<5	17	<3	7	<10	<2	3.2	105	2035	5	<5	1646	36	620	<2	29	1	10	<0.01	0.5	0.62	4	18.22	<0.01	0.02	<0.01
HR - R 7	<0.1	11	4	23	<5	13	<3	5	<10	<2	<0.1	79	1854	<2	<5	1436	31	629	<2	1	1	9	<0.01	0.64	1.04	2.81	17.99	<0.01	0.02	<0.01
HR - R 8	<0.1	17	4	20	<5	12	<3	5	<10	<2	<0.1	86	1581	28	<5	1099	29	623	<2	3	1	8	<0.01	0.57	0.09	2.72	14.08	<0.01	0.02	<0.01
HR - R 9	<0.1	4	5	17	<5	16	<3	5	<10	<2	<0.1	64	1811	<2	<5	1507	28	462	<2	1	<1	9	<0.01	0.55	0.19	2.69	17.48	<0.01	0.02	<0.01
HR - R 10	<0.1	8	3	14	<5	7	<3	5	<10	<2	<0.1	77	1714	2	<5	656	22	579	<2	<1	<1	8	<0.01	0.44	0.22	2.89	15.16	<0.01	0.02	<0.01
HR - R 11	<0.1	13	4	21	<5	11	<3	4	<10	<2	<0.1	80	1488	<2	<5	1100	23	580	<2	<1	<1	6	<0.01	0.57	0.36	2.2	14.89	<0.01	0.02	<0.01
HR - R 12	<0.1	14	8	29	<5	17	<3	7	<10	<2	<0.1	77	1948	8	<5	1522	29	684	<2	2	<1	7	<0.01	0.64	0.08	2.98	17.99	<0.01	0.02	<0.01
HR - R 13	<0.1	8	2	14	<5	8	<3	4	<10	<2	<0.1	50	1371	6	<5	633	18	418	<2	2	<1	5	<0.01	0.43	0.22	1.84	13.83	<0.01	0.02	<0.01
HR - R 14	<0.1	9	3	18	<5	6	<3	5	<10	<2	<0.1	58	1619	35	<5	733	24	542	<2	18	<1	6	<0.01	0.57	0.09	2.13	15.63	<0.01	0.02	<0.01
HR - R 15	<0.1	9	5	17	<5	17	<3	6	<10	<2	<0.1	108	1980	6	<5	1665	29	882	<2	1	<1	9	<0.01	0.53	0.08	3.01	20.84	<0.01	0.02	<0.01
HR - R 16	<0.1	7	7	15	<5	10	<3	5	<10	<2	<0.1	79	1844	<2	<5	1062	25	562	<2	1	1	7	<0.01	0.45	0.05	3.46	15.59	<0.01	0.02	<0.01
HR - R 17	<0.1	4	6	12	<5	12	<3	4	<10	<2	<0.1	84	1741	8	<5	1073	25	581	<2	1	<1	7	<0.01	0.46	0.31	2.15	14.51	<0.01	0.02	<0.01
HR - R 18	<0.1	5	10	18	<5	5	<3	5	<10	<2	<0.1	69	1880	<2	<5	458	19	542	<2	<1	<1	5	<0.01	0.42	0.13	2.9	16.95	<0.01	0.02	<0.01
HR - R 19	<0.1	4	8	11	<5	11	<3	4	<10	<2	<0.1	81	1803	<2	<5	803	19	454	<2	1	<1	7	<0.01	0.37	0.03	2.24	16.61	<0.01	0.02	<0.01
HR - R 20	<0.1	16	6	29	<5	12	<3	5	<10	<2	<0.1	88	1859	5	<5	1372	36	755	<2	5	<1	9	0.01	0.69	0.25	3	15.14	<0.01	0.02	<0.01
HR - R 21	<0.1	28	5	16	<5	15	<3	5	<10	<2	<0.1	67	1715	<2	<5	1378	28	606	<2	1	<1	7	<0.01	0.58	0.94	2.67	16.18	<0.01	0.02	<0.01
HR - R 22	<0.1	10	2	16	<5	6	<3	4	<10	<2	<0.1	58	1722	<2	<5	713	21	562	<2	<1	<1	6	<0.01	0.47	0.08	2.29	15.97	<0.01	0.02	<0.01
HR - R 23	<0.1	13	6	26	<5	14	<3	6	<10	<2	<0.1	96	1912	22	<5	1294	44	899	<2	4	1	10	0.01	0.62	0.35	4.03	18.36	0.01	0.02	<0.01
HR - R 24	<0.1	23	4	28	<5	16	<3	5	<10	<2	<0.1	86	1829	29	<5	1714	52	1351	<2	4	1	12	0.01	0.7	0.25	4.52	19.18	<0.01	0.02	<0.01
HR - R 25	<0.1	5	7	17	237	15	<3	3	<10	<2	<0.1	82	1719	11	<5	1149	23	514	<2	2	<1	8	<0.01	0.47	0.04	2.68	15.48	<0.01	0.02	<0.01
HR - R 26	<0.1	7	<2	36	<5	5	<3	4	<10	<2	<0.1	84	1791	6	<5	581	13	713	<2	1	1	7	<0.01	0.11	0.03	3.85	15.05	<0.01	0.02	<0.01

Min Limit	0.1	1	2	1	5	5	3	1	10	2	0.1	1	1	2	5	1	2	1	2	1	1	1	0.01	0.01	0.01	0.01	0.01	0.01	0.01	0.01	
Max Reported	99.9	20000	20000	20000	9999	9999	9999	9999	999	999	99.9	999	999	9999	999	9999	999	9999	9999	9999	9999	999	99	100	9.99	9.99	9.99	9.99	9.99	500	500

--No Test ns=Insufficient Sample m=Estimate/1000 %=Estimate Max=No Estimate

07/09/2002

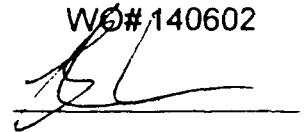
Certificate of Analysis

Page 1

Gord McLeod

WO# 140602

Certified by



Sample #	Au 30g ppb	Pt 30g ppb	Pd 30g ppb
r HR - R 1	<2	11	<15
r HR - R 2	35	<5	<15
r HR - R 3	2	6	<15
r HR - R 4	<2	<5	<15
r HR - R 5	2	<5	<15
r HR - R 6	48	<5	<15
r HR - R 7	<2	<5	<15
r HR - R 8	28	<5	<15
r HR - R 9	38	<5	<15
r HR - R10	97	<5	<15
r HR - R11	<2	<5	<15
r HR - R12	<2	<5	<15
r HR - R13	<2	<5	<15
r HR - R14	<2	<5	<15
r HR - R15	<2	<5	<15
r HR - R16	<2	<5	<15
r HR - R17	6	<5	<15
r HR - R18	<2	5	<15
r HR - R19	<2	<5	<15
r HR - R20	<2	7	<15
r HR - R21	<2	7	<15
r HR - R22	<2	<5	<15
r HR - R23	<2	5	<15
r HR - R24	<2	<5	<15
r HR - R25	84	11	<15
r HR - R26	27	<5	47



ALS Chemex

Aurora Laboratory Services Ltd.
 Analytical Chemists * Geochemists * Registered Assayers
 212 Brooksbank Ave., North Vancouver
 British Columbia, Canada V7J 2C1
 PHONE: 604-984-0221 FAX: 604-984-0218



J.P. ROMAN & ASSOCIATES

464 E. 18TH ST.
 NORTH VANCOUVER, BC
 V7N 2Y2

Project : GORD
 Comments: ATTN: J PETER ROMAN

Page : 1-B
 Total : 1
 Certificate Date: 26-MAY-2000
 Invoice No. : 10019198
 P.O. Number :
 Account : PCC

DP CORE

CERTIFICATE OF ANALYSIS

A0019198

SAMPLE	PREP CODE		La	Mg	Mn	Mo	Na	Ni	P	Pb	S	Sb	Sc	Sr	Ti	Tl	U	V	W	Zn
			ppm	%	ppm	ppm	%	ppm	ppm	ppm	%	ppm	ppm	ppm	%	ppm	ppm	ppm	ppm	ppm
GORD	205	226	< 10	13.05	555	1	< 0.01	1535	< 10	< 2	0.04	< 2	7	2	< 0.01	< 10	< 10	29	< 10	18

CERTIFICATION:

Appendix 4
Stream Pan Concentrate Results



OVERBURDEN DRILLING MANAGEMENT LIMITED

24 July, 2002

Mr. Mike Beauregard
116 Kasteel Drive
Yellowknife, N.T.
X1A 3V6

Fax: 867-873-3127

Re: Gold Grains and MMSIMs in Alluvial Gravel Pan Concentrate HR-PC-1, Northern Canada

Attached please find our laboratory data for the above field concentrate together with a list of abbreviations used on our lab data sheets.

In addition to indicator minerals, we listed the major (>15 percent by volume) paramagnetic (augite, hornblende) and nonparamagnetic (pale epidote, diopside) minerals present in the 0.25-0.5 mm nonferromagnetic heavy mineral fraction. Only a few gold grains are present. From a Ni-Cu-PGE perspective, the MMS indicator minerals of interest are forsterite and chromite, which are indicative of cumulus settling in a mafic/ultramafic magma, and Cr-free to Cr-bearing andradite garnet which is indicative of assimilation of felsic country rocks by the magma. The andradite, although not plentiful, is enticing because it is visually identical to the variety found in glacial sediments at the major Lac des Iles Ni-Cu-PGE deposit in Ontario.

I hope these observations are helpful. Please call me if you have any questions.

Yours, sincerely, —

Stuart Averill,
President

**Mines
Are
Where WE
Find Them.**

OVERBURDEN DRILLING MANAGEMENT LIMITED LABORATORY ABBREVIATIONS

SEDIMENT LOG

<p><u>Largest Clasts Present:</u></p> <p>G: Granules P: Pebbles C: Cobbles BL: Boulder fragments BK: Bedrock fragments</p> <p><u>Clast Composition:</u></p> <p>V/S: Volcanics and sediments GR: Granitics LS: Limestone, carbonates OT: Other Lithologies (refer to footnotes) TR: Only trace present NA: Not applicable OX: Very oxidized, undifferentiated</p> <p><u>Matrix Colour:</u></p> <table style="width: 100%;"> <tr> <td>B: Beige</td> <td>BN: Brown</td> <td>L: Light</td> </tr> <tr> <td>GY: Grey</td> <td>BK: Black</td> <td>M: Medium</td> </tr> <tr> <td>GB: Grey-beige</td> <td>PP: Purple</td> <td>D: Dark</td> </tr> <tr> <td>GN: Green</td> <td>PK: Pink</td> <td>R: Red</td> </tr> <tr> <td>GG: Grey-green</td> <td>OC: Ochre</td> <td></td> </tr> </table>	B: Beige	BN: Brown	L: Light	GY: Grey	BK: Black	M: Medium	GB: Grey-beige	PP: Purple	D: Dark	GN: Green	PK: Pink	R: Red	GG: Grey-green	OC: Ochre		<p><u>Matrix Grain Size:</u></p> <p>S: Sorted U: Unsorted SD: Sand — F: Fine M: Medium C: Coarse</p> <p>ST: Silt CY: Clay OR: Organics Y: Fraction present +: Fraction more abundant than normal -: Fraction less abundant than normal N: Fraction not present L: Lumps present</p>
B: Beige	BN: Brown	L: Light														
GY: Grey	BK: Black	M: Medium														
GB: Grey-beige	PP: Purple	D: Dark														
GN: Green	PK: Pink	R: Red														
GG: Grey-green	OC: Ochre															

GOLD GRAIN LOG

<p><u>Number of Grains:</u></p> <p>T: Number found on shaking table P: Number found by panning</p> <p><u>Thickness:</u></p> <p>C: Calculated thickness of grain (microns) M: Actual measured thickness of grain (micr</p>	<p><u>Remarks:</u></p> <p>‰: Percentage of HMC (estimated from panning of table concentrate) gr: Grains (estimated number) µM: Microns (1/1000 mm) py: Pyrite cpy: Chalcopyrite aspy: Arsenopyrite marc: Marcasite lg: Limonite/goethite sid: Siderite</p>
---	--

KIM (kimberlite indicator mineral) LOG

<p>GP: Purple garnet (G9/G10 chrome pyrope).</p> <p>GO: Orange mantle garnet; includes both eclogitic pyrope-almandine (G3) and Cr-poor megacrystic pyrope (G1/G2) varieties; may include unchecked (by SEM) grains of common crustal garnet (G5) lacking diagnostic inclusions or crystal faces.</p> <p>DC: Chrome diopside, emerald green; paler green low-Cr diopside picked separately.</p> <p>IM: Mg-ilmenite; may include unchecked (by SEM) grains of common crustal ilmenite lacking diagnostic inclusions or crystal faces.</p> <p>CR: Chromite. OL: Olivine FO: Forsterite.</p>	
---	--

MMSIM (metamorphosed or magmatic massive sulphide indicator mineral) LOG

<p>Ky: Kyanite Sil: Sillimanite Rut: Rutile Tm: Tourmaline St: Staurolite Ol: Olivine Fay: Fayalite Opx: Orthopyroxene</p>	<p>Cr: Chromite Sp: Spessartine Gth: Goethite Py: Pyrite Cpy: Chalcopyrite</p>
--	--

OVERBURDEN DRILLING MANAGEMENT LIMITED
107-15 CAPELLA COURT, NEPEAN, ONTARIO, K2E 7X1
TELEPHONE: (613) 226-1771
FAX NO.: (613) 226-8753
EMAIL: odm@storm.ca

DATA TRANSMITTAL REPORT

DATE: 24-Jul-02

ATTENTION: **Mr. Mike Beauregard**

CLIENT: **Mr. Mike Beauregard**
116 Kasteel Drive
Yellowknife NT
X1A 3V6

FAX NO.: 867-873-3127 e-mail: mbeau@internorth.com

NO. OF PAGES: 5 plus letter

PROJECT: **HR-PC-1**

FILE NAME: **Mike Beauregard - Sieved pan concentrate - July 2002**

SAMPLE NUMBERS: 1

BATCH NUMBER: 1036

NO. OF SAMPLES: 1


THESE SAMPLES WERE PROCESSED FOR: **MMSIMs**
GOLD GRAINS

SPECIFICATIONS:

1. Submitted by client: One sieved pan concentrate from drainage eroding Alpine-type ultramafic rocks.
2. Heavy liquid separation specific gravity: 3.20.
3. 0.25-2.0 mm nonferromagnetic heavy mineral fraction picked for indicator minerals.
4. Heavy fractions returned to client.

REMARKS: Gold grains encapsulated.


Remy Huneault
Laboratory Manager



**OVERBURDEN DRILLING MANAGEMENT LIMITED
GOLD GRAIN SUMMARY SHEET**

Project: HR-PC-1

Filename: Mike Beauregard - Sieved pan concentrate - July 2002

Total Number of Samples in this Report = 1

Batch Number: 1036

Sample Number	Number of Visible Gold Grains				Nonmag HMC Weight (g)	Calculated PPB Visible Gold in HMC			
	Total	Reshaped	Modified	Pristine		Total	Reshaped	Modified	Pristine
HR-PC-1	4	2	2	0	9.2	1124	425	700	0

**OVERBURDEN DRILLING MANAGEMENT LIMITED
DETAILED GOLD GRAIN SHEET**

Project: HR-PC-1

File Name: Mike Beauregard - Sieved pan concentrate - July 2002

Batch Number: 1036

Total Number of Samples in this Report = 1

Sample Number	Panned Yes/No	Dimensions (microns)			Number of Visible Gold Grains				Nonmag HMC Weight (g)	Calculated V.G. Assay in HMC (ppb)	Remarks
		Thickness	Width	Length	Reshaped	Modified	Pristine	Total			
HR-PC-1	Yes	8 C	25	50	1			1	4	9.2	1124
		20 C	75	125		1		1			
		27 C	125	150	1			1			
		28 C	125	175		1		1			

-20 grains pyrite.

**OVERBURDEN DRILLING MANAGEMENT LIMITED
 LABORATORY SAMPLE LOG
 KIMBERLITE INDICATOR MINERAL COUNTS**

Project: HR-PC-1

Filename: Mike Beauregard - Sieved pan concentrate - July 2002

Total Number of Samples in this Report = 1

Batch Number: 1036

Sample Number	Field Concentrate Dry Weight (g)							
	Total	0.25-2.0 mm Heavy Liquid Separation S.G 3.20		Nonferromagnetic HMC				
		Heavy Liquid Lights	Mag HMC	Total	<0.25 mm	0.25 to 0.5 mm	0.5 to 1.0 mm	1.0 to 2.0 mm
HR-PC-1	664.5	639.7	2.3	22.5	7.1	7.6	5.6	2.2

YUKON ENERGY, MINES
 & RESOURCES LIBRARY
 P.O. BOX 2703
 WHITEHORSE, YUKON Y1A 2C6

OVERBURDEN DRILLING MANAGEMENT LIMITED
MMS INDICATOR MINERAL DATA

Batch Number: 1036

Project: HR-PC-1
Filename: Mike Beauregard - Slaved pan concentrate - July 2002
Total Number of Samples in this Report = 1

Sample Number	Sulphide/Arsenide + Related Minerals 0.25-0.5 mm				Mg/Mn/Al/Cr Minerals 0.25-0.5 mm											Remarks	Picked Grains
	>1 amp		<1.0 amp		>1.0 amp					0.8-1.0 amp		<0.8 amp					
	% Cpy	Misc. Prime MMSIMs	% Py	% Gth	# Grains + Colour Spinel	Misc. Prime MMSIMs	% Red Rutile	% Ky	% Sil	% Sl	% Spa	% Cl	% Opx	% Cr			
HR-PC-1	0	Tr barite (4 gr)	Tr (-20 gr)	Tr	0	Tr low-Cr diopside (15 gr) Tr Cr-andradite (1 gr) Tr andradite (11 gr)	0	0	Tr	0	Tr	Tr (-75 gr)	Tr	Tr (-75 gr)	Augite-hornblende/epidote-diopside assemblage. SEM checks from 0.5-1.0 mm fraction: 2 barite versus epidote candidates = 2 barite; 4 creamy beige to pale green andradite versus amphibole candidates = 4 andradite; 2 blue-green pumpellyite candidates = 2 pumpellyite; and 1 orange spessartine versus almandine candidate = 1 spessartine. SEM checks from 0.25-0.5 mm fraction: 1 bimineratic green chromite + Cr-grossular candidate = 1 chromite + Cr-andradite; and 5 orthopyroxene candidates = 1 enstatite (grain lost in transfer to vial) and 4 diopside (major assemblage mineral).	0.5-1.0 mm fraction: 2 barite 4 andradite 4 low-Cr diopside 1 representative spessartine 1 chromite 2 pumpellyite 0.25-0.5 mm fraction: 4 barite 15 low-Cr diopside 1 chromite + Cr-andradite 11 andradite 14 pumpellyite 30 representative forsterite 40 representative chromite 4 representative diopside	

JUL-29-02 12:04 PM OVERBURDEN DRILLING

6132268753

P.09

Statement of Expenditures
HF Claims, 2002 Exploration

Field Supplies, groceries	\$74.54
Airphotos, maps, publications	\$18.73
Satellite phone rental	\$111.35
Gasoline	\$30.00
Charter Aircraft (2 trips)	\$456.00
Assays (26 samples @ 35.00 each)	\$910.00
Nickel fusion analysis (3 samples @ 100 each)	\$300.00
Stream pan concentrate (Gold and MMSIMs)	\$260.14
Geologist (4 days @ 200/day)	\$800.00
Report Preparation	<u>\$100.00</u>
	\$3060.76 (total)