

094332

2001 DIAMOND DRILLING REPORT

ON THE

CANYON GOLD GREW CREEK PROJECT

**Whitehorse Mining District
NTS: 105K/2
Latitude 62.03', Longitude 132°50'**

**CANYON CLAIMS
(June 24th-August 29th, 2001)**



**By: A. Carlos (owner of claims)
January 15, 2002**

File Number 01-012

TABLE OF CONTENTS

	PAGE
INTRODUCTION	1
PROGRAM 2001	1
RECOMMENDATIONS	1
HISTORY and PROJECT SUMMARY	3
DISCUSSION of DIAMOND DRILLING	1
CONCLUSIONS	5
 <u>LIST of FIGURES</u>	
LOCATION MAP	2
 1. ORTHOPHOTO: 2000 grid location, structure & Enzyme Leach anomaly centres.	
2. Color air photo (flown 1993), grid location, anomaly centres & claim post location.	
3. Data Compilation : Various, including CGGC diamond drill hole locations at Enzyme Leach anomaly E.	

APPENDICES

- 1. STATEMENT OF QUALIFICATIONS**
- 2. DRILL HOLE CROSS SECTIONS**
- 3. DRILL HOLE DESCRIPTIVE LOGS**
- 4. ANALYTICAL RESULTS**
- 5. SUMMARY OF EXPENDITURES**

INTRODUCTION

History of the Grew Creek deposit area leading to the present is detailed further on in this text. The summer of 2001, between June 24th and August 29th, was spent in an attempt to assess a geochemical anomaly (Enzyme Leach anomaly E) determined during a soil survey performed the prior year.

PROGRAM 2001

A total of 627 ft. in 4 holes was drilled using a Hydracore machine producing 1.39 inch diameter core. Recovery was excellent, with the deepest hole drilled to 325 ft. (-50°). This program could not have taken place without the aid of my sons (Luke and Shane). Though no economic mineralization was determined, we were successful in locating hydrothermal brecciation noted in hole 4 and interpreted as such in hole 95-172 (fig.3). This is significant, for in essence we have determined the presence of what appears to be an extensive portion of a fossil hydrothermal system.

RECOMMENDATIONS

Drill core geochemical data indicates that attention be directed to the general area of hole 1 and 3. Geological modeling, together with evidence from diamond drill holes 4 and 95-172, suggests turning the drill 180° to the northeast. Precise drill hole locations are yet to be determined.

DISCUSSION OF DIAMOND DRILLING

The following discussion summarizes the 2001 drill program on claim Canyon 15. Detail drill log descriptions, cross sections and assays are reported in Appendix 2, 3 and 4.

Hole CGGC 1 was drilled to test the Enzyme Leach apical anomaly on line 11+300E. Clay rich fractures within the rhyolite porphyry gave us some problems, but recovery was good. At 136 ft. I became concerned that, on the evidence, we might not be able to drill as far as necessary to encounter potential mineralization.

GEOLOGY: THE YUKON'S UNIQUE RESOURCE



The Yukon's geology is complex and full of surprises. Over the years, areas previously explored for minerals have been revisited with innovative technology and geological modelling, resulting in the discovery of new deposits. The tumultuous geological history of the Yukon's rocks, combined with the fact that

our large territory has not yet been fully explored, creates the potential for large discoveries.

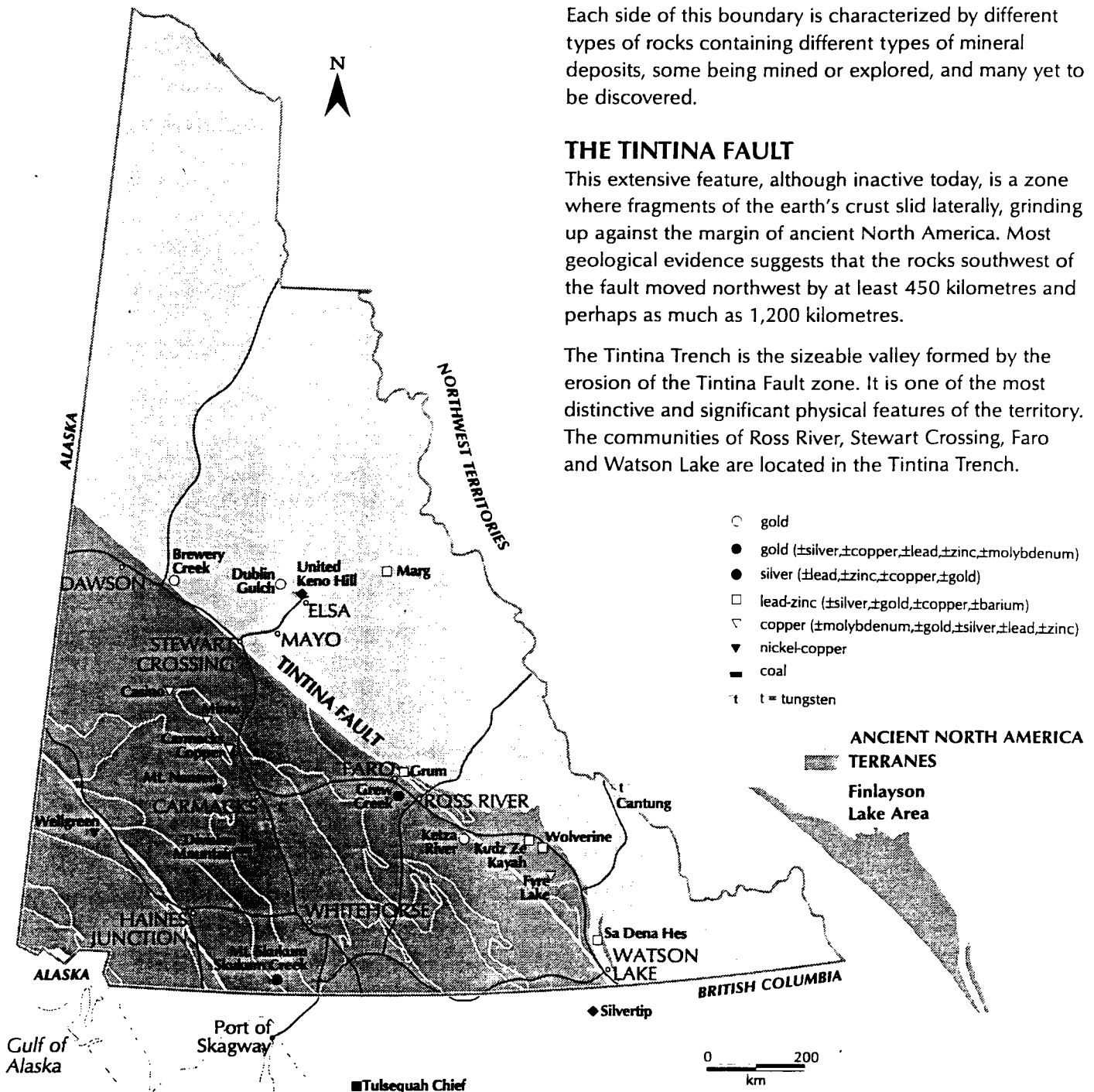
The Yukon's geology can be roughly split into two rock groups: those north of the Tintina Fault and those south of it. This dividing line cuts northwest to southeast across the territory from Alaska to northern British Columbia.

Each side of this boundary is characterized by different types of rocks containing different types of mineral deposits, some being mined or explored, and many yet to be discovered.

THE TINTINA FAULT

This extensive feature, although inactive today, is a zone where fragments of the earth's crust slid laterally, grinding up against the margin of ancient North America. Most geological evidence suggests that the rocks southwest of the fault moved northwest by at least 450 kilometres and perhaps as much as 1,200 kilometres.

The Tintina Trench is the sizeable valley formed by the erosion of the Tintina Fault zone. It is one of the most distinctive and significant physical features of the territory. The communities of Ross River, Stewart Crossing, Faro and Watson Lake are located in the Tintina Trench.



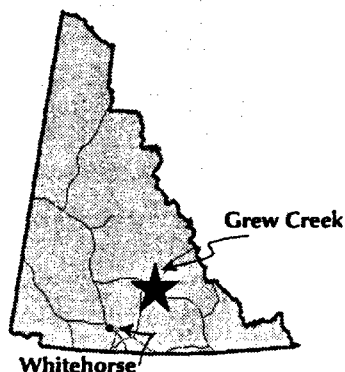
GREW CREEK PROJECT

Owner: A. Carlos
Whitehorse, Yukon

Phone (867) 668-6309

PROJECT STATUS

Available for option



HISTORY

The original Grew Creek claims were staked by Whitehorse prospector A. Carlos in 1983 and optioned by the Mincan JV (Hudson Bay Mining and Minerals), which carried out an extensive exploration program from 1984 to 1986.

In 1987, the claims were optioned by Noranda, who subsequently signed a joint-venture agreement with Golden Nevada Resources and Brenda Mines. Results of the 1987 program triggered a flurry of claimstaking and exploration activity in the area. A large-scale exploration program continued in 1988. In 1989, Golden Nevada changed its name to Goldnev Resources and renegotiated the joint venture agreement to give it a 100% interest in the property.

In 1992, Wheaton River Minerals took an option to conduct an underground development program, however, the option was dropped shortly after.

YGC Resources Ltd. optioned the property in 1993, and completed a \$150,000 drilling program at Grew Creek in 1995 and a 17 diamond-drill hole program in 1996. YGC terminated its option agreement with Carlos in January, 1997.

Location

35 km west of Ross River

Ownership

A. Carlos

Commodity

Gold, silver

Ore type

Oxide

Geological reserve

773,012 tonnes

Silver: 33 grams/tonne

Gold: 8.9 grams/tonne

Proposed mining method

Open-pit, 365 days per year

Processing method

Conventional mill, dore bar, 365 days per year

Power

3 MW, on-site diesel generation

In 2000, a total of \$36,000 was spent by A. Carlos exploring a new area 1.8 km from the main zone.

PROJECT SUMMARY

The Grew Creek deposit can be mined by open-pit methods with a stripping ratio of 9:1, waste to ore. Metallurgical testing by Noranda in 1988 indicated that recoveries of 92% to 94% are possible using simple cyanide processing.

The Grew Creek property is located approximately 35 km west of Ross River and one km from the Robert Campbell Highway and the Whitehorse power grid. The property consists of 138 claims and is owned by A. Carlos of Whitehorse.

GEOLOGY, MINERALOGY AND ORE RESERVES

The Grew Creek epithermal gold deposit is hosted by Eocene volcanic and sedimentary rocks deposited in a pull-apart basin within the Tintina Fault zone. The gold occurs in stockwork quartz veins and hydrothermal breccias cutting hydrothermally altered rhyolite.

In the main zone, rhyolitic tuffs are juxtaposed by an east-west fault against a cyclic sequence of fluvial sediments. The faulted contact is partly intruded by a quartz-feldspar porphyry dyke. The pyroclastic rocks, dyke, fault and sediments all dip steeply to the north. The volcanic rocks are hydrothermally altered to illite-quartz and illite-quartz-adularia assemblages, with an outer propylitic halo.

Mineralization consists of pyrite, marcasite, arsenopyrite, chalcopyrite, argentite, electrum, silver selenides, galena and sphalerite. Fluorite is also present in the Tarn zone. Gangue minerals include quartz, adularia, carbonates, and quartz pseudomorphs after calcite. In the main zone, gold and silver occur as micron-size grains in chalcedony stringer stockworks and adjacent silicified tuffs. There is a good correlation between gold and silver, with a gold:silver ratio of about 1:4 for ore-grade mineralization, which occurs in an elongated zone trending west northwest. The mineralization is strongly anomalous in arsenic and mercury, but mercury shows only a weak correlation with gold and silver. Most high mercury values lie along the fault, above the gold-silver zone.

Initial drilling on the main zone gave a best intersection of 11.7 grams/tonne Au and 150.9 grams/tonne Ag across 31.4 m while the best section exposed in a trench assayed 3.6 grams/tonne Au and 15.3 grams/tonne Ag across 13 m. The 1989 drilling focused on the main zone, with the best hole returning 10.5 grams/tonne Au over 13 m.

The Tarn zone, located 2 km to the east, consists of quartz-fluorite-chalcedony stockworks and localized silicification within a 900 x 100 m zone of sericitized rhyolite dykes and tuff. The best assays were 150 ppb Au across 2.0 m in a trench and 520 ppb Au over 1.5 m in a drill hole.

Prospecting in the area is difficult due to a thick cover of glacial till. Plouffe (1989) showed that gold is concentrated in the silt- and clay-size fraction down ice from the Grew Creek deposit, but the common pathfinder elements Ag,

Sb, As and Hg show little correlation with the gold distribution.

In 1991, a trench in the K410 zone, 15 km northwest of the deposit, uncovered intensely iron-stained, highly fractured acid-leached volcanic rocks. Carlos excavated four hand pits to bedrock in 1992 and encountered intensely clay-altered Eocene sediments with hematite-rich bands. Samples from the pits returned anomalous values of mercury and barium, and a heavy mineral concentrate from 45 kg of glacial till in Pit #2 assayed 9,320 ppb Au.

The 1993 diamond drilling intersected strongly altered volcanic rocks beneath a zone of hydrothermal alteration exposed in a surface trench.

The 1994 drilling showed that mineralization in the South Zone consists of an extensive quartz-adularia stringer stockwork of low-grade Au-Ag values. The best intersections were 2.33 grams/tonne Au and 4.1 grams/tonne Ag over 10.4 m. The South Zone mineralization appears to be connected with the Main Zone mineralization, but further drilling between the two zones needs to be carried out to confirm this theory. Drilling in the Main Zone confirmed earlier reported grades. The best intersection was 1.69 grams/tonne Au and 3.0 grams/tonne Ag over 24 m.

In 2000, a total of 558 soil samples were grid-collected over a 2 km area and analyzed by the enzyme leach method. To date, (5) new geochemical targets have been delineated in a favourable structural area north of the Tarn zone, adjacent to the Robert Campbell Highway.

PRODUCTION PLANS

In 1989, Orcan Mineral Associates estimated geological reserves of 773,012 tonnes grading 8.9 grams/tonne Au and 33.6 grams/tonne Ag at a cut-off grade of 0.2 grams/tonne and containing a higher grade reserve of 184,947 tonnes grading 12.1 grams/tonne Au.

Hole CCGC 2 was located to drill a local physiographic low, trending in a northwesterly direction. As well, we were more closely located to 2 conventional soil sample sights anomalous in Au. We stopped the hole at 54 ft., as alteration was less evident than in hole CCGC 1.

Hole CCGC 3 was to determine the cause of the second Enzyme Leach peak of anomaly E, as recommended by Gregory Hill of Enzyme Laboratories, Inc. Though quite well altered and brecciated, we stopped the hole in rhyolite porphyry at 112 ft., concerned about depth to possible mineralization.

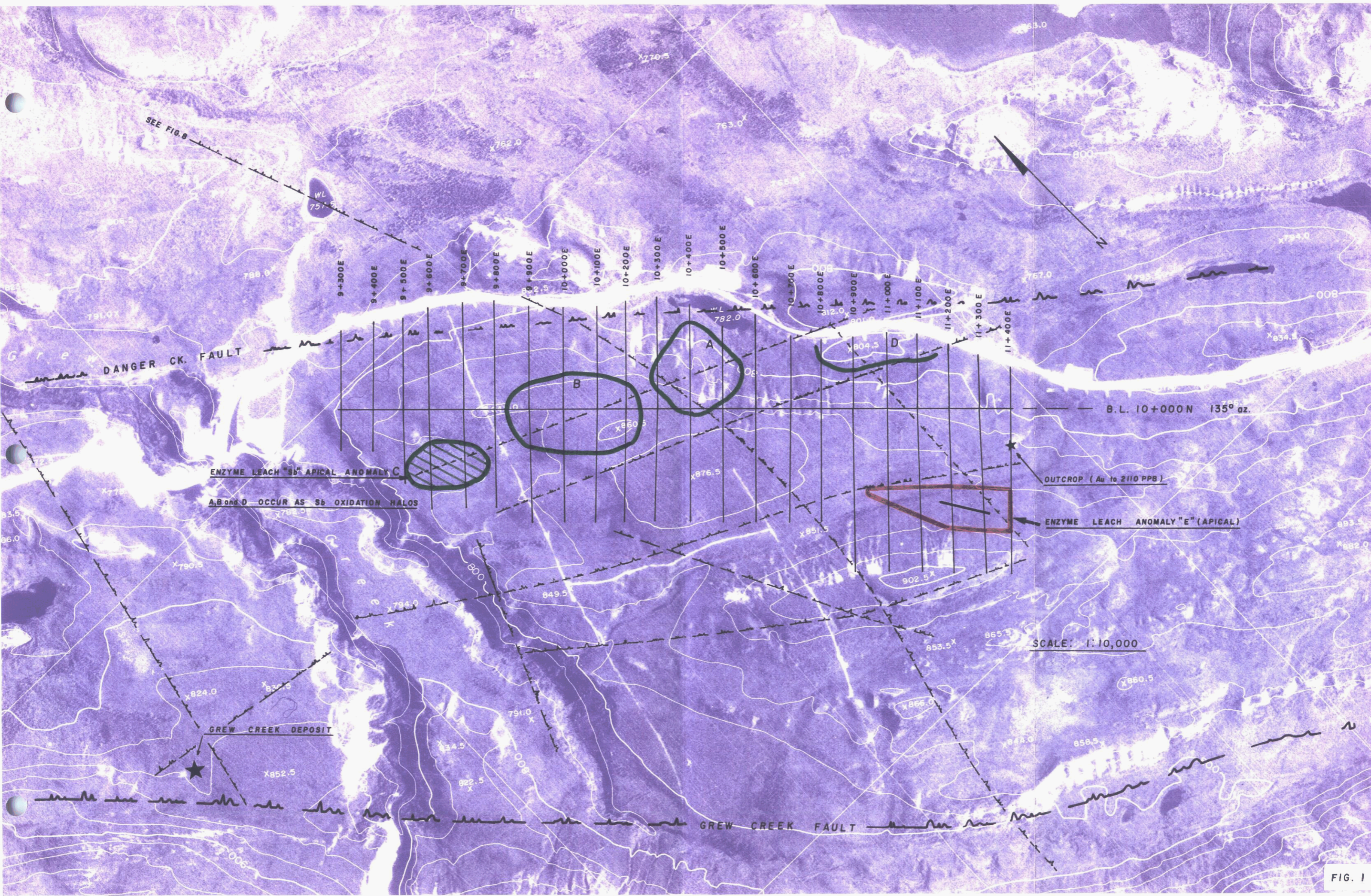
Becoming somewhat perturbed regarding the validity of the Enzyme Leach anomaly, we decided to drill CCGC 4, for the following reasons:

1. Conventional soil geochemistry had determined an anomalous centre in Au (fig.3) as well as Hg, Ba, Cu and Mn.
2. The hole would intersect a lengthy magnetic feature trending in an east - west direction.
3. We would still be within the confines of anomaly E.
4. The area north of hole 95-172 would be tested, where anomalous pyrite and Au occurred in the upper section (fig.3). At this point in time the consensus was that any mineralized zone would likely have a northeasterly dip.

CONCLUSIONS

The hydrothermal breccia was found some distance to the west of a more intense portion of Enzyme Leach anomaly E (fig.3). This latter sector may indicate the presence of an underlying centre of mineralization, hosted within a more focused portion of the hydrothermal system (central vent). Encouraging also is that the Enzyme Leach approach appears to be working. Yet to be tested are 4 other similar anomalies in the vicinity (fig.1 and fig.2).

In closing, it is very fortunate that hole 4 was drilled and the presence of hydrothermal brecciation determined. Without that evidence, one might be less likely to be aggressive in a drilling campaign. Unfortunately, this information was available from DDH 95-172 – 6 years past – where, from a reading of the logs in hindsight, it appears that hydrothermally brecciated material was logged as (HVB) Heterolithic Volcanic Breccia. A critical distinction!



SEE FIG. 8

WL
751.5

9+300E 9+400E 9+500E 9+600E 9+700E 9+800E 9+900E 10+000E 10+100E 10+200E 10+300E 10+400E 10+500E 10+600E 10+700E 10+800E 10+900E 11+000E 11+100E 11+200E 11+300E 11+400E

DANGER CK. FAULT

ENZYME LEACH "Sb" APICAL ANOMALY C

A, B and D OCCUR AS Sb OXIDATION HALOS

OUTCROP (Au to 2110 PPB)

ENZYME LEACH ANOMALY "E" (APICAL)

SCALE: 1:10,000

GREW CREEK DEPOSIT

GREW CREEK FAULT

B.L. 10+000N 135° az.

FIG. 1

UAG 1011 151.94

UAG 1011 151.94

UAG 1011 151.94

SEE FIG. 1

A, B, C, D, and E = ENZYME LEACH ANOMALIES

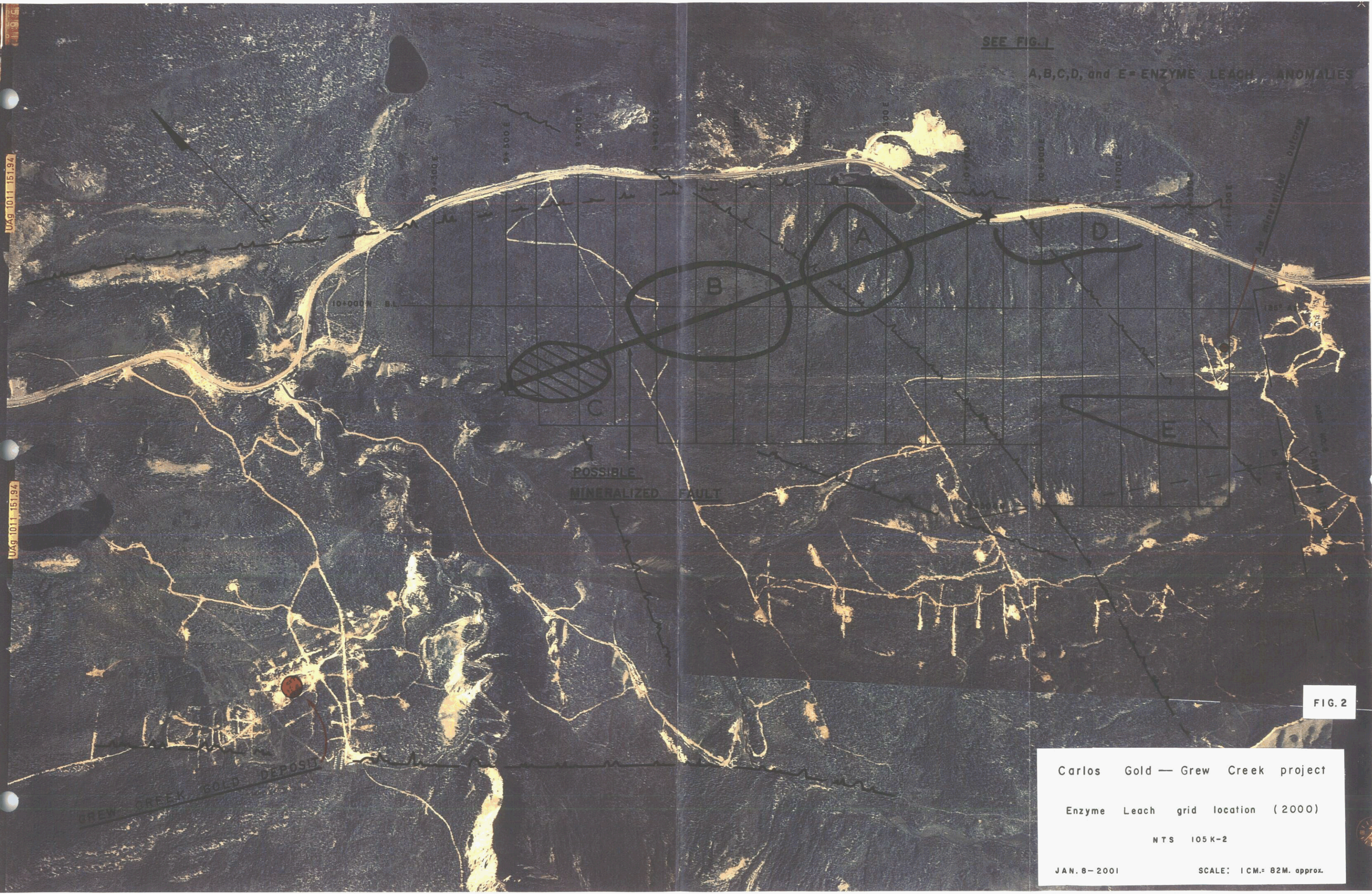


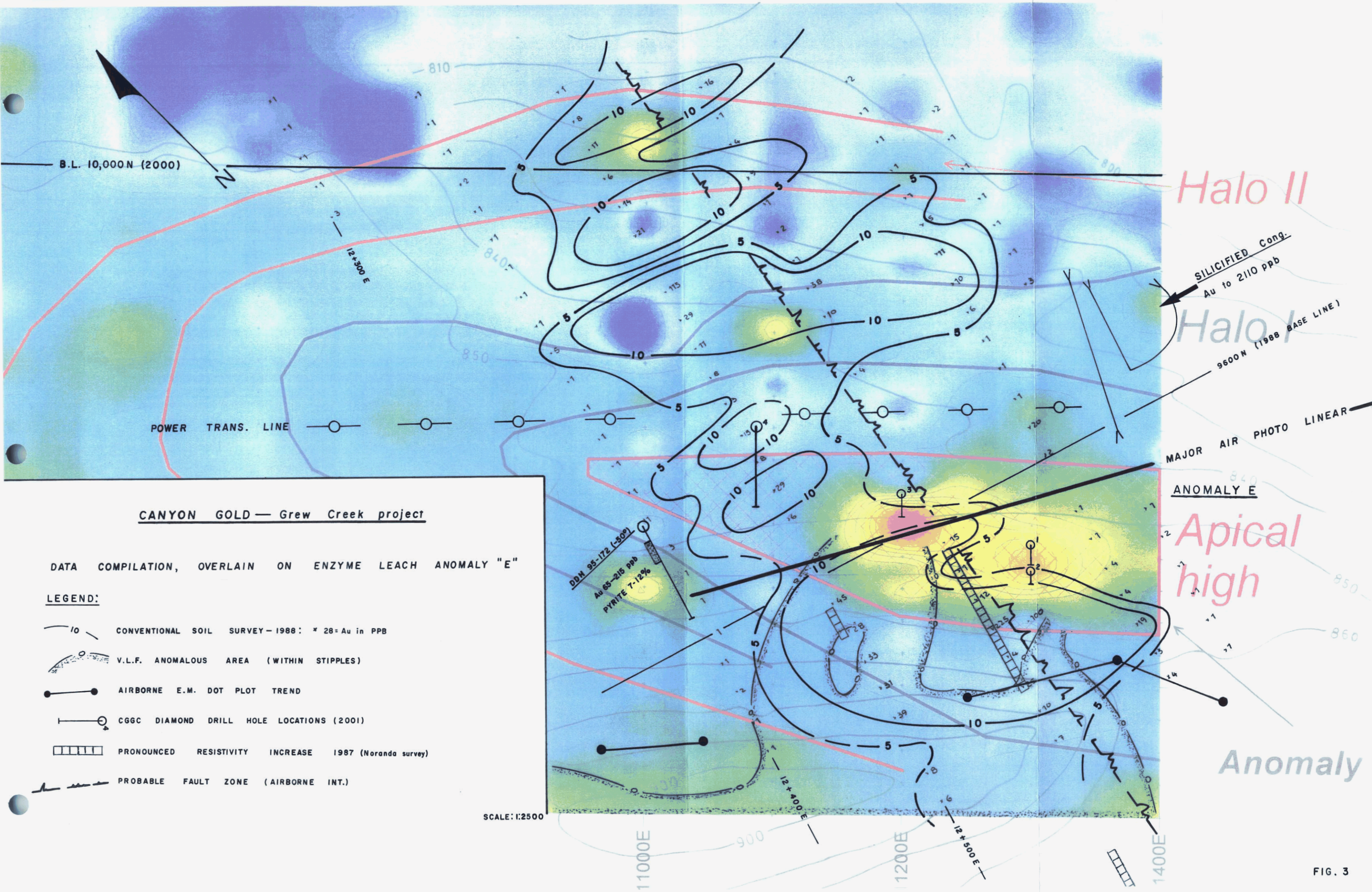
FIG. 2

Carlos Gold — Grew Creek project

Enzyme Leach grid location (2000)

NTS 105 K-2

JAN. 8 - 2001 SCALE: 1 CM. = 82M. approx.



B.L. 10,000 N (2000)

Halo II

Halo I

ANOMALY E

Apical high

Anomaly

CANYON GOLD — Grew Creek project

DATA COMPILATION, overlain on ENZYME LEACH ANOMALY "E"

LEGEND:

- CONVENTIONAL SOIL SURVEY - 1988: * 28= Au in PPB
- V.L.F. ANOMALOUS AREA (WITHIN STIPPLES)
- AIRBORNE E.M. DOT PLOT TREND
- CGGC DIAMOND DRILL HOLE LOCATIONS (2001)
- PRONOUNCED RESISTIVITY INCREASE 1987 (Noranda survey)
- PROBABLE FAULT ZONE (AIRBORNE INT.)

SCALE: 1:2500

FIG. 3

APPENDIX 1

STATEMENT OF QUALIFICATIONS

ALLEN M. CARLOS, PROSPECTOR

I, Allen M. Carlos of Whitehorse, Yukon Territory, hereby certify that:

1. I have been actively engaged as a mineral prospector in Western Canada for 35 years, initially for a major company, then as an independent.
2. I studied 3 years at the University of Saskatchewan:
One year of Engineering followed by 2 years Arts and Science (Geology).
3. I worked one year in northern Saskatchewan as a student assistant for the Department of Mineral Resources.
4. I have for the last 18 years spent much time researching papers regarding Volcanic Hosted Epithermal type deposits.
5. In 1983 I was responsible for discovering the Grew Creek precious metal deposit, the first epithermal deposit of this type along the Tintina Trench in Yukon.
6. I planned and with the aid of my sons, carried out the current program.

Signed,

A handwritten signature in black ink, appearing to read 'Allen M. Carlos', written over a horizontal line.

Allen M. Carlos, PROSPECTOR

January 15, 2002

APPENDIX 2

DIAMOND DRILL HOLE CROSS SECTIONS

2001 DRILL PROGRAM

88 LINE

225 PPB Au Noranda 88

100 PPB Au NORANDA 87

PLAN 11+300E X

9700N- ENZYME LEACH APICAL ANOMALY

9650 N

9692 N

9710 N

11+300E

11+300E

Fluorite veining

CGGC-2 (-50°)

CGGC-1 (-70°)

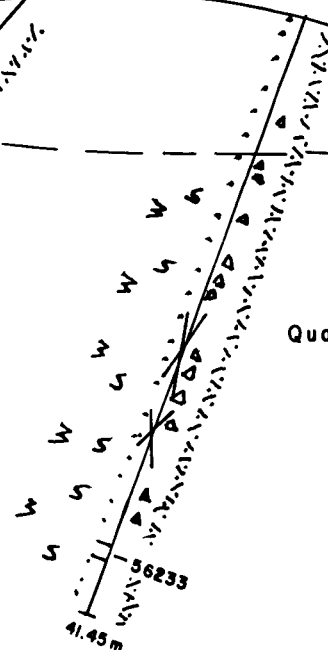
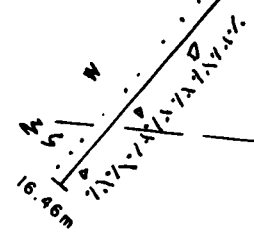
9750 N

OXIDIZED ZONE

Quartz Feldspar Porphyry

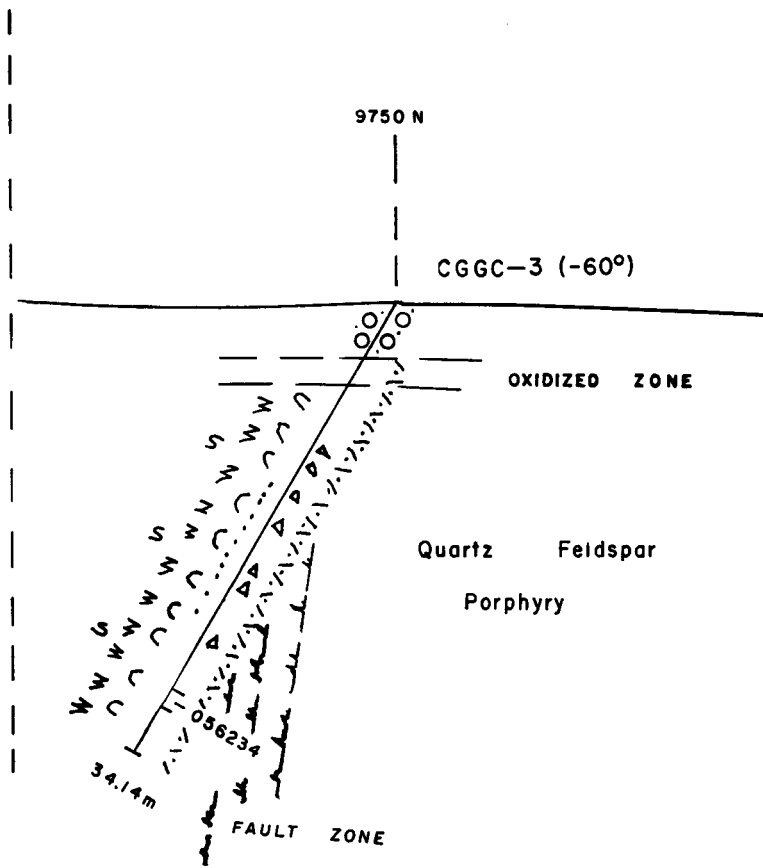
LEGEND:

- ▲ BRECCIA
- ∴ DISSEMINATED PYRITE / LIMONITE
- C CARBONATE ALTERATION
- S SERICITE ALTERATION
- 3 CLAY ALTERATION



D.D.H. 1 and 2 2001	
COLLARS 11+300E	AZIMUTH 225°
LOOKING NW	SCALE: 1:500

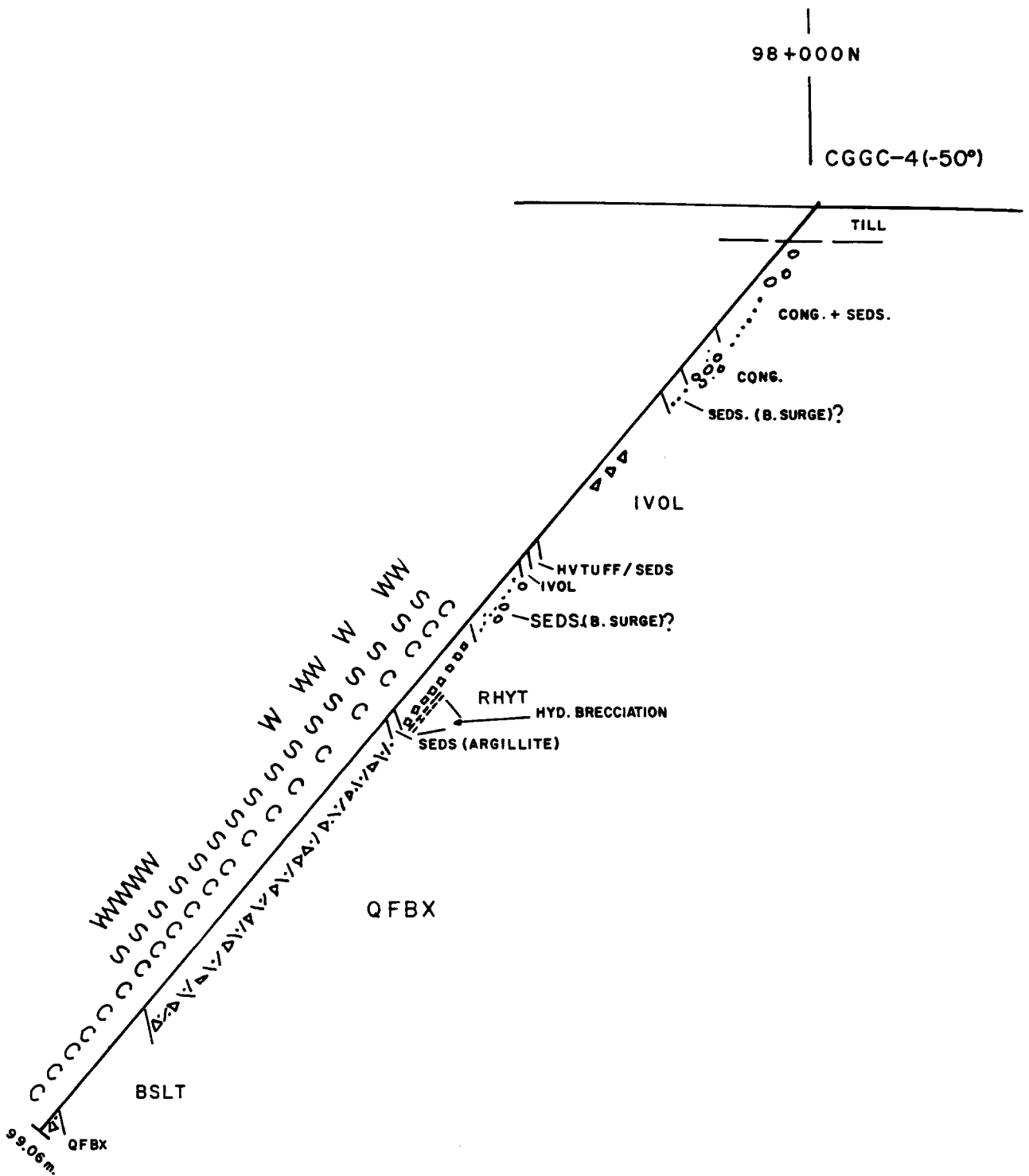
9725 N — ENZYME LEACH APICAL ANOMALY



LEGEND:

- ▲ BRECCIA
- ⋮ DISSEMINATED PYRITE / LIMONITE
- C CARBONATE ALTERATION
- S SERICITE ALTERATION
- 3 CLAY ALTERATION

D.D.H. No. 3 — 2001	
COLLAR 11+200E	AZIMUTH 225°
LOOKING NW	SCALE: 1: 500



LEGEND:

- ▲ BRECCIA
- ∴ DISSEMINATED PYRITE
- C CARBONATE ALTERATION
- S SERICITE ALTERATION
- W CLAY ALTERATION

D.D.H. No. 4 — 2001	
COLLAR 11+085E	AZIMUTH 225°
LOOKING NW	SCALE: 1:500

APPENDIX 3

DIAMOND DRILL HOLE DESCRIPTIVE LOG

GREW CREEK PROJECT
DIAMOND DRILL HOLE LOGS

GEOLOGIC AND ALTERATION LEGEND

PLEISTOCENE

OVBN Overburden: poorly sorted, clay rich glacial till; numerous exotic boulders rounded to sub-angular in clay rich matrix. Or, preglacial gravel; rusty weathered sandy to pebbles of exotic composition recoveries very poor. Or, carbonaceous black organic deposits; locally coal beds at deeper levels.

EOCENE

SEDS Fluvial sedimentary rocks: moderately to poorly consolidated interbedded sandstone, conglomerate, argillite and coal. Light grey to black, moderately to poorly sorted sandstone and polymictic conglomerate with gradational contacts. Conglomerate is clast supported with sandy matrix. Sandstone massive to graded bedding and locally cross bedded. Argillite is fissile black mudstone to coaly deposits. Thin beds within the clastic graded sequence.

TUFF Felsic crystal tuff: otherwise identified as:

RHYT: felsic crystal or ash tuff with variable lithic or lapilli clasts.

S&P TUFF: salt and pepper texture of non-welded rhyolite crystal lithic tuff. Lithic clasts of uniform size ranging from 1-3 mm in crystal matrix.

CLP TUFF: rhyolite crystal lithic or lapilli pumice tuff. Distal facies poorly sorted with minor lapilli clasts predominant lithic clast and crystal tuff matrix. Proximal facies predominantly lapilli rhyolite and pumice fragments with minor dark crystal matrix.

WELDED RHYT: welded CLP tuff. Creamy grey to green pseudo-porphyry with rounded and broken white to grey "phenocryst" of calcite or rhyolite.

RHY **RHYOLITE:** massive fine grained grey rhyolite. Partially brecciated. Other types as follows:

RHYX: rhyolite breccia.

RHYP: rhyolite "quartz eye" porphyry. Smoky grey quartz phenocryst in fine grained creamy to white groundmass.

QPOR: quartz porphyry. As RHYP with larger more prominent quartz phenocryst.

FPOR: feldspar porphyry. Grey euhedral feldspar phenocryst in fine grained grey groundmass.

QFP: quartz feldspar porphyry. Grey quartz eye and feldspar phenocryst in creamy white groundmass.

IVOL INTERMEDIATE VOLCANICS: dark grey green lithic and lapilli tuff and tuff breccia.

AND: fine grained massive andesite flow rocks. Occasionally porphyritic or amygdaloidal.

MVOL MAFIC VOLCANICS: dark green to black locally chloritized mafic tuff and tuff breccia.

BSLT: fine grained massive to porphyritic dark green basalt flow or dyke.

DIABASE DIABASE/MICROGABBRO/DIORITE: equigranular fine to medium grained mafic intrusive rocks. Composed of plagioclase grains and 20-40 % amphibole crystals.

CONG CONGLOMERATE: very resistant, strongly lithified quartz pebble conglomerate. Massive bedded with interbeds of SST - sandstone and ARG - argillite. Conglomerate is clast supported with rounded to sub-angular clasts of quartz, sandstone, siltstone and rare volcanic and metamorphic rocks. Interbeds of coarse sandstone are gradational quartzose beds of medium thickness. Siltstone beds are black carbonaceous.

PALAEOZOIC

CPHY CHLORITIC SHEAR: well foliated heterolithic brecciated shear zone with chlorite rich matrix.

FLT FAULT ZONE: coarse heterolithic breccia in black carbonaceous clay matrix in conglomerate sequence or clay seams in volcanic rocks.

ALTERATION CODES:

- S SILICIFICATION: W - weak, patchy
M - moderate, along vein margins
P - pervasive
- A ARGILLIC: Ac - acid leaching
F - feldspars selectively altered to clay
P - pervasive clay altered
- C CARBONATE W - weak, patchy local calcification
M - moderate calcite of matrix or calcite altered "phenocrysts"
P - pervasive alteration of matrix and calcite "phenocrysts".
S - strong, highly effervescent with HCl.
- Se SERICITE W - weak, patchy green alteration
M - moderate alteration
P - pervasive, bright green smectite alteration
- Py PYRITE
- | | | |
|------------|----|--------------|
| Percentage | Tr | trace |
| | 1 | 1 - 3 % |
| | 2 | 3 - 5 % |
| | 3 | 5 - 10 % |
| | 4 | 10 - 20 % |
| | 5 | 20 - 40 % |
| Type | D | disseminated |
| | S | stringer |
- Qv QUARTZ VEINS Number of veins or stringers.
- T Type or Total Alteration Classification
- | | |
|----|-----------------|
| Ph | phyllic |
| QA | quartz-adularia |
| A | argillic |
| W | clay weathering |
| L | local |
| M | moderate |
| I | intense |
- CR Core recovery in %
- Struct. Int. Fracture intensity of core: degree of broken core from 0 - continuous whole core piece to 10 - no whole core pieces recovered.

GREW CREEK PROJECT

DIAMOND DRILL LOG

Hole No: CGGC - 1	Grid:	Claim:	Page 1 of 4
Depth: 41.45 m.	Coordinates - Northing 9710N	Bearing: 225° Az	Date Started:
Angle: -70°	- Easting: 11+300E	Elevation:	Date Completed:
Core Size: BQ	Dip Tests:	Drilled by: A. CARLOS	Logged By: Robert STROSHEN

Footage		Rock Type	Alteration							Assays					% RCVRY	Description	
From (m)	To (m)		S	A	C	Se	Py	Qv	T	From (m)	To (m)	Width (m)	Sample No.	Au ppb			Ag ppm
0.00	1.22	OVBN															No Recovery.
1.22	11.00	QFP OXIDIZED ZONE															85-90% Quartz feldspar porphyry B. Grey quartz "eye" phenocrysts 1-3mm and pale buff feldspar phenocrysts rectangular to sub-rounded in pale grey green ground mass Lime orange brown weathering. Noticeable on feldspar phenos. fine brown weathering fractures in oxidized zone sub-parallel to acute angle to CA. 8.50m - fractures with pale ORN-BRN fine clay seams @ 30° CA.
11.00	41.45	QFP		WE			W	TR									Qtz-feldspar porphyry. Grey Qtz "eyes" phenocrysts 1-4mm and white to pale buff irregular feldspar phenocrysts in pale grey-green groundmass. Feldspar phenos up to 10%. Smectite on fractures or in scattered irregular patches. Feldspar phenos - moderately argillized TR-1% disc py/limonite grains

Footage		Rock Type	Alteration							Assays					% RCVRY	Description	
From (m)	To (m)		S	A	C	Se	Py	Qv	T	From (m)	To (m)	Width (m)	Sample No.	Au ppb			Ag ppm
				W			W	TR								97%	Qfp - fractured BRX core. Irregular
																8	fractures with white clay. Dominant fractures are sub-parallel to acite
				W			TR	TR								99%	Qfp. solid pcs of core up to 35cm
																6	12.70m clay filled fracture @ 20° CA. other fractures from 30-60° CA.
				W			W	TR								97%	Qfp.
																6	Broken core in fracture zones with white sandy clay and weathering @
																10	14.90 - 15.55m
																10	17.90 - 18.60m
																10	19.90 - 21.05m
				W			TR									100%	Qfp. disc py/limonite
																5	21.25m - fine fracture with disc py strgs @ 32° CA clay filled (fine) fracture @ 10° CA 21.50 22.15-22.25m Broken Core Fractures CA < 40°
				W			W	TR								100%	Fracture zone in Qfp
																8-9	Sub-parallel fractures - 10° CA.

GREW CREEK PROJECT

DIAMOND DRILL LOG

Hole No: CGGC-2	Grid:	Claim:	Page 1 of 2
Depth: 16.46 m	Coordinates - Northing 9692N	Bearing: 225° Az	Date Started:
Angle: -50°	- Easting: 11+300 E	Elevation:	Date Completed:
Core Size: BQ	Dip Tests:	Drilled by: AL CARLOS	Logged By: ROBERT STROSHEN

Footage		Rock Type	Alteration							Assays					% RCVR	Description	
From (m)	To (m)		S	A	C	Se	Py	Qv	T	From (m)	To (m)	Width (m)	Sample No.	Au ppb			Ag ppm
0.00	1.70	DVBN															0% No Recovery.
1.70	11.50	QFP OXIDIZED															97% ORANGE BROWN WEATHERING Qz-feld 7 porphyry. Grey smoky Qz "eye" white to light brown feldspar phenocr in light grey green f.g. groundmass. Qz "eyes" up to 3mm elongate Feldspar - angular to sub-round buff argillized phenos up to 14mm long. Disseminated limonite grains from pyrite. Weathering decreases down hole. 3.80m - 40cm clay and BRx zone. 10° CA on upper contact. 36° CA on lower contact. 8.75-10.00m - BRx zone clay matrix weathered Upper CN 27° CA.

GREW CREEK PROJECT

DIAMOND DRILL LOG

Hole No.: CGGC-3		Grid:		Claim:		Page 1 of 3											
Depth: 34.14 m		Coordinates - Northing 9750N		Bearing: 225° Az		Date Started:											
Angle: -60°		- Easting: 11+200E		Elevation:		Date Completed:											
Core Size: BQ		Dip Tests:		Drilled by: A. CARLOS		Logged By: R. STROSHAIN											
Footage		Rock Type	Alteration							Assays						% RCVRY	Description
From (m)	To (m)		S	A	C	Se	Py	Qv	T	From (m)	To (m)	Width (m)	Sample No.	Au ppb	Ag ppm		
0.00	4.57	OUBN															Overburden no recovery
4.57	6.00	QFP OXIDIZED															99% Quartz-feldspar porphyry 7 surface oxidized zone. Wkly BRX. ORN-BRN weathered
6.00	34.14	QFP															Grey QZ "eye" - buff to light brown. Feldspar phenos crystals in creamy grey green f.g. groundmass Diss Py/lim is rare.
				W	W		TR				6.00	10.85	4.85				100% Smectite along fractures 4-5 Fractures at acute angles 10-15° or 40-50°. Predominantly shallow CA Carbonate alt ⁿ & feldspar phenos
				W	W		TR				10.85	25.00	14.95				98% FAULT ZONE 4-7 10.90m - 11.40m sub-parallel fracture/BX with dark grey clay in fill
																	11.82m - clay filled fracture @ 27° CA
																	12.20m - 12.45m - fracture/BX sub parallel fracture

Footage		Rock Type	Alteration							Assays					% RCVRY	Description	
From (m)	To (m)		S	A	C	Se	Py	Qv	T	From (m)	To (m)	Width (m)	Sample No.	Au ppb			Ag ppm
																	14.65m - clay filled fracture BRX @ 18°
																	15.25m - 2cm clay filled fracture @ 12° CA.
																	15.55-15.75m clay filled BRX upper CN @ 33° CA lower CN @ 30° CA.
																	16.25-16.45m - BRX.
																	18.40-18.65m - BRX lower CN shaly CN with dark green silicified zone @ 18° CN (local)
																	19.10-19.20m - clay in BRX
				W	W		TR	TR			14.60	24.0					19.75m - 2cm seam @ 18° CA hard green fill
																	20.60m - clay seam @ 15° CA
																	21.90-22.30m Fault BRX with dark green matrix and pale green clay irregular CN @ 15° CA.
																	24.25m - med green clay seam @ 18° CA.
																	25.00-25.35m clay rich (weathered) fine BRX.

GREW CREEK PROJECT

DIAMOND DRILL LOG

Hole No.: CGGC-4	Grid: C	Claim:	Page 1 of 14
Depth: 325' - 99.06m.	Coordinates - Northing 9800N	Bearing: 225° Az	Date Started:
Angle: -50°	- Easting: 114085E	Elevation:	Date Completed:
Core Size: SQ	Dip Tests:	Drilled by:	Logged By: Robert Strohsen

Footage		Rock Type	Alteration							Assays					% RCVRY	Description	
From (m)	To (m)		S	A	C	Se	Py	Qv	T	From (m)	To (m)	Width (m)	Sample No.	Au ppb			Ag ppm
0.00	5.64	OVBN															0-2.74m No recovery
											2.75	3.00	0.25	56151			2.74-3.08 Orange Brown clay clay alt frags
																	3.08-5.64m Qfp frags - clay seams Sed frags mudstone arg
5.64	5.85	OVBN															90% Light grey muddy matrix rich fine clay altered frags, coarse - fine argillite frags.
5.85	6.13	SEDS															50% black fine grained mudstone - argillite 10 finely banded Core is intensely broken Possibly large boulder in OVBN.
6.13	8.70	OVBN															70% Glacial till Silty dark grey matrix with 6-7 frags/clasts ranging from mm - 12cm. Poorly consolidated frags - Qfp QPOR SEDS

Footage		Rock Type	Alteration							Assays					% RCVRY	Description	
From (m)	To (m)		S	A	C	Se	Py	Qv	T	From (m)	To (m)	Width (m)	Sample No.	Au ppb			Ag ppm
8.70	11.92	SEDS														85% 4	Moderately well consolidated conglomerate with interbedded micaceous mudstone. Clasts - FOPR, CHERT, ARG, QFP, Gritty dark grey matrix. Micaceous mudstone @ 10.60 - 10.81m. - Ca 55° @ 10.60m 40° @ 10.81m includes coarse frags @ 11.42 - 11.68m Ca 52° @ 11.42m 53° @ 11.55m parting (laminae)
11.92	17.35	CONG SEDS														98% 3	Light grey Qz pebble conglomerate Moderately - well consolidated - Competent matrix. Variably clast or matrix supported. Frags Qz, CHT, ARG, GNEISS, (VOLC) rare. Porphyry, COAL (15.20m)(16.40m) 16.98 - 17.08m - micaceous black mudstone finely laminated Ca @ 64° contacts irregular ≈ Ca 55° 12.37m - 3cm dull brown/grey mud scan 85° CA.

Footage		Rock Type	Alteration							Assays					% RCVR	Description	
From (m)	To (m)		S	A	C	Se	Py	Qv	T	From (m)	To (m)	Width (m)	Sample No.	Au ppb			Ag ppm
17.35	19.55	SEDS														98% 5-6	Dark grey to black fine-silty grained micaceous mudstone with coarse poorly sorted SST and conglomerate interbeds Upper Contact @ 50° CA Lower Contact @ 55° CA Lamina 52° CA @ 18.17m cross bedding @ 18.30m
										19.45	20.05	0.50	56152			100% 7	Coarse frags in grey brown matrix Cong at lower CN ALTIN ZONE AT CONTACT (SAMPLE) ANDESITE Flow - massive dark green with fragmental tuff sections.
19.55	34.40	IVOL														100% 3-4	abundant white Calcite stringers at variable core angles. 21.60m - 15cm @ 50° 25.0 - 29.40m
																95+% 9	strongly fracture - chlorite on fracture surfaces with slickenside fractures generally at very low core angles. sub-parallel to core axes others @ 45°, 35°, 85° At upper contact 10cm band of pale tan bleaching gradual decrease in intensity 23.0 m slickenside at 82° rake on surface 85° CA 24.90 m - slickensides rake at 45° on fracture CA @ 35° 20m - multiple fine calcite inlets ^{50°} 35° CA

Footage		Rock Type	Alteration							Assays					% RCVRY	Description		
From (m)	To (m)		S	A	C	Se	Py	Qv	T	From (m)	To (m)	Width (m)	Sample No.	Au ppb			Ag ppm	
																	28.75m - 10° CA on fracture slickens at 12° ^{rate}	
																	29.75m 20° CA on fracture slickens @ 85°	
																	27.65m 15° CA on fracture slickens @ 10° ^{rate}	
																	28.15m 55° CA on fracture slickens @ 8° ^{rate}	
																	28.72m BNO calcite vnlts @ 50° - 1cm	
															100%		29.40 - 34.40m. ANDESITE fracture intensifi.	
															5		much lower than previous section.	
																	ANDESITE THROUGHOUT has fine irregular block hld(?) grains. Locally porphyritic texture.	
																	33.05-34.40m. ABUNDANT CALCITE VNLTS, strgs. and irregular masses. 5%.	
																	CA @ 10° - 60°	
																	32.90 34.40 1.50 56153	
															100%		work done colored alt'm gone at lower CN	
															8		CN - CA 45° fq. porphyritic texture. Note calcite. Vnlts, irregular masses, broken vnlts frags and wispy stringers	
34.40	35.60	HTUF															100	
																	6.	Heterolithic tuff. Coarse volcanic fragments in XAL MATRIX. Lapilli tuff. Lapilli of QPOR. RHY. SEDS. Lower CN 40° CA.
																		34.40 35.60 1.20 56154
35.60	35.85	SEDS																"COALY" siltstone. Black siltstone frags. Irregular polished shears CN's irregular micaceous

Footage		Rock Type	Alteration							Assays					% RCVRY	Description	
From (m)	To (m)		S	A	C	Se	Py	Qv	T	From (m)	To (m)	Width (m)	Sample No.	Au ppb			Ag ppm
35.35	37.60	IVOL														100% 9	Light grey green intermediate volcanic. Weakly Brecciated Irregular contacts approximately 45°C Black irregular frags carbonaceous argillite lower contact. White calcite masses along brx openings
37.60	44.05	SEDS														100% 6	Poorly bedded dark grey micaceous silty mudstone with conglomeric and rare volcanic tuff breccia interbeds Poorly sorted conglomerate layers: 37.9 - 38.05 m 38.20 - 38.45 m 42.25 - 42.50 m 42.60 - 43.40 m Felsic Volc lithic tuff: 38.55 - 38.90 m upper CN 90°C Black m lower CN 55°C Occasional mud seams. Local irregular deformation
44.05	50.90	RHMT		F	W							44.05	45.55	1.50	56155		Nonwelded crystal lithic tuff Grey Brown upper CN 45°C. Felsic frags with rare coarse QFP clasts Black argillite Pumice frags 45.55 - 46.75 m acid leach zone Fe Carb staining of pumice frags
				Ac								45.55	46.75	1.20	56156		

Footage		Rock Type	Alteration							Assays					% RCVRY	Description		
From (m)	To (m)		S	A	C	Se	Py	Qv	T	From (m)	To (m)	Width (m)	Sample No.	Au ppb			Ag ppm	
																	3 matrix rich zones.	
																	55.65-56.00m.	
																	56.20-56.50m.	
																	56.85-57.00m.	
					TR	TR						57.00	58.50	1.50	56163		100	matrix zones 57.3-57.45m. 20%
																4	57.55-57.80m 5%	
																	57.60m 58.05-58.32m. 35% 3mm white clay seam 75° CA 2mm ^{57.1} 60° CA	
					W	-						58.50	60.00	1.50	56164		100	Breccia
																5	58.15-60.0m 10-15% MATRIX CA 45° 55° BANDS of MATRIX also irregular masses and sub parallel seams	
						TR	W					60.00	61.50	1.50	56165		100	BRECCIAS
					AC											4	60.35-60.65m - 20% matrix irregular white clay seams w/smectite } AC ≈ 65° CA	
																		61.40-61.50m - 10% matrix 2mm BND @ 62
					W	TR	M					61.50	63.00	1.50	56166		100	flow banding textures 62.00-62.70m ^{sub} and 3
																4	BRX	
																		61.65-61.95m 20% matrix
																		62.80-62.90m 35% matrix
																		Clay Band with smectite @ 62.40m. 6cm @ 30°
					W	-	W					63.00	64.50	1.50	56167		100	Near continuous BRX
																4	10-15%	
																		CA 82° matrix BN @ 63.3m WHITE clay seam @ 64.45m. 3mm. 60° CA.

Footage		Rock Type	Alteration							Assays					% RCVRY	Description		
From (m)	To (m)		S	A	C	Se	Py	Qv	T	From (m)	To (m)	Width (m)	Sample No.	Au ppb			Ag ppm	
					W	W-M					64.50	66.00	1.50	56168			100	BRX
																	4	-64.70-65.40m 10-15% matrix
																		64.50-64.70m flow banding textures
																		65.20m - 4cm mass of white Qz in BRX
																		65.75-66.00m pervasive smectite alt with clay rich seams + clast
					W	W/P					66.00	67.50	1.50	56169			100	BRX 66.20-67.00m 4% matrix
																	6	sub parallel BNS 3-4cm
																		irregular discordant BNS
																		67.00-67.50m - Pervasive smectite
					TR	W/M					67.50	69.00	1.50	56170			100	BRX - 67.70-68.20m 10% matrix chaotic
																	3-4	68.60-69.10 60% matrix massive
																		68.30-68.50m - flow band textures
																		67.50-67.85 - Pervasive smectite + carbonate
					-	W					69.00	70.50	1.50	56173			100	BRX 69.40-70.10m 20%
																	5	70.10-70.35m - black massive f.g granular tourmaline BRX in 5% volc frags in black matrix
																		Upper CN - Broken \approx 85°C
																		Lower CN 35°C - 2m m white-greenish clay seam on contact
																		70.35-70.50m BRX 15% matrix
																		69.70m - wispy light grey Qz frag in BRX

Footage		Rock Type	Alteration							Assays					% RCVR	Description	
From (m)	To (m)		S	A	C	Se	Py	Qv	T	From (m)	To (m)	Width (m)	Sample No.	Au ppb			Ag ppm
					TR	W				70.50	72.00	1.50	56174			98%	70.65-70.85m BRX 12% grey matrix
																3-4	71.05-71.65m BRX 12% massive to dendritic "swirly" grey matrix, FG black granular masses (tourmaline) @ 70.75m, 71.28m, 71.60m. 5-ben. 71.63m broken in?
																	71.75-72.00m BRX 65% Grey matrix
					W	TR				72.00	73.50	1.50	56175			99%	72.20-72.40m flow textures?
																5	BRX 72.20-72.25m 10% grey matrix
																	72.70-73.50m BRX 15-20% Matrix
																	intense 73.05-73.50m occasional f.g. black fragments with amorphous Qz bands (cht?)
					TR/W	TR				73.50	75.00	1.50	56176			100%	Intermittent BRX throughout - 5-7% matrix
																3-4	73.75-73.95m - intensely altered "bird's foot" gabbro? with BRX.
																	74.05m - flow textures
																	74.85m - flow textures
																	74.90-75.00m - Breccia Band. CA's 35°
																	Fe Carb and Calcite rounded "phenos"
					W	-	W			75.00	76.50	1.50	56177			100%	BRX - 75.00-76.15m. 7% matrix upper CN at 50°
																3	75.80m - flow texture @ ≈ 37° CA
																	76.00m - 1cm frag of light grey f.g. Qz in Br
																	76.15-76.50m pseudo-banded Qz with smectite altered intervals < 1cm.

Footage		Rock Type	Alteration							Assays					% RCVRV	Description	
From (m)	To (m)		S	A	C	Se	Py	Qv	T	From (m)	To (m)	Width (m)	Sample No.	Au ppb			Ag ppm
			W		-	W				76.50	78.00	1.50	56178			100%	Pseudo-banded Porphyry with green
				Ac												4	Smectite altered layer @ 35° CA
																	76.72m - 3cm ^{gr} Fluorite with light brown
																	very f.g. porcellaneous siliceous bn.
																	CA @ 64°
																	77.20m - 5mm fg grey Qz stringer @ 28° CA
																	77.22m - green fluorite fragment 2 x 5cm
																	in Ac crush/shear zone
																	55° CA on clay seam in zone
																	ends 77.37m
																	77.60m - wispy flow textures @ 35-47° CA
																	77.70m - clay seam on fracture @ 45° CA
																	77.90-78.00m irregular fractures with clay
																	lower CA @ 30°
			TR			W	-			78.00	79.50	1.50	56179			95%	78.00 - 78.30m - Qfp
				Ac												7	78.30 - 79.45m Brown altered "Buds foot"
																	porphyry. Upper CN @ 60° CA
																	lower CN @ 40° CA
																	78.40 - 78.90m - fracture zone with clay
																	on irregular fractures. frags of BRX
																	Qfp and "Buds foot"
																	79.20m 8cm BRX zone 50% matrix
																	79.00m Qfp - BRX 20%

Footage		Rock Type	Alteration							Assays					% RCVRV	Description		
From (m)	To (m)		S	A	C	Se	Py	Qv	T	From (m)	To (m)	Width (m)	Sample No.	Au ppb			Ag ppm	
			TR		W	W					79.50	81.00	1.50	56180			99%	Flow bnd textures throughout w. test
																	5	sub-parallel - 50° CA. Minor local fracture with clay seams irregular
																		72.85 - 80.00m BRX 15% matrix
																		"Birds foot" por frag and Qfp.
																		Upper CN @ 45° CA. Irregular CN's
																		Lower CN @ 40° CA
																		80.15 - 80.75m Variable BRX 10-15% matrix
																		Flow textures sub // to matrix sub // to chl.
																		Heterolithic frags Qfp, pale light gr vble
			TR		W						81.00	82.50	1.50	56181			99%	Variably BRX - 5-7% matrix Heterolithic frags
				Ac													5	81.5 - 82.0m - irregular fractures clay and Ac
					W	TR					82.50	84.00	1.50	56182			99%	BRX variably 75% of section matrix 5-7%
																	5	Heterolithic clasts "Birds foot" por, calcite amygdaloids in vble, pale green act vble, Qfp
																		Coarse flight - med grey f.g. "chest" frags
																		2x2cm at 83.25m
																		Clay or irregular fractures 83.0 - 83.5m
			TR		M	TR					84.00	85.50	1.50	56183			100%	Heterolithic BRX Semi continuous
																	4-5	matrix 12-15%
																		84.10 - 84.60 m - irregular discontinuous fracture with clay

Footage		Rock Type	Alteration							Assays					% RCVRY	Description	
From (m)	To (m)		S	A	C	Se	Py	Qv	T	From (m)	To (m)	Width (m)	Sample No.	Au ppb			Ag ppm
					M.	P.				85.50	86.35	0.85	56184			96%	Heterolithic BRX 85.50 - 85.95m Matrix:
																4	70°C @ 85.95m 85.95m - 86.25m - intense pervasive altered green smectite zone Grey or eyes as remnants. lower contact 86.35m 3cm clay/mud seam. Core ground but remnant suggest 90°C A. -
86.35	97.25	BSLT M/JOL															Medium Green fine grained massive basalt. Altered strongly to dull brown with coarse calcite "amygdaloids" 1m - 10mm occasional fine calcite stringers.
			TR		M					86.35	87.85	1.50	56185			100%	Dun altered BSLT (M/JOL)
																4-5	Coarse calcite "amygdaloids" angular. up to 10% 86.95 - 87.40m BRX siliceous medium grey matrix irregular for 5cm bn @ 87.40m @ irregular cn.
					M					87.85	89.55	1.70m	56186			100%	Dun altered BSLT Coarse Calcite "amygdaloids" 7-10% 88.3 - 88.9m BRX light grey matrix 5%. Blotchy to dendritic distribution.

Footage		Rock Type	Alteration							Assays					% RCVR	Description	
From (m)	To (m)		S	A	C	Se	Py	Qv	T	From (m)	To (m)	Width (m)	Sample No.	Au ppb			Ag ppm
					P					89.55	91.20	1.65	56187			100%	Weakly altered BSLT. Gradational changes with f.g. med. green 2-3% fine white calcite strags or lin bns.
					P					91.20	92.20	1.50	56188			100%	Moderately altered Dun coloured BSLT with calcite "amygdules" increasing down section. 92.0-92.1m BRX BN 10% Matrix
					P					92.70	94.20	1.50	56189			95%	DUN altered BSLT with calcite amygdules and local 1mm Black "irised" eyes siliceous. 93.50m - mud seam 3cm @ 62° CA 93.60m - 6cm BRX BN. 25% Dark grey matrix with light brown porcellaneous mass containing white calcite swirles. BNS. 93.50-94.20m Clay rich fractures subll with calcite
					P					94.20	95.70	1.50	56190			95%	Dun altered BSLT with calcite amygd 94.20-95.10m Broken linear fracture zones with calcite mud and brown porcellaneous fracs. 94.80m - grey siliceous amorphous mass 0.5-2cm grey matrix

APPENDIX 4

ANALYTICAL RESULTS

CGGC - 1: 056233
CGGC - 3: 056234
CGGC - 4: 056151-056192



ALS Chemex

Aurora Laboratory Services Ltd.
 Analytical Chemists • Geochemists • Registered Assayers
 212 Brooksbank Ave., North Vancouver
 British Columbia, Canada V7J 2C1
 PHONE: 604-984-0221 FAX: 604-984-0218

To: CARLOS, ALLEN
 275 ALSEK RD.
 WHITEHORSE, YT
 Y1A 4T1

A0128210

Comments: ATTN: ALLEN CARLOS

CERTIFICATE

A0128210

(TFI) - CARLOS, ALLEN

Project: CANYON GOLD
 P.O.#:

Samples submitted to our lab in Vancouver, BC.
 This report was printed on 16-NOV-2001.

SAMPLE PREPARATION

METHOD CODE	NUMBER SAMPLES	DESCRIPTION
3290	84	Ring 2000 g to approx -150 mesh
STO-21	84	Reject Storage-First 90 Days
LOG-22	84	Samples received without barcode
CRU-31	84	Crush to 70% minus 2mm
SPL-21	84	Splitting Charge

* NOTE 1:

The 32 element ICP package is suitable for trace metals in soil and rock samples. Elements for which the nitric-aqua regia digestion is possibly incomplete are: Al, Ba, Be, Ca, Cr, Ga, K, La, Mg, Na, Sr, Ti, Tl, W.

ANALYTICAL PROCEDURES 1 of 2

METHOD CODE	NUMBER SAMPLES	DESCRIPTION	METHOD	DETECTION LIMIT	UPPER LIMIT
WEI-21	84	Weight of received sample	BALANCE	0.01	1000.0
Au-AA24	84	Au ppb: Fuse 50 g sample	FA-AAS	5	10000
Ag-MS41	84	Ag ppm: ICP + ICP-MS package	ICP-MS/ICP	0.01	100.0
Al-MS41	84	Al %: ICP + ICP-MS package	ICP	0.01	15.00
As-MS41	84	As ppm: ICP + ICP-MS package	ICP-MS/ICP	0.1	10000
B-MS41	84	B ppm: ICP + ICP-MS package	ICP	10	10000
Ba-MS41	84	Ba ppm: ICP + ICP-MS package	ICP-MS/ICP	0.2	10000
Be-MS41	84	Be ppm: ICP + ICP-MS package	ICP	0.05	100.0
Bi-MS41	84	Bi ppm: ICP + ICP-MS package	ICP-MS/ICP	0.01	10000
Ca-MS41	84	Ca %: ICP + ICP-MS package	ICP	0.01	15.00
Cd-MS41	84	Cd ppm: ICP + ICP-MS package	ICP-MS/ICP	0.01	500
Ce-MS41	84	Ce ppm: ICP + ICP-MS package	ICP-MS	0.02	500
Co-MS41	84	Co ppm: ICP + ICP-MS package	ICP-MS/ICP	0.1	10000
Cr-MS41	84	Cr ppm: ICP + ICP-MS package	ICP	1	10000
Cs-MS41	84	Cs ppm: ICP + ICP-MS package	ICP-MS	0.05	500
Cu-MS41	84	Cu ppm: ICP + ICP-MS package	ICP-MS/ICP	0.2	10000
Fe-MS41	84	Fe %: ICP + ICP-MS package	ICP	0.01	15.00
Ga-MS41	84	Ga ppm: ICP + ICP-MS package	ICP-MS/ICP	0.05	10000
Ge-MS41	84	Ge ppm: ICP + ICP-MS package	ICP-MS	0.05	500.0
Hf-MS41	84	Hf ppm: ICP + ICP-MS package	ICP-MS	0.02	500.0
Hg-MS41	84	Hg ppm: ICP + ICP-MS package	ICP-MS/ICP	0.01	10000
In-MS41	84	In ppm: ICP + ICP-MS package	ICP-MS	0.005	500.00
K-MS41	84	K %: ICP + ICP-MS package	ICP	0.01	10.00
La-MS41	84	La ppm: ICP + ICP-MS package	ICP-MS/ICP	0.2	10000
Li-MS41	84	Li ppm: ICP + ICP-MS package	ICP-MS	0.1	500
Mg-MS41	84	Mg %: ICP + ICP-MS package	ICP	0.01	15.00
Mn-MS41	84	Mn ppm: ICP + ICP-MS package	ICP	5	10000
Mo-MS41	84	Mo ppm: ICP + ICP-MS package	ICP-MS/ICP	0.05	10000
Na-MS41	84	Na %: ICP + ICP-MS package	ICP	0.01	10.00
Nb-MS41	84	Nb ppm: ICP + ICP-MS package	ICP-MS	0.05	500.0
Ni-MS41	84	Ni ppm: ICP + ICP-MS package	ICP-MS/ICP	0.2	10000
P-MS41	84	P ppm: ICP + ICP-MS package	ICP	10	10000
Pb-MS41	84	Pb ppm: ICP + ICP-MS package	ICP-MS/ICP	0.2	10000
Rb-MS41	84	Rb ppm: ICP + ICP-MS package	ICP-MS	0.1	500
Re-MS41	84	Re ppm: ICP + ICP-MS package	ICP-MS	0.001	50.0



ALS Chemex

Aurora Laboratory Services Ltd.
 Analytical Chemists * Geochemists * Registered Assayers
 212 Brooksbank Ave., North Vancouver
 British Columbia, Canada V7J 2C1
 PHONE: 604-984-0221 FAX: 604-984-0218

To: CARLOS, ALLEN

275 ALSEK RD.
 WHITEHORSE, YT
 Y1A 4T1

A0128210

Comments: ATTN: ALLEN CARLOS

CERTIFICATE

A0128210

(TFI) - CARLOS, ALLEN

Project: CANYON GOLD
 P.O. #:

Samples submitted to our lab in Vancouver, BC.
 This report was printed on 16-NOV-2001.

SAMPLE PREPARATION

METHOD CODE	NUMBER SAMPLES	DESCRIPTION
3290	84	Ring 2000 g to approx -150 mesh
STO-21	84	Reject Storage-First 90 Days
LOG-22	84	Samples received without barcode
CRU-31	84	Crush to 70% minus 2mm
SPL-21	84	Splitting Charge

* NOTE 1:

The 32 element ICP package is suitable for trace metals in soil and rock samples. Elements for which the nitric-aqua regia digestion is possibly incomplete are: Al, Ba, Be, Ca, Cr, Ga, K, La, Mg, Na, Sr, Ti, Tl, W.

ANALYTICAL PROCEDURES 2 of 2

METHOD CODE	NUMBER SAMPLES	DESCRIPTION	METHOD	DETECTION LIMIT	UPPER LIMIT
S-MS41	84	S %: ICP + ICP-MS package	ICP	0.01	10.00
Sb-MS41	84	Sb ppm: ICP + ICP-MS package	ICP-MS/ICP	0.05	10000
Sc-MS41	84	Sc ppm: ICP + ICP-MS package	ICP-MS/ICP	0.1	10000
Se-MS41	84	Se ppm: ICP + ICP-MS package	ICP-MS	0.2	1000
Sn-MS41	84	Sn ppm: ICP + ICP-MS package	ICP-MS	0.2	500
Sr-MS41	84	Sr ppm: ICP + ICP-MS package	ICP-MS/ICP	0.2	10000
Ta-MS41	84	Ta ppm: ICP + ICP-MS package	ICP-MS	0.01	500.0
Te-MS41	84	Te ppm: ICP + ICP-MS package	ICP-MS	0.01	500
Th-MS41	84	Th ppm: ICP + ICP-MS package	ICP-MS	0.2	500
Ti-MS41	84	Ti %: ICP + ICP-MS package	ICP	0.01	10.00
Tl-MS41	84	Tl ppm: ICP + ICP-MS package	ICP-MS/ICP	0.02	10000
U-MS41	84	U ppm: ICP + ICP-MS package	ICP-MS/ICP	0.05	10000
V-MS41	84	V ppm: ICP + ICP-MS package	ICP	1	10000
W-MS41	84	W ppm: ICP + ICP-MS package	ICP-MS/ICP	0.05	10000
Y-MS41	84	Y ppm: ICP + ICP-MS package	ICP-MS	0.05	500.0
Zn-MS41	84	Zn ppm: ICP + ICP-MS package	ICP	2	10000
Zr-MS41	84	Zr ppm: ICP + ICP-MS package	ICP-MS	0.5	500



ALS Chemex

Aurora Laboratory Services Ltd.
 Analytical Chemists * Geochemists * Registered Assayers
 212 Brooksbank Ave., North Vancouver
 British Columbia, Canada V7J 2C1
 PHONE: 604-984-0221 FAX: 604-984-0218

To: CARLOS, ALLEN

275 ALSEK RD.
 WHITEHORSE, YT
 Y1A 4T1

Project: CANYON GOLD
 Comments:

Page Number :1-A
 Total Pages :3
 Certificate Date: 16-NOV-2001
 Invoice No. : 10128210
 P.O. Number :
 Account : TFI

CERTIFICATE OF ANALYSIS A0128210

SAMPLE	PREP CODE	Weight Au ppb Kg FA+AA	Ag ppm	Al %	As ppm	B ppm	Ba ppm	Be ppm	Bi ppm	Ca %	Cd ppm	Ce ppm	Co ppm	Cr ppm	Cs ppm	Cu ppm	Fe %	Ga ppm	Ge ppm
056151	82909402	1.04 < 5	0.58	1.73	9.5	< 10	488.2	1.40	0.09	1.95	0.27	33.4	25.8	32	1.70	25.4	5.02	4.40	0.05
056152	82909402	0.54 < 5	0.54	2.57	1.2	< 10	528.5	1.25	0.04	2.07	0.19	54.8	23.2	75	2.20	29.4	5.44	7.60	0.05
056153	82909402	2.02 < 5	0.40	2.70	1.6	< 10	349.2	1.05	0.01	5.04	0.13	62.1	30.7	93	12.35	33.0	6.14	8.15	0.10
056154	82909402	1.54 < 5	0.30	1.34	5.3	< 10	237.4	1.05	0.10	2.58	0.27	27.2	18.5	34	2.10	23.4	4.65	4.35	< 0.05
056155	82909402	1.84 < 5	0.31	0.44	2.4	< 10	160.2	1.30	0.20	1.69	0.21	75.3	6.3	9	1.80	13.6	2.74	1.70	0.05
056156	82909402	1.48 < 5	0.32	0.60	9.4	< 10	184.2	2.20	0.15	3.27	0.20	68.3	13.4	12	2.00	25.4	3.81	2.15	0.05
056157	82909402	1.44 < 5	0.30	0.49	1.3	< 10	166.4	1.25	0.27	0.84	0.24	89.1	4.2	8	1.35	7.0	2.52	2.15	0.05
056158	82909402	1.52 < 5	0.24	0.45	0.9	< 10	156.4	1.25	0.26	1.33	0.25	88.2	3.9	7	1.25	6.0	2.56	2.05	0.05
056159	82909402	1.84 < 5	0.20	0.44	1.0	< 10	150.2	1.15	0.25	1.03	0.25	81.2	4.1	8	1.35	6.0	2.59	1.90	0.05
056160	82909402	2.10 < 5	0.24	0.64	1.3	< 10	164.4	1.60	0.10	3.82	0.15	63.6	18.0	24	3.30	48.4	4.91	2.00	0.05
056161	82909402	0.96 < 5	0.26	0.76	10.6	< 10	112.6	2.60	0.28	2.13	0.22	68.4	9.2	12	2.95	23.8	3.43	2.40	0.05
056162	82909402	1.92 < 5	0.58	0.52	4.2	< 10	80.8	2.25	0.23	1.12	0.22	113.5	5.5	4	2.00	17.2	2.26	2.15	0.10
056163	82909402	2.10 < 5	0.45	0.52	12.0	< 10	106.6	3.05	0.25	1.94	0.17	102.0	15.3	12	2.95	17.0	4.56	2.30	0.10
056164	82909402	1.96 < 5	0.46	0.55	16.6	< 10	101.4	2.95	0.26	2.00	0.16	93.1	12.2	14	3.00	16.6	3.62	2.35	0.05
056165	82909402	1.78 < 5	0.42	0.43	3.3	< 10	74.6	1.80	0.34	1.01	0.25	136.5	2.8	2	1.60	10.0	1.84	2.05	0.10
056166	82909402	1.86 10	0.34	0.51	11.4	< 10	73.8	1.90	0.30	1.36	0.25	160.5	3.1	4	1.70	9.8	2.11	2.70	0.15
056167	82909402	1.76 < 5	0.30	0.42	4.8	< 10	70.6	2.10	0.22	1.45	0.17	113.5	6.3	9	1.80	10.0	2.59	2.05	0.10
056168	82909402	1.90 < 5	0.27	0.46	7.8	< 10	77.4	2.70	0.25	1.68	0.23	124.0	6.6	8	2.05	14.0	2.61	2.30	0.10
056169	82909402	1.66 < 5	0.29	0.46	2.2	< 10	71.2	2.60	0.29	1.36	0.26	154.0	1.5	1	2.20	19.6	1.49	2.25	0.15
056170	82909402	1.72 < 5	0.28	0.63	11.2	< 10	169.0	2.35	0.15	3.29	0.19	64.2	15.6	13	2.30	27.8	3.82	2.50	0.05
056171	82909402	1.60 5	0.76	0.56	18.5	< 10	157.4	3.10	0.23	2.96	0.21	50.2	18.8	26	4.15	50.8	4.78	1.75	0.05
056172	82909402	1.06 < 5	0.56	0.55	7.1	< 10	110.0	2.25	0.46	0.37	0.09	20.7	9.0	9	2.65	6.0	2.42	1.90	< 0.05
056173	82909402	1.72 < 5	0.46	0.41	3.5	< 10	67.2	2.55	0.26	1.57	0.23	112.0	6.7	6	2.30	13.0	2.89	2.05	0.10
056174	82909402	1.54 < 5	0.39	0.32	1.6	< 10	52.0	1.60	0.50	1.07	0.11	114.5	4.6	4	1.60	10.0	2.21	1.70	0.10
056175	82909402	1.80 < 5	0.35	0.33	3.2	< 10	61.2	1.85	0.38	1.30	0.22	112.5	6.2	10	2.10	7.6	2.72	1.85	0.10
056176	82909402	1.76 < 5	0.32	0.41	10.8	< 10	79.6	2.80	0.30	2.35	0.16	105.0	12.5	11	3.50	10.6	3.67	2.00	0.10
056177	82909402	1.62 < 5	0.44	1.28	6.2	< 10	75.4	2.30	0.46	1.24	0.16	93.9	1.6	3	2.55	8.6	1.35	6.25	0.10
056178	82909402	1.48 < 5	0.27	0.41	4.5	< 10	61.2	1.65	0.49	1.08	0.23	130.0	4.0	5	1.70	6.4	2.11	2.20	0.10
056179	82909402	1.74 < 5	0.26	0.50	15.7	< 10	92.6	3.95	0.15	3.26	0.27	76.9	23.5	39	3.75	26.6	5.23	2.10	0.05
056180	82909402	1.80 < 5	0.21	0.36	4.8	< 10	69.6	1.95	0.23	1.30	0.25	118.0	6.7	8	2.45	16.2	2.77	1.95	0.10
056181	82909402	1.76 < 5	0.25	0.42	9.1	< 10	86.2	2.95	0.19	1.95	0.14	101.0	15.3	22	3.75	20.8	4.11	2.15	0.15
056182	82909402	1.92 < 5	0.29	0.45	9.6	< 10	108.8	3.30	0.15	3.09	0.18	90.4	15.5	26	3.85	18.4	4.56	1.85	0.10
056183	82909402	1.96 < 5	0.59	0.42	5.9	< 10	91.4	3.70	0.13	3.00	0.12	89.3	16.7	29	3.60	17.2	4.22	1.95	0.05
056184	82909402	1.08 < 5	0.47	0.50	3.7	< 10	110.0	5.20	0.23	3.34	0.11	113.5	12.1	13	3.30	48.0	3.86	2.00	0.10
056185	82909402	2.10 < 5	0.34	0.54	5.6	< 10	137.6	4.75	0.03	5.19	0.12	48.3	34.9	25	4.30	33.8	6.74	1.80	0.05
056186	82909402	2.30 < 5	0.32	0.49	5.3	< 10	115.4	4.25	0.04	5.46	0.12	48.3	37.6	27	3.30	28.6	7.40	1.80	0.05
056187	82909402	1.80 < 5	0.26	1.08	0.1	< 10	266.4	4.05 < 0.01	5.60	0.09	52.6	39.4	23	9.30	25.6	7.73	3.25	0.10	
056188	82909402	1.88 < 5	0.25	0.56	4.5	< 10	130.0	4.10	0.01	4.56	0.11	51.2	37.8	28	4.05	33.6	7.56	2.00	0.10
056189	82909402	2.06 10	0.29	0.51	10.5	< 10	129.4	3.65	0.03	6.14	0.18	43.8	36.1	27	3.25	40.8	7.86	1.70	0.05
056190	82909402	1.96 < 5	0.34	0.60	9.5	< 10	141.6	3.80	0.08	4.93	0.17	45.9	33.2	36	4.00	45.8	7.12	1.85	0.05

CERTIFICATION:



ALS Chemex

Aurora Laboratory Services Ltd.
 Analytical Chemists * Geochemists * Registered Assayers
 212 Brooksbank Ave., North Vancouver
 British Columbia, Canada V7J 2C1
 PHONE: 604-984-0221 FAX: 604-984-0218

To: CARLOS, ALLEN **

275 ALSEK RD.
 WHITEHORSE, YT
 Y1A 4T1

Project: CANYON GOLD
 Comments:

Page Number :2-A
 Total Pages :3
 Certificate Date: 16-NOV-2001
 Invoice No. : I0128210
 P.O. Number :
 Account : TFI

CERTIFICATE OF ANALYSIS A0128210

SAMPLE	PREP CODE	Weight Kg	Au ppb FA+AA	Ag ppm	Al %	As ppm	B ppm	Ba ppm	Be ppm	Bi ppm	Ca %	Cd ppm	Ce ppm	Co ppm	Cr ppm	Cs ppm	Cu ppm	Fe %	Ga ppm	Ge ppm
056191	32909402	2.06	< 5	0.67	0.48	9.7	< 10	135.4	4.15	0.06	5.42	0.16	43.6	33.5	34	3.95	32.4	6.54	1.55	0.05
056192	32909402	2.24	< 5	0.79	0.36	6.0	< 10	77.8	2.85	0.44	3.21	0.20	90.9	6.5	7	2.25	19.8	2.49	1.60	0.05
056193	32909402	1.60	< 5	0.68	2.78	14.1	< 10	530.7	1.45	0.25	1.83	0.46	48.0	18.5	45	2.05	70.1	3.93	8.10	0.05
056194	32909402	1.82	< 5	0.59	2.39	10.7	< 10	497.6	0.85	0.22	3.04	0.42	35.6	19.4	44	1.20	103.0	3.75	6.40	0.05
056195	32909402	1.56	< 5	0.45	2.49	13.1	< 10	793.6	1.05	0.21	2.38	0.36	45.7	17.5	46	1.50	58.2	3.74	6.75	0.05
056196	32909402	1.44	< 5	0.44	2.74	15.8	< 10	631.7	1.40	0.22	2.06	0.42	51.4	19.1	49	1.65	60.4	4.09	7.65	0.05
056197	32909402	1.74	< 5	0.34	1.92	12.2	< 10	587.5	1.15	0.19	2.28	0.32	39.5	15.5	34	1.50	56.7	3.43	5.40	0.05
056198	32909402	1.74	< 5	0.34	2.57	12.0	< 10	526.3	1.65	0.21	1.91	0.42	45.7	19.7	66	1.70	52.3	4.13	7.15	0.05
056199	32909402	0.84	5	0.39	1.25	9.1	< 10	481.6	1.35	0.25	0.64	0.43	30.2	15.7	23	2.00	62.2	3.49	3.30	< 0.05
056200	32909402	1.80	< 5	0.38	0.72	9.3	< 10	356.6	0.95	0.19	0.30	0.34	30.4	7.1	13	2.05	66.8	3.11	1.90	< 0.05
056201	32909402	1.74	< 5	0.36	0.35	5.2	< 10	207.6	0.45	0.08	0.55	0.12	12.95	4.9	7	0.85	65.9	1.91	0.90	< 0.05
056202	32909402	1.90	< 5	0.39	0.39	8.9	< 10	247.4	0.65	0.13	0.88	0.18	18.55	6.4	9	1.10	76.0	2.73	1.00	< 0.05
056203	32909402	1.82	< 5	0.50	0.37	6.9	< 10	225.8	0.55	0.10	0.51	0.15	13.40	7.6	7	0.80	98.1	1.99	0.95	< 0.05
056204	32909402	1.70	< 5	0.85	0.55	6.8	< 10	314.4	0.90	0.15	0.89	0.22	25.6	11.3	9	1.30	51.3	2.52	1.50	< 0.05
056205	32909402	1.78	< 5	0.88	0.96	5.7	< 10	292.8	0.90	0.13	0.86	0.22	23.6	9.4	14	1.15	52.6	3.14	2.75	< 0.05
056206	32909402	1.68	< 5	0.67	0.49	9.4	< 10	282.0	0.85	0.13	0.44	0.17	19.00	7.9	9	1.25	96.3	2.39	1.30	< 0.05
056207	32909402	1.70	< 5	0.62	1.36	13.2	< 10	445.6	1.75	0.27	0.37	0.52	27.2	16.4	25	2.30	53.4	3.60	3.85	0.05
056208	32909402	1.64	< 5	0.55	1.22	14.7	< 10	457.2	1.30	0.22	0.62	0.34	21.4	11.9	23	1.80	60.1	2.84	3.45	< 0.05
056209	32909402	1.66	< 5	0.41	1.30	6.4	< 10	353.2	1.20	0.20	0.67	0.30	24.5	8.7	19	1.90	28.4	2.56	3.75	< 0.05
056210	32909402	1.68	< 5	0.30	0.58	8.0	< 10	146.6	0.30	0.05	1.68	0.07	9.20	3.6	10	0.45	29.8	1.41	1.50	< 0.05
056211	32909402	1.54	< 5	0.83	1.51	10.2	< 10	466.0	1.20	0.21	0.48	0.30	18.85	9.5	22	1.60	26.6	2.93	4.35	< 0.05
056212	32909402	1.68	< 5	0.59	1.71	6.8	< 10	420.0	1.15	0.19	0.77	0.32	22.6	10.7	23	1.55	25.6	3.55	5.20	0.05
056213	32909402	1.80	< 5	0.55	1.83	6.3	< 10	300.0	1.20	0.21	0.58	0.36	23.0	11.8	27	1.65	31.6	3.60	5.25	< 0.05
056214	32909402	1.76	< 5	0.48	1.62	10.1	< 10	484.6	1.15	0.20	0.30	0.29	26.5	10.0	26	1.35	26.8	3.15	4.70	< 0.05
056215	32909402	1.94	< 5	0.27	1.53	7.3	< 10	396.8	1.20	0.24	0.54	0.41	27.9	12.6	24	1.70	27.2	3.10	4.30	0.05
056216	32909402	1.88	< 5	0.41	1.50	7.8	< 10	340.0	1.40	0.25	1.16	0.39	29.6	16.3	27	1.90	30.2	2.82	4.25	< 0.05
056217	32909402	1.70	< 5	0.40	0.96	7.3	< 10	330.0	1.15	0.19	0.39	0.27	23.5	10.7	17	1.65	34.8	2.44	2.65	< 0.05
056218	32909402	1.92	< 5	0.38	1.44	8.2	< 10	470.0	1.10	0.20	0.30	0.31	27.8	11.9	21	1.45	27.8	2.97	4.15	< 0.05
056219	32909402	2.06	< 5	0.38	1.16	7.1	< 10	394.6	0.85	0.15	0.52	0.21	24.4	7.4	18	1.00	25.8	2.46	3.45	< 0.05
056220	32909402	1.74	< 5	0.29	0.48	10.4	< 10	254.0	0.35	0.08	0.61	0.08	12.95	3.5	9	0.40	13.4	1.07	1.25	< 0.05
056221	32909402	1.94	< 5	0.39	1.34	5.9	< 10	310.0	1.50	0.23	0.51	0.39	26.8	13.4	22	1.55	42.0	3.11	4.00	< 0.05
056222	32909402	1.96	< 5	0.35	1.47	9.2	< 10	412.2	1.10	0.17	0.53	0.32	22.9	14.7	25	1.20	33.2	3.23	4.65	< 0.05
056223	32909402	1.44	< 5	0.25	0.64	8.1	< 10	256.4	0.50	0.08	0.44	0.10	8.86	3.9	12	0.65	24.0	1.51	1.85	< 0.05
056224	32909402	1.94	< 5	0.23	1.20	6.0	< 10	293.2	0.85	0.16	0.38	0.55	18.10	5.4	19	1.30	22.4	2.63	3.35	< 0.05
056225	32909402	1.98	10	0.34	1.63	3.5	< 10	370.0	1.65	0.26	0.25	0.44	32.8	13.5	24	1.70	38.4	3.08	4.75	< 0.05
056226	32909402	1.86	< 5	0.71	1.54	6.0	< 10	357.2	1.55	0.20	0.57	0.36	30.1	13.4	23	1.20	41.0	3.46	4.50	< 0.05
056227	32909402	1.82	< 5	0.53	1.51	9.1	< 10	290.6	1.20	0.20	0.61	0.25	23.8	13.0	21	1.40	30.2	3.47	4.45	0.05
056228	32909402	1.82	< 5	0.49	1.37	7.7	< 10	367.4	1.45	0.23	0.41	0.44	32.9	16.1	22	1.40	39.2	2.80	3.95	< 0.05
056229	32909402	1.68	< 5	0.55	1.72	8.5	< 10	449.2	1.55	0.24	0.44	0.36	28.6	11.9	23	1.55	33.0	3.41	4.95	0.05
056230	32909402	2.06	< 5	0.46	1.01	9.1	< 10	290.4	1.20	0.19	0.71	0.32	28.1	7.5	25	1.35	38.0	3.41	3.05	< 0.05

CERTIFICATION:



ALS Chemex

Aurora Laboratory Services Ltd.
 Analytical Chemists * Geochemists * Registered Assayers
 212 Brooksbank Ave., North Vancouver
 British Columbia, Canada V7J 2C1
 PHONE: 604-984-0221 FAX: 604-984-0218

To: CARLOS, ALLEN **
 275 ALSEK RD.
 WHITEHORSE, YT
 Y1A 4T1

Page Number :3-A
 Total Pages :3
 Certificate Date: 16-NOV-2001
 Invoice No. :I0128210
 P.O. Number :
 Account :TFI

Project : CANYON GOLD
 Comments:

CERTIFICATE OF ANALYSIS A0128210

SAMPLE	PREP CODE	Weight		Ag	Al	As	B	Ba	Be	Bi	Ca	Cd	Ce	Co	Cr	Cs	Cu	Fe	Ga	Ge
		Kg	FA+AA	ppm	%	ppm	ppm	ppm	ppm	ppm	ppm	%	ppm	ppm	ppm	ppm	ppm	ppm	%	ppm
056231	82909402	2.04	< 5	0.62	0.30	25.5	< 10	162.6	0.45	0.08	0.72	0.14	15.70	4.8	9	0.65	61.8	1.17	0.80	< 0.05
056232	82909402	2.58	10	0.86	0.31	9.0	< 10	166.0	0.55	0.08	0.58	0.12	18.30	4.7	9	0.60	46.6	2.51	0.90	< 0.05
056233	82909402	1.34	15	0.41	0.25	27.7	< 10	34.4	1.35	0.12	0.74	0.15	147.5	0.7	3	2.65	3.6	1.65	1.40	0.10
056234	82909402	1.64	< 5	0.52	0.34	1.8	< 10	49.6	2.00	0.04	0.35	0.23	143.0	0.7	3	2.75	3.4	1.82	1.60	0.05

CERTIFICATION: _____



ALS Chemex

Aurora Laboratory Services Ltd.
 Analytical Chemists * Geochemists * Registered Assayers
 212 Brooksbank Ave., North Vancouver
 British Columbia, Canada V7J 2C1
 PHONE: 604-984-0221 FAX: 604-984-0218

To: CARLOS, ALLEN

275 ALSEK RD.
 WHITEHORSE, YT
 Y1A 4T1

Project: CANYON GOLD
 Comments:

Page Number :1-B
 Total Pages :3
 Certificate Date: 16-NOV-2001
 Invoice No. :I0128210
 P.O. Number :
 Account :TFI

CERTIFICATE OF ANALYSIS A0128210

SAMPLE	PREP CODE	Hf ppm	Hg ppm	In ppm	K %	La ppm	Li ppm	Mg %	Mn ppm	Mo ppm	Na %	Nb ppm	Ni ppm	P ppm	Pb ppm	Rb ppm	Re ppm	S %	Sb ppm	Sc ppm	
056151	82909402	0.10	0.15	0.055	0.50	15.0	6.7	1.24	865	2.80	0.08	0.10	53.3	1660	11.6	18.0<	0.001	0.02	0.40	10.8	
056152	82909402	0.06	0.11	0.055	0.52	27.4	11.8	2.13	985	1.55	0.41	0.15	55.1	2120	7.4	23.8<	0.001	0.01	0.25	16.2	
056153	82909402	0.10	0.06	0.060	0.17	31.0	19.1	2.65	1255	2.10	0.77	0.25	62.9	2690	2.8	9.7<	0.001	0.01	0.25	17.7	
056154	82909402	0.10	0.16	0.060	0.25	12.4	14.1	2.03	910	6.90	0.23	0.05	46.4	1310	12.2	14.6<	0.001	0.10	0.35	12.0	
056155	82909402	0.14	0.09	0.075	0.23	37.8	5.9	0.56	570	2.05	0.20	<	0.05	9.2	460	22.2	11.9<	0.001	0.01	0.30	6.0
056156	82909402	0.14	0.05	0.075	0.27	35.0	7.1	1.13	795	1.45	0.24	0.05	14.2	1310	21.2	15.2<	0.001	0.01	0.35	9.9	
056157	82909402	0.16	0.03	0.100	0.31	42.2	2.7	0.31	545	3.95	0.19	0.05	5.6	320	24.0	14.1<	0.001	0.01	0.20	4.2	
056158	82909402	0.18	0.04	0.100	0.30	42.6	2.3	0.32	585	3.75	0.19	0.05	5.4	300	26.2	13.6<	0.001	0.01	0.15	4.2	
056159	82909402	0.18	0.01	0.095	0.28	38.6	2.9	0.32	585	3.50	0.18	0.05	5.4	330	22.6	13.2<	0.001	0.01	0.10	4.2	
056160	82909402	0.16	0.02	0.075	0.34	32.6	7.3	1.66	930	0.55	0.22	0.05	21.2	1820	14.2	19.1<	0.001	0.02	0.05	11.2	
056161	82909402	0.22	0.03	0.080	0.42	36.6	4.0	0.60	625	3.20	0.15	0.05	10.4	830	34.4	25.7<	0.001	0.05	0.20	4.8	
056162	82909402	0.40	0.07	0.075	0.33	56.0	3.3	0.31	425	3.95	0.14	0.25	6.4	340	39.0	21.6<	0.001	0.03	0.10	2.7	
056163	82909402	0.32	0.04	0.095	0.30	50.2	3.9	0.56	865	3.55	0.16	0.20	16.2	1170	26.8	19.2<	0.001	0.07	0.20	5.7	
056164	82909402	0.28	0.08	0.080	0.33	45.6	3.7	0.39	775	3.10	0.15	0.20	14.0	1140	32.2	20.9<	0.001	0.24	0.35	4.0	
056165	82909402	0.38	0.04	0.080	0.30	68.2	2.6	0.20	390	5.00	0.11	0.20	3.8	80	41.2	18.8<	0.001	0.06	0.15	1.8	
056166	82909402	0.64	0.03	0.085	0.33	80.6	2.6	0.21	415	4.55	0.11	0.25	4.0	220	42.0	22.4<	0.001	0.10	0.30	1.9	
056167	82909402	0.32	0.04	0.065	0.28	56.8	2.7	0.29	540	3.70	0.12	0.20	8.4	470	30.4	17.6<	0.001	0.06	0.15	2.7	
056168	82909402	0.30	0.03	0.075	0.32	61.4	3.1	0.30	565	2.85	0.12	0.20	9.6	540	35.6	23.2<	0.001	0.08	0.20	3.0	
056169	82909402	0.30	0.03	0.070	0.35	76.6	3.3	0.15	385	2.70	0.13	0.20	2.0	60	45.6	26.6<	0.001	0.04	0.05	1.6	
056170	82909402	0.18	0.06	0.070	0.28	35.8	8.7	1.14	800	1.50	0.24	0.10	16.8	1390	21.6	17.7<	0.001	0.01	0.35	7.6	
056171	82909402	0.18	0.04	0.060	0.28	24.4	10.1	1.45	910	2.60	0.20	0.10	28.2	1250	22.6	19.8<	0.001	0.11	0.40	7.2	
056172	82909402	0.16	0.02	0.035	0.37	10.4	3.4	0.37	410	7.00	0.09	0.05	22.4	470	23.6	31.0	0.002	<	0.01	0.10	2.6
056173	82909402	0.56	0.03	0.080	0.26	56.4	2.8	0.23	695	3.90	0.11	0.45	9.8	480	32.8	20.3<	0.001	<	0.01	0.15	3.1
056174	82909402	0.44	0.03	0.085	0.23	57.6	2.1	0.19	430	4.00	0.10	0.30	6.6	330	40.0	16.7<	0.001	0.01	0.20	2.3	
056175	82909402	0.40	0.02	0.070	0.22	56.2	2.3	0.24	530	3.60	0.11	0.20	8.4	580	36.4	15.4<	0.001	0.03	0.10	2.5	
056176	82909402	0.34	0.03	0.080	0.25	52.4	3.4	0.40	830	2.85	0.14	0.25	15.8	1120	34.4	17.7<	0.001	0.08	0.20	4.1	
056177	82909402	1.92	0.16	0.055	0.74	43.8	4.8	0.14	265	4.95	0.11	4.05	2.8	100	49.8	73.5<	0.001	0.04	0.25	1.8	
056178	82909402	0.44	0.06	0.100	0.28	64.4	2.9	0.17	430	4.00	0.10	0.60	5.6	200	41.6	22.2<	0.001	0.06	0.15	1.9	
056179	82909402	0.24	0.06	0.065	0.28	44.6	5.5	0.95	1110	2.05	0.15	0.35	29.0	1600	24.2	21.2<	0.001	0.06	0.30	9.0	
056180	82909402	0.32	0.06	0.065	0.24	58.6	3.1	0.32	535	3.20	0.12	0.25	8.6	520	32.0	17.0<	0.001	0.04	0.20	3.0	
056181	82909402	0.26	0.07	0.070	0.24	49.8	4.5	0.57	755	2.65	0.16	0.20	20.6	1190	28.6	17.6<	0.001	0.06	0.25	4.7	
056182	82909402	0.22	0.07	0.065	0.25	49.0	5.8	0.82	945	2.85	0.16	0.15	19.4	1110	23.8	16.5<	0.001	0.05	0.30	6.9	
056183	82909402	0.58	0.12	0.060	0.24	51.6	6.3	0.76	895	2.45	0.17	0.30	26.0	1410	19.6	17.1<	0.001	0.03	0.15	5.9	
056184	82909402	0.38	0.08	0.055	0.28	54.4	7.1	0.59	880	1.70	0.19	0.20	17.8	750	35.0	20.0<	0.001	0.03	0.15	4.5	
056185	82909402	0.20	0.07	0.050	0.27	22.2	8.2	1.20	1520	2.05	0.17	0.15	49.6	2260	4.8	18.0<	0.001	0.05	0.25	11.9	
056186	82909402	0.20	0.08	0.050	0.23	22.4	8.4	1.38	1705	1.05	0.15	0.15	51.6	2110	5.2	15.2<	0.001	0.15	0.40	12.2	
056187	82909402	0.16	0.09	0.055	0.32	24.8	25.1	1.84	1605	0.45	0.22	0.10	47.0	1950	3.4	25.7<	0.001	0.03	0.25	15.7	
056188	82909402	0.14	0.14	0.050	0.27	23.8	9.6	1.13	1465	1.85	0.16	0.05	53.3	2240	4.4	17.9<	0.001	0.08	0.30	12.8	
056189	82909402	0.16	0.09	0.050	0.24	20.0	8.4	1.21	2330	1.50	0.16	0.10	48.8	2160	16.8	15.2<	0.001	0.12	0.40	12.9	
056190	82909402	0.12	0.05	0.060	0.27	21.0	10.5	1.16	1665	1.10	0.18	0.05	45.0	2280	13.4	18.6<	0.001	0.08	0.30	12.3	

CERTIFICATION: _____



ALS Chemex

Aurora Laboratory Services Ltd.
 Analytical Chemists * Geochemists * Registered Assayers
 212 Brooksbank Ave., North Vancouver
 British Columbia, Canada V7J 2C1
 PHONE: 604-984-0221 FAX: 604-984-0218

To: CARLOS, ALLEN **

275 ELSEK RD.
 WHITEHORSE, YT
 Y1A 4T1

Page Number :2-B
 Total Pages :3
 Certificate Date: 16-NOV-2001
 Invoice No. : I0128210
 P.O. Number :
 Account : TFI

Project : CANYON GOLD
 Comments:

CERTIFICATE OF ANALYSIS A0128210

SAMPLE	PREP CODE	Hf ppm	Hg ppm	In ppm	K %	La ppm	Li ppm	Mg %	Mn ppm	Mo ppm	Na %	Nb ppm	Ni ppm	P ppm	Pb ppm	Rb ppm	Re ppm	S %	Sb ppm	Sc ppm
056191	82909402	0.14	0.04	0.045	0.25	19.8	8.1	1.16	1770	1.00	0.16	0.05	43.2	1890	6.4	17.0<	0.001	0.11	0.35	11.4
056192	82909402	0.30	0.11	0.050	0.23	49.0	3.8	0.32	545	5.30	0.13	0.15	8.8	450	37.8	15.5<	0.001	0.04	0.20	3.3
056193	82909402	0.16	0.14	0.045	0.51	26.4	30.0	1.04	760	1.50	0.39	0.05	55.6	940	24.0	22.6	0.001	0.12	0.40	7.0
056194	82909402	0.12	0.37	0.030	0.34	17.0	19.3	1.37	805	1.10	0.27	0.05	37.4	540	52.4	14.6<	0.001	0.33	0.35	9.1
056195	82909402	0.12	0.15	0.035	0.40	21.4	25.5	1.14	750	1.35	0.34	0.05	47.4	850	25.0	17.5<	0.001	0.18	0.40	7.2
056196	82909402	0.12	0.19	0.040	0.45	24.0	29.5	1.26	780	1.65	0.38	0.05	52.2	980	24.8	19.8	0.001	0.19	0.45	7.9
056197	82909402	0.12	0.27	0.030	0.28	18.4	20.6	1.05	715	1.25	0.30	< 0.05	37.2	670	26.8	13.0<	0.001	0.21	0.45	6.8
056198	82909402	0.10	0.10	0.050	0.40	21.0	27.7	1.23	745	2.00	0.36	< 0.05	57.4	940	22.2	17.1<	0.001	0.11	0.35	8.1
056199	82909402	0.10	0.05	0.050	0.37	13.8	8.1	0.58	590	2.00	0.27	< 0.05	48.4	750	26.8	15.5<	0.001	0.04	0.25	5.7
056200	82909402	0.08	0.01	0.040	0.24	14.2	4.4	0.47	260	0.55	0.22	< 0.05	34.0	140	26.6	10.1<	0.001	0.01	0.05	4.1
056201	82909402	0.10	0.01	0.015	0.15	5.8	1.7	0.27	275	0.60	0.15	< 0.05	14.6	420	15.4	6.0<	0.001	< 0.01	0.15	2.3
056202	82909402	0.10	0.01	0.025	0.16	8.4	2.0	0.41	415	0.75	0.17	< 0.05	23.0	220	21.2	6.8<	0.001	0.02	0.25	3.1
056203	82909402	0.08	0.02	0.020	0.15	6.2	2.0	0.25	305	1.10	0.17	< 0.05	19.6	250	15.6	5.8<	0.001	0.01	0.35	2.4
056204	82909402	0.16	0.08	0.035	0.19	9.6	3.5	0.37	465	2.00	0.20	0.20	31.6	320	21.8	8.9<	0.001	0.02	0.30	3.5
056205	82909402	0.20	0.06	0.025	0.17	10.4	9.9	0.45	400	1.00	0.16	0.15	30.4	1390	21.6	8.4<	0.001	0.01	0.30	3.3
056206	82909402	0.10	0.04	0.025	0.18	8.6	3.1	0.30	540	0.80	0.19	0.10	22.0	360	16.6	8.6<	0.001	0.03	0.25	2.7
056207	82909402	0.10	0.05	0.050	0.24	12.2	15.3	0.55	605	1.85	0.25	0.05	54.5	520	30.0	12.4<	0.001	0.04	0.35	3.9
056208	82909402	0.10	0.04	0.035	0.21	9.6	13.4	0.44	495	1.40	0.21	0.05	42.8	320	26.4	10.5<	0.001	0.04	0.35	3.0
056209	82909402	0.08	0.03	0.030	0.21	11.0	13.5	0.39	320	1.05	0.20	0.05	32.4	210	21.4	10.7<	0.001	0.02	0.25	2.6
056210	82909402	0.06	< 0.01	< 0.005	0.12	4.2	5.2	0.18	570	0.50	0.10	0.05	13.6	260	8.8	5.4<	0.001	0.01	0.30	1.4
056211	82909402	0.06	0.04	0.040	0.21	8.4	17.0	0.42	275	0.80	0.19	< 0.05	38.4	290	26.4	10.3<	0.001	0.02	0.25	2.9
056212	82909402	0.06	0.04	0.035	0.18	10.2	19.8	0.49	490	1.15	0.17	< 0.05	38.6	850	24.4	9.3<	0.001	0.01	0.20	2.9
056213	82909402	0.06	0.03	0.040	0.28	10.4	18.6	0.49	425	1.15	0.18	< 0.05	42.0	260	27.8	13.1<	0.001	0.01	0.20	3.3
056214	82909402	0.06	0.03	0.040	0.22	11.8	17.2	0.50	260	0.80	0.19	< 0.05	36.6	360	25.8	10.6<	0.001	0.02	0.20	2.8
056215	82909402	0.08	0.04	0.050	0.24	11.8	17.1	0.48	430	2.00	0.19	0.05	40.8	490	29.4	9.4<	0.001	0.03	0.45	4.7
056216	82909402	0.06	0.03	0.045	0.24	13.2	14.9	0.48	665	2.15	0.23	< 0.05	50.3	470	26.8	11.8<	0.001	0.03	0.35	3.1
056217	82909402	0.06	0.04	0.035	0.22	10.6	8.2	0.38	330	1.15	0.20	< 0.05	30.2	210	21.4	10.9<	0.001	0.03	0.30	2.8
056218	82909402	0.04	0.02	0.040	0.24	12.2	13.9	0.48	315	2.25	0.17	< 0.05	39.2	160	23.8	11.3<	0.001	0.03	0.30	3.0
056219	82909402	0.04	0.03	0.025	0.21	11.0	11.0	0.38	320	0.90	0.14	< 0.05	26.6	270	20.0	8.9<	0.001	0.01	0.20	2.5
056220	82909402	0.02	0.01	0.005	0.17	6.2	2.7	0.17	305	0.45	0.09	< 0.05	11.8	350	10.2	7.3<	0.001	0.03	0.40	1.3
056221	82909402	0.06	0.03	0.045	0.26	11.6	12.5	0.48	550	1.90	0.20	< 0.05	41.8	490	25.0	11.8<	0.001	0.03	0.30	3.2
056222	82909402	0.06	0.01	0.035	0.21	10.0	14.4	0.49	475	1.05	0.16	< 0.05	43.8	760	24.2	10.4<	0.001	0.01	0.20	3.3
056223	82909402	0.04	0.02	0.005	0.17	4.0	4.6	0.23	235	0.30	0.11	< 0.05	15.2	400	12.8	7.6<	0.001	0.01	0.15	1.5
056224	82909402	0.08	0.04	0.035	0.23	7.8	11.6	0.41	295	0.50	0.14	< 0.05	23.6	320	19.8	8.7<	0.001	0.01	0.20	3.8
056225	82909402	0.06	0.08	0.050	0.28	14.8	15.2	0.49	280	0.90	0.21	< 0.05	46.2	140	32.0	13.3<	0.001	0.01	0.20	3.1
056226	82909402	0.18	0.09	0.040	0.22	14.8	15.5	0.50	525	0.95	0.17	0.25	44.4	1330	29.2	9.5<	0.001	0.02	0.25	7.7
056227	82909402	0.12	0.06	0.030	0.20	11.6	16.0	0.47	650	1.25	0.16	0.15	39.6	940	23.2	9.3<	0.001	0.02	0.25	6.3
056228	82909402	0.10	0.05	0.045	0.24	15.6	13.1	0.46	405	1.85	0.19	0.10	47.8	500	24.4	9.9<	0.001	0.01	0.25	6.5
056229	82909402	0.10	0.07	0.045	0.37	13.8	14.5	0.50	415	1.45	0.22	0.10	40.4	320	31.4	14.8<	0.001	0.01	0.20	7.4
056230	82909402	0.12	0.06	0.040	0.14	13.4	12.0	0.44	640	2.85	0.17	0.10	32.2	610	24.8	6.8<	0.001	0.01	0.20	6.1

CERTIFICATION:



ALS Chemex

Aurora Laboratory Services Ltd.
 Analytical Chemists * Geochemists * Registered Assayers
 212 Brooksbank Ave., North Vancouver
 British Columbia, Canada V7J 2C1
 PHONE: 604-984-0221 FAX: 604-984-0218

To: CARLOS, ALLEN **

275 ALSEK RD.
 WHITEHORSE, YT
 Y1A 4T1

Project: CANYON GOLD
 Comments:

Page Number :3-B
 Total Pages :3
 Certificate Date: 16-NOV-200
 Invoice No. : I0128210
 P.O. Number :
 Account : TFI

CERTIFICATE OF ANALYSIS

A0128210

SAMPLE	PREP CODE	Hf ppm	Hg ppm	In ppm	K %	La ppm	Li ppm	Mg %	Mn ppm	Mo ppm	Na %	Nb ppm	Ni ppm	P ppm	Pb ppm	Rb ppm	Re ppm	S %	Sb ppm	Sc ppm
056231	82909402	0.10	0.05	0.010	0.11	7.8	1.9	0.20	210	1.25	0.11	0.05	18.0	1120	12.8	5.2 < 0.001	0.05	1.05	3.6	
056232	82909402	0.08	0.03	0.015	0.12	8.8	2.3	0.35	475	0.75	0.11	0.05	17.4	750	12.0	5.5 < 0.001	0.01	0.35	4.5	
056233	82909402	0.28	0.03	0.050	0.28	67.8	0.8	0.03	440	3.65	0.03	0.20	1.0	100	47.6	18.9 < 0.001	0.21	0.70	1.3	
056234	82909402	0.28	0.01	0.055	0.31	75.4	1.1	0.03	450	1.85	0.04	0.20	1.2	40	42.8	20.4 < 0.001	0.05	0.25	2.4	



ALS Chemex

Aurora Laboratory Services Ltd.
 Analytical Chemists * Geochemists * Registered Assayers
 212 Brooksbank Ave., North Vancouver
 British Columbia, Canada V7J 2C1
 PHONE: 604-984-0221 FAX: 604-984-0218

To: CARLOS, ALLEN **

275 ALSEK RD.
 WHITEHORSE, YT
 Y1A 4T1

Page Number :1-C
 Total Pages :3
 Certificate Date: 16-NOV-2001
 Invoice No. :10128210
 P.O. Number :
 Account :TFI

Project : CANYON GOLD
 Comments:

CERTIFICATE OF ANALYSIS A0128210

SAMPLE	PREP CODE	Se ppm	Sn ppm	Sr ppm	Ta ppm	Te ppm	Th ppm	Ti %	Tl ppm	U ppm	V ppm	W ppm	Y ppm	Zn ppm	Zr ppm
056151	32909402	0.2	0.6	145.6	< 0.01	< 0.01	4.2	< 0.01	0.08	1.35	65	0.10	16.90	76	2.0
056152	32909402	< 0.2	1.4	147.6	0.01	0.01	4.6	0.05	0.10	0.75	116	0.05	17.20	74	1.5
056153	32909402	0.2	1.2	448.0	0.01	< 0.01	5.0	0.11	0.02	0.55	136	< 0.05	18.20	74	2.5
056154	32909402	0.2	1.0	120.7	< 0.01	< 0.01	3.6	< 0.01	0.08	0.90	64	< 0.05	17.35	68	3.0
056155	32909402	0.2	1.8	99.1	0.01	< 0.01	3.8	< 0.01	0.02	0.90	21	0.05	24.45	74	2.5
056156	32909402	0.2	3.2	173.0	0.02	< 0.01	5.0	< 0.01	0.06	1.50	36	0.15	32.20	80	3.5
056157	32909402	0.2	1.0	55.5	< 0.01	< 0.01	3.8	< 0.01	0.06	0.75	14	< 0.05	19.20	86	3.0
056158	32909402	0.2	1.0	54.8	< 0.01	< 0.01	4.2	< 0.01	0.06	0.75	16	< 0.05	21.60	94	3.0
056159	32909402	0.2	1.0	48.0	< 0.01	< 0.01	5.2	< 0.01	0.06	0.70	14	< 0.05	19.40	88	3.5
056160	32909402	0.2	7.2	174.7	0.01	< 0.01	6.6	< 0.01	0.06	0.50	61	0.15	28.00	82	3.5
056161	32909402	0.2	4.4	108.1	0.01	< 0.01	5.6	< 0.01	0.14	0.75	29	0.15	28.35	96	5.5
056162	32909402	0.4	2.2	76.4	0.01	0.03	4.6	< 0.01	0.14	0.90	10	0.20	33.00	94	5.0
056163	32909402	0.6	1.6	95.9	0.01	0.03	5.2	< 0.01	0.10	0.70	35	0.20	37.20	132	5.5
056164	32909402	0.4	2.0	96.0	0.01	0.03	4.8	< 0.01	0.14	1.00	25	0.25	35.95	104	5.0
056165	32909402	0.4	1.8	65.5	0.01	0.01	4.2	< 0.01	0.14	1.10	5	0.15	34.85	100	6.5
056166	32909402	0.6	1.6	97.0	0.01	0.03	7.2	< 0.01	0.14	1.25	6	0.15	39.70	106	13.0
056167	32909402	0.4	1.2	78.3	0.01	0.01	4.8	< 0.01	0.10	0.95	12	0.15	34.50	80	6.5
056168	32909402	0.4	1.8	91.4	0.01	0.02	5.4	< 0.01	0.12	0.80	13	0.15	34.85	100	7.0
056169	32909402	0.6	3.4	84.8	0.01	0.02	4.8	< 0.01	0.14	0.95	3	0.10	37.55	96	6.0
056170	32909402	0.4	2.8	181.0	0.01	0.02	5.2	< 0.01	0.06	1.50	36	0.15	36.90	84	4.0
056171	32909402	0.4	4.8	169.8	0.03	0.02	8.0	< 0.01	0.08	0.85	39	0.75	30.20	86	5.0
056172	32909402	< 0.2	2.2	45.0	< 0.01	0.01	3.4	< 0.01	0.08	0.60	27	0.15	9.35	86	4.5
056173	32909402	0.4	1.6	81.4	0.01	0.02	9.6	< 0.01	0.08	1.20	13	0.20	36.90	94	15.0
056174	32909402	0.6	1.6	63.3	0.01	0.03	8.4	< 0.01	0.08	2.65	10	0.15	43.65	68	10.5
056175	32909402	0.4	1.0	70.0	0.01	0.02	7.6	< 0.01	0.08	0.95	12	0.15	37.20	104	10.5
056176	32909402	0.4	1.0	109.7	0.01	0.01	9.0	< 0.01	0.08	0.90	22	0.25	39.55	118	9.5
056177	32909402	0.6	4.2	48.6	0.03	0.03	29.8	< 0.01	0.34	5.60	4	0.60	54.65	66	35.0
056178	32909402	0.6	1.4	73.2	0.01	0.02	8.4	< 0.01	0.12	2.20	7	0.20	47.40	94	11.0
056179	32909402	0.6	2.0	154.5	0.03	0.02	10.8	< 0.01	0.12	0.65	48	0.30	41.90	116	7.5
056180	32909402	0.4	2.0	74.1	0.01	0.01	7.6	< 0.01	0.10	0.95	13	0.20	35.15	104	9.0
056181	32909402	0.6	1.8	105.7	0.01	0.03	8.6	< 0.01	0.10	0.80	28	0.25	38.55	96	8.0
056182	32909402	0.2	2.2	141.7	0.03	0.03	5.8	< 0.01	0.08	0.70	32	0.35	33.60	94	4.5
056183	32909402	0.2	1.4	143.6	0.02	< 0.01	8.4	< 0.01	0.10	0.70	33	0.25	37.40	100	7.0
056184	32909402	0.2	6.8	174.6	0.01	0.01	7.6	< 0.01	0.10	0.70	23	0.30	36.40	92	6.5
056185	32909402	0.2	1.4	162.1	0.01	< 0.01	8.0	< 0.01	0.10	0.10	86	0.20	35.60	106	2.5
056186	32909402	0.2	0.6	162.6	0.01	< 0.01	8.6	< 0.01	0.12	0.10	96	0.15	36.20	100	2.5
056187	32909402	0.2	0.2	202.1	0.01	0.01	6.0	< 0.01	0.14	0.15	74	0.05	38.10	88	2.5
056188	32909402	0.2	0.6	151.0	0.01	< 0.01	6.2	< 0.01	0.12	0.10	97	0.15	41.00	118	2.0
056189	32909402	0.2	1.6	217.4	0.01	< 0.01	7.8	< 0.01	0.12	0.10	100	0.20	44.80	124	2.0
056190	32909402	0.2	3.0	179.4	0.01	< 0.01	5.2	< 0.01	0.10	0.10	96	0.40	37.15	132	1.5

CERTIFICATION:



ALS Chemex

Aurora Laboratory Services Ltd.
 Analytical Chemists * Geochemists * Registered Assayers
 212 Brooksbank Ave., North Vancouver
 British Columbia, Canada V7J 2C1
 PHONE: 604-984-0221 FAX: 604-984-0218

To: CARLOS, ALLEN **

275 ALSEK RD.
 WHITEHORSE, YT
 Y1A 4T1

Project : CANYON GOLD
 Comments:

Page Number :2-C
 Total Pages :3
 Certificate Date: 16-NOV-2001
 Invoice No. :10128210
 P.O. Number :
 Account :TFI

CERTIFICATE OF ANALYSIS A0128210

SAMPLE	PREP CODE	Se ppm	Sn ppm	Sr ppm	Ta ppm	Te ppm	Th ppm	Ti %	Tl ppm	U ppm	V ppm	W ppm	Y ppm	Zn ppm	Zr ppm
056191	82909402	0.2	2.6	153.9	0.01	< 0.01	5.4	< 0.01	0.10	0.10	79	0.35	38.30	140	1.5
056192	82909402	0.2	3.2	198.6	0.01	0.01	5.4	< 0.01	0.10	1.10	14	0.20	30.20	82	4.5
056193	82909402	0.6	7.6	188.4	< 0.01	0.01	5.2	< 0.01	0.04	1.35	54	0.05	19.05	106	2.0
056194	82909402	0.6	10.6	222.4	< 0.01	0.02	4.6	< 0.01	0.06	1.25	56	0.05	14.35	90	1.5
056195	82909402	0.4	5.8	223.6	< 0.01	0.01	4.8	< 0.01	0.02	1.20	50	0.05	15.85	84	1.5
056196	82909402	0.4	5.4	198.8	< 0.01	0.01	5.6	< 0.01	0.02	1.25	54	0.05	17.70	94	1.5
056197	82909402	0.4	5.2	194.0	< 0.01	0.02	5.4	< 0.01	0.02	1.55	37	0.05	14.60	72	1.5
056198	82909402	0.4	4.0	185.0	< 0.01	0.02	5.2	< 0.01	0.02	1.00	53	0.05	16.95	96	1.5
056199	82909402	0.6	6.0	90.8	< 0.01	0.03	3.6	< 0.01	0.04	0.85	25	0.20	12.35	102	1.5
056200	82909402	0.2	7.8	68.1	< 0.01	0.01	2.6	< 0.01	0.06	0.75	15	0.15	6.60	92	1.0
056201	82909402	0.2	9.6	71.6	< 0.01	< 0.01	1.8	< 0.01	0.06	0.35	8	0.20	7.10	48	1.5
056202	82909402	0.2	10.8	89.1	0.01	0.01	2.2	< 0.01	0.08	0.45	11	0.20	7.00	60	1.5
056203	82909402	0.2	14.6	71.2	< 0.01	0.01	1.8	< 0.01	0.04	0.35	8	0.30	5.65	48	1.0
056204	82909402	0.2	6.0	108.2	0.01	0.04	1.8	< 0.01	0.06	0.55	11	0.30	9.05	70	1.0
056205	82909402	0.2	6.4	87.1	0.01	0.03	2.6	< 0.01	0.06	0.50	16	0.30	13.85	64	2.0
056206	82909402	0.2	13.4	72.5	< 0.01	0.02	1.8	< 0.01	0.08	0.45	10	0.25	7.25	58	1.5
056207	82909402	0.8	3.6	84.0	< 0.01	0.07	2.8	< 0.01	0.06	0.80	22	0.25	11.00	118	1.5
056208	82909402	0.6	6.0	83.5	< 0.01	0.06	2.0	< 0.01	0.06	0.65	18	0.25	8.05	88	1.0
056209	82909402	0.4	2.2	88.3	< 0.01	0.04	1.8	< 0.01	0.06	0.65	17	0.20	6.65	78	1.5
056210	82909402	< 0.2	4.0	96.2	< 0.01	0.02	1.2	< 0.01	0.06	0.25	7	0.15	5.15	22	0.5
056211	82909402	0.4	1.8	75.9	0.01	0.03	1.0	< 0.01	0.08	0.65	19	0.30	6.75	88	1.0
056212	82909402	0.4	2.0	81.2	< 0.01	0.03	1.2	< 0.01	0.06	0.65	22	0.25	10.20	84	1.5
056213	82909402	0.4	2.8	83.4	< 0.01	0.02	1.4	< 0.01	0.06	0.75	24	0.20	7.60	94	1.5
056214	82909402	0.6	1.8	60.0	< 0.01	0.03	1.2	< 0.01	0.06	0.75	22	0.20	7.05	86	1.5
056215	82909402	0.6	1.8	69.3	0.01	0.05	2.4	< 0.01	0.06	0.75	18	0.25	8.10	102	1.0
056216	82909402	0.6	1.4	99.2	< 0.01	0.05	1.4	< 0.01	0.08	0.90	21	0.25	11.10	98	1.5
056217	82909402	0.2	3.0	70.4	< 0.01	0.04	1.2	< 0.01	0.08	0.70	15	0.20	6.15	80	1.5
056218	82909402	0.2	2.0	60.6	< 0.01	0.02	1.2	< 0.01	0.08	0.65	20	0.20	6.15	84	1.5
056219	82909402	0.2	2.2	59.6	< 0.01	0.03	1.2	< 0.01	0.04	0.60	17	0.15	6.90	70	1.5
056220	82909402	< 0.2	1.4	47.8	< 0.01	0.01	1.0	< 0.01	0.10	0.40	7	0.15	5.30	30	1.5
056221	82909402	0.4	3.2	84.6	< 0.01	0.04	1.4	< 0.01	0.06	0.75	21	0.20	9.30	102	1.5
056222	82909402	0.6	2.6	77.1	< 0.01	0.03	1.4	< 0.01	0.06	0.60	23	0.20	9.10	96	2.0
056223	82909402	< 0.2	2.8	54.3	< 0.01	0.01	0.6	< 0.01	0.08	0.30	9	0.20	5.45	32	1.5
056224	82909402	0.2	2.0	49.4	< 0.01	0.02	1.8	< 0.01	0.04	0.50	14	0.25	5.60	70	1.0
056225	82909402	0.4	3.2	65.5	< 0.01	0.05	1.2	< 0.01	0.08	0.90	21	0.15	7.10	104	1.5
056226	82909402	0.6	3.8	75.7	0.01	0.05	3.6	< 0.01	0.06	0.65	21	0.35	14.85	92	1.5
056227	82909402	0.6	2.2	67.8	0.01	0.04	3.6	< 0.01	0.06	0.60	19	0.30	10.40	72	1.5
056228	82909402	0.6	3.0	69.3	< 0.01	0.03	3.4	< 0.01	0.04	0.75	19	0.25	9.05	106	1.5
056229	82909402	0.6	2.4	80.4	0.01	0.04	3.4	< 0.01	0.06	0.70	22	0.25	8.15	98	1.5
056230	82909402	0.6	3.2	81.2	< 0.01	0.04	3.2	< 0.01	0.04	0.60	15	0.70	10.75	78	1.5

CERTIFICATION:



ALS Chemex

Aurora Laboratory Services Ltd.
 Analytical Chemists * Geochemists * Registered Assayers
 212 Brooksbank Ave., North Vancouver
 British Columbia, Canada V7J 2C1
 PHONE: 604-984-0221 FAX: 604-984-0218

To: CARLOS, ALLEN **

275 ALSEK RD.
 WHITEHORSE, YT
 Y1A 4T1

Project: CANYON GOLD
 Comments:

Page Number :3-C
 Total Pages :3
 Certificate Date: 16-NOV-2001
 Invoice No. : I0128210
 P.O. Number :
 Account : TFI

CERTIFICATE OF ANALYSIS

A0128210

SAMPLE	PREP CODE	Se	Sn	Sr	Ta	Te	Th	Ti	Tl	U	V	W	Y	Zn	Zr
		ppm	ppm	ppm	ppm	ppm	ppm	%	ppm	ppm	ppm	ppm	ppm	ppm	ppm
056231	82909402	0.2	7.0	72.8	< 0.01	0.03	2.2	< 0.01	0.08	0.30	6	0.40	10.55	44	1.5
056232	82909402	0.2	5.6	63.5	< 0.01	0.03	2.8	< 0.01	0.04	0.30	11	0.25	10.60	42	1.5
056233	82909402	0.2	0.4	20.6	0.01	0.01	6.6	< 0.01	0.30	1.15	< 1	0.10	30.45	70	5.0
056234	82909402	0.2	0.6	22.4	0.01	< 0.01	8.8	< 0.01	0.12	0.95	2	0.10	32.60	90	8.5

CERTIFICATION:

APPENDIX 5

SUMMARY OF FIELD EXPENDITURES

2001 DIAMOND DRILLING

PROGRAM

CANYON CLAIMS

Summary of Expenditures/Work Performed (TOTAL)

Diamond Drilling and related costs

Drill rental (rated at 10% of value of equipment/month) \$45,000.00 x 2.5 months= \$11,250.00 at 75% (heavy equipment)= \$8,437.50	\$8,437.50
Drilling fluids	\$ 750.00
Core boxes	\$ 412.96
Diamond products	\$1,380.00
Core barrel assembly and slides	\$1,303.26
Fuel	\$1,104.25
Truck rental (2 ½ months at \$1,450.00/month 2.5 x \$1,450.00 = \$3,625.00 x 25% = \$906.25	\$ 906.25
Truck mileage: a) Daily work travel = 450Km. b) Whitehorse – return = <u>2317Km.</u> TOTAL 2767 Km. x .42 =	\$1,162.00
Assays	\$3,801.44
Logging of core (R. Stroshein)	\$1,200.00
Living expenses: \$35.00 x 177 man days	\$6,195.00
Salaries: (Luke) 73 days x \$150.00 per = \$10,950.00 (Shane) 40 days x \$150.00per = \$ 6,000.00	\$10,950.00 \$ 6,000.00
Report and drafting	<u>\$ 500.00</u>
 GRAND TOTAL FOR SUMMER 2001=	 \$44,373.38
 Percentage of total available for assessment purposes on CANYON CLAIMS = 83.75% OF GRAND TOTAL	 <u>\$37,163.54</u>