

094214
0.2



PROSPECTING AND GEOCHEMICAL
REPORT

094214

SEVEN 101-116 claims

GRANT # YC09759 - YC09774

Whitehorse Mining Division

NTS # 115 N/2

LAT. # 63.02 NORTH

LONG. # 140.35 WEST

Work performed for Canadian United Minerals
Inc.

author of report : Shawn Ryan

work performed March, 2000.

YUKON ENERGY, MINES
& RESOURCES LIBRARY
P.O. BOX 2703
WHITEHORSE, YUKON Y1A 2C6

This report has been examined by
the Geological Evaluation Unit
under Section 53 (4) Yukon Quartz
Mineral Agreement is allowed as
representing work in the amount
of \$ 1600.00.

M. Buck
for Regional Manager, Exploration and
Geological Services for Commissioner
Yukon Territory.

YUKON TERRITORY
GEOLOGICAL SURVEY
WHITEHORSE

TABLE OF CONTENTS.

SUMMARY	pg.1
INTRODUCTION	pg.1
LOCATION	pg.1
ACCESS	pg.1
PROPERTY GEOLOGY	pg.1
WORK PERFORMED	pg.2
INTERPRETATION	pg.2
RECOMMENDATIONS	pg.2
QUALIFICATIONS	pg.2
COST	pg.3

- claim map
- topo map (assay location)
- chemex assay sheet
- magnetic map
- geology map

SUMMARY

The Seven 101-116 Claims grant # YC09759-YC09774 register to Canadian United Minerals Inc. are being renewed for 1 year. Prospecting on claim block has revealed only slightly anomalous Bi in two samples.

INTRODUCTION

The Seven 101-116 claims were staked to cover a geophysical magnetic anomaly. The magnetic anomaly is a mag low, flanked by a larger mag high. The magnetic anomaly appears to come from granodiorite intrusion of possibly the Coffee Creek intrusion suite.

LOCATION

The property is located 80 miles south west of Dawson City.

ACCESS

Access is by helicopter during summer months from Dawson or Beaver Creek or by skidoo in winter from Dawson, up the Yukon river for 80 miles, then travel up the White river for 45 miles avoiding open water sections. Then one travels up the Seven Mile creek drainage for 8 miles.

PROPERTY GEOLOGY

The entire claim group is underlain by granodiorite of possibly the Coffee Creek intrusion suite.

WORK PERFORMED/METHOD

I spent 1/2 day breaking trail from the lower Seven property and then 3 days prospecting and taking soil samples and silt samples. The work was performed in early March so soil sampling was done by first removing 1.5 ft. of snow and then proceeding to cut with an axe, the moss away. I would then chip away a good B horizon sample. Silt samples were taken by cutting a hole through the ice on the creeks and then digging up from creek bottom a good mud sample.

INTERPRETATION

The soil and silt returned disappointing Au results. SEV S 205501 silt sample returned anomalous values in Hg (3 ppm) and W (10 ppm) and SEV S 205505 had a Bi (2 ppm). SEV SR 20502 soil sample gave a W (10 ppm) and SEV SR 20505 gave a Bi (2 ppm).

The Bi value and W value are encouraging, but the low Au value makes these claims less interesting.

RECOMMENDATION

I would recommend the company spend time prospecting during summer months. If nothing is found, then I would suggest the company drop them.

QUALIFICATIONS

I have been prospecting in the Yukon for 8 years and I have 19 years experience in the exploration business working in Ontario, Quebec, N.W.T. and the Yukon. I own 40% of Canadian United Minerals Inc., that owns the SEVEN 101-116 claims.

Cost

3.5 days x \$250.00 wage	\$ 875.00
3.5 days x \$100.00 stridco rental	\$ 350.00
Assay - 11 samples x \$20.00	\$ 220.00
Report.	\$ 300.00
	<hr/>
	\$ 1745.00

John R.

Prospector



88
YCO9748
87
YCO9745
86
YCO9744
85
YCO9743
84
YCO9742
83
YCO9741
82
YCO9740
81
YCO9739
79
YCO9737
YCO9735
YCO9738
YCO9736

49
YCO9715
36
YCO9702
35
YCO9701
34
YCO9700
33
YCO9699
32
YCO9688
31
YCO9687
20
YCO9686
19
YCO9685

115
YCO9773
113
YCO9771
112
YCO9770
111
YCO9769
110
YCO9768
109
YCO9767
108
YCO9766
107
YCO9765
106
YCO9764
105
YCO9763
104
YCO9762
103
YCO9761
102
YCO9760
101
YCO9759

MILL CREEK

MILL CREEK

SEVEN

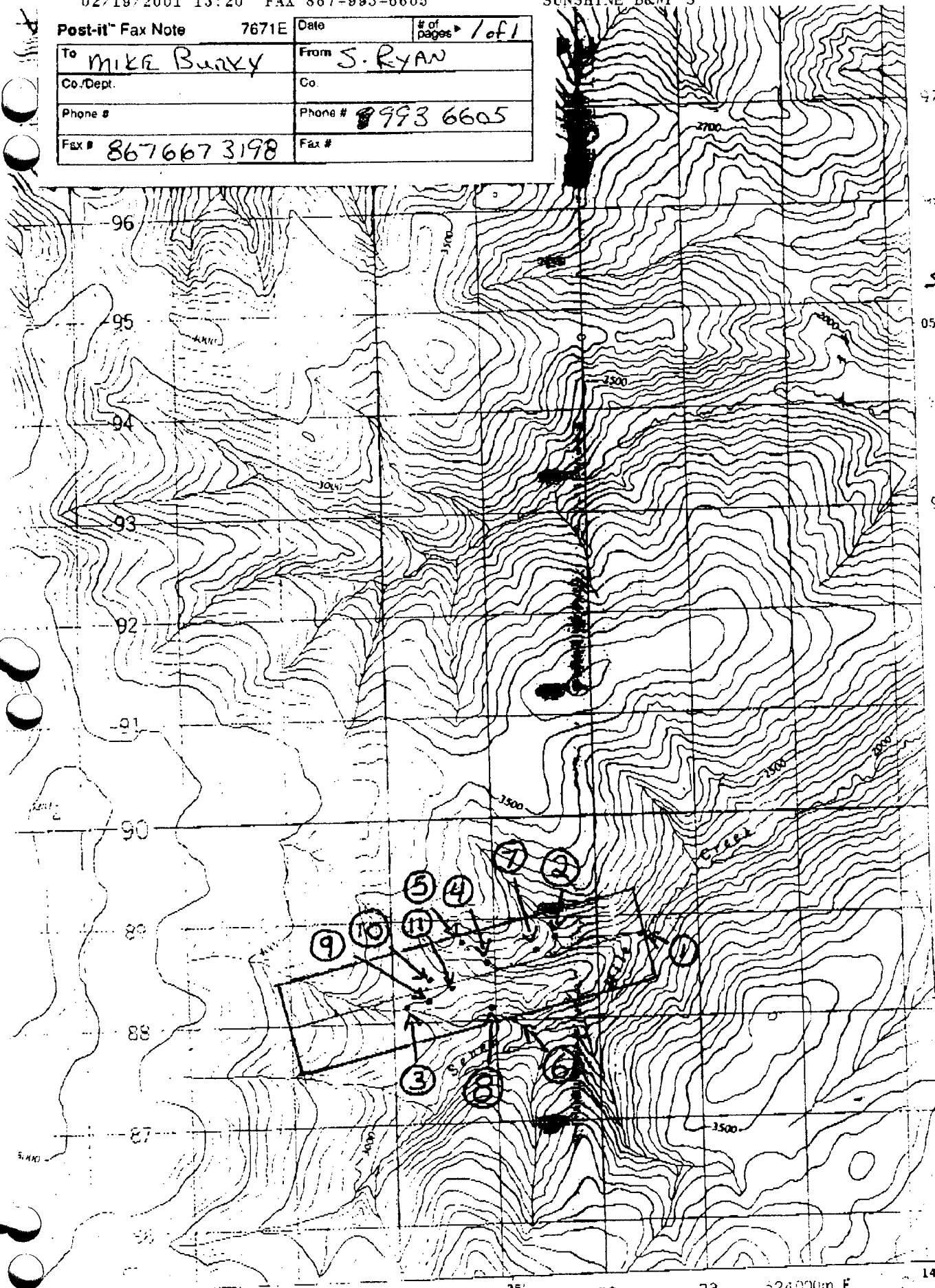
Post-it™ Fax Note		7671E	Date	# of Pages	1 of 1
To	MIKE BUCKY		From	S. RYAN	
Co./Dept.			Co.		
Phone #			Phone #	993 6605	
Fax #	867667 3198		Fax #		

↑ NORTH

1:50,000

SCALE ON UNITS

SEVEN cl 101-116

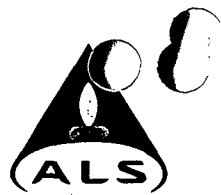


SS - silt ① → ②
 S - Soil ③ → ⑪

SAMPLE LOCATION MAP

Cette carte provisoire équivaut une carte régulière

NTS 115 N 12



ALS Chemex

Aurora Laboratory Services Ltd.
 Analytical Chemists * Geochemists * Registered Assayers
 212 Brooksbank Ave., North Vancouver
 British Columbia, Canada V7J 2C1
 PHONE: 604-984-0221 FAX: 604-984-0218

To: CANADIAN UNITED MINERALS INC.
 BOX 1260
 DAWSON CITY, YT
 Y0B 1G0

Page Number : 1-A
 Total P :
 Certificate No. : JUN-2000
 Invoice No. : 10021329
 P.O. Number :
 Account : PRP

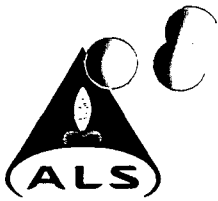
Project :
 Comments: ATTN: SHAWN RYAN

CERTIFICATE OF ANALYSIS A0021329

SAMPLE	PREP CODE	Au ppb FA+AA	Ag ppm	Al %	As ppm	B ppm	Ba ppm	Be ppm	Bi ppm	Ca %	Cd ppm	Co ppm	Cr ppm	Cu ppm	Fe %	Ga ppm	Hg ppm	K %	La ppm	Mg %
[REDACTED]	2254 202	not/ss	< 0.2	0.55	< 2	< 10	190	< 0.5	< 2	0.78	0.5	5	55	26	1.88	< 10	1	0.04	10	0.35
	2254 202	5	< 0.2	1.90	12	< 10	250	< 0.5	< 2	0.53	0.5	12	45	27	2.62	< 10	< 1	0.15	10	0.76
	2254 202	< 5	< 0.2	1.96	10	< 10	270	< 0.5	< 2	0.68	0.5	14	45	32	2.93	< 10	3	0.24	10	0.81
	2254 202	< 5	< 0.2	1.51	10	< 10	220	< 0.5	< 2	0.66	0.5	9	34	22	2.22	< 10	< 1	0.12	< 10	0.60
	2254 202	< 5	< 0.2	1.81	20	< 10	260	< 0.5	< 2	0.66	0.5	13	40	26	2.89	< 10	< 1	0.11	10	0.68
	2254 202	< 5	0.2	1.90	8	< 10	300	< 0.5	< 2	0.52	1.5	12	37	32	2.99	< 10	3	0.07	10	0.62
	2254 202	40	< 0.2	0.95	8	< 10	140	< 0.5	< 2	0.22	< 0.5	7	150	15	2.41	< 10	1	0.22	10	0.29
	2254 202	< 5	< 0.2	1.30	10	< 10	330	< 0.5	< 2	0.82	0.5	11	29	36	2.27	< 10	1	0.07	10	0.56
	2254 202	10	< 0.2	2.08	12	< 10	200	< 0.5	2	0.79	0.5	15	37	13	4.17	< 10	1	0.10	20	0.70
	2254 202	< 5	< 0.2	3.22	26	< 10	360	0.5	< 2	0.84	1.0	15	40	27	6.52	10	< 1	0.48	40	1.13
1- SEVS20 5501	2254 202	< 5	< 0.2	2.17	4	< 10	250	< 0.5	< 2	0.71	0.5	10	30	18	2.99	< 10	3	0.15	10	0.76
2- SEVS20 5502	2254 202	< 5	< 0.2	2.29	2	< 10	180	0.5	< 2	0.45	0.5	11	31	16	2.99	< 10	3	0.09	40	0.55
3- SEVS20 5503	2254 202	< 5	< 0.2	2.92	14	< 10	400	< 0.5	< 2	0.69	0.5	14	35	28	4.40	< 10	2	0.48	< 10	1.23
4- SEVS20 5504	2254 202	10	< 0.2	2.84	8	< 10	200	0.5	< 2	0.35	0.5	11	42	28	3.81	< 10	1	0.09	10	0.73
5- SEVS20 5505	2254 202	< 5	< 0.2	1.84	2	< 10	160	0.5	2	0.67	0.5	9	35	21	2.87	< 10	1	0.07	30	0.61
6- SEVS20 5506	2254 202	< 5	< 0.2	2.19	8	< 10	190	< 0.5	< 2	0.76	0.5	10	36	24	2.86	< 10	1	0.09	20	0.65

SEVEN lot-116
 claim block

CERTIFICATION:



ALS Chemex

Aurora Laboratory Services Ltd.
 Analytical Chemists * Geochemists * Registered Assayers
 212 Brooksbank Ave., North Vancouver
 British Columbia, Canada V7J 2C1
 PHONE: 604-984-0221 FAX: 604-984-0218

TO: CANADIAN UNITED MINERALS INC.
 BOX 1260
 DAWSON CITY, YT
 Y0B 1G0

Page Number :
 Total Pages :
 Certificate Date : JUN-2000
 Invoice No. : I0021329
 P.O. Number :
 Account : PRP

Project :
 Comments : ATTN: SHAWN RYAN

CERTIFICATE OF ANALYSIS A0021329

SAMPLE	PREP CODE	Mn ppm	Mo ppm	Na %	Ni ppm	P ppm	Pb ppm	S %	Sb ppm	Sc ppm	Sr ppm	Ti %	Tl ppm	U ppm	V ppm	W ppm	Zn ppm
[REDACTED]	8254 202	150	3	0.01	30	2270	100	0.01	2	2	36	0.07	< 10	< 10	53	< 10	60
	8254 202	455	1	0.03	25	620	< 2	0.03	2	4	34	0.11	< 10	< 10	67	< 10	76
	8254 202	620	< 1	0.03	23	550	2	0.03	< 2	4	34	0.10	< 10	< 10	63	< 10	118
	8254 202	335	2	0.03	19	580	< 2	0.03	< 2	4	37	0.10	< 10	< 10	57	< 10	58
	8254 202	640	1	0.03	24	600	< 2	0.03	4	4	40	0.09	< 10	< 10	61	< 10	78
[REDACTED]	8254 202	510	2	0.02	27	660	< 2	0.04	2	4	37	0.07	< 10	< 10	73	< 10	110
	8254 202	200	3	0.02	18	590	18	0.01	2	1	14	0.05	< 10	< 10	42	< 10	62
	8254 202	405	1	0.02	24	830	< 2	0.05	8	3	37	0.04	< 10	< 10	45	< 10	88
	8254 202	1185	3	0.04	16	910	< 2	0.01	2	4	44	0.13	< 10	< 10	120	< 10	68
8254 202	620	5	0.04	19	1710	< 2	< 0.01	2	8	39	0.24	< 10	10	116	< 10	104	
SEVS20 5501	8254 202	525	< 1	0.03	17	860	< 2	0.03	< 2	4	45	0.13	< 10	< 10	74	10	64
SEVS20 5502	8254 202	540	< 1	0.02	16	650	< 2	0.03	< 2	4	34	0.09	< 10	< 10	65	< 10	68
SEVS20 5503	8254 202	485	1	0.04	21	570	< 2	0.01	2	5	37	0.23	< 10	< 10	102	< 10	70
SEVS20 5504	8254 202	465	2	0.03	24	490	< 2	0.03	6	5	32	0.10	< 10	< 10	91	< 10	70
SEVS20 5505	8254 202	440	1	0.03	19	960	< 2	0.01	< 2	5	39	0.09	< 10	< 10	78	< 10	56
SEVS20 5506	8254 202	585	1	0.03	21	1010	< 2	0.05	< 2	4	57	0.09	< 10	< 10	71	< 10	66

CERTIFICATION:



ALS Chemex

Aurora Laboratory Services Ltd.
 Analytical Chemists * Geochemists * Registered Assayers
 212 Brooksbank Ave., North Vancouver
 British Columbia, Canada V7J 2C1
 PHONE: 604-984-0221 FAX: 604-984-0218



CANADIAN UNITED MINERALS INC.
 BOX 1260
 DAWSON CITY, YT
 Y0B 1G0

Page No. :
 Total Pages : 1
 Certificate Date: 29-JUN-2000
 Invoice No. : 10021330
 P.O. Number :
 Account : PRP

Project :
 Comments: ATTN: SHAWN RYAN

CERTIFICATE OF ANALYSIS A0021330

SAMPLE	PREP CODE	Au ppb FA+AA	Ag ppm	Al %	As ppm	B ppm	Ba ppm	Be ppm	Bi ppm	Ca %	Cd ppm	Co ppm	Cr ppm	Cu ppm	Fe %	Ga ppm	Hg ppm	K %	La ppm	Mg %
	201 202	< 5	3.4	0.13	4	< 10	640	< 0.5	< 2	13.45	11.0	< 1	9	13	2.30	< 10	2	< 0.01	< 10	8.61
	201 202	10	6.2	0.37	30	< 10	120	< 0.5	< 2	10.30	25.0	3	12	37	6.27	< 10	2	0.01	< 10	6.42
	201 202	< 5	0.6	1.22	12	< 10	240	< 0.5	< 2	5.27	20.5	7	25	27	2.94	< 10	< 1	0.04	< 10	3.42
	201 202	< 5	0.2	0.75	10	< 10	180	< 0.5	< 2	10.70	2.5	3	14	12	1.28	< 10	2	0.03	< 10	6.93
	201 202	< 5	< 0.2	0.64	14	< 10	220	< 0.5	< 2	12.00	5.0	3	13	14	1.31	< 10	< 1	0.03	< 10	7.76
	201 202	< 5	2.8	1.16	24	< 10	200	< 0.5	< 2	5.75	14.5	5	24	39	4.13	< 10	3	0.03	< 10	3.74
	201 202	< 5	0.4	0.85	4	< 10	290	< 0.5	< 2	10.35	9.0	4	15	20	1.99	< 10	1	0.03	< 10	6.70
	201 202	< 5	2.2	1.21	12	< 10	170	< 0.5	< 2	4.60	3.0	7	22	17	2.23	< 10	2	0.04	< 10	2.63
	201 202	< 5	< 0.2	2.21	4	< 10	180	< 0.5	2	0.51	< 0.5	13	50	58	2.86	< 10	< 1	0.09	< 10	0.67
	201 202	< 5	< 0.2	3.01	4	< 10	380	< 0.5	2	0.37	< 0.5	21	214	62	3.85	< 10	< 1	0.82	< 10	2.23
	201 202	< 5	< 0.2	2.46	4	< 10	370	< 0.5	< 2	0.38	0.5	12	39	24	3.90	< 10	< 1	0.87	< 10	1.02
	201 202	< 5	< 0.2	3.29	10	< 10	300	< 0.5	< 2	0.38	0.5	13	43	43	4.84	< 10	1	1.14	10	1.42
	201 202	< 5	< 0.2	3.08	20	< 10	570	< 0.5	< 2	0.25	0.5	13	55	39	3.90	< 10	< 1	0.20	< 10	0.79
	201 202	< 5	< 0.2	0.63	6	< 10	80	< 0.5	< 2	0.14	< 0.5	3	19	12	1.15	< 10	< 1	0.06	< 10	0.21
	201 202	< 5	0.6	2.82	24	< 10	200	< 0.5	< 2	0.21	2.5	11	45	45	3.70	< 10	1	0.08	< 10	0.74
	201 202	< 5	< 0.2	1.44	10	< 10	130	< 0.5	< 2	0.71	< 0.5	9	32	18	2.67	< 10	< 1	0.07	< 10	0.63
	201 202	< 5	< 0.2	1.74	22	< 10	200	< 0.5	< 2	0.73	0.5	8	30	26	2.42	< 10	< 1	0.07	< 10	0.56
	201 202	< 5	< 0.2	1.79	8	< 10	250	< 0.5	< 2	0.49	0.5	11	41	26	3.05	< 10	1	0.15	20	0.56
	201 202	5	< 0.2	3.28	20	< 10	110	5.0	< 2	0.71	0.5	19	43	58	2.96	< 10	< 1	0.19	100	0.53
	201 202	< 5	< 0.2	4.43	18	< 10	60	7.5	< 2	0.68	4.0	9	8	26	3.14	10	1	0.15	60	0.30
	201 202	< 5	< 0.2	2.97	10	< 10	90	6.5	< 2	0.42	0.5	13	11	28	2.41	< 10	< 1	0.15	110	0.29
	201 202	< 5	< 0.2	3.85	12	< 10	50	10.0	2	0.30	1.5	7	6	23	4.61	10	< 1	0.17	140	0.15
	201 202	< 5	< 0.2	1.21	2	< 10	280	< 0.5	< 2	0.08	< 0.5	4	18	8	1.61	< 10	< 1	0.05	30	0.32
	201 202	< 5	< 0.2	1.96	8	< 10	200	< 0.5	< 2	0.06	< 0.5	6	25	10	3.22	< 10	< 1	0.10	10	0.54
	201 202	< 5	< 0.2	0.71	2	< 10	230	< 0.5	< 2	0.04	< 0.5	1	9	3	0.98	< 10	1	0.05	40	0.16
	201 202	5	< 0.2	2.45	16	< 10	270	< 0.5	< 2	0.06	< 0.5	9	40	18	3.78	< 10	< 1	0.06	20	0.51
	201 202	< 5	< 0.2	1.73	4	< 10	150	0.5	< 2	0.49	< 0.5	9	33	15	3.19	< 10	< 1	0.24	70	0.61
	201 202	< 5	< 0.2	2.08	6	< 10	140	< 0.5	< 2	0.48	< 0.5	9	38	17	3.28	< 10	< 1	0.12	10	0.87
	201 202	< 5	< 0.2	1.62	4	< 10	110	< 0.5	< 2	0.57	< 0.5	8	37	12	2.82	< 10	1	0.11	20	0.62
	201 202	< 5	< 0.2	1.52	6	< 10	110	< 0.5	2	0.61	< 0.5	8	36	12	2.74	< 10	< 1	0.10	30	0.58
	201 202	< 5	< 0.2	3.58	12	< 10	150	0.5	< 2	0.21	0.5	12	50	26	4.34	< 10	< 1	0.05	10	0.70
	201 202	< 5	< 0.2	1.43	6	< 10	80	< 0.5	< 2	0.20	< 0.5	4	23	13	2.31	< 10	1	0.05	< 10	0.36

7-
8-
9-
10-
11-

CERTIFICATION:



ALS Chemex

Aurora Laboratory Services Ltd.
 Analytical Chemists * Geochemists * Registered Assayers
 212 Brooksbank Ave., North Vancouver
 British Columbia, Canada V7J 2C1
 PHONE: 604-984-0221 FAX: 604-984-0218



CANADIAN UNITED MINERALS INC.

BOX 1260
 DAWSON CITY, YT
 Y0B 1G0

Project:
 Comments: ATTN: SHAWN RYAN

Page No. 3
 Total Pages 11
 Certificate Date: 29-JUN-2000
 Invoice No. : I0021330
 P.O. Number :
 Account : PRP

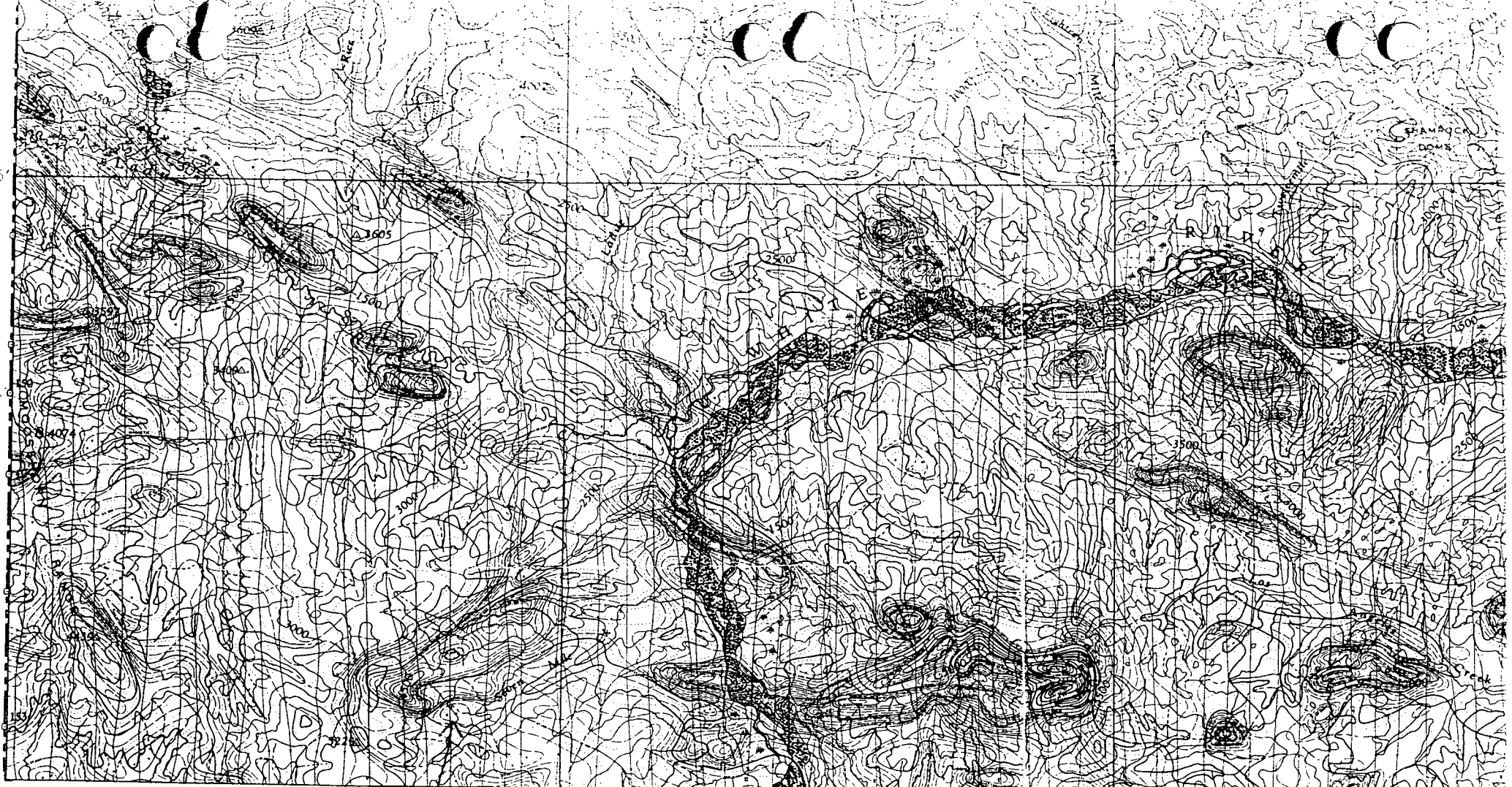
CERTIFICATE OF ANALYSIS

A0021330

SAMPLE	PREP CODE		Mn	Mo	Na	Ni	P	Pb	S	Sb	Sc	Sr	Ti	Tl	U	V	W	Zn
			ppm	ppm	%	ppm	ppm	ppm	%	ppm	ppm	ppm	%	ppm	ppm	ppm	ppm	ppm
[REDACTED]	201	202	980	7	< 0.01	4	160	528	0.01	6	< 1	59	< 0.01	< 10	< 10	10	< 10	>10000
	201	202	1755	18	< 0.01	11	230	528	0.02	2	< 1	40	< 0.01	< 10	< 10	11	< 10	9900
	201	202	1005	5	0.01	21	530	94	0.06	6	1	28	0.01	< 10	< 10	42	< 10	7000
	201	202	600	5	0.01	10	410	60	0.03	< 2	< 1	45	0.01	< 10	< 10	24	10	532
[REDACTED]	201	202	740	5	0.01	14	280	60	0.02	< 2	< 1	55	< 0.01	< 10	< 10	27	20	576
[REDACTED]	201	202	885	8	0.01	18	470	362	0.05	< 2	1	27	0.01	< 10	< 10	39	< 10	7160
	201	202	875	3	0.01	14	360	56	0.03	6	1	44	0.01	< 10	< 10	27	< 10	1850
	201	202	1155	7	0.01	15	910	60	0.12	< 2	1	22	0.01	< 10	< 10	36	< 10	1595
	201	202	620	< 1	0.03	24	160	2	0.01	< 2	5	36	0.11	< 10	< 10	76	< 10	50
[REDACTED]	201	202	350	1	0.01	120	340	< 2	< 0.01	< 2	4	24	0.22	< 10	< 10	98	< 10	74
[REDACTED]	201	202	455	1	0.02	16	570	< 2	< 0.01	2	7	25	0.18	< 10	< 10	89	< 10	92
	201	202	570	2	0.01	18	710	34	< 0.01	< 2	9	24	0.23	< 10	< 10	100	< 10	150
	201	202	540	1	0.01	33	290	2	< 0.01	< 2	5	25	0.13	< 10	< 10	96	< 10	82
	201	202	165	< 1	0.01	7	250	< 2	0.01	< 2	1	13	0.08	< 10	< 10	44	< 10	26
[REDACTED]	201	202	340	< 1	0.01	30	550	12	< 0.01	< 2	4	18	0.08	< 10	< 10	82	< 10	188
[REDACTED]	201	202	355	1	0.03	17	890	< 2	0.01	< 2	4	38	0.10	< 10	< 10	74	< 10	52
	201	202	300	1	0.03	17	450	< 2	0.01	2	4	44	0.10	< 10	< 10	57	< 10	42
	201	202	780	1	0.01	27	250	6	< 0.01	6	6	29	0.07	< 10	< 10	59	< 10	66
	202	202	635	2	0.05	56	1220	60	0.10	< 2	1	84	0.07	< 10	< 10	37	< 10	148
[REDACTED]	201	202	1000	3	0.03	5	490	64	0.08	< 2	1	69	0.08	< 10	< 10	35	10	328
[REDACTED]	201	202	730	4	0.03	11	620	36	0.05	< 2	1	69	0.05	< 10	< 10	29	10	146
	201	202	815	11	0.07	4	420	48	0.10	2	< 1	40	0.05	< 10	< 10	19	30	276
	201	202	105	< 1	< 0.01	9	120	8	< 0.01	< 2	1	18	0.03	< 10	< 10	29	< 10	30
	201	202	265	2	< 0.01	11	230	8	< 0.01	6	3	12	0.06	< 10	< 10	48	< 10	60
[REDACTED]	201	202	75	< 1	< 0.01	4	60	26	< 0.01	< 2	1	7	0.02	< 10	< 10	18	< 10	20
[REDACTED]	201	202	240	3	0.01	17	240	6	0.06	2	6	31	0.06	< 10	< 10	60	< 10	54
	201	202	400	3	0.03	16	530	2	< 0.01	2	7	37	0.13	< 10	< 10	67	< 10	74
	201	202	320	2	0.02	15	580	2	< 0.01	< 2	5	35	0.15	< 10	< 10	81	10	62
	201	202	345	1	0.01	15	1260	< 2	0.01	2	4	30	0.10	< 10	< 10	69	< 10	64
[REDACTED]	201	202	380	2	0.01	14	1220	< 2	0.01	< 2	4	38	0.09	< 10	< 10	68	< 10	60
[REDACTED]	201	202	370	1	0.01	23	310	4	< 0.01	4	5	24	0.13	< 10	< 10	109	< 10	76
	201	202	205	1	0.01	10	160	2	< 0.01	2	3	20	0.12	< 10	< 10	69	< 10	40

2005
 11
 11
 11
 11

CERTIFICATION:



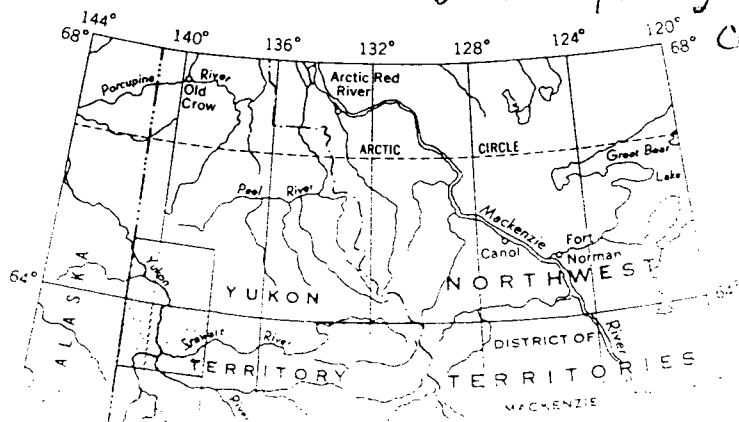
1°00'

MAS Low, MAS^{30'} HIGH

CONTACT

MAGNETIC MAP^{140°00'}

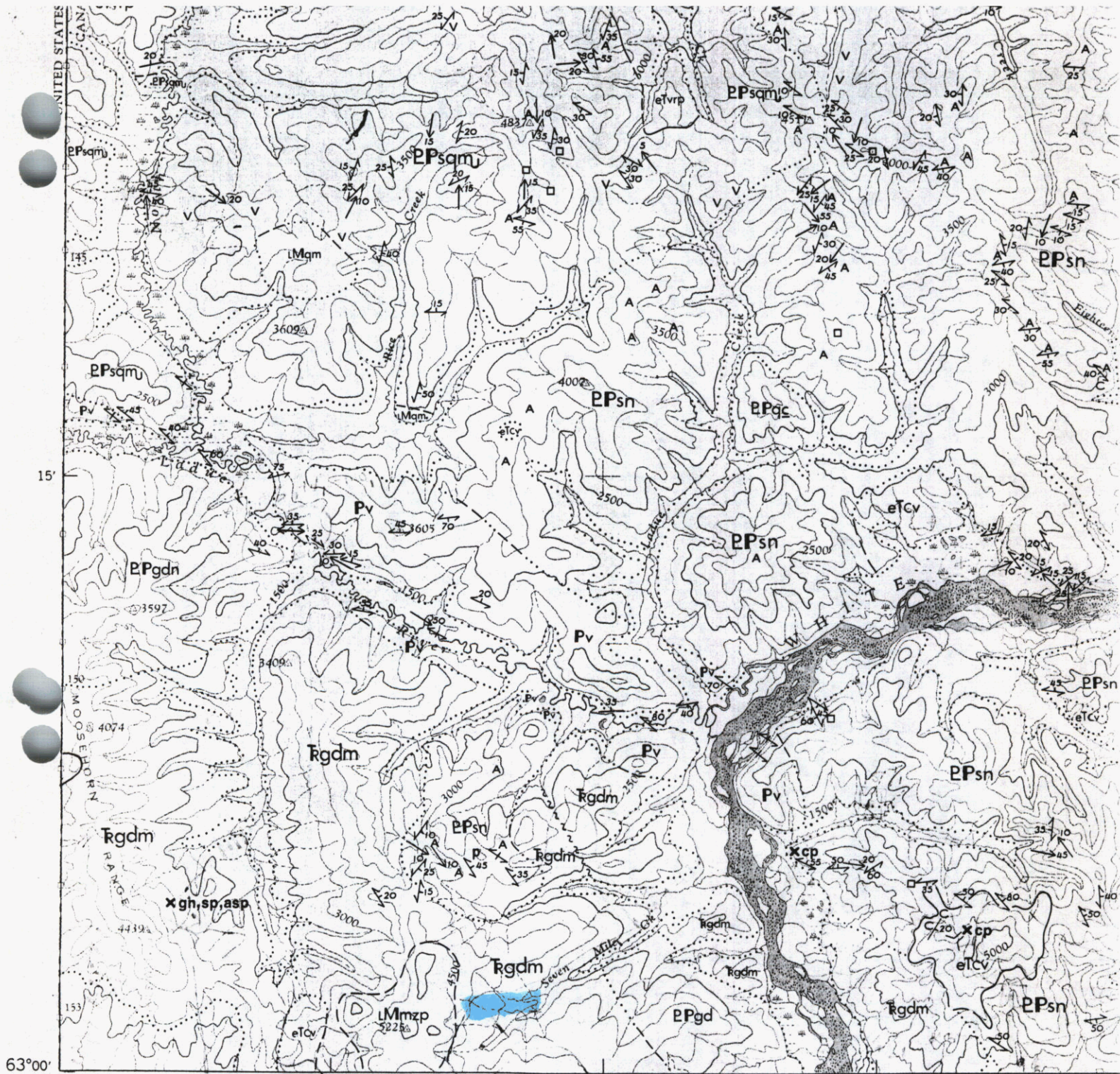
Flight altitude: nominally 1000 feet above ground level where terrain permitted.



SEVEN 101-116 claim Block

ST

SCC



63°00'

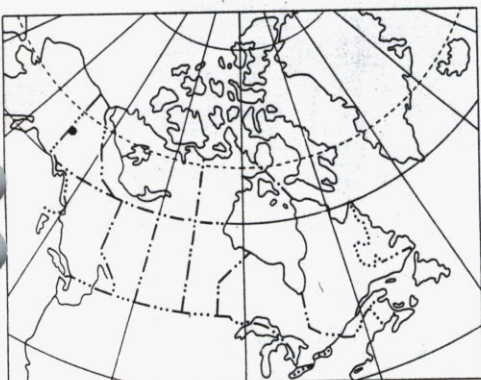
141°00'

45'

30'

15'

Claim Block



INDEX MAP

CEN.

eTdi DIORITE: dark brown, fine-grained diorite and gabbro

eTvrp QUARTZ FELDSPAR PORPHYRY: light coloured acid quartz feldspar porphyry and rhyolite; minor acid tuff breccia, crystal lithic tuff and ignimbrite

eTccg SANDSTONE AND CONGLOMERATE: white, coarse-grained, immature terrestrial sandstone with lesser interbedded pebble conglomerate and shale; minor lignite and rare ignimbrite

CRETACEOUS(?)

LMqm QUARTZ MONZONITE: medium-grained equigranular biotite quartz monzonite

LMmzp PORPHYRITIC MONZONITE: medium-grained, porphyritic (K-feldspar) hornblende monzonite to syenite *I HAVE DATA THAT CALLS THE INTRUSION AT SNAG/STEWART MAP AS BIOTITE MONZONITE*

LMmz HORNBLende MONZONITE: medium-grained equigranular hornblende monzonite

TRIASSIC(?)

Rgdm HORNBLende GRANODIORITE: dark grey weathering, strongly foliated, coarse-grained equigranular biotite hornblende granodiorite

PERMIAN(?) AND/OR TRIASSIC(?)

PMub DUNITE: foliated serpentized dunite and peridotite

CARBONIFEROUS(?) AND/OR PERMIAN(?)

Pv SHEARED GREENSTONE: sheared and foliated chloritic greenstone and green lithic tuff; minor green cherty tuff

PERMIAN AND/OR OLDER

Pt CHERT AND METACHERT: grey-weathering pale green and purplish brown hornfelsed argillaceous chert with lesser interbedded chloritic phyllite and marble

Pc LIMESTONE: thin-bedded limestone and marble

EPqmmu FOLIATED MUSCOVITE QUARTZ MONZONITE: foliated equigranular medium-grained muscovite quartz monzonite

EPc MARBLE: coarsely crystalline white graphite marble

EPgd FOLIATED BIOTITE GRANODIORITE: foliated to gneissic biotite granodiorite; minor interfoliated phyllite, schist and amphibolite

EPqs NASINA QUARTZITE: black-weathering, massive, dark grey to black graphitic quartzite with lesser grey micaceous quartzite and quartz mica schist

EPsqmu KLONDIKE SCHIST: black and orange-weathering well foliated pale green chlorite muscovite quartz schist; includes augen gneiss and amphibolite

EPsn SCHIST GNEISS: brown-weathering, grey muscovite biotite quartzite and quartz mica schist; includes amphibolite augen gneiss and minor marble; includes rocks of Klondike Schist and Pelly Gneiss undifferentiated

EPgdn PELLY GNEISS: strongly foliated to gneissic muscovite chlorite biotite granodiorite; minor augen gneiss; includes some undifferentiated foliated muscovite quartz monzonite

MESOZOIC

PRE-CAMBRIAN

Geological boundary (defined, approximate, assumed).....

Limit of geological mapping

Bedding, tops known (inclined, vertical)

Foliation (inclined, vertical)

