

094163

2000 GEOLOGICAL and GEOCHEMICAL REPORT

ON THE TEN MILE CREEK PROPERTY

(Ten 1-123, Val 1-32, Jul 1-41, Five 1-10)

NTS: 115N/8,9 and 115O/5,12

Latitude 63°29'N

Longitude 140°00'W

Dawson Mining Division

Work performed between June 20 and August 2, 2000
(To fulfil assessment requirements on Five 1-10 and Val 31-32)

Owner: Teck Corporation,
600 - 200 Burrard Street,
Vancouver, B.C.
V6C 3L9

Operator: Teck Exploration Ltd.
350 - 272 Victoria Street,
Kamloops, B.C.
V2C 2A2



Jean Pautler
January, 2001

This report has been examined by
the Geological Evaluation Unit
under Section 53 (4) Yukon Quartz
Mining Act and is allowed as
representation work in the amount
of \$ 3200.

M. B. ...
for Regional Manager, Exploration and
Geological Services for Commissioner
of Yukon Territory.

1.0 SUMMARY:

The Ten Mile Creek property, comprising 206 claims (4,200 ha) in two separate claim blocks, was principally staked by Teck in 1998. The property is located 70 km south of Dawson City, Y.T.

The property is primarily underlain by two Mesozoic quartz monzonite intrusions which cut Proterozoic and/or Paleozoic metamorphic basement rocks. On the Ten claims the above units are intruded by dykes of feldspar, \pm quartz, porphyritic rhyolite of probable late Cretaceous age.

The 2000 program consisted of the continuation of grid soil sampling on the Ten and Val/Jual soil grids and a trenching program on the Jual Vein System. In addition five reconnaissance soil lines were completed on the property. One of the soil lines was completed over the Five claims and one of the lines crosses the Val 32 claim. The cost of the work completed to cover assessment on the Five 1-10 and Val 31-32 claims was \$3,853.75

The 1999 program on the Ten Mile Creek property delineated five mineralized zones, limited only by the lack of exposure and work. All of the zones appear to occur within a Mesozoic intrusion proximal to the contact with high grade metamorphic rocks. Only two of the zones were investigated in 2000 (the Jual Vein System and the Ten Grid) due to budgetary constraints. A synopsis of the five zones follows:

- 1) Jual Vein System: Numerous northwesterly trending, flat to moderately dipping quartz veins, contact and fault zones occur with many values in the 8-16 g/t Au range. Strong northwest trending gold in soil anomalies (values to 670 ppb Au) cover a 1.4x 0.6 km area on the Val/Jual Grid. Trenching of lower order gold in soil anomalies, peripheral to the above, yielded results of 1.6 g/t Au over 25m, including 11.1 g/t Au over 3m and 1.0 g/t Au over 19m (including 8.5 g/t over 1.5m).
- 2) Cupid Zone: This zone, similar to the Jual, lies 3 km to the west and contains mineralized float to 3.5 g/t Au. The two zones may be connected on the basis of gold anomalous streams and reconnaissance soils.
- 3) Ten Grid: An open ended, 1.6 km long gold/arsenic soil anomaly, with values up to 255 ppb Au and 1280 ppm As, occurs 4.5 km to the southeast of the Cupid Zone.
- 4) Ten West: Quartz vein float with values to 3.76 g/t Au and reconnaissance soil anomalies to 150 ppb Au and 220 ppm As occur 2 km to the southwest of the Ten Grid. The gold/arsenic signature and presence of arsenopyrite suggests a similarity and possible continuity between the Ten and Ten West Zones.
- 5) Galena Creek-Five Mile: At the south end of the property, sheeted quartz veins with values up to 3.98 g/t Au, quartz stringers carrying 5.36 g/t Au, anomalous reconnaissance soils and local stream sediments exceeding 1 g/t Au occur along trend of anomalies, obtained on the Ten Grid.

A \$500,000 helicopter supported program is proposed for 2001 on the Ten Mile Creek property. The program would consist of preliminary grid magnetic/VLF surveys to define anomalous trends, faults and geological contacts with additional grid soil sampling. Diamond drilling is proposed to test the soil anomalies on the Ten Grid due to the overburden cover, and to test the continuity of gold mineralization in the 2000 trenches and significant soil anomalies on the Val/Jual Grid

TABLE OF CONTENTS

| | Page |
|---|----------|
| 1.0 SUMMARY | i |
| 2.0 LOCATION AND ACCESS..... | 1 |
| 3.0 LEGAL DESCRIPTION | 1 |
| 4.0 PHYSIOGRAPHY | 1 |
| 5.0 HISTORY..... | 2 |
| 6.0 2000 WORK | 2 |
| 7.0 GEOLOGY | 2 |
| 7.1 Regional Geology..... | 2 |
| 7.2 Property Geology | 3 |
| 7.3 Mineralization | 3 |
| 8.0 GEOCHEMISTRY | 4 |
| 8.1 Procedure..... | 4 |
| 8.2 Results and Interpretation | 5 |
| 8.2.1 Ten Grid | 5 |
| 8.2.2 Reconnaissance Soil Lines..... | 6 |
| 9.0 CONCLUSIONS AND RECOMMENDATIONS..... | 6 |

LIST OF FIGURES

| | | Following Page |
|----------|--|-----------------------|
| Figure 1 | Location Map (1:250,000) | 1 |
| Figure 2 | Claim Map (1:50,000)..... | 1 |
| Figure 3 | Regional Geology Map (1: 250,000) | 2 |
| Figure 4 | Compilation Map (1:25,000) | back pocket |
| Figure 5 | Property Geology and Geochemistry (1:15,000) | back pocket |
| Figure 6 | Ten Grid - Geology and Geochemistry (1:5,000)..... | back pocket |
| Figure 7 | Ten Soil Grid - Au (1:5,000)..... | back pocket |
| Figure 8 | Ten Soil Grid - As (1:5,000)..... | back pocket |

APPENDICES

| | |
|--------------|--|
| Appendix I | Selected References |
| Appendix II | Geochemical Procedure and Results |
| Appendix III | Statement of Expenditures – Five Claims |
| Appendix IV | Statement of Expenditures – Val 31-32 Claims |
| Appendix V | Statement of Qualifications |

2.0 LOCATION AND ACCESS (Figure 1)

The Ten Mile Creek property, NTS map sheet 115N/8,9 and 115O/5,12 is located 70 km south of Dawson City, Y.T. in the Dawson Mining Division. It borders Ten Mile Creek, between Twenty Mile Creek, a tributary of the Sixty Mile River, and Sestak Creek, a tributary of the Yukon River. Latitude and longitude of the property are 63°29'N, 140°00'W. Access is by helicopter from Dawson City. If local transportation is available the Lammers Airstrip, which is located at the mouth of Ten Mile Creek, can be utilized. There is barge access to the mouth of the Sixty Mile River, 7 km east of the airstrip.

3.0 LEGAL DESCRIPTION (Figure 2)

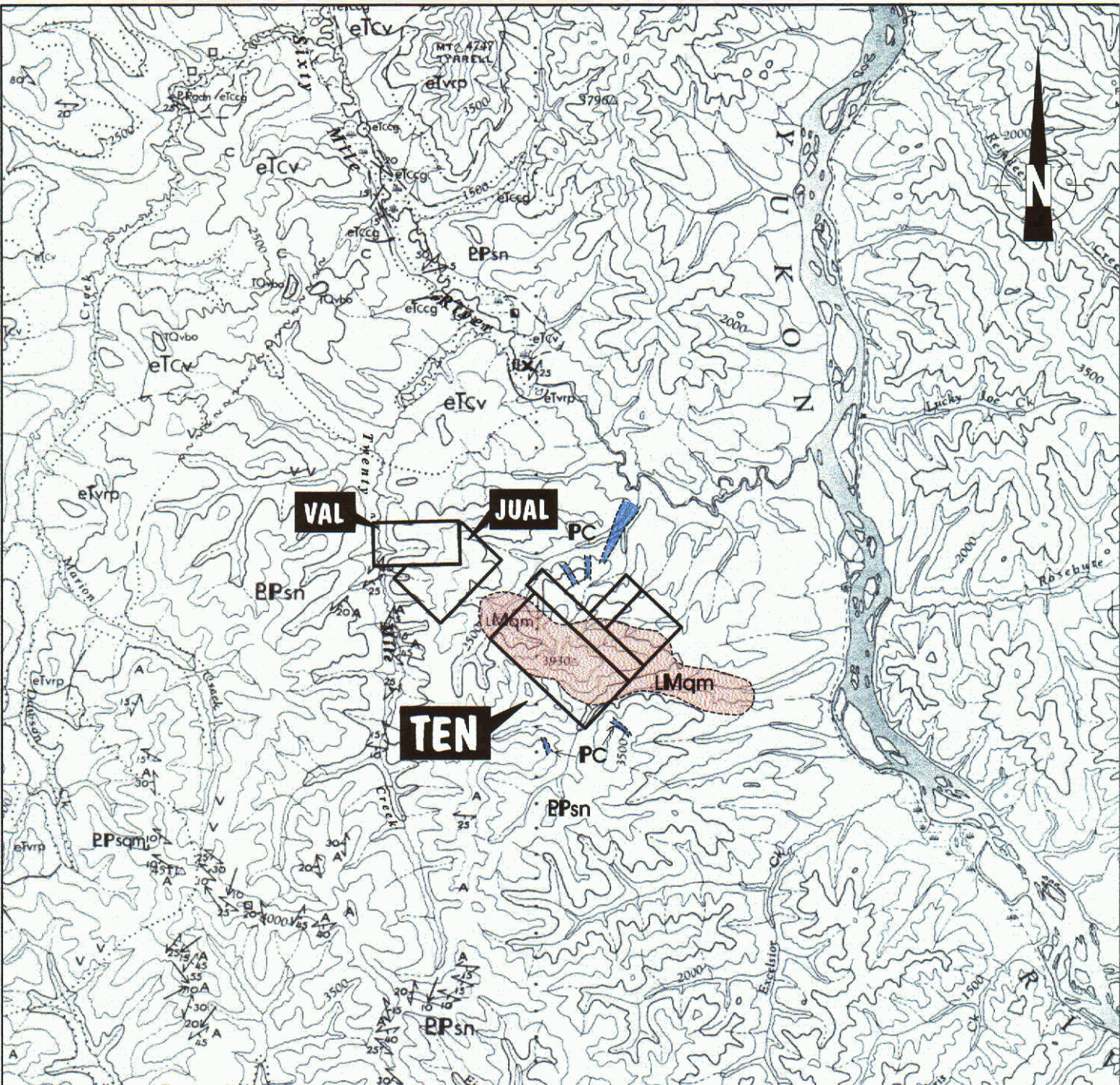
The Ten Mile property, covering an area of approximately 4,200 hectares, consists of two separate blocks of claims, separated by Phelps Dodge Corporation's Flume Property. The Ten block consists of 123 contiguous Ten claims and 10 contiguous Five claims. The Val/Jual block lies 3 km north of the Ten block and consists of 32 contiguous Val and 41 contiguous Jual claims. The property is owned by Teck Corporation, Vancouver, B.C. and Teck Exploration Ltd., of Kamloops, B.C., is the operator. A table showing pertinent claim data follows:

| Claim Name | Record No. | Expiry Date | Renewal Years | New Expiry Date |
|-------------------|-------------------|--------------------|----------------------|------------------------|
| Ten 1-72 | YC06983-7054 | April 9, 2002 | 0 | April 9, 2002 |
| Ten 73-98 | YC06983-7054 | July 22, 2002 | 0 | July 22, 2002 |
| Ten 99-123 | YC12500-2524 | Sept 11, 2002 | 0 | Sept11, 2002 |
| Val 1-28 | YC07772-7799 | August 4, 2001 | 0 | Aug 4, 2001 |
| Jual 1-41 | YC07800-7840 | August 7, 2001 | 0 | Aug 7, 2001 |
| Val 29-30 | YC17145-7146 | June 30, 2002 | 0 | June 30, 2002 |
| Val 31-32 | YC17404-7405 | August 6, 2000 | 1 | Aug 6, 2001* |
| Five 1-10 | YC17377-7386 | August 3, 2000 | 3 | Aug 3, 2003* |

* Note: New expiry date based on acceptance of assessment report.

4.0 PHYSIOGRAPHY

The property covers an area of rolling, tree covered hills in the Yukon Plateau. Exposure is extremely poor but does exist along some of the slopes as talus boulders. Elevations on the property range from 1700' to 3930'. Vegetation includes trees, buckbrush and moss. Most of the property was burned approximately twenty years ago.



LEGEND

Cretaceous

LMqm QUARTZ MONZONITE: medium-grained equigranular biotite quartz monzonite.

Proterozoic and / or Paleozoic

Pc LIMESTONE: thin-bedded limestone and marble.

PPsqm KLONDIKE SCHIST: black and orange-weathering well foliated pale green chlorite muscovite quartz-schist; includes augen gneiss and amphibolite.

PPsn SCHIST GNEISS: brown-weathering, grey muscovite biotite quartzite and quartz mica schist; includes amphibolite augen gneiss and minor marble; includes rocks of Klondike Schist and Pelly Gneiss undifferentiated.

PPgdn PELLY GNEISS: strongly foliated to gneissic muscovite chlorite biotite granodiorite; minor augen gneiss; includes some undifferentiated foliated muscovite quartz monzonite.



TECK EXPLORATION LTD.
KAMLOOPS, BRITISH COLUMBIA

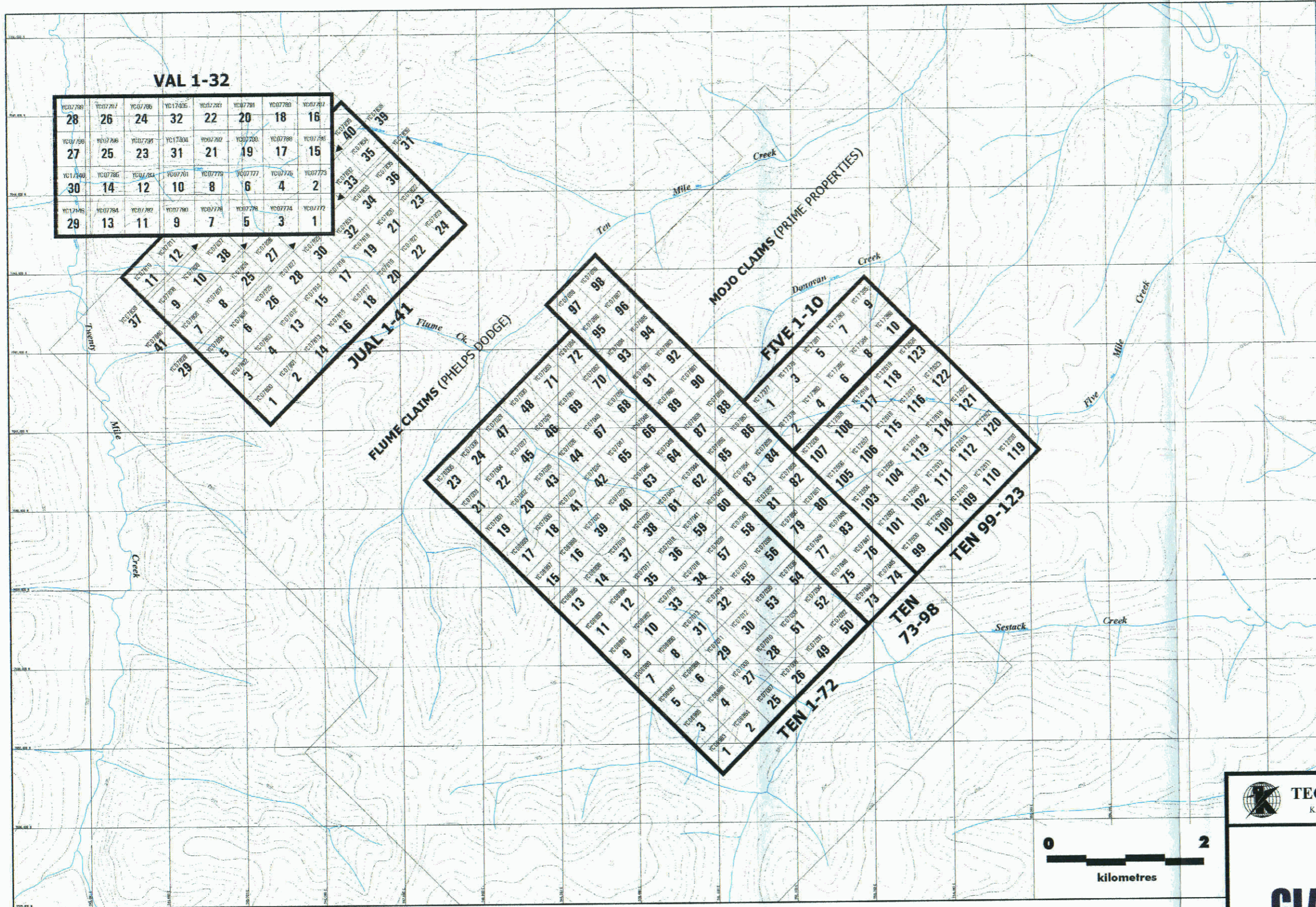
TEN MILE CK. PROPERTY, Yukon

REGIONAL GEOLOGY

From Bostock, 1942 and Tempelman-Kluit, 1974

SCALE: 1:250,000 NTS No:115N,O DRAWN BY: S.A. **FIGURE 3**

094163



VAL 1-32

| | | | | | | | |
|---------|---------|---------|---------|---------|---------|---------|---------|
| YC07786 | YC07787 | YC07788 | YC17205 | YC07781 | YC07780 | YC07782 | YC07783 |
| 28 | 26 | 24 | 32 | 22 | 20 | 18 | 16 |
| YC07789 | YC07790 | YC07791 | YC17204 | YC07782 | YC07780 | YC07788 | YC07785 |
| 27 | 25 | 23 | 31 | 21 | 19 | 17 | 15 |
| YC17200 | YC07785 | YC07784 | YC07781 | YC07779 | YC07777 | YC07776 | YC07773 |
| 30 | 14 | 12 | 10 | 8 | 6 | 4 | 2 |
| YC17745 | YC07784 | YC07782 | YC07780 | YC07778 | YC07774 | YC07772 | |
| 29 | 13 | 11 | 9 | 7 | 5 | 3 | 1 |



094163



TECK EXPLORATION LTD.
KAMLOOPS, BRITISH COLUMBIA

TEN PROPERTY
CLAIM LOCATION

SCALE: 1:50,000 NTS No: 115N,0 DRAWN BY: S.A. **FIGURE 2**

5.0 HISTORY

There is no record of any previous work on the Ten Mile Creek property, although the Hunter claims previously covered the northeastern Ten claims and a small block of Soo claims overlapped the extreme southeast corner. Ten Mile Creek is an active placer creek with significant past production. Limited previous placer production has also come from Sestak, Thirteen Mile and Twenty Mile Creeks.

6.0 2000 WORK

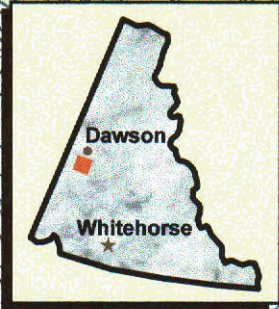
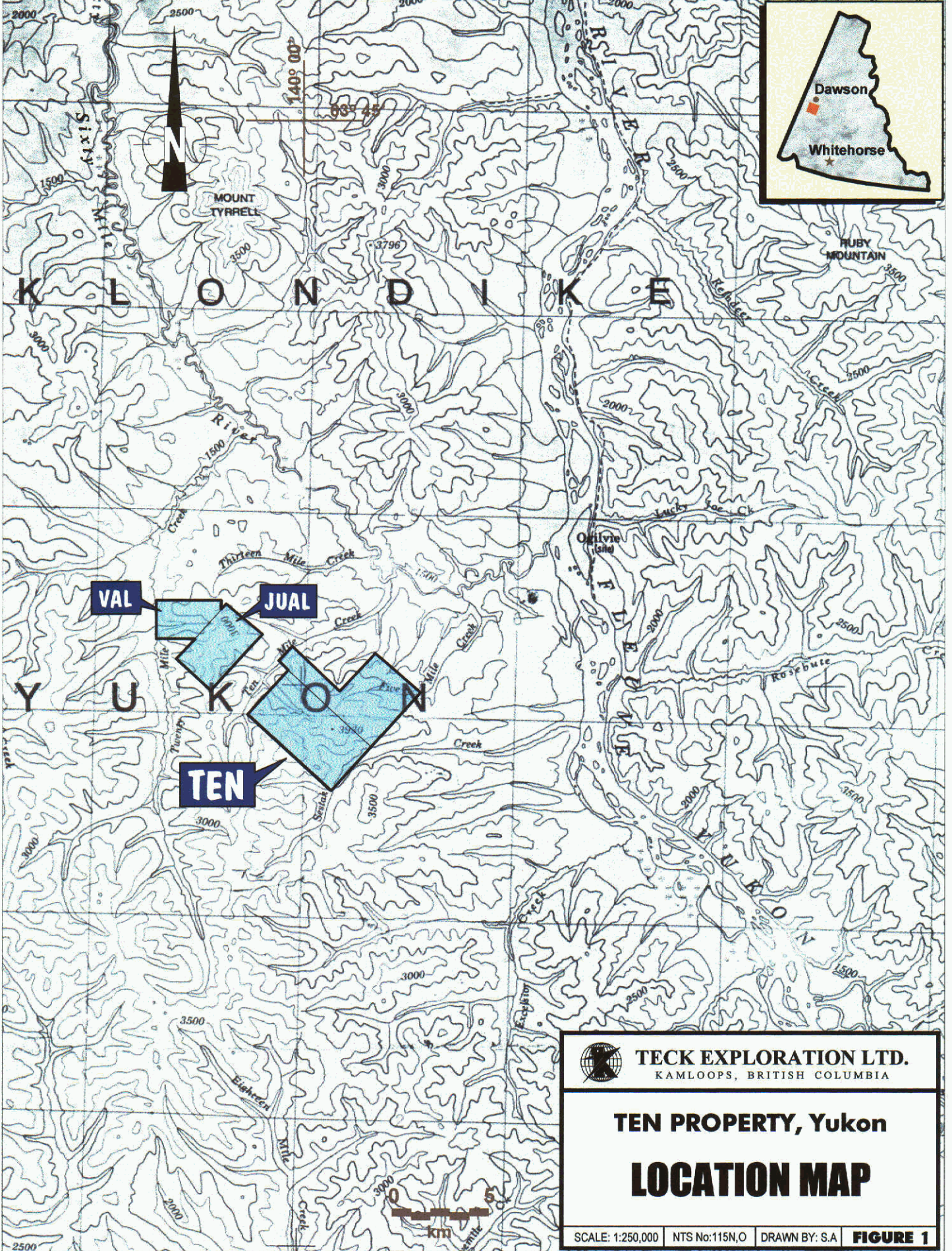
Three and one quarter man-days were spent in the field on the Five 1-10, Ten 86-90 and Val 32 claims to complete assessment work on the Five 1-10 and Val 31-32 claims between July 25 and 30, 2000. Work consisted of the continuation of grid soil sampling on the Ten soil grid and the completion of a reconnaissance soil line across the Five claims and another crossing the Val 32 claim. A total of five reconnaissance soil lines were completed on the property in 2000 and the Val/Jual grid was also expanded. A trenching program was undertaken on the Jual Vein System. This report will primarily focus on that work which pertains to the required assessment on the Five and Val 31-32 claims. Control for the grids was provided by a chained baseline that was established in 1999. Crosslines and reconnaissance lines were run using topochain and compass.

7.0 GEOLOGY

7.1 Regional Geology (Figure 3)

The regional geology of the Ten Mile Creek property is represented on the Stewart River (115N), Tempelman-Kluit, 1974 and Ogilvie (115 O) Map Sheets, Bostock, 1942.

The Ten claims are shown to be underlain by a Cretaceous quartz monzonite intrusion cutting Proterozoic and/or Paleozoic metamorphic basement rocks. The Val/Jual claims are shown to be underlain by Proterozoic and/or Paleozoic metamorphic basement rocks but a Mesozoic quartz monzonite intrusion is known to underlie most of the claim area.



VAL

JUAL

TEN



TECK EXPLORATION LTD.
KAMLOOPS, BRITISH COLUMBIA

TEN PROPERTY, Yukon

LOCATION MAP



SCALE: 1:250,000 | NTS No:115N,O | DRAWN BY: S.A | **FIGURE 1**

094163

7.2 Property Geology (Figures 4 and 5)

Despite the limited exposure on the Ten Mile Creek property, it appears to be primarily underlain by two Mesozoic quartz monzonite intrusions (Unit 2) that cut paragneiss (Unit 1) of the older metamorphic basement unit. On the Ten claims dykes of feldspar, \pm quartz, porphyritic rhyolite (Unit 3) of probable late Cretaceous age intrude the above units. A large body of orthogneiss (Unit 1b) occurs 2 km to the west of the Ten claims. Two large bands of marble (Unit 1a) occur within the metasedimentary unit (Unit 1) to the east and west of the Ten claims.

The oldest rocks in the general property area are the Proterozoic and/or Paleozoic metasedimentary basement rocks (Unit 1). Individual lithologies include brown weathering, muscovite biotite quartzite, augen gneiss and muscovite-chlorite granodiorite gneiss. The metasedimentary rocks locally exhibit hornfelsing at the contact with the intrusion. The orthogneiss (Unit 1b) to the west of the Ten claims includes diorite gneiss and foliated quartz monzonite. The marble bands (Unit 1a) consist of grey weathering, white recrystallized limestone.

The metasedimentary rocks are cut by two Mesozoic biotite quartz monzonite intrusions (Unit 2) which underlie most of the property. Two main phases of the intrusion have been distinguished. One consists of a fresh, pink coloured, medium grained to rarely fine grained, equigranular biotite quartz monzonite with 10-15 % biotite. The second phase (Unit 2a) is white in colour, fine grained to almost aphanitic with <5% fine biotite. The latter unit commonly exhibits clay alteration and may represent an alteration phase that includes potassic alteration. This phase resembles an alteration style that is evident at Pogo.

Late Cretaceous feldspar, \pm quartz, rhyolite porphyry dykes (Unit 3) intrude both the quartz monzonite and the metamorphic rocks on the western to central Ten claims. The dykes have not been observed on the Val/Jual claims. The dykes are tan weathering, contain miarolitic cavities, flow textures and, in places, autolithic fragments and generally appear to be deuterically pervasively clay altered.

7.3 Mineralization (Figures 4 and 5)

Five mineralized zones have been delineated on the Ten Mile Creek property, limited only by the lack of exposure and work. All of the zones appear to occur within a Mesozoic intrusion proximal to the contact with high grade metamorphic rocks. The zones are as follows:

1) Jual Vein System: Numerous northwesterly trending, flat to moderately dipping quartz veins, stockworks, contact and fault zones occur with many values in the 8-16 g/t Au range. Strong northwest trending gold in soil anomalies (values to 670 ppb Au) cover a 1.4x 0.6 km area on the Val/Jual Grid. Trenching of lower order gold in soil anomalies, peripheral to the above, yielded results of 1.6 g/t Au over 25m, including 11.1 g/t Au over 3m and 1.0 g/t Au over 19m (including 8.5 g/t over 1.5m).

2) Cupid Zone: This zone, similar to the Jual, lies 3 km to the west and contains mineralized float to 3.5 g/t Au. Quartz and altered intrusive boulders, with disseminated sulfide, were uncovered over a 600m x 500m area near Twenty Mile Creek. Galena is the most common sulfide with minor pyrite. The two zones may be connected on the basis of gold anomalous streams and reconnaissance soils with values up to 70 ppb Au.

3) Ten Grid: An open ended, 1.6 km long gold/arsenic soil anomaly, with values up to 255 ppb Au and 1280 ppm As, occurs 4.5 km to the southeast of the Cupid Zone. The anomaly covers the contact between the metasedimentary unit and the intrusion. Northerly trending feldspar porphyry dykes occur in the grid area but do not appear to be associated with the soil anomaly. The strong correlation between gold and arsenic on the Ten Soil Grid suggests that the style of mineralization here is distinct from that exposed in the Jual Vein System.

4) Ten West: Quartz vein float with values to 3.76 g/t Au and reconnaissance soil anomalies to 150 ppb Au and 220 ppm As occur 2 km to the southwest of the Ten Grid. The gold/arsenic signature and presence of arsenopyrite suggests a similarity and possible continuity between the Ten and Ten West Zones.

5) Galena Creek-Five Mile: At the south end of the property, sheeted quartz veins with values up to 3.98 g/t Au, quartz stringers carrying 5.36 g/t Au, anomalous reconnaissance soils and local stream sediments exceeding 1 g/t Au occur along trend of anomalies, obtained on the Ten Grid

8.0 GEOCHEMISTRY (Figures 5 - 8)

8.1 Procedure

A total of 1 rock and 115 soil samples were collected from the Five 1-10, Ten 86-90 claims. Five soil samples were collected from the Val 32 claim. The samples were sent to Eco-Tech Labs, Kamloops, B.C. and analyzed for Al, Sb, As, Ba, Bi, Cd, Ca, Cr, Co, Cu, Fe, La, Pb, Mg, Mn, Hg, Mo, Na, Ni, P, Ag, Sr, Ti, Sn, W, U, V and Zn using a 32 element ICP package which involves a nitric-aqua regia digestion. Gold was analyzed by fire assay with an atomic absorption finish. Lab procedures and complete sample results are outlined in Appendix II.

The rock sample (RF-514) consisted of a grab sample of altered intrusion, exposed as limited subcrop along the Five 7-8 claim line. The sample location is plotted on Figure 5. Rock sample locations from the Ten Grid are plotted on Figure 6.

The Ten and Val/Jual Soil Grids were extended and infill sampling conducted between existing lines. An additional 5.6 line km was added to the Ten Grid resulting in 12.4 line km. The 2.6 km baseline trends 315° with lines spaced 100m apart in the central area

and 200m apart at the margins. Samples were generally collected at 25m intervals along the lines. The gold results are plotted on Figure 7 and arsenic results on Figure 8.

Five reconnaissance soil lines were completed on the Val/Jual and Five claims. The soil samples were generally collected at 100m intervals along the lines. All soil samples were collected from the B horizon with an auger and sent to the lab in waterproof kraft bags. Reconnaissance soil sample locations with selected results are plotted on Figure 5.

8.2 Results and Interpretation

8.2.1 Ten Grid: (Figures 6 -8)

An open-ended, 1.6 km long gold/arsenic soil anomaly, with values up to 255 ppb Au and 1280 ppm As, was outlined on the Ten Grid. Geology and rock sample locations are plotted on Figure 6. Gold results are plotted on Figure 7 and arsenic results are plotted on Figure 8. The anomaly is broad, particularly at the southeast end of the grid with up to 1.0 km long >50 ppb gold in soil anomalous trends. Distinct northwest trends are evident with one pronounced east-west trend in the central grid area between L79 and L83N. A second, less pronounced east-west trend is suggestive at L85N/9725E. There is a remarkably strong correlation between gold and arsenic on the Ten Grid, although not a direct correlation.

The higher-value gold in soil anomalies are linear suggestive of a vein source with strong continuity. A vein source is further substantiated by the discovery of the Jual Vein System on the Val/Jual claims. The broadening of the anomaly in the southeast grid area (L74-76N) is suggestive of a bulk tonnage target with peripheral veins to the northwest. This appears to be consistent with results on the Jual Vein System, although the latter veins generally do not have an arsenic association.

The soil anomaly on the Ten Grid is underlain by both the metasedimentary unit and the intrusion and may be related to the contact between the two units (Figure 6).

The gold in soil values appear to taper off at the north end of the grid but the arsenic values increase and broaden into a zone over 400m wide with values to 1280 ppm As. This appears to reflect the greater mobility and downslope dispersion of arsenic.

The Ten Grid gold/arsenic soil anomaly is strongly open to the south. Expansion of the grid in this direction and infill lines in the southeast grid area are necessary to trace the anomaly.

8.2.2 Reconnaissance Soil Lines: (Figure 5)

The two soil lines between the Jual Vein System and the Cupid Zone returned three gold in soil anomalies. A two station anomaly with values of 70 ppb and 20 ppb Au lies between the Jual Vein System and the Cupid Zone, on the north side of Jual Creek just east of the Val 31-32 claim line (T-S1010 and 1011). Another anomaly with 50 and 25 ppb Au values occurs at the southwest end of L60N of the Val/Jual Grid (T-S1101 and 1100). The third, consists of a point anomaly of 45 ppb Au (T-S1021) on the northeastern edge of the Cupid Zone.

In 1999, an isolated soil sample collected from the western Jual claims returned an anomalous gold value of 45 ppb, associated with 615 ppm As (V-S967). A reconnaissance soil line completed in the area in 2000, returned a two station gold in soil anomaly with values up to 295 ppb Au and 385 ppm As (T-S7 and 8). Another reconnaissance soil line along the old cat trail, yielded a 600m long gold anomalous zone, 250m above the aforementioned anomaly. The maximum values include 75 ppb Au and 1505 ppm As (T-S7+00 to T-S13+50) and are proximal to the intrusive/metasedimentary contact. The gold/arsenic signature is similar to that observed on the Ten Grid and Ten West Zones.

Limited follow up of a 150 ppb Au in soil anomaly (T-S902) from the Ten West Zone yielded three additional anomalous soils with values up to 70 ppb Au. The soil anomalies occur within 500m of an occurrence of quartz boulders that carries 3.76 g/t Au.

A reconnaissance soil line along the Five 1-10 claim line returned three minor arsenic in soil anomalies with values up to 130 ppm As (S-F509) but no significant gold anomalies. A rock sample collected along the line was not anomalous in gold or arsenic.

9.0 CONCLUSIONS AND RECOMMENDATIONS

Five mineralized zones, separated only by the lack of work and exposure are evident on the Ten Mile Creek property. All of the zones appear to occur within a Mesozoic intrusion proximal to the contact with high grade metamorphic rocks. The zones include the Jual Vein System, the Cupid Zone, the Ten Grid, the Ten West Zone and the Galena Creek-Five Mile Zone.

Another zone is beginning to be delineated on the western Jual claims. Reconnaissance soil lines in 2000 have yielded up to 600m long gold/arsenic in soil anomalies with values up to 295 ppb Au and 1505 ppm As. Grid soil sampling, prospecting and mapping is necessary to define this new zone.

The 2000 program extended the soil anomaly on the Ten Grid by an additional 400m to the south and more clearly defined the anomaly with infill lines. The anomaly broadens to the south and is strongly open in this direction. Up to 1.0 km long >50 ppb gold in soil

anomalies with a strong arsenic correlation are present. Drill targets based on the soil results can now be delineated. A prime target area occurs at L76N/9925E and covers a 200 ppb gold in soil anomaly that occurs within a five station > 50 ppb gold soil anomaly, along a low ridge.

Mineralized zones grading 1.6 g/t Au over 25m, including 11.1 g/t Au over 3m and 1.0 g/t Au over 19m (including 8.5 g/t over 1.5m) were encountered in areas of lower order soil anomalies on the Val/Jual Grid. Elsewhere on the grid, continuous, up to 700m long > 50 ppb gold in soil anomalies are evident with values up to 220 ppb Au.

Three gold in soil anomalies were delineated between the Jual Vein System and the Cupid Zone with values up to 70 ppb Au. More detailed soil sampling is required to define the anomalies.

Additional geological mapping and soil sampling, recommended but not undertaken in 2000, should also be carried out between the Ten and Galena Creek Zones, the south side of Five Mile Creek and between the Ten and Ten West Zones.

Grid magnetic/VLF surveys are recommended, in conjunction with the above-mentioned soil surveys, to define anomalous trends and geological contacts.

There appears to be at least two styles of gold mineralization on the Ten Mile Creek property. One style may be associated with minor galena as observed in the Jual Vein System, Cupid Zone and Galena Creek. The distal expression of this type of mineralization has been tested with success on the Val/Jual Grid. The second style is associated with arsenic on the Ten Grid, the Ten West and western Jual claims and has not been tested.

A \$500,000 helicopter supported program of grid magnetic/VLF surveys, to define anomalous trends, faults and geological contacts, and extensive grid soil sampling is recommended for the year 2000 on the Ten Mile Creek property. Diamond drilling is proposed to test the soil anomalies on the Ten Grid due to the overburden cover, and to test the continuity of gold mineralization in the 2000 trenches and significant soil anomalies on the Val/Jual Grid.

APPENDIX I

Selected References

- Bostock, H.S. (1942): Geology of the Ogilvie map area, Y.T.; Geological Survey of Canada Map 711A, scale 1:250,000.
- Pautler, J. (1999): 1999 geological, geochemical and trenching report on the Ten Mile Creek property; In house report, 18 pages.
- Pautler, J. (1998): 1998 geological and geochemical report on the Ten Mile Creek property; In house report, 10 pages.
- Pautler, J. (1998): 1998 geological and geochemical assessment report on the Ten property; assessment report, 8 pages.
- Pautler, J. (1997): Yukon regional report; In house report, 18 pages.
- Tempelman-Kluit, D.J. (1974): Reconnaissance Geology of the Aishihik Lake, Snag and part of Stewart River map-areas, west-central Yukon; Geological Survey of Canada, Paper 73-41, 97 pages.
- Yukon Minfile (1996): Yukon Geology Program, IMS Ltd., NTS 115 N, 115 O.

APPENDIX II

Geochemical Procedure and Results

Jan. 1990.

GEOCHEMICAL ANALYTICAL METHODS CURRENTLY IN USE AT
ROSSBACHER LABORATORY LTD.

SAMPLE PREPARATION

1. **Geochem. Soil and Silt:**
Samples are dried and sifted to minus 80 Mesh, through stainless steel or nylon screens.
2. **Geochem. Rock:**
Samples are dried, crushed to minus 1/4 inch, split, and pulverized to minus 100 mesh.

METHODS OF ANALYSIS

1. **Multi element: (Mo, Cu, Ni, Co, Mn, Fe, Ag, Zn, Pb, Cd, As):**
0.50 Gram sample is digested for four hours with a 15:85 mixture of Nitric-Perchloric acid. The resulting extract is analyzed by Atomic Absorption spectroscopy, using Background Correction where appropriate.
2. **Antimony:**
0.50 Gram sample is fused with Ammonium Iodide and dissolved. The resulting solution is extracted into TOPO/MIBK and analyzed by Atomic Absorption spectroscopy.
3. **Arsenic: (Generation Method)**
0.25 Gram sample is digested with Nitric-Perchloric acid. Arsenic from the solution is converted to arsine, which in turn reacts with silver D.D.C. The resulting solution is analyzed by colorimetry.
4. **Barium:**
0.20 Gram sample is repeatedly digested with HClO_4 - HNO_3 and HF. The solution is analyzed by atomic absorption spectroscopy.
5. **Biogeochemical:**
Samples are dried and ashed at 550°C. The resulting ash analyzed as in #1, Multielement Analysis.
6. **Bismuth:**
0.50 Gram sample is digested with Nitric acid. The solution is analysed by Atomic absorption spectroscopy.

METHODS OF ANALYSIS (CONT'D)

7. Chromium:

0.25 Gram sample is fused with Sodium Peroxide. The solution is analyzed by atomic absorption spectroscopy.

8. Fluorine:

0.50 Gram sample is fused with Carbonate Flux, and dissolved. The solution is analysed for Fluorine by use of an Ion Selective Electrode.

9. Gold AR/AAS:

10.0 Gram sample is roasted at 550°C and dissolved in Aqua Regia. The resulting solution is subjected to a MIBK extraction, and the extract is analyzed for Gold using Atomic Absorption spectroscopy.

9A Gold FA:

10.0 Gram sample is fused with appropriate fluxes, and the resulting lead button is cupelled to produce a gold/silver bead. The bead is dissolved in Aqua Regia and analyzed for gold by AAS.

10. Mercury:

1.00 Gram sample is digested with Nitric and Sulfuric acids. The solution is analyzed by Atomic Absorption spectroscopy, using a cold vapor generation technique.

11. Partial Extraction and Fe/Mn oxides:

0.50 Gram sample is extracted using one of the following: hot or cold 0.5 N. HCl, 2.5% E.D.T.A., Ammonium citrate, or other selected organic acids. The solution is analyzed by use of Atomic Absorption spectroscopy.

12. --pH:

An aqueous suspension of soil, or silt is prepared, and its pH is measured by use of a pH meter.

13. Rapid Silicate Analysis:

0.10 Gram sample is fused with Lithium Metaborate, and dissolved in HNO₃. The solution is analyzed by Atomic Absorption for SiO₂, Al₂O₃, Fe₂O₃, MgO, CaO, Na₂O, K₂O, TiO₂, TiO₂, P₂O₅, and MnO.

14. Tin:

0.50 Gram sample is sublimated by fusion with Ammonium Iodide, and dissolved. The resulting solution is extracted into TOPO/MIBK and analysed by atomic absorption spectroscopy.

15. Tungsten:

1.00 Gram sample is sintered with a carbonate flux, and dissolved. The resulting extract is analyzed colorimetrically, after reduction with Stannous Chloride, by use of Potassium Thiocyanate.

16. ICP :

0.5 Gram sample is digested with Aqua Regia, and analyzed using a JOBIN YVON MODEL JY 32 1987 ICP Emission Spectrophotometer for Ag, Al, As, Au, B, Ba, Be, Bi, Ca, Cd, Co, Cr, Cu, Fe, Hg, La, Mg, Mo, Mn, Ni, P, Pb, Sb, Si, Sr, Ti, U, V, W, Zn.

23-Aug-00

ECO-TECH LABORATORIES LTD.
10041 Dallas Drive
KAMLOOPS, B.C.
V2C 6T4

ICP CERTIFICATE OF ANALYSIS AK 2000-225

TECK EXPLORATION LTD.
#350-272 VICTORIA STREET
KAMLOOPS, B.C.
V2C 2A2

Phone: 250-573-5700
Fax : 250-573-4557

ATTENTION: JEAN PAUTLER

No of samples received 21
Sample Type Soil
Project #: 176900
Shipment #: None Given
Samples submitted by J Pautler

Values in ppm unless otherwise reported

| Et #. | Tag # | Au(ppb) | Ag | Al % | As | Ba | Bi | Ca % | Cd | Co | Cr | Cu | Fe % | La | Mg % | Mn | Mo | Na % | Ni | P | Pb | Sb | Sn | Sr | Ti % | U | V | W | Y | Zn |
|-------|---------|---------|------|------|-----|-----|----|------|----|----|----|----|------|-----|------|-----|----|-------|----|-----|----|----|-----|-----|------|-----|-----|-----|----|----|
| 1 | S-F 500 | <5 | <0.2 | 1.41 | 20 | 240 | 5 | 0.28 | <1 | 10 | 24 | 24 | 2.39 | <10 | 0.39 | 519 | 1 | <0.01 | 13 | 670 | 24 | <5 | <20 | 29 | 0.04 | <10 | 49 | <10 | 5 | 65 |
| 2 | S-F 501 | <5 | <0.2 | 1.27 | 25 | 185 | <5 | 0.20 | <1 | 7 | 21 | 12 | 2.14 | <10 | 0.34 | 197 | <1 | <0.01 | 13 | 490 | 22 | <5 | <20 | 20 | 0.03 | <10 | 45 | <10 | 4 | 58 |
| 3 | S-F 502 | <5 | <0.2 | 1.49 | 75 | 370 | 5 | 0.71 | <1 | 11 | 31 | 36 | 2.82 | <10 | 0.63 | 267 | <1 | 0.01 | 29 | 610 | 20 | <5 | <20 | 111 | 0.07 | <10 | 54 | <10 | 9 | 87 |
| 4 | S-F 503 | <5 | <0.2 | 1.40 | 40 | 265 | 5 | 0.70 | <1 | 16 | 25 | 34 | 3.85 | <10 | 0.46 | 877 | 2 | 0.01 | 29 | 360 | 14 | <5 | <20 | 87 | 0.04 | <10 | 47 | <10 | 13 | 53 |
| 5 | S-F 504 | <5 | <0.2 | 1.30 | 10 | 215 | 10 | 0.40 | <1 | 9 | 25 | 19 | 2.83 | <10 | 0.38 | 227 | 2 | <0.01 | 22 | 250 | 10 | <5 | <20 | 55 | 0.04 | <10 | 51 | <10 | 3 | 38 |
| 6 | S-F 505 | <5 | <0.2 | 1.39 | 15 | 315 | 10 | 0.51 | <1 | 12 | 24 | 22 | 2.72 | <10 | 0.44 | 544 | 1 | 0.01 | 22 | 370 | 12 | <5 | <20 | 102 | 0.04 | <10 | 52 | <10 | 8 | 43 |
| 7 | S-F 506 | <5 | <0.2 | 1.46 | 10 | 285 | 5 | 0.23 | <1 | 8 | 23 | 16 | 2.61 | <10 | 0.37 | 215 | <1 | <0.01 | 15 | 100 | 12 | <5 | <20 | 42 | 0.05 | <10 | 59 | <10 | <1 | 36 |
| 8 | S-F 507 | <5 | <0.2 | 1.68 | 30 | 375 | 5 | 0.99 | <1 | 13 | 27 | 33 | 3.40 | <10 | 0.57 | 512 | 1 | 0.01 | 25 | 230 | 14 | <5 | <20 | 324 | 0.03 | <10 | 64 | <10 | 13 | 44 |
| 9 | S-F 508 | <5 | <0.2 | 1.49 | 15 | 215 | 10 | 0.23 | <1 | 13 | 30 | 19 | 3.43 | <10 | 0.50 | 662 | 1 | <0.01 | 22 | 310 | 12 | <5 | <20 | 29 | 0.05 | <10 | 79 | <10 | <1 | 44 |
| 10 | S-F 509 | <5 | <0.2 | 2.02 | 130 | 240 | 15 | 0.26 | <1 | 18 | 27 | 18 | 3.78 | <10 | 0.64 | 170 | 2 | 0.01 | 18 | 250 | 12 | <5 | <20 | 28 | 0.08 | <10 | 150 | <10 | <1 | 46 |
| 11 | S-F 510 | 10 | <0.2 | 2.02 | 10 | 300 | 10 | 0.56 | <1 | 24 | 37 | 43 | 4.36 | <10 | 0.73 | 626 | 1 | 0.01 | 22 | 340 | 12 | <5 | <20 | 63 | 0.05 | <10 | 102 | <10 | 3 | 48 |
| 12 | S-F 511 | <5 | <0.2 | 0.91 | 25 | 135 | <5 | 0.13 | <1 | 8 | 13 | 16 | 1.91 | <10 | 0.17 | 269 | <1 | <0.01 | 10 | 290 | 12 | <5 | <20 | 18 | 0.03 | <10 | 39 | <10 | 3 | 53 |
| 13 | S-F 512 | 10 | 0.4 | 1.70 | 20 | 545 | <5 | 0.91 | <1 | 12 | 21 | 31 | 2.83 | <10 | 0.36 | 845 | 1 | 0.01 | 18 | 630 | 14 | <5 | <20 | 152 | 0.03 | <10 | 44 | <10 | 27 | 52 |
| 14 | S-F 513 | 5 | <0.2 | 1.77 | 20 | 430 | 10 | 1.18 | <1 | 12 | 25 | 27 | 2.94 | <10 | 0.52 | 602 | 1 | 0.01 | 19 | 680 | 18 | <5 | <20 | 198 | 0.04 | <10 | 50 | <10 | 21 | 73 |
| 15 | S-F 515 | <5 | <0.2 | 1.53 | 30 | 325 | 10 | 1.31 | <1 | 16 | 21 | 28 | 3.19 | <10 | 0.64 | 949 | 1 | 0.01 | 16 | 800 | 12 | <5 | <20 | 107 | 0.03 | <10 | 59 | <10 | 13 | 62 |
| 16 | S-F 516 | <5 | <0.2 | 1.36 | 60 | 280 | 5 | 0.61 | <1 | 13 | 18 | 28 | 2.76 | <10 | 0.49 | 618 | 2 | <0.01 | 12 | 690 | 10 | <5 | <20 | 55 | 0.03 | <10 | 54 | <10 | 6 | 58 |
| 17 | S-F 517 | <5 | <0.2 | 1.31 | 45 | 245 | <5 | 0.76 | <1 | 10 | 20 | 31 | 2.34 | <10 | 0.39 | 460 | <1 | <0.01 | 12 | 440 | 12 | <5 | <20 | 78 | 0.03 | <10 | 42 | <10 | 5 | 57 |
| 18 | S-F 518 | <5 | <0.2 | 1.70 | 30 | 380 | 5 | 0.49 | <1 | 14 | 28 | 31 | 3.04 | <10 | 0.46 | 717 | 1 | <0.01 | 15 | 420 | 22 | <5 | <20 | 52 | 0.04 | <10 | 58 | <10 | 9 | 55 |
| 19 | S-F 519 | <5 | <0.2 | 2.01 | 15 | 275 | 10 | 0.22 | <1 | 14 | 69 | 32 | 3.22 | <10 | 1.10 | 400 | <1 | <0.01 | 38 | 280 | 12 | <5 | <20 | 19 | 0.16 | <10 | 93 | <10 | 7 | 57 |
| 20 | S-F 520 | <5 | <0.2 | 1.58 | 15 | 265 | 10 | 0.35 | <1 | 10 | 23 | 25 | 2.82 | <10 | 0.55 | 248 | <1 | <0.01 | 12 | 370 | 12 | <5 | <20 | 31 | 0.06 | <10 | 61 | <10 | 5 | 53 |
| 21 | S-F 521 | <5 | <0.2 | 1.69 | 10 | 195 | 5 | 0.20 | <1 | 9 | 23 | 22 | 2.95 | <10 | 0.51 | 209 | 1 | <0.01 | 13 | 140 | 10 | <5 | <20 | 17 | 0.05 | <10 | 65 | <10 | 2 | 50 |

13-Jul-00

ICP CERTIFICATE OF ANALYSIS AK 2000-124

TECK EXPLORATION LTD.

| Et #. | Tag # | Au(ppb) | Ag | Al % | As | Ba | Bi | Ca % | Cd | Co | Cr | Cu | Fe % | La | Mg % | Mn | Mo | Na % | Ni | P | Pb | Sb | Sn | Sr | Ti % | U | V | W | Y | Zn |
|-------|-------------|---------|------|------|-----|-----|----|------|----|----|----|----|------|-----|------|-----|----|-------|----|-----|----|----|-----|----|------|-----|----|-----|----|-----|
| 303 | L74N 95+00E | 20 | <0.2 | 1.39 | 165 | 325 | <5 | 0.18 | <1 | 7 | 26 | 20 | 2.42 | <10 | 0.35 | 274 | <1 | <0.01 | 18 | 430 | 30 | <5 | <20 | 15 | 0.06 | <10 | 56 | <10 | 4 | 66 |
| 304 | L74N 95+25E | 30 | <0.2 | 1.50 | 285 | 195 | 5 | 0.16 | <1 | 7 | 26 | 24 | 2.81 | <10 | 0.28 | 188 | <1 | <0.01 | 16 | 390 | 40 | <5 | <20 | 12 | 0.07 | <10 | 64 | <10 | <1 | 64 |
| 305 | L74N 95+50E | 45 | <0.2 | 1.34 | 375 | 420 | 10 | 0.22 | <1 | 11 | 26 | 34 | 2.76 | 10 | 0.34 | 454 | 1 | <0.01 | 26 | 670 | 42 | <5 | <20 | 23 | 0.06 | <10 | 53 | <10 | 8 | 108 |

13-Jul-00

ICP CERTIFICATE OF ANALYSIS AK 2000-124

TECK EXPLORATION LTD.

| Et #. | Tag # | Au(ppb) | Ag | Al % | As | Ba | Bi | Ca % | Cd | Co | Cr | Cu | Fe % | La | Mg % | Mn | Mo | Na % | Ni | P | Pb | Sb | Sn | Sr | Ti % | U | V | W | Y | Zn |
|-------|--------------|---------|------|------|-----|-----|----|------|----|----|----|----|------|-----|------|------|----|-------|----|-----|----|----|-----|----|------|-----|----|-----|----|-----|
| 306 | L74N 95+75E | 60 | <0.2 | 1.86 | 300 | 450 | 5 | 0.23 | <1 | 11 | 32 | 35 | 2.88 | 10 | 0.42 | 327 | <1 | <0.01 | 27 | 740 | 42 | <5 | <20 | 22 | 0.07 | <10 | 59 | <10 | 10 | 103 |
| 307 | L74N 96+00E | 45 | <0.2 | 1.61 | 325 | 265 | 10 | 0.14 | <1 | 12 | 30 | 30 | 3.15 | <10 | 0.35 | 453 | 1 | <0.01 | 27 | 620 | 46 | <5 | <20 | 12 | 0.06 | <10 | 66 | <10 | 4 | 108 |
| 308 | L74N 96+25E | 40 | <0.2 | 1.44 | 250 | 310 | 10 | 0.16 | <1 | 10 | 27 | 26 | 2.68 | <10 | 0.34 | 315 | 1 | <0.01 | 24 | 610 | 36 | <5 | <20 | 15 | 0.05 | <10 | 56 | <10 | 4 | 88 |
| 309 | L74N 96+75E | 55 | <0.2 | 1.55 | 235 | 285 | 5 | 0.15 | <1 | 8 | 29 | 19 | 2.59 | <10 | 0.32 | 306 | 2 | <0.01 | 20 | 730 | 40 | <5 | <20 | 14 | 0.04 | <10 | 66 | <10 | 1 | 74 |
| 310 | L74N 97+00E | 50 | <0.2 | 1.23 | 315 | 155 | 10 | 0.09 | <1 | 12 | 24 | 17 | 2.61 | <10 | 0.29 | 586 | 2 | <0.01 | 19 | 590 | 42 | <5 | <20 | 5 | 0.04 | <10 | 68 | <10 | 1 | 66 |
| 311 | L74N 97+50E | 55 | <0.2 | 1.56 | 305 | 205 | 5 | 0.17 | <1 | 8 | 24 | 19 | 2.49 | <10 | 0.36 | 165 | 2 | <0.01 | 22 | 580 | 52 | <5 | <20 | 14 | 0.03 | <10 | 50 | <10 | 4 | 60 |
| 312 | L74N 97+75E | 40 | <0.2 | 1.79 | 285 | 260 | <5 | 0.19 | <1 | 9 | 28 | 22 | 2.84 | <10 | 0.45 | 236 | 2 | <0.01 | 24 | 690 | 42 | <5 | <20 | 17 | 0.04 | <10 | 57 | <10 | 5 | 67 |
| 313 | L74N 98+00E | 30 | <0.2 | 1.66 | 285 | 180 | 5 | 0.17 | <1 | 11 | 30 | 20 | 2.79 | <10 | 0.49 | 358 | 1 | <0.01 | 21 | 570 | 38 | <5 | <20 | 12 | 0.04 | <10 | 62 | <10 | 2 | 66 |
| 314 | L74N 98+25E | 50 | <0.2 | 1.30 | 510 | 125 | 5 | 0.06 | <1 | 9 | 40 | 39 | 3.18 | 10 | 0.44 | 316 | 2 | <0.01 | 39 | 510 | 36 | <5 | <20 | 13 | 0.04 | <10 | 53 | <10 | 2 | 65 |
| 315 | L74N 98+50E | 30 | <0.2 | 1.54 | 270 | 170 | 5 | 0.16 | <1 | 16 | 29 | 20 | 2.87 | <10 | 0.46 | 767 | 1 | <0.01 | 21 | 620 | 50 | <5 | <20 | 17 | 0.05 | <10 | 56 | <10 | 2 | 71 |
| 316 | L74N 98+75E | 25 | <0.2 | 1.31 | 205 | 155 | <5 | 0.12 | <1 | 11 | 29 | 24 | 2.53 | 10 | 0.49 | 356 | <1 | <0.01 | 20 | 420 | 28 | <5 | <20 | 8 | 0.07 | <10 | 54 | <10 | 4 | 58 |
| 317 | L74N 99+00E | 30 | <0.2 | 1.78 | 245 | 210 | 10 | 0.28 | <1 | 25 | 77 | 49 | 3.41 | <10 | 1.10 | 1076 | <1 | <0.01 | 49 | 490 | 24 | <5 | <20 | 24 | 0.11 | <10 | 84 | <10 | 5 | 79 |
| 318 | L74N 99+25E | 25 | <0.2 | 1.11 | 115 | 140 | <5 | 0.14 | <1 | 6 | 22 | 16 | 1.87 | <10 | 0.30 | 134 | <1 | <0.01 | 15 | 670 | 22 | <5 | <20 | 12 | 0.03 | <10 | 31 | <10 | 2 | 45 |
| 319 | L74N 99+50E | 15 | <0.2 | 1.36 | 180 | 110 | <5 | 0.14 | <1 | 7 | 24 | 17 | 2.33 | <10 | 0.39 | 136 | <1 | <0.01 | 15 | 540 | 26 | <5 | <20 | 7 | 0.04 | <10 | 48 | <10 | 1 | 56 |
| 320 | L74N 99+75E | 20 | <0.2 | 1.23 | 125 | 170 | <5 | 0.15 | <1 | 5 | 21 | 19 | 2.07 | <10 | 0.29 | 95 | <1 | <0.01 | 13 | 700 | 24 | <5 | <20 | 10 | 0.03 | <10 | 32 | <10 | 3 | 46 |
| 321 | L74N 100+00E | 20 | <0.2 | 1.30 | 135 | 160 | <5 | 0.17 | <1 | 6 | 29 | 19 | 2.23 | <10 | 0.39 | 121 | <1 | <0.01 | 15 | 600 | 24 | <5 | <20 | 12 | 0.04 | <10 | 40 | <10 | 3 | 50 |
| 322 | L74N 100+25E | 15 | <0.2 | 1.40 | 110 | 140 | 5 | 0.17 | <1 | 6 | 24 | 15 | 2.04 | <10 | 0.37 | 106 | <1 | <0.01 | 14 | 560 | 28 | <5 | <20 | 11 | 0.04 | <10 | 39 | <10 | 3 | 54 |
| 323 | L74N 100+50E | 20 | <0.2 | 1.33 | 160 | 175 | 5 | 0.18 | <1 | 7 | 25 | 21 | 2.42 | <10 | 0.38 | 136 | <1 | <0.01 | 15 | 630 | 26 | <5 | <20 | 13 | 0.04 | <10 | 43 | <10 | 3 | 54 |
| 324 | L76N 89+00E | 20 | <0.2 | 1.67 | 125 | 305 | 10 | 0.40 | <1 | 16 | 68 | 33 | 3.17 | <10 | 0.87 | 939 | <1 | <0.01 | 39 | 380 | 50 | 10 | <20 | 42 | 0.06 | <10 | 62 | <10 | 6 | 67 |
| 325 | L76N 89+25E | 5 | <0.2 | 1.93 | 115 | 230 | 10 | 0.32 | <1 | 14 | 35 | 24 | 3.53 | <10 | 0.67 | 410 | <1 | <0.01 | 26 | 370 | 28 | <5 | <20 | 31 | 0.07 | <10 | 68 | <10 | 4 | 63 |
| 326 | L76N 89+50E | 5 | <0.2 | 1.56 | 90 | 315 | 10 | 0.37 | <1 | 11 | 30 | 20 | 3.11 | <10 | 0.58 | 885 | 1 | <0.01 | 19 | 330 | 26 | 5 | <20 | 40 | 0.06 | <10 | 70 | <10 | 6 | 58 |
| 327 | L76N 89+75E | 5 | <0.2 | 2.10 | 95 | 225 | 10 | 0.16 | <1 | 13 | 35 | 29 | 3.38 | <10 | 0.60 | 478 | 2 | <0.01 | 22 | 250 | 30 | <5 | <20 | 14 | 0.05 | <10 | 77 | <10 | 2 | 61 |
| 328 | L76N 90+00E | 5 | <0.2 | 2.33 | 115 | 230 | 10 | 0.22 | <1 | 15 | 40 | 33 | 3.92 | <10 | 0.75 | 307 | 2 | <0.01 | 30 | 340 | 34 | <5 | <20 | 23 | 0.05 | <10 | 78 | <10 | 2 | 73 |
| 329 | L76N 90+25E | 10 | <0.2 | 2.10 | 140 | 205 | <5 | 0.21 | <1 | 11 | 49 | 24 | 3.38 | <10 | 0.69 | 371 | 2 | <0.01 | 34 | 250 | 32 | <5 | <20 | 20 | 0.04 | <10 | 69 | <10 | 3 | 66 |
| 330 | L76N 90+50E | 15 | <0.2 | 1.83 | 195 | 250 | 10 | 0.22 | <1 | 14 | 41 | 27 | 3.54 | <10 | 0.78 | 441 | 2 | <0.01 | 37 | 210 | 28 | <5 | <20 | 21 | 0.05 | <10 | 68 | <10 | 5 | 63 |
| 331 | L76N 90+75E | 35 | <0.2 | 1.79 | 315 | 325 | 5 | 0.29 | <1 | 17 | 36 | 41 | 3.79 | 10 | 0.84 | 684 | 2 | <0.01 | 44 | 280 | 32 | <5 | <20 | 34 | 0.05 | <10 | 62 | <10 | 13 | 73 |
| 332 | L76N 91+00E | 5 | <0.2 | 1.50 | 55 | 245 | 10 | 0.20 | <1 | 9 | 27 | 12 | 2.99 | <10 | 0.42 | 355 | <1 | <0.01 | 17 | 380 | 24 | <5 | <20 | 15 | 0.06 | <10 | 74 | <10 | <1 | 59 |
| 333 | L76N 91+25E | 5 | <0.2 | 2.58 | 145 | 295 | 15 | 0.23 | <1 | 12 | 42 | 20 | 4.38 | <10 | 0.67 | 380 | 3 | <0.01 | 25 | 520 | 32 | <5 | <20 | 13 | 0.06 | <10 | 89 | <10 | <1 | 90 |
| 334 | L76N 91+50E | 15 | <0.2 | 2.07 | 115 | 270 | 15 | 0.17 | <1 | 14 | 33 | 18 | 3.61 | <10 | 0.55 | 1197 | 2 | <0.01 | 22 | 560 | 30 | <5 | <20 | 9 | 0.05 | <10 | 77 | <10 | <1 | 94 |
| 335 | L76N 91+75E | 10 | <0.2 | 2.12 | 45 | 185 | 10 | 0.14 | <1 | 12 | 35 | 19 | 3.57 | <10 | 0.54 | 323 | <1 | <0.01 | 20 | 410 | 22 | <5 | <20 | 10 | 0.07 | <10 | 80 | <10 | <1 | 62 |
| 336 | L76N 92+00E | 25 | <0.2 | 2.16 | 125 | 260 | 10 | 0.17 | <1 | 10 | 32 | 18 | 3.66 | <10 | 0.55 | 345 | 2 | <0.01 | 20 | 430 | 22 | <5 | <20 | 13 | 0.05 | <10 | 79 | <10 | 5 | 50 |
| 337 | L76N 92+25E | 10 | <0.2 | 1.75 | 65 | 175 | 5 | 0.13 | <1 | 8 | 25 | 15 | 3.24 | <10 | 0.36 | 225 | 2 | <0.01 | 14 | 360 | 34 | <5 | <20 | 9 | 0.04 | <10 | 78 | <10 | <1 | 47 |
| 338 | L76N 92+50E | 5 | <0.2 | 2.66 | 65 | 205 | 10 | 0.13 | <1 | 16 | 46 | 26 | 4.67 | <10 | 0.78 | 431 | 2 | <0.01 | 26 | 350 | 34 | <5 | <20 | 8 | 0.08 | <10 | 97 | <10 | <1 | 73 |
| 339 | L76N 92+75E | 15 | <0.2 | 2.55 | 40 | 205 | 10 | 0.12 | <1 | 13 | 37 | 18 | 4.05 | <10 | 0.62 | 283 | 1 | <0.01 | 21 | 280 | 30 | <5 | <20 | 8 | 0.07 | <10 | 88 | <10 | <1 | 57 |
| 340 | L76N 93+00E | 10 | <0.2 | 1.73 | 50 | 240 | 10 | 0.21 | <1 | 10 | 34 | 24 | 3.21 | 10 | 0.56 | 376 | <1 | <0.01 | 20 | 260 | 28 | <5 | <20 | 18 | 0.07 | <10 | 66 | <10 | 9 | 59 |

13-Jul-00

ICP CERTIFICATE OF ANALYSIS AK 2000-124

TECK EXPLORATION LTD.

| Et# | Tag # | Au(ppb) | Ag | Al % | As | Ba | Bi | Ca % | Cd | Co | Cr | Cu | Fe % | La | Mg % | Mn | Mo | Na % | Ni | P | Pb | Sb | Sn | Sr | Ti % | U | V | W | Y | Zn |
|-----|--------------|---------|------|------|-----|-----|----|------|----|----|----|----|------|-----|------|------|----|-------|----|-----|----|----|-----|----|------|-----|----|-----|----|----|
| 341 | L76N 93+25E | 15 | <0.2 | 2.24 | 160 | 100 | 10 | 0.11 | <1 | 12 | 36 | 24 | 4.17 | <10 | 0.58 | 327 | <1 | <0.01 | 19 | 420 | 84 | <5 | <20 | 6 | 0.07 | <10 | 81 | <10 | <1 | 82 |
| 342 | L76N 93+50E | 10 | <0.2 | 2.37 | 30 | 225 | 5 | 0.16 | <1 | 12 | 35 | 26 | 3.16 | <10 | 0.58 | 260 | <1 | <0.01 | 23 | 220 | 36 | <5 | <20 | 13 | 0.06 | <10 | 66 | <10 | 4 | 49 |
| 343 | L76N 93+75E | 15 | <0.2 | 2.65 | 155 | 220 | 10 | 0.17 | <1 | 15 | 45 | 30 | 3.98 | 10 | 0.68 | 346 | 1 | <0.01 | 28 | 220 | 58 | <5 | <20 | 14 | 0.06 | <10 | 81 | <10 | 8 | 69 |
| 344 | L76N 94+00E | 15 | <0.2 | 1.89 | 550 | 150 | 10 | 0.11 | <1 | 12 | 32 | 20 | 4.25 | 10 | 0.35 | 351 | 3 | <0.01 | 32 | 310 | 44 | <5 | <20 | 10 | 0.04 | <10 | 72 | <10 | <1 | 55 |
| 345 | L76N 94+25E | 20 | <0.2 | 1.64 | 405 | 170 | <5 | 0.08 | <1 | 12 | 22 | 33 | 3.57 | 10 | 0.29 | 402 | 3 | <0.01 | 30 | 380 | 70 | <5 | <20 | 9 | 0.03 | <10 | 55 | <10 | 3 | 68 |
| 346 | L76N 94+50E | 25 | <0.2 | 1.82 | 240 | 220 | <5 | 0.15 | <1 | 14 | 32 | 28 | 3.38 | 10 | 0.49 | 381 | 1 | <0.01 | 31 | 330 | 60 | <5 | <20 | 13 | 0.05 | <10 | 60 | <10 | 4 | 71 |
| 347 | L76N 94+75E | 10 | <0.2 | 1.75 | 205 | 95 | 10 | 0.09 | <1 | 12 | 29 | 20 | 3.92 | 10 | 0.42 | 377 | 2 | <0.01 | 21 | 440 | 42 | <5 | <20 | 8 | 0.07 | <10 | 71 | <10 | 1 | 64 |
| 348 | L76N 95+00E | 35 | <0.2 | 1.43 | 285 | 90 | 15 | 0.07 | <1 | 12 | 25 | 26 | 3.70 | 20 | 0.38 | 368 | 1 | <0.01 | 22 | 560 | 36 | <5 | <20 | 6 | 0.08 | <10 | 68 | <10 | 5 | 60 |
| 349 | L76N 95+25E | 60 | <0.2 | 1.66 | 450 | 170 | 10 | 0.19 | <1 | 17 | 33 | 32 | 3.45 | 20 | 0.61 | 605 | <1 | <0.01 | 34 | 510 | 42 | <5 | <20 | 15 | 0.09 | <10 | 48 | <10 | 11 | 81 |
| 350 | L76N 95+50E | 30 | <0.2 | 1.78 | 350 | 185 | 10 | 0.14 | <1 | 19 | 32 | 32 | 3.54 | 20 | 0.58 | 605 | 1 | <0.01 | 31 | 480 | 62 | <5 | <20 | 10 | 0.07 | <10 | 53 | <10 | 8 | 79 |
| 351 | L76N 95+75E | 20 | <0.2 | 1.64 | 375 | 205 | 10 | 0.16 | <1 | 13 | 30 | 31 | 3.37 | 20 | 0.49 | 443 | 2 | <0.01 | 30 | 490 | 38 | <5 | <20 | 11 | 0.06 | <10 | 53 | <10 | 8 | 73 |
| 352 | L76N 96+00E | 35 | <0.2 | 1.45 | 180 | 225 | 10 | 0.25 | <1 | 11 | 29 | 27 | 2.79 | 20 | 0.53 | 342 | <1 | <0.01 | 24 | 510 | 38 | <5 | <20 | 16 | 0.07 | <10 | 49 | <10 | 13 | 64 |
| 353 | L76N 96+25E | 70 | <0.2 | 1.50 | 210 | 265 | <5 | 0.22 | <1 | 13 | 30 | 30 | 2.73 | 20 | 0.50 | 546 | <1 | <0.01 | 29 | 510 | 30 | <5 | <20 | 20 | 0.06 | <10 | 43 | <10 | 15 | 64 |
| 354 | L76N 96+75E | 15 | <0.2 | 1.71 | 180 | 300 | <5 | 0.32 | <1 | 16 | 37 | 23 | 3.09 | 10 | 0.59 | 656 | 2 | <0.01 | 28 | 670 | 36 | <5 | <20 | 34 | 0.04 | <10 | 55 | <10 | 9 | 63 |
| 355 | L76N 97+00E | 20 | <0.2 | 1.79 | 165 | 355 | 10 | 0.70 | <1 | 14 | 36 | 31 | 2.77 | 20 | 0.61 | 684 | <1 | <0.01 | 30 | 600 | 36 | <5 | <20 | 61 | 0.05 | <10 | 52 | <10 | 16 | 64 |
| 356 | L76N 97+25E | 30 | <0.2 | 2.00 | 150 | 350 | 10 | 0.45 | <1 | 15 | 42 | 36 | 2.95 | 20 | 0.72 | 524 | <1 | <0.01 | 36 | 530 | 34 | 5 | <20 | 41 | 0.05 | <10 | 56 | <10 | 14 | 74 |
| 357 | L76N 97+50E | 30 | <0.2 | 1.84 | 245 | 370 | 10 | 0.52 | <1 | 16 | 38 | 32 | 3.06 | 10 | 0.65 | 758 | 1 | <0.01 | 29 | 600 | 38 | <5 | <20 | 41 | 0.04 | <10 | 58 | <10 | 11 | 68 |
| 358 | L76N 97+75E | 20 | <0.2 | 1.80 | 165 | 485 | 10 | 0.74 | <1 | 12 | 36 | 38 | 2.83 | 10 | 0.62 | 548 | <1 | <0.01 | 26 | 620 | 28 | <5 | <20 | 75 | 0.05 | <10 | 56 | <10 | 13 | 63 |
| 359 | L76N 98+00E | 130 | <0.2 | 1.68 | 85 | 345 | 10 | 0.41 | <1 | 16 | 41 | 38 | 3.06 | <10 | 0.86 | 540 | <1 | <0.01 | 25 | 480 | 24 | <5 | <20 | 31 | 0.08 | <10 | 70 | <10 | 4 | 64 |
| 360 | L76N 98+25E | 15 | <0.2 | 1.75 | 90 | 425 | 5 | 0.57 | <1 | 13 | 44 | 41 | 2.87 | <10 | 0.73 | 497 | <1 | <0.01 | 26 | 610 | 24 | <5 | <20 | 49 | 0.06 | <10 | 64 | <10 | 10 | 62 |
| 361 | L76N 98+50E | 15 | <0.2 | 1.91 | 50 | 445 | 5 | 0.71 | <1 | 15 | 64 | 54 | 3.10 | <10 | 0.96 | 422 | <1 | <0.01 | 41 | 580 | 18 | 5 | <20 | 50 | 0.08 | <10 | 75 | <10 | 6 | 64 |
| 362 | L76N 98+75E | 20 | <0.2 | 1.72 | 80 | 250 | <5 | 0.41 | <1 | 21 | 56 | 52 | 3.03 | <10 | 0.91 | 611 | <1 | <0.01 | 51 | 560 | 20 | 5 | <20 | 28 | 0.07 | <10 | 73 | <10 | 4 | 59 |
| 363 | L76N 99+00E | 50 | <0.2 | 1.95 | 210 | 385 | <5 | 0.78 | <1 | 15 | 58 | 44 | 3.04 | 10 | 0.82 | 463 | <1 | <0.01 | 52 | 620 | 22 | 5 | <20 | 69 | 0.07 | <10 | 64 | <10 | 11 | 63 |
| 364 | L76N 99+25E | 30 | <0.2 | 1.92 | 145 | 330 | <5 | 0.43 | <1 | 12 | 56 | 27 | 2.88 | 20 | 0.72 | 339 | <1 | <0.01 | 39 | 470 | 24 | <5 | <20 | 37 | 0.06 | <10 | 57 | <10 | 9 | 59 |
| 365 | L76N 99+50E | 25 | <0.2 | 1.95 | 145 | 325 | 5 | 0.37 | <1 | 15 | 42 | 29 | 3.17 | 10 | 0.64 | 539 | 1 | <0.01 | 30 | 570 | 30 | <5 | <20 | 30 | 0.06 | <10 | 59 | <10 | 6 | 76 |
| 366 | L76N 99+75E | 30 | <0.2 | 1.65 | 185 | 355 | 5 | 0.26 | <1 | 12 | 33 | 24 | 2.82 | <10 | 0.44 | 453 | 1 | <0.01 | 23 | 480 | 22 | <5 | <20 | 25 | 0.05 | <10 | 54 | <10 | 3 | 62 |
| 367 | L76N 100+00E | 30 | <0.2 | 1.72 | 260 | 370 | <5 | 0.22 | <1 | 18 | 35 | 27 | 3.09 | <10 | 0.53 | 1219 | 1 | <0.01 | 27 | 570 | 26 | <5 | <20 | 20 | 0.06 | <10 | 58 | <10 | 4 | 72 |
| 368 | L76N 100+25E | 40 | <0.2 | 1.68 | 280 | 530 | <5 | 0.33 | <1 | 10 | 34 | 35 | 2.97 | <10 | 0.55 | 383 | 1 | <0.01 | 28 | 510 | 22 | <5 | <20 | 30 | 0.06 | <10 | 59 | <10 | 7 | 67 |
| 369 | L76N 100+50E | 15 | 0.4 | 1.88 | 195 | 230 | <5 | 0.20 | <1 | 10 | 29 | 17 | 3.34 | <10 | 0.45 | 296 | 2 | <0.01 | 20 | 450 | 26 | <5 | <20 | 25 | 0.05 | <10 | 68 | <10 | <1 | 60 |
| 370 | L76N 100+75E | 25 | <0.2 | 1.58 | 230 | 250 | 10 | 0.17 | <1 | 12 | 25 | 16 | 2.96 | <10 | 0.37 | 1056 | 1 | <0.01 | 18 | 970 | 24 | <5 | <20 | 14 | 0.06 | <10 | 59 | <10 | <1 | 62 |
| 371 | L76N 101+00E | 35 | <0.2 | 1.92 | 160 | 585 | 10 | 0.35 | <1 | 9 | 29 | 25 | 2.98 | <10 | 0.46 | 391 | <1 | <0.01 | 24 | 410 | 28 | <5 | <20 | 43 | 0.05 | <10 | 59 | <10 | 9 | 64 |

25-Jul-00

ECO-TECH LABORATORIES LTD.
10041 Dallas Drive
KAMLOOPS, B.C.
V2C 6T4

Phone: 250-573-5700
Fax : 250-573-4557

ICP CERTIFICATE OF ANALYSIS AK 2000-149

TECK EXPLORATION LTD.
#350-272 VICTORIA STREET
KAMLOOPS, B.C.
V2C 2A2

ATTENTION: Jean Pautler

No of samples received: 24

Sample Type Soil

Project #: 1765-T

Shipment #: 4

Samples submitted by J Pautler

Values in ppm unless otherwise reported

| Et# | Tag # | Au(ppb) | Ag | Al % | As | Ba | Bi | Ca % | Cd | Co | Cr | Cu | Fe % | La | Mg % | Mn | Mo | Na % | Ni | P | Pb | Sb | Sn | Sr | Ti % | U | V | W | Y | Zn |
|-----|--------------|---------|------|------|-----|-----|----|------|----|----|----|-----|------|-----|------|-----|----|-------|----|-----|-----|----|-----|-----|------|-----|----|-----|----|----|
| 1 | L79N 94+25E | 160 | <0.2 | 2.26 | 775 | 425 | 5 | 0.37 | <1 | 21 | 49 | 51 | 3.84 | 10 | 0.75 | 644 | 1 | <0.01 | 66 | 580 | 40 | <5 | <20 | 38 | 0.06 | <10 | 72 | <10 | 10 | 79 |
| 2 | L79N 94+50E | 50 | <0.2 | 2.55 | 450 | 165 | 10 | 0.17 | <1 | 16 | 39 | 35 | 5.04 | 10 | 0.67 | 404 | 2 | <0.01 | 33 | 330 | 40 | <5 | <20 | 14 | 0.06 | <10 | 69 | <10 | 2 | 83 |
| 3 | L79N 94+75E | 25 | <0.2 | 1.82 | 420 | 135 | <5 | 0.10 | <1 | 10 | 22 | 115 | 3.30 | 30 | 0.29 | 247 | 3 | <0.01 | 21 | 480 | 32 | <5 | <20 | 11 | 0.02 | <10 | 62 | <10 | 8 | 54 |
| 4 | L79N 95+00E | 65 | <0.2 | 2.52 | 320 | 400 | 10 | 0.29 | <1 | 13 | 41 | 29 | 3.40 | 10 | 0.62 | 447 | <1 | <0.01 | 30 | 440 | 50 | 5 | <20 | 22 | 0.08 | <10 | 71 | <10 | 7 | 63 |
| 5 | L79N 95+25E | 10 | <0.2 | 2.16 | 60 | 435 | 10 | 0.38 | <1 | 10 | 38 | 31 | 2.95 | 30 | 0.63 | 310 | <1 | <0.01 | 24 | 410 | 36 | 5 | <20 | 29 | 0.09 | <10 | 66 | <10 | 18 | 55 |
| 6 | L79N 95+50E | <5 | <0.2 | 1.74 | 75 | 205 | 5 | 0.24 | <1 | 9 | 40 | 23 | 2.71 | 20 | 0.45 | 219 | <1 | <0.01 | 23 | 300 | 30 | <5 | <20 | 21 | 0.08 | <10 | 67 | <10 | 11 | 44 |
| 7 | L79N 95+75E | 20 | <0.2 | 1.79 | 60 | 155 | 10 | 0.26 | <1 | 13 | 34 | 26 | 3.25 | 20 | 0.67 | 416 | <1 | <0.01 | 24 | 480 | 36 | <5 | <20 | 23 | 0.10 | <10 | 68 | <10 | 13 | 62 |
| 8 | L79N 96+00E | <5 | <0.2 | 2.46 | 60 | 270 | 15 | 0.34 | <1 | 14 | 41 | 32 | 3.34 | 30 | 0.71 | 371 | <1 | 0.01 | 41 | 350 | 28 | <5 | <20 | 36 | 0.07 | <10 | 63 | <10 | 14 | 60 |
| 9 | L79N 96+25E | <5 | <0.2 | 1.73 | 35 | 200 | <5 | 0.25 | <1 | 11 | 94 | 144 | 2.78 | 20 | 0.85 | 205 | <1 | <0.01 | 62 | 300 | 24 | <5 | <20 | 25 | 0.07 | <10 | 71 | <10 | 7 | 48 |
| 10 | L79N 96+50E | 35 | <0.2 | 2.04 | 30 | 265 | 10 | 0.38 | <1 | 13 | 83 | 22 | 3.17 | <10 | 0.84 | 286 | <1 | <0.01 | 57 | 230 | 22 | 10 | <20 | 31 | 0.10 | <10 | 73 | <10 | 2 | 53 |
| 11 | L79N 96+75E | 10 | <0.2 | 2.06 | 45 | 215 | <5 | 0.28 | <1 | 14 | 97 | 25 | 3.05 | 10 | 0.84 | 244 | <1 | <0.01 | 64 | 370 | 24 | 5 | <20 | 20 | 0.09 | <10 | 71 | <10 | 6 | 54 |
| 12 | L79N 97+00E | 40 | <0.2 | 2.07 | 310 | 245 | 10 | 0.24 | <1 | 12 | 73 | 24 | 2.99 | 10 | 0.67 | 246 | <1 | <0.01 | 45 | 380 | 36 | 5 | <20 | 21 | 0.06 | <10 | 64 | <10 | 3 | 56 |
| 13 | L79N 97+25E | 160 | <0.2 | 2.29 | 570 | 220 | <5 | 0.19 | <1 | 17 | 55 | 31 | 3.42 | 20 | 0.62 | 364 | <1 | <0.01 | 47 | 400 | 28 | <5 | <20 | 25 | 0.05 | <10 | 54 | <10 | 3 | 60 |
| 14 | L79N 97+50E | 20 | <0.2 | 2.28 | 230 | 370 | <5 | 0.21 | <1 | 14 | 43 | 28 | 3.74 | 10 | 0.54 | 326 | 1 | <0.01 | 37 | 460 | 36 | <5 | <20 | 26 | 0.06 | <10 | 72 | <10 | 4 | 68 |
| 15 | L79N 97+75E | 25 | <0.2 | 2.22 | 200 | 260 | 10 | 0.17 | <1 | 12 | 61 | 27 | 4.36 | <10 | 0.54 | 228 | 1 | <0.01 | 29 | 380 | 30 | <5 | <20 | 26 | 0.08 | <10 | 87 | <10 | <1 | 80 |
| 16 | L79N 98+00E | 75 | <0.2 | 1.33 | 440 | 530 | 5 | 0.26 | <1 | 10 | 33 | 37 | 3.18 | 20 | 0.45 | 245 | <1 | 0.01 | 32 | 430 | 36 | <5 | <20 | 162 | 0.07 | <10 | 51 | <10 | 13 | 80 |
| 17 | L79N 98+25E | 50 | <0.2 | 2.53 | 225 | 300 | 10 | 0.21 | <1 | 14 | 72 | 32 | 4.10 | 10 | 0.64 | 242 | <1 | <0.01 | 47 | 430 | 32 | <5 | <20 | 54 | 0.08 | <10 | 79 | <10 | 1 | 79 |
| 18 | L79N 98+50E | 150 | <0.2 | 2.25 | 515 | 560 | <5 | 0.19 | <1 | 9 | 38 | 204 | 4.35 | 20 | 0.42 | 192 | 2 | <0.01 | 31 | 700 | 30 | <5 | <20 | 55 | 0.07 | <10 | 85 | <10 | 5 | 67 |
| 19 | L79N 98+75E | 70 | <0.2 | 2.27 | 170 | 320 | <5 | 0.20 | <1 | 11 | 39 | 29 | 3.59 | <10 | 0.42 | 280 | <1 | <0.01 | 26 | 390 | 100 | <5 | <20 | 19 | 0.08 | <10 | 82 | <10 | <1 | 66 |
| 20 | L79N 99+00E | 40 | <0.2 | 1.22 | 150 | 155 | <5 | 0.05 | <1 | 5 | 13 | 63 | 2.46 | 30 | 0.14 | 121 | 2 | <0.01 | 16 | 290 | 28 | <5 | <20 | 21 | 0.02 | <10 | 44 | <10 | 3 | 28 |
| 21 | L79N 99+25E | 5 | <0.2 | 2.67 | 50 | 415 | <5 | 0.19 | <1 | 13 | 38 | 34 | 3.56 | 10 | 0.48 | 314 | <1 | <0.01 | 31 | 430 | 32 | <5 | <20 | 18 | 0.05 | <10 | 69 | <10 | 2 | 56 |
| 22 | L79N 99+50E | 15 | <0.2 | 1.28 | 50 | 170 | <5 | 0.18 | <1 | 17 | 28 | 194 | 2.48 | 20 | 0.35 | 698 | <1 | <0.01 | 26 | 370 | 20 | 5 | <20 | 14 | 0.07 | <10 | 50 | <10 | 5 | 46 |
| 23 | L79N 99+75E | 10 | <0.2 | 2.38 | 85 | 455 | 10 | 0.23 | <1 | 13 | 45 | 60 | 4.11 | 10 | 0.28 | 546 | <1 | <0.01 | 40 | 510 | 32 | <5 | <20 | 29 | 0.07 | <10 | 85 | <10 | 8 | 49 |
| 24 | L79N 100+00E | 5 | <0.2 | 2.95 | 50 | 425 | 10 | 0.27 | <1 | 15 | 47 | 25 | 3.54 | 20 | 0.56 | 278 | <1 | <0.01 | 38 | 190 | 36 | <5 | <20 | 24 | 0.08 | <10 | 72 | <10 | 6 | 59 |

26-Sep-00

ECO-TECH LABORATORIES LTD.
10041 Dallas Drive
KAMLOOPS, B.C.
V2C 6T4

ICP CERTIFICATE OF ANALYSIS AK 2000-228

TECK EXPLORATION LTD.
#350 272 VICTORIA STREET
KAMLOOPS, B.C.
V2C 2A2

Phone: 250-573-5700
Fax : 250-573-4557

ATTENTION: JEAN PAUTLER

No. of samples received: 1
Sample Type: Rock
Project #: 178900
Shipment #: None Given
Samples submitted by: J. Pautler

Values in ppm unless otherwise reported

| Et #. | Tag # | Au(ppb) | Ag | Al % | As | Ba | Bi | Ca % | Cd | Co | Cr | Cu | Fe % | La | Mg % | Mn | Mo | Na % | Ni | P | Pb | Sb | Sn | Sr | Ti % | U | V | W | Y | Zn |
|-------|---------|---------|------|------|----|-----|----|------|----|----|----|----|------|----|------|-----|----|------|----|-----|----|----|-----|----|------|-----|----|-----|---|----|
| 1 | R-F-514 | 25 | <0.2 | 0.52 | 30 | 130 | <5 | 0.41 | <1 | 14 | 80 | 27 | 3.10 | 30 | 0.29 | 700 | 6 | 0.02 | 34 | 770 | 8 | <5 | <20 | 50 | 0.01 | <10 | 24 | <10 | 4 | 36 |

QC DATA:

Repeat:

| | | | | | | | | | | | | | | | | | | | | | | | | | | | | | | |
|---|---------|----|------|------|----|-----|----|------|----|----|----|----|------|----|------|-----|---|------|----|-----|---|----|-----|----|-------|-----|----|-----|---|----|
| 1 | R-F-514 | 25 | <0.2 | 0.51 | 25 | 125 | <5 | 0.40 | <1 | 14 | 88 | 23 | 3.05 | 30 | 0.24 | 692 | 5 | 0.02 | 28 | 760 | 6 | <5 | <20 | 48 | <0.01 | <10 | 24 | <10 | 3 | 36 |
|---|---------|----|------|------|----|-----|----|------|----|----|----|----|------|----|------|-----|---|------|----|-----|---|----|-----|----|-------|-----|----|-----|---|----|

Standard:

| | | | | | | | | | | | | | | | | | | | | | | | | | | | | | | |
|-------|--|-----|-----|------|----|-----|----|------|----|----|----|----|------|-----|------|-----|----|------|----|-----|----|---|-----|----|------|-----|----|-----|----|----|
| GE000 | | 125 | 1.0 | 1.72 | 55 | 175 | <5 | 1.63 | <1 | 20 | 60 | 96 | 3.47 | <10 | 1.02 | 726 | <1 | 0.02 | 24 | 750 | 26 | 5 | <20 | 67 | 0.21 | <10 | 83 | <10 | 11 | 77 |
|-------|--|-----|-----|------|----|-----|----|------|----|----|----|----|------|-----|------|-----|----|------|----|-----|----|---|-----|----|------|-----|----|-----|----|----|

ECO-TECH LABORATORIES LTD.

Frank J. Pezzotti, A.Sc.T

B.C. Certified Assayer

dlf297

XLS/00Teck

fax: 372-1285

23-Aug-00

ICP CERTIFICATE OF ANALYSIS AK 2000 221

TECK EXPLORATION LTD.

| Et # | Tag # | Au(ppb) | Ag | Al % | As | Ba | Br | Ca % | Cd | Co | Cr | Cu | Fe % | La | Mg % | Mn | Mo | Na % | Ni | P | Pb | Sb | Sn | Sr | Ti % | U | V | W | Y | Zn |
|------|------------|---------|------|------|----|-----|----|------|----|----|----|----|------|-----|------|-----|----|-------|----|-----|----|----|-----|-----|------|-----|----|-----|----|----|
| 61 | TS 1006+00 | <5 | <0.2 | 1.41 | 5 | 375 | 10 | 0.39 | <1 | 9 | 25 | 13 | 2.58 | <10 | 0.36 | 382 | <1 | 0.01 | 14 | 210 | 14 | <5 | <20 | 88 | 0.07 | <10 | 57 | <10 | 2 | 41 |
| 62 | TS 1007+00 | <5 | <0.2 | 1.06 | <5 | 530 | <5 | 0.41 | <1 | 5 | 17 | 18 | 1.82 | <10 | 0.25 | 391 | <1 | 0.01 | 11 | 15 | 12 | <5 | <20 | 208 | 0.04 | <10 | 36 | <10 | 7 | 31 |
| 63 | TS 1008+00 | <5 | <0.2 | 1.58 | 10 | 450 | 10 | 0.60 | <1 | 9 | 28 | 14 | 3.65 | <10 | 0.38 | 375 | <1 | 0.01 | 16 | 190 | 14 | <5 | <20 | 175 | 0.07 | <10 | 57 | <10 | 3 | 42 |
| 64 | TS 1009+00 | <5 | <0.2 | 1.67 | 10 | 495 | 10 | 0.80 | <1 | 10 | 28 | 25 | 2.90 | 10 | 0.56 | 396 | <1 | 0.02 | 22 | 180 | 18 | <5 | <20 | 144 | 0.07 | <10 | 60 | <10 | 26 | 50 |
| 65 | TS 1010+00 | 70 | <0.2 | 1.22 | <5 | 235 | 5 | 0.19 | <1 | 7 | 18 | 21 | 2.11 | <10 | 0.24 | 277 | <1 | 0.01 | 10 | 130 | 14 | <5 | <20 | 37 | 0.05 | <10 | 47 | <10 | <1 | 32 |
| 66 | TS 1011+00 | 20 | <0.2 | 1.66 | 5 | 485 | 5 | 0.49 | <1 | 9 | 23 | 35 | 2.63 | <10 | 0.34 | 446 | <1 | 0.01 | 14 | 190 | 18 | <5 | <20 | 100 | 0.05 | <10 | 57 | <10 | <1 | 41 |
| 67 | TS 1012+00 | <5 | <0.2 | 1.47 | 5 | 650 | 5 | 0.59 | <1 | 8 | 21 | 28 | 2.46 | <10 | 0.35 | 482 | <1 | 0.02 | 16 | 240 | 14 | <5 | <20 | 288 | 0.05 | <10 | 50 | <10 | 5 | 36 |
| 68 | TS 1013+00 | <5 | <0.2 | 1.63 | 10 | 520 | <5 | 0.26 | <1 | 5 | 22 | 11 | 2.46 | <10 | 0.29 | 188 | 1 | <0.01 | 13 | 160 | 16 | <5 | <20 | 43 | 0.03 | <10 | 60 | <10 | <1 | 34 |
| 69 | TS 1014+00 | <5 | <0.2 | 1.76 | 10 | 535 | <5 | 0.57 | <1 | 9 | 31 | 31 | 2.75 | <10 | 0.41 | 314 | <1 | 0.01 | 20 | 110 | 18 | <5 | <20 | 46 | 0.07 | <10 | 60 | <10 | 4 | 39 |
| 70 | TS 1015+00 | <5 | <0.2 | 2.08 | 15 | 405 | 5 | 0.52 | <1 | 12 | 38 | 44 | 3.45 | <10 | 0.42 | 439 | 1 | 0.01 | 24 | 180 | 24 | <5 | <20 | 89 | 0.07 | <10 | 67 | <10 | 4 | 55 |
| 71 | TS 1016+00 | <5 | <0.2 | 2.04 | 5 | 460 | 10 | 0.59 | <1 | 11 | 32 | 19 | 2.99 | <10 | 0.45 | 742 | <1 | 0.01 | 19 | 110 | 20 | <5 | <20 | 50 | 0.07 | <10 | 65 | <10 | 7 | 47 |
| 72 | TS 1017+00 | <5 | <0.2 | 1.87 | 5 | 450 | <5 | 0.43 | <1 | 11 | 31 | 29 | 2.80 | <10 | 0.39 | 368 | <1 | 0.01 | 18 | 160 | 20 | <5 | <20 | 38 | 0.07 | <10 | 61 | <10 | 3 | 45 |
| 73 | TS 1018+00 | <5 | <0.2 | 1.73 | 10 | 445 | 5 | 0.36 | <1 | 10 | 30 | 34 | 2.80 | <10 | 0.43 | 274 | <1 | <0.01 | 17 | 210 | 18 | <5 | <20 | 34 | 0.07 | <10 | 66 | <10 | <1 | 47 |
| 74 | TS 1019+00 | <5 | <0.2 | 1.68 | 10 | 505 | 5 | 0.42 | <1 | 9 | 28 | 17 | 2.58 | <10 | 0.34 | 503 | <1 | 0.01 | 14 | 180 | 18 | <5 | <20 | 32 | 0.07 | <10 | 56 | <10 | 2 | 34 |
| 75 | TS 1020+00 | <5 | <0.2 | 1.72 | 5 | 330 | 5 | 0.57 | <1 | 11 | 35 | 25 | 2.73 | <10 | 0.38 | 480 | <1 | 0.01 | 20 | 210 | 18 | <5 | <20 | 36 | 0.08 | <10 | 57 | <10 | 3 | 37 |
| 76 | TS 1021+00 | 45 | <0.2 | 1.90 | 5 | 345 | 10 | 0.23 | <1 | 10 | 30 | 19 | 2.73 | <10 | 0.40 | 274 | <1 | <0.01 | 17 | 160 | 28 | <5 | <20 | 27 | 0.06 | <10 | 65 | <10 | 1 | 47 |
| 77 | TS 1022+00 | <5 | <0.2 | 2.16 | 5 | 325 | 5 | 0.22 | <1 | 9 | 30 | 14 | 3.02 | <10 | 0.40 | 264 | <1 | <0.01 | 17 | 230 | 22 | <5 | <20 | 24 | 0.06 | <10 | 69 | <10 | <1 | 54 |
| 78 | TS 1023+00 | <5 | <0.2 | 1.63 | <5 | 205 | 10 | 0.19 | <1 | 6 | 22 | 9 | 2.44 | <10 | 0.30 | 168 | <1 | <0.01 | 12 | 160 | 20 | <5 | <20 | 17 | 0.04 | <10 | 57 | <10 | <1 | 45 |
| 79 | TS 1024+00 | <5 | <0.2 | 1.63 | <5 | 400 | 5 | 0.27 | <1 | 7 | 24 | 24 | 2.42 | <10 | 0.29 | 367 | 1 | <0.01 | 14 | 120 | 44 | <5 | <20 | 27 | 0.04 | <10 | 53 | <10 | 1 | 45 |
| 80 | TS 1025+00 | <5 | <0.2 | 1.53 | 10 | 820 | 10 | 0.48 | <1 | 5 | 21 | 14 | 2.45 | <10 | 0.30 | 547 | <1 | 0.01 | 13 | 160 | 36 | <5 | <20 | 48 | 0.06 | <10 | 51 | <10 | 7 | 48 |

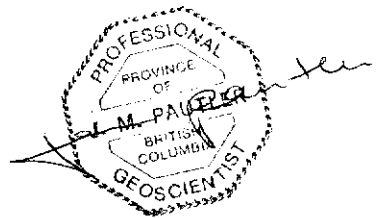
**APPENDIX III - Statement of Expenditures
Five 1-10, Ten 86-90 claims**

| | | | |
|--|--|---------------------|-------------------------|
| Wages: | J. Pautler | 1 day @ 300.00/day | \$300.00 |
| | E. A. Archibald | 2 days @ 200.00/day | 400.00 |
| | Total: 4 man-days | | \$ 700.00 |
| Meals, Accommodation: | 3 man-days @ \$75.00/ea. | | 225.00 |
| Field Supplies: | (flagging tape, thread, sample bags) 3 man-days @ \$15.00 | | 45.00 |
| Truck/Gas: | 2 days @ \$50/day | | 100.00 |
| Air Charter: | Trans North Helicopters, Dawson City, Y.T. (July 25, 26) | | |
| | 95% of 2.4 hrs @ \$ 750.00/hr incl. fuel | | Total: 1,710.00 |
| | Applicable Total: | | 725.00 |
| Geochemistry: | 115 soils @ 20.00 ea. | Au, ICP | 2,300.00 |
| | 1 rock @ 20.00 ea. | Au, ICP | 20.00 |
| | Shipping: | | 100.00 |
| | Total: | | 2,420.00 |
| Maps & Prints: | | | 50.00 |
| Report & Drafting: | | | <u>\$ 300.00</u> |
| GRAND TOTAL: | | | \$ 3,595.00 |
| Total Amount Applied for Assessment | | | \$ 3,000.00 |



**APPENDIX IV - Statement of Expenditures
Val 31-32 claims**

| | | | |
|--|--|-----------------------------|------------------------|
| Wages: | E. A. Archibald | 0.25 days @ 200.00/day | 50.00 |
| | | Total: 0.25 man-days | \$ 50.00 |
| Meals, Accommodation: | 0.25 man-days @ \$75.00/ea. | | 18.75 |
| Air Charter: | Trans North Helicopters, Dawson City, Y.T. (July 25, 30) | | |
| | 5% of 2.4 hrs @ \$ 750.00/hr incl. fuel | Total: 90.00 | |
| | Applicable Total: | | 50.00 |
| Geochemistry: | 5 soils @ 20.00 ea. Au, ICP | 100.00 | |
| | Shipping: | 10.00 | |
| | Total: | | 110.00 |
| Report & Drafting: | | | <u>\$ 30.00</u> |
| GRAND TOTAL: | | | \$ 258.75 |
| Total Amount Applied for Assessment | | | \$ 200.00 |



APPENDIX V

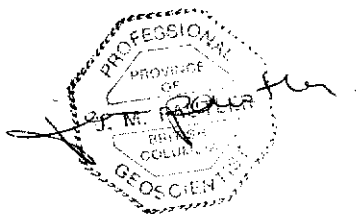
STATEMENT OF QUALIFICATION

I, Jean Marie Pautler, do hereby certify that:

- 1) I am a geologist with more than twenty years of field experience.
- 2) I am a graduate of Laurentian University, Sudbury, Ontario with an Honours B.Sc. degree in geology (May, 1980).
- 3) I am a Professional Geoscientist, registered in the province of British Columbia.
- 4) I supervised and conducted exploration on the Ten Mile Creek property between June 20 and Aug 2, 2000.

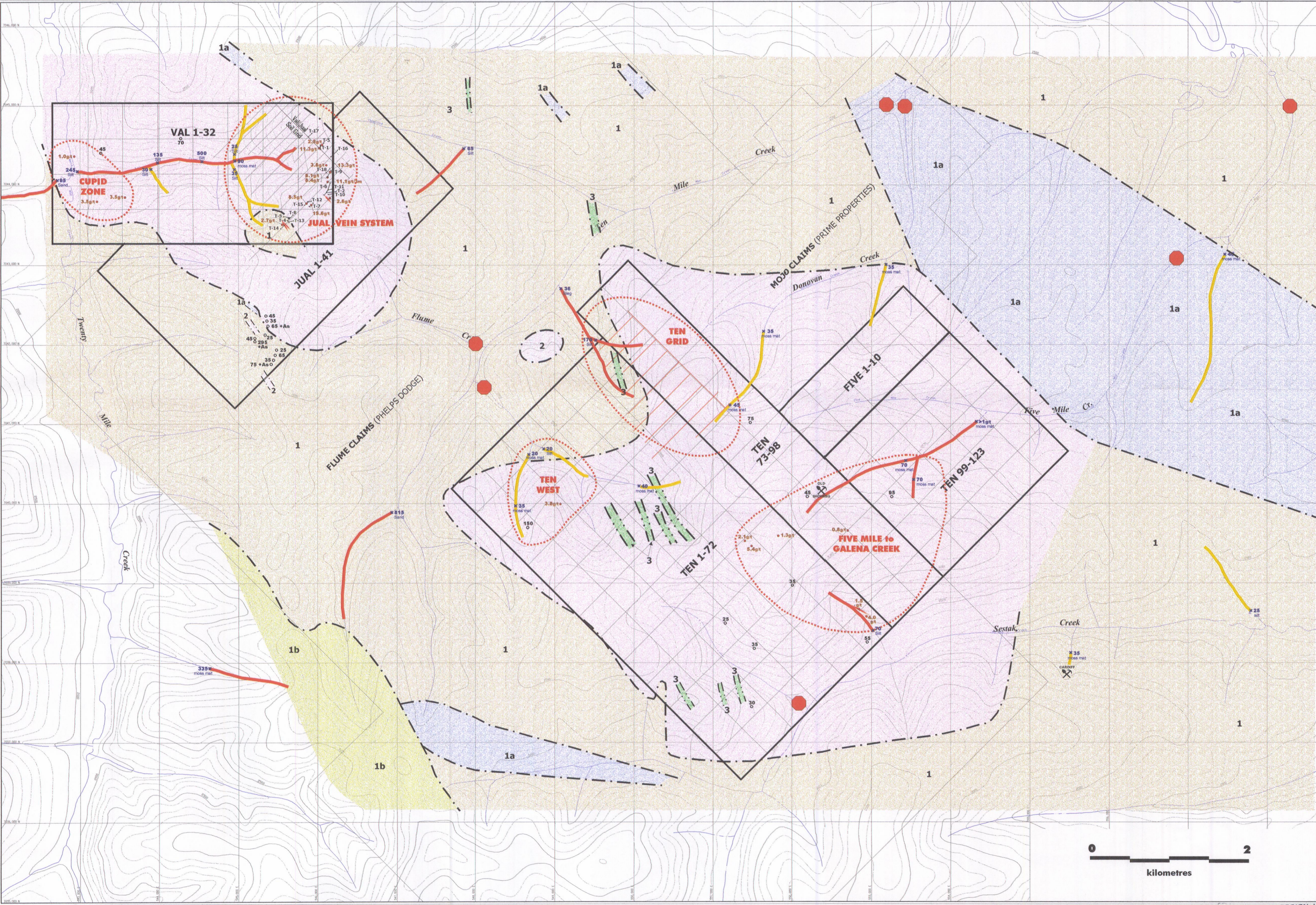


Jean Pautler
Senior Project Geologist.



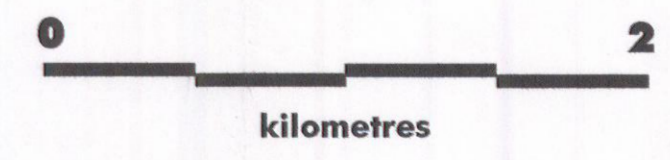


094163



LEGEND

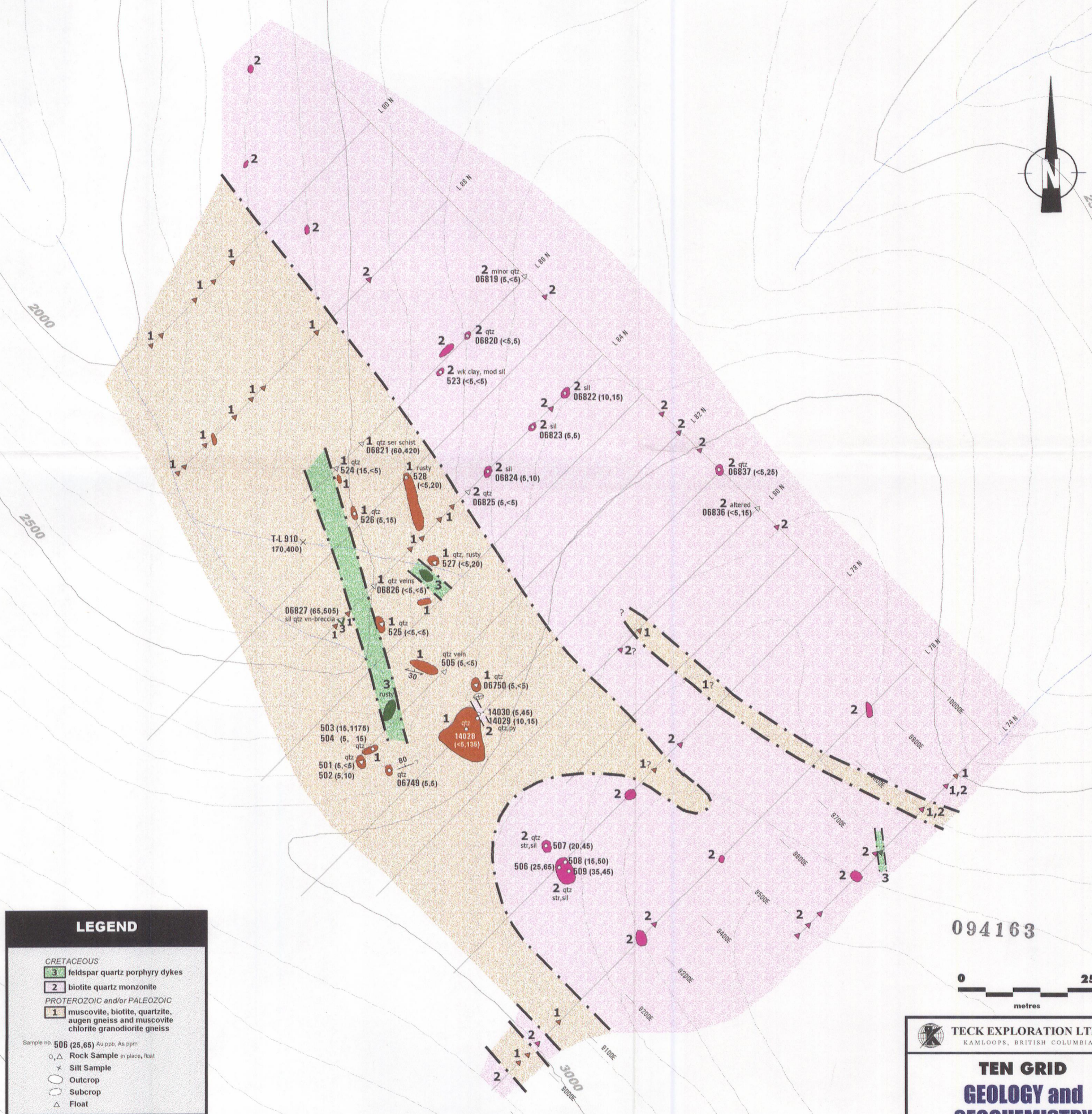
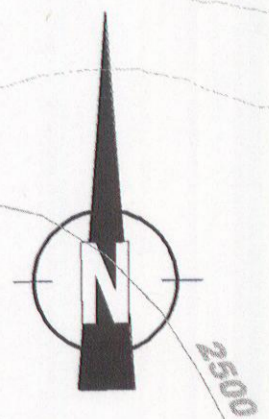
- CRETACEOUS**
- 3 feldspar quartz porphyry dykes
 - 2 biotite quartz monzonite
- PROTEROZOIC and/or PALEOZOIC**
- 1 paragneiss, includes; muscovite, biotite, quartzite, augen gneiss and muscovite chlorite granodiorite gneiss
 - 1a marble 1b orthogneiss
- Geological Contact**
- Rock Sample ppb Au
 - x Stream Sediment Sample ppb Au
 - Soil Sample ppb Au
 - Anomalous Heavy Mineral Sample
 - Anomalous Stream Sediment Sample
 - Highly Anomalous Stream Sediment Sample
 - Zones of Interest



TECK EXPLORATION LTD.
KAMLOOPS, BRITISH COLUMBIA

TEN MILE CREEK PROPERTY
COMPILATION MAP

SCALE: 1:25,000 NTS No. 115N-0 DRAWN BY: SA **FIGURE 4**

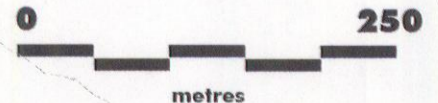


LEGEND

- CRETACEOUS**
- feldspar quartz porphyry dykes
 - biotite quartz monzonite
- PROTEROZOIC and/or PALEOZOIC**
- muscovite, biotite, quartzite, augen gneiss and muscovite chlorite granodiorite gneiss

- Sample no. 506 (25,65) Au ppb, As ppm
- Rock Sample in place, float
 - Silt Sample
 - Outcrop
 - Subcrop
 - Float

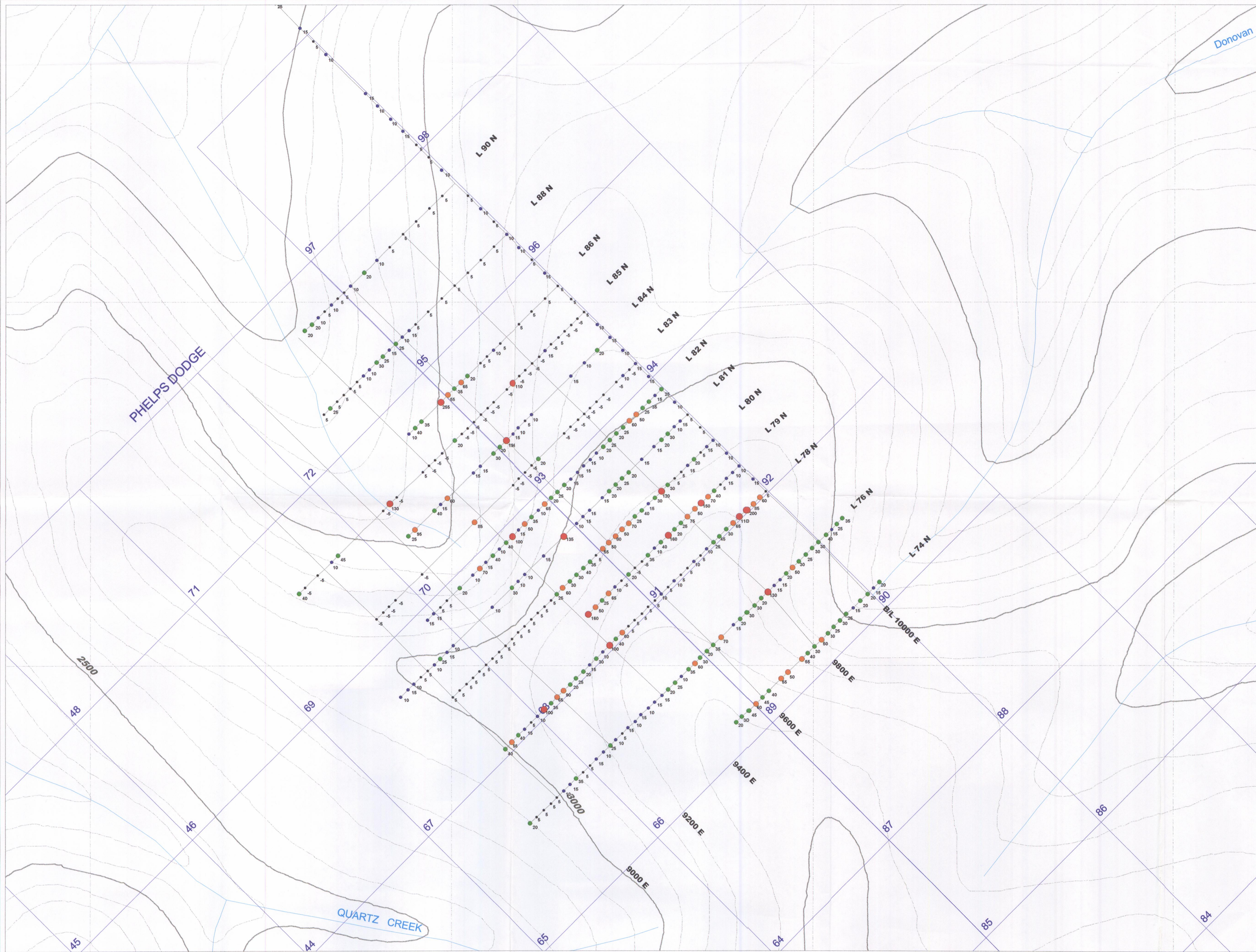
094163



TECK EXPLORATION LTD.
KAMLOOPS, BRITISH COLUMBIA

**TEN GRID
GEOLOGY and
GEOCHEMISTRY**

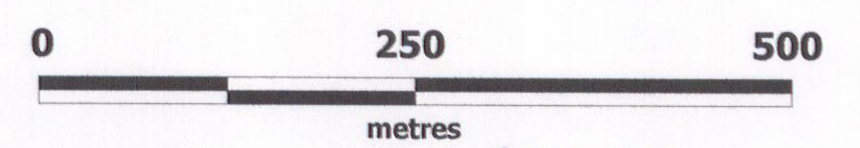
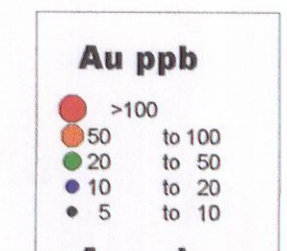
SCALE: 1:5,000 NTS No. 115N.0 DRAWN BY: S.A. **FIGURE 6**



Donovan

PHELPS DODGE

QUARTZ CREEK

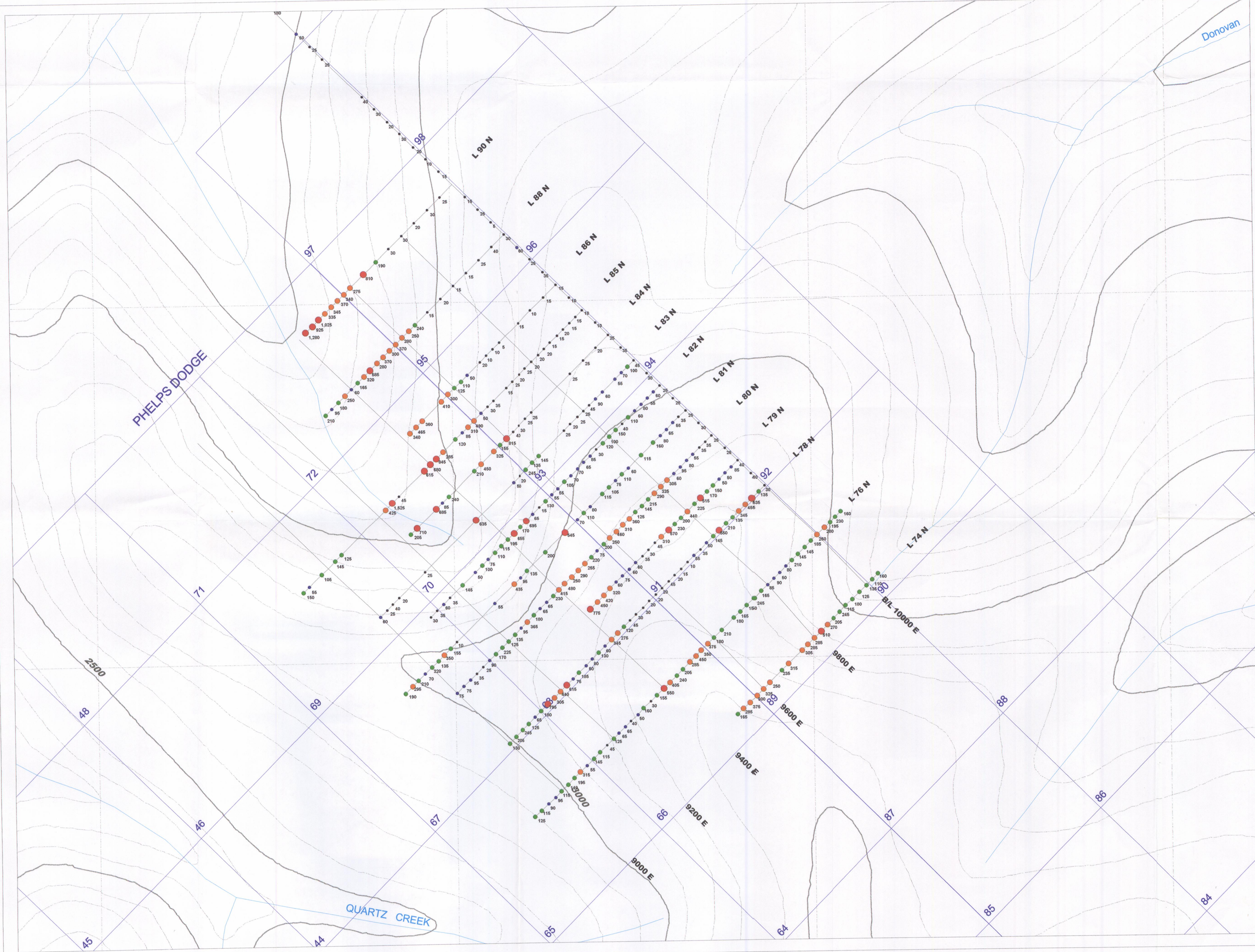


094163

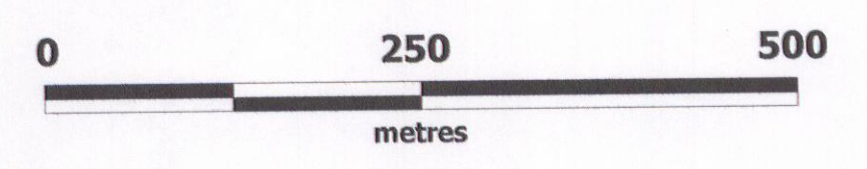
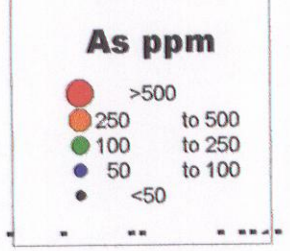
TECK EXPLORATION LTD.
 KAMLOOPS, BRITISH COLUMBIA

TEN MILE CREEK PROPERTY
TEN SOIL GRID
SOIL GEOCHEMISTRY
Au ppb

SCALE: 1:5,000 NTS No: 115N, O DRAWN BY: S.A. **FIGURE No: 7**



094163



TECK EXPLORATION LTD.
 KAMLOOPS, BRITISH COLUMBIA

TEN MILE CREEK PROPERTY
TEN SOIL GRID
SOIL GEOCHEMISTRY
As ppm

SCALE: 1:5,000 NTS No: 115N, O DRAWN BY: S.A. **FIGURE No: 8**