

**Prospecting Report**  
**on the**  
**Uranus and MM**  
**Claim Groups**  
**Montana Mountain Area**

**094156**

NTS 105D/2

Whitehorse Mining District

Yukon Terr.

Latitude 60 02' Longitude 134 38'

December 2000

by Ron Berdahl, prospector  
for field work fall 1999 and spring 2000

**Prospecting Report**  
**on the**  
**Uranus and MM**  
**Claim Groups**  
**Montana Mountain Area**



NTS 105D/2  
Whitehorse Mining District  
Yukon Terr.

Latitude 60 02' Longitude 134 38'

December 2000

by Ron Berdahl, prospector  
for field work fall 1999 and spring 2000

This report has been examined by  
the Geological Evaluation Unit  
under Section 53 (4) Yukon Quartz  
Mining Act and is allowed as  
representation work in the amount  
of \$ 1100.00.

*MB*  
for Regional Manager, Exploration and  
Geological Services for Commissioner  
of Yukon Territory.

## Table of Contents

1. Summary	...1
2. Introduction	...1
3. Property Location and Access	...1
a. property location map (2)	...2/3
b. claim location map	...4
4. Physiography and Vegetation	...5
5. Property History	...5
6. Regional Geology	...5
a. table of formations	...6
b. geology map	...9
7. Local Geology	...10
a. sample location map	...back
8. Prospecting Program	...10
9. Conclusion and Results	...10
References	...12
Certificate of Qualification	...13
Project Costs	...14
Assay Results	

## **1. Summary:**

The Uranus and MM showings were first discovered and staked in the early 1900's. In 1905 the claims were optioned to Conrad Consolidated Mining. The company's main focus was exploration and development on claims a mile to the north (Montana et.al.) and the same distance to the south (Venus et.al.). Thus the Uranus and MM claims were never extensively explored or developed. Today several caved adits or pits can be found on the property.

In 1984 UKHM, which at the time controlled much of the surrounding ground and nearby Venus Mine, drilled the Uranus Vein. Their program outlined a zone 50 m. long averaging 3.8 g/t Au, 870.8 g/t Ag, 5.7% Pb and 2.6% Zn over a 1.5m width.

In 1998 Ron Berdahl started to acquire, through staking and purchase, the Venus/Montana claim groups. Intermittently in July-September, 1999 and again in May - June 2000 the area was prospected. A small portion of the Uranus and MM claim blocks were investigated.

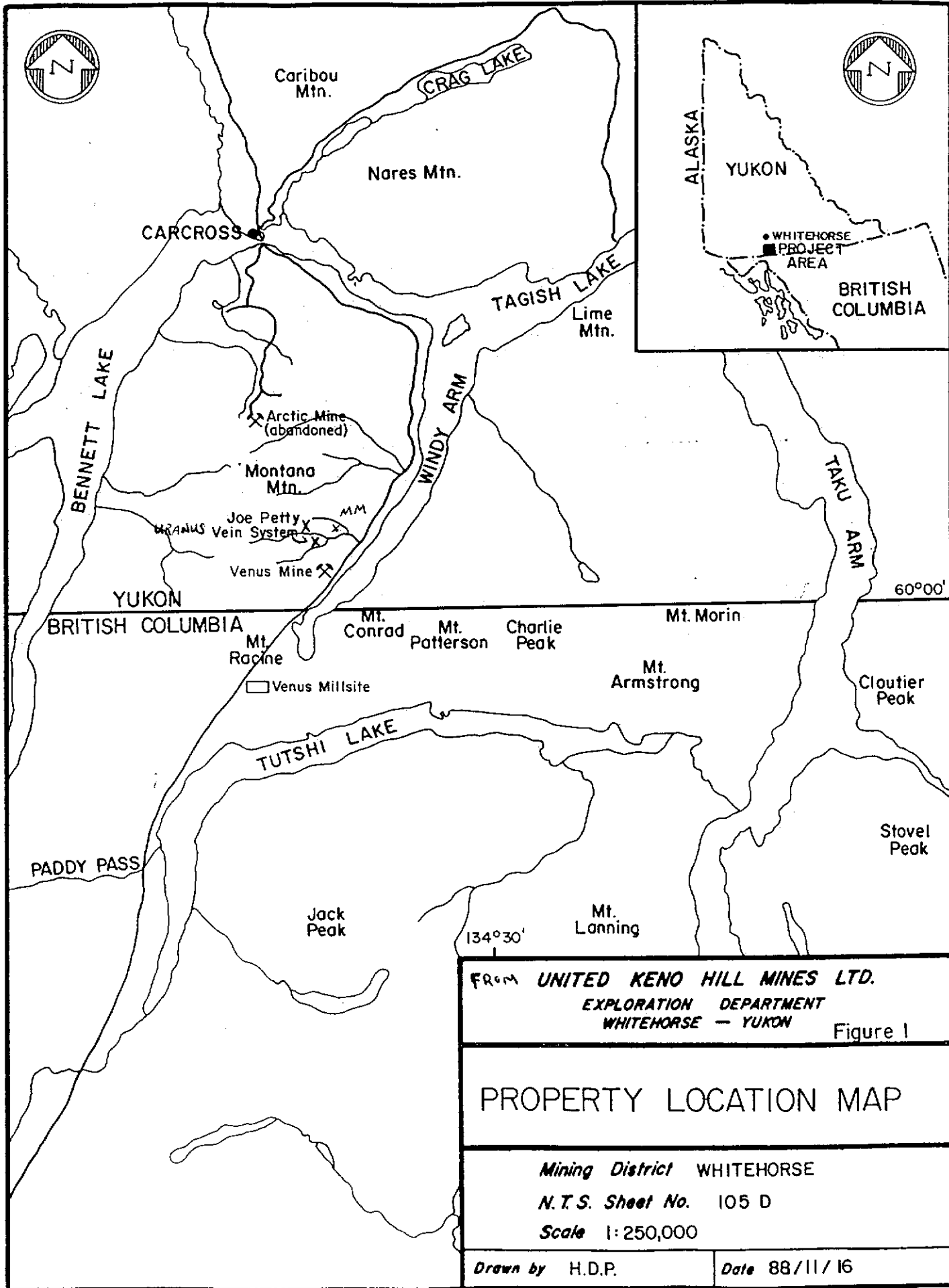
## **2. Introduction:**

During the summer of 1999 and spring of 2000 general prospecting was conducted on the Uranus, MM and adjacent ground. The Venus/Montana camp was originally a silver play. The most recent work concentrated on trying to locate new gold zones and non vein mineralization. On the MM, altered rock, mostly float, was collected and analyzed. On the Uranus a soil line was run to attempt to extend the Uranus Vein, from the "south lower adit" to the west, toward the "west adit". All old workings found were caved.

## **3. Property Location and Access:**

The two adjacent claim blocks are located on NTS map sheet 105D/2 @ latitude 60, 02' and longitude 134, 39' approximately 80 air miles south of Whitehorse.(fig. 1). The property is situated on the north side of Windy Arm of Tagish Lake, 4 km. north of the B.C. border. The MM claims are bisected by Pooley Creek, which just upstream (west) splits into a north and south forks. The three Uranus claims are cut by both forks. Pooley canyon is very steep and rugged, prone to slides and avalanche. The Klondike Highway passes 2km southeast of the claims.

The claims are accessible by helicopter, or 4WD vehicle on a 25 km long summer road from Carcross. Although the Klondike Highway (#2) is close by, steep cliffs and Pooley canyon preclude access other than foot travel.

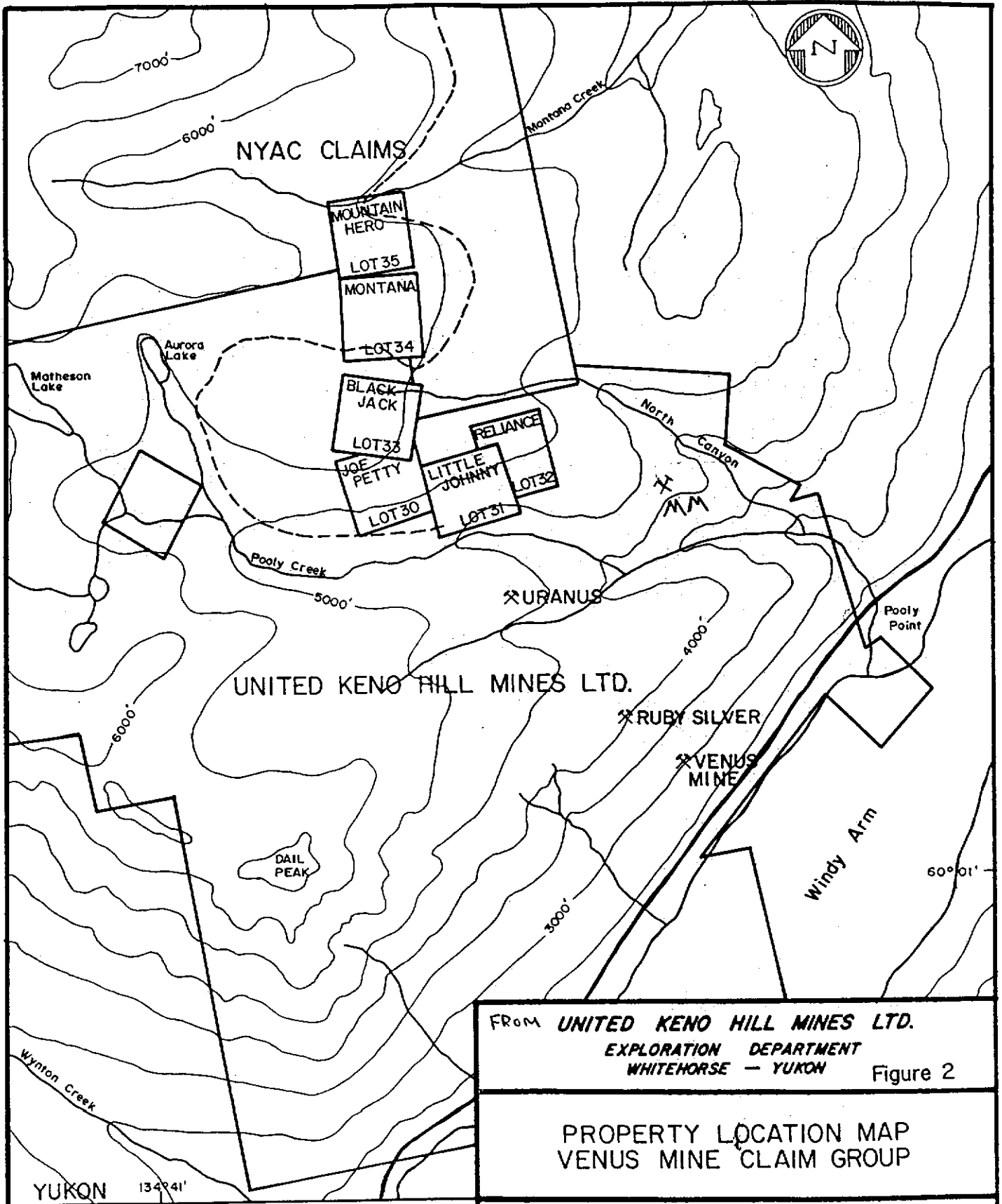


FROM **UNITED KENO HILL MINES LTD.**  
**EXPLORATION DEPARTMENT**  
**WHITEHORSE - YUKON** Figure 1

**PROPERTY LOCATION MAP**

*Mining District* WHITEHORSE  
*N.T.S. Sheet No.* 105 D  
*Scale* 1:250,000

*Drawn by* H.D.P. *Date* 88/11/16



FROM **UNITED KENO HILL MINES LTD.**  
**EXPLORATION DEPARTMENT**  
**WHITEHORSE - YUKON** Figure 2

**PROPERTY LOCATION MAP**  
**VENUS MINE CLAIM GROUP**

*Mining District* **WHITEHORSE**  
*N.T.S. Sheet No.* **105 D/2**  
*Scale* **1: 30,000**

*Drawn by* **H.D.P.** *Date* **88/11/18**

**YUKON** 134°41'  
**BRITISH COLUMBIA**

--- 4WD Road  
 [Montana Lot 34] Milot Crown Grant



#### 4. Physiography and Vegetation:

The claims are located in a high region of volcanic rocks called the Montana Mountain volcanic complex. The Montana Mountain area is bordered by narrow, long north trending lakes (Tagish, Bennett) and is on the eastern fringe of the Coast Range. The topography is steep and rugged with elevations of 7,233 feet on Montana Mountain. Adjacent Windy Arm is at an elevation of 2150 feet. Treeline is about 4,000 feet, though relatively few trees cover the area due to steep slopes, slides and avalanches. Spruce and fir are the climax species, with moss and lichen climax species above treeline. Goats, sheep, caribou and two bear species frequent the area.

#### 5. Property History:

The first mineral discovery in the area was in 1899 by William R. Young, a Montanan, thus the name of the first claim and subsequently the mountain, Montana. By 1901 Jack Pooley and Jack Stewart had located the Venus showing two miles south of the Montana. A year later they discovered and staked the Uranus and MM showings. These claims along with most others in the area were optioned to Conrad Consolidated Mining in 1905. Development work concentrated on the Montana and Venus showings, and a third the "Big Thing" on the north end of the mountain. Adits, tramways, roads and the town of Conrad quickly grew out of the promotion. But by 1912 Conrad's company was bankrupt.

The ownership of the Uranus and MM claim blocks moved with the Venus Mine property through several mining companies from 1919 until 1979 when UKHM optioned the ground from the Tagish Lake Syndicate. UKHM, like the others before it, concentrated its efforts on the Venus Vein system. In an attempt to find more tonnage on its ground it conducted several exploration and small drill programs on surrounding ground, including the Uranus property in 1984. A 'resource' was identified but never fully defined. Ron Berdahl restaked the claims in 1999.

Uranus 1-3 YC15301-03	Staked 26 June 1999	Effective to: 29 June 2002*
MM 1-4 YC15304-07	“	“

\* if assessment accepted

#### 6. Regional Geology:

The regional geology is taken from a private UKHM report authored by L. Walton, (1984) which relies, in part, on Charlie Roots 1982 work in the area, among others.

## 6. REGIONAL GEOLOGY

### A. Tectonic History

The Montana Mountain area is located on the western margin of a Mesozoic fore-arc basin called the Whitehorse Trough. The Whitehorse Trough and the Paleozoic Cache Creek terrane are part of an island arc assemblage called Terrane I (Monger et al., 1982). The arc system consisted of Lewes River Group andesites and basalts and Lower Jurassic Laberge Group sedimentary rocks, both of which were stratigraphically linked by the Triassic to oceanic rocks in the Cache Creek terrane. Terrane I then collided with, and was obducted over the North American craton during the mid-Jurassic. The boundary of the collision is marked by the Teslin suture zone, 90 km east of the project area. In the late Jurassic, a section of Cache Creek terrane oceanic floor was juxtaposed over the Whitehorse Trough along the north-westerly striking, northeasterly dipping Nahlin fault.

After accretion of Terrane I, Terrane II accreted on to the new west margin of North America, and resulted in a large magmatic island arc called the Coast Plutonic Belt. The Coast Plutonic Belt marks the site of extensive calc-alkaline volcanism, and obliterated the existing boundary between Terrane I and Terrane II. The Llewellyn fault separates the Whitehorse Trough from the Coast Plutonic Belt and older rocks to the east.

Roots (1982) suggested that the Montana Mountain volcanic complex was emplaced on the far west margin of Terrane I during the final stages of the collision between Terrane I and the Mesozoic North American margin.

### B. Stratigraphy and Structure

#### **Granitic Rocks**

Pink weathering, medium to coarse grained, granite to granodiorite is exposed north of the volcanic complex. The exposures form the south end of a 22 km long body informally known as the "Carcross pluton." Roots (1982) suggests that the Carcross pluton is the granitic equivalent of the Mount Nansen Group volcanic rocks. The Carcross pluton has been dated at  $64.3 \pm 2.2$  Ma (K-Ar method) by Morrison et al. (1974), but there is some uncertainty about the date.

#### **Mount Nansen Group**

The Montana Mountain volcanic complex was originally mapped as Hutshi Group by Wheeler (1961). Roots (1982) concluded that the Montana Mountain volcanic complex correlates with Mount Nansen plug domes in south central Yukon and layered Sloko piles in northern British Columbia. The ages of the Hutshi, Mount Nansen and Carmacks Groups were found to be late Cretaceous by Grond et al. (1984).

Mount Nansen Group volcanic rocks are distributed throughout southwestern Yukon and northwestern British Columbia. Tempelman-Kluit (1980) interpreted the Mount Nansen volcanic centers as remnants of plug domes and differentiated volcanic piles that were deposited on an erosion surface of considerable relief. Mount Nansen Group rocks consist of volcanic flows, breccias, and pyroclastic andesite to basalt.

The nearby Skukum complex and Bennett Lake volcanic complex contrast with Mount Nansen Group rocks on Montana Mountain because they are younger, more felsic and intrude Paleozoic and older rocks west of the trend of Mount Nansen Group volcanic rocks (Roots, 1982).

### **Regional Structure**

The Whitehorse Trough consists of Late Paleozoic and Mesozoic rocks that have been folded into a northwesterly trending synclinorium. The Whitehorse Trough is separated from the Coast Plutonic Belt by the steeply dipping Llewellyn Fault system. The Nahlin Fault separates Mesozoic rocks in the Whitehorse Trough from the Paleozoic rocks in the Atlin terrane. The southwestern part of the Nahlin Fault has been traced for more than 250 miles. It is a vertical or steep, northeast dipping thrust fault, and extends from the southern Yukon southeasterly across British Columbia to the Cassiar Mountains, where it appears to swing south into the Pinchi Lake Fault zone.

### **C. Regional Precious Metal Mineralization**

The Montana Mountain mining district is one of several precious metal districts in southwestern Yukon and northwestern British Columbia. The Wheaton River precious metal district is located 35 km northwest of Montana Mountain. The Mount Skukum volcanic complex is situated on the western side of the district. The Bennett Lake Caldera is located on the southern border. Morin and Downing (1984) list 26 gold-silver deposits and occurrences in the Wheaton River district, including Total Erickson's Mount Skukum epithermal gold deposit and Omni Resources' Skukum Creek deposit.

In northwestern British Columbia, several precious metal occurrences are situated in a belt of Mesozoic island arc derived volcanic and sedimentary rocks. The area between the Engineer Mine and the Venus Mine is anomalous in antimony, arsenic, gold and silver. The Venus Mine, a mesothermal Au-Ag-Pb-Zn quartz vein has reserves of 77,000 tons of .32 oz./ton Au, 8.9 oz./ton Ag, 2.45% Pb and 1.48% Zn.

**LEGEND**

N



**Early Tertiary**

Coast Range Intrusions  
granodiorite, granite

**Middle or Late Cretaceous**

- Mount Nansen Group  
rhyolite and silicified volcanic rocks
- heterolithic breccia
- intermediate volcanic flows and plugs
- flow banded intrusion breccia

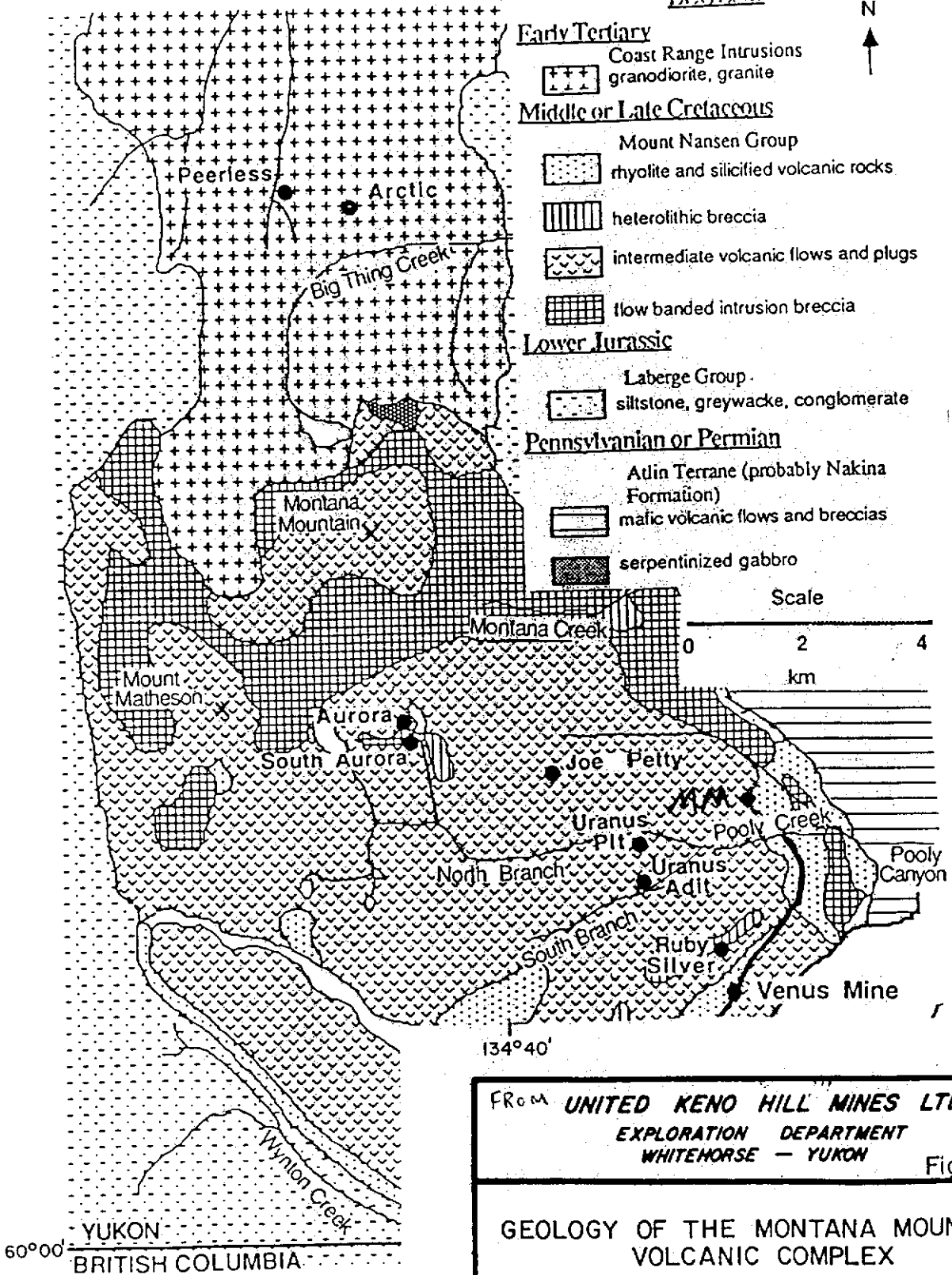
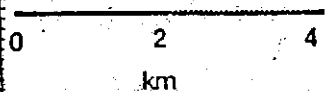
**Lower Jurassic**

Laberge Group  
siltstone, greywacke, conglomerate

**Pennsylvanian or Permian**

- Atlin Terrane (probably Nakina Formation)  
mafic volcanic flows and breccias
- serpentinized gabbro

Scale



FROM <b>UNITED KENO HILL MINES LTD.</b> EXPLORATION DEPARTMENT WHITEHORSE — YUKON	
Figure 4	
<b>GEOLOGY OF THE MONTANA MOUNTAIN VOLCANIC COMPLEX</b>	
Mining District <b>WHITEHORSE</b>	
N.T.S. Sheet No. <b>105 D/2</b>	
Scale	
Drawn by <b>L.A.W.</b>	Date <b>88/11/21</b>

\* Modified after Roots, 1982

## **7. Local Geology/ Mineralization:**

The local geology consists of variations of light to dark greenish volcanics, usually porphyritic. My rudimentary observations tend toward areas of potential mineralization, and less inclined to ubiquitous volcanics. Structures are important and sheared rocks are not uncommon. Mineralized veins in the area are always enveloped in quartz veins, usually with crystals, and bleached, to yellow (limonitic) "alteration" sometimes to several feet on either side of the vein.

Bleached, silicic, pyritic rock, within the green volcanics, often rusty on fractures and sometimes associated with slicken slide (shears) have returned disappointingly low values (v-3). In some areas breccias are found, but again without sulfide (galena) present usually are without precious metal values (v-2). V-1 and v-7 have galena proportionate to their precious metal values. Samples v-4,5 and 6 all contained minor disseminated sulfides with lots of 'alteration, eg. silicification, limonite, possible manganese staining, but failed to return even anomalous Au values.

In summary the local geology would seem to have great potential for various deposit types, however limited work to date seems to indicate, at least on surface, that veins are the only target with 'economic' gold/silver values.

## **8. Prospecting Program:**

The prospecting program for the MM and Uranus consisted of reccy type prospecting and the collection of 40 +/- samples, 22 which were sent for analyzes. The goal of the program was to try extend the Uranus Vein to the west, find new showings, and find mineralization that was not vein related. As the same rock unit is found on either side of the south fork of Pooley Creek (7.3 - "light green volcanics") and as no apparent offset was observed along the creek, it was thought that some possibility might exist for a vein extension between the "south lower adit" and the "west adit" approximately 450 m. to the west. As the canyon walls are steep and /or talus covered a single soil line near the base of the slope was run. Spacing was 50m. Fifteen samples were taken. Six anomalous values (24860, 24861 and 24866-69) were recorded.

The second objective was to find new showings on the MM. The ground on the claim block can best be described as perilous. Altered rock (V1 to V6) was collected and analyzed. Most rock was float. V-7 consisted of massive galena from the south Uranus Vein. Samples were analyzed for Au plus 32 element ICP at NAL and IPL respectively using aqua regia digestion and atomic absorption spectrophotometry. Samples were prepared at NAL.

## **9. Conclusion and Results:**

No new showings were discovered on the MM or Uranus claim groups. In addition veins seem to be the only obvious, surface type of mineral deposit with 'economic' grades. On the Uranus soil line, two anomalous numbers (24860-61) can be explained from down slope dispersion from the "west adit" showing. The other four anomalous samples are associated with the "south

lower adit" showing, though they do extend the anomaly possibly 50m west of the visible vein. This could mean the Vein does, at the very least, trend westerly toward the "west adit " showing, and not simply end due to offset at Pooley Creek.

LEGEND

From UKHM private rpt 1980/84

URANUS / MM

GEOLOGY:

- 7<sub>1</sub> dark gray-green volcanics
- 7<sub>2</sub> medium gray-grn volc.
- 7<sub>3</sub> light gray-green volc
- 7<sub>2a</sub> - porphyritic
- 7<sub>4</sub> Volcanic breccia

--- vein  
 1.2' : 1.0g, 47.9, 17.90, 0.05  
 width Au Ag Pb Zn  
 (ft) opt opt % %

⊕ - BERDAHL Sample Locations

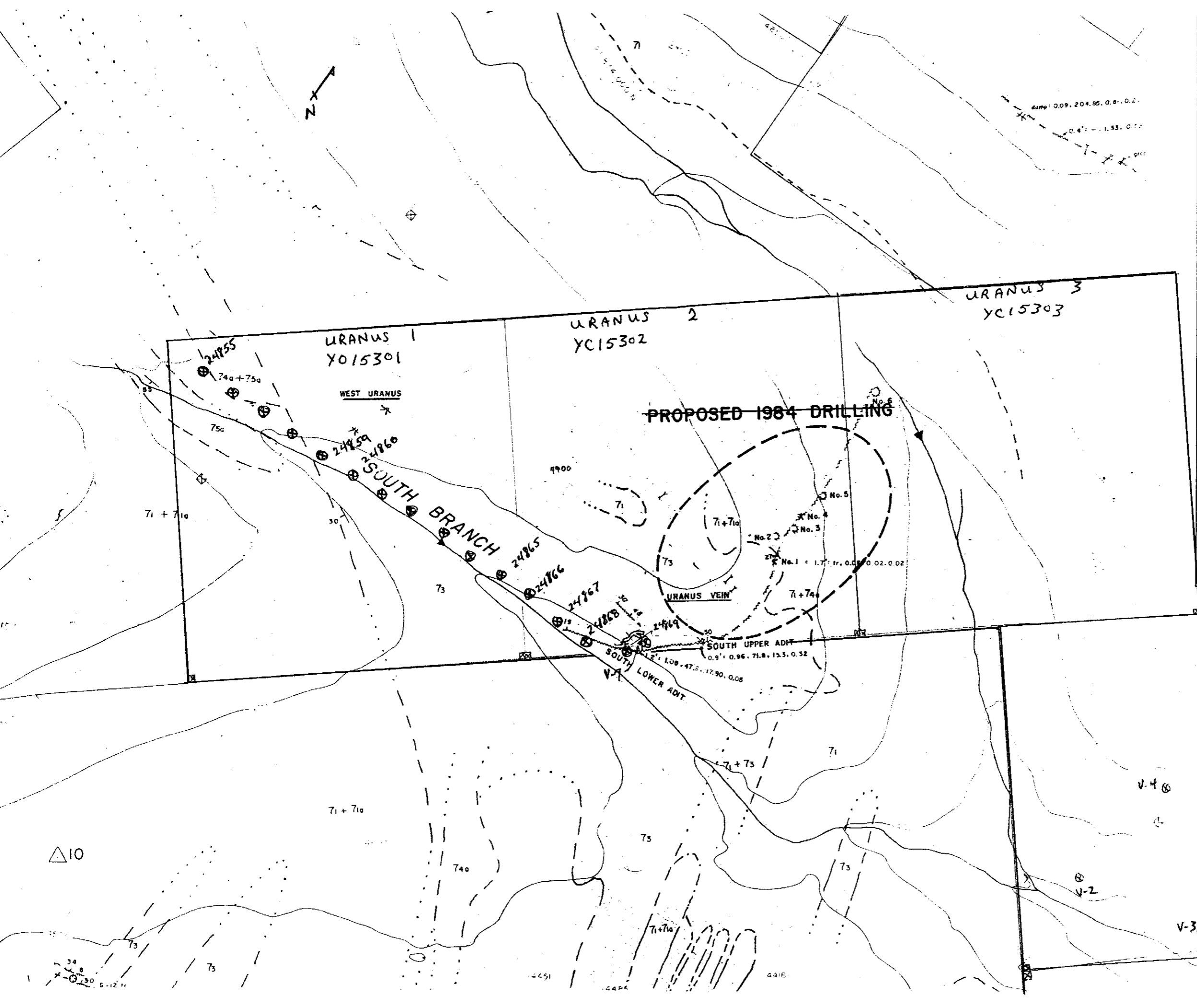
? x - adit, adit caved

50' contours  
 105 p/z  
 1:5,000

MM 1	MM 3
YC15304	YC15306

V-4  
 V-6  
 V-5

V-3  
 V-1  
 MM 2  
 MM 4



△ 10

38  
 130  
 5-12 11

MM VEIN

## REFERENCES

Brown, C.E., and Kelly, J.A. 1963. Private Company Report.

Cairnes, D. D. 1907. Exploration in a portion of the Yukon south of Whitehorse. Geological Survey of Canada, Summary Report for 1906, p. 22-30.

Cairnes, D. D. 1908. Reports on a portion of the Conrad and Whitehorse Mining Districts, Yukon. Geological Survey of Canada, Department of Mines, Publication 982, p. 14-18.

Ground, H.C., Churchill, S.J. and Armstrong, R.L. 1979. Interpretation of isotopic ages and  $87\text{Sr}/86\text{Sr}$  initial ratios for plutonic rocks in the Whitehorse map area, Yukon. Canadian Journal of Earth Sciences, V. 16, p. 1988-1997.

McConnell, R. G. 1906. Windy Arm District, northwestern B.C. Geological Survey of Canada, Summary Report for 1905, p. 30-32.

Monger, J. W. H.; Price, R. A. and Tempelman-Kluit, D. J. 1982. Tectonic accretion and the origin of the two major metamorphic and plutonic belts in the Canadian Cordillera. Geology, v. 10, p. 70-75.

Morrison, G. W., Godwin, C. I. and Armstrong, R. L. 1984. Late Cretaceous age of the Hutshi, Mount Nansen, and Carmacks groups, southwestern Yukon Territory and northwestern British Columbia. Canadian Journal of Earth Sciences, v. 21, p. 554-558.

Roots, C. F. 1981. Geological setting of gold-silver veins on Montana Mountain in Yukon Geology and Exploration 1979-1980. Geology Section, Department of Indian and Northern Development, Whitehorse, p. 116-122.

Roots, C. F. 1982. Geology of the Montana Mountain area, Yukon. Unpublished M.Sc. thesis, Carleton University, 127 pp.

Walton, L. 1984. Montana Mountain Surface Exploration Program, Venus Property Area. UKHM Report.

Walton, L. 1988. Report on the Joe Petty Drill Program, Montana Mountain Area, Whitehorse Mining District, Yukon. UKHM Report.

Watson, K. 1979. Report on the Surface and Underground Program on the Venus Mines Area. UKHM Report.

Watson, K. 1980. Report on the Surface Program-Venus Mines Area. UKHM Report.

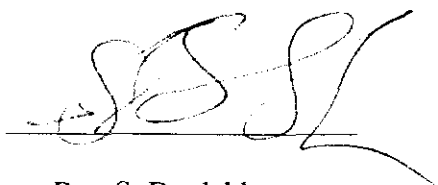
Watson, K. 1981. Report on the Venus Property-Geochemical Soil Grids. UKHM Report.

Wheeler, J. O. 1961. Whitehorse map-area, Yukon Territory. Geological Survey of Canada Memoir 312, 156 pp.

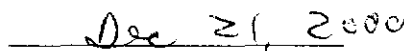
## Statement of Qualifications

I, Ron Berdahl, declare I am an independent prospector who has worked the MM and Uranus claims during the 1999/2000 field season.

I have worked several years in the Whitehorse trough and taken several courses related to prospecting and in addition make the bulk of my living from prospecting.



Ron S. Berdahl



Date

### Summary of Costs Statement

Assays - 22 rock and soil	\$498.09
Vehicle - Whse/Uranus 250km @ \$.42/km	\$105.00
Laborer - 3 man-days	\$0750.00
Per diem - includes camp, food supplies etc.	\$105.00
Report	\$500.00

---

**Total** \$ 1,958.09

Asking for: two years on MM 1-4 and Uranus 1-3 \$1,400.00

15/09/2000

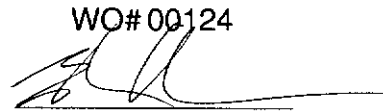
Certificate of Analysis

Page 1

Ron Berdahl

WO# 00124

Certified by



Sample #	Au ppb	Au oz/ton
r V-1	1336	
r V-2	37	
r V-3	24	
r V-4	20	
r V-5	15	
r V-6	18	
r V-7	>7000	0.210
s 24855	13	
s 24856	12	
s 24857	15	
s 24858	26	
s 24859	23	
s 24860	109	
s 24861	161	
s 24862	24	
s 24863	12	
s 24864	88	
s 24865	29	
s 24866	267	
s 24867	638	
s 24868	1133	
s 24869	962	

# CERTIFICATE OF ANALYSIS

iPL 00I129

2036 Columbia Street  
Vancouver, B.C.  
Canada V5Y 3E1  
Phone (604) 879-7878  
Fax (604) 879-7898

INTERNATIONAL PLASMA LABORATORY LTD

Client : Northern Analytical Laboratories  
Project: W.O. 00124

**22 Samples**  
22=Pulp

[112913:03:18:00092100]

Out: Sep 21, 2000  
In : Sep 07, 2000

Page 1 of 1  
Section 1 of 1

Sample Name	Ag ppm	Cu ppm	Pb ppm	Zn ppm	As ppm	Sb ppm	Hg ppm	Mo ppm	Tl ppm	Bi ppm	Cd ppm	Co ppm	Ni ppm	Ba ppm	W ppm	Cr ppm	V ppm	Mn ppm	La ppm	Sr ppm	Zr ppm	Sc ppm	Ti %	Al %	Ca %	Fe %	Mg %	K %	Na %	P %
V - 1	P 0.4m	16	370	841	1.1%	121	<	5	<	<	40.2	4	5	49	<	105	2	81	3	24	2	<	<	0.09	0.14	1.77	0.03	0.06	0.01	0.02
V - 2	P 10.4	28	44	295	862	7	<	10	<	<	11.1	17	35	73	<	46	19	987	6	78	7	2	<	0.29	4.28	3.69	0.12	0.19	0.01	0.11
V - 3	P 2.5	5	32	29	129	<	<	3	<	<	2.8	1	<	57	<	59	3	104	9	49	3	1	<	0.32	0.47	2.29	0.08	0.18	0.05	0.04
V - 4	P 0.8	15	30	36	49	<	<	12	<	<	3.5	7	5	39	<	32	10	84	7	21	2	1	<	0.50	0.39	2.91	0.17	0.16	0.02	0.14
V - 5	P 0.6	10	24	38	115	<	<	7	<	<	3.8	8	7	53	<	18	13	194	8	16	2	1	<	0.88	0.39	3.18	0.25	0.16	0.01	0.17
V - 6	P 0.5	8	29	52	1189	<	<	8	<	<	4.2	6	7	36	<	40	5	123	5	12	3	1	<	0.38	0.21	3.22	0.08	0.16	0.01	0.08
V - 7	P 0.2m	47	14114	452	12%	483	<	1	<	<	45.4	15	15	<	<	106	19	12	<	3	6	<	<	0.05	0.01	16%	<	0.03	0.01	0.02
24855	P 0.4	19	81	73	464	15	<	3	<	<	3.8	13	15	119	<	20	33	851	19	19	1	3	0.02	1.43	0.32	2.92	0.46	0.06	0.01	0.13
24856	P 0.4	23	38	83	160	<	<	3	<	<	4.8	16	23	123	<	22	36	998	19	21	2	3	0.01	1.61	0.33	3.32	0.58	0.06	0.01	0.12
24857	P 0.7	24	68	116	232	<	<	3	<	<	5.0	11	16	165	<	23	36	679	22	24	2	2	0.01	1.63	0.39	3.26	0.56	0.06	0.01	0.15
24858	P 0.6	21	61	116	207	<	<	2	<	<	4.9	14	18	128	5	26	39	908	18	24	2	3	0.02	1.55	0.36	3.12	0.58	0.07	0.02	0.10
24859	P 0.6	27	55	90	109	<	<	2	<	<	4.2	17	19	164	<	28	44	929	18	30	3	4	0.04	1.55	0.45	3.10	0.60	0.17	0.02	0.06
24860	P 2.5	24	244	288	493	<	<	4	<	<	5.5	12	21	157	<	25	37	673	15	33	3	3	0.01	1.82	0.47	3.49	0.60	0.08	0.01	0.11
24861	P 2.6	26	291	194	462	<	<	3	<	<	6.5	15	20	142	<	21	36	1156	19	27	3	3	0.02	1.35	0.37	3.25	0.49	0.13	0.02	0.09
24862	P 0.3	17	50	101	180	<	<	2	<	<	4.5	12	18	131	<	24	36	721	13	21	2	2	0.01	1.58	0.37	3.04	0.58	0.06	0.01	0.12
24863	P 0.2	21	27	74	73	<	<	3	<	<	4.6	16	15	124	<	21	35	950	18	18	2	3	0.01	1.47	0.37	3.41	0.60	0.05	0.01	0.13
24864	P 1.0	22	123	156	278	<	<	4	<	<	5.5	18	14	166	<	19	33	1972	17	33	2	2	0.01	1.57	0.54	3.14	0.47	0.09	0.01	0.16
24865	P 1.2	30	90	120	234	<	<	3	<	<	4.6	11	24	162	<	24	37	577	19	57	4	3	0.02	1.60	0.75	3.21	0.57	0.09	0.02	0.11
24866	P 7.0	28	803	443	1061	<	<	2	<	<	9.8	11	18	129	<	15	26	897	15	28	4	3	0.01	1.30	0.34	3.90	0.41	0.07	0.01	0.08
24867	P 11.3	53	1286	1148	2420	14	<	6	<	<	27.2	23	33	302	<	13	25	2763	20	50	6	4	<	1.16	0.66	4.93	0.33	0.10	0.01	0.09
24868	P 21.0	40	2591	1755	7401	33	<	3	<	<	36.0	15	19	314	<	4	11	1849	11	76	4	2	<	0.70	0.63	5.07	0.27	0.07	0.01	0.05
24869	P 18.5	179	1686	1789	4813	26	<	6	<	<	43.5	42	45	511	<	8	16	3924	10	288	7	4	<	0.59	5.48	6.09	0.37	0.07	0.01	0.09

Min Limit 0.1 1 2 1 5 5 3 1 10 2 0.1 1 1 2 5 1 2 1 2 1 1 1 0.01 0.01 0.01 0.01 0.01 0.01 0.01 0.01 0.01  
 Max Reported\* 99.9 2000 2000 2000 9999 999 9999 999 999 9999 99.9 9999 9999 9999 999 9999 9999 9999 9999 9999 9999 9999 9999 1.00 9.99 9.99 9.99 9.99 9.99 5.00 5.00  
 Method ICP  
 ---=No Test Ins=Insufficient Sample Del=Delay Max=No Estimate Rec=ReCheck m=x1000 %=Estimate % NS=No Sample P=Pulp