

ARCHER, CATHRO

& ASSOCIATES (1981) LIMITED

CONSULTING GEOLOGICAL ENGINEERS

1016 - 510 WEST HASTINGS STREET, VANCOUVER, B.C. V6B 1L8 TEL (604) 688-2568 • FAX (604) 688-2578

ASSESSMENT REPORT

094137

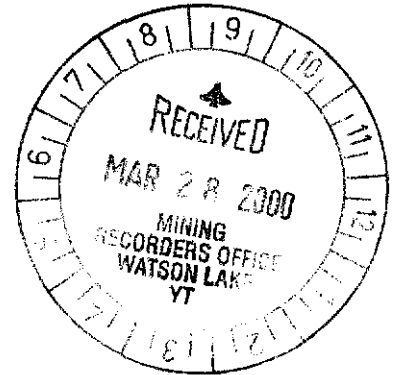
describing

EXCAVATOR TRENCHING AND BULK SAMPLING

on the

BLUE HEAVEN PROPERTY

| | |
|-------------|-----------------|
| Blue 1-2 | YB34963-YB34964 |
| H 1-2 | YB34965-YB34966 |
| Heaven 1-80 | YB91140-YB91219 |
| 81-92 | YB91396-YB91407 |
| 93-102 | YB91552-YB91561 |
| 103-114 | YB91630-YB91641 |



Latitude 60°19' N; Longitude 130°41' W

NTS 105B/7

in the

WATSON LAKE MINING DISTRICT

YUKON TERRITORY

Prepared by

Archer, Cathro & Associates (1981) Limited

for

NORDAC RESOURCES LTD.

T. C. Becker, B.Sc., P.Geo.

February, 2000

This report has been examined by
the Geological Evaluation Unit
under Section 53 (4) Yukon Quartz
Mining Act and is allowed as
representation work in the amount
of \$ 47,200.00.

M. B. B.
for Regional Manager, Exploration and
Geological Services for Commission
of Yukon Territory.

TABLE OF CONTENTS

| | <u>PAGE</u> |
|--|--------------------|
| INTRODUCTION | 1 |
| LOCATION, CLAIM STATUS AND ACCESS | 1 |
| PREVIOUS WORK..... | 2 |
| GEOMORPHOLOGY | 5 |
| REGIONAL GEOLOGY | 5 |
| REGIONAL MINERALIZATION..... | 6 |
| PROPERTY GEOLOGY | 6 |
| 1999 EXCAVATOR TRENCHING..... | 8 |
| BULK SAMPLING, SHIPPING AND SMELTING | 10 |
| CONCLUSIONS AND RECOMMENDATIONS | 12 |
| SELECTED REFERENCES..... | 13 |

TABLE

| | | |
|---|--------------------------|----|
| 1 | PRODUCTION SUMMARY | 11 |
|---|--------------------------|----|

APPENDICES

| | |
|-----|--------------------------------------|
| I | AUTHOR'S STATEMENT OF QUALIFICATIONS |
| II | ROCK SAMPLE DESCRIPTIONS |
| III | CERTIFICATES OF ANALYSIS |
| IV | SMELTER STATEMENT |

FIGURES

| <u>NO.</u> | <u>DESCRIPTION</u> | <u>LOCATION</u> |
|------------|------------------------------|-------------------|
| 1 | Property Location | Following Page 1 |
| 2 | Claim Location | Following Page 1 |
| 3 | Access | Following Page 1 |
| 4 | Historical Compilation | Following Page 2 |
| 5 | Tectonic Setting | Following Page 5 |
| 6 | Regional Geology | Following Page 5 |
| 7 | Property Geology | Following Page 6 |
| 8 | Blue Zone..... | Following Page 8 |
| 9 | Blue Zone Detail..... | Following Page 9 |
| 10 | H Zone | Following Page 10 |

INTRODUCTION

Nordac Resources Ltd. owns the Blue Heaven property which consists of 118 claims covering 1975 hectares. The property is located in southern Yukon and hosts high grade silver-lead-zinc veins, lead-zinc-silver replacement mineralization and tungsten±copper skarns. Nordac acquired the Blue 1-2 and H 1-2 claims in February 1998 from W4 Joint Venture and subsequently staked 114 Heaven claims within a surrounding area of interest. The property is subject to a net smelter return royalty of 2% on ore milled before smelting or 10% on ore not milled before smelting.

This report describes exploration conducted between July and early August, 1999. The program utilized a three-person crew working from a camp located on the property. Work included excavator trenching, bulk sampling and reclamation. The program was managed by Archer, Cathro & Associates (1981) Limited and supervised by the author. Appendix I contains the Author's Statement of Qualifications.

LOCATION, CLAIM STATUS AND ACCESS

The Blue Heaven property consists of 118 contiguous mineral claims located in southern Yukon at latitude 60°19' north and longitude 130°41' west on NTS 105B/7 (Figure 1). They are registered with the Watson Lake Mining Recorder in the name of Archer, Cathro & Associates (1981) Limited which holds them in trust for Nordac. Claim data are listed below while claim locations are shown on Figure 2.

| <u>Claim Name</u> | <u>Grant Number</u> | <u>Expiry Date*</u> |
|-------------------|---------------------|---------------------|
| Blue 1-2 | YB34963-YB34964 | March 11, 2009 |
| H 1-2 | YB34965-YB34966 | March 11, 2009 |
| Heaven 1-80 | YB91140-YB91219 | February 24, 2008 |
| Heaven 81-92 | YB91396-YB91407 | February 24, 2008 |
| Heaven 93-102 | YB91552-YB91561 | February 24, 2008 |
| Heaven 103-114 | YB91630-YB91641 | February 24, 2008 |

*Expiry dates include 1999 work filed for assessment credit but not yet accepted.

Access is provided by a 40 km road extending from Km 1160 on the Alaska Highway to an abandoned campsite on the adjacent Silver Hart property (Figure 3). The road is suitable for four-wheel drive vehicles but could be easily upgraded for two-wheel drive use. A system of four-wheel drive roads extends from the Silver Hart campsite onto the Blue Heaven property however, because the roads are eroded in places, access to all but the most important parts of the property is limited to off-road vehicles.

NORDAC RESOURCES LTD.

FIGURE 1

ARCHER, CATHRO & ASSOCIATES (1981) LIMITED

LOCATION
BLUE HEAVEN PROPERTY

SCALE 1:5,000,000

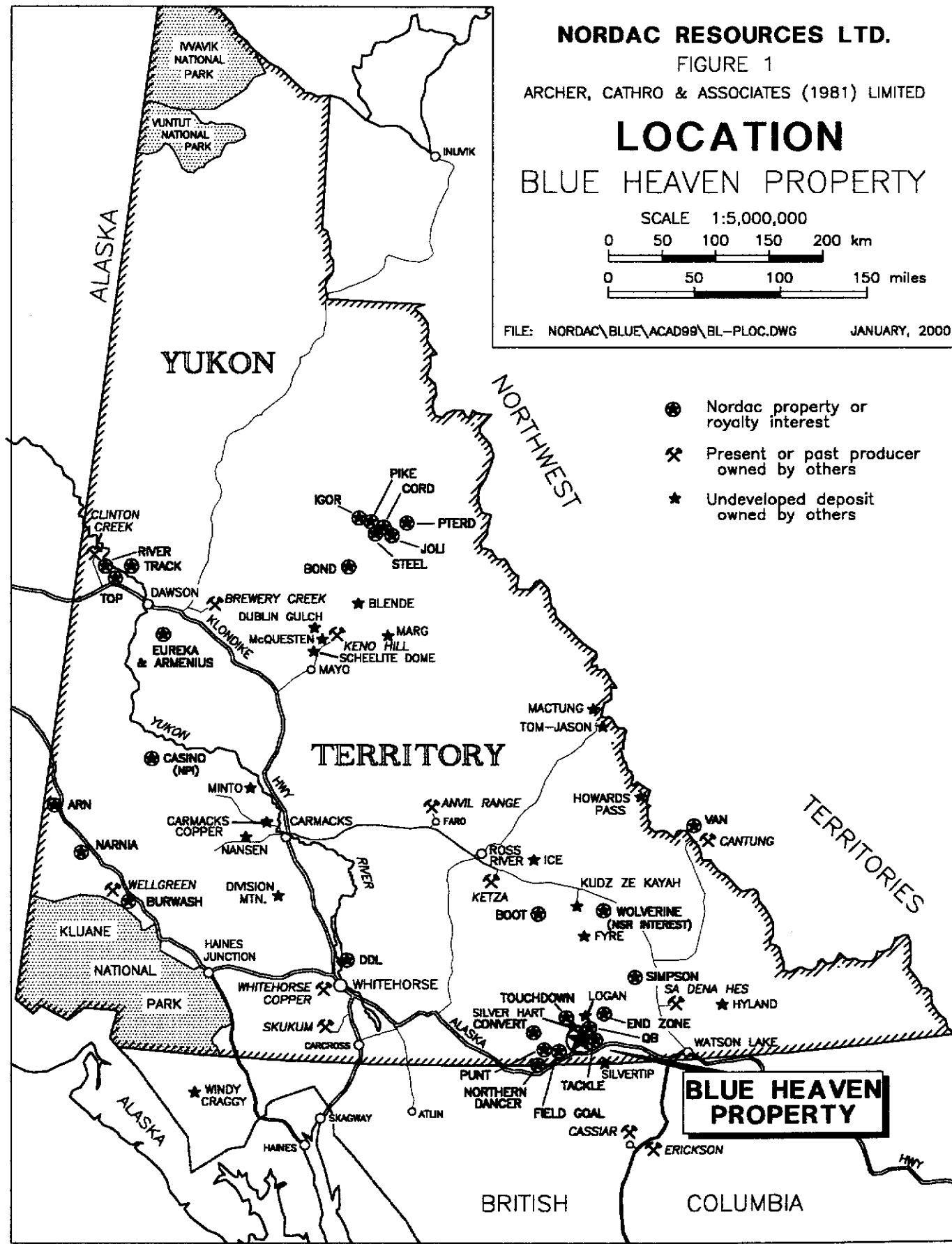
0 50 100 150 200 km

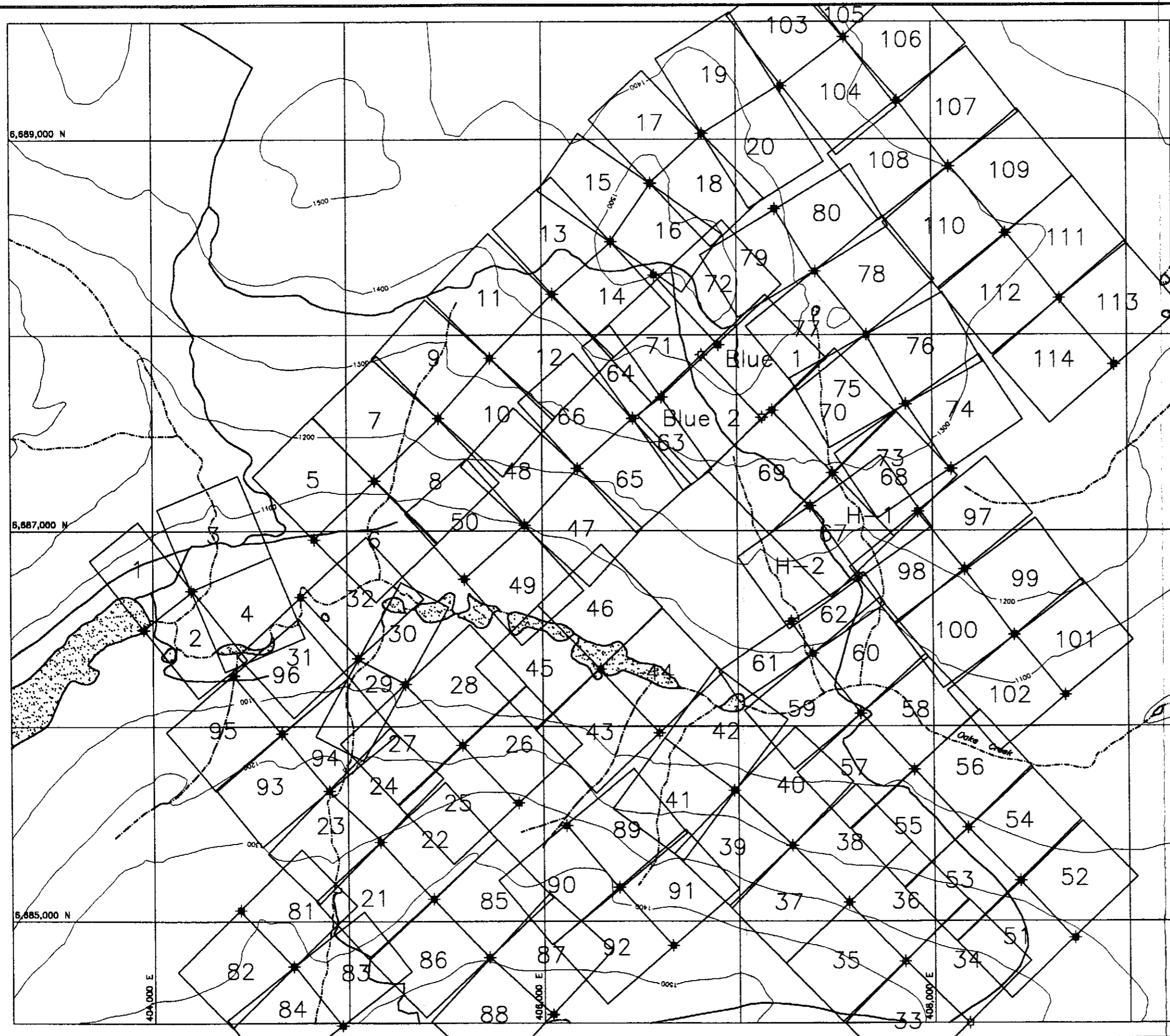
0 50 100 150 miles

FILE: NORDAC\BLUE\ACAD99\BL-PL0C.DWG

JANUARY, 2000

- Nordac property or royalty interest
- ⌘ Present or past producer owned by others
- ★ Undeveloped deposit owned by others

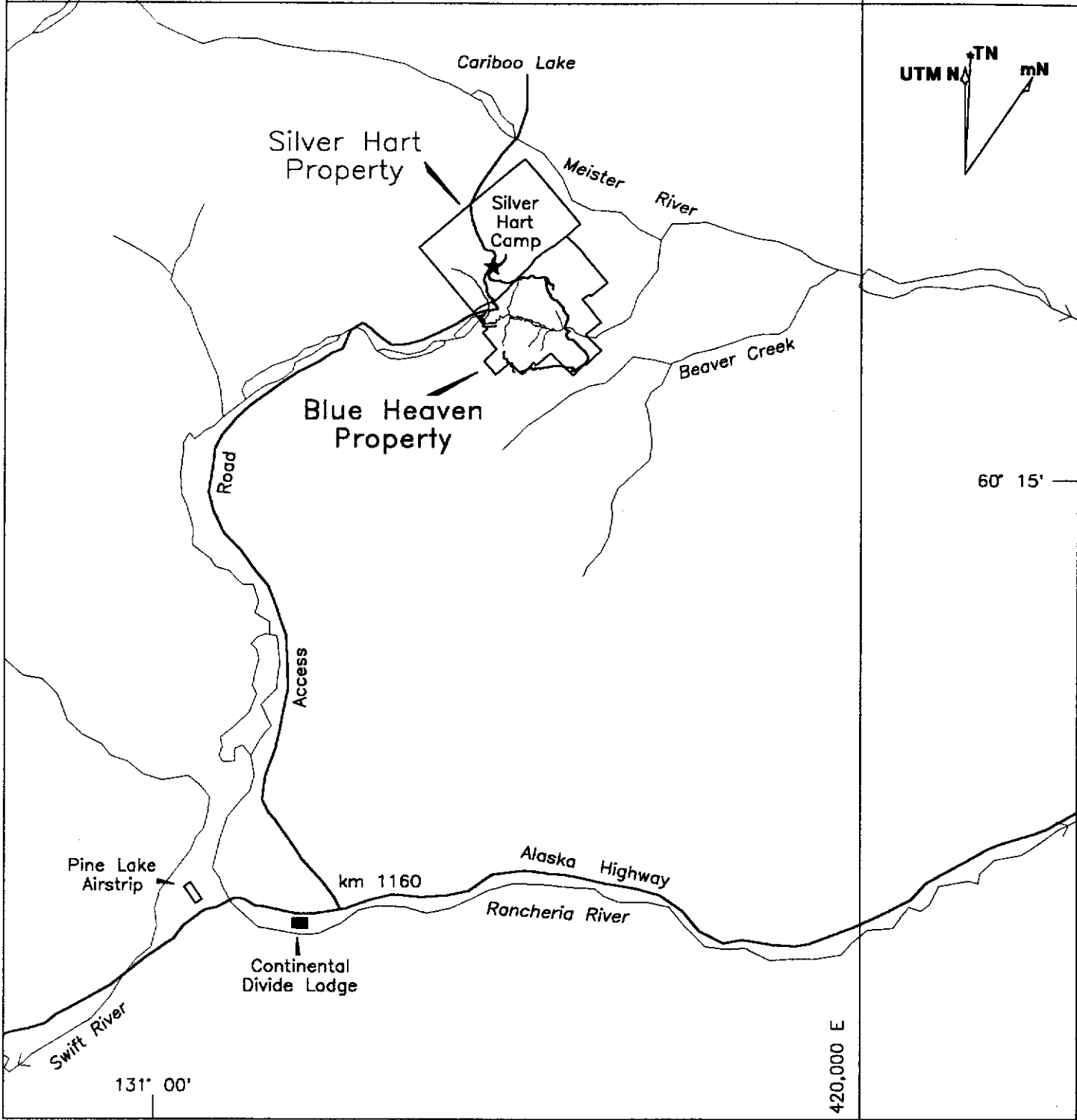
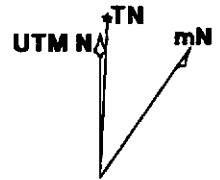




- ★ Post location with standard GPS fix
- ⊕ Post location with poor GPS fix
- ⊠ Post location with uncorrected or no GPS fix

| | |
|--|---------------------|
| NORDAC RESOURCES LTD. | |
| FIGURE 2 | |
| ARCHER, CATHRO & ASSOCIATES (1981) LIMITED | |
| CLAIM LOCATION | |
| BLUE HEAVEN PROPERTY | |
| | |
| DRAWN/REVISED BY: TCB | PROJECT: |
| FILE: NORDAC\BLUE\ACAD99\BL-CLI.DWG | DATE: JANUARY, 2000 |

6,700,000 N



60° 15'

131° 00'

420,000 E

NORDAC RESOURCES LTD.

FIGURE 3
ARCHER, CATHRO & ASSOCIATES (1981) LIMITED

ACCESS
BLUE HEAVEN PROPERTY



DRAWN/REVISED BY: TCB

PROJECT:

FILE: NORDAC\BLUE\ACAD98\BL-LOC.DWG

DATE: JANUARY, 2000

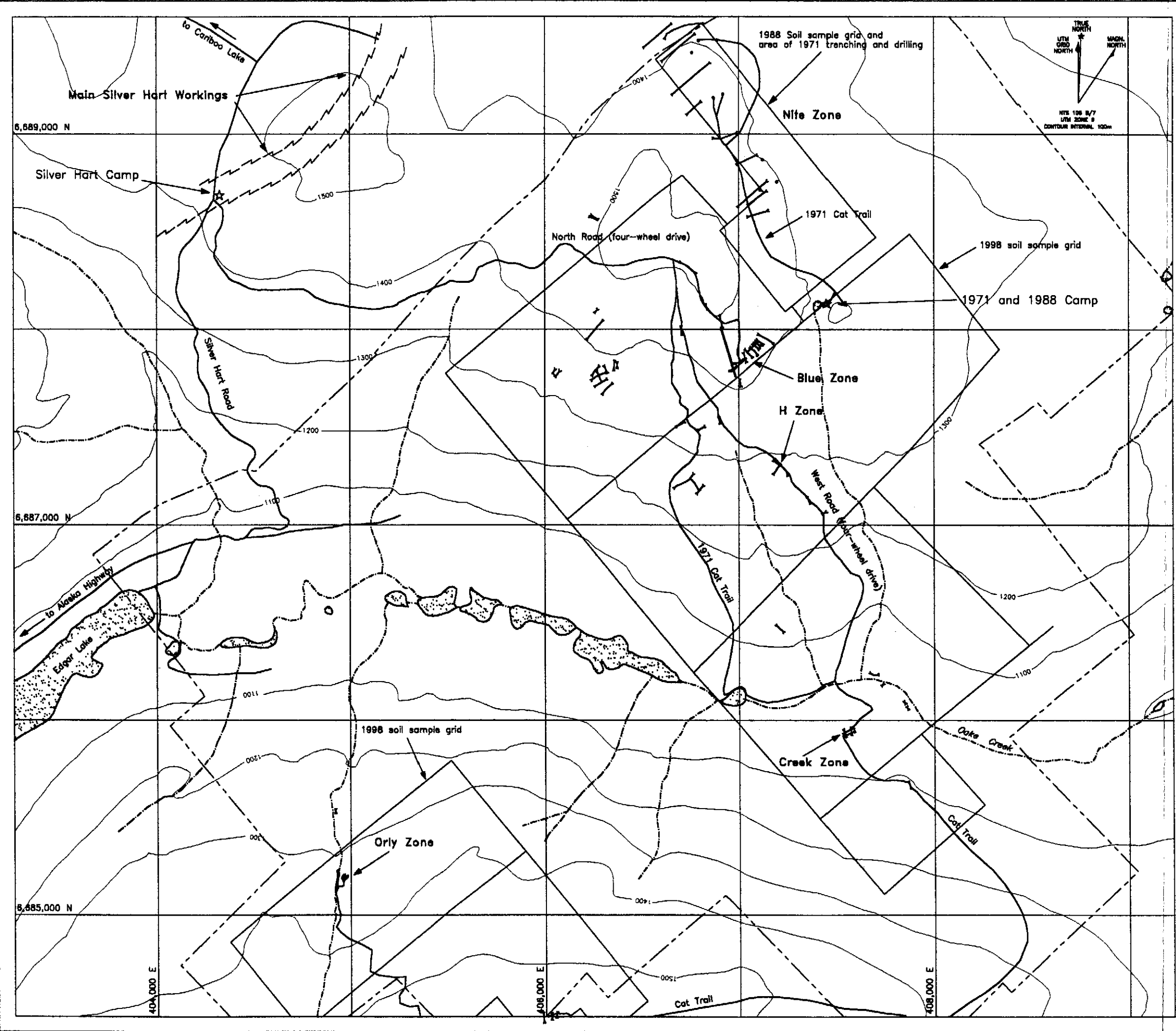
Whitehorse, the capital and largest community in Yukon, is located 355 km by road west of the property while Watson Lake, where most exploration services are available, lies 180 km to the east. Whitehorse receives daily scheduled air service from Vancouver. The closest all-season deep water seaport is at Skagway, Alaska 430 km by road to the west-southwest. The nearest railhead is at Fort Nelson, B.C., 720 km to the east-southeast.

In early July 1999 a Hitachi UH09 excavator was mobilized from the Alaska Highway to the Blue Heaven property along the Silver Hart Road. Minor improvements were made to the road in accordance with the land use permit. The excavator was demobilized along the same route in early August.

PREVIOUS WORK

The first reported activity on ground now covered by the Blue Heaven property occurred in 1971 when the Nite occurrence, a scheelite-bearing skarn, was staked by Wolf Lake Joint Venture (Ashland Oil Canada Ltd., Caltor Syndicate, Canadian Industrial Gas and Oil Ltd. and Rayrock Mines Ltd). The joint venture explored that year with geological mapping, reconnaissance and grid soil geochemistry, bulldozer trenching and 476.5 m of diamond drilling in eight holes (Figure 4). Although trench results were encouraging, the best drill intersection was 0.17% tungsten over a width of 22.9 m (Archer, 1971; Archer and Cathro, 1972). The property was transferred to Archer, Cathro & Associates Limited in 1976 and was later reduced to four claims. Big Creek Resources Ltd purchased the claims in 1988 and explored that summer with grid soil sampling and prospecting (Main, 1988). No further work was done before the claims expired. Most of the scheelite-bearing skarn zone is now situated on the Blue Heaven property.

Silver-lead-zinc mineralization was first recognized in 1973 when Hudson Bay Mining and Smelting Co. Ltd. staked the Buc claims covering what is now the Orly Zone on the Blue Heaven property. It carried out mapping and sampling later that year. In 1978 the showing was restaked as the Com claims by the Wolf Lake Project (Comaplex Resources International Limited and Dayton Creek Silver Mines Limited). The showing at that time was described as a zone of highly fractured granodiorite surrounding a 15.2 cm wide quartz vein containing pyrite and galena (Allen, 1979). This showing was restaked in 1983 as part of the Silver Hart property (described in the following paragraphs). Bulldozer trenching at the showing in 1987 exposed two quartz veins containing galena and sphalerite over a 9 m strike length. A specimen taken in 1987 returned 8671.2 g/t silver while chip samples returned 2077.7 g/t silver over a true width of 21 cm from the south vein and 2022.8 g/t silver over 24 cm from the north vein (DIAND, 1995).



- Pre-1998 equipment trench
- 1971 diamond drill hole
- Property boundary
- Road
- Creek
- Fault

| | |
|--|---------------------|
| NORDAC RESOURCES LTD. | |
| FIGURE 4 ARCHER, CATHRO & ASSOCIATES (1981) LIMITED | |
| HISTORICAL COMPILATION | |
| BLUE HEAVEN PROPERTY | |
| | |
| DRAWN/REVISED BY: TCB | PROJECT: |
| FILE: NORDAC\BLUE\ACAD99\BL-HCOMP.DWG | DATE: JANUARY, 2000 |

Silver-lead-zinc mineralization north of Oake Creek was first recognized in 1980 when prospector Wally Hyde followed up anomalous soil geochemical values defined by Wolf Lake JV and discovered a high grade galena vein about 2.5 km southwest of the Nite occurrence. He and two partners staked a large claim block (part of which covered the area that is now the Blue Heaven property) and performed hand trenching before optioning the property to BRX Mining and Petroleum Corporation in 1982. BRX conducted geological mapping, soil sampling and 197 m of diamond drilling in two holes later that year then dropped its option (DIAND, 1995). In 1983 Hyde and his partners did more hand trenching and briefly optioned the claims to United Greenwood Exploration Limited and Consolidated Montclerg Mines Limited.

Large scale exploration began in 1984 when the property was optioned to a joint venture consisting of Shakwak Exploration Company Limited and Silver Hart Mines Limited. Subsequent exploration was managed by Silver Hart and included geological mapping, prospecting, reconnaissance and grid soil geochemistry, bulldozer trenching and stripping, 3658 m of diamond drilling in fifty holes and 673 m of underground development from an adit (DIAND, 1995). Silver Hart also constructed a road to the property. Most of Silver Hart's work was done on claims that adjoin the Blue Heaven property to the northwest (Silver Hart property on Figure 3).

Work completed by Silver Hart in 1985, 1986 and 1987 identified more than twenty veins in a 6 by 4 km area. Most of its work, including all diamond drilling, stripping and underground development, focussed on the TM, FM, SM and Meteorite Zones located 1 km northwest of the Blue Heaven property. In 1987 a resource of 97,000 tonnes grading 1025 g/t silver was calculated assuming an underground operation with a 1.5 m minimum mining width (DIAND, 1995 and Silver Hart, 1987). The reserve is localized in a small area in the central part of the Silver Hart property and there is good exploration potential along strike, down dip and on parallel veins. None of the veins on the Blue Heaven property received serious exploration by Silver Hart.

Silver prices dropped sharply in the late 1980's and for the next several years the property was inactive. During this period a number of claims were allowed to expire. In 1991 and 1992 Silver Hart performed additional trenching and environmental reclamation before relinquishing its option. A similar program was done in 1993 by Hyde and his partners and since that time the property has been dormant.

In fall 1991 W4 Joint Venture staked the Blue claim after Silver Hart claims in that area had expired. Prospecting the following year showed that the Blue claim was mislocated. W4 JV then staked the Blue 1-2, H 1-2 and Orly 1-2 claims to protect veins exposed in old Silver Hart trenches. In 1994 W4 JV performed prospecting and trench sampling on the claims and staked fourteen Glory claims around them. An additional 24 Glory claims were staked in 1995 and minor reconnaissance soil sampling and prospecting were done. This work was not filed for assessment and the original Blue, both Orly and all 38 Glory claims were allowed to expire.

Nordac acquired the Blue 1-2 and H 1-2 claims in February 1998 and staked the Heaven 1-80 claims within a surrounding 5 km radius area of interest. All 84 claims, and any other claims that Nordac subsequently stakes within the area of interest, are subject to a 2% net smelter return royalty on any ores which are milled before smelting or a 10% net smelter return royalty on ores which are not milled before smelting. The net smelter royalties are payable to W4 JV.

Exploration by Nordac between mid-June and late September 1998 included staking an additional 34 claims plus geological mapping, prospecting, grid and reconnaissance soil sampling, ground magnetic surveys, hand trenching and 1759 m of excavator trenching in 39 trenches (Becker, 1999). Most of the soil samples were collected from two grids which measure approximately 1500 by 1500 m and 2300 by 3000 m. Results from the sampling outlined areas of strongly anomalous silver, lead, zinc and copper response on both grids and strongly anomalous lead and zinc values within a broad southeast trending band that extends the full length of the larger grid. The first set of anomalies are attributed to mineralized quartz veins while the lead-zinc rich band roughly corresponds to a southeast trending belt of skarn and carbonate rich metasedimentary rocks. Excavator trenching tested known areas of mineralization and previously unexplored soil geochemical anomalies. These trenches successfully expanded and better defined the known vein occurrences and discovered new areas of vein, skarn and carbonate replacement mineralization.

Exploration programs up to and including 1998 have identified three types of mineralization within thirty-six occurrences on the Blue Heaven property. Twenty-three of the occurrences consist of galena and sphalerite with varying amounts of pyrite, arsenopyrite, tetrahedrite and chalcopyrite hosted in northeast trending quartz veins. These veins crosscut both intrusive and metasedimentary rocks. The best veins exposed to date are the Blue and H Zones which returned assays up to 12,396 g/t silver over 20 cm and 10,561 g/t silver over 94 cm, respectively. These veins were the main target of 1999 exploration described in this report. The second type of mineralization consists of galena and sphalerite found in eight, strongly oxidized manganese siderite and jasperoid replacement zones developed within the southeast trending belt of carbonate metasedimentary rocks. Chip samples from an excavator trench in one of these zones returned a weighted average of 5.0% lead, 3.6% zinc and 65.6 g/t silver over a width of 35.8 m (Becker, 1999). The last type of mineralization consists of five tungsten±copper skarn showings, four of which lie within the same belt of carbonate metasedimentary as hosts the lead-zinc-silver replacement mineralization. A chip sample of garnet-diopside skarn containing pyrite, pyrrhotite, chalcopyrite and scheelite returned 0.3% W_3O_8 and 0.31% copper over 3.5 m.

GEOMORPHOLOGY

The property is situated in the Cassiar Mountains. Local elevations range from 1050 m on Oake Creek to 1600 m on a ridge crest along the southern edge of the claim block. Creeks draining the property flow into the Meister River, a tributary of the Liard River watershed.

Vegetation includes thick stands of mature balsam, spruce and pine interspersed with willow below 1300 m giving way to buckbrush and stunted balsam and finally grasses and lichen above 1500 m. Linear vegetation-depleted zones up to 15 m wide and 100 m long are developed along the surface trace of some known and suspected mineral occurrences. Bedrock is generally obscured by talus above 1400 m or by glacial till at lower elevations.

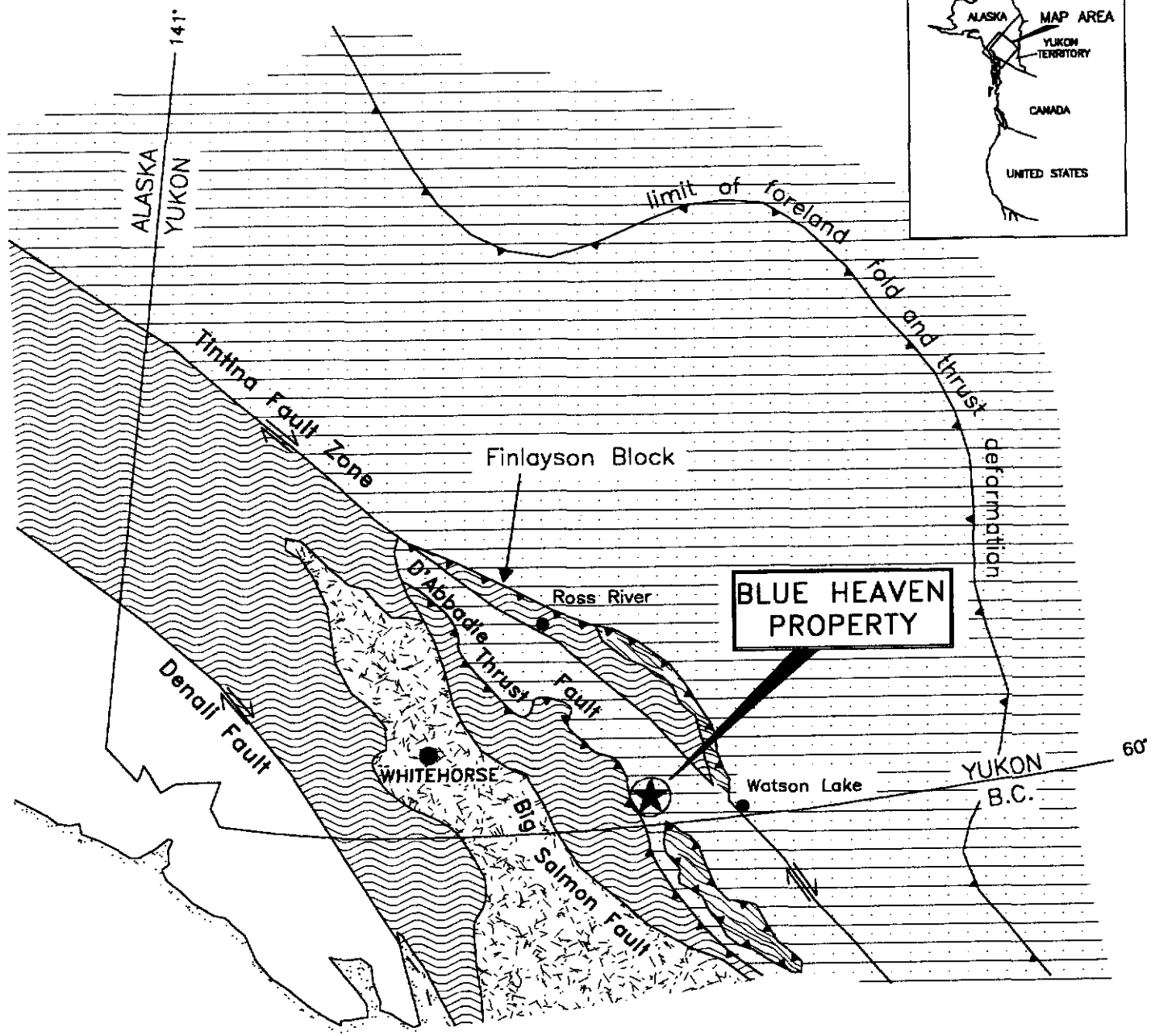
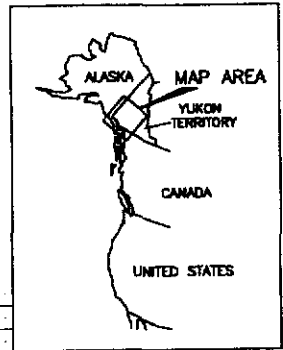
Climate in the area is categorized as continental and characterized by relatively long cold winters and warm dry summers. Daylight hours range from a minimum of about 6 in December to a maximum of 22 in June. Annual precipitation averages approximately 450 mm. Snow can occur in any month and normally covers the ground from October to May. Maximum snow depth is about 150 cm. Permafrost is common in the area but is not pervasive. The local streams usually break up in late May and freeze over in early November.






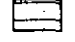
REGIONAL GEOLOGY

The Blue Heaven property lies within a belt of metamorphic rocks belonging to the Yukon-Tanana Terrane and Cassiar Platform (Figure 5). This belt extends from northern B.C. into central Yukon. The northeastern edge of the belt is defined by the Tintina Fault Zone, a series of subparallel transcurrent faults which produced about 450 km of dextral offset in Late Cretaceous and/or Early Tertiary times (Tempelman-Kluit, et al, 1976). The southwestern side is bounded by the Big Salmon Fault (Keijzer, et al, 1999).

Yukon-Tanana Terrane and Cassiar Platform rocks are composed of Paleozoic stratigraphy which has been intruded by Jurassic to Cretaceous plutons as illustrated on Figure 6. Both of the major geological packages are considered "suspect terranes" representing variably distal metamorphosed equivalents of North American continental margin sediments. Yukon-Tanana, the furthest outboard of the two terranes, is thrust onto Cassiar Platform rocks by the D'Abbadie Thrust Fault. The regional metamorphic fabric within both terranes strikes northwesterly and dips moderately toward the northeast.

Although rocks of the Yukon-Tanana Terrane and Cassiar Platform are generally similar and approximately the same age, the two packages are distinguished by higher proportions of carbonate strata in the Cassiar Platform and metavolcanics in the Yukon-Tanana Terrane. The Blue Heaven




-  Thrust fault
-  Steep fault
-  Yukon-Tanana Terrane
-  Slide Mountain Terrane
-  Stikinia and other Terranes
-  Cassiar Platform and other North American Miogeoclinal Strata

NORDAC RESOURCES LTD.

FIGURE 5
ARCHER, CATHRO & ASSOCIATES (1981) LIMITED

TECTONIC SETTING

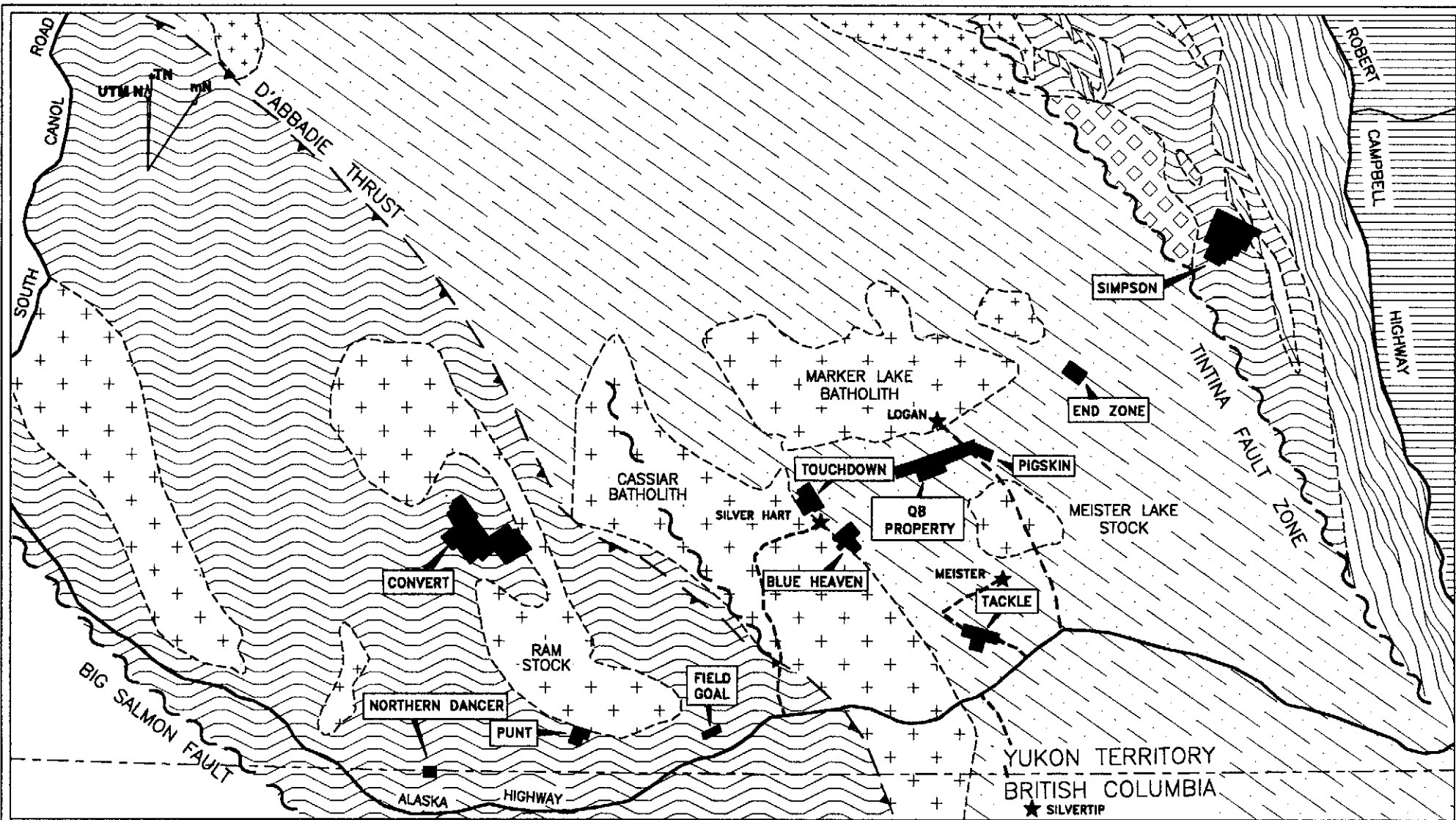
BLUE HEAVEN PROPERTY



0 100 200 300 400
KILOMETRES

| | |
|-----------------------------------|---------------------|
| DRAWN/REVISED BY: TCB/AG | PROJECT: |
| FILE: NORDAC\BLUE\ACAD99\BL-TECTO | DATE: JANUARY, 2000 |

Modified after Mortenson and Jilson (1985), Mortenson (1992) and Johnston and Mortenson (1994).



North American Miogeocline

Pre-Triassic sedimentary and volcanic rocks

Slide Mountain Terrane

Chert, ultramafic, metavolcanic, and carbonate rocks

Yukon-Tanana Terrane

Paleozoic metasedimentary and metavolcanic rocks

Cassiar Platform

Paleozoic metasedimentary and metavolcanic rocks

Intrusive Suites

Paleozoic metaplutonic rocks

Mesozoic plutonic rocks

Property owned by Nordac Resources Ltd.

★ Deposit owned by others

--- Access road to property

NORDAC RESOURCES LTD.

FIGURE 5
ARCHER, CATHRO & ASSOCIATES (1981) LIMITED

REGIONAL GEOLOGY

BLUE HEAVEN PROPERTY



DRAWN/REVISED BY: TCS/AG

PROJECT:

FILE: NORDAC\BLUE\ACAD99\QB-RGE1.DWG

DATE: JANUARY, 2000

claims straddle the contact between the Cassiar Platform and the Cassiar Batholith, a mid-Cretaceous pluton up to 20 km wide and 400 km long that extends from northern British Columbia into south Yukon. The batholith is cut by a major dextral strike-slip fault, the Cassiar Fault.

Movement on this structure and other major faults resulted in a series of smaller extensional, northeast trending faults that are associated with much of the mineralization in the Blue Heaven area.

Geology in the Rancheria area was mapped at 1:250,000 scale in 1960 by the Geological Survey of Canada (Poole, et al, 1960). More detailed mapping in the Rancheria District (105B/1, 2, 7 and 8) was done in 1985 and 1986 at 1:50,000 scale by DIAND (Lowey and Lowey, 1986; Amuken and Lowey, 1987) in response to numerous base and precious metal discoveries in the area.

REGIONAL MINERALIZATION

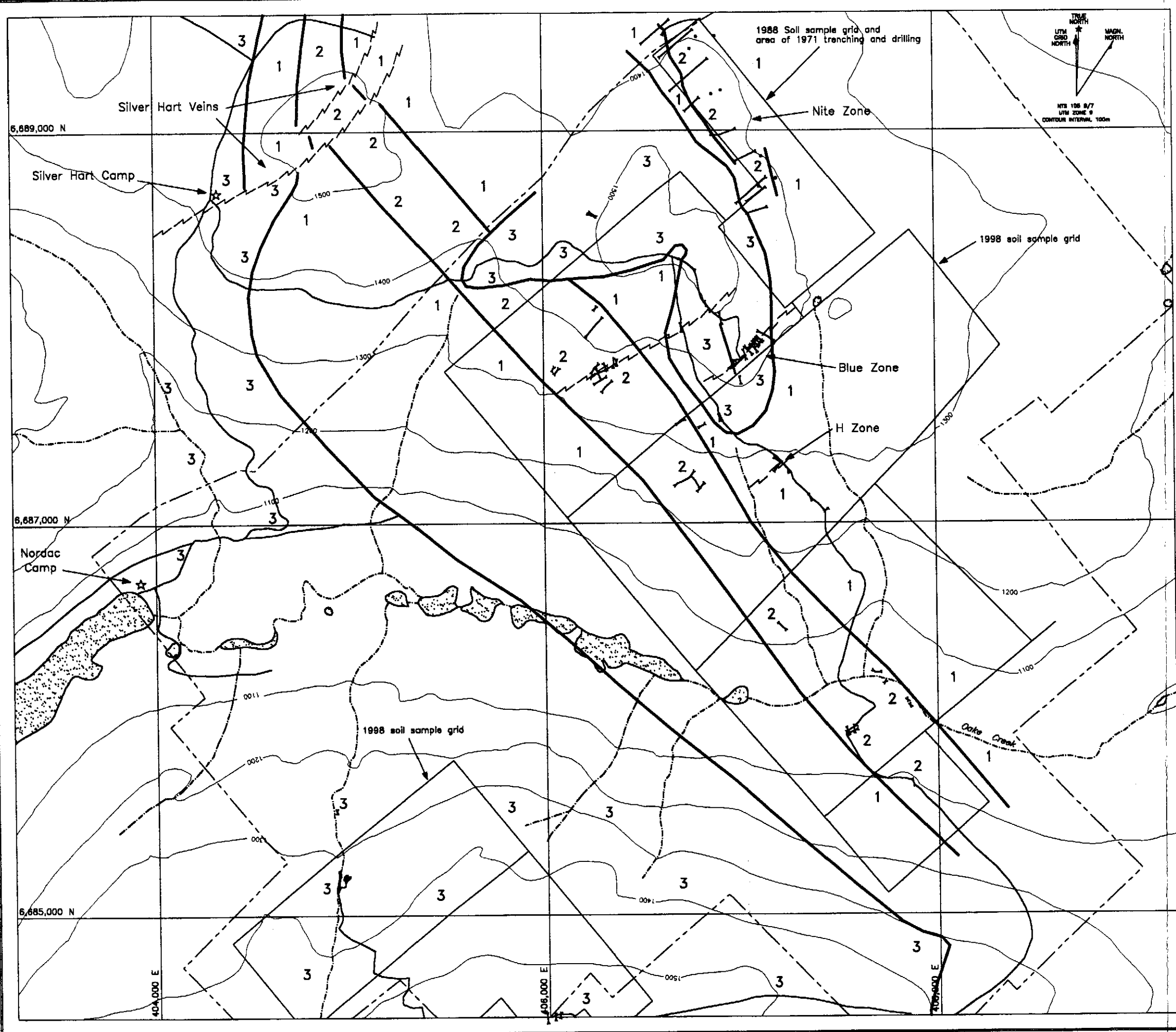
The Cassiar Platform and intrusive rocks of the Rancheria area are host to numerous mineral occurrences including: silver-lead-zinc±copper±gold veins, tin±tungsten±zinc skarns, and silver-zinc-lead replacement bodies. The most significant discoveries in this region to date are the Silvertip (Midway), Logan and Silver Hart Deposits. The locations of these deposits are shown on Figure 6.

The Silvertip Deposit is classified as a manto replacement body hosted in Devonian-age strata. Diamond drilling and underground development have outlined a mineral resource of 2,570,000 tonnes with an average grade of 325.0 g/t silver, 6.4% lead, 8.8% zinc and 0.63 g/t gold (GCNL #10, January 15, 1998). Vein- and shear-hosted mineralization occurs within the Cretaceous Marker Lake Batholith at the Logan Deposit where reserves are estimated at 12.3 million tonnes grading 6.17% zinc and 26.0 g/t silver (DIAND, 1995). The Silver Hart Deposit consists of a series of high grade silver-bearing veins reportedly containing 99,000 kg of silver (DIAND, 1995). Most high grade silver veins and silver-zinc-lead replacement bodies in the Rancheria area are associated with northeast trending extensional faults.

PROPERTY GEOLOGY

Bedrock exposure on the property is poor (<5%) and generally restricted to creek cuts, outcrops above treeline or small windows through the glacial till. The main units are Lower Cambrian schist, limestone and skarn belonging to the Cassiar Platform and granitic rocks of the mid-Cretaceous Cassiar Batholith. Mineralized quartz veins crosscut both the metasedimentary and plutonic rocks but are in turn crosscut by younger felsic and mafic dykes.

Geology for the entire property is shown on Figure 7. The main rock types are described below and followed by a few paragraphs on structural geology.



Schist is usually tan to dark brown weathering, medium grained, well foliated and light grey to pale green when fresh. It varies from hard and massive to crenulated and highly fissile. The unit consists of various combinations of quartz-muscovite±biotite±chlorite±feldspar. It was subdivided during outcrop and trench mapping but for the purpose of this report all schist has been grouped together. Quartz and feldspar augen are present in some layers with the feldspar often weathering to kaolinite. Foliaform quartz sweats are locally present while manganese and limonite stained fractures are common.

Limestone is white and coarsely crystalline or pale greenish grey and fine grained. The finer grained material contains biotite and muscovite along schistose partings and laminations. Trace amounts of pyrite and pyrrhotite occur as thin laminae (2 to 4 mm wide). This unit is interbedded with schist in a 350 to 500 m wide band that trends southeasterly across the centre of the property. Limestone outcrops are rare and locally exhibit weak skarnification which grades into rocks assigned to the skarn unit.

Skarn is moderately banded, resistant weathering and varies in colour from green to white. It typically consists of alternating diopside and diopside-garnet rich bands but occasionally contains 60 to 80% coarse almandine garnet (<20 mm in diameter) in a white marble matrix. This unit contains up to 50% thinly interbedded schist in some exposures but averages less than 10%. Skarnified rocks occur in two main belts. The largest belt is 350 to 500 m wide and trends southeast across the central part of the property. The other belt is 200 to 300 m wide and is centred on the Nite Zone in the northeastern part of the property.

Granodiorite is grey, non-foliated and blocky weathering. Composition is relatively consistent with approximately 60% feldspar, 20% quartz, 15% biotite and 5% muscovite. The southwestern part of the property is underlain by the Cassiar Batholith while a 1.5 by 2 km plug of similar material occurs along a ridge in the northeastern part of the property. The contact between plutonic and metasedimentary rocks is irregular and marked by increased weathering and fracturing.

Felsic or Mafic Dykes have only been found in a few outcrops. Both dykes are aphanitic with the felsic dykes having quartz and albite phenocrysts in a light grey groundmass and the mafic dykes having biotite and rare augite phenocrysts in a dark green groundmass. The dykes are generally less than 1 m wide and altered to green clay near surface.

Foliation is well developed within the metasedimentary rocks and consistently strikes southeast with moderate dips toward the northeast. It appears to parallel compositional layering and relic bedding. All units are conformable and there is no evidence of large scale folding.

Jointing is well developed in all rock types and three sets of orientations predominate. The strongest jointing strikes northeast and dips moderately northwest. The second set strikes east and dips steeply to the south. The weakest joints strike north and dip near vertical. Mineralized veins approximately parallel the strongest joint set, striking northeast and dipping to the northwest, while unmineralized veins strike east and dip moderately to the north.

Two sets of topographic linears have been identified on airphotos. The strongest linears trend northeast and are best developed on ridge tops within the granodiorite. On surface these zones are marked by depressions from 2 to 10 m deep and up to 20 m wide. They can be easily followed for up to 800 m. Most are U-shaped with flat bottoms containing intermittent streams and angular granodiorite boulders. These linears are interpreted as zones of increased jointing adjacent to faults. They parallel mineralized veins and the dominant joints.

The second set of topographic linears trend southeast and occur within the metasedimentary units. These linears are found at lower elevations and range from 2 to 4 m deep and average 5 m wide. They are usually filled with intermittent streams, overburden and thick vegetation. This set of linears appears to have developed due to differential weathering of the metasedimentary units.

1999 EXCAVATOR TRENCHING

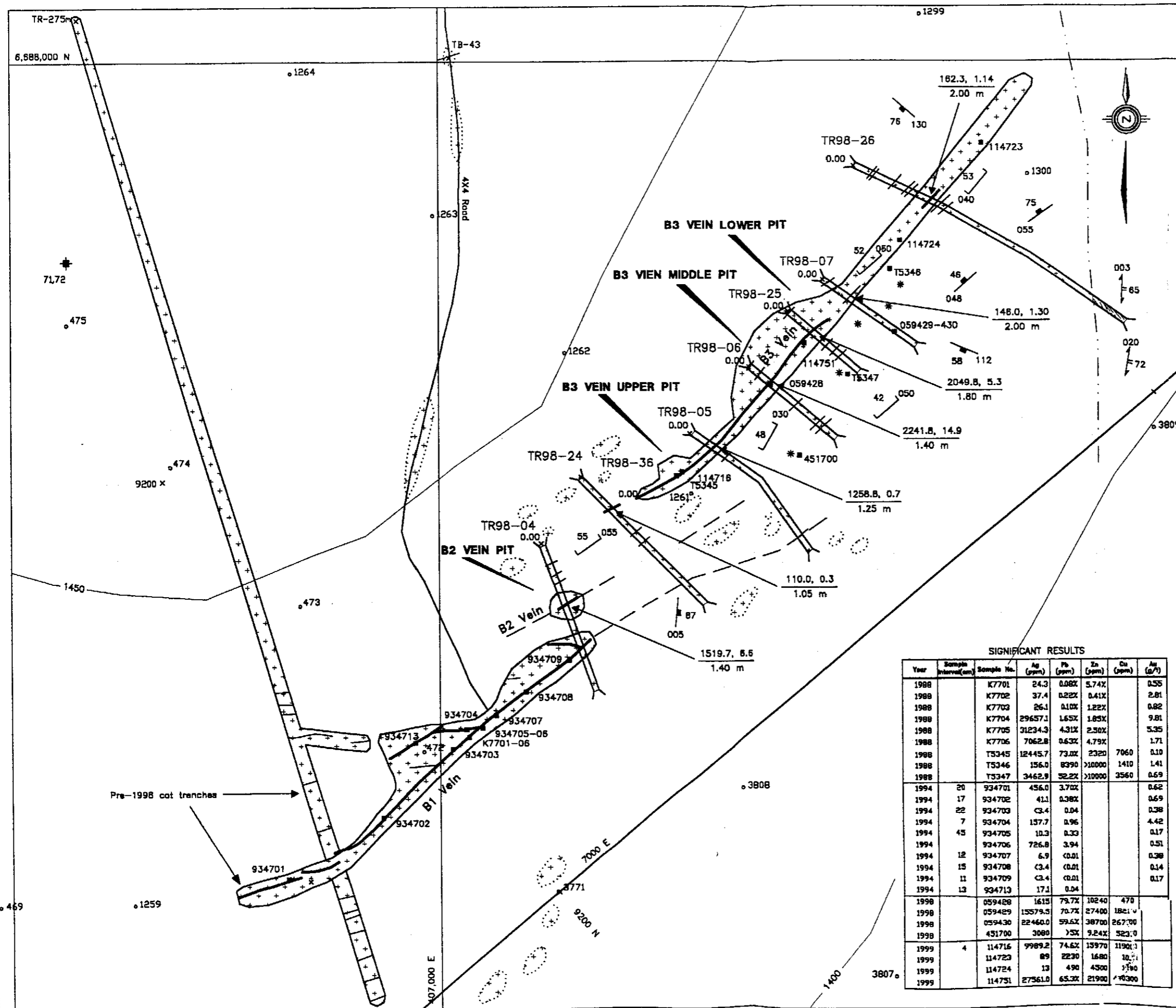
Work in 1999 focussed on high grade silver-lead-zinc mineralization at the Blue and H Zones and consisted of excavator trenching and selective bulk sampling of high grade material. This section discusses trench results while the next section describes bulk sampling. Descriptions of specimens collected in 1999 are in Appendix II.

A total of 22 specimens and chip samples were sent to Chemex Labs Ltd. in North Vancouver where they were geochemically analyzed for 32 elements using the Induced Coupled Plasma technique. When a sample exceeded detection limit for silver, lead, zinc or copper it was reanalyzed using standard assay techniques. Certificates of Analysis for the 1999 samples are in Appendix III.

The **Blue Zone** consists of a 40 m wide system of subparallel veins that have been intermittently exposed over a 290 m strike length within a granodiorite stock near its contact with metasedimentary country rocks (Figure 8). Work prior to 1999 exposed three main veins and several narrower discontinuous ones, some of which horsetail off the main veins. Only the B2 and B3 Veins were trenched in 1999.

Work on the B2 Vein consisted of one excavator pit dug along strike from mineralization found in 1998 Trench TR98-04. The 1998 trench exposed erratic 1 to 5 cm wide bands of massive galena and quartz within a 40 cm zone of sheared and broken, strongly limonite and manganese coated granodiorite, developed at the intersection of two veins. A chip sample across the zone assayed 5206 g/t silver and 22.6% lead over 0.4 m. In 1999 the sample site was relocated, then the vein was exposed 2 m downdip for a strike length of 5 m. The mineralization weakened both along strike and downdip as the quartz bands narrowed and sulphides became less common. Chip samples in 1999 returned values up to 369 g/t silver, 0.8% lead and 0.9% zinc over 0.3 m.

The B3 Vein has been exposed approximately 140 m along strike and is intermittently mineralized. Three lenses of relatively massive mineralization were tested with excavator pits in 1999. The lenses occur where narrow hanging wall quartz veins obliquely intersect the main northeast trending structure. Away from the junctions both vein sets are weakly mineralized and decrease in width.



- Limit of outcrop
- Fault
- Linear
- 1998 excavator trench
- x GPS survey station with standard fix
- 934722 Rock sample location with sample number
- 1463 Soil sample location with sample number
- * Mineralized float
- 110 Joints
- 080 Mineralized veins
- 080 Foliation
- +++ Granodiorite
- Schist or skarn
- Vein, mineralized
- Vein, weakly mineralized
- Geological contact
- $\frac{3860.7, 9.2}{1.0 \text{ m}}$ Assay interval with silver in g/t and lead in % over interval in metres

SIGNIFICANT RESULTS

| Year | Sample Interval (cm) | Sample No. | Ag (ppm) | Pb (ppm) | Zn (ppm) | Cu (ppm) | Ag (g/t) |
|------|----------------------|------------|----------|----------|----------|----------|----------|
| 1988 | | K7701 | 24.3 | 0.08X | 5.74X | | 0.55 |
| 1988 | | K7702 | 37.4 | 0.22X | 0.41X | | 2.81 |
| 1988 | | K7703 | 26.1 | 0.10X | 1.22X | | 0.82 |
| 1988 | | K7704 | 29657.1 | 1.65X | 1.85X | | 9.81 |
| 1988 | | K7705 | 31234.3 | 4.31X | 2.50X | | 5.35 |
| 1988 | | K7706 | 7062.8 | 0.63X | 4.79X | | 1.71 |
| 1988 | | T5345 | 12445.7 | 73.0X | 2320 | 7060 | 0.10 |
| 1988 | | T5346 | 156.0 | 8390 | >10000 | 1410 | 1.41 |
| 1988 | | T5347 | 3462.9 | 52.2X | >10000 | 3560 | 0.69 |
| 1994 | 20 | 934701 | 456.0 | 3.70X | | | 0.62 |
| 1994 | 17 | 934702 | 41.1 | 0.38X | | | 0.69 |
| 1994 | 22 | 934703 | 3.4 | 0.04 | | | 0.38 |
| 1994 | 7 | 934704 | 157.7 | 0.96 | | | 4.42 |
| 1994 | 45 | 934705 | 10.3 | 0.33 | | | 0.17 |
| 1994 | | 934706 | 726.8 | 3.94 | | | 0.51 |
| 1994 | 12 | 934707 | 6.9 | <0.01 | | | 0.38 |
| 1994 | 15 | 934708 | 3.4 | <0.01 | | | 0.14 |
| 1994 | 11 | 934709 | 3.4 | <0.01 | | | 0.17 |
| 1994 | 13 | 934713 | 17.1 | 0.04 | | | |
| 1998 | | 059428 | 1615 | 79.7X | 10240 | 470 | |
| 1998 | | 059429 | 15579.5 | 70.7X | 27400 | 1821.0 | |
| 1998 | | 059430 | 22460.0 | 59.6X | 38700 | 267.00 | |
| 1998 | | 451700 | 3080 | >5X | 9.24X | 523.0 | |
| 1999 | 4 | 114716 | 9989.2 | 74.6X | 15970 | 1190.0 | |
| 1999 | | 114723 | 89 | 2230 | 1680 | 10.0 | |
| 1999 | | 114724 | 13 | 490 | 4500 | 1700 | |
| 1999 | | 114751 | 27561.0 | 65.3X | 21900 | 10300 | |

NORDAC RESOURCES LTD.

FIGURE 8
ARCHER, CATHRO & ASSOCIATES (1981) LIMITED

BLUE ZONE
BLUE HEAVEN PROPERTY

0 5 10 20 30 40 50 m

| | |
|--------------------------------------|---------------------|
| DRAWN/REVISED BY: TCB | PROJECT: |
| FILE: NORDAC\BLUE\ACAD99\BL-BLUE.DWG | DATE: JANUARY, 2000 |

Each lens plunges northwesterly, following the junction of the two veins, resulting in an elongated tabular body. Each lens shows a lateral gradation from a core of massive galena with tetrahedrite and locally chalcopyrite to a margin phase of mixed sphalerite, galena and quartz.

The high grade cores of the mineralized lenses reach maximum widths of 70 cm and lengths of 7 m. The galena is usually coarsely cubic but grades locally into fine grained or sheared textures. Tetrahedrite occurs as erratically distributed blebs up to 1.5 cm in diameter and composing up to 20% of the rock. A specimen of tetrahedrite rich material assayed 27,561 g/t silver, 65.3% lead, 21.9% zinc and 4.0% copper. Silver appears to occur primarily in tetrahedrite rather than galena, as demonstrated by a 1998 sample which returned 79.5% lead but only 1615 g/t silver. This conclusion is further supported by strong positive correlation between silver and antimony and highly erratic correlation between silver and lead. Chalcopyrite forms as fine grained wisps or bands usually within tetrahedrite rich areas. Quartz is the most common gangue mineral but within the massive galena cores it rarely exceeds 5% of the rock, usually occurring as brecciated fragments.

The margin phase of mixed sphalerite and galena, which surrounds high grade cores, is best developed where the lenses pinch out along strike. This characteristic is a potentially useful exploration parameter because the presence of a narrow sphalerite rich band in a trench could indicate that a silver rich galena lens is located nearby. A sample of marginal phase mineralization returned 30.8% zinc, 11.1% lead and 1795 g/t silver.

Three excavator pits were dug into mineralized lenses on the B3 Vein (Figure 9). The Lower Pit exposed two veins which intersected in the middle of the sulphide lens. The best mineralization occurred in the hanging wall vein reaching a maximum width of 50 cm and 7 m strike length. A chip sample across the upper part of the lens returned 10,616 g/t silver over 19 cm. The footwall lens returned 6765 g/t silver over 5 cm. At a depth of 3 m on the floor of the pit the footwall lens had pinched out completely and the hanging wall lens was only 18 cm wide and 2 m long. The remaining mineralization contained sphalerite and appeared to also be pinching out.

The lens in the Middle Pit reached a maximum width of 1.2 m and was tested over a 12 m length to a 2 m depth. It consisted of a hanging wall massive galena band and a footwall sphalerite rich band. The galena band was up to 70 cm wide and 3 m long. It consisted of galena with cubic or sheared textures containing 10 to 15% coarse tetrahedrite blebs. Along strike to the north the galena had a steely texture over widths of up to 10 cm. At the bottom of the pit the lens was 40 cm wide by 2 m long. A chip sample across it returned 10,758 g/t silver, 77.2% lead, 3.1% zinc and 1.3% copper. The footwall sphalerite rich band ranged from 20 to 50 cm wide and was followed along the entire 12 m length exposed in the pit.

The Upper Pit contained the smallest lens of mineralization. It was 2 to 2.5 m deep and 5 m long. The vein consisted of broken, sheared and moderately weathered granodiorite and quartz featuring

erratically distributed 1 to 5 cm wide bands of massive galena with minor quartz, pyrite, arsenopyrite, tetrahedrite, chalcopyrite and malachite. At the bottom of the pit a 4 cm wide by 1 m long band of steely galena returned 9989 g/t silver, 74.6% lead, 1.6% zinc and 1.2% copper.

The **H Zone** lies approximately 600 m south of the Blue Zone and has been explored intermittently since 1987. Work has outlined a 6 m wide vein zone that consists of one main vein and numerous narrow structures cutting schist wallrocks. The zone strikes 035° and dips steeply to the northwest (Figure 10). The main vein is comprised of two sulphide rich bands separated by 1 to 1.5 m of broken wallrock. The stronger and better mineralized hanging wall band contains disseminated to lensy massive sphalerite, galena, arsenopyrite and tetrahedrite in a gangue of quartz with minor carbonate. Narrow veinlets splay off the hanging wall band extending up to 2 m into the broken wallrock in the core of the vein. Where exposed, the footwall band is weakly mineralized and strongly weathered. The best mineralization occurs near the southwest end of the stripped area where the two bands come together forming a 94 cm by 3 m long, nearly massive galena and sphalerite lens. Southwest of this lens the vein narrows and is poorly mineralized. Two post mineralization cross faults cut the vein producing small dextral offsets.

Work on the H Zone in 1999 consisted of a 2 to 3 m deep excavator pit dug along the vein for a 12 m strike length. The galena lens showed lateral and vertical mineral gradation similar to the lenses explored on the B3 Vein at the Blue Zone. The massive galena core in the main lens reached a maximum width of 94 cm and was 3 m long. At the bottom of the pit the lens consisted of a 20 cm wide by 3 m long sphalerite rich band. Along strike to the southwest the vein pinched and became more sphalerite rich. To the northeast it was offset by a cross fault. Beyond the fault the hanging wall band exhibited discontinuous sulphide lenses up to 5 cm wide and 1 m long while the footwall band and wallrock between the two bands were weakly mineralized.

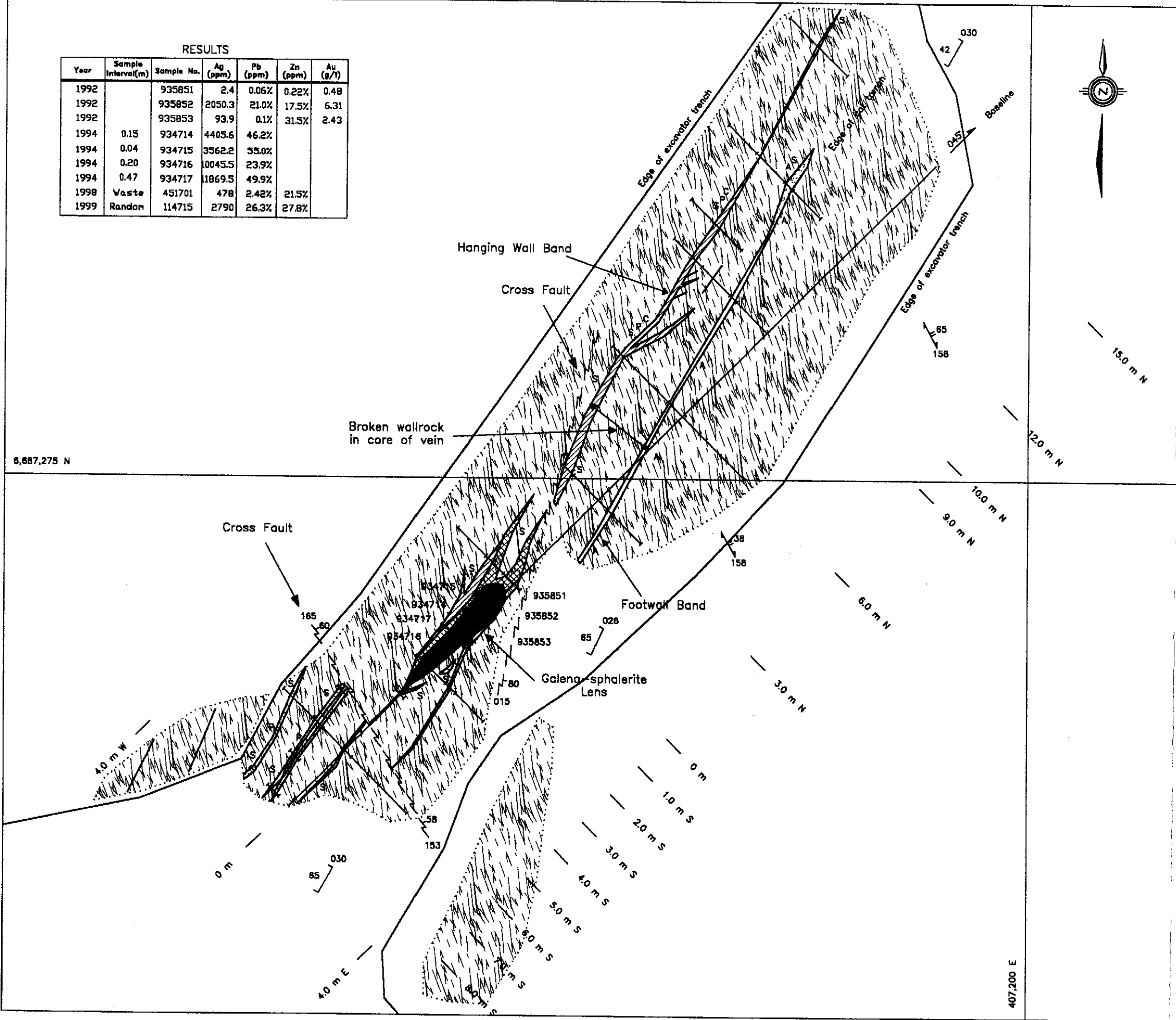
All trenches dug during the 1999 exploration season were backfilled and reclaimed before the excavator and crew left the property.

BULK SAMPLING, SHIPPING AND SMELTING

During the exploration program galena and tetrahedrite rich mineralization was separated from lower grade material to form a bulk sample. Previous sampling indicated that the bulk sample would likely exceed 3500 g/t silver and therefore have a value that would exceed the cost of shipping and smelting. The mineralization was placed into fibreglass bags and removed from the excavator pits. Table 1 shows the number of bags taken from each pit.

RESULTS

| Year | Sample Interval(m) | Sample No. | Ag (ppm) | Pb (ppm) | Zn (ppm) | Au (g/t) |
|------|--------------------|------------|----------|----------|----------|----------|
| 1992 | | 935851 | 2.4 | 0.06% | 0.22% | 0.48 |
| 1992 | | 935852 | 2050.3 | 21.0% | 17.5% | 6.31 |
| 1992 | | 935853 | 93.9 | 0.1% | 31.5% | 2.43 |
| 1994 | 0.15 | 934714 | 4405.6 | 46.2% | | |
| 1994 | 0.04 | 934715 | 3562.2 | 55.0% | | |
| 1994 | 0.20 | 934716 | 10045.5 | 23.9% | | |
| 1994 | 0.47 | 934717 | 11869.5 | 49.9% | | |
| 1998 | Waste | 451701 | 478 | 2.42% | 21.5% | |
| 1999 | Random | 114715 | 2790 | 26.3% | 27.8% | |



- Area cleaned to bedrock in 1998 or outcrop
- ~~~~~ Fault
- Linear
- ||| Pre-1998 cat trench
- 1998 chip sample
- 934722 Rock sample location with sample number
- * Mineralized float
- 110 Joint
- 88 Mineralized vein
- 42 080 Foliation
- 42 080 Vein
- Mineralized vein with ≥ 50% galena
- ▨ Mineralized vein with ≥25 < 50% galena
- ▧ Mineralized vein with ≥10 < 25% galena
- ▩ Mineralized vein with ≥2.5 < 10% galena
- Mineralized vein with <2.5 galena
- S Sphalerite
- P Pyrite
- A Anglesite
- C Chalcopyrite
- ▨ Schist

NORDAC RESOURCES LTD.

FIGURE 10
ARCHER, CATHRO & ASSOCIATES (1981) LIMITED

H ZONE

BLUE HEAVEN PROPERTY

| | |
|--------------------------------------|---------------------|
| DRAWN/REVISED BY: TCB | PROJECT: |
| FILE: NORDAC\BLUE\ACAD99\BL-H-DE.DWG | DATE: JANUARY, 2000 |

Table 1
Production Summary

| <u>Excavator Pit</u> | <u>Number of Bags</u> |
|----------------------|-----------------------|
| B2 Vein Pit | 0 |
| B3 Vein, Lower Pit | 14 |
| B3 Vein, Middle Pit | 19 |
| B3 Vein, Upper Pit | 3 |
| H Vein - >50% galena | 7 |
| H Vein - <50% galena | <u>6</u> |
| | 49 |

At the end of the program all forty-nine bags were loaded onto a four-wheel drive flat deck truck by the excavator and shuttled from the pit area to the camp site on Edgar Lake. There a truck equipped with a five ton Hiab reloaded the bags onto its deck and a trailer before transporting them to Whitehorse. The bulk sample was shipped from Whitehorse to the Cominco smelter at Trail by PNT Transportation on a negotiated backhaul basis. Smelting was done in one lot during October, 1999. Appendix IV contains the smelter statement.

The net weight of the material was 52.31 tonnes of which 51.47 tonnes were dried ore and 0.84 tonnes (1.6%) moisture. The grade of the shipment was 8563 g/t silver, 56.2% lead, 9.5% zinc and 1.2 g/t gold.

CONCLUSIONS AND RECOMMENDATIONS

Exploration by Nordac on the Blue Heaven property in 1999 evaluated two areas which contained northeast trending high grade silver-lead-zinc veins. The work successfully defined the character and extent of previously discovered sulphide lenses but did not discover additional lenses. Continued work on these veins and other similar targets is warranted if there is a sharp increase in the price of silver. These veins will require additional excavator trenching to identify high grade lenses before more bulk sampling can be done.

At the present time the most promising targets on the property are the carbonate hosted lead-zinc-silver replacement occurrences. The tungsten-copper skarn zones are also interesting but are too low grade to be of economic interest at current metal prices.

Future exploration should focus on the carbonate hosted replacement mineralization and should consist of detailed stratigraphic and alteration mapping, ground magnetic and electromagnetic surveys and excavator trenching. Once structural and stratigraphic controls are determined, diamond drilling will be required to test the targets beneath the depth of near surface oxidation.

Respectfully submitted,

ARCHER, CATHRO & ASSOCIATES (1981) LIMITED



T.C. Becker, B.Sc., P. Geo.

SELECTED REFERENCES

- Allen, G.
1979 Report of Investigations on the Buc prospect, Edgar Lake Area, Watson Lake Mining District, September, 1979.
- Amuken, S.E. and Lowey, G.W.
1987 Geology of the Sab Lake Map Area (105B/7), Rancheria District, Southeast Yukon, Indian and Northern Affairs Canada, OF 1987-1.

1987 Geology of the Meister Lake Map Area (105B/8), Rancheria District, Southeast Yukon, Indian and Northern Affairs Canada, OF 1987-1.
- Archer, A.R.
1971 Final Report, Wolf Lake Joint Venture, Private Report, Archer Cathro files, December 15, 1971.
- Archer, A.R. and Cathro, R.J.
1972 Wolf Lake Joint Venture Final Report, Private Report, Archer Cathro files, November 30, 1972.
- Becker, T.C.
1999 Assessment Report describing Geological Mapping, Prospecting, Soil Geochemistry, Ground Magnetics and Excavator Trenching on the Blue Heaven Property for Nordac Resources Ltd.
- DIAND
1995 Yukon Minfile, WP 5.1 Version, 20 Nov/95. Exploration and Geological Services, Indian and Northern Affairs Canada, Map 105B and occurrences 105B/21, 57 and 99.
- George Cross News Letter Ltd.
1998 Imperial Metals Corp., Silvertip Resource Update; GCNL #10, January 15.
- Johnston, S.T. and Mortensen, J.K.
1994 Regional setting of porphyry Cu-Mo deposits, volcanogenic massive sulphide deposits, and mesothermal gold deposits in the Yukon-Tanana Terrane, Yukon; Yukon Metallogeny: Recent Developments, Canadian-Yukon Economic Development Agreement, pp.30-34.
- Keijzer, M. de, Williams, P.F. and Brown, R.L.
1999 Kilometre-scale folding in the Teslin zone, northern Canadian Cordillera, and its tectonic implications for the accretion of the Yukon Tanana terrane to North America; Can. J. Earth Sci. 36: 479-494 (1999).

- Lowey, G.W. and Lowey, J.F.
1986 Geology of Spencer Creek (105B/1) and Daughney Lake (105B/2) Map Areas, Rancheria District, Southeast Yukon, Indian and Northern Affairs Canada, OF 1986-1.
- Main, C.A.
1988 Hand Trenching Program, Nite Property, Edgar Lake Area, Yukon Territory for Big Creek Resources Ltd., November 8, 1988.
- Mortensen, J.K.
1992 Pre-Mid-Mesozoic Tectonic Evolution of the Yukon-Tanana Terrane, Yukon and Alaska; Tectonics, Vol.11, No.4, pp.836-853.
- Mortensen, J.K. and Jilson, G.A.
1985 Evolution of the Yukon-Tanana Terrane: evidence from southeastern Yukon Territory; Geology, V.13, pp.806-810.
- Poole, W.H., Roddick J.A. and Green, L.H.
1960 Geology of Wolf Lake (105B), Yukon Territory, Geological Survey of Canada, Map 10-1960.
- Silver Hart
1987 News Release, Silver Hart Mines Limited, December 22, 1987.
- Tempelman-Kluit, D.J., Gordey, S.P. and Read, B.C.
1976 Stratigraphic and Structural Studies in the Pelly Mountains, Yukon Territory; Geological Survey of Canada Paper 76-1A, pp.97-106.

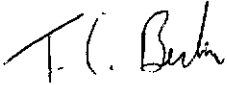
APPENDIX I

AUTHOR'S STATEMENT OF QUALIFICATIONS

STATEMENT OF QUALIFICATIONS

I, Thomas C. Becker, geologist, with business addresses in Vancouver, British Columbia and Whitehorse, Yukon Territory and residential address in Port Moody, British Columbia, do hereby certify that:

1. I graduated from the University of Alberta in 1989 with a B.Sc. (Honours) in Geological Sciences.
2. I am a member of the Association of Professional Engineers and Geoscientists of British Columbia in the Province of British Columbia (registration number 20021).
3. I have been actively involved in mineral exploration in the Northern Cordillera since 1984.
4. I have personally participated in or supervised the field work reported herein.



Thomas C. Becker, B.Sc., P.Geo.

APPENDIX II
CERTIFICATES OF ANALYSIS



Chemex Labs Ltd.

Analytical Chemists Geochemists Registered Assayers

212 Brooksbank Ave.
North Vancouver, B.C.
Canada V7J 2C1
Phone: (604) 984-0221
Fax: (604) 984-0218

December 20, 1999

Al Archer
Nordac Resources Ltd.
C/O Archer, Cathro & Associates (1981) Limited
1016 – 510 W. Hastings Street
Vancouver, B.C.
V6B – 1L8

Dear Mr. Archer,

**RE: Certificate of Analysis A9934312
 Corrected Copy for Pb – Sample LOT 001**

Please find enclosed a revised copy of Certificate of Analysis A9934312 which contains a correction to the lead value for sample LOT 001. As per our conversation we have re-assayed this sample and found that the original result was low, which was unfortunately not caught by our internal QC. The re-analysis of LOT 001 included the CANMET certified reference material CPB-1 to ensure accuracy. The results are listed below:

| Sample ID | Original Pb % | Re-Run Pb % | Certified Value |
|-----------|---------------|-------------|-----------------|
| LOT 001 | 49.9 | 57.5 | N/A |
| CPB-1 | N/A | 64.7 | 64.74 |

We sincerely regret any inconvenience this may have caused. If you have any questions do not hesitate to contact me.

Regards,

Michele Wonghen,
Quality Assurance Chemist

Enclosures: Certificate of Analysis A9934312
 Corrected Copy for Pb – Sample LOT 001



Chemex Labs Ltd.

Analytical Chemists * Geochemists * Registered Assayers
212 Brooksbank Ave., North Vancouver
British Columbia, Canada V7J 2C1
PHONE: 604-984-0221 FAX: 604-984-0218



: NORDAC RESOURCES LTD.
C/O ARCHER, CATHRO & ASSOCIATES (1981) LIMITED
1016 - 510 W. HASTINGS ST.
VANCOUVER, BC
V6B 1L8

Project : BLUE HEAVEN
Comments: ATTN: A.R. ARCHER

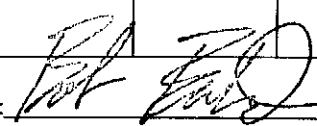
Page : 1
Total : 1
Certificate Date: 01-DEC-1999
Invoice No. : 19934312
P.O. Number :
Account : MTT

** CORRECTED COPY

CERTIFICATE OF ANALYSIS

A9934312

| SAMPLE | PREP CODE | Au con g/t | Ag con g/t | Pb % | Zn % | | | | | | |
|---------|-----------|------------|------------|------|------|--|--|--|--|--|--|
| LOT 001 | 2251327 | 1.1 | 8554.6 | 57.5 | 9.78 | | | | | | |

CERTIFICATION:  +

** FOR Pb ON LOT 001.



Chemex Labs Ltd.

Analytical Chemists * Geochemists * Registered Assayers
212 Brooksbank Ave., North Vancouver
British Columbia, Canada V7J 2C1
PHONE: 604-984-0221 FAX: 604-984-0218

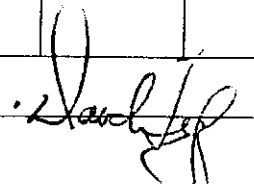
NORDAC RESOURCES LTD.
C/O ARCHER, CATHRO & ASSOCIATES (1981) LIMITED
1016 - 510 W. HASTINGS ST.
VANCOUVER, BC
V6B 1L8

Project: BLUE HEAVEN
Comments: ATTN: A.R. ARCHER

Page: 1
Total Pages: 1
Certificate Date: 01-DEC-1999
Invoice No.: 19934312
P.O. Number:
Account: MTT

CERTIFICATE OF ANALYSIS A9934312

| SAMPLE | PREP CODE | Au con g/t | Ag con g/t | Pb % | Zn % | | | | | | |
|---------|-----------|------------|------------|------|------|--|--|--|--|--|--|
| LOT 001 | 2251327 | 1.1 | 8554.6 | 50.0 | 9.78 | | | | | | |

CERTIFICATION:  +



Chemex Labs Ltd.

Analytical Chemists * Geochemists * Registered Assayers

212 Brooksbank Ave., North Vancouver
British Columbia, Canada V7J 2C1
PHONE: 604-984-0221 FAX: 604-984-0218



To: NORDAC RESOURCES LTD.
C/O ARCHER, CATHRO & ASSOCIATES (1981) LIMITED
BOX 4127, 2054 SECOND AVE.
WHITEHORSE, YT
Y1A 3S9

Project : BLUE HEAVEN
Comments:

Page Number : 1
Total Pages : 1
Certificate Date: 31-AUG-1999
Invoice No. : 19927405
P.O. Number :
Account : MTT

CERTIFICATE OF ANALYSIS A9927405

| SAMPLE | PREP CODE | | Zn % | | | | | | | | | |
|----------|-----------|----|------|--|--|--|--|--|--|--|--|--|
| BB 26738 | 212 | -- | 8.86 | | | | | | | | | |

[Handwritten Signature]

CERTIFICATION:



Chemex Labs Ltd.

Analytical Chemists * Geochemists * Registered Assayers

212 Brooksbank Ave., North Vancouver
British Columbia, Canada V7J 2C1
PHONE: 604-984-0221 FAX: 604-984-0218

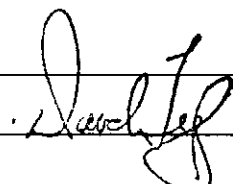
To: NORDAC RESOURCES LTD.
C/O ARCHER, CATHRO & ASSOCIATES (1981) LIMITED
BOX 4127, 2054 SECOND AVE.
WHITEHORSE, YT
Y1A 3S9

Page Number : 1-A
Total : 1
Certificate Date: 31-AUG-1999
Invoice No. : 19926985
P.O. Number :
Account : MTT

Project : BLUE HEAVEN
Comments:

CERTIFICATE OF ANALYSIS A9926985

| SAMPLE | PREP CODE | Au ppb FA+AA | Ag FA g/t | Ag con g/t | Pb % | Ag ppm | Al % | As ppm | Ba ppm | Be ppm | Bi ppm | Ca % | Cd ppm | Co ppm | Cr ppm | Cu ppm | Fe % | Hg ppm | K % | Mg % |
|----------|-----------|-----------------|--------------|---------------|------|--------|------|--------|--------|--------|--------|------|--------|--------|--------|--------|------|--------|------|------|
| BB 26738 | 208 226 | 1670 | >3500 | 6718.8 | 61.7 | >200 | 0.06 | 1480 | < 20 | < 5 | 100 | 0.03 | 195 | < 5 | 10 | 9600 | 1.99 | < 10 | 0.04 | 0.01 |

CERTIFICATION:  +



Chemex Labs Ltd.

Analytical Chemists * Geochemists * Registered Assayers
212 Brooksbank Ave., North Vancouver
British Columbia, Canada V7J 2C1
PHONE: 604-984-0221 FAX: 604-984-0218



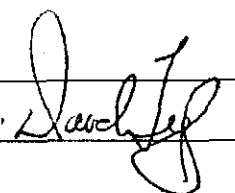
To: NORDAC RESOURCES LTD.
C/O ARCHER, CATHRO & ASSOCIATES (1981) LIMITED
BOX 4127, 2054 SECOND AVE.
WHITEHORSE, YT
Y1A 3S9

Project : BLUE HEAVEN
Comments:

Page Number : 1-B
Total Pages : 1
Certificate Date: 31-AUG-1999
Invoice No. : 19926985
P.O. Number :
Account : MTT

CERTIFICATE OF ANALYSIS A9926985

| SAMPLE | PREP CODE | Mn ppm | Mo ppm | Na % | Ni ppm | P ppm | Pb ppm | Sb ppm | Sc ppm | Sr ppm | Ti % | Tl ppm | U ppm | V ppm | W ppm | Zn ppm |
|----------|-----------|--------|--------|------|--------|-------|--------|--------|--------|--------|--------|--------|-------|-------|-------|--------|
| BB 26738 | 208 226 | 2340 | < 5 | 0.04 | 5 | < 100 | >50000 | 7370 | < 5 | 5 | < 0.01 | < 20 | < 20 | < 20 | < 20 | >50000 |

CERTIFICATION:  +



Chemex Labs Ltd.

Analytical Chemists * Geochemists * Registered Assayers

212 Brooksbank Ave., North Vancouver
British Columbia, Canada V7J 2C1
PHONE: 604-984-0221 FAX: 604-984-0218

To: NORDAC RESOURCES LTD.
C/O ARCHER, CATHRO & ASSOCIATES (1981) LIMITED
BOX 4127, 2054 SECOND AVE.
WHITEHORSE, YT
Y1A 3S9

Project : BLUE HEAVEN
Comments:

Page Number : 1
Total Pages : 1
Certificate Date: 26-AUG-1999
Invoice No. : I9926752
P.O. Number :
Account : MTT

* PLEASE NOTE

CERTIFICATE OF ANALYSIS A9926752

| SAMPLE | PREP CODE | | Ag con g/t | | | | | | | | | |
|---------|-----------|----|------------|--|--|--|--|--|--|--|--|--|
| N114726 | 212 | -- | 10758.5 | | | | | | | | | |

CERTIFICATION: *[Signature]* +

OVERLIMITS FROM A9926477 *RECOMMEND TITRATION FOR GREATER ACCURACY & PRECISION FOR Pb.



Chemex Labs Ltd.

Analytical Chemists * Geochemists * Registered Assayers

212 Brooksbank Ave., North Vancouver
British Columbia, Canada V7J 2C1
PHONE: 604-984-0221 FAX: 604-984-0218



To: NORDAC RESOURCES LTD.
C/O ARCHER, CATHRO & ASSOCIATES (1981) LIMITED
BOX 4127, 2054 SECOND AVE.
WHITEHORSE, YT
Y1A 3S9

Page Number : 1-A
Total : 1
Certificate Date: 19-AUG-1999
Invoice No. : 19925570
P.O. Number :
Account : MTT

Project : BLUE HEAVEN
Comments:

CERTIFICATE OF ANALYSIS A9925570

| SAMPLE | PREP CODE | Ag ppm | Al % | As ppm | Ba ppm | Be ppm | Bi ppm | Ca % | Cd ppm | Co ppm | Cr ppm | Cu ppm | Fe % | Hg ppm | K % | Mg % | Mn ppm | Mo ppm | Na % | Ni ppm |
|---------|-----------|--------|------|--------|--------|--------|--------|------|--------|--------|--------|--------|------|--------|------|--------|--------|--------|------|--------|
| N114725 | 208 226 | 92 | 0.54 | 190 | 20 | < 5 | < 10 | 0.17 | 60 | < 5 | 80 | 300 | 3.80 | < 10 | 0.57 | 0.11 | 11690 | < 5 | 0.05 | < 5 |
| N114726 | 208 226 | >200 | 0.04 | 420 | < 20 | < 5 | 30 | 0.02 | 100 | < 5 | < 10 | 13460 | 0.44 | < 10 | 0.03 | < 0.01 | 160 | < 5 | 0.04 | < 5 |
| N114727 | 208 226 | >200 | 0.08 | 1590 | < 20 | < 5 | < 10 | 0.03 | 600 | < 5 | 70 | 6270 | 3.93 | < 10 | 0.09 | < 0.01 | 370 | 20 | 0.07 | 10 |
| N114728 | 208 226 | 123 | 0.53 | 270 | 20 | < 5 | < 10 | 0.14 | 55 | < 5 | 90 | 390 | 3.05 | < 10 | 0.52 | 0.09 | 7370 | < 5 | 0.04 | < 5 |
| N114729 | 208 226 | >200 | 0.47 | 2000 | 20 | < 5 | < 10 | 0.06 | 5 | < 5 | 100 | 455 | 2.55 | < 10 | 0.42 | 0.01 | 5110 | 10 | 0.04 | 5 |
| N114730 | 208 226 | >200 | 0.26 | 5750 | 20 | < 5 | < 10 | 0.05 | 110 | < 5 | 200 | 675 | 5.25 | < 10 | 0.20 | 0.08 | 4760 | 20 | 0.04 | 10 |
| N114731 | 208 226 | 13 | 0.62 | 220 | 20 | < 5 | < 10 | 0.08 | 15 | < 5 | 90 | 155 | 2.40 | < 10 | 0.55 | 0.02 | 5220 | < 5 | 0.04 | < 5 |
| N114732 | 208 226 | 16 | 0.58 | 1280 | 20 | < 5 | 10 | 0.07 | 20 | < 5 | 100 | 325 | 3.31 | < 10 | 0.47 | 0.03 | 6950 | 5 | 0.04 | < 5 |
| N114733 | 208 226 | >200 | 0.31 | 7630 | 20 | < 5 | < 10 | 0.03 | 20 | 5 | 140 | 945 | 4.55 | < 10 | 0.24 | 0.01 | 180 | 20 | 0.04 | 5 |
| N114734 | 208 226 | 29 | 0.50 | 940 | 20 | < 5 | < 10 | 0.06 | 30 | < 5 | 100 | 440 | 3.20 | < 10 | 0.51 | 0.01 | 3980 | 5 | 0.04 | < 5 |

CERTIFICATION:



Chemex Labs Ltd.

Analytical Chemists * Geochemists * Registered Assayers

212 Brooksbank Ave., North Vancouver
British Columbia, Canada V7J 2C1
PHONE: 604-984-0221 FAX: 604-984-0218



To: NORDAC RESOURCES LTD.
C/O ARCHER, CATHRO & ASSOCIATES (1981) LIMITED
BOX 4127, 2054 SECOND AVE.
WHITEHORSE, YT
Y1A 3S9

Page Number : 1-B
Total : 1
Certificate Date: 19-AUG-1999
Invoice No. : 19925570
P.O. Number :
Account : MTT

Project : BLUE HEAVEN
Comments:

CERTIFICATE OF ANALYSIS

A9925570

| SAMPLE | PREP | | P | Pb | Sb | Sc | Sr | Ti | Tl | U | V | W | Zn |
|---------|------|-----|-------|--------|--------|-----|-----|--------|------|------|------|------|--------|
| | CODE | | ppm | ppm | ppm | ppm | ppm | % | ppm | ppm | ppm | ppm | ppm |
| N114725 | 208 | 226 | 600 | 2780 | 70 | < 5 | < 5 | < 0.01 | < 20 | < 20 | < 20 | < 20 | 23400 |
| N114726 | 208 | 226 | < 100 | >50000 | >10000 | < 5 | 5 | < 0.01 | < 20 | < 20 | < 20 | < 20 | 31200 |
| N114727 | 208 | 226 | < 100 | >50000 | 1560 | < 5 | 15 | < 0.01 | < 20 | 20 | < 20 | < 20 | >50000 |
| N114728 | 208 | 226 | 600 | 7070 | 80 | < 5 | < 5 | < 0.01 | < 20 | < 20 | < 20 | < 20 | 15090 |
| N114729 | 208 | 226 | 400 | 15210 | 110 | < 5 | 25 | < 0.01 | < 20 | < 20 | < 20 | < 20 | 1285 |
| N114730 | 208 | 226 | 100 | 3670 | 90 | < 5 | 5 | < 0.01 | < 20 | < 20 | < 20 | < 20 | 41500 |
| N114731 | 208 | 226 | 500 | 2070 | < 10 | < 5 | 10 | < 0.01 | < 20 | < 20 | < 20 | < 20 | 3080 |
| N114732 | 208 | 226 | 400 | 1650 | 10 | < 5 | 15 | < 0.01 | < 20 | < 20 | < 20 | < 20 | 4540 |
| N114733 | 208 | 226 | 100 | 7650 | 110 | < 5 | 25 | < 0.01 | < 20 | < 20 | < 20 | < 20 | 8590 |
| N114734 | 208 | 226 | 400 | 1705 | 30 | < 5 | 15 | < 0.01 | < 20 | < 20 | < 20 | < 20 | 8290 |

CERTIFICATION:



Chemex Labs Ltd.

Analytical Chemists * Geochemists * Registered Assayers
212 Brooksbank Ave., North Vancouver
British Columbia, Canada V7J 2C1
PHONE: 604-984-0221 FAX: 604-984-0218

To: NORDAC RESOURCES LTD.
C/O ARCHER, CATHRO & ASSOCIATES (1981) LIMITED
BOX 4127, 2054 SECOND AVE.
WHITEHORSE, YT
Y1A 3S9

Project: BLUE HEAVEN
Comments:

Page Number : 1
Total Pages : 1
Certificate Date: 10-AUG-1999
Invoice No. : I9925226
P.O. Number :
Account : MTT

CERTIFICATE OF ANALYSIS

A9925226

| SAMPLE | PREP CODE | Ag con g/t | | | | | | | | | |
|---------|-----------|------------|--|--|--|--|--|--|--|--|--|
| N114716 | 212 -- | 9989.2 | | | | | | | | | |
| N114717 | 212 -- | 10616.5 | | | | | | | | | |
| N114721 | 212 -- | 6765.3 | | | | | | | | | |

CERTIFICATION: *M. S. ...* +



Chemex Labs Ltd.

Analytical Chemists * Geochemists * Registered Assayers

212 Brooksbank Ave., North Vancouver
British Columbia, Canada V7J 2C1
PHONE: 604-984-0221 FAX: 604-984-0218

To: NORDAC RESOURCES LTD.
C/O ARCHER, CATHRO & ASSOCIATES (1981) LIMITED
BOX 4127, 2054 SECOND AVE.
WHITEHORSE, YT
Y1A 3S9

Project : BLUE HEAVEN
Comments:

Page Number : 1
Total Pages : 1
Certificate Date: 05-AUG-1999
Invoice No. : 19924757
P.O. Number :
Account : MTT

CERTIFICATE OF ANALYSIS

A9924757

| SAMPLE | PREP CODE | Ag FA g/t | Pb % | | | | | | | | |
|---------|-----------|-----------|-------|--|--|--|--|--|--|--|--|
| N114716 | 212 -- | >3500 | 74.6 | | | | | | | | |
| N114717 | 212 -- | >3500 | 77.5 | | | | | | | | |
| N114719 | 212 -- | 1080 | 15.45 | | | | | | | | |
| N114721 | 212 -- | >3500 | ----- | | | | | | | | |

CERTIFICATION:



Chemex Labs Ltd.

Analytical Chemists * Geochemists * Registered Assayers

212 Brooksbank Ave., North Vancouver
British Columbia, Canada V7J 2C1
PHONE: 604-984-0221 FAX: 604-984-0218

To: NORDAC RESOURCES LTD.
C/O ARCHER, CATHRO & ASSOCIATES (1981) LIMITED
BOX 4127, 2054 SECOND AVE.
WHITEHORSE, YT
Y1A 3S9

Project: BLUE HEAVEN
Comments:

Page Number : 1
Total Pages : 1
Certificate Date: 03-AUG-1999
Invoice No. : 19924622
P.O. Number :
Account : MTT

CERTIFICATE OF ANALYSIS

A9924622

| SAMPLE | PREP CODE | Pb % | | | | | | | | | |
|---------|-----------|------|--|--|--|--|--|--|--|--|--|
| N114751 | 212 -- | 65.3 | | | | | | | | | |

CERTIFICATION:



Chemex Labs Ltd.

Analytical Chemists * Geochemists * Registered Assayers
212 Brooksbank Ave., North Vancouver
British Columbia, Canada V7J 2C1
PHONE: 604-984-0221 FAX: 604-984-0218

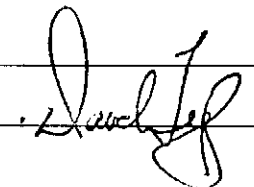
To: NORDAC RESOURCES LTD.
C/O ARCHER, CATHRO & ASSOCIATES (1981) LIMITED
BOX 4127, 2054 SECOND AVE.
WHITEHORSE, YT
Y1A 3S9

Project: BLUE HEAVEN
Comments:

Page Number: 1-A
Total Pages: 1
Certificate Date: 04-AUG-1999
Invoice No.: 19924318
P.O. Number:
Account: MTT

CERTIFICATE OF ANALYSIS A9924318

| SAMPLE | PREP CODE | Ag ppm | Al % | As ppm | Ba ppm | Be ppm | Bi ppm | Ca % | Cd ppm | Co ppm | Cr ppm | Cu ppm | Fe % | Hg ppm | K % | Mg % | Mn ppm | Mo ppm | Na % | Ni ppm |
|---------|-----------|--------|------|--------|--------|--------|--------|------|--------|--------|--------|--------|-------|--------|------|--------|--------|--------|------|--------|
| N114716 | 208 226 | >200 | 0.03 | 430 | < 20 | < 5 | 10 | 0.03 | 60 | < 5 | < 10 | 11900 | 1.11 | < 10 | 0.01 | < 0.01 | 220 | 45 | 0.04 | < 5 |
| N114717 | 208 226 | >200 | 0.06 | 330 | < 20 | < 5 | 150 | 0.07 | 65 | < 5 | < 10 | 9740 | 0.64 | < 10 | 0.01 | < 0.01 | 230 | 5 | 0.03 | < 5 |
| N114718 | 208 226 | 115 | 0.55 | 270 | 20 | < 5 | < 10 | 0.11 | 30 | < 5 | 120 | 580 | 3.14 | < 10 | 0.44 | 0.04 | 6080 | < 5 | 0.03 | < 5 |
| N114719 | 208 226 | >200 | 0.15 | 1460 | 20 | < 5 | 80 | 0.06 | 50 | < 5 | < 10 | 2060 | 29.1 | < 10 | 0.04 | 0.06 | >50000 | 35 | 0.05 | < 5 |
| N114720 | 208 226 | 11 | 0.56 | 50 | 20 | < 5 | < 10 | 0.15 | 10 | < 5 | 80 | 40 | 3.29 | < 10 | 0.55 | 0.08 | 10970 | < 5 | 0.03 | < 5 |
| N114721 | 208 226 | >200 | 0.52 | 10790 | 60 | < 5 | < 10 | 0.05 | 25 | < 5 | 60 | 2740 | 12.00 | < 10 | 0.29 | 0.03 | 14150 | 10 | 0.04 | < 5 |
| N114722 | 208 226 | 57 | 0.75 | 170 | 20 | < 5 | < 10 | 0.07 | 10 | < 5 | 100 | 175 | 2.27 | < 10 | 0.60 | 0.02 | 7080 | < 5 | 0.04 | < 5 |
| N114723 | 208 226 | 89 | 0.32 | 4460 | 20 | < 5 | 110 | 0.04 | 5 | < 5 | 160 | 105 | 1.55 | < 10 | 0.23 | 0.01 | 210 | 30 | 0.03 | < 5 |
| N114724 | 208 226 | 13 | 0.37 | 14090 | 40 | < 5 | < 10 | 0.09 | 20 | 10 | 110 | 190 | 9.05 | < 10 | 0.27 | 0.11 | 24800 | 5 | 0.04 | < 5 |

CERTIFICATION: 



Chemex Labs Ltd.

Analytical Chemists * Geochemists * Registered Assayers

212 Brooksbank Ave., North Vancouver
British Columbia, Canada V7J 2C1
PHONE: 604-984-0221 FAX: 604-984-0218



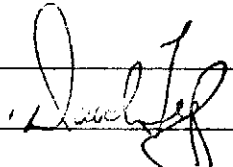
To: NORDAC RESOURCES LTD.
C/O ARCHER, CATHRO & ASSOCIATES (1981) LIMITED
BOX 4127, 2054 SECOND AVE.
WHITEHORSE, YT
Y1A 3S9

Project : BLUE HEAVEN
Comments:

Page Number : 1-B
Total Pages : 1
Certificate Date: 04-AUG-1999
Invoice No. : I9924318
P.O. Number :
Account : MTT

CERTIFICATE OF ANALYSIS A9924318

| SAMPLE | PREP CODE | P ppm | Pb ppm | Sb ppm | Sc ppm | Sr ppm | Ti % | Tl ppm | U ppm | V ppm | W ppm | Zn ppm |
|---------|-----------|----------|-----------|-----------|-----------|-----------|---------|-----------|----------|----------|----------|-----------|
| N114716 | 208 226 | < 100 | >50000 | 8910 | < 5 | 15 | < 0.01 | < 20 | < 20 | < 20 | 100 | 15970 |
| N114717 | 208 226 | 100 | >50000 | >10000 | < 5 | 20 | < 0.01 | < 20 | < 20 | < 20 | 140 | 17770 |
| N114718 | 208 226 | 500 | 16900 | 120 | < 5 | 15 | < 0.01 | < 20 | < 20 | < 20 | < 20 | 4390 |
| N114719 | 208 226 | < 100 | >50000 | 770 | < 5 | 40 | < 0.01 | < 20 | 20 | < 20 | < 20 | 18990 |
| N114720 | 208 226 | 500 | 2400 | 20 | < 5 | 15 | < 0.01 | < 20 | < 20 | < 20 | < 20 | 2250 |
| N114721 | 208 226 | 200 | 31500 | 5910 | < 5 | 30 | < 0.01 | < 20 | < 20 | < 20 | 140 | 6980 |
| N114722 | 208 226 | 500 | 5010 | 70 | < 5 | 20 | < 0.01 | < 20 | < 20 | < 20 | < 20 | 2130 |
| N114723 | 208 226 | < 100 | 2230 | 30 | < 5 | 20 | < 0.01 | < 20 | < 20 | < 20 | < 20 | 1680 |
| N114724 | 208 226 | 100 | 490 | 60 | < 5 | 20 | < 0.01 | < 20 | < 20 | < 20 | < 20 | 4500 |

CERTIFICATION: 



Chemex Labs Ltd.

Analytical Chemists * Geochemists * Registered Assayers
212 Brooksbank Ave., North Vancouver
British Columbia, Canada V7J 2C1
PHONE: 604-984-0221 FAX: 604-984-0218



To: NORDAC RESOURCES LTD.
C/O ARCHER, CATHRO & ASSOCIATES (1981) LIMITED
BOX 4127, 2054 SECOND AVE.
WHITEHORSE, YT
Y1A 3S9

Project: BLUE HEAVEN
Comments:

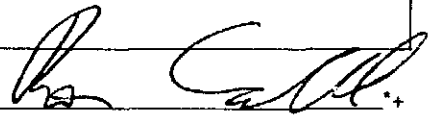
Page Number: 1-A
Total Pages: 1
Certificate Date: 30-JUL-1999
Invoice No.: I9923858
P.O. Number:
Account: MTT

* PLEASE NOTE

CERTIFICATE OF ANALYSIS

A9923858

| SAMPLE | PREP CODE | Ag con g/t | Zn % | Ag ppm | Al % | As ppm | Ba ppm | Be ppm | Bi ppm | Ca % | Cd ppm | Co ppm | Cr ppm | Cu ppm | Fe % | Hg ppm | K % | Mg % | Mn ppm | Mo ppm |
|---------|-----------|---------------|---------|-----------|---------|-----------|-----------|-----------|-----------|---------|-----------|-----------|-----------|-----------|---------|-----------|--------|---------|-----------|-----------|
| N114751 | 2091364 | 27561 | 2.20 | >200 | 0.01 | 820 | < 20 | < 5 | Intf* | 0.02 | 120 | < 5 | < 10 | 40300 | 2.24 | < 10 | < 0.01 | 0.01 | 10 | < 5 |

CERTIFICATION: 

* INTERFERENCE: HIGH Pb, Ag ON Bi & P.



Chemex Labs Ltd.

Analytical Chemists * Geochemists * Registered Assayers
212 Brooksbank Ave., North Vancouver
British Columbia, Canada V7J 2C1
PHONE: 604-984-0221 FAX: 604-984-0218

To: NORDAC RESOURCES LTD.
C/O ARCHER, CATHRO & ASSOCIATES (1981) LIMITED
BOX 4127, 2054 SECOND AVE.
WHITEHORSE, YT
Y1A 3S9

Project: BLUE HEAVEN
Comments:

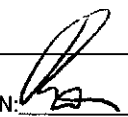
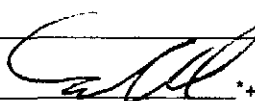
Page Number: 1-B
Total Pages: 1
Certificate Date: 30-JUL-1999
Invoice No.: 19923858
P.O. Number:
Account: MTT

* PLEASE NOTE

CERTIFICATE OF ANALYSIS

A9923858

| SAMPLE | PREP CODE | Na % | Ni ppm | P ppm | Pb ppm | Sb ppm | Sc ppm | Sr ppm | Ti % | Tl ppm | U ppm | V ppm | W ppm | Zn ppm | Sb % |
|---------|-----------|------|--------|-------|--------|--------|--------|--------|--------|--------|-------|-------|-------|--------|------|
| N114751 | 2091364 | 0.02 | 5 | Intf* | >50000 | >10000 | < 5 | < 5 | < 0.01 | < 20 | < 20 | < 20 | < 20 | 21900 | 2.57 |

CERTIFICATION:  

* INTERFERENCE: HIGH Pb, Ag ON Bi & P.



Chemex Labs Ltd.

Analytical Chemists * Geochemists * Registered Assayers

212 Brooksbank Ave., North Vancouver
British Columbia, Canada V7J 2C1
PHONE: 604-984-0221 FAX: 604-984-0218



To: NORDAC RESOURCES LTD.
C/O ARCHER, CATHRO & ASSOCIATES (1981) LIMITED
BOX 4127, 2054 SECOND AVE.
WHITEHORSE, YT
Y1A 3S9

Page Number : 1
Total Pages : 1
Certificate Date: 21-JUL-1999
Invoice No. : 19923373
P.O. Number :
Account : MTT

Project : BLUE HEAVEN
Comments:

CERTIFICATE OF ANALYSIS

A9923373

| SAMPLE | PREP CODE | | Ag FA g/t | | | | | | | | | |
|---------|-----------|----|-----------|--|--|--|--|--|--|--|--|--|
| N114715 | 212 | -- | 2790 | | | | | | | | | |

CERTIFICATION: *Mark Naylor*



Chemex Labs Ltd.

Analytical Chemists * Geochemists * Registered Assayers
212 Brooksbank Ave., North Vancouver
British Columbia, Canada V7J 2C1
PHONE: 604-984-0221 FAX: 604-984-0218

To: NORDAC RESOURCES LTD.
C/O ARCHER, CATHRO & ASSOCIATES (1981) LIMITED
BOX 4127, 2054 SECOND AVE.
WHITEHORSE, YT
Y1A 3S9

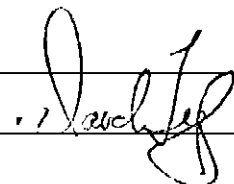
Page Number : 1-A
Total : 1
Certificate Date: 19-JUL-1999
Invoice No. : A9922854
P.O. Number :
Account : MTT

Project : BLUE HEAVEN
Comments:

CERTIFICATE OF ANALYSIS

A9922854

| SAMPLE | PREP CODE | Ag g/t | Pb % | Zn % | Ag ppm | Al % | As ppm | Ba ppm | Be ppm | Bi ppm | Ca % | Cd ppm | Co ppm | Cr ppm | Cu ppm | Fe % | Hg ppm | K % | Mg % | Mn ppm |
|---------|-----------|-----------|---------|---------|-----------|---------|-----------|-----------|-----------|-----------|---------|-----------|-----------|-----------|-----------|---------|-----------|--------|---------|-----------|
| N114715 | 208 294 | >350 | 26.3 | 27.8 | >200 | 0.09 | 5140 | < 20 | < 5 | 140 | 0.10 | 625 | < 5 | 10 | 7390 | 5.35 | < 10 | 0.09 | 0.08 | 12370 |

CERTIFICATION: 



Chemex Labs Ltd.

Analytical Chemists * Geochemists * Registered Assayers
212 Brooksbank Ave., North Vancouver
British Columbia, Canada V7J 2C1
PHONE: 604-984-0221 FAX: 604-984-0218



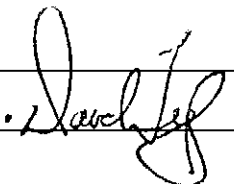
To: NORDAC RESOURCES LTD.
C/O ARCHER, CATHRO & ASSOCIATES (1981) LIMITED
BOX 4127, 2054 SECOND AVE.
WHITEHORSE, YT
Y1A 3S9

Page Number : 1-B
Total Pages : 1
Certificate Date: 19-JUL-1999
Invoice No. : 19922854
P.O. Number :
Account : MTT

Project : BLUE HEAVEN
Comments:

CERTIFICATE OF ANALYSIS A9922854

| SAMPLE | PREP CODE | Mo ppm | Na % | Ni ppm | P ppm | Pb ppm | Sb ppm | Sc ppm | Sr ppm | Ti % | Tl ppm | U ppm | V ppm | W ppm | Zn ppm |
|---------|-----------|--------|------|--------|-------|--------|--------|--------|--------|--------|--------|-------|-------|-------|--------|
| N114715 | 208 294 | < 5 | 0.07 | 20 | < 100 | >50000 | 2150 | < 5 | 5 | < 0.01 | < 20 | 20 | < 20 | 160 | >50000 |

CERTIFICATION: 



Chemex Labs Ltd.

Analytical Chemists * Geochemists * Registered Assayers
212 Brooksbank Ave., North Vancouver
British Columbia, Canada V7J 2C1
PHONE: 604-984-0221 FAX: 604-984-0218

To: NORDAC RESOURCES LTD.
C/O ARCHER, CATHRO & ASSOCIATES (1981) LIMITED
1016 - 510 W. HASTINGS ST.
VANCOUVER, BC
V6B 1L8

Project : BLUE HEAVEN
Comments:

Page Number : 1
Total Pages : 1
Certificate Date : 25-FEB-1999
Invoice No. : 19912083
P.O. Number :
Account : MTT

CERTIFICATE OF ANALYSIS

A9912083

| SAMPLE | PREP CODE | WO3 % | | | | | | | | | |
|--------|-----------|--------|--|--|--|--|--|--|--|--|--|
| 451654 | 244 -- | 0.03 | | | | | | | | | |
| 451655 | 244 -- | 0.05 | | | | | | | | | |
| 451656 | 244 -- | 0.02 | | | | | | | | | |
| 451657 | 244 -- | 0.11 | | | | | | | | | |
| 451658 | 244 -- | 0.05 | | | | | | | | | |
| 451659 | 244 -- | < 0.01 | | | | | | | | | |
| 451660 | 244 -- | 0.13 | | | | | | | | | |

CERTIFICATION:



Chemex Labs Ltd.

Analytical Chemists * Geochemists * Registered Assayers

212 Brooksbank Ave., North Vancouver
British Columbia, Canada V7J 2C1
PHONE: 604-984-0221 FAX: 604-984-0218




To: NORDAC RESOURCES LTD.
C/O ARCHER, CATHRO & ASSOCIATES (1981) LIMITED
1016 - 510 W. HASTINGS ST.
VANCOUVER, BC
V6B 1L8

Project: BLUE HEAVEN
Comments:

Page Number : 1
Total Pages : 1
Certificate Date: 11-FEB-1999
Invoice No. : I9911142
P.O. Number :
Account : MTT

CERTIFICATE OF ANALYSIS A9911142

| SAMPLE | PREP CODE | WO3 % | | | | | | | | | |
|--------|-----------|-------|--|--|--|--|--|--|--|--|--|
| 451671 | 244 -- | 0.17 | | | | | | | | | |
| 451672 | 244 -- | 0.14 | | | | | | | | | |
| 451673 | 244 -- | 0.65 | | | | | | | | | |
| 451674 | 244 -- | 0.36 | | | | | | | | | |

CERTIFICATION: 

APPENDIX IV
ROCK SAMPLE DESCRIPTIONS

Rock Sample Descriptions

Project: Rancheria Property:

1 of

Sample Number: 114715 Grid North: H Zone N Grid East: E Type: random Dimension:
 UTM: N UTM: E Sample Width: Abundance:
 Elevation: m

Comments: Random samples from the material which went in 5 bags of sphalerite rich material

Sample Number: 114716 Grid North: Blue Zone N Grid East: E Type: chip Dimension: 1m long lense
 UTM: N UTM: E Sample Width: 4cm Abundance:
 Elevation: m

Comments: Sample from B2 vein pit. Bottom of pit is a 4cm wide by 1m long lense of steel galena.

Sample Number: 114723 Grid North: Blue Zone N Grid East: E Type: chip Dimension: 2m long lense
 UTM: N UTM: E Sample Width: 20cm Abundance:
 Elevation: m

Comments: sample at 125m in stripped trench on B3 vein. Weakly mineralized quartz vein material. Vein 15-20 cm wide with white quartz and 1-2% fine grained black sulphides.

Sample Number: 114724 Grid North: Blue Zone N Grid East: E Type: chip Dimension: 2m long lense
 UTM: N UTM: E Sample Width: 40cm Abundance:
 Elevation: m

Comments: Sample at 90m in stripped trench on B3 vein. Weakly mineralized 30-40 cm wide quartz vein with 1% pyrite, 5-15% fine grained black sulphides with trace galena, sphalerite and 2% brown carbonate

Sample Number: 114751 Grid North: Blue Zone N Grid East: E Type: specimen Dimension:
 UTM: N UTM: E Sample Width: Abundance:
 Elevation: m

Comments: Massive galena with abundant tetrahedrite from lower pit on B3 vein.

Sample Number: BB26738 Grid North: N Grid East: E Type: random Dimension:
 UTM: N UTM: E Sample Width: Abundance:
 Elevation: m

Comments: Random grab sample from the top of all 48 ore bags

Rock Sample Descriptions

Project: Rancheria Property: Gold

Sample Number: Lot 001 Grid North: _____ N Grid East: _____ E Type: _____ Dimension: _____
 UTM: _____ N UTM: _____ E Sample Width: _____ Abundance: _____
 Elevation: _____ m
 Comments: Sample sent to Chemex from Cominco smelter

Sample Number: _____ Grid North: _____ N Grid East: _____ E Type: _____ Dimension: _____
 UTM: _____ N UTM: _____ E Sample Width: _____ Abundance: _____
 Elevation: _____ m
 Comments: _____

Sample Number: _____ Grid North: _____ N Grid East: _____ E Type: _____ Dimension: _____
 UTM: _____ N UTM: _____ E Sample Width: _____ Abundance: _____
 Elevation: _____ m
 Comments: _____

Sample Number: _____ Grid North: _____ N Grid East: _____ E Type: _____ Dimension: _____
 UTM: _____ N UTM: _____ E Sample Width: _____ Abundance: _____
 Elevation: _____ m
 Comments: _____

Sample Number: _____ Grid North: _____ N Grid East: _____ E Type: _____ Dimension: _____
 UTM: _____ N UTM: _____ E Sample Width: _____ Abundance: _____
 Elevation: _____ m
 Comments: _____

Sample Number: _____ Grid North: _____ N Grid East: _____ E Type: _____ Dimension: _____
 UTM: _____ N UTM: _____ E Sample Width: _____ Abundance: _____
 Elevation: _____ m
 Comments: _____

APPENDIX IV
SMEALTER STATEMENT

COMINCO LTD. - TRAIL OPERATIONS

Trail, British Columbia, Canada V1R 4L8

Raw Materials Accounting

Tel. (250) 364-4181 / 364-4159 / 364-4820 / Fax (250) 364-4371



January 10, 2000

NORDAC RESOURCES LTD.

C/O ARCHER, CATHRO & ASSOCIATES LTD.
1016 - 510 WEST HASTINGS ST
VANCOUVER BC V6B 1L8

NORDAC RESOURCES AG/PB ORE
FINAL LOT NO 1

CAR NUMBERS: 49 BAGS ON DATE RECEIVED: 1999 10 13
PALLETS
2 TRUCKS

WEIGHTS: NET WET 115320 MOIST 1.6 % NET DRY 113475 S.D.T. 56.7375

ASSAYS:

| | | | | | |
|---------|--------|---------|--------|----------|--------------|
| LEAD | 56.2 % | ZINC | 9.5 % | SILVER | 249.75 OZ/TN |
| URANIUM | 0.00 % | ARSENIC | 0.15 % | GOLD | 0.035 OZ/T |
| TIN | 0.01 % | BISMUTH | 0.01 % | ANTIMONY | 1.1 % |
| | | | | MERCURY | 6. PPM |

QUOTATIONS: DEC AVERAGE - EXCHANGE LEAD SILVER GOLD

EXCHANGE: DEC \$US TO \$CDN 1.473300 STERLING TO \$US 1.613132

CALCULATED PRICES:

| | | |
|--------|---------------------------------|-----------------|
| LEAD | 479.05 * 1.4733 / 2204.60 | 32.01416 /LB |
| SILVER | 5.1595 * 1.4733 - 0.42 * 1.4733 | 6.98271 \$/OZ |
| GOLD | 283.0680 * 1.4733 - 8. * 1.4733 | 405.25768 \$/OZ |

PAYMENTS: (PER SHORT DRY TON)

| | CONTENT | DEDUCTIONS | PAID FOR | | |
|--------|--------------|------------|---------------|----|---------|
| LEAD | 1124.0000 LB | 60.0000 LB | 1064.0000 LB | \$ | 340.63 |
| SILVER | 249.7500 OZ | 13.8754 OZ | 235.8746 OZ | \$ | 1647.04 |
| GOLD | 0.0350 OZ | 0.0293 OZ | 0.0057 OZ | \$ | 2.31 |
| | | | TOTAL PAYMENT | \$ | 1989.98 |

DEDUCTIONS: (PER SHORT DRY TON)

| | | | |
|------------------------|--|----|---------|
| BASIC TREATMENT CHARGE | : (213.190601 * 1.473300) | \$ | -314.09 |
| ZINC PENALTY | : (9.50 - 7.) * 0.907190 * 1.4733 | | -3.34 |
| ANTIMONY PENALTY | : (1.10 - 0.50) * 13.607910 * 1.4733 | | -12.03 |
| | NET DEDUCTIONS | \$ | -329.46 |

NET VALUE (PER SHORT DRY TON) \$ 1660.52

GROSS LOT VALUE \$ 94213.75

BALANCE \$ 94213.75

GST # R100 247 667 \$ 6594.96

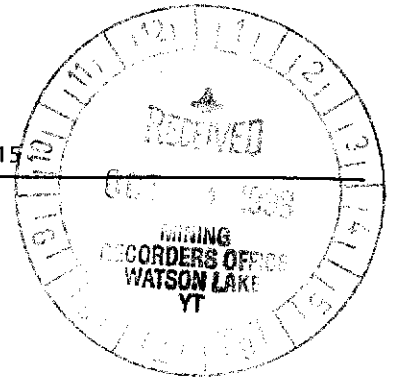
BALANCE PAID \$ 100808.71

ARCHER, CATHRO

& ASSOCIATES (1981) LIMITED

CONSULTING GEOLOGICAL ENGINEERS

Box 4127, 2054 SECOND AVENUE, WHITEHORSE, Y.T. Y1A 3S9 TEL (403) 667 - 4415



AFFIDAVIT

I, Joan Mariacher, of WHITEHORSE, YUKON make oath and say:

That to the best of my knowledge the attached Statement of Expenditures for exploration work on the BLUE 1-2, H 1-2, HEAVEN 1-114 mineral claims on Claim Sheet 105 B/7 is accurate.


Joan Mariacher

Sworn before me at WHITEHORSE, YUKON

this 18TH day of

OCTOBER, 1999



Notary, Yukon Territory

Statement of Expenditures
Blue 1-2, H 1-2 and Heaven 1-114 Mineral Claims
October 17, 1999

Labour

| | |
|--|-----------------|
| D. Eaton - geologist - July to August - 79 hours at \$56/hr | \$ 4,733.68 |
| T. Becker - geologist - July 3-20, 27-August 6 - 29 days at \$344/day | 10,674.32 |
| J. Owerko - field assistant - July 3-20, 27-August 6 - 29 days at \$225/day | <u>6,981.75</u> |
| | 22,389.75 |

Expenses

| | |
|---|--------------------|
| Field room and board - 96 7/8 days at \$115 day | 11,920.47 |
| E. Caron Diamond Drilling - excavator trenching | 33,547.18 |
| Chemex Labs | 806.60 |
| Frontier Freightlines - pallets | <u>1,048.60</u> |
| | 47,322.85 |
| | <u>\$69,712.60</u> |

ARCHER, CATHRO & ASSOCIATES (1981) LIMITED

In Account With

Project BLUE HEAVEN PROJECT
Date JULY 31, 1999

| LABOUR | | | |
|--|--|---------|----------|
| Field | A. ARCHER - 20 HRS AT 66/HR | 1320.00 | |
| | D. EATON - 64 HRS AT 56/HR | 3584.00 | |
| | T. BECKER - 202 HRS AT 43/HR | 8686.00 | |
| | J. ODERKO - 23 1/2 DAYS AT 225/DAY | 5287.50 | |
| | G. DOWNS - 1 DAY AT 210/DAY | 210.00 | |
| Office | M. COOKE - 1 HR AT 36.70/HR | 36.70 | |
| Accounting and Expediting | A. BELLING - 36 1/2 HRS AT 46/HR | 1677.00 | |
| | J. MARIACHER - 41 1/2 HRS AT 46.67/HR | 1936.81 | 22740.01 |
| OTHER SERVICES | | | |
| Room & Board in Whitehorse | 11 DAYS AT 60/DAY | 660.00 | |
| Field equipment from AC stock | | 97.00 | |
| Printing | Photocopies 117 @ 25 | 2925 | |
| Rentals from AC JULY 3-31 - 2 HANDSAWES AT 3.33 EA/DAY + 50X11 AT 10/DAY + 2 GAS AT 7.66 EA/DAY + MAG AT NIC | | 928.00 | |
| Drafting | 5 1/2 hrs at \$36 /hr. | 198.00 | |
| | LOOMIS COLLIER - 1 AT 13.50 EA | 13.50 | 1925.75 |
| EXPENSES | | | |
| Petty Cash | 144.7201 + 45.7705 + 85.1504 + 23.3604 | 299.00 | |
| Telephone | 20.94 + 120.67 | 141.61 | |
| PNT TRANSPORTATION | - 9.60 + 38.50 | 48.10 | |
| TESLIN LAKE MOTORS | | 61.84 | |
| JOAN M XP ATC | | 11.70 | |
| MAC'S FIREWEED | | 25.14 | |
| NORTHERN METALIC | | 42.90 | |
| HOUGEN'S PHOTO | | 21.77 | |
| CONTINENTAL DIVIDE | | 145.81 | |
| SECOND AVENUE SHELL | 11.7201 + 165.2904 | 176.57 | |
| CAL | | 68.78 | |
| HORWOOD'S OFFICE | | 5.00 | |
| NORDAN LEASING | | 281.88 | 3684.54 |
| MANAGEMENT 6% - ON EXPENSES | | | |
| | - ON FIELD ATC | 221.07 | |
| | | 1436.87 | 1657.94 |
| | | | 30008.24 |
| GST (R100247667) | 7% ON 30008.24 | | 2100.58 |
| E=GST exempt | | | 32108.82 |

ARCHER, CATHRO & ASSOCIATES (1981) LIMITED

In Account With

Project BLUE HEAVEN PROJECT
Date AUGUST 31, 1999

| LABOUR | | | |
|---------------------------|---|---------|---------|
| Field | A. ARCHER - 7 HR AT 66/HR | 462.00 | |
| | D. EATON - 15 HR AT 56/HR | 840.00 | |
| | T. BECKER - 48 HR AT 43/HR | 2064.00 | |
| | J. OWEKHO - 6 1/2 DAYS AT 225/DAY | 1462.50 | |
| Office | M. COOKE - 3 HR AT 36.70/HR | 110.10 | |
| Accounting and Expediting | A. GELLING - 5 HR AT 46/HR | 230.00 | |
| | J. MARIACHEL - 25 1/4 HR AT 46.67/HR | 1178.42 | 6347.02 |
| OTHER SERVICES | | | |
| | Room & Board in Whitehorse 2 DAYS AT 60/DAY | 120.00 | |
| | Field equipment from AC stock | | |
| | Printing Photocopies 41 AT .25 | 10.25 | |
| | Rentals from AC AVENUE 1-6 - 56 X 11 AT 10/DAY + 2 KONGS AT 333/DAY EACH + 2 GPS AT 2.67/DAY EACH + MAR-N/C | 192.00 | |
| Drafting | 8 hrs at \$36 /hr. | 288.00 | 610.25 |
| EXPENSES | | | |
| Petty Cash | | | |
| | Telephone 80.74 | 80.74 | |
| | ATLAS TRAVEL | 158.08 | |
| | HOUGHEN'S PHOTO | 31.85 | |
| | INTEGRAPHICS | 27.85 | |
| | NORCAN LEASING | 1275.94 | |
| | SECOND AVENUE SHELL | 148.44 | |
| | PNT TRANSPORTATION | 13.01 | 1736.01 |
| MANAGEMENT | 6% - ON EXPENSES | 104.16 | |
| | - ON FIELD A/C | 19.88 | 124.04 |
| | | | 8817.32 |
| GST (R100247667) | 7% ON 8817.32 | | 617.21 |

E=GST exempt

9434.53



E. CARON DIAMOND DRILLING LTD.

7 Roundel Road, Whitehorse, Yukon Y1A 3H3

Phone: (867) 668-2424 Fax: (867) 668-4520

July 15, 1999
Invoice #3687
UH09 - Hoe

IN ACCOUNT WITH

Nordac Resources Ltd.
1016-510 West Hastings
Vancouver, B.C.
V6B 1L8

UH09 - Hoe Charges July 1-14/99: (Silver Hart)

UH09 - Hoe

112 machine hrs. @ \$120.00 per hr.

\$13,440.00

G.S.T. 10155 7122RT @ 7%

\$ 940.80

Total Invoice

\$14,380.80 ↙

*pd July 18/99
#493*





E. CARON DIAMOND DRILLING LTD.

7 Roundel Road, Whitehorse, Yukon Y1A 3H3

Phone: (867) 668-2424 Fax: (867) 668-4520

In Account With:

Nordac Resources Ltd.
1016-510 West Hastings Street
Vancouver, B.C.
V6B 1L8

Date: August 1, 1999

Invoice: 3693

UHO9 Hoe

Charges for July 15-31, 1999

(Silver Hart) ↗

| Work Description | per day/foot | Sub-totals | Totals |
|--|--------------|-------------|----------------|
| <u>Moving</u> | | | |
| ↗ 3.0 man hrs | \$ 35.00 | \$ 105.00 | |
| <u>Standby</u> | | | |
| ↗ 5 man hrs | \$ 35.00 | \$ 175.00 | |
| <u>Travel Time</u> | | | |
| ↗ 4 man hrs | \$ 35.00 | \$ 140.00 | |
| <u>UHO9</u> | | | |
| ↗ 78 machine hrs (190 TOTAL TO JULY 31) | \$ 120.00 | \$ 9,360.00 | \$ 9,780.00 |
| Sub-total | | | \$ 9,780.00 |
| G.S.T. @ 7% 10155 7122 | | | \$ 684.60 |
| Total | | | \$ 10,464.60 ↗ |





E. CARON DIAMOND DRILLING LTD.

7 Roundel Road, Whitehorse, Yukon Y1A 3H3

Phone: (867) 668-2424 Fax: (867) 668-4520

In Account With:
Nordac Resources Ltd.
1016-510 West Hastings Street
Vancouver, B.C.
V6B 1L8

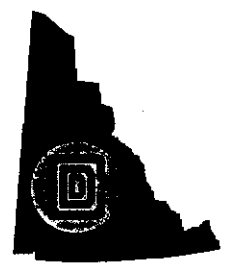
Date: August 1, 1999
Invoice: 3694
UHO9 Hoe

Charges for August 1-9, 1999

(Silver Hart)

| Work Description | per day/foot | Sub-totals | Totals |
|------------------------|--------------|-------------|-------------|
| <u>Kenworth</u> | | | |
| ✓ 10.0 machine hrs | \$ 85.00 | \$ 850.00 | |
| <u>Mack</u> | | | |
| ✓ 34.5 machine hrs | \$ 85.00 | \$ 2,932.50 | |
| <u>Standby</u> | | | |
| ✓ 6 man hrs | \$ 35.00 | \$ 210.00 | |
| <u>UH09</u> | | | |
| ✓ 34.5 machine hrs | \$ 120.00 | \$ 4,140.00 | \$ 8,132.50 |
| Sub-total | | | \$ 8,132.50 |
| G.S.T. @ 7% 10155 7122 | | | \$ 569.28 |
| Total | | | \$ 8,701.78 |

John King 17/99 #507





Chemex Labs Ltd.

Analytical Chemists * Geochemists * Registered Assayers
212 Brooksbank Ave., North Vancouver
British Columbia, Canada V7J 2C1
PHONE: 604-984-0221

To: NORDAC RESOURCES LTD.
C/O ARCHER, CATHRO & ASSOCIATES (1981) LIMITED
BOX 4127, 2054 SECOND AVE.
WHITEHORSE, YT
Y1A 3S9

INVOICE NUMBER

1 9 9 2 2 8 5 4

BILLING INFORMATION

Date: 28-JUL-1999
Project: BLUE HEAVEN ✕
P.O. No.:
Account: MTT

Comments:

Billing: For analysis performed on
Certificate A9922854

Terms: Payment due on receipt of invoice
1.25% per month (15% per annum)
charged on overdue accounts

Please Remit Payments to:

CHEMEX LABS LTD.
212 Brooksbank Ave.,
North Vancouver, B.C.
Canada V7J 2C1

| # OF SAMPLES | ANALYSED FOR CODE - DESCRIPTION | UNIT PRICE | SAMPLE PRICE | AMOUNT |
|-------------------------------|-------------------------------------|------------|--------------|--------------|
| 1 | 208 - Assay ring to approx 150 mesh | 2.60 | | |
| | 294 - 4-7 Kg crush and split | 3.50 | | |
| | 3202 - Rock - save entire reject | 0.60 | | |
| | Ag,Pb,Zn assay package | 19.80 | | |
| | A-30 ICP Package | 11.25 | 37.75 | 37.75 |
| Total Cost \$ | | | | 37.75 |
| Client Discount (25%) \$ | | | | -9.44 |
| Net Cost \$ | | | | 28.31 |
| (Reg# R100938885) GST \$ | | | | 1.98 |
| TOTAL PAYABLE (CDN) \$ | | | | 30.29 |



Chemex Labs Ltd.

Analytical Chemists * Geochemists * Registered Assayers
212 Brooksbank Ave., North Vancouver
British Columbia, Canada V7J 2C1
PHONE: 604-984-0221

To: NORDAC RESOURCES LTD.
C/O ARCHER, CATHRO & ASSOCIATES (1981) LIMITED
BOX 4127, 2054 SECOND AVE.
WHITEHORSE, YT
Y1A 3S9

INVOICE NUMBER

I 9 9 2 3 3 7 3

BILLING INFORMATION

Date: 21-JUL-1999
Project: BLUE HEAVEN X
P.O. No.:
Account: MTT

Comments:

Billing: For analysis performed on
Certificate A9923373

Terms: Payment due on receipt of invoice
1.25% per month (15% per annum)
charged on overdue accounts

Please Remit Payments to:

CHEMEX LABS LTD.
212 Brooksbank Ave.,
North Vancouver, B.C.
Canada V7J 2C1

| # OF SAMPLES | ANALYSED FOR CODE - DESCRIPTION | UNIT PRICE | SAMPLE PRICE | AMOUNT |
|--------------|--|---------------|--------------|------------------------------------|
| 1 | 212 - Overlimit pulp, to be found 384 - Ag FA g/t | 0.00 11.00 | 11.00 | 11.00 |
| | | | | Total Cost \$ 11.00 |
| | | | | Client Discount (25%) \$ -2.75 |
| | | | | Net Cost \$ 8.25 |
| | | | | (Reg# R100938885) GST \$ 0.58 |
| | | | | TOTAL PAYABLE (CDN) \$ 8.83 |



Chemex Labs Ltd.

Analytical Chemists * Geochemists * Registered Assayers
212 Brooksbank Ave., North Vancouver
British Columbia, Canada V7J 2C1
PHONE: 604-984-0221

To: NORDAC RESOURCES LTD.
C/O ARCHER, CATHRO & ASSOCIATES (1981) LIMITED
BOX 4127, 2054 SECOND AVE.
WHITEHORSE, YT
Y1A 3S9

INVOICE NUMBER

I 9 9 2 4 3 1 8

BILLING INFORMATION

Date: 05-AUG-1999
Project: BLUE HEAVEN ↗
P.O. No.:
Account: MTT

Comments:

Billing: For analysis performed on
Certificate A9924318

Terms: Payment due on receipt of invoice
1.25% per month (15% per annum)
charged on overdue accounts

Please Remit Payments to:

CHEMEX LABS LTD.
212 Brooksbank Ave.,
North Vancouver, B.C.
Canada V7J 2C1

| # OF SAMPLES | ANALYSED FOR CODE - DESCRIPTION | UNIT PRICE | SAMPLE PRICE | AMOUNT |
|-------------------------------|---|-----------------------|--------------|---------------|
| 9 | 208 - Assay ring to approx 150 mesh A-30 ICP Package 0-3 Kg crush and split | 2.60 11.25 2.60 | 16.45 | 148.05 |
| Total Cost \$ | | | | 148.05 |
| Client Discount (25%) \$ | | | | <u>-37.01</u> |
| Net Cost \$ | | | | 111.04 |
| (Reg# R100938885) GST \$ | | | | <u>7.77</u> |
| TOTAL PAYABLE (CDN) \$ | | | | 118.81 |



Chemex Labs Ltd.

Analytical Chemists * Geochemists * Registered Assayers
212 Brooksbank Ave., North Vancouver
British Columbia, Canada V7J 2C1
PHONE: 604-984-0221

To: NORDAC RESOURCES LTD.
C/O ARCHER, CATHRO & ASSOCIATES (1981) LIMITED
BOX 4127, 2054 SECOND AVE.
WHITEHORSE, YT
Y1A 3S9

INVOICE NUMBER

I 9 9 2 4 6 2 2

BILLING INFORMATION

Date: 03-AUG-1999
Project: BLUE HEAVEN ✕
P.O. No.:
Account: MTT

Comments:

Billing: For analysis performed on
Certificate A9924622

Terms: Payment due on receipt of invoice
1.25% per month (15% per annum)
charged on overdue accounts

Please Remit Payments to:

CHEMEX LABS LTD.
212 Brooksbank Ave.,
North Vancouver, B.C.
Canada V7J 2C1

| # OF SAMPLES | ANALYSED FOR CODE - DESCRIPTION | UNIT PRICE | SAMPLE PRICE | AMOUNT |
|--------------|---|--------------|--------------|--|
| 1 | 212 - Overlimit pulp, to be found 312 - Pb | 0.00 8.75 | 8.75 | 8.75 |
| | | | | Total Cost \$ 8.75 |
| | | | | Client Discount (25%) \$ <u>-2.19</u> |
| | | | | Net Cost \$ 6.56 |
| | | | | (Reg# R100938885) GST \$ <u>0.46</u> |
| | | | | TOTAL PAYABLE (CDN) \$ 7.02 |



Chemex Labs Ltd.

Analytical Chemists * Geochemists * Registered Assayers
212 Brooksbank Ave., North Vancouver
British Columbia, Canada V7J 2C1
PHONE: 604-984-0221

To: NORDAC RESOURCES LTD.
C/O ARCHER, CATHRO & ASSOCIATES (1981) LIMITED
BOX 4127, 2054 SECOND AVE.
WHITEHORSE, YT
Y1A 3S9

INVOICE NUMBER

I 9 9 2 4 7 5 7

BILLING INFORMATION

Date: 05-AUG-1999
Project: BLUE HEAVEN ✓
P.O. No.:
Account: MTT

Comments:

Billing: For analysis performed on
Certificate A9924757

Terms: Payment due on receipt of invoice
1.25% per month (15% per annum)
charged on overdue accounts

Please Remit Payments to:

CHEMEX LABS LTD.
212 Brooksbank Ave.,
North Vancouver, B.C.
Canada V7J 2C1

| # OF SAMPLES | ANALYSED FOR CODE - DESCRIPTION | UNIT PRICE | SAMPLE PRICE | AMOUNT |
|--------------|-----------------------------------|------------|--------------|-------------------------------------|
| 3 | 212 - Overlimit pulp, to be found | 0.00 | | |
| | 384 - Ag FA g/t | 11.00 | | |
| | 312 - Pb % | 8.75 | 19.75 | 59.25 |
| 1 | 212 - Overlimit pulp, to be found | 0.00 | | |
| | 384 - Ag FA g/t | 11.00 | 11.00 | 11.00 |
| | | | | Total Cost \$ 70.25 |
| | | | | Client Discount (25%) \$ -17.56 |
| | | | | Net Cost \$ 52.69 |
| | | | | (Reg# R100938885) GST \$ 3.69 |
| | | | | TOTAL PAYABLE (CDN) \$ 56.38 |



Chemex Labs Ltd.

Analytical Chemists * Geochemists * Registered Assayers
212 Brooksbank Ave., North Vancouver
British Columbia, Canada V7J 2C1
PHONE: 604-984-0221

To: NORDAC RESOURCES LTD.
C/O ARCHER, CATHRO & ASSOCIATES (1981) LIMITED
BOX 4127, 2054 SECOND AVE.
WHITEHORSE, YT
Y1A 3S9

INVOICE NUMBER

I 9 9 2 5 2 2 6

BILLING INFORMATION

Date: 10-AUG-1999
Project: BLUE HEAVEN ↗
P.O. No.:
Account: MTT

Comments:

Billing: For analysis performed on
Certificate A9925226

Terms: Payment due on receipt of invoice
1.25% per month (15% per annum)
charged on overdue accounts

Please Remit Payments to:

CHEMEX LABS LTD.
212 Brooksbank Ave.,
North Vancouver, B.C.
Canada V7J 2C1

| # OF SAMPLES | ANALYSED FOR CODE - DESCRIPTION | UNIT PRICE | SAMPLE PRICE | AMOUNT |
|-------------------------------|---|---------------|--------------|---------------|
| 3 | 212 - Overlimit pulp, to be found 389 - Ag con g/t | 0.00 56.00 | 56.00 | 168.00 |
| Total Cost \$ | | | | 168.00 |
| Client Discount (25%) \$ | | | | <u>-42.00</u> |
| Net Cost \$ | | | | 126.00 |
| (Reg# R100938885) GST \$ | | | | <u>8.82</u> |
| TOTAL PAYABLE (CDN) \$ | | | | 134.82 |



Chemex Labs Ltd.

Analytical Chemists * Geochemists * Registered Assayers
212 Brooksbank Ave., North Vancouver
British Columbia, Canada V7J 2C1
PHONE: 604-984-0221

To: NORDAC RESOURCES LTD.
C/O ARCHER, CATHRO & ASSOCIATES (1981) LIMITED
BOX 4127, 2054 SECOND AVE.
WHITEHORSE, YT
Y1A 3S9

INVOICE NUMBER

I 9 9 2 5 5 7 0

BILLING INFORMATION

Date: 19-AUG-1999
Project: BLUE HEAVEN ↗
P.O. No.:
Account: MTT

Comments:

Billing: For analysis performed on
Certificate A9925570

Terms: Payment due on receipt of invoice
1.25% per month (15% per annum)
charged on overdue accounts

Please Remit Payments to:

CHEMEX LABS LTD.
212 Brooksbank Ave.,
North Vancouver, B.C.
Canada V7J 2C1

| # OF SAMPLES | ANALYSED FOR CODE - DESCRIPTION | UNIT PRICE | SAMPLE PRICE | AMOUNT |
|-------------------------------|---|-----------------------|--------------|---------------|
| 10 | 208 - Assay ring to approx 150 mesh A-30 ICP Package 0-3 Kg crush and split | 2.60 11.25 2.60 | 16.45 | 164.50 |
| Total Cost \$ | | | | 164.50 |
| Client Discount (25%) \$ | | | | -41.13 |
| Net Cost \$ | | | | 123.37 |
| (Reg# R100938885) GST \$ | | | | 8.64 |
| TOTAL PAYABLE (CDN) \$ | | | | 132.01 |



Chemex Labs Ltd.

Analytical Chemists * Geochemists * Registered Assayers
212 Brooksbank Ave., North Vancouver
British Columbia, Canada V7J 2C1
PHONE: 604-984-0221

To: NORDAC RESOURCES LTD.
C/O ARCHER, CATHRO & ASSOCIATES (1981) LIMITED
BOX 4127, 2054 SECOND AVE.
WHITEHORSE, YT
Y1A 3S9

INVOICE NUMBER

I 9 9 2 6 4 7 7

BILLING INFORMATION

Date: 23-AUG-1999
Project: BLUE HEAVEN 
P.O. No.:
Account: MTT

Comments:

Billing: For analysis performed on
Certificate A9926477

Terms: Payment due on receipt of invoice
1.25% per month (15% per annum)
charged on overdue accounts

Please Remit Payments to:

CHEMEX LABS LTD.
212 Brooksbank Ave.,
North Vancouver, B.C.
Canada V7J 2C1

| # OF SAMPLES | ANALYSED FOR CODE - DESCRIPTION | UNIT PRICE | SAMPLE PRICE | AMOUNT | |
|--------------|-----------------------------------|------------|--------------|-------------------------------|---------------|
| 1 | 212 - Overlimit pulp, to be found | 0.00 | | | |
| | 384 - Ag FA g/t | 11.00 | | | |
| | 312 - Pb % | 8.75 | 19.75 | 19.75 | |
| 1 | 212 - Overlimit pulp, to be found | 0.00 | | | |
| | 384 - Ag FA g/t | 11.00 | | | |
| | 312 - Pb % | 8.75 | | | |
| | 316 - Zn % | 8.75 | 28.50 | 28.50 | |
| 3 | 212 - Overlimit pulp, to be found | 0.00 | | | |
| | 384 - Ag FA g/t | 11.00 | 11.00 | 33.00 | |
| | | | | Total Cost \$ | 81.25 |
| | | | | Client Discount (25%) \$ | <u>-20.31</u> |
| | | | | Net Cost \$ | 60.94 |
| | | | | (Reg# R100938885) GST \$ | <u>4.27</u> |
| | | | | TOTAL PAYABLE (CDN) \$ | 65.21 |



Chemex Labs Ltd.

Analytical Chemists * Geochemists * Registered Assayers
212 Brooksbank Ave., North Vancouver
British Columbia, Canada V7J 2C1
PHONE: 604-984-0221

To: NORDAC RESOURCES LTD.
C/O ARCHER, CATHRO & ASSOCIATES (1981) LIMITED
BOX 4127, 2054 SECOND AVE.
WHITEHORSE, YT
Y1A 3S9

INVOICE NUMBER

I 9 9 2 6 7 5 2

BILLING INFORMATION

Date: 26-AUG-1999
Project: BLUE HEAVEN ✓
P.O. No.:
Account: MTT

Comments:

Billing: For analysis performed on
Certificate A9926752

Terms: Payment due on receipt of invoice
1.25% per month (15% per annum)
charged on overdue accounts

Please Remit Payments to:

CHEMEX LABS LTD.
212 Brooksbank Ave.,
North Vancouver, B.C.
Canada V7J 2C1

| # OF SAMPLES | ANALYSED FOR CODE - DESCRIPTION | UNIT PRICE | SAMPLE PRICE | AMOUNT |
|--------------|---|---------------|--------------|--------|
| 1 | 212 - Overlimit pulp, to be found 389 - Ag con g/t | 0.00 56.00 | 56.00 | 56.00 |

| | |
|-------------------------------|--------------|
| Total Cost \$ | 56.00 |
| Client Discount (25%) \$ | -14.00 |
| Net Cost \$ | 42.00 |
| (Reg# R100938885) GST \$ | 2.94 |
| TOTAL PAYABLE (CDN) \$ | 44.94 |



Chemex Labs Ltd.

Analytical Chemists * Geochemists * Registered Assayers
212 Brooksbank Ave., North Vancouver
British Columbia, Canada V7J 2C1
PHONE: 604-984-0221

To: NORDAC RESOURCES LTD.
C/O ARCHER, CATHRO & ASSOCIATES (1981) LIMITED
BOX 4127, 2054 SECOND AVE.
WHITEHORSE, YT
Y1A 3S9

INVOICE NUMBER

I 9 9 2 6 9 8 5

BILLING INFORMATION

Date: 31-AUG-1999
Project: BLUE HEAVEN *JA*
P.O. No.:
Account: MTT

Comments:

Billing: For analysis performed on
Certificate A9926985

Terms: Payment due on receipt of invoice
1.25% per month (15% per annum)
charged on overdue accounts

Please Remit Payments to:

CHEMEX LABS LTD.
212 Brooksbank Ave.,
North Vancouver, B.C.
Canada V7J 2C1

| # OF SAMPLES | ANALYSED FOR CODE - DESCRIPTION | UNIT PRICE | SAMPLE PRICE | AMOUNT |
|--------------|---|-----------------------|--------------|--------|
| 1 | 208 - Assay ring to approx 150 mesh A-30 ICP Package 0-3 Kg crush and split | 2.60 11.25 2.60 | | |
| | 983 - Au ppb FA+AA | 10.25 | | |
| | 384 - Ag FA g/t | 11.00 | | |
| | 389 - Ag con g/t | 56.00 | | |
| | 312 - Pb % | 8.75 | 102.45 | 102.45 |

| | |
|-------------------------------|---------------|
| Total Cost \$ | 102.45 |
| Client Discount (25%) \$ | <u>-25.61</u> |
| Net Cost \$ | 76.84 |
| (Reg# R100938885) GST \$ | <u>5.38</u> |
| TOTAL PAYABLE (CDN) \$ | 82.22 |



Chemex Labs Ltd.

Analytical Chemists * Geochemists * Registered Assayers
212 Brooksbank Ave., North Vancouver
British Columbia, Canada V7J 2C1
PHONE: 604-984-0221

To: NORDAC RESOURCES LTD.
C/O ARCHER, CATHERO & ASSOCIATES (1981) LIMITED
BOX 4127, 2054 SECOND AVE.
WHITEHORSE, YT
Y1A 3S9

INVOICE NUMBER **I 9 9 2 7 4 0 5**

BILLING INFORMATION

Date: 31-AUG-1999
 Project: BLUE HEAVEN
 P.O. No.:
 Account: MTT

Comments:

Billing: For analysis performed on Certificate A9927405

Terms: Payment due on receipt of invoice
 1.25% per month (15% per annum)
 charged on overdue accounts

Please Remit Payments to:

CHEMEX LABS LTD.
 212 Brooksbank Ave.,
 North Vancouver, B.C.
 Canada V7J 2C1

| # OF SAMPLES | ANALYSED FOR CODE - DESCRIPTION | UNIT PRICE | SAMPLE PRICE | AMOUNT |
|-------------------------------|---|--------------|--------------|-------------|
| 1 | 212 - Overlimit pulp, to be found 316 - Zn | 0.00 8.75 | 8.75 | 8.75 |
| Total Cost \$ | | | | 8.75 |
| Client Discount (25%) \$ | | | | -2.19 |
| Net Cost \$ | | | | 6.56 |
| (Reg# R100938885) GST \$ | | | | 0.46 |
| TOTAL PAYABLE (CDN) \$ | | | | 7.02 |



Chemex Labs Ltd.

Analytical Chemists * Geochemists * Registered Assayers
212 Brooksbank Ave., North Vancouver
British Columbia, Canada V7J 2C1
PHONE: 604-984-0221

To: NORDAC RESOURCES LTD.
C/O ARCHER, CATHRO & ASSOCIATES (1981) LIMITED
BOX 4127, 2054 SECOND AVE.
WHITEHORSE, YT
Y1A 3S9

INVOICE NUMBER

I 9 9 8 0 8 5 8

BILLING INFORMATION

Date: 13-SEP-1999
Project: BLUE HEAVEN ↗
P.O. No.:
Account: MTT

Comments:

Billing: For services regarding
A9923858

Terms: Payment due on receipt of invoice
1.25% per month (15% per annum)
charged on overdue accounts

Please Remit Payments to:

CHEMEX LABS LTD.
212 Brooksbank Ave.,
North Vancouver, B.C.
Canada V7J 2C1

DESCRIPTION OF SERVICES

AMOUNT *

For analysis performed on Certificate A9923858
Project: Blue Heaven

| # of Samples | Analysed for Code - Description | Unit Price |
|--------------|----------------------------------|------------|
| 1 | 209 - High grade assay ring | 18.75 |
| | 1364 - High grade crush & split | 11.25 |
| | 3202 - Rock - save entire reject | 0.60 |
| | A-30 ICP Package | 11.25 |
| | 389 - Ag con g/t | 84.00 |
| | 316 - Zn % | 8.75 |
| | 348 - Sb % | 13.75 |

1 sample @ \$ 148.35/sample 148.35

| | |
|-------------------------------|---------------|
| Total Cost \$ | 148.35 |
| Client Discount (25%) \$ | -37.09 |
| Net Cost \$ | 111.26 |
| (Reg# R100938885) GST \$ | 7.79 |
| TOTAL PAYABLE (CDN) \$ | 119.05 |



105 GOLD ROAD
 WHITEHORSE, YUKON
 Y1A 2W4
 PHONE: 668-2441
 FAX: 668-2717

GST NO. 10189 8104 RT

WAYBILL NO: 059835

PAGE NO: 1

TRIP NO: 002229

DATE: 10/06/99

STRAIGHT BILL OF LADING - ORIGINAL - NOT NEGOTIABLE

RECEIVED, subject to the classifications and tariffs in effect on the date of issue of this

Original Bill of Lading, at WHITEHORSE
(Point of Origin)

CHARGE ARCHER CATHRO & ASSOC. LTD
 TO BOX 4127

SHIPPER:
 FRONTIER FREIGHTLINES LTD.

WHITEHORSE YT
 Y1A 3S9

CONSIGNEE:
 ARCHER CATHRO & ASSOC. LTD
 BOX 4127

P.O. NO.:
 DESTINATION: WHITEHORSE

WHITEHORSE YT Y1A 3S9
 PREPAID/COLLECT: COLLECT

SPECIAL INSTRUCTIONS:

| QTY | DESCRIPTION | WEIGHT | RATE | TOTAL |
|-----|----------------------|--------|---------|--------|
| 49 | PALLETS AS PER QUOTE | 49.00 | 20.0000 | 980.00 |

Sub-Total 980.00
 Total G.S.T 68.60
 Invoice Total 1048.60

| | | |
|-------------------------|------------|------------------------------|
| Delivering Driver _____ | Date _____ | Received in Good Order _____ |
|-------------------------|------------|------------------------------|

NOTE: - Articles will not be accepted for shipment unless properly packaged, and addressed
 - Carrier Maximum liability not to exceed \$2.00 per pound unless value declared.
 - Claims must be received in writing within 7 days of delivery.

Shipper _____ Carrier _____

The goods described above in apparent good order, except as noted (contents and conditions of packages unknown), marked, consigned, and destined as shown above, which said Carrier agrees to carry and deliver to said Consignee at said destination, if on its own route otherwise to deliver to another carrier on the route to said destination. It is mutually agreed as to each carrier of all or any of said goods over all or any portion of said route to destination and as to each party at any time interested in all or any of said goods, that every service to be performed hereunder shall be subject to all the conditions not prohibited by law, whether printed or written, herein contained, and which are hereby agreed to by the shipper and accepted for himself and his assigns.

The shipper certifies the shipment does not contain any goods identified as dangerous by the Federal Transportation of Dangerous Goods Act, except as noted above.

RATES AND CHARGES SHOWN ARE SUBJECT TO AUDIT AND MAY BE ADJUSTED FOR INVOICING
 ORIGINAL INVOICE