

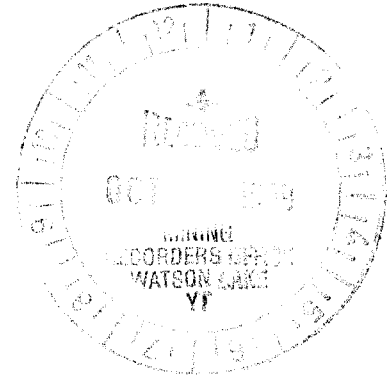
**REPORT ON THE 1999  
DIAMOND DRILLING PROGRAM  
ON THE DOLLY VARDEN PROPERTY**

Watson Lake Mining District, Y.T.  
NTS 105H-2  
(61°08'N, 128°40'W)

094029

for

**GEE-TEN VENTURES INC.**  
298 - 1198 West Pender Street  
Vancouver, B.C. V6E 2R1  
(604)688-2638



by

**CARL G. VERLEY, P.Geo.**  
**Amerlin Exploration Services Ltd.**  
2150 - 1851 Savage Road  
Richmond, B.C. V6V 1R1  
(604)821-1088

**October, 1999**

**Claims:** LANCE 1 - 20, 22, 29 - 39 (YB15739-YB15744, YB45922-YB45927, YB56165-YB56172, YB56174, YB56181-YB56191)

**Location:** 128 kilometres north of Watson Lake, Yukon.

**Date:** June 28 to July 6, 1999

This report has been examined by  
the Geological Evaluation Unit  
under Section 53 (4) Yukon Quartz  
Mining Act and is allowed as  
representation work in the amount  
of \$ 12,800.<sup>00</sup>.

*M. B. ...*  
for Regional Manager, Exploration and  
Geological Services for Commissioner  
of Yukon Territory.

### TABLE OF CONTENTS

	<b>Page</b>
SUMMARY .....	2
INTRODUCTION .....	3
Location .....	3
Access .....	3
History .....	3
PROPERTY .....	5
DRILL PROGRAM .....	7
GEOLOGY .....	8
Regional .....	8
Property .....	8
Mineralization .....	11
REFERENCES .....	14
APPENDICES: A. Drill Logs	
B. Assay and Analytical Data from Pioneer Laboratories Inc.	
C. Personnel	
D. Writer's Certificate	

### Figures

	<b>Page</b>
Figure:	
1 Property Location Map .....	1
2 Claim Map .....	6
3 Regional Geological Setting .....	9
4 Total Magnetic Field & Drill Hole Location Plan .....	13

### Tables

Table:	
1 Mineral Claims .....	5
2 Diamond Drill Hole Summary .....	7
3 Drill Hole Assay Data .....	12

### Plates

Plates:	
1 Property Geology .....	in pocket
2 Trench & Drill Hole Location Plan .....	in pocket

This report has been examined by  
the Geological Evaluation Unit  
under Section 53 (4) Yukon Quartz  
Mining Act and is allowed as  
representation work in the amount  
of \$ 12,800.00.

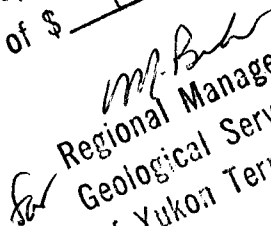
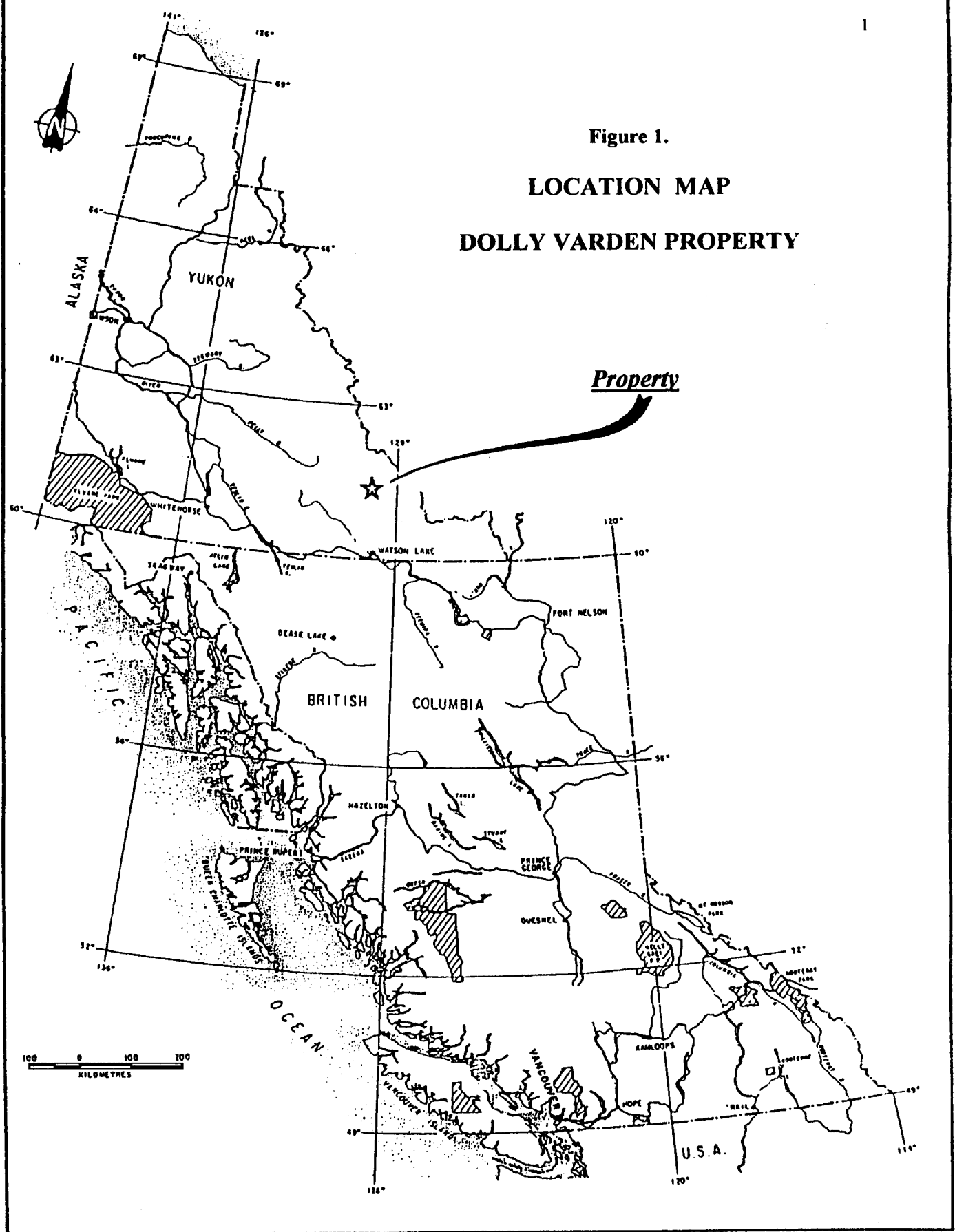
 Regional Manager, Exploration and  
Geological Services for Commissioner  
of Yukon Territory.

Figure 1.  
LOCATION MAP  
DOLLY VARDEN PROPERTY



## SUMMARY

Gee-Ten Ventures Inc. has an option to earn an interest in 32 mineral claims situated in one contiguous block centered 128 kilometres north of Watson Lake, in the Logan Mountains, Watson Lake Mining District (105H/2), Yukon Territory. The property is accessible by helicopter.

The ground is located in an area underlain by metasediments believed to be Upper Devonian to Mississippian in age. Easterly dipping mineralized bands containing sphalerite, galena, chalcopyrite, pyrite, pyrrhotite and scheelite, occur associated with quartzite horizons within the metasedimentary succession. The metasediments were intruded by Cretaceous quartz monzonite, which was responsible for developing the skarn mineralization. Lead isotope work on galena from the skarn bands gives an age of less than 70 million years and confirms that the mineralization is intrusive related. Structural evidence suggests that the host sequence has been folded into a southerly facing recumbent isocline. A linear easterly trending magnetic low is centered over the suspect hinge of this fold. This structure may thicken and enhance the mineral potential of the property.

Diamond drilling conducted during the 1999 field season intersected several of the mineralized bands. The best of which averaged 3.10% Zn, 2.33% Pb, 0.12% Cu and 2.33 gmt Ag, over 2.50 metres (8.2'), including: 21.40% Zn, 16.90% Pb, 1.18% Cu and 248.0 gmt Ag over 0.24 metres. These results demonstrate that potentially economic values occur on the property. Further work is therefore warranted to look for thicker accumulations of mineralization. In addition, further work should also focus on testing the property for thermal aureole or intrusion related gold deposits similar to the Pogo deposit in Alaska.

A program of airborne geophysics (magnetometer and EM surveys) and continued diamond drilling is recommended to continue evaluation of the mineralized zone.

## INTRODUCTION

This report compiles results of work conducted on the Dolly Varden property under the supervision of the writer for Gee-Ten Ventures Inc. during the period June 28 to July 6, 1999. The object of this work was to drill test geophysical anomalies associated with the known showings on the property.

### Location

The Dolly Varden property is centered 128 kilometres north of Watson Lake in the Logan Mountains, Watson Lake Mining District, Y.T. at latitude 61°08'N and longitude 128°40'W. The property is situated on map-sheet 105H/2. The ground straddles Dolly Varden creek valley and consists, in the central and western parts, of forested, gently sloping valley bottom to steeper alpine ranges in the east. Elevations range from about 900 to 1700 metres (2000 to 5600 feet) above sea level, with the main showing being at about 1300 metres (4250 feet) A.S.L.

### Access

The property is best accessed by helicopter from Watson Lake. A staging point, found where the Cantung highway crosses Dolly Varden creek, is 21 kilometres south of the claims and is suitable for slinging gear to the property. An old bulldozer trail leads to the claims from the Cantung highway, but it is overgrown in some areas.

### History

The Yukon Pacific Prospecting Group first acquired the property in 1964 as the AL claims. This group (Ostensoe, E.A., 1965) conducted mapping and magnetometer surveys on the property. In 1967 H. Kepper and Associates acquired the ground. Waterton-type airborne magnetometer, EM and radiometric surveys were conducted on the claims (H.S. Aikens et al., 1968). The ground was then optioned by Montana Mines Limited. Montana Mines conducted

reconnaissance geochemistry, ground magnetometer surveys and sampling in 1968 (B.C. Fulcher, 1969). In 1970, Welland Consolidated Mining Ltd. staked the area as the Queen claims, however no work was reported. In 1976 Cominco restaked the area as the MTB claims. Cominco conducted magnetometer and IP surveys in 1977 (A.R. Scott, 1977) as well as bulldozer trenching in 1979 (A.B. Mawer, 1980). In 1993 Alex Black acquired by staking the Lance 1- 6 claims and conducted a limited hand-trenching program for assessment purposes. In 1994, Mr. Black added the COX 1 - 16 and LANCE 7 - 12 claims. Later, during the 1994 field season, Amerlin Exploration Services Ltd. conducted a program of soil sampling and geophysics on the claims (Verley, 1994) as well as staking the LANCE 13 - 39 claims on behalf of Snowdrift Minerals Inc. Subsequently, Snowdrift Minerals Inc. was taken over by Reward Mining Corp. In 1996, Reward Mining drilled 2 core holes on the property. Reward then abandoned its interest in the claims.

## PROPERTY

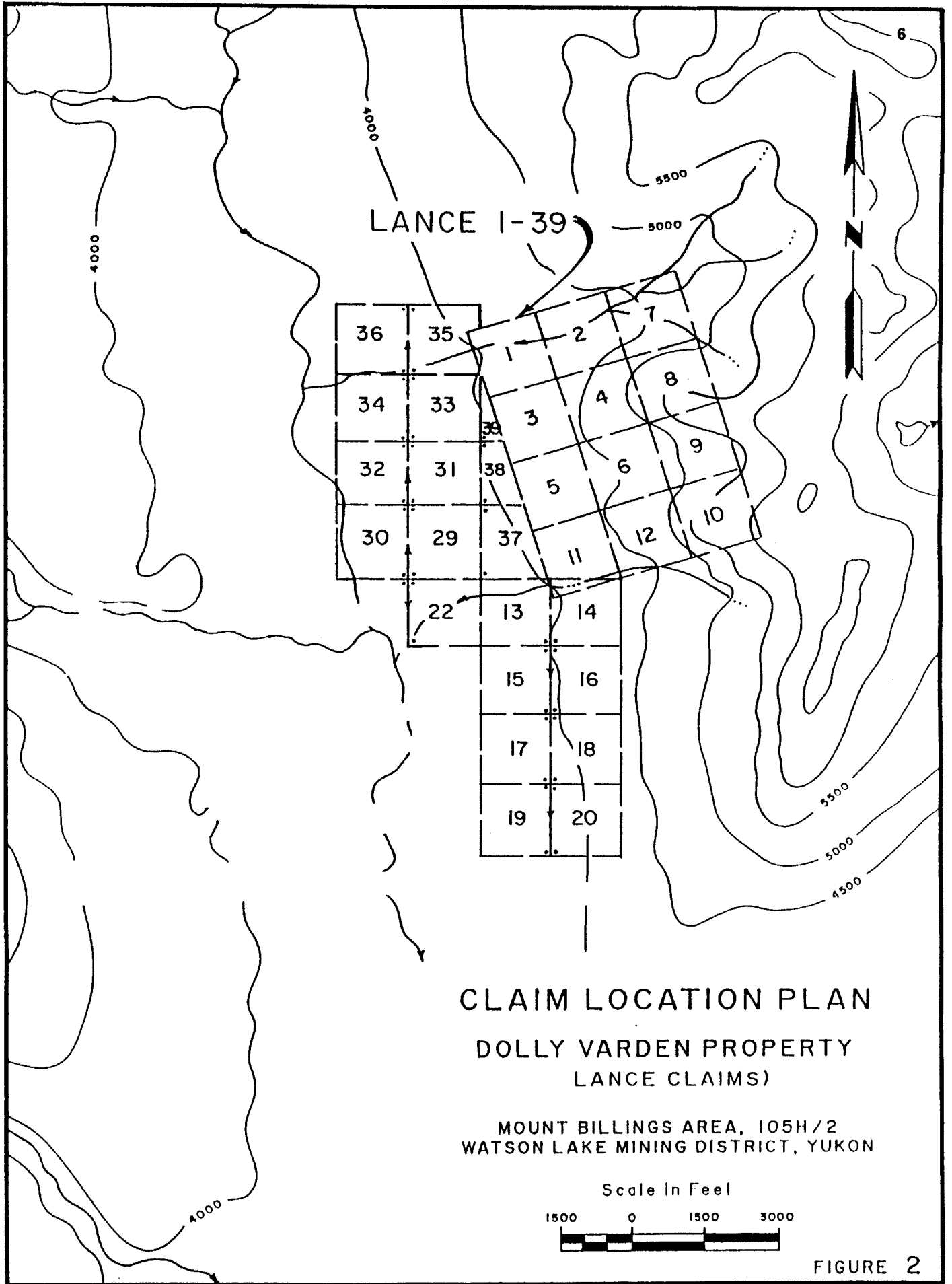
The property consists of a total of 32 contiguous, full sized mineral claims as tabulated below and illustrated on Figure 2. The claims are located in the Mount Billings area, Watson Lake Mining District, Y.T. (NTS 105H/2).

The Lance 1 - 39 claims are subject to an option agreement between Gee-Ten Ventures Inc. and the claim owners: Messrs. Alex Black and Lance Steigenberger.

**Table 1. MINERAL CLAIMS**

Claims	Grant Numbers	Expiry Date*
LANCE 1 - 6	YB15739-YB15744	June 19, 2008
LANCE 7 - 12	YB45922-YB45927	July 14, 2008
LANCE 13 - 20	YB56165-YB56172	Sept. 9, 2005
LANCE 22	YB56174	Sept. 9, 2005
LANCE 29 - 39	YB56181-YB56191	Sept. 9, 2005

\*Pending acceptance of assessment work.



**CLAIM LOCATION PLAN**  
**DOLLY VARDEN PROPERTY**  
**(LANCE CLAIMS)**

MOUNT BILLINGS AREA, 105H/2  
 WATSON LAKE MINING DISTRICT, YUKON

Scale in Feet



FIGURE 2

## DRILL PROGRAM

A 5 hole, 439 metre (1439'), diamond-drilling program was conducted on the Lance 2, 3 and 4 claims from June 28 to July 6, 1999. DJ Drilling Ltd. of Watson Lake, Yukon was the drill contractor. A Longyear LH-70 drill, rigged for NQ wire-line core drilling, was utilized.

The drill and ancillary equipment were mobilized to the site by helicopter from the Dolly Varden staging point using a Bell 206C helicopter contracted from the Watson Lake base of Trans North Helicopters.

Drilling commenced June 29 and was completed July 5, 1999. A four man drill crew that consisted of 2 drillers and 2 helpers split into teams operated in two 12 hour shifts.

Ground conditions encountered during drilling were variable. Phyllite encountered in the holes was relatively soft and quick to drill, but quartzite sections associated with skarn and sulphide mineralization were very hard, resulting in slow drilling through these intervals.

### Core Logging and Sampling:

Drill core was logged at the drill sites. Intersections containing skarn and sulphide mineralization were split on the property. Split portions of the core were sent to Pioneer Laboratories Inc., in New Westminster, B.C. for analysis and assay. All remaining drill core is stored on the property at each drill site.

The writer's drill logs are found in Appendix A, assay and analytical data in Appendix B.

**Table 2. Diamond Drill Hole Summary**

Hole No.	Northing*	Easting*	Elevation	Azim	Incl.	Over-burden	Total Depth	Date Begun	Date Finished
99-1	6778062	517585	1311 m	-	-90°	6.10	97.54	Jun. 29/99	Jun. 30/99
99-2	6778062	517585	1311 m	270°	-60°	5.18	76.81	Jun. 30/99	July 01/99
99-3	6778078	517634	1316 m	-	-90°	6.40	79.25	July 01/99	July 02/99
99-4	6778078	517634	1316 m	270°	-60°	7.00	78.33	July 02/99	July 03/99
99-5	6777993	517480	1305 m	-	-90°	3.05	106.68	July 04/99	July 05/99

\*UTM Grid, North American Datum, 1927 Zone 9.

## GEOLOGY

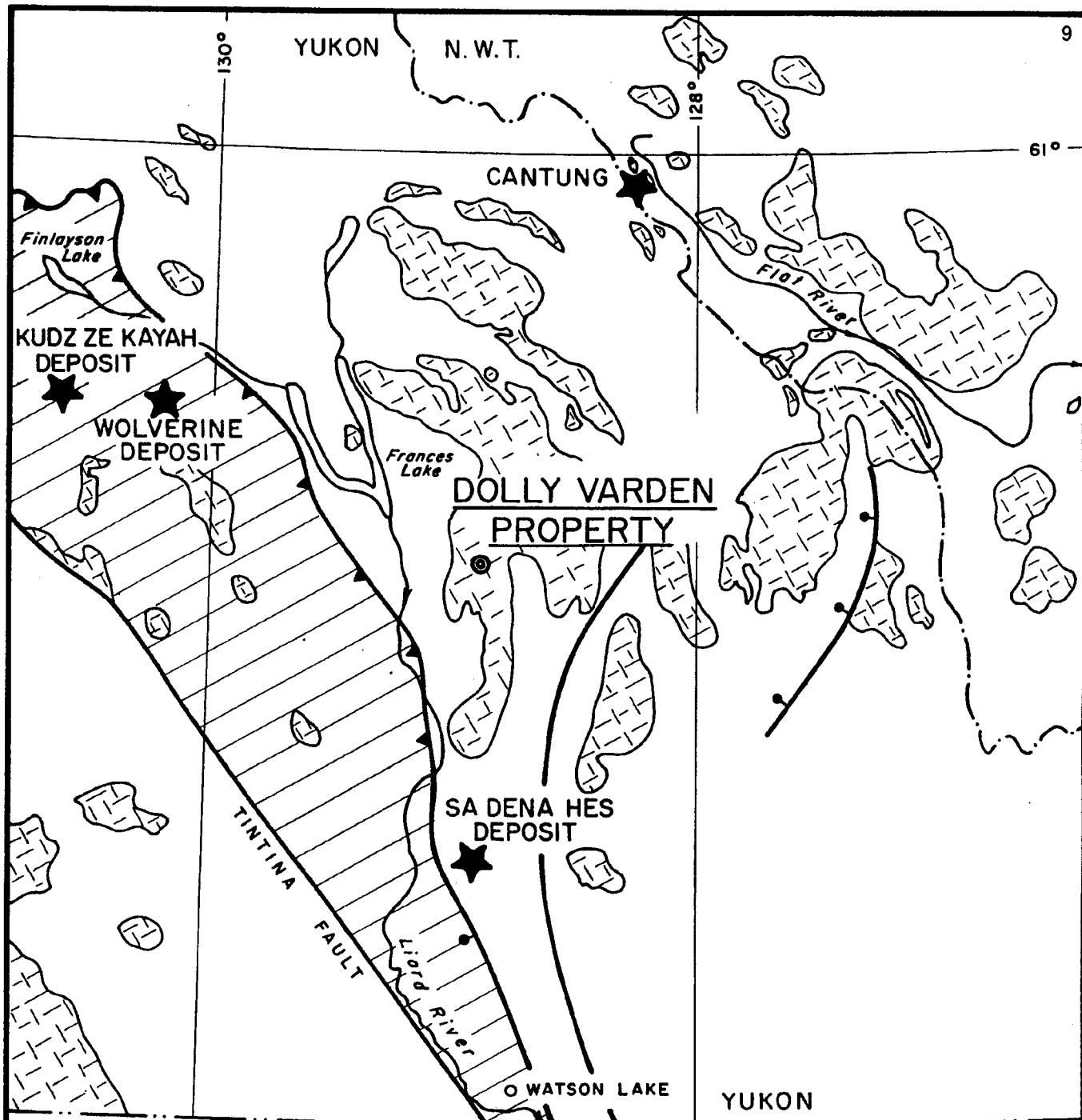
### Regional:

The property is situated in the northern extension of the Omineca belt east of the Tintina fault zone (Figure 3). Regionally, the area is characterized by a succession of Proterozoic and Paleozoic miogeoclinal strata, that is: sediments - fine clastics and carbonates - that were probably derived from and deposited onto ancestral North America. Numerous syntectonic and post accretionary, Cretaceous to Tertiary age, plutons intrude this succession (Wheeler et al., 1989). This plutonism has produced variable degrees of regional and contact metamorphism through out the area, resulting in the development of a variety of mineral deposits. The miogeoclinal prism is overlain by allocthonous sediments and volcanics of the Paleozoic Yukon-Tanana terrane, to the west (Mortensen, 1992).

### Property:

The property is underlain by a highly deformed succession of Devonian-Mississippian age metasediments, which to the east are intruded by Cretaceous age quartz monzonite.

The metasediments consist of medium to dark grey phyllites to very fine-grained schists that contain interbedded fine-grained white to pale grey quartz-rich bands. The quartz-bands range from 0.5 to 2 cm in thickness. The phyllite has been subdivided, based on the content of quartz bands, into *Phyllite* that contains less than 25% quartz bands and *Quartz-banded Phyllite* containing greater than 25% quartz-bands. The phyllites contain finely disseminated pyrite and pyrrhotite and are rusty weathering near the contact with the quartz monzonite stock. White to pale grey, fine-grained quartzite layers occur within the phyllite sequence. The quartzites vary from 1 to 9 metres in thickness. They locally contain calcareous sections, which in some areas have been altered to wollastonite. Silver-lead-zinc mineralization



MID-CRETACEOUS - TERTIARY (?)



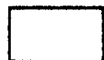
SYN - AND POST-TECTONIC  
GRANITIC INTRUSIVES

PALEOZOIC

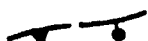


YUKON - TANANA TERRANE  
METASEDIMENTS AND VOLCANICS  
MAY INCLUDE SOME SLIDE MT. TERRANE

PRECAMBRIAN - PALEOZOIC



ANCESTRAL NORTH AMERICA SEDIMENTS



THRUST AND NORMAL FAULTS

GEOLOGICAL SETTING  
DOLLY VARDEN  
PROPERTY  
YUKON TERRITORY



FIGURE 3

is intimately associated with the quartzite layers. Contacts between the phyllite and quartzite units are sharp and commonly sheared. The original nature of the quartzites are questionable: were they simply quartz sands, or chemical sediments, or were they formed from hydrothermal fluids generated by the intrusive? The writer favors the later origin.

Small-scale recumbent, isoclinal folds, having easterly trending fold axes, occur in exposures of the phyllites immediately east of the Creek zone. In drill core small-scale "M" folds of quartz bands are relatively common. These structural features are interpreted as indicating that the phyllite-quartzite succession has been folded into a south verging recumbent isocline (F1). Geophysical surveys conducted on the property (Power, 1994) indicated that a pronounced linear, easterly trending magnetic low underlies the area of the Creek zone (Figure 4). This magnetic low may reflect the low magnetic susceptibility of the quartzite member. The linear shape of the low may indicate tectonic thickening, by the recumbent isoclinal fold, of the quartzite in this area. If this is the case it is possible that the mineralized bands may also thicken in this area.

A later phase of folding (F2) along north-northeast axes and inferred from kinking of the foliation in the phyllite, has domed the quartzite sequence upwards resulting in its exposure in the area trenched along the creek. If the mineralized zone were a relatively continuous easterly dipping horizon it should be traceable to the south. No exposures of the mineralized horizon occur to the south. The results of geochemical soil sampling in this area are not anomalous providing further evidence that the horizon does not continue in this direction. In addition, drill hole 99-5 failed to intersect mineralization in the area to the south of the inferred hinge zone.

The quartz monzonite pluton (Kqm) that intrudes the phyllites on the eastern part of the property is a blocky grey-weathering, biotite-hornblende bearing, medium-grained equigranular to weakly porphyritic rock. Near or at the contact with the phyllites the quartz monzonite is typically rusty weathering and locally has pyrrhotite-rich sections. The intrusive contact is situated approximately 500 metres from the Creek zone mineralization. This intrusive is believed

to have been responsible for the skarn mineral assemblage and associated massive sulphide mineralization located on the property.

**Mineralization:**

On the Dolly Varden property the silver-lead-zinc+/-copper-tungsten mineralization located within quartzite layers in the phyllite sequence on the northeastern part of the property at the “Creek zone”. Mineralized float boulders were found on the property during initial prospecting by Cominco (Mawer, 1979). Cominco trenched the source area of the float and exposed a mineralized band over a strike length of 150 metres. Attempts at exposing the horizon beyond this appear to have met with difficulty because of increasing thickness of overburden.

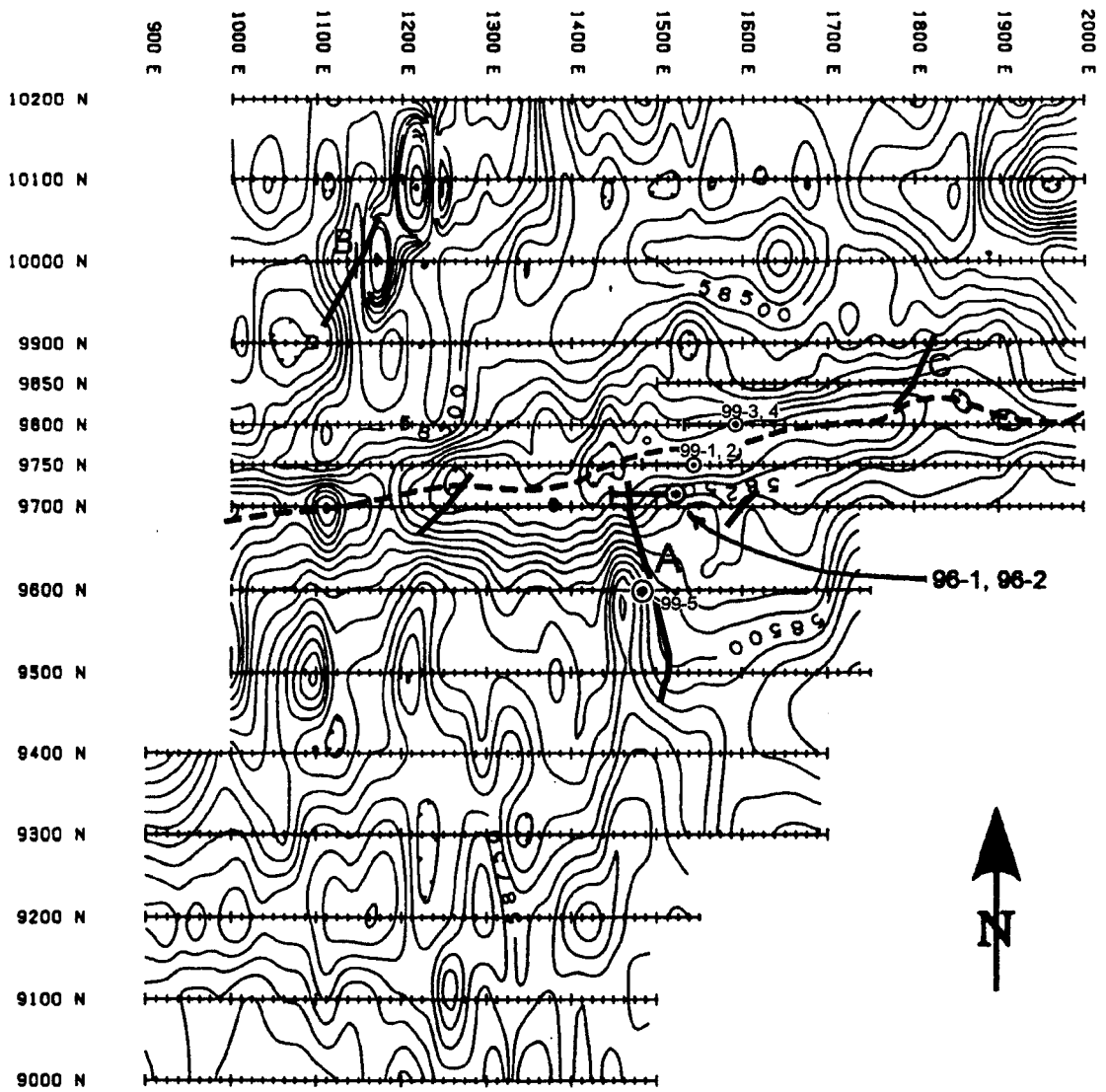
During the 1996 season 2 diamond drill holes, from the same setup, were drilled to test the skarn horizons located by the trenching. This activity was successful in locating a number of mineralized bands (Verley, 1997). In 1999, 5 holes additional were put into the property to test continuity of mineralization along the magnetic low feature as well as to test one of the EM conductors (Figure 4). The best intercept in 1999 was in hole 99-1, from 48.55 to 51.05 metres, and averaged 3.10% Zn, 2.33% Pb, 0.12% Cu and 2.33 gmt Ag, over 2.50 metres (8.2’), including: 21.40% Zn, 16.90% Pb, 1.18% Cu and 248.0 gmt Ag over 0.24 metres

Mineralization at the Creek zone occurs either as massive bands of sphalerite, galena and chalcopyrite with minor scheelite in contact with quartzite or as disseminations of sphalerite and galena within quartzite bands or as disseminations of sphalerite with lesser galena in diopside-rich layers. Lead isotope work conducted at the University of B.C. on 2 galena-bearing samples from drill hole 96-1 at depths of 55.62 and 68.58 metres returned  $^{206}\text{Pb}/^{204}\text{Pb}$  ratios of 19.44159 and 19.46115 and  $^{207}\text{Pb}/^{204}\text{Pb}$  ratios of 15.73011 and 15.73775 indicating the the mineralization has an age of less than 70 million years (C.I. Godwin, personal communication). This result clearly ties the mineralization to the intrusive even though the mineralization is not in direct contact with an intrusive body. Relatively high bismuth values (up

to 578 ppm) and anomalous gold (up to 645 ppb) associated with the mineralization suggest that there is potential, that has not been tested, for finding thermal aureole or intrusion related gold deposits on the property. An example of such deposits is the Pogo in Alaska, which is currently being developed by Teck and Sumitomo Mining Corp. Pogo has a resource estimated at 5,200,000 oz of gold (Smith et al 1999). The deposit is contained in near flat-lying lenses of hydrothermal quartz. Gold is associated with high bismuth.


**Table 3. Drill Hole Assay Data**

Hole No.	Sample No.	Interval (m)			Zn %	Pb %	Cu %	Ag G/T
		From	To	Width				
99-1	8962	48.55	- 50.14	1.59	0.72	0.28	0.01	8.5
99-1	8963	50.14	- 50.38	0.24	<b>21.40</b>	<b>16.90</b>	<b>1.18</b>	<b>248.0</b>
99-1	8964	50.38	- 51.05	0.67	2.20	1.98	0.01	38.6
99-1	<b>Averaged</b>	<b>48.55</b>	<b>- 51.05</b>	<b>2.50</b>	<b>3.10</b>	<b>2.33</b>	<b>0.12</b>	<b>2.33</b>
99-1	8965	57.45	- 58.45	1.00	0.92	0.10	0.01	10.5
99-1	8966	58.45	- 59.28	0.83	0.56	0.05	0.01	5.9
99-1	8967	68.89	- 70.10	1.21	0.59	0.41	0.01	44.1
99-1	8968	70.10	- 70.87	0.77	2.04	0.09	0.01	11.8
99-1	8969	70.87	- 72.72	1.85	0.81	0.05	0.01	11.6
99-1	8971	74.67	- 75.90	1.23	0.49	0.32	0.01	8.8
99-2	8973	48.16	- 50.55	2.39	2.42	0.29	0.03	31.5
99-2	8975	69.04	- 70.25	1.21	2.06	0.92	0.23	38.1
99-2	8976	70.25	- 70.47	0.22	<b>8.64</b>	<b>9.20</b>	<b>0.46</b>	<b>132.0</b>
99-2	8977	70.47	- 71.78	1.31	0.24	0.34	0.01	4.6
99-2	<b>Averaged</b>	<b>69.04</b>	<b>- 70.47</b>	<b>1.43</b>	<b>3.07</b>	<b>2.19</b>	<b>0.27</b>	<b>52.55</b>
99-2	8979	72.30	- 72.85	0.55	1.42	1.86	0.01	2.9
99-2	8980	72.85	- 74.13	1.28	0.60	0.90	0.01	4.2
99-3	8982	73.24	- 74.37	1.13	2.84	0.08	0.03	15.6



⊙ 96-1 Diamond Drill Hole Location       EM Conductor Axis

Note: Refer to Plate 1 for location with respect to claims.

 - Axis of magnetic field low



Contour interval: 50 nT

SNOWDRIFT MINERALS INC.	Claims: LANCE F-39	
DOLLY VARDEN PROPERTY	Mining District: Watson Lake, Y.T.	
Total Magnetic Field	NTS: 105 H2	Scale: 1:3300
AMEROK GEOPHYSICS	Drawn by: MAP.	
	DATE: 12 SEP 94	Figure 4

## REFERENCES

- Aikins, H.S., R.C. Gifford, P. Sevensma, 1968: Report on Airborne Geophysical Survey, KF and DF Claims, for H. Kepper & Associates, Indian & Northern Affairs Canada report no. 018909.
- Fulcher, B.C., 1969: Geochemical, Geological and Geophysical Report on the Dolly Varden Property, for Montana Mines Limited, Indian & Northern Affairs report no. 060169.
- Mawer, A.B., 1979: Work Proposal on the MTB claim group, internal Cominco report.
- Mawer, A.B., 1980: Assessment Report for Bulldozer Trenching on MTB Mining Claims, for Cominco Ltd., Indian & Northern Affairs Canada report no. 090934.
- Mortensen, J., 1992: Pre-Mid-Mesozoic Tectonic Evolution of the Yukon-Tanana Terrane, Yukon and Alaska, Tectonics, Vol. 11, pp 836-853.
- Ostensoe, E.A., 1965: Report on Magnetometer Survey with Notes on Geology, for Yukon Pacific Prospecting Group, Indian & Northern Affairs Canada report no. 017940.
- Power, M., 1994: HLEM and Magnetometer Surveys of the Dolly Varden Property, Frances Lake Area, Yukon Territory, for Snowdrift Minerals Inc.
- Scott, A.R., 1977: Induced Polarization and Magnetics Survey, MTB Claims, for Cominco Ltd., Indian & Northern Affairs Canada report no. 090209.
- Smith, M. and J.F.H. Thompson, 1999: Geology of the Liese Zone, Pogo Property, East-Central Alaska, SEG Newsletter, No. 38, July 1999.
- Wheeler, J.O. and A.J. Brookfield, H. Gabrielse, J.W.H. Monger, H.W. Tipper, G.J. Woodsworth, 1989: Terrane Map of the Canadian Cordillera, Geol. Survey of Canada, O.F. 1894.
- Verley, C.G., 1994: Geological, Geochemical and Geophysical Report on the Dolly Varden Property, for Snowdrift Minerals Inc.
- Verley, C.G., 1997: Geochemical and Diamond Drill Report on the Dolly Varden Property, for Reward Mining Corp.

**APPENDIX A**  
**DRILL LOGS**

# DRILL LOG LEGEND

## Dolly Varden Property

### Lithology:

#### Quaternary:

OB Overburden: glacial till.


#### Upper Devonian-Mississippian:


**QTZ<25%** Phyllite, with sand/quartzite bands < 25%

**QTZ>25%** Phyllite, with sand/quartzite bands > 25%

**QTZ** Quartzite

### Structure:

 f70° Angle of foliation as measured from core axis = 0°

 shear or fault zone.

 breccia

### Mineral:

chl.	chlorite	
cpy	chalcopyrite	
CuOx	copper oxides, malachite	
Dp	diopside	
Epid.	epidote	
PbS	galena	Tr. = trace
Po	pyrrhotite	
Py	pyrite	
Wo	wollastonite	
ZnS	sphalerite	

### Alteration:

chl.	chloritization
seric.	sericitization
SK <sub>D</sub>	skarn, diopside-bearing

**DIAMOND DRILL SUMMARY LOG**

**GEE-TEN VENTURES INC. - DOLLY VARDEN PROPERTY**

**Dolly Varden Creek Area, Yukon**

Hole No.:	99-1	Northing:	6778062N
Claim:	LANCE 4	Easting:	517585E
Azimuth:	-	Elevation:	1311 m
Inclination:	-90°	Depth:	97.54 m (320')

Interval		Geology	Significant Assays					
To	From		To	From	Zn %	Pb %	Cu %	Ag g/T
0.0	5.18	Overburden						
5.18	23.17	<i>Upper Devonian-Mississippian:</i> Phyllite (>25% quartz bands).						
23.17	47.39	Phyllite (<25% quartz bands).						
47.39	50.14	Quartzite						
50.14	51.05	Skarn massive sulphide skarn: 50.14 - 50.38 diopside skarn: 50.38 - 51.05	48.55	50.14	0.72	0.28	0.01	8.5
			50.14	50.38	<b>21.40</b>	<b>16.90</b>	<b>1.18</b>	<b>248.0</b>
			50.38	51.05	2.20	1.98	0.01	38.6
51.05	57.45	Phyllite (<25% quartz bands).						
57.45	58.45	Skarn (diopside)						
58.45	63.48	Phyllite (<25% quartz bands).						
63.48	72.72	Quartzite	68.98	70.10	0.59	0.41	0.01	44.1
			70.10	70.87	2.04	0.09	0.01	11.8
72.72	75.90	Skarn (diopside)	70.87	72.72	0.81	0.05	0.01	11.6
75.90	76.81	Quartzite						
76.81	97.54	Phyllite						











**Diamond Drill Log**  
**Gee-Ten Ventures Inc. - Dolly Varden Property**

Hole No.: 99-1

Page: 6 of 13

DEPTH (m)	LITHOLOGY	STRUCTURE	MINERAL	ALTERATION	COMMENTS	Assay Data				RECOVERY (%)
						Zn %	Pb %	Ag g/t	W %	
					DESCRIPTIVE GEOLOGY					
40					PHYLLITE continued.					
41					39.62 m (130') ~30 cm sheared zone					
42										
43										
44										
45				Seric						
46										
47				Seric	46.33 m (152') phyllite is bleached to a buff colour. Bleaching is gradational from ~44.50 m (146')					

*70-75° dip*

f63° ↗





**Diamond Drill Log**  
**Gee-Ten Ventures Inc. - Dolly Varden Property**

Hole No.: 99-1

Page: 10 Of 13

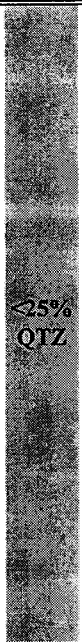
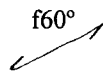

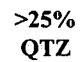


D E P T H  (m)	L I T H O L O G Y	S T R U C T U R E	M I N E R A L	A L T E R A T I O N	C O M M E N T S	A s s a y    D a t a				R E C O V E R Y  (%)
						Zn %	Pb %	Cu %	Ag gm/T	
					D E S C R I P T I V E    G E O L O G Y					
72	QTZ				QUARTZITE continued.	0.81	0.05	0.01	11.6	...
73	SK		Tr ZnS	SK	72.72 to 75.90 m (238.6' - 249') Dark Skarn (diopside? Or epidote after diopside?), fine-grained with <5% disseminated ZnS, trace PbS, Py; lower 50 cm has >5% ZnS.					...
74			Tr PbS				695*	135*	8*	2.8*
75			ZnS ZnS			0.49	0.32	0.01	8.8	...
76	QTZ				75.90 to 76.81 m (249' - 252') quartz-calcite band with high angle calcite-filled fracture/shear					...
77	<25% QTZ		ZnS		PHYLLITE 76.81 to E.O.H.					...
78						77.42 m (254') 8 cm wide creamy calcite band with >5% dark brown ZnS; zone is offset ~5 cm by high angle calcite filled shear				
79										...

*Handwritten notes:*  
 ~~~~~  
 f60°

**Diamond Drill Log**  
**Gee-Ten Ventures Inc. - Dolly Varden Property**

Hole No.: 99-1

Page: 11 of 13

| DEPTH<br>(m) | LITHOLOGY                                                                           | STRUCTURE                                                                          | MINERAL  | ALTERATION                                                                          | COMMENTS                                                                    | Assay Data |      |        |     | RECOVERY (%) |  |  |
|--------------|-------------------------------------------------------------------------------------|------------------------------------------------------------------------------------|----------|-------------------------------------------------------------------------------------|-----------------------------------------------------------------------------|------------|------|--------|-----|--------------|--|--|
|              |                                                                                     |                                                                                    |          |                                                                                     |                                                                             | Zn %       | Pb % | Ag g/t | W % |              |  |  |
| 80           |   |  |          |                                                                                     | PHYLLITE: continued                                                         |            |      |        |     |              |  |  |
| 81           |                                                                                     |                                                                                    |          |                                                                                     |                                                                             |            |      |        |     |              |  |  |
| 82           |                                                                                     |                                                                                    |          |                                                                                     |                                                                             |            |      |        |     |              |  |  |
| 83           |                                                                                     |                                                                                    |          |                                                                                     |                                                                             |            |      |        |     |              |  |  |
| 84           |  |                                                                                    |          |                                                                                     | 84.13 to 84.43 m (276' - 277') qtz-cal band                                 |            |      |        |     |              |  |  |
| 85           |                                                                                     |                                                                                    |          |                                                                                     |                                                                             |            |      |        |     |              |  |  |
| 86           |  |                                                                                    |          |                                                                                     | 85.43 to 88.39 m (281' - 290') relatively qtz-rich section.                 |            |      |        |     |              |  |  |
| 87           |  |                                                                                    | Zns, PbS |  | 86.87 m (285') 15 cm dark skarn band with dissem. ZnS (~5%), trace PbS & Py |            |      |        |     |              |  |  |

**Diamond Drill Log**  
**Gee-Ten Ventures Inc. - Dolly Varden Property**

Hole No.: 99-1

Page: 12 of 13

| DEPTH<br>(m) | LITHOLOGY   | STRUCTURE | MINERAL | ALTERATION | COMMENTS                                                                       | Assay Data |      |        |     | RECOVERY (%) |
|--------------|-------------|-----------|---------|------------|--------------------------------------------------------------------------------|------------|------|--------|-----|--------------|
|              |             |           |         |            |                                                                                | Zn %       | Pb % | Ag g/t | W % |              |
| 88           | >25%<br>QTZ |           |         |            | PHYLLITE continued.                                                            |            |      |        |     |              |
| 89           |             |           |         |            | 88.39 to 90.68 m (290' - 297.5') qtz-cal band: white to pale grey              |            |      |        |     |              |
| 90           | <25%<br>QTZ |           | Po      |            | 90.68 m - 4cm epidote skarn band with trace Po                                 |            |      |        |     |              |
| 91           |             |           |         |            | 92.66 to 92.96 m (304' - 305') shear                                           |            |      |        |     |              |
| 92           |             |           | ZnS     |            | 93.00 - 93.45 m (305' - 306.5') breccia vein with creamy cal-qtz;<br>trace ZnS |            |      |        |     |              |
| 93           |             |           |         |            |                                                                                |            |      |        |     |              |
| 94           |             |           |         |            |                                                                                |            |      |        |     |              |
| 95           |             |           |         |            |                                                                                |            |      |        |     |              |

f60°

NO MINERALOGY  
ANALYSIS



**DIAMOND DRILL SUMMARY LOG**

**GEE-TEN VENTURES INC. - DOLLY VARDEN PROPERTY**

**Dolly Varden Creek Area, Yukon**

|              |             |            |                |
|--------------|-------------|------------|----------------|
| Hole No.:    | 99-2        | Northing:  | 6778062N       |
| Claim:       | LANCE 2 & 4 | Easting:   | 517585E        |
| Azimuth:     | 270°        | Elevation: | 1311 m         |
| Inclination: | -60°        | Depth:     | 76.81 m (252') |

| Interval |       | Geology                                                               | Significant Assays |             |             |             |       |
|----------|-------|-----------------------------------------------------------------------|--------------------|-------------|-------------|-------------|-------|
| To       | From  |                                                                       | Zn %               | Pb %        | Cu %        | Ag g/T      |       |
| 0.0      | 5.18  | Overburden                                                            |                    |             |             |             |       |
| 5.18     | 18.10 | <i>Upper Devonian-Mississippian:</i><br>Phyllite (>25% quartz bands). |                    |             |             |             |       |
| 18.10    | 30.48 | Phyllite (<25% quartz bands).                                         |                    |             |             |             |       |
| 30.48    | 42.98 | Phyllite (>25% quartz bands).                                         |                    |             |             |             |       |
| 42.98    | 48.16 | Phyllite (<25% quartz bands).                                         |                    |             |             |             |       |
| 48.16    | 50.55 | Quartzite                                                             | 48.16 - 50.55      | 2.42        | 0.29        | 0.03        | 31.5  |
| 50.55    | 63.09 | Phyllite (<25% quartz bands).                                         |                    |             |             |             |       |
| 63.09    | 69.04 | Quartzite                                                             |                    |             |             |             |       |
| 69.04    | 73.76 | Skarn                                                                 | 69.04 - 70.25      | 2.06        | 0.92        | 0.23        | 38.1  |
|          |       | diopside skarn: 69.04 - 70.25                                         | 70.25 - 70.47      | <b>8.64</b> | <b>9.20</b> | <b>0.46</b> | 132.0 |
|          |       | massive sulphide skarn: 70.25 - 70.47                                 | 70.47 - 71.78      | 0.24        | 0.34        | 0.01        | 4.6   |
|          |       | diopside skarn: 70.47 - 71.78                                         |                    |             |             |             |       |
|          |       | diopside skarn: 72.30 - 72.85                                         | 72.30 - 72.85      | 1.42        | 1.86        | 0.01        | 2.9   |
|          |       | diopside skarn: 73.46 - 73.76                                         |                    |             |             |             |       |
| 73.76    | 76.81 | Phyllite (>25% quartz bands).                                         |                    |             |             |             |       |









**Diamond Drill Log**  
**Gee-Ten Ventures Inc. - Dolly Varden Property**

Hole No.: 99-1

Page: 9 of 13

| DEPTH<br>(m) | LITHOLOGY | STRUCTURE | MINERAL | ALTERATION        | COMMENTS                                                               | Assay Data |         |         |            | RECOVERY<br>(%) |
|--------------|-----------|-----------|---------|-------------------|------------------------------------------------------------------------|------------|---------|---------|------------|-----------------|
|              |           |           |         |                   |                                                                        | Zn<br>%    | Pb<br>% | Cu<br>% | Ag<br>gm/T |                 |
| 64           | QTZ       |           |         |                   | 63.48 to 72.72 m (208.3' - 238.6') QUARTZITE                           |            |         |         |            |                 |
| 65           | QTZ       |           |         |                   |                                                                        |            |         |         |            |                 |
| 66           |           |           | ZnS     | SK <sub>w</sub>   | 65.53 m trace disseminated black ZnS with calcite/wollastonite.        |            |         |         |            |                 |
| 67           |           |           | ZnS     | SK <sub>D/W</sub> | 66.75 m dark Skarn ~2 cm wide; contains ZnS. Enveloped by qtz/wo skarn |            |         |         |            |                 |
| 68           | QTZ       |           |         |                   |                                                                        | 40*        | 15*     | 2*      | 0.3*       |                 |
| 69           |           |           | ZnS     |                   |                                                                        |            |         |         |            |                 |
| 70           |           |           | ZnS     |                   | 68.89 to 70.71 m (226' - 232') disseminated ZnS with epidote           | 0.59       | 0.41    | 0.01    | 44.1       |                 |
| 71           |           |           | ZnS     |                   |                                                                        | 2.04       | 0.09    | 0.01    | 11.8       |                 |

\* denotes values in ppm under Assay Data

DESCRIPTIVE GEOLOGY



**Diamond Drill Log**  
**Gee-Ten Ventures Inc. - Dolly Varden Property**

Hole No.: 99-2

Page: 6 of 10

| DEPTH<br>(m)        | LITHOLOGY   | STRUCTURE | MINERAL | ALTERATION | COMMENTS                                                                                                                      | Assay Data |      |        |     | RECOVERY (%) |
|---------------------|-------------|-----------|---------|------------|-------------------------------------------------------------------------------------------------------------------------------|------------|------|--------|-----|--------------|
|                     |             |           |         |            |                                                                                                                               | Zn %       | Pb % | Ag g/t | W % |              |
| DESCRIPTIVE GEOLOGY |             |           |         |            |                                                                                                                               |            |      |        |     |              |
| 40                  |             |           |         |            | PHYLLITE continued.<br>39.01 m (128') 10 cm shear                                                                             |            |      |        |     |              |
| 41                  | >25%<br>QTZ |           |         |            |                                                                                                                               |            |      |        |     |              |
| 42                  |             |           |         |            |                                                                                                                               |            |      |        |     |              |
| 43                  |             |           |         |            | 42.98 m (141') phyllite starting to become bleached . . . increasing in intensity to 48.16 m (158') also has few quartz bands |            |      |        |     |              |
| 44                  |             |           |         | Seric      |                                                                                                                               |            |      |        |     |              |
| 45                  | <25%<br>QTZ |           |         |            |                                                                                                                               |            |      |        |     |              |
| 46                  |             |           |         | Seric      |                                                                                                                               |            |      |        |     |              |
| 47                  |             |           |         |            |                                                                                                                               |            |      |        |     |              |

f50° ↗

f55° ↗



**Diamond Drill Log**  
**Gee-Ten Ventures Inc. - Dolly Varden Property**

Hole No.: 99-2

Page: 8 of 10

| DEPTH<br>(m) | LITHOLOGY   | STRUCTURE | MINERAL | ALTERATION | COMMENTS                                                                                              | Assay Data |         |           |        | RECOVERY<br>(%) |
|--------------|-------------|-----------|---------|------------|-------------------------------------------------------------------------------------------------------|------------|---------|-----------|--------|-----------------|
|              |             |           |         |            |                                                                                                       | Zn<br>%    | Pb<br>% | Ag<br>g/t | W<br>% |                 |
|              |             |           |         |            | * denotes values in ppm under Assay Data<br><br>_____<br>DESCRIPTIVE GEOLOGY                          |            |         |           |        |                 |
| 56           | QTZ<br><25% |           |         | Seric      | PHYLLITE continued.                                                                                   |            |         |           |        |                 |
| 57           |             |           |         |            | 57.00 m (187') Alteration (bleaching) is diminishing; small clay-filled slip at 187.3'                |            |         |           |        |                 |
| 58           |             |           |         |            |                                                                                                       |            |         |           |        |                 |
| 59           |             |           |         |            | 59.44 to 59.74 m (195' - 196') quartz-wollastonite band                                               |            |         |           |        |                 |
| 60           |             |           |         |            | 60.20 to 61.87 m (197.5' - 203') qtz band, lower 40 cm: qtz-wo primary phyllite not bleached on walls |            |         |           |        |                 |
| 61           | QTZ<br><25% |           |         |            |                                                                                                       |            |         |           |        |                 |
| 62           |             |           |         |            |                                                                                                       |            |         |           |        |                 |
| 63           |             |           |         |            |                                                                                                       |            |         |           |        |                 |

*Handwritten notes:*  
 200-200-200-200-200  
 f65°

**Diamond Drill Log**  
**Gee-Ten Ventures Inc. - Dolly Varden Property**

Hole No.: 99-2

Page: 9 of 10

| DEPTH<br>(m) | LITHOLOGY   | STRUCTURE | MINERAL     | ALTERATION      | COMMENTS                                                                                                                                                                                             | Assay Data |         |         |            | RECOVERY<br>(%) |
|--------------|-------------|-----------|-------------|-----------------|------------------------------------------------------------------------------------------------------------------------------------------------------------------------------------------------------|------------|---------|---------|------------|-----------------|
|              |             |           |             |                 |                                                                                                                                                                                                      | Zn<br>%    | Pb<br>% | Cu<br>% | Ag<br>gm/T |                 |
|              |             |           |             |                 | * denotes values in ppm under Assay Data                                                                                                                                                             |            |         |         |            |                 |
|              |             |           |             |                 | DESCRIPTIVE GEOLOGY                                                                                                                                                                                  |            |         |         |            |                 |
| 64           |             |           |             |                 | PHYLLITE continued.<br>63.09 to 69.04 m (206' - 226.5')<br>Quartz bands with some phyllite intervals (~66.14 to 66.75 m)<br>Some sections with Wo; lower part, clean white quartz (67.04 to 69.04 m) |            |         |         |            |                 |
| 65           | QTZ<br>>25% |           |             |                 |                                                                                                                                                                                                      |            |         |         |            |                 |
| 66           |             |           |             |                 |                                                                                                                                                                                                      |            |         |         |            |                 |
| 67           |             |           |             |                 |                                                                                                                                                                                                      |            |         |         |            |                 |
| 68           | QTZ         |           |             |                 |                                                                                                                                                                                                      | 141*       | 82*     | 5*      | 0.3*       |                 |
| 69           | SK          |           |             |                 | 69.04 to 70.25 m (226.5' - 230.5')<br>Dark green skarn band (diopside±epidote±garnet) with intermittent disseminations & blotchy patches of ZnS-FeS <sub>2</sub> -Cpy-PbS aggregates.                | 2.06       | 0.92    | 0.23    | 38.1       |                 |
| 70           |             |           | ZnS/PbS/Cpy | SK <sub>2</sub> | 70.25 to 70.47 m (230.5' - 231.4') 25 cm band of massive sulphide: ZnS-PbS-Cpy                                                                                                                       | 8.64       | 9.20    | 0.46    | 132.0      |                 |
| 71           |             |           | ZnS/PbS/Cpy |                 | 70.47 to 71.78 m (231.4' - 235.5') dark green skarn w. dissem. ZnS/PbS/Py                                                                                                                            |            |         |         |            |                 |



**DIAMOND DRILL SUMMARY LOG**

**GEE-TEN VENTURES INC. - DOLLY VARDEN PROPERTY**

**Dolly Varden Creek Area, Yukon**

|              |         |            |                |
|--------------|---------|------------|----------------|
| Hole No.:    | 99-3    | Northing:  | 6778078N       |
| Claim:       | LANCE 2 | Easting:   | 517634E        |
| Azimuth:     | -       | Elevation: | 1316 m         |
| Inclination: | -90°    | Depth:     | 79.25 m (260') |

| Interval |         | Geology                                                               | Significant Assays |      |      |        |      |
|----------|---------|-----------------------------------------------------------------------|--------------------|------|------|--------|------|
| To       | From    |                                                                       | Zn %               | Pb % | Cu % | Ag g/T |      |
| 0.0      | - 6.40  | Overburden                                                            |                    |      |      |        |      |
| 6.40     | - 21.38 | <i>Upper Devonian-Mississippian:</i><br>Phyllite (>25% quartz bands). |                    |      |      |        |      |
| 21.38    | - 28.96 | Phyllite (<25% quartz bands).                                         |                    |      |      |        |      |
| 28.96    | - 32.92 | Quartzite                                                             |                    |      |      |        |      |
| 32.92    | - 47.09 | Phyllite (<25% quartz bands).                                         |                    |      |      |        |      |
| 47.09    | - 50.90 | Quartzite                                                             |                    |      |      |        |      |
| 50.90    | - 62.48 | Phyllite (<25% quartz bands).                                         |                    |      |      |        |      |
| 62.48    | - 66.29 | Phyllite (>25% quartz bands).                                         |                    |      |      |        |      |
| 66.29    | - 73.24 | Quartzite                                                             |                    |      |      |        |      |
| 73.24    | - 76.81 | Skarn (diopside)                                                      | 73.24 - 74.37      | 2.84 | 0.08 | 0.03   | 15.6 |
| 76.81    | - 79.25 | Phyllite (>25% quartz bands).                                         |                    |      |      |        |      |

**Diamond Drill Log**  
**Gee-Ten Ventures Inc. - Dolly Varden Property**

**Hole No.:** 99-3      **Inclination:** - 90°      **Azimuth:** -      **Logged by:** C. Verley      **Page:** 1 of 10  
**Claim:** LANCE 2      **Date Begun:** July 01/99      **Date Finished:** July 02/99  
**Northing:** 6778078N      **Easting:** 517634E      **Total Depth:** 79.25 m (260')

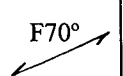
| D<br>E<br>P<br>T<br>H<br><br>(m) | L<br>I<br>T<br>H<br>O<br>L<br>O<br>G<br>Y | S<br>T<br>R<br>U<br>C<br>T<br>U<br>R<br>E | M<br>I<br>N<br>E<br>R<br>A<br>L | A<br>L<br>T<br>E<br>R<br>A<br>T<br>I<br>O<br>N | C<br>O<br>M<br>M<br>E<br>N<br>T<br>S                                                                                                           | Assay Data |         |           |        | R<br>E<br>C<br>O<br>V<br>E<br>R<br>Y<br><br>(%) |
|----------------------------------|-------------------------------------------|-------------------------------------------|---------------------------------|------------------------------------------------|------------------------------------------------------------------------------------------------------------------------------------------------|------------|---------|-----------|--------|-------------------------------------------------|
|                                  |                                           |                                           |                                 |                                                |                                                                                                                                                | Zn<br>%    | Pb<br>% | Ag<br>g/t | W<br>% |                                                 |
|                                  |                                           |                                           |                                 |                                                | <p align="center">Cased to 9.14 m (30').<br/>                     Core stored on property.</p> <hr/> <p align="center">DESCRIPTIVE GEOLOGY</p> |            |         |           |        |                                                 |
| 1                                | OB                                        |                                           |                                 |                                                | OVERBURDEN to 6.40 m (21')                                                                                                                     |            |         |           |        |                                                 |
| 2                                |                                           |                                           |                                 |                                                |                                                                                                                                                |            |         |           |        |                                                 |
| 3                                |                                           |                                           |                                 |                                                |                                                                                                                                                |            |         |           |        |                                                 |
| 4                                | OB                                        |                                           |                                 |                                                |                                                                                                                                                |            |         |           |        |                                                 |
| 5                                |                                           |                                           |                                 |                                                |                                                                                                                                                |            |         |           |        |                                                 |
| 6                                |                                           |                                           |                                 |                                                |                                                                                                                                                |            |         |           |        |                                                 |
| 7                                | >25%<br>QTZ                               |                                           |                                 |                                                | <p align="center">PHYLLITE<br/>                     6.40 to 48.77</p>                                                                          |            |         |           |        |                                                 |

**Diamond Drill Log**  
**Gee-Ten Ventures Inc. - Dolly Varden Property**

Hole No.: 99-3

Page: 2 of 10

| DEPTH<br>(m) | LITHOLOGY | STRUCTURE | MINERAL | ALTERATION | COMMENTS                                                                                  | Assay Data |      |        |     | RECOVERY (%) |
|--------------|-----------|-----------|---------|------------|-------------------------------------------------------------------------------------------|------------|------|--------|-----|--------------|
|              |           |           |         |            |                                                                                           | Zn %       | Pb % | Ag g/t | W % |              |
| 8            |           |           |         |            | PHYLLITE continued                                                                        |            |      |        |     |              |
| 9            |           |           |         |            |                                                                                           |            |      |        |     |              |
| 10           | >25% QTZ  | △△▽▽△     |         |            | 9.75 m (32') narrow (20 cm) breccia zone; angular clasts support white calcite matrix.    |            |      |        |     |              |
| 11           |           |           |         |            |                                                                                           |            |      |        |     |              |
| 12           |           |           |         |            |                                                                                           |            |      |        |     |              |
| 13           |           |           |         |            | 13.11 m (43') folding evident: F.A.P. parallel foliation.                                 |            |      |        |     |              |
| 14           | QTZ       |           |         |            | 13.36 to 14.63 m (43.8' - 48') Quartzite band; basal 40 cm with wollastonite laminations. |            |      |        |     |              |
| 15           | >25% QTZ  |           |         |            | 14.63 to 21.34 m (48'-70') Phyllite with quartz laminations >25%.                         |            |      |        |     |              |



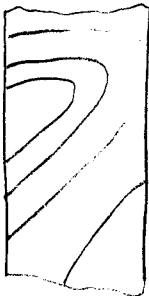




**Diamond Drill Log**  
Gee-Ten Ventures Inc. - Dolly Varden Property

Hole No.: 99-3

Page: 5 of 10

| DEPTH<br>(m) | LITHOLOGY | STRUCTURE | MINERAL | ALTERATION | COMMENTS                                                                                                                                                                                                                                                                                                 | Assay Data |      |        |     | RECOVERY (%) |
|--------------|-----------|-----------|---------|------------|----------------------------------------------------------------------------------------------------------------------------------------------------------------------------------------------------------------------------------------------------------------------------------------------------------|------------|------|--------|-----|--------------|
|              |           |           |         |            |                                                                                                                                                                                                                                                                                                          | Zn %       | Pb % | Ag g/t | W % |              |
|              | QTZ       |           |         |            | DESCRIPTIVE GEOLOGY                                                                                                                                                                                                                                                                                      |            |      |        |     |              |
| 32           | >25% QTZ  |           |         |            | UPPER PHYLLITE MEMBER cont'd.<br>31.39 to 32.37 m Phyllite with >25% quartz laminations                                                                                                                                                                                                                  |            |      |        |     |              |
| 33           | QTZ       |           |         |            | 32.37 to 32.92 m (106.2' - 108') Quartzite; Quartz-wollastonite bands.                                                                                                                                                                                                                                   |            |      |        |     |              |
| 34           | <25% QTZ  | f70° ↘    |         |            | 32.92 to 34.44 m (108' - 113') Phyllite with <25% quartz bands;<br>34.44 to 35.81 m (113' - 117.5') Phyllite with <25% quartz bands but has 30% bands of pale greenish, fine-grained (micritic?) material, also zones of fine amber grains in pale matrix (garnet in wollastonite?). Bands show folding: |            |      |        |     |              |
| 35           |           |           |         |            |                                                                                                                                                                                                                      |            |      |        |     |              |
| 36           |           |           |         |            | 35.81 to 47.09 m (113' - 154.5') Phyllite w. <25% Qtz                                                                                                                                                                                                                                                    |            |      |        |     |              |
| 37           | <25% QTZ  |           |         |            |                                                                                                                                                                                                                                                                                                          |            |      |        |     |              |
| 38           |           |           |         |            |                                                                                                                                                                                                                                                                                                          |            |      |        |     |              |
| 39           |           | f75° ↘    |         | Seric      | Note: 38.86 m (127.5') Phyllite starts to become bleached (sericite Alteration?)                                                                                                                                                                                                                         |            |      |        |     |              |



**Diamond Drill Log**  
**Gee-Ten Ventures Inc. - Dolly Varden Property**

Hole No.: 99-3

Page: 7 of 10

| DEPTH<br>(m) | LITHOLOGY       | STRUCTURE | MINERAL | ALTERATION | COMMENTS                                                                                                                                                                                                                                     | Assay Data |      |        |     | RECOVERY (%) |
|--------------|-----------------|-----------|---------|------------|----------------------------------------------------------------------------------------------------------------------------------------------------------------------------------------------------------------------------------------------|------------|------|--------|-----|--------------|
|              |                 |           |         |            |                                                                                                                                                                                                                                              | Zn %       | Pb % | Ag g/t | W % |              |
| 48           | QTZ<br>>25% QTZ |           |         |            | PHYLITE cont'd.<br>47.09 to 47.91 m (154.5' - 157.2') relatively clean white quartz, lower part with several phyllite "septa"<br>47.91 to 48.77 m (157.2' - 160') phyllite with >25% quartz lam.                                             |            |      |        |     |              |
| 49           | QTZ             |           |         |            | 48.77 to 50.90 m (160' - 167') relatively clean white quartz; dense, very fine grained. Sheared and brecciated at contacts: i.e. 49.68 to 49.99 m (163' - 164') also at 50.90 m (167') = "Upper Zone"                                        |            |      |        |     |              |
| 51           | QTZ             |           |         | Seric      | 50.90 to 62.48 m (167' - 205') Phyllite with <25% quartz laminations. Weakly bleached to a buff, mottled appearance (=> sericitized?). bleaching becomes very weak at 60.96 m (200') to 62.02 m (203.5') then back into bleached phyllite to |            |      |        |     |              |
| 52           |                 |           | Py      | Seric      |                                                                                                                                                                                                                                              |            |      |        |     |              |
| 53           | QTZ             |           |         |            |                                                                                                                                                                                                                                              |            |      |        |     |              |
| 54           |                 |           |         |            |                                                                                                                                                                                                                                              |            |      |        |     |              |
| 55           |                 |           |         |            |                                                                                                                                                                                                                                              |            |      |        |     |              |

*Handwritten notes:*  
 48-49: N 20 W 10 S  
 49-50: N 20 W 10 S  
 50-51: N 20 W 10 S

*Handwritten notes:*  
 51-52: N 20 W 10 S  
 52-53: N 20 W 10 S  
 53-54: N 20 W 10 S  
 f70°

**Diamond Drill Log**  
**Gee-Ten Ventures Inc. - Dolly Varden Property**

Hole No.: 99-3

Page: 8 of 10

| DEPTH<br>(m)                             | LITHOLOGY   | STRUCTURE | MINERAL | ALTERATION | COMMENTS                                                                | Assay Data |         |           |        | RECOVERY<br>(%) |  |
|------------------------------------------|-------------|-----------|---------|------------|-------------------------------------------------------------------------|------------|---------|-----------|--------|-----------------|--|
|                                          |             |           |         |            |                                                                         | Zn<br>%    | Pb<br>% | Ag<br>g/t | W<br>% |                 |  |
| * denotes values in ppm under Assay Data |             |           |         |            |                                                                         |            |         |           |        |                 |  |
| DESCRIPTIVE GEOLOGY                      |             |           |         |            |                                                                         |            |         |           |        |                 |  |
| 56                                       | <25%<br>QTZ | f60°<br>  |         | Seric      | PHYLLITE cont'd.                                                        |            |         |           |        |                 |  |
| 57                                       |             |           |         |            |                                                                         |            |         |           |        |                 |  |
| 58                                       |             |           |         | Seric      |                                                                         |            |         |           |        |                 |  |
| 59                                       |             |           |         |            |                                                                         |            |         |           |        |                 |  |
| 60                                       | <25%<br>QTZ |           |         | Seric      |                                                                         |            |         |           |        |                 |  |
| 61                                       |             |           |         | Unalt'd    |                                                                         |            |         |           |        |                 |  |
| 62                                       |             |           |         |            |                                                                         |            |         |           |        |                 |  |
| 63                                       | 25%<br>QTZ  | f75°<br>  |         | Seric      | 62.48 to 66.29 m (205' - 217.5') Phyllite with >25% quartz laminations. |            |         |           |        |                 |  |

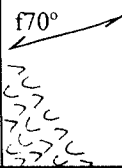


**Diamond Drill Log**  
**Gee-Ten Ventures Inc. - Dolly Varden Property**

Hole No.: 99-3

Page: 10 of 10

| D<br>E<br>P<br>T<br>H<br><br>(m) | L<br>I<br>T<br>H<br>O<br>L<br>O<br>G<br>Y | S<br>T<br>R<br>U<br>C<br>T<br>U<br>R<br>E | M<br>I<br>N<br>E<br>R<br>A<br>L | A<br>L<br>T<br>E<br>R<br>A<br>T<br>I<br>O<br>N | COMMENTS                                                                                                                                        | Assay Data |         |         |            | R<br>E<br>C<br>O<br>V<br>E<br>R<br>Y<br><br>(%) |
|----------------------------------|-------------------------------------------|-------------------------------------------|---------------------------------|------------------------------------------------|-------------------------------------------------------------------------------------------------------------------------------------------------|------------|---------|---------|------------|-------------------------------------------------|
|                                  |                                           |                                           |                                 |                                                |                                                                                                                                                 | Zn<br>%    | Pb<br>% | Cu<br>% | Ag<br>gm/T |                                                 |
|                                  |                                           |                                           |                                 |                                                | * denotes values in ppm under Assay Data                                                                                                        |            |         |         |            |                                                 |
|                                  |                                           |                                           |                                 |                                                | DESCRIPTIVE GEOLOGY                                                                                                                             |            |         |         |            |                                                 |
| 72                               | QTZ                                       |                                           |                                 |                                                | QUARTZITE continued.                                                                                                                            |            |         |         |            |                                                 |
| 73                               |                                           |                                           |                                 |                                                | 72.24 to 73.24 m brecciated, large (10 cm +) limonitic clasts cemented with carbonate.                                                          | 195*       | 65*     | 4*      | 0.3*       |                                                 |
| 74                               |                                           |                                           | ZnS/FeS <sub>2</sub>            | SK <sub>1</sub>                                | 73.24 to 76.81 m (240.3' - 252') Dark green skarn : contains clots of coarse-grained brown ZnS with disseminated, euhedral Py to 74.07 m (243') | 2.84       | 0.08    | 0.03    | 15.6       |                                                 |
| 75                               | SK                                        |                                           |                                 |                                                |                                                                                                                                                 | 430*       | 38*     | 12*     | 2.1*       |                                                 |
| 76                               |                                           |                                           |                                 |                                                |                                                                                                                                                 |            |         |         |            |                                                 |
| 77                               |                                           |                                           |                                 |                                                | 76.81 to 79.25 m (252' - 260') Lower Phyllite member. >25% quartz laminations                                                                   | 41*        | 15*     | 1*      | 1.6*       |                                                 |
| 78                               | >25% QTZ                                  |                                           |                                 |                                                | 78.33 to 79.25 m (257' - 258') sheared                                                                                                          |            |         |         |            |                                                 |
| 79                               |                                           |                                           |                                 |                                                | E.O.H. 79.25 m (260')                                                                                                                           |            |         |         |            |                                                 |



**DIAMOND DRILL SUMMARY LOG**

**GEE-TEN VENTURES INC. - DOLLY VARDEN PROPERTY**

**Dolly Varden Creek Area, Yukon**

|              |         |            |                |
|--------------|---------|------------|----------------|
| Hole No.:    | 99-4    | Northing:  | 6778078N       |
| Claim:       | LANCE 2 | Easting:   | 517634E        |
| Azimuth:     | 270°    | Elevation: | 1316 m         |
| Inclination: | -60°    | Depth:     | 78.33 m (257') |

| Interval |         | Geology                                                               | Significant Analyses |           |           |           |     |
|----------|---------|-----------------------------------------------------------------------|----------------------|-----------|-----------|-----------|-----|
| To       | From    |                                                                       | Zn<br>ppm            | Pb<br>ppm | Cu<br>ppm | Ag<br>ppm |     |
| 0.0      | - 7.00  | Overburden                                                            |                      |           |           |           |     |
| 7.00     | - 21.34 | <i>Upper Devonian-Mississippian:</i><br>Phyllite (>25% quartz bands). |                      |           |           |           |     |
| 21.34    | - 33.52 | Phyllite (<25% quartz bands).                                         |                      |           |           |           |     |
| 33.52    | - 43.59 | Phyllite (>25% quartz bands).                                         |                      |           |           |           |     |
| 43.59    | - 44.96 | Quartzite                                                             |                      |           |           |           |     |
| 44.96    | - 62.18 | Phyllite (<25% quartz bands).                                         |                      |           |           |           |     |
| 62.18    | - 73.76 | Quartzite                                                             |                      |           |           |           |     |
| 73.76    | - 75.87 | Skarn (diopside)                                                      | 73.76 - 75.87        | 95        | 65        | 12        | 3.0 |
| 75.87    | - 78.33 | Phyllite (>25% quartz bands).                                         |                      |           |           |           |     |













**Diamond Drill Log**  
Gee-Ten Ventures Inc. - Dolly Varden Property

Hole No.: 99-4

Page: 7 of 10

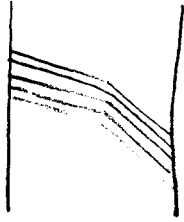
| DEPTH<br>H<br>(m) | LITHOLOGY   | STRUCTURE | MINERAL | ALTERATION | COMMENTS                                                              | Assay Data |         |                                                                 |        | RECOVERY<br>(%) |  |
|-------------------|-------------|-----------|---------|------------|-----------------------------------------------------------------------|------------|---------|-----------------------------------------------------------------|--------|-----------------|--|
|                   |             |           |         |            |                                                                       | Zn<br>%    | Pb<br>% | Ag<br>g/t                                                       | W<br>% |                 |  |
| 48                | <25%<br>QTZ |           |         | Seric.     | PHYLLITE continued.                                                   |            |         |                                                                 |        |                 |  |
| 49                |             |           |         |            | Bleaching continues to 51.82 m (170')                                 |            |         |                                                                 |        |                 |  |
| 50                |             |           |         |            | Seric.                                                                |            |         |                                                                 |        |                 |  |
| 51                |             |           |         |            | Seric.                                                                |            |         |                                                                 |        |                 |  |
| 52                |             |           |         |            |                                                                       |            |         | 51.82 to 62.18 m (170' - 204') phyllite is relatively unaltered |        |                 |  |
| 53                | <25%<br>QTZ |           |         |            | 53.34 to 53.95 m (175' - 177') greenish (chl/epid?) bands in phyllite |            |         |                                                                 |        |                 |  |
| 54                |             |           |         |            |                                                                       |            |         |                                                                 |        |                 |  |
| 55                |             |           |         |            |                                                                       |            |         |                                                                 |        |                 |  |

f75° ↗

**Diamond Drill Log**  
**Gee-Ten Ventures Inc. - Dolly Varden Property**

Hole No.: 99-4

Page: 8 of 10

| DEPTH<br>(m)                             | LITHOLOGY | STRUCTURE | MINERAL | ALTERATION | COMMENTS                                                                            | Assay Data |      |        |     | RECOVERY (%) |
|------------------------------------------|-----------|-----------|---------|------------|-------------------------------------------------------------------------------------|------------|------|--------|-----|--------------|
|                                          |           |           |         |            |                                                                                     | Zn %       | Pb % | Ag g/t | W % |              |
| * denotes values in ppm under Assay Data |           |           |         |            |                                                                                     |            |      |        |     |              |
| DESCRIPTIVE GEOLOGY                      |           |           |         |            |                                                                                     |            |      |        |     |              |
| 56                                       | <25% QTZ  | f60° ↙    |         | Unalt'd    | PHYLLITE continued<br>Foliation is locally kinked:                                  |            |      |        |     |              |
| 57                                       |           |           |         |            |  |            |      |        |     |              |
| 58                                       |           |           |         |            |                                                                                     |            |      |        |     |              |
| 59                                       |           |           |         |            |                                                                                     |            |      |        |     |              |
| 60                                       | <25% QTZ  |           |         | Unalt'd    |                                                                                     |            |      |        |     |              |
| 61                                       |           |           |         |            |                                                                                     |            |      |        |     |              |
| 62                                       |           |           |         |            |                                                                                     |            |      |        |     |              |
| 63                                       | >25% QTZ  |           |         | Seric      | 62.18 to 63.70 m (204' - 209') Phyllite with >25% qtz laminations                   |            |      |        |     |              |



**Diamond Drill Log**  
**Gee-Ten Ventures Inc. - Dolly Varden Property**

Hole No.: 99-4

Page: 10 of 10

| D<br>E<br>P<br>T<br>H<br><br>(m) | L<br>I<br>T<br>H<br>O<br>L<br>O<br>G<br>Y | S<br>T<br>R<br>U<br>C<br>T<br>U<br>R<br>E | M<br>I<br>N<br>E<br>R<br>A<br>L | A<br>L<br>T<br>E<br>R<br>A<br>T<br>I<br>O<br>N | COMMENTS<br><br>* denotes values in ppm under Assay Data<br><br>_____<br><br>DESCRIPTIVE GEOLOGY | Assay Data |         |         |            | R<br>E<br>C<br>O<br>V<br>E<br>R<br>Y<br><br>(%) |
|----------------------------------|-------------------------------------------|-------------------------------------------|---------------------------------|------------------------------------------------|--------------------------------------------------------------------------------------------------|------------|---------|---------|------------|-------------------------------------------------|
|                                  |                                           |                                           |                                 |                                                |                                                                                                  | Zn<br>%    | Pb<br>% | Cu<br>% | Ag<br>gm/T |                                                 |
| 72                               | QTZ                                       |                                           |                                 |                                                | QUARTZITE continued                                                                              |            |         |         |            |                                                 |
| 73                               |                                           |                                           |                                 |                                                |                                                                                                  |            |         |         |            |                                                 |
| 74                               | SK                                        |                                           |                                 | SK <sub>o</sub>                                | 73.76 to 75.87 m (242' - 248.9') Skarn: diopside & garnet bearing                                |            |         |         |            |                                                 |
| 75                               |                                           |                                           |                                 | SK <sub>o</sub>                                |                                                                                                  | 95*        | 65*     | 12*     | 3.0*       |                                                 |
| 76                               | >25%<br>QTZ                               |                                           |                                 |                                                | 75.87 to 77.24 m (248.9' - 283.4') quartz-wollastonite band                                      |            |         |         |            |                                                 |
| 77                               | SK                                        |                                           |                                 |                                                | 77.24 to 77.42 m (253.4' - 254') skarn band: diopside-garnet with trace ZnS, Po                  |            |         |         |            |                                                 |
| 78                               | >25%<br>QTZ                               |                                           |                                 |                                                |                                                                                                  |            |         |         |            |                                                 |
| 79                               |                                           |                                           |                                 |                                                | E.O.H. 78.33 m (257')                                                                            |            |         |         |            |                                                 |

**DIAMOND DRILL SUMMARY LOG**

**GEE-TEN VENTURES INC. - DOLLY VARDEN PROPERTY**

**Dolly Varden Creek Area, Yukon**

|              |         |            |                 |
|--------------|---------|------------|-----------------|
| Hole No.:    | 99-5    | Northing:  | 6777993N        |
| Claim:       | LANCE 3 | Easting:   | 517480E         |
| Azimuth:     | -       | Elevation: | 1305 m          |
| Inclination: | -90°    | Depth:     | 106.68 m (350') |

| Interval |          | Geology                                                               | Significant Analyses |           |           |           |
|----------|----------|-----------------------------------------------------------------------|----------------------|-----------|-----------|-----------|
| To       | From     |                                                                       | Zn<br>ppm            | Pb<br>ppm | Cu<br>ppm | Ag<br>ppm |
| 0.0      | - 3.05   | Overburden                                                            |                      |           |           |           |
| 3.05     | - 23.17  | <i>Upper Devonian-Mississippian:</i><br>Phyllite (<25% quartz bands). |                      |           |           |           |
| 23.17    | - 27.43  | Phyllite (>25% quartz bands).                                         |                      |           |           |           |
| 27.43    | - 49.68  | Phyllite (<25% quartz bands).                                         |                      |           |           |           |
| 49.68    | - 57.30  | Phyllite (>25% quartz bands).                                         |                      |           |           |           |
| 57.30    | - 68.89  | Phyllite (<25% quartz bands).                                         |                      |           |           |           |
| 68.89    | - 70.10  | Quartzite (?)                                                         |                      |           |           |           |
| 70.10    | - 106.68 | Phyllite (>25% quartz bands).                                         |                      |           |           |           |



**Diamond Drill Log**  
**Gee-Ten Ventures Inc. - Dolly Varden Property**

Hole No.: 99-5

Page: 2 of 14

| D<br>E<br>P<br>T<br>H<br><br>(m) | L<br>I<br>T<br>H<br>O<br>L<br>O<br>G<br>Y | S<br>T<br>R<br>U<br>C<br>T<br>U<br>R<br>E | M<br>I<br>N<br>E<br>R<br>A<br>L | A<br>L<br>T<br>E<br>R<br>A<br>T<br>I<br>O<br>N | C<br>O<br>M<br>M<br>E<br>N<br>T<br>S | A<br>s<br>s<br>a<br>y<br>D<br>a<br>t<br>a                                                                                                                                                                                                                                                                                                                                                                                                                                                                                                             |             |               |            | R<br>E<br>C<br>O<br>V<br>E<br>R<br>Y<br><br>(%) |  |
|----------------------------------|-------------------------------------------|-------------------------------------------|---------------------------------|------------------------------------------------|--------------------------------------|-------------------------------------------------------------------------------------------------------------------------------------------------------------------------------------------------------------------------------------------------------------------------------------------------------------------------------------------------------------------------------------------------------------------------------------------------------------------------------------------------------------------------------------------------------|-------------|---------------|------------|-------------------------------------------------|--|
|                                  |                                           |                                           |                                 |                                                |                                      | Zn<br><br>%                                                                                                                                                                                                                                                                                                                                                                                                                                                                                                                                           | Pb<br><br>% | Ag<br><br>g/t | W<br><br>% |                                                 |  |
| 8                                | <25%<br>QTZ                               |                                           |                                 |                                                | Po                                   | <p style="text-align: center;">DESCRIPTIVE GEOLOGY</p> <p>PHYLLITE continued.</p> <p>7.32 to 7.72 m (24' - 25.3')<br/>                     Pale, laminated band with 1 cm layers of disseminated Po -<br/>                     Looks like a meta-tuff.</p> <p>9.45 to 10.67 m (31'-35') Phyllite with &gt;25% qtz laminations</p> <p>Note: Po is a ubiquitous component of rock ~1-2% as thin 0.1 to 0.5<br/>                     mm lenticular aggregates parallel to foliation. Sub-centimetre<br/>                     bands are not uncommon.</p> |             |               |            |                                                 |  |
| 9                                |                                           |                                           |                                 |                                                | Po                                   |                                                                                                                                                                                                                                                                                                                                                                                                                                                                                                                                                       |             |               |            |                                                 |  |
| 10                               | >25%<br>QTZ                               |                                           |                                 |                                                |                                      |                                                                                                                                                                                                                                                                                                                                                                                                                                                                                                                                                       |             |               |            |                                                 |  |
| 11                               |                                           | f75°                                      |                                 |                                                |                                      |                                                                                                                                                                                                                                                                                                                                                                                                                                                                                                                                                       |             |               |            |                                                 |  |
| 12                               |                                           |                                           |                                 |                                                | Po                                   |                                                                                                                                                                                                                                                                                                                                                                                                                                                                                                                                                       |             |               |            |                                                 |  |
| 13                               | <25%<br>QTZ                               |                                           |                                 |                                                |                                      |                                                                                                                                                                                                                                                                                                                                                                                                                                                                                                                                                       |             |               |            |                                                 |  |
| 14                               |                                           |                                           |                                 |                                                |                                      |                                                                                                                                                                                                                                                                                                                                                                                                                                                                                                                                                       |             |               |            |                                                 |  |
| 15                               |                                           |                                           |                                 |                                                | Po                                   |                                                                                                                                                                                                                                                                                                                                                                                                                                                                                                                                                       |             |               |            |                                                 |  |

**Diamond Drill Log**  
**Gee-Ten Ventures Inc. - Dolly Varden Property**

Hole No.: 99-5

Page: 3 of 14

| D<br>E<br>P<br>T<br>H<br><br>(m) | L<br>I<br>T<br>H<br>O<br>L<br>O<br>G<br>Y | S<br>T<br>R<br>U<br>C<br>T<br>U<br>R<br>E | M<br>I<br>N<br>E<br>R<br>A<br>L | A<br>L<br>T<br>E<br>R<br>A<br>T<br>I<br>O<br>N | C<br>O<br>M<br>M<br>E<br>N<br>T<br>S                                                   | A<br>s<br>s<br>a<br>y<br>D<br>a<br>t<br>a |         |           |        | R<br>E<br>C<br>O<br>V<br>E<br>R<br>Y<br><br>(%) |     |
|----------------------------------|-------------------------------------------|-------------------------------------------|---------------------------------|------------------------------------------------|----------------------------------------------------------------------------------------|-------------------------------------------|---------|-----------|--------|-------------------------------------------------|-----|
|                                  |                                           |                                           |                                 |                                                |                                                                                        | Zn<br>%                                   | Pb<br>% | Ag<br>g/t | W<br>% |                                                 |     |
| ...                              |                                           |                                           |                                 |                                                | D<br>E<br>S<br>C<br>R<br>I<br>P<br>T<br>I<br>V<br>E<br>G<br>E<br>O<br>L<br>O<br>G<br>Y |                                           |         |           |        | ...                                             |     |
| 16                               | 25%<br>QTZ                                | f70°                                      |                                 | Chl?                                           | PHYLLITE continued.                                                                    |                                           |         |           |        | ...                                             |     |
| 17                               |                                           |                                           | Po                              |                                                |                                                                                        |                                           |         |           |        | ...                                             |     |
| 18                               |                                           |                                           |                                 |                                                |                                                                                        |                                           |         |           |        |                                                 | ... |
| 19                               |                                           |                                           |                                 |                                                |                                                                                        |                                           |         |           |        |                                                 | ... |
| 20                               |                                           |                                           |                                 | Po                                             |                                                                                        |                                           |         |           |        |                                                 | ... |
| 21                               |                                           |                                           |                                 | Po                                             |                                                                                        |                                           |         |           |        |                                                 | ... |
| 22                               |                                           |                                           |                                 |                                                |                                                                                        |                                           |         |           | ...    |                                                 |     |
| 23                               |                                           |                                           |                                 |                                                |                                                                                        |                                           |         |           | ...    | ...                                             |     |



**Diamond Drill Log**  
**Gee-Ten Ventures Inc. - Dolly Varden Property**

Hole No.: 99-5

Page: 5 of 14

| DEPTH<br>(m) | LITHOLOGY   | STRUCTURE | MINERAL | ALTERATION | COMMENTS            | Assay Data |      |        |     | RECOVERY (%) |
|--------------|-------------|-----------|---------|------------|---------------------|------------|------|--------|-----|--------------|
|              |             |           |         |            |                     | Zn %       | Pb % | Ag g/t | W % |              |
| 32           | <25%<br>Q1Z | f80°      |         |            | PHYLLITE continued. |            |      |        |     | .....        |
| 33           |             |           |         |            |                     |            |      |        |     | .....        |
| 34           |             |           |         |            |                     |            |      |        |     | .....        |
| 35           |             |           |         |            |                     |            |      |        |     | .....        |
| 36           |             |           |         |            |                     |            |      |        |     | .....        |
| 37           |             |           |         |            |                     |            |      |        |     | .....        |
| 38           |             |           |         |            |                     |            |      |        |     | .....        |
| 39           |             |           |         |            |                     |            |      |        |     | .....        |



**Diamond Drill Log**  
**Gee-Ten Ventures Inc. - Dolly Varden Property**

Hole No.: 99-5

Page: 7 of 14

| DEPTH<br>H<br>(m) | LITHOLOGY   | STRUCTURE | MINERAL | ALTERATION | COMMENTS<br><br>DESCRIPTIVE GEOLOGY                                   | Assay Data |      |        |     | RECOVERY (%) |
|-------------------|-------------|-----------|---------|------------|-----------------------------------------------------------------------|------------|------|--------|-----|--------------|
|                   |             |           |         |            |                                                                       | Zn %       | Pb % | Ag g/t | W % |              |
| 48                | ~25%<br>QTZ | f75°      | Po      |            | PHYLLITE continued.                                                   |            |      |        |     |              |
| 49                |             |           |         |            |                                                                       |            |      |        |     |              |
| 50                | >25%<br>QTZ | f75°      | Po      |            | 49.68 to 57.30 m (163' - 188') Phyllite with >25% quartz / sand bands |            |      |        |     |              |
| 51                |             |           |         |            |                                                                       |            |      |        |     |              |
| 52                | >25%<br>QTZ | f75°      | Po      |            |                                                                       |            |      |        |     |              |
| 53                |             |           |         |            |                                                                       |            |      |        |     |              |
| 54                | >25%<br>QTZ | f75°      | Po      |            |                                                                       |            |      |        |     |              |
| 55                |             |           |         |            |                                                                       |            |      |        |     |              |



**Diamond Drill Log**  
**Gee-Ten Ventures Inc. - Dolly Varden Property**

Hole No.: 99-5

Page: 9 of 14

| DEPTH<br>(m)                             | LITHOLOGY   | STRUCTURE | MINERAL | ALTERATION | COMMENTS                                                                         | Assay Data |      |        |     | RECOVERY (%) |
|------------------------------------------|-------------|-----------|---------|------------|----------------------------------------------------------------------------------|------------|------|--------|-----|--------------|
|                                          |             |           |         |            |                                                                                  | Zn %       | Pb % | Ag g/t | W % |              |
| * denotes values in ppm under Assay Data |             |           |         |            |                                                                                  |            |      |        |     |              |
| DESCRIPTIVE GEOLOGY                      |             |           |         |            |                                                                                  |            |      |        |     |              |
| 64                                       | <25%<br>QTZ | f75°      | Po      |            | PHYLLITE continued.                                                              |            |      |        |     |              |
| 65                                       |             |           |         |            |                                                                                  |            |      |        |     |              |
| 66                                       |             |           |         |            |                                                                                  |            |      |        |     |              |
| 67                                       |             |           | Po      |            |                                                                                  |            |      |        |     |              |
| 68                                       |             |           |         |            |                                                                                  |            |      |        |     |              |
| 69                                       |             |           |         |            | 68.89 to 70.10 m (226' - 230') thick quartzite/sand member                       |            |      |        |     |              |
| 70                                       | QTZ         |           |         |            |                                                                                  |            |      |        |     |              |
| 71                                       | >25%<br>QTZ |           |         |            | 70.10 m to E.O.H. Unit has character of sand-banded phyllite<br>~>25% sand bands |            |      |        |     |              |











**APPENDIX B**  
**ASSAY AND ANALYTICAL DATA**

A S S A Y C E R T I F I C A T E

Cu, Pb, Zn & Ag Analysis - 1.000 gm sample is digested with 50 ml of aqua regia, diluted to 100 ml with water and is finished by AA.

BERLIN EXPLORATION

Project:

Sample Type: Cores

Analyst RSam

Report No. 9993036

Date: July 29, 1999

---

| SAMPLE | Cu<br>% | Pb<br>% | Zn<br>% | Ag<br>gm/T |
|--------|---------|---------|---------|------------|
| 8962   | 0.01    | 0.28    | 0.72    | 8.5        |
| 8963   | 1.18    | 16.90   | 21.40   | 248        |
| 8964   | 0.01    | 1.98    | 2.20    | 38.6       |
| 8965   | 0.01    | 0.10    | 0.92    | 10.5       |
| 8966   | 0.01    | 0.05    | 0.56    | 5.9        |
| 8967   | 0.01    | 0.41    | 0.59    | 44.1       |
| 8968   | 0.01    | 0.09    | 2.04    | 11.8       |
| 8969   | 0.01    | 0.05    | 0.81    | 11.6       |
| 8971   | 0.01    | 0.32    | 0.49    | 8.8        |
| 8973   | 0.03    | 0.29    | 2.42    | 31.5       |
| 8975   | 0.23    | 0.92    | 2.06    | 38.1       |
| 8976   | 0.46    | 9.20    | 8.64    | 132        |
| 8977   | 0.01    | 0.34    | 0.24    | 4.6        |
| 8979   | 0.01    | 1.86    | 1.42    | 2.9        |
| 8980   | 0.01    | 0.90    | 0.60    | 4.2        |
| 8982   | 0.03    | 0.08    | 2.84    | 15.6       |

GEOCHEMICAL ANALYSIS CERTIFICATE

Date: July 19, 1999

AMERLIN EXPLORATION

Report No. 9923036

Project:

Sample Type: Cores

Multi-element ICP Analysis - .500 gram sample is digested with 3 ml of aqua regia, Ba, Ti, B, W and limited for Na, K and Al. Detection Limit for diluted to 10 ml with Water. This leach is partial for Mn, Fe, Ca, P, La, Cr, Mg,

Au is 3 ppm. \*Au Analysis- 10 gram sample is digested with aqua regia, MIBK extracted, graphite furnace AA finished to 1 ppb detection.

| SAMPLE | Zn<br>ppm | Pb<br>ppm | Cu<br>ppm | Ag<br>ppm | Au*<br>ppb | W<br>ppm | Mo<br>ppm | As<br>ppm | Sb<br>ppm | Bi<br>ppm | Cd<br>ppm | Ba<br>ppm | Mn<br>ppm | Fe<br>% | Ni<br>ppm | Co<br>ppm | V<br>ppm | Cr<br>ppm | Ti<br>% | U<br>ppm | Th<br>ppm | Sr<br>ppm | La<br>ppm | B<br>ppm |
|--------|-----------|-----------|-----------|-----------|------------|----------|-----------|-----------|-----------|-----------|-----------|-----------|-----------|---------|-----------|-----------|----------|-----------|---------|----------|-----------|-----------|-----------|----------|
| 8962   | 7080      | 2799      | 66        | 8.3       | 95         | 84       | 8         | 9         | 3         | 43        | 74.3      | 9         | 1079      | 1.57    | 7         | 8         | 5        | 125       | 0.01    | 8        | 2         | 68        | 12        | 3        |
| 8963   | 99999     | 27777     | 11709     | 235.2     | 180        | 66       | 1         | 2         | 8         | 578       | 2045.1    | 26        | 3614      | 8.28    | 11        | 219       | 11       | 13        | 0.01    | 8        | 2         | 304       | 42        | 14       |
| 8964   | 20518     | 21840     | 41        | 38.4      | 14         | 631      | 4         | 2         | 4         | 84        | 196.5     | 75        | 2349      | 2.94    | 16        | 15        | 21       | 56        | 0.01    | 8        | 5         | 190       | 16        | 11       |
| 8965   | 8845      | 969       | 41        | 10.3      | 645        | 475      | 1         | 18        | 3         | 218       | 89.2      | 79        | 13600     | 7.11    | 4         | 6         | 2        | 24        | 0.01    | 8        | 2         | 157       | 7         | 14       |
| 8966   | 4934      | 554       | 20        | 6.4       | 160        | 572      | 9         | 23        | 3         | 132       | 53.9      | 68        | 12609     | 7.77    | 9         | 7         | 14       | 38        | 0.01    | 8        | 2         | 364       | 45        | 11       |
| 8967   | 5557      | 4326      | 10        | 43.6      | 35         | 198      | 7         | 5         | 3         | 103       | 52.6      | 6         | 4334      | 2.75    | 3         | 3         | 7        | 136       | 0.01    | 8        | 2         | 59        | 27        | 4        |
| 8968   | 19396     | 893       | 24        | 11.4      | 38         | 223      | 6         | 2         | 3         | 92        | 212.8     | 13        | 1096      | 1.58    | 2         | 16        | 5        | 105       | 0.01    | 8        | 2         | 50        | 22        | 3        |
| 8969   | 8101      | 549       | 29        | 11.2      | 28         | 254      | 10        | 2         | 3         | 96        | 90.6      | 13        | 694       | 1.06    | 5         | 7         | 5        | 97        | 0.01    | 8        | 2         | 48        | 12        | 3        |
| 8970   | 695       | 135       | 8         | 2.8       | 20         | 37       | 1         | 17        | 3         | 16        | 9.4       | 34        | 1619      | 10.99   | 2         | 1         | 2        | 36        | 0.01    | 8        | 2         | 23        | 7         | 9        |
| 8971   | 4085      | 3104      | 78        | 8.9       | 95         | 57       | 2         | 54        | 3         | 36        | 45.2      | 31        | 9082      | 11.83   | 5         | 4         | 9        | 35        | 0.01    | 8        | 2         | 189       | 8         | 11       |
| 8972   | 40        | 15        | 2         | 0.3       | 6          | 2        | 7         | 2         | 3         | 5         | 0.6       | 1         | 139       | 0.35    | 3         | 1         | 1        | 139       | 0.01    | 8        | 2         | 8         | 9         | 3        |
| 8973   | 22861     | 3093      | 321       | 32.2      | 180        | 27       | 6         | 8         | 3         | 236       | 251.0     | 22        | 1642      | 2.99    | 9         | 29        | 11       | 87        | 0.01    | 8        | 2         | 60        | 9         | 3        |
| 8974   | 141       | 82        | 5         | 0.3       | 11         | 2        | 5         | 3         | 3         | 7         | 1.2       | 4         | 321       | 0.26    | 3         | 1         | 1        | 98        | 0.01    | 8        | 2         | 31        | 2         | 3        |
| 8975   | 17448     | 9769      | 2347      | 37.6      | 240        | 105      | 9         | 282       | 3         | 96        | 177.2     | 16        | 3361      | 12.10   | 4         | 37        | 9        | 85        | 0.01    | 8        | 2         | 107       | 13        | 11       |
| 8976   | 75262     | 21153     | 4132      | 112.8     | 53         | 402      | 6         | 18        | 3         | 209       | 640.5     | 46        | 4982      | 31.21   | 4         | 49        | 8        | 27        | 0.01    | 8        | 4         | 98        | 6         | 9        |
| 8977   | 2267      | 3340      | 71        | 4.9       | 4          | 49       | 1         | 2         | 3         | 16        | 16.0      | 26        | 3984      | 2.30    | 5         | 3         | 5        | 20        | 0.02    | 8        | 2         | 30        | 5         | 5        |
| 8978   | 815       | 999       | 22        | 2.5       | 8          | 14       | 1         | 4         | 3         | 3         | 5.2       | 8         | 5152      | 0.82    | 1         | 1         | 1        | 4         | 0.01    | 8        | 2         | 133       | 5         | 7        |
| 8979   | 11748     | 18580     | 8         | 3.2       | 11         | 354      | 3         | 5         | 3         | 3         | 81.8      | 5         | 4446      | 1.94    | 1         | 3         | 1        | 13        | 0.01    | 8        | 2         | 15        | 6         | 10       |
| 8980   | 5330      | 9126      | 3         | 3.7       | 13         | 128      | 3         | 2         | 3         | 3         | 38.6      | 16        | 3831      | 1.62    | 5         | 3         | 9        | 49        | 0.03    | 8        | 3         | 34        | 7         | 12       |
| 8981   | 195       | 65        | 4         | 0.3       | 80         | 3        | 3         | 2         | 3         | 3         | 1.3       | 1         | 3496      | 0.36    | 2         | 1         | 1        | 55        | 0.01    | 8        | 2         | 187       | 2         | 3        |
| 8982   | 22589     | 870       | 352       | 13.4      | 85         | 163      | 11        | 62        | 3         | 41        | 230.3     | 102       | 6694      | 13.97   | 1         | 26        | 17       | 29        | 0.01    | 8        | 2         | 224       | 10        | 12       |
| 8983   | 430       | 38        | 12        | 2.1       | 14         | 52       | 2         | 16        | 3         | 14        | 4.6       | 64        | 5306      | 10.53   | 1         | 1         | 6        | 42        | 0.02    | 8        | 4         | 64        | 9         | 13       |
| 8984   | 41        | 15        | 1         | 1.6       | 12         | 77       | 3         | 13        | 3         | 13        | 1.4       | 13        | 2203      | 9.69    | 2         | 1         | 8        | 56        | 0.01    | 8        | 3         | 20        | 15        | 8        |
| 8985   | 95        | 65        | 12        | 3.0       | 14         | 94       | 1         | 47        | 3         | 25        | 2.1       | 10        | 6655      | 9.65    | 3         | 4         | 3        | 31        | 0.01    | 8        | 2         | 16        | 11        | 15       |
| 8986   | 35852     | 21335     | 467       | 14.7      | 21         | 2        | 2         | 2         | 6         | 20        | 158.3     | 6         | 1868      | 12.99   | 19        | 28        | 37       | 46        | 0.04    | 8        | 7         | 107       | 7         | 10       |

## GEOCHEMICAL ANALYSIS CERTIFICATE

Date: July 19, 1999

AMERLIN EXPLORATION

Project:

Report No. 9923036

Sample Type: Cores

| SAMPLE | K<br>% | Na<br>% | Ca<br>% | Mg<br>% | Al<br>% | P<br>% |
|--------|--------|---------|---------|---------|---------|--------|
| 8962   | 0.07   | 0.01    | 1.84    | 0.09    | 0.13    | 0.005  |
| 8963   | 0.16   | 0.01    | 6.59    | 0.14    | 0.29    | 0.001  |
| 8964   | 0.19   | 0.02    | 4.16    | 0.16    | 0.96    | 0.021  |
| 8965   | 0.03   | 0.04    | 6.45    | 0.30    | 0.11    | 0.002  |
| 8966   | 0.07   | 0.01    | 7.67    | 0.64    | 0.35    | 0.005  |
| 8967   | 0.02   | 0.01    | 2.96    | 0.12    | 0.35    | 0.001  |
| 8968   | 0.05   | 0.01    | 1.23    | 0.05    | 0.24    | 0.002  |
| 8969   | 0.07   | 0.01    | 1.41    | 0.04    | 0.20    | 0.005  |
| 8970   | 0.03   | 0.01    | 12.44   | 0.05    | 0.27    | 0.001  |
| 8971   | 0.03   | 0.01    | 12.70   | 0.15    | 0.40    | 0.001  |
| 8972   | 0.03   | 0.01    | 0.36    | 0.01    | 0.02    | 0.002  |
| 8973   | 0.08   | 0.01    | 2.04    | 0.44    | 0.16    | 0.005  |
| 8974   | 0.01   | 0.01    | 1.03    | 0.01    | 0.02    | 0.001  |
| 8975   | 0.02   | 0.01    | 4.04    | 0.19    | 0.16    | 0.001  |
| 8976   | 0.03   | 0.06    | 2.57    | 0.17    | 0.36    | 0.001  |
| 8977   | 0.02   | 0.01    | 2.08    | 0.09    | 0.25    | 0.006  |
| 8978   | 0.01   | 0.01    | 28.99   | 0.02    | 0.05    | 0.001  |
| 8979   | 0.02   | 0.01    | 4.68    | 0.02    | 0.08    | 0.002  |
| 8980   | 0.05   | 0.01    | 4.84    | 0.12    | 0.37    | 0.010  |
| 8981   | 0.02   | 0.01    | 19.37   | 0.02    | 0.04    | 0.001  |
| 8982   | 0.09   | 0.04    | 13.24   | 0.30    | 0.91    | 0.001  |
| 8983   | 0.03   | 0.01    | 11.64   | 0.14    | 0.44    | 0.003  |
| 8984   | 0.03   | 0.01    | 10.65   | 0.12    | 0.35    | 0.005  |
| 8985   | 0.01   | 0.01    | 10.07   | 0.06    | 0.20    | 0.001  |
| 8986   | 0.01   | 0.01    | 3.86    | 0.91    | 1.16    | 0.047  |

**APPENDIX C**

**PERSONNEL**

## PERSONNEL

Carl G. Verley  
Vancouver, B.C.

Geologist

Alex Black  
Watson Lake, Y.T

Cook/Prospector

Ray Pickford  
Watson Lake, Y.T

Field Assistant

Mike Reed  
Watson Lake, Yukon

Helicopter Pilot

Ed Gartner  
Armstrong, B.C.

Driller Foreman

K. Riemer  
Watson Lake, Yukon

Driller

K. Hillman  
Watson Lake, Yukon

Drill Helper

B.Anderson  
Watson Lake, Yukon

Drill Helper

**APPENDIX D**  
**WRITER'S CERTIFICATE**

# **AMERLIN EXPLORATION SERVICES LTD.**


2150 - 1851 Savage Road, Richmond, B.C. V6V 1R1 Tel.: (604)821-1088

## **WRITER'S CERTIFICATE**

I, Carl G. Verley of Vancouver, British Columbia hereby certify that:

1. I am a geologist with business office at 2150 - 1851 Savage Road, Richmond, B.C.
2. I am a graduate of the University of British Columbia, B.Sc. in 1974, and have practiced my profession since that time.
3. I am a registered member of the Association of Professional Engineers and Geoscientists of the Province of B.C.
4. I am the author of this report which is based on work supervised by me on the LANCE claims and conducted during the period June 28 to July 6, 1999.

**Amerlin Exploration Services Ltd.**

The seal is circular with a double-line border. The outer ring contains the text "PROFESSIONAL ENGINEERS AND GEOSCIENTISTS" at the top and "PROVINCE OF BRITISH COLUMBIA" at the bottom. In the center, the name "C. G. VERLEY" is written in a stylized, cursive font. Below the name, the text "C. G. VERLEY" and "B.C. Geo." are printed in a smaller, sans-serif font.

Carl G. Verley, B.C. Geo.

October 26, 1999.  
Richmond, B.C.



# DRILLING COMPANY LTD.

PS. 3084

HEAD OFFICE: 2115-129TH ST. SURREY, B.C., V4A-8H6

TEL: (604) 538-4542 FAX: (604) 538-7798

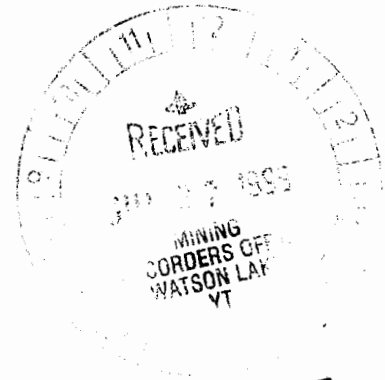
BRANCH OFFICE: BOX 332, WATSON LAKE, Y.T., Y0A-1C0

TEL: (403) 538-2611 FAX: (403) 538-2617

Amerlin Exploration Services Ltd.  
2150 - 1851 Savage Rd.  
Richmond BC  
V6V 1R1

July 12, 1999

Re: **Diamond Drilling Project**  
**Dolly Varden Creek Area**  
**June 28<sup>th</sup> to July 7<sup>th</sup> 1999**



094029

**Mobilization:**

Mobilize men; drill equipment and supplies, from the truck unloading point to first

Drill site: 4 men @ 13 hrs:  
2 men @ 3 hrs: = 58 man hours @ \$35.00 = \$2 030.00

|          |                                |               |            |
|----------|--------------------------------|---------------|------------|
| DV 99-01 | NQ                             |               |            |
| Casing   | 0 - 17ft @ \$25.00 =           | 425.00        |            |
| Core     | 20 - 320ft = 300ft @ \$25.00 = | 7 575.00      |            |
|          | 2 Alcomer @ \$150.00 =         | 300.00        |            |
|          | 3 Mud @ \$15.00 =              | 45.00         |            |
| Man Hrs. | 4 hrs @ \$35.00 =              | <u>140.00</u> | \$8 485.00 |

|          |                              |               |            |
|----------|------------------------------|---------------|------------|
| DV 99-02 | NQ                           |               |            |
| Casing   | 0 - 20ft @ \$25.00 =         | 500.00        |            |
| Core     | 20 - 252ft = 232ft @ \$25.00 | 5 800.00      |            |
|          | 1 Alcomer @ \$150.00         | 150.00        |            |
|          | 6 Mud @ \$15.00 =            | 90.00         |            |
| Man Hrs. | 16 hrs @ \$35.00 =           | <u>560.00</u> | \$7 100.00 |

|          |                                |              |            |
|----------|--------------------------------|--------------|------------|
| DV 99-03 | NQ                             |              |            |
| Casing   | 0 - 30ft @ \$25.00 =           | 750.00       |            |
| Core     | 30 - 260ft = 230ft @ \$25.00 = | 5 750.00     |            |
|          | 2 Alcomer @ \$150.00 =         | 300.00       |            |
|          | 2 Mud @ \$15.00 =              | <u>30.00</u> | \$6 830.00 |

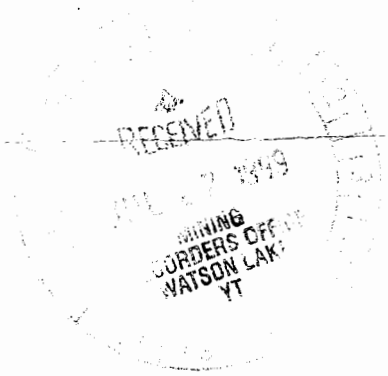
|          |                                |               |            |
|----------|--------------------------------|---------------|------------|
| DV 99-04 | NQ                             |               |            |
| Casing   | 0 - 27ft @ \$25.00 =           | 675.00        |            |
| Core     | 27 - 257ft = 230ft @ \$25.00 = | 5 750.00      |            |
|          | 2 Alcomer @ \$150.00 =         | 300.00        |            |
| Man Hrs. | 16 hours @ \$35.00 =           | <u>560.00</u> | \$7 285.00 |

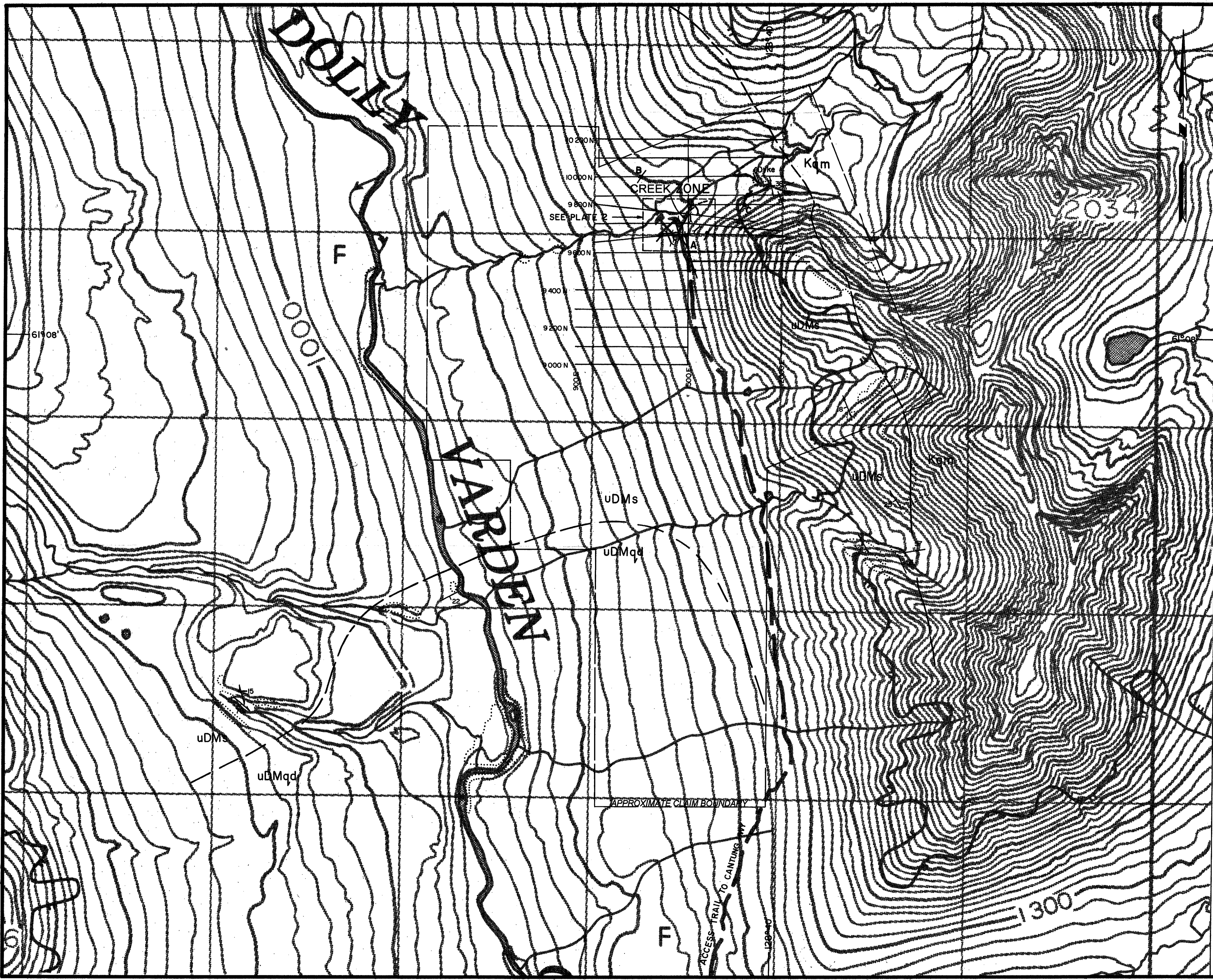
|          |                              |               |            |
|----------|------------------------------|---------------|------------|
| DV 99-05 | NQ                           |               |            |
| Casing   | 0 - 13ft @ \$25.00 =         | 325.00        |            |
| Core     | 13 - 350ft = 337ft @ \$25.00 | 8 425.00      |            |
|          | 1 Alcomer @ \$150.00 =       | 150.00        |            |
| Man Hrs. | 16 hours @ \$35.00 =         | <u>560.00</u> | \$9 460.00 |

**Demobilization:**

Move, dismantle and tear down equipment from last drill site, to the truck  
 Loading point. 2 men @ 13 hrs  
 2 men @ 8 hrs = 42 man hours @ \$35.00 = **\$1 470.00**

|                  |                     |
|------------------|---------------------|
| Sub-Total        | 42 660.00           |
| <u>7% GST</u>    | <u>2 986.20</u>     |
|                  | \$45 646.20         |
| <u>Retainer</u>  | <u>10 000.00</u>    |
| <b>Total Due</b> | <b>\$ 35 646.20</b> |



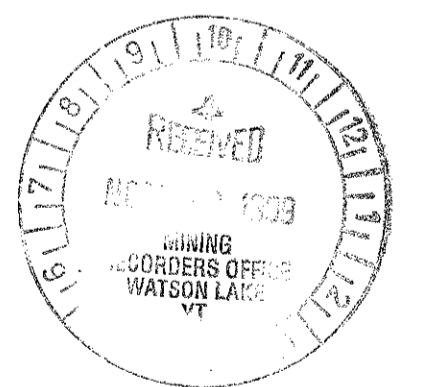


LEGEND

- CRETACEOUS (?)
- Kqm MEDIUM-GRAINED BIOTITE-QUARTZ MONZONITE
- UPPER DEVONIAN-MISSISSIPPIAN
- uDMqd QUARTZITE AND DOLOMITIC QUARTZITE LOCALLY FOSSILIFEROUS.
  - uDMs PHYLLITE: GREENISH GREY TO DARK GREY AND CARBONACEOUS. LOCAL HORNFELS, WITH QUARTZ VEINS AND DISSEMINATED PYRITE NEAR INTRUSIVE CONTACTS. CONTAINS QUARTZITE AT CREEK SEE PLATE 2 FOR DETAILS.
- LITHOLOGIC CONTACT
  - OUTCROP DISTRIBUTION
  - BEDDING
  - FRACTURES
  - FOLIATION
  - EM CONDUCTORS (1994)
  - FOREST COVERED AREAS

NOTE:  
 TOPOGRAPHY FROM ENERGY, MINES AND RESOURCES MAP 105H/2  
 -CONTOUR INTERVAL 20 METERS  
 -MAGNETIC DECLINATIONS 29°46' (1994)

094029



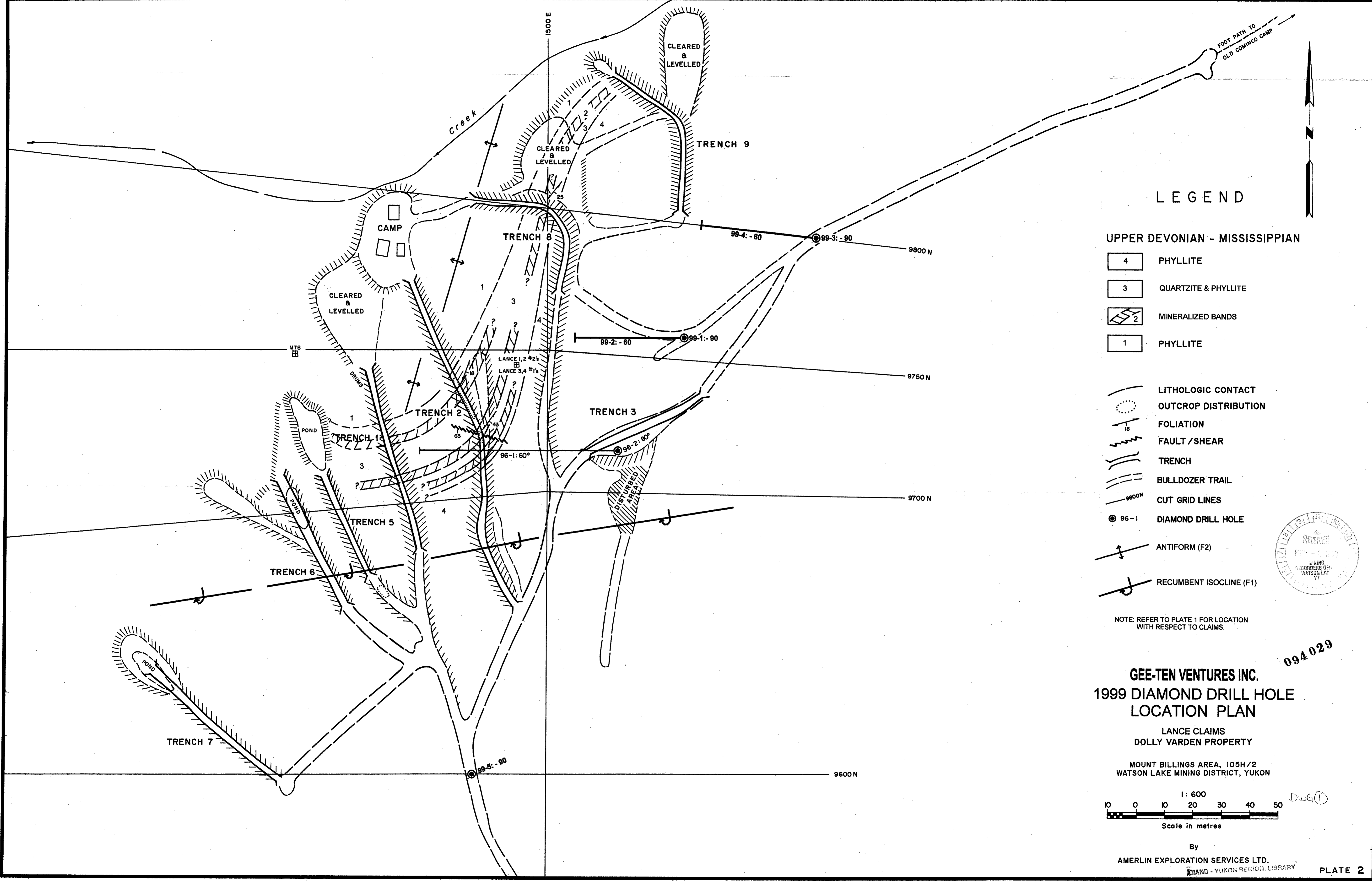
GEE-TEN VENTURES INC.  
 GEOLOGY

DOLLY VARDEN PROPERTY  
 MOUNT BILLINGS AREA, 105H/2  
 WATSON LAKE MINING DISTRICT, YUKON



Scale in Metres  
 By  
 AMERLIN EXPLORATION SERVICES LTD.

DWG ©



LEGEND

UPPER DEVONIAN - MISSISSIPPIAN

- 4 PHYLITE
- 3 QUARTZITE & PHYLITE
- 2 MINERALIZED BANDS
- 1 PHYLITE

- LITHOLOGIC CONTACT
- OUTCROP DISTRIBUTION
- FOLIATION
- FAULT / SHEAR
- TRENCH
- BULLDOZER TRAIL
- CUT GRID LINES
- 96-1 DIAMOND DRILL HOLE
- ANTIFORM (F2)
- RECUMBENT ISOCLINE (F1)



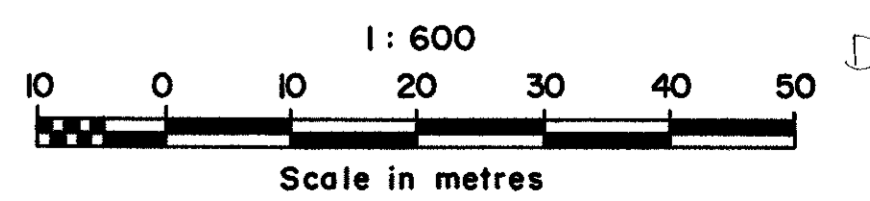
NOTE: REFER TO PLATE 1 FOR LOCATION WITH RESPECT TO CLAIMS.

094029

**GEE-TEN VENTURES INC.**  
**1999 DIAMOND DRILL HOLE**  
**LOCATION PLAN**

LANCE CLAIMS  
 DOLLY VARDEN PROPERTY

MOUNT BILLINGS AREA, 105H/2  
 WATSON LAKE MINING DISTRICT, YUKON



By  
 AMERLIN EXPLORATION SERVICES LTD.  
 DIAMOND - YUKON REGION, LIBRARY