

**1998 GEOLOGICAL and GEOCHEMICAL  
ASSESSMENT REPORT  
ON THE BACH PROPERTY**

**093 970**

**Quartz Claims**

**Bach 001-060 YB99785-99844**

March 15, 1999

Mayo Mining District  
N.T.S. 105N/07 & 08

Latitude: 63°24' North  
Longitude: 132°31' West

Owner: Viceroy Exploration (Canada), Inc.

Author: Carl M. Schulze

Date of work: June & August 1998

This report has been examined by  
the Geological Evaluation Unit  
under Section 53 (4) Yukon Quartz  
Mining Act and is allowed as  
representation work in the amount  
of \$ 10,537.00.

*M. B. B.*  
for Regional Manager, Exploration and  
Geological Services for Commissioner  
of Yukon Territory.

## TABLE OF CONTENTS

SUMMARY .....	1
CHAPTER 1: INTRODUCTION.....	2
1.1 Introductory Statement .....	2
1.2 Location and Access .....	2
1.3 Physiography and Vegetation .....	2
1.4 Regional Exploration History and Competitor Activity .....	2
1.5 Property Exploration History.....	2
1.6 Work Program .....	6
1.6.1 Sample Preparation and Assay Procedure .....	7
1.6.2 Personnel .....	7
CHAPTER 2: GEOLOGY.....	8
2.1 Regional Geology.....	8
2.2 Property Geology.....	8
CHAPTER 3: MINERALIZATION.....	11
3.1 Property Mineralization.....	11
CHAPTER 4: CONCLUSIONS .....	12
CHAPTER 5: RECOMMENDATIONS .....	13
BIBLIOGRAPHY .....	14
STATEMENT OF QUALIFICATIONS .....	15

## LIST OF TABLES

		Page
Table 1	Status of Claims After 1998 Filing .....	6
Table 2	Stratigraphic Column: Bach Property .....	9

## LIST OF FIGURES

Figure 1	General Location Map.....	3
Figure 2	Regional Location and Land Tenure Map.....	4
Figure 3	Government Claim Map.....	5
Figure 4	Regional Geologic Setting .....	10

## APPENDICES

Appendix 1	Applicable Expenditures For Assessment Credits
Appendix 2	Rock Assay Results
Appendix 3	Soil Assay Results
Appendix 4	Silt Assay Results

## LIST OF PLATES

Plate 1	Bach Property Sample Location Map 1:10,000
Plate 2	Bach Property Compilation Map 1:10,000

## SUMMARY

The Bach Property, consisting of the Bach 1-60 Claims located in Central Yukon on NTS sheets 105N/07 and 105N/08, was staked in 1997 by Viceroy Exploration (Canada), Inc.

The Bach Property is located within the Paleozoic Selwyn Basin which consists of a broad package of Paleozoic sediments extending ESE from north-west of Dawson City to the Yukon-NWT border north of the major NW-SE trending Tintina Fault Zone. This stratigraphy consists of shallow shelf to off-shelf marine clastic and chemical sediments, as well as basinal clastic sediments derived from the Ancient North American Platform to the north-east. Several episodes of continental uplift have led to periods of increased erosion and resulting continental margin or miogeosynclinal deposition, resulting in formation of comparatively high energy, shallow water sediments, often coarsely grained and variably calcareous. These are separated by strata formed under deeper, quieter water conditions, resulting in formation of fine clastic sediments and chert. The Mid-Cretaceous Tombstone-Tungsten Suite (95-89 Ma) has been emplaced within the Selwyn Basin. Members of this suite occur along an ESE trending belt extending for over 500 kilometres from north-west of Dawson City, Yukon to the Yukon-NWT border. Tombstone Suite intrusives are believed to control much of the economic gold mineralization within the Selwyn Basin.

Extensive thrust faulting along the entire extent of the Selwyn Basin began during Late Jurassic time, resulting in creation of a compressional regime. Most thrust faults are oriented roughly ESE, dipping to the south-west, subparallel to the overall ESE trend of stratigraphy. This regional lineation has been overprinted by a slightly less pronounced NE-SW lineation, marked by high angle orthogonal faults suggesting the compressional regime was followed by an extensional tectonic regime. The Bach Property occurs along the western limit of a broad deformation belt unofficially called the "Gold River Fold Belt". Several WNW trending thrust faults, reactivated as strike-slip faults associated with fairly intense folding extend ESE from the Bach Property area south of the Hess River.

The Bach Claims are underlain by an ESE trending package of Road River Group shale with minor chert extending along contact with a broad package of Road River Group chert with lesser shale and siltstone to the north. Earn Group chert pebble conglomerate underlies extreme southern areas. Two lineament sets are recognized from drainage orientations: a north-south lineation shown by a significant drainage towards the north, and a WNW trending lineation controlling minor drainages within western property areas.

Exploration in 1998 revealed a roughly one kilometre wide ESE trending belt of anomalous soil and silt values extending along the ESE trending shale-chert contact. Consistently anomalous gold in silt values to 35 ppb Au were returned from the central drainage, as well as a soil sample profile of 44 ppb Au over 400 metres. Gold in silt values to 85 ppb Au along a western lineament also suggests a strong structural component to control of mineralization. An area of anomalous geochemical values covers roughly three square kilometres.

Exploration expenditures in 1998 amounted to \$10,539.

Exploration in 1999 shall focus on establishment of a cut grid across the central part of the property, followed by systematic soil sampling, geological mapping and rock sampling, to delineate presently recognized soil anomalies.

## CHAPTER 1: INTRODUCTION

### 1.1 Introductory Statement

The Bach Property consists of 60 contiguous quartz mining claims (Bach 1-60 claims) covering a 13.5 square kilometre area measuring 4.5 by 3 kilometres within NTS Sheets 105 N/07 & 08, in the Mayo Mining District (Figures 1, 3).

The 1998 exploration program involved reconnaissance style systematic soil and silt sampling, and limited geological mapping and rock sampling.

### 1.2 Location and Access

The Bach Property is located 160 kilometres north of the town of Ross River, in the Yukon Territory. It is centered at 63° 24' North latitude, 132° 31' west longitude on NTS Map Sheets 105 N/07 and 105N/ 08 (Figure 2).

Access is by helicopter from Fairweather Lake roughly 15 kilometres to the southeast.

### 1.3 Physiography and Vegetation

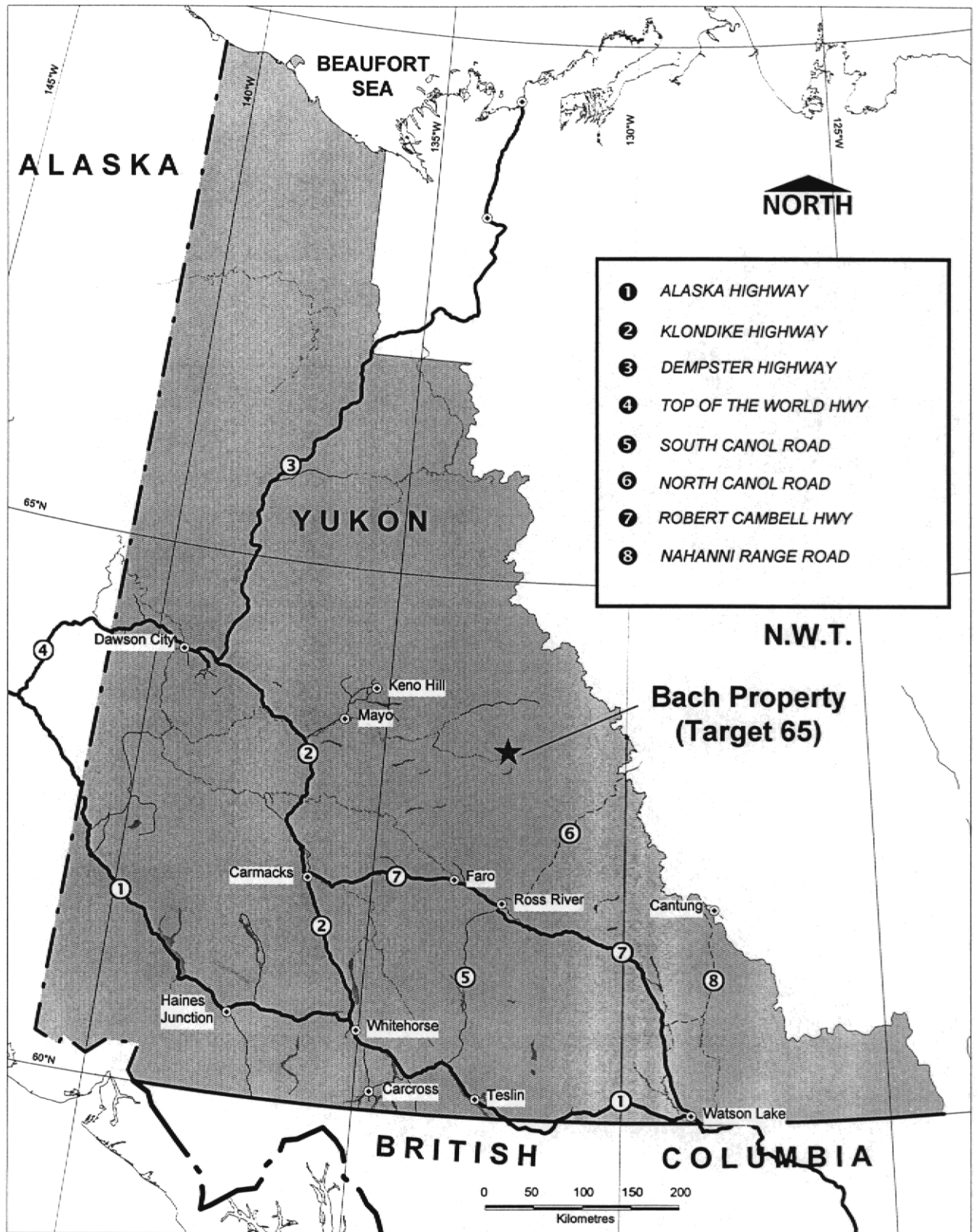
The Bach Property occurs within moderately rolling terrain with limited outcrop exposure attaining elevations of 3,500 feet. The entire property is covered by typical northern boreal spruce and fir forest.

### 1.4 Regional Exploration History and Competitor Activity

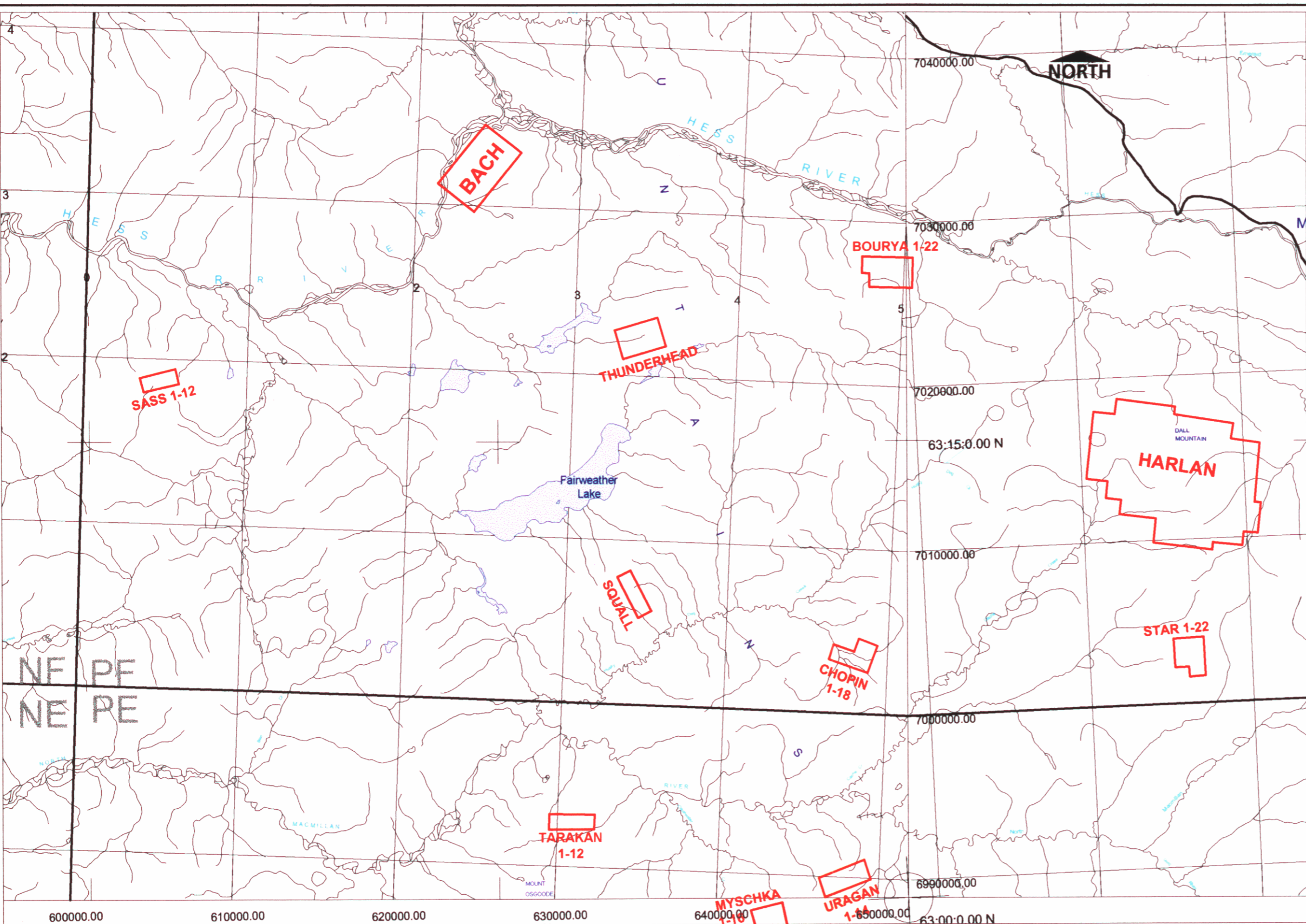
Little past exploration has occurred in the immediate Bach Property area. The JET Claims held by the Archer-Cathro Group located roughly fifty kilometres east-southeast overlie barite occurrences within Earn Group sediments. Several claim blocks overlie Tombstone Suite stocks and associated gold mineralization and gold in silt anomalies. These include: the YZ, NID, EM, and CYP Claims, held by Alliance Pacific Gold Ltd., which added the WEAS Claims onto the CYP Block in 1998; and the NUG Claims held by Bernard Kreft. The PLATA lead-zinc-silver prospect, held by Alliance Pacific, is located thirty-five kilometres to the north-east. The TOM and JASON lead-zinc-silver Sedex-style deposits, held by Cominco, are located roughly ninety kilometres to the east.

### 1.5 Property Exploration History

The Bach Property area was targeted due to several coincident gold-arsenic-mercury-antimony anomalies from RGS silt sampling across Earn Group stratigraphy. The Bach 1-60 claims were staked to cover significant gold values from systematic soil sampling, and several closely spaced coincident gold-mercury silt anomalies from streams overlying Earn and Road River Group stratigraphy. Soil and silt sampling in 1998 continued to substantiate the presence of widespread coincident gold-mercury-arsenic anomalies across the property.



**FIGURE 1: GENERAL LOCATION MAP**



 Valid Quartz Claims



VICEROY RESOURCE CORPORATION

**BACH PROPERTY  
REGIONAL LOCATION  
and  
LAND TENURE MAP**

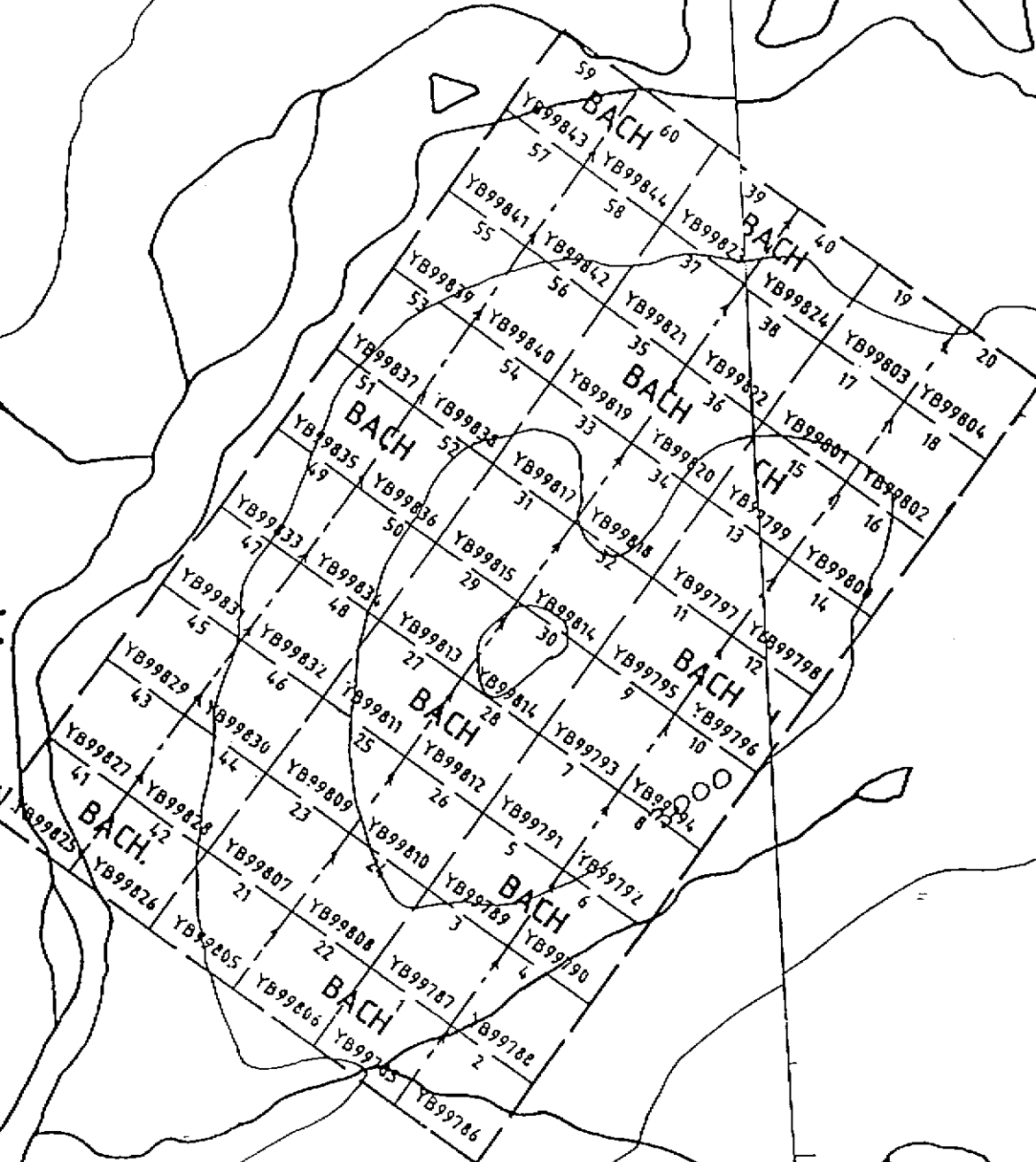
DATE:	Mar. 99	NTS:	105N/7,8
SCALE:	1:250,000	FIGURE NO.:	2

93970



2500

R  
I  
V  
E  
R



SCALE: 1/2 MILE: 1"



VIMROY RESOURCE CORPORATION

### BACH PROPERTY CLAIM LOCATION MAP

DRAWN BY:	SCALE:	1/2 Mile:1"
DATA BY: S.C.	NTS:	105N/7&N/8
DATE: 04/02/98	FIGURE:	3

Table 1 below lists detailed claim status, including assessment status and expiry dates following the 1998 filing.

<b>Table 1. Status of Bach Property claims after 1998 filing</b>				
<i>Claim Name</i>	<i>Grant No.</i>	<i>Owner</i>	<i>New expiry date</i>	<i>Work completed By</i>
Bach 001-003 Bach 005 Bach 007 Bach 009 Bach 011-013 Bach 015 Bach 017 Bach 019 Bach 021-040 Bach 042 Bach 044 Bach 046 Bach 048 Bach 050 Bach 052 Bach 054 Bach 056 Bach 058 Bach 060	YB99785-87 YB99789 YB99791 YB99793 YB99795-97 YB99799 YB99801 YB99803 YB99805-24 YB99826 YB99828 YB99830 YB99832 YB99834 YB99836 YB99838 YB99840 YB99842 YB99844	Viceroy Exploration (Canada), Inc.	October 27, 2000	Viceroy
Bach 004 Bach 006 Bach 008 Bach 010 Bach 014 Bach 016 Bach 018 Bach 020 Bach 041 Bach 043 Bach 045 Bach 047 Bach 049 Bach 051 Bach 053 Bach 055 Bach 057 Bach 059	YB99788 YB99790 YB99792 YB99794 YB99798 YB99800 YB99802 YB99804 YB99825 YB99827 YB99829 YB99831 YB99833 YB99835 YB99837 YB99839 YB99841 YB99843	Viceroy Exploration (Canada), Inc.	October 27, 1999	Viceroy

### 1.6 Work Program

In 1998, geological mapping of the property was undertaken, as well as rock, soil and silt soil sampling. Sample locations for 1998 and prior years are shown on Plate 1. Please note that the appendices contain only 1998 sample information.

### **1.6.1 Sample Preparation and Assay Procedure**

All samples were shipped and analyzed by Chemex Labs of North Vancouver, B.C. Soil samples were dried and sieved to – 80 mesh, and rock samples were crushed and pulverized to – 150 mesh. All samples were subject to 30g fire assay for gold with an atomic absorption finish, and also analyzed by 32 element ICP scan. Mercury was analyzed using a 10 ppb detection limit. Rejects are retained at Chemex Labs for one year. All sample locations have been tied into UTM co-ordinates and have been plotted. A sample database in Microsoft Excel format is included and can be interfaced with Autocad Map or MapInfo software programs.

### **1.6.2 Personnel**

All applicable assessment work was done by Carl Schulze, Senior Exploration Geologist; Gordon MacIntosh, Geologist; S. Gower, consultant and field assistants C. Travis, S. Erdman and E. Thompson. Mr. C. Meyer provided cooking and camp services.

Fireweed Helicopters of Dawson City, Yukon, provided helicopter services.

## CHAPTER 2: GEOLOGY

### 2.1 Regional Geology

The Bach Property is located within the Selwyn Basin which consists of a broad package of Paleozoic sediments extending ESE from north-west of Dawson City to the Yukon-NWT border north of the major NW-SE trending Tintina Fault Zone. This stratigraphy consists of shallow shelf to off-shelf marine clastic and chemical sediments, as well as basinal clastic sediments derived from the Ancient North American Platform to the north-east. Age of deposition ranges from Late Precambrian to Permian. At least two major episodes of rifting have occurred: the first during deposition of the Late Precambrian Hyland Group sediments, and the second during deposition of the Devonian-Mississippian Earn Group sediments (Table 2, Figure 4). These major rift zones often host poorly sorted coarse clastic sediments, such as debris flows or turbidite horizons. Several episodes of continental uplift have led to periods of increased erosion and resulting continental margin or miogeosynclinal deposition, resulting in the creation of sequences of comparatively high energy, shallow water sediments, often coarsely grained and variably calcareous. These are separated by strata formed under deeper, quieter water conditions, resulting in formation of fine clastic sediments and chert. The Mid-Cretaceous Tombstone-Tungsten Suite (95-89 Ma) has been emplaced within the Selwyn Basin. Intrusives of this suite occur along an ESE trending belt extending for over 500 kilometres from north-west of Dawson City, Yukon to the Yukon-NWT border. Intrusives are believed to control much of the economic gold mineralization within the Selwyn Basin.

Extensive thrust faulting along the entire extent of the Selwyn Basin began during Late Jurassic time, resulting in creation of a compressional regime. Most thrust faults are oriented roughly ESE, dipping to the south-west, subparallel to the overall ESE trend of stratigraphy. Several major regional thrust faults were formed including the Dawson Thrust, Tombstone Thrust, and Robert Service Thrust. This regional lineation has been overprinted by a slightly less pronounced NE-SW lineation, marked by high angle orthogonal faults suggesting the compressional regime was followed by an extensional tectonic regime.

The Bach Property occurs along the western limit of a broad deformation belt unofficially called the "Gold River Fold Belt". Several WNW trending thrust faults, reactivated as strike-slip faults associated with fairly intense folding extend ESE from the Bach Property area south of the Hess River. Several Tombstone Suite monzonite stocks occur within this belt within twenty kilometres of the property.

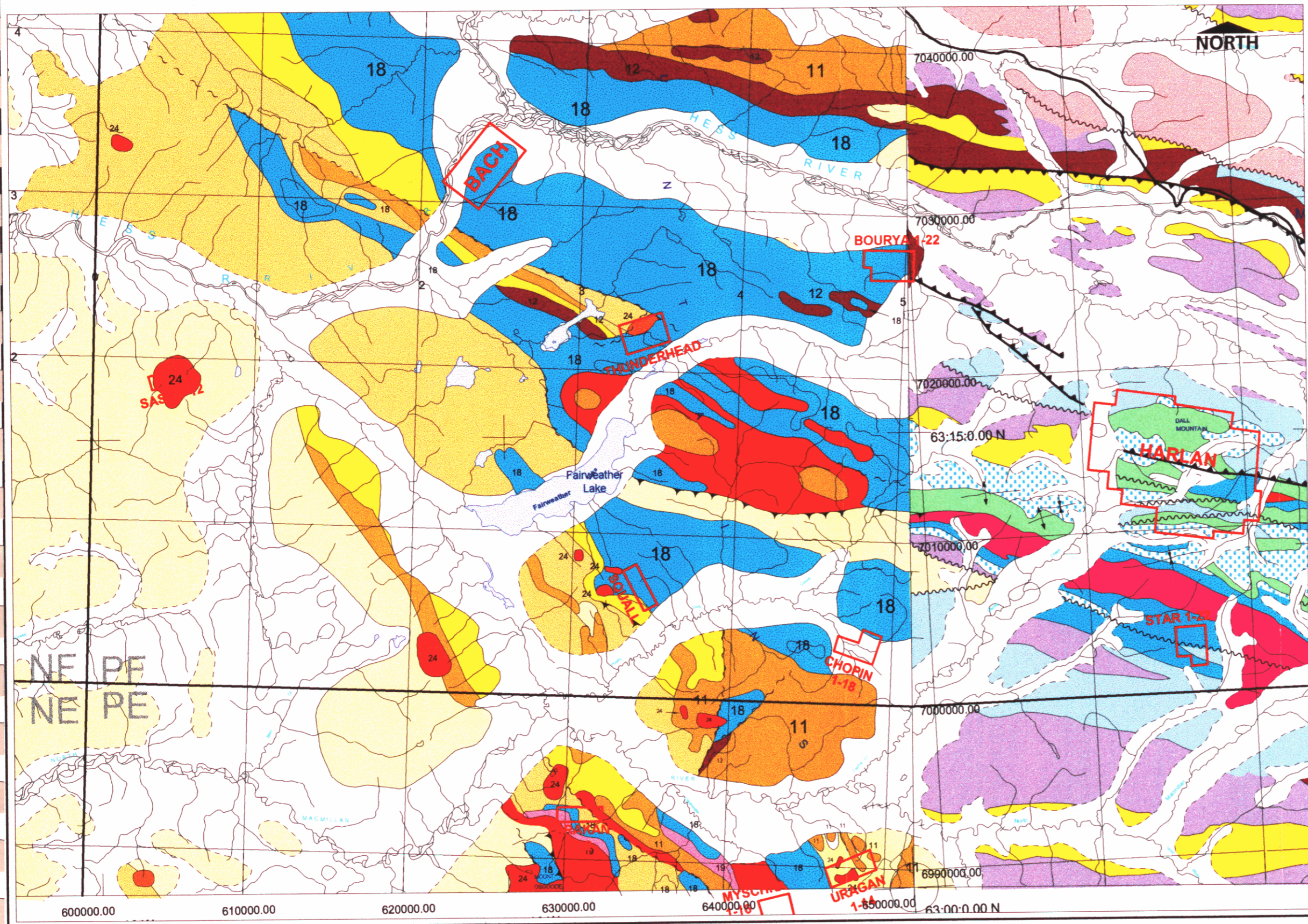
### 2.2 Property Geology

The Bach Claims are underlain by an ESE trending package of Road River Group shale with minor chert extending along an ESE trending contact with a broad package of Road River Group chert with lesser shale and siltstone to the north (Plate 2). The southern shale package, which contains a small phyllite member, lies in contact with a unit of Earn Group chert pebble conglomerate to the south. A smaller unit of Earn Group conglomerate extends along western portions of the shale-chert contact.

Two lineament sets are recognized from drainage orientation: a north-south lineation shown by a significant drainage towards the north, as well as drainages east of the property; and a WNW trending lineation controlling minor drainages within western property areas.

TABLE 2: STRATIGRAPHIC COLUMN, BACH PROPERTY

Age	Group	Formation (Lithology)	Geology Map Designation	Rock Code	Description
Mid-Late Cretaceous (95-89 Ma)	Tombstone-Tungsten Plutonic Suite	Diorite through Granite (Most commonly Quartz Monzonite), minor Syenite	Kg, Kqm, Ks		Felsic to intermediate dioritic to granitic intrusives, most commonly monzonitic, quartz monzonitic to quartz dioritic, Commonly feldspar to quartz-feldspar porphyritic within upper emplacement levels and dykes.
Devonian - Mississippian	Earn Group	<b>Prevost Formation</b>	Dmp (Dme)	CPC, GW	Grey chert-pebble-conglomerate to greywacke, locally fairly large clasts.
Devonian - Mississippian	Earn Group	<b>Portrait Lake Formation</b>	Dme	SH, CH	Black shale, minor chert.
Ordovician - Early Devonian	Road River Group	<b>Steel Formation</b>	SS (OSDr)		Siltstone to mudstone, commonly weakly to moderately calcareous, lesser sandstone to calcareous sandstone. all members commonly limonitic; minor limestone
Ordovician - Early Devonian	Road River Group	<b>Duo Lake Formation</b>	OSDr	CH	Thin bedded light grey chert, minor shale horizons. Weakly to moderately limonitic near intrusive contacts; local weak argillic alteration, silicification.
Ordovician - Early Devonian	Road River Group	<b>Duo Lake Formation</b>	OSDr	SH, SLT	Grey shale to siltstone, minor chert horizons.



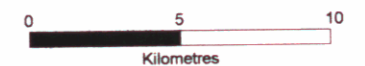
**GEOLOGICAL LEGEND**

I: Selwyn Basin (Northeast of Tintina Trench)

- MESOZOIC**
- Cretaceous**
    - 24 Bottle granite, bottle quartz monzonite, syenite (predominantly Tombstone Suite)
  - Triassic**
    - JONES LAKE FORMATION: Brown to gray weathering calcareous and micaceous sandstone and siltstone, siliceous shale and slate, minor limestone
- PALEOZOIC**
- Permian**
    - MOUNT CHRISTIE FORMATION: Green argillite, siliceous siltstone, minor sandstone and dolomite with deep-orange weathering
  - Carboniferous to Permian**
    - 20 Thin bedded limestone, minor black shale, chert, chert pebble conglomerate
  - Mississippian**
    - 19 Keno Hill quartzite, Messive quartzite, minor slate, phyllite, argillaceous quartzite; Eastern units may be temporally equivalent
  - Devonian to Mississippian**
    - 18 EARN GROUP: Prevost Formation: Thin bedded to laminated, dark blue-gray to black slate, phyllite, commonly graphitic, lesser calcareous siltstone sandstone and shale
    - 17 Prevost Formation: chert pebble conglomerate interbedded with chert-quartz, anelite and greywacke, chert-quartz, sandstone, blue-gray to black slate
    - EARN GROUP: Portrait Lake Formation and Unsubdivided: Thin bedded, siliceous black siltstone, shale and chert
    - 16 Felsic metavolcanics, quartz porphyry (part of lower schist?)
  - Ordovician to Early Devonian**
    - ROAD RIVER GROUP: Steel Formation: Orange weathering, thin bedded, bioturbated dolomitic to grey-green mudstone to siltstone, lesser chert
    - ROAD RIVER GROUP: Duo Formation and Unsubdivided: Thin to medium bedded, light grey to black chert, black shale, often graphitic
  - RABBITKITTLE FORMATION**
    - Basalt, tuff, tuff breccia
    - 11 Limestone and dolomite, minor black platy argillaceous limestone and dolomite
  - Early to Mid-Cambrian**
    - GULL LAKE FORMATION: Dark grey to black siliceous siltstone
    - SEKWI FORMATION: Limestone, silty limestone, local limestone slope breccia, minor siltstone and black shale
- PROTEROZOIC**
- Late Hadrynian to Early Cambrian**
    - HYLAND GROUP: Narchoile Formation: Argillite, dark grey, green to maroon shale and phyllite, minor argillaceous limestone and chert pebble conglomerate and "grit" unit
  - Late Hadrynian**
    - YUSEZYU FORMATION: Grey to dark grey limestone, minor arenaceous limestone, dark quartzite, calcareous quartzite, minor argillaceous limestone
    - YUSEZYU FORMATION: Argillite, maroon and green thin bedded, also thick bedded quartzite, calcareous quartzite, minor argillaceous limestone

**VICEROY RESOURCE CORPORATION**

**BACH PROPERTY  
REGIONAL GEOLOGIC SETTING**



DATE:	Mar. 99	NTS:	105N/7,8
SCALE:	1:250,000	FIGURE NO.:	4

93970

## CHAPTER 3: MINERALIZATION

### 3.1 Property Mineralization

Consistently elevated gold values were returned from soil and silt sampling across a roughly one kilometre wide zone centered along the ESE trending shale-chert contact. The north-south and WNW trending lineations also affect mineralogic controls within this zone. Soil sampling roughly 300 metres west of the northern stream returned 66 ppb Au/ 600 metres, with mercury values exceeding 1,000 ppb. A value of 44 ppb Au/ 400 metres was returned from sampling roughly 200 metres east of the stream. Silt sampling along the northern stream returned consistently anomalous values to 35 ppb Au with mercury values ranging from 290 to 1560 ppb Hg, weakly anomalous silver values to 5.4 gpt Ag, and antimony values from 4-12 ppm Sb. Gold values to 75 ppb Au were returned from tributaries draining the east side.

Structural control is inferred along a lineament within western areas of the property. Silt sampling approximately 1.2 kilometres west of the stream revealed a cluster of moderately anomalous gold values to 85 ppb Au, associated with weakly anomalous gold in soil values to 25 ppb Au, along a WNW trending lineament. Anomalous values along the main north trending drainage may also be partially structurally controlled. Anomalous geochemical values were returned across roughly three square kilometres.

The coincident gold-mercury-arsenic values suggest an epithermal, sediment-hosted gold source. Further surface exploration is necessary to determine whether mineralization occurs as replacement zones in reactive sediments, or within stockwork or veins within brittle sediments.

## CHAPTER 4: CONCLUSIONS

The Bach Property, consisting of the Bach 1-60 Claims located in Central Yukon on NTS sheets 105N/07 and 105N/08, was staked in 1997 by Viceroy Exploration (Canada), Inc.

The Bach Property is located within the Selwyn Basin which consists of a broad package of Paleozoic sediments extending ESE from north-west of Dawson City to the Yukon-NWT border north of the major NW-SE trending Tintina Fault Zone. This stratigraphy consists of shallow shelf to off-shelf marine clastic and chemical sediments, as well as basinal clastic sediments derived from the Ancient North American Platform to the north-east. Age of deposition ranges from Late Precambrian to Permian. Several episodes of continental uplift have led to periods of increased erosion and resulting continental margin or miogeosynclinal deposition, resulting in formation of comparatively high energy, shallow water sediments, often coarsely grained and variably calcareous. These are separated by strata formed under deeper, quieter water conditions, resulting in formation of fine clastic sediments and chert. The Mid-Cretaceous Tombstone-Tungsten Suite (95-89 Ma) has been emplaced within the Selwyn Basin. Members of this suite occur along an ESE trending belt extending for over 500 kilometres from north-west of Dawson City, Yukon to the Yukon-NWT border. Tombstone Suite intrusives are believed to control much of the economic gold mineralization within the Selwyn Basin.

Extensive thrust faulting along the entire extent of the Selwyn Basin began during Late Jurassic time, resulting in creation of a compressional regime. Most thrust faults are oriented roughly ESE, dipping to the south-west, subparallel to the overall ESE trend of stratigraphy. This regional lineation has been overprinted by a slightly less pronounced NE-SW lineation, marked by high angle orthogonal faults suggesting the compressional regime was followed by an extensional tectonic regime.

The Bach Property occurs along the western limit of a broad deformation belt unofficially called the "Gold River Fold Belt". Several WNW trending thrust faults, reactivated as strike-slip faults associated with fairly intense folding extend ESE from the Bach Property area south of the Hess River. The Bach Claims are underlain by an ESE trending package of Road River Group shale with minor chert extending along contact with a broad package of Road River Group chert with lesser shale and siltstone to the north. Earn Group chert pebble conglomerate underlies extreme southern areas. Two lineament sets are recognized from drainage orientations: a north-south lineation shown by a significant drainage towards the north, and a WNW trending lineation controlling minor drainages within western property areas.

Exploration in 1998 revealed a roughly one kilometre wide ESE trending belt of anomalous soil and silt values extending along the ESE trending shale-chert contact. Consistently anomalous gold in silt values to 35 ppb Au were returned from the central drainage, as well as a soil sample profile of 44 ppb Au over 400 metres. Gold in silt values to 85 ppb Au along a western lineament also suggests a strong structural component to control of mineralization. An area of anomalous geochemical values covers roughly three square kilometres.

## **CHAPTER 5: RECOMMENDATIONS**

Exploration in 1999 shall concentrate on soil geochemical surveying across the ESE trending anomalous belt along the shale-chert contact. A grid across north-central areas will be established, consisting of cross lines established at 200 metre spacings. Systematic B-horizon soil sampling at 50 metre station spacing will be done across the grid to determine extent of geochemical anomalies. Detailed geological mapping and rock chip sampling will also be conducted. Reconnaissance style traversing involving systematic soil sampling, geological mapping and rock sampling shall be done across areas south of the proposed grid.

## BIBLIOGRAPHY

Department of Indian and Northern Affairs, 1995: Yukon Minfile, Frances Lake Area (Sheet 105N); Exploration and Geological Services, Whitehorse.

Diment, R, 1997; Brewery Creek Report, 1996: Exploration Progress Report, In-house report, Viceroy International Exploration, Inc.

Gordey, S.P. and Anderson, R.G., 1996: Evolution of the Northern Cordilleran Miogeosyncline, Nahanni Map Area (105I), Yukon and Northwest Territories; Geological Survey of Canada, Memoir 428.

Poulson, K.H., 1996: Carlin Type Gold Deposits: Canadian Potential?, in New Deposit Models of the Cordillera, Northwest Mining Association short course.

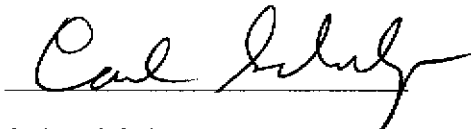
Roots, C.F. Abbott, J.G. Cecile, M.P. Gordey, S.P. 1995: Bedrock Geology of Lansing Range Map Area (105N), East Half, Hess Mountains, Yukon; Exploration and Geological Services, Yukon Region, and Indian and Northern Affairs Canada.

Schulze, C, 1997: Yukon Regional Project, 1997 Progress Report; In-house Report, Viceroy Exploration (Canada), Inc.

## STATEMENT OF QUALIFICATIONS

I, Carl Schulze, of the City of Whitehorse, Yukon Territory, Canada, do hereby certify that:

- 1) I have held the position of Senior Exploration Geologist with Viceroy Exploration (Canada), Inc, since its 1998 inception and with Viceroy International Exploration Inc. since 1996.
- 2) I graduated from Lakehead University with a Bachelor of Science Degree in Geology in 1984.
- 3) I have been continually active in mineral exploration since 1984.
- 4) I supervised the exploration program and performed part of the work described in this report.
- 5) I am currently president of the Yukon Chamber of Mines and a member of the Yukon Prospectors' Association.



Carl M. Schulze  
Senior Geologist  
Viceroy Exploration (Canada) Inc.

APPENDIX 1

APPLICABLE EXPENDITURES FOR ASSESSMENT CREDITS

<b>Bach Property Expenditures</b>	
<b>Description</b>	<b>Expenditure</b>
Labor	\$2,040
Camp costs	360
Helicopter	4,224
Geochemical Analyses	2,000
Ground Transportation	300
Report Writing	1,615
<b>Total</b>	<b>10,539</b>

**APPENDIX 2**

**ROCK ASSAY RESULTS**

**Target 65  
Rock Sample Description Sheet**

Sample	X_Coord	Y_Coord	Z_Coord	Traverse	Zone	Type	Width_m	Desc	Fm	Lithology	Modifier	Colour	Carb	Silicif	Alt_ARG	Alt_POT	Alt_PHY	Limonite	Mineral_1	M1_Amt	Mineral_2	M2_Amt	Mineral_3	M3_Amt	Date	Name
M685763R	622680	7028940		65K	8	cg		Outcrop		CPC	brec	dgy							Mag						06/13/98	SG/ET
P132461R	623684	7032691		65M	Zone 8	cg		Outcrop	DMe	QTZ	vn	wh						strg							08/03/98	GDM
P132462R	623615.6	7033073		65M	Zone 8	cg		Outcrop	DMe	QTZ	vn	wh						mod							08/03/98	GDM
Sample	Au_ppb	Ag	Al	As	Ba	Be	Bi	Ca	Cd	Co	Cr	Cu	Fe	Ga	Hg	K	La	Mg	Mn	Mo	Na	Ni	P	Pb	Sb	Sc
M685763R	2	0.1	0.3	8	340	0.2	1	0.04	0.5	5	133	77	1.19	5	40	0.09	5	0.07	685	3	0	20	130	1	1	1
P132461R	2	0.1	0.3	6	110	0.25	1	0.38	1.5	5	285	42	1.39	5	150	0.06	5	0.11	1790	0.5	5	23	180	1	1	0.5
P132462R	2	0.1	0.57	10	240	0.25	4	8.5	0.25	33	83	9	3.87	5	70	0.14	10	3.08	9200	0.5	5	54	450	1	1	3
Sample	Sr	Ti	Tl	U	V	W	Zn	Comments																		
M685763R	5	0	5	5	6	5	100	1065m from IP31/32 @260 degrees																		
P132461R	42	5	5	5	7	5	68	in PHY																		
P132462R	1395	5	5	5	8	5	94																			

**APPENDIX 3**  
**SOIL ASSAY RESULTS**

## Target 65

## Soil Sample Description Sheet

Sample	X_Coord	Y_Coord	Z_Coord	Zone	Horizon	Depth_cm	Slope_Ang	Colour	Permafros	Cse	Frag	Vegetation	Surf_Geol	Frag_Lith	Organics	Date	Name	Au_ppb	Ag	Al	As	Ba
65F 000	624099.54	7031991.35			8 B	20	sl	org			0	cf	ff	SLT	0	09/01/97	GM	2	0.6	1.84	28	400
65F 0050	624134.41	7032027.19			8 B	20	sl	org			0	cf	ff	SLT	0	09/01/97	GM	2	0.2	1.26	12	130
65F 0100	624169.28	7032063.02			8 B	20	sl	org			0	cf	ff	SLT	0	09/01/97	GM	2	0.2	1.23	22	250
65F 0150	624204.15	7032098.85			8 B	20	sl	org			0	cf	ff	SLT	0	09/01/97	GM	2	0.1	1.68	22	260
65F 0200	624239.02	7032134.69			8 B	30	mod	org			0	cf	ff	SLT	0	09/01/97	GM	2	1.6	1.03	26	450
65F 0250	624273.89	7032170.52			8 B	40	mod	org			30	cf	ff	SLT	0	09/01/97	GM	2	0.8	1.28	26	290
65F 0300	624308.77	7032206.35			8 B	30	mod	gry			20	cf	ff	SLT	0	09/01/97	GM	10	0.8	1.27	14	690
65F 0350	624343.84	7032242.19			8 B	40	mod	gry			20	cf	ff	SLT	10	09/01/97	GM	2	0.2	0.53	26	160
65F 0400	624378.51	7032278.02			8 B	40	mod	gry			20	cf	ff	SLT	10	09/01/97	GM	2	1.4	0.68	38	570
65F 0450	624413.38	7032313.85			8 NS	NS	mod	NS	NS	NS	NS	NS	NS	NS	NS	09/01/97	GM	-1	-1	-1	-1	-1
65F 0500	624448.25	7032349.89			8 A	50	mod	dbm			0	bb			90	09/01/97	GM	2	0.8	1.87	1	770
65F 0550	624483.12	7032385.52			8 A	50	mod	dbm			0	cf			80	09/01/97	GM	2	0.8	1.52	14	910
65F 0600	624517.99	7032421.35			8 B	20	sl	gry			30	cf	ff	SLT	20	09/01/97	GM	2	0.1	0.66	1	280
65F 0650	624552.86	7032457.19			8 NS	NS	NS	NS	NS	NS	NS	NS	NS	NS	NS	09/01/97	GM	-1	-1	-1	-1	-1
65F 0700	624587.73	7032493.02			8 A	40	mod	dbm			0	cf			90	09/01/97	GM	2	1	1.36	2	1090
65F 0750	624622.6	7032528.85			8 NS	NS	NS	NS	NS	NS	NS	NS	NS	NS	NS	09/01/97	GM	-1	-1	-1	-1	-1
65F 0800	624657.47	7032564.69			8 A	40	mod	dbm			0	cf			80	09/01/97	GM	2	1.2	2.71	8	540
65F 0850	624692.34	7032600.52			8 B	30	sl	org			0	cf			20	09/01/97	GM	2	1.6	1.59	8	1160
65F 0900	624727.21	7032636.35			8 B	20	sl	org			0	cf	ff	SLT	10	09/01/97	GM	2	2.8	1.19	18	150
65F 0950	624762.08	7032672.19			8 B	30	sl	org			10	cf	ff	SLT	10	09/01/97	GM	2	0.1	1.31	30	390
65F 1000	624798.95	7032708.02			8 B	30	sl	org			20	cf	ff	SLT	10	09/01/97	GM	2	1.6	1.5	30	310
65F 1050	624801.98	7032761.55			8 B	30	sl	org			20	cf	ff	SLT	20	09/01/97	GM	15	0.8	1.53	60	340
65F 1100	624804.98	7032811.48			8 B	20	mod	gry			0	cf	ff	SLT	20	09/01/97	GM	5	0.1	0.65	20	720
65F 1150	624807.98	7032861.37			8 B	30	mod	gry			0	cf			20	09/01/97	GM	10	0.8	0.5	34	600
65F 1200	624810.98	7032911.18			8 AB	40	mod	dbm			0	cf			20	09/01/97	GM	10	2.8	0.93	20	1610
65F 1250	624813.98	7032961.19			8 AB	30	mod	dbm			40	cf			40	09/01/97	GM	5	1	0.64	12	1200
65F 1300	624816.98	7033011.1			8 AB	40	mod	dbm			0	cf			50	09/01/97	GM	10	1	1.03	6	1470
65F 1350	624819.97	7033061.01			8 AB	40	mod	dbm			0	cf			70	09/01/97	GM	10	2	0.83	16	1200
65F 1400	624822.97	7033110.92			8 AB	40	mod	gry			0	cf			70	09/01/97	GM	2	2.8	0.85	8	1110
65F 1450	624825.97	7033160.83			8 B	40	mod	gry			0	cf			20	09/01/97	GM	10	3.4	0.9	24	690
65F 1500	624828.97	7033210.74			8 AB	40	mod	dbm			0	cf			60	09/01/97	GM	10	2.4	0.83	14	620
65F 1550	624831.97	7033260.85			8 A	40	mod	dbm			0	cf			70	09/01/97	GM	2	2.2	0.43	10	360
65F 1600	624834.97	7033310.56			8 A	40	mod	dbm			0	cf			70	09/01/97	GM	10	2.2	0.91	52	820
65F 1650	624837.96	7033360.47			8 A	40	mod	blk			0	cf			70	09/01/97	GM	2	1.8	0.99	20	1420
65F 1700	624840.96	7033410.38			8 A	40	mod	blk			0	cf			70	09/01/97	GM	10	1.4	1.22	32	1230
65G 0000	624364.17	7032200.89			8 C	20	ft	gry			20	cf	cv		0	09/01/97	GM	2	0.6	0.66	24	260
65G 0050	624350.76	7032248.86			8 C	20	gt	bm			5	cf	cv		0	09/01/97	GM	2	9	1.57	62	350
65G 0100	624337.36	7032297.03			8 C	20	gt	bm			5	cf	cv		0	09/01/97	GM	2	0.8	1.16	24	230
65G 0150	624323.96	7032345.2			8 C	20	mod	blk			25	cf	cv	SH	0	09/01/97	GM	15	2.4	0.23	16	290
65G 0200	624310.56	7032393.37			8 C	20	st	blk			5	cf	cv		10	09/01/97	GM	2	1.4	0.6	14	690
65G 0250	624297.16	7032441.54			8 C	20	st	blk			10	cf	cv	SH	0	09/01/97	GM	10	1.6	0.94	10	750
65G 0300	624283.75	7032489.72			8 C	20	st	blk			10	cf	cv	SH	0	09/01/97	GM	20	1.4	1.56	24	1290
65G 0350	624270.35	7032537.89			8 C	20	st	blk			10	cf	cv	SH	5	09/01/97	GM	10	0.8	1.33	20	1190
65G 0400	624256.95	7032588.06			8 C	20	st	blk			20	cf	cv	SHG	10	09/01/97	GM	10	1	1.25	28	1350
65G 0450	624243.55	7032634.23			8 C	20	st	blk			20	cf	cv	SH	10	09/01/97	GM	10	0.4	0.78	30	500
65G 0500	624230.15	7032682.4			8 C	20	st	gry			40	cf	cv	SH	0	09/01/97	GM	20	8	0.59	96	420
65G 0550	624216.74	7032730.57			8 C	20	st	blk			5	cf	cv	SH	20	09/01/97	GM	2	2.2	0.78	48	830
65G 0600	624203.34	7032778.74			8 C	20	st	blk			40	cf	cv	SH	0	09/01/97	GM	2	1.8	0.3	18	440
65G 0650	624189.94	7032826.91			8 C	20	st	tan			20	cf	cv		0	09/01/97	GM	10	1.4	0.39	10	330
65G 0700	624176.54	7032875.08			8 C	20	st	tan			20	cf	cv		0	09/01/97	GM	-1	0.2	1.06	46	410
65G 0750	624163.14	7032923.25			8 C	20	st	gry			20	cf	cv	SLT	0	09/01/97	GM	2	0.6	0.77	26	310
65G 0800	624149.73	7032971.42			8 C	20	st	gry			20	cf	cv		5	09/01/97	GM	150	1.6	0.59	252	410
65G 0850	624136.33	7033019.59			8 C	20	st	blk			10	cf	cv	SH	10	09/01/97	GM	2	0.6	0.34	1	490
65G 0900	624122.93	7033067.76			8 C	20	st	dgy			20	cf	cv	SH	0	09/01/97	GM	20	1.4	0.72	40	500
65G 0950	624109.53	7033115.93			8 C	20	st	gry			30	cf	cv	SH	0	09/01/97	GM	55	1.2	0.95	38	420
65G 1000	624096.13	7033164.1			8 C	20	st	blk			30	cf	cv	SH	0	09/01/97	GM	65	2.4	0.54	40	380

Target 65

Soil Sample Description Sheet

Sample	X_Coord	Y_Coord	Z_Coord	Zone	Horizon	Depth_cm	Slope_Ang	Colour	Permatros	Cse_Frag	Vegetation	Surf_Geol	Frag_Lith	Organics	Date	Name	Au_ppb	Ag	Al	As	Ba
85G 1050	624082.73	7033212.27		B	C	20	st	blk		30	cf	cv	SH	0	09/01/97	GM	45	4.4	0.51	12	300
85G 1100	624089.32	7033260.44		B	C	20	st	blk		30	cf	cv	SH	0	09/01/97	GM	30	3	0.7	46	550
85G 1150	624055.92	7033308.81		B	C	20	st	blk		30	cf	cv	SH	0	09/01/97	GM	115	2.8	1.01	102	520
85G 1200	624042.52	7033358.78		B	C	20	st	blk		30	cf	cv	SH	0	09/01/97	GM	120	2.4	1.04	76	500
85G 1300	624020.86	7033444.18		B	C	20	st	blk		30	cf	cv	SH	0	09/01/97	GM	100	2	0.5	86	490
85G 1400	623995.19	7033540.83		B	C	20	mod	gry		30	cf	cv	SLT	0	09/01/97	GM	20	1	0.54	58	430
85H 0000	624782.27	7032493.64		B	B	10	rt	org		30	cf	tf	SLT	10	09/01/97	GM	2	0.1	0.97	10	120
85H 0100	624882.01	7032433.3		B	B	10	st	org		30	bb	tf	SLT	10	09/01/97	GM	2	0.8	0.92	24	310
85H 0200	624941.76	7032372.97		B	A	10	st	dbm		0	bb			70	09/01/97	GM	2	1	0.92	18	1460
85H 0300	625021.51	7032312.64		B	NS	NS					bb			NS	09/01/97	GM	-1	-1	-1	-1	-1
85H 0400	625101.26	7032252.31		B	A	50	mod	dbm		0	bb			80	09/01/97	GM	2	0.4	1.23	8	660
85H 0500	625181.01	7032191.97		B	A	50	mod	dbm		0	bb			80	09/01/97	GM	2	0.6	0.95	16	1070
85H 0600	625260.76	7032131.64		B	A	50	mod	dbm		0	bb			70	09/01/97	GM	2	0.6	1.25	8	800
85H 0700	625340.51	7032071.31		B	A	20	mod	gry		0	bb			20	09/01/97	GM	2	0.4	1.75	18	420
85H 0800	625420.26	7032010.97		B	NS	NS	mod				bb			NS	09/01/97	GM	-1	-1	-1	-1	-1
85H 0900	625500.01	7031950.64		B	NS	NS	mod				bb			NS	09/01/97	GM	-1	-1	-1	-1	-1
85H 1000	625579.76	7031890.31		B	B	30	mod	gry		0	bb	tf	SLT	30	09/01/97	GM	2	0.8	1.38	12	1010
85H 1100	625659.51	7031829.97		B	B	30	sl	gry		0	bb			30	09/01/97	GM	5	0.6	1.11	10	1500
85H 1200	625739.25	7031769.64		B	NS	NS	sl				bb			NS	09/01/97	GM	-1	-1	-1	-1	-1
85H 1300	625819	7031709.31		B	B	30	sl	gry		10	bb	tf	SLT	20	09/01/97	GM	2	0.2	1.11	12	300
85H 1400	625898.75	7031648.97		B	B	20	sl	gry		20	bb	tf	SLT	20	09/01/97	GM	2	0.1	0.76	22	170
85H 1500	625978.5	7031588.64		B	NS	NS	sl				bb			NS	09/01/97	GM	-1	-1	-1	-1	-1
85H 1600	626070.65	7031602.59		B	AB	40	sl	dbm		0	bb			60	09/01/97	GM	10	1.6	2.03	26	2160
85H 1700	626169.75	7031615.92		B	B	40	sl	bm		0	bb			20	09/01/97	GM	2	0.6	1.05	14	690
85H 1800	626268.86	7031629.25		B	B	40	sl	bm		0	bb			20	09/01/97	GM	2	1.4	1.98	26	1800
85H 1900	626367.97	7031642.58		B	B	30	sl	bm		0	bb			30	09/01/97	GM	2	0.6	1.44	24	380
85H 2000	626467.08	7031655.91		B	B	30	sl	gry		0	cf			20	09/01/97	GM	2	0.1	1.33	28	230
85H 2100	626549.72	7031596.45		B	B	40	sl	gry		0	cf			10	09/01/97	GM	2	0.1	0.55	20	230
85H 2200	626629.74	7031536.48		B	B	30	sl	gry		0	cf			10	09/01/97	GM	2	0.4	0.86	14	240
85H 2300	626709.78	7031476.51		B	B	30	sl	gry		0	cf			10	09/01/97	GM	2	0.1	1.47	20	280
85H 2400	626789.78	7031416.53		B	B	20	sl	dbm		0	cf			20	09/01/97	GM	2	0.1	1.43	14	310
85H 2500	626868.8	7031356.56		B	B	30	sl	dbm		0	cf			10	09/01/97	GM	2	0.1	1.06	2	220
85H 2600	626949.82	7031296.59		B	B	30	sl	gry		0	cf			10	09/01/97	GM	2	0.1	0.75	10	220
85H 2700	627029.84	7031236.61		B	B	30	sl	gry		0	cf			10	09/01/97	GM	2	0.6	1.46	8	690
85H 2800	627109.86	7031176.64		B	B	40	sl	gry		0	cf			20	09/01/97	GM	2	0.8	0.75	2	1240
85H 2900	627189.88	7031116.67		B	B	30	sl	gry		0	cf			20	09/01/97	GM	10	0.6	0.89	26	1750
85H 3000	627265.05	7031060.68		B	B	20	sl	gry		0	cf			10	09/01/97	GM	5	0.8	0.88	22	2050
85J 0000	625175.5865	7034218.882		g	B	25	mod	bl		25	cf	ti			06/13/98	CT	15	1.4	0.61	38	960
85J 0100	625207.5902	7034129.033			B	30	mod	bl	yes	0	cf			70	06/13/98	CT	2	0.2	0.27	1	480
85J 0200	625210.8545	7034047.279			B	5	mod	bl	yes	20	cf	ti			06/13/98	CT	15	2	0.8	28	1320
85J 0300	625203.8685	7033979.717		NS	NS										06/13/98	CT	-1	-1	-1	-1	-1
85J 0400	625196.8825	7033912.154			B/C	20	mod	bl	yes	20	cf	ti	ch		06/13/98	CT	2	1.6	0.44	18	630
85J 0500	625154.7953	7033823.37			B	20	mod	bl	yes	0	cf	ti	sh		06/13/98	CT	2	1.6	0.42	24	540
85J 0600	625109.758	7033709.06			A/B	30	mod	bm	yes	0	cf	ls			06/13/98	CT	2	1.4	0.27	10	580
85J 0700	624985.0968	7033670.782			B	20	st	bm	yes	20	cf	ti	ch/qtz		06/13/98	CT	2	0.2	0.55	10	240
85J 0800	624858.9473	7033624.243			B	28	st	gry	yes	45	de	cv	sa,slt		06/13/98	CT	15	2.4	0.36	10	480
85J 0900	624889.671	7033585.691			B	20	st	gry	no	50	cf	cv	ch		06/13/98	CT	2	0.6	0.3	16	180
85J 1000	624500.1137	7033500.501			B	5	st	bm	no	60	cf	cv			06/13/98	CT	30	0.4	0.49	16	340
85J 1100	624349.786	7033447.061			B	20	st	bm	no	30	cf	cv	slt		06/13/98	CT	20	1.2	0.77	18	640
85J 1200	624401.5475	7033331.096			B	20	st	bm	no	30	cf	cv	slt, ch		06/13/98	CT	90	0.4	0.73	212	190
85J 1300	624444.1292	7033251.085			B	22	st	bm	yes	20	cf	cv	ch,slt		06/13/98	CT	35	1.6	0.78	24	640
85J 1400	624473.2534	7033118.475			A/B	25	st	bm	no	5	cf	cv	ch		06/13/98	CT	2	0.8	0.39	2	190
85J 1500	624506.1278	7032996.392			B	25	st	gry	no	25	cf	cv	slt		06/13/98	CT	15	1.4	1.37	22	1650
85J 1600	624516.8462	7032890.676			NS	NS			yes						06/13/98	CT	-1	-1	-1	-1	-1
85J 1700	624527.1848	7032784.96			B/C	20	st	gry	yes	65	cf	ti			06/13/98	CT	10	0.4	0.72	10	460
85J 1800	624479.1158	7032688.13			B	20	st	gry	yes	50	cf	ti			06/13/98	CT	10	1	0.68	10	590

## Target 65

## Soil Sample Description Sheet

Sample	X_Coord	Y_Coord	Z_Coord	Zone	Horizon	Depth_cm	Slope_Ang	Colour	Permatros	Cse_Frag	Vegetation	Surf_Geol	Frag_Lith	Organics	Date	Name	Au_ppb	Ag	Al	As	Ba
65J 1900	624427.2465	7032560.781			B	20	st	brn	yes	70	cf	cv	sh,silt		06/13/98	CT	2	0.6	0.48	6	240
65J 2000	624343.604	7032459.738			B	10	ht	brn		50	cf	tl			06/13/98	CT	2	0.1	0.54	10	70
65J 2100	624219.0856	7032372.697			B/C	10	ht	brn		60	cf	cv	sh		06/13/98	CT	2	0.1	0.54	8	90
65J 2200	624319.0856	7032472.697			B	10	ht	or		30	cf	cv	sh,ch,qtz		06/13/98	CT	2	0.1	1.33	24	160
65K 0850	622837.4256	7032399.46		8	B	20	mod	grybrn		10	cf		SH	15	06/13/98	SG/ET	10	0.6	1.01	10	840
65K 0950	622904.5022	7032476.394		8	B	30	st	tan		25	cf		SH	10	06/13/98	SG/ET	15	0.2	0.71	22	220
65K 1100	623006.2844	7032580.55		8	B	30	mod	gry		20	cf		SH	40	06/13/98	SG/ET	10	1.6	0.68	14	780
65K 1310	623060.0832	7032686.035		8	B	30	st	gry		50	cf	silt	SH	5	06/13/98	SG/ET	5	0.1	0.52	10	210
65K 1500	623196.1165	7032830.04		8	B	20	st	tan		40	cf	cv	SH	5	06/13/98	SG/ET	10	0.2	0.88	8	190
65K 1600	623248.8453	7032900.134		8	B	40	st	dgry			cf	cv		10	06/13/98	SG/ET	10	1.6	0.76	6	470
65K 1700	623311.3782	7032879.292		8	B	40	st	brn		10	cf	cv	SH	10	06/13/98	SG/ET	20	1	1.1	14	390
65K 1810	623388.2501	7033068.29		8	A	100	st	blk		10	stunted cf	cv	Gr SH	30	06/13/98	SG/ET	25	1	0.41	8	270
65K 1900	623438.7917	7033110.613		8	AB	50	st	grybrn		20	stunted cf	silt	SH	20	06/13/98	SG/ET	10	0.6	0.94	18	440
65K 2300	623710.1383	7033413.119		8	A	35	mod	blk			stunted cf			30	06/13/98	SG/ET	2	0.1	0.32	8	370
65K 2400	623771.926	7033488.52		8	AB	30	mod	dgry		40	stunted cf	ti	CONG	5	06/13/98	SG/ET	25	1.2	0.99	28	1750
M687313S	623628.186	7032735.169		8	B	15	gen	brn		10	bb	cv	PHY	0	08/03/98	GDM	25	1.4	3.01	24	920

**Target 65**  
**Soil Sample Description Sheet**

Sample	Be	Bi	Ca	Cd	Co	Cr	Cu	Fe	Ga	Hg	K	La	Mg	Mn	Mo	Na	Ni	P	Pb	Sb	Sc	Sr
65F 0000	0.2	1	0.04	0.2	5	29	28	3.71	5	110	0.15	10	0.24	240	5	0	23	830	16	1	2	21
65F 0050	0.2	1	0.03	0.2	3	17	14	2.96	5	40	0.1	10	0.17	190	3	0	12	510	10	1	1	9
65F 0100	0.2	1	0.04	0.2	4	18	9	2.69	5	10	0.1	10	0.16	190	2	0	12	610	12	1	1	13
65F 0150	0.2	1	0.05	0.2	5	24	24	3.85	5	30	0.15	10	0.21	210	5	0	18	1110	18	1	2	41
65F 0200	0.2	1	0.03	0.2	1	35	12	2.42	5	80	0.19	20	0.13	105	6	0	14	1240	14	8	1	93
65F 0250	0.2	1	0.01	0.2	3	29	18	3.12	5	100	0.11	10	0.14	490	5	0	15	830	18	4	1	48
65F 0300	0.2	1	0.59	1.5	7	19	61	2.28	5	250	0.12	10	0.37	245	4	0.01	36	1150	10	2	3	49
65F 0350	0.2	1	0.04	0.5	5	10	34	1.71	5	50	0.08	20	0.05	175	10	0	27	480	10	2	0	19
65F 0400	0.5	1	0.17	3	6	15	77	2.49	5	220	0.14	30	0.12	125	23	0	62	940	22	8	1	111
65F 0450	-1	-1	-1	-1	-1	-1	-1	-1	-1	-1	-1	-1	-1	-1	-1	-1	-1	-1	-1	-1	-1	-1
65F 0500	0.5	1	2.35	0.2	4	30	23	1.16	5	470	0.51	20	0.88	125	1	0	21	4280	10	1	3	108
65F 0550	0.2	1	0.74	1	9	23	31	2.06	5	400	0.15	10	0.36	1825	6	0	20	1280	10	1	3	52
65F 0600	0.2	1	0.1	0.2	1	11	23	0.53	5	40	0.07	20	0.06	40	3	0	10	330	6	1	0	15
65F 0650	-1	-1	-1	-1	-1	-1	-1	-1	-1	-1	-1	-1	-1	-1	-1	-1	-1	-1	-1	-1	-1	-1
65F 0700	0.2	1	0.85	3.5	4	17	23	1.51	5	190	0.11	10	0.31	235	1	0.02	17	550	8	1	2	51
65F 0750	-1	-1	-1	-1	-1	-1	-1	-1	-1	-1	-1	-1	-1	-1	-1	-1	-1	-1	-1	-1	-1	-1
65F 0800	0.5	1	0.14	0.5	8	34	28	3.28	5	190	0.13	10	0.43	185	3	0	26	520	12	2	3	21
65F 0850	0.5	1	0.64	0.5	9	20	40	1.93	5	410	0.1	10	0.2	1140	3	0.02	16	1370	12	1	1	48
65F 0900	0.2	1	0.03	0.2	5	20	29	3.21	5	80	0.08	10	0.12	220	4	0	28	640	18	1	1	14
65F 0950	0.2	1	0	0.2	5	20	33	3.14	5	40	0.15	10	0.13	165	5	0	24	610	28	4	1	18
65F 1000	0.2	1	0.08	0.2	4	25	19	3.74	5	150	0.12	10	0.18	200	5	0	19	2430	16	1	1	26
65F 1050	0.2	1	0.02	0.2	8	22	56	3.38	5	150	0.12	10	0.18	195	9	0	42	600	16	2	2	22
65F 1100	0.2	1	0.15	0.5	4	10	33	1.55	5	110	0.07	10	0.11	190	6	0	23	550	10	2	1	29
65F 1150	0.5	1	0.36	3.5	5	9	123	2.33	5	370	0.07	10	0.06	80	39	0	69	1340	12	8	3	122
65F 1200	0.2	1	0.61	1.5	4	16	56	2.25	5	950	0.09	5	0.18	155	7	0.01	31	1050	22	2	1	100
65F 1250	0.2	1	0.46	0.5	4	13	25	1.49	5	690	0.07	5	0.21	130	4	0.01	30	750	10	2	1	69
65F 1300	0.2	1	0.94	1.5	2	20	24	0.97	5	810	0.14	5	0.28	215	1	0	42	880	10	2	3	137
65F 1350	0.2	1	1.14	1.5	3	20	42	1.41	5	730	0.09	10	0.25	165	2	0	35	1080	12	4	1	166
65F 1400	0.2	1	0.41	1.5	1	24	47	1.04	5	1510	0.1	10	0.15	35	3	0.01	28	970	10	2	1	107
65F 1450	0.2	1	0.24	0.5	1	21	29	1.04	5	1140	0.11	10	0.17	45	4	0	13	920	16	1	1	84
65F 1500	0.2	1	0.19	1	0	26	44	0.93	5	1010	0.12	20	0.12	20	5	0.01	23	910	14	2	1	105
65F 1550	0.2	1	0.19	0.5	1	9	30	0.96	5	730	0.04	5	0.09	15	4	0.02	15	750	14	1	1	48
65F 1600	0.5	1	0.67	11.5	7	25	190	1.92	5	1600	0.13	30	0.18	140	32	0	135	1140	14	14	3	83
65F 1650	0.5	1	0.73	18.5	9	21	110	1.45	5	1600	0.14	10	0.19	545	11	0.01	157	820	12	6	3	109
65F 1700	0.5	1	0.11	4.5	12	26	86	2.01	5	1180	0.15	20	0.12	405	17	0	58	620	12	6	2	48
65G 0000	0.2	1	0.04	0.2	3	18	21	2.14	5	50	0.1	10	0.07	120	5	0	17	1290	20	2	0	99
65G 0050	0.2	1	0.05	0.5	3	39	35	3.78	5	170	0.12	10	0.22	150	19	0	28	1790	18	8	2	198
65G 0100	0.2	1	0.03	0.2	2	26	8	2.63	5	1350	0.09	10	0.18	155	4	0	8	980	18	1	1	22
65G 0150	0.2	1	0.2	0.2	0	17	19	2.16	5	1850	0.25	10	0.03	35	4	0	31	820	18	2	1	89
65G 0200	0.2	1	1.28	1.5	3	18	48	1.29	5	870	0.12	10	0.23	185	5	0	124	1100	12	6	1	116
65G 0250	0.5	1	1.34	9	4	23	69	1.36	5	1300	0.18	10	0.35	305	8	0	127	1060	10	6	2	97
65G 0300	0.5	1	0.39	2	12	28	65	2.48	5	1020	0.24	10	0.29	895	9	0	43	1640	18	6	3	73
65G 0350	0.5	1	0.35	1	8	26	54	2.38	5	310	0.28	10	0.28	660	9	0.01	35	1530	14	4	3	74
65G 0400	0.2	1	0.47	1	6	22	51	2.16	5	540	0.24	10	0.32	450	7	0	32	1450	18	2	3	81
65G 0450	0.2	1	0.13	0.5	6	14	50	2.07	5	220	0.15	10	0.2	195	7	0	31	1000	14	2	1	38
65G 0500	0.2	1	0.32	3	7	22	69	4.63	5	530	0.26	20	0.13	245	17	0	55	1680	26	10	2	304
65G 0550	0.5	1	1.91	11	6	26	101	2.03	5	1590	0.15	20	0.34	275	27	0	109	760	12	14	3	104
65G 0600	0.2	1	0.38	0.2	1	17	15	1.22	5	880	0.18	10	0.09	55	7	0	12	270	12	6	0	71
65G 0650	0.2	1	0.24	0.2	1	15	10	0.56	5	720	0.09	30	0.09	60	2	0	8	170	16	1	0	36
65G 0700	0.2	1	0.05	0.5	6	19	47	2.72	5	230	0.19	30	0.18	200	19	0	52	620	24	8	1	36
65G 0750	0.2	1	0.06	0.2	3	20	25	1.67	5	190	0.16	10	0.15	185	9	0	19	790	12	2	1	24
65G 0800	0.2	1	0.1	0.5	3	17	59	2.57	5	330	0.16	10	0.14	105	15	0	24	580	20	10	1	70
65G 0850	0.2	1	3.84	1.5	3	7	62	0.46	5	370	0.03	5	0.39	875	1	0	11	980	2	2	0	182
65G 0900	0.2	1	0.47	2	2	19	33	1.42	5	770	0.18	10	0.15	65	15	0.01	23	440	16	4	1	81
65G 0950	0.2	1	0.12	0.2	1	18	18	1.27	5	1840	0.17	20	0.23	65	8	0.01	17	580	12	2	1	30
65G 1000	0.2	1	0.09	0.2	0	21	28	0.8	5	1050	0.12	30	0.08	35	5	0	13	480	20	2	0	36

Target 65

Soil Sample Description Sheet

Sample	Ba	Bi	Ca	Cd	Co	Cr	Cu	Fe	Ga	Hg	K	La	Mg	Mn	Mo	Na	Ni	P	Pb	Sb	Sc	Sr
65G 1050	0.2	1	0.09	0.2	0	17	17	0.47	5	1860	0.11	20	0.08	10	0	0	9	390	16	1	0	32
65G 1100	0.2	1	0.16	1	0	21	29	1.45	5	1130	0.12	20	0.13	40	6	0	18	880	18	2	1	48
65G 1150	0.2	1	0.06	1.5	2	33	60	1.93	5	1300	0.13	20	0.17	75	17	0	46	720	22	10	1	71
65G 1200	0.2	1	0.04	1	1	34	53	1.6	5	1210	0.14	20	0.18	55	14	0	39	560	22	6	1	58
65G 1300	0.2	1	0.39	0.5	2	15	35	1.68	5	640	0.11	10	0.16	95	10	0	25	1060	22	6	1	98
65G 1400	0.5	1	0.17	3.5	11	15	82	3.85	5	360	0.09	5	0.05	540	65	0	127	1150	28	12	3	64
65H 0000	0.2	1	0.03	0.2	3	13	11	1.92	5	20	0.07	10	0.09	100	3	0	12	240	8	1	1	6
65H 0100	0.2	1	0.03	0.2	4	17	33	2.81	5	180	0.1	5	0.11	175	6	0	22	1750	14	4	1	27
65H 0200	0.2	1	0.54	0.2	5	14	38	1.58	5	350	0.09	10	0.18	280	4	0	23	900	10	2	1	46
65H 0300	-1	-1	-1	-1	-1	-1	-1	-1	-1	-1	-1	-1	-1	-1	-1	-1	-1	-1	-1	-1	-1	-1
65H 0400	0.2	1	1.78	1	7	19	34	1.67	5	250	0.08	5	0.48	445	1	0	24	600	10	1	3	131
65H 0500	0.2	1	1.92	2	8	12	53	2.52	5	330	0.06	5	0.33	1830	3	0.01	39	1040	6	1	1	123
65H 0600	0.2	1	1.27	0.5	5	19	51	1.47	5	420	0.11	10	0.4	325	3	0.02	29	670	8	1	3	74
65H 0700	0.2	1	0.1	0.2	5	28	25	2.66	5	90	0.16	10	0.32	195	4	0	20	410	12	1	2	17
65H 0800	-1	-1	-1	-1	-1	-1	-1	-1	-1	-1	-1	-1	-1	-1	-1	-1	-1	-1	-1	-1	-1	-1
65H 0900	-1	-1	-1	-1	-1	-1	-1	-1	-1	-1	-1	-1	-1	-1	-1	-1	-1	-1	-1	-1	-1	-1
65H 1000	0.2	1	0.46	0.5	8	24	31	1.84	5	460	0.18	10	0.36	395	5	0.01	21	970	10	2	3	51
65H 1100	0.2	1	0.33	0.2	5	20	40	1.56	5	440	0.16	10	0.29	205	4	0	20	1210	8	2	3	56
65H 1200	-1	-1	-1	-1	-1	-1	-1	-1	-1	-1	-1	-1	-1	-1	-1	-1	-1	-1	-1	-1	-1	-1
65H 1300	0.2	1	0.18	0.2	3	20	14	1.92	5	90	0.08	10	0.26	155	4	0	12	780	10	2	1	24
65H 1400	0.2	1	0.03	0.2	3	12	17	1.66	5	30	0.1	10	0.13	125	5	0	11	750	10	2	0	11
65H 1500	-1	-1	-1	-1	-1	-1	-1	-1	-1	-1	-1	-1	-1	-1	-1	-1	-1	-1	-1	-1	-1	-1
65H 1600	0.5	1	0.29	2	14	31	67	3.13	5	990	0.24	10	0.34	695	8	0.01	54	1140	16	4	4	69
65H 1700	0.2	1	0.07	0.5	2	18	52	1.6	5	190	0.1	10	0.08	265	3	0.01	12	1240	12	1	1	21
65H 1800	0.5	1	0.75	1	3	38	54	2.16	5	820	0.26	10	0.34	155	6	0.02	33	770	16	6	3	81
65H 1900	0.2	1	0.05	0.5	4	23	19	2.86	5	110	0.13	10	0.19	205	6	0	18	1350	16	4	1	22
65H 2000	0.2	1	0.05	0.2	4	22	13	2.76	5	30	0.1	10	0.23	170	4	0	15	970	18	1	2	14
65H 2100	0.2	1	0.05	0.5	2	11	17	1.54	5	30	0.04	5	0.05	85	4	0.01	8	670	10	2	0	11
65H 2200	0.2	1	0.05	0.2	3	12	13	1.56	5	40	0.07	10	0.11	155	3	0	11	480	10	1	1	11
65H 2300	0.2	1	0.04	0.2	4	22	28	2.98	5	90	0.08	10	0.21	155	4	0	24	660	12	2	2	16
65H 2400	0.2	1	0.11	0.2	6	22	31	2.44	5	50	0.11	10	0.28	315	5	0	22	690	12	2	2	18
65H 2500	0.2	1	0.05	0.2	1	13	18	0.97	5	30	0.07	10	0.09	125	1	0.01	6	260	10	1	1	10
65H 2600	0.2	1	0.09	0.2	1	13	11	1.03	5	20	0.07	10	0.07	55	2	0.01	7	150	10	1	1	14
65H 2700	0.5	1	0.89	1	6	20	41	1.96	5	440	0.3	10	0.66	195	5	0.02	27	1750	12	1	4	61
65H 2800	0.2	1	0.12	0.2	1	15	13	0.95	5	310	0.1	10	0.17	30	3	0.01	9	710	8	1	1	36
65H 2900	0.2	1	0.13	1	6	17	51	1.97	5	540	0.13	10	0.16	195	8	0	28	1140	8	2	2	68
65H 3000	0.2	1	0.25	1.5	5	19	39	1.85	5	600	0.15	10	0.18	190	9	0	30	1210	8	2	2	94
65J 0000	0.5	1	0.34	3.5	12	19	86	2.12	5	870	0.09	10	0.11	705	16	5	48	1790	10	6	2	133
65J 0100	0.2	1	1.08	1	2	2	12	0.49	5	170	0.01	5	0.05	130	2	5	8	770	2	2	0.5	67
65J 0200	0.2	1	0.35	4	5	17	90	2.02	5	900	0.12	30	0.19	245	8	5	42	1400	10	6	3	97
65J 0300	-1	-1	-1	-1	-1	-1	-1	-1	-1	-1	-1	-1	-1	-1	-1	-1	-1	-1	-1	-1	-1	-1
65J 0400	0.2	1	0.14	2	3	12	42	1.47	5	550	0.08	10	0.07	120	9	5	24	1070	10	6	1	64
65J 0500	0.2	1	0.17	0.25	1	11	36	1.28	5	580	0.06	10	0.1	70	11	5	17	970	10	4	1	75
65J 0600	0.2	1	1.29	1	0.5	7	37	0.65	5	720	0.04	5	0.29	105	3	5	25	680	4	6	1	80
65J 0700	0.2	1	0.04	0.25	1	8	20	0.9	5	50	0.04	10	0.05	45	3	5	8	320	8	2	0.5	15
65J 0800	0.2	1	0.11	1	1	9	51	1.21	5	400	0.06	10	0.04	70	7	0.01	19	980	10	6	1	69
65J 0900	0.2	1	5	0.5	3	10	31	1.38	5	150	0.05	10	0.01	80	9	5	22	830	12	2	0.5	26
65J 1000	0.2	1	0.19	0.5	13	8	122	3.28	5	80	0.07	5	0.09	1330	4	5	48	870	8	2	3	25
65J 1100	0.2	1	1.02	0.5	6	12	60	2.13	5	250	0.06	5	0.29	315	4	5	40	620	10	2	3	120
65J 1200	0.2	1	0.04	0.5	6	12	62	2.49	5	70	0.07	10	0.23	285	5	5	23	1330	16	1	1	35
65J 1300	0.2	1	0.24	0.25	1	14	50	1.33	5	580	0.12	10	0.15	45	3	5	11	2070	16	2	1	56
65J 1400	0.2	1	0.02	0.5	0.5	4	39	0.8	5	110	0.03	5	0.01	20	0.5	0.01	5	690	1	2	0.5	6
65J 1500	0.2	1	0.56	2	8	20	84	2.27	5	490	0.21	20	0.38	255	5	5	47	1250	10	2	4	73
65J 1600	-1	-1	-1	-1	-1	-1	-1	-1	-1	-1	-1	-1	-1	-1	-1	-1	-1	-1	-1	-1	-1	-1
65J 1700	0.5	1	0.23	0.5	7	13	42	1.78	5	170	0.13	10	0.22	330	5	5	19	1590	10	4	1	34
65J 1800	0.5	1	0.23	0.5	1	12	34	1.23	5	550	0.11	5	0.14	50	3	5	14	1290	8	2	1	44

**Target 65**  
**Soil Sample Description Sheet**

Sample	Ba	Bi	Ca	Cd	Co	Cr	Cu	Fe	Ga	Hg	K	La	Mg	Mn	Mo	Na	Ni	P	Pb	Sb	Sc	Sr
65J 1900	0.5	1	0.01	1	2	5	31	1.2	5	70	0.05	10	0.04	105	4	5	14	490	8	1	0.5	11
65J 2000	0.5	1	0.01	0.25	1	7	8	0.85	5	5	0.03	10	0.04	50	1	5	5	200	2	2	0.5	7
65J 2100	0.5	1	0.01	0.25	3	8	12	1.21	5	5	0.02	10	0.03	170	0.5	5	9	220	2	2	0.5	6
65J 2200	0.5	1	0.02	0.25	4	19	18	3.1	5	20	0.05	10	0.16	220	3	5	14	350	12	2	1	9
65K 0850	0.5	1	0.44	2	8	17	71	1.92	5	350	0.16	20	0.34	555	5	5	30	1140	8	4	3	65
65K 0950	0.5	1	0.04	0.25	5	13	41	2.28	5	80	0.08	20	0.16	210	4	5	21	1260	10	6	1	38
65K 1100	0.5	1	0.14	0.5	4	13	66	1.61	5	880	0.1	10	0.13	185	5	5	22	1100	12	2	2	58
65K 1310	0.5	1	0.09	0.25	11	9	39	1.61	5	120	0.07	10	0.16	730	4	5	22	580	8	1	1	21
65K 1500	0.5	1	0.02	0.25	7	12	32	1.93	5	80	0.08	10	0.14	565	3	5	18	640	10	2	1	12
65K 1600	0.5	1	0.38	0.5	7	11	33	1.17	5	720	0.13	10	0.23	875	4	0.01	18	840	10	1	2	65
65K 1700	0.5	1	0.1	0.5	10	16	34	2.32	5	630	0.13	20	0.24	590	3	5	20	940	10	4	2	30
65K 1810	0.5	1	0.14	0.25	1	8	29	0.62	5	530	0.09	10	0.07	45	2	5	12	580	1	2	1	21
65K 1900	0.5	1	0.21	0.5	10	14	31	1.9	5	350	0.12	20	0.26	635	3	5	20	940	10	2	1	31
65K 2300	0.5	1	0.08	0.5	0.5	4	16	0.87	5	250	0.03	5	0.02	25	1	5	6	870	4	1	0.5	15
65K 2400	0.5	1	0.23	1.5	7	21	82	2.21	5	720	0.17	20	0.17	355	6	5	38	1380	12	6	3	79
M687313S	1.5	1	0.5	0.25	52	32	92	14.8	5	1360	0.23	80	0.51	5220	17	5	139	850	56	6	11	44

**Target 65**  
**Soil Sample Description Sheet**

Sample	T1	T1	U	V	W	Zn	Comments
65F 0000	0.01	5	5	109	5	116	
65F 0050	0.03	5	5	80	5	56	
65F 0100	0.02	5	5	79	5	52	
65F 0150	0.02	5	5	98	5	88	
65F 0200	0.01	5	5	231	5	64	
65F 0250	0.01	5	5	170	5	60	
65F 0300	0.01	5	5	61	5	172	
65F 0350	0	5	5	74	5	176	
65F 0400	0	5	5	120	5	486	
65F 0450	-1	-1	-1	-1	-1	-1	
65F 0500	0.01	5	5	149	5	126	
65F 0550	0.01	5	5	86	5	102	
65F 0600	0.01	5	5	43	5	54	
65F 0650	-1	-1	-1	-1	-1	-1	
65F 0700	0.03	5	5	59	5	86	
65F 0750	-1	-1	-1	-1	-1	-1	
65F 0800	0.04	5	5	89	5	116	
65F 0850	0.01	5	5	62	5	52	
65F 0900	0.02	5	5	93	5	112	
65F 0950	0	5	5	109	5	114	
65F 1000	0.01	5	5	112	5	100	
65F 1050	0	5	5	91	5	202	
65F 1100	0	5	5	55	5	102	
65F 1150	0	5	5	102	5	388	
65F 1200	0	5	5	69	5	140	
65F 1250	0	5	5	54	5	126	
65F 1300	0	5	5	81	5	208	
65F 1350	0	5	5	99	5	116	
65F 1400	0	5	5	109	5	84	
65F 1450	0	5	5	98	5	50	
65F 1500	0	5	5	188	5	68	
65F 1550	0	5	5	42	5	36	
65F 1600	0	5	10	250	5	890	
65F 1650	0	5	5	226	5	1090	
65F 1700	0	5	5	198	5	420	
65G 0000	0	5	5	99	5	78	
65G 0050	0.01	5	5	274	5	158	
65G 0100	0.02	5	5	194	5	46	
65G 0150	0	5	5	85	5	20	
65G 0200	0	5	5	71	5	126	
65G 0250	0	5	5	127	5	610	
65G 0300	0	5	5	157	5	222	
65G 0350	0.01	5	5	115	5	178	
65G 0400	0	5	5	101	5	170	
65G 0450	0	5	5	69	5	166	
65G 0500	0	5	5	76	5	406	
65G 0550	0	5	5	293	5	920	
65G 0600	0	5	5	87	5	38	
65G 0650	0	5	5	66	5	18	
65G 0700	0	5	5	170	5	352	
65G 0750	0	5	5	99	5	120	
65G 0800	0	5	5	97	5	128	
65G 0850	0	5	5	9	5	64	
65G 0900	0	5	5	164	5	116	
65G 0950	0	5	5	113	5	78	
65G 1000	0	5	5	92	5	42	

Target 65  
Soil Sample Description Sheet

Sample	Ti	TI	U	V	W	Zn	Comments
65G 1050	0	5	5	47	5	20	
65G 1100	0	5	5	102	5	48	
65G 1150	0	5	5	241	5	224	
65G 1200	0	5	5	252	5	174	
65G 1300	0	5	5	93	5	126	
65G 1400	0	5	5	152	5	628	
65H 0000	0.01	5	5	70	5	52	
65H 0100	0	5	5	70	5	118	
65H 0200	0	5	5	65	5	100	
65H 0300	-1	-1	-1	-1	-1	-1	
65H 0400	0.01	5	5	47	5	82	
65H 0500	0	5	5	48	5	84	
65H 0600	0.01	5	5	60	5	88	
65H 0700	0.03	5	5	100	5	122	
65H 0800	-1	-1	-1	-1	-1	-1	
65H 0900	-1	-1	-1	-1	-1	-1	
65H 1000	0.01	5	5	87	5	88	
65H 1100	0.01	5	5	75	5	88	
65H 1200	-1	-1	-1	-1	-1	-1	
65H 1300	0.04	5	5	69	5	60	
65H 1400	0	5	5	66	5	70	
65H 1500	-1	-1	-1	-1	-1	-1	
65H 1600	0.01	5	5	115	5	208	
65H 1700	0	5	5	57	5	46	
65H 1800	0.01	5	5	171	5	144	
65H 1900	0.01	5	5	106	5	86	
65H 2000	0.04	5	5	114	5	72	
65H 2100	0.01	5	5	41	5	38	
65H 2200	0.01	5	5	66	5	52	
65H 2300	0.01	5	5	81	5	108	
65H 2400	0.01	5	5	76	5	138	
65H 2500	0.01	5	5	47	5	36	
65H 2600	0.01	5	5	47	5	42	
65H 2700	0.01	5	5	84	5	166	
65H 2800	0.01	5	5	53	5	36	
65H 2900	0	5	5	83	5	144	
65H 3000	0	5	5	102	5	162	
65J 0000	5	5	5	119	5	328	
65J 0100	5	5	40	8	5	36	
65J 0200	5	5	5	82	5	260	
65J 0300	-1	-1	-1	-1	-1	-1	
65J 0400	5	5	5	61	5	164	
65J 0500	5	5	5	56	5	112	
65J 0600	5	5	20	22	5	72	
65J 0700	5	5	5	44	5	88	
65J 0800	5	5	5	57	5	128	
65J 0900	5	5	5	68	5	150	
65J 1000	5	5	5	38	5	270	
65J 1100	5	5	10	38	5	138	
65J 1200	5	5	5	50	5	152	
65J 1300	5	5	5	50	5	64	
65J 1400	5	5	5	13	5	26	
65J 1500	5	5	5	81	5	224	
65J 1600	-1	-1	-1	-1	-1	-1	
65J 1700	5	5	5	58	5	134	
65J 1800	5	5	5	43	5	70	

**Target 65**  
**Soil Sample Description Sheet**

Sample	Ti	Tl	U	V	W	Zn	Comments
65J 1900	5	5	5	28	5	86	
65J 2000	0.01	5	5	37	5	30	
65J 2100	0.01	5	5	51	5	46	
65J 2200	0.01	5	5	69	5	72	
65K 0850	5	5	5	53	5	162	
65K 0950	5	5	5	41	5	106	
65K 1100	5	5	5	34	5	78	
65K 1310	5	5	5	29	5	96	
65K 1500	5	5	5	46	5	90	
65K 1600	5	5	5	27	5	66	
65K 1700	5	5	5	51	5	110	
65K 1810	5	5	5	17	5	36	
65K 1800	5	5	5	50	5	120	
65K 2300	5	5	5	12	5	28	
65K 2400	5	5	5	109	5	204	
M687313S	5	5	5	66	5	158	

**APPENDIX 4**  
**SILT ASSAY RESULTS**

**Target 65**  
**Silt Sample Description Sheet**

Sample No	X_Coord	Y_Coord	Z_Coord	Traverse	Zone	Fines	Colour	Date	Name	Au_ppb	Ag	Al	As	Ba	Be
M685888T	625248.1	7034257		65J		100	bl	06/20/05	CT	20	1.8	0.78	42	1010	0.5
M685889T	625298.7	7034012		65J		100	bl	06/20/05	CT	10	1.8	0.75	40	1100	0.5
M685890T	624527.6	7032879		65J		50	bl	06/20/05	CT	10	1.2	1.25	46	1030	0.5
M686768T	623146.6	7030254		65X		8 70	gry	06/13/98	SE	5	0.8	1.15	22	1300	0.5
M686872T	622806.6	7032347		65K		8 50	bl	06/13/98	SG/ET	2	4.8	1.14	30	1010	0.25
M686872T	622806.6	7032347		65K		8 50	bl	06/13/98	SG/ET	10	1	1.43	22	1190	0.5
M686873T	622946.7	7032527		65K		8 30	bl	06/13/98	SG/ET	2	1.2	0.7	1	1280	0.25
M686874T	623056	7032633		65K		8 40	dbm	06/13/98	SG/ET	2	0.6	0.7	4	430	0.25
M686875T	623111.7	7032718		65K		8 70	dgry	06/13/98	SG/ET	2	1.2	1.06	8	850	0.25
M686876T	623163.7	7032810		65K		8 90	dgry	06/13/98	SG/ET	2	2.2	1.79	12	1100	0.5
M686877T	623280.5	7032942		65K		8 60	brn	06/13/98	SG/ET	2	1.6	0.93	12	450	0.25
M686878T	623348.3	7033021		65K		8 70	dbm	06/13/98	SG/ET	30	3.8	1.45	24	1080	0.5
M686879T	623463.6	7033146		65K		8 70	bl	06/13/98	SG/ET	30	1.2	0.98	36	790	0.25
M686880T	623530	7033214		65K		8 100	dgry	06/13/98	SG/ET	85	1.8	1.15	66	890	0.5
M686881T	623594.1	7033283		65K		8 80	dgry	06/13/98	SG/ET	30	1.4	1.23	44	980	0.5
M686882T	623640.8	7033328		65K		8 80	bl	06/13/98	SG/ET	2	1	1.01	26	680	0.25
M686883T	623725.2	7033419		65K		8 70	bl	06/13/98	SG/ET	2	1	0.98	20	880	0.25
M686884T	623759.2	7033456		65K		8 70	dgry	06/13/98	SG/ET	15	1.4	1.05	30	1130	0.25
M686885T	624034.2	7033797		65K		8 50	bl	06/13/98	SG/ET	5	1.8	0.8	42	1290	0.5
M686886T	624184.2	7033943		65K		8 50	dgry	06/13/98	SG/ET	20	1.8	0.9	30	1110	0.5
M686969T	624600	7034600		65X		8 50	blk	06/13/98	GDM	2	1.6	0.59	38	890	0.5
M686970T	624312.1	7033159		65X		8 70	bl	06/13/98	GDM	15	1.6	0.82	38	860	0.5
M686971T	622061.2	7030680		65X		8 80	bl	06/13/98	GDM	2	0.8	1.79	12	1580	0.5
M686972T	621842.5	7030647		65X		8 80	bl	06/13/98	GDM	10	1	1.53	18	1580	0.5
M687314T	623650.4	7033402		65M		8 90	bl	08/03/98	GDM	35	1.4	1.26	50	870	0.5
M687315T	623675.5	7033349		65M		8 70	gry	08/03/98	GDM	30	1.4	0.99	6	550	0.25
M687316T	623500	7033625		65M		8 90	dgry	08/03/98	GDM	5	0.8	1.07	22	1210	0.25
M687860T	624040	7032390		65L		8		06/25/98	SG/ET	10	1.4	1.53	18	1210	0.5
M687861T	623976.1	7032442		65L		8 60	dbm	06/25/98	SG/ET	15	1.6	1.49	10	870	0.5
M687862T	623986.3	7032491		65L		8 70	dgry	06/25/98	SG/ET	10	1.2	1.22	16	1020	0.5
M687863T	624042.9	7032489		65L		8 80	brn	06/25/98	SG/ET	10	1.4	1.33	20	920	0.5
M687864T	624080.2	7032539		65L		8 75	gbrn	06/25/98	SG/ET	10	1.4	1.38	20	1020	0.5
M687865T	624134.1	7032465		65L		8 60	bl	06/25/98	SG/ET	10	1.6	1.37	20	1260	0.5
M687866T	624137.7	7032528		65L		8 70	bl	06/25/98	SG/ET	10	1.4	1.45	22	1050	0.5
M687867T	624192.9	7032539		65L		8 75	bl	06/25/98	SG/ET	15	1.4	1.71	22	1170	0.5
M687868T	624195.8	7032591		65L		8 55	dgry	06/25/98	SG/ET	15	2.8	1.01	42	1040	0.5
M687869T	624238.9	7032591		65L		8 70	bl	06/25/98	SG/ET	20	1.8	1.39	12	660	0.5
M687870T	624196.2	7032687		65L		8 90	bl	06/25/98	SG/ET	10	2.4	0.83	38	430	0.5
M687871T	624269.5	7032700		65L		8 50	dgry	06/25/98	SG/ET	20	1.4	1.6	24	860	0.5
M687872T	624245.3	7032713		65L		8 70	bl	06/25/98	SG/ET	10	2.4	1.29	38	790	0.5
M687873T	624237.6	7032758		65L		8 60	bl	06/25/98	SG/ET	10	2.2	0.73	24	620	0.25

**Target 65**  
**Silt Sample Description Sheet**

Sample_No	X_Coord	Y_Coord	Z_Coord	Traverse	Zone	Fines	Colour	Date	Name	Au_ppb	Ag	Al	As	Ba	Be
M687874T	624244.3	7032806		65L	8	70	bl	06/25/98	SG/ET	15	2	1.07	40	670	0.5
M687875T	624298.9	7032755		65L	8	70	dgry	06/25/98	SG/ET	20	1.4	1.16	32	960	0.5
M687876T	624285.7	7032849		65L	8	75	dgry	06/25/98	SG/ET	15	1.6	0.98	36	710	0.5
M687877T	624330.4	7032842		65L	8	70	gbm	06/25/98	SG/ET	35	1.2	1.42	32	1110	0.5
M687878T	624338.6	7032884		65L	8	80	bl	06/25/98	SG/ET	20	2.8	1.16	26	830	0.25
M687879T	624346	7032928		65L	8	70	gry	06/25/98	SG/ET	15	1.4	1.11	32	950	0.5
M687880T	624353.9	7032919		65L	8	80	gbm	06/25/98	SG/ET	20	2	0.81	40	610	0.5
M687881T	624303.6	7032967		65L	8	80	bl	06/25/98	SG/ET	10	1.8	1.08	38	930	0.5
M687882T	624352.6	7032988		65L	8	100	dgry	06/25/98	SG/ET	10	1.4	1.37	24	1390	0.5
M687883T	624261	7033028		65L	8	80	bl	06/25/98	SG/ET	30	2.4	1.24	54	1030	0.5
M687884T	624341.2	7033034		65L	8	70	gry	06/25/98	SG/ET	20	2.2	1.17	34	1090	0.5
M687885T	624289.2	7033121		65L	8	70	dgry	06/25/98	SG/ET	20	2	1.11	34	950	0.5
M687886T	624368.1	7033134		65L	8	70	dgry	06/25/98	SG/ET	15	1.8	1.19	30	1310	0.5
M687887T	624310.7	7033101		65L	8	60	dgry	06/25/98	SG/ET	2	0.8	0.56	72	1500	0.25
M687888T	624366.5	7033157		65L	8	85	dgry	06/25/98	SG/ET	15	2.4	0.93	30	870	0.25
M687889T	624361.1	7033194		65L	8	80	dgry	06/25/98	SG/ET	10	1.4	1.08	24	1330	0.5
M687890T	624359.5	7033226		65L	8	60	gbm	06/25/98	SG/ET	15	2.4	0.83	36	1070	0.5
M687891T	624350.2	7033313		65L	8	85	dbm	06/25/98	SG/ET	30	2.2	1.26	22	1630	0.5
M687892T	624326.6	7033344		65L	8	80	dgry	06/25/98	SG/ET	15	2	0.97	34	1540	0.5
M687893T	624281.9	7033387		65L	8	70	dgry	06/25/98	SG/ET	20	1.8	0.64	28	640	0.25
M687894T	624247.1	7033398		65L	8	75	dgry	06/25/98	SG/ET	20	2	0.71	34	460	0.5
M687895T	624299	7033479		65L	8	90	dgry	06/25/98	SG/ET	15	1.8	0.78	32	1110	0.25
M687896T	624255.8	7033535		65L	8	75	dgry	06/25/98	SG/ET	15	1.6	0.81	32	740	0.5
M687897T	624211.5	7033677		65L	8	90	dgry	06/25/98	SG/ET	35	1.6	0.78	30	860	0.25
M687898T	624144	7033723		65L	8	85	dgry	06/25/98	SG/ET	10	5.4	1.43	30	1020	0.5
M687899T	624216.5	7033776		65L	8	80	dgry	06/25/98	SG/ET	10	1.8	0.87	30	1160	0.5
M687900T	624184.6	7033821		65L	8	85	dgry	06/25/98	SG/ET	15	2.2	0.94	30	950	0.5
M691251T	624260	7033840		65L	8	90	dgry	06/28/98	SG/ET	10	2.2	0.74	26	960	0.2

**Target 65**  
**Silt Sample Description Sheet**

Sample No	Bi	Ca	Cd	Co	Cr	Cu	Fe	Ga	Hg	K	La	Mg	Mn	Mo	Na
M685888T	1	0.59	6	7	25	99	2.24	5	1120	0.14	10	0.17	450	12	5
M685889T	1	0.55	7	8	25	98	2.5	5	1130	0.13	10	0.16	380	16	5
M685890T	1	1.07	3	10	23	69	2.75	5	550	0.22	10	0.41	895	8	5
M686768T	1	0.83	1.5	10	20	76	2.27	5	470	0.24	10	0.62	430	6	0.01
M686872T	1	0.17	1	3	11	58	2.1	5	1020	0.06	5	0.17	55	11	5
M686872T	1	0.87	2.5	11	28	121	2.42	5	760	0.4	20	0.49	635	10	0.01
M686873T	1	1.13	1.5	9	14	54	0.91	5	800	0.12	5	0.23	885	6	0.01
M686874T	1	1.69	1.5	4	12	34	1.05	5	410	0.12	5	0.36	450	1	0.01
M686875T	1	0.69	0.5	8	21	63	1.92	5	690	0.23	10	0.35	670	6	5
M686876T	1	0.31	1	9	28	65	1.75	5	960	0.28	10	0.34	570	3	0.01
M686877T	1	0.14	0.5	17	17	40	1.51	5	680	0.15	20	0.19	1305	8	5
M686878T	1	0.66	5	18	22	111	2.59	5	1030	0.21	10	0.32	2130	11	5
M686879T	1	0.33	0.5	7	18	43	1.64	5	490	0.18	10	0.23	305	6	5
M686880T	1	0.3	1.5	4	23	60	2.09	5	720	0.21	20	0.25	150	6	5
M686881T	1	0.74	2	12	21	104	2.51	5	630	0.23	10	0.38	770	8	5
M686882T	1	0.26	0.25	4	20	27	1.68	5	490	0.19	10	0.25	185	7	0.01
M686883T	1	0.23	0.5	2	20	34	1.2	5	530	0.18	10	0.2	70	4	5
M686884T	1	0.38	1.5	7	21	53	2	5	610	0.19	10	0.25	400	7	0.01
M686885T	1	0.82	12.5	43	18	93	3.19	5	610	0.13	5	0.22	4550	24	5
M686886T	1	0.8	6	9	24	87	2.15	5	1030	0.18	10	0.25	845	10	5
M686969T	1	0.44	5.5	8	20	98	2.06	5	1040	0.11	10	0.13	400	17	0
M686970T	1	0.65	5	16	25	83	2.52	5	800	0.17	10	0.23	2630	13	5
M686971T	1	0.86	1.5	8	31	63	2.33	5	450	0.38	10	0.51	470	6	0.01
M686972T	1	0.75	2	8	28	67	2.2	5	480	0.31	10	0.47	465	6	0.01
M687314T	1	0.31	1	3	22	54	2.18	5	650	0.22	20	0.27	135	5	5
M687315T	1	0.22	0.5	1	20	26	0.81	5	640	0.18	10	0.2	60	1	5
M687316T	1	0.46	1.5	6	18	45	1.87	5	430	0.18	10	0.27	410	4	5
M687860T	1	0.19	1.5	8	24	64	2.15	5	460	0.28	10	0.26	425	6	0.01
M687861T	1	1	2	11	24	62	1.99	5	610	0.23	10	0.37	1105	5	5
M687862T	1	0.58	1	7	23	51	2	5	640	0.21	10	0.28	450	7	5
M687863T	1	1.02	1.5	7	22	58	1.87	5	570	0.2	10	0.33	625	5	5
M687864T	1	0.94	1.5	7	23	65	2	5	620	0.22	10	0.36	485	6	5
M687865T	1	1.01	3	7	24	82	1.97	5	650	0.25	10	0.35	590	6	5
M687866T	1	0.88	2.5	8	26	74	2.14	5	610	0.25	10	0.33	465	7	5
M687867T	1	1.11	3.5	8	29	122	2.51	5	550	0.33	10	0.45	455	8	5
M687868T	2	1.26	75.5	12	25	122	2.26	5	1100	0.21	10	0.28	10000	46	5
M687869T	1	1.34	7.5	6	23	86	1.83	5	830	0.24	10	0.33	2060	8	5
M687870T	1	2.48	8.5	6	28	130	2.11	5	1560	0.17	10	0.36	715	22	5
M687871T	1	0.74	3	11	27	103	2.09	5	540	0.23	10	0.3	630	6	5
M687872T	1	1.54	16	8	33	104	2.27	5	1150	0.27	10	0.33	2540	18	5
M687873T	1	0.83	2	4	29	52	1.44	5	990	0.2	20	0.19	455	10	5

**Target 65**  
**Silt Sample Description Sheet**

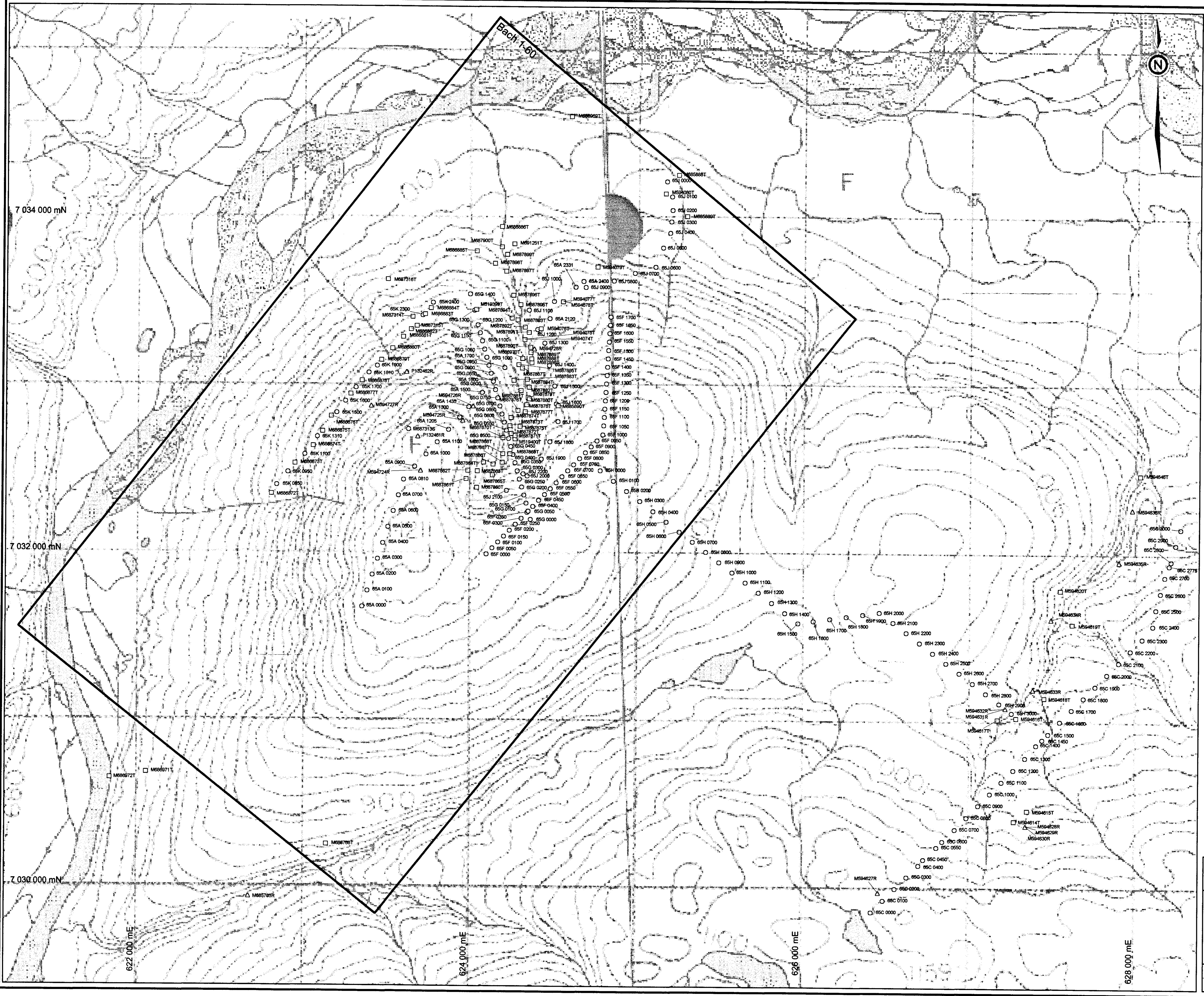
Sample_N	Bi	Ca	Cd	Co	Cr	Cu	Fe	Ga	Hg	K	La	Mg	Mn	Mo	Na
M687874T	1	1.29	9.5	9	30	91	2.05	5	1100	0.21	10	0.3	1970	14	5
M687875T	1	0.94	2.5	7	23	84	2.08	5	600	0.21	10	0.33	570	7	5
M687876T	2	0.85	6	8	25	81	2.14	5	680	0.2	10	0.27	1280	13	5
M687877T	1	0.58	0.5	9	24	59	2.1	5	630	0.26	10	0.34	590	8	5
M687878T	1	0.34	1	7	26	58	2.53	5	570	0.14	10	0.28	335	11	5
M687879T	1	0.56	2.5	12	20	71	2.34	5	360	0.16	10	0.31	770	6	5
M687880T	1	0.81	6	9	23	85	2.38	5	690	0.17	10	0.23	3820	14	5
M687881T	1	0.78	4	8	27	110	2.1	5	960	0.2	10	0.3	710	15	5
M687882T	1	0.52	25	9	30	99	2.38	5	290	0.15	10	0.44	200	7	0.01
M687883T	1	0.91	5	12	26	98	2.7	5	840	0.2	10	0.34	1535	14	5
M687884T	1	0.41	2	12	27	86	2.9	5	570	0.16	10	0.28	815	12	5
M687885T	1	0.83	4.5	10	28	94	2.46	5	770	0.21	10	0.3	1885	14	5
M687886T	1	0.69	3.5	9	30	89	2.85	5	740	0.21	10	0.29	365	12	5
M687887T	18	1.78	51	705	17	57	7.58	5	610	0.12	5	0.23	10000	362	0.01
M687888T	1	0.35	3.5	12	24	72	2.54	5	540	0.13	10	0.22	1210	17	5
M687889T	1	0.47	3	9	27	75	2.75	5	680	0.14	10	0.34	385	11	0.01
M687890T	2	0.42	4.5	8	22	112	2.57	5	710	0.13	10	0.16	510	13	5
M687891T	1	0.79	3	7	28	83	2.04	5	840	0.2	10	0.29	410	7	5
M687892T	1	0.29	3.5	8	25	81	2.2	5	870	0.19	10	0.14	460	14	5
M687893T	1	0.63	4	9	19	77	2.15	5	520	0.12	10	0.18	1570	12	5
M687894T	1	0.94	10	8	16	135	2.11	5	990	0.11	5	0.17	955	19	5
M687895T	1	0.35	2	4	20	70	1.81	5	760	0.15	10	0.16	160	13	5
M687896T	1	0.83	4.5	9	20	94	2.13	5	730	0.14	10	0.24	745	11	5
M687897T	1	0.7	3.5	8	20	79	2.04	5	700	0.13	10	0.21	360	9	5
M687898T	1	0.93	28.5	18	33	222	2.75	5	1210	0.23	10	0.22	820	15	5
M687899T	1	0.61	6.5	8	24	97	1.93	5	900	0.15	10	0.18	485	10	5
M687900T	1	0.8	7	9	27	92	2.17	5	890	0.18	10	0.23	1180	10	5
M691251T	1	0.56	4.5	4	16	92	1.92	5	880	0.12	10	0.18	255	10	0

**Target 65**  
**Silt Sample Description Sheet**

Sample_No	Ni	P	Pb	Sb	Sc	Sr	Ti	Tl	U	V	W	Zn	Comments
M685888T	55	1540	10	1	3	141	5	5	5	159	5	416	
M685889T	56	1680	12	6	3	165	5	5	5	165	5	428	
M685890T	40	1420	12	2	3	112	5	5	5	98	5	266	
M686768T	38	1580	6	2	3	109	5	5	5	81	5	192	
M686872T	29	3110	16	6	1	79	5	5	5	41	5	90	CL.49,50 Dry Gully, silt Rx frags, organic
M686872T	58	1630	12	6	4	107	0.01	5	10	115	5	252	CL.49,50 Dry Gully, silt Rx frags, organic
M686873T	24	760	8	2	2	128	5	5	10	37	5	46	CL. 51,52 Seep, silt organic
M686874T	18	770	6	2	2	129	5	5	5	38	5	84	CL. 51,52 Seep, silt organic
M686875T	33	1060	14	2	3	113	5	5	5	70	5	128	CL. 53,54, Trickle silt gravel organic
M686876T	38	1090	14	2	4	61	5	5	5	82	5	128	CL. 53,54 Seep, silt organic
M686877T	22	630	14	2	1	38	5	5	5	75	5	84	CL. 55,56 Trickle silt gravel organic
M686878T	58	1050	22	4	4	110	5	5	5	93	5	308	CL. 55,56 Trickle silt gravel organic
M686879T	25	1010	10	4	2	55	5	5	10	83	5	124	CL. 55,56 Seep, silt gravel organic
M686880T	31	1100	12	2	3	57	5	5	5	112	5	134	CL. 55,56 Seep, silt
M686881T	50	1310	10	2	4	77	5	5	5	91	5	274	CL. 57,58 Dry Gully silt gravel organic
M686882T	17	1060	8	4	1	43	0.01	5	5	91	5	92	CL. 57,58 Pot Hole silt organic
M686883T	18	1140	12	2	1	49	5	5	5	89	5	70	CL. 57,58 Trickle, silt gravel organic
M686884T	29	1360	12	4	3	76	5	5	5	96	5	134	CL. 57,58 Major Drain ,silt,organic
M686885T	82	1420	12	10	3	119	5	5	5	100	5	584	CL. 59,60 Seep, silt organic
M686886T	65	1310	14	6	3	141	5	5	5	126	5	490	CL 59,60 Major Cr. silt gravel organic
M686969T	52	1620	14	12	2	158	0	5	5	156	5	382	
M686970T	76	1340	18	8	3	134	0.01	5	5	126	5	400	graphitic
M686971T	40	1270	8	2	4	92	5	5	5	120	5	200	
M686972T	39	1330	10	2	4	85	5	5	5	102	5	196	
M687314T	28	1090	10	2	3	59	5	5	5	119	5	138	graphitic SH , same as M686880T
M687315T	14	670	8	1	1	41	5	5	5	84	5	56	graphitic SH
M687316T	26	1400	8	2	3	68	5	5	5	91	5	150	
M687860T	27	1130	4	2	3	33	0.01	5	5	98	5	120	
M687861T	36	1170	12	2	3	94	0.01	5	5	81	5	122	Active R, silt organic
M687862T	32	970	4	4	2	75	5	5	5	91	5	136	Trickle L, silt gravel organic
M687863T	36	1120	8	4	3	79	5	5	5	86	5	156	Major drain L, silt gravel organic
M687864T	39	1140	6	2	3	85	5	5	5	87	5	170	Dry gully L, silt gravel organic
M687865T	43	1530	6	4	3	94	5	5	5	98	5	216	Seep R, silt gravel organic
M687866T	44	1270	8	2	3	73	5	5	5	108	5	210	Main Stream, silt gravel organic
M687867T	61	1760	12	6	4	98	5	5	5	115	5	306	Gully R, 10M over, silt organic
M687868T	223	1400	10	10	2	130	5	5	5	156	5	1840	Main Stream below SH O/C silt organic
M687869T	72	1460	10	6	3	88	5	5	5	104	5	322	Trickle R silt organic
M687870T	104	1060	8	12	2	102	5	5	5	291	5	726	Dry Gully L, silt organic CH O/C on R.
M687871T	50	1370	18	4	2	55	0.01	5	5	111	5	266	Dry Gully R, silt Rx frags, organic, SH
M687872T	103	1250	8	8	3	112	5	5	5	208	5	854	Main Stream, silt Rx frags organic
M687873T	34	630	10	4	1	68	5	5	5	150	5	168	Active L, silt gravel organic

**Target 65**  
**Silt Sample Description Sheet**

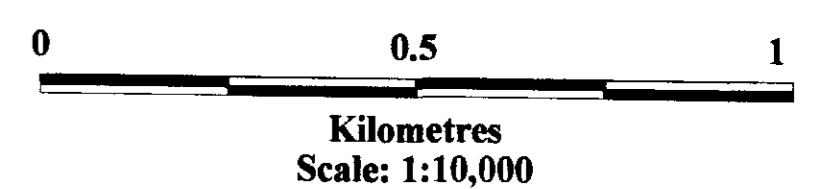
Sample No	Ni	P	Pb	Sb	Sc	Sr	Ti	Ti	U	V	W	Zn	Comments
M687874T	78	1300	10	8	2	101	5	5	5	192	5	414	Dry Gully R, silt organic
M687875T	43	1410	8	4	3	90	5	5	5	103	5	218	Major drain R, silt Rx frag organic
M687876T	63	1260	8	4	3	85	5	5	5	144	5	422	Seep, (bank blowout) silt Rx frag organic
M687877T	29	1130	18	1	3	60	5	5	5	108	5	154	Main stream silt gravel organic
M687878T	40	1200	10	4	3	59	0.02	5	5	105	5	168	Seep R, silt organic
M687879T	40	1090	8	2	3	81	5	5	5	83	5	210	Major Drain R, silt organic
M687880T	83	1170	20	6	3	139	5	5	5	130	5	364	Main Stream, silt organic
M687881T	70	1460	8	8	3	90	5	5	5	180	5	388	Bank blowout L, silt organic
M687882T	89	1280	14	4	5	70	0.03	5	10	138	5	594	Bank blowout R, silt clay Linear 140 degr
M687883T	73	1550	12	6	3	93	5	5	5	137	5	414	Trickle L silt organic
M687884T	53	1250	14	6	4	80	0.01	5	5	115	5	272	Trickle R silt clay organic
M687885T	74	1270	12	6	4	119	0.01	5	5	149	5	368	Main Stream silt organic
M687886T	67	1360	12	6	4	110	0.01	5	5	150	5	348	Trickle R silt organic
M687887T	1630	1260	1	2	2	162	5	5	130	72	5	5630	Active L, silt sand organic
M687888T	56	1010	14	6	3	73	0.01	5	5	133	5	252	Trickle R, silt organic
M687889T	54	1300	12	4	4	78	0.03	5	5	109	5	304	Blowout R silt clay Rx frag, organic
M687890T	59	1460	12	6	3	106	5	5	5	116	5	336	Major drain R silt clay Rx frag organic
M687891T	40	1300	8	6	3	113	5	5	5	145	5	234	Seep, gully R silt organic
M687892T	45	1400	8	6	3	88	5	5	5	138	5	226	Blowout R, silt organic
M687893T	59	1170	12	6	3	124	5	5	5	94	5	310	Main cr. silt Rx frag organic
M687894T	77	1290	14	8	3	130	5	5	5	107	5	550	Trickle L silt organic
M687895T	38	1360	6	4	2	97	5	5	5	117	5	172	Trickle R silt organic
M687896T	70	1330	10	6	3	103	5	5	5	120	5	422	Main Cr. silt sand organic
M687897T	60	1390	8	4	3	97	5	5	5	107	5	358	Main Cr. silt organic
M687898T	221	1600	14	6	4	118	5	5	5	161	5	1885	Active L silt gravel clay organic
M687899T	58	1460	8	6	3	113	5	5	5	152	5	358	Major drain R silt organic
M687900T	72	1300	14	6	3	139	5	5	5	141	5	492	Main Cr. silt organic
M691251T	51	1490	8	4	3	130	0	5	5	106	5	324	



**LEGEND**

- Silt Sample
- Soil Sample
- △ Rock Sample
- XXXXXXXX Sample Number

Map Datum : UTM Zone 8 (NAD27)



DIAND - YUKON REGION, LIBRARY

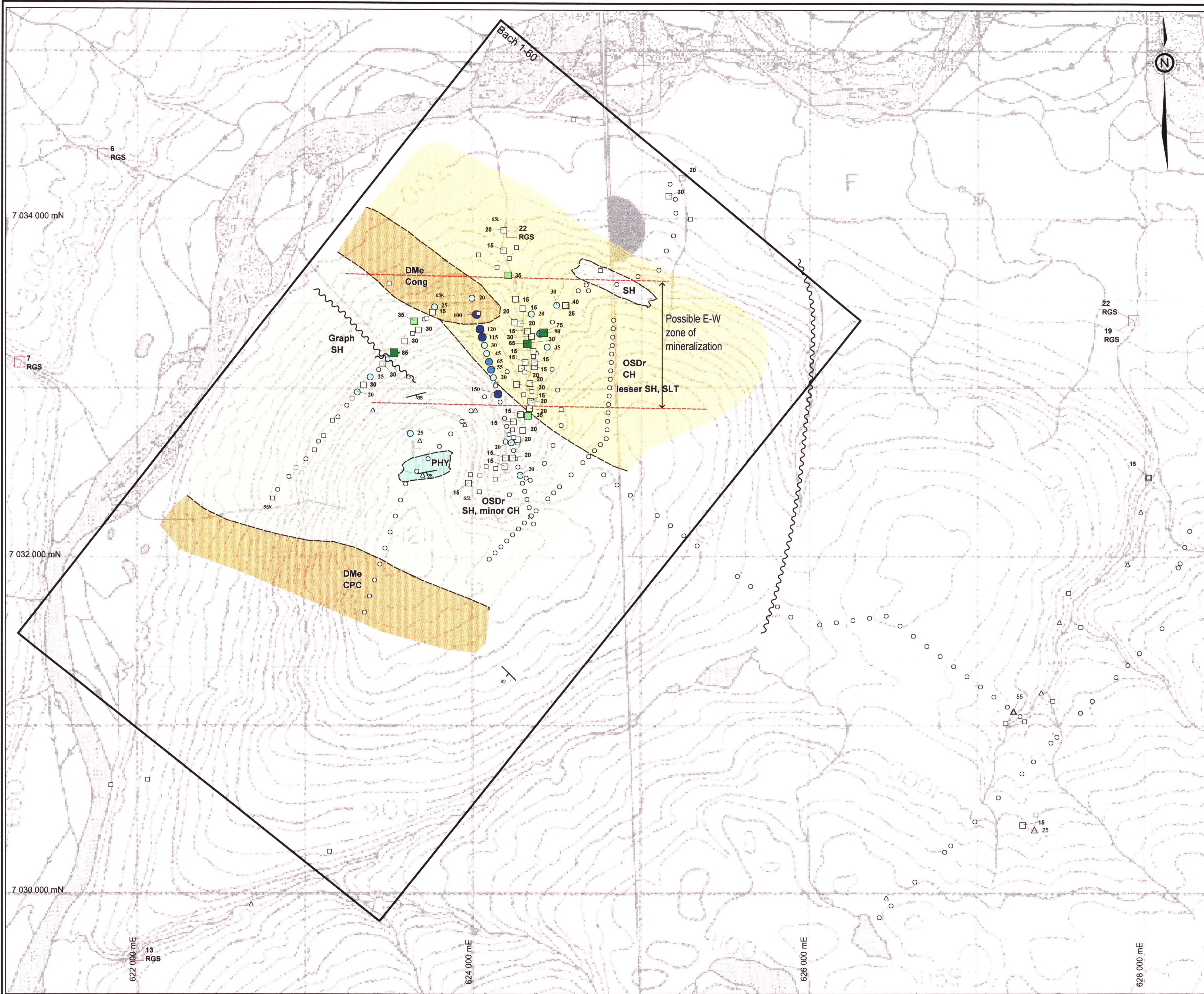
093970  
DWG 1

**VICEROY EXPLORATION (CANADA), INC.**

**BACH PROPERTY (Target 65)**

**SAMPLE LOCATION MAP**

DRAWN BY: CS,TLAF	DATE: Dec. 1998	NTS: 105N/7.8
REVISION:	SCALE: 1:10,000	PLATE NO: 1



### GEOLOGICAL LEGEND

Devono-Mississippian: Earn Group

- DMe - Chert pebble conglomerate(CPC), other conglomerate

Ordovician to Devonian: Road River Group

- OSDr - Shale(SH), minor chert(CH), siltstone(SLT)
- OSDr - Chert(CH), minor shale
- OSDr - Phyllite(PHY)

--- Geological contact

— Strike and dip of bedding

~ Fault

### GEOCHEMISTRY LEGEND

Silt samples

- ≤ 14 ppb Au (53)
- 15 to 34 ppb Au (37)
- 35 to 49 ppb Au (4)
- 50 to 99 ppb Au (4)
- ≥ 100 ppb Au (0)

Soil samples

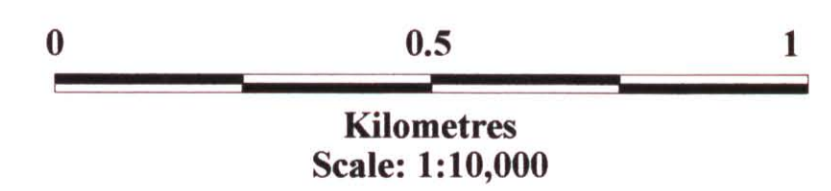
- ≤ 19 ppb Au (160)
- 20 to 49 ppb Au (13)
- 50 to 99 ppb Au (3)
- 100 to 249 ppb Au (4)
- 250 to 499 ppb Au (0)
- ≥ 500 ppb Au (0)

Rock samples

- △ ≤ 19 ppb Au (22)
- △ 20 to 99 ppb Au (2)
- △ 100 to 499 ppb Au (0)
- △ 500 to 999 ppb Au (0)
- △ ≥ 1000 ppb Au (0)

□ RGS Stream sediment sample  
Au in ppb (-1 = element not analysed)

Map Datum : UTM Zone 8 (NAD27)



**VICEROY EXPLORATION (CANADA), INC.**

**BACH PROPERTY (Target 65)**

**COMPILATION & GOLD GEOCHEMISTRY**

DRAWN BY: CS,TL,AF	DATE: Dec. 1998	NTS: 105N/7,8
REVISION:	SCALE: 1:10,000	PLATE NO: 2