

Blackstone Resources Inc.

**093 963**

**1998 GEOLOGICAL MAPPING, PROSPECTING,  
ROCK AND SOIL SAMPLING PROGRAM  
ON THE SCARY PROPERTY,  
SCARY 1-20 CLAIMS.  
Date Worked: July 16, 1998**

Dawson Mining District  
NTS 116B/14  
64° 52' North Latitude  
139° 25' West Longitude

-prepared for-

**BLACKSTONE RESOURCES INC**  
501-675 West Hastings Street  
Vancouver, B.C., Canada  
V6B 1N2

-prepared by-

Murray I. Jones, M.Sc., P.Geo.  
**EQUITY ENGINEERING LTD.**  
207-675 West Hastings Street,  
Vancouver, B.C., Canada  
V6B 1N2

February 1999



This report has been examined by  
the Geological Evaluation Unit  
under Section 53 (4) Yukon Quartz  
Mining Act and is allowed as  
representation work in the amount  
of \$ 2200.00.

*M. Burk*  
For Regional Manager, Exploration and  
Geological Services for Commissioner  
of Yukon Territory.

# 1998 EXPLORATION PROGRAM ON THE SCARY PROPERTY

## TABLE OF CONTENTS

	<u>Page</u>
SUMMARY	.i.
1.0 INTRODUCTION	.1.
2.0 LIST OF CLAIMS	.1.
3.0 LOCATION, ACCESS, AND GEOGRAPHY	.1.
4.0 PROPERTY EXPLORATION HISTORY	.2.
5.0 1998 EXPLORATION PROGRAM	.2.
6.0 REGIONAL GEOLOGY	.2.
7.0 PROPERTY GEOLOGY	.3.
7.1 Mineralization	.4.
8.0 SOIL GEOCHEMISTRY	.5.
9.0 DISCUSSION AND RECOMMENDATIONS	.5.

### APPENDICES

Appendix A	Bibliography
Appendix B	List of Personnel
Appendix C	Statement of Expenditures
Appendix D	Rock Sample Descriptions
Appendix E	Certificates of Analysis, Statistical Tables
Appendix F	Geologist's Certificate

### LIST OF TABLES

	<u>Page</u>	
Table 2.0.1	Claim Data	.1.
Table 7.1.1	Significant Rock Sample Results, Scary Claims	.4.
Table 8.0.1	Anomalous Thresholds for Soil Geochemistry	.5.

### LIST OF FIGURES

	<u>Following</u> <u>Page</u>	
Figure 1	Property Location Map	.1.
Figure 2	Claim Map	.1.
Figure 3	Regional Geology Map (1:50,000)	.2.
Figure 4	Property Geology and Compilation (1:10,000)	-Pocket-
Figure 5	Rock Geochemistry, Cu, Au, Co (1:10,000)	-Pocket-
Figure 6	Soil Geochemistry, Cu, Au, Co (1:10,000)	-Pocket-

## SUMMARY

The Scary Property is located approximately 100 kilometres north of Dawson City, Yukon, in the Dawson Mining District. The property is situated in the southern Ogilvie Mountains and consists of 20 quartz mining claims. It is one of seven properties that make up the Monster Project of Blackstone Resources Inc.. The Scary Property was first staked in 1994 following a regional stream sediment sampling and geological mapping program in the spring of that year. In 1998, a one day program of additional geological mapping, prospecting and rock and soil sampling was done on the Scary Property. The property was accessed by helicopter from a camp based on the Monster Property, 15 kilometres to the southwest. A total of 10 rock samples and 23 soil samples were collected on the property in 1998.

The north half of the Scary Property is underlain by an east-west trending breccia complex, part of the Northern Breccia Belt of the Ogilvie Mountain breccias (Lane, 1990). This complex consists of homolithic and heterolithic breccia and diorite intruding dolomite, dolomitic shale and siltstone, shale and quartzite of the Quartet and Gillespie Lake(?) Groups of the Proterozoic Wernecke Supergroup. The Breccia belt occurs at the core of an anti-cline with country rocks dipping off to the north and south on either side. The south half of the property is underlain by relatively undisturbed Quartet Group sedimentary rocks.

Mineralization on the Scary Property is relatively scarce. There are no mineralized zones of consequence known on the property. Several samples collected in 1998 returned anomalous copper and cobalt values but none of these samples were taken over significant widths. Soil sampling detected only two widely separated, moderate copper anomalies, both associated with apparently limited mineralization on fault structures.

Any further work on the Scary property may be best directed at examining the area of intersection of major regional structures and the breccia complex, apparent to the east of the property. At the present level of exploration, the property itself has not shown the presence of a significant mineral deposit.

## 1.0 INTRODUCTION

The Scary Property is one of seven properties that makes up Blackstone Resources Inc.'s Monster Project. The Monster Project is located in the southern Ogilvie Mountains, about 100 kilometres north of Dawson City in the Yukon (Figure 1). The Monster Property was staked in 1993 and 1994 to cover numerous hematite-rich breccias and numerous Cu-Co-Au geochemical anomalies associated with these breccias. These breccias, which also occur in the Wernecke Mountains to the east, are similar to the host rocks of the giant Olympic Dam deposit in southern Australia. The objective of the exploration program on the Scary Property was to further examine the breccias found on the property for the potential to host a deposit similar to Olympic Dam.

On July 16, 1998, Blackstone Resources Inc. funded an exploration program of geological mapping, prospecting and rock and soil sampling primarily in areas where earlier exploration was not definitive or was lacking altogether. This work was completed by Equity Engineering Ltd. for Blackstone. Equity has also been retained to report on the results of the fieldwork.

## 2.0 LIST OF CLAIMS

The Scary Property consists of 20 quartz mineral claims, located in the Dawson Mining District (Figure 2), registered to Blackstone Resources Inc.. Claim data for the Scary Property is summarized in Table 2.0.1.

**Table 2.0.1**  
**CLAIM DATA**

Claim Name	Grant Number	No. of Claims	Expiry Date*
Scary 1-7	YB52487-493	7	Dec. 31, 2000
Scary 8	YB52494	1	Dec. 31, 2001
Scary 9	YB52495	1	Dec. 31, 2000
Scary 10-20	YB52496-506	10	Dec. 31, 2001

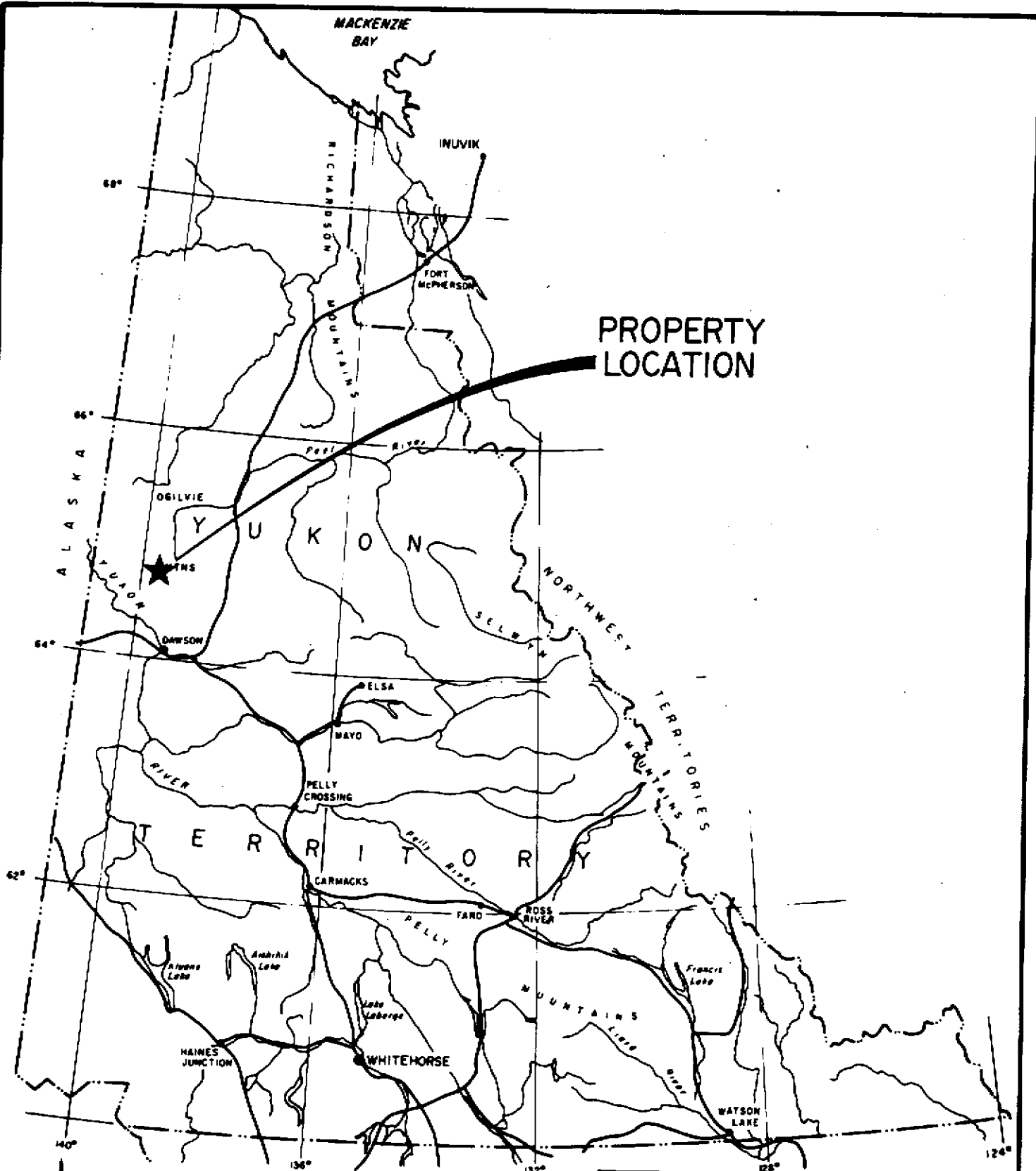
\* The expiry dates for the Scary Claims take into account the assessment work covered by this report.

## 3.0 LOCATION, ACCESS AND GEOGRAPHY

The Scary Property is situated in the southern Ogilvie Mountains of west central Yukon, approximately 85 kilometres north of Dawson (Figure 1). The claims are centred at 64° 52' north latitude and 139° 25' west longitude.

The property lies approximately 65 kilometres north of the Tintina Trench. This region was unaffected by continental glaciation during the pleistocene (Lane, 1990) resulting in rounded mountainous terrain. Elevations on the Scary Property range from 1,189 metres (3,900') to 1,951 metres (6,400'). The entire area is above tree line and is covered by alpine grasses and shrubs. Thick stands of spruce are found only in the major river valleys within this region.

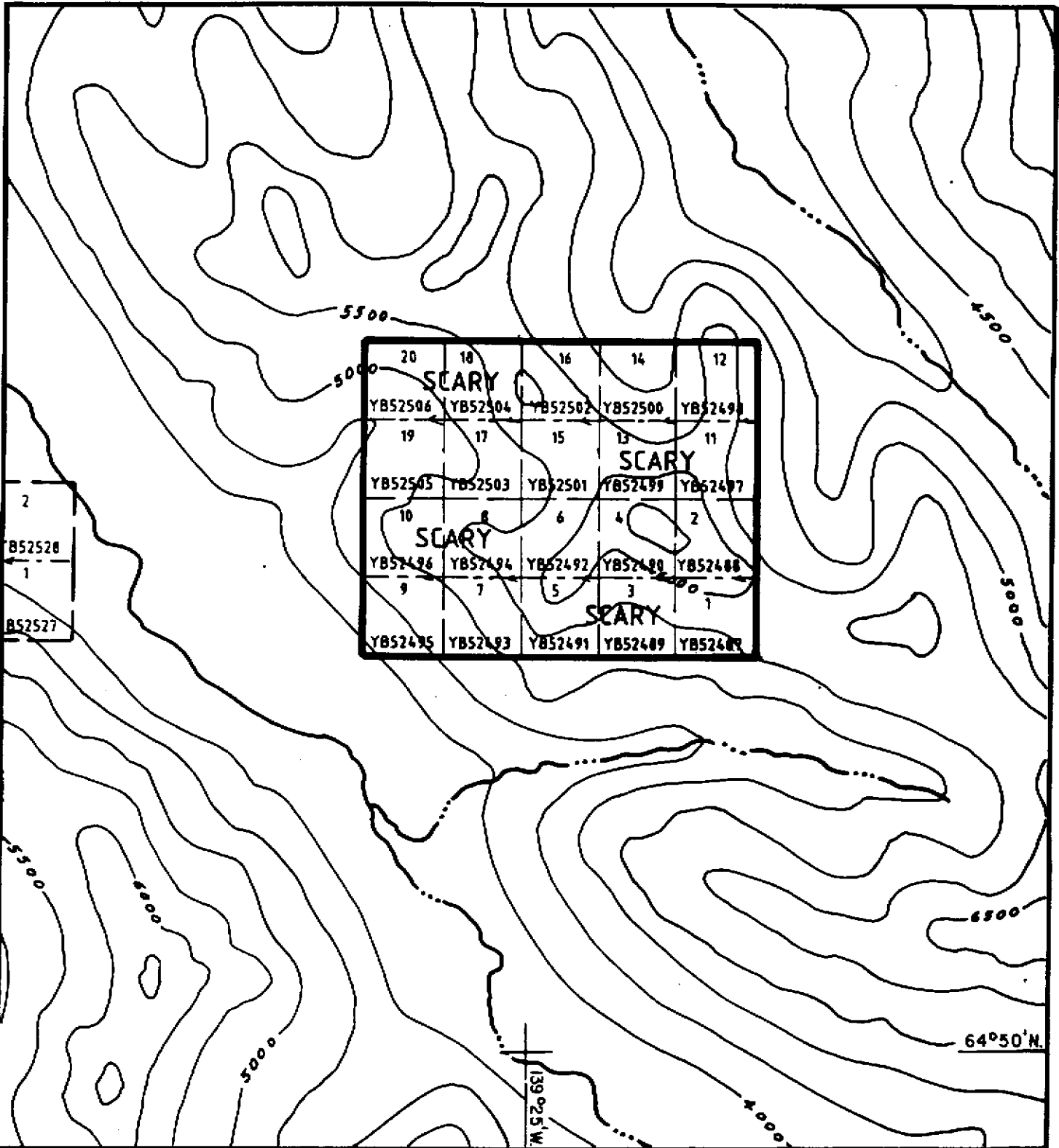
The Scary Property was accessed by helicopter from Dawson City, Yukon for the 1998 field program.



**PROPERTY  
LOCATION**



<b>BLACKSTONE RESOURCES INC.</b>		
<b>SCARY 1-20 CLAIMS LOCATION MAP</b>		
<b>YUKON TERRITORY</b>		
— PAMICON DEVELOPMENTS LTD. — — EQUITY ENGINEERING LTD. —		
DRAWN: J.W./R.F.	MINING DIST.: DAWSON	<b>FIGURE 1</b>
N.T.S.: 116 B/14	SCALE: 1:500,000	
DATE: NOV. 1994	REVISED:	



2  
YB52528  
1  
YB52527

20	18	16	14	12
YB52506	YB52504	YB52502	YB52500	YB52498
19	17	15	13	11
YB52505	YB52503	YB52501	YB52499	YB52497
10	8	6	4	2
YB52496	YB52494	YB52492	YB52490	YB52488
9	7	5	3	1
YB52495	YB52493	YB52491	YB52489	YB52487



BLACKSTONE RESOURCES INC.			
SCARY 1-20 CLAIMS CLAIM MAP YUKON TERRITORY			
PAMICON DEVELOPMENTS LTD. EQUITY ENGINEERING LTD.			
DRAWN:	J.W.	MINING DIST.:	DAWSON
N.T.S.:	116 B / 14	SCALE:	AS SHOWN
DATE:	NOV. 1994	REVISED:	
			FIGURE <b>2</b>

#### 4.0 PROPERTY EXPLORATION HISTORY

The most concentrated exploration work in the area was carried out in the mid to late 1970's by Hudson Bay, Dynasty, Cyprus Anvil and UMEX/Shell. That work was directed primarily at carbonate-hosted Pb-Zn targets in the Gillespie Lake Group. During that same period, UMEX/Shell conducted work on the breccia-hosted ID, DAS, Rob and Lala occurrences. The results of their geochemical surveys were very encouraging, but the anomalies were never thoroughly followed up. There was no further exploration recorded in the area until the recent staking of the Monster claims and the staking by Placer Dome and Major General of the Lala occurrence. In addition to their assessment of the Lala occurrence, Placer Dome conducted limited silt and rock sampling program in the Monster West and Southwest areas in 1992. In 1993, a preliminary exploration program was carried out by the Monster Joint Venture on the Monster 1-72 claims. The program focused on the two areas, the Monster East and Monster West and consisted of geological mapping, prospecting and soil geochemistry (Caulfield, 1994 a,b). In May of 1994, an additional 193 Monster claims were staked to span the area between the Monster East and West groups and to extend the claims to the southwest to cover known breccia occurrences. The Scary claims were staked during August of 1994. That same year a preliminary exploration program of geological mapping, prospecting, and rock, soil, and silt geochemical sampling was carried out on the Scary Property (Falls and Baknes, 1995). This program identified copper mineralization in breccia and altered sedimentary rocks. As well, several silt samples returned moderately anomalous values for copper, cobalt and gold.

A regional airborne magnetics and radiometrics survey was flown over the Ogilvie Mountain breccias by Blackstone Resources Inc. in 1996. This survey included the Scary Property. An interpretive report was produced based on this geophysical survey by Etheridge Henley Williams of Australia (EHW) in 1997 (EHW, 1997). This report confirmed the apparent potential for Olympic Dam style mineral deposits associated with the breccias and made extensive recommendations with respect to land acquisition and future work.

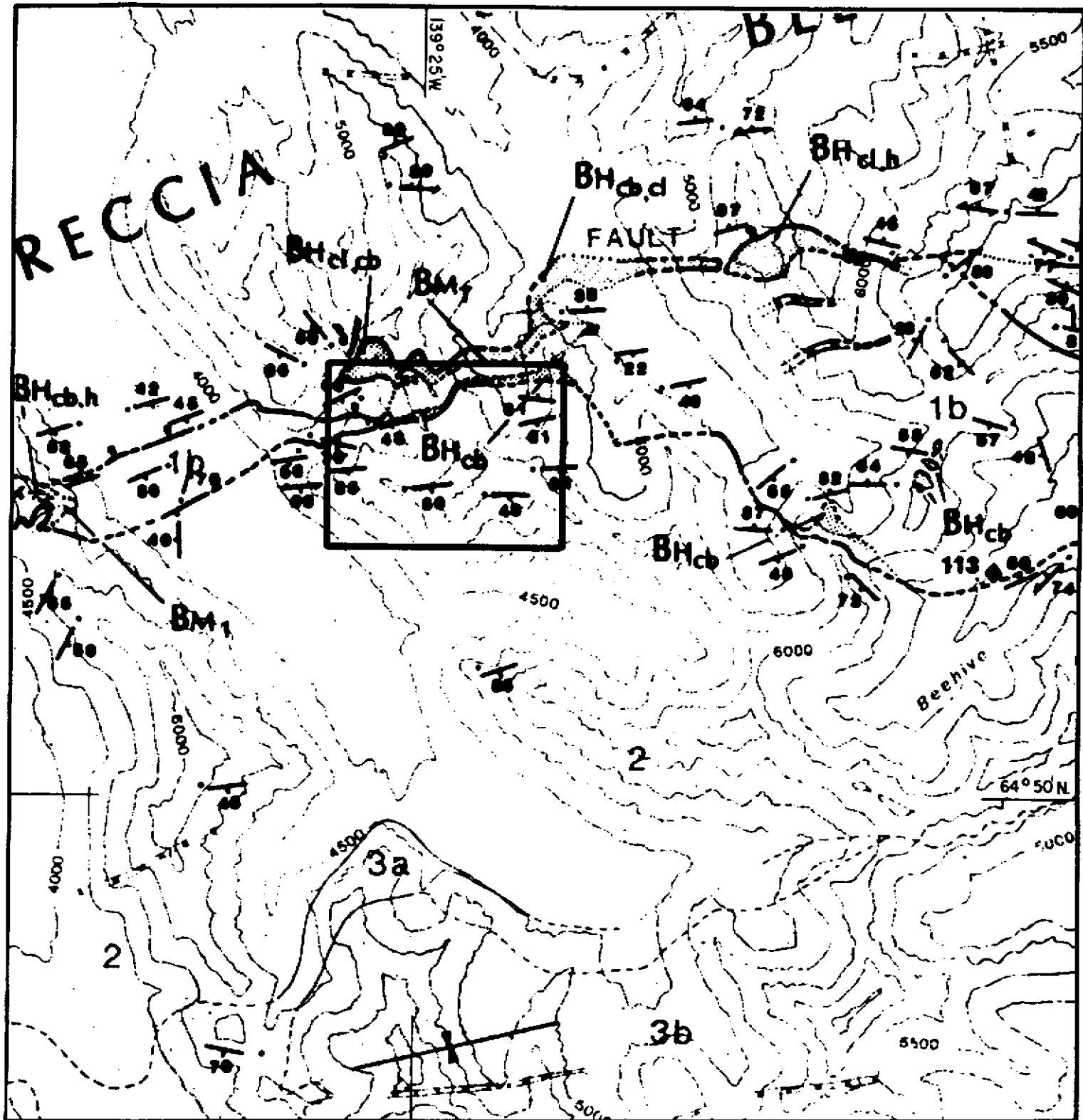
#### 5.0 1998 EXPLORATION PROGRAM

The main objective of the 1998 exploration program was to follow-up anomalous results from the 1994 program as well as provide additional mapping and sampling, particularly soil sampling, in areas of little coverage. Three man/days (one geologist, one soil sampler, one prospector) were spent mapping, prospecting and sampling several areas of the property. A total of 10 rock samples and 23 soil samples were taken in the course of this work. The soil samples were taken along an individual contour at one hundred metre spacing. All samples were given a unique number and marked by tyvek tag (soils) or aluminum tag (rocks) plus flagging in the field. Soil samples were taken of talus fines and colluvium where possible due to poor soil development. These samples were subsequently analysed for gold, by fire assay-atomic absorption, plus 24 elements by inductively coupled plasma-atomic emission spectroscopy (ICP-AES) at Chemex Labs in North Vancouver, B.C.

#### 6.0 REGIONAL GEOLOGY

The Dawson 1:250,000 map sheet (116B) was reconnaissance mapped by the Geological Survey of Canada in 1961 by Green and Roddick and published later in a memoir (Green, 1972). More recently, a smaller area which includes the Scary property, was mapped at 1:50,000 by R. Lane as part of a graduate thesis (Lane, 1990) and later as a government map release (Lane and Godwin, 1992). The Geological Survey of Canada has re-mapped the Dawson map area at a scale of 1:50,000 (Thompson et al, 1992).

The Middle Proterozoic stratigraphy of the Coal Creek Inlier has been correlated by Lane (1990) to that of the Wernecke Supergroup as defined by Delaney (1985) in the Wernecke Mountains, some 250



Geology by: Lane and Godwin, 1992  
 Legend on following page



BLACKSTONE RESOURCES INC.

SCARY 1-20 CLAIMS  
 REGIONAL GEOLOGY  
 YUKON TERRITORY

PAMICON DEVELOPMENTS LTD.  
 EQUITY ENGINEERING LTD.

DRAWN: J.W.	MINING DIST: DAWSON	FIGURE <b>3</b>
M.T.S.: 116 B / 14	SCALE: 1:50,000	
DATE: NOV. 1994	REVISED:	

# LEGEND

(to accompany Figure 3)

## STRATIFIED UNITS

### ORDOVICIAN TO DEVONIAN

8 Road River Group  
black shale, chert

### EARLY CAMBRIAN TO DEVONIAN

7 CDb Formation  
pale grey dolostone

6 Slats Creek Group  
dolostone, mudstone, sandstone, conglomerate

### MIDDLE TO LATE PROTEROZOIC

5 Upper Fifteenmile Group  
dolomitic limestone and dolostone

4 Lower Fifteenmile Group  
c:mudstone, limestone, sandstone  
b:dolostone and dolostone breccia  
a:limestone, shale, sandstone, olistoliths

### EARLY? TO MIDDLE PROTEROZOIC

3 Gillespie Lake Group  
b:buff-weathering dolostone  
a:orange-weathering dolostone

2 Quartet Group  
sandstone, mudstone, argillite

1 Fairchild Lake Group  
b:silty dolostone, mudstone, quartzite  
a:platey dolomitic limestone

## INTRUSIVE UNITS

### PROTEROZOIC AND YOUNGER

Mafic dykes

## OGILVIE MOUNTAIN BRECCIAS

### PROTEROZOIC

#### Heterolithic Breccia

BHcb:carbonate-rich matrix

BHh:hematite-rich matrix

BHcl:chlorite-rich matrix

#### Monolithic Breccia

BM1:Fairchild Lake Group fragments

BM2:Quartet Group fragments

BM3:Gillespie Lake Group fragments

Unclassified Breccia

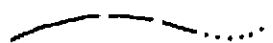
## SYMBOLS



Bedding, Foliation, Jointing, Layering



Fold axis, Anticline, Syncline



Contacts (known, approximate, assumed)



Fault (ball denotes side down)



Disrupted bedding

kilometres to the east. The Wernecke Supergroup is a thick succession of generally fine-grained terrigenous and carbonate rocks of Helikian age that have been penetrated by mineralized breccias and cut by mafic sills and dykes (Figure 3). The entire succession has been mapped by Lane (1990) in the Coal Creek Inlier. The Wernecke Supergroup has been divided into three groups (oldest to youngest): Fairchild Lake Group, Quartet Group and Gillespie Lake Group. The Scary property is underlain by rocks of the Wernecke Supergroup. To the north, Cambrian to Devonian carbonate and clastic units unconformably overlie the Wernecke Supergroup stratigraphy whereas the Late Proterozoic Fifteenmile Group sediments lie unconformably over it to the south.

The Quartet Group consists of a monotonous succession of fine-grained, interbedded sandstone to siltstone and black argillite (Lane, 1990). Minor limestone and chert pebble conglomerate were also noted. The Gillespie Lake strata consists of a lower unit of orange-weathering dolostone and an upper unit of grey-weathering dolostone. Mafic, locally amygdaloidal, flows have been mapped at the Quartet-Gillespie Lake contact. The Fairchild Lake Group rocks consist predominantly of light grey, dolomitic limestone and pink silty dolostone. The group also includes minor mudstone and quartzite.

Strata of the Wernecke Supergroup are cut by two east-west, fault-related belts of hematite breccias that are enriched in iron, copper, uranium, REE, cobalt and gold. The Scary property straddles the northernmost breccia belt. Lane (1992) has subdivided the breccias into two main groups: homolithic (one clast type) and heterolithic (several clast types). Other breccia types including quartz-specularite breccia, intraformational breccia and rare pebble dykes were identified. Alteration minerals associated with the breccias are hematite (specular and earthy red varieties), carbonate, chlorite, silica and potassium feldspar. Fragments are normally subangular to subrounded and average 1 to 2 centimetres. Wernecke Supergroup strata are the dominant clast lithology with rare igneous, massive specular hematite and quartz vein fragments. The matrix of the breccia is comprised of the alteration minerals listed above and finely fragmented rock. The breccias mostly have steep discordant contacts although bodies following bedding have been mapped by Lane (1992). Maroon mudstone is associated with the breccia as interbeds, and as fragments and matrix of many breccias.

The Wernecke Supergroup and breccia bodies are cut by diorite. Conversely, fragments of the mafic intrusives are also found within the breccia indicating a close genetic relationship between the two. Lane (1990) reported a lead isotope date of 0.9 Ga from mineralization in a crosscutting dyke in a breccia penetrating lower Fifteenmile Group. This remains ambiguous, since Lane did not map dykes intruding Fifteenmile Group strata. These mafic units vary from a fine-grained, amygdaloidal form to medium-to coarse-grained equigranular varieties. Lane (1990) noted that the dykes are amygdaloidal where in contact with breccia bodies. Igneous zircon from mafic intrusive bodies associated with the Wernecke Breccias in the Wernecke Mountains have been dated at  $1705 \pm 1$  Ma and hydrothermal monazite from breccia has been dated at  $1595 \pm 8/-5$  Ma (Thorkelson and Wallace, 1998).

Proterozoic strata dip away in opposite directions on either side of the northern breccia belt, but bedding attitudes are much more contorted adjacent to the breccia bodies. The trend of the breccia belt follows the axial trace of an anticlinal structure and a steep zone of reverse faulting (Lane, 1990).

## 7.0 PROPERTY GEOLOGY

The geology of the south half of the Scary Property is dominated by relatively undisturbed Quartet Group sedimentary rocks. The north half of the property, and beyond, is underlain by the breccia complex of the Northern Breccia Belt (Lane, 1990). The complex consists of dolomite and shale-quartzite cut by breccia bodies of various composition, but primarily carbonate-rich homolithic breccia. Overall, the complex lies on an east-west trend.

Mapping in 1998 has refined contacts between the various units (Figure 4). The dolomitic rocks occur primarily on the main east-west ridge in the northwest part of the property, striking to the east across

the main cirque, across the east ridge and beyond. The dolomitic rocks may belong to either the Fairchild Lake Group, as mapped previously, or the Gillespie Lake Group. In other areas of the Monster Project, the breccias seem to be preferentially intruding at the Quartet-Gillespie Lake Group contact. On the Scary Property, there is a large body of light green, strongly deformed phyllite in contact with the dolomitic rocks within the breccia complex. This rock is reminiscent of phyllite characteristic of the Fairchild Lake Group in other areas, such as the Wernecke Mountains. At this time, the issue of which group the dolomite belongs to is unanswered.

There is a large body of diorite which lies on the ridge at the northwest corner of the property, crossing through the mouth of the main north cirque, to the north end of the ridge in the east. This is part of the overall breccia complex. Little diorite was noted elsewhere on the property.

North of the Scary Property, the breccia complex gives way to Quartet sedimentary rocks consisting of interbedded quartzite and shale.

Several faults have been mapped crossing the property. There is an obvious structural break, with associated deformation, in the east central part of the property. Strong silicification in the dolomitic sediments is associated with this fault. The fault extends across the main cirque and beyond the east ridge. There is a possibility that this fault is a reverse fault, lifting Quartet up over the breccia complex section.

Other faults on the property show little evidence of significant offset. The 1996 airborne geophysical survey indicates a major northeast trending fault cutting through the centre of the property. The approximate trace of this fault (Figure 4) coincides with a large gully on the north side of the main east-west ridge in the north half of the property. Elsewhere on the Monster Project, these northeast faults can be the locus of brecciation and mineralization, especially where they encounter cross faults of various orientations.

## 7.1 Mineralization

Significant results from the rock sampling on the Scary Claims are tabulated below.

**Table 7.1.1**  
**SIGNIFICANT 1998 ROCK SAMPLE RESULTS, SCARY CLAIMS.**

Sample No.	type	Cu (ppm)	Co (ppm)	Au (ppb)	Ag (g/t)
597175	grab (4m)	9320	2480	70	<0.2
597176	float	5000	16	<5	0.4
597177	float	3830	15	<5	<0.2
709565	grab (20m)	3870	33	<5	0.2
709669	float	3020	16	<5	0.2
709670	float	3900	14	<5	<0.2

Follow up work on several mineralized samples from previous work produced mixed results (Figure 5). Strong cobalt values for a sample on the northwest ridge turned out to be related to a pyritic shear at the contact of a diorite dyke and Quartet Group quartzite-shale. Samples with strong copper mineralization from the homolithic breccia in the north-central part of the property were apparently from quite localized mineralization. Close examination in the vicinity of the samples did not detect any significant mineralized zones.

Prospecting near the north boundary of the property, in homolithic breccia and altered dolomite located a small zone of strong copper-cobalt-gold mineralization (sample 597175). This mineralization is in close proximity to a fault and is apparently restricted in size. Another small zone of fracture controlled copper oxide and sulphide mineralization was located on the east side of the main cirque (samples

587176, 177). Again these samples are related to a mapped fault. This mineralization does not contain any significant cobalt or gold values.

Prospecting in the drainage in the west central part of the property was intended to follow up moderately anomalous gold results in silt samples from 1994. Spotty copper mineralization was encountered in homolithic and heterolithic breccia in this area but the samples contain less than 5 ppb gold.

## 8.0 SOIL GEOCHEMISTRY

Sample results from the Scary Property were included in statistical analysis for soil samples from all over the Monster Project (1265 samples). From this sample population, the following thresholds were calculated for weakly anomalous (70<sup>th</sup> percentile), moderately anomalous (85<sup>th</sup> percentile), highly anomalous (95<sup>th</sup> percentile) and very highly anomalous values (98<sup>th</sup> percentile). Complete results for the sampling can be found in Appendix E.

**Table 8.0.1**  
**SOIL GEOCHEMICAL THRESHOLDS, MONSTER PROJECT.**

Percentile	Copper (ppm)	Cobalt (ppm)	Gold (ppb)	Silver (ppm)
98 <sup>th</sup>	1555	143	20	1.9
95 <sup>th</sup>	899	75	10	1.0
85 <sup>th</sup>	406	48	<5	0.4
70 <sup>th</sup>	218	35		0.2
50 <sup>th</sup>	109	24		<0.2

Twenty three soil samples were taken along the 5000' (1525 metre) contour through the main cirque in the northeast part of the property (Figure 6). Of these samples, only two contained weakly anomalous copper values. Both of these samples are associated with the faults within the breccia complex, where mineralized rocks were picked up in prospecting. Several moderately anomalous cobalt values were also obtained, but these are scattered over a wider area of the breccia complex.

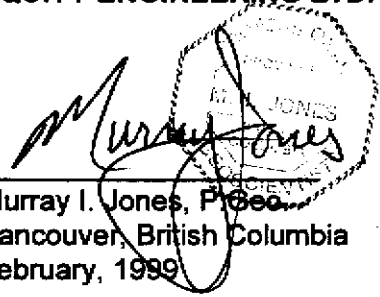
## 9.0 DISCUSSION AND RECOMMENDATIONS

The Scary Property lies along the Northern Breccia Belt of the southern Ogilvie Mountains (Lane, 1990). The breccia complex lies in the north half of the property and to the north of the property. The breccia complex in this area consists of homolithic and heterolithic breccia and diorite intruding quartzite and shale units of the Quartet Group and dolomitic rocks of either the Gillespie Lake or Fairchild Lake Group. Also, there is a large body of phyllite which may belong to the Fairchild Lake Group or represent an altered shale unit of the Quartet Group. The breccia complex traverses the area in an east-west direction. The south half of the property has not had significant work but does not seem to host any breccia occurrences.

Mineralization and alteration on the Scary Property is confined to the area of the breccia complex. Scattered copper and cobalt mineralization is common but to date no significant mineralized zone has been located. Soil and rock sample results reflect the spotty nature of mineralization with no areas of consistently anomalous values.

Although the Scary Property is situated on a major northeast trending structural break (EHW, 1997), a structural trend commonly associated with mineralization in other areas, there is very little evidence at this time of a significant mineralized zone on the property. It may be that additional structural preparation would be required to develop such a zone. Such an area may exist on the ground to the east, between the Scary and the Rob properties.

Respectfully submitted,  
**EQUITY ENGINEERING LTD.**



Murray I. Jones, P.Eng.  
Vancouver, British Columbia  
February, 1999

**APPENDIX A**

**BIBLIOGRAPHY**

## BIBLIOGRAPHY

- Baknes, M.E. (1995). 1994 Geological Report on the Monster 1-265 Claims, Report submitted for Assessment Credit.
- Caulfield, D.A. (1994,a): 1993 Geological Report on the Monster 1-40 Claims; Report submitted for assessment credit.
- Caulfield, D.A. (1994,b): 1993 Geological Report on the Monster 41-72 Claims; Report submitted for assessment credit.
- Delaney, G.D. (1985): The Middle Proterozoic Wernecke Supergroup, Wernecke Mountains, Yukon Territory; Unpublished Ph.D. Thesis, University of Western Ontario, 373 pp.
- Etheridge Henley Williams (1997). Structural Interpretation and Targeting of Monster and Environs Geophysical Survey, Yukon Territory, Canada, Report submitted for assessment credit.
- Falls, R.B. and Baknes, M.E. (1995). 1994 Geological Report on the Scary 1-20 Claims, Report submitted for assessment credit.
- Friske, P.W.B., Hornbrook, E.H.W., Lynch, J.J., McCurdy, M.W., Gross, H., Galletta, A.C. and Durham, C.C. (1991): National Geochemical Reconnaissance Stream Sediment and Water Data, West Central Yukon, (NTS 116B; parts of 116C, 116F and 116G) Geological Survey of Canada Open File 2365.
- Green, L.H. and Roddick, J.A. (1972): Geology of Nash Creek, Larsen Creek, and Dawson Map-Areas, Yukon Territory; Geological Survey of Canada, Memoir 364, 157 pp.
- Lane R.A. (1990): Geologic Setting and Petrology of the Proterozoic Ogilvie Mountains Breccia of the Coal Creek Inlier, Southern Ogilvie Mountains, Yukon Territory; Unpublished Masters Thesis, University of British Columbia, 223 pp.
- Lane, R.A. and Godwin, C.I. (1992): Geology of the Ogilvie Mountains Breccias, Coal Creek Inlier, (NTS 116B/11, 13, 14); Department of Indian and Northern Affairs, Open File 1992-1
- Thompson, R.I., Roots, C.F. and Mustard, P.S. (1992): Geology of Dawson Map Area (116B,C); Geological Survey of Canada, Open File 2849.
- Thorkelson, D.J., and Wallace, C.A. (1998). Geological Map of Slat Creek map area, Wernecke Mountains, Yukon, NTS106D/16. Exploration and Geological Services Division, Yukon, Indian And Northern Affairs Canada. Geoscience Map 1998-9, 1:50,000.

**APPENDIX B**

**LIST OF PERSONNEL**

LIST OF PERSONNEL

Murray I. Jones (Project Geologist)  
8606 144A St.  
Surrey, B.C.  
V3S 2Y2

Tim Sullivan, Senior Sampler  
207 - 675 West Hastings St.  
Vancouver, B.C.  
V6B 1N2

Tom Bell (Prospector)  
207 - 675 West Hastings St.  
Vancouver, B.C.  
V6B 1N2

**APPENDIX C**

**STATEMENT OF EXPENDITURES**

STATEMENT OF EXPENDITURES  
SCARY PROPERTY  
Scary 1-20 Claims  
July 16, 1998

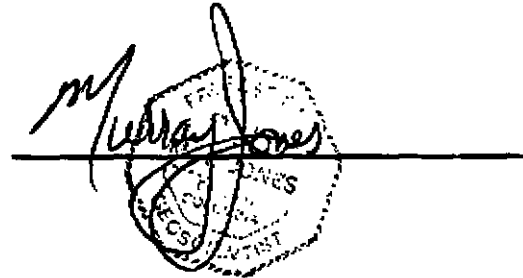
CANADA ) In the matter of an evaluation program on the Scary Property

I, Murray I. Jones, of Equity Engineering Ltd., 207, 675 West Hastings Street, Vancouver, B.C. do solemnly declare that a program consisting of geological mapping, prospecting and rock and soil sampling was carried out on the Scary 1-20 Mineral Claims on July 16, 1998. The following expenses were incurred during the course of this work and in the compilation and reporting of the results:

see table on following page

And I make this solemn declaration conscientiously believing it to be true and knowing that it is of the same force and effect as if made under oath and by virtue of the Canada Evidence Act.

Declared before me at Vancouver in the )  
Province of British Columbia this )  
20<sup>th</sup> day of March, 1999 )



A handwritten signature, "Murray I. Jones", is written over a circular notary seal. The seal contains the text "PROVINCE OF BRITISH COLUMBIA" and "REGISTRAR OF DEEDS".

Notary Public for the Province of British Columbia



Summary

**EQUITY ENGINEERING LTD.**  
**DAILY FIELD ACCOUNTING**  
 Project: Monster - Scary  
 Date: 1-Jul-98

	UNITS	RATE	SUBTOTAL	TOTAL
<b>WAGES:</b>				
Project Geologist, prefield	1	\$ 425	\$ 425.00	
Project Geologist, field	1	425	425.00	
Project Geologist, report	2	425	850.00	
Prospector	1	300	300.00	
Senior Sampler	1	275	275.00	
				2,275.00
<b>RENTALS (EQUITY AND NON EQUITY)</b>				
Camp (mandays)	3	\$ 25.00	\$ 75.00	
Generator (1kvA)	1	10.00	10.00	
Hand-held radios(non EEL)	3	\$6.00	18.00	
				103.00
<b>SUBCONTRACTS</b>				
Fixed Wing			202.49	
Helicopter			1,014.61	
				1,217.10
<b>ANALYSES</b>				
Soils	23	16.79	386.17	
Rock Geochem 1	10	19.01	190.10	
				576.27
<b>EXPENSES</b>				
Airfare			36.49	
Camp Food			72.63	
Camp Supplies			72.20	
Expediting			49.11	
Freight			62.46	
Printing & Repro			95.81	
				\$ 388.70
<b>ESTIMATED POST-FIELD EXPENSES</b>				
Drafting			<u>160.00</u>	160.00
<b>SUBTOTAL</b>				
				4,720.07
<b>PROJECT SUPERVISION CHARGE</b>				
12% on expenditures up to \$100,000		\$	566.41	
10% on expenditures \$100,001 to \$500,000			-	
8% on expenditures \$500,001 to \$2,000,000			-	
6% on portion of expenditures >2,000,000			-	
				<u>566.41</u>
<b>TOTAL</b>				\$ 5,286.48
<b>G.S.T.</b>	7%			<u>370.05</u>
<b>GRAND TOTAL</b>				<u>\$ 5,656.53</u>

**APPENDIX D**

**ROCK SAMPLE DESCRIPTIONS**

### MINERAL ABBREVIATIONS

AK	ankerite	AS	arsenopyrite	BA	barite
BI	biotite	CA	calcite (or CC)	CL	chlorite
CP	chalcopyrite	CY	clay	EP	epidote
GE	goethite	GL	galena	HE	hematite
HS	specularite	JA	jarosite	KF	K-feldspar
MG	magnetite	MN	Mn-oxides	MS	sericite (or SE)
PO	pyrrhotite	PY	pyrite	QZ	quartz
SI	silica	SP	sphalerite	SM	smithsonite

### ALTERATION INTENSITY

tr	trace	w	weak	m	moderate
		s	strong		

# Rock Sample Descriptions

**Project Name:** Monster

**Project:** BLK98-02

**NTS:** 116B/13,14

Sample Number:	Grid North:	N	Grid East:	E	Type: Grab	Alteration: sSI	<u>Cu (ppm)</u>	<u>Au (ppb)</u>	<u>Co (ppm)</u>	<u>Ag (ppm)</u>
<b>597175</b>	UTM	N	UTM	E	Strike Length Exp: 4 m	Metallics: 1%CP, 0.3%PY, 0.3%CO	9320	70	2480	<.2
<b>Scary</b>	Elevation 5300	ft	Sample Width: 4	m	True Width: 0	cm	Secondaries: wGE, wMC	<u>Bi (ppm)</u>	<u>Pb (ppm)</u>	<u>Zn (ppm)</u>
Comments:	Orientation		Bedding		Host: Siliceous Fairchild dolomite		<2	6	6	
About 200 feet up from 98TSS-05 plus 75 metres.										
Sample Number:	Grid North:	N	Grid East:	E	Type: Float	Alteration: sQZ, sSI	<u>Cu (ppm)</u>	<u>Au (ppb)</u>	<u>Co (ppm)</u>	<u>Ag (ppm)</u>
<b>597176</b>	UTM	N	UTM	E	Strike Length Exp:	Metallics: 0.1%CP	5000	<5	16	0.4
<b>Scary</b>	Elevation 5000	ft	Sample Width: 0	cm	True Width: 0	cm	Secondaries: sAZ, mMC	<u>Bi (ppm)</u>	<u>Pb (ppm)</u>	<u>Zn (ppm)</u>
Comments:	Orientation				Host: Quartzite (with quartz veins)		<2	2	16	
At 98TSS-016										
Sample Number:	Grid North:	N	Grid East:	E	Type: Float	Alteration: sQZ, sSI	<u>Cu (ppm)</u>	<u>Au (ppb)</u>	<u>Co (ppm)</u>	<u>Ag (ppm)</u>
<b>597177</b>	UTM	N	UTM	E	Strike Length Exp:	Metallics: 0.1%CP, ?TT	3830	<5	15	<.2
<b>Scary</b>	Elevation 5120	ft	Sample Width: 0	cm	True Width: 0	cm	Secondaries: sAZ, mMC	<u>Bi (ppm)</u>	<u>Pb (ppm)</u>	<u>Zn (ppm)</u>
Comments:	Orientation				Host: Quartzite		<2	6	10	
Two soil samples in line up slope from 98TSS-016										
Sample Number:	Grid North:	N	Grid East:	E	Type: Chip	Alteration: wCB, mCL, mKF	<u>Cu (ppm)</u>	<u>Au (ppb)</u>	<u>Co (ppm)</u>	<u>Ag (ppm)</u>
<b>709565</b>	UTM	N	UTM	E	Strike Length Exp: 20 m	Metallics: 0.5%CP	3870	<5	33	0.2
<b>Scary</b>	Elevation 1765	m	Sample Width: 1	m	True Width: 1	m	Secondaries: wGE, wMC	<u>Bi (ppm)</u>	<u>Pb (ppm)</u>	<u>Zn (ppm)</u>
Comments:	Orientation 095°/50° S		Joint		Host: Diorite, medium grained		<2	4	54	
Chalcopyrite seams/veinlets, disseminated blebs in fractures in potassium feldspar altered zone.										
Sample Number:	Grid North:	N	Grid East:	E	Type: Chip	Alteration: wCB, sCL, wQZ	<u>Cu (ppm)</u>	<u>Au (ppb)</u>	<u>Co (ppm)</u>	<u>Ag (ppm)</u>
<b>709566</b>	UTM	N	UTM	E	Strike Length Exp: 10 m	Metallics: 2%PY	124	5	232	0.6
<b>Scary</b>	Elevation 1815	m	Sample Width: 2	m	True Width: 2	m	Secondaries: sGE, wJA	<u>Bi (ppm)</u>	<u>Pb (ppm)</u>	<u>Zn (ppm)</u>
Comments:	Orientation 100°/80° S		Fault		Host: Diorite		<2	12	138	
Shear in diorite near contact with shale. Main pyrite seam, minor disseminated pyrite										
Sample Number:	Grid North:	N	Grid East:	E	Type: Grab	Alteration: sCB, wCL	<u>Cu (ppm)</u>	<u>Au (ppb)</u>	<u>Co (ppm)</u>	<u>Ag (ppm)</u>
<b>709567</b>	UTM	N	UTM	E	Strike Length Exp: 5 m	Metallics: trCP, trPY	47	<5	10	<.2
<b>Scary</b>	Elevation 1830	m	Sample Width: 2	m	True Width: 0	cm	Secondaries: wHE	<u>Bi (ppm)</u>	<u>Pb (ppm)</u>	<u>Zn (ppm)</u>
Comments:	Orientation				Host: Homolithic breccia, dolomite/shale- Fairchild Lake?		<2	6	14	
Near lineament from EHW- found one bleb of chalcopyrite, trace disseminated pyrite in float around outcrop.										

# Rock Sample Descriptions

**Project Name: Monster**

**Project: BLK98-02**

**NTS: 116B/13,14**

Sample Number:	Grid North:	N	Grid East:	E	Type:	Alteration:	<u>Cu (ppm)</u>	<u>Au (ppb)</u>	<u>Co (ppm)</u>	<u>Ag (ppm)</u>
<b>709568</b>	UTM	N	UTM	E	Grab	mOZ, sSI	24	<5	9	0.2
<b>Scary</b>	Elevation 1770	m	Sample Width: 5	m	Strike Length Exp: 20 m	Metallics:	<u>Bi (ppm)</u>	<u>Pb (ppm)</u>	<u>Zn (ppm)</u>	
Comments:	Orientation 070°/80° SE		Bedding		True Width: 5 m	Secondaries: mGE, wJA	<2	2	12	
Within dolomite/shale section.										
<b>709668</b>	UTM	N	UTM	E	Strike Length Exp:	sCB, sCL	1525	<5	46	0.2
<b>Scary</b>	Elevation 4760	ft	Sample Width: 0	cm	True Width: 0 cm	Metallics: 1-2%CP, 5%HS	<u>Bi (ppm)</u>	<u>Pb (ppm)</u>	<u>Zn (ppm)</u>	
Comments:	Orientation				Host: Breccia	Secondaries: mHE, wMC	<2	6	18	
Float on main north fork of southwest creek.										
<b>709669</b>	UTM	N	UTM	E	Strike Length Exp:	sCB, mCL	3020	<5	16	0.2
<b>Scary</b>	Elevation 5360	ft	Sample Width: 0	cm	True Width: 0 cm	Metallics: 1%CP, >1%HS	<u>Bi (ppm)</u>	<u>Pb (ppm)</u>	<u>Zn (ppm)</u>	
Comments:	Orientation				Host: Heterolithic breccia	Secondaries: wHE	<2	<2	6	
Taken on northwestern side of northeast bowl.										
<b>709670</b>	UTM	N	UTM	E	Strike Length Exp:	sCL	3900	<5	14	<2
<b>Scary</b>	Elevation 5640	ft	Sample Width: 0	cm	True Width: 0 cm	Metallics: 1-2%CP, 30-40%HS	<u>Bi (ppm)</u>	<u>Pb (ppm)</u>	<u>Zn (ppm)</u>	
Comments:	Orientation				Host: Specular hematite breccia	Secondaries: mHE	<2	2	2	
Taken on northeastern side of basin.										

**APPENDIX E**

**CERTIFICATES OF ANALYSIS AND STATISTICAL TABLES**



# Chemex Labs Ltd.

Analytical Chemists \* Geochemists \* Registered Assayers  
 212 Brooksbank Ave., North Vancouver  
 British Columbia, Canada V7J 2C1  
 PHONE: 604-984-0221 FAX: 604-984-0218

To: EQUITY ENGINEERING LTD.

207 - 675 W. HASTINGS ST.  
 VANCOUVER, BC  
 V6B 1N2

A9826143

Comments: ATTN: MURRAY JONES

CERTIFICATE

A9826143

(EIA) - EQUITY ENGINEERING LTD.

Project: BLK98-02  
 P.O. #:

Samples submitted to our lab in Vancouver, BC.  
 This report was printed on 10-AUG-98.

### SAMPLE PREPARATION

CHEMEX CODE	NUMBER SAMPLES	DESCRIPTION
205	46	Geochem ring to approx 150 mesh
226	46	0-3 Kg crush and split
3202	46	Rock - save entire reject
285	46	ICP - HF digestion charge

### ANALYTICAL PROCEDURES

CHEMEX CODE	NUMBER SAMPLES	DESCRIPTION	METHOD	DETECTION LIMIT	UPPER LIMIT
983	46	Au ppb: Fuse 30 g sample	FA-AAS	5	10000
578	46	Ag ppm: 24 element, rock & core	AAS	0.2	100.0
573	46	Al %: 24 element, rock & core	ICP-AES	0.01	25.0
565	46	Ba ppm: 24 element, rock & core	ICP-AES	10	10000
575	46	Be ppm: 24 element, rock & core	ICP-AES	0.5	1000
561	46	Bi ppm: 24 element, rock & core	ICP-AES	2	10000
576	46	Ca %: 24 element, rock & core	ICP-AES	0.01	25.0
562	46	Cd ppm: 24 element, rock & core	ICP-AES	0.5	500
563	46	Co ppm: 24 element, rock & core	ICP-AES	1	10000
569	46	Cr ppm: 24 element, rock & core	ICP-AES	1	10000
577	46	Cu ppm: 24 element, rock & core	ICP-AES	1	10000
566	46	Fe %: 24 element, rock & core	ICP-AES	0.01	25.0
584	46	K %: 24 element, rock & core	ICP-AES	0.01	10.00
570	46	Mg %: 24 element, rock & core	ICP-AES	0.01	15.00
568	46	Mn ppm: 24 element, rock & core	ICP-AES	5	10000
554	46	Mo ppm: 24 element, rock & core	ICP-AES	1	10000
583	46	Na %: 24 element, rock & core	ICP-AES	0.01	10.00
564	46	Ni ppm: 24 element, rock & core	ICP-AES	1	10000
559	46	P ppm: 24 element, rock & core	ICP-AES	10	10000
560	46	Pb ppm: 24 element, rock & core	AAS	2	10000
582	46	Sr ppm: 24 element, rock & core	ICP-AES	1	10000
579	46	Ti %: 24 element, rock & core	ICP-AES	0.01	10.00
572	46	V ppm: 24 element, rock & core	ICP-AES	1	10000
556	46	W ppm: 24 element, rock & core	ICP-AES	10	10000
558	46	Zn ppm: 24 element, rock & core	ICP-AES	2	10000



# Chemex Labs Ltd.

Analytical Chemists \* Geochemists \* Registered Assayers  
 212 Brooksbank Ave., North Vancouver  
 British Columbia, Canada V7J 2C1  
 PHONE: 604-984-0221 FAX: 604-984-0218

To: EQUITY ENGINEERING LTD.

207 - 675 W. HASTINGS ST.  
 VANCOUVER, BC  
 V6B 1N2

Project: BLK98-02  
 Comments: ATTN: MURRAY JONES

Page Number :1-A  
 Total Pages :2  
 Certificate Date: 10-AUG-98  
 Invoice No. :19826143  
 P.O. Number :  
 Account :EIA

\* PLEASE NOTE

## CERTIFICATE OF ANALYSIS A9826143

SAMPLE	PREP CODE	Au ppb FA+AA	Ag ppm AAS	Al % (ICP)	Ba ppm (ICP)	Be ppm (ICP)	Bi ppm (ICP)	Ca % (ICP)	Cd ppm (ICP)	Co ppm (ICP)	Cr ppm (ICP)	Cu ppm (ICP)	Fe % (ICP)	K % (ICP)	Mg % (ICP)
597159	205 226	30	6.0	1.26	170	< 0.5									
597160	205 226	10	0.2	4.04	390	0.5	Intf*	9.36	< 0.5	84	66	>10000	3.25	0.42	5.22
597161	205 226	10	0.4	7.73	100	1.0	< 2	8.35	< 0.5	26	60	164	6.45	1.78	5.03
597162	205 226	< 5	1.6	2.30	70	< 0.5	< 2	0.49	< 0.5	106	99	63	7.74	4.61	3.13
597163	205 226	< 5	1.0	7.33	160	< 0.5	Intf*	12.65	< 0.5	10	27	>10000	5.56	1.69	6.67
							Intf*	3.54	< 0.5	49	77	>10000	2.75	6.21	2.14
597164	205 226	< 5	0.4	0.13	30	< 0.5	< 2	18.00	54.5	6	< 1	126	1.36	0.13	11.45
597165	205 226	< 5	4.4	4.26	270	1.5	< 2	3.69	0.5	23	103	3870	2.36	2.38	2.57
597166	205 226	< 5	5.6	3.91	310	1.0	< 2	2.51	0.5	26	139	4890	1.55	2.36	1.79
597167	205 226	10	4.0	4.40	320	1.5	< 2	4.35	1.5	32	85	2850	1.40	2.80	2.69
597168	205 226	80	32.0	4.16	340	1.5	Intf*	2.80	0.5	45	111	>10000	1.15	2.79	1.80
597169	205 226	125	5.2	5.08	330	2.0	< 2	3.45	0.5	36	104	4220	1.71	3.06	2.37
597170	205 226	15	7.0	3.71	240	1.5	< 2	6.18	< 0.5	46	92	5210	1.76	2.18	3.81
597171	205 226	35	1.6	3.48	220	1.0	< 2	5.60	< 0.5	36	102	2550	2.04	1.99	3.52
597172	205 226	10	2.0	0.27	70	< 0.5	Intf*	3.25	< 0.5	391	238	>10000	1.59	0.27	1.58
597173	205 226	< 5	< 0.2	7.25	400	2.0	< 2	2.09	< 0.5	117	96	596	7.01	4.18	1.74
597174	205 226	< 5	< 0.2	7.17	580	2.0	< 2	1.57	< 0.5	82	116	1665	7.41	4.14	1.40
SCARY 597175	205 226	70	< 0.2	4.89	130	0.5	< 2	6.82	< 0.5	2480	68	9320	3.56	0.24	3.46
597176	205 226	< 5	0.4	0.48	100	< 0.5	< 2	0.31	< 0.5	16	193	5000	0.84	0.21	0.16
597177	205 226	< 5	< 0.2	0.28	80	< 0.5	< 2	0.92	< 0.5	15	223	3830	0.58	0.13	0.37
709555	205 226	5	< 0.2	6.14	610	0.5	< 2	3.60	< 0.5	21	102	2120	4.68	3.56	3.29
709556	205 226	< 5	< 0.2	0.72	90	< 0.5	< 2	3.88	< 0.5	4	136	33	4.69	0.40	1.01
709557	205 226	< 5	< 0.2	0.47	120	< 0.5	< 2	0.05	< 0.5	1	213	21	0.90	0.45	0.04
709558	205 226	10	0.8	8.41	420	0.5	< 2	0.98	< 0.5	53	112	6400	5.67	3.32	2.80
709559	205 226	5	0.8	6.89	1190	< 0.5	< 2	0.24	< 0.5	28	126	5720	3.70	6.04	2.44
709560	205 226	35	0.6	1.11	250	< 0.5	< 2	5.30	< 0.5	29	135	4430	2.38	0.50	2.85
709561	205 226	< 5	0.4	3.52	640	< 0.5	< 2	3.30	< 0.5	890	94	2730	2.14	3.42	2.24
709562	205 226	< 5	0.4	3.89	820	0.5	< 2	6.39	< 0.5	766	77	1625	3.03	2.01	3.45
709563	205 226	10	0.2	5.09	500	0.5	< 2	4.22	< 0.5	570	71	210	3.82	4.51	2.75
709564	205 226	10	0.2	6.75	730	0.5	< 2	0.86	< 0.5	27	75	396	7.10	4.18	3.34
709565	205 226	< 5	0.2	7.34	960	1.5	< 2	1.84	< 0.5	33	111	3870	6.54	1.35	3.73
SCARY 709566	205 226	5	0.6	6.25	150	0.5	< 2	0.83	< 0.5	232	114	124	10.15	1.55	2.98
709567	205 226	< 5	< 0.2	4.38	320	1.5	< 2	5.03	< 0.5	10	99	47	2.86	2.42	2.24
709568	205 226	< 5	0.2	0.34	50	< 0.5	< 2	0.17	< 0.5	9	247	24	0.74	0.16	0.09
709568	205 226	< 5	< 0.2	6.92	590	1.5	< 2	1.59	< 0.5	34	55	1295	8.15	1.96	4.37
709569	205 226	510	24.2	0.11	120	< 0.5	Intf*	1.17	< 0.5	9820	< 1	>10000	16.90	0.05	0.59
709660	205 226	< 5	0.2	6.09	740	1.5	< 2	5.02	< 0.5	20	94	159	3.08	4.30	3.00
709661	205 226	< 5	0.2	2.99	170	< 0.5	< 2	2.29	< 0.5	145	119	2170	4.21	1.48	2.72
709662	205 226	50	0.6	4.61	410	1.0	< 2	4.70	< 0.5	341	87	4620	3.74	3.25	3.05
709663	205 226	< 5	0.6	4.64	390	0.5	< 2	4.20	< 0.5	367	72	3030	4.41	3.39	2.79
709664	205 226	< 5	< 0.2	4.35	400	0.5	< 2	4.05	< 0.5	65	60	410	4.21	3.69	3.51

CERTIFICATION:

*Stuart Buchler*

\* INTERFERENCE: Cu ON Bi, P, AND Zn



# Chemex Labs Ltd.

Analytical Chemists \* Geochemists \* Registered Assayers  
 212 Brooksbank Ave., North Vancouver  
 British Columbia, Canada V7J 2C1  
 PHONE: 604-984-0221 FAX: 604-984-0218

To: EQUITY ENGINEERING LTD.

207 - 675 W. HASTINGS ST.  
 VANCOUVER, BC  
 V6B 1N2

Project: BLK98-02  
 Comments: ATTN: MURRAY JONES

Page Number : 1-B  
 Total Pages : 2  
 Certificate Date: 10-AUG-98  
 Invoice No. : 19826143  
 P.O. Number :  
 Account : EIA

\* PLEASE NOTE

## CERTIFICATE OF ANALYSIS A9826143

SAMPLE	PREP CODE	Mn ppm (ICP)	Mo ppm (ICP)	Na % (ICP)	Ni ppm (ICP)	P ppm (ICP)	Pb ppm AAS	Sr ppm (ICP)	Ti % (ICP)	V ppm (ICP)	W ppm (ICP)	Zn ppm (ICP)			
597159	205 226	4830	1	0.28	16	Intf*	4	54	0.03	19	< 10	22			
597160	205 226	5890	< 1	0.24	24	410	6	38	0.11	53	< 10	12			
597161	205 226	410	3	0.26	80	690	32	13	0.36	127	< 10	40			
597162	205 226	5780	< 1	0.33	8	Intf*	8	39	0.04	22	< 10	26			
597163	205 226	1145	1	1.81	19	Intf*	8	25	0.31	34	< 10	10			
597164	205 226	3860	< 1	0.03	6	< 10	126	14	< 0.01	18	< 10	>10000			
597165	205 226	1275	< 1	0.11	19	370	40	12	0.13	79	< 10	340			
597166	205 226	775	1	0.10	16	300	36	12	0.12	80	< 10	260			
597167	205 226	1165	< 1	0.12	10	230	56	26	0.11	103	< 10	274			
597168	205 226	910	< 1	0.07	12	Intf*	28	13	0.10	100	< 10	108			
597169	205 226	1155	1	0.15	17	340	16	15	0.15	102	< 10	136			
597170	205 226	2050	< 1	0.07	14	290	50	22	0.09	63	< 10	90			
597171	205 226	1880	< 1	0.04	17	260	38	16	0.10	65	< 10	130			
597172	205 226	1540	2	0.03	14	Intf*	10	15	< 0.01	5	< 10	10			
597173	205 226	580	6	0.16	25	560	2	12	0.25	81	< 10	10			
597174	205 226	470	1	0.16	26	790	4	20	0.25	85	< 10	10			
597175	205 226	1615	4	3.82	303	760	6	185	0.08	47	< 10	6			
597176	205 226	395	3	0.03	7	60	2	8	0.01	6	< 10	16			SCARY
597177	205 226	395	2	0.02	7	1150	6	7	< 0.01	3	< 10	10			
709555	205 226	1510	3	1.08	33	680	2	26	0.17	78	< 10	18			
709556	205 226	6920	2	0.01	3	140	2	20	0.01	11	< 10	30			
709557	205 226	70	2	0.03	3	100	18	< 1	0.01	5	< 10	2			
709558	205 226	1110	< 1	1.80	80	350	8	13	0.54	194	< 10	44			
709559	205 226	630	3	0.25	52	450	6	22	0.18	126	< 10	30			
709560	205 226	3040	2	0.14	8	100	2	32	0.02	17	< 10	8			
709561	205 226	1470	3	0.13	32	470	2	28	0.04	27	< 10	22			
709562	205 226	3950	1	1.32	26	350	4	79	0.08	47	< 10	22			
709563	205 226	2500	1	0.19	32	340	8	21	0.17	61	< 10	86			
709564	205 226	445	7	0.97	43	680	6	22	0.35	177	< 10	70			
709565	205 226	1825	< 1	2.01	87	720	4	36	0.98	290	< 10	54			
709566	205 226	1430	< 1	0.51	179	210	12	10	0.32	182	< 10	138			SCARY
709567	205 226	3530	2	0.18	13	1110	6	39	0.20	54	< 10	14			
709568	205 226	300	3	0.03	7	140	2	6	< 0.01	5	< 10	12			
709658	205 226	795	< 1	2.41	50	720	8	21	0.49	326	< 10	104			
709659	205 226	615	< 1	0.08	1655	Intf*	172	24	0.01	6	< 10	Intf*			
709660	205 226	2180	< 1	0.32	28	680	4	44	0.22	70	< 10	44			
709661	205 226	1260	1	0.08	65	200	6	15	0.12	49	< 10	58			
709662	205 226	2250	1	0.24	80	520	14	29	0.18	64	< 10	102			
709663	205 226	1940	3	0.17	172	410	26	32	0.18	63	< 10	156			
709664	205 226	2130	< 1	0.20	34	310	12	21	0.19	53	< 10	114			



# Chemex Labs Ltd.

Analytical Chemists \* Geochemists \* Registered Assayers

212 Brooksbank Ave., North Vancouver  
 British Columbia, Canada V7J 2C1  
 PHONE: 604-984-0221 FAX: 604-984-0218

To: EQUITY ENGINEERING LTD.

207 - 875 W. HASTINGS ST.  
 VANCOUVER, BC  
 V6B 1N2

Project: BLK98-02  
 Comments: ATTN: MURRAY JONES

Page Number : 2-A  
 Total Pages : 2  
 Certificate Date : 10-AUG-98  
 Invoice No. : 19826143  
 P.O. Number :  
 Account : EIA

\* PLEASE NOTE

## CERTIFICATE OF ANALYSIS A9826143

SAMPLE	PREP CODE	Au ppb FA+AA	Ag ppm AAS	Al % (ICP)	Ba ppm (ICP)	Be ppm (ICP)	Bi ppm (ICP)	Ca % (ICP)	Cd ppm (ICP)	Co ppm (ICP)	Cr ppm (ICP)	Cu ppm (ICP)	Fe % (ICP)	K % (ICP)	Mg % (ICP)
709665	205 226	25	0.4	5.66	460	1.5	< 2	5.69	< 0.5	1265	71	5150	3.17	3.41	3.37
709666	205 226	< 5	< 0.2	3.89	260	0.5	< 2	3.59	< 0.5	20	50	415	3.76	1.38	2.95
709667	205 226	< 5	< 0.2	5.46	670	1.0	2	3.54	< 0.5	157	96	3660	3.34	3.34	3.24
709668	205 226	< 5	0.2	6.14	740	< 0.5	< 2	3.09	< 0.5	46	62	1525	4.82	4.64	2.55
709669	205 226	< 5	0.2	6.39	420	< 0.5	< 2	2.33	< 0.5	16	81	3020	4.68	0.28	1.83
709670	205 226	< 5	< 0.2	5.01	350	0.5	< 2	2.60	< 0.5	14	71	3900	7.43	3.54	1.55

SCARY

\* INTERFERENCE: CU ON Bi, B AND Zr

CERTIFICATION:

*Hart Buchler*



# Chemex Labs Ltd.

Analytical Chemists \* Geochemists \* Registered Assayers  
 212 Brooksbank Ave., North Vancouver  
 British Columbia, Canada V7J 2C1  
 PHONE: 604-984-0221 FAX: 604-984-0218

To: EQUITY ENGINEERING LTD.

207 - 675 W. HASTINGS ST.  
 VANCOUVER, BC  
 V6B 1N2

Project: BLK98-02  
 Comments: ATTN: MURRAY JONES

Page Number : 2-B  
 Total Pages : 2  
 Certificate Date: 10-AUG-98  
 Invoice No. : 19826143  
 P.O. Number :  
 Account : EIA

\* PLEASE NOTE

## CERTIFICATE OF ANALYSIS A9826143

SAMPLE	PREP CODE	Mn ppm (ICP)	Mo ppm (ICP)	Na % (ICP)	Ni ppm (ICP)	P ppm (ICP)	Pb ppm AAS	Sr ppm (ICP)	Ti % (ICP)	V ppm (ICP)	W ppm (ICP)	Zn ppm (ICP)			
709665	205 226	2050	1	0.23	53	670	24	23	0.19	77	< 10	40			
709666	205 226	3230	< 1	0.12	31	240	8	24	0.15	57	10	34			
709667	205 226	1950	1	0.22	48	470	4	21	0.13	116	< 10	18			
709668	205 226	1400	< 1	1.26	30	470	6	28	0.30	170	< 10	18			
709669	205 226	945	1	4.36	20	360	< 2	20	0.20	210	< 10	6			
709670	205 226	1470	2	0.21	20	410	2	34	0.16	65	< 10	2			SCARY

\* INTERFERENCE CHECKED AND OK

CERTIFICATION: Robert Buchler



# Chemex Labs Ltd.

Analytical Chemists \* Geochemists \* Registered Assayers  
 212 Brooksbank Ave., North Vancouver  
 British Columbia, Canada V7J 2C1  
 PHONE: 604-984-0221 FAX: 604-984-0218

To: EQUITY ENGINEERING LTD.

207 - 675 W. HASTINGS ST.  
 VANCOUVER, BC  
 V6B 1N2

A9826144

Comments: ATTN: MURRAY JONES

CERTIFICATE

A9826144

(EIA) - EQUITY ENGINEERING LTD.

Project: BLK 98-02  
 P.O. #:

Samples submitted to our lab in Vancouver, BC.  
 This report was printed on 12-AUG-98.

## SAMPLE PREPARATION

CHEMEX CODE	NUMBER SAMPLES	DESCRIPTION
201	69	Dry, sieve to -80 mesh
202	69	save reject
217	17	Geochem ring entire sample
285	86	ICP - HF digestion charge

## ANALYTICAL PROCEDURES

CHEMEX CODE	NUMBER SAMPLES	DESCRIPTION	METHOD	DETECTION LIMIT	UPPER LIMIT
983	86	Au ppb: Fuse 30 g sample	FA-AAS	5	10000
578	86	Ag ppm: 24 element, rock & core	AAS	0.2	100.0
573	86	Al %: 24 element, rock & core	ICP-AES	0.01	25.0
565	86	Ba ppm: 24 element, rock & core	ICP-AES	10	10000
575	86	Ba ppm: 24 element, rock & core	ICP-AES	0.5	1000
561	86	Bi ppm: 24 element, rock & core	ICP-AES	2	10000
576	86	Ca %: 24 element, rock & core	ICP-AES	0.01	25.0
562	86	Cd ppm: 24 element, rock & core	ICP-AES	0.5	500
563	86	Co ppm: 24 element, rock & core	ICP-AES	1	10000
569	86	Cr ppm: 24 element, rock & core	ICP-AES	1	10000
577	86	Cu ppm: 24 element, rock & core	ICP-AES	1	10000
566	86	Fe %: 24 element, rock & core	ICP-AES	0.01	25.0
584	86	K %: 24 element, rock & core	ICP-AES	0.01	10.00
570	86	Mg %: 24 element, rock & core	ICP-AES	0.01	15.00
568	86	Mn ppm: 24 element, rock & core	ICP-AES	5	10000
554	86	Mo ppm: 24 element, rock & core	ICP-AES	1	10000
583	86	Na %: 24 element, rock & core	ICP-AES	0.01	10.00
564	86	Ni ppm: 24 element, rock & core	ICP-AES	1	10000
559	86	P ppm: 24 element, rock & core	ICP-AES	10	10000
560	86	Pb ppm: 24 element, rock & core	AAS	2	10000
582	86	Sr ppm: 24 element, rock & core	ICP-AES	1	10000
579	86	Ti %: 24 element, rock & core	ICP-AES	0.01	10.00
572	86	V ppm: 24 element, rock & core	ICP-AES	1	10000
556	86	W ppm: 24 element, rock & core	ICP-AES	10	10000
558	86	Zn ppm: 24 element, rock & core	ICP-AES	2	10000



# Chemex Labs Ltd.

Analytical Chemists \* Geochemists \* Registered Assayers  
 212 Brooksbank Ave., North Vancouver  
 British Columbia, Canada V7J 2C1  
 PHONE: 604-984-0221 FAX: 604-984-0218

To: EQUITY ENGINEERING LTD.

207 - 675 W. HASTINGS ST.  
 VANCOUVER, BC  
 V6B 1N2

Project: BLK 98-02  
 Comments: ATTN: MURRAY JONES

Page Number : 1-A  
 Total Pages : 3  
 Certificate Date: 12-AUG-98  
 Invoice No. : 19826144  
 P.O. Number :  
 Account : EIA

## CERTIFICATE OF ANALYSIS A9826144

SAMPLE	PREP CODE	Au ppb FA+AA	Ag ppm AAS	Al % (ICP)	Ba ppm (ICP)	Be ppm (ICP)	Bi ppm (ICP)	Ca % (ICP)	Cd ppm (ICP)	Co ppm (ICP)	Cr ppm (ICP)	Cu ppm (ICP)	Fe % (ICP)	K % (ICP)	Mg % (ICP)
TSS9801-000	201 202	30	< 0.2	6.20	1770	1.5	< 2	1.40	0.5	93	51	258	5.39	3.70	1.44
TSS9801-100	217 285	< 5	< 0.2	7.31	2380	0.5	< 2	2.58	0.5	14	90	23	2.64	4.92	1.65
TSS9801-200	201 202	< 5	0.2	6.12	2910	1.5	2	4.61	0.5	37	111	287	4.83	3.26	3.76
TSS9801-300	201 202	15	0.6	5.66	1850	1.5	< 2	1.03	0.5	88	83	586	6.97	2.92	1.17
TSS9801-400	201 202	< 5	0.2	8.28	1900	4.0	< 2	0.29	0.5	73	89	337	5.99	3.18	0.88
TSS9801-500	201 202	< 5	0.6	8.62	1540	5.0	2	0.20	0.5	97	79	258	5.79	3.32	0.87
TSS9801-600	217 285	< 5	< 0.2	8.78	1450	2.5	< 2	0.22	< 0.5	12	108	28	2.73	3.59	0.79
TSS9801-700	201 202	< 5	0.4	7.13	7050	3.5	< 2	0.76	2.0	73	59	270	6.59	2.64	1.00
TSS 9801-800	201 202	10	1.0	3.11	420	2.0	2	4.34	< 0.5	36	18	191	11.50	1.72	1.68
TSS9801-900	201 202	< 5	0.4	3.45	1430	1.5	2	5.12	0.5	42	27	54	7.78	2.44	1.78
TSS9801-1000	217 285	< 5	0.2	8.02	5730	3.0	< 2	2.53	2.0	28	76	293	3.67	3.56	2.50
TSS9801-1100	217 285	< 5	0.2	5.29	3850	2.0	< 2	4.44	1.0	28	41	231	6.28	2.24	3.34
TSS9801-1200	201 202	5	0.6	5.48	2140	1.5	< 2	6.22	< 0.5	26	51	301	6.01	2.63	2.99
TSS9801-1300	201 202	< 5	0.2	6.40	1680	1.5	< 2	3.31	0.5	61	54	554	5.42	3.05	3.41
TSS9801-1400	201 202	< 5	0.6	7.76	1020	2.0	< 2	0.85	< 0.5	45	73	515	5.97	3.44	1.85
TSS9801-1500	201 202	< 5	0.4	7.10	1390	1.5	< 2	2.83	< 0.5	73	77	215	6.21	3.12	2.61
TSS9801-1600	201 202	< 5	0.8	5.15	910	1.5	< 2	8.08	< 0.5	22	62	74	4.44	1.43	5.68
TSS9801-1700	201 202	< 5	0.6	2.11	460	0.5	2	15.20	< 0.5	12	26	94	2.63	1.08	9.81
TSS9801-1800	201 202	< 5	< 0.2	0.69	140	< 0.5	2	18.90	< 0.5	5	3	59	1.09	0.29	12.05
TSS9801-1900	201 202	< 5	0.8	0.38	150	< 0.5	2	19.35	< 0.5	5	1	84	1.51	0.15	12.45
TSS9801-2000	201 202	< 5	2.4	0.63	100	< 0.5	2	18.10	3.5	11	3	35	2.77	0.44	11.60
98DHS-060	201 202	< 5	< 0.2	6.48	960	1.5	< 2	0.66	< 0.5	14	72	42	4.73	1.84	0.69
98DHS-061	201 202	< 5	0.2	6.81	760	1.5	2	0.36	< 0.5	14	71	52	4.07	1.95	0.55
98DHS-062	201 202	< 5	< 0.2	5.58	690	1.0	< 2	0.78	< 0.5	12	41	46	3.38	1.71	0.48
98DHS-063	201 202	< 5	0.2	7.76	930	5.5	< 2	0.30	< 0.5	93	65	437	6.62	2.78	0.77
98DHS-064	201 202	< 5	1.0	6.02	2020	4.0	< 2	0.64	0.5	60	46	277	9.62	1.84	0.82
98DHS-065	201 202	< 5	0.2	5.45	2340	1.5	< 2	1.10	0.5	32	47	537	7.23	2.26	1.00
98DHS-066	201 202	< 5	0.4	5.68	2160	1.5	< 2	1.16	0.5	42	54	533	5.83	2.18	1.37
98DHS-067	201 202	< 5	0.8	6.25	5100	1.5	4	3.23	2.0	94	70	577	6.59	2.49	3.04
98DHS-068	201 202	< 5	0.4	4.36	600	1.0	< 2	2.83	0.5	20	50	89	3.99	1.32	1.41
98DHS-069	201 202	< 5	< 0.2	1.66	230	0.5	2	15.35	< 0.5	8	29	42	1.71	0.79	9.88
98DHS-070	201 202	< 5	0.4	2.30	310	0.5	2	14.30	< 0.5	8	38	44	1.84	1.47	9.33
98DHS-071	201 202	< 5	0.6	6.33	2000	3.0	< 2	1.20	0.5	36	242	67	4.89	2.83	2.80
98DHS-072	201 202	15	2.0	6.00	1840	2.0	30	0.87	1.5	92	70	610	8.32	2.04	2.34
98DHS-073	201 202	< 5	1.2	5.48	1320	2.0	38	1.67	0.5	77	62	750	7.26	1.94	2.50
98DHS-074	201 202	10	1.0	4.33	890	1.5	28	7.04	2.5	156	43	2040	4.79	1.94	5.17
98DHS-075	201 202	< 5	0.2	5.99	1400	1.0	< 2	1.53	0.5	36	71	133	4.99	1.37	1.42
98DHS-076	201 202	< 5	0.2	5.71	1260	0.5	< 2	2.57	0.5	64	78	433	5.74	1.06	2.67
98DHS-077	201 202	< 5	0.2	5.04	2460	0.5	< 2	2.33	1.0	47	66	321	4.57	1.48	1.76
98DHS-078	201 202	10	0.8	5.27	2670	1.5	< 2	1.64	0.5	196	49	1200	4.83	2.82	1.70

CERTIFICATION: Hunt Buehler



# Chemex Labs Ltd.

Analytical Chemists \* Geochemists \* Registered Assayers  
 212 Brooksbank Ave., North Vancouver  
 British Columbia, Canada V7J 2C1  
 PHONE: 604-984-0221 FAX: 604-984-0218

To: EQUITY ENGINEERING LTD.

207 - 675 W. HASTINGS ST.  
 VANCOUVER, BC  
 V6B 1N2

Project : BLK 98-02  
 Comments: ATTN: MURRAY JONES

Page Number : 1-B  
 Total Pages : 3  
 Certificate Date: 12-AUG-98  
 Invoice No. : 19826144  
 P.O. Number :  
 Account : EIA

## CERTIFICATE OF ANALYSIS A9826144

SAMPLE	PREP CODE	Mn ppm (ICP)	Mo ppm (ICP)	Na % (ICP)	Ni ppm (ICP)	P ppm (ICP)	Pb ppm AAS	Sr ppm (ICP)	Ti % (ICP)	V ppm (ICP)	W ppm (ICP)	Zn ppm (ICP)			
TSS9801-000	201 202	6320	1	0.66	39	1240	16	60	0.16	75	< 10	172			
TSS9801-100	217 285	1630	1	2.04	20	1180	2	82	0.22	71	< 10	54			
TSS9801-200	201 202	4340	< 1	0.25	37	770	10	38	0.27	142	< 10	86			
TSS9801-300	201 202	7530	< 1	0.31	45	1170	54	54	0.20	102	< 10	148			
TSS9801-400	201 202	3390	3	0.37	52	1160	50	39	0.28	88	< 10	98			
TSS9801-500	201 202	3100	3	0.25	52	940	80	33	0.29	82	< 10	90			
TSS9801-600	217 285	685	< 1	0.10	20	530	10	8	0.26	77	< 10	28			
TSS9801-700	201 202	4970	3	0.16	41	780	66	36	0.20	68	< 10	70			
TSS 9801-800	201 202	5090	13	0.02	52	3670	90	52	0.10	63	< 10	146			
TSS9801-900	201 202	9050	2	0.05	29	580	64	32	0.11	29	< 10	150			
TSS9801-1000	217 285	2280	1	0.14	34	610	12	44	0.31	80	< 10	40			
TSS9801-1100	217 285	9170	3	0.23	28	1080	10	52	0.20	64	< 10	58			
TSS9801-1200	201 202	5360	3	0.22	32	990	6	123	0.24	75	< 10	38			
TSS9801-1300	201 202	5110	2	0.45	42	1360	10	62	0.27	104	< 10	70			
TSS9801-1400	201 202	5200	3	0.53	56	1180	12	32	0.30	102	< 10	62			
TSS9801-1500	201 202	3200	3	0.45	37	880	2	22	0.23	114	< 10	22			
TSS9801-1600	201 202	3730	1	0.36	26	680	22	45	0.18	81	< 10	56			
TSS9801-1700	201 202	3340	< 1	0.13	16	330	24	33	0.09	36	< 10	60			
TSS9801-1800	201 202	1915	< 1	0.13	5	140	42	27	0.03	26	< 10	134			
TSS9801-1900	201 202	1900	< 1	0.08	6	80	36	30	0.01	22	< 10	92			
TSS9801-2000	201 202	2320	< 1	0.06	18	110	160	26	0.03	33	< 10	1640			
98DHS-060	201 202	710	3	0.82	17	580	32	114	0.44	152	< 10	96			
98DHS-061	201 202	1245	1	0.68	15	790	22	72	0.34	132	< 10	62			
98DHS-062	201 202	740	2	1.11	13	1030	22	171	0.26	74	< 10	56			
98DHS-063	201 202	6740	3	0.55	39	740	32	46	0.27	78	< 10	56			
98DHS-064	201 202	9180	6	0.40	47	1310	108	59	0.20	75	< 10	156			
98DHS-065	201 202	8240	2	0.65	32	1210	16	48	0.18	73	< 10	46			
98DHS-066	201 202	2430	3	0.54	38	1160	24	64	0.23	84	< 10	64			
98DHS-067	201 202	4760	4	0.53	69	840	52	49	0.20	87	< 10	162			
98DHS-068	201 202	3990	1	0.65	28	1290	44	118	0.19	83	< 10	172			
98DHS-069	201 202	2360	< 1	0.22	19	490	18	35	0.08	43	< 10	80			
98DHS-070	201 202	2450	< 1	0.20	19	520	22	35	0.10	43	< 10	154			
98DHS-071	201 202	4000	< 1	0.47	100	960	60	79	0.34	105	< 10	154			
98DHS-072	201 202	>10000	4	0.47	105	1280	108	82	0.28	128	< 10	352			
98DHS-073	201 202	>10000	8	0.40	87	960	70	65	0.24	128	< 10	154			
98DHS-074	201 202	5510	3	0.33	41	660	100	58	0.21	82	< 10	1105			
98DHS-075	201 202	1675	5	0.98	36	1010	36	177	0.38	158	< 10	270			
98DHS-076	201 202	2390	< 1	0.91	64	1210	118	215	0.30	162	< 10	300			
98DHS-077	201 202	3140	1	0.73	47	1090	58	189	0.26	118	< 10	184			
98DHS-078	201 202	6310	4	0.41	40	1070	18	82	0.26	89	< 10	62			

CERTIFICATION: *Hunt Beckler*



# Chemex Labs Ltd.

Analytical Chemists \* Geochemists \* Registered Assayers  
 212 Brooksbank Ave., North Vancouver  
 British Columbia, Canada V7J 2C1  
 PHONE: 604-984-0221 FAX: 604-984-0218

To: EQUITY ENGINEERING LTD.

207 - 675 W. HASTINGS ST.  
 VANCOUVER, BC  
 V6B 1N2

Project: BLK 98-02  
 Comments: ATTN: MURRAY JONES

Page Number :2-A  
 Total Pages :3  
 Certificate Date: 12-AUG-98  
 Invoice No. : 19826144  
 P.O. Number :  
 Account : EIA

## CERTIFICATE OF ANALYSIS A9826144

SAMPLE	PREP CODE		Au ppb	Ag ppm	Al %	Ba ppm	Ba ppm	Bi ppm	Ca %	Cd ppm	Co ppm	Cr ppm	Cu ppm	Fe %	K %	Mg %
	FA+AA	AAS	(ICP)	(ICP)	(ICP)	(ICP)	(ICP)	(ICP)	(ICP)	(ICP)	(ICP)	(ICP)	(ICP)	(ICP)	(ICP)	(ICP)
98DHS-079	201	202	< 5	0.2	7.96	4610	4.5	< 2	0.50	1.5	99	66	407	6.96	2.81	1.03
98DHS-080	201	202	< 5	0.2	5.68	980	1.0	< 2	0.62	0.5	14	62	51	4.65	1.93	0.63
98DHS-081	201	202	< 5	< 0.2	6.08	1020	1.5	< 2	1.04	0.5	35	71	264	5.40	1.69	0.96
98DHS-082	201	202	< 5	< 0.2	4.10	840	1.0	< 2	7.37	0.5	17	42	193	3.94	1.37	4.70
98DHS-083	201	202	< 5	0.2	1.20	330	< 0.5	2	16.90	< 0.5	8	10	89	1.97	0.49	11.35
98DHS-084	201	202	< 5	0.2	2.26	340	0.5	< 2	12.10	< 0.5	9	24	69	2.14	0.68	6.98
98DHS-085	201	202	10	< 0.2	6.25	1770	2.0	< 2	1.45	0.5	40	52	425	6.01	3.13	1.20
98DHS-086	217	285	< 5	< 0.2	10.85	1660	3.0	< 2	0.14	0.5	11	108	119	2.26	4.54	0.75
98DHS-087	217	285	< 5	< 0.2	10.10	770	4.5	< 2	0.19	< 0.5	9	106	145	2.85	4.60	0.87
98DHS-088	201	202	< 5	0.2	6.75	5110	2.0	< 2	2.20	2.0	31	56	236	5.70	2.03	1.96
98DHS-089	217	285	< 5	< 0.2	8.77	1160	3.5	< 2	0.30	< 0.5	20	140	85	1.97	4.27	0.71
98DHS-090	217	285	< 5	0.2	7.85	1020	3.0	< 2	0.81	< 0.5	19	96	43	4.11	4.50	1.02
98DHS-091	217	285	< 5	< 0.2	9.07	1360	4.0	< 2	0.21	< 0.5	23	116	104	3.50	3.13	0.93
98DHS-092	217	285	< 5	0.2	7.69	1040	2.0	< 2	2.00	0.5	21	106	121	4.65	4.54	2.23
98DHS-093	217	285	< 5	0.2	6.56	810	2.0	2	3.11	< 0.5	21	113	47	3.81	3.27	2.49
98DHS-094	201	202	< 5	0.2	4.89	1860	1.5	< 2	1.59	1.5	55	48	248	6.54	2.20	1.10
98DHS-095	201	202	< 5	0.4	6.02	1550	1.5	< 2	1.46	0.5	75	54	596	5.14	3.43	1.40
98DHS-096	217	285	< 5	0.8	7.74	1390	1.5	< 2	0.65	0.5	43	110	982	2.82	6.11	1.00
98DHS-097	201	202	< 5	0.4	5.99	2850	1.5	< 2	1.23	1.5	42	50	319	4.70	3.16	1.35
98DHS-098	201	202	< 5	0.2	5.79	5010	0.5	< 2	2.92	2.0	18	40	91	3.80	2.81	2.17
98DHS-099	201	202	10	0.4	4.41	3280	1.0	< 2	4.78	2.0	36	81	241	4.63	2.64	3.18
98DHS-100	201	202	< 5	0.4	4.15	2850	1.0	< 2	0.35	1.0	26	101	182	4.94	1.08	1.89
98DHS-101	201	202	< 5	< 0.2	5.77	4400	1.5	< 2	3.86	1.5	26	76	186	5.12	3.14	2.99
98TSS-001	201	202	< 5	< 0.2	8.72	790	5.0	< 2	0.33	< 0.5	66	64	34	3.90	2.70	1.00
98TSS-002	201	202	< 5	< 0.2	8.69	2000	5.0	< 2	0.47	0.5	48	64	118	4.69	3.07	1.21
98TSS-003	217	285	< 5	< 0.2	10.50	1150	3.5	< 2	0.11	< 0.5	14	95	36	2.87	4.89	0.73
98TSS-004	201	202	< 5	< 0.2	4.43	1080	1.5	< 2	1.44	< 0.5	18	35	15	4.22	1.58	1.11
98TSS-005	217	285	< 5	< 0.2	8.32	600	2.5	< 2	0.84	< 0.5	10	94	21	2.55	3.88	1.00
98TSS-006	201	202	10	< 0.2	6.14	2070	1.5	< 2	0.96	0.5	40	40	392	4.84	1.37	1.48
98TSS-007	201	202	< 5	< 0.2	7.82	1050	3.5	< 2	0.44	0.5	70	65	97	4.78	2.89	1.29
98TSS-008	201	202	< 5	< 0.2	7.98	700	3.0	2	0.72	< 0.5	38	65	121	4.44	2.71	0.93
98TSS-009	201	202	< 5	0.2	7.56	690	3.0	6	0.56	< 0.5	52	83	97	5.05	2.29	0.89
98TSS-010	201	202	< 5	< 0.2	7.63	750	3.0	< 2	0.39	< 0.5	42	77	82	4.72	2.41	0.94
98TSS-011	201	202	10	0.2	6.00	940	2.5	6	0.73	< 0.5	51	40	105	7.91	2.09	1.34
98TSS-012	201	202	< 5	0.2	8.08	1560	2.5	2	0.19	< 0.5	28	69	45	3.57	3.02	0.77
98TSS-013	217	285	< 5	0.2	8.53	880	2.5	< 2	0.11	< 0.5	11	107	24	2.82	3.47	0.54
98TSS-014	217	285	< 5	< 0.2	8.31	2310	2.5	2	0.13	0.5	15	110	33	2.92	3.26	0.66
98TSS-015	217	285	< 5	< 0.2	8.78	640	2.5	< 2	0.12	< 0.5	20	126	43	4.49	3.07	0.87
98TSS-016	201	202	< 5	0.2	4.53	940	2.0	2	0.61	0.5	32	27	300	9.85	1.61	1.05
98TSS-017	201	202	< 5	0.2	6.42	850	2.0	< 2	0.82	0.5	43	47	76	4.43	2.75	1.15

SCARY

CERTIFICATION: Hunter Beckler



# Chemex Labs Ltd.

Analytical Chemists \* Geochemists \* Registered Assayers  
 212 Brooksbank Ave., North Vancouver  
 British Columbia, Canada V7J 2C1  
 PHONE: 604-984-0221 FAX: 604-984-0218

To: EQUITY ENGINEERING LTD.

207 - 675 W. HASTINGS ST.  
 VANCOUVER, BC  
 V6B 1N2

Project : BLK 98-02  
 Comments: ATTN: MURRAY JONES

Page Number : 2-B  
 Total Pages : 3  
 Certificate Date: 12-AUG-98  
 Invoice No. : 19826144  
 P.O. Number :  
 Account : EIA

## CERTIFICATE OF ANALYSIS A9826144

SAMPLE	PREP CODE	Mn ppm (ICP)	Mo ppm (ICP)	Na % (ICP)	Ni ppm (ICP)	P ppm (ICP)	Pb ppm AAS	Sr ppm (ICP)	Ti % (ICP)	V ppm (ICP)	W ppm (ICP)	Zn ppm (ICP)			
98DHS-079	201 202	7860	3	0.60	39	860	30	98	0.26	87	< 10	50			
98DHS-080	201 202	1600	1	0.69	18	670	20	95	0.37	121	< 10	108			
98DHS-081	201 202	3110	1	0.74	30	1450	28	107	0.28	129	< 10	118			
98DHS-082	201 202	5250	< 1	0.54	25	1120	32	92	0.20	85	< 10	132			
98DHS-083	201 202	2640	< 1	0.16	11	210	22	37	0.07	42	< 10	78			
98DHS-084	201 202	2570	< 1	0.34	16	1030	28	62	0.14	62	< 10	84			
98DHS-085	201 202	5840	1	0.21	23	1110	26	33	0.20	83	< 10	104			
98DHS-086	217 285	240	< 1	0.17	23	490	6	10	0.30	90	< 10	16			
98DHS-087	217 285	485	< 1	0.14	24	510	6	13	0.30	90	< 10	20			
98DHS-088	201 202	4090	1	0.46	32	1350	24	46	0.20	101	< 10	76			
98DHS-089	217 285	840	< 1	0.20	24	590	42	14	0.25	84	< 10	62			
98DHS-090	217 285	3380	< 1	0.29	27	570	32	30	0.28	69	< 10	64			
98DHS-091	217 285	1255	< 1	0.30	34	540	10	38	0.30	87	< 10	32			
98DHS-092	217 285	1225	< 1	0.21	38	600	24	24	0.30	111	< 10	148			
98DHS-093	217 285	2480	< 1	0.19	26	800	6	30	0.26	76	< 10	54			
98DHS-094	201 202	6980	1	0.33	34	1380	38	50	0.20	79	< 10	298			
98DHS-095	201 202	6800	1	0.27	36	1420	38	47	0.19	81	< 10	196			
98DHS-096	217 285	1340	< 1	0.12	23	770	20	19	0.23	111	< 10	58			
98DHS-097	201 202	5290	< 1	0.53	32	1360	60	59	0.18	81	< 10	210			
98DHS-098	201 202	5800	< 1	1.09	27	1430	14	67	0.13	63	< 10	88			
98DHS-099	201 202	3890	1	0.12	46	920	70	38	0.15	79	< 10	174			
98DHS-100	201 202	4400	< 1	0.42	59	520	46	43	0.14	120	< 10	94			
98DHS-101	201 202	5360	< 1	0.23	25	1130	18	51	0.20	90	< 10	48			
98TSS-001	201 202	6340	1	0.44	24	1170	22	52	0.28	74	< 10	28			
98TSS-002	201 202	5230	1	0.61	32	440	14	77	0.25	85	< 10	34			
98TSS-003	217 285	1280	< 1	0.32	18	140	4	17	0.34	81	< 10	14			
98TSS-004	201 202	7060	1	0.35	19	1240	12	61	0.16	71	< 10	30			
98TSS-005	217 285	1260	< 1	0.73	22	660	6	18	0.25	68	< 10	8			
98TSS-006	201 202	6870	4	1.18	19	1140	10	34	0.17	64	< 10	26			
98TSS-007	201 202	5170	1	0.55	40	570	12	39	0.26	73	< 10	24			
98TSS-008	201 202	4100	1	0.85	30	1160	20	108	0.28	91	< 10	42			
98TSS-009	201 202	3250	1	0.82	41	1050	32	94	0.33	116	< 10	48			
98TSS-010	201 202	1710	1	0.53	30	1280	24	58	0.24	91	< 10	34			
98TSS-011	201 202	4590	5	0.22	40	1770	32	29	0.13	64	< 10	38			
98TSS-012	201 202	1030	< 1	0.36	23	430	12	28	0.35	71	< 10	16			
98TSS-013	217 285	245	< 1	0.61	15	330	8	21	0.33	66	< 10	12			
98TSS-014	217 285	565	< 1	0.49	15	250	16	20	0.35	64	< 10	14			
98TSS-015	217 285	385	< 1	0.25	33	480	6	15	0.30	81	< 10	14			
98TSS-016	201 202	>10000	4	0.27	27	960	38	54	0.15	60	< 10	46			
98TSS-017	201 202	5310	1	0.92	32	770	46	40	0.24	53	< 10	158			

SCARY ↓

CERTIFICATION: *Howard Buchler*



# Chemex Labs Ltd.

Analytical Chemists \* Geochemists \* Registered Assayers  
 212 Brooksbank Ave., North Vancouver  
 British Columbia, Canada V7J 2C1  
 PHONE: 604-984-0221 FAX: 604-984-0218

To: EQUITY ENGINEERING LTD.

207 - 675 W. HASTINGS ST.  
 VANCOUVER, BC  
 V6B 1N2

Page Number : 3-A  
 Total Pages : 3  
 Certificate Date: 12-AUG-98  
 Invoice No. : 19826144  
 P.O. Number :  
 Account : EIA

Project : BLK 98-02  
 Comments: ATTN: MURRAY JONES

## CERTIFICATE OF ANALYSIS A9826144

SAMPLE	PREP CODE		Au ppb FA+AA	Ag ppm AAS	Al % (ICP)	Ba ppm (ICP)	Be ppm (ICP)	Bi ppm (ICP)	Ca % (ICP)	Cd ppm (ICP)	Co ppm (ICP)	Cr ppm (ICP)	Cu ppm (ICP)	Fe % (ICP)	K % (ICP)	Mg % (ICP)
98TSS-018	201	202	< 5	< 0.2	7.89	810	3.5	< 2	0.61	< 0.5	46	75	36	4.20	2.48	0.98
98TSS-019	201	202	< 5	< 0.2	7.42	640	2.0	< 2	0.72	< 0.5	35	79	36	3.59	2.40	0.92
98TSS-020	201	202	< 5	< 0.2	5.38	730	1.5	< 2	0.83	< 0.5	21	45	24	4.57	1.73	1.12
98TSS-021	201	202	< 5	0.2	5.29	490	1.0	< 2	1.19	< 0.5	14	39	11	4.23	1.36	1.05
98TSS-022	201	202	< 5	< 0.2	6.10	720	1.5	< 2	0.85	0.5	18	49	20	4.64	1.85	1.17
98TSS-023	201	202	< 5	< 0.2	4.78	600	1.5	< 2	1.16	< 0.5	11	23	62	3.06	2.24	1.24

↑ SCARY

CERTIFICATION: Mark Buchler



# Chemex Labs Ltd.

Analytical Chemists \* Geochemists \* Registered Assayers  
 212 Brooksbank Ave., North Vancouver  
 British Columbia, Canada V7J 2C1  
 PHONE: 604-984-0221 FAX: 604-984-0218

To: EQUITY ENGINEERING LTD.

207 - 675 W. HASTINGS ST.  
 VANCOUVER, BC  
 V6B 1N2

Project : BLK 98-02  
 Comments: ATTN: MURRAY JONES

Page Number : 3-B  
 Total Pages : 3  
 Certificate Date: 12-AUG-98  
 Invoice No. : 19826144  
 P.O. Number :  
 Account : EIA

## CERTIFICATE OF ANALYSIS A9826144

SAMPLE	PREP CODE		Mn ppm (ICP)	Mo ppm (ICP)	Na % (ICP)	Ni ppm (ICP)	P ppm (ICP)	Pb ppm AAS	Sr ppm (ICP)	Ti % (ICP)	V ppm (ICP)	W ppm (ICP)	Zn ppm (ICP)			
	98TSS-018	201	202	2250	1	1.06	36	1010	30	115	0.36	94	< 10	48		
98TSS-019	201	202	1200	1	0.97	33	1170	22	112	0.38	109	< 10	56			
98TSS-020	201	202	3750	1	0.75	22	1180	10	69	0.23	83	10	40			
98TSS-021	201	202	5560	1	1.27	19	1250	32	62	0.22	66	< 10	28			
98TSS-022	201	202	7210	1	1.42	23	1320	26	63	0.27	76	< 10	36			
98TSS-023	201	202	4130	< 1	0.29	12	1000	10	19	0.17	42	< 10	22			

→ SCARY

CERTIFICATION: *[Signature]*

Statistics - Correlation Table For All Monster Rocks

Statistics - Percentile Rank																										
Units																										
Percentile	Au ppb	Ag	Al	Ba	Be	Bl	Ca	Cd	Co	Cr	Cu	Fe	K	Mg	Mn	Mo	Na	Ni	P	Pb	Sr	Tl	V	W	Zn	
Population	792	792	760	750	750	735	750	750	792	750	792	750	792	750	792	750	750	750	750	736	750	749	750	750	750	749
98th	175.9	13.78	8.1114	5944	1.91	20.64	17.0702	23.53	2499.8	313.2	37734	21.8	7.1338	8.793	7091.4	30	3.21	250.04	1653.2	1204.3	913.64	0.81	628.7	20	1846.24	
95th	75	5.6	7.6085	2691	1.5	6.6	13.493	2	807.39	243	13370	13.133	8.2665	7.234	5837.75	11	2.461	122.1	1143	188.8	150	0.8166	317	10	506	
90th	24.5	2	7.13	1450	1	4	9.763	0.5	147.7	185.1	7796.1	9.257	5.461	5.202	4215	5	1.892	77	890	36.2	66	0.37	234.2	5	181.6	
85th	10	1	6.86	960	0.5	2	7.5285	0.5	84	149.85	5040.85	7.9195	4.75	4.5985	3243	3	1.13	61	820	16	49	0.31	164	5	99.6	
80th	2	0.6	5.65	792	0.5	2	6.502	0.2	83.8	136	3686	7.1	4.432	4.132	2824	2	0.682	51	780	12	41	0.28	122	5	74	
70th	2	0.2	6.213	620	0.5	1	4.861	0.2	42	120	2297.3	5.969	3.86	3.6	2176.5	1	0.28	39	710	6	33	0.25	94	0	52	
60th	2	0.1	5.738	510	0	0	3.978	0	29	106	1218.8	5.074	3.254	3.214	1765	1	0.23	31	650	2	27	0.22	79	0	36	
50th	2	0.1	5.18	410	0	0	3.285	0	23	97	480	4.346	2.605	2.78	1395	0.5	0.19	25	590	1	24	0.19	89.5	0	28	
40th	2	0.1	4.35	330	0	0	2.676	0	18	88	128.8	3.6	1.806	2.416	1116	0.6	0.16	21	480	1	21	0.146	60	0	22	
30th	2	0.1	3.34	250	0	0	1.827	0	14	79	53	3.057	1.03	2.027	832	0.5	0.11	17	380	1	17	0.1	49	0	18	
Correlation Coefficients																										
	Au ppb	Ag	Al	Ba	Be	Bl	Ca	Cd	Co	Cr	Cu	Fe	K	Mg	Mn	Mo	Na	Ni	P	Pb	Sr	Tl	V	W	Zn	
Au ppb		0.23	-0.13	-0.03	-0.02	0.03	0.02	0.00	0.73	-0.01	0.41	0.14	-0.10	-0.01	0.01	0.07	-0.08	0.11	-0.06	-0.01	-0.03	-0.12	-0.01	0.28	-0.0055	
Ag	0.23																									
Al	-0.13	-0.17																								
Ba	-0.03	-0.02	-0.20																							
Be	-0.02	0.00	0.24	-0.06																						
Bl	0.03	0.17	-0.11	0.08	-0.02																					
Ca	0.02	-0.02	-0.46	0.04	-0.12	-0.04																				
Cd	0.00	0.12	-0.06	0.03	0.10	0.01	-0.04																			
Co	0.73	0.04	-0.04	-0.02	-0.02	0.05	0.02	0.02																		
Cr	-0.01	0.02	-0.05	-0.15	-0.07	-0.05	-0.34	0.03	-0.06																	
Cu	0.41	0.37	-0.18	-0.02	-0.04	0.55	-0.03	-0.01	0.19	-0.08																
Fe	0.14	0.13	0.06	-0.13	0.07	0.12	-0.29	0.01	0.00	-0.11	0.28															
K	-0.10	-0.12	0.72	-0.15	0.16	-0.08	-0.31	-0.06	-0.04	-0.08	-0.12	-0.10														
Mg	-0.01	-0.07	-0.15	-0.17	-0.08	-0.09	0.74	-0.08	0.03	-0.37	-0.07	-0.14	-0.17													
Mn	0.01	-0.03	-0.35	-0.12	-0.07	-0.06	0.59	0.05	0.01	-0.30	-0.03	0.03	-0.27	0.56												
Mo	0.07	0.03	-0.09	0.11	0.02	0.03	-0.03	0.08	0.04	0.08	-0.01	0.03	-0.10	-0.14	-0.08											
Na	-0.08	-0.09	0.41	-0.07	-0.06	-0.05	-0.16	-0.06	-0.05	-0.03	-0.04	0.07	-0.13	-0.03	-0.12	-0.06										
Ni	0.11	0.07	-0.05	0.02	0.05	0.02	-0.02	0.08	0.08	0.03	0.08	0.09	-0.07	-0.08	-0.06	0.88	-0.03									
P	-0.06	-0.01	0.22	-0.02	0.06	0.05	-0.07	0.00	-0.03	-0.08	0.00	0.06	0.18	-0.08	-0.12	0.58	0.06	0.61								
Pb	-0.01	0.36	-0.08	-0.01	0.02	0.09	-0.02	0.38	-0.01	0.09	-0.01	-0.04	0.07	-0.06	-0.02	-0.01	-0.05	-0.01	-0.06							
Sr	-0.03	-0.02	-0.22	0.78	-0.06	0.10	0.15	0.04	-0.02	-0.12	-0.03	-0.15	-0.18	-0.17	-0.12	0.14	-0.08	0.08	0.03	0.00						
Tl	-0.12	-0.13	0.69	-0.12	0.08	-0.08	-0.32	-0.07	-0.06	-0.04	-0.09	0.17	0.38	-0.05	-0.22	-0.06	0.41	-0.03	0.16	-0.07	-0.13					
V	-0.01	0.07	0.04	0.06	-0.04	-0.01	-0.13	0.09	-0.02	0.22	0.01	0.02	-0.07	-0.19	-0.21	0.34	0.08	0.14	0.24	-0.04	0.14	0.23				
W	0.28	0.08	-0.13	-0.03	-0.01	-0.01	0.13	-0.01	0.19	-0.06	0.24	0.12	-0.11	0.09	0.08	-0.01	-0.04	0.06	-0.08	-0.01	-0.04	-0.06	-0.04			
Zn	-0.01	0.14	-0.03	0.00	0.06	0.01	-0.03	0.88	-0.01	-0.01	-0.01	-0.01	-0.02	-0.05	0.04	0.01	-0.03	0.01	-0.02	0.48	0.00	-0.05	0.00	0.00	1	

Statistics - Correlation Table For All Monster Soils

Statistics - Percentile Rank

Units		Au ppb	Ag	Al	Ba	Be	Bl	Ca	Cd	Co	Cr	Cu	Fe	K	Mg	Mn	Mo	Na	Ni	P	Pb	Sr	Ti	V	W	Zn
Percentile	Population	1265	1265	1265	1265	1265	1265	1265	1265	1265	1265	1265	1265	1265	1265	1265	1265	1265	1265	1265	1265	1265	1265	1265	1265	1265
98th	20	1.944	9.8952	5017.2	4	6	15.672	4.72	143.16	196.72	1555	8.6804	4.7844	10.508	10000	7.72	1.6944	93.72	2296	425.84	243.24	0.48	245.16	50	1658	712.8
95th	10	1	8.846	3188	3.5	2	10.122	2	74.8	133.8	899.4	7.836	4.258	6.606	10000	4	1.318	59.8	1896	223.2	172.8	0.44	184.2	5	712.8	
90th	2	0.6	8.02	2250	3	2	5.05	0.5	58	101	551.2	6.884	3.856	3.634	8284	3	1.14	47	1670	128	144	0.4	143	5	374	
85th	2	0.4	7.664	1860	2.5	1	3.298	0.5	48	92	405.8	6.41	3.51	2.674	7104	2	1.014	42	1530	90	125	0.38	130	5	256.8	
80th	2	0.4	7.312	1632	2	1	2.254	0.5	42	85	323.2	6.1	3.27	2.212	6458	2	0.92	38	1410	66	112	0.36	122	5	182	
70th	2	0.2	6.77	1350	1.5	1	1.53	0.2	35	76	218	5.62	2.94	1.63	5194	1	0.76	33	1260	38	93.8	0.33	112	5	128	
60th	2	0.1	6.38	1130	1.5	1	1.24	0.2	29	70	156	5.14	2.65	1.33	4184	1	0.66	30	1150	26	76	0.3	103.4	5	100	
50th	2	0.1	6.09	990	1	1	1.04	0.2	24	65	109	4.74	2.36	1.12	3260	0.5	0.56	27	1040	20	66	0.28	85	5	88	
40th	2	0.1	5.796	890	1	1	0.856	0.2	21	59	80	4.336	2.11	0.99	2640	0.5	0.47	25	920	14	58	0.26	86.6	5	74	
30th	2	0.1	5.38	790	0.5	1	0.71	0.2	18	54	56.2	3.87	1.86	0.87	2040	0.5	0.39	22	770	10	49	0.23	79	5	64	

Correlation Coefficients

Au ppb	Ag	Al	Ba	Be	Bl	Ca	Cd	Co	Cr	Cu	Fe	K	Mg	Mn	Mo	Na	Ni	P	Pb	Sr	Ti	V	W	Zn	
Au ppb	0.07	-0.01	0.05	0.00	0.07	-0.02	-0.01	0.37	-0.02	0.25	0.09	-0.02	-0.01	0.10	0.01	-0.02	0.01	0.02	0.04	-0.02	-0.04	-0.01	0.02	-0.005	
Ag	0.07																								
Al	-0.01	-0.13																							
Ba	0.05	0.08	0.08																						
Be	0.00	0.01	0.63	0.04																					
Bl	0.07	0.13	-0.02	0.01	0.09																				
Ca	-0.02	0.07	-0.64	-0.10	-0.29	0.04																			
Cd	-0.01	0.68	-0.14	0.12	-0.02	-0.02	0.09																		
Co	0.37	0.12	0.01	0.05	0.02	0.13	-0.06	0.00																	
Cr	-0.02	0.13	0.22	0.11	0.11	-0.01	-0.16	0.16	0.03																
Cu	0.25	0.18	-0.10	0.07	-0.08	0.18	0.01	0.03	0.47	0.05															
Fe	0.09	-0.01	0.09	0.14	-0.03	0.07	-0.30	-0.09	0.16	0.11	0.26														
K	-0.02	-0.04	0.65	0.13	0.44	0.02	-0.36	-0.12	0.01	0.17	0.00	0.01													
Mg	-0.01	0.05	-0.60	-0.05	-0.28	0.07	0.89	0.05	-0.03	-0.05	0.03	-0.26	-0.32												
Mn	0.10	-0.02	-0.31	0.14	-0.15	0.07	0.01	-0.09	0.17	-0.10	0.34	0.56	-0.07	0.00											
Mo	0.01	0.59	-0.11	0.10	-0.02	-0.01	0.02	0.82	0.00	0.16	0.03	0.02	-0.12	-0.04	-0.07										
Na	-0.02	-0.17	0.30	-0.06	-0.08	-0.32	-0.11	-0.05	-0.01	-0.15	-0.02	-0.25	-0.36	-0.25	-0.10										
Ni	0.01	0.55	-0.07	0.15	-0.01	-0.01	-0.01	0.71	0.05	0.37	0.07	0.07	-0.08	-0.02	-0.05	0.91	-0.11								
P	0.02	0.15	-0.20	0.10	-0.22	-0.03	-0.22	0.24	0.03	-0.02	0.09	0.33	-0.21	-0.30	0.39	0.32	0.10	0.28							
Pb	0.04	0.26	-0.03	0.03	0.07	0.05	0.03	0.01	0.13	-0.01	0.15	0.00	0.00	0.04	0.03	-0.02	-0.05	0.02	-0.06						
Sr	-0.02	0.32	-0.04	0.10	-0.06	-0.06	-0.09	0.51	-0.05	0.05	-0.07	-0.12	-0.33	-0.18	-0.22	0.38	0.60	0.31	-0.01						
Ti	-0.04	-0.06	0.68	0.00	0.34	-0.03	-0.51	-0.03	-0.03	0.26	-0.09	0.09	0.30	-0.48	-0.39	-0.01	0.40	0.04	-0.08	-0.01	0.21				
V	-0.01	0.66	-0.07	0.12	-0.02	-0.03	-0.01	0.95	0.00	0.22	0.03	-0.03	-0.09	-0.06	-0.10	0.90	-0.06	0.81	0.30	-0.02	0.59	0.09			
W	0.02	0.00	0.05	0.02	0.13	0.05	-0.01	-0.05	0.02	0.01	0.02	0.04	0.10	0.01	0.05	-0.05	-0.08	-0.04	0.01	0.02	-0.06	0.04	-0.05		
Zn	0.00	0.68	-0.25	0.07	-0.06	0.01	0.24	0.88	0.07	0.12	0.09	-0.13	-0.17	0.22	-0.07	0.80	-0.18	0.72	0.16	0.13	0.47	-0.13	0.82	-0.04	1

**APPENDIX F**

**GEOLOGIST'S CERTIFICATE**

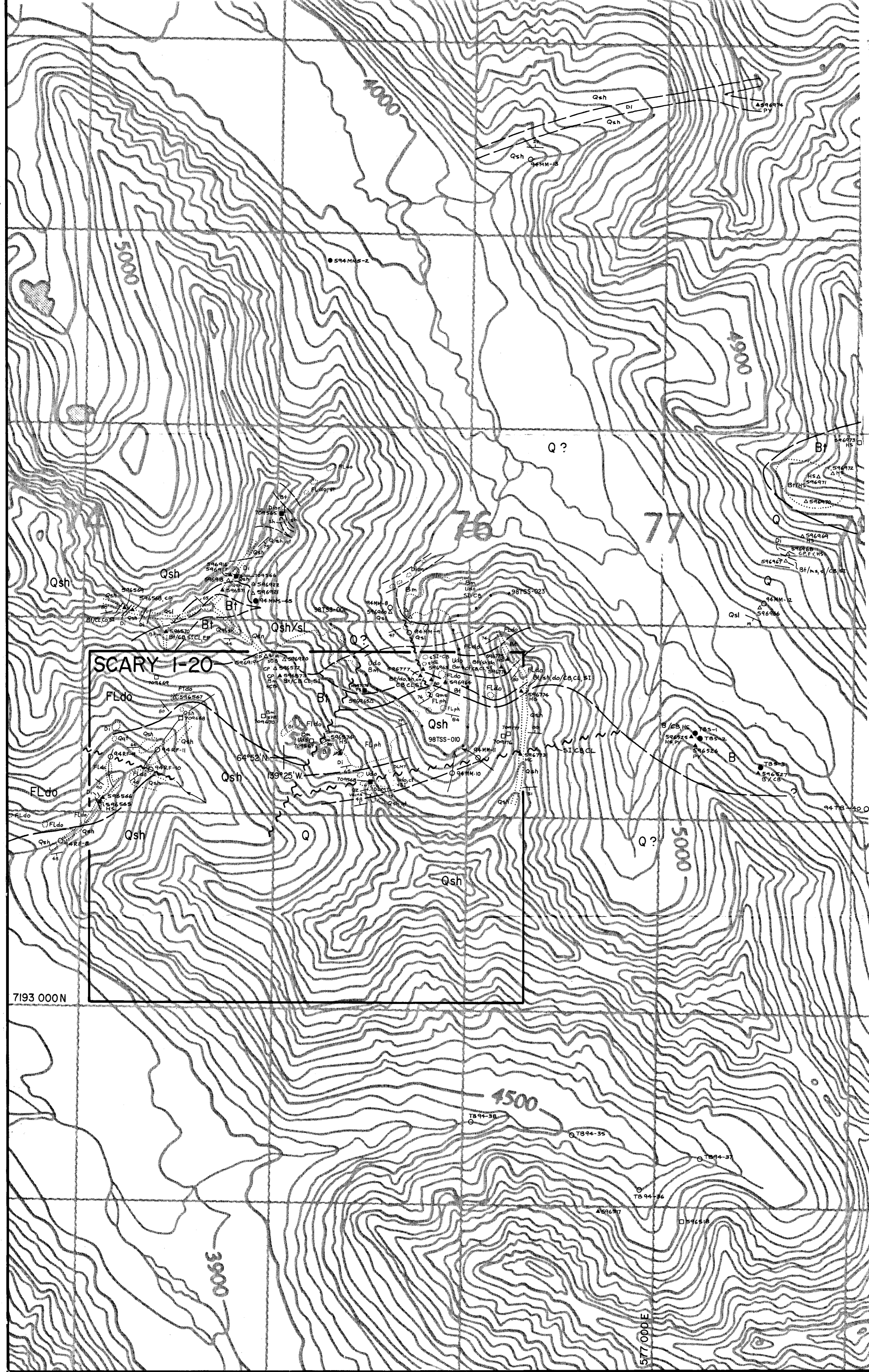
## GEOLOGIST'S CERTIFICATE

I, Murray I. Jones of 8606 144A St., Surrey, in the Province of British Columbia, DO HEREBY CERTIFY:

1. THAT I am a Consulting Geologist with offices at Suite 207, 675 West Hastings Street, Vancouver, British Columbia.
2. THAT I am a graduate of the University of British Columbia with a Bachelor of Science Honours degree in Geology (1982) and the University of Ottawa with a Master's of Science degree in Geology (1992).
3. THAT I am a Professional Geoscientist registered in good standing with the Association of Professional Engineers and Geoscientists of the Province of British Columbia (No. 20063).
4. THAT this report is based on property work I conducted and/or supervised July 16, 1998, as well as government publications and assessment reports filed with the Yukon Territory.

DATED at Vancouver, British Columbia, this 18<sup>th</sup> day of February, 1999.

  
Murray I. Jones M.Sc., P. Geol.



**LEGEND**  
LITHOLOGIES

- PROTEROZOIC**
- Di Diorite
  - B Breccia
  - Bt Heterolithic breccia
  - Bm Homolithic breccia
- Note: Convention for breccia description; Breccia class/fragment type/matrix components, i.e. Bm/Do/CL indicates a homolithic breccia, with dolostone clasts, and chlorite matrix.
- EARLY TO MIDDLE PROTEROZOIC**
- Q Quartet Group
  - Qsh black shale
  - Qsl grey to black siltstone
  - Qqt grey quartzite
  - Qms mudstone
  - FL Fairchild Lake Group
  - FLdo orange-brown dolostone
  - FLls grey limestone
  - FLms mudstone, m-maron, mg-grey
  - FLss sandstone
  - FLsl grey siltstone
  - FLph Phyllite

**SYMBOLS**

- Outerop boundary
- Geological contact (approximate)
- - - Fault (assumed)
- /// Bedding, Foliation, Jointing
- Lineation
- Vein
- 1998 Rock sample (float, outcrop)
- △ Previous sample (float, outcrop)
- Silt sample
- Soil sample
- ... Contour soil line

**ROCK AND MINERAL ABBREVIATIONS**

ct	chert	CA	calcite
do	dolostone	CB	carbonate
lg	limestone	CL	chlorite
mg	grey mudstone	DO	dolomite
ms	maroon mudstone	EP	epidote
qt	quartzite	GR	graphite
sh	shale	JP	jasper
sl	siltstone	KF	orthoclase
ss	sandstone	PF	plagioclase
sw	stockwork	QZ	quartz
		SD	siderite
		SI	silica

**METALLIC AND SECONDARY MINERALS**

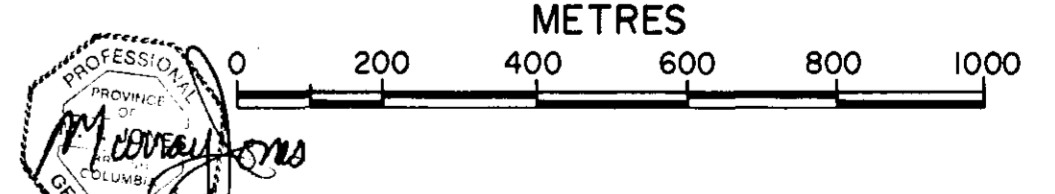
CC	chalcocite	CP	chalcopyrite
GE	goethite	CL	galena
HE	hematite	HS	specularite
MC	malachite	PY	pyrite
SP	sphalerite		

1994 Silt Geochemical Analyses

Sample	Au (ppb)	Ag (ppm)	Co (ppm)	Cu (ppm)
94NM - 8	<5	<0.2	19	68
94RF - 8	<5	<0.2	23	64
94RF - 9	5	<0.2	18	59
94NM - 9	<5	<0.2	33	93
94RF - 10	<5	<0.2	17	67
94NM - 10	<5	<0.2	48	97
94RF - 11	20	<0.2	21	58
94NM - 11	<5	<0.2	36	115
94NM - 12	<5	<0.2	16	49
94NM - 13	<5	<0.2	20	63
94TB - 35	<5	<0.2	30	107
94TB - 36	<5	<0.2	33	135
94TB - 37	<5	<0.2	30	89
94TB - 38	<5	<0.2	31	98
94TB - 40	<5	<0.2	13	31

T.N.

TRUE NORTH IS 1° 35' W OF UTM GRID NORTH



093 963

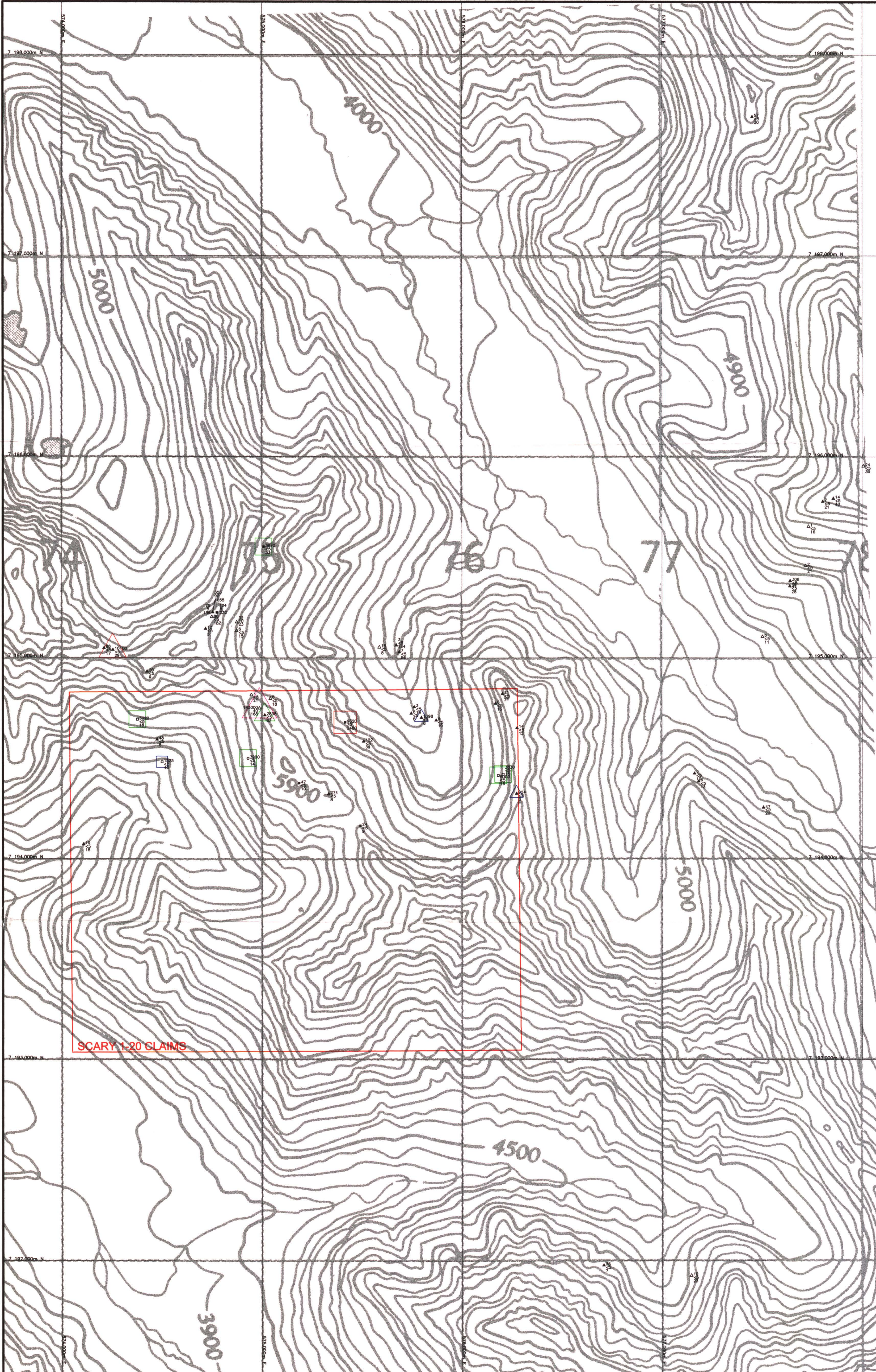
DWG ①

**BLACKSTONE RESOURCES INC.**

**SCARY 1-20 CLAIMS**  
**GEOLOGY & GEOCHEMISTRY**  
YUKON TERRITORY

PAMICON DEVELOPMENTS LTD.  
EQUITY ENGINEERING LTD.

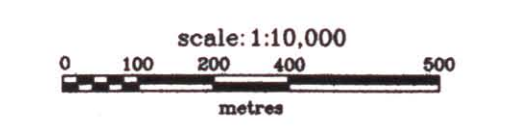
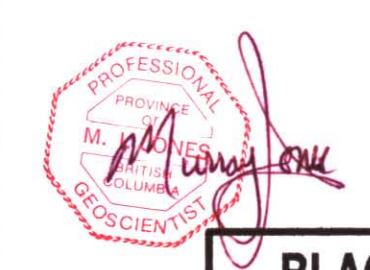
DRAWN: J.W.	MINING DISTRICT: DAWSON	FIGURE
N.T.S.: 1:16 B/14	SCALE: 1:10,000	<b>4</b>
DATE:	REVISED:	



True North is 1° 35' West of Grid North  
Magnetic declination is 29° 30' West

SCARY 1-20 CLAIMS

- Symbols**
- 70955 1998 sample: float, bedrock
  - △ 59674 1998 sample: float, bedrock
- Sample No. Cu(ppm)  
Au(ppb)  
Co(ppm)
- 093 963**  
DUG
- Class ranges for Cu in rock samples:**
- |      |          |  |
|------|----------|--|
| 1998 | pre-1998 | No bubble : < 460 ppm Cu (less than 50th percentile) |
| □    | △        | 460 to 2299 ppm Cu (50th to 70th percentile)         |
| □    | △        | 2300 to 5039 ppm Cu (70th to 85th percentile)        |
| □    | △        | 5040 to 13,370 ppm Cu (85th to 95th percentile)      |
| □    | △        | >13,370ppm Cu (>95th percentile)                     |

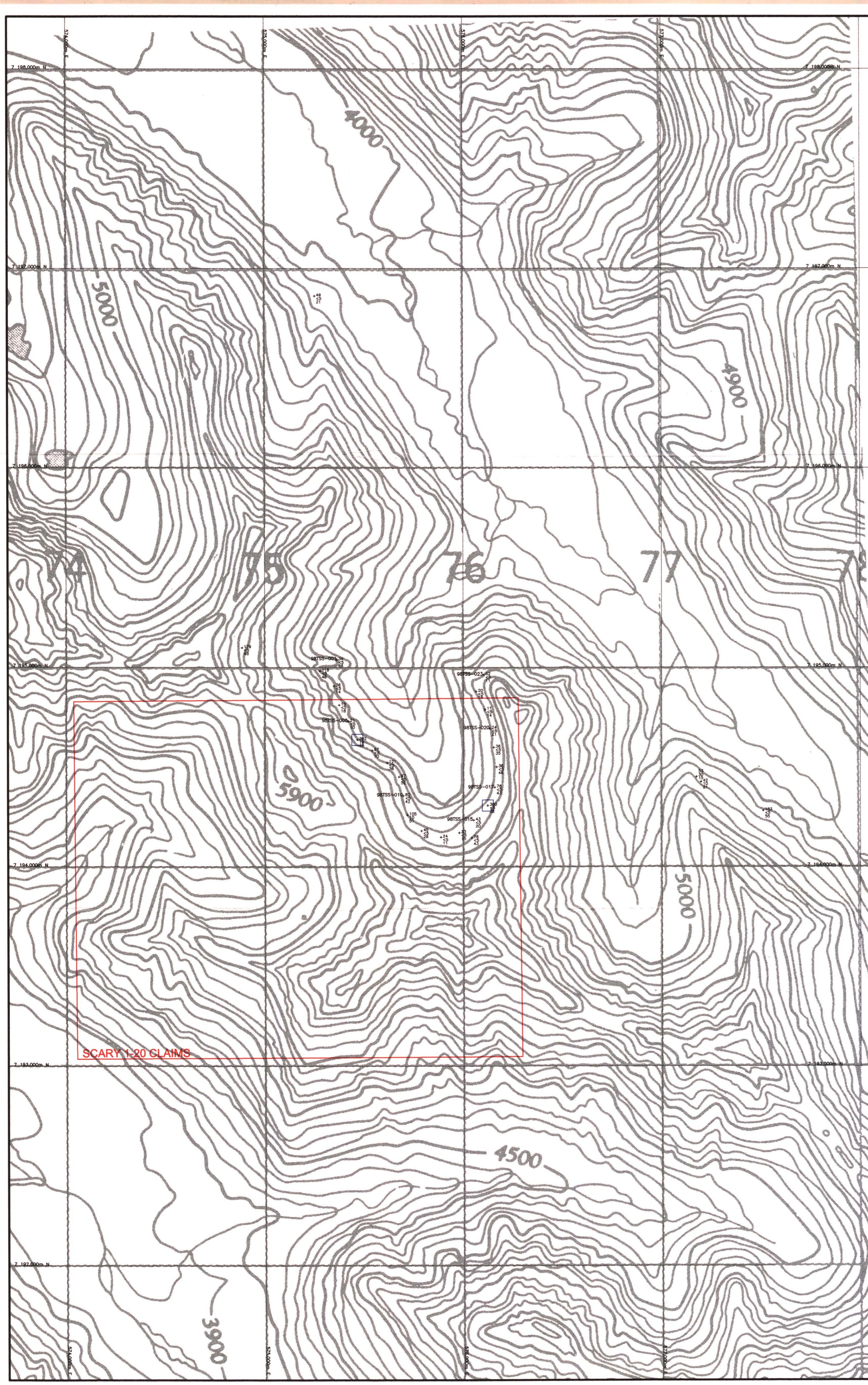


**BLACKSTONE RESOURCES INC.**  
**MONSTER PROJECT**  
**SCARY CLAIMS**  
**ROCK GEOCHEMISTRY**  
**Cu(ppm), Au(ppb) and Co(ppm)**

	Date	Feb 1999	Scale	1:10,000	Figure	5
	U.T.M. Zone	UTM8(NAD27)	Mining District	Dawson		
	N.T.S.	116B/14	State/Province	Yukon		



True North is 1° 35' West of Grid North  
Magnetic declination is 29° 30' West



SCARY 1-20 CLAIMS

Symbols

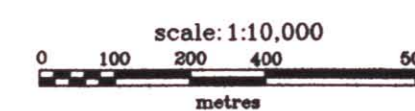
98H5005-85 Soil sample  
Sample No, Cu(ppm)  
Au(ppb)  
Co(ppm)

093 963

Dug ③

Class ranges for Cu in soil samples:

- 1998 pre-1998 No bubble : < 218 ppm Cu (less than 70th percentile)
- 218 to 405 ppm Cu (70th to 85th percentile)
- 406 to 898 ppm Cu (85th to 95th percentile)
- 899 to 1555 ppm Cu (95th to 98th percentile)
- >1555ppm Cu (>98th percentile)



**BLACKSTONE RESOURCES INC.**  
**MONSTER PROJECT**  
**SCARY CLAIMS**  
**SOIL GEOCHEMISTRY**  
**Cu(ppm), Au(ppb) and Co(ppm)**

Date	Feb 1999	Scale	1:10,000	Figure	6
U.T.M. Zone	UTMB(NAD27)	Mining District	Dawson		
N.T.S.	116B/14	State/Province	Yukon		