

093771

**ROB PROPERTY
1997 REPORT
PROSPECTING AND GEOPHYSICS**

**Located in the Ogilvie Mountains
Dawson Mining District
Yukon Territory
64° 52' N Latitude
139° 16' W Longitude
NTS 116B/14**

Work Completed: June to October 1997

Work done on the Rob 1 to 24 Claims

Grant Numbers

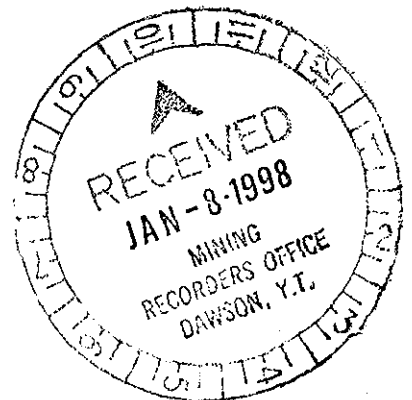
**YA10340 to YA10345
and
YB52469 to YB52486**

for

**Major General Resources Ltd.
1550 - 409 Granville Street
Vancouver, B.C. V6C 1T2**

By

**Sean P. Butler, P. Geo
Larry Lebel, P. Eng
December, 1997**



This report has been examined by
the Geological Evaluation Unit
under Section 53 (4) Yukon Quartz
Mining Act and is allowed as
representation work in the amount
of \$ 8500.00.

M. Buh
for Regional Manager, Exploration and
Geological Services for Commissioner
of Yukon Territory.

TABLE TO CONTENTS

SUMMARY.....	2
INTRODUCTION.....	3
LOCATION AND ACCESS.....	4
PHYSIOGRAPHY.....	4
CLAIMS AND OWNERSHIP.....	4
HISTORY.....	5
REGIONAL GEOLOGY.....	5
PROPERTY GEOLOGY.....	7
LINECUTTING.....	8
GEOPHYSICS.....	8
IP/RESISTIVITY SURVEY.....	9
MAGNETIC SURVEY.....	9
CONCLUSIONS AND RECOMMENDATIONS.....	10
REFERENCES.....	11
COST STATEMENT.....	12
APPENDIX I.....	1

LIST OF FIGURES

FIGURE 1	Location Map
FIGURE 2	Claim Location Map
FIGURE 3	Rock Sample and Grid Location
FIGURE 4	IP Chargeability/Resistivity Section – L81000E
FIGURE 5	IP Chargeability/Resistivity Section – L81400E
FIGURE 6	IP Chargeability/Resistivity Section – L81600E
FIGURE 7	Total Field Magnetometer Profiles – Recce Grid
FIGURE 8	Total Field Magnetometer Postings – Recce Grid
FIGURE 9	Total Magnetic Field Contour Map – Detailed Grid
FIGURE 10	Total Magnetic Field Postings Map – Detailed Grid
FIGURE 11	Geocompilation

SUMMARY

The Rob property is a group of 24 quartz claims located approximately 90 kilometres north of Dawson City in the Ogilvie Mountains. The Rob was first located in 1977 by Umex who identified a coincident copper and uranium soil geochemical anomaly. Further work in 1994 by Pendisle Resources defined in more detail the anomalous area via mapping, rock sampling and additional soil geochemistry.

The 1997 program consisted of prospecting, induced polarization and total field ground magnetics. Results from the widely spaced induced polarization/resistivity survey were deemed inconclusive. The detailed magnetics, conducted due to the discovery of massive magnetite while prospecting, showed a small, crescent shaped, low intensity anomaly in the same area as the Cu soil anomaly delineated by the Umex surveys in 1977 and 1979 coincident with Pendisle's anomalous (Cu,Co,Au) rock sampling.

Future exploration on the Rob Claims should include diamond drilling of the coincident magnetic and geochemistry anomalies.

INTRODUCTION

From June to September, 1997 a small field program consisting of one day of prospecting and 3.65 kilometres of combined pole-dipole induced polarization and total field ground magnetics was conducted. Subsequently a detailed total field ground magnetics survey consisting of 11.2 kilometres was completed. Linecutting and grid establishment were completed in two phases; preparation of the reconnaissance grid in June with infill and extension for the detailed magnetic survey completed later in September.

The geology, prospecting and field supervision were the responsibility of Mr. S. Butler. Mr. L. Lebel of Orequest Consultants, interpreted the geophysical data collected by Scott Geophysics and Amerock Geosciences and did not review the geology or other aspects of the property and program.

LOCATION AND ACCESS

The Rob property lies on the northern fringe of the Ogilvie Mountains just south of the broad east-west trending Taiga Valley. It is located approximately 90 km north of Dawson City and 48 kms west of Chapman Lake Airstrip on the Dempster Highway on NTS Map 116B/14, centered at 64° 52'N latitude and 139° 16'W longitude. (Figure 1)

Access to the property is by helicopter, based in Dawson City, with mobilization and major logistics completed utilizing the Chapman Lake Airstrip 120 kilometers north of Dawson, on the Dempster Highway. Fireweed Helicopters from Dawson City provided the helicopter support for the 1997 project. The Taiga Valley is broad and gentle and the logistics of future road construction in this valley are good.

PHYSIOGRAPHY

The claims cover a northeasterly trending valley with adjacent rugged, mountainous terrain. The elevations range from 1,190 to 1,710 m above sea level.

Vegetation consists of alpine meadows, stunted alder and minor bog vegetation.

The streams on the property drain northward and form part of the headwaters of the Ogilvie River which eventually drains into the Arctic Ocean. The major creek is Pyramid Creek, also known as Beehive Creek named after the prominent Pyramid-like hill in the centre of the valley on the Rob claims. The valley bottoms are largely overburden covered. Large talus covered slopes occur on the side hills of the mountains. There are also large areas of limited rock outcrops.

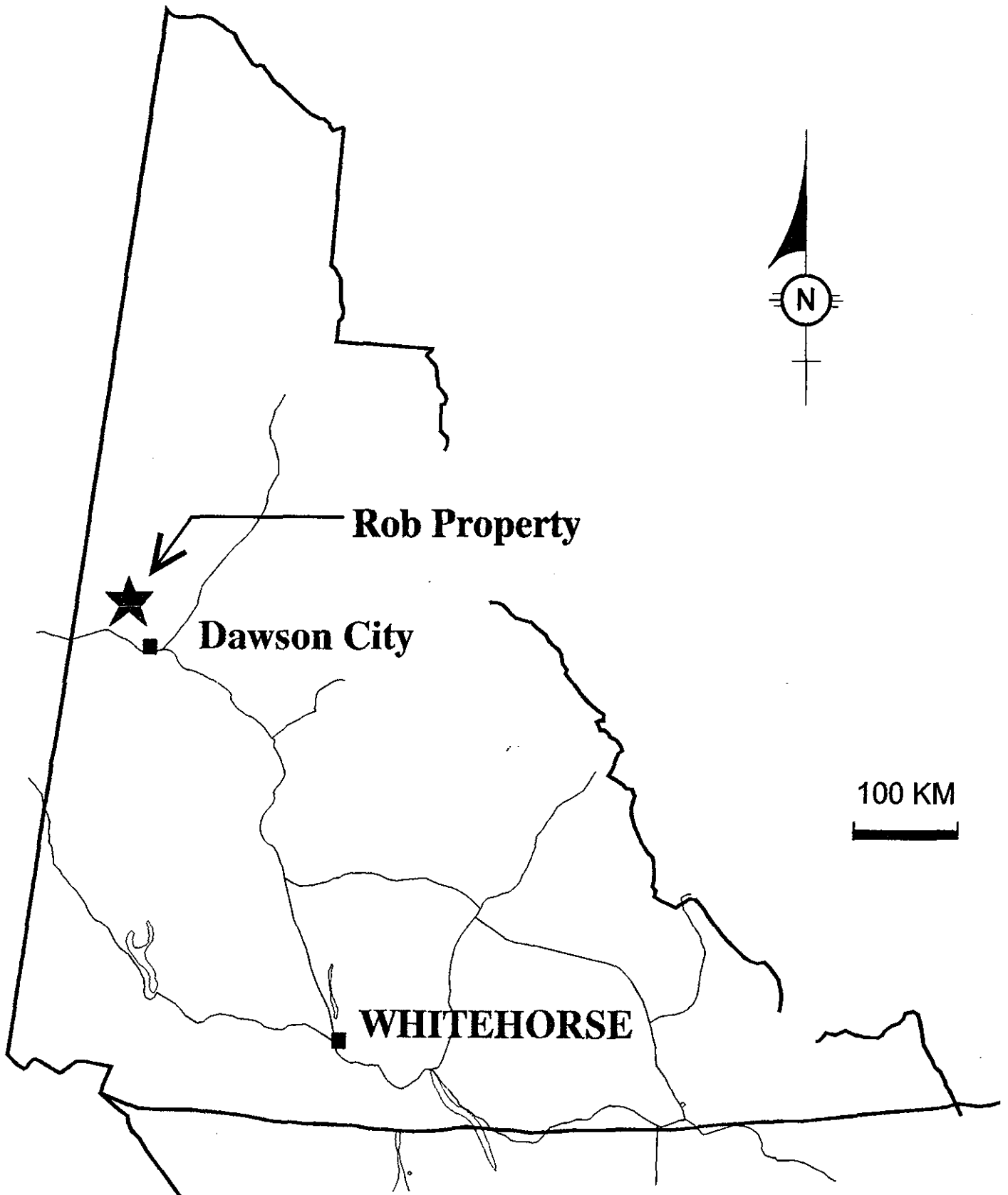
CLAIMS AND OWNERSHIP

The following claims comprise the Rob property. (Figure 2):

Claim Name	Grant No.	Recording Date	Expiry Date
ROB 1	YA10340	15-Jul-77	15-Oct-98
ROB 2	YA10341	15-Jul-77	15-Oct-98
ROB 3	YA10342	15-Jul-77	15-Oct-98
ROB 4	YA10343	15-Jul-77	15-Oct-98
ROB 5	YA10344	15-Jul-77	15-Oct-98
ROB 6	YA10345	15-Jul-77	15-Oct-98
ROB 7	YB52469	3-Aug-94	31-Dec-97
ROB 8	YB52470	3-Aug-94	31-Dec-97
ROB 9	YB52471	3-Aug-94	31-Dec-97



Yukon Territory



Claim Name	Grant No.	Recording Date	Expiry Date
ROB 10	YB52472	3-Aug-94	31-Dec-97
ROB 11	YB52473	3-Aug-94	31-Dec-97
ROB 12	YB52474	3-Aug-94	31-Dec-97
ROB 13	YB52775	3-Aug-94	31-Dec-97
ROB 14	YB52476	3-Aug-94	31-Dec-97
ROB 15	YB52477	3-Aug-94	31-Dec-97
ROB 16	YB52478	3-Aug-94	31-Dec-97
ROB 17	YB52479	3-Aug-94	31-Dec-97
ROB 18	YB52480	3-Aug-94	31-Dec-97
ROB 19	YB52481	3-Aug-94	31-Dec-97
ROB 20	YB52482	3-Aug-94	31-Dec-97
ROB 21	YB52483	3-Aug-94	31-Dec-97
ROB 22	YB52484	3-Aug-94	31-Dec-97
ROB 23	YB52485	3-Aug-94	31-Dec-97
ROB 24	YB52486	3-Aug-94	31-Dec-97

The Rob 1-6 claims are 50% owned by Major General with Blackstone Resources Inc. controlling the remaining 50%. Rob 7-24 are co-owned by Blackstone and Major General at 75% and 25% respectively.

HISTORY

Umex staked the Rob claims in 1977 as follow-up to a regional geochemical survey. Subsequently a work program in 1977 consisting of soil sampling, rock sampling and geological mapping was completed. This work identified several anomalous areas on the Rob 1-6 claims. Coincident copper and uranium soil anomalies and heterolithic breccia occurrences centered on the Rob 4 claim were the most significant results obtained from the 1977 and 1979 surveys as they suggested that a possible "Olympic Dam" type setting existed on the property.

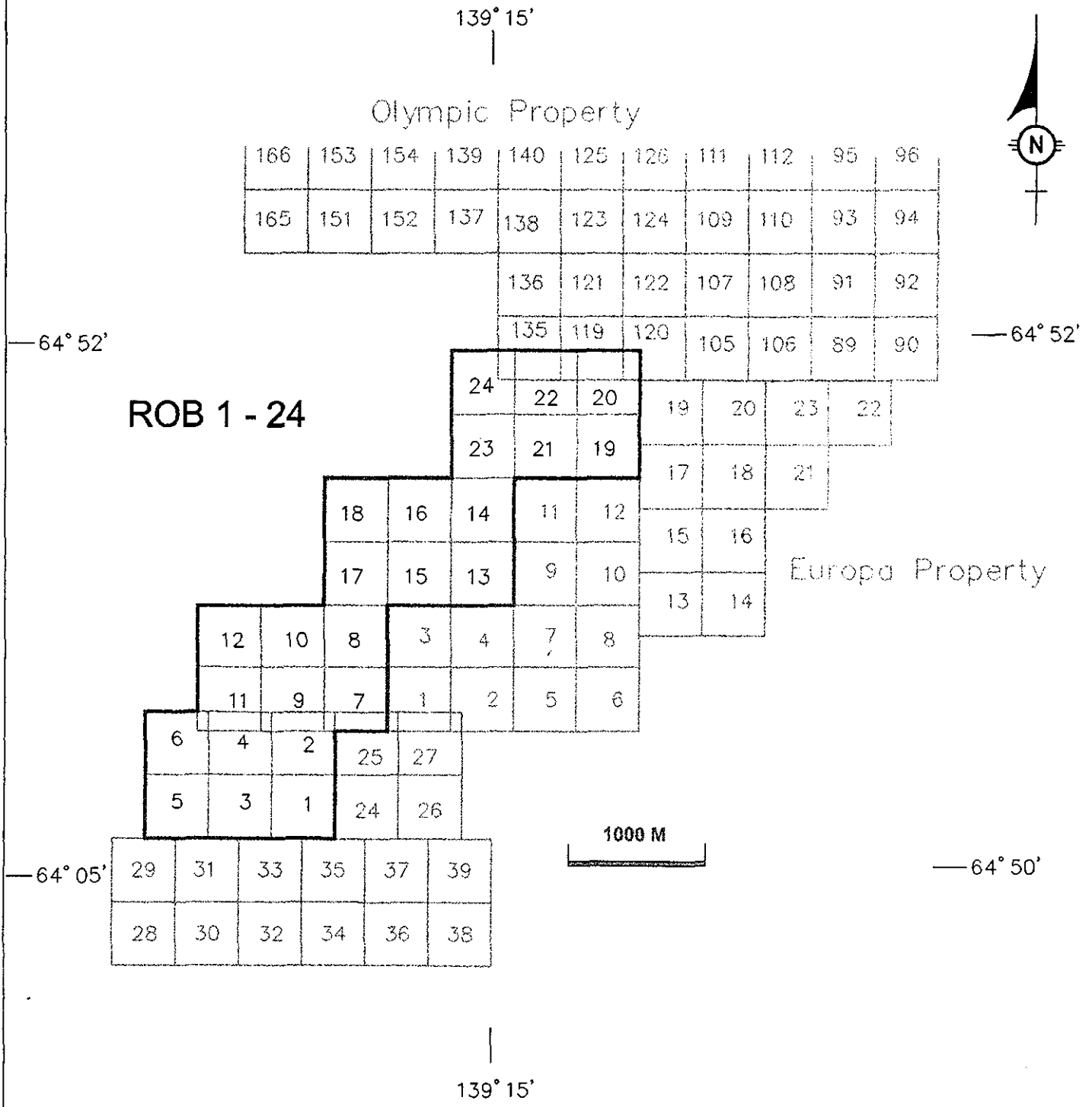
In August 1994, the Rob 7-24 claims were located. During July and August 1994 Pendisle Resources Ltd. carried out soil and rock geochemistry as well as geological mapping on the Rob claims. This work confirmed anomalies discovered by the previous workers.

REGIONAL GEOLOGY

The Rob Property lies within the Coal Creek Inlier, a roughly oval shaped, easterly trending erosional window which exposes Middle to Late Proterozoic epicontinental rocks and Lower and Middle Paleozoic carbonate rocks of the Mackenzie Platform.



Rob Claims, Yukon Territory Claim Map



The Coal Creek Inlier contains three easterly trending Proterozoic successions which are, from oldest to youngest: Wernecke Supergroup, Fifteenmile assemblage (informal) and Harper Group (informal).

The Wernecke Supergroup has been subdivided into three groups; the oldest is the Fairchild Lake Group which is disconformably overlain by the younger Quartet Group which, in turn, is conformably overlain on a gradational contact by the Gillespie Lake Group. These groups are broadly described as follows:

Fairchild Lake Group: 1.5 km thick, upward-shallowing sequence of dark grey to black meta-mudstone and quartzite with minor carbonate beds. Rare jaspillite beds. Includes grey, green-grey and purple dolomites and siltstones.

Quartet Group: 3 km thick, upward-shallowing succession of dark grey to brown weathering sandstone, siltstone shale and mudstone with very minor silty dolostone.

Gillespie Lake Group: 1 km thick sequence of stromatolitic dolostone, argillites, oolitic dolostone and parallel-laminated to wavy-bedded dolostone.

The base of the mid-Proterozoic succession is not exposed and the fold and thrust belt deformation suggests that the Wernecke Supergroup overlies an Early Proterozoic basement. Folding of the Wernecke Supergroup forms a northeast trending anticline as defined on the map by Lane and Godwin (1992) immediately north of the property.

The Fifteenmile assemblage unconformably overlies the Wernecke Supergroup and consists of two lithologically distinct successions: the lower Fifteenmile Group, composed primarily of clastic rocks with minor dolostone; and the upper Fifteenmile Group, consisting of shallow water platformal dolostone and siltstone.

The Harper Group consists of clastic and volcanic rocks that disconformably overlay the upper Fifteenmile Group and rest unconformably on older units in the southern part of the inlier.

Two breccia complexes, the Northern Breccia Belt and Southern Breccia Belt (known collectively as the Ogilvie Mountain Breccias, Lane, 1990) occur within the Coal Creek Inlier and are distributed along two distinct northeast trending axes that are about 40 and 15 km long, respectively. The Northern Breccia Belt cuts the Wernecke Supergroup while the Southern Breccia Belt cuts the lower Fifteenmile assemblage. These breccias are mapped by Thompson et al (1992) as the Wernecke Breccias due to similarities with other breccias occurring in the Wernecke Mountains to the east. Significant mineralization has been found in these breccias including copper, uranium and molybdenum.

The morphology of these discordant breccia occurrences are complex, however, they are typically steep, pipe-like, sill-like or dike-like bodies that commonly occur along structures or contacts. The dyke or sill-like complexes range from a few metres to more than 1 km

wide, while the pipe-like zones range from 100 m to over 3 km in diameter. The vast majority of breccia bodies appear to have formed along faults oriented east-northeast, along or parallel to the major regional structures. The two largest areas of brecciation in the Coal Creek Inlier occur at the Donut located approximately 25 kilometres to the west and at the Olympic property 5 kilometres to the north of the Rob property. (Lane, 1990).

A regional structural interpretation the Rob property and surrounding area completed by the firm of Etheridge Henley Williams for Major General reveals a possible graben structure exists along the NE trending Pyramid Valley which effectively ties together the breccia zones observed on both the Olympic and Rob claim blocks. Massive dilation at the intersection of certain faults including the deeper seated graben structure would be favourable for localized brecciation, fluid flow, intense alteration and mineralization.

The majority of the breccia bodies are supported by varying intensities of chlorite to hematite to carbonate rich matrices while fragment compositions range from monolithic to heterolithic.

A minimum age date of 1.2 to 1.5 Ga years (Helikian) is given to the breccia bodies that cut the lower portion of the sequence. A U-Pb date of 1.27 Ga on monazite from a breccia occurring in Wernecke Supergroup rocks to the east in the Richardson Mountains has also been reported (Parrish and Bell, 1987).

Mafic intrusive bodies, largely diabase and diorite, occur within the breccias of the Wernecke Supergroup, but not the Fifteenmile Group (Lane and Godwin, 1992). In reviewing the map by Lane (1990) the area to the north of the Rob claims, near the Olympic property appears to have the largest concentration of intrusive sills and dykes of the two breccia belts.

PROPERTY GEOLOGY

A roughly northeast trending contact between dolostone and mudstones of the Fairchild Group to the northwest and the Quartet Group shales to the southeast bisects the southern portion of the Rob claims. Several flat to gently dipping irregularly shaped breccia bodies have also been observed on the northeast side of Pyramid hill and on the north facing hillside southwest of the Pyramid. These breccias are largely carbonate matrix supported with minor chlorite and hematite and contain strongly milled wall rocks and angular to semi-angular fragments. Some semi-massive magnetite was found within hematite rich, matrix supported breccias centered on the baseline 93,000N near 80,075E. Locally, disseminated and blebby chalcopyrite was observed to be hosted within the breccia matrices.

Geological fieldwork in 1997 consisted of prospecting the north facing hillside southwest of the Pyramid. This work confirmed the presence of carbonate rich, matrix supported breccias indicated by previous surveys. Two grab samples were collected within the carbonate rich breccia and contained only weakly disseminated chalcopyrite. A third

sample was taken as a select grab of massive magnetite float occurring in quartz-carbonate veined, hematite rich breccia coincident with an area of both anomalous copper in rock and Cu-U soil anomalies (See **Figure 3 and 11**).

The coincidence of magnetite, heterolithic hematite rich breccias, anomalous copper-uranium in soils and anomalous copper-cobalt-gold values returned from previous rock sampling is significant in that it is analogous to certain geological settings and styles/types of mineralization associated with the Olympic Dam deposit in Australia. The occurrence of magnetite suggests a hotter, more volatile rich phase of mineralization associated with the brecciation. It is these proximal settings that may contain the potential for higher grade concentrations of economic mineralization.

The recognition of massive magnetite during prospecting led to the detailed magnetics survey that outlined a small area of increased magnetics.

LINECUTTING

Grid establishment consisted of compass and hipchain measurement of gridlines. Station locations were marked by wooden lathes and aluminum tags. Station numbers were impressed on the tags and stapled to the pickets.

The grid was established with a 045° azimuth for the baseline. The first phase had perpendicular lines set at 400 metre line spacings. The grid was later filled in at 50 to 100 metre line spacings with stations established at 25 metre intervals along an extended baseline. The Rob grid is above tree line and as such no cutting of vegetation was involved in grid establishment. A total of 11.65 line kilometres of grid was established for use in geophysical surveying as well as ground control during prospecting. Refer to **Figure 3** for locations of both phases of grid establishment and geophysical coverage.

GEOPHYSICS

Induced polarization/resistivity (IP) and reconnaissance total field magnetometer surveys were performed on the Rob grid on July 23 and 24, 1997, by Scott Geophysics Ltd. of Vancouver, B.C. Amerock Geophysics of Whitehorse later completed 11.2 line kilometres of detailed total field magnetics on September 30, 1997.

A pole dipole array was used for the IP survey with a potential electrode spacing of 50 metres ($a=50$) and a current pole to receiving dipole separation of 1 to 6 ($n=1-6$). IP plus reconnaissance magnetometer survey coverage performed on the Rob Claims consisted of a total of 3.65 line kms. The pole dipole array IP results are presented as Chargeability and Resistivity Pseudosections (**Figures 4 to 6**). A Scintrex IPR12 receiver and TSQ4 (10.0 kw) transmitter were used on the IP survey. Readings were taken in the time domain using a 2 second on/off current pulse (0.125 Hz). The chargeability plotted on the accompanying pseudosections and plan maps is for the interval between 120 and 1020 milliseconds after shutoff.

The reconnaissance magnetometer survey by Scott Geophysics was performed at reading intervals of 25 metres on lines spaced 400m apart. All values were corrected for diurnal variations with reference to a fixed base station. Two Scintrex IGS-MP4 proton precession total field magnetometers were used for the magnetometer survey with one deployed as the field unit and the other as a fixed recording base station. The magnetometer survey results data are presented as profile and data posting plans. (**Figures 7 and 8**).

The detailed magnetometer survey by Amerock Geophysics was collected at a 12.5 metre station spacing. These values were also corrected for diurnal variations with reference to a base station. The results are presented as contour and data posting plans (**Figures 9 and 10**). Two EDA Omni-Plus magnetometers were used to complete the survey, one as a base station near camp and the other in the field.

IP/RESISTIVITY SURVEY

Widespread, moderately anomalous chargeabilities of 20 - 30 mv/v occur almost everywhere on the three lines surveyed. Shallow pockets and thin layers of low chargeability, indicated by the $n = 1 - 3$ data, occur at the surface in several places. These areas are also characterized by high resistivity responses and are interpreted to reflect unmineralized dolomite layers. The moderate chargeability is interpreted to reflect carbonaceous sediments that outcrop throughout the area and underlie the dolomite.

Wide zones of higher than average chargeability, up to and over 50 mv/v, occur near the centres of lines 81400E and 81800E. These zones are partially concealed by layers of dolomite as discussed above. Zones of higher chargeability are also evident at the south ends of the lines 81000E and 81800E but are not well resolved because the survey coverage did not extend far enough.

Other than the high resistivity due to the dolomite layers, the apparent resistivity does not outline any significant features.

MAGNETIC SURVEY

The detailed magnetic survey outlined a 400 m by 300 m high with a crescent shaped core of up to 200 nT. Magnetite was found in the vicinity of the high but the results deny any significant accumulations. The gentle gradients on the flanks of the high suggest a cause at a moderate depth which raises the possibility of a buried intrusion in the area. The feature appears to overlap and is centered just to the north of the copper uranium soil geochemical anomaly outlined by previous work.

Several spot magnetic highs also occur throughout the survey area. These include a series of highs in the south-central part of the grid which outline several distinct, northerly trending, linear highs which may represent dykes and as such, with an inferred intrusion

plus the presence of carbonate rocks in the area, skarn mineralization is also a possibility. Highs indicated at 92700N and 92750N on line 81400E occur within the heart of the strong chargeability high but because of the difference in size of the magnetic and IP features it is unlikely that they are related.

CONCLUSIONS AND RECOMMENDATIONS

The program of geophysics and prospecting completed in 1997 has improved the geological understanding of the Rob property. Prospecting confirmed the presence of the breccia zones on the north facing slope and found outcrops that are likely the origin of several float samples collected during the 1994 program. Prospecting also established the existence of magnetite in the area of higher grade copper values returned from previous rock and soil sampling surveys which resulted in the completion of the detailed magnetics survey.

The IP survey outlined moderately anomalous chargeabilities throughout the area with a wide, north trending zone of higher values possibly due to the extensive carbonaceous sediments in the area that typically return these types of IP signatures. These IP responses may also cause a masking effect of any potential mineralized breccia zones within the IP survey area and as such the IP survey results are considered inconclusive.

The magnetic survey outlined several linear highs which may be caused by mafic dykes and a broad elliptical high with a crescent shaped core possibly related to a buried intrusion. This magnetic high partially overlaps a copper soil anomaly and some of the dykes indicated by the magnetic survey are encompassed by one of the strong chargeability anomalies. Buried skarn mineralization may be present in the area of the crescent shaped magnetic feature and the associated magnetite float boulders but no other evidence of skarning such as hornfelsing or calc-silicate mineralization was observed. Also the fine grained nature of the magnetite is not supportive of skarn type mineralization.

Rather, the coincident nature of fine grained magnetite, anomalous copper, uranium, cobalt and gold values, heterolithic, hematized breccias and multiple inferred dykes located within a deep seated graben structure, is suggestive of a mineralized system located proximal to a larger, deep buried Olympic Dam style deposit.

Diamond drilling of the coincident magnetic and soil geochemistry anomaly is highly recommended.

REFERENCES

- Burgoyne, A. (1978)** Geochemical Copper Soil Survey Rob 1-12 Mineral Claims for Umex.
- Etheridge Henley Williams (1997)** Interpretation and Assessment of the Olympic Claims, Yukon Territory. In house report commissioned by Major General Resources Ltd.
- Falls, R.B. and Baknes M.E. (1995)** 1994 Geological Report on the Rob 1-24 Claims for Pendisle Resources Ltd.
- Hall, D. (1977)** Amerock Geosciences Ltd., Field Report, October 2, 1997
- Lane, R.A. (1990)** Geologic Setting and Petrology of the Proterozoic Ogilvie Mountains Breccia of the Coal Creek Inlier, Southern Ogilvie Mountains, Yukon Territory, University of British Columbia, unpublished M.Sc Thesis.
- Lane, R.A. and Godwin, C.I. (1992).** Geology of the Ogilvie Mountains breccias, Coal Creek Inlier (NTS 116B/11, 13 + 14) Yukon Territory. Indian and Northern Affairs Canada, Open File 92-1.
- Parrish, R.R. and Bell, R.I. (1987)** Age of the NOR breccia pipe, Wernecke Supergroup, Yukon Territory in Geological Survey of Canada, Paper 87-2.
- Scott, A. (1997)** Logistical Report, Induced Polarization and Magnetometer Surveys, Rob Claims for Major General Resources Ltd.
- Thompson, R.I. Roots, C.F. and Mustard, P.S. (1992)** Geology of Dawson Map Area (116 B.C) Geological Survey of Canada, Open File 2849.

COST STATEMENT**June 1 to October 1, 1997**

Wages (Salary and Consulting Staff)		\$1,210.00
Food		425.75
Accommodation		486.75
Analysis		49.65
Contractors		
Air:	Fireweed Helicopters	6,200.11
Linecutting:	Coureur des Bois Ltd.	3,880.00
IP & Recce Mag:	Scott Geophysics Ltd.	3,248.50
Detail Mag:	Amerock Geosciences Ltd.	2,680.58
Geophysical Assistants	Coureur des Bois Ltd.	<u>760.00</u>
Total		<u>\$18,941.04</u>

Unit Costs

Linecutting June 1997 4.45 km x \$400/km	\$1,780.00
Induced Polarization 3.65 km x \$2,022/km	7,380.30
Reconnaissance Magnetics 3.65 km x \$130/km	474.50
Linecutting Sept 1997 11.65 km x \$390/km	4,543.50
Detailed Magnetics 11.2 km x \$340/km	3,808.00
Prospecting 1 day x 951.74/day	<u>951.74</u>
Total	<u>\$18,941.04</u>

Statement of Qualifications

I, Sean P. Butler, of 3252 Ganymede Drive, Burnaby, B.C. hereby certify that:

I am a member of the Association of Professional Engineers and Geoscientists of British Columbia registered as a Professional Geoscientist.

I graduated in 1982 from the University of British Columbia with a Bachelor of Science in Geology.

I have practised my profession as a geologist in mineral exploration and mining since graduating.

I have no material interest in the equity of the company or its mineral properties.

The report "ROB PROPERTY 1997 REPORT" is based on my work and my supervision of work by others on the ROB claims in the Yukon in 1997 and a review of the geological literature on the property and the region.

Respectfully Submitted

A handwritten signature in cursive script that reads "Sean P. Butler".

Sean P. Butler, P. Geo

Dec 5/97

STATEMENT OF QUALIFICATIONS

I, J.L. LeBel, of 2684 Violet Street, North Vancouver, British Columbia, hereby certify that:

1. I am a graduate of Queen's University (1971) and the University of Manitoba (1973) and I hold a B.Sc. degree in Geological Engineering and a M.Sc. degree in Geophysics.
2. I am a Professional Engineer registered with the Association of Professional Engineers and Geoscientists of British Columbia. I have been a member of the Society of Exploration Geophysicists for over 25 years.
4. I have been employed in mining exploration on a full-time basis since 1972 and I have been involved many exploration projects in Yukon.
5. I am an independent consultant working through OreQuest Consultants Ltd. on this project.



J. L. LeBel, P. Eng.

Dated at Vancouver, British Columbia, this 6th day of December, 1997.

**APPENDIX I
ANALYSIS SHEET
ANALYTICAL METHOD
AND
ROCK SAMPLE
DESCRIPTIONS**

- 624162 Grab from outcrop
banded specularite (20%), red hematite (40%), pyrite (5%), chalcopyrite
(1/2%) , malachite (1%)
from breccia outcrop located upslope of samples 596642-45 (1994
Report - Pendisle Resources)
- 624163 Grab from outcrop
quartz-dol matrix breccia with red brown hematite in Quartet Shale with
Quartet shale fragments located upslope of 596642-45 (1994 survey) and
NW of 1997 sample 624162.
- 624164 Grab from float (near source outcrops)
massive black magnetite selected from float within dark red brown gossan
located near BL93,000N, 81,075E (1997 grid)
located downslope approximately 20 metres south east of samples 596580-
582 (1994 Report-Pendisle Resources)

AA
LL

GEOCHEMICAL ANALYSIS CERTIFICATE

AA
LL

Major General Resources Ltd. PROJECT ROB File # 97-4985

1550 - 409 Granville St., Vancouver BC V6C 1T2 Submitted by: Sean P. Butler

SAMPLE#	Mo ppm	Cu ppm	Pb ppm	Zn ppm	Ag ppm	Ni ppm	Co ppm	Mn ppm	Fe %	As ppm	U ppm	Au ppm	Th ppm	Sr ppm	Cd ppm	Sb ppm	Bi ppm	V ppm	Ca %	P %	La ppm	Cr ppm	Mg %	Ba ppm	Ti %	Al %	Na %	K %	W ppm	Zr ppm	Sn ppm	Y ppm	Nb ppm	Be ppm	Sc ppm	Au* ppb
624162 H	<2	15970	13	11	<.5	25	51	4275	12.50	17	<10	<4	3	42	<.4	<5	<5	32	7.89	.052	12	20	3.92	469	.03	1.46	.30	.07	<4	13	<2	14	<2	<1	2	8
624163 H	<2	81	11	4	<.5	9	10	5118	6.08	15	<10	<4	4	34	1.0	5	<5	16	14.23	.159	32	10	6.91	50	.01	.83	.04	.03	4	10	<2	17	4	<1	3	1
624164 H	10	126	32	4	3.8	19	<2	1029	33.56	<5	12	6	<2	2	<.4	8	<5	15	.22	.007	20	14	.10	28	<.01	.03	.01	.01	<4	<2	<2	13	<2	<1	<1	3
RE 624164 H	8	119	33	4	4.0	19	<2	977	32.16	<5	<10	<4	<2	2	<.4	<5	<5	13	.20	.004	22	14	.09	28	<.01	.03	.01	.02	<4	<2	<2	13	<2	<1	<1	-

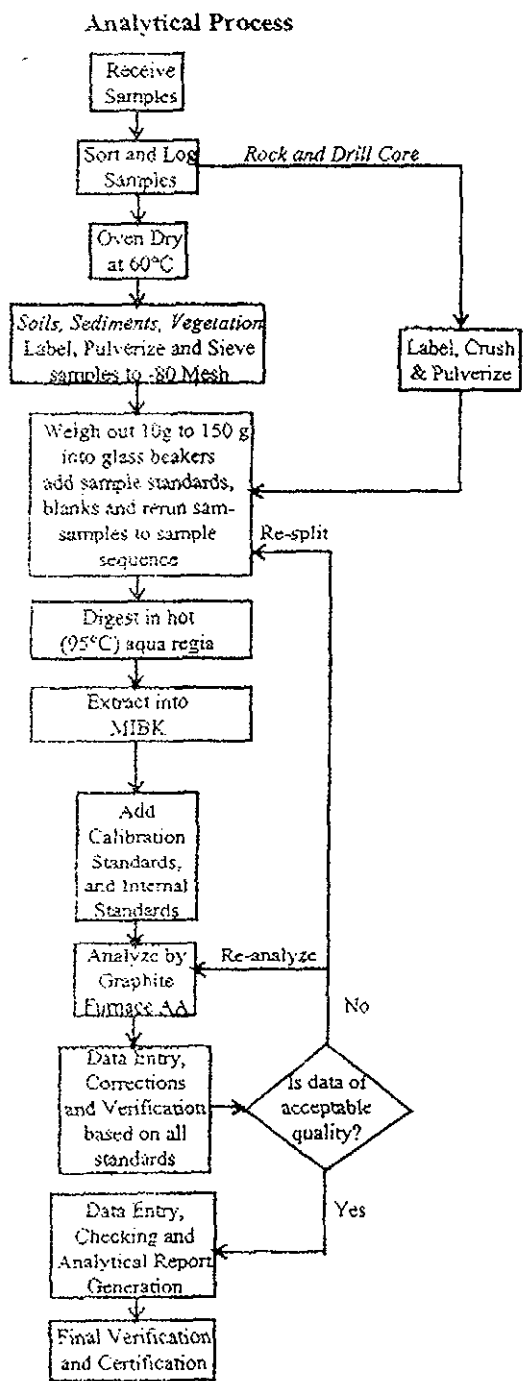
ICP - .250 GRAM SAMPLE IS DIGESTED WITH 10ML HClO₄-HNO₃-HCl-HF AT 200 DEG. C TO FUMING AND IS DILUTED TO 10 ML WITH DILUTED AQUA REGIA. THIS LEACH IS PARTIAL FOR MAGNETITE, CHROMITE, BARITE, OXIDES OF AL, ZR & MW AND MASSIVE SULFIDE SAMPLES. AS, CR, SB, AU SUBJECT TO LOSS BY VOLATILIZATION DURING HClO₄ FUMING.

- SAMPLE TYPE: ROCK AU* - IGNITED, AQUA-REGIA/MIBK EXTRACT, GF/AA FINISHED.(10 GM)

Samples beginning 'RE' are Reruns and 'RRE' are Reject Reruns.

DATE RECEIVED: SEP 2 1997 DATE REPORT MAILED: *Sept 17/97* SIGNED BY: *C. Leong* D. TOYE, C. LEONG, J. WANG; CERTIFIED B.C. ASSAYERS

METHODS AND SPECIFICATIONS FOR ANALYTICAL PACKAGE GROUP 3A - AU BY WET EXTRACTION



Comments

Sample Preparation

Soils and sediments are dried (60°C) and sieved to -80 mesh (-177 microns), rocks and drill core are crushed and pulverized to -100 mesh (-150 microns). Plant samples are dried (60°C) and pulverized or ashed (550°C). Sediment in moss mats is recovered by disaggregation then sieved to -80 mesh. A precise quantity of the fine fraction (client may select from 10 g to 150 g sample weights) is weighed. In every analytical batch (34 samples) a duplicate split is added from a randomly selected sample to monitor precision. Reference materials (in-house control standards) are also added to each batch to monitor accuracy.

Sample Digestion and Extraction

Aqua Regia is a 3:1:2 mixture of ACS grade conc. HCl, conc. HNO₃ and demineralized H₂O. Aqua Regia is added to each sample and to the empty reagent blank test tube in each batch of samples. Sample solutions are heated for 1 hr in a boiling hot water bath (95°C). After cooling, MIBK is added and the samples are shaken to extract Au into the MIBK phase.

Sample Analysis

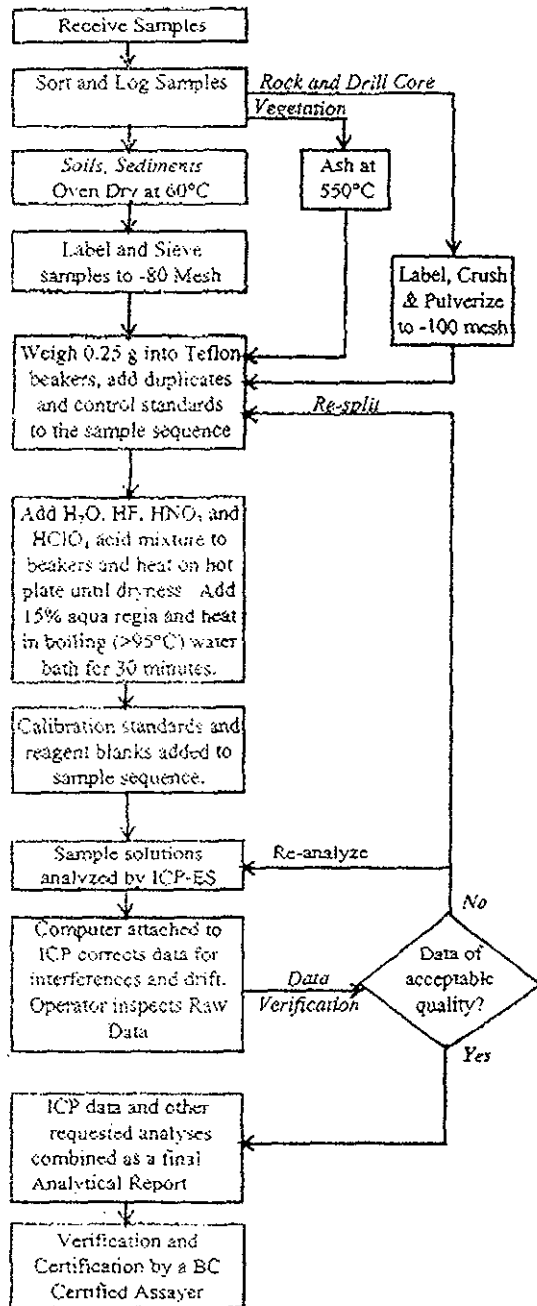
Sample extracts are aspirated into a graphite furnace AAS (Varian model SpectrAA 10Plus) for the determination of Au.

Data Evaluation

Raw and final data from the undergoes a final verification by a British Columbia Certified Assayer who then signs the Analytical Report before it is released to the client. Chief Assayer is Clarence Leong, other certified assayers are Dean Toye and Jacky Wang.

METHODS AND SPECIFICATIONS FOR ANALYTICAL PACKAGE GROUP 1E - 35 ELEMENT ICP BY 4 ACIDS

Analytical Process



Comments

Sample Preparation

Soils and sediments are dried (60°C) and sieved to -80 mesh (-177 microns), rocks and drill core are crushed and pulverized to -100 mesh (-150 microns). Moss-mat samples are dried (60°C), pounded then sieved to recover -80 mesh sediment or samples can be ashed (550°C) on the client's request. Sample splits (0.25 g) are placed in Teflon beakers. Duplicate splits of crushed (rejects) and pulverized (pulp) fractions are included with every 34 rock samples to define sample homogeneity (reject split) and analytical precision (pulp split). Duplicate pulp splits are included in each batch of 34 soil or sediment samples. A blank and standard STD C are included in each batch of samples to monitor accuracy.

Sample Digestion

The 4-Acid solution (18:10:3:6 demineralized H₂O, ACS grade HF, ACS grade HClO₄, and ACS grade HNO₃) is added to each sample then heated to fuming on a hot plate and taken to dryness. The residue is dissolved in diluted (15%) aqua regia (3:1:2 ACS grade HCl, HNO₃, and demineralized H₂O) heated in a boiling water (>95°C) bath for 30 minutes.

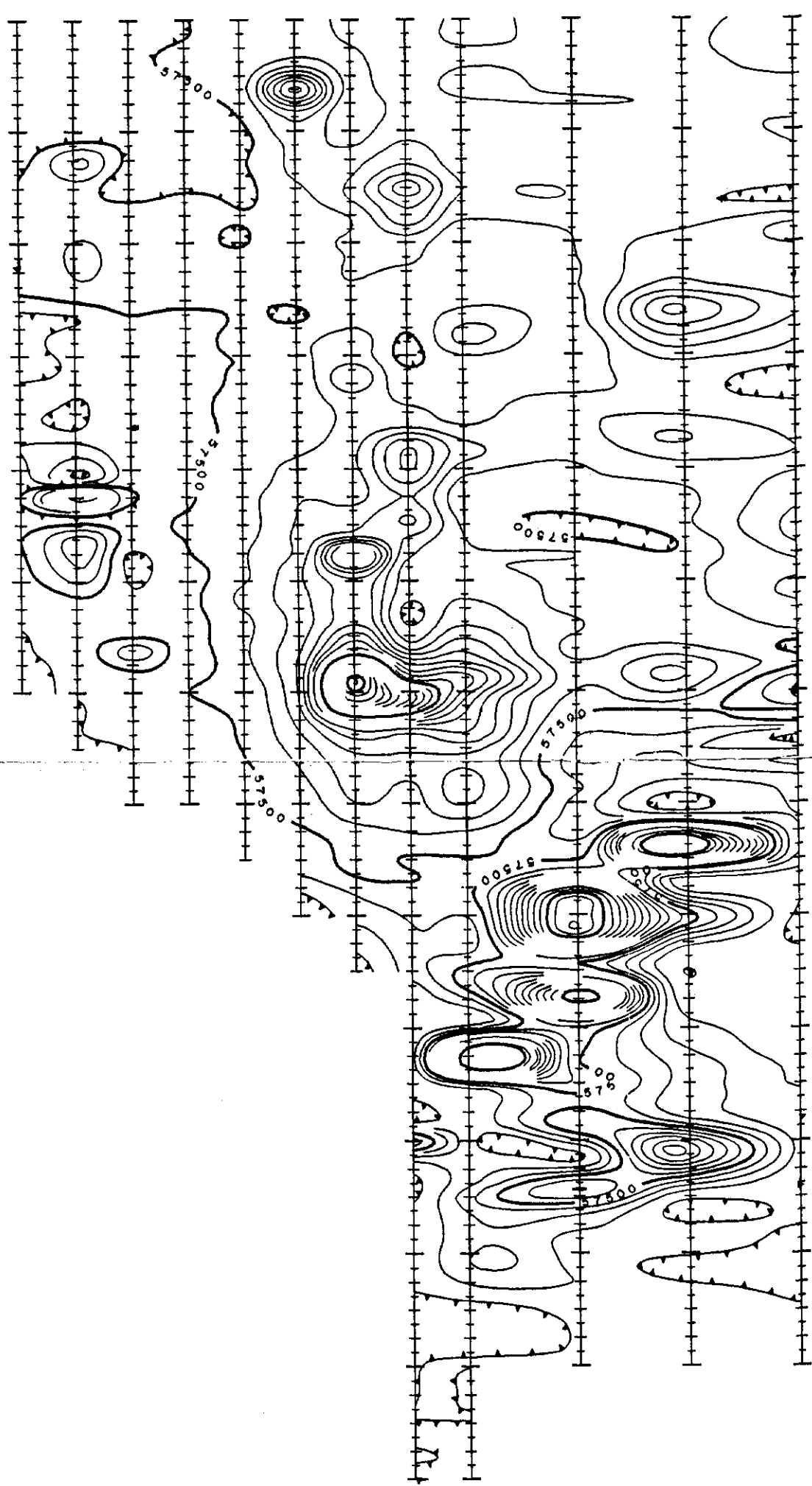
Sample Analysis

Sample solutions are aspirated into and ICP emission spectrograph (Jarrel Ash AtomComp model 800 or 975) for the determination of 35 elements comprising: Ag, Al, As, Au, Ba, Be, Bi, Ca, Cd, Co, Cr, Cu, Fe, K, La, Mg, Mn, Mo, Na, Nb, Ni, P, Pb, Sb, Sc, Sn, Sr, Th, Ti, U, V, W, Y, Zn and Zr.

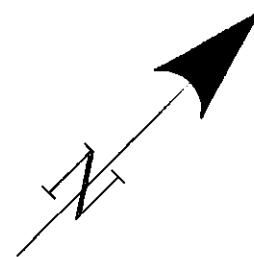
Data Evaluation

Raw and final data from the ICP-ES undergoes a final verification by a British Columbia Certified Assayer who then signs the Analytical Report before it is released to the client. Chief Assayer is Clarence Leong, other certified assayers are Dean Toye and Jacky Wang.

93500 N
93400 N
93300 N
93200 N
93100 N
93000 N
92900 N
92900 N
92700 N
92600 N
92500 N
92400 N
92300 N
92200 N



93500 N
93400 N
93300 N
93200 N
93100 N
93000 N
92900 N
92800 N
92700 N
92600 N
92500 N
92400 N
92300 N
92200 N



093771

Total field in nanoTeslas
Contours: 10, 100 nT



Scale: 1:5,000

MAJOR GENERAL
RESOURCES LTD.
ROB PROPERTY
(NTS 116 B/14)

TOTAL MAGNETIC FIELD
CONTOUR MAP

Pg. 29

DWG

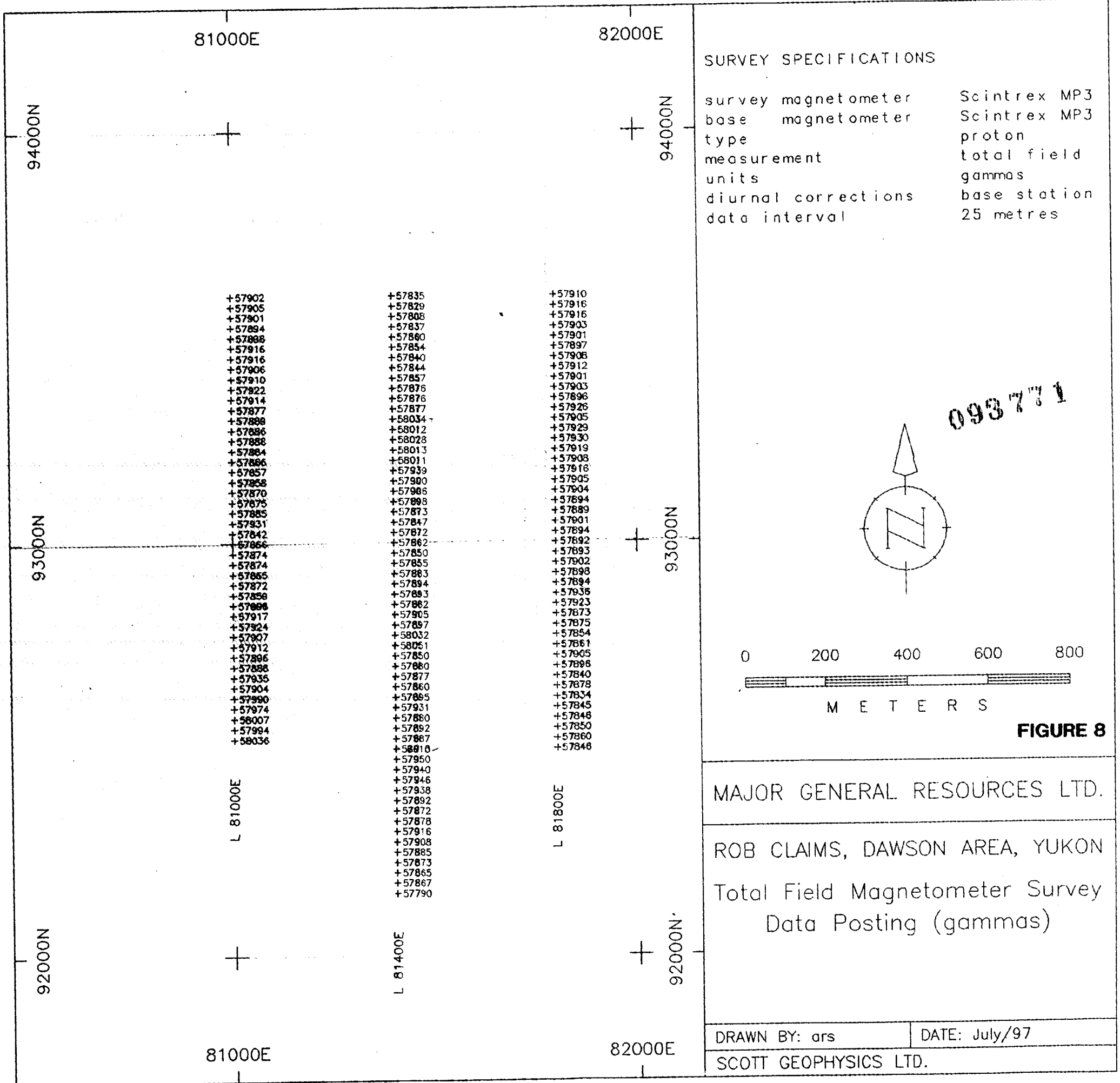
FIGURE 9

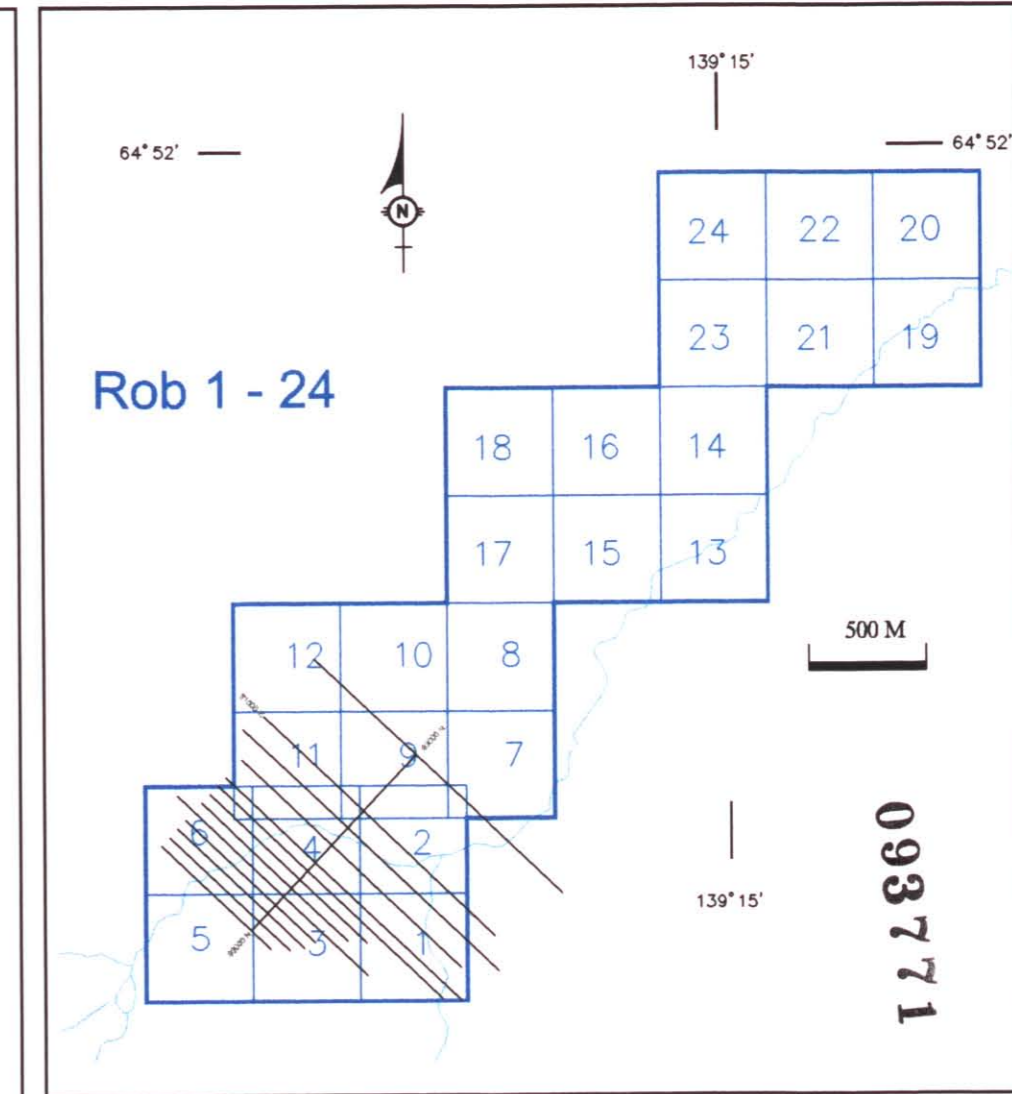
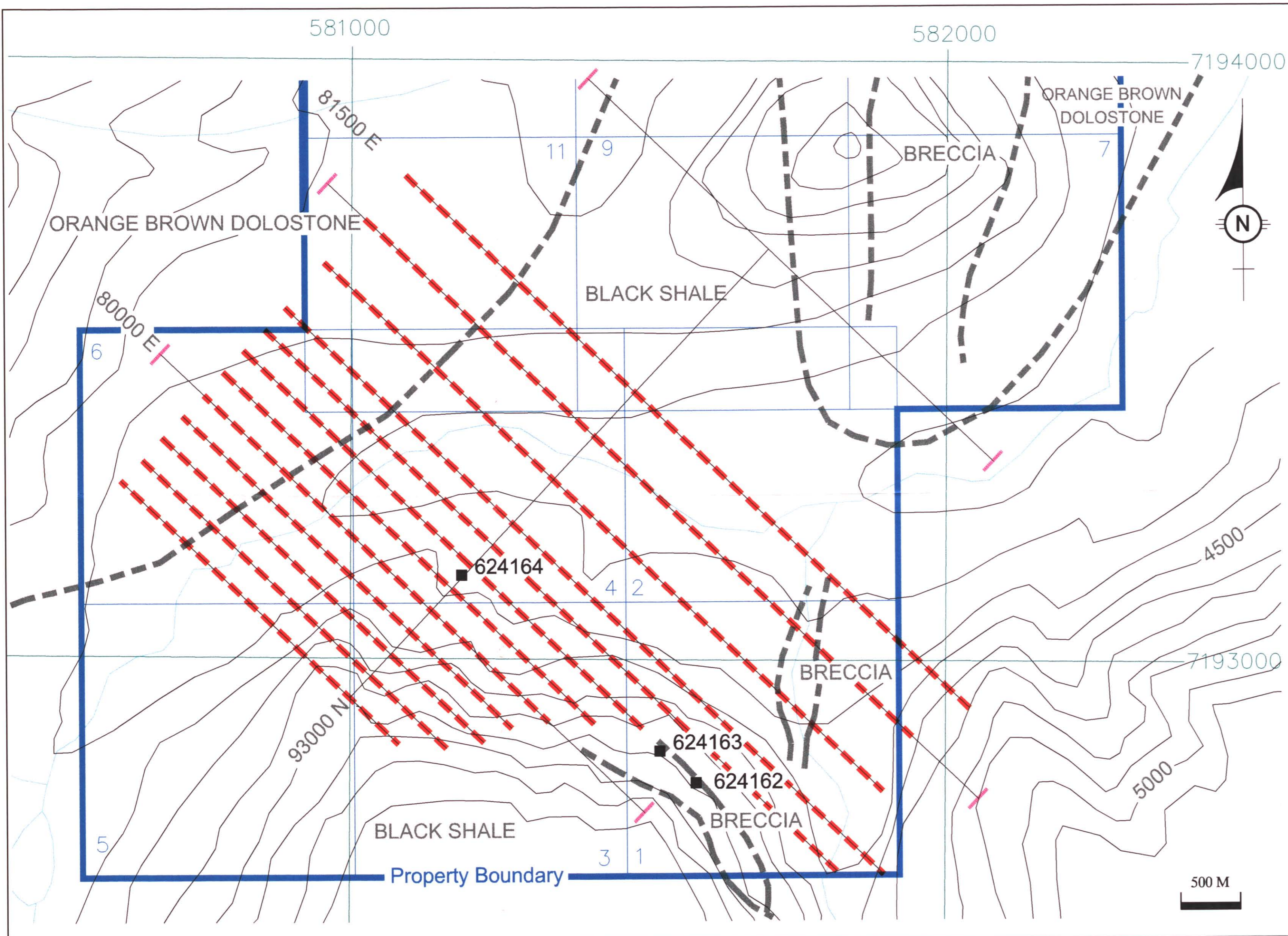
AMEROK GEOSCIENCES LTD.





81500 E
81400 E
81300 E
81200 E
81150 E
81100 E
81050 E
81000 E
80950 E
80900 E
80850 E
80800 E

81500 E
81400 E
81300 E
81200 E
81150 E
81100 E
81050 E
81000 E
80950 E
80900 E
80850 E
80800 E


	80800 E	80850 E	80900 E	80950 E	81000 E	81050 E	81100 E	81150 E	81200 E	81300 E	81400 E	81500 E	
93500 N	500	500	496	500	508	508	511	515	521	518	520	520	93500 N
	498	497	495	499	504	506	512	513	524	518	518	525	
	498	497	496	502	503	507	509	519	519	520	518	528	
	498	495	497	509	502	511	507	518	518	519	518	522	
	496	495	493	500	505	513	507	515	522	516	519	521	
	496	495	494	498	508	588	507	518	524	517	519	515	
	494	492	494	497	501	548	504	512	518	523	518	518	
	493	492	493	493	501	520	500	514	514	515	520	520	
93400 N	494	490	496	493	497	521	504	518	513	514	518	521	93400 N
	492	504	498	498	497	511	507	521	517	513	518	520	
	494	526	498	494	500	513	518	528	514	518	518	519	
	499	516	495	499	497	513	518	537	517	517	513	511	
	501	505	487	498	498	507	524	566	521	520	513	512	
	503	503	502	506	498	506	521	542	517	520	511	504	
	505	503	504	504	501	503	509	540	512	515	511	522	
	502	508	502	504	498	504	509	530	504	511	518	538	
93300 N	501	511	504	503	498	508	512	512	502	509	527	531	93300 N
	500	513	504	505	503	503	510	512	508	510	528	527	
	498	511	504	502	502	500	512	509	505	508	529	520	
	505	509	506	508	508	504	509	503	508	511	530	520	
	495	502	508	512	500	502	509	501	506	506	555	530	
	488	488	500	491	501	498	505	504	514	507	565	530	
	485	491	497	491	502	501	510	500	523	508	547	528	
	485	501	497	494	511	509	519	497	525	500	537	519	
93200 N	483	492	498	492	500	508	512	495	509	503	524	518	93200 N
	485	491	496	500	501	505	529	501	502	508	516	508	
	492	492	498	496	501	502	530	502	505	503	514	501	
	496	489	498	496	505	504	516	507	507	513	511	510	
	490	489	496	497	504	506	511	513	507	518	517	513	
	492	488	502	495	503	505	513	514	509	518	527	515	
	490	492	497	495	505	508	518	551	521	514	534	520	
	490	480	498	500	505	510	519	553	526	513	521	520	
93100 N	484	489	495	497	507	513	518	554	512	508	519	519	93100 N
	494	482	495	499	503	516	515	544	507	509	512	523	
	498	510	505	499	508	519	515	527	502	504	507	529	
	496	498	494	500	506	521	522	540	504	502	507	531	
	485	497	497	503	505	520	528	545	508	497	510	534	
	500	533	498	499	508	524	532	525	510	498	502	534	
	497	526	484	501	510	518	520	525	511	514	500	524	
93000 N	497	521	488	495	508	528	579	510	510	507	508	517	93000 N
	484	513	488	496	507	529	543	517	518	507	507	522	
	492	500	491	497	515	528	546	514	518	508	507	524	
	492	487	492	497	511	525	552	503	527	506	507	516	
	492	496	490	496	508	523	545	508	527	512	502	517	
	488	494	495	498	508	529	572	512	540	510	503	506	
	490	494	524	495	509	528	560	525	550	505	512	491	
	487	493	504	494	507	532	548	561	558	511	528	509	
	487	492	497	498	508	530	728	573	596	515	532	483	
92900 N	489	491	496	501	503	530	703	546	574	508	520	475	92900 N
	488	496	498	498	504	529	678	630	563	508	505	483	
	489	498	498	498	501	523	588	578	556	498	494	523	
	490	492	495	495	502	520	545	534	552	489	491	499	
	487	492	494	494	500	514	533	532	533	490	478	473	
	489	491	496	501	503	530	703	546	574	508	520	475	
	488	496	498	498	504	529	678	630	563	508	505	483	
	489	498	498	498	501	523	588	578	556	498	494	523	
	490	492	495	495	502	520	545	534	552	489	491	499	
	487	492	494	494	500	514	533	532	533	490	478	473	
	489	491	496	501	503	530	703	546	574	508	520	475	
	488	496	498	498	504	529	678	630	563	508	505	483	
	489	498	498	498	501	523	588	578	556	498	494	523	
	490	492	495	495	502	520	545	534	552	489	491	499	
	487	492	494	494	500	514	533	532	533	490	478	473	
	489	491	496	501	503	530	703	546	574	508	520	475	
	488	496	498	498	504	529	678	630	563	508	505	483	
	489	498	498	498	501	523	588	578	556	498	494	523	
	490	492	495	495	502	520	545	534	552	489	491	499	
	487	492	494	494	500	514	533	532	533	490	478	473	
	489	491	496	501	503	530	703	546	574	508	520	475	
	488	496	498	498	504	529	678	630	563	508	505	483	
	489	498	498	498	501	523	588	578	556	498	494	523	
	490	492	495	495	502	520	545	534	552	489	491	499	
	487	492	494	494	500	514	533	532	533	490	478	473	
	489	491	496	501	503	530	703	546	574	508	520	475	
	488	496	498	498	504	529	678	630	563	508	505	483	
	489	498	498	498	501	523	588	578	556	498	494	523	
	490	492	495	495	502	520	545	534	552	489	491	499	
	487	492	494	494	500	514	533	532	533	490	478	473	
	489	491	496	501	503	530	703	546	574	508	520	475	
	488	496	498	498	504	529	678	630	563	508	505	483	
	489	498	498	498	501	523	588	578	556	498	494	523	
	490	492	495	495	502	520	545	534	552	489	491	499	
	487	492	494	494	500	514	533	532	533	490	478	473	
	489	491	496	501	503	530	703	546	574	508	520	475	
	488	496	498	498	504	529	678	630	563	508	505	483	
	489	498	498	498	501	523	588	578	556	498	494	523	
	490	492	495	495	502	520	545	534	552	489	491	499	
	487	492	494	494	500	514	533	532	533	490	478	473	
	489	491	496	501	503	530	703	546	574	508	520	475	
	488	496	498	498	504	529	678	630	563	508	505	483	
	489	498	498	498	501	523	588	578	556	498	494	523	
	490	492	495	495	502	520	545	534	552	489	491	499	
	487	492	494	494	500	514	533	532	533	490	478	473	
	489	491	496	501	503	530	703	546	574	508	520	475	
	488	496	498	498	504	529	678	630	563	508	505	483	
	489	498	498	498	501	523	588	578	556	498	494	523	
	490	492	495	495	502	520	545	534	552	489	491	499	
	487	492	494	494	500	514	533	532	533	490	478	473	
	489	491	496	501	503	530	703	546	574	508	520	475	
	488	496	498	498	504	529	678	630	563	508	505	483	
	489	498	498	498	501	523	588	578	556	498	494	523	
	490	492	495	495	502	520	545	534	552	489	491	499	
	487	492	494	494	500	514	533	532	533	490	478	473	
	489	491	496	501	503	530	703	546	574	508	520	475	
	488	496	498	498	504	529	678	630	563	508	505	483	
	489	498	498	498	501	523	588	578	556	498	494	523	
	490	492	495	495	502	520	545	534	552	489	491	499	
	487	492	494	494	500	514	533	532	533	490	478	473	
	489	491	496	501	503	530	703	546	574	508	520	475	
	488	496	498	498	504	529	678	630	563	508	505	483	
	489	498	498	498	501	523	588	578	556	498	49		

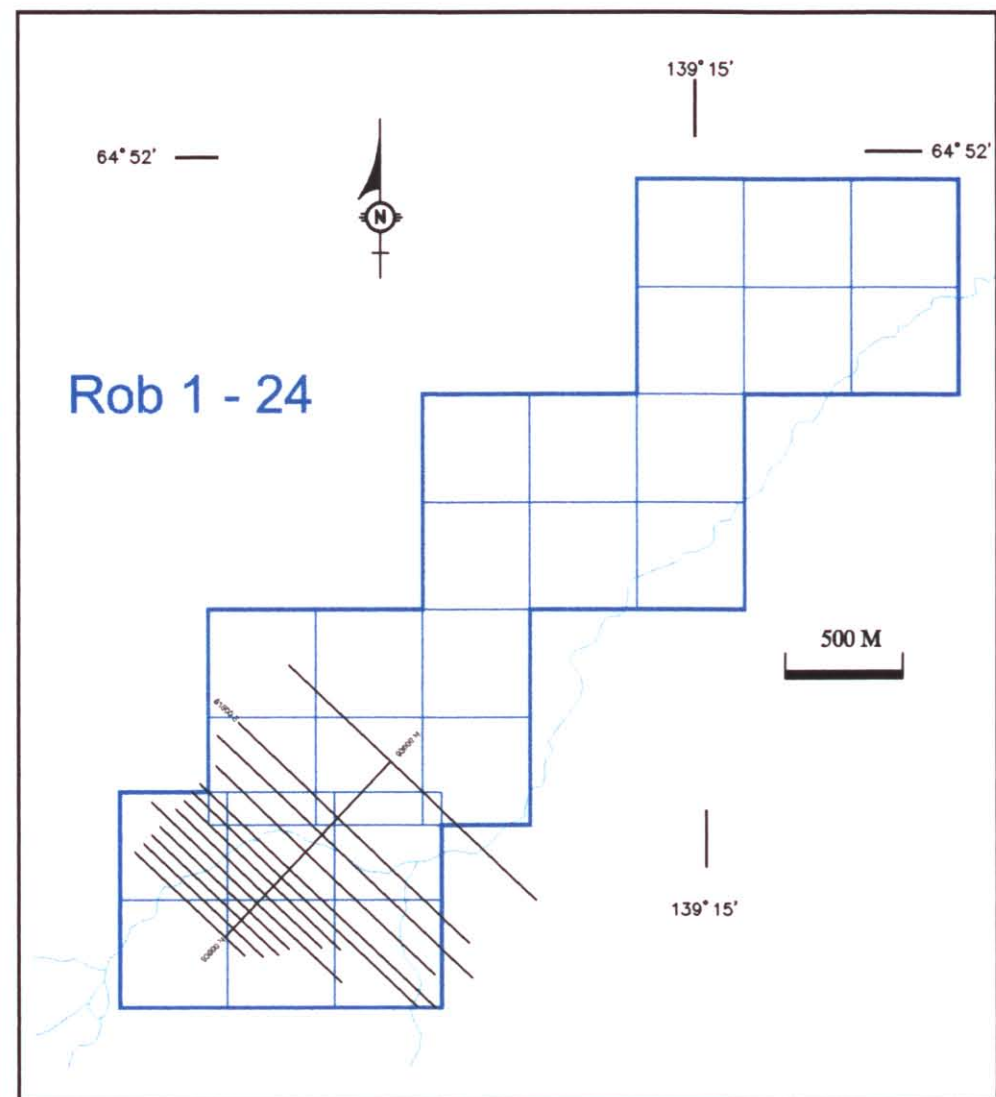
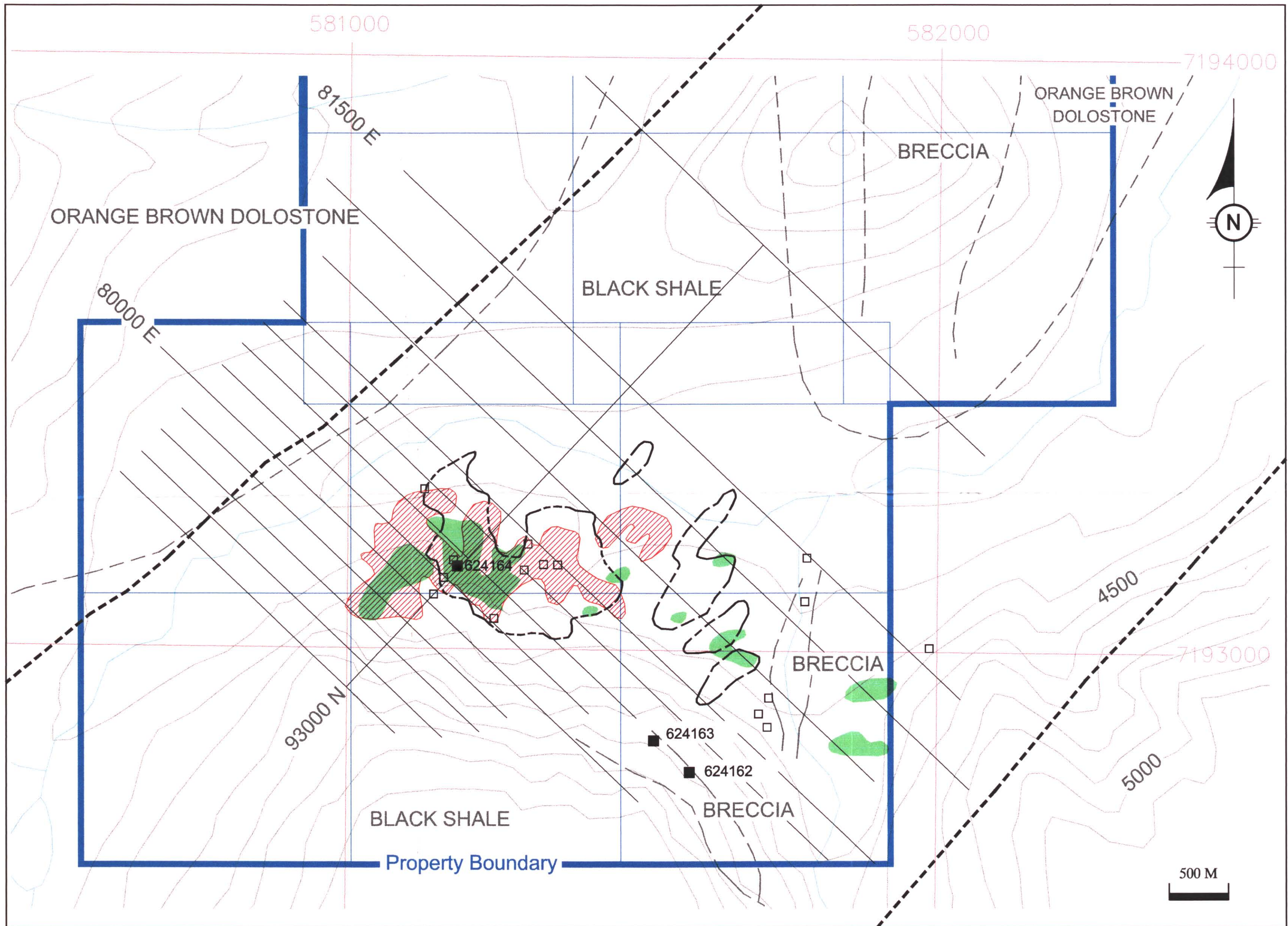




-  Detail mag coverage
-  I.P. and recon mag coverage
-  624163 Rock Sample
-  Geologic Contact


DWG ①
FIGURE 3 ①

 MAJOR GENERAL RESOURCES LTD.	
Rob Property - Yukon Territory	
ROCK SAMPLE AND GRID LOCATION	
N.T.S. 116 B/14	Scale 1 : 5000
Data S.B., Pendle Res.	Date 97-11-13
File 97-902-RSB-3	Revised



- 624163 ■ Rock Sample
- Rock Sample: Cu ≥ 0.1% (Pendisle 1994)
- ▨ Soil Anomaly: U ≥ 1.5 ppm (Umex)
- Soil Anomaly: Cu ≥ 400 ppm (Umex)
- Magnetic Anomaly
- - - Geologic Contact
- - - - - Interpreted Graben Structure

② FIGURE 11

 MAJOR GENERAL RESOURCES LTD.	
Rob Property - Yukon Territory	
GEOCOMPILATION	
N.T.S. 116 B/14	Scale 1 : 5000
Data G.G. S.B., Pendisle Res.	Date 98-1-5
File 97-902-RSB-11	Revised

DWG ②