

ARCHER, CATHRO

& ASSOCIATES (1981) LIMITED

CONSULTING GEOLOGICAL ENGINEERS

1016 - 510 WEST HASTINGS STREET, VANCOUVER, B.C. V6B 1L8 TEL (604) 688 - 2568 • FAX (604) 688 - 2578

REPORT

on

GEOCHEMICAL SURVEY AND TRENCHING

on the

TOP PROPERTY

Top 1-20	YB53070-YB53089
21-24	YC04762-YC04765

Latitude 64° 11' N; Longitude 139° 50' W

NTS 116B/4

in the

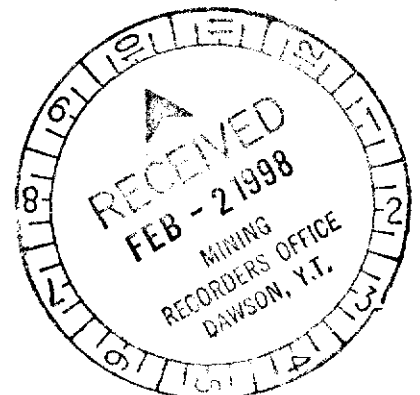
DAWSON MINING DISTRICT

YUKON TERRITORY

093765

Owned by: Nordac Resources Ltd.
Operated by: Archer, Cathro & Associates (1981) Limited

Tania C. Heaton, B.Sc.
R.C. Carne, M.Sc., P.Geo.
December, 1997



This report has been examined by
the Geological Evaluation Unit
under Section 53 (4) Yukon Quartz
Mining Act and is allowed as
representation work in the amount
of \$ 11,900.00.

M. B. L.
for Regional Manager, Exploration and
Geological Services for Commissioner
of Yukon Territory.

TABLE OF CONTENTS

	<u>PAGE</u>
INTRODUCTION	1
LOCATION AND ACCESS	1
TOPOGRAPHY, GEOMORPHOLOGY AND VEGETATION	2
CLAIM STATUS	3
PREVIOUS WORK	3
GEOLOGY	4
1997 PROGRAM	6
RESULTS	8
CONCLUSIONS AND RECOMMENDATIONS	11

APPENDICES

- I AUTHORS' STATEMENTS OF QUALIFICATIONS
- II CERTIFICATES OF ANALYSIS
- III TABLE 1 - ROCK SAMPLE DESCRIPTIONS FROM EXCAVATOR TRENCH 97-01

FIGURES

<u>NO.</u>	<u>DESCRIPTION</u>	<u>LOCATION</u>
1	Property Location	Following Page 1
2	Claim and Trench Location	In Pocket
3	Regional Geological Setting	Following Page 4
4	Geology and 1995 Geochemistry	In Pocket
5	Sample Location	In Pocket
6	Copper Soil Geochemistry	In Pocket
7	Lead Soil Geochemistry	In Pocket
8	Zinc Soil Geochemistry	In Pocket
9	Excavator Trench Geology	In Pocket
10	Bulldozer Trench Locations and Generalized Geology	Following Page 9

INTRODUCTION

The Top property in west-central Yukon was staked to cover a multi-element geochemical anomaly that is a volcanogenic massive sulphide (VMS) exploration target. A small exploration program was carried out from August 9 to 15, 1997 which included soil sampling, prospecting, geological mapping and excavator trenching. After results of this work were received, bulldozer trenching was carried out on September 25 and 26, 1997 over the zone of interest to allow permafrost retreat in preparation for continued excavator trenching proposed for 1998. The exploration was managed by Archer, Cathro & Associates (1981) Limited and supervised by the authors. Appendix I contains the Authors' Statements of Qualifications.

The Top claims are located within the Klondike segment of Yukon-Tanana tectonic terrane. Recent exploration success at the Kudz Ze Kayah Deposit by Cominco Ltd., the Wolverine Deposit by Westmin Resources Limited and Atna Resources Ltd., the Fyre Lake Deposit by Columbia Gold Mines Ltd. and the Pack occurrence by Westmin Resources Limited within Devonian to Mississippian metavolcanic rocks of Yukon-Tanana Terrane in the Finlayson Lake area prompted Nordac Resources Ltd. to investigate unexplored geochemical anomalies along the Top of the World Highway. Although the two areas are over 500 km apart, they were once adjacent before being separated by movement along the Tintina Fault Zone.

LOCATION AND ACCESS

The Top claims are located immediately north of the Top of the World Highway, 25 km northwest of Dawson City on NTS map sheet 116B/4 (Figure 1). In 1997 access was by pick-up truck from Dawson City to the southeastern corner of the property and then by foot to the areas of exploration interest.

TOPOGRAPHY, GEOMORPHOLOGY AND VEGETATION

The southeastern corner of the Top property and the main area of exploration interest is located in Klondike Plateau along a ridge crest which probably lies close to the original surface of a pre-Pleistocene peneplain. Because the area is unglaciated, oxidation and leaching of metals probably extends to depths of 20 m or more. The remainder of the claim block lies along the southwestern side of a relatively steep-sided, northwestern-trending creek valley. Elevations range from about 1225 m on the ridge crest to 640 m at the northwest property boundary.

Upper parts of the property are mantled with a thin veneer of frost-heaved felsenmeer and residual soils while lower elevations are covered with an unknown thickness of soliflucted residual overburden.

Treeline occurs at about 1070 m in this area so that the southeastern part of the property is only lightly vegetated with scrub brush and mosses. Lower elevations support a mixture of deciduous and evergreen forest with a thick understorey of willows in poorly drained areas. Permafrost is likely to be continuous over most of the property.

CLAIM STATUS

The Top property consists of twenty-four full-size claims (Figure 2) as outlined below.

<u>Claim Name</u>	<u>Grant Number</u>	<u>Mining District</u>	<u>Expiry Date*</u>
Top 1-20	YB53070-YB53089	Dawson	April 24, 2003
21-24	YC04762-YC04765	Dawson	April 24, 2003

*Expiry dates include 1997 work filed for assessment credit but not yet accepted.

PREVIOUS WORK

There is no public record of any previous exploration work done on the Top claims other than a short prospecting and soil sampling reconnaissance program carried out in 1995 by Nordac to evaluate the potential for VMS mineralization. Seventy-nine soil samples were collected along the claim location line at approximately 50 m intervals. Prior to this a more regional exploration program was conducted by Archer Cathro which included soil sampling along ridge crests and collecting silt samples from nearby creeks and streams.

GEOLOGY

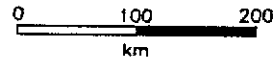
The Top claims lie within the Klondike segment of Yukon-Tanana tectonic terrane (Figure 3). Yukon-Tanana Terrane underlies a vast area, approximately the size of California, that lies west of autochthonous North America in central Yukon and Alaska. The sequence is geologically complex recording the tectonic incorporation of a Paleozoic volcanic and magmatic arc with its basement sequence onto the outboard edge of the northern Cordillera. Restoration of movement along Tintina Trench demonstrates that the Klondike segment is probably an along-strike continuation of the Finlayson Allochthon which contains the Kudz Ze Kayah, Wolverine, Ice, Fyre Lake and Pack VMS deposits. These are hosted by Late Devonian to Mid-Mississippian metavolcanic and metasedimentary rocks.

Geology in the vicinity of the Top property was published at 1:250,000 scale in 1988 by the Geological Survey of Canada (GSC Open File 1927). Property geology, shown on Figure 4, is summarized from Open File 1927 and augmented by observations taken during the 1995 and 1997 field seasons.

Regional geology consists of a series of highly strained metavolcanic and metasedimentary rocks which have undergone polyphase deformation. The property is underlain by an unnamed sequence of Lower to Middle Paleozoic metavolcanic and metasedimentary rocks consisting of quartz-muscovite-chlorite schist, chlorite schist, quartz-feldspar-amphibole gneiss, metagabbro, micaceous quartzite and marble. Compositional layering of bedrock on the property is subparallel to foliation that undulates locally with a gentle southerly dip on a regional scale.

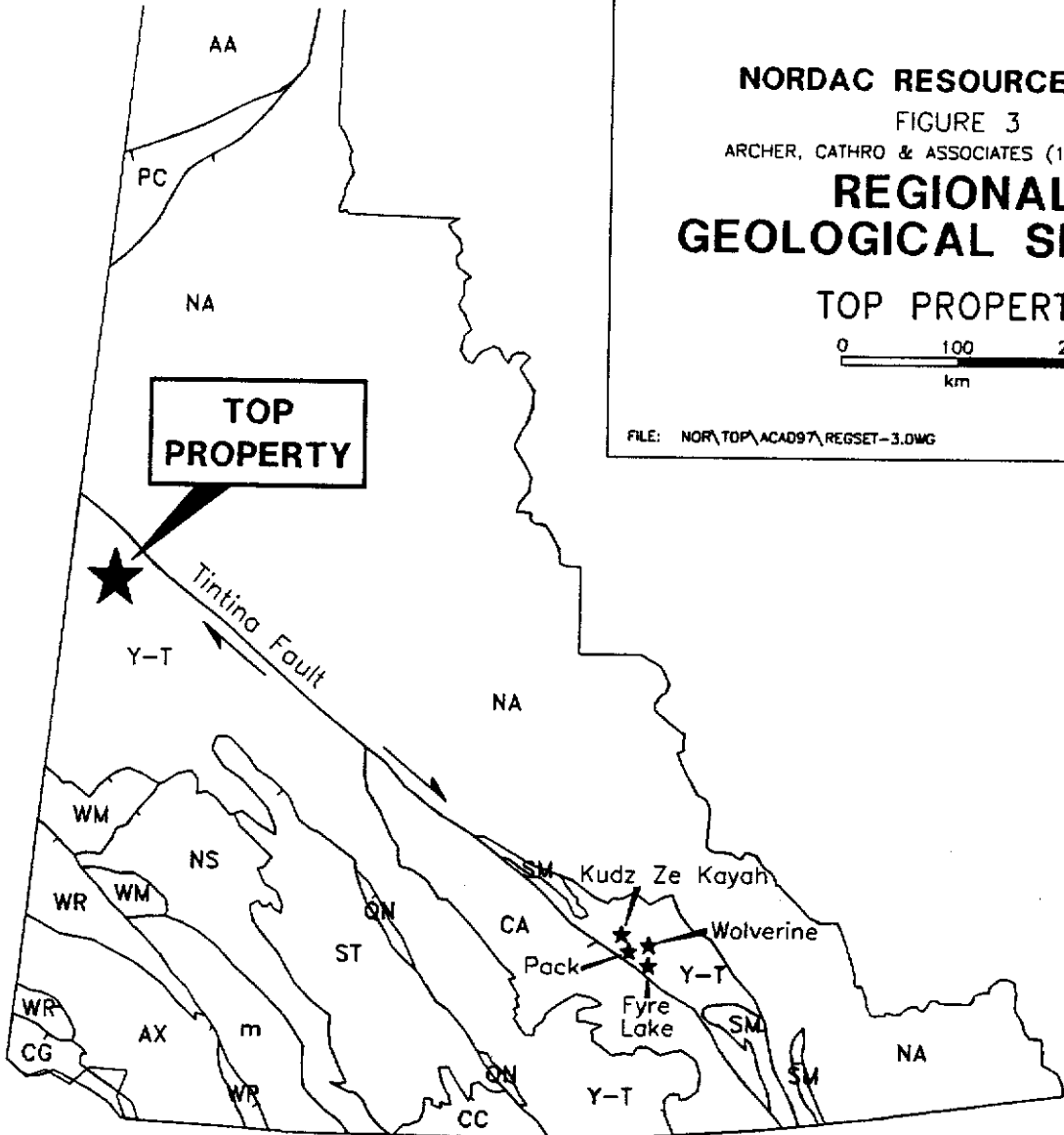
NORDAC RESOURCES LTD.
 FIGURE 3
 ARCHER, CATHRO & ASSOCIATES (1981) LIMITED
**REGIONAL
 GEOLOGICAL SETTING**

TOP PROPERTY



FILE: NOR\TOP\ACAD97\REGSET-3.DWG

DECEMBER, 1997



CRATON

NA Ancestral North America

TERRANES

Displaced Continental Margin

AA Arctic Alaska

CA Cassiar

NS Nisling

PC Porcupine

Pericratonic Terranes

Y-T Yukon-Tanana

ACCRETED TERRANES

Intermontane Superterrane

SM Slide Mountain

QN Quesnellia

CC Cache Creek

ST Stikinia

WM Windy-McKinley

Intermontane Superterrane

AX Alexander

WR Wrangellia

Other Terranes

CG Chugach

m Undivided metamorphics

★ Devono-Mississippian VMS deposit

An iron oxide-rich horizon that carries anomalous values of copper, lead and zinc is exposed in highway roadcuts at the southeastern end of the claim block. Cominco geologists have apparently located oxidized massive sulphide float cobbles in proximity to this unit about 2.5 km along strike to the east of the Top property.

The Lower to Middle Paleozoic sequence is in thrust fault contact outside the property boundaries with Middle Paleozoic Nasina Series metasedimentary rocks consisting of quartzite, quartz-muscovite-biotite schist and marble. The thrust faults are often marked by slivers of carbonatized and serpentized ultramafic rocks assigned to the Middle and Upper Paleozoic Klondike Schist.

The Top claims were staked to cover unexplained strong multi-element stream sediment geochemical anomalies resulting from surveys conducted previously in the area by Archer Cathro (Figure 4). These appear to reflect a source within a sequence of felsic metavolcanic rocks that are associated with the iron oxide-rich unit exposed in Top of the World Highway roadcuts on the claim block.

1997 PROGRAM

A work program was conducted on the Top claims between August 9 and 15, 1997. This included soil sampling, prospecting, geological mapping and excavator trenching. On September 25 and 26 bulldozer pre-stripping of trenches was carried out over anomalous zones identified by the earlier work.

Soil samples were collected mainly on the southeastern portion of the property where samples taken in previous years had returned anomalous values. The sample lines were 100 m apart and samples were taken at 50 m stations for 450 m east and 450 m west of the baseline (claim location line) (Figure 5). The lines were surveyed using a hip chain and compass. Another small grid was put in closer to the northwestern end of the property to evaluate other previously identified geochemical anomalies (Figure 2). A total of 261 soil samples were collected.

The soil samples were optimally collected from the B horizon although soil profiles in the area are not sufficiently developed to be reliably differentiated. Most samples were probably taken from soliflucted soils which include both B and C horizons. The samples were collected in pre-numbered Kraft paper bags and sent to Chemex Labs Ltd. in North Vancouver, B.C. where they were prepared by drying and sieving to minus 80 mesh. Thirty-two element analyses, including those for all the major base metals and silver, were carried out on nitric acid-aqua regia digestion of two gram samples with induced coupled plasma (ICP) determination.

A trench was excavated in the southeastern corner of the property along an old bulldozer road which had been previously soil sampled, returning anomalous values. A Caterpillar 225

excavator was utilized for the work. The trench was excavated to a depth of approximately 1 to 1.5 m and 340 m in length. The trench was geologically mapped and 30 rock samples were taken and sent to Chemex Labs for analysis.

On September 25 and 26 1997, a Caterpillar D7 bulldozer was mobilized to the property and trenching was carried out. This was done in order to pre-strip the area of interest to allow thawing to take place in preparation for an excavator trenching program planned for summer 1998.

RESULTS

Locations of 1997 soil samples taken on the southeastern end of the Top property are shown on Figure 5. Copper, lead and zinc geochemical data for the same area are shown on Figures 6, 7 and 8. Certificates of Analysis are located in Appendix II.

The Top claim area is unglaciated and surface weathering with accompanying oxidation and leaching of base metals is probably well developed. Based on results of extensive geochemical exploration programs carried out in the area in the past by Archer Cathro, threshold values for copper, lead and zinc in soils are set at 25, 50 and 100 ppm, respectively. Highly anomalous values for copper, lead and/or zinc were returned from analyses of soil samples taken from a discontinuous, linear zone near the southeastern end of the property. This 1300 m long north-northwestern trend is roughly conformable with foliation and overlies the stratigraphic interval believed to be prospective for VMS mineralization. A number of highly anomalous silt samples collected to the northwest in previous years suggests that the area of interest could exceed several kilometres in strike length.

The excavator trench started at the uphill edge of the strongest soil geochemistry anomaly (including one sample which contained 116 ppm copper, 1085 ppm lead, 254 ppm zinc, 1.0 ppm silver, 16 ppb gold) but it did not reach bedrock in the first 85 m over the anomaly due to frozen overburden. Channel, chip and grab samples from bedrock downslope of the soil anomaly were weakly to moderately anomalous for copper, lead and zinc (Table 1). The samples with high values of base metals all carried extensive secondary manganese and iron oxide accumulations on

fractures and outside surfaces while no primary iron or manganese minerals are evident in fresh rock. It is quite possible therefore that the anomalous metal values represent hydromorphic dispersion downhill from the zone of interest. The rocks uncovered in the trench consisted mainly of quartz-chlorite-muscovite schists with varying degrees of oxidation as well as a few basaltic dykes (Figure 9). Some graphitic phyllite was found in the northeastern end of the trench but it is questionable whether this is actual bedrock or overburden. Generally the rocks in the trench strike north-northwesterly and dip gently to the south (20 to 40°).

Some prospecting and geological mapping was also conducted on the Top claims. There is very little outcrop on the claims themselves but some mapping was done in the vicinity of the property on nearby roadcuts. The main rock type found here was moderately to well foliated quartz-chlorite-muscovite schists with occasional small (1 to 2 mm) bands of limonite, and others with trace euhedral pyrite. Locally there is some small scale folding but the general trend of the rocks is north-northwesterly with dips varying from shallow to steep to the south. There are also interbeds of quartzite and a few small post-metamorphic basaltic dykes.

The areas stripped by bulldozer are named "Cat trenches" 97-01, 97-02 and 97-03 and their locations are shown on Figure 10. Cat trench 97-01 is an uphill continuation of excavator trench 97-01 and has azimuths varying from 029 to 062°. Cat trench 97-02 is located on the grid at 2+25 N and trends 027° and Cat trench 97-03 is on the grid at 5+00 N and trends 072°.

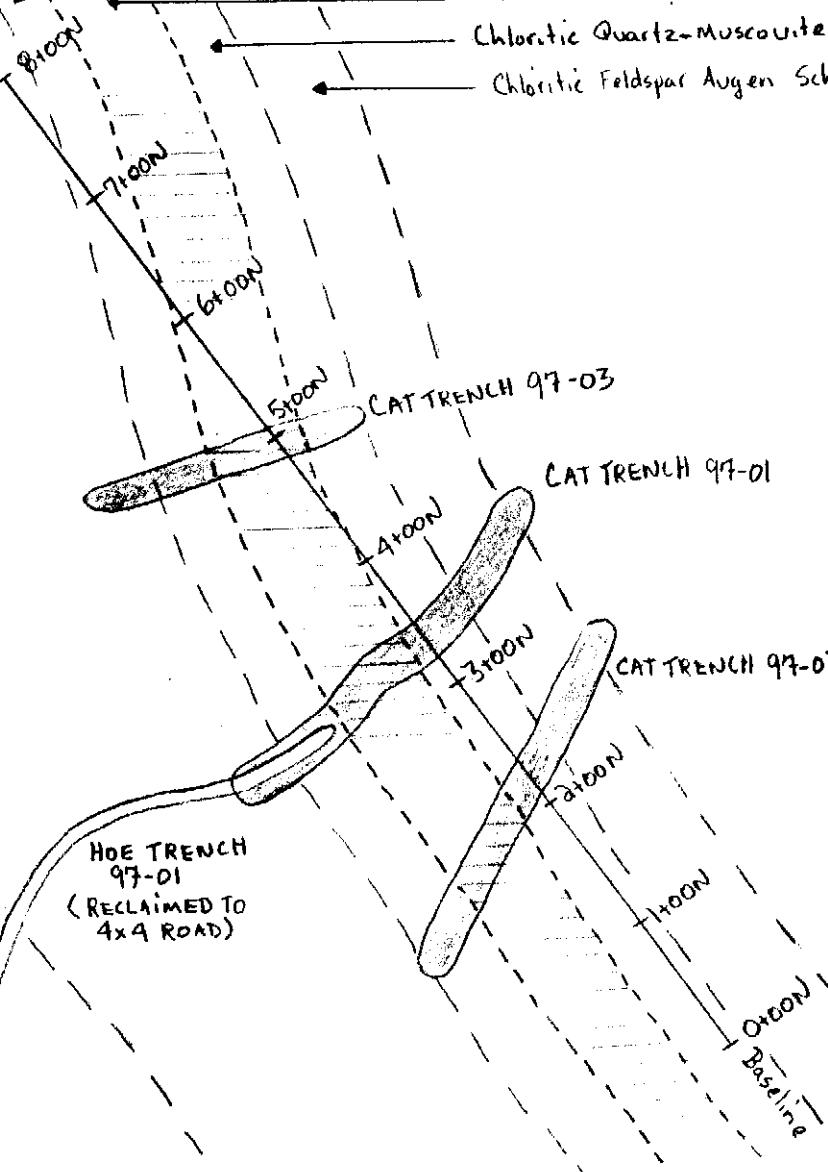
Graphitic Phyllite

Quartz-Muscovite Schist

Mineralized Zone ?

Chloritic Quartz-Muscovite Schist

Chloritic Feldspar Augen Schist



4x4 ROAD

HOE TRENCH
97-01
(RECLAIMED TO
4x4 ROAD)

CAT TRENCH 97-03

CAT TRENCH 97-01

CAT TRENCH 97-02

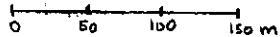
0700N
Baseline

NORDAC RESOURCES LTD.

FIGURE 10
ARCHER, CATHRO & ASSOCIATES (1981) LIMITED

Bulldozer TRENCH LOCATIONS and Generalized GEOLOGY

TOP PROPERTY



DRAWN/REVISED BY: T. H. R. G.

PROJECT:

FILE:

DATE: NOVEMBER 1997

The bulldozer trenches average about 1 m deep and did not reach bedrock but mapping of frozen soliflucted colluvium was carried out. Results of this work demonstrate that the probable source of the coincident copper, lead, zinc, and silver anomaly is the recessive contact between siliceous graphitic phyllite (metamorphosed black shale) and underlying chloritic quartz-muscovite schist (metarhyolite). This is further underlain by a chloritic feldspar augen schist that probably has an andesite porphyry protolith. This geological environment is similar to that for felsic metavolcanic hosted VMS deposits in the Finlayson Allochthon elsewhere in Yukon-Tanana Terrane.

CONCLUSIONS AND RECOMMENDATIONS

The work conducted on the Top property and vicinity to date has demonstrated the following:

- a. stratigraphy at both a property and regional scale appears to correlate with the Middle to Upper Palaeozoic Finlayson Allochthon, metavolcanic host of recent VMS discoveries at the Kudz Ze Kayah, Wolverine and Fyre Lake Deposits and Pack occurrence;
- b. an iron oxide-rich horizon with anomalous base metal values has been mapped in roadcuts at the southeastern end of the property. The Wolverine Deposit hanging wall contains a similar iron formation which may represent the waning of exhalite activity responsible for the deposition of massive sulphide mineralization;
- c. Cominco is reported to have discovered oxidized massive sulphide float about 2.5 km east of the property. The float appears to have originated from the stratigraphic interval enclosing the Top claim iron oxide-rich horizon;
- d. strongly anomalous soil and silt sample geochemical values have been returned from the extrapolated location of the prospective horizon on the Top claims over a strike length of several kilometres;
- e. excavator trenches of the anomalous zone were not successful due to frozen overburden. Anomalous values of copper, lead and zinc in samples taken from the trench floor downslope of the anomaly may represent hydromorphic dispersion from a mineralized zone hidden by talus and soliflucted overburden;

- f. bulldozer trenches were excavated in September 1997 to explore the probable bedrock source of grid soil geochemical anomalies resulting from the earlier surveys. No bedrock was encountered in the approximately 1 m deep trenches but mapping of soliflucted colluvium suggests that the anomalies originate in a linear, conformable, recessive zone which is underlain by chloritic quartz-muscovite schist and by chloritic feldspar augen schist (metarhyolite and meta-andesite porphyry, respectively) and overlain by graphitic phyllite (metamorphosed black shale); and,
- g. the geological environment, in conjunction with the associated base metal geochemical anomalies, are strongly suggestive of VMS mineralization located along the recessive contact between metarhyolite and overlying graphitic phyllite. This zone has been prepared for testing by excavator trenching in July or August of 1998 once frost has thawed beneath the pre-stripped bulldozer trenches.

Respectfully submitted,

ARCHER, CATHRO & ASSOCIATES (1981) LIMITED

Tania C. Heaton

Tania C. Heaton, B.Sc.

A handwritten signature in black ink, consisting of a large, stylized 'C' followed by a horizontal line that ends in a small loop.

R.C. Carne, M.Sc., P.Geo.

APPENDIX I

AUTHORS' STATEMENTS OF QUALIFICATIONS

STATEMENT OF QUALIFICATIONS

I, Tania C. Heaton, geologist, with business addresses in Whitehorse, Yukon Territory and Vancouver, British Columbia and residential address in Burnaby, British Columbia, hereby certify that:

1. I graduated from Concordia University, Montreal, Quebec in 1990 with a Bachelor of Science majoring in Geological Sciences.
2. From 1989 to present, I have been actively engaged as a geologist in mineral exploration, and am presently employed with Archer, Cathro & Associates (1981) Limited.
3. I have personally participated in or supervised the field work reported herein and have interpreted the data resulting from the work.

Tania C. Heaton

Tania C. Heaton, B.Sc.

STATEMENT OF QUALIFICATIONS

I, Robert C. Carne, geologist, with business addresses in Whitehorse, Yukon Territory and Vancouver, British Columbia and residential address in Burnaby, British Columbia, hereby certify that:

1. I graduated from the University of British Columbia in 1974 with a B.Sc. and in 1979 with an M.Sc. majoring in Geological Sciences.
2. I am a Professional Geoscientist registered with the Association of Professional Engineers and Geoscientists of the Province of British Columbia (registration number 19868).
3. From 1974 to present, I have been actively engaged as a geologist in mineral exploration in British Columbia and Yukon Territory and on June 1, 1981 became a partner of Archer, Cathro & Associates (1981) Limited.
4. I have personally participated in or supervised the field work reported herein and have interpreted all data resulting from this work.



Robert C. Carne, M.Sc., P. Geo.

APPENDIX II
CERTIFICATES OF ANALYSIS



Chemex Labs Ltd.

Analytical Chemists * Geochemists * Registered Assayers

212 Brooksbank Ave., North Vancouver
British Columbia, Canada V7J 2C1
PHONE: 604-984-0221 FAX: 604-984-0218

To: NORDAC RESOURCES LTD.
C/O ARCHER, CATHRO
BOX 4127, 2054 SECOND AVE.
WHITEHORSE, YT
Y1A 3S9

Project : NORDAC-TOP
Comments:

Page Number : 1-A
Total Pages : 7
Certificate Date: 31-AUG-97
Invoice No. : 19739412
P.O. Number :
Account : MTT

CERTIFICATE OF ANALYSIS

A9739412

SAMPLE	PREP CODE		Ag	Al	As	Ba	Be	Bi	Ca	Cd	Co	Cr	Cu	Fe	Ga	Hg	K	La	Mg	Mn	Mo
			ppm	%	ppm	ppm	ppm	ppm	%	ppm	ppm	ppm	ppm	%	ppm	ppm	%	ppm	%	ppm	ppm
T28490	201	202	< 0.2	0.78	8	100	< 0.5	< 2	0.09	< 0.5	3	16	12	1.46	< 10	< 1	0.05	10	0.25	180	< 1
T28491	201	202	0.2	0.96	10	200	< 0.5	< 2	0.06	0.5	3	23	14	1.67	< 10	< 1	0.05	50	0.21	110	1
T28492	201	202	< 0.2	1.59	10	120	< 0.5	< 2	0.11	< 0.5	5	22	13	2.51	< 10	< 1	0.05	30	0.32	220	< 1
T28493	201	202	< 0.2	0.87	10	90	< 0.5	< 2	0.04	< 0.5	2	11	6	1.79	< 10	< 1	0.03	10	0.08	130	1
T28494	201	202	< 0.2	0.80	6	90	< 0.5	< 2	0.04	< 0.5	2	11	6	1.65	< 10	< 1	0.04	10	0.13	90	1
T28495	201	202	< 0.2	0.86	2	60	< 0.5	< 2	0.08	< 0.5	1	7	3	1.32	< 10	< 1	0.03	10	0.39	70	< 1
T28496	201	202	< 0.2	0.94	4	70	< 0.5	< 2	0.07	< 0.5	1	13	5	1.48	< 10	< 1	0.06	20	0.16	75	< 1
T28497	201	202	< 0.2	0.69	2	100	< 0.5	< 2	0.10	< 0.5	1	9	9	0.83	< 10	< 1	0.07	60	0.25	135	< 1
T28498	201	202	< 0.2	1.51	8	90	< 0.5	< 2	0.09	< 0.5	5	80	15	1.94	< 10	< 1	0.06	20	0.47	190	< 1
T28499	201	202	< 0.2	1.24	4	160	< 0.5	< 2	0.14	0.5	4	20	18	1.97	< 10	< 1	0.05	10	0.35	485	< 1
T28500	201	202	0.2	1.76	8	240	0.5	< 2	0.15	1.0	7	27	27	2.57	< 10	< 1	0.07	20	0.48	660	< 1
T28501	201	202	0.2	1.55	< 2	260	< 0.5	< 2	0.14	0.5	8	23	27	1.74	< 10	< 1	0.05	20	0.56	435	< 1
T28502	201	202	0.2	1.09	4	350	< 0.5	< 2	0.12	0.5	3	18	17	1.40	< 10	< 1	0.07	10	0.33	165	< 1
T28503	201	202	< 0.2	0.87	< 2	150	< 0.5	< 2	0.13	< 0.5	3	11	12	1.15	< 10	< 1	0.03	10	0.37	170	< 1
T28504	201	202	< 0.2	0.99	6	170	< 0.5	< 2	0.13	< 0.5	5	18	13	1.67	< 10	1	0.04	< 10	0.40	190	< 1
T28505	201	202	< 0.2	1.16	< 2	450	< 0.5	< 2	0.06	0.5	3	17	28	1.29	< 10	< 1	0.03	10	0.32	95	< 1
T28506	201	202	< 0.2	1.23	6	230	< 0.5	< 2	0.10	< 0.5	4	19	14	1.72	< 10	< 1	0.03	10	0.50	150	< 1
T28507	201	202	< 0.2	1.18	2	210	< 0.5	< 2	0.07	< 0.5	2	14	11	1.20	< 10	< 1	0.03	10	0.41	110	< 1
T28508	201	202	0.2	1.75	14	500	< 0.5	< 2	0.10	< 0.5	6	25	17	2.54	< 10	< 1	0.05	10	0.55	175	1
T28509	201	202	0.2	1.88	6	410	< 0.5	< 2	0.09	< 0.5	7	30	24	2.37	< 10	1	0.04	10	0.52	295	< 1
T28510	201	202	0.2	1.85	10	310	< 0.5	< 2	0.10	< 0.5	6	25	25	2.09	< 10	< 1	0.06	10	0.65	215	< 1
T28511	201	202	0.2	1.83	12	510	< 0.5	< 2	0.09	0.5	7	24	20	2.51	< 10	< 1	0.06	10	0.60	485	< 1
T28512	201	202	< 0.2	1.42	6	290	< 0.5	< 2	0.13	< 0.5	4	18	13	1.87	< 10	< 1	0.05	10	0.56	195	< 1
T28513	201	202	< 0.2	1.05	6	370	< 0.5	< 2	0.13	< 0.5	3	14	13	1.31	< 10	< 1	0.04	10	0.44	140	< 1
T28514	201	202	< 0.2	1.27	6	150	< 0.5	< 2	0.10	< 0.5	4	17	10	1.88	< 10	< 1	0.05	10	0.42	130	< 1
T28515	201	202	0.2	1.43	4	210	< 0.5	< 2	0.12	< 0.5	4	18	12	1.59	< 10	1	0.06	10	0.51	135	< 1
T28516	201	202	< 0.2	1.21	6	110	< 0.5	< 2	0.07	< 0.5	2	14	7	1.37	< 10	< 1	0.05	10	0.35	90	< 1
T28517	201	202	0.2	1.97	12	380	0.5	< 2	0.12	< 0.5	6	24	18	2.71	< 10	< 1	0.07	< 10	0.37	295	< 1
T28518	201	202	< 0.2	1.16	6	180	< 0.5	< 2	0.08	< 0.5	3	18	12	1.69	< 10	< 1	0.06	10	0.38	190	< 1
T28519	201	202	< 0.2	1.30	8	310	< 0.5	< 2	0.14	0.5	4	22	16	2.13	< 10	< 1	0.05	10	0.34	435	< 1
T28520	201	202	< 0.2	1.59	6	220	< 0.5	< 2	0.12	< 0.5	5	17	27	2.14	< 10	< 1	0.08	10	0.41	440	< 1
T28521	201	202	< 0.2	0.82	< 2	80	< 0.5	< 2	0.03	< 0.5	4	65	7	1.12	< 10	< 1	0.03	30	0.37	50	< 1
T28522	201	202	< 0.2	1.12	2	80	< 0.5	< 2	0.05	< 0.5	4	13	6	1.38	< 10	< 1	0.04	10	0.21	80	< 1
T28523	201	202	< 0.2	1.17	2	70	< 0.5	< 2	0.08	< 0.5	3	16	6	1.18	< 10	< 1	0.04	10	0.35	60	< 1
T28524	201	202	< 0.2	0.97	6	80	< 0.5	< 2	0.09	< 0.5	3	11	7	1.09	< 10	< 1	0.04	20	0.31	85	< 1
T28525	201	202	< 0.2	0.72	< 2	80	< 0.5	< 2	0.06	< 0.5	1	8	5	0.89	< 10	< 1	0.04	20	0.18	75	< 1
T28526	201	202	< 0.2	1.30	2	140	< 0.5	< 2	0.06	< 0.5	3	13	9	1.55	< 10	< 1	0.05	10	0.39	135	< 1
T28527	201	202	< 0.2	1.41	8	150	< 0.5	< 2	0.09	< 0.5	7	19	9	2.11	< 10	1	0.05	10	0.36	215	< 1
T28528	201	202	< 0.2	0.78	6	70	< 0.5	< 2	0.07	< 0.5	2	14	6	1.44	< 10	< 1	0.04	10	0.20	135	1
T28529	201	202	< 0.2	1.59	6	120	< 0.5	< 2	0.07	< 0.5	3	19	9	2.00	< 10	< 1	0.04	< 10	0.20	115	< 1

CERTIFICATION: Hart Buchler



Chemex Labs Ltd.

Analytical Chemists * Geochemists * Registered Assayers

212 Brooksbank Ave., North Vancouver
British Columbia, Canada V7J 2C1
PHONE: 604-984-0221 FAX: 604-984-0218

To: NORDAC RESOURCES LTD.
C/O ARCHER, CATHRO
BOX 4127, 2054 SECOND AVE.
WHITEHORSE, YT
Y1A 3S9

Project : NORDAC-TOP
Comments:

Page Number : 1-B
Total Pages : 7
Certificate Date: 31-AUG-97
Invoice No. : 19739412
P.O. Number :
Account : MTT

CERTIFICATE OF ANALYSIS

A9739412

SAMPLE	PREP CODE	Na %	Ni ppm	P ppm	Pb ppm	Sb ppm	Sc ppm	Sr ppm	Ti %	Tl ppm	U ppm	V ppm	W ppm	Zn ppm
T28490	201 202	< 0.01	11	360	90	< 2	1	8	0.03	< 10	< 10	27	< 10	122
T28491	201 202	< 0.01	14	440	90	< 2	< 1	9	0.01	< 10	< 10	21	< 10	88
T28492	201 202	< 0.01	15	370	36	< 2	1	14	0.03	< 10	< 10	35	< 10	54
T28493	201 202	< 0.01	5	200	16	< 2	< 1	7	0.04	< 10	< 10	42	< 10	26
T28494	201 202	< 0.01	5	210	28	< 2	< 1	7	0.04	< 10	< 10	31	< 10	32
T28495	201 202	< 0.01	3	220	22	< 2	< 1	15	0.03	< 10	< 10	14	< 10	28
T28496	201 202	< 0.01	6	190	18	< 2	1	9	0.04	< 10	< 10	36	< 10	22
T28497	201 202	< 0.01	5	170	58	< 2	1	10	0.02	< 10	< 10	12	< 10	76
T28498	201 202	< 0.01	20	410	52	< 2	1	9	0.02	< 10	< 10	28	< 10	80
T28499	201 202	< 0.01	12	340	128	< 2	1	13	0.05	< 10	< 10	38	< 10	200
T28500	201 202	< 0.01	16	390	252	< 2	3	14	0.06	< 10	< 10	46	< 10	250
T28501	201 202	< 0.01	14	420	184	< 2	3	13	0.04	< 10	< 10	31	< 10	160
T28502	201 202	< 0.01	9	360	68	< 2	1	13	0.03	< 10	< 10	30	< 10	86
T28503	201 202	< 0.01	7	420	70	< 2	1	12	0.02	< 10	< 10	18	< 10	86
T28504	201 202	< 0.01	14	410	24	< 2	1	11	0.03	< 10	< 10	29	< 10	60
T28505	201 202	< 0.01	10	490	58	< 2	< 1	12	0.01	< 10	< 10	21	< 10	62
T28506	201 202	< 0.01	13	310	26	< 2	1	11	0.03	< 10	< 10	29	< 10	66
T28507	201 202	< 0.01	8	190	40	< 2	1	10	0.03	< 10	< 10	25	< 10	60
T28508	201 202	< 0.01	15	370	82	< 2	3	18	0.03	< 10	< 10	36	< 10	104
T28509	201 202	< 0.01	17	510	106	< 2	2	14	0.04	< 10	< 10	46	< 10	94
T28510	201 202	< 0.01	16	560	120	< 2	1	16	0.03	< 10	< 10	31	< 10	128
T28511	201 202	< 0.01	14	480	84	< 2	1	14	0.03	< 10	< 10	42	< 10	122
T28512	201 202	< 0.01	11	260	48	< 2	1	17	0.05	< 10	< 10	30	< 10	88
T28513	201 202	< 0.01	9	210	54	< 2	1	16	0.05	< 10	< 10	22	< 10	86
T28514	201 202	< 0.01	10	280	54	< 2	1	12	0.03	< 10	< 10	36	< 10	90
T28515	201 202	< 0.01	10	310	86	< 2	1	13	0.03	< 10	< 10	25	< 10	134
T28516	201 202	< 0.01	7	270	56	< 2	< 1	9	0.01	< 10	< 10	26	< 10	90
T28517	201 202	< 0.01	13	410	110	< 2	2	14	0.02	< 10	< 10	39	< 10	106
T28518	201 202	< 0.01	11	300	58	< 2	1	9	0.02	< 10	< 10	32	< 10	112
T28519	201 202	< 0.01	12	500	106	< 2	1	12	0.01	< 10	< 10	34	< 10	138
T28520	201 202	< 0.01	15	270	188	< 2	1	11	0.03	< 10	< 10	30	< 10	206
T28521	201 202	< 0.01	31	200	30	< 2	1	5	0.01	< 10	< 10	11	< 10	28
T28522	201 202	< 0.01	9	170	28	< 2	1	7	0.02	< 10	< 10	21	< 10	28
T28523	201 202	< 0.01	8	190	24	< 2	1	10	0.03	< 10	< 10	18	< 10	28
T28524	201 202	< 0.01	7	220	44	< 2	1	12	0.04	< 10	< 10	17	< 10	40
T28525	201 202	< 0.01	5	180	24	< 2	< 1	9	0.02	< 10	< 10	16	< 10	22
T28526	201 202	< 0.01	7	300	44	< 2	1	8	0.01	< 10	< 10	24	< 10	50
T28527	201 202	< 0.01	12	200	24	< 2	1	12	0.04	< 10	< 10	37	< 10	40
T28528	201 202	< 0.01	8	230	30	< 2	1	13	0.03	< 10	< 10	20	< 10	28
T28529	201 202	< 0.01	8	290	30	< 2	1	8	0.03	< 10	< 10	41	< 10	32

CERTIFICATION:

Hart Buchler



Chemex Labs Ltd.

Analytical Chemists * Geochemists * Registered Assayers

212 Brooksbank Ave., North Vancouver
British Columbia, Canada V7J 2C1
PHONE: 604-984-0221 FAX: 604-984-0218

To: NORDAC RESOURCES LTD.
C/O ARCHER, CATHRO
BOX 4127, 2054 SECOND AVE.
WHITEHORSE, YT
Y1A 3S9

Project : NORDAC-TOP
Comments:

Page Number : 2-A
Total Pages : 7
Certificate Date: 31-AUG-97
Invoice No. : I9739412
P.O. Number :
Account : MTT

CERTIFICATE OF ANALYSIS

A9739412

SAMPLE	PREP CODE		Ag	Al	As	Ba	Be	Bi	Ca	Cd	Co	Cr	Cu	Fe	Ga	Hg	K	La	Mg	Mn	Mo
			ppm	%	ppm	ppm	ppm	ppm	%	ppm	ppm	ppm	ppm	%	ppm	ppm	%	ppm	%	ppm	ppm
T28530	201	202	< 0.2	1.35	6	150	< 0.5	< 2	0.09	< 0.5	4	16	8	1.96	< 10	< 1	0.05	< 10	0.35	140	< 1
T28531	201	202	< 0.2	1.93	8	130	< 0.5	< 2	0.08	< 0.5	6	24	15	2.54	< 10	< 1	0.06	10	0.41	240	< 1
T28532	201	202	< 0.2	1.63	12	150	< 0.5	< 2	0.07	< 0.5	6	21	12	2.08	< 10	< 1	0.06	10	0.34	210	< 1
T28533	201	202	< 0.2	1.54	8	100	< 0.5	< 2	0.04	< 0.5	4	19	9	2.32	< 10	< 1	0.04	10	0.30	165	< 1
T28534	201	202	< 0.2	0.94	6	80	< 0.5	< 2	0.06	< 0.5	3	10	25	1.70	< 10	< 1	0.06	30	0.22	215	< 1
T28535	201	202	< 0.2	1.20	4	150	< 0.5	< 2	0.09	0.5	4	17	12	1.78	< 10	< 1	0.05	10	0.39	165	< 1
T28536	201	202	0.6	1.45	6	670	< 0.5	< 2	0.10	< 0.5	5	15	21	1.97	< 10	1	0.06	30	0.39	240	< 1
T28537	201	202	< 0.2	1.14	6	430	< 0.5	< 2	0.05	0.5	1	14	22	1.34	< 10	1	0.04	10	0.27	90	< 1
T28538	201	202	< 0.2	1.28	< 2	320	< 0.5	< 2	0.17	0.5	6	17	13	1.77	< 10	< 1	0.04	10	0.68	215	< 1
T28539	201	202	1.4	1.00	8	470	< 0.5	< 2	0.13	0.5	3	11	118	2.36	< 10	< 1	0.08	30	0.34	195	1
T28540	201	202	0.4	1.74	12	280	< 0.5	< 2	0.15	< 0.5	8	23	45	2.69	< 10	< 1	0.06	10	0.52	290	1
T28541	201	202	0.2	1.60	16	490	< 0.5	< 2	0.10	< 0.5	5	22	18	3.04	< 10	1	0.05	10	0.46	250	2
T28542	201	202	0.2	1.96	4	610	< 0.5	< 2	0.17	< 0.5	3	22	20	1.93	< 10	< 1	0.10	20	0.57	130	1
T28543	201	202	< 0.2	2.14	< 2	280	< 0.5	< 2	0.11	< 0.5	3	21	17	1.85	< 10	< 1	0.06	10	0.60	90	< 1
T28544	201	202	< 0.2	1.61	< 2	360	< 0.5	< 2	0.19	< 0.5	4	21	10	2.53	< 10	1	0.07	10	0.46	210	< 1
T28545	201	202	< 0.2	1.86	6	230	< 0.5	< 2	0.17	< 0.5	6	23	10	2.21	< 10	< 1	0.05	10	0.58	265	< 1
T28546	201	202	< 0.2	1.85	4	240	< 0.5	< 2	0.10	< 0.5	7	24	18	2.63	< 10	1	0.06	30	0.52	205	< 1
T28547	201	202	0.2	1.56	4	900	< 0.5	< 2	0.17	< 0.5	8	26	25	3.21	< 10	< 1	0.08	30	0.67	365	3
T28548	201	202	0.2	2.11	12	1150	< 0.5	< 2	0.21	< 0.5	11	40	28	3.52	< 10	1	0.06	30	0.82	355	2
T28549	201	202	1.0	1.43	16	460	< 0.5	< 2	0.22	0.5	4	13	116	2.60	< 10	< 1	0.12	30	0.47	280	< 1
T28550	201	202	< 0.2	1.87	6	310	< 0.5	< 2	0.14	< 0.5	5	23	13	2.45	< 10	< 1	0.07	10	0.61	255	< 1
T28551	201	202	< 0.2	1.84	2	370	< 0.5	< 2	0.11	< 0.5	7	8	10	1.98	< 10	1	0.06	40	1.18	570	< 1
T28552	201	202	< 0.2	1.77	10	210	< 0.5	< 2	0.13	< 0.5	4	22	9	2.45	< 10	< 1	0.05	10	0.38	160	< 1
T28553	201	202	< 0.2	1.33	2	180	< 0.5	< 2	0.13	< 0.5	4	16	12	1.86	< 10	< 1	0.07	20	0.38	185	< 1
T28554	201	202	< 0.2	1.05	6	90	< 0.5	< 2	0.13	< 0.5	1	14	5	1.04	< 10	< 1	0.06	20	0.23	55	< 1
T28555	201	202	< 0.2	1.42	6	180	< 0.5	< 2	0.13	< 0.5	5	19	7	2.40	< 10	< 1	0.06	20	0.30	190	< 1
T28556	201	202	< 0.2	1.19	10	170	< 0.5	< 2	0.09	< 0.5	5	18	6	2.31	< 10	< 1	0.07	10	0.24	365	< 1
T28557	201	202	< 0.2	1.42	6	120	< 0.5	< 2	0.08	< 0.5	4	20	7	2.05	< 10	< 1	0.07	10	0.32	165	< 1
T28558	201	202	< 0.2	1.26	6	140	< 0.5	< 2	0.11	< 0.5	4	16	7	1.90	< 10	< 1	0.05	< 10	0.28	150	< 1
T28559	201	202	< 0.2	1.74	8	90	< 0.5	< 2	0.09	< 0.5	5	23	9	3.17	< 10	< 1	0.06	10	0.33	210	< 1
T28560	201	202	< 0.2	1.33	< 2	80	< 0.5	< 2	0.07	< 0.5	3	24	8	2.10	< 10	< 1	0.07	20	0.27	160	< 1
T28561	201	202	< 0.2	1.79	2	160	< 0.5	< 2	0.16	< 0.5	4	27	12	1.76	< 10	< 1	0.08	30	0.67	120	< 1
T28562	201	202	< 0.2	1.68	2	130	< 0.5	< 2	0.17	< 0.5	5	25	12	2.17	< 10	< 1	0.07	30	0.51	205	< 1
T28563	201	202	< 0.2	1.17	< 2	80	< 0.5	< 2	0.17	< 0.5	3	12	10	1.31	< 10	< 1	0.06	30	0.47	120	< 1
T28564	201	202	< 0.2	1.17	4	150	< 0.5	< 2	0.14	< 0.5	4	19	12	1.78	< 10	< 1	0.06	10	0.29	130	< 1
T28565	201	202	0.2	2.26	10	260	< 0.5	< 2	0.13	< 0.5	5	29	18	3.05	< 10	1	0.13	30	0.52	280	< 1
T28566	201	202	< 0.2	2.71	12	150	0.5	< 2	0.14	< 0.5	11	35	19	3.04	< 10	< 1	0.07	10	0.52	295	< 1
T28567	201	202	0.2	1.96	10	120	0.5	< 2	0.13	< 0.5	5	25	14	2.95	< 10	< 1	0.09	20	0.29	235	< 1
T28568	201	202	< 0.2	1.98	6	210	< 0.5	< 2	0.13	< 0.5	5	26	11	2.99	< 10	< 1	0.06	10	0.32	180	< 1
T28569	201	202	< 0.2	2.04	10	150	< 0.5	< 2	0.18	< 0.5	5	22	9	2.91	< 10	< 1	0.07	10	0.60	235	< 1

CERTIFICATION:

[Handwritten Signature]



Chemex Labs Ltd.

Analytical Chemists * Geochemists * Registered Assayers
 212 Brooksbank Ave., North Vancouver
 British Columbia, Canada V7J 2C1
 PHONE: 604-984-0221 FAX: 604-984-0218

To: NORDAC RESOURCES LTD.
 C/O ARCHER, CATHRO
 BOX 4127, 2054 SECOND AVE.
 WHITEHORSE, YT
 Y1A 3S9

Page Number : 2-B
 Total Pages : 7
 Certificate Date: 31-AUG-97
 Invoice No. : I9739412
 P.O. Number :
 Account : MTT

Project : NORDAC-TOP
 Comments:

CERTIFICATE OF ANALYSIS A9739412

SAMPLE	PREP CODE	Na %	Ni ppm	P ppm	Pb ppm	Sb ppm	Sc ppm	Sr ppm	Ti %	Tl ppm	U ppm	V ppm	W ppm	Zn ppm
T28530	201 202	< 0.01	9	260	12	< 2	1	13	0.04	< 10	< 10	27	< 10	40
T28531	201 202	< 0.01	14	280	142	< 2	2	9	0.04	< 10	< 10	40	< 10	78
T28532	201 202	< 0.01	14	230	58	< 2	1	9	0.03	< 10	< 10	33	< 10	60
T28533	201 202	< 0.01	11	280	34	< 2	1	7	0.02	< 10	< 10	35	< 10	50
T28534	201 202	< 0.01	7	320	196	< 2	< 1	9	0.01	< 10	< 10	17	< 10	202
T28535	201 202	< 0.01	11	270	60	< 2	1	10	0.03	< 10	< 10	30	< 10	112
T28536	201 202	< 0.01	10	340	144	< 2	1	19	0.03	< 10	< 10	23	< 10	164
T28537	201 202	< 0.01	7	480	42	< 2	< 1	10	0.01	< 10	< 10	21	< 10	54
T28538	201 202	< 0.01	14	290	50	< 2	1	19	0.05	< 10	< 10	28	< 10	88
T28539	201 202	< 0.01	10	370	744	< 2	1	19	0.02	< 10	< 10	16	< 10	216
T28540	201 202	< 0.01	17	380	300	< 2	3	16	0.04	< 10	< 10	34	< 10	134
T28541	201 202	< 0.01	14	340	144	< 2	2	20	0.04	< 10	< 10	42	< 10	104
T28542	201 202	< 0.01	11	620	70	< 2	1	27	0.02	< 10	< 10	27	< 10	102
T28543	201 202	< 0.01	8	520	30	< 2	< 1	16	0.01	< 10	< 10	26	< 10	40
T28544	201 202	< 0.01	10	280	32	< 2	2	22	0.06	< 10	< 10	51	< 10	50
T28545	201 202	< 0.01	11	220	38	< 2	2	18	0.06	< 10	< 10	33	< 10	60
T28546	201 202	< 0.01	16	240	42	< 2	2	18	0.05	< 10	< 10	34	< 10	64
T28547	201 202	< 0.01	17	450	164	< 2	3	42	0.04	< 10	< 10	37	< 10	128
T28548	201 202	< 0.01	26	400	114	< 2	5	40	0.06	< 10	< 10	48	< 10	158
T28549	201 202	< 0.01	12	310	1035	< 2	3	26	0.03	< 10	< 10	22	< 10	254
T28550	201 202	< 0.01	12	290	44	< 2	2	16	0.05	< 10	< 10	41	< 10	94
T28551	201 202	< 0.01	10	250	52	< 2	1	14	0.01	< 10	< 10	11	< 10	96
T28552	201 202	< 0.01	10	240	42	< 2	2	15	0.06	< 10	< 10	48	< 10	58
T28553	201 202	< 0.01	10	320	84	< 2	1	17	0.04	< 10	< 10	28	< 10	84
T28554	201 202	< 0.01	6	250	20	< 2	1	16	0.03	< 10	< 10	23	< 10	26
T28555	201 202	< 0.01	12	220	26	< 2	2	14	0.05	< 10	< 10	36	< 10	54
T28556	201 202	< 0.01	9	300	20	< 2	1	11	0.05	< 10	< 10	40	< 10	50
T28557	201 202	< 0.01	11	250	26	< 2	1	10	0.04	< 10	< 10	33	< 10	60
T28558	201 202	< 0.01	9	230	20	< 2	1	14	0.05	< 10	< 10	29	< 10	38
T28559	201 202	< 0.01	11	320	52	< 2	2	11	0.05	< 10	< 10	37	< 10	48
T28560	201 202	< 0.01	10	260	44	< 2	1	13	0.04	< 10	< 10	35	< 10	32
T28561	201 202	< 0.01	13	200	44	< 2	3	19	0.05	< 10	< 10	30	< 10	54
T28562	201 202	< 0.01	14	380	36	< 2	3	18	0.05	< 10	< 10	37	< 10	60
T28563	201 202	< 0.01	7	270	40	< 2	1	21	0.04	< 10	< 10	19	< 10	46
T28564	201 202	< 0.01	11	240	32	< 2	2	16	0.06	< 10	< 10	38	< 10	54
T28565	201 202	< 0.01	16	380	58	< 2	3	17	0.05	< 10	< 10	50	< 10	134
T28566	201 202	< 0.01	25	350	26	< 2	4	15	0.07	< 10	< 10	53	< 10	70
T28567	201 202	< 0.01	12	360	96	< 2	3	14	0.06	< 10	< 10	55	< 10	60
T28568	201 202	< 0.01	13	230	20	< 2	3	16	0.08	< 10	< 10	62	< 10	54
T28569	201 202	< 0.01	12	280	26	< 2	2	23	0.08	< 10	< 10	41	< 10	64

CERTIFICATION: _____

[Handwritten signature]



Chemex Labs Ltd.

Analytical Chemists * Geochemists * Registered Assayers

212 Brooksbank Ave., North Vancouver
 British Columbia, Canada V7J 2C1
 PHONE: 604-984-0221 FAX: 604-984-0218

To: NORDAC RESOURCES LTD.
 C/O ARCHER, CATHRO
 BOX 4127, 2054 SECOND AVE.
 WHITEHORSE, YT
 Y1A 3S9

Project: NORDAC-TOP
 Comments:

Page Number : 3-A
 Total Pages : 7
 Certificate Date: 31-AUG-97
 Invoice No. : 19739412
 P.O. Number :
 Account : MTT

CERTIFICATE OF ANALYSIS

A9739412

SAMPLE	PREP CODE	Ag ppm	Al %	As ppm	Ba ppm	Be ppm	Bi ppm	Ca %	Cd ppm	Co ppm	Cr ppm	Cu ppm	Fe %	Ga ppm	Hg ppm	K %	La ppm	Mg %	Mn ppm	Mo ppm
T28570	201 202	< 0.2	1.38	< 2	80	< 0.5	< 2	0.09	< 0.5	2	16	6	1.56	< 10	< 1	0.03	10	0.39	75	< 1
T28571	201 202	< 0.2	1.17	< 2	290	< 0.5	< 2	0.11	0.5	4	15	29	1.64	< 10	< 1	0.05	20	0.69	230	< 1
T28572	201 202	< 0.2	1.52	6	240	< 0.5	< 2	0.13	< 0.5	4	17	10	2.02	< 10	< 1	0.05	10	0.58	170	< 1
T28573	201 202	0.2	1.15	8	620	< 0.5	< 2	0.11	< 0.5	4	16	26	2.59	< 10	< 1	0.08	30	0.43	205	3
T28574	201 202	< 0.2	1.48	8	340	< 0.5	< 2	0.13	< 0.5	4	18	15	2.07	< 10	< 1	0.06	20	0.45	160	1
T28575	201 202	< 0.2	1.15	< 2	540	< 0.5	< 2	0.11	< 0.5	2	14	10	1.62	< 10	< 1	0.07	20	0.33	85	1
T28576	201 202	< 0.2	1.93	4	430	< 0.5	< 2	0.15	< 0.5	7	25	17	2.85	< 10	1	0.06	30	0.64	275	< 1
T28577	201 202	< 0.2	1.46	2	310	< 0.5	< 2	0.20	< 0.5	4	22	10	1.87	< 10	< 1	0.07	10	0.58	170	< 1
T28578	201 202	< 0.2	1.55	6	330	< 0.5	< 2	0.24	< 0.5	5	28	15	2.03	< 10	< 1	0.07	20	0.66	175	< 1
T28579	201 202	< 0.2	1.41	< 2	340	< 0.5	< 2	0.19	< 0.5	4	21	15	1.79	< 10	< 1	0.08	20	0.49	135	< 1
T28580	201 202	0.2	1.19	14	300	< 0.5	< 2	0.13	0.5	3	17	37	1.62	< 10	< 1	0.06	10	0.42	115	< 1
T28581	201 202	< 0.2	1.30	6	200	< 0.5	< 2	0.16	< 0.5	3	14	9	1.37	< 10	< 1	0.07	20	0.66	120	< 1
T28582	201 202	< 0.2	1.08	4	160	< 0.5	< 2	0.10	< 0.5	1	14	7	1.25	< 10	< 1	0.05	10	0.14	105	< 1
T28583	201 202	< 0.2	1.53	10	70	< 0.5	< 2	0.09	< 0.5	3	18	8	2.35	< 10	< 1	0.05	10	0.29	125	< 1
T28584	201 202	< 0.2	1.52	10	110	< 0.5	< 2	0.10	0.5	5	20	14	2.61	< 10	< 1	0.07	20	0.45	325	< 1
T28585	201 202	< 0.2	1.74	10	90	< 0.5	< 2	0.09	< 0.5	5	23	13	2.96	< 10	< 1	0.06	10	0.39	280	< 1
T28586	201 202	0.6	1.68	10	140	< 0.5	< 2	0.15	0.5	6	25	24	2.79	< 10	1	0.07	10	0.40	355	< 1
T28587	201 202	0.2	1.64	6	170	< 0.5	< 2	0.12	< 0.5	4	21	16	2.07	< 10	< 1	0.07	30	0.48	205	< 1
T28588	201 202	< 0.2	1.41	8	180	< 0.5	< 2	0.16	< 0.5	5	19	14	1.92	< 10	< 1	0.08	30	0.54	285	< 1
T28589	201 202	< 0.2	2.05	8	480	< 0.5	< 2	0.23	< 0.5	8	29	35	2.53	< 10	< 1	0.08	30	0.79	340	< 1
T28590	201 202	< 0.2	1.83	4	380	< 0.5	< 2	0.19	< 0.5	4	26	20	2.36	< 10	< 1	0.08	10	0.59	195	< 1
T28591	201 202	< 0.2	1.78	2	440	< 0.5	< 2	0.15	< 0.5	4	22	24	2.19	< 10	< 1	0.08	20	0.57	200	< 1
T28592	201 202	0.4	1.70	< 2	650	< 0.5	< 2	0.17	< 0.5	3	19	31	1.89	< 10	< 1	0.11	20	0.41	140	< 1
T28593	201 202	0.2	1.91	12	1250	0.5	< 2	0.20	< 0.5	4	21	41	2.38	< 10	< 1	0.11	30	0.38	120	1
T28594	201 202	< 0.2	1.68	6	640	< 0.5	< 2	0.21	0.5	6	22	18	2.05	< 10	< 1	0.07	10	0.59	220	< 1
T28595	201 202	< 0.2	2.19	10	480	< 0.5	< 2	0.25	< 0.5	8	32	19	2.69	< 10	< 1	0.07	10	0.78	330	< 1
T28596	201 202	< 0.2	1.39	2	330	< 0.5	< 2	0.17	< 0.5	4	26	8	2.47	< 10	1	0.07	10	0.39	195	< 1
T28597	201 202	< 0.2	1.75	10	290	< 0.5	< 2	0.21	< 0.5	8	31	16	2.52	< 10	< 1	0.08	20	0.72	365	< 1
T28598	201 202	0.8	1.54	2	340	< 0.5	< 2	0.16	< 0.5	4	33	13	1.61	< 10	< 1	0.06	10	0.48	105	< 1
T28599	201 202	0.6	1.29	8	290	< 0.5	< 2	0.19	< 0.5	5	41	27	1.84	< 10	< 1	0.08	20	0.56	225	< 1
T28600	201 202	0.2	1.20	6	240	< 0.5	< 2	0.17	< 0.5	5	47	15	1.58	< 10	< 1	0.09	10	0.62	210	< 1
T28601	201 202	0.2	1.25	2	250	< 0.5	< 2	0.15	< 0.5	4	53	18	1.73	< 10	1	0.07	10	0.57	195	< 1
T28602	201 202	1.4	1.62	< 2	400	< 0.5	< 2	0.22	0.5	4	33	33	1.87	< 10	< 1	0.09	20	0.44	140	< 1
T28603	201 202	0.2	1.42	< 2	190	< 0.5	< 2	0.25	0.5	6	47	28	2.12	< 10	< 1	0.08	20	0.68	290	< 1
T28604	201 202	1.8	2.43	2	500	0.5	< 2	0.35	1.5	7	55	68	2.75	< 10	< 1	0.17	30	0.71	400	< 1
T28605	201 202	0.4	1.70	< 2	240	< 0.5	< 2	0.25	0.5	6	35	30	2.39	< 10	< 1	0.13	30	0.60	290	< 1
T28606	201 202	< 0.2	1.10	2	150	< 0.5	< 2	0.28	0.5	4	27	18	1.31	< 10	< 1	0.13	30	0.43	195	< 1
T28607	201 202	< 0.2	1.45	2	210	< 0.5	< 2	0.20	0.5	6	48	18	2.22	< 10	< 1	0.09	20	0.61	210	< 1
T28608	201 202	< 0.2	1.80	2	260	< 0.5	< 2	0.22	0.5	8	66	23	2.51	< 10	< 1	0.12	30	0.76	380	< 1
T28609	201 202	0.6	1.80	4	470	0.5	< 2	0.21	0.5	6	36	30	2.64	< 10	< 1	0.09	20	0.48	245	< 1

CERTIFICATION: _____



Chemex Labs Ltd.

Analytical Chemists * Geochemists * Registered Assayers

212 Brooksbank Ave., North Vancouver
British Columbia, Canada V7J 2C1
PHONE: 604-984-0221 FAX: 604-984-0218

To: NORDAC RESOURCES LTD.
C/O ARCHER, CATHRO
BOX 4127, 2054 SECOND AVE.
WHITEHORSE, YT
Y1A 3S9

Project: NORDAC-TOP
Comments:

Page Number: 3-B
Total Pages: 7
Certificate Date: 31-AUG-97
Invoice No.: 19739412
P.O. Number:
Account: MTT

CERTIFICATE OF ANALYSIS A9739412

SAMPLE	PREP CODE	Na %	Ni ppm	P ppm	Pb ppm	Sb ppm	Sc ppm	Sr ppm	Ti %	Tl ppm	U ppm	V ppm	W ppm	Zn ppm
T28570	201 202	< 0.01	7	220	24	< 2	< 1	10	0.04	< 10	< 10	29	< 10	58
T28571	201 202	< 0.01	12	240	68	< 2	1	17	0.04	< 10	< 10	13	< 10	140
T28572	201 202	< 0.01	10	180	54	< 2	1	16	0.04	< 10	< 10	27	< 10	90
T28573	201 202	< 0.01	9	300	86	< 2	2	35	0.03	< 10	< 10	20	< 10	104
T28574	201 202	< 0.01	10	240	74	< 2	1	22	0.04	< 10	< 10	30	< 10	88
T28575	201 202	< 0.01	7	270	56	< 2	1	21	0.03	< 10	< 10	26	< 10	50
T28576	201 202	< 0.01	16	360	86	< 2	3	21	0.05	< 10	< 10	37	< 10	86
T28577	201 202	< 0.01	10	240	52	< 2	2	26	0.05	< 10	< 10	33	< 10	66
T28578	201 202	< 0.01	12	270	46	< 2	2	29	0.06	< 10	< 10	36	< 10	72
T28579	201 202	< 0.01	8	230	36	< 2	1	23	0.04	< 10	< 10	28	< 10	56
T28580	201 202	0.01	9	260	94	< 2	1	15	0.04	< 10	< 10	32	< 10	90
T28581	201 202	< 0.01	10	240	24	< 2	1	21	0.03	< 10	< 10	21	< 10	72
T28582	201 202	< 0.01	5	300	30	< 2	< 1	15	0.03	< 10	< 10	47	< 10	40
T28583	201 202	< 0.01	9	260	54	< 2	1	10	0.04	< 10	< 10	34	< 10	56
T28584	201 202	< 0.01	11	420	90	< 2	1	12	0.04	< 10	< 10	38	< 10	120
T28585	201 202	< 0.01	12	270	128	< 2	2	10	0.05	< 10	< 10	52	< 10	120
T28586	201 202	< 0.01	17	570	450	< 2	2	15	0.04	< 10	< 10	39	< 10	170
T28587	201 202	< 0.01	12	440	68	< 2	1	13	0.03	< 10	< 10	34	< 10	94
T28588	201 202	< 0.01	12	340	50	< 2	2	19	0.04	< 10	< 10	31	< 10	84
T28589	201 202	< 0.01	17	270	144	< 2	4	24	0.05	< 10	< 10	38	< 10	126
T28590	201 202	< 0.01	15	310	66	< 2	2	24	0.05	< 10	< 10	46	< 10	92
T28591	201 202	< 0.01	14	220	54	< 2	3	22	0.05	< 10	< 10	35	< 10	106
T28592	201 202	0.01	12	280	130	< 2	2	29	0.04	< 10	< 10	35	< 10	96
T28593	201 202	0.01	16	510	134	< 2	1	38	0.03	< 10	< 10	38	< 10	94
T28594	201 202	< 0.01	14	400	42	< 2	2	26	0.04	< 10	< 10	34	< 10	70
T28595	201 202	< 0.01	19	300	32	< 2	4	26	0.08	< 10	< 10	50	< 10	78
T28596	201 202	< 0.01	11	310	18	< 2	2	21	0.08	< 10	< 10	67	< 10	44
T28597	201 202	< 0.01	17	360	44	< 2	3	24	0.06	< 10	< 10	38	< 10	72
T28598	201 202	< 0.01	13	400	88	< 2	2	15	0.03	< 10	< 10	24	< 10	94
T28599	201 202	< 0.01	18	410	162	< 2	2	15	0.02	< 10	< 10	25	< 10	184
T28600	201 202	< 0.01	16	330	56	< 2	1	13	0.03	< 10	< 10	22	< 10	106
T28601	201 202	< 0.01	21	320	52	< 2	2	13	0.02	< 10	< 10	24	< 10	124
T28602	201 202	< 0.01	15	620	218	< 2	3	22	0.02	< 10	< 10	23	< 10	142
T28603	201 202	< 0.01	21	530	92	< 2	2	19	0.05	< 10	< 10	27	< 10	190
T28604	201 202	< 0.01	24	820	284	< 2	4	32	0.03	< 10	< 10	37	< 10	322
T28605	201 202	< 0.01	16	520	100	< 2	3	21	0.05	< 10	< 10	34	< 10	192
T28606	201 202	< 0.01	13	500	70	< 2	2	23	0.05	< 10	< 10	17	< 10	134
T28607	201 202	< 0.01	24	390	48	< 2	3	17	0.05	< 10	< 10	32	< 10	108
T28608	201 202	< 0.01	32	480	72	< 2	3	20	0.06	< 10	< 10	35	< 10	158
T28609	201 202	< 0.01	19	730	122	< 2	2	23	0.03	< 10	< 10	39	< 10	120

CERTIFICATION:

Hart Bickler



Chemex Labs Ltd.

Analytical Chemists * Geochemists * Registered Assayers

212 Brooksbank Ave., North Vancouver
British Columbia, Canada V7J 2C1
PHONE: 604-984-0221 FAX: 604-984-0218

To: NORDAC RESOURCES LTD.
C/O ARCHER, CATHRO
BOX 4127, 2054 SECOND AVE.
WHITEHORSE, YT
Y1A 3S9

Project : NORDAC-TOP
Comments:

Page Number : 4-A
Total Pages : 7
Certificate Date : 31-AUG-97
Invoice No. : 19739412
P.O. Number :
Account : MTT

CERTIFICATE OF ANALYSIS A9739412

SAMPLE	PREP CODE		Ag	Al	As	Ba	Be	Bi	Ca	Cd	Co	Cr	Cu	Fe	Ga	Hg	K	La	Mg	Mn	Mo
			ppm	%	ppm	ppm	ppm	ppm	%	ppm	ppm	ppm	ppm	%	ppm	ppm	%	ppm	%	ppm	ppm
T28610	201	202	0.2	1.52	< 2	260	< 0.5	< 2	0.22	< 0.5	5	34	15	1.90	< 10	< 1	0.07	20	0.52	175	< 1
T28611	201	202	0.4	1.58	2	340	< 0.5	< 2	0.27	< 0.5	4	33	13	1.71	< 10	< 1	0.08	10	0.49	135	< 1
T28612	201	202	0.2	1.57	< 2	290	< 0.5	< 2	0.24	< 0.5	4	31	14	1.75	< 10	< 1	0.09	10	0.47	120	< 1
T28613	201	202	0.2	1.50	4	210	< 0.5	< 2	0.22	< 0.5	4	29	15	1.83	< 10	< 1	0.08	20	0.52	170	< 1
T28614	201	202	< 0.2	1.84	< 2	280	< 0.5	< 2	0.17	< 0.5	6	30	14	2.18	< 10	< 1	0.08	20	0.52	200	< 1
T28615	201	202	< 0.2	2.04	< 2	460	< 0.5	< 2	0.20	< 0.5	5	32	15	2.42	< 10	< 1	0.11	30	0.56	195	< 1
T28616	201	202	0.2	1.88	2	430	< 0.5	< 2	0.20	< 0.5	5	28	15	2.25	< 10	< 1	0.11	20	0.46	195	1
T28617	201	202	0.6	2.48	10	450	0.5	< 2	0.20	0.5	5	42	23	2.91	< 10	< 1	0.13	10	0.47	220	1
T28618	201	202	0.2	1.68	< 2	310	< 0.5	< 2	0.14	< 0.5	3	24	22	1.77	< 10	< 1	0.11	10	0.36	130	< 1
T28619	201	202	0.4	1.45	< 2	390	< 0.5	< 2	0.13	< 0.5	3	21	23	1.48	< 10	< 1	0.13	20	0.28	100	< 1
T28620	201	202	< 0.2	1.37	2	270	< 0.5	< 2	0.13	< 0.5	3	22	15	1.74	< 10	< 1	0.11	20	0.32	165	< 1
T28621	201	202	0.4	1.47	2	370	< 0.5	< 2	0.17	< 0.5	3	28	16	1.81	< 10	< 1	0.10	20	0.36	135	< 1
T28622	201	202	0.2	1.91	8	130	< 0.5	< 2	0.11	< 0.5	5	26	18	2.57	< 10	< 1	0.07	40	0.35	160	1
T28623	201	202	0.2	1.43	2	100	< 0.5	< 2	0.10	< 0.5	4	19	13	2.00	< 10	< 1	0.07	60	0.35	135	3
T28624	201	202	< 0.2	1.34	8	180	< 0.5	< 2	0.09	< 0.5	2	16	8	1.71	< 10	< 1	0.06	30	0.25	75	1
T28625	201	202	< 0.2	1.33	4	140	< 0.5	< 2	0.08	< 0.5	4	19	14	1.88	< 10	< 1	0.05	30	0.37	125	< 1
T28626	201	202	< 0.2	1.05	4	170	< 0.5	< 2	0.12	< 0.5	3	15	10	1.37	< 10	< 1	0.06	30	0.30	115	< 1
T28627	201	202	< 0.2	1.11	6	110	< 0.5	< 2	0.07	< 0.5	3	14	9	1.73	< 10	< 1	0.08	30	0.39	125	< 1
T28628	201	202	< 0.2	1.06	6	90	< 0.5	< 2	0.07	< 0.5	3	12	8	1.74	< 10	< 1	0.05	10	0.18	130	< 1
T28629	201	202	< 0.2	1.75	10	150	< 0.5	< 2	0.10	< 0.5	7	25	13	2.37	< 10	< 1	0.07	10	0.37	255	< 1
T28630	201	202	< 0.2	1.24	4	100	< 0.5	< 2	0.10	< 0.5	3	17	6	1.83	< 10	< 1	0.09	30	0.22	190	< 1
T28631	201	202	0.2	1.93	8	260	< 0.5	< 2	0.17	0.5	6	32	20	2.48	< 10	< 1	0.10	40	0.51	285	< 1
T28632	201	202	< 0.2	1.55	2	100	< 0.5	< 2	0.10	< 0.5	2	20	26	1.83	< 10	< 1	0.04	10	0.22	150	< 1
T28633	201	202	< 0.2	1.87	10	210	< 0.5	< 2	0.17	0.5	5	32	25	2.89	< 10	< 1	0.06	10	0.44	340	< 1
T28634	201	202	0.2	1.88	4	190	< 0.5	< 2	0.16	< 0.5	5	30	26	2.35	< 10	< 1	0.06	10	0.63	290	< 1
T28635	201	202	0.2	1.62	< 2	240	< 0.5	< 2	0.16	< 0.5	4	23	18	1.82	< 10	< 1	0.06	10	0.51	195	< 1
T28636	201	202	< 0.2	1.22	2	180	< 0.5	< 2	0.11	< 0.5	3	19	12	1.50	< 10	< 1	0.03	10	0.39	115	< 1
T28637	201	202	< 0.2	1.40	< 2	180	< 0.5	< 2	0.14	< 0.5	5	21	13	1.88	< 10	< 1	0.03	10	0.48	200	< 1
T28638	201	202	< 0.2	1.35	6	190	< 0.5	< 2	0.14	< 0.5	5	22	14	1.87	< 10	< 1	0.03	10	0.48	175	< 1
T28639	201	202	< 0.2	0.91	< 2	250	< 0.5	< 2	0.06	< 0.5	2	16	8	0.95	< 10	< 1	0.04	< 10	0.23	55	< 1
T28640	201	202	< 0.2	1.47	8	170	< 0.5	< 2	0.08	< 0.5	7	23	12	2.49	< 10	< 1	0.04	< 10	0.48	470	< 1
T28641	201	202	< 0.2	3.41	< 2	940	0.5	< 2	0.62	0.5	18	56	31	4.80	< 10	< 1	0.08	30	1.68	440	< 1
T28642	201	202	< 0.2	1.05	< 2	180	< 0.5	< 2	0.11	< 0.5	2	17	13	1.19	< 10	< 1	0.05	10	0.27	95	< 1
T28643	201	202	< 0.2	1.14	< 2	310	< 0.5	< 2	0.09	1.0	3	18	26	1.35	< 10	< 1	0.06	10	0.16	85	< 1
T28644	201	202	< 0.2	1.68	6	190	< 0.5	< 2	0.17	< 0.5	7	28	22	2.40	< 10	< 1	0.07	10	0.47	535	< 1
T28645	201	202	< 0.2	1.49	2	230	< 0.5	< 2	0.15	< 0.5	4	24	23	1.85	< 10	< 1	0.07	10	0.47	195	< 1
T28646	201	202	< 0.2	1.09	2	150	< 0.5	< 2	0.11	< 0.5	4	21	22	2.01	< 10	< 1	0.06	20	0.30	165	< 1
T28647	201	202	0.8	1.50	8	140	< 0.5	< 2	0.11	< 0.5	5	29	20	2.19	< 10	< 1	0.05	30	0.41	230	< 1
T28648	201	202	0.2	1.97	12	200	< 0.5	< 2	0.16	< 0.5	6	30	21	2.46	< 10	< 1	0.06	30	0.49	155	1
T28649	201	202	< 0.2	1.45	6	130	< 0.5	< 2	0.11	< 0.5	7	24	13	2.49	< 10	< 1	0.04	10	0.38	280	< 1

CERTIFICATION:

David Bisher



Chemex Labs Ltd.

Analytical Chemists * Geochemists * Registered Assayers

212 Brooksbank Ave., North Vancouver
British Columbia, Canada V7J 2C1
PHONE: 604-984-0221 FAX: 604-984-0218

To: NORDAC RESOURCES LTD.
C/O ARCHER, CATHRO
BOX 4127, 2054 SECOND AVE.
WHITEHORSE, YT
Y1A 3S9

Project: NORDAC-TOP
Comments:

Page Number: 4-B
Total Pages: 7
Certificate Date: 31-AUG-97
Invoice No.: I9739412
P.O. Number:
Account: MTT

CERTIFICATE OF ANALYSIS

A9739412

SAMPLE	PREP CODE		Na %	Ni ppm	P ppm	Pb ppm	Sb ppm	Sc ppm	Sr ppm	Ti %	Tl ppm	U ppm	V ppm	W ppm	Zn ppm
	T28610	201	202	< 0.01	15	350	38	< 2	3	18	0.04	< 10	< 10	29	< 10
T28611	201	202	< 0.01	15	420	36	< 2	3	24	0.03	< 10	< 10	28	< 10	78
T28612	201	202	< 0.01	14	390	30	< 2	2	21	0.03	< 10	< 10	29	< 10	74
T28613	201	202	< 0.01	14	340	30	< 2	3	18	0.05	< 10	< 10	30	< 10	80
T28614	201	202	< 0.01	15	270	30	< 2	3	17	0.05	< 10	< 10	38	< 10	72
T28615	201	202	< 0.01	16	350	30	< 2	4	22	0.05	< 10	< 10	39	< 10	80
T28616	201	202	< 0.01	14	520	26	< 2	3	20	0.03	< 10	< 10	37	< 10	72
T28617	201	202	< 0.01	19	620	44	< 2	3	21	0.04	< 10	< 10	48	< 10	96
T28618	201	202	< 0.01	10	360	70	< 2	1	16	0.03	< 10	< 10	32	< 10	114
T28619	201	202	< 0.01	8	500	100	< 2	2	16	0.03	< 10	< 10	23	< 10	94
T28620	201	202	< 0.01	10	280	58	< 2	1	14	0.03	< 10	< 10	32	< 10	68
T28621	201	202	< 0.01	13	380	66	< 2	2	17	0.03	< 10	< 10	32	< 10	70
T28622	201	202	< 0.01	13	450	52	< 2	3	14	0.04	< 10	< 10	42	< 10	56
T28623	201	202	< 0.01	10	320	80	< 2	2	13	0.04	< 10	< 10	25	< 10	64
T28624	201	202	< 0.01	8	280	54	< 2	1	14	0.03	< 10	< 10	30	< 10	60
T28625	201	202	< 0.01	12	330	50	< 2	1	13	0.02	< 10	< 10	27	< 10	68
T28626	201	202	< 0.01	10	330	44	< 2	1	12	0.02	< 10	< 10	23	< 10	38
T28627	201	202	< 0.01	7	220	56	< 2	1	9	0.02	< 10	< 10	25	< 10	96
T28628	201	202	< 0.01	6	250	40	< 2	1	11	0.04	< 10	< 10	32	< 10	38
T28629	201	202	< 0.01	19	290	30	< 2	2	13	0.05	< 10	< 10	39	< 10	66
T28630	201	202	< 0.01	7	250	30	< 2	1	13	0.04	< 10	< 10	36	< 10	42
T28631	201	202	< 0.01	17	410	94	< 2	3	20	0.06	< 10	< 10	39	< 10	166
T28632	201	202	< 0.01	7	360	568	< 2	1	10	0.02	< 10	< 10	36	< 10	108
T28633	201	202	< 0.01	17	510	202	< 2	3	14	0.05	< 10	< 10	49	< 10	160
T28634	201	202	< 0.01	16	330	170	< 2	3	15	0.05	< 10	< 10	42	< 10	192
T28635	201	202	< 0.01	11	330	132	< 2	2	15	0.05	< 10	< 10	38	< 10	130
T28636	201	202	< 0.01	8	240	102	< 2	1	9	0.03	< 10	< 10	28	< 10	66
T28637	201	202	< 0.01	12	360	32	< 2	1	11	0.03	< 10	< 10	29	< 10	68
T28638	201	202	< 0.01	14	360	26	< 2	2	11	0.04	< 10	< 10	31	< 10	64
T28639	201	202	0.01	6	250	32	< 2	< 1	9	0.02	< 10	< 10	20	< 10	30
T28640	201	202	< 0.01	12	360	50	< 2	1	9	0.04	< 10	< 10	42	< 10	82
T28641	201	202	< 0.01	44	1200	22	< 2	8	36	0.11	< 10	< 10	76	< 10	200
T28642	201	202	< 0.01	8	470	104	< 2	< 1	13	0.02	< 10	< 10	27	< 10	62
T28643	201	202	0.01	8	560	210	< 2	< 1	14	0.01	< 10	< 10	36	< 10	64
T28644	201	202	< 0.01	17	390	172	< 2	3	15	0.06	< 10	< 10	44	< 10	142
T28645	201	202	< 0.01	13	380	136	< 2	1	17	0.04	< 10	< 10	36	< 10	138
T28646	201	202	< 0.01	11	340	138	< 2	1	15	0.04	< 10	< 10	30	< 10	80
T28647	201	202	< 0.01	16	380	100	< 2	2	11	0.03	< 10	< 10	32	< 10	106
T28648	201	202	< 0.01	16	480	78	< 2	4	15	0.05	< 10	< 10	44	< 10	74
T28649	201	202	< 0.01	13	340	48	< 2	2	12	0.05	< 10	< 10	41	< 10	58

CERTIFICATION:

Paul B...



Chemex Labs Ltd.

Analytical Chemists * Geochemists * Registered Assayers

212 Brooksbank Ave., North Vancouver
British Columbia, Canada V7J 2C1
PHONE: 604-984-0221 FAX: 604-984-0218

To: NORDAC RESOURCES LTD.
C/O ARCHER, CATHRO
BOX 4127, 2054 SECOND AVE.
WHITEHORSE, YT
Y1A 3S9

Project: NORDAC-TOP
Comments:

Page Number: 5-A
Total Pages: 7
Certificate Date: 31-AUG-97
Invoice No.: I9739412
P.O. Number:
Account: MTT

CERTIFICATE OF ANALYSIS A9739412

SAMPLE	PREP CODE		Ag	Al	As	Ba	Be	Bi	Ca	Cd	Co	Cr	Cu	Fe	Ga	Hg	K	La	Mg	Mn	Mo
			ppm	%	ppm	ppm	ppm	ppm	%	ppm	ppm	ppm	ppm	%	ppm	ppm	%	ppm	%	ppm	ppm
T28650	201	202	< 0.2	1.66	< 2	210	< 0.5	< 2	0.22	< 0.5	7	29	15	2.29	< 10	< 1	0.08	30	0.48	265	< 1
T28651	201	202	0.2	1.60	2	150	< 0.5	< 2	0.14	< 0.5	3	19	14	1.88	< 10	< 1	0.08	30	0.37	125	< 1
T28652	201	202	< 0.2	0.96	2	200	< 0.5	< 2	0.10	< 0.5	1	11	10	1.14	< 10	< 1	0.08	30	0.19	100	< 1
T28653	201	202	0.2	1.20	4	140	< 0.5	< 2	0.16	0.5	5	25	15	1.75	< 10	< 1	0.06	30	0.41	245	< 1
T28654	201	202	0.4	1.25	< 2	150	< 0.5	< 2	0.10	< 0.5	2	21	10	1.33	< 10	< 1	0.08	20	0.37	80	< 1
T28655	201	202	< 0.2	1.06	< 2	80	< 0.5	< 2	0.07	< 0.5	3	16	6	1.99	< 10	< 1	0.06	10	0.24	195	< 1
T28656	201	202	< 0.2	1.33	< 2	70	< 0.5	< 2	0.10	< 0.5	2	14	11	1.39	< 10	< 1	0.08	30	0.41	135	< 1
T28657	201	202	< 0.2	1.59	6	130	< 0.5	< 2	0.11	< 0.5	5	21	12	1.87	< 10	< 1	0.08	30	0.35	205	< 1
T28658	201	202	< 0.2	1.53	6	130	< 0.5	< 2	0.13	< 0.5	5	27	12	1.90	< 10	< 1	0.09	30	0.37	185	< 1
T28659	201	202	< 0.2	1.97	12	130	0.5	< 2	0.16	< 0.5	8	31	21	2.41	< 10	< 1	0.08	40	0.46	415	< 1
T28660	201	202	< 0.2	1.66	6	100	< 0.5	< 2	0.09	< 0.5	3	17	7	2.01	< 10	< 1	0.06	20	0.22	130	< 1
T28661	201	202	< 0.2	1.52	4	120	< 0.5	< 2	0.15	< 0.5	4	21	8	1.99	< 10	< 1	0.05	10	0.32	180	< 1
T28662	201	202	0.2	1.47	6	130	< 0.5	< 2	0.14	< 0.5	4	21	13	1.72	< 10	< 1	0.08	30	0.38	210	< 1
T28663	201	202	< 0.2	0.94	4	80	< 0.5	< 2	0.14	< 0.5	4	18	15	1.57	< 10	< 1	0.07	40	0.29	180	< 1
T28664	201	202	< 0.2	1.40	2	120	< 0.5	< 2	0.11	< 0.5	4	19	10	2.26	< 10	< 1	0.07	20	0.23	375	< 1
T28665	201	202	< 0.2	0.85	2	70	< 0.5	< 2	0.06	< 0.5	1	10	5	1.07	< 10	< 1	0.06	20	0.10	80	< 1
T28666	201	202	< 0.2	1.53	8	150	< 0.5	< 2	0.15	< 0.5	5	24	14	2.23	< 10	< 1	0.06	10	0.41	190	< 1
T28667	201	202	0.2	1.66	8	210	< 0.5	< 2	0.13	< 0.5	6	29	16	2.60	< 10	< 1	0.05	20	0.44	225	< 1
T28668	201	202	< 0.2	1.14	6	130	< 0.5	< 2	0.10	< 0.5	4	20	15	1.81	< 10	< 1	0.04	10	0.33	205	< 1
T28669	201	202	0.2	0.91	4	140	< 0.5	< 2	0.05	< 0.5	2	15	16	1.26	< 10	< 1	0.04	10	0.18	75	1
T28670	201	202	< 0.2	1.42	8	100	< 0.5	< 2	0.13	< 0.5	4	23	18	1.81	< 10	< 1	0.05	20	0.35	125	< 1
T28671	201	202	< 0.2	1.24	2	80	< 0.5	< 2	0.12	< 0.5	3	22	12	1.78	< 10	< 1	0.05	20	0.32	140	< 1
T28672	201	202	< 0.2	1.35	6	200	< 0.5	< 2	0.14	< 0.5	3	22	20	1.58	< 10	< 1	0.06	20	0.35	120	1
T28673	201	202	< 0.2	1.27	2	190	< 0.5	< 2	0.15	< 0.5	4	22	15	1.77	< 10	< 1	0.05	10	0.38	180	< 1
T28674	201	202	< 0.2	1.26	6	140	< 0.5	< 2	0.15	< 0.5	4	22	15	1.92	< 10	< 1	0.05	10	0.40	180	< 1
T28675	201	202	< 0.2	1.19	2	120	< 0.5	< 2	0.13	< 0.5	2	18	12	1.24	< 10	< 1	0.04	10	0.37	100	< 1
T28676	201	202	< 0.2	0.93	2	100	< 0.5	< 2	0.11	< 0.5	3	15	15	1.33	< 10	< 1	0.05	30	0.27	160	< 1
T28677	201	202	< 0.2	1.44	10	110	< 0.5	< 2	0.11	< 0.5	3	22	13	2.45	< 10	< 1	0.04	10	0.29	110	< 1
T28678	201	202	< 0.2	1.26	2	110	< 0.5	< 2	0.09	< 0.5	2	20	12	1.65	< 10	< 1	0.04	10	0.25	70	< 1
T28679	201	202	< 0.2	1.14	4	90	< 0.5	< 2	0.11	< 0.5	3	20	13	1.58	< 10	< 1	0.04	10	0.31	105	< 1
T28680	201	202	< 0.2	1.05	2	100	< 0.5	< 2	0.10	< 0.5	3	19	11	1.52	< 10	< 1	0.04	10	0.31	115	< 1
T28681	201	202	< 0.2	1.34	4	80	< 0.5	< 2	0.08	< 0.5	3	22	7	2.37	< 10	< 1	0.03	10	0.30	195	< 1
T28682	201	202	< 0.2	0.81	< 2	90	< 0.5	< 2	0.06	< 0.5	2	14	13	1.22	< 10	< 1	0.04	10	0.17	75	< 1
T28683	201	202	< 0.2	1.23	< 2	110	< 0.5	< 2	0.13	< 0.5	3	20	8	1.57	< 10	< 1	0.05	10	0.36	120	< 1
T28684	201	202	< 0.2	1.21	10	90	< 0.5	< 2	0.18	< 0.5	5	21	14	1.83	< 10	< 1	0.06	20	0.35	260	< 1
T28685	201	202	< 0.2	1.74	6	110	< 0.5	< 2	0.10	< 0.5	4	25	16	2.48	< 10	< 1	0.07	20	0.29	180	1
T28686	201	202	< 0.2	1.18	10	110	0.5	< 2	0.11	< 0.5	4	18	24	1.59	< 10	< 1	0.10	40	0.25	250	< 1
T28687	201	202	0.2	1.62	8	160	< 0.5	< 2	0.15	< 0.5	4	23	18	2.04	< 10	< 1	0.09	30	0.47	180	< 1
T28688	201	202	0.2	1.68	6	140	< 0.5	< 2	0.16	< 0.5	4	25	15	2.12	< 10	< 1	0.09	30	0.44	175	< 1
T28689	201	202	0.2	1.64	2	130	< 0.5	< 2	0.18	< 0.5	5	26	12	2.28	< 10	< 1	0.08	30	0.51	195	< 1

CERTIFICATION: _____



Chemex Labs Ltd.

Analytical Chemists * Geochemists * Registered Assayers
 212 Brooksbank Ave., North Vancouver
 British Columbia, Canada V7J 2C1
 PHONE: 604-984-0221 FAX: 604-984-0218

To: NORDAC RESOURCES LTD.
 C/O ARCHER, CATHRO
 BOX 4127, 2054 SECOND AVE.
 WHITEHORSE, YT
 Y1A 3S9

Page Number : 5-B
 Total Pages : 7
 Certificate Date: 31-AUG-97
 Invoice No. : 19739412
 P.O. Number :
 Account : MTT

Project : NORDAC-TOP
 Comments:

CERTIFICATE OF ANALYSIS A9739412

SAMPLE	PREP CODE		Na	Ni	P	Pb	Sb	Sc	Sr	Ti	Tl	U	V	W	Zn
			%	ppm	ppm	ppm	ppm	ppm	ppm	%	ppm	ppm	ppm	ppm	ppm
T28650	201	202	< 0.01	16	470	62	< 2	3	21	0.05	< 10	< 10	40	< 10	74
T28651	201	202	< 0.01	9	410	114	< 2	1	15	0.03	< 10	< 10	32	< 10	118
T28652	201	202	< 0.01	4	200	56	< 2	1	14	0.01	< 10	< 10	24	< 10	76
T28653	201	202	< 0.01	14	410	82	< 2	2	14	0.04	< 10	< 10	28	< 10	106
T28654	201	202	< 0.01	10	360	90	< 2	1	12	0.02	< 10	< 10	21	< 10	96
T28655	201	202	< 0.01	7	380	24	< 2	1	9	0.04	< 10	< 10	42	< 10	40
T28656	201	202	< 0.01	7	270	82	< 2	1	12	0.02	< 10	< 10	19	< 10	82
T28657	201	202	< 0.01	11	260	38	< 2	3	13	0.04	< 10	< 10	32	< 10	54
T28658	201	202	< 0.01	13	350	50	< 2	3	14	0.04	< 10	< 10	34	< 10	72
T28659	201	202	< 0.01	23	380	90	< 2	3	17	0.06	< 10	< 10	38	< 10	108
T28660	201	202	< 0.01	7	220	34	< 2	1	13	0.05	< 10	< 10	38	< 10	42
T28661	201	202	< 0.01	10	240	22	< 2	2	15	0.05	< 10	< 10	39	< 10	42
T28662	201	202	< 0.01	10	330	118	< 2	2	15	0.04	< 10	< 10	29	< 10	98
T28663	201	202	< 0.01	11	340	94	< 2	1	13	0.04	< 10	< 10	24	< 10	102
T28664	201	202	< 0.01	8	300	64	< 2	1	14	0.04	< 10	< 10	43	< 10	68
T28665	201	202	< 0.01	4	180	20	< 2	1	10	0.03	< 10	< 10	27	< 10	32
T28666	201	202	< 0.01	13	340	68	< 2	2	14	0.04	< 10	< 10	39	< 10	86
T28667	201	202	< 0.01	14	470	102	< 2	2	13	0.03	< 10	< 10	42	< 10	76
T28668	201	202	< 0.01	10	320	90	< 2	1	10	0.03	< 10	< 10	34	< 10	66
T28669	201	202	0.01	8	480	96	< 2	< 1	8	0.01	< 10	< 10	25	< 10	48
T28670	201	202	< 0.01	12	340	130	< 2	1	13	0.04	< 10	< 10	35	< 10	82
T28671	201	202	< 0.01	10	230	80	< 2	1	13	0.05	< 10	< 10	37	< 10	64
T28672	201	202	< 0.01	10	370	108	< 2	1	19	0.04	< 10	< 10	36	< 10	80
T28673	201	202	< 0.01	12	320	104	< 2	2	15	0.05	< 10	< 10	36	< 10	84
T28674	201	202	< 0.01	13	330	92	< 2	1	13	0.05	< 10	< 10	38	< 10	82
T28675	201	202	< 0.01	7	230	86	< 2	1	14	0.05	< 10	< 10	27	< 10	70
T28676	201	202	< 0.01	8	320	118	< 2	1	12	0.04	< 10	< 10	25	< 10	134
T28677	201	202	< 0.01	9	340	102	< 2	1	13	0.04	< 10	< 10	45	< 10	60
T28678	201	202	< 0.01	8	330	50	< 2	< 1	11	0.02	< 10	< 10	38	< 10	34
T28679	201	202	< 0.01	10	300	42	< 2	1	12	0.03	< 10	< 10	34	< 10	42
T28680	201	202	< 0.01	11	250	48	< 2	1	10	0.03	< 10	< 10	30	< 10	50
T28681	201	202	< 0.01	8	260	36	< 2	1	8	0.04	< 10	< 10	49	< 10	50
T28682	201	202	< 0.01	7	390	66	< 2	< 1	9	0.01	< 10	< 10	25	< 10	32
T28683	201	202	< 0.01	10	200	44	< 2	1	13	0.05	< 10	< 10	38	< 10	54
T28684	201	202	< 0.01	12	340	74	< 2	2	16	0.06	< 10	< 10	35	< 10	74
T28685	201	202	< 0.01	10	350	100	< 2	2	13	0.05	< 10	< 10	50	< 10	72
T28686	201	202	< 0.01	10	320	212	< 2	1	14	0.03	< 10	< 10	22	< 10	126
T28687	201	202	< 0.01	13	320	106	< 2	3	17	0.04	< 10	< 10	34	< 10	116
T28688	201	202	< 0.01	13	420	70	< 2	3	18	0.05	< 10	< 10	35	< 10	78
T28689	201	202	< 0.01	14	430	48	< 2	3	18	0.06	< 10	< 10	39	< 10	78

CERTIFICATION:

Hart Buchler



Chemex Labs Ltd.

Analytical Chemists * Geochemists * Registered Assayers

212 Brooksbank Ave., North Vancouver
British Columbia, Canada V7J 2C1
PHONE: 604-984-0221 FAX: 604-984-0218

To: NORDAC RESOURCES LTD.
C/O ARCHER, CATHRO
BOX 4127, 2054 SECOND AVE.
WHITEHORSE, YT
Y1A 3S9

Project : NORDAC-TOP
Comments:

Page Number : 6-A
Total Pages : 7
Certificate Date: 31-AUG-97
Invoice No. : 19739412
P.O. Number :
Account : MTT

CERTIFICATE OF ANALYSIS A9739412

SAMPLE	PREP CODE		Ag	Al	As	Ba	Be	Bi	Ca	Cd	Co	Cr	Cu	Fe	Ga	Hg	K	La	Mg	Mn	Mo
			ppm	%	ppm	ppm	ppm	ppm	%	ppm	ppm	ppm	ppm	%	ppm	ppm	%	ppm	%	ppm	ppm
T28690	201	202	0.2	1.44	4	110	< 0.5	< 2	0.24	< 0.5	6	27	19	2.13	< 10	< 1	0.08	30	0.53	255	< 1
T28691	201	202	< 0.2	1.24	4	130	< 0.5	< 2	0.20	< 0.5	5	24	13	1.77	< 10	< 1	0.08	30	0.45	220	< 1
T28692	201	202	0.2	1.49	< 2	110	< 0.5	< 2	0.16	< 0.5	5	21	16	1.83	< 10	< 1	0.10	30	0.51	245	< 1
T28693	201	202	< 0.2	1.19	4	200	< 0.5	< 2	0.33	< 0.5	6	28	23	2.31	< 10	< 1	0.07	20	0.50	270	< 1
T28694	201	202	0.8	1.19	4	160	0.5	< 2	0.09	< 0.5	2	19	43	1.54	< 10	< 1	0.05	20	0.24	110	1
T28695	201	202	0.6	1.03	< 2	130	< 0.5	< 2	0.07	< 0.5	3	20	13	1.33	< 10	< 1	0.04	10	0.25	90	< 1
T28696	201	202	0.4	1.46	2	140	< 0.5	< 2	0.08	< 0.5	4	25	13	2.00	< 10	< 1	0.05	10	0.39	115	< 1
T28697	201	202	< 0.2	1.51	8	100	< 0.5	< 2	0.14	< 0.5	4	25	12	2.03	< 10	< 1	0.06	10	0.47	135	< 1
T28698	201	202	< 0.2	1.52	8	160	< 0.5	< 2	0.13	< 0.5	4	27	12	2.00	< 10	< 1	0.07	20	0.41	155	< 1
T28699	201	202	0.2	1.76	2	170	< 0.5	< 2	0.13	< 0.5	4	27	12	2.00	< 10	< 1	0.09	10	0.46	155	< 1
T28700	201	202	< 0.2	1.63	8	160	< 0.5	< 2	0.23	< 0.5	7	31	14	2.46	< 10	< 1	0.09	20	0.51	320	< 1
T28701	201	202	< 0.2	1.26	6	150	< 0.5	< 2	0.23	< 0.5	6	32	16	2.18	< 10	< 1	0.09	20	0.51	260	< 1
T28702	201	202	< 0.2	1.12	2	90	< 0.5	< 2	0.22	< 0.5	6	26	14	2.24	< 10	< 1	0.07	10	0.44	230	< 1
T28703	201	202	0.2	1.48	4	220	< 0.5	< 2	0.16	< 0.5	4	26	19	1.98	< 10	< 1	0.08	20	0.36	130	< 1
T28704	201	202	< 0.2	1.23	6	80	< 0.5	< 2	0.13	< 0.5	4	33	14	1.86	< 10	< 1	0.06	10	0.37	160	< 1
T28705	201	202	< 0.2	1.48	2	100	< 0.5	< 2	0.15	< 0.5	3	26	13	1.97	< 10	< 1	0.06	20	0.33	130	< 1
T28706	201	202	< 0.2	1.39	< 2	110	< 0.5	< 2	0.13	< 0.5	3	21	11	1.72	< 10	< 1	0.06	10	0.30	110	< 1
T28707	201	202	< 0.2	1.61	2	120	< 0.5	< 2	0.12	< 0.5	4	27	19	2.46	< 10	< 1	0.07	10	0.37	180	< 1
T28708	201	202	< 0.2	1.54	2	100	< 0.5	< 2	0.12	< 0.5	5	25	16	2.16	< 10	< 1	0.05	10	0.35	220	< 1
T28709	201	202	< 0.2	1.37	4	100	< 0.5	< 2	0.09	< 0.5	4	21	12	2.17	< 10	< 1	0.04	10	0.32	160	< 1
T28710	201	202	0.2	1.28	6	100	< 0.5	< 2	0.10	< 0.5	3	22	12	1.90	< 10	< 1	0.05	10	0.30	105	< 1
T28711	201	202	2.0	1.86	< 2	400	0.5	< 2	0.21	3.5	3	18	48	1.83	< 10	< 1	0.05	10	0.21	230	< 1
T28712	201	202	0.2	2.00	8	120	< 0.5	< 2	0.12	< 0.5	3	24	14	2.08	< 10	< 1	0.07	20	0.34	115	< 1
T28713	201	202	0.2	1.78	< 2	120	< 0.5	< 2	0.11	< 0.5	4	25	14	2.53	< 10	< 1	0.06	10	0.30	150	< 1
T28714	201	202	< 0.2	1.30	4	80	< 0.5	< 2	0.10	< 0.5	3	20	12	2.15	< 10	< 1	0.06	10	0.27	140	< 1
T28715	201	202	< 0.2	1.20	< 2	110	< 0.5	< 2	0.10	< 0.5	2	19	13	1.61	< 10	< 1	0.05	10	0.25	80	< 1
T28716	201	202	< 0.2	1.34	6	110	< 0.5	< 2	0.09	< 0.5	2	21	23	1.51	< 10	< 1	0.05	10	0.24	70	< 1
T28717	201	202	< 0.2	1.66	8	150	< 0.5	< 2	0.12	< 0.5	3	30	18	2.12	< 10	< 1	0.06	10	0.32	110	< 1
T28718	201	202	< 0.2	1.32	4	100	< 0.5	< 2	0.12	< 0.5	3	24	11	1.56	< 10	< 1	0.06	10	0.29	85	< 1
T28719	201	202	0.2	1.05	< 2	130	< 0.5	< 2	0.09	< 0.5	1	18	13	1.23	< 10	< 1	0.06	10	0.21	70	< 1
T28720	201	202	< 0.2	1.12	8	90	< 0.5	< 2	0.13	< 0.5	4	20	16	1.66	< 10	< 1	0.04	10	0.37	135	< 1
T28721	201	202	< 0.2	0.61	< 2	110	< 0.5	< 2	0.05	< 0.5	1	10	7	0.60	< 10	< 1	0.04	10	0.07	35	< 1
T28722	201	202	< 0.2	0.70	2	100	< 0.5	< 2	0.06	< 0.5	1	15	7	1.03	< 10	< 1	0.03	< 10	0.12	45	< 1
T28723	201	202	< 0.2	1.09	< 2	80	< 0.5	< 2	0.08	< 0.5	3	19	8	1.18	< 10	< 1	0.04	10	0.31	75	< 1
T28724	201	202	< 0.2	1.29	< 2	120	< 0.5	< 2	0.13	< 0.5	4	23	11	1.87	< 10	< 1	0.05	10	0.37	160	< 1
T28725	201	202	< 0.2	1.44	6	130	< 0.5	< 2	0.17	< 0.5	5	26	13	2.07	< 10	< 1	0.07	20	0.44	285	< 1
T28726	201	202	< 0.2	1.11	2	110	< 0.5	< 2	0.10	< 0.5	3	18	8	1.34	< 10	< 1	0.06	10	0.24	80	< 1
T28727	201	202	< 0.2	1.34	6	140	< 0.5	< 2	0.18	< 0.5	7	27	13	2.08	< 10	< 1	0.07	20	0.47	420	< 1
T28728	201	202	0.2	2.07	8	170	< 0.5	< 2	0.15	< 0.5	6	41	17	2.78	< 10	< 1	0.09	10	0.53	235	< 1
T28729	201	202	0.2	1.74	4	200	< 0.5	< 2	0.20	< 0.5	6	39	17	2.45	< 10	< 1	0.09	10	0.52	205	< 1

CERTIFICATION:

Hank Bickler



Chemex Labs Ltd.

Analytical Chemists * Geochemists * Registered Assayers
 212 Brooksbank Ave., North Vancouver
 British Columbia, Canada V7J 2C1
 PHONE: 604-984-0221 FAX: 604-984-0218

To: NORDAC RESOURCES LTD.
 C/O ARCHER, CATHRO
 BOX 4127, 2054 SECOND AVE.
 WHITEHORSE, YT
 Y1A 3S9

Page Number : 6-B
 Total Pages : 7
 Certificate Date: 31-AUG-97
 Invoice No. : 19739412
 P.O. Number :
 Account : MTT

Project : NORDAC-TOP
 Comments:

CERTIFICATE OF ANALYSIS A9739412

SAMPLE	PREP CODE	Na %	Ni ppm	P ppm	Pb ppm	Sb ppm	Sc ppm	Sr ppm	Ti %	Tl ppm	U ppm	V ppm	W ppm	Zn ppm
T28690	201 202	< 0.01	18	530	80	< 2	3	21	0.06	< 10	< 10	37	< 10	100
T28691	201 202	< 0.01	16	400	36	< 2	3	18	0.05	< 10	< 10	30	< 10	70
T28692	201 202	< 0.01	11	360	176	< 2	2	16	0.04	< 10	< 10	29	< 10	124
T28693	201 202	< 0.01	22	720	28	< 2	4	25	0.06	< 10	< 10	43	< 10	76
T28694	201 202	< 0.01	9	820	442	< 2	1	12	0.01	< 10	< 10	21	< 10	88
T28695	201 202	< 0.01	7	740	112	< 2	< 1	9	0.01	< 10	< 10	24	< 10	50
T28696	201 202	< 0.01	11	630	72	< 2	1	9	0.02	< 10	< 10	33	< 10	64
T28697	201 202	< 0.01	14	400	56	< 2	3	12	0.04	< 10	< 10	34	< 10	76
T28698	201 202	< 0.01	13	400	46	< 2	2	13	0.03	< 10	< 10	34	< 10	66
T28699	201 202	< 0.01	12	400	86	< 2	2	14	0.03	< 10	< 10	36	< 10	86
T28700	201 202	< 0.01	19	450	38	< 2	3	20	0.06	< 10	< 10	44	< 10	80
T28701	201 202	< 0.01	20	430	56	< 2	3	19	0.06	< 10	< 10	41	< 10	100
T28702	201 202	< 0.01	17	460	34	< 2	2	17	0.07	< 10	< 10	43	< 10	66
T28703	201 202	< 0.01	13	520	90	< 2	1	20	0.04	< 10	< 10	37	< 10	80
T28704	201 202	< 0.01	17	280	72	< 2	2	13	0.04	< 10	< 10	35	< 10	92
T28705	201 202	< 0.01	10	300	62	< 2	1	16	0.05	< 10	< 10	42	< 10	52
T28706	201 202	< 0.01	9	410	102	< 2	1	15	0.04	< 10	< 10	39	< 10	48
T28707	201 202	< 0.01	12	360	102	< 2	1	13	0.04	< 10	< 10	50	< 10	68
T28708	201 202	< 0.01	12	290	86	< 2	2	13	0.05	< 10	< 10	43	< 10	74
T28709	201 202	< 0.01	11	250	52	< 2	2	10	0.04	< 10	< 10	45	< 10	78
T28710	201 202	< 0.01	9	380	62	< 2	1	11	0.03	< 10	< 10	41	< 10	44
T28711	201 202	< 0.01	11	430	160	< 2	1	20	0.03	< 10	< 10	30	< 10	196
T28712	201 202	< 0.01	11	290	92	< 2	3	14	0.04	< 10	< 10	39	< 10	74
T28713	201 202	< 0.01	10	300	110	< 2	3	14	0.06	< 10	< 10	60	< 10	64
T28714	201 202	< 0.01	9	300	48	< 2	1	13	0.05	< 10	< 10	49	< 10	64
T28715	201 202	< 0.01	7	430	106	< 2	< 1	12	0.02	< 10	< 10	33	< 10	44
T28716	201 202	< 0.01	8	410	88	< 2	< 1	12	0.02	< 10	< 10	32	< 10	38
T28717	201 202	< 0.01	13	480	64	< 2	< 1	14	0.03	< 10	< 10	40	< 10	52
T28718	201 202	< 0.01	10	390	40	< 2	1	13	0.03	< 10	< 10	36	< 10	40
T28719	201 202	< 0.01	7	470	78	< 2	< 1	12	0.02	< 10	< 10	25	< 10	40
T28720	201 202	< 0.01	12	260	74	< 2	1	12	0.04	< 10	< 10	30	< 10	72
T28721	201 202	< 0.01	3	470	54	< 2	< 1	9	0.01	< 10	< 10	18	< 10	18
T28722	201 202	0.01	5	550	26	< 2	< 1	9	0.01	< 10	< 10	22	< 10	18
T28723	201 202	< 0.01	9	270	34	< 2	1	9	0.03	< 10	< 10	26	< 10	46
T28724	201 202	< 0.01	12	340	30	< 2	1	13	0.04	< 10	< 10	36	< 10	52
T28725	201 202	< 0.01	14	380	44	< 2	3	15	0.05	< 10	< 10	37	< 10	70
T28726	201 202	< 0.01	8	380	20	< 2	1	13	0.04	< 10	< 10	30	< 10	34
T28727	201 202	< 0.01	17	420	34	< 2	2	16	0.05	< 10	< 10	39	< 10	72
T28728	201 202	< 0.01	21	510	46	< 2	3	15	0.05	< 10	< 10	50	< 10	84
T28729	201 202	< 0.01	21	510	34	< 2	3	19	0.05	< 10	< 10	47	< 10	76

CERTIFICATION: *[Signature]*



Chemex Labs Ltd.

Analytical Chemists * Geochemists * Registered Assayers
 212 Brooksbank Ave., North Vancouver
 British Columbia, Canada V7J 2C1
 PHONE: 604-984-0221 FAX: 604-984-0218

To: NORDAC RESOURCES LTD.
 C/O ARCHER, CATHRO
 BOX 4127, 2054 SECOND AVE.
 WHITEHORSE, YT
 Y1A 3S9

Project: NORDAC-TOP
 Comments:

Page Number: 7-A
 Total Pages: 7
 Certificate Date: 31-AUG-97
 Invoice No.: 19739412
 P.O. Number:
 Account: MTT

CERTIFICATE OF ANALYSIS A9739412

SAMPLE	PREP CODE		Ag	Al	As	Ba	Be	Bi	Ca	Cd	Co	Cr	Cu	Fe	Ga	Hg	K	La	Mg	Mn	Mo
			ppm	%	ppm	ppm	ppm	ppm	%	ppm	ppm	ppm	ppm	%	ppm	ppm	%	ppm	%	ppm	ppm
T28730	201	202	< 0.2	0.84	< 2	40	< 0.5	< 2	0.07	< 0.5	3	15	7	1.26	< 10	< 1	0.03	< 10	0.15	55	< 1
T28731	201	202	< 0.2	1.58	6	130	< 0.5	< 2	0.15	< 0.5	5	30	17	2.39	< 10	< 1	0.06	10	0.44	215	< 1
T28732	201	202	< 0.2	1.24	4	100	< 0.5	< 2	0.09	< 0.5	3	23	12	1.70	< 10	< 1	0.04	10	0.30	95	< 1
T28733	201	202	< 0.2	1.30	4	120	< 0.5	< 2	0.13	< 0.5	4	24	11	1.93	< 10	< 1	0.05	10	0.39	170	< 1
T28734	201	202	< 0.2	0.90	< 2	80	< 0.5	< 2	0.09	< 0.5	3	17	7	1.35	< 10	< 1	0.05	10	0.27	110	< 1
T28735	201	202	< 0.2	1.12	2	90	< 0.5	< 2	0.09	< 0.5	3	21	9	1.59	< 10	< 1	0.05	10	0.32	100	< 1
T28736	201	202	< 0.2	0.72	2	70	< 0.5	< 2	0.06	< 0.5	1	12	6	0.93	< 10	< 1	0.04	10	0.09	35	< 1
T28737	201	202	0.2	1.32	< 2	180	< 0.5	< 2	0.19	< 0.5	3	20	14	1.46	< 10	< 1	0.07	30	0.40	120	< 1
T28738	201	202	< 0.2	1.65	8	110	< 0.5	< 2	0.13	< 0.5	4	25	13	1.96	< 10	< 1	0.06	20	0.39	125	< 1
T28739	201	202	< 0.2	1.49	2	110	< 0.5	< 2	0.14	< 0.5	4	25	13	2.23	< 10	1	0.06	10	0.33	185	< 1
T28740	201	202	< 0.2	1.12	4	80	< 0.5	< 2	0.09	< 0.5	2	19	12	1.28	< 10	< 1	0.05	10	0.22	70	< 1
T28741	201	202	< 0.2	1.43	6	90	< 0.5	< 2	0.11	< 0.5	2	23	12	1.70	< 10	< 1	0.05	10	0.30	80	< 1
T28742	201	202	< 0.2	1.65	8	100	< 0.5	< 2	0.14	< 0.5	6	25	19	2.43	< 10	< 1	0.05	10	0.41	265	< 1
T28743	201	202	< 0.2	1.53	6	110	< 0.5	< 2	0.11	< 0.5	4	25	23	2.20	< 10	1	0.05	10	0.34	180	< 1
T28744	201	202	< 0.2	2.16	12	170	0.5	< 2	0.16	< 0.5	9	35	24	2.87	< 10	< 1	0.07	20	0.54	370	< 1
T28745	201	202	< 0.2	1.75	6	120	< 0.5	< 2	0.14	< 0.5	4	27	11	2.46	< 10	< 1	0.06	10	0.41	155	< 1
T28746	201	202	< 0.2	1.29	2	50	< 0.5	< 2	0.08	< 0.5	2	18	8	1.91	< 10	< 1	0.04	10	0.22	90	< 1
T28747	201	202	< 0.2	1.40	4	120	< 0.5	< 2	0.13	< 0.5	4	23	13	1.97	< 10	< 1	0.05	20	0.37	195	< 1

CERTIFICATION:

Hart Bichler



Chemex Labs Ltd.

Analytical Chemists * Geochemists * Registered Assayers

212 Brooksbank Ave., North Vancouver
British Columbia, Canada V7J 2C1
PHONE: 604-984-0221 FAX: 604-984-0218

To: NORDAC RESOURCES LTD.
C/O ARCHER, CATHRO
BOX 4127, 2054 SECOND AVE.
WHITEHORSE, YT
Y1A 3S9

Project: NORDAC-TOP
Comments:

Page Number : 7-B
Total : 7
Certificate Date: 31-AUG-97
Invoice No. : I9739412
P.O. Number :
Account : MTT

CERTIFICATE OF ANALYSIS

A9739412

SAMPLE	PREP CODE		Na	Ni	P	Pb	Sb	Sc	Sr	Ti	Tl	U	V	W	Zn
			%	ppm	ppm	ppm	ppm	ppm	ppm	%	ppm	ppm	ppm	ppm	ppm
T28730	201	202	0.01	5	540	20	< 2	< 1	9	0.03	< 10	< 10	28	< 10	20
T28731	201	202	< 0.01	16	440	60	< 2	2	13	0.04	< 10	< 10	44	< 10	78
T28732	201	202	0.01	10	540	24	< 2	< 1	10	0.02	< 10	< 10	32	< 10	40
T28733	201	202	< 0.01	14	350	30	< 2	1	11	0.04	< 10	< 10	35	< 10	58
T28734	201	202	< 0.01	8	310	28	< 2	1	9	0.03	< 10	< 10	27	< 10	44
T28735	201	202	< 0.01	10	330	26	< 2	1	9	0.03	< 10	< 10	29	< 10	44
T28736	201	202	< 0.01	3	290	44	< 2	< 1	9	0.03	< 10	< 10	23	< 10	18
T28737	201	202	< 0.01	10	460	112	< 2	1	21	0.03	< 10	< 10	25	< 10	112
T28738	201	202	< 0.01	13	290	80	< 2	2	14	0.05	< 10	< 10	39	< 10	58
T28739	201	202	< 0.01	11	510	72	< 2	1	14	0.04	< 10	< 10	42	< 10	62
T28740	201	202	< 0.01	7	300	70	< 2	< 1	12	0.03	< 10	< 10	31	< 10	38
T28741	201	202	< 0.01	9	270	82	< 2	1	12	0.04	< 10	< 10	38	< 10	42
T28742	201	202	< 0.01	14	360	104	< 2	3	13	0.05	< 10	< 10	43	< 10	76
T28743	201	202	< 0.01	14	430	144	< 2	1	12	0.04	< 10	< 10	40	< 10	74
T28744	201	202	< 0.01	22	250	52	< 2	4	17	0.07	< 10	< 10	51	< 10	84
T28745	201	202	< 0.01	12	240	70	< 2	2	15	0.05	< 10	< 10	44	< 10	70
T28746	201	202	< 0.01	7	220	54	< 2	1	11	0.05	< 10	< 10	49	< 10	44
T28747	201	202	< 0.01	12	320	56	< 2	2	13	0.04	< 10	< 10	35	< 10	74

CERTIFICATION: Hart Buchler



Chemex Labs Ltd.

Analytical Chemists * Geochemists * Registered Assayers
 212 Brooksbank Ave., North Vancouver
 British Columbia, Canada V7J 2C1
 PHONE: 604-984-0221 FAX: 604-984-0218

To: NORDAC RESOURCES LTD.
 C/O ARCHER, CATHRO
 BOX 4127, 2054 SECOND AVE.
 WHITEHORSE, YT
 Y1A 3S9

Page Number : 1-A
 Total Pages : 1
 Certificate Date : 31-AUG-97
 Invoice No. : I9739421
 P.O. Number :
 Account : MTT

Project : NORDAC-TOP
 Comments :

CERTIFICATE OF ANALYSIS A9739421

SAMPLE	PREP CODE	Ag ppm	Al %	As ppm	Ba ppm	Be ppm	Bi ppm	Ca %	Cd ppm	Co ppm	Cr ppm	Cu ppm	Fe %	Ga ppm	Hg ppm	K %	La ppm	Mg %	Mn ppm	Mo ppm
T13162	205 226	0.2	0.92	56	540	< 0.5	< 2	0.09	0.5	3	66	35	2.09	< 10	< 1	0.37	50	0.08	125	35
T13163	205 226	< 0.2	1.58	10	350	0.5	< 2	0.82	1.0	8	143	50	2.28	< 10	< 1	0.11	10	0.51	230	15
T13164	205 226	< 0.2	0.91	138	590	0.5	< 2	0.15	0.5	3	94	40	3.10	< 10	< 1	0.26	40	0.17	100	20
T13165	205 226	< 0.2	1.72	12	330	0.5	< 2	1.07	0.5	10	174	37	2.58	< 10	< 1	0.11	30	0.59	270	20
T13166	205 226	< 0.2	0.37	52	610	< 0.5	< 2	0.09	< 0.5	1	76	15	1.96	< 10	< 1	0.16	20	0.07	55	4
T13167	205 226	< 0.2	0.26	54	280	< 0.5	< 2	0.02	< 0.5	2	86	11	1.63	< 10	< 1	0.11	30	0.03	25	1
T13168	205 226	< 0.2	1.75	2	240	< 0.5	< 2	0.86	< 0.5	11	128	25	2.69	< 10	< 1	0.08	20	0.92	265	9
T13169	205 226	< 0.2	0.37	14	840	< 0.5	< 2	0.07	< 0.5	1	50	14	1.41	< 10	< 1	0.14	20	0.10	60	< 1
T13170	205 226	< 0.2	0.83	30	940	< 0.5	< 2	0.17	< 0.5	3	96	26	2.56	< 10	< 1	0.14	20	0.41	90	1
T13171	205 226	< 0.2	1.05	12	890	< 0.5	< 2	0.22	< 0.5	1	93	20	2.53	< 10	< 1	0.27	30	0.61	65	< 1
T13172	205 226	< 0.2	1.10	14	800	< 0.5	< 2	0.17	< 0.5	2	38	20	2.80	< 10	< 1	0.18	40	0.49	115	< 1
T13173	205 226	0.2	0.51	< 2	770	< 0.5	< 2	0.09	< 0.5	< 1	75	19	1.33	< 10	< 1	0.19	40	0.07	50	1
T13174	205 226	0.4	0.65	8	320	< 0.5	< 2	0.05	< 0.5	< 1	92	22	2.59	< 10	< 1	0.30	60	0.12	25	5
T13175	205 226	0.2	0.43	4	310	< 0.5	< 2	0.02	< 0.5	3	110	31	3.70	< 10	< 1	0.21	40	0.07	45	10
T13176	205 226	0.6	2.04	2	890	< 0.5	< 2	0.27	< 0.5	4	131	66	4.79	< 10	< 1	0.12	50	0.94	145	6
T13177	205 226	1.4	0.62	2	600	< 0.5	< 2	0.04	< 0.5	< 1	89	33	3.91	< 10	< 1	0.18	30	0.19	35	12
T13178	205 226	1.0	0.96	6	990	< 0.5	< 2	0.09	< 0.5	1	101	47	3.54	< 10	< 1	0.15	30	0.36	65	16
T13179	205 226	0.6	3.15	4	1220	0.5	< 2	0.32	< 0.5	16	95	66	4.89	< 10	< 1	0.15	50	1.03	380	4
T13180	205 226	0.4	0.73	< 2	440	< 0.5	< 2	0.04	< 0.5	1	90	27	1.65	< 10	< 1	0.17	30	0.31	135	1
T13181	205 226	1.0	0.78	6	780	< 0.5	< 2	0.07	< 0.5	3	110	36	3.43	< 10	< 1	0.23	40	0.21	125	14
T13182	205 226	0.8	0.48	< 2	500	< 0.5	< 2	0.05	< 0.5	1	81	41	4.33	< 10	< 1	0.22	30	0.13	50	6
T13183	205 226	0.4	0.38	2	440	< 0.5	< 2	0.03	< 0.5	< 1	109	32	2.44	< 10	< 1	0.18	20	0.08	30	5
T13184	205 226	1.2	0.48	10	510	< 0.5	< 2	0.05	< 0.5	< 1	91	29	3.12	< 10	< 1	0.26	30	0.09	30	9
T13185	205 226	0.2	0.40	4	290	< 0.5	< 2	0.01	< 0.5	< 1	152	18	2.68	< 10	< 1	0.18	10	0.04	25	5
T13186	205 226	0.2	0.95	4	1230	< 0.5	< 2	0.06	< 0.5	< 1	72	15	1.82	< 10	< 1	0.20	20	0.30	75	2
T13187	205 226	0.2	1.05	< 2	1090	< 0.5	< 2	0.07	< 0.5	1	127	13	1.86	< 10	< 1	0.20	30	0.47	110	1
T13188	205 226	0.2	0.88	< 2	420	< 0.5	< 2	0.07	< 0.5	< 1	100	24	1.46	< 10	< 1	0.20	30	0.40	90	3
T13189	205 226	0.2	0.73	< 2	570	< 0.5	< 2	0.06	< 0.5	< 1	134	38	0.98	< 10	< 1	0.21	20	0.28	65	< 1
T13190	205 226	< 0.2	0.49	< 2	320	< 0.5	< 2	0.09	< 0.5	1	93	4	0.88	< 10	< 1	0.16	10	0.06	70	2
T13191	205 226	< 0.2	0.51	< 2	570	< 0.5	< 2	0.17	< 0.5	1	110	4	1.06	< 10	< 1	0.15	10	0.09	60	2

CERTIFICATION:

Hart Bichler



Chemex Labs Ltd.

Analytical Chemists * Geochemists * Registered Assayers

212 Brooksbank Ave., North Vancouver
 British Columbia, Canada V7J 2C1
 PHONE: 604-984-0221 FAX: 604-984-0218

To: NORDAC RESOURCES LTD.
 C/O ARCHER, CATHRO
 BOX 4127, 2054 SECOND AVE.
 WHITEHORSE, YT
 Y1A 3S9

Project: NORDAC-TOP
 Comments:

Page Number : 1-B
 Total Pages : 1
 Certificate Date: 31-AUG-97
 Invoice No. : I9739421
 P.O. Number :
 Account : MTT

CERTIFICATE OF ANALYSIS A9739421

SAMPLE	PREP CODE	Na %	Ni ppm	P ppm	Pb ppm	Sb ppm	Sc ppm	Sr ppm	Ti %	Tl ppm	U ppm	V ppm	W ppm	Zn ppm
T13162	205 226	0.02	10	380	84	< 2	1	102	< 0.01	< 10	< 10	8	< 10	138
T13163	205 226	< 0.01	55	1400	26	< 2	3	70	0.03	< 10	< 10	169	< 10	216
T13164	205 226	0.03	23	500	40	< 2	2	74	0.03	< 10	< 10	13	< 10	134
T13165	205 226	< 0.01	50	1560	30	< 2	4	100	0.05	< 10	< 10	168	< 10	216
T13166	205 226	0.05	4	210	52	< 2	1	36	0.04	< 10	< 10	5	< 10	58
T13167	205 226	0.07	4	230	34	< 2	1	56	0.04	< 10	< 10	6	< 10	20
T13168	205 226	< 0.01	69	1520	24	< 2	4	81	0.05	< 10	< 10	134	< 10	276
T13169	205 226	0.01	4	370	22	< 2	< 1	25	0.02	< 10	< 10	3	< 10	56
T13170	205 226	0.01	10	360	44	< 2	3	49	0.03	< 10	< 10	13	< 10	136
T13171	205 226	< 0.01	8	360	26	< 2	3	62	0.05	< 10	< 10	10	< 10	84
T13172	205 226	0.01	9	450	26	< 2	4	55	0.05	< 10	< 10	10	< 10	104
T13173	205 226	0.04	3	270	108	< 2	1	44	< 0.01	< 10	< 10	6	< 10	30
T13174	205 226	0.05	3	460	58	2	1	117	< 0.01	< 10	< 10	8	< 10	48
T13175	205 226	0.05	9	420	56	< 2	3	61	0.06	< 10	< 10	13	< 10	116
T13176	205 226	0.01	15	670	130	< 2	6	121	0.07	< 10	< 10	44	< 10	144
T13177	205 226	0.01	2	370	164	< 2	1	78	0.02	< 10	< 10	18	< 10	28
T13178	205 226	0.01	5	360	192	< 2	2	59	0.03	< 10	< 10	23	< 10	58
T13179	205 226	< 0.01	33	780	202	2	9	67	0.07	< 10	< 10	48	< 10	216
T13180	205 226	0.01	1	90	206	< 2	< 1	10	< 0.01	< 10	< 10	5	< 10	474
T13181	205 226	0.01	9	420	284	< 2	2	58	0.01	< 10	< 10	16	< 10	126
T13182	205 226	0.03	3	390	126	< 2	1	52	0.04	< 10	< 10	14	< 10	94
T13183	205 226	0.01	2	150	446	< 2	< 1	19	< 0.01	< 10	< 10	4	< 10	56
T13184	205 226	0.01	2	310	226	2	1	41	0.02	< 10	< 10	10	< 10	56
T13185	205 226	0.01	2	110	196	2	< 1	6	< 0.01	< 10	< 10	2	< 10	88
T13186	205 226	0.01	3	90	118	< 2	1	15	< 0.01	< 10	< 10	4	< 10	84
T13187	205 226	0.01	3	130	80	< 2	1	27	< 0.01	< 10	< 10	6	< 10	80
T13188	205 226	0.01	1	110	72	< 2	1	23	< 0.01	< 10	< 10	3	< 10	58
T13189	205 226	0.01	1	110	70	< 2	< 1	24	< 0.01	< 10	< 10	1	< 10	26
T13190	205 226	0.03	2	90	46	< 2	1	27	< 0.01	< 10	< 10	2	< 10	18
T13191	205 226	0.01	1	160	22	< 2	1	43	0.02	< 10	< 10	2	< 10	16

CERTIFICATION:

Hart Bichler



Chemex Labs Ltd.

Analytical Chemists * Geochemists * Registered Assayers
212 Brooksbank Ave., North Vancouver
British Columbia, Canada V7J 2C1
PHONE: 604-984-0221 FAX: 604-984-0218

o: NORDAC RESOURCES LTD.
C/O ARCHER, CATHRO
BOX 4127, 2054 SECOND AVE.
WHITEHORSE, YT
Y1A 3S9

Project: *Top*
Comments:

Page Number: 1-A
Total Pages: 1
Certificate Date: 25-OCT-97
Invoice No.: 19747863
P.O. Number:
Account: MTT

CERTIFICATE OF ANALYSIS A9747863

SAMPLE	PREP CODE	Ag ppm	Al %	As ppm	Ba ppm	Be ppm	Bi ppm	Ca %	Cd ppm	Co ppm	Cr ppm	Cu ppm	Fe %	Ga ppm	Hg ppm	K %	La ppm	Mg %	Mn ppm	Mo ppm
059499M	205 226	< 0.2	0.77	232	2650	0.5	< 2	0.03	< 0.5	3	58	151	>15.00	< 10	< 1	0.14	30	0.03	65	52
059500M	205 226	0.2	0.58	46	840	< 0.5	< 2	0.01	< 0.5	3	60	36	7.94	< 10	< 1	0.13	10	0.01	25	7

CERTIFICATION: Hart Buchler



Chemex Labs Ltd.

Analytical Chemists * Geochemists * Registered Assayers

212 Brooksbank Ave., North Vancouver
British Columbia, Canada V7J 2C1
PHONE: 604-984-0221 FAX: 604-984-0218

To: NORDAC RESOURCES LTD.
C/O ARCHER, CATHRO
BOX 4127, 2054 SECOND AVE.
WHITEHORSE, YT
Y1A 3S9

Project: *TOP*
Comments:

Page Number : 1-B
Total Pages : 1
Certificate Date: 25-OCT-97
Invoice No. : 19747863
P.O. Number :
Account : MTT

CERTIFICATE OF ANALYSIS

A9747863

SAMPLE	PREP CODE	Na %	Ni ppm	P ppm	Pb ppm	Sb ppm	Sc ppm	Sr ppm	Ti %	Tl ppm	U ppm	V ppm	W ppm	Zn ppm
059499M	205 226	< 0.01	5	2280	58	2	5	94	< 0.01	< 10	< 10	9	< 10	84
059500M	205 226	0.02	6	990	38	< 2	< 1	8	< 0.01	< 10	< 10	2	< 10	44

CERTIFICATION: *Hart Buchler*

APPENDIX III

TABLE 1

ROCK SAMPLE DESCRIPTIONS FROM EXCAVATOR TRENCH 97-01

TABLE I**Rock Sample Descriptions from Excavator Trench 97- 01**

Location	Sample #	Description	Cu (ppm)	Pb (ppm)	Zn (ppm)
2m	T13162	Grab of moderately oxidized quartz-chlorite-muscovite schist	35	84	138
3m	T13163	Grab of phyllite with oxidized fractures	50	26	216
14m	T13164	Grab of moderately oxidized quartz-chlorite-muscovite schist	40	40	134
25m	T13165	Grab of moderately oxidized quartz-chlorite-muscovite schist	37	30	216
30m	T16166	Grab of moderately oxidized quartz-chlorite-muscovite schist	15	52	58
36m	T16167	Grab of highly siliceous, very hard dark blue rock with some oxidized zones	11	34	20
43m	T16168	Grab of phyllite with some oxidized zones	25	24	276
55m	T16169	Grab of weakly to moderately oxidized quartz-chlorite-muscovite schist	14	22	56
60 - 65m	T16170	Weakly oxidized quartz-chlorite-muscovite schist with manganese staining	26	44	136
65 - 70m	T16171	Weakly oxidized quartz-chlorite-muscovite schist with manganese staining	20	26	84
70 - 75m	T16172	Weakly oxidized quartz-chlorite-muscovite schist with manganese staining	20	26	104
80 - 85m	T16173	Weak to moderately oxidized quartz-chlorite-muscovite schist	19	108	30
85 - 90m	T16174	Strongly oxidized quartz-chlorite-muscovite schist	22	58	48
91m	T16175	Fairly siliceous quartz-chlorite-muscovite schist with pits	31	56	116
90 - 95m	T16176	Highly oxidized quartz-chlorite-muscovite schist with pits	66	130	144
95 - 100m	T16177	Highly oxidized quartz-chlorite-muscovite schist with pits	33	164	28
100 - 105m	T16178	Moderately oxidized clay mixed with quartz-muscovite-chlorite schist	47	192	58
105 - 110m	T16179	Weakly oxidized clay rich soil from trench floor	66	202	216
115 - 120m	T16180	Moderately oxidized quartz-chlorite-muscovite schist with manganese staining	27	206	474
134 - 137m	T16181	Highly oxidized quartz-chlorite-muscovite schist with pits and manganese staining	36	284	126
137 - 140m	T16182	Highly oxidized quartz-chlorite-muscovite schist with pits and manganese staining	41	126	94
140 - 143m	T16183	Highly oxidized quartz-chlorite-muscovite schist with pits and manganese staining	32	446	56
143 - 146m	T16184	Weak to moderately oxidized quartz-chlorite-muscovite schist	29	226	56
147 - 148m	T16185	Clay rich reddish decomposed quartz-chlorite-muscovite schist	18	196	88
155 - 158m	T16186	Weak to moderately oxidized quartz-chlorite-muscovite schist	15	118	84
160 - 165m	T16187	Moderately oxidized reddish quartz-chlorite-muscovite schist	13	80	80
165 - 170m	T16188	Moderately oxidized reddish quartz-chlorite-muscovite schist	24	72	58
175 - 180m	T16189	Weak to moderately oxidized quartz-chlorite-muscovite schist	38	70	26
200 - 205m	T16190	Moderately to highly oxidized quartz-chlorite-muscovite schist with trace pyrite	4	46	18
205 - 210m	T16191	Moderately to highly oxidized quartz-chlorite-muscovite schist with trace pyrite	4	22	16

ARCHER, CATHRO
* ASSOCIATES (1981) LIMITED
CONSULTING GEOLOGICAL ENGINEERS

Box 4127, 2054 SECOND AVENUE, WHITEHORSE, Y.T. Y1A 3S9 TEL (403) 667 - 4415

AFFIDAVIT

I, Joan Mariacher, of WHITEHORSE, YUKON make oath and say:

That to the best of my knowledge the attached Statement of Expenditures for exploration work on the TOP 1-24 mineral claims on Claim Sheet 116 B/4 is accurate.

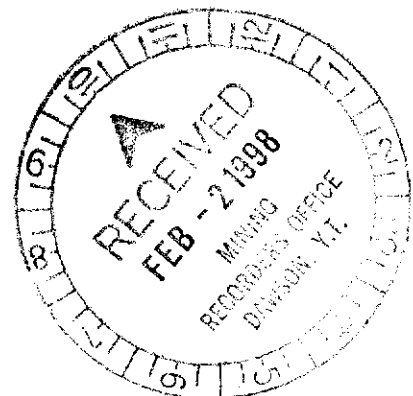


Joan Mariacher

Sworn before me at WHITEHORSE, YUKON
this 15TH day of
DECEMBER, 1997



Notary, Yukon Territory



Statement of Expenditures
Top 1-24 Mineral Claims
December 13, 1997

Labour

R. Carne - geologist - August 7-17 - 32 hours, September 25-26 - 12 hours, October - 3 hours - total 47 hours at \$56/hr	\$ 2,816.24
T. Heaton - geologist - August 7-15, October 20-23 - total 13 days at \$270/day	3,755.70
N. Christianson - field ass't - August 9-15 - 7 days at \$165/day	<u>1,235.85</u>
	7,807.79

Expenses

Van Every Inc. - excavator and D7	6,478.85
Triple J Motel + groceries	909.80
Norcan - 10 days truck rental	483.23
Gas - Sunrise Service, Second Ave Chevron, Dawson	188.07
Chemex Labs	<u>2,194.84</u>
	10,254.79
	<u>\$18,062.58</u>

ARCHER, CATHRO & ASSOCIATES (1981) LIMITED

In Account With

Project —

NORDAC - FIELD ACCOUNT

Date —

AUGUST 31, 1997

LABOUR			
Field	A ARCHER - 37 HRS AT 66/HR	2442.00	
	R. CARNE - 32 HRS AT 56/HR	1792.00	
	D. EATON - 95 HRS AT 56/HR	5320.00	
	B. WENGZYNOWSKI - 91 HRS AT 43/HR	3913.00	
	G. AUSTO - 31 DAYS AT 285/DAY	8835.00	
	T. HEATON - 12 DAYS AT 270/DAY	3240.00	
	T. BIRD - 28 DAYS AT 180/DAY	5040.00	
	J. DICK - 31 DAYS AT 172.50/DAY	5347.50	
	G. SMARCH - 26 DAYS AT 172.50/DAY	4485.00	
	N. CHRISTIANSON - 7 DAYS AT 165/DAY	1155.00	
	M. HANNUS - 27 DAYS AT 262.50/DAY	7087.50	
	N. CHRISTIANSON - 8 DAYS AT 240/DAY	1920.00	
Office	M. COOKE - 11 1/4 HRS AT 34/HR	391.00	
Accounting & Expediting	J. MARACHER - 69 1/4 HRS AT 46.67/HR	3231.90	54199.90
OTHER SERVICES			
Room & Board in Whitehorse	22 MANDAYS AT 60/DAY	1320.00	
Field equipment from AC stock		414.05	
Printing	Photocopies 145 @ .70	36.75	
Rentals from AC	AUGUST 1-31 - 2 56X11'S AT 450/MD + 2 Honda 170 Pumps AT 150/MD		
	+ WATER TANK AT 65/MD	665.00	
	SHAKE AC 81 HANDHELD	100.00	
	AV6B-16 - HANDHELD AT 3.33/DAY	29.97	
Drafting	15 1/4 hrs at \$34.80 1hr.	539.40	
	SEPTEMBER RENT + OFFICE SUPPORT	1000.00	4104.67
EXPENSES			
Petty Cash	33.98 01 + 91.59 02	125.57	
Telephone	24.70 + 52.01 + 124.06 + 88.84	289.61	
	TO CORRECT ADD ERROR ON JUNE BILLING	30.00	
	DUPLICATE EXPENSES 67.80 + 58.05 CV	125.85	Do MKT
	BILL WENT MEALS	36.14	
	PNT TRANSPORTATION	86.68	
	CAMP-GROUND SERVICES 1662.06 02 + 224.76 04	1886.82	
	SINKER SERVICE	60.25	
	SECOND AVENUE CHEVRON	405.10	
	NORTHERN METALIC SALES	26.46	
	NORDAC LEASENT - 936.19 + 1719.25	2155.64	
	MAC'S FIREWEED	219.80	
	HOLWOOD'S OFFICE SUPPLY	38.64	
	STEWART CROSSING CHEVRON	121.72	
	HOUKER'S PHOTO	11.80	
	GATEWAY COMMUNICATIONS CV	9.81	NO MKT
	ATLAS TRAVEL	75.00	
	CAIL	29.10	543.97
MANAGEMENT	6% - ON EXPENSES	336.53	
	- ON FIELD AK	857.69	1194.22
GST (R100247667)	7% ON 65242.76		65242.76
			4566.99
E = GST Exempt			69809.21

ARCHER, CATHRO & ASSOCIATES (1981) LIMITED

In Account With

Project —

NORDAC - FIELD ACCOUNT

Date —

SEPTEMBER 30, 1997

LABOUR			
Field	A. ARCHER - 19 HM AT 66/HM	1254.00	
	R. CARNE - 31 HM AT 56/HM (TOP)	1736.00	
	D. EATON - 37 HM AT 56/HM	2071.00	
	B. WENZLHODSKI - 59 HM AT 43/HM	2537.00	
	G. DUSO - 11 1/2 DAYS AT 285/DAY	3277.50	
	B. GAY - 10 1/2 DAYS AT 195/DAY	2047.50	
Office	M. COOKE - 17 HM AT 34/HM	578.00	
Accounting & Expediting	J. MALACHEL - 49 1/2 HM AT 46.67/HM	2310.17	15812.17
OTHER SERVICES			
Room & Board In Whitehorse	17 DAYS AT 60/DAY	720.00	
Field equipment from AC stock		1031.50	
Printing	Photocopies 536 @ .20	107.20	
Rentals from AC SEPT 1-30 - 2 SBX 11'S AT 410/MO + 2 HANNA HYD PUMPS AT 150/MO + WATER TANK AT 65/MO		665.00	
SHARE AC 81 HANDHELD		100.00	
Drafting,	6 1/2 hrs at \$34.80 /hr.	226.20	
OCTOBER RENT & OFFICE SUPPORT		1000.00	
LEOMIS COURSEL - 2 AT 13.50		27.00	
BOUL JET B SOLD TO FP (ARM) AT 1.00L		600.00	4503.70
EXPENSES			
Petty Cash	23,350.1 + 4,49,53.04	472.88	
Telephone	252.78 + 14.69	267.47	
B. WENZ - MEAL ALLOWANCE		44.05	
BEAVER LUMBER		52.96	
GATEWAY COMMUNICATIONS		8.42	NO M&T
VAN EVERY INC	(TOP CLS)	2990.00	
NORCAN LEASING		429.99	
CAMP GROUND SERVICES		54.98	
SECOND AVENUE CHEVRON		121.75	
B. WENZ XP AC	20.90 CV + 35.51 DV	56.41	
R. CARNE XP AC	516.50 DV + 120.26 DV	636.76	
J. STEPHEN TAXI EXPENSES		22.90	NO M&T
			5154.57
MANAGEMENT			
	6% - ON EXPENSES	307.40	
	- ON FIELD AC	4974.24	5281.64
			30752.08
GST (R100247667)	7% ON 30752.08		2152.65
			32904.73

E - GST Exempt

ARCHER, CATHRO & ASSOCIATES (1981) LIMITED

In Account With

Project —

NORDAC-FIELD ACCOUNT

Date —

OCTOBER 31, 1997

LABOUR			
Field	A. ARCHER - 17 HRS AT 66/HR	791.00	
	D. EATON - 27 HRS AT 56/HR	1517.00	
	T. BECKER - 5 HRS AT 43/HR	215.00	
	B. WENGLYNDOWSKI - 49 HRS AT 43/HR	2107.00	
	G. BUSO - 19 DAYS AT 285/DAY	5415.00	
	T. HEATON - 5 DAYS AT 270/DAY	1350.00	
	S. BURAKI - 12 1/2 DAYS AT 247.50/DAY	3093.75	
	K. LESNIKOV - 12 1/2 DAYS AT 225/DAY	2812.50	
	R. MOAL - 1 DAY AT 202.50/DAY	202.50	
	B. GAY - 2 DAYS AT 195/DAY	390.00	
Office	M. COOKE - 15 1/2 HRS AT 34/HR	527.00	
Accounting & Expediting	J. MARIACHER - 65 1/2 HRS AT 46.67/HR	3056.89	21473.64
OTHER SERVICES			
Room & Board in Whitehorse	48 DAYS AT 60/DAY	2880.00	
Field equipment from AC stock			
Printing	198.90 Photocopies 721 @ .25 = 180.25	379.15	
Rentals from AC	OCT 1-15 - CORE SPLITTEL AT 2.33/DAY	34.95	
	To CORRECT JN POSTING ERROR ON SEPT. BILLS RE 600L JET B TO FP	<1700.00>	
	NOVEMBER RENT & OFFICE SUPPLY	1000.00	
Drafting,	24 1/2 hrs at \$ 34.80 /hr.	852.60	
	LOOMIS COULIER - 2 AT 13/EA	26.00	3972.70
EXPENSES			
Petty Cash	30.00 CV + 10.46 01	40.46	
Telephone	91.22 + 38.02 + 143.59 + 66.44	339.27	
AC BI POSTAGE		68.41	
B. GAY - MEALS		33.61	
G. BUSO - MEALS		147.66	
S. BURAKI - MEALS		119.63	
K. LESNIKOV - MEALS		119.63	
PNT TRANSPORTATION	- 39.08 + 183.24 + 23.70	245.95	
PRINTING IMPRESSIONS		62.50	
BRYAN & CO	CV	131.50	} NO MET
GATEWAY COMMUNICATIONS	CV	14.27	
HOLWOOD'S OFFICE		7.06	
MA'S FIREWOOD	- 38.07 + 16.11	54.18	
CORPORATE COUNSELLOR		2.00	
DEWEEL LUMBER		119.24	
GAFFNEY HEATING		4.50	
HOBGEN'S PHOTO		12.06	
NORTHELM METALIC		190.20	
NORDAN LENSING		685.61	
SECOND AVENUE CHELSEA		225.76	
D. BARK NALC - FAX		162.50	NO MET
			2786.08
MANAGEMENT	6% - ON EXPENSES	144.92	
	- ON FIELD AC	449.75	594.67
			28827.10
GST (R100247667)	7% ON 28827.10		2017.90
E = GST Exempt			30845.00

VAN EVERY INC.
 Transport Division
 GST #R105488514
 P.O. Box 15
 DAWSON CITY, YUKON Y0B 1G0
 (403) 993-5624

CUSTOMER ORDER NUMBER		TELEPHONE		FAX		DATE		
						Aug. 15/97		
NAME								
Archer Catho + Associates (1981) Ltd.								
ADDRESS								
Box 4127								
CITY		PROVINCE		POSTAL CODE				
Whitehorse		Yukon						
SOLD BY	CASH	CHEQUE	CHARGE	DEBIT CARD	C.O.D.	ON ACCT.	MOSE. RET'D.	
QUANTITY		DESCRIPTION			PRICE		AMOUNT	
2 1/2 hrs		haul 225 backhoe Callison subdivision to Top of Wold Highway			85 ⁰⁰		212 ⁵⁰	
2 2 hrs		backhoe to dig trenches and fill back in			120 ⁰⁰		2640 ⁰⁰	
2 1/2 hrs		haul 225 backhoe Top of Wold Highway to Callison sub.			85 ⁰⁰		212 ⁵⁰	
SPECIAL INSTRUCTIONS					SUBTOTAL		3065 ⁰⁰	
					GST		214 ⁵⁵	
					PST			
RECEIVED BY					TOTAL		3279 ⁵⁵	

1505

THANK YOU

VAN EVERY INC.
 Transport Division
 GST #R105488514
 P.O. Box 15
 DAWSON CITY, YUKON Y0B 1G0
 (403) 993-5624

CUSTOMER ORDER NUMBER	TELEPHONE	FAX	DATE
NORDAC RESOURCES LTD			Sept 26/97
NAME c/o Archer Cathro + associates			
ADDRESS			

CITY	PROVINCE	POSTAL CODE

SOLD BY	CASH	CHEQUE	CHARGE	DEBIT CARD	C.O.D.	ON ACCT.	MOSE. RETD.	PAID OUT

QUANTITY	DESCRIPTION	PRICE	AMOUNT
17 hrs	D7 Cat to do trenching on property near Top of World Highway	130 ⁰⁰	2210 ⁰⁰
3 hrs	haul D7 Top of World Highway to Carlson	85 ⁰⁰	255 ⁰⁰
3 hrs	pilot vehicle	45 ⁰⁰	135 ⁰⁰

SPECIAL INSTRUCTIONS	SUBTOTAL	2600 ⁰⁰
	GST	182 ⁰⁰
	PST	
	TOTAL	2782 ⁰⁰

All claims and returned goods MUST be accompanied by this bill.
 RECEIVED BY

1558

THANK YOU

VAN EVERY INC.
 Transport Division
 GST #R105488514
 P.O. Box 15
 DAWSON CITY, YUKON Y0B 1G0
 (403) 993-5624

CUSTOMER ORDER NUMBER	TELEPHONE	FAX	DATE <i>Sept. 24/97</i>
-----------------------	-----------	-----	-------------------------

NAME *Archer Cathers & Associates*

ADDRESS

CITY PROVINCE POSTAL CODE

SOLD BY	CASH	CHEQUE	CHARGE	DEBIT CARD	C.O.D.	ON ACCT.	MDSE. RET'D.	PAID OUT
---------	------	--------	--------	------------	--------	----------	--------------	----------

QUANTITY	DESCRIPTION	PRICE	AMOUNT
<i>3 hrs</i>	<i>haul D7 Caterpillar to Top of World Highway</i>	<i>85⁰⁰</i>	<i>255⁰⁰</i>
<i>3 hrs</i>	<i>patrol vehicle</i>	<i>45⁰⁰</i>	<i>135⁰⁰</i>

SPECIAL INSTRUCTIONS	SUBTOTAL	<i>390⁰⁰</i>
	GST	<i>27³⁰</i>
	PST	
	TOTAL	<i>417³⁰</i>

All claims and returned goods MUST be accompanied by this bill.

RECEIVED BY

1557

THANK YOU

LE J HOTEL

Dawson City
Canada Y0B 1G0
Reservations Toll Free 1-800-861-0405

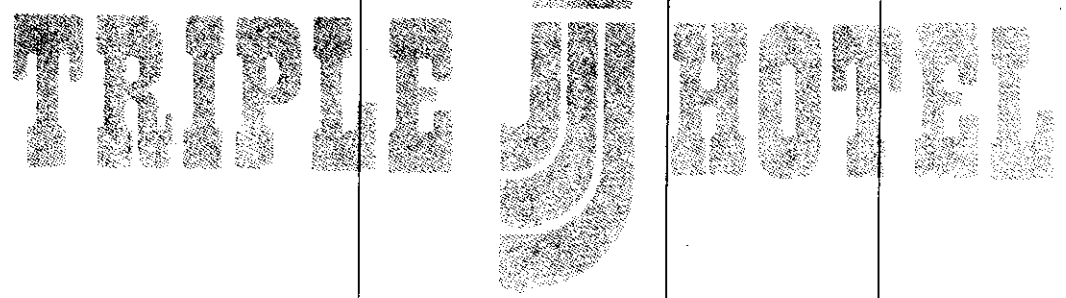
Tel: (403) 993-5323
Fax: (403) 993-5030

ROOM NO.	ARRIVAL DATE	DEPARTURE DATE
103	08/09/97	08/10/97

ARCHER JOAN (Robert carne)
BOX 4127 WHS. YT.
Y1A 3S9

GST # R105396667
INV # 271558
C/L # 133

DATE	DESCRIPTION	REFERENCE	CHARGE	CREDIT	BALANCE
08/09/97	ROOM	117.00	117.00		
	1 NIGHT AT \$ 117.00				
08/09/97	ROOM GST	.08	117.08		
08/10/97	ROOM GST	8.11	125.19		
ROOM GST TOT = 8.19 MISC GST TOT = .00 GST TOT = 8.19					



I agree that my liability for any charges incurred by me is not waived and agree to be held personally liable in the event that the indicated person, company or association fails to pay for any part of the full amount of these charges. Interest will be charged on any overdue balance.

SIGNATURE X _____

TRIPLE JJ HOTEL

P.O. Box 359, Dawson City Yukon, Canada Y0B 1G0
 Tel: (403) 993-5323 Fax: (403) 993-5030
 Reservations Toll Free 1-800-661-0405

Nordac - Top Claims

ROOM NO.	ARRIVAL DATE	DEPARTURE DATE
104	08/09/97	08/15/97

HEATON TANIA
 BOX 4127 WHS. YT.
 Y1A 3S9

GST # R105396667
 INV # 271560

ACHER CATHRO

DATE	DESCRIPTION	REFERENCE	CHARGE	CREDIT	BALANCE
08/14/97	ROOM		642.00		642.00
6	NIGHTS AT \$ 107.00				
08/14/97	ROOM GST		.42		642.42
08/10/97	ROOM GST		7.42		649.84
08/11/97	ROOM GST		7.42		657.26
08/11/97	ROOM GST		7.49		664.75
08/12/97	ROOM GST ADJ			.14	664.61
08/12/97	LOUNGE CHAIR 17519		12.65		677.26
08/13/97	ROOM GST		7.42		684.68
08/14/97	ROOM GST		10.47		695.15
08/15/97	PAID - CASH			12.65	682.50
ROOM GST TOT = 40.50		MISC GST TOT =	.00	GST TOT =	40.50

Handwritten notes:
 Nordac - 642
 40.50
 682.50 pd
 8/14/97
 #17486

I agree that my liability for any charges incurred by me is not waived and agree to be held personally liable in the event that the indicated person, company or association fails to pay for any part of the full amount of these charges. Interest will be charged on any overdue balance.

SIGNATURE X _____



- 1 METHOD OF PAYMENT / MODE DE PAIEMENT
- AMEX
 - CASH/COMPTANT
 - DIRECT/FACTURE
 - EN ROUTE
 - MASTERCARD
 - NATIONAL TILDEN (NTCB)
 - VISA

**RENTAL AGREEMENT
CONTRAT DE LOCATION**

97

LEASING
7.4, ALASKA HIGHWAY
WHITEHORSE, YUKON Y1A 3E5
PHONE (403) 660-2137
TOLL FREE 1-800-661-0445
FAX (403) 633-7596
GST # R121995476

97

28 Customer/Client

OTHER/AUTRE _____

This lease and any vehicles leased thereunder will be subject to any rights and interest in and to said vehicles under any respective contract or contracts that GMAC may hold on same.

2 UNIT NO./UNITÉ GREEN 6301890 - DODGE		3 LICENSE NO./N° D'IMM. RBD 09		4 MODEL/MODÈLE FLAT DECK RAM 3500		5 RATE/TARIF CLASS/CAT.	
6 OWNER STAT/PROPRIÉTAIRE NORCAN OFFICE				7 TO BE CHECKED IN AT/ARRIVERA À			
8 CREDIT CARD NO./N° CARTE DE CRÉDIT			EXPIRATION		9 RETURN DATE DE RETOUR Sep 20/97		
10 DRIVER'S LICENSE NO./PERMIS DU CONDUCTEUR 51558		PROV.		EXP.		11 DESTINATION	
57 ALTERNATE VEHICLE/AUTRE VÉHICULE							
UNIT NO./UNITÉ		DATE & TIME/HEURE		KM IN/RETOUR			
LICENSE/N° D'IMM.				KM OUT/DÉPART			
MODEL/MODÈLE		RATE/TARIF CLASS/CAT.		KM DRIVEN PARCOURUS			
12 RECAP # ▶							
13 REMARKS/REMARQUES SEE DAMAGE REPORT DIRECT BILL NO132 NORCAN RESOURCES LTD						14 IN BY RETOUR PAR PME	
16 LOSS DAMAGE WAIVER (L.D.W.) BY CUSTOMER'S INITIALS IN CONSIDERATION OF THE PAYMENT OF \$ _____ PER DAY						15 OUT BY DÉPART PAR SJL FOR THE OWNER POUR LE PROPRIÉTAIRE	
17 PERSONAL ACCIDENT INSURANCE (PAI) CUSTOMER ACCEPTS OR DECLINES PAI AT RATE SHOWN IN SEPARATE BROCHURE. ACCEPTANCE IS PROOF OF COVERAGE UNDER POLICY ISSUED TO NATIONAL TILDEN AS OUTLINED IN SEPARATE BROCHURE.							
INITIAL ONE ▶		ACCEPTS PAI ACCEPTÉ AAP		DECLINES PAI REFUSE AAP		◀ INITIALEZ UNE CASE	
18 CUSTOMER AUTHORIZES NATIONAL TILDEN TO PROCESS A CREDIT CARD VOUCHER, IF ANY, IN HIS/HER NAME FOR CHARGES HEREUNDER. I HAVE RECEIVED, AGREED TO AND UNDERSTAND ALL TERMS AND CONDITIONS OF THIS RENTAL AGREEMENT INCLUDING THE SEPARATE FOLDER DELIVERED TO ME WITH THIS RENTAL DOCUMENT.							
LE CLIENT AUTORISE NATIONAL TILDEN À ÉMETTRE UN TALON DE CARTE DE CRÉDIT, S'IL Y A LIEU, EN SON NOM POUR LES FRAIS CI-DESSOUS. J'AI REÇU, COMPRIS ET ACCEPTÉ TOUTES LES CONDITIONS ATTENANTES À CE CONTRAT DE LOCATION, Y COMPRIS CELLES QUI SONT DÉCRITES DANS UN DÉPLIANT SÉPARÉ, LEQUEL M'A ÉTÉ REMIS AVEC LE CONTRAT DE LOCATION.							
X _____							
19 DRIVER'S NAME / NOM DU CHAUFFEUR DEER CHRISTOPHER							
20 HOME ADDRESS / ADRESSE DOMICILE C/O ARCHER CATHRO PO BOX 4127							
21 CITY / VILLE WHITEHORSE YT Y1A 3E9							
22 LOCAL ADDRESS / ADRESSE LOCALE				23 TELEPHONE			
24 #1 A T A AGENT		25 RES. #		26 RES. CLASS CAT.		27 COMM. CODE	

29 IN RETOUR Aug 13/97 8:00		DATE & TIME/HEURE	
30 OUT DÉPART Jun 01/97 8:00		DATE & TIME/HEURE	
31 23786		KM IN/RETOUR	
32 13586		KM OUT/DÉPART	
33 10200		KM DRIVEN/PARCOURUS	
34		KM ALLOWED/COMPRIS	
35 0		KM @ 0.00	
36		ADD. HOURS HEURES ADD. @ 17.49	
37		DAYS JOURS 13 @ 45.16 587.08	
38		WEEKS SEMAINES @ 399.00	
39		MONTHS MOIS 2 @ 1400.00 2800.00	
39A			
40		TOTAL TIME & KM TEMPS TOTAL & KM 3387.08	
40A			
40B		PREVIOUSLY BILLED TIME & K/M -2000.00	
41		INTER-CITY FEE TO: A: 0.00	
42		L.D.W. E.C.D.	
43		SUB-TOTAL SOUS-TOTAL 587.08	
44		P.A.I. A.A.P.	
45		REFUELING CHARGE / REMPLACEMENT DE CARBURANT .75	
46		SUB-TOTAL SOUS-TOTAL 587.08	
47		G.S.T. T.P.S. 7% 41.10	
48		P.S.T. T.V.P.	
49		OTHERS/AUTRES	
55 DEPOSITS/DÉPÔTS			
50		TOTAL CHARGES TOTAL DES FRAIS 628.18	
51		LESS DEPOSITS MOINS DÉPÔTS 0.00	
52		BALANCE DUE SOLDE 628.18	
53		CASH COMPTANT	
54		CHARGE À FACTURER DB 628.18	

904660

Nordac-Top

DAWSON CITY
GENERAL
STORE

DAWSON CITY YUKON
PHONE 403-993-5475

THANK YOU

GST # R101296739

MONDAY 08-11-97 010001

0.555%	2.84%
BANANAS YELO	1.59
OLIVE OIL	6.59
COUNTRY 100%	2.29
BAGGIES FREZ	2.25 T
TXBLTL	12.87
TAX-2	0.16
TOTAL	12.87
CASH	22.07
CHANGE	9.20

ITEM BY

Nordac-Top

DAWSON CITY
GENERAL
STORE

DAWSON CITY YUKON
PHONE 403-993-5475

THANK YOU

GST # R101296739

WEDNES 08-13-97 010001

GRANDOLA BAR	3.49 T
GATORADE	3.22 T
PTL DEP	0.05
GATORADE	3.22 T
PTL DEP	0.05
0.500%	4.39%
NECTARINE	2.20
BAKERY	1.59
0.385%	3.73%
PLUMS RED	1.44
TXBLTL	15.96
TAX-2	0.70
TOTAL	17.96

ITEM BY

Nordac-Top

DAWSON CITY
GENERAL
STORE

DAWSON CITY YUKON
PHONE 403-993-5475

THANK YOU

GST # R101296739

SUNDAY 08-10-97 030003

GATORADE	3.22 T
PTL DEP	0.05
GATORADE	2.49 T
GATORADE	2.49 T
GATORADE	2.49 T
GATORADE	2.49 T
GRANDOLA BARS	3.49 T
MISC MEAT	5.88
BBQ CHIPS	2.49 T
LETTUCE BRN	1.69
TXBLTL	28.12
TAX-2	1.34
TOTAL	28.12

VISA 28.12
CHANGE 0.00

ITEM 9%
47608 0004 08:11P

DV - ~~77.91~~
77.91
V.V.O

Total -

75.4702
74.11 04
8.67

118.15



NORTHERN

SUNRISE SERVICE CENTRE

BOX 101, CARMACKS, YUKON, Y0B 1C0

PHONE 863-5291

GARAGE • TIRE REPAIRS • TOWING • PROPANE
GAS • DIESEL • WATER

DATE August 9 19 97

NAME

Archer Carthoo

ADDRESS

MAKE	ODOMETER	LICENCE NO.

QUANTITY	DESCRIPTION	AMOUNT
<u>105</u>	LITRES GAS <input type="checkbox"/> LITRES DIESEL <input checked="" type="checkbox"/>	<u>65.00</u>
	LITRES OIL	
	LUBRICATION	
	FILTER	
<p style="text-align: center;"><u>NORDAK</u></p>		TOTAL
GST REG. NO. <u>R105075782</u>		GST
		SUB-TOTAL
RECEIVED BY		PST
SOLD BY		TOTAL
CASH <input type="checkbox"/>	CHARGE <input type="checkbox"/>	ON ACCT. <input type="checkbox"/>

COMDA SERVICE LTD., TORONTO, ONT., 243-8766 - 714549

3945



INVOICE

22735

**SECOND AVENUE CHEVRON
& TIRE SERVICE**

2240 - 2nd Avenue, Whitehorse, Yukon Y1A 1C8

Phone: 668-6171

Fax: 668-4228

SOLD TO Archer Cathro

ADDRESS _____

DATE	DESCRIPTION	AMOUNT
	<p>69.6 L @ .629.</p> <p><i>[Signature]</i></p> <p><u>No Date</u></p>	<p>43.77</p>
<p>G.S.T.# R106626963 2% Charge monthly on Overdue Account.</p>		<p>TOTAL 43.77</p>

NORDAC-TOP

SHELL CANADA PRODUCTS LIMITED

BONANZA SHELL
P.O. BOX 750
DAWSON CITY YT (403)993-5142

GST #122664337
INV NO. 1205115765 97/02/15 10:33
VISA 4503300516723 01/99

FUEL	QTY	PRICE	AMOUNT
DIESEL	110.29	0.719	79.30
FUEL INCL. GST		\$5.19	

TOTAL \$79.30

X Tania Heaton 009403
SEC NO. 001-001-024

74.11 84
5.19

R

TRANSACTION RECORD 970815/10:00

KLONDIKE KATE'S REST'NT
BOX 417
DAWSON CITY YUKON TERRITORY
Y0B1G0

TERM ID: 02317622
MID: 259804
CARD # 4503300516723 EXP: 01 99
ACCT TYPE: VISA PURCHASE
REF NO: 0062101 AMOUNT \$19.52

TIP: \$ _____

TOTAL: \$ 22.00

(001) APPROVED - THANK YOU AUTH #002973

CARDHOLDER AGREES TO PAY ISSUER SUCH
TOTAL IN ACCORDANCE WITH ISSUER'S
AGREEMENT WITH CARDHOLDER

X Tania Heaton
CARDHOLDER SIGNATURE

20.72 04
1.28



Chemex Labs Ltd.

Analytical Chemists * Geochemists * Registered Assayers
212 Brooksbank Ave., North Vancouver
British Columbia, Canada V7J 2C1
PHONE: 604-984-0221

To: NORDAC RESOURCES LTD.
C/O ARCHER, CATHRO
BOX 4127, 2054 SECOND AVE.
WHITEHORSE, YT
Y1A 3S9

INVOICE NUMBER

I 9 7 3 9 4 1 2

BILLING INFORMATION

Date: 1-SEP-97
Project: NORDAC-TOP
P.O. No.:
Account: MTT

Comments:

Billing: For analysis performed on
Certificate A9739412

Terms: Payment due on receipt of invoice
1.25% per month (15% per annum)
charged on overdue accounts

Please Remit Payments to:

CHEMEX LABS LTD.
212 Brooksbank Ave.,
North Vancouver, B.C.
Canada V7J 2C1

# OF SAMPLES	ANALYSED FOR CODE - DESCRIPTION	UNIT PRICE	SAMPLE PRICE	AMOUNT
258	201 - Dry, sieve to -80 mesh	1.25		
	202 - save reject	0.85		
	ICP-32	7.00	9.10	2347.80
				Total Cost \$ 2347.80
				Client Discount (25%) \$ <u>-586.95</u>
				Net Cost \$ 1760.85
				(Reg# R100938885) GST \$ <u>123.26</u>
				TOTAL PAYABLE (CDN) \$ 1884.11



Chemex Labs Ltd.

Analytical Chemists * Geochemists * Registered Assayers
212 Brooksbank Ave., North Vancouver
British Columbia, Canada V7J 2C1
PHONE: 604-984-0221

To: NORDAC RESOURCES LTD.
C/O ARCHER, CATHRO
BOX 4127, 2054 SECOND AVE.
WHITEHORSE, YT
Y1A 3S9

INVOICE NUMBER

I 9 7 3 9 4 2 1

BILLING INFORMATION

Date: 1-SEP-97
Project: NORDAC-TOP
P.O. No.:
Account: MTT

Comments:

Billing: For analysis performed on
Certificate A9739421

Terms: Payment due on receipt of invoice
1.25% per month (15% per annum)
charged on overdue accounts

Please Remit Payments to:

CHEMEX LABS LTD.
212 Brooksbank Ave.,
North Vancouver, B.C.
Canada V7J 2C1

# OF SAMPLES	ANALYSED FOR CODE - DESCRIPTION	UNIT PRICE	SAMPLE PRICE	AMOUNT
30	205 - Geochem ring to approx 150 mesh 0-3 Kg crush and split ICP-32	2.50 2.60 7.00	12.10	363.00
Total Cost \$				363.00
Client Discount (25%) \$				<u>-90.75</u>
Net Cost \$				272.25
(Reg# R100938885) GST \$				<u>19.06</u>
TOTAL PAYABLE (CDN) \$				291.31



Chemex Labs Ltd.

Analytical Chemists * Geochemists * Registered Assayers
212 Brooksbank Ave., North Vancouver
British Columbia, Canada V7J 2C1
PHONE: 604-984-0221

To: NORDAC RESOURCES LTD.
C/O ARCHER, CATHRO
BOX 4127, 2054 SECOND AVE.
WHITEHORSE, YT
Y1A 3S9

INVOICE NUMBER

I 9 7 4 7 8 6 3

BILLING INFORMATION

Date: 27-OCT-97
Project: *TOP* λ
P.O. No.:
Account: MTT

Comments:

Billing: For analysis performed on
Certificate A9747863

Terms: Payment due on receipt of invoice
1.25% per month (15% per annum)
charged on overdue accounts

Please Remit Payments to:

CHEMEX LABS LTD.
212 Brooksbank Ave.,
North Vancouver, B.C.
Canada V7J 2C1

# OF SAMPLES	ANALYSED FOR CODE - DESCRIPTION	UNIT PRICE	SAMPLE PRICE	AMOUNT
2	205 - Geochem ring to approx 150 mesh 0-3 Kg crush and split ICP-32	2.50 2.60 7.00	12.10	24.20
Total Cost \$				24.20
Client Discount (25%) \$				-6.05
Net Cost \$				18.15
(Reg# R100938885) GST \$				1.27
TOTAL PAYABLE (CDN) \$				19.42



★
 True North
 UTM North
 1°07'
 UTM Zone 7
 NTS: 116B/4

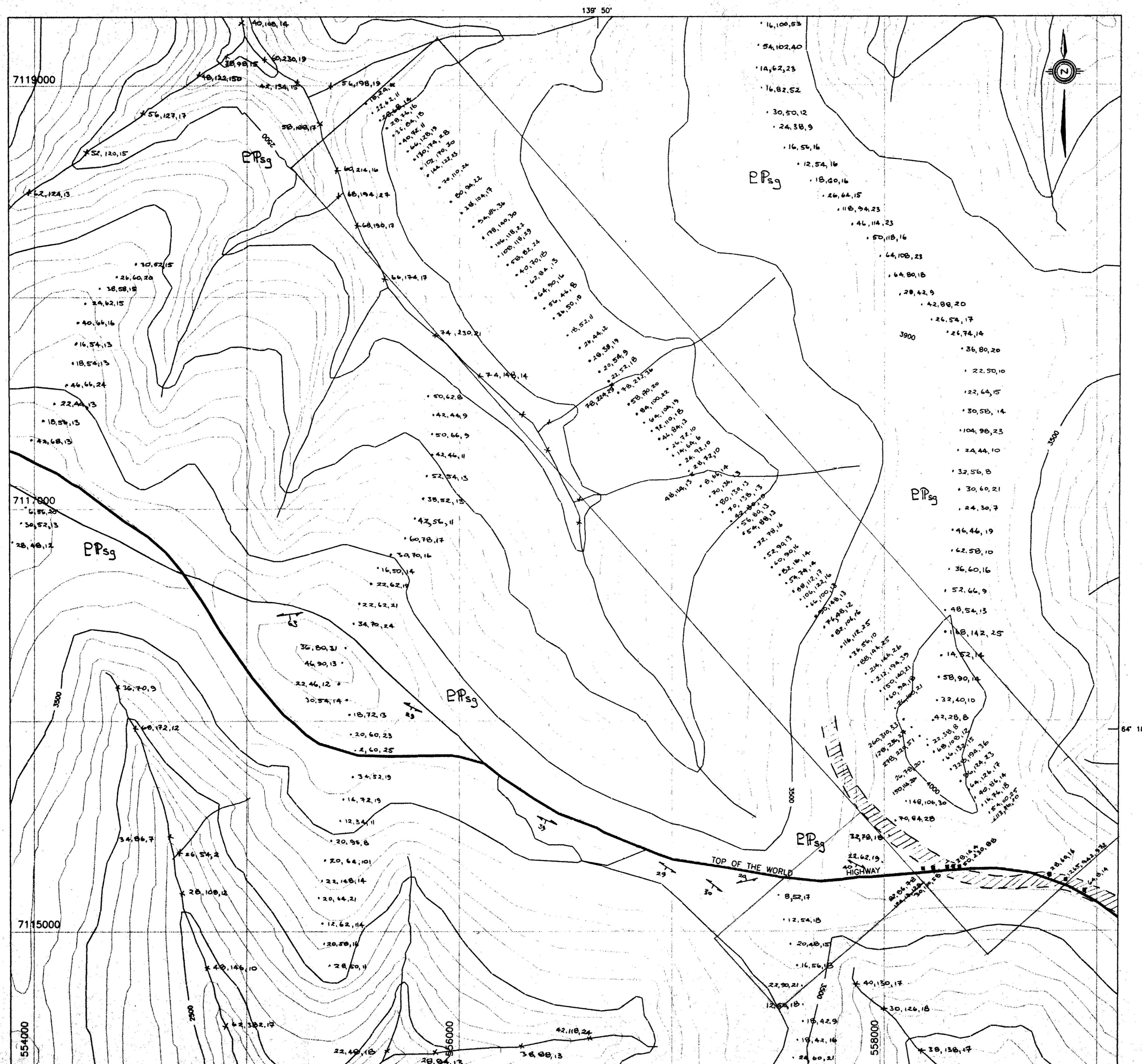
LEGEND

- Claim boundary
- 52,124,18 Soil sample (Pb, Zn, Cu, ppm)
- ⊃ Bulldozer trench
- ⊂ Excavator trench

093765
 DIAND - YUKON REGION, LIBRARY

DWG ①

NORDAC RESOURCES LTD.	
FIGURE 2 ARCHER, CATHRO & ASSOCIATES (1981) LIMITED	
CLAIM AND TRENCH LOCATION	
TOP PROPERTY	
Scale 1:10,000 0 100 200 400 600 800 1000 m	
DRAWN/REVISED BY: AG/TCH FILE: NOR_TOP_ACAD97_TO-CLLOC.DWG	PROJECT: DATE: DECEMBER, 1987



LEGEND

- Claim boundary
- Soil sample (Pb, Zn, Cu ppm)
- x Silt sample (Pb, Zn, Cu ppm)
- Rock sample (Pb, Zn, Cu ppm)
- Spruce bog, deep overburden
- ★ mineral occurrence
- ↖ foliation with strike and dip
- normal fault (symbol on down-thrown side)
- thrust fault (symbol on down-thrown side)
- lithological contact (observed, inferred)
- ▨ mineralized horizon (?)

LITHOLOGIES

MIDDLE AND UPPER PALEOZOIC

- Klondike Schist
- ▨ carbonatized ultramafic rocks, serpentine, talc-carbonate schist

MIDDLE PALEOZOIC

- Nasina Series
- ▨ marble
 - ▨ undifferentiated quartzite and quartz-muscovite-biotite schist

- Unnamed Metavolcanic Rocks
- ▨ quartz-muscovite-chlorite schist, micaceous quartzite, chlorite schist, quartz-feldspar-amphibolite gneiss, metagabbro, marble

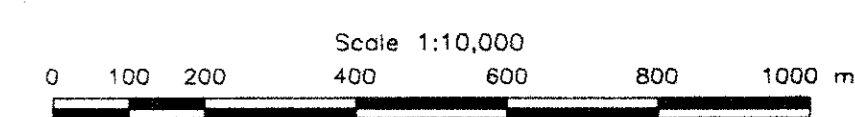
093765 Dwg 2

DIAND - YUKON REGION, LIBRARY UTM Zone 7
 NTS: 1188/4

True North
 UTM North
 1°07'

NORDAC RESOURCES LTD.

FIGURE 4
 ARCHER, CATHRO & ASSOCIATES (1981) LIMITED
**GEOLOGY AND
 1995 GEOCHEMISTRY**
 TOP PROPERTY

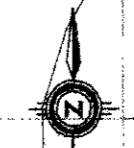


139° 50'

7,117,000

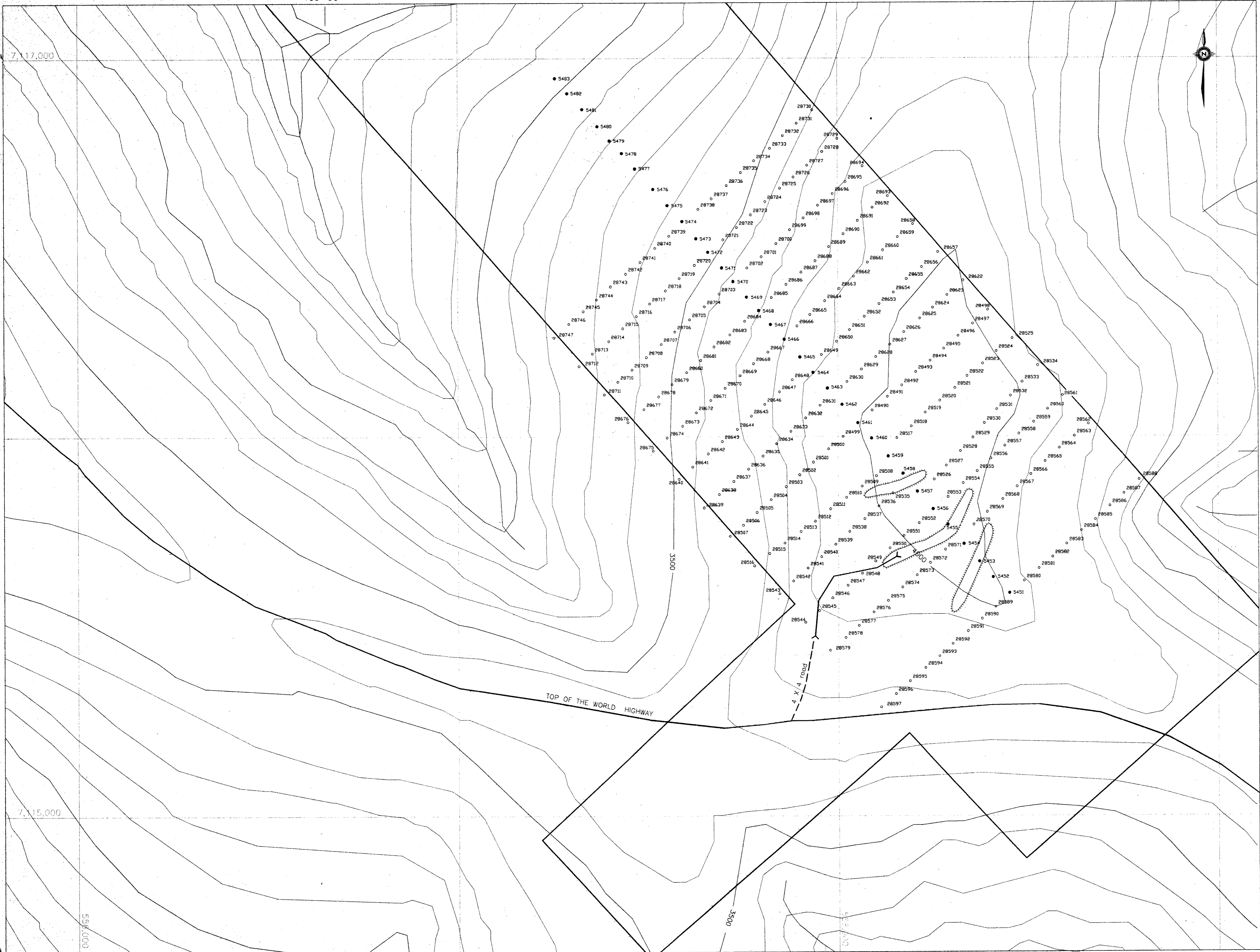
7,115,000




556,000

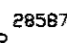
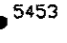


True North
UTM North
1°07'

NTS 118B/4
UTM ZONE 7
CONTOUR INTERVAL 100m



-  Claim boundary
-  Excavator trench
-  Bulldozer trench

-  1997 soil sample location and number
-  1996 soil sample location and number

64' 10'

093765

Dwg ③

DIAND - YUKON REGION, LIBRARY

NORDAC RESOURCES LTD

FIGURE 5
ARCHER, CATHRO & ASSOCIATES (1981) LIMITED

SAMPLE LOCATION

TOP PROPERTY

SCALE 1:5000
0 50 100 150 200 250m

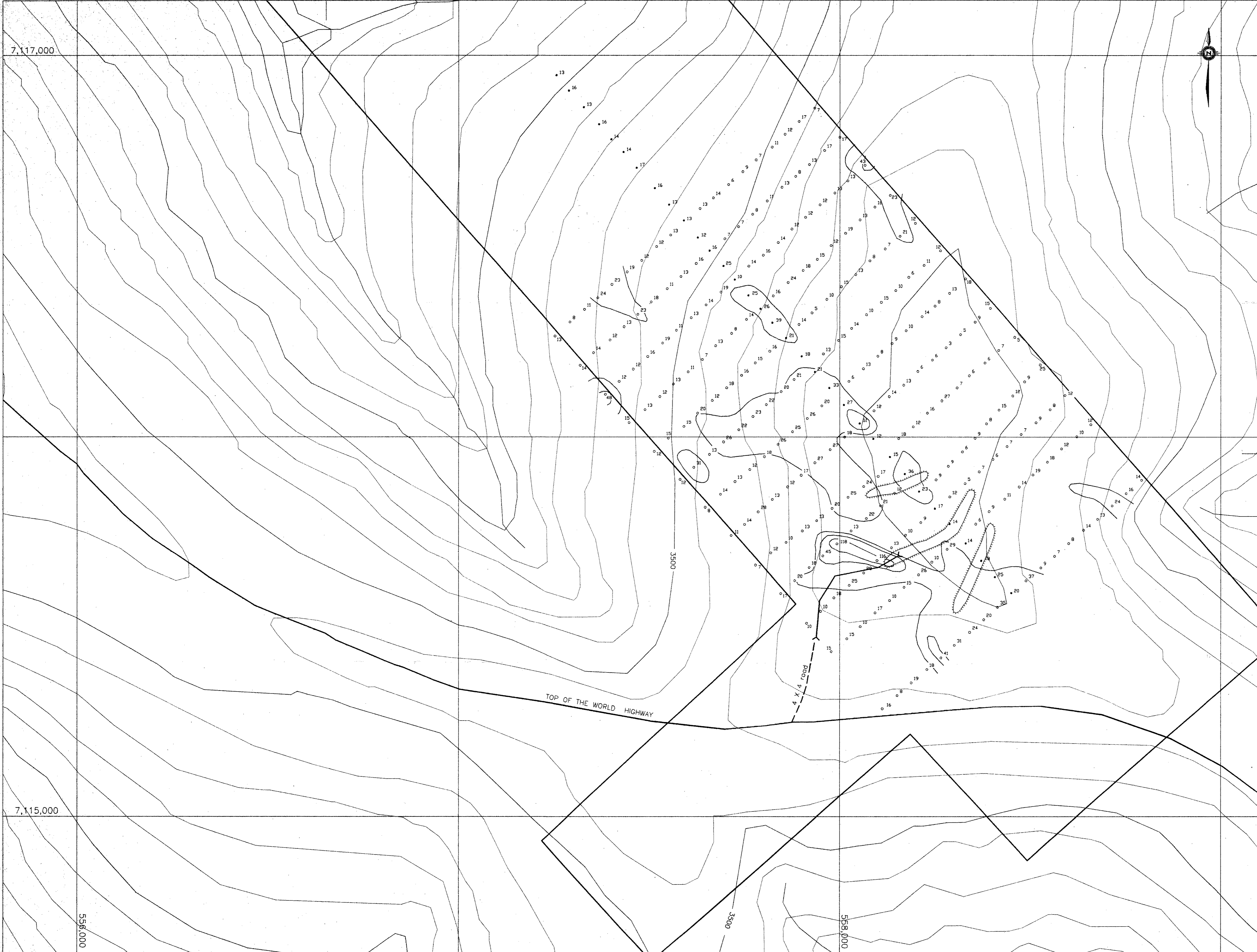
DRAWN/REVISED BY: AG/TCH
FILE: NDR\TOP\ACAD\TO-5K-SL.DWG

PROJECT:
DATE: DECEMBER, 1997

139° 50'

7,117,000

True North
UTM North
1°07'
NTS 116B/4
UTM ZONE 7
CONTOUR INTERVAL 100m



○²⁸ 1997 soil sample location with copper value in ppm
 ●²⁵ 1996 soil sample location with copper value in ppm

— Claim boundary
 - - - Excavator trench
 ▭ Bulldozer trench

□ ≥ 100 ppm Cu
 □ ≥ 40 < 100 ppm Cu
 □ ≥ 20 < 40 ppm Cu

64' 10"

7,115,000

556,000

3500

556,000

DIAND - YUKON REGION, LIBRARY 093765

Dwg 4

NORDAC RESOURCES LTD

FIGURE 6
 ARCHER, CATHRO & ASSOCIATES (1981) LIMITED

COPPER SOIL GEOCHEMISTRY
 TOP PROPERTY

SCALE 1:5000
 0 50 100 150 200 250m

DRAWN/REVISED BY: AG/TCH PROJECT:
 FILE: NOR_TOP_ACAD97\TO-5K-CU.DWG DATE: DECEMBER, 1997

139° 50'

7,117,000

7,115,000

556,000

3500

558,000

True North
North
UTM
1'07"
N15 1188/4
UTM ZONE 7
CONTOUR INTERVAL 100m

○ 132 1997 soil sample location with lead value in ppm
○ 60 1996 soil sample location with lead value in ppm

— Claim boundary
— Excavator trench
— Bulldozer trench

□ ≥ 500 ppm Pb
□ ≥ 200 < 500 ppm Pb
□ ≥ 75 < 200 ppm Pb

64° 10'

TOP OF THE WORLD HIGHWAY

4 x 4 road

093765 DWG 5

NORDAC RESOURCES LTD

FIGURE 7
ARCHER, CATHRO & ASSOCIATES (1981) LIMITED

LEAD SOIL GEOCHEMISTRY

TOP PROPERTY

SCALE 1:5000
0 50 100 150 200 250m

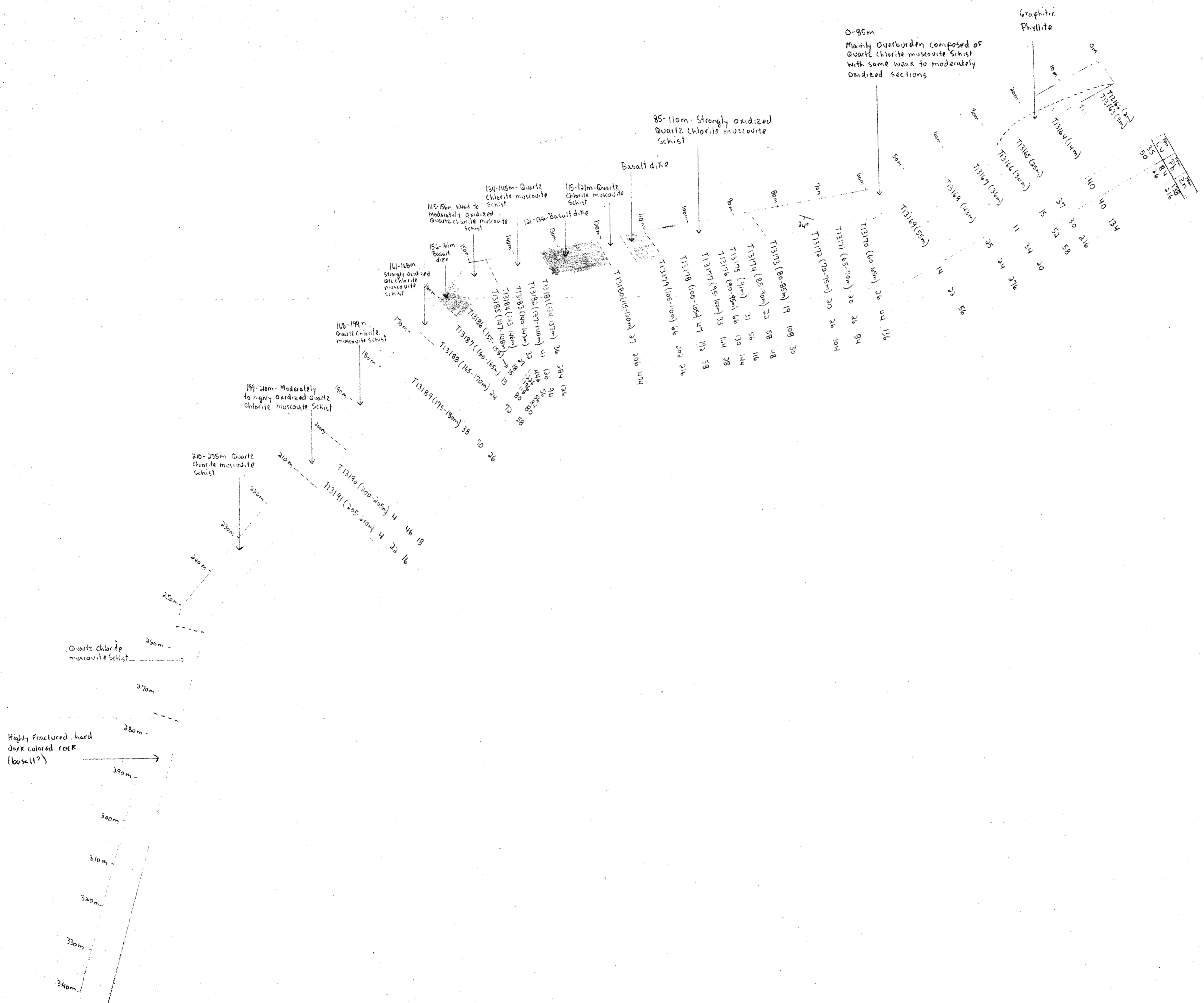
DRAWN/REVISED BY: AG/TCH

PROJECT:

FILE: NOR_TOP\ACAD97\TO-5K-PB.DWG

DATE: DECEMBER, 1997

DIAND - YUKON REGION, LIBRARY



093765

Dwg 7

NORDAC RESOURCES LTD.

FIGURE 9
ARCHER, CATHRO & ASSOCIATES (1981) LIMITED
EXCAVATOR TRENCH GEOLOGY
TOP PROPERTY

SCALE 1:500
0 10 20 30 40m

DRAWN/REVISED BY: TCH	PROJECT:
FILE:	DATE: DECEMBER, 1997