

COMINCO LTD.

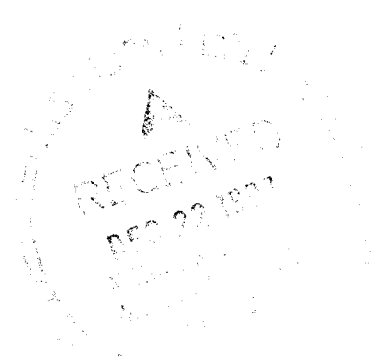
EXPLORATION

WESTERN DISTRICT

NTS 95 D/11

1997 ASSESSMENT REPORT

ZIEL PROPERTY



PROSPECTING, GEOLOGICAL MAPPING AND SOIL GEOCHEMISTRY

WATSON LAKE M.D., YUKON

COAL RIVER AREA

WORK PERIOD
May 29, 1997
June 04, 1997
August 15, 1997

LATITUDE: 60° 35' N

LONGITUDE: 127° 16' W

DECEMBER 1997,

STEVE B. NOAKES

This report has been submitted to
the Geological Evaluation Unit
under Section 53 (4) Yukon Quartz
Mining Act and is allowed as
representation work in the amount
of \$ 7900.00.

M. B. [Signature]
for Regional Manager, Exploration and
Geological Services for Commissioner,
of Yukon Territory.

TABLE OF CONTENTS

	Page
1. SUMMARY	1
2. LOCATION AND ACCESS	1
3. PROPERTY AND OWNERSHIP	1
4. PREVIOUS WORK	1
5. 1997 WORK	1
6. REGIONAL GEOLOGY	2
7. PROPERTY GEOLOGY AND MINERALIZATION	2
8. SOIL ROCK GEOCHEMISTRY	2
9. CONCLUSIONS AND RECOMMENDATIONS	3
10. REFERENCES	3

FIGURES

FIGURE 1	ZIEL PROPERTY LOCATION MAP	4
FIGURE 2	CLAIM MAP	5
FIGURE 3	ZIEL PROPERTY: 1997 SOIL GEOCHEMISTRY: SAMPLE NUMBER	6
FIGURE 4	ZIEL PROPERTY: 1997 SOIL GEOCHEMISTRY: SAMPLE NUMBER SUMMARY	7
FIGURE 5	ZIEL PROPERTY: 1997 SOIL GEOCHEMISTRY: ZN IN PPM	8
FIGURE 6	ZIEL PROPERTY: 1997 SOIL GEOCHEMISTRY: PB IN PPM	9

APPENDICES

APPENDIX I	STATEMENT OF QUALIFICATIONS
APPENDIX II	1997 GEOCHEMISTRY DATA
APPENDIX III	STATEMENT OF EXPENDITURES

**1997 ASSESSMENT REPORT
ZIEL PROPERTY, YUKON TERRITORY**

1. SUMMARY

The ZIEL property is located approximately 170 kms NE of Watson Lake, Yukon. The property was accessed by helicopter based at the Mel Property exploration camp 20 kilometres to the south on May 29 and June 04 and from Watson Lake for the work completed on August 15.

The ZIEL property comprises 28 units owned 100% by Cominco. (YB86037 - YB86064)

The property is underlain by N - S striking and steeply to moderately dipping sequence of a basal carbonate unit grading through sandstone, siltstone, to mafic volcanic rocks and conglomerates. The age is postulated as lower Cambrian to lower Devonian. The property is 80% overburden covered with the bulk of the mapping extrapolated through the claims from exposures on surrounding ridges. The overburden is predominantly glacial till. The rock ages are projected regionally from the extensive mapping done around the Mel, Jeri and Mel East showings 20 kilometres to the south. The ground was frozen on the work dates.

The property was originally staked as a result of the anomalously high zinc and lead values reported in regional government sampling. Followup in 1996 of that original sample resulted in 8 samples in the creek returning zinc values from 186 ppm to 522 ppm. The 1997 work involved prospecting the creek, mapping and prospecting the surrounding ridges and searching for outcrop in the central region of the claims. Three soil lines running the width of the property, a line following the north side of the creek and three contour lines in the central zone were completed.

2. LOCATION AND ACCESS

The ZIEL property is located approximately 170 kms NE of Watson Lake, Yukon, within NTS mapsheet 95 D/11 (Figure 1). The center of the property lies at 595000E / 6715000 N (NAD27, Zone 9).

The property was accessed in May and June with a helicopter based at the Cominco Mel camp 20 kms south of the property. The work in August was accessed from Watson Lake by helicopter.

3. PROPERTY AND OWNERSHIP

The ZIEL property comprises 28 units owned 100% by Cominco (YB86037 - YB86064). These claims are due Dec 31, 1997.

4. PREVIOUS WORK

A 1996 geochemical release by the Yukon government resulted in a sediment sample returning anomalous zinc and lead values. A Cominco crew spent one day in 1996 prospecting and sampling the creek. Of the 12 samples taken along the course of the creek, 8 samples returned zinc values from 186 ppm to 522 ppm and three lead values over 100 ppm.. As a result, the ZIEL property was staked in 1996 by Courier De Bois contract stakers.

No other work is known on the claims.

5. 1997 WORK

On May 29, the property was visited by temporary geologist, Richard Mann, and soil sampler Will Armstrong. The creek was mapped and prospected and a soil line was run down the north bank from the ridge to the main valley (Map: Ziel Property: 1997 Soil Geochemistry: Sample Number. Samples 328,225 - 328293)

On June 04, the author, Cominco geologist Darren Senft, temporary geologist Trevor Bohay, soil samplers Marcus Waidliech, Ryan Hamilton and Will Armstrong visited the property. Prospecting and mapping was done on the north, west and south ridges of the property. The creek was prospected again and the central zone was searched for outcrop. North facing slopes were snow covered on that date. Three east-west soil lines were run across the property. One traversed the northern area (samples 331736 - 331,795), one ran across the center (328,172 - 328,234) and the third through the south along the ridge descending to the valley below (332,298 - 332, 352).

On August 15, the author revisited the property based anomalies returned from the May 29 sampling. Also working that day was geologist Pauline Orr, Richard Mann and soil sampler Marcus Waidelich. The central zone was intensively searched for outcrop and confirmation of previous mapping was done. Three contour soil lines were run uphill from the strongest sediment and soil results (281,001 - 281, 060)

6. REGIONAL GEOLOGY

The regional geology consists of miogeoclinal sedimentary rocks ranging from Hadrynian to Carboniferous. Unconformities are present below Silurian and possibly below Upper Cambrian strata. Mafic volcanic rocks are extruded in three events stratigraphically dated as Late Proterozoic and/or Early Cambrian, late Early Cambrian and Middle Ordovician. Wavey banded, cryptocrystalline and massive limestone flank the Mel to Ziel corridor. Conglomerates, sandstone, shale and mudstone sequences are evident.

7. PROPERTY GEOLOGY AND MINERALIZATION

The ZIEL property geology correlates regionally to mapping published for the Mel property 20 kilometres to the south (Miller, Wright, 1985). Mapping on the property is restricted to the north, west and south ridges where outcrop occurs. Strata strikes 170 - 190 degrees through the property. The central valley area is covered by glacial debris and reworked fluvial deposits. No outcrop could be found in this central zone.

At the eastern base of the property, outcrop is restricted to 2 outcrops of massive grey limestone in the main creek. One exposure of mudstone with minor siltstone laminates occurs farther to the west. Exposures of basalt and andesite are found on the eastern margins of the ridges north and south of the claims. Along the western ridge are exposures of conglomerate, sandstone and quartz sandstone. All strata have dips of between 30 to 60 degrees west.

No mineralization or alteration was seen in any of the outcrops.

8. SOIL GEOCHEMISTRY

A total of 291 soil samples were collected. The results are listed in Appendix II. The samples were collected in kraft paper sample bags and analysed for 27 elements by ICP at the Cominco Exploration Laboratory in Vancouver.

Sample location and number, topography, lead and zinc values are posted on figures 3 to 6.

Elevated zinc values were detected in samples taken May 20 on a line up the creek. No outcrop occurs at these localities. Peak values range from 517 to 1,055 ppm. Subsequent sampling on lines traversing and contouring the property revealed other isolated zones of elevated metal content, with zinc ranging to 1525 ppm.

Lead values correspond well to the zinc pattern with 32 values exceeding 100 ppm. High zinc anomalies have been experienced in regional work and can be attributed to pH thresholds in carbonate and sedimentary terrains. Lead at these levels however, has not been noted in the belt other than around the Mel deposit and its satellite occurrences. Lead should not be as sensitive to pH changes as zinc and thus lends significant credibility to the anomalous patterns shown in the soil geochemistry.

The remaining elements show no definable anomalous patterns.

9. CONCLUSIONS AND RECOMMENDATIONS


The strong lead signature coincident with the zinc values is significant in discerning potential mineralization from zinc loading in the soil because of pH fronts.

As no outcrop occurs in the central zone, conclusions can not be made as to the potential style or type of mineralization. There is no indication of mineralization on the surrounding ridges, suggesting that the anomalies may be coming from a zone in the mudstone or mafic volcanic units that occurs laterally distinct from those rocks seen topographically higher on the ridges.

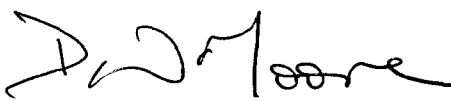
These preliminary survey results require fill in sampling lower in the drainage to better define the anomalies detected in the creek bank samples at mid property.

A small backhoe should be air lifted into the anomalous sites. Pits need to be dug in the anomalous zones with attention paid to the type, texture and content of the overburden. A plugger and dynamite will be required to break the frozen ground as an assist to the backhoe.

Report by:


Steve B. Noakes
Technical Services Co-ordinator

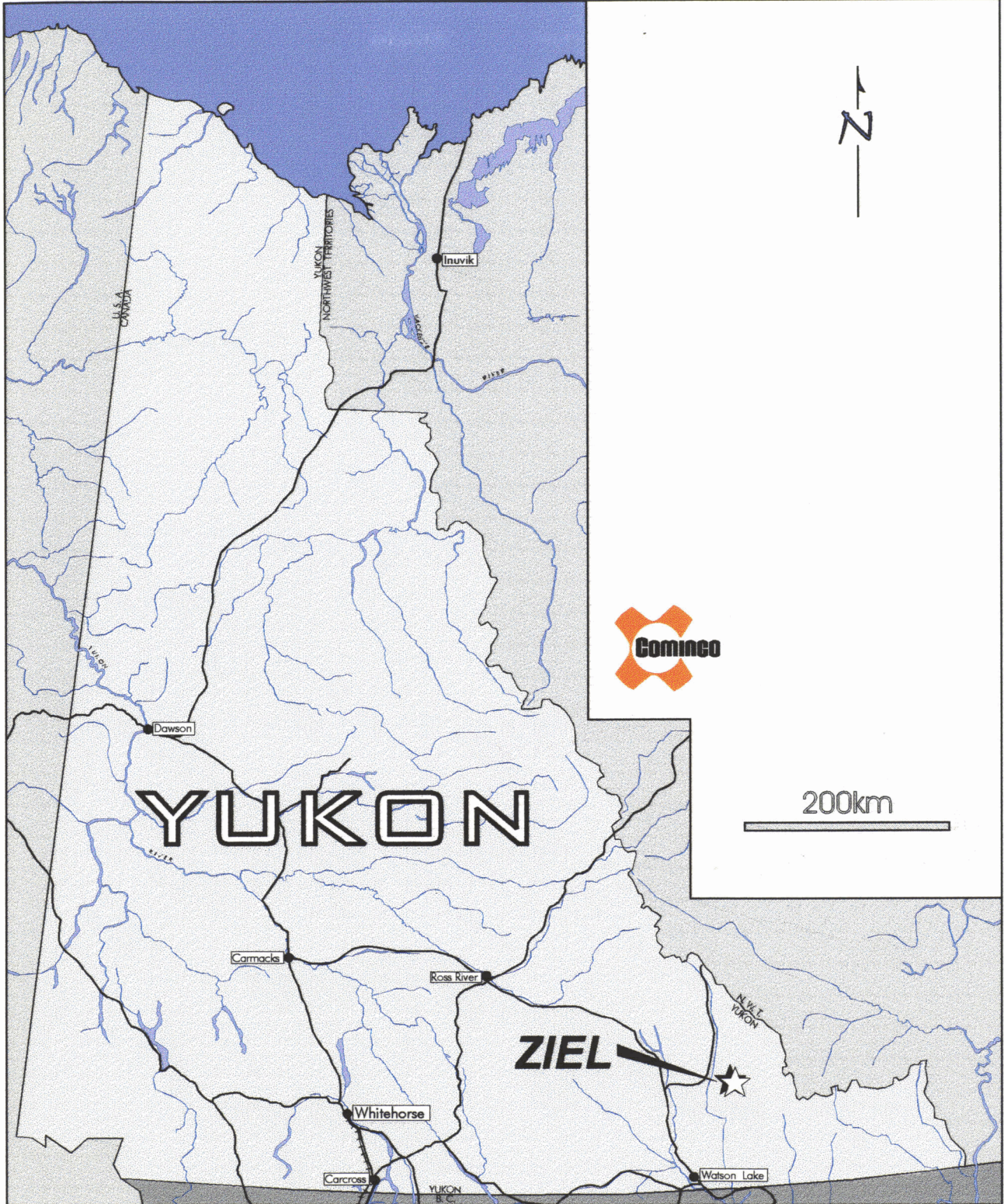
Approved for
Release by:


D. W. Moore,
Manager, Exploration
Western Canada

SBN/
DISTRIBUTION:
Mining Recorder (2)
W.D. Files

10. REFERENCES

Miller, D.C., and Wright, J., 1985(?). Mel Barite-Zinc-Lead Deposit, Yukon - An Exploration Case History. Report by Sulpetro Minerals Limited, Kamloops, B.C.



Drawn by: _____ Traced by: a. m. a.

Revised by:	Date:	Revised by:	Date:

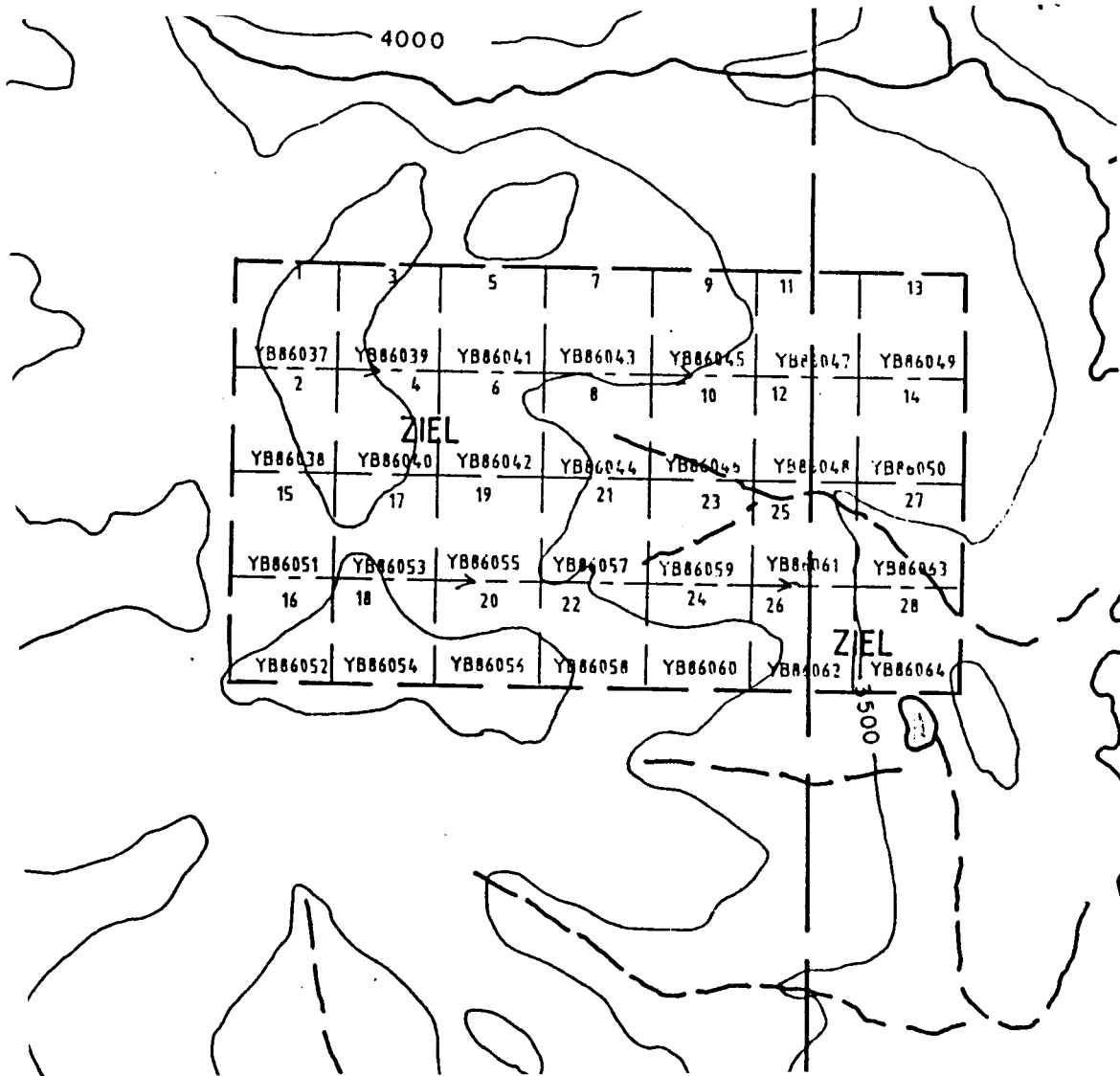
ZIEL PROPERTY LOCATION MAP

Scale: _____

Date: _____

Plate: 1

12



Drawn by: Traced by: a. m. a.

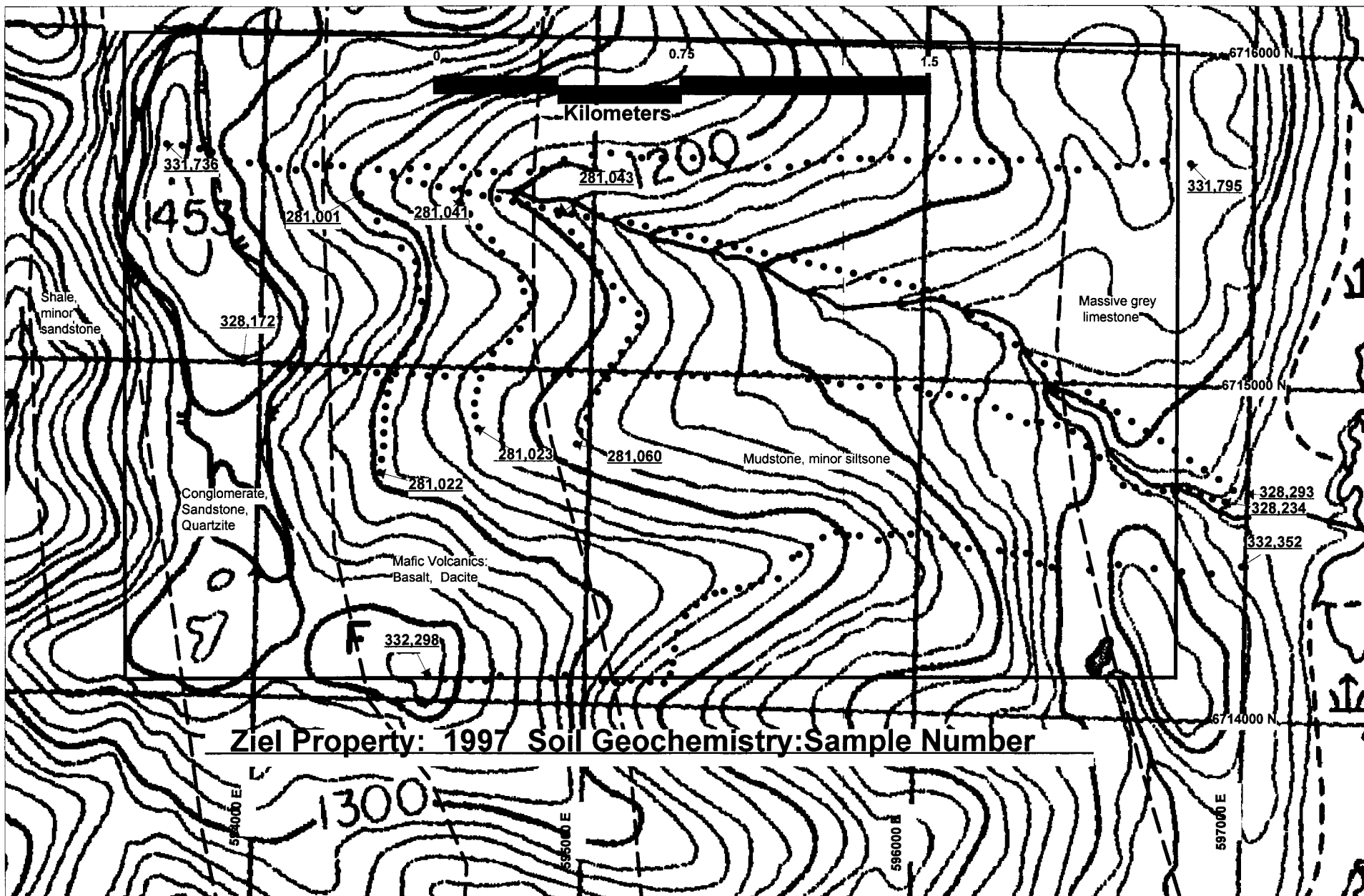
Revised by:	Date:	Revised by:	Date:

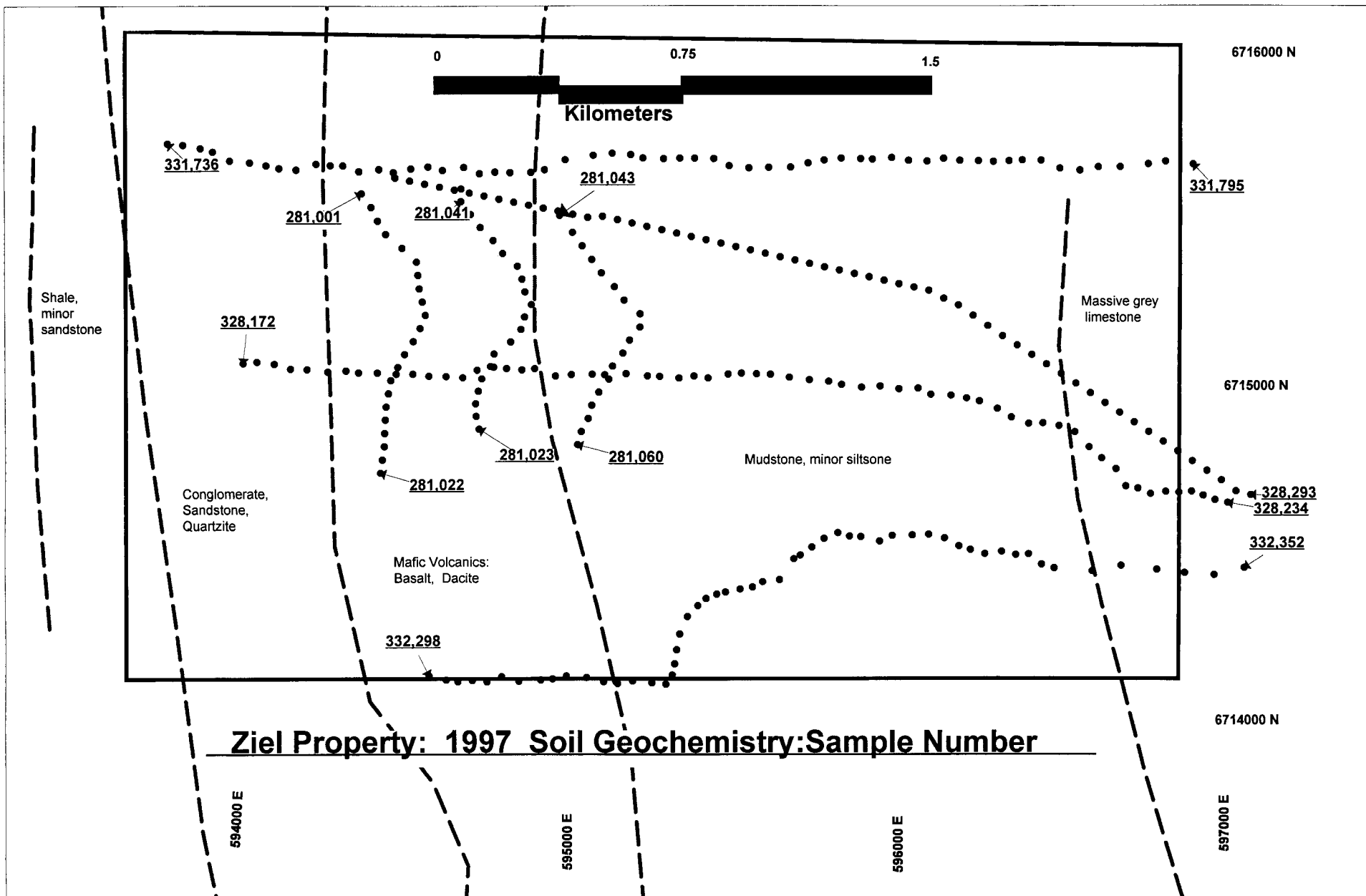
ZIEL PROPERTY CLAIM MAP

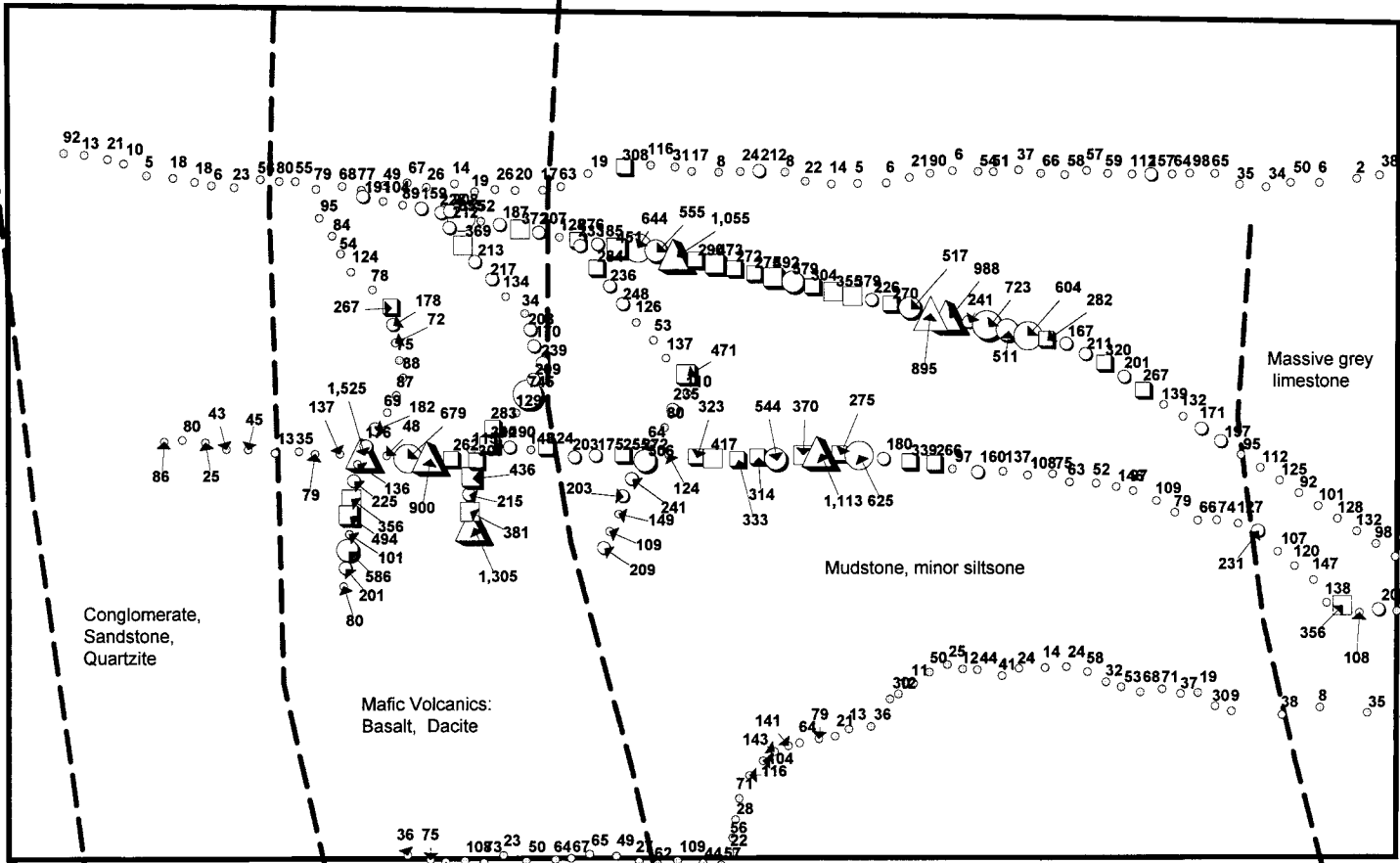
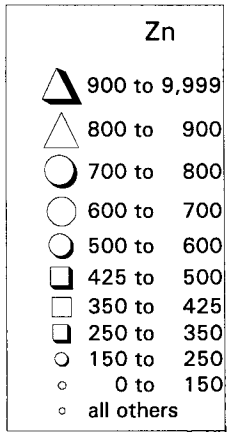
Scale: 1:50,000

Date:

Plate: 2







Schale,
minor
sandstone

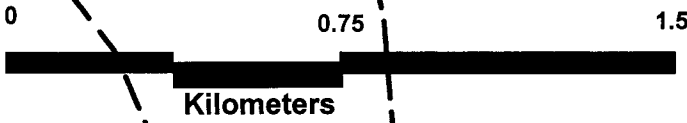
Conglomerate,
Sandstone,
Quartzite

Mafic Volcanics:
Basalt, Dacite

Mudstone, minor siltstone

Massive grey
limestone

Ziel Property: 1997 Soil Geochemistry: Zn in PPM.



APPENDIX I

STATEMENT OF QUALIFICATIONS

I, Stephen B. Noakes, of 11922 73A Avenue, Delta, B.C. hereby declare that I:

1. Graduated from Simon Fraser University, Burnaby, British Columbia with a B.A in Geography (Geomorphology) in December, 1981.
2. Have been actively engaged in mineral exploration in Western Canada and South America as a permanent Technician, Geochemical Technician, Geologist and Technical Co-ordinator with Cominco Ltd. since June, 1980.

Date: December, 1997

S. B. Noakes.
Technical Services Co-ordinator.

APPENDIX II
1997 SOIL GEOCHEMISTRY

1997 Soil Geochemistry: Ziel Property

FIELD	EAST	NORTH	LINE	METRES	Cu	Pb	Zn	Ag	As	Ba	Cd	Co	Ni	Fe	Mo	Cr	Bi	Sb	V	Sn	W	Sr	Y	La	Mn	Mg	Ti	Al	Ca	Na	K
331736	593711	6715685		0	22	46	92	0.4	52	61	1	11	27	3.18	2	8	5	5	6	2	2	10	7	49	282	0.11	0.01	0.65	0.07	0.02	0.05
331737	593758	6715682		50	6	19	13	0.4	3	47	1	1	4	0.53	2	7	5	5	8	2	2	4	2	19	20	0.01	0.01	0.53	0.02	0.02	0.03
331738	593811	6715673		100	5	8	21	0.4	8	34	1	2	5	0.82	2	8	5	5	19	2	2	4	2	25	57	0.03	0.01	0.61	0.02	0.01	0.03
331739	593849	6715664		150	1	9	10	0.7	2	41	1	1	1	0.23	2	8	5	5	15	2	2	4	2	17	26	0.03	0.01	0.57	0.04	0.02	0.02
331740	593901	6715638		200	1	7	5	0.4	2	25	1	1	1	0.14	2	7	5	5	11	2	2	3	2	21	8	0.02	0.01	0.46	0.02	0.01	0.03
331741	593962	6715634		250	4	6	18	0.4	19	21	1	2	5	0.69	2	6	5	5	9	2	2	3	2	28	41	0.01	0.01	0.41	0.01	0.01	0.03
331742	594012	6715626		300	5	11	18	0.4	35	26	1	2	6	0.85	2	5	5	5	9	2	2	4	2	20	45	0.03	0.01	0.46	0.01	0.01	0.03
331743	594051	6715619		350	1	6	6	0.4	3	16	1	1	2	0.21	2	4	5	5	2	2	2	2	2	4	11	0.01	0.01	0.25	0.01	0.01	0.01
331744	594103	6715616		400	6	10	23	0.4	18	33	1	3	8	0.95	2	4	5	5	4	2	2	2	2	6	99	0.01	0.01	0.22	0.02	0.01	0.01
331745	594163	6715635		450	10	20	56	0.4	25	27	1	5	12	2.19	2	5	5	5	12	2	2	2	2	7	167	0.02	0.01	0.31	0.02	0.01	0.01
331746	594206	6715632		500	12	51	80	0.4	27	76	1	6	14	2.53	2	6	5	11	5	2	2	3	4	8	304	0.08	0.01	0.57	0.04	0.01	0.03
331747	594243	6715632		550	10	26	55	0.4	23	55	1	6	12	2	2	5	5	7	5	2	2	2	2	7	220	0.04	0.01	0.37	0.02	0.01	0.02
331748	594291	6715616		600	16	31	79	0.4	45	24	1	7	18	2.6	2	6	5	9	4	2	2	2	2	11	211	0.07	0.01	0.32	0.03	0.01	0.02
331749	594351	6715624		650	13	35	68	0.5	52	24	1	7	17	2.63	2	6	5	8	5	2	2	2	2	10	257	0.05	0.01	0.34	0.01	0.01	0.02
331750	594395	6715616		700	10	30	77	0.4	12	45	1	4	11	2.04	2	7	5	5	8	2	2	2	2	7	159	0.06	0.01	0.59	0.01	0.01	0.02
331751	594447	6715628		750	11	23	49	0.4	16	20	1	5	13	1.81	2	6	5	5	6	2	2	2	2	8	115	0.04	0.01	0.33	0.01	0.01	0.01
331752	594499	6715635		800	15	35	67	0.4	90	20	1	6	16	2.61	2	4	5	10	4	2	2	2	2	5	271	0.04	0.01	0.27	0.02	0.01	0.02
331753	594543	6715626		850	6	14	26	0.4	13	25	1	2	7	1.11	2	4	5	5	5	2	2	2	2	6	50	0.01	0.01	0.3	0.01	0.01	0.01
331754	594607	6715636		900	2	6	14	0.5	5	28	1	1	3	0.38	2	4	5	5	4	2	2	2	2	8	26	0.01	0.01	0.24	0.03	0.01	0.01
331755	594654	6715619		950	3	12	19	0.4	11	14	1	2	5	0.79	2	4	5	5	5	2	2	2	2	8	53	0.01	0.01	0.25	0.01	0.01	0.01
331756	594701	6715625		1000	5	9	26	0.4	8	33	1	2	7	0.98	2	4	5	5	6	2	2	3	2	5	105	0.01	0.01	0.32	0.04	0.01	0.01
331757	594747	6715624		1050	4	13	20	0.4	5	17	1	1	5	0.78	2	4	5	5	8	2	2	2	2	7	49	0.01	0.01	0.35	0.01	0.01	0.01
331758	594810	6715626		1100	5	14	17	0.4	2	70	1	1	4	0.36	2	4	5	5	3	2	2	3	2	3	78	0.01	0.01	0.31	0.05	0.03	0.02
331759	594851	6715635		1150	7	14	63	0.6	6	38	1	2	8	1.26	2	5	5	5	8	2	2	3	2	7	93	0.03	0.01	0.39	0.05	0.01	0.03
331760	594913	6715666		1200	3	7	19	0.4	2	45	1	1	2	0.2	2	4	5	5	2	2	2	3	2	3	15	0.01	0.01	0.23	0.06	0.03	0.02
331762	594998	6715681		1300	13	56	308	0.4	22	25	1	6	15	2.63	2	6	5	5	10	2	2	8	3	12	229	0.13	0.01	0.6	0.19	0.01	0.03
331763	595055	6715689		1350	8	49	116	0.4	10	25	1	2	8	1.24	2	5	5	5	8	2	2	4	2	4	58	0.02	0.01	0.3	0.08	0.01	0.01
331764	595111	6715686		1400	2	9	31	0.4	2	25	1	1	4	0.91	2	5	5	5	12	2	2	2	2	6	52	0.04	0.01	0.42	0.02	0.01	0.01
331765	595149	6715677		1450	3	5	17	0.4	2	40	1	1	3	0.57	2	5	5	5	5	2	2	6	2	7	40	0.08	0.01	0.42	0.1	0.03	0.02
331766	595211	6715676		1500	1	4	8	0.4	2	14	1	1	2	0.28	2	4	5	5	6	2	2	2	2	7	15	0.02	0.01	0.31	0.01	0.01	0.01
331767	595260	6715679		1550	3	4	24	0.4	2	37	1	1	2	0.2	2	4	5	5	2	2	2	11	2	2	116	0.02	0.01	0.1	0.43	0.03	0.08
331768	595305	6715680		1600	5	47	212	0.4	7	60	1	3	7	3	2	5	5	5	14	2	2	16	3	17	616	0.07	0.01	0.58	0.15	0.01	0.02
331769	595363	6715680		1650	2	4	8	0.4	2	19	1	1	1	0.18	2	4	5	5	4	2	2	2	2	7	23	0.01	0.01	0.27	0.03	0.03	0.02
331770	595410	6715660		1700	4	21	22	0.4	2	60	1	1	3	0.61	2	4	5	5	7	2	2	12	2	8	73	0.02	0.01	0.39	0.58	0.01	0.02
331771	595470	6715655		1750	16	6	14	0.8	2	62	1	1	3	0.53	2	4	5	5	3	2	2	51	11	7	1216	0.03	0.01	0.43	2.83	0.03	0.03
331772	595530	6715658		1800	2	4	5	0.4	2	18	1	1	1	0.16	2	4	5	5	2	2	2	12	2	8	27	0.01	0.01	0.17	0.13	0.03	0.01
331773	595596	6715660		1850	2	4	6	0.4	2	28	1	1	1	0.18	2	4	5	5	2	2	2	7	2	3	43	0.01	0.01	0.09	0.07	0.03	0.02
331774	595649	6715674		1900	5	8	21	0.6	2	33	1	1	4	0.68	2	6	5	5	8	2	2	10	2	12	125	0.05	0.01	0.39	0.09	0.03	0.01
331775	595697	6715684		1950	6	47	90	0.9	9	49	1	4	7	2.48	2	7	5	5	17	2	2	5	2	5	404	0.06	0.01	0.44	0.17	0.03	0.02
331776	595748	6715691		2000	1	7	6	0.4	2	12	1	1	1	0.16	2	4	5	5	2	2	2	2	2	2	6	0.01	0.01	0.1	0.02	0.02	0.01
331777	595807	6715691		2050	6	4	54	0.4	2	116	2	1	4	0.4	2	4	5	5	2	2	2	33	3	2	906	0.06	0.01	0.33	2.66	0.01	0.04
331778	595842	6715691		2100	6	4	51	0.7	2	27	3	1	1	0.09	2	4	5	5	2	2	2	21	2	2	192	0.06	0.01	0.06	2.45	0.01	0.03
331779	595900	6715697		2150	7	4	37	1.1	2	50	1	1	1	0.13	2	4	5	5	2	2	2	33	2	2	278	0.05	0.01	0.1	3.33	0.01	0.02
331780	595951	6715690		2200	6	4	66	1.2	2	35	2	1	2	0.08	2	4	5	5	2	2	2	30	2	2	545	0.04	0.01	0.07	3.15	0.01	0.03
331781	596006	6715689		2250	4	4	58	1.1	2	41	1	1	1	0.07	3	4	5	5	2	2	2	29	2	2	109	0.03	0.01	0.06	2.49	0.01	0.03
331782	596056	6715699		2300	6	4	57	0.4	2	51	1	1	2	0.12	2	4	5	5	2	2	2	41	2	2	195	0.04	0.01	0.12	3.01	0.01	0.02
331783	596105	6715694		2350	6	6	59	1.3	2	45	1	1	2	0.15	3	4	5	5	2	2	2	33	2	2	540	0.03	0.01	0.12	2.12	0.01	0.03
331784	596161	6715694		2400	7	29	112	1	2	105	1	6	6	0.9	2	6	5	5	8	2	2	30	2	4	965	0.07	0.01	0.46	1.24	0.03	0.03

FIELD	EAST	NORTH	LINE	METRES	Cu	Pb	Zn	Ag	As	Ba	Cd	Co	Ni	Fe	Mo	Cr	Bi	Sb	V	Sn	W	Sr	Y	La	Mn	Mg	Ti	Al	Ca	Na	K
331785	596206	6715693		2450	8	28	157	0.9	5	106	2	3	8	1	2	6	5	5	6	2	2	35	4	4	463	0.08	0.01	0.52	1.44	0.01	0.05
331786	596253	6715696		2500	6	4	64	0.4	2	91	2	2	2	0.18	2	4	5	5	2	2	2	51	2	2	504	0.02	0.01	0.2	2.47	0.03	0.05
331787	596293	6715699		2550	14	10	98	0.8	2	111	3	3	7	0.7	2	6	5	5	5	2	2	37	3	5	725	0.06	0.01	0.49	1.71	0.04	0.03
331788	596350	6715700		2600	8	4	65	0.4	2	57	1	1	3	0.17	2	4	5	5	2	2	2	73	2	2	303	0.03	0.01	0.15	3.09	0.04	0.03
331789	596407	6715677		2650	8	5	35	0.4	2	54	1	3	4	0.32	2	4	5	5	2	2	2	55	2	2	256	0.06	0.01	0.22	3.11	0.03	0.03
331790	596468	6715673		2700	5	4	34	0.5	2	34	1	1	1	0.06	2	4	5	5	2	2	2	35	2	2	368	0.04	0.01	0.04	2.61	0.01	0.03
331791	596524	6715684		2800	4	9	50	0.5	2	58	1	1	3	0.38	2	4	5	5	2	2	2	40	2	2	48	0.02	0.01	0.16	2	0.03	0.04
331792	596590	6715686		2900	1	4	6	0.4	2	17	1	1	1	0.17	2	4	5	5	4	2	2	2	2	5	9	0.01	0.01	0.26	0.01	0.01	0.01
331793	596676	6715697		3000	1	4	2	0.4	2	9	1	1	1	0.11	2	4	5	5	2	2	2	2	2	4	5	0.01	0.01	0.31	0.01	0.01	0.01
331794	596728	6715706		3100	12	14	38	0.6	2	136	1	1	6	0.47	2	4	5	5	3	2	2	21	2	3	39	0.02	0.01	0.25	0.72	0.04	0.05
331795	596812	6715700		3200	14	27	114	0.7	11	125	1	10	19	2.31	2	16	5	5	22	2	2	16	3	8	540	0.35	0.01	1.06	0.83	0.01	0.05
328172	593954	6715031	WA-4	0	16	36	86	0.4	39	36	1	6	17	4.3	4	10	5	5	16	2	2	2	3	20	382	0.11	0.01	0.76	0.01	0.01	0.03
328173	593996	6715036	WA-4	50	10	30	80	0.4	15	91	1	5	14	3.18	4	20	5	5	33	2	2	6	4	22	288	0.28	0.01	1.54	0.05	0.01	0.05
328174	594049	6715031	WA-4	100	1	16	25	0.4	2	40	1	1	3	1.06	2	10	5	5	23	2	2	3	2	24	55	0.11	0.01	0.85	0.02	0.01	0.03
328175	594098	6715017	WA-4	150	4	20	43	0.4	21	56	1	2	6	1.56	3	11	5	5	24	2	2	5	3	24	93	0.14	0.01	0.94	0.03	0.01	0.05
328176	594148	6715017	WA-4	200	6	26	45	0.4	19	43	1	2	8	2	3	10	5	5	24	2	2	4	3	31	100	0.11	0.01	0.83	0.02	0.01	0.04
328177	594210	6715011	WA-4	250	1	17	13	0.4	3	45	1	1	2	0.55	4	5	5	5	12	2	2	4	3	37	27	0.04	0.01	0.58	0.02	0.01	0.04
328178	594265	6715016	WA-4	300	5	21	35	0.4	2	30	1	2	6	1.64	4	8	5	5	18	2	2	4	3	31	69	0.07	0.01	0.61	0.02	0.01	0.03
328179	594302	6715011	WA-4	350	16	42	79	0.4	37	25	1	6	15	3.03	3	6	5	5	11	2	2	3	4	30	138	0.06	0.01	0.47	0.01	0.01	0.03
328180	594359	6715012	WA-4	400	11	275	137	0.4	28	46	1	5	14	3.04	3	12	5	5	20	2	2	3	3	18	273	0.19	0.01	0.78	0.05	0.01	0.05
328181	594416	6715010	WA-4	450	15	441	1525	0.4	24	114	3	6	16	2.96	3	10	5	5	15	2	2	9	7	14	719	0.18	0.01	0.79	0.21	0.03	0.04
328182	594466	6715011	WA-4	500	2	48	48	0.4	2	42	1	1	3	0.53	2	4	5	5	7	2	2	3	2	13	45	0.02	0.01	0.35	0.04	0.01	0.03
328183	594515	6715006	WA-4	550	14	154	679	0.4	25	237	4	11	15	2.8	3	12	5	5	23	2	2	17	13	22	2331	0.22	0.01	1.34	0.42	0.01	0.13
328184	594567	6715006	WA-4	600	20	129	900	0.4	27	136	3	7	20	2.32	3	9	5	5	12	2	2	40	14	15	542	0.27	0.01	0.91	1.78	0.01	0.1
328185	594617	6715004	WA-4	650	13	52	262	0.4	2	93	3	2	8	0.65	2	4	5	5	3	2	2	78	6	5	370	0.11	0.01	0.41	4.31	0.03	0.04
328186	594660	6715028	WA-4	700	7	17	115	0.4	3	79	2	1	4	0.33	2	4	5	5	2	2	2	65	3	3	177	0.07	0.01	0.26	3.02	0.03	0.04
328187	594710	6715038	WA-4	750	15	117	302	0.4	36	129	1	10	11	2.29	3	7	5	5	11	2	2	40	18	17	861	0.13	0.01	0.95	1.33	0.03	0.1
328188	594749	6715035	WA-4	800	10	39	190	0.4	8	103	1	3	9	1.08	2	4	5	5	5	2	2	67	6	8	413	0.12	0.01	0.55	3.14	0.01	0.05
328189	594796	6715032	WA-4	850	8	46	148	0.4	3	111	1	2	6	1.04	2	5	5	5	9	2	2	40	5	10	113	0.11	0.01	0.6	1.79	0.01	0.05
328190	594834	6715036	WA-4	900	12	116	324	0.4	32	117	1	10	13	2.36	3	9	5	5	14	2	2	30	8	17	777	0.22	0.01	0.85	0.99	0.01	0.08
328191	594898	6715016	WA-4	950	11	69	203	0.4	12	135	2	8	9	1.31	3	5	5	5	8	2	2	59	9	10	1407	0.11	0.01	0.72	2.69	0.01	0.05
328192	594946	6715021	WA-4	1000	13	23	175	0.4	16	81	1	2	8	0.61	2	4	5	5	2	2	2	84	5	4	370	0.11	0.01	0.3	3.72	0.01	0.06
328193	595009	6715023	WA-4	1050	12	66	255	0.4	19	76	1	4	9	1.49	2	5	5	5	6	2	2	50	8	8	335	0.11	0.01	0.53	1.98	0.03	0.06
328194	595047	6715023	WA-4	1100	16	129	272	0.4	39	76	2	13	14	1.84	2	5	5	9	5	2	2	30	5	6	1882	0.14	0.01	0.46	1.28	0.02	0.08
328195	595111	6715028	WA-4	1150	10	47	124	0.4	10	55	1	2	8	1.19	2	4	5	5	7	2	2	20	3	9	58	0.04	0.01	0.32	0.63	0.03	0.05
328196	595176	6715023	WA-4	1200	19	87	323	0.4	41	84	1	6	14	2.25	3	5	5	8	7	2	2	44	7	9	476	0.13	0.01	0.57	1.82	0.02	0.06
328197	595213	6715022	WA-4	1250	22	122	417	0.4	37	91	1	8	16	2.25	2	6	5	5	7	2	2	51	9	10	827	0.15	0.01	0.6	2.16	0.01	0.06
328198	595271	6715019	WA-4	1300	16	87	333	0.4	44	47	1	7	13	2.3	2	6	5	5	8	2	2	24	5	13	479	0.11	0.01	0.47	0.73	0.01	0.06
328199	595317	6715026	WA-4	1350	15	33	314	0.4	6	75	3	2	11	0.91	2	4	5	5	4	2	2	66	6	7	607	0.12	0.01	0.36	3.13	0.01	0.06
328200	595360	6715021	WA-4	1400	22	123	544	0.4	51	72	1	7	16	2.8	2	7	5	5	10	2	2	30	8	14	357	0.14	0.01	0.76	1	0.01	0.06
328201	595420	6715034	WA-4	1450	15	42	370	0.4	9	88	2	3	10	0.83	2	4	5	5	3	2	2	83	6	5	621	0.09	0.01	0.36	3.38	0.01	0.05
328202	595460	6715038	WA-4	1500	19	133	1113	0.4	44	62	1	7	18	2.7	2	6	5	5	7	2	2	30	6	10	319	0.14	0.01	0.53	1.04	0.01	0.07
328203	595506	6715037	WA-4	1550	6	30	275	0.4	3	44	1	7	3	0.24	2	4	5	5	2	2	2	56	2	2	262	0.05	0.01	0.1	2.16	0.03	0.07
328204	595548	6715037	WA-4	1600	20	80	625	0.4	13	70	2	5	17	1.23	2	4	5	5	4	2	2	56	10	7	450	0.1	0.01	0.43	2.34	0.02	0.06
328205	595606	6715029	WA-4	1650	8	39	180	0.4	17	72	1	5	11	2.33	4	11	5	5	25	2	2	11	3	20	114	0.24	0.01	0.92	0.22	0.01	0.05
328206	595667	6715023	WA-4	1700	14	117	339	0.4	33	130	1	6	12	2.36	3	8	5	5	15	2	2	23	6	14	265	0.17	0.01	0.82	0.59	0.01	0.08
328207	595725	6715020	WA-4	1750	11	58	266	0.4	9	63	1	1	6	0.5	2	4	5	5	2	3	2	42	6	5	483	0.08	0.01	0.19	1.7	0.02	0.07
328208	595764	6715011	WA-4	1800	7	34	97	0.4	20	141	1	4	9	1.39	2	10	5	5	20	2	2	15	4	15	249	0.19	0.01	0.88	0.44	0.01	0.07

FIELD	EAST	NORTH	LINE	METRES	Cu	Pb	Zn	Ag	As	Ba	Cd	Co	Ni	Fe	Mo	Cr	Bi	Sb	V	Sn	W	Sr	Y	La	Mn	Mg	Ti	Al	Ca	Na	K
328209	595824	6715004	WA-4	1850	20	28	160	0.4	18	200	1	10	20	3.26	3	17	5	5	25	2	2	37	14	17	401	0.39	0.01	1.29	1.01	0.01	0.1
328210	595880	6715009	WA-4	1900	6	4	137	0.4	2	48	3	1	3	0.27	2	4	5	5	2	2	41	2	2	28	0.04	0.01	0.12	1.3	0.02	0.04	
328211	595937	6715002	WA-4	1950	13	10	108	0.4	2	93	2	4	6	0.61	2	4	5	5	4	2	2	41	3	4	473	0.05	0.01	0.24	1.43	0.03	0.08
328212	595994	6715006	WA-4	2000	10	4	75	0.4	2	76	2	2	5	0.39	2	4	5	5	2	3	2	71	6	4	421	0.09	0.01	0.2	2.98	0.02	0.07
328213	596033	6714988	WA-4	2050	11	4	63	0.4	2	63	1	1	6	0.14	2	4	5	5	2	2	2	65	2	2	203	0.07	0.01	0.08	3.24	0.02	0.05
328214	596094	6714987	WA-4	2100	14	4	52	0.4	2	88	1	2	7	0.4	2	4	5	5	4	3	2	72	4	4	438	0.09	0.01	0.2	3.56	0.02	0.06
328215	596141	6714980	WA-4	2150	12	31	146	0.4	21	118	1	11	15	3.14	4	16	5	5	24	2	2	30	8	17	828	0.38	0.01	1.03	0.9	0.01	0.08
328216	596180	6714972	WA-4	2200	11	4	97	0.4	2	56	2	1	4	0.22	2	4	5	5	2	2	2	58	2	2	316	0.09	0.01	0.09	3.02	0.03	0.08
328217	596234	6714950	WA-4	2250	13	4	109	0.4	2	46	3	1	3	0.1	2	4	5	5	2	3	2	65	2	2	391	0.09	0.01	0.05	3.22	0.02	0.08
328218	596277	6714925	WA-4	2300	15	16	79	0.4	2	160	1	5	11	1.52	2	8	5	5	11	2	2	56	8	9	563	0.18	0.01	0.71	2.08	0.03	0.07
328219	596330	6714908	WA-4	2350	9	9	66	0.4	2	100	1	4	6	0.53	2	4	5	5	2	4	2	42	8	5	96	0.04	0.01	0.19	1.43	0.03	0.1
328220	596373	6714910	WA-4	2400	9	11	74	0.4	2	76	2	1	4	0.5	2	4	5	5	4	2	2	32	3	4	44	0.04	0.01	0.21	0.93	0.02	0.06
328221	596422	6714903	WA-4	2450	15	30	127	0.4	13	165	1	8	14	2.2	2	11	5	5	18	2	2	24	6	11	729	0.22	0.01	0.95	0.69	0.04	0.06
328222	596470	6714886	WA-4	2500	18	80	231	0.4	40	116	1	11	20	4.13	4	14	5	5	23	2	2	19	7	21	363	0.27	0.01	1.13	0.36	0.01	0.06
328223	596515	6714841	WA-4	2550	12	22	107	0.4	17	97	1	5	13	2.27	4	13	5	5	21	2	2	12	4	11	195	0.23	0.01	0.84	0.2	0.02	0.08
328224	596554	6714809	WA-4	2600	16	21	120	0.4	28	136	1	5	14	1.86	4	9	5	5	14	2	2	38	7	9	163	0.18	0.01	0.73	1.16	0.02	0.06
328225	596598	6714778	WA-4	2650	19	31	147	0.4	16	174	1	6	16	2.51	3	15	5	5	21	2	2	32	11	13	437	0.26	0.01	1.06	0.94	0.01	0.08
328226	596629	6714727	WA-4	2700	13	47	138	0.4	2	104	1	7	13	2.96	4	16	5	5	26	2	2	11	6	18	387	0.25	0.01	1.03	0.14	0.01	0.11
328227	596666	6714721	WA-4	2750	14	67	356	0.4	26	89	2	8	13	2.55	3	12	5	5	17	2	2	35	8	13	475	0.29	0.01	0.91	1.44	0.03	0.1
328228	596705	6714706	WA-4	2800	20	43	108	0.4	2	84	1	2	8	1.07	2	4	5	5	6	2	2	33	4	5	222	0.08	0.01	0.47	1.79	0.04	0.04
328229	596751	6714713	WA-4	2850	21	41	204	0.4	20	131	1	8	18	2.95	2	15	5	5	19	2	2	37	10	10	474	0.36	0.01	1.03	1.84	0.03	0.07
328230	596791	6714712	WA-4	2900	18	13	121	0.4	25	78	1	4	13	1.42	3	8	5	5	9	2	2	45	5	4	304	0.22	0.01	0.49	3	0.02	0.06
328231	596829	6714716	WA-4	2950	11	14	42	0.4	6	108	1	3	7	1.24	3	5	5	5	16	2	2	9	4	16	64	0.05	0.01	0.56	0.21	0.03	0.04
328232	596865	6714705	WA-4	3000	9	16	91	0.4	33	135	1	6	18	2.84	2	17	5	5	25	2	2	9	7	14	239	0.35	0.01	1.29	0.23	0.01	0.06
328233	596901	6714692	WA-4	3050	21	20	128	0.4	16	173	1	14	31	4.25	4	29	5	5	36	2	2	21	9	17	560	0.68	0.01	1.57	0.54	0.01	0.08
328234	596940	6714685	WA-4	3100	14	24	105	0.4	4	77	1	8	11	2.43	2	10	5	5	16	2	2	42	7	8	581	0.24	0.01	0.77	1.67	0.03	0.04
328235	594400	6715600	WA-5	0	19	58	191	<.4	53	74	<1	8	19	3.09	2	7	<5	6	7	<2	<2	24	9	8	423	0.18	<.01	0.63	0.99	<.01	0.04
328236	594445	6715592	WA-5	50	18	63	104	<.4	54	58	<1	9	16	3.9	2	7	<5	5	6	<2	<2	6	9	10	502	0.11	<.01	0.61	0.1	<.01	0.04
328237	594490	6715584	WA-5	100	11	10	89	<.4	6	32	1	3	5	0.47	2	<4	<5	<5	<2	<2	<2	57	2	2	386	0.1	<.01	0.21	3.32	0.03	0.03
328238	594535	6715576	WA-5	150	20	84	159	<.4	22	76	<1	5	16	2.63	2	5	<5	5	5	<2	<2	28	7	5	277	0.09	<.01	0.56	0.81	0.03	0.04
328239	594580	6715568	WA-5	200	20	95	228	<.4	52	78	<1	11	22	3.34	-1	8	<5	6	7	<2	<2	17	9	11	555	0.17	<.01	0.58	0.53	<.01	0.05
328240	594625	6715560	WA-5	250	12	54	655	<.4	12	90	1	8	19	3.02	4	10	<5	<5	15	<2	<2	28	12	18	532	0.36	<.01	0.97	0.79	<.01	0.05
328241	594670	6715552	WA-5	300	7	6	52	<.4	<2	28	2	1	2	0.26	-1	<4	<5	<5	<2	<2	<2	43	<2	2	93	0.07	<.01	0.13	2.07	0.04	0.07
328242	594715	6715544	WA-5	350	9	55	187	<.4	15	35	<1	5	8	1.83	2	6	<5	<5	9	<2	<2	32	2	4	185	0.15	<.01	0.45	1.73	<.01	0.03
328243	594760	6715536	WA-5	400	14	97	372	<.4	22	96	1	9	16	2.94	2	13	<5	5	15	<2	<2	15	6	18	381	0.29	<.01	0.83	0.32	<.01	0.05
328244	594805	6715528	WA-5	450	14	8	207	<.4	<2	48	2	1	4	0.34	-1	<4	<5	<5	<2	<2	<2	85	2	2	329	0.09	<.01	0.14	4.54	0.03	0.05
328245	594850	6715520	WA-5	500	11	17	128	<.4	3	25	1	1	4	0.42	-1	<4	<5	<5	<2	<2	<2	40	2	<2	232	0.07	<.01	0.13	2.44	0.03	0.05
328246	594895	6715512	WA-5	550	18	73	276	<.4	10	54	2	7	12	1.81	-1	4	<5	<5	4	<2	<2	41	9	6	359	0.15	<.01	0.35	1.66	0.03	0.06
328247	594940	6715504	WA-5	600	9	24	185	1.1	7	31	4	2	3	0.3	-1	<4	<5	<5	2	<2	<2	54	2	2	683	0.09	<.01	0.15	3.25	0.02	0.05
328248	594985	6715496	WA-5	650	21	97	451	<.4	25	60	2	5	13	1.78	2	6	<5	5	8	<2	<2	40	7	6	321	0.16	<.01	0.51	2.04	0.03	0.05
328249	595030	6715500	WA-5	700	20	152	644	<.4	5	44	8	5	10	1.45	-1	4	<5	7	5	<2	<2	51	10	7	281	0.13	<.01	0.43	2.7	0.04	0.04
328250	595075	6715491	WA-5	750	17	145	555	<.4	50	64	1	5	12	2.13	-1	7	<5	8	8	<2	<2	23	6	7	252	0.18	<.01	0.59	1.05	0.02	0.05
328251	595120	6715482	WA-5	800	24	99	1055	0.5	17	66	3	4	14	1.36	-1	4	<5	<5	4	<2	<2	45	7	4	385	0.15	<.01	0.35	3.25	0.03	0.07
328252	595165	6715473	WA-5	850	17	70	290	0.6	35	119	1	5	11	1.78	-1	8	<5	<5	10	<2	<2	40	11	9	498	0.2	<.01	0.79	2.04	0.03	0.04
328253	595210	6715464	WA-5	900	20	114	473	<.4	52	74	<1	9	19	3.2	-1	8	<5	7	9	<2	<2	17	7	18	365	0.16	<.01	0.66	0.62	<.01	0.06
328254	595255	6715455	WA-5	950	21	82	272	0.4	27	105	2	7	12	2.1	-1	7	5	<5	10	<2	<2	23	6	8	430	0.11	<.01	0.63	0.97	0.03	0.06
328255	595300	6715446	WA-5	1000	20	122	275	<.4	9	112	3	13	11	1.18	-1	<4	<5	7	3	<2	<2	60	10	7	1775	0.11	<.01	0.43	3.1	0.03	0.05
328256	595345	6715437	WA-5	1050	24	72	492	0.7	26	136	2	5	15	1.76	-1	9	<5	5	9	<2											

FIELD	EAST	NORTH	LINE	METRES	Cu	Pb	Zn	Ag	As	Ba	Cd	Co	Ni	Fe	Mo	Cr	Bi	Sb	V	Sn	W	Sr	Y	La	Mn	Mg	Ti	Al	Ca	Na	K
328257	595390	6715428	WA-5	1100	22	79	579	0.4	11	139	3	5	17	1.79	-1	6	<5	8	7	<2	<2	58	14	10	620	0.16	<.01	0.67	2.9	<.01	0.07
328258	595435	6715419	WA-5	1150	11	60	304	<.4	20	56	<1	4	10	2.02	-1	8	5	<5	14	<2	<2	14	3	7	130	0.16	<.01	0.65	0.49	0.02	0.04
328259	595480	6715410	WA-5	1200	14	63	355	<.4	4	104	2	5	9	1.08	-1	<4	<5	<5	3	<2	<2	52	9	6	294	0.07	<.01	0.35	2.02	0.03	0.04
328260	595525	6715401	WA-5	1250	18	47	379	<.4	10	49	10	3	8	1.08	-1	<4	<5	<5	4	<2	<2	45	4	3	192	0.11	<.01	0.29	2.61	0.03	0.07
328261	595570	6715392	WA-5	1300	13	27	226	<.4	3	59	4	1	6	0.41	-1	<4	<5	<5	<2	<2	<2	51	5	4	634	0.07	<.01	0.18	2.89	0.03	0.04
328262	595615	6715383	WA-5	1350	17	99	270	<.4	22	61	2	5	10	2.13	2	5	<5	<5	11	<2	<2	13	5	6	125	0.07	<.01	0.59	0.26	0.03	0.04
328263	595660	6715374	WA-5	1400	20	139	517	<.4	55	76	1	9	18	3.17	-1	9	<5	<5	12	<2	<2	25	9	21	370	0.2	<.01	0.74	0.76	<.01	0.07
328264	595705	6715365	WA-5	1450	24	220	895	<.4	65	77	2	13	23	3.9	-1	10	<5	9	13	<2	<2	22	11	23	611	0.34	<.01	0.76	0.82	<.01	0.09
328265	595750	6715356	WA-5	1500	28	237	988	<.4	52	73	1	13	24	3.83	-1	10	<5	9	13	<2	<2	20	11	20	633	0.31	<.01	0.69	0.78	<.01	0.07
328266	595795	6715347	WA-5	1550	13	63	241	<.4	38	107	<1	7	16	3.07	-1	12	<5	7	20	<2	<2	17	5	16	240	0.25	<.01	1.04	0.5	<.01	0.04
328267	595840	6715338	WA-5	1600	26	219	723	<.4	88	67	1	13	24	3.75	-1	9	<5	10	12	<2	<2	19	11	20	648	0.22	<.01	0.65	0.43	<.01	0.07
328268	595885	6715329	WA-5	1650	21	173	511	<.4	63	72	1	12	18	3.49	2	7	<5	7	11	<2	<2	22	10	13	563	0.17	<.01	0.61	0.48	0.02	0.05
328269	595930	6715320	WA-5	1700	24	152	604	<.4	52	86	2	12	19	3.6	2	9	<5	6	13	<2	<2	28	11	10	620	0.23	<.01	0.76	0.82	0.03	0.06
328270	595975	6715311	WA-5	1750	18	23	282	0.4	<2	48	7	2	6	0.49	-1	<4	5	<5	2	<2	<2	48	4	3	203	0.03	<.01	0.26	1.83	0.03	0.06
328271	596020	6715303	WA-5	1800	6	5	167	<.4	<2	50	3	1	1	0.12	-1	<4	<5	<5	<2	<2	<2	46	<2	<2	283	0.06	<.01	0.07	2	0.03	0.07
328272	596065	6715280	WA-5	1850	11	10	211	0.5	<2	79	3	2	5	0.44	-1	<4	<5	<5	<2	<2	<2	68	3	3	339	0.07	<.01	0.29	3.16	0.03	0.03
328273	596110	6715260	WA-5	1900	17	19	320	<.4	5	56	8	4	7	0.75	-1	<4	5	<5	4	<2	<2	60	2	3	957	0.13	<.01	0.36	3.39	<.01	0.05
328274	596155	6715230	WA-5	1950	16	17	201	<.4	9	54	4	2	6	0.71	-1	<4	<5	<5	4	<2	<2	47	3	3	509	0.15	<.01	0.32	2.95	0.03	0.08
328275	596200	6715200	WA-5	2000	19	77	267	<.4	31	113	2	7	12	1.91	2	6	<5	<5	10	<2	<2	33	5	7	595	0.15	<.01	0.71	1.64	0.03	0.06
328276	596245	6715170	WA-5	2050	31	28	139	<.4	17	87	<1	14	26	3.98	3	17	<5	<5	25	<2	<2	51	14	23	577	0.82	<.01	1.07	2.43	<.01	0.08
328277	596290	6715144	WA-5	2100	26	34	132	0.4	12	87	<1	13	22	3.64	3	13	<5	<5	21	<2	<2	60	15	21	607	0.73	<.01	0.9	3.24	<.01	0.08
328278	596335	6715116	WA-5	2150	19	37	171	<.4	10	86	<1	11	22	3.5	3	17	<5	9	22	<2	<2	20	19	22	389	0.46	<.01	1.09	0.47	<.01	0.05
328279	596380	6715088	WA-5	2200	19	26	197	<.4	2	116	2	7	12	2.03	-1	6	<5	<5	11	<2	<2	73	13	10	658	0.17	<.01	0.53	2.7	0.02	0.07
328280	596425	6715060	WA-5	2250	24	19	95	<.4	<2	144	<1	13	28	3.82	3	28	<5	<5	33	<2	<2	24	11	13	411	0.67	<.01	1.46	0.66	<.01	0.05
328281	596470	6715032	WA-5	2300	33	25	112	<.4	12	157	1	14	30	3.71	3	25	<5	5	29	<2	<2	29	15	11	611	0.67	<.01	1.12	1.29	<.01	0.06
328282	596515	6715004	WA-5	2350	22	22	125	<.4	39	119	<1	10	20	2.64	-1	14	<5	<5	22	<2	<2	21	15	11	425	0.78	<.01	0.67	1.8	<.01	0.06
328283	596560	6714976	WA-5	2400	23	17	92	<.4	22	128	<1	14	29	4.27	2	30	<5	<5	38	<2	<2	16	13	24	427	0.73	<.01	1.62	0.36	<.01	0.08
328284	596605	6714948	WA-5	2450	24	22	101	0.4	20	185	<1	12	26	3.14	2	20	<5	6	29	<2	<2	28	20	21	624	0.59	<.01	1.11	1.27	<.01	0.07
328285	596650	6714920	WA-5	2500	34	24	128	<.4	25	246	<1	15	37	4.09	3	30	<5	<5	36	<2	<2	22	18	25	637	0.83	<.01	1.75	0.62	<.01	0.13
328286	596695	6714892	WA-5	2550	22	23	132	0.4	28	191	<1	12	27	3.48	4	25	<5	<5	33	<2	<2	19	9	20	569	0.63	<.01	1.62	0.42	<.01	0.13
328287	596740	6714864	WA-5	2600	32	20	98	<.4	47	164	<1	19	33	4.86	4	27	<5	<5	41	<2	<2	40	28	29	643	0.67	<.01	1.52	1.51	0.03	0.1
328288	596785	6714836	WA-5	2700	13	15	110	<.4	32	137	<1	10	19	3.1	2	20	<5	<5	29	<2	<2	14	6	18	452	0.42	<.01	1.09	0.44	<.01	0.07
328289	596830	6714808	WA-5	2750	23	17	80	<.4	47	72	<1	12	26	3.35	-1	26	<5	<5	31	<2	<2	68	14	19	548	2.02	<.01	1.01	6.58	<.01	0.06
328290	596875	6714780	WA-5	2800	9	22	139	<.4	34	148	1	6	13	2.46	-1	15	<5	<5	20	<2	<2	17	6	10	688	0.28	<.01	1.01	0.8	<.01	0.04
328291	596920	6714752	WA-5	2850	5	13	101	<.4	9	177	<1	6	13	2.16	-1	15	<5	<5	22	<2	<2	10	3	10	350	0.3	<.01	1.07	0.18	<.01	0.02
328292	596965	6714720	WA-5	2900	8	12	66	<.4	10	112	<1	6	14	2.14	-1	14	<5	<5	24	<2	<2	15	5	7	272	0.24	<.01	0.98	0.4	<.01	0.03
328293	597010	6714710	WA-5	3000	16	<4	19	<.4	11	75	1	2	6	0.53	-1	4	<5	<5	5	<2	<2	97	5	4	257	0.07	<.01	0.41	3.23	0.03	0.04
332298	594536	6714101	RH-6	0	3	14	36	0.4	8	50	1	3	7	1.81	2	8	5	5	26	2	2	3	2	12	117	0.11	0.01	0.85	0.03	0.01	0.01
332299	594588	6714091	RH-6	50	8	19	75	0.4	10	65	1	4	9	2.27	2	7	5	5	18	2	2	17	3	14	316	0.16	0.01	0.83	0.19	0.01	0.05
332300	594623	6714087	RH-6	100	14	31	94	0.4	20	70	1	6	13	2.38	2	6	5	5	14	2	2	9	3	14	205	0.08	0.01	0.66	0.14	0.01	0.02
332301	594667	6714091	RH-6	150	10	45	108	0.4	24	71	1	6	14	3.1	2	10	5	5	19	2	2	6	3	13	230	0.15	0.01	0.94	0.09	0.01	0.02
332302	594711	6714088	RH-6	200	7	31	73	0.4	15	62	1	4	9	1.75	2	6	5	5	16	2	2	8	2	12	153	0.08	0.01	0.64	0.22	0.01	0.04
332303	594755	6714105	RH-6	250	2	11	23	0.4	6	57	1	1	4	0.77	2	5	5	5	16	2	2	4	2	16	39	0.04	0.01	0.62	0.06	0.01	0.02
332304	594808	6714093	RH-6	300	8	17	50	0.4	8	66	1	4	8	1.52	2	4	5	5	13	2	2	12	2	11	148	0.03	0.01	0.42	0.31	0.01	0.04
332305	594874	6714098	RH-6	350	9	27	64	0.4	9	65	1	5	9	1.94	2	5	5	5	16	2	2	9	2	15	156	0.09	0.01	0.54	0.23	0.01	0.05
332306	594910	6714102	RH-6	400	10	29	67	0.4	10	76	1	6	11	2.4	2	5	5	5	13	2	2	15	3	6	615	0.09	0.01	0.62	0.44	0.01	0.03
332307	594952	6714112	RH-6	450	12	29	65	0.4	10	90	1	6	10	1.81	2	4	5	5	9	2	2	30									

FIELD	EAST	NORTH	LINE	METRES	Cu	Pb	Zn	Ag	As	Ba	Cd	Co	Ni	Fe	Mo	Cr	Bi	Sb	V	Sn	W	Sr	Y	La	Mn	Mg	Ti	Al	Ca	Na	K
332309	595065	6714098	RH-6	550	8	9	27	0.4	2	92	1	3	7	1.25	2	5	5	5	11	2	2	59	4	4	500	0.1	0.01	0.6	2.22	0.01	0.03
332310	595107	6714093	RH-6	600	13	28	62	0.4	10	80	1	6	13	1.95	2	5	5	5	10	2	2	56	10	7	370	0.12	0.01	0.62	2.11	0.01	0.04
332311	595153	6714102	RH-6	650	12	32	109	0.4	15	71	1	6	14	2.14	2	5	5	5	9	2	2	35	6	7	199	0.12	0.01	0.57	1.26	0.01	0.03
332312	595211	6714098	RH-6	700	12	10	44	0.7	9	85	1	4	12	1.49	2	7	5	5	13	2	2	52	5	4	284	0.17	0.01	0.61	1.82	0.01	0.04
332313	595253	6714095	RH-6	750	14	21	57	0.4	14	76	1	8	19	2.43	2	10	5	5	19	2	2	20	6	14	259	0.27	0.01	0.86	0.5	0.01	0.05
332314	595272	6714123	RH-6	800	8	6	22	0.4	3	101	1	3	6	0.91	2	4	5	5	7	2	2	76	4	2	189	0.07	0.01	0.45	1.82	0.01	0.02
332315	595278	6714157	RH-6	850	11	19	56	0.4	11	95	1	6	16	2.07	2	9	5	5	17	2	2	29	6	10	339	0.22	0.01	0.84	0.84	0.01	0.04
332316	595283	6714199	RH-6	900	9	12	28	0.5	5	87	1	3	9	1.15	2	6	5	5	10	2	2	35	4	5	203	0.11	0.01	0.57	1.09	0.01	0.02
332317	595291	6714247	RH-6	950	14	25	71	0.4	17	103	1	6	13	1.87	2	6	5	5	11	2	2	32	5	7	281	0.12	0.01	0.72	1.04	0.01	0.04
332318	595313	6714300	RH-6	1000	25	52	116	0.4	30	39	1	11	26	3.06	2	5	5	5	10	2	2	39	7	17	398	0.26	0.01	0.54	2.2	0.01	0.08
332319	595344	6714334	RH-6	1050	19	55	104	0.4	28	62	1	11	21	2.96	3	5	5	5	11	2	2	23	6	17	484	0.12	0.01	0.55	0.75	0.01	0.06
332320	595369	6714356	RH-6	1100	21	62	143	0.4	28	92	1	12	25	3.34	2	5	5	5	13	2	2	21	7	16	736	0.14	0.01	0.75	0.87	0.01	0.07
332321	595401	6714370	RH-6	1150	27	75	141	0.4	39	66	1	12	28	3.3	3	6	5	5	12	2	2	25	8	24	503	0.18	0.01	0.61	0.95	0.01	0.07
332322	595427	6714377	RH-6	1200	5	16	64	0.4	10	69	1	5	14	2.44	2	14	5	5	30	2	2	5	2	13	152	0.28	0.01	1.09	0.09	0.01	0.03
332323	595471	6714387	RH-6	1250	17	22	79	0.4	14	81	1	9	22	3.51	2	11	5	5	23	2	2	11	4	19	214	0.38	0.01	1.24	0.21	0.01	0.04
332324	595508	6714394	RH-6	1300	3	13	21	0.4	2	58	1	2	4	0.75	2	5	5	5	15	2	2	6	2	8	47	0.06	0.01	0.59	0.11	0.01	0.02
332325	595539	6714411	RH-6	1350	2	6	13	0.4	4	20	1	1	4	0.72	2	4	5	5	13	2	2	2	2	12	32	0.06	0.01	0.61	0.02	0.01	0.01
332326	595590	6714418	RH-6	1400	7	10	36	0.4	8	43	1	6	16	2.34	2	17	5	5	30	2	2	4	2	17	114	0.34	0.01	0.94	0.08	0.01	0.07
332327	595632	6714482	RH-6	1450	3	8	30	0.4	4	37	1	2	5	0.93	2	8	5	5	22	2	2	3	2	19	57	0.1	0.01	0.61	0.04	0.01	0.03
332328	595651	6714494	RH-6	1500	2	5	12	0.4	4	31	1	1	3	0.53	2	6	5	5	16	2	2	5	2	17	22	0.04	0.01	0.51	0.07	0.01	0.02
332329	595686	6714519	RH-6	1550	1	4	11	0.4	2	30	1	1	2	0.36	2	5	5	5	11	2	2	4	2	19	47	0.03	0.01	0.37	0.08	0.01	0.03
332330	595722	6714546	RH-6	1600	9	11	50	0.4	10	58	1	6	14	2.58	2	11	5	5	31	2	2	3	2	22	109	0.24	0.01	1.07	0.03	0.01	0.03
332331	595763	6714564	RH-6	1650	8	10	25	0.4	7	34	1	4	9	1.49	2	6	5	5	22	2	2	4	2	17	54	0.06	0.01	0.52	0.06	0.01	0.02
332332	595798	6714555	RH-6	1700	1	6	12	0.4	2	34	1	1	2	0.73	2	4	5	5	10	2	2	3	2	11	253	0.01	0.01	0.34	0.01	0.02	0.01
332333	595832	6714554	RH-6	1750	2	6	44	0.4	7	59	1	3	12	1.73	2	11	5	5	23	2	2	7	2	18	141	0.27	0.01	0.95	0.06	0.01	0.03
332334	595889	6714542	RH-6	1800	13	14	41	0.4	4	101	1	2	8	1.09	2	9	5	5	18	2	2	47	4	12	123	0.13	0.01	0.6	0.7	0.01	0.02
332335	595927	6714560	RH-6	1850	12	4	24	0.4	2	78	1	1	4	0.16	2	4	5	5	3	2	2	77	2	2	179	0.05	0.01	0.18	3.24	0.01	0.02
332336	595987	6714563	RH-6	1900	4	4	14	0.4	2	29	1	1	1	0.07	2	4	5	5	2	2	2	93	2	2	69	0.07	0.01	0.07	2.5	0.01	0.01
332337	596036	6714566	RH-6	1950	11	4	24	0.4	2	106	1	2	7	0.77	2	5	5	5	6	2	2	98	7	2	346	0.14	0.01	0.4	3.33	0.01	0.03
332338	596084	6714556	RH-6	2000	20	12	58	0.4	8	111	1	11	23	3.78	2	18	5	5	33	2	2	20	9	23	303	0.55	0.01	1.51	0.35	0.01	0.05
332339	596128	6714533	RH-6	2050	10	8	32	0.4	4	137	1	4	12	1.54	2	11	5	5	21	2	2	75	4	8	270	0.27	0.01	0.92	1.35	0.01	0.03
332340	596163	6714523	RH-6	2100	14	9	53	0.4	7	155	1	8	19	2.44	2	14	5	5	23	2	2	40	7	14	481	0.35	0.01	1.26	0.87	0.01	0.04
332341	596207	6714512	RH-6	2150	17	12	68	0.4	10	144	1	10	23	3.52	2	14	5	5	28	2	2	15	4	17	177	0.44	0.01	1.46	0.31	0.01	0.04
332342	596257	6714520	RH-6	2200	20	12	71	0.4	9	95	1	12	29	3.91	2	14	5	5	25	2	2	14	5	22	252	0.39	0.01	1.23	0.25	0.01	0.04
332343	596300	6714511	RH-6	2250	7	9	37	0.4	5	83	1	4	11	1.67	2	9	5	5	20	2	2	7	2	14	119	0.17	0.01	0.75	0.17	0.01	0.04
332344	596339	6714514	RH-6	2300	5	9	19	0.4	5	49	1	2	6	0.99	2	5	5	5	15	2	2	3	2	19	48	0.05	0.01	0.46	0.04	0.01	0.03
332345	596379	6714484	RH-6	2350	4	12	30	0.4	8	39	1	3	9	1.87	2	8	5	5	24	2	2	3	2	11	102	0.12	0.01	0.6	0.05	0.01	0.03
332346	596417	6714474	RH-6	2400	15	5	9	0.4	2	116	1	2	8	0.64	2	4	5	5	5	2	2	100	6	2	377	0.07	0.01	0.5	2.95	0.01	0.01
332347	596533	6714468	RH-6	2450	13	7	38	0.4	2	106	1	5	11	1.18	2	6	5	5	8	2	2	143	5	2	1857	0.37	0.01	0.55	4.33	0.01	0.04
332348	596620	6714487	RH-6	2500	4	4	8	0.4	2	39	1	1	2	0.14	2	4	5	5	2	2	2	49	2	2	12	0.04	0.01	0.12	1.98	0.01	0.03
332349	596729	6714478	RH-6	2550	6	10	35	0.4	6	72	1	5	12	2.08	2	12	5	5	29	2	2	7	2	15	122	0.23	0.01	0.83	0.18	0.01	0.06
332350	596814	6714470	RH-6	2600	17	17	83	0.4	12	137	1	13	26	3.94	2	15	5	5	29	2	2	18	5	21	410	0.54	0.01	1.48	0.36	0.01	0.04
332351	596904	6714466	RH-6	2650	19	13	55	0.6	11	95	1	11	24	2.7	2	12	5	5	25	2	2	39	7	10	950	0.33	0.01	0.76	1.52	0.01	0.05
332352	596995	6714490	RH-6	2700	6	4	49	0.8	2	33	1	1	2	0.1	2	4	5	5	2	2	2	45	2	2	198	0.05	0.01	0.06	2.08	0.01	0.04
281001	594300	6715550	MW-55		23	39	95	<.4	62	54	<1	9	22	3.33	10	7	<5	17	5	2	<2	5	4	7	329	0.12	<.01	0.43	0.09	<.01	0.02
281002	594330	6715510	MW-55		20	31	84	<.4	33	54	<1	7	20	2.90	-1	6	<5	20	5	<2	<2	6	8	6	359	0.10	<.01	0.38	0.13	<.01	0.01
281003	594350	6715470	MW-55		10	16	54	<.4	26	95	<1	5	10	1.75	2	6	<5	13	7	<2	<2	6	5	4	357	0.07	<.01	0.38	0.13	0.02	0.03
281004	594375	6715430	MW-55		15	64	124	<.4	16	107	<1	5	11	2.59	5	7	<5	15	8	<2	<2	10	7	4	476	0.15	<.01	0.56	0.44	0.03	0.01

FIELD	EAST	NORTH	LINE	METRES	Cu	Pb	Zn	Ag	As	Ba	Cd	Co	Ni	Fe	Mo	Cr	Bi	Sb	V	Sn	W	Sr	Y	La	Mn	Mg	Ti	Al	Ca	Na	K
281005	594425	6715390	MW-55		12	122	78	<.4	21	29	<1	3	8	2.11	3	4	<5	<5	9	<2	<2	<2	2	4	252	0.04	<.01	0.37	0.02	0.02	0.01
281006	594470	6715350	MW-55		22	143	267	<.4	25	55	<1	9	19	3.41	2	6	8	13	5	<2	<2	5	5	6	535	0.09	<.01	0.39	0.09	<.01	0.01
281007	594475	6715310	MW-55		14	103	178	<.4	20	55	<1	17	14	3.31	2	9	<5	5	9	<2	<2	5	4	6	981	0.12	<.01	0.71	0.08	0.03	0.01
281008	594480	6715270	MW-55		8	36	72	<.4	3	28	<1	2	7	1.45	3	<4	<5	6	8	<2	<2	2	<2	5	102	0.02	<.01	0.28	0.02	0.02	0.01
281009	594490	6715230	MW-55		9	25	75	<.4	9	16	<1	2	7	1.37	4	<4	<5	21	6	<2	<2	<2	<2	3	74	0.01	<.01	0.22	0.01	0.03	0.02
281010	594500	6715190	MW-55		9	37	88	<.4	23	23	<1	3	8	1.69	4	<4	<5	22	7	5	<2	<2	<2	7	102	0.01	<.01	0.30	0.02	0.02	0.01
281011	594485	6715150	MW-55		9	43	87	<.4	22	54	1	1	6	1.01	3	<4	<5	8	4	<2	<2	2	4	4	91	0.02	<.01	0.24	0.03	0.03	0.01
281012	594465	6715110	MW-55		6	40	69	<.4	25	55	<1	2	5	1.08	6	5	<5	<5	7	<2	<2	4	2	6	70	0.06	<.01	0.37	0.07	0.03	0.02
281013	594440	6715070	MW-55		10	68	182	<.4	23	42	1	4	11	2.45	3	9	<5	20	13	4	<2	2	3	6	179	0.12	<.01	0.53	0.04	0.02	0.01
281014	594420	6715030	MW-55		9	46	176	<.4	27	54	<1	4	13	2.43	8	11	<5	<5	19	4	<2	3	2	6	165	0.20	<.01	0.67	0.04	<.01	0.03
281015	594400	6714990	MW-55		8	52	136	1.4	23	37	1	4	9	2.10	-1	7	<5	<5	17	<2	<2	3	<2	4	312	0.13	<.01	0.49	0.08	0.02	0.03
281016	594394	6714950	MW-55		8	52	225	<.4	18	71	<1	6	14	2.44	4	12	<5	12	17	<2	<2	6	3	6	316	0.24	<.01	0.77	0.13	<.01	0.03
281017	594388	6714910	MW-55		14	116	356	<.4	36	61	1	8	18	2.53	4	9	5	13	12	<2	<2	10	6	7	487	0.23	<.01	0.54	0.32	<.01	0.02
281018	594386	6714870	MW-55		12	416	494	<.4	33	84	2	6	12	2.80	3	7	<5	18	12	<2	<2	6	5	6	666	0.33	<.01	0.56	0.50	0.02	0.02
281019	594385	6714830	MW-55		3	51	101	<.4	11	51	<1	1	3	0.64	-1	5	<5	<5	6	6	<2	3	<2	4	35	0.07	<.01	0.35	0.05	0.02	0.01
281020	594385	6714790	MW-55		8	160	586	<.4	5	92	1	4	8	1.58	6	8	<5	7	15	3	<2	8	8	9	269	0.13	<.01	0.67	0.15	0.02	0.02
281021	594380	6714750	MW-55		7	102	201	<.4	46	16	<1	2	6	1.62	3	4	<5	16	15	<2	<2	2	<2	8	79	0.03	<.01	0.29	0.02	0.02	0.01
281022	594375	6714710	MW-55		2	53	80	<.4	4	47	<1	1	4	1.16	5	5	6	6	22	<2	<2	2	<2	10	43	0.03	<.01	0.58	0.03	<.01	<.01
281023	594670	6714850	MW-56		21	110	1305	<.4	17	98	4	4	16	1.60	-1	6	<5	10	5	2	<2	42	11	7	646	0.12	<.01	0.48	1.88	0.04	0.02
281024	594660	6714888	MW-56		12	83	381	0.5	27	69	1	4	10	1.76	5	6	<5	17	7	5	<2	21	5	4	282	0.11	<.01	0.41	0.62	0.03	0.01
281025	594658	6714926	MW-56		9	205	215	0.6	28	84	<1	10	7	2.05	7	7	<5	11	10	<2	<2	13	4	4	635	0.11	<.01	0.52	0.35	0.02	0.01
281026	594665	6714964	MW-56		12	69	436	<.4	23	103	3	4	10	1.59	-1	7	<5	13	8	<2	<2	29	6	5	449	0.15	<.01	0.57	1.15	0.03	0.03
281027	594675	6715002	MW-56		13	94	307	<.4	43	80	<1	5	13	2.30	4	8	<5	<5	10	4	<2	18	6	7	275	0.17	<.01	0.64	0.58	0.03	0.02
281028	594700	6715040	MW-56		14	101	310	<.4	44	83	1	5	11	2.35	5	6	<5	13	7	<2	<2	18	5	7	307	0.10	<.01	0.55	0.67	0.02	0.01
281029	594710	6715078	MW-56		14	112	283	<.4	46	61	<1	6	15	2.90	5	7	<5	11	11	<2	<2	11	4	9	208	0.15	<.01	0.60	0.23	0.02	0.02
281030	594760	6715116	MW-56		5	49	129	0.4	3	78	1	2	5	1.09	4	8	<5	5	12	<2	<2	12	3	9	94	0.13	<.01	0.64	0.31	0.03	0.02
281031	594790	6715154	MW-56		12	247	745	<.4	26	56	2	4	12	1.84	8	4	<5	14	6	<2	<2	9	5	11	208	0.06	<.01	0.44	0.22	<.01	0.02
281032	594800	6715192	MW-56		4	44	209	<.4	5	70	<1	3	8	1.87	5	11	5	<5	19	<2	<2	5	3	12	134	0.20	<.01	0.85	0.10	<.01	0.03
281033	594820	6715230	MW-56		4	33	239	0.7	21	73	<1	4	12	2.06	5	14	<5	<5	20	<2	<2	7	3	11	176	0.25	<.01	0.92	0.13	<.01	0.02
281034	594800	6715268	MW-56		5	55	170	<.4	20	70	<1	2	8	1.71	6	8	<5	<5	17	<2	<2	9	4	13	223	0.14	<.01	0.68	0.25	<.01	0.03
281035	594790	6715306	MW-56		8	69	208	<.4	5	69	1	3	9	2.08	6	8	6	8	18	<2	<2	10	4	13	245	0.15	<.01	0.70	0.25	0.03	0.02
281036	594775	6715344	MW-56		3	7	34	<.4	5	36	<1	<1	2	0.44	2	<4	7	<5	7	<2	<2	4	<2	7	19	0.01	<.01	0.26	0.06	0.03	0.01
281037	594730	6715382	MW-56		8	36	134	<.4	7	90	1	4	8	1.66	5	10	5	10	18	<2	<2	13	4	10	241	0.17	<.01	0.78	0.39	0.02	0.01
281038	594700	6715420	MW-56		13	61	217	<.4	33	84	<1	6	14	2.24	5	9	<5	9	12	3	<2	20	6	8	316	0.24	<.01	0.69	0.72	<.01	0.02
281039	594660	6715458	MW-56		14	56	213	<.4	44	89	<1	5	14	2.11	-1	9	<5	<5	10	<2	<2	25	7	8	289	0.23	<.01	0.73	0.98	0.02	0.03
281040	594630	6715496	MW-56		20	90	369	<.4	27	70	1	8	17	3.54	-1	8	6	14	8	<2	<2	28	11	7	1106	0.33	<.01	0.54	1.24	0.02	0.02
281041	594600	6715534	MW-56		17	47	212	<.4	20	95	<1	4	14	2.29	3	6	6	11	7	<2	<2	39	7	5	423	0.14	<.01	0.61	1.13	0.03	0.02
281042	594600	6715572	MW-56		16	103	208	<.4	19	67	<1	11	18	3.19	9	8	<5	13	6	<2	<2	7	5	4	1246	0.09	<.01	0.39	0.20	0.02	0.02
281043	594900	6715500	MW-57		16	56	233	<.4	27	83	<1	6	15	2.37	-1	9	<5	12	9	<2	<2	21	7	6	351	0.16	<.01	0.62	0.55	0.02	0.02
281044	594940	6715450	MW-57		15	77	284	<.4	20	108	1	6	15	2.50	7	11	<5	7	14	<2	<2	19	8	14	330	0.27	<.01	0.81	0.58	0.03	0.05
281045	594970	6715410	MW-57		18	36	236	<.4	<2	67	2	3	12	1.00	4	4	<5	17	3	<2	<2	83	10	10	464	0.22	<.01	0.45	4.05	0.03	0.02
281046	595000	6715370	MW-57		20	48	248	<.4	3	56	1	2	10	1.03	3	4	<5	15	5	<2	<2	67	17	12	469	0.16	<.01	0.62	3.91	0.03	0.02
281047	595030	6715330	MW-57		12	29	126	<.4	<2	40	1	2	5	0.76	5	<4	<5	7	4	<2	<2	48	7	8	206	0.06	<.01	0.43	2.90	0.03	0.01
281048	595070	6715290	MW-57		10	21	53	<.4	3	40	1	1	4	0.67	-1	<4	<5	9	6	<2	<2	32	5	5	351	0.04	<.01	0.42	1.69	0.04	0.02
281049	595100	6715250	MW-57		10	7	137	<.4	2	60	3	<1	5	0.34	-1	<4	<5	<5	<2	<2	<2	71	3	3	170	0.09	<.01	0.42	3.85	0.04	<.01
281050	595150	6715210	MW-57		21	88	471	<.4	32	46	1	6	15	2.16	4	6	<5	12	5	<2	<2	46	11	9	277	0.31	<.01	0.44	2.45	0.03	0.03
281051	595150	6715170	MW-57		14	12	110	<.4	<2	62	1	1	5	0.54	2	<4	<5	7	3	<2	<2	66	9	8	285	0.08	<.01	0.49	3.58	0.03	0.01
281052	595120	6715130	MW-57		17	44	235	<.4	12	98	2	3	9	1.39	6	6	5	9													

FIELD	EAST	NORTH	LINE	METRES	Cu	Pb	Zn	Ag	As	Ba	Cd	Co	Ni	Fe	Mo	Cr	Bi	Sb	V	Sn	W	Sr	Y	La	Mn	Mg	Ti	Al	Ca	Na	K
281054	595070	6715050	MW-57		12	5	64	<.4	7	72	1	1	5	0.28	5	<4	<5	14	<2	<2	<2	91	5	5	288	0.11	<.01	0.56	5.21	0.03	<.01
281055	595060	6715010	MW-57		17	117	506	<.4	52	57	1	7	16	3.09	5	6	<5	8	7	<2	<2	37	10	12	472	0.16	<.01	0.50	1.72	<.01	0.02
281056	595030	6714970	MW-57		18	47	241	<.4	17	84	1	4	9	1.37	2	5	<5	<5	7	<2	<2	62	12	9	986	0.13	<.01	0.65	3.45	0.03	<.01
281057	595010	6714930	MW-57		15	40	203	<.4	17	74	1	2	9	1.30	7	5	<5	10	10	2	<2	45	9	8	854	0.10	<.01	0.51	2.45	0.03	<.01
281058	595000	6714890	MW-57		7	30	149	<.4	<2	64	<1	2	7	1.52	7	9	<5	<5	20	<2	<2	22	4	8	205	0.16	<.01	0.65	1.09	0.02	0.02
281059	594980	6714850	MW-57		7	20	109	<.4	<2	72	<1	2	5	1.17	3	6	7	6	17	<2	<2	32	4	6	384	0.11	<.01	0.60	1.75	0.03	0.01
281060	594970	6714810	MW-57		12	67	209	<.4	20	45	<1	6	11	2.32	-1	5	<5	10	12	<2	<2	20	3	6	280	0.12	<.01	0.45	1.00	0.02	0.01
Property Averages =					12	45	174	0.5	17	74	1	5	11	1.73	2	8	5	7	12	2	2	28	5	10	353	0.16	0.01	0.58	1.16	0.02	0.04

