

COMINCO LTD.

EXPLORATION

WESTERN DISTRICT

NTS 105 G/7

093713

1996 ASSESSMENT REPORT

COBB PROPERTY

GEOLOGICAL MAPPING/PROSPECTING AND
GEOCHEMISTRY

WATSON LAKE M.D., YUKON

PELLY MOUNTAINS AREA

WORK PERIOD

JULY 26-29, 1996



LATITUDE: 61°25'

JUNE, 1997

LONGITUDE: 130°40'

VICTORIA L. BANNISTER

This report has been examined by
the Geological Evaluation Unit
under Section 53 (4) Yukon Quartz
Mining Act and is allowed as
representation work in the amount
of \$ 11,600.

M. Burke
for Regional Manager, Exploration and
Geological Services for Commissioner
of Yukon Territory.

TABLE OF CONTENTS

	PAGE
1.0 SUMMARY	1
2.0 LOCATION AND ACCESS	1
3.0 PROPERTY AND OWNERSHIP	1
4.0 PREVIOUS WORK	3
5.0 REGIONAL GEOLOGY	3
6.0 1996 FIELD WORK	4
6.1 GEOLOGY, PROSPECTING AND GEOCHEMISTRY	
7.0 COBB PROPERTY	4
7.1 GEOLOGY AND MINERALIZATION	
7.2 GEOCHEMISTRY	
8.0 CONCLUSIONS AND RECOMMENDATIONS	5
9.0 REFERENCES	6

FIGURES

FIGURE 1	GENERAL LOCATION	2
----------	------------------	---

APPENDICES

APPENDIX I	STATEMENT OF QUALIFICATIONS	7
APPENDIX II	1996 GEOCHEMISTRY DATA	8
APPENDIX III	STATEMENT OF EXPENDITURES	9

ATTACHMENTS

FIGURE 2	CLAIM MAP (1:31,500)
FIGURE 3	GEOLOGY MAP (1:10,000)
FIGURE 4	GEOCHEMICAL SAMPLE LOCATIONS (1:10,000)

1996 ASSESSMENT REPORT COBB PROPERTY, YUKON TERRITORY

1.0 SUMMARY

The COBB property, comprising 88 units, is located directly south (10kms) of Cominco's ABM VHMS Deposit, approximately between the southern Grass Lakes and the southern North Lakes, and approximately 85 kms southeast of Ross River.

The property was staked in June 1995 after the discovery of Zn-Pb mineralized float in the drainages near the property area.

The rocks underlying this area of the Yukon have been assigned to the Yukon Tanana Terrane (YTT). The YTT consists of a layered sequence of metamorphosed rocks comprising a "*lower unit*" of pre-Devonian quartzite, pelitic schist and minor marble, a late Devonian to mid-Mississippian "*middle unit*" comprised of carbonaceous phyllite and schist with interbanded mafic and, locally significant felsic metavolcanics, and an "*upper unit*" of Pennsylvanian marbles and quartzites. Volcanism within the "*middle unit*" was accompanied by the intrusion of late Devonian to Mississippian, mafic to felsic metaplutonic suites. Felsic volcanics of the "*middle unit*" are host to Cominco's ABM VHMS Deposit.

The COBB property is underlain by a late Devonian to mid-Mississippian sequence of intermixed felsic metavolcanics and variably carbonaceous metasediments of the YTT.

Work completed on the COBB property in 1996 included two days of mapping, and 13 person days of geochemical sampling. Results of grid based and contour soil sampling showed an anomalous area of Pb, Zn and some Cu values. Further work, including diamond drilling to test the anomalous geochemical values is planned.

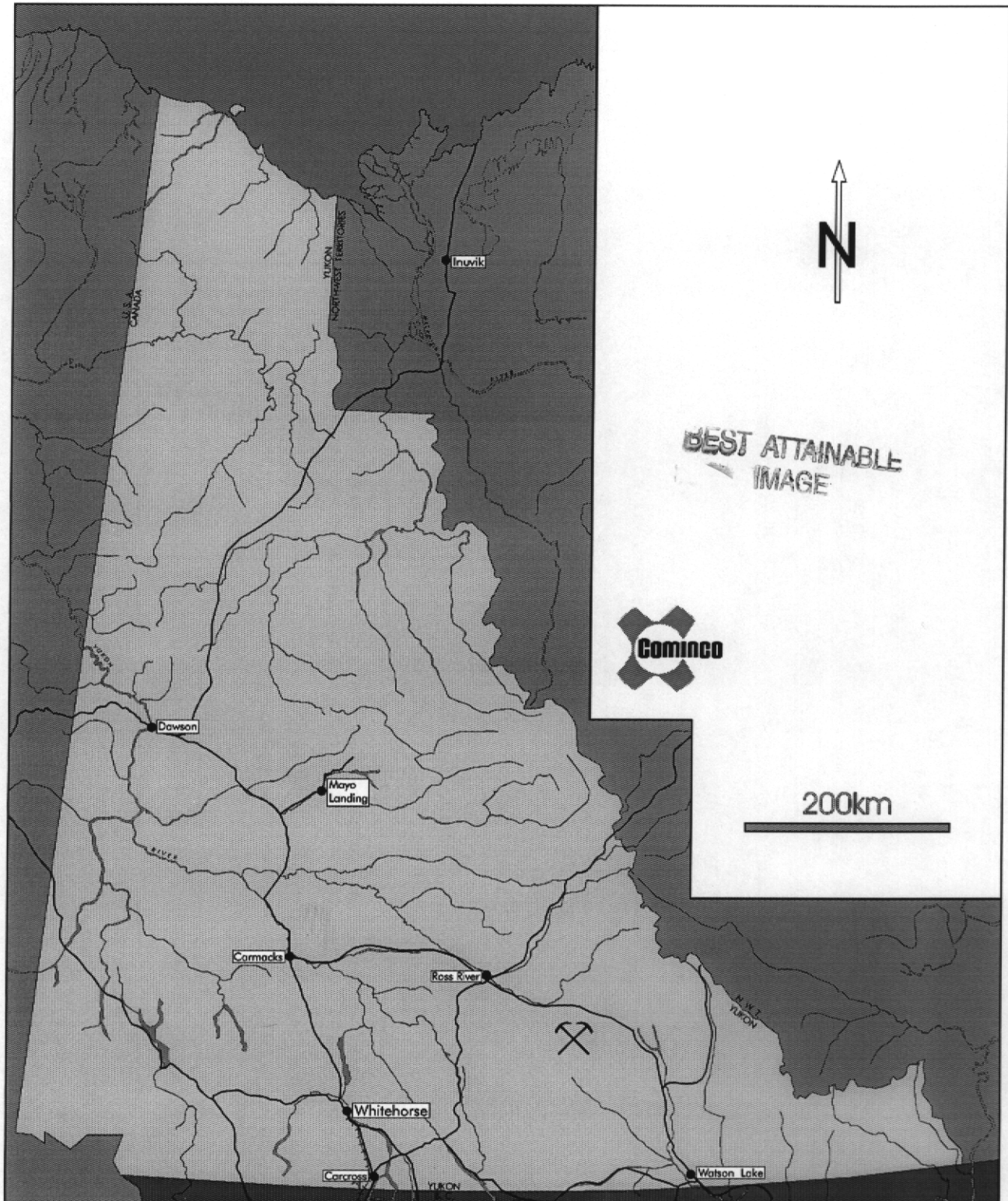
2.0 LOCATION AND ACCESS

The COBB property is located 10 kms south of Cominco's ABM VHMS Deposit and adjoins the TAG property. Overall, the property lies 85 kms southeast of Ross River, Yukon (Figure 1). The Kudz Ze Kayah camp and private gravel road provides access to within 10 kms of the property. Direct access is by helicopter.

3.0 PROPERTY AND OWNERSHIP

The COBB property, comprising 88 units, is 100% owned by Cominco Ltd. (Figure 2).

<u>Name</u>	<u>Units</u>	<u>Claim No.</u>	<u>Due Dates</u>
COBB 1-88	88	YB60092-179	



Drawn by:		Traced by: a. m. a.	
Revised by:	Date:	Revised by:	Date:

COBB PROPERTY LOCATION

105 G7

Scale: **As Shown**

Date: **June 1997**

Plate: **1**

4.0 PREVIOUS WORK

Known-recorded work on the COBB property is limited to the government RGS survey conducted in 1987. Subsequently Cominco began work on this property, doing silt sampling in 1994, followed by a more substantial interest beginning in 1995. In 1995, an airborne EM/MAG geophysical survey was flown over the property while minor geological mapping and prospecting was done. Mapping and prospecting found boulders showing Pb-Zn mineralization and that the property is dominantly comprised of schistose to banded metavolcanics with interbanded carbonaceous metasediments.

5.0 REGIONAL GEOLOGY

The rocks underlying this part of southeastern Yukon have been assigned to 2 terranes: the Yukon-Tanana Terrane (YTT) and the Slide Mountain Terrane (SMT) (Mortensen, 1983a; Mortensen and Jilson, 1985).

The YTT consists primarily of a layered sequence of metamorphosed rocks comprising a "lower unit" (3I) of pre-Devonian quartzite, pelitic schist and minor marble, a late Devonian to mid-Mississippian "middle unit" (3F) comprising carbonaceous phyllite and schist with interbanded mafic and, locally significant, felsic metavolcanics (3G), and an "upper unit" of Pennsylvanian marbles and quartzite. Volcanism within the "middle unit" was accompanied by the intrusion of 2-3, late Devonian to Mississippian, mafic to felsic metaplutonic suites (Simpson Range suite and augen and monzonitic orthogneisses). This sequence appears to reflect stable platformal or shelf sedimentation with an intervening period of mafic to felsic arc volcanism developed within a more reduced basinal setting. Felsic volcanoclastics of the "middle unit" are host to Cominco's ABM VHMS Deposit.

The late Devonian to Triassic SMT comprises a heterogeneous package of mafic to ultramafic plutonic rocks, mafic volcanics, massive carbonate and chert. This sequence was structurally emplaced as thrust bounded klippen on YTT rocks or as thrust slices imbricated within YTT rocks during a period of crustal shortening (D2). The SMT is thought to represent a disrupted oceanic crust and volcanic arc assemblage thought to be located between the YTT and ancestral North America(?).

A sub-horizontal to moderately north to northeast dipping, penetrative ductile deformation fabric (S2) and associated middle greenschist facies (chlorite-biotite grade) metamorphism affects all YTT rocks. This fabric reflects the first, and most significant, deformational and metamorphic event (D1) perhaps related to a continent-arc collision during late Permian to early Triassic time.

Late Triassic immature clastics comprising micaceous argillite, siltstone and sandstone unconformably(?) overlie the deformed and metamorphosed YTT rocks. These sediments are often closely associated with SMT volcanics and are invariably in fault contact with YTT rocks.

The SMT, Late Triassic sediments and Late Triassic to Middle Jurassic plutons are all affected by a period of Middle Jurassic to Late Cretaceous thrust faulting (D2), during which the Finlayson Lake Fault Zone was formed. This complex fault zone contains both thrust and steep, transcurrent(?) faults and separates the YTT from autochthonous North America (Mortensen, 1983a; Mortensen and Jilson, 1985).

6.0 1996 FIELD WORK

6.1 GEOLOGY, PROSPECTING AND GEOCHEMISTRY

Property scale mapping at 1:10,000 was completed by detailed traverses on the COBB property, as well as grid-based and contour soil sampling. The following table summarizes the 1996 fieldwork:

PROPERTY	GEOLOGY	PROSPECTING	GEOCHEMISTRY
COBB	July 26; LT, PO	None	July 26-29 368 soils

7.0 COBB PROPERTY

7.1 GEOLOGY AND MINERALIZATION

The COBB property is predominantly underlain by a late Devonian to mid-Mississippian sequence of intermixed felsic metavolcanics and variably carbonaceous metasediments of the Yukon Tanana Terrane. The COBB appears to be just below or contemporaneous with the Kudz Ze Kayah observed stratigraphy. Stratigraphy on the property is generally shallow dipping with the interbedded metasediments and felsic metavolcanics being strongly foliated. Thick felsic crystal tuffs, with interlayered felsic flows dominated the rock units mapped, with minor mudstones and siltstones being interbedded with the felsic units.

Mineralization appears in some of the flat lying interlayered metasedimentary units, bounded by felsic metavolcanics. Sphalerite, galena and pyrite are found as fine to blotchy disseminated patches parallel to foliation and as fracture filling. Thin laminations of galena and chalcopyrite are also seen to occur within the felsic crystal tuffs. Some of the quartz-biotite schists found on the property also display fine-grained chalcopyrite and pyrite, +/- magnetite.

7.2 GEOCHEMISTRY

Soil samples on the COBB property were collected at 50 and 100 metres along 11 grid lines and on 3 contour lines (Figure 4).

Results from sampling enhanced the anomalous nature of an area where 3 previously collected samples showed anomalous values. Coincident Pb (>75 ppm, up to 1003 ppm), Zn (>400ppm, up to 5638 ppm) and moderate Cu (>50 ppm, up to 375 ppm) anomalies occur within a 1-2 km long anomalous zone. The grid samples have defined more of the area considered anomalous, and this area includes values of Ba (up 12,409 ppm) and Ag with a sample of 3.9 ppm.

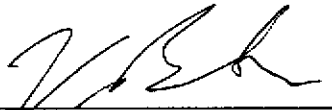
The grid area covers the area of the Zn-Pb mineralized horizon and complements the grid sampling previously done downslope.

8.0 CONCLUSIONS AND RECOMMENDATIONS

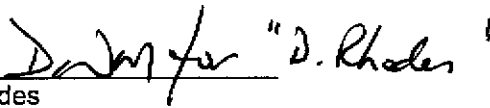
Work completed on the COBB property in 1996 included two days of mapping and 13 person days of soil sampling. Along with previous work, the geology found occurs in promising horizons that stratigraphically may be similar to the Kudz Ze Kayah stratigraphy. The anomalous zone of geochemistry related to the mineralized horizon suggest the need for further examination.

Planning for 1997 work includes diamond drill testing of the geochemically anomalous zone.


Report by:


V.L. Bannister, M.Sc
Geologist I

Endorsed by:


D. Rhodes
Senior Geologist

Approved for
Release by:


D.W. Moore
Manager, Exploration
Western Canada

VLB/

DISTRIBUTION:
W.D. Files
Mining Recorder (2)

9.0 REFERENCES

PLINT, H. E., 1994. GEOLOGICAL MAPPING IN THE CAMPBELL RANGE, SOUTHEASTERN YUKON (PARTS OF 105 G/8, G/9 AND 105 H/5, H/12); Yukon Exploration and Geology 1994: Part C, Exploration and Geological Services Division, Yukon, Indian and Northern Affairs, Canada, p. 47-58.

MORTENSEN, J. K., 1983a. AGE AND EVOLUTION OF THE YUKON-TANANA TERRANE, SOUTHEASTERN YUKON TERRITORY [Ph.D. Thesis]; Santa Barbara, University of California, 155 p.

MORTENSEN, J. K. AND JILSON, G. A., 1985. EVOLUTION OF THE YUKON-TANANA TERRANE : EVIDENCE FROM SOUTHEASTERN YUKON TERRITORY; Geology, 13, p. 806-810.

MACROBBIE, P. A., 1995. YEAR END REPORT : PELLY MOUNTAIN PROPERTIES, SOIL GEOCHEMISTRY AND GEOLOGICAL MAPPING; Cominco Report, 41p.

APPENDIX I
STATEMENT OF QUALIFICATIONS

STATEMENT OF QUALIFICATIONS

I, Victoria L. Bannister, of #7-2035 W. 3rd Ave., Vancouver, B.C. hereby declare that I:

1. Graduated from The University of Toronto, Toronto, Ontario, with a B.Sc. in Geology in May, 1993.
2. Graduated from Queen's University, Kingston, Ontario, with a M.Sc. in Geology in May, 1996.
3. Have acted as a contract geologist in Ontario, Canada; Martinique; and Guyana since the summer of 1991.
4. Have been actively engaged in mineral exploration in Western Canada as a geological assistant with Cominco Ltd. during the summer and fall of 1996 and as a full-time geologist since November, 1996.

Date: June, 1997



V.L. Bannister, M.Sc.
Geologist I

APPENDIX II
1996 GEOCHEMISTRY DATA

COBB SOIL GEOCHEMISTRY

Lab	Field	Cu	Pb	Zn	Ag	As	Ba_a	Cd	Co	Ni	Fe	Mo	Cr	Bi	Sb	V	Sn	W	Sr	Y	La	Mn	Mg	Ti	Al	Ca	Na	K	Au	Au Wt.	Ba	
Number	Number	ppm	ppm	ppm	ppm	ppm	ppm	ppm	ppm	ppm	%	ppm	ppm	ppm	ppm	ppm	ppm	ppm	ppm	ppm	ppm	ppm	%	%	%	%	%	%	%	%	%	xtf
S9620749	334820	40	54	1108	1.3	282	544	5	81	650	8.3	1	1206	2	7	193	5	2	28	10	15	3053	6.83	0.43	5.4	0.83	0.02	1.01	5	10	1508	
S9620750	334821	60	69	367	0.6	17	260	2	25	49	6.16	1	86	2	10	97	5	2	39	15	30	1187	3.06	0.26	3.65	0.68	0.02	0.9	5	10	1392	
S9620751	334822	201	130	427	0.2	21	158	1	15	43	5.4	2	33	2	2	37	5	2	51	9	45	1665	0.97	0.15	1.41	0.31	0.01	0.41	12	10	2084	
S9620752	334823	77	59	275	0.4	812	197	1	25	47	5.67	3	26	2	9	36	5	2	42	10	27	1397	0.85	0.01	1.15	0.68	0.01	0.14	20	10	2029	
S9620753	334824	103	121	1622	1.3	30	226	6	46	156	7.16	1	98	2	5	104	5	7	30	17	24	2792	2.71	0.2	3.39	0.93	0.02	0.54	5	10	1992	
S9620754	334825	108	296	1129	0.9	35	409	4	34	160	6.05	2	162	2	2	71	5	2	38	13	26	1841	1.66	0.15	2.16	0.92	0.02	0.42	5	10	4012	
S9620755	334826	80	60	339	0.2	71	233	1	28	95	4.98	2	103	2	2	69	5	2	21	12	38	1625	1.64	0.16	2.26	0.55	0.02	0.38	5	10	2300	
S9620756	334827	61	58	452	0.2	44	93	1	16	32	4.09	3	29	2	2	26	5	2	23	18	70	1047	0.88	0.13	1.33	0.3	0.02	0.33	5	10	1166	
S9620757	334828	54	187	603	0.2	6	76	2	20	48	4.61	2	66	2	2	36	5	2	15	21	65	1014	1.82	0.27	2.33	0.34	0.02	0.73	5	10	774	
S9620758	334829	90	583	579	0.2	7	54	1	8	16	3.01	6	12	2	6	14	5	2	17	15	72	622	0.83	0.09	0.98	0.13	0.01	0.26	5	10	904	
S9620759	334830	97	101	1173	0.2	20	99	2	5	17	4	5	14	2	2	18	5	2	20	7	58	574	0.36	0.05	0.87	0.08	0.01	0.17	5	10	1340	
S9620760	334832	104	68	106	0.5	43	209	1	2	2	5.38	10	6	2	2	8	5	2	13	3	25	183	0.09	0.01	0.37	0.02	0.02	0.33	5	10	1979	
S9620761	334833	41	46	448	0.2	5	123	1	5	14	3.23	3	14	2	2	20	5	2	11	3	18	805	0.4	0.07	0.99	0.16	0.01	0.16	5	10	1750	
S9620762	334834	32	18	247	0.2	13	135	1	2	15	4.34	2	15	2	2	20	5	2	17	16	67	691	0.57	0.06	1.36	0.42	0.01	0.2	-1	-1	-1	
S9620763	334835	69	25	207	0.2	14	229	1	14	38	4.06	1	65	2	2	60	5	2	21	9	32	806	1.51	0.16	2.25	0.6	0.01	0.25	5	10	2676	
S9620764	334836	191	44	328	0.2	4	145	1	6	14	3.93	5	9	2	2	14	5	2	15	11	72	804	0.62	0.08	1.12	0.16	0.01	0.2	5	10	3280	
S9620765	334837	48	92	1520	0.2	25	140	3	16	72	4.44	2	92	2	10	46	5	2	21	23	75	780	1.39	0.14	2	0.52	0.01	0.33	-1	-1	-1	
S9620766	334838	106	36	145	0.2	25	639	1	18	63	3.79	1	52	2	2	47	5	2	39	11	40	1813	1.24	0.05	1.95	0.39	0.01	0.19	-1	-1	-1	
S9620767	334839	37	32	173	0.2	19	175	1	15	38	3.67	1	52	2	2	42	5	2	18	33	86	1040	1.11	0.1	1.88	0.45	0.01	0.28	-1	-1	-1	
S9620768	334840	45	26	129	0.2	23	268	1	11	48	3.67	1	70	2	2	54	5	2	20	11	38	655	1.31	0.11	2.02	0.4	0.01	0.25	-1	-1	-1	
S9620769	334841	62	28	123	0.2	29	439	1	15	52	4.4	1	80	2	2	82	5	3	28	9	31	870	1.63	0.15	2.49	0.81	0.01	0.32	-1	-1	-1	
S9620770	334842	52	36	124	0.2	23	257	1	11	46	3.47	1	59	2	2	56	5	2	17	11	32	672	1.14	0.1	1.76	0.35	0.01	0.23	-1	-1	-1	
S9620771	334843	73	37	158	0.2	27	482	1	19	81	4.9	1	104	2	7	84	5	4	46	14	46	1073	2.05	0.14	2.92	0.58	0.01	0.29	-1	-1	-1	
S9620772	334844	88	39	207	0.2	61	354	1	26	92	5.6	1	125	2	2	96	5	4	22	15	36	1752	2.06	0.18	2.97	0.69	0.01	0.37	5	10	3865	
S9620773	334845	244	19	135	0.2	321	536	1	73	143	6.96	1	191	2	5	173	5	7	20	13	20	2308	3	0.21	3.84	0.72	0.02	0.41	5	10	2966	
S9620774	334846	85	73	498	0.4	128	185	2	25	93	6.01	2	78	2	7	51	5	5	17	39	104	1622	1.46	0.1	2.15	0.35	0.01	0.27	5	10	2561	
S9620775	334847	41	45	208	0.2	25	118	1	10	36	3.54	2	45	2	2	41	5	3	8	13	43	754	0.69	0.05	1.33	0.15	0.01	0.12	5	10	2176	
S9620776	334848	50	36	117	0.2	52	182	1	12	39	4.57	3	56	2	2	55	5	2	24	17	56	926	1.01	0.08	1.56	0.5	0.02	0.16	5	10	1809	
S9620777	334849	86	48	113	0.2	64	377	1	19	90	4.77	1	112	2	2	74	5	2	30	18	56	1646	1.79	0.14	2.57	0.78	0.01	0.35	5	10	4032	
S9620778	334850	62	38	97	0.2	26	358	1	13	56	4.48	1	85	2	2	81	5	2	27	7	24	963	1.24	0.13	2.13	0.72	0.01	0.2	5	10	4527	
S9620779	334851	78	198	361	0.6	39	116	2	12	52	3.85	7	7	2	5	8	5	2	16	24	104	1410	0.06	0.01	0.37	0.14	0.01	0.08	5	10	2156	
S9620780	334852	29	82	139	0.2	28	92	1	10	28	3.24	2	18	2	2	24	5	2	16	16	59	961	0.33	0.08	0.88	0.31	0.01	0.13	5	10	1845	
S9620781	334853	52	97	237	0.6	60	216	2	29	75	5.33	1	99	2	2	92	5	5	15	17	34	2616	1.66	0.23	2.73	0.97	0.01	0.31	5	10	1317	
S9620782	334854	100	189	449	1.4	7	277	4	25	56	5.96	2	29	2	2	41	5	2	20	49	58	6740	1.04	0.16	1.61	0.64	0.02	0.22	5	10	2659	
S9620783	334855	89	159	792	1.3	29	247	4	33	103	6.85	4	74	2	5	64	5	2	24	22	75	1962	1.66	0.26	2.4	0.7	0.02	0.39	5	10	2320	
S9620784	334856	83	67	367	0.2	39	351	2	31	136	5.66	1	109	2	9	68	5	2	20	15	42	2044	1.88	0.2	2.36	0.54	0.01	0.41	5	10	4171	
S9620785	334857	78	38	134	0.2	30	348	1	23	80	4.88	1	102	2	2	87	5	2	25	10	31	1123	1.88	0.15	2.61	0.58	0.01	0.28	5	10	3535	
S9620786	334858	364	45	233	0.4	38	325	1	30	122	5.67	1	144	2	2	84	5	3	22	13	41	1738	1.98	0.14	2.72	0.56	0.01	0.26	5	10	3527	
S9620787	334859	230	47	378	0.2	158	329	2	43	157	6.55	4	118	2	2	68	5	2	21	9	42	2045	2.04	0.13	2.32	0.57	0.01	0.28	5	10	2795	
S9620788	334860	358	143	349	0.4	123	252	1	17	71	5.24	7	48	2	2	26	5	2	21	7	72	575	0.89	0.04	1.04	0.19	0.01	0.21	5	10	2763	
S9620789	334861	224	48	335	0.2	80	247	1	14	64	5.85	8	70	2	2	62	5	2	17	9	46	582	1.33	0.1	1.91	0.45	0.01	0.23	-1	-1	-1	
S9620790	334862	214	50	266	0.2	26	133	1	5	17	4.53	9	23	2	2	21	5	2	16	6	41	368	1.04	0.05	1.44	0.22	0.01	0.11	5	10	2474	
S9620791	334863	93	22	139	0.2	17	138	1	2	13	3.97	3	17	2	8	25	5	3	10	6	59	587	1.8	0.14	2.35	0.19	0.01	0.34	-1	-1	-1	
S9620792	334864	167	14	133	0.2	9	196	1	16	21	4.64	3	36	2	6	66	5	2	11	6	19	965	1.78	0.2	2.32	0.26	0.01	0.37	-1	-1	-1	
S9620793	334865	181	24	258	0.2	10	195	1	19	33	5.11	2	62	2	5	90	5	2	11	7	32	1046	2.09	0.23	2.73	0.25	0.01	0.34	-1	-1	-1	
S9620794	334866	34	14	94	0.2	2	100	1	17	29	5.46	2	60	2	2	90	5	4	9	5	10	798	1.89	0.11	2.56	0.15	0.01	0.18	-1	-1	-1	
S9620795	334870	35	16	121	0.2	6	229	1	6	25	3.08	1	29	2	2	28	5	5	18	9	38	600	0.66	0.09	1.36	0.42	0.01	0.18	-1	-1	-1	

S9620796	334871	38	28	80	0.2	9	213	1	6	24	2.2	1	31	2	2	25	5	2	19	8	36	393	0.64	0.07	1.13	0.45	0.02	0.11	-1	-1	-1	
S9620797	334872	58	56	144	0.2	22	279	1	9	34	2.95	1	46	2	2	32	5	2	25	15	58	519	0.81	0.07	1.53	0.64	0.01	0.13	-1	-1	-1	
S9620798	334873	50	44	144	0.2	9	245	1	5	21	2.93	1	22	2	2	22	5	2	25	32	112	619	0.67	0.08	1.46	0.61	0.02	0.16	-1	-1	-1	
S9620799	334874	44	35	166	0.2	20	199	1	8	23	3.82	2	23	2	2	21	5	2	17	15	61	773	0.95	0.14	1.68	0.4	0.01	0.23	-1	-1	-1	
S9620800	334875	68	121	196	0.2	2	216	1	7	18	4.94	3	16	2	2	18	5	2	19	9	63	1113	1.37	0.26	2.09	0.44	0.01	0.43	-1	-1	-1	
S9620801	334876	200	83	153	0.2	18	171	1	5	21	4.96	4	23	2	2	20	5	2	13	11	75	252	0.89	0.14	1.55	0.23	0.01	0.26	-1	-1	-1	
S9620802	334877	144	34	174	0.2	3	198	1	6	18	4.61	2	21	2	2	18	5	2	15	8	60	704	0.92	0.19	1.78	0.28	0.01	0.36	-1	-1	-1	
S9620803	334878	88	37	172	0.2	7	185	1	11	21	4.63	3	26	2	2	27	5	2	12	14	64	1008	1.08	0.11	1.86	0.26	0.01	0.22	-1	-1	-1	
S9620804	334879	106	40	148	0.2	24	169	1	10	21	4.34	4	22	2	2	24	5	2	12	13	62	688	1	0.09	1.66	0.24	0.01	0.18	-1	-1	-1	
S9620805	334880	172	41	198	0.2	22	221	1	22	34	5.96	2	50	2	2	61	5	2	12	15	60	1245	1.9	0.04	2.81	0.31	0.01	0.11	-1	-1	-1	
S9620806	334881	113	23	184	0.2	26	154	1	13	25	3.97	2	37	2	2	47	5	2	11	14	53	839	0.99	0.03	1.85	0.2	0.02	0.07	-1	-1	-1	
S9620807	334882	121	40	243	0.2	35	218	1	16	30	4.64	3	43	2	2	51	5	2	13	17	63	1273	1.14	0.04	1.91	0.26	0.01	0.1	-1	-1	-1	
S9620808	334883	42	39	223	0.2	25	225	1	15	35	4.42	1	56	2	2	59	5	3	21	15	49	809	1.29	0.15	2.24	0.57	0.02	0.27	-1	-1	-1	
S9620809	334884	70	27	200	0.2	8	197	1	19	37	5.41	1	50	2	2	88	5	2	11	9	27	995	1.55	0.11	2.44	0.27	0.01	0.16	-1	-1	-1	
S9620810	334885	93	35	487	0.2	25	297	1	17	32	5.25	2	45	2	2	71	5	2	13	18	43	1038	1.46	0.1	2.35	0.3	0.01	0.17	-1	-1	-1	
S9620811	334886	123	25	123	0.2	26	201	1	22	27	4.92	5	48	2	2	49	5	2	12	22	60	1548	1.7	0.11	2.56	0.2	0.01	0.21	-1	-1	-1	
S9620812	334887	141	20	136	0.2	27	132	1	12	23	4.54	6	34	2	2	36	5	2	11	10	43	753	1.42	0.11	2.09	0.15	0.01	0.22	-1	-1	-1	
S9620813	334888	158	28	163	0.2	23	209	1	22	30	5.42	9	41	2	2	46	5	2	18	13	68	1041	1.77	0.13	2.59	0.2	0.01	0.24	-1	-1	-1	
S9620814	334889	61	5	68	0.2	9	103	1	4	10	2.27	4	17	2	2	30	5	2	13	7	32	258	0.65	0.07	1.2	0.18	0.02	0.07	-1	-1	-1	
S9620815	334890	85	5	76	0.2	2	149	1	2	11	3.65	2	21	2	2	24	5	2	1	7	17	421	1.25	0.13	1.76	0.1	0.01	0.3	-1	-1	-1	
S9620816	334891	266	54	95	0.2	26	148	1	4	18	3.67	11	35	2	2	42	5	2	10	14	55	336	1.02	0.04	1.99	0.1	0.01	0.13	-1	-1	-1	
S9620817	334892	116	17	73	0.5	9	337	1	91	18	7.58	4	18	2	2	13	5	2	13	20	71	8732	0.58	0.03	1.07	0.24	0.01	0.09	-1	-1	-1	
S9620818	334893	99	25	98	0.2	12	218	1	26	14	3.33	3	13	2	2	15	5	2	24	20	72	2757	0.51	0.05	1.2	0.46	0.01	0.12	-1	-1	-1	
S9620819	334894	81	20	108	0.2	15	166	1	2	13	3.75	3	15	2	2	19	5	2	16	11	38	475	0.83	0.03	1.41	0.23	0.01	0.1	-1	-1	-1	
S9620820	334895	34	19	75	0.2	16	152	1	2	15	2.52	1	19	2	2	24	5	2	16	9	30	334	0.46	0.05	1.05	0.29	0.01	0.1	-1	-1	-1	
S9620821	334896	49	17	113	0.2	19	138	1	5	20	2.99	2	21	2	2	6	24	5	2	12	11	36	627	0.61	0.07	1.27	0.23	0.01	0.14	-1	-1	-1
S9620822	334897	49	24	127	0.2	9	171	1	6	18	2.85	2	15	2	2	18	5	2	15	13	46	782	0.49	0.04	1.09	0.32	0.01	0.13	-1	-1	-1	
S9620823	334898	95	46	213	0.2	21	292	1	6	27	3.13	2	22	2	2	27	5	2	31	39	144	1161	0.45	0.03	1.27	0.79	0.01	0.1	-1	-1	-1	
S9620824	334899	57	51	157	0.2	33	290	1	4	33	2.54	1	35	2	2	37	5	2	27	16	33	477	0.65	0.07	1.26	0.76	0.01	0.13	-1	-1	-1	
S9620825	334900	38	66	107	0.2	28	239	1	14	52	3.44	1	90	2	2	60	5	2	23	10	19	567	1.15	0.08	1.68	0.54	0.01	0.14	-1	-1	-1	
S9620826	334901	71	36	137	0.2	46	404	1	22	88	5.64	1	122	2	2	135	5	2	22	8	18	1130	1.95	0.2	2.92	0.5	0.01	0.31	-1	-1	-1	
S9620827	334902	73	30	97	0.2	22	313	1	11	49	3.75	1	59	2	2	73	5	2	22	11	29	831	1.07	0.08	1.83	0.52	0.01	0.16	-1	-1	-1	
S9620828	334903	89	27	89	0.2	20	333	1	14	56	3.42	1	61	2	2	55	5	2	30	24	41	1172	1	0.05	1.69	0.72	0.01	0.14	-1	-1	-1	
S9620829	334904	89	22	100	0.2	26	463	1	14	60	2.61	1	59	2	2	42	5	2	50	16	37	966	0.93	0.07	1.43	1.41	0.01	0.15	-1	-1	-1	
S9620830	334905	68	121	181	0.2	21	234	1	18	75	3.97	1	97	2	2	61	5	2	10	8	19	1138	1.28	0.1	1.95	0.23	0.01	0.21	-1	-1	-1	
S9620831	334906	138	32	137	0.2	31	404	1	27	117	5.08	1	94	2	2	73	5	2	24	21	49	1866	1.57	0.12	2.36	0.45	0.01	0.25	-1	-1	-1	
S9620832	334907	106	167	223	0.2	49	276	1	41	95	4.62	2	87	2	2	68	5	2	17	26	37	2714	1.43	0.14	2.17	0.68	0.01	0.21	-1	-1	-1	
S9620833	334908	112	37	136	0.2	34	234	1	28	103	5.13	1	72	2	2	58	5	2	29	17	33	2519	1.1	0.09	1.75	0.46	0.01	0.22	-1	-1	-1	
S9620834	334909	76	37	143	0.2	37	364	1	20	90	4.8	2	110	2	2	77	5	2	37	13	35	1022	1.98	0.12	2.65	0.79	0.01	0.28	-1	-1	-1	
S9620835	334910	74	34	143	0.2	27	375	1	19	68	4.59	1	85	2	2	79	5	2	24	14	32	1052	1.79	0.15	2.45	0.46	0.01	0.36	-1	-1	-1	
S9620836	334911	78	40	152	0.2	37	341	1	21	78	4.91	1	99	2	6	86	5	5	29	17	34	1110	2.03	0.14	2.68	0.52	0.01	0.31	-1	-1	-1	
S9620837	334912	113	53	152	0.2	45	566	1	21	84	4.67	2	93	2	5	79	5	4	33	14	34	1617	1.85	0.09	2.52	0.49	0.01	0.24	-1	-1	-1	
S9620838	334913	123	46	174	0.2	43	508	1	24	95	4.92	1	95	2	2	81	5	2	46	16	40	1780	2.07	0.1	2.74	0.62	0.01	0.24	-1	-1	-1	
S9620839	334914	89	28	122	0.2	3	444	1	15	31	5.79	1	71	2	2	104	5	2	20	9	18	1393	1.86	0.22	2.98	0.4	0.01	0.4	-1	-1	-1	
S9620840	334915	103	41	105	0.4	44	748	1	35	93	5.53	1	166	2	9	156	5	5	17	5	6	1651	2.7	0.18	3.48	1.11	0.01	0.5	-1	-1	-1	
S9620841	334916	91	61	270	0.2	34	451	1	24	107	4.94	1	126	2	2	92	5	2	21	10	19	1569	2.05	0.16	2.89	0.86	0.01	0.35	-1	-1	-1	
S9620842	334917	19	97	118	0.2	17	956	1	6	22	2.11	1	25	2	2	17	5	2	10	8	24	1486	0.36	0.02	1.16	0.09	0.01	0.15	-1	-1	-1	
S9620843	334918	24	32	43	0.2	35	201	1	3	14	1.6	2	17	2	2	19	5	2	11	6	19	534	0.22	0.02	0.82	0.05	0.01	0.11	-1	-1	-1	
S9620844	334919	18	45	58	0.2	11	382	1	2	15	1.99	1	17	2	2	22	5	2	12	5	19	569	0.24	0.03	0.99	0.06	0.01	0.09	-1	-1	-1	
S9620845	334920	39	60	102	0.2	19	553	1	7	26	2.42	1	21	2	2	22	5	2	19	13	49	985	0.5	0.04	1.34	0.11	0.02	0.13	-1	-1	-1	
S9620846	334921	4																														

S9620847	334922	50	36	89	0.2	16	286	1	7	29	2.25	1	22	2	2	23	5	2	18	7	23	1039	0.45	0.01	1.23	0.28	0.01	0.08	-1	-1	-1
S9620848	334923	31	20	51	0.2	4	686	1	3	16	0.97	1	9	2	2	11	5	2	112	9	18	649	0.19	0.01	0.52	1.58	0.01	0.07	-1	-1	-1
S9620849	334924	50	22	161	0.2	29	304	1	14	67	4.35	1	100	2	2	67	5	2	65	8	36	767	1.97	0.15	2.71	0.47	0.01	0.26	-1	-1	-1
S9620850	334925	65	21	95	0.2	11	430	1	6	37	2.43	1	33	2	2	31	5	2	48	28	61	1100	0.63	0.04	1.34	0.88	0.01	0.12	-1	-1	-1
S9620851	334926	55	305	208	0.2	24	266	1	14	59	3.43	2	71	2	2	48	5	2	21	18	33	1297	1.2	0.1	1.86	0.56	0.01	0.15	-1	-1	-1
S9620852	334927	74	55	119	0.2	22	406	1	10	36	2.38	2	35	2	2	32	5	2	49	29	56	1163	0.52	0.03	1.2	1.22	0.01	0.09	-1	-1	-1
S9620853	334928	22	17	59	0.2	16	197	1	5	11	1.05	2	11	2	2	13	5	2	33	6	7	838	0.22	0.02	0.42	0.84	0.01	0.09	-1	-1	-1
S9620854	334929	51	36	105	0.2	40	387	1	14	48	3.13	1	80	2	2	44	5	2	23	16	33	934	1.4	0.08	1.98	0.85	0.01	0.25	-1	-1	-1
S9620855	334930	78	19	95	0.2	14	382	1	23	93	4.98	1	178	2	2	94	5	2	17	8	14	810	3.04	0.23	3.53	0.65	0.01	0.49	-1	-1	-1
S9620856	334931	47	26	83	0.2	21	336	1	11	59	2.77	1	81	2	2	47	5	2	25	13	18	429	1.44	0.12	1.94	0.7	0.01	0.27	-1	-1	-1
S9620857	334932	61	38	114	0.2	18	320	1	16	73	3.42	1	94	2	2	53	5	2	24	17	21	774	1.65	0.13	2.23	0.75	0.01	0.3	-1	-1	-1
S9620858	334933	46	30	91	0.2	18	259	1	12	46	2.64	1	62	2	2	39	5	2	19	11	18	571	1.04	0.09	1.59	0.52	0.01	0.2	-1	-1	-1
S9620859	334934	50	56	131	0.2	21	219	1	6	30	2.78	2	27	2	2	21	5	2	23	33	73	623	0.86	0.08	1.17	0.48	0.01	0.2	-1	-1	-1
S9620860	334935	100	20	110	0.2	2	161	1	15	32	4.69	3	67	2	2	79	5	2	9	14	26	1129	1.79	0.09	2.42	0.21	0.01	0.14	-1	-1	-1
S9620861	334936	86	26	100	0.2	21	161	1	12	29	4.19	3	57	2	2	71	5	2	11	11	20	619	1.4	0.07	1.96	0.29	0.01	0.13	-1	-1	-1
S9620862	334937	105	31	112	0.2	20	431	1	37	29	4.3	2	62	2	2	82	5	3	21	30	50	3546	1.32	0.08	2.13	0.63	0.01	0.19	-1	-1	-1
S9620863	334938	99	18	90	0.2	4	352	1	15	27	4.84	1	58	2	2	85	5	2	15	12	19	795	1.84	0.19	2.63	0.52	0.01	0.33	-1	-1	-1
S9620864	334939	65	23	82	0.2	2	217	1	9	26	4.14	1	51	2	2	67	5	2	14	15	26	659	1.34	0.11	2.01	0.41	0.01	0.25	-1	-1	-1
S9620865	334940	51	8	107	0.2	9	293	1	9	26	3.37	1	38	2	8	102	5	5	34	42	71	581	0.97	0.07	1.89	1.11	0.01	0.18	-1	-1	-1
S9620866	334941	76	18	236	0.2	2	163	1	13	39	4.8	2	68	2	2	81	5	2	9	10	24	809	1.61	0.14	2.35	0.2	0.01	0.2	-1	-1	-1
S9620867	334942	43	21	135	0.2	17	113	1	9	34	4.48	1	64	2	2	82	5	2	6	5	15	605	1.27	0.11	1.94	0.1	0.01	0.15	-1	-1	-1
S9620868	334943	61	26	95	0.2	17	330	1	13	27	4.12	2	54	2	2	74	5	2	19	20	27	3116	0.97	0.03	1.73	0.49	0.01	0.18	-1	-1	-1
S9620869	334944	53	9	124	0.2	2	125	1	6	17	2.46	2	29	2	2	37	5	2	14	34	27	1147	0.48	0.02	1.1	0.34	0.02	0.11	-1	-1	-1
S9620870	334950	75	61	129	0.2	10	236	1	12	30	4.21	2	47	2	2	55	5	2	25	34	70	1570	0.85	0.08	1.75	0.92	0.01	0.15	-1	-1	-1
S9620871	334951	32	41	73	0.2	11	192	1	11	20	3.46	2	36	2	2	53	5	2	14	13	25	2168	0.48	0.03	1.16	0.41	0.01	0.12	-1	-1	-1
S9620872	334952	44	20	124	0.2	17	117	1	20	36	4.33	1	41	2	2	41	5	2	6	13	42	1563	0.77	0.04	1.47	0.1	0.01	0.13	-1	-1	-1
S9620873	334953	31	16	45	0.2	11	120	1	4	10	2.21	2	28	2	2	33	5	2	7	8	19	828	0.38	0.01	0.95	0.09	0.01	0.08	-1	-1	-1
S9620874	334954	44	14	137	0.2	18	158	1	12	37	4.48	1	80	2	2	85	5	2	8	6	12	585	1.57	0.13	2.16	0.25	0.01	0.24	-1	-1	-1
S9620875	334955	47	13	108	0.2	20	162	1	13	30	4.3	1	62	2	2	77	5	2	9	7	14	747	1.52	0.13	2.11	0.24	0.01	0.19	-1	-1	-1
S9620876	334956	96	16	123	0.2	9	203	1	10	26	3.7	2	49	2	2	62	5	2	13	15	35	1276	1.4	0.11	2	0.28	0.01	0.2	-1	-1	-1
S9620877	334957	68	13	155	0.2	12	430	2	19	46	6.37	1	103	2	2	120	5	2	15	9	18	1425	2.88	0.35	3.63	0.62	0.02	0.72	-1	-1	-1
S9620878	334958	135	19	87	0.2	20	296	2	19	33	5.19	3	65	2	2	85	5	3	32	20	26	1794	1.9	0.07	2.63	0.96	0.01	0.33	-1	-1	-1
S9620879	334959	27	11	70	0.2	9	102	1	7	22	3.12	1	34	2	2	45	5	2	18	9	19	1282	0.75	0.12	1.48	0.58	0.01	0.15	-1	-1	-1
S9620880	334960	166	32	283	0.2	20	195	2	21	39	6.56	3	43	2	2	50	5	2	20	20	36	3057	1.89	0.29	2.3	0.47	0.01	0.54	-1	-1	-1
S9620881	334961	71	33	154	0.8	3	237	2	26	54	7.57	2	42	2	2	67	5	2	20	23	16	3069	1.49	0.38	2.52	0.56	0.01	0.79	5	10	2194
S9620882	334962	219	51	261	0.2	62	213	1	11	48	5.08	5	73	2	2	62	5	2	16	17	52	760	1.4	0.1	1.96	0.4	0.01	0.27	-1	-1	-1
S9620883	334963	103	37	221	0.2	22	203	2	12	45	4.21	3	55	2	2	45	5	2	21	10	36	1033	1.03	0.08	1.48	0.42	0.01	0.27	-1	-1	-1
S9620884	334964	70	17	138	0.2	36	106	1	19	59	5.43	4	47	2	2	38	5	2	9	22	37	1516	1.16	0.08	1.7	0.25	0.01	0.21	-1	-1	-1
S9620885	334965	33	27	136	0.2	5	129	1	13	36	4.55	2	35	2	2	43	5	2	17	27	49	1288	0.71	0.16	1.61	0.87	0.01	0.3	-1	-1	-1
S9620886	334966	34	20	107	0.2	2	128	1	14	32	4.83	3	36	2	2	40	5	2	20	15	24	1633	0.81	0.24	1.71	0.93	0.01	0.46	-1	-1	-1
S9620887	334967	39	32	136	0.2	3	136	1	13	43	5.04	3	44	2	2	40	5	2	25	19	33	1393	0.86	0.2	1.78	0.85	0.01	0.47	-1	-1	-1
S9620888	334968	33	34	185	0.2	12	157	1	14	42	4.53	2	72	2	2	70	5	3	16	23	47	1427	1.11	0.12	2.05	0.51	0.01	0.3	-1	-1	-1
S9620889	334969	31	32	87	0.2	10	146	1	16	51	4.1	2	93	2	2	74	5	2	10	9	20	1831	1.04	0.14	1.74	0.28	0.01	0.25	-1	-1	-1
S9620890	334970	81	34	137	0.6	4	309	2	38	101	7.02	1	180	2	2	161	5	5	18	22	11	2672	2.51	0.36	3.75	1.03	0.01	0.77	-1	-1	-1
S9620891	334971	303	17	106	0.4	132	575	1	77	196	5.3	1	287	2	2	111	5	3	17	12	16	1316	2.66	0.15	3.14	1.42	0.02	0.54	5	10	2216
S9620892	334972	24	19	73	0.2	13	175	1	5	26	2.7	2	39	2	2	44	5	2	12	6	17	297	0.54	0.06	1.09	0.34	0.01	0.16	-1	-1	-1
S9620893	334973	1	7	60	0.2	71	491	1	39	147	4	1	318	2	2	97	5	2	12	2	1	797	2.22	0.2	2.63	0.95	0.02	0.43	5	10	1000
S9620894	334974	99	19	84	0.2	106	591	1	48	138	5.09	1	226	2	2	133	5	5	21	8	9	2094	2.2	0.16	3.02	1.37	0.01	0.46	5	10	1474
S9620895	334975	57	10	63	0.2	70	786	1	40	159	4.16	1	373	2	2	109	5	3	11	4	2	799	2.42	0.24	2.86	0.71	0.02	0.56	5	10	1325
S9620896	334976	48	25	93	0.2	17	163	1	15	56	3.67	1	92	2	2	66	5	2	14	7	21	939	1.12	0.14	1.89	0.32	0.01	0.24	-1	-1	-1
S9620897	334977	38	26																												

S9620898	334978	103	9	110	0.2	17	203	1	16	57	5.37	1	63	2	2	69	5	2	5	7	15	1255	0.51	0.02	1.35	0.08	0.01	0.14	-1	-1	-1
S9620899	334979	24	24	64	0.2	15	80	1	5	37	3.56	1	71	2	2	58	5	2	8	4	11	283	0.82	0.09	1.73	0.14	0.01	0.08	-1	-1	-1
S9620900	334980	44	20	88	0.2	43	129	1	12	43	4.73	1	88	2	2	108	5	2	5	5	14	1002	1.09	0.07	2.24	0.06	0.01	0.08	-1	-1	-1
S9620901	334981	15	10	30	0.2	13	50	1	2	11	1.8	1	21	2	2	37	5	2	4	2	8	286	0.2	0.04	0.81	0.02	0.01	0.07	-1	-1	-1
S9620902	334982	9	7	24	0.2	2	61	1	2	6	1.22	1	16	2	2	19	5	2	6	4	15	265	0.19	0.02	0.63	0.09	0.01	0.07	-1	-1	-1
S9620903	334983	25	7	86	0.2	23	129	1	7	35	3.9	1	72	2	2	64	5	2	8	6	15	534	0.94	0.14	1.73	0.12	0.01	0.18	-1	-1	-1
S9620904	334984	10	2	31	0.2	9	72	1	3	8	1.39	1	17	2	2	20	5	2	8	4	13	760	0.18	0.02	0.78	0.1	0.02	0.07	-1	-1	-1
S9620905	334985	17	10	103	0.2	2	92	1	4	20	3.31	1	38	2	2	53	5	2	6	4	12	431	0.52	0.1	1.12	0.08	0.01	0.15	-1	-1	-1
S9620906	334986	19	19	68	0.2	9	97	1	3	18	2.39	1	31	2	2	54	5	2	6	3	13	403	0.37	0.11	0.81	0.06	0.01	0.11	-1	-1	-1
S9620907	334987	26	5	124	0.2	5	130	1	5	24	4.71	2	40	2	2	44	5	2	6	5	15	578	0.85	0.19	2.09	0.07	0.01	0.19	-1	-1	-1
S9621030	323137	85	14	49	0.2	11	425	1	6	24	2.77	1	39	2	2	54	5	2	32	25	58	357	0.72	0.07	1.37	1	0.01	0.18	-1	-1	-1
S9621031	323138	46	14	95	0.2	17	203	1	15	32	5.05	1	77	2	2	95	5	2	9	8	15	641	1.72	0.23	2.58	0.24	0.01	0.38	-1	-1	-1
S9621032	323139	105	10	93	0.2	25	392	1	13	23	3.62	1	56	2	2	74	5	2	27	14	23	778	1.42	0.12	1.92	0.94	0.01	0.31	-1	-1	-1
S9621033	323140	72	14	113	0.4	37	236	1	19	33	4.84	2	85	2	2	115	5	2	13	6	12	859	1.94	0.15	2.6	0.39	0.01	0.37	-1	-1	-1
S9621034	323141	37	7	103	0.2	22	128	1	13	21	4.23	1	66	2	2	96	5	2	10	5	13	1154	1.27	0.06	1.83	0.19	0.01	0.15	-1	-1	-1
S9621035	323142	77	16	153	0.5	23	329	1	16	34	4.76	1	83	2	2	99	5	2	16	8	20	986	1.96	0.25	2.68	0.41	0.01	0.55	-1	-1	-1
S9621036	323143	56	2	141	0.4	13	238	1	16	36	4.76	1	67	2	2	64	5	2	16	9	36	1550	1.85	0.3	2.5	0.28	0.01	1.05	-1	-1	-1
S9621037	323144	112	44	188	0.5	22	213	1	14	28	5.97	1	51	2	2	63	5	2	26	13	36	1937	1.2	0.33	2.2	0.54	0.01	0.9	-1	-1	-1
S9621038	323145	125	18	137	0.7	25	243	1	7	14	3.94	2	37	2	2	37	5	2	18	11	43	852	1.44	0.12	1.95	0.41	0.01	0.44	-1	-1	-1
S9621039	323146	151	17	133	0.4	16	144	1	4	9	4.12	5	22	2	2	23	5	2	12	11	61	726	1.26	0.08	1.72	0.14	0.01	0.31	5	10	1920
S9621040	323147	375	41	390	1.7	46	210	1	35	48	5.18	4	43	2	2	43	5	2	14	22	68	2137	0.88	0.05	1.8	0.27	0.01	0.24	5	10	2105
S9621041	323148	134	33	196	0.6	70	167	1	11	40	4.35	5	58	2	2	46	5	2	14	9	32	569	1.05	0.08	1.4	0.23	0.01	0.25	5	10	2198
S9621042	323149	71	23	110	0.5	39	163	1	11	33	4.23	4	56	2	2	50	5	2	13	5	22	805	0.9	0.08	1.29	0.24	0.01	0.22	5	7	2167
S9621043	323150	38	47	299	0.7	32	241	1	14	54	3.63	1	61	2	2	37	5	2	30	15	38	1130	0.83	0.07	1.31	0.9	0.01	0.15	5	9	2239
S9621044	323152	65	331	558	1.6	24	260	2	29	69	5.67	1	99	2	2	100	5	2	20	24	47	2181	1.98	0.33	2.85	0.61	0.03	0.91	5	10	1430
S9621045	323153	24	89	135	0.6	16	166	1	6	18	3.83	2	25	2	2	28	5	2	20	21	42	1008	0.63	0.08	1.52	0.43	0.01	0.35	5	10	1099
S9621046	323154	31	84	194	0.9	32	160	1	16	39	3.95	2	77	2	2	72	5	2	15	13	32	1136	1.04	0.14	1.82	0.38	0.01	0.29	5	10	1837
S9621047	323155	69	53	123	1.1	45	299	1	30	92	5.17	1	215	2	7	145	5	2	18	6	9	1378	1.72	0.16	2.56	0.61	0.01	0.34	-1	-1	-1
S9621048	323156	73	24	96	0.6	72	358	1	22	101	4.39	1	225	2	5	111	5	2	17	6	11	678	1.78	0.14	2.61	0.89	0.01	0.3	-1	-1	-1
S9621049	323157	41	20	97	0.2	40	270	1	20	69	3.33	1	185	2	2	77	5	2	14	5	12	755	1.34	0.16	1.9	0.6	0.01	0.32	-1	-1	-1
S9621050	323158	31	77	252	0.6	19	84	1	5	14	2.61	3	10	2	2	16	5	2	18	11	57	550	0.19	0.05	0.44	0.21	0.01	0.2	-1	-1	-1
S9621051	323159	25	24	80	0.2	23	129	1	6	28	2.67	1	41	2	2	51	5	2	15	5	19	564	0.51	0.09	0.99	0.27	0.01	0.18	-1	-1	-1
S9621052	323160	8	60	12	2.5	8	38	1	2	2	0.37	1	2	2	2	7	5	2	7	1	2	26	0.03	0.01	0.37	0.05	0.02	0.05	-1	-1	-1
S9621053	323161	16	9	46	0.2	2	69	1	3	10	1.74	3	17	2	2	38	5	2	4	3	13	224	0.16	0.08	0.44	0.05	0.01	0.11	-1	-1	-1
S9621054	323162	16	12	45	0.2	2	71	1	3	13	1.67	1	26	2	2	38	5	2	7	2	11	369	0.18	0.01	0.62	0.09	0.01	0.07	-1	-1	-1
S9621055	323163	35	11	97	0.5	31	215	1	18	36	3.81	1	66	2	2	54	5	2	12	15	45	1122	1.1	0.15	1.72	0.45	0.01	0.51	-1	-1	-1
S9621194	335228	85	791	2913	0.5	17	391	7	32	66	5.62	3	17	2	5	36	5	2	33	18	21	3433	0.26	0.06	0.86	1.03	0.01	0.16	5	10	5887
S9621195	335229	57	4003	3791	0.7	4	502	8	31	63	5.44	1	14	2	2	69	5	2	43	20	13	2829	0.94	0.21	1.61	1.19	0.01	0.38	5	5	7144
S9621196	335230	57	712	1473	0.4	3	550	2	22	47	5.38	1	21	2	2	83	5	2	46	13	13	1997	1.35	0.34	2.07	1.05	0.01	0.41	5	10	4509
S9621197	335231	74	332	3288	0.6	12	506	8	26	59	5.98	2	21	2	2	70	5	2	41	20	17	2118	0.9	0.2	1.64	1.19	0.01	0.38	5	10	6759
S9621198	335232	90	810	5638	1	14	496	18	28	104	6.21	1	117	2	2	74	5	2	45	17	18	2356	1.96	0.24	2.38	1.57	0.01	0.34	5	10	4413
S9621199	335233	52	328	1077	0.6	26	310	2	11	47	4.23	2	68	2	2	52	5	2	46	8	15	1181	0.95	0.12	1.67	0.82	0.02	0.18	5	10	2488
S9621200	335234	34	143	482	0.4	2	246	1	9	33	3.54	1	35	2	2	58	5	2	23	11	24	1001	0.61	0.13	1.33	0.55	0.03	0.22	5	10	2396
S9621201	335235	67	161	1280	0.4	23	394	3	13	57	5.2	1	74	2	2	65	5	2	41	16	30	1000	1.63	0.28	2.33	0.81	0.01	0.49	5	10	2519
S9621202	335236	62	136	1210	0.4	22	299	2	11	56	5.6	1	81	2	2	75	5	2	34	11	29	1117	1.87	0.34	2.64	0.72	0.01	0.58	5	10	2385
S9621203	335237	54	159	527	0.2	9	302	1	14	68	5.18	1	121	2	2	79	5	2	28	14	36	1281	1.93	0.27	2.67	0.76	0.01	0.55	5	10	2167
S9621204	335238	70	83	477	0.5	21	370	2	21	78	5.16	1	135	2	2	81	5	2	26	15	34	1685	1.63	0.26	2.36	0.73	0.01	0.48	5	10	2805
S9621205	335239	34	113	712	0.5	18	209	1	10	35	4.34	2	59	2	2	63	5	2	15	10	34	821	1.05	0.18	1.91	0.37	0.01	0.23	5	10	2114
S9621206	335240	49	86	493	0.8	21	312	1	15	41	4.8	1	53	2	2	80	5	2	21	12	36	1056	1.39	0.26	2.25	0.51	0.01	0.37	-1	-1	-1
S9621207	335241	181	136	714	0.7	17	192	2	9	39	3.69	1	58	2	2	41	5	2	18	10	40	1433	1.29	0.23	1.89	0.34	0.01	0.36	-1	-1	-1

S9621209	335243	30	17	164	0.2	2	153	1	4	19	2.86	1	37	2	2	36	5	2	18	5	20	625	0.74	0.09	1.29	0.36	0.02	0.12	-1	-1	-1
S9621210	335244	47	47	347	0.4	25	233	1	10	31	4.21	1	65	2	2	55	5	2	30	9	30	1117	1.11	0.12	1.9	0.63	0.01	0.18	-1	-1	-1
S9621211	335245	48	60	316	0.8	9	244	1	15	28	4.78	1	64	2	2	72	5	2	28	8	22	1241	1.79	0.25	2.33	0.7	0.01	0.51	5	10	1614
S9621212	335246	41	51	394	0.4	62	233	1	13	46	4.42	1	91	2	2	54	5	2	38	9	29	1250	1.14	0.13	1.77	0.79	0.01	0.31	5	10	1882
S9621213	335247	46	64	404	0.8	71	217	1	12	55	4.67	1	108	2	2	53	5	2	33	13	37	1028	1.04	0.1	1.81	0.55	0.01	0.24	5	10	2137
S9621214	335248	48	65	481	0.8	71	242	1	12	52	4.51	1	100	2	2	50	5	2	40	14	34	1069	1.04	0.11	1.84	0.77	0.01	0.26	5	10	2184
S9621215	335249	60	334	538	1.2	53	209	1	15	59	5.09	1	109	2	2	57	5	2	31	14	36	1345	1.19	0.18	1.74	0.54	0.01	0.34	5	10	2601
S9621216	335250	51	130	552	1.1	41	226	1	14	60	4.37	1	127	2	2	54	5	2	27	13	34	1271	1.07	0.17	1.78	0.51	0.01	0.37	5	10	2304
S9621217	335252	132	210	239	1.5	17	196	1	5	15	3.65	10	29	6	2	20	5	2	12	7	39	573	0.34	0.01	0.82	0.13	0.01	0.22	-1	-1	-1
S9621218	335253	65	88	603	0.5	23	271	1	16	62	4.57	1	100	2	2	51	5	2	37	13	36	1624	0.86	0.17	1.47	0.47	0.01	0.35	-1	-1	-1
S9621219	335254	52	53	812	0.5	48	344	1	17	85	5.15	1	203	2	2	73	5	2	24	15	33	1183	1.47	0.27	2.2	0.7	0.01	0.52	-1	-1	-1
S9621220	335255	49	80	393	0.7	30	278	1	13	52	4.13	1	124	2	2	68	5	2	23	8	22	1259	1.32	0.21	2	0.57	0.01	0.39	-1	-1	-1
S9621221	335256	59	60	219	0.2	28	97	1	6	26	3.21	4	17	2	2	55	5	2	12	4	20	340	0.06	0.04	0.35	0.03	0.01	0.13	-1	-1	-1
S9621222	335257	54	30	175	0.2	10	115	1	4	21	3.25	2	31	2	2	58	5	2	8	4	17	632	0.23	0.07	0.82	0.04	0.01	0.12	-1	-1	-1
S9621223	335259	38	223	1712	0.6	5	212	2	11	33	5.33	4	28	2	2	38	5	2	43	15	30	3345	0.4	0.1	1.11	0.76	0.01	0.3	5	10	1417
S9621224	335260	83	176	1163	1	13	627	13	31	108	4.79	6	57	2	2	51	5	2	47	15	47	7031	1.48	0.21	1.94	1.02	0.01	0.45	5	10	2749
S9621225	335261	62	124	861	1.1	61	346	4	38	58	4.04	3	52	2	2	39	5	2	44	21	35	3781	1.27	0.16	1.77	0.98	0.02	0.39	5	10	2109
S9621226	335262	52	125	767	0.6	24	236	2	12	50	3.17	2	33	2	2	32	5	2	35	17	33	1543	0.62	0.12	1.27	0.82	0.02	0.28	5	10	2531
S9621227	335263	97	80	899	1	40	478	2	32	96	5.17	1	121	2	2	80	5	2	41	17	31	2205	1.56	0.2	2.16	1.3	0.01	0.45	5	10	3338
S9621228	335264	84	118	1497	1.2	33	427	5	32	102	5.36	3	117	2	2	70	5	2	43	17	39	2258	1.55	0.22	2.1	0.99	0.01	0.55	5	10	2810
S9621229	335266	115	220	1348	0.4	24	203	1	17	80	5.51	2	79	2	2	41	5	2	34	10	40	3444	0.55	0.08	1.13	0.2	0.01	0.24	5	10	2153
S9621230	335267	79	266	2403	0.4	26	503	7	31	86	5.36	1	100	2	2	72	5	2	36	16	34	2431	1.49	0.24	2.11	1.01	0.01	0.5	5	10	3182
S9621231	335269	57	242	2398	0.6	18	372	7	24	52	5.06	2	35	2	2	41	5	2	53	21	44	2880	0.86	0.2	1.52	1.23	0.01	0.42	5	10	3200
S9621232	335268	105	84	798	0.2	32	323	1	27	121	4.09	1	33	2	2	21	5	2	130	13	11	2772	0.41	0.06	0.55	5.12	0.01	0.17	5	10	12409
S9621233	335265	77	210	4771	0.7	2	443	16	26	77	6.47	4	8	2	2	14	5	3	72	17	78	3407	0.16	0.12	0.78	0.81	0.01	0.39	5	10	5054
S9621234	335270	96	103	929	0.5	20	154	1	11	60	5.16	3	46	2	2	35	5	2	30	12	44	2517	0.33	0.03	1.04	0.11	0.01	0.2	5	10	1808
S9621235	335271	161	48	1656	1.5	140	313	3	63	244	7.17	3	281	2	2	90	5	2	42	17	28	3061	1.92	0.04	2.14	0.58	0.01	0.17	5	8	2210
S9621236	335272	101	250	570	2.7	100	263	1	33	134	5.89	2	176	2	2	68	5	2	37	16	35	2097	1.52	0.03	1.92	0.56	0.01	0.17	5	10	2257
S9621237	335273	82	93	600	0.9	83	207	1	21	96	5.13	1	131	2	2	57	5	2	51	12	34	1919	1.29	0.05	1.66	1.16	0.01	0.17	5	10	1964
S9621238	335274	51	74	349	0.2	56	193	1	12	44	4.26	2	67	2	2	40	5	2	45	8	30	1080	1.02	0.02	1.47	0.96	0.01	0.16	5	9	2532
S9621239	335275	66	62	381	0.4	74	158	1	17	99	5.72	3	183	2	2	65	5	2	39	6	31	1096	1.57	0.06	1.95	0.37	0.01	0.12	5	10	2194
S9621240	335276	78	74	499	1	76	225	1	17	98	5.56	4	173	2	2	68	5	2	51	12	29	1228	1.56	0.05	2.04	1.17	0.01	0.14	5	10	2167
S9621241	335277	77	72	440	0.9	71	217	1	21	99	5.11	3	168	2	2	66	5	2	50	10	26	1299	1.46	0.05	1.86	1.23	0.01	0.13	5	9	1952
S9621242	335278	128	16	190	0.8	2	569	1	31	20	7.26	4	48	2	2	74	5	2	28	12	35	1171	2.57	0.38	3.55	0.71	0.01	0.87	5	9	2274
S9621243	335279	108	13	244	0.8	22	575	1	15	21	6.97	4	55	2	2	90	5	2	22	10	30	1015	2.72	0.43	3.68	0.56	0.01	1.05	-1	-1	-1
S9621244	335280	65	17	177	0.5	4	338	1	12	14	4.46	1	37	2	2	50	5	2	18	6	19	1115	1.51	0.26	2.29	0.46	0.02	0.47	-1	-1	-1
S9621245	334161	62	22	141	0.2	2	201	1	2	11	2.88	4	17	2	2	21	5	2	19	5	24	458	0.78	0.09	1.19	0.43	0.01	0.2	-1	-1	-1
S9621246	334162	99	95	295	0.5	8	141	1	2	8	3.69	6	8	2	2	6	5	2	13	9	55	1059	1.54	0.1	1.7	0.22	0.01	0.34	-1	-1	-1
S9621247	334163	102	52	124	0.4	10	196	1	3	21	3.89	8	42	2	2	31	5	2	17	6	38	376	0.77	0.08	1.15	0.28	0.01	0.15	-1	-1	-1
S9621248	334164	170	117	226	0.6	17	334	1	2	12	3.94	8	22	2	2	18	5	2	27	4	66	335	0.39	0.03	0.77	0.26	0.02	0.17	5	10	2612
S9621249	334165	145	40	274	0.6	87	310	1	13	89	5.41	7	69	2	2	38	5	2	18	7	37	723	1.13	0.07	1.45	0.43	0.01	0.23	5	10	2482
S9621250	334166	119	13	217	0.7	184	595	1	48	90	6	1	175	2	2	151	5	2	24	12	21	2192	2.47	0.25	3.22	0.92	0.01	0.33	5	10	2215
S9621251	334167	101	32	193	1.1	92	565	1	30	100	5.51	1	191	2	2	119	5	2	18	10	24	1307	2.25	0.27	2.96	0.76	0.01	0.44	5	10	2816
S9621252	334168	154	77	156	0.8	41	711	1	33	117	5.62	2	174	2	2	106	5	2	18	9	30	1901	2.07	0.25	2.83	0.49	0.01	0.47	5	10	7117
S9621253	334169	134	9	145	1.1	80	676	1	42	124	5.84	1	220	2	2	125	5	2	26	11	26	2338	2.35	0.25	3.05	0.82	0.01	0.47	5	10	4431
S9621254	334170	98	48	172	1.5	60	324	1	37	101	4.86	2	109	9	2	64	5	2	18	19	59	2269	1.62	0.14	2.14	0.46	0.01	0.46	5	10	3121
S9621434	334100	93	44	455	2.2	86	1121	6	84	145	5.13	8	87	2	2	69	5	2	51	9	27	16106	1.26	0.12	1.89	1.07	0.01	0.29	5	9	2938
S9621435	334101	28	137	446	0.2	15	150	1	6	30	3.95	4	23	2	2	23	5	2	22	5	27	1827	0.24	0.02	0.85	0.09	0.01	0.18	5	10	1244
S9621436	334102	201	146	954	3.9	27	274	4	27	115	8.09	5	27	2	2	25	5	2	106	14	37	30926	0.28	0.04	0.62	1.57	0.01	0.15	5	10	2485
S9621437	334103	228	155	594																											

S9621439	334105	104	101	558	0.8	29	192	1	17	78	4.94	3	57	2	5	35	5	2	26	10	38	2213	0.34	0.03	1.02	0.23	0.01	0.16	5	10	2415
S9621440	334106	160	51	184	1.1	64	200	1	34	60	6.12	3	67	2	2	60	5	5	15	11	38	2424	1.69	0.05	2.26	0.3	0.01	0.29	5	10	1769
S9621441	334107	130	92	432	0.9	88	166	1	16	82	4.96	3	56	2	2	35	5	2	32	10	37	1390	0.58	0.02	1.19	0.52	0.01	0.16	5	10	2199
S9621442	334108	223	137	296	1.2	50	197	1	22	55	5.67	3	64	2	2	66	5	2	20	8	38	1560	1.62	0.09	2.34	0.4	0.01	0.25	-1	-1	-1
S9621443	334109	99	29	138	0.2	14	176	1	6	26	2.67	1	31	2	2	32	5	2	25	12	43	1104	0.52	0.02	1.32	0.44	0.01	0.12	-1	-1	-1
S9621444	334110	87	255	215	0.6	18	397	1	7	24	2.81	1	59	2	2	57	5	2	23	12	35	996	1.04	0.12	1.54	0.58	0.01	0.31	-1	-1	-1
S9621445	334111	349	124	342	0.7	21	189	1	13	22	4.98	2	43	2	2	63	5	2	18	12	52	1247	1.21	0.19	2.15	0.45	0.01	0.46	-1	-1	-1
S9621446	334112	48	33	184	0.2	16	91	1	6	13	2.5	1	34	2	2	50	5	2	9	4	15	559	0.93	0.15	1.47	0.21	0.02	0.34	-1	-1	-1
S9621448	334114	1	2	44	0.2	2	54	1	2	1	1.41	1	5	2	2	24	5	7	1	2	1	148	0.21	0.01	0.49	0.01	0.01	0.07	-1	-1	-1
S9621449	334115	43	65	328	0.2	15	112	1	10	36	3.65	4	36	2	2	31	5	3	14	4	22	1010	0.38	0.04	0.97	0.14	0.01	0.14	-1	-1	-1
S9621450	334116	81	51	278	0.2	9	61	1	9	47	4.66	17	5	2	2	11	5	2	39	4	11	649	0.03	0.01	0.12	0.26	0.01	0.08	-1	-1	-1
S9621451	334117	75	41	274	0.5	13	99	1	14	48	3.5	4	15	2	2	12	5	2	47	10	22	1285	0.13	0.01	0.34	0.9	0.01	0.14	-1	-1	-1
S9621452	334118	82	89	483	0.8	25	140	1	13	58	4.21	7	46	2	2	28	5	2	29	9	30	1088	0.48	0.04	0.89	0.38	0.01	0.18	5	10	2313
S9621453	334119	161	115	776	0.8	345	149	1	18	104	5.2	3	54	2	2	27	5	2	15	8	32	2254	0.44	0.04	0.88	0.14	0.01	0.16	5	10	2830
S9621454	334120	53	66	371	0.9	48	207	1	19	82	4.12	1	125	2	2	71	5	2	19	7	21	915	1.47	0.14	1.99	0.6	0.01	0.27	5	10	2449
S9621455	334121	56	62	378	0.9	48	231	1	20	56	4.65	2	77	2	2	57	5	2	18	10	37	434	1.45	0.16	2.08	0.44	0.01	0.34	-1	-1	-1
S9621456	334122	47	53	229	0.6	27	216	1	17	44	3.61	1	61	2	2	46	5	2	24	13	43	1259	1.05	0.11	1.73	0.48	0.01	0.28	-1	-1	-1
S9621457	334123	46	63	261	0.6	38	241	1	20	56	4.19	2	100	2	2	71	5	2	15	6	26	949	1.74	0.18	2.45	0.3	0.01	0.31	-1	-1	-1
S9621458	334124	41	64	244	0.2	37	180	1	14	51	3.3	3	70	2	2	45	5	2	13	11	36	928	1.09	0.08	1.68	0.27	0.01	0.15	-1	-1	-1
S9621459	334125	59	50	176	0.2	63	283	1	18	68	3.74	2	95	2	2	68	5	2	24	10	36	1014	1.47	0.12	2.03	0.52	0.01	0.24	-1	-1	-1
S9621460	334126	66	47	199	0.5	30	343	1	19	62	3.93	1	85	2	2	62	5	2	23	11	34	1050	1.5	0.13	2.1	0.44	0.01	0.26	-1	-1	-1
S9621462	334128	69	38	169	0.7	34	392	1	22	64	4.23	2	82	2	5	65	5	2	28	10	37	1083	1.75	0.16	2.38	0.52	0.01	0.37	-1	-1	-1
S9621463	334129	75	45	188	1	44	435	1	26	72	4.4	2	93	2	2	72	5	2	28	10	35	1198	1.85	0.17	2.47	0.55	0.01	0.37	-1	-1	-1
S9621464	334130	89	47	204	0.9	40	519	1	24	75	4.42	1	107	2	2	79	5	2	29	8	29	1202	1.84	0.17	2.46	0.56	0.01	0.32	-1	-1	-1
S9621465	334131	65	56	421	0.5	16	468	1	16	43	3.65	3	55	2	2	47	5	2	33	8	30	977	1.38	0.15	1.89	0.4	0.01	0.28	-1	-1	-1
S9621466	334132	59	28	74	0.2	12	393	1	9	27	1.91	2	22	2	2	26	5	2	15	3	23	1075	0.38	0.04	0.85	0.08	0.01	0.1	-1	-1	-1
S9621467	334133	74	39	99	0.2	19	339	1	9	38	2.46	2	25	2	2	29	5	2	16	3	29	893	0.48	0.05	1.08	0.07	0.01	0.1	-1	-1	-1
S9621468	334134	29	50	79	0.2	9	382	1	8	17	1.81	1	12	2	2	12	5	2	14	8	41	1857	0.41	0.01	0.94	0.1	0.01	0.1	-1	-1	-1
S9621469	334135	28	44	73	0.2	13	1057	1	5	18	1.66	1	17	2	2	17	5	2	14	8	52	638	0.35	0.02	1.12	0.1	0.01	0.09	-1	-1	-1
S9621470	334136	17	52	79	0.2	10	458	1	4	13	1.7	1	16	2	2	15	5	2	26	7	32	625	0.38	0.01	1.02	0.19	0.01	0.07	-1	-1	-1
S9621471	334137	22	65	89	0.2	2	629	1	4	10	1.61	1	13	2	2	11	5	2	33	12	47	932	0.35	0.01	1.07	0.3	0.01	0.08	-1	-1	-1
S9621472	334138	87	24	108	0.2	16	261	1	9	39	2.54	1	32	2	2	41	5	2	14	4	31	712	0.56	0.05	1.36	0.14	0.01	0.06	-1	-1	-1
S9621473	334139	84	21	110	0.2	16	462	1	10	49	2.68	1	46	2	2	42	5	2	15	4	30	832	0.58	0.06	1.39	0.11	0.01	0.08	-1	-1	-1
S9621474	334140	69	19	70	0.2	2	438	1	6	34	2.14	1	31	2	2	31	5	2	10	2	17	632	0.49	0.02	1.02	0.02	0.01	0.08	-1	-1	-1
S9621475	334141	83	26	86	0.2	2	476	1	9	47	2.13	2	23	2	2	27	5	2	16	2	18	2524	0.32	0.01	0.77	0.03	0.01	0.07	-1	-1	-1
S9621476	334142	157	27	139	0.6	12	631	1	11	64	2.36	1	17	2	2	17	5	2	42	4	34	3559	0.37	0.01	1.04	0.09	0.01	0.08	-1	-1	-1
S9621477	334143	172	73	190	1.3	31	796	1	29	90	4.31	3	49	2	2	42	5	2	52	12	63	2081	1.21	0.07	1.87	0.28	0.01	0.22	-1	-1	-1
S9621478	334144	102	40	163	0.6	56	534	1	24	73	3.87	3	61	2	2	43	5	2	41	9	46	1075	1.93	0.14	2.24	0.47	0.01	0.37	5	10	8170
S9621479	334145	76	38	163	1	64	399	1	32	134	4.73	2	159	2	2	64	5	2	33	9	34	1332	2.78	0.24	3.03	0.58	0.01	0.63	5	10	3961
S9621480	334146	78	45	147	0.7	88	485	1	25	104	4.27	1	120	2	2	56	5	2	44	8	37	1209	2.27	0.2	2.61	0.77	0.01	0.43	5	10	4471
S9621481	334147	68	39	122	0.8	60	416	1	25	76	3.78	1	89	2	2	50	5	2	64	12	45	1110	2.25	0.15	2.55	1.4	0.01	0.43	5	10	2898
S9621482	334148	60	69	332	1.2	47	327	1	29	71	4.64	1	82	2	2	54	5	2	41	13	43	1306	2.23	0.22	2.68	0.71	0.01	0.67	5	10	2965
S9621483	334149	53	64	294	0.8	64	335	1	28	102	4.67	2	125	2	2	61	5	2	37	11	33	1190	2.49	0.22	2.84	0.7	0.01	0.64	5	10	3341
S9621484	334160	35	23	48	0.2	10	82	1	5	9	2.48	11	8	2	2	13	5	2	5	6	25	209	0.93	0.01	1.27	0.1	0.01	0.07	-1	-1	-1
S9621485	334159	30	22	68	0.6	5	65	1	13	22	3.61	5	43	2	2	36	5	2	8	5	22	390	1.3	0.06	1.85	0.16	0.01	0.05	-1	-1	-1
S9621486	334158	43	21	74	0.4	15	74	1	15	25	4.16	9	45	2	2	48	5	2	8	5	25	394	1.19	0.05	1.9	0.14	0.01	0.05	-1	-1	-1
S9621487	334157	38	19	60	0.2	23	75	1	15	1	4.71	9	49	2	2	61	5	2	5	5	23	306	1.5	0.02	2.23	0.05	0.01	0.04	-1	-1	-1
S9621488	334156	53	28	81	0.4	26	78	1	15	25	4.19	7	46	2	2	50	5	3	9	5	23	422	1.35	0.06	1.99	0.17	0.01	0.06	-1	-1	-1
S9621489	334155	59	25	77	0.6	17	97	1	18	23	4.98	10	53	2	2	64	5	2	5	5	25	495	1.85	0.03	2.49	0.08	0.01	0.04	-1	-1	-1
S9621490	334154	297	22	106	0.9	18	148	1	18	22	4.81	4	52	2	2	70	5	2	9	12	56	894	1.55	0.07	2.42	0.21	0.01	0.09	-1	-1	-1
S9621491	3																														

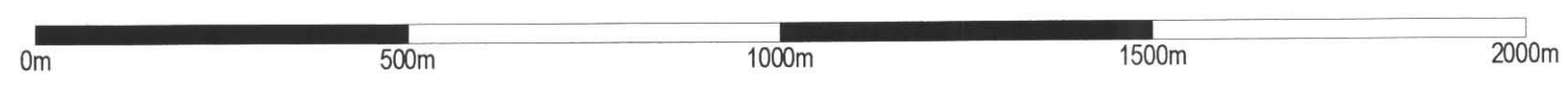
S9621492	334152	15	6	66	0.2	2	83	1	2	3	0.9	2	13	2	2	14	5	2	7	2	12	199	0.18	0.01	0.39	0.15	0.01	0.05	-1	-1	-1
S9621493	334151	134	16	45	0.2	10	225	1	29	9	1.56	3	13	2	2	18	5	2	44	31	139	1776	0.31	0.02	1.03	0.88	0.01	0.05	-1	-1	-1
S9621494	334150	106	20	40	0.2	6	176	1	10	9	2	3	22	2	2	29	5	2	29	23	91	509	0.49	0.02	1.08	0.67	0.01	0.05	-1	-1	-1
S9621515	335620	87	71	295	0.2	24	323	1	14	56	3.55	2	64	2	2	34	5	2	46	13	38	1160	0.48	0.09	0.94	1.67	0.01	0.18	5	10	2658
S9621516	335621	62	76	305	0.2	31	277	1	16	42	3.81	2	43	2	2	39	5	2	20	7	38	783	0.58	0.08	1.14	0.5	0.01	0.18	5	10	4214
S9621517	335622	81	119	592	0.2	18	252	1	9	54	3.85	1	36	2	2	28	5	2	23	12	52	992	0.43	0.07	1.04	0.5	0.01	0.16	5	10	2829
S9621518	335623	78	109	409	0.2	32	201	1	14	61	3.72	2	51	2	2	35	5	2	23	7	27	969	0.64	0.1	1.08	0.42	0.01	0.19	5	10	3128
S9621519	335624	85	91	508	0.6	43	247	1	14	75	4.36	3	99	2	2	48	5	4	22	12	51	713	0.77	0.13	1.46	0.48	0.01	0.21	5	10	3096
S9621520	335625	79	98	432	0.7	41	244	1	14	58	4.33	3	56	2	2	38	5	2	21	11	47	1010	0.82	0.09	1.48	0.5	0.01	0.19	5	10	3027
S9621521	335626	85	66	304	1.2	50	207	1	26	71	4.98	3	105	2	2	55	5	2	17	11	45	1233	1.51	0.05	2.1	0.42	0.01	0.14	5	10	3072
S9621522	335627	87	95	452	0.9	41	253	1	25	86	4.65	2	107	2	2	58	5	2	17	10	42	1597	1.16	0.09	1.72	0.4	0.01	0.19	5	10	3235
S9621523	335628	64	76	394	0.4	33	221	1	15	62	3.78	2	69	2	2	39	5	2	16	8	35	716	0.75	0.1	1.27	0.39	0.01	0.18	5	10	3698
S9621524	335629	74	85	436	0.8	38	228	1	17	70	4.37	2	95	2	2	50	5	2	17	8	38	848	0.94	0.11	1.62	0.4	0.01	0.18	5	10	3621
S9621525	335630	58	198	337	0.7	48	158	1	20	89	4.89	3	81	2	2	36	5	2	24	11	37	1202	0.36	0.08	0.87	0.79	0.01	0.21	36	10	2272
S9621526	335631	1	79	251	0.2	21	300	1	27	71	5.47	1	10	2	2	42	5	2	35	13	27	2811	0.24	0.1	0.76	1.04	0.01	0.25	5	10	2563
S9621527	335632	33	50	184	0.2	10	249	1	8	25	3.06	2	53	2	2	40	5	3	17	4	17	345	0.64	0.08	1.1	0.29	0.01	0.1	-1	-1	-1
S9621528	335633	40	27	108	0.2	10	401	1	6	20	1.33	1	24	2	2	19	5	2	62	9	29	712	0.43	0.04	0.83	1.53	0.01	0.08	-1	-1	-1
S9621529	335634	56	57	137	0.9	34	337	1	22	53	3.89	1	73	2	2	57	5	2	27	7	33	983	1.66	0.14	2.28	0.58	0.01	0.2	-1	-1	-1
S9621530	335635	63	53	146	0.6	48	321	1	20	51	3.71	1	64	2	2	51	5	6	27	8	37	912	1.47	0.11	2.08	0.51	0.01	0.21	-1	-1	-1
S9621531	335636	79	52	159	0.8	47	299	1	18	47	3.46	2	53	2	2	43	5	3	30	8	37	1058	1.22	0.06	1.84	0.56	0.01	0.14	5	10	4503
S9621532	335637	63	42	145	0.8	51	428	1	29	54	4.48	1	79	2	2	64	5	2	31	7	39	937	2.25	0.18	2.87	0.55	0.01	0.31	5	10	3664
S9621533	335638	72	45	157	0.9	50	396	1	26	54	3.87	1	58	2	2	50	5	5	28	6	32	1058	1.83	0.13	2.39	0.44	0.01	0.26	5	10	4329
S9621534	335639	105	87	234	1.3	70	316	1	24	53	3.7	1	50	2	2	36	5	6	21	5	34	1530	1.16	0.01	1.84	0.21	0.01	0.08	5	10	5721
S9621535	335640	171	67	168	0.5	35	424	1	16	56	3.19	3	33	2	2	32	5	3	22	5	36	2327	0.63	0.01	1.49	0.15	0.01	0.09	5	10	7112
S9621536	335641	33	21	77	0.2	7	275	1	9	25	2.17	2	29	2	2	27	5	2	19	4	29	674	0.5	0.06	1.04	0.12	0.01	0.13	-1	-1	-1
S9621537	335642	45	40	97	0.2	20	454	1	18	36	2.85	1	37	2	2	30	5	2	28	6	51	1401	0.61	0.07	1.42	0.2	0.01	0.15	5	10	4818
S9621538	335643	19	12	35	0.2	2	333	1	5	9	1.4	1	17	2	2	22	5	2	14	3	20	577	0.2	0.01	0.7	0.11	0.01	0.06	-1	-1	-1
S9621539	335644	14	27	60	0.2	2	348	1	6	12	1.87	1	21	2	2	21	5	2	14	4	27	636	0.3	0.01	1.12	0.07	0.01	0.08	-1	-1	-1
S9621540	335645	16	18	57	0.2	13	164	1	4	13	1.48	1	20	2	2	20	5	2	11	3	19	433	0.24	0.01	0.76	0.06	0.01	0.08	-1	-1	-1
S9621541	335646	22	28	57	0.2	4	178	1	5	15	1.68	2	21	2	2	26	5	2	18	4	30	495	0.27	0.03	0.82	0.12	0.01	0.09	-1	-1	-1
S9621542	335647	44	26	77	0.2	4	444	1	10	23	2.49	2	30	2	2	37	5	2	15	3	28	960	0.43	0.03	1.28	0.1	0.01	0.08	-1	-1	-1
S9621543	335648	107	46	137	0.2	5	382	1	14	49	2.74	1	27	2	2	30	5	2	26	4	31	1414	0.55	0.03	1.24	0.12	0.01	0.1	-1	-1	-1
S9621544	335649	106	118	157	1	22	809	1	16	64	3.59	5	47	2	2	49	5	2	67	6	48	1194	0.67	0.03	1.41	0.38	0.01	0.12	-1	-1	-1
S9621545	335650	107	46	113	0.2	23	658	1	13	51	2.75	2	29	2	2	26	5	2	61	11	65	1080	0.6	0.02	1.26	0.89	0.01	0.1	-1	-1	-1
S9621546	335651	32	21	95	0.2	20	314	1	18	39	3.13	1	57	2	2	48	5	2	25	3	16	815	1.55	0.13	1.92	0.43	0.01	0.2	-1	-1	-1
S9621547	335652	47	32	100	0.2	27	367	1	16	39	3.15	1	52	2	2	47	5	2	30	4	28	637	1.28	0.1	1.81	0.56	0.01	0.17	-1	-1	-1
S9621548	335653	59	33	116	0.2	28	634	1	21	63	3.08	1	68	2	2	52	5	2	45	7	23	1037	1.28	0.09	1.73	1.28	0.01	0.21	-1	-1	-1
S9621549	335654	76	96	429	0.9	34	640	1	25	86	4.06	1	97	2	2	65	5	2	32	10	37	1238	1.64	0.13	2.18	0.79	0.01	0.2	-1	-1	-1
S9621550	335655	103	67	295	0.6	2	275	1	4	16	5.64	8	12	2	2	9	5	2	52	3	39	750	0.23	0.04	0.49	0.18	0.01	0.24	5	10	1929
S9621551	335656	215	238	814	2.3	2	415	3	10	34	5.73	7	25	2	2	17	5	2	47	6	44	2047	0.43	0.13	1.09	0.44	0.01	0.34	5	8	2305
S9621552	335657	50	47	250	0.2	17	510	1	6	22	1.78	1	30	2	2	26	5	2	61	7	25	824	0.49	0.03	1.08	1.48	0.01	0.08	5	9	2254
S9621553	335658	52	48	320	0.2	25	317	1	25	81	3.92	1	113	2	2	62	5	2	21	5	21	818	1.6	0.18	2.17	0.52	0.01	0.24	5	10	4286
S9621554	335659	87	103	365	0.2	21	261	1	11	46	3.73	4	45	2	2	32	5	2	17	6	47	744	0.58	0.07	1.45	0.27	0.01	0.14	5	10	2447
S9621555	335660	55	82	277	0.2	17	239	1	9	28	3.44	4	28	2	2	25	5	2	14	6	39	938	0.62	0.1	1.41	0.27	0.01	0.17	5	10	2068
S9621556	335661	77	111	434	0.8	26	258	1	21	89	4.86	2	57	2	2	40	5	2	22	8	29	1791	0.56	0.14	1.37	0.49	0.01	0.23	5	10	2116
S9621557	335662	65	85	427	0.8	24	271	1	14	64	4.06	2	58	2	2	33	5	4	26	11	47	927	0.61	0.11	1.4	0.71	0.01	0.22	5	10	2231
S9621558	335663	65	108	389	0.7	21	185	1	12	53	3.47	1	40	2	2	28	5	2	23	9	52	754	0.52	0.08	1.2	0.58	0.01	0.15	5	10	2399
S9621559	335664	53	78	312	0.2	15	186	1	12	45	3.36	1	35	2	2	26	5	2	16	6	37	751	0.5	0.09	1.19	0.37	0.01	0.14	5	10	2794
S9621560	335665	58	68	305	0.5	29	235	1	11	47	3.42	1	37	2	2	29	5	2	19	9	50	608	0.54	0.08	1.32	0.42	0.01	0.15	5	10	2781
S9621561	335666	70	66	262	0.2	16	199	1	12	39	3.29	2	36	2	2	32	5	2	15	8	44	617	0.74	0.12	1.39	0.3					

S9621563	335668	121	69	573	0.6	13	303	1	16	31	3.81	3	39	2	2	46	5	2	23	9	57	993	1.16	0.16	1.83	0.56	0.01	0.28	5	10	2056
S9621564	335669	92	42	305	0.8	34	192	1	20	42	4.27	2	63	2	2	58	5	4	17	5	37	901	1.46	0.06	2.08	0.28	0.01	0.14	5	10	2255
S9621565	335670	45	35	119	0.2	22	233	1	12	1	2.76	2	24	2	2	45	5	2	19	5	25	491	0.58	0.06	1.03	0.43	0.01	0.12	-1	-1	-1
S9621566	335671	73	47	186	0.2	17	237	1	11	21	3.19	4	33	2	2	37	5	2	16	4	26	639	0.83	0.08	1.28	0.33	0.01	0.16	-1	-1	-1
S9621567	335672	48	58	248	0.2	17	195	1	17	41	3.39	2	53	2	2	59	5	2	14	5	28	616	0.8	0.1	1.47	0.34	0.01	0.12	5	10	2492
S9621568	335673	66	68	371	0.5	49	296	1	23	80	4.82	1	67	2	2	47	5	2	35	10	27	1919	0.41	0.11	1.05	1.35	0.01	0.24	5	9	2720
S9621569	335281	90	25	92	0.2	17	199	1	15	22	3.84	5	53	2	6	69	5	3	13	8	33	755	1.47	0.05	2.04	0.31	0.01	0.1	-1	-1	-1
S9621570	335282	204	14	202	1.1	19	302	1	40	38	6.2	5	84	2	6	123	5	3	13	7	31	1972	2.5	0.19	3.19	0.37	0.01	0.31	-1	-1	-1
S9621571	335283	37	17	144	0.4	13	149	1	20	27	4.35	2	71	2	2	89	5	2	4	3	12	665	1.94	0.15	2.42	0.06	0.01	0.2	-1	-1	-1
S9621572	335284	195	27	153	0.9	16	198	1	26	31	4.59	3	66	2	6	99	5	4	12	5	24	1092	2.06	0.18	2.49	0.27	0.01	0.25	-1	-1	-1
S9621573	335285	207	27	120	0.9	24	161	1	22	22	4.82	6	42	2	2	61	5	2	11	4	25	1005	1.78	0.14	2.33	0.19	0.01	0.19	-1	-1	-1
S9621574	335286	61	18	88	0.2	10	108	1	16	13	3.06	5	27	2	2	41	5	2	5	3	17	1335	1.01	0.08	1.34	0.07	0.01	0.1	-1	-1	-1
S9621575	335287	110	22	190	0.2	27	430	1	15	22	4.28	3	53	2	2	70	5	2	10	6	48	880	2.22	0.26	2.82	0.18	0.01	0.58	-1	-1	-1
S9621576	335288	147	22	72	0.2	7	233	1	9	7	7.1	5	35	2	2	37	5	2	18	3	30	530	2.03	0.04	2.53	0.05	0.01	0.16	5	10	3265


APPENDIX III
STATEMENT OF EXPENDITURES

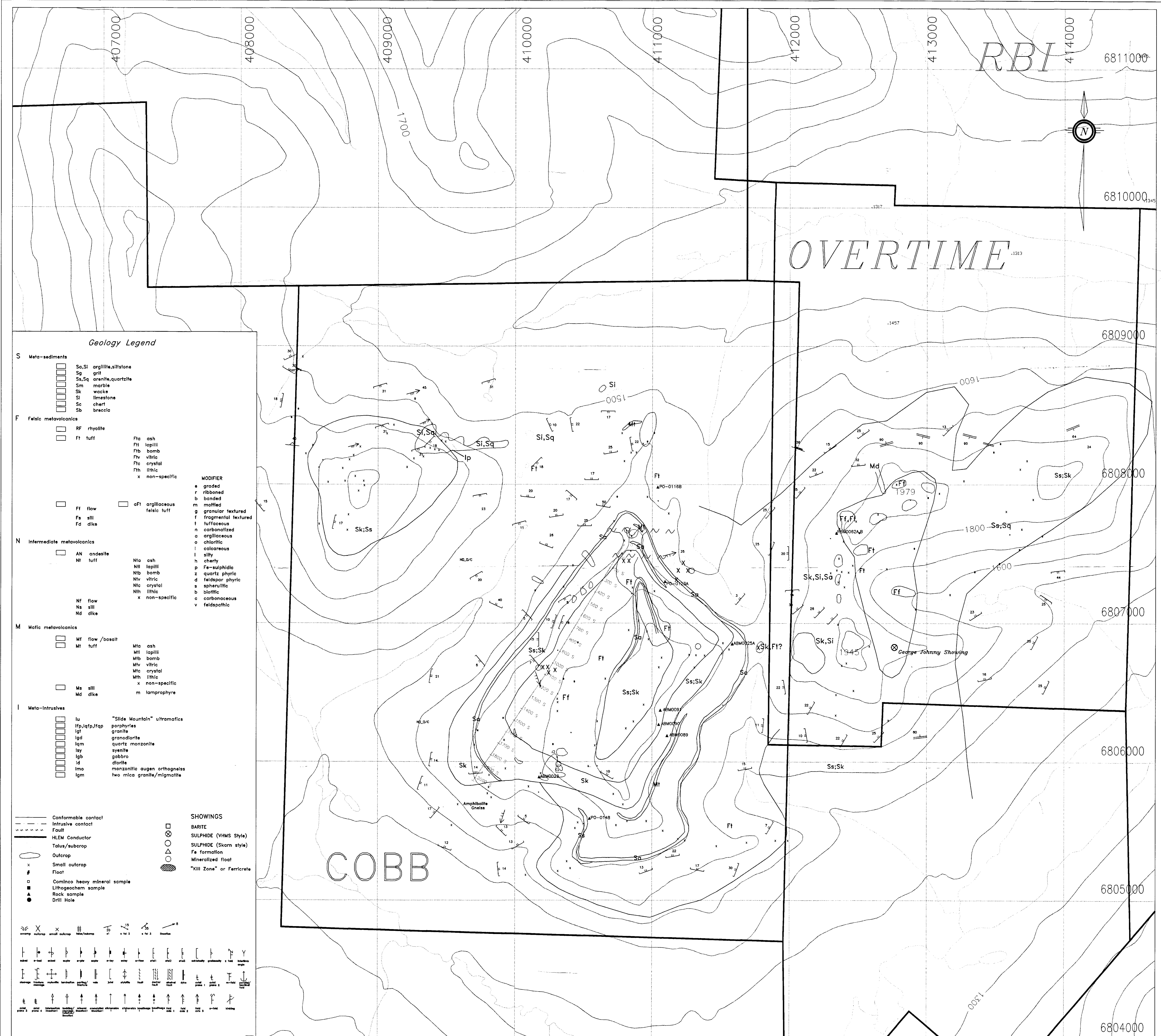
COBB PROPERTY

<u>EXPENDITURE ITEM</u>	<u>COST \$</u>
GEOLOGY STAFF COST	320
GEOCHEMISTRY STAFF COSTS	1560
PROSPECTING STAFF COSTS	0
GEOCHEMICAL ANALYSES	6672
DOMICILE	1050
HELICOPTER	3120
TOTAL	\$12,722



N.T.S. 105 G7

COBB PROPERTY		
Drawn by: DGV	Traced by:	Geochem Sample Locations 093713 <i>DGV #1</i>
Revised by: Date:	Acad file:	
SCALE 1:10,000		DATE: JUNE 697
		PLATE NO FIG. 4



Geology Legend

S Meta-sediments

[Symbol]	Sa, Si	argillite, siltstone
[Symbol]	Sg	grit
[Symbol]	Ss, Sq	arenite, quartzite
[Symbol]	Sm	marble
[Symbol]	Sk	wacke
[Symbol]	Sl	limestone
[Symbol]	Sc	chert
[Symbol]	Sb	breccia

F Felsic metavolcanics

[Symbol]	RF	rhyolite
[Symbol]	Ft	tuff
[Symbol]	Fta	ash
[Symbol]	Fli	lapilli
[Symbol]	Ffb	bomb
[Symbol]	Ffv	vitric
[Symbol]	Ffc	crystal
[Symbol]	Ffh	ilitic
[Symbol]	x	non-specific

N Intermediate metavolcanics

[Symbol]	AN	andesite
[Symbol]	Nt	tuff
[Symbol]	Nta	ash
[Symbol]	Ntl	lapilli
[Symbol]	Ntb	bomb
[Symbol]	Ntv	vitric
[Symbol]	Ntc	crystal
[Symbol]	Nth	ilitic
[Symbol]	x	non-specific

M Mafic metavolcanics

[Symbol]	Mf	flow/basalt
[Symbol]	Mt	tuff
[Symbol]	Mta	ash
[Symbol]	Mtl	lapilli
[Symbol]	Mtb	bomb
[Symbol]	Mtv	vitric
[Symbol]	Mtc	crystal
[Symbol]	Mth	ilitic
[Symbol]	x	non-specific
[Symbol]	Md	diapirite

I Meta-Intrusives

[Symbol]	Iu	"Slide Mountain" ultramafics
[Symbol]	Ipl, Iqp, Ifap	porphyries
[Symbol]	Igt	granite
[Symbol]	Igd	granodiorite
[Symbol]	Iqm	quartz monzonite
[Symbol]	Isv	syenite
[Symbol]	Igb	gabbro
[Symbol]	Id	diorite
[Symbol]	Ilo	monzonitic augen orthogneiss
[Symbol]	Igm	two mica granite/migmatite

MODIFIER

e	graded
r	ribbed
b	banded
m	mottled
g	granular textured
f	fragmental textured
t	tuffaceous
n	carbonized
a	argillaceous
o	chloritic
l	calcareous
l	silty
h	cherty
p	Fe-sulphidic
z	quartz phytic
d	feldspar phytic
s	spherulitic
b	blotitic
c	carbonaceous
v	feldspathic

SHOWINGS

[Symbol]	BARITE
[Symbol]	SULPHIDE (VHMS Style)
[Symbol]	SULPHIDE (Skarn style)
[Symbol]	Fe formation
[Symbol]	Mineralized float
[Symbol]	"Kill Zone" or Ferricrete

CONTACTS AND FEATURES

[Symbol]	Conformable contact
[Symbol]	Intrusive contact
[Symbol]	Fault
[Symbol]	HLEM Conductor
[Symbol]	Talus/subcrop
[Symbol]	Outcrop
[Symbol]	Small outcrop
[Symbol]	Float
[Symbol]	Cominco heavy mineral sample
[Symbol]	Lithochem sample
[Symbol]	Rock sample
[Symbol]	Drill Hole

Scale and Orientation

SCALE: 1:10000

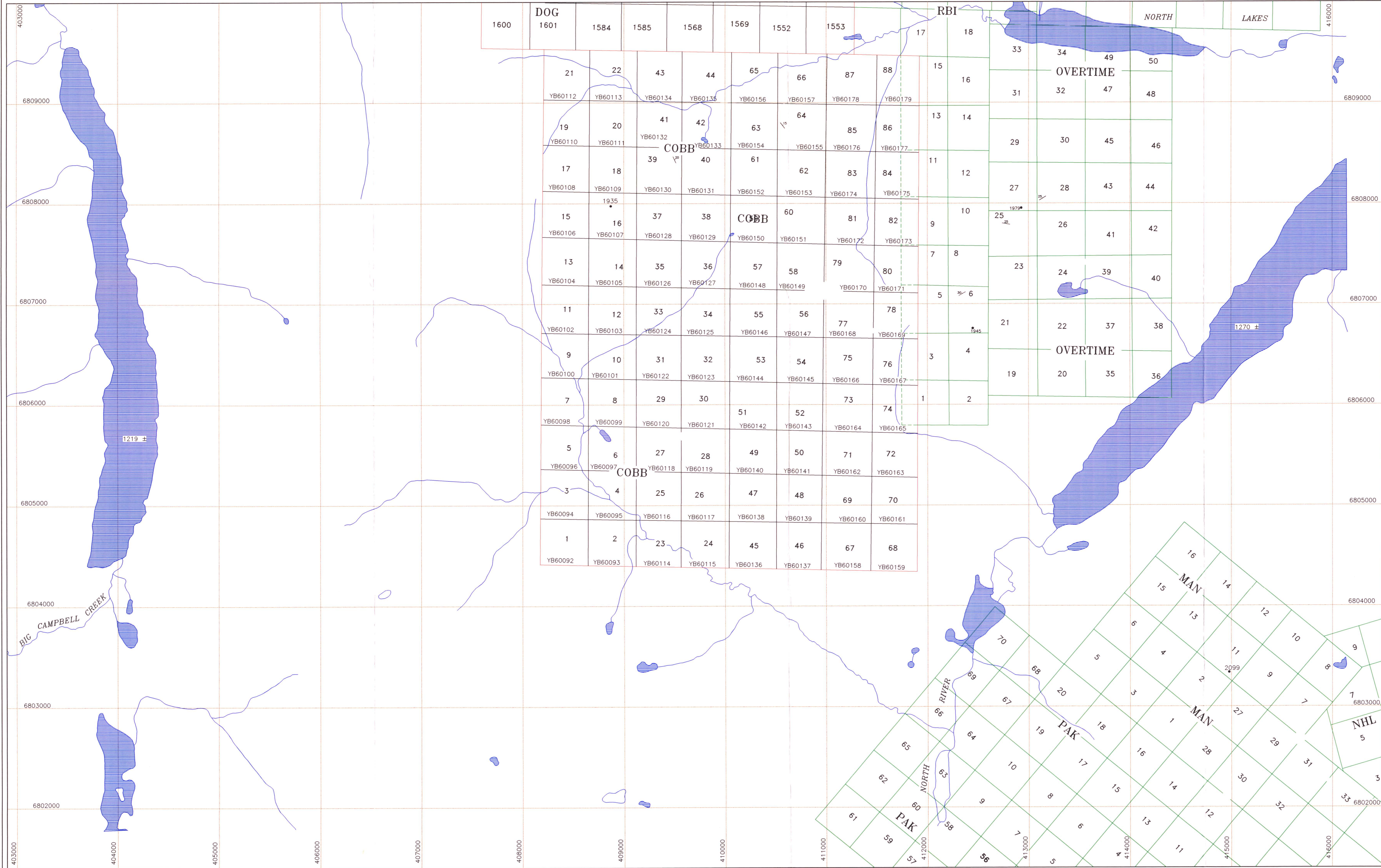
0 400 800 1200 METRES

N.T.S. 105G 7

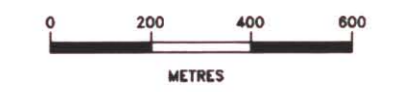
OVERTIME

COBB

COBB		Geology		093713 DUG#2	
Drawn by: JP	Traced by:	Acad file: COBB.DWG	SCALE: 1:10000	DATE: 05/28/97	PLATE NO: 3
Revised by:	Date:				



1600	DOG								RBI				NORTH				LAKES			
1601	1584	1585	1568	1569	1552	1553	17	18	33	34	49	50								
21	22	43	44	65	66	87	88	15	16	OVERTIME										
YB60112	YB60113	YB60134	YB60135	YB60156	YB60157	YB60178	YB60179	13	14	31	32	47	48							
19	20	41	42	63	64	85	86	11	12	29	30	45	46							
YB60110	YB60111	YB60132	YB60133	YB60154	YB60155	YB60176	YB60177	9	10	27	28	43	44							
17	18	39	40	61	62	83	84	7	8	25	26	41	42							
YB60108	YB60109	YB60130	YB60131	YB60152	YB60153	YB60174	YB60175	5	6	23	24	39	40							
15	16	37	38	60	81	82	9	10	21	22	37	38								
YB60106	YB60107	YB60128	YB60129	YB60150	YB60151	YB60172	YB60173	3	4	19	20	35	36							
13	14	35	36	57	58	79	80	7	8	19	20	35	36							
YB60104	YB60105	YB60126	YB60127	YB60148	YB60149	YB60170	YB60171	5	6	21	22	37	38							
11	12	33	34	55	56	77	78	3	4	19	20	35	36							
YB60102	YB60103	YB60124	YB60125	YB60146	YB60147	YB60168	YB60169	1	2	19	20	35	36							
9	10	31	32	53	54	75	76	3	4	19	20	35	36							
YB60100	YB60101	YB60122	YB60123	YB60144	YB60145	YB60166	YB60167	1	2	19	20	35	36							
7	8	29	30	51	52	73	74	1	2	19	20	35	36							
YB60098	YB60099	YB60120	YB60121	YB60142	YB60143	YB60164	YB60165	1	2	19	20	35	36							
5	6	27	28	49	50	71	72	1	2	19	20	35	36							
YB60096	YB60097	YB60118	YB60119	YB60140	YB60141	YB60162	YB60163	1	2	19	20	35	36							
3	4	25	26	47	48	69	70	1	2	19	20	35	36							
YB60094	YB60095	YB60116	YB60117	YB60138	YB60139	YB60160	YB60161	1	2	19	20	35	36							
1	2	23	24	45	46	67	68	1	2	19	20	35	36							
YB60092	YB60093	YB60114	YB60115	YB60136	YB60137	YB60158	YB60159	1	2	19	20	35	36							



WATSON LAKE MINING DISTRICT N.T.S. 1050/7

COBB PROPERTY

Drawn by: AM Traced by: AM

Sheet no: 1 Date: 2/20/98 and the FILED

Claim Map

SCALE: 1:50,000 DATE: Feb. 1998 PLATE NO.: 2

DIAND - YUKON REGION LIBRARY

093713
DUG #3