

**PROSPECTING REPORT
ON THE
TM CLAIMS**

093709

**Watson Lake Mining District, Y.T.
NTS 105H/7
(61°16'N, 128°47'W)**

for

FINLAYSON JOINT VENTURE (FJV) INC.
502 - 475 Howe Street
Vancouver, B.C. V6C 2B3
(604)681-1568

by

CARL G. VERLEY, P.Geo.
Amerlin Exploration Services Ltd.
2150 - 1851 Savage Road
Richmond, B.C. V6V 1R1
(604)821-1088

July, 1997

CLAIMS: TM 1 - 25
LOCATION: 135 kilometres north of Watson Lake, Y.T.
DATE: September 10 and 17, 1996.



This report has been examined by
the Geological Evaluation Unit
under Section 53 (4) Yukon Quartz
Mining Act and is allowed as
representation work in the amount
of \$ 2500.00.

M. B. B.
Regional Manager, Exploration and
Geological Services for Commissioner
of Yukon Territory.

TABLE OF CONTENTS

SUMMARY	2
INTRODUCTION	3
Location & Access	3
History	3
PROPERTY	4
GEOLOGY	6
Regional	6
Property	6
CONCLUSIONS	9
REFERENCES	10
APPENDICES:	
A. Geochemical Data	
B. Writer's Certificate	

Figures

Figure:

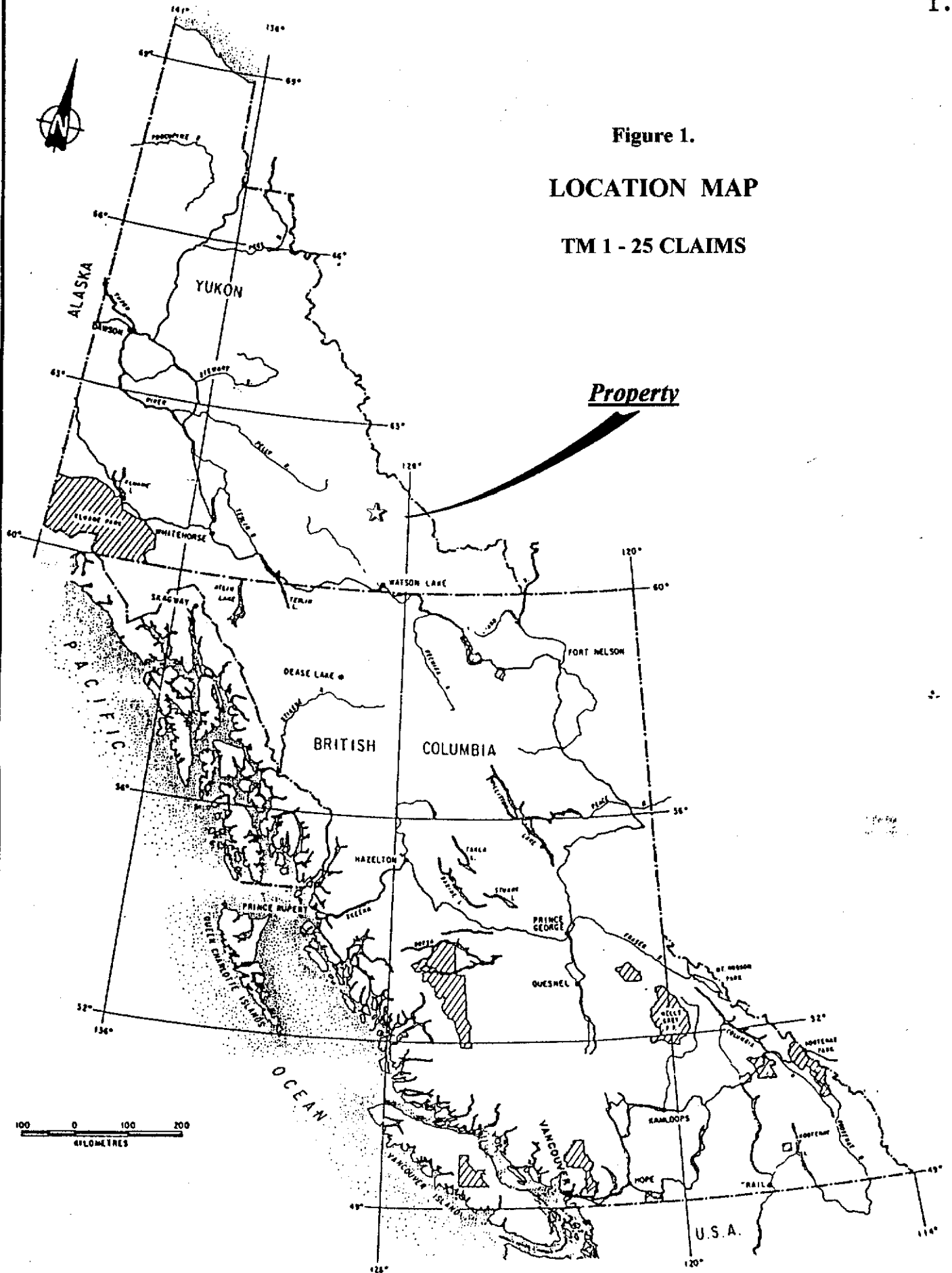
1 Property Location Map	1
2 Claim Map	5
3 Regional Geology	8

Tables

Table:

1 Mineral Claims	4
------------------------	---

Figure 1.
LOCATION MAP
TM 1 - 25 CLAIMS



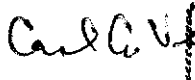
SUMMARY


Finlayson Joint Venture (FJV) Inc. owns 25 mineral contiguous claims centered 135 kilometres north of Watson Lake, in the Pelly Mountains, Watson Lake Mining District (105H/7), Yukon Territory. The property is accessible by helicopter.

The ground is underlain by Cretaceous and Tertiary (?) age granodiorite and feldspar porphyry dykes. There are no records of previous exploration work on this property.

During the 1996 field season a program of prospecting, including some rock and stream silt sampling, was conducted on the claim group. The results of this work located a low order zinc, copper gold anomaly associated with shattered granodiorite adjacent to a dyke. Follow-up rock sampling and prospecting of this area is warranted.

Respectfully submitted,
Amerlin Exploration Services Ltd.


Carl G. Verley, P. Geo.



Richmond, B.C.
August 23, 1997.

INTRODUCTION

This report describes the results of a work program supervised by the writer for Finlayson Joint Venture (FJV) Inc. on September 10 and 17, 1996. The object of this work was to prospect the claims.

LOCATION & ACCESS

The claims are centered 135 kilometres north of Watson Lake in the Logan Mountains, Watson Lake Mining District, Y.T. at latitude $61^{\circ}16'N$ and longitude $128^{\circ}47'W$. This property is situated on map-sheet 105H/7. Physiographically the ground lies in relatively steep alpine terrain, near the head of Conglomerate Creek. Elevations range from 1260 to just over 2000 metres above sea level.

The property is best accessed by helicopter from Watson Lake.

HISTORY

There are no records of work having been conducted on property in the past. However, immediately to the east, considerable exploration of base metal and tungsten-bearing skarns has been undertaken.

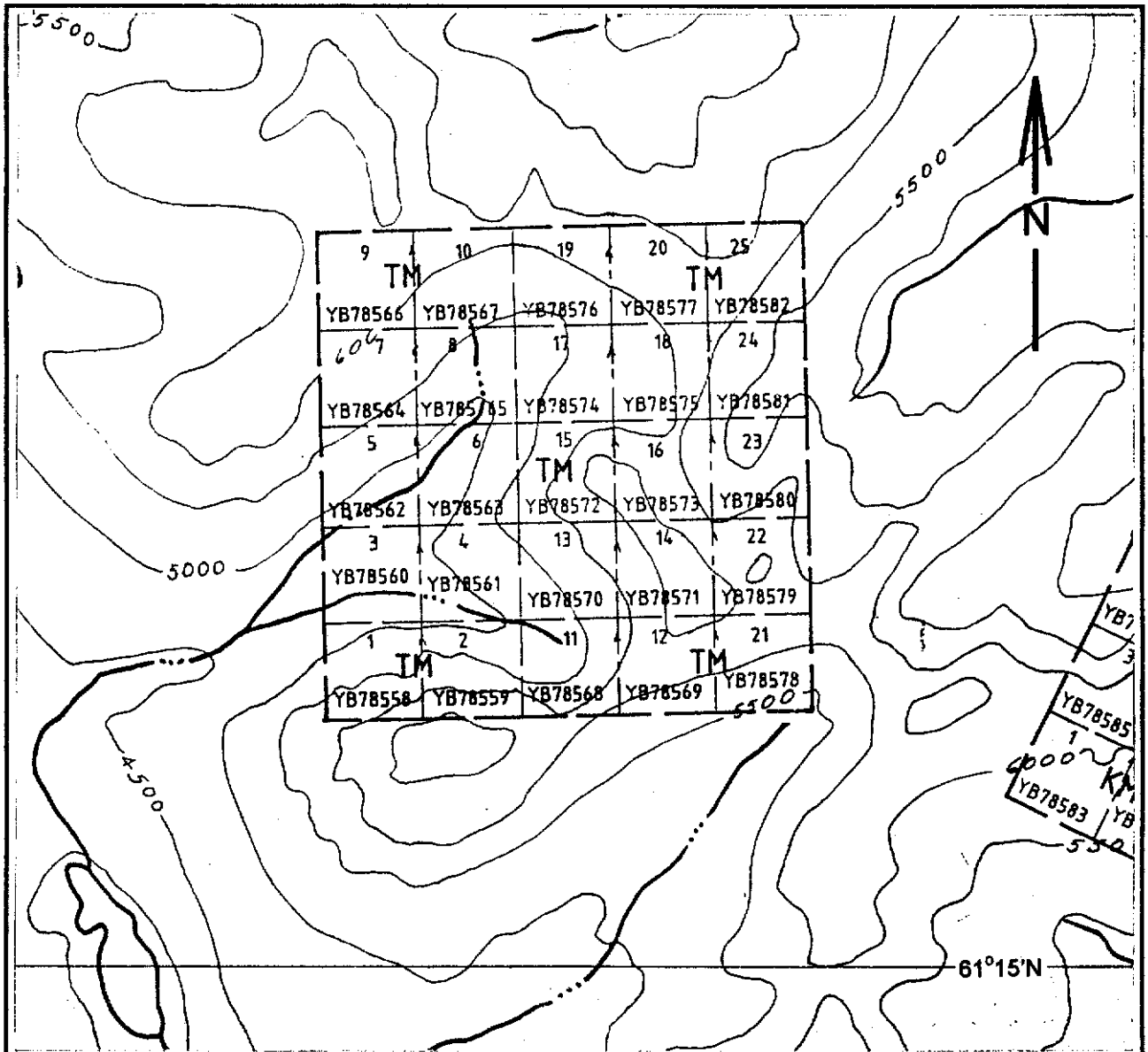
PROPERTY

Finlayson Joint Venture (FJV) Inc. has 100% ownership of 25, full sized mineral claims, located in 1 contiguous block as tabulated below and illustrated on Figure 2. The claims are located in the Mount Billings area, Watson Lake Mining District, Y.T. (NTS 105H/7).

Table 1. MINERAL CLAIMS

Claims	Grant Numbers	Expiry Date*
TM 1 to 25	YB78558-YB78582	March 06/1998

*Pending acceptance of assessment work.



FINLAYSON JOINT VENTURE (FJV) INC.

**CLAIM MAP
TM 1-25 Claims**

**Tyers River Area
Watson Lake Mining District, Yukon
NTS 105H/7**

Scale 1:31,680

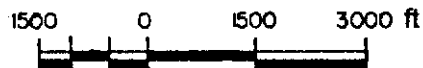


Figure 2.

GEOLOGY

Regional:

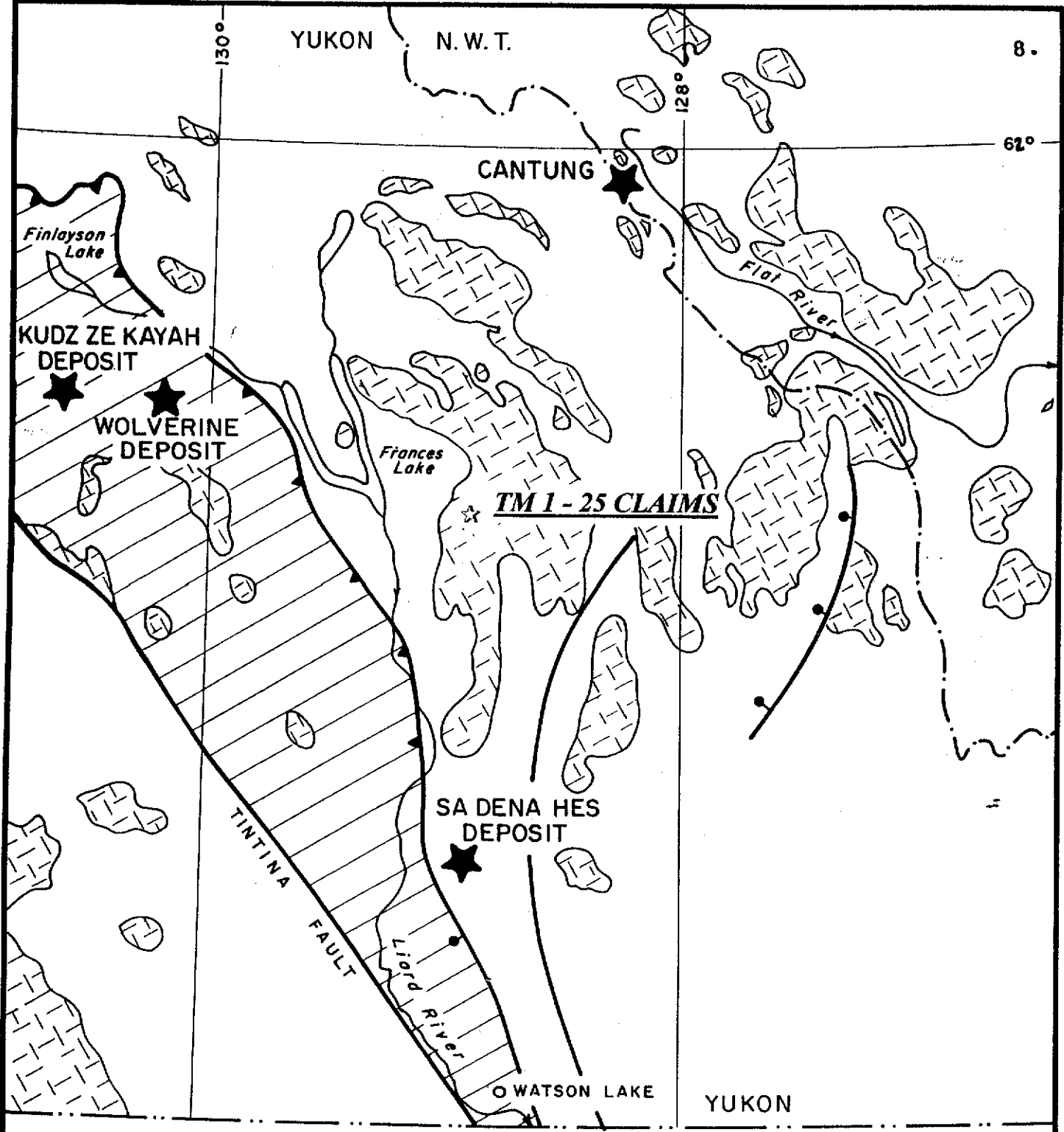
The property is situated in the northern extension of the Omineca belt east of the Tintina fault zone. Regionally, the area is characterized by a succession of Paleozoic sediments - fine clastics and carbonates - that were probably derived from and deposited onto ancestral North America at or near the transition from platform carbonates to the east and basinal shales to the west. Numerous post accretionary, Cretaceous to Tertiary age, plutons intrude this succession (Wheeler et al., 1989). This plutonism has produced variable degrees of regional and contact metamorphism throughout the area, resulting in the development of a variety of mineral deposits.

Property:

The TM claims are completely underlain by intrusives of the Mount Billings batholith. These, on the property consist of blocky weathering, grey, medium to fine-grained quartz monzonite to granodiorite. Some phase of the intrusive exhibit a porphyritic texture. These granitic rocks are intruded by a swarm of northeasterly striking, steep dipping, feldspar porphyry dykes on the east side of the property. A small hydrothermal breccia zone approximately 50 metres by 20 metres occurs in or at the contact of one of the dykes. The breccia consists of angular fragments of dyke rock in a vuggy and drusy quartz matrix. The granodiorite surrounding the breccia zone has a distinct pinkish cast for approximately 10 metres from the breccia - suggesting that it has undergone K-spar alteration.

Rock samples (Appendix A and Plate 1) of the breccia are low in metal values. A sample of shattered and limonitic granodiorite collected approximately 575 metres northeast of the breccia has slightly elevated values in zinc (603 ppm), copper (195 ppm) and gold (20 ppb). Further prospecting and rock sample around the dyke swarm is warranted in order to determine if there is a zone of mineralization that has bulk-tonnage copper-gold potential.

Stream silt samples collected in the area draining the dyke swarm (samples TMS-2, 3) have elevated lead and slightly elevated zinc values.

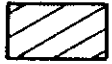


MID-CRETACEOUS - TERTIARY (?)



SYN - AND POST-TECTONIC GRANITIC INTRUSIVES

PALEOZOIC

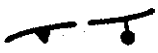


YUKON - TANANA TERRANE METASEDIMENTS AND VOLCANICS MAY INCLUDE SOME SLIDE MT. TERRANE

PRECAMBRIAN - PALEOZOIC



ANCESTRAL NORTH AMERICA SEDIMENTS



THRUST AND NORMAL FAULTS

GEOLOGICAL SETTING

TM 1 - 25 CLAIMS

YUKON TERRITORY



SCALE IN KILOMETRES

FIGURE 3

CONCLUSIONS

Finlayson Joint Venture has tenure to TM mineral claims located in 1 contiguous block in the Mount Billings area, Watson Lake Mining District, Yukon. The claims are situated 135 kilometres north of Watson Lake. Access is by helicopter.

The property is underlain by a Cretaceous age granitic rocks which are intruded by a feldspar porphyry dyke swarm. A hydrothermal breccia zone is associated with one of the dykes. Slightly anomalous zinc, copper and gold values occur in one area of shattered and limonitic granodiorite adjacent to a dyke. Follow-up rock sampling and prospecting of the dyke swarm and altered zone within it is warranted.

REFERENCES

Blusson, S.L., E.F. Roots, L.H. Green, J.A. Roddick, 1966: Geology Map of Frances Lake, Yukon, Geol. Surv. Can. Map 6-1966.

Wheeler, J.O. and A.J. Brookfield, H. Gabrielse, J.W.H. Monger, H.W. Tipper, G.J. Woodsworth, 1989: Terrane Map of the Canadian Cordillera, Geol. Survey of Canada, O.F. 1894.

APPENDIX A
GEOCHEMICAL DATA

Sample	
No.	Description
811	Chips from outcrop of flow banded feldspar porphyry dyke
812	Chips from outcrop of K-spar altered quartz monzonite at contact with dykes
813	Chips across ~ 1 m of outcrop of breccia zone in dyke or at contact with quartz monzonite. matrix consists of quartz lined vugs
814	Chips from narrow sheared (?) section of quartz monzonite with pyrite, MnOx & FeOx stain.

GEOCHEMICAL ANALYSIS CERTIFICATE

AMERLIN EXPLORATION

Project:

Report No. 9621913

Sample Type: Rocks

Date: September 30, 1996

Multi-element ICP Analysis - .500 gram sample is digested with 3 ml of aqua regia, diluted to 10 ml with Water. This leach is partial for Mn, Fe, Ca, P, La, Cr, Mg, Ba, Ti, B, W and limited for Na, K and Al. Detection Limit for Au is 3 ppm.

*Au Analysis- 10 gram sample is digested with aqua regia, MIBK extracted, graphite furnace AA finished to 1 ppb detection.

SAMPLE NO.	Pb ppm	Zn ppm	Ag ppm	Au* ppb	Cu ppm	Mo ppm	W ppm	As ppm	Sb ppm	Bi ppm	Cd ppm	Mn ppm	Fe %	Ni ppm	Co ppm	Cr ppm	V ppm	Th ppm	Sr ppm	La ppm	Ba ppm	Na %	K %	Ca %	Al %	Mg %	Ti %	P %
811	27	63	0.3	2	3	3	2	2	2	2	0.3	495	0.98	2	1	87	4	10	14	33	46	0.07	0.21	0.59	0.51	0.09	0.01	0.012
812	18	80	0.3	1	4	5	2	2	2	2	0.2	558	1.50	3	2	109	14	11	12	24	22	0.03	0.09	0.77	0.34	0.04	0.01	0.039
813	14	30	0.3	1	3	5	2	12	2	2	0.2	143	0.70	2	1	112	3	5	4	15	27	0.01	0.14	0.11	0.33	0.01	0.01	0.012
814	71	603	1.0	20	195	2	2	2	2	2	0.6	3308	8.17	1	8	32	41	17	9	24	20	0.05	0.01	0.19	1.01	0.21	0.01	0.061

GEOCHEMICAL ANALYSIS CERTIFICATE

AMERLIN EXPLORATION

Project:

Report No. 9611914

Sample Type: Silts

Date: September 30, 1996

Multi-element ICP Analysis - .500 gram sample is digested with 3 ml of aqua regia, diluted to 10 ml with Water. This leach is partial for Mn, Fe, Ca, P, La, Cr, Mg, Ba, Ti, B, W and limited for Na, K and Al. Detection Limit for Au is 3 ppm.

*Au Analysis- 10 gram sample is digested with aqua regia, MIBK extracted, graphite furnace AA finished to 1 ppb detection.

ELEMENT SAMPLE	Pb ppm	Zn ppm	Ag ppm	Au ppb	Cu ppm	Mo ppm	W ppm	As ppm	Sb ppm	Bi ppm	Cd ppm	Mn ppm	Fe %	Co ppm	Cr ppm	V ppm	U ppm	Sr ppm	La ppm	Ba ppm	Na %	K %	Ca %	Al %
TMS-1	24	88	0.3	1	4	1	2	12	2	2	0.3	255	1.17	1	3	9	33	14	17	33	0.01	0.10	0.30	0.92
TMS-2	181	226	0.8	1	10	1	2	2	2	5	1.4	820	1.75	5	2	27	14	122	16	42	0.02	0.17	2.65	3.87
TMS-3	105	378	0.6	1	18	7	2	35	2	7	1.4	1218	2.36	4	6	20	72	28	27	66	0.03	0.13	0.38	2.05
TMS-4	68	127	0.3	2	13	3	2	2	2	2	0.4	619	2.72	6	7	54	34	41	32	116	0.01	0.11	0.77	2.2

APPENDIX B
PERSONNEL

PERSONNEL

C.G. Verley, P.Geo.
2150 - 1851 Savage Road
Richmond, B.C. V6V 1R1

Project Geologist

Bill Preston
Kamloops, B.C

Prospector

Yasu Hashimoto
New Denver, B.C.

Prospector

APPENDIX C
WRITER'S CERTIFICATE

AMERLIN EXPLORATION SERVICES LTD.

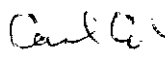
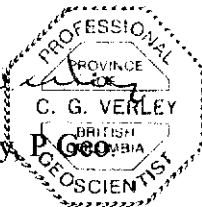
2150 - 1851 Savage Road, Richmond, B.C. V6V 1R1 Tel/Fax (604) 821-1088

WRITER'S CERTIFICATE

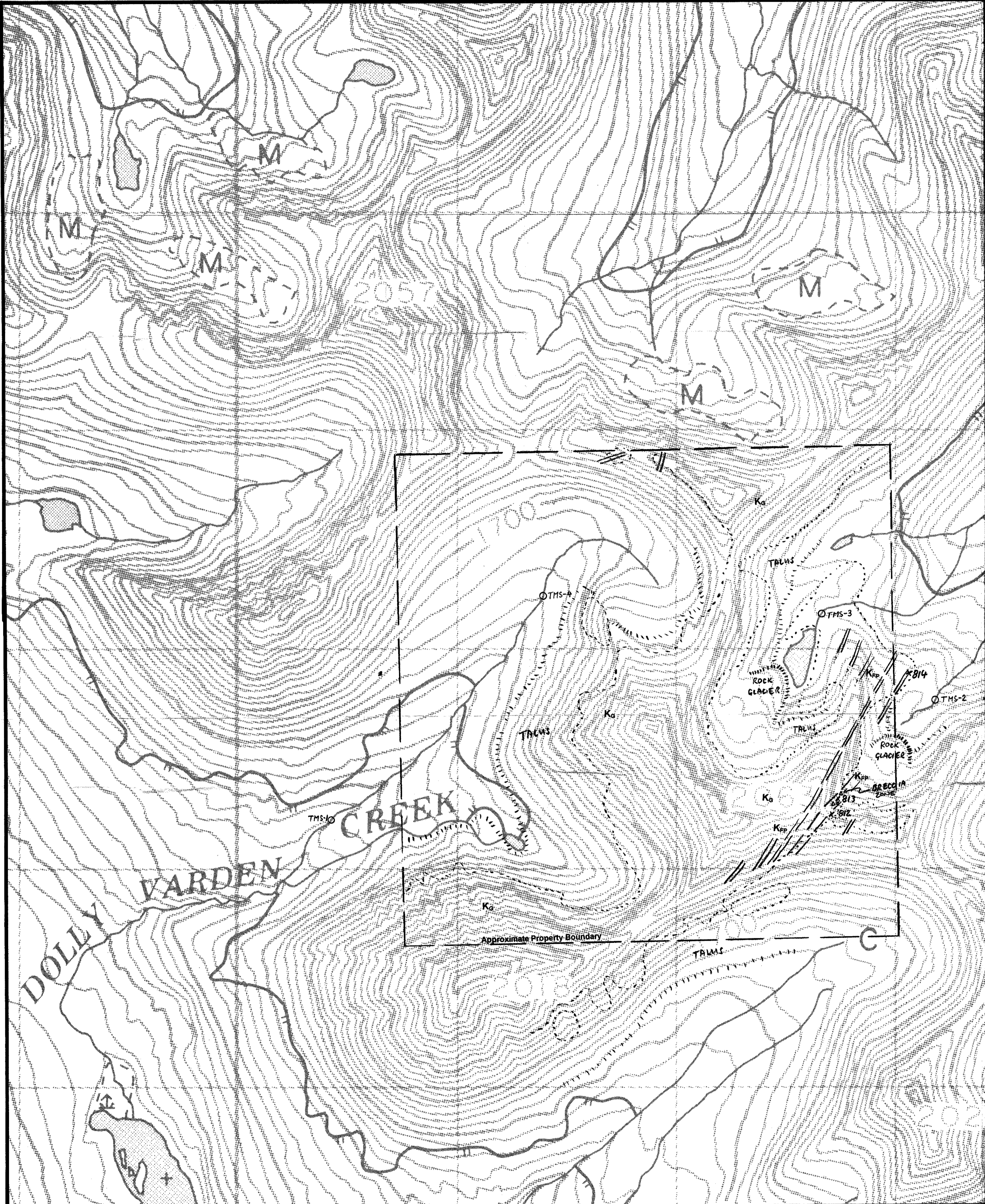
I, Carl G. Verley of Vancouver, British Columbia hereby certify that:

1. I am a geologist with business office at 2150 - 1851 Savage Road, Richmond, B.C.
2. I am a graduate of the University of British Columbia, B.Sc. in 1974, and have practiced my profession since that time.
3. I am a registered member of the Association of Professional Engineers and Geoscientists of the Province of B.C.
4. I am the author of this report which is based on field work I supervised on the TM claims on September 10 and 17, 1996.


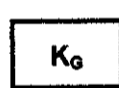




Amerlin Exploration Services Ltd.


Carl G. Verley, P. Geo.


August 23, 1997.
Richmond, B.C.



LEGEND

-  Late Cretaceous to Tertiary (?) feldspar porphyry dykes.
-  Mid-Cretaceous quartz monzonite to granodiorite.
-  Outcrop
-  Lithologic contact
-  812 Rock Sample, see Appendix A for analytical and assay data.
-  TMS-1 Stream silt sample, see Appendix A for analytical data.

Note: Contours in metres, interval 20 m.
 Magnetic declination: 29°31'E (1996)
 Topography from Energy, Mines & Resources Canada maps 105H/7

093709

DWG ①

FINLAYSON JOINT VENTURE (FJV) INC.
GEOLOGY & SAMPLE LOCATION PLAN
 TM 1-25 CLAIM GROUP
 Tyers River Area
 Watson Lake Mining Division, Y.T.
 NTS 105H/7

