

**PROSPECTING REPORT
ON THE
PP CLAIMS**

Watson Lake Mining District, Y.T.
NTS 105H/2
(61°14'N, 128°44'W)

for

FINLAYSON JOINT VENTURE (FJV) INC.
502 - 475 Howe Street
Vancouver, B.C. V6C 2B3
(604)681-1568

by

CARL G. VERLEY, P.Geo.
Amerlin Exploration Services Ltd.
2150 - 1851 Savage Road
Richmond, B.C. V6V 1R1
(604)821-1088

December, 1996

CLAIMS: PP 1 - 16

LOCATION: 130 kilometres north of Watson Lake, Y.T.

DATE: September 16 and 17, 1996.



This report has been examined by
the Geological Evaluation Unit
under Section 53 (4) Yukon Quartz
Mining Act and is allowed as
representation work in the amount
of \$ 1600.00.

M. B. ...
for Regional Manager, Exploration and
Geological Services for Commissioner
of Yukon Territory.

TABLE OF CONTENTS

SUMMARY	2
INTRODUCTION	3
Location	3
Access	3
History	3
PROPERTY	5
GEOLOGY	7
Regional	7
Property	7
CONCLUSIONS	9
REFERENCES	10
APPENDICES:	
A. Estimated Cost of Recommended Program	
B. Geochemical Data	
C. Writer's Certificate	

Figures

Figure:

1 Property Location Map	1
2 Claim Map	6
3 Property Geology	8

Tables

Table:

1 Mineral Claims	5
------------------------	---

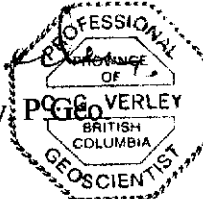
SUMMARY

Finlayson Joint Venture (FJV) Inc. owns 16 mineral claims centered 130 kilometres north of Watson Lake, in the Pelly Mountains, Watson Lake Mining District (105H/2), Yukon Territory. The property is accessible by helicopter.

The ground is situated in an area where a large roof pendant of metamorphosed Upper Cambrian to Devono-Mississippian sediments lies on top of Cretaceous to Tertiary (?) age granodiorite. Previous mineral tenure holders conducted a variety of exploration work in the area from the 1960's to 1980's. This work included ground geophysical surveys, soil geochemical surveys and trenching.

During the 1996 field season prospecting of the claim group was conducted. The results of this work failed to locate any potentially economic mineralization.

Respectfully submitted,
Amerlin Exploration Services Ltd.

Carl G. Verley
Carl G. Verley, P. Geo.
A circular professional seal for a geoscientist. The outer ring contains the text 'PROFESSIONAL' at the top and 'GEOLOGIST' at the bottom. Inside the ring, the text reads 'BRITISH COLUMBIA' and 'GEOLOGIST'. In the center, there is a signature 'Carl G. Verley' and the text 'P. Geo.' below it.

Richmond, B.C.
August 21, 1997.

INTRODUCTION

This report describes the results of a prospecting program conducted on the property under the supervision of the writer for Finlayson Joint Venture (FJV) Inc. on September 16 and 17, 1996. The object of this work was to determine if the property has potential for hosting economic mineralization and therefore merits further exploration work.

LOCATION

The claim group is centered 130 kilometres north of Watson Lake in the Logan Mountains, Watson Lake Mining District, Y.T. at latitude 61°14'N and longitude 128°44'W. These properties are situated on map-sheet 105H/2. Physiographically the ground lies in relatively steep alpine terrain, near the head of a south tributary drainage of Dolly Varden Creek. Elevations range from 1260 to just over 2000 metres above sea level.

ACCESS

The properties are best accessed by helicopter from Watson Lake. A 4x4 passable bulldozer trail to the PP claims leads out to the Cantung Highway and will facilitate future development of these properties.

HISTORY

The PP claims were first staked as the DC claims in 1965 by the Mt Billings Venture. K. Armstrong tied on the DAY claims in 1966 and J.C. Turner added the EGG claims in 1968. In 1969 the property was restaked as the TOBY claim group by Welland Consolidated Mining Ltd. Welland conducted a program of hand trenching and drilling in 1971 before abandoning the property. Again, in 1974 the area was restaked by D. Vigouret as the SUZANNE group. In that year, Denu Mine & Development Ltd. acquired the claims. Dual Resources Limited bought the

claims in 1975 and conducted geological mapping and geochemical sampling on the ground. Then in 1977, Canada Tungsten Mining Corp. tied on the LITE claims. Turner-Hindmarsh Tungsten Ltd. acquired the property in 1977 and conducted further trenching in 1978. In 1979, J.C. Turner tied on the TIE claims, which were then optioned to Rideau Resources Corp.

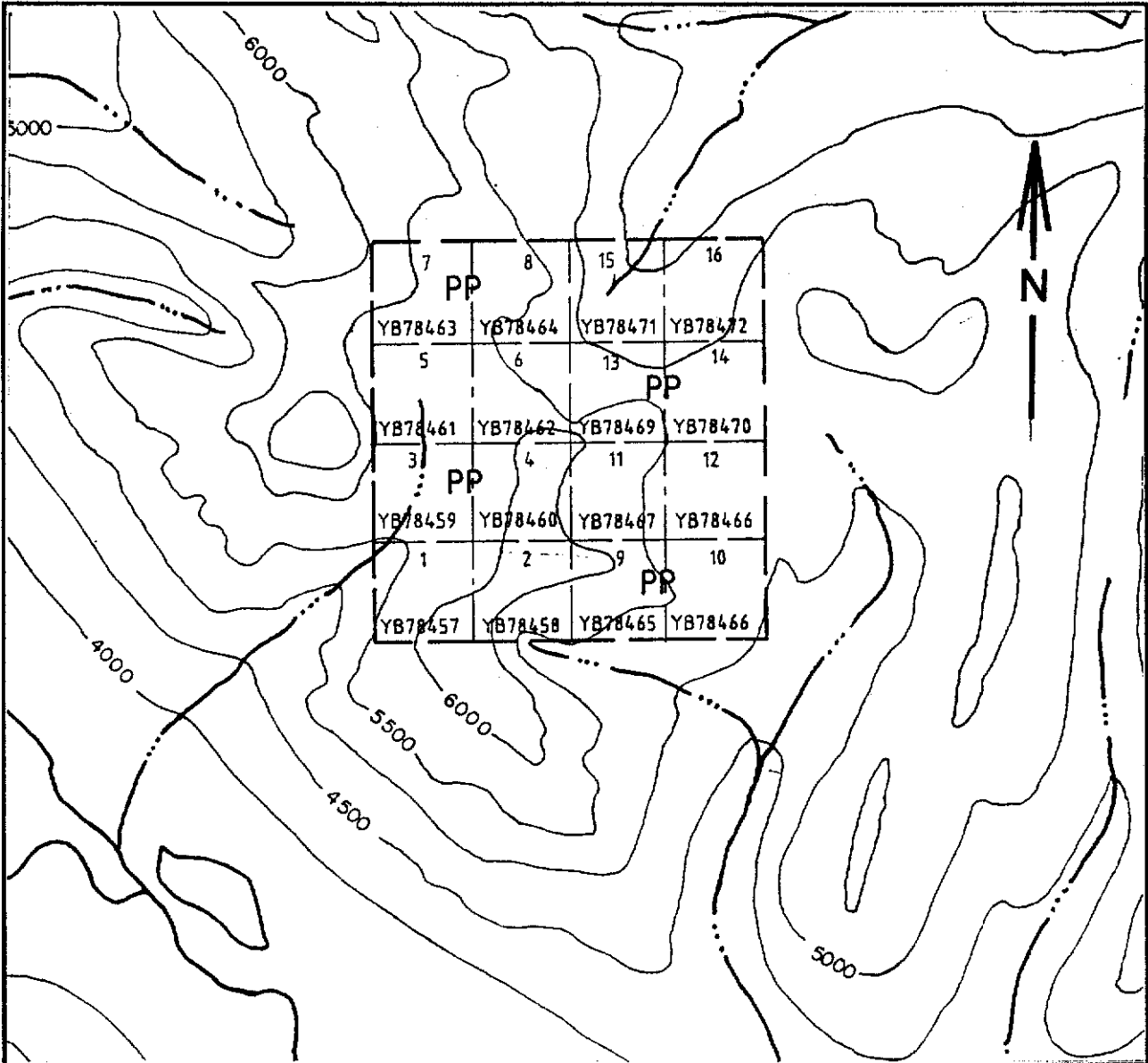
The area underlain by the PP group subsequently came open for staking in the late 1980's and were recently staked for Finlayson Joint Venture (FJV) Inc.

PROPERTY

Finlayson Joint Venture (FJV) Inc. has 100% ownership of 16, full sized mineral claims, located in 1 contiguous block as tabulated below and illustrated on Figure 2. The claims are located in the Mount Billings area, Watson Lake Mining District, Y.T. (NTS 105H/2).

Table 1. MINERAL CLAIMS

Claims	Grant Numbers	Expiry Date
PP 1 to 16	YB78457-YB78472	March 05/1997



FINLAYSON JOINT VENTURE (FJV) INC.

**CLAIM MAP
PP 1-16 Claims**

**Mount Billings Area
Watson Lake Mining District, Yukon
NTS 105H/2**

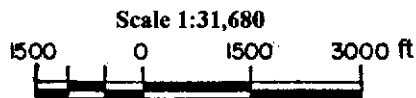


Figure 2.

GEOLOGY

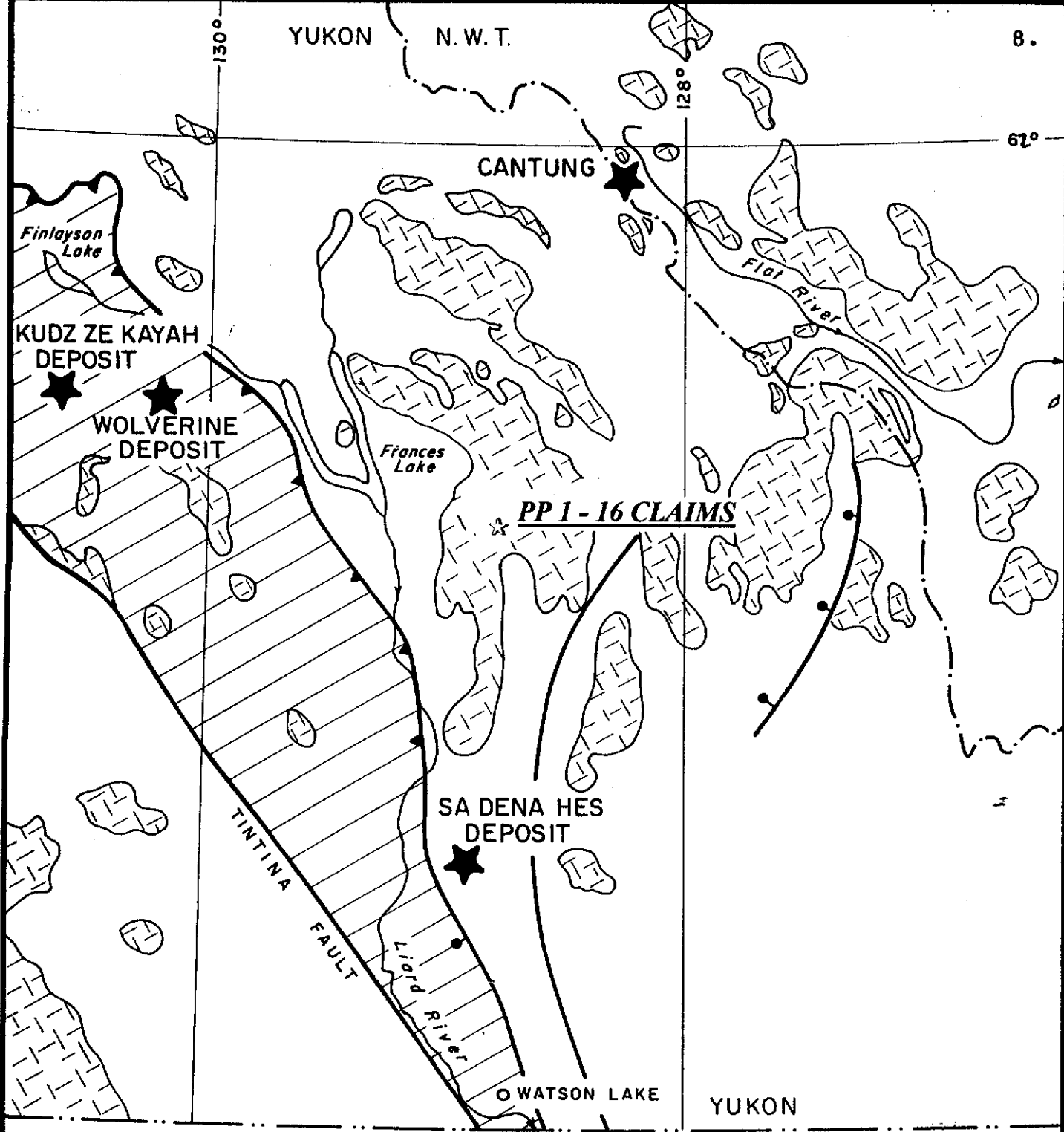
Regional:

The property is situated in the northern extension of the Omineca belt east of the Tintina fault zone. Regionally, the area is characterized by a succession of Paleozoic sediments - fine clastics and carbonates - that were probably derived from and deposited onto ancestral North America at or near the transition from platform carbonates to the east and basinal shales to the west. Numerous post accretionary, Cretaceous to Tertiary age, plutons intrude this succession (Wheeler et al., 1989). This plutonism has produced variable degrees of regional and contact metamorphism throughout the area, resulting in the development of a variety of mineral deposits.


Property:

The PP claims are underlain by a sequence of predominantly quartz-feldspar-mica gneisses and schists with minor marble and skarn bands of Cambrian and/or earlier in age, that dip moderately the southeast (Blusson, et. al., 1966). Aplite, pegmatite and numerous small granitic sills and apophyses occur within the metamorphic package. The succession of metamorphic rocks is situated as an roof pendant surrounded by granitic rocks of the Mount Billings batholith. These granitic rocks are of Cretaceous to Tertiary (?) age and vary from quartz monzonites to granodiorites and lessor diorite.

During the 1996 field season prospecting of the claim area failed to locate significant mineralization. Weak skarn development was noted in several areas at the margins of limestone bands within the schist sequence. However, these were devoid of sulphides. Within the granitic rocks disseminated pyrite and pyrrhotite occurs near the contact with the sediments in several areas. However, this mineralization does not appear to carry potentially economic values in base or precious metals (refer to analytical data, Appendix A).



MID-CRETACEOUS - TERTIARY (?)

 SYN - AND POST-TECTONIC GRANITIC INTRUSIVES

PALEOZOIC

 YUKON - TANANA TERRANE METASEDIMENTS AND VOLCANICS MAY INCLUDE SOME SLIDE MT. TERRANE

PRECAMBRIAN - PALEOZOIC

 ANCESTRAL NORTH AMERICA SEDIMENTS

 THRUST AND NORMAL FAULTS

GEOLOGICAL SETTING

PP 1 - 16 CLAIMS

YUKON TERRITORY



FIGURE 3

CONCLUSIONS

Finlayson Joint Venture has tenure to 16 mineral claims located in 1 contiguous blocks in the Mount Billings area, Watson Lake Mining District, Yukon. The claims are situated 130 kilometres north of Watson Lake. Access is by helicopter.

The property is underlain by a succession of regionally and contact metamorphosed Cambrian or earlier sediments. This package of rocks has been intruded Cretaceous age granitic rocks of the Mount Billings pluton.

During the 1996 field season a program of prospecting was conducted on the claims. However, no potentially economic mineralization was located in the areas examined. Therefore, no further work is recommended on this property.

REFERENCES

- Abbott, J.G., 1981: A New Geological Map of Mt. Hundere and the Area North, in Yukon Geology and Exploration, 1979-80, Department of Indian and Northern Affairs.
- Blusson, S.L., E.F. Roots, L.H. Green, J.A. Roddick, 1966: Geology Map of Frances Lake, Yukon, Geol. Surv. Can. Map 6-1966.
- Bremner, T. and D. Ouellete, 1990: Mt Hundere, in Yukon Exploration, Department of Indian and Northern Affairs
- Coffin, D., Geology and geochemistry of the Mar, Tin, Schee, Rieta and Lite Claims, report for Canada Tungsten Mining Corporation, DIAND assessment report #091177.
- Dick, L.A., 1979: Tungsten and Base Metal Skarns in the Northern Cordillera, in Current Research, Part A, Geol. Surv. Can., Paper 79-1A p.259-266.
- Galloway, G., J.R. Glass, 1972: Geochemical and Geophysical Report on the Max-Mar claims, report for Dusty Mac Mines Limited, DIAND assessment report #061958.
- Ostensoe, E. A., R.A. Riley, 1965: Geological Report on the BM Claims, for Yukon Pacific Prospecting Group, DIAND Assessment Report #017454.
- Ray, G.E. and I.C.L. Webster, 1991: An Overview of Skarn Deposits, in Ore Deposits, Tectonics and Metallogeny in the Canadian Cordillera, B.C. Geological Survey Branch Paper 1991-4.
- Tully, D. W., 1981: Diamond Drilling Report on the Lite, Tin, Mar, Schee and Rieta Claims, for Tungco Resources Corporation, DIAND Assessment Report #090702.
- Vincent, J.S., 1973: A Geological and Geochemical Report on the Rieta and Wo claims, for Pan Ocean Oil Ltd., Assessment Report #060144.
- Wheeler, J.O. and A.J. Brookfield, H. Gabrielse, J.W.H. Monger, H.W. Tipper, G.J. Woodsworth, 1989: Terrane Map of the Canadian Cordillera, Geol. Survey of Canada, O.F. 1894.

APPENDIX A
GEOCHEMICAL DATA

Sample No.	Description
850	Chip sample from limonitic granitic sill.
859	Chips from altered (seriticized?) border phase of granitic stock.

PIONEER LABORATORIES INC. 5-730 EATON WAY NEW WESTMINSTER, BC CANADA V3M 6J9

TELEPHONE (604) 522-3830

GEOCHEMICAL ANALYSIS CERTIFICATE

AMERLIN EXPLORATION

Project:

Report No. 9621913

Sample Type: Rocks

Date: September 30, 1996

Multi-element ICP Analysis - .500 gram sample is digested with 3 ml of aqua regia, diluted to 10 ml with Water. This leach is partial for Mn, Fe, Ca, P, La, Cr, Mg, Ba, Ti, B, W and limited for Na, K and Al. Detection Limit for Au is 3 ppm.

*Au Analysis- 10 gram sample is digested with aqua regia, MIBK extracted, graphite furnace AA finished to 1 ppb detection.

SAMPLE NO.	Pb ppm	Zn ppm	Ag ppm	Au* ppb	Cu ppm	Mo ppm	W ppm	As ppm	Sb ppm	Bi ppm	Cd ppm	Mn ppm	Fe %	Ni ppm	Co ppm	Cr ppm	V ppm	Th ppm	Sr ppm	La ppm	Ba ppm	Na %	K %	Ca %	Al %	Mg %	Ti %	P %
850	14	96	1.0	35	436	6	2	2	5	2	0.2	287	6.57	5	2	82	14	8	90	12	12	0.08	0.03	1.15	1.98	0.40	0.08	0.215
859	20	55	0.3	10	15	4	2	2	3	2	0.2	582	2.18	2	4	88	16	13	66	27	46	0.03	0.19	2.48	0.42	0.39	0.01	0.069

APPENDIX B

PERSONNEL

PERSONNEL

C.G. Verley, P.Geo. 2150 - 1851 Savage Road Richmond, B.C. V6V 1R1	Project Geologist
Peter Roman 4040 St. Paul's Avenue North Vancouver, B.C. V7N 1T5	Prospector
Bill Preston Kamloops, B.C	Prospector
Yasu Hashimoto New Denver, B.C.	Prospector
Harry Melnichuk Enderby, B.C.	Cook
Steven Stanley Watson Lake, Yukon	Helicopter Pilot

APPENDIX C
WRITER'S CERTIFICATE

AMERLIN EXPLORATION SERVICES LTD.

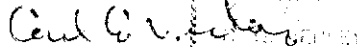
2150 - 1851 Savage Road, Richmond, B.C. V6V 1R1 Tel/Fax (604) 821-1088

WRITER'S CERTIFICATE

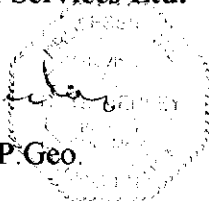
I, Carl G. Verley of Vancouver, British Columbia hereby certify that:

1. I am a geologist with business office at 2150 - 1851 Savage Road, Richmond, B.C.
2. I am a graduate of the University of British Columbia, B.Sc. in 1974, and have practiced my profession since that time.
3. I am a registered member of the Association of Professional Engineers and Geoscientists of the Province of B.C.
4. I am the author of this report which is based on a field work that I supervised on the PP claims September 16 and 17, 1996.

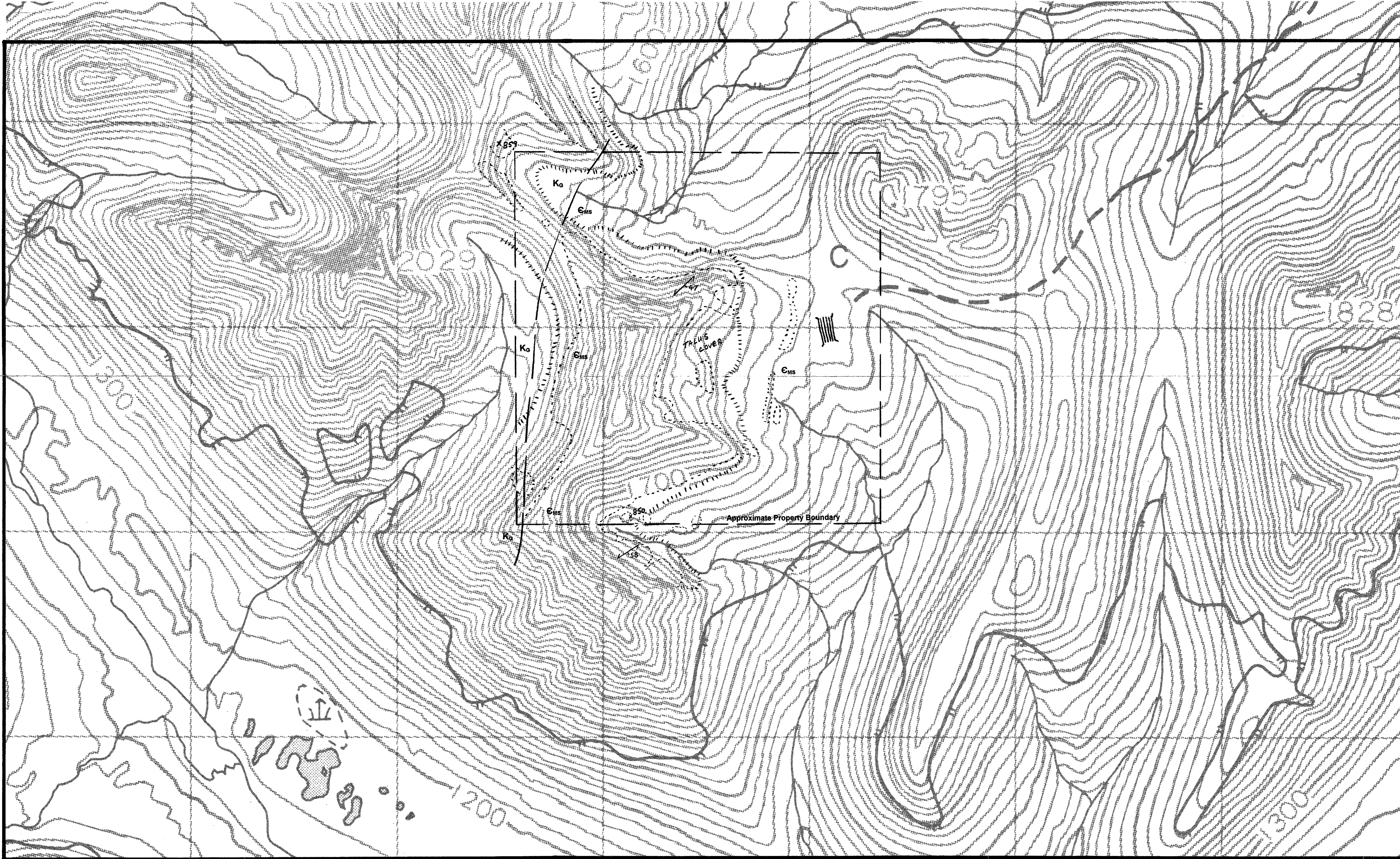
Amerlin Exploration Services Ltd.



Carl G. Verley, P. Geo.



August 21, 1997.
Richmond, B.C.



LEGEND

- K_c Mid-Cretaceous to Tertiary (?): quartz monzonite to granodiorite.
- C_{ms} Cambrian or earlier (?): metasediments: schist.
- Outcrop
- Lithologic contact
- Foliation in metasediments
- x 854 Rock Sample, see Appendix A for analytical and assay data.
- Old bulldozer trenches

Note: Contours in metres; interval: 20 m.
 Magnetic declination: 29°31'E (1998)
 Topography from Energy, Mines & Resources Canada maps 105H/2

093705

DWG ①

FINLAYSON JOINT VENTURE (FJV) INC.
GEOLOGY & SAMPLE LOCATION PLAN

PP 1-16 CLAIM GROUP

Mount Billings Area
 Watson Lake Mining Division, Y.T.
 NTS 105H/2

