

**PROSPECTING REPORT
ON THE
PR 1 - 4 CLAIMS**

Watson Lake Mining District, Y.T.
NTS 105H/1
(61°03'N, 128°14'W)

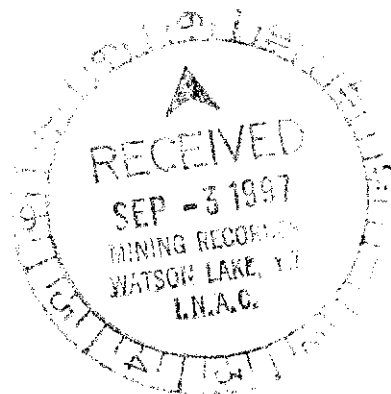
093704

for

FINLAYSON JOINT VENTURE (FJV) INC.
502 - 475 Howe Street
Vancouver, B.C. V6C 2B3
(604)681-1568

by

CARL G. VERLEY, P.Geo.
Amerlin Exploration Services Ltd.
2150 - 1851 Savage Road
Richmond, B.C. V6V 1R1
(604)821-1088



June, 1997

CLAIMS: PR 1 - 4

LOCATION: 114 kilometres north-northeast of Watson Lake, Y.T.

DATE: September 28, 1996.

TABLE OF CONTENTS

SUMMARY	2
INTRODUCTION	3
Location	3
Access	3
History	3
PROPERTY	5
GEOLOGY	7
Regional	7
Property	7
CONCLUSIONS	10
REFERENCES	11
APPENDICES:	
A. Geochemical Data	
B. Personnel	
C. Writer's Certificate	

Figures

Figure:	
1 Property Location Map	1
2 Claim Map	6
3 Geological Setting	8

Tables

Table:	
1 Mineral Claims	5

Plates

Plate:	
1 Geology & Sample Location Plan	in pocket

This report has been examined by
the Geological Evaluation Unit
under Section 53 (4) Yukon Quartz
Mining Act and is allowed as
representation work in the amount
of \$ 400.00.

M. B. B.
for Regional Manager, Exploration and
Geological Services for Commissioner
of Yukon Territory.

SUMMARY

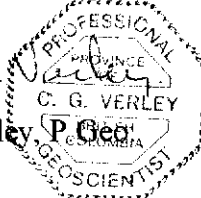
Finlayson Joint Venture (FJV) Inc. owns 4 contiguous mineral claims centered 114 kilometres north-northeast of Watson Lake, in the Pelly Mountains, Watson Lake Mining District (105H/1), Yukon Territory. The property is accessible by helicopter.

The ground is situated in an area underlain by Cambrian or earlier metasediments. Previous mineral tenure holders conducted a variety of exploration work in the area from the 1960's to 1980's. This work included ground geophysical surveys, soil geochemical surveys and trenching.

During the 1996 field season the property was prospected and skarn zones were located and sampled. The results of this work indicated that a copper-gold-bismuth-bearing, diopside-rich skarn occurs in thin gently southeasterly dipping band on the property.

The size of the occurrence and remoteness of the location are such as to suggest that no further work is warranted at this time on the property.

Respectfully submitted,
Amerlin Exploration Services Ltd.

Carl G. Verley
Carl G. Verley, P. Geol.
A circular professional seal for a geoscientist in the Province of British Columbia. The seal contains the text: 'PROFESSIONAL PROVINCE', 'C. G. VERLEY', 'P. Geol.', and 'GEOLOGIST'. The seal is partially overlaid by the signature and printed name of Carl G. Verley.

Richmond, B.C.
June 17, 1997.

INTRODUCTION

This report describes the results of a work program supervised by the writer for Finlayson Joint Venture (FJV) Inc. on September 28, 1996. The object of this work was to test previously underexplored areas of the property and to re-examine known showings on the claims.

LOCATION

The claims are centered 114 kilometres north-northeast of Watson Lake in the Logan Mountains, Watson Lake Mining District, Y.T. at latitude 61°03'N and longitude 128°14'W. This property is situated on map-sheet 105H/1. Physiographically the ground lies in relatively steep alpine terrain. Elevations range from just below 1600 to just over 1900 metres above sea level.

ACCESS

The property is best accessed by helicopter from Watson Lake.

HISTORY

The area underlain by the PR 1 - 4 claims was first acquired by Hyland River Mining Ltd in 1966 as the JAN claims. Hyland conducted trenching and geochemical sampling programs on the claims from 1966 to 1969 (J.G. Simpson, 1969). The ground came open and was restaked in 1973 as the GOLD claims by J.C. Turner. In 1978, J.C. Turner restaked the area, again, as the PRINCESS and PATRICIA claims. These claims were then optioned to Patmar and Majestic Mining Corp. in 1979. Majestic conducted a program of geochemical soil sampling and magnetometer as well as VLF-EM geophysical surveys during the 1980 field season (Tully, 1981). In 1980 Pacific Rim Energy Corp. tied on the Zebra claims and conducted geochemical soil sampling, VLF-EM and magnetometer geophysical surveys (Tully, 1982). In 1981 Kinai

Energy Corp. acquired the Patricia claims and Vancliffe Resources Ltd. acquired a 10% interest in the Zebra claims. There are no reports documenting work on the claims by either Kinai or Vancliffe. In 1987, D. Stewart restaked part of the Princess claims as the Jan claims.

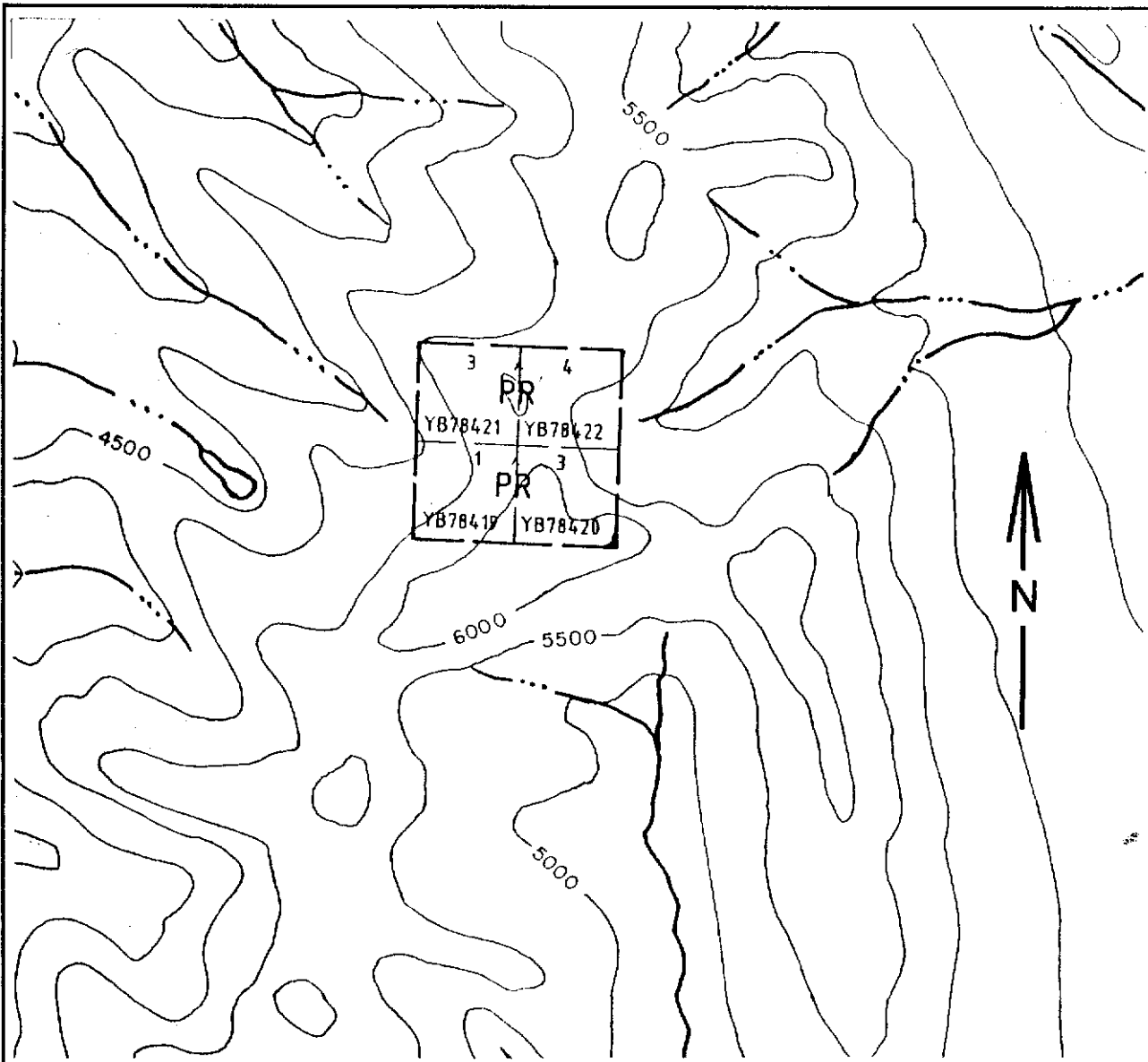
The areas underlain by the PR 1 - 4 group subsequently came open for staking in the late 1980's and were recently staked for Finlayson Joint Venture (FJV) Inc.

PROPERTY

Finlayson Joint Venture (FJV) Inc. has 100% ownership of 4, full sized mineral claims, located in 1 contiguous block as tabulated below and illustrated on Figure 2. The claims are located in the Lower Hyland Creek area, Watson Lake Mining District, Y.T. (NTS 105H/1).

Table 1. MINERAL CLAIMS

Claims	Grant Numbers	Expiry Date
PR 1 to 4	YB78419-YB78422	March 05/1997



FINLAYSON JOINT VENTURE (FJV) INC.

CLAIM MAP
PR 1-4 Claims

Lower Hyland Lake Area
Watson Lake Mining District, Yukon
NTS 105H/1

Scale 1:31,680

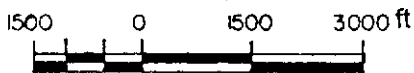


Figure 2.

GEOLOGY

Regional:

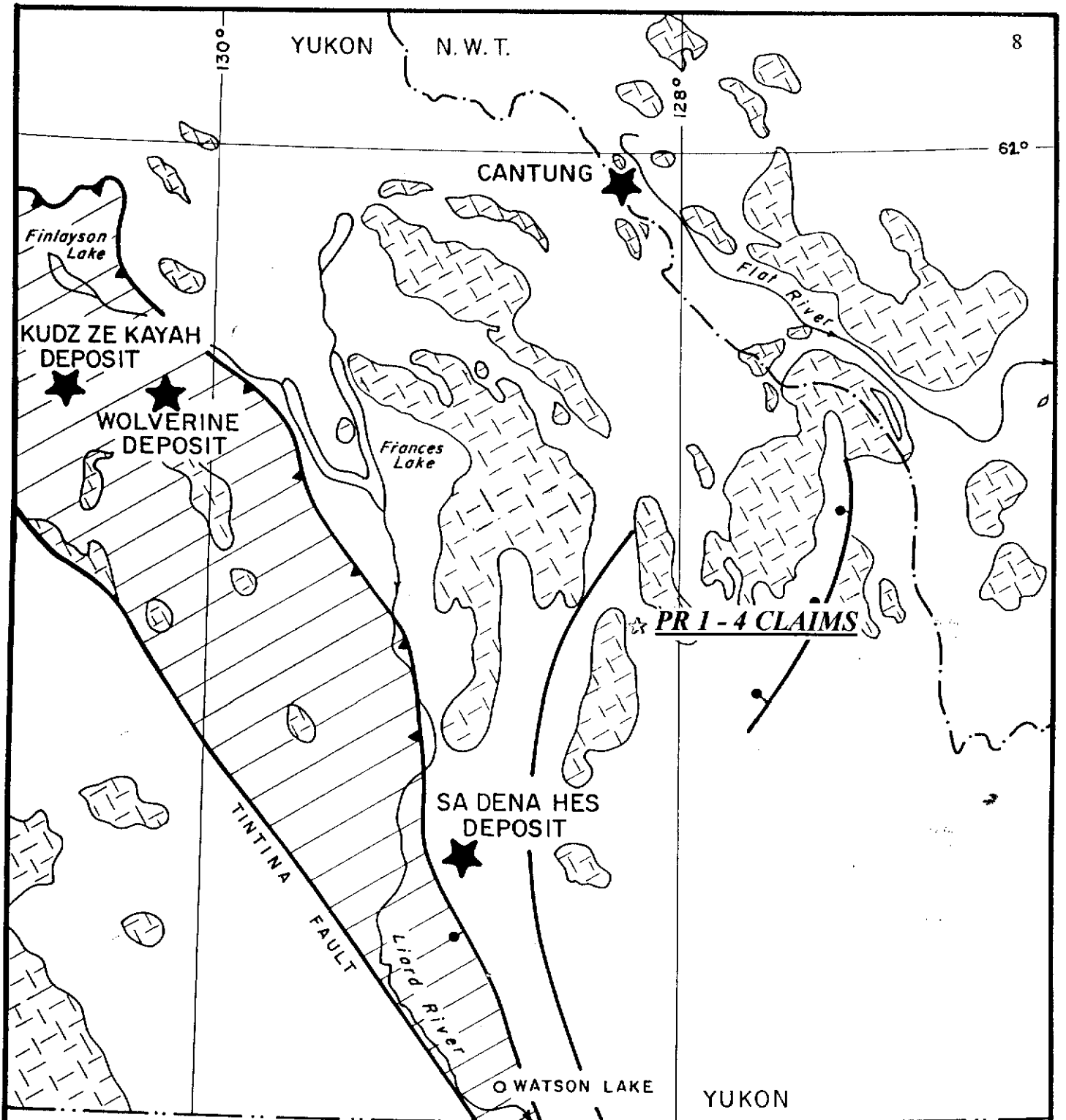
The property is situated in the northern extension of the Omineca belt east of the Tintina fault zone (Figure 3). Regionally, the area is characterized by a succession of Paleozoic sediments - fine clastics and carbonates - that were probably derived from and deposited onto ancestral North America at or near the transition from platform carbonates to the east and basinal shales to the west. The PR 1 - 4 claims are located in the lower part of this succession in a sequence of Cambrian or earlier gneisses and schists (Blusson et al, 1966). Numerous post accretionary, Cretaceous to Tertiary age, plutons intrude the metamorphic units (Wheeler et al., 1989). This plutonism has produced variable degrees of regional and contact metamorphism throughout the area, resulting in the development of a variety of skarn deposits.

Property:

The PR 1 - 4 claims are underlain by a sequence of predominantly quartz-feldspar-mica gneisses and schists with minor marble and skarn bands of Cambrian and/or earlier in age, that dip gently to the southeast. Numerous small aplitic and pegmatitic granitoid sills and apophyses occur within the metamorphic package. These granitic rocks are presumably of Cretaceous age and vary from quartz monzonites to granodiorites.

A gently, southeasterly dipping (20°) band of diopside-pyrrhotite-chalcopyrite bearing skarn mineralization occurs on the property and has been investigated by previous workers (Simpson op cit.). The band varies from approximately 0.5 to 2m in thickness and is invariably underlain by sills and irregular dykes of granitic material which are typically 2 to 3 metres in thickness.

Samples of the skarn zone collected by the writer, during the 1996 field season, are high in copper (up to 3609 ppm). One sample (#771) was high in gold (2150 ppb). The skarn is also



MID-CRETACEOUS - TERTIARY (?)



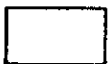
SYN - AND POST-TECTONIC
GRANITIC INTRUSIVES

PALEOZOIC

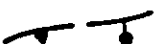


YUKON - TANANA TERRANE
METASEDIMENTS AND VOLCANICS
MAY INCLUDE SOME SLIDE MT. TERRANE

PRECAMBRIAN - PALEOZOIC



ANCESTRAL NORTH AMERICA SEDIMENTS



THRUST AND NORMAL FAULTS

GEOLOGICAL SETTING

PR 1 - 4 CLAIMS

YUKON TERRITORY

0 50



SCALE IN KILOMETRES

FIGURE 3

anomalous in bismuth with values up to 922 ppm Bi. A detailed listing of the samples with analytical results is found in Appendix A. Locations are plotted on Plate 1.

The attitude of the skarn horizon, its thickness and relative accessibility combined with current metal markets suggest that the PR 1 - 4 is of low priority as an exploration target. However, the gold values associated with the skarn are intriguing. If a thicker portion of this unit could be located at lower elevations, down dip and to the south, it would be worth examining.

CONCLUSIONS

Finlayson Joint Venture has tenure to 4 mineral claims located in 1 contiguous block in the Lower Hyland Creek area (NTS 105H/1), Watson Lake Mining District, Yukon. The claims are situated 114 kilometres north-northeast of Watson Lake. Access is by helicopter.

The property is underlain by a succession of regionally and contact metamorphosed Cambrian or earlier metasediments that have been intruded by granitic dykes and sills. A gently southeasterly dipping pyrrhotite-chalcopyrite bearing skarn bands occurs within this sequence. Rock samples across the skarn horizon are anomalous in copper, gold and bismuth.

The location, thickness and tenor of mineralization combined are such as to suggest that further development of the property is not warranted on the basis of this occurrence.

REFERENCES

- Blusson, S.L., E.F. Roots, L.H. Green, J.A. Roddick, 1966: Geology Map of Frances Lake, Yukon, Geol. Surv. Can. Map 6-1966.
- Simpson, J.G., 1969: Geology Report for Hyland River Mines Ltd., DIAND assesement report No. 060700
- Tully, D.W., 1981: Assessment Report on the Princess 1 - 12 Mineral Claim Group, for Majestic Mining Corp., DIAND assesement report No. 090927.
- Tully, D.W., 1982: Assessment Report on the 1981 Program of Geochemical Soil Sampling and Geophysical Surveying on Zebra 1- 18 Mineral Claim Group, for Pacific Rim Energy Corp., DIAND assesement report No. 090985.
- Wheeler, J.O. and A.J. Brookfield, H. Gabrielse, J.W.H. Monger, H.W. Tipper, G.J. Woodsworth, 1989: Terrane Map of the Canadian Cordillera, Geol. Survey of Canada, O.F. 1894.

APPENDIX A
GEOCHEMICAL DATA

Sample	
No.	Description
769	Chips across 2 m of FeOx-MnOx in diopside skarn band
770	Grab sample of diopside skarn float with Pyrrhotite, tr. Cpy
771	Grab sample of diopside skarn with pyrrhotite+Cpy
772	Chips across 1.15 m thick diopside skarn band with pyrrhotite+Cpy
773	Chips across 1.0 m of siliceous footwall to diopside skarn band

PIONEER LABORATORIES INC. 5-730 EATON WAY NEW WESTMINSTER, BC CANADA V3M 6J9

TELEPHONE (604) 522-3830

GEOCHEMICAL ANALYSIS CERTIFICATE

AMERLIN EXPLORATION

Project:

Report No. 9621891

Sample Type: Rocks

Date: September 11, 1996

Multi-element ICP Analysis - .500 gram sample is digested with 3 ml of aqua regia, diluted to 10 ml with Water. This leach is partial for Mn, Fe, Ca, P, La, Cr, Mg, Ba, Ti, B, W and limited for Na, K and Al. Detection Limit for Au is 3 ppm.

*Au Analysis- 10 gram sample is digested with aqua regia, MIBK extracted, graphite furnace AA finished to 1 ppb detection.

SAMPLE	Pb ppm	Zn ppm	Ag ppm	Au* ppb	Cu ppm	Mo ppm	W ppm	As ppm	Sb ppm	Bi ppm	Cr ppm	Mn ppm	Fe %	Ni ppm	Co ppm	Cr ppm	V ppm	Th ppm	Sr ppm	La ppm	Ba ppm	Na %	K %	Ca %	Al %	Mg %	Ti %
769	7	9	0.3	70	530	1	2	2	2	32	0.2	135	6.71	3	8	28	20	8	16	18	13	0.08	0.12	0.45	0.58	0.08	0.10
770	18	35	0.3	60	2891	2	2	2	2	16	0.2	177	15.30	59	128	15	6	2	7	25	8	0.01	0.05	0.34	0.46	0.10	0.04
771	8	75	0.6	2150	3609	1	2	2	2	922	0.2	293	13.60	52	90	13	10	6	39	27	5	0.03	0.04	0.68	1.07	0.17	0.03
772	10	46	0.5	135	3399	1	24	2	2	260	0.2	171	20.36	14	111	14	17	4	17	16	5	0.01	0.03	0.29	0.68	0.13	0.04
773	10	20	0.3	12	239	3	3	2	2	6	0.2	338	3.48	13	11	70	27	9	180	22	15	0.14	0.06	2.82	3.62	0.37	0.09

APPENDIX B
PERSONNEL

PERSONNEL

C.G. Verley, P.Geo.
2150 - 1851 Savage Road
Richmond, B.C. V6V 1R1

Project Geologist

Peter Roman
4040 St. Paul's Avenue
North Vancouver, B.C. V7N 1T5

Prospector

APPENDIX C
WRITER'S CERTIFICATE

AMERLIN EXPLORATION SERVICES LTD.

2150 - 1851 Savage Road, Richmond, B.C. V6V 1R1 Tel/Fax (604) 821-1088

WRITER'S CERTIFICATE

I, Carl G. Verley of Vancouver, British Columbia hereby certify that:

1. I am a geologist with business office at 2150 - 1851 Savage Road, Richmond, B.C.
2. I am a graduate of the University of British Columbia, B.Sc. in 1974, and have practiced my profession since that time.
3. I am a registered member of the Association of Professional Engineers and Geoscientists of the Province of B.C.
4. I am the author of this report which is based on field work I supervised on the PR 1 - 4 claims during the period from September 28, 1996.

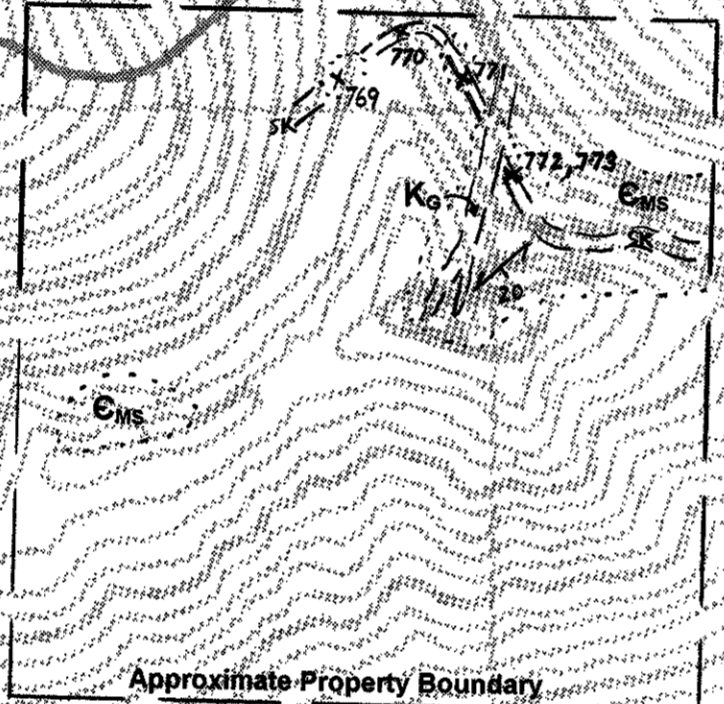
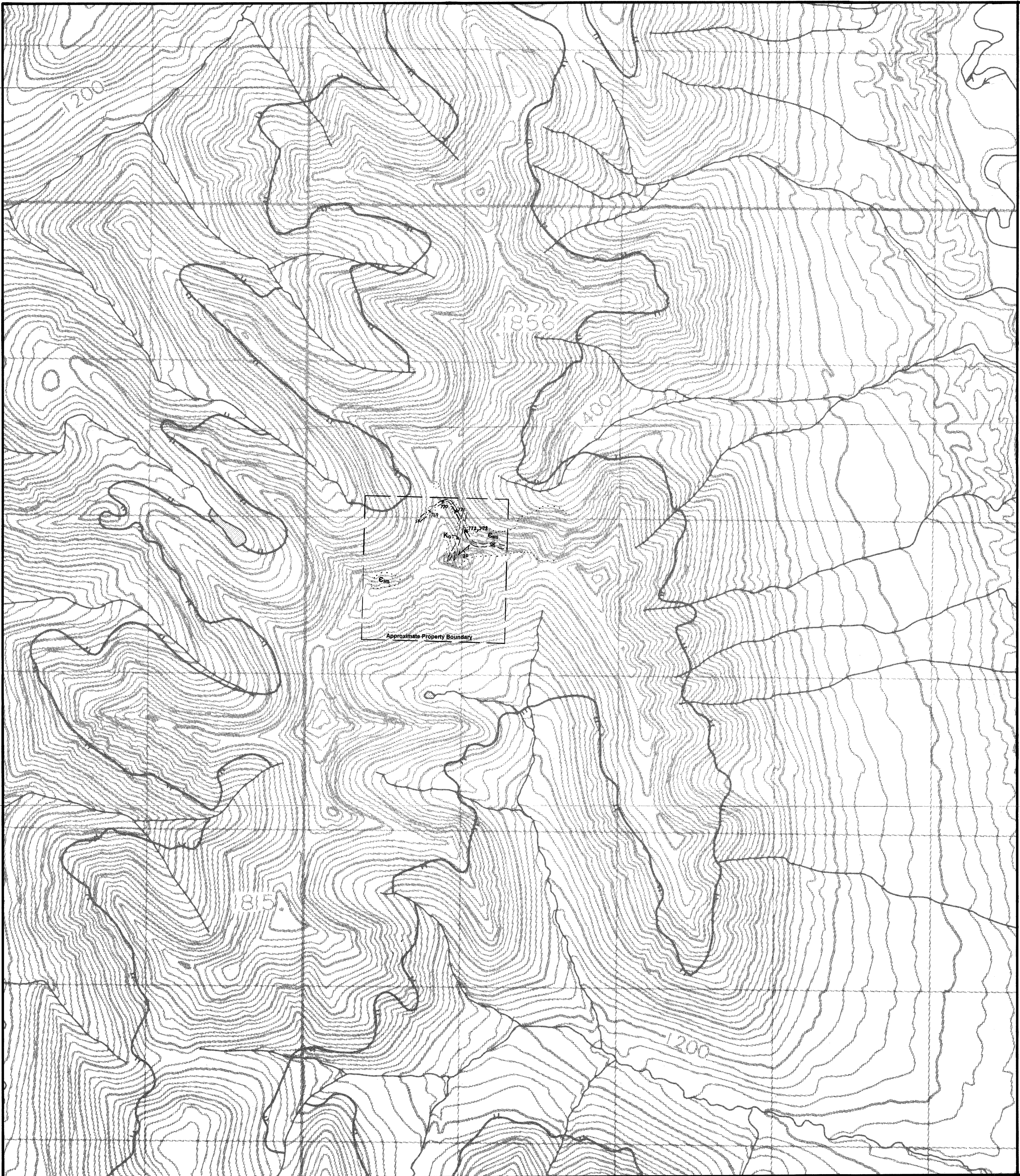
Amerlin Exploration Services Ltd.

Carl G. Verley




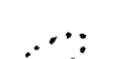
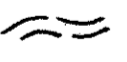
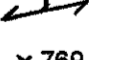

Carl G. Verley, P. Geo.



June 17, 1997.
Richmond, B.C.



LEGEND

-  Mid-Cretaceous intrusives (?):
pegmatitic granitoid dyke
-  Cambrian or earlier (?):
metasediments: quartz-feldspar-mica schist.
-  Skarn bands within Cambrian or earlier (?)
metasediments.
-  Outcrop
-  Lithologic contact
-  Foliation in metasediments
-  Rock Sample, see Appendix A for analytical and assay data.

Note: Contours in metres; interval: 20 m.
Magnetic declination: 28°31'E (1998)
Topography from Energy, Mines & Resources Canada maps 105H/1

093704
DWG 1

FINLAYSON JOINT VENTURE (FJV) INC.
GEOLOGY & SAMPLE LOCATION PLAN
PR 1-4 CLAIM GROUP
Lower Hyland Creek Area
Watson Lake Mining Division, Y.T.
NTS 105H/1

