

**PROSPECTING REPORT
ON THE
PR 5 - 8 CLAIMS**

093703

**Watson Lake Mining District, Y.T.
NTS 105H/1
(61°06'N, 128°14'W)**

for

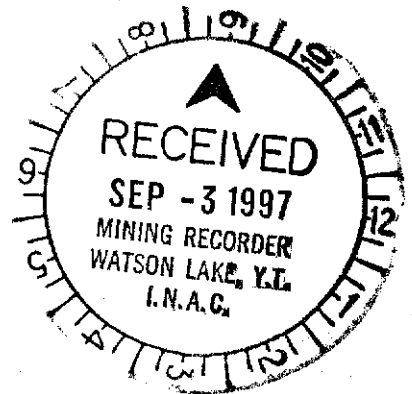
**FINLAYSON JOINT VENTURE (FJV) INC.
502 - 475 Howe Street
Vancouver, B.C. V6C 2B3
(604)681-1568**

by

**CARL G. VERLEY, P.Geo.
Amerlin Exploration Services Ltd.
2150 - 1851 Savage Road
Richmond, B.C. V6V 1R1
(604)821-1088**

June, 1997

CLAIMS: PR 5 - 8
LOCATION: 121 kilometres north-northeast of Watson Lake, Y.T.
DATE: September 16, 1996



The report has been examined by
the Geological Evaluation Unit
of the Geological Survey (4) Yukon Quartz
Investigation is allowed as
research work in the amount

400.00

M. Bush

Regional Manager, Exploration and
Geological Services for Commissioner
of Yukon Territory.

TABLE OF CONTENTS

SUMMARY	2
INTRODUCTION	3
Location & Access	3
History	3
PROPERTY	5
GEOLOGY	7
Regional	7
Property	7
CONCLUSIONS	9
REFERENCES	10
APPENDICES:	
A. Geochemical Data	
B. Personnel	
C. Writer's Certificate	

Figures

Figure:

1 Property Location Map	1
2 Claim Map	6
3 Geological Setting	8

Tables

Table:

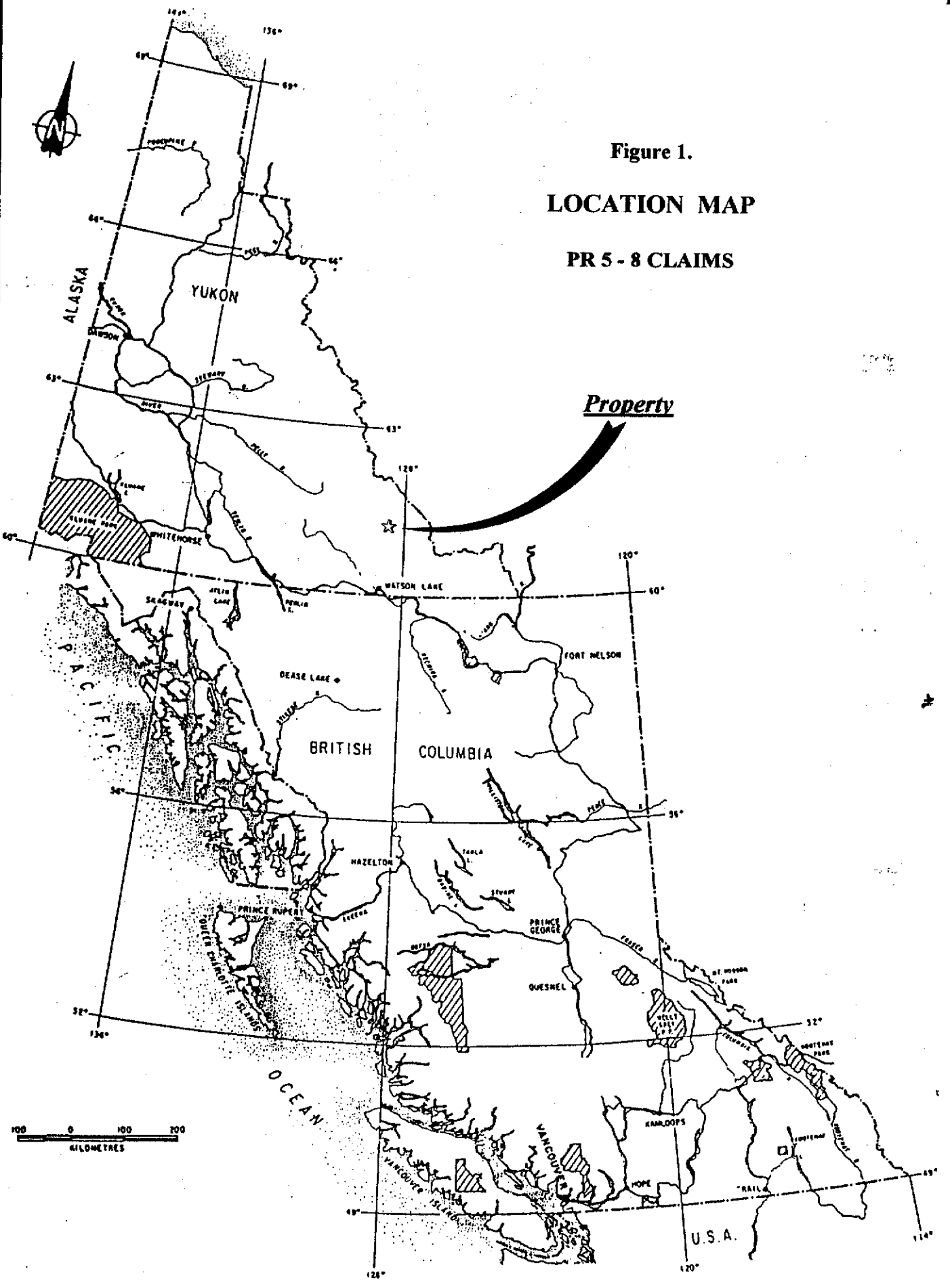
1 Mineral Claims	5
------------------------	---

Plates

Plate:

1 Geology & Sample Location Plan	in pocket
--	-----------

Figure 1.
LOCATION MAP
PR 5 - 8 CLAIMS



SUMMARY

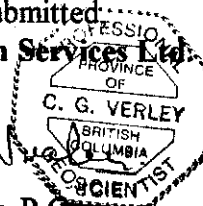
Finlayson Joint Venture (FJV) Inc. owns 4 mineral contiguous claims centered 121 kilometres north of Watson Lake, in the Pelly Mountains, Watson Lake Mining District (105H/1), Yukon Territory. The property is accessible by helicopter.

The ground is situated in an area underlain by Cambrian or earlier age quartzites, which are intruded by rare felsic dykes of unknown age. Previous mineral tenure holders conducted a variety of exploration work in the area from the 1960's to 1980's. This work included ground geophysical surveys and soil geochemical surveys. The results of this work located several geochemical and geophysical anomalies.

During the 1996 field season prospecting and rock sampling was conducted on the claim group. The results of this work located several area where anomalous values in lead (up to 771 ppm), zinc (up to 270 ppm) and copper (up to 1080 ppm) occur in quartzite. In addition anomalous values in lead and zinc (1660 and 1296 ppm respectively) were found adjacent to a felsic dyke. Potentially economic mineralization was not located on the claims during this program. Therefore no further work is recommended on these claims at the present time.

Respectfully submitted
Amerlin Exploration Services Ltd.

Carl G. Verley
 Carl G. Verley, P. Geo.



Richmond, B.C.
 June 17, 1997.

INTRODUCTION

This report describes the results of a work program supervised by the writer for Finlayson Joint Venture (FJV) Inc. on September 16, 1996. The object of this work was to test previously underexplored areas of the property and to re-examine known showings on the claims.

LOCATION & ACCESS

The claims are centered 121 kilometres north of Watson Lake in the Logan Mountains, Watson Lake Mining District, Y.T. at latitude 61°06'N and longitude 128°14'W. This property is situated on map-sheet 105H/1. Physiographically the ground lies in moderately steep alpine terrain. Elevations range from 1260 to just over 2000 metres above sea level.

The property is accessible by helicopter from Watson Lake.

HISTORY

The area underlain by the PR 5 - 8 claims was first acquired by in 1964 by Yukon Pacific Prospecting Group (a partnership of Asarco, Cerro and Duval) as the LF claims. Yukon Pacific conducted a limited amount of geological mapping and geochemical sampling before abandoning the property. The area was restaked in 1966 as the MIDAS claims by Hyland River Mines Ltd. Hyland River abandoned the property without recording any significant work. In 1980, Newline Resources Ltd. restaked the area as the ZULU and ZEST claims. Also in that year, Pacific Rim Energy Corp. tied on the ZEBRA claims. In 1981, Vancliffé Resources Ltd. acquired a part interest in the Zebra claims. Pacific Tungsten Corp. optioned the Zest group, also in 1981. During the 1980 field season Pacific Rim conducted geochemical sampling and VLF-EM and magnetometer surveys on the Zest 1-18 claims (Tully, 1982), which lie immediately south of the PR 5 - 8 claims. Their work outlined several soil anomalies, a magnetic anomaly and 5 apparent EM conductors.

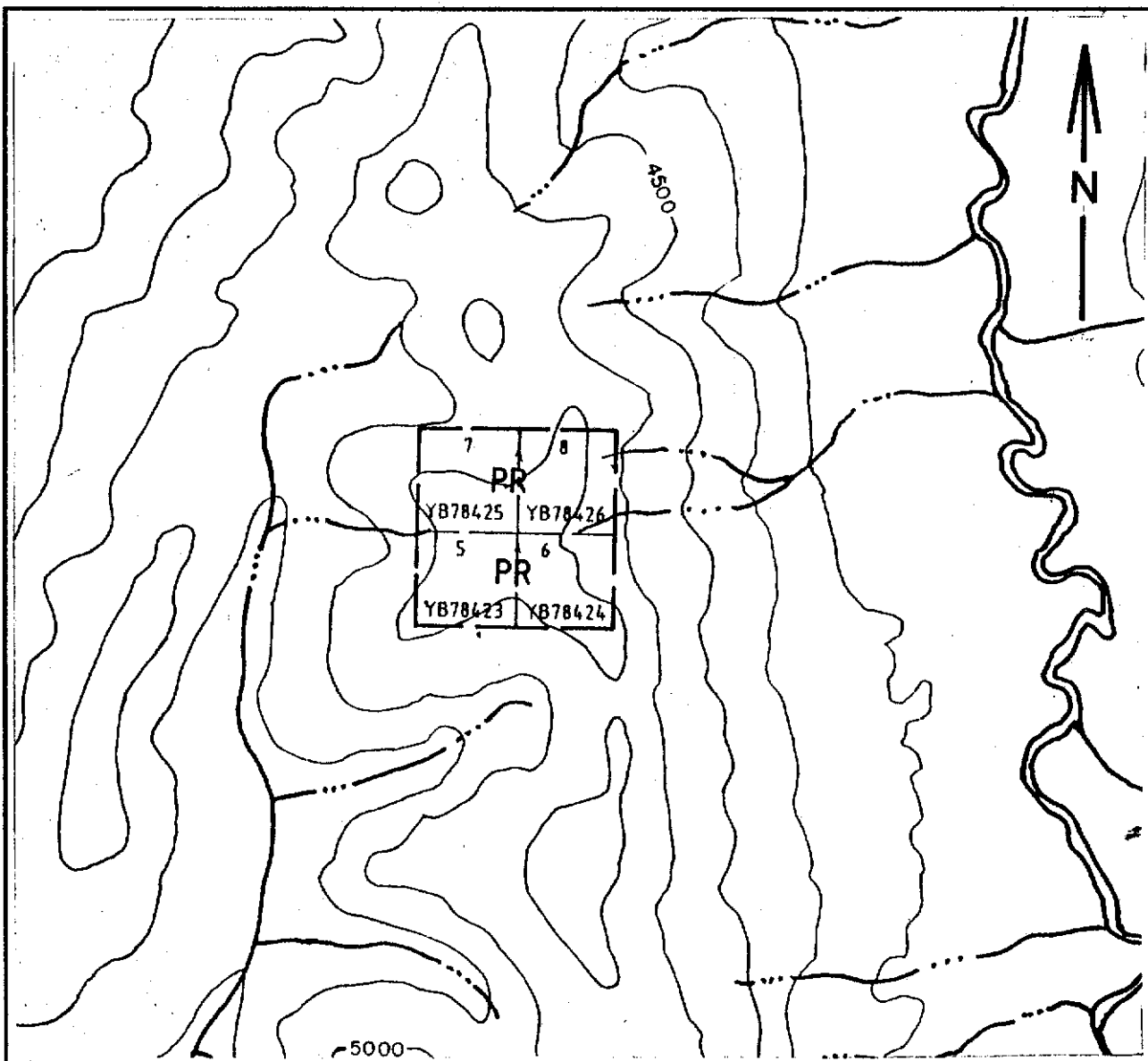
The areas underlain by the PR 5 - 8 group subsequently came open for staking in the late 1980's and were recently staked for Finlayson Joint Venture (FJV) Inc.

PROPERTY

Finlayson Joint Venture (FJV) Inc. has 100% ownership of 4, full sized mineral claims, located in 1 contiguous block as tabulated below and illustrated on Figure 2. The claims are located in the Lower Hyland Creek area, Watson Lake Mining District, Y.T. (NTS 105H/1).

Table 1. MINERAL CLAIMS

Claims	Grant Numbers	Expiry Date
PR 5 to 8	YB78423-YB78426	March 05/1997



FINLAYSON JOINT VENTURE (FJV) INC.

**CLAIM MAP
PR 5-8 Claims**

**Lower Hyland Lake Area
Watson Lake Mining District, Yukon
NTS 105H/1**

Scale 1:31,680

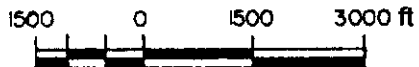


Figure 2.

GEOLOGY

Regional:

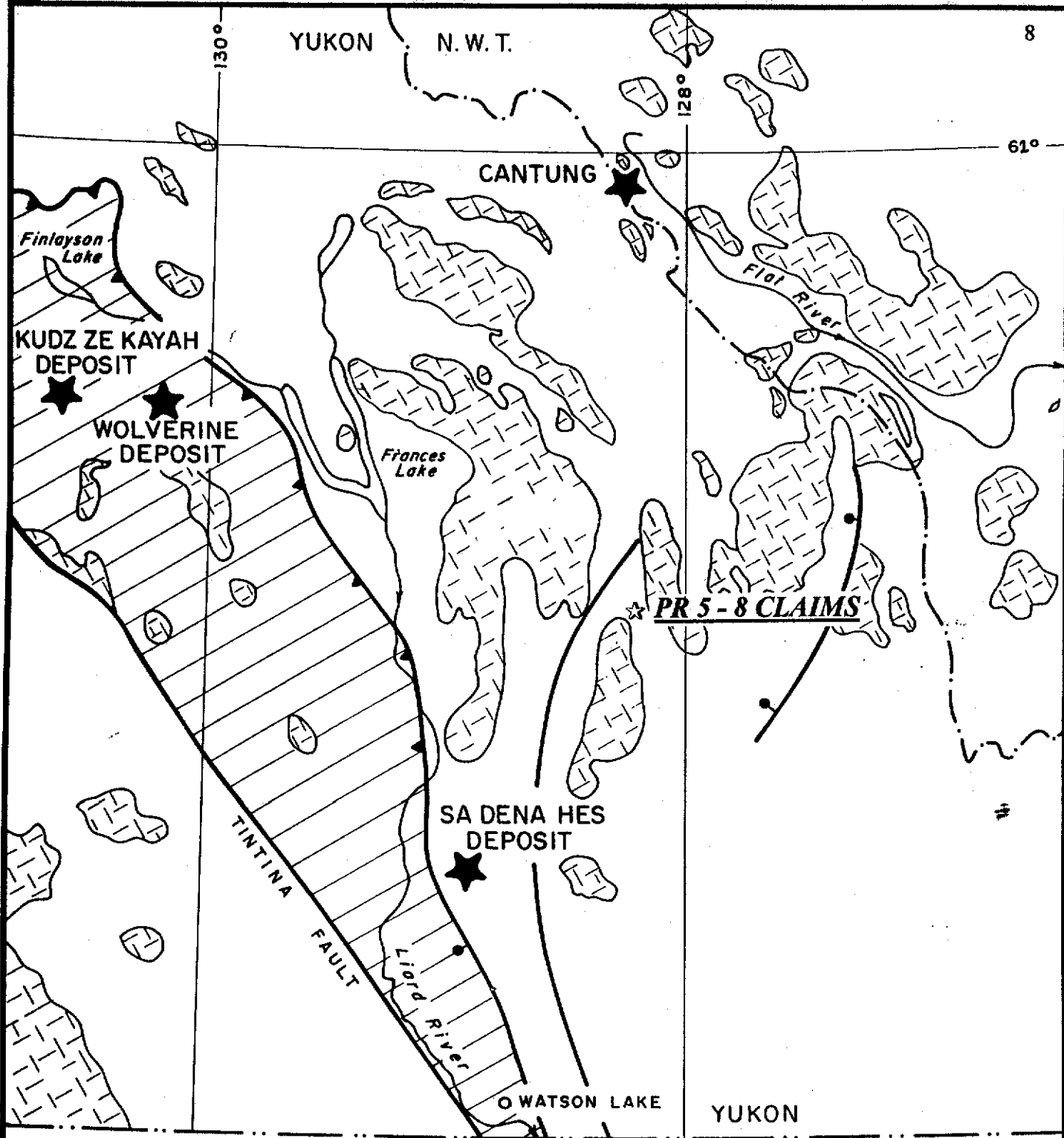
The property is situated in the northern extension of the Omineca belt east of the Tintina fault zone (Figure 3). Regionally, the area is characterized by a succession of Paleozoic sediments - fine clastics and carbonates - that were probably derived from and deposited onto ancestral North America at or near the transition from platform carbonates to the east and basinal shales to the west. The PR 5 - 8 claims are located in the lower part of this succession in a sequence of Cambrian or earlier gneisses and schists (Blusson et al, 1966). Numerous post accretionary, Cretaceous to Tertiary age, plutons intrude the metamorphic units (Wheeler et al., 1989). This plutonism has produced variable degrees of regional and contact metamorphism throughout the area, resulting in the development of a variety of skarn deposits.

Property:

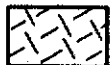
The PR 5 - 8 claims are underlain by a sequence of predominantly quartzites and quartz-mica schists of Cambrian and/or earlier in age, that dip gently to the north. Rare felsic dykes intrude the succession underlying the property.

Prospecting during the 1996 field season located several areas of limonitic rubble that may reflect sulphide bearing horizons in the enclosing sediments. This material returned generally low metal values. However, a limonitic exposure of felsic dyke was anomalous in lead (1660 ppm) and zinc (1296 ppm). A sample from a pyritic quartzite band was also anomalous in lead (771 ppm). In addition, a grab sample from another pyritic quartzite band was anomalous in copper (1080 ppm). A complete listing of sample descriptions and analytical results is found in Appendix A. Sample locations are plotted on Plate 1.

The limited extent of the base metal mineralization in the quartzite suggests that the probability of finding economic concentrations of mineralization is low on this property.

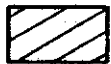


MID-CRETACEOUS - TERTIARY (?)



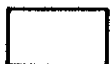
SYN - AND POST-TECTONIC
GRANITIC INTRUSIVES

PALEOZOIC



YUKON - TANANA TERRANE
METASEDIMENTS AND VOLCANICS
MAY INCLUDE SOME SLIDE MT. TERRANE

PRECAMBRIAN - PALEOZOIC



ANCESTRAL NORTH AMERICA SEDIMENTS



THRUST AND NORMAL FAULTS

GEOLOGICAL SETTING

PR 5 - 8 CLAIMS

YUKON TERRITORY



FIGURE 3

CONCLUSIONS

Finlayson Joint Venture has tenure to 4 mineral claims located in 1 contiguous block in the Lower Hyland Creek area, Watson Lake Mining District, Yukon (NTS 105H/1). The claims are situated 121 kilometres north of Watson Lake. Access is by helicopter.

The property is underlain by a succession of regionally metamorphosed Cambrian or earlier sediments - predominantly quartzite. This package of rocks has been intruded by rare felsic dykes of unknown age.

The limited extent of mineralization on the claims suggests potential for finding economic concentration of base metals is low. Therefore no further work on the claims is recommended.

REFERENCES

- Blusson, S.L., E.F. Roots, L.H. Green, J.A. Roddick, 1966: Geology Map of Frances Lake, Yukon, Geol. Surv. Can. Map 6-1966.
- Tully, D.W., 1982: Assessment Report on the 1981 Program of Geochemical Soil Sampling and Geophysical Surveying on the Zest 1 - 18 Mineral Claim Group, DIAND Assessment Report No. 090989.
- Wheeler, J.O. and A.J. Brookfield, H. Gabrielse, J.W.H. Monger, H.W. Tipper, G.J. Woodsworth, 1989: Terrane Map of the Canadian Cordillera, Geol. Survey of Canada, O.F. 1894.

APPENDIX A
GEOCHEMICAL DATA

Sample No.	Description
872	Grab of pyrite + Cpy? bearing siliceous (quartzite?) float.
873	Chips across 15 cm thick py-bearing quartzite (?) band in metased. sequence.
854	Chips from talus of rusty weathering felsite or quartzite; contains FeOx & MnOx.
855	Chips from limonitic rubble - FeOx + MnOx.
856	Chips from quartzite? with abundant FeOx + MnOx.
857	Grab sample of pyritic quartzite.

APPENDIX B
PERSONNEL

PERSONNEL

C.G. Verley, P.Geo.
2150 - 1851 Savage Road
Richmond, B.C. V6V 1R1

Project Geologist

Bill Preston
Kamloops, B.C

Prospector

Yasu Hashimoto
New Denver, B.C.

Prospector

APPENDIX C
WRITER'S CERTIFICATE

AMERLIN EXPLORATION SERVICES LTD.

2150 - 1851 Savage Road, Richmond, B.C. V6V 1R1 Tel/Fax (604) 821-1088

WRITER'S CERTIFICATE

I, Carl G. Verley of Vancouver, British Columbia hereby certify that:

1. I am a geologist with business office at 2150 - 1851 Savage Road, Richmond, B.C.
2. I am a graduate of the University of British Columbia, B.Sc. in 1974, and have practiced my profession since that time.
3. I am a registered member of the Association of Professional Engineers and Geoscientists of the Province of B.C.
4. I am the author of this report which is based on field work I supervised on the PR 5 - 8 claims on September 16, 1996.

Amerlin Exploration Services Ltd.

Carl G. Verley

Carl G. Verley, P. Geo.



June 17, 1997.
Richmond, B.C.

PIONEER LABORATORIES INC. 5-730 EATON WAY NEW WESTMINSTER, BC CANADA V3M 6J9

TELEPHONE (604) 522-3830

GEOCHEMICAL ANALYSIS CERTIFICATE

AMERLIN EXPLORATION

Project:

Report No. 9621913

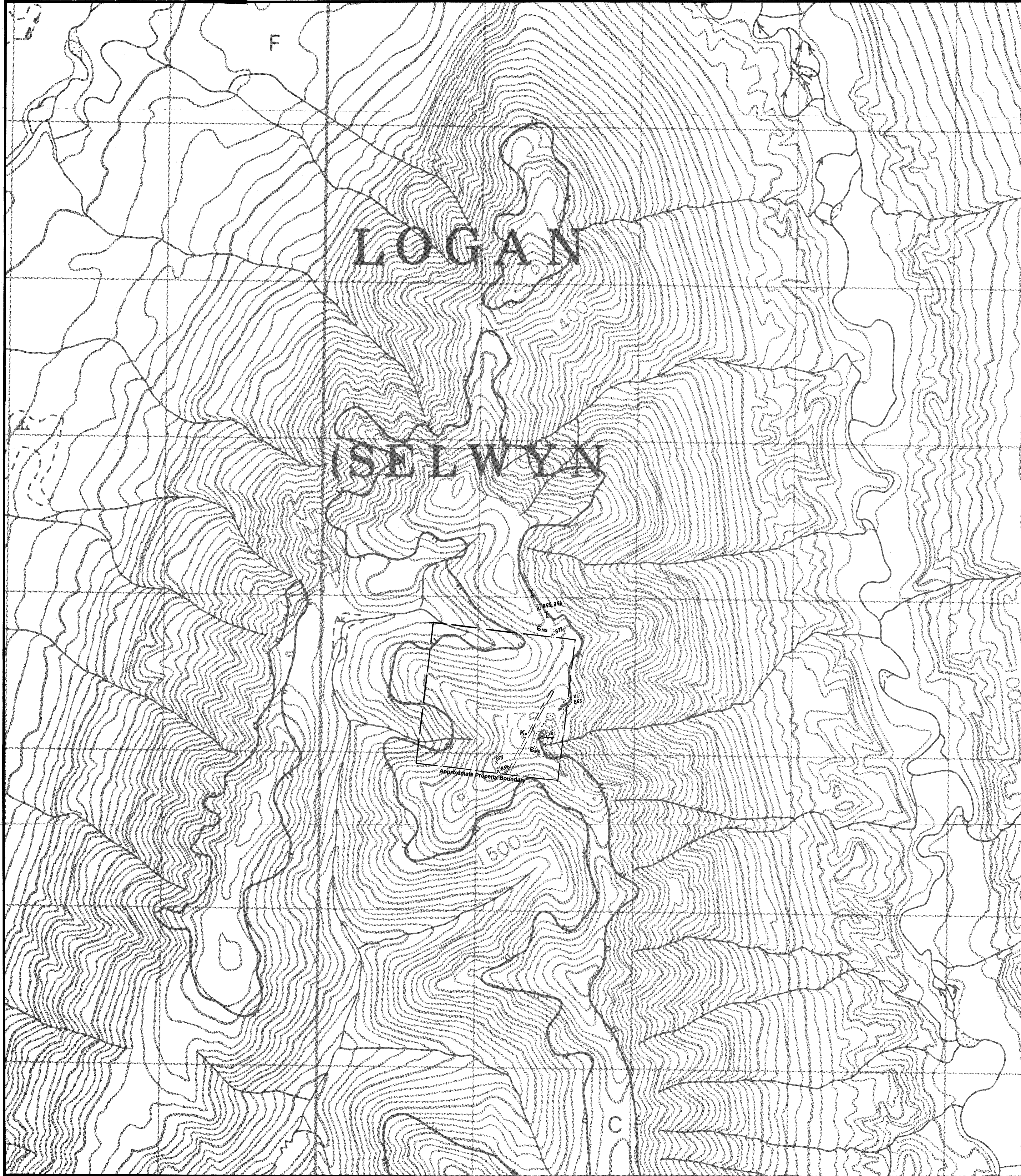
Sample Type: Rocks

Date: September 30, 1996

Multi-element ICP Analysis - .500 gram sample is digested with 3 ml of aqua regia, diluted to 10 ml with Water. This leach is partial for Mn, Fe, Ca, P, La, Cr, Mg, Ba, Ti, B, W and limited for Na, K and Al. Detection Limit for Au is 3 ppm.

*Au Analysis- 10 gram sample is digested with aqua regia, MIBK extracted, graphite furnace AA finished to 1 ppb detection.

SAMPLE NO.	Pb ppm	Zn ppm	Ag ppm	Au* ppb	Cu ppm	Mo ppm	W ppm	As ppm	Sb ppm	Bi ppm	Cd ppm	Mn ppm	Fe %	Ni ppm	Co ppm	Cr ppm	V ppm	Th ppm	Sr ppm	La ppm	Ba ppm	Na %	K %	Ca %	Al %	Mg %	P %
854	1660	1296	2.1	26	106	7	2	5	4	5	7.4	701	3.47	6	2	123	7	6	16	10	233	0.08	0.07	0.03	0.27	0.01	0.015
855	64	77	0.7	80	356	8	1264	64	2	61	0.2	306	10.19	3	1	71	18	7	1	14	19	0.01	0.09	0.02	0.44	0.08	0.028
856	38	270	0.3	15	63	5	15	2	2	2	1.1	1667	2.97	9	7	126	10	9	15	17	78	0.01	0.22	1.12	0.97	0.35	0.022
857	771	84	8.6	42	309	9	2	30	15	40	0.2	104	7.98	35	31	180	6	2	3	5	12	0.01	0.05	0.02	0.31	0.06	0.008
872	111	69	0.9	35	117	9	2	2	6	4	0.2	178	5.96	17	25	165	8	4	3	6	20	0.01	0.05	0.03	0.18	0.02	0.018
873	7	22	0.5	48	1080	7	2	3	13	88	0.2	188	8.51	14	44	151	15	8	5	9	11	0.01	0.08	0.05	0.50	0.13	0.017



F

LOGAN

ISELWYAN

Approximate Property Boundary



LEGEND

- K_f Cretaceous (?): felsite dyke.
- C_{ms} Cambrian or earlier (?): metasediments: quartzite and schist.
- Outcrop
- Lithologic contact
- Foliation in metasediments
- X 854 Rock Sample, see Appendix A for analytical and assay data.
- Old trench

Note: Contours in metres; interval: 20 m.
Magnetic declination: 29°31'E (1996)
Topography from Energy, Mines & Resources Canada maps 105H/1

093703

DWG ①

FINLAYSON JOINT VENTURE (FJV) INC.

GEOLOGY & SAMPLE LOCATION PLAN

PR 5-8 CLAIM GROUP

Lower Hyland Creek Area
Watson Lake Mining Division, Y.T.
NTS 105H/1

