

# ARCHER, CATHRO

• ASSOCIATES (1981) LIMITED

CONSULTING GEOLOGICAL ENGINEERS

1016 - 510 WEST HASTINGS STREET, VANCOUVER, B.C. V6B 1L8 TEL (604) 688 - 2568 • FAX (604) 688 - 2578

## ASSESSMENT REPORT

describing

**GEOLOGICAL MAPPING, PROSPECTING,  
SOIL GEOCHEMISTRY AND CLAIM SURVEYS** 093683

on the

## OFFSIDE PROPERTY

Offside 1-90	YB71851-YB71940
Offside 90-101FR	YB77147-YB77157
Offside 102-104	YB77158-YB77160
Offside 105-107FR	YB77161-YB77163
Onside 1-43	YB73842-YB73884

Latitude 61°23' N; Longitude 130°11' W

NTS 105G/8

in the

WATSON LAKE MINING DISTRICT

YUKON TERRITORY

Prepared by

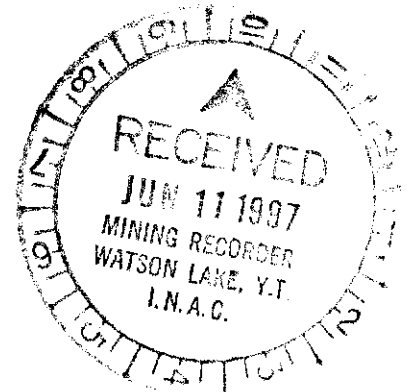
Archer, Cathro & Associates (1981) Limited

for

**EXPATRIATE RESOURCES LTD.**

A. Burgert, B.Sc.

April, 1997



This report has been examined by  
the Geological Evaluation Unit  
of the Department of Energy and  
Resources and is issued as  
7096 91

For  
M.B.K.

Geological Services Exploration and  
Production Department, Commissioner  
of Energy Resources.

**TABLE OF CONTENTS**

	<u>PAGE</u>
INTRODUCTION .....	1
PROPERTY, LOCATION AND ACCESS .....	2
GEOMORPHOLOGY .....	3
REGIONAL GEOLOGY .....	4
REGIONAL MINERALIZATION .....	8
REGIONAL GEOCHEMISTRY .....	10
REGIONAL GEOPHYSICS .....	12
PROPERTY GEOLOGY .....	13
PROPERTY GEOCHEMISTRY .....	14
CONCLUSIONS AND RECOMMENDATIONS .....	15
SELECTED REFERENCES .....	16

**APPENDICES**

- I AUTHOR'S STATEMENT OF QUALIFICATIONS
- II GPS DATA
- III CERTIFICATES OF ANALYSIS

## **FIGURES**

<b><u>NO.</u></b>	<b><u>DESCRIPTION</u></b>	<b><u>LOCATION</u></b>
1	Property Location . . . . .	Following Page 2
2	Claim Location . . . . .	Following Page 2
3	Tectonic Setting . . . . .	Following Page 4
4	Regional Geology . . . . .	Following Page 4
5	Property Geology . . . . .	Following Page 13
6	Sample Location . . . . .	Following Page 14
7	Copper Geochemistry . . . . .	Following Page 14
8	Zinc Geochemistry . . . . .	Following Page 14
9	Molybdenum Geochemistry . . . . .	Following Page 14

## INTRODUCTION

Expatriate Resources Ltd. has a 100% interest in the Offside property which protects a previously unstaked volcanogenic massive sulphide (VMS) target selected on the basis of a regional aeromagnetic anomaly that is subparallel to a similar anomaly associated with the Wolverine Deposit, 5 km to the northeast. One hundred and fifty claims were staked in early 1996 to cover the target.

Field exploration was conducted during summer 1996 by crews working from Expatriate's base camp on Finlayson Lake. The program consisted of geological mapping, prospecting, soil sampling and claim surveys. The work was managed by Archer, Cathro & Associates (1981) Limited and supervised by the author. Appendix I contains the Author's Statement of Qualifications.

## PROPERTY, LOCATION AND ACCESS

The property is located in southeastern Yukon at latitude 61°23'N and longitude 130°11'W on NTS map sheet 105G/8 (Figure 1). It is comprised of 150 contiguous mineral claims (Figure 2) registered with the Watson Lake Mining Recorder in the name of Archer, Cathro & Associates (1981) Limited which holds them in trust for Expatriate Resources Ltd. Claim registration data is listed below.

<u>Claim Name</u>	<u>Grant Number</u>	<u>Expiry Date*</u>
Offside 1-90	YB71851-YB71940	March 17, 2001
Offside 90-101FR	YB77147-YB77157	March 17, 2001
Offside 102-104	YB77158-YB77160	March 17, 2001
Offside 105-107FR	YB77161-YB77163	March 17, 2001
Onside 1-43	YB73842-YB73884	March 17, 2001

\*Expiry dates include 1996 work filed for assessment credit but not yet accepted.

In 1996 the property was accessed by helicopter from Expatriate's base camp on Finlayson Lake (Km 232 on the Robert Campbell Highway). The property lies 37 km southeast of the base camp and 270 km east-northeast of Whitehorse. Helicopter support was provided by a Bell 206B Jet Ranger contracted from Kluane Helicopters of Haines Junction. The helicopter was stationed at Expatriate's base camp for the summer.

During the 1996 exploration program claim post locations were surveyed using Trimble Geoexplorer GPS units. Field readings were corrected using base station data from Westmin Resources Limited's camp at Wolverine Lake. GPS survey data appears in Appendix II.

130°00'

Figure 1

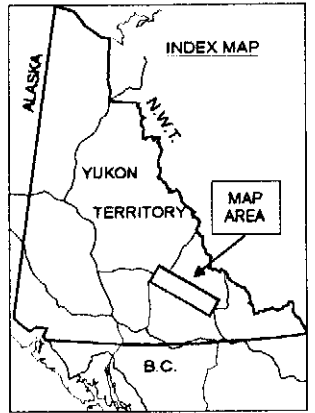
ARCHER, CATHRO & ASSOCIATES (1981) LIMITED

# PROPERTY LOCATION

## OFFSIDE PROPERTY

### EXPATRIATE RESOURCES LTD.

62°00'



132°00'

FINLAYSON LAKE FAULT ZONE - NORTHEASTERN LIMIT OF FAVOURABLE ROCKS

Kudz Ze Kayah Deposit

Wolverine Deposit

TINTINA FAULT ZONE - 450 km RIGHT LATERAL OFFSET

OFFSIDE PROPERTY

Robert

61°00'

Campbell

Hwy

-  Expatriate Resources Ltd.
-  Cominco Ltd.
-  Westmin Resources Ltd. and various joint venture partners
-  Others
-  Native Land Claims



August 26, 1996  
Note: Claim boundaries are approximate  
Expatriate Resources Ltd. does not assume responsibility for errors or omissions

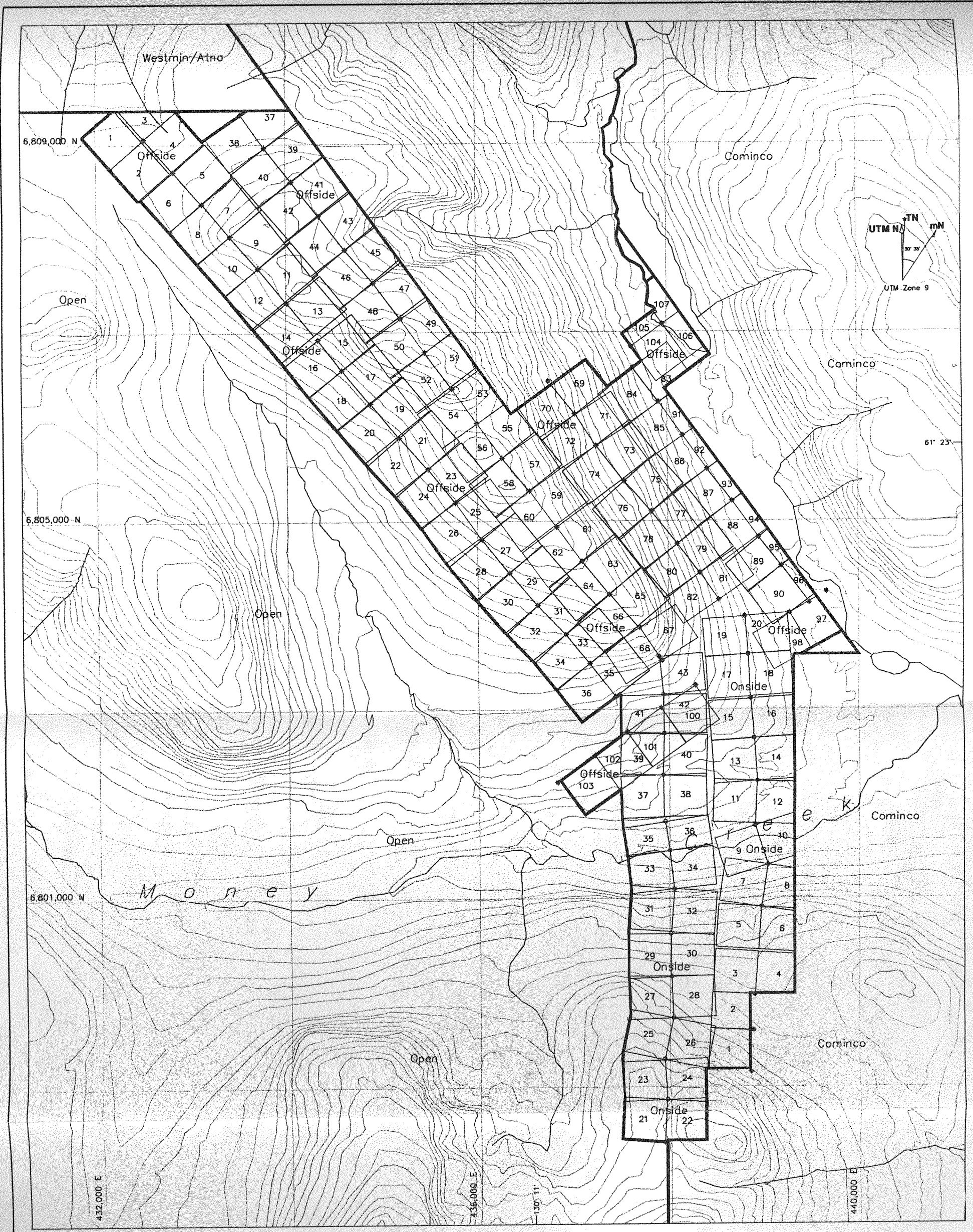


FIGURE 2

Archer, Cathro & Associates (1981) Limited

**CLAIM LOCATION  
OFFSIDE PROPERTY**

**EXPATRIATE RESOURCES LTD.**

- Claim boundary
- ◆ Post location with standard GPS fix
- ⊕ Post location with poor GPS fix
- ⊖ Post location with no GPS fix
- Native Land Claims



SCALE: 1: 40,000 FILE: OF-CLI.DWG  
DRAWN: TCB PROJ: FP DATE: 29-APR-97

## GEOMORPHOLOGY

The Offside property covers parts of a linear ridge 2 km south of Wolverine Lake and the Money Creek valley to the south of the ridge. Creeks draining the property flow northerly or southerly into Money Creek which transects the property. Money Creek drains into Frances Lake which is a part of the Liard River watershed.

Elevations range from 1260 m on the banks of Money Creek in the southern part of the property to 1719 m atop the ridge in the northern part of the claim block. Topographic relief is moderate, typically 10 to 25°, with a few steeper slopes on the sides of the ridge. The valley bottoms are covered with Pleistocene deposits of glacial till.

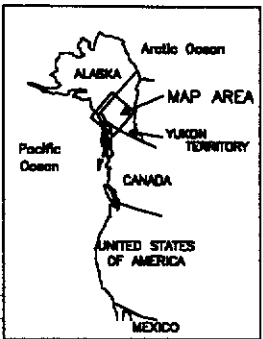
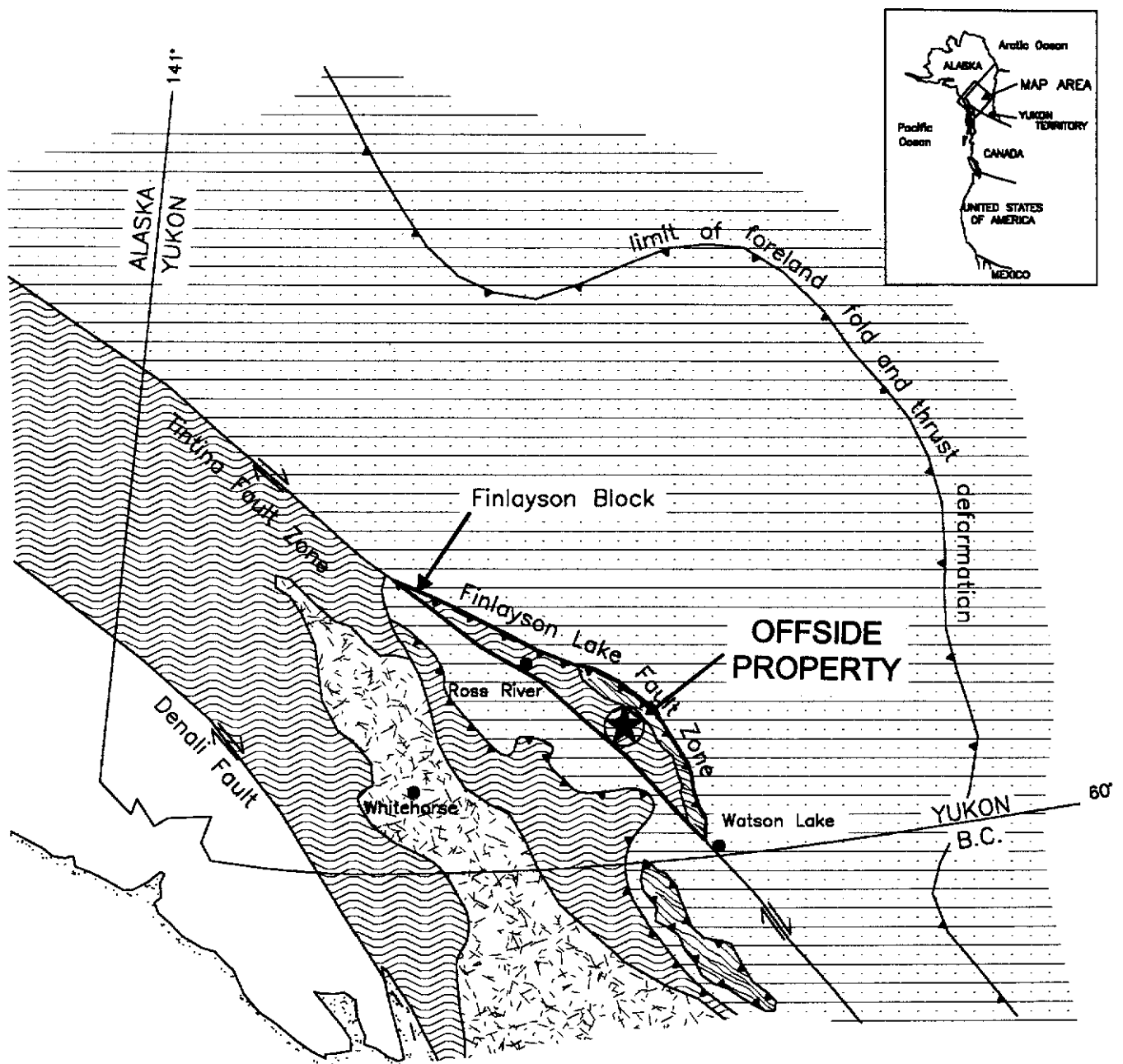
Vegetation consists of stands of mature black spruce in the valleys with occasional patches of red alder. The hillsides are covered with buckbrush and willow giving way to grassy meadows on the ridge top. A large area in the southern portion of the property covers a recent burn where the only vegetation is fireweed and grass among the charred timber.

## REGIONAL GEOLOGY

The Offside property is located within the Finlayson Block, a 380 by 60 km area comprised primarily of the Yukon-Tanana and Slide Mountain geologic terranes (Figure 3). These terranes represent the innermost of the accreted or "suspect" terranes in the Canadian Cordillera (Mortensen and Jilson, 1985). The northeastern margin of the block is the Finlayson Lake Fault Zone a complex zone of steep and shallow faults related to transpressive suturing. The southwestern boundary of the block is the Tintina Fault, a major strike-slip fault with at least 450 km of dextral displacement during Late Cretaceous and/or Early Tertiary time (Tempelman-Kluit et al, 1976).

Regional mapping of the Finlayson Lake area was completed by the Geological Survey of Canada (GSC) in the mid to late 1970's (Tempelman-Kluit, 1977, 1979). More recent regional studies have been published by Mortensen and Jilson (1985) and Mortensen (1992). The following discussion of the regional geology (Figure 4) is based partly on the published work and partly on unpublished mapping completed in 1996 (Tempelman-Kluit, personal communication, 1996).

The Yukon-Tanana Terrane consists largely of Paleozoic continental margin and/or arc stratigraphy deposited on a continental basement of uncertain origin (Mortensen, 1992). The Yukon-Tanana Terrane in the Finlayson Lake area contains three major packages, collectively termed the Layered Metamorphic Sequence. The lowermost unit consists of garnet-mica schist with interbanded marbles, calc-silicates and calcareous schists near the top. The middle unit is a carbonaceous quartzite, schist or phyllite with rare conglomerates and locally extensive felsic and mafic volcanic interbands. Radiometric dating of the felsic metavolcanics in the Finlayson Block has consistently resulted in Late Devonian to Mississippian crystallization ages. Immediately south of Finlayson Lake, large isolated outcrops of marble and quartzite which are poorly dated as Early




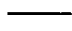


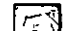
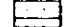
-  Thrust fault
-  Steep fault
-  Yukon-Tanana Terrane
-  Slide Mountain Terrane
-  Stikinia and other Terranes
-  North American Miogeoclinal Strata

FIGURE 3  
 ARCHER, CATHRO & ASSOCIATES (1981) LIMITED  
**TECTONIC SETTING**  
**OFFSIDE PROPERTY**  
 EXPATRIATE RESOURCES LTD.



Modified after Mortensen and Jileon (1965), Mortensen (1982) and Johnson and Mortensen (1984).

130°00'

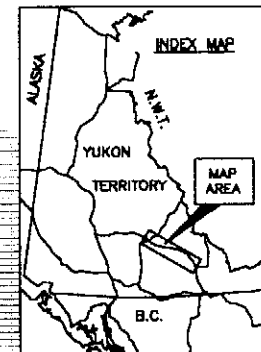
FIGURE 4

ARCHER, CATHRO &amp; ASSOCIATES (1981) LIMITED

## REGIONAL GEOLOGY

OFFSIDE PROPERTY  
EXPATRIATE RESOURCES LTD.

82°00'



## North American Miogeoclinal

Pre-Triassic sedimentary and volcanic

## Slide Mountain Terrane

Chert, ultramafic, greenstone, metavolcanics, and carbonate rocks

## Yukon-Tanana Terrane

Paleozoic Metaplutonic Rocks

Paleozoic Layered Metamorphic Sequence

## Units common to all three terranes

Young Volcanic Rocks

Mesozoic Plutonic Rocks

Mesozoic Clastic Rocks

Geological contacts

Steep fault

Thrust fault

Properties held by Expatriate Resources Ltd.

OFFSIDE  
PROPERTY

Pennsylvanian to Early Permian (Tempelman-Kluit, 1979) form the uppermost unit of the Yukon-Tanana Terrane.

This sequence of units is generally correlative with a similar stratigraphic sequence in ancestral North America (Mortensen and Jilson, 1985; Tempelman-Kluit, personal communication, 1996). The lowermost is correlated with the Lower Cambrian Atan Group and the middle carbonaceous assemblage is correlated with the offshore, Silurian-Devonian Nasina quartzite assemblage. The felsic volcanics are most similar to locally extensive Mississippian siliceous volcanics in the North American stratigraphy. Local calcareous phyllites and massive greenstones near the top of the lower unit are lithologically similar to the Kechika Group and Lower Paleozoic alkalic and potassic greenstones, respectively.

Gneiss and augen gneiss invariably occur low in the Yukon-Tanana succession beneath either the lowermost calcareous unit or the middle carbonaceous unit. Mortensen and Jilson (1985) considered the gneisses to be metamorphosed Mid-Paleozoic plutonic rocks. Conversely Tempelman-Kluit (personal communication, 1996) considers these gneisses to be at least in part recrystallization of earlier stratigraphy. Radiometric dating of the gneisses has consistently resulted in Late Devonian to Mississippian ages (Mortensen, 1992). The gneisses occur in structural culminations with diameters on the order of 10 km and structural relief up to about 1 km.

The Devonian-Mississippian Simpson Suite (Mortensen, 1992) forms thick intervals of hornblende granodiorite and quartz monzonite higher in the Yukon-Tanana stratigraphic sequence. Mortensen and Jilson (1985) interpreted this suite as intrusive. Tempelman-Kluit (1979, personal communication, 1996) mapped the suite as an allochthonous slice emplaced on top of the structural pile.

Slide Mountain Terrane consists of Late Devonian to Late Triassic disrupted oceanic crust (Mortensen, 1992). Lithologies include massive and sheared greenstone, chert and mafic to ultramafic plutonic rocks occurring as fault-bounded slices along thrust faults and steep faults. These units are most abundant near the northeastern edge of the Finlayson Block but are also found throughout it.

Younger units unconformably overlie units from Slide Mountain, Yukon-Tanana and North American Terranes. Mesozoic clastic rocks are Late Triassic, immature sediments containing cobbles from both Slide Mountain and Yukon-Tanana Terranes. Young volcanic rocks consist of Late Cretaceous to Tertiary felsic volcanic flows and volcanoclastic deposits. They are usually found in close proximity to the Tintina Fault Zone.

Mesozoic intrusive activity in the Finlayson Block includes two suites. The first is comprised of several unmetamorphosed Early Jurassic mafic and intermediate composition plutons. The second suite consists of Late Cretaceous two-mica quartz monzonite and granite (Mortensen and Jilson, 1985).

Structurally Yukon-Tanana schists and gneisses contain a pervasive, flat- to gently-dipping foliation. Close examination of this fabric indicates that it commonly is a closely spaced crenulation cleavage. Large-scale folds related to this fabric can rarely be mapped in the field. In most cases bedding and earlier fabrics are transposed into near parallelism with this dominant fabric. Later crenulation cleavages are present only locally. Some of the Cretaceous intrusions have a mild deformation fabric, others are massive and do not contain a foliation.

Thrust faults within the Finlayson Block juxtapose lithologic sequences with similar deformation fabrics. Thrusting postdates the Late Paleozoic Slide Mountain lithologies and predates the Cretaceous intrusives. Recent mapping also suggests, but does not definitively prove, the presence of major late extensional faults juxtaposing differing sequences (Tempelman-Kluit, personal communication, 1996). East-northeast trending, steep normal faults disrupt all earlier deformation fabrics.

Metamorphic grades range from lower greenschist facies to middle amphibolite facies. Contact hornfels around plutonic units occur locally.

Metamorphism and deformation are tentatively correlated with transpressive suturing of these suspect terranes with ancestral North America. Suturing is restricted to the time interval of post-Triassic continuing into the Cretaceous. Whether deformation is continuous or sporadic has not been fully verified at present.

The discovery of the Kudz Ze Kayah and Wolverine VMS deposits within the Finlayson Block in the last few years (Johnston and Mortensen, 1994) has refocused exploration activities in the area. Both deposits occur within metasedimentary and metavolcanic sequences of the Yukon-Tanana Terrane and are associated with felsic volcanics present in the middle unit of that terrane.

## REGIONAL MINERALIZATION

A total of fifty-one mineral occurrences have been reported within the Finlayson Block (DIAND, 1995). Of these, twenty-one are known or suspected to be volcanogenic in origin while veins, skarns and asbestos occurrences comprise most of the remainder. Although the better known volcanogenic occurrences are thought to be of the Kuroko-type, some Besshi-type mineralization is also present (Morin, 1981; Johnston and Mortensen, 1994) and the recently discovered Ice Deposit appears to be Cyprus-type. Two occurrences have definite economic potential, the Kudz Ze Kayah and Wolverine Deposits (Figure 4). These Kuroko-type occurrences are the main "type-deposits" for Expatriate's exploration in the district and are briefly described below.

The Kudz Ze Kayah (ABM) Deposit lies within Yukon-Tanana Terrane near the centre of the block (Cominco Exploration, 1995; Whiteway, 1995). It is a VMS deposit hosted by an overturned assemblage of felsic pyroclastics, aphanitic massive rhyolites and metasiliclastic rocks belonging to the middle unit of the Layered Metamorphic Sequence. Although both the sulphides and wallrocks are highly strained and exhibit pervasive schistosity, compositional layering in the vicinity of the deposit is relatively undeformed with a consistent, shallow northerly dip. Sphalerite, chalcopyrite and galena are the main economic minerals while the gangue includes various mixtures of magnetite, barite, pyrrhotite, pyrite and carbonate. The deposit averages about 18 m thick and has been traced 700 m along strike and up to 400 m downdip. Open pit mineable ore reserves are reported to be 11 million tonnes grading 5.9% zinc, 0.9% copper, 1.5% lead, 130 g/t silver and 1.3 g/t gold (Schultze, 1996). Preliminary studies suggest that satisfactory

lead, zinc and copper concentrates can be produced using conventional flotation processes (Cominco Exploration, 1995). The mineralization responds well to magnetic and electromagnetic surveys but geochemical response is somewhat erratic because the entire deposit is covered by 2 to 10 m of glacial till.

The Wolverine Deposit is located 25 km east of the Kudz Ze Kayah property near a contact between Yukon-Tanana and overlying Slide Mountain rocks. It consists of the Wolverine and Lynx Zones which are hosted by rhyolitic metavolcanics and argillites lying within the middle unit of the Layered Metamorphic Sequence. The mineralization consists primarily of semi-massive to massive pyrite and sphalerite with varying amounts of galena, chalcopyrite, tetrahedrite and native gold. The surface expression of the Wolverine Zone is marked by a vegetation kill zone containing weakly malachite-stained argillite while the Lynx Zone is blanketed by glacial till. Westmin has traced the deposit 700 m along strike and up to 450 m downdip and it is still open. The mineralization averages 6.1 m thick and dips shallowly to the north. Both zones contain significantly more zinc and precious metals than Kudz Ze Kayah. The current geological inventory is reported to be 5,311,000 tonnes grading 12.96% zinc, 1.41% copper, 1.53% lead, 359.1 g/t silver and 1.81 g/t gold (Westmin News Release, November 30, 1996). Soil geochemistry outlined weakly to moderately anomalous values along the projected surface trace of the deposit while magnetic surveys easily traced a laterally extensive, banded iron formation which occurs about 80 m up-section from the massive sulphide horizon. Interpretation of electromagnetic results is complicated by the presence of graphite within the argillite.

## REGIONAL GEOCHEMISTRY

Published geochemical data for the Finlayson Lake area are limited to reconnaissance scale stream sediment sampling conducted in the late 1980's by the GSC (Hornbrook and Friske, 1988; Friske et al, 1990). The sampling was done at an approximate density of one sample per 10 sq km. Each sample was analyzed for twenty elements including common indicator elements for VMS deposits such as copper, lead, zinc, silver and arsenic. Anomalous results were obtained from creeks draining some previously known VMS occurrences (DIAND, 1995, Yukon Minfile 105G/32, 34 and 40) but many others, including the streams draining the Wolverine Deposit, produced near background values. Anomalous results were also obtained from several drainages where there were no known mineral occurrences. Follow-up exploration has since located showings in many of the anomalous creeks with the most significant discovery to date being the Kudz Ze Kayah Deposit.

Expatriate was able to supplement the published reports with private data summarizing results of 1973 exploration managed by Archer Cathro on behalf of a joint venture (Cathro, 1973). The reconnaissance prospecting and geochemical sampling program explored for lead-zinc mineralization in the lower unit of the Layered Metamorphic Sequence but because the data provides relatively uniform coverage over the entire region, it is also suitable for evaluating areas underlain by the favourable middle unit. The Archer Cathro samples included approximately 5000 soils and stream sediments collected at a density of approximately one sample per sq km. They were all analyzed for lead, zinc, copper and molybdenum. As might be expected, this closer spaced sampling outlined many more areas of anomalous geochemical response than the

government survey. Almost all of the known volcanogenic occurrences showed up as anomalies on this survey, including Kudz Ze Kayah and Wolverine.

The following table illustrates regional geochemical backgrounds for the metals and anomalous thresholds used for target selection.

**GEOCHEMICAL BACKGROUNDS AND ANOMALOUS THRESHOLDS**

	<u>Background</u>	<u>Anomalous Thresholds (ppm)</u>			<u>Peak Value</u>
		<u>Weak</u>	<u>Moderate</u>	<u>Strong</u>	
Copper	25	50	100	200	1720
Lead	30	50	100	200	>4000
Zinc	80	200	500	1000	>4000
Molybdenum	<1	2	5	10	65

The 1973 soil sampling on the Offside property was wide spaced and returned background response except for a few weakly anomalous copper values up to 68 ppm.

Copper, lead and zinc are major metals in most VMS occurrences in the Finlayson Lake area and are obvious indicator elements. Molybdenum is present in anomalous quantities in the banded iron formation overlying the Wolverine Deposit (Meade, personal communication, 1995) and appears to be slightly enriched in the felsic metavolcanic rocks. Based on the geochemical signature in the vicinity of known occurrences its presence can be used to distinguish copper anomalies associated with volcanogenic mineralization from those derived from ultramafic rocks.

## REGIONAL GEOPHYSICS

The only published geophysical data for the Finlayson Lake area resulted from airborne magnetic surveys conducted in 1961 by the GSC on behalf of the Department of Mines and Technical Surveys. The surveys were flown with fixed-wing aircraft at a nominal elevation of 300 m above ground level on east-west lines spaced approximately 1.6 km apart. Results are presented on a 1:250,000 scale map (DMTS, 1961) and in more detail on a series of 1:50,000 maps.

The largest, most intense areas of positive magnetic response are associated with obducted ultramafic rocks belonging to the Slide Mountain Terrane. Within the Campbell Range Belt where dips are usually moderate to steep, the anomalies are narrow and elongate while in the remainder of the block where the ultramafic rocks occur along shallowly-dipping thrust faults, they are much broader.

A series of secondary positive anomalies was also recorded over Yukon-Tanana rocks but until recently they had no obvious explanation. Prospecting and mapping have now shown that magnetite occurs locally within schists of the middle unit of the Layered Metamorphic Sequence. The greatest documented concentration of magnetite is found in the hanging wall of the Wolverine Deposit where it forms several thin horizons approximately 80 m up-section from the massive sulphide mineralization. Magnetite is also a significant constituent of the mineralization at the Kudz Ze Kayah Deposit.

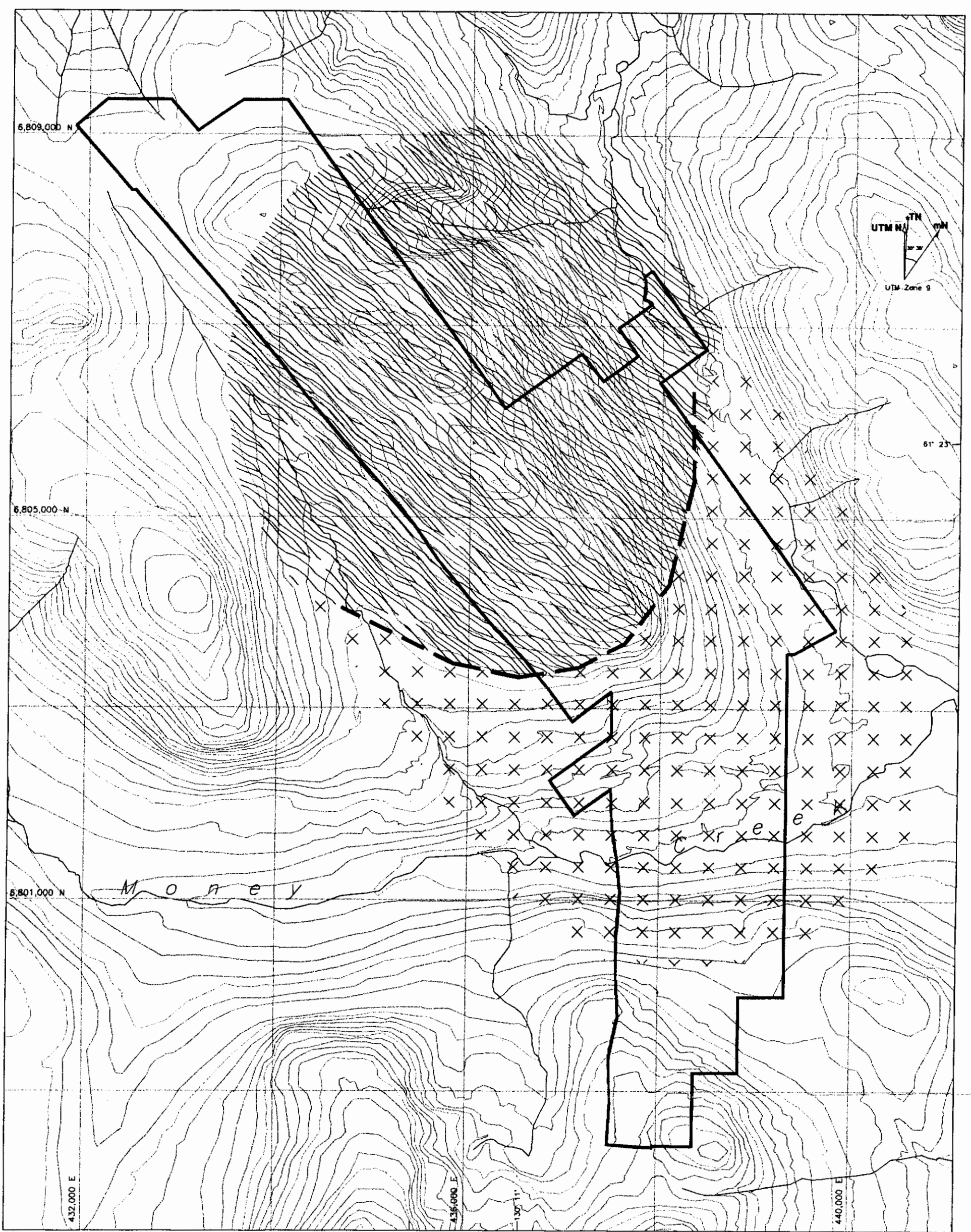
The Offside property covers a linear aeromagnetic anomaly 4.8 km in length. The anomaly's magnitude of 120 gammas is significant with respect to surrounding rocks and its orientation is parallel to the series of anomalies associated with the nearby Wolverine deposit.

### **PROPERTY GEOLOGY**

Bedrock exposure is moderate on the ridge and poor in the valley. Two rock types were observed on the property, one belongs to the lower unit of the Layered Metamorphic Sequence and the other is part of the Mesozoic Plutonic Suite. Geology is shown in Figure 5 while the rock types are described below.

Quartz-feldspar-mica gneiss is light grey to green-grey on fresh surfaces and weathers grey. In some localities it displays porphyroblastic feldspar and quartz grains to 1 cm in diameter. Both muscovite and biotite are present in varying quantities. Muscovite and minor sericite are found primarily along foliation planes while biotite is dispersed throughout the rock.

Quartz diorite is weakly to moderately foliated. It is light grey on fresh surfaces and weathers slightly darker grey.






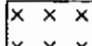
-  Geology boundary
-  Claim boundary
-  Paleozoic metaplutonic
-  Mesozoic granodiorite



FIGURE 5

Archer, Cathro & Associates (1981) Limited

**PROPERTY GEOLOGY  
OFFSIDE PROPERTY**

**EXPATRIATE RESOURCES LTD.**

SCALE: 1: 40,000 FILE: OF-GEOL.DWG

DRAWN: TCB

PROJ: FP

DATE: Mar.24,1997

### PROPERTY GEOCHEMISTRY

Reconnaissance soil sampling was carried out at 100 m intervals along claim lines. Sample locations were marked with 0.5 m wooden lath bearing aluminum tags inscribed with sample numbers. Figure 6 shows sample locations.

The samples were sent Chemex Labs Ltd. in North Vancouver where they were screened to -80 mesh, digested in nitric-aqua regia and geochemically analyzed for 32 elements using the Induced Coupled Plasma (ICP) technique. Certificates of Analysis appear in Appendix III. Results for copper, zinc and molybdenum are plotted on Figures 7 to 9 while anomalous thresholds and peak values for six VMS indicator elements are as follows.

<u>Element</u>	<u>Threshold Values (ppm)</u>			<u>Peak Value</u>
	<u>Weak</u>	<u>Moderate</u>	<u>Strong</u>	
Copper	50	NA*	NA*	94
Zinc	200	500	NA*	620
Lead	NA*	NA*	NA*	28
Silver	1	2	NA*	2.0
Molybdenum	2	5	10	17
Cobalt	NA*	NA*	NA*	23

\*NA = not applicable because property values did not reach regional threshold.

The most interesting target outlined by sampling is a 500 m long zone containing scattered, weakly anomalous zinc, copper and molybdenum values. The target is located at the southeastern tip of the ridge, 1.5 km north of Money Creek.

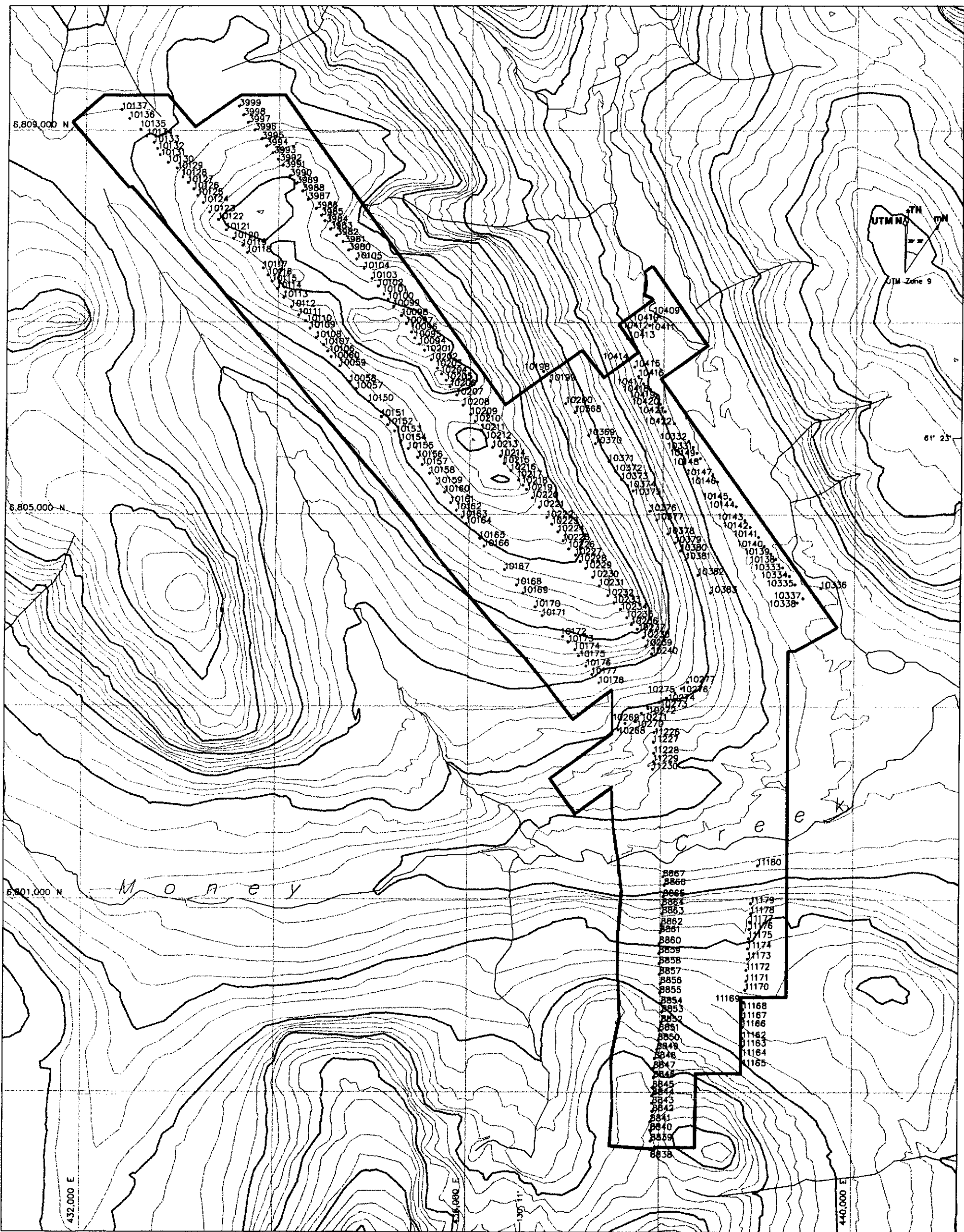


FIGURE 6

Archer, Cathro & Associates (1981) Limited

**SAMPLE LOCATION  
OFFSIDE PROPERTY**

**EXPATRIATE RESOURCES LTD.**

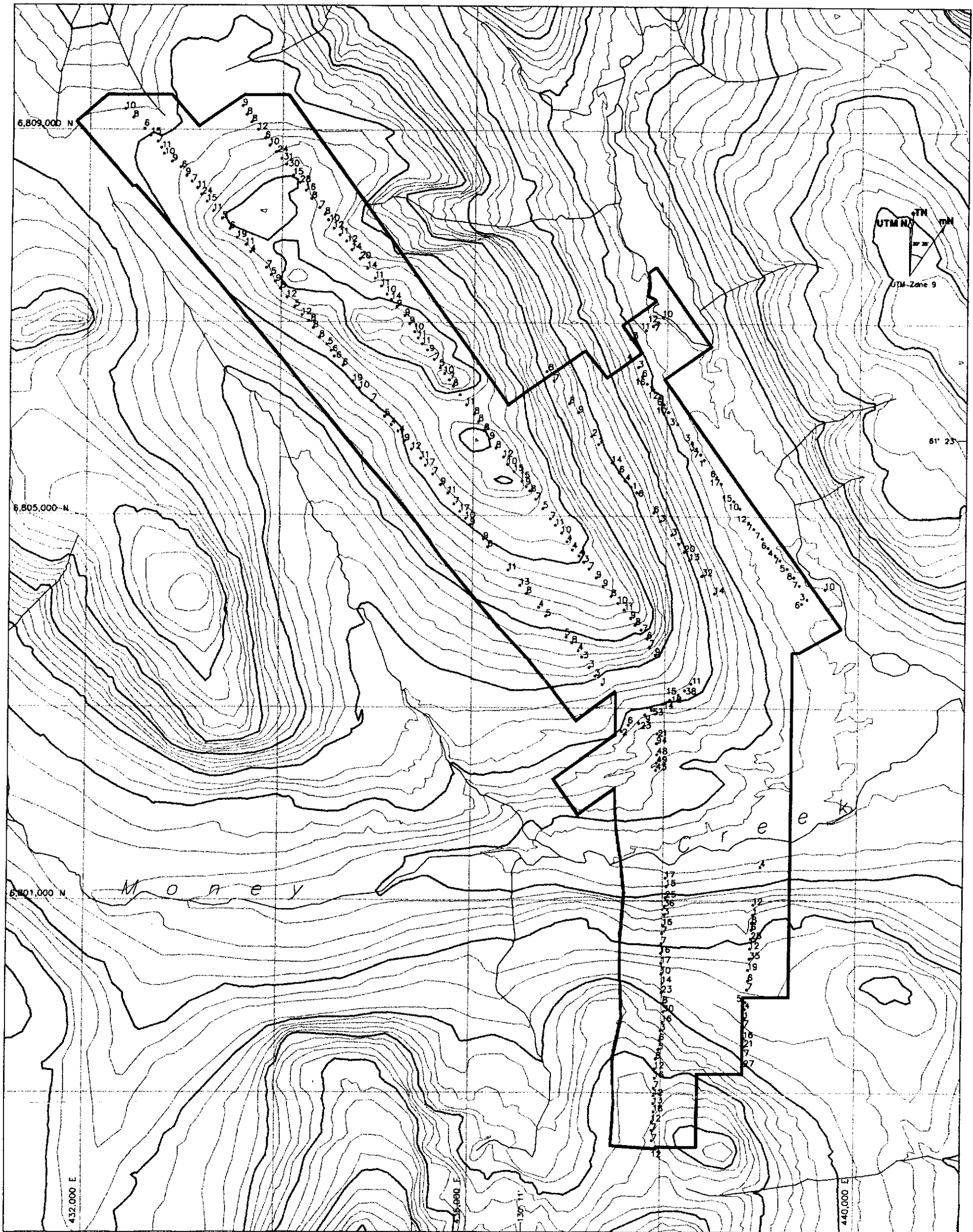
SCALE: 1: 40,000

FILE: OF-SNO.DWG

DRAWN: TCB

PROJ: FP

DATE: Mar.24,1997



— Claim boundary

10 Sample location with copper value in ppm

0 200 400 800 1200 1800 2000

FIGURE 7

Archer, Cathro & Associates (1981) Limited

**COPPER GEOCHEMISTRY**

**OFFSIDE PROPERTY**

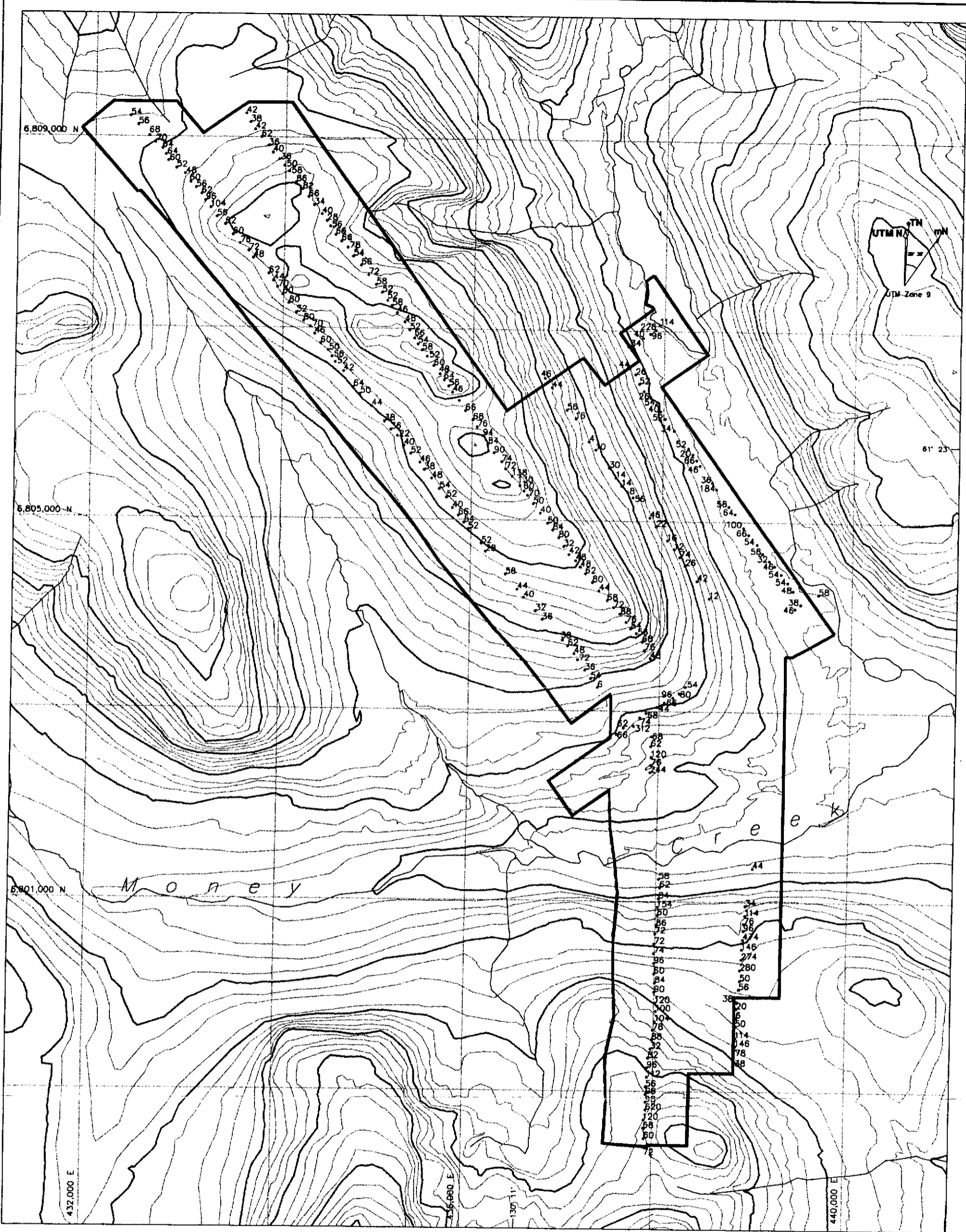
**EXPATRIATE RESOURCES LTD.**

SCALE: 1: 40,000 FILE: OF-CU.DWG

DRAWN: TCB

PROJ: FP

DATE: Mar.24,1997



— Claim boundary  
 .40 Sample location with zinc value in ppm

0 200 400 800 1200 1800 2000

FIGURE 8

Archer, Cathro & Associates (1981) Limited

**ZINC GEOCHEMISTRY  
 OFFSIDE PROPERTY**

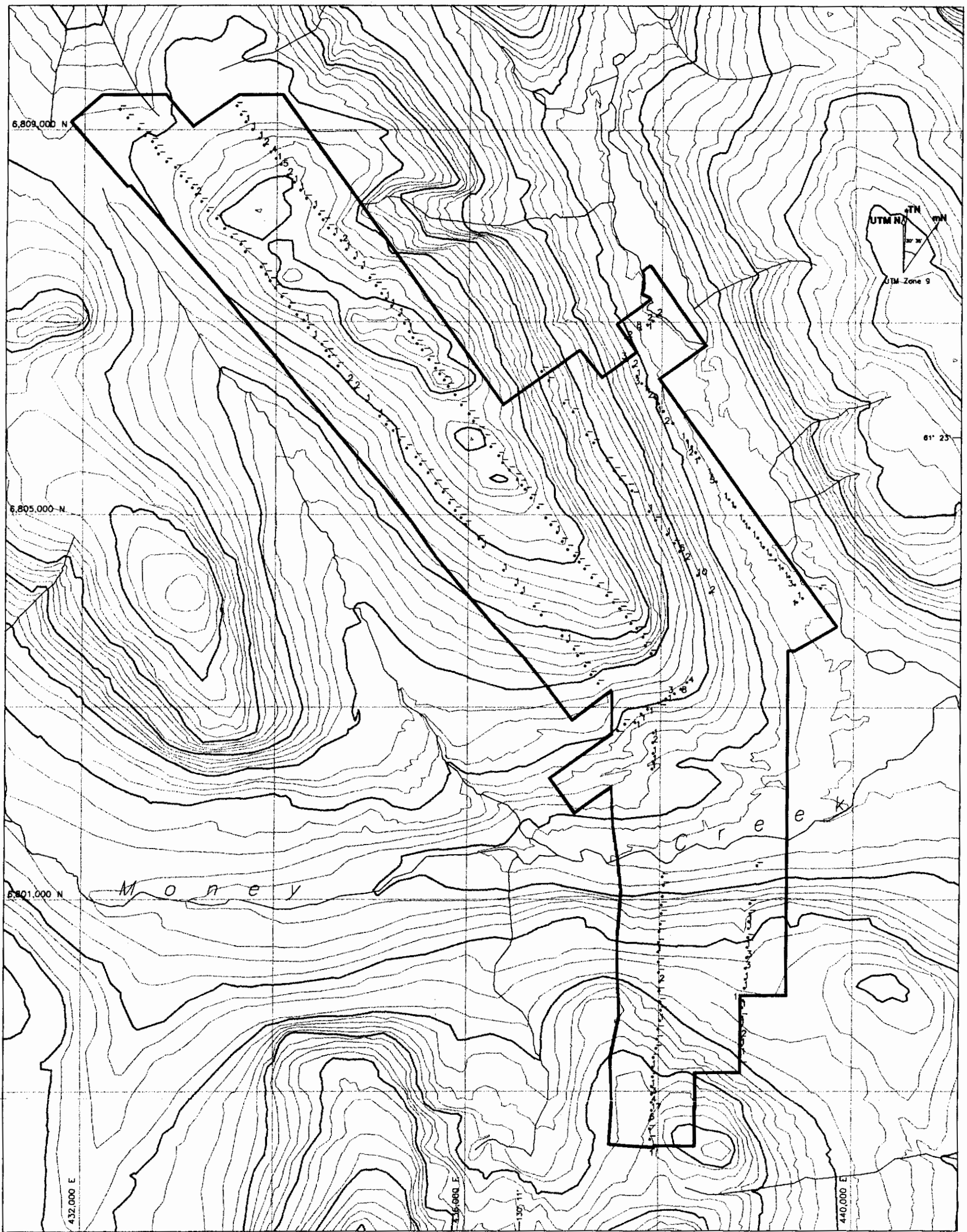
**EXPATRIATE RESOURCES LTD.**

SCALE: 1: 40,000 FILE: OF-ZN.DWG

DRAWN: TCB

PROJ: FP

DATE: Mar.24,1997



- Claim boundary
- 2 Sample location with molybdenum value in ppm

0 200 400 800 1200 1600 2000

FIGURE 9

Archer, Cathro & Associates (1981) Limited

**MOLYBDENUM GEOCHEMISTRY**

**OFFSIDE PROPERTY**

**EXPATRIATE RESOURCES LTD.**

SCALE: 1: 40,000

FILE: OF-MO.DWG

DRAWN: TCB

PROJ: FP

DATE: Mar.24,1997

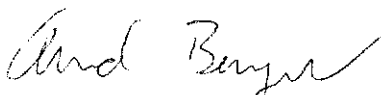
## CONCLUSIONS AND RECOMMENDATIONS

The Offside property is located 5 km southwest of the Wolverine Deposit. Unfortunately mapping has shown that it is underlain predominantly by rocks belonging to the lower unit of the Paleozoic Metamorphic Sequence and Mesozoic Plutonic Suite, neither of which is likely to host VMS mineralization. Reconnaissance soil sampling has defined only scattered, weakly to moderately anomalous values for copper, zinc and molybdenum.

The best geochemical target is interesting but not compelling. One day of geological mapping, prospecting and additional reconnaissance soil sampling should be done in the vicinity of the target to determine the lithology of the underlying bedrock and extent of the anomalous response.

Respectfully submitted,

ARCHER, CATHRO & ASSOCIATES (1981) LIMITED

  
A. Burgert, B.Sc.

**SELECTED REFERENCES**

Cathro, R.J.

1973 Final Report, Finlayson Joint Venture; November 30, 1973, p.44.

Cominco Exploration

1995 Kudz Ze Kayah Program, Yukon; Information handout from Cordilleran Roundup, Spring 1995.

DIAND

1995 Yukon Minfile, November/95; Exploration Geological Services Division, Indian and Northern Affairs Canada.

DMTS

1961 Finlayson Lake (105G), Airborne Magnetic Map; Department of Mines and Technical Surveys, Geophysical Paper 70006G.

Friske, P.W.B., Hornbrook, E.H.W., Lynch, J.J., McCurdy, M.W., Gross, H., Galletta, A.C. and Durham, C.C.

1990 Regional stream sediment and water geochemical data, central Yukon; Geological Survey of Canada Open File 2174 (105K East).

Hornbrook, E.H.W. and Friske, P.W.B.

1988 Regional stream sediment and water geochemical data, southeastern Yukon; Geological Survey of Canada Open File 1648 (105G).

Johnston, S.T. and Mortensen, J.K.

1994 Regional setting of porphyry Cu-Mo deposits, volcanogenic massive sulphide deposits, and mesothermal gold deposits in the Yukon-Tanana Terrane, Yukon; Yukon Metallogeny: Recent Developments, Canadian-Yukon Economic Development Agreement, pp.30-34.

Morin, J.A.

1981 Volcanogenic iron and base metal occurrences in Klondike Schist, Yukon Geology and Exploration 1979-80, Department of Indian and Northern Affairs, pp.91-97.

Mortensen, J.K.

1992 Pre-Mid-Mesozoic Tectonic Evolution of the Yukon-Tanana Terrane, Yukon and Alaska; Tectonics, Vol.11, No.4, pp.836-853.

**Mortensen, J.K. and Jilson, G.A.**

- 1985 Evolution of the Yukon-Tanana Terrane: evidence from southeastern Yukon Territory; *Geology*, V.13, pp.806-810.

**Schultze, H.C.**

- 1996 Summary of the Kudz Ze Kayah Project, volcanic hosted massive sulphide deposit Yukon Territory; *in*: Yukon Exploration and Geology, 1995, Exploration and Geological Services Division, Yukon, Indian and Northern Affairs Canada, pp.29-32.

**Tempelman-Kluit, D.J., Gordey, S.P. and Read, B.C.**

- 1976 Stratigraphic and structural studies in the Pelly Mountains, Yukon Territory; Geological Survey of Canada Paper 76-1A, pp.97-106.

**Tempelman-Kluit, D.J.**

- 1977 Quiet Lake (105F) and Finlayson Lake (105G) map areas; Geological Survey of Canada Open File 486.

- 1979 Transported Cataclasite, Ophiolite and Granodiorite in Yukon: Evidence of Arc-Continent Collision. Geological Survey of Canada, Paper 79-14, 27 pages.

**Westmin Resources Limited**

- 1996 News Release, Joint Release with Atna Resources Ltd; November 30, 1996, p.2.

**Whiteway, P.**

- 1995 "Fast-Tracking" ABM; *in* Canadian Mining Journal, June 1995, pp.17-21.

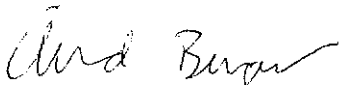
**APPENDIX I**

**AUTHOR'S STATEMENT OF QUALIFICATIONS**

## **STATEMENT OF QUALIFICATIONS**

I, Arnd Burgert, geologist, with business addresses in Whitehorse, Yukon Territory and in Vancouver, British Columbia and residential address in White Rock, British Columbia, do hereby certify that:

1. I graduated from the University of British Columbia in 1995 with a B.Sc. in geology.
2. From 1989 to present, I have been actively engaged in mineral exploration in British Columbia, the Northwest Territories and the Yukon Territory and am presently employed with Archer, Cathro & Associates (1981) Limited.
3. I have personally participated in the field work reported herein.

  
A. Burgert, B.Sc.

## **APPENDIX II**

### **GPS DATA**

**Offside**  
**GPS Survey Coordinates**

**Data Quality:** Standard = The surveyed positions were recorded in 3D mode and were differentially corrected. The reported UTM coordinates are within 1 to 5 meters of their actual locations; Poor = >25% of the surveyed positions were recorded in 2D mode; Uncorrected = The surveyed positions were not differentially corrected; N/S = No survey data available.

**Base Station:** W = Westmin Resources Limited base station at Wolverine Lake; WL = Ministry of Environment, Lands and Parks base station at Williams Lake; DL = Ministry of Environment, Lands and Parks base station at Dease Lake; RR = Department of Renewable Resources (Forestry) at Whitehorse.

**A. Expatriate Resources Ltd. Claim Posts**

Claim	Posts 1	Posts 2	UTM Coordinates		Data Quality	Base Station	Date
			Northing	Easting			
2134 Offside	1, 2	-	6808745	432150	Uncorrected	-	16-Aug-96
2135	3, 4	1, 2	6809059	432512	Standard	W	16-Aug-96
2136	5, 6	3, 4	6808709	432818	Standard	W	16-Aug-96
2137	7, 8	5, 6	6808368	433121	Standard	W	16-Aug-96
2138	9, 10	7, 8	6808023	433414	Standard	W	16-Aug-96
2139	11, 12	9, 10	6807684	433709	Standard	W	16-Aug-96
2140	13, 14	11, 12	6807317	434011	Standard	W	16-Aug-96
2141	15, 16	13, 14	6806926	434337	Uncorrected	-	16-Aug-96
2142	17, 18	15, 16	6806804	434588	Standard	W	16-Aug-96
2143	19, 20	17, 18	6806251	434884	Standard	W	16-Aug-96
2144	21, 22	19, 20	6805888	435185	Standard	W	20-Aug-96
2145	23, 24	21, 22	6805555	435483	Standard	W	20-Aug-96
2146	25, 26	23, 24	6805196	435769	Standard	W	20-Aug-96
2147	27, 28	25, 26	6804811	436045	Standard	W	20-Aug-96
2148	29, 30	27, 28	6804460	436333	Standard	W	20-Aug-96
2149	31, 32	29, 30	6804119	436627	Standard	W	20-Aug-96
2150	33, 34	31, 32	6803809	436921	Standard	W	20-Aug-96
2151	35, 36	33, 34	6803496	437172	Standard	W	20-Aug-96
2152	-	35, 36	6803144	437440	Standard	W	20-Aug-96
2153 Offside	37, 38	-	6809316	433530	Standard	W	16-Aug-96
2154	39, 40	37, 38	6808961	433779	Standard	W	16-Aug-96
2155	41, 42	39, 40	6808602	434063	Standard	W	16-Aug-96
2156	43, 44	41, 42	6808238	434348	Standard	W	16-Aug-96
2157	45, 46	43, 44	6807880	434621	Standard	W	16-Aug-96
2158	47, 48	45, 46	6807525	434919	Standard	W	16-Aug-96
2159	49, 50	47, 48	6807147	435204	Standard	W	16-Aug-96
2160	51, 52	49, 50	6806790	435457	Standard	W	16-Aug-96
2161	53, 54	51, 52	6806406	435742	Standard	W	16-Aug-96
2162	55, 56	53, 54	6806043	436000	Standard	W	16-Aug-96
2163	57, 58	55, 56	6805669	436264	Standard	W	16-Aug-96
2164	59, 60	57, 58	6805318	436548	Standard	W	16-Aug-96
2165	61, 62	59, 60	6804939	436831	Standard	W	16-Aug-96
2166	63, 64	61, 62	6804584	437095	Standard	W	16-Aug-96
2167	65, 66	63, 64	6804232	437382	Standard	W	16-Aug-96
2168	67, 68	65, 66	6803880	437695	Uncorrected	-	16-Aug-96
2169	-	67, 68	6803524	437929	Uncorrected	-	16-Aug-96
2170 Offside	69, 70	-	6806487	436755	Standard	W	20-Aug-96
2171	71, 72	69, 70	6806137	437030	Standard	W	20-Aug-96
2172	73, 74	71, 72	6805800	437251	Standard	W	20-Aug-96
2173	75, 76	73, 74	6805423	437545	Standard	W	20-Aug-96
2174	77, 78	75, 76	6805101	437830	Standard	W	20-Aug-96
2175	79, 80	77, 78	6804763	438098	Standard	W	20-Aug-96
2176	81, 82	79, 80	6804459	438331	Standard	W	20-Aug-96
2177	-	81, 82	6804175	438528	Standard	W	20-Aug-96

Claim	Posts 1	Posts 2	UTM Coordinates		Data Quality	Base Station	Date	
			Northing	Easting				
2178	Offside	83, 84	-	6806622	437643	Standard	W	20-Aug-96
2179		85, 91	83, 84	6806266	437908	Standard	W	20-Aug-96
2180		86, 92	85, 91	6805907	438161	Standard	W	20-Aug-96
2181		87, 93	86, 92	6805551	438415	Standard	W	20-Aug-96
2182		88, 94	87, 93	6805209	438675	Standard	W	20-Aug-96
2183		89, 95	88, 94	6804827	438951	Standard	W	20-Aug-96
2184		90, 96	89, 95	6804531	439189	Standard	W	20-Aug-96
2185		-	90, 96	6804141	439478	Standard	W	20-Aug-96
2186		97	-	6804258	439659	Standard	W	20-Aug-96
2187		98	97	6804037	439272	Standard	W	20-Aug-96
2188		99	98	-	-	N/S	-	-
2189		-	99	-	-	N/S	-	-
2190	Offside	100	-	6803262	438279	Standard	W	20-Aug-96
2191		101	100	6803020	437919	Standard	W	20-Aug-96
2192		102	101	6802765	437559	Standard	W	20-Aug-96
2193		103	102	6802520	437218	Standard	W	20-Aug-96
2194		-	103	6802237	436825	Standard	W	20-Aug-96
2195		-	104, 105	6806648	437626	Standard	W	20-Aug-96
2196		104, 105	106, 107	6807084	437956	Standard	W	20-Aug-96
2197		106, 107	-	6807084	437956	Standard	W	20-Aug-96
2269	Onside	1	-	6799162	438853	Standard	W	02-Sep-96
2270		2	1	6799602	438880	Standard	W	02-Sep-96
2271		3, 4	2	6799985	438897	Standard	W	02-Sep-96
2272		5, 6	3, 4	-	-	N/S	-	-
2273		7, 8	5, 6	6800909	438967	Standard	W	02-Sep-96
2274		9, 10	7, 8	6801354	439036	Standard	W	02-Sep-96
2275	Onside	11, 12	9, 10	6801774	438898	Standard	W	02-Sep-96
2276		13, 14	11, 12	6802249	438923	Standard	W	02-Sep-96
2277		15, 16	13, 14	6802699	438890	Standard	W	02-Sep-96
2278		17, 18	15, 16	6803124	438863	Standard	W	02-Sep-96
2279		19, 20	17, 18	6803592	438832	Standard	W	02-Sep-96
2280		-	19, 20	6804003	438800	Standard	W	02-Sep-96
2281	Onside	21, 22	-	6798411	437933	Uncorrected	-	02-Sep-96
2282		23, 24	21, 22	6798866	437964	Uncorrected	-	02-Sep-96
2283		25, 26	23, 24	6799297	437944	Uncorrected	-	02-Sep-96
2284		27, 28	25, 26	6799733	438035	Uncorrected	-	02-Sep-96
2285		29, 30	27, 28	6800175	438017	Uncorrected	-	02-Sep-96
2286		31, 32	29, 30	6800628	438012	Uncorrected	-	02-Sep-96
2287		33, 34	31, 32	6801095	438049	Uncorrected	-	02-Sep-96
2288		35, 36	33, 34	6801507	438002	Uncorrected	-	02-Sep-96
2289		37, 38	35, 36	6801816	437954	Uncorrected	-	02-Sep-96
2290		39, 40	37, 38	6802312	437933	Uncorrected	-	02-Sep-96
2291		41, 42	39, 40	6802747	437948	Standard	W	02-Sep-96
2292		43	41, 42	6803163	437942	Uncorrected	-	02-Sep-96
2293		-	43	6803565	437900	Standard	W	02-Sep-96

**B. Claim Posts From Adjoining Claim Blocks**

Claim	Posts 1	Posts 2	UTM Coordinates		Data Quality	Base Station	Date
			Northing	Easting			
Ang	25, 26	23, 24	6809724	433076	Standard	W	16-Aug-96
	23, 24	21, 22	6809709	432620	Standard	W	16-Aug-96
	21, 22	19, 20	6809699	432184	Standard	W	16-Aug-96
Mony	201, 202	199, 200	6801626	439047	Standard	W	16-Aug-96

**APPENDIX III**  
**CERTIFICATES OF ANALYSIS**



# Chemex Labs Ltd.

Analytical Chemists \* Geochemists \* Registered Assayers  
 212 Brooksbank Ave., North Vancouver  
 British Columbia, Canada V7J 2C1  
 PHONE: 604-984-0221 FAX: 604-984-0218

EXPATRIATE RESOURCES LTD.  
 C/O ARCHER, CATHRO & ASSOCIATES (1981) LIMITED  
 1016 - 510 W. HASTINGS ST.  
 VANCOUVER, BC  
 V6B 1L8

Page Number : 1-A  
 Total Pages : 2  
 Certificate Date: 21-SEP-96  
 Invoice No. : I9631760  
 P.O. Number :  
 Account : MPO

Project : ONSIDE  
 Comments:

## CERTIFICATE OF ANALYSIS A9631760

SAMPLE	PREP CODE		Ag	Al	As	Ba	Be	Bi	Ca	Cd	Co	Cr	Cu	Fe	Ga	Hg	K	La	Mg	Mn	Mo
			ppm	%	ppm	ppm	ppm	ppm	%	ppm	ppm	ppm	ppm	%	ppm	ppm	%	ppm	%	ppm	ppm
BB08838	201	202	< 0.2	2.37	2	160	1.0	< 2	0.10	< 0.5	7	29	12	3.32	< 10	1	0.37	20	0.75	375	1
BB08839	201	202	< 0.2	1.78	4	80	1.0	< 2	0.07	< 0.5	4	17	7	2.42	10	< 1	0.14	30	0.32	160	< 1
BB08840	201	202	< 0.2	2.57	< 2	270	1.0	< 2	0.17	< 0.5	9	34	7	3.58	10	< 1	0.70	30	1.28	450	< 1
BB08841	201	202	< 0.2	1.95	< 2	180	1.0	< 2	0.06	< 0.5	8	22	12	3.47	< 10	< 1	0.38	30	0.89	470	6
BB08842	201	202	< 0.2	2.73	18	380	2.0	< 2	0.08	2.0	14	21	18	4.96	< 10	1	0.71	190	1.12	2210	17
BB08843	201	202	< 0.2	0.95	8	70	0.5	< 2	0.03	< 0.5	3	12	13	2.23	< 10	< 1	0.16	30	0.23	220	4
BB08844	201	202	< 0.2	2.12	8	240	1.5	< 2	0.06	< 0.5	7	21	12	3.80	< 10	< 1	0.38	40	0.73	445	3
BB08845	201	202	< 0.2	1.57	< 2	110	0.5	< 2	0.14	< 0.5	6	21	7	2.46	< 10	< 1	0.31	10	0.62	290	1
BB08846	201	202	< 0.2	2.69	2	210	1.5	< 2	0.23	< 0.5	13	41	16	4.92	10	1	0.69	10	1.27	1125	< 1
BB08847	201	202	< 0.2	3.38	2	290	1.5	< 2	0.13	< 0.5	11	32	12	4.98	10	1	0.68	10	1.43	640	1
BB08848	201	202	< 0.2	2.54	2	90	1.5	< 2	0.06	< 0.5	5	26	8	3.98	10	< 1	0.25	10	0.63	335	< 1
BB08849	201	202	< 0.2	0.95	< 2	50	0.5	< 2	0.08	< 0.5	2	7	5	0.97	< 10	< 1	0.10	10	0.15	265	< 1
BB08850	201	202	< 0.2	1.90	2	110	1.5	< 2	0.09	< 0.5	4	12	6	2.73	< 10	< 1	0.14	30	0.31	245	< 1
BB08851	201	202	< 0.2	1.23	< 2	40	1.0	< 2	0.03	< 0.5	3	4	3	1.98	< 10	< 1	0.05	40	0.06	90	< 1
BB08852	201	202	< 0.2	1.78	4	80	1.0	< 2	0.10	< 0.5	6	20	16	3.37	10	< 1	0.36	30	0.60	345	1
BB08853	201	202	< 0.2	2.70	10	170	2.5	< 2	0.23	< 0.5	11	39	30	3.76	10	< 1	0.43	30	1.11	515	< 1
BB08854	201	202	< 0.2	2.16	2	200	1.5	< 2	0.36	< 0.5	8	26	8	3.32	10	< 1	0.47	30	1.26	345	< 1
BB08855	201	202	< 0.2	2.64	2	290	1.5	< 2	0.55	< 0.5	14	48	23	4.54	10	1	0.92	30	1.60	585	< 1
BB08856	201	202	< 0.2	2.02	4	210	0.5	< 2	0.31	< 0.5	9	37	14	3.54	< 10	< 1	0.51	30	1.08	420	2
BB08857	201	202	< 0.2	1.45	2	150	0.5	< 2	0.38	< 0.5	8	28	10	2.72	< 10	< 1	0.40	20	0.89	365	< 1
BB08858	201	202	< 0.2	2.27	< 2	300	0.5	< 2	0.48	< 0.5	13	47	17	4.04	< 10	< 1	0.71	10	1.33	520	< 1
BB08859	201	202	0.4	1.94	< 2	270	0.5	< 2	0.50	< 0.5	12	37	16	3.45	< 10	1	0.44	20	1.02	615	1
BB08860	201	202	< 0.2	2.19	12	120	1.0	< 2	0.17	< 0.5	8	44	7	3.87	10	< 1	0.24	10	0.99	310	< 1
BB08861	201	202	< 0.2	2.04	8	140	0.5	< 2	0.24	< 0.5	7	35	7	3.15	10	< 1	0.45	10	0.91	305	< 1
BB08862	201	202	< 0.2	2.19	20	220	1.0	< 2	0.65	< 0.5	14	47	16	3.96	< 10	< 1	0.76	20	1.32	720	< 1
BB08863	201	202	< 0.2	1.35	2	120	< 0.5	< 2	0.51	< 0.5	7	54	3	2.41	< 10	< 1	0.61	10	0.97	255	< 1
BB08864	201	202	< 0.2	2.67	2	240	0.5	< 2	0.69	< 0.5	18	53	36	5.10	10	< 1	1.11	10	1.73	785	< 1
BB08865	201	202	< 0.2	1.90	2	220	0.5	< 2	0.50	< 0.5	11	32	25	3.10	< 10	< 1	0.59	30	0.93	610	< 1
BB08866	201	202	< 0.2	1.56	2	150	0.5	< 2	0.34	< 0.5	7	29	15	2.26	< 10	< 1	0.44	30	0.67	335	< 1
BB08867	201	202	< 0.2	1.81	< 2	190	0.5	< 2	0.29	< 0.5	6	28	17	2.11	< 10	< 1	0.43	30	0.57	270	< 1
BB11162	201	202	< 0.2	1.82	< 2	180	1.5	< 2	0.23	< 0.5	8	27	16	3.17	< 10	< 1	0.27	30	0.77	390	2
BB11163	201	202	< 0.2	2.76	2	330	2.5	< 2	0.16	1.0	12	41	21	4.71	10	< 1	0.41	80	1.06	775	1
BB11164	201	202	< 0.2	1.24	2	350	0.5	< 2	0.09	1.5	4	20	7	2.28	< 10	< 1	0.30	40	0.61	195	1
BB11165	201	202	0.8	1.16	< 2	330	0.5	< 2	0.23	< 0.5	1	10	27	1.19	< 10	< 1	0.05	40	0.14	165	< 1
BB11166	201	202	< 0.2	1.34	2	100	< 0.5	< 2	0.06	< 0.5	4	20	7	2.76	< 10	< 1	0.14	20	0.43	220	1
BB11167	201	202	0.2	0.21	< 2	50	< 0.5	< 2	0.04	< 0.5	< 1	3	1	0.33	< 10	< 1	0.03	< 10	0.03	15	< 1
BB11168	201	202	< 0.2	0.63	2	140	< 0.5	< 2	0.12	< 0.5	1	13	4	1.18	< 10	< 1	0.11	30	0.18	90	1
BB11169	201	202	< 0.2	1.08	< 2	110	< 0.5	< 2	0.11	< 0.5	3	17	5	1.92	< 10	< 1	0.15	20	0.37	220	1
BB11170	201	202	< 0.2	2.09	2	110	0.5	< 2	0.10	< 0.5	6	29	7	3.45	10	1	0.19	10	0.61	340	1
BB11171	201	202	< 0.2	1.37	2	90	< 0.5	< 2	0.09	< 0.5	4	22	6	2.62	10	< 1	0.14	20	0.43	250	1

CERTIFICATION: *Haut Bichler*



# Chemex Labs Ltd.

Analytical Chemists \* Geochemists \* Registered Assayers  
 212 Brooksbank Ave., North Vancouver  
 British Columbia, Canada V7J 2C1  
 PHONE: 604-984-0221 FAX: 604-984-0218

EXPATRIATE RESOURCES LTD.  
 C/O ARCHER, CATHRO & ASSOCIATES (1981) LIMITED  
 1016 - 510 W. HASTINGS ST.  
 VANCOUVER, BC  
 V6B 1L8

Page Number : 1-B  
 Total Pages : 2  
 Certificate Date: 21-SEP-96  
 Invoice No. : 19631760  
 P.O. Number :  
 Account : MPO

Project : ONSIDE  
 Comments:

## CERTIFICATE OF ANALYSIS A9631760

SAMPLE	PREP CODE	Na %	Ni ppm	P ppm	Pb ppm	Sb ppm	Sc ppm	Sr ppm	Ti %	Tl ppm	U ppm	V ppm	W ppm	Zn ppm
BB08838	201 202	< 0.01	12	770	8	< 2	4	8	0.11	< 10	< 10	55	< 10	72
BB08839	201 202	< 0.01	10	450	14	< 2	2	10	0.08	< 10	< 10	41	< 10	60
BB08840	201 202	< 0.01	12	520	8	< 2	7	8	0.23	< 10	< 10	62	< 10	68
BB08841	201 202	< 0.01	10	440	18	< 2	4	7	0.12	< 10	< 10	40	< 10	120
BB08842	201 202	< 0.01	23	570	18	< 2	6	15	0.11	< 10	< 10	40	< 10	620
BB08843	201 202	< 0.01	8	390	18	< 2	1	7	0.06	< 10	< 10	33	< 10	98
BB08844	201 202	< 0.01	11	920	12	< 2	4	8	0.09	< 10	< 10	45	< 10	96
BB08845	201 202	< 0.01	9	760	8	< 2	3	5	0.11	< 10	< 10	39	< 10	56
BB08846	201 202	< 0.01	15	700	10	< 2	8	10	0.36	< 10	< 10	106	< 10	112
BB08847	201 202	< 0.01	11	460	8	< 2	9	8	0.33	< 10	< 10	90	< 10	96
BB08848	201 202	< 0.01	9	610	12	< 2	4	6	0.16	< 10	< 10	60	< 10	82
BB08849	201 202	0.07	3	590	4	< 2	< 1	8	0.02	< 10	< 10	15	< 10	32
BB08850	201 202	< 0.01	7	880	22	< 2	2	17	0.05	< 10	< 10	30	< 10	88
BB08851	201 202	< 0.01	2	510	14	< 2	1	11	< 0.01	< 10	< 10	18	< 10	78
BB08852	201 202	< 0.01	7	610	20	< 2	5	11	0.14	< 10	< 10	54	< 10	104
BB08853	201 202	< 0.01	14	790	20	< 2	7	14	0.23	< 10	< 10	69	< 10	100
BB08854	201 202	< 0.01	9	1050	8	< 2	7	21	0.21	< 10	10	67	< 10	120
BB08855	201 202	< 0.01	17	1030	8	< 2	9	17	0.34	< 10	< 10	98	< 10	90
BB08856	201 202	< 0.01	14	1010	12	< 2	7	12	0.20	< 10	< 10	74	< 10	84
BB08857	201 202	< 0.01	12	930	6	< 2	5	11	0.16	< 10	< 10	53	< 10	60
BB08858	201 202	< 0.01	20	710	8	< 2	7	18	0.24	< 10	< 10	82	< 10	96
BB08859	201 202	0.01	14	1090	8	< 2	7	21	0.16	< 10	10	74	< 10	74
BB08860	201 202	< 0.01	14	620	12	< 2	5	6	0.25	< 10	< 10	80	< 10	72
BB08861	201 202	< 0.01	13	380	12	< 2	5	6	0.28	< 10	< 10	68	< 10	72
BB08862	201 202	< 0.01	17	1650	8	< 2	7	14	0.22	< 10	< 10	80	< 10	86
BB08863	201 202	< 0.01	15	40	6	< 2	4	7	0.29	< 10	< 10	45	< 10	60
BB08864	201 202	< 0.01	20	1530	6	< 2	8	16	0.36	< 10	< 10	113	< 10	154
BB08865	201 202	< 0.01	15	890	8	< 2	6	19	0.20	< 10	< 10	61	< 10	84
BB08866	201 202	< 0.01	14	860	8	< 2	4	13	0.13	< 10	< 10	41	< 10	62
BB08867	201 202	0.01	16	570	8	< 2	4	15	0.11	< 10	< 10	35	< 10	58
BB11162	201 202	< 0.01	14	470	16	< 2	5	13	0.14	< 10	< 10	51	< 10	114
BB11163	201 202	< 0.01	16	840	14	< 2	8	10	0.19	< 10	< 10	77	< 10	146
BB11164	201 202	< 0.01	7	240	12	< 2	4	11	0.14	< 10	< 10	47	< 10	78
BB11165	201 202	0.03	9	1090	12	< 2	1	16	0.01	< 10	< 10	20	< 10	38
BB11166	201 202	< 0.01	9	490	14	< 2	3	7	0.13	< 10	< 10	63	< 10	50
BB11167	201 202	0.06	1	280	2	< 2	< 1	4	< 0.01	< 10	< 10	10	< 10	6
BB11168	201 202	< 0.01	3	210	10	< 2	1	8	0.13	< 10	< 10	34	< 10	20
BB11169	201 202	< 0.01	7	360	8	< 2	3	8	0.16	< 10	< 10	53	< 10	38
BB11170	201 202	< 0.01	10	980	10	< 2	4	6	0.13	< 10	< 10	62	< 10	56
BB11171	201 202	< 0.01	8	830	12	< 2	3	6	0.17	< 10	< 10	65	< 10	50

CERTIFICATION:

*Hart Bichler*



# Chemex Labs Ltd.

Analytical Chemists \* Geochemists \* Registered Assayers  
 212 Brooksbank Ave., North Vancouver  
 British Columbia, Canada V7J 2C1  
 PHONE: 604-984-0221 FAX: 604-984-0218

EXPATRIATE RESOURCES LTD.  
 C/O ARCHER, CATHRO & ASSOCIATES (1981) LIMITED  
 1016 - 510 W. HASTINGS ST.  
 VANCOUVER, BC  
 V6B 1L8

Page Number : 2-A  
 Total Pages : 2  
 Certificate Date: 21-SEP-96  
 Invoice No. : I9631760  
 P.O. Number :  
 Account : MPO

Project : ONSIDE  
 Comments:

## CERTIFICATE OF ANALYSIS A9631760

SAMPLE	PREP CODE		Ag	Al	As	Ba	Be	Bi	Ca	Cd	Co	Cr	Cu	Fe	Ga	Hg	K	La	Mg	Mn	Mo
			ppm	%	ppm	ppm	ppm	ppm	%	ppm	ppm	ppm	ppm	%	ppm	ppm	%	ppm	%	ppm	ppm
BB11172	201	202	0.2	3.13	2	340	1.5	< 2	0.18	< 0.5	9	37	19	4.12	< 10	< 1	0.29	30	0.82	425	3
BB11173	201	202	0.6	2.38	< 2	530	2.0	< 2	1.45	2.5	7	21	35	2.59	< 10	< 1	0.19	60	0.52	1155	3
BB11174	201	202	< 0.2	1.76	4	180	0.5	< 2	0.19	< 0.5	6	28	12	2.86	< 10	< 1	0.23	20	0.62	245	1
BB11175	201	202	< 0.2	2.47	< 2	400	2.0	< 2	1.24	2.0	8	31	28	3.35	< 10	< 1	0.44	130	0.84	385	< 1
BB11176	201	202	< 0.2	1.47	< 2	210	0.5	< 2	0.42	< 0.5	8	28	6	2.88	< 10	< 1	0.45	30	0.85	430	1
BB11177	201	202	< 0.2	2.21	2	340	0.5	< 2	0.54	< 0.5	16	38	8	4.77	10	< 1	0.72	30	1.02	1720	1
BB11178	201	202	< 0.2	3.45	< 2	250	0.5	< 2	0.70	< 0.5	18	87	1	6.28	10	< 1	0.70	10	2.49	725	< 1
BB11179	201	202	< 0.2	1.30	< 2	270	0.5	< 2	0.93	< 0.5	5	15	12	1.78	< 10	< 1	0.32	10	0.56	205	< 1
BB11180	201	202	< 0.2	1.27	< 2	90	< 0.5	4	0.30	< 0.5	5	29	4	2.20	< 10	< 1	0.32	20	0.72	245	< 1
BB11226	201	202	< 0.2	2.10	< 2	340	0.5	< 2	0.08	< 0.5	14	28	21	4.86	10	< 1	0.74	10	1.03	750	1
BB11227	201	202	< 0.2	2.72	< 2	430	3.5	< 2	0.32	< 0.5	20	26	94	4.16	10	< 1	0.43	90	0.67	2590	2
BB11228	201	202	< 0.2	2.62	< 2	320	3.0	< 2	0.38	< 0.5	11	34	48	3.91	10	< 1	0.70	60	0.96	750	1
BB11229	201	202	< 0.2	1.80	< 2	220	2.0	< 2	0.31	< 0.5	5	19	49	2.53	< 10	< 1	0.34	80	0.49	305	1
BB11230	201	202	0.2	2.26	< 2	590	4.0	< 2	3.24	5.5	5	17	43	2.31	< 10	< 1	0.66	240	0.65	685	1

CERTIFICATION: Hart Buchler



# Chemex Labs Ltd.

Analytical Chemists \* Geochemists \* Registered Assayers  
 212 Brooksbank Ave., North Vancouver  
 British Columbia, Canada V7J 2C1  
 PHONE: 604-984-0221 FAX: 604-984-0218

EXPATRIATE RESOURCES LTD.  
 C/O ARCHER, CATHRO & ASSOCIATES (1981) LIMITED  
 1016 - 510 W. HASTINGS ST.  
 VANCOUVER, BC  
 V6B 1L8

Page Number : 2-B  
 Total Pages : 2  
 Certificate Date: 21-SEP-96  
 Invoice No. : I9631760  
 P.O. Number :  
 Account : MPO

Project : ONSIDE  
 Comments:

## CERTIFICATE OF ANALYSIS

### A9631760

SAMPLE	PREP CODE		Na	Ni	P	Pb	Sb	Sc	Sr	Ti	Tl	U	V	W	Zn
			%	ppm	ppm	ppm	ppm	ppm	ppm	%	ppm	ppm	ppm	ppm	ppm
BB11172	201	202	< 0.01	20	1070	14	< 2	7	13	0.12	< 10	< 10	63	< 10	280
BB11173	201	202	0.01	18	2120	10	< 2	4	46	0.04	< 10	20	38	< 10	274
BB11174	201	202	< 0.01	12	680	14	< 2	4	13	0.12	< 10	< 10	53	< 10	146
BB11175	201	202	0.01	23	1010	14	< 2	8	38	0.11	< 10	50	42	< 10	474
BB11176	201	202	< 0.01	12	330	8	< 2	6	15	0.13	< 10	< 10	45	< 10	96
BB11177	201	202	< 0.01	9	570	6	< 2	8	20	0.15	< 10	< 10	112	< 10	76
BB11178	201	202	< 0.01	22	250	6	< 2	14	17	0.34	< 10	< 10	113	< 10	114
BB11179	201	202	0.03	8	430	4	< 2	4	25	0.08	< 10	< 10	34	< 10	34
BB11180	201	202	< 0.01	10	270	8	< 2	4	9	0.20	< 10	< 10	51	< 10	44
BB11226	201	202	< 0.01	10	630	10	< 2	7	8	0.26	< 10	< 10	72	< 10	68
BB11227	201	202	0.02	15	930	14	< 2	6	20	0.08	< 10	< 10	54	< 10	62
BB11228	201	202	< 0.01	18	450	14	< 2	7	16	0.13	< 10	< 10	53	< 10	120
BB11229	201	202	0.04	15	460	22	< 2	5	17	0.05	< 10	10	33	< 10	76
BB11230	201	202	0.11	19	1710	10	< 2	7	102	0.04	< 10	30	25	< 10	244

CERTIFICATION: Harold Bechler



# Chemex Labs Ltd.

Analytical Chemists \* Geochemists \* Registered Assayers

212 Brooksbank Ave., North Vancouver  
British Columbia, Canada V7J 2C1  
PHONE: 604-984-0221 FAX: 604-984-0218

EXPATRIATE RESOURCES LTD.  
C/O ARCHER, CATHRO & ASSOCIATES (1981) LIMITED  
1016 - 510 W. HASTINGS ST.  
VANCOUVER, BC  
V6B 1L8

Project : OFFSIDE  
Comments:

Page : 1-A  
Total Pages : 6  
Certificate Date: 15-SEP-96  
Invoice No. : 19631042  
P.O. Number :  
Account : MPO

## CERTIFICATE OF ANALYSIS A9631042

SAMPLE	PREP CODE		Ag	Al	As	Ba	Be	Bi	Ca	Cd	Co	Cr	Cu	Fe	Ga	Hg	K	La	Ng	Mn	Mo
			ppm	%	ppm	ppm	ppm	ppm	%	ppm	ppm	ppm	ppm	%	ppm	ppm	%	ppm	%	ppm	ppm
BB03980	201	202	< 0.2	2.54	4	160	0.5	< 2	0.21	< 0.5	9	45	14	3.08	10	< 1	0.36	10	1.17	285	1
BB03981	201	202	< 0.2	4.05	8	320	2.0	< 2	0.25	< 0.5	15	56	12	5.54	10	< 1	0.43	40	1.66	915	2
BB03982	201	202	< 0.2	2.68	6	90	0.5	< 2	0.13	< 0.5	11	48	11	4.13	10	< 1	0.47	20	1.36	365	1
BB03983	201	202	< 0.2	2.83	8	180	1.5	< 2	0.24	< 0.5	12	50	12	4.09	10	< 1	0.52	20	1.56	495	< 1
BB03984	201	202	< 0.2	2.22	2	160	0.5	< 2	0.20	< 0.5	10	41	10	2.75	10	< 1	0.35	30	1.11	240	< 1
BB03985	201	202	< 0.2	1.38	6	50	< 0.5	< 2	0.05	< 0.5	4	18	8	2.49	< 10	< 1	0.19	10	0.51	175	< 1
BB03986	201	202	< 0.2	2.39	4	160	0.5	< 2	0.12	< 0.5	9	29	7	3.14	10	< 1	0.40	40	1.26	270	1
BB03987	201	202	< 0.2	1.59	4	100	< 0.5	< 2	0.09	< 0.5	6	22	8	2.14	< 10	< 1	0.17	30	0.76	180	< 1
BB03988	201	202	< 0.2	1.77	6	120	0.5	< 2	0.19	< 0.5	7	28	16	2.65	< 10	< 1	0.22	30	0.83	285	1
BB03989	201	202	< 0.2	2.31	6	170	1.0	< 2	0.35	< 0.5	11	34	28	3.49	< 10	< 1	0.59	50	1.26	805	1
BB03990	201	202	< 0.2	2.01	4	120	0.5	< 2	0.20	< 0.5	9	33	15	3.02	< 10	< 1	0.25	30	0.94	400	2
BB03991	201	202	< 0.2	2.66	8	180	1.0	< 2	0.12	< 0.5	9	31	30	4.37	10	< 1	0.43	40	1.00	375	5
BB03992	201	202	< 0.2	2.52	8	130	0.5	< 2	0.14	< 0.5	11	53	31	3.49	10	< 1	0.63	40	1.35	335	1
BB03993	201	202	< 0.2	2.36	6	140	0.5	< 2	0.07	< 0.5	8	29	24	3.60	10	< 1	0.42	40	1.11	290	4
BB03994	201	202	< 0.2	2.07	4	120	0.5	< 2	0.08	< 0.5	8	23	10	3.01	< 10	< 1	0.36	30	0.97	260	2
BB03995	201	202	< 0.2	1.82	4	90	0.5	< 2	0.07	< 0.5	7	22	6	2.83	< 10	< 1	0.28	20	0.80	265	1
BB03996	201	202	< 0.2	1.98	8	120	0.5	< 2	0.18	< 0.5	9	28	12	2.96	< 10	< 1	0.21	30	0.94	290	1
BB03997	201	202	< 0.2	1.70	4	80	0.5	< 2	0.07	< 0.5	7	21	8	2.68	< 10	< 1	0.19	20	0.76	210	1
BB03998	201	202	< 0.2	1.87	< 2	90	0.5	< 2	0.08	< 0.5	6	21	8	2.63	< 10	< 1	0.21	30	0.77	205	< 1
BB03999	201	202	< 0.2	1.65	4	120	0.5	< 2	0.09	< 0.5	6	20	9	2.31	< 10	< 1	0.15	30	0.67	180	< 1
BB10057	201	202	< 0.2	1.69	4	190	0.5	< 2	0.12	< 0.5	7	23	10	3.29	10	< 1	0.27	20	0.53	895	2
BB10058	201	202	< 0.2	2.96	6	240	1.0	< 2	0.13	< 0.5	11	36	19	4.31	10	< 1	0.56	30	1.27	585	2
BB10059	201	202	< 0.2	1.79	2	140	0.5	< 2	0.12	< 0.5	6	22	6	2.72	< 10	< 1	0.42	20	0.84	255	< 1
BB10060	201	202	< 0.2	2.10	< 2	190	0.5	< 2	0.10	< 0.5	9	31	6	3.27	10	< 1	0.49	20	1.15	335	< 1
BB10094	201	202	< 0.2	2.51	2	180	1.0	< 2	0.27	< 0.5	10	43	11	3.38	10	1	0.39	30	1.19	515	< 1
BB10095	201	202	< 0.2	2.48	6	190	0.5	< 2	0.24	< 0.5	11	47	11	3.59	10	< 1	0.58	40	1.26	365	< 1
BB10096	201	202	< 0.2	2.01	8	170	0.5	< 2	0.24	< 0.5	9	33	10	3.19	< 10	< 1	0.30	20	1.00	290	1
BB10097	201	202	< 0.2	2.12	4	150	0.5	< 2	0.22	< 0.5	8	28	9	3.03	< 10	< 1	0.20	20	0.99	395	< 1
BB10098	201	202	< 0.2	2.15	4	140	0.5	< 2	0.21	< 0.5	8	30	9	3.27	10	< 1	0.31	20	1.13	410	1
BB10099	201	202	< 0.2	2.31	6	210	0.5	< 2	0.29	< 0.5	9	30	9	3.67	10	< 1	0.42	30	1.30	520	1
BB10100	201	202	< 0.2	2.72	6	200	0.5	< 2	0.34	< 0.5	12	43	14	4.28	10	< 1	0.66	30	1.53	535	1
BB10101	201	202	< 0.2	2.22	6	170	0.5	< 2	0.20	< 0.5	9	36	10	3.27	10	< 1	0.44	30	1.15	325	< 1
BB10102	201	202	< 0.2	2.62	8	170	1.0	< 2	0.15	< 0.5	11	48	11	3.75	10	< 1	0.72	50	1.43	445	< 1
BB10103	201	202	< 0.2	2.28	6	160	0.5	< 2	0.18	< 0.5	10	40	11	3.39	10	< 1	0.40	20	1.20	425	< 1
BB10104	201	202	< 0.2	2.52	6	220	0.5	< 2	0.24	< 0.5	10	48	14	3.53	10	< 1	0.39	20	1.25	460	1
BB10105	201	202	< 0.2	2.65	2	170	0.5	< 2	0.22	< 0.5	11	53	20	3.81	10	1	0.37	20	1.34	415	1
BB10106	201	202	< 0.2	2.21	4	160	0.5	< 2	0.09	< 0.5	8	28	6	3.49	10	< 1	0.49	20	1.08	355	< 1
BB10107	201	202	< 0.2	1.94	< 2	160	0.5	< 2	0.10	< 0.5	7	27	5	3.02	10	< 1	0.44	10	0.95	285	< 1
BB10108	201	202	< 0.2	2.30	6	210	0.5	< 2	0.21	< 0.5	10	35	8	3.43	10	< 1	0.56	30	1.26	395	1
BB10109	201	202	< 0.2	1.57	2	150	0.5	< 2	0.10	< 0.5	5	21	8	2.66	10	< 1	0.39	20	0.67	235	< 1

CERTIFICATION:

*Hart Buchler*



# Chemex Labs Ltd.

Analytical Chemists \* Geochemists \* Registered Assayers

212 Brooksbank Ave., North Vancouver  
British Columbia, Canada V7J 2C1  
PHONE: 604-984-0221 FAX: 604-984-0218

EXPATRIATE RESOURCES LTD.  
C/O ARCHER, CATHRO & ASSOCIATES (1981) LIMITED  
1016 - 510 W. HASTINGS ST.  
VANCOUVER, BC  
V6B 1L8

Page Number : 1-B  
Total Pages : 6  
Certificate Date: 15-SEP-96  
Invoice No. : I9631042  
P.O. Number :  
Account : MPO

Project : OFFSIDE  
Comments:

## CERTIFICATE OF ANALYSIS A9631042

SAMPLE	PREP		Na	Ni	P	Pb	Sb	Sc	Sr	Ti	Tl	U	V	W	Zn
	CODE		%	ppm	ppm	ppm	ppm	ppm	ppm	%	ppm	ppm	ppm	ppm	ppm
BB03980	201	202	0.01	17	690	6	< 2	5	11	0.14	< 10	< 10	66	< 10	54
BB03981	201	202	< 0.01	23	1150	10	< 2	9	18	0.22	< 10	< 10	110	< 10	78
BB03982	201	202	< 0.01	23	500	10	< 2	5	11	0.20	< 10	< 10	68	< 10	66
BB03983	201	202	< 0.01	25	720	8	< 2	6	15	0.23	< 10	< 10	75	< 10	66
BB03984	201	202	< 0.01	19	630	4	< 2	6	12	0.17	< 10	< 10	68	< 10	56
BB03985	201	202	< 0.01	8	270	4	< 2	3	5	0.12	< 10	< 10	42	< 10	28
BB03986	201	202	< 0.01	13	440	2	< 2	4	10	0.12	< 10	< 10	45	< 10	40
BB03987	201	202	< 0.01	11	380	6	< 2	2	8	0.08	< 10	< 10	33	< 10	34
BB03988	201	202	< 0.01	18	610	8	< 2	3	14	0.10	< 10	< 10	49	< 10	66
BB03989	201	202	< 0.01	19	980	4	< 2	6	20	0.16	< 10	< 10	61	< 10	82
BB03990	201	202	< 0.01	18	630	8	< 2	4	13	0.12	< 10	< 10	47	< 10	86
BB03991	201	202	< 0.01	15	890	8	< 2	4	13	0.09	< 10	< 10	50	< 10	58
BB03992	201	202	< 0.01	19	590	6	< 2	5	9	0.17	< 10	< 10	57	< 10	50
BB03993	201	202	< 0.01	13	470	6	< 2	3	8	0.09	< 10	< 10	37	< 10	36
BB03994	201	202	< 0.01	12	440	6	< 2	2	7	0.08	< 10	< 10	34	< 10	40
BB03995	201	202	< 0.01	11	430	6	< 2	3	6	0.08	< 10	< 10	38	< 10	36
BB03996	201	202	< 0.01	19	640	10	< 2	3	12	0.09	< 10	< 10	44	< 10	62
BB03997	201	202	< 0.01	12	320	8	< 2	3	6	0.07	< 10	< 10	35	< 10	42
BB03998	201	202	< 0.01	11	330	6	< 2	3	7	0.07	< 10	< 10	33	< 10	38
BB03999	201	202	< 0.01	11	300	6	< 2	3	8	0.07	< 10	< 10	31	< 10	42
BB10057	201	202	< 0.01	9	1390	12	< 2	1	10	0.05	< 10	< 10	67	< 10	50
BB10058	201	202	< 0.01	12	700	8	< 2	5	8	0.14	< 10	< 10	81	< 10	64
BB10059	201	202	< 0.01	10	510	6	< 2	4	7	0.15	< 10	< 10	47	< 10	42
BB10060	201	202	< 0.01	12	430	2	< 2	5	7	0.19	< 10	< 10	60	< 10	52
BB10094	201	202	< 0.01	23	740	8	< 2	5	16	0.16	< 10	< 10	54	< 10	58
BB10095	201	202	< 0.01	19	740	6	< 2	6	13	0.22	< 10	< 10	69	< 10	54
BB10096	201	202	< 0.01	17	780	8	< 2	5	13	0.16	< 10	< 10	64	< 10	56
BB10097	201	202	< 0.01	16	680	8	< 2	4	13	0.13	< 10	< 10	52	< 10	52
BB10098	201	202	< 0.01	14	710	4	< 2	4	12	0.15	< 10	< 10	54	< 10	48
BB10099	201	202	< 0.01	15	820	6	< 2	6	14	0.19	< 10	< 10	62	< 10	46
BB10100	201	202	< 0.01	19	1000	6	< 2	8	14	0.27	< 10	< 10	84	< 10	58
BB10101	201	202	< 0.01	18	650	8	< 2	5	12	0.17	< 10	< 10	57	< 10	52
BB10102	201	202	< 0.01	19	620	6	< 2	6	10	0.20	< 10	< 10	59	< 10	52
BB10103	201	202	< 0.01	18	660	8	< 2	5	10	0.17	< 10	< 10	62	< 10	58
BB10104	201	202	< 0.01	22	860	6	< 2	6	14	0.16	< 10	< 10	70	< 10	72
BB10105	201	202	< 0.01	22	830	8	< 2	5	12	0.17	< 10	< 10	71	< 10	66
BB10106	201	202	< 0.01	12	580	6	< 2	4	8	0.16	< 10	< 10	59	< 10	56
BB10107	201	202	< 0.01	11	600	6	< 2	4	8	0.16	< 10	< 10	53	< 10	50
BB10108	201	202	< 0.01	16	610	4	< 2	6	12	0.19	< 10	< 10	59	< 10	60
BB10109	201	202	< 0.01	7	660	4	< 2	3	8	0.13	< 10	< 10	54	< 10	46

CERTIFICATION: Hart Buchler



# Chemex Labs Ltd.

Analytical Chemists \* Geochemists \* Registered Assayers  
 212 Brooksbank Ave., North Vancouver  
 British Columbia, Canada V7J 2C1  
 PHONE: 604-984-0221 FAX: 604-984-0218

EXPATRIATE RESOURCES LTD.  
 C/O ARCHER, CATHRO & ASSOCIATES (1981) LIMITED  
 1016 - 510 W. HASTINGS ST.  
 VANCOUVER, BC  
 V6B 1L8

Page Number : 2-A  
 Total Pages : 6  
 Certificate Date: 15-SEP-96  
 Invoice No. : I9631042  
 P.O. Number :  
 Account : MPO

Project : OFFSIDE  
 Comments :

## CERTIFICATE OF ANALYSIS A9631042

SAMPLE	PREP CODE	Ag ppm	Al %	As ppm	Ba ppm	Be ppm	Bi ppm	Ca %	Cd ppm	Co ppm	Cr ppm	Cu ppm	Fe %	Ga ppm	Hg ppm	K %	La ppm	Mg %	Mn ppm	Mo ppm
BB10110	201 202	< 0.2	2.07	2	140	0.5	< 2	0.18	< 0.5	10	38	8	3.27	< 10	< 1	0.54	20	1.20	405	1
BB10111	201 202	< 0.2	2.95	6	200	1.0	< 2	0.18	< 0.5	11	43	12	3.97	10	1	0.48	20	1.29	500	< 1
BB10112	201 202	< 0.2	1.28	< 2	70	< 0.5	< 2	0.05	< 0.5	4	15	5	2.33	< 10	< 1	0.29	10	0.56	180	< 1
BB10113	201 202	< 0.2	2.61	4	140	1.0	< 2	0.16	0.5	11	45	12	3.89	10	1	0.54	30	1.45	410	< 1
BB10114	201 202	< 0.2	2.10	10	120	0.5	< 2	0.18	< 0.5	9	37	8	3.68	< 10	< 1	0.39	10	1.09	315	< 1
BB10115	201 202	< 0.2	2.41	10	140	0.5	< 2	0.19	< 0.5	11	40	9	4.08	10	< 1	0.59	20	1.28	405	< 1
BB10116	201 202	< 0.2	1.68	2	120	0.5	< 2	0.06	< 0.5	5	13	5	2.30	< 10	< 1	0.35	30	0.93	235	< 1
BB10117	201 202	< 0.2	2.48	6	140	0.5	< 2	0.14	< 0.5	9	32	7	3.67	10	1	0.53	30	1.23	420	< 1
BB10118	201 202	< 0.2	1.15	< 2	90	< 0.5	< 2	0.04	< 0.5	4	15	4	1.81	< 10	< 1	0.33	10	0.54	205	< 1
BB10119	201 202	< 0.2	2.52	6	160	0.5	< 2	0.16	< 0.5	11	44	11	3.87	< 10	< 1	0.64	20	1.33	390	< 1
BB10120	201 202	< 0.2	3.19	4	220	1.0	< 2	0.19	< 0.5	13	52	19	4.52	10	< 1	0.84	30	1.64	520	< 1
BB10121	201 202	< 0.2	2.24	8	140	0.5	< 2	0.16	< 0.5	10	33	6	4.05	10	< 1	0.66	10	1.36	350	< 1
BB10122	201 202	< 0.2	2.90	6	160	0.5	< 2	0.24	< 0.5	13	59	5	4.40	10	< 1	0.93	30	1.82	420	< 1
BB10123	201 202	< 0.2	2.37	4	130	0.5	< 2	0.18	< 0.5	11	34	11	3.53	< 10	1	0.61	20	1.32	365	< 1
BB10124	201 202	< 0.2	3.04	6	200	0.5	< 2	0.28	0.5	13	52	15	4.35	10	< 1	0.69	30	1.66	455	< 1
BB10125	201 202	< 0.2	3.44	10	270	1.0	< 2	0.22	< 0.5	12	51	24	4.63	10	< 1	0.49	60	1.16	1030	2
BB10126	201 202	< 0.2	2.42	8	160	0.5	< 2	0.19	< 0.5	10	44	11	3.32	< 10	< 1	0.50	20	1.32	330	< 1
BB10127	201 202	< 0.2	2.33	6	150	0.5	< 2	0.20	< 0.5	9	36	7	3.23	< 10	< 1	0.49	30	1.20	320	< 1
BB10128	201 202	< 0.2	2.40	4	150	0.5	< 2	0.17	< 0.5	10	38	9	3.29	< 10	< 1	0.55	30	1.24	330	< 1
BB10129	201 202	< 0.2	1.98	4	120	0.5	< 2	0.13	< 0.5	8	31	6	2.60	< 10	< 1	0.45	20	1.06	255	< 1
BB10130	201 202	< 0.2	2.30	6	140	0.5	< 2	0.14	< 0.5	9	36	9	3.21	< 10	< 1	0.52	30	1.21	280	< 1
BB10131	201 202	< 0.2	2.37	2	180	0.5	< 2	0.15	< 0.5	10	38	10	3.33	< 10	< 1	0.61	30	1.26	340	< 1
BB10132	201 202	< 0.2	2.08	6	200	0.5	< 2	0.21	< 0.5	10	32	11	3.09	< 10	< 1	0.48	30	1.13	335	< 1
BB10133	201 202	< 0.2	2.02	6	170	0.5	< 2	0.41	< 0.5	10	32	7	3.13	< 10	< 1	0.61	20	1.10	590	< 1
BB10134	201 202	< 0.2	1.97	6	160	0.5	< 2	0.40	< 0.5	11	46	15	3.27	< 10	< 1	0.59	30	1.17	440	< 1
BB10135	201 202	< 0.2	2.28	2	180	0.5	< 2	0.27	< 0.5	10	30	6	3.45	< 10	< 1	0.50	30	1.24	415	< 1
BB10136	201 202	< 0.2	2.19	10	140	0.5	< 2	0.19	< 0.5	9	37	8	3.10	< 10	< 1	0.55	30	1.21	355	< 1
BB10137	201 202	< 0.2	2.04	10	150	0.5	< 2	0.13	< 0.5	8	38	10	3.07	< 10	< 1	0.51	10	1.07	325	< 1
BB10138	201 202	< 0.2	1.42	6	160	0.5	< 2	0.26	< 0.5	7	23	7	2.46	< 10	< 1	0.36	20	0.79	250	< 1
BB10139	201 202	0.2	1.02	2	70	< 0.5	< 2	0.08	< 0.5	4	21	4	2.10	< 10	< 1	0.11	10	0.41	150	1
BB10140	201 202	< 0.2	1.08	10	50	< 0.5	< 2	0.07	< 0.5	5	28	6	2.81	< 10	< 1	0.11	10	0.41	270	1
BB10141	201 202	< 0.2	1.34	6	110	< 0.5	< 2	0.26	< 0.5	6	24	7	2.17	< 10	< 1	0.24	20	0.72	225	1
BB10142	201 202	< 0.2	1.23	8	70	< 0.5	< 2	0.13	< 0.5	5	25	7	3.06	< 10	< 1	0.09	10	0.35	600	1
BB10143	201 202	< 0.2	1.65	16	90	0.5	< 2	0.18	< 0.5	6	33	12	3.50	< 10	< 1	0.11	10	0.67	465	1
BB10144	201 202	< 0.2	1.22	2	220	< 0.5	< 2	0.25	< 0.5	6	23	10	1.97	< 10	< 1	0.17	10	0.67	260	1
BB10145	201 202	< 0.2	1.52	6	160	0.5	< 2	0.15	< 0.5	6	24	15	2.20	< 10	< 1	0.16	20	0.66	245	1
BB10146	201 202	0.2	1.20	6	350	0.5	< 2	1.04	2.0	12	23	17	2.83	< 10	< 1	0.23	30	0.43	970	5
BB10147	201 202	< 0.2	0.80	2	60	< 0.5	< 2	0.08	< 0.5	3	22	6	1.67	< 10	< 1	0.07	10	0.25	135	1
BB10148	201 202	< 0.2	0.86	< 2	80	< 0.5	< 2	0.08	< 0.5	3	14	1	1.19	< 10	< 1	0.12	10	0.35	120	1
BB10149	201 202	< 0.2	1.13	10	70	0.5	< 2	0.12	< 0.5	4	18	7	2.78	< 10	< 1	0.15	10	0.41	150	2

CERTIFICATION: Hans Zuchler



# Chemex Labs Ltd.

Analytical Chemists \* Geochemists \* Registered Assayers  
 212 Brooksbank Ave., North Vancouver  
 British Columbia, Canada V7J 2C1  
 PHONE: 604-984-0221 FAX: 604-984-0218

EXPATRIATE RESOURCES LTD.  
 C/O ARCHER, CATHRO & ASSOCIATES (1981) LIMITED  
 1016 - 510 W. HASTINGS ST.  
 VANCOUVER, BC  
 V6B 1L8

Page Number : 2-B  
 Total Pages : 6  
 Certificate Date: 15-SEP-96  
 Invoice No. : I9631042  
 P.O. Number :  
 Account : MPO

Project : OFFSIDE  
 Comments:

## CERTIFICATE OF ANALYSIS A9631042

SAMPLE	PREP CODE		Na	Ni	P	Pb	Sb	Sc	Sr	Ti	Tl	U	V	W	Zn
			%	ppm	ppm	ppm	ppm	ppm	ppm	%	ppm	ppm	ppm	ppm	ppm
BB10110	201	202	< 0.01	18	680	6	< 2	6	9	0.19	< 10	< 10	62	< 10	70
BB10111	201	202	< 0.01	20	920	8	< 2	6	11	0.21	< 10	< 10	76	< 10	80
BB10112	201	202	< 0.01	6	420	4	< 2	3	4	0.15	< 10	< 10	50	< 10	32
BB10113	201	202	< 0.01	19	430	8	< 2	7	10	0.24	< 10	< 10	74	< 10	80
BB10114	201	202	< 0.01	16	630	8	< 2	5	10	0.24	< 10	< 10	75	< 10	60
BB10115	201	202	< 0.01	19	670	8	< 2	6	11	0.25	< 10	< 10	76	< 10	70
BB10116	201	202	< 0.01	6	640	4	< 2	3	5	0.10	< 10	< 10	44	< 10	44
BB10117	201	202	< 0.01	13	730	6	< 2	6	8	0.18	< 10	< 10	63	< 10	62
BB10118	201	202	< 0.01	5	540	2	< 2	1	3	0.10	< 10	< 10	40	< 10	48
BB10119	201	202	< 0.01	19	730	8	< 2	6	10	0.21	< 10	< 10	73	< 10	72
BB10120	201	202	< 0.01	21	800	8	< 2	8	12	0.26	< 10	< 10	85	< 10	76
BB10121	201	202	< 0.01	14	580	6	< 2	6	10	0.31	< 10	< 10	88	< 10	60
BB10122	201	202	< 0.01	21	800	6	< 2	9	12	0.30	< 10	< 10	84	< 10	62
BB10123	201	202	< 0.01	17	620	4	< 2	6	10	0.22	< 10	< 10	71	< 10	56
BB10124	201	202	< 0.01	21	850	6	< 2	8	14	0.27	< 10	< 10	81	< 10	104
BB10125	201	202	< 0.01	23	1240	10	< 2	7	16	0.16	< 10	< 10	98	< 10	96
BB10126	201	202	< 0.01	18	510	4	< 2	5	13	0.21	< 10	< 10	63	< 10	62
BB10127	201	202	< 0.01	16	530	6	< 2	6	12	0.20	< 10	< 10	59	< 10	56
BB10128	201	202	< 0.01	18	530	6	< 2	6	11	0.21	< 10	< 10	60	< 10	60
BB10129	201	202	< 0.01	14	470	6	< 2	5	7	0.16	< 10	< 10	47	< 10	48
BB10130	201	202	< 0.01	15	530	8	< 2	5	9	0.20	< 10	< 10	58	< 10	52
BB10131	201	202	< 0.01	17	500	6	< 2	6	10	0.21	< 10	< 10	60	< 10	60
BB10132	201	202	< 0.01	17	550	6	< 2	6	14	0.20	< 10	< 10	58	< 10	64
BB10133	201	202	< 0.01	15	930	6	< 2	6	14	0.19	< 10	< 10	59	< 10	64
BB10134	201	202	< 0.01	24	910	8	< 2	6	20	0.18	< 10	< 10	59	< 10	70
BB10135	201	202	< 0.01	13	750	2	< 2	6	12	0.21	< 10	< 10	55	< 10	68
BB10136	201	202	< 0.01	16	560	4	< 2	5	10	0.20	< 10	< 10	53	< 10	56
BB10137	201	202	< 0.01	15	690	8	< 2	5	7	0.16	< 10	< 10	61	< 10	54
BB10138	201	202	< 0.01	12	900	6	< 2	4	9	0.12	< 10	< 10	40	< 10	46
BB10139	201	202	< 0.01	9	450	8	< 2	1	5	0.09	< 10	< 10	44	< 10	32
BB10140	201	202	< 0.01	14	870	12	< 2	1	5	0.08	< 10	< 10	49	< 10	58
BB10141	201	202	< 0.01	12	940	8	< 2	3	9	0.10	< 10	< 10	34	< 10	54
BB10142	201	202	< 0.01	12	1470	18	< 2	1	6	0.08	< 10	< 10	55	< 10	66
BB10143	201	202	< 0.01	20	1860	16	< 2	2	9	0.07	< 10	< 10	61	< 10	100
BB10144	201	202	< 0.01	15	620	8	< 2	3	11	0.08	< 10	< 10	30	< 10	64
BB10145	201	202	< 0.01	22	460	10	< 2	3	8	0.07	< 10	< 10	31	< 10	58
BB10146	201	202	< 0.01	24	1000	20	< 2	2	26	0.06	< 10	< 10	36	< 10	184
BB10147	201	202	< 0.01	8	460	10	< 2	1	5	0.07	< 10	< 10	42	< 10	36
BB10148	201	202	< 0.01	5	300	14	< 2	1	6	0.07	< 10	< 10	21	< 10	46
BB10149	201	202	< 0.01	10	1220	12	< 2	1	7	0.06	< 10	< 10	29	< 10	66

CERTIFICATION: Hart Buchler



# Chemex Labs Ltd.

Analytical Chemists \* Geochemists \* Registered Assayers

212 Brooksbank Ave., North Vancouver  
British Columbia, Canada V7J 2C1  
PHONE: 604-984-0221 FAX: 604-984-0218

EXPATRIATE RESOURCES LTD.  
C/O ARCHER, CATHRO & ASSOCIATES (1981) LIMITED  
1016 - 510 W. HASTINGS ST.  
VANCOUVER, BC  
V6B 1L8

Page Number : 3-A  
Total Pages : 6  
Certificate Date: 15-SEP-96  
Invoice No. : I9631042  
P.O. Number :  
Account : MPO

Project : OFFSIDE  
Comments :

## CERTIFICATE OF ANALYSIS A9631042

SAMPLE	PREP CODE		Ag	Al	As	Ba	Be	Bi	Ca	Cd	Co	Cr	Cu	Fe	Ga	Hg	K	La	Mg	Mn	Mo	
			ppm	%	ppm	ppm	ppm	ppm	%	ppm	ppm	ppm	ppm	%	ppm	ppm	%	ppm	%	ppm	ppm	
BB10150	201	202	< 0.2	2.03	< 2	180	0.5	< 2	0.09	< 0.5	6	18	7	2.98	< 10	< 1	0.25	10	0.84	265	1	
BB10151	201	202	< 0.2	1.31	< 2	150	< 0.5	< 2	0.10	< 0.5	4	13	5	2.05	< 10	< 1	0.28	10	0.53	215	1	
BB10152	201	202	< 0.2	1.10	2	130	< 0.5	< 2	0.06	< 0.5	4	12	4	1.88	< 10	1	0.29	10	0.50	300	< 1	
BB10153	201	202	< 0.2	0.91	< 2	80	< 0.5	< 2	0.06	< 0.5	2	11	4	1.27	< 10	< 1	0.06	10	0.31	90	< 1	
BB10154	201	202	< 0.2	1.53	< 2	200	< 0.5	< 2	0.07	< 0.5	5	17	9	2.40	< 10	< 1	0.28	10	0.60	195	< 1	
BB10155	201	202	< 0.2	2.07	6	280	0.5	< 2	0.14	< 0.5	8	25	12	3.30	< 10	< 1	0.48	30	1.05	320	< 1	
BB10156	201	202	< 0.2	1.63	4	180	< 0.5	< 2	0.09	< 0.5	6	21	11	2.76	< 10	< 1	0.17	20	0.64	210	< 1	
BB10157	201	202	< 0.2	1.90	4	170	0.5	< 2	0.35	< 0.5	6	7	17	3.27	< 10	< 1	0.48	10	0.40	265	< 1	
BB10158	201	202	< 0.2	1.17	2	210	< 0.5	< 2	0.10	< 0.5	5	19	7	2.27	< 10	< 1	0.36	10	0.57	415	< 1	
BB10159	201	202	< 0.2	1.63	8	190	0.5	< 2	0.13	< 0.5	6	23	9	2.82	< 10	< 1	0.31	20	0.66	270	< 1	
BB10160	201	202	< 0.2	2.11	6	240	0.5	< 2	0.13	< 0.5	7	27	11	3.29	< 10	< 1	0.27	20	0.88	270	< 1	
BB10161	201	202	< 0.2	1.20	6	170	< 0.5	< 2	0.09	< 0.5	5	17	7	2.14	< 10	< 1	0.27	10	0.57	205	< 1	
BB10162	201	202	< 0.2	2.06	< 2	220	0.5	< 2	0.32	< 0.5	7	13	17	3.83	10	< 1	0.52	20	0.83	210	< 1	
BB10163	201	202	< 0.2	1.66	2	180	0.5	< 2	0.17	< 0.5	7	23	10	2.81	< 10	< 1	0.32	10	0.76	225	< 1	
BB10164	201	202	< 0.2	1.82	4	210	0.5	< 2	0.17	< 0.5	8	25	9	3.00	< 10	< 1	0.28	20	0.81	240	< 1	
BB10165	201	202	< 0.2	1.93	< 2	270	0.5	< 2	0.24	< 0.5	10	35	9	3.06	< 10	< 1	0.48	20	1.06	240	< 1	
BB10166	201	202	< 0.2	1.22	< 2	120	< 0.5	< 2	0.08	< 0.5	5	15	6	2.14	< 10	< 1	0.13	10	0.41	560	1	
BB10167	201	202	< 0.2	1.92	2	210	0.5	< 2	0.19	< 0.5	7	40	11	2.69	< 10	< 1	0.22	10	0.69	235	1	
BB10168	201	202	< 0.2	1.37	2	180	0.5	4	0.15	< 0.5	5	27	13	2.13	< 10	< 1	0.20	10	0.48	240	1	
BB10169	201	202	< 0.2	0.93	6	120	< 0.5	< 2	0.08	< 0.5	4	18	8	1.98	< 10	< 1	0.14	10	0.20	400	1	
BB10169	201	202	< 0.2	1.41	6	120	< 0.5	< 2	0.13	< 0.5	7	21	6	2.29	< 10	< 1	0.26	10	0.68	210	< 1	
BB10170	201	202	< 0.2	0.95	< 2	160	< 0.5	< 2	0.11	< 0.5	4	15	4	1.58	< 10	< 1	0.23	10	0.46	130	< 1	
BB10171	201	202	< 0.2	1.10	2	110	< 0.5	< 2	0.11	< 0.5	4	16	5	1.68	< 10	< 1	0.20	10	0.43	130	< 1	
BB10172	201	202	< 0.2	0.94	2	120	0.5	< 2	0.10	< 0.5	4	12	5	1.65	< 10	< 1	0.20	20	0.29	225	< 1	
BB10173	201	202	0.2	1.22	2	160	0.5	< 2	0.08	< 0.5	10	17	8	2.57	< 10	< 1	0.18	10	0.26	760	1	
BB10174	201	202	< 0.2	1.16	2	80	< 0.5	< 2	0.12	< 0.5	4	16	4	1.91	< 10	< 1	0.22	20	0.50	160	< 1	
BB10175	201	202	< 0.2	1.55	4	80	1.0	< 2	0.13	< 0.5	4	13	3	2.32	< 10	< 1	0.17	30	0.40	165	< 1	
BB10176	201	202	< 0.2	0.69	2	80	< 0.5	< 2	0.07	< 0.5	3	9	3	1.07	< 10	< 1	0.08	10	0.19	130	< 1	
BB10177	201	202	< 0.2	1.72	4	310	0.5	< 2	0.24	< 0.5	9	30	3	3.15	< 10	< 1	0.57	10	1.08	295	< 1	
BB10178	201	202	< 0.2	0.33	< 2	10	< 0.5	< 2	0.09	< 0.5	1	3	1	0.43	< 10	< 1	0.02	< 10	0.09	25	< 1	
BB10198	201	202	< 0.2	1.84	6	80	0.5	< 2	0.08	< 0.5	7	26	8	2.89	< 10	1	0.32	10	0.80	235	< 1	
BB10199	201	202	< 0.2	2.47	8	240	1.5	< 2	0.27	< 0.5	10	36	7	3.18	< 10	< 1	0.52	70	1.23	330	< 1	
BB10200	201	202	< 0.2	1.83	6	110	0.5	< 2	0.21	< 0.5	8	27	8	2.86	< 10	< 1	0.32	30	0.80	265	< 1	
BB10201	201	202	< 0.2	1.98	8	120	0.5	< 2	0.19	< 0.5	8	26	9	2.83	< 10	< 1	0.40	20	0.92	280	< 1	
BB10202	201	202	< 0.2	2.74	8	230	1.0	< 2	0.32	< 0.5	13	37	7	4.26	10	< 1	0.97	40	1.58	360	< 1	
BB10203	201	202	< 0.2	1.79	8	120	0.5	< 2	0.17	< 0.5	8	25	5	3.04	< 10	< 1	0.45	20	0.94	235	< 1	
BB10204	201	202	< 0.2	1.90	8	140	0.5	< 2	0.24	< 0.5	10	35	10	3.00	< 10	< 1	0.40	30	0.95	300	< 1	
BB10205	201	202	< 0.2	2.16	10	130	0.5	< 2	0.19	< 0.5	10	41	7	3.72	< 10	< 1	0.44	10	1.08	375	< 1	
BB10206	201	202	< 0.2	1.57	4	90	0.5	< 2	0.12	< 0.5	7	29	6	3.07	< 10	< 1	0.32	10	0.72	255	< 1	
BB10207	--	--	NotRed	NotRed	NotRed	NotRed	NotRed	NotRed	NotRed	NotRed	NotRed	NotRed	NotRed	NotRed	NotRed	NotRed	NotRed	NotRed	NotRed	NotRed	NotRed	NotRed

CERTIFICATION: Hart Buchler



# Chemex Labs Ltd.

Analytical Chemists \* Geochemists \* Registered Assayers

212 Brooksbank Ave., North Vancouver  
British Columbia, Canada V7J 2C1  
PHONE: 604-984-0221 FAX: 604-984-0218

EXPATRIATE RESOURCES LTD.  
C/O ARCHER, CATHRO & ASSOCIATES (1981) LIMITED  
1016 - 510 W. HASTINGS ST.  
VANCOUVER, BC  
V6B 1L8

Project : OFFSIDE  
Comments:

Page Number : 3-B  
Total Pages : 6  
Certificate Date: 15-SEP-96  
Invoice No. : 19631042  
P.O. Number :  
Account : MPO

## CERTIFICATE OF ANALYSIS A9631042

SAMPLE	PREP CODE		Na	Ni	P	Pb	Sb	Sc	Sr	Ti	Tl	U	V	W	Zn
			%	ppm	ppm	ppm	ppm	ppm	ppm	%	ppm	ppm	ppm	ppm	ppm
BB10150	201	202	< 0.01	7	720	6	< 2	4	7	0.13	< 10	< 10	51	< 10	44
BB10151	201	202	< 0.01	5	650	4	< 2	1	7	0.10	< 10	< 10	48	< 10	38
BB10152	201	202	< 0.01	5	600	4	< 2	2	5	0.10	< 10	< 10	36	< 10	36
BB10153	201	202	< 0.01	5	580	4	< 2	< 1	5	0.05	< 10	< 10	29	< 10	22
BB10154	201	202	< 0.01	8	820	6	< 2	2	6	0.09	< 10	< 10	46	< 10	40
BB10155	201	202	< 0.01	10	780	8	< 2	4	6	0.15	< 10	< 10	61	< 10	52
BB10156	201	202	< 0.01	11	560	6	< 2	3	6	0.12	< 10	< 10	58	< 10	46
BB10157	201	202	0.02	3	1850	4	< 2	4	9	0.16	< 10	< 10	40	< 10	38
BB10158	201	202	< 0.01	8	580	4	< 2	3	6	0.12	< 10	< 10	51	< 10	48
BB10159	201	202	< 0.01	11	780	6	< 2	4	8	0.13	< 10	< 10	63	< 10	54
BB10160	201	202	< 0.01	11	680	6	< 2	4	7	0.13	< 10	< 10	61	< 10	52
BB10161	201	202	< 0.01	8	510	2	< 2	3	6	0.13	< 10	< 10	46	< 10	40
BB10162	201	202	< 0.01	6	1800	2	< 2	6	7	0.14	< 10	< 10	41	< 10	66
BB10163	201	202	< 0.01	11	850	6	< 2	4	7	0.13	< 10	< 10	57	< 10	54
BB10164	201	202	< 0.01	12	620	6	< 2	4	7	0.14	< 10	< 10	58	< 10	52
BB10165	201	202	< 0.01	13	630	4	< 2	5	7	0.18	< 10	< 10	61	< 10	52
BB10166	201	202	0.03	5	1020	4	< 2	1	6	0.04	< 10	< 10	41	< 10	28
BB10167	201	202	0.01	19	1080	10	< 2	3	10	0.07	< 10	< 10	54	< 10	58
BB10168	201	202	0.02	11	1140	12	< 2	1	9	0.05	< 10	< 10	42	< 10	44
BB10169	201	202	< 0.01	7	700	14	< 2	1	7	0.06	< 10	< 10	56	< 10	40
BB10169	201	202	< 0.01	9	450	6	< 2	3	5	0.12	< 10	< 10	44	< 10	48
BB10170	201	202	< 0.01	5	310	4	< 2	2	6	0.09	< 10	< 10	35	< 10	32
BB10171	201	202	0.01	6	390	6	< 2	1	6	0.08	< 10	< 10	36	< 10	36
BB10172	201	202	0.01	5	450	8	< 2	1	7	0.05	< 10	< 10	36	< 10	38
BB10173	201	202	< 0.01	7	950	12	< 2	1	8	0.08	< 10	< 10	55	< 10	62
BB10174	201	202	< 0.01	6	380	6	< 2	2	6	0.10	< 10	< 10	34	< 10	48
BB10175	201	202	< 0.01	6	1560	10	< 2	2	10	0.08	< 10	< 10	31	< 10	72
BB10176	201	202	0.03	4	410	10	< 2	< 1	7	0.06	< 10	< 10	23	< 10	36
BB10177	201	202	< 0.01	10	760	2	< 2	5	12	0.19	< 10	< 10	53	< 10	54
BB10178	201	202	0.06	< 1	410	< 2	< 2	< 1	6	0.02	< 10	< 10	13	< 10	6
BB10198	201	202	< 0.01	14	320	8	< 2	3	8	0.16	< 10	< 10	48	< 10	46
BB10199	201	202	< 0.01	16	600	6	< 2	5	14	0.17	< 10	< 10	44	< 10	44
BB10200	201	202	< 0.01	17	680	6	< 2	3	14	0.13	< 10	< 10	47	< 10	56
BB10201	201	202	< 0.01	15	680	6	< 2	4	11	0.14	< 10	< 10	49	< 10	52
BB10202	201	202	< 0.01	19	1100	6	< 2	8	17	0.29	< 10	< 10	71	< 10	60
BB10203	201	202	< 0.01	14	650	6	< 2	4	11	0.18	< 10	< 10	54	< 10	48
BB10204	201	202	< 0.01	20	760	6	< 2	4	14	0.16	< 10	< 10	61	< 10	64
BB10205	201	202	< 0.01	19	690	8	< 2	5	12	0.22	< 10	< 10	72	< 10	56
BB10206	201	202	< 0.01	13	500	6	< 2	4	9	0.20	< 10	< 10	75	< 10	46
BB10207	--	--	NotRed	NotRed	NotRed	NotRed	NotRed	NotRed	NotRed	NotRed	NotRed	NotRed	NotRed	NotRed	NotRed

CERTIFICATION:

*Hart Bichler*



# Chemex Labs Ltd.

Analytical Chemists \* Geochemists \* Registered Assayers  
 212 Brooksbank Ave., North Vancouver  
 British Columbia, Canada V7J 2C1  
 PHONE: 604-984-0221 FAX: 604-984-0218

EXPATRIATE RESOURCES LTD.  
 C/O ARCHER, CATHRO & ASSOCIATES (1981) LIMITED  
 1016 - 510 W. HASTINGS ST.  
 VANCOUVER, BC  
 V6B 1L8

Page: 4-A  
 Total Pages: 6  
 Certificate Date: 15-SEP-96  
 Invoice No.: I9631042  
 P.O. Number:  
 Account: MPO

Project: OFFSIDE  
 Comments:

## CERTIFICATE OF ANALYSIS A9631042

SAMPLE	PREP CODE		Ag	Al	As	Ba	Be	Bi	Ca	Cd	Co	Cr	Cu	Fe	Ga	Hg	K	La	Mg	Mn	Mo
			ppm	%	ppm	ppm	ppm	ppm	%	ppm	ppm	ppm	ppm	%	ppm	ppm	%	ppm	%	ppm	ppm
BB10208	201	202	< 0.2	2.23	4	210	0.5	< 2	0.23	< 0.5	11	34	11	3.32	< 10	< 1	0.49	30	1.12	380	< 1
BB10209	201	202	< 0.2	2.55	8	380	0.5	< 2	0.18	< 0.5	11	44	8	3.76	10	< 1	0.58	20	1.50	340	< 1
BB10210	201	202	< 0.2	3.08	2	810	1.0	< 2	0.50	< 0.5	15	56	8	4.91	10	1	0.91	30	1.94	555	< 1
BB10211	201	202	< 0.2	3.09	2	660	0.5	< 2	0.36	0.5	16	60	8	4.63	10	< 1	0.65	30	2.09	460	< 1
BB10212	201	202	< 0.2	2.84	6	510	0.5	< 2	0.37	< 0.5	15	61	9	4.54	10	< 1	0.69	30	1.70	480	< 1
BB10213	201	202	< 0.2	2.55	4	390	0.5	< 2	0.20	< 0.5	12	48	8	3.74	10	1	0.71	20	1.60	505	< 1
BB10214	201	202	< 0.2	1.97	8	250	0.5	< 2	0.21	< 0.5	9	35	12	2.90	< 10	< 1	0.26	30	1.09	305	< 1
BB10215	201	202	< 0.2	1.72	< 2	130	0.5	< 2	0.14	< 0.5	7	27	10	2.49	< 10	< 1	0.31	20	0.82	325	< 1
BB10216	201	202	< 0.2	2.27	4	180	0.5	< 2	0.27	< 0.5	12	41	15	3.59	< 10	< 1	0.53	30	1.29	575	< 1
BB10217	201	202	< 0.2	2.07	12	110	0.5	< 2	0.24	< 0.5	11	42	15	3.58	< 10	< 1	0.37	10	1.13	540	< 1
BB10218	201	202	< 0.2	1.54	4	150	< 0.5	< 2	0.05	< 0.5	6	20	9	2.87	< 10	< 1	0.37	20	0.80	255	< 1
BB10219	201	202	< 0.2	1.93	6	180	0.5	< 2	0.21	< 0.5	9	31	8	3.24	< 10	< 1	0.40	20	1.09	355	< 1
BB10220	201	202	< 0.2	1.93	6	270	0.5	< 2	0.24	< 0.5	9	28	7	2.88	< 10	< 1	0.55	30	1.08	335	< 1
BB10221	201	202	< 0.2	1.55	2	150	< 0.5	< 2	0.18	< 0.5	7	24	5	2.37	< 10	< 1	0.40	30	0.83	270	< 1
BB10222	201	202	< 0.2	1.76	6	210	< 0.5	< 2	0.32	< 0.5	9	31	7	2.78	< 10	< 1	0.47	40	0.98	310	< 1
BB10223	201	202	< 0.2	2.27	6	230	0.5	< 2	0.22	< 0.5	10	39	11	3.28	< 10	< 1	0.43	40	1.03	435	< 1
BB10224	201	202	< 0.2	2.20	8	280	0.5	< 2	0.22	< 0.5	10	36	10	3.31	< 10	< 1	0.52	30	1.07	430	< 1
BB10225	201	202	< 0.2	1.32	2	270	< 0.5	< 2	0.08	< 0.5	5	23	4	2.67	10	< 1	0.27	10	0.68	190	< 1
BB10226	201	202	< 0.2	1.41	< 2	260	< 0.5	< 2	0.10	< 0.5	7	30	4	2.61	< 10	< 1	0.42	10	0.84	245	< 1
BB10227	201	202	< 0.2	1.62	2	640	0.5	< 2	0.12	< 0.5	7	62	4	2.82	< 10	< 1	0.36	20	1.01	265	< 1
BB10228	201	202	< 0.2	1.73	2	480	< 0.5	< 2	0.16	< 0.5	7	24	3	2.73	< 10	< 1	0.40	30	1.07	255	< 1
BB10229	201	202	< 0.2	2.41	2	510	0.5	< 2	0.21	< 0.5	11	50	7	3.43	< 10	< 1	0.59	30	1.43	330	< 1
BB10230	201	202	< 0.2	1.76	6	90	0.5	< 2	0.21	< 0.5	8	53	9	3.14	< 10	< 1	0.22	10	0.66	275	< 1
BB10231	201	202	< 0.2	1.17	2	120	< 0.5	< 2	0.12	< 0.5	6	29	9	2.64	< 10	< 1	0.33	10	0.63	190	< 1
BB10232	201	202	< 0.2	1.87	8	180	0.5	< 2	0.14	< 0.5	8	36	8	3.38	< 10	< 1	0.52	10	1.09	345	< 1
BB10233	201	202	< 0.2	1.46	2	170	0.5	< 2	0.17	< 0.5	7	37	10	2.87	< 10	< 1	0.30	10	0.65	350	< 1
BB10234	201	202	< 0.2	1.68	10	140	0.5	< 2	0.18	< 0.5	9	45	11	3.18	< 10	< 1	0.41	10	0.81	410	< 1
BB10235	201	202	< 0.2	2.33	4	300	0.5	< 2	0.16	< 0.5	11	46	9	3.73	10	< 1	0.47	10	1.43	385	< 1
BB10236	201	202	< 0.2	0.77	2	130	< 0.5	< 2	0.10	< 0.5	3	12	8	1.43	< 10	< 1	0.12	10	0.22	800	< 1
BB10237	201	202	< 0.2	1.54	< 2	200	0.5	< 2	0.18	< 0.5	8	30	7	2.39	< 10	< 1	0.30	10	0.79	350	< 1
BB10238	201	202	< 0.2	1.63	< 2	200	0.5	< 2	0.10	< 0.5	7	28	6	2.61	< 10	< 1	0.22	20	0.63	715	< 1
BB10239	201	202	< 0.2	1.43	< 2	340	0.5	< 2	0.19	0.5	12	26	7	2.18	< 10	< 1	0.21	10	0.66	1145	< 1
BB10240	201	202	< 0.2	1.32	4	160	0.5	< 2	0.14	< 0.5	7	40	9	2.39	< 10	< 1	0.33	30	0.61	270	< 1
BB10268	201	202	< 0.2	1.04	< 2	70	< 0.5	< 2	0.09	< 0.5	3	16	2	1.33	< 10	< 1	0.14	40	0.26	150	< 1
BB10269	201	202	< 0.2	0.95	< 2	160	< 0.5	< 2	0.11	< 0.5	5	35	6	1.49	< 10	< 1	0.16	30	0.33	785	< 1
BB10270	201	202	0.2	2.10	2	480	1.0	< 2	1.17	4.5	9	26	23	2.97	< 10	< 1	0.37	10	0.58	1580	1
BB10271	201	202	< 0.2	1.63	2	160	1.5	< 2	0.33	< 0.5	7	25	9	2.66	< 10	< 1	0.43	30	0.81	300	1
BB10272	201	202	< 0.2	1.97	< 2	290	2.0	< 2	0.45	0.5	5	20	53	2.47	< 10	< 1	0.35	80	0.55	295	1
BB10273	201	202	< 0.2	1.14	< 2	120	0.5	< 2	0.13	< 0.5	5	21	14	1.95	< 10	< 1	0.34	30	0.59	215	< 1
BB10274	201	202	< 0.2	2.08	2	410	1.0	< 2	0.22	< 0.5	12	50	18	4.11	10	< 1	0.95	40	1.12	705	1

CERTIFICATION:

*Stan Buehler*



# Chemex Labs Ltd.

Analytical Chemists \* Geochemists \* Registered Assayers

212 Brooksbank Ave., North Vancouver  
British Columbia, Canada V7J 2C1  
PHONE: 604-984-0221 FAX: 604-984-0218

EXPATRIATE RESOURCES LTD.  
C/O ARCHER, CATHRO & ASSOCIATES (1981) LIMITED  
1016 - 510 W. HASTINGS ST.  
VANCOUVER, BC  
V6B 1L8

Project : OFFSIDE  
Comments:

Page Number : 4-B  
Total Pages : 6  
Certificate Date: 15-SEP-96  
Invoice No. : I9631042  
P.O. Number :  
Account : MPO

## CERTIFICATE OF ANALYSIS A9631042

SAMPLE	PREP		Na	Ni	P	Pb	Sb	Sc	Sr	Ti	Tl	U	V	W	Zn
	CODE		%	ppm	ppm	ppm	ppm	ppm	ppm	%	ppm	ppm	ppm	ppm	ppm
BB10208	201	202	< 0.01	19	650	6	< 2	5	14	0.20	< 10	< 10	61	< 10	66
BB10209	201	202	< 0.01	16	730	8	< 2	6	9	0.22	< 10	< 10	71	< 10	68
BB10210	201	202	< 0.01	19	1260	4	< 2	9	21	0.27	< 10	< 10	91	< 10	76
BB10211	201	202	< 0.01	21	1170	6	< 2	9	16	0.28	< 10	< 10	96	< 10	94
BB10212	201	202	< 0.01	23	1150	8	< 2	7	18	0.27	< 10	< 10	89	< 10	84
BB10213	201	202	< 0.01	17	630	2	< 2	7	12	0.26	< 10	< 10	80	< 10	90
BB10214	201	202	< 0.01	19	630	8	< 2	5	14	0.14	< 10	< 10	55	< 10	74
BB10215	201	202	0.03	11	790	6	< 2	4	10	0.14	< 10	< 10	49	< 10	72
BB10216	201	202	< 0.01	18	890	6	< 2	5	13	0.23	< 10	< 10	69	< 10	138
BB10217	201	202	< 0.01	18	770	8	< 2	5	12	0.20	< 10	< 10	75	< 10	130
BB10218	201	202	< 0.01	9	310	6	< 2	4	5	0.18	< 10	< 10	59	< 10	60
BB10219	201	202	< 0.01	15	820	6	< 2	6	10	0.17	< 10	< 10	62	< 10	70
BB10220	201	202	< 0.01	13	640	4	< 2	5	13	0.18	< 10	< 10	50	< 10	50
BB10221	201	202	< 0.01	11	490	4	< 2	4	9	0.14	< 10	< 10	40	< 10	40
BB10222	201	202	< 0.01	15	880	6	< 2	6	15	0.17	< 10	< 10	52	< 10	50
BB10223	201	202	< 0.01	24	620	10	< 2	5	15	0.15	< 10	< 10	59	< 10	84
BB10224	201	202	< 0.01	21	670	8	< 2	5	13	0.17	< 10	< 10	57	< 10	80
BB10225	201	202	< 0.01	8	280	6	< 2	4	4	0.21	< 10	< 10	74	< 10	32
BB10226	201	202	< 0.01	11	310	2	< 2	5	4	0.19	< 10	< 10	61	< 10	42
BB10227	201	202	< 0.01	25	460	6	< 2	5	7	0.17	< 10	< 10	54	< 10	48
BB10228	201	202	< 0.01	10	710	6	< 2	6	6	0.16	< 10	< 10	58	< 10	48
BB10229	201	202	< 0.01	21	540	6	< 2	6	11	0.19	< 10	< 10	64	< 10	62
BB10230	201	202	< 0.01	28	990	18	< 2	4	8	0.10	< 10	< 10	44	< 10	80
BB10231	201	202	< 0.01	11	430	8	< 2	4	4	0.16	< 10	< 10	56	< 10	44
BB10232	201	202	< 0.01	14	730	8	< 2	5	5	0.17	< 10	< 10	68	< 10	68
BB10233	201	202	< 0.01	17	1140	8	< 2	2	6	0.08	< 10	< 10	49	< 10	72
BB10234	201	202	< 0.01	22	940	14	< 2	4	8	0.12	< 10	< 10	57	< 10	88
BB10235	201	202	< 0.01	17	530	8	< 2	6	9	0.21	< 10	< 10	74	< 10	76
BB10236	201	202	0.03	5	1360	6	< 2	< 1	7	0.04	< 10	< 10	27	< 10	54
BB10237	201	202	0.01	14	840	12	< 2	4	11	0.11	< 10	< 10	46	< 10	56
BB10238	201	202	< 0.01	11	650	10	< 2	3	7	0.12	< 10	< 10	46	< 10	68
BB10239	201	202	0.02	12	1120	10	< 2	3	14	0.09	< 10	< 10	38	< 10	76
BB10240	201	202	< 0.01	17	440	6	< 2	3	9	0.13	< 10	< 10	48	< 10	48
BB10268	201	202	< 0.01	6	350	8	< 2	1	8	0.09	< 10	< 10	23	< 10	66
BB10269	201	202	0.01	16	290	10	< 2	1	9	0.09	< 10	< 10	30	< 10	62
BB10270	201	202	0.05	18	780	16	< 2	4	38	0.07	< 10	< 10	45	< 10	312
BB10271	201	202	0.01	11	370	6	< 2	5	10	0.13	< 10	< 10	46	< 10	74
BB10272	201	202	0.05	15	460	10	< 2	4	16	0.05	< 10	< 10	32	< 10	68
BB10273	201	202	< 0.01	7	200	6	< 2	3	8	0.12	< 10	< 10	35	< 10	44
BB10274	201	202	< 0.01	14	290	4	< 2	8	11	0.19	< 10	< 10	63	< 10	66

CERTIFICATION:

*Hart Buchler*



# Chemex Labs Ltd.

Analytical Chemists \* Geochemists \* Registered Assayers

212 Brooksbank Ave., North Vancouver  
British Columbia, Canada V7J 2C1  
PHONE: 604-984-0221 FAX: 604-984-0218

EXPATRIATE RESOURCES LTD.  
C/O ARCHER, CATHRO & ASSOCIATES (1981) LIMITED  
1016 - 510 W. HASTINGS ST.  
VANCOUVER, BC  
V6B 1L8

Project : OFFSIDE  
Comments:

Page : 5-A  
Total Pages : 6  
Certificate Date: 15-SEP-96  
Invoice No. : I9631042  
P.O. Number :  
Account : MPO

## CERTIFICATE OF ANALYSIS A9631042

SAMPLE	PREP CODE		Ag	Al	As	Ba	Be	Bi	Ca	Cd	Co	Cr	Cu	Fe	Ga	Hg	K	La	Mg	Mn	Mo
			ppm	%	ppm	ppm	ppm	ppm	%	ppm	ppm	ppm	ppm	%	ppm	ppm	%	ppm	%	ppm	ppm
BB10275	201	202	0.2	3.60	< 2	560	1.5	2	0.32	< 0.5	12	53	15	5.11	10	< 1	0.93	40	2.55	410	3
BB10276	201	202	< 0.2	3.51	< 2	360	2.5	4	0.15	< 0.5	23	47	38	6.18	10	1	0.50	70	1.31	930	8
BB10277	201	202	0.2	2.28	2	270	0.5	2	0.29	< 0.5	11	37	11	3.53	< 10	< 1	0.60	20	1.32	460	4
BB10331	201	202	< 0.2	0.54	< 2	70	< 0.5	< 2	0.06	< 0.5	1	15	3	1.01	< 10	< 1	0.10	20	0.18	85	1
BB10332	201	202	< 0.2	1.84	6	140	< 0.5	2	0.10	< 0.5	5	30	3	3.19	< 10	< 1	0.11	20	0.65	205	1
BB10333	201	202	< 0.2	1.26	2	100	< 0.5	< 2	0.07	< 0.5	4	18	5	2.59	< 10	< 1	0.11	10	0.33	145	1
BB10334	201	202	< 0.2	1.17	2	110	< 0.5	< 2	0.06	< 0.5	4	33	8	2.51	< 10	< 1	0.07	10	0.22	265	1
BB10335	201	202	< 0.2	1.15	14	60	< 0.5	2	0.07	< 0.5	5	30	7	3.27	< 10	< 1	0.10	10	0.28	230	3
BB10336	201	202	0.2	1.48	2	270	< 0.5	< 2	0.19	< 0.5	6	38	10	2.40	< 10	< 1	0.05	10	0.63	210	< 1
BB10337	201	202	< 0.2	1.44	< 2	90	0.5	2	0.09	< 0.5	4	22	3	2.37	< 10	< 1	0.08	10	0.39	130	1
BB10338	201	202	< 0.2	1.01	10	70	< 0.5	< 2	0.06	< 0.5	5	27	6	3.09	< 10	< 1	0.08	10	0.24	240	1
BB10368	201	202	< 0.2	1.20	< 2	100	0.5	< 2	0.05	< 0.5	3	11	9	1.18	< 10	< 1	0.09	40	0.16	235	< 1
BB10369	201	202	< 0.2	0.38	< 2	30	< 0.5	< 2	0.05	< 0.5	1	3	2	0.43	< 10	< 1	0.02	< 10	0.05	35	< 1
BB10370	201	202	< 0.2	0.48	2	30	< 0.5	< 2	0.02	< 0.5	1	5	1	0.77	< 10	< 1	0.08	20	0.10	40	< 1
BB10371	201	202	< 0.2	1.41	2	400	0.5	< 2	0.27	< 0.5	4	17	14	1.70	< 10	< 1	0.17	50	0.56	135	< 1
BB10372	201	202	< 0.2	0.62	< 2	250	< 0.5	< 2	0.08	< 0.5	1	4	6	0.54	< 10	< 1	0.07	40	0.07	95	< 1
BB10373	201	202	< 0.2	0.36	< 2	80	< 0.5	< 2	0.06	< 0.5	2	3	4	0.51	< 10	< 1	0.06	10	0.08	205	< 1
BB10374	201	202	< 0.2	0.14	< 2	30	< 0.5	< 2	0.03	< 0.5	1	3	1	0.38	< 10	< 1	0.03	< 10	0.03	25	< 1
BB10375	201	202	< 0.2	1.42	2	280	0.5	< 2	0.12	< 0.5	10	17	6	2.89	< 10	< 1	0.13	30	0.45	950	< 1
BB10376	201	202	< 0.2	1.26	< 2	180	< 0.5	< 2	0.35	< 0.5	5	21	6	1.97	< 10	< 1	0.23	20	0.64	185	1
BB10377	201	202	< 0.2	0.70	2	90	< 0.5	< 2	0.06	< 0.5	3	17	3	1.15	< 10	1	0.08	20	0.20	90	< 1
BB10378	201	202	< 0.2	0.38	< 2	100	< 0.5	< 2	0.04	< 0.5	1	5	3	0.67	< 10	< 1	0.06	10	0.07	50	1
BB10379	201	202	< 0.2	0.23	< 2	40	< 0.5	< 2	0.03	< 0.5	1	2	1	0.37	< 10	< 1	0.05	< 10	0.07	45	< 1
BB10380	201	202	0.6	1.91	< 2	410	1.5	2	0.18	< 0.5	14	23	20	2.64	< 10	< 1	0.24	80	0.53	810	5
BB10381	201	202	< 0.2	0.99	4	110	0.5	< 2	0.08	< 0.5	3	10	13	1.28	< 10	< 1	0.12	20	0.18	90	2
BB10382	201	202	0.6	1.61	< 2	230	1.5	2	0.22	0.5	5	17	32	2.26	< 10	< 1	0.19	60	0.25	100	10
BB10383	201	202	0.4	0.54	< 2	80	0.5	< 2	0.14	< 0.5	1	6	14	0.55	< 10	< 1	0.05	40	0.04	30	2
BB10409	201	202	< 0.2	1.66	30	80	0.5	2	0.13	< 0.5	5	29	10	3.36	< 10	1	0.11	10	0.59	200	2
BB10410	201	202	2.0	2.05	12	150	0.5	< 2	0.15	1.0	8	36	12	3.82	< 10	< 1	0.08	20	0.38	405	2
BB10411	201	202	< 0.2	1.78	12	70	0.5	2	0.17	< 0.5	5	29	7	3.28	< 10	< 1	0.12	10	0.60	285	1
BB10412	201	202	0.2	1.84	2	110	1.5	2	0.10	0.5	7	22	11	5.84	< 10	< 1	0.10	50	0.30	230	8
BB10413	201	202	< 0.2	0.83	< 2	60	< 0.5	< 2	0.06	< 0.5	3	9	3	1.65	< 10	< 1	0.19	30	0.29	100	2
BB10414	201	202	< 0.2	1.50	8	90	0.5	< 2	0.06	< 0.5	4	12	4	3.61	< 10	< 1	0.24	20	0.51	180	3
BB10415	201	202	< 0.2	1.15	< 2	70	< 0.5	< 2	0.04	< 0.5	4	12	3	2.78	< 10	< 1	0.18	10	0.36	125	2
BB10416	201	202	< 0.2	1.58	< 2	110	0.5	2	0.25	< 0.5	7	42	6	2.35	< 10	< 1	0.27	30	0.79	245	1
BB10417	201	202	< 0.2	1.77	2	80	< 0.5	< 2	0.04	< 0.5	7	16	16	4.41	< 10	< 1	0.31	10	0.76	310	3
BB10418	201	202	< 0.2	0.50	< 2	50	< 0.5	< 2	0.04	< 0.5	2	7	1	1.05	< 10	< 1	0.09	20	0.09	55	1
BB10419	201	202	< 0.2	1.04	10	70	< 0.5	< 2	0.10	< 0.5	5	32	12	2.45	< 10	< 1	0.08	10	0.39	160	2
BB10420	201	202	0.2	1.44	4	90	< 0.5	2	0.08	< 0.5	4	22	6	2.63	< 10	< 1	0.12	20	0.37	140	1
BB10421	201	202	< 0.2	0.96	< 2	80	< 0.5	< 2	0.06	< 0.5	5	18	10	2.14	< 10	< 1	0.17	10	0.43	145	1

CERTIFICATION:

*Hart Buchler*



# Chemex Labs Ltd.

Analytical Chemists \* Geochemists \* Registered Assayers

212 Brooksbank Ave., North Vancouver  
British Columbia, Canada V7J 2C1  
PHONE: 604-984-0221 FAX: 604-984-0218

EXPATRIATE RESOURCES LTD.  
C/O ARCHER, CATHRO & ASSOCIATES (1981) LIMITED  
1016 - 510 W. HASTINGS ST.  
VANCOUVER, BC  
V6B 1L8

Project : OFFSIDE  
Comments:

Page Number : 5-B  
Total Pages : 6  
Certificate Date: 15-SEP-96  
Invoice No. : I9631042  
P.O. Number :  
Account : MPO

## CERTIFICATE OF ANALYSIS

### A9631042

SAMPLE	PREP CODE		Na	Ni	P	Pb	Sb	Sc	Sr	Ti	Tl	U	V	W	Zn
			%	ppm	ppm	ppm	ppm	ppm	ppm	%	ppm	ppm	ppm	ppm	ppm
BB10275	201	202	0.01	14	320	< 2	< 2	11	9	0.18	< 10	< 10	103	< 10	96
BB10276	201	202	< 0.01	17	450	8	< 2	9	10	0.24	< 10	< 10	103	< 10	80
BB10277	201	202	< 0.01	13	220	6	< 2	6	11	0.20	< 10	< 10	65	< 10	54
BB10331	201	202	< 0.01	5	180	6	< 2	< 1	6	0.06	< 10	< 10	17	< 10	20
BB10332	201	202	< 0.01	12	420	10	< 2	3	10	0.12	< 10	< 10	47	< 10	52
BB10333	201	202	< 0.01	8	560	8	< 2	1	6	0.07	< 10	< 10	43	< 10	54
BB10334	201	202	< 0.01	12	680	8	< 2	1	7	0.06	< 10	< 10	52	< 10	54
BB10335	201	202	< 0.01	14	940	12	< 2	1	7	0.10	< 10	< 10	60	< 10	48
BB10336	201	202	< 0.01	28	610	6	< 2	2	11	0.07	< 10	< 10	48	< 10	58
BB10337	201	202	< 0.01	9	480	4	< 2	1	5	0.07	< 10	< 10	33	< 10	38
BB10338	201	202	< 0.01	11	620	10	< 2	1	6	0.09	< 10	< 10	51	< 10	46
BB10368	201	202	0.01	5	1290	4	< 2	< 1	8	< 0.01	< 10	< 10	23	< 10	16
BB10369	201	202	0.06	1	220	< 2	< 2	< 1	5	0.01	< 10	< 10	11	< 10	4
BB10370	201	202	< 0.01	1	140	< 2	< 2	< 1	3	0.06	< 10	< 10	15	< 10	10
BB10371	201	202	0.02	8	550	2	< 2	2	16	0.05	< 10	< 10	29	< 10	30
BB10372	201	202	0.03	2	270	< 2	< 2	< 1	7	0.01	< 10	< 10	9	< 10	14
BB10373	201	202	0.04	1	450	< 2	< 2	< 1	6	0.01	< 10	< 10	9	< 10	14
BB10374	201	202	0.04	< 1	200	< 2	< 2	< 1	4	< 0.01	< 10	< 10	12	< 10	8
BB10375	201	202	< 0.01	8	780	2	< 2	2	9	0.09	< 10	< 10	44	< 10	56
BB10376	201	202	0.01	11	450	2	< 2	3	13	0.11	< 10	< 10	37	< 10	46
BB10377	201	202	0.03	6	290	8	< 2	1	6	0.07	< 10	< 10	28	< 10	22
BB10378	201	202	0.03	4	220	4	< 2	< 1	9	0.02	< 10	< 10	15	< 10	16
BB10379	201	202	0.04	1	190	< 2	< 2	< 1	3	0.01	< 10	< 10	7	< 10	12
BB10380	201	202	0.01	12	410	14	< 2	3	14	0.07	< 10	< 10	44	< 10	74
BB10381	201	202	0.04	6	290	8	< 2	1	8	0.04	< 10	< 10	23	< 10	26
BB10382	201	202	0.03	12	820	16	< 2	1	17	0.06	< 10	< 10	36	< 10	42
BB10383	201	202	0.02	4	550	4	< 2	< 1	10	0.01	< 10	< 10	10	< 10	12
BB10409	201	202	< 0.01	15	2370	28	< 2	2	9	0.08	< 10	< 10	49	< 10	114
BB10410	201	202	< 0.01	19	1610	26	< 2	2	13	0.08	< 10	< 10	68	< 10	226
BB10411	201	202	< 0.01	14	2630	14	< 2	2	8	0.08	< 10	< 10	44	< 10	96
BB10412	201	202	< 0.01	11	1030	22	< 2	1	9	0.06	< 10	< 10	46	< 10	40
BB10413	201	202	< 0.01	4	280	6	< 2	< 1	6	0.05	< 10	< 10	16	< 10	34
BB10414	201	202	< 0.01	6	1410	6	< 2	1	8	0.07	< 10	< 10	28	< 10	44
BB10415	201	202	< 0.01	5	430	10	< 2	1	4	0.10	< 10	< 10	31	< 10	26
BB10416	201	202	< 0.01	25	680	8	< 2	3	10	0.11	< 10	< 10	34	< 10	52
BB10417	201	202	< 0.01	8	810	6	< 2	1	5	0.10	< 10	< 10	48	< 10	44
BB10418	201	202	< 0.01	3	200	4	< 2	< 1	4	0.04	< 10	< 10	16	< 10	26
BB10419	201	202	< 0.01	23	790	10	< 2	1	7	0.07	< 10	< 10	46	< 10	54
BB10420	201	202	< 0.01	11	380	8	< 2	1	8	0.09	< 10	< 10	41	< 10	40
BB10421	201	202	< 0.01	11	360	4	< 2	2	5	0.07	< 10	< 10	44	< 10	52

CERTIFICATION:

*Hart Bickler*



# Chemex Labs Ltd.

Analytical Chemists \* Geochemists \* Registered Assayers  
212 Brooksbank Ave., North Vancouver  
British Columbia, Canada V7J 2C1  
PHONE: 604-984-0221 FAX: 604-984-0218

EXPATRIATE RESOURCES LTD.  
C/O ARCHER, CATHRO & ASSOCIATES (1981) LIMITED  
1016 - 510 W. HASTINGS ST.  
VANCOUVER, BC  
V6B 1L8

Project : OFFSIDE  
Comments:

Page Number : 6-A  
Total Pages : 6  
Certificate Date: 15-SEP-96  
Invoice No. : 19631042  
P.O. Number :  
Account : MPO

## CERTIFICATE OF ANALYSIS

### A9631042

SAMPLE	PREP CODE		Ag	Al	As	Ba	Be	Bi	Ca	Cd	Co	Cr	Cu	Fe	Ga	Hg	K	La	Mg	Mn	Mo
			ppm	%	ppm	ppm	ppm	ppm	%	ppm	ppm	ppm	ppm	%	ppm	ppm	%	ppm	%	ppm	ppm
BB10422	201	202	< 0.2	1.24	< 2	70	< 0.5	< 2	0.04	< 0.5	4	14	3	3.27	< 10	< 1	0.21	10	0.43	160	2

CERTIFICATION: Hart Bichler



# Chemex Labs Ltd.

Analytical Chemists \* Geochemists \* Registered Assayers  
212 Brooksbank Ave., North Vancouver  
British Columbia, Canada V7J 2C1  
PHONE: 604-984-0221 FAX: 604-984-0218

EXPATRIATE RESOURCES LTD.  
C/O ARCHER, CATHRO & ASSOCIATES (1981) LIMITED  
1016 - 510 W. HASTINGS ST.  
VANCOUVER, BC  
V6B 1L8

Project : OFFSIDE  
Comments:

Page : 6-B  
Total Pages : 6  
Certificate Date: 15-SEP-96  
Invoice No. : I9631042  
P.O. Number :  
Account : MPO

## CERTIFICATE OF ANALYSIS

A9631042

SAMPLE	PREP CODE		Na	Ni	P	Pb	Sb	Sc	Sr	Ti	Tl	U	V	W	Zn
			%	ppm	ppm	ppm	ppm	ppm	ppm	%	ppm	ppm	ppm	ppm	ppm
BB10422	201	202	< 0.01	6	610	6	< 2	1	5	0.09	< 10	< 10	34	< 10	34

CERTIFICATION:

*Hart Bichler*