

ARCHER, CATHRO
• ASSOCIATES (1981) LIMITED
CONSULTING GEOLOGICAL ENGINEERS

1016 - 510 WEST HASTINGS STREET, VANCOUVER, B.C. V6B 1L8 TEL (604) 688 - 2568 • FAX (604) 688 - 2578

ASSESSMENT REPORT

describing

**GEOLOGICAL MAPPING, PROSPECTING,
GEOCHEMISTRY AND CLAIM SURVEYS**

on the

CHECK PROPERTY

Check 1-22 Claims YB70534-YB70555

093640

Latitude 61°47' N; Longitude 131°09' W

NTS 105G/14

in the

WATSON LAKE MINING DISTRICT

YUKON TERRITORY

Prepared by

Archer, Cathro & Associates (1981) Limited

for

EXPATRIATE RESOURCES LTD.



A. Burgert, B.Sc.
March, 1997

This report has been examined by
the Geological Evaluation Unit
under Section 53 (4) Yukon Quartz
Mining Act and is allowed as
representation work in the amount
of \$ 7,700.

M. B. B.
for Regional Manager, Exploration and
Geological Services for Commissioner
of Yukon Territory.

TABLE OF CONTENTS

	<u>PAGE</u>
INTRODUCTION	1
PROPERTY, LOCATION AND ACCESS	2
GEOMORPHOLOGY	3
REGIONAL GEOLOGY	4
REGIONAL MINERALIZATION	8
REGIONAL GEOCHEMISTRY	10
REGIONAL GEOPHYSICS	12
PROPERTY GEOLOGY AND MINERALIZATION	13
PROPERTY GEOCHEMISTRY	14
PROPERTY GEOPHYSICS	16
CONCLUSIONS AND RECOMMENDATIONS	17
SELECTED REFERENCES	18

APPENDICES

- I AUTHOR'S STATEMENT OF QUALIFICATIONS
- II GPS DATA
- III CERTIFICATES OF ANALYSIS

FIGURES

<u>NO.</u>	<u>DESCRIPTION</u>	<u>LOCATION</u>
1	Property Location	Following Page 2
2	Claim Location	Following Page 2
3	Tectonic Setting	Following Page 4
4	Regional Geology	Following Page 4
5	Property Geology	Following Page 13
6	Sample Location	Following Page 13
7	Copper Geochemistry	Following Page 14
8	Zinc Geochemistry	Following Page 14
9	Cobalt Geochemistry	Following Page 14
10	Molybdenum Geochemistry	Following Page 14

INTRODUCTION

Expatriate Resources Ltd. has a 100% interest in the Check property which protects a volcanogenic massive sulphide (VMS) target selected from a regional geochemical data base documenting results of 1973 exploration by a joint venture managed by Archer, Cathro & Associates Limited. Twenty-two claims were staked in fall 1995 over a soil sample site that had yielded moderately to strongly anomalous copper, zinc and molybdenum values.

Field exploration was conducted in early summer 1996 by crews working from Expatriate's base camp on Finlayson Lake. The work consisted of geological mapping, prospecting, reconnaissance soil geochemistry and claim surveys. The program was managed by Archer, Cathro & Associates (1981) Limited and the work compiled by the author. Appendix I contains the Author's Statement of Qualifications.

PROPERTY, LOCATION AND ACCESS

The property is located in southeastern Yukon at latitude 61°47'N and longitude 131°09'W on NTS map sheet 105G/14 (Figure 1). It is comprised of twenty-two contiguous mineral claims (Figure 2) registered with the Watson Lake Mining Recorder in the name of Archer, Cathro & Associates (1981) Limited which holds them in trust for Expatriate Resources Ltd. Claim registration data is listed below.

<u>Claim Name</u>	<u>Grant Number</u>	<u>Expiry Date*</u>
Check 1-22	YB70534-YB70555	March 17, 2000

*Expiry date includes 1996 work filed for assessment credit but not yet accepted.

In 1996 the property was accessed by helicopter from Expatriate's base camp on Finlayson Lake (Km 232 on the Robert Campbell Highway). The property lies 37 km northwest of the base camp and 240 km northeast of Whitehorse. Helicopter support was provided by a Bell 206B Jet Ranger contracted from Kluane Helicopters of Haines Junction, Yukon. The helicopter was stationed at Expatriate's base camp for the summer.

During the 1996 exploration program about half of the claim post locations were surveyed using Trimble Geoexplorer GPS units. Field readings were corrected using base station data from Westmin Resources Limited's camp at Wolverine Lake. GPS survey data appears in Appendix II.

130°00'

Figure 1

ARCHER, CATHRO & ASSOCIATES (1981) LIMITED

PROPERTY LOCATION CHECK PROPERTY EXPATRIATE RESOURCES LTD.

82°00'



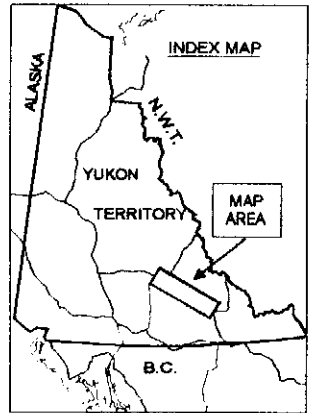
132°00'

FINLAYSON LAKE FAULT ZONE - NORTHEASTERN LIMIT OF FAVOURABLE ROCKS

CHECK
PROPERTY

Kudz Ze Kayah
Deposit

Wolverine
Zone



TITINA PAULT ZONE - 480 km RIGHT LATERAL OFFSET

-  Expatriate Resources Ltd.
-  Cominco Ltd.
-  Westmin Resources Ltd. and various joint venture partners
-  Others
-  Native Land Claims



Robert
Campbell
Hwy.

81°00'

August 28, 1988
Note: Claim boundaries are approximate
Expatriate Resources Ltd. does not assume responsibility for errors or omissions

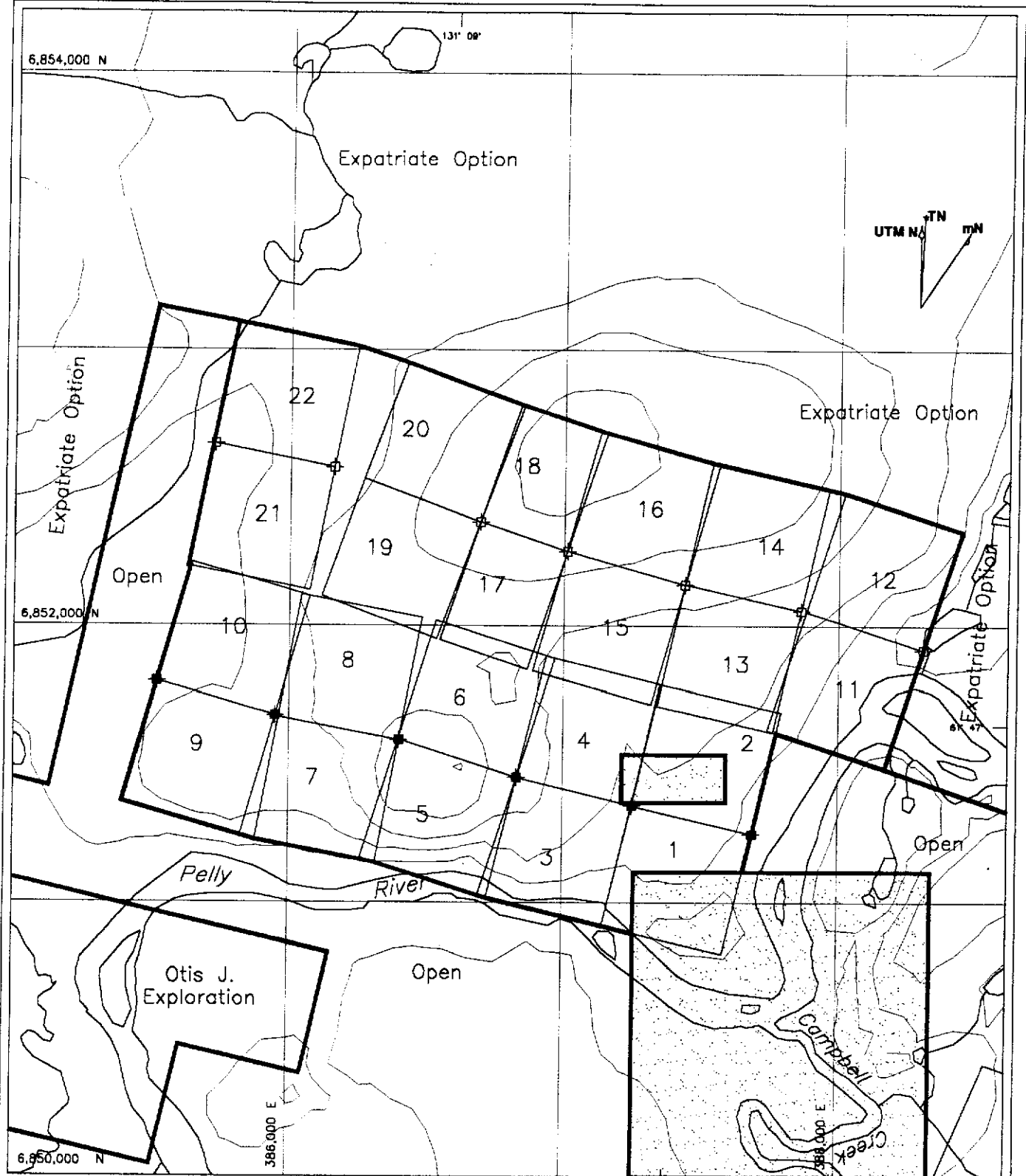


FIGURE 2

Archer, Cathro & Associates (1981) Limited

**CLAIM LOCATION
CHECK PROPERTY**

EXPATRIATE RESOURCES LTD.

SCALE: 1:20,000	FILE: CH-CLI.DWG
DRAWN: AB	PROJ: FP
	DATE: 1-MAR-87

GEOMORPHOLOGY

The Check property covers an area of subdued topography on the northern bank of the Pelly River 1 km north of the mouth of the Big Campbell Creek and 4 km north of the Robert Campbell Highway. Creeks draining the property flow to the south into the Pelly River.

Elevations range from 820 m at the Pelly River along the south side of the property to 930 m atop a low knoll in the northern part of the claim block. Topographic relief is gentle, typically less than 10°. The property is blanketed with Pleistocene glacial till deposits.

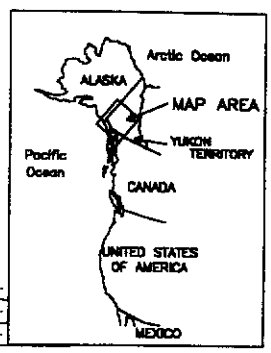
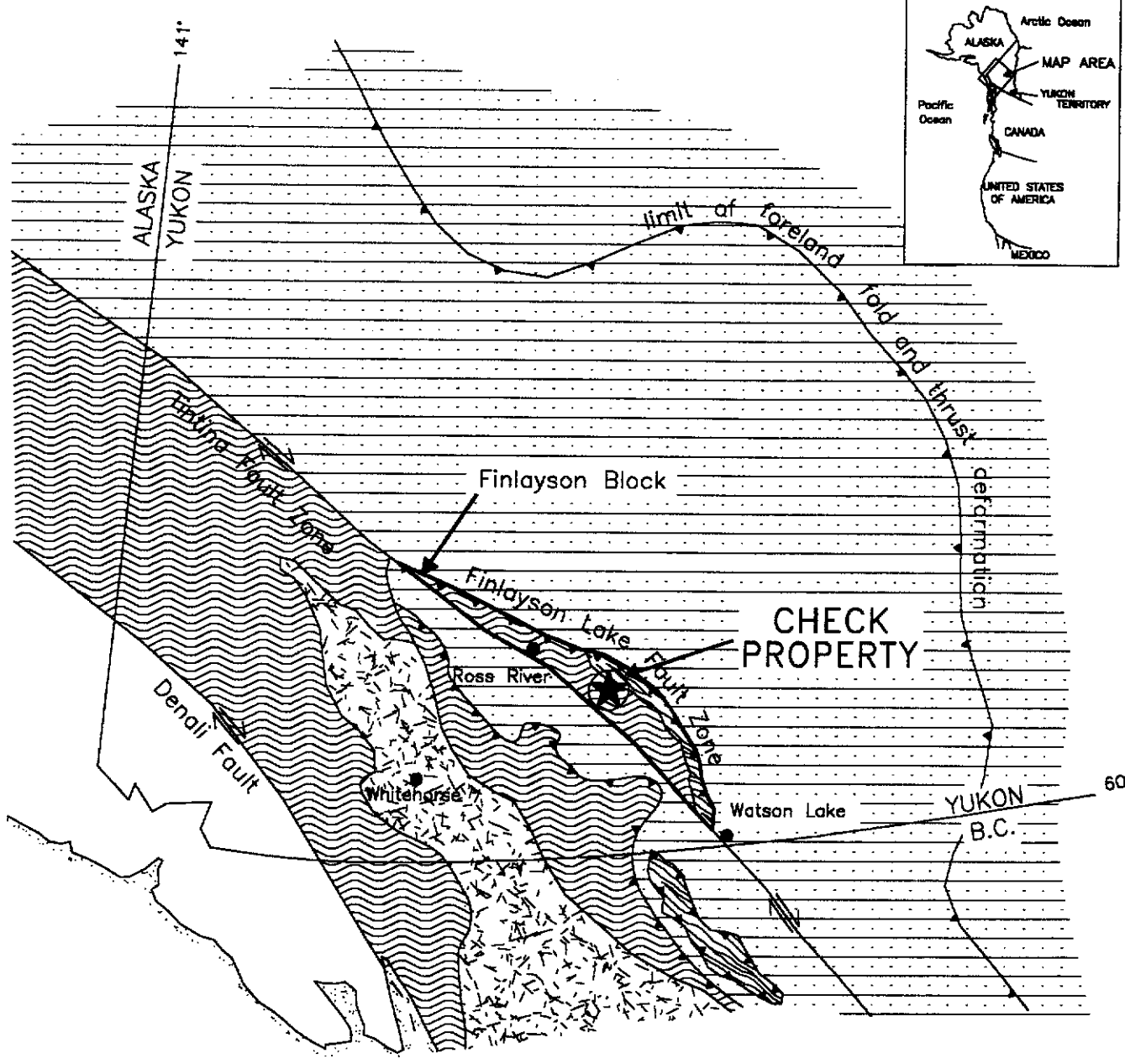
Vegetation consists of moderately dense stands of mature black spruce with patches of aspen and willow.

REGIONAL GEOLOGY

The Check property is located within the Finlayson Block, a 380 by 60 km area comprised primarily of the Yukon-Tanana and Slide Mountain geologic terranes (Figure 3). These terranes represent the innermost of the accreted or "suspect" terranes in the Canadian Cordillera (Mortensen and Jilson, 1985). The northeastern margin of the block is the Finlayson Lake Fault Zone a complex zone of steep and shallow faults related to transpressive suturing. The southwestern boundary of the block is the Tintina Fault, a major strike-slip fault with at least 450 km of dextral displacement during Late Cretaceous and/or Early Tertiary time (Tempelman-Kluit et al, 1976).

Regional mapping of the Finlayson Lake area was completed by the Geological Survey of Canada (GSC) in the mid to late 1970's (Tempelman-Kluit, 1977, 1979). More recent regional studies have been published by Mortensen and Jilson (1985) and Mortensen (1992). The following discussion of the regional geology (Figure 4) is based partly on the published work and partly on unpublished mapping completed in 1996 (Tempelman-Kluit, personal communication, 1996).

The Yukon-Tanana Terrane consists largely of Paleozoic continental margin and/or arc stratigraphy deposited on a continental basement of uncertain origin (Mortensen, 1992). The Yukon-Tanana Terrane in the Finlayson Lake area contains three major packages, collectively termed the Layered Metamorphic Sequence. The lowermost unit consists of garnet-mica schist with interbanded marbles, calc-silicates and calcareous schists near the top. The middle unit is a carbonaceous quartzite, schist or phyllite with rare conglomerates and locally extensive felsic and mafic volcanic interbands. Radiometric dating of the felsic metavolcanics in the Finlayson Block has consistently resulted in Late Devonian to Mississippian crystallization ages. Immediately south of Finlayson Lake, large isolated outcrops of marble and quartzite which are poorly dated as Early









-  Thrust fault
-  Steep fault
-  Yukon-Tanana Terrane
-  Slide Mountain Terrane
-  Stikinia and other Terranes
-  North American Miogeoclinal Strata

FIGURE 3
 ARCHER, CATHRO & ASSOCIATES (1981) LIMITED
TECTONIC SETTING
 CHECK PROPERTY
 EXPATRIATE RESOURCES LTD.



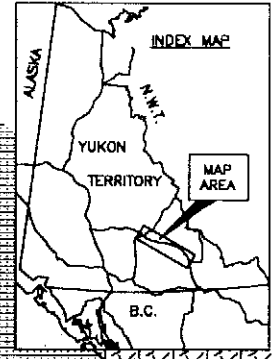
Modified after Mortensen and Jilka (1985), Mortensen (1992) and Johnston and Mortensen (1984).

REGIONAL GEOLOGY

CHECK PROPERTY
EXPATRIATE RESOURCES LTD.




CHECK PROPERTY



North American Miogeocline

 Pre-Triassic sedimentary and volcanic

Slide Mountain Terrane


 Chert, ultramafic, greenstone, metavolcanics, and carbonate rocks

Yukon-Tanana Terrane

 Paleozoic Metaplutonic Rocks

 Paleozoic Layered Metamorphic Sequence

Units common to all three terranes

 Young Volcanic Rocks


 Mesozoic Plutonic Rocks

 Mesozoic Clastic Rocks

 Geological contacts

 Steep fault

 Thrust fault

 Properties held by Expatriate Resources Ltd.



TINTINA FAULT ZONE - 450 km RIGHT LATERAL OFFSET

Kudz Za Kayah Deposit

LESTER PASS

LESTER PASS

Modified after Mortensen and Jilson (1985)

Pennsylvanian to Early Permian (Tempelman-Kluit, 1979) form the uppermost unit of the Yukon-Tanana Terrane.

This sequence of units is generally correlative with a similar stratigraphic sequence in ancestral North America (Mortensen and Jilson, 1985; Tempelman-Kluit, personal communication, 1996). The lowermost is correlated with the Lower Cambrian Atan Group and the middle carbonaceous assemblage is correlated with the offshore, Silurian-Devonian Nasina quartzite assemblage. The felsic volcanics are most similar to locally extensive Mississippian siliceous volcanics in the North American stratigraphy. Local calcareous phyllites and massive greenstones near the top of the lower unit are lithologically similar to the Kechika Group and Lower Paleozoic alkalic and potassic greenstones, respectively.

Gneiss and augen gneiss invariably occur low in the Yukon-Tanana succession beneath either the lowermost calcareous unit or the middle carbonaceous unit. Mortensen and Jilson (1985) considered the gneisses to be metamorphosed Mid-Paleozoic plutonic rocks. Conversely Tempelman-Kluit (personal communication, 1996) considers these gneisses to be at least in part *recrystallization of earlier stratigraphy*. Radiometric dating of the gneisses has consistently resulted in Late Devonian to Mississippian ages (Mortensen, 1992). The gneisses occur in structural culminations with diameters on the order of 10 km and structural relief up to about 1 km.

The Devonian-Mississippian Simpson Suite (Mortensen, 1992) forms thick intervals of hornblende granodiorite and quartz monzonite higher in the Yukon-Tanana stratigraphic sequence. Mortensen and Jilson (1985) interpreted this suite as intrusive. Tempelman-Kluit (1979, 1996) mapped the suite as an allochthonous slice emplaced on top of the structural pile.

Slide Mountain Terrane consists of Late Devonian to Late Triassic disrupted oceanic crust (Mortensen, 1992). Lithologies include massive and sheared greenstone, chert and mafic to ultramafic plutonic rocks occurring as fault-bounded slices along thrust faults and steep faults. These units are most abundant near the northeastern edge of the Finlayson Block but are also found throughout it.

Younger units unconformably overlie units from Slide Mountain, Yukon-Tanana and North American Terranes. Mesozoic clastic rocks are Late Triassic, immature sediments containing cobbles from both Slide Mountain and Yukon-Tanana Terranes. Young volcanic rocks consist of Late Cretaceous to Tertiary felsic volcanic flows and volcanoclastic deposits. They are usually found in close proximity to the Tintina Fault Zone.

Mesozoic intrusive activity in the Finlayson Block includes two suites. The first is comprised of several unmetamorphosed Early Jurassic mafic and intermediate composition plutons. The second suite consists of Late Cretaceous two-mica quartz monzonite and granite (Mortensen and Jilson, 1985).

Structurally Yukon-Tanana schists and gneisses contain a pervasive, flat- to gently-dipping foliation. Close examination of this fabric indicates that it commonly is a closely spaced crenulation cleavage. Large-scale folds related to this fabric can rarely be mapped in the field. In most cases bedding and earlier fabrics are transposed into near parallelism with this dominant fabric. Later crenulation cleavages are present only locally. Some of the Cretaceous intrusions have a mild deformation fabric, others are massive and do not contain a foliation.

Thrust faults within the Finlayson Block juxtapose lithologic sequences with similar deformation fabrics. Thrusting postdates the Late Paleozoic Slide Mountain lithologies and predates the Cretaceous intrusives. Recent mapping also suggests, but does not definitively prove, the presence of major late extensional faults juxtaposing differing sequences (Tempelman-Kluit, personal communication, 1996). East-northeast trending, steep normal faults disrupt all earlier deformation fabrics.

Metamorphic grades range from lower greenschist facies to middle amphibolite facies. Contact hornfels around plutonic units occur locally.

Metamorphism and deformation are tentatively correlated with transpressive suturing of these suspect terranes with ancestral North America. Suturing is restricted to the time interval of post-Triassic continuing into the Cretaceous. Whether deformation is continuous or sporadic has not been fully verified at present.

The discovery of the Kudz Ze Kayah and Wolverine VMS deposits within the Finlayson Block in the last few years (Johnston and Mortensen, 1994) has refocused exploration activities in the area. Both deposits occur within metasedimentary and metavolcanic sequences of the Yukon-Tanana Terrane and are associated with felsic volcanics present in the middle unit of that terrane.

REGIONAL MINERALIZATION

A total of fifty-one mineral occurrences have been reported within the Finlayson Block (DIAND, 1995). Of these, twenty-one are known or suspected to be volcanogenic in origin while veins, skarns and asbestos occurrences comprise most of the remainder. Although the better known volcanogenic occurrences are thought to be of the Kuroko-type, some Besshi-type mineralization is also present (Morin, 1981; Johnston, Mortensen, 1994) and the recently discovered Ice Deposit appears to be Cyprus-type. Two occurrences have definite economic potential, the Kudz Ze Kayah and Wolverine Deposits (Figure 4). These Kuroko-type occurrences are the main "type-deposits" for Expatriate's exploration in the district and are briefly described below.

The Kudz Ze Kayah (ABM) Deposit lies within Yukon-Tanana Terrane near the centre of the block (Cominco Exploration, 1995; Whiteway, 1995). It is a VMS deposit hosted by an overturned assemblage of felsic pyroclastics, aphanitic massive rhyolites and metasiliclastic rocks belonging to the middle unit of the Layered Metamorphic Sequence. Although both the sulphides and wallrocks are highly strained and exhibit pervasive schistosity, compositional layering in the vicinity of the deposit is relatively undeformed with a consistent, shallow northerly dip. Sphalerite, chalcopyrite and galena are the main economic minerals while the gangue includes various mixtures of magnetite, barite, pyrrhotite, pyrite and carbonate. The deposit averages about 18 m thick and has been traced 700 m along strike and up to 400 m downdip. Open pit mineable ore reserves are reported to be 11 million tonnes grading 5.9% zinc, 0.9% copper, 1.5% lead, 130 g/t silver and 1.3 g/t gold (Schultze, 1996). Preliminary studies suggest that satisfactory

lead, zinc and copper concentrates can be produced using conventional flotation processes (Cominco Exploration, 1995). The mineralization responds well to magnetic and electromagnetic surveys but geochemical response is somewhat erratic because the entire deposit is covered by 2 to 10 m of glacial till.

The Wolverine Deposit is located 25 km east of the Kudz Ze Kayah property near a contact between Yukon-Tanana and overlying Slide Mountain rocks. It consists of the Wolverine and Lynx Zones which are hosted by rhyolitic metavolcanics and argillites lying within the middle unit of the Layered Metamorphic Sequence. The mineralization consists primarily of semi-massive to massive pyrite and sphalerite with varying amounts of galena, chalcopyrite, tetrahedrite and native gold. The surface expression of the Wolverine Zone is marked by a vegetation kill zone containing weakly malachite-stained argillite while the Lynx Zone is blanketed by glacial till. Westmin has traced the deposit 700 m along strike and up to 450 m downdip and it is still open. The mineralization averages 6.1 m thick and dips shallowly to the north. Both zones contain significantly more zinc and precious metals than Kudz Ze Kayah. The current geological inventory is reported to be 5,311,000 tonnes grading 12.96% zinc, 1.41% copper, 1.53% lead, 359.1 g/t silver and 1.81 g/t gold (Westmin News Release, November 30, 1996). Soil geochemistry outlined weakly to moderately anomalous values along the projected surface trace of the deposit while magnetic surveys easily traced a laterally extensive, banded iron formation which occurs about 80 m up-section from the massive sulphide horizon. Interpretation of electromagnetic results is complicated by the presence of graphite within the argillite.

REGIONAL GEOCHEMISTRY

Published geochemical data for the Finlayson Lake area are limited to reconnaissance scale stream sediment sampling conducted in the late 1980's by the GSC (Hornbrook and Friske, 1988; Friske et al, 1990). The sampling was done at an approximate density of one sample per 10 sq km. Each sample was analyzed for twenty elements including common indicator elements for VMS deposits such as copper, lead, zinc, silver and arsenic. Anomalous results were obtained from creeks draining some previously known VMS occurrences (DIAND, 1995, Yukon Minfile 105G/32, 34 and 40) but many others, including the streams draining the Wolverine Deposit, produced near background values. Anomalous results were also obtained from several drainages where there were no known mineral occurrences. Follow-up exploration has since located showings in many of the anomalous creeks with the most significant discovery to date being the Kudz Ze Kayah Deposit.

Expatriate was able to supplement the published reports with private data summarizing results of 1973 exploration managed by Archer Cathro on behalf of a joint venture (Cathro, 1973). The reconnaissance prospecting and geochemical sampling program explored for lead-zinc mineralization in the lower unit of the Layered Metamorphic Sequence but because the data provides relatively uniform coverage over the entire region, it is also suitable for evaluating areas underlain by the favourable middle unit. The Archer Cathro samples included approximately 5000 soils and stream sediments collected at a density of approximately one sample per sq km. They were all analyzed for lead, zinc, copper and molybdenum. As might be expected, this closer spaced sampling outlined many more areas of anomalous geochemical response than the

government survey. Almost all of the known volcanogenic occurrences showed up as anomalies on this survey, including Kudz Ze Kayah and Wolverine.

The following table illustrates regional geochemical backgrounds for the metals and anomalous thresholds used for target selection.

GEOCHEMICAL BACKGROUNDS AND ANOMALOUS THRESHOLDS

	<u>Background</u>	<u>Anomalous Thresholds (ppm)</u>			<u>Peak Value</u>
		<u>Weak</u>	<u>Moderate</u>	<u>Strong</u>	
Copper	25	50	100	200	1720
Lead	30	50	100	200	>4000
Zinc	80	200	500	1000	>4000
Molybdenum	<1	2	5	10	65

The Check property was staked to protect a target selected from the Archer Cathro data.

Peak values from 1973 sampling at Check were 116 ppm copper, 35 ppm lead, 440 ppm zinc and 5 ppm molybdenum.

Copper, lead and zinc are major metals in most VMS occurrences in the Finlayson Lake area and are obvious indicator elements. Molybdenum is present in anomalous quantities in the banded iron formation overlying the Wolverine Deposit (Meade, personal communication, 1995) and appears to be slightly enriched in the felsic metavolcanic rocks. Based on the geochemical signature in the vicinity of known occurrences its presence can be used to distinguish copper anomalies associated with volcanogenic mineralization from those derived from ultramafic rocks.

REGIONAL GEOPHYSICS

The only published geophysical data for the Finlayson Lake area resulted from airborne magnetic surveys conducted in 1961 by the GSC on behalf of the Department of Mines and Technical Surveys. The surveys were flown with fixed-wing aircraft at a nominal elevation of 300 m above ground level on east-west lines spaced approximately 1.6 km apart. Results are presented on a 1:250,000 scale map (DMTS, 1961) and in more detail on a series of 1:50,000 maps.

The largest, most intense areas of positive magnetic response are associated with obducted ultramafic rocks belonging to the Slide Mountain Terrane. Within the Campbell Range Belt where dips are usually moderate to steep, the anomalies are narrow and elongate while in the remainder of the block where the ultramafic rocks occur along shallowly-dipping thrust faults, they are much broader.

A series of secondary positive anomalies was also recorded over Yukon-Tanana rocks but until recently they had no obvious explanation. Prospecting and mapping have now shown that magnetite occurs locally within schists of the middle unit of the Layered Metamorphic Sequence. The greatest documented concentration of magnetite is found in the hanging wall of the Wolverine Deposit where it forms several thin horizons approximately 80 m up-section from the massive sulphide mineralization. Magnetite is also a significant constituent of the mineralization at Kudz Ze Kayah. The Check property lies in an area of low aeromagnetic response.

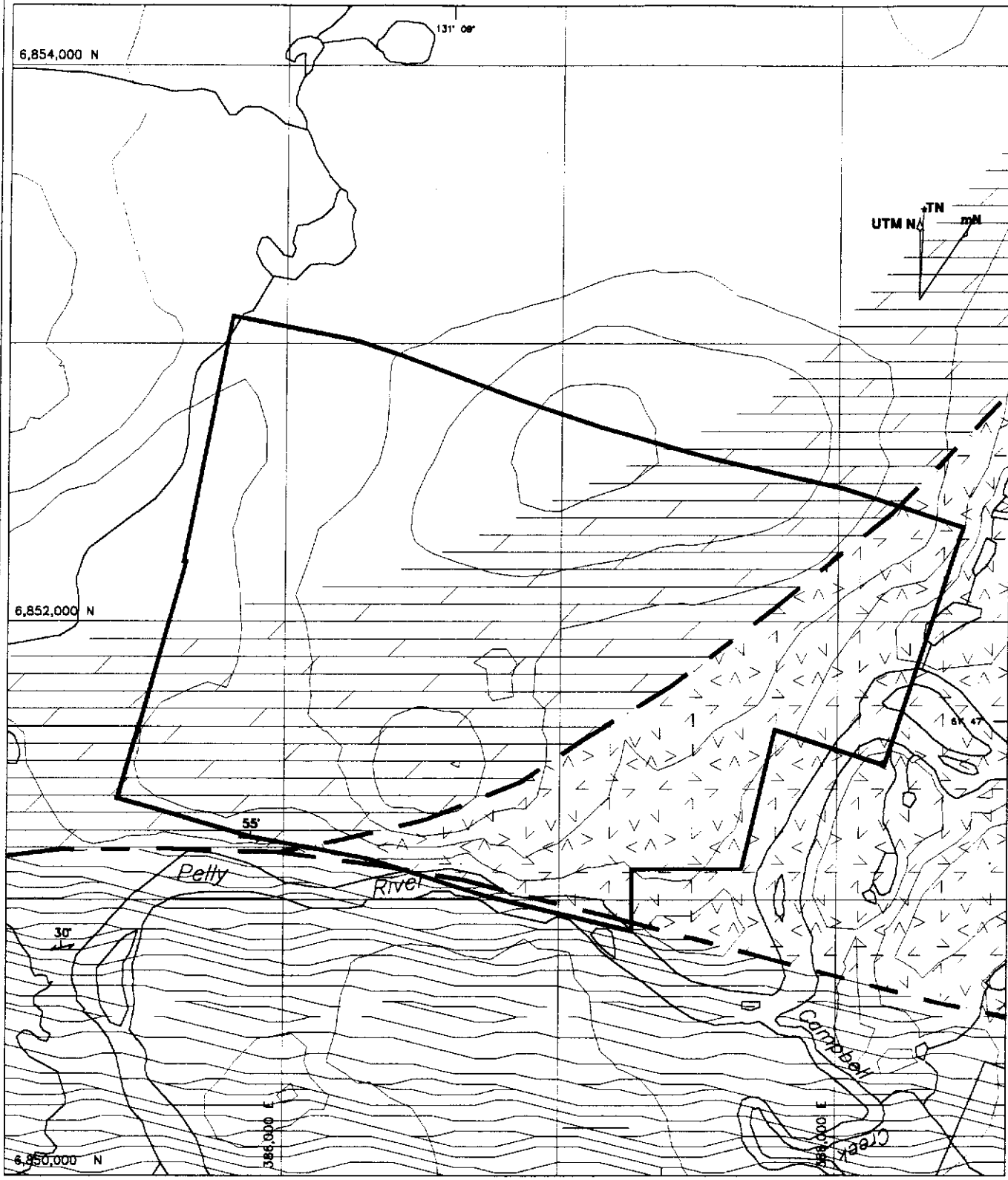
PROPERTY GEOLOGY AND MINERALIZATION

Bedrock exposure is poor due to extensive glacial till cover and the only mapped exposures occur along the bank of the Pelly River. Property geology is shown on Figure 5 while the three main rock types in the vicinity of the property are described below. All are part of the Layered Metamorphic Sequence.

Well foliated chlorite schist is grey green on fresh surfaces and weathers silver grey. It locally exhibits biotite on foliation planes and epidote throughout. Interlayers of graphite schist and bull quartz vein are common within the unit.

The schist is conformably overlain in the western part of the property by calcareous phyllite. It weathers dark grey and is variably foliated and calcareous.

Several exposures of green massive volcanics occur in the eastern part of the property. Most of this unit is felsic but at least one interfingering of massive, mafic volcanic rock was observed. Mariposite is common throughout. The volcanics host pyrite and traces of chalcopyrite as disseminations and fracture coatings in several localities. Both the felsic and mafic volcanic rocks exhibit limonite and sulphates on fractures. Five samples of volcanic rocks (N110301-N110305) were collected and sent to Chemex Labs Ltd. in North Vancouver, B.C. where they were analyzed for 32 elements by the Induced Coupled Plasma (ICP) technique. The samples returned background values for all metals. Sample locations are illustrated on Figure 6 while Certificates of Analysis are in Appendix III.



- Chlorite schist
- Calcareous phyllite
- Massive volcanics

- Geologic boundary
- Claim boundary
- Foliation with strike and dip



FIGURE 5

Archer, Cathra & Associates (1981) Limited

**PROPERTY GEOLOGY
CHECK PROPERTY**

EXPATRIATE RESOURCES LTD.

SCALE: 1:20,000	FILE: CH-GEOL.DWG
DRAWN: AB	PROJ: FP
DATE: 1-MAR-87	

PROPERTY GEOCHEMISTRY

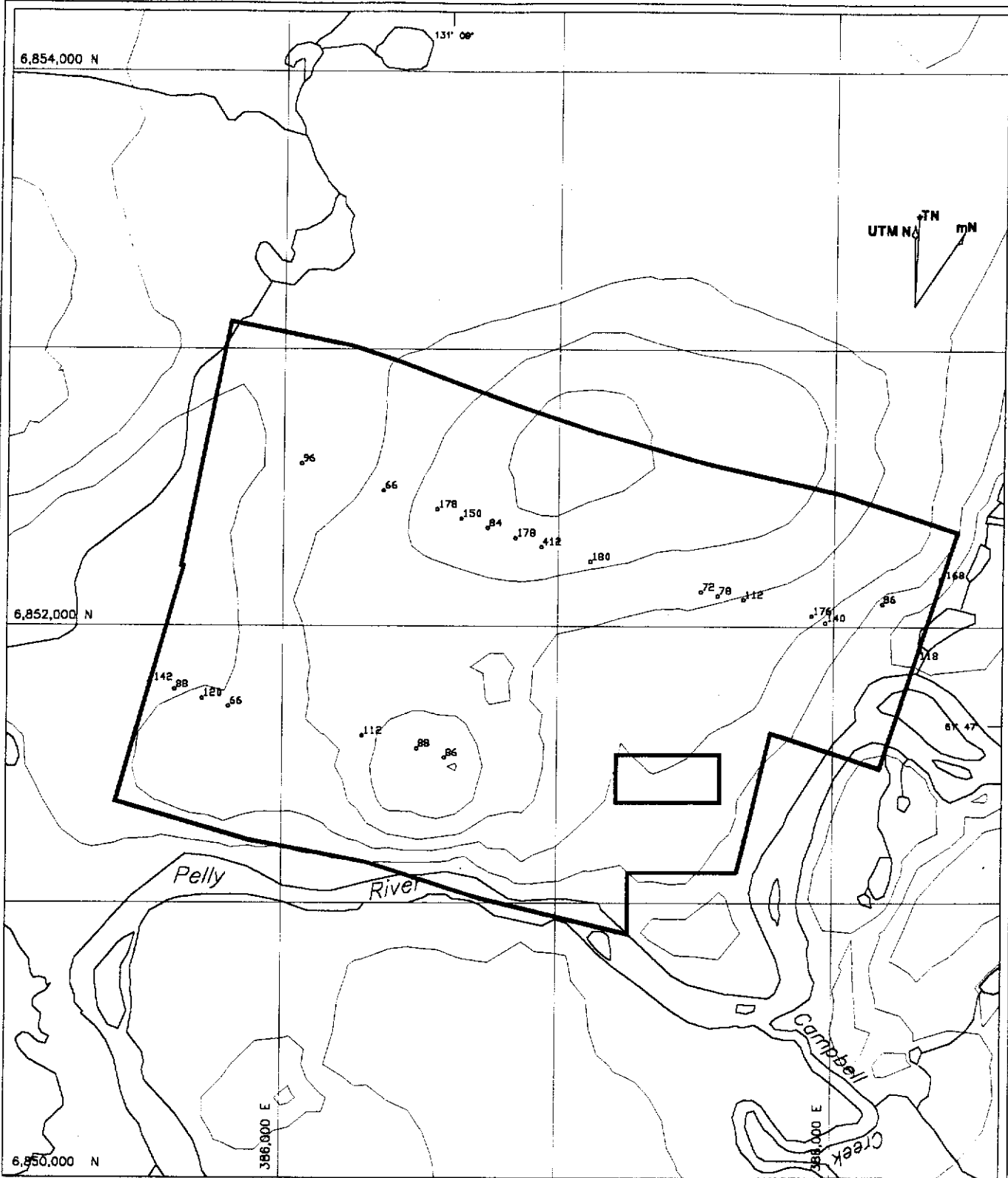
Reconnaissance soil sampling was done during prospecting and at 100 m intervals along claim lines except when frozen soil prevented sample collection. Sample locations are shown on Figure 6. The sample sites were marked with 50 cm wooden lath bearing aluminum tags inscribed with sample numbers.

All samples were sent to Chemex where they were screened to -80 mesh, digested in nitric-aqua regia and geochemically analyzed for 32 elements using the ICP technique. Certificates of Analysis are listed in Appendix III. Results for four elements (copper, zinc, cobalt and molybdenum) are plotted on Figures 7 to 10 while anomalous thresholds and peak values for six VMS pathfinder metals are as follows.

<u>Element</u>	<u>Threshold Values (ppm)</u>			<u>Peak Value</u>
	<u>Weak</u>	<u>Moderate</u>	<u>Strong</u>	
Copper	50	100	NA*	168
Zinc	200	500	NA*	412
Cobalt	30	50	80	103
Molybdenum	2	5	NA*	5
Lead	NA*	NA*	NA*	32
Silver	NA*	NA*	NA*	0.4

*NA = not applicable because property values did not reach regional thresholds.

Two soil samples in the northeastern corner of the property returned weakly to strongly anomalous copper, cobalt and molybdenum values. The samples were taken about 250 m apart and are in an area that is underlain by volcanic rocks. Based on the metal signature and geological setting this could be a Besshi- or Cyprus-type target.



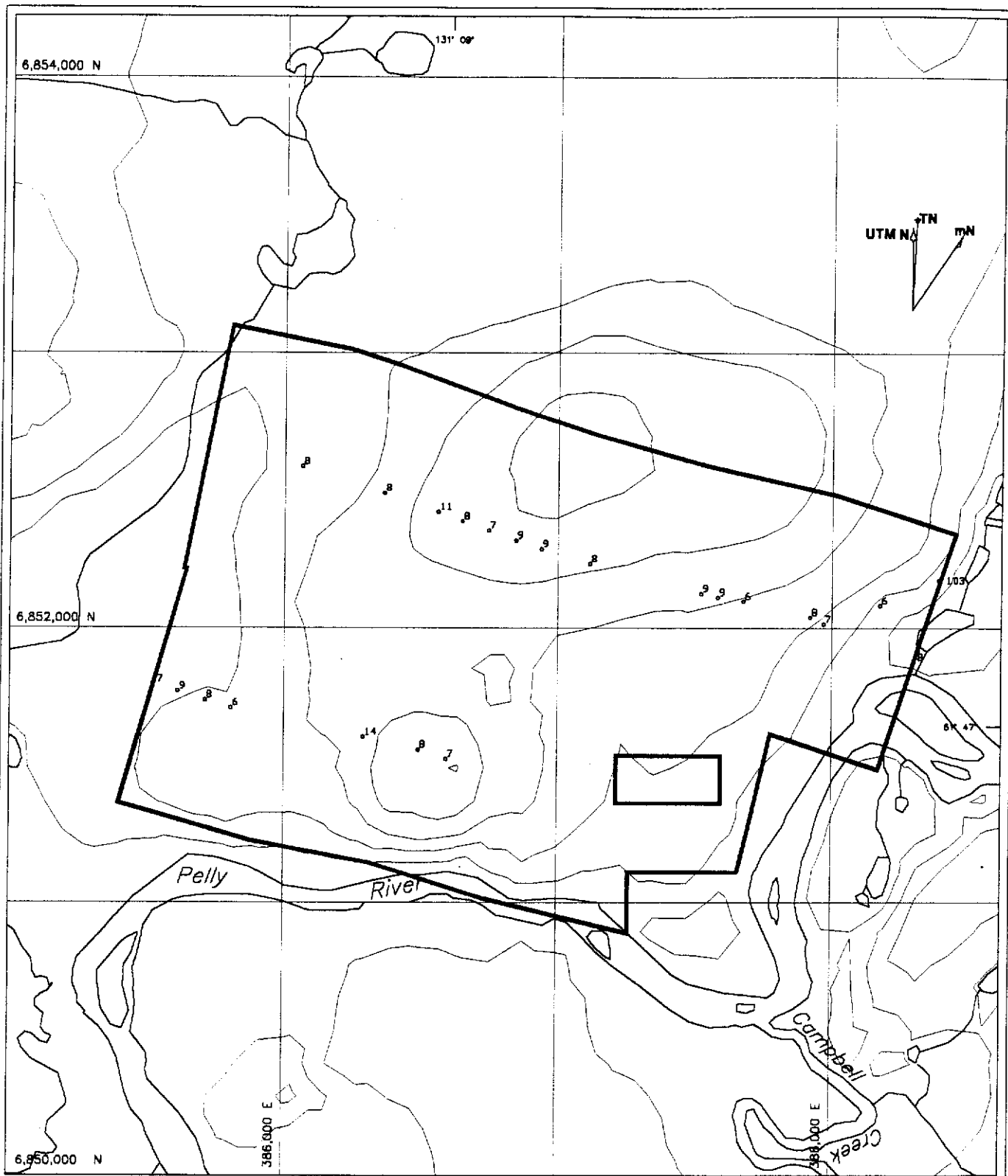
— Claim boundary

•175 Sample location with zinc value in ppm



FIGURE 8
 Archer, Cathra & Associates (1981) Limited
ZINC GEOCHEMISTRY
CHECK PROPERTY
EXPATRIATE RESOURCES LTD.

SCALE: 1:20,000	FILE: CH-ZN.DWG
DRAWN: AB	PROJ: FP
	DATE: 1-MAR-87



— Claim boundary

•175 Sample location with cobalt value in ppm



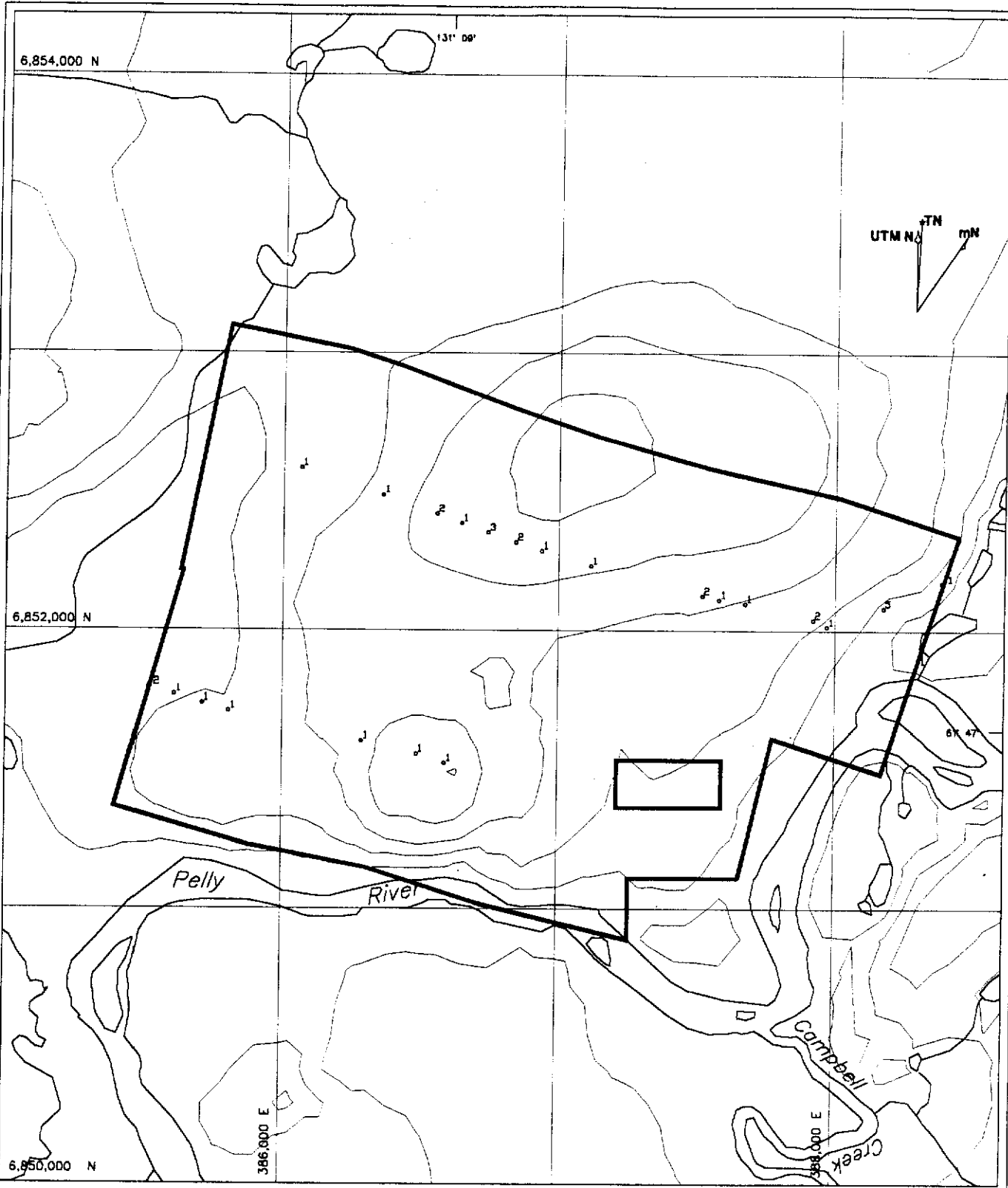
FIGURE 9

Archer, Cathro & Associates (1981) Limited

**COBALT GEOCHEMISTRY
CHECK PROPERTY**

EXPATRIATE RESOURCES LTD.

SCALE: 1:20,000	FILE: CH-CO.DWG
DRAWN: AB	PROJ: FP
DATE: 1-MAR-87	



— Claim boundary

▲⁷⁵ Sample location with molybdenum value in ppm

FIGURE 10

Archer, Cathra & Associates (1981) Limited

MOLYBDENUM GEOCHEMISTRY

CHECK PROPERTY

EXPATRIATE RESOURCES LTD.

SCALE: 1:20,000 FILE: CH-MQ.DWG

DRAWN: AB

PROJ: FP

DATE: 1-MAR-87

A second possible area of interest is a string of weakly anomalous molybdenum and high background zinc values flanking a single moderately anomalous zinc value in the north-central portion of the property. This anomaly is underlain by glacial till that may have obscured the geochemical bedrock signature.

PROPERTY GEOPHYSICS

In 1996, a suite of low level helicopter-borne geophysical surveys were conducted by Aerodat Inc. on behalf of Condor International Resources Inc. over ground covered by the Check property (Aerodat, 1996). The results of the surveys were made available to Expatriate.

The Check claims cover most of a 1 km long linear aeromagnetic high. The anomaly trends to the east-southeast and is flanked to the north and south by linear lows. The aeromagnetic anomaly parallels the geological trend in the area. It lies within a broad zone of low resistivity but no specific conductors were identified.

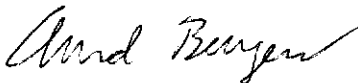
CONCLUSIONS AND RECOMMENDATIONS

The Check property covers rocks of the Layered Metamorphic Sequence, a favourable sequence for VMS deposits. Reconnaissance soil geochemistry outlined two general areas of interest which confirmed the 1973 results. The source of one anomaly appears to be volcanic rocks in which minor sulphide occurrences have been reported. The other geochemical target is in a till-covered area. Airborne geophysical surveys outlined a positive magnetic anomaly in the vicinity of the geochemical targets.

This is a low priority target compared to Expatriate's other properties in the Finlayson Lake area. Further prospecting is recommended to determine a source of the magnetic anomaly while additional reconnaissance soil sampling should be done to better define the extent of the geochemical anomalies. The newly optioned ground on the southeastern bank of the Pelly River should also be prospected and reconnaissance sampled to locate any continuation of the anomalies.

Respectfully submitted,

ARCHER, CATHRO & ASSOCIATES (1981) LIMITED


A. Burgert, B.Sc.

SELECTED REFERENCES

Aerodat, Inc.

- 1996 Report on Combined Helicopter-Borne Electromagnetic, Magnetic and VLF-EM Surveys, Lip and War Properties, Finlayson Lake Area, Yukon for Equity Engineering Limited, September 20, 1996, p.30.

Cathro, R.J.

- 1973 Final Report, Finlayson Joint Venture; November 30, 1973, p.44.

Cominco Exploration

- 1995 Kudz Ze Kayah Program, Yukon; Information handout from Cordilleran Roundup, Spring 1995.

DIAND

- 1995 Yukon Minfile, November/95; Exploration Geological Services Division, Indian and Northern Affairs Canada.

DMTS

- 1961 Finlayson Lake (105G), Airborne Magnetic Map; Department of Mines and Technical Surveys, Geophysical Paper 70006G.

Friske, P.W.B., Hornbrook, E.H.W., Lynch, J.J., McCurdy, M.W., Gross, H., Galletta, A.C. and Durham, C.C.

- 1990 Regional stream sediment and water geochemical data, central Yukon; Geological Survey of Canada Open File 2174 (105K East).

Hornbrook, E.H.W. and Friske, P.W.B.

- 1988 Regional stream sediment and water geochemical data, southeastern Yukon; Geological Survey of Canada Open File 1648 (105G).

Johnston, S.T. and Mortensen, J.K.

- 1994 Regional setting of porphyry Cu-Mo deposits, volcanogenic massive sulphide deposits, and mesothermal gold deposits in the Yukon-Tanana Terrane, Yukon; Yukon Metallogeny: Recent Developments, Canadian-Yukon Economic Development Agreement, pp.30-34.

Morin, J.A.

- 1981 Volcanogenic iron and base metal occurrences in Klondike Schist, Yukon Geology and Exploration 1979-80, Department of Indian and Northern Affairs, pp.91-97.

Mortensen, J.K.

- 1992 Pre-Mid-Mesozoic Tectonic Evolution of the Yukon-Tanana Terrane, Yukon and Alaska; *Tectonics*, Vol.11, No.4, pp.836-853.

Mortensen, J.K. and Jilson, G.A.

- 1985 Evolution of the Yukon-Tanana Terrane: evidence from southeastern Yukon Territory; *Geology*, V.13, pp.806-810.

Schultze, H.C.

- 1996 Summary of the Kudz Ze Kayah Project, volcanic hosted massive sulphide deposit Yukon Territory; *in*: Yukon Exploration and Geology, 1995, Exploration and Geological Services Division, Yukon, Indian and Northern Affairs Canada, pp.29-32.

Tempelman-Kluit, D.J., Gordey, S.P. and Read, B.C.

- 1976 Stratigraphic and structural studies in the Pelly Mountains, Yukon Territory; Geological Survey of Canada Paper 76-1A, pp.97-106.

Tempelman-Kluit, D.J.

- 1977 Quiet Lake (105F) and Finlayson Lake (105G) map areas; Geological Survey of Canada Open File 486.

- 1979 Transported Cataclasite, Ophiolite and Granodiorite in Yukon: Evidence of Arc-Continent Collision. Geological Survey of Canada, Paper 79-14, 27 pages.

Westmin Resources Limited

- 1996 News Release, Joint Release with Atna Resources Ltd; November 30, 1996, p.2.

Whiteway, P.

- 1995 "Fast-Tracking" ABM; *in* Canadian Mining Journal, June 1995, pp.17-21.

APPENDIX I

AUTHOR'S STATEMENT OF QUALIFICATIONS

STATEMENT OF QUALIFICATIONS

I, Arnd Burgert, geologist, with business addresses in Whitehorse, Yukon Territory and in Vancouver, British Columbia and residential address in White Rock, British Columbia, do hereby certify that:

1. I graduated from the University of British Columbia in 1995 with a B.Sc. in geology.
2. From 1989 to present, I have been actively engaged in mineral exploration in British Columbia, the Northwest Territories and the Yukon Territory and am presently employed with Archer, Cathro & Associates (1981) Limited.
3. I have personally participated in field work in the Finlayson Lake region in 1996 and have compiled the information reported herein.


A. Burgert, B.Sc.

APPENDIX II

GPS DATA

Check Property
GPS Survey Coordinates

Data Quality: Standard = The surveyed positions were recorded in 3D mode and were differentially corrected. The reported UTM coordinates are within 1 to 5 meters of their actual locations; Poor = >25% of the surveyed positions were recorded in 2D mode; Uncorrected = The surveyed positions were not differentially corrected; N/S = No survey data available.

Base Station: W = Westmin Resources Limited base station at Wolverine Lake; WL = Ministry of Environment, Lands and Parks base station at Williams Lake; DL = Ministry of Environment, Lands and Parks base station at Dease Lake; RR = Department of Renewable Resources (Forestry) at Whitehorse.

A. Expatriate Resources Ltd. Claim Posts

Claim	Posts 1	Posts 2	UTM Coordinates		Data Quality	Base Station	Date	
			Northing	Easting				
54	Check	1, 2	-	6851249	387689	Standard	WL	29-May-96
55		3, 4	1, 2	6851352	387253	Standard	WL	29-May-96
56		5, 6	3, 4	6851454	386832	Standard	WL	29-May-96
57		7, 8	5, 6	6851587	386405	Standard	WL	29-May-96
58		9, 10	7, 8	6851675	385951	Standard	WL	29-May-96
59		-	9, 10	6851798	385523	Standard	WL	29-May-96
60	Check	11, 12	-	6851913	388310	Uncorrected	-	28-May-96
61		13, 14	11, 12	6852055	387863	Uncorrected	-	28-May-96
62		15, 16	13, 14	6852149	387443	Uncorrected	-	28-May-96
63		17, 18	15, 16	6852269	387011	Uncorrected	-	28-May-96
64		19, 20	17, 18	6852374	386697	Uncorrected	-	28-May-96
65		21,22	19, 20	6852570	386162	Uncorrected	-	28-May-96
66		-	21,22	6852656	385728	Uncorrected	-	28-May-96

B. Claim Posts From Adjoining Claim Blocks

Claim	Posts 1	Posts 2	UTM Coordinates		Data Quality	Base Station	Date
			Northing	Easting			
Stand	483, 484	-	6851924	388529	Standard	WL	28-May-96

APPENDIX III
CERTIFICATES OF ANALYSIS



Chemex Labs Ltd.

Analytical Chemists * Geochemists * Registered Assayers

212 Brooksbank Ave., North Vancouver
British Columbia, Canada V7J 2C1
PHONE: 604-984-0221 FAX: 604-984-0218

To: EXPATRIATE RESOURCES LTD.
C/O ARCHER, CATHRO & ASSOCIATES (1981) LIMITED
1016 - 510 W. HASTINGS ST.
VANCOUVER, BC
V6B 1L8

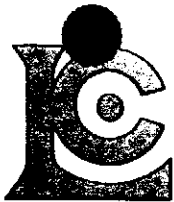
Project: CHECK
Comments:

Page Number: 1-A
Total Pages: 1
Certificate Date: 12-AUG-96
Invoice No.: I9626571
P.O. Number:
Account: MPO

CERTIFICATE OF ANALYSIS A9626571

SAMPLE	PREP CODE	Ag ppm	Al %	As ppm	Ba ppm	Be ppm	Bi ppm	Ca %	Cd ppm	Co ppm	Cr ppm	Cu ppm	Fe %	Ga ppm	Hg ppm	K %	La ppm	Mg %	Mn ppm	Mo ppm
BB0665	201 202	0.2	1.78	20	280	< 0.5	< 2	0.32	< 0.5	8	45	20	2.56	< 10	< 1	0.15	30	0.61	290	2
BB0666	201 202	< 0.2	1.48	18	310	< 0.5	< 2	0.54	0.5	11	44	33	2.57	< 10	< 1	0.12	30	0.70	325	< 1
BB0667	201 202	< 0.2	1.78	20	160	< 0.5	2	0.13	< 0.5	10	45	21	3.18	< 10	< 1	0.07	10	0.63	240	1

CERTIFICATION: Hart Bichler



Chemex Labs Ltd.

Analytical Chemists * Geochemists * Registered Assayers
212 Brooksbank Ave., North Vancouver
British Columbia, Canada V7J 2C1
PHONE: 604-984-0221 FAX: 604-984-0218

To: EXPATRIATE RESOURCES LTD.
C/O ARCHER, CATHRO & ASSOCIATES (1981) LIMITED
1016 - 510 W. HASTINGS ST.
VANCOUVER, BC
V6B 1L8

Project : CHECK
Comments:

Page Number : 1-B
Total Pages : 1
Certificate Date: 12-AUG-96
Invoice No. : I9626571
P.O. Number :
Account : MPO

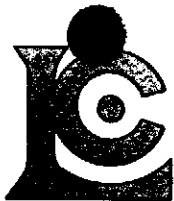
CERTIFICATE OF ANALYSIS

A9626571

SAMPLE	PREP		Na	Ni	P	Pb	Sb	Sc	Sr	Ti	Tl	U	V	W	Zn
	CODE		%	ppm	ppm	ppm	ppm	ppm	ppm	%	ppm	ppm	ppm	ppm	ppm
BB0665	201	202	< 0.01	27	780	18	< 2	3	21	0.04	< 10	< 10	56	< 10	96
BB0666	201	202	< 0.01	30	1080	32	< 2	4	29	0.05	< 10	< 10	46	< 10	130
BB0667	201	202	< 0.01	30	400	10	2	3	10	0.05	< 10	< 10	57	< 10	82

CERTIFICATION:

Hait Bichler



Chemex Labs Ltd.

Analytical Chemists * Geochemists * Registered Assayers
 212 Brooksbank Ave., North Vancouver
 British Columbia, Canada V7J 2C1
 PHONE: 604-984-0221 FAX: 604-984-0218

To: EXPATRIATE RESOURCES LTD.
 C/O ARCHER, CATHRO & ASSOCIATES (1981) LIMITED
 1016 - 510 W. HASTINGS ST.
 VANCOUVER, BC
 V6B 1L8

Page Number : 1-A
 Total Pages : 1
 Certificate Date: 11-JUL-96
 Invoice No. : 19622862
 P.O. Number :
 Account : MPO

Project : CHECK
 Comments:

CERTIFICATE OF ANALYSIS A9622862

SAMPLE	PREP CODE	Ag ppm	Al %	As ppm	Ba ppm	Be ppm	Bi ppm	Ca %	Cd ppm	Co ppm	Cr ppm	Cu ppm	Fe %	Ga ppm	Hg ppm	K %	La ppm	Mg %	Mn ppm	Mo ppm
BB 00670	201 202	< 0.2	1.16	10	540	< 0.5	< 2	0.76	0.5	8	25	14	2.00	< 10	< 1	0.08	10	0.48	180	1
BB 00671	201 202	< 0.2	1.21	8	510	< 0.5	< 2	0.14	0.5	7	23	11	2.11	< 10	< 1	0.12	10	0.28	145	1
BB 00672	201 202	< 0.2	1.69	14	380	< 0.5	2	0.19	1.0	8	31	12	3.09	< 10	< 1	0.15	10	0.39	160	2
BB 00673	201 202	< 0.2	1.24	8	560	< 0.5	< 2	0.71	1.0	6	20	20	1.70	< 10	< 1	0.07	10	0.36	220	1
BB 00674	201 202	< 0.2	1.57	14	550	0.5	< 2	0.28	0.5	9	28	15	2.30	< 10	< 1	0.09	10	0.41	230	1
BB 00675	201 202	< 0.2	1.64	16	550	0.5	2	0.34	0.5	9	26	18	2.46	< 10	< 1	0.08	10	0.44	335	2
BB 00676	201 202	0.2	1.04	6	680	< 0.5	< 2	0.70	1.5	8	20	29	1.76	< 10	< 1	0.10	10	0.38	490	1
BB 00677	201 202	0.2	1.37	2	710	< 0.5	< 2	0.58	1.5	9	24	20	1.80	< 10	< 1	0.15	10	0.38	630	1
BB 00678	201 202	0.2	1.84	10	550	0.5	2	0.43	0.5	9	36	13	2.88	10	< 1	0.22	10	0.55	210	2
BB 00679	201 202	< 0.2	1.49	10	460	< 0.5	< 2	0.37	< 0.5	7	27	11	2.10	< 10	< 1	0.12	10	0.48	170	3
BB 00680	201 202	< 0.2	1.49	12	670	0.5	2	0.49	0.5	8	27	18	2.16	< 10	< 1	0.14	10	0.47	345	1
BB 00681	201 202	0.2	1.60	8	710	0.5	2	0.85	1.0	11	29	40	2.38	< 10	< 1	0.12	10	0.54	710	2
BB 00682	201 202	< 0.2	1.09	10	260	< 0.5	< 2	0.42	< 0.5	8	26	9	1.96	< 10	< 1	0.11	10	0.50	175	1
BB 00683	201 202	0.2	1.38	8	500	0.5	< 2	0.71	0.5	8	26	18	2.06	10	< 1	0.12	10	0.49	230	1
BB 00684	201 202	< 0.2	1.28	10	310	< 0.5	< 2	0.20	0.5	7	37	12	2.36	10	< 1	0.15	10	0.45	280	2
BB 00685	201 202	< 0.2	1.31	20	670	< 0.5	2	0.47	0.5	9	29	17	2.50	< 10	< 1	0.15	10	0.41	255	1
BB 00686	201 202	< 0.2	1.19	12	480	< 0.5	< 2	0.28	0.5	8	28	9	2.09	< 10	< 1	0.16	10	0.39	200	1
BB 00687	201 202	< 0.2	0.99	10	580	< 0.5	< 2	0.38	< 0.5	6	22	14	1.62	< 10	< 1	0.11	10	0.37	175	1
BB 00688	201 202	0.2	1.59	8	440	0.5	2	0.79	1.0	14	38	24	2.60	10	< 1	0.13	10	0.71	605	1
BB 00689	201 202	0.2	1.32	14	640	0.5	< 2	0.52	1.0	8	30	16	2.26	< 10	< 1	0.14	10	0.44	310	1
BB 00690	201 202	< 0.2	0.93	8	400	< 0.5	2	0.43	< 0.5	8	21	15	1.96	< 10	< 1	0.09	10	0.42	470	1
BB 00691	201 202	0.2	0.97	6	370	< 0.5	2	0.66	0.5	7	20	16	1.82	< 10	< 1	0.09	10	0.39	250	1
BB 00692	201 202	< 0.2	1.25	12	290	< 0.5	< 2	0.25	< 0.5	7	22	12	2.18	< 10	< 1	0.09	10	0.42	245	1

CERTIFICATION:

Hart Bickler



Chemex Labs Ltd.

Analytical Chemists * Geochemists * Registered Assayers
 212 Brooksbank Ave., North Vancouver
 British Columbia, Canada V7J 2C1
 PHONE: 604-984-0221 FAX: 604-984-0218

To: EXPATRIATE RESOURCES LTD.
 C/O ARCHER, CATHRO & ASSOCIATES (1981) LIMITED
 1016 - 510 W. HASTINGS ST.
 VANCOUVER, BC
 V6B 1L8

Page Number : 1-B
 Total Pages : 1
 Certificate Date: 11-JUL-96
 Invoice No. : I9622862
 P.O. Number :
 Account : MPO

Project : CHECK
 Comments:

CERTIFICATE OF ANALYSIS A9622862

SAMPLE	PREP CODE	Na %	Ni ppm	P ppm	Pb ppm	Sb ppm	Sc ppm	Sr ppm	Ti %	Tl ppm	U ppm	V ppm	W ppm	Zn ppm
BB 00670	201 202	< 0.01	22	1050	8	< 2	2	43	< 0.01	< 10	< 10	47	< 10	118
BB 00671	201 202	< 0.01	14	510	10	< 2	1	13	0.02	< 10	< 10	51	< 10	140
BB 00672	201 202	< 0.01	20	2060	16	< 2	2	17	0.01	< 10	< 10	73	< 10	176
BB 00673	201 202	0.01	14	460	10	< 2	1	40	0.01	< 10	< 10	52	< 10	112
BB 00674	201 202	< 0.01	26	430	16	< 2	3	20	0.01	< 10	< 10	60	< 10	78
BB 00675	201 202	< 0.01	33	810	14	< 2	3	24	0.01	< 10	< 10	59	< 10	72
BB 00676	201 202	0.01	29	910	12	< 2	1	42	0.01	< 10	< 10	41	< 10	180
BB 00677	201 202	0.01	19	700	12	< 2	3	38	0.03	< 10	< 10	44	< 10	412
BB 00678	201 202	< 0.01	23	530	10	< 2	3	34	0.04	< 10	< 10	59	< 10	178
BB 00679	201 202	< 0.01	20	510	10	< 2	2	28	0.03	< 10	< 10	47	< 10	84
BB 00680	201 202	0.01	26	700	10	< 2	3	33	0.02	< 10	< 10	44	< 10	150
BB 00681	201 202	< 0.01	30	810	12	< 2	4	60	0.02	< 10	< 10	50	< 10	178
BB 00682	201 202	< 0.01	21	720	8	< 2	3	28	0.03	< 10	< 10	44	< 10	66
BB 00683	201 202	0.01	22	980	8	< 2	4	48	0.03	< 10	< 10	46	< 10	96
BB 00684	201 202	< 0.01	25	1280	12	< 2	1	20	0.01	< 10	< 10	54	< 10	142
BB 00685	201 202	< 0.01	28	970	10	< 2	3	38	0.01	< 10	< 10	61	< 10	88
BB 00686	201 202	< 0.01	20	730	10	< 2	2	22	0.03	< 10	< 10	55	< 10	120
BB 00687	201 202	0.01	21	600	6	< 2	1	28	0.01	< 10	< 10	37	< 10	66
BB 00688	201 202	< 0.01	39	540	12	< 2	5	42	0.01	< 10	< 10	52	< 10	112
BB 00689	201 202	< 0.01	27	470	12	< 2	3	32	0.01	< 10	< 10	50	< 10	98
BB 00690	201 202	< 0.01	25	980	10	< 2	2	34	0.01	< 10	< 10	42	< 10	88
BB 00691	201 202	< 0.01	18	390	8	< 2	2	32	0.01	< 10	< 10	38	< 10	86
BB 00692	201 202	< 0.01	20	400	10	< 2	2	19	0.01	< 10	< 10	35	< 10	112

CERTIFICATION: Hart Bickler



Chemex Labs Ltd.

Analytical Chemists * Geochemists * Registered Assayers

212 Brooksbank Ave., North Vancouver
British Columbia, Canada V7J 2C1
PHONE: 604-984-0221 FAX: 604-984-0218

To: EXPATRIATE RESOURCES LTD.
C/O ARCHER, CATHRO & ASSOCIATES (1981) LIMITED
1016 - 510 W. HASTINGS ST.
VANCOUVER, BC
V6B 1L8

Project: CHECK
Comments:

Page Number : 1
Total Pages : 1
Certificate Date: 26-JUN-96
Invoice No. : I9622080
P.O. Number :
Account : MPO

CERTIFICATE OF ANALYSIS

A9622080

SAMPLE	PREP CODE	Au g/t FA+AA									
BB13501	244 --	0.030									
BB13502	244 --	0.025									

CERTIFICATION:



Chemex Labs Ltd.

Analytical Chemists * Geochemists * Registered Assayers

212 Brooksbank Ave., North Vancouver
British Columbia, Canada V7J 2C1
PHONE: 604-984-0221 FAX: 604-984-0218

To: EXPATRIATE RESOURCES LTD.
C/O ARCHER, CATHRO & ASSOCIATES (1981) LIMITED
1016 - 510 W. HASTINGS ST.
VANCOUVER, BC
V6B 1L8

Project : CHECK
Comments:

Page Number : 1
Total Pages : 1
Certificate Date: 26-JUN-96
Invoice No. : 19622079
P.O. Number :
Account : MPO

CERTIFICATE OF ANALYSIS

A9622079

SAMPLE	PREP CODE	Au g/t FA+AA									
N110301	244 --	0.015									
N110302	244 --	< 0.005									
N110303	244 --	< 0.005									
N110304	244 --	0.195									
N110305	244 --	0.010									

CERTIFICATION:

Frank Vonk



Chemex Labs Ltd.

Analytical Chemists * Geochemists * Registered Assayers

212 Brooksbank Ave., North Vancouver
British Columbia, Canada V7J 2C1
PHONE: 604-984-0221 FAX: 604-984-0218

To: EXPATRIATE RESOURCES LTD.
C/O ARCHER, CATHRO & ASSOCIATES (1981) LIMITED
1016 - 510 W. HASTINGS ST.
VANCOUVER, BC
V6B 1L8

Project: CHECK
Comments:

Page Number: 1-A
Total Pages: 1
Certificate Date: 19-JUN-96
Invoice No.: 19620848
P.O. Number:
Account: MPO

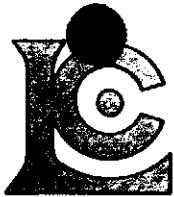
CERTIFICATE OF ANALYSIS

A9620848

SAMPLE	PREP CODE		Ag	Al	As	Ba	Be	Bi	Ca	Cd	Co	Cr	Cu	Fe	Ga	Hg	K	La	Mg	Mn	Mo
			ppm	%	ppm	ppm	ppm	ppm	%	ppm	ppm	ppm	ppm	%	ppm	ppm	%	ppm	%	ppm	ppm
BB13501	201	202	0.4	1.58	566	840	0.5	< 2	3.73	0.5	103	343	63	4.05	< 10	2	0.20	10	3.12	1140	1
BB13502	201	202	< 0.2	0.35	62	160	< 0.5	< 2	0.18	< 0.5	6	16	168	6.53	< 10	1	0.26	10	0.11	265	5

CERTIFICATION:

Hart Buehler



Chemex Labs Ltd.

Analytical Chemists * Geochemists * Registered Assayers
212 Brooksbank Ave., North Vancouver
British Columbia, Canada V7J 2C1
PHONE: 604-984-0221 FAX: 604-984-0218

Client: EXPATRIATE RESOURCES LTD.
C/O ARCHER, CATHRO & ASSOCIATES (1981) LIMITED
1016 - 510 W. HASTINGS ST.
VANCOUVER, BC
V6B 1L8

Project: CHECK
Comments:

Page Number : 1-B
Total Pages : 1
Certificate Date: 19-JUN-96
Invoice No. : I9620848
P.O. Number :
Account : MPO

CERTIFICATE OF ANALYSIS

A9620848

SAMPLE	PREP CODE		Na	Ni	P	Pb	Sb	Sc	Sr	Ti	Tl	U	V	W	Zn
			%	ppm	ppm	ppm	ppm	ppm	ppm	%	ppm	ppm	ppm	ppm	ppm
BB13501	201	202	< 0.01	1060	840	10	24	8	123	< 0.01	< 10	< 10	72	< 10	168
BB13502	201	202	0.02	43	1120	14	16	7	41	< 0.01	< 10	< 10	20	< 10	86

CERTIFICATION: Hart Buchler



Chemex Labs Ltd.

Analytical Chemists * Geochemists * Registered Assayers

212 Brooksbank Ave., North Vancouver
British Columbia, Canada V7J 2C1
PHONE: 604-984-0221 FAX: 604-984-0218

To: EXPATRIATE RESOURCES LTD.
C/O ARCHER, CATHRO & ASSOCIATES (1981) LIMITED
1016 - 510 W. HASTINGS ST.
VANCOUVER, BC
V6B 1L8

Project : CHECK
Comments:

Page Number : 1-A
Total Pages : 1
Certificate Date: 23-JUN-96
Invoice No. : I9620847
P.O. Number :
Account : MPO

CERTIFICATE OF ANALYSIS

A9620847

SAMPLE	PREP CODE		Ag	Al	As	Ba	Be	Bi	Ca	Cd	Co	Cr	Cu	Fe	Ga	Hg	K	La	Mg	Mn	Mo
			ppm	%	ppm	ppm	ppm	ppm	%	ppm	ppm	ppm	ppm	%	ppm	ppm	%	ppm	%	ppm	ppm
N110301	205	226	< 0.2	0.20	58	150	< 0.5	< 2	0.07	< 0.5	3	216	19	0.96	< 10	3	0.10	< 10	0.03	25	< 1
N110302	205	226	< 0.2	0.31	424	120	< 0.5	2	9.99	< 0.5	24	289	12	3.70	< 10	< 1	0.08	< 10	7.67	1195	< 1
N110303	205	226	< 0.2	0.25	6	360	< 0.5	< 2	0.29	< 0.5	2	400	19	0.91	< 10	< 1	0.15	< 10	0.07	40	< 1
N110304	205	226	0.2	0.20	464	< 10	< 0.5	< 2	1.94	< 0.5	3	72	7	9.45	< 10	55	0.12	< 10	0.59	335	< 1
N110305	205	226	< 0.2	0.17	784	80	< 0.5	2	3.41	< 0.5	39	252	11	1.60	< 10	11	0.07	< 10	1.93	505	< 1

CERTIFICATION:

Hart Buchler



Chemex Labs Ltd.

Analytical Chemists * Geochemists * Registered Assayers

212 Brooksbank Ave., North Vancouver
British Columbia, Canada V7J 2C1
PHONE: 604-984-0221 FAX: 604-984-0218

To: EXPATRIATE RESOURCES LTD.
C/O ARCHER, CATHRO & ASSOCIATES (1981) LIMITED
1016 - 510 W. HASTINGS ST.
VANCOUVER, BC
V6B 1L8

Project : CHECK
Comments:

Page Number : 1-B
Total Pages : 1
Certificate Date: 23-JUN-96
Invoice No. : 19620847
P.O. Number :
Account : MPO

CERTIFICATE OF ANALYSIS

A9620847

SAMPLE	PREP CODE	Na %	Ni ppm	P ppm	Pb ppm	Sb ppm	Sc ppm	Sr ppm	Ti %	Tl ppm	U ppm	V ppm	W ppm	Zn ppm
N110301	205 226	< 0.01	9	30	24	8	< 1	5	< 0.01	< 10	< 10	6	< 10	42
N110302	205 226	< 0.01	370	30	36	2	8	482	< 0.01	< 10	< 10	25	< 10	44
N110303	205 226	< 0.01	14	40	8	< 2	< 1	16	< 0.01	< 10	< 10	7	< 10	12
N110304	205 226	< 0.01	23	20	12	102	< 1	14	< 0.01	< 10	< 10	9	< 10	12
N110305	205 226	< 0.01	425	10	< 2	64	5	92	< 0.01	< 10	< 10	13	< 10	22

CERTIFICATION: Haut Buchler

QA24832


ARCHER, CATHRO
A ASSOCIATES (1981) LIMITED
CONSULTING GEOLOGICAL ENGINEERS

Box 4127, 2054 SECOND AVENUE, WHITEHORSE, Y.T. Y1A 3S9 TEL (403) 667 - 4415

AFFIDAVIT

I, Joan Mariacher, of WHITEHORSE, YUKON make oath and say:

That to the best of my knowledge the attached Statement of Expenditures for exploration work on the CHECK 1-22 mineral claims on Claim Sheet 105 G/14 is accurate.

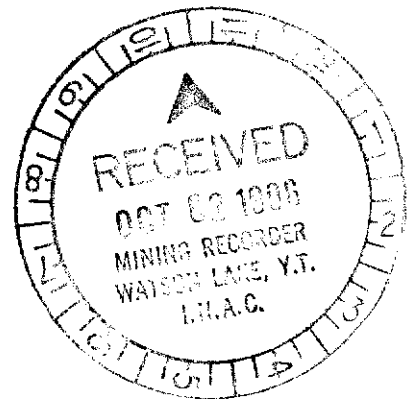


Joan Mariacher

Sworn before me at WHITEHORSE, YUKON
this 27TH day of
SEPTEMBER, 1996



Notary, Yukon Territory



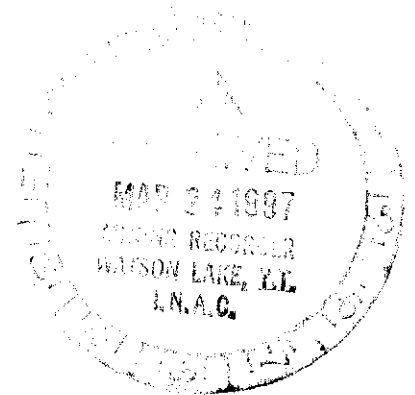
Statement of Expenditures
Check 1-22 Mineral Claims
September 23, 1996

Labour

T. Becker, geologist - May 28 - 1 day @ \$320/day	\$ 342.40
I Gibson, field assistant - May 29, June 23 - 2 days @ \$202.50/day	433.35
J. Owerko, field assistant - May 28 - 1 day @ \$202.50/day	216.68
D. Robinson, field assistant - May 29 - 1 day @ \$172.50/day	<u>184.58</u>
	\$1,177.01
Less claim tagging costs - .55 mandays @ \$172.50/day, plus room and board @ \$115/day	<u>169.19</u>
	\$1,007.82

Expenses

Field room and board - 5 days @ \$115/day	615.25
Kluane Helicopters - 1.7 hrs Bell 206B @ \$585/hr, plus fuel and 119 minutes Astar @ \$900/hr, plus fuel	3,518.86
Chemex Labs Ltd.	307.76
Supervision, claim surveys, data entry - pro rated	<u>2,747.83</u>
	\$7,189.70
TOTAL	<u>\$8,197.52</u>



In Account With

Project —

FINLAYSON PROJECT

Date —

JUNE 30, 1996

LABOUR			
Field	A. ARCHER - 39 HRS AT 60/HK	2340.00	
	R. CARNE - 8 HRS AT 50/HK	400.00	
	D. EATON - 18Y HRS AT 50/HK	9100.00	
	T. BECKER - 240 HRS AT 40	9600.00	
	B. WENZYNOWSKI - 56 HRS AT 40/HK	2240.00	
	G. LOWEY - 9 DAYS AT 300/DAY	2700.00	
	G. MCDUGALL - 14 DAYS AT 300/DAY	4200.00	
	K. SAX - 30 DAYS AT 270/DAY	8100.00	
	G. BUSO - 9 DAYS AT 255/DAY	2295.00	
	A. BURGERT - 26 DAYS AT 247.50/DAY	6435.00	
	M. BEDARD - 30 DAYS AT 232.50/DAY	6975.00	
	J. O'ROURKE - 30 DAYS AT 225/DAY	6750.00	
	G. BELL - 30 DAYS AT 210/DAY	6300.00	
	I. GIBSON - 30 DAYS AT 202.50/DAY	6075.00	
	J. OWERKO - 28 DAYS AT 202.50/DAY	5670.00	
	J. McPHEE - 30 DAYS AT 180/DAY	5400.00	
	K. WOJCIK - 30 DAYS AT 180/DAY	5400.00	
	C. COWAN - 6 DAYS AT 175.50/DAY	1053.00	
	P. GLOMBICK - 9 DAYS AT 175.50/DAY	1582.50	
	J. HICKLE - 9 DAYS AT 175.50/DAY	1582.50	
	P. MOORES - 18 DAYS AT 175.50/DAY	3159.00	
	D. ROBINSON - 30 DAYS AT 175.50/DAY	5265.00	
	BRAD WENZYNOWSKI - 9 DAYS AT 175.50/DAY	1582.50	
	R. BAINES - 30 DAYS AT 165/DAY	4950.00	
	G. DOWNS - 9 DAYS AT 165/DAY	1485.00	
	B. NODWELL - 30 DAYS AT 165/DAY	4950.00	
	D. REGEHR - 30 DAYS AT 165/DAY	4950.00	
	T. RESZAT - 30 DAYS AT 165/DAY	4950.00	
	S. SCHNEIDER - 11 DAYS AT 165/DAY	1815.00	
	S. TAYLOR - 30 DAYS AT 165/DAY	4950.00	
	J. YOUNG - 30 DAYS AT 165/DAY	4950.00	
	S. DE LA BARRE - 26 DAYS AT 267.50/DAY	6955.00	
	N. EDELSON - 30 DAYS AT 165/DAY	4950.00	
Office	M. COOKE - 25 1/4 HRS AT 32/HK	725.50	
Accounting & Expediting	J. MARIACHER - 155 1/4 HRS AT 44.50/HK	6898.13	15610.13
OTHER SERVICES			
Room & Board in Whitehorse	26 DAYS AT 60/DAY	1560.00	
Field equipment from AC stock	17.00CV + 705.30DI	717.30	
Printing	27.95 Photocopies 1984 @ .75 - 496.00	523.95	
Rentals from AC	JUNE 1-30 - 4 56X 11 1/2 @ 70/mo; BINOC SCOPE @ 360/mo; ROCK SAW @ 170/mo; 1Y KVA GENERATOR @ 1410/mo; 2 HANNAHES AT 700/mo; 1/2 D. EATON HANNAHER @ 100/mo; HONDA HYD PUMP @ 75/mo	2965.00	
Drafting	9 hrs at \$ 34.70 1hr.	307.80	
Loomis COURIER	5 @ 12.50 EACH	62.50	6136.55

In Account With

Project —

FINLAYSON PROJECT

Date —

MAY 31, 1996

BOUR			
Field	A. ARCHER - 28 HRS AT 60/HR		1680.00
	D. EATON - 157 HRS AT 50/HR		7850.00
	T. BECKER - 230 HRS AT 40/HR		9200.00
	B. WENZLYNOWSKI - 84 HRS AT 40/HR		3360.00
	K. SAX - 10 DAYS AT 270/DAY		2700.00
	G. DUNN - 85 HRS AT 31.88/HR		2709.80
	A. BURBERT - 9 DAYS AT 247.50/DAY		2227.50
	M. BEDARD - 99 HRS AT 29.06/HR		2876.94
	J. O'ROURKE - 31 DAYS AT 215/DAY		6675.00
	G. BELL - 4 DAYS AT 210/DAY		840.00
	J. HAGGETT - 11 DAYS AT 210/DAY		2310.00
	I. GIBSON - 31 DAYS AT 207.50/DAY		6427.50
	J. OWERKO - 31 DAYS AT 207.50/DAY		6427.50
	J. MCPHEE - 11 DAYS AT 180/DAY		1980.00
	K. WOJCIEK - 9 DAYS AT 180/DAY		1620.00
	P. GLOMBICK - 8 DAYS AT 175.50/DAY		1380.00
	J. HUCKLE - 8 DAYS AT 175.50/DAY		1380.00
	D. ROBINSON - 9 DAYS AT 175.50/DAY		1579.50
	BRAO WENZLYNOWSKI - 8 1/2 DAYS AT 175.50/DAY		1466.25
	R. BAINES - 4 DAYS AT 165/DAY		660.00
	G. DOWNS - 8 1/2 DAYS AT 165/DAY		1402.50
	B. NOWELL - 4 DAYS AT 165/DAY		660.00
	D. REBEHL - 4 DAYS AT 165/DAY		660.00
	T. RESZAT - 9 DAYS AT 165/DAY		1485.00
	S. TAYLOR - 9 DAYS AT 165/DAY		1485.00
	J. YOUNG - 4 DAYS AT 165/DAY		660.00
	S. BELA BARRE - 17 DAYS AT 267.50/DAY		4547.50
	M. PHILLIPS - 6 DAYS AT 210/DAY		1260.00
	N. EDELSON - 11 DAYS AT 165/DAY		1815.00
Office	M. COOLE - 56 1/2 HRS AT 33/HR		1864.50
Accounting & Expediting	J. MARIACHER - 61 1/2 HRS VAN AT 37.50/HR - 69 HRS XY AT 44.50/HR		2296.88 2932.50
OTHER SERVICES			
Room & Board In Whitehorse	27 MANDAYS AT 60/DAY		1620.00
Field equipment from AC stock	2678.55 + 10453.84		13132.39
Printing	791.11	Photocopies 4971 @ .25 - 1242.75	100.00 7033.90
Rentals from AC MAY 1-31	3 SBX 11 @ 600; HONDA H2O PUMP @ 75/mo; 17 KVA GENSET @ 1410/mo; 2 HANDHELDS @ 200/mo		2785.00
	MAY 1-7 - 5 KVA GEN @ 15/DAY		105.00
	MAY 21-31 - SBX 11 @ 5/DAY; BINDU SCOPE @ 17/DAY; ROCK SAW @ 4/DAY		231.00
Drafting	44 hrs at \$ 33.75 /hr.		1447.50
	Dennis COOLE - 9 @ 12.50 EA		112.50
			21037.29

KLUANE

CHARTER TICKET: KH 0428

HELICOPTERS A DIVISION OF 528470 ALBERTA LIMITED
 P.O. BOX 2128, HAINES JUNCTION, YUKON TERRITORY, CANADA Y0B 1L0
 TELEPHONE: (403) 634-2224 • FAX: (403) 634-2226

CHARTERER: *EXPATRIATE RESOURCES / KP % ARCHER CATRO*
 ADDRESS: *Box 4127, 2054 - 2ND AVENUE*
WHITE HORSE, YUKON Y1A 3S9

DATE: <i>MAY 28-96</i>	A/C TYPE <i>ASTAR</i>	A/C REG. <i>CG KHS</i>	PURCHASE ORDER #	FORESTRY TICKET No.	
FLIGHT DESCRIPTION	TIME UP	TIME DOWN	HOURS	RATE	SUB-TOTAL
<i>DROP TOM & JASON at Claim Block.</i>	<i>0945</i>	<i>1020</i>	<i>0.5</i>	}	<i>CHECK</i>
<i>PICK CREW UP IN EVENING</i>	<i>1640</i>	<i>1710</i>	<i>0.5</i>		
			<i>1.0</i>		<i>900.00</i>
CONTRACT No.	CONTRACT DAYS	MINIMUM HOURS	DAILY MINIMUMS	FUEL:	
CHARTERER FUEL:		COMPANY FUEL:		OIL:	
DRUMS:	GALLONS	\$	/GAL.	MEALS:	
GALLONS	LITRES:	\$	/LTR.	LODGING:	
LITRES:				G.S.T. REG. 132709809	<i>63.00</i>
CHARTERER AUTHORIZATION: <i>TC Becht</i>	PILOT: <i>Dick Karmax</i>	TOTAL: \$ <i>963.00</i>			

SIGNING OF THIS TICKET BY AUTHORIZED REPRESENTATIVES CONSTITUTES THE RIGHT BY THE CARRIER TO CHARGE 3% PER MONTH INTEREST ON ALL ACCOUNTS OVER 30 DAYS.

KLUANE

CHARTER TICKET: KH 0429

HELICOPTERS A DIVISION OF 528470 ALBERTA LIMITED
 P.O. BOX 2128, HAINES JUNCTION, YUKON TERRITORY, CANADA Y0B 1L0
 TELEPHONE: (403) 634-2224 • FAX: (403) 634-2226

CHARTERER: EXPATRIATE RESOURCES / FP. % ARCHER CATHRO & ASSOC.
 ADDRESS: Box 4127, 2054-2ND AVE
WHITE HORSE, YT. Y1A 3S9.

DATE:		A/C TYPE	A/C REG.	PURCHASE ORDER #		FORESTRY TICKET No.		
MAY 29-96		ASTAR	C-GKHS.					
FLIGHT DESCRIPTION			TIME UP	TIME DOWN	HOURS	RATE	SUB-TOTAL	
BASE - ARND'S CAMP DROP			822	854				
2 PAX ON WITH JASON.			904	925	CHECK		PLAY 6588	
SET OUT CREW (RAIN + FOG POOR VIS.). PICK TAN & DON			935	957			1.7	
DROP IN CLAIM BLOCKS								
RETURN CAMP.								
MOVE CREW TO *MCELVY MTN.			1021	1044				
2 TRIPS IN 2 OUT.			1120	1127				
EVENING: DROP SUPPLIES TO			1450	1457				
ARND & KEZ. PICK UP			1503	1509				
BOTH CREWS: RTN BC.								
Field Crews: TAN {			1645	1722	CHECK		CHECK-	
JASON }			1731	1758			51 MINUTES	
*MCELVY MTN Crew:			1804	1812				
					3.5	900	3150.00	
CONTRACT No.	CONTRACT DAYS	MINIMUM HOURS	DAILY MINIMUMS		FUEL:			
CHARTERER FUEL:		COMPANY FUEL: N/A.		OIL:				
DRUMS:		GALLONS	\$	/GAL.	MEALS:			
GALLONS		LITRES:	\$	/LTR.	LODGING:			
LITRES: 560						G.S.T. REG. 132709809		220.50
CHARTERER AUTHORIZATION:			PILOT:		TOTAL: \$			
T.C. Beech			Diel Karmann		3370.50			

SIGNING OF THIS TICKET BY AUTHORIZED REPRESENTATIVES CONSTITUTES THE RIGHT BY THE CARRIER TO CHARGE 3% PER MONTH INTEREST ON ALL ACCOUNTS OVER 30 DAYS.



Chemex Labs Ltd.

Analytical Chemists * Geochemists * Registered Assayers
212 Brooksbank Ave., North Vancouver
British Columbia, Canada V7J 2C1
PHONE: 604-984-0221

To: EXPATRIATE RESOURCES LTD.
C/O ARCHER, CATHRO & ASSOCIATES (1981) LIMITED
1016 - 510 W. HASTINGS ST.
VANCOUVER, BC
V6B 1L8

INVOICE NUMBER

I 9 6 2 0 8 4 7

BILLING INFORMATION

Date: 24-JUN-96
Project: CHECK
P.O. No.:
Account: MPO

Comments:

Billing: For analysis performed on
Certificate A9620847

Terms: Payment due on receipt of invoice
1.25% per month (15% per annum)
charged on overdue accounts

Please Remit Payments to:

CHEMEX LABS LTD.
212 Brooksbank Ave.,
North Vancouver, B.C.
Canada V7J 2C1

# OF SAMPLES	ANALYSED FOR CODE - DESCRIPTION	UNIT PRICE	SAMPLE PRICE	AMOUNT
5	205 - Geochem ring to approx 150 mesh 0-3 Kg crush and split ICP-32	2.50 2.60 7.00	12.10	60.50
Total Cost \$				60.50
Client Discount (25%) \$				<u>-15.13</u>
Net Cost \$				45.37
(Reg# R100938885) GST \$				<u>3.18</u>
TOTAL PAYABLE (CDN) \$				48.55



Chemex Labs Ltd.

Analytical Chemists * Geochemists * Registered Assayers
212 Brooksbank Ave., North Vancouver
British Columbia, Canada V7J 2C1
PHONE: 604-984-0221

To: EXPATRIATE RESOURCES LTD.
C/O ARCHER, CATHRO & ASSOCIATES (1981) LIMITED
1016 - 510 W. HASTINGS ST.
VANCOUVER, BC
V6B 1L8

INVOICE NUMBER

I 9 6 2 0 8 4 8

BILLING INFORMATION

Date: 20-JUN-96
Project: CHECK
P.O. No.:
Account: MPO

Comments:

Billing: For analysis performed on
Certificate A9620848

Terms: Payment due on receipt of invoice
1.25% per month (15% per annum)
charged on overdue accounts

Please Remit Payments to:

CHEMEX LABS LTD.
212 Brooksbank Ave.,
North Vancouver, B.C.
Canada V7J 2C1

# OF SAMPLES	ANALYSED FOR CODE - DESCRIPTION	UNIT PRICE	SAMPLE PRICE	AMOUNT
2	201 - Dry, sieve to -80 mesh 202 - save reject ICP-32	1.25 0.85 7.00	9.10	18.20
Total Cost \$				18.20
Client Discount (25%) \$				<u>-4.55</u>
Net Cost \$				13.65
(Reg# R100938885) GST \$				<u>0.96</u>
TOTAL PAYABLE (CDN) \$				14.61



Chemex Labs Ltd.

Analytical Chemists * Geochemists * Registered Assayers
212 Brooksbank Ave., North Vancouver
British Columbia, Canada V7J 2C1
PHONE: 604-984-0221

To: EXPATRIATE RESOURCES LTD.
C/O ARCHER, CATHRO & ASSOCIATES (1981) LIMITED
1016 - 510 W. HASTINGS ST.
VANCOUVER, BC
V6B 1L8

INVOICE NUMBER

I 9 6 2 2 0 7 9

BILLING INFORMATION

Date: 27-JUN-96
Project: CHECK
P.O. No.:
Account: MPO

Comments:

Billing: For analysis performed on
Certificate A9622079

Terms: Payment due on receipt of invoice
1.25% per month (15% per annum)
charged on overdue accounts

Please Remit Payments to:

CHEMEX LABS LTD.
212 Brooksbank Ave.,
North Vancouver, B.C.
Canada V7J 2C1

# OF SAMPLES	ANALYSED FOR CODE - DESCRIPTION	UNIT PRICE	SAMPLE PRICE	AMOUNT
5	244 - Pulp; prev. prepared at Chemex 494 - Au g/t FA+AA	0.00 9.75	9.75	48.75
Total Cost \$				48.75
Client Discount (25%) \$				-12.19
Net Cost \$				36.56
(Reg# R100938885) GST \$				2.56
TOTAL PAYABLE (CDN) \$				39.12



Chemex Labs Ltd.

Analytical Chemists * Geochemists * Registered Assayers
212 Brooksbank Ave., North Vancouver
British Columbia, Canada V7J 2C1
PHONE: 604-984-0221

To: EXPATRIATE RESOURCES LTD.
C/O ARCHER, CATHRO & ASSOCIATES (1981) LIMITED
1016 - 510 W. HASTINGS ST.
VANCOUVER, BC
V6B 1L8

INVOICE NUMBER

I 9 6 2 2 0 8 0

BILLING INFORMATION

Date: 27-JUN-96
Project: CHECK
P.O. No.:
Account: MPO

Comments:

Billing: For analysis performed on
Certificate A9622080

Terms: Payment due on receipt of invoice
1.25% per month (15% per annum)
charged on overdue accounts

Please Remit Payments to:

CHEMEX LABS LTD.
212 Brooksbank Ave.,
North Vancouver, B.C.
Canada V7J 2C1

# OF SAMPLES	ANALYSED FOR CODE - DESCRIPTION	UNIT PRICE	SAMPLE PRICE	AMOUNT
2	244 - Pulp; prev. prepared at Chemex 494 - Au g/t FA+AA	0.00 9.75	9.75	19.50
Total Cost \$				19.50
Client Discount (25%) \$				-4.88
Net Cost \$				14.62
(Reg# R100938885) GST \$				1.02
TOTAL PAYABLE (CDN) \$				15.64



Chemex Labs Ltd.

Analytical Chemists * Geochemists * Registered Assayers
212 Brooksbank Ave., North Vancouver
British Columbia, Canada V7J 2C1
PHONE: 604-984-0221

To: EXPATRIATE RESOURCES LTD.
C/O ARCHER, CATHRO & ASSOCIATES (1981) LIMITED
1016 - 510 W. HASTINGS ST.
VANCOUVER, BC
V6B 1L8

INVOICE NUMBER

I 9 6 2 2 8 6 2

BILLING INFORMATION

Date: 11-JUL-96
Project: CHECK
P.O. No.:
Account: MPO

Comments:

Billing: For analysis performed on
Certificate A9622862

Terms: Payment due on receipt of invoice
1.25% per month (15% per annum)
charged on overdue accounts

Please Remit Payments to:

CHEMEX LABS LTD.
212 Brooksbank Ave.,
North Vancouver, B.C.
Canada V7J 2C1

# OF SAMPLES	ANALYSED FOR CODE - DESCRIPTION	UNIT PRICE	SAMPLE PRICE	AMOUNT
23	201 - Dry, sieve to -80 mesh 202 - save reject ICP-32	1.25 0.85 7.00	9.10	209.30
Total Cost \$				209.30
Client Discount (25%) \$				-52.33
Net Cost \$				156.97
(Reg# R100938885) GST \$				10.99
TOTAL PAYABLE (CDN) \$				167.96



Chemex Labs Ltd.

Analytical Chemists * Geochemists * Registered Assayers
212 Brooksbank Ave., North Vancouver
British Columbia, Canada V7J 2C1
PHONE: 604-984-0221

To: EXPATRIATE RESOURCES LTD.
C/O ARCHER, CATHRO & ASSOCIATES (1981) LIMITED
1016 - 510 W. HASTINGS ST.
VANCOUVER, BC
V6B 1L8

INVOICE NUMBER

I 9 6 2 6 5 7 1

BILLING INFORMATION

Date: 13-AUG-96
Project: CHECK
P.O. No.:
Account: MPO

Comments:

Billing: For analysis performed on
Certificate A9626571

Terms: Payment due on receipt of invoice
1.25% per month (15% per annum)
charged on overdue accounts

Please Remit Payments to:

CHEMEX LABS LTD.
212 Brooksbank Ave.,
North Vancouver, B.C.
Canada V7J 2C1

# OF SAMPLES	ANALYSED FOR CODE - DESCRIPTION	UNIT PRICE	SAMPLE PRICE	AMOUNT
3	201 - Dry, sieve to -80 mesh	1.25		
	202 - save reject	0.85		
	ICP-32	7.00	9.10	27.30
Total Cost \$				27.30
Client Discount (25%) \$				<u>-6.83</u>
Net Cost \$				20.47
(Reg# R100938885) GST \$				<u>1.43</u>
TOTAL PAYABLE (CDN) \$				21.90