

**SOIL GEOCHEMICAL REPORT
ON THE
TREE CLAIM GROUP**



**N.T.S. 105F/9
WATSON LAKE MINING DIVISION**

ATNA RESOURCES LTD.

REPORT BY: RICK KEMP

DECEMBER, 1996

TABLE OF CONTENTS

		PAGE
1.0	SUMMARY	-1-
2.0	INTRODUCTION	-2-
	2.1 LOCATION, ACCESS, PHYSIOGRAPHY	-2-
	2.2 HISTORICAL WORK	-2-
	2.3 OWNER-OPERATOR	-2-
	2.4 CLAIM DATA	-4-
3.0	GEOLOGY	-6-
	3.1 REGIONAL GEOLOGY	-6-
	3.2 PROPERTY GEOLOGY	
4.0	GEOCHEMISTRY	-6-
	4.1 GEOCHEMICAL SURVEY	-6-
	4.2 SURVEY RESULTS	-7-
5.0	CONCLUSIONS	-8-
6.0	RECOMMENDATIONS	-9-
7.0	REFERENCES	-10-
APPENDICES		
APPENDIX I	STATEMENT OF QUALIFICATIONS	
APPENDIX II	STATEMENT OF COSTS	
APPENDIX III	ANALYTICAL PROCEDURES	
APPENDIX IV	CERTIFICATE OF ANALYSIS	
FIGURES		
FIGURE 1	GENERAL LOCATION MAP	
FIGURE 2	CLAIM LOCATION (1:30000)	
FIGURE 3	ZINC GEOCHEMISTRY (1:5000)	
FIGURE 4	LEAD GEOCHEMISTRY (1:5000)	

1.0 SUMMARY

The Tree claim group consists of 16 contiguous claims located on N.T.S. 105F/9 on the Cloutier Creek map sheet . Access to the claim group is by helicopter chartered from Ross River located 40 Km to the north . Atna Resources Ltd. owns 100% interest in the property.

The property is underlain by Upper Devonian to Mississippian aged intermediate to felsic volcanic and sedimentary stratigraphy . The felsic volcanic stratigraphy is dominated by medium to coarse-grained lapilli tuff and agglomerate with minor interbedded flows and interflow sediments. Pyrite is weakly disseminated throughout most of the felsic volcanic stratigraphy which locally approach massive proportions accompanied by silicification and sericitization.

Between August 24 , 1996 and September 2 , 1996 a soil geochemical survey was completed over the Tree claim group along traverse lines established at 200 to 400 meter centers over which 221 soil samples were collected at 50 meter intervals. Results of the soil survey outlined several broadly elevated Pb.\ Zn. soil anomalies with results to 1166 ppm. Zn. and 2779 ppm. Pb. Anomalous base metal results occur both down slope of and overlying felsic volcanic stratigraphy as well as flanking black shale horizons, presumed to represent shallow sub-basin stratigraphy.

The felsic volcanic stratigraphy with its medium to coarse grained pyroclastic components, combined with pyrite, silica, sericite alteration and overlying Pb.\ Zn. soil anomalies within favorable host stratigraphy, indicate a favorable VMS exploration target.

2.0 INTRODUCTION

2.1 LOCATION, ACCESS, PHYSIOGRAPHY

The Tree claim group is located on the Cloutier Creek map sheet N.T.S. 105 F / 9 , centered at 61° 38 N. latitude , 132° 25 W. longitude (figure-1). Access to the claim group is by helicopter based at Ross River. Mobilization to the claims is best handled from the Ketz Mine access road near the junction of the Ketz River and Cloutier Creek.

The claims cover sub-alpine to alpine terrain within the St. Cyr range of the Pelly Mountains . The southern portion of the claim group encompass steep and locally inaccessible terrain . Elevations vary from 4600m. to 6900m. along an east-west trending , north facing slope.

2.2 HISTORICAL WORK

The original Tree claim group was staked by Utah Mines Ltd. in 1977 as a result of anomalous copper and zinc stream geochemical results located through regional reconnaissance silt surveys completed in 1976.

During the 1977 and 1978 field season , geological mapping , prospecting , reconnaissance soil sampling and an electromagnetic survey was completed.

2.3 OWNER - OPERATOR

The Tree claim group is owned 100% by Atna Resources Ltd. The property consists of 16 contiguous claims orientated at 060° azimuth (figure 2). Expiry dates and claim record numbers are illustrated in table 1.

ATNA RESOURCES LTD.

TREE PROPERTY

LOCATION MAP

YUKON TERRITORY

DRAWN

NTS.

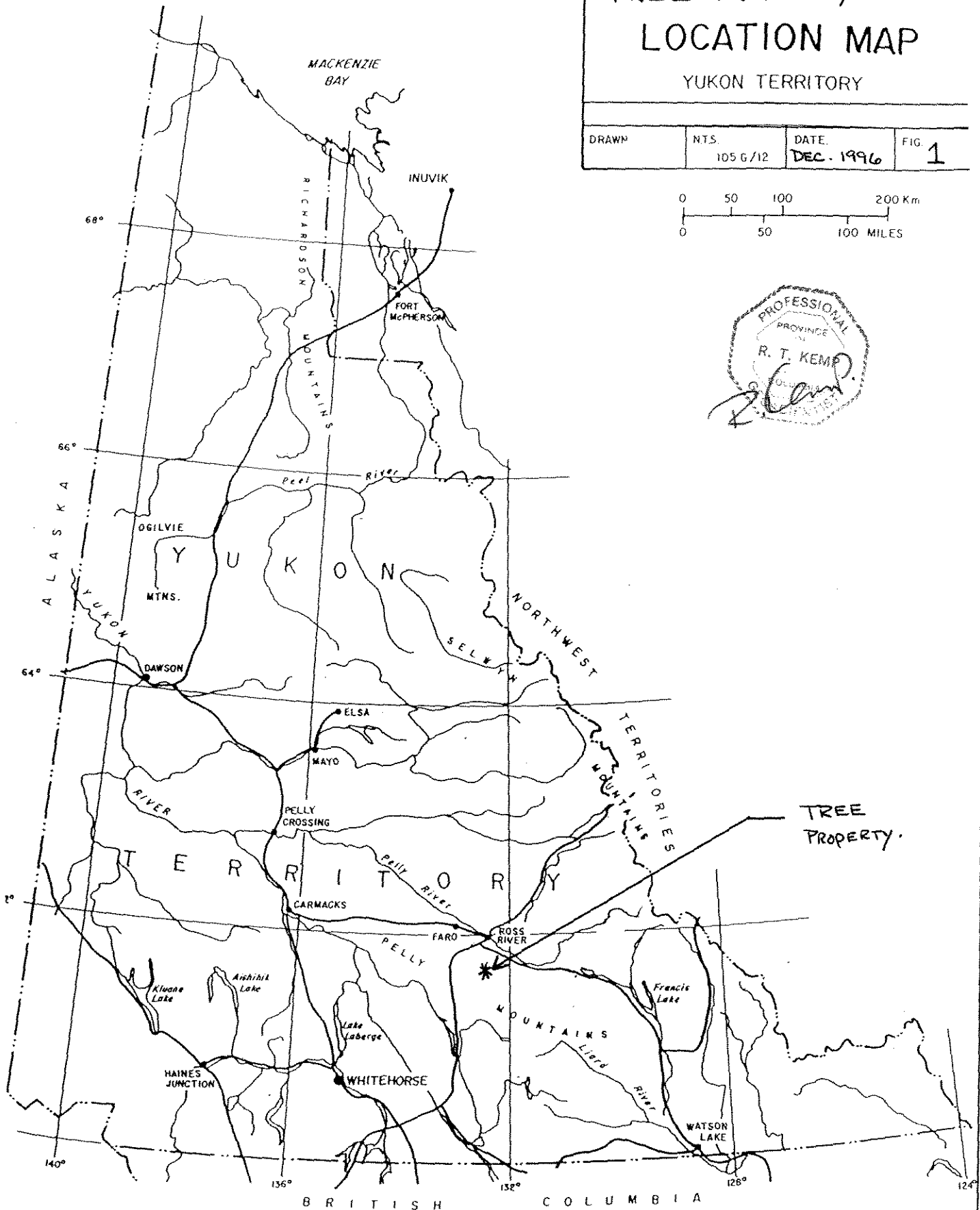
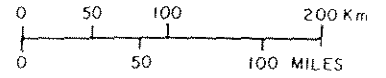
105 G/12

DATE.

DEC. 1996

FIG.

1



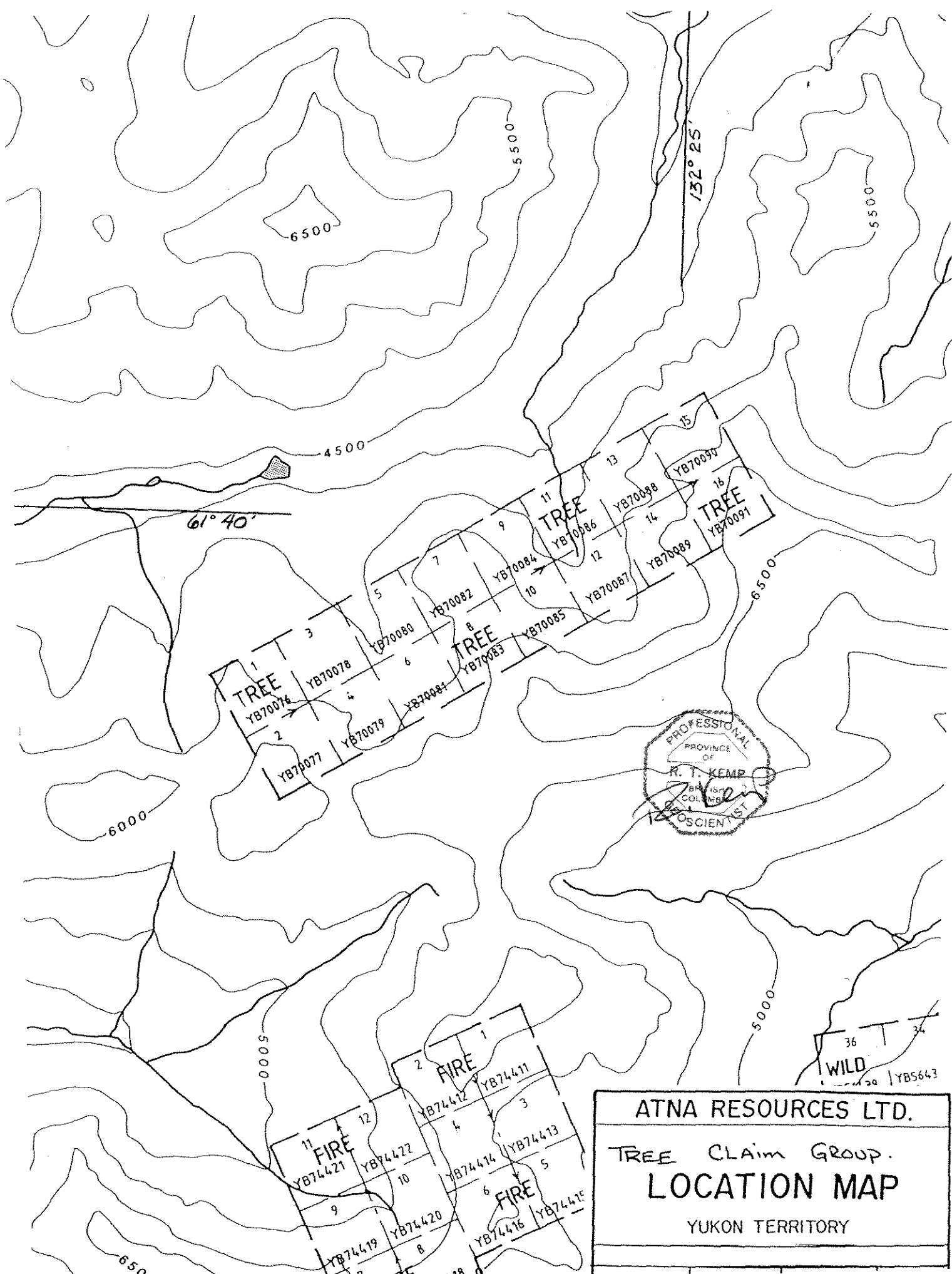
TREE
PROPERTY.

2.4 CLAIM DATA

NAME	RECORD NO.	RECORD DATE	EXPIRY DATE
TREE 1	YB70076	11/OCT./1995	11/OCT./2001
TREE 2	YB70077	11/OCT./1995	11/OCT./2001
TREE 3	YB70078	11/OCT./1995	11/OCT./2001
TREE 4	YB70079	11/OCT./1995	11/OCT./2001
TREE 5	YB70080	11/OCT./1995	11/OCT./2001
TREE 6	YB70081	11/OCT./1995	11/OCT./2001
TREE 7	YB70082	11/OCT./1995	11/OCT./2001
TREE 8	YB70083	11/OCT./1995	11/OCT./2001
TREE 9	YB70084	11/OCT./1995	11/OCT./2001
TREE 10	YB70085	11/OCT./1995	11/OCT./2001
TREE 11	YB70086	11/OCT./1995	11/OCT./2001
TREE 12	YB70087	11/OCT./1995	11/OCT./2001
TREE 13	YB70088	11/OCT./1995	11/OCT./2001
TREE 14	YB70089	11/OCT./1995	11/OCT./2001
TREE 15	YB70090	11/OCT./1995	11/OCT./2001
TREE 16	YB70091	11/OCT./1995	11/OCT./2001

TABLE 1

The expiry date of these claims is pending acceptance of this report.



PROFESSIONAL
 SURVEYOR
 PROVINCE OF
 BRITISH COLUMBIA
 R. T. KEMP
 OSCIENT ST.

ATNA RESOURCES LTD.
 TREE CLAIM GROUP.
LOCATION MAP
 YUKON TERRITORY

3.0 GEOLOGY

3.1 REGIONAL GEOLOGY

The regional geology of the Pelly Mountains is described by Templeman-Kluit (1976,1977) and Mortenson (1985,1992).

The Tree claim group is located within the Pelly Cassiar Platform , a miogeoclinal sequence of platform carbonates , clastic sediments and volcanics ranging in age from Upper Proterozoic to Triassic.

To the north - east of the platform are time equivalent shales and clastic sediments , similar to those found within the Selwyn Basin . Southwest of the platform are metamorphosed shales , quartzites and volcanic rocks of the Yukon Crystalline Terrain , Paleozoic in age . The metamorphic rocks are locally covered by an overthrust assembly of late Paleozoic basalt , serpentized peridotite and chert which are part of the Anvil-Campbell Allochthon.

3.2 LOCAL GEOLOGY

Property wide mapping was completed by Utah Mines Ltd. in 1977 which extended beyond the limits of the present day claim group . The reconnaissance style mapping program completed in 1977 forms the basis of geological knowledge within the claim group and aided in the interpretation of results from the soil geochemical survey. A summary of the property geology is described by C. Westerman and J. Wilson (1977). The Tree claims are underlain by a lower package of black shales and an upper package of intermediate to felsic volcanic flows and tuffs of Mississippian age. The strata dip at moderate angles to the south or southeast and the structure is dominated by an open synform plunging to the southeast . The volcanic rocks display complex lateral facies changes.

4.0 GEOCHEMISTRY

4.1 GEOCHEMICAL SURVEY

The Tree soil geochemical survey utilized a compass - chain and flagged base line (5000N.) established along the claims location line at 060 azimuth. Wing lines were emplaced at 200 to 400m. intervals .

Soil samples were collected along both the base and wing lines with sample sites established at 50m. intervals . In total 13.2km. of gridding was established over which 221 soil samples were collected and submitted for analysis . Samples were taken at depths varying from 15cm. to 45cm. The soil is generally brown to light

tan brown in color varying from a sandy clay to pebbly matrix. Approximately 40% of the sample population come from talus slope.

Samples were taken with a mattock and placed in kraft soil sample bags. Sample preparation and analysis were completed at Acme Analytical Laboratories Ltd. in Vancouver. Sample prep. and analytical procedures are attached under appendix III. Analytical results of the soil sampling program are attached under appendix IV and illustrated in figures 3 and 4 at 1:5000 scale.

4.2 SURVEY RESULTS

Based on historical geochemical survey results in the area surrounding the Tree claim group, base metal values in soils exceeding 65ppm. copper, 90ppm. lead and 250ppm. zinc are considered anomalous. Zinc geochemical results are plotted in figure 3 and illustrate three distinct geochemical trends.

Anomaly I, an east west trending anomaly north of base line 5000N. between lines 1700E. to 2325E. roughly occupies the natural drainage in that area, underlain by black shale. The eastern end of the anomaly reports a high of 708ppm. Zn. which roughly coincides with the upper shale contact and overlying Rhyo-Dacite flows and tuffs.

Anomaly II, located on the west flank of a prominent north trending ridge is centered on base line 5000N. between lines 2800E. to 3050E. The anomaly overlies Andesite-Dacite flows and Dacite lapilli tuff with Zinc values reporting to 698ppm.

Anomaly III, occupies the southern portion of the claim group from L. 1250E. to L. 3550E. and remains open to extension to the east west and south. Within anomaly III several isolated anomalies exist with values exceeding 600ppm. Zn. to a maximum of 1159ppm. Zn.

Several other isolated and multi-point anomalies exist along base line 5000N. with values to 1166ppm. Zn.

Lead soil results are plotted on figure 4 and illustrate four anomalous trends and several more single and multiple point anomalies.

Anomaly I occurs on the west flank of a north trending ridge, north of base line 5000N. between line's 2325E. and 2800E. Broadly elevated lead results to 481ppm. Pb. overlie Rhyolite tuffs and Andesite lapilli tuffs.

Anomaly II is located on the east facing slope of the above mentioned ridge , straddling base line 5000N. between line's 3050E. and 3550E. Some down slope dispersion is suspected however it's proximity to Argillites and pyritic Rhyolite flows and fragmentals may reflect the potential source.

Anomaly III comprises several single point anomaly's up to 2779ppm.Pb. and is coincident with zinc anomaly III in figure 3.

Anomaly IV is located in the south west portion of the claim group , coincident with zinc anomaly III between line 1250E. and 1900E. Best results report to 279ppm.Pb.

5.0 CONCLUSIONS

- 1) The Tree claim group covers Mississippian aged intermediate to felsic volcanic stratigraphy considered favorable for hosting volcanogenic massive sulphide deposits
- 2) Lead and Zinc soil geochemical results are anomalous reporting up to 1166ppm. Zinc and 2779ppm. Lead.
- 3) There are several discreet lead and zinc soil anomalies which plot as single element trends . Lead anomalies III and IV are coincident with Zinc anomaly III.
- 4) Several anomalous Pb/Zn. trends flank a prominent north trending ridge centered on line 3050E. The presence of a black shale horizon bounded by Rhyolite lapilli tuffs and flows suggests these shales may have accumulated in shallow basins during periods of volcanic quiescence. The coincidence of the shale horizon and its proximity to anomalous Pb/Zn. soil anomalies depicts a most favorable environment for the deposition and accumulation of volcanogenic massive sulphides.
- 5) Lead and zinc soil anomalies remain open to extension along the south claim boundary and under explored areas to the east.

6.0 RECOMENDATIONS.

- 1) Complete soil geochemical coverage on the east side of the claim group and infill soil line coverage at 100m. line spacing between L.2325E. and L.3550E. Detail mapping, outcrop sampling and prospecting is recommended in areas of elevated base metal soil results.
- 2) Stake additional ground to the south of the existing claim boundary.
- 3) Extend soil geochemical coverage to the south , up slope of existing soil anomalies.
- 4) Produce a 1:5000 scale geology map ; prospect and sample outcrop exposure in areas of high Pb/Zn. soil anomalies; prospect and sample outcrop exposures along the south side of the claim group.

7.0 REFERENCES

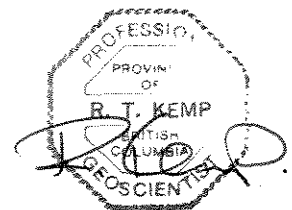
- Mortensen, J.K. and Jilson, G.A. (1985), Evolution of The Yukon - Tanana Terrane: Evidence from southeastern Yukon Territory, *GEOLOGY*, v.13 p.806-810
- Mortense, J.K. (1992), Pre-Mid Mesozoic Tectonic Evolution of the Yukon-Tanana Terrain, Yukon and Alaska, *TECTONICS*, VOL. 11 NO.4, p.836-853
- Mortensen, J.K. and Goodwin, C.I. (1982), Volcanogenic massive sulphide deposits associated with highly alkaline rift volcanics in the southeastern Yukon Territory, *Economic Geology*, vol. 77, No. 5, p. 1225-1230.
- Templman-Kluit, D.J.(1977), GSC Open File 486
- Templman-Kluit, D.J. (1979), Transported Cataclasite, Ophiolite and Granodiorite in Yukon: Evidence of Arc-Continent Collision, GSC Paper 79-14
- Vyselaar, J. and Norman, G. (1979) Assessment Report 090455, Combined Geological, Geochemical and Geophysical Report, Tree Claim Group. Utah Mines Ltd, Vancouver, B.C.
- Wilson, J. and Westerman, C.J. (1979), Assessment report 090322, combined Geological and Geochemical Report on the Tree Claim Group. Utah Mines Ltd., Vancouver, BC.

APPENDIX I
STATEMENT OF QUALIFICATIONS

STATEMENT OF QUALIFICATION

I, Richard Kemp of the City of Vancouver, Province of British Columbia, do hereby certify that:

- 1) I am a registered Professional Geologist in the Province of British Columbia. My address is 524 West 21 street, North Vancouver.
- 2) I am a graduate of the Haileybury School of Mines (1974), and am a certified Mining Technician. I hold a B.Sc. degree in Geology from Lakehead University (1981).
- 3) I have been continuously employed in the Mining Industry in Canada and Internationally since 1974.
- 4) The work described in this report was conducted under my supervision and I have prepared this report based on my field observations and those contracted by Atna Resources Ltd.
- 5) I have no interest in the property nor do I expect to receive any.



*Vancouver, B.C
December 1996*

*Rick Kemp
P. Geo*

APPENDIX II
STATEMENT OF COSTS

STATEMENT OF COSTS

AUGUST 24, 1996 TO SEPTEMBER 02, 1996

WAGES

R.KEMP	\$277.00/ DAY X 10 DAYS =	\$2770.00	
R.BEAUCHAMP	\$165.00/ DAY X 10 DAYS =	<u>\$1650.00</u>	
		\$4420.00	\$4420.00

TRANSPORTATION

TRANS NORTH HELICOPTER	\$730.00/HR. X 3.6 HRS. =	\$2628.00	
COMMERCIAL AIR (WHITEHORSE TO DAWSON)	=	\$249.15	
TRUCK RENTAL	=	\$800.00	
FUEL	=	<u>\$151.00</u>	
		\$3828.15	\$3828.15

ROOM / BOARD \$474.28

GROCERY / HARDWARE \$819.06

CAMP RENTAL (N.W. GEOLOGICAL SERVICES LTD.) \$504.00

SAMPLE ANALYSIS 221 SAMPLES X \$13.00/SAMPLE \$2873.00

REPORT WRITING / DRAFTING \$1200.00

TOTAL PROJECT EXPENDITURE \$14118.49

APPENDIX III
ANALYTICAL PROCEDURES



INFORMATION BULLETIN - 30 ELEMENT ICP-ES

Acme Analytical Laboratories Ltd

INTRODUCTION

ICP-ES, in analytical shorthand, stands for Inductively Coupled Plasma - Emission Spectrograph, an instrument that has revolutionized the analysis of samples for mineral exploration and mining. Unlike its predecessors that relied on absorption, titration, colourmetric change, etc. to deliver a single element determination, the ICP-ES delivers simultaneous multielement determinations. Samples dissolved in a solution or reduced to a gas, are aspirated into a "plasma" operating at 8000°K that atomizes the sample and excites electrons to higher energy levels. Light given off by the atoms as they return to their ground state, reflects off a grating that separates the light into its various spectral lines. Photomultiplier tubes (PMTs) in critical positions measure individual spectral line intensities thus giving the concentration of each element. ICP-ES has become one of the most popular analytical methods for exploration owing to the number of elements that can be determined (over 70), the wide linear range (4 to 5 orders of magnitude), sensitivity (ppm to ppb level detection limits) and stability of readings for solutions with high dissolved solids. Because the ICP-ES relies upon sample dissolution, the explorationist can be selective towards the species of the element to be determined. A weak or sequential leach can permit examination of metal transported by groundwater or bound up in iron and manganese coatings on grains. A fusion followed by acid digestion can totally dissolve the sample allowing absolute determination of the element of interest. In addition, pre-concentration or dilution of the sample solution permits

expansion of the dynamic linear range of the instrument.

Acme has 8 ICP-ES units (Jarrel-Ash Atomcomp 800s and 975s) each with 15 to 40 PMTs. Individual units are devoted to specific analytical tasks such as our 30 Element ICP, Ultratrace ICP, Precious Metal ICP, Whole Rock ICP, Hydride ICP and Rare Earth ICP packages. Computers attached to ICP-ES units and connected to Acme's local area network, control analysis, capture data, correct for instrument drift and background noise and monitor analytical precision and accuracy.

30 ELEMENT ICP

Samples are sieved to -80 mesh (soils and sediments) or crushed and pulverized to -100 mesh (rocks and drill cores). Acme's in-house standard (STD-C) and duplicate samples are inserted in the sample sequence. A 0.5 gram split is weighed and digested in hot (95°C) aqua regia (3:1:2 mixture of HCl, HNO₃ and H₂O) for 1 hour. After cooling for 2 hours, the sample solution is analyzed for 30 elements by ICP-ES. Aqua regia is particularly effective in the total digestion of sulphides, carbonates and most metal oxides. Some sulphates are totally dissolved (e.g. PbSO₄) while others are only marginally attacked (e.g. BaSO₄). Silicates vary in their susceptibility; micas and ferromagnesian silicates are more readily digested compared to the tectosilicates such as feldspar and quartz. Chromite is highly resistant while magnetite is less so. Analytical results are considered partial for B, Ba, Ca, Cr, Fe, La, Mg, Mn, P, Sr, Ti and W and limited for Al, K and Na.

QUALITY ASSURANCE - QUALITY CONTROL

Acme is implementing procedures under the ISO 9002 series of standards, from the initial commitment to quality by our management and employees to statistical process control of all analytical operations.

Samples arriving at the laboratory are logged into Acme's local-area computer network and labeled for positive identification. At every stage of the analytical process, technicians inspect the work performed at the previous stage thus insuring that the quality of their work is

optimized. Reference standards, duplicates and analytical blanks are inserted every 20 to 40 samples (depending on sample type and analytical package) to monitor overall accuracy and precision. Analytical results are inspected and verified at four levels by; the computer, operator, data verification technician and finally by a British Columbia Certified Assayer before they are released to the client. Anomalous samples are frequently re-analyzed to confirm their content.

Precision of the 30-Element ICP Package

		±100%	±50%	±25%	±15%	±12.5%	±10%	12.5%
Cd	ppm	0.01	0.01 - 0.08	0.09 - 0.20	0.21 - 0.50	0.51 - 1.00	1.01 - 3.00	3.00 - 100.00
Ag	ppm	0.3	10 - 80	81 - 200	201 - 500	501 - 1000	1001 - 3000	3000 - 20000
Cr, Co, Cu, La, Mo, Sr, V, Zn	ppm	1	1 - 2	3 - 5	6 - 10	11 - 20	21 - 50	51 - 5000
Ba	ppm	1	1 - 5	6 - 15	16 - 30	31 - 50	51 - 100	101 - 5000
Ni	ppm	1	1 - 4	5 - 10	11 - 20	21 - 40	41 - 100	101 - 5000
As, Au, Bi, Mn, Sb, Th, W	ppm	2	2 - 4	5 - 10	11 - 20	21 - 40	41 - 100	101 - 10000
Pb	ppm	3	0.3 - 0.6	0.7 - 1.5	1.6 - 6.0	6.1 - 20.0	>20.0	
B	ppm	3	3 - 20	21 - 50	51 - 100	>100		
U	ppm	5	5 - 10	11 - 20	21 - 40	41 - 50	51 - 100	100 - 1000
P	%	.001	.001 - .002	.003 - .005	.006 - .010	.011 - .020	.021 - .050	.050 - 10.000
Al, Ca Fe, K Mg, Na Ti	%	.01	.01 - .02	.03 - .05	.06 - .10	.11 - .20	.21 - .50	.51 - 20.00

Accuracy of 30 Element ICP Standard - STD-C*

Element	Mo	Cu	Pb	Zn	Ag	Ni	Co	Mn	Fe	As	U	Au	Th	Sr	Cd
units	ppm	ppm	ppm	ppm	ppm	ppm	ppm	ppm	%	ppm	ppm	ppm	ppm	ppm	ppm
mean	18.4	57.8	40.7	133.5	6.7	71.1	31.5	1074	4.01	40.7	18.7	6.7	34.9	48.6	18.0
R.S.D.*	6.5	3.6	5.7	3.8	6.9	4.3	7.3	3.3	5.7	6.4	11.4	11.2	4.2	4.7	5.1

Element	Sb	Bi	V	Ca	P	La	Cr	Mg	Ba	Ti	B	Al	Na	K	W
units	ppm	ppm	ppm	%	%	ppm	ppm	%	ppm	%	ppm	%	%	%	ppm
mean	17.0	20.7	62.4	0.509	0.091	41.4	59.7	0.871	181	0.095	31.3	1.91	0.058	0.155	11.7
R.S.D.*	10.4	10.3	4.9	5.9	4.3	5.0	9.9	4.8	3.9	10.6	11.2	5.0	11.1	7.4	9.4

* Relative Standard Deviations (in %) based on a recent survey of 20 determinations for STD-C



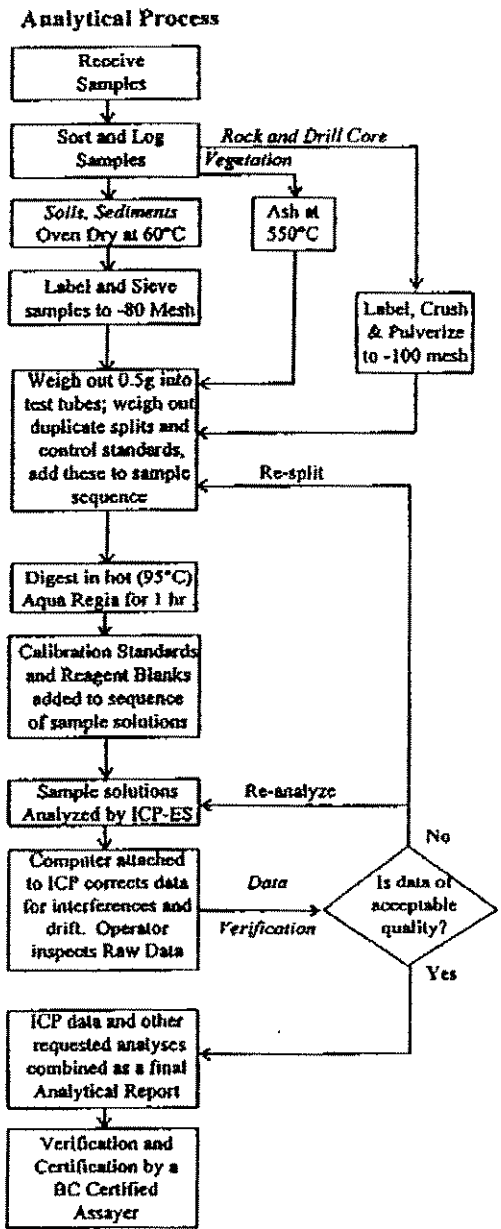
ACME ANALYTICAL LABORATORIES LTD.

Assaying & Trace Analysis

852 E. Hastings St., Vancouver, B.C., Canada V6A 1R6

Telephone: (604) 253-3158 Fax: (604) 253-1716

**METHODS AND SPECIFICATIONS FOR ANALYTICAL PACKAGE
GROUP 1D - 30 ELEMENT ICP BY AQUA REGIA**



Comments

Sample Preparation

Soils and sediments are dried (60°C) and sieved to -80 mesh (-177 microns), rocks and drill core are crushed and pulverized to -100 mesh (-150 microns). Plant samples are dried (60°C) and pulverized or dry ashed (550°C). Moss-mat samples are dried (60°C), pounded to loosen trapped sediment then sieved to -80 mesh. At the clients request, moss mats can be ashed at 550°C then sieved to -80 mesh although this can result in the potential loss by volatilization of Hg, As, Sb, Bi and Cr. A 0.5 g split from each sample is placed in a test tube. A duplicate split is taken from 1 sample in each batch of 34 samples for monitoring precision. A sample standard is added to each batch of samples to monitor accuracy.

Sample Digestion

Aqua Regia is a 3:1:2 mixture of ACS grade conc. HCl, conc. HNO₃ and demineralized H₂O. Aqua Regia is added to each sample and to the empty reagent blank test tube in each batch of samples. Sample solutions are heated for 1 hr in a boiling hot water bath (95°C).

Sample Analysis

Sample solutions are aspirated into an ICP emission spectrograph (Jarrel Ash AtomComp model 800 or 975) for the determination of 30 elements comprising: Ag, Al, As, Au, B, Ba, Bi, Ca, Cd, Co, Cr, Cu, Fe, K, La, Mg, Mn, Mo, Na, Ni, P, Pb, Sb, Sr, Th, Ti, U, V, W, Zn.

Data Evaluation

Raw and final data from the ICP-ES undergoes a final verification by a British Columbia Certified Assayer who then signs the Analytical Report before it is released to the client. Chief Assayer is Clarence Leong, other certified assayers are Dean Toye and Jacky Wang.

Document: ICP30M&S.doc	Date: November 15, 1995	Prepared By: J. Gravel
------------------------	-------------------------	------------------------

APPENDIX IV
CERTIFICATE OF ANALYSIS



SAMPLE#	Mo ppm	Cu ppm	Pb ppm	Zn ppm	Ag ppm	Ni ppm	Co ppm	Mn ppm	Fe %	As ppm	U ppm	Au ppm	Th ppm	Sr ppm	Cd ppm	Sb ppm	Bi ppm	V ppm	Ca %	P %	La ppm	Cr ppm	Mg %	Ba ppm	Ti %	B ppm	Al %	Na %	K %	W ppm	Au* ppb
T5000N 2200E	7	28	73	368	.3	27	17	1425	4.73	12	<5	<2	4	24	2.5	<2	<2	16	.28	.098	58	18	.08	478	<.01	3	.56	.01	.11	<2	3
T5000N 2250E	6	19	59	235	<.3	16	11	757	4.56	11	<5	<2	3	19	.4	<2	<2	11	.22	.100	56	11	.06	470	<.01	<3	.51	.01	.10	<2	1
T5000N 2300E	7	51	49	158	<.3	29	29	844	5.48	15	<5	<2	23	11	.2	<2	<2	9	.05	.076	57	2	.04	133	<.01	<3	.20	<.01	.08	<2	8
T5000N 2400E	3	16	83	99	<.3	11	5	360	2.89	7	<5	<2	<2	37	<.2	<2	<2	13	.21	.085	52	13	.04	497	<.01	<3	.59	.02	.08	<2	<1
T5000N 2450E	3	22	138	134	.4	15	6	401	3.79	12	<5	<2	<2	35	<.2	<2	<2	12	.15	.097	75	19	.04	714	<.01	<3	.70	.01	.09	<2	2
T5000N 2500E	9	30	165	175	<.3	18	10	925	8.62	14	<5	<2	4	56	<.2	<2	<2	17	.21	.222	63	22	.05	716	<.01	<3	1.42	.01	.16	<2	2
T5000N 2550E	3	21	239	44	.3	12	4	145	3.81	12	<5	<2	<2	62	<.2	<2	<2	11	.34	.111	79	27	.05	1185	<.01	<3	.66	.01	.10	<2	2
T5000N 2600E	3	21	147	59	.5	13	6	474	2.57	10	<5	<2	2	71	.3	<2	<2	12	.29	.119	60	26	.06	937	<.01	<3	.56	.01	.13	<2	2
T5000N 2650E	4	29	140	108	.3	22	8	484	3.52	13	<5	<2	3	59	<.2	<2	<2	12	.24	.089	64	18	.05	761	<.01	<3	.53	.01	.13	<2	5
T5000N 2700E	4	26	72	140	<.3	18	8	418	3.86	11	<5	<2	4	27	<.2	<2	<2	8	.06	.077	81	12	.03	428	<.01	<3	.52	.01	.10	<2	2
T5000N 2750E	4	33	61	176	.4	23	7	232	3.81	14	<5	<2	4	28	<.2	<2	<2	10	.07	.076	77	12	.03	491	<.01	<3	.46	.01	.12	<2	4
T5000N 2800E	5	28	67	198	<.3	20	6	297	4.42	15	<5	<2	8	30	<.2	<2	<2	7	.09	.072	85	9	.03	431	<.01	<3	.33	.01	.14	<2	4
T5000N 2850E	6	19	90	138	<.3	15	7	352	4.42	11	<5	<2	9	37	<.2	<2	<2	8	.23	.065	85	21	.04	767	<.01	<3	.37	.02	.17	<2	3
T5000N 2900E	4	29	33	385	<.3	42	14	655	4.78	11	<5	<2	2	38	<.2	<2	<2	18	.93	.100	37	19	.18	303	<.01	<3	.74	.01	.10	<2	1
T5000N 2950E	5	46	45	698	<.3	74	24	1278	6.32	14	<5	<2	4	33	4.0	2	<2	22	.54	.103	57	44	.37	474	.01	<3	1.00	.01	.11	<2	2
T5000N 3000E	13	12	159	196	.8	4	2	488	5.14	11	<5	<2	24	33	1.0	<2	<2	5	.12	.039	84	<1	.04	204	<.01	<3	.20	.01	.63	<2	1
RE T5000N 3000E	13	12	165	205	.7	4	3	517	5.23	11	<5	<2	25	34	1.2	<2	<2	5	.13	.039	88	3	.04	210	<.01	<3	.21	.01	.61	<2	<1
T5000N 3050E	13	12	76	273	.3	7	4	1584	5.94	8	<5	<2	26	4	1.6	<2	<2	2	.09	.024	113	3	.05	153	<.01	<3	.34	<.01	.13	<2	1
T5000N 3100E	4	57	1098	143	.4	45	21	1226	6.13	11	<5	<2	14	185	1.0	<2	<2	18	.54	.200	145	16	.03	344	<.01	<3	.66	.07	.29	<2	2
T5000N 3150E	4	58	182	146	.7	43	14	462	4.30	13	<5	<2	5	71	<.2	<2	<2	15	.83	.097	96	24	.04	806	<.01	<3	.51	.01	.13	<2	5
T5000N 3200E	11	40	363	52	1.3	27	18	904	6.73	41	<5	<2	5	80	<.2	<2	<2	5	.64	.099	55	1	.10	142	<.01	<3	.38	.05	.53	<2	7
T5000N 3250E	9	42	337	71	.6	32	20	1487	8.07	35	<5	<2	7	61	<.2	<2	<2	6	.45	.101	52	7	.08	378	<.01	<3	.59	.01	.29	<2	2
T5000N 3300E	5	59	278	125	<.3	40	22	777	5.60	15	<5	<2	9	54	.2	<2	<2	12	.54	.141	131	9	.06	394	<.01	<3	.42	.01	.19	<2	3
T5000N 3350E	6	78	276	173	.3	52	23	688	5.86	22	<5	<2	5	44	.4	<2	<2	15	.37	.135	106	11	.04	419	<.01	<3	.61	.02	.19	<2	2
T5000N 3400E	7	38	129	233	<.3	26	14	682	4.91	13	<5	<2	2	42	.7	<2	<2	14	.89	.170	109	2	.12	213	<.01	<3	.43	.01	.13	<2	6
T5000N 3550E	14	31	73	302	<.3	25	13	1098	4.78	12	<5	<2	13	20	.8	<2	<2	6	.41	.072	65	2	.12	112	<.01	<3	.22	.01	.12	<2	4
T5000N 3600E	15	29	87	276	<.3	22	12	1173	4.75	13	<5	<2	14	21	.7	<2	<2	6	.46	.063	71	<1	.14	126	<.01	<3	.21	.01	.13	<2	2
T5000N 3650E	10	39	74	249	<.3	26	13	975	4.97	13	<5	<2	7	27	.4	<2	<2	12	.49	.079	89	<1	.07	229	<.01	<3	.39	.01	.13	<2	3
T5000N 3700E	9	44	115	438	.3	34	22	1361	5.63	15	<5	<2	9	39	2.4	<2	<2	23	.45	.140	66	<1	.25	191	.01	<3	.60	.01	.20	<2	1
T5000N 3750E	9	30	48	201	.3	28	18	1266	4.37	11	<5	<2	2	33	1.4	<2	<2	18	.92	.175	38	23	.15	764	.01	<3	.49	.01	.13	<2	1
T5000N 3800E	12	66	53	718	.8	101	37	2271	7.33	20	<5	<2	5	32	6.6	<2	<2	32	1.11	.136	46	17	.23	500	.01	<3	.51	.01	.14	<2	3
T5000N 3850E	5	24	55	100	<.3	23	16	1286	5.12	8	<5	<2	6	29	.2	<2	<2	21	.50	.104	64	41	.20	1414	.02	<3	.55	.01	.13	<2	1
T5000N 3900E	4	15	69	104	<.3	14	13	1354	4.60	7	<5	<2	4	35	<.2	<2	<2	19	.61	.143	68	42	.19	1536	.01	<3	.77	.01	.15	<2	1
T5000N 3950E	5	14	39	56	<.3	13	13	1833	4.25	5	<5	<2	<2	35	<.2	<2	<2	21	1.04	.127	49	41	.22	1428	.01	<3	.94	.01	.10	<2	1
T5000N 4000E	7	18	41	78	<.3	15	11	1251	3.64	6	<5	<2	<2	43	<.2	<2	<2	23	1.14	.119	54	44	.24	1220	.01	<3	.79	.01	.13	<2	2
STANDARD C2/AU-S	21	59	37	135	6.7	74	36	1172	3.97	42	25	7	35	54	20.4	20	14	73	.53	.110	42	61	1.00	186	.07	26	2.09	.07	.16	12	58

ICP - .500 GRAM SAMPLE IS DIGESTED WITH 3ML 3-1-2 HCL-HNO3-H2O AT 95 DEG. C FOR ONE HOUR AND IS DILUTED TO 10 ML WITH WATER.
 THIS LEACH IS PARTIAL FOR MN FE SR CA P LA CR MG BA TI B W AND LIMITED FOR NA K AND AL.
 - SAMPLE TYPE: SOIL AU* - IGNITED, AQUA-REGIA/MIBK EXTRACT, GF/AA FINISHED.
 Samples beginning 'RE' are Reruns and 'RRE' are Reject Reruns.

DATE RECEIVED: SEP 9 1996 DATE REPORT MAILED: *Sept 18/96* SIGNED BY: *C. Leong* D. TOYE, C. LEONG, J. WANG; CERTIFIED B.C. ASSAYERS

SAMPLE#	Mo ppm	Cu ppm	Pb ppm	Zn ppm	Ag ppm	Ni ppm	Co ppm	Mn ppm	Fe %	As ppm	U ppm	Au ppm	Th ppm	Sr ppm	Cd ppm	Sb ppm	Bi ppm	V ppm	Ca %	P %	La ppm	Cr ppm	Mg %	Ba ppm	Ti %	B ppm	Al %	Na %	K %	W ppm	Au* ppb
T5000N 4050E	7	11	26	47	<.3	8	5	654	2.37	5	<5	<2	<2	40	<.2	<2	<2	13	1.35	.084	46	18	.21	793	.01	<3	.57	.01	.05	<2	1
T5000N 4100E	37	15	64	151	<.3	13	7	988	4.36	9	<5	<2	<2	23	.6	<2	<2	15	.91	.095	125	27	.20	1047	.01	<3	.71	.01	.09	<2	3
T5000N 4200E	42	28	143	336	.3	19	10	1356	4.62	20	<5	<2	2	49	3.9	2	<2	16	.60	.135	75	3	.15	95	.01	<3	.75	.01	.30	<2	1
T5000N 4300E	10	67	67	57	<.3	37	31	2096	6.15	12	<5	<2	8	28	<.2	<2	<2	30	.35	.148	60	6	.07	351	.01	<3	.34	.01	.07	<2	<1
T5000N 4350E	8	42	78	73	.4	33	22	1048	5.94	9	<5	<2	2	48	.2	<2	<2	22	.86	.136	45	17	.13	562	<.01	<3	1.08	.01	.09	<2	2
T5000N 4400E	6	31	137	58	.7	23	19	711	5.49	15	<5	<2	2	50	<.2	<2	<2	25	.61	.140	49	14	.09	573	<.01	<3	.52	.01	.14	<2	2
T5000N 4450E	14	47	152	89	.3	37	32	1275	9.72	19	<5	<2	11	53	<.2	3	<2	33	.80	.191	66	9	.19	351	<.01	<3	.72	.01	.17	<2	1
T5000N 4500E	8	23	80	276	.8	11	18	1378	5.00	12	<5	<2	4	32	.9	<2	<2	11	.92	.167	57	10	.11	400	<.01	3	.48	.01	.13	<2	1
T5000N 4550E	8	21	315	1166	1.8	11	18	1142	4.95	16	<5	<2	3	30	6.7	3	<2	9	.87	.180	49	<1	.08	265	<.01	3	.46	.01	.14	<2	1
T5000N 4600E	7	18	109	530	.8	9	16	1393	4.96	13	<5	<2	5	26	3.3	<2	<2	9	.81	.148	62	<1	.09	263	<.01	<3	.38	.01	.14	<2	1
RE T5000N 4600E	8	17	103	489	.8	9	15	1416	4.96	13	<5	<2	5	27	2.9	<2	<2	9	.82	.146	64	<1	.10	267	<.01	3	.37	.01	.14	<2	1
T5000N 4650E	9	12	29	51	<.3	8	9	1852	5.32	8	<5	<2	8	18	<.2	<2	<2	7	.59	.070	104	1	.14	210	<.01	<3	.26	.01	.10	<2	<1
T5000N 4700E	11	15	101	89	<.3	9	8	1925	5.32	10	<5	<2	14	36	.4	<2	<2	7	.99	.064	109	1	.16	212	<.01	<3	.28	.01	.11	<2	<1
T5000N 4750E	6	12	25	48	<.3	9	8	1787	5.15	8	<5	<2	14	19	<.2	<2	<2	6	.28	.067	101	3	.12	200	<.01	<3	.23	.01	.09	<2	<1
T5000N 4800E	6	26	47	29	.4	19	11	1669	5.73	20	<5	<2	10	45	<.2	<2	<2	15	.32	.074	58	2	.13	270	<.01	<3	.30	.01	.14	<2	3
T5000N 4850E	10	19	30	33	<.3	13	13	2281	6.38	13	<5	<2	12	24	<.2	<2	<2	7	.26	.074	96	2	.12	184	<.01	<3	.29	.01	.11	<2	1
T5000N 4900E	12	16	39	39	<.3	12	9	2665	7.09	9	<5	<2	11	29	<.2	<2	<2	4	1.36	.054	83	3	.22	222	<.01	<3	.27	.01	.12	<2	1
T5000N 4950E	11	16	25	35	<.3	14	13	3100	6.98	9	<5	<2	12	56	<.2	<2	<2	8	.47	.084	85	4	.13	280	<.01	<3	.35	.01	.16	<2	1
T5000N 5000E	24	39	91	46	1.0	15	19	1555	7.15	42	<5	<2	8	120	<.2	<2	<2	9	.46	.164	34	<1	.12	110	<.01	<3	.62	.02	.52	<2	<1
T1250E 5450N	3	39	23	84	.4	24	6	177	1.97	7	<5	<2	3	15	<.2	<2	<2	12	.15	.065	4	2	.03	98	<.01	<3	.22	<.01	.05	<2	5
T1250E 5400N	5	79	27	235	.8	42	12	251	3.58	12	5	<2	3	24	.5	<2	<2	25	.53	.145	6	5	.08	133	<.01	<3	.38	<.01	.07	<2	4
T1250E 5350N	5	35	35	94	.7	27	7	225	2.01	10	8	<2	<2	30	<.2	<2	<2	22	.10	.069	5	5	.03	132	<.01	3	.23	<.01	.08	<2	2
T1250E 5300N	5	46	34	209	.8	35	7	189	2.54	11	<5	<2	<2	57	.4	<2	<2	23	.13	.102	4	3	.03	149	<.01	<3	.26	.01	.09	<2	3
T1250E 5250N	5	28	32	199	.4	25	7	268	2.56	9	6	<2	2	22	.4	<2	<2	20	.07	.069	12	6	.03	91	<.01	<3	.29	<.01	.06	<2	12
T1250E 5200N	4	62	29	176	.6	54	10	240	3.34	11	6	<2	<2	22	<.2	<2	<2	22	.11	.086	3	5	.05	100	<.01	<3	.27	<.01	.06	<2	3
T1250E 5150N	10	139	57	195	1.7	113	24	370	5.44	29	10	<2	8	78	<.2	9	<2	30	.52	.218	4	5	.11	250	<.01	<3	.51	.01	.10	<2	6
T1250E 5100N	6	83	28	238	.6	31	18	1117	4.79	8	<5	<2	2	59	1.1	<2	<2	30	.71	.292	22	5	.14	213	<.01	<3	.78	.01	.10	<2	3
T1250E 5050N	7	109	37	248	.7	61	13	367	3.54	16	6	<2	6	59	1.3	2	2	20	.34	.178	6	3	.06	147	<.01	<3	.36	<.01	.09	<2	5
T1250E 5000N	7	69	30	170	.7	71	15	330	3.55	17	6	<2	<2	37	.8	<2	<2	25	.34	.159	5	8	.10	110	<.01	<3	.46	<.01	.08	<2	4
T1250E 4950N	4	42	21	166	.4	27	6	123	1.76	10	8	<2	<2	28	.2	<2	2	13	.05	.055	12	2	.01	90	<.01	<3	.25	<.01	.07	<2	4
T1250E 4900N	6	41	33	126	.5	34	7	212	2.54	8	5	<2	2	33	<.2	<2	<2	21	.18	.090	5	3	.04	85	<.01	<3	.26	.01	.08	<2	3
T1250E 4850N	7	24	30	162	.3	13	4	439	2.39	11	19	<2	4	17	.3	<2	2	15	.25	.066	39	<1	.05	148	<.01	<3	.33	<.01	.06	<2	2
T1250E 4800N	2	33	27	135	.5	19	7	395	2.90	22	7	<2	12	39	.3	<2	2	5	2.08	.110	7	2	.80	102	<.01	<3	.24	<.01	.07	<2	<1
T1250E 4750N	20	34	35	405	<.3	11	5	907	3.71	21	<5	<2	20	22	1.2	<2	2	8	.24	.034	123	3	.07	103	<.01	<3	.23	.01	.07	<2	2
T1250E 4700N	9	69	36	281	.4	12	5	478	2.38	18	12	<2	21	24	2.2	<2	2	14	.37	.113	26	2	.04	134	<.01	<3	.30	.01	.09	<2	<1
STANDARD C2/AU-S	20	58	40	131	6.7	72	35	1134	3.95	41	20	6	34	53	19.9	17	15	71	.52	.106	40	62	.98	191	.07	25	2.06	.08	.15	11	56

Sample type: SOIL. Samples beginning 'RE' are Reruns and 'RRE' are Reject Reruns.

SAMPLE#	Mo ppm	Cu ppm	Pb ppm	Zn ppm	Ag ppm	Ni ppm	Co ppm	Mn ppm	Fe %	As ppm	U ppm	Au ppm	Th ppm	Sr ppm	Cd ppm	Sb ppm	Bi ppm	V ppm	Ca %	P %	La ppm	Cr ppm	Mg %	Ba ppm	Ti %	B ppm	Al %	Na %	K %	W ppm	Au* ppb
T1250E 4650N	11	91	52	373	.3	19	5	679	4.04	31	18	<2	25	34	4.0	<2	4	48	.24	.144	28	1	.04	165	<.01	<3	.40	.01	.13	<2	2
T1250E 4600N	46	69	244	316	1.8	19	19	1191	6.75	88	5	<2	7	160	2.8	6	<2	259	.59	.236	29	6	.09	233	<.01	<3	.59	.02	.44	<2	4
T1250E 4550N	26	30	116	362	<.3	18	11	1793	5.45	42	<5	<2	13	41	2.7	3	2	23	.40	.082	125	<1	.09	102	<.01	<3	.26	<.01	.12	<2	2
T1700E 5450N	3	47	120	249	.4	47	16	599	3.45	12	<5	<2	3	27	.5	<2	2	16	.33	.090	42	28	.06	1115	<.01	<3	.49	.01	.10	<2	11
T1700E 5400N	6	31	76	150	.4	24	9	248	3.57	13	<5	<2	2	17	<.2	<2	<2	23	.05	.056	28	26	.04	1119	<.01	<3	.54	.01	.17	<2	2
T1700E 5350N	2	36	55	131	<.3	27	25	854	3.22	6	<5	<2	2	19	.2	<2	<2	21	.82	.149	53	47	.05	1841	<.01	<3	.67	<.01	.07	<2	3
T1700E 5300N	1	24	16	102	<.3	52	29	1055	3.68	23	<5	<2	<2	12	1.0	<2	2	20	.94	.131	63	14	.03	262	<.01	<3	.36	<.01	.05	<2	<1
T1700E 5250N	2	29	22	126	<.3	20	5	204	1.98	7	<5	<2	2	17	<.2	<2	<2	17	.26	.096	15	19	.05	651	<.01	<3	.40	.01	.07	<2	5
T1700E 5200N	6	35	52	284	<.3	36	8	506	3.26	8	<5	<2	<2	18	.7	<2	<2	20	.13	.169	40	16	.04	549	<.01	<3	.47	.01	.05	<2	2
T1700E 5150N	6	60	172	311	<.3	59	19	1136	6.60	16	<5	<2	<2	15	1.2	<2	<2	20	.10	.162	38	17	.03	602	<.01	<3	.40	.01	.08	<2	3
T1700E 5100N	4	23	30	118	<.3	19	4	194	1.93	9	<5	<2	<2	20	.3	<2	2	19	.19	.089	13	3	.06	113	<.01	<3	.31	.01	.06	<2	2
T1700E 5050N	12	21	95	299	.6	11	4	474	3.49	21	<5	<2	3	19	1.0	2	<2	36	.21	.094	57	12	.05	384	<.01	<3	.53	.01	.08	<2	3
T1700E 5000N	6	11	30	172	.3	5	2	369	2.37	8	<5	<2	<2	11	.4	<2	<2	20	.20	.051	9	<1	.05	103	.01	<3	.60	.04	.05	<2	1
T1700E 4950N	23	18	93	400	.7	13	4	554	4.89	24	<5	<2	4	11	1.4	4	<2	44	.08	.042	13	4	.04	125	<.01	<3	.45	.01	.06	<2	<1
T1700E 4900N	16	15	66	385	<.3	11	4	963	5.07	19	<5	<2	3	8	1.8	<2	<2	27	.07	.047	11	2	.04	107	<.01	<3	.35	.01	.06	<2	<1
T1700E 4850N	18	19	78	438	.4	14	5	1167	5.44	22	<5	<2	7	10	2.8	2	<2	22	.04	.033	19	3	.04	129	<.01	<3	.33	.01	.06	<2	1
T1700E 4800N	19	24	83	412	.5	12	4	742	5.33	23	<5	<2	7	14	1.0	2	<2	28	.05	.042	35	3	.04	89	<.01	<3	.38	<.01	.07	<2	2
T1700E 4750N	21	13	78	153	<.3	7	3	1049	3.95	16	<5	<2	13	11	.4	<2	<2	25	.11	.034	199	5	.04	80	<.01	<3	.33	<.01	.09	<2	2
T1700E 4700N	20	16	62	194	<.3	7	3	1066	4.59	17	<5	<2	15	14	.7	<2	<2	21	.11	.044	178	1	.03	78	<.01	<3	.22	<.01	.08	<2	<1
T1700E 4650N	24	16	120	204	.6	9	3	673	3.46	22	<5	<2	10	24	.9	5	2	37	.13	.058	87	4	.03	266	<.01	<3	.23	.01	.12	<2	1
T1700E 4600N	18	27	108	325	.5	14	5	1009	4.57	28	<5	<2	9	31	2.2	4	<2	43	.12	.059	56	2	.04	193	<.01	<3	.32	.01	.10	<2	1
T1700E 4550N	16	21	69	403	.4	14	5	1005	4.73	21	<5	<2	8	17	2.2	<2	<2	27	.08	.044	39	1	.05	141	<.01	<3	.39	<.01	.07	<2	<1
T1900E 5450N	1	23	23	82	<.3	16	5	223	1.56	3	<5	<2	<2	15	<.2	<2	<2	20	.35	.067	14	14	.04	531	.01	<3	.49	.03	.05	<2	<1
T1900E 5400N	5	26	40	134	<.3	23	7	174	2.63	9	<5	<2	<2	10	.3	<2	<2	21	.08	.098	15	5	.03	161	<.01	<3	.31	.01	.06	<2	1
RE T1900E 5400N	4	28	44	134	<.3	25	7	167	2.68	10	<5	<2	<2	10	.3	<2	<2	21	.09	.101	15	6	.03	153	<.01	4	.32	.01	.06	<2	1
T1900E 5350N	5	32	53	166	<.3	33	14	1038	3.88	9	<5	<2	5	15	.2	<2	<2	17	.30	.068	48	23	.07	797	<.01	<3	.45	<.01	.08	<2	1
T1900E 5300N	5	26	89	225	<.3	36	11	496	5.12	23	<5	<2	12	20	.2	<2	<2	4	.07	.071	79	18	.02	799	<.01	<3	.39	.01	.10	<2	<1
T1900E 5250N	4	92	146	209	2.5	98	17	1428	5.89	20	<5	<2	4	62	.8	<2	<2	24	.57	.315	67	32	.03	1136	<.01	<3	.39	.01	.13	<2	6
T1900E 5200N	6	63	137	324	4.1	41	7	340	4.26	21	<5	<2	<2	7	<.2	<2	<2	17	.04	.111	27	7	.02	157	<.01	<3	.24	<.01	.07	<2	4
T1900E 5150N	11	26	68	422	.7	23	10	840	4.83	16	<5	<2	4	25	2.2	<2	<2	22	.40	.093	40	23	.09	962	<.01	<3	.48	.01	.07	<2	1
T1900E 5100N	6	39	39	293	<.3	34	10	633	3.59	10	<5	<2	4	15	1.0	<2	<2	14	.18	.109	40	7	.07	212	<.01	<3	.40	<.01	.08	<2	1
T1900E 5050N	4	8	18	53	<.3	5	2	136	1.32	5	<5	<2	<2	11	<.2	<2	<2	20	.08	.058	20	4	.02	108	<.01	<3	.42	.01	.04	<2	<1
T1900E 5000N	9	15	51	108	.4	6	3	282	2.33	10	<5	<2	<2	15	<.2	2	<2	36	.18	.070	25	2	.06	131	.01	<3	.56	.02	.05	<2	<1
T1900E 4950N	15	11	90	128	.5	5	3	371	2.46	12	<5	<2	<2	18	<.2	2	2	37	.11	.055	29	2	.04	195	.01	<3	.47	.03	.07	<2	<1
T1900E 4900N	22	14	89	180	.3	6	3	698	3.99	19	<5	<2	4	14	.7	3	<2	27	.06	.059	100	2	.02	129	<.01	<3	.32	.01	.08	<2	<1
STANDARD C2/AU-S	20	55	40	131	6.5	70	35	1170	3.88	41	23	7	33	51	19.9	19	16	70	.51	.105	40	60	.96	191	.06	24	2.03	.07	.15	12	55

Sample type: SOIL. Samples beginning 'RE' are Reruns and 'RRE' are Reject Reruns.

SAMPLE#	Mo ppm	Cu ppm	Pb ppm	Zn ppm	Ag ppm	Ni ppm	Co ppm	Mn ppm	Fe %	As ppm	U ppm	Au ppm	Th ppm	Sr ppm	Cd ppm	Sb ppm	Bi ppm	V ppm	Ca %	P %	La ppm	Cr ppm	Mg %	Ba ppm	Ti %	B ppm	Al %	Na %	K %	W ppm	Au* ppb
T1900E 4850N	20	13	65	200	<.3	6	3	738	4.39	17	<5	<2	6	14	.3	<2	<2	21	.12	.056	179	4	.03	90	<.01	<3	.25	.01	.08	<2	1
T1900E 4800N	20	17	64	231	<.3	8	4	1072	5.19	20	<5	<2	16	15	.5	<2	<2	21	.09	.054	221	3	.04	86	<.01	<3	.27	.01	.08	<2	<1
T1900E 4750N	13	38	71	321	.4	9	7	1867	7.72	19	<5	<2	15	13	1.2	<2	<2	25	.14	.069	127	1	.19	124	.02	<3	.83	.01	.11	<2	3
T1900E 4700N	31	63	279	1034	2.7	7	5	1249	14.53	71	<5	<2	15	25	.8	<2	<2	4	.03	.060	92	1	.09	90	<.01	<3	.62	.01	.47	<2	27
T1900E 4650N	26	100	172	1033	.7	8	6	1021	9.98	84	<5	<2	33	5	4.5	<2	<2	3	.02	.026	139	1	.04	67	<.01	<3	.33	<.01	.10	<2	17
T1900E 4600N	28	44	133	489	<.3	3	3	115	12.71	96	<5	<2	9	61	<.2	<2	<2	9	.06	.065	51	2	.02	69	<.01	<3	.22	.01	.96	<2	9
T1900E 4550N	9	19	86	218	.6	6	7	297	6.99	32	<5	<2	5	42	<.2	<2	<2	7	.23	.137	39	4	.03	158	<.01	<3	.22	.01	.23	<2	8
T2125E 5450N	3	37	64	156	<.3	25	9	184	3.00	10	<5	<2	2	18	.4	<2	<2	16	.29	.122	39	15	.07	511	<.01	<3	.44	.01	.07	<2	2
T2125E 5400N	3	25	68	93	<.3	11	6	360	2.64	4	<5	<2	<2	14	<.2	<2	<2	11	.13	.074	38	19	.03	862	.01	<3	.61	.03	.06	<2	1
T2125E 5350N	8	36	64	264	.5	30	8	408	3.30	14	7	<2	2	23	.9	2	<2	29	.30	.130	31	4	.05	247	<.01	<3	.42	.01	.08	<2	2
T2125E 5300N	4	45	66	234	<.3	33	11	574	4.34	12	<5	<2	3	16	<.2	<2	<2	16	.21	.104	47	23	.07	865	<.01	<3	.64	<.01	.06	<2	8
T2125E 5250N	4	34	47	122	.4	20	5	265	2.75	9	<5	<2	<2	8	<.2	<2	<2	15	.05	.114	29	8	.03	117	<.01	<3	.38	.01	.05	<2	2
T2125E 5200N	1	15	14	65	<.3	7	3	219	1.27	5	<5	<2	<2	14	<.2	<2	<2	18	.26	.066	9	5	.06	85	.02	<3	.61	.04	.04	<2	3
T2125E 5150N	4	28	53	185	<.3	19	8	624	3.60	9	<5	<2	2	13	<.2	<2	<2	15	.22	.088	33	5	.07	225	<.01	<3	.62	.01	.06	<2	3
T2125E 5100N	7	55	56	403	.5	42	13	881	4.57	14	<5	<2	10	25	2.2	<2	<2	20	.33	.138	56	16	.09	576	<.01	<3	.50	.01	.11	<2	4
T2125E 5050N	7	50	113	488	.6	31	11	839	3.80	19	<5	<2	2	15	1.4	3	<2	23	.15	.132	27	5	.06	106	<.01	<3	.46	.01	.06	<2	2
T2125E 5000N	8	46	91	438	.7	29	12	750	4.11	19	7	<2	2	14	.9	2	<2	24	.08	.186	33	8	.04	85	<.01	<3	.42	.01	.08	<2	3
T2125E 4950N	10	19	43	224	<.3	13	5	392	4.30	17	<5	<2	<2	9	<.2	<2	<2	32	.02	.066	40	7	.03	58	.01	<3	.40	<.01	.07	<2	1
T2125E 4900N	6	16	37	104	<.3	9	2	192	2.11	9	5	<2	<2	16	<.2	<2	<2	29	.08	.103	25	7	.04	163	<.01	<3	.83	.02	.08	<2	1
T2125E 4850N	6	17	41	166	<.3	13	6	791	5.56	15	<5	<2	<2	9	<.2	<2	<2	26	.02	.172	30	9	.05	95	.01	<3	.75	<.01	.06	<2	<1
RE T2125E 4850N	7	17	40	168	<.3	12	6	823	5.70	15	<5	<2	<2	9	<.2	<2	2	25	.02	.176	30	5	.05	96	<.01	<3	.76	<.01	.06	<2	1
T2125E 4800N	8	21	76	724	.4	6	4	728	4.30	18	<5	<2	2	11	1.8	<2	<2	10	.19	.083	74	2	.08	102	.01	<3	.93	.03	.08	<2	3
T2125E 4750N	13	16	38	282	<.3	5	6	1318	4.91	12	<5	<2	8	13	<.2	<2	<2	6	.18	.057	133	4	.06	119	<.01	<3	.49	.01	.07	<2	<1
T2125E 4700N	13	22	73	310	<.3	5	5	1268	4.73	12	<5	<2	3	18	.3	<2	<2	7	.42	.074	73	4	.11	132	<.01	<3	.84	.02	.11	<2	1
T2325E 4950N	7	11	30	142	<.3	8	4	307	3.36	8	<5	<2	<2	9	<.2	<2	<2	15	.05	.066	30	3	.04	98	<.01	<3	.59	.01	.06	<2	1
T2325E 4900N	<1	5	4	18	<.3	2	2	107	.92	2	<5	<2	<2	10	<.2	<2	<2	18	.12	.049	6	3	.04	38	.02	<3	.47	.04	.03	<2	<1
T2325E 4850N	9	15	44	156	<.3	12	10	925	6.26	13	<5	<2	5	5	1.1	<2	<2	10	.05	.078	47	6	.05	80	<.01	<3	.46	<.01	.07	<2	<1
T2325E 4800N	9	28	56	224	.4	15	10	1132	5.89	12	<5	<2	<2	12	<.2	<2	<2	13	.16	.120	71	6	.08	149	<.01	<3	.57	.01	.07	<2	1
T2325E 4750N	5	23	49	177	<.3	12	8	590	4.07	8	<5	<2	2	51	.6	<2	<2	16	.73	.129	38	7	.09	130	.01	<3	.67	.02	.13	<2	1
T2325E 4700N	11	43	152	307	.6	26	21	1165	6.63	16	<5	<2	9	54	1.2	<2	<2	19	.37	.137	84	12	.14	169	<.01	<3	.58	.01	.17	<2	<1
T2325E 4650N	17	39	65	261	<.3	14	13	1626	7.17	16	<5	<2	15	45	.3	<2	<2	14	.29	.102	124	8	.15	144	.01	<3	.49	.01	.23	<2	1
T2325E 4600N	12	32	30	143	<.3	9	16	2148	5.84	11	<5	<2	16	31	<.2	<2	<2	10	.48	.169	141	7	.14	137	<.01	<3	.45	.01	.20	<2	<1
T2325E 4550N	12	31	30	130	<.3	7	11	1913	4.99	11	<5	<2	17	28	<.2	<2	<2	8	.35	.124	143	5	.11	119	<.01	<3	.35	<.01	.15	<2	1
T2325E 4500N	18	40	32	150	<.3	8	12	1512	5.57	9	<5	<2	14	12	<.2	<2	<2	12	.24	.094	80	4	.06	113	<.01	<3	.34	.01	.12	<2	<1
T2350E 5450N	8	12	16	41	<.3	8	7	1568	4.35	7	<5	<2	8	11	<.2	<2	2	3	1.36	.037	89	6	.07	277	<.01	3	.32	<.01	.08	<2	1
STANDARD C2/AU-S	20	59	38	134	6.8	73	36	1181	4.00	43	23	8	35	54	20.5	20	15	71	.52	.108	41	64	1.01	191	.07	25	2.07	.07	.16	12	55

Sample type: SOIL. Samples beginning 'RE' are Reruns and 'RRE' are Reject Reruns.

SAMPLE#	Mo	Cu	Pb	Zn	Ag	Ni	Co	Mn	Fe	As	U	Au	Th	Sr	Cd	Sb	Bi	V	Ca	P	La	Cr	Mg	Ba	Ti	B	Al	Na	K	W	Au*	
	ppm	ppm	ppm	ppm	ppm	ppm	ppm	ppm	%	ppm	ppm	ppm	ppm	ppm	ppm	ppm	ppm	ppm	%	%	ppm	ppm	%	ppm	%	%	%	%	%	ppm	ppb	
T2350E 5400N	9	15	28	71	<.3	9	8	2964	5.41	6	<5	<2	5	22	<.2	2	<2	11	1.35	.074	81	19	.13	607	<.01	4	.59	.01	.09	<2	1	
T2350E 5350N	5	16	36	108	<.3	14	10	2157	5.26	8	<5	<2	6	15	.5	<2	<2	14	.38	.093	68	18	.09	605	.01	<3	.63	.01	.15	<2	1	
T2350E 5300N	7	20	55	125	<.3	18	11	1317	6.88	15	<5	<2	6	13	<.2	<2	<2	16	.21	.070	75	14	.12	396	<.01	<3	.84	<.01	.12	<2	12	
T2350E 5250N	8	19	33	132	<.3	10	6	1744	3.51	12	5	<2	<2	8	<.2	<2	<2	22	.08	.067	28	6	.03	211	.01	4	.32	.01	.07	<2	1	
T2350E 5200N	8	22	96	127	.6	16	7	560	4.69	15	8	<2	2	20	<.2	<2	<2	14	.19	.106	20	17	.06	641	<.01	<3	.77	.01	.11	<2	<1	
T2350E 5150N	6	20	68	106	<.3	14	17	2539	4.95	12	<5	<2	2	18	<.2	<2	<2	21	.43	.217	53	25	.06	809	<.01	<3	.94	<.01	.07	<2	1	
T2350E 5100N	16	28	307	708	.3	48	57	7628	11.05	46	<5	<2	5	50	4.2	2	<2	6	.07	.203	74	17	.03	441	<.01	<3	.54	.01	.25	<2	6	
T2350E 5050N	7	18	57	188	<.3	13	6	493	3.90	12	<5	<2	3	16	<.2	<2	<2	9	.11	.066	62	4	.04	304	<.01	<3	.46	.01	.08	<2	2	
T2575E 5450N	10	39	153	91	.6	27	21	1323	8.37	23	<5	<2	2	57	<.2	<2	<2	11	.65	.146	35	<1	.09	99	<.01	<3	.77	.03	.46	<2	1	
T2575E 5400N	22	56	176	131	.8	57	48	2191	8.71	31	<5	<2	6	63	.6	<2	<2	12	.36	.201	52	<1	.08	241	<.01	<3	.79	.02	.34	<2	1	
T2575E 5300N	11	43	230	35	1.5	27	18	1222	7.14	22	<5	<2	<2	25	<.2	3	<2	21	.58	.123	31	43	.07	1166	<.01	<3	.43	.01	.13	<2	2	
T2575E 5250N	11	50	205	117	.5	42	40	2380	11.87	27	<5	<2	3	33	<.2	<2	<2	50	.39	.169	39	28	.10	869	<.01	<3	.82	.01	.20	<2	1	
T2575E 5200N	6	19	231	55	<.3	15	12	711	6.05	9	<5	<2	6	27	<.2	<2	<2	11	.14	.086	76	21	.04	783	<.01	<3	.62	.01	.28	<2	1	
T2575E 5150N	10	28	191	113	<.3	20	12	705	6.91	19	<5	<2	5	23	<.2	<2	<2	13	.15	.112	70	26	.05	855	<.01	4	.61	.01	.17	<2	2	
T2575E 5100N	6	29	224	133	.6	18	8	308	4.90	16	<5	<2	7	35	<.2	2	<2	12	.10	.092	63	16	.03	495	<.01	<3	.36	.01	.30	<2	2	
T2575E 5050N	6	21	132	116	<.3	12	7	361	8.25	17	<5	<2	5	135	<.2	<2	2	10	.05	.132	58	3	.03	110	<.01	<3	.30	.01	.74	<2	2	
T2575E 4950N	8	13	42	219	<.3	11	6	425	3.68	9	<5	<2	4	14	.3	<2	3	12	.23	.070	50	6	.06	115	<.01	<3	.38	<.01	.09	<2	2	
T2575E 4900N	13	21	62	308	<.3	21	10	1121	5.84	13	<5	<2	3	33	1.0	<2	<2	27	.35	.077	21	1	.09	161	<.01	<3	.49	.01	.12	<2	1	
T2575E 4850N	13	21	48	231	<.3	17	10	1337	5.16	7	<5	<2	11	34	.4	<2	<2	11	.22	.057	71	<1	.08	137	<.01	<3	.40	.01	.13	<2	1	
T2575E 4800N	16	30	55	266	<.3	35	20	2612	5.79	11	<5	<2	8	22	<.2	<2	<2	5	.27	.067	95	7	.09	193	<.01	<3	.49	<.01	.16	<2	1	
T2575E 4750N	16	34	82	337	<.3	35	23	1693	7.28	20	<5	<2	9	21	.2	<2	<2	18	.40	.102	91	4	.08	107	<.01	<3	.45	.01	.14	<2	1	
RE T2575E 4750N	15	33	81	336	<.3	34	23	1709	7.19	21	<5	<2	9	21	.3	<2	<2	18	.39	.103	90	5	.08	105	<.01	<3	.43	<.01	.13	<2	1	
T2575E 4700N	20	24	75	625	<.3	29	14	1444	7.60	21	<5	<2	14	26	1.4	<2	<2	4	.13	.068	119	1	.07	119	<.01	<3	.55	.01	.16	<2	1	
T2575E 4650N	16	42	100	252	.4	24	15	1557	6.61	24	<5	<2	8	100	.7	<2	<2	14	.53	.097	64	1	.10	202	<.01	<3	.61	.01	.34	<2	1	
T2575E 4600N	26	71	148	301	.6	30	18	951	8.61	39	<5	<2	54	136	1.1	<2	<2	20	.18	.116	45	5	.05	214	<.01	<3	.41	.01	.49	<2	1	
T2575E 4550N	9	34	70	60	<.3	31	13	404	8.96	20	<5	<2	17	99	<.2	<2	<2	16	.22	.055	43	1	.06	124	<.01	<3	.13	.01	.64	<2	1	
T2575E 4500N	8	62	146	198	1.1	57	30	1596	6.29	25	<5	<2	11	98	1.5	3	<2	13	.82	.116	72	9	.17	90	<.01	<3	.33	.01	.20	<2	1	
T2800E 5450N	16	49	36	40	.3	28	30	1100	6.67	10	<5	<2	5	32	<.2	2	<2	15	1.90	.240	34	3	.24	158	<.01	<3	.33	.01	.13	<2	1	
T2800E 5400N	16	30	258	63	1.1	17	9	1527	7.96	42	<5	<2	4	50	<.2	2	<2	7	.46	.107	87	7	.09	99	<.01	<3	.71	.02	.65	<2	1	
T2800E 5350N	21	35	332	69	1.3	17	9	1042	9.50	59	<5	<2	4	69	<.2	<2	<2	7	.13	.097	44	2	.05	62	<.01	<3	.64	.05	1.00	<2	1	
T2800E 5300N	N/S	-	-	-	-	-	-	-	-	-	-	-	-	-	-	-	-	-	-	-	-	-	-	-	-	-	-	-	-	-	-	-
T2800E 5250N	8	15	56	72	<.3	17	14	1127	4.37	13	8	<2	<2	17	<.2	<2	3	25	.33	.213	32	19	.07	626	<.01	<3	.72	.01	.09	<2	1	
T2800E 5200N	5	105	77	117	.5	64	40	845	4.30	10	<5	<2	3	37	<.2	2	<2	17	.97	.132	58	40	.10	1114	<.01	<3	.63	.01	.15	<2	3	
T2800E 5150N	5	12	481	30	<.3	9	7	198	3.58	10	5	<2	7	92	<.2	<2	2	7	.18	.100	115	15	.04	379	<.01	<3	.39	.03	.34	<2	1	
T2800E 5100N	3	31	398	51	.3	18	7	440	2.80	11	<5	<2	7	75	<.2	<2	2	11	.22	.078	91	24	.06	911	<.01	<3	.50	.01	.13	<2	3	
STANDARD C2/AU-S	20	58	40	135	6.6	72	36	1182	4.00	43	24	7	35	54	20.8	21	15	72	.52	.109	42	65	1.00	191	.07	26	2.08	.07	.17	12	45	

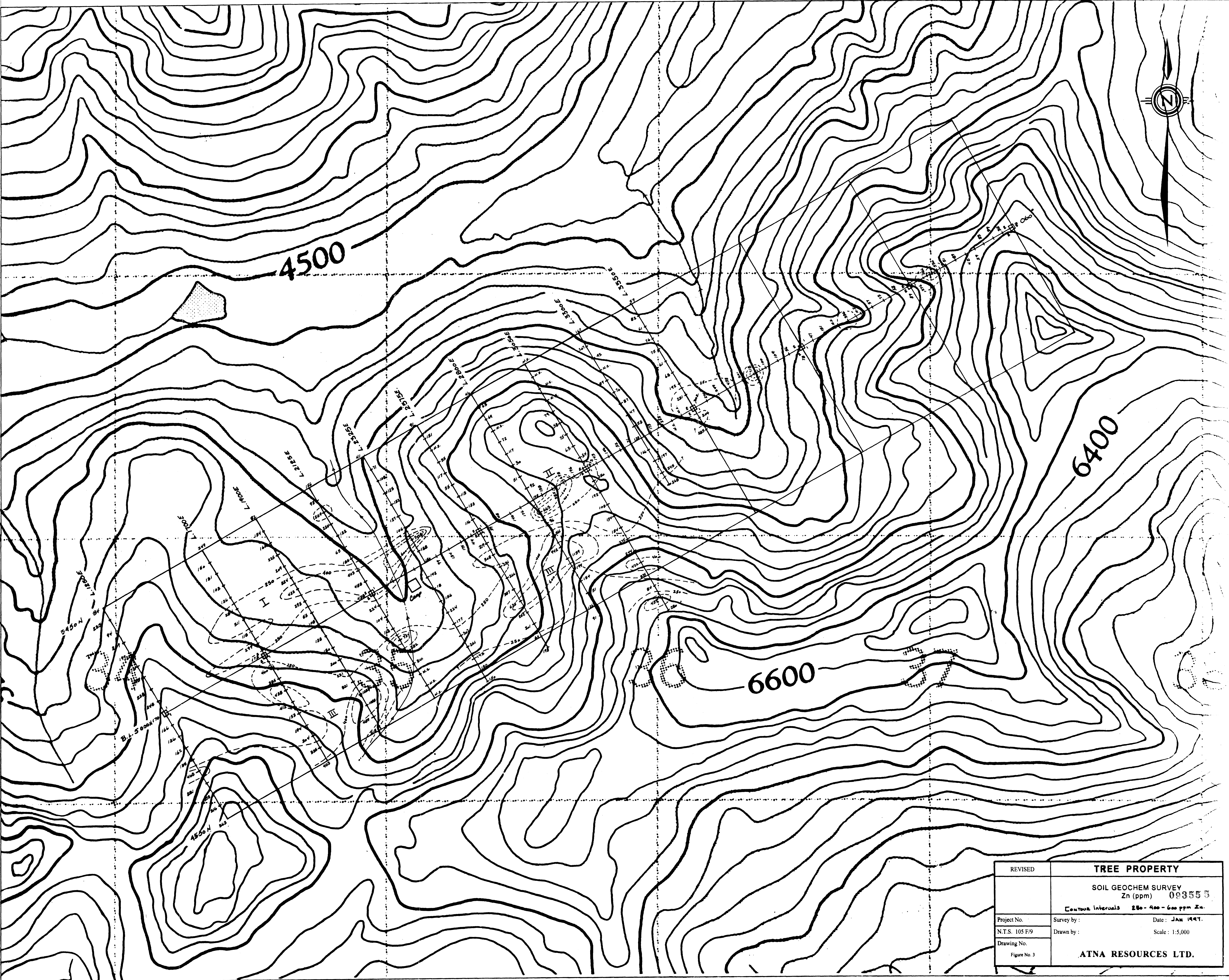
Sample type: SOIL. Samples beginning 'RE' are Reruns and 'RRE' are Reject Reruns.

SAMPLE#	Mo ppm	Cu ppm	Pb ppm	Zn ppm	Ag ppm	Ni ppm	Co ppm	Mn ppm	Fe %	As ppm	U ppm	Au ppm	Th ppm	Sr ppm	Cd ppm	Sb ppm	Bi ppm	V ppm	Ca %	P %	La ppm	Cr ppm	Mg %	Ba ppm	Ti %	B ppm	Al %	Na %	K %	W ppm	Au* ppb
T2800E 5050N	4	20	95	92	.6	18	5	122	2.86	16	<5	<2	2	64	<.2	<2	2	11	.03	.075	62	12	.01	448	<.01	<3	.30	.05	.19	<2	4
RE T2800E 5050N	5	21	92	90	.5	18	5	122	2.82	16	<5	<2	2	63	<.2	<2	2	11	.03	.075	62	14	.01	438	<.01	<3	.30	.05	.19	<2	2
T2800E 4950N	12	13	68	665	<.3	16	11	765	11.31	21	<5	<2	6	20	2.8	<2	2	5	.27	.058	62	4	.03	113	<.01	<3	.24	.01	.06	<2	2
T2800E 4900N	7	21	38	96	<.3	18	12	779	4.43	10	<5	<2	5	21	.2	<2	<2	10	.61	.193	21	1	.10	64	<.01	<3	.35	.01	.08	<2	<1
T2800E 4850N	19	26	125	561	.3	26	8	1562	5.68	23	<5	<2	6	59	4.5	2	2	60	.20	.055	15	2	.07	252	<.01	<3	.40	.01	.10	<2	<1
T2800E 4800N	16	30	37	942	<.3	38	24	2257	5.69	12	<5	<2	9	39	6.6	<2	2	48	.32	.065	27	2	.22	265	<.01	<3	.70	.01	.12	<2	1
T2800E 4750N	13	41	35	1159	<.3	54	44	2801	8.43	8	<5	<2	7	49	3.2	2	<2	80	.57	.113	86	11	.46	319	.01	<3	1.24	.01	.23	<2	2
T2800E 4700N	20	55	670	199	.4	26	21	1147	8.23	44	<5	<2	4	117	<.2	2	3	16	.23	.138	41	6	.08	84	<.01	<3	.50	.01	.65	<2	2
T2800E 4650N	10	32	89	154	<.3	25	20	1568	7.28	15	<5	<2	2	97	.2	<2	2	13	.73	.175	34	3	.18	128	<.01	<3	.47	.01	.54	<2	<1
T2800E 4550N	7	35	41	51	<.3	17	19	930	5.08	7	<5	<2	2	68	<.2	<2	<2	21	1.41	.108	39	5	.15	113	<.01	<3	.36	.01	.15	<2	1
T2800E 4500N	5	44	50	126	<.3	26	20	1173	4.95	6	<5	<2	2	91	<.2	<2	2	29	1.17	.116	39	10	.24	168	<.01	<3	.81	.01	.14	<2	1
T2800E 4450N	9	14	2779	91	10.4	6	5	248	2.33	11	<5	<2	2	70	.4	7	2	11	.47	.052	50	3	.06	144	<.01	<3	.17	.01	.20	<2	1
T3050E 5250N	4	19	128	79	<.3	27	11	646	3.36	11	<5	<2	8	37	<.2	<2	3	27	.19	.070	98	34	.29	724	.02	<3	1.09	.01	.19	<2	2
T3050E 5200N	4	14	87	58	<.3	11	8	692	2.62	8	<5	<2	<2	21	<.2	<2	<2	19	.05	.119	52	18	.05	485	<.01	<3	.68	.01	.15	<2	1
T3050E 5150N	4	24	54	75	.3	21	14	1191	3.98	15	<5	<2	3	42	<.2	<2	<2	17	.77	.098	59	20	.14	494	.01	<3	.64	.01	.15	<2	2
T3050E 5100N	2	33	121	63	<.3	24	18	656	3.12	7	<5	<2	<2	40	<.2	<2	<2	13	.62	.106	65	34	.06	1202	<.01	<3	.59	.01	.16	<2	2
T3050E 5050N	2	47	26	34	<.3	41	29	766	3.10	17	<5	<2	5	72	<.2	<2	<2	11	4.35	.223	58	22	.16	406	<.01	<3	.52	.01	.21	<2	<1
T3050E 4950N	8	20	59	250	<.3	20	9	2208	5.60	11	<5	<2	4	15	.4	<2	2	12	.29	.090	78	10	.14	274	<.01	<3	.71	.01	.14	<2	2
T3050E 4900N	9	19	38	192	<.3	14	10	1267	5.60	11	<5	<2	8	6	<.2	<2	2	16	.04	.048	104	10	.08	121	<.01	<3	.81	<.01	.08	<2	1
T3050E 4850N	5	19	28	108	<.3	12	10	628	3.75	6	<5	<2	7	14	.7	<2	2	12	.44	.133	55	1	.08	158	<.01	<3	.45	<.01	.12	<2	<1
T3050E 4800N	5	20	41	134	<.3	14	11	856	3.80	6	<5	<2	3	47	.5	<2	2	11	.94	.097	29	3	.11	94	<.01	<3	.25	.01	.10	<2	<1
T3050E 4750N	7	25	56	184	<.3	20	18	1482	4.80	9	<5	<2	8	50	.4	<2	<2	16	1.30	.113	31	2	.12	149	<.01	<3	.34	.01	.13	<2	1
T3050E 4700N	10	26	69	275	<.3	18	14	967	4.41	11	<5	<2	15	39	1.2	<2	<2	13	.47	.083	50	<1	.07	162	<.01	<3	.32	.01	.13	<2	1
T3050E 4650N	12	21	66	244	<.3	14	12	1183	4.23	9	<5	<2	7	34	.8	<2	<2	15	.46	.057	39	3	.09	191	<.01	<3	.37	.01	.13	<2	<1
T3050E 4600N	13	29	96	422	<.3	23	16	944	5.64	13	<5	<2	14	25	1.2	<2	<2	9	1.36	.051	9	6	.24	101	<.01	<3	.23	.01	.09	<2	1
T3050E 4550N	10	21	38	375	<.3	17	11	666	3.51	9	<5	<2	21	40	1.9	<2	<2	11	.57	.050	61	1	.12	185	<.01	<3	.27	.01	.15	<2	<1
T3050E 4500N	7	48	45	84	<.3	33	26	793	4.93	11	<5	<2	19	80	<.2	<2	<2	17	.37	.110	52	9	.10	128	<.01	<3	.30	.02	.29	<2	1
T3050E 4450N	22	33	94	439	.7	23	11	975	6.50	25	<5	<2	10	51	1.3	4	<2	66	.23	.063	19	10	.07	353	<.01	3	.48	.01	.22	<2	1
T3050E 4400N	7	50	81	280	<.3	29	40	1683	7.03	14	<5	<2	6	63	1.4	<2	<2	31	.71	.241	40	3	.17	193	<.01	3	.51	.02	.26	<2	1
T3300E 5450N	11	31	64	167	<.3	24	17	1330	5.47	15	<5	<2	10	19	.8	3	<2	7	.52	.093	24	2	.13	188	<.01	<3	.23	.01	.10	<2	<1
T3300E 5400N	10	31	63	207	<.3	23	16	1294	5.55	15	<5	<2	10	21	1.3	2	<2	8	.54	.095	23	<1	.13	202	<.01	<3	.24	.01	.10	<2	<1
T3300E 5350N	13	18	58	43	<.3	13	9	1007	5.28	19	<5	<2	15	15	<.2	5	<2	5	.46	.043	8	2	.10	187	<.01	<3	.18	.01	.14	<2	1
T3300E 5250N	6	21	85	89	<.3	16	14	1952	5.99	14	<5	<2	7	43	<.2	<2	<2	8	.50	.118	69	15	.09	479	<.01	<3	.43	.01	.23	<2	1
T3300E 5200N	6	38	90	70	<.3	28	20	944	4.39	12	<5	<2	3	38	<.2	<2	<2	10	.83	.132	52	4	.10	265	<.01	<3	.45	.01	.15	<2	1
T3300E 5150N	7	18	47	87	<.3	15	11	2130	4.98	5	<5	<2	7	21	<.2	<2	<2	5	.50	.073	83	2	.07	223	<.01	<3	.29	.01	.12	<2	14
STANDARD C2/AU-S	20	55	38	130	6.3	68	34	1124	3.74	41	16	7	33	50	19.6	19	16	68	.52	.102	38	57	.93	185	.06	24	1.94	.06	.14	11	54

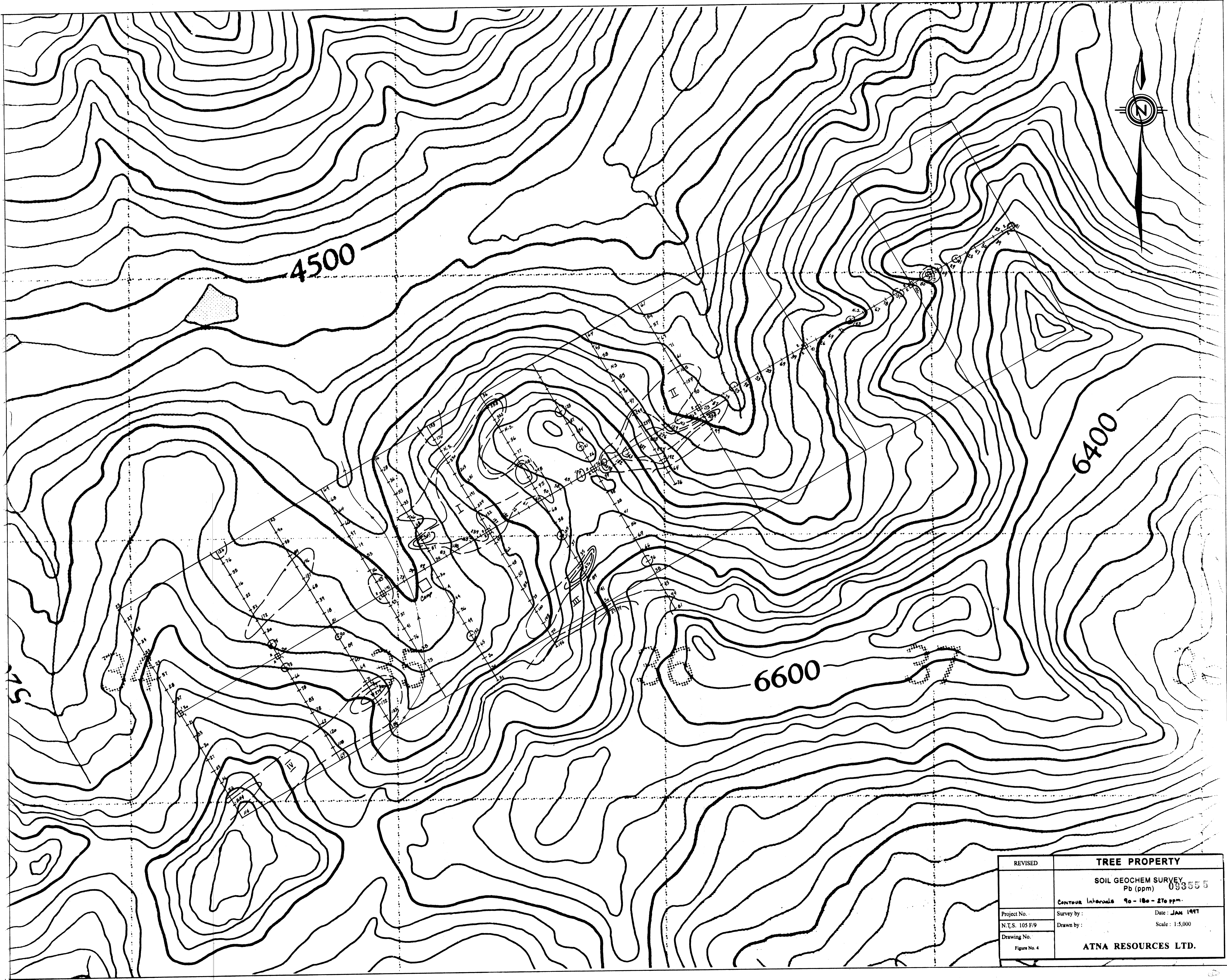
Sample type: SOIL. Samples beginning 'RE' are Reruns and 'RRE' are Reject Reruns.

SAMPLE#	Mo ppm	Cu ppm	Pb ppm	Zn ppm	Ag ppm	Ni ppm	Co ppm	Mn ppm	Fe %	As ppm	U ppm	Au ppm	Th ppm	Sr ppm	Cd ppm	Sb ppm	Bi ppm	V ppm	Ca %	P %	La ppm	Cr ppm	Mg %	Ba ppm	Ti %	B ppm	Al %	Na %	K %	W ppm	Au* ppb
T3300E 5100N	11	34	249	47	1.4	24	16	910	5.31	34	<5	<2	5	42	<.2	3	<2	8	.35	.098	66	<1	.02	301	<.01	<3	.41	.01	.33	<2	2
T3300E 5050N	12	33	239	53	1.2	25	19	1088	5.42	30	<5	<2	3	66	.5	3	<2	8	1.14	.104	42	2	.11	287	<.01	<3	.34	.01	.31	<2	2
T3300E 4950N	8	72	274	166	.6	56	29	803	5.84	20	<5	<2	14	58	.8	3	<2	10	.34	.140	117	4	.01	294	<.01	<3	.35	.02	.25	<2	1
T3300E 4900N	8	40	192	197	.6	33	16	949	5.51	17	<5	<2	6	36	.8	3	<2	13	.46	.106	51	1	.06	227	<.01	<3	.28	.01	.15	<2	<1
T3300E 4850N	10	42	64	245	.3	32	15	882	4.72	17	<5	<2	12	23	.8	<2	<2	5	.69	.096	77	<1	.15	138	<.01	<3	.19	<.01	.10	<2	1
T3300E 4800N	16	25	76	265	<.3	19	11	1070	4.49	14	<5	<2	14	23	1.4	3	<2	6	.46	.060	62	2	.12	137	<.01	<3	.17	<.01	.10	<2	<1
T3550E 5450N	8	32	61	59	<.3	24	18	1468	5.28	16	<5	<2	5	22	.2	3	<2	11	.36	.110	46	3	.04	296	<.01	<3	.24	<.01	.09	<2	1
T3550E 5400N	7	30	84	82	.3	20	17	1533	5.85	17	<5	<2	9	27	.2	4	<2	9	.29	.083	71	1	.05	436	<.01	<3	.35	<.01	.12	<2	1
T3550E 5350N	5	26	57	61	<.3	16	15	1058	4.21	9	5	<2	<2	41	.3	2	<2	11	.77	.125	37	2	.08	275	.01	<3	.44	.02	.10	<2	1
T3550E 5300N	5	30	67	76	.4	17	17	1081	5.03	13	<5	<2	3	34	.2	<2	2	11	.61	.088	39	1	.08	326	<.01	<3	.73	.01	.10	<2	1
T3550E 5250N	5	29	71	75	.3	17	16	1161	5.02	11	<5	<2	2	33	<.2	<2	<2	10	.59	.086	38	1	.08	321	<.01	<3	.69	.01	.10	<2	<1
T3550E 5200N	4	18	61	61	<.3	13	9	413	3.49	11	<5	<2	2	24	.2	<2	<2	12	.55	.135	48	2	.05	266	.01	<3	.57	.01	.08	<2	11
T3550E 5150N	6	29	105	68	.7	20	14	872	4.31	23	<5	<2	2	33	<.2	3	<2	9	.66	.121	66	4	.05	343	<.01	<3	.40	.01	.16	<2	36
T3550E 5100N	7	31	159	192	.3	24	13	660	4.65	14	<5	<2	5	31	.6	2	<2	14	.38	.110	61	2	.03	232	<.01	<3	.39	.01	.10	<2	2
T3550E 5050N	9	32	90	251	<.3	29	15	931	4.68	13	<5	<2	9	24	.8	3	<2	10	.49	.113	63	1	.09	136	<.01	<3	.25	<.01	.10	<2	1
T3550E 4950N	16	57	434	204	.8	31	18	582	8.44	32	<5	<2	15	49	<.2	6	<2	20	.06	.197	51	4	.01	218	<.01	<3	.30	.01	.27	<2	1
T3550E 4900N	12	37	94	285	<.3	25	14	1266	5.06	15	<5	<2	17	24	1.2	3	<2	11	.25	.080	89	3	.04	245	<.01	<3	.23	<.01	.11	<2	2
RE T3550E 4900N	12	38	97	293	<.3	25	15	1308	5.17	18	<5	<2	16	25	.8	<2	<2	11	.25	.080	92	1	.04	249	<.01	<3	.25	<.01	.12	<2	1
T3550E 4800N	13	41	81	275	.3	30	16	1059	5.21	18	<5	<2	15	27	1.1	3	<2	9	.30	.075	78	2	.06	164	<.01	<3	.24	.01	.11	<2	1
STANDARD C2/AU-S	20	60	39	137	6.6	74	37	1157	3.92	44	21	7	34	52	20.5	16	19	73	.53	.104	40	63	.97	196	.08	24	2.00	.06	.14	15	47

Sample type: SOIL. Samples beginning 'RE' are Reruns and 'RRE' are Reject Reruns.



REVISED	TREE PROPERTY	
	SOIL GEOCHEM SURVEY Zn (ppm) 093553	
	Caution Intervals 250 - 400 - 600 ppm Zn	
Project No.	Survey by :	Date : JAN 1997.
N.T.S. 105 F/9	Drawn by :	Scale : 1:5,000
Drawing No.		
Figure No. 3	ATNA RESOURCES LTD.	



REVISED	TREE PROPERTY	
	SOIL GEOCHEM SURVEY Pb (ppm) 093555	
	Contour intervals 90 - 180 - 270 ppm	
Project No.	Survey by :	Date : JAN 1997
N.T.S. 105 F/9	Drawn by :	Scale : 1:5,000
Drawing No.		
Figure No. 4	ATNA RESOURCES LTD.	