

TABLE OF CONTENTS

	<u>PAGE</u>
INTRODUCTION	1
LOCATION AND ACCESS	2
TOPOGRAPHY, GEOMORPHOLOGY AND VEGETATION	3
PROPERTY	4
1995 PROGRAM	4
GEOLOGY, MINERALIZATION AND GEOCHEMISTRY	5
GEOPHYSICAL SURVEY	8
CONCLUSIONS AND RECOMMENDATIONS	9

APPENDIX

- I AUTHOR'S STATEMENT OF QUALIFICATIONS
- II CERTIFICATES OF ANALYSES

FIGURES

<u>NO.</u>	<u>DESCRIPTION</u>	<u>LOCATION</u>
1	Property Location	Following Page 2
2	Claim and Sample Location	In Pocket
3	Regional Geological Setting	Following Page 5
4	Geology and Geochemistry	In Pocket
5	Total Field Magnetics	In Pocket
6	EM Profiles	In Pocket

INTRODUCTION

The River property in west-central Yukon contains a volcanogenic massive sulphide (VMS) prospect. A geochemical sampling and prospecting program was carried out on the claim block on August 19, 21 and 22, 1995. Results of a helicopter-borne geophysical survey carried out by Cominco Ltd. over the property in May 1995 are included.

The River claims are located within the Klondike segment of Yukon-Tanana tectonic terrane. The recent discoveries of the Kudz Ze Kayah deposit by Cominco Ltd. and the Wolverine deposit by Westmin Resources Limited/Atna Resources Ltd. within Devonian to Mississippian metavolcanic rocks of Yukon-Tanana Terrane in the Finlayson Lake area prompted Nordac Resources Ltd. to investigate a reported massive sulphide occurrence on the banks of the Yukon River. Although the two areas are over 500 km apart, they were once adjacent before being separated by movement along Tintina Fault Zone.

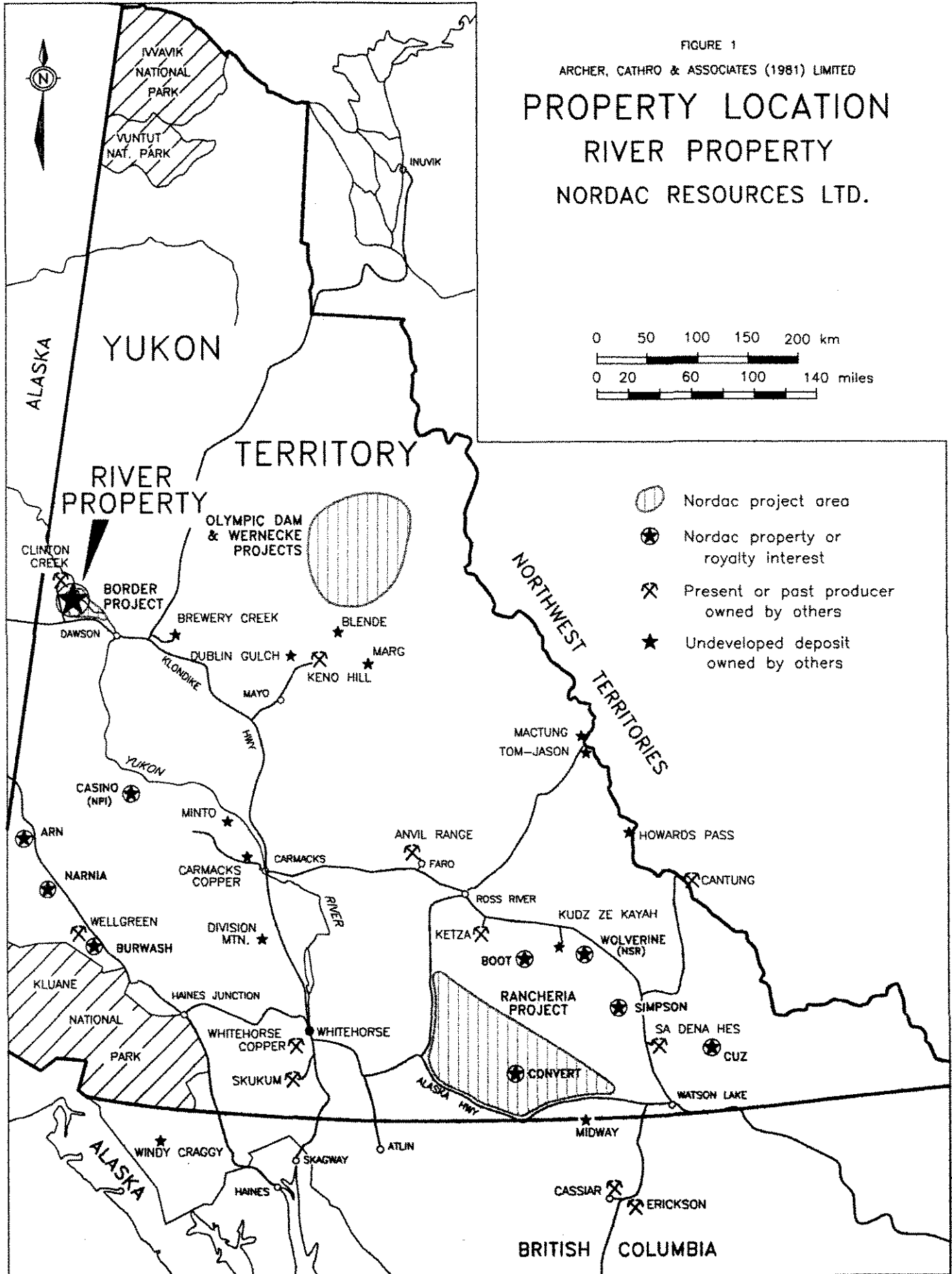
There is no public record of any previous exploration on the River claims. The 1995 work was carried out by Archer, Cathro & Associates (1981) Limited.





LOCATION AND ACCESS

The River claims straddle the Yukon River, 45 km northwest of Dawson City on NTS map sheet 116C/8 (Figure 1). There is no road access to the property although a bulldozer tote trail passes within 700 m of the southwest claim boundary. The bulldozer trail connects with the haul road from the abandoned Caley asbestos mine 3 km southwest of the claim block and 80 km by all-weather road from Dawson City.

In 1995 access was by helicopter from Dawson City. Summer and fall access is also possible by boat from Dawson City. Princess Tours operate a tour boat between Dawson City and Eagle, Alaska during the summer months and arrangements can be made for dropoff along the riverbank in the morning with a late afternoon pickup on the return trip.

FIGURE 1
 ARCHER, CATHRO & ASSOCIATES (1981) LIMITED
PROPERTY LOCATION
RIVER PROPERTY
 NORDAC RESOURCES LTD.



-  Nordac project area
-  Nordac property or royalty interest
-  Present or past producer owned by others
-  Undeveloped deposit owned by others

TOPOGRAPHY, GEOMORPHOLOGY AND VEGETATION

The River property is located in the Yukon River valley which is deeply incised into the Klondike Plateau. Elevations on the property range from river level at about 300 m in the centre of the property to 580 m along the ridge crest at the southwest end of the claim block.

The Klondike area is unglaciated. Steep slopes on the south half of the property are mantled with a thin veneer of talus or residual overburden. The north half of the claim block is overlain by peat bog and alluvial gravels.

Treeline is at about 900 m on the Klondike Plateau so the entire property is vegetated with thick stands of spruce and balsam fir with a light understorey of alders and willow. Permafrost is likely to be continuous over most of the property.

PROPERTY

The River property consists of twenty-four full-size claims (Figure 2) as outlined below.

<u>Claim Name</u>	<u>Grant Number</u>	<u>Mining District</u>	<u>Expiry Date*</u>
River 1-10	YB53090-YB53099	Dawson	April 24, 1996
11-24	YB54217-YB54230	Dawson	August 22, 1996

*Expiry dates do not include assessment credit for work performed in 1995.

1995 PROGRAM

An initial reconnaissance by a two-person crew comprising soil sampling, prospecting and claim post tagging was carried out on August 19, 1995. The River 11 to 24 claims were staked on August 21. Soil samples were taken from the claim location lines at the same time. The crew returned to the property on August 22 to check access by bulldozer trail from the Caley mine road.

Details of personnel are given below

<u>Name</u>	<u>Title</u>	<u>Work Done</u>	<u>Date</u>
R.C. Carne	Geologist	Prospect/Sample	August 19, 21, 22
R.F. Gish	Geologist	Prospect/Sample	August 19, 21, 22

Helicopter support was provided by Trans North Air from a base at Dawson City.

GEOLOGY, MINERALIZATION AND GEOCHEMISTRY

The River claims lie within the Klondike segment of Yukon-Tanana tectonic terrane (Figure 3). Yukon-Tanana Terrane underlies a vast area, approximately the size of California, that lies west of autochthonous North America in central Yukon and Alaska. The sequence is geologically complex, recording the tectonic incorporation of a Paleozoic volcanic and magmatic arc with its basement sequence onto the outboard edge of the northern Cordillera. Restoration of movement along Tintina Trench demonstrates that the Klondike segment is probably a direct along-strike continuation of the Finlayson Allochthon which contains the Kudz Ze Kayah and Wolverine VMS deposits hosted by Late Devonian to Mid-Mississippian metavolcanic and metasedimentary rocks.

Geology in the vicinity of the River property was published at 1:250,000 scale in 1988 by the Geological Survey of Canada (GSC Open File 1927). Property geology, shown on Figure 4, is summarized from Open File 1927 and augmented by observations taken by the author during the 1995 field work.

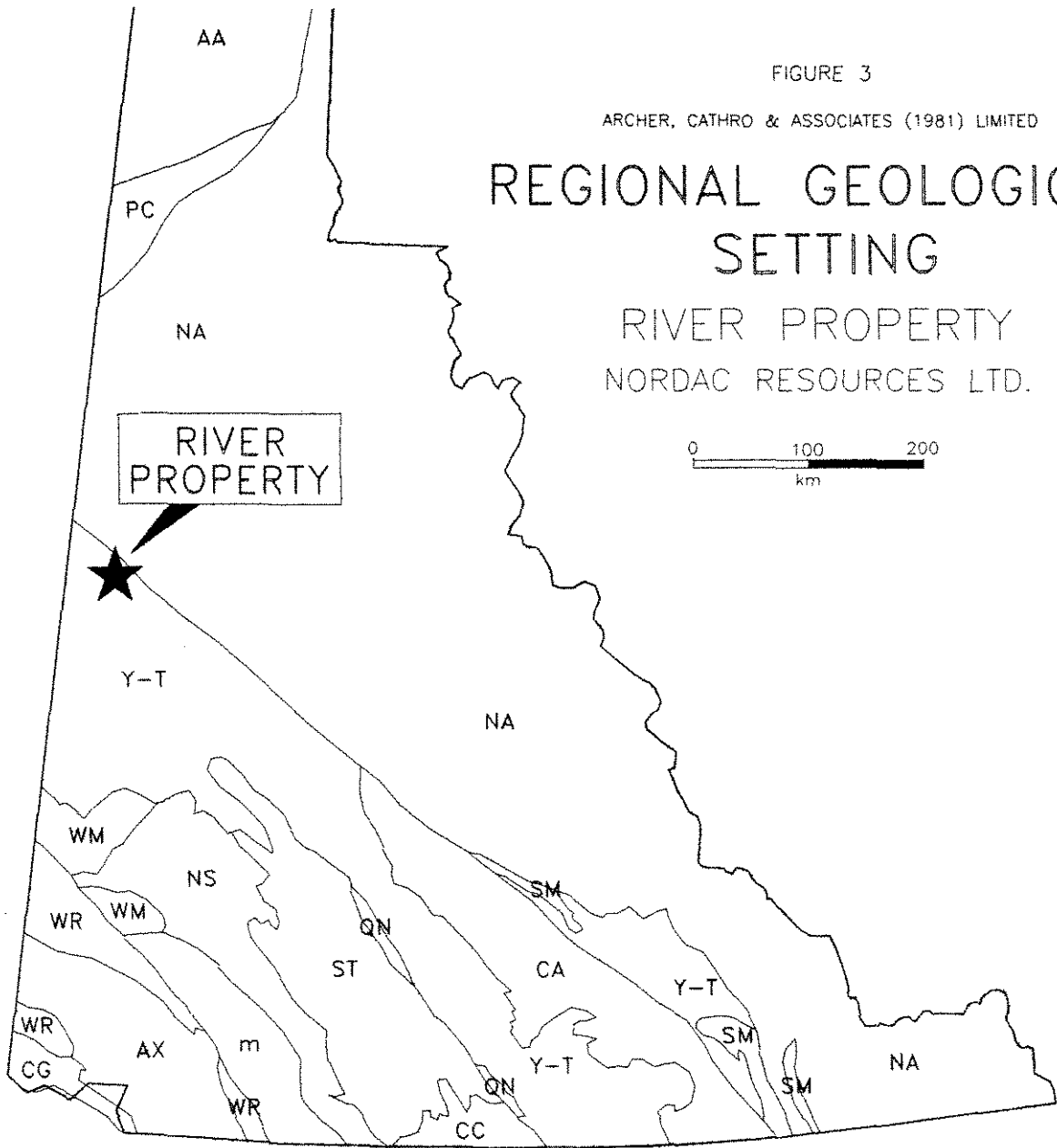
Bedrock is a series of highly strained Middle to Upper Paleozoic metavolcanic and metasedimentary rocks which have undergone polyphase deformation. Oldest lithologies are an unnamed sequence of Lower to Middle Paleozoic quartz-muscovite-chlorite schist, chlorite schist, quartz-feldspar-amphibole gneiss, metagabbro, micaceous quartzite and marble. These are in thrust fault contact with Middle Paleozoic Nasina Series quartzite and quartz-muscovite-biotite schist and marble. The thrust faults are often marked by slivers of carbonatized and serpentinized ultramafic rocks assigned to the Middle and Upper Paleozoic Klondike Schist.

FIGURE 3

ARCHER, CATHRO & ASSOCIATES (1981) LIMITED

REGIONAL GEOLOGICAL SETTING

RIVER PROPERTY
NORDAC RESOURCES LTD.



CRATON

NA Ancestral North America

TERRANES

Displaced Continental Margin

AA Arctic Alaska

CA Cassiar

NS Nisling

PC Porcupine

Pericratonic Terranes

Y-T Yukon-Tanana

ACCRETED TERRANES

Intermontane Superterrane

SM Slide Mountain

QN Quesnellia

CC Cache Creek

ST Stikinia

WM Windy-McKinley

Insular Superterrane

AX Alexander

WR Wrangellia

Other Terranes

CG Chugach

m Undivided metamorphics

The River claims were staked to cover galena, sphalerite and pyrite occurrences discovered along the banks of the Yukon River by government geologist Dr. J.K. Mortensen during the course of regional geological mapping in 1986 (Figure 4). Host rocks are siliceous quartz-muscovite schist of the unnamed Lower to Middle Palaeozoic metavolcanic sequence.

Compositional layering dips at a shallow angle to the west, subparallel to foliation. Concordant seams, layers and lenses of massive pyrite up to several centimetres thick can be found at low water near the lower contact of the metavolcanic unit with underlying marble and quartzite.

Abundant float of this material occurs along the downstream bed of the river for over 1 km suggesting that a much larger mineralized area is present than what was observed in 1995. Pyrite mineralized with galena and sphalerite sampled by Mortensen in 1986 was not observed in 1995, presumably due to higher water levels or cover by alluvium.

Reconnaissance soil sediment samples were collected across the property to evaluate the potential for VMS mineralization. Samples were optimally collected from the B Horizon although soil profiles in the area are not sufficiently developed to be reliably differentiated. Most samples were probably taken from soliflucted mineral soils which include both B and C Horizons or from A Horizon material in low-lying spruce bogs along the flood plain of the Yukon River.

Samples were collected in pre-numbered Kraft paper bags and sent to Chemex Labs Ltd. in North Vancouver, B.C. where they were prepared by drying and sieving to minus 80 mesh. Thirty-two element analyses, including those for all the major base metals and silver, were carried out on nitric acid-aqua regia digestion of two gram samples with inducted coupled plasma (ICP) determination.

Copper, lead and zinc geochemical data for the River property are shown on Figure 3. No anomalous values for copper, lead or zinc were returned from analyses of the soil samples. This does not necessarily reflect the absence of mineralization since overburden is likely to have considerable thickness along the north bank of the river. Steeper terrain along the south bank of the river is mantled with a much thinner blanket of overburden but because weathering and oxidation is extensive, geochemical response is expected to be subdued.

Samples of pyritic float and bedrock returned weakly anomalous values of copper, lead and zinc.

GEOPHYSICAL SURVEY

A multi-component helicopter electromagnetic and magnetic field survey was flown over the property by Aerodat Inc. for Cominco Ltd. in June 1995. Approximately 60 line-kilometres were flown at azimuths of 45 and 225° with an average line spacing of 300 m. Average magnetic sensor elevation was 45 m while the electromagnetic sensor was flown at an average elevation of 30 m above ground level. A plot of total field magnetics is given in Figure 5 while the 935 Hz coaxial electromagnetic data expressed as stacked profiles are shown in Figure 6.

In general VMS deposits are excellent geophysical targets. They generally have high electrical conductivity and often have an associated magnetic signature. Magnetic field response to the Aerodat survey of the River claims shows a rapid gradient decrease to the west along a northwest trend which parallels stratigraphy and probably reflects variations in magnetic background of underlying bedrock. Spot highs are present, however, along the projected trend of the prospective horizon. Weak to moderate strength EM anomalies are also present along the prospective trend although the survey orientation, being roughly parallel to structural strike of the bedrock, is not optimum for the definition of extensions of the known pyrite-bearing zones beneath overburden of unknown thickness and conductivity. In addition the Klondike area is unglaciated and oxidation of sulphide minerals is expected to extend to depths of several tens of metres away from recent erosion along the bed of the Yukon River. The coincidence of mineralized pyrite horizons in Middle Paleozoic felsic metavolcanic rocks with airborne EM and magnetic anomalies however, is significant and the target should be further refined with follow-up ground geophysical surveys.

CONCLUSIONS AND RECOMMENDATIONS

The work conducted on the River property to date has demonstrated the following:

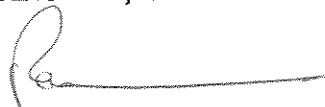
- a. stratigraphy at both property and regional scale appears to correlate with the Upper Devonian to Lower Mississippian Finlayson Allochthon, host of recent volcanogenic massive sulphide discoveries at Kudz Ze Kayah and Wolverine Lake;
- b. lead- and zinc-bearing massive pyrite layers in felsic metavolcanic rocks on the River property are conformable with compositional layering in host rocks and are probably of volcanogenic origin; and,
- c. helicopter geophysical surveys have located low to moderate strength coincident magnetic and EM anomalies which appear to reflect the overburden-covered on-strike extensions of the poorly exposed massive sulphide horizons despite extensive overburden cover, relatively deep surface weathering and poor survey orientation.

The airborne geophysical response should be screened with ground horizontal loop electromagnetic (HLEM) and magnetic geophysical surveys. In addition more soil sampling is warranted in areas of reduced overburden cover along strike of the surveyed area to the northeast and southwest.

Positive results of either or both of the geophysical and geochemical surveys should be followed up with shallow diamond drilling.

Respectfully submitted,

ARCHER, CATHRO & ASSOCIATES (1981) LIMITED



R.C. Carne, M.Sc., P.Geo.

APPENDIX I

AUTHOR'S STATEMENT OF QUALIFICATIONS

STATEMENT OF QUALIFICATIONS

I, Robert C. Carne, geologist, with business addresses in Whitehorse, Yukon Territory and Vancouver, British Columbia and residential address in Burnaby, British Columbia, hereby certify that:

1. I graduated from the University of British Columbia in 1974 with a B.Sc. and in 1979 with an M.Sc. majoring in Geological Sciences.
2. I am a Professional Geoscientist registered with the Association of Professional Engineers and Geoscientists of the Province of British Columbia (registration number 19868).
3. From 1974 to present, I have been actively engaged as a geologist in mineral exploration in British Columbia and Yukon Territory and on June 1, 1981 became a partner of Archer, Cathro & Associates (1981) Limited.
4. I have personally participated in or supervised the field work reported herein and have interpreted all data resulting from this work.

A handwritten signature in black ink, appearing to read 'R. Carne', with a long horizontal line extending to the right.

Robert C. Carne, M.Sc., P.Geol.

APPENDIX II
CERTIFICATES OF ANALYSES



Chemex Labs Ltd.

Analytical Chemists * Geochemists * Registered Assayers

212 Brooksbank Ave., North Vancouver
British Columbia, Canada V7J 2C1
PHONE: 604-984-0221 FAX: 604-984-0218

To: NORDAC RESOURCES LTD.
C/O ARCHER, CATHRO
BOX 4127, 2054 SECOND AVE.
WHITEHORSE, YT
Y1A 3S9

RIVER

A9526617

Comments:

CERTIFICATE

A9526617

(MTT) - NORDAC RESOURCES LTD.

Project: NORDAC
P.O. #:

Samples submitted to our lab in Vancouver, BC.
This report was printed on 11-SEP-95.

SAMPLE PREPARATION

CHEMEX CODE	NUMBER SAMPLES	DESCRIPTION
201	218	Dry, sieve to -80 mesh
229	218	ICP - AQ Digestion charge

* NOTE 1:

The 32 element ICP package is suitable for trace metals in soil and rock samples. Elements for which the nitric-aqua regia digestion is possibly incomplete are: Al, Ba, Be, Ca, Cr, Ga, K, La, Mg, Na, Sr, Ti, Tl, W.

ANALYTICAL PROCEDURES

CHEMEX CODE	NUMBER SAMPLES	DESCRIPTION	METHOD	DETECTION LIMIT	UPPER LIMIT
2118	218	Ag ppm: 32 element, soil & rock	ICP-AES	0.2	200
2119	218	Al %: 32 element, soil & rock	ICP-AES	0.01	15.00
2120	218	As ppm: 32 element, soil & rock	ICP-AES	2	10000
2121	218	Ba ppm: 32 element, soil & rock	ICP-AES	10	10000
2122	218	Be ppm: 32 element, soil & rock	ICP-AES	0.5	100.0
2123	218	Bi ppm: 32 element, soil & rock	ICP-AES	2	10000
2124	218	Ca %: 32 element, soil & rock	ICP-AES	0.01	15.00
2125	218	Cd ppm: 32 element, soil & rock	ICP-AES	0.5	100.0
2126	218	Co ppm: 32 element, soil & rock	ICP-AES	1	10000
2127	218	Cr ppm: 32 element, soil & rock	ICP-AES	1	10000
2128	218	Cu ppm: 32 element, soil & rock	ICP-AES	1	10000
2150	218	Fe %: 32 element, soil & rock	ICP-AES	0.01	15.00
2130	218	Ga ppm: 32 element, soil & rock	ICP-AES	10	10000
2131	218	Hg ppm: 32 element, soil & rock	ICP-AES	1	10000
2132	218	K %: 32 element, soil & rock	ICP-AES	0.01	10.00
2151	218	La ppm: 32 element, soil & rock	ICP-AES	10	10000
2134	218	Mg %: 32 element, soil & rock	ICP-AES	0.01	15.00
2135	218	Mn ppm: 32 element, soil & rock	ICP-AES	5	10000
2136	218	Mo ppm: 32 element, soil & rock	ICP-AES	1	10000
2137	218	Na %: 32 element, soil & rock	ICP-AES	0.01	5.00
2138	218	Ni ppm: 32 element, soil & rock	ICP-AES	1	10000
2139	218	P ppm: 32 element, soil & rock	ICP-AES	10	10000
2140	218	Pb ppm: 32 element, soil & rock	ICP-AES	2	10000
2141	218	Sb ppm: 32 element, soil & rock	ICP-AES	2	10000
2142	218	Sc ppm: 32 elements, soil & rock	ICP-AES	1	10000
2143	218	Sr ppm: 32 element, soil & rock	ICP-AES	1	10000
2144	218	Ti %: 32 element, soil & rock	ICP-AES	0.01	5.00
2145	218	Tl ppm: 32 element, soil & rock	ICP-AES	10	10000
2146	218	U ppm: 32 element, soil & rock	ICP-AES	10	10000
2147	218	V ppm: 32 element, soil & rock	ICP-AES	1	10000
2148	218	W ppm: 32 element, soil & rock	ICP-AES	10	10000
2149	218	Zn ppm: 32 element, soil & rock	ICP-AES	2	10000



Chemex Labs Ltd.

Analytical Chemists * Geochemists * Registered Assayers

212 Brooksbank Ave., North Vancouver
British Columbia, Canada V7J 2C1
PHONE: 604-984-0221 FAX: 604-984-0218

To: NORDAC RESOURCES LTD.
C/O ARCHER, CATHRO
BOX 4127, 2054 SECOND AVE.
WHITEHORSE, YT
Y1A 3S9

Project: NORDAC - TOP, RIVER
Comments:

Page Number : 2-A
Total Pages : 6
Certificate Date: 11-SEP-95
Invoice No. : I9526617
P.O. Number :
Account : MTT

CERTIFICATE OF ANALYSIS A9526617

TOP
RIVER

SAMPLE	PREP CODE	Ag ppm	Al %	As ppm	Ba ppm	Be ppm	Bi ppm	Ca %	Cd ppm	Co ppm	Cr ppm	Cu ppm	Fe %	Ga ppm	Hg ppm	K %	La ppm	Mg %	Mn ppm	Mo ppm
R 5491	201 229	< 0.2	1.88	4	280	< 0.5	< 2	0.20	< 0.5	4	34	10	2.09	< 10	< 1	0.12	20	0.43	165	< 1
R 5492	201 229	< 0.2	1.53	2	280	< 0.5	< 2	0.14	< 0.5	3	32	10	1.78	< 10	< 1	0.09	20	0.34	150	< 1
R 5493	201 229	< 0.2	1.39	2	180	< 0.5	< 2	0.14	< 0.5	2	20	6	1.77	< 10	< 1	0.09	20	0.18	115	< 1
R 5494	201 229	< 0.2	1.26	2	180	< 0.5	< 2	0.23	< 0.5	3	29	10	1.56	< 10	< 1	0.08	20	0.42	140	< 1
R 5495	201 229	< 0.2	1.69	4	240	< 0.5	< 2	0.23	< 0.5	3	37	13	1.90	< 10	< 1	0.09	20	0.51	135	< 1
R 5496	201 229	0.6	1.94	2	370	< 0.5	< 2	0.28	< 0.5	3	43	18	2.01	< 10	< 1	0.11	20	0.49	145	< 1
R 5497	201 229	< 0.2	1.68	2	220	< 0.5	< 2	0.23	0.5	4	39	19	1.89	< 10	< 1	0.08	20	0.55	160	< 1
R 5498	201 229	0.2	1.74	2	380	< 0.5	< 2	0.24	1.0	4	33	22	2.01	< 10	< 1	0.09	30	0.44	155	< 1
R 5499	201 229	< 0.2	1.89	4	280	< 0.5	< 2	0.26	1.0	6	37	20	2.55	< 10	< 1	0.14	40	0.62	320	1
R 5500	201 229	1.4	2.13	2	670	0.5	< 2	0.77	2.0	7	48	29	2.14	< 10	< 1	0.15	40	0.60	545	1
S 2259	201 229	< 0.2	1.77	8	380	< 0.5	< 2	0.55	< 0.5	8	33	19	2.70	< 10	< 1	0.09	20	0.55	350	1
S 2260	201 229	< 0.2	1.53	6	340	< 0.5	< 2	0.62	< 0.5	8	33	18	2.46	< 10	< 1	0.08	10	0.58	290	< 1
S 2261	201 229	< 0.2	1.71	6	340	< 0.5	< 2	0.56	< 0.5	8	32	15	2.42	< 10	< 1	0.08	10	0.54	380	1
S 2262	201 229	< 0.2	1.90	8	360	< 0.5	< 2	0.45	< 0.5	8	36	18	2.84	< 10	< 1	0.08	10	0.62	420	1
S 2263	201 229	< 0.2	1.81	6	400	< 0.5	< 2	0.70	< 0.5	9	35	17	2.65	< 10	< 1	0.10	10	0.58	450	1
S 2264	201 229	< 0.2	1.60	4	330	< 0.5	< 2	0.48	< 0.5	6	31	7	2.24	< 10	< 1	0.06	10	0.50	225	1
S 2265	201 229	< 0.2	1.60	6	430	< 0.5	< 2	0.61	< 0.5	8	28	14	2.41	< 10	< 1	0.07	10	0.49	575	1
S 2266	201 229	< 0.2	1.38	4	350	< 0.5	< 2	0.46	< 0.5	6	27	10	2.04	< 10	< 1	0.04	10	0.44	235	< 1
S 2267	201 229	< 0.2	1.52	6	320	< 0.5	< 2	0.42	< 0.5	7	30	9	2.27	< 10	< 1	0.05	10	0.44	295	1
S 2268	201 229	< 0.2	1.38	8	460	< 0.5	< 2	1.05	< 0.5	8	29	21	2.39	< 10	< 1	0.05	10	0.51	370	< 1
S 2269	201 229	< 0.2	0.95	4	160	< 0.5	< 2	0.74	< 0.5	4	22	9	1.73	< 10	< 1	0.05	10	0.44	195	< 1
S 2270	201 229	< 0.2	1.44	10	370	< 0.5	< 2	0.75	< 0.5	8	32	30	2.65	< 10	< 1	0.09	20	0.66	370	1
S 2271	201 229	< 0.2	0.98	4	160	< 0.5	< 2	0.87	< 0.5	5	24	7	1.76	< 10	< 1	0.04	10	0.45	210	< 1
S 2272	201 229	< 0.2	1.35	4	260	< 0.5	< 2	0.30	< 0.5	6	26	7	1.92	< 10	< 1	0.04	< 10	0.34	390	< 1
S 2273	201 229	< 0.2	1.30	2	170	< 0.5	< 2	0.24	< 0.5	4	26	6	1.98	< 10	< 1	0.06	10	0.32	140	< 1
S 2274	201 229	< 0.2	1.04	6	130	< 0.5	< 2	0.33	< 0.5	9	28	6	2.20	< 10	< 1	0.07	10	0.36	775	< 1
S 2275	201 229	0.2	3.28	< 2	1480	1.0	2	1.45	< 0.5	33	90	91	6.96	10	< 1	0.99	10	3.16	1180	< 1
S 2276	201 229	0.2	3.68	18	820	1.0	< 2	2.21	< 0.5	33	31	52	6.69	10	< 1	0.98	10	3.28	975	< 1
S 2277	201 229	< 0.2	3.23	< 2	940	0.5	< 2	1.59	< 0.5	33	31	57	7.04	< 10	< 1	0.57	20	2.29	1145	1
S 2278	201 229	< 0.2	3.39	4	390	0.5	< 2	0.61	< 0.5	27	71	27	5.68	10	< 1	0.08	20	1.97	620	1
S 2279	201 229	< 0.2	4.35	8	570	1.5	< 2	1.28	< 0.5	44	372	72	8.21	10	< 1	0.87	20	3.70	1065	< 1
S 2280	201 229	< 0.2	5.01	22	880	1.0	2	2.50	< 0.5	41	381	111	6.98	10	< 1	1.72	< 10	6.06	855	< 1
S 2281	201 229	< 0.2	1.47	14	130	< 0.5	< 2	2.98	< 0.5	21	35	65	3.53	< 10	< 1	0.18	40	1.43	450	1
S 2282	201 229	0.2	0.98	6	150	0.5	< 2	7.05	< 0.5	11	11	21	2.75	< 10	< 1	0.23	< 10	0.71	890	1
S 2283	201 229	0.2	0.84	38	330	0.5	< 2	4.35	< 0.5	29	14	85	6.57	< 10	< 1	0.19	10	0.74	2440	1
S 2284	201 229	< 0.2	1.90	12	480	0.5	< 2	3.30	< 0.5	38	88	49	6.55	< 10	< 1	0.26	40	1.99	1055	< 1
S 2285	201 229	< 0.2	2.11	< 2	660	0.5	< 2	2.23	< 0.5	31	44	39	6.58	< 10	< 1	0.11	20	2.46	810	1
S 2286	201 229	< 0.2	2.12	6	370	0.5	< 2	0.94	< 0.5	15	29	24	4.11	< 10	< 1	0.13	20	0.63	755	< 1
S 2287	201 229	< 0.2	1.83	8	380	< 0.5	< 2	0.90	< 0.5	18	49	21	4.91	< 10	< 1	0.06	10	0.56	1035	< 1
S 2288	201 229	< 0.2	2.23	10	410	< 0.5	< 2	0.89	< 0.5	16	38	33	4.10	< 10	< 1	0.05	10	0.76	565	< 1

CERTIFICATION:

Handwritten signature



Chemex Labs Ltd.

Analytical Chemists * Geochemists * Registered Assayers
 212 Brooksbank Ave., North Vancouver
 British Columbia, Canada V7J 2C1
 PHONE: 604-984-0221 FAX: 604-984-0218

To: NORDAC RESOURCES LTD.
 C/O ARCHER, CATHRO
 BOX 4127, 2054 SECOND AVE.
 WHITEHORSE, YT
 Y1A 3S9

Page Number : 2-B
 Total Pages : 6
 Certificate Date: 11-SEP-95
 Invoice No. : 19526617
 P.O. Number :
 Account : MTT

Project: NORDAC - TOP, RIVER
 Comments:

CERTIFICATE OF ANALYSIS A9526617

TOP
 |
 RIVER

SAMPLE	PREP CODE	Na %	Ni ppm	P ppm	Pb ppm	Sb ppm	Sc ppm	Sr ppm	Ti %	Tl ppm	U ppm	V ppm	W ppm	Zn ppm
R 5491	201 229	< 0.01	14	280	28	< 2	2	19	0.07	< 10	< 10	41	< 10	72
R 5492	201 229	< 0.01	14	420	24	< 2	2	17	0.06	< 10	< 10	33	< 10	92
R 5493	201 229	< 0.01	6	280	14	< 2	2	16	0.08	< 10	< 10	56	< 10	64
R 5494	201 229	< 0.01	11	220	26	< 2	2	23	0.07	< 10	< 10	30	< 10	72
R 5495	201 229	< 0.01	15	200	46	< 2	3	21	0.07	< 10	< 10	39	< 10	84
R 5496	201 229	< 0.01	16	600	92	< 2	3	28	0.05	< 10	< 10	33	< 10	110
R 5497	201 229	< 0.01	16	290	64	< 2	3	21	0.07	< 10	< 10	37	< 10	104
R 5498	201 229	0.01	15	510	84	< 2	2	27	0.04	< 10	< 10	39	< 10	100
R 5499	201 229	< 0.01	16	440	58	< 2	3	23	0.06	< 10	< 10	39	< 10	170
R 5500	201 229	< 0.01	24	730	74	< 2	3	74	0.04	< 10	20	32	< 10	224
S 2259	201 229	0.01	21	650	8	< 2	4	38	0.08	< 10	< 10	59	< 10	50
S 2260	201 229	0.01	19	810	6	< 2	4	41	0.07	< 10	< 10	56	< 10	58
S 2261	201 229	0.01	17	580	8	< 2	4	36	0.09	< 10	< 10	59	< 10	64
S 2262	201 229	0.01	21	550	8	< 2	5	33	0.09	< 10	< 10	64	< 10	64
S 2263	201 229	0.01	21	510	8	< 2	4	41	0.08	< 10	< 10	59	< 10	76
S 2264	201 229	0.01	15	530	8	< 2	3	29	0.07	< 10	< 10	54	< 10	70
S 2265	201 229	0.01	17	460	8	< 2	4	39	0.07	< 10	< 10	55	< 10	72
S 2266	201 229	0.01	13	510	6	< 2	3	31	0.07	< 10	< 10	49	< 10	52
S 2267	201 229	0.01	14	410	8	< 2	3	27	0.08	< 10	< 10	59	< 10	66
S 2268	201 229	0.01	20	860	6	< 2	4	54	0.06	< 10	< 10	53	< 10	46
S 2269	201 229	0.01	13	760	4	< 2	2	43	0.06	< 10	< 10	43	< 10	36
S 2270	201 229	0.02	27	840	8	< 2	4	46	0.09	< 10	< 10	62	< 10	72
S 2271	201 229	0.01	12	730	4	< 2	2	47	0.06	< 10	< 10	46	< 10	40
S 2272	201 229	0.01	14	420	4	< 2	2	18	0.07	< 10	< 10	52	< 10	100
S 2273	201 229	< 0.01	11	280	6	< 2	2	16	0.08	< 10	< 10	58	< 10	78
S 2274	201 229	< 0.01	11	510	4	< 2	2	20	0.08	< 10	< 10	67	< 10	66
S 2275	201 229	< 0.01	67	1970	4	< 2	23	107	0.26	< 10	< 10	220	< 10	108
S 2276	201 229	< 0.01	41	2150	2	< 2	17	128	0.35	< 10	< 10	195	< 10	116
S 2277	201 229	< 0.01	38	1770	8	< 2	13	102	0.26	< 10	< 10	151	< 10	114
S 2278	201 229	< 0.01	44	650	6	< 2	10	35	0.16	< 10	< 10	150	< 10	86
S 2279	201 229	< 0.01	134	1140	8	< 2	30	82	0.36	< 10	< 10	288	< 10	182
S 2280	201 229	< 0.01	208	1340	2	< 2	23	135	0.57	< 10	< 10	212	< 10	108
S 2281	201 229	0.01	58	1180	22	< 2	2	159	0.01	< 10	< 10	21	< 10	60
S 2282	201 229	< 0.01	26	1230	16	< 2	2	163	< 0.01	< 10	< 10	15	< 10	32
S 2283	201 229	0.01	42	2820	22	< 2	5	168	< 0.01	< 10	< 10	28	< 10	124
S 2284	201 229	< 0.01	81	2690	6	< 2	17	102	< 0.01	< 10	< 10	117	< 10	106
S 2285	201 229	0.12	42	1890	< 2	< 2	10	127	0.16	< 10	< 10	116	< 10	108
S 2286	201 229	0.01	26	650	8	< 2	7	69	0.03	< 10	< 10	48	< 10	74
S 2287	201 229	0.01	49	960	6	< 2	6	80	0.02	< 10	< 10	48	< 10	114
S 2288	201 229	0.01	33	670	12	< 2	8	63	0.04	< 10	< 10	58	< 10	80

CERTIFICATION: Hart Buchler



Chemex Labs Ltd.

Analytical Chemists * Geochemists * Registered Assayers

212 Brooksbank Ave., North Vancouver
British Columbia, Canada V7J 2C1
PHONE: 604-984-0221 FAX: 604-984-0218

To: NORDAC RESOURCES LTD.
C/O ARCHER, CATHRO
BOX 4127, 2054 SECOND AVE.
WHITEHORSE, YT
Y1A 3S9

Project: NORDAC - TOP, RIVER
Comments:

Page Number : 3-A
Total Pages : 6
Certificate Date: 11-SEP-95
Invoice No. : 19526617
P.O. Number :
Account : MTT

CERTIFICATE OF ANALYSIS A9526617

RIVER
TOP

SAMPLE	PREP CODE	Ag ppm	Al %	As ppm	Ba ppm	Be ppm	Bi ppm	Ca %	Cd ppm	Co ppm	Cr ppm	Cu ppm	Fe %	Ga ppm	Hg ppm	K %	La ppm	Mg %	Mn ppm	Mo ppm
S 2289	201 229	< 0.2	2.19	4	610	< 0.5	< 2	0.66	< 0.5	12	39	15	3.52	< 10	< 1	0.04	10	0.56	455	1
S 2290	201 229	< 0.2	1.40	2	340	< 0.5	< 2	0.77	< 0.5	12	16	17	3.19	< 10	< 1	0.12	20	0.39	475	1
S 2291	201 229	< 0.2	1.87	2	230	< 0.5	< 2	0.30	< 0.5	16	18	37	4.47	< 10	< 1	0.05	30	0.43	335	1
S 2292	201 229	< 0.2	1.96	2	770	< 0.5	< 2	0.67	< 0.5	10	24	17	2.82	< 10	< 1	0.08	20	0.39	1185	< 1
S 2293	201 229	0.2	1.34	24	570	0.5	< 2	0.60	1.0	12	30	17	3.29	< 10	< 1	0.18	10	0.28	635	5
S 2294	201 229	0.2	1.37	22	390	< 0.5	< 2	0.44	< 0.5	33	67	48	8.95	< 10	< 1	0.05	20	0.28	1050	3
S 2295	201 229	< 0.2	2.85	6	650	0.5	< 2	0.67	< 0.5	15	45	19	4.25	< 10	< 1	0.06	20	0.41	1275	1
S 2296	201 229	< 0.2	2.22	58	640	0.5	< 2	0.81	< 0.5	30	125	34	4.78	< 10	< 1	0.12	20	0.79	1060	1
S 2297	201 229	< 0.2	2.01	8	830	< 0.5	< 2	0.70	1.5	14	51	20	2.98	< 10	< 1	0.13	10	0.45	1260	1
S 2298	201 229	< 0.2	2.68	8	820	0.5	< 2	0.80	< 0.5	14	68	24	3.82	< 10	< 1	0.12	20	0.60	555	< 1
S 2299	201 229	< 0.2	2.65	4	640	0.5	< 2	1.23	< 0.5	21	146	24	4.99	< 10	< 1	0.13	20	1.16	865	1
S 2300	201 229	< 0.2	2.15	8	400	0.5	< 2	0.61	< 0.5	13	51	24	3.77	< 10	< 1	0.11	20	0.69	650	1
S 2301	201 229	< 0.2	2.06	8	360	< 0.5	< 2	0.57	< 0.5	11	51	18	3.54	< 10	< 1	0.08	10	0.65	450	< 1
S 2303	201 229	< 0.2	1.33	30	120	0.5	< 2	0.24	< 0.5	21	13	44	4.15	< 10	< 1	0.13	80	0.28	580	< 1
S 2304	201 229	< 0.2	2.28	26	80	0.5	< 2	0.47	< 0.5	25	39	54	5.11	< 10	< 1	0.14	90	0.94	580	< 1
S 2305	201 229	< 0.2	1.88	6	190	< 0.5	< 2	0.40	< 0.5	14	49	34	3.50	< 10	< 1	0.08	40	0.76	320	1
S 2306	201 229	< 0.2	2.33	8	70	0.5	< 2	0.24	< 0.5	24	27	67	5.37	< 10	< 1	0.13	70	0.87	455	< 1
T 26955	201 229	1.6	2.20	2	570	0.5	< 2	0.64	1.5	7	47	36	2.40	< 10	< 1	0.14	50	0.62	435	1
T 26956	201 229	0.2	1.68	6	550	< 0.5	< 2	0.17	0.5	5	27	18	2.51	< 10	< 1	0.11	20	0.37	185	< 1
T 26957	201 229	< 0.2	1.87	2	790	< 0.5	< 2	0.27	< 0.5	4	23	9	2.38	< 10	< 1	0.12	20	0.39	350	< 1
T 26958	201 229	0.8	1.59	4	970	0.5	< 2	0.21	0.5	2	21	19	1.86	< 10	< 1	0.10	30	0.25	125	< 1
T 26959	201 229	< 0.2	1.80	2	570	< 0.5	< 2	0.18	< 0.5	3	30	12	1.96	< 10	< 1	0.16	30	0.33	140	< 1
T 26960	201 229	< 0.2	1.58	4	280	< 0.5	< 2	0.18	< 0.5	4	57	11	2.07	< 10	< 1	0.12	20	0.55	185	< 1
T 26961	201 229	< 0.2	1.81	4	250	< 0.5	< 2	0.15	< 0.5	3	27	10	2.26	< 10	< 1	0.13	20	0.35	175	< 1
T 26962	201 229	0.2	1.48	< 2	310	< 0.5	< 2	0.14	< 0.5	2	21	8	1.20	< 10	< 1	0.14	30	0.20	100	< 1
T 26963	201 229	0.2	1.49	2	320	< 0.5	< 2	0.21	< 0.5	4	27	16	1.87	< 10	< 1	0.15	20	0.38	240	< 1
T 26964	201 229	< 0.2	1.57	4	200	< 0.5	< 2	0.18	< 0.5	4	27	13	1.98	< 10	< 1	0.11	30	0.38	195	< 1
T 26965	201 229	0.2	1.93	4	400	< 0.5	< 2	0.20	< 0.5	4	41	18	2.29	< 10	< 1	0.12	20	0.39	150	< 1
T 26966	201 229	0.2	1.79	4	450	< 0.5	< 2	0.15	0.5	2	24	24	1.82	< 10	< 1	0.12	20	0.24	120	< 1
T 26967	201 229	0.4	2.03	6	550	< 0.5	< 2	0.20	0.5	4	29	28	2.58	< 10	< 1	0.16	30	0.39	215	< 1
T 26968	201 229	0.2	1.86	4	390	< 0.5	< 2	0.27	1.0	4	37	27	2.33	< 10	< 1	0.13	20	0.43	210	< 1
T 26969	201 229	1.2	1.93	2	430	< 0.5	< 2	0.28	< 0.5	3	35	30	1.99	< 10	< 1	0.11	20	0.54	140	< 1
T 26970	201 229	0.8	2.55	6	460	< 0.5	< 2	0.29	0.5	4	49	36	2.81	< 10	< 1	0.19	20	0.69	260	1
T 26971	201 229	< 0.2	1.97	4	190	< 0.5	< 2	0.34	< 0.5	6	54	17	2.34	< 10	< 1	0.10	20	0.82	250	< 1
T 26972	201 229	0.2	1.29	2	290	< 0.5	< 2	0.22	0.5	3	31	22	1.51	< 10	< 1	0.10	20	0.34	190	< 1
T 26973	201 229	0.2	1.67	2	210	< 0.5	< 2	0.35	0.5	5	37	24	2.16	< 10	< 1	0.09	20	0.71	245	< 1
T 26974	201 229	< 0.2	1.89	4	260	< 0.5	< 2	0.42	0.5	7	38	23	2.36	< 10	< 1	0.10	30	0.80	315	< 1
T 26975	201 229	0.2	2.07	2	320	< 0.5	< 2	0.48	1.0	7	50	30	2.40	< 10	< 1	0.12	30	0.81	300	< 1
T 26976	201 229	0.2	2.29	4	310	< 0.5	< 2	0.43	1.0	6	44	28	2.48	< 10	< 1	0.12	30	0.73	250	< 1
T 26977	201 229	< 0.2	2.41	4	350	< 0.5	< 2	0.57	0.5	7	42	19	2.60	< 10	< 1	0.12	20	0.69	310	1

CERTIFICATION:

Hart Buchler



Chemex Labs Ltd.

Analytical Chemists * Geochemists * Registered Assayers

212 Brooksbank Ave., North Vancouver
British Columbia, Canada V7J 2C1
PHONE: 604-984-0221 FAX: 604-984-0218

To: NORDAC RESOURCES LTD.
C/O ARCHER, CATHRO
BOX 4127, 2054 SECOND AVE.
WHITEHORSE, YT
Y1A 3S9

Project: NORDAC - TOP, RIVER
Comments:

Page Number : 3-B
Total Pages : 6
Certificate Date: 11-SEP-95
Invoice No. : 19526617
P.O. Number :
Account : MTT

CERTIFICATE OF ANALYSIS

A9526617

SAMPLE	PREP CODE	Na %	Ni ppm	P ppm	Pb ppm	Sb ppm	Sc ppm	Sr ppm	Ti %	Tl ppm	U ppm	V ppm	W ppm	Zn ppm
S 2289	201 229	0.01	24	320	12	< 2	6	43	0.05	< 10	< 10	60	< 10	76
S 2290	201 229	0.01	20	860	6	< 2	2	60	< 0.01	< 10	< 10	29	< 10	132
S 2291	201 229	< 0.01	31	500	6	< 2	2	30	< 0.01	< 10	< 10	22	< 10	98
S 2292	201 229	0.01	19	270	16	< 2	2	51	0.02	< 10	< 10	38	< 10	116
S 2293	201 229	0.01	38	930	72	< 2	4	106	< 0.01	< 10	< 10	45	< 10	268
S 2294	201 229	< 0.01	116	850	22	< 2	7	37	< 0.01	< 10	< 10	38	< 10	240
S 2295	201 229	0.01	29	440	12	< 2	5	39	0.03	< 10	< 10	65	< 10	164
S 2296	201 229	0.01	124	630	90	< 2	7	50	0.03	< 10	< 10	57	< 10	206
S 2297	201 229	0.01	32	580	20	< 2	4	36	0.04	< 10	< 10	56	< 10	274
S 2298	201 229	0.01	41	310	18	< 2	7	50	0.02	< 10	< 10	63	< 10	108
S 2299	201 229	0.01	73	1000	8	< 2	10	85	0.06	< 10	< 10	73	< 10	82
S 2300	201 229	0.01	34	600	12	< 2	7	42	0.05	< 10	< 10	59	< 10	90
S 2301	201 229	0.01	31	280	12	< 2	7	42	0.06	< 10	< 10	61	< 10	58
S 2303	201 229	< 0.01	51	290	2	2	4	16	< 0.01	< 10	< 10	12	< 10	52
S 2304	201 229	< 0.01	61	530	14	2	5	28	< 0.01	< 10	< 10	26	< 10	60
S 2305	201 229	0.01	40	280	12	< 2	6	25	0.04	< 10	< 10	50	< 10	62
S 2306	201 229	< 0.01	53	490	8	< 2	3	35	< 0.01	< 10	< 10	23	< 10	70
T 26955	201 229	0.01	26	730	78	< 2	4	60	0.04	< 10	< 10	35	< 10	232
T 26956	201 229	< 0.01	13	250	22	< 2	3	18	0.07	< 10	< 10	54	< 10	52
T 26957	201 229	< 0.01	10	250	20	< 2	3	24	0.08	< 10	< 10	52	< 10	54
T 26958	201 229	0.02	11	620	28	< 2	2	26	0.04	< 10	< 10	32	< 10	38
T 26959	201 229	0.01	12	480	26	< 2	2	21	0.06	< 10	< 10	35	< 10	44
T 26960	201 229	< 0.01	25	240	18	< 2	2	17	0.07	< 10	< 10	38	< 10	52
T 26961	201 229	< 0.01	10	270	36	< 2	2	15	0.07	< 10	< 10	45	< 10	50
T 26962	201 229	< 0.01	7	300	56	< 2	1	14	0.03	< 10	< 10	25	< 10	46
T 26963	201 229	< 0.01	12	360	64	< 2	2	19	0.06	< 10	< 10	32	< 10	90
T 26964	201 229	< 0.01	11	270	62	< 2	2	16	0.06	< 10	< 10	36	< 10	84
T 26965	201 229	< 0.01	16	560	40	< 2	2	19	0.04	< 10	< 10	39	< 10	70
T 26966	201 229	0.01	9	590	58	< 2	< 1	17	0.02	< 10	< 10	33	< 10	82
T 26967	201 229	< 0.01	14	680	108	< 2	3	23	0.03	< 10	< 10	34	< 10	118
T 26968	201 229	0.01	13	450	106	< 2	2	25	0.04	< 10	< 10	43	< 10	118
T 26969	201 229	< 0.01	14	470	178	< 2	3	23	0.06	< 10	< 10	34	< 10	140
T 26970	201 229	0.01	18	440	94	< 2	3	27	0.06	< 10	< 10	45	< 10	186
T 26971	201 229	< 0.01	16	580	38	< 2	3	23	0.06	< 10	< 10	41	< 10	104
T 26972	201 229	0.01	8	590	80	< 2	< 1	21	0.02	< 10	< 10	32	< 10	94
T 26973	201 229	< 0.01	15	490	70	< 2	3	26	0.08	< 10	< 10	38	< 10	110
T 26974	201 229	< 0.01	15	530	44	< 2	4	31	0.09	< 10	< 10	42	< 10	122
T 26975	201 229	< 0.01	19	570	102	< 2	5	34	0.09	< 10	< 10	47	< 10	170
T 26976	201 229	< 0.01	17	490	130	< 2	4	33	0.09	< 10	< 10	45	< 10	174
T 26977	201 229	0.01	18	620	66	< 2	4	48	0.09	< 10	< 10	43	< 10	128

RIVER
TOP

CERTIFICATION: *Stuart Buchler*



Chemex Labs Ltd.

Analytical Chemists * Geochemists * Registered Assayers
 212 Brooksbank Ave., North Vancouver
 British Columbia, Canada V7J 2C1
 PHONE: 604-984-0221 FAX: 604-984-0218

To: NORDAC RESOURCES LTD.
 C/O ARCHER, CATHRO
 BOX 4127, 2054 SECOND AVE.
 WHITEHORSE, YT
 Y1A 3S9

Page Number : 5-A
 Total Pages : 6
 Certificate Date: 11-SEP-95
 Invoice No. : I9526617
 P.O. Number :
 Account : MTT

Project : NORDAC - FRESNO, RIVER
 Comments:

CERTIFICATE OF ANALYSIS A9526617

FRESNO
 RIVER

SAMPLE	PREP CODE	Ag ppm	Al %	As ppm	Ba ppm	Be ppm	Bi ppm	Ca %	Cd ppm	Co ppm	Cr ppm	Cu ppm	Fe %	Ga ppm	Hg ppm	K %	La ppm	Mg %	Mn ppm	Mo ppm
T 27018	201 229	< 0.2	1.23	4	90	< 0.5	< 2	0.04	< 0.5	2	15	9	1.63	< 10	1	0.03	10	0.25	120	< 1
T 27019	201 229	< 0.2	1.21	8	230	< 0.5	< 2	0.53	< 0.5	8	25	15	2.23	< 10	< 1	0.02	10	0.53	235	< 1
T 27020	201 229	< 0.2	1.47	2	390	0.5	< 2	0.98	0.5	6	26	31	2.39	< 10	< 1	0.04	20	0.40	160	< 1
T 27021	201 229	< 0.2	1.44	6	270	< 0.5	< 2	0.61	< 0.5	11	29	30	2.70	< 10	< 1	0.05	10	0.59	360	1
T 27022	201 229	< 0.2	1.65	8	270	< 0.5	< 2	0.65	< 0.5	13	33	25	2.93	< 10	< 1	0.06	10	0.65	420	1
T 27023	201 229	< 0.2	1.58	10	250	0.5	< 2	0.56	< 0.5	11	33	28	2.92	< 10	< 1	0.06	10	0.64	250	1
T 27024	201 229	< 0.2	1.32	4	240	< 0.5	< 2	0.50	< 0.5	9	28	20	2.30	< 10	< 1	0.03	10	0.61	165	< 1
T 27025	201 229	< 0.2	1.11	4	180	< 0.5	< 2	0.54	< 0.5	10	25	16	2.27	< 10	< 1	0.07	10	0.52	310	< 1
T 27026	201 229	< 0.2	1.38	4	250	< 0.5	< 2	0.93	< 0.5	10	26	19	2.38	< 10	< 1	0.04	10	0.56	325	< 1
T 27027	201 229	< 0.2	1.50	6	240	< 0.5	< 2	0.72	< 0.5	9	28	20	2.53	< 10	1	0.04	10	0.57	400	< 1
T 27028	201 229	< 0.2	1.39	4	170	< 0.5	< 2	0.40	< 0.5	9	29	12	2.39	< 10	1	0.05	10	0.58	175	< 1
T 27029	201 229	< 0.2	1.70	6	220	< 0.5	< 2	0.68	< 0.5	9	26	16	2.61	< 10	< 1	0.10	10	0.56	265	< 1
T 27030	201 229	< 0.2	1.66	8	260	0.5	< 2	0.66	< 0.5	9	30	22	2.82	< 10	< 1	0.05	10	0.61	280	< 1
T 27031	201 229	< 0.2	0.78	< 2	160	< 0.5	< 2	0.46	< 0.5	4	18	9	1.34	< 10	< 1	0.04	10	0.39	120	< 1
T 27032	201 229	< 0.2	1.70	6	240	0.5	< 2	0.95	0.5	11	29	25	2.59	< 10	< 1	0.08	20	0.59	730	< 1
T 27033	201 229	< 0.2	1.01	14	220	< 0.5	< 2	0.76	< 0.5	6	22	18	2.61	< 10	< 1	0.04	10	0.45	250	1
T 27034	201 229	< 0.2	1.00	4	220	< 0.5	< 2	0.59	0.5	6	23	19	1.87	< 10	< 1	0.04	10	0.46	280	< 1
T 27035	201 229	< 0.2	0.56	4	420	< 0.5	< 2	2.56	0.5	6	11	23	1.12	< 10	< 1	0.02	< 10	0.38	775	1
T 27036	201 229	< 0.2	1.07	4	410	< 0.5	< 2	0.90	0.5	8	22	28	1.88	< 10	< 1	0.03	< 10	0.46	310	< 1
T 27037	201 229	< 0.2	0.92	2	180	< 0.5	< 2	0.52	< 0.5	3	21	8	1.56	< 10	< 1	0.03	< 10	0.46	115	< 1
T 27038	201 229	< 0.2	1.51	4	400	< 0.5	< 2	0.78	0.5	10	27	28	2.43	< 10	< 1	0.06	10	0.55	600	< 1
T 27039	201 229	< 0.2	1.09	6	210	< 0.5	< 2	0.56	< 0.5	8	25	16	2.05	< 10	< 1	0.06	10	0.46	255	< 1
T 27040	201 229	< 0.2	1.41	4	280	< 0.5	< 2	0.54	0.5	10	27	18	2.39	< 10	1	0.09	10	0.50	365	< 1
T 27041	201 229	< 0.2	1.58	4	390	< 0.5	< 2	0.40	< 0.5	9	29	17	2.45	< 10	< 1	0.08	10	0.45	555	1
T 27042	201 229	< 0.2	1.58	6	430	< 0.5	< 2	0.36	< 0.5	9	27	11	2.24	< 10	< 1	0.06	10	0.42	645	1
T 27043	201 229	< 0.2	1.36	2	350	< 0.5	< 2	0.35	< 0.5	8	25	8	2.21	< 10	< 1	0.05	10	0.38	415	< 1
T 39415	201 229	0.2	1.34	2	480	< 0.5	< 2	0.88	2.0	10	25	29	2.29	< 10	< 1	0.05	10	0.53	615	< 1
T 39416	201 229	< 0.2	1.27	4	380	< 0.5	< 2	0.31	< 0.5	8	24	9	2.12	< 10	< 1	0.03	< 10	0.37	235	< 1
T 39417	201 229	< 0.2	1.04	10	250	< 0.5	< 2	0.75	0.5	9	22	18	2.05	< 10	< 1	0.03	< 10	0.53	585	< 1
T 39418	201 229	< 0.2	1.15	8	330	< 0.5	< 2	0.25	< 0.5	8	28	11	2.11	< 10	< 1	0.04	< 10	0.37	190	< 1
T 39419	201 229	< 0.2	1.21	6	320	< 0.5	< 2	0.29	< 0.5	8	24	8	2.17	< 10	< 1	0.04	< 10	0.39	380	1
T 39420	201 229	< 0.2	0.92	6	160	< 0.5	< 2	0.18	< 0.5	4	17	7	1.61	< 10	< 1	0.02	< 10	0.27	110	< 1
T 39421	201 229	< 0.2	1.06	4	330	< 0.5	< 2	0.72	0.5	7	21	18	2.01	< 10	< 1	0.03	< 10	0.42	330	< 1
T 39422	201 229	< 0.2	1.43	6	310	< 0.5	< 2	0.20	< 0.5	8	26	8	2.27	< 10	< 1	0.06	10	0.39	420	< 1
T 39423	201 229	< 0.2	1.36	6	270	< 0.5	< 2	0.28	< 0.5	7	24	19	2.30	< 10	< 1	0.03	10	0.45	285	< 1
T 39424	201 229	< 0.2	1.20	4	260	< 0.5	< 2	0.32	< 0.5	6	24	8	2.15	< 10	< 1	0.04	10	0.41	245	1
T 39425	201 229	< 0.2	1.32	4	310	< 0.5	< 2	0.35	< 0.5	8	24	7	2.12	< 10	< 1	0.04	< 10	0.38	410	< 1
T 39426	201 229	< 0.2	1.07	6	140	< 0.5	< 2	0.41	< 0.5	6	22	9	1.95	< 10	< 1	0.07	10	0.45	245	< 1
T 39427	201 229	< 0.2	1.39	8	300	< 0.5	< 2	0.64	< 0.5	9	26	24	2.54	< 10	< 1	0.12	10	0.55	345	< 1
T 39428	201 229	< 0.2	1.35	12	180	< 0.5	< 2	0.46	< 0.5	10	25	17	2.32	< 10	< 1	0.10	20	0.52	250	1

CERTIFICATION: Stan A. Buchler



Chemex Labs Ltd.

Analytical Chemists * Geochemists * Registered Assayers

212 Brooksbank Ave., North Vancouver
British Columbia, Canada V7J 2C1
PHONE: 604-984-0221 FAX: 604-984-0218

To: NORDAC RESOURCES LTD.
C/O ARCHER, CATHRO
BOX 4127, 2054 SECOND AVE.
WHITEHORSE, YT
Y1A 3S9

Project: NORDAC - FRESNO, RIVER
Comments:

Page Number : 5-B
Total Pages : 6
Certificate Date: 11-SEP-95
Invoice No. : I9526617
P.O. Number :
Account : MTT

CERTIFICATE OF ANALYSIS

A9526617

FRESNO
RIVER

SAMPLE	PREP CODE	Na %	Ni ppm	P ppm	Pb ppm	Sb ppm	Sc ppm	Sr ppm	Ti %	Tl ppm	U ppm	V ppm	W ppm	Zn ppm
T 27018	201 229	< 0.01	8	180	12	< 2	1	4	0.01	< 10	< 10	29	< 10	40
T 27019	201 229	0.01	22	700	6	< 2	3	29	0.05	< 10	< 10	46	< 10	46
T 27020	201 229	0.02	24	1110	10	< 2	5	72	0.03	< 10	30	36	< 10	36
T 27021	201 229	0.01	26	740	8	2	4	42	0.04	< 10	10	46	< 10	62
T 27022	201 229	0.01	25	760	12	< 2	4	43	0.04	< 10	20	51	< 10	62
T 27023	201 229	< 0.01	24	640	8	< 2	4	37	0.04	< 10	10	52	< 10	66
T 27024	201 229	< 0.01	24	680	8	< 2	3	32	0.03	< 10	< 10	42	< 10	58
T 27025	201 229	< 0.01	20	950	8	< 2	3	31	0.04	< 10	20	40	< 10	50
T 27026	201 229	0.01	20	800	8	< 2	3	60	0.04	< 10	130	41	< 10	52
T 27027	201 229	0.01	22	680	8	< 2	3	50	0.04	< 10	60	41	< 10	56
T 27028	201 229	< 0.01	19	640	8	< 2	2	26	0.06	< 10	< 10	44	< 10	48
T 27029	201 229	0.01	17	550	12	< 2	3	42	0.06	< 10	< 10	48	< 10	60
T 27030	201 229	0.01	21	630	10	< 2	3	44	0.05	< 10	10	48	< 10	52
T 27031	201 229	0.01	13	790	4	< 2	2	29	0.04	< 10	< 10	30	< 10	40
T 27032	201 229	0.01	25	930	10	2	4	56	0.06	< 10	10	47	< 10	58
T 27033	201 229	0.01	19	800	8	< 2	2	46	0.04	< 10	< 10	52	< 10	42
T 27034	201 229	0.02	22	1030	6	< 2	2	34	0.06	< 10	< 10	42	< 10	58
T 27035	201 229	0.01	17	910	4	< 2	< 1	127	0.02	< 10	< 10	24	< 10	30
T 27036	201 229	0.01	26	750	6	< 2	2	49	0.02	< 10	< 10	35	< 10	66
T 27037	201 229	0.01	13	720	6	< 2	2	31	0.03	< 10	< 10	29	< 10	44
T 27038	201 229	0.04	29	740	8	< 2	3	45	0.05	< 10	< 10	46	< 10	68
T 27039	201 229	0.01	19	800	6	< 2	2	32	0.07	< 10	< 10	45	< 10	50
T 27040	201 229	0.01	20	720	8	< 2	3	33	0.07	< 10	< 10	51	< 10	58
T 27041	201 229	0.01	18	730	8	< 2	3	26	0.06	< 10	< 10	53	< 10	88
T 27042	201 229	0.01	17	470	8	< 2	2	26	0.07	< 10	< 10	57	< 10	60
T 27043	201 229	< 0.01	14	280	8	< 2	2	22	0.04	< 10	< 10	50	< 10	52
T 39415	201 229	0.01	25	750	8	< 2	3	57	0.04	< 10	< 10	46	< 10	132
T 39416	201 229	< 0.01	15	270	8	< 2	2	22	0.03	< 10	< 10	46	< 10	38
T 39417	201 229	0.01	20	760	6	< 2	2	45	0.03	< 10	< 10	39	< 10	54
T 39418	201 229	< 0.01	17	240	6	< 2	3	16	0.03	< 10	< 10	40	< 10	38
T 39419	201 229	0.01	15	440	6	< 2	2	21	0.02	< 10	< 10	40	< 10	50
T 39420	201 229	< 0.01	10	270	6	< 2	1	12	0.02	< 10	< 10	36	< 10	28
T 39421	201 229	0.02	18	430	6	< 2	2	61	0.03	< 10	< 10	42	< 10	42
T 39422	201 229	< 0.01	14	210	8	< 2	2	15	0.04	< 10	< 10	50	< 10	46
T 39423	201 229	0.01	17	440	6	< 2	2	21	0.04	< 10	< 10	48	< 10	46
T 39424	201 229	< 0.01	14	550	6	< 2	2	23	0.05	< 10	< 10	49	< 10	40
T 39425	201 229	0.01	13	350	6	< 2	2	24	0.05	< 10	< 10	47	< 10	58
T 39426	201 229	0.01	15	610	6	< 2	2	25	0.04	< 10	< 10	38	< 10	60
T 39427	201 229	0.01	24	600	10	2	3	41	0.06	< 10	< 10	48	< 10	58
T 39428	201 229	0.01	20	720	10	< 2	3	33	0.04	< 10	< 10	39	< 10	56

CERTIFICATION:

Handwritten signature



Chemex Labs Ltd.

Analytical Chemists * Geochemists * Registered Assayers

212 Brooksbank Ave., North Vancouver
 British Columbia, Canada V7J 2C1
 PHONE: 604-984-0221 FAX: 604-984-0218

To: NORDAC RESOURCES LTD.
 C/O ARCHER, CATHRO
 BOX 4127, 2054 SECOND AVE.
 WHITEHORSE, YT
 Y1A 3S9

Project: NORDAC - RIVER
 Comments:

Page Number : 6-A
 Total Pages : 6
 Certificate Date: 11-SEP-95
 Invoice No. : I9526617
 P.O. Number :
 Account : MTT

CERTIFICATE OF ANALYSIS A9526617

SAMPLE	PREP CODE	Ag ppm	Al %	As ppm	Ba ppm	Be ppm	Bi ppm	Ca %	Cd ppm	Co ppm	Cr ppm	Cu ppm	Fe %	Ga ppm	Hg ppm	K %	La ppm	Mg %	Mn ppm	Mo ppm
T 39429	201 229	< 0.2	1.43	8	360	< 0.5	< 2	0.91	< 0.5	8	25	16	2.40	< 10	1	0.05	10	0.51	470	< 1
T 39430	201 229	< 0.2	1.12	4	210	< 0.5	< 2	0.50	0.5	4	23	13	1.98	< 10	< 1	0.06	10	0.46	175	< 1
T 39431	201 229	< 0.2	1.14	8	420	< 0.5	< 2	1.45	1.5	11	21	27	2.08	< 10	< 1	0.06	10	0.49	890	< 1
T 39432	201 229	< 0.2	1.21	4	370	< 0.5	< 2	0.79	1.0	10	22	28	2.19	< 10	1	0.06	10	0.44	790	< 1
T 39433	201 229	< 0.2	1.04	6	200	< 0.5	< 2	0.50	0.5	8	22	15	2.04	< 10	< 1	0.04	10	0.47	300	< 1
T 39434	201 229	< 0.2	1.47	10	470	< 0.5	< 2	0.67	< 0.5	7	25	25	2.26	< 10	< 1	0.03	10	0.56	335	< 1
T 39435	201 229	< 0.2	1.21	4	350	< 0.5	< 2	0.53	0.5	8	26	34	2.16	< 10	< 1	0.04	10	0.47	285	< 1
T 39436	201 229	< 0.2	1.20	8	220	< 0.5	< 2	0.65	< 0.5	6	25	12	2.14	< 10	< 1	0.04	10	0.51	215	< 1
T 39437	201 229	< 0.2	1.14	10	330	< 0.5	< 2	0.65	1.0	12	23	33	2.32	< 10	< 1	0.04	10	0.51	280	< 1
T 39438	201 229	< 0.2	1.66	2	210	0.5	< 2	0.58	< 0.5	9	31	14	2.55	< 10	< 1	0.09	20	0.66	220	1
T 39439	201 229	< 0.2	1.36	8	330	< 0.5	< 2	0.82	0.5	8	27	19	2.37	< 10	< 1	0.08	10	0.55	290	< 1
T 39440	201 229	< 0.2	1.52	8	440	< 0.5	< 2	0.68	< 0.5	11	28	36	2.44	< 10	< 1	0.05	10	0.52	625	< 1
T 39441	201 229	< 0.2	1.45	6	360	< 0.5	< 2	0.88	< 0.5	9	28	19	2.42	< 10	< 1	0.06	10	0.58	455	1
T 39442	201 229	< 0.2	1.46	6	410	< 0.5	< 2	0.77	0.5	8	30	20	2.31	< 10	< 1	0.06	10	0.58	375	1
T 39443	201 229	< 0.2	1.40	6	310	< 0.5	< 2	0.82	< 0.5	6	23	14	2.12	< 10	< 1	0.04	10	0.45	200	< 1
T 39444	201 229	< 0.2	1.33	10	200	< 0.5	< 2	0.46	< 0.5	8	27	12	2.41	< 10	1	0.09	10	0.50	245	< 1
T 39445	201 229	< 0.2	1.32	6	370	0.5	< 2	0.59	0.5	15	26	36	2.57	< 10	< 1	0.06	10	0.47	1095	1
T 39446	201 229	< 0.2	1.42	12	460	0.5	< 2	0.79	0.5	13	28	42	2.59	< 10	1	0.07	10	0.50	675	1

CERTIFICATION: Hart Bichler



Chemex Labs Ltd.

Analytical Chemists * Geochemists * Registered Assayers

212 Brooksbank Ave., North Vancouver
 British Columbia, Canada V7J 2C1
 PHONE: 604-984-0221 FAX: 604-984-0218

To: NORDAC RESOURCES LTD.
 C/O ARCHER, CATHRO
 BOX 4127, 2054 SECOND AVE.
 WHITEHORSE, YT
 Y1A 3S9

Project: NORDAC - RIVER
 Comments:

Page Number : 6-B
 Total Pages : 6
 Certificate Date: 11-SEP-95
 Invoice No. : 19526617
 P.O. Number :
 Account : MTT

CERTIFICATE OF ANALYSIS

A9526617

SAMPLE	PREP CODE	Na %	Ni ppm	P ppm	Pb ppm	Sb ppm	Sc ppm	Sr ppm	Ti %	Tl ppm	U ppm	V ppm	W ppm	Zn ppm
T 39429	201 229	0.01	21	590	10	< 2	3	53	0.04	< 10	< 10	48	< 10	44
T 39430	201 229	0.01	15	670	8	< 2	2	32	0.05	< 10	< 10	40	< 10	64
T 39431	201 229	0.01	26	980	8	< 2	2	73	0.03	< 10	< 10	39	< 10	82
T 39432	201 229	0.01	29	650	8	< 2	2	45	0.03	< 10	< 10	38	< 10	78
T 39433	201 229	0.01	18	740	6	< 2	2	31	0.04	< 10	< 10	42	< 10	54
T 39434	201 229	0.03	22	820	8	< 2	3	41	0.03	< 10	< 10	46	< 10	74
T 39435	201 229	0.01	27	640	6	< 2	2	32	0.04	< 10	< 10	46	< 10	62
T 39436	201 229	0.01	17	690	6	< 2	2	39	0.06	< 10	< 10	45	< 10	50
T 39437	201 229	0.02	32	850	4	< 2	3	40	0.05	< 10	< 10	43	< 10	66
T 39438	201 229	0.01	22	700	12	< 2	4	34	0.07	< 10	10	49	< 10	58
T 39439	201 229	0.01	22	730	8	< 2	3	46	0.07	< 10	< 10	49	< 10	66
T 39440	201 229	0.02	29	600	8	< 2	3	39	0.07	< 10	< 10	52	< 10	68
T 39441	201 229	0.02	21	790	8	< 2	3	52	0.06	< 10	< 10	54	< 10	56
T 39442	201 229	0.02	22	850	8	< 2	3	49	0.07	< 10	< 10	51	< 10	66
T 39443	201 229	0.02	16	590	6	< 2	2	51	0.05	< 10	< 10	45	< 10	54
T 39444	201 229	0.01	19	720	8	< 2	2	28	0.06	< 10	< 10	48	< 10	60
T 39445	201 229	0.01	29	730	6	< 2	3	36	0.06	< 10	< 10	48	< 10	70
T 39446	201 229	0.01	36	540	8	< 2	3	45	0.06	< 10	< 10	48	< 10	66

CERTIFICATION:

John A. Bickler



Chemex Labs Ltd.

Analytical Chemists * Geochemists * Registered Assayers
 212 Brooksbank Ave., North Vancouver
 British Columbia, Canada V7J 2C1
 PHONE: 604-984-0221 FAX: 604-984-0218

To: NORDAC RESOURCES LTD.
 C/O ARCHER, CATHRO
 BOX 4127, 2054 SECOND AVE.
 WHITEHORSE, YT
 Y1A 3S9

RIVER

A9526797

Comments:

CERTIFICATE

A9526797

(MTT) - NORDAC RESOURCES LTD.

Project: RIVER
 P.O. #:

Samples submitted to our lab in Vancouver, BC.
 This report was printed on 6-SEP-95.

SAMPLE PREPARATION

CHEMEX CODE	NUMBER SAMPLES	DESCRIPTION
205	9	Geochem ring to approx 150 mesh
226	9	0-3 Kg crush and split
3204	9	Save 1 Kg reject for 90 days
285	9	ICP - HF digestion charge

ANALYTICAL PROCEDURES

CHEMEX CODE	NUMBER SAMPLES	DESCRIPTION	METHOD	DETECTION LIMIT	UPPER LIMIT
578	9	Ag ppm: 24 element, rock & core	AAS	0.2	200
573	9	Al %: 24 element, rock & core	ICP-AES	0.01	25.0
565	9	Ba ppm: 24 element, rock & core	ICP-AES	10	10000
575	9	Be ppm: 24 element, rock & core	ICP-AES	0.5	1000
561	9	Bi ppm: 24 element, rock & core	ICP-AES	2	10000
576	9	Ca %: 24 element, rock & core	ICP-AES	0.01	25.0
562	9	Cd ppm: 24 element, rock & core	ICP-AES	0.5	500
563	9	Co ppm: 24 element, rock & core	ICP-AES	1	10000
569	9	Cr ppm: 24 element, rock & core	ICP-AES	1	10000
577	9	Cu ppm: 24 element, rock & core	ICP-AES	1	10000
566	9	Fe %: 24 element, rock & core	ICP-AES	0.01	25.0
584	9	K %: 24 element, rock & core	ICP-AES	0.01	10.00
570	9	Mg %: 24 element, rock & core	ICP-AES	0.01	15.00
568	9	Mn ppm: 24 element, rock & core	ICP-AES	5	10000
554	9	Mo ppm: 24 element, rock & core	ICP-AES	1	10000
583	9	Na %: 24 element, rock & core	ICP-AES	0.01	10.00
564	9	Ni ppm: 24 element, rock & core	ICP-AES	1	10000
559	9	P ppm: 24 element, rock & core	ICP-AES	10	10000
560	9	Pb ppm: 24 element, rock & core	AAS	2	10000
582	9	Sr ppm: 24 element, rock & core	ICP-AES	1	10000
579	9	Ti %: 24 element, rock & core	ICP-AES	0.01	10.00
572	9	V ppm: 24 element, rock & core	ICP-AES	1	10000
556	9	W ppm: 24 element, rock & core	ICP-AES	10	10000
558	9	Zn ppm: 24 element, rock & core	ICP-AES	2	10000



Chemex Labs Ltd.

Analytical Chemists * Geochemists * Registered Assayers

212 Brooksbank Ave., North Vancouver
British Columbia, Canada V7J 2C1
PHONE: 604-984-0221 FAX: 604-984-0218

To: NORDAC RESOURCES LTD.
C/O ARCHER, CATHRO
BOX 4127, 2054 SECOND AVE.
WHITEHORSE, YT
Y1A 3S9

Project: RIVER
Comments:

Page Number : 1-A
Total Pages : 1
Certificate Date: 06-SEP-95
Invoice No. : 19526797
P.O. Number :
Account : MTT

CERTIFICATE OF ANALYSIS

A9526797

SAMPLE	PREP CODE	Ag ppm AAS	Al % (ICP)	Ba ppm (ICP)	Be ppm (ICP)	Bi ppm (ICP)	Ca % (ICP)	Cd ppm (ICP)	Co ppm (ICP)	Cr ppm (ICP)	Cu ppm (ICP)	Fe % (ICP)	K % (ICP)	Mg % (ICP)	Mn ppm (ICP)
T39451	205 226	1.0	4.86	220	2.5	2	0.06	< 0.5	6	72	13	6.40	2.73	0.26	105
T39452	205 226	3.0	2.75	90	3.5	< 2	0.01	< 0.5	24	106	10	12.40	1.37	0.13	10
T39453	205 226	1.4	4.22	100	1.0	< 2	0.14	< 0.5	19	120	50	4.72	2.12	0.22	20
T39454	205 226	1.6	2.11	80	< 0.5	< 2	0.03	< 0.5	32	85	13	24.0	0.97	0.09	5
T39455	205 226	1.0	2.33	130	< 0.5	< 2	0.21	< 0.5	13	132	87	>25.0	0.95	0.06	15
T39456	205 226	0.8	3.91	1060	< 0.5	2	0.33	< 0.5	21	78	12	15.95	2.06	0.10	30
T39457	205 226	1.4	3.35	730	< 0.5	< 2	0.23	< 0.5	18	151	64	22.0	1.34	0.07	30
T39458	205 226	0.8	2.96	780	< 0.5	< 2	0.02	< 0.5	37	102	19	22.6	1.55	0.09	30
T39459	205 226	0.8	3.02	280	< 0.5	< 2	0.07	< 0.5	28	101	13	24.1	1.59	0.09	20

CERTIFICATION:

Hart Buchler



Chemex Labs Ltd.

Analytical Chemists * Geochemists * Registered Assayers

212 Brooksbank Ave., North Vancouver
British Columbia, Canada V7J 2C1
PHONE: 604-984-0221 FAX: 604-984-0218

To: NORDAC RESOURCES LTD.
C/O ARCHER, CATHRO
BOX 4127, 2054 SECOND AVE.
WHITEHORSE, YT
Y1A 3S9

Project: RIVER
Comments:

Page Number : 1-B
Total Pages : 1
Certificate Date: 06-SEP-95
Invoice No. : 19526797
P.O. Number :
Account : MTT

CERTIFICATE OF ANALYSIS

A9526797

SAMPLE	PREP CODE	Mo ppm (ICP)	Na % (ICP)	Ni ppm (ICP)	P ppm (ICP)	Pb ppm AAS	Sr ppm (ICP)	Ti % (ICP)	V ppm (ICP)	W ppm (ICP)	Zn ppm (ICP)				
T39451	205 226	2	0.14	11	430	46	16	0.47	250	< 10	184				
T39452	205 226	3	0.08	94	< 10	48	2	0.08	60	< 10	60				
T39453	205 226	1	0.13	26	600	24	291	0.27	124	< 10	90				
T39454	205 226	7	0.10	90	60	48	17	0.16	66	< 10	40				
T39455	205 226	15	0.11	66	750	310	26	0.04	28	< 10	2				
T39456	205 226	8	0.12	66	1410	14	28	0.09	173	< 10	12				
T39457	205 226	14	0.16	60	970	340	40	0.06	46	< 10	4				
T39458	205 226	15	0.08	66	750	18	7	0.10	140	< 10	12				
T39459	205 226	15	0.10	64	910	22	10	0.10	138	< 10	18				

CERTIFICATION: *David S. Fisher*



Chemex Labs Ltd.

Analytical Chemists * Geochemists * Registered Assayers

212 Brooksbank Ave., North Vancouver
British Columbia, Canada V7J 2C1
PHONE: 604-984-0221 FAX: 604-984-0218

to: NORDAC RESOURCES LTD.
C/O ARCHER, CATHRO
BOX 4127, 2054 SECOND AVE.
WHITEHORSE, YT
Y1A 3S9

A9526618

Comments:

CERTIFICATE

A9526618

(MTT) - NORDAC RESOURCES LTD.

Project: NORDAC - RIVER
P.O. #:

Samples submitted to our lab in Vancouver, BC.
This report was printed on 11-SEP-95.

SAMPLE PREPARATION

CHEMEX CODE	NUMBER SAMPLES	DESCRIPTION
205	2	Geochem ring to approx 150 mesh
226	2	0-3 Kg crush and split
3202	2	Rock - save entire reject
229	2	ICP - AQ Digestion charge

* NOTE 1:

The 32 element ICP package is suitable for trace metals in soil and rock samples. Elements for which the nitric-aqua regia digestion is possibly incomplete are: Al, Ba, Be, Ca, Cr, Ga, K, La, Mg, Na, Sr, Ti, Tl, W.

ANALYTICAL PROCEDURES

CHEMEX CODE	NUMBER SAMPLES	DESCRIPTION	METHOD	DETECTION LIMIT	UPPER LIMIT
2118	2	Ag ppm: 32 element, soil & rock	ICP-AES	0.2	200
2119	2	Al %: 32 element, soil & rock	ICP-AES	0.01	15.00
2120	2	As ppm: 32 element, soil & rock	ICP-AES	2	10000
2121	2	Ba ppm: 32 element, soil & rock	ICP-AES	10	10000
2122	2	Be ppm: 32 element, soil & rock	ICP-AES	0.5	100.0
2123	2	Bi ppm: 32 element, soil & rock	ICP-AES	2	10000
2124	2	Ca %: 32 element, soil & rock	ICP-AES	0.01	15.00
2125	2	Cd ppm: 32 element, soil & rock	ICP-AES	0.5	100.0
2126	2	Co ppm: 32 element, soil & rock	ICP-AES	1	10000
2127	2	Cr ppm: 32 element, soil & rock	ICP-AES	1	10000
2128	2	Cu ppm: 32 element, soil & rock	ICP-AES	1	10000
2150	2	Fe %: 32 element, soil & rock	ICP-AES	0.01	15.00
2130	2	Ga ppm: 32 element, soil & rock	ICP-AES	10	10000
2131	2	Hg ppm: 32 element, soil & rock	ICP-AES	1	10000
2132	2	K %: 32 element, soil & rock	ICP-AES	0.01	10.00
2151	2	La ppm: 32 element, soil & rock	ICP-AES	10	10000
2134	2	Mg %: 32 element, soil & rock	ICP-AES	0.01	15.00
2135	2	Mn ppm: 32 element, soil & rock	ICP-AES	5	10000
2136	2	Mo ppm: 32 element, soil & rock	ICP-AES	1	10000
2137	2	Na %: 32 element, soil & rock	ICP-AES	0.01	5.00
2138	2	Ni ppm: 32 element, soil & rock	ICP-AES	1	10000
2139	2	P ppm: 32 element, soil & rock	ICP-AES	10	10000
2140	2	Pb ppm: 32 element, soil & rock	ICP-AES	2	10000
2141	2	Sb ppm: 32 element, soil & rock	ICP-AES	2	10000
2142	2	Sc ppm: 32 elements, soil & rock	ICP-AES	1	10000
2143	2	Sr ppm: 32 element, soil & rock	ICP-AES	1	10000
2144	2	Ti %: 32 element, soil & rock	ICP-AES	0.01	5.00
2145	2	Tl ppm: 32 element, soil & rock	ICP-AES	10	10000
2146	2	U ppm: 32 element, soil & rock	ICP-AES	10	10000
2147	2	V ppm: 32 element, soil & rock	ICP-AES	1	10000
2148	2	W ppm: 32 element, soil & rock	ICP-AES	10	10000
2149	2	Zn ppm: 32 element, soil & rock	ICP-AES	2	10000



Chemex Labs Ltd.

Analytical Chemists * Geochemists * Registered Assayers

212 Brooksbank Ave., North Vancouver
British Columbia, Canada V7J 2C1
PHONE: 604-984-0221 FAX: 604-984-0218

To: NORDAC RESOURCES LTD.
C/O ARCHER, CATHRO
BOX 4127, 2054 SECOND AVE.
WHITEHORSE, YT
Y1A 3S9

Project: NORDAC - *River*
Comments:

Page Number: 1-A
Total Pages: 1
Certificate Date: 11-SEP-95
Invoice No.: I9526618
P.O. Number:
Account: MTT

CERTIFICATE OF ANALYSIS

A9526618

SAMPLE	PREP CODE	Ag ppm	Al %	As ppm	Ba ppm	Be ppm	Bi ppm	Ca %	Cd ppm	Co ppm	Cr ppm	Cu ppm	Fe %	Ga ppm	Hg ppm	K %	La ppm	Mg %	Mn ppm	Mo ppm
s 2317	205 226	< 0.2	3.95	16	440	1.0	< 2	7.47	0.5	15	14	16	7.93	10	< 1	0.37	20	2.10	1220	2
s 2318	205 226	< 0.2	2.12	< 2	330	0.5	< 2	1.88	< 0.5	30	57	29	5.93	< 10	< 1	0.14	20	1.92	525	1

CERTIFICATION: Hart Buchler

ARCHER, CATHRO

& ASSOCIATES (1981) LIMITED

CONSULTING GEOLOGICAL ENGINEERS

Box 4127, 2054 SECOND AVENUE, WHITEHORSE, Y.T. Y1A 3S9 TEL (403) 667 - 4415

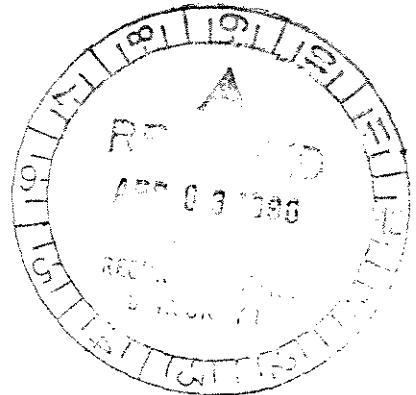
AFFIDAVIT

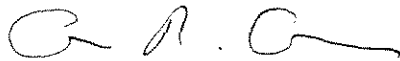
I, Joan Mariacher, of Vancouver, B.C. make oath and say:

That to the best of my knowledge the attached Statement of Expenditures for exploration work on the River 1-24 mineral claims on Claim Sheet 116C/8 is accurate.


Joan Mariacher

Sworn before me at Vancouver, B.C.
this 26th day of
March, 1996





Notary, Yukon Territory

Statement of Expenditures
River 1-24 Claims
March 25, 1996

Labour

R. Carne, geologist - August 15-23, 1995 - 28 hrs, February 6 - March 12, 1996 - 25 hrs - Total 53 hrs @ \$50/hr	\$2,835.50
F. Gish, geologist - August 15-23, 1995 - 27 hrs @ \$40/hr	<u>1,155.60</u>
	\$3,991.10

Expenses

Airborne geophysical survey for Cominco - 70 km @ \$100/km	7,000.00
Field room and board - 8 days @ \$70/day	599.20
Dawson and Carmacks room and board	421.34
Trans North Air - 2.8 hrs @ \$615/hr, plus fuel	2,065.11
Norcan truck rental and gas	328.96
Chemex Labs	817.46
Canadian Air Lines	<u>39.65</u>
	\$11,271.72
 TOTAL	 <u>\$15,262.82</u>

RCC Mark - Aug 25/91

Div Int -	1.75	24.95	01
	5.82	83.18	03
	1.98	28.22	04

Norfolk F -

Dr	.81	13.50	02
	5.61	80.15	04

Cng	1.70	24.22	02
-----	------	-------	----

Dawson	60.90	906.34	02
	5.43	77.57	04
		221.50	F

84. 1459.63

1543.63

John April 15/91
#5749

Dr - 944.06
04 - 157.72
F - 221.50
Firms +
Risks

STATEMENT

DATE

01 Sep 95

2-106

ACCOUNT NUMBER

Carmacks Hotel Ltd,
Post Office Box 160
Carmacks
Yukon, Y08 1C0
(403)863-5221,

Archer Cathro & Associates
PO Box 4127
3125 - 3rd. Avenue
Whitehorse, Yukon

PAGE

REFERENCE	DATE	CODE	DESCRIPTION	AMOUNT
128984	14/07/95	IN		10.9
128984	30/08/95	CA	10.91	10.9
133018	16/08/95	IN		22.0
133624	23/08/95	IN	12.00 trip	22.0

Y. Nulu-F - 47.80
3.20
51.00

CODES	BF - BALANCE FORWARD	DS - DISCOUNT	DR - DEBIT MEMO	CA - CASH PAYMENT	PLEASE PAY	51.00
	IT - INTEREST CHARGE	IN - INVOICE	CR - CREDIT MEMO			
CURRENT	30 DAYS	60 DAYS	90 DAYS			
51.00	0.00	0.00	0.00			0

BEST ATTAINABLE IMAGE



REMIT PAYMENT TO:
TRANS NORTH AIR
 TRANS NORTH TURBO AIR LTD.
 AIRPORT HANGAR "C" • WHITEHORSE • YUKON • Y1A 3E4
 TELEPHONE (403) 668-2177 FAX (403) 668-3420

ACCOUNT NUMBER	ARCHNDOR		
INVOICE NUMBER	08398		
INVOICE DATE	23	08	95
A/C TYPE	206B	AIRCRAFT REGISTRATION C	FDRZ
FLIGHT DATE	19	08	95
PURCHASE ORDER NO.			

40 ARCHER CATHRO.
 CHARTERER
 NORDAC (RIVER)
 BILLING ADDRESS
 Box 4127
 Whitehorse, YT Y1A 3S9

FUEL & OIL - X	TNTA FUEL USED	HR/LITRES	FROM
✓	JPA	.9	YDA.

FROM	DAWSON CITY	HOURS	REMARKS - NO. OF PASS - FREIGHT Kg
TO	CASSIAL CRK.		- ROB & FRANK.
	YDA.		- 5/0's & P/L's

SUB	GL	AMOUNT			
1805	502	55350	.9	@ 615 ⁰⁰	55350
1800	131	6695		@	
			HOLDING TIME:	@ / HR.	
0000	323	4344	FUEL 103 L	@ .65 / LITRE	6695

TERMS: PAYABLE UPON RECEIPT OF INVOICE.
 2% INTEREST PER MONTH (24% PER ANNUM) WILL BE CHARGED ON ALL OUTSTANDING AMOUNTS OVER 30 DAYS IF INTEREST IS NOT PAID. FUTURE FLIGHTS WILL BE ON A CASH BASIS.

X [Signature]
 CHARTERER'S SIGNATURE

[Signature]
 CHARTERER'S NAME (PRINTED)

INITIALS AKM
 PILOTS SIGNATURE Adam Morrison

INITIALS AKM
 ENGINEER'S NAME MORRISON

FUEL	@	/ LITRE	
MEALS & LODGINGS			
OTHER			
OTHER			
SUB TOTAL			620 45
GOODS & SERVICES TAX			43 44
REGISTRATION NO. R121483135			

TOTAL \$ 663 89

CARRIAGE SUBJECT TO TERMS OF PUBLISHED TARIFF.
 TARIFF AVAILABLE TO PUBLIC VIEW AT TRANS NORTH OFFICE.
THIS IS YOUR ONLY INVOICE — PAY UPON RECEIPT

BEST TRAINING
 IMPROVE



REMIT PAYMENT TO:
TRANS NORTH AIR
 TRANS NORTH TURBO AIR LTD.
 AIRPORT HANGAR "C" • WHITEHORSE • YUKON • Y1A 3E4
 TELEPHONE (403) 668-2177 FAX: (403) 668-3420

ACCOUNT NUMBER	ARCHNOR		
INVOICE NUMBER	08400		
INVOICE DATE	23	08	95
A/C TYPE	206B	AIRCRAFT REGISTRATION C	FDRZ
FLIGHT DATE	21	08	95
PURCHASE ORDER NO.			

C/O ARCHER CATHALO

CHARTERER
 NORDA (RIVER)

BILLING ADDRESS
 Box 4127
 Whitehorse, Y.T. Y1A 3S9

FUEL & OIL - X TNTA CUST	TNTA FUEL USED	(HRS) LITRES	FROM
V	JP4	1.9	YDA.

FROM	HOURS	REMARKS - NO. OF PASS - FREIGHT Kg
DAWSON CITY		
TO		
CASSIAR CRK.		- ROB & FRANK.
LOCAL		- 5/6's - MOVE - P/u's.
YDA.		

SUB	GL	AMOUNT			
1805	502	1168.50	1.9	@ 615 ⁰⁰	1168.50
1800	131	141.05		@	
			HOLDING TIME:	@ / HR.	
0000	323	91.67	FUEL 217.0	@ .65 / LITRE	141.05

TERMS: PAYABLE UPON RECEIPT OF INVOICE.
 2% INTEREST PER MONTH (24% PER ANNUM) WILL BE CHARGED ON ALL OUTSTANDING AMOUNTS OVER 30 DAYS. IF INTEREST IS NOT PAID, FUTURE FLIGHTS WILL BE ON A CASH BASIS.

X *[Signature]*
 CHARTERER'S SIGNATURE

CHARTERER'S NAME (PRINTED)

INITIALS *Axm* PILOT'S SIGNATURE *Adam Maysen*

ENGINEER'S NAME *Axm* *M. Maysen*

CRD DAMM.

OTHER		
OTHER		
SUB TOTAL		1309.55
GOODS & SERVICES TAX REGISTRATION NO. R 121483135		91.67
TOTAL		\$ 1401.22

CARRIAGE SUBJECT TO TERMS OF PUBLISHED TARIFF.
 TARIFF AVAILABLE TO PUBLIC VIEW AT TRANS NORTH OFFICE.
THIS IS YOUR ONLY INVOICE - PAY UPON RECEIPT

NORCAN LEASING

MILE 917.4 ALASKA HIGHWAY
WHITEHORSE, YUKON Y1A 3E5

INTERIM RENTAL BILLING

THIS INVOICE NUMBER: 9575

DEPARTMENT : BECKER THOMAS *Div mt truck*

VEH. RENTAL PERIOD : FROM : August 01 1995
TO : August 31 1995

RENTAL AGREEMENT # : 30823

NORCAN VEHICLE NO. : 3302140

LICENSE PLATE NO. : RAR 57

CONTRACT / P.O. # : MONTHLY RENTAL

REG. MONTHLY RATE : 1575.00

TIME PERIOD BILLED : ONE MONTH

TOTAL RENTAL CHARGE: 1575.00

6 Div mt - 304.85
11 Nahr-F - 558.85
8 WL coal - 406.45
6 AC(H) - 304.85
PLUS 7% G. S. T. : 110.25

TOTAL THIS INVOICE : 1685.25

1685.25

VEHICLE DESCRIPTION: WHITE 1994 FORD
F250 SUPERCAB
FOUR WHEEL DRIVE
RENTAL START DATE : April 1 1995

CASH RESOURCES LTD
C/O ARCHER, CATHRO & ASSOC
P. O. BOX 4127
WHITEHORSE YT
Y1A 3S9



INVOICE No 018358

SECOND AVENUE CHEVRON & TIRE SERVICE

2240 - 2nd Avenue, Whitehorse, Yukon Y1A 1C8
Phone: 668-6171
Fax: 668-4228

SOLD TO Archer Cathro
ADDRESS _____



STATEMENT
SECOND AVENUE CHEVRON & TIRE SERVICE

2240 - 2nd Avenue, Whitehorse, Yukon Y1A 1C8
Phone: 668-6171
Fax: 668-4228

SOLD TO c/o Archer Cathro
ADDRESS Box 4127
Whitehorse, Y.T.

DATE	DESCRIPTION	AMOUNT
Aug 95	58.7 lts @ .669	\$38.00
	1 Ltr oil @ \$3.00	3.00
	G.S.T	21
		<u>41.21</u>
	<u>NORDAC (Dawson)</u>	

DATE	DESCRIPTION	AMOUNT
	Previous Balance	893.61
	R.O.A.	893.61
Aug 95	Balance GST. (54.30)	829.87
	Inw # 018310 \$72.00	
	018313 55.00	
	018318 45.00	
	018326 75.00	
	018345 72.00	
	018351 56.00	
	018353 13.76	
	018356 50.00	
	018358 41.21	
	018378 53.50	
	018398 70.40	
	018408 31.00	
	018409 28.02	
	018417 45.49	
	018421 60.49	
	018429 61.00	
	<u>829.87</u>	

G.S.T. R106626963
2% Charge monthly on Overdue Account.

TOTAL 829.87



SUNRISE SERVICE CENTRE

CARMACKS, YUKON, Y0B 1C0
PHONE 863-5291

GARAGE • TIRE REPAIRS • TOWING • PROPANE
GAS • DIESEL • WATER

DATE, aug / 25 / 95

NAME ARCHER Catho

ADDRESS _____

MAKE		ODOMETER		LICENCE NO.	
QUANTITY	DESCRIPTION		TAXABLE	NON TAXABLE	
49-	LITRES GAS <input checked="" type="checkbox"/>	LITRES DIESEL <input type="checkbox"/>		3450	
	LITRES OIL				
	LUBRICATION				
			TOTAL		
GST REGISTRATION NO. R105075782		GST			
RECEIVED BY <u>MORDAC (Dawson)</u>		RG4-70		SUB-TOTAL	
		PST			
SOLD BY	CASH	CHARGE	ON ACCT.	GRAND TOTAL <u>3450</u>	

COMDA SERVICE LTD., TORONTO, ONT., 243-8786 - 10128

1273



SUNRISE SERVICE CENTRE

CARMACKS, YUKON, Y0B 1C0
PHONE 863-5291

GARAGE • TIRE REPAIRS • TOWING • PROPANE
GAS • DIESEL • WATER

DATE, aug / 23 / 95

NAME ARCHER Catho

ADDRESS _____

MAKE		ODOMETER		LICENCE NO.	
QUANTITY	DESCRIPTION		TAXABLE	NON TAXABLE	
55	LITRES GAS <input checked="" type="checkbox"/>	LITRES DIESEL <input type="checkbox"/>		3830	
	LITRES OIL				
	LUBRICATION				
			TOTAL		
GST REGISTRATION NO. R105075782		GST			
RECEIVED BY <u>MORDAC (Dawson)</u>		RG4-70		SUB-TOTAL	
		PST			
SOLD BY	CASH	CHARGE	ON ACCT.	GRAND TOTAL <u>3830</u>	

COMDA SERVICE LTD., TORONTO, ONT., 243-8786 - 10128

1068



Chemex Labs Ltd.

Analytical Chemists * Geochemists * Registered Assayers
212 Brooksbank Ave., North Vancouver
British Columbia, Canada V7J 2C1
PHONE: 604-984-0221

To: NORDAC RESOURCES LTD.
C/O ARCHER, CATHRO
BOX 4127, 2054 SECOND AVE.
WHITEHORSE, YT
Y1A 3S9

INVOICE NUMBER

I 9 5 2 6 6 1 7

BILLING INFORMATION

Date: 11-SEP-95
Project: NORDAC
P.O. No.:
Account: MTT

Comments:

Billing: For analysis performed on
Certificate A9526617

Terms: Payment due on receipt of invoice
1.25% per month (15% per annum)
charged on overdue accounts

Please Remit Payments to:

CHEMEX LABS LTD.
212 Brooksbank Ave.,
North Vancouver, B.C.
Canada V7J 2C1

# OF SAMPLES	ANALYSED FOR CODE - DESCRIPTION	UNIT PRICE	SAMPLE PRICE	AMOUNT
218	201 - Dry, sieve to -80 mesh ICP-32	1.25 7.00	8.25	1798.50
				Total Cost \$ 1798.50
				Client Discount (25%) \$ -449.63
				Net Cost \$ 1348.87
				(Reg# R100938885) GST \$ 94.42
				TOTAL PAYABLE (CDN) \$ 1443.29
<i>River - 68854</i>				



Chemex Labs Ltd.

Analytical Chemists * Geochemists * Registered Assayers
212 Brooksbank Ave., North Vancouver
British Columbia, Canada V7J 2C1
PHONE: 604-984-0221

To: NORDAC RESOURCES LTD.
C/O ARCHER, CATHRO
BOX 4127, 2054 SECOND AVE.
WHITEHORSE, YT
Y1A 3S9

INVOICE NUMBER

I 9 5 2 6 6 1 8

BILLING INFORMATION

Date: 11-SEP-95
Project: NORDAC - RIVER
P.O. No.:
Account: MTT

Comments:

Billing: For analysis performed on
Certificate A9526618

Terms: Payment due on receipt of invoice
1.25% per month (15% per annum)
charged on overdue accounts

Please Remit Payments to:

CHEMEX LABS LTD.
212 Brooksbank Ave.,
North Vancouver, B.C.
Canada V7J 2C1

# OF SAMPLES	ANALYSED FOR CODE - DESCRIPTION	UNIT PRICE	SAMPLE PRICE	AMOUNT
2	205 - Geochem ring to approx 150 mesh	2.50		
	226 - 0-3 Kg crush and split	2.60		
	3202 - Rock - save entire reject	0.50		
	ICP-32	7.00	12.60	25.20

Total Cost \$	25.20
Client Discount (25%) \$	-6.30
Net Cost \$	18.90
(Reg# R100938885) GST \$	1.32
TOTAL PAYABLE (CDN) \$	20.22



Chemex Labs Ltd.

Analytical Chemists * Geochemists * Registered Assayers
212 Brooksbank Ave., North Vancouver
British Columbia, Canada V7J 2C1
PHONE: 604-984-0221

To: NORDAC RESOURCES LTD.
C/O ARCHER, CATHRO
BOX 4127, 2054 SECOND AVE.
WHITEHORSE, YT
Y1A 3S9

INVOICE NUMBER

I 9 5 2 6 7 9 7

BILLING INFORMATION

Date: 6-SEP-95
Project: RIVER
P.O. No.:
Account: MTT

Comments:

Billing: For analysis performed on
Certificate A9526797

Terms: Payment due on receipt of invoice
1.25% per month (15% per annum)
charged on overdue accounts

Please Remit Payments to:

CHEMEX LABS LTD.
212 Brooksbank Ave.,
North Vancouver, B.C.
Canada V7J 2C1

# OF SAMPLES	ANALYSED FOR CODE - DESCRIPTION	UNIT PRICE	SAMPLE PRICE	AMOUNT
9	205 - Geochem ring to approx 150 mesh	2.50		
	226 - 0-3 Kg crush and split	2.60		
	3204 - Save 1 Kg reject for 90 days ICP-24	0.00		
		9.95	15.05	135.45
Total Cost \$				135.45
Client Discount (25%) \$				-33.86
Net Cost \$				101.59
(Reg# R100938885) GST \$				7.11
TOTAL PAYABLE (CDN) \$				108.70

Name and Address
Nom et adresse de l'expéditeur

Shipper's Account Number
Numéro de compte de l'expéditeur
F00025682

Not negotiable / Non négociable
Air Waybill Lettre de transport aérien
Issued by / Émise par
CANADIAN AIRLINES INTERNATIONAL
STE 2800-700 2ND ST SW
CALGARY AB

ARCHER CATHRO ASSOC
BOX 4127
WHITEHORSE, YT
-YXY-

Copies 1, 2 and 3 of this Air Waybill are originals and have the same validity
Les exemplaires 1, 2 et 3 de cette lettre de transport aérien sont originaux et ont la même validité

Consignee's Name and Address
Nom et adresse du destinataire
CHEMEX LABS
212 BROOKSBANK AVE
NORTH VANCOUVER, BC
-YVR-

Consignee's Account Number
Numéro de compte du destinataire

It is agreed that the goods described herein are accepted in apparent good order and condition (except as noted) for carriage SUBJECT TO THE CONDITIONS OF CONTRACT ON THE REVERSE HEREOF. THE SHIPPER'S ATTENTION IS DRAWN TO THE NOTICE CONCERNING CARRIER'S LIMITATION OF LIABILITY. Shipper may increase such limitation of liability by declaring a higher value for carriage and paying a supplemental charge if required.
Il est convenu que les marchandises décrites dans le présent document sont acceptées pour le transport en bon état apparent (sauf annotation contraire) et que le transport est SOUMIS AUX CONDITIONS DU CONTRAT QUI FIGURENT AU VERSO. L'ATTENTION DE L'EXPÉDITEUR EST ATTIRÉE SUR L'AVIS CONCERNANT LA LIMITATION DE RESPONSABILITÉ DU TRANSPORTEUR. L'expéditeur peut augmenter cette limitation de responsabilité en déclarant une valeur pour le transport plus élevée et en payant des frais supplémentaires s'il y a lieu.

Issuing Carrier's Agent Name and City / Nom et ville de l'agent du transporteur émetteur
CANADIAN AIRLINES INTL

Accounting information / Renseignements comptables

Agent's IATA Code / Code IATA de l'agent
71-9 9020 **C**

Account Number / Numéro de compte

Airport of Departure (Address of first Carrier) and Requested Routing
Aéroport de départ (Adresse du premier transporteur) et itinéraire demandé
WHITEHORSE

to / à	By first Carrier Par premier transport	Routing and Destination Routage et destination	to / à	by / par	to / à	by / par
YVR	CP					

Currency Monnaie	CHGS Code	WT/Pcs Poids/Pcs	Vol Vol	Other/Autres	Declared Value of Carriage Valeur déclarée pour le transport	Declared Value for Customs Valeur déclarée pour la douane
CAD	PXX			X	NVD	NCV

Airport of Destination / Aéroport de destination
VANCOUVER

Flight Date
Vol. / Date

Amount of Insurance
Montant de l'assurance
XXX

Handling information / Renseignements pour le traitement de l'expédition
-CALL ON ARR FOR P
NTF-U

Number of Pieces Nombre de colis RCP	Gross Weight Poids brut	kg	Rate Class / Classif. du tarif	Commodity Item No. N° d'article de la marchandise	Chargeable Weight Poids de taxation	Rate / Charge Tarif / Montant	Total	Nature and Quantity of Goods (including Dimensions or Volume) Nature et quantité des marchandises (y compris dimensions ou volume)
4	45.0	kg	C		45.0	1.99	89.55	SOIL SAMPLES
4	45.0	kg					89.55	

Prepaid / Port payé	Weight Charge / Taxation au poids	Collect / Port dû
	89.55	
Valuation charge / Taxation à la valeur		
Tax / Taxe		
Total other Charges Due Agent / Total des autres frais dus à l'agent		
Total other Charges Due Carrier / Total des autres frais dus au transporteur		
	6.27	
Total prepaid / Total port payé	Total collect / Total port dû	
95.82		
Currency Conversion Rates Taux conversion monnaie	CC Charges in Destination Currency Port dû en monnaie du pays de destination	
1.000000		
For Carrier's Use only at Destination Réserve au transporteur à destination	Charges at Destination / Frais à l'arrivée	Total collect Charges / Total dû
		CAD

Other Charges / Autres frais
GOC6.27

Shipper certifies that the particulars on the face hereof are correct and that insofar as any part of the consignment contains dangerous goods, such part is properly described by name and is in proper condition for carriage by air according to the applicable Dangerous Goods Regulations.
L'expéditeur certifie que les indications portées sur le présent document sont exactes et que dans la mesure où une partie quelconque de l'expédition contient des marchandises dangereuses, cette partie d'expédition est correctement dénommée et bien préparée pour le transport par air conformément à la réglementation applicable.

Signature of Shipper or his Agent: *(Wardac Dawson)*
Signature de l'expéditeur ou de son agent.

Signature of Issuing Carrier or its Agent: *(R. ...)*
Signature du transporteur émetteur ou de son agent.

Executed on (Date) / Fait le (Date) at (Place) / à (Lieu)
23 AUG 1995

XXXXXXXXXXXXXXXXXXXX

TAT-C3 6.92

ARCHER, CATHRO & ASSOCIATES (1981) LIMITED

In Account With

NORDAC - FIELD ACCOUNT

AUGUST 31, 1995

Project: _____
Date: _____

LABOUR

Field	A. ARCHER - 12 HRS AT 60/HR	720.00	
	R. CARNE - 145 HRS AT 50/HR (Cuz-57; Dv-90; Dawson-68)	7250.00	
	D. EATON - 8 HRS AT 50/HR	400.00	
	F. GISH - 84 HRS AT 40/HR (Cuz-9; Dv-9; Dawson-66)	3360.00	
	G. WENZELNOWSKI - 4 HRS AT 40/HR (Dv)	160.00	

Office M. COOKE - 5 HRS AT 30/HR (Cuz) 150.00

Accounting & Expediting J. MARIACHER - 25 HRS AT 42.50/HR 1062.50 13102.50

OTHER SERVICES

Room & Board In Whitehorse	9 DAYS AT 60/DAY	540.00	
Field equipment from AC stock	90.00 + 185.90	275.90	
Photocopies	92 copies at 25¢/copy	23.00	
Rentals from AC			

AC HANDHELD - PRO RATED 8.00

Blueprinting sq.ft. Ozalid at \$/ft, plus sq.ft. Dilar at \$/ft.

Drafting 55 1/2 hrs at \$33.25/hr (Dawson-10 1/2; Cuz-37; Dv-8) 1873.13

LOOMIS COURIER - 1 AT 17.50/EA 17.50 2732.53

EXPENSES

Petty Cash 3.55 01 + 25.00 03 + 48.60 04 77.15

Telephone 10.52 + 1.93 + 0.19 12.64

FRONTIER HELICOPTER - Cuz-1103.64 + Dv-158.00 2621.64

CAIL - 47.85 + 17.50 + 39.35 94.70

INTEGRAPHICS 17.90

DELVEDELE MORAN HOTEL 250.33

CALMACKS HOTEL 10.20

DOMINION BLUE 47.25

REGENEL GENERAL - MANS 357.20

SUNRISE SERVICE 68.04

HAGEN'S PHOTO 14.06

COUREUR DES BOIS - Dv 5600.00 FV

NORDAC LEASING - 106.45 + 558.85 665.30

FINLAYSON PROJECT JET B USED AUG. 30/95 - 2282 124.24 9960.25

MANAGEMENT 6% - ON EXPENSES 597.65

- ON FIELD AC 7.93 605.58

26401.36

GST (R100247667) 7% ON 26401.36

1848.10

ARCHER, CATHRO & ASSOCIATES (1981) LIMITED

In Account With

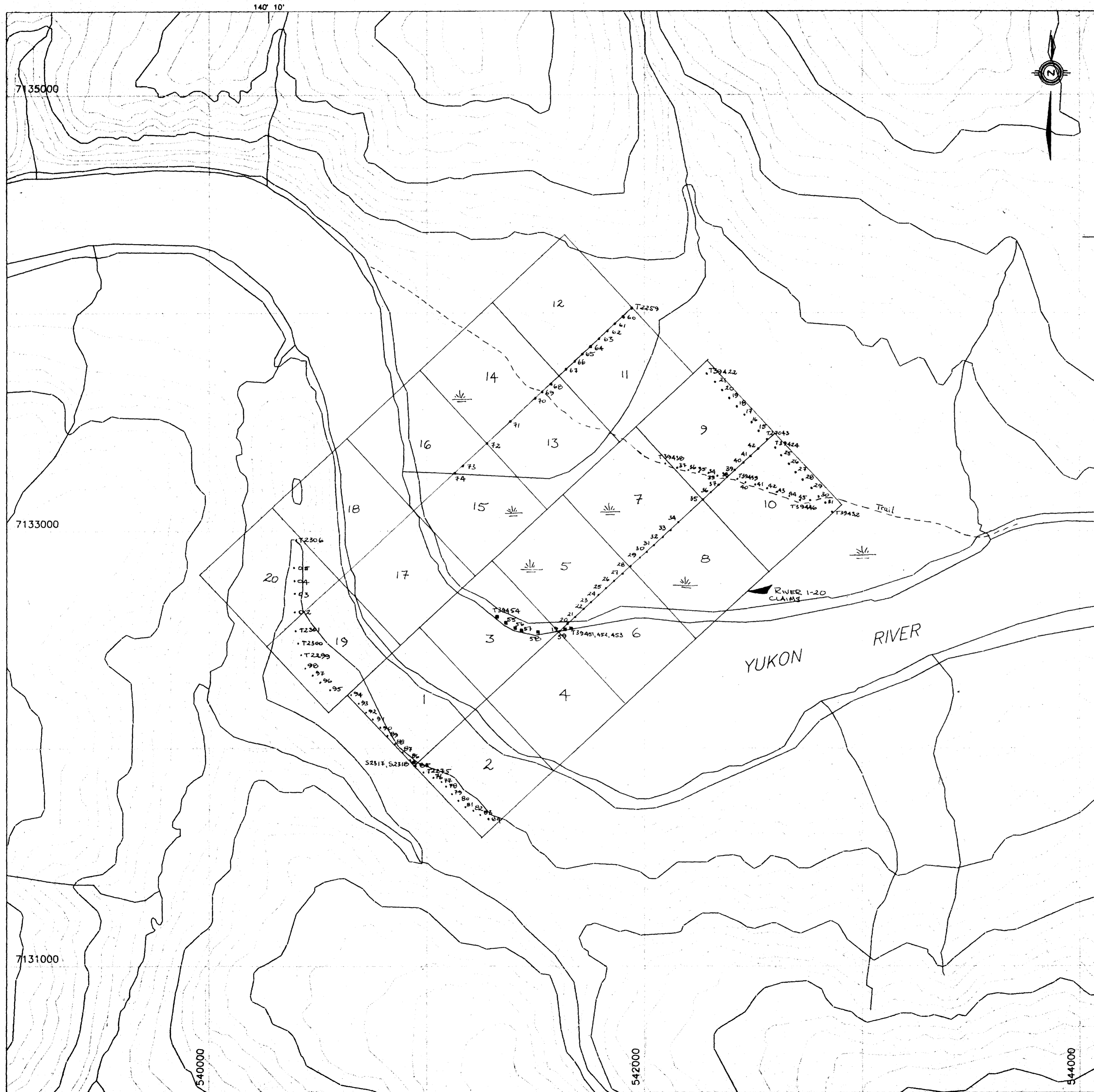
Project —

NORDAC - FIELD ACCOUNT

Date —

FEBRUARY 29, 1996

LABOUR			
Field	A ARCHER - 44 HR AT 60/HR	2640.00	
	R. CARNE - 93 HR AT 50/HR	4650.00	
	D. EATON - 23 HR AT 50/HR	1150.00	
	B WENBYNOWSKI - 18 HR AT 40/HR	720.00	
	T. BECKER - 27 HR AT 33.75/HR	744.50	
	G. BUSO - 157 HR AT 31.88/HR	5004.38	
Office	M. COOKE - 17 1/2 HR AT 33/HR	577.50	
Accounting & Expediting	J. MALIACHEL - 34 1/4 HR AT 37.50/HR	1293.75	16778.13
OTHER SERVICES			
	Room & Board in Whitehorse		
	Field equipment from AC stock		
Printing	34.00	54.75	
	Photocopies 317 @ .25	113.25	
Rentals from AC			
	MALCA RENT & OFFICE SUPPLIES	1000.00	
Drafting,	111 1/4 hrs at \$34.20 /hr.	3813.30	
	LOOMIS COURIER - 2 @ 14.50 EA	29.00	5006.30
EXPENSES			
Petty Cash	40.36 CV	40.36	
Telephone	33.15	33.15	
	CORPORATE COURIER	14.89	
	CAPITAL HELICOPTERS	37214.46	37301.86
MANAGEMENT			
	6% - ON EXPENSES	2238.17	
	- ON FIELD AMT	1344.85	3583.02
			62670.31
GST (R100247667)	7% ON 62670.31		4386.92
E - GST Exempt			67057.23



- LEGEND**
- Claim boundary
 - Soil sample
 - x Silt sample
 - Rock sample
 - ▨ Spruce bog, deep overburden

093534

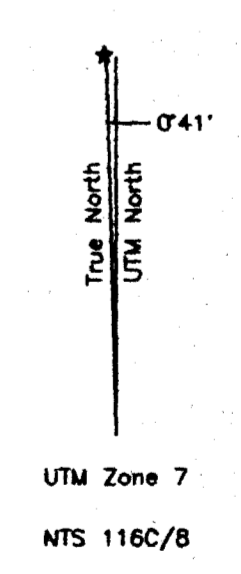
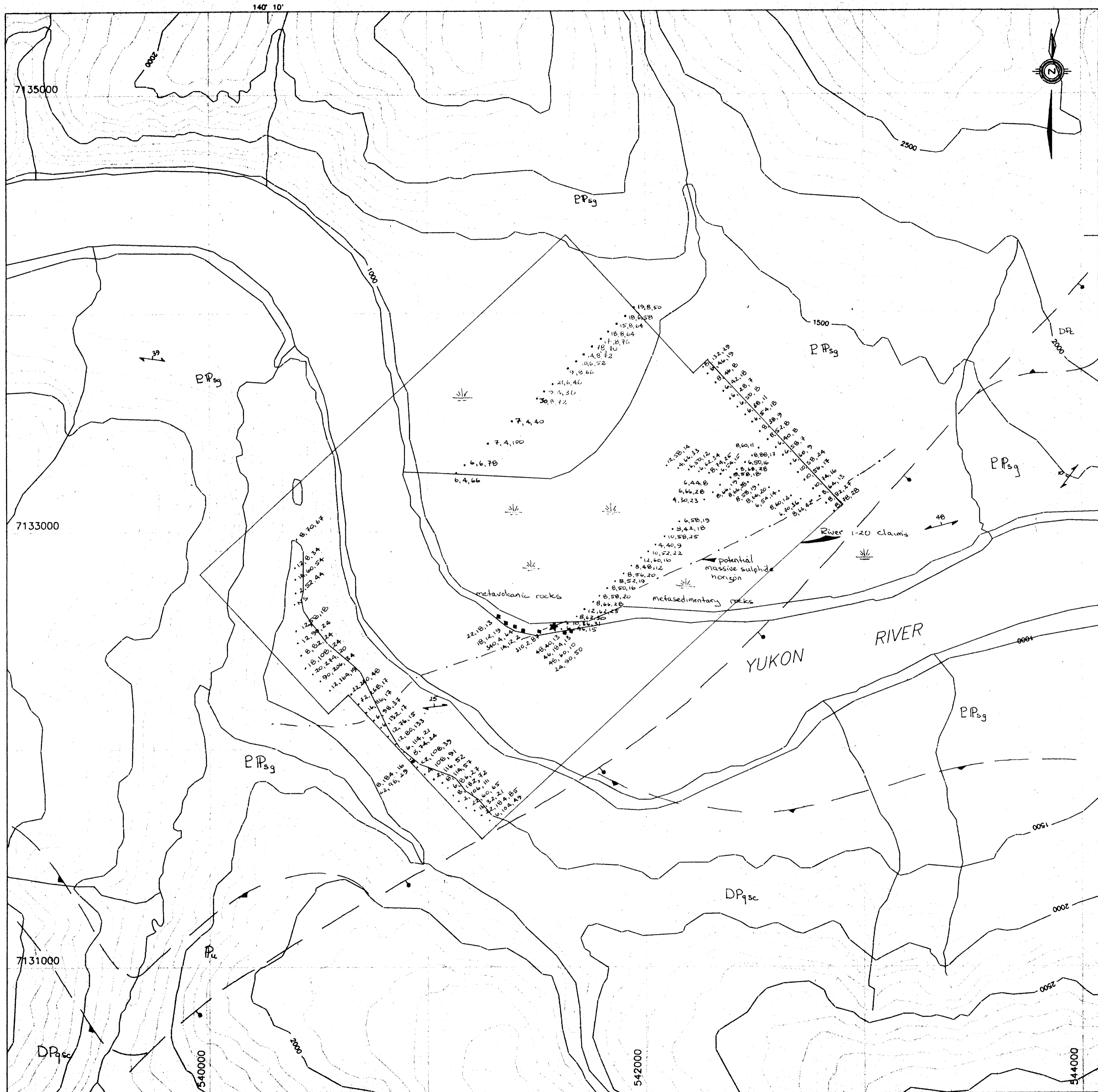


FIGURE 2
 ARCHER, CATHRO & ASSOCIATES (1981) LIMITED
CLAIM AND SAMPLE LOCATION
 RIVER PROPERTY
 NORDAC RESOURCES LTD.
 Scale 1:10,000



#1



LEGEND

- Claim boundary
- Soil sample (Cu, Pb, Zn ppm)
- x Silt sample (Cu, Pb, Zn ppm)
- Rock sample (Cu, Pb, Zn ppm)
- ☼ Spruce bog, deep overburden
- ★ mineral occurrence
- ↖ 45° foliation with strike and dip
- |— normal fault (symbol on down-thrown side)
- |— thrust fault (symbol on down-thrown side)
- - - lithological contact (observed, inferred)

LITHOLOGIES

- MIDDLE AND UPPER PALEOZOIC **093534**
- Klondike Schist
- _{PPu} carbonatized ultramafic rocks, 'serpentine, talc-carbonate schist
- MIDDLE PALEOZOIC
- Nasina Series
- _{DPe} marble
 - _{DPqsc} undifferentiated quartzite and quartz-muscovite-biotite schist
- Unnamed Metavolcanic Rocks
- _{PPsg} quartz-muscovite-chlorite schist, micaceous quartzite, chlorite schist, quartz-feldspar-amphibolite gneiss, metagabbro, marble

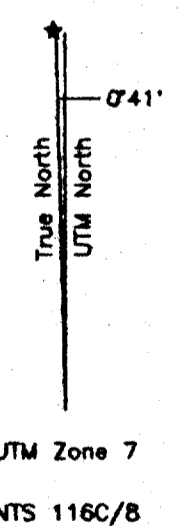
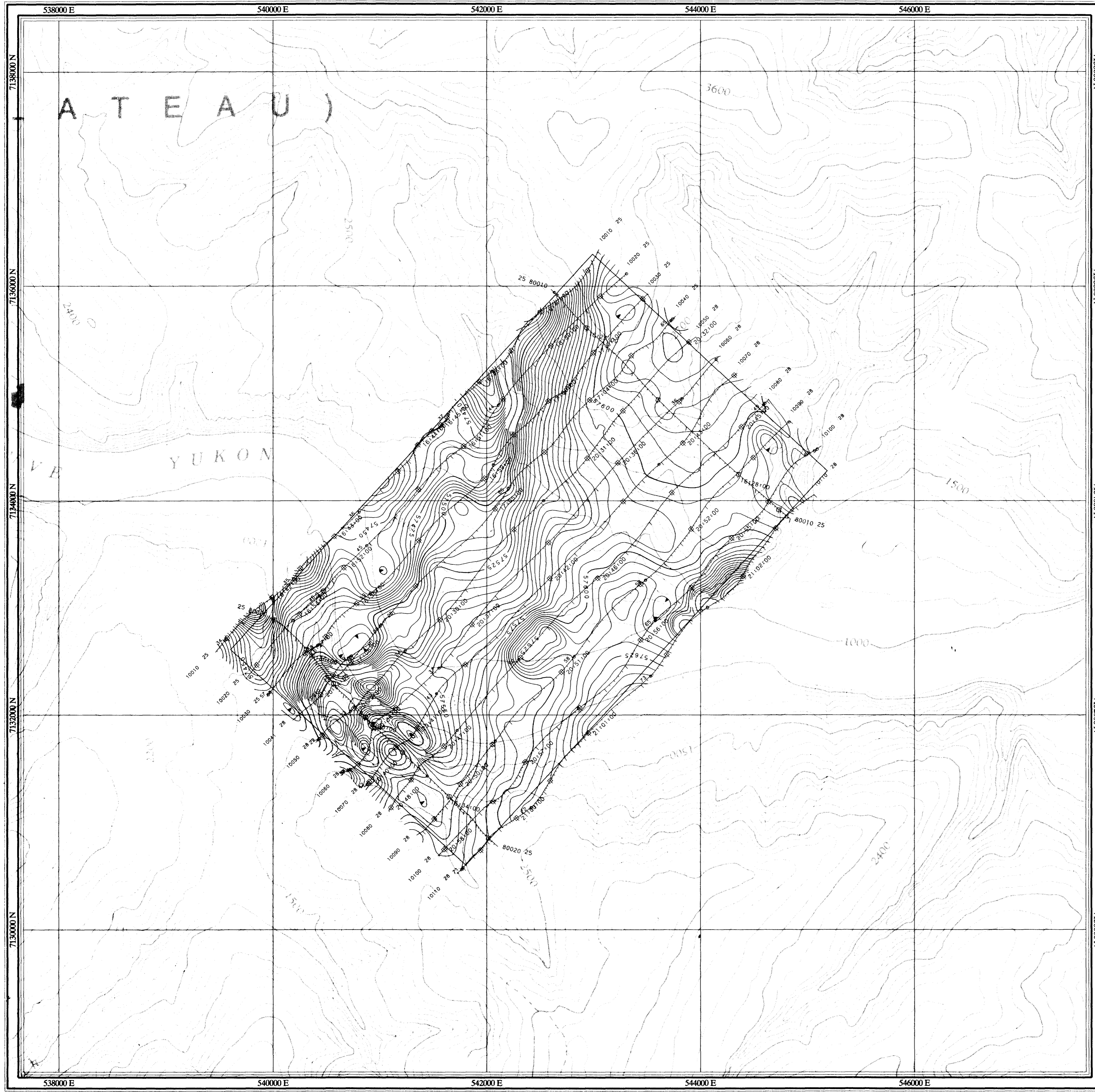


FIGURE 4
 ARCHER, CATHRO & ASSOCIATES (1981) LIMITED
GEOLOGY AND GEOCHEMISTRY
 RIVER PROPERTY
 NORDAC RESOURCES LTD.
 Scale 1:10,000
 0 100 200 400 600 800 1000 m

#2

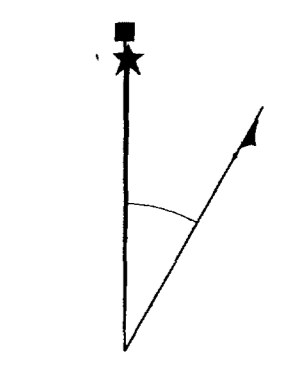


TOTAL FIELD MAGNETICS

Total field magnetic intensity contour data, measured by a cesium high sensitivity magnetometer at an average sensor elevation of 45m, and corrected for diurnal variation.

Map contours are in nanoTeslas, and are multiples of those listed below:

- 5 nT
- 25 nT
- 100 nT
- 500 nT
- 2000 nT



Square: Grid North
 Star: True North
 Arrow: Magnetic North

Angles presented are approximate mean deviations for centre of NTS sheet. Use diagram for reference only.

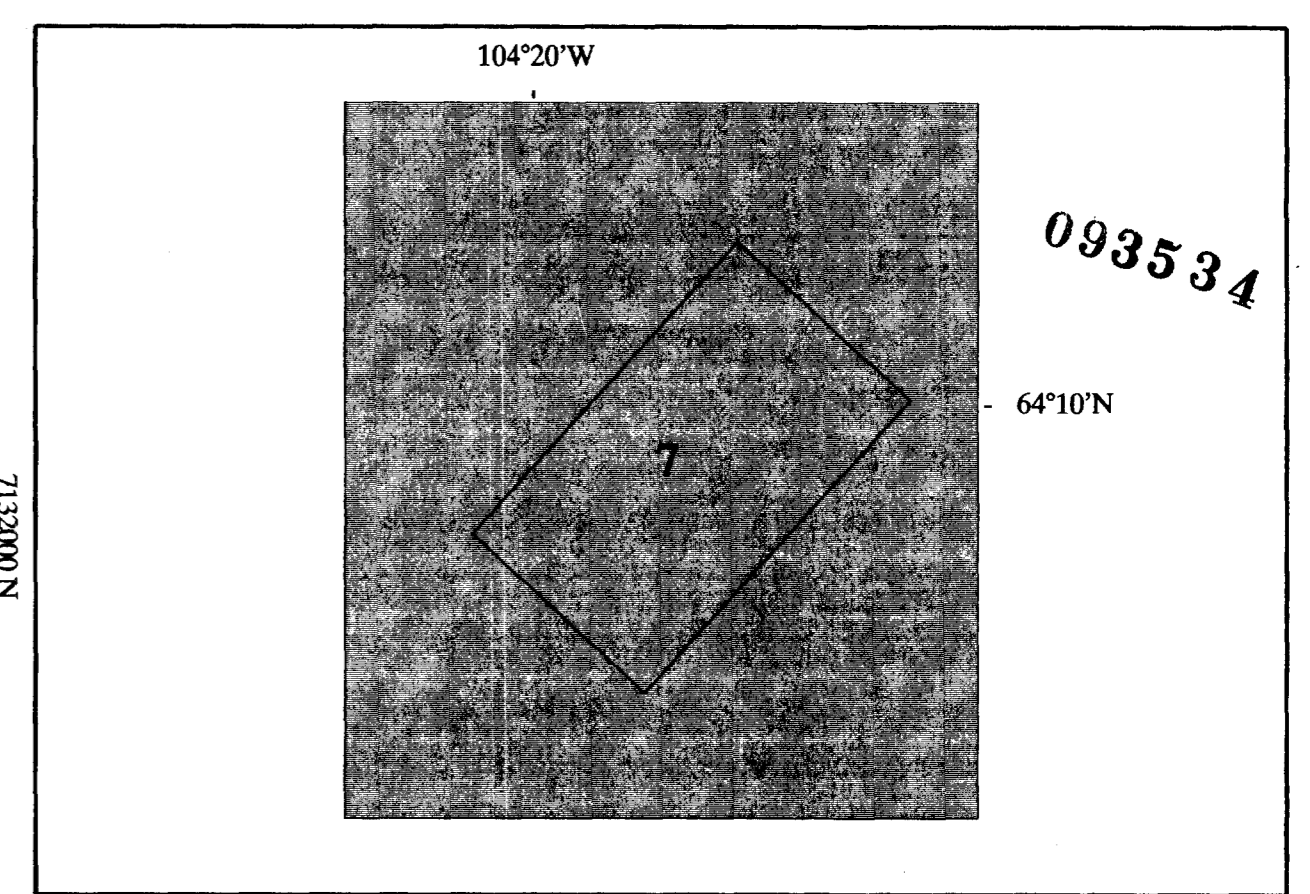
Grid North - True North : 0.7°
 Grid North - Magnetic North : 29.4°
 Annual change : 0.17°

FLIGHT PATH

Navigation and flight path recovery was conducted using a Global Positioning System (GPS) satellite navigation system.

Lines were flown at an azimuth of 45 - 225°, with an average line spacing of 300m.

Average helicopter-terrain clearance of 60m was monitored by radar and barometric altimeters.



COMINCO EXPLORATION

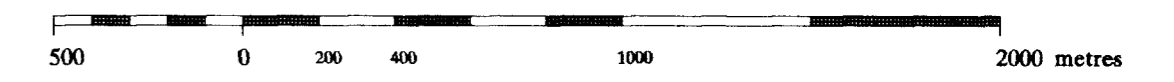
TOTAL FIELD MAGNETICS

AREA 7 TANANA-PROJECT

YUKON

#3

SCALE 1:20 000



Date Flown : JUNE 1995

NTS : 116 C/8

Project : J9518

Map Ref : 1 - 2

