

ASSESSMENT REPORT  
ON THE  
GOLDFINGER 1-10

093514

PHYSICAL, GEOCHEMICAL, and GEOPHYSICAL

BENNETT LAKE AREA  
Latitude 60° 02' N      Longitude 134° 58' W  
NTS 105D/2  
WHITEHORSE MINING DISTRICT

BY

LARRY D. LUTJEN

BRITISH COLUMBIA MINISTER OF MINES CERTIFIED  
GEOLOGICAL, GEOCHEMICAL and GEOPHYSICAL PROSPECTOR

RR1-B12-S11  
CHASE, BRITISH COLUMBIA  
FEBRUARY 1996

FOR

BARNES CREEK MINERALS CORPORATION

RURAL ROUTE 1  
P.O. BOX 36  
CHASE, BRITISH COLUMBIA



## TABLE OF CONTENTS

- Introduction .....	1.
- Property and ownership .....	1.
- Location and access .....	1.
- History .....	2.
- Physiography .....	2.
- Regional Geology .....	2.
- 1995 explorational program .....	3.
- Traversing the Goldfinger claims .....	3.
- Trenching the Main Ore Zone.....	3.
- A detailed SP survey .....	4.
- Additional trenching .....	4.
- Bulk-sampling .....	4.
- Conclusions .....	4.
- Location map .....	5.
- Grid location and trenching map .....	6.
- Self-Potential map .....	7.
- Statement of qualifications .....	8.
- Qualifications (continued) .....	9.
- Qualifications (continued) .....	10.
- Malaspina college certification .....	11.
- Petrology for prospectors certification .....	12.
- Statement of costs .....	13.
- Bibliography .....	14.
- Bondar Clegg bulk-sample assays .....	15.
- Bondar Clegg bulk-sample assays .....	16.
- Bondar Clegg bulk-sample assays .....	17.
- Bondar Clegg bulk-sample assays .....	18.
- Bondar Clegg bulk-sample assays .....	19.
- Bondar Clegg bulk-sample assays .....	20.
- Bondar Clegg bulk-sample invoices .....	21.
- Bondar Clegg bulk-sample invoices .....	22.
- Photographs .....	23.
- Photographs .....	24.
- Photographs .....	25.

**INTRODUCTION** the bulk sampling, geochemical and geophysical program by Barnes Creek Minerals Corporation was conducted from the 29st of June 1995 until the 29th of July 1995. We put in 1,045 feet of detailed Self-Potential (SP) surveys along with bedrock geochemical bulk sampling and trenching. The SP survey outlined 5 new quartz vein stockworks of which all were trenched to bedrock and sampled. Gold values and path-finder minerals will determine the mineralization relationship to the main ore zone. The main ore zone was cut by three trenches T1, T2 and T3 (see enclosed map fig.2) and bulk sampled across each ore zone. We took out over 500 lbs of lithochemical samples from the 1,045 feet of trenching. Bulk concentrate splits were processed for assay from all five of the newly discovered quartz vein stockworks and the main ore zone. It appears that we are only in the quartz vein stockwork of the epithermal system and have yet to hit the bonanza zone (?).

**PROPERTY and OWNERSHIP** the Goldfinger 1-10 claims were located on the 7th of July 1993 and were recorded on the 12th of July 1993 in the Whitehorse Mining Recorders Office Whitehorse, Yukon. All 10 claims are 100% owned by Larry D. Lutjen; RR1- B12-S11; Chase, British Columbia; VOE-1M0. The claim data is as follows:

Claim	Units	Grant Number	Rec. Date
Goldfinger 1	1	# 38106	12 Jul 1993
Goldfinger 2	1	# 38107	12 Jul 1993
Goldfinger 3	1	# 38108	12 Jul 1993
Goldfinger 4	1	# 38109	12 Jul 1993
Goldfinger 5	1	# 38110	12 Jul 1993
Goldfinger 6	1	# 38111	12 Jul 1993
Goldfinger 7	1	# 38112	12 Jul 1993
Goldfinger 8	1	# 38113	12 Jul 1993
Goldfinger 9	1	# 38114	12 Jul 1993
Goldfinger 10	1	# 38115	12 Jul 1993

All work and fees have been paid and recorded and the properties are in good standing until the year 2000.

**LOCATION and ACCESS** the Goldfinger claims are located on NTS mapsheet 105D/02 just east of Monroe Lake on the West Arm of Bennett Lake. The property ranges in altitude from 2100 feet to 5100 feet and includes most of the east slope of Finger Mountain. Access is by boat only from the town of Carcross, Yukon or any point on Taglish or Bennett Lakes. From Carcross you boat west on Bennett Lake past Prejevaisky Point to Camp YMIP (see fig.1). From Camp YMIP access is by flagged trail around 007 Lake as indicated on the grid location map to the Goldfinger 1-10 claims. The only other access is by helicopter in that there are no known roads in the area.

**HISTORY** the first recorded staking in the Wheaton River and Bennett Lake district occurred in 1893 when Frank Corwin and Thomas Rickman located several claims on Carbon Hill, Chieftan Hill, Idaho Hill and possibly Gold Hill. The men died shortly their discovery without disclosing the location of their claims (Cairnes, 1912). Exploration continued in 1905 with the discovery of silver and gold bearing veins on Montana Mountain in 1905 and the discovery of free gold and tellurides on Gold Hill in 1906. Exploration, development, and mining have continued intermittently since then. Activity increased in the area with the opening up of the Venus Mine by United Keno Mining Company in 1981 and 1982 along with the discovery of the Mt. Skukum deposit in 1981 (164,000 tons at 0.73 oz/tn gold and 0.63 oz/tn silver; Erickson 1985 Annual Report). Mining on the Mt. Skukum deposit commenced in the spring of 1986 at the rate of 300 tons per day. The Ben 1-18 claims were staked in 1986 to cover the headwaters of a no name creek containing 853 ppb gold silt anomaly from a government geochemical survey (GSC open file 1218). The Goldfinger 1-10 claims were staked over the Ben claims in 1993 to include several gossans and a newly discovered ore zone (main ore zone) that has returned 9.52 gm/tn and 5.81 gm/tn gold. The main ore zone, which was bulk sampled in 1995, across trench T1, from T1+124 feet to T1+127 feet, has returned a bulk sample average of 8.84 gm/tn gold.

**PHYSIOGRAPHY** on the Goldfinger 1-10 claims ranges from steep slopes at the 2100 foot level to even steeper slopes at the 51200 foot level. The treeline is generally around the 3500 foot level with great wastes of debris from reoccurring avalanches down these steep slopes. The bush at low levels is dense and consists of Vine Alder, Willow and Devil's Club. The trees at low levels are Lodgepole Pine, Cedar, Pine, Alder, Birch, Spruce and Balsam. Above the treeline are occasional small clusters of Spruce and Balsam Fir with low level bush of grasses, alpine flowers, shrubs and vines. There is a continuous avalanche condition with high boulders cascading down the steep slopes and ravens several times a day. There are several east/west faults that crosscut the Goldfinger 1-10 claims that are extremely dangerous to cross. Most of the traverses across these faults were done by hiking to the 5,000 foot level or higher and cutting across the face of the fault at its origin and then hiking back down to the opposite side of the fault. This was a tedious process but one that was necessary. Some of these east/west fault structures were hundreds of feet deep.

**REGIONAL GEOLOGY** the Goldfinger 1-10 claims are on Finger Mountain which lies within the eastern margin of the Coast Plutonic Complex. The Coast Plutonic Complex consists of Cretaceous granites which intrude and lie under low grade metamorphic sediments and volcanics of the Mesozoic Whitehores-Nechako Trough and quartzites, schists and gneisses of the late Precambrian/Paleozoic Yukon Group.

The upper most units of the Trough consist of conglomerates of the Jurassic to Cretaceous Tantalus Formation. These are overlain by subaerial intermediate volcanics of the Cretaceous Mt. Nanson Group. Approximately 10 km west of Finger Mountain is the Bennett Lake Caldera. It's a well developed ring fracture and dyke system with late stage rhyolite and andesite dykes that intrude into the Finger Mountain area (?). Tertiary rhyolite and andesite dykes crosscut older rocks and are exposed in several of the east/west faults. The volcanics are gray to green on weathered outcrops and are found at the top of the talus slopes and form prominent cliffs. The Cretaceous granite is a medium grained K-feldspar megacrystic hornblende that weathers to a pink/gray on outcropping rocks. The conglomerate is rusty and gray weathering outcrop and consists mostly of chert and quartz pebbles with some interbedded siltstones. The granite, conglomerates and volcanics are cut by east/west trending faults. The rhyolite dykes appear to strike with the east/west trending faults. The ore zone appears to strike at an azimuth of 50 degrees and is exposed by the east/west faults. The ore zone is approximately 20/30 meters wide and is formed in a wide alteration zone of silicification. It consists of fine grained quartz, rusty pyrite, kaolinite and montmorillonite clay, epidote, sericite and chlorite. The ore zone has been traced for over a kilometer by following the exposed gossans at the intersection of the ore zone and the east/west crosscutting faults.

**1995 EXPLORATION PROGRAM** was conducted from the 29th of June 1995 until the 29th of July 1995 (see fig.2). We set-up a base camp at camp YMIP (see fig.1) as operational control for the survey. We cut 6 trenches across the entire vein stockwork as follows:

- T1 - at an azimuth of 140 degrees for 375 feet.
- T2 - at an azimuth of 140 degrees for 270 feet.
- T3 - at an azimuth of 140 degrees for 200 feet.
- T4 - at an azimuth of 140 degrees for 55 feet.
- T5 - at an azimuth of 85 degrees for 80 feet.
- T6 - at an azimuth of 140 degrees for 65 feet.

The grids T1, T2, and T3 were cut as access trails from the rim of the fault gouge down to Goldfinger Creek and stations established at 5 foot intervals to facilitate the SP survey (see fig.3) and bulk-sampling. The SP survey was especially useful in outlining five new quartz vein stockworks that were trenched to bedrock and sampled.

**TRAVERSES TO GOLDFINGER CLAIMS** were conducted from the 27th of June to the 28th of June 1995. Food, camping supplies and explorational equipment were transported from Camp YMIP to the Goldfinger claims.

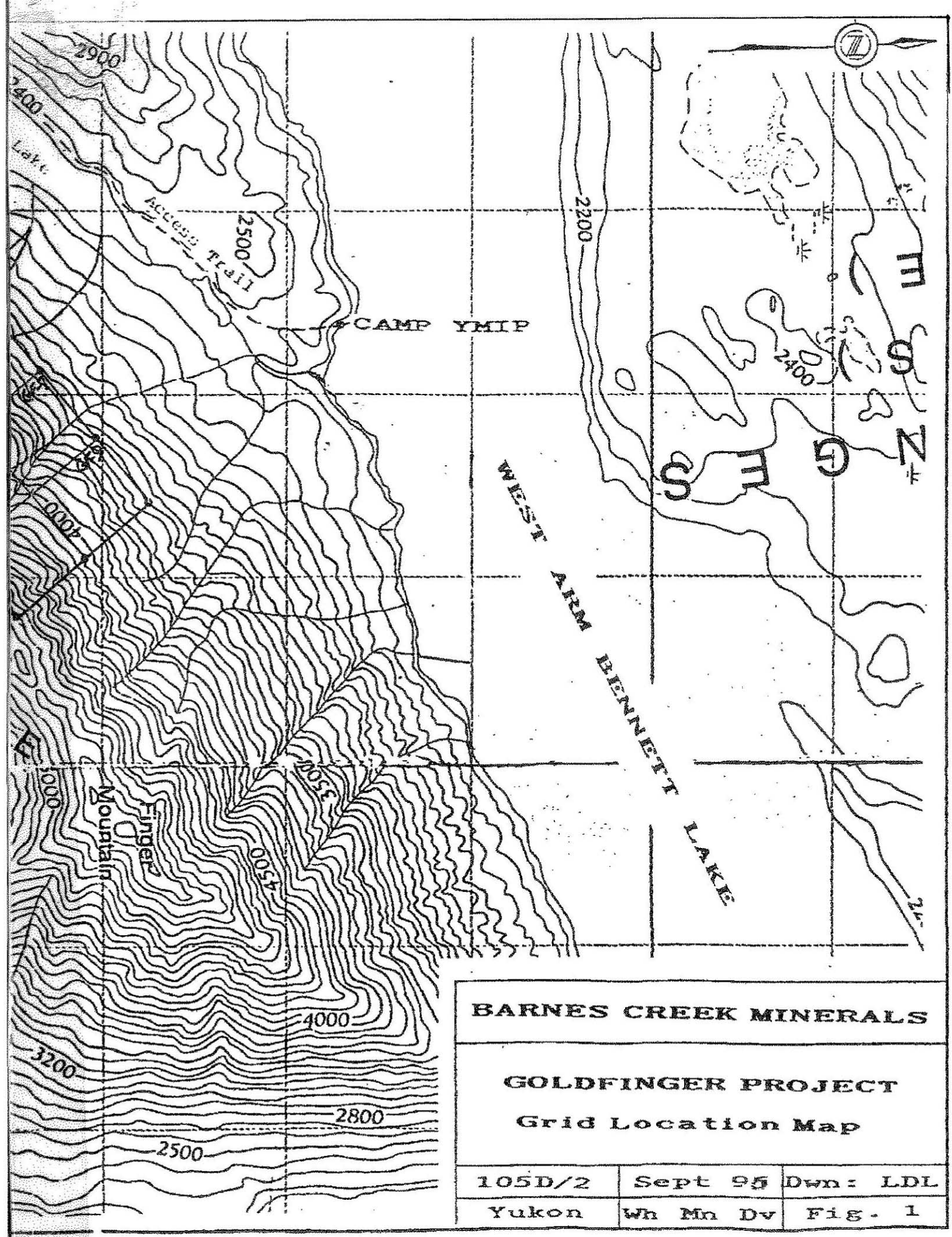
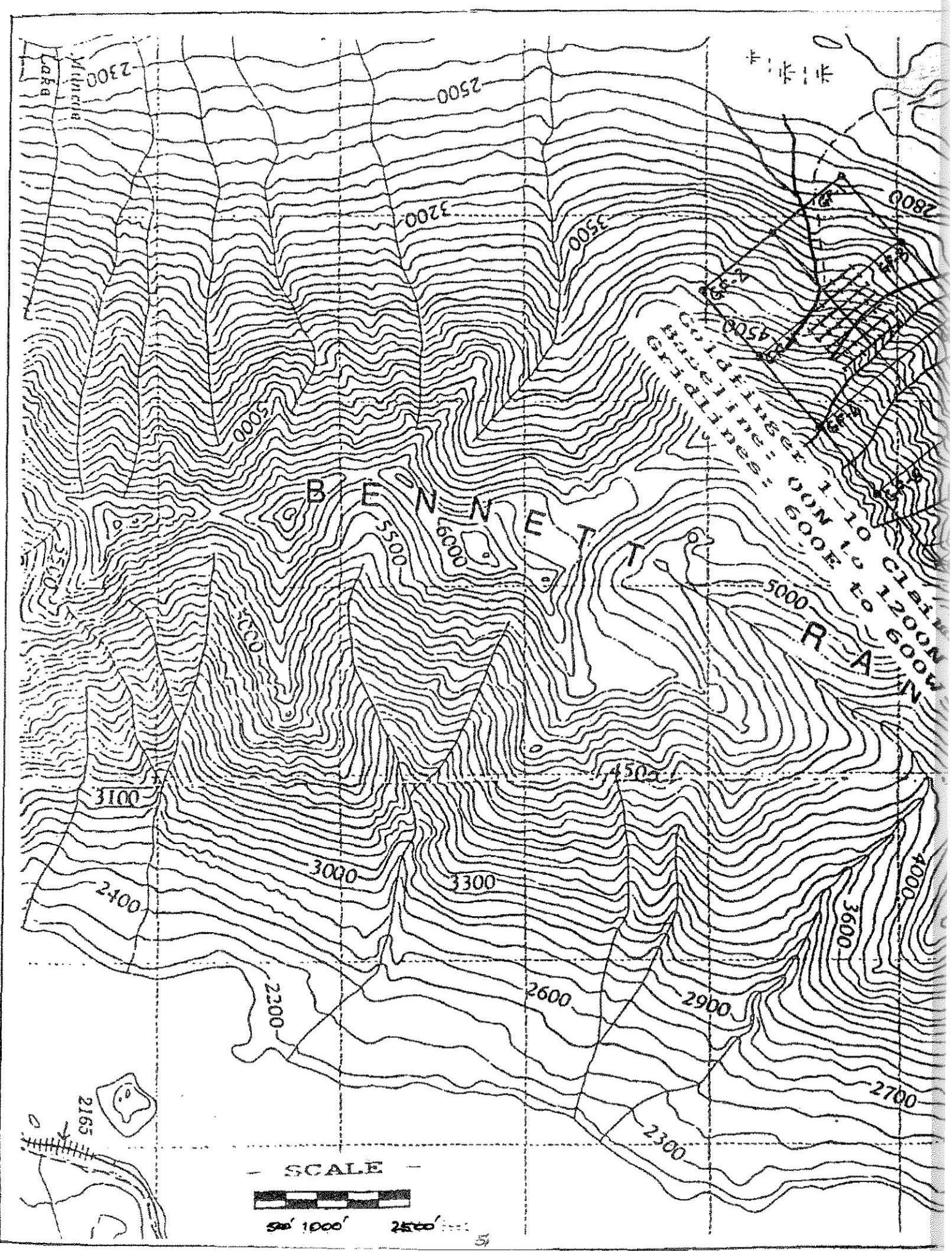
**TRENCHING ON THE MAIN ORE ZONE** was conducted from the 29th of June to the 9th of July 1995 and six trenches T1, T2, T3, T4, T5 and T6 were constructed from the rim of the fault gouge to Goldfinger Creek (see fig.2) and stations were established, at 5 foot intervals, for SP and bulk-sampling surveys.

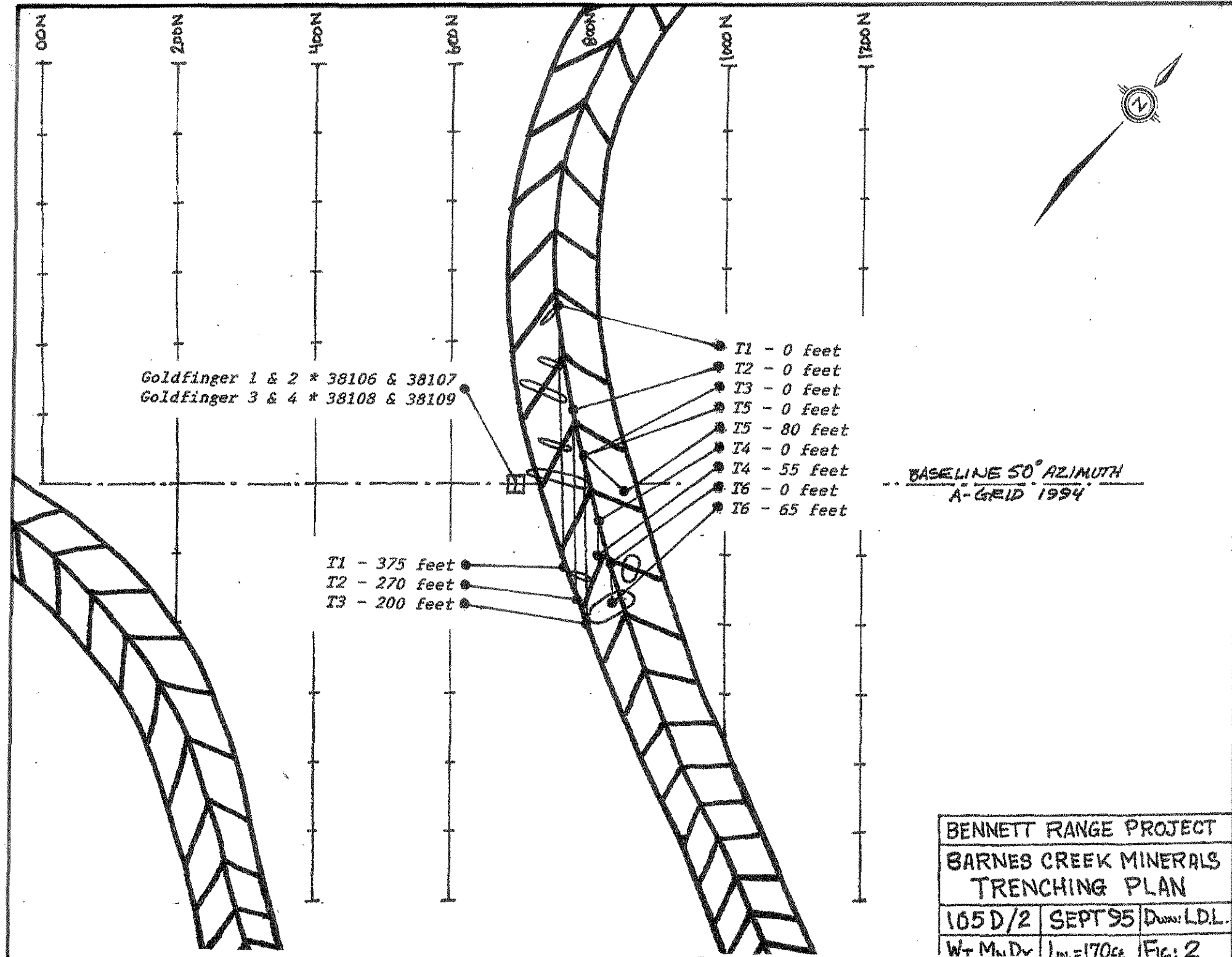
**A DETAILED SP SURVEY** was conducted from the 10th of July to the 14th of July 1995 and five new quartz vein stockworks were discovered. The SP survey was conducted with a 30 meg ohm input impedance millivolt meter (ser. No. 1152) and three conductive-pots zeroed to plus or minus one millivolt. Because of the talus flows and resulting over-burden it was very difficult to establish our ground base for the SP survey so we had to set it up in a small group of Balsam firs and run our ground reference line an extra 250 feet. Once the ground reference was established we dug a 10 centimeter pit at each station and twisted another conductive-pot into the 10 cm pit and measured the millivolt potential at each station. The process repeated twice to confirm the millivolt potential. The conductive-pots are special kaolinite clay without any iron minerals and a super saturated copper sulfate solution surrounding a copper electrodes. Fresh conductive-pots were made up each night before the next days survey.

**ADDITIONAL TRENCHING TO BEDROCK** was done over the five newly discovered quartz veins and the main ore zone from the 15th of July to the 20th of July 1995. Highly silicified brecciated quartz veins were exposed and samples taken. The extent of the mineralization is much greater than was originally mapped.

**BULK-SAMPLING WAS DONE OVER ALL MINERALIZED QUARTZ VEINS** from the 6th of July to the 29th of July 1995. The samples were flagged, bagged and logged and then flown out by helicopter.

**CONCLUSIONS** are that the Goldfinger 1-10 claims represent an exciting new epithermal gold prospect warranting further exploration. The bulk-sampling results of 8.84 gm/tn Au across 4 feet of vein structure, from a surface showing, needs to be diamond drilled to depth to prove up its economic potential. It is recommended that at least two drill pads be established and the main ore zone and newly discovered quartz veins be drilled to depths of 50 meters, 100 meters and 150 meters. The resultant cores then split and assayed across the true width of the veins to determine the economic potential of the Goldfinger Project.





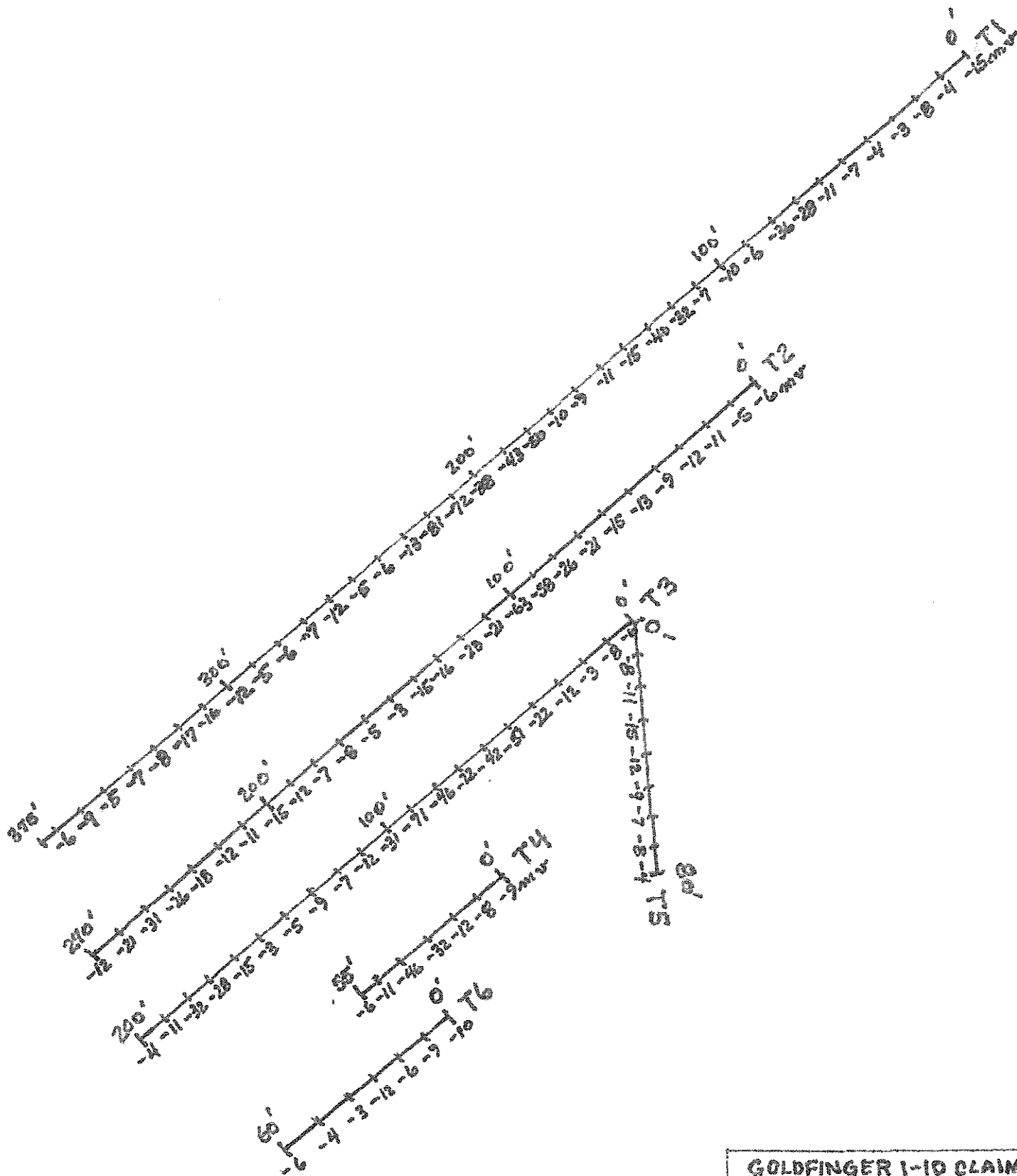
Goldfinger 1 & 2 \* 38106 & 38107  
 Goldfinger 3 & 4 \* 38108 & 38109

- T1 - 0 feet
- T2 - 0 feet
- T3 - 0 feet
- T5 - 0 feet
- T5 - 80 feet
- T4 - 0 feet
- T4 - 55 feet
- T6 - 0 feet
- T6 - 65 feet

- T1 - 375 feet
- T2 - 270 feet
- T3 - 200 feet

--- BASELINE 50° AZIMUTH  
 A-GRID 1994

BENNETT RANGE PROJECT		
BARNES CREEK MINERALS		
TRENCHING PLAN		
105D/2	SEPT 95	Drawn: LDL.
W + M. D. V.	1 in. = 170 ft.	FIG. 2



NOTE: ALL READINGS ARE IN MILLIVOLTS.

GOLDFINGER 1-10 CLAIMS		
BARNES CREEK MINERALS CORP.		
SELF-POTENTIAL MAP		
105D/02	JAN 96	DWN: LD.L
Wt M.D.	1"=42 Feet	Fig. 3

I **LARRY D. LUTJEN** of Rural Route No. 1, Post Office Box 12; Chase, British Columbia; having graduated from the College of San Mateo (U.S.) in 1965 with a degree in Electronics, did my post graduate work at the University of California (Berkeley) in 1966, and received my teaching credentials from Merrit College in 1967. I taught Electronics for the United States Navy at the Naval Air Station in Alameda California from 1962 to 1969. The following is a synopsis of my work experience in the mining industry:

**1958-1962** Surface and subsurface mining on the Hard Quartz claim, Adin Mountain, California including drilling, blasting, timbering, and highgrading.

**1963-1969** Prospecting with John Harden on the Warner Range (Calif), Lovelock plateau (Nevada), and Shieffer Mountain (Calif) for gold, silver, mercury, tungsten, copper, lead, and zinc. We staked several claims in California and Nevada.

**1972-1976** Geophysical prospecting in the Scotch Creek area using a Sharpe SE 600 horizontal and vertical loop on VLF and self potential surveys. We staked several claims including the Silver King and the Silver Queen.

**1977-1980** Geophysical and geochemical surveys in the Shuswap Lake and Adams Plateau with a McPhar 800 vertical field magnetometer and B horizon sampling. Geophysically surveyed the Lost Cabin Mine on Shieffer Mountain California resulting in an option to Lorcan Resources Ltd.

**1982-1983** Received my geophysical certification from the British Columbia Ministry of Mines and Malasapina College. Geophysical survey for Aurun Minerals Ltd. on Ground Hog Basin using a Geonics 816-G Proton Magnetometer and an EM-16 VLF/EM, including geochemical sampling of the B horizon, geophysical mapping, and grid layout. Geochemical sampling of the B horizon and geological surveying for Tylox Resources Ltd. on the Au-1 and Au-2 claims in the Monashee Pass area British Columbia.

**1983-1984** Geophysical survey for MacKenzie Range Gold Inc. on the Golden Eagle Project using a Sabre Model 27 VLF/EM, Scintrex MF-2, and S.P. potential difference surveying. Geophysical and geochemical survey for MacKenzie Range Gold Inc. on the Golden Quartz Project Adin Pass California using a Scintrex Fluxgate Magnetometer MF-2, Sabre Model 27, and S.P. potential difference evaluations.

**1984-1985** 80km of geophysical and geochemical surveys for Barnes Creek Minerals Corporation on the Golden Eagle Project including mapping, profiles, contours and interpretation. Geophysical assessment report for Mr. M. Riley on the Otto claims on the Adams Plateau, British Columbia. 30km of geophysical and geochemical surveys for Noranda Exploration Ltd. on the Birk Creek Project. 10km of geochemical and geophysical surveys for Noranda Exploration Ltd. on the London Ridge Project. All projects sampled the B horizon and used a Scintrex MF-2, Sabre Mod. 27, and potential difference sampling.

**1985-1986** Assessment report, geochemical, and geophysical surveys (30km) for Barnes Creek Minerals Corporation on the Golden Loon Project Little Fort, B.C. 30km of geophysical and geochemical

surveys for Lacana Mining Corporation on the Comstock Project (optioned to Lacana by L.Lutjen) Adams Plateau, B.C.. Assessment reports on the Golden Eagles I & II (40 units), Silver Weasel 1 & 2 (40 units), and Golden Loons 1-9 (176 units) for Barnes Creek Minerals Corporation. All projects sampled the B & C horizons and used a Scintrex MF-2, Geonics 816-G, Sabre Mod. 27, and S.P. potential difference surveying.

1986-1987 50km of geophysical and geochemical surveys for Mineta Resources Ltd. on the Golden Loon Project (optioned to Mineta) Little Fort, B.C.. 10km of geophysical surveys for Barnes Creek Minerals Corporation on the Platinum Giant Project, Salmon Arms British Columbia. 20km of geochemical and geophysical surveys for Westwego Resources Ltd. on the Lost Cabin Project (optioned to Westwego Resources Ltd.) Shieffer Mountain California. Assessment reports for Barnes Creek Minerals Corporation on the Golden Eagles I & II (40 units), Golden Popes (80 units), and Golden Skarns 1 & 2 (40 units). All projects sampled the B & C horizons and used a Scintrex MF-2, Geonics 816-G, Sabre Mod. 27, and S.P. potential difference surveying.

1987-1988 10km of geophysical and geochemical surveys for Souix City Resources Ltd. on the King George Claims, Kettle River British Columbia. 10km of geophysical surveys for Westwego Resources Ltd. on the Lost Cabin Project, Shieffer Mountain California. Assessment reports for Barnes Creek Minerals Corporation on the Golden Skarns (40 units), Lost Lightning Peak Mine (20 units), Golden Popes (40 units), Platinum Giant Project (40 units), and Golden Eagles (40 units). 40km of geochemical and geophysical surveys for Mineta Resources Ltd. on the Golden Loon Project (optioned to Mineta). All projects sampled the B & C horizons and used a Scintrex MF-2, Geonics 816-G, Sabre Mod. 27, and S.P. potential differences.

1988-1989 10km of geochemical and geophysical surveys for Westwego Resources Ltd. on the Lost Cabin Group (optioned to Westwego). 7.5km of geophysical surveys with Corona Corporation on the Platinum Giant Project. Assessment reports on the Golden Eagles I & II (40 units), Golden Pope 1 & 2 (40 units), Lost Lightning Peak Mine (20 units), and Golden Skarn 1 & 2 (40 units). 10km of geophysical and geochemical surveys for Souix City Resources on the King George Project (76 units). 200 meters of diamond drilling (A-core) for Barnes Creek Minerals Corporation on the Golden Fiddler Project, Harris Creek British Columbia. All projects sampled the B & C horizons and used a Scintrex BGS-1SL, Scintrex MF-2, Geonics 816-G, S.P. potential differences, Sabre Mod. 27, and Boyles BBS-1 diamond drill.

1989-1990 100 meters of diamond drilling for Barnes Creek Minerals Corporation on the Golden Fiddler Project (20 units). 10km of geophysical and geochemical surveys on the Golden Eagles 1 & 2 (40 units) for Barnes Creek Minerals Corporation. 10km of geochemical surveys on the Golden Skarns 1 & 2 (40 units) for Barnes Creek Minerals Corporation. Assessment reports on the Platinum Giants 1 & 2 (40 units), Golden Popes 1 & 2 (40 units), Golden Stake 1 & 2 (40 units), Golden Fiddler (20 units), and King George Mine (76 units). All projects sampled the B & C horizons and used a Scintrex BGS-1SL, sabre Mod. 27, S.P. potential differences, Geonics 816-G, and Scintrex MF-2.

1990-1991 350 meters of diamond drilling (A-core) for Westwego Resources Ltd. on the Lost Cabin Project. 100 meters of diamond drilling (A-core) for Barnes Creek Minerals Corporation on the Golden Eagle 1 & 2 (40 units). 10km of geophysical and geochemical surveys for Barnes Creek Minerals Corporation on the King George Mine Project (76 units). Assessment reports on the Golden Eagles 1 & 2 (40 units), Lost Lightning Peak Mine (20 units), Golden Skarns (40 units), Golden Popes 1 & 2 (40 units), and Platinum Giants 1 & 2 (40 units). 5km of geochemical surveys for Barnes Creek Minerals Corporation on the Dixie Queen Project (33 claims), Adin Pass California. All projects sampled the B & C horizons and used a Scintrex BGS-1SL, Sabre Mod. 27, Boyles BBS-1, Geonics 816-G, S.P. potential differences, and Scintrex MF-2.

1991-1992 Assessment work surveys for Barnes Creek Minerals on the Golden Popes 1&2, King George Mine, Platinum Giants, BJ 1-4, Lost Cabin Mine, Dixie Queens and Golden Quartzs. Assessment work surveys for Pharlap Resources Ltd. on the Why 1&2, GM 2 and GM 3, Sweep and Duffer. The surveys included geochemical sampling of the B and/or C horizons, VLF/EM surveys with a Sabre Mod.27, Mag surveys with a Geonics 816-G and a Scintrex MF-2 and SP potential differences.

1992-1993 Grassroots Prospecting on the Bennett Range Project (NTS 105D/2), staked the Goldfinger 1-10 on finger Mountain Bennett Range, assessment work surveys for Barnes Creek Minerals Corp. on their California Project Dixie Queen, Lost Cabin Mine, Golden Quartz and Hess Gold Mine. Assessment work survey on the Lone Coyote Project NTS 82M/3. Assessment work survey on the Frank Hall Mine. The geophysical surveys were done with a Geonics 816G proton magnetometer, Scintrex MF-2 flux-gate magnetometer, a Sabre Mod. 27 VLF/EM and SP potential differences.

1993-1994 Prospecting on the L-331 Group (104M/8&9), staked the Engineer North (104M/9), assessment work survey on the Goldfinger 1-10 (105D/2), assessment work surveys on Barnes Creek Minerals Corporation California Project the Lost Cabin Mine and the Daddy Hess Mine, Assessment work surveys on the Goldfields 1-10 (92I/15W), assessment work surveys on the King George Mine (82E/15E), and staking the Mariko 1 & 2 (82L/14W). The geophysical surveys were done with a geonics 816G proton magnetometer, Scintrex MF-2 flux-gate magnetometer, a Sabre model 27 VLF/EM and SP potential differences.

1994-1995 Grassroots Prospecting on the Judas Mountain Project (NTS 105D/08), assessment work survey on the Goldfields 1-10 (92I/15W), assessment work survey the King George Mine (82E/15E), assessment work survey on the Mariko 1 & 2 (82L/14W), assessment work survey on the Goldfinger 1-10 (105D/02) and staked the L & L claims (92I/10) and Win claims (92I/10). The geophysical surveys were done with a Geonics 816G proton magnetometer, Scintrex MF-2 flux-gate magnetometer, a Sabre model 27 VLF/EM and SP potential differences.

# MALASPINA COLLEGE

## Statement of Course Completion

LARRY D. LUTJEN

has

Successfully Completed 180 Hours of Instruction  
in

MINERAL EXPLORATION FOR PROSPECTORS

PRESENTED BY B.C. MINISTRY OF ENERGY, MINES AND PETROLEUM RESOURCES  
B.C. MINISTRY OF EDUCATION

APRIL 16 to 30, 1983 - MESACHIE LAKE, B.C.

MAY 2, 1983

Dated at Nanaimo,  
British Columbia, Canada



Malaspina  
College

*[Signature]*

Director / Dean

*[Signature]*

Registrar

*[Signature]*

Instructor



Province of British Columbia  
Ministry of Energy, Mines and Petroleum Resources

THIS IS TO CERTIFY THAT

LARRY D. LUTJEN

HAS SUCCESSFULLY COMPLETED  
PETROLOGY FOR PROSPECTORS COURSE

AND IS HEREBY GRANTED  
THIS CERTIFICATE OF ACHIEVEMENT

*VA Peto*  
DIRECTOR OF  
PROSPECTORS' ASSISTANCE

TOM RICHARDS  
COURSE INSTRUCTOR  
April 1st - 9th, 1991

DATE

STATEMENT OF COSTS

1. Daily living allowance, 31 days @ \$55.15/day x 3 .....	\$ 5,128.95
Note: Paid invoice 10/23/95	
2. Wages: L.Lutjen, 31 days @ \$175/day .....	\$ 5,425.00
Note: Paid invoice 10/23/95	
3. Wages: R.Delmar, 31 days @ \$150/day .....	\$ 4,650.00
Note: Paid invoice 10/23/95	
4. Wages: M.Lutjen, 31 days @ \$150 .....	\$ 4,650.00
Note: Paid invoice 10/23/95	
5. Transportation: 897 km @ \$0.40/km .....	\$ 358.80
Note: Paid invoice 10/23/95	
6. Equipment rentals, Barnwell & Assoc. (Chase B.C.) ....	\$ 1,550.00
Note: Paid invoice 10/23/95	
7. Office/field supplies .....	\$ 530.98
Note: Paid invoice 10/23/95	
8. Crushed bulk-samples to minus 80 mesh, quarter-split to 2 kilogram samples, and bagged for transportation; 3 man/days at \$150 per man/day .....	\$ 450.00
9. Report preparation, 2 man/days at \$150 per man/day ...	\$ 300.00
10. Bondar Clegg assay invoice .....	\$ 193.94
11. Helicopter, 24 Jul 95, Heli-Dynamics, P.O.4280, Whitehorse, Yukon, Y1A-3T3, 1-403-668-3536 .....	\$ 800.00
<hr/>	
Total	\$24,037.67

## BIBLIOGRAPHY

Cairnes, D. GSC Memoir #37  
Bultman, T. Phd thesis on Whitehorse Trough west of Atlin  
Christie, R. Bennett Cassiar district  
Doherty, R. & Hart, C. Open File 1988-2  
Doherty, R. & Hart, C. Open File 1990-4  
GSC Open File 214  
GSC Memoir #74  
GSC Geological Bulletin #5  
GSC Map #19-1957  
Gsc Map #94A  
GSC Map 218A  
GSC Map 1418A



# Bondar Clegg Inchcape Testing Services

## Certificate of Analysis

CLIENT: BARNES CREEK MINERALS CORPORATION  
REPORT: V95-01836.4 ( COMPLETE )

*M. B. B.*

PROJECT: 1-10  
DATE PRINTED: 15-JAN-96 PAGE 1

SAMPLE NUMBER	ELEMENT UNITS	Fine g	Heavy g	AuFine OPT	Au Hvy OPT	Ag-Au g/T	AgFine OPT	Ag Hvy OPT
Q: T3+50 T3+52		1800.0	39.03	0.020	0.17	0.8	0.06	0.1
Q: T3+85 T3+87		1800.0	40.59	0.038	0.10	1.35	0.24	0.3
Q: T4+32 T4+38		1860.0	37.00	0.007	0.05	0.27	0.10	<0.1
Q: T2+95 T2+100		1720.0	64.86	0.049	0.17	1.83	0.17	0.2
Q: T1+125 T1+126		1690.0	42.10	0.064	0.26	2.36	0.09	0.2

Bondar-Clegg & Company Ltd.  
130 Pemberton Avenue, North Vancouver, B.C., V7P 2R5, Canada  
Tel: (604) 985-0681, Fax: (604) 985-1071

  
Registered Assayer, Province of British Columbia



# Bondar Clegg Inchcape Testing Services

## Certificate of Analysis

CLIENT: BARNES CREEK MINERALS CORPORATION  
REPORT: V95-01836.4 ( COMPLETE )

PROJECT: 1-10  
DATE PRINTED: 15-JAN-96 PAGE 2

STANDARD NAME	ELEMENT UNITS	Fine g	Heavy g	AuFine OPT	Au Hvy OPT	AgFine OPT	Ag Hvy OPT
FA SYNTHETIC STD		-	-	-	-	0.46	-
Number of Analyses		-	-	-	-	1	-
Mean Value		-	-	-	-	0.457	-
Standard Deviation		-	-	-	-	-	-
Accepted Value		-	-	-	-	0.50	-
MISC STD		-	-	0.092	-	-	-
Number of Analyses		-	-	1	-	-	-
Mean Value		-	-	0.0920	-	-	-
Standard Deviation		-	-	-	-	-	-
Accepted Value		-	-	-	-	-	-



# Bondar Clegg Inchcape Testing Services

Certificat  
of  
Analysis

REPORT: V95-01836.4 ( COMPLETE )

REFERENCE:

CLIENT: BARNES CREEK MINERALS CORPORATION  
PROJECT: 1-10

SUBMITTED BY: L. LUTJEN  
DATE PRINTED: 15-JAN-96

ORDER	ELEMENT	NUMBER OF ANALYSES	LOWER DETECTION LIMIT	EXTRACTION	METHOD
1	Fine Pulp Weight -- Fine	5	0.1 g		FIRE ASSAY
2	Heavy Pulp Weight - Heavy	5	0.01 g		FIRE ASSAY
3	AuFine Gold in Fines	5	0.001 OPT		FIRE ASSAY
4	Au Hvy Gold in Heavies	5	0.01 OPT		FIRE ASSAY
5	AVG_AU Avg Au in Sample	5	0.001 OPT		FIRE ASSAY
6	AgFine Silver in Fines	5	0.01 OPT		FIRE ASSAY
7	Ag Hvy Silver in Heavies	5	0.1 OPT		FIRE ASSAY
8	AVG_AG Avg Ag in Sample	5	0.01 OPT		FIRE ASSAY

SAMPLE TYPES	NUMBER	SIZE FRACTIONS	NUMBER	SAMPLE PREPARATIONS	NUMBER
Q OTHER DRILL TYPES	5	HEAVY/-200	5	TSP - BLASTER PREP PULVERIZING/KG	5 10

REPORT COPIES TO: RR1 BOX 36

INVOICE TO: RR1 BOX 36



# Bondar Clegg

## Inchcape Testing Services

Geochemical  
Lab  
Report

REPORT: V95-01836.0 ( COMPLETE )

REFERENCE:

CLIENT: BARNES CREEK MINERALS CORPORATION

SUBMITTED BY: L. LUTJEN

PROJECT: 1-10

DATE PRINTED: 12-JAN-96

ELEMENT	NUMBER OF ANALYSES	LOWER DETECTION	EXTRACTION	METHOD
1 Ag Silver	5	0.2 PPM	HCL:HNO3 (3:1)	INDUC. COUP. PLASMA
2 Cu Copper	5	1 PPM	HCL:HNO3 (3:1)	INDUC. COUP. PLASMA
3 Pb Lead	5	2 PPM	HCL:HNO3 (3:1)	INDUC. COUP. PLASMA
4 Zn Zinc	5	1 PPM	HCL:HNO3 (3:1)	INDUC. COUP. PLASMA
5 Mo Molybdenum	5	1 PPM	HCL:HNO3 (3:1)	INDUC. COUP. PLASMA
6 Ni Nickel	5	1 PPM	HCL:HNO3 (3:1)	INDUC. COUP. PLASMA
7 Co Cobalt	5	1 PPM	HCL:HNO3 (3:1)	INDUC. COUP. PLASMA
8 Cd Cadmium	5	0.2 PPM	HCL:HNO3 (3:1)	INDUC. COUP. PLASMA
9 Bi Bismuth	5	5 PPM	HCL:HNO3 (3:1)	INDUC. COUP. PLASMA
10 As Arsenic	5	5 PPM	HCL:HNO3 (3:1)	INDUC. COUP. PLASMA
11 Sb Antimony	5	5 PPM	HCL:HNO3 (3:1)	INDUC. COUP. PLASMA
12 Fe Iron	5	0.01 PCT	HCL:HNO3 (3:1)	INDUC. COUP. PLASMA
13 Mn Manganese	5	1 PPM	HCL:HNO3 (3:1)	INDUC. COUP. PLASMA
14 Te Tellurium	5	10 PPM	HCL:HNO3 (3:1)	INDUC. COUP. PLASMA
15 Ba Barium	5	1 PPM	HCL:HNO3 (3:1)	INDUC. COUP. PLASMA
16 Cr Chromium	5	1 PPM	HCL:HNO3 (3:1)	INDUC. COUP. PLASMA
17 V Vanadium	5	1 PPM	HCL:HNO3 (3:1)	INDUC. COUP. PLASMA
18 Sn Tin	5	20 PPM	HCL:HNO3 (3:1)	INDUC. COUP. PLASMA
19 W Tungsten	5	20 PPM	HCL:HNO3 (3:1)	INDUC. COUP. PLASMA
20 La Lanthanum	5	1 PPM	HCL:HNO3 (3:1)	INDUC. COUP. PLASMA
21 Al Aluminium	5	0.01 PCT	HCL:HNO3 (3:1)	INDUC. COUP. PLASMA
22 Mg Magnesium	5	0.01 PCT	HCL:HNO3 (3:1)	INDUC. COUP. PLASMA
23 Ca Calcium	5	0.01 PCT	HCL:HNO3 (3:1)	INDUC. COUP. PLASMA
24 Na Sodium	5	0.01 PCT	HCL:HNO3 (3:1)	INDUC. COUP. PLASMA
25 K Potassium	5	0.01 PCT	HCL:HNO3 (3:1)	INDUC. COUP. PLASMA
26 Sr Strontium	5	1 PPM	HCL:HNO3 (3:1)	INDUC. COUP. PLASMA
27 Y Yttrium	5	1 PPM	HCL:HNO3 (3:1)	INDUC. COUP. PLASMA
28 Ga Gallium	5	2 PPM	HCL:HNO3 (3:1)	INDUC. COUP. PLASMA
29 Li Lithium	5	1 PPM	HCL:HNO3 (3:1)	INDUC. COUP. PLASMA
30 Nb Niobium	5	1 PPM	HCL:HNO3 (3:1)	INDUC. COUP. PLASMA
31 Sc Scandium	5	5 PPM	HCL:HNO3 (3:1)	INDUC. COUP. PLASMA
32 Ta Tantalum	5	10 PPM	HCL:HNO3 (3:1)	INDUC. COUP. PLASMA
33 Ti Titanium	5	0.01 PCT	HCL:HNO3 (3:1)	INDUC. COUP. PLASMA
34 Zr Zirconium	5	1 PPM	HCL:HNO3 (3:1)	INDUC. COUP. PLASMA

SAMPLE TYPES	NUMBER	SIZE FRACTIONS	NUMBER	SAMPLE PREPARATIONS	NUME
Q OTHER DRILL TYPES	5	2 -150	5		

REPORT COPIES TO: RR1 BOX 36

INVOICE TO: RR1 BOX 36



# Bondar Clegg

## Inchcape Testing Services

# Geochemical Lab Report

CLIENT: BARNES CREEK MINERALS CORPORATION

PROJECT: 1-10

REPORT: V95-01836.0 ( COMPLETE )

DATE PRINTED: 12-JAN-96

PAGE 1

AMPLE	ELEMENT	Ag	Cu	Pb	Zn	Mo	Ni	Co	Cd	Bi	As	Sb	Fe	Mn	Te	Ba	Cr	V	Sn	W	La	Al	Mg	Ca	Na	K	Sr	Y	Ga	Li	Nb	Sc	Ta	Ti	Zr
NUMBER	UNITS	PPM	PPM	PPM	PPM	PPM	PPM	PPM	PPM	PPM	PPM	PPM	PCT	PPM	PPM	PPM	PPM	PPM	PPM	PPM	PPM	PCT	PCT	PCT	PCT	PCT	PPM	PPM	PPM	PPM	PPM	PPM	PPM	PCT	PPM
3+50 T3+52		2.8	16	31	8	28	43	1	<.2	<5	17	<5	0.54	61	<10	14	97	2	<20	<20	2	0.24	<.01	0.11	<.01	0.09	13	1	<2	<1	<1	<5	<10	<.01	<1
3+85 T3+87		7.6	27	27	37	37	23	3	<.2	<5	9	<5	1.03	1322	<10	25	48	7	<20	<20	13	0.46	0.23	6.40	<.01	0.15	277	6	<2	4	<1	<5	<10	<.01	1
4+32 T4+38		3.7	28	58	7	52	54	1	<.2	<5	35	<5	0.70	78	<10	20	121	3	<20	<20	2	0.26	<.01	0.08	<.01	0.14	31	1	<2	<1	<1	<5	<10	<.01	1
2+95 T2+100		5.6	18	32	11	54	70	2	<.2	<5	14	<5	0.72	128	<10	24	151	4	<20	<20	5	0.57	0.02	0.37	<.01	0.11	43	2	<2	1	<1	<5	<10	<.01	1
1+125 T1+126		3.5	14	59	32	36	32	2	<.2	<5	12	<5	1.37	264	<10	46	70	7	<20	<20	10	0.65	0.14	0.53	0.02	0.17	50	6	<2	4	<1	<5	<10	<.01	2

61



# Bondar Clegg Incape Testing Services

## Geochemical Lab Report

CLIENT: BARNES CREEK MINERALS CORPORATION

REPORT: V95-01836.0 ( COMPLETE )

PROJECT: 1-10

DATE PRINTED: 12-JAN-96

PAGE 2

STANDARD NAME	ELEMENT UNITS	Ag	Cu	Pb	Zn	Mo	Ni	Co	Cd	Bi	As	Sb	Fe	Mn	Te	Ba	Cr	V	Sn	W	La	Al	Mg	Ca	Na	K	Sr	Y	Ga	Li	Nb	Sc	Ta	Ti	Zr	
BCC GEOCHEM STD 4		0.4	255	28	230	5	37	8	0.8	<5	37	<5	2.38	589	<10	44	66	6	<20	<20	2	0.66	1.41	1.35	0.04	0.11	35	2	<2	5	<1	<5	<10	<.01	6	
Number of Analyses		1	1	1	1	1	1	1	1	1	1	1	1	1	1	1	1	1	1	1	1	1	1	1	1	1	1	1	1	1	1	1	1	1	1	1
Mean Value		0.4	255	28	230	5	37	8	0.8	3	37	3	2.38	589	5	44	66	6	10	10	2	0.66	1.41	1.35	0.04	0.11	35	2	1	5	0.5	3	5	.005	6	
Standard Deviation		-	-	-	-	-	-	-	-	-	-	-	-	-	-	-	-	-	-	-	-	-	-	-	-	-	-	-	-	-	-	-	-	-	-	
Accepted Value		0.5	290	33	255	4	42	9	0.8	1	30	1	2.40	600	0.1	55	80	9	5	1	4	0.77	1.34	1.43	0.04	0.14	39	4	2	7	1	12	1	0.01	8	
ANALYTICAL BLANK		<.2	<1	<2	<1	<1	<1	<1	<.2	<5	<5	<5	<.01	<1	<10	<1	<1	<1	<20	<20	<1	<.01	<.01	<.01	<.01	<.01	<1	<1	<2	<1	<1	<5	<10	<.01	<1	
Number of Analyses		1	1	1	1	1	1	1	1	1	1	1	1	1	1	1	1	1	1	1	1	1	1	1	1	1	1	1	1	1	1	1	1	1	1	1
Mean Value		0.1	0.5	1	0.5	0.5	0.5	0.5	0.1	3	3	3	.005	0.5	5	0.5	0.5	0.5	10	10	0.5	.005	.005	.005	.005	.005	0.5	0.5	1	0.5	0.5	3	5	.005	0.5	
Standard Deviation		-	-	-	-	-	-	-	-	-	-	-	-	-	-	-	-	-	-	-	-	-	-	-	-	-	-	-	-	-	-	-	-	-	-	
Accepted Value		.01	.01	.01	.01	.01	.01	.01	.01	.01	.01	.01	<.01	.005	.01	.01	.01	.01	.01	.01	.01	<.01	<.01	<.01	<.01	<.01	<.01	.01	.01	.01	.01	.01	.01	.01	<.01	.01

20.



# Bondar Clegg

## Inchcape Testing Services

Bondar-Clegg & Company Ltd  
 170 Pemberton Avenue  
 North Vancouver, British Columbia  
 V7P 2R5  
 Tel: (604) 985-0681  
 Fax: (604) 985-1071

BARNES CREEK MINERALS CORPORATION  
 RRI BOX 36  
 SITE 11  
 CHASE, B.C.  
 V0E 1M0

Invoice : V124098, Page 1  
 Date : 16-JAN-96  
 Report No: V95-01836.4  
 Project : 1-10  
 Reference:

REC'D \$200.00 CDN  
 -THANK YOU-

5 Analyses of TSP - GOLD & SILVER	at \$21.00	\$ 105.00	\$ 105.00
Silver in Fines			
Silver in Heavies			
Avg Ag in Sample			
Gold in Fines			
Gold in Heavies			
Avg Au in Sample			
Pulp Weight -- Fine			
Pulp Weight - Heavy			

Sample Preparation

5 Samples of TSP - BLASTER PREP	at \$ 7.50	\$ 37.50	
Subtotal		\$ 37.50	\$ 37.50

Miscellaneous Charges

TAX GST #R100576693		\$ 9.98	
Subtotal		\$ 9.98	\$ 9.98

Invoice Total: \$ 152.48 Cdn

THIS IS A PROFESSIONAL SERVICE  
 ACCOUNTS DUE WHEN RENDERED



# Bondar Clegg Inchcape Testing Services

Bondar-Clegg & Company Ltd  
150 Pemberton Avenue  
North Vancouver, British Columbia  
V7P 2R5  
Tel: (604) 985-0681  
Fax: (604) 985-1071

BARNES CREEK MINERALS CORPORATION  
RR1 BOX 36  
SITE 11  
CHASE, B.C.  
VOE 1M0

Invoice : V124097, Page 1

Date : 16-JAN-96

Report No: V95-01836.0

Project : 1-10

Reference:

5 Analyses of LEEMAN 34EL PARTIAL	at \$ 7.75	\$ 38.75	\$ 38.75
Silver		Aluminum	
Arsenic		Barium	
Bismuth		Calcium	
Cadmium		Cobalt	
Chromium		Copper	
Iron		Gallium	
Potassium		Lanthanum	
Lithium		Magnesium	
Manganese		Molybdenum	
Sodium		Niobium	
Nickel		Lead	
Antimony		Scandium	
Tin		Strontium	
Tantalum		Tellurium	
Titanium		Vanadium	
Tungsten		Yttrium	
Zinc		Zirconium	

Sample Preparation

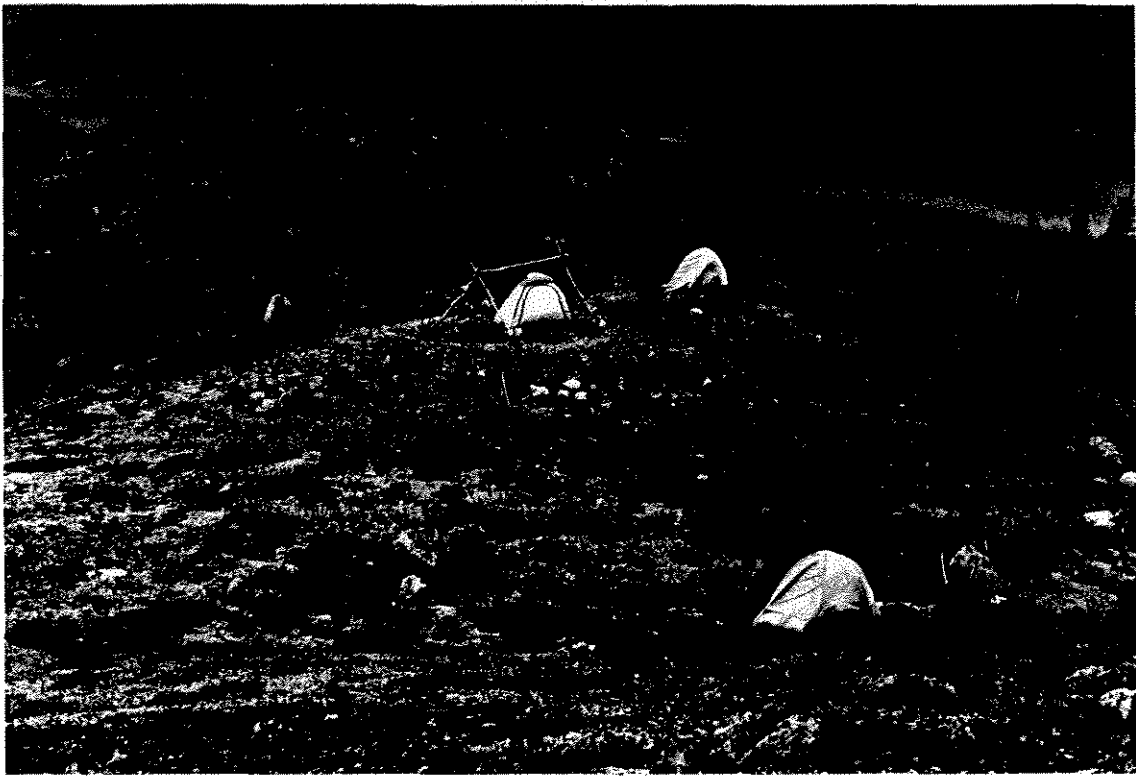
5 Samples of TSP - BLASTER PREP	at \$ 0.00	\$ 0.00	
Subtotal		\$ 0.00	\$ 0.00

Miscellaneous Charges

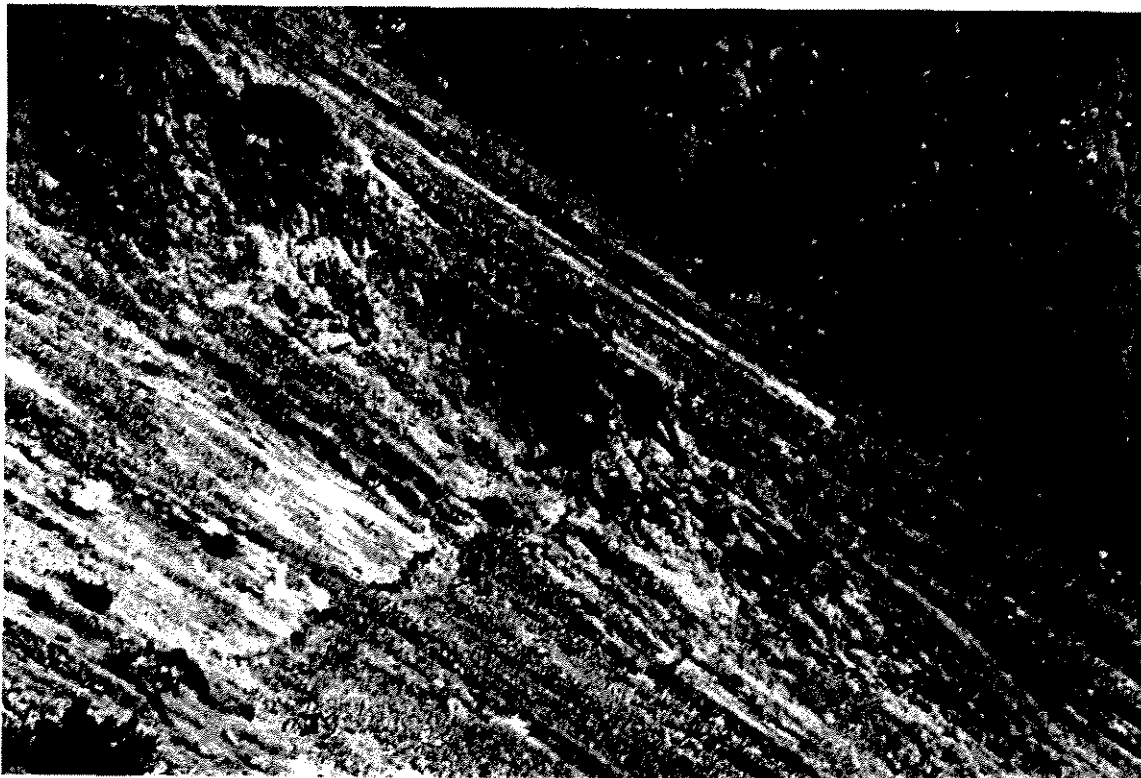
TAX GST #R100576693		\$ 2.71	
Subtotal		\$ 2.71	\$ 2.71

Invoice Total: \$ 41.46 Cdn

THIS IS A PROFESSIONAL SERVICE  
ACCOUNTS DUE WHEN RENDERED

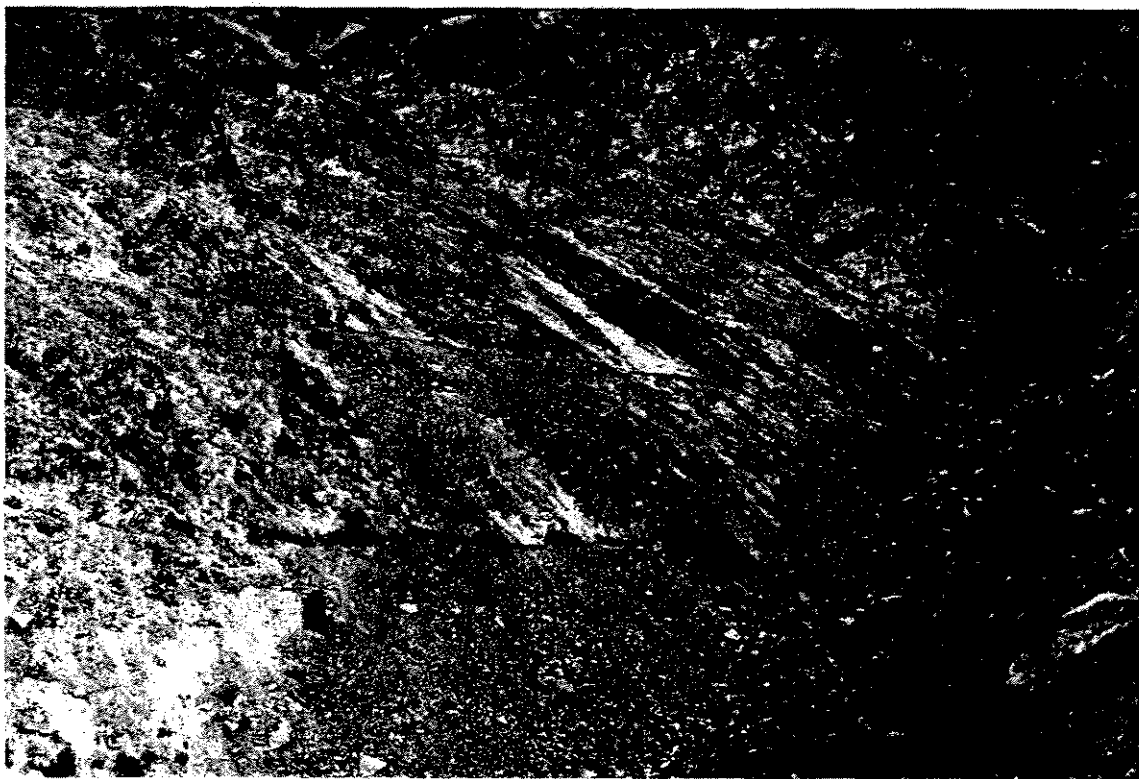


*BACK HOME AGAIN ON THE LEDGE*



*FIRST TRAIL CUT ON TRENCH T1*

BEST ATTAINABLE  
IMAGE

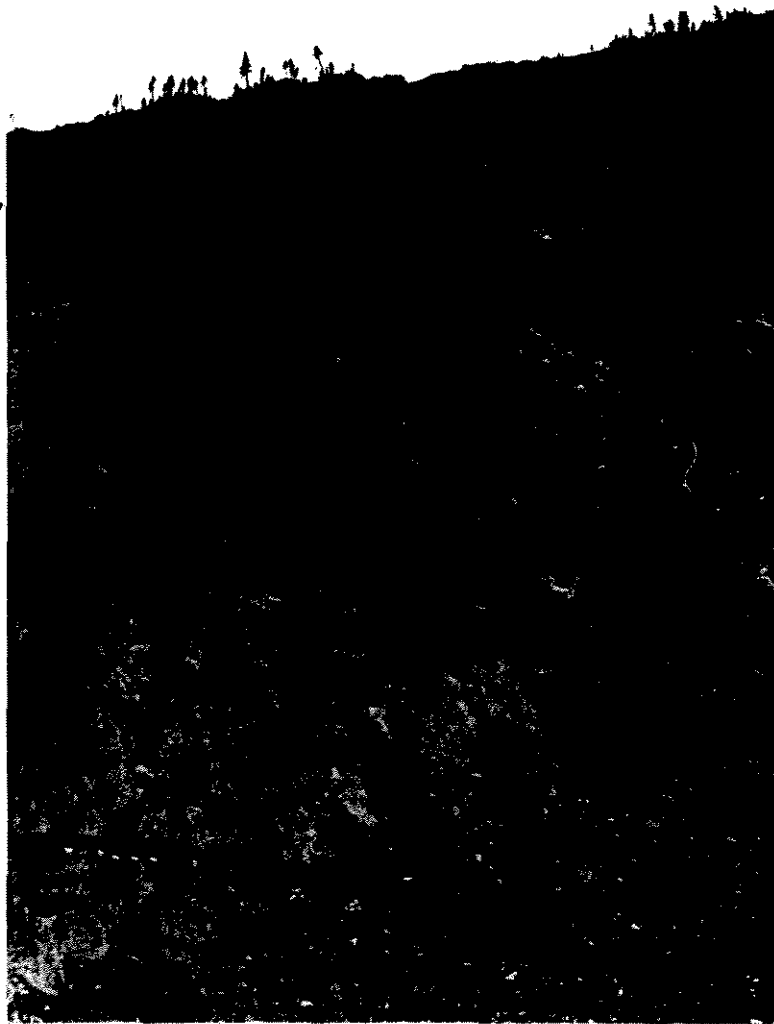


*TRENCH T1 & T2 LOOKING NORTH*



*TRENCH T5 LOOKING SOUTH*

BEST ATTAINABLE  
IMAGE



TRENCHES T1, T2 & T3  
LOOKING NORTH

TRENCH T2 ACROSS  
ORE ZONE LOOKING  
WEST.

BEST ATTAINABLE  
IMAGE

