

**ARCHER, CATHRO**  
& ASSOCIATES (1981) LIMITED  
CONSULTING GEOLOGICAL ENGINEERS

1016 - 510 WEST HASTINGS STREET, VANCOUVER, B.C. V6B 1L8 TEL (604) 688 - 2568 • FAX (604) 688 - 2578

**PROSPECTING AND GEOCHEMICAL SURVEY REPORT**

on the

**CONVERT 1-30 CLAIMS**

YB60028 - YB60037  
YB63774 - YB63793

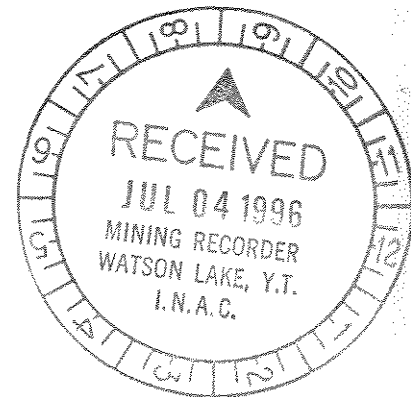
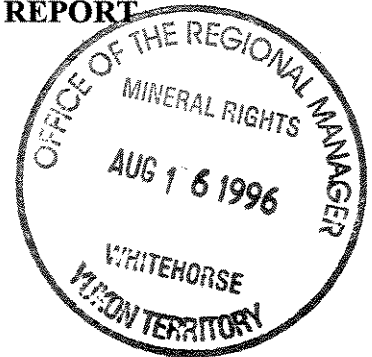
Latitude 60°21' N; Longitude 131°48' W

NTS 105B/5

in the

**WATSON LAKE MINING DISTRICT**

**YUKON TERRITORY**



Owned by: Nordac Resources Ltd.

Operated by: Archer, Cathro & Associates (1981) Limited

R.C. Carne, M.Sc., P.Geol.

April, 1996

093506

## TABLE OF CONTENTS

	<u>PAGE</u>
SUMMARY AND RECOMMENDATIONS .....	1
INTRODUCTION .....	5
LOCATION AND ACCESS .....	5
TOPOGRAPHY, GEOMORPHOLOGY AND VEGETATION .....	6
PROPERTY .....	6
1995 PROGRAM .....	7
REGIONAL GEOLOGY .....	8
PROPERTY GEOLOGY .....	11
REGIONAL GEOCHEMISTRY .....	12
PROPERTY GEOCHEMISTRY .....	13
REFERENCES .....	15

## APPENDICES

- I AUTHOR'S STATEMENT OF QUALIFICATIONS
- II CERTIFICATES OF ANALYSIS

## FIGURES

<u>NO.</u>	<u>DESCRIPTION</u>	<u>LOCATION</u>
1	Property Location . . . . .	Following Page 5
2	Claim Location . . . . .	Following Page 6
3	Regional Geological Setting . . . . .	Following Page 8
4	Property Geology . . . . .	Following Page 11
5	Sample Location . . . . .	Following Page 13
6	Copper Geochemistry . . . . .	Following Page 13
7	Lead Geochemistry . . . . .	Following Page 13
8	Zinc Geochemistry . . . . .	Following Page 13
9	Silver Geochemistry . . . . .	Following Page 13
10	Barium Geochemistry . . . . .	Following Page 13
11	Cobalt Geochemistry . . . . .	Following Page 13
12	Nickel Geochemistry . . . . .	Following Page 13
13	Arsenic Geochemistry . . . . .	Following Page 13
14	Bismuth Geochemistry . . . . .	Following Page 13
15	Manganese Geochemistry . . . . .	Following Page 13
16	Iron Geochemistry . . . . .	Following Page 13

## SUMMARY AND RECOMMENDATIONS

The Convert 1-30 claims, 100% owned by Nordac Resources Ltd., are located 54 km east-northeast of the community of Teslin in south-central Yukon. Access is by helicopter from Whitehorse 200 km to the west or Watson Lake 230 km east of the property.

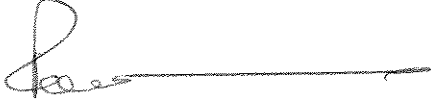
The Convert claims lie within the Dorsey segment of Yukon-Tanana Terrane. Bedrock geology consists of a poorly exposed sequence of metasedimentary and metavolcanic rocks of Devonian to Mississippian age. The first ten claims were staked in July 1995 to cover extensive gossan zones found during follow-up by Archer Cathro geologists in 1987 of reconnaissance geochemical sampling conducted in the 1970's. Geological mapping and geochemical sampling carried out in September demonstrated that the gossans are spatially related to very strong coincident soil and stream sediment geochemical anomalies for copper, lead, zinc, silver, barium, cobalt, nickel, arsenic, manganese and iron along a 2 km long horizon conformable with underlying quartz-muscovite schist. These rocks are directly correlative with similar sequences that host significant new discoveries by Cominco (Kudz Ze Kayah) and Westmin (Wolverine) in the Finlayson Lake area, some 150 km to the northeast. Accordingly, an aggressive exploration program is recommended for 1996.

Initial target definition should consist of airborne electromagnetic and magnetic surveys in the spring. This work will guide orientation and location of detailed ground geophysical surveys to be conducted on a grid established by linecutting and surveying in early June. A second phase 2000 m diamond drill program is recommended as follow-up contingent on positive results of the initial surface exploration.

Budgets for the recommended programs follow.

Respectfully submitted

ARCHER, CATHRO & ASSOCIATES (1981) LIMITED

A handwritten signature in black ink, appearing to read 'R.C. Carne', with a long horizontal line extending to the right.

R.C. Carne, M.Sc., P.Geo.

PROPOSED 1996 BUDGET  
CONVERT PROPERTY

PHASE I: Assumes a one-month field program (aside from airborne geophysical survey) with a crew comprising a geologist and a cook, plus contractor personnel.

Helicopter - 50 hrs @ \$1000/hr, fuel included .....	\$ 50,000
Labour .....	30,000
Linecutting - 40 km @ \$400/km .....	16,000
Camp costs - 180 mandays @ \$75/day .....	13,500
Airborne geophysical survey - 100 km @ \$100/km .....	10,000
Ground geophysical survey - 40 km @ \$100/km .....	4,000
Report preparation .....	8,500
Vehicle rental, fuel .....	6,000
Travel, freight .....	5,000
Drafting, office .....	5,000
Expediting .....	3,000
Equipment rental - GPS, computer, printer, radio phone, etc .....	3,000
Assays .....	2,000
Management .....	<u>8,000</u>
	\$164,000
Plus 7% GST	<u>11,480</u>
TOTAL	<u>\$175,480</u>

PROPOSED 1996 BUDGET  
CONVERT PROPERTY (cont'd)

PHASE II: Assumes a two-month, 2000 m helicopter-supported diamond drill program field program with a crew comprising a geologist, geological assistant and a cook, plus contractor personnel.

Diamond Drilling - 2000 m @ \$130/m (including consumables) . . . . .	\$260,000
Helicopter - 90 hrs @ \$1000/hr, fuel included . . . . .	90,000
Labour . . . . .	83,000
Camp costs - 420 mandays @ \$75/day . . . . .	31,500
Report preparation . . . . .	20,000
Travel, freight . . . . .	14,000
Vehicle rental, fuel . . . . .	12,000
Drafting, office . . . . .	10,000
Assays . . . . .	6,000
Equipment rental - GPS, computer, printer, radio phone, etc . . . . .	6,000
Expediting . . . . .	6,000
Management . . . . .	<u>33,000</u>
	\$571,500
Plus 7% GST	<u>40,005</u>
TOTAL	<u>\$611,505</u>

## **INTRODUCTION**

The Convert 1-30 claims are located within the Dorsey segment of Yukon-Tanana tectonic terrane. The recent discoveries of the Kudz Ze Kayah Deposit by Cominco Ltd. and the Wolverine Deposit by Westmin Resources Limited/Atna Resources Ltd. within Devonian to Mississippian metavolcanic rocks of Yukon-Tanana Terrane in the Finlayson Lake area prompted Nordac Resources Ltd. to investigate unexplained multi-element geochemical anomalies underlain by similar geological sequences in the Wolf Lake area, 150 km to the southwest. There is no public record of any previous exploration on the Convert claims. The 1995 exploration was conducted by Archer, Cathro & Associates (1981) Limited.

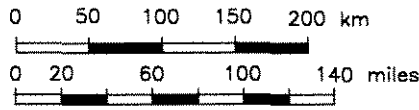
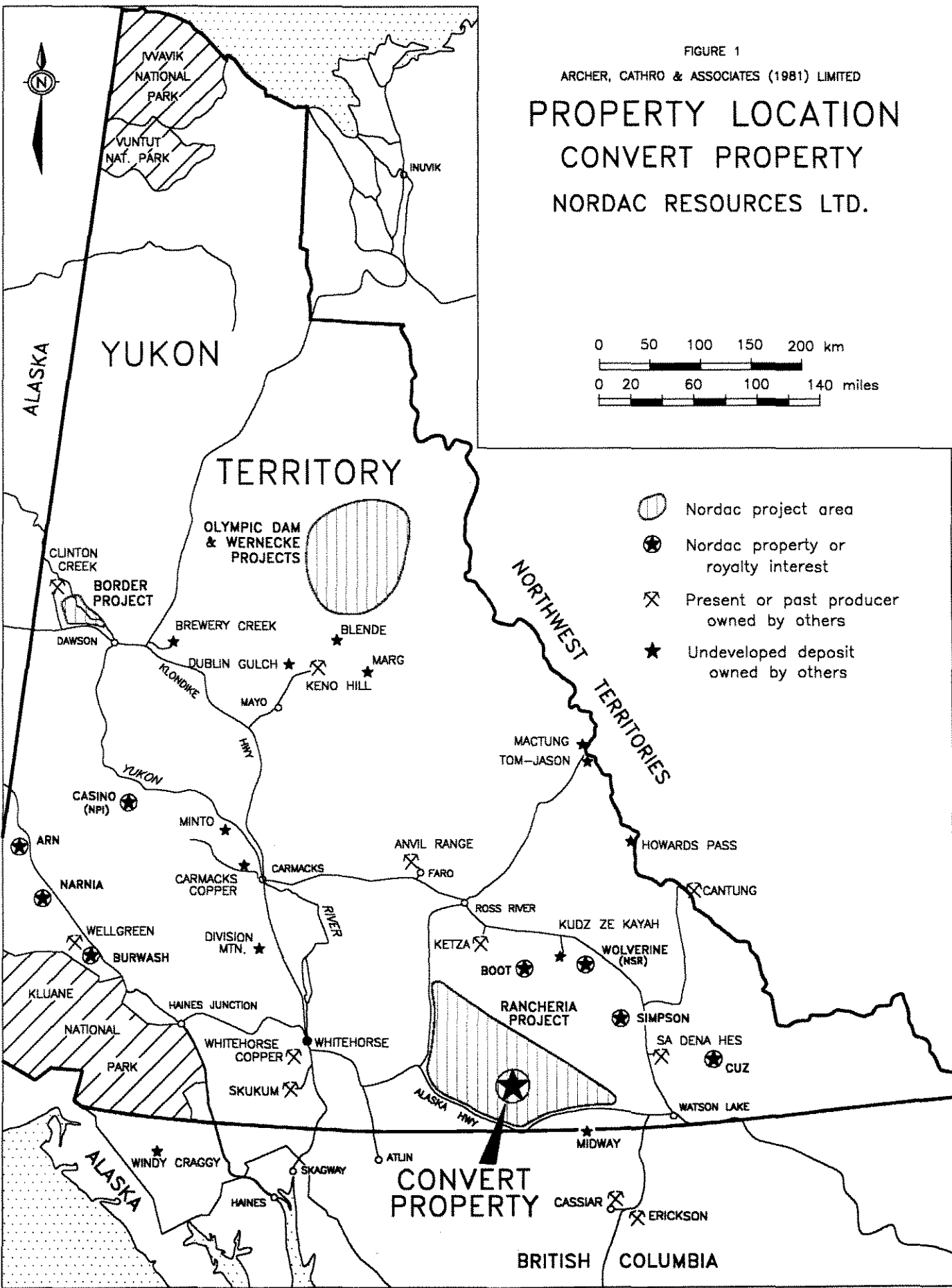
## **LOCATION AND ACCESS**





The Convert claims are located on Bottle Creek in the Wolf Lake area of south-central Yukon, 54 km east-northeast of the community of Teslin (Figure 1). There is no road access to the property although a bulldozer tote trail passes within 20 km to the south. Winter access to the Convert property could be achieved by travelling 25 km along this route from the point of departure on the Alaska Highway near the Smart River bridge to Cabin Lake and thence by a valley bottom pioneer trail to the property. Slim Lake, 9 km northeast of the property, is suitable for float-equipped fixed-wing aircraft. In 1995 access was by helicopter from Watson Lake, 230 km to the east, where aircraft are available on a year-round basis. Similarly, both fixed-wing aircraft and helicopters are available for charter 200 km to the west in Whitehorse on a year-round basis. Year-round support by fixed-wing aircraft is also available from Teslin.

FIGURE 1

ARCHER, CATHRO & ASSOCIATES (1981) LIMITED

# PROPERTY LOCATION CONVERT PROPERTY NORDAC RESOURCES LTD.



-  Nordac project area
-  Nordac property or royalty interest
-  Present or past producer owned by others
-  Undeveloped deposit owned by others

## CONVERT PROPERTY

BRITISH COLUMBIA

## TOPOGRAPHY, GEOMORPHOLOGY AND VEGETATION

The Convert property is located at the south end of the Englishmans Range of the Cassiar Mountains. Elevations on the property range from 1020 m along the southeast claim boundary to 1420 m in the northeast part of the property. The claims are centred over the southeast-trending valley of Bottle Creek. The northeastern valley slope is relatively steep while gentler slopes form the southwest side of the valley.

Steep slopes are mantled with a thin veneer of talus or residual overburden. Lower parts of the property are covered with extensive glacial deposits which are largely lodgement till.

Treeline is about 1300 m in the Englishmans Range. Vegetation on lower elevations consists of mature stands of white or black spruce with a thick understorey of willows in boggy areas. Higher slopes support a typical assemblage of balsam fir, black spruce, willow and dwarf birch. Permafrost is likely to be continuous over much of the lower parts of the property, especially within areas of mature forest cover.

## PROPERTY

The Convert property consists of 30 full size claims (Figure 2) as outlined below.

<u>Claim Name</u>	<u>Grant Number</u>	<u>Mining District</u>	<u>Expiry Date*</u>
Convert 1-10	YB60028-YB60037	Watson Lake	July 4, 1996
11-30	YB63774-YB63793	Watson Lake	October 2, 1996

\*Expiry dates do not include assessment credit for work performed in 1995.

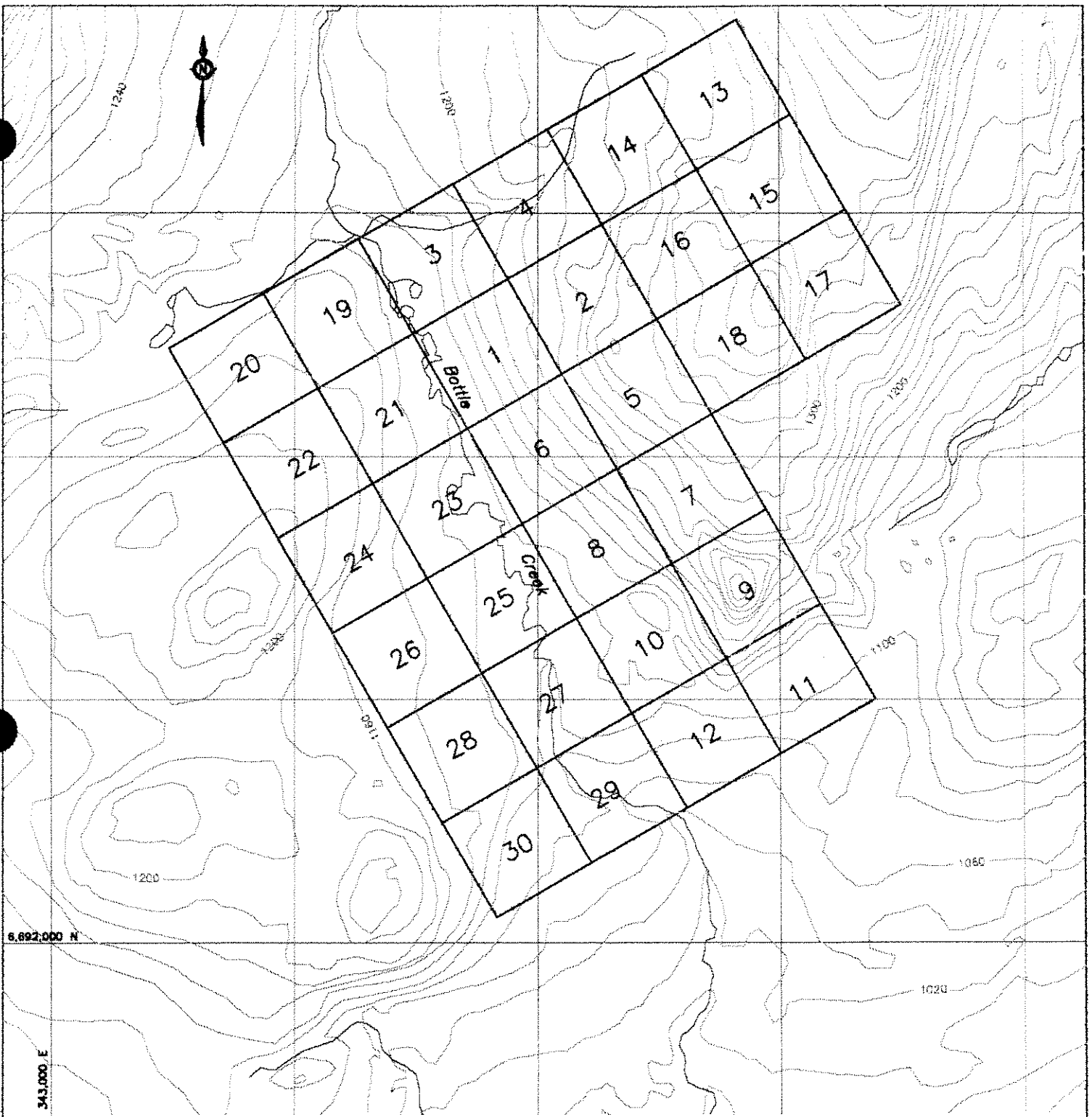


FIGURE 2  
 ARCHER, CATHRO & ASSOCIATES (1981) LIMITED

# CLAIM LOCATION

CONVERT PROPERTY  
 NORDAC RESOURCES LTD.



**1995 PROGRAM**

An initial reconnaissance of the Convert claim area was carried out in July 1995 and centred on an extensive gossan zone and found, but not staked, by Archer Cathro in 1987. A two-person crew spent eight days from September 21 to 28, including demobilization to Whitehorse, exploring the property. During this time an additional twenty claims were staked to bring the total to thirty.

Details of personnel are given below.

<u>Name</u>	<u>Title</u>	<u>Work Done</u>	<u>Date</u>
Bill Wengzynowski	Geologist	Prospect/Sample	September 21-28
Brad Wengzynowski	Assistant	Prospect/Sample	September 21-28

Helicopter support was provided by Frontier Helicopters Ltd. from a base at Watson Lake.

## REGIONAL GEOLOGY

The Convert claim area lies near the southeast end of the Dorsey Assemblage (Figure 3). Available data on age constraints, lithology and structural style of the fault-bounded Dorsey Assemblage strongly suggest that it should be assigned to Yukon-Tanana Terrane. Yukon-Tanana Terrane underlies a vast area, approximately the size of California, that lies west of autochthonous North America in central Yukon and Alaska. The sequence is geologically complex, recording the tectonic incorporation of a Paleozoic volcanic and magmatic arc with its basement sequence onto the outboard edge of the northern Cordillera (Johnston and Mortensen, 1994). Restoration of movement along Tintina Trench demonstrates that the Dorsey Assemblage is probably an along-strike continuation of the Finlayson Allochthon which contains the Kudzu, Ze Kayah and Wolverine volcanogenic massive sulphide (VMS) occurrences hosted by Late Devonian to Mid-Mississippian metavolcanic and metasedimentary rocks.

Geology in the vicinity of the Convert property was published at 1:250,000 scale in 1960 by the Geological Survey of Canada (Poole et al, 1960). The following geological summary is based primarily on the work of Mortensen and Jilson (1985) and Mortensen (1992) in the Finlayson Lake area and, for consistency, their nomenclature and unit descriptions are adapted for this report. Geology of the Finlayson Lake area is better understood than that of the Wolf Lake area but, in general terms, stratigraphic and structural geology of the two areas appear to be nearly identical.

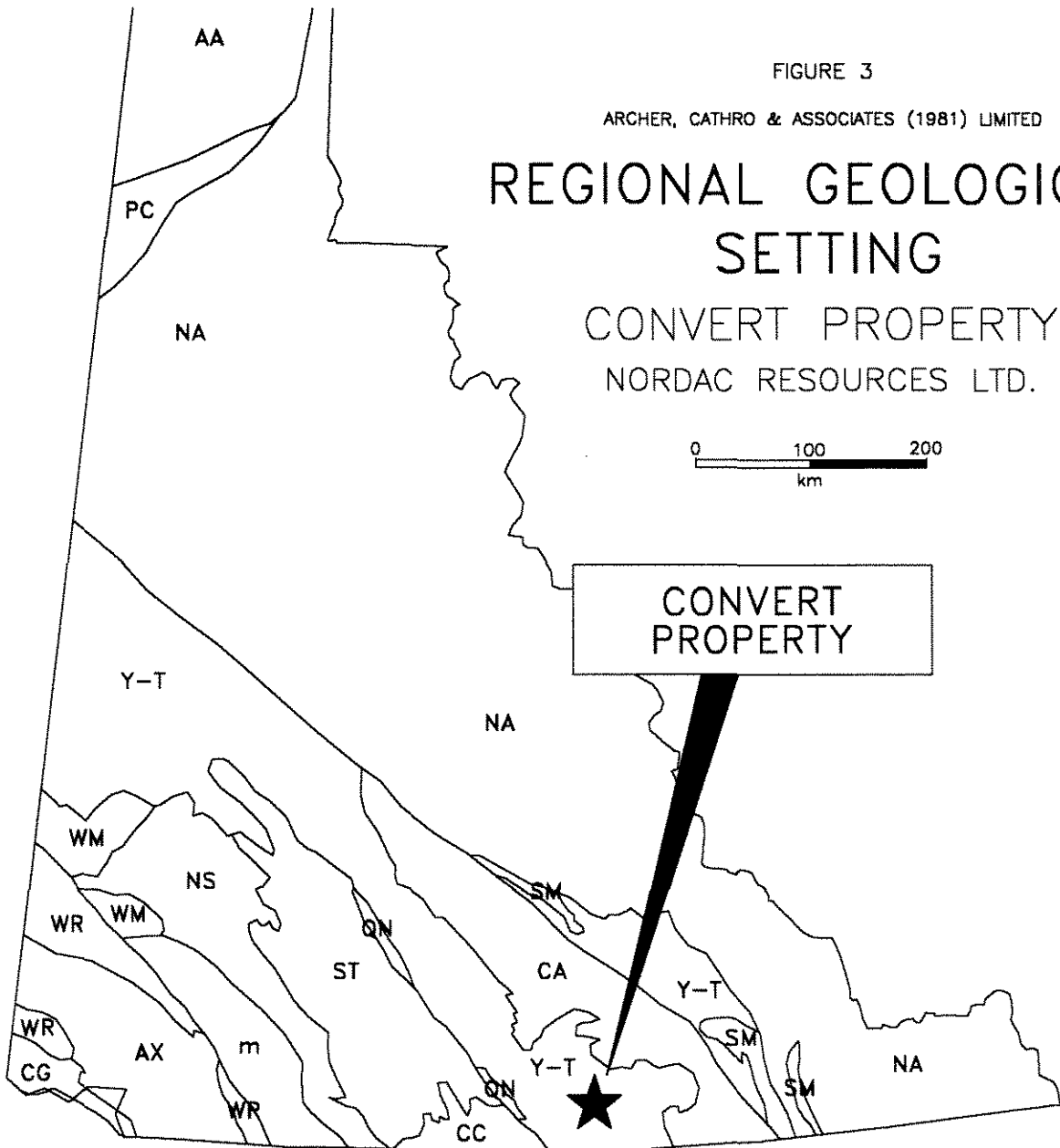
FIGURE 3

ARCHER, CATHRO & ASSOCIATES (1981) LIMITED

# REGIONAL GEOLOGICAL SETTING

CONVERT PROPERTY  
NORDAC RESOURCES LTD.

0 100 200  
km



### ACCRETED TERRANES

Intermontane Superterrane

**SM** Slide Mountain

**QN** Quesnellia

**CC** Cache Creek

**ST** Stikinia

**WM** Windy-McKinley

Insular Superterrane

**AX** Alexander

**WR** Wrangellia

Other Terranes

**CG** Chugach

**m** Undivided metamorphics

### CRATON

**NA** Ancestral North America

### TERRANES

Displaced Continental Margin

**AA** Arctic Alaska

**CA** Cassiar

**NS** Nisling

**PC** Porcupine

Pericratonic Terranes

**Y-T** Yukon-Tanana

Five principal lithological packages have been identified within the Wolf Lake area. These include a metamorphic assemblage that comprises the bulk of Yukon-Tanana Terrane, relatively unmetamorphosed packages belonging to Cassiar and Slide Mountain Terranes of the North American Miogeocline and two younger units that are found in all three terranes.

Paleozoic Layered Metamorphic Sequence is the oldest and most abundant lithological package within Yukon-Tanana Terrane. It consists of three distinct stratigraphic units. The lowest unit contains pre-Late Devonian biotite schist and quartzite with minor marble. The middle unit is Late Devonian to Mid-Mississippian in age and is the focus of volcanogenic massive sulphide exploration in the Finlayson Lake area. It consists of dark siliceous phyllite that becomes increasingly carbonaceous toward the base of the section where it is interfingered with widespread mafic metavolcanic schist. Localized felsic metavolcanic centres are found throughout the section.

Paleozoic metaplutonic rocks, which are widespread elsewhere in Yukon-Tanana Terrane, have not yet been identified in the Dorsey Assemblage.

The four remaining units are all younger and unmetamorphosed. They are found in Yukon-Tanana, Slide Mountain and Cassiar Terranes. Mesozoic Clastic Rocks are Permian or younger conglomerates, greywacke and volcanic sediments. Mesozoic Plutonic Rocks comprise a number of igneous suites including Jurassic dioritic rocks; Jurassic and/or Cretaceous quartz monzonite and granodiorite of the Cassiar Batholith, Ram Stock and Logjam Stocks; and, Cretaceous or Tertiary quartz monzonite and alaskite of the Seagull and Hake Batholiths.

Exploration in Yukon-Tanana Terrane elsewhere during the past decade has located numerous Devonian to Mississippian VMS and sedex occurrences including the recent important discoveries of the Kudz Ze Kayah and Wolverine deposits in the Finlayson Lake area. This, coupled with the 1970's delineation of significant VMS occurrences within similar geological sequences in the Delta and Boundary districts of Alaska, confirms that Yukon-Tanana Terrane is a metallogenic sequence unusually well endowed in precious metal-rich syngenetic base metal occurrences.

Exploration in Yukon-Tanana Terrane within the Wolf Lake area has discovered a remarkably diverse suite of mineral deposits. These include the Logtung porphyry tungsten-molybdenum deposit with open pitatable reserves of 230 million tonnes grading 0.104%  $WO_3$  and 0.05%  $MoS_2$  and numerous tin-bearing skarns and pegmatites. An abundant variety of silver-rich veins are also present including the Logjam deposit of 70,000 tonnes grading 392 g/t Ag and 3.0 g/t Au with an equal tonnage of possible reserves and the Hart system of veins with reserves of 97,000 tonnes grading 1025 g/t Ag. An unusual bulk tonnage, structurally-controlled zinc-silver deposit is also present at the Logan property where geological reserves are listed at 12.4 million tonnes grading 6.17% Zn and 26.4 g/t Ag, 90% of which is open pitatable. In addition, numerous other tungsten and lead-zinc-silver skarns are present in the area. Most, if not all, of these mineral occurrences are epigenetic, intrusive-related deposits. Very little exploration has been carried out for VMS occurrences although both private and published data bases document a relatively high abundance of stratiform sulphide or barite float occurrences and unexplained multi-element geochemical anomalies in areas underlain by favourable Devonian to Mississippian metasedimentary and metavolcanic sequences.

## **PROPERTY GEOLOGY**

Geology of the Convert claim block is summarized on Figure 4. The area is largely till-covered and exposure is limited to steep slopes and high elevations. Two lithologic packages are present, both are assigned an Upper Devonian to Lower Mississippian age on Geological Survey of Canada Map 10-1960 (Poole et al, 1960). Compositional layering is roughly parallel with foliation which strikes southeast, dipping moderately to the southwest. The structurally lowest package is comprised of black phyllite and blue-grey chert with only weakly developed metamorphic fabric. The structurally overlying sequence consists of siliceous quartz-muscovite schist, calcareous quartz-muscovite-chlorite schist and quartzite. All units are highly strained. The lower sequence bears strong similarities, both structurally and stratigraphically, with Slide Mountain Terrane lithologies in the Finlayson Lake district while the upper package is indistinguishable with Yukon-Tanana Terrane felsic metavolcanic sequences that host polymetallic VMS deposits in the same area. If this is the case, then the Yukon-Tanana schists are probably thrust over the slightly younger Slide Mountain sedimentary sequence.

Distribution of soil geochemical anomalies suggests that a stratiform source for the polymetallic response is present in the Yukon-Tanana schist sequence. This hypothesis remains to be tested by detailed geological mapping and additional soil sampling to close off the anomalies uphill to the northeast.

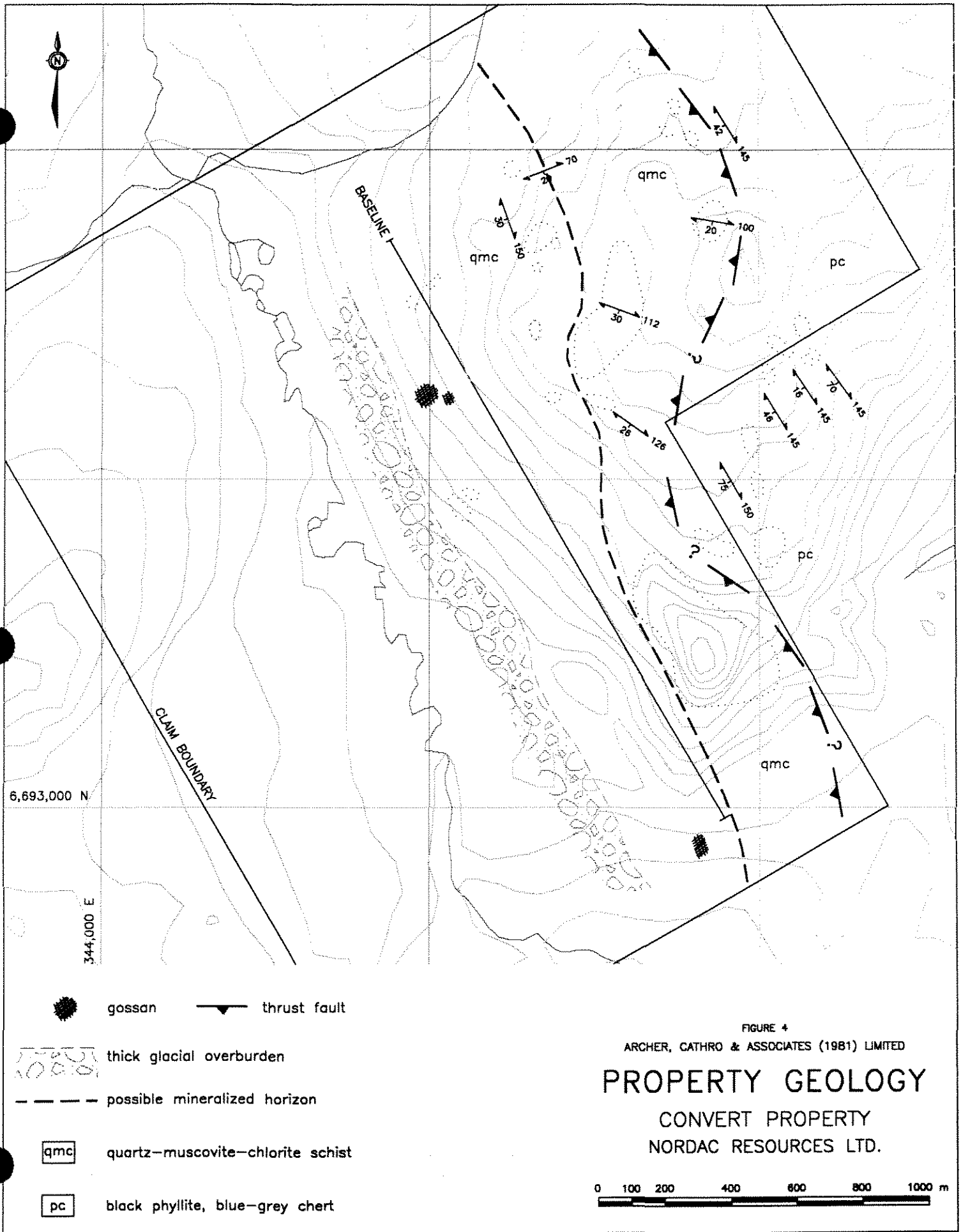


FIGURE 4

ARCHER, CATHRO & ASSOCIATES (1981) LIMITED

# PROPERTY GEOLOGY

CONVERT PROPERTY  
NORDAC RESOURCES LTD.



## REGIONAL GEOCHEMISTRY

Public geochemical data for the Wolf Lake area is limited to wide-spaced reconnaissance-scale stream sediment sampling published in 1978 and 1985 by the GSC (Open Files 563 and 1289). Nordac was able to supplement the published reports with private data summarizing results of 1971 and 1972 exploration in the Wolf Lake area managed by Archer Cathro on behalf of a joint venture (Archer, 1971; Archer and Cathro, 1972). The Archer Cathro data base includes analyses of about 5000 soil and stream sediment samples collected at an average density of approximately one sample per square kilometre. With few exceptions, all samples were analyzed for copper, lead, zinc, molybdenum, silver and tungsten.

Copper, lead and zinc are major metals in VMS deposits in the Finlayson Lake area and are obvious indicator elements. Molybdenum is present in anomalous quantities in the banded iron formation overlying the Wolverine Deposit (H. Meade, pers. comm.) and appears to be slightly enriched in the felsic metavolcanic rocks. Strongly anomalous values for all four elements were recorded in the Archer Cathro data base for sediment samples taken from creeks draining the area of the Convert claims and this information provided the impetus for current exploration on the property by Nordac. The relatively widespread government geochemical sampling however, did not include any of the watercourses draining the property.

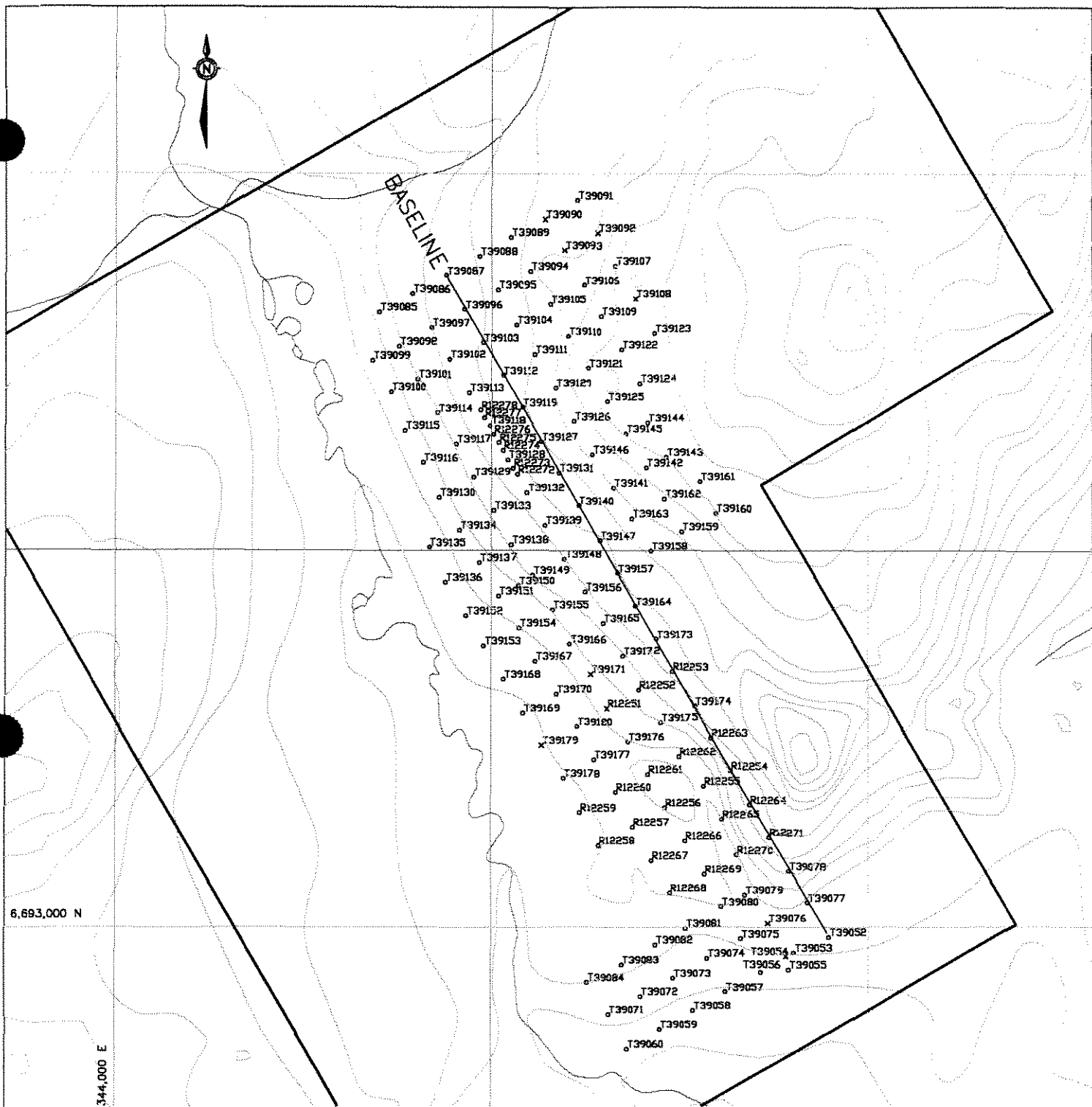
### **PROPERTY GEOCHEMISTRY**

Grid geochemical sampling was carried out on the Convert claims in September 1995. Soil and stream sediment samples were collected at 100 m spacing in the central part of the property to evaluate the potential for stratiform base metal mineralization. Silt and soil samples were collected in pre-numbered Kraft paper bags and sent to Chemex Labs Ltd. in North Vancouver, B.C. where they were prepared by drying and sieving to minus 80 mesh. Thirty-two element analyses, including those for all the major base metals and silver, were carried out on nitric acid-aqua regia digestion of two gram samples with induced coupled plasma (ICP) determination. Analytical certificates are reproduced in Appendix II.

Soil samples were optimally collected from the B Horizon although soil profiles in the area are not sufficiently developed to be reliably differentiated. Most samples were probably taken from soliflucted mineral soils which include both B and C Horizons.

Sample locations are given on Figure 5 while values for VMS indicator metals copper, lead, zinc, silver, barium, cobalt, nickel, arsenic, bismuth, manganese and iron are plotted on Figures 6 to 16, respectively. Results for other elements are listed with the complete data set in Appendix II.

Very strong anomalies are present for all the VMS indicator metals in the Convert geochemical data, outlining an almost continuous 2 km long zone that is open to extension in unsampled areas along regional bedrock strike to the northwest and southeast. Many of the strongest values for most of the indicator elements occur from analyses of silt samples rather than soil samples. These are small spring and seep sediment samples rather than silt stream samples in the conventional sense.



— Claim boundary

x T39171 1995 silt sample location with sample number

o T39179 1995 soil sample location with sample number

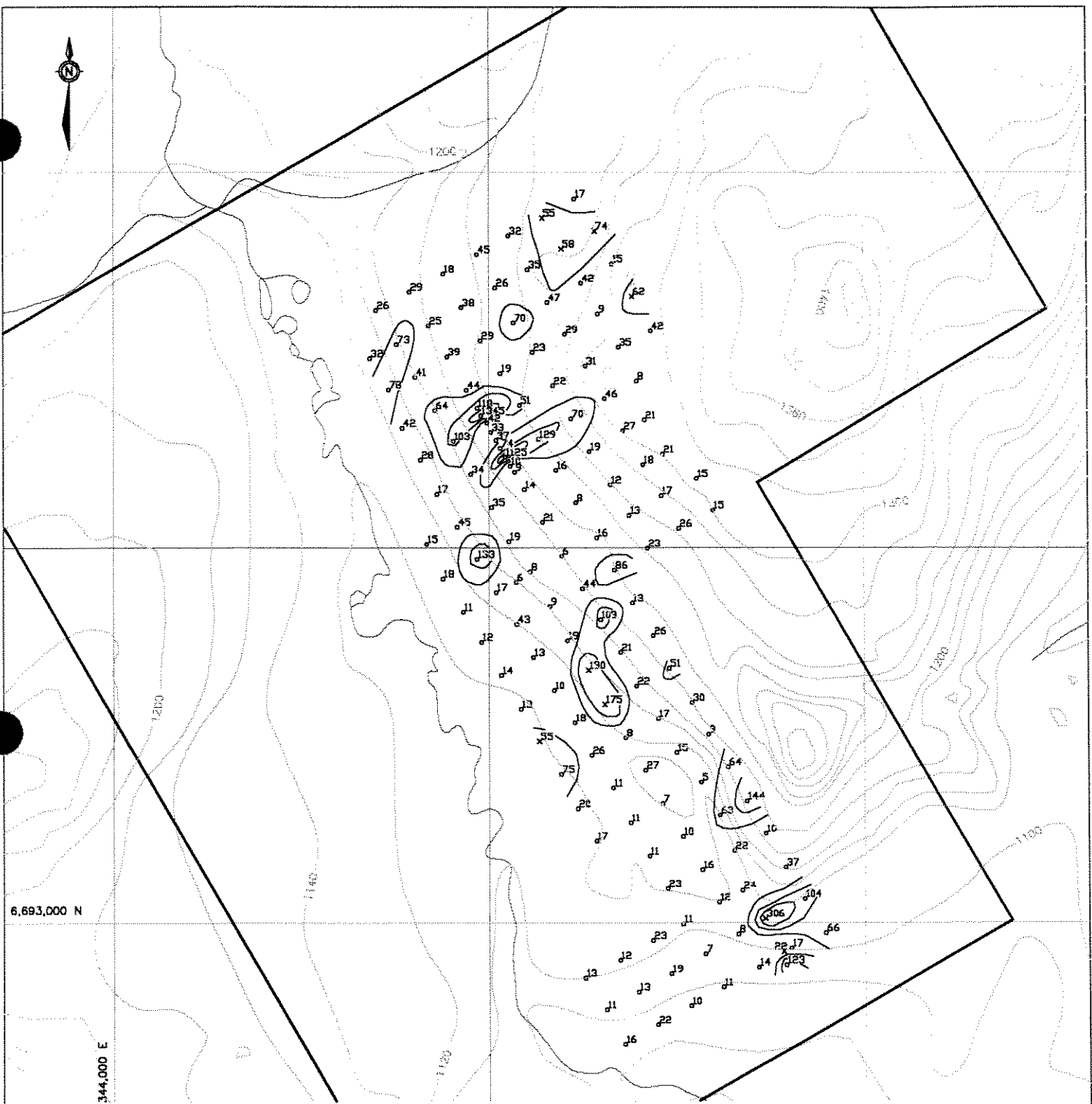
FIGURE 5

ARCHER, CATHRO & ASSOCIATES (1981) LIMITED

# SAMPLE LOCATION

CONVERT PROPERTY  
NORDAC RESOURCES LTD.





- Claim boundary
- <sup>98</sup> Soil sample location with copper value in ppm
- ×<sup>58</sup> Silt sample location with copper value in ppm
- ≥ 200 ppm Cu
- ≥ 100 < 200 ppm Cu
- ≥ 50 < 100 ppm Cu

FIGURE 6

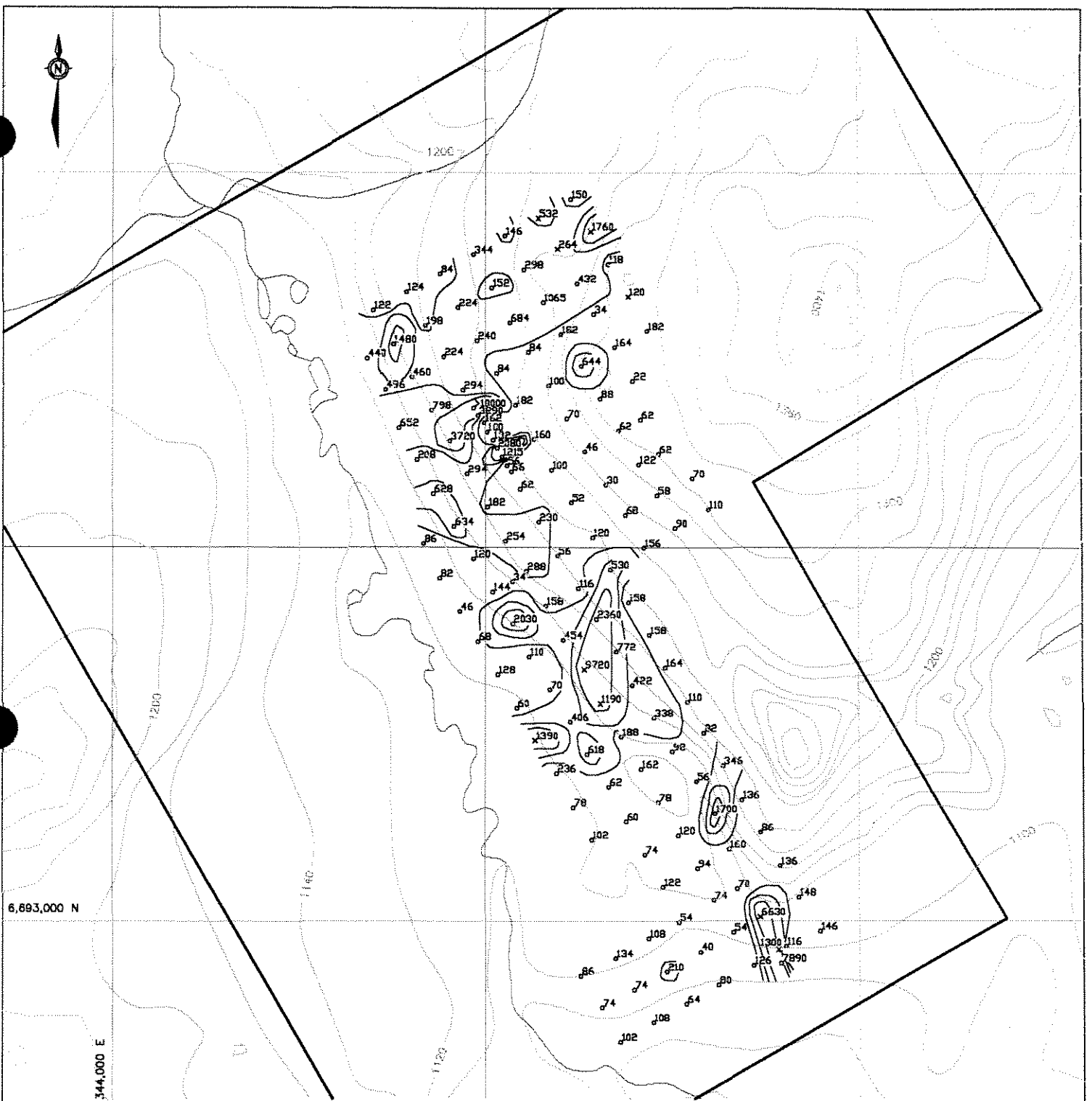
ARCHER, CATHRO & ASSOCIATES (1981) LIMITED

# COPPER GEOCHEMISTRY

CONVERT PROPERTY  
NORDAC RESOURCES LTD.



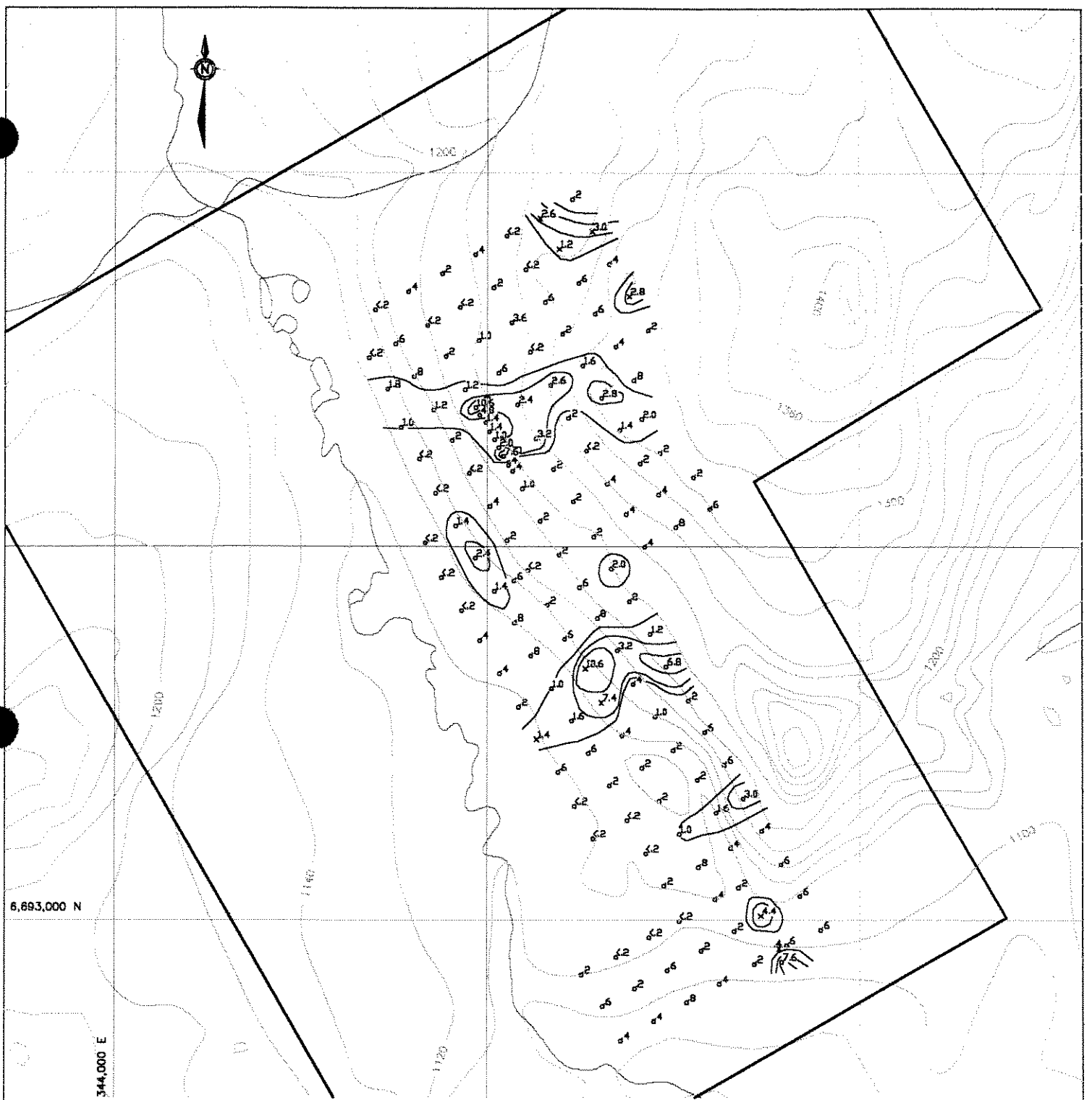




- Claim boundary
- 1190 Soil sample location with zinc value in ppm
- × 1300 Silt sample location with zinc value in ppm
- ≥ 1000 ppm Zn
- ≥ 500 < 1000 ppm Zn
- ≥ 200 < 500 ppm Zn

FIGURE 8  
 ARCHER, CATHRO & ASSOCIATES (1981) LIMITED  
**ZINC GEOCHEMISTRY**  
 CONVERT PROPERTY  
 NORDAC RESOURCES LTD.





- Claim boundary
- <sup>2.6</sup> Soil sample location with silver value in ppm
- ×<sup>7.4</sup> Silt sample location with silver value in ppm
- ≥ 5 ppm Ag
- ≥ 2 < 5 ppm Ag
- ≥ 1 < 2 ppm Ag

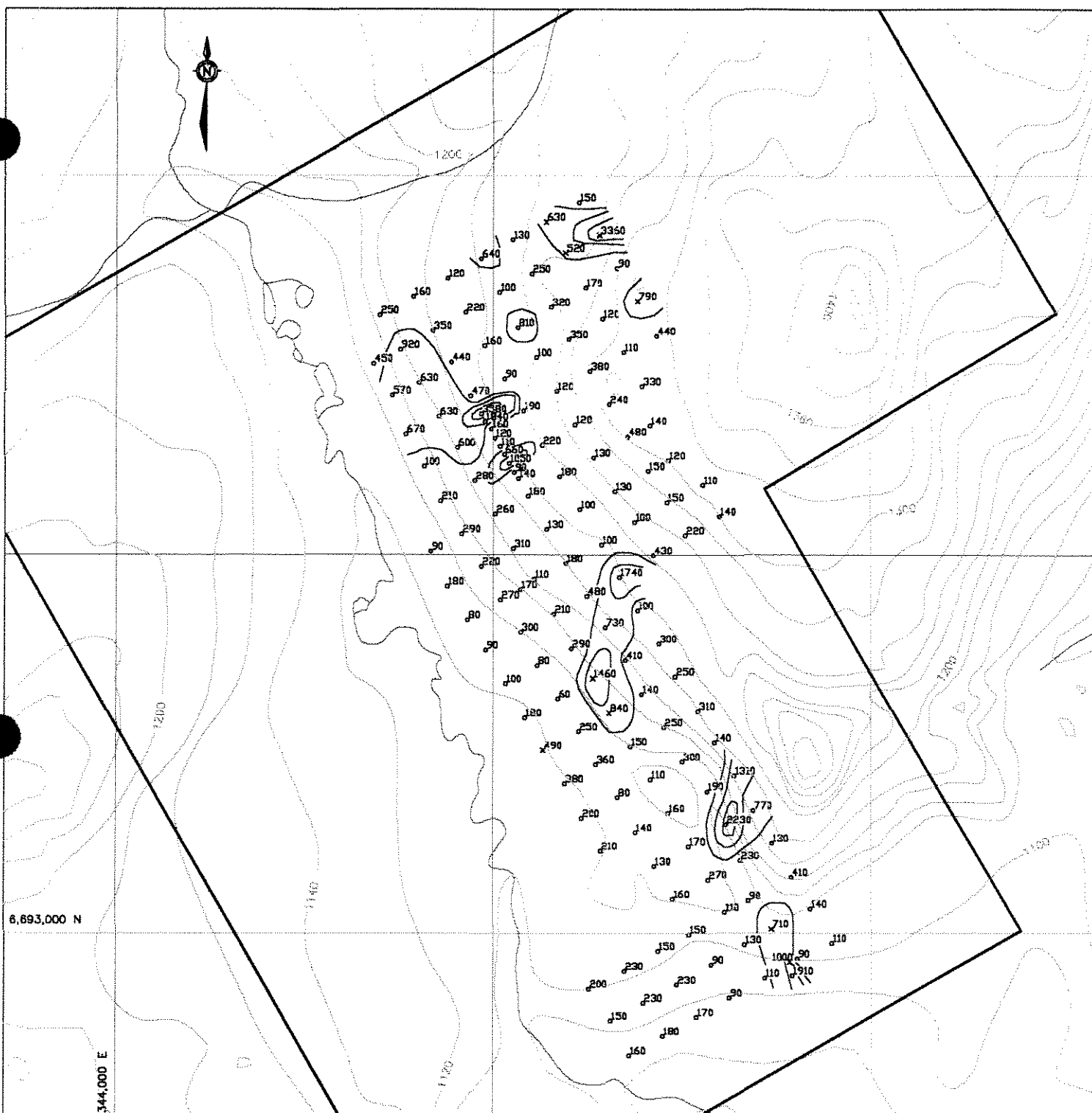
FIGURE 9

ARCHER, CATHRO & ASSOCIATES (1981) LIMITED

# SILVER GEOCHEMISTRY

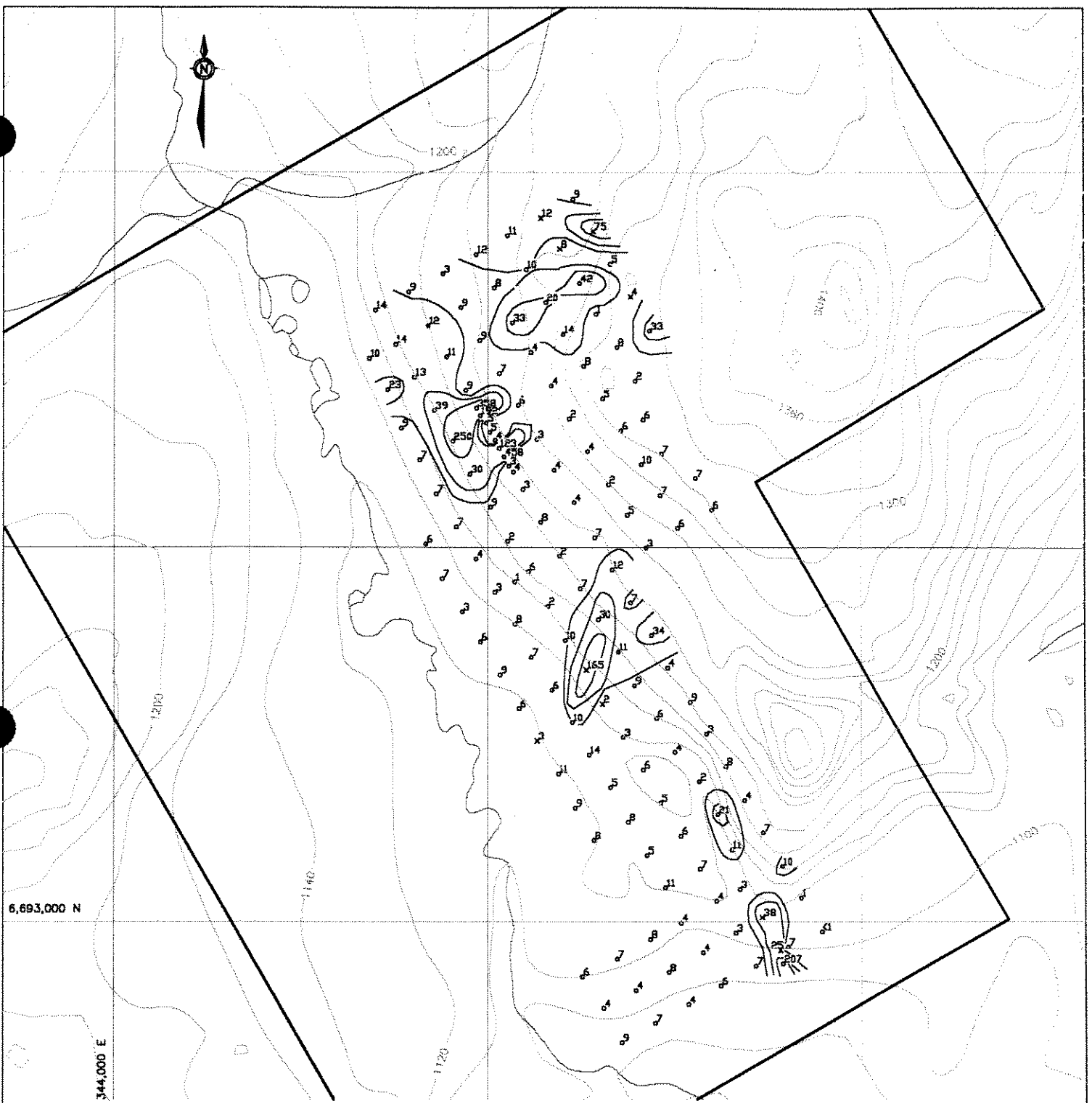
CONVERT PROPERTY  
NORDAC RESOURCES LTD.





- Claim boundary
- <sup>220</sup> Soil sample location with barium value in ppm
- ×<sup>840</sup> Silt sample location with barium value in ppm
- ≥ 2000 ppm Ba
- ≥ 1000 < 2000 ppm Ba
- ≥ 500 < 1000 ppm Ba

FIGURE 10  
 ARCHER, CATHRO & ASSOCIATES (1981) LIMITED  
**BARIUM GEOCHEMISTRY**  
 CONVERT PROPERTY  
 NORDAC RESOURCES LTD.  
 0 100 200 400 600 800 1000 m



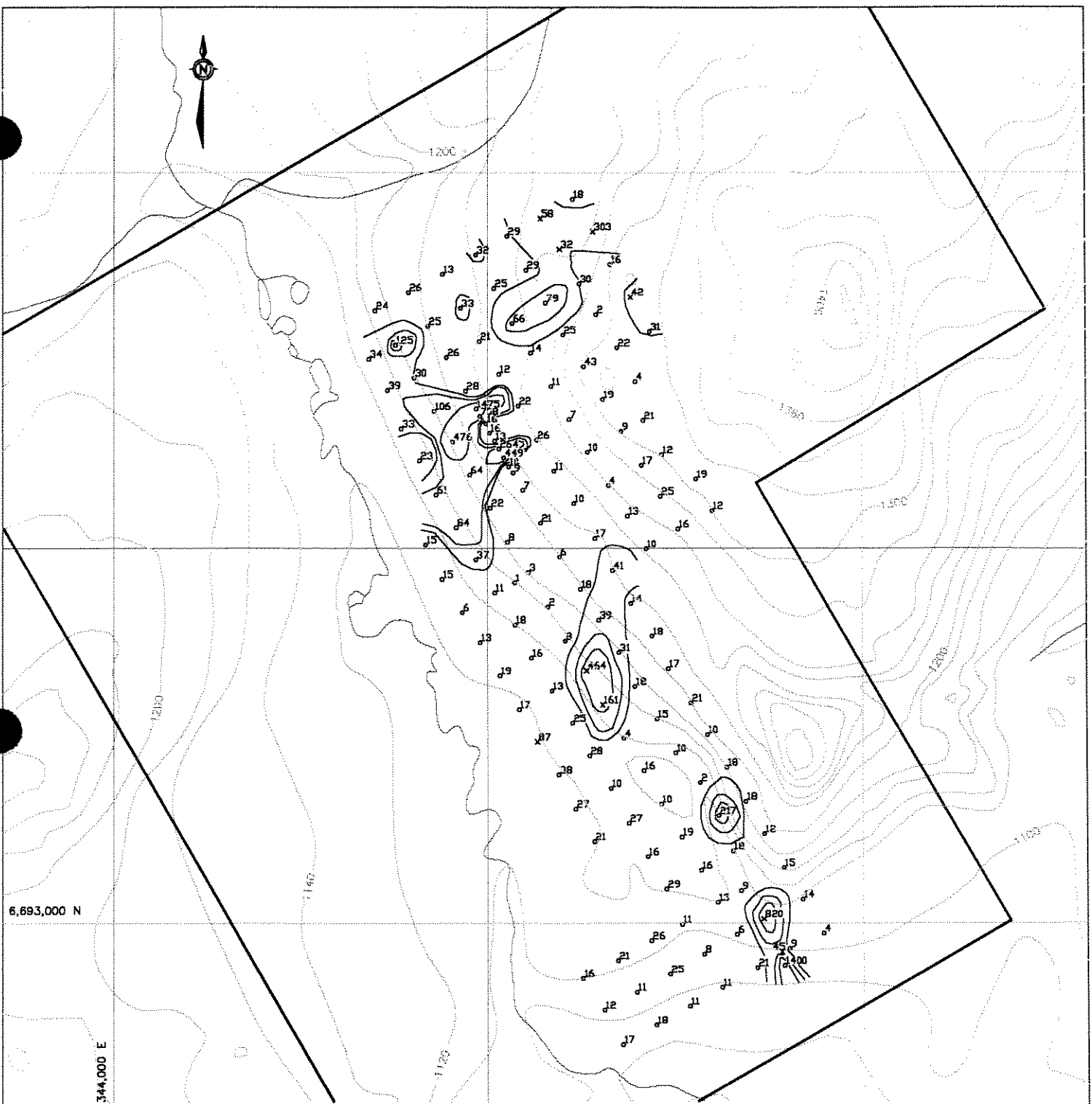
- Claim boundary
- <sup>62</sup> Soil sample location with cobalt value in ppm
- x<sup>75</sup> Silt sample location with cobalt value in ppm
- ≥ 50 ppm Co
- ≥ 20 < 50 ppm Co
- ≥ 10 < 20 ppm Co

FIGURE 11  
 ARCHER, CATHRO & ASSOCIATES (1981) LIMITED

# COBALT GEOCHEMISTRY

CONVERT PROPERTY  
 NORDAC RESOURCES LTD.





- Claim boundary
- <sup>84</sup> Soil sample location with nickel value in ppm
- <sup>161</sup> Silt sample location with nickel value in ppm
- ≥ 120 ppm Ni
- ≥ 60 < 120 ppm Ni
- ≥ 30 < 60 ppm Ni

FIGURE 12

ARCHER, CATHRO & ASSOCIATES (1981) LIMITED

# NICKEL GEOCHEMISTRY

CONVERT PROPERTY  
NORDAC RESOURCES LTD.





- Claim boundary
- <sup>26</sup> Soil sample location with arsenic value in ppm
- <sup>66</sup> Silt sample location with arsenic value in ppm
- ◻ ≥ 100 ppm As
- ◻ ≥ 50 < 100 ppm As
- ◻ ≥ 20 < 50 ppm As

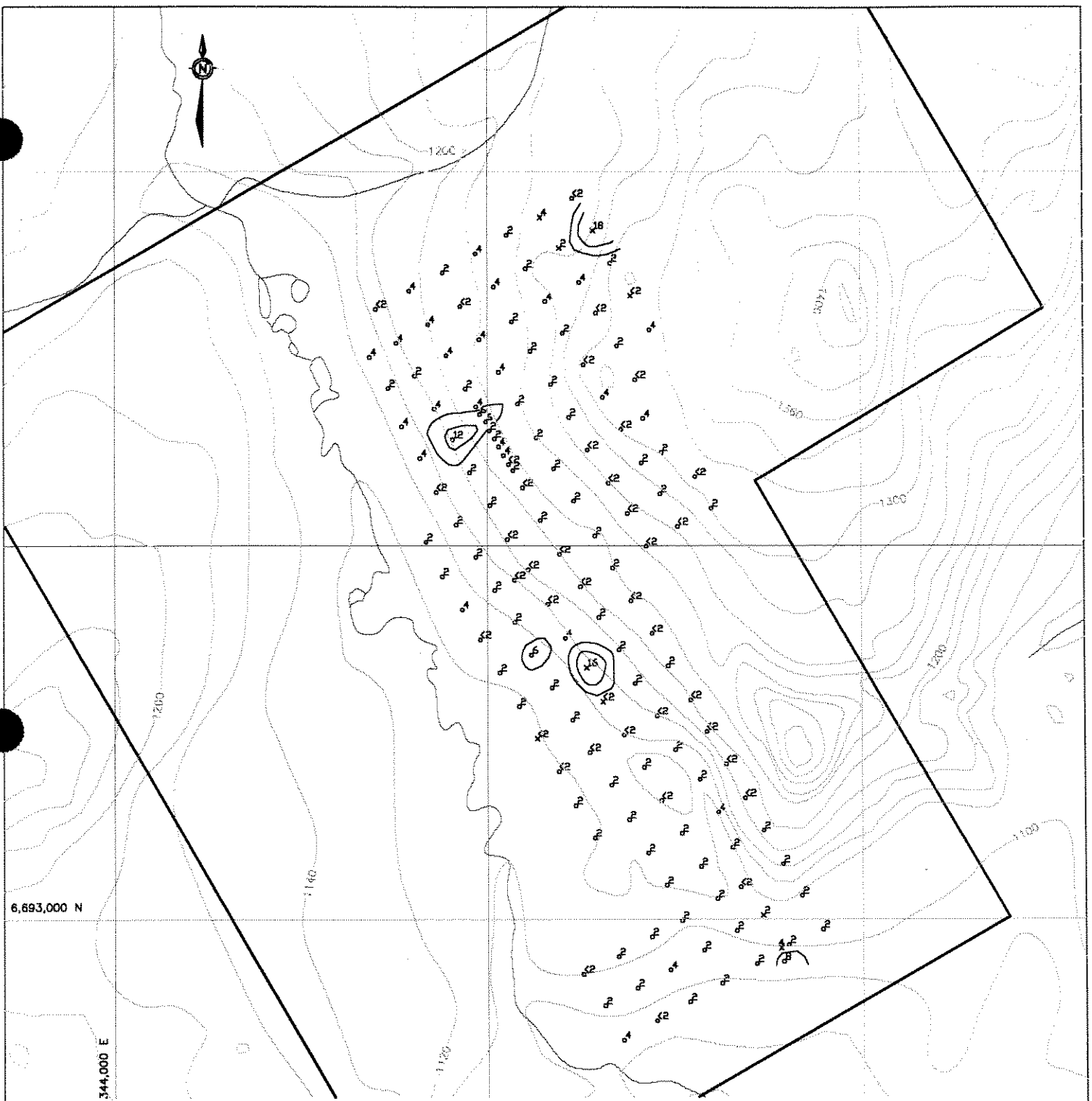
FIGURE 13

ARCHER, CATHRO & ASSOCIATES (1981) LIMITED

# ARSENIC GEOCHEMISTRY

CONVERT PROPERTY  
NORDAC RESOURCES LTD.





6,693,000 N

344,000 E

- Claim boundary
- <sup>6</sup> Soil sample location with bismuth value in ppm
- <sup>16</sup> Silt sample location with bismuth value in ppm
- ◻ ≥ 20 ppm Bi
- ◻ ≥ 10 < 20 ppm Bi
- ◻ ≥ 5 < 10 ppm Bi

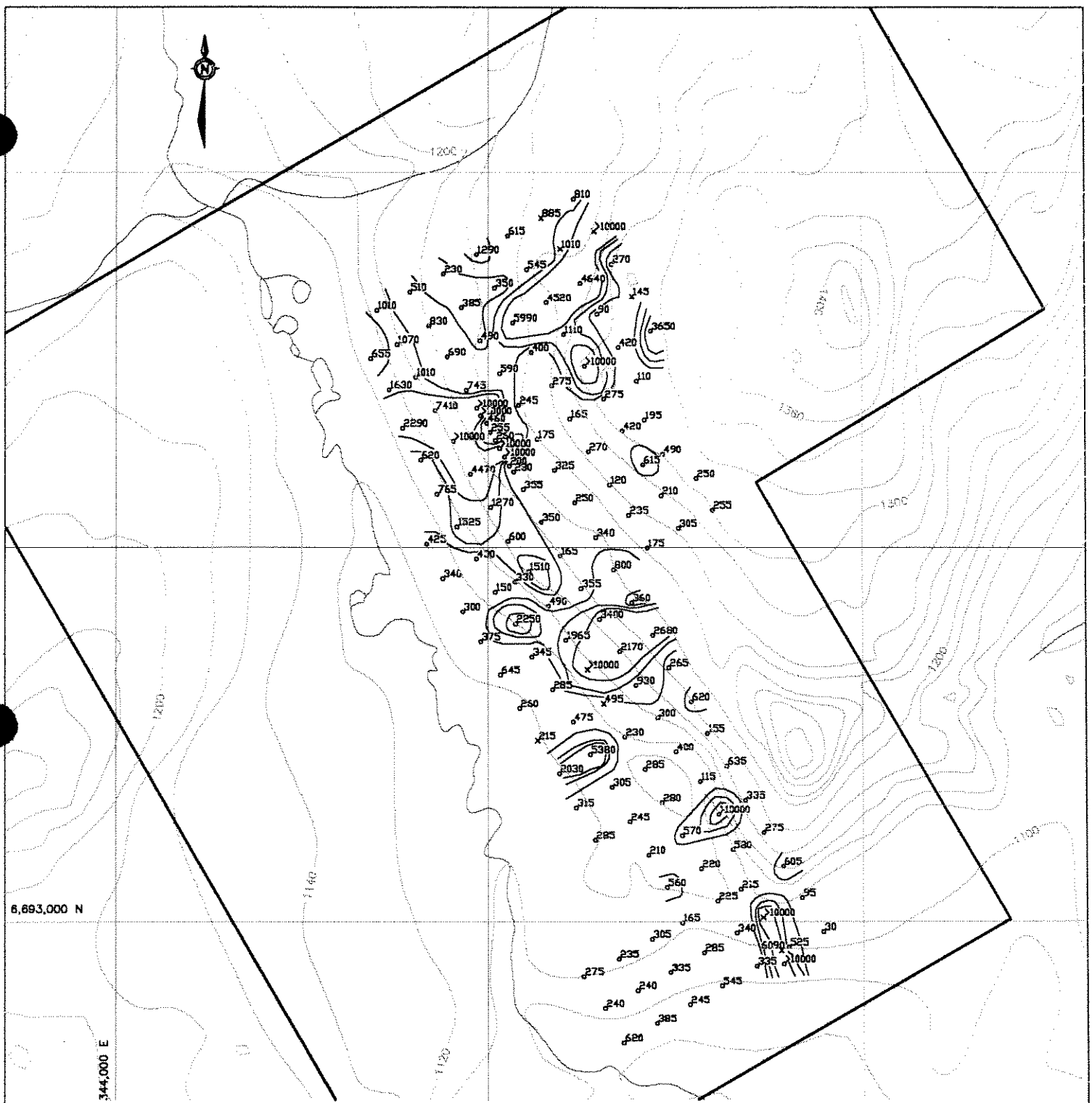
FIGURE 14

ARCHER, CATHRO & ASSOCIATES (1981) LIMITED

# BISMUTH GEOCHEMISTRY

CONVERT PROPERTY  
NORDAC RESOURCES LTD.





- Claim boundary
- 1270 Soil sample location with manganese value in ppm
- x<sup>1010</sup> Silt sample location with manganese value in ppm
- ≥ 2000 ppm Mn
- ≥ 1000 < 2000 ppm Mn
- ≥ 500 < 1000 ppm Mn

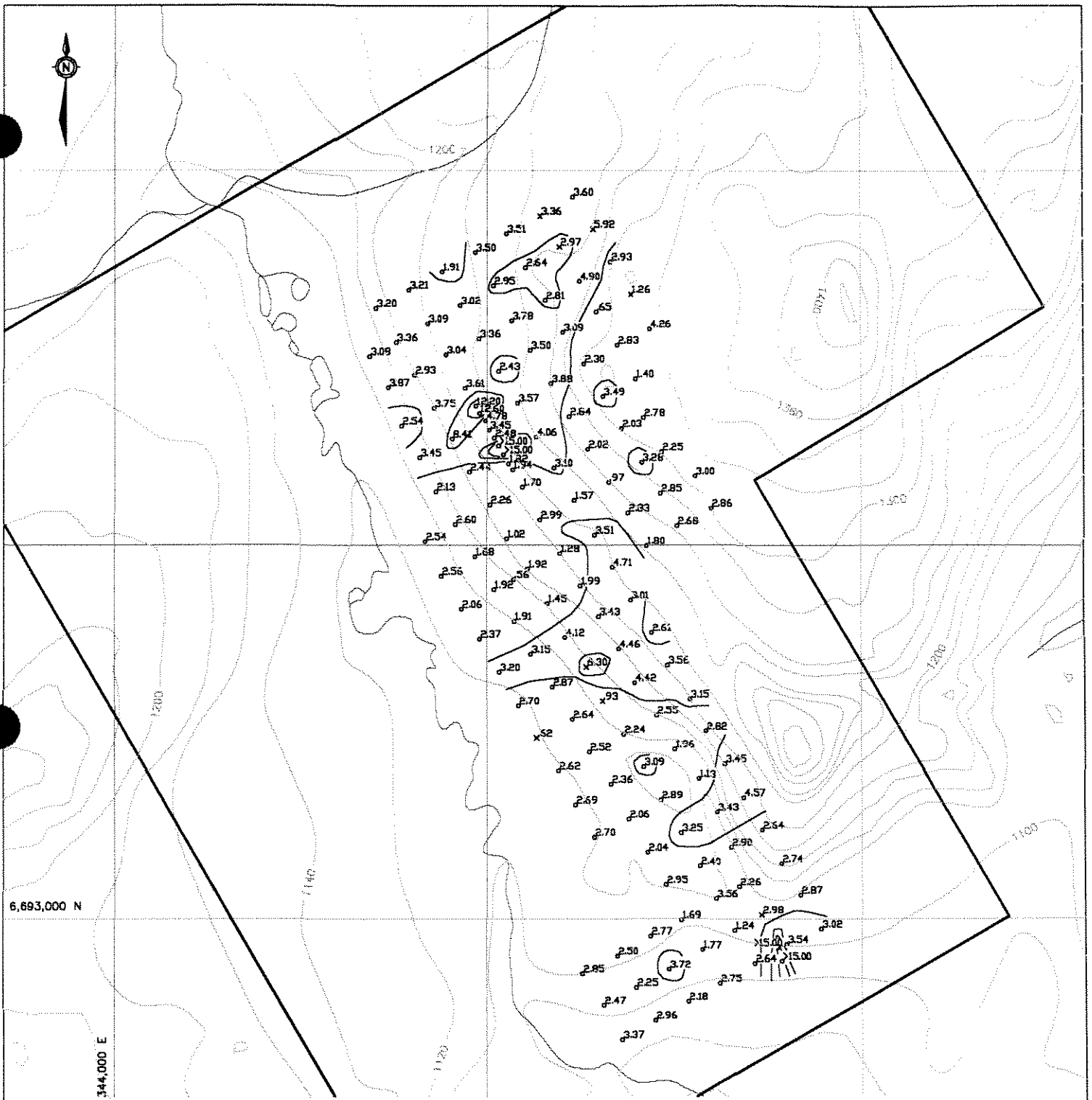
FIGURE 15

ARCHER, CATHRO & ASSOCIATES (1981) LIMITED

## MANGANESE GEOCHEMISTRY

CONVERT PROPERTY  
NORDAC RESOURCES LTD.





- Claim boundary
- ↓ 3.43 Soil sample location with iron value in %
- × 6.30 Silt sample location with iron value in %
- ≥ 12% Fe
- ≥ 6 < 12% Fe
- ≥ 3 < 6% Fe

FIGURE 16  
 ARCHER, CATHRO & ASSOCIATES (1981) LIMITED  
**IRON GEOCHEMISTRY**  
 CONVERT PROPERTY  
 NORDAC RESOURCES LTD.

0 100 200 400 600 800 1000 m

Inspection shows that there is not a one-to-one correlation between the elements and that there is a general tendency for partitioning of individual metal values. Maximum lead, barium, silver, arsenic and bismuth response tends to occur at the uphill end of an individual anomalous area. Downslope of this, copper values reach their maximum while zinc, nickel and cobalt peak values are attained at even lower elevations. These relationships are an expression of relative solubilities of the various metals in the surficial geochemical environment. This, plus the disposition of the various individual metal anomalies, suggests that the silt and, possibly, the soil sample response is derived through hydromorphic dispersion from a metal-rich stratiform source that is blind to surface beneath glacial till or cover rock. If this is the case, then the Convert anomalies take on an even greater exploration significance than if the geochemical response was simply due to downslope detrital dispersion from an outcropping sulphide zone. Because very acidic and anoxic groundwaters are required to transport metals such as lead and barium which readily form insoluble sulphates, hydromorphic transport of these elements usually occurs only when blind massive sulphide deposits of considerable size are subjected to weathering. Hydromorphic lead and/or barium transport is documented elsewhere in Yukon Territory and northern British Columbia at the Marg and Wolverine VMS deposits and the Tom, Cirque and Driftpile Creek sedex occurrences. The author is not aware of any otherwise unexplained hydromorphic lead geochemical anomalies of the magnitude and scale of the Convert response elsewhere in the northern Canadian Cordillera. This, in conjunction with the impressive strike length of the zone already outlined by preliminary sampling and the favourable host rocks, suggests that significant VMS mineralization occurs on the claim block. This hypothesis remains to be tested by diamond drilling.

**REFERENCES**

- Archer, A.R.  
1971 Wolf Lake Joint Venture, Final Report.
- Archer, A.R. and Cathro, R.J.  
1972 Wolf Lake Joint Venture, Final Report.
- Johnston, S.T. and Mortensen, J.K.  
1994 Regional setting of porphyry Cu-Mo deposits, volcanogenic massive sulphide deposits, and mesothermal gold deposits in the Yukon-Tanana Terrane, Yukon; Yukon Metallogeny: Recent Developments, Canadian-Yukon Economic Development Agreement, pp.30-34.
- Mortensen, J.K.  
1992 Pre-Mid-Mesozoic Tectonic Evolution of the Yukon-Tanana Terrane, Yukon and Alaska; Tectonics, Vol.11, No.4, pp.836-853.
- Mortensen, J.K. and Jilson, G.A.  
1985 Evolution of the Yukon-Tanana Terrane: evidence from southeastern Yukon Territory; Geology, V.13, pp.806-810.
- Poole, W.H., Roddick, J.A. and Green, L.H.  
1960 Geology, Wolf Lake (105B); Geological Survey Canada Map 10-1960.

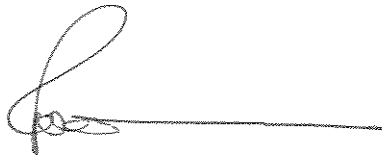
**APPENDIX I**

**AUTHOR'S STATEMENT OF QUALIFICATIONS**

## **STATEMENT OF QUALIFICATIONS**

I, Robert C. Carne, geologist, with business addresses in Whitehorse, Yukon Territory and Vancouver, British Columbia and residential address in Burnaby, British Columbia, hereby certify that:

1. I graduated from the University of British Columbia in 1974 with a B.Sc. and in 1979 with an M.Sc. majoring in Geological Sciences.
2. I am a Professional Geoscientist registered with the Association of Professional Engineers and Geoscientists of the Province of British Columbia (registration number 19868).
3. From 1974 to present, I have been actively engaged as a geologist in mineral exploration in British Columbia and Yukon Territory and on June 1, 1981 became a partner of Archer, Cathro & Associates (1981) Limited.
4. I have personally participated in or supervised the field work reported herein and have interpreted all data resulting from this work.

A handwritten signature in black ink, consisting of a large, stylized initial 'R' followed by a horizontal line extending to the right.

Robert C. Carne, M.Sc., P. Geo.

**APPENDIX II**  
**CERTIFICATES OF ANALYSIS**



# Chemex Labs Ltd.

Analytical Chemists \* Geochemists \* Registered Assayers

212 Brooksbank Ave., North Vancouver  
British Columbia, Canada V7J 2C1  
PHONE: 604-984-0221 FAX: 604-984-0218

Client: NORDAC RESOURCES LTD.  
C/O ARCHER, CATHRO  
BOX 4127, 2054 SECOND AVE.  
WHITEHORSE, YT  
Y1A 3S9

Page Number : 1  
Total Pages : 4  
Certificate Date: 08-NOV-95  
Invoice No. : I9532610  
P.O. Number :  
Account : MTT

Project : CODE CONVERT  
Comments:

## CERTIFICATE OF ANALYSIS A9532610

SAMPLE	PREP CODE	Au ppb FA+AA										
T39052	244 --	< 5										
T39053	244 --	< 5										
T39054	244 --	< 5										
T39055	244 --	< 5										
T39056	244 --	< 5										
T39057	244 --	< 5										
T39058	244 --	< 5										
T39059	244 --	< 5										
T39060	244 --	< 5										
T39071	244 --	< 5										
T39072	244 --	< 5										
T39073	244 --	< 5										
T39074	244 --	< 5										
T39075	244 --	< 5										
T39076	244 --	< 5										
T39077	244 --	< 5										
T39078	244 --	< 5										
T39079	244 --	< 5										
T39080	244 --	< 5										
T39081	244 --	< 5										
T39082	244 --	< 5										
T39083	244 --	< 5										
T39084	244 --	< 5										
T39085	244 --	< 5										
T39086	244 --	< 5										
T39087	244 --	< 5										
T39088	244 --	< 5										
T39089	244 --	< 5										
T39090	244 --	< 5										
T39091	244 --	< 5										
T39092	244 --	< 5										
T39093	244 --	< 5										
T39094	244 --	< 5										
T39095	244 --	< 5										
T39096	244 --	< 5										
T39097	244 --	< 5										
T39098	244 --	< 5										
T39099	244 --	< 5										
T39100	244 --	< 5										
T39101	244 --	< 5										

CERTIFICATION: *Mark Vink*



# Chemex Labs Ltd.

Analytical Chemists \* Geochemists \* Registered Assayers

212 Brooksbank Ave., North Vancouver  
British Columbia, Canada V7J 2C1  
PHONE: 604-984-0221 FAX: 604-984-0218

NORDAC RESOURCES LTD.  
C/O ARCHER, CATHRO  
BOX 4127, 2054 SECOND AVE.  
WHITEHORSE, YT  
Y1A 3S9

Project : CODE CONVERT  
Comments:

Page Number : 2  
Total Pages : 4  
Certificate Date: 08-NOV-95  
Invoice No. : I9532610  
P.O. Number :  
Account : MTT

## CERTIFICATE OF ANALYSIS

### A9532610

SAMPLE	PREP CODE	Au ppb FA+AA											
T39102	244 --	< 5											
T39103	244 --	< 5											
T39104	244 --	< 5											
T39105	244 --	< 5											
T39106	244 --	< 5											
T39107	244 --	< 5											
T39108	244 --	< 5											
T39109	244 --	< 5											
T39110	244 --	< 5											
T39111	244 --	< 5											
T39112	244 --	< 5											
T39113	244 --	< 5											
T39114	244 --	< 5											
T39115	244 --	< 5											
T39116	244 --	< 5											
T39117	244 --	< 5											
T39118	244 --	< 5											
T39119	244 --	< 5											
T39120	244 --	< 5											
T39121	244 --	< 5											
T39122	244 --	< 5											
T39123	244 --	< 5											
T39124	244 --	< 5											
T39125	244 --	< 5											
T39126	244 --	< 5											
T39127	244 --	< 5											
T39128	244 --	< 5											
T39129	244 --	< 5											
T39130	244 --	< 5											
T39131	244 --	< 5											
T39132	244 --	< 5											
T39133	244 --	< 5											
T39134	244 --	< 5											
T39135	244 --	< 5											
T39136	244 --	< 5											
T39137	244 --	< 5											
T39138	244 --	< 5											
T39139	244 --	< 5											
T39140	244 --	< 5											
T39141	244 --	< 5											

CERTIFICATION: *John Vonk*



# Chemex Labs Ltd.

Analytical Chemists \* Geochemists \* Registered Assayers

212 Brooksbank Ave., North Vancouver  
British Columbia, Canada V7J 2C1  
PHONE: 604-984-0221 FAX: 604-984-0218

NORDAC RESOURCES LTD.  
C/O ARCHER, CATHRO  
BOX 4127, 2054 SECOND AVE.  
WHITEHORSE, YT  
Y1A 3S9

Page Number : 3  
Total Pages : 4  
Certificate Date: 08-NOV-95  
Invoice No. : I9532610  
P.O. Number :  
Account : MTT

Project : CODE CONVERT  
Comments:

## CERTIFICATE OF ANALYSIS

### A9532610

SAMPLE	PREP CODE	Au ppb FA+AA											
T39142	244 --	45											
T39143	244 --	< 5											
T39144	244 --	< 5											
T39145	244 --	< 5											
T39146	244 --	< 5											
T39147	244 --	< 5											
T39148	244 --	< 5											
T39149	244 --	< 5											
T39150	244 --	< 5											
T39151	244 --	< 5											
T39152	244 --	< 5											
T39153	244 --	< 5											
T39154	244 --	< 5											
T39155	244 --	< 5											
T39156	244 --	< 5											
T39157	244 --	< 5											
T39158	244 --	< 5											
T39159	244 --	< 5											
T39160	244 --	< 5											
T39161	244 --	< 5											
T39162	244 --	< 5											
T39163	244 --	< 5											
T39164	244 --	< 5											
T39165	244 --	< 5											
T39166	244 --	< 5											
T39167	244 --	< 5											
T39168	244 --	< 5											
T39169	244 --	< 5											
T39170	244 --	< 5											
T39171	244 --	< 5											
T39172	244 --	< 5											
T39173	244 --	< 5											
T39174	244 --	< 5											
T39175	244 --	< 5											
T39176	244 --	< 5											
T39177	244 --	< 5											
T39178	244 --	< 5											
T39179	244 --	< 5											
T39180	244 --	< 5											
R12251	244 --	< 5											

CERTIFICATION: John Vrah



# Chemex Labs Ltd.

Analytical Chemists \* Geochemists \* Registered Assayers  
212 Brooksbank Ave., North Vancouver  
British Columbia, Canada V7J 2C1  
PHONE: 604-984-0221 FAX: 604-984-0218

NORDAC RESOURCES LTD.  
C/O ARCHER, CATHRO  
BOX 4127, 2054 SECOND AVE.  
WHITEHORSE, YT  
Y1A 3S9

Page Number : 4  
Total Pages : 4  
Certificate Date: 08-NOV-95  
Invoice No. : 19532610  
P.O. Number :  
Account : MTT

Project : CODE CONVERT  
Comments:

## CERTIFICATE OF ANALYSIS A9532610

SAMPLE	PREP CODE	Au ppb FA+AA											
R12252	244 --	< 5											
R12253	244 --	< 5											
R12254	244 --	< 5											
R12255	244 --	< 5											
R12256	244 --	< 5											
R12257	244 --	< 5											
R12258	244 --	< 5											
R12259	244 --	< 5											
R12260	244 --	< 5											
R12261	244 --	< 5											
R12262	244 --	< 5											
R12263	244 --	< 5											
R12264	244 --	< 5											
R12265	244 --	< 5											
R12266	244 --	< 5											
R12267	244 --	< 5											
R12268	244 --	< 5											
R12269	244 --	< 5											
R12270	244 --	< 5											
R12271	244 --	< 5											
R12272	244 --	< 5											
R12273	244 --	< 5											
R12274	244 --	< 5											
R12275	244 --	< 5											
R12276	244 --	< 5											
R12277	244 --	< 5											
R12278	244 --	< 5											

CERTIFICATION: Thak Vmb



# Chemex Labs Ltd.

Analytical Chemists \* Geochemists \* Registered Assayers

212 Brooksbank Ave., North Vancouver  
British Columbia, Canada V7J 2C1  
PHONE: 604-984-0221 FAX: 604-984-0218

to: NORDAC RESOURCES LTD.  
C/O ARCHER, CATHRO  
BOX 4127, 2054 SECOND AVE.  
WHITEHORSE, YT  
Y1A 3S9

Project : CONVERT  
Comments:

Page Number : 1-A  
Total Pages : 1  
Certificate Date: 25-OCT-95  
Invoice No. : I9531381  
P.O. Number :  
Account : MTT

## CERTIFICATE OF ANALYSIS A9531381

SAMPLE	PREP CODE		Au ppb	Ag	Al	As	Ba	Be	Bi	Ca	Cd	Co	Cr	Cu	Fe	Ga	Hg	K	La	Mg	Mn
	FA+AA		ppm	ppm	%	ppm	ppm	ppm	ppm	%	ppm	ppm	ppm	ppm	%	ppm	ppm	%	ppm	%	ppm
935606	205	226	< 5	< 0.2	0.83	< 2	320	< 0.5	< 2	0.07	3.5	135	37	147	>15.00	< 10	< 1	0.09	10	0.17	>10000

CERTIFICATION: Hart Buchler



# Chemex Labs Ltd.

Analytical Chemists \* Geochemists \* Registered Assayers  
212 Brooksbank Ave., North Vancouver  
British Columbia, Canada V7J 2C1  
PHONE: 604-984-0221 FAX: 604-984-0218

Client: NORDAC RESOURCES LTD.  
C/O ARCHER, CATHRO  
BOX 4127, 2054 SECOND AVE.  
WHITEHORSE, YT  
Y1A 3S9

Project : CONVERT  
Comments:

Page Number : 1-B  
Total Pages : 1  
Certificate Date: 25-OCT-95  
Invoice No. : I9531381  
P.O. Number :  
Account : MTT

## CERTIFICATE OF ANALYSIS A9531381

SAMPLE	PREP CODE	Mo ppm	Na %	Ni ppm	P ppm	Pb ppm	Sb ppm	Sc ppm	Sr ppm	Ti %	Tl ppm	U ppm	V ppm	W ppm	Zn ppm
935606	205 226	2	< 0.01	113	120	34	8	3	20	0.03	< 10	< 10	18	< 10	1050

CERTIFICATION: Hart/Buehler



# Chemex Labs Ltd.

Analytical Chemists \* Geochemists \* Registered Assayers

212 Brooksbank Ave., North Vancouver  
British Columbia, Canada V7J 2C1  
PHONE: 604-984-0221 FAX: 604-984-0218



NORDAC RESOURCES LTD.  
C/O ARCHER, CATHRO  
BOX 4127, 2054 SECOND AVE.  
WHITEHORSE, YT  
Y1A 3S9

Project : CODE CONVERT  
Comments:

Page Number : 1-A  
Total Pages : 1  
Certificate Date: 12-OCT-95  
Invoice No. : I9530175  
P.O. Number :  
Account : MTT

## CERTIFICATE OF ANALYSIS A9530175

SAMPLE	PREP CODE		Au ppb	Ag ppm	Al %	As ppm	Ba ppm	Be ppm	Bi ppm	Ca %	Cd ppm	Co ppm	Cr ppm	Cu ppm	Fe %	Ga ppm	Hg ppm	K %	La ppm	Mg %	Mn ppm
	FA+AA																				
T39188	205	226	345	< 0.2	1.12	8	1440	< 0.5	32	0.03	42.5	1780	13	1585	14.20	< 10	< 1	0.09	< 10	< 0.01	>10000

CERTIFICATION: *Jhai D Ma*



# Chemex Labs Ltd.

Analytical Chemists \* Geochemists \* Registered Assayers  
212 Brooksbank Ave., North Vancouver  
British Columbia, Canada V7J 2C1  
PHONE: 604-984-0221 FAX: 604-984-0218

Client: NORDAC RESOURCES LTD.  
C/O ARCHER, CATHRO  
BOX 4127, 2054 SECOND AVE.  
WHITEHORSE, YT  
Y1A 3S9

Project: CODE CONVERT  
Comments:

Page Number: 1-B  
Total Pages: 1  
Certificate Date: 12-OCT-95  
Invoice No.: I9530175  
P.O. Number:  
Account: MTT

## CERTIFICATE OF ANALYSIS A9530175

SAMPLE	PREP CODE		Mo	Na	Ni	P	Pb	Sb	Sc	Sr	Ti	Ti	U	V	W	Zn
			ppm	%	ppm	ppm	ppm	ppm	ppm	ppm	%	ppm	ppm	ppm	ppm	ppm
T39188	205	226	1	0.01	1100	120	4	6	1	9	< 0.01	< 10	10	< 1	< 10	3280

CERTIFICATION: *[Signature]*



# Chemex Labs Ltd.

Analytical Chemists \* Geochemists \* Registered Assayers

212 Brooksbank Ave., North Vancouver  
British Columbia, Canada V7J 2C1  
PHONE: 604-984-0221 FAX: 604-984-0218

NORDAC RESOURCES LTD.  
C/O ARCHER, CATHRO  
BOX 4127, 2054 SECOND AVE.  
WHITEHORSE, YT  
Y1A 3S9

Project: CODE CONVERT  
Comments:

Page: 1-A  
Total Pages: 4  
Certificate Date: 21-OCT-95  
Invoice No.: I9530174  
P.O. Number:  
Account: MTT

## CERTIFICATE OF ANALYSIS

### A9530174

SAMPLE	PREP CODE	Ag ppm	Al %	As ppm	Ba ppm	Be ppm	Bi ppm	Ca %	Cd ppm	Co ppm	Cr ppm	Cu ppm	Fe %	Ga ppm	Hg ppm	K %	La ppm	Mg %	Mn ppm	Mo ppm
T39052	201 229	0.6	0.24	12	110	< 0.5	2	0.01	< 0.5	< 1	14	66	3.02	< 10	< 1	0.03	10	0.01	30	2
T39053	201 229	0.6	1.47	26	90	< 0.5	2	0.24	0.5	7	29	17	3.54	10	< 1	0.07	10	0.73	525	< 1
T39054	201 229	0.4	0.37	< 2	1000	1.0	4	< 0.01	2.0	25	3	22	>15.00	< 10	6	< 0.01	< 10	< 0.01	6090	< 1
T39055	201 229	7.6	0.74	8	1910	3.0	8	0.04	15.5	207	1	123	>15.00	< 10	2	0.04	< 10	0.01	>10000	1
T39056	201 229	0.2	1.61	6	110	< 0.5	2	0.15	0.5	7	27	14	2.64	< 10	< 1	0.06	10	0.45	335	< 1
T39057	201 229	0.4	1.07	10	90	< 0.5	2	0.22	< 0.5	6	18	11	2.75	< 10	< 1	0.06	10	0.42	545	1
T39058	201 229	0.8	1.36	10	170	< 0.5	2	0.11	< 0.5	4	15	10	2.18	< 10	< 1	0.06	10	0.32	245	< 1
T39059	201 229	0.4	1.69	18	180	< 0.5	< 2	0.11	< 0.5	7	27	22	2.96	< 10	< 1	0.08	10	0.46	385	1
T39060	201 229	0.4	1.78	16	160	< 0.5	4	0.17	< 0.5	9	28	16	3.37	10	< 1	0.08	10	0.52	620	1
T39071	201 229	0.6	1.47	12	150	< 0.5	2	0.13	< 0.5	4	23	11	2.47	< 10	< 1	0.07	20	0.39	240	< 1
T39072	201 229	0.2	1.20	8	230	< 0.5	2	0.15	0.5	4	19	13	2.25	< 10	< 1	0.08	20	0.35	240	< 1
T39073	201 229	0.6	2.32	16	230	< 0.5	4	0.11	< 0.5	8	26	19	3.72	10	< 1	0.09	20	0.68	335	2
T39074	201 229	0.2	0.90	8	90	< 0.5	2	0.16	< 0.5	4	16	7	1.77	< 10	< 1	0.04	10	0.37	285	< 1
T39075	201 229	0.2	0.64	2	130	< 0.5	2	0.21	0.5	3	8	8	1.24	< 10	< 1	0.08	10	0.21	340	< 1
T39076	201 229	4.4	3.34	4	710	1.5	2	0.87	41.5	38	76	306	2.98	< 10	1	0.15	10	0.57	>10000	1
T39077	201 229	0.6	0.51	14	140	< 0.5	2	< 0.01	< 0.5	1	11	104	2.87	< 10	< 1	0.11	10	0.07	95	< 1
T39078	201 229	0.6	1.01	8	410	< 0.5	2	0.24	0.5	10	25	37	2.74	10	< 1	0.11	10	0.37	605	< 1
T39079	201 229	0.2	1.06	8	90	< 0.5	< 2	0.07	< 0.5	3	10	24	2.26	10	< 1	0.06	30	0.29	215	1
T39080	201 229	0.4	1.57	12	110	< 0.5	2	0.14	< 0.5	4	28	12	3.56	10	< 1	0.07	10	0.48	225	1
T39081	201 229	< 0.2	1.24	6	150	< 0.5	2	0.22	< 0.5	4	27	11	1.69	< 10	< 1	0.07	10	0.38	165	< 1
T39082	201 229	< 0.2	1.93	14	150	< 0.5	2	0.19	< 0.5	8	26	23	2.77	10	< 1	0.08	10	0.60	305	< 1
T39083	201 229	< 0.2	2.04	12	230	< 0.5	2	0.12	< 0.5	7	25	12	2.50	10	< 1	0.07	10	0.53	235	< 1
T39084	201 229	0.2	1.96	8	200	< 0.5	< 2	0.14	0.5	6	29	13	2.85	10	1	0.06	10	0.49	275	1
T39085	201 229	< 0.2	1.69	12	250	< 0.5	< 2	0.24	0.5	14	31	26	3.20	10	< 1	0.08	20	0.55	1010	1
T39086	201 229	0.4	1.84	16	160	< 0.5	4	0.15	0.5	9	35	29	3.21	10	< 1	0.08	10	0.55	510	1
T39087	201 229	0.2	1.26	4	120	< 0.5	2	0.11	< 0.5	3	22	18	1.91	< 10	< 1	0.07	10	0.27	230	1
T39088	201 229	0.4	2.09	18	640	< 0.5	4	0.56	0.5	12	38	45	3.50	10	< 1	0.11	20	0.68	1290	1
T39089	201 229	< 0.2	1.92	4	130	< 0.5	2	0.25	< 0.5	11	38	32	3.51	10	< 1	0.09	20	0.65	615	1
T39090	201 229	2.6	2.27	28	630	< 0.5	4	0.56	1.0	12	47	55	3.36	10	< 1	0.13	20	0.51	885	1
T39091	201 229	0.2	1.82	10	150	< 0.5	< 2	0.15	0.5	9	34	17	3.60	10	< 1	0.07	10	0.46	810	1
T39092	201 229	3.0	2.38	34	3360	< 0.5	18	0.65	5.5	75	31	74	5.92	10	3	0.09	30	0.48	>10000	11
T39093	201 229	1.2	1.75	12	520	< 0.5	2	0.79	0.5	8	30	58	2.97	10	< 1	0.07	20	0.58	1010	< 1
T39094	201 229	< 0.2	1.47	10	250	< 0.5	2	0.25	< 0.5	10	28	35	2.64	< 10	< 1	0.06	20	0.53	545	1
T39095	201 229	0.2	2.11	20	100	< 0.5	4	0.17	< 0.5	8	34	26	2.95	< 10	< 1	0.07	10	0.56	350	1
T39096	201 229	< 0.2	1.75	20	220	< 0.5	< 2	0.21	0.5	9	36	38	3.02	10	< 1	0.07	20	0.54	385	1
T39097	201 229	< 0.2	1.74	10	350	< 0.5	4	0.16	0.5	12	31	25	3.09	10	< 1	0.06	20	0.50	830	1
T39098	201 229	0.6	1.88	42	920	< 0.5	4	0.58	5.5	14	68	73	3.36	10	< 1	0.10	20	0.60	1070	1
T39099	201 229	< 0.2	1.54	18	450	< 0.5	4	0.29	1.5	10	30	32	3.08	10	< 1	0.11	20	0.58	655	1
T39100	201 229	1.8	2.41	18	570	< 0.5	2	0.25	2.0	23	48	78	3.87	10	< 1	0.14	10	0.59	1630	1
T39101	201 229	0.8	1.62	18	630	< 0.5	2	0.25	1.5	13	33	41	2.93	10	< 1	0.09	20	0.47	1010	1

CERTIFICATION:

*Hart Buchler*



# Chemex Labs Ltd.

Analytical Chemists \* Geochemists \* Registered Assayers

212 Brooksbank Ave., North Vancouver  
British Columbia, Canada V7J 2C1  
PHONE: 604-984-0221 FAX: 604-984-0218

NORDAC RESOURCES LTD.  
C/O ARCHER, CATHRO  
BOX 4127, 2054 SECOND AVE.  
WHITEHORSE, YT  
Y1A 3S9

Page Number : 1-B  
Total Pages : 4  
Certificate Date: 21-OCT-95  
Invoice No. : I9530174  
P.O. Number :  
Account : MTT

Project : CODE CONVERT  
Comments:

## CERTIFICATE OF ANALYSIS A9530174

SAMPLE	PREP CODE	Na %	Ni ppm	P ppm	Pb ppm	Sb ppm	Sc ppm	Sr ppm	Ti %	Tl ppm	U ppm	V ppm	W ppm	Zn ppm
T39052	201 229	< 0.01	4	540	68	2	< 1	6	< 0.01	< 10	< 10	35	< 10	146
T39053	201 229	< 0.01	9	230	20	< 2	3	14	0.17	< 10	< 10	69	< 10	116
T39054	201 229	< 0.01	45	120	24	< 2	< 1	19	< 0.01	< 10	< 10	< 1	< 10	1300
T39055	201 229	0.01	1400	790	46	4	1	36	< 0.01	< 10	< 10	1	< 10	7890
T39056	201 229	< 0.01	21	330	8	< 2	2	8	0.09	< 10	< 10	45	< 10	126
T39057	201 229	< 0.01	11	330	18	2	1	12	0.08	< 10	< 10	52	< 10	80
T39058	201 229	< 0.01	11	300	28	2	2	8	0.04	< 10	< 10	29	< 10	64
T39059	201 229	< 0.01	18	240	32	< 2	2	8	0.04	< 10	< 10	34	< 10	108
T39060	201 229	< 0.01	17	510	36	2	3	12	0.07	< 10	< 10	45	< 10	102
T39071	201 229	< 0.01	12	380	22	2	2	10	0.06	< 10	< 10	38	< 10	74
T39072	201 229	< 0.01	11	320	22	< 2	2	12	0.06	< 10	< 10	33	< 10	74
T39073	201 229	< 0.01	25	310	26	4	3	9	0.04	< 10	< 10	34	< 10	210
T39074	201 229	< 0.01	8	210	18	< 2	2	12	0.08	< 10	< 10	48	< 10	40
T39075	201 229	< 0.01	6	260	20	< 2	< 1	15	0.04	< 10	< 10	26	< 10	54
T39076	201 229	0.01	820	2080	128	4	2	102	0.03	< 10	40	39	< 10	6630
T39077	201 229	< 0.01	14	370	38	< 2	1	12	< 0.01	< 10	< 10	19	< 10	148
T39078	201 229	< 0.01	15	440	30	2	2	22	0.07	< 10	< 10	45	< 10	136
T39079	201 229	< 0.01	9	670	18	< 2	< 1	8	< 0.01	< 10	< 10	22	< 10	70
T39080	201 229	< 0.01	13	380	22	< 2	2	11	0.09	< 10	< 10	56	< 10	74
T39081	201 229	< 0.01	11	420	8	< 2	2	14	0.08	< 10	< 10	38	< 10	54
T39082	201 229	< 0.01	26	470	22	4	2	11	0.08	< 10	< 10	40	< 10	108
T39083	201 229	< 0.01	21	240	14	< 2	2	8	0.06	< 10	< 10	31	< 10	134
T39084	201 229	< 0.01	16	290	20	< 2	3	10	0.07	< 10	< 10	39	< 10	86
T39085	201 229	< 0.01	24	530	20	< 2	2	21	0.07	< 10	< 10	46	< 10	122
T39086	201 229	< 0.01	26	470	32	< 2	3	11	0.09	< 10	< 10	46	< 10	124
T39087	201 229	< 0.01	13	480	28	2	1	11	0.05	< 10	< 10	35	< 10	84
T39088	201 229	< 0.01	32	1110	48	4	4	49	0.04	< 10	< 10	49	< 10	344
T39089	201 229	< 0.01	29	610	30	< 2	3	16	0.11	< 10	< 10	57	< 10	146
T39090	201 229	< 0.01	58	1890	774	2	4	55	0.04	< 10	< 10	41	< 10	532
T39091	201 229	< 0.01	18	520	36	2	3	13	0.09	< 10	< 10	50	< 10	150
T39092	201 229	< 0.01	303	1510	320	< 2	4	101	0.03	< 10	< 10	42	10	1760
T39093	201 229	< 0.01	32	1300	42	2	2	58	0.01	< 10	< 10	25	< 10	264
T39094	201 229	< 0.01	29	570	58	2	2	22	0.06	< 10	< 10	36	< 10	298
T39095	201 229	< 0.01	25	570	18	2	2	13	0.07	< 10	< 10	37	< 10	152
T39096	201 229	< 0.01	33	650	30	2	2	20	0.07	< 10	< 10	43	< 10	224
T39097	201 229	< 0.01	25	540	42	2	2	16	0.06	< 10	< 10	43	< 10	198
T39098	201 229	< 0.01	125	850	60	2	3	61	0.05	< 10	< 10	47	10	1480
T39099	201 229	< 0.01	34	600	38	2	3	29	0.08	< 10	< 10	45	< 10	440
T39100	201 229	< 0.01	39	1250	110	2	2	26	0.04	< 10	< 10	60	< 10	496
T39101	201 229	< 0.01	30	570	72	2	3	28	0.07	< 10	< 10	50	< 10	460

CERTIFICATION:

*Hart Buchler*



# Chemex Labs Ltd.

Analytical Chemists \* Geochemists \* Registered Assayers

212 Brooksbank Ave., North Vancouver  
British Columbia, Canada V7J 2C1  
PHONE: 604-984-0221 FAX: 604-984-0218

NORDAC RESOURCES LTD.  
C/O ARCHER, CATHRO  
BOX 4127, 2054 SECOND AVE.  
WHITEHORSE, YT  
Y1A 3S9

Project : CODE CONVERT  
Comments:

Page Number : 2-A  
Total Pages : 4  
Certificate Date : 21-OCT-95  
Invoice No. : I9530174  
P.O. Number :  
Account : MTT

## CERTIFICATE OF ANALYSIS A9530174

SAMPLE	PREP		Ag	Al	As	Ba	Be	Bi	Ca	Cd	Co	Cr	Cu	Fe	Ga	Hg	K	La	Mg	Mn	Mo
	CODE		ppm	%	ppm	ppm	ppm	ppm	%	ppm	ppm	ppm	ppm	%	ppm	ppm	%	ppm	%	ppm	ppm
T39102	201	229	0.2	1.55	8	440	< 0.5	4	0.15	0.5	11	28	39	3.04	< 10	< 1	0.07	10	0.50	690	1
T39103	201	229	1.0	1.49	26	160	< 0.5	4	0.13	0.5	9	28	29	3.36	10	< 1	0.06	10	0.43	490	1
T39104	201	229	3.6	2.75	24	810	0.5	2	0.49	1.5	33	78	70	3.78	10	< 1	0.09	30	0.57	5990	2
T39105	201	229	0.6	1.74	14	320	< 0.5	4	0.26	1.5	20	42	47	2.81	10	< 1	0.08	20	0.50	4520	1
T39106	201	229	0.6	1.65	22	170	< 0.5	4	0.10	0.5	42	31	42	4.90	10	< 1	0.08	10	0.39	4640	2
T39107	201	229	0.4	1.73	10	90	< 0.5	2	0.16	< 0.5	5	31	15	2.93	10	< 1	0.06	10	0.40	270	< 1
T39108	201	229	2.8	1.87	10	790	< 0.5	< 2	1.25	2.5	4	85	62	1.26	< 10	< 1	0.07	30	0.30	145	< 1
T39109	201	229	0.6	0.20	6	120	< 0.5	< 2	0.04	< 0.5	1	3	9	0.65	< 10	< 1	0.04	10	0.02	90	3
T39110	201	229	0.2	2.10	18	350	< 0.5	2	0.21	< 0.5	14	34	29	3.09	10	< 1	0.14	10	0.45	1110	1
T39111	201	229	< 0.2	1.37	14	100	< 0.5	2	0.09	< 0.5	4	23	23	3.50	10	< 1	0.06	20	0.32	400	2
T39112	201	229	0.6	1.06	12	90	< 0.5	4	0.09	< 0.5	7	13	19	2.43	10	< 1	0.09	10	0.28	590	1
T39113	201	229	1.2	1.97	16	470	< 0.5	2	0.15	0.5	9	30	44	3.61	10	< 1	0.08	20	0.50	745	2
T39114	201	229	1.2	1.76	28	630	< 0.5	4	0.09	2.0	39	33	64	3.75	10	< 1	0.08	20	0.40	7410	2
T39115	201	229	1.0	1.73	12	670	< 0.5	4	0.64	0.5	9	28	42	2.54	10	< 1	0.12	20	0.37	2290	1
T39116	201	229	< 0.2	1.25	16	100	< 0.5	4	0.16	0.5	7	28	28	3.45	10	< 1	0.08	10	0.58	620	1
T39117	201	229	0.2	1.58	18	600	< 0.5	12	0.07	27.5	250	13	103	8.41	10	< 1	0.08	30	0.43	>10000	3
T39118	201	229	1.4	2.05	30	160	< 0.5	6	0.02	< 0.5	5	32	42	4.78	10	< 1	0.12	50	0.61	460	2
T39119	201	229	2.4	1.93	14	190	< 0.5	2	0.10	< 0.5	6	37	51	3.57	10	< 1	0.07	10	0.27	245	2
T39120	201	229	2.6	1.31	18	120	< 0.5	2	0.15	< 0.5	4	30	22	3.88	10	< 1	0.08	20	0.29	275	2
T39121	201	229	1.6	1.71	6	380	< 0.5	< 2	0.08	4.5	8	28	31	2.30	10	< 1	0.07	30	0.24	>10000	1
T39122	201	229	0.4	1.66	14	110	< 0.5	2	0.18	< 0.5	8	32	35	2.83	< 10	< 1	0.07	10	0.50	420	1
T39123	201	229	0.2	2.17	20	440	< 0.5	4	0.22	0.5	33	52	42	4.26	10	< 1	0.10	10	0.49	3650	1
T39124	201	229	0.8	0.36	14	330	< 0.5	< 2	0.04	< 0.5	2	18	8	1.40	< 10	< 1	0.03	10	0.03	110	2
T39125	201	229	2.8	1.27	14	240	< 0.5	4	0.14	0.5	5	30	46	3.49	< 10	< 1	0.06	10	0.35	275	2
T39126	201	229	0.2	0.77	12	120	< 0.5	2	0.05	< 0.5	2	21	70	2.84	< 10	< 1	0.04	10	0.15	165	2
T39127	201	229	3.2	1.44	82	220	< 0.5	2	0.03	< 0.5	3	26	129	4.06	10	< 1	0.06	10	0.10	175	4
T39128	201	229	7.6	1.84	< 2	1050	< 0.5	4	< 0.01	21.0	458	1	1125	>15.00	< 10	< 1	0.02	< 10	< 0.01	>10000	< 1
T39129	201	229	< 0.2	1.23	< 2	280	< 0.5	2	0.10	2.0	30	13	34	2.44	< 10	< 1	0.05	10	0.31	4470	< 1
T39130	201	229	< 0.2	1.47	4	210	< 0.5	< 2	0.38	0.5	7	31	17	2.13	10	< 1	0.07	20	0.53	765	< 1
T39131	201	229	0.2	1.27	8	180	< 0.5	2	0.16	0.5	4	27	16	3.10	10	< 1	0.07	10	0.32	325	1
T39132	201	229	1.0	0.98	10	180	< 0.5	< 2	0.13	< 0.5	3	15	14	1.70	10	< 1	0.07	10	0.18	355	< 1
T39133	201	229	0.4	1.64	2	260	< 0.5	2	0.12	0.5	9	23	35	2.26	10	< 1	0.09	10	0.41	1270	< 1
T39134	201	229	1.4	1.68	< 2	290	0.5	2	0.23	1.0	7	9	45	2.60	< 10	< 1	0.08	20	0.66	1525	1
T39135	201	229	< 0.2	1.35	6	90	< 0.5	2	0.23	0.5	6	24	15	2.54	10	< 1	0.10	10	0.43	425	< 1
T39136	201	229	< 0.2	1.28	20	180	< 0.5	2	0.25	< 0.5	7	20	18	2.56	10	< 1	0.15	10	0.59	340	< 1
T39137	201	229	2.4	1.15	6	220	< 0.5	2	2.58	0.5	4	12	133	1.68	< 10	< 1	0.07	10	0.29	430	< 1
T39138	201	229	0.2	0.77	2	310	< 0.5	< 2	0.44	1.5	2	3	19	1.02	< 10	< 1	0.07	20	0.24	600	1
T39139	201	229	0.2	1.50	10	130	< 0.5	2	0.15	0.5	8	30	21	2.99	10	< 1	0.05	10	0.49	350	1
T39140	201	229	0.2	0.94	< 2	100	< 0.5	2	0.16	< 0.5	4	17	8	1.57	10	< 1	0.07	10	0.36	250	< 1
T39141	201	229	0.4	0.58	2	130	< 0.5	< 2	0.14	< 0.5	2	12	12	0.97	< 10	< 1	0.06	10	0.11	120	< 1

CERTIFICATION: *Hart Beckler*



# Chemex Labs Ltd.

Analytical Chemists \* Geochemists \* Registered Assayers

212 Brooksbank Ave., North Vancouver  
British Columbia, Canada V7J 2C1  
PHONE: 604-984-0221 FAX: 604-984-0218

to: NORDAC RESOURCES LTD.  
C/O ARCHER, CATHRO  
BOX 4127, 2054 SECOND AVE.  
WHITEHORSE, YT  
Y1A 3S9

Project: CODE CONVERT  
Comments:

Page Number : 2-B  
Total Pages : 4  
Certificate Date: 21-OCT-95  
Invoice No. : 19530174  
P.O. Number :  
Account : MTT

## CERTIFICATE OF ANALYSIS

### A9530174

SAMPLE	PREP		Na	Ni	P	Pb	Sb	Sc	Sr	Ti	Tl	U	V	W	Zn
	CODE		%	ppm	ppm	ppm	ppm	ppm	ppm	%	ppm	ppm	ppm	ppm	ppm
T39102	201	229	< 0.01	26	500	78	< 2	2	16	0.06	< 10	< 10	39	< 10	224
T39103	201	229	< 0.01	21	500	38	4	2	15	0.06	< 10	< 10	48	< 10	240
T39104	201	229	< 0.01	66	2260	48	4	6	38	0.06	< 10	< 10	56	< 10	684
T39105	201	229	< 0.01	79	570	18	< 2	6	25	0.09	< 10	< 10	46	< 10	1065
T39106	201	229	< 0.01	30	1070	32	< 2	3	16	0.08	< 10	< 10	56	< 10	432
T39107	201	229	< 0.01	16	490	26	2	3	12	0.10	< 10	< 10	53	< 10	118
T39108	201	229	0.01	42	1620	16	2	2	65	0.01	< 10	< 10	18	< 10	120
T39109	201	229	< 0.01	2	250	212	< 2	< 1	11	0.01	< 10	< 10	14	< 10	34
T39110	201	229	< 0.01	25	710	70	4	2	22	0.04	< 10	< 10	49	< 10	182
T39111	201	229	< 0.01	14	400	22	2	2	11	0.07	< 10	< 10	52	< 10	84
T39112	201	229	< 0.01	12	490	24	< 2	1	10	0.04	< 10	< 10	40	< 10	84
T39113	201	229	< 0.01	28	590	320	2	3	20	0.06	< 10	< 10	46	< 10	294
T39114	201	229	< 0.01	106	420	348	4	4	18	0.06	< 10	< 10	46	< 10	798
T39115	201	229	< 0.01	33	570	96	2	2	73	0.03	< 10	< 10	37	< 10	652
T39116	201	229	< 0.01	23	470	48	2	2	12	0.08	< 10	< 10	47	< 10	208
T39117	201	229	< 0.01	476	590	48	< 2	3	28	0.01	< 10	< 10	24	10	3720
T39118	201	229	< 0.01	16	620	54	2	2	26	0.01	< 10	< 10	35	< 10	162
T39119	201	229	< 0.01	22	480	80	2	3	11	0.08	< 10	< 10	55	< 10	182
T39120	201	229	< 0.01	11	1020	338	< 2	2	16	0.11	< 10	< 10	69	< 10	100
T39121	201	229	< 0.01	43	550	40	< 2	1	14	0.02	< 10	< 10	30	< 10	644
T39122	201	229	< 0.01	22	380	24	2	3	13	0.10	< 10	< 10	44	< 10	164
T39123	201	229	< 0.01	31	1400	24	< 2	2	22	0.03	< 10	< 10	62	< 10	182
T39124	201	229	< 0.01	4	210	228	2	1	9	0.13	< 10	< 10	46	< 10	22
T39125	201	229	< 0.01	19	720	214	2	2	18	0.06	< 10	< 10	48	< 10	88
T39126	201	229	< 0.01	7	570	62	2	2	11	0.04	< 10	< 10	61	< 10	70
T39127	201	229	< 0.01	26	1130	68	4	2	19	0.03	< 10	< 10	71	< 10	160
T39128	201	229	0.01	449	970	22	6	2	7	0.01	< 10	< 10	2	< 10	1215
T39129	201	229	< 0.01	64	530	14	< 2	< 1	12	0.02	< 10	< 10	31	< 10	294
T39130	201	229	< 0.01	61	500	10	2	3	29	0.10	< 10	< 10	40	< 10	628
T39131	201	229	< 0.01	11	490	26	2	3	14	0.12	< 10	< 10	72	< 10	100
T39132	201	229	0.01	7	310	32	2	1	14	0.09	< 10	< 10	50	< 10	62
T39133	201	229	0.01	22	800	34	< 2	< 1	12	0.02	< 10	< 10	36	< 10	182
T39134	201	229	< 0.01	84	820	22	2	1	20	< 0.01	< 10	< 10	15	< 10	634
T39135	201	229	< 0.01	15	430	8	2	3	9	0.11	< 10	< 10	49	< 10	86
T39136	201	229	< 0.01	15	290	10	< 2	3	17	0.10	< 10	< 10	45	< 10	82
T39137	201	229	< 0.01	37	1130	20	< 2	1	152	0.01	< 10	10	10	< 10	120
T39138	201	229	< 0.01	8	430	18	< 2	< 1	35	0.01	< 10	< 10	9	< 10	254
T39139	201	229	< 0.01	21	440	12	2	3	10	0.09	< 10	< 10	62	< 10	230
T39140	201	229	< 0.01	10	270	20	< 2	2	12	0.09	< 10	< 10	40	< 10	52
T39141	201	229	< 0.01	4	420	12	< 2	< 1	13	0.01	< 10	< 10	22	< 10	30

CERTIFICATION:

*Haut Bichler*



# Chemex Labs Ltd.

Analytical Chemists \* Geochemists \* Registered Assayers  
 212 Brooksbank Ave., North Vancouver  
 British Columbia, Canada V7J 2C1  
 PHONE: 604-984-0221 FAX: 604-984-0218

NORDAC RESOURCES LTD.  
 C/O ARCHER, CATHRO  
 BOX 4127, 2054 SECOND AVE.  
 WHITEHORSE, YT  
 Y1A 3S9

Page: 3-A  
 Total: 4  
 Certificate Date: 21-OCT-95  
 Invoice No.: I9530174  
 P.O. Number:  
 Account: MTT

Project: CODE CONVERT  
 Comments:

## CERTIFICATE OF ANALYSIS A9530174

SAMPLE	PREP CODE	Ag ppm	Al %	As ppm	Ba ppm	Be ppm	Bi ppm	Ca %	Cd ppm	Co ppm	Cr ppm	Cu ppm	Fe %	Ga ppm	Hg ppm	K %	La ppm	Mg %	Mn ppm	Mo ppm
F39142	201 229	0.2	1.52	6	150	< 0.5	2	0.24	0.5	10	32	18	3.28	10	< 1	0.08	10	0.47	615	1
F39143	201 229	0.2	0.85	6	120	< 0.5	2	0.21	< 0.5	7	16	21	2.25	10	< 1	0.14	10	0.27	490	1
F39144	201 229	2.0	1.81	26	140	< 0.5	4	0.17	< 0.5	6	38	21	2.78	10	< 1	0.07	10	0.41	195	1
F39145	201 229	1.4	1.06	6	480	0.5	< 2	0.20	0.5	6	17	27	2.03	< 10	< 1	0.07	10	0.23	420	1
F39146	201 229	< 0.2	0.83	10	130	< 0.5	< 2	0.19	< 0.5	4	19	19	2.02	< 10	< 1	0.04	10	0.26	270	< 1
F39147	201 229	0.2	1.66	14	100	< 0.5	2	0.19	0.5	7	33	16	3.51	10	< 1	0.06	10	0.47	340	1
F39148	201 229	0.2	0.77	8	180	< 0.5	< 2	0.13	< 0.5	2	14	6	1.28	< 10	< 1	0.06	10	0.16	165	1
F39149	201 229	< 0.2	1.04	12	110	< 0.5	< 2	0.02	0.5	6	3	8	1.92	< 10	< 1	0.07	30	0.46	1510	1
F39150	201 229	0.6	0.35	< 2	170	< 0.5	< 2	0.02	< 0.5	1	4	6	0.56	< 10	< 1	0.03	30	0.02	330	< 1
F39151	201 229	1.4	1.28	2	270	< 0.5	2	0.04	< 0.5	3	17	17	1.92	< 10	< 1	0.06	20	0.25	150	2
F39152	201 229	< 0.2	0.89	10	80	< 0.5	4	0.13	< 0.5	3	15	11	2.06	10	< 1	0.07	20	0.20	300	1
F39153	201 229	0.4	1.42	< 2	90	< 0.5	< 2	0.20	0.5	6	20	12	2.37	10	< 1	0.09	10	0.40	375	< 1
F39154	201 229	0.8	1.31	28	300	< 0.5	2	2.24	8.0	8	21	43	1.91	< 10	< 1	0.09	10	0.41	2250	4
F39155	201 229	0.2	0.93	8	210	< 0.5	< 2	0.12	0.5	2	3	9	1.45	< 10	< 1	0.09	30	0.27	490	1
F39156	201 229	0.6	1.09	4	480	0.5	< 2	0.27	1.5	7	23	44	1.99	< 10	< 1	0.08	10	0.25	355	< 1
F39157	201 229	2.0	2.90	44	1740	0.5	2	0.38	1.5	12	45	86	4.71	10	< 1	0.21	20	0.47	800	4
F39158	201 229	0.4	1.41	6	430	< 0.5	< 2	0.17	0.5	3	25	23	1.80	10	< 1	0.06	20	0.24	175	1
F39159	201 229	0.8	1.15	14	220	< 0.5	< 2	0.16	< 0.5	6	21	26	2.68	< 10	< 1	0.08	20	0.33	305	1
F39160	201 229	0.6	1.27	16	140	< 0.5	2	0.16	< 0.5	6	24	15	2.86	10	< 1	0.08	20	0.24	255	1
F39161	201 229	0.2	1.67	22	110	< 0.5	< 2	0.23	< 0.5	7	32	15	3.00	10	< 1	0.08	10	0.50	250	1
F39162	201 229	0.4	1.47	2	150	< 0.5	2	0.16	< 0.5	7	50	17	2.85	10	< 1	0.05	10	0.49	210	< 1
F39163	201 229	0.4	1.09	12	100	< 0.5	< 2	0.15	0.5	5	25	13	2.83	10	< 1	0.06	10	0.30	235	< 1
F39164	201 229	0.8	1.33	12	100	< 0.5	< 2	0.14	0.5	7	28	13	3.01	10	< 1	0.06	10	0.36	360	1
F39165	201 229	0.8	1.77	12	730	< 0.5	2	0.48	19.5	30	36	109	3.43	10	< 1	0.11	20	0.50	3400	1
F39166	201 229	0.6	1.82	< 2	290	< 0.5	4	0.06	1.0	10	4	19	4.12	10	< 1	0.06	10	0.77	1965	1
F39167	201 229	0.8	1.46	< 2	80	< 0.5	6	0.22	1.0	7	28	13	3.15	10	< 1	0.09	20	0.49	345	< 1
F39168	201 229	0.4	1.97	10	100	< 0.5	2	0.23	< 0.5	9	33	14	3.20	10	< 1	0.10	20	0.54	645	1
F39169	201 229	0.2	1.55	4	180	< 0.5	2	0.25	0.5	6	27	13	2.70	10	< 1	0.08	10	0.37	260	1
F39170	201 229	1.0	1.26	4	60	< 0.5	2	0.15	< 0.5	6	25	10	2.87	10	< 1	0.08	10	0.37	285	1
F39171	201 229	10.6	1.36	66	1460	< 0.5	16	1.32	25.5	165	20	190	6.30	20	2	0.07	60	0.31	>10000	3
F39172	201 229	3.2	1.40	278	410	< 0.5	2	0.33	2.5	11	10	21	4.46	10	1	0.11	30	0.50	2170	1
F39173	201 229	1.2	1.26	14	300	< 0.5	< 2	0.15	< 0.5	34	25	26	2.61	10	< 1	0.12	20	0.22	2680	2
F39174	201 229	0.2	1.23	10	310	< 0.5	< 2	0.14	< 0.5	9	28	30	3.15	10	< 1	0.09	10	0.37	620	1
F39175	201 229	1.0	1.47	18	250	< 0.5	< 2	0.13	< 0.5	6	21	17	2.55	10	< 1	0.09	20	0.35	300	2
F39176	201 229	0.4	1.23	8	150	< 0.5	< 2	0.05	0.5	3	7	8	2.24	10	< 1	0.07	20	0.31	230	1
F39177	201 229	0.6	1.64	16	360	0.5	< 2	0.73	2.0	14	30	26	2.52	10	< 1	0.09	20	0.50	5380	1
F39178	201 229	0.6	2.43	24	380	2.0	< 2	0.97	1.5	11	38	75	2.62	< 10	< 1	0.11	40	0.50	2030	< 1
F39179	201 229	1.4	0.78	8	490	1.0	< 2	1.29	4.0	3	23	55	0.62	< 10	< 1	0.03	30	0.21	215	< 1
F39180	201 229	1.6	1.37	20	250	< 0.5	2	0.30	1.0	10	27	18	2.64	10	< 1	0.09	20	0.54	475	1
R12251	201 229	7.4	1.08	8	840	0.5	< 2	1.87	2.0	2	15	175	0.93	< 10	< 1	0.06	30	0.32	495	< 1

CERTIFICATION:

*Hant Bichler*



# Chemex Labs Ltd.

Analytical Chemists \* Geochemists \* Registered Assayers

212 Brooksbank Ave., North Vancouver  
British Columbia, Canada V7J 2C1  
PHONE: 604-984-0221 FAX: 604-984-0218

NORDAC RESOURCES LTD.  
C/O ARCHER, CATHRO  
BOX 4127, 2054 SECOND AVE.  
WHITEHORSE, YT  
Y1A 3S9

Page Number : 3-B  
Total Pages : 4  
Certificate Date: 21-OCT-95  
Invoice No. : I9530174  
P.O. Number :  
Account : MTT

Project : CODE CONVERT  
Comments:

## CERTIFICATE OF ANALYSIS A9530174

SAMPLE	PREP CODE	Na %	Ni ppm	P ppm	Pb ppm	Sb ppm	Sc ppm	Sr ppm	Ti %	Tl ppm	U ppm	V ppm	W ppm	Zn ppm
T39142	201 229	< 0.01	17	670	20	2	2	16	0.11	< 10	< 10	58	< 10	122
T39143	201 229	< 0.01	12	720	6	2	1	21	0.06	< 10	< 10	43	< 10	62
T39144	201 229	< 0.01	21	470	24	2	3	14	0.13	< 10	< 10	64	< 10	62
T39145	201 229	< 0.01	9	800	88	2	< 1	23	0.02	< 10	< 10	41	< 10	62
T39146	201 229	0.01	10	530	22	< 2	1	14	0.04	< 10	< 10	43	< 10	46
T39147	201 229	< 0.01	17	630	16	2	2	13	0.09	< 10	< 10	55	< 10	120
T39148	201 229	< 0.01	6	290	20	< 2	1	11	0.07	< 10	< 10	36	< 10	56
T39149	201 229	< 0.01	3	320	18	< 2	< 1	3	< 0.01	< 10	< 10	10	< 10	288
T39150	201 229	< 0.01	1	240	48	< 2	< 1	6	< 0.01	< 10	< 10	9	< 10	34
T39151	201 229	< 0.01	11	240	120	< 2	1	16	0.02	< 10	< 10	20	< 10	144
T39152	201 229	0.01	6	300	16	< 2	2	9	0.13	< 10	< 10	56	< 10	46
T39153	201 229	< 0.01	13	790	20	< 2	2	18	0.10	< 10	< 10	48	< 10	68
T39154	201 229	0.01	18	890	32	2	2	142	0.07	< 10	< 10	29	< 10	2030
T39155	201 229	< 0.01	2	270	96	2	< 1	10	0.01	10	< 10	16	< 10	158
T39156	201 229	0.01	18	950	32	< 2	< 1	41	0.01	< 10	< 10	38	< 10	116
T39157	201 229	0.01	41	1640	156	4	2	54	0.02	< 10	< 10	68	< 10	530
T39158	201 229	< 0.01	10	290	126	2	2	17	0.08	< 10	< 10	42	< 10	156
T39159	201 229	< 0.01	16	730	34	2	1	20	0.04	< 10	< 10	41	< 10	90
T39160	201 229	< 0.01	12	510	16	2	1	18	0.07	< 10	< 10	58	< 10	110
T39161	201 229	< 0.01	19	500	14	2	2	17	0.10	< 10	< 10	60	< 10	70
T39162	201 229	< 0.01	25	320	10	< 2	3	11	0.11	< 10	< 10	53	10	58
T39163	201 229	< 0.01	13	780	14	< 2	1	11	0.05	< 10	< 10	48	< 10	68
T39164	201 229	< 0.01	14	550	18	2	2	11	0.08	< 10	< 10	59	10	158
T39165	201 229	< 0.01	39	1120	546	2	3	45	0.04	< 10	< 10	46	10	2360
T39166	201 229	< 0.01	8	370	72	< 2	2	7	0.01	< 10	< 10	18	10	454
T39167	201 229	< 0.01	16	370	6	< 2	3	11	0.15	< 10	< 10	62	10	110
T39168	201 229	< 0.01	19	720	6	2	3	12	0.14	< 10	< 10	62	10	128
T39169	201 229	< 0.01	17	490	14	2	3	20	0.12	< 10	< 10	49	< 10	60
T39170	201 229	< 0.01	13	870	12	< 2	2	8	0.10	< 10	< 10	53	10	70
T39171	201 229	0.01	464	1710	682	< 2	3	127	0.01	< 10	< 10	7	20	9720
T39172	201 229	< 0.01	31	680	474	< 2	2	29	< 0.01	< 10	< 10	16	10	772
T39173	201 229	< 0.01	18	650	158	< 2	1	23	0.04	< 10	< 10	48	10	158
T39174	201 229	< 0.01	21	410	34	< 2	2	18	0.08	< 10	< 10	46	10	110
T39175	201 229	< 0.01	15	330	86	< 2	2	15	0.05	< 10	< 10	38	< 10	338
T39176	201 229	< 0.01	4	270	168	< 2	1	5	0.01	< 10	< 10	23	< 10	188
T39177	201 229	< 0.01	28	480	42	< 2	3	63	0.09	< 10	< 10	43	10	618
T39178	201 229	0.01	38	1620	28	< 2	6	89	0.05	< 10	< 10	47	< 10	236
T39179	201 229	0.01	87	920	24	< 2	1	96	0.01	< 10	< 10	10	< 10	1390
T39180	201 229	< 0.01	25	260	34	< 2	3	21	0.10	< 10	< 10	44	10	406
R12251	201 229	0.01	161	1090	184	< 2	1	129	< 0.01	< 10	< 10	6	< 10	1190

CERTIFICATION: *[Signature]*



# Chemex Labs Ltd.

Analytical Chemists \* Geochemists \* Registered Assayers

212 Brooksbank Ave., North Vancouver  
 British Columbia, Canada V7J 2C1  
 PHONE: 604-984-0221 FAX: 604-984-0218

NORDAC RESOURCES LTD.  
 C/O ARCHER, CATHRO  
 BOX 4127, 2054 SECOND AVE.  
 WHITEHORSE, YT  
 Y1A 3S9

Page Number : 4-A  
 Total Pages : 4  
 Certificate Date : 21-OCT-95  
 Invoice No. : 19530174  
 P.O. Number :  
 Account : MTT

Project : CODE CONVERT  
 Comments:

## CERTIFICATE OF ANALYSIS A9530174

SAMPLE	PREP CODE		Ag	Al	As	Ba	Be	Bi	Ca	Cd	Co	Cr	Cu	Fe	Ga	Hg	K	La	Mg	Mn	Mo
			ppm	%	ppm	ppm	ppm	ppm	%	ppm	ppm	ppm	ppm	%	ppm	ppm	%	ppm	%	ppm	ppm
R12252	201	229	0.4	1.66	44	140	< 0.5	2	0.15	0.5	9	24	22	4.42	10	< 1	0.08	10	0.59	930	1
R12253	201	229	6.8	1.91	26	250	< 0.5	2	0.03	< 0.5	4	26	51	3.56	10	< 1	0.11	30	0.56	265	1
R12254	201	229	0.6	1.12	32	1310	< 0.5	< 2	0.08	< 0.5	8	18	64	3.45	10	< 1	0.10	10	0.16	635	7
R12255	201	229	0.2	1.33	6	190	< 0.5	2	0.09	< 0.5	2	3	5	1.13	10	< 1	0.07	30	0.45	115	< 1
R12256	201	229	0.2	1.49	6	160	< 0.5	< 2	0.16	< 0.5	5	24	7	2.89	10	< 1	0.09	20	0.45	280	1
R12257	201	229	< 0.2	1.30	10	140	< 0.5	2	0.42	< 0.5	8	41	11	2.06	< 10	< 1	0.07	20	0.58	245	< 1
R12258	201	229	< 0.2	1.94	8	210	< 0.5	2	0.30	< 0.5	8	35	17	2.70	10	< 1	0.09	20	0.65	285	< 1
R12259	201	229	< 0.2	1.66	22	200	0.5	2	0.29	< 0.5	9	31	20	2.69	10	< 1	0.12	20	0.60	315	1
R12260	201	229	0.2	0.99	16	80	< 0.5	2	0.20	< 0.5	5	25	11	2.36	10	< 1	0.09	10	0.29	305	< 1
R12261	201	229	0.2	1.20	36	110	< 0.5	2	0.12	< 0.5	6	16	27	3.09	10	< 1	0.08	20	0.36	285	1
R12262	201	229	0.2	0.69	14	300	< 0.5	2	0.09	< 0.5	4	8	15	1.96	< 10	< 1	0.08	10	0.25	400	1
R12263	201	229	0.6	1.07	10	140	< 0.5	< 2	0.13	< 0.5	3	22	9	2.82	10	< 1	0.07	10	0.26	155	2
R12264	201	229	3.0	1.12	34	770	< 0.5	< 2	0.07	< 0.5	4	21	144	4.57	10	< 1	0.19	20	0.17	335	16
R12265	201	229	1.6	1.83	6	2230	0.5	4	0.32	7.5	21	43	63	3.43	10	< 1	0.12	20	0.29	>10000	3
R12266	201	229	1.0	1.58	14	170	< 0.5	2	0.21	< 0.5	6	32	10	3.25	10	< 1	0.07	10	0.46	570	1
R12267	201	229	< 0.2	1.53	10	130	< 0.5	2	0.19	< 0.5	5	29	11	2.04	10	< 1	0.08	10	0.41	210	1
R12268	201	229	0.2	1.50	18	160	< 0.5	2	0.25	< 0.5	11	24	23	2.95	10	< 1	0.10	20	0.67	560	< 1
R12269	201	229	0.8	2.03	38	270	< 0.5	2	0.19	< 0.5	7	29	16	2.40	10	1	0.06	10	0.34	220	1
R12270	201	229	0.4	1.79	14	230	< 0.5	2	0.37	0.5	11	29	22	2.90	10	< 1	0.15	20	0.73	580	< 1
R12271	201	229	0.4	1.17	8	130	< 0.5	2	0.22	< 0.5	7	26	10	2.64	10	< 1	0.08	10	0.36	275	< 1
R12272	201	229	0.4	0.70	6	140	< 0.5	2	0.16	2.0	4	18	9	1.94	10	< 1	0.04	10	0.21	230	< 1
R12273	201	229	0.4	0.89	16	90	< 0.5	< 2	0.13	< 0.5	3	18	10	1.82	10	< 1	0.04	10	0.20	200	1
R12274	201	229	2.0	0.29	< 2	660	< 0.5	4	< 0.01	7.0	123	1	74	>15.00	< 10	2	0.03	< 10	< 0.01	>10000	< 1
R12275	201	229	1.0	0.78	8	110	< 0.5	2	0.04	< 0.5	4	18	37	2.48	10	< 1	0.06	20	0.09	260	1
R12276	201	229	1.4	1.33	22	120	< 0.5	2	0.10	< 0.5	5	25	33	3.45	10	< 1	0.08	10	0.30	255	2
R12277	201	229	4.0	1.78	8	1840	0.5	6	0.03	56.5	192	28	1345	12.60	< 10	2	0.06	10	0.12	>10000	1
R12278	201	229	10.6	0.95	< 2	3580	< 0.5	4	0.09	11.5	358	14	118	12.20	< 10	< 1	0.09	< 10	0.07	>10000	1

CERTIFICATION: Hart Buchler



# Chemex Labs Ltd.

Analytical Chemists \* Geochemists \* Registered Assayers

212 Brooksbank Ave., North Vancouver  
British Columbia, Canada V7J 2C1  
PHONE: 604-984-0221 FAX: 604-984-0218

Client: NORDAC RESOURCES LTD.  
C/O ARCHER, CATHRO  
BOX 4127, 2054 SECOND AVE.  
WHITEHORSE, YT  
Y1A 3S9

Project: CODE CONVERT  
Comments:

Page Number: 4-B  
Total Pages: 4  
Certificate Date: 21-OCT-95  
Invoice No.: I9530174  
P.O. Number:  
Account: MTT

## CERTIFICATE OF ANALYSIS

### A9530174

SAMPLE	PREP CODE	Na %	Ni ppm	P ppm	Pb ppm	Sb ppm	Sc ppm	Sr ppm	Ti %	Tl ppm	U ppm	V ppm	W ppm	Zn ppm
R12252	201 229	< 0.01	18	730	140	< 2	2	13	0.06	< 10	< 10	41	< 10	422
R12253	201 229	< 0.01	17	520	500	< 2	2	18	< 0.01	< 10	< 10	33	< 10	164
R12254	201 229	< 0.01	18	540	256	< 2	2	24	0.04	< 10	< 10	36	< 10	346
R12255	201 229	< 0.01	2	330	4	< 2	< 1	9	< 0.01	< 10	< 10	4	< 10	56
R12256	201 229	< 0.01	10	340	40	< 2	2	14	0.10	< 10	< 10	46	< 10	78
R12257	201 229	< 0.01	27	620	14	< 2	3	21	0.11	< 10	< 10	39	< 10	60
R12258	201 229	< 0.01	21	240	28	< 2	4	19	0.13	< 10	< 10	48	< 10	102
R12259	201 229	< 0.01	27	360	20	< 2	4	17	0.12	< 10	< 10	46	< 10	78
R12260	201 229	< 0.01	10	450	12	< 2	2	11	0.12	< 10	< 10	61	< 10	62
R12261	201 229	< 0.01	16	550	90	< 2	1	11	0.03	< 10	< 10	37	< 10	162
R12262	201 229	< 0.01	10	430	58	< 2	1	12	0.02	< 10	< 10	26	< 10	98
R12263	201 229	< 0.01	10	290	72	< 2	2	15	0.08	< 10	< 10	43	< 10	82
R12264	201 229	< 0.01	18	1030	582	< 2	3	73	0.01	< 10	< 10	32	< 10	136
R12265	201 229	0.01	217	1900	274	< 2	1	73	0.01	< 10	< 10	33	< 10	1700
R12266	201 229	< 0.01	19	300	30	< 2	3	16	0.12	< 10	< 10	52	< 10	120
R12267	201 229	< 0.01	16	370	36	< 2	3	15	0.10	< 10	< 10	39	< 10	74
R12268	201 229	< 0.01	29	550	28	< 2	3	17	0.08	< 10	< 10	34	< 10	122
R12269	201 229	< 0.01	16	340	42	2	3	18	0.08	< 10	< 10	37	< 10	94
R12270	201 229	< 0.01	18	660	46	< 2	6	21	0.11	< 10	< 10	60	< 10	160
R12271	201 229	< 0.01	12	280	24	< 2	2	17	0.12	< 10	< 10	51	< 10	86
R12272	201 229	< 0.01	9	270	14	< 2	1	12	0.08	< 10	< 10	61	< 10	66
R12273	201 229	< 0.01	10	260	14	< 2	1	10	0.08	< 10	< 10	47	< 10	56
R12274	201 229	0.01	264	180	34	< 2	< 1	6	< 0.01	< 10	< 10	< 1	< 10	2080
R12275	201 229	< 0.01	13	280	32	< 2	1	8	0.03	< 10	< 10	52	< 10	132
R12276	201 229	< 0.01	16	510	28	< 2	2	10	0.08	< 10	< 10	61	< 10	100
R12277	201 229	0.01	708	990	102	4	4	14	0.03	< 10	< 10	31	< 10	3890
R12278	201 229	0.01	1475	570	44	12	3	27	0.02	< 10	< 10	17	< 10	>10000

CERTIFICATION:

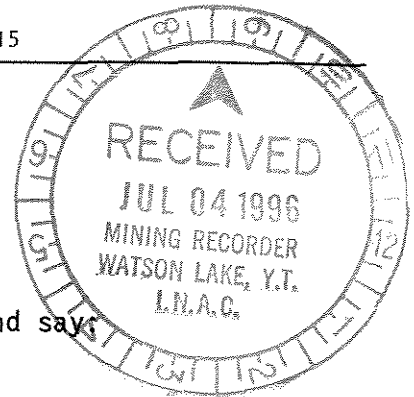
*Hart Buchler*

# ARCHER, CATHRO

▲ ASSOCIATES (1981) LIMITED

CONSULTING GEOLOGICAL ENGINEERS

Box 4127, 2054 SECOND AVENUE, WHITEHORSE, Y.T. Y1A 3S9 TEL (403) 667 - 4415



## AFFIDAVIT

I, Joan Mariacher, of WHITEHORSE, YUKON make oath and say:

That to the best of my knowledge the attached Statement of Expenditures for exploration work on the CONVERT 1-30 mineral claims on Claim Sheet 105BK is accurate.

  
Joan Mariacher

Sworn before me at WHITEHORSE, YUKON

this 2ND day of

JULY, 1996

  
Notary, Yukon Territory

093506

**Statement of Expenditures  
Convert 1-30 Claims  
July 1, 1996**



Labour

Bill Wengzynowski, geologist - 48 hrs @ \$40/hr, September 21-24, 27-28, 1995	\$2,054.40	
Brad Wengzynowski, field assistant - 6 days @ \$165/day September 21-24, 27-28, 1995	<u>1,059.30</u>	\$3,113.70

Expenses

Field room and board, 12 mandays @ \$60/day	\$770.40	
Frontier Helicopter - 3 hrs @ \$615/hr, plus fuel	2,214.71	
Chemex Labs	1,975.95	
Twin Mountain - linecutting	<u>20,768.70</u>	<u>25,729.76</u>
		<u>\$28,843.46</u>

# FRONTIER

FRONTIER HELICOPTERS  
 A division of Conair Aviation Ltd.  
 P.O. BOX 220, ABBOTSFORD, B.C. V2S 4N9  
 TELEPHONE (604) 855-1190 FAX (604) 855-1017 - ABBOTSFORD, B.C.  
 TELEPHONE (403) 536-7766 FAX (403) 536-7705 - WATSON LAKE, YT

FLIGHT TICKET  
 No 43518

*Comment 4/6*

CUSTOMER ARCHIBOLD CATHER JOB # \_\_\_\_\_ CUST # FA790  
 ADDRESS \_\_\_\_\_ PH ( ) \_\_\_\_\_  
WHITE HORSE POSTAL CODE \_\_\_\_\_  
 PILOT R HODGKINSON ENGINEER B CLIFFORD  
INITIAL LAST NAME INITIAL LAST NAME  
 AIRCRAFT TYPE BEEL 200 B AIRCRAFT REGISTRATION FQGP  
 DATE SEPT 27-95 BASE/LOCATION WATSON

VP	DOWN	ITINERARY	TIME
1538	1646	WATSON - BATTLECK	1.1
1705	1725	BATTLE CK - PINELK	0.3
1726	1898	SKIN4 CAMP - GEAR TO PINELK	0.8
1825	1945	RETURN WATSON LK	0.8
			MINIMUMS

LONG LINE HOURS \_\_\_\_\_ TOTAL FLIGHT HOURS 3-0

**CHECK ONLY THE MEALS TO BE BILLED TO THE CUSTOMER**

Pilot Exp. Cl.# _____	Engineer Exp. Cl.# _____	Flying <u>3.0</u> hours @ <u>615</u> /hr. = \$ <u>1845.00</u>
B <input type="checkbox"/>	B <input type="checkbox"/>	Fuel supplied: by FRONTIER <input checked="" type="checkbox"/> CUSTOMER <input type="checkbox"/>
L <input type="checkbox"/>	L <input type="checkbox"/>	<u>327</u> litres from <u>BASE</u> @ \$ <u>168</u> /L = \$ <u>715.52</u>
D <input type="checkbox"/>	D <input type="checkbox"/>	_____ litres from _____ @ \$ _____ /L = \$ _____
# OF DROPS _____	FOAM: YES <input type="checkbox"/> NO <input type="checkbox"/>	<u>3.0</u> hours oil @ \$ <u>300</u> /hr. = \$ <u>900</u>
		GST #R101084044 Misc. Charges \$ _____
		Cash <input type="checkbox"/> GST \$ <u>144.59</u>
		Charge <input type="checkbox"/> TOTAL THIS REPORT \$ <u>2714.71</u>

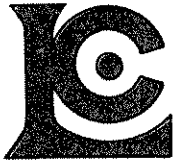
Pre-flight information received by undersigned

B. Wenzel  
 Customer Signature

Approved By (Print Name) \_\_\_\_\_

Agency Flight Report # / or Purchase Order # \_\_\_\_\_  
[Signature]  
 Pilot Signature

THE CARRIAGE OF PASSENGERS, BAGGAGE AND GOODS BY FRONTIER HELICOPTERS IS SUBJECT TO



# Chemex Labs Ltd.

Analytical Chemists \* Geochemists \* Registered Assayers  
212 Brooksbank Ave., North Vancouver  
British Columbia, Canada V7J 2C1  
PHONE: 604-984-0221

To: NORDAC RESOURCES LTD.  
C/O ARCHER, CATHRO  
BOX 4127, 2054 SECOND AVE.  
WHITEHORSE, YT  
Y1A 3S9

**INVOICE NUMBER**

**I 9 5 3 0 1 7 4**

## BILLING INFORMATION

Date: 23-OCT-95  
Project: CODE CONVERT  
P.O. No.:  
Account: MTT

Comments:

Billing: For analysis performed on  
Certificate A9530174

Terms: Payment due on receipt of invoice  
1.25% per month (15% per annum)  
charged on overdue accounts

Please Remit Payments to:

**CHEMEX LABS LTD.**  
212 Brooksbank Ave.,  
North Vancouver, B.C.  
Canada V7J 2C1

# OF SAMPLES	ANALYSED FOR CODE - DESCRIPTION	UNIT PRICE	SAMPLE PRICE	AMOUNT
147	201 - Dry, sieve to -80 mesh ICP-32	1.25 7.00	8.25	1212.75
Total Cost \$				1212.75
Client Discount ( 25%) \$				<u>-303.19</u>
Net Cost \$				909.56
(Reg# R100938885 ) GST \$				<u>63.67</u>
<b>TOTAL PAYABLE (CDN) \$</b>				<b>973.23</b>



# Chemex Labs Ltd.

Analytical Chemists \* Geochemists \* Registered Assayers  
212 Brooksbank Ave., North Vancouver  
British Columbia, Canada V7J 2C1  
PHONE: 604-984-0221

To: NORDAC RESOURCES LTD.  
C/O ARCHER, CATHRO  
BOX 4127, 2054 SECOND AVE.  
WHITEHORSE, YT  
Y1A 3S9

**INVOICE NUMBER**

**I 9 5 3 2 6 1 0**

## BILLING INFORMATION

Date: 9-NOV-95  
Project: CODE CONVERT  
P.O. No.:  
Account: MTT

Comments:

Billing: For analysis performed on  
Certificate A9532610

Terms: Payment due on receipt of invoice  
1.25% per month (15% per annum)  
charged on overdue accounts

Please Remit Payments to:

**CHEMEX LABS LTD.**  
212 Brooksbank Ave.,  
North Vancouver, B.C.  
Canada V7J 2C1

# OF SAMPLES	ANALYSED FOR CODE - DESCRIPTION	UNIT PRICE	SAMPLE PRICE	AMOUNT
147	244 - Pulp; prev. prepared at Chemex 100 - Au ppb FA+AA	0.00 8.50	8.50	1249.50
Total Cost \$				1249.50
Client Discount ( 25%) \$				<u>-312.38</u>
Net Cost \$				937.12
(Reg# R100938885 ) GST \$				<u>65.60</u>
<b>TOTAL PAYABLE (CDN) \$</b>				<b>1002.72</b>

TWIN MOUNTAIN ENTERPRISES LTD.

P.O. Box 4006, Whitehorse, Yukon

Phone: (403) 667-7480 Fax: (403) 633-6954

February 15, 1996

Nordac Resources Ltd.  
1016 West Hastings Street Suite 510  
Vancouver, B.C.  
V6B 1L8

**INVOICE**

**RE: Line Cutting Performed on the Convert Property  
Yukon Territory**

Mar. 1 <sup>st</sup> - 14 <sup>th</sup>	4 man crew at \$265.00 each per day For Fourteen (14) days	\$14,840.00
	Camp accommodations for 4 men @ \$55.00 each per day For Twelve (12) days <i>includes groceries, radio communications, fuel, etc.</i>	\$2,640.00
Mar. 1 <sup>st</sup> - 7 <sup>th</sup>	Snow machine @ \$65.00 per day	\$455.00
Mar. 1 <sup>st</sup> - 7 <sup>th</sup>	G.P.S. @ \$25.00 per day	\$175.00
Mar. 1 <sup>st</sup>	2 Trucks and drivers - haul fuel, snow machine & camp <i>includes wages, fuel, meals, etc.</i>	\$700.00
Mar. 8 <sup>th</sup>	Truck and Driver - haul fuel <i>includes wages and fuel</i>	\$300.00
Mar. 14 <sup>th</sup>	Truck and Driver <i>includes wages and fuel</i>	\$300.00
	Subtotal	\$19,410.00
	GST	\$1,358.70
	<b>TOTAL INVOICE:</b>	<b><u>\$20,768.70</u></b>

and printed 1996 #181

ARCHER, CATHRO & ASSOCIATES (1981) LIMITED

In Account With

Project —

NORAC - FIELD ACCOUNT

Date —

SEPTEMBER 30, 1995

LABOUR			
Field	A. ARCHER - 5 HRS AT 60/HR	300.00	
	R. CARNE - 63 HRS AT 50/HR	3150.00	
	D. EATON - 22 HRS AT 50/HR	1100.00	
	B. WENZYNOWSKI - 131 HRS AT 40/HR	5240.00	
	BRAD WENZYNOWSKI - 16 DAYS AT 165/DAY	2640.00	
Office	M. COOKE - 3 1/4 HRS AT 30/HR (CO2)	105.00	
Accounting & Expediting	J. MARIACHEL - 43 1/4 HRS AT 42.50/HR	1828.13	14373.13
<b>OTHER SERVICES</b>			
	Room & Board In Whitehorse 3 DAYS AT 60/DAY	180.00	
	Field equipment from AC stock 32 MANDAYS AT 10/DAY + 39.90 + 250.03	709.93	
	Photocopies, 899 copies at .25 \$/copy	224.75	
	Rentals from AC. SEPT 14-27 - 56X 11 AT 10/DAY	160.00	
	RENT & OFFICE SUPPLY - OCTOBER	1000.00	
Blueprinting	sq.ft. Ozalid at \$/ft. plus sq.ft. Dilar at \$/ft.		
Drafting	15 hrs at \$33.75/hr. (CO2-84.38 + DY-461.87)	506.25	
LOOMIS COURIER	1 AT 17.50 EA	17.50	2793.43
<b>EXPENSES</b>			
Petty Cash			
Telephone	4.10 + 106.53 + 13.08	123.71	
R. CARNE - XP TR	944.06 DY + 157.72 DY + 221.50 F (FRESNO/RIVEL)	1323.28	
CARMACKS HOTEL		47.80	
SECOND AVENUE CHEVRON	38.51 + 32.71	71.22	
CATL	115.55 + 20.10	135.65	
REGENER GENERAL MAPS		57.40	
FRONTIER HELICOPTERS	444.806 + 3281.30 + 2069.82	5895.92	
B. WENZYNOWSKI - XP TR	212.27 DY + 110.28 DY	322.55	
YUKON BUILDING SUPPLIES		215.23	
ALCAN AIR		86.85	
MAC'S BOOKS		11.58	
BELVEDERE MOTOR HOTEL		1283.67	
NORCAN LEASING		880.00	
CAMP - GROUND SERVICES		204.66	10658.02
MANAGEMENT 6% - ON EXPENSES		639.48	
- ON FIELD AC		1504.26	2143.74
			29968.32
ST (R100247667)	7% ON 29968.32		2097.78
- GST Exempt			32066.10