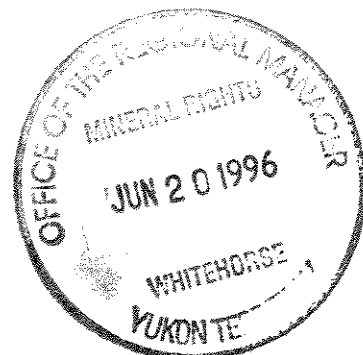


**SUN PROSPECT**  
**PROSPECTING, ROCK SAMPLING**  
**JULY 8 - 26, 1995**



**HEMLO GOLD MINES INC.**

**SUN PROSPECT**

**PROSPECTING, ROCK SAMPLING**

**JULY 8 - 26, 1995**

**JUSTIN 1-4 CLAIMS (YB59913-916)**

**N.T.S.: 105H/09**

**61°39'N**

**128°07'W**

**BY C.M. SCHULZE**

## TABLE OF CONTENTS

	<u>PAGE</u>
1. Introduction.....	1
2. Location & Access.....	1
3. Ownership & Claim Status.....	1
4. Geology.....	4
5. Mineralization.....	4
6. Conclusion.....	6
Statement of Qualifications	
Statement of Expenditures	

## LIST OF FIGURES

Figure 1:	Location Map.....	2
Figure 2:	Claim Map.....	3
Figure 3:	Sample Location Map.....	Folder

## LIST OF APPENDICES

Appendix I:	Rock Sample Descriptions
Appendix II:	Rock Sample Assay Results

## 1. INTRODUCTION

The Sun property (Justin 1-4 claims) is an old copper-gold prospect originally staked in 1964 by the Norquest Joint Venture. The prospect has been worked intermittently since that time with mapping, magnetics and four drill holes in 1988. Bernie Kreft restaked the property early in 1995.

From July 11-14, 1995 a two man crew employed by Hemlo Gold Mines examined the geology and mineralization of the property and surrounding area and is the subject of this report. The two personnel were:

- (1) Carl M. Schulze - resident of Whitehorse, Yukon.
- (2) Gordon D. MacIntosh - resident of Whitehorse, Yukon.

## 2. LOCATION & ACCESS

The Sun property is located 175 kilometers north of Watson Lake and 35 kilometers south of the Cantung Mine. The claims are situated on NTS Map Sheet 105H/09 at latitude 61°39'N and longitude 128°07'W.

Access is by helicopter from Watson Lake, although shuttling can be done from the Hyland Strip located beside the Cantung Road, roughly 20 km to the southeast.

## 3. OWNERSHIP & CLAIM STATUS

At the time of the property work was carried out the claim group consisted of four contiguous mineral claims registered with the Watson Lake Mining Recorder as follows:

<u>CLAIM NAME</u>	<u>GRANT NUMBER</u>	<u>EXPIRY DATE</u>
Justin 1	YB59913	June 1, 1996
Justin 2	YB59914	June 1, 1996
Justin 3	YB59915	June 1, 1996
Justin 4	YB59916	June 1, 1996

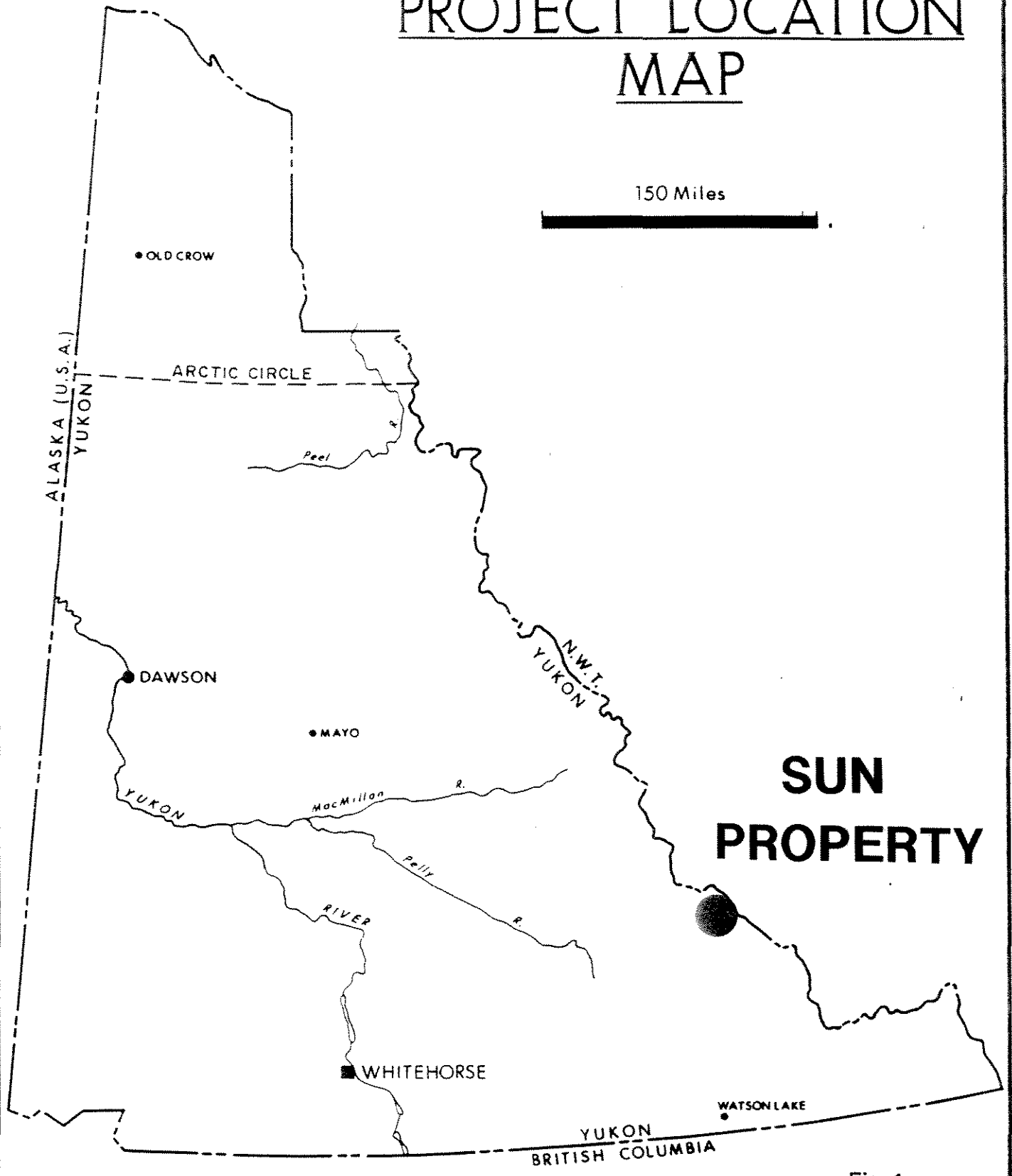
The Justin 1-4 claims are registered in the name of Bernard Kreft, 19 Roundel Road, Apt. 107, Whitehorse, Y.T. Y1A 3H3.

Since the July, 1995 work program an additional 21 claims (Justin 5-25) have been staked as outlined on Figure 2.

# YUKON TERRITORY

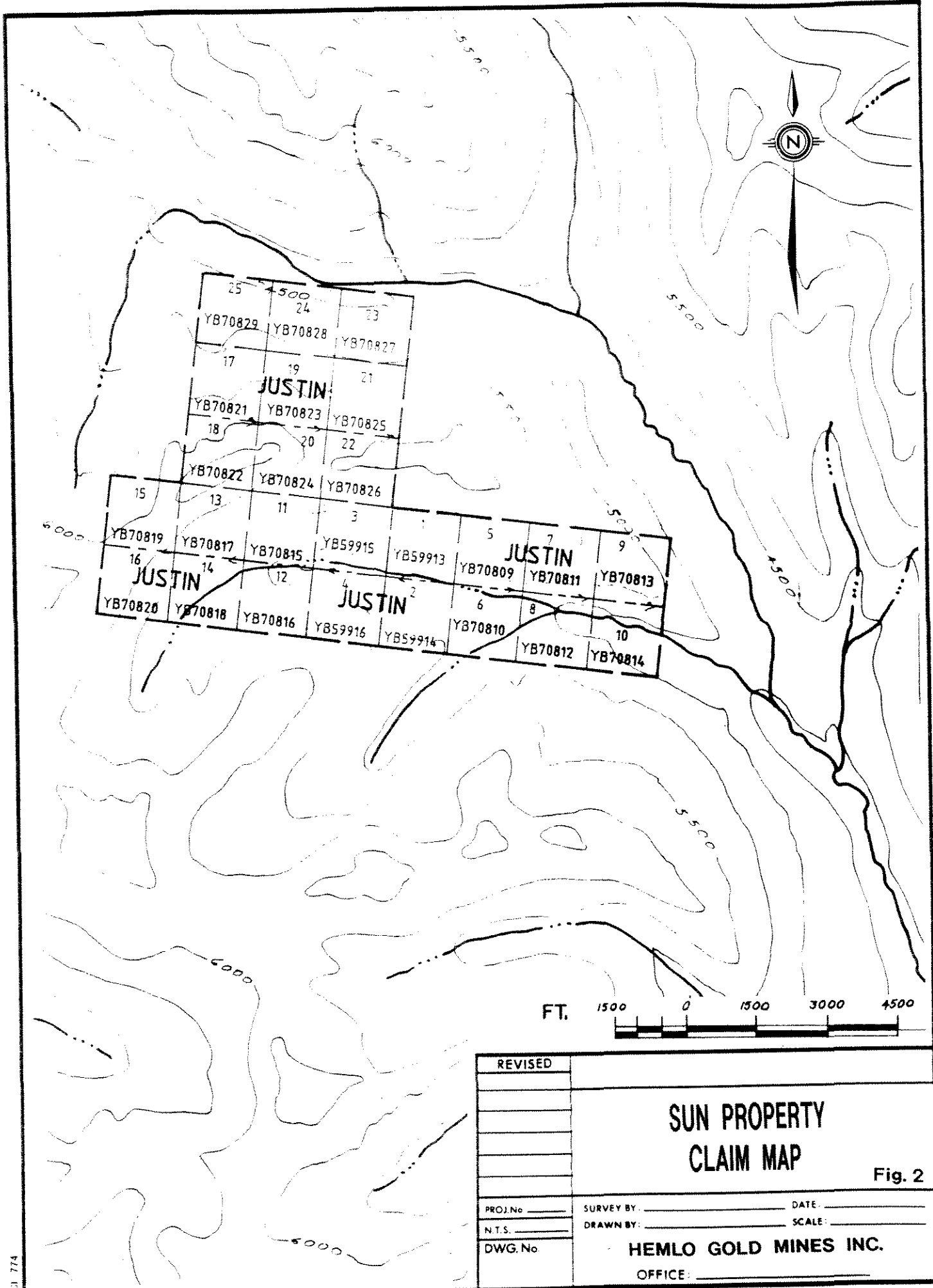
## PROJECT LOCATION MAP

150 Miles



# SUN PROPERTY

Fig. 1



REVISED	
PROJ. No. _____	SURVEY BY: _____ DATE: _____
N.T.S. _____	DRAWN BY: _____ SCALE: _____
DWG. No. _____	<b>HEMLO GOLD MINES INC.</b>
	OFFICE: _____

**SUN PROPERTY  
CLAIM MAP**

Fig. 2

#### 4. GEOLOGY

The area is underlain by flat lying Late Proterozoic to early Cambrian sandstone to siltstone interbedded with limestone and calcareous siltstone. This is overlain by a thick sequence of coarse grained quartzite to fine conglomerate. Frequently the limestone units are locally more abundant than clastic sedimentary units. North-south trending quartz porphyritic felsic dykes occur throughout the area, particularly 0.5 km west of the showing. Small late-stage mafic dykes occur locally. Stratigraphy strikes at roughly 60 degrees and dips gently to the SSE within and to the north of the Justin Claims. Three kilometers to the west, bedding strikes at roughly 125 degrees, and dips to the southwest at 35 degrees. A pronounced north-south trending lineament, seen in jointing and foliation direction and in orientation of the felsic dykes, occurs throughout the area. A NW-SE trending fault extends just north of the claims.

#### 5. MINERALIZATION

Mineralization is extensive and appears to be structurally controlled, associated with the lineament. The property showing consists of a roughly 10 m thick skarn sequence within nearly flat lying calcareous siltstone, underlain by brecciated quartzite and siltstone. Moderate to strong diopside development and lesser silicification has occurred within the fractured skarn. Mineralization consists of fracture controlled and disseminated pyrite, pyrrhotite and up to 1% chalcopyrite. Unbrecciated areas are much less mineralized. Strongly brecciated zones with up to 40% pyrite extend north-south through the skarn, as well as occasional quartz-arsenic veining. Directly to the west, associated with a brecciated zone containing chalcedonic quartz stringers with up to 20% pyrite, with lesser arsenopyrite, a sample assaying 2256 ppb Au was obtained by Mr. Kreft. Mineralization within the underlying brecciated zone consists of fracture and vug filling pyrite associated with strong silicification and local chalcedonic quartz. These zones appear to trend N-S; however, directly beneath the skarn they appear to form a continuous flat lying zone. These also occur intermittently a considerable distance stratigraphically beneath the zone. Five samples each 1.5 m in width across this zone averaged 2.62 gpt over 7.5 m (sample #169390-394).

To the north of the showing considerable skarn-like alteration occurs within outcrop and rubblecrop. Moderate calc-silicate development with pyrite and minor pyrrhotite and chalcopyrite occurs within calcareous siltstone; galena bearing quartz-arsenic stringers occur also. The E-W trending ridge north of camp consists of ENE trending, gently SSE dipping interbedded calcareous siltstone and limestone, crosscut by frequent N-S trending dykes. As can be seen on the north facing side of the ridge, calc-silicate alteration, together with minor chalcopyrite, pyrite and pyrrhotite, of particular beds occurs throughout the entire sequence. Localized but frequent N-S trending fracture related zones hosting up to 2% chalcopyrite, 3-5% arsenopyrite and nearly massive pyrite and pyrrhotite occur, frequently associated with moderately altered felsic dykes. The dykes themselves are often fractured with strong silica emplacement together with pyrite,

arsenopyrite, galena and occasional tourmaline. These zones may be of economically exploitable widths. Sample #171538 from this area is a 1.5 m chip of exoskarn and assayed 1.265 gpt gold. A silt sample from the stream draining the area yielded 129 ppm Pb, 425 ppm As, 4.1 ppm Sb, and 45 ppb Au. It appears that intensity of mineralization increases with depth into the stratigraphic sequence. Strongly limonitic gossans, possibly structurally controlled, are visible to the east. Due to lack of time they were not investigated.

Roughly 3.5 km west of the Justin Claims, along a northward draining tributary of Piggott Creek, frequent fracture associated quartz-pyrite-arsenopyrite-galena mineralization occurs within coarse quartz-rich sandstone. Mineralization occurs across a 300 m long N-S trending zone along and directly east of the creek. Similar mineralization also occurs pervasively within altered wallrock. An outcrop exposure occurring in the creek bed consists of strongly brecciated argillite within a strongly pyritic matrix of unknown width. A silt sample obtained downstream of this zone, tentatively named the "Neebing Mineralized Zone" returned 34 ppb Au. Best results from sampling in this area was sample #171530 which assayed 2.0 gpt Au in a quartzite with quartz/arsenopyrite veins.

Numerous other mineralized occurrences, predominantly fracture controlled quartz associated with pyrite, arsenopyrite and minor galena occur throughout the area, predominantly within felsic dykes and "massive" quartzite units. Towards the headwaters of Sun Creek, which flows across the claim block, are several N-S trending felsic dykes and coarse quartzitic sedimentary units. These host abundant fracture related quartz-pyrite stringer zones, with minor arsenopyrite. Some of these zones appear to have widths greater than 10 meters. This area also warrants further detailed study, following favourable assay results.

At the junction of Sun and South Sun Creeks, roughly 1.0 km east of Justin 1-4 occurs a zone of mineralized chalcedonic quartz stringers. This zone, hosted within massive coarse quartz-rich sandstone (felsic intrusive?), is at least 30 m wide, although somewhat intermittent. Fracture related chalcedonic quartz, with localized pyrite and arsenopyrite, are abundant across this zone, associated with localized silicification and mineralization of wall rock. Previous assays from samples obtained by Mr. Kreft assayed up to 797 ppb Au. July sampling gave 15.8 gpt Au from a grab of a massive sulphide vein and 3.48 gpt gold from a 2.0 meter chip (Sample #169358 & 9)

Roughly 300 m upstream from the confluence a narrow quartz-pyrite-galena vein extends through a felsic intrusive unit. Abundant proximal float containing strong silica-arsenopyrite mineralization with minor galena within silicified and fractured intrusive rock occurs just south of the stream. Galena bearing quartz yielded 0.66 opt Au from previous sampling.

Numerous minor mineralized zones occur along Sun Creek between the skarn zone and the stream confluence, including several brecciated zones.

## 6. CONCLUSIONS

The skarn and related brecciated zones underlying the Justin (formerly Sun) Claim Block appear to be part of a much larger, possibly district scale, late mesothermal mineralized system. Sulphide mineralization appears spatially related to, and partially controlled by, a north-south trending lineament manifested by N-S trending dykes, fracture and breccia zones (fault related?) and a strong N-S trending foliation and predominant jointing direction. Where mineralized fluids encountered favourable permeable stratigraphy (i.e. limestone, calcareous siltstone), skarn-like stratiform alteration, often with significant pyrite, pyrrhotite, chalcopyrite and localized arsenopyrite, resulted. This occurs within the skarn zone itself, as well as abundantly in particular beds within the calcareous sediments comprising the north facing slope of the next valley to the north. Where the host rock was more brittle, fracture related mineralization, often across considerable widths, evolved. Frequent localized mineralized skarn-like alteration occurs adjacent to N-S trending dykes.

It appears that mineralization near the Justin Claims resulted from a single major mineralizing event (possibly as a series of "pulses") and is not part of two unrelated systems, as previously proposed. This event has manifested itself as a number of different mineralogic settings, depending on host lithology, possibly resulting in different deposit "models". The intensity of mineralization increases with depth within the stratigraphy; thus more favourable strata occurs towards valley floors, partially overlain by till and talus.

## STATEMENT OF QUALIFICATIONS

I, Carl Schulze, of the Community of Marsh Lake, in the Yukon Territory do hereby certify that:

- 1) I have been employed as a Geologist by Hemlo Gold Mines Inc. since 1995, and by Noranda Exploration Company, Ltd. (No Personal Liability) since 1988.
- 2.) I graduated from Lakehead University with a Bachelor of Science in Geology in 1984.
- 3) I have been active in mineral exploration since 1984.
- 4) I supervised and performed part of the work described in this report.
- 5) I am a member of the Yukon Chamber of Mines and a director of the Yukon Prospectors Association.

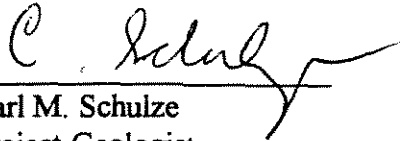


Carl M. Schulze  
Project Geologist  
Hemlo Gold Mines Inc.

## STATEMENT OF EXPENDITURES

I, Carl Schulze, of the Community of Marsh Lake, in the Yukon Territory do hereby certify that the following expenditures were incurred with regard to work on the Sun Property in the period July 10-15, 1995:

Salaries (\$140.00/man day)	1,680.00
2 men x 6 days x \$140.00	
Transportation	
truck - 6 days x \$50.00/day	300.00
- gas	80.00
Helicopter (invoice)	3,270.00
Food & Lodging	
2 men x 6 days x \$40.00/day	480.00
Assays (including transportation)	
53 samples x \$20.00/sample	<u>1,060.00</u>
	\$6,870.00

  
\_\_\_\_\_  
Carl M. Schulze  
Project Geologist  
Hemlo Gold Mines Inc.

## STATEMENT OF EXPENDITURES

I, Carl Schulze, of the Community of Marsh Lake, in the Yukon Territory do hereby certify that the following expenditures were incurred with regard to work on the Sun Property in the period July 10-15, 1995:

Salaries (\$140.00/man day)	1,680.00
2 men x 6 days x \$140.00	
Transportation	
truck - 6 days x \$50.00/day	300.00
- gas	80.00
Helicopter (invoice)	3,270.00
Food & Lodging	
2 men x 6 days x \$40.00/day	480.00
Assays (including transportation)	
53 samples x \$20.00/sample	<u>1,060.00</u>
	\$6,870.00

---

Carl M. Schulze  
Project Geologist  
Hemlo Gold Mines Inc.

**APPENDIX I**

**ROCK SAMPLE DESCRIPTIONS**

LAB: Norex

PROJECT #: 212

PROPERTY: Sun

NTS:

GRID REFERENCE:

DATE: July 14/95

SAMPLE#	DESCRIPTION	TYPE	WIDTH	ASSAY REQUEST	COORDINATES	SAMPLER
169357	Fine grained intrusive with sulphides	grab	—	Au: AA 30 elem. ICP	6836600 548600	GDM
169358	Massive sulphide vein (80%) galena	grab	—	"	6836900 548500	"
169359	Massive sulphide vein & alteration zone	chip	2m	"	" "	"
169360	Quartzite inlay altered Breccia	grab	—	"	6837000 547950	"
169361	Main zone mineralized Breccia	chip	2m	"	6837050 547700	"
169362	Skarn, pyrite, pyrotite, chalcopyrite	chip	2m	"	6837100 547650	"
169363	Quartz veins in fault breccia zone	grab	—	"	6836500 546150	"
169364	Granite with sulphides (~3%)	grab	—	"	6836950 546400	"
169365	Quartz breccia with sulphides chylall	grab	—	"	" "	"
169366	Quartz alt. int. dike with sulphides	grab	—	"	" "	"
169367	Massive <del>star</del> sulphide vein arseno	grab	—	"	6838300 546950	"
169368	vein gouge overlying above vein	chip	3m	"	" "	"
169369	Wall rock near main vein above	grab	—	"	" "	"
169370	Massive sulphide vein - 10m from 367	grab	—	"	" "	"
169371	Fine grained Quartzite with arseno	grab	—	"	6837800 546250	"

LAB: NOREX

PROJECT #: 212

PROPERTY: SUN (B. KREFT)

NTS: 105 H/d GRID REFERENCE:

DATE: July 11/95

SAMPLE#	DESCRIPTION	TYPE	WIDTH	ASSAY REQUEST	COORDINATES	SAMPLER
169381	Q. Vn, buff white, weak limonite alteration - occurs irregularly; 6-7% of intrusive	Comp Grab		30 elements P, Au	547860E, 6836230N	C. Schulze
169382	Mod. silicified fine gr. intrusive - 5% silica stringers, mod. argill. lim. alteration	" "			" "	
169383	Mod.-strong silicified Q. porphyritic intrusive; 3-4% Py stringers, 1% Pyrite - new stringers	Chip	2.0 m		548740E, 6836720N	
169384	strongly sil. chalcidonic seeds - silica pervasive but fract. rel; tr. Py - part of 10m wide	Chip	2.0 m		548860E, 6836760N	
169385	Q. Por. Int. 10% chalcidonic Qtz + Qz at 20m	Chip	2.0 m		548770E, 6836780N	
169386	Fractures: 5-7% white qz, tr. Py, mod. lim. alt	Chip	2.0 m		548820E, 6836760N	
169387	Q. Por. felsic intrusive strongly sil. with chaly: 2% Py, mg. in sil. intrusive	Chip	2.0 m		548540E, 6836870N	
169388	Strong silicified Q. Por. 30% Asp ass. with 2-3% galena, 7% Pyrite, stringer related	Comp, Grab			548060E, 6836940N	
169389	Strongly frond-brec. argillite (?) strong arg. alt, 7-8% chaly stwork, strong limonite	Chip	2.0 m		547860E, 6837060N	
169390	Strong brecc. Qtzite (?) 30-40% Pyrite. Malacsite along fractures; strong sil. 15% Qz	Chip	1.5 m		547700E, 6837120N	
169391	Qzite-coarse sst. - strong, fract-buried - 15% fine chalcidonic Qz stringer, loc. mass Py, tr. Po	Chip	1.5 m		" "	
169392	Similar to 1390; local arsenic, 15-20% chalcidonic quartz, 1-2% Pyrite	Chip	1.5 m		" "	
169393	Fractured qzite-coarse sandstone: 10-15% fine chalcidonic stringers, sil. black qzite, tr. Py	Chip	1.5 m		" "	
169394	Similar to 1392; 15% quartz-pyrite stringers; 15-20% mg. Py throughout rock, mod. arg. alt.	Chip	1.5 m		" "	
169395	Strongly sil. qzite - weak calc-silicate alt; Fractured, 8-10% Pyrite	Chip	1.5 m		" "	
169395	Mineralized exoshale, strong diopside alt; 7-8% Pyrite, tr. Cp at fract., disseminated	Chip	1.5 m		547720E, 6837120N	✓

LAB: NOREX

PROJECT #: 212

PROPERTY: SUN/PIAR (B, RAFT)

NTS: 105H/9

GRID REFERENCE:

DATE: July 12/95

SAMPLE#	DESCRIPTION	TYPE	WIDTH	ASSAY REQUEST	COORDINATES	SAMPLER
169396	Strongly fractured brecc. shawn(?) bleached, locally sil, 15% Py, 1-1% Cpy at fract. disson.	Chip	2.5 m	30 element ICP + Au	547710E 6837110N	C/S, 10/70
169397	Strongly fract - brecc. shawn(?) loc. Q. Voids + Py, locally massive med. gr. Py, 1% Cpy	Chip	2.0 m		" "	
169398	Strongly sil. quartz. sst. 5-6% Qz stringers, 3-4% Py over interval, conc. at fract. ang. alt.	Chip	2.5 m		546000 6836440	
169399	Quartzite - coarse sst, fractured, 15% Py, 3-4% Galena; 7-8% Asp, med. sil, 10% Q. Voids	Grab	prox fract		543760E 6836780N	
169400	Petroconcrete, covers considerable area below fill	Comp. Grab	Grab		" "	
171526	Siltstone, brecc. 15-20% interstitial Pyrite, 3-4% F.E. Quartz	Chip	0.8 m		6836860N 543700E	
171527	Mod-strong sil. sst - quartz. 7-8% Py 4-5% Quartz stringers	Comp. Grab			6836870N 543710E	
171528	Silicified eng. sst. quartz. Pyrite at fractures (10-15% of rock) Loc. Gal in Qz stringers, 15% Quartz	Chip	2 m		543720E 6836900N	
171529	Quartz. sst., strongly silicified, fractured, some Qz injection; 15% calc. rel. Asp, 1% Gal, 3% Py	Grab	prox fract		" "	
171530	Coarse sst - quartz. 40% Qz - arsenic veins (2-10% in O/C) 8% Arsenic, 1-2% Galena, 2-3% Py	Comp. Grab	Q/C + r/loop		543720E 6836750N	
171531	Silt				543560E 6837080N	
171532	Silt				543720E 6837180N	
171533	Silt				543970E 6837330N	
171534	Coarse sst - conglom. fract. w. Qz - Asp - Gal stringers - 15% Asp; 1-2% Gal, 3% Pyrite	Comp. Grab			544000E 6837330N	
171535	Calcareous seds ± lstone, mod - strong shawn development; 1% Cpy, fract. rel. 3-4% Py, 1-2% Asp	Comp. Grab	O/C, r/loop		549300E 6838130N	



**APPENDIX II**

**ROCK SAMPLE ASSAY RESULTS**

DUN

# NORANDA VANCOUVER LABORATORY

## Geochemical Analysis

Project Name & No.: YUKON GENEX - 212

Geol.: C.S./G.M.

Date received: JULY 18

LAB CODE: 9507-027

Material: 50 RX

Sheet: 1 of 2

Date completed: JULY 26

Remarks: \* Sample screened @ -35 MESH (0.5 mm)

‡ Organic, Δ Humus, S Sulfide

Au - silt & soil, 15.0 g sample digested with aqua-regia and determined by A.A. (D.L. 2 PPB); Rx, 10.0 g/AR/AA (DL 5 PPB)

ICP - 0.2 g sample digested with 3 ml HClO<sub>4</sub>/HNO<sub>3</sub> (4:1) at 203 °C for 4 hours diluted to 10 ml with water. Leeman PS3000 ICP determined elemental contents.

N.B. The major oxide elements and Ba, Be, Ce, La, Li, Ga are rarely dissolved completely from geological materials with this acid dissolution method.

T.T. No.	SAMPLE No.	Au ppb	Ag ppm	Al %	As ppm	Ba ppm	Be ppm	Bi ppm	Ca %	Cd ppm	Ce ppm	Co ppm	Cr ppm	Cu ppm	Fe %	K %	La ppm	Li ppm	Mg %	Mn ppm	Mo ppm	Na %	Ni ppm	P %	Pb ppm	Sr ppm	Tl %	V ppm	Zn ppm
116	169357	135	4.4	2.25	6379	110	0.5	5	0.06	4.1	44	14	141	145	3.72	0.68	19	68	0.08	96	7	0.01	43	0.05	2592	28	0.02	16	464
117	169358	15800	204.4	0.46	5178	1	0.2	5	0.02	37.3	17	1	155	306	9.88	0.08	10	17	0.02	142	6	0.01	1	0.02	6254	2	0.01	4	4247
119	169359	3450	38.0	2.21	1120	79	0.4	5	0.04	4.6	27	1	130	80	3.18	0.65	14	54	0.07	207	7	0.01	4	0.02	3372	8	0.01	14	688
120	169360	40	1.6	3.09	494	84	1.4	5	0.15	0.9	63	9	62	196	13.22	1.07	33	13	0.26	2604	1	0.01	32	0.04	194	3	0.06	26	255
121	169361	25	0.2	1.78	39	35	0.4	5	0.38	0.2	22	1	98	89	5.88	0.19	5	8	0.11	156	3	0.01	10	0.08	11	19	0.04	19	17
122	169362 S	510	0.6	0.52	134	8	1.3	226	5.97	1.2	68	20	31	2447	15.25	0.07	10	4	0.08	809	1	0.03	2	0.04	65	4	0.02	17	87
124	169363	5	0.2	1.74	36	85	0.3	5	0.27	0.2	53	2	72	11	0.94	0.35	19	20	0.08	201	3	0.01	5	0.02	5	110	0.02	12	21
125	169364	5	0.2	1.54	316	73	0.6	5	0.47	0.2	86	6	114	16	2.94	0.28	33	44	0.51	272	5	0.11	5	0.05	64	20	0.18	35	45
126	169365	5	0.2	2.62	97	225	0.5	5	0.04	0.2	59	2	113	7	1.37	0.90	23	19	0.12	33	10	0.01	5	0.03	35	9	0.03	16	9
127	169366	10	0.2	1.26	3991	27	0.7	5	0.22	0.2	55	118	93	132	7.79	0.28	20	13	0.16	210	4	0.02	9	0.05	22	10	0.06	25	31
128	169367	1360	29.2	0.93	177179	13	0.4	548	1.27	4.2	68	140	33	8268	15.77	0.33	21	20	0.30	239	4	0.02	45	0.07	199	21	0.05	31	323
129	169368	240	22.8	3.00	61601	115	1.1	126	0.45	8.6	84	17	38	1499	11.95	1.30	35	28	0.34	441	1	0.07	12	0.07	592	44	0.10	53	654
130	169369	765	4.6	0.78	93329	26	0.5	355	0.21	0.2	84	35	51	570	12.24	0.30	37	12	0.19	129	1	0.02	11	0.03	70	8	0.09	25	60
131	169370 S	180	6.0	1.10	146092	9	0.4	75	0.30	1.2	30	76	48	2833	13.17	0.22	12	35	0.57	327	4	0.01	23	0.03	111	10	0.01	39	154
132	169371	5	0.2	6.48	2	46	2.2	5	4.10	0.3	169	13	85	355	2.88	0.45	61	22	0.39	144	2	0.62	29	0.05	10	314	0.35	44	49
133	169381	20	0.6	0.27	210	14	0.2	5	0.04	0.2	13	1	317	10	1.17	0.09	3	9	0.01	175	11	0.01	4	0.02	103	12	0.01	5	36
134	169382	5	0.2	3.45	102	165	0.6	5	0.04	0.2	28	1	91	9	1.55	1.00	11	16	0.11	48	4	0.02	3	0.02	34	5	0.03	20	88
135	169383	135	1.8	3.29	47	174	0.6	5	0.03	0.2	48	2	120	53	1.95	1.35	20	32	0.13	62	6	0.02	6	0.03	389	13	0.03	25	109
136	169384	720	1.0	2.47	900	174	0.5	5	0.06	0.2	38	2	151	21	1.92	1.01	19	8	0.11	187	6	0.02	6	0.03	9	91	0.02	25	24
137	169385	95	0.2	2.36	85	102	0.4	5	0.01	0.2	39	2	192	13	0.78	0.66	15	246	0.08	50	9	0.01	4	0.01	7	23	0.03	15	17
138	169386	810	1.4	1.81	406	106	0.3	5	0.24	0.2	36	4	186	22	1.43	0.72	12	45	0.13	418	10	0.01	14	0.01	143	16	0.01	16	25
139	169387	840	107.2	1.56	57204	1	0.4	22	0.10	106.8	31	6	152	722	12.73	0.69	14	4	0.07	75	22	0.01	2	0.06	4378	10	0.01	13	13000
141	169388	105	2.8	3.07	619	130	1.0	11	0.01	0.2	22	1	53	201	14.73	0.59	14	17	0.08	600	1	0.01	4	0.07	11	8	0.03	50	82
142	169389	275	2.0	2.01	88	47	1.0	5	0.07	0.2	23	5	102	113	13.47	0.59	11	13	0.10	337	3	0.01	10	0.03	37	3	0.03	42	203
143	169390	5150	0.2	3.70	3232	162	1.2	5	0.08	0.2	30	2	95	20	5.35	1.44	15	4	0.12	659	13	0.01	2	0.05	9	12	0.01	17	31
144	169391	3700	2.2	1.87	9727	97	0.8	5	0.02	0.2	24	8	131	78	8.69	0.74	11	5	0.05	105	12	0.01	1	0.03	156	18	0.01	13	56
145	169392	80	0.2	0.71	218	18	2.8	9	1.11	0.5	45	11	147	47	17.66	0.04	10	6	0.49	6971	6	0.01	7	0.05	120	9	0.01	23	194
146	169393 S	1535	0.2	1.36	362	26	1.5	196	0.15	0.2	21	12	60	409	17.03	0.12	8	7	0.11	2511	5	0.01	4	0.05	33	4	0.02	24	66
147	169394	2650	1.8	1.85	136	52	2.7	1908	0.24	0.2	26	8	93	571	14.46	0.57	8	6	0.09	1062	3	0.01	2	0.07	38	14	0.01	16	71
148	169395 S	225	0.2	1.42	82	12	1.8	343	5.59	0.3	72	30	69	1159	14.41	0.21	9	10	0.12	1454	1	0.08	4	0.04	2	21	0.03	22	51
151	169396	295	0.2	0.63	148	22	2.4	309	0.55	0.2	27	20	69	2125	12.47	0.04	7	3	0.18	1127	1	0.01	4	0.04	101	29	0.01	13	67
152	169397	400	2.4	0.41	777	20	1.3	80	0.24	0.2	14	8	77	1863	7.90	0.08	5	3	0.05	399	1	0.01	3	0.02	2	9	0.01	9	33
151	169398 S	20	2.0	4.52	1759	357	0.8	5	0.02	0.2	40	5	53	62	2.51	2.06	16	11	0.21	60	3	0.02	7	0.04	113	10	0.04	27	71
154	169399	1675	60.0	1.20	77217	62	0.3	7	0.01	560.7	54	406	138	183	5.22	0.48	28	8	0.05	65	37	0.01	11	0.01	25201	9	0.01	11	32000
155	169400	5	0.2	2.15	48	157	0.8	5	0.01	2.9	40	20	43	84	28.44	0.63	22	8	0.10	385	1	0.03	26	0.17	20	12	0.01	36	360

# NORANDA VANCOUVER LABORATORY

## Geochemical Analysis

**Project Name & No.:** YUKON GENEX - 212

**Geol.:** C.S./G.M.

**Date received:** JULY 18

**LAB CODE:** 9507-027

**Material:** 3 silts

**Sheet:** 1 of 1

**Date completed:** JULY 25

**Remarks:** \* Sample screened @ -35 MESH (0.5 mm)

‡ Organic, Δ Humus, S Sulfide

Au - silt & soil, 15.0 g sample digested with aqua-regia and determined by A.A. (D.L. 2 PPB); Rx, 10.0 g/AR/AA (D.L. 5 PPB)

ICP - 0.2 g sample digested with 3 ml HClO<sub>4</sub>/HNO<sub>3</sub> (4:1) at 203 °C for 4 hours diluted to 10 ml with water. Leeman PS3000 ICP determined elemental contents.

N.B. The major oxide elements and Ba, Be, Ce, La, Li, Ga are rarely dissolved completely from geological materials with this acid dissolution method.

T.T. No.	SAMPLE No.	Au ppb	Ag ppm	Al %	As ppm	Ba ppm	Be ppm	Bi ppm	Ca %	Cd ppm	Ce ppm	Co ppm	Cr ppm	Cu ppm	Fe %	K %	La ppm	Li ppm	Mg %	Mn ppm	Mo ppm	Na %	Ni ppm	P %	Pb ppm	Sr ppm	Ti %	V ppm	Zn ppm
12	171531 *	6	0.2	5.60	26	425	1.7	5	0.14	1.1	85	31	23	26	4.37	1.64	38	44	0.44	973	1	0.07	54	0.05	34	45	0.05	55	193
13	171532 *	8	0.2	4.99	14	446	1.4	5	0.27	0.6	259	12	11	20	3.10	1.68	127	37	0.39	674	1	0.05	26	0.07	29	45	0.05	47	95
14	171533 *	8	2.4	6.62	151	559	1.7	5	0.11	6.9	171	16	13	32	3.83	2.22	72	31	0.32	513	1	0.08	34	0.08	636	71	0.06	62	346

T.T. No.	SAMPLE No.	Au ppb	Ag ppm	Al %	As ppm	Ba ppm	Be ppm	Bi ppm	Ca %	Cd ppm	Ce ppm	Co ppm	Cr ppm	Cu ppm	Fe %	K %	La ppm	Li ppm	Mg %	Mn ppm	Mo ppm	Na %	Ni ppm	P %	Pb ppm	Sr ppm	Ti %	V ppm	Zn ppm	Pg. 2 of 2
156	171526	50	0.2	2.12	2	168	0.4	5	0.01	0.2	19	3	74	13	5.22	0.67	13	9	0.07	21	1	0.05	53	0.01	2	76	0.01	23	19	
158	171527	170	0.2	2.06	39	108	0.4	5	0.01	0.2	43	1	125	8	3.98	0.46	18	7	0.03	40	5	0.02	10	0.01	7	7	0.01	17	13	
159	171528	180	3.4	1.63	9289	135	0.3	5	0.01	2.3	11	6	162	6	1.57	0.58	4	6	0.06	42	6	0.01	6	0.01	410	5	0.02	12	86	
160	171529	210	0.2	2.59	171	158	0.4	5	0.02	7.0	30	3	116	21	2.00	0.72	12	9	0.07	85	7	0.02	9	0.01	1048	8	0.02	20	438	
161	171530	2000	28.0	1.34	75406	104	0.3	5	0.01	15.7	25	7	124	91	7.45	0.54	11	4	0.05	48	6	0.01	2	0.02	16450	8	0.01	12	742	
162	171534	145	15.8	2.75	12384	183	0.5	5	0.01	19.5	44	13	122	29	2.45	1.02	17	6	0.07	57	7	0.04	6	0.02	9737	13	0.02	24	945	
163	171535	250	2.8	3.74	1073	47	2.6	5	0.63	0.6	164	25	56	2461	5.53	1.36	80	70	1.04	371	1	0.08	36	0.04	55	20	0.15	69	103	
164	171536	30	3.4	2.30	29986	9	1.5	5	1.64	1.5	110	51	43	3345	8.74	0.28	42	39	0.64	553	1	0.15	35	0.10	4	17	0.11	40	135	
166	171537	10	0.2	5.25	2645	51	1.8	5	0.01	0.2	38	5	41	23	1.11	1.10	17	15	0.05	28	3	0.03	3	0.03	28	16	0.01	5	21	
167	171538	1265	2.4	0.40	6626	2	0.3	620	1.03	0.6	42	462	9	3897	10.43	0.02	11	4	0.07	235	1	0.01	27	0.03	136	9	0.01	7	67	
170	171539	160	0.2	2.13	36	3	0.5	70	2.86	0.2	74	11	95	433	8.18	0.04	19	17	0.12	487	3	0.03	4	0.03	4	205	0.07	18	25	
171	171540	25	1.8	4.17	446	83	1.8	21	0.15	0.2	36	2	26	613	6.30	1.49	16	26	0.46	128	1	0.03	18	0.04	95	18	0.09	28	73	
172	171541	5	15.4	6.21	2390	265	2.3	5	0.16	12.6	24	7	19	95	2.25	2.77	10	9	0.19	515	4	0.04	2	0.04	4680	14	0.01	7	1453	
173	171542	235	164.4	3.58	59258	116	1.0	371	1.46	47.5	153	54	53	156	7.31	0.57	66	27	0.24	205	12	0.16	17	0.02	26257	133	0.10	35	7028	
174	171543	5	1.0	6.10	220	6	1.7	5	14.91	48.4	115	32	46	273	5.13	0.04	26	7	0.03	1055	11	0.16	60	0.09	25	243	0.15	47	6951	

