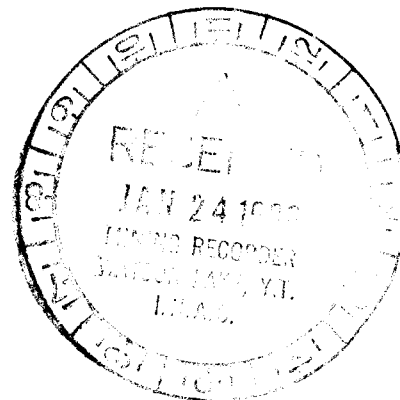


**GEOCHEMICAL REPORT
ON THE
WILD-EVE CLAIMS**

Watson Lake Mining District, Y.T.
NTS 105F/9
(61°36'N, 132°22'W)



for

MOUNTAIN PROVINCE MINING INC.
1205 - 789 West Pender Street
Vancouver, B.C. V6C 2H1
(604)687-0122



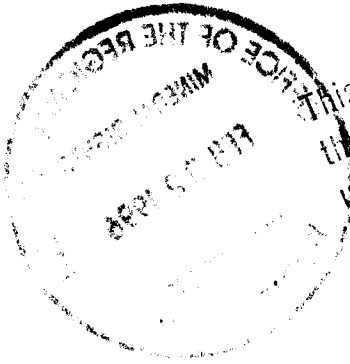
by

CARL G. VERLEY, P.Geo.
Amerlin Exploration Services Ltd.
2150 - 1851 Savage Road
Richmond, B.C. V6V 1R1
(604)821-1088

January, 1996

CLAIMS: EVE 63, 65, 67 to 72; WILD 1 to 36.
LOCATION: 26 miles (42 km) south of Ross River, Yukon
DATE: September 1, 1995.

093473



This report has been examined by
the Geological Evaluation Unit
under Section 53 (4) Yukon Quartz
Mining Act and is allowed as
representation work in the amount
of \$ 4400.

for

M. B. L.

Regional Manager, Exploration and
Geological Services for Commissioner
of Yukon Territory.

TABLE OF CONTENTS

SUMMARY	2
INTRODUCTION	3
Location	3
Access	3
History	4
PROPERTY	5
GEOLOGY	7
Regional	7
Property	7
GEOCHEMISTRY	9
RECOMMENDATIONS & CONCLUSIONS	11
REFERENCES	12
APPENDICES:	
A. Geochemical Data	
B. Personnel	
C. Writer's Certificate	

Figures

Figure:	
1 Property Location Map	1
2 Claim Map	6

Tables

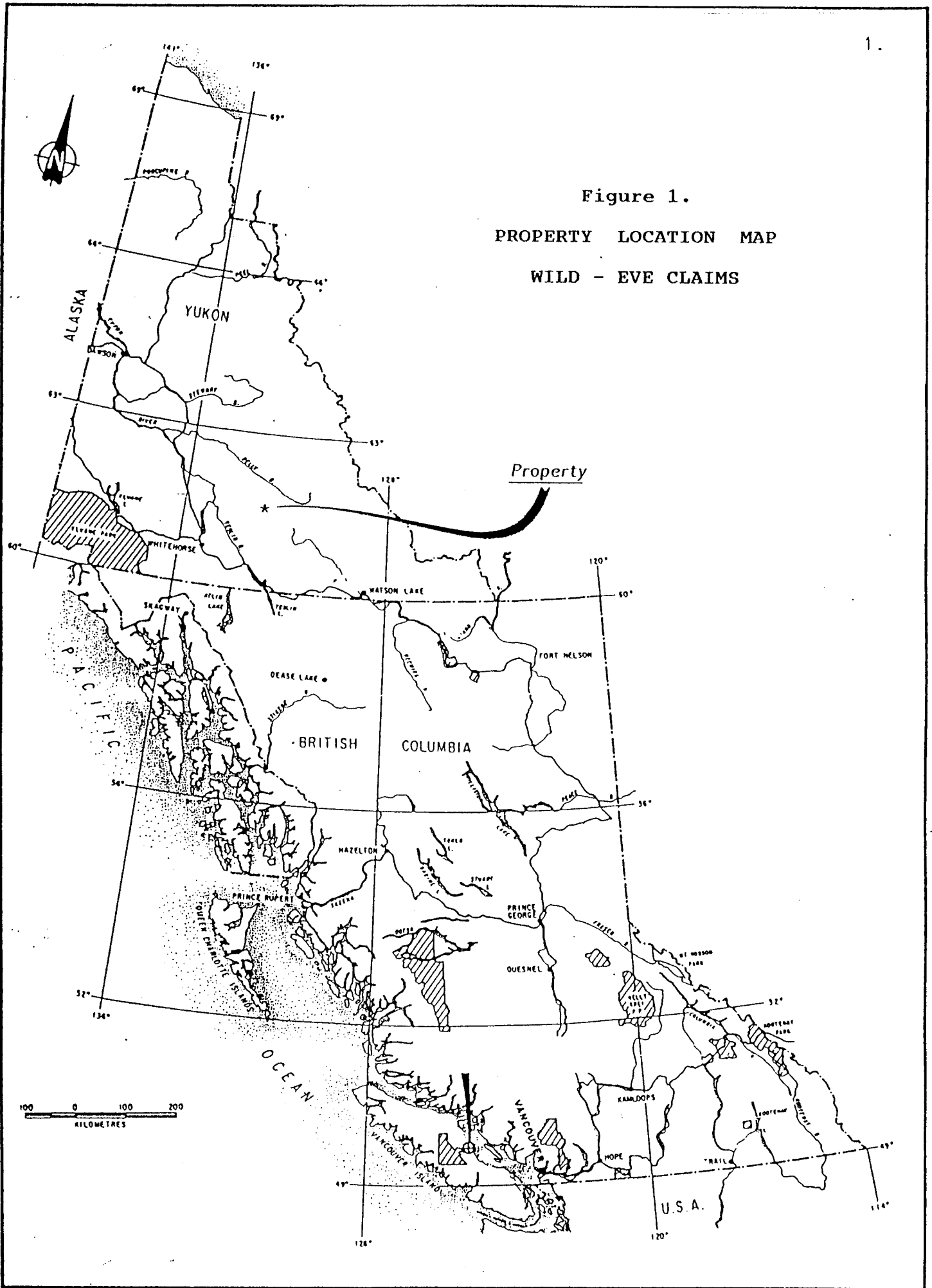
Table:	
1 Mineral Claims	5
2 Comparison of Geochemical Data	10

Plates

Plate:	
1 Lead and Zinc Geochemistry	in pocket
2 Sample Location Map	in pocket

Figure 1.

PROPERTY LOCATION MAP
WILD - EVE CLAIMS



SUMMARY

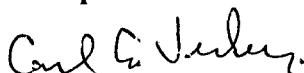
Mountain Province Mining Inc. owns 44 mineral claims situated in one contiguous block centered 55 kilometres south of Ross River, in the Pelly Mountains, Watson Lake Mining District (105F/9), Yukon Territory. The property is accessible by helicopter.

This report describes a geochemical soil sampling program conducted on the property on September 1, 1995 as well as work conducted on August 29, 1995. The purpose of this work was to try to define the northern up-slope extent of anomalous lead-zinc-silver-copper soils at the North zone and to test whether a continuation of this anomalous geochemistry exists in the cirque to the north.

The ground is situated in an area underlain by Upper Cambrian to Devonian-Mississippian shales and Mississippian volcanics. A strong silver-lead-zinc soil anomaly is associated with Devonian-Mississippian shales and volcanics at the North zone. Diamond drilling in 1978 by a previous mineral tenure holder (Cyprus Anvil) was not successful in explaining the anomalous geochemistry. A weathered sulphide zone may have been penetrated during drilling and mistaken for overburden. The highly anomalous soil geochemistry combined with the favorable stratigraphic setting suggests that there is excellent potential for locating a volcanogenic polymetallic massive sulphide deposit at the North zone.

Further soil and rock geochemistry, as well as geological mapping are recommended to continue evaluation of the claims. The estimated cost of this work is \$115,000.

Respectfully submitted,
Amerlin Exploration Services Ltd.



Carl G. Verley, P. Geo.

Richmond, B.C.
January 12, 1996.

INTRODUCTION

This report describes the results of work conducted on the property by the writer for Mountain Province Mining Inc. on September 1, 1993. The object of this work was to gain a better understanding of the soil geochemical anomalies in terms of causative source mineralization.

LOCATION

The claim group is centered 42 kilometres south of Ross River in the Pelly Mountains, Watson Lake Mining District, Y.T. at latitude 61°36'N and longitude 132°22'W. The property is situated on map-sheet 105F/9. Physiographically the ground lies in relatively steep alpine terrain, near the head of a south tributary drainage of the Ketza River. Elevations range from 1500 to 1900 metres above sea level. The mine and millsite of the Ketza river gold mine (Wheaton River Minerals Ltd.) is situated 8 kilometres to the southeast of the WILD-EVE.

ACCESS

The property is best accessed by helicopter from Ross River. A bulldozer trail to the Slide zone on Wheaton River Minerals' adjoining ground ends 2.5 kilometres southeast of the property.

HISTORY

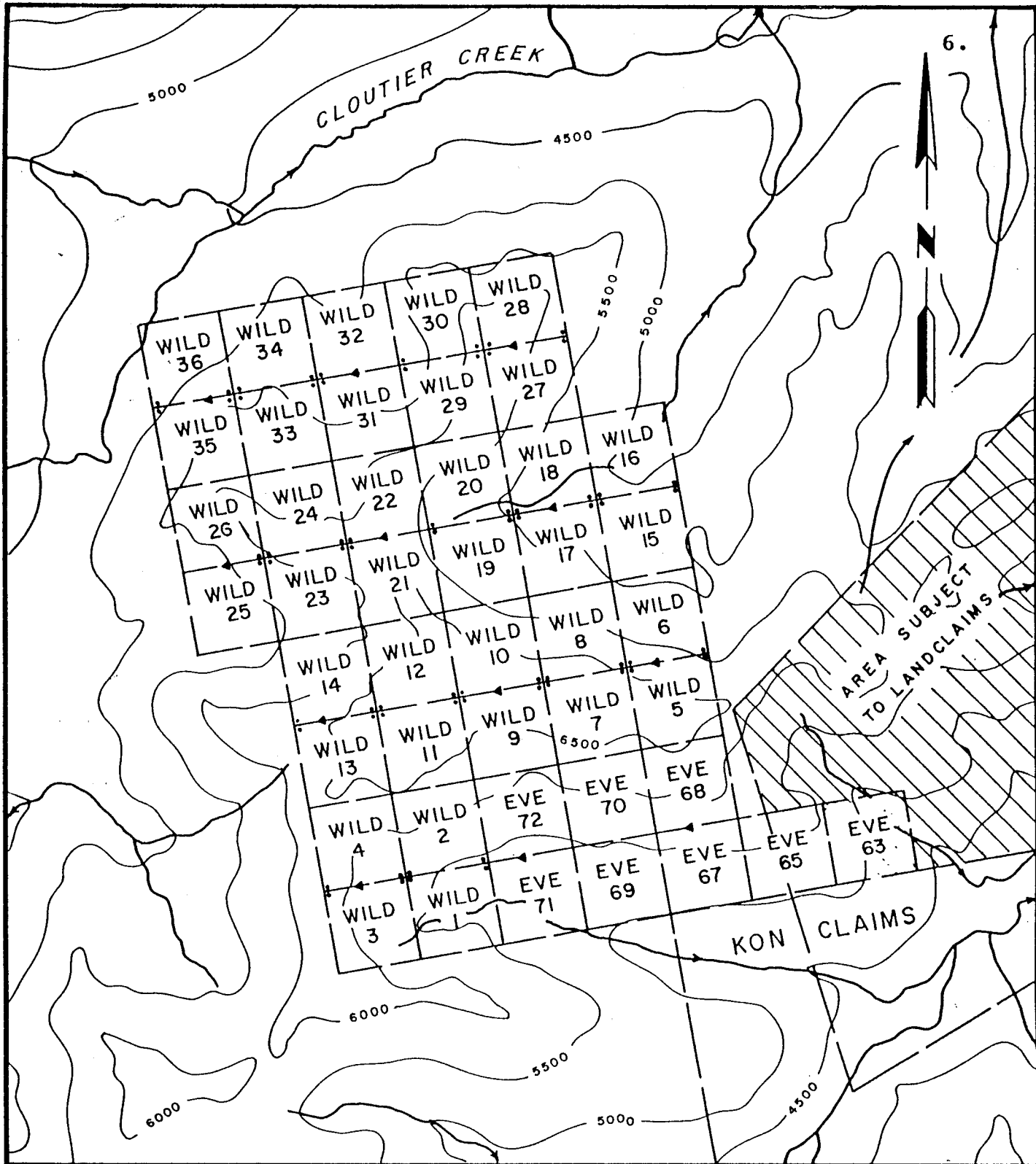
The property was first acquired by Cyprus Anvil Mining Corp. in August 1976 (Morin et al., 1979) as the EROS 1 to 8 claims. During the 1977 field season a program of soil sampling and geophysics was undertaken on the property (P. Dean, 1977). In 1978, Cyprus Anvil put one, vertical diamond drill hole into the property. This drill core is currently stored at the H. Bostock Core Library in Whitehorse. Cyprus Anvil subsequently allowed the EROS claims to lapse. In 1986, Mountain Province Mining Inc. acquired the ground by staking it as the EVE claims. Mountain Province conducted further geochemical soil sampling and geophysics on the claims in 1987 (Verley, 1988) and 1989 (Verley 1990). Results of this work outlined a ferricrete gossan and an associated zone containing anomalous Pb, Zn, Ag, Cu, As and Au in soil. The source of the gossan and anomalous geochemistry has not been determined. In 1993, the drill core of the Cyprus Anvil hole was relogged by the writer. One of the conclusions of this work was that the drilling may have passed through the oxidized sulphide horizon without recovering any core (Verley, 1993). In September 1994, an additional 36 mineral claims were added to the claim block to cover possible northern extensions of the "North Zone."

PROPERTY

The property consists of a total of 44 contiguous, full sized mineral claims as tabulated below and illustrated on Figure 2. The claims are located in the Ketzá River area, Watson Lake Mining District, Y.T. (NTS 105F/9).

Table 1. MINERAL CLAIMS

Claims	Grant Numbers	Expiry Date
EVE 63	YA99684	December 22/1996
EVE 65	YA99686	December 22/1996
EVE 67	YA99688	December 22/1996
EVE 68	YA99689	December 22/1996
EVE 69	YA99690	December 22/1996
EVE 70	YA99691	December 22/1996
EVE 71	YA99692	December 22/1996
EVE 72	YA99693	December 22/1996
WILD 1 - 36	YB56404-YB56439	October 04/1996



CLAIM LOCATION PLAN

WILD - EVE CLAIMS

CLOUTIER CREEK AREA, NTS 105F-9

WATSON LAKE MINING DISTRICT, YUKON

SCALE 1: 30,000

FIGURE 2

GEOLOGY

Regional:

The property is situated in the Cassiar terrane, a displaced segment of continental margin (Wheeler, et al., 1988) that consists of a sequence of sediments ranging in age from Precambrian to Upper Triassic. This succession is overlain by allochthonous sediments, volcanics and associated pyroclastics of the Upper Devonian to Mississippian age Yukon-Tanana terrane. Rare syenitic intrusives of Mississippian age intrude the sequence in the Ketz River area (Templeman-Kluit, 1977). These formations were deformed by an arc-continent collision event in Mesozoic times (Templeman-Kluit, 1979). Later, dextral strike-slip movement of at least 450 km along the Tintina Fault (Gabrielse, 1985) has undoubtedly influenced structural development in the area. Several large thrust sheets and small domal uplifts document the past deformation.

Property:

The property is underlain by a relatively flat lying Upper Cambrian to Ordovician formation containing phyllite, chloritic phyllite, calcareous phyllite and argillaceous limestone with local volcanic flows - massive and amygdaloidal - as well as sections of tuff and agglomerate. In general, this package of rocks is thinly bedded, recessive and forms pale yellowish-orange weathering talus slopes. Abundant, irregular quartz-carbonate veins are an ubiquitous feature of this unit. The Upper Cambrian-Ordovician unit has been uplifted and juxtaposed against relatively flat lying Devonian-Mississippian shales and volcanics on the western and northern part of the property by a northeasterly trending normal fault.

The Upper Devonian - Mississippian shales consist of thin-bedded to laminated, dark grey to black, carbonaceous silt and/or sand-bands. The shales are overlain by subaqueous Mid-Mississippian peralkaline andesitic flows and fragmental rocks (Mortensen, 1981). The

contact between the shales and volcanics, where observed in drill core is mylonitized, suggesting that the volcanics have been thrust into their present position. A number of felsite apophyses were also observed, in drill core, to intrude the shale and volcanic section.

A strong soil geochemical anomaly suggests the presence of polymetallic mineralization within the Mississippian volcanics or at the contact between Devono-Mississippian shales and overlying volcanics. A ferricrete (iron oxide cemented) zone is associated with the soil anomaly.

The location of the Cyprus Anvil drill hole collar is up slope from the geochemical anomaly; in a position that one would expect to provide a successful test of the geochemical anomaly. However, an examination of the Cyprus Anvil drill core (Appendix B) indicates that drill core is first reported at a depth of 25.1 metres (82'). Presumably the 25.1 metres that is absent from the top of the core record was material that could not be recovered: i.e. overburden, talus or weathered rock. The strong soil geochemical anomaly suggests that mineralization probably subcrops below the overburden. If this mineralization is highly weathered - as the ferricrete gossan would suggest - then it is likely that drilling may have passed through this weathered material, mistaking it for overburden and not recovering it. Therefore, Cyprus Anvil's drill test of the anomaly probably failed because of poor core recovery at the start of the drill hole.

GEOCHEMISTRY

Geochemical surveys of the Wild-Eve claims in 1995 consisted of soil sampling and limited rock sampling. Soil sampling was undertaken on contour lines where sample intervals varied from 25 to 50 metres. Sample sites were marked with orange flagging. In the "North Cirque area" 70 soil samples were collected on September 1, 1995. The purpose of this sampling was to test the area for a northward continuation of anomalous geochemistry found at the North zone. In addition, 32 soil samples were collected from the North zone this sampling was undertaken to try to determine the up-slope extent of the anomalous lead-zinc-silver mineralization in this area.

All samples were placed in numbered bags and delivered to Pioneer Laboratories Inc. in New Westminster, B.C. These samples were dried and sieved to -80 mesh. A 0.5 gram portion of each sieved sample was digested in 3 ML of a 3:1:2 solution of HCl, HNO₃ and H₂O at 95°C for one hour, then diluted with water to a 10 ML solution. Gold analysis was by atomic absorption from a 10 gram sample. Inductively coupled argon plasma(ICP) technique was used to analyze 0.5 grams samples for Mo, Cu, Pb, Zn, Ag, Ni, Co, Mn, Fe, As, U, Th, Sr, Cd, Sb, Bi, V, Ca, P, La, Cr, Mg, Ba, Al, Na, K, and W.

The results of the sampling indicate that in the North Cirque area two samples are probably anomalous in lead and zinc (CV-16 & 17 with 145 & 225 ppm Pb and 3293 & 511 ppm Zn respectively). Further sampling in this area and in cirques to the north and west is strongly recommended as well as detailed geological mapping and prospecting. Sampling at the North zone in part confirmed anomalous results previously obtained. But, because of weather problems, sufficient sampling was unable to be conducted to conclusively isolate the anomalous area from background values up-slope.

A comparison of the combined 1987 and 1989 data with the 1995 data is tabulated below (Table 2).

Table 2. Comparison of Geochemical Data

	No. of Samples	Lead (ppm)	Zinc (ppm)	Silver (ppm)	Gold (ppb)
Range: '87 & '89 data	280	12 - 2881	46 - 14201	0.2 - 54.9	0 - 265
Range: '95 North zone	32	20 - 1184	34 - 5154	0.3 - 18.2	1 - 28
Range: '95 North cirq.	70	8 - 225	20 - 3293	0.3 - 1.7	1 - 5
(from '87 & '89 data)					
Background		1 - 324	1 - 2999	0.1 - 3.3	1 - 4
Possibly anomalous		325 - 409	3000 - 3829	3.4 - 3.7	5 - 6
Anomalous		410 - 944	3830 - 8549	3.8 - 8.9	7 - 32
Strongly anomalous		945+	8550+	9.0+	32+

A grab sample (No. 660) of a pale coloured, tuff with seams to 1 cm thick of fine grained pyrite collected up-slope from sample CV-33 analyzed 158 ppm Pb; 594 ppm Zn; 326 ppm As and 22 ppb Au. The gold and arsenic values are relatively high for this sample. Similarly, a grab sample (No. 659) of limonitic, shattered volcanic rock from an exposure at the North zone analyzed 8327 ppm Pb; 1059 ppm Zn; 306 ppm As; 17.8 ppm Ag and 21 ppb Au - indicating this material is mineralized and presumably is peripheral to the main zone of mineralization causing the soil anomaly at the North zone.

CONCLUSIONS & RECOMMENDATIONS

Mountain Province Mining Inc. has tenure to 44 mineral claims located in the Ketzá River area, Watson Lake Mining District, Yukon. The claims are situated 42 kilometres south of Ross River. Access is by helicopter.

The property is underlain by a succession of Upper Cambrian to Mississippian phyllites, carbonates, shale and volcanics. A gossan zone that is strongly anomalous in Pb, Zn, Ag, Cu, As and Au occurs on the property. The source and/or origin of this gossan has not been determined. However, because of the strong geochemical signature, host rocks and structural setting it is believed the gossan is indicative of a volcanogenic polymetallic massive sulphide deposit.

Continued detailed soil and rock geochemistry in conjunction with trenching is recommended to further evaluate the claims. This project will probably require helicopter support. The field work should commence in July and be completed in August, 1995. The program is estimated to cost approximately \$115,000.

Contingent upon the success of this work a program of diamond drilling will be required to fully assess the mineral potential of the ground.

REFERENCES

- Carne, R.C., 1976: Stratabound Barite and Lead-Zinc-Barite Deposits in Eastern Selwyn Basin, Yukon; Exploration and Geological Services Division, Yukon, Indian and Northern Affairs Canada, Open File 1976-16, 41 p.
- Dean, P., 1977: Geochemical and Geophysical Report on the EROS Claim Group, assessment report No. 090194.
- Gabrielse, H., 1985: Major transcurrent displacements along the northern Rocky Mountain trench and related lineaments in north-central B.C., *Geol. Soc. Am. Bull.*, Vol. 96, p. 1-14.
- Morin, J.A. and M. Marchand, D.B. Craig, R.L. Debicki, 1979: Mineral Industry Report 1977 Yukon Territory, Dept. of Indian and Northern Affairs, Ottawa.
- Mortensen, J.K., 1982: Geological Setting and Tectonic Significance of Mississippian Felsic Metavolcanic Rocks in the Pelly Mountains, Southeastern Yukon Territory, *Can. J. Earth Sci.*, Vol. 19, p. 8-22.
- Mortensen, J.K. and C.I. Godwin, 1982: Volcanogenic massive sulphide deposits associated with highly alkaline rift volcanics in the southeastern Yukon Territory, *Econ. Geol.*, Vol. 77, No.5, p.1225-1230.
- St. Pierre, M. and P.A. Cartwright, 1989: Report on the Induced Polarization and Resistivity Survey, and the Magnetometer Survey on the Ketza Project, for Mountain Province Mining Inc.
- Stanley, C.R., 1987: Probplot, an interactive computer program to fit mixtures of normal(or lognormal) distributions, Association of Exploration Geochemists, Special Vol. #14.
- Templeman-Kluit, D.J., 1977: Geology of Quiet Lake and Finlayson Lake map areas, Yukon Territory(105F and G), *Geol. Surv. Can. Open File 486*.
- Templeman-Kluit, D.J., 1979: Transported cataclasite, ophiolite and granodiorite in Yukon: evidence of arc-continent collision, *Geol. Surv. Can.*, Paper 79-14.
- Wheeler, J.O. and A.J. Brookfield, H. Gabrielse, J.W.H. Monger, H.W. Tipper, G.J. Woodsworth, 1989: Terrane Map of the Canadian Cordillera, *Geol. Survey of Canada, O.F. 1894*.
- Verley, C.G., 1987: Preliminary Geological and Geochemical Report on the EVE, PS, WHITE and WHYTE Claims, assessment report filed on behalf of Mountain Province Mining Inc.
- Verley, C.G., 1990: Geochemical and Geophysical Report on the Ketza River Property, Vol. I & II, assessment report filed on behalf of Mountain Province Mining Inc.
- Verley, C.G., 1994: Report on Diamond Drill Core from the EVE Claims, assessment report filed on behalf of Mountain Province Mining Inc.

APPENDIX A
GEOCHEMICAL DATA

PIONEER LABORATORIES INC.

5-730 EATON WAY NEW WESTMINSTER, BC CANADA V3M 6J9 TELEPHONE (604) 522-3830

GEOCHEMICAL ANALYSIS CERTIFICATE

AMERLIN EXPLORATION

Project:

Report No. 9511405

Sample Type: Soils

Date: September 14, 1995

Multi-element ICP Analysis - .500 gram sample is digested with 3 ml of aqua regia, diluted to 10 ml with Water. This leach is partial for Mn, Fe, Ca, P, La, Cr, Mg, Ba, Ti, B, W and limited for Na, K and Al. Detection Limit for Au is 3 ppm. *Au Analysis- 10 gram sample is digested with aqua regia, MIBK extracted, graphite furnace AA finished to 1 ppb detection.

SOILS:

SMPL No.	Au ppb	As ppm	Ag ppm	Pb ppm	Zn ppm	Cu ppm	Mo ppm	W ppm	Cd ppm	Sb ppm	Bi ppm	Ba ppm	B ppm	Mn ppm	Fe %	Ti %	Ni ppm	Cr ppm	Co ppm	V ppm	La ppm	U ppm	Th ppm	Sr ppm	Na %	K %	Ca %	Mg %	Al %	P %
CV 1	2	246	5.2	880	471	31	4	2	0.2	22	2	40	3	125	12.12	0.01	7	10	1	41	11	5	2	23	0.01	0.61	0.02	0.03	0.17	0.087
CV 2	1	13	0.3	41	75	46	5	2	0.2	2	2	212	4	940	4.82	0.01	27	4	22	17	47	5	5	35	0.01	0.16	0.38	0.13	0.41	0.098
CV 3	1	9	0.3	23	107	64	3	2	0.5	2	2	306	3	1428	5.01	0.02	36	36	22	46	41	5	3	24	0.01	0.15	0.46	0.54	1.02	0.094
CV 4	1	29	0.3	60	279	43	9	2	0.8	7	2	324	3	1074	4.89	0.01	29	15	14	39	34	5	2	46	0.01	0.21	0.53	0.17	0.71	0.108
CV 5	1	16	0.3	36	229	50	6	2	0.8	2	2	348	3	1232	4.95	0.01	36	13	19	30	41	5	3	35	0.01	0.18	0.50	0.21	0.82	0.089
CV 6	1	19	0.3	26	93	58	7	2	0.4	2	2	357	3	1459	4.74	0.01	34	9	26	28	40	5	3	45	0.01	0.18	0.60	0.24	0.67	0.113
CV 7	4	11	0.3	24	47	29	4	2	0.2	2	2	371	3	998	3.79	0.01	21	19	13	33	34	5	2	41	0.01	0.09	0.56	0.25	0.99	0.103
CV 8	1	15	0.3	22	48	46	5	2	0.2	2	2	448	3	1294	4.22	0.01	28	11	18	29	32	5	2	46	0.01	0.17	0.75	0.23	0.66	0.099
CV 9	1	11	0.3	39	49	36	6	2	0.2	2	2	351	3	1123	4.49	0.01	26	12	18	24	34	5	2	50	0.01	0.22	0.61	0.21	0.64	0.101
CV 10	1	14	0.3	29	37	35	6	2	0.2	2	2	483	4	870	5.09	0.01	21	6	16	20	32	5	3	70	0.01	0.24	0.89	0.18	0.56	0.111
CV 11	1	11	0.3	20	34	30	4	2	0.2	2	2	413	3	658	4.66	0.01	17	4	14	14	45	5	4	64	0.01	0.16	0.89	0.14	0.55	0.116
CV 12	1	19	1.7	86	366	77	3	2	2.0	2	2	644	3	439	2.96	0.01	49	4	11	12	30	5	5	75	0.01	0.10	0.19	0.04	0.39	0.079
CV 13	1	17	1.4	21	318	71	6	2	1.1	2	2	577	4	513	2.91	0.01	56	11	12	19	27	5	6	66	0.01	0.19	0.18	0.07	0.47	0.081
CV 14	2	20	1.5	28	188	84	5	2	0.4	4	2	651	3	758	3.76	0.01	71	7	22	17	40	5	8	77	0.01	0.13	0.21	0.04	0.42	0.108
CV 15	1	22	1.1	38	201	84	6	2	0.7	4	2	561	3	1141	3.97	0.01	60	7	23	20	44	5	8	87	0.01	0.14	0.30	0.08	0.49	0.105
CV 16	1	46	0.3	145	3293	57	10	2	15.3	2	2	810	3	4952	9.41	0.01	61	15	28	19	99	7	18	29	0.01	0.19	0.28	0.16	0.92	0.102
CV 17	1	45	0.3	225	511	17	16	2	0.2	8	2	190	3	719	12.38	0.01	14	6	1	11	42	5	7	35	0.01	0.18	0.12	0.08	0.34	0.065

SMPL No.	Au	As	Ag	Pb	Zn	Cu	Mo	W	Cd	Sb	Bi	Ba	B	Mn	Fe	Tl	Ni	Cr	Co	V	La	U	Th	Sr	Na	K	Ca	Mg	Al	P
	ppb	ppm	ppm	ppm	ppm	ppm	ppm	ppm	ppm	ppm	ppm	ppm	ppm	ppm	%	%	ppm	ppm	ppm	ppm	ppm	ppm	ppm	ppm	%	%	%	%	%	%
CV 18	1	16	0.4	35	95	67	5	2	0.3	8	2	277	3	1311	4.90	0.01	68	19	43	24	44	5	9	71	0.02	0.14	0.97	0.48	0.66	0.118
CV 19	2	52	0.3	122	290	168	7	2	1.9	3	2	344	3	1526	7.71	0.01	151	29	64	40	36	5	29	73	0.01	0.21	0.37	0.12	1.64	0.289
CV 20	1	21	0.3	32	62	72	6	2	0.3	7	2	204	3	787	4.89	0.01	68	7	45	20	34	5	8	90	0.01	0.17	1.14	0.35	0.27	0.181
CV 21	1	15	0.3	21	54	52	4	2	0.3	4	2	246	3	877	4.70	0.01	61	18	47	28	37	5	8	56	0.01	0.12	0.89	0.44	0.49	0.176
CV 22	5	24	1.2	36	358	119	4	2	1.1	2	2	219	4	950	4.64	0.01	112	18	30	23	37	5	9	78	0.02	0.20	0.28	0.16	0.71	0.113
CV 23	1	11	0.3	46	69	53	5	2	0.2	2	2	279	4	1296	5.26	0.01	33	8	32	19	61	5	8	41	0.05	0.17	0.37	0.12	0.50	0.118
CV 24	1	13	0.3	41	54	49	4	2	0.2	2	2	254	4	938	4.57	0.01	36	5	35	15	49	5	8	47	0.03	0.15	0.38	0.07	0.38	0.144
CV 25	1	14	0.5	59	128	60	3	2	0.6	2	2	362	3	663	3.69	0.01	39	8	25	17	47	5	10	55	0.04	0.16	0.36	0.09	0.38	0.134
CV 26	3	15	0.5	81	121	54	5	2	0.3	2	2	493	3	1002	3.47	0.01	38	12	22	18	44	5	6	67	0.02	0.15	0.45	0.12	0.41	0.122
CV 27	2	11	0.6	40	135	57	3	2	0.6	2	2	685	4	585	3.21	0.01	36	13	16	17	47	5	6	45	0.02	0.14	0.46	0.15	0.45	0.116
CV 28	1	11	0.4	33	78	27	2	2	0.2	2	2	508	4	1011	2.76	0.01	20	10	11	19	30	5	2	32	0.02	0.08	0.34	0.10	0.75	0.101
CV 29	3	11	0.7	43	145	62	3	2	0.5	2	2	770	4	759	3.42	0.01	39	16	17	19	49	5	5	48	0.02	0.16	0.57	0.18	0.61	0.113
CV 30	1	7	0.4	22	82	39	2	2	0.3	2	2	431	3	433	2.61	0.01	25	8	11	19	30	5	3	25	0.03	0.12	0.29	0.09	0.59	0.076
CV 31	1	12	0.8	47	182	70	4	2	0.5	2	2	611	5	820	4.32	0.01	46	12	20	18	47	5	5	44	0.02	0.22	0.58	0.15	0.73	0.102
CV 32	1	20	0.6	64	193	81	6	2	0.6	2	2	380	4	817	4.68	0.01	50	10	26	17	54	5	10	52	0.04	0.21	0.39	0.15	0.50	0.130
CV 33	1	13	0.3	55	137	62	6	2	0.7	2	2	319	3	814	3.53	0.01	37	3	24	7	58	5	11	39	0.03	0.19	0.43	0.05	0.31	0.123
CV 34	1	13	0.3	33	193	61	5	2	0.5	2	2	397	3	707	4.74	0.01	30	2	27	14	51	5	9	29	0.01	0.16	0.54	0.15	0.41	0.131
CV 35	1	13	0.3	40	142	61	5	2	0.5	2	2	256	3	935	4.71	0.01	30	3	22	13	61	5	8	25	0.01	0.15	0.46	0.13	0.37	0.127
CV 36	2	10	0.3	25	117	41	4	2	0.5	2	2	290	5	819	3.60	0.01	22	3	21	18	54	5	9	22	0.01	0.23	0.79	0.27	0.45	0.116
CV 37	4	14	0.5	50	160	52	6	2	0.6	2	2	312	3	595	4.30	0.01	28	3	19	10	75	5	12	35	0.01	0.20	0.38	0.10	0.41	0.128
CV 38	5	21	1.0	49	258	77	6	2	0.6	2	2	361	4	832	4.40	0.01	48	5	20	13	64	5	11	48	0.01	0.22	0.36	0.09	0.47	0.117
CV 39	4	16	0.8	46	162	53	6	2	0.6	2	2	328	3	584	3.41	0.01	37	4	17	11	73	5	12	40	0.01	0.19	0.37	0.08	0.41	0.114
CV 40	2	13	0.3	37	181	58	5	2	0.7	2	2	271	4	659	3.52	0.01	36	5	20	9	78	5	13	29	0.01	0.31	0.69	0.13	0.54	0.126
CV 41	1	14	0.4	39	175	48	7	2	1.3	2	2	300	5	793	3.68	0.01	23	3	16	6	83	5	13	26	0.01	0.29	0.42	0.12	0.52	0.122
CV 42	1	15	0.3	52	73	48	6	2	0.5	2	2	253	5	650	3.51	0.01	23	4	19	8	92	5	13	29	0.02	0.31	0.41	0.12	0.54	0.118
CV 43	1	10	0.3	26	44	36	4	2	0.3	2	2	210	5	1117	3.42	0.01	29	9	21	22	54	5	8	27	0.02	0.23	0.94	0.27	0.45	0.156
CV 44	2	22	0.5	47	81	55	10	2	0.3	2	2	380	3	1025	4.97	0.01	33	5	23	17	55	5	8	36	0.01	0.15	0.36	0.19	0.53	0.124
CV 45	1	20	0.3	25	188	51	5	2	1.4	2	2	492	3	1045	4.44	0.01	32	5	24	23	57	5	9	26	0.02	0.16	0.50	0.32	0.76	0.103
CV 46	1	21	0.3	50	110	97	4	2	0.7	2	2	506	3	1098	6.32	0.01	62	9	49	43	34	5	4	26	0.01	0.17	0.49	0.50	1.07	0.165
CV 47	1	14	0.3	15	68	98	2	2	0.4	2	2	516	5	1305	7.06	0.01	50	15	37	44	34	5	3	18	0.01	0.26	0.53	0.35	0.99	0.113
CV 48	1	13	0.3	16	123	94	2	2	0.6	2	2	379	3	1471	5.43	0.01	52	11	47	40	27	5	2	19	0.01	0.12	0.67	0.35	0.61	0.139
CV 49	1	19	0.3	13	75	72	2	2	0.5	2	2	664	3	1193	6.97	0.01	26	12	23	43	34	5	2	22	0.01	0.17	0.56	0.43	1.31	0.090
CV 50	1	10	0.3	13	33	31	2	2	0.3	2	2	494	3	515	4.16	0.01	15	9	14	31	24	5	2	16	0.01	0.07	0.44	0.17	1.16	0.128

SMPL No.	Au ppb	As ppm	Ag ppm	Pb ppm	Zn ppm	Cu ppm	Mo ppm	W ppm	Cd ppm	Sb ppm	Bi ppm	Ba ppm	B ppm	Mn ppm	Fe %	Ti %	Ni ppm	Cr ppm	Co ppm	V ppm	La ppm	U ppm	Th ppm	Sr ppm	Na %	K %	Ca %	Mg %	Al %	P %
CV 51	2	10	0.3	10	41	41	2	2	0.2	2	2	505	3	594	4.91	0.01	20	11	17	33	23	5	2	16	0.01	0.08	0.45	0.18	1.12	0.117
CV 52	1	4	0.3	13	20	62	2	2	0.2	2	2	215	4	500	6.51	0.01	49	10	25	22	24	5	2	15	0.01	0.09	0.44	0.07	0.46	0.117
CV 53	1	5	0.3	9	25	81	2	2	0.2	2	2	203	3	971	4.90	0.01	48	9	29	17	26	5	3	14	0.01	0.16	0.51	0.10	0.46	0.112
CV 54	1	4	0.3	10	34	42	2	2	0.2	2	2	316	3	498	3.68	0.01	24	16	15	32	34	5	3	20	0.01	0.16	0.74	0.28	0.85	0.085
CV 55	1	7	0.3	41	22	37	3	2	0.3	2	2	296	4	917	3.88	0.01	22	9	16	17	52	5	4	24	0.01	0.24	0.85	0.13	0.69	0.084
CV 56	1	5	0.3	18	26	45	2	2	0.3	2	2	350	5	562	3.20	0.01	24	13	15	18	25	5	2	36	0.01	0.21	2.21	0.17	0.63	0.106
CV 57	1	4	0.3	8	32	72	2	2	0.5	2	2	362	6	820	3.86	0.01	36	26	21	25	29	5	2	20	0.01	0.30	1.84	0.36	0.76	0.093
CV 58	1	9	0.3	12	39	170	4	2	0.5	2	2	231	5	1500	7.18	0.01	135	14	102	21	24	5	3	28	0.01	0.31	1.14	0.25	0.74	0.160
CV 59	1	8	0.3	12	55	154	4	2	0.3	2	2	274	4	1585	7.07	0.01	116	22	86	26	29	5	3	40	0.01	0.33	0.55	0.22	0.78	0.126
CV 60	1	5	0.3	16	78	109	3	2	0.4	2	2	239	4	1420	6.58	0.01	86	22	60	26	28	5	4	36	0.01	0.42	0.65	0.23	0.79	0.131
CV 61	1	8	0.3	26	59	58	3	2	0.4	2	2	423	6	1335	6.08	0.01	48	20	37	36	37	5	4	29	0.01	0.33	0.64	0.41	0.84	0.124
KC 1	28	200	18.2	1064	5154	123	8	2	52.1	80	2	302	3	815	6.97	0.01	57	27	39	56	34	5	7	78	0.01	0.22	0.25	0.10	0.77	0.110
KC 2	3	119	6.0	1131	579	34	7	2	2.5	26	2	270	3	417	5.93	0.01	15	15	7	29	30	5	3	47	0.01	0.33	0.14	0.11	0.46	0.107
KC 3	3	157	6.0	956	344	45	7	2	0.8	26	2	141	4	359	8.63	0.01	12	15	4	33	26	5	2	57	0.01	0.41	0.08	0.10	0.41	0.140
KC 4	6	213	6.2	819	737	49	7	2	3.2	21	2	263	4	673	5.93	0.01	24	23	12	32	30	5	2	68	0.01	0.35	0.49	0.22	0.67	0.170
KC 5	2	226	5.4	784	1067	35	3	2	2.6	23	2	210	3	516	6.17	0.01	18	19	8	23	32	5	3	56	0.01	0.20	0.35	0.13	0.37	0.121
KC 6	1	35	1.0	137	408	24	4	2	1.6	3	2	375	3	745	3.52	0.01	23	39	9	36	36	5	2	24	0.01	0.10	0.35	0.40	1.15	0.148
KC 7	2	35	1.0	193	294	29	5	2	1.1	2	2	439	3	577	3.83	0.01	20	13	10	26	36	5	2	34	0.01	0.16	0.51	0.20	0.90	0.117
KC 8	2	13	0.4	61	72	25	6	2	0.3	2	2	278	4	861	4.46	0.01	17	11	14	25	38	5	3	35	0.01	0.22	0.36	0.15	0.67	0.118
KC 9	6	61	17.9	1171	690	42	5	2	9.8	32	2	694	4	404	2.47	0.01	18	9	12	23	24	5	2	64	0.01	0.16	0.83	0.08	0.51	0.078
KC 10	7	53	16.2	1184	601	34	6	2	4.1	51	2	550	3	290	2.56	0.01	14	8	9	26	26	5	2	36	0.01	0.16	0.09	0.02	0.41	0.056
KC 11	1	18	3.7	431	76	14	4	2	0.5	9	2	267	3	152	1.43	0.01	6	6	3	16	24	5	2	35	0.02	0.07	0.13	0.04	0.38	0.048
KC 12	1	25	5.7	604	122	23	6	2	0.6	12	2	453	3	251	2.12	0.01	9	9	4	22	38	5	2	49	0.01	0.08	0.12	0.04	0.55	0.058
KC 13	1	27	4.7	562	144	26	8	2	1.5	13	2	583	4	219	2.38	0.01	14	10	5	25	37	5	3	73	0.01	0.15	0.23	0.05	0.55	0.066
KC 14	1	12	1.4	186	85	16	4	2	0.7	6	2	205	3	391	1.86	0.01	9	9	6	19	28	5	2	39	0.02	0.07	0.09	0.06	0.54	0.055
KC 15	1	13	0.9	93	90	18	4	2	0.9	6	2	373	3	256	1.96	0.01	12	7	6	18	31	5	2	61	0.01	0.08	0.24	0.06	0.48	0.074
KC 16	3	22	0.9	107	115	39	7	2	0.2	8	2	379	4	217	3.01	0.01	15	8	6	20	43	5	3	63	0.01	0.19	0.16	0.05	0.37	0.064
KC 17	1	28	1.1	127	315	21	10	2	1.3	7	2	320	3	200	2.69	0.01	8	6	4	16	53	5	4	56	0.01	0.11	0.11	0.03	0.24	0.048
KC 18	3	43	1.2	145	1084	51	8	2	4.1	7	2	202	3	339	5.81	0.01	15	7	6	23	31	5	3	32	0.01	0.09	0.23	0.06	0.37	0.071
KC 19	2	48	1.2	165	847	59	7	2	3.5	7	2	215	4	519	6.55	0.01	22	9	15	18	42	5	5	24	0.02	0.18	0.22	0.06	0.45	0.065
KC 20	3	46	1.5	144	619	50	6	2	3.9	9	2	273	5	519	5.57	0.01	18	8	13	17	35	5	3	34	0.01	0.24	0.61	0.07	0.43	0.088
KC 21	3	54	1.4	97	1124	68	7	2	4.1	8	2	188	4	392	6.83	0.01	25	9	13	23	51	5	4	18	0.01	0.11	0.28	0.06	0.50	0.077
KC 22	1	29	0.9	114	380	60	8	2	2.5	6	2	299	4	448	3.84	0.01	46	6	14	39	28	5	6	71	0.01	0.10	0.38	0.12	0.44	0.114

SMPL No.	Au	As	Ag	Pb	Zn	Cu	Mo	W	Cd	Sb	Bi	Ba	B	Mn	Fe	Ti	Ni	Cr	Co	V	La	U	Th	Sr	Na	K	Ca	Mg	Al	P
	ppb	ppm	ppm	ppm	ppm	ppm	ppm	ppm	ppm	ppm	ppm	ppm	ppm	ppm	%	%	ppm	ppm	ppm	ppm	ppm	ppm	ppm	ppm	%	%	%	%	%	%
KC 23	1	18	1.7	40	276	87	6	2	0.9	5	2	713	3	567	3.69	0.01	62	8	16	19	34	5	7	79	0.01	0.12	0.20	0.05	0.42	0.098
KC 24	1	7	0.6	45	292	84	5	2	0.7	3	2	359	3	863	6.79	0.01	75	10	39	41	26	5	5	66	0.01	0.08	1.09	0.40	0.38	0.173
KC 25	1	7	0.6	32	133	46	12	2	0.3	3	2	261	3	1068	5.52	0.01	44	4	11	18	47	5	9	41	0.01	0.07	0.43	0.09	0.24	0.086
KC 26	1	12	0.8	44	798	76	6	2	1.9	3	2	420	3	428	4.69	0.01	56	8	17	30	20	5	4	42	0.01	0.10	0.33	0.04	0.42	0.100
KC 27	3	13	1.4	44	297	86	5	2	1.0	4	2	438	3	846	3.73	0.01	60	6	20	17	32	5	7	82	0.01	0.11	0.25	0.06	0.39	0.087
KC 28	1	10	0.4	33	56	72	3	2	0.3	8	2	287	3	1074	4.61	0.01	50	7	34	21	44	5	7	41	0.01	0.10	0.48	0.10	0.29	0.107
KC 29	3	20	0.9	40	184	82	3	2	0.6	4	2	477	4	543	3.10	0.01	60	15	18	19	29	5	7	66	0.01	0.13	0.31	0.16	0.42	0.086
KC 30	3	12	0.8	29	152	69	3	2	0.4	2	2	381	7	656	3.25	0.01	52	17	17	22	35	5	7	102	0.02	0.28	1.36	0.14	0.57	0.098
KC 31	1	8	0.3	41	72	47	4	2	0.3	3	2	221	4	757	3.33	0.01	30	6	26	16	41	5	10	41	0.01	0.12	0.40	0.08	0.27	0.138
KC 32	1	14	0.3	55	132	42	8	2	0.6	5	2	342	3	1575	2.91	0.01	36	16	18	23	36	5	7	47	0.01	0.11	0.30	0.17	0.42	0.094
KC 33	1	16	1.1	212	223	88	11	2	0.9	7	2	180	3	860	7.78	0.01	61	11	36	35	37	5	7	21	0.01	0.12	0.17	0.04	0.28	0.098
KC 34	1	8	0.6	52	103	48	5	2	0.3	2	2	335	4	593	3.02	0.01	28	10	14	18	35	5	4	40	0.01	0.13	0.47	0.10	0.47	0.102
KC 35	1	8	0.5	36	73	55	4	2	0.2	2	2	329	4	571	3.30	0.01	28	7	17	17	50	5	8	34	0.01	0.14	0.50	0.06	0.31	0.097
KC 36	1	9	0.6	59	157	72	6	2	0.6	4	2	430	5	645	4.00	0.01	30	4	20	14	48	5	4	34	0.01	0.18	0.77	0.08	0.45	0.098
KC 37	1	5	0.3	45	88	35	3	2	0.3	2	2	384	4	590	4.46	0.01	18	2	20	15	71	5	6	26	0.01	0.15	0.83	0.19	0.48	0.105
KC 38	1	5	0.3	38	115	46	4	2	0.2	2	2	352	3	575	3.88	0.01	24	2	22	12	62	5	8	30	0.01	0.16	1.08	0.31	0.37	0.129
KC 39	1	8	0.3	57	98	43	6	2	0.6	2	2	238	4	618	3.29	0.01	19	2	14	6	73	5	6	35	0.02	0.15	0.62	0.10	0.47	0.088
KC 40	1	8	0.3	52	62	46	5	2	0.2	2	2	224	3	759	4.33	0.01	39	4	22	18	55	5	5	24	0.01	0.10	0.51	0.10	0.39	0.110
KC 41	1	2	0.3	12	42	48	1	2	0.2	2	2	181	5	1730	5.75	0.01	42	13	23	31	28	5	2	21	0.01	0.11	0.68	0.22	0.39	0.113

ROCKS:

659	21	306	17.8	8327	1059	27	15	2	10.1	15	2	157	4	100	2.67	0.04	63	11	2	35	14	7	7	23	0.01	0.24	0.12	0.10	0.33	0.061
660	22	326	0.9	158	594	110	10	2	7.0	3	2	12	9	62	5.34	0.01	11	111	63	11	5	5	2	34	0.02	0.24	0.58	0.04	0.31	0.149

APPENDIX B
PERSONNEL

PERSONNEL

Carl G. Verley
566 West 63rd Avenue
Vancouver, B.C.

Geologist

Kevin Coles
1030 East 29th Avenue
North Vancouver, B.C.

Field Assistant

APPENDIX C
WRITER'S CERTIFICATE

AMERLIN EXPLORATION SERVICES LTD.

2150 - 1851 Savage Road, Richmond, B.C. V6V 1R1 Tel/Fax (604) 821-1088

WRITER'S CERTIFICATE

I, Carl G. Verley of Vancouver, British Columbia hereby certify that:

1. I am a geologist residing at 566 West 63rd Avenue, Vancouver B.C.
2. I am a graduate of the University of British Columbia, B.Sc. in 1974, and have practised my profession since that time.
3. I am a registered member of the Association of Professional Engineers and Geoscientists of the Province of B.C.
4. I am the author of this report which is based on the work described herein pertaining to the EVE and WILD claims and conducted on September 1, 1995.

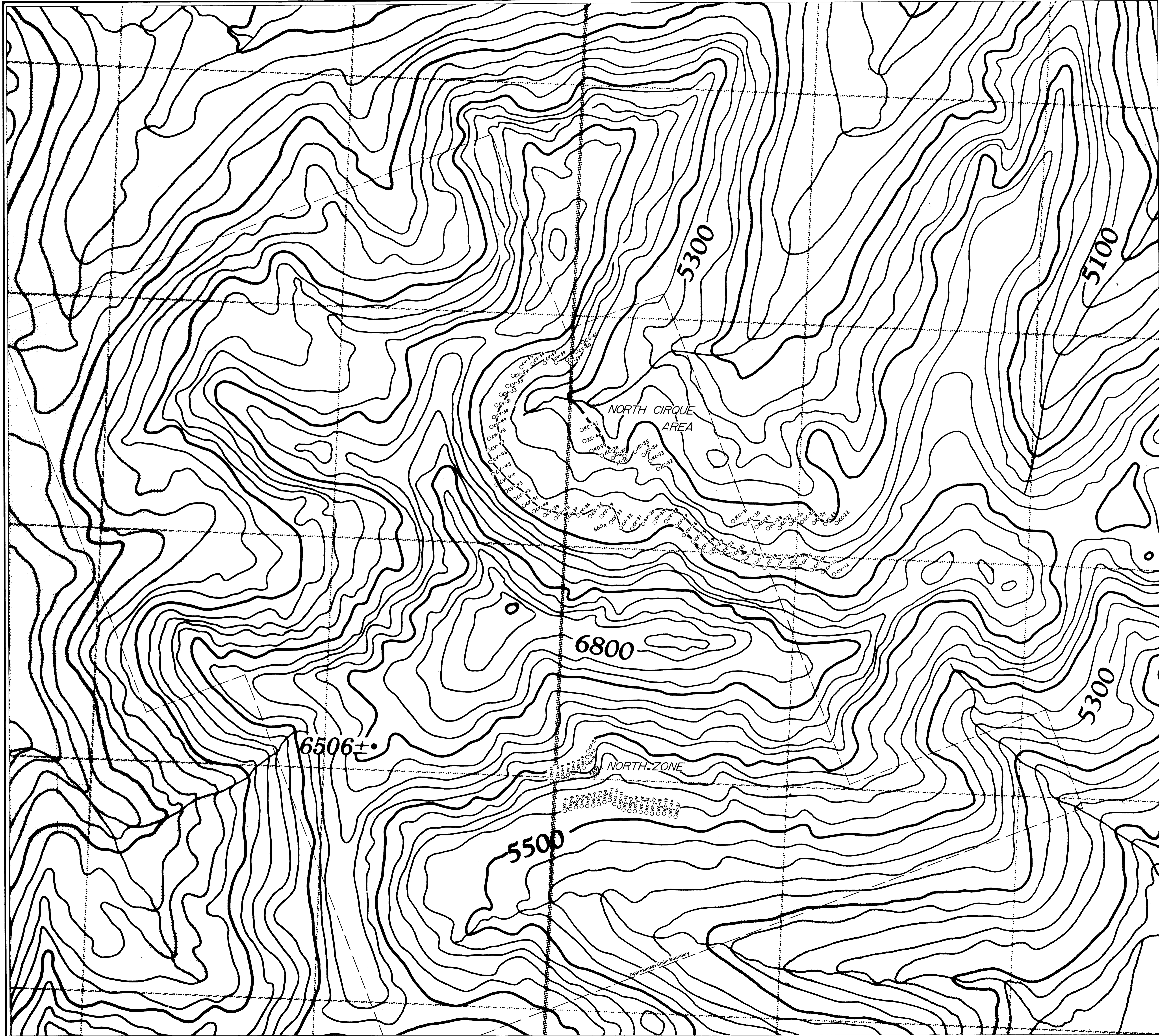
~~Amerlin Exploration Services Ltd.~~

Carl G. Verley

Carl G. Verley, P. Geoscientist



January 12, 1996.
Richmond, B.C.



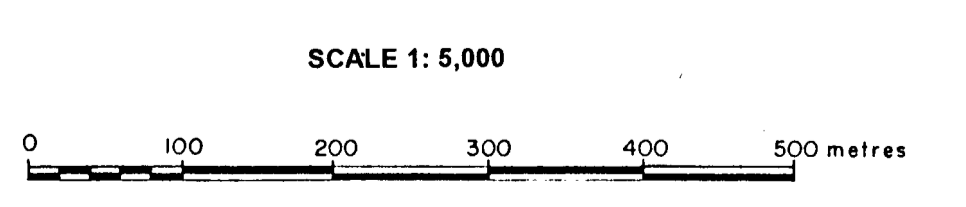
LEGEND

- OKC-31 Soil sample site with sample number
- △ 659 Rock sample site with sample number

Note: Topography from Dept. of Energy Mines and Petroleum Resources 1:50,000 map 105F/9
Contour interval 100 feet.

093473

MOUNTAIN PROVINCE MINING INC.
SAMPLE LOCATION PLAN
WILD - EVE CLAIMS
CLOUTIER CREEK AREA, NTS 105F/9
WATSON LAKE MINING DISTRICT, YUKON



By
Amerlin Exploration Services Ltd.
2150 - 1851 Savage Road
Richmond, B.C. V6V 1R1