

COMINCO LTD.

EXPLORATION

WESTERN DISTRICT

NTS 105 H/4

1995 ASSESSMENT REPORT

JAYS PROPERTY

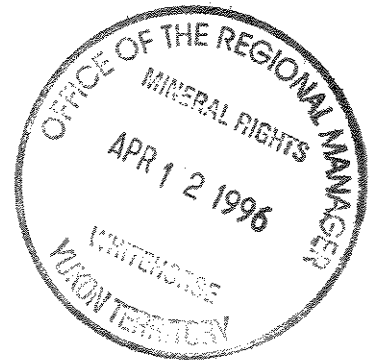
AIRBORNE GEOPHYSICS,
SILT GEOCHEMISTRY AND GEOLOGICAL MAPPING

WATSON LAKE M.D., YUKON

WEST TUCHITUA RIVER AREA

WORK PERIOD

July 20, 24, 1995



LATITUDE: 61°12'

LONGITUDE: 129°50'

MARCH, 1996

DARREN A. SENFT
R. W. HOLROYD

TABLE OF CONTENTS

	<u>Page</u>
1. SUMMARY	1
2. LOCATION AND ACCESS	1
3. PROPERTY AND OWNERSHIP	3
4. PREVIOUS WORK	3
5. 1995 WORK	3
6. REGIONAL GEOLOGY	3
7. PROPERTY GEOLOGY AND MINERALIZATION	4
8. SILT GEOCHEMISTRY	4
9. AIRBORNE GEOPHYSICS	4
10. CONCLUSIONS AND RECOMMENDATIONS	6
11. REFERENCES	7
FIGURE 1 GENERAL LOCATION	2
APPENDIX 1 STATEMENT OF QUALIFICATIONS	
APPENDIX 2 1995 GEOCHEMISTRY DATA	
APPENDIX 3 STATEMENT OF EXPENDITURES	

ATTACHMENTS

FIGURE 2 CLAIM MAP (1:20,000)	
FIGURE 3 GEOLOGY/GEOCHEMISTRY MAP (1:20,000)	
FIGURE 4a AIRBORNE EM PROFILES (1:20,000)	
FIGURE 4b AIRBORNE MAGNETICS (1:20,000)	

**1995 ASSESSMENT REPORT
JAYS PROPERTY, YUKON TERRITORY****1. SUMMARY**

The JAYS property, comprising 170 units, is located west of the Tuchitua River, approximately 50 kms southeast of Cominco's ABM VHMS Deposit, 10 kms east of Whitefish Lake, and roughly 135 kms southeast of Ross River.

The original property was staked to cover the drainage areas of anomalous silt samples identified during a 1987 government RGS survey.

The rocks underlying this part of southeastern Yukon have been assigned to 2 terranes: the Yukon-Tanana Terrane (YTT) and the Slide Mountain Terrane (SMT). The YTT consists primarily of a layered sequence of metamorphosed rocks comprising a "lower unit" of pre-Devonian quartzite, pelitic schist and minor marble, a late Devonian to mid-Mississippian "middle unit" comprising carbonaceous phyllite and schist with interbanded mafic and, locally significant, felsic metavolcanics, and an "upper unit" of Pennsylvanian marbles and quartzite. Volcanism within the "middle unit" was accompanied by the intrusion of 2-3, late Devonian to Mississippian, mafic to felsic metaplutonic suites. Felsic volcanics of the middle unit are host to Cominco's ABM and Westmin/Atna's Wolverine Zone VHMS Deposits.

The late Devonian to Triassic SMT comprises a heterogenous package of mafic to ultramafic plutonic rocks, mafic volcanics, massive carbonate and chert. This sequence was structurally emplaced as thrust bounded klippen on YTT rocks or as thrust slices imbricated within YTT rocks during a period of crustal shortening (D2). The SMT is thought to represent a disrupted oceanic crust and volcanic arc assemblage thought to be located between the YTT and ancestral North America(?).

The JAYS property is underlain by late Devonian to Triassic metasediments of the SMT within the Finlayson Lake Fault Zone to the east, and mixed felsic/mafic volcanics of the YTT to the west. The stratigraphy over the property has fairly consistent bedding and foliation trends, generally trending to the northwest, with shallow to steep northeast dips. Mafic volcanics of the SMT are host to Besshi-style mineralization at the Julia Showing.

The geology on the JAYS property is comprised of rocks from two distinct geological terranes. The stratigraphically uppermost of these is a package of metasedimentary rocks, mostly chert and limestone, found within the Slide Mountain Terrane on the eastern half of the property. Underlying these sediments on the western edge of the property is the second package of rocks, belonging to the Yukon Tanana Terrane. It is comprised of both mafic and felsic volcanics, as well as a massive limestone unit.

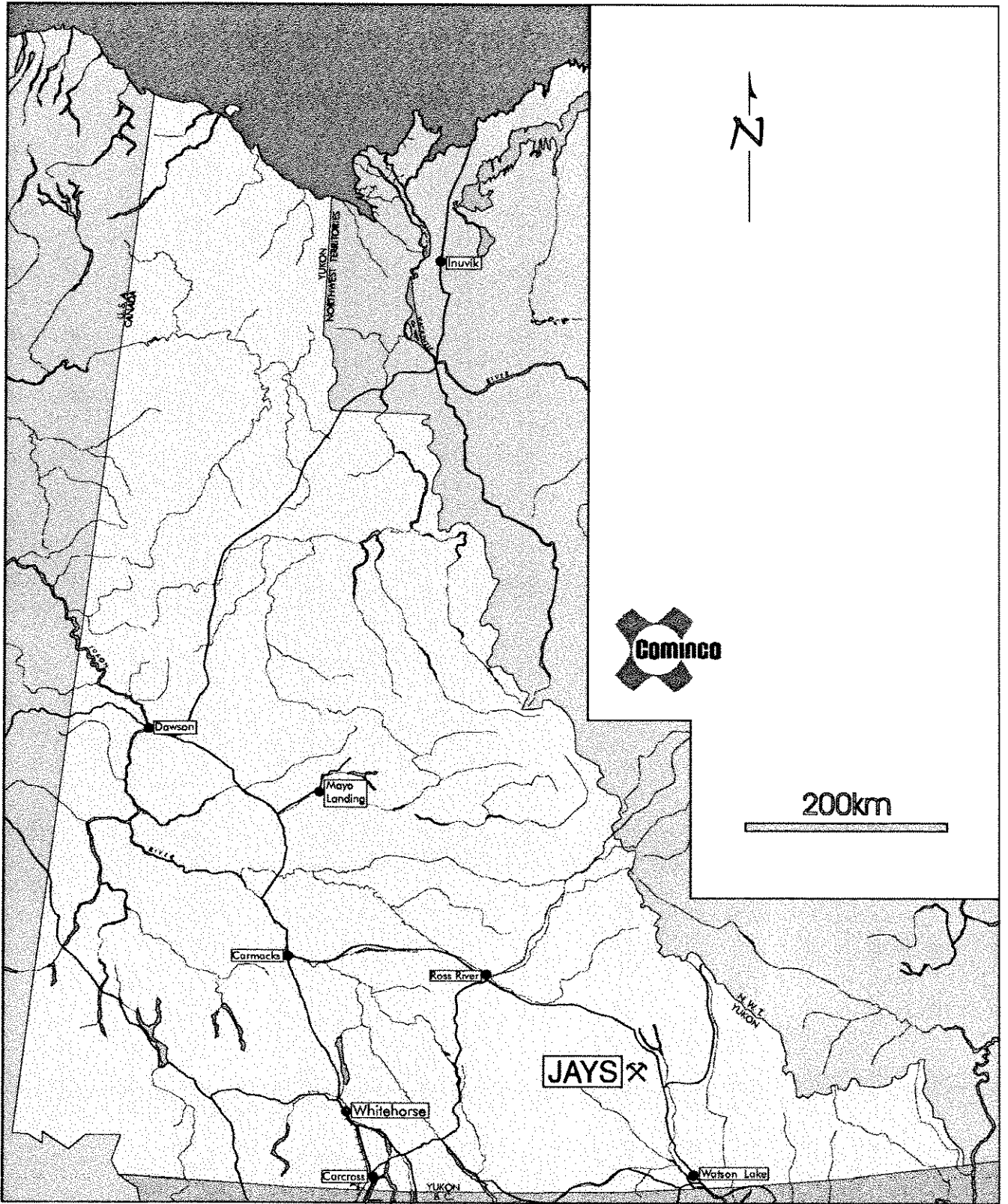
A helicopter supported silt sampling program was carried out in the JAYS claim area on July 20, 1995. A total of 43 silt samples were collected from streams on or near the property. Results returned three samples anomalous in Cu or Zn, and several samples anomalous in Ba.

Airborne geophysical surveys outlined several moderate to strong AEM responses and conductive zones, almost all associated with moderate to strong, linear mag features.

Further detailed geological mapping, prospecting, soil and rock geochemistry, as well as ground geophysics are recommended for work on the JAYS property in 1996.

2. LOCATION AND ACCESS

The JAYS property is located about 50 kms east of Cominco's ABM VHMS Deposit, west of the Tuchitua River, approximately 10 kms east of Whitefish Lake, and 130 kms southeast of Ross River (Figure 1). The gravel, all-weather Robert Campbell Highway provides access to within 15 kms of the eastern extent of the property. Direct access is by helicopter.



Drawn by: Traced by: a. m. a.

Revised by:	Date:	Revised by:	Date:

JAYS PROPERTY LOCATION MAP

105 H/4

Scale: As Shown

Date: Feb., 1996

Plate: 1

3. PROPERTY AND OWNERSHIP

The JAYS property, totalling 170 units (Figure 2), is 100% owned by Cominco Ltd. Subsequent Cominco staking has made the MONY claims contiguous with the JAYS claim block.

<u>NAME</u>	<u>UNITS</u>	<u>CLAIM NO.</u>	<u>DUE DATES</u>
JAYS 1-170	170	YB59412-581	Feb. 5/97

4. PREVIOUS WORK

The only known previous work in this area is a government RGS survey conducted in 1987. Initial staking in this area was in response to anomalous silt samples from this survey which returned values of Zn up to 939 ppm, and Cd up to 6.4 ppm.

5. 1995 WORK

GEOLOGICAL MAPPING

On July 24, 1995, 1:20,000 scale geological mapping and prospecting was carried out by D. Senft, T.C. Schwartz and A.B. Mawer on the JAYS claim block (Figure 3). A total of 2 rock samples were collected, data for which is presented in Appendix 2.

SILT GEOCHEMISTRY

A helicopter supported silt sampling program was carried out in the JAYS property area on July 20, 1995. A total of 43 silt samples were collected from streams on or near the property. Data is presented in Figure 3 and Appendix 2.

GEOCHEMICAL ANALYSES: The silt and rock samples were analyzed for Cu, Pb, Zn, Ag, As, Cd, Co, Ni, Fe, Mo, Cr, Bi, Sb, V, Sn, W, Sr, Y, La, Mn, Mg, Ti, Al, Ca, Na and K by I.C.P., Au by Aqua Regia decomposition/AAS and Ba by XRF at Cominco Exploration Research Laboratory (CERL) in Vancouver.

AIRBORNE GEOPHYSICAL SURVEYS

The airborne EM/MAG survey was flown over the JAYS property between July 22 and August 23, 1995. Results are included in Figures 4a,b.

6. REGIONAL GEOLOGY

The rocks underlying this part of southeastern Yukon have been assigned to 2 terranes: the Yukon-Tanana Terrane (YTT) and the Slide Mountain Terrane (SMT) (Mortensen, 1983a; Mortensen and Jilson, 1985).

The YTT consists primarily of a layered sequence of metamorphosed rocks comprising a "lower unit" of pre-Devonian quartzite, pelitic schist and minor marble, a late Devonian to mid-Mississippian "middle unit" (3F) comprising carbonaceous phyllite and schist with interbanded mafic and, locally significant, felsic metavolcanics (3G), and an "upper unit" of Pennsylvanian marbles and quartzite. Volcanism within the "middle unit" was accompanied by the intrusion of 2-3, late Devonian to Mississippian, mafic to felsic metaplutonic suites (Simpson Range suite and augen and monzonitic orthogneisses). This sequence appears to reflect stable platformal or shelf sedimentation with an intervening period of mafic to felsic arc volcanism developed within a more reduced basinal setting.

The late Devonian to Triassic SMT comprises a heterogenous package of mafic to ultramafic plutonic rocks, mafic volcanics, massive carbonate and chert. This sequence was structurally emplaced as thrust bounded klippen on YTT rocks or as thrust slices imbricated within YTT rocks during a period of crustal shortening (D2). The SMT is thought to represent a disrupted oceanic crust and volcanic arc assemblage thought to be located between the YTT and ancestral North America(?).

A subhorizontal to moderately north to northeast dipping, penetrative ductile deformation fabric (S2) and associated middle greenschist facies (chlorite-biotite grade) metamorphism affects all YTT rocks. This fabric reflects the first, and most significant, deformational and metamorphic event (D1) perhaps related to a continent-arc collision during late Permian to early Triassic time.

Late Triassic immature clastics comprising micaceous argillite, siltstone and sandstone unconformably(?) overlie the deformed and metamorphosed YTT rocks. These sediments are often closely associated with SMT volcanics and are invariably in fault contact with YTT rocks.

The SMT, Late Triassic sediments and Late Triassic to Middle Jurassic plutons are all affected by a period of Middle Jurassic to Late Cretaceous thrust faulting (D2), during which the Finlayson Lake Fault Zone was formed. This complex fault zone contains both thrust and steep, transcurrent(?) faults and separates the YTT from autochthonous North America (Mortensen, 1983a; Mortensen and Jilson, 1985). Thrust faulting continued after the formation of the Finlayson Lake Fault Zone as indicated by the presence of over thrust sheets of SMT rocks (Campbell Range Belt) above the fault zone (Plint, 1994).

7. PROPERTY GEOLOGY AND MINERALIZATION

The eastern part of the JAYS property is underlain by late Devonian to Triassic metasediments of the SMT within the Finlayson Lake Fault Zone, with a mixed felsic/mafic volcanic sequence of the YTT to the west.

The property is very well exposed on the ridges above treeline, as well as along creek cuts at higher elevations. The stratigraphy is variably shallow to steeply dipping, with fairly consistent bedding and foliation trends. The stratigraphy on most of the property generally trends to the northwest, with dips of 20-80° to the northeast.

The geology on the JAYS property is comprised of rocks from two distinct geological terranes. The stratigraphically uppermost of these is a package of metasedimentary rocks within the Slide Mountain Terrane on the eastern half of the property. These sediments are comprised of a thick section of massive, grey to brown, silicified, locally carbonaceous and pyritic fine-grained chert, with local interbeds of quartzite and argillaceous shale, underlain by a massive limestone unit, 300-400 metres thick, which locally contains crinoids. 5-10% pyrite is seen locally associated with the chert.

Underlying these sediments on the western edge of the property is the second package of rocks, found within the Yukon Tanana Terrane. Uppermost is a fine-grained, greenish grey, chloritic mafic volcanic tuff unit, often containing small lapilli. This is underlain by a cherty, pyritic quartz-sericite schist (rhyolite) unit, 100-200 metres thick. Underlying these felsic volcanics is a massive, non-fossiliferous limestone unit, 200-300 metres thick. The lowermost unit, occurring at the western edge of the property, is an intrusive quartz-feldspar porphyry.

8. SILT GEOCHEMISTRY

A helicopter supported silt sampling program was carried out in the JAYS property area on July 20, 1995. A total of 43 silt samples were collected from streams on or near the property. Results from this program returned one sample anomalous in Cu (231 ppm), two anomalous in Zn (up to 1657 ppm), and several anomalous in Ba (up to 3610 ppm). Data is presented in Figure 3 and Appendix 2.

9. AIRBORNE GEOPHYSICAL SURVEY

SURVEY PROCEDURES

The survey was completed in the period from July 22 to August 23, 1995 with the flying over the JAYS claims involving only a small portion of this time. Principal personnel are listed in Appendix II. Aircraft ground speed is maintained at approx. 60 knots (30 metres per second). The nominal EM sensor height is 30 metres (100 feet), consistent with the safety of the aircraft and crew. The spacing of the flight lines is 300 metres.

A global positioning system (GPS) consisting of a Magnavox MX 9212 operated in differential mode guides aircraft navigation and flight line control. Field processing of the differential GPS data in the field utilizes a PC using software supplied by the manufacturer. One system is installed in the survey helicopter. This involves mounting the receiver antenna on the tail boom. A second system acts as the base station.

The published NTS maps provide the UTM coordinates of the survey area corners. These coordinates program the navigation system. A test flight confirms if area coverage is correct. Thereafter, the navigation system guides the pilot along the survey traverse lines marked on the topographic map. The operator also enters manual fiducials over prominent topographic features. Survey lines showing excessive deviation are re-flown.

Aircraft position is registered by the navigation system. The operator calibrates the geophysical systems at the start, middle (if required) and end of every survey flight. During calibration the aircraft is flown away from ground effects to record electro-magnetic zero levels.

PRESENTATION

A claim map of the JAYS area is presented on a topo base, at a scale of 1:10,000. The EM and magnetic data are overlain for easy interpretation in this report and include the 4600 Hz coaxial, electromagnetic profiles and interpretation on a coloured total field magnetic background, at a scale of 1:10,000 (Figure 4a). On a separate plate is a total field magnetic contour map, also at a scale of 1:10,000 (Figure 4b).

AIRCRAFT AND EQUIPMENT

The survey aircraft was an Aerospatiale AS316B helicopter (C-FPWH), piloted by G. Suthern and B. Stone, owned and operated by Turbowest Helicopters. P. Moisan and J. Cunningham of Aerodat acted as navigator and equipment operator. Aerodat performed the installation of the geophysical and ancillary equipment. The survey aircraft flies at a mean terrain clearance of 60 metres (200 feet).

The electromagnetic system is an Aerodat five-frequency configuration, though this data set includes only one vertical coaxial coil pair at a frequency of 4600 Hz. Transmitter-receiver separation is seven metres. In-phase and quadrature signals are measured simultaneously with a time constant of 0.1 seconds. The HEM bird is towed 30 metres (100 feet) below the helicopter.

A Scintrex H88 Cesium, optically pumped magnetometer sensor, measures the earth's magnetic field. The sensitivity of this instrument is 0.001 nT at a sampling rate of 0.2 second. The sensor is towed in a bird 15 metres (50 feet) below the helicopter, 45 metres (150 feet) above the ground. A GSM-19 Cesium magnetometer is set up at the base of operations to record diurnal variations of the earth's magnetic field. Synchronization of the clock of the base station with that of the airborne system is checked each day to ensure diurnal corrections will be accurate. Recording resolution is 1 nT with an update rate of four seconds. The data is saved to disk.

DATA PROCESSING AND PRESENTATION

The base map is taken from digital NTS topographic maps. A UTM reference grid and the survey area boundary are added.

The electromagnetic data are recorded digitally at a sample rate of 10 per second with a time constant of 0.1 seconds. A two-stage digital filtering process rejects major spheric events and reduces system noise. Following the filtering process, a base level correction is made using EM zero levels determined during high altitude calibration sequences. The correction applied is a linear function of time that ensures the corrected amplitude of the various in-phase and quadrature components is zero when no conductive or permeable source is present.

The aeromagnetic data are corrected for diurnal variations by adjustment with the recorded base station magnetic values. No corrections for regional variations are applied. The corrected profile data are interpolated on a regular grid using an Akima spline technique. The grid provided the basis for threading the presented contours. The minimum contour interval is 2 nT. The grid cell is 50 m.

ANOMALY SELECTION

EM anomalies are manually picked from the profiles, are digitized by location and type (normal, magnetite or power line). The 4600 Hz in-phase and quadrature anomaly amplitudes are recovered for the locations given. Normal anomalies are modelled as a vertical thin sheet conductor using an automated phasor diagram. Inversion returns estimates of source conductance and depth of burial. Anomaly centres showing the conductance range and in-phase response are plotted on selected map products.

10. CONCLUSIONS and RECOMMENDATIONS

The JAYS property is underlain by late Devonian to Triassic metasediments of the SMT within the Finlayson Lake Fault Zone to the east, and mixed felsic/mafic volcanics of the YTT to the west. The stratigraphy is variably shallow to steeply dipping, with fairly consistent bedding and foliation trends. The stratigraphy on most of the property generally trends to the northwest, with dips of 20-80° to the northeast.

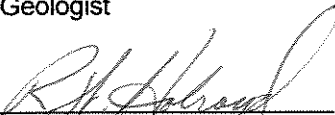
The geology on the JAYS property is comprised of rocks from two distinct geological terranes. The stratigraphically uppermost of these is a package of metasedimentary rocks, mostly chert and limestone, found within the Slide Mountain Terrane on the eastern half of the property. Underlying these sediments on the western edge of the property is the second package of rocks, found within the Yukon Tanana Terrane. It is comprised of both mafic and felsic volcanics, as well as a massive limestone unit.


A helicopter supported silt sampling program was carried out in the JAYS property area on July 20, 1995. A total of 43 silt samples were collected from streams on or near the property. Results returned three samples anomalous in Cu or Zn, and several anomalous in Ba.


Airborne geophysical surveys outlined several moderate to strong AEM responses and conductive zones, almost all associated with moderate to strong, linear mag features.

Further detailed geological mapping, prospecting and soil and rock geochemistry are recommended for the JAYS property, specifically targeting drainages with anomalous silt results. Grid-based geophysical surveys are also recommended for specific AEM/MAG targets.

Report by: 
D. A. Senft, B.Sc.
Geologist


R.W. Holroyd, B.Sc./P. Geo.
Geophysicist

Endorsed by: 
D. Rhodes
Senior Geologist

Approved for
Release by: 
D.W. Moore
Manager, Exploration
Western Canada

DISTRIBUTION:
W.D. Files
Geophysical Files
Mining Recorder (2)

11. REFERENCES

FRANKLIN, J. M., 1993. VOLCANIC-ASSOCIATED MASSIVE SULPHIDE DEPOSITS; in Kirkham, R.V., Sinclair, W. D., Thorpe, R. I. and Duke, J. M., eds., Mineral Deposit Modelling; Geological Association of Canada, Special Paper 40, p. 315-334.

PLINT, H. E., 1994. GEOLOGICAL MAPPING IN THE CAMPBELL RANGE, SOUTHEASTERN YUKON (PARTS OF 105 G/8, G/9 AND 105 H/5,H/12); Yukon Exploration and Geology 1994: Part C, Exploration and Geological Services Division, Yukon, Indian and Northern Affairs, Canada, p. 47-58.

MORTENSEN, J. K., 1983a. AGE AND EVOLUTION OF THE YUKON-TANANA TERRANE, SOUTHEASTERN YUKON TERRITORY [Ph.D. Thesis]; Santa Barbara, University of California, 155 p.

MORTENSEN, J. K. AND JILSON, G. A., 1985. EVOLUTION OF THE YUKON-TANANA TERRANE : EVIDENCE FROM SOUTHEASTERN YUKON TERRITORY; Geology, 13, p. 806-810.

TAKATA, S. S., 1995. OPERATIONAL REPORT ON A COMBINED HELICOPTER-BORNE MAGNETIC AND ELECTROMAGNETIC SURVEY, PELLY MOUNTAIN EXTENSION, YUKON TERRITORY; for Cominco Exploration Ltd.

APPENDIX 1

STATEMENT OF QUALIFICATIONS

STATEMENT OF QUALIFICATIONS

I, Darren A. Senft, of #4-2415 W. 4th Ave., Vancouver, B.C. hereby declare that I:

1. Graduated from The University of British Columbia, Vancouver, B.C. with a B.Sc. in Geology in May, 1994.
2. Have been actively engaged in mineral exploration in Western Canada from 1991 to 1995, and am presently employed as a geologist with Cominco Ltd.

Date: March, 1996

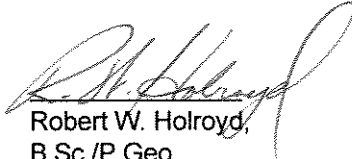

D.A. Senft
GEOLOGIST

STATEMENT OF QUALIFICATIONS

I, ROBERT W. HOLROYD, of 2752 Dollarton Highway, in the City of North Vancouver, in the Province of British Columbia, do hereby certify:

1. THAT I graduated with a Bachelor of Science in Honours Applied Earth Science - Cooperative Programme, from the University of Waterloo in 1977.
2. THAT I am a member in good standing of the Association of Professional Engineers and Geoscientists of the Province of British Columbia.
3. THAT I have been actively practising my profession from 1973 to 1995, and have been an employee of Cominco Ltd. from 1977 to 1995.

Date: March, 1996



Robert W. Holroyd,
B.Sc./P. Geo.
GEOPHYSICIST

APPENDIX 2

1995 GEOCHEMISTRY DATA

LAB NO	sample #	property	Au	Ba(d)	Cu	Pb	Zn	Ag	As	Ba	Cd	Co	Ni	Pb	Mo	Cr	Bi	Sb	V	Sn	W	Zr	Y	La	Mn	Mg	Ti	Al	Ca	Na	K
R9517147	TS95-R41	JAYS	<10	13285	41	41	31	0.5	381	153	1	1	15	7.53	9	133	6	130	2	21	<2	6	<2	<2	21	<.01	<.01	0.06	<.01	<.01	<.01
R9517148	TS95-R42	JAYS	<10	11241	14	13	13	1	363	20	<1	11	43	7.89	<2	97	<5	55	<2	12	<2	3	<2	<2	10	<.01	<.01	0.02	<.01	<.01	<.01

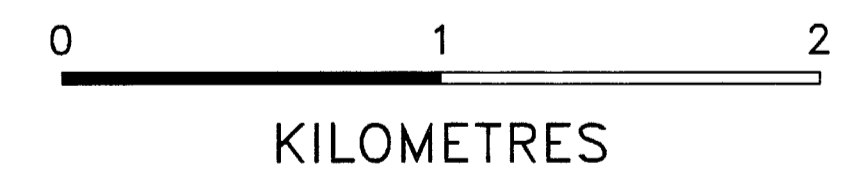
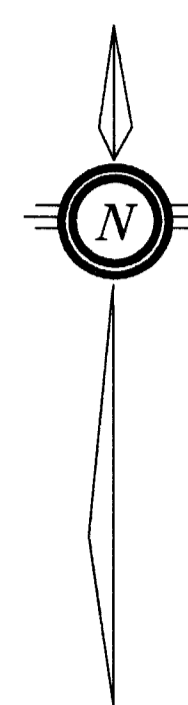
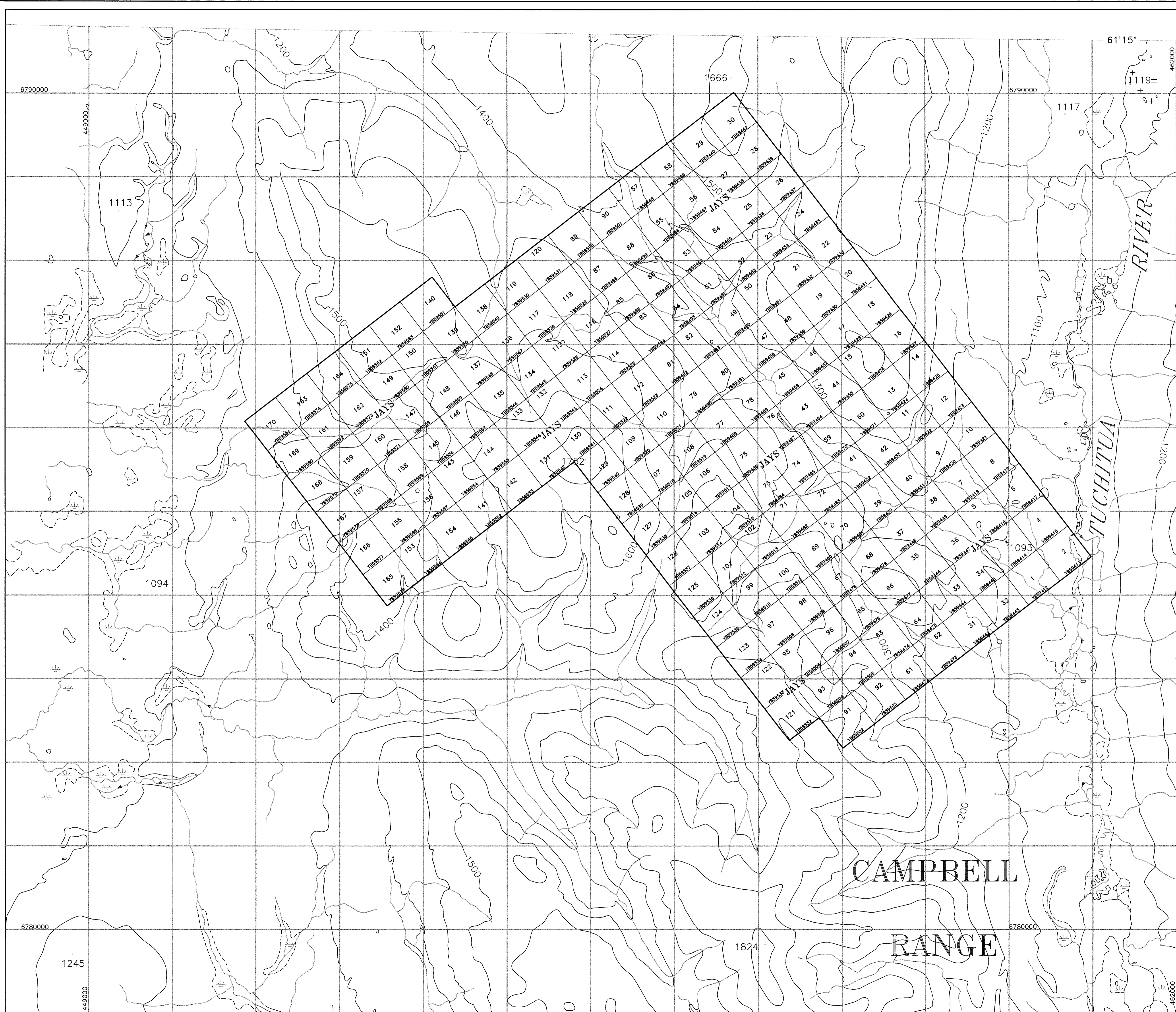
Lab_Field,S,M,O,S,C,S,O,W,Dpth,W,S,F/H,Cu,Pb,Zn,Ag,As,Ba,Cd,Co,Ni,Fe,Mo,Cr,Bi,Sb,V,Sn,W,Sr,Y,La,Mn,Mg,Ti,Al,Ca,Na,K,Au,Ba(XRF)

JAYS																																									
LAB#	FIELD#	S	M	O	S	C	S	O	W	DPH	W/S	F/W	CU	PB	ZN	AG	AS	BA_A	CD	CO	NI	FE	MO	CR	BI	SB	V	SN	W	SR	Y	LA	MN	MG	TI	AL	CA	NA	K	AU	BA_B
9524270	245758	-1	2	1	1	2B	34	2	3	5	12	2	49	14	158	1.1	1	414	1	12	93	2.48	3	52	2	5	20	3	1	42	22	22	602	0.83	0.01	1.45	0.61	0.01	0.07	5	2528
9524271	245759	-1	2	1	1	3B	34	2	3	5	12	2	89	9	127	1.4	2	785	1	8	244	2.05	1	114	2	5	18	1	1	84	34	19	446	0.7	0.01	1.71	2.36	0.01	0.12	5	1866
9524272	245760	-1	2	1	1	B	23	1	3	5	12	2	29	10	177	0.2	7	369	1	10	101	2.6	2	51	2	5	18	5	1	33	13	19	552	0.85	0.01	1.37	0.46	0.01	0.09	-1	-1
9524273	245761	-1	2	1	1	3B	34	3	3	10	12	2	64	8	88	1.3	4	460	1	5	59	1.25	1	37	2	2	11	2	1	129	63	29	500	0.28	0.01	1.56	2.42	0.01	0.08	5	1224
9524274	245762	-1	2	1	1	2G	23	1	3	-1	52	2	35	12	121	0.8	8	314	1	7	49	1.9	1	37	5	2	16	1	1	62	26	16	546	0.5	0.01	1.31	1.29	0.01	0.07	-1	1345
9524275	245763	-1	2	1	1	BK	34	2	3	20	52	1	35	6	85	0.6	1	549	1	6	42	1.37	1	46	2	6	14	3	1	76	14	9	593	0.39	0.01	1.02	2.34	0.01	0.05	5	1512
9524276	245764	-1	2	1	1	3G	23	1	3	-1	-1	2	33	13	206	0.5	4	554	1	9	47	2.68	2	50	2	5	29	5	1	61	20	15	1095	0.48	0.01	1.37	0.8	0.01	0.11	-1	1972
9524277	245765	-1	2	1	1	2B	23	1	3	20	22	2	18	9	100	0.4	1	325	1	8	43	2.22	3	54	2	2	24	1	1	23	8	13	458	0.6	0.01	1.07	0.43	0.01	0.06	-1	1812
9524278	245766	-1	2	1	1	BG	23	1	3	30	12	2	25	11	124	0.6	1	247	1	6	33	2.21	1	42	2	2	26	2	1	33	16	12	323	0.57	0.01	1.18	0.54	0.01	0.06	-1	1508
9524279	245767	-1	2	1	1	2B	23	1	3	5	33	2	28	21	109	0.6	1	297	1	7	55	2.11	1	77	2	2	34	1	1	23	14	9	278	0.58	0.01	1.01	0.58	0.01	0.06	5	1558
9524280	245768	-1	2	1	1	BG	23	1	3	10	52	1	51	13	138	1.5	4	499	1	10	79	2.66	1	74	2	2	34	1	1	38	33	14	541	0.68	0.01	1.53	0.86	0.02	0.09	5	1844
9524281	245769	-1	2	1	1	G	23	1	3	-1	32	2	30	13	169	1.3	7	403	1	6	35	1.98	4	26	2	2	16	1	1	70	30	20	320	0.33	0.01	1.76	0.74	0.01	0.09	5	-1
9524282	245770	-1	2	1	1	G	23	1	3	5	52	2	20	7	84	0.5	5	178	1	5	17	1.62	2	13	2	2	14	1	1	44	20	15	382	0.34	0.01	1.06	0.46	0.01	0.05	5	1488
9524283	245771	-1	2	1	1	BG	34	1	3	10	12	2	28	14	140	0.9	6	244	1	6	32	2.46	4	23	2	2	18	3	1	41	22	18	415	0.47	0.01	1.61	0.42	0.01	0.07	5	1546
9524284	245772	-1	2	1	1	3B	34	2	3	10	12	1	31	12	143	1.5	2	351	1	8	36	2.2	1	25	2	2	17	1	1	40	28	17	461	0.42	0.01	1.88	0.87	0.01	0.07	5	1456
9524285	245773	-1	2	1	1	3B	4	1	3	10	12	1	38	11	178	0.5	1	243	1	7	41	1.88	1	22	2	2	14	6	1	41	24	17	414	0.41	0.01	1.15	1.18	0.01	0.08	5	-1
9524286	245774	-1	2	1	1	3B	24	1	3	10	-1	2	16	9	90	0.2	3	217	1	8	43	2.15	1	47	2	5	23	2	1	18	8	11	346	0.69	0.01	1.06	0.36	0.01	0.06	5	-1
9524287	245775	-1	2	1	1	3B	24	1	3	10	22	2	85	16	114	0.6	1	230	1	8	23	2.12	1	30	2	2	20	6	1	48	16	9	535	0.59	0.01	1	1.42	0.01	0.07	5	1208
9524288	245776	-1	2	1	1	3B	24	1	3	10	33	1	39	14	164	0.2	7	225	1	8	34	2.04	3	19	2	2	14	2	1	42	27	17	621	0.4	0.01	1.13	1.09	0.02	0.08	-1	-1
9524289	245777	-1	2	1	1	B	23	1	3	10	82	Z	125	10	155	1.2	30	208	1	9	77	1.98	1	16	2	2	17	1	1	24	11	9	408	0.27	0.01	0.78	0.92	0.01	0.07	5	3060
9524290	245778	-1	2	1	2	BG	23	1	3	5	32	-1	61	22	178	0.2	16	653	1	15	44	2.85	6	24	2	2	19	1	1	52	34	29	973	0.53	0.01	1.44	0.61	0.01	0.16	5	-1
9524291	245779	-1	2	1	1	B2	24	1	3	10	13	Z	51	20	154	0.2	3	480	1	17	48	3.32	8	28	5	2	24	3	1	41	22	34	955	0.74	0.01	1.7	0.41	0.01	0.17	5	2140
9524292	245780	-1	2	1	2	BG	23	1	1	10	13	-1	84	13	594	0.7	62	511	3	34	129	4.91	9	17	2	6	25	1	1	53	14	12	2297	0.33	0.01	0.77	0.43	0.01	0.07	-1	-1
9524293	245781	-1	2	1	1	B2	23	1	3	-1	83	Z	62	9	276	0.2	27	671	1	39	68	3.75	5	50	2	2	26	1	1	42	24	14	975	0.59	0.01	1.36	0.71	0.01	0.08	5	1858
9524294	245782	-1	2	1	1	BK	23	1	3	5	-1	3	52	13	343	0.2	27	695	1	27	81	3.67	4	60	2	2	28	6	1	41	17	15	1155	0.57	0.01	1.13	0.58	0.01	0.08	5	-1
9524295	245783	-1	2	1	1	BK	4	1	3	-1	52	1	31	7	1657	0.2	14	639	3	117	523	*****	7	6	11	5	12	22	16	39	7	4	11851	0.08	0.01	0.46	0.58	0.01	0.04	5	2462
9524296	245784	-1	2	1	1	B2	24	1	3	-1	62	2	40	7	83	0.2	3	313	1	2	13	1.05	2	21	2	2	8	1	1	204	7	4	487	0.51	0.01	0.72	4.03	0.01	0.07	5	1004
9524297	245785	-1	2	1	1	B2	23	1	3	-1	42	2	28	14	117	0.2	7	184	1	8	23	2.25	2	24	2	2	13	1	2	52	8	6	394	0.47	0.01	0.86	1.56	0.01	0.04	5	1424
9524298	245786	-1	2	1	1	B	34	1	3	-1	22	3	35	11	225	0.2	24	402	1	17	55	2.86	3	35	2	2	22	4	1	31	12	11	751	0.56	0.01	1.01	0.48	0.01	0.05	5	2002
9524299	245787	-1	2	1	2	B2	34	1	2	5	52	-1	231	33	110	2.2	88	458	1	122	42	4.46	6	20	5	8	14	4	1	19	33	10	4650	0.09	0.01	2.53	0.11	0.01	0.04	5	3610
9524300	245788	-1	2	1	1	B2	34	1	3	-1	12	2	44	15	321	0.2	11	356	1	13	59	2.62	5	18	2	2	18	3	4	41	16	13	857	0.32	0.01	0.95	0.83	0.01	0.09	5	2171
9524301	245789	-1	2	1	1	BG	34	1	3	-1	13	3	33	18	111	0.2	3	264	1	9	27	2.57	4	23	2	6	17	4	1	36	18	25	506	0.52	0.01	1.32	0.52	0.01	0.13	5	1415
9524302	245790	-1	2	1	1	B3	34	2	3	5	52	1	69	11	288	1.3	18	658	2	4	76	1.52	6	13	5	9	13	1	1	54	12	7	478	0.13	0.01	0.58	2.01	0.01	0.1	5	2512
9524303	245791	-1	2	1	1	B3	4	1	3	-1	43	2	41	13	69	0.2	9	253	1	5	17	1.9	5	17	2	2	11	1	1	65	24	14	498	0.39	0.01	1.19	1.58	0.01	0.1	5	1101
9524304	245792	-1	2	1	1	G	23	1	3	5	82	2	64	24	162	0.2	28	253	1	32	34	3.23	4	24	2	2	17	4	1	59	23	28	1757	0.5	0.01	1.55	0.51	0.01	0.16	-1	1095
9524305	245793	-1	2	1	1	BG	34	1	3	-1	22	2	46	15	105	0.2	19	424	1	10	41	2.14	5	38	2	5	22	1	1	52	24	18	593	0.71	0.01	1.16	1.01	0.01	0.13	5	1687
9524306	245794	-1	2	1	1	BG	34	1	3	-1	13	2	45	12	151	0.2	6	547	1	16	128	2.58	3	66	2	2	24	8	1	45	17	24	1048	1.42	0.01	1.27	0.63	0.01	0.13	5	-1
9524307	245795	-1	2	1	1	BG	24	1	3	-1	12	2	37	10	93	0.2	1	385	1	12	120	2.36	5	70	2	2	25	1	1	30	16	16	344	1.26	0.01	1.03	1.56	0.01	0.1	5	1186
9524308	245796	-1	2	1	1	B	23	1	3	-1	83	2	60	14	182	0.2	20	754	1																						

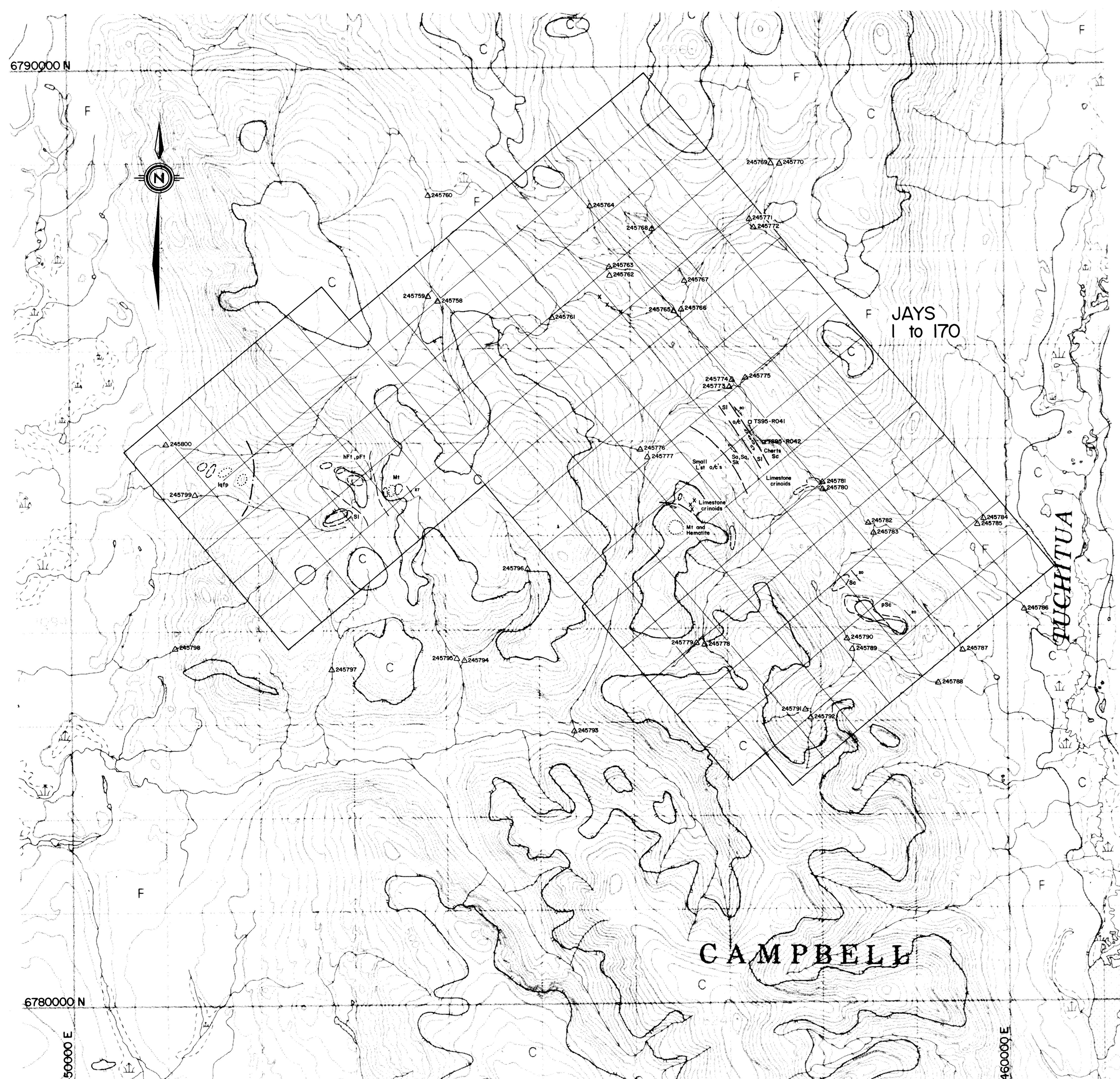
APPENDIX 3
STATEMENT OF EXPENDITURES

JAYS PROPERTY

<u>EXPENDITURE ITEM</u>	<u>COST \$</u>
STAFF COSTS	1,275
DOMICILE	425
GEOCHEMISTRY	1,405
HELICOPTER	460
COMMUNICATIONS	60
GEOPHYSICS/HELICOPTER	7,938
EXPEDITING	355
DRAFTING	882
TOTAL	12,790



Drawn by:		Traced by: <i>APR</i>		N.T.S. 105 H/4	
Revised by:	Date:	Acad file:	JAYS96-1		
a.m.a.	Jan '96				
			CLAIM MAP 093456		
Watson Lake M.D., Yukon					
SCALE: 1:20,000 DATE: Jan. 1996 PLATE NO: 2					

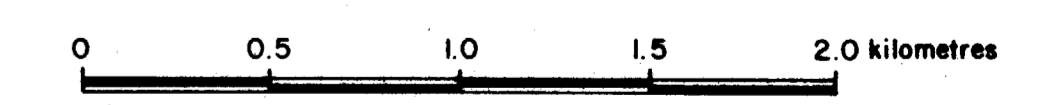


GEOLOGY LEGEND

- S Meta-sediments**
- Sa argillite/shale
 - Sg grit
 - Sq quartzite
 - St limestone/marble
 - Sw weakly/argillaceous
 - Sl silty
 - Sc chert
- Protolith uncertain**
- Su sh-schist (sl) schist
 - Sv sh-schist (sl) schist
 - Sw sh-schist (sl) schist
 - Sy sh-schist (sl) schist
 - Sz sh-schist (sl) schist
- F Fabric metamorphic**
- Fa schist
 - Fb amphibolite
 - Fc amphibolite
 - Fd amphibolite
 - Ff amphibolite
 - Fg amphibolite
 - Fh amphibolite
 - Fi amphibolite
 - Fj amphibolite
 - Fk amphibolite
 - Fl amphibolite
 - Fm amphibolite
 - Fn amphibolite
 - Fn amphibolite
 - Fo amphibolite
 - Fp amphibolite
 - Fq amphibolite
 - Fr amphibolite
 - Fs amphibolite
 - Ft amphibolite
 - Fu amphibolite
 - Fv amphibolite
 - Fw amphibolite
 - Fx amphibolite
 - Fy amphibolite
 - Fz amphibolite
- M Meta-igneous**
- Mf flow
 - Mg sill
 - Mh dike
- UM Ultramafic metamorphic**
- UMf flow
 - UMg sill
 - UMh dike
- I Meta-intrusives**
- Isp feld porphyry
 - Iqp feld-quartz porphyry
 - Iup feld-quartz porphyry
 - Ims monzonitic orthogneiss

SYMBOLS

- FROM REGIONAL MAPPING**
- conformable (?) contact
 - - - - - intrusive contact
 - ~ ~ ~ fault
- FROM DETAILED MAPPING**
- conformable (?) contact
 - - - - - intrusive contact
 - ~ ~ ~ fault
 - o outcrop
 - x small outcrop
 - o talus / subcrop
 - o fault
 - o late tectonic altered zone / gneiss
 - S, dip
 - S, strike
 - S, fault
 - break with plunge
 - joint surface
 - o Cambrian rock sample
 - o Cambrian stream all sample
 - o Cambrian soil sample
 - o Cambrian lithogeochem. sample
 - o Cambrian heavy mineral sample
 - o R.O.S. stream all sample
 - o M.M.I. stream
 - o bench
 - o B.D.N. collar
 - o Cambrian 1988 geophysical grid



Dwg 2

1995 Pelly Mtn. Recce.

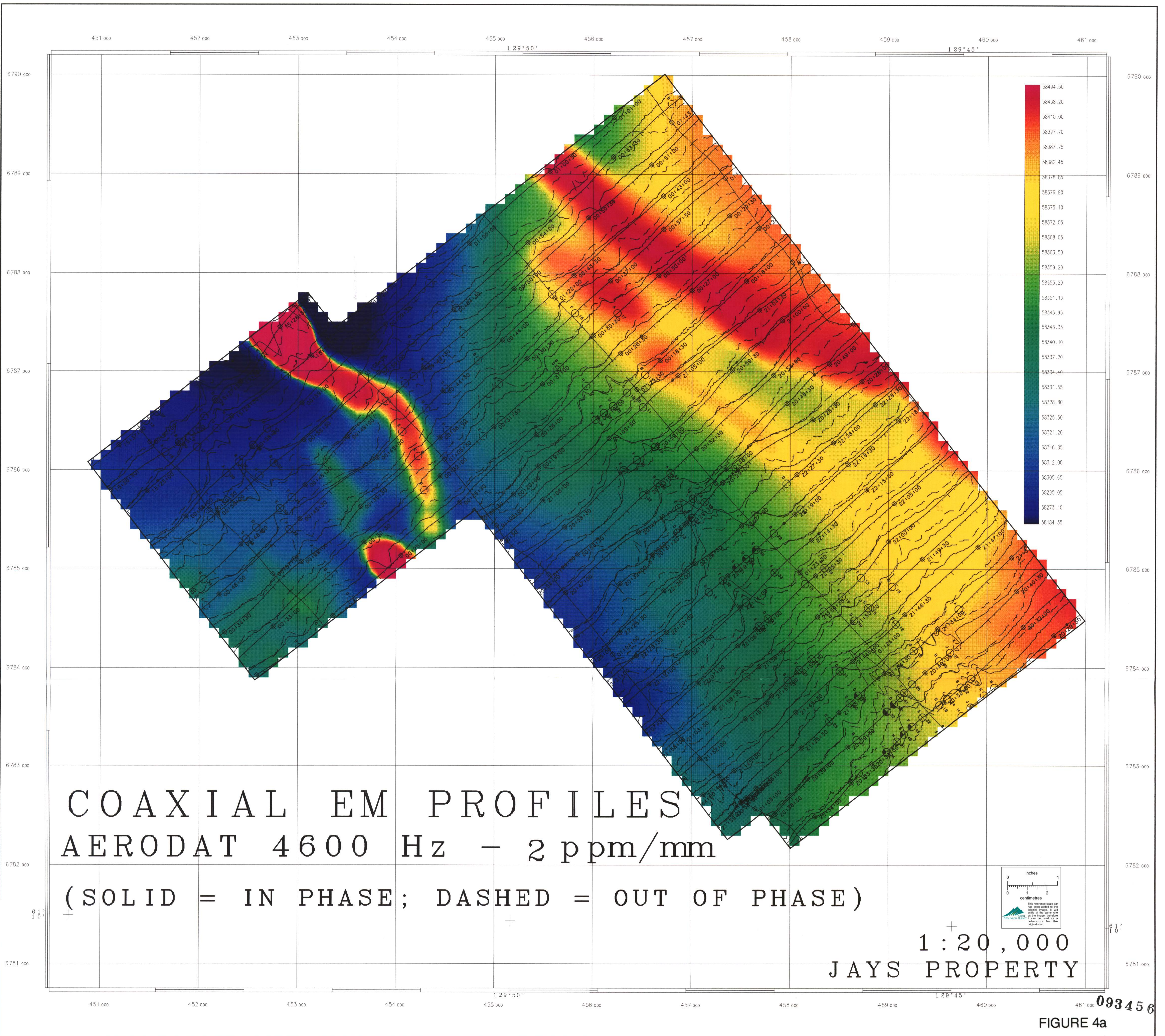
Drawn by P.A.M. Traced by _____

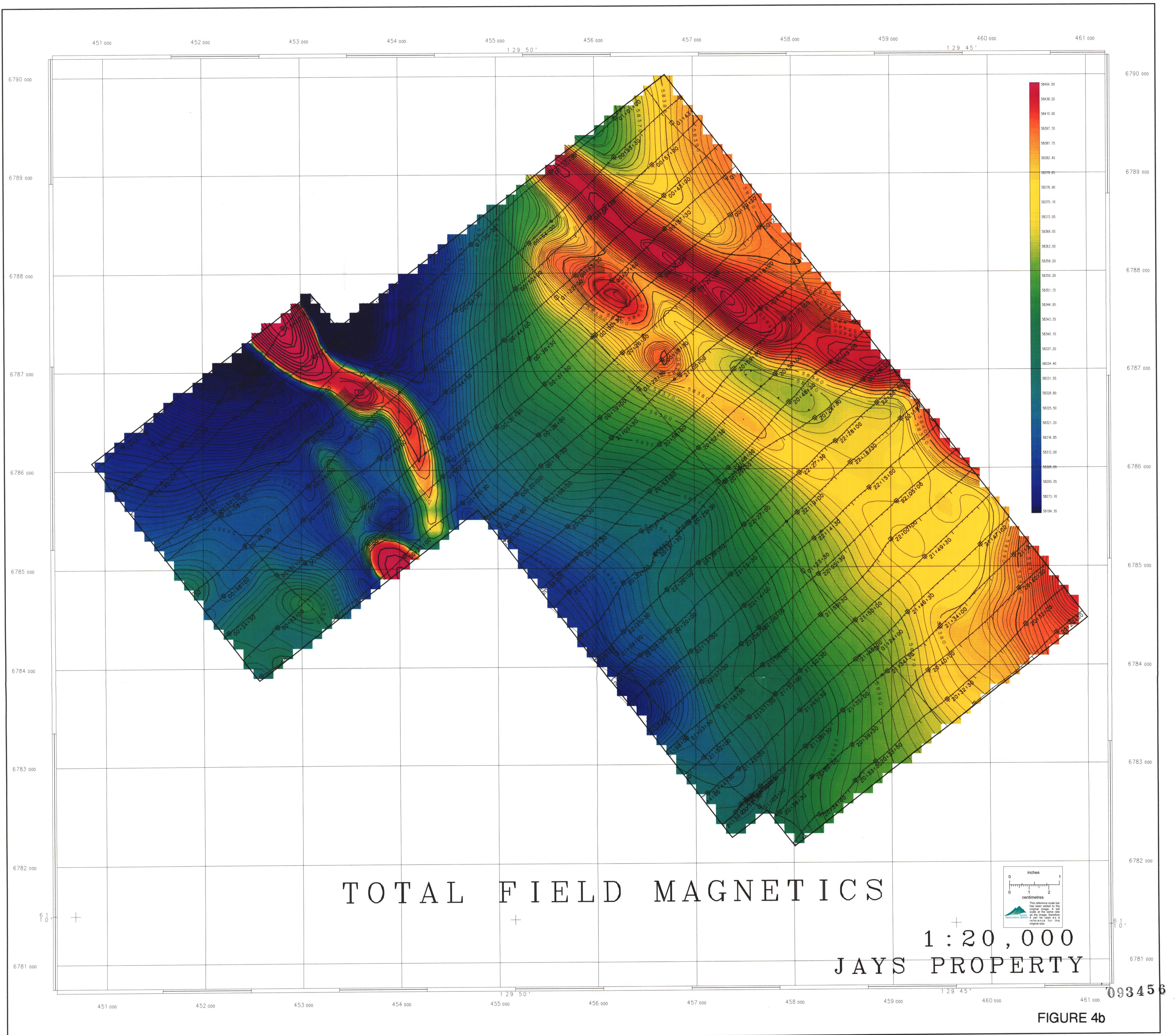
Reviewed by _____

JAYS PROPERTY
Geology and **093456**
Silt Sample Locations

Watson Lake M.D., Yukon

Scale: 1 : 20,000 Date: Feb., 1996 Plate: 3





TOTAL FIELD MAGNETICS

1 : 20,000
JAYS PROPERTY

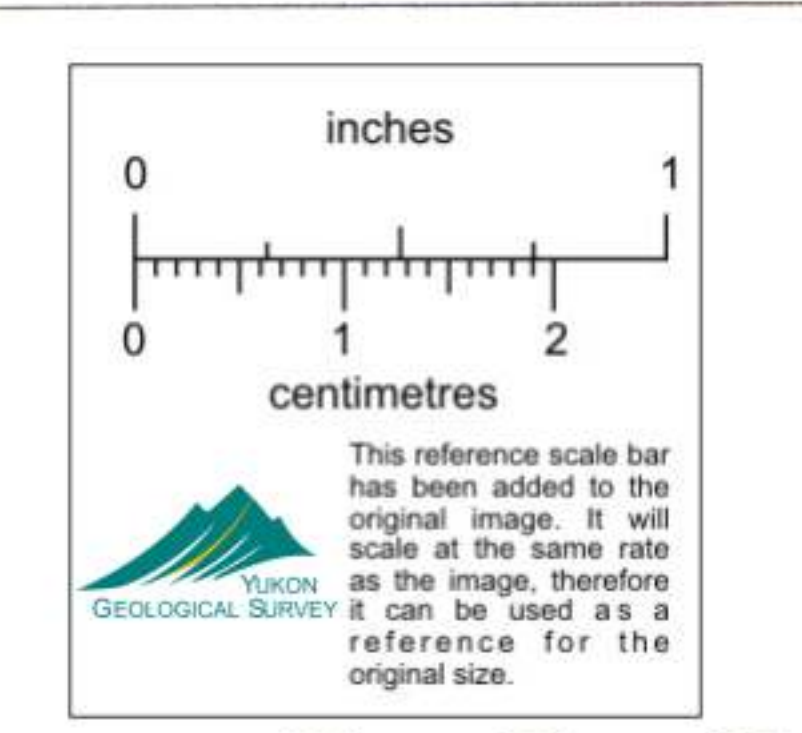


FIGURE 4b

093456