

COMINCO LTD.

EXPLORATION

WESTERN DISTRICT

NTS 105 H/4

1995 ASSESSMENT REPORT

CHIT PROPERTY



SOIL GEOCHEMISTRY, GEOPHYSICS AND GEOLOGICAL MAPPING

WATSON LAKE M.D., YUKON

PELLY MOUNTAINS AREA

WORK PERIOD

JUNE 28-JULY 1, 22, AUG. 2, 30 1995



LATITUDE: 61°06'

LONGITUDE: 129°51'

FEBRUARY, 1996

PAUL A. MacROBBIE

TABLE OF CONTENTS

	<u>Page</u>
1. SUMMARY	1
2. LOCATION AND ACCESS	1
3. PROPERTIES AND OWNERSHIP	1
4. PREVIOUS WORK	3
5. 1995 WORK	3
6. REGIONAL GEOLOGY	3
7. PROPERTY GEOLOGY	4
8. MINERALIZATION	4
9. GEOCHEMISTRY	4
10. GEOPHYSICS	4
11. CONCLUSIONS and RECOMMENDATIONS	5
12. REFERENCES	6
FIGURE 1 GENERAL LOCATION	2
APPENDIX 1 STATEMENT OF QUALIFICATIONS	
APPENDIX 2 1995 GEOCHEMISTRY DATA	
APPENDIX 3 STATEMENTS OF EXPENDITURES	
ATTACHMENTS	
FIGURE 2 CLAIM MAP (1:10,000)	
FIGURE 3 GEOLOGY/GEOCHEMISTRY MAP (1:10,000)	

**1995 ASSESSMENT REPORT
CHIT PROPERTY, YUKON TERRITORY**

1. SUMMARY

The CHIT property, comprising 146 units, is located within the Pelly Mountains, approximately 10 kms southeast of Whitefish Lake, west of the Tuchitua River, 55 km southeast of Cominco's ABM VHMS Deposit, and 130 kms northwest of Watson Lake.

The CHIT property was staked to cover airborne geophysical targets identified during a Cominco survey conducted in early 1994.

The rocks underlying this part of southeastern Yukon have been assigned to 2 terranes: the Yukon-Tanana Terrane (YTT) and the Slide Mountain Terrane (SMT). The YTT consists primarily of a layered sequence of metamorphosed rocks comprising a "*lower unit*" of pre-Devonian quartzite, pelitic schist and minor marble, a late Devonian to mid-Mississippian "*middle unit*" comprising carbonaceous phyllite and schist with interbanded mafic and, locally significant, felsic metavolcanics, and an "*upper unit*" of Pennsylvanian marbles and quartzite. Volcanism within the "*middle unit*" was accompanied by the intrusion of 2-3, late Devonian to Mississippian, mafic to felsic metaplutonic suites. Felsic volcanics of the "*middle unit*" are host to both Cominco's ABM and Westmin/Atna's Wolverine Zone VHMS Deposits.

The CHIT property is underlain by mixed sedimentary and felsic±mafic volcanoclastic sequences of the YTT, proximal to a large Devono-Mississippian, synvolcanic granitic/granodioritic pluton. The stratigraphy generally trends west with shallow to moderate northerly dips.

In 1995, HLEM, Magnetics, and Gravity geophysical surveys were completed on a 6.7 km grid. Several conductors and significant magnetic features were detected on the northern part of the grid.

Geochemical sampling was also completed on this grid. Results indicate the presence of significant Ag (up to 6.9 ppm), associated with elevated Cu (up to 199 pm), and Pb (up to 233 ppm) values.

Further geological mapping and soil and rock geochemical surveys are strongly recommended for areas east of the 1995 grid and west of the Kneil showing. Ground geophysical surveys covering other weak airborne EM/MAG features are also recommended.

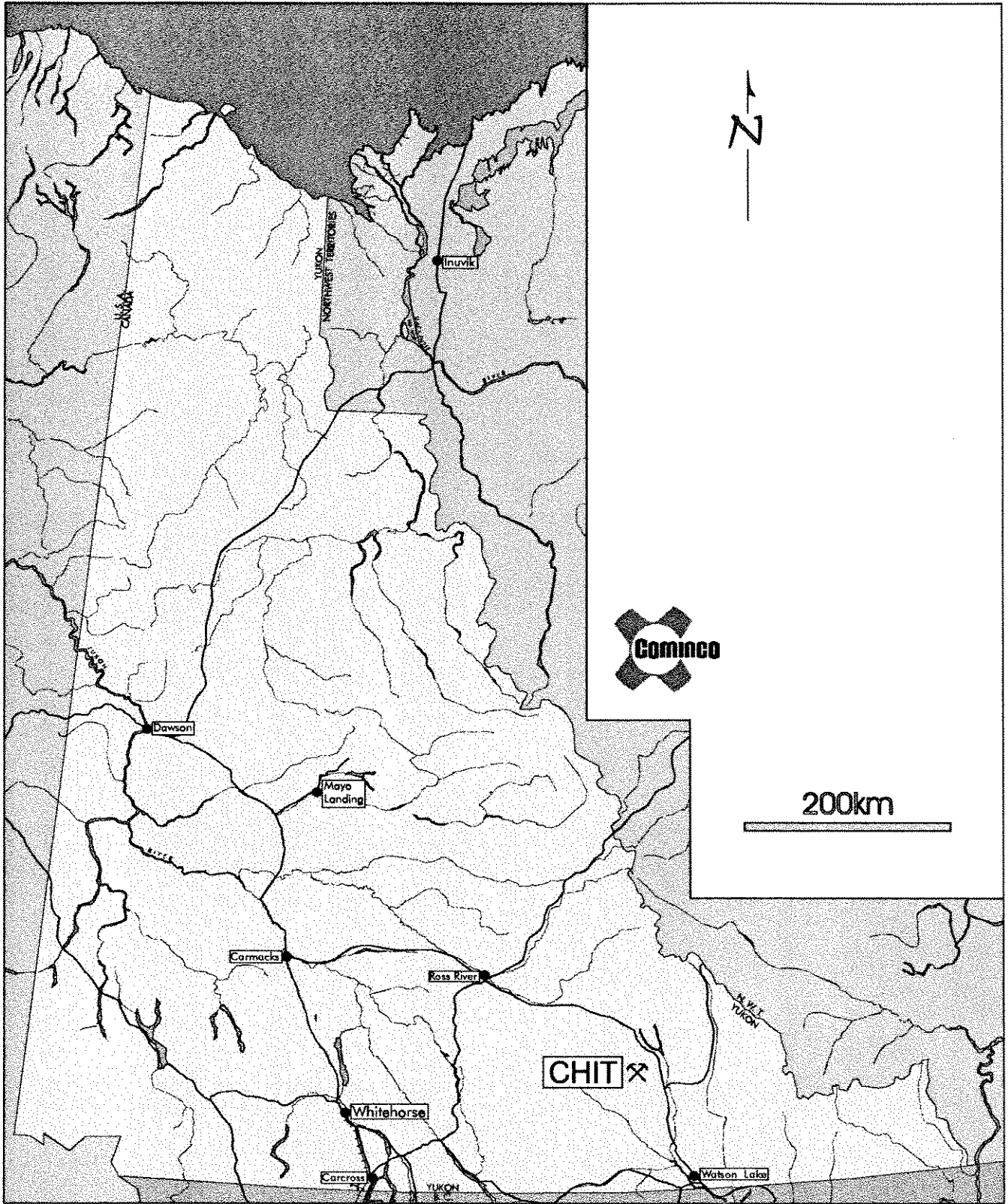
2. LOCATION AND ACCESS

The CHIT property is located within the Pelly Mountains, northeast of the Tintina Fault (Figure 1), approximately 10 kms southeast of Whitefish Lake, west of the Tuchitua River and 130 kms northwest of Watson Lake. The gravel, all-weather Robert Campbell Highway provides access to within 25 kms of the properties. Direct access is by helicopter.

3. PROPERTY AND OWNERSHIP

The CHIT property, totalling 146 units (Figure 2) is 100% owned by Cominco Ltd.

<u>NAME</u>	<u>UNITS</u>	<u>CLAIM NO.</u>	<u>DUE DATES</u>
CHIT 1-146	146	YB51060-205	July 7/95



Drawn by:		Traced by: a. m. a.	
Revised by:	Date:	Revised by:	Date:

CHIT PROPERTY LOCATION MAP

4. PREVIOUS WORK

The CHIT property includes the Kneil showing (Minfile #80) which was found and staked by Cyprus Anvil in 1981. During that year geological mapping and soil geochemical surveys were conducted. The showings consist of small lenses of semi-massive pyrite-pyrrhotite+sphalerite-galena-chalcopyrite within a micaceous quartzite, occurring in a sequence of carbonaceous phyllite and minor felsic volcanoclastics near the contact of a Devonian granodiorite. The soil geochemistry was weak and the claims were allowed to lapse.

In the summer of 1994, Cominco Ltd. conducted geological mapping/prospecting and soil geochemistry. Results from the soil lines indicated the presence of significant Ag (up to 5.7 ppm) and Cu (up to 2400 ppm) anomalies with supporting, weaker Pb (up to 177 ppm), Zn (up to 1648 ppm), and locally elevated Ba (up to 8740 ppm) values in the area of the Kneil showing.

5. 1995 WORK

LINECUTTING

During the period of June 28 to July 1, 1995, a geophysical grid totalling 6.7 line kilometres was cut on the CHIT property by Coureur Des Bois Ltd. of Whitehorse, Yukon.

GEOPHYSICAL SURVEYS

On July 22, August 2 and 30, 1995, a total of 5.2 line kms of HLEM, 5.2 line kms of total field magnetics, and 1 km of gravity surveying were surveyed on this grid by a Cominco geophysical crew.

GEOLOGICAL MAPPING

On July 22, 1995, 1:10,000 scale geological mapping and prospecting was carried out on the property by D. Rhodes, D. Senft, T.C. Schwartz, and A.B. Mawer (Figure 3).

GEOCHEMISTRY

On July 22, 1995, a total of 129 soil samples and 5 rock samples were collected from the geophysical grid (Figure 3).

GEOCHEMICAL ANALYSES: Soil and rock samples were analyzed for Cu, Pb, Zn, Ag, As, Cd, Co, Ni, Fe, Mo, Cr, Bi, Sb, V, Sn, W, Sr, Y, La, Mn, Mg, Ti, Al, Ca, Na and K by I.C.P., Au by Aqua Regia decomposition/AAS and Ba by XRF at Cominco Exploration Research Laboratory (CERL) in Vancouver. Results are included in Appendix 3.

6. REGIONAL GEOLOGY

The rocks underlying this part of southeastern Yukon have been assigned to 2 terranes: the Yukon-Tanana Terrane (YTT) and the Slide Mountain Terrane (SMT) (Mortensen, 1983a; Mortensen and Jilson, 1985).

The YTT consists primarily of a layered sequence of metamorphosed rocks comprising a "lower unit" (3I) of pre-Devonian quartzite, pelitic schist and minor marble, a late Devonian to mid-Mississippian "middle unit" (3F) comprising carbonaceous phyllite and schist with interbanded mafic and, locally significant, felsic metavolcanics (3G), and an "upper unit" of Pennsylvanian marbles and quartzite. Volcanism within the "middle unit" was accompanied by the intrusion of 2-3, late Devonian to Mississippian, mafic to felsic metaplutonic suites (Simpson Range suite and augen and monzonitic orthogneisses). This sequence appears to reflect stable platformal or shelf sedimentation with an intervening period of mafic to felsic arc volcanism developed within a more reduced basinal setting. Felsic volcanoclastics of the "middle unit" are host to both Cominco's ABM and Westmin/Atrna's Wolverine Zone VHMS Deposits.

A subhorizontal to moderately north to northeast dipping, penetrative ductile deformation fabric (S2) and associated middle greenschist facies (chlorite-biotite grade) metamorphism affects all YTT rocks. This fabric reflects the first, and most significant, deformational and metamorphic event (D1) perhaps related to a continent-arc collision during late Permian to early Triassic time.

Late Triassic immature clastics comprising micaceous argillite, siltstone and sandstone unconformably(?) overlie the deformed and metamorphosed YTT rocks. These sediments are often closely associated with SMT volcanics and are invariably in fault contact with YTT rocks.

The late Devonian to Triassic SMT comprises a heterogeneous package of mafic to ultramafic plutonic rocks, mafic volcanics, massive carbonate and chert. This sequence was structurally emplaced as thrust bounded klippen on YTT rocks or as thrust slices imbricated within YTT rocks during a period of crustal shortening (D2). The SMT is thought to represent a disrupted oceanic crust and volcanic arc assemblage thought to be located between the YTT and ancestral North America(?).

The SMT, Late Triassic sediments and Late Triassic to Middle Jurassic plutons are all affected by the Middle Jurassic to Late Cretaceous period of thrust faulting (D2).

7. PROPERTY GEOLOGY

The property is generally well exposed over the western part of the property dominated by ridges and steep slopes. The eastern half of the property lies over more overburden covered lower slopes.

The property is underlain by a WNW-trending, shallow to moderately ENE-dipping (10-40° foliation; 10-82° bedding) sequence of thin to thick intervals of cherty to phyllitic, locally pyritic, felsic ash to feldspar-quartz pyritic crystal-rich ash tuffs with intercalated black, carbonaceous phyllitic argillite, siltstone and minor quartzite, as well as chloritic mafic tuffs and/or flows (Figure 3). This sequence would correlate to Mortensen's 3F unit.

A large, foliated, fine equigranular to coarse-grained quartz-feldspar (locally hornblende-feldspar) porphyry stock intrudes along the southern margin of the property. This intrusive is part of the Simpson Range Plutonic Suite (3N on Figure 3) and has been dated by zircon U-Pb methods at 359 Ma (Mortensen, 1983a). Several dykes (aphyric gabbro to quartz-hornblende porphyry) occur within the volcanic-sedimentary package proximal to the stocks contact.

8. MINERALIZATION

The Kneil showing is hosted within a thin interval (10-20 metres thick) of mafic flows and chloritic and pyritic mafic(?) tuffs within a thicker felsic volcanoclastic sequence. The footwall felsic tuffs are Fe-carbonate altered and veined. The showing comprises a 0.5-1.5 m thick, "conformable" zone consisting primarily of pyrite (40-60%) with minor chalcopyrite and sphalerite. The sulphides occur as thin (few mms to 1.5 cms) fine-grained wispy bands to 4 x 20 cms sheared "lozenges" often cored by coarse-grained pyrite and ferroan dolomite. These bands and lozenges are separated by thin seams of chlorite and sericite. A 1994 grab sample returned a grade of 1.8% Zn, 0.6% Pb, 0.9% Cu and 53 g/t Ag. Numerous dolomite-pyrite-sphalerite veins are locally present. This showing is thought to represent a VHMS style of mineralization. Although the showing is small, low grade and has not been traced along strike, its presence on the property is very significant.

9. GEOCHEMISTRY

Soil samples were collected every 50 metres along the cut lines of the geophysical grid (Figure 3). Results returned moderately anomalous values for Cu (up to 199 ppm), Pb (up to 233 ppm), and Ag (up to 6.9 ppm).

All of the anomalous samples occur peripheral to streams draining the upper ridges to the south of the grid, possibly indicating that the anomalous metals have been transported.

10. GEOPHYSICS

A total of 5.2 line kms of HLEM, 5.2 line kms of total field magnetics, and 1 km of gravity surveying was conducted on the CHIT grid in 1995. Four HLEM conductors, locally associated with magnetic anomalies, were detected in the northern part of the grid. Complete data for geophysics conducted on the CHIT grid is presented in a separate report by Jackisch (1995).

11. CONCLUSIONS and RECOMMENDATIONS

The rocks underlying this part of southeastern Yukon have been assigned to the Yukon-Tanana Terrane (YTT) and the Slide Mountain Terrane (SMT). The YTT consists primarily of a layered sequence of metamorphosed rocks comprising a "lower unit" of pre-Devonian quartzite, pelitic schist and minor marble, a late Devonian to mid-Mississippian "middle unit" comprising carbonaceous phyllite and schist with interbanded mafic and, locally significant, felsic metavolcanics, and an "upper unit" of Pennsylvanian marbles and quartzite. Volcanism within the "middle unit" was accompanied by the intrusion of 2-3, late Devonian to Mississippian, mafic to felsic metaplutonic suites. Felsic volcanics of the "middle unit" are host to two significant VHMS Deposits.

The CHIT property is underlain by mixed sedimentary and felsic+mafic volcanoclastic sequences of the YTT, proximal to a Devonian-Mississippian synvolcanic granitic/ granodioritic pluton. The stratigraphy generally trends to the west with shallow to moderate northerly dips.

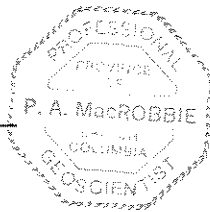
HLEM, Magnetics, and Gravity geophysical surveys were completed on the CHIT grid in 1995. Several conductors and significant magnetic features were detected on the northern part of the grid.

Geochemical sampling was also completed on this grid. Results indicate the presence of significant Ag (up to 6.9 ppm), associated with elevated Cu (up to 199 pm), and Pb (up to 233 ppm) values.

Further geological mapping and soil and rock geochemical surveys are strongly recommended for this property, especially east of the 1995 grid and west of the Kneil Showing. Ground geophysical surveys covering other weak airborne EM/MAG features are also recommended.

Report by:

P. A. MacRobbie
P.A. MacRobbie,
Geologist



Endorsed by:

D.W. Moore for D. Rhodes.
D. Rhodes,
Senior Geologist

Approved for Release by:

D.W. Moore
D.W. Moore
Manager, Exploration
Western Canada

PAM/

DISTRIBUTION:
W.D. Files
Mining Recorder (2)

MORTENSEN, J. K., 1983a. AGE AND EVOLUTION OF THE YUKON-TANANA TERRANE, SOUTHEASTERN YUKON TERRITORY [Ph.D. Thesis]; Santa Barbara, University of California, 155 p.

MORTENSEN, J. K. AND JILSON, G. A., 1985. EVOLUTION OF THE YUKON-TANANA TERRANE : EVIDENCE FROM SOUTHEASTERN YUKON TERRITORY; *Geology*, 13, p. 806-810.

JACKISCH, I., 1995. GEOPHYSICAL SURVEYS ON THE CHIT, DOT, JIG, LING, FIRE, AND ZOO CLAIMS OF THE PELLY MTN PROPERTIES; Assessment Report, Cominco Ltd.

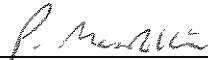
APPENDIX 1
STATEMENT OF QUALIFICATIONS

STATEMENT OF QUALIFICATIONS

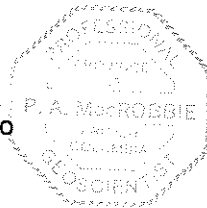
I, Paul A. MacRobbie, of 11164 Southridge Rd., Delta, B.C. hereby declare that I:

1. Graduated from Carleton University, Ottawa, Ontario with a B.Sc. in Geology in May, 1986 and a M.Sc. in Geology in June, 1988.
2. Have been actively engaged in mineral exploration in Western Canada as a permanent geologist with Cominco Ltd. since June, 1988.
3. Am a registered member of The Association of Professional Engineers and Geoscientists of the Province of British Columbia.

Date: February, 1996



P.A MacROBBIE, P.Ge
GEOLOGIST



APPENDIX 2
1995 GEOCHEMISTRY DATA

Lab.Field,S.M,O,S,C,S,O,W,Dph,W,S,F,H,Cu,Pb,Zn,Ag,As,Ba,Cd,Co,Ni,Fe,Mo,Cr,Bi,Sb,V,Sn,W,Sr,Y,La,Mn,Mg,Ti,Al,Ca,Na,K,Au,Ba(XRF)

CHIT	LAB#	FIELD#	S	M	O	S	C	S	O	W	DPH	W/S	F/W	CU	PB	ZN	AG	AS	BA_A	CD	CO	NI	FE	MO	CR	BI	SB	V	SN	W	SR	Y	LA	MN	MG	TI	AL	CA	NA	K	AU	BA_B
9522160	297889	-1	1	2	-1	B2	34	1	-1	30	2	B	25	13	41	0.2	16	23	1	6	29	1.26	1	17	2	2	24	1	1	4	1	9	77	0.01	0.01	0.3	0.01	0.01	0.01	0.01	5	1177
9522161	297890	-1	1	2	-1	B2	34	1	-1	30	2	B	7	6	12	0.6	1	17	1	1	10	0.67	1	13	2	2	16	2	1	2	1	7	50	0.05	0.01	0.25	0.01	0.01	0.01	0.01	5	954
9522162	297891	-1	1	2	-1	B2	34	1	-1	30	2	B	10	4	24	0.2	5	28	1	2	7	1.24	3	5	2	2	45	2	2	5	2	7	92	0.03	0.01	0.69	0.03	0.01	0.02	0.01	5	-1
9522163	297892	-1	1	2	-1	B2	34	1	-1	30	2	B	17	8	57	0.7	11	119	1	8	13	1.93	5	32	2	7	34	6	8	17	19	20	1055	0.28	0.01	1.36	0.33	0.01	0.03	0.01	5	754
9522164	297893	-1	1	2	-1	B2	34	1	-1	30	2	B	8	4	13	0.2	1	16	1	2	12	0.67	3	11	2	2	17	4	5	4	2	28	32	0.02	0.01	0.27	0.01	0.01	0.01	0.01	5	948
9522165	297894	-1	1	2	-1	B2	34	1	-1	30	2	B	1	2	1	0.4	1	5	1	1	1	0.09	1	2	2	2	2	1	3	2	1	1	6	0.01	0.01	0.07	0.01	0.02	0.01	0.01	5	1117
9522166	297895	-1	1	2	-1	B2	34	1	-1	30	2	B	8	2	14	0.4	1	13	1	1	10	0.48	1	5	2	2	13	1	1	4	1	8	29	0.02	0.01	0.39	0.02	0.01	0.01	0.01	5	1086
9522167	297896	-1	1	2	-1	B2	34	1	-1	30	2	B	12	13	21	0.2	2	15	1	2	11	0.53	1	5	2	6	15	1	4	4	1	12	26	0.01	0.01	0.23	0.02	0.01	0.01	0.01	5	1139
9522168	297897	-1	1	2	-1	B2	34	1	-1	30	2	B	7	2	13	0.5	1	10	1	1	6	0.34	2	2	2	2	9	1	6	3	1	8	34	0.01	0.01	0.14	0.02	0.01	0.01	0.01	5	1089
9522169	297898	-1	1	2	-1	B2	34	1	-1	30	2	B	10	4	17	1	1	17	1	1	8	0.38	2	4	2	5	9	1	2	4	1	5	36	0.01	0.01	0.18	0.02	0.01	0.01	0.01	5	1208
9522170	297899	-1	1	2	-1	B2	34	1	-1	30	2	B	44	32	175	0.5	40	89	1	28	29	4.61	9	46	2	2	56	5	3	10	11	21	3978	0.8	0.01	2.27	0.09	0.01	0.04	0.01	5	911
9522171	297900	-1	1	2	-1	B2	34	1	-1	30	2	B	5	2	8	2.9	1	13	1	1	4	0.22	2	2	2	2	5	1	2	2	1	3	28	0.01	0.01	0.07	0.01	0.01	0.01	0.01	5	1130
9522172	297901	-1	1	2	-1	B2	34	1	-1	30	2	B	8	5	15	0.2	1	14	1	1	6	0.43	3	2	2	2	9	2	1	3	1	7	27	0.01	0.01	0.11	0.01	0.01	0.01	0.01	5	1208
9522173	297902	-1	1	2	-1	B2	34	1	-1	30	2	B	69	26	243	0.2	7	222	2	21	58	3.43	5	21	2	2	44	8	1	32	47	61	3289	0.54	0.01	1.78	0.65	0.01	0.08	0.01	5	1162
9522174	297903	-1	1	2	-1	B2	34	1	-1	30	2	B	29	30	75	0.2	11	196	1	14	18	2.67	4	20	2	2	37	2	2	13	16	33	895	0.43	0.01	1.38	0.08	0.01	0.04	0.01	5	1498
9522175	297904	-1	1	2	-1	B2	34	1	-1	30	2	B	13	11	25	0.6	5	28	1	1	7	0.7	4	5	2	2	15	4	4	6	1	11	44	0.03	0.01	0.33	0.02	0.01	0.02	0.01	5	1655
9522176	297905	-1	1	2	-1	B2	34	1	-1	30	2	B	27	18	61	0.5	18	57	1	7	20	1.91	4	23	2	2	24	1	3	15	5	13	279	0.54	0.02	0.84	0.19	0.01	0.05	0.01	5	1194
9522177	297906	-1	1	2	-1	B2	34	1	-1	30	2	B	16	10	15	0.8	10	31	1	1	7	1.03	2	5	2	2	19	2	2	3	2	8	189	0.05	0.01	0.31	0.01	0.01	0.01	0.01	5	861
9522178	297907	-1	1	2	-1	B2	34	1	-1	30	2	B	97	53	214	3.7	59	279	1	8	102	3.57	9	51	2	2	40	1	1	57	46	64	789	0.69	0.01	2.18	0.73	0.01	0.05	0.01	5	1569
9522179	297908	-1	1	2	-1	BG	34	1	1	25	2	B	34	32	34	1.9	10	190	1	1	27	1.17	2	15	2	2	19	1	1	31	7	15	172	0.17	0.01	0.79	0.45	0.01	0.03	0.01	5	1458
9522180	297909	-1	1	2	-1	BG	34	1	1	25	2	B	6	5	11	0.8	3	48	1	1	4	0.4	2	2	2	2	9	1	2	3	1	7	63	0.01	0.01	0.26	0.02	0.01	0.01	0.01	5	1183
9522181	297910	-1	1	2	-1	BG	34	1	1	25	2	B	54	20	30	1	12	267	1	5	55	1.4	4	30	2	2	24	1	3	81	46	104	873	0.16	0.01	1.39	0.89	0.01	0.03	0.01	5	1328
9522182	297911	-1	1	2	-1	BG	23	1	1	25	2	B	1	11	2	0.2	1	28	1	1	1	0.15	1	2	2	2	7	2	1	3	2	18	13	0.01	0.01	0.44	0.01	0.01	0.01	0.01	5	912
9522183	297912	-1	1	2	-1	B2	24	1	1	25	2	B	4	2	7	0.5	1	15	1	1	3	0.3	1	2	2	2	8	1	3	2	1	6	24	0.01	0.01	0.18	0.01	0.01	0.01	0.01	5	1101
9522184	297913	-1	1	2	-1	BG	24	1	1	25	2	B	2	5	4	0.7	1	14	1	1	1	0.3	1	2	2	2	10	1	2	1	1	8	20	0.01	0.01	0.21	0.01	0.01	0.01	0.01	5	786
9522185	297914	-1	1	2	-1	BG	24	1	1	25	2	B	3	15	9	0.5	1	29	1	1	2	0.41	1	2	2	2	11	1	1	4	1	8	31	0.02	0.01	0.38	0.02	0.01	0.01	0.01	5	914
9522186	297915	-1	1	2	-1	BG	24	1	1	25	2	B	3	6	5	0.4	1	19	1	1	2	0.26	1	2	2	2	7	1	2	3	1	3	14	0.01	0.01	0.16	0.02	0.02	0.01	0.01	5	1152
9522187	297916	-1	1	2	-1	B2	24	1	1	25	2	B	7	13	16	0.7	3	53	1	1	4	0.55	2	4	2	2	13	1	4	5	1	10	24	0.02	0.01	0.41	0.02	0.01	0.01	0.01	5	1227
9522188	297917	-1	1	2	-1	B2	24	1	1	25	2	B	18	33	43	0.4	22	54	1	1	10	1.11	3	5	2	2	26	1	1	8	2	11	32	0.01	0.01	0.27	0.02	0.01	0.01	0.01	5	1966
9522189	297918	-1	1	2	-1	B2	24	1	1	25	2	B	31	33	44	0.2	38	104	1	4	35	2.17	5	46	2	2	37	1	5	24	3	18	240	0.74	0.02	0.94	0.08	0.01	0.04	0.01	5	854
9522190	297919	-1	1	2	-1	B2	24	1	1	25	2	B	6	32	22	0.4	7	59	1	1	10	1.83	1	21	2	2	31	2	4	4	2	10	143	0.21	0.02	0.99	0.01	0.01	0.01	0.01	5	814
9522191	297920	-1	1	2	-1	B2	24	1	1	25	2	B	2	14	6	0.4	1	46	1	1	3	0.42	1	5	2	2	10	3	3	3	1	7	31	0.05	0.01	0.31	0.01	0.01	0.01	0.01	5	995
9522192	297921	-1	1	2	-1	B2	24	1	1	25	2	B	6	2	6	1.1	2	57	1	1	4	0.3	1	2	2	2	4	3	1	21	3	6	449	0.04	0.01	0.58	0.31	0.02	0.01	0.01	5	1132
9522193	297922	-1	1	2	-1	B2	24	1	1	25	2	B	120	39	144	6.9	43	255	1	4	121	2.23	7	39	2	2	23	7	1	77	34	48	387	0.46	0.01	1.44	1.2	0.01	0.03	0.01	5	1234
9522194	297923	-1	1	2	-1	B2	24	1	1	25	2	B	93	61	323	1.7	39	223	1	10	160	3.39	5	59	2	2	40	3	1	50	40	53	606	0.96	0.01	1.89	0.66	0.01	0.06	0.01	5	1851
9522195	297924	-1	1	2	-1	B2	24	1	1	25	2	B	84	31	50	1.2	18	126	1	4	92	1.68	4	20	2	2	17	3	1	40	25	46	406	0.28	0.01	1.16	0.54	0.01	0.03	0.01	5	1140
9522196	297925	-1	1	2	-1	B2	24	1	1	25	2	B	9	10	12	0.5	3	20	1	1	12	0.56	1	13	2	2	9	1	1	14	2	6	80	0.16	0.01	0.41	0.18	0.02	0.01	0.01	5	1125
9522197	297926	-1	1	2	-1	B2	24	1	1	25	2	B	38	46	61	0.8	25	75	1	3	21	2.52	6	23	2	6	24	1	1	36	8	22	369	0.72	0.02	1.08	0.2	0.01	0.06	0.01	5	1308
9522198	297927	-1	1	2	-1	B2	24	1	1	25	2																															

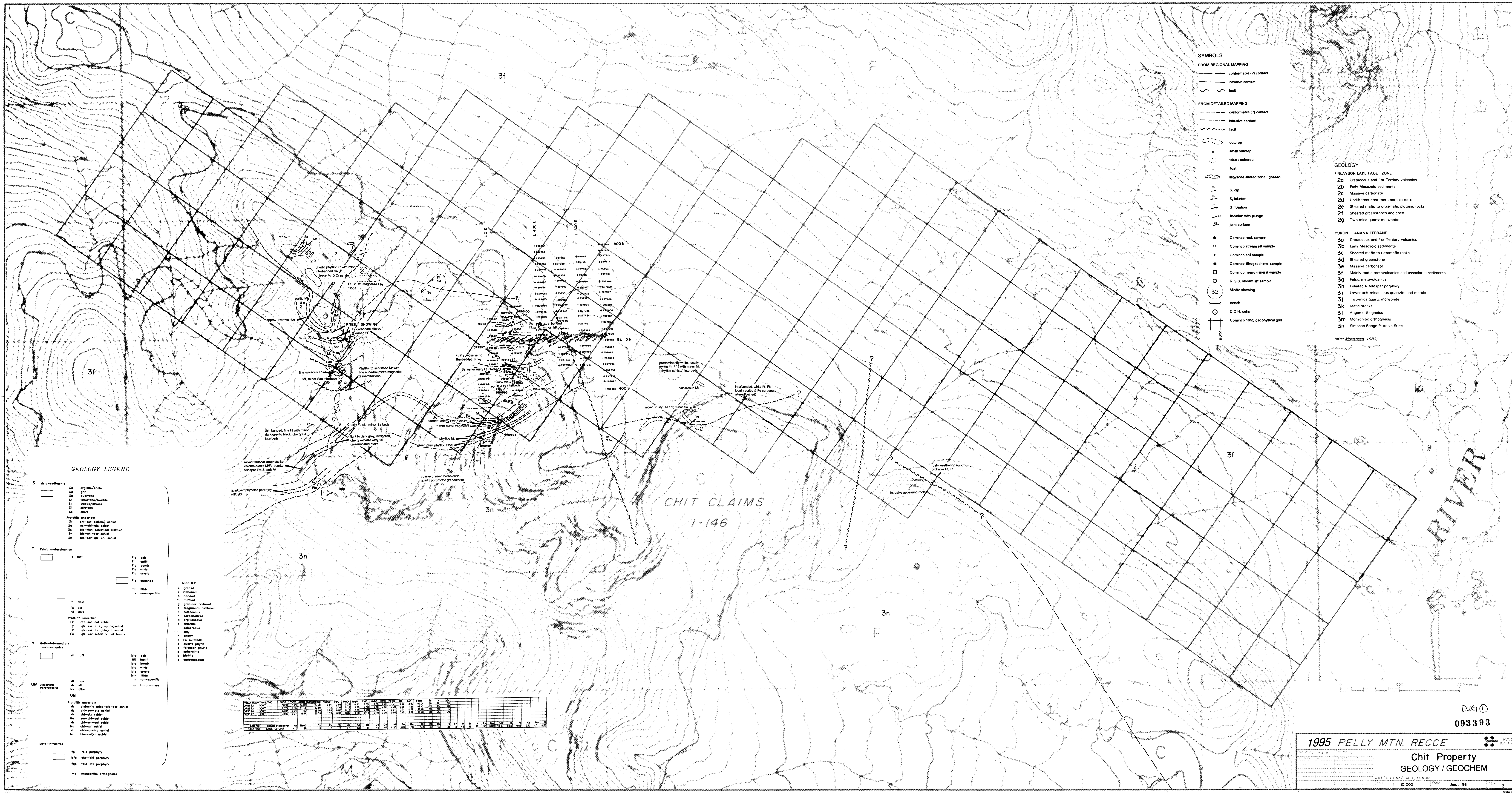
ab,Field,S,M,O,S,C,S,O,W,Dpth,W/S,F/H,Cu,Pb,Zn,Ag,As,Ba,Cd,Co,Ni,Fe,Mo,Cr,Bi,Sb,V,Sn,W,Sr,Y,La,Mn,Mg,Ti,Al,Ca,Na,K,Au,Ba(XRF)

9522226	297955	-1	1	2	-1	B2	34	1	-1	30	2	B	1	2	2	1.1	1	15	1	1	1	0.09	1	2	2	2	3	1	2	2	1	9	6	0.01	0.01	0.16	0.01	0.01	0.01	5	1126	
9522227	297956	-1	1	2	-1	B2	34	1	-1	30	2	B	4	2	7	0.4	1	14	1	1	1	0.25	1	2	2	2	6	1	5	2	1	3	11	0.01	0.01	0.11	0.01	0.01	0.01	5	1270	
9522228	297957	-1	1	2	-1	B2	34	1	-1	30	2	B	16	21	37	0.2	22	53	1	1	7	0.94	3	4	2	6	23	1	5	15	1	8	30	0.01	0.01	0.29	0.02	0.01	0.02	5	1776	
9524081	299412	-1	1	3	2	2B	23	1	1	20	2	B	34	19	86	0.6	23	32	1	2	19	1.02	6	4	2	5	22	3	2	6	1	5	70	0.01	0.01	0.15	0.04	0.02	0.01	5	1992	
9524082	299413	-1	1	3	2	3B	23	1	1	20	2	B	34	9	72	0.9	24	28	1	1	16	1.07	5	6	2	5	33	1	1	5	1	3	85	0.01	0.01	0.17	0.06	0.04	0.02	5	963	
9524083	299414	-1	1	3	2	2B	23	1	1	20	2	B	50	45	104	0.5	61	44	1	3	24	3.69	5	13	2	2	40	2	1	10	3	8	167	0.16	0.03	0.76	0.03	0.01	0.04	5	1274	
9524084	299415	-1	1	3	2	3B	23	1	1	20	2	B	12	16	31	0.2	1	61	1	1	6	0.72	1	4	2	2	19	1	1	6	1	7	103	0.03	0.01	0.45	0.06	0.03	0.02	5	947	
9524085	299416	-1	1	3	2	3B	23	1	1	20	2	B	48	22	53	0.4	38	73	1	8	39	3.99	2	40	2	8	40	2	2	11	3	10	258	0.41	0.02	1.41	0.06	0.01	0.03	5	1118	
9524086	299417	-1	1	5	2	2B	34	1	1	20	2	B	13	4	9	0.2	1	50	1	1	12	0.29	1	7	2	2	4	1	1	5	3	3	39	0.08	0.01	0.31	0.06	0.01	0.02	5	999	
9524087	299418	-1	1	3	2	3B	23	1	1	20	3	B	27	25	45	0.2	29	27	1	8	25	1.67	1	33	2	9	29	2	1	4	2	9	579	0.19	0.01	0.49	0.03	0.03	0.02	5	783	
9524088	299419	-1	1	3	2	3B	12	1	1	20	3	B	7	6	8	0.2	1	26	1	1	4	0.36	1	8	2	2	6	1	1	2	1	2	38	0.02	0.01	0.2	0.02	0.01	0.02	5	561	
9524089	299420	-1	1	3	2	2B	2	1	1	20	3	B	59	28	66	0.2	43	88	1	6	35	3.18	4	37	2	8	49	1	3	13	6	16	293	0.38	0.01	0.83	0.07	0.01	0.07	5	1239	
9524090	299421	-1	1	5	2	2B	34	1	1	20	3	B	45	23	132	0.2	64	262	1	33	164	3.85	6	207	2	6	107	4	1	74	10	42	738	3.07	0.08	2.39	0.79	0.01	0.46	5	745	
9524091	299422	-1	1	3	2	2B	23	1	1	20	3	B	56	10	134	0.2	98	508	1	62	214	4.35	2	196	2	2	127	2	3	103	11	52	836	3.48	0.08	2.46	1.15	0.01	0.89	5	907	
9524092	299423	-1	1	3	2	2B	23	1	1	20	3	B	31	148	88	0.4	1	60	1	27	21	2.29	1	14	2	2	18	2	3	8	6	8	849	0.59	0.03	0.98	0.11	0.01	0.07	5	1212	
9524093	299424	-1	1	3	2	2B	23	1	1	20	3	B	25	70	54	0.5	4	53	1	22	10	2.43	1	11	2	2	20	1	1	12	4	7	534	0.5	0.04	0.85	0.1	0.01	0.07	5	988	
9524094	299425	-1	1	3	2	2B	23	1	1	20	3	B	22	33	38	0.2	4	47	1	10	9	2.21	1	11	2	2	26	5	7	2	6	281	0.32	0.04	0.99	0.04	0.03	0.06	5	976		
9524095	299426	-1	1	3	2	2B	23	1	1	20	3	B	25	20	47	0.2	1	55	1	20	10	2.29	1	12	2	2	22	1	1	9	3	8	534	0.5	0.04	1.1	0.09	0.01	0.09	5	1021	
9524096	299427	-1	1	3	2	22	23	2	3	20	3	B	27	19	51	0.2	16	51	1	17	13	3.06	1	15	2	5	28	1	1	11	7	11	827	0.23	0.01	0.89	0.05	0.01	0.05	5	1078	
9524097	299428	-1	1	5	2	2B	34	1	1	20	3	B	35	34	73	0.2	9	68	1	39	14	3.82	2	22	2	7	35	2	2	8	11	15	860	0.48	0.01	1.53	0.06	0.01	0.07	5	1196	
9524098	299429	-1	1	5	2	3B	34	1	1	20	3	B	42	41	93	0.2	30	49	1	10	26	2.2	1	15	2	2	20	1	1	5	5	12	571	0.26	0.01	0.69	0.06	0.01	0.03	5	784	
9524099	299430	-1	1	5	2	2B	34	1	1	20	3	B	17	14	55	0.2	5	58	1	7	56	1.47	1	48	2	5	24	1	1	9	6	12	398	0.75	0.01	0.86	0.13	0.01	0.02	5	942	
9524100	299431	-1	1	5	2	3B	34	1	1	20	3	B	53	24	157	0.5	58	180	1	74	218	4.26	1	194	2	2	68	3	1	37	16	47	1428	2.94	0.04	2.37	0.53	0.03	0.05	5	515	
9524101	299432	-1	1	5	2	2B	23	1	1	20	2	B	30	46	79	0.2	63	108	1	212	82	3.29	1	98	2	8	61	3	1	11	4	16	5338	1.13	0.03	1.33	0.07	0.03	0.06	5	720	
9524102	299433	-1	1	5	2	3B	34	1	1	20	3	B	63	42	176	0.2	64	108	1	34	173	3.72	1	154	2	2	5	71	2	2	55	14	30	670	2.46	0.05	1.93	0.68	0.01	0.13	5	448
9524103	299434	-1	1	5	2	1B	34	1	1	20	3	B	39	26	127	0.2	51	250	1	27	139	3.3	3	173	2	2	83	1	1	57	7	26	858	2.68	0.07	2.03	0.64	0.01	0.4	5	693	
9524104	299435	-1	1	5	2	3B	23	1	1	20	3	B	81	24	150	0.2	62	173	1	78	153	5.07	4	209	2	5	103	1	1	12	5	31	5696	2.45	0.05	2.26	1.19	0.03	0.05	5	560	
9524105	299436	-1	1	3	2	2B	23	1	1	20	3	B	84	89	91	0.2	46	55	1	10	31	2.38	8	33	2	9	35	1	1	28	6	21	330	0.27	0.01	0.6	0.03	0.01	0.02	5	967	
9524106	299437	-1	1	5	2	3B	34	1	1	20	2	B	60	23	39	1.2	25	72	1	15	38	2.14	4	32	2	2	27	1	1	7	20	32	1125	0.39	0.01	1.35	0.06	0.01	0.03	12	983	
9524107	299438	-1	1	3	2	2B	23	1	1	20	2	B	47	26	255	0.2	77	37	1	5	60	2.73	13	24	10	10	239	4	4	7	3	7	331	0.02	0.01	0.26	0.02	0.01	0.02	5	1298	
9524108	299439	-1	1	3	2	3B	23	1	1	20	2	B	24	26	76	0.5	56	239	1	225	449	4.49	4	129	2	2	38	1	1	17	17	24	5750	2.1	0.01	0.67	0.53	0.03	0.03	5	697	
9524109	299440	-1	1	5	2	3B	34	1	1	20	2	B	14	16	17	0.4	6	144	1	9	48	1.17	1	100	2	6	14	1	3	6	5	14	222	0.15	0.01	0.51	0.06	0.03	0.02	5	1078	
9524110	299441	-1	1	3	2	2B	23	1	1	20	2	B	11	12	1	0.5	1	12	1	1	2	0.26	1	2	2	2	2	1	3	2	1	2	2	13	0.01	0.01	0.2	0.01	0.01	0.01	5	935
9524111	299442	-1	1	5	2	2B	34	1	1	20	2	B	14	8	11	0.6	8	25	1	2	10	0.5	3	8	2	7	6	1	2	6	4	6	111	0.07	0.01	0.34	0.1	0.01	0.01	5	1090	
9524112	299443	-1	1	5	2	1B	34	1	1	20	2	B	60	26	57	1	26	102	1	16	49	2.57	7	40	2	2	35	2	1	11	15	25	1190	0.48	0.01	1.24	0.11	0.01	0.04	5	942	
9524113	299444	-1	1	5	2	1B	34	1	1	20	2	B	15	17	27	0.2	8	39	1	2	9	0.71	2	6	2	6	20	1	1	4	1	4	38	0.02	0.01	0.41	0.01	0.01	0.01	5	1179	
9524114	299445	-1	1	5	2	3B	34	1	1	20	2	B	15	8	12	0.6	1	49	1	3	16	0.53	1	13	2	2	7	1	2	7	5	8	373	0.11	0.01	0.67	0.08	0.01	0.02	5	971	
9524115	299446	-1	1	5	2	3B	34	1	1	20	2	B	18	5	8	0.2	6	24	1	5	7	0.4	1	7	2	2	6	1	1	4	5	6	535	0.08	0.01	0.41	0.06	0.01	0.01	5	1003	
9524116	299447	-1	1	5	2	3B	34	1	1	20	2	B	24	12	22	1.3	13	51	1	3	19	0.81	3	14	2	2	13	1	4	9	8	12	206	0.15	0.01	0.51	0.13	0.01	0.02	5	1109	
9524117	299448	-1	1	3	2	3B	23	1	1	20	2	B	27	34	39	0.4	7	60	1	4	20	1.74	3	28	2	2	38	4	1	8	3	10	104	0.05	0.02	0.54	0.04	0.03	0.02	5	837	
9524118	299449	-1	1	3</																																						

APPENDIX 3
STATEMENTS OF EXPENDITURES

CHIT PROPERTY

STAFF COSTS	3,275
DOMICILE	425
GEOCHEMISTRY	2,222
HELICOPTER	460
COMMUNICATIONS	60
GEOPHYSICS	3,708
EXPEDITING	355
DRAFTING	882
TOTAL	11,387



- SYMBOLS**
- FROM REGIONAL MAPPING**
- conformable (?) contact
 - intrusive contact
 - fault
- FROM DETAILED MAPPING**
- conformable (?) contact
 - intrusive contact
 - fault
 - outcrop
 - small outcrop
 - talus / subcrop
 - float
 - alterable altered zone / gossan
 - S, dip
 - S, foliation
 - S, foliation
 - lineation with plunge
 - joint surface
 - Cominco rock sample
 - Cominco stream all sample
 - Cominco soil sample
 - Cominco lithogeochem sample
 - Cominco heavy mineral sample
 - R.G.S. stream silt sample
 - Mineral showing
 - trench
 - D.D.H. collar
 - Cominco 1995 geophysical grid

- GEOLOGY**
- FINLAYSON LAKE FAULT ZONE**
- 2a Cretaceous and / or Tertiary volcanics
 - 2b Early Mesozoic sediments
 - 2c Massive carbonate
 - 2d Undifferentiated metamorphic rocks
 - 2e Sheared mafic to ultramafic plutonic rocks
 - 2f Sheared greenstones and chert
 - 2g Two-mica quartz monzonite
- YUKON - TANANA TERRANE**
- 3a Cretaceous and / or Tertiary volcanics
 - 3b Early Mesozoic sediments
 - 3c Sheared mafic to ultramafic rocks
 - 3d Sheared greenstone
 - 3e Massive carbonate
 - 3f Mainly mafic metavolcanics and associated sediments
 - 3g Felsic metavolcanics
 - 3h Foliated K-feldspar porphyry
 - 3i Lower unit micaceous quartzite and marble
 - 3j Two-mica quartz monzonite
 - 3k Mafic stocks
 - 3l Augen orthogneiss
 - 3m Monzonitic orthogneiss
 - 3n Simpson Range Plutonic Suite
- (after Mortensen, 1983)*

GEOLOGY LEGEND

- S Metasediments**
- Su argillite/shale
 - Sg gill
 - Ss limestone/marble
 - Sl shales/slates
 - St chert
- Prothrust uncertain**
- Sy chert-carbonate schist
 - Sw argillite-schist
 - Sz blue-schist schist
 - S1 blue-schist schist
 - S2 blue-schist schist
- F Felsic metaigneous**
- Ft tuff
 - Fo ash
 - Ft lapilli
 - Fb bomb
 - Fv vitric
 - Fc crystal
 - Ft exposed
 - Fm mic
 - x non-specific
- Flow**
- Ff flow
 - Fa all
 - Fd dike
- Prothrust uncertain**
- Fz argillite-schist
 - F1 argillite-schist
 - F2 argillite-schist
 - F3 argillite-schist
 - F4 argillite-schist
 - F5 argillite-schist
 - F6 argillite-schist
 - F7 argillite-schist
 - F8 argillite-schist
 - F9 argillite-schist
 - F0 argillite-schist
- M Mafic-Intermediate metaigneous**
- Mt tuff
 - Mo ash
 - Ml lapilli
 - Mb bomb
 - Mv vitric
 - Mc crystal
 - Mm mic
 - x non-specific
 - m lamprophyre
- UM Ultramafic metaigneous**
- Uf flow
 - Ua all
 - Ud dike
 - UM
- Prothrust uncertain**
- Uy argillite-schist
 - Uz argillite-schist
 - U1 argillite-schist
 - U2 argillite-schist
 - U3 argillite-schist
 - U4 argillite-schist
 - U5 argillite-schist
 - U6 argillite-schist
 - U7 argillite-schist
 - U8 argillite-schist
 - U9 argillite-schist
 - U0 argillite-schist
- I Mafic-Intrusive**
- Ip feld porphyry
 - Iep feld-qtz porphyry
 - Isp feld-qtz porphyry
 - Ims monzonitic orthogneiss

- Textures**
- g graded
 - r ribboned
 - b banded
 - m mottled
 - f fragmental
 - f fragmental fractured
 - l luffaceous
 - c carbonatized
 - o organofossiliferous
 - ob oblique
 - l colorless
 - l silty
 - h cherty
 - q Fe-sulfidic
 - q quartz phytic
 - f feldspar phytic
 - a aphanitic
 - b blastic
 - e euhedral

UTM Zone	UTM Easting	UTM Northing	UTM Easting	UTM Northing	UTM Easting	UTM Northing	UTM Easting	UTM Northing	UTM Easting	UTM Northing
18N	500000	6000000	500000	6000000	500000	6000000	500000	6000000	500000	6000000

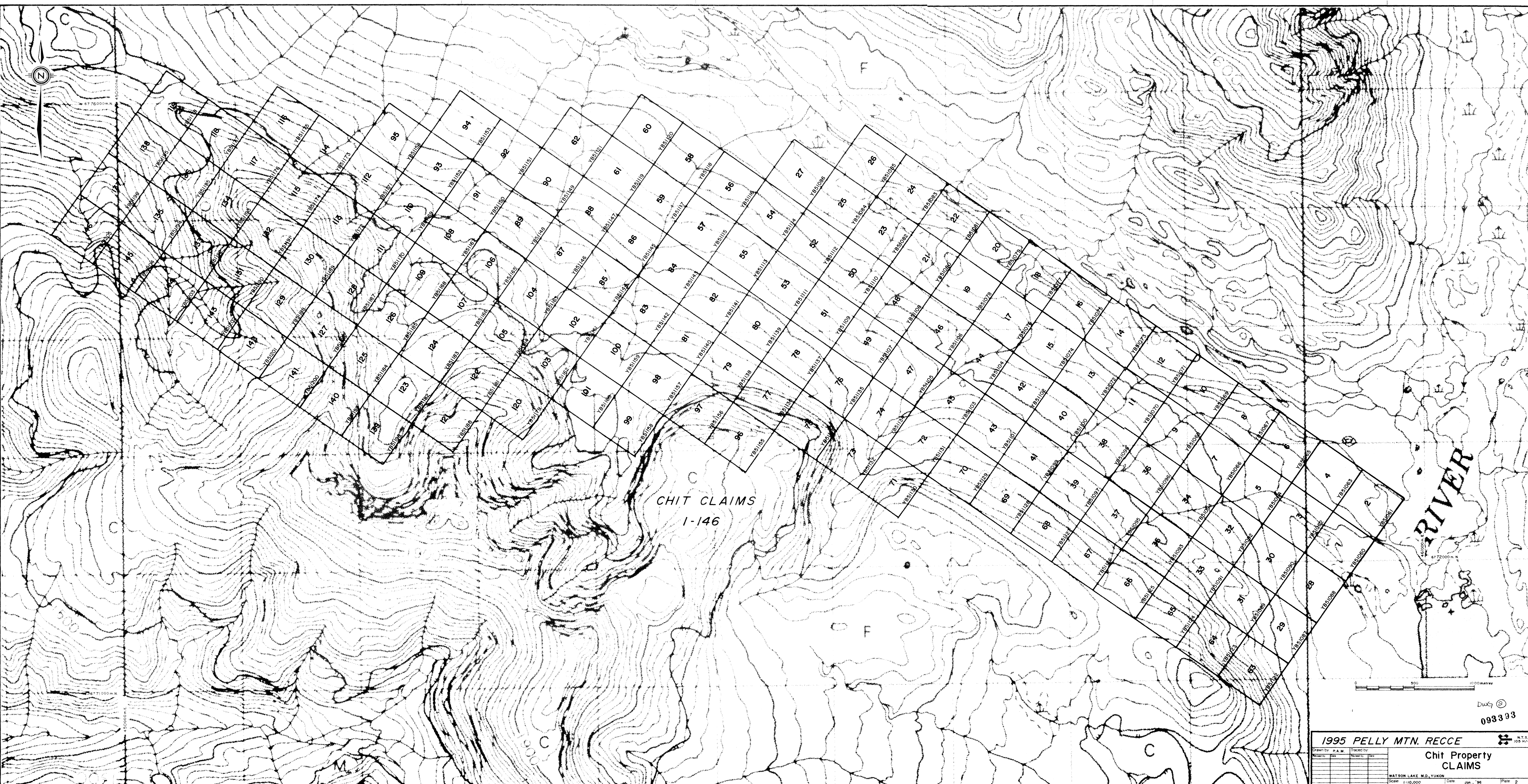
1995 PELLY MTN. RECCE

Chit Property
GEOLOGY / GEOCHEM

WATSON LAKE, M.D., YUKON

Scale: 1:10,000 Date: Jan. '96

Dwg 10
093393



CHIT CLAIMS
1-146

RIVER

0 500 1000 METERS

DWG ©
093393

1995 PELLY MTN. RECCE

Drawn by: S.A.M.	Traced by:
Checked by:	Checked by:
Scale: 1:10,000	Date: Jan '96
Sheet: 2	Plate: 2

WATSON LAKE M.D., YUKON

Chit Property CLAIMS

N.T.S. 105 1/2