

**1995 GEOLOGICAL AND GEOCHEMICAL
ASSESSMENT REPORT
ON THE
DRAKE 1-8 CLAIM GROUP
TET PROJECT**

093377

Located in the Quartet Lakes Area
Mayo Mining District
Yukon Territory, Canada
NTS 106E/1,2
64° 05' North Latitude
134° 30' West Longitude

-prepared for-

NEWMONT EXPLORATION LIMITED
Denver, Colorado

-prepared by-

WESTMIN RESOURCES LIMITED
Murray I. Jones, M.Sc., P.Geo.

DATES OF WORK PERFORMED: June 2 - 4, 1995

DATE OF REPORT: December, 1995

1995 ASSESSMENT REPORT ON THE DRAKE 1 - 8 CLAIM GROUP

TABLE OF CONTENTS

	<u>Page</u>
1.0 SUMMARY AND RECOMMENDATIONS	1
2.0 INTRODUCTION	1
2.1 Location, Access and Physiography	1
2.2 List of Claims	2
2.3 Previous work	2
3.0 1995 EXPLORATION PROGRAM	2
4.0 REGIONAL GEOLOGY	3
5.0 PROPERTY GEOLOGY	3
5.1 Rock Types	3
5.2 Structure	4
5.3 Alteration and Mineralization	4
5.4 Rock Geochemistry	5
6.0 DISCUSSION	5

APPENDICES

Appendix A	Bibliography
Appendix B	List of Personnel
Appendix C	Statement of Expenditures
Appendix D	Rock Description Forms
Appendix E	Analytical Procedures and Certificates of Analysis
Appendix F	Geologist's Certificate

LIST OF TABLES

Table 2.2.1	Claim Data	2
Table 5.4.1	Significant Results, Rock Samples	5

LIST OF FIGURES

	<u>Following Page</u>	
Figure 1	Location Map	1
Figure 2	Claim Map	2
Figure 3	Regional Geology	3

LIST OF PLATES

Plate 1	Simplified Geology, 1:10000
Plate 2	Cu in Rocks and Stream Sediments, 1:10000
Plate 3	Au in Rocks and Stream Sediments, 1:10000

1.0 SUMMARY AND RECOMMENDATIONS

Mapping and rock sampling in 1995 on the Drake property (Tet Project) has not detected any new potential for economic mineralization. Several chip samples on the Tet West Zone confirmed the presence of low grade copper-gold-cobalt mineralization in a narrow, fault related, north-south zone approximately 900 metres long. Additional mapping and rock sampling was designed to test the large diorite-breccia complex on the west side of the property for disseminated or fracture controlled mineralization. This test was not successful in detecting significant mineralization. The Tet West Zone is sufficiently well exposed to determine from surface work that it is too small and low grade a zone to be considered an economic target. However, the considerable extent and continuity of the Tet West Zone suggests that additional mineralization may be present along strike. The zone is open at both ends and there are signs of mineralization at least 1 kilometre to the south of the zone at the south boundary of the property. Bedrock is largely covered in this area by talus. A relatively quick contour soil sampling survey to the north and south of the Tet West Zone would answer the questions regarding the potential for buried mineralization along strike in the vicinity of the claims.

2.0 INTRODUCTION

The Tet Project is part of the Fairchild Joint Venture Project (Newmont Exploration Ltd. and Westmin Resources Limited). The property was staked as part of this regional program exploring for copper-gold breccia-hosted deposits, in the style of the Olympic Dam deposit in South Australia. The geological setting of the Wernecke Mountains area is considered to have excellent potential to host this type of deposit.

2.1 Location, Access and Physiography

The property is located in the Wernecke Mountains in east central Yukon, approximately 170 kilometres northeast of Mayo, Yukon (Figure 1). The claim group is located 5 kilometres south-southwest of Quartet Lakes.

The project area is accessible by fixed wing, wheeled aircraft to the 885 metre long Copper Point airstrip on the Bonnet Plume River, 23 kilometres east-southeast of the property. The camp for the 1995 program was located at the airstrip. Access to the property was by helicopter from the base camp.

Elevations on the property range from 1050 to 1750 metres above sea level and relief varies from moderate slopes to cliffs. Most of the property lies above tree-line and vegetation consists of alpine, local spruce, dwarf alder, willow, mosses and grasses.

NEWMONT EXPLORATION LTD.
WESTMIN RESOURCES, PAMICON DEVELOPMENTS, EQUITY ENGR.

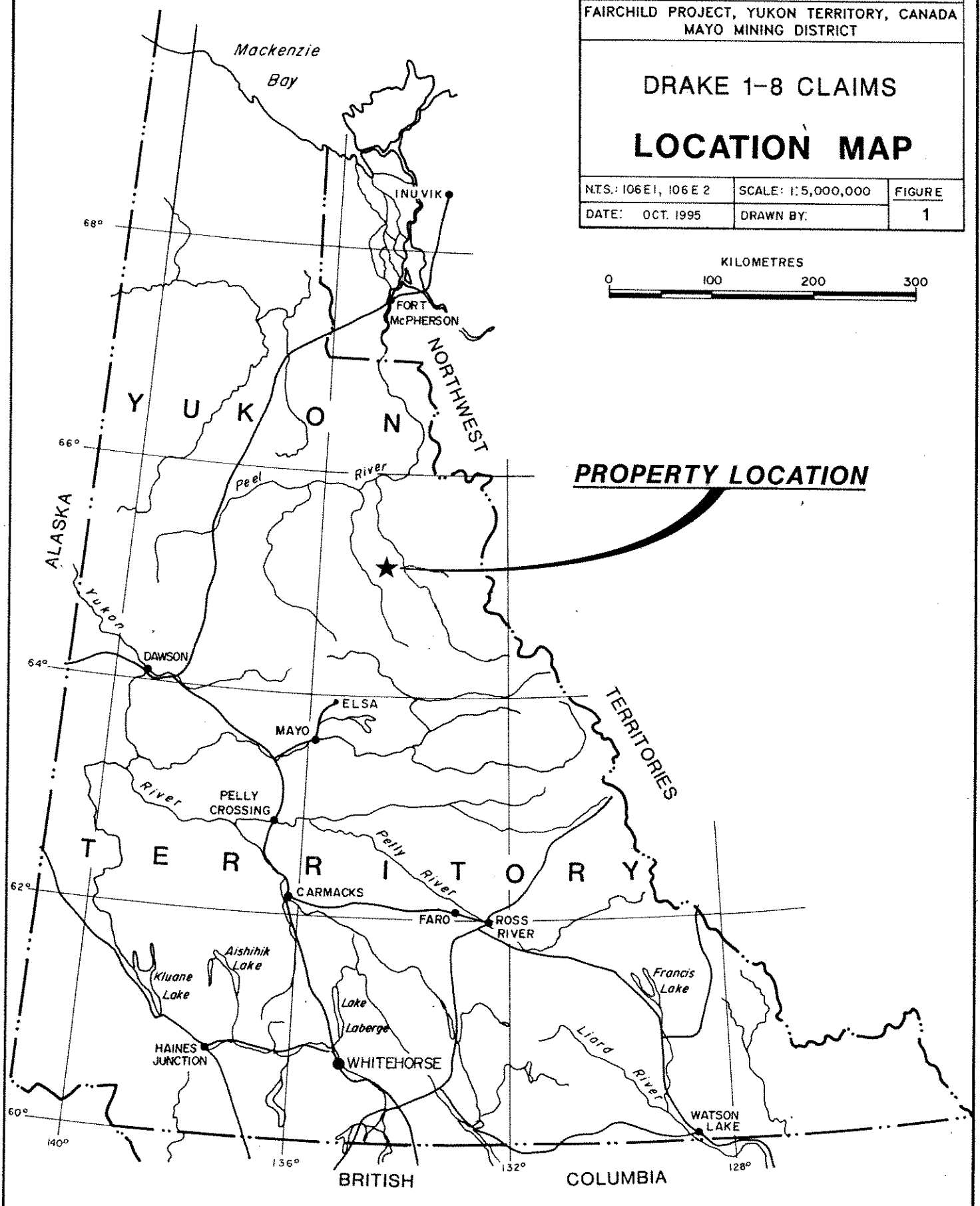
FAIRCHILD PROJECT, YUKON TERRITORY, CANADA
MAYO MINING DISTRICT

DRAKE 1-8 CLAIMS LOCATION MAP

NTS: 106E1, 106E2	SCALE: 1:5,000,000	FIGURE
DATE: OCT. 1995	DRAWN BY:	1



PROPERTY LOCATION



2.2 List of Claims

The property comprises 8 contiguous quartz mineral claims, located in the Mayo Mining District (Figure 2). Government records indicate that the following claims (Table 2.2.1) are owned 100% by Westmin Resources Limited of Vancouver, B.C.. An underlying agreement indicates the claims area held in trust by Westmin on behalf of joint venture partners Newmont Mines Limited of Denver, Colorado and Westmin Resources Limited.

**Table 2.2.1
Claim Data**

<u>Claim Name</u>	<u>Claim Number</u>	<u>Record Numbers</u>	<u>Record Date</u>	<u>Expiry Date</u>	<u>NTS</u>
Drake	1 - 8	YB43999 - 44006	03/02/95	12/31/00*	106E1/E2

* Subject to government acceptance of work covered by this report.

2.3 Previous work

The property was originally staked as the Tet Property in 1976 (Minfile 106E/ 027). A mineralized zone, the Tet West Zone, was traced over 600 metres, with the best results being 0.64% Cu over 3 metres. The area was covered in the fall of 1993 by a regional airborne magnetic and radiometric survey flown by Newmont Exploration Limited. Follow up work in 1994 examined the Tet West Zone and some preliminary mapping and rock sampling was carried out (Caulfield et al, 1995). Subsequently, eight claims were staked in the winter of 1995.

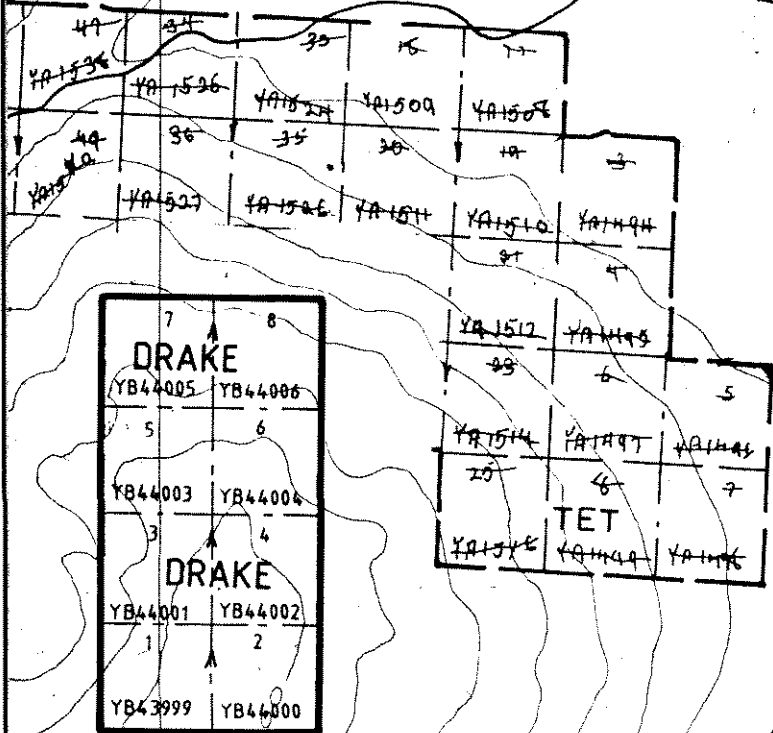
3.0 1995 EXPLORATION PROGRAM

The 1995 exploration program focused on mapping and rock sampling in the vicinity of the Tet West Zone. A few samples were taken within the zone to test for other elements not previously analyzed. The main focus of the program was to gather samples in rocks not previously tested, looking for subtle, disseminated mineralization similar to the Olympic Dam model type.

In total, this work consisted of the following:

- 13.5 man/days geological mapping, sampling and GPS survey control
- 18 rock samples taken in total
- Establishment of GPS total station survey points

QUARTET
LAKES



C



NEWMONT EXPLORATION LTD.		
WESTMIN RESOURCES, PAMICON DEVELOPMENTS, EQUITY ENGR.		
FAIRCHILD PROJECT, YUKON TERRITORY, CANADA MAYO MINING DISTRICT		
DRAKE 1-8 CLAIMS		
CLAIM MAP		
N.T.S.	SCALE: 1:50,000	FIGURE
DATE: OCT. 1995	DRAWN BY: J.W.	2

All samples were shipped to Chemex Labs of North Vancouver, B.C. for preparation and analysis for gold, lanthanum and 24-elements by ICP geochemistry. Analytical procedures, descriptive rock forms and a complete set of results may be found in the appendices.

4.0 REGIONAL GEOLOGY

This summary of the regional geology is based on work by Delaney (1985), Thorkelson and Wallace (1994) and by Pamicon Developments Limited (Unpublished 1977). References to earlier work are cited by Delaney. A complete table of formations including lithologies is presented on the legend following Figure 3.

The Wernecke Mountains are cored by at least 14,000 metres of generally fine-grained terrigenous and carbonate rocks of Helikian age that have been penetrated by hematite breccias and cut by mafic sill and dykes. The entire succession has been named the Wernecke Supergroup and has been divided into three groups (oldest to youngest): Fairchild Lake Group, Quartet Group and Gillespie Lake Group. To the east and south, the Hadrynian Pinguicula Group unconformably overlies the Wernecke Supergroup. Paleozoic strata bound the western margin and Cretaceous and Tertiary sediments fill the area to the north in the Bonnet Plume Basin.

The main structural components of the Wernecke terrane are the southeast trending fault splays (Deslauriers, Knorr, and Snake River faults) of the Richardson Fault array. On a regional scale, sediments dip away from the Bonnet Plume valley causing the Proterozoic rock units to be exposed in a northwest trending anticlinal structure.

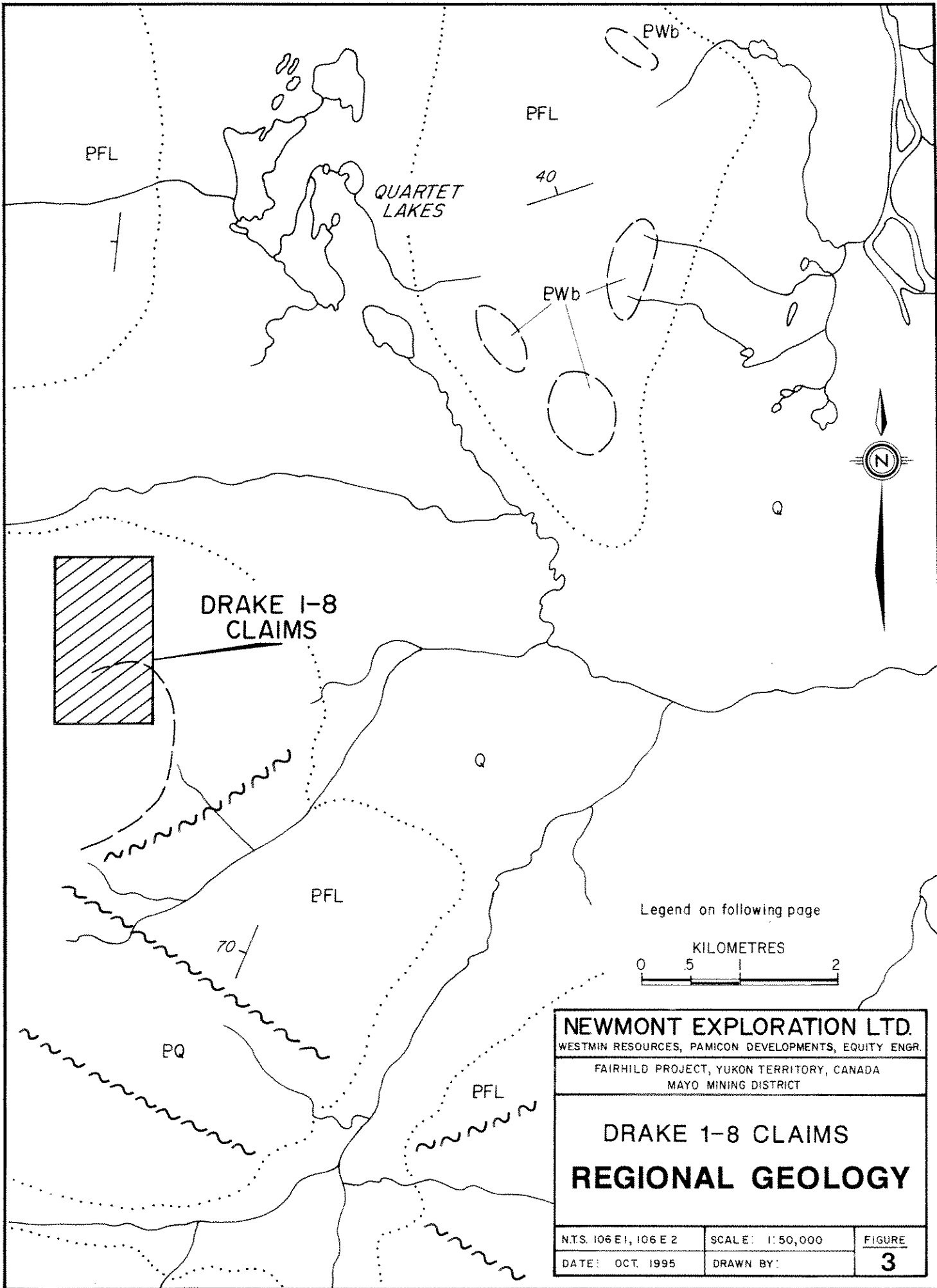
5.0 PROPERTY GEOLOGY

Mapping on the property was designed to investigate the diorite-breccia complex on the west side of the property for mineral potential (Plate 1). The sedimentary package which dominates the east half of the property was not examined in detail.

5.1 Rock Types

The east half of the property is underlain by a section of shale (**shl**), dolomite (**dol**) and chert (**cht**). The rocks are likely part of the upper Fairchild Lake and lower Quartet Groups.

The west half of the property is mostly underlain by a large diorite-heterolithic breccia body. This body forms a sinuous contact which traces approximately north-south through the property. The diorite is a fairly homogeneous rock in general. Chlorite



NEWMONT EXPLORATION LTD.		
WESTMIN RESOURCES, PAMICON DEVELOPMENTS, EQUITY ENGR.		
FAIRHILD PROJECT, YUKON TERRITORY, CANADA		
MAYO MINING DISTRICT		
DRAKE 1-8 CLAIMS		
REGIONAL GEOLOGY		
N.T.S. 106 E 1, 106 E 2	SCALE: 1:50,000	FIGURE
DATE: OCT. 1995	DRAWN BY:	3

LEGEND

(to accompany Figure 3)

LITHOLOGIES

Quaternary

Q Unconsolidated glacial and alluvial deposits

Paleozoic

P Carbonate and siliciclastic sediments, undivided

Proterozoic

Pp **Pinguicula Group:** Carbonate and siliciclastic sedimentary rocks and lesser volcanics

Kd Diabase

Kdi Diorite

Gb Gabbro

Bx Hematite breccia

WERNECKE SUPERGROUP

Pg **Gillespie Lake Group:** Buff-, orange-, grey-, and locally maroon-weathering dolomite, dolomite terrigenous admixtures, limestone, claystone, mudstone, siltstone and fine sandstone.

Pgtr **Transitional Zone:** Interbedded dolomite and dark siltstone/shale with characteristic striped appearance.

Pq **Quartet Group:** Dark grey- and grey-weathering siltstone, mudstone, claystone and fine sandstone (wavy bedded); locally quartzites.

Pq1 Black shale with sandstone and shale interbeds, quartzite

Pq2 Pyritic quartzite

Pf **Fairchild Lake Group:** Light grey-, greenish grey-, and locally dark grey- weathering shale, siltstone (80%), fine sandstone and limestone (20%); locally phyllites, schists and slates.

Pftr **Transitional Zone:** Shale and brown-weathering dolomite with limestone marker unit, pyritic black shale.

SYMBOLS



Geological contact (approximate)



Thrust fault (approximate)



Fault (approximate)



Bedding attitude



Bedding (overturned)



Anticlinal axis (arrow indicates plunge)



Synclinal axis (arrow indicates plunge)



Limit of unconsolidated glacial and alluvial deposits

alteration is common throughout with smaller magnetite and potassium feldspar-rich zones. The rock is fine to coarse grained and locally feldspar phyrlic. Near the northwest corner of the property there is an area of quite coarse grained, relatively fresh, magnetic diorite (or possibly gabbro?). Near its margins the diorite has a weakly brecciated texture and has locally been labelled as homolithic breccia.

Heterolithic breccia bodies pinch and swell along the eastern margin of the diorite. Generally the breccia is narrow but toward the south boundary of the property it does have some significant width in outcrop. The breccia is characterized by chlorite and carbonate in the matrix. Potassium feldspar is also common likely as an alteration product. Specularite is common throughout the breccia.

5.2 Structure

A low angle fault has been mapped in the eastern part of the property. This fault overlies the Fairchild Lake Group rocks, essentially separating them from the Quartet Group rocks to the east. The bedding attitudes in both hangingwall and footwall are quite similar.

A narrow fault zone roughly follows the contact between the diorite-breccia complex and the sediments. This fault is quite altered and is the focus of mineralization in the Tet West Zone. The fault strikes north-south, dipping steeply to the east.

5.3 Alteration and Mineralization

The only area of significant mineralization seen on the property is the Tet West Zone which was originally mapped and sampled in 1977 (Harivel et al, 1977). This zone is characterized by iron carbonate and silica alteration of dolomitic sedimentary rocks. The zone strikes north-south and roughly coincides with the contact between the sedimentary rocks and the large diorite-breccia complex to the east. The zone is about 25 metres wide and can be traced in outcrop over a distance of approximately 900 metres. The zone is open, under talus cover, at both ends but is well constrained laterally by outcrop exposure.

The Tet West Zone contains trace to 3% chalcopyrite and equivalent pyrite over most of its length. Higher grade mineralization tends to be restricted in area. Quartz-ankerite veining is generally well developed. Carbonate alteration is apparently associated with chalcopyrite mineralization. Magnetite alteration is quite strong locally but no particular association with sulphide mineralization was noted.

A 10 metre wide mineralized zone was located in altered shales near the contact with heterolithic breccia at the southern boundary of the property. This zone is characterized by strong malachite and azurite coatings on rock fractures. Gossanous

weathering is likely due to the abundant iron carbonate in the mineralized zone. Samples taken in 1994 returned up to 3.6 g/T Au within this zone (Caulfield et al, 1995). Unfortunately, the outcrop exposure of the zone is quite limited so a search for extensions of the zone was not possible. This zone is roughly on strike from the Tet West Zone, which is 1 kilometre north across a talus covered cirque floor.

Mapping of the diorite-breccia complex on the west side of the property did not detect any other mineralized zones.

5.4 Rock Geochemistry

Sampling on the property in 1995 confirmed the low grade copper mineralization present in the Tet West Zone (Plates 2 and 3). Significant results are summarized in Table 5.4.1. The gold values are quite low in general. No other significant metal enrichments were detected.

Sampling in the northwest area of the property, in the diorite-breccia complex did not locate additional areas of metal concentration. The copper and gold values from the rocks in this area were uniformly low (Appendices D and E).

Table 5.4.1
Significant Results - Rock Samples

<u>Sample</u>	<u>Type</u>	<u>Width</u>	<u>Au(ppb)</u>	<u>Cu(ppm)</u>	<u>Other</u>
21804	float		25	1040	
21851	chip	2.8 m	15	2460	150 ppm La
21852	chip	1.2 m	135	4030	
21853	chip	1.8 m	40	1195	

6.0 DISCUSSION

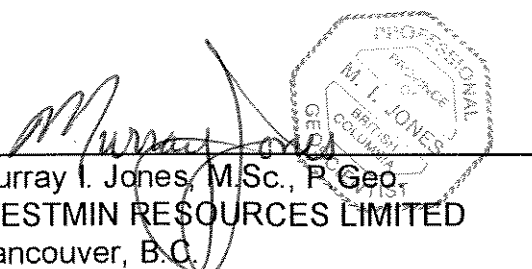
A large diorite body intrudes meta-sedimentary rocks on the west side of the property. This intrusion has narrow bodies of heterolithic breccia along its margin. The relative timing of the intrusion of these two rock types was not determined. Magnetite and potassium feldspar alteration in the diorite-breccia complex indicates hydrothermal activity associated with this complex.

The emplacement of the diorite-breccia complex is locally controlled by a north-south trending structure which is altered and mineralized along the extent of its exposure on the property. This mineralized structure is called the Tet West Zone. The small width

of the mineralized zone, and the low grade of the mineralization contained within it, do not bode well for the presence of a significant ore body in this area.

Overall, the diorite-breccia complex does not seem to be associated with strong hydrothermal alteration and this is reflected in the poor tenor of local mineralization. There are hints of significant copper-gold mineralization at the southern boundary of the property but the mineralized zone here is very small. Any potential associated on the property is likely in covered areas, along the projection of the main structures which are controlling mineralization.

Respectfully submitted.



Murray I. Jones, M.Sc., P. Geol.
WESTMIN RESOURCES LIMITED
Vancouver, B.C.
December 1995

APPENDIX A
BIBLIOGRAPHY

BIBLIOGRAPHY

Delaney, G.D. (1985): The Middle Proterozoic Wernecke Supergroup, Wernecke Mountains, Yukon Territory; Unpublished Ph.D. Thesis, University of Western Ontario, 373 p.

Caulfield, D.A., K.A. Hofmann, K.A. Owerko, H.M. Klatt, M.A. Stammers and A. Montgomery, (1995): Summary Report on the Fairchild Property Regional prospects; Internal joint Venture Report, 3 vols.

Harivel, C., C.K. Ikona and P.P. Nielsen, (1977): Geological and Geophysical Report on the Tet Mineral Claims: Assessment Report submitted for Thor Explorations Ltd.

Thorkelson, D.A. and C.A. Wallace, (1993): Development of Wernecke Breccia in Slat Creek (106D/16) map area, Wernecke Mountains, Yukon; in Yukon Exploration and Geology, 1992. Exploration and Geological Services Division, Yukon, Indian and Northern Affairs Canada, p. 77-87.

APPENDIX B
LIST OF PERSONNEL

LIST OF PERSONNEL

Dave Caulfield, P. Geo.
207,675 W. Hastings
Vancouver, B.C. V6B 1N2

Murray Jones, P. Geo.
904 - 1055 Dunsmuir St.
Vancouver, B.C. V7X 1C4

Kathi Hoffman, Geologist
711 - 675 W. Hastings St.
Vancouver, B.C. V6B 1N4

Mike Stammers, P. Geo.
711 - 675 W. Hastings St.
Vancouver, B.C. V6B 1N4

Dan Corpe, Sampler
General Delivery
Carmacks, Yukon Y0B 1C0

Kris Carruthers, Sampler
5126 5th Ave.
Whitehorse, Yukon Y1A 1L6

APPENDIX C
STATEMENT OF EXPENDITURES

**STATEMENT OF EXPENDITURES
DRAKE 1-8 CLAIM GROUP, TET PROJECT**

CANADA -- In the matter of geological and geochemical assessment work filed on the Drake Claim Group, Tet Project

I, Michael A. Stammers agent for Westmin Resources Limited, 904, 1055 Dunsmuir Street, Vancouver, B.C. do solemnly declare that a program consisting of geological mapping and geochemical survey work was carried out on the Drake 1-8 Claim Group during the period June 2 to 4, 1995.

The following expenses were incurred during the course of this work and in the compilation and reporting of the results:

PROFESSIONAL FEES AND WAGES

Dave Caulfield, P. Geo. 4.5 days@ \$400/day	\$1,800.00	
Murray Jones, P. Geo 3 days @ \$400/day	1,200.00	
Kathi Hoffman, Geo. 3 days @ \$325/day	975.00	
Mike Stammers, P. Geo 1.5 days @ \$400/day	600.00	
Dan Corpe, Sampler .5 day @ \$250/day	125.00	
Kris Carruthers, Sampler 1 day @ \$225/day	225.00	
Prorated Wages	<u>890.22</u>	\$5,815.22

EXPENSES

Ground Geophysics	0.00
Field Supplies - Geology	3.37
Field Supplies - Guaiacum	18.11
Field Supplies - Drilling	0.00
Field Supplies - Other/Camp	34.66
Auto Expense	0.28
Photocopies	0.64
Maps	0.93
Reproductions	100.00
Report Materials	2.27
Repairs & Maintenance	0.27
Analyses	940.00

STATEMENT OF EXPENDITURES


Drill - Time Charges	0.00	
Footage Charges	0.00	
Materials	0.00	
Travel - Hotel	17.81	
Travel - Meals	6.22	
Travel - Airfare	82.16	
Travel - Auto	3.79	
Travel - Misc.	25.18	
Helicopter	2,461.84	
Fixed Wing	424.77	
Camp - Expendibles	40.32	
Camp - Equipment	4.33	
Camp - Building Materials	35.08	
Camp - Good	216.22	
Camp - Fuels	22.44	
Camp - Safety Supplies	3.04	
Drafting	1,240.44	
Expediting	40.77	
Drum Deposit	6.30	
Miscellaneous Expenses	0.95	
Rentals - Survey Equipment	39.13	
Rentals - Rock Saw	6.22	
Rentals - Chain Saw	2.05	
Rentals - Base Radio	5.58	
Rentals - Hand Held Radio	30.54	
Rentals - Truck	18.62	
Rentals - ATV	27.71	
Rentals - Office	22.50	
Rentals - Generator	58.75	
Rentals - Xerox	11.25	
Rentals - Camp	302.23	
Courier & Postage	2.73	
Freight - Air	18.50	
Freight - Truck	33.54	
Freight - Courier	4.65	
Freight - Miscellaneous	1.63	
Recording Fees	0.00	
Licenses	4.15	
Telephone - Long Distance	25.90	
Telephone - Space Tel	220.16	
Management Fees	338.22	
Office Supplies	15.10	<u>\$6,921.35</u>
TOTAL		\$12,736.57

Notes:

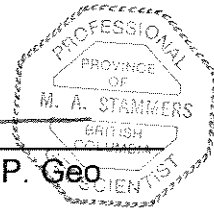
1. Wages are based on actual man days spent on the property.
2. Helicopter charges are based on actual hours flown.
3. Assay charges are based on actual numbers of samples from the property.
4. General expenses (all other costs) are prorated according to man days allocated to each property.

And I make this solemn declaration conscientiously believing it to be true and knowing that it is of the same force and effect as if made under oath and by virtue of the Canada Evidence Act.

Dated at Vancouver in the Province of British Columbia this 5 day of December, 1995.



Michael A. Stammers, P. Geo.



APPENDIX D
ROCK DESCRIPTION FORMS

Property : DRAKE (XT)

NTS :

Date : November 17, 1995

Sample No.	UTM :	7217493 N	Type :	Chip	Alteration :	mQZ, w-mSI	Au	Cu	Co	Ag	Mo	La
		523764 E	Strike Length Exp. :	m	Metallics :	tr-1%CP	(ppb)	(ppm)	(ppm)	(ppm)	(ppm)	(ppm)
1801	Elevation:	1390 m	Sample Width :	2.5 m	Secondaries:	mHE, mJA, wMC	15	983	18	<0.2	<1	100
	Veining :	030 / 32 E	True Width :	2.5 m	Host :	Phyllite (PEL)						

Comments : Chalcopyrite and quartz veins up to 10cm wide in well fractured, variably silica altered phyllite with greenish tinge. Vein follows or slightly crosscuts foliation.

Sample No.	UTM :	7217506 N	Type :	Chip	Alteration :	mQZ, w-mSI	Au	Cu	Co	Ag	Mo	La
		523756 E	Strike Length Exp. :	m	Metallics :	trCP, trCO	(ppb)	(ppm)	(ppm)	(ppm)	(ppm)	(ppm)
1802	Elevation:	1410 m	Sample Width :	1.3 m	Secondaries:	wHE, wJA, wMC	75	163	6	<0.2	2	80
	Veining :	360 / 20 E	True Width :	1.3 m	Host :	Phyllite (PEL)						

Comments : Quartz vein is undulating and is approximately 40cm wide.

Sample No.	UTM :	7217790 N	Type :	Chip	Alteration :	sQZ, sCB	Au	Cu	Co	Ag	Mo	La
		523850 E	Strike Length Exp. :	m	Metallics :	1-2%MG, tr-1%PY	(ppb)	(ppm)	(ppm)	(ppm)	(ppm)	(ppm)
1803	Elevation:	1300 m	Sample Width :	5 m	Secondaries:	mGE, wHE	<5	19	75	<0.2	<1	<10
	Fault? :	015 / 80 E	True Width :	5 m	Host :	Phyllite						

Comments : Quartz-carbonate vein cross-cutting bedding (155/27 NE) in PFL phyllites and associated with faulting. Zone is at least 25m wide (true width).

Sample No.	UTM :	7218090 N	Type :	Float	Alteration :	sQZ, sCB	Au	Cu	Co	Ag	Mo	La
		523943 E	Strike Length Exp. :	m	Metallics :	trCP, tr-1%HS, trPY	(ppb)	(ppm)	(ppm)	(ppm)	(ppm)	(ppm)
1804	Elevation:	1200 m	Sample Width :	m	Secondaries:	wMC, wGE, wHE	25	1040	67	<0.2	6	60
	Orientation:	/	True Width :	m	Host :	Phyllite						

Comments : Quartz-carbonate zone with pyrite and chalcopyrite in PFL phyllites. Weathered face exposes cordierite? scapolite? crystals. Fracture- and vein-controlled mineralization.

Sample No.	UTM :	7218177 N	Type :	Chip	Alteration :	sCB, sSI	Au	Cu	Co	Ag	Mo	La
		523880 E	Strike Length Exp. :	m	Metallics :	None	(ppb)	(ppm)	(ppm)	(ppm)	(ppm)	(ppm)
1805	Elevation:	1200 m	Sample Width :	m	Secondaries:	None	<5	44	7	<0.2	1	10
	Orientation:	/	True Width :	m	Host :	Iron carbonate-altered chert (PFL)						

Comments : Outcrop is blocky and folded. Chert is medium-dark grey and massive.

Sample No.	UTM :	7218152 N	Type :	Chip	Alteration :	tr-wCB, mSI	Au	Cu	Co	Ag	Mo	La
		523796 E	Strike Length Exp. :	m	Metallics :	trCP, trPY	(ppb)	(ppm)	(ppm)	(ppm)	(ppm)	(ppm)
1806	Elevation:	1200 m	Sample Width :	1 m	Secondaries:	None	<5	37	9	<0.2	<1	80
	S1 :	335 / 28 E	True Width :	m	Host :	Green phyllite (PFL)						

Comments : Green phyllite has variable fissile and siliceous competent layers. Traces of silicification in more siliceous layers.

Property : DRAKE (XT)

NTS :

Date : November 17, 1995

Sample No.	UTM :	7218051 N	Type :	Chip	Alteration :	tr-wCB, wQZ, sSI	Au	Cu	Co	Ag	Mo	La
		523731 E	Strike Length Exp. :	m	Metallics :	tr-wCP, tr-1%PY	(ppb)	(ppm)	(ppm)	(ppm)	(ppm)	(ppm)
21807	Elevation:	1220 m	Sample Width :	2.8 m	Secondaries:	trGE, wHE, w-mMC	<5	738	80	<0.2	1	40
	Faulting :	215 / 78 W	True Width :	m	Host :	Green phyllite / chert (siliceous phyllite)						

Comments : Mineralization follows fracture surfaces and quartz-iron carbonate veinlets, which cross-cut S1 and fracture surfaces and sometimes parallel S1. Veinlets at 014/32E.

Sample No.	UTM :	7217490 N	Type :	Chip	Alteration :	mMS, mSI, mAK	Au	Cu	Co	Ag	Mo	La
		523740 E	Strike Length Exp. :	30 m	Metallics :	tr-1%CP, trPY	(ppb)	(ppm)	(ppm)	(ppm)	(ppm)	(ppm)
21851	Elevation:	1390 m	Sample Width :	2.8 m	Secondaries:	wAZ, wMC	15	2460	51	<0.2	1	150
	S1 :	171 / 28 E	True Width :	2.8 m	Host :	Phyllite						

Comments : Strongly fractured and mineralized phyllite marginal to carbonate-tered fault zone.

Sample No.	UTM :	7217490 N	Type :	Chip	Alteration :	sCB	Au	Cu	Co	Ag	Mo	La
		523740 E	Strike Length Exp. :	30 m	Metallics :	1-3%CP, tr-1%PY	(ppb)	(ppm)	(ppm)	(ppm)	(ppm)	(ppm)
21852	Elevation:	1390 m	Sample Width :	1.2 m	Secondaries:	None	135	4030	38	<0.2	<1	<10
	Vein/fault :	015 / 75 E	True Width :	1.2 m	Host :	Quartz-carbonate zone						

Comments : Quartz-carbonate rock; poddy quartz with chalcopyrite as blebs and in fractures.

Sample No.	UTM :	7217513 N	Type :	Chip	Alteration :	sQZ, sSI	Au	Cu	Co	Ag	Mo	La
		523745 E	Strike Length Exp. :	30 m	Metallics :	trHS, trPY	(ppb)	(ppm)	(ppm)	(ppm)	(ppm)	(ppm)
21853	Elevation:	1395 m	Sample Width :	1.8 m	Secondaries:	sGE, mHE	40	1195	26	<0.2	4	80
	Orientation:	/	True Width :	? m	Host :	Quartz vein / silicified zone						

Comments : Sulphides weathered out of accessible rock surface - test remaining metals in rock - Au (?).

Sample No.	UTM :	7218454 N	Type :	Chip	Alteration :	wSI	Au	Cu	Co	Ag	Mo	La
		524063 E	Strike Length Exp. :	m	Metallics :	trMG, trPY	(ppb)	(ppm)	(ppm)	(ppm)	(ppm)	(ppm)
21854	Elevation:	1000 m	Sample Width :	m	Secondaries:	None	5	140	66	<0.2	3	20
	Orientation:	/	True Width :	m	Host :	Locally brecciated, cherty hornfelsed sediments (PFL)						

Comments : Concealed float from upslope; locally talus is very homogeneous. No outcrop nearby.

Sample No.	UTM :	7218486 N	Type :	Float	Alteration :	wCB, wSI	Au	Cu	Co	Ag	Mo	La
		523958 E	Strike Length Exp. :	m	Metallics :	tr-1%HS, tr-1%PY	(ppb)	(ppm)	(ppm)	(ppm)	(ppm)	(ppm)
21855	Elevation:	1000 m	Sample Width :	m	Secondaries:	None	<5	70	79	<0.2	2	40
	Orientation:	/	True Width :	m	Host :	Brecciated cherty hornfels						

Comments : Pyrite-specular hematite in fractures with iron carbonate-ankerite (?). Siliceous brecciated hornfels; similar to host rocks at West zone.

Property : DRAKE (XT)

NTS :

Date : November 17, 1995

Sample No.	UTM :	7218477 N	Type :	Float	Alteration :	mCB, sSI	Au	Cu	Co	Ag	Mo	La
		523899 E	Strike Length Exp. :	m	Metallics :	1-3%PY	(ppb)	(ppm)	(ppm)	(ppm)	(ppm)	(ppm)
21856	Elevation:	1000 m	Sample Width :	m	Secondaries:	None	<5	44	167	<0.2	11	100
	Orientation:	/	True Width :	m	Host :	Iron carbonate-altered brecciated silicified hornfels						

Comments : Concentrated, local talus; homogeneous brecciated hornfels; West zone.

Sample No.	UTM :	7218481 N	Type :	Chip	Alteration :	None	Au	Cu	Co	Ag	Mo	La
		523854 E	Strike Length Exp. :	10 m	Metallics :	None	(ppb)	(ppm)	(ppm)	(ppm)	(ppm)	(ppm)
21857	Elevation:	1005 m	Sample Width :	2 m	Secondaries:	None	<5	59	26	<0.2	1	30
	Orientation:	/	True Width :	2 m	Host :	Foliated diorite						

Comments : Apparently unmineralized; minor quartz veins.

Sample No.	UTM :	7218478 N	Type :	Chip	Alteration :	wCA, mCL	Au	Cu	Co	Ag	Mo	La
		523739 E	Strike Length Exp. :	5 m	Metallics :	1%HS	(ppb)	(ppm)	(ppm)	(ppm)	(ppm)	(ppm)
21858	Elevation:	1000 m	Sample Width :	2 m	Secondaries:	None	<5	60	32	<0.2	129	40
	Orientation:	/	True Width :	2 m	Host :	Diorite						

Comments :

Sample No.	UTM :	7218367 N	Type :	Float	Alteration :	wCA, mCL	Au	Cu	Co	Ag	Mo	La
		523572 E	Strike Length Exp. :	m	Metallics :	1%HS	(ppb)	(ppm)	(ppm)	(ppm)	(ppm)	(ppm)
21859	Elevation:	1000 m	Sample Width :	m	Secondaries:	None	<5	10	41	<0.2	<1	20
	Orientation:	/	True Width :	m	Host :	Diorite						

Comments : Localized float at brow of hill.

Sample No.	UTM :	7218169 N	Type :	Chip	Alteration :	wCL	Au	Cu	Co	Ag	Mo	La
		523481 E	Strike Length Exp. :	2 m	Metallics :	?MG	(ppb)	(ppm)	(ppm)	(ppm)	(ppm)	(ppm)
21860	Elevation:	1000 m	Sample Width :	1 m	Secondaries:	None	<5	32	35	<0.2	<1	10
	Orientation:	/	True Width :	? m	Host :	Feldspar-phyric mafic intrusion						

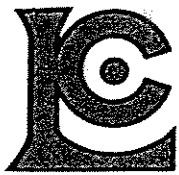
Comments : Strongly magnetic rock.

Sample No.	UTM :	7218161 N	Type :	Float	Alteration :	wCL	Au	Cu	Co	Ag	Mo	La
		523296 E	Strike Length Exp. :	m	Metallics :	trMG	(ppb)	(ppm)	(ppm)	(ppm)	(ppm)	(ppm)
21861	Elevation:	1000 m	Sample Width :	m	Secondaries:	None	<5	7	27	<0.2	<1	30
	Orientation:	/	True Width :	m	Host :	Weakly brecciated diorite						

Comments : Local talus.

APPENDIX E

ANALYTICAL PROCEDURES AND CERTIFICATES OF ANALYSIS



Chemex Labs Ltd.

Analytical Chemists

Geochemists

Registered Assayers

212 Brooksbank Ave.
North Vancouver, B.C.
Canada V7J 2C1

Phone: (604) 984-0221
Telex: 043-52597

CHEMEX LABS LTD ANALYTICAL PROCEDURES

1. TRACE ANALYSIS

Gold

Fire Assay Collection/ Atomic Absorption Spectroscopy (FA-AA)

Chemex Code: 983

A 30g sample is fused with a neutral lead oxide flux inquarted with 6mg of gold-free silver and then cupelled to yield a precious metal bead.

These beads are digested for 30 mins in 0.5ml concentrated nitric acid, then 1.5ml of concentrated hydrochloric acid are added and the mixture is digested for 1 hr. The samples are cooled, diluted to a final volume of 5ml, homogenized and analyzed by atomic absorption spectroscopy.

Detection limit: 5 ppb

Upper Limit: 10,000 ppb

Arsenic ppm - Chemex Code 13

A 1.0 gram sample is digested with HNO_3 - aqua regia acids for approximately 2 hours. The digested solution is diluted to volume and mixed. An aliquot of the digest is acidified and reduced with NaBH_4 and arsenic content determined using flameless atomic absorption.

Detection limit: 1 ppm



Chemex Labs Ltd.

Analytical Chemists

Geochemists

Registered Assayers

212 Brooksbank Ave.
North Vancouver, B.C.
Canada V7J 2C1

Phone: (604) 984-0221

Telex: 04-352597

Fax: (604) 984-0218

24-Element Geochemistry Package (24-ICP)

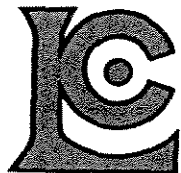
Inductively-Coupled Plasma Atomic Emission Spectroscopy (ICP-AES)

The 24 element rock geochemistry package provides quantitative analysis of all major elements (except silicon) as well as most important trace elements.

A prepared sample (0.50g) is digested with perchloric, nitric and hydrofluoric acids to dryness. The residue is taken up in a volume of 25ml of 10% hydrochloric acid and the resulting solution is analyzed by inductively-coupled plasma atomic emission spectroscopy. Results are corrected for spectral interelement interferences.

For this project only uranium and lanthanum were also analyzed.

Chemex Code	Element	Detection Limit	Upper Limit
573	Aluminum	0.01 %	15 %
565	Barium	10 ppm	1 %
575	Beryllium	0.5 ppm	0.01 %
561	Bismuth	2 ppm	1 %
576	Calcium	0.01 %	25 %
562	Cadmium	0.5 ppm	0.05 %
569	Chromium	1 ppm	1 %
563	Cobalt	1 ppm	1 %
577	Copper	1 ppm	1 %
566	Iron	0.01 %	15 %
560	Lead	2 ppm	1 %
570	Magnesium	0.01 %	15 %
568	Manganese	5 ppm	1 %
554	Molybdenum	1 ppm	1 %
564	Nickel	1 ppm	1 %
559	Phosphorus	10 ppm	1 %
584	Potassium	0.01 %	10 %
578	Silver	0.5 ppm	0.02 %
583	Sodium	0.01 %	10 %
582	Strontium	1 ppm	1 %
579	Titanium	0.01 %	10 %
556	Tungsten	10 ppm	1 %
572	Vanadium	1 ppm	1 %
558	Zinc	2 ppm	1 %
	Uranium	10 ppm	1 %
	Lanthanum	10 ppm	1 %



Chemex Labs Ltd.

Analytical Chemists

Geochemists

Registered Assayers

212 Brooksbank Ave.
North Vancouver, B.C.
Canada V7J 2C1

Phone: (604) 984-0221
Telex: 043-52597

PREPARATION METHODS

201 - DRY, SIEVE TO -80 MESH

a) Geochemical soil/silt samples are usually received in High/wet-strength 4x6 soil gusset bags. Sample sets are ordered, and dried for 12 to 24 hours at 50 deg. C.

b) The dried sample is hammered, to desegregate the soil particles, and then poured from the gusset bag into an 8 inch dia. 80 mesh stainless steel screen.

c) The sieve is shaken horizontally over a large clean piece of paper, where the -80 mesh fraction accumulates. When all the -80 fraction has passed through the sieve the +80 portion is discarded.

d) The -80 fraction is poured into a 2x3 coin envelope, which contains the exact same number as the submitted sample, for distribution to the analytical lab.

202 - DRY, SIEVE TO -80 MESH, SAVE +80 FRACTION

a) and b) see sections a) and b) of 201 c) The sieve is shaken horizontally over a large clean piece of paper, where the -80 mesh fraction accumulates. When all the -80 fraction has passed through the sieve the +80 portion is poured into a new 4x6 gusset bag (which contains the same number as the submitted sample), boxed, and filed. d) The -80 fraction is poured into a 2x3 coin envelope, which contains the exact same number as the submitted sample, for distribution to the analytical lab.

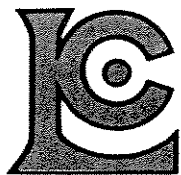
203 - DRY, SIEVE TO -35 MESH

a) Geochemical soil/silt samples are usually received in High/wet-strength 4x6 soil gusset bags. Sample sets are ordered, and dried for 12 to 24 hours at 50 deg. C.

b) The dried sample is hammered, to desegregate the soil particles, and then poured from the gusset bag into an 8 inch dia. 35 mesh stainless steel screen.

c) The sieve is shaken horizontally over a large clean piece of paper, where the -35 mesh fraction accumulates. When all the -35 fraction has passed through the sieve the +35 portion is discarded.

d) The -35 fraction is put into a ring grinder and rung to approximately 150 mesh. The pulp is put into a 2x3 coin envelope (same sample numbered envelope) for distribution to the analytical lab.



Chemex Labs Ltd.

Analytical Chemists

Geochemists

Registered Assayers

212 Brooksbank Ave.
North Vancouver, B.C.
Canada V7J 2C1

Phone: (604) 984-0221
Telex: 043-52597

PREPARATION METHODS - ROCK/ORE

205 - GEOCHEM RING

a) Samples arrive in poly or olefin rock bags. Samples are ordered prior to crushing.

b) The sample is poured into a primary jaw, and crushed to approximately 1/4 inch. This is secondary crushed in a roll crusher to approximately 10 mesh.

c) The crushed sample is then split using a Jones Riffle splitter to approximately 200 to 250 grams. The reject is poured into the original bag for storage, or return to client.

d) The sample split is put into a Rocklabs (large ring) ring mill, and rung to approximately 150 mesh. The pulped sample is poured into a 4x6 tin-top bag, (which has been labeled with the original number), for distribution to the analytical lab.

217 - GEOCHEM RING - ENTIRE SAMPLE (Used for samples 200 grams or less)

a) The entire sample is put into a Rocklabs (large ring) ring mill, and rung to approximately 150 mesh. The pulped sample is poured into a 4x6 tin-top bag (correctly labeled), for distribution to the analytical lab.

208 - ASSAY RING

a) Samples arrive in poly or olefin rock bags. Samples are ordered prior to crushing.

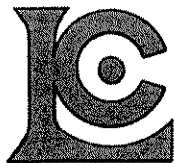
b) The sample is poured into a primary jaw, and crushed to approximately 1/4 inch. This is secondary crushed in a roll or cone crusher to approximately 10 mesh.

c) The crushed sample is then split using a Jones Riffle splitter to approximately 200 to 250 grams. The reject is poured into the original bag for storage, or return to client.

d) The sample split is put into a Rocklabs (large ring) ring mill, and rung to approximately 150 mesh. The pulped sample is poured into a 4x6 tin-top bag, (which has been labeled with the original number), sealed prior to being distributed to the analytical lab.

207 - ASSAY ROTARY PULVERIZE

a) and b) - see sections a) and b) under 208 c) The crushed sample is then split using a Jones Riffle splitter to approximately 250 to 350 grams. The reject is poured into the original bag for storage, or return to client. d) The sample split is ground in a Bico rotary pulverizer and screened to 140 mesh. The +140 material is visually inspected for metallics. e) If NO metallics are found, then the +140 fraction is hand ground to -140. The entire sample is then homogenized (by rolling). f) IF metallics are found, they are put into a separate coin envelope, kept with the original sample, and fused separately. The entire -140 fraction is homogenized.



Chemex Labs Ltd.

Analytical Chemists * Geochemists * Registered Assayers

212 Brooksbank Ave., North Vancouver
British Columbia, Canada V7J 2C1
PHONE: 604-984-0221 FAX: 604-984-0218

To: P.E. FAIRCHILD JOINT VENTURE **

207 - 675 W. HASTINGS ST.
VANCOUVER, BC
V6B 1N2

Project: FAIRCHILD-XT
Comments: ATTN: MIKE STAMMERS (PAMICON)

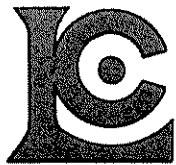
Page Number :1-A
Total Pages :1
Certificate Date: 02-MAY-95
Invoice No. :19516050
P.O. Number :
Account :PEF

CERTIFICATE OF ANALYSIS A9516050

SAMPLE	PREP CODE	Au ppb FA+AA	Ag ppm AAS	Al % (ICP)	Ba ppm (ICP)	Be ppm (ICP)	Bi ppm (ICP)	Ca % (ICP)	Cd ppm (ICP)	Co ppm (ICP)	Cr ppm (ICP)	Cu ppm (ICP)	Fe % (ICP)	K % (ICP)	Mg % (ICP)
40510 64617	225 285	65	< 0.2	8.50	800	3.5	< 2	0.24	< 0.5	74	75	8380	1.71	3.68	0.68
40510 64618	225 285	25	< 0.2	8.28	230	1.5	2	0.58	< 0.5	120	86	66	3.00	0.49	0.28
40510 64619	225 285	10	< 0.2	6.66	680	3.0	2	0.12	< 0.5	53	76	1905	1.91	3.05	0.67
40510 64620	225 285	15	< 0.2	0.39	40	< 0.5	2	0.01	< 0.5	33	58	993	5.85	0.15	0.03
32674&4051064680	-- --	miss.	miss.	miss.	miss.	miss.	miss.	miss.	miss.	miss.	miss.	miss.	miss.	miss.	miss.
32674&4051064681	-- --	miss.	miss.	miss.	miss.	miss.	miss.	miss.	miss.	miss.	miss.	miss.	miss.	miss.	miss.
32674&4051064682	-- --	miss.	miss.	miss.	miss.	miss.	miss.	miss.	miss.	miss.	miss.	miss.	miss.	miss.	miss.
32674&4051064683	-- --	miss.	miss.	miss.	miss.	miss.	miss.	miss.	miss.	miss.	miss.	miss.	miss.	miss.	miss.
32674&4051064684	-- --	miss.	miss.	miss.	miss.	miss.	miss.	miss.	miss.	miss.	miss.	miss.	miss.	miss.	miss.
32674&4051064685	-- --	miss.	miss.	miss.	miss.	miss.	miss.	miss.	miss.	miss.	miss.	miss.	miss.	miss.	miss.
32674&4051064686	-- --	miss.	miss.	miss.	miss.	miss.	miss.	miss.	miss.	miss.	miss.	miss.	miss.	miss.	miss.
32674&4051064687	-- --	miss.	miss.	miss.	miss.	miss.	miss.	miss.	miss.	miss.	miss.	miss.	miss.	miss.	miss.
32674&4051064688	-- --	miss.	miss.	miss.	miss.	miss.	miss.	miss.	miss.	miss.	miss.	miss.	miss.	miss.	miss.
32674&4051064689	-- --	miss.	miss.	miss.	miss.	miss.	miss.	miss.	miss.	miss.	miss.	miss.	miss.	miss.	miss.
32674&4051064690	-- --	miss.	miss.	miss.	miss.	miss.	miss.	miss.	miss.	miss.	miss.	miss.	miss.	miss.	miss.
32674 64609	225 285	5	< 0.2	0.08	740	< 0.5	< 2	0.90	< 0.5	17	22	18	>25.0	< 0.01	0.08
32674 64610	225 285	10	< 0.2	6.12	2060	0.5	2	0.25	< 0.5	20	72	1275	11.00	3.00	0.78
32674 64607	225 285	< 5	< 0.2	10.20	820	1.5	8	0.26	< 0.5	13	73	88	4.71	2.57	2.10
32674 64608	225 285	< 5	< 0.2	10.10	870	2.0	6	0.26	< 0.5	11	80	245	3.60	2.74	0.93
32674 64678	225 285	15	3.4	1.83	80	< 0.5	8	0.16	< 0.5	85	20	4940	>25.0	0.71	2.85
32674 64611	225 285	< 5	< 0.2	9.05	980	3.0	6	0.58	< 0.5	12	75	2710	3.95	3.20	0.87
32674 64612	225 285	< 5	< 0.2	9.78	1060	3.0	12	0.29	< 0.5	10	64	67	3.17	3.45	0.96
32674 64613	225 285	< 5	< 0.2	10.40	1250	3.0	10	0.10	< 0.5	9	66	68	2.90	3.91	0.85
32674 64614	225 285	< 5	< 0.2	9.59	1130	3.0	8	0.12	< 0.5	11	66	54	3.28	3.33	1.01
32674 64615	225 285	< 5	< 0.2	10.45	1150	3.0	8	0.13	< 0.5	9	65	1100	2.32	3.46	0.90
32674 64616	225 285	< 5	< 0.2	9.33	1020	2.5	8	0.21	< 0.5	12	68	673	2.73	3.13	0.95
32674 64651	225 285	10	< 0.2	8.42	1390	3.0	6	0.62	< 0.5	26	71	990	7.14	4.00	0.49
32674 64652	225 285	15	< 0.2	8.35	2900	2.5	4	1.91	< 0.5	11	62	689	2.32	3.69	0.53
40510 64653	225 285	< 5	< 0.2	9.34	1080	2.5	6	0.17	< 0.5	4	88	15	2.00	3.33	0.58
40510 64654	225 285	< 5	< 0.2	9.77	1090	3.0	6	0.20	< 0.5	11	70	10	4.00	2.83	0.79
40425 64622	225 285	< 5	< 0.2	1.26	150	< 0.5	2	5.41	< 0.5	42	44	153	23.7	0.22	1.92
40425 64623	225 285	< 5	< 0.2	3.22	530	< 0.5	< 2	4.46	< 0.5	38	53	1365	14.50	1.01	1.48
40425 64624	225 285	25	< 0.2	1.26	180	< 0.5	4	4.24	< 0.5	40	60	3080	23.7	0.32	1.61
40425 64625	225 285	< 5	< 0.2	1.35	100	< 0.5	< 2	2.63	< 0.5	44	67	806	>25.0	0.17	0.85
40425 64695	225 285	10	< 0.2	0.79	360	< 0.5	< 2	7.10	< 0.5	37	65	4530	22.5	0.02	2.79
40425 64696	225 285	< 5	< 0.2	0.98	80	< 0.5	< 2	5.37	< 0.5	87	51	1920	>25.0	0.09	2.07
32674 64693	225 285	10	< 0.2	2.66	40	< 0.5	< 2	10.50	< 0.5	9	48	1470	3.09	0.36	5.68
32674 64694	225 285	35	< 0.2	7.42	20	1.0	8	5.69	< 0.5	31	26	3560	5.03	0.08	1.94
32674 64691	225 285	155	< 0.2	7.73	100	0.5	12	0.41	< 0.5	4	87	20	3.34	0.34	0.40
32674 64692	225 285	120	< 0.2	7.87	70	< 0.5	8	0.45	< 0.5	6	96	31	4.34	0.13	0.14

CERTIFICATION:

Hart Becker



Chemex Labs Ltd.

Analytical Chemists * Geochemists * Registered Assayers

212 Brooksbank Ave., North Vancouver
British Columbia, Canada V7J 2C1
PHONE: 604-984-0221 FAX: 604-984-0218

To: P.E. FAIRCHILD JOINT VENTURE **

207 - 675 W. HASTINGS ST.
VANCOUVER, BC
V6B 1N2

Project: FAIRCHILD-XT
Comments: ATTN: MIKE STAMMERS (PAMICON)

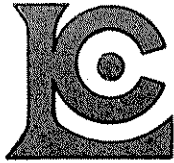
Page Number :1-B
Total Pages :1
Certificate Date: 02-MAY-95
Invoice No. : I9516050
P.O. Number :
Account : PEF

CERTIFICATE OF ANALYSIS A9516050

SAMPLE	PREP CODE	Mn ppm (ICP)	Mo ppm (ICP)	Na % (ICP)	Ni ppm (ICP)	P ppm (ICP)	Pb ppm AAS	Sr ppm (ICP)	Ti % (ICP)	V ppm (ICP)	W ppm (ICP)	Zn ppm (ICP)	As ppm		
40510 64617	225 285	425	2	0.89	19	270	< 2	18	0.25	84	10	10	60		
40510 64618	225 285	400	28	6.16	16	660	120	98	0.18	33	< 10	14	36		
40510 64619	225 285	310	< 1	0.21	20	230	2	7	0.17	61	< 10	8	46		
40510 64620	225 285	200	5	0.02	22	70	< 2	2	< 0.01	7	< 10	14	146		
32674&4051064680	-- --	miss.	miss.	miss.	miss.	miss.	miss.	miss.	miss.	miss.	miss.	miss.	miss.		
32674&4051064681	-- --	miss.	miss.	miss.	miss.	miss.	miss.	miss.	miss.	miss.	miss.	miss.	miss.		
32674&4051064682	-- --	miss.	miss.	miss.	miss.	miss.	miss.	miss.	miss.	miss.	miss.	miss.	miss.		
32674&4051064683	-- --	miss.	miss.	miss.	miss.	miss.	miss.	miss.	miss.	miss.	miss.	miss.	miss.		
32674&4051064684	-- --	miss.	miss.	miss.	miss.	miss.	miss.	miss.	miss.	miss.	miss.	miss.	miss.		
32674&4051064685	-- --	miss.	miss.	miss.	miss.	miss.	miss.	miss.	miss.	miss.	miss.	miss.	miss.		
32674&4051064686	-- --	miss.	miss.	miss.	miss.	miss.	miss.	miss.	miss.	miss.	miss.	miss.	miss.		
32674&4051064687	-- --	miss.	miss.	miss.	miss.	miss.	miss.	miss.	miss.	miss.	miss.	miss.	miss.		
32674&4051064688	-- --	miss.	miss.	miss.	miss.	miss.	miss.	miss.	miss.	miss.	miss.	miss.	miss.		
32674&4051064689	-- --	miss.	miss.	miss.	miss.	miss.	miss.	miss.	miss.	miss.	miss.	miss.	miss.		
32674&4051064690	-- --	miss.	miss.	miss.	miss.	miss.	miss.	miss.	miss.	miss.	miss.	miss.	miss.		
32674 64609	225 285	360	36	0.21	96	4040	< 2	69	< 0.01	52	Intf*	38	2		
32674 64610	225 285	225	25	0.21	24	1070	< 2	12	0.15	62	30	18	1		
32674 64607	225 285	1810	1	0.67	44	490	28	87	0.16	88	< 10	130	1		
32674 64608	225 285	1265	8	0.82	31	560	8	114	0.23	85	< 10	70	2		
32674 64678	225 285	>10000	< 1	0.19	82	110	60	9	0.02	17	30	172	1		
32674 64611	225 285	340	2	1.31	33	620	< 2	58	0.11	62	10	14	1		
32674 64612	225 285	235	< 1	0.91	33	470	< 2	82	0.15	69	< 10	16	2		
32674 64613	225 285	160	1	0.97	27	430	4	89	0.14	73	< 10	14	1		
32674 64614	225 285	180	1	0.99	35	440	8	83	0.14	70	< 10	22	< 1		
32674 64615	225 285	160	2	1.69	36	440	< 2	80	0.17	76	< 10	12	1		
32674 64616	225 285	265	< 1	1.30	37	380	< 2	75	0.14	66	< 10	14	< 1		
32674 64651	225 285	245	7	0.35	40	2640	< 2	32	0.13	86	10	12	1		
32674 64652	225 285	355	10	0.31	11	7690	< 2	45	0.14	85	20	8	1		
40510 64653	225 285	160	2	1.73	16	380	2	37	0.18	74	< 10	12	1		
40510 64654	225 285	410	< 1	1.02	31	480	< 2	176	0.23	74	< 10	20	2		
40425 64622	225 285	3360	< 1	0.30	68	5080	< 2	39	< 0.01	22	< 10	28	1		
40425 64623	225 285	2450	< 1	0.83	39	5710	< 2	38	0.03	22	< 10	20	1		
40425 64624	225 285	2710	< 1	0.39	65	2380	< 2	30	0.01	24	< 10	26	1		
40425 64625	225 285	2010	3	0.64	41	2580	< 2	23	0.01	35	< 10	32	1		
40425 64695	225 285	3200	1	0.08	85	3180	< 2	55	0.04	22	< 10	32	< 1		
40425 64696	225 285	2650	< 1	0.45	106	2620	< 2	39	< 0.01	25	< 10	32	2		
32674 64693	225 285	4000	18	1.69	10	310	< 2	43	0.04	25	10	14	1		
32674 64694	225 285	360	< 1	4.80	47	2700	< 2	47	1.13	222	10	18	1		
32674 64691	225 285	220	< 1	5.81	8	610	100	49	0.23	69	< 10	16	< 1		
32674 64692	225 285	225	2	6.35	9	1050	104	57	0.21	77	< 10	12	1		

CERTIFICATION:

Hart Bichler



Chemex Labs Ltd.

Analytical Chemists * Geochemists * Registered Assayers
 212 Brooksbank Ave., North Vancouver
 British Columbia, Canada V7J 2C1
 PHONE: 604-984-0221 FAX: 604-984-0218

To: P.E. FAIRCHILD JOINT VENTURE **

207 - 675 W. HASTINGS ST.
 VANCOUVER, BC
 V6B 1N2

Project : FAIRCHILD-XT
 Comments: ATTN: MIKE STAMMERS

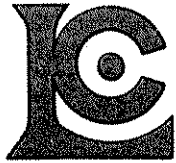
Page Number : 1-A
 Total Pages : 1
 Certificate Date: 14-JUN-95
 Invoice No. : 19519140
 P.O. Number :
 Account : PEF

CERTIFICATE OF ANALYSIS A9519140

SAMPLE	PREP CODE	Au ppb FA+AA	Ag ppm AAS	Al % (ICP)	Ba ppm (ICP)	Be ppm (ICP)	Bi ppm (ICP)	Ca % (ICP)	Cd ppm (ICP)	Co ppm (ICP)	Cr ppm (ICP)	Cu ppm (ICP)	Fe % (ICP)	K % (ICP)	Mg % (ICP)
21801	205 226	15	< 0.2	9.86	1050	4.5	8	0.14	< 0.5	18	126	983	0.94	4.59	0.66
21802	205 226	75	< 0.2	7.06	700	3.0	4	0.06	< 0.5	6	214	163	0.82	3.14	0.44
21803	205 226	< 5	< 0.2	0.53	60	< 0.5	< 2	8.37	< 0.5	75	117	19	9.49	0.23	6.13
21804	205 226	25	< 0.2	1.54	180	0.5	4	0.67	< 0.5	67	291	1040	3.59	0.65	0.61
21805	205 226	< 5	< 0.2	0.40	30	< 0.5	8	3.52	< 0.5	7	284	44	1.33	0.20	1.63
21806	205 226	< 5	< 0.2	6.23	520	2.0	2	0.61	< 0.5	9	144	37	0.84	3.11	0.47
21807	205 226	< 5	< 0.2	6.65	630	2.5	4	1.87	< 0.5	80	111	738	2.08	3.55	1.22
21851	205 226	15	< 0.2	6.56	430	2.0	8	1.29	< 0.5	51	232	2460	2.16	2.66	1.15
21852	205 226	135	< 0.2	0.68	60	< 0.5	2	7.40	1.0	38	92	4030	14.55	0.25	6.43
21853	205 226	40	< 0.2	1.31	110	< 0.5	2	0.08	< 0.5	26	350	1195	3.88	0.61	0.14
21854	205 226	5	< 0.2	1.93	70	< 0.5	4	0.66	< 0.5	66	335	140	1.84	0.34	0.59
21855	205 226	< 5	< 0.2	3.23	40	0.5	2	0.54	< 0.5	79	339	70	1.75	0.18	0.26
21856	205 226	< 5	< 0.2	4.72	60	0.5	2	2.46	< 0.5	167	245	44	4.02	0.25	1.12
21857	205 226	< 5	< 0.2	6.98	160	1.5	< 2	0.46	< 0.5	26	195	59	5.45	1.20	5.79
21858	205 226	< 5	< 0.2	7.14	50	0.5	< 2	3.25	0.5	32	99	60	7.60	0.28	4.92
21859	205 226	< 5	< 0.2	7.66	80	0.5	< 2	0.82	< 0.5	41	262	10	6.92	1.60	6.76
21860	205 226	< 5	< 0.2	6.63	160	0.5	< 2	4.00	0.5	35	55	32	9.37	0.73	2.91
21861	205 226	< 5	< 0.2	6.38	100	1.0	< 2	2.68	0.5	27	162	7	4.54	0.93	4.07

CERTIFICATION:

Hart Buchler



Chemex Labs Ltd.

Analytical Chemists * Geochemists * Registered Assayers
 212 Brooksbank Ave., North Vancouver
 British Columbia, Canada V7J 2C1
 PHONE: 604-984-0221 FAX: 604-984-0218

To: P.E. FAIRCHILD JOINT VENTURE **

207 - 675 W. HASTINGS ST.
 VANCOUVER, BC
 V6B 1N2

Project : FAIRCHILD-XT
 Comments: ATTN: MIKE STAMMERS

Page Number : 1-B
 Total Pages : 1
 Certificate Date: 14-JUN-95
 Invoice No. : I9519140
 P.O. Number :
 Account : PEF

CERTIFICATE OF ANALYSIS

A9519140

SAMPLE	PREP CODE	Mn ppm (ICP)	Mo ppm (ICP)	Na % (ICP)	Ni ppm (ICP)	P ppm (ICP)	Pb ppm AAS	Sr ppm (ICP)	Ti % (ICP)	V ppm (ICP)	W ppm (ICP)	Zn ppm (ICP)	La ppm ICP		
21801	205 226	85	< 1	0.79	8	350	8	16	0.26	92	< 10	6	100		
21802	205 226	35	2	0.78	6	270	10	15	0.15	66	< 10	2	80		
21803	205 226	6140	< 1	0.09	15	80	< 2	60	< 0.01	21	< 10	6	< 10		
21804	205 226	1335	6	0.36	16	190	4	12	0.03	17	< 10	8	60		
21805	205 226	2100	1	0.06	5	100	4	15	< 0.01	9	< 10	8	10		
21806	205 226	440	< 1	0.36	10	1040	4	10	0.22	54	< 10	4	80		
21807	205 226	1450	1	0.29	32	650	2	21	0.22	60	< 10	18	40		
21851	205 226	1055	1	1.52	17	350	4	29	0.12	51	< 10	6	150		
21852	205 226	7600	< 1	0.07	20	90	< 2	57	0.01	36	< 10	14	< 10		
21853	205 226	190	4	0.19	17	250	4	6	0.01	17	< 10	2	80		
21854	205 226	545	3	1.01	16	110	52	12	0.04	13	< 10	18	20		
21855	205 226	685	2	2.79	14	140	4	26	0.04	11	< 10	8	40		
21856	205 226	1530	11	3.86	21	1390	6	75	0.06	26	< 10	6	100		
21857	205 226	565	1	0.75	32	650	< 2	13	0.26	153	< 10	20	30		
21858	205 226	1120	129	3.09	64	310	< 2	20	0.64	294	< 10	20	40		
21859	205 226	450	< 1	1.68	98	580	< 2	35	0.61	219	< 10	20	20		
21860	205 226	730	< 1	3.28	39	490	< 2	114	0.97	403	< 10	20	10		
21861	205 226	575	< 1	3.46	69	500	< 2	36	0.66	257	< 10	12	30		

CERTIFICATION: Haut Becker

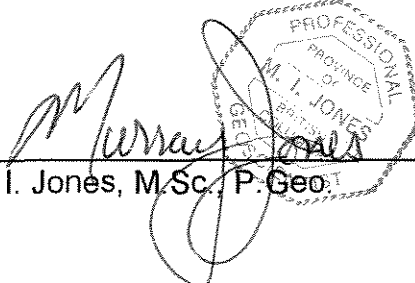
APPENDIX F
GEOLOGIST'S CERTIFICATE

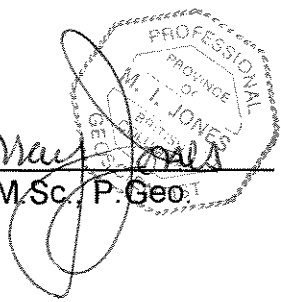
GEOLOGIST'S CERTIFICATE

I, Murray I. Jones, of 8606 - 144A Street, Surrey, in the Province of British Columbia, DO HEREBY CERTIFY:

1. THAT I am a Geologist, working for Westmin Resources Limited, with offices at Suite 904, 1055 Dunsmuir Street, Vancouver, British Columbia.
2. THAT I have practised in my profession with various mining companies in Yukon, British Columbia, Ontario and Quebec for 12 years.
3. THAT I am a graduate of University of British Columbia (1982) with a B.Sc. (Honours) in Geology, and the University of Ottawa (1992) with a M.Sc. in Geology.
4. THAT I am duly registered as a Professional Geoscientist in the Province of British Columbia (#20063).
5. THAT I am a Associate Member of the Geological Association of Canada.
6. THAT this report is based in part on property work I personally completed and/or supervised between June 2 and June 4, 1995 combined with four seasons experience in the Wernecke terrain.

DATED at Vancouver, British Columbia, this 5th day of December, 1995.


Murray I. Jones, M.Sc., P. Geo.



MAP NO: 106E/1,2

ASSESSMENT REPORT: X

DOCUMENT NO: 093377

PROSPECTUS:

MINING DISTRICT: Mayo

CONFIDENTIAL: X

TYPE OF WORK: Geology,
geochem

OPEN FILE:

REPORT FILED UNDER: Newmont Exploration Ltd.

DATE PERFORMED: June 2-4, 1995

DATE FILED: December 20, 1995

LATITUDE: 64 05

AREA: Quartet Lakes

LONGITUDE: 134 30

VALUE: \$4000

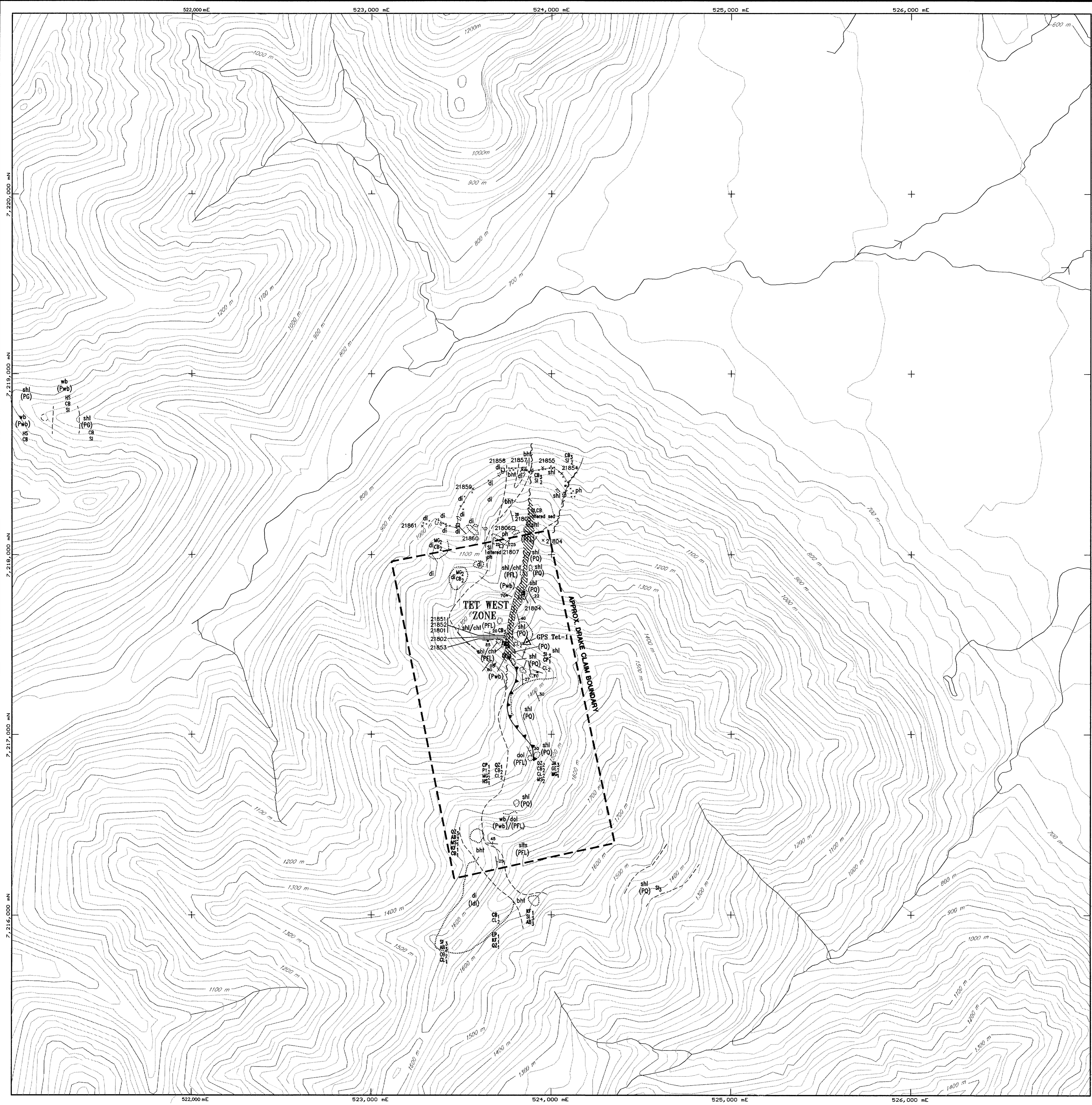
CLAIM NAME AND #: Drake 1-8

WORK DONE BY: Murray Jones

WORK DONE FOR: Newmont Exploration Ltd.

Claims in Good Standing	

Remarks: Low grade copper-gold-cobalt mineralization exists at the Tet west zone in a narrow fault related north-south zone. Grades are low but potential still exists along strike to the north and south.



EXPLANATION

GEOLOGY

- ss BEDDING
- JOINT
- OUTCROP
- LOCAL FLOAT
- APPROXIMATE FAULT
- GEOLOGIC CONTACT, APPROXIMATE OR ASSUMED.
- ROCK SAMPLES - GRAB,CHIP,FLOAT

LITHOLOGY

- shb Siltstone
- shl Shale, dark grey-green, well bedded, chert layers.
- dol Dolomite, dull green-gray poorly bedded, dolomitic layers with chert.
- cht Chert
- di Diorite
- bht Heterolithic Breccia
- wb Undifferentiated Breccia
- ph Phyllite

EXPLANATION

ALTERATION

- SI Silica
- MG Magnetite
- HS Hematite
- OZ Quartz
- CB Carbonate
- MS Sericite
- JA Jarosite
- GE Goethite
- KF Potassium Feldspar
- AB Albite
- Hornfels
- CL Chlorite
- Sulfides
- CP Chalcopyrite
- PY Pyrite
- 1 - Weak (w)
- 2 - Moderate (m)
- 3 - Strong (s)

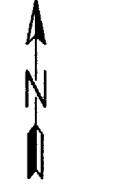
EXPLANATION

INTERPRETED GEOLOGY

- THRUST FAULT
- PFL FAIRCHILD LAKE GROUP (MIDDLE PROTEROZOIC)
- PO QUARTET GROUP (MIDDLE PROTEROZOIC)
- (Pwb) WERNECKE BRECCIA, UNDIFFERENTIATED
- Pbht HETEROLITHIC BRECCIA
- Pbhm HOMOLITHIC BRECCIA
- Idi DIORITE TO GABBRO INTRUSIVE BODIES

093377

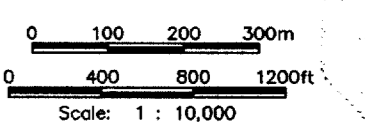
HAP AREA:
 X: 522000 - 527000
 Y: 7215000 - 7221000
 Z: 0 - 10000
 Units are meters.



Grid North
 Magnetic Declination for the center of this map is: 31° 15' East of True North
 Annual Change West 13.9'

Grid North is 0° 28.1' East of True North for center of map

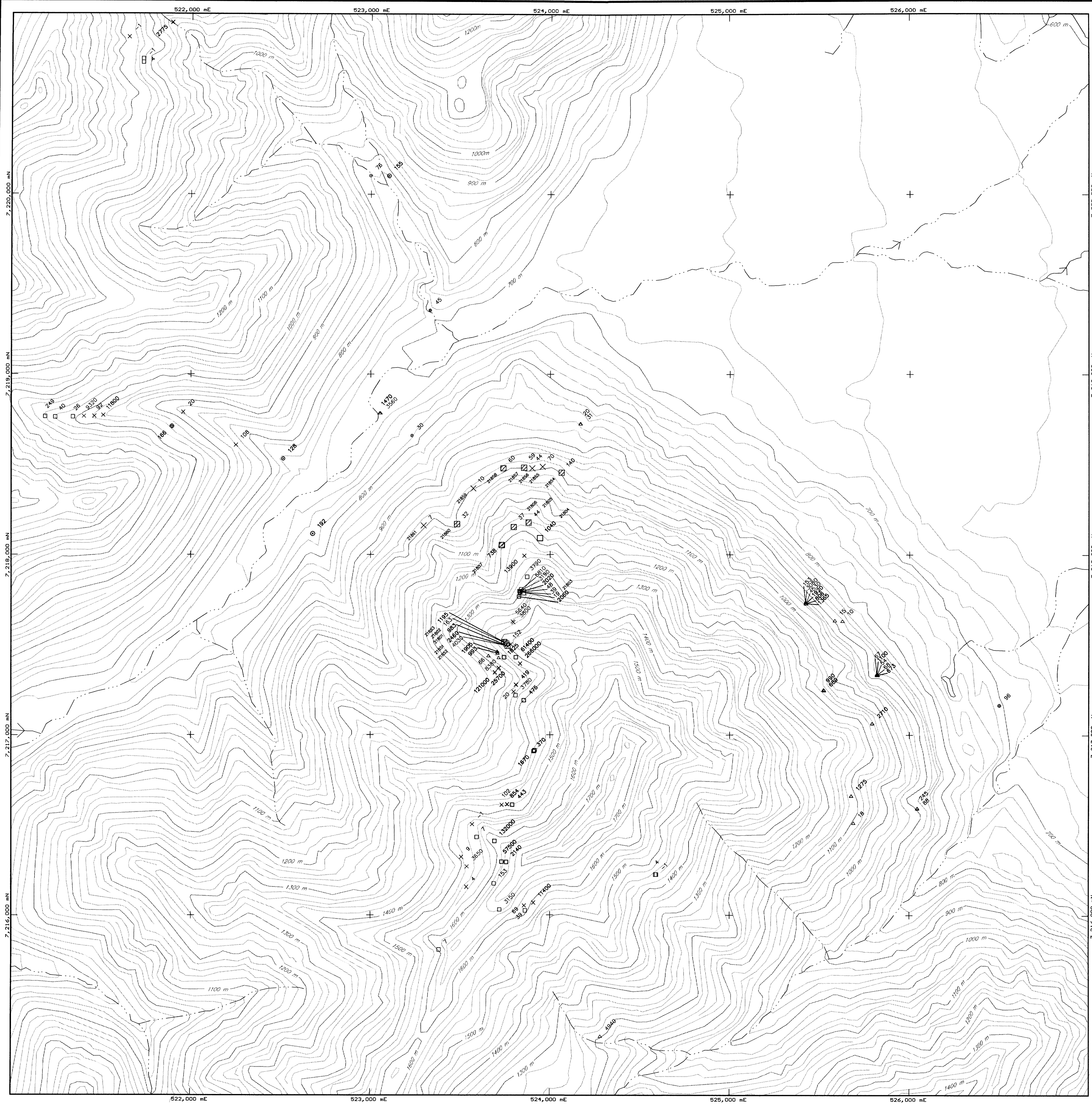
NTS Map 106 E/1, E/Murray Jones



NEWMONT EXPLORATION LTD.
 WESTMIN RESOURCES, PAMICON DEVELOPMENTS, EQUITY ENGR.
 FAIRCHILD PROJECT, YUKON TERRITORY, CANADA
 MAYO MINING DISTRICT

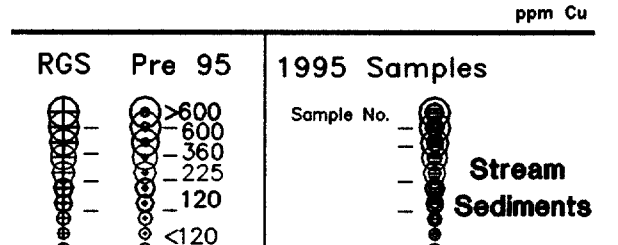
**PLATE 1
 DRAKE 1-8 CLAIMS
 SIMPLIFIED GEOLOGY MAP**

Compiled By: M. JONES	Date Drafted: 11/99	Coordinate System: UTM ZONE 8
Drafted By: GEODRAFTING	File Name: 95TD-Geo.DWG	Contour Interval: 20M



Cu Geochemistry

Pre 95	1995 Samples
float	
X value	Sample No. X value (ppm)
grab	
□ value	Sample No. □ value
chip	Rocks
▣ value	Sample No. ▣ value
channel	
■ value	Sample No. ■ value



MAP AREA:
 X: 522000 - 527000
 Y: 7215000 - 7221000
 Z: 0 - 10000
 Units are meters.

093377

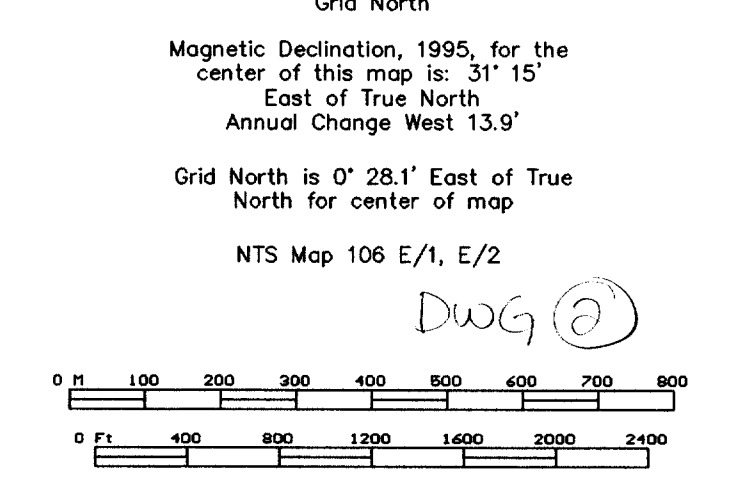
Grid North

Magnetic Declination, 1995, for the center of this map is: 31° 15' East of True North
 Annual Change West 13.9'

Grid North is 0° 28.1' East of True North for center of map

NTS Map 106 E/1, E/2

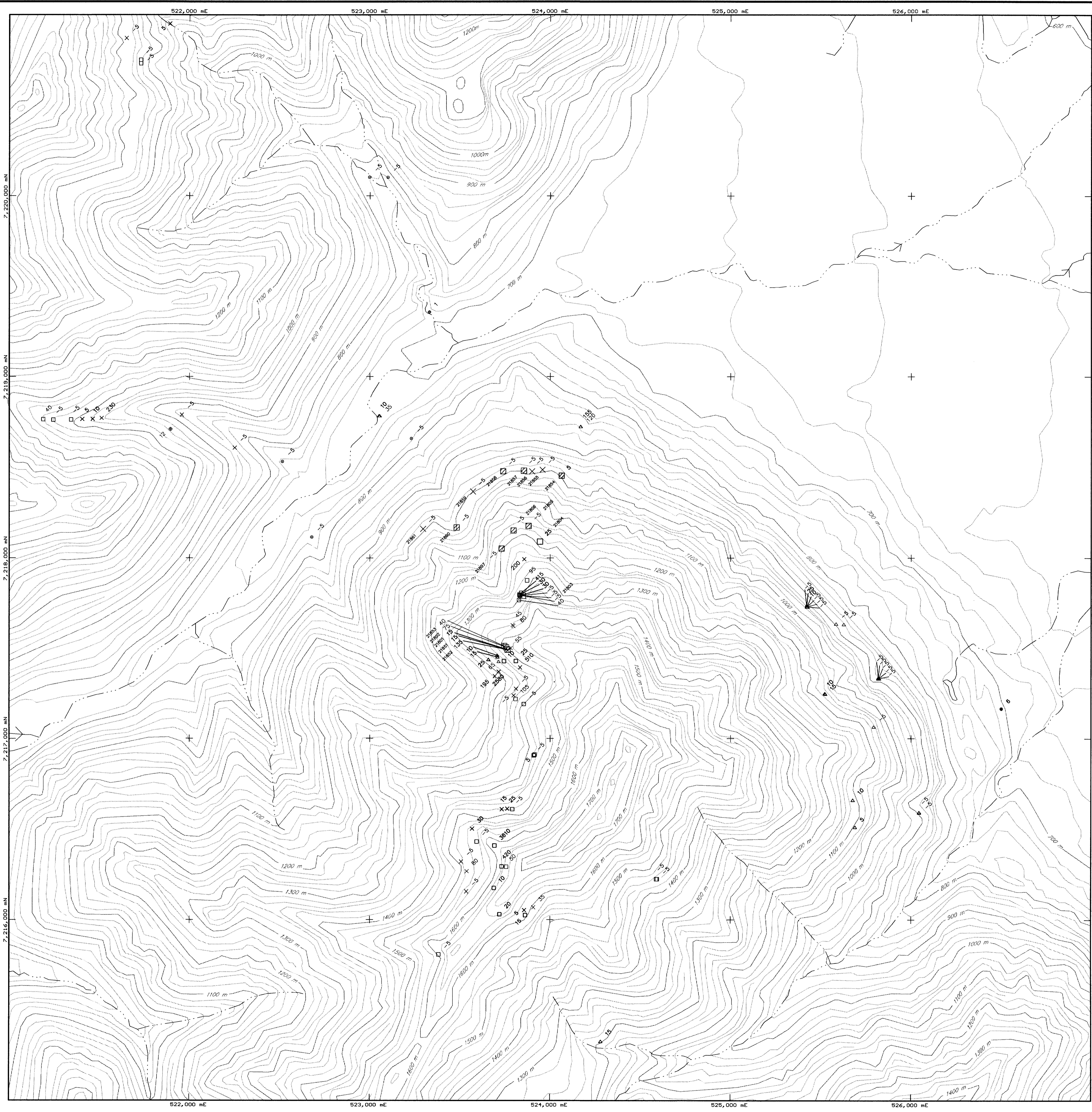
DWG 2



NEWMONT EXPLORATION LTD.
 WESTMIN RESOURCES, FAMCON DEVELOPMENTS, EQUITY ENGR.
 FAIRCHILD PROJECT, YUKON TERRITORY, CANADA
 MAYO MINING DISTRICT

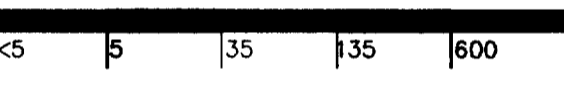
Plate 2
TET (DRAKE 1-8 CLAIMS)
 Cu in Rocks and Stream Sediments

Compiled By: M. Stammers
 Date Drafted: 11/95
 Coordinate System: UTM ZONE 8
 Drafted By: N. MERRITT
 File Name: 95TDR.DWG
 Contour Interval: 20M



Au Geochemistry

Pre 95	1995 Samples
float	float
X value	Sample No. X value (ppb)
grab	grab
□ value	Sample No. □ value
chip	chip
▣ value	Sample No. ▣ value
channel	channel
■ value	Sample No. ■ value



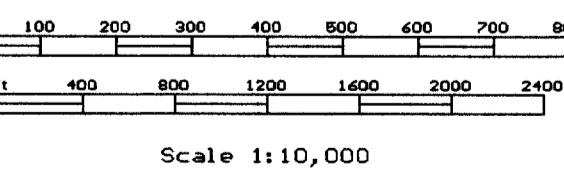
RGS	Pre 95	1995 Samples
Stream Sediments	ppb	Stream Sediments
●	>90	●
○	90	○
○	20	○
○	10	○
○	5	○
○	<5	○

093377 DWG(3)

HAP AREA:
 X: 522000 - 527000
 Y: 7215000 - 7221000
 Z: 0 - 10000
 Units are meters.

Grid North
 Magnetic Declination, 1995, for the center of this map is: 31° 15' East of True North
 Annual Change West 13.9'

Grid North is 0° 28.1' East of True North for center of map
 NTS Map 106 E/1, E/2



NEWMONT EXPLORATION LTD.
 WESTMIN RESOURCES, PAMICON DEVELOPMENTS, EQUITY ENGR:
 FAIRCHILD PROJECT, YUKON TERRITORY, CANADA
 MAYO MINING DISTRICT

Plate 3
TET (DRAKE 1-8 CLAIMS)
 Au in Rocks and Stream Sediments

Compiled By: M. Stammers	Date Drafted: 11/95	Coordinate System: UTM ZONE 8
Drafted By: N. MERRITT	File Name: 95TDAUR.DWG	Contour Interval: 20M