

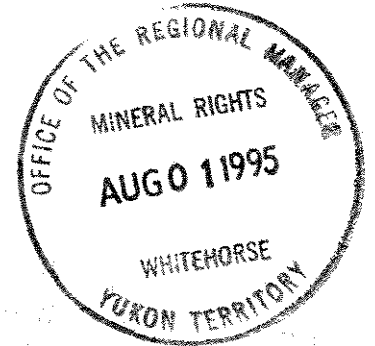
093346

COMINCO LTD.

EXPLORATION

WESTERN DISTRICT

NTS 105 G/11



1994 ASSESSMENT REPORT

PICK AND COD PROPERTIES

SOIL GEOCHEMISTRY AND GEOLOGICAL MAPPING

WATSON LAKE M.D., YUKON

LATITUDE  
 COD 61° 37'  
 PICK 61° 40'

LONGITUDE  
 COD 131° 14'  
 PICK 131° 15'

PELLY MOUNTAINS AREA



WORK PERIOD

JULY 23 and 28, 1994

APRIL, 1995

PAUL A. MacROBBIE

## TABLE OF CONTENTS

	<u>Page</u>
1. SUMMARY	1
2. LOCATION AND ACCESS	1
3. PROPERTIES AND OWNERSHIP	1
4. PREVIOUS WORK	1
5. 1994 WORK	3
6. REGIONAL GEOLOGY	3
7. PICK PROPERTY GEOLOGY AND GEOCHEMISTRY	3
8. COD PROPERTY GEOLOGY AND GEOCHEMISTRY	4
9. CONCLUSIONS AND RECOMMENDATIONS	4
10. REFERENCES	5
FIGURE 1 GENERAL LOCATION	2
APPENDIX 1 STATEMENT OF QUALIFICATIONS	
APPENDIX 2 1994 GEOCHEMISTRY DATA	
APPENDIX 3 STATEMENT OF EXPENDITURES	
<b>ATTACHMENTS</b>	
FIGURE 2 CLAIM MAP (1:10,000)	
FIGURE 3 GEOLOGY and GEOCHEMISTRY MAP (1:10,000)	

1994 ASSESSMENT REPORT  
PICK AND COD PROPERTIES, YUKON TERRITORY

1. SUMMARY

The PICK and COD properties are located south of the Robert Campbell Highway, approximately 30 kms west of Finlayson Lake and 70 kms southeast of Ross River.

The properties were staked to cover airborne geophysical targets identified during a Cominco survey conducted in early 1994.

The rocks underlying this part of southeastern Yukon have been assigned to 2 terranes: the Yukon-Tanana Terrane and the Slide Mountain Terrane. The YTT consists primarily of a layered sequence of metamorphosed rocks comprising a "lower unit" of pre-Devonian quartzite, pelitic schist and minor marble, a late Devonian to mid-Mississippian "middle unit" comprising carbonaceous phyllite and schist with interbanded mafic and, locally significant, felsic metavolcanics, and an "upper unit" of Pennsylvanian marbles and quartzite. Volcanism within the "middle unit" was accompanied by the intrusion of 2-3, late Devonian to Mississippian, mafic to felsic metaplutonic suites. Felsic volcanics of the middle unit are host to Cominco's ABM VHMS deposit.

The PICK and COD properties are apparently underlain by unit 3F (Mortensen, 1983a) comprising mafic metavolcanics and associated sediments. Both properties are completely overburden covered. On the COD property, the soil sampling did return several weak to moderate Cu anomalies locally with associated elevated Co<sub>±</sub>Fe-Ag values.

Since there exists virtually no outcrop exposure on either property and soil geochemistry appears to be hampered by overburden cover, the 2 properties' merit must be based on the airborne geophysical anomalies.

No further work is recommended on the PICK property. Further soil sampling in the area of the highest Cu soil geochemistry on the COD property maybe warranted.

2. LOCATION AND ACCESS

The PICK and COD properties are located on the Yukon Plateau, south of the Robert Campbell Highway, approximately 30 kms west of Finlayson Lake and 70 kms southeast of Ross River (Figures 1 and 2). The gravel, all-weather Robert Campbell Highway provides access to within 5 kms of the PICK property and 10 kms of the COD property. Direct access to either property is by helicopter. An old, overgrown winter road network joins each property to the highway at the Mink Creek crossing.

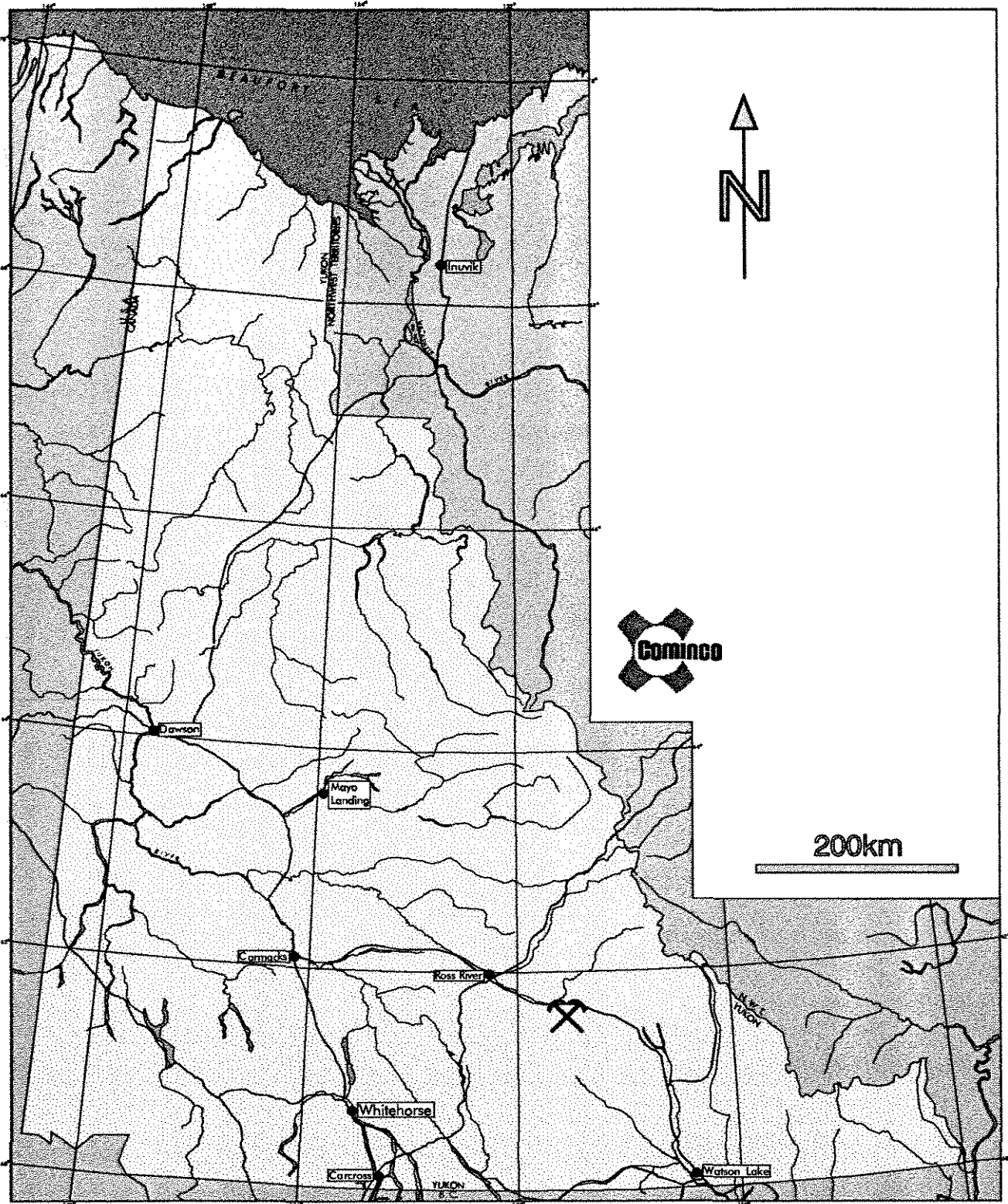
3. PROPERTY AND OWNERSHIP

The PICK property (36 units) and COD property (15 units) are both due July 7, 1995 (Figure 2) and are 100% owned by Cominco Ltd.

<u>NAME</u>	<u>UNITS</u>	<u>CLAIM NO.</u>	<u>DUE DATES</u>
PICK 1-36	36	YB50959-0994	July 7/95
COD 1-15	15	YB51022-1036	July 7/95

4. PREVIOUS WORK

No previous work by Cominco has been done in either the PICK or COD property areas.



Drawn by: \_\_\_\_\_ Traced by: a. m. a.

Revised by: \_\_\_\_\_ Date: \_\_\_\_\_ Revised by: \_\_\_\_\_ Date: \_\_\_\_\_


## PICK and COD PROPERTY LOCATIONS

105 G/11

Scale: As Shown

Date: April, 1995

Plate: 1

Claims were staked in the PICK area (Minfile #78; Flon or Bev) in 1974 by Hudson Bay based on airborne geophysical surveys. Hudson Bay conducted ground EM and Mag surveys and drilled 2 holes totalling 148 m in 1975.

In the COD area, claims were also staked (Minfile #76; Freberg or Bev) by Hudson Bay in 1974. Ground EM and Mag surveys were conducted in 1975 and 2 drill holes totalling 232 m were completed in 1976.

Both claims were allowed to lapse.

## 5. 1994 WORK

### GEOCHEMISTRY

A total of 44 soil samples were collected on the PICK property and 32 soils were collected on the COD property on July 23, 1994. Data is presented in Figure 3 and Appendix 2.

The soil samples were analyzed for Cu, Pb, Zn, Ag, As, Cd, Co, Ni, Fe, Mo, Cr, Bi, Sb, V, Sn, W, Sr, Y, La, Mn, Mg, Ti, Al, Ca, Na and K by I.C.P., Au by Aqua Regia decomposition/AAS and Ba by XRF at Cominco Exploration Research Laboratory (CERL) in Vancouver.

## 6. REGIONAL GEOLOGY

The rocks underlying this part of southeastern Yukon have been assigned to 2 terranes: the Yukon-Tanana Terrane (YTT) and the Slide Mountain Terrane (SMT) (Mortensen, 1983a; Mortensen and Jilson, 1985).

The YTT consists primarily of a layered sequence of metamorphosed rocks comprising a "lower unit" of pre-Devonian quartzite, pelitic schist and minor marble, a late Devonian to mid-Mississippian "middle unit" (3F) comprising carbonaceous phyllite and schist with interbanded mafic and, locally significant, felsic metavolcanics (3G), and an "upper unit" of Pennsylvanian marbles and quartzite. Volcanism within the "middle unit" was accompanied by the intrusion of 2-3, late Devonian to Mississippian, mafic to felsic metaplutonic suites (Simpson Range suite and augen and monzonitic orthogneisses). This sequence appears to reflect stable platformal or shelf sedimentation with an intervening period of mafic to felsic arc volcanism developed within a more reduced basinal setting.

A subhorizontal to moderately north to northeast dipping, penetrative ductile deformation fabric (S2) and associated middle greenschist facies (chlorite-biotite grade) metamorphism affects all YTT rocks. This fabric reflects the first, and most significant, deformational and metamorphic event (D1) perhaps related to a continent-arc collision during late Permian to early Triassic time.

The late Devonian to Triassic SMT comprises a heterogeneous package of mafic to ultramafic plutonic rocks, mafic volcanics, massive carbonate and chert. This sequence was structurally emplaced as thrust bounded klippen on YTT rocks or as thrust slices imbricated within YTT rocks during a period of crustal shortening (D2). The SMT is thought to represent a disrupted oceanic crust and volcanic arc assemblage thought to be located between the YTT and ancestral North America(?).

Late Triassic immature clastics comprising micaceous argillite, siltstone and sandstone unconformably(?) overlie the deformed and metamorphosed YTT rocks. These sediments are often closely associated with SMT volcanics and are invariably in fault contact with YTT rocks.

The SMT, Late Triassic sediments and Late Triassic to Middle Jurassic plutons are all affected by a period of thrust faulting (D2) during the Jurassic.

## 7. PICK PROPERTY GEOLOGY AND GEOCHEMISTRY

The PICK property is apparently underlain by unit 3F (Mortensen, 1983a) comprising mafic metavolcanics and associated sediments.

The property is completely overburden covered (Figure 3).

Not surprisingly, the soil geochemistry revealed no anomalies of interest.

The COD property is also underlain by unit 3F.

No outcrop exposure exists on the property (Figure 3).

Although no anomalies of interest were found, the soil sampling did return several weak to moderate Cu (52 to 189 ppm) anomalies, locally with associated elevated Co<sub>±</sub>Fe-Ag values.

9. CONCLUSIONS and RECOMMENDATIONS

Since there exists virtually no outcrop exposure on either property and soil geochemistry appears to be hampered by overburden cover, the 2 properties' merit must be based on the airborne geophysical anomalies.

No further work is recommended on the PICK property.

Further soil sampling in the area of the highest Cu soil geochemistry on the COD property maybe warranted.

Report by: P. MacRobbie  
P.A. MacRobbie, P. Geo  
Geologist

Endorsed by: D. Rhodes  
D. Rhodes,  
Senior Geologist

Approved for Release by: J.M. Hamilton  
J.M. Hamilton  
Manager, Exploration  
Western Canada

PAM/

DISTRIBUTION:  
W.D. Files  
Administration Files

10. REFERENCES

MORTENSEN, J. K., 1983a. AGE AND EVOLUTION OF THE YUKON-TANANA TERRANE, SOUTHEASTERN YUKON TERRITORY [Ph.D. Thesis]; Santa Barbara, University of California, 155 p.

MORTENSEN, J. K. AND JILSON, G. A., 1985. EVOLUTION OF THE YUKON-TANANA TERRANE : EVIDENCE FROM SOUTHEASTERN YUKON TERRITORY; *Geology*, 13, p. 806-810.

**APPENDIX 1**

**STATEMENT OF QUALIFICATIONS**

## STATEMENT OF QUALIFICATIONS

I, Paul A. MacRobbie, of 11164 Southridge Rd., Delta, B.C. hereby declare that I:

1. Graduated from Carleton University, Ottawa, Ontario with a B.Sc. in Geology in May, 1986 and a M.Sc. in Geology in June, 1988.
2. Have been actively engaged in mineral exploration in Western Canada as a permanent geologist with Cominco Ltd. since June, 1988.
3. Am a registered member of The Association of Professional Engineers and Geoscientists of the Province of British Columbia.

Date: April 10, 1995

  
\_\_\_\_\_  
P.A MacROBBIE, P.Geo  
GEOLOGIST

**APPENDIX 2**

**1994 GEOCHEMISTRY DATA**

Property	LabNo	FieldNo	S	M	O	S	Col	Sz	O	W	Dph	W/S	F/W	P	Cu	Pb	Zn	Ag	As	Ba(1cp)	Cd	Co	Ni	Fe	Mo	Cr	Bi	Sb	V	Sn	W	Sr	Y	La	Mn	Mg	Ti	Al	Ca	Na	K	Au	Wt	Ba(mf)	
Pick	S9416595	241590	5	1	5	2	3K	23	3	2	40	2	Z	**	15	4	53	0.2	1	357	2	3	8	0.29	1	2	2	2	5	1	1	122	2	2	649	0.22	0.01	0.40	2.74	0.04	0.02	5	10	1028	
Pick	S9416596	241591	5	1	5	2	BR	23	1	1	30	2	B2	**	7	5	24	0.2	48	250	1	4	14	1.35	1	14	2	5	23	2	1	8	1	3	67	0.26	0.01	0.79	0.12	0.01	0.01	5	10	1167	
Pick	S9416597	241592	5	1	5	2	BK	35	3	2	40	2	B2	**	12	2	19	0.2	4	296	1	3	6	0.48	1	5	2	2	9	3	1	71	2	2	360	0.21	0.01	0.42	0.96	0.04	0.02	5	10	1352	
Pick	S9416598	241593	5	1	5	2	2G	25	2	2	40	2	B2	**	20	8	63	0.2	10	278	1	7	27	1.48	1	22	2	2	22	3	1	36	9	8	274	0.44	0.01	0.80	0.74	0.01	0.01	5	10	1381	
Pick	S9416599	241594	5	1	5	2	2B	23	1	2	30	2	B2	**	20	8	50	0.2	24	262	1	7	24	1.67	1	17	2	2	21	1	1	28	10	8	237	0.42	0.01	0.79	0.61	0.01	0.02	5	10	1359	
Pick	S9416600	241595	5	1	5	2	3K	35	2	2	40	2	B2	**	19	8	32	0.2	17	463	1	4	15	0.91	4	8	2	2	12	2	1	75	5	5	355	0.32	0.01	0.56	1.58	0.02	0.01	5	10	1542	
Pick	S9416601	241596	5	1	5	2	3B	35	1	2	35	2	B2	**	3	7	20	0.2	18	211	1	3	7	1.23	1	11	2	5	20	2	1	9	1	4	46	0.18	0.01	0.71	0.15	0.01	0.01	5	10	1178	
Pick	S9416602	241597	5	1	5	2	3K	23	3	2	45	2	Z	**	10	2	64	0.2	1	185	1	1	7	0.13	1	2	2	5	1	2	1	130	1	1	269	0.48	0.01	0.15	3.02	0.04	0.02	5	8	390	
Pick	S9416603	241598	5	1	5	2	2B	25	1	1	35	2	B2	**	5	6	28	0.2	13	227	1	5	12	1.47	1	17	2	2	22	1	1	9	1	3	125	0.27	0.01	0.80	0.15	0.01	0.02	5	10	1370	
Pick	S9416604	241599	5	1	5	2	2B	35	2	1	30	2	B2	**	24	7	36	0.2	12	190	1	7	21	1.67	2	20	2	2	18	3	1	19	11	9	233	0.41	0.01	0.61	0.40	0.01	0.01	5	10	1263	
Pick	S9416605	241600	5	1	5	2	3K	23	3	2	40	2	B2	**	13	7	31	0.2	16	190	1	7	16	1.53	1	14	2	2	16	2	1	33	6	6	148	0.42	0.01	0.85	0.60	0.01	0.01	5	10	1127	
Pick	S9416606	241601	5	1	5	2	1K	35	2	2	45	2	B2	**	32	7	55	0.2	15	242	1	10	28	1.47	1	18	2	2	18	4	1	69	11	8	342	0.44	0.01	0.68	1.36	0.01	0.02	5	10	1332	
Pick	S9416607	241602	5	1	5	2	3K	35	1	2	45	1	Z	**	7	2	35	0.2	1	129	1	1	3	0.18	1	2	2	2	2	2	1	98	1	1	578	0.21	0.01	0.29	2.19	0.03	0.02	5	10	926	
Pick	S9416608	241603	5	1	5	2	BK	35	3	2	40	1	B2	**	10	2	17	0.2	2	114	1	1	3	0.25	1	2	2	2	3	2	1	100	1	2	148	0.21	0.01	0.41	2.38	0.03	0.01	5	10	775	
Pick	S9416609	241604	5	1	5	2	2B	23	2	1	35	1	B2	**	15	11	37	0.2	16	329	1	6	17	1.77	1	14	2	2	34	4	1	14	4	4	156	0.27	0.01	1.07	0.20	0.01	0.01	5	10	1367	
Pick	S9416610	241605	5	1	5	2	3K	35	3	2	30	1	B2	**	10	2	11	0.2	1	152	1	2	4	0.22	1	2	2	2	2	1	1	100	1	1	177	0.21	0.01	0.23	1.47	0.05	0.01	5	10	1167	
Pick	S9416611	241606	5	1	5	2	3K	35	3	2	30	1	A2	**	23	8	50	0.2	6	428	1	4	13	0.74	2	8	2	2	14	1	1	162	6	4	415	0.25	0.01	0.47	3.31	0.02	0.01	5	10	1261	
Pick	S9416612	241607	5	1	5	2	3B	35	3	2	45	1	B2	**	2	2	6	0.2	1	51	1	1	1	0.05	1	2	2	2	2	1	2	1	25	1	1	15	0.04	0.01	0.15	0.43	0.05	0.01	5	10	1097
Pick	S9416613	241608	5	1	5	2	2B	35	2	2	30	1	B2	**	5	2	20	0.2	9	153	1	2	7	0.84	1	8	2	2	14	2	1	22	2	3	57	0.16	0.01	0.52	0.42	0.02	0.01	5	10	1173	
Pick	S9416614	241609	5	1	5	2	2G	23	2	2	35	1	B2	**	11	8	54	0.2	11	368	1	7	16	1.40	1	18	2	2	27	4	1	34	10	8	574	0.31	0.01	0.88	0.56	0.01	0.01	5	10	1572	
Pick	S9416615	241610	5	1	5	2	2G	25	1	2	30	1	B2	**	11	8	36	0.4	9	290	1	5	27	1.45	1	23	2	2	21	5	1	21	10	8	180	0.41	0.01	0.80	0.33	0.01	0.01	5	10	1519	
Pick	S9416616	241611	5	1	5	2	BK	32	3	**	40	1	B2	**	9	2	20	0.2	3	118	1	1	7	0.47	1	5	2	2	7	2	1	33	3	2	64	0.16	0.01	0.34	0.64	0.03	0.01	5	10	1223	
Pick	S9416617	241612	5	1	5	2	BK	35	3	2	45	1	B2	**	3	2	12	0.2	1	59	1	1	1	0.13	3	2	2	2	2	1	1	42	1	1	35	0.06	0.01	0.27	0.81	0.05	0.01	5	10	1106	
Pick	S9416618	241613	5	1	5	2	2B	23	2	2	30	1	B2	**	18	7	40	0.2	7	292	1	7	24	1.32	1	15	2	2	15	1	1	78	8	6	1020	0.44	0.01	0.48	1.91	0.02	0.01	5	10	1262	
Pick	S9416619	241614	5	1	5	2	2G	23	2	2	35	1	B2	**	17	9	73	0.2	11	262	1	8	33	1.29	2	24	2	2	20	3	1	37	10	8	220	0.56	0.01	0.65	0.67	0.02	0.02	5	10	1363	
Pick	S9416620	241615	5	1	5	2	2G	23	3	2	30	1	B2	**	11	6	64	0.4	5	193	1	7	29	1.29	1	28	2	2	22	1	1	25	9	8	118	0.51	0.01	0.71	0.39	0.01	0.02	5	10	1465	
Pick	S9416621	241616	5	1	5	2	BG	35	3	2	35	1	B2	**	13	2	29	0.2	1	171	1	3	14	0.86	1	9	2	2	9	2	1	59	5	4	179	0.21	0.01	0.43	1.30	0.03	0.01	5	10	1191	
Pick	S9416622	241617	5	1	5	2	2B	23	2	2	25	1	B2	**	10	8	61	0.2	13	205	1	10	23	1.54	3	25	2	2	24	3	1	23	6	7	244	0.41	0.01	0.91	0.33	0.01	0.02	5	10	1356	
Pick	S9416623	241618	5	1	5	2	2B	23	2	1	35	2	B2	**	4	5	12	0.2	3	199	1	1	7	0.85	1	9	2	2	18	5	1	10	1	3	50	0.13	0.01	0.56	0.15	0.01	0.01	5	10	1225	
Pick	S9416624	241619	5	1	5	2	3K	35	3	2	40	1	Z	**	4	2	13	0.2	1	58	1	1	1	0.09	1	2	2	2	2	2	1	59	1	1	72	0.11	0.01	0.28	1.10	0.04	0.01	5	10	972	
Pick	S9416625	241620	5	1	5	2	2G	23	2	1	30	1	B2	**	17	7	71	0.2	4	187	1	6	28	1.52	1	26	2	2	21	3	1	35	9	8	166	0.51	0.01	0.77	0.60	0.01	0.03	5	10	1458	
Pick	S9416626	241621	5	1	5	2	3B	25	2	2	30	2	B2	**	16	6	28	0.2	7	349	1	5	15	1.17	3	15	2	2	21	3	1	65	7	7	296	0.29	0.01	0.74	1.19	0.01	0.01	5	10	1355	
Pick	S9416627	241622	5	1	5	2	1B	23	2	1	30	1	B2	**	4	5	31	0.2	9	199	1	3	10	1.22	1	16	2	2	23	1	1	15	2	4	102	0.25	0.01	0.63	0.24	0.01	0.02	5	10	1236	
Pick	S9416628	241623	5	1	5	2	2B	23	1	1	30	1	B2	**	10	11	37	0.2	81	164	1	15	20	2.03	1	18	2	2	18	3	1	20	5	6	232	0.32	0.01	0.64	0.36	0.01	0.01	5	10	1293	
Pick	S9416629	241624	5	1	5	2	2B	23	1	1	30	2	B2	**	13	10	39	0.2	32	235	1	8	22	1.85	1	18	2	2	19	4	1	24	9	7	250	0.40	0.01	0.76	0.39	0.01	0.01	5	10	1252	
Pick	S9416630	241625	5	1	5	2	2B	23	2	1	30	2	B2	**	9	7	53	0.2	17	135	1	7	22	1.44	1	21	2	2	18	1	1	33	7	6	303	0.44	0.01	0.65	0.52	0.02	0.02	5	10	1134	
Pick	S9416631	241626	5	1	5	2	2B	23	2	1	30	1	B2	**	6	4	15	0.2	1	136	1	2	10	0.78	1	11	2	2	12	1	1	18	2	3	81	0.20	0.01	0.48	0.27	0.02	0.01	5	10	1225	
Pick	S9416632	241627	5																																										

BEST ATTAINABLE IMAGE

Property	LabNo	FieldNo	S	M	O	S	Col	Sz	O	W	Dph	W/S	F/W	P	Cu	Pb	Zn	Ag	As	Ba(1cp)	Cd	Co	Ni	Fe	Mo	Cr	Bi	Sb	V	Sn	W	Sr	Y	La	Mn	Mg	Ti	Al	Ca	Na	K	Au	Vt	Ba(xrf)
Cod	S9416831	241203	4	1	5	**	BK	23	2	2	50	1	B2	**	25	8	48	0.2	31	579	1	9	28	1.82	1	29	2	2	35	1	1	59	8	9	397	0.46	0.01	0.98	1.10	0.01	0.01	5	10	1827
Cod	S9416831	241203	4	1	5	**	BK	23	2	2	50	1	B2	**	25	8	48	0.2	31	579	1	9	28	1.82	1	29	2	2	35	1	1	59	8	9	397	0.46	0.01	0.98	1.10	0.01	0.01	5	10	1827
Cod	S9416832	241204	4	1	5	**	1B	23	1	2	45	1	B2	**	17	7	35	0.2	39	218	1	8	27	2.17	3	28	2	2	31	1	1	16	11	14	169	0.48	0.01	1.06	0.25	0.01	0.02	5	10	1331
Cod	S9416832	241204	4	1	5	**	1B	23	1	2	45	1	B2	**	17	7	35	0.2	39	218	1	8	27	2.17	3	28	2	2	31	1	1	16	11	14	169	0.48	0.01	1.06	0.25	0.01	0.02	5	10	1331
Cod	S9416833	241205	4	1	5	**	1B	23	2	1	35	2	B2	**	17	2	38	0.2	29	219	1	8	25	2.28	1	33	2	2	46	1	1	18	4	8	193	0.73	0.01	1.18	0.28	0.01	0.03	5	10	1471
Cod	S9416833	241205	4	1	5	**	1B	23	2	1	35	2	B2	**	17	2	38	0.2	29	219	1	8	25	2.28	1	33	2	2	46	1	1	18	4	8	193	0.73	0.01	1.18	0.28	0.01	0.03	5	10	1471
Cod	S9416834	241206	4	1	5	**	GN	23	2	2	40	2	B2	**	56	7	44	0.2	103	107	1	32	58	2.55	1	56	2	2	43	3	1	30	10	19	630	1.18	0.01	1.33	0.54	0.01	0.03	5	10	1583
Cod	S9416834	241206	4	1	5	**	GN	23	2	2	40	2	B2	**	56	7	44	0.2	103	107	1	32	58	2.55	1	56	2	2	43	3	1	30	10	19	630	1.18	0.01	1.33	0.54	0.01	0.03	5	10	1583
Cod	S9416835	241207	4	1	5	**	1B	23	2	1	35	2	B2	**	14	10	45	0.4	29	279	1	10	30	2.64	1	42	2	2	50	1	1	21	4	8	219	0.53	0.01	1.39	0.31	0.01	0.04	5	10	1588
Cod	S9416835	241207	4	1	5	**	1B	23	2	1	35	2	B2	**	14	10	45	0.4	29	279	1	10	30	2.64	1	42	2	2	50	1	1	21	4	8	219	0.53	0.01	1.39	0.31	0.01	0.04	5	10	1588
Cod	S9416836	241208	4	1	5	**	BR	3	1	1	40	2	B2	**	8	10	54	0.4	15	139	1	6	18	2.37	1	30	2	2	41	2	1	21	2	6	167	0.40	0.01	0.89	0.41	0.01	0.06	5	10	1399
Cod	S9416836	241208	4	1	5	**	BR	3	1	1	40	2	B2	**	8	10	54	0.4	15	139	1	6	18	2.37	1	30	2	2	41	2	1	21	2	6	167	0.40	0.01	0.89	0.41	0.01	0.06	5	10	1399
Cod	S9416837	241209	4	1	5	**	2G	5	1	3	40	1	B2	**	57	11	105	0.8	17	320	1	13	45	3.36	1	36	2	2	49	4	1	43	16	14	445	0.92	0.01	1.23	0.93	0.01	0.06	5	10	2200
Cod	S9416837	241209	4	1	5	**	2G	5	1	3	40	1	B2	**	57	11	105	0.8	17	320	1	13	45	3.36	1	36	2	2	49	4	1	43	16	14	445	0.92	0.01	1.23	0.93	0.01	0.06	5	10	2200
Cod	S9416838	241210	4	1	5	**	KG	35	3	3	50	1	Z	**	39	8	117	0.2	18	252	1	15	41	2.56	1	34	2	2	43	1	1	47	13	12	714	0.76	0.01	1.10	0.89	0.01	0.06	5	10	1857
Cod	S9416838	241210	4	1	5	**	KG	35	3	3	50	1	Z	**	39	8	117	0.2	18	252	1	15	41	2.56	1	34	2	2	43	1	1	47	13	12	714	0.76	0.01	1.10	0.89	0.01	0.06	5	10	1857
Cod	S9416839	241211	4	1	5	**	GN	35	1	2	50	1	B2	**	42	10	105	0.4	12	302	1	13	41	2.66	3	34	2	2	45	1	1	46	14	14	669	0.93	0.01	1.16	1.01	0.01	0.07	5	10	1889
Cod	S9416839	241211	4	1	5	**	GN	35	1	2	50	1	B2	**	42	10	105	0.4	12	302	1	13	41	2.66	3	34	2	2	45	1	1	46	14	14	669	0.93	0.01	1.16	1.01	0.01	0.07	5	10	1889
Cod	S9416840	241212	4	1	5	**	1B	3	3	1	35	2	B2	**	14	12	87	0.2	8	676	1	7	20	2.08	1	24	2	2	41	1	1	44	4	7	328	0.31	0.01	1.03	0.54	0.01	0.06	5	10	2307
Cod	S9416840	241212	4	1	5	**	1B	3	3	1	35	2	B2	**	14	12	87	0.2	8	676	1	7	20	2.08	1	24	2	2	41	1	1	44	4	7	328	0.31	0.01	1.03	0.54	0.01	0.06	5	10	2307
Cod	S9416841	241213	4	1	5	**	KG	35	1	3	45	1	Z	**	37	9	88	0.2	12	287	1	13	40	2.45	2	33	2	2	42	1	1	47	13	13	542	0.81	0.01	1.07	1.08	0.01	0.06	5	10	1746
Cod	S9416841	241213	4	1	5	**	KG	35	1	3	45	1	Z	**	37	9	88	0.2	12	287	1	13	40	2.45	2	33	2	2	42	1	1	47	13	13	542	0.81	0.01	1.07	1.08	0.01	0.06	5	10	1746
Cod	S9416842	241214	4	1	5	**	1G	3	1	1	40	1	B2	**	29	9	73	0.2	15	271	1	10	32	2.08	1	25	2	2	36	1	1	50	12	11	449	0.71	0.01	0.85	1.17	0.01	0.05	5	10	1644
Cod	S9416842	241214	4	1	5	**	1G	3	1	1	40	1	B2	**	29	9	73	0.2	15	271	1	10	32	2.08	1	25	2	2	36	1	1	50	12	11	449	0.71	0.01	0.85	1.17	0.01	0.05	5	10	1644
Cod	S9416843	241193	4	1	5	**	K	3	3	3	70	1	Z	**	53	2	27	0.2	13	323	1	3	15	0.37	1	4	2	2	4	3	1	322	5	3	507	0.51	0.01	0.19	6.32	0.01	0.01	5	10	663
Cod	S9416843	241193	4	1	5	**	K	3	3	3	70	1	Z	**	53	2	27	0.2	13	323	1	3	15	0.37	1	4	2	2	4	3	1	322	5	3	507	0.51	0.01	0.19	6.32	0.01	0.01	5	10	663
Cod	S9416844	241194	4	1	5	**	1B	23	2	2	35	2	B2	**	33	7	39	0.2	72	255	1	13	34	2.44	1	36	2	2	32	3	1	27	16	16	348	0.68	0.01	1.12	0.46	0.01	0.02	5	10	1462
Cod	S9416844	241194	4	1	5	**	1B	23	2	2	35	2	B2	**	33	7	39	0.2	72	255	1	13	34	2.44	1	36	2	2	32	3	1	27	16	16	348	0.68	0.01	1.12	0.46	0.01	0.02	5	10	1462
Cod	S9416845	241195	4	1	5	**	NY	23	2	2	40	2	B2	**	27	6	32	0.2	51	346	1	13	34	2.44	3	42	2	2	38	2	1	23	9	13	169	0.65	0.01	1.35	0.41	0.01	0.03	5	10	1443
Cod	S9416845	241195	4	1	5	**	NY	23	2	2	40	2	B2	**	27	6	32	0.2	51	346	1	13	34	2.44	3	42	2	2	38	2	1	23	9	13	169	0.65	0.01	1.35	0.41	0.01	0.03	5	10	1443
Cod	S9416846	241196	4	1	5	**	RY	23	1	1	30	2	B2	**	10	13	50	0.2	31	390	1	15	28	2.88	1	44	2	2	57	2	1	12	2	7	380	0.71	0.01	1.61	0.16	0.01	0.03	5	10	1464
Cod	S9416846	241196	4	1	5	**	RY	23	1	1	30	2	B2	**	10	13	50	0.2	31	390	1	15	28	2.88	1	44	2	2	57	2	1	12	2	7	380	0.71	0.01	1.61	0.16	0.01	0.03	5	10	1464
Cod	S9416847	241197	4	1	5	**	1B	23	1	1	40	2	B2	**	62	7	38	0.2	66	268	1	15	40	2.71	1	52	2	2	49	1	1	49	14	12	317	0.85	0.02	1.22	1.08	0.01	0.02	5	10	1288
Cod	S9416847	241197	4	1	5	**	1B	23	1	1	40	2	B2	**	62	7	38	0.2	66	268	1	15	40	2.71	1	52	2	2	49	1	1	49	14	12	317	0.85	0.02	1.22	1.08	0.01	0.02	5	10	1288
Cod	S9416848	241198	4	1	5	**	1B	23	2	2	75	2	B2	**	33	8	34	0.2	61	262	1	12	32	2.80	1	39	2	2	46	2	1	14	8	11	241	0.69	0.01	1.26	0.26	0.01	0.02	5	10	1344
Cod	S9416848	241198	4	1	5	**	1B	23	2	2	75	2	B2	**	33	8	34	0.2	61	262	1	12	32	2.80	1	39	2	2	46	2	1	14	8	11	241	0.69	0.01	1.26	0.26	0.01	0.02	5	10	1344
Cod	S9416849	241199	4	1	5	**	2B	23	2	3	50	2	Z	**	133	9	53	0.2	120	170	1	21	46	3.05	2	38	2	2	41	2	1	42	16											

Cod	S9418883	241192	4	1	5	**	K	35	3	3	25	1	Z	**	27	4	35	0.4	3	327	1	2	13	0.29	1	2	2	2	4	6	1	144	2	3	600	0.23	0.01	0.40	3.61	0.03	0.01	5	10	956
Cod	S9418883	241192	4	1	5	**	K	35	3	3	25	1	Z	**	27	4	35	0.4	3	327	1	2	13	0.29	1	2	2	2	4	6	1	144	2	3	600	0.23	0.01	0.40	3.61	0.03	0.01	5	10	956

BEST ATTAINABLE IMAGE

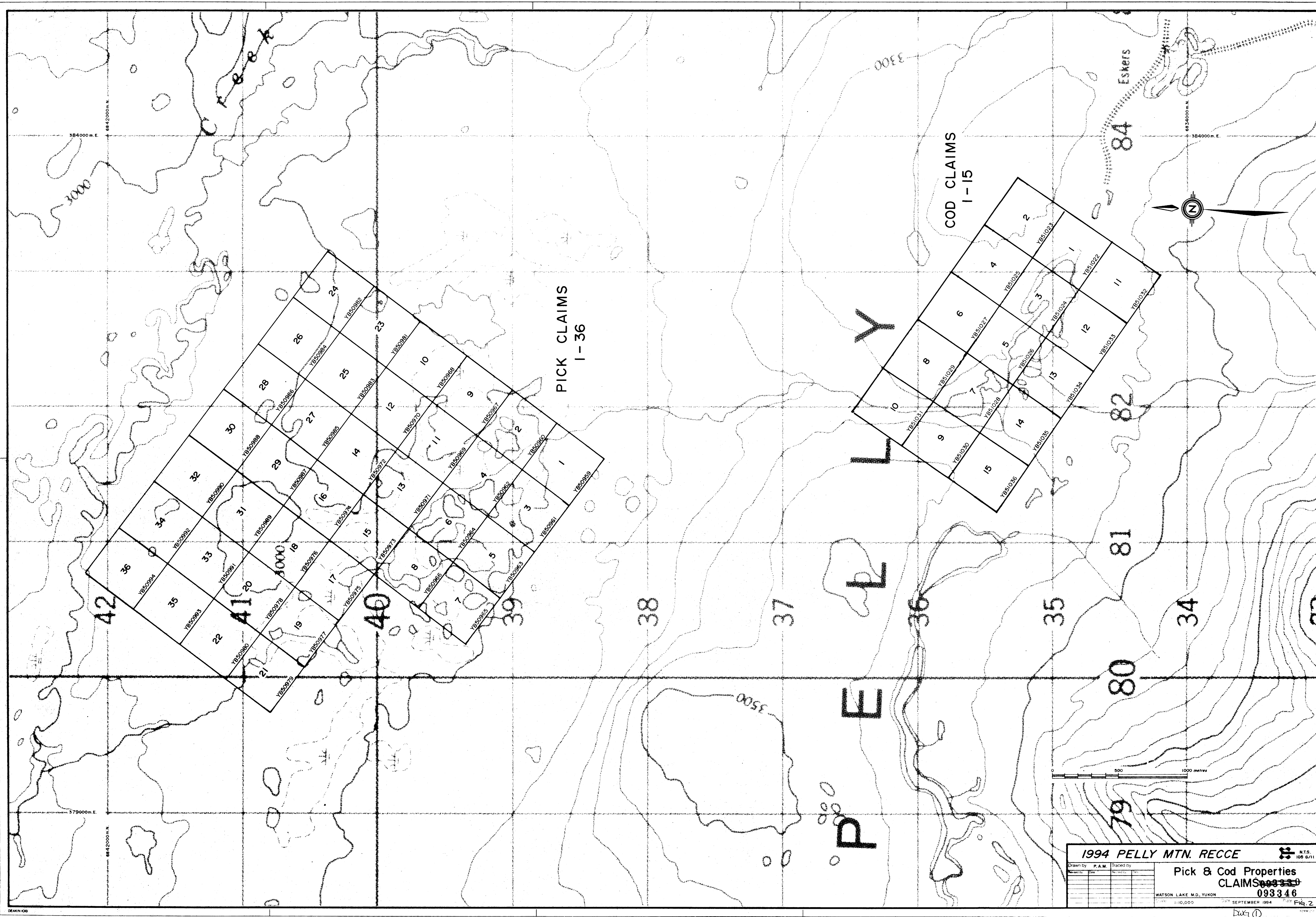
**APPENDIX 3**  
**STATEMENTS OF EXPENDITURES**

PICK PROPERTY

STAFF COSTS	350
DOMICILE	109
GEOCHEMISTRY	748
HELICOPTER	360
COMMUNICATIONS	30
TRUCK RENTAL	64
FREIGHT	198
EXPEDITING	40
DRAFTING	192
TOTAL	2,091

**COD PROPERTY**

STAFF COSTS	342
DOMICILE	109
GEOCHEMISTRY	544
HELICOPTER	360
COMMUNICATIONS	23
TRUCK RENTAL	48
FREIGHT	149
EXPEDITING	30
DRAFTING	144
<b>TOTAL</b>	<b>1,749</b>



**1994 PELLY MTN. RECCE** N.T.S. 108 G/11

Drawn by	P.A.M.	Traced by	
Checked by		Reviewed by	
Scale		Date	

**Pick & Cod Properties**  
**CLAIMS 093316**  
 093316  
 WATSON LAKE M.D., YUKON  
 1:110,000 SEPTEMBER 1994 FIG. 2

