

COMINCO LTD.

EXPLORATION

WESTERN DISTRICT

NTS 105 G/6



1994 ASSESSMENT REPORT

TIN PROPERTY

SOIL GEOCHEMISTRY AND GEOLOGICAL MAPPING

WATSON LAKE M.D., YUKON

PELLY MOUNTAINS AREA

WORK PERIOD

JULY 24 and 25, 1994



093331

APRIL, 1995

PAUL A. MacROBBIE

TABLE OF CONTENTS

| | <u>Page</u> |
|--------------------------------------|-------------|
| 1. SUMMARY | 1 |
| 2. LOCATION AND ACCESS | 1 |
| 3. PROPERTY AND OWNERSHIP | 1 |
| 4. PREVIOUS WORK | 3 |
| 5. 1994 WORK | 3 |
| 6. REGIONAL GEOLOGY | 3 |
| 7. PROPERTY GEOLOGY AND GEOCHEMISTRY | 4 |
| 8. CONCLUSIONS AND RECOMMENDATIONS | 5 |
| 9. REFERENCES | 6 |
| | |
| FIGURE 1 GENERAL LOCATION | 2 |

APPENDIX 1 STATEMENT OF QUALIFICATIONS

APPENDIX 2 1994 GEOCHEMISTRY DATA

APPENDIX 3 STATEMENT OF EXPENDITURES

ATTACHMENTS

FIGURE 2 CLAIM MAP (1:10,000)

FIGURE 3 GEOLOGY MAP (1:10,000)

FIGURE 4 SOIL, SILT and ROCK GEOCHEMISTRY MAP (1:10,000)

This report has been examined by
the Geological Evaluation Unit
under Section 53 (4) Yukon Quartz
Mining Act and is allowed as
representation work in the amount
of \$ 9600.

M. Burke

Jr Regional Manager, Exploration and
Geological Services for Commissioner
of Yukon Territory.

**1994 ASSESSMENT REPORT
TIN PROPERTY, YUKON TERRITORY**

1. SUMMARY

The TIN property is located northeast of the Hoole River, approximately 75 kms southeast of Ross River and 35kms southwest of Finlayson Lake.

The property was staked to cover previously known showings and airborne geophysical targets identified during a Cominco survey conducted in early 1994.

The rocks underlying this part of southeastern Yukon have been assigned to 2 terranes: the Yukon-Tanana Terrane and the Slide Mountain Terrane. The Yukon-Tanana Terrane consists primarily of a layered sequence of metamorphosed rocks comprising a "*lower unit*" of pre-Devonian quartzite, pelitic schist and minor marble, a late Devonian to mid-Mississippian "*middle unit*" comprising carbonaceous phyllite and schist with interbanded mafic and, locally significant, felsic metavolcanics, and an "*upper unit*" of Pennsylvanian marbles and quartzite. Volcanism within the "*middle unit*" was accompanied by the intrusion of 2-3, late Devonian to Mississippian, mafic to felsic metaplutonic suites. Felsic volcanics of the middle unit are host to Cominco's ABA VHMS deposit.

The western half of the TIN property is underlain by favourable YTT, "*middle unit*" felsic and mafic metavolcanics, including dense, aphyric felsic flows and feldspar augened schists (felsic crystal tuffs?) which appear to be of similar character and chemistry as corresponding units in the Kudz Ze Zayah area.

The felsic volcanics are variably Fe-carbonate altered and are host to vein and disseminated sphalerite+galena-pyrite at the El showings. A significant Ba soil anomaly suggests the presence of barite at a stratigraphic level between the felsic flow and feldspar crystal tuff. Additional soil geochemistry sampling is recommended for this area to define the distribution of mineralization.

The weak AEM and Mag features in the area of geological interest should be evaluated in detail. Ground UTEM/HLEM and Mag surveys and grid soil geochemistry sampling are recommended for anomalies of interest.

The AEM and Mag features staked in the eastern half of the property appear to reflect carbonaceous sediments or structures and magnetic mafic intrusives, respectively. No further work is recommended for this area.

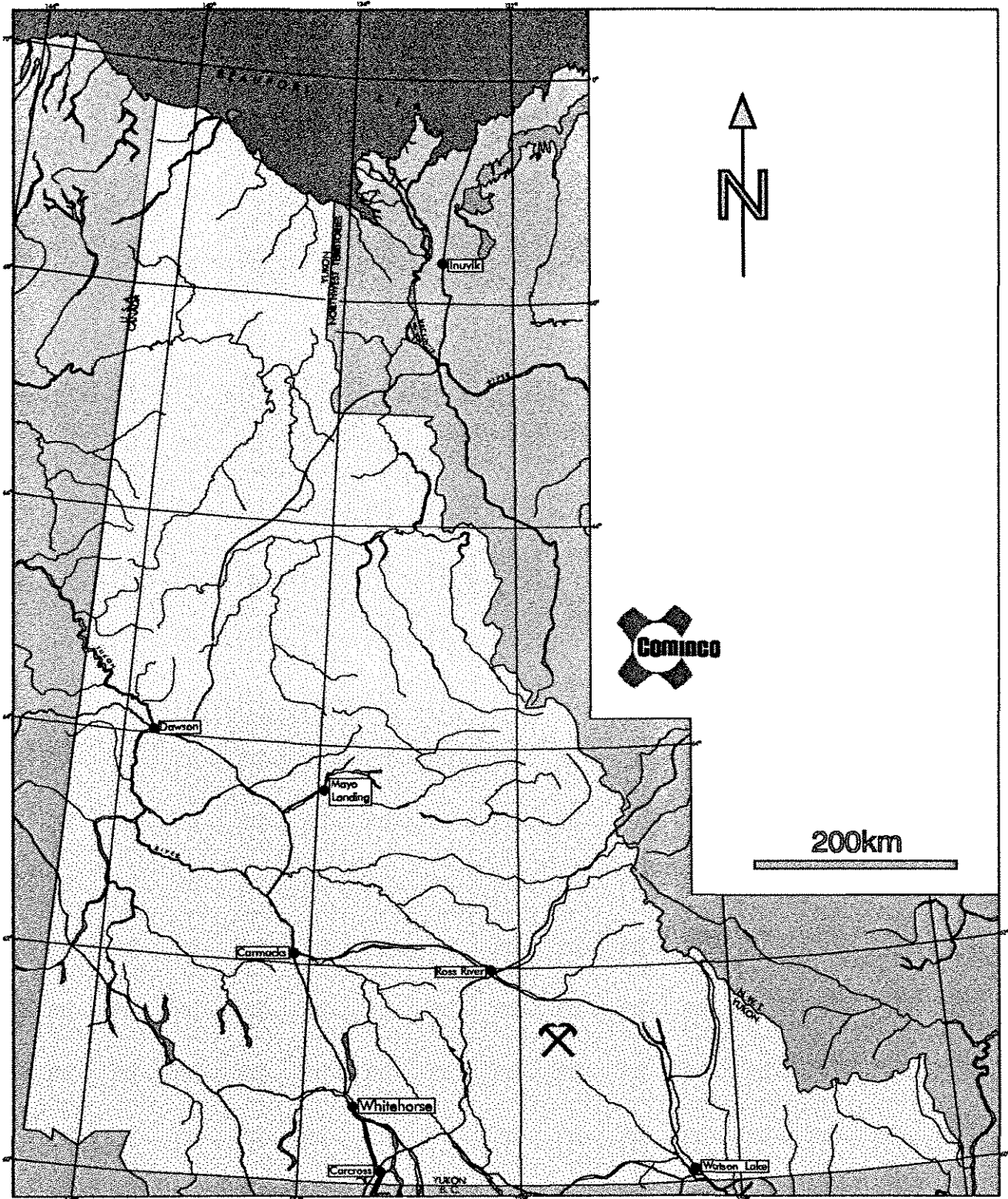
2. LOCATION AND ACCESS

The TIN property is located northeast of the Tintina Fault and Hoole River, approximately 75 kms southeast of Ross River and 35 kms southwest of Finlayson Lake (Figures 1 and 2). The gravel, all-weather Robert Campbell Highway provides access to within 30 kms of the property. Direct access is by helicopter. An old, overgrown winter road joins the property to the highway at Mink Creek.

3. PROPERTY AND OWNERSHIP

The TIN property, totalling 96 units due June 22, 1995 (Figure 2), is 100% owned by Cominco Ltd.

| <u>NAME</u> | <u>UNITS</u> | <u>CLAIM NO.</u> | <u>DUE DATES</u> |
|-------------|--------------|------------------|------------------|
| TIN 1-96 | 96 | YB49431-9526 | June 22/95 |



| | | | |
|-------------|-------|---------------------|-------|
| Drawn by: | | Traced by: a. m. a. | |
| Revised by: | Date: | Revised by: | Date: |
| | | | |
| | | | |
| | | | |
| | | | |

**TIN
PROPERTY LOCATION**

105 G/6

Scale: As Shown

Date: April, 1995

Plate: 1

No previous work by Cominco has been done in the immediate property area. The property area was initially staked (Minfile #16; E1) by Newmont in 1955 and then restaked by Northlake Mines Ltd. in 1966 following an airborne geophysical survey. Northlakes conducted prospecting, trenching and grid soil sampling in 1966 and drilled 4 holes (324 m) in 1967. The claims eventually lapsed and the ground was restaked by Empire Metals Corp. (Sovereign Metals Corp.) in 1974. The property was optioned to Texasgulf in 1975 and then to St. Joseph Exploration in 1976. Both companies undertook mapping and soil geochemical surveys. The claims again lapsed. In 1988, Welcome North restaked an aeromagnetic anomaly and completed a mapping, prospecting and soil geochemical survey in that same year. The claims subsequently lapsed and apparently remained open until 1994.

The showing of interest comprises veins of Zn-Pb-Ag mineralization within a feldspar augened schist (felsic crystal tuff or intrusive?). Previous work outlined a 120 x 850 metres weak Zn₊Pb anomaly centered on the showings exposed in trenches. A grab sample from the trenches returned 26.8% Pb, 0.5% Zn and 20.6 g/t Ag. The best drill result was 0.6% Pb, 0.6% Zn and 6.9 g/t Ag over 11.3 metres in Hole-1, including 2.5% Zn, 0.8% Pb and 10.3 g/t Ag over 1.2 metres.

Other showings on the property are reported to include asbestos fibre float and showings and a strong As with weak scattered Au values coincident with zones of quartz-carbonate alteration in mafic metavolcanics.

GEOLOGICAL MAPPING

On July 24 and 25, 1994, 1:10,000 scale geological mapping and prospecting was carried out by A.B.Mawer, P.A.MacRobbie and N.J.Callen (Figure 3).

GEOCHEMISTRY

A total of 124 soil samples, 4 silt samples and 8 rock sample were collected on July 24 and 25, 1994. Data is presented in Figure 4 and Appendix 2.

The soil, silt and rock samples were analyzed for Cu, Pb, Zn, Ag, As, Cd, Co, Ni, Fe, Mo, Cr, Bi, Sb, V, Sn, W, Sr, Y, La, Mn, Mg, Ti, Al, Ca, Na and K by I.C.P., Au by Aqua Regia decomposition/AAS and Ba by XRF at Cominco Exploration Research Laboratory (CERL) in Vancouver. Two of the rock samples were analyzed for major oxides by Li Borate Fusion/XRF (FeO by acid digestion/volumetric; LOI gravimetrically). Trace elements Cu, Pb, Zn and Ag were analyzed by aqua regia decomposition/AAS; Cr and Ni by HF-HClO₄ decomposition /AAS; Rb, Zr, Y, Nb and Ba by XRF/pressed pellet.

The rocks underlying this part of southeastern Yukon have been assigned to 2 terranes: the Yukon-Tanana Terrane (YTT) and the Slide Mountain Terrane (SMT) (Mortensen, 1983a; Mortensen and Jilson, 1985).

The YTT consists primarily of a layered sequence of metamorphosed rocks comprising a "lower unit" of pre-Devonian quartzite, pelitic schist and minor marble, a late Devonian to mid-Mississippian "middle unit" (3F) comprising carbonaceous phyllite and schist with interbanded mafic and, locally significant, felsic metavolcanics (3G), and an "upper unit" of Pennsylvanian marbles and quartzite. Volcanism within the "middle unit" was accompanied by the intrusion of 2-3, late Devonian to Mississippian, mafic to felsic metaplutonic suites (Simpson Range suite and augen and monzonitic orthogneisses). This sequence appears to reflect stable platformal or shelf sedimentation with an intervening period of mafic to felsic arc volcanism developed within a more reduced basinal setting.

A subhorizontal to moderately north to northeast dipping, penetrative ductile deformation fabric (S2) and associated middle greenschist facies (chlorite-biotite grade) metamorphism affects all YTT rocks. This fabric reflects the first, and most significant, deformational and metamorphic event (D1) perhaps related to a continent-arc collision during late Permian to early Triassic time.

The late Devonian to Triassic SMT comprises a heterogeneous package of mafic to ultramafic plutonic rocks, mafic volcanics, massive carbonate and chert. This sequence was structurally emplaced as thrust bounded klippen on YTT rocks or as thrust slices imbricated within YTT rocks during a period of crustal shortening (D2). The SMT is thought to represent a disrupted oceanic crust and volcanic arc assemblage thought to be located between the YTT and ancestral North America(?).

Late Triassic immature clastics comprising micaceous argillite, siltstone and sandstone unconformably(?) overlie the deformed and metamorphosed YTT rocks. These sediments are often closely associated with SMT volcanics and are invariably in fault contact with YTT rocks.

The SMT, Late Triassic sediments and Late Triassic to Middle Jurassic plutons are all affected by a period of thrust faulting (D2) during the Jurassic.

7. PROPERTY GEOLOGY AND GEOCHEMISTRY

The property is underlain primarily by the "middle unit" comprising mafic metavolcanics and associated sediments (3F) and lesser felsic metavolcanics (3G) (Mortensen, 1983a).

Outcrop exposure on the property is generally poor (Figure 3) with outcrop and talus/subcrop restricted to the northwest corner, on the slopes above the El showings, and on the ridge at the east end of the property. A significant fault is interpreted to be present in the main valley bottom separating these 2 areas of contrasting geology.

The east end of the property is underlain by a series of EW-trending, red brown weathering, variably magnetic, strongly quartz (silica)-Fe-carbonate (listwanite?) altered gabbroic(?) intrusives up to 300 metres thick/wide, cutting a monotonous sequence of fissile grey phyllites. No felsic metavolcanics were encountered in this area. Soil geochemistry sample lines run perpendicular to the strike of the intrusives/metasediments returned weak to moderate Cu (50-185 ppm) anomalies with a strong, associated Ni-Cr-Fe-Co signature (Figure 4).

The northwest corner of the property is underlain by NE-trending package of mafic and felsic metavolcanics with minor argillite and siltstones. On the property, the rocks strike generally NW with shallow to steep (5 to 85°) NE and SW dips; perpendicular to the trend of the units. Outcrops to the northeast, off the property, exhibit more northerly trends and west dips.

The lowest (structurally/stratigraphically?) unit is a black, variably carbonaceous argillite exposed low on the slope and in a small tributary creek.

Overlying the argillites is a relatively thin interval (50-100 m) of laminated to thinly banded, siliceous, light silvery green, quartz-sericite-chlorite schist, which grades upwards into a thick interval (300-400 m) of sheared, feldspar augened, locally Fe-carbonate altered, sericite-chlorite-quartz schist with interbedded argillaceous sediments. The interbedded/interbanded nature of the interval (as seen in old drill core) suggest the augened unit to be a series of felsic crystal-rich tuffs similar to rhyolitic feldspar crystal tuffs in the Kudz Ze Kayah area. This unit is host to disseminated and vein sphalerite + galena-pyrite mineralization. This augened unit appears to thin and then thicken, to the northeast, off the property.

Above the El showing and overlying(?) the feldspar augened schists, is a thick (200-300 m), very distinctive white, massive, dense, fine-grained aphyric felsic flow(?) similar to rhyolite flows/sills in the Kudz Ze Kayah area. This unit appears to thin rapidly to the northeast, grading laterally into massive to well bedded/banded(?), grey sericite-quartz-feldspar and white to grey sericite-quartz schists (felsic tuffs?) exposed in the small tributary creek. In this area and to the northeast, the felsics interfinger and grade laterally into variably Fe-carbonate altered, locally magnetic, bedded/banded(?) mafic chlorite-calcite phyllitic schists.

Above the dense felsic flow unit is an interval of interbedded/banded biotitic sediments, siliceous banded/bedded(?) quartz-feldspar-sericite schist and grey to black siltstone, argillite and minor sedimentary breccias/conglomerate.

At the western edge of the property, serpentinized ultramafics of the SMT containing trace chromite disseminations, structurally overlie the YTT metavolcanic/sedimentary rocks.

The relatively minor contour and trench soil sampling was intended to give an indication of the previously defined soil anomaly. The results indicate a Pb (71 to 125 ppm) anomaly over the EI showings with no corresponding Zn. The showings exposed in the trenches are; however, Zn-rich and Pb-poor. A single grab sample graded 4.1% Zn with no Pb-Cu-Ag signature. The effects of sampling soils along the trench cuts and whether or not a Zn anomaly exists and has been hydrologically transported down slope remains to be tested. The contour soil line, approximately 450 metres upslope of the showings returned significant Ba (3500 to 10493 ppm) values over a 1,500 metre strike length. Scattered Zn (425, 430 ppm) anomalies often with supporting Cd (up to 23 ppm) values and elevated Pb (30 to 36 ppm) values are present. Several Ba anomalous samples are present along the contour line to the northeast.

8. CONCLUSIONS and RECOMMENDATIONS


The western half of the property is underlain by favourable YTT, "middle unit" felsic and mafic metavolcanics, including dense, aphyric felsic flows and feldspar augened schists (felsic crystal tuffs?) which appear to be of similar character and chemistry as corresponding units in the Kudz Ze Zayah area.

The felsic volcanics are variably Fe-carbonate altered and are host to vein and disseminated sphalerite+galena-pyrite at the EI showings. A significant Ba soil anomaly suggests the presence of barite at a stratigraphic level between the felsic flow and feldspar crystal tuff. Additional soil geochemistry sampling is recommended for this area to define the distribution of mineralization.

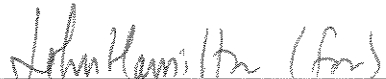
The weak AEM and Mag features in the area of geological interest should be evaluated in detail. Ground UTEM/HLEM and Mag surveys and grid soil geochemistry sampling are recommended for anomalies of interest.

The AEM and Mag features staked in the eastern half of the property appear to reflect carbonaceous sediments or structures and magnetic mafic intrusives, respectively. No further work is recommended for this area.


Report by:


P.A. MacRobbie, P. Geo
Geologist

Endorsed by:


D. Rhodes,
Senior Geologist

Approved for
Release by:


J.M. Hamilton
Manager, Exploration
Western Canada

PAM/

DISTRIBUTION:

W.D Files

Administration Files

- MORTENSEN, J. K., 1983a. AGE AND EVOLUTION OF THE YUKON-TANANA TERRANE, SOUTHEASTERN YUKON TERRITORY [Ph.D. Thesis]; Santa Barbara, University of California, 155 p.
- MORTENSEN, J. K. AND JILSON, G. A., 1985. EVOLUTION OF THE YUKON-TANANA TERRANE : EVIDENCE FROM SOUTHEASTERN YUKON TERRITORY; *Geology*, 13, p. 806-810.


APPENDIX 1
STATEMENT OF QUALIFICATIONS

STATEMENT OF QUALIFICATIONS

I, Paul A. MacRobbie, of 11164 Southridge Rd., Delta, B.C. hereby declare that I:

1. Graduated from Carleton University, Ottawa, Ontario with a B.Sc. in Geology in May, 1986 and a M.Sc. in Geology in June, 1988.
2. Have been actively engaged in mineral exploration in Western Canada as a permanent geologist with Cominco Ltd. since June, 1988.
3. Am a registered member of The Association of Professional Engineers and Geoscientists of the Province of British Columbia.

Date: April 10, 1995



P.A MacROBBIE, P.Geo
GEOLOGIST

APPENDIX 2

1994 GEOCHEMISTRY DATA

TIN PROPERTY GEOCHEM.

| LAB NO | FIELD NUMBER | Cu ppm | Pb ppm | Zn ppm | Ag ppm | Au ppb | Wt Au gram | Ba(4) ppm |
|----------|--------------|-----------|-----------|-----------|-----------|-----------|---------------|--------------|
| R9406419 | M94 R29 | 14 | 35 | 2840 | 2.7 | <10 | 5 | |
| R9406420 | M94 R30 | 23 | 14 | E41300 | <.4 | <10 | 5 | |
| R9406421 | M94 R31 | 3 | 24 | 217 | <.4 | <10 | 5 | |
| R9406422 | M94 R32 | 4 | 26 | 773 | <.4 | <10 | 5 | |
| R9406423 | M94 R33 | 9 | 6 | 34 | .5 | <10 | 5 | |

I=insufficient sample X=small sample E=exceeds calibration C=being checked R=revised
If requested analyses are not shown ,results are to follow

ANALYTICAL METHODS

Cu Aqua regia decomposition / AAS
Pb Aqua regia decomposition / AAS
Zn Aqua regia decomposition / AAS
Ag Aqua regia decomposition / AAS
Au Aqua regia decomposition / solvent extraction / AAS
Wt Au The weight of sample taken to analyse for gold (geochem)
Ba(4) X-Ray fluorescence / pressed pellet

| LAB NO | FIELD NUMBER | Au ppb | Wt Au gram | Ba ppm |
|----------|--------------|-----------|---------------|-----------|
| R9410553 | MRTI03 | <10 | 5 | 1106 |

I=insufficient sample X=small sample E=exceeds calibration C=being checked R=revised
If requested analyses are not shown ,results are to follow

ANALYTICAL METHODS

Au Aqua regia decomposition / solvent extraction / AAS
Wt Au The weight of sample taken to analyse for gold (geochem)
Ba X-Ray fluorescence / loose powder

| LAB NO | FIELD NUMBER | Cu ppm | Pb ppm | Zn ppm | Ag ppm | As ppm | Ba ppm | Cd ppm | Co ppm | Ni ppm | Fe % | Mo ppm | Cr ppm | Bi ppm |
|----------|--------------|-----------|-----------|-----------|-----------|-----------|-----------|-----------|-----------|-----------|---------|-----------|-----------|-----------|
| R9410553 | MRTI03 | 6 | 4 | 77 | <.4 | <2 | 85 | <1 | 4 | 6 | 2.40 | 13 | 50 | <5 |

| Sb | V | Sn | W | Sr | Y | La | Mn | Mg | Ti | Al | Ca | Na | K |
|-----|-----|-----|-----|-----|-----|-----|-----|-----|------|-----|------|-----|-----|
| ppm | ppm | ppm | ppm | ppm | ppm | ppm | ppm | % | % | % | % | % | % |
| <5 | 2 | 10 | <2 | 41 | 20 | 86 | 438 | .21 | <.01 | .42 | 1.32 | .01 | .13 |

ANALYTICAL METHODS

ICP PACKAGE :0.5 gram sample digested in hot reverse aqua regia (soil,silt) or hot Aqua Regia(rocks).

TIN PROPERTY GEOCHEM.

| LAB NO | FIELD NUMBER | SiO2 | TiO2 | Al2O3 | Fe2O3 | FeO | MnO | MgO | CaO | Na2O | K2O | P2O5 | Ba | LOI | TOTAL |
|----------|--------------|-------|------|-------|-------|------|------|------|------|------|------|------|------|------|-------|
| | | % | % | % | % | % | % | % | % | % | % | % | % | % | % |
| R9410561 | LGTTI02 | 72.89 | 0.28 | 13.66 | .21 | 0.29 | 0.03 | 0.14 | 0.36 | 1.23 | 9.72 | 0.08 | 0.07 | .49 | 99.45 |
| R9406454 | LG-TI-01 | 71.15 | 0.55 | 13.50 | 1.01 | 2.72 | 0.08 | 0.62 | 0.33 | 2.70 | 3.28 | 0.16 | 0.10 | 2.96 | 99.16 |

I=insufficient sample X=small sample E=exceeds calibration C=being checked R=revised
 If requested analyses are not shown ,results are to follow

ANALYTICAL METHODS

FeO determined by acid digestion /volumetric.LOI determined gravimetrically

| LAB NO | FIELD NUMBER | Cu | Pb | Zn | Ag | Cr(2) | Ni(2) | Rb | Zr | Y | Nb | Ba(4) |
|----------|--------------|-----|-----|-----|-----|-------|-------|-----|-----|-----|-----|-------|
| | | ppm | ppm | ppm | ppm | ppm | ppm | ppm | ppm | ppm | ppm | ppm |
| R9410561 | LGTTI02 | 5 | 21 | 6 | <.4 | 85 | <4 | 197 | 246 | 36 | 32 | 789 |
| R9406454 | LG-TI-01 | 92 | 97 | 45 | 29 | 962 | 3 | 26 | 112 | 94 | 18 | 509 |

I=insufficient sample X=small sample E=exceeds calibration C=being checked R=revised
 If requested analyses are not shown ,results are to follow

ANALYTICAL METHODS

Rb X-Ray fluorescence / pressed pellet
 Sr X-Ray fluorescence / pressed pellet
 Y X-Ray fluorescence / pressed pellet

| Property | LabNo | FieldNo | S | M | O | S | Col | Sz | O | W | Dph | WS | FW | P | Cu | Pb | Zn | Ag | As | Ba(lcp) | Cd | Co | Ni | Fe | Mo | Cr | Bi | Sb | V | Sn | W | Sr | Y | La | Mn | Mg | Ti | Al | Ca | Na | K | Au | Wt | Ba(xrf) |
|----------|----------|---------|---|---|----|----|-----|----|---|---|-----|----|----|----|----|----|-----|-----|-----|---------|----|----|-----|------|----|-----|----|----|----|----|---|----|----|----|------|------|------|------|------|------|------|----|----|---------|
| Tin | S9416187 | 243540 | 1 | 1 | 5 | ** | 2B | 23 | 2 | 2 | 35 | 3 | B2 | ** | 2 | 18 | 60 | 0.2 | 25 | 245 | 1 | 3 | 8 | 1.72 | 2 | 11 | 2 | 2 | 19 | 3 | 8 | 14 | 3 | 10 | 152 | 0.20 | 0.01 | 0.71 | 0.23 | 0.01 | 0.05 | 5 | 10 | 2509 |
| Tin | S9416188 | 243541 | 1 | 1 | 5 | ** | 2B | 23 | 2 | 2 | 30 | 3 | B2 | ** | 21 | 19 | 46 | 0.2 | 12 | 207 | 1 | 7 | 22 | 2.98 | 2 | 17 | 2 | 2 | 11 | 5 | 1 | 26 | 25 | 26 | 191 | 0.34 | 0.01 | 1.05 | 0.43 | 0.01 | 0.02 | 5 | 10 | 2444 |
| Tin | S9416189 | 243542 | 1 | 1 | 5 | ** | NB | 23 | 1 | 2 | 40 | 4 | B2 | ** | 26 | 16 | 66 | 0.2 | 13 | 265 | 1 | 12 | 25 | 3.08 | 2 | 18 | 2 | 2 | 12 | 1 | 1 | 16 | 7 | 23 | 469 | 0.37 | 0.01 | 1.02 | 0.29 | 0.01 | 0.04 | 5 | 10 | 2718 |
| Tin | S9416190 | 243543 | 1 | 1 | 5 | ** | 2B | 23 | 2 | 2 | 30 | 4 | B2 | ** | 9 | 28 | 74 | 0.2 | 28 | 482 | 1 | 13 | 43 | 2.46 | 1 | 64 | 2 | 2 | 29 | 4 | 1 | 36 | 3 | 10 | 342 | 0.50 | 0.01 | 1.07 | 0.39 | 0.01 | 0.06 | 5 | 10 | 2466 |
| Tin | S9416191 | 243544 | 1 | 1 | 5 | ** | 1B | 23 | 1 | 1 | 25 | 3 | B2 | ** | 6 | 16 | 59 | 0.2 | 36 | 139 | 1 | 13 | 51 | 2.02 | 1 | 70 | 2 | 2 | 31 | 2 | 1 | 6 | 2 | 11 | 637 | 0.65 | 0.01 | 0.89 | 0.07 | 0.01 | 0.08 | 5 | 10 | 2308 |
| Tin | S9416192 | 243545 | 1 | 1 | 2 | ** | 1B | 23 | 1 | 2 | 35 | 3 | B2 | ** | 37 | 35 | 95 | 0.5 | 180 | 558 | 1 | 25 | 143 | 6.44 | 2 | 199 | 2 | 2 | 37 | 2 | 1 | 44 | 22 | 20 | 6748 | 0.50 | 0.01 | 1.74 | 0.66 | 0.01 | 0.04 | 5 | 10 | 3124 |
| Tin | S9416193 | 243546 | 1 | 1 | 2 | ** | 1B | 23 | 1 | 1 | 35 | 4 | B2 | ** | 16 | 17 | 67 | 0.2 | 18 | 230 | 1 | 7 | 16 | 2.83 | 2 | 14 | 2 | 2 | 8 | 1 | 1 | 13 | 7 | 36 | 348 | 0.28 | 0.01 | 1.01 | 0.15 | 0.01 | 0.04 | 5 | 10 | 2832 |
| Tin | S9416194 | 243547 | 1 | 1 | 2 | ** | 2B | 23 | 1 | 2 | 40 | 3 | B2 | ** | 25 | 15 | 55 | 0.2 | 48 | 564 | 1 | 17 | 51 | 3.30 | 1 | 28 | 2 | 2 | 20 | 3 | 1 | 48 | 19 | 20 | 1173 | 0.37 | 0.01 | 1.08 | 0.73 | 0.01 | 0.04 | 5 | 10 | 2666 |
| Tin | S9416195 | 243548 | 1 | 1 | 2 | ** | 2B | 23 | 1 | 1 | 30 | 3 | B2 | ** | 22 | 12 | 60 | 0.2 | 24 | 270 | 1 | 8 | 28 | 2.55 | 1 | 27 | 2 | 2 | 15 | 5 | 1 | 21 | 10 | 20 | 308 | 0.48 | 0.01 | 1.04 | 0.33 | 0.01 | 0.05 | 5 | 10 | 3119 |
| Tin | S9416196 | 243549 | 1 | 1 | 2 | ** | NG | 23 | 1 | 1 | 40 | 3 | B2 | ** | 22 | 14 | 66 | 0.2 | 31 | 294 | 1 | 8 | 23 | 2.57 | 2 | 18 | 2 | 2 | 12 | 4 | 1 | 12 | 9 | 28 | 340 | 0.38 | 0.01 | 0.99 | 0.16 | 0.01 | 0.05 | 5 | 10 | 3081 |
| Tin | S9416197 | 243550 | 1 | 1 | 4 | ** | NG | 23 | 1 | 3 | 40 | 3 | Z | ** | 20 | 21 | 67 | 0.2 | 19 | 578 | 1 | 8 | 23 | 2.27 | 1 | 16 | 2 | 2 | 13 | 1 | 1 | 30 | 19 | 27 | 441 | 0.34 | 0.01 | 1.10 | 0.42 | 0.01 | 0.06 | 5 | 10 | 3336 |
| Tin | S9416198 | 243551 | 1 | 1 | 4 | ** | NG | 23 | 1 | 2 | 45 | 3 | B2 | ** | 20 | 27 | 70 | 0.2 | 43 | 361 | 1 | 11 | 16 | 2.11 | 2 | 16 | 2 | 2 | 14 | 1 | 1 | 32 | 5 | 19 | 805 | 0.27 | 0.01 | 0.79 | 0.50 | 0.01 | 0.06 | 5 | 10 | 3842 |
| Tin | S9416199 | 243552 | 1 | 1 | 4 | ** | NG | 23 | 1 | 2 | 45 | 3 | B2 | ** | 14 | 37 | 70 | 0.2 | 32 | 321 | 1 | 8 | 14 | 1.71 | 2 | 14 | 2 | 2 | 11 | 2 | 1 | 31 | 6 | 23 | 472 | 0.24 | 0.01 | 0.69 | 0.47 | 0.01 | 0.05 | 5 | 10 | 2681 |
| Tin | S9416200 | 243553 | 1 | 1 | 4 | ** | 1G | 23 | 1 | 1 | 35 | 3 | B2 | ** | 4 | 14 | 59 | 0.2 | 16 | 199 | 1 | 2 | 7 | 1.21 | 1 | 11 | 2 | 2 | 11 | 3 | 3 | 13 | 3 | 23 | 267 | 0.19 | 0.01 | 0.53 | 0.18 | 0.01 | 0.08 | 5 | 10 | 2495 |
| Tin | S9416201 | 243554 | 1 | 1 | 2 | ** | 2B | 23 | 1 | 1 | 35 | 3 | B2 | ** | 9 | 18 | 53 | 0.2 | 23 | 146 | 1 | 3 | 11 | 1.51 | 3 | 11 | 2 | 2 | 9 | 1 | 1 | 10 | 6 | 34 | 175 | 0.21 | 0.01 | 0.65 | 0.13 | 0.01 | 0.06 | 5 | 10 | 2522 |
| Tin | S9416202 | 243555 | 1 | 1 | 2 | ** | 1B | 23 | 1 | 1 | 30 | 3 | B2 | ** | 12 | 13 | 54 | 0.2 | 13 | 259 | 1 | 5 | 19 | 1.65 | 2 | 20 | 2 | 2 | 13 | 3 | 1 | 17 | 8 | 25 | 252 | 0.34 | 0.01 | 0.80 | 0.24 | 0.01 | 0.05 | 5 | 10 | 2753 |
| Tin | S9416203 | 243556 | 1 | 1 | 2 | ** | 2B | 23 | 2 | 2 | 30 | 3 | B2 | ** | 12 | 13 | 41 | 0.2 | 12 | 233 | 1 | 3 | 14 | 1.27 | 1 | 14 | 2 | 2 | 13 | 1 | 1 | 8 | 5 | 12 | 229 | 0.16 | 0.01 | 0.82 | 0.05 | 0.02 | 0.05 | 5 | 10 | 1754 |
| Tin | S9416204 | 243557 | 1 | 2 | ** | ** | 2B | 12 | 1 | 3 | 5 | 5 | 1 | ** | 30 | 20 | 113 | 0.2 | 61 | 359 | 1 | 6 | 24 | 1.81 | 1 | 15 | 2 | 2 | 10 | 1 | 1 | 65 | 18 | 14 | 418 | 0.32 | 0.01 | 0.89 | 0.98 | 0.01 | 0.13 | 5 | 10 | 2965 |
| Tin | S9416205 | 243558 | 1 | 1 | 2 | ** | 1B | 23 | 1 | 2 | 45 | 3 | B2 | ** | 37 | 22 | 38 | 0.2 | 21 | 234 | 1 | 10 | 23 | 2.85 | 1 | 14 | 2 | 2 | 12 | 1 | 1 | 28 | 25 | 25 | 404 | 0.30 | 0.01 | 1.04 | 0.53 | 0.01 | 0.04 | 5 | 10 | 2914 |
| Tin | S9416206 | 243559 | 1 | 1 | 2 | ** | 1B | 23 | 1 | 1 | 35 | 3 | B2 | ** | 13 | 12 | 44 | 0.2 | 20 | 169 | 1 | 9 | 16 | 2.54 | 3 | 17 | 2 | 2 | 15 | 2 | 1 | 14 | 3 | 22 | 258 | 0.35 | 0.01 | 1.08 | 0.22 | 0.01 | 0.07 | 5 | 10 | 2944 |
| Tin | S9416207 | 243560 | 1 | 1 | 2 | ** | 2N | 23 | 1 | 2 | 35 | 3 | B2 | ** | 27 | 14 | 52 | 0.2 | 36 | 159 | 1 | 12 | 24 | 2.35 | 1 | 19 | 2 | 2 | 12 | 1 | 1 | 20 | 7 | 13 | 569 | 0.52 | 0.01 | 1.07 | 0.33 | 0.01 | 0.04 | 5 | 10 | 2546 |
| Tin | S9416208 | 243561 | 1 | 1 | 2 | ** | 1N | 23 | 1 | 1 | 35 | 3 | B2 | ** | 27 | 16 | 63 | 0.2 | 23 | 299 | 1 | 10 | 26 | 2.47 | 2 | 18 | 2 | 2 | 12 | 2 | 1 | 18 | 12 | 20 | 329 | 0.51 | 0.01 | 1.06 | 0.26 | 0.01 | 0.05 | 5 | 10 | 4487 |
| Tin | S9416209 | 243562 | 1 | 1 | 2 | ** | 1N | 23 | 1 | 2 | 40 | 3 | B2 | ** | 8 | 13 | 46 | 0.2 | 13 | 216 | 1 | 7 | 12 | 1.88 | 2 | 17 | 2 | 2 | 15 | 1 | 1 | 16 | 3 | 13 | 322 | 0.34 | 0.01 | 0.76 | 0.22 | 0.01 | 0.05 | 5 | 10 | 2357 |
| Tin | S9416210 | 243563 | 1 | 1 | 2 | ** | 1B | 23 | 1 | 2 | 40 | 3 | B2 | ** | 37 | 13 | 48 | 0.2 | 44 | 452 | 1 | 7 | 24 | 2.09 | 2 | 15 | 2 | 2 | 10 | 1 | 1 | 21 | 14 | 18 | 242 | 0.38 | 0.01 | 0.87 | 0.27 | 0.01 | 0.06 | 5 | 10 | 4466 |
| Tin | S9416211 | 243564 | 1 | 1 | 2 | ** | 1B | 23 | 1 | 1 | 25 | 3 | B2 | ** | 15 | 14 | 53 | 0.2 | 39 | 350 | 1 | 5 | 15 | 1.77 | 1 | 11 | 2 | 2 | 10 | 1 | 1 | 9 | 4 | 12 | 355 | 0.17 | 0.01 | 0.59 | 0.13 | 0.01 | 0.07 | 5 | 10 | 6980 |
| Tin | S9416212 | 243565 | 1 | 1 | 2 | ** | 1Y | 23 | 1 | 1 | 20 | 3 | B2 | ** | 59 | 24 | 66 | 0.2 | 119 | 492 | 1 | 6 | 25 | 3.40 | 2 | 14 | 2 | 2 | 13 | 4 | 1 | 16 | 5 | 11 | 283 | 0.22 | 0.01 | 0.84 | 0.05 | 0.01 | 0.06 | 5 | 10 | 6232 |
| Tin | S9416213 | 243566 | 1 | 1 | 2 | ** | 2B | 23 | 1 | 1 | 40 | 3 | B2 | ** | 11 | 33 | 27 | 0.5 | 223 | 195 | 1 | 4 | 12 | 1.54 | 2 | 9 | 2 | 2 | 8 | 1 | 1 | 79 | 20 | 17 | 447 | 0.15 | 0.01 | 0.64 | 1.03 | 0.01 | 0.17 | 5 | 10 | 2068 |
| Tin | S9416214 | 243567 | 1 | 1 | 2 | ** | 1Y | 23 | 1 | 1 | 30 | 3 | B2 | ** | 12 | 16 | 37 | 0.2 | 77 | 280 | 1 | 4 | 14 | 1.81 | 1 | 16 | 2 | 2 | 10 | 1 | 1 | 15 | 2 | 9 | 303 | 0.21 | 0.01 | 0.74 | 0.18 | 0.01 | 0.06 | 5 | 10 | 3230 |
| Tin | S9416215 | 243568 | 1 | 1 | 5 | ** | GB | 23 | 1 | 2 | 35 | 3 | B2 | ** | 26 | 21 | 55 | 0.2 | 88 | 210 | 1 | 6 | 20 | 1.88 | 2 | 14 | 2 | 2 | 10 | 2 | 1 | 18 | 5 | 12 | 257 | 0.30 | 0.01 | 0.66 | 0.24 | 0.01 | 0.08 | 5 | 10 | 4136 |
| Tin | S9416216 | 243569 | 1 | 1 | 2 | ** | 1Y | 23 | 1 | 1 | 30 | 3 | B2 | ** | 6 | 26 | 28 | 0.2 | 14 | 188 | 1 | 2 | 6 | 1.51 | 1 | 9 | 2 | 2 | 16 | 1 | 1 | 11 | 1 | 9 | 105 | 0.14 | 0.01 | 0.55 | 0.06 | 0.01 | 0.08 | 5 | 10 | 2862 |
| Tin | S9416217 | 243570 | 1 | 1 | 2 | ** | 1Y | 23 | 1 | 1 | 30 | 3 | B2 | ** | 16 | 14 | 36 | 0.2 | 29 | 696 | 1 | 4 | 12 | 1.54 | 2 | 12 | 2 | 2 | 11 | 1 | 1 | 12 | 5 | 17 | 264 | 0.21 | 0.01 | 0.72 | 0.12 | 0.01 | 0.06 | 5 | 10 | 6715 |
| Tin | S9416218 | 243571 | 1 | 1 | 2 | ** | 2B | 23 | 2 | 2 | 45 | 3 | B2 | ** | 19 | 16 | 58 | 0.2 | 25 | 330 | 1 | 5 | 18 | 1.87 | 2 | 17 | 2 | 2 | 13 | 2 | 1 | 25 | 10 | 18 | 283 | 0.32 | 0.01 | 0.80 | 0.38 | 0.01 | 0.09 | 5 | 10 | 3164 |
| Tin | S9416219 | 243572 | 1 | 1 | 2 | ** | 1B | 23 | 1 | 2 | 40 | 3 | B2 | ** | 13 | 17 | 46 | 0.2 | 33 | 139 | 1 | 5 | 16 | 1.88 | 1 | 16 | 2 | 2 | 11 | 1 | 1 | 22 | 6 | 16 | 270 | 0.35 | 0.01 | 0.74 | 0.27 | 0.01 | 0.11 | 5 | 10 | 2882 |
| Tin | S9416220 | 243573 | 1 | 1 | 5 | ** | 1B | 23 | 1 | 2 | 45 | 3 | B2 | ** | 22 | 17 | 64 | 0.2 | 38 | 157 | 1 | 7 | 20 | 1.77 | 1 | 15 | 2 | 2 | 11 | 1 | 1 | 71 | 12 | 15 | 439 | 0.34 | 0.01 | 0.78 | 0.94 | 0.01 | 0.08 | 5 | 10 | 2366 |
| Tin | S9416221 | 243574 | 1 | 1 | 5 | ** | 1B | 24 | 1 | 2 | 40 | 3 | B2 | ** | 20 | 14 | 59 | 0.2 | 24 | 218 | 1 | 6 | 22 | 2.08 | 2 | 21 | 2 | 2 | 17 | 2 | 1 | 29 | 10 | 21 | 259 | 0.40 | 0.01 | 1.01 | 0.36 | 0.01 | 0.10 | 5 | 10 | 2291 |
| Tin | S9416222 | 243575 | 1 | 1 | 5 | ** | GB | 24 | 1 | 2 | 35 | 3 | B2 | ** | 19 | 12 | 53 | 0.2 | 7 | 181 | 1 | 7 | 22 | 2.25 | 3 | 22 | 2 | 2 | 16 | 3 | 1 | 19 | 8 | 21 | 313 | 0.46 | 0.01 | 1.13 | 0.28 | 0.01 | 0.08 | 5 | 10 | 2286 |
| Tin | S9416223 | 243576 | 1 | 1 | 5 | ** | 2B | 23 | 2 | 2 | 40 | 3 | B2 | ** | 38 | 22 | 70 | 0.2 | 15 | 457 | 1 | 9 | 30 | 2.38 | 3 | 23 | 2 | 2 | 2 | | | | | | | | | | | | | | | |

BEST ATTAINABLE IMAGE

| | | | | | | | | | | | | | | | | | | | | | | | | | | | | | | | | | | | | | | | | | | | | |
|-----|----------|--------|---|---|---|----|----|----|---|---|----|---|----|----|----|----|-----|-----|-----|------|----|----|----|------|---|----|---|---|----|---|---|-----|----|----|------|------|------|------|------|------|------|----|----|------|
| Tin | S9416484 | 242670 | 3 | 1 | 2 | ** | 1B | 4 | 3 | 1 | 20 | 3 | C | ** | 8 | 10 | 430 | 0.2 | 4 | 869 | 23 | 3 | 6 | 0.51 | 1 | 2 | 2 | 2 | 4 | 3 | 1 | 125 | 3 | 4 | 1306 | 0.09 | 0.01 | 0.39 | 1.33 | 0.02 | 0.09 | 5 | 6 | 2260 |
| Tin | S9416485 | 242671 | 3 | 1 | 2 | ** | 1B | 23 | 1 | 1 | 45 | 3 | B2 | ** | 11 | 34 | 170 | 0.2 | 17 | 296 | 1 | 6 | 8 | 3.46 | 2 | 12 | 2 | 2 | 16 | 4 | 1 | 28 | 4 | 8 | 568 | 0.14 | 0.01 | 0.81 | 0.04 | 0.01 | 0.11 | 5 | 10 | 3613 |
| Tin | S9416486 | 242672 | 3 | 1 | 2 | ** | 1B | 3 | 1 | 1 | 25 | 3 | B2 | ** | 12 | 27 | 179 | 0.2 | 21 | 1112 | 2 | 10 | 20 | 1.69 | 1 | 23 | 2 | 2 | 24 | 2 | 1 | 49 | 3 | 10 | 1440 | 0.25 | 0.01 | 0.69 | 0.35 | 0.01 | 0.16 | 5 | 10 | 3574 |
| Tin | S9416487 | 242673 | 3 | 1 | 2 | ** | 2B | 23 | 1 | 2 | 30 | 3 | B2 | ** | 12 | 21 | 153 | 0.2 | 20 | 465 | 3 | 4 | 19 | 1.78 | 1 | 35 | 2 | 2 | 29 | 1 | 1 | 19 | 5 | 16 | 199 | 0.29 | 0.01 | 0.79 | 0.13 | 0.01 | 0.11 | 5 | 10 | 3376 |
| Tin | S9416488 | 242674 | 3 | 1 | 2 | ** | 1B | 23 | 1 | 1 | 30 | 3 | B2 | ** | 14 | 27 | 126 | 0.2 | 18 | 437 | 1 | 5 | 29 | 1.90 | 2 | 38 | 2 | 2 | 19 | 1 | 1 | 10 | 5 | 21 | 270 | 0.43 | 0.01 | 0.88 | 0.09 | 0.01 | 0.09 | 5 | 10 | 4078 |
| Tin | S9416489 | 242675 | 3 | 1 | 2 | ** | 1G | 4 | 3 | 1 | 40 | 3 | C | ** | 23 | 34 | 127 | 0.2 | 18 | 1040 | 1 | 11 | 30 | 1.60 | 1 | 36 | 2 | 2 | 17 | 3 | 1 | 88 | 11 | 14 | 668 | 0.30 | 0.01 | 0.94 | 0.75 | 0.02 | 0.09 | 5 | 10 | 3006 |
| Tin | S9416490 | 242676 | 3 | 1 | 2 | ** | 2B | 23 | 1 | 1 | 40 | 3 | B2 | ** | 13 | 14 | 65 | 0.2 | 17 | 569 | 1 | 7 | 47 | 1.94 | 1 | 65 | 2 | 2 | 19 | 2 | 1 | 20 | 6 | 23 | 241 | 0.56 | 0.01 | 1.02 | 0.19 | 0.01 | 0.07 | 5 | 10 | 3451 |
| Tin | S9416491 | 242677 | 3 | 1 | 2 | ** | 2G | 23 | 1 | 1 | 40 | 3 | B2 | ** | 11 | 17 | 38 | 0.2 | 19 | 692 | 1 | 2 | 16 | 0.90 | 1 | 13 | 2 | 2 | 10 | 3 | 1 | 17 | 4 | 13 | 78 | 0.13 | 0.01 | 0.58 | 0.08 | 0.02 | 0.07 | 5 | 10 | 3595 |
| Tin | S9416492 | 242678 | 3 | 1 | 2 | ** | 1B | 23 | 1 | 1 | 40 | 3 | B2 | ** | 21 | 19 | 118 | 0.2 | 28 | 784 | 1 | 8 | 66 | 1.64 | 1 | 73 | 2 | 2 | 16 | 1 | 1 | 34 | 7 | 18 | 340 | 0.65 | 0.01 | 0.84 | 0.26 | 0.01 | 0.07 | 5 | 10 | 4940 |
| Tin | S9416493 | 242679 | 3 | 1 | 2 | ** | 2G | 23 | 1 | 3 | 40 | 3 | B2 | ** | 26 | 30 | 121 | 0.5 | 56 | 1476 | 1 | 8 | 48 | 2.06 | 3 | 27 | 2 | 2 | 10 | 3 | 1 | 78 | 23 | 34 | 608 | 0.34 | 0.01 | 0.75 | 0.66 | 0.01 | 0.15 | 5 | 10 | 7120 |
| Tin | S9416494 | 242680 | 3 | 1 | 2 | ** | 2B | 4 | 3 | 1 | 40 | 3 | B1 | ** | 28 | 27 | 74 | 0.2 | 30 | 1176 | 1 | 4 | 25 | 1.43 | 5 | 10 | 2 | 2 | 6 | 2 | 1 | 64 | 26 | 84 | 156 | 0.18 | 0.01 | 0.69 | 0.66 | 0.01 | 0.10 | 5 | 10 | 5935 |
| Tin | S9416495 | 242681 | 3 | 1 | 2 | ** | 2G | 23 | 3 | 1 | 40 | 3 | B2 | ** | 41 | 24 | 95 | 0.2 | 8 | 1651 | 1 | 5 | 18 | 1.23 | 3 | 14 | 2 | 2 | 14 | 2 | 1 | 33 | 6 | 24 | 522 | 0.25 | 0.01 | 1.10 | 0.20 | 0.02 | 0.05 | 5 | 10 | 4586 |
| Tin | S9416496 | 242682 | 3 | 1 | 2 | ** | 1G | 4 | 1 | 1 | 30 | 3 | C | ** | 17 | 6 | 81 | 0.5 | 12 | 187 | 1 | 2 | 9 | 1.14 | 1 | 4 | 2 | 2 | 16 | 1 | 1 | 5 | 1 | 7 | 68 | 0.03 | 0.01 | 0.55 | 0.01 | 0.01 | 0.03 | 5 | 10 | 8018 |
| Tin | S9416497 | 242683 | 3 | 1 | 2 | ** | 1G | 4 | 1 | 1 | 40 | 3 | C | ** | 56 | 27 | 425 | 0.2 | 2 | 126 | 1 | 1 | 3 | 0.45 | 1 | 2 | 2 | 2 | 8 | 2 | 1 | 7 | 1 | 2 | 114 | 0.01 | 0.01 | 0.28 | 0.02 | 0.02 | 0.04 | 5 | 10 | 2471 |
| Tin | S9416498 | 242684 | 3 | 1 | 2 | ** | 1G | 4 | 1 | 1 | 40 | 3 | B2 | ** | 43 | 9 | 64 | 0.2 | 6 | 258 | 1 | 3 | 10 | 2.61 | 2 | 8 | 2 | 2 | 25 | 1 | 1 | 12 | 2 | 23 | 366 | 0.08 | 0.01 | 0.68 | 0.04 | 0.01 | 0.06 | 5 | 10 | 5149 |
| Tin | S9416499 | 242685 | 3 | 1 | 2 | ** | 1G | 4 | 1 | 1 | 40 | 3 | C | ** | 42 | 9 | 66 | 0.2 | 5 | 266 | 1 | 3 | 12 | 2.72 | 1 | 9 | 2 | 2 | 25 | 2 | 1 | 12 | 2 | 25 | 380 | 0.08 | 0.01 | 0.69 | 0.05 | 0.01 | 0.06 | 5 | 10 | 3657 |
| Tin | S9416500 | 242686 | 3 | 1 | 2 | ** | 1G | 4 | 1 | 1 | 40 | 3 | B1 | ** | 16 | 8 | 33 | 0.2 | 6 | 838 | 1 | 4 | 10 | 0.91 | 1 | 11 | 2 | 2 | 14 | 1 | 1 | 29 | 3 | 12 | 552 | 0.15 | 0.01 | 0.84 | 0.27 | 0.02 | 0.06 | 5 | 10 | 3306 |
| Tin | S9416501 | 242687 | 3 | 1 | 2 | ** | 1B | 23 | 1 | 1 | 40 | 3 | B2 | ** | 40 | 13 | 106 | 0.2 | 23 | 660 | 1 | 11 | 33 | 2.23 | 1 | 16 | 2 | 2 | 14 | 2 | 1 | 22 | 4 | 24 | 962 | 0.39 | 0.01 | 1.06 | 0.15 | 0.01 | 0.09 | 5 | 10 | 6758 |
| Tin | S9416502 | 242688 | 3 | 1 | 2 | ** | 1Y | 4 | 1 | 1 | 40 | 3 | B2 | ** | 8 | 15 | 53 | 0.2 | 13 | 170 | 1 | 4 | 14 | 1.65 | 1 | 17 | 2 | 2 | 27 | 1 | 1 | 15 | 3 | 20 | 254 | 0.14 | 0.01 | 0.48 | 0.16 | 0.01 | 0.10 | 5 | 10 | 2224 |
| Tin | S9416503 | 242689 | 3 | 1 | 2 | ** | 1Y | 34 | 1 | 1 | 40 | 3 | B2 | ** | 45 | 28 | 286 | 0.2 | 17 | 546 | 1 | 9 | 50 | 2.17 | 1 | 61 | 2 | 2 | 24 | 1 | 1 | 7 | 5 | 21 | 213 | 0.64 | 0.01 | 1.22 | 0.10 | 0.01 | 0.07 | 5 | 10 | 3395 |
| Tin | S9416504 | 242690 | 3 | 1 | 2 | ** | 1G | 4 | 1 | 1 | 40 | 3 | B1 | ** | 10 | 5 | 24 | 0.2 | 12 | 121 | 1 | 4 | 10 | 1.42 | 1 | 12 | 2 | 2 | 42 | 1 | 1 | 8 | 1 | 5 | 198 | 0.25 | 0.03 | 0.79 | 0.09 | 0.02 | 0.04 | 5 | 10 | 1493 |
| Tin | S9416505 | 242691 | 3 | 1 | 2 | ** | 2B | 4 | 2 | 1 | 40 | 3 | B2 | ** | 68 | 11 | 59 | 0.2 | 136 | 525 | 1 | 11 | 67 | 2.09 | 1 | 39 | 2 | 2 | 31 | 3 | 1 | 72 | 29 | 27 | 628 | 0.62 | 0.01 | 1.52 | 1.24 | 0.01 | 0.07 | 5 | 10 | 3056 |
| Tin | S9416506 | 241750 | 5 | 1 | 2 | 2 | 1G | 23 | 3 | 1 | 15 | 4 | B2 | ** | 6 | 2 | 13 | 0.2 | 1 | 25 | 1 | 1 | 3 | 0.36 | 1 | 4 | 2 | 2 | 4 | 1 | 1 | 6 | 1 | 12 | 113 | 0.07 | 0.01 | 0.26 | 0.06 | 0.02 | 0.02 | 5 | 10 | 1311 |
| Tin | S9416507 | 241751 | 5 | 1 | 2 | 2 | 3B | 23 | 3 | 1 | 20 | 4 | B2 | ** | 39 | 5 | 100 | 0.4 | 1 | 235 | 1 | 27 | 73 | 5.83 | 3 | 14 | 2 | 2 | 26 | 3 | 1 | 53 | 21 | 8 | 2193 | 0.33 | 0.01 | 0.39 | 2.41 | 0.01 | 0.02 | 5 | 10 | 889 |
| Tin | S9416508 | 241752 | 5 | 1 | 2 | 2 | 3B | 23 | 2 | 1 | 30 | 3 | B2 | ** | 44 | 8 | 56 | 0.4 | 1 | 270 | 1 | 17 | 43 | 2.38 | 2 | 76 | 2 | 2 | 46 | 2 | 1 | 54 | 10 | 13 | 990 | 0.88 | 0.01 | 1.15 | 1.46 | 0.01 | 0.04 | 5 | 10 | 1251 |
| Tin | S9416509 | 241753 | 5 | 1 | 2 | 2 | BK | 35 | 3 | 1 | 40 | 3 | B2 | ** | 66 | 4 | 30 | 0.2 | 1 | 318 | 1 | 6 | 32 | 1.20 | 1 | 57 | 2 | 2 | 25 | 3 | 1 | 86 | 15 | 14 | 370 | 0.56 | 0.01 | 0.85 | 1.84 | 0.02 | 0.03 | 5 | 10 | 1205 |
| Tin | S9416510 | 241754 | 5 | 1 | 2 | 2 | 3B | 23 | 3 | 1 | 50 | 3 | B2 | ** | 45 | 11 | 129 | 0.2 | 2 | 338 | 1 | 14 | 28 | 2.21 | 2 | 18 | 2 | 2 | 11 | 4 | 1 | 80 | 16 | 10 | 2206 | 0.20 | 0.01 | 0.71 | 1.96 | 0.01 | 0.03 | 5 | 10 | 1408 |
| Tin | S9416511 | 241755 | 5 | 1 | 2 | 2 | 2B | 23 | 2 | 1 | 30 | 3 | B2 | ** | 29 | 8 | 45 | 0.4 | 6 | 97 | 1 | 15 | 42 | 2.97 | 1 | 43 | 2 | 2 | 22 | 6 | 1 | 32 | 8 | 15 | 922 | 0.59 | 0.01 | 1.14 | 0.56 | 0.01 | 0.02 | 5 | 10 | 1258 |
| Tin | S9416512 | 241756 | 5 | 1 | 2 | 2 | 2B | 23 | 2 | 1 | 30 | 3 | B2 | ** | 38 | 12 | 74 | 0.5 | 13 | 141 | 1 | 16 | 58 | 4.60 | 1 | 78 | 2 | 2 | 44 | 4 | 1 | 38 | 10 | 21 | 1872 | 0.64 | 0.01 | 0.96 | 0.77 | 0.01 | 0.04 | 5 | 10 | 1448 |
| Tin | S9416513 | 241757 | 5 | 1 | 2 | 2 | 2B | 23 | 2 | 1 | 30 | 3 | B1 | ** | 37 | 9 | 49 | 0.4 | 7 | 172 | 1 | 20 | 60 | 4.14 | 2 | 79 | 2 | 2 | 32 | 3 | 1 | 23 | 12 | 25 | 1426 | 0.80 | 0.01 | 1.47 | 0.37 | 0.01 | 0.03 | 16 | 10 | 1584 |
| Tin | S9416514 | 241758 | 5 | 1 | 2 | 2 | BR | 23 | 2 | 1 | 30 | 3 | B2 | ** | 28 | 9 | 61 | 0.4 | 26 | 298 | 1 | 18 | 60 | 5.08 | 2 | 89 | 2 | 2 | 49 | 7 | 1 | 53 | 12 | 26 | 998 | 0.69 | 0.01 | 1.40 | 0.78 | 0.01 | 0.02 | 5 | 10 | 1330 |
| Tin | S9416515 | 241759 | 5 | 1 | 2 | 2 | 2B | 34 | 3 | 2 | 40 | 3 | B2 | ** | 26 | 7 | 50 | 0.5 | 11 | 116 | 1 | 12 | 44 | 2.97 | 4 | 59 | 2 | 2 | 24 | 5 | 1 | 37 | 11 | 20 | 984 | 0.52 | 0.01 | 1.05 | 0.73 | 0.01 | 0.01 | 5 | 10 | 1450 |
| Tin | S9416516 | 241760 | 5 | 1 | 2 | 2 | BK | 35 | 2 | 2 | 40 | 3 | B2 | ** | 25 | 7 | 56 | 0.2 | 9 | 197 | 1 | 12 | 37 | 3.11 | 2 | 37 | 2 | 2 | 15 | 3 | 1 | 77 | 10 | 14 | 1332 | 0.46 | 0.01 | 0.68 | 1.56 | 0.01 | 0.01 | 5 | 10 | 1246 |
| Tin | S9416517 | 241761 | 5 | 1 | 2 | 2 | 2B | 23 | 3 | 1 | 30 | 3 | B2 | ** | 78 | 9 | 64 | 0.2 | 3 | 214 | 1 | 13 | 35 | 2.34 | 4 | 45 | 2 | 2 | 18 | 3 | 1 | 36 | 18 | 29 | 812 | 0.51 | 0.01 | 0.92 | 0.92 | 0.01 | 0.02 | 5 | 10 | 1553 |
| Tin | S9416518 | 241762 | 5 | 1 | 2 | 2 | BG | 23 | 1 | 1 | 30 | 3 | B2 | ** | 57 | 9 | 59 | 0.2 | 1 | 45 | 1 | 14 | 25 | 2.54 | 6 | 20 | 2 | 2 | 12 | 3 | 1 | 5 | 4 | 39 | 1273 | 0.41 | 0.01 | 1.14 | 0.05 | 0.01 | 0.02 | 5 | 10 | 1274 |
| Tin | S9416519 | 241763 | 5 | 1 | 2 | 2 | 1B | 23 | 1 | 2 | 35 | 3 | B2 | ** | 40 | 13 | 67 | 0.2 | 9 | 101 | 1 | 14 | 35 | 3.26 | 4 | 40 | 2 | 2 | 21 | 5 | 1 | 16 | 9 | 45 | 888 | 0.82 | 0.01 | 1.38 | 0.24 | 0.01 | 0.02 | 5 | 10 | 1661 |
| Tin | S9416520 | 241764 | 5 | 1 | 2 | 2 | 2B | 35 | 3 | 2 | 30 | 3 | B1 | ** | 36 | 6 | 74 | 0.4 | 6 | 265 | 1 | 16 | 61 | 2.91 | 3 | 82 | 2 | 2 | 29 | 5 | 1 | 58 | 10 | 21 | 695 | 1.02 | 0.01 | 1.25 | 1.19 | 0.01 | 0.03 | 5 | 10 | 1703 |
| Tin | S9416521 | 241765 | 5 | 1 | 2 | 2 | 1B | 23 | 1 | 1 | 30 | 3 | B2 | ** | 31 | 11 | 57 | 0.4 | 14 | 89 | 1 | 16 | 51 | 3.43 | 3 | 40 | 2 | 2 | 21 | 7 | 1 | | | | | | | | | | | | | |

BEST ATTAINABLE IMAGE

| | | | | | | | | | | | | | | | | | | | | | | | | | | | | | | | | | | | | | | | | | | | | |
|-----|----------|--------|---|---|---|----|----|----|---|---|----|---|----|----|-----|----|----|-----|----|-----|---|----|----|------|---|-----|---|---|----|----|---|-----|----|----|------|------|------|------|------|------|------|---|----|------|
| Tin | S9416683 | 241793 | 5 | 1 | 5 | 2 | 3G | 23 | 2 | 2 | 40 | 3 | B2 | ** | 52 | 7 | 75 | 0.4 | 8 | 119 | 1 | 25 | 93 | 2.98 | 1 | 140 | 2 | 2 | 52 | 1 | 1 | 56 | 10 | 22 | 1072 | 2.12 | 0.07 | 1.89 | 1.40 | 0.01 | 0.04 | 5 | 10 | 852 |
| Tin | S9416684 | 241794 | 5 | 1 | 2 | 2 | 3G | 25 | 2 | 2 | 40 | 3 | B2 | ** | 46 | 9 | 50 | 0.2 | 5 | 128 | 1 | 15 | 53 | 1.89 | 1 | 81 | 2 | 2 | 30 | 1 | 1 | 73 | 9 | 15 | 848 | 1.11 | 0.03 | 1.21 | 1.63 | 0.02 | 0.03 | 5 | 10 | 1031 |
| Tin | S9416685 | 241795 | 5 | 1 | 3 | 2 | 3G | 35 | 2 | 2 | 30 | 3 | B2 | ** | 48 | 9 | 89 | 0.2 | 4 | 168 | 1 | 26 | 87 | 3.06 | 1 | 140 | 2 | 2 | 52 | 1 | 1 | 69 | 11 | 21 | 1818 | 1.99 | 0.06 | 1.96 | 1.48 | 0.01 | 0.03 | 5 | 10 | 1116 |
| Tin | S9416686 | 241796 | 5 | 1 | 5 | 2 | BG | 35 | 2 | 2 | 35 | 3 | B2 | ** | 24 | 5 | 49 | 0.2 | 9 | 97 | 1 | 11 | 35 | 1.49 | 1 | 52 | 2 | 2 | 19 | 1 | 1 | 74 | 5 | 11 | 440 | 0.74 | 0.01 | 1.03 | 1.48 | 0.03 | 0.02 | 5 | 10 | 1006 |
| Tin | S9416687 | 241797 | 5 | 1 | 5 | 2 | 2G | 23 | 2 | 2 | 30 | 2 | B1 | ** | 51 | 11 | 61 | 0.2 | 11 | 164 | 1 | 18 | 61 | 3.03 | 2 | 73 | 2 | 2 | 30 | 1 | 1 | 75 | 14 | 21 | 957 | 1.16 | 0.03 | 1.29 | 1.62 | 0.02 | 0.03 | 5 | 10 | 1105 |
| Tin | S9416688 | 241798 | 5 | 1 | 5 | 2 | BG | 35 | 2 | 2 | 30 | 3 | B2 | ** | 23 | 8 | 81 | 0.2 | 7 | 238 | 1 | 15 | 48 | 2.67 | 1 | 86 | 2 | 2 | 24 | 1 | 1 | 49 | 9 | 25 | 592 | 0.89 | 0.01 | 1.16 | 0.93 | 0.01 | 0.04 | 5 | 10 | 1899 |
| Tin | S9416688 | 241798 | 5 | 1 | 5 | 2 | BG | 35 | 2 | 2 | 30 | 3 | B2 | ** | 23 | 8 | 81 | 0.2 | 7 | 238 | 1 | 15 | 48 | 2.67 | 1 | 86 | 2 | 2 | 24 | 1 | 1 | 49 | 9 | 25 | 592 | 0.89 | 0.01 | 1.16 | 0.93 | 0.01 | 0.04 | 5 | 10 | 1899 |
| Tin | S9416689 | 241799 | 5 | 1 | 5 | 2 | 2B | 35 | 1 | 2 | 30 | 2 | B2 | ** | 50 | 4 | 59 | 0.4 | 11 | 370 | 1 | 15 | 56 | 2.28 | 1 | 92 | 2 | 2 | 32 | 1 | 1 | 90 | 6 | 12 | 1054 | 1.23 | 0.04 | 1.21 | 1.94 | 0.02 | 0.06 | 5 | 10 | 1399 |
| Tin | S9417005 | 244008 | 2 | 1 | 2 | ** | K | 4 | 2 | 2 | 45 | 2 | B2 | ** | 88 | 2 | 44 | 0.5 | 9 | 311 | 1 | 8 | 37 | 1.28 | 1 | 69 | 2 | 2 | 20 | 8 | 1 | 97 | 5 | 7 | 163 | 0.84 | 0.02 | 1.07 | 1.67 | 0.03 | 0.02 | 5 | 10 | 1337 |
| Tin | S9417006 | 244009 | 2 | 1 | 5 | ** | 1N | 4 | 3 | 2 | 25 | 2 | B2 | ** | 67 | 6 | 64 | 0.4 | 29 | 210 | 1 | 18 | 70 | 3.38 | 1 | 110 | 2 | 2 | 44 | 8 | 1 | 31 | 10 | 17 | 505 | 1.77 | 0.07 | 2.17 | 0.60 | 0.01 | 0.05 | 5 | 10 | 1248 |
| Tin | S9417007 | 244010 | 2 | 1 | 5 | ** | 2G | 23 | 3 | 2 | 20 | 2 | B2 | ** | 88 | 4 | 65 | 0.6 | 18 | 333 | 1 | 22 | 98 | 3.17 | 1 | 181 | 2 | 5 | 44 | 10 | 1 | 45 | 7 | 11 | 500 | 2.23 | 0.09 | 2.17 | 0.98 | 0.02 | 0.06 | 5 | 10 | 1007 |
| Tin | S9417008 | 244011 | 2 | 1 | 5 | ** | 1G | 23 | 3 | 2 | 20 | 2 | B2 | ** | 56 | 4 | 62 | 0.5 | 18 | 352 | 1 | 21 | 93 | 3.47 | 1 | 153 | 2 | 2 | 49 | 5 | 1 | 30 | 6 | 12 | 478 | 2.23 | 0.10 | 2.33 | 0.68 | 0.01 | 0.05 | 5 | 10 | 1299 |
| Tin | S9417009 | 244012 | 2 | 1 | 5 | ** | 1N | 23 | 3 | 2 | 25 | 2 | B2 | ** | 29 | 8 | 62 | 0.5 | 15 | 397 | 1 | 18 | 64 | 3.60 | 2 | 110 | 2 | 2 | 55 | 6 | 1 | 24 | 4 | 9 | 358 | 1.66 | 0.12 | 2.20 | 0.51 | 0.01 | 0.04 | 5 | 10 | 1547 |
| Tin | S9417010 | 244013 | 2 | 1 | 5 | ** | 3N | 23 | 3 | 2 | 25 | 2 | B2 | ** | 33 | 5 | 56 | 0.2 | 7 | 165 | 1 | 17 | 67 | 2.84 | 1 | 109 | 2 | 2 | 39 | 6 | 1 | 42 | 5 | 10 | 417 | 1.69 | 0.08 | 1.83 | 0.83 | 0.02 | 0.04 | 5 | 10 | 1022 |
| Tin | S9417011 | 244014 | 2 | 1 | 5 | ** | 1Y | 23 | 3 | 2 | 20 | 2 | B2 | ** | 12 | 10 | 49 | 0.2 | 15 | 330 | 1 | 12 | 35 | 2.83 | 1 | 62 | 2 | 2 | 41 | 6 | 1 | 17 | 5 | 14 | 436 | 0.98 | 0.02 | 1.98 | 0.25 | 0.01 | 0.04 | 5 | 10 | 1566 |
| Tin | S9417012 | 244015 | 2 | 1 | 5 | ** | BR | 23 | 3 | 2 | 25 | 2 | B2 | ** | 12 | 7 | 41 | 0.4 | 18 | 58 | 1 | 8 | 28 | 3.26 | 1 | 46 | 2 | 7 | 41 | 6 | 1 | 8 | 3 | 10 | 235 | 0.69 | 0.04 | 1.34 | 0.11 | 0.01 | 0.04 | 5 | 10 | 936 |
| Tin | S9417013 | 244016 | 2 | 1 | 5 | ** | 1N | 23 | 3 | 2 | 30 | 2 | B2 | ** | 38 | 7 | 39 | 0.5 | 10 | 272 | 1 | 11 | 39 | 2.01 | 1 | 57 | 2 | 2 | 27 | 8 | 1 | 40 | 7 | 14 | 353 | 0.77 | 0.03 | 1.31 | 0.58 | 0.03 | 0.03 | 5 | 10 | 1436 |
| Tin | S9417014 | 244017 | 2 | 1 | 5 | ** | 3B | 23 | 3 | 2 | 30 | 2 | B2 | ** | 17 | 8 | 51 | 0.5 | 13 | 309 | 1 | 13 | 47 | 3.03 | 1 | 74 | 2 | 2 | 41 | 2 | 1 | 32 | 8 | 17 | 297 | 1.08 | 0.02 | 2.01 | 0.42 | 0.02 | 0.05 | 5 | 10 | 1479 |
| Tin | S9417015 | 244018 | 2 | 1 | 5 | ** | BR | 23 | 3 | 2 | 20 | 2 | B2 | ** | 11 | 15 | 51 | 0.2 | 50 | 110 | 1 | 11 | 28 | 4.58 | 1 | 56 | 2 | 2 | 54 | 6 | 1 | 8 | 3 | 11 | 374 | 0.86 | 0.04 | 1.93 | 0.08 | 0.01 | 0.04 | 5 | 10 | 1246 |
| Tin | S9417016 | 244019 | 2 | 1 | 5 | ** | BR | 23 | 3 | 2 | 30 | 2 | B2 | ** | 7 | 15 | 58 | 0.7 | 26 | 91 | 1 | 10 | 31 | 4.12 | 3 | 80 | 2 | 2 | 47 | 11 | 1 | 9 | 4 | 14 | 283 | 1.00 | 0.03 | 2.08 | 0.12 | 0.01 | 0.04 | 5 | 10 | 1279 |
| Tin | S9417017 | 244020 | 2 | 1 | 5 | ** | 2G | 23 | 3 | 2 | 25 | 2 | B2 | ** | 39 | 9 | 75 | 0.4 | 12 | 213 | 1 | 16 | 55 | 3.39 | 1 | 77 | 2 | 2 | 41 | 11 | 1 | 44 | 22 | 34 | 538 | 1.24 | 0.03 | 1.97 | 0.74 | 0.01 | 0.05 | 5 | 10 | 1469 |
| Tin | S9417018 | 244021 | 2 | 1 | 5 | ** | 3B | 23 | 3 | 2 | 20 | 2 | B2 | ** | 28 | 4 | 51 | 0.6 | 13 | 202 | 1 | 15 | 50 | 3.31 | 1 | 76 | 2 | 2 | 38 | 7 | 1 | 25 | 8 | 18 | 489 | 1.09 | 0.03 | 1.71 | 0.43 | 0.01 | 0.04 | 5 | 10 | 1303 |
| Tin | S9417019 | 244022 | 2 | 1 | 5 | ** | 1Y | 5 | 2 | 3 | 30 | 2 | B2 | ** | 78 | 11 | 89 | 0.7 | 13 | 128 | 1 | 29 | 95 | 5.27 | 2 | 115 | 2 | 5 | 48 | 7 | 1 | 34 | 15 | 25 | 963 | 1.59 | 0.10 | 1.92 | 0.70 | 0.01 | 0.10 | 5 | 10 | 1777 |
| Tin | S9417020 | 244023 | 2 | 1 | 5 | ** | K | 4 | 2 | 3 | 55 | 2 | B2 | ** | 15 | 5 | 45 | 0.4 | 4 | 399 | 1 | 1 | 4 | 0.19 | 1 | 2 | 2 | 2 | 2 | 2 | 1 | 280 | 1 | 2 | 38 | 2.55 | 0.01 | 0.19 | 4.45 | 0.06 | 0.02 | 5 | 10 | 991 |
| Tin | S9417021 | 244024 | 2 | 1 | 5 | ** | K | 4 | 1 | 3 | 35 | 2 | B2 | ** | 88 | 6 | 60 | 0.6 | 7 | 411 | 1 | 9 | 42 | 1.50 | 1 | 80 | 2 | 2 | 20 | 4 | 1 | 147 | 8 | 8 | 393 | 0.86 | 0.02 | 1.21 | 2.72 | 0.02 | 0.05 | 5 | 10 | 1055 |
| Tin | S9417022 | 244025 | 2 | 1 | 5 | ** | K | 4 | 2 | 2 | 50 | 2 | B2 | ** | 31 | 5 | 43 | 0.6 | 4 | 377 | 1 | 5 | 23 | 0.95 | 1 | 31 | 2 | 2 | 11 | 4 | 1 | 137 | 6 | 7 | 333 | 0.50 | 0.01 | 0.81 | 2.43 | 0.03 | 0.02 | 5 | 10 | 1368 |
| Tin | S9417023 | 244026 | 2 | 1 | 5 | ** | K | 4 | 3 | 2 | 40 | 2 | B2 | ** | 49 | 10 | 26 | 0.4 | 12 | 826 | 1 | 13 | 32 | 1.78 | 1 | 38 | 2 | 2 | 21 | 6 | 1 | 131 | 13 | 14 | 2091 | 0.47 | 0.02 | 1.16 | 2.23 | 0.01 | 0.01 | 5 | 10 | 2066 |
| Tin | S9417024 | 244027 | 2 | 1 | 5 | ** | 1N | 23 | 3 | 2 | 20 | 2 | B2 | ** | 30 | 2 | 82 | 0.7 | 20 | 301 | 1 | 18 | 66 | 3.30 | 1 | 126 | 2 | 8 | 46 | 9 | 1 | 21 | 5 | 14 | 454 | 1.60 | 0.04 | 2.32 | 0.46 | 0.01 | 0.04 | 5 | 10 | 1422 |
| Tin | S9417025 | 244028 | 2 | 1 | 5 | ** | 1N | 23 | 3 | 2 | 30 | 2 | B2 | ** | 30 | 4 | 35 | 0.4 | 5 | 414 | 1 | 10 | 37 | 1.81 | 1 | 71 | 2 | 2 | 22 | 6 | 1 | 51 | 8 | 16 | 378 | 0.83 | 0.02 | 1.31 | 0.78 | 0.02 | 0.03 | 5 | 10 | 1641 |
| Tin | S9417026 | 244029 | 2 | 1 | 5 | ** | 2N | 23 | 3 | 2 | 20 | 2 | B2 | ** | 43 | 9 | 56 | 0.4 | 10 | 397 | 1 | 17 | 66 | 3.36 | 1 | 127 | 2 | 2 | 48 | 12 | 1 | 19 | 5 | 13 | 511 | 1.65 | 0.04 | 2.26 | 0.41 | 0.01 | 0.03 | 5 | 10 | 1313 |
| Tin | S9417027 | 244030 | 2 | 1 | 5 | ** | K | 24 | 3 | 2 | 45 | 2 | B1 | ** | 121 | 7 | 84 | 0.4 | 1 | 459 | 1 | 8 | 29 | 1.22 | 1 | 40 | 2 | 6 | 13 | 5 | 1 | 159 | 12 | 15 | 812 | 0.47 | 0.01 | 0.94 | 2.72 | 0.02 | 0.03 | 5 | 10 | 1411 |
| Tin | S9417028 | 244031 | 2 | 1 | 5 | ** | 1G | 23 | 3 | 2 | 20 | 2 | B2 | ** | 23 | 9 | 52 | 0.4 | 9 | 177 | 1 | 13 | 33 | 1.98 | 1 | 47 | 2 | 2 | 25 | 5 | 1 | 27 | 6 | 14 | 461 | 0.77 | 0.02 | 1.15 | 0.50 | 0.02 | 0.04 | 5 | 10 | 1522 |
| Tin | S9417029 | 244032 | 2 | 1 | 5 | ** | KG | 3 | 3 | 2 | 40 | 2 | Z | ** | 4 | 2 | 9 | 0.4 | 5 | 110 | 1 | 1 | 2 | 0.13 | 1 | 2 | 2 | 2 | 2 | 2 | 1 | 51 | 1 | 3 | 51 | 0.06 | 0.01 | 0.27 | 0.82 | 0.06 | 0.01 | 5 | 10 | 1299 |
| Tin | S9417030 | 244033 | 2 | 1 | 5 | ** | GR | 23 | 3 | 2 | 30 | 2 | B2 | ** | 33 | 8 | 74 | 0.7 | 25 | 302 | 1 | 19 | 51 | 4.40 | 3 | 74 | 2 | 2 | 52 | 9 | 1 | 41 | 11 | 19 | 884 | 1.12 | 0.02 | 1.72 | 0.60 | 0.01 | 0.04 | 5 | 10 | 1488 |
| Tin | S9417031 | 244034 | 2 | 1 | 5 | ** | 1N | 23 | 2 | 2 | 30 | 2 | B2 | ** | 15 | 8 | 44 | 0.8 | 13 | 440 | 1 | 14 | 36 | 2.77 | 1 | 70 | 2 | 6 | 44 | 5 | 1 | 20 | 3 | 12 | 815 | 1.06 | 0.02 | 1.91 | 0.34 | 0.01 | 0.08 | 5 | 10 | 1777 |
| Tin | S9417032 | 244035 | 2 | 1 | 5 | ** | 1G | 34 | 3 | 2 | 30 | 2 | B1 | ** | 3 | 2 | 3 | 0.5 | 2 | 20 | 1 | 1 | 1 | 0.07 | 1 | 2 | 2 | 7 | 1 | 2 | 1 | 9 | 1 | 1 | 10 | 0.02 | 0.01 | 0.13 | 0.05 | 0.04 | 0.02 | 5 | 10 | 1277 |
| Tin | S9417033 | 244036 | 2 | 1 | 5 | ** | 1N | 23 | 3 | 2 | 30 | 2 | B2 | ** | 36 | 9 | 49 | 0.6 | 10 | 228 | 1 | 17 | 67 | 3.02 | 1 | 122 | 2 | 2 | 44 | 7 | 1 | 29 | 5 | 13 | 477 | 1.58 | 0.04 | 2.09 | 0.55 | 0.01 | 0.03 | 5 | 10 | 1199 |
| Tin | S9417034 | 244037 | 2 | 1 | 5 | ** | 1G | 12 | 3 | 2 | 20 | 2 | B2 | ** | 38 | 5 | 37 | 0.7 | 9 | 113 | 1 | 13 | 52 | 1.94 | 1 | 98 | 2 | 8 | 31 | 4 | 1 | 18 | 2 | 8 | 371 | | | | | | | | | |

APPENDIX 3
STATEMENT OF EXPENDITURES

TIN PROPERTY

| | |
|----------------|--------|
| STAFF COSTS | 2,525 |
| DOMICILE | 927 |
| GEOCHEMISTRY | 2,344 |
| HELICOPTER | 2,808 |
| COMMUNICATIONS | 93 |
| TRUCK RENTAL | 196 |
| FREIGHT | 608 |
| EXPEDITING | 123 |
| DRAFTING | 588 |
| TOTAL | 10,212 |

MAP NO:105G/6

ASSESSMENT REPORT: X

DOCUMENT NO: 093331

PROSPECTUS:

MINING DISTRICT: Watson Lake

CONFIDENTIAL: X

TYPE OF WORK:Geology, geochem

OPEN FILE:

REPORT FILED UNDER: Cominco Ltd.

DATE PERFORMED:July, 1994

DATE FILED:June 23, 1995

LATITUDE:61 28

AREA:Pelly Mountains

LONGITUDE:131 18

VALUE:\$9600

CLAIM NAME AND #:Tin 1-96

WORK DONE BY:P. MacRobbie

WORK DONE FOR:Cominco Ltd.

| DATE TO GOOD STANDING | REMARKS:The property is underlain by favourable felsic metavolcanic rocks. |
|-----------------------|--|
| | |
| | |
| | |
| | |
| | |
| | |

COMINCO LTD.

EXPLORATION

WESTERN DISTRICT

NTS 105 G/6

1994 ASSESSMENT REPORT

TIN PROPERTY

SOIL GEOCHEMISTRY AND GEOLOGICAL MAPPING

WATSON LAKE M.D., YUKON

PELLY MOUNTAINS AREA

LAT: 61°28'

LONG: 131°18'

WORK PERIOD

JULY 24 and 25, 1994

APRIL, 1995

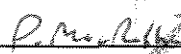
PAUL A. MacROBBIE

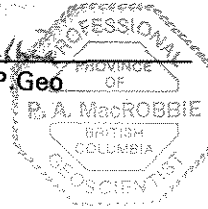
STATEMENT OF QUALIFICATIONS

I, Paul A. MacRobbie, of 11164 Southridge Rd., Delta, B.C. hereby declare that I:

1. Graduated from Carleton University, Ottawa, Ontario with a B.Sc. in Geology in May, 1986 and a M.Sc. in Geology in June, 1988.
2. Have been actively engaged in mineral exploration in Western Canada as a permanent geologist with Cominco Ltd. since June, 1988.
3. Am a registered member of The Association of Professional Engineers and Geoscientists of the Province of British Columbia.

Date: April 10, 1995


P.A. MacROBBIE, P. Geo
GEOLOGIST



COMINCO LTD.

EXPLORATION

WESTERN DISTRICT

NTS 105 G/6

1994 ASSESSMENT REPORT

TIN PROPERTY

SOIL GEOCHEMISTRY AND GEOLOGICAL MAPPING

WATSON LAKE M.D., YUKON

PELLY MOUNTAINS AREA

LAT: 61°28'

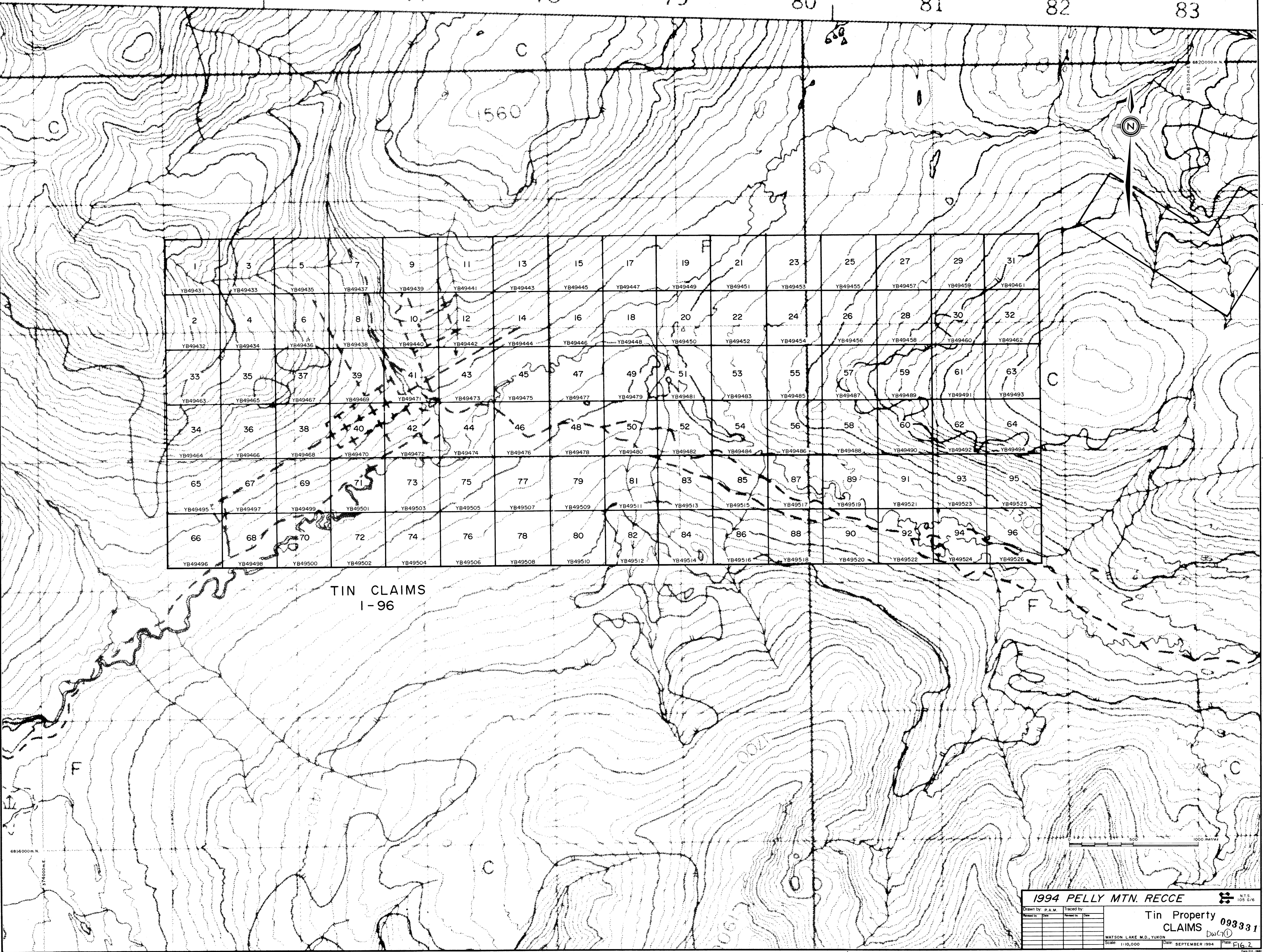
LONG: 131°18'

WORK PERIOD

JULY 24 and 25, 1994

1093331

74 75 76 77 78 79 80 81 82 83



| | | | | | | | | | | | | | | | |
|---------|---------|---------|---------|---------|---------|---------|---------|---------|---------|---------|---------|---------|---------|---------|---------|
| 1 | 3 | 5 | 7 | 9 | 11 | 13 | 15 | 17 | 19 | 21 | 23 | 25 | 27 | 29 | 31 |
| YB49431 | YB49433 | YB49435 | YB49437 | YB49439 | YB49441 | YB49443 | YB49445 | YB49447 | YB49449 | YB49451 | YB49453 | YB49455 | YB49457 | YB49459 | YB49461 |
| 2 | 4 | 6 | 8 | 10 | 12 | 14 | 16 | 18 | 20 | 22 | 24 | 26 | 28 | 30 | 32 |
| YB49432 | YB49434 | YB49436 | YB49438 | YB49440 | YB49442 | YB49444 | YB49446 | YB49448 | YB49450 | YB49452 | YB49454 | YB49456 | YB49458 | YB49460 | YB49462 |
| 33 | 35 | 37 | 39 | 41 | 43 | 45 | 47 | 49 | 51 | 53 | 55 | 57 | 59 | 61 | 63 |
| YB49463 | YB49465 | YB49467 | YB49469 | YB49471 | YB49473 | YB49475 | YB49477 | YB49479 | YB49481 | YB49483 | YB49485 | YB49487 | YB49489 | YB49491 | YB49493 |
| 34 | 36 | 38 | 40 | 42 | 44 | 46 | 48 | 50 | 52 | 54 | 56 | 58 | 60 | 62 | 64 |
| YB49464 | YB49466 | YB49468 | YB49470 | YB49472 | YB49474 | YB49476 | YB49478 | YB49480 | YB49482 | YB49484 | YB49486 | YB49488 | YB49490 | YB49492 | YB49494 |
| 65 | 67 | 69 | 71 | 73 | 75 | 77 | 79 | 81 | 83 | 85 | 87 | 89 | 91 | 93 | 95 |
| YB49495 | YB49497 | YB49499 | YB49501 | YB49503 | YB49505 | YB49507 | YB49509 | YB49511 | YB49513 | YB49515 | YB49517 | YB49519 | YB49521 | YB49523 | YB49525 |
| 66 | 68 | 70 | 72 | 74 | 76 | 78 | 80 | 82 | 84 | 86 | 88 | 90 | 92 | 94 | 96 |
| YB49496 | YB49498 | YB49500 | YB49502 | YB49504 | YB49506 | YB49508 | YB49510 | YB49512 | YB49514 | YB49516 | YB49518 | YB49520 | YB49522 | YB49524 | YB49526 |

TIN CLAIMS
1-96

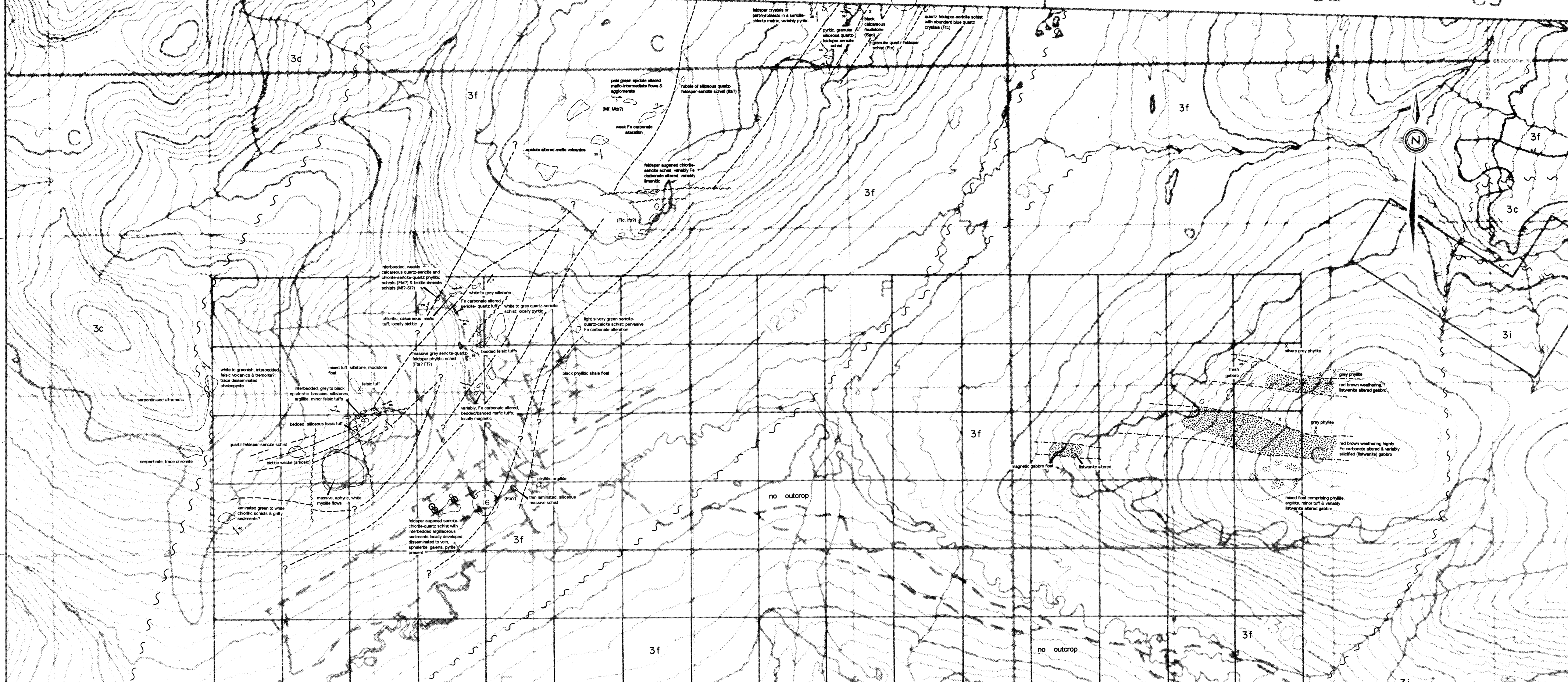


1994 PELLY MTN. RECCE

| | | |
|------------------|-------------|------------|
| Drawn by: P.A.M. | Traced by: | NTS: 100:1 |
| Checked by: | Checked by: | DOB: 6/16 |
| Date: | Date: | |

Tin Property CLAIMS 093331
DWC1

WATSON LAKE M.D., YUKON
Scale: 1:10,000 Date: SEPTEMBER 1994 Plate: FIG. 2

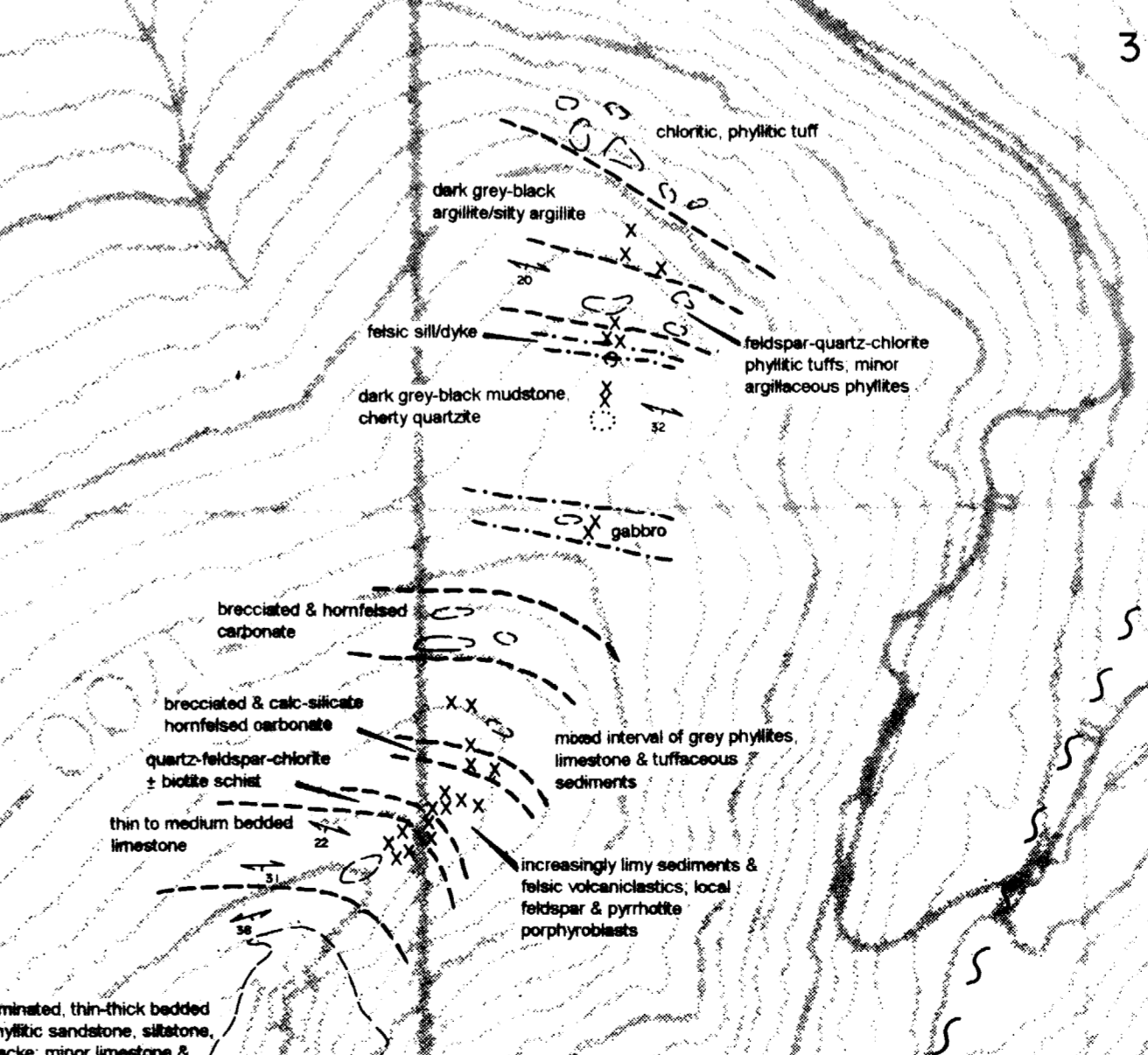


**TIN CLAIMS
1-96**

- SYMBOLS**
- FROM REGIONAL MAPPING**
- conformable (?) contact
 - intrusive contact
 - - - fault
- FROM DETAILED MAPPING**
- conformable (?) contact
 - intrusive contact
 - - - fault
- o outcrop
 - x small outcrop
 - o talus / subcrop
 - + float
 - bestwite altered zone / gossan
 - 30 S₁ dip
 - 30 S₂ foliation
 - 30 S₃ foliation
 - 30 lineation with plunge
 - 30 joint surface
- ▲ Cominco rock sample
 - Cominco stream silt sample
 - Cominco soil sample
 - Cominco lithogeochem. sample
 - Cominco heavy mineral sample
 - R.G.S. stream silt sample
 - Mirelle showing
 - D.D.H. collar
 - Cominco 1994 geophysical grid

- GEOLOGY**
- FINLAYSON LAKE FAULT ZONE**
- 2a Cretaceous and / or Tertiary volcanics
 - 2b Early Mesozoic sediments
 - 2c Massive carbonate
 - 2d Undifferentiated metamorphic rocks
 - 2e Sheared mafic to ultramafic plutonic rocks
 - 2f Sheared greenstones and chert
 - 2g Two-mica quartz monzonite
- YUKON - TANANA TERRANE**
- 3a Cretaceous and / or Tertiary volcanics
 - 3b Early Mesozoic sediments
 - 3c Sheared mafic to ultramafic rocks
 - 3d Sheared greenstone
 - 3e Massive carbonate
 - 3f Mainly mafic metavolcanics and associated sediments
 - 3g Felsic metavolcanics
 - 3h Foliated K-feldspar porphyry
 - 3i Lower unit micaceous quartzite and marble
 - 3j Two-mica quartz monzonite
 - 3k Mafic stocks
 - 3l Augen orthogneiss
 - 3m Monzonitic orthogneiss
 - 3n Simpson Range Plutonic Suite

(After Morrison, 1983)



1994 PELLY MTN. RECCE

Drawn by: P.A.M. Traced by: _____

Scale: 1:10,000 Date: SEPTEMBER 1994

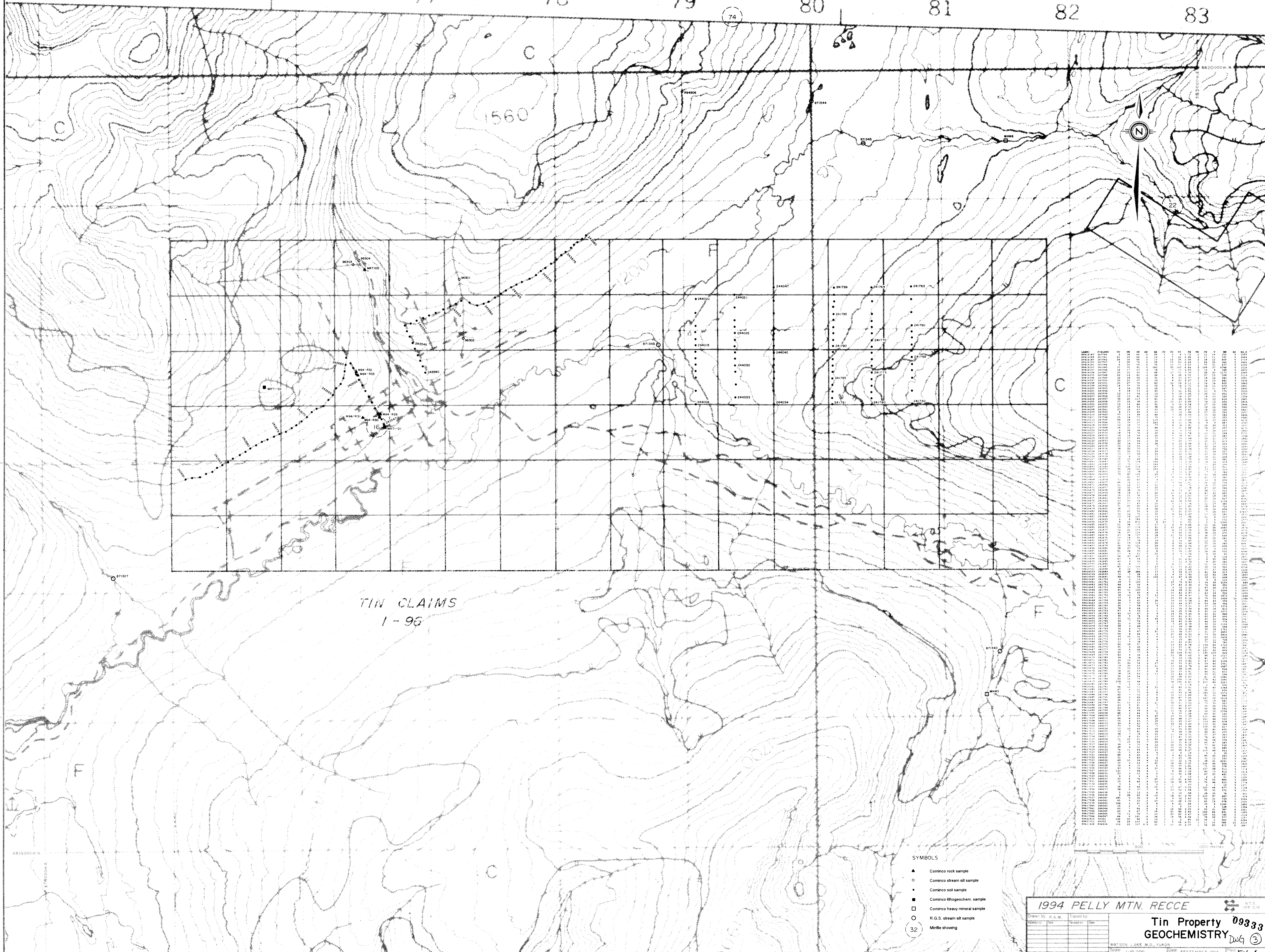
Tin Property Dwy

GEOLOGY 093331

WATSON LAKE M.D., YUKON

Fig. 3

74 75 76 77 78 79 80 81 82 83



TIN CLAIMS
1-96

| Sample No. | Location | Depth | Sample Type | Result |
|------------|----------|-------|-------------|--------|
| 244001 | | | | |
| 244002 | | | | |
| 244003 | | | | |
| 244004 | | | | |
| 244005 | | | | |
| 244006 | | | | |
| 244007 | | | | |
| 244008 | | | | |
| 244009 | | | | |
| 244010 | | | | |
| 244011 | | | | |
| 244012 | | | | |
| 244013 | | | | |
| 244014 | | | | |
| 244015 | | | | |
| 244016 | | | | |
| 244017 | | | | |
| 244018 | | | | |
| 244019 | | | | |
| 244020 | | | | |
| 244021 | | | | |
| 244022 | | | | |
| 244023 | | | | |
| 244024 | | | | |
| 244025 | | | | |
| 244026 | | | | |
| 244027 | | | | |
| 244028 | | | | |
| 244029 | | | | |
| 244030 | | | | |
| 244031 | | | | |
| 244032 | | | | |
| 244033 | | | | |
| 244034 | | | | |
| 244035 | | | | |
| 244036 | | | | |
| 244037 | | | | |
| 244038 | | | | |
| 244039 | | | | |
| 244040 | | | | |
| 244041 | | | | |
| 244042 | | | | |
| 244043 | | | | |
| 244044 | | | | |
| 244045 | | | | |
| 244046 | | | | |
| 244047 | | | | |
| 244048 | | | | |
| 244049 | | | | |
| 244050 | | | | |
| 244051 | | | | |
| 244052 | | | | |
| 244053 | | | | |
| 244054 | | | | |
| 244055 | | | | |
| 244056 | | | | |
| 244057 | | | | |
| 244058 | | | | |
| 244059 | | | | |
| 244060 | | | | |
| 244061 | | | | |
| 244062 | | | | |
| 244063 | | | | |
| 244064 | | | | |
| 244065 | | | | |
| 244066 | | | | |
| 244067 | | | | |
| 244068 | | | | |
| 244069 | | | | |
| 244070 | | | | |
| 244071 | | | | |
| 244072 | | | | |
| 244073 | | | | |
| 244074 | | | | |
| 244075 | | | | |
| 244076 | | | | |
| 244077 | | | | |
| 244078 | | | | |
| 244079 | | | | |
| 244080 | | | | |
| 244081 | | | | |
| 244082 | | | | |
| 244083 | | | | |
| 244084 | | | | |
| 244085 | | | | |
| 244086 | | | | |
| 244087 | | | | |
| 244088 | | | | |
| 244089 | | | | |
| 244090 | | | | |
| 244091 | | | | |
| 244092 | | | | |
| 244093 | | | | |
| 244094 | | | | |
| 244095 | | | | |
| 244096 | | | | |
| 244097 | | | | |
| 244098 | | | | |
| 244099 | | | | |
| 244100 | | | | |
| 244101 | | | | |
| 244102 | | | | |
| 244103 | | | | |
| 244104 | | | | |
| 244105 | | | | |
| 244106 | | | | |
| 244107 | | | | |
| 244108 | | | | |
| 244109 | | | | |
| 244110 | | | | |
| 244111 | | | | |
| 244112 | | | | |
| 244113 | | | | |
| 244114 | | | | |
| 244115 | | | | |
| 244116 | | | | |
| 244117 | | | | |
| 244118 | | | | |
| 244119 | | | | |
| 244120 | | | | |
| 244121 | | | | |
| 244122 | | | | |
| 244123 | | | | |
| 244124 | | | | |
| 244125 | | | | |
| 244126 | | | | |
| 244127 | | | | |
| 244128 | | | | |
| 244129 | | | | |
| 244130 | | | | |
| 244131 | | | | |
| 244132 | | | | |
| 244133 | | | | |
| 244134 | | | | |
| 244135 | | | | |
| 244136 | | | | |
| 244137 | | | | |
| 244138 | | | | |
| 244139 | | | | |
| 244140 | | | | |
| 244141 | | | | |
| 244142 | | | | |
| 244143 | | | | |
| 244144 | | | | |
| 244145 | | | | |
| 244146 | | | | |
| 244147 | | | | |
| 244148 | | | | |
| 244149 | | | | |
| 244150 | | | | |
| 244151 | | | | |
| 244152 | | | | |
| 244153 | | | | |
| 244154 | | | | |
| 244155 | | | | |
| 244156 | | | | |
| 244157 | | | | |
| 244158 | | | | |
| 244159 | | | | |
| 244160 | | | | |
| 244161 | | | | |
| 244162 | | | | |
| 244163 | | | | |
| 244164 | | | | |
| 244165 | | | | |
| 244166 | | | | |
| 244167 | | | | |
| 244168 | | | | |
| 244169 | | | | |
| 244170 | | | | |
| 244171 | | | | |
| 244172 | | | | |
| 244173 | | | | |
| 244174 | | | | |
| 244175 | | | | |
| 244176 | | | | |
| 244177 | | | | |
| 244178 | | | | |
| 244179 | | | | |
| 244180 | | | | |
| 244181 | | | | |
| 244182 | | | | |
| 244183 | | | | |
| 244184 | | | | |
| 244185 | | | | |
| 244186 | | | | |
| 244187 | | | | |
| 244188 | | | | |
| 244189 | | | | |
| 244190 | | | | |
| 244191 | | | | |
| 244192 | | | | |
| 244193 | | | | |
| 244194 | | | | |
| 244195 | | | | |
| 244196 | | | | |
| 244197 | | | | |
| 244198 | | | | |
| 244199 | | | | |
| 244200 | | | | |

- SYMBOLS**
- ▲ Cominco rock sample
 - Cominco stream silt sample
 - Cominco soil sample
 - Cominco lithochem. sample
 - Cominco heavy mineral sample
 - R.G.S. stream silt sample
 - (with cross) Millfile showing

1994 PELLY MTN. RECCE

Drawn by: P.A.M. Traced by: _____
 Checked by: _____ Reviewed by: _____

Tin Property 093331
GEOCHEMISTRY DWG ③

WATSON LAKE M.D., YUKON
 Scale: 1:10,000 Date: SEPTEMBER 1994 File: 4