

# ARCHER, CATHRO

& ASSOCIATES (1981) LIMITED

CONSULTING GEOLOGICAL ENGINEERS

1016 - 510 WEST HASTINGS STREET, VANCOUVER, B.C. V6B 1L8 TEL (604) 688 - 2568 • FAX (604) 688 - 2578

## ASSESSMENT REPORT

describing

### MAPPING, PROSPECTING AND SOIL SAMPLING

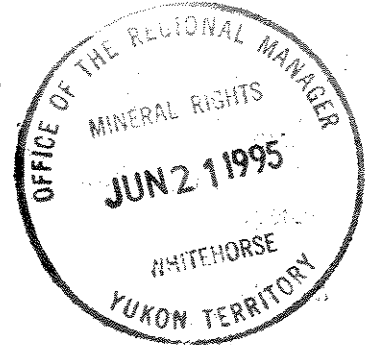
on the

#### UNO 1-22 CLAIMS

(YB49293-YB49302 and YB55939-YB55950)

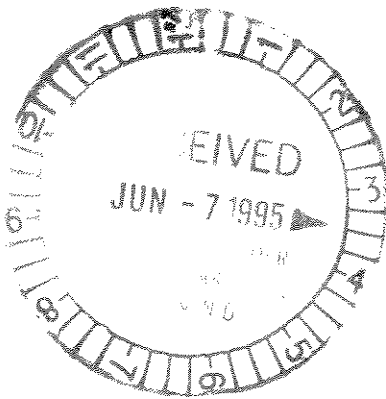
Latitude 62°07' North, Longitude 130°25' West  
NTS 105J/1  
in the

WATSON LAKE MINING DISTRICT  
YUKON TERRITORY



owned by

**CASH RESOURCES LTD.**



March, 1995

by

W. Wengzynowski, B.A.Sc.

Work done between August 9 and 14, 1994

This report has been examined by  
the Geological Evaluation Unit  
under Section 53 (4) Yukon Quartz  
Mining Act and is allowed as  
representation work in the amount  
of \$ 10,150

*M. Butler*  
Regional Manager, Exploration and  
Geological Services for Commissioner  
of Yukon Territory.

TO: [illegible]

RE: [illegible]

## TABLE OF CONTENTS

	<u>PAGE</u>
INTRODUCTION .....	1
PROPERTY LOCATION, CLAIM DATA AND ACCESS .....	2
HISTORY AND PREVIOUS WORK .....	3
GEOMORPHOLOGY .....	4
GEOLOGY .....	5
MINERALIZATION .....	7
SOIL GEOCHEMISTRY .....	10
CONCLUSIONS AND RECOMMENDATIONS .....	12
SELECTED REFERENCES .....	13

### TABLE

1	SELECTED GEOCHEMICAL DATA .....	11
---	---------------------------------	----

### APPENDICES

- I STATEMENT OF QUALIFICATIONS
- II LIST OF FIELD PERSONNEL
- III CERTIFICATES OF ANALYSES

## FIGURES

<u>NO.</u>	<u>DESCRIPTION</u>	<u>LOCATION</u>
1	Property Location .....	Following Page 2
2	Claim Location .....	Following Page 2
3	Detailed Location .....	Following Page 2
4	Geology & Mineralization .....	In Pocket
5	Sample Location .....	In Pocket
6	Silver Geochemistry .....	In Pocket
7	Lead Geochemistry .....	In Pocket
8	Zinc Geochemistry .....	In Pocket
9	Copper Geochemistry .....	In Pocket
10	Gold Geochemistry .....	In Pocket

## INTRODUCTION

The Uno property is owned 100% by Cash Resources Ltd. It was acquired to cover previously reported silver-lead-zinc soil geochemical anomalies and argentiferous float occurrences identified during a review of prospective silver targets conducted by Archer, Cathro & Associates (1981) Limited on behalf of Cash Resources in spring 1994. Ten claims were staked on June 7 and twelve more were added on August 30.

The 1994 exploration program was funded by Cash Resources and consisted of grid soil geochemistry, geological mapping and prospecting. The work was done by a two-man crew operating from a tent camp on the property between August 9 to 14.

Appendix I includes the Author's Statement of Qualifications while field personnel are listed in Appendix II.

PROPERTY LOCATION, CLAIM DATA AND ACCESS

The property is located on Traffic Mountain 106 km east of Ross River in east-central Yukon Territory at latitude 62°07'N and longitude 130°25'W on NTS map sheet 105J/1 (Figure 1). It consists of 22 contiguous mineral claims (Figure 2) registered with the Watson Lake Mining Recorder in the name of Archer, Cathro & Associates (1981) Limited which holds them in trust for Cash Resources Ltd. Data concerning claim registration is listed below.

<u>Claim Name</u>	<u>Grant Number</u>	<u>Expiry Date*</u>
Uno 1-10	YB49293-YB49302	June 9, 1995
11-22	YB55939-YB55950	September 6, 1995

\*The expiry dates do not include assessment credit for work done in 1994.

Access from Whitehorse to the Traffic Mountain area is provided by 180 km of paved highway (Klondike Highway) to Carmacks followed by 320 km of all-weather chip seal/gravel road (Robert Campbell Highway) to Finlayson Lake located 50 km due south of the property (Figure 3). In 1994 air support was provided by Trans North Air Bell 206B helicopters operating from a permanent base at Ross River or a Cominco Ltd. exploration camp on Finlayson Lake. The closest lakes suitable for float-equipped aircraft are Pelly Lakes located 6 km south of the property and 44 km north of Finlayson Lake. In 1967 Atlas Exploration Limited constructed a 56 km winter road from the west end of Finlayson Lake to Pelly Lakes. The road has not been used for many years and its present condition is unknown.

Figure 1

ARCHER, CATHRO & ASSOCIATES (1981) LIMITED

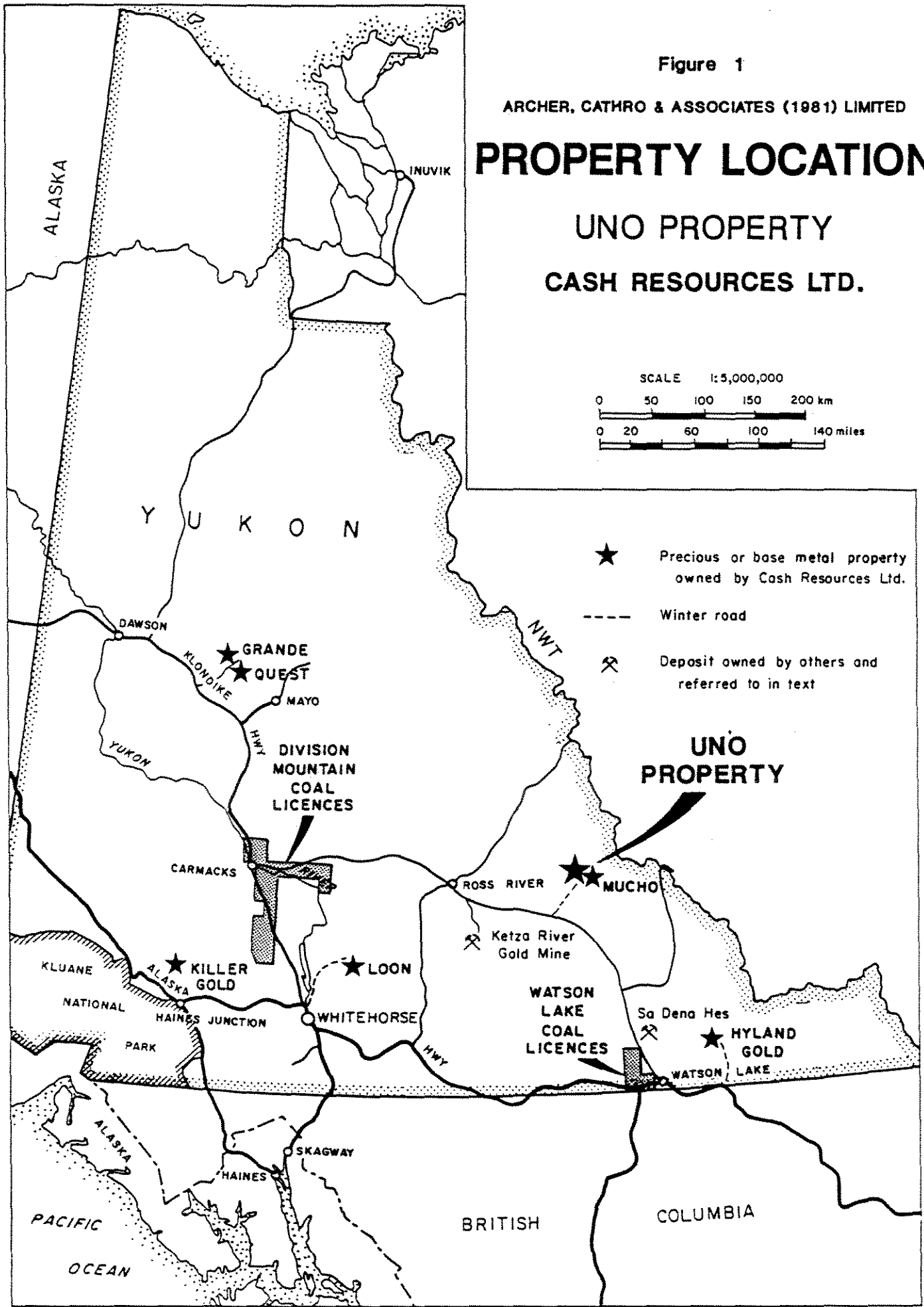
# PROPERTY LOCATION

## UNO PROPERTY CASH RESOURCES LTD.

SCALE 1:5,000,000

0 50 100 150 200 km

0 20 60 100 140 miles



★ Precious or base metal property owned by Cash Resources Ltd.

--- Winter road

⚒ Deposit owned by others and referred to in text

**UNO  
PROPERTY**

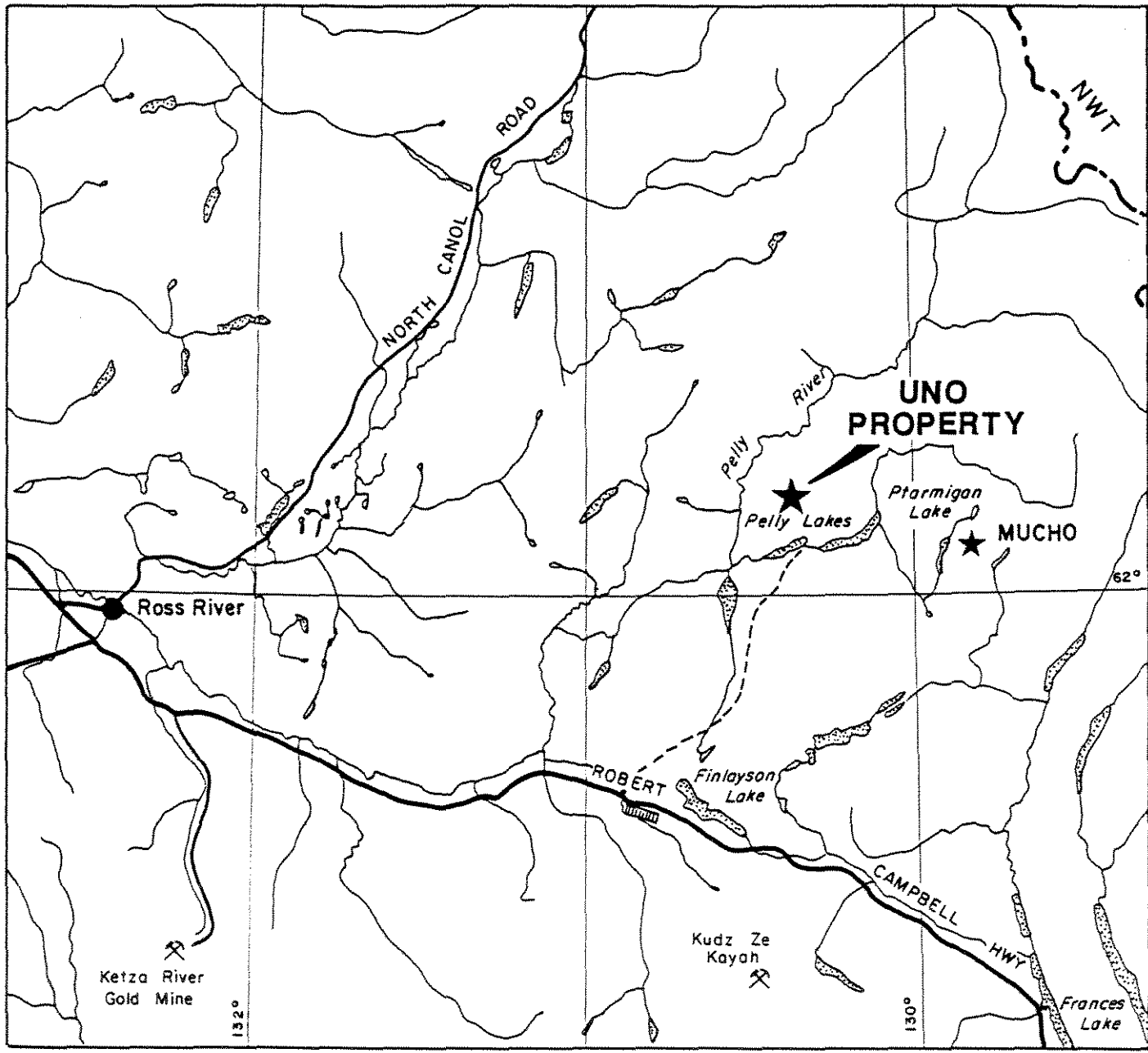


Figure 2

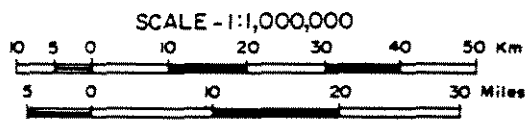
ARCHER, CATHRO & ASSOCIATES (1981) LIMITED

# DETAILED LOCATION

UNO PROPERTY

CASH RESOURCES LTD.

- ★ Prospect owned by CASH RESOURCES LTD.
- ⚡ Deposit owned by others
- ▬ Gravel airstrip
- Winter road



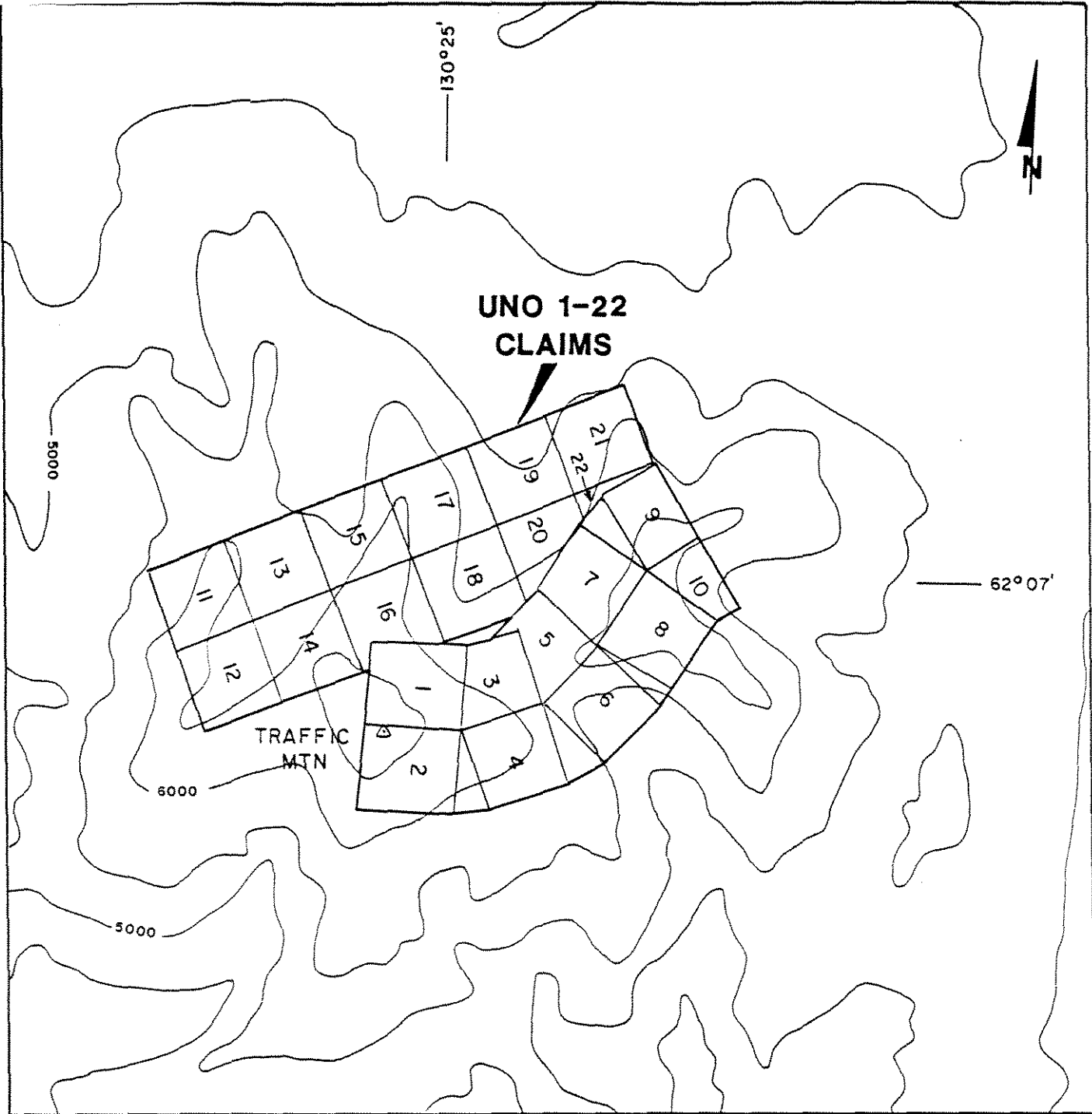


Figure 3

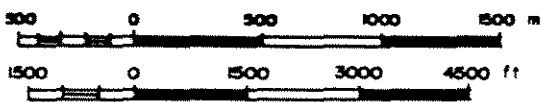
ARCHER, CATHRO & ASSOCIATES (1981) LIMITED

# CLAIM LOCATION

UNO PROPERTY

CASH RESOURCES LTD.

SCALE - 1 inch = 1/2 Mile (1:31,680)



## HISTORY AND PREVIOUS WORK

The area of interest was first staked as the Marylou claims in August 1979 by Getty Mines Ltd. as part of its Anvil Range Project which was designed to follow up anomalous stream sediment samples previously reported by Atlas Exploration in 1968. The initial 32 claims were staked to cover lead-zinc geochemical response from two drainages on the north side of Traffic Mountain. The property was subsequently expanded to 328 claims and explored by prospecting, stream sediment sampling and reconnaissance contour soil sampling later that year (Clemmer, 1979). Five areas of significant mineralization were discovered with specimens grading up to 1786 g/t silver, 33.7% lead, 15.6% zinc, 3.55% copper and 3.84 g/t gold. Although a follow up program was recommended, no further work was done.

## GEOMORPHOLOGY

The claims are located on the northeast side of Traffic Mountain which lies on the western edge of the Logan Range, 100 km northeast of the Tintina Trench. Creeks draining the property flow into the Pelly River which is part of the Yukon River watershed.

Local topography is modified by Pleistocene to Recent, valley and alpine glaciation which has cut broad U-shaped valleys flanked by hanging valleys ending in cirques. Glaciofluvial outwash and till blanket the floors of the larger valleys while lateral and terminal moraines and talus fans are common in upland valleys. Elevations range from 900 m on the shores of Pelly Lakes to 2050 m at the peak of Traffic Mountain.

Treeline in the area is about 1400 m with willow, alder and spruce on lower slopes, gradually giving way to buckbrush and stunted spruce and finally grass and lichen above 1500 m. Most of the property is above 1500 m and is underlain by lichen-covered talus. Bedrock exposures are best in north-facing cirques, along ridge crests and on south-facing slopes where deep incisions have been made by drainages.

Soil development is poor throughout the property. In the vicinity of the geochemical grid it typically consists of thin intermittent patches of humus overlying an unknown thickness of talus mixed with immature soil.

## GEOLOGY

The Uno claim block is located on the southwest edge of the Selwyn Basin geological terrane approximately 1 km south of a major fault that separates these basinal sediments from allochthonous paracratonic rocks of the Cassiar Platform. The project area was mapped at 1:250,000 scale in the mid-1980's by the Geological Survey of Canada (Gordey and Irwin, 1987). Stratigraphy in the vicinity of Traffic Mountain exhibits tight folds within a northwest-trending antiform. The claims lie in the upper plate of a southwest-dipping thrust that comes to surface 2 km north of the property. The thrust is truncated downdip by the regional-scale high angle fault located 1 km south of the property. Both faults strike approximately parallel to the axial fold trend.

Figure 4 illustrates geology in the core of the property as mapped by Getty Mines in 1979 and Cash Resources in 1994. Local geology consists of clastic and carbonate sedimentary rocks that are locally intruded and thermally metamorphosed by an elongate felsic stock. Two primary lithological units have been identified on the property as described below.

**Road River Group** sediments are Cambrian to Ordovician in age. Clastic rocks ( $\epsilon O_t$ ) include thin to thick interbedded, maroon, rusty weathering pelitic hornfels; white to grey-blue, buff and rusty weathering quartzite; and, grey to pale green, thinly laminated chert. Carbonate rocks ( $\epsilon O_{ta}$ ) are typically interbedded with chert and consist of thin bedded, strongly bleached, white to pale green calc-silicate hornfels with local skarn zones.

Selwyn Plutonic Suite rocks are Mid-Cretaceous in age and form an elongate stock 2.5 km long and up to 300 m wide that trends east-west across the property. Most of the stock is comprised of fresh non-foliated quartz-monzonite but in places it grades into porphyritic biotite granite. The intrusion cuts obliquely across the strike of the sediments and generally exhibits sharp contacts. It has produced a thermal metamorphic aureole, the extent of which has not yet been determined.

Fold deformation in the area is thought to have occurred between Mid-Jurassic and Mid-Cretaceous. Local folds are tight and upright with limbs dipping 70 to 85°. No major faults have been identified on the property. Smaller scale structures include joints which are typically tri-planar (orthogonal and parallel to bedding) and veins which are commonly perpendicular to bedding.

## MINERALIZATION

Most prospecting focused on a cirque on the northeast side of Traffic Mountain where Getty Mines had previously identified three mineralized zones (ML, East and Skarn) within the current property boundary (Figure 4). The Getty Mines showings are situated on cliffs or along ridge crests. The ML and East Zones contain silver, lead, zinc and copper while the Skarn Zone hosts tungsten and gold. In 1994 the East Zone was relocated, several areas of mineralized float and bedrock were found near the reported locations of the ML and Skarn Zones, and a number of new occurrences were discovered.

A total of twenty-seven chip samples and float specimens was taken mainly from ridge tops within the central and eastern parts of the property during 1994. All samples were sent to Chemex Labs Ltd. where they were crushed and ring pulverized then routinely analyzed for 32 elements using the induced coupled plasma (ICP) technique. Samples exceeding geochemical detection limits were later assayed for gold, silver, lead, zinc and/or copper as required. Selective pulps were also analyzed for tin, tantalum and niobium. Sample locations are shown on Figure 5 while Appendix III contains Certificates of Analyses.

The two main types of mineralization are (1) semi-massive to massive sulphide lenses and breccia fillings; and, (2) sulphide stockworks. Both are best developed within moderate to strongly bleached quartzite beds. Vein and skarn zones are also present but appear to be small and sporadically mineralized. The main mineral occurrences are described below.

Sulphide lenses and breccia fillings are found in outcrop and as float at the ML and East Zones. Getty Mines describes the ML Zone as massive sulphide lenses occurring on a cliff in

the southwest corner of the cirque. The mineralization is hosted by a moderate to strongly bleached and oxidized, buff weathering quartzite bed up to 12 m thick. The largest exposure is reportedly up to 2 m thick and has been traced along strike for 10 m. Sulphides are described as generally coarse-grained pyrite>galena>arsenopyrite>chalcopyrite>sphalerite>pyrrhotite. A 1 m chip sample taken by Getty Mines returned 633 g/t silver, 12.50% lead, 1.05% copper, 0.18% zinc and only minor gold (57 ppb) while selective grab samples assayed up to 1786 g/t silver, 33.70% lead, 2.38% copper and 0.92% zinc. Float boulders of similar mineralization up to 1 m in diameter were discovered by Cash Resources in the East Zone 900 m to the east. Specimens from them yielded up to 853 g/t silver, 18.70% lead, 4.50% zinc, 1.66% copper and 400 ppb gold. Two samples from this zone were also strongly anomalous for tantalum (88 and 220 ppm).

Sulphide stockwork mineralization was located in outcrop along a ridge crest 400 m north of the ML Zone (West Zone) and in a narrow float train at the East Zone. Host lithology is very similar to that of the massive sulphide lenses. Sulphide-filled fractures comprise 20 to 30% (by volume) of the mineralized stockwork and contain coarse-grained pyrite>galena>sphalerite>chalcopyrite>arsenopyrite>pyrrhotite. Outcrop specimens taken by Cash Resources from the West Zone returned up to 289 g/t silver, 7.35% lead, 0.12% zinc, 0.09% copper and low gold values (5 ppb), while float samples collected by Getty Mines and Cash Resources from the East Zone yielded up to 73.0 g/t silver, 1.42% lead, 2.72% zinc, 0.26% copper and low gold values (<5 ppb).

Veins are most abundant within calc-silicate rocks in the northeastern part of the property. They trend due north, dip steeply west and range from 10 to 150 cm in width. Typical mineralogy consists of a carbonate gangue (usually calcite) surrounding 5 to 20 cm wide bands of manganiferous limonite±galena±molybdenite. Specimens of galena-rich manganiferous limonite without molybdenite assayed up to 176 g/t silver, >1.00% lead, 0.39% zinc, 0.14% copper, 0.13% tungsten and 42 ppb gold. None of the molybdenite-bearing samples were analyzed.

Several small areas of skarn mineralization occur in the northeast corner of the property. Economic minerals include disseminated sphalerite, chalcopyrite, scheelite and traces of molybdenite. Specimens collected by Getty Mines returned up to 30 g/t silver, 0.56% copper, 0.44% zinc, 0.10% lead, 0.60% tungsten, 204 ppm molybdenum and 3800 ppb gold.

## SOIL GEOCHEMISTRY

The majority of the soil sampling conducted by Cash Resources was done on the east side of the cirque in the east-central part of the property (Figure 5) where a string of contour soil samples taken by Getty Mines returned strongly anomalous values for silver, lead, zinc and copper. The grid is centred on the west end of the granitic stock and extends approximately 200 m on each side into altered metasediments.

A total of 102 soil samples was collected from the 650 by 500 m grid, while five soils were taken by Cash Resources from scattered locations elsewhere on the property. Grid control was provided by a baseline marked at 50 m intervals with 50 cm wooden lath bearing aluminum tags inscribed with the grid coordinates. Soil samples were collected at 50 m intervals along compass- and topofil-controlled lines aligned perpendicular to the baseline and spaced approximately 100 m apart. Sample locations are indicated with 50 cm wooden lath bearing aluminium tags inscribed with the sample number and grid coordinate. All samples were sent to Chemex Labs Ltd. where they were screened to -80 mesh and then geochemically analyzed for 32 elements using the induced coupled plasma technique (ICP) and gold by fire assay with a neutron activation finish. Sample locations are shown on Figure 5 while Certificates of Analyses are included in Appendix III.

Figures 6 to 10 illustrate silver, lead, zinc, copper and gold results, respectively, for the Cash Resources work plus Getty Mines contour soil and stream sediment sampling. Table 1 on the following page lists threshold and peak values for each metal.

TABLE 1  
SELECTED GEOCHEMICAL DATA

<u>Metal</u>	<u>Threshold Values</u>			<u>Peak Value</u>
	<u>Weak</u>	<u>Moderate</u>	<u>Strong</u>	
Silver	1 ppm	2 ppm	5 ppm	12.6 ppm
Lead	200 ppm	500 ppm	1000 ppm	2,450 ppm
Zinc	200 ppm	500 ppm	1000 ppm	2,800 ppm
Copper	50 ppm	100 ppm	200 ppm	350 ppm
Gold	5 ppb	10 ppb	20 ppb	33 ppb

Silver, lead and zinc show a high degree of correlation especially among moderately to strongly anomalous values. The area of moderately anomalous response is about 400 by 300 m and is open on the south and west edges of the grid. Figures 6 and 7 illustrate a strong northerly geochemical trend which coincides with the main fracture direction over much of the property. This trend marks the eastern limit of anomalous values for silver and lead but is not apparent in the distribution of zinc values.

Gold geochemistry outlines a 450 by 150 m northwest-trending band of moderately anomalous response that coincides with the northern edge of the stock.

Relatively uniform, moderately to strongly anomalous copper response occurs over the granitic stock.

Five soil samples collected off the grid in gullies suspected of containing vein faults returned strongly anomalous values for silver, lead, zinc and copper but near background response for gold. Individual values were as high as 175 ppm silver, >10,000 ppm lead, >10,000 ppm zinc, 300 ppm copper and 17 ppb gold.

**CONCLUSIONS AND RECOMMENDATIONS**

Preliminary results from the Uno property are encouraging and support potential for a bulk-tonnage silver target. Further exploration should consist of contour soil sampling and prospecting traverses in the adjoining cirques followed by detailed prospecting, grid soil geochemistry and hand trenching in specific areas of interest. Previously discovered massive sulphide and stockwork mineralization at and near the ML and East Zones should definitely be hand trenched. The work should be done by a two-man crew operating from a tent camp on the property and will likely require about twenty days to complete.

Respectively submitted,

ARCHER, CATHRO & ASSOCIATES (1981) LIMITED



W. Wengzynowski, B.A.Sc.

**SELECTED REFERENCES**

Clemmer, S.

1979: Geological, Geochemical and Prospecting Report for Marylou 1-96 Claims,  
Getty Mines Ltd.

Gordey, S.P. and Irwin, S.E.B.

1987: Geology, Sheldon Lake and Tay River Map Areas, Yukon Territory; Geological  
Society of Canada Map 19-1987 (1:250,000).

**APPENDIX I**  
**STATEMENT OF QUALIFICATIONS**

## STATEMENT OF QUALIFICATIONS

I, William A. Wengzynowski, geological engineer, with business addresses in Whitehorse, Yukon Territory and Vancouver, British Columbia and residential address in Vancouver, British Columbia, do hereby certify that:

1. I graduated from the University of British Columbia in 1993 with a B.A.Sc. in geological engineering, option 1, mineral and fuel exploration.
2. From 1983 to present, I have been actively engaged in mineral exploration in the Yukon Territory and am presently employed with Archer, Cathro & Associates (1981) Limited.
3. I have personally participated in and supervised the field work reported herein.

*W.A. Wengzynowski*  
W.A. Wengzynowski, B.A.Sc.

**APPENDIX II**  
**LIST OF PERSONNEL**

## LIST OF FIELD PERSONNEL

<u>Personnel</u>	<u>Position</u>	<u>Dates Worked</u>
B. Wengzynowski	Geologist	August 9 to 14
J. Owerko	Field Assistant	August 9 to 14

**APPENDIX III**  
**CERTIFICATES OF ANALYSES**



# Chemex Labs Ltd.

Analytical Chemists \* Geochemists \* Registered Assayers  
212 Brooksbank Ave., North Vancouver  
British Columbia, Canada V7J 2C1  
PHONE: 604-984-0221

To: ARCHER CATHRO & ASSOC. (1981) LTD.

1016 - 510 W. HASTINGS ST.  
VANCOUVER, BC  
V6B 1L8

Project : UNO  
Comments:

Page : 1-A  
Total Pages : 1  
Certificate Date: 03-JAN-95  
Invoice No. : 19433286  
P.O. Number :  
Account : F

## CERTIFICATE OF ANALYSIS

### A9433286

SAMPLE	PREP CODE	Ag ppm	Al %	As ppm	Ba ppm	Be ppm	Bi ppm	Ca %	Cd ppm	Co ppm	Cr ppm	Cu ppm	Fe %	Ga ppm	Hg ppm	K %	La ppm	Mg %	Mn ppm	Mo ppm
U-1	299 233	>200	0.06	>10000	20	< 0.5	20	1.74	>100.0	23	>10000	>10000	>15.00	< 10	39	0.13	< 10	0.29	2630	< 1
U-2	299 233	78.4	0.17	>10000	40	< 0.5	< 2	0.36	>100.0	3	15	2530	8.99	< 10	16	0.13	< 10	0.06	640	< 1

CERTIFICATION: Hart Bichler



# Chemex Labs Ltd.

Analytical Chemists \* Geochemists \* Registered Assayers  
212 Brooksbank Ave., North Vancouver  
British Columbia, Canada V7J 2C1  
PHONE: 604-984-0221

To: ARCHER CATHRO & ASSOC. (1981) LTD.

1016 - 510 W. HASTINGS ST.  
VANCOUVER, BC  
V6B 1L8

Project : UNO  
Comments:

Form Number : 1-B  
Total Pages : 1  
Certificate Date: 03-JAN-95  
Invoice No. : I9433286  
P.O. Number :  
Account : F

## CERTIFICATE OF ANALYSIS

A9433286

SAMPLE	PREP CODE		Na	Ni	P	Pb	Sb	Sc	Sr	Ti	Tl	U	V	W	Zn
			%	ppm	ppm	ppm	ppm	ppm	ppm	%	ppm	ppm	ppm	ppm	ppm
U-1	299	233	0.03	2	850	>10000	1080	< 1	62	< 0.01	< 10	< 10	Intf*	Intf*	>10000
U-2	299	233	0.01	7	650	>10000	92	< 1	17	< 0.01	< 10	< 10	Intf*	< 10	>10000

CERTIFICATION:

*Hart Bichler*



# Chemex Labs Ltd.

Analytical Chemists \* Geochemists \* Registered Assayers  
212 Brooksbank Ave., North Vancouver  
British Columbia, Canada V7J 2C1  
PHONE: 604-984-0221

Client: ARCHER CATHRO & ASSOC. (1981) LTD.

1016 - 510 W. HASTINGS ST.  
VANCOUVER, BC  
V6B 1L8

Project: UNO  
Comments:

Page: 1  
Total Pages: 1  
Certificate Date: 03-JAN-95  
Invoice No.: 19433285  
P.O. Number:  
Account: F

## CERTIFICATE OF ANALYSIS

### A9433285

SAMPLE	PREP CODE		Au oz/T FA+AA	Ag oz/T	Cu %	Pb %	Zn %					
U-1	208	226	0.0135	21.4	1.66	16.80	4.25					
U-2	208	226	<0.0005	2.14	0.26	1.42	2.72					

CERTIFICATION: *Albosta*



# Chemex Labs Ltd.

Analytical Chemists \* Geochemists \* Registered Assayers  
212 Brooksbank Ave., North Vancouver  
British Columbia, Canada V7J 2C1  
PHONE: 604-984-0221

Client: ARCHER CATHRO & ASSOC. (1981) LTD.

BOX 4127  
WHITEHORSE, YT  
Y1A 3S9

Project: SQF-UNO  
Comments:

Order #: 1  
Total Pages: 1  
Certificate Date: 09-DEC-94  
Invoice No.: I9431237  
P.O. Number:  
Account: F

## CERTIFICATE OF ANALYSIS

A9431237

SAMPLE	PREP CODE	Au NAA ppb									
T5552	244 --	4									
T5553	244 --	6									
T5555	244 --	2									
T5557	244 --	42									
T5564	244 --	11									
T5566	244 --	72									
T5567	244 --	< 1									
T5568	244 --	1									
T5569	244 --	52									
T5570	244 --	< 1									
T5577	244 --	< 1									

CERTIFICATION: *Thak Vank*



# Chemex Labs Ltd.

Analytical Chemists \* Geochemists \* Registered Assayers  
212 Brooksbank Ave., North Vancouver  
British Columbia, Canada V7J 2C1  
PHONE: 604-984-0221

To: ARCHER CATHRO & ASSOC. (1981) LTD.

BOX 4127  
WHITEHORSE, YT  
Y1A 3S9

Project : SQF-UNO  
Comments:

Number : 1  
Total Pages : 3  
Certificate Date: 17-OCT-94  
Invoice No. : 19428259  
P.O. Number :  
Account : F

## CERTIFICATE OF ANALYSIS

A9428259

SAMPLE	PREP CODE	Au NAA ppb											
T8451	244 --	10											
T8452	244 --	1											
T8453	244 --	2											
T8454	244 --	5											
T8455	244 --	< 1											
T8456	244 --	< 1											
T8457	244 --	4											
T8458	244 --	18											
T8459	244 --	2											
T8460	244 --	3											
T8461	244 --	3											
T8462	244 --	8											
T8463	244 --	3											
T8464	244 --	11											
T8465	244 --	3											
T8466	244 --	1											
T8467	244 --	7											
T8468	244 --	9											
T8469	244 --	2											
T8470	244 --	3											
T8471	244 --	4											
T8472	244 --	4											
T8473	244 --	3											
T8474	244 --	10											
T8475	244 --	2											
T8476	244 --	3											
T8477	244 --	5											
T8478	244 --	6											
T8479	244 --	3											
T8480	244 --	6											
T8481	244 --	2											
T8482	244 --	4											
T8483	244 --	7											
T8484	244 --	< 1											
T8485	244 --	12											
T8486	244 --	20											
T8487	244 --	6											
T8488	244 --	14											
T8489	244 --	10											
T8490	244 --	7											

CERTIFICATION: *Hub Vonh*



# Chemex Labs Ltd.

Analytical Chemists \* Geochemists \* Registered Assayers  
212 Brooksbank Ave., North Vancouver  
British Columbia, Canada V7J 2C1  
PHONE: 604-984-0221

To: ARCHER CATHRO & ASSOC. (1981) LTD.

BOX 4127  
WHITEHORSE, YT  
Y1A 3S9

Project : SQF-UNO  
Comments:

Page Number : 2  
Total Pages : 3  
Certificate Date: 17-OCT-94  
Invoice No. : 19428259  
P.O. Number :  
Account : F

## CERTIFICATE OF ANALYSIS

A9428259

SAMPLE	PREP CODE	Au NAA ppb											
T8491	244 --	9											
T8492	244 --	21											
T8493	244 --	13											
T8494	244 --	21											
T8495	244 --	5											
T8496	244 --	7											
T8497	244 --	7											
T8498	244 --	12											
T8499	244 --	17											
T8500	244 --	9											
T8501	244 --	6											
T8502	244 --	33											
T8503	244 --	21											
T8504	244 --	18											
T8505	244 --	17											
T8506	244 --	20											
T8507	244 --	8											
T8508	244 --	5											
T8509	244 --	7											
T8510	244 --	9											
T8511	244 --	< 1											
T8512	244 --	7											
T8513	244 --	1											
T8514	244 --	3											
T8515	244 --	4											
T8516	244 --	3											
T8517	244 --	2											
T8518	244 --	2											
T8519	244 --	< 1											
T8520	244 --	2											
T8521	244 --	1											
T8522	244 --	3											
T8523	244 --	< 1											
T8524	244 --	5											
T8525	244 --	5											
T8526	244 --	3											
T8527	244 --	6											
T8528	244 --	13											
T8529	244 --	2											
T8530	244 --	3											

CERTIFICATION:

*Mark Vank*



# Chemex Labs Ltd.

Analytical Chemists \* Geochemists \* Registered Assayers  
 212 Brooksbank Ave., North Vancouver  
 British Columbia, Canada V7J 2C1  
 PHONE: 604-984-0221

To: ARCHER CATHRO & ASSOC. (1981) LTD.

BOX 4127  
 WHITEHORSE, YT  
 Y1A 3S9

Project : SQF-UNO  
 Comments:

Order : 3  
 Total Pages : 3  
 Certificate Date: 17-OCT-94  
 Invoice No. : 19428259  
 P.O. Number :  
 Account : F

## CERTIFICATE OF ANALYSIS

### A9428259

SAMPLE	PREP CODE	Au NAA ppb											
T8531	244 --	3											
T8532	244 --	< 1											
T8533	244 --	5											
T8534	244 --	2											
T8535	244 --	3											
T8536	244 --	7											
T8537	244 --	5											
T8538	244 --	1											
T8539	244 --	1											
T8540	244 --	1											
T8541	244 --	5											
T8542	244 --	< 1											
T8543	244 --	2											
T8544	244 --	11											
T8545	244 --	< 1											
T8546	244 --	2											
T8547	244 --	2											
T5551	244 --	17											
T5554	244 --	7											
T5556	244 --	< 1											
T5563	244 --	< 1											
T5576	244 --	< 1											
T5558	244 --	1											
T5559	244 --	7											
T5560	244 --	< 1											
T5561	244 --	2											
T5562	244 --	1											
T5565	244 --	3											
T5571	244 --	< 1											
T5572	244 --	2											
T5573	244 --	31											
T5574	244 --	10											
T5575	244 --	< 1											
T5578	244 --	32											
T5579	244 --	170											
T5580	244 --	790											
T5581	244 --	12											

CERTIFICATION: *Theresa Vank*



# Chemex Labs Ltd.

Analytical Chemists \* Geochemists \* Registered Assayers  
 212 Brooksbank Ave., North Vancouver  
 British Columbia, Canada V7J 2C1  
 PHONE: 604-984-0221

o: ARCHER CATHRO & ASSOC. (1981) LTD.

BOX 4127  
 WHITEHORSE, YT  
 Y1A 3S9

Project : SQF-UNO  
 Comments:

Page : 1  
 Total Pages : 1  
 Certificate Date: 10-NOV-94  
 Invoice No. : I9428255  
 P.O. Number :  
 Account : F

## CERTIFICATE OF ANALYSIS

A9428255

SAMPLE	PREP CODE		Sn %	Ta NAA ppm	Nb ppm	Cu %						
T5558	244	288	< 0.01	< 2.0	8	-----						
T5559	244	288	< 0.01	< 2.0	4	-----						
T5560	244	288	0.01	< 2.0	3	-----						
T5561	244	288	0.01	< 2.0	21	-----						
T5562	244	288	0.02	< 2.0	24	-----						
T5565	244	288	< 0.01	< 2.0	13	-----						
T5571	244	288	0.02	< 2.0	15	-----						
T5572	244	288	0.09	< 2.0	17	-----						
T5573	244	288	0.06	< 2.0	11	-----						
T5574	244	288	0.23	16.0	19	-----						
T5575	244	288	0.01	< 2.0	11	-----						
T5578	244	288	0.02	88.0	14	-----						
T5579	244	288	0.01	210	13	-----						
T5580	244	288	0.22	6.0	< 2	1.41						
T5581	244	288	0.02	< 2.0	20	-----						

CERTIFICATION:

*Hart Bichler*



# Chemex Labs Ltd.

Analytical Chemists \* Geochemists \* Registered Assayers  
 212 Brooksbank Ave., North Vancouver  
 British Columbia, Canada V7J 2C1  
 PHONE: 604-984-0221

To: ARCHER CATHRO & ASSOC. (1981) LTD.

BOX 4127  
 WHITEHORSE, YT  
 Y1A 3S9

Project : SQF-UNO  
 Comments:

Form Number : 1-A  
 Total Pages : 1  
 Certificate Date: 09-SEP-94  
 Invoice No. : I9424163  
 P.O. Number :  
 Account : F

## CERTIFICATE OF ANALYSIS

A9424163

SAMPLE	PREP CODE		Ag	Al	As	Ba	Be	Bi	Ca	Cd	Co	Cr	Cu	Fe	Ga	Hg	K	La	Mg	Mn	Mo
			ppm	%	ppm	ppm	ppm	ppm	%	ppm	ppm	ppm	ppm	%	ppm	ppm	%	ppm	%	ppm	ppm
75552	205	226	5.6	0.36	438	240	< 0.5	18	14.75	8.5	6	23	79	2.62	< 10	< 1	0.15	10	0.13	7420	< 1
75553	205	226	2.8	1.60	120	490	2.0	< 2	10.55	18.0	5	46	63	5.00	< 10	< 1	0.30	20	0.87	7080	< 1
75555	205	226	5.4	0.30	264	630	0.5	< 2	14.75	10.0	4	25	28	1.37	10	< 1	0.10	10	0.11	>10000	< 1
75557	205	226	5.4	0.38	9160	30	< 0.5	132	5.08	81.0	12	33	1445	>15.00	30	< 1	0.11	10	0.17	2180	< 1
75564	205	226	176.5	0.53	7320	30	< 0.5	66	0.11	0.5	< 1	55	342	>15.00	20	< 1	0.19	10	0.03	185	25
75566	205	226	5.8	0.15	>10000	20	< 0.5	80	0.69	>100.0	33	25	426	9.63	10	< 1	0.06	10	0.20	110	< 1
75567	205	226	0.8	4.73	24	100	< 0.5	2	3.76	0.5	18	111	79	4.24	< 10	< 1	0.04	10	0.09	70	< 1
75568	205	226	< 0.2	2.57	16	60	1.0	< 2	2.17	0.5	20	95	84	2.63	10	1	0.02	< 10	0.07	50	< 1
75569	205	226	< 0.2	4.18	18	20	< 0.5	< 2	2.54	< 0.5	69	65	387	14.20	10	< 1	0.02	< 10	0.35	50	< 1
75570	205	226	< 0.2	0.94	256	20	1.0	< 2	0.24	5.0	20	57	67	>15.00	60	< 1	0.10	20	0.10	975	< 1
75577	205	226	1.2	2.05	22	60	0.5	< 2	11.55	6.5	3	56	111	3.08	< 10	< 1	0.06	10	2.06	1875	< 1

CERTIFICATION: *Hart Bickler*



# Chemex Labs Ltd.

Analytical Chemists \* Geochemists \* Registered Assayers  
212 Brooksbank Ave., North Vancouver  
British Columbia, Canada V7J 2C1  
PHONE: 604-984-0221

to: ARCHER CATHRO & ASSOC. (1981) LTD.

BOX 4127  
WHITEHORSE, YT  
Y1A 3S9

Project: SQF-UNO  
Comments:

Page Number: 1-B  
Total Pages: 1  
Certificate Date: 09-SEP-94  
Invoice No.: I9424163  
P.O. Number:  
Account: F

## CERTIFICATE OF ANALYSIS

### A9424163

SAMPLE	PREP CODE	Na %	Ni ppm	P ppm	Pb ppm	Sb ppm	Sc ppm	Sr ppm	Ti %	Tl ppm	U ppm	V ppm	W ppm	Zn ppm
T5552	205 226	< 0.01	10	550	1505	12	3	240	< 0.01	< 10	30	22	20	470
T5553	205 226	0.03	13	780	168	12	4	168	0.02	< 10	20	20	30	1100
T5555	205 226	< 0.01	3	220	1180	70	1	129	< 0.01	< 10	70	25	30	472
T5557	205 226	< 0.01	7	250	>10000	96	2	26	< 0.01	< 10	< 10	620	80	3890
T5564	205 226	< 0.01	< 1	420	>10000	900	2	2	< 0.01	< 10	< 10	9	40	1440
T5566	205 226	< 0.01	9	180	>10000	20	1	12	< 0.01	< 10	< 10	26	50	9940
T5567	205 226	0.21	35	860	73	10	1	424	0.45	< 10	< 10	57	10	32
T5568	205 226	0.12	28	670	45	6	< 1	274	0.08	< 10	< 10	20	< 10	43
T5569	205 226	0.22	92	850	32	16	2	94	0.09	< 10	< 10	25	20	34
T5570	205 226	< 0.01	88	1100	80	80	3	17	< 0.01	< 10	< 10	123	120	178
T5577	205 226	< 0.01	11	750	490	6	6	136	0.15	< 10	< 10	66	20	424

CERTIFICATION:

*Hart Buchler*



# Chemex Labs Ltd.

Analytical Chemists \* Geochemists \* Registered Assayers  
 212 Brooksbank Ave., North Vancouver  
 British Columbia, Canada V7J 2C1  
 PHONE: 604-984-0221

Client: ARCHER CATHRO & ASSOC. (1981) LTD.

BOX 4127  
 WHITEHORSE, YT  
 Y1A 3S9

Project: SQF-UNO  
 Comments:

Form: 1-A  
 Total Pages: 1  
 Certificate Date: 02-SEP-94  
 Invoice No.: I9424162  
 P.O. Number:  
 Account: F

## CERTIFICATE OF ANALYSIS A9424162

SAMPLE	PREP CODE	Au oz/T FA+AA	Ag oz/T	Pb %	Zn %	Ag ppm	Al %	As ppm	Ba ppm	Be ppm	Bi ppm	Ca %	Cd ppm	Co ppm	Cr ppm	Cu ppm	Fe %	Ga ppm	Hg ppm	K %
T5558	208 226	-----	0.15	0.01	0.09	6.0	0.70	278	330	1.5	10	0.15	55.0	9	34	119	12.30	30	< 1	0.39
T5559	208 226	-----	0.56	0.04	< 0.01	20.2	0.39	412	30	1.5	230	0.12	2.0	4	95	123	12.95	10	< 1	0.18
T5560	208 226	-----	1.15	0.13	1.15	38.4	0.79	4570	970	2.5	30	1.83	>100.0	26	27	54	>15.00	30	< 1	0.23
T5561	208 226	-----	0.01	< 0.01	< 0.01	0.6	1.36	14	10	1.0	< 2	3.34	1.0	11	24	63	4.78	20	< 1	< 0.01
T5562	208 226	-----	2.48	1.58	0.10	86.0	1.38	78	160	2.0	80	0.38	6.5	7	38	267	>15.00	20	< 1	0.51
T5565	208 226	-----	0.19	0.02	< 0.01	7.6	1.14	20	10	0.5	30	1.85	< 0.5	7	90	120	9.11	20	< 1	< 0.01
T5571	208 226	-----	0.86	0.44	0.11	30.2	0.47	38	50	0.5	24	0.14	17.0	7	174	178	5.85	10	< 1	0.13
T5572	208 226	-----	8.44	7.35	0.12	>200	0.58	>10000	70	1.0	50	0.13	4.5	3	122	896	8.54	10	< 1	0.24
T5573	208 226	-----	0.41	1.03	0.76	15.0	2.89	90	< 10	3.5	24	11.25	99.0	7	84	81	4.12	30	< 1	< 0.01
T5574	208 226	-----	2.04	1.82	1.80	73.0	1.60	>10000	90	3.0	50	3.49	>100.0	22	77	941	12.75	20	< 1	0.25
T5575	208 226	-----	1.53	2.10	1.20	55.2	5.41	48	< 10	1.0	< 2	7.39	57.0	10	70	2160	4.58	30	< 1	< 0.01
T5578	208 226	-----	1.90	1.69	1.25	69.6	0.40	>10000	40	1.5	6	0.71	>100.0	28	77	1070	>15.00	10	< 1	0.17
T5579	208 226	0.0055	-----	-----	-----	29.2	0.40	>10000	50	2.0	4	0.12	6.5	22	56	107	>15.00	< 10	< 1	0.14
T5580	208 226	-----	24.9	18.70	4.00	>200	0.24	>10000	10	1.5	30	7.05	>100.0	15	43	>10000	>15.00	10	< 1	0.04
T5581	208 226	-----	1.53	1.25	0.52	55.6	0.59	5960	90	0.5	4	0.81	41.5	5	163	647	6.27	10	< 1	0.35

CERTIFICATION: *[Signature]*



# Chemex Labs Ltd.

Analytical Chemists \* Geochemists \* Registered Assayers  
 212 Brooksbank Ave., North Vancouver  
 British Columbia, Canada V7J 2C1  
 PHONE: 604-984-0221

Client: ARCHER CATHRO & ASSOC. (1981) LTD.

BOX 4127  
 WHITEHORSE, YT  
 Y1A 3S9

Project: SQF-UNO  
 Comments:

Page Number: 1-B  
 Total Pages: 1  
 Certificate Date: 02-SEP-94  
 Invoice No.: 19424162  
 P.O. Number:  
 Account: F

## CERTIFICATE OF ANALYSIS

A9424162

SAMPLE	PREP CODE		La	Mg	Mn	Mo	Na	Ni	P	Pb	Sb	Sc	Sr	Ti	Tl	U	V	W	Zn
			ppm	%	ppm	ppm	%	ppm	ppm	ppm	ppm	ppm	ppm	%	ppm	ppm	ppm	ppm	ppm
T5558	208	226	90	0.13	3720	< 1	< 0.01	11	270	132	18	3	30	< 0.01	< 10	< 10	36	< 10	1470
T5559	208	226	10	0.10	135	4	< 0.01	9	530	374	24	3	49	< 0.01	< 10	< 10	17	30	108
T5560	208	226	40	0.23	>10000	22	0.01	16	6050	1220	22	2	395	< 0.01	< 10	< 10	91	10	>10000
T5561	208	226	40	0.09	925	3	0.01	4	1020	8	6	1	122	0.18	< 10	< 10	19	60	102
T5562	208	226	20	0.22	980	23	0.01	5	790	>10000	44	6	37	0.02	< 10	< 10	35	1320	1485
T5565	208	226	30	0.37	220	< 1	< 0.01	11	560	256	6	3	34	0.25	< 10	< 10	43	< 10	58
T5571	208	226	10	0.06	2250	1	< 0.01	6	440	4700	16	3	8	0.03	< 10	< 10	15	< 10	1615
T5572	208	226	20	0.08	230	2	0.01	1	360	>10000	238	4	42	0.09	< 10	< 10	26	< 10	1780
T5573	208	226	40	0.59	2510	< 1	0.01	12	920	>10000	118	6	143	0.54	< 10	< 10	53	< 10	7730
T5574	208	226	50	0.54	3840	< 1	0.01	9	410	>10000	68	4	80	0.10	< 10	< 10	25	< 10	>10000
T5575	208	226	40	1.55	1700	< 1	0.01	9	1480	>10000	22	5	165	0.18	< 10	< 10	26	< 10	>10000
T5578	208	226	20	0.08	765	< 1	< 0.01	22	880	>10000	370	3	35	0.01	< 10	< 10	12	< 10	>10000
T5579	208	226	10	0.04	110	< 1	< 0.01	8	540	9350	916	2	10	< 0.01	< 10	< 10	11	< 10	2700
T5580	208	226	20	1.30	>10000	< 1	< 0.01	2	< 10	>10000	2430	2	126	< 0.01	< 10	< 10	3	10	>10000
T5581	208	226	20	0.20	1055	< 1	< 0.01	16	1010	>10000	64	3	34	0.01	< 10	< 10	17	< 10	5550

CERTIFICATION: *ylaid Ma*



# Chemex Labs Ltd.

Analytical Chemists \* Geochemists \* Registered Assayers  
 212 Brooksbank Ave., North Vancouver  
 British Columbia, Canada V7J 2C1  
 PHONE: 604-984-0221

Client: ARCHER CATHRO & ASSOC. (1981) LTD.

BOX 4127  
 WHITEHORSE, YT  
 Y1A 3S9

Project: SQF-UNO  
 Comments:

Page: 1-A  
 Total Pages: 3  
 Certificate Date: 05-SEP-94  
 Invoice No.: 19424159  
 P.O. Number:  
 Account: F

## CERTIFICATE OF ANALYSIS A9424159

SAMPLE	PREP CODE	Ag ppm	Al %	As ppm	Ba ppm	Be ppm	Bi ppm	Ca %	Cd ppm	Co ppm	Cr ppm	Cu ppm	Fe %	Ga ppm	Hg ppm	K %	La ppm	Mg %	Mn ppm	Mo ppm
T8451	201 229	< 0.2	3.07	26	130	< 0.5	2	1.53	0.5	13	28	55	2.98	< 10	< 1	0.10	10	1.69	505	< 1
T8452	201 229	< 0.2	2.99	80	270	< 0.5	< 2	0.60	0.5	13	33	55	3.23	10	< 1	0.18	10	1.00	770	< 1
T8453	201 229	1.0	2.92	246	180	0.5	< 2	1.17	0.5	13	32	71	3.42	< 10	< 1	0.31	10	1.34	655	< 1
T8454	201 229	4.4	1.69	462	90	< 0.5	< 2	2.40	10.0	13	16	155	2.77	< 10	< 1	0.13	10	1.59	1465	< 1
T8455	201 229	< 0.2	2.88	28	130	0.5	< 2	1.62	< 0.5	11	30	31	2.59	< 10	< 1	0.14	20	1.67	975	< 1
T8456	201 229	< 0.2	1.68	30	70	< 0.5	< 2	0.46	< 0.5	20	39	31	4.27	< 10	2	0.11	10	1.32	315	3
T8457	201 229	12.6	2.35	2800	250	< 0.5	< 2	0.90	1.5	22	32	350	4.85	10	1	0.43	20	1.16	1025	< 1
T8458	201 229	1.6	2.95	664	260	0.5	< 2	1.17	1.0	18	39	80	4.16	10	< 1	0.36	10	1.35	815	2
T8459	201 229	0.4	3.08	208	220	< 0.5	2	1.40	0.5	14	34	64	3.95	10	< 1	0.31	10	1.30	655	< 1
T8460	201 229	1.4	2.92	296	260	0.5	< 2	1.42	4.0	16	33	103	3.57	10	1	0.47	10	1.62	935	< 1
T8461	201 229	2.2	2.95	822	290	0.5	< 2	1.39	1.5	28	31	124	5.00	< 10	1	0.47	20	1.46	1575	1
T8462	201 229	0.4	3.01	286	240	< 0.5	< 2	1.49	1.0	13	33	68	3.95	< 10	< 1	0.32	10	1.29	675	1
T8463	201 229	1.4	3.03	534	230	0.5	< 2	1.17	< 0.5	19	31	100	4.91	10	1	0.29	20	2.35	1900	1
T8464	201 229	2.0	2.04	1490	250	0.5	< 2	0.91	< 0.5	37	23	141	6.68	10	6	0.15	30	1.22	4960	1
T8465	201 229	0.8	2.49	356	330	< 0.5	< 2	1.00	< 0.5	21	29	106	5.52	10	2	0.11	20	0.86	1835	1
T8466	201 229	< 0.2	2.74	98	300	< 0.5	2	0.46	< 0.5	16	40	37	3.66	10	< 1	0.18	10	0.87	575	< 1
T8467	201 229	4.8	2.67	1820	320	0.5	2	1.14	35.0	46	24	240	7.31	< 10	< 1	0.31	20	1.59	3630	1
T8468	201 229	11.6	2.92	3780	330	0.5	< 2	1.20	15.0	31	28	259	7.02	10	6	0.32	20	1.74	5030	2
T8469	201 229	3.2	2.50	906	220	< 0.5	< 2	1.21	3.5	32	25	154	6.07	10	4	0.27	20	1.47	2990	1
T8470	201 229	3.0	2.64	574	240	< 0.5	< 2	0.92	< 0.5	15	25	107	4.75	< 10	< 1	0.17	10	1.23	1240	< 1
T8471	201 229	3.6	2.80	1360	230	< 0.5	< 2	1.25	4.0	25	28	159	4.78	10	< 1	0.38	20	1.26	1615	< 1
T8472	201 229	7.6	2.98	2180	310	< 0.5	< 2	1.29	5.5	22	22	176	5.82	10	4	0.32	20	1.32	2180	< 1
T8473	201 229	3.4	2.56	902	420	0.5	< 2	0.52	0.5	14	14	139	5.70	< 10	1	0.23	20	0.60	1120	9
T8474	201 229	3.8	2.48	986	410	0.5	2	0.41	< 0.5	21	17	148	5.22	< 10	1	0.25	20	0.70	1410	7
T8475	201 229	2.2	2.34	938	400	< 0.5	< 2	0.39	< 0.5	16	16	98	4.36	< 10	1	0.23	10	0.65	1240	4
T8476	201 229	1.2	1.74	518	300	< 0.5	< 2	0.30	0.5	13	16	98	3.53	< 10	< 1	0.12	10	0.58	930	6
T8477	201 229	1.8	1.55	602	220	< 0.5	< 2	0.46	2.5	14	14	119	3.52	< 10	< 1	0.18	10	0.61	895	4
T8478	201 229	2.8	1.84	888	220	< 0.5	2	0.48	3.5	16	12	116	3.57	< 10	< 1	0.13	10	0.75	1215	2
T8479	201 229	4.6	1.62	1300	160	< 0.5	< 2	0.57	0.5	9	12	95	2.91	< 10	1	0.10	10	0.79	1185	2
T8480	201 229	6.6	2.60	1800	150	< 0.5	< 2	1.81	10.5	20	13	203	4.77	< 10	4	0.15	20	1.97	2580	1
T8481	201 229	< 0.2	2.88	110	130	< 0.5	< 2	1.20	1.0	18	21	146	3.89	10	< 1	0.06	20	0.99	1365	1
T8482	201 229	< 0.2	3.06	188	180	< 0.5	< 2	0.99	< 0.5	31	29	94	4.25	10	< 1	0.21	10	1.23	1000	1
T8483	201 229	0.2	3.30	208	200	< 0.5	< 2	1.43	< 0.5	22	36	96	4.27	10	< 1	0.35	10	1.41	1265	2
T8484	201 229	0.2	3.55	58	170	< 0.5	< 2	0.55	< 0.5	27	34	103	4.97	10	< 1	0.20	10	0.84	1030	< 1
T8485	201 229	< 0.2	3.36	16	230	0.5	< 2	0.50	< 0.5	12	16	122	4.09	< 10	< 1	0.18	20	0.65	460	7
T8486	201 229	< 0.2	3.41	242	310	< 0.5	< 2	0.56	< 0.5	10	15	57	4.06	< 10	< 1	0.20	20	0.71	595	5
T8487	201 229	0.8	3.15	284	370	0.5	< 2	0.64	1.0	19	15	81	5.28	< 10	< 1	0.29	20	0.74	650	6
T8488	201 229	1.4	3.11	406	330	0.5	< 2	0.63	2.0	14	16	73	4.70	< 10	< 1	0.28	20	0.74	740	3
T8489	201 229	1.2	2.25	344	340	< 0.5	< 2	0.30	< 0.5	14	15	90	3.99	< 10	1	0.17	10	0.51	590	6
T8490	201 229	2.0	1.75	746	250	< 0.5	< 2	0.38	< 0.5	14	12	134	4.93	< 10	< 1	0.21	20	0.49	730	8

CERTIFICATION:

*Hant Buchler*



# Chemex Labs Ltd.

Analytical Chemists \* Geochemists \* Registered Assayers  
 212 Brooksbank Ave., North Vancouver  
 British Columbia, Canada V7J 2C1  
 PHONE: 604-984-0221

o: ARCHER CATHRO & ASSOC. (1981) LTD.

BOX 4127  
 WHITEHORSE, YT  
 Y1A 3S9

Project: SQF-UNO  
 Comments:

Page: 1-B  
 Total Pages: 3  
 Certificate Date: 05-SEP-94  
 Invoice No.: 19424159  
 P.O. Number:  
 Account: F

## CERTIFICATE OF ANALYSIS A9424159

SAMPLE	PREP CODE		Na	Ni	P	Pb	Sb	Sc	Sr	Ti	Tl	U	V	W	Zn
			%	ppm	ppm	ppm	ppm	ppm	ppm	%	ppm	ppm	ppm	ppm	ppm
T8451	201	229	0.08	23	960	40	6	5	96	0.15	< 10	< 10	55	< 10	144
T8452	201	229	0.03	23	1130	190	< 2	6	81	0.17	< 10	< 10	80	< 10	254
T8453	201	229	0.03	25	870	238	4	7	194	0.18	< 10	< 10	72	< 10	340
T8454	201	229	0.02	23	800	1405	16	4	114	0.06	< 10	< 10	42	< 10	2450
T8455	201	229	0.04	19	1070	32	4	6	262	0.15	< 10	< 10	62	< 10	106
T8456	201	229	0.01	29	840	8	8	7	83	0.16	< 10	< 10	95	< 10	38
T8457	201	229	0.02	29	1160	2450	18	8	187	0.11	< 10	< 10	77	< 10	1375
T8458	201	229	0.03	26	1020	272	8	9	201	0.16	< 10	< 10	84	< 10	372
T8459	201	229	0.03	25	1110	130	4	8	340	0.19	< 10	< 10	80	< 10	214
T8460	201	229	0.02	27	1050	494	6	7	339	0.14	< 10	< 10	72	< 10	514
T8461	201	229	0.02	41	1090	382	14	9	280	0.15	< 10	< 10	83	< 10	484
T8462	201	229	0.03	24	1100	168	2	9	296	0.19	< 10	< 10	83	< 10	280
T8463	201	229	0.03	29	930	196	12	11	218	0.16	< 10	< 10	88	< 10	284
T8464	201	229	0.02	63	620	360	28	8	136	0.10	< 10	< 10	65	< 10	346
T8465	201	229	0.02	22	1740	304	6	9	107	0.16	< 10	< 10	90	< 10	232
T8466	201	229	0.01	19	910	108	4	8	77	0.23	< 10	< 10	115	< 10	126
T8467	201	229	0.03	57	1000	1300	16	8	350	0.12	< 10	< 10	74	< 10	2890
T8468	201	229	0.03	46	1040	1550	44	8	266	0.10	< 10	< 10	62	< 10	1980
T8469	201	229	0.02	45	960	540	12	11	213	0.14	< 10	< 10	78	< 10	556
T8470	201	229	0.03	25	1100	318	8	8	162	0.17	< 10	< 10	77	< 10	360
T8471	201	229	0.02	41	1060	642	20	8	250	0.14	< 10	< 10	70	< 10	736
T8472	201	229	0.03	34	1230	1145	24	8	309	0.14	< 10	< 10	73	< 10	1120
T8473	201	229	0.03	22	1730	456	12	4	305	0.06	< 10	< 10	86	< 10	428
T8474	201	229	0.03	25	1510	612	8	5	321	0.07	< 10	< 10	78	< 10	376
T8475	201	229	0.02	18	1090	478	6	4	333	0.07	< 10	< 10	74	< 10	328
T8476	201	229	0.01	19	1220	284	2	3	146	0.06	< 10	< 10	80	< 10	350
T8477	201	229	0.01	28	1160	336	4	3	188	0.06	< 10	< 10	78	< 10	474
T8478	201	229	0.01	24	790	602	10	4	224	0.07	< 10	< 10	55	< 10	746
T8479	201	229	0.01	14	770	614	4	4	102	0.06	< 10	< 10	47	< 10	656
T8480	201	229	0.05	33	1110	856	8	5	350	0.11	< 10	< 10	54	< 10	1190
T8481	201	229	0.04	41	1090	40	8	6	357	0.16	< 10	< 10	72	< 10	330
T8482	201	229	0.04	35	1150	22	6	8	239	0.21	< 10	< 10	86	< 10	120
T8483	201	229	0.03	31	1200	10	4	10	431	0.17	< 10	< 10	103	< 10	80
T8484	201	229	0.02	24	1190	6	4	11	349	0.21	< 10	< 10	111	< 10	56
T8485	201	229	0.02	12	840	20	< 2	9	348	0.04	< 10	< 10	48	< 10	92
T8486	201	229	0.02	10	590	22	6	9	489	0.07	< 10	< 10	48	< 10	114
T8487	201	229	0.03	24	1160	82	4	8	454	0.08	< 10	< 10	53	< 10	250
T8488	201	229	0.02	15	900	200	8	9	382	0.09	< 10	< 10	53	< 10	340
T8489	201	229	0.01	16	1210	188	4	6	190	0.06	< 10	< 10	59	< 10	264
T8490	201	229	0.02	17	1600	350	6	4	190	0.06	< 10	< 10	50	< 10	316

CERTIFICATION:

*Haut-Buehler*



# Chemex Labs Ltd.

Analytical Chemists \* Geochemists \* Registered Assayers  
 212 Brooksbank Ave., North Vancouver  
 British Columbia, Canada V7J 2C1  
 PHONE: 604-984-0221

to: ARCHER CATHRO & ASSOC. (1981) LTD.

BOX 4127  
 WHITEHORSE, YT  
 Y1A 3S9

Project: SQF-UNO  
 Comments:

Page: 12-A  
 Total Pages: 3  
 Certificate Date: 05-SEP-94  
 Invoice No.: I9424159  
 P.O. Number:  
 Account: F

## CERTIFICATE OF ANALYSIS A9424159

SAMPLE	PREP CODE	Ag ppm	Al %	As ppm	Ba ppm	Be ppm	Bi ppm	Ca %	Cd ppm	Co ppm	Cr ppm	Cu ppm	Fe %	Ga ppm	Hg ppm	K %	La ppm	Mg %	Mn ppm	Mo ppm
T8491	201 229	7.6	2.52	680	500	0.5	< 2	0.33	< 0.5	7	21	169	8.17	10	< 1	0.31	30	0.56	420	14
T8492	201 229	3.0	2.53	424	490	0.5	< 2	0.23	< 0.5	13	30	129	5.81	< 10	2	0.30	20	0.60	750	10
T8493	201 229	1.8	2.43	414	620	< 0.5	< 2	0.30	< 0.5	8	28	126	6.09	< 10	1	0.39	20	0.73	490	12
T8494	201 229	5.6	2.52	1245	380	0.5	< 2	0.51	2.0	12	17	157	6.92	< 10	< 1	0.30	30	0.60	945	8
T8495	201 229	7.0	2.44	1610	310	< 0.5	< 2	0.51	3.0	13	13	147	5.86	10	< 1	0.27	30	0.61	990	6
T8496	201 229	4.0	2.51	976	450	0.5	< 2	0.41	1.0	16	21	156	7.02	< 10	3	0.31	30	0.68	1135	8
T8497	201 229	1.0	2.60	302	390	0.5	< 2	0.38	1.5	11	20	92	4.44	< 10	< 1	0.23	20	0.65	680	9
T8498	201 229	1.4	1.82	294	380	< 0.5	< 2	0.21	1.0	7	20	154	5.33	< 10	< 1	0.26	30	0.43	605	4
T8499	201 229	1.6	1.95	304	430	0.5	< 2	0.22	0.5	9	23	173	5.90	< 10	< 1	0.28	30	0.44	685	5
T8500	201 229	2.8	1.94	662	380	0.5	< 2	0.22	0.5	9	18	159	5.86	< 10	< 1	0.24	30	0.37	620	4
T8501	201 229	4.6	2.13	910	260	0.5	< 2	0.21	2.0	10	10	116	5.37	< 10	< 1	0.18	30	0.28	700	2
T8502	201 229	1.8	2.23	192	610	0.5	< 2	0.21	0.5	8	30	184	6.69	10	< 1	0.30	20	0.50	710	7
T8503	201 229	1.6	2.03	608	560	< 0.5	< 2	0.45	< 0.5	< 1	33	174	7.81	< 10	< 1	0.37	20	0.58	355	11
T8504	201 229	0.2	2.19	342	580	< 0.5	< 2	0.36	< 0.5	7	31	149	5.68	< 10	< 1	0.32	20	0.61	440	13
T8505	201 229	0.4	2.37	232	610	< 0.5	< 2	0.37	< 0.5	9	34	184	6.34	< 10	< 1	0.34	20	0.65	505	13
T8506	201 229	0.2	2.69	76	580	0.5	< 2	0.62	0.5	18	32	206	5.44	< 10	< 1	0.35	20	0.85	785	20
T8507	201 229	0.2	2.73	82	620	0.5	< 2	0.47	0.5	17	32	206	5.10	< 10	< 1	0.33	20	0.88	960	16
T8508	201 229	0.4	3.54	42	480	1.0	< 2	1.09	2.0	37	20	234	5.22	< 10	4	0.50	20	0.90	3170	10
T8509	201 229	0.6	2.73	72	460	0.5	< 2	0.70	1.0	10	30	141	4.96	< 10	< 1	0.64	20	1.18	790	4
T8510	201 229	< 0.2	1.82	42	380	< 0.5	< 2	0.28	1.0	9	23	15	2.62	< 10	< 1	0.15	20	0.51	370	1
T8511	201 229	< 0.2	3.01	24	280	0.5	< 2	1.02	1.5	7	8	10	2.31	< 10	< 1	0.31	30	0.74	530	< 1
T8512	201 229	0.4	3.29	238	320	0.5	< 2	1.07	4.5	15	35	78	4.03	10	< 1	0.49	10	1.23	505	1
T8513	201 229	< 0.2	3.16	14	70	0.5	< 2	1.93	1.5	22	12	41	2.64	10	< 1	0.04	30	0.78	1685	4
T8514	201 229	0.2	2.14	22	100	< 0.5	2	1.19	1.0	9	27	40	2.97	10	< 1	0.05	10	2.28	835	3
T8515	201 229	0.6	2.56	48	130	< 0.5	< 2	1.50	0.5	12	12	34	2.22	< 10	1	0.04	20	1.51	1650	2
T8516	201 229	0.4	2.31	20	180	0.5	< 2	1.15	2.0	17	19	79	2.97	10	1	0.09	30	1.34	1140	1
T8517	201 229	0.2	2.85	16	220	< 0.5	2	1.57	1.0	9	20	40	2.47	< 10	< 1	0.08	20	1.26	520	1
T8518	201 229	0.8	2.93	36	170	0.5	< 2	2.03	3.5	10	24	54	2.59	10	< 1	0.08	30	1.24	775	1
T8519	201 229	< 0.2	4.15	12	160	< 0.5	< 2	0.82	0.5	11	26	28	2.45	10	< 1	0.08	20	0.90	500	1
T8520	201 229	0.8	3.67	54	180	0.5	< 2	2.16	1.5	15	37	56	2.97	< 10	2	0.10	30	1.37	765	1
T8521	201 229	0.2	2.76	40	240	< 0.5	< 2	0.71	1.0	6	24	28	2.45	< 10	< 1	0.07	20	0.80	315	2
T8522	201 229	0.8	2.54	214	450	< 0.5	< 2	0.75	1.5	10	33	83	4.41	10	< 1	0.21	20	1.01	540	5
T8523	201 229	0.2	1.20	30	100	< 0.5	< 2	0.20	< 0.5	2	4	19	1.06	< 10	< 1	0.04	< 10	0.17	210	1
T8524	201 229	1.2	2.90	420	150	0.5	< 2	1.45	8.0	7	14	43	3.57	< 10	< 1	0.17	30	1.09	780	3
T8525	201 229	1.2	2.94	320	170	0.5	< 2	1.46	4.5	7	15	44	3.05	10	< 1	0.12	30	1.14	715	< 1
T8526	201 229	0.6	2.87	306	160	0.5	2	1.04	4.0	7	15	34	3.12	< 10	< 1	0.10	20	1.12	850	1
T8527	201 229	1.4	2.78	492	170	0.5	< 2	1.11	10.0	10	14	51	4.05	< 10	< 1	0.23	30	1.00	1000	1
T8528	201 229	1.4	2.59	434	150	0.5	< 2	1.18	10.5	9	13	49	3.77	10	2	0.22	30	0.93	970	1
T8529	201 229	0.4	3.71	126	160	0.5	< 2	1.65	1.5	6	15	32	1.97	< 10	< 1	0.13	30	1.01	430	1
T8530	201 229	0.4	3.48	190	180	0.5	2	1.51	1.0	7	19	25	2.31	< 10	< 1	0.09	30	1.09	490	1

CERTIFICATION: *Hart Buehler*



# Chemex Labs Ltd.

Analytical Chemists \* Geochemists \* Registered Assayers  
 212 Brooksbank Ave., North Vancouver  
 British Columbia, Canada V7J 2C1  
 PHONE: 604-984-0221

o: ARCHER CATHRO & ASSOC. (1981) LTD.

BOX 4127  
 WHITEHORSE, YT  
 Y1A 3S9

Project: SQF-UNO  
 Comments:

Page: 2-B  
 Total Pages: 3  
 Certificate Date: 05-SEP-94  
 Invoice No.: 19424159  
 P.O. Number:  
 Account: F

## CERTIFICATE OF ANALYSIS

### A9424159

SAMPLE	PREP		Na	Ni	P	Pb	Sb	Sc	Sr	Ti	Tl	U	V	W	Zn
	CODE		%	ppm	ppm	ppm	ppm	ppm	ppm	%	ppm	ppm	ppm	ppm	ppm
T8491	201	229	0.06	13	3180	966	12	6	184	0.07	< 10	< 10	118	< 10	240
T8492	201	229	0.03	18	1640	334	6	6	94	0.06	< 10	< 10	140	< 10	230
T8493	201	229	0.03	14	1970	206	8	7	183	0.10	< 10	< 10	150	< 10	180
T8494	201	229	0.03	15	2050	682	8	7	214	0.07	< 10	< 10	73	< 10	476
T8495	201	229	0.02	12	1370	886	6	7	210	0.07	< 10	< 10	52	< 10	618
T8496	201	229	0.02	20	2200	532	6	7	177	0.08	< 10	< 10	77	< 10	402
T8497	201	229	0.02	19	1410	160	4	5	131	0.06	< 10	< 10	70	< 10	324
T8498	201	229	0.03	11	1710	258	4	6	75	0.04	< 10	< 10	87	< 10	222
T8499	201	229	0.03	13	1960	282	2	6	83	0.04	< 10	< 10	92	< 10	230
T8500	201	229	0.03	12	1730	552	4	6	83	0.03	< 10	< 10	75	< 10	306
T8501	201	229	0.02	13	1070	1090	6	7	58	0.02	< 10	< 10	45	< 10	572
T8502	201	229	0.04	14	2290	192	6	6	100	0.07	< 10	< 10	110	< 10	174
T8503	201	229	0.05	9	3840	98	12	6	182	0.08	< 10	< 10	143	< 10	114
T8504	201	229	0.03	17	2360	62	2	5	157	0.09	< 10	< 10	136	< 10	112
T8505	201	229	0.03	19	2480	36	< 2	5	182	0.09	< 10	< 10	117	< 10	126
T8506	201	229	0.02	39	3300	88	2	6	291	0.09	< 10	< 10	146	< 10	180
T8507	201	229	0.02	36	2480	74	6	6	358	0.08	< 10	< 10	131	< 10	196
T8508	201	229	0.03	58	2590	50	6	4	1180	0.08	< 10	< 10	72	< 10	202
T8509	201	229	0.03	14	3050	54	8	6	243	0.10	< 10	< 10	52	< 10	158
T8510	201	229	0.01	22	1090	14	2	3	33	0.04	< 10	< 10	60	< 10	190
T8511	201	229	0.01	3	610	4	6	6	388	0.02	< 10	< 10	33	< 10	240
T8512	201	229	0.02	21	950	52	4	9	132	0.14	< 10	< 10	92	< 10	314
T8513	201	229	0.04	27	1350	8	6	3	308	0.09	< 10	< 10	35	< 10	254
T8514	201	229	0.02	14	1030	36	6	4	88	0.11	< 10	< 10	47	< 10	252
T8515	201	229	0.04	23	1030	182	4	2	189	0.06	< 10	< 10	31	< 10	194
T8516	201	229	0.03	36	1540	54	6	6	163	0.09	< 10	< 10	51	< 10	160
T8517	201	229	0.07	18	950	30	2	5	188	0.12	< 10	< 10	42	< 10	142
T8518	201	229	0.07	21	1070	66	6	6	127	0.12	< 10	< 10	51	< 10	280
T8519	201	229	0.06	23	970	26	< 2	3	112	0.17	< 10	< 10	48	< 10	98
T8520	201	229	0.11	27	1560	52	12	7	127	0.14	< 10	< 10	62	< 10	234
T8521	201	229	0.03	14	1230	52	4	4	117	0.13	< 10	< 10	53	< 10	214
T8522	201	229	0.04	27	1470	74	4	7	98	0.11	< 10	< 10	94	< 10	238
T8523	201	229	0.06	3	520	22	2	1	30	0.03	< 10	< 10	22	< 10	60
T8524	201	229	0.04	10	1080	158	4	4	125	0.06	< 10	< 10	37	< 10	606
T8525	201	229	0.05	12	1070	158	6	4	136	0.06	< 10	< 10	35	< 10	514
T8526	201	229	0.04	11	980	148	4	4	128	0.05	< 10	< 10	36	< 10	510
T8527	201	229	0.03	12	890	184	6	5	143	0.07	< 10	< 10	41	< 10	672
T8528	201	229	0.04	11	820	172	4	4	136	0.06	< 10	< 10	36	< 10	624
T8529	201	229	0.10	13	1070	68	6	3	277	0.08	< 10	< 10	28	< 10	280
T8530	201	229	0.07	14	920	70	6	3	157	0.08	< 10	< 10	29	< 10	216

CERTIFICATION: *[Signature]*



# Chemex Labs Ltd.

Analytical Chemists \* Geochemists \* Registered Assayers  
 212 Brooksbank Ave., North Vancouver  
 British Columbia, Canada V7J 2C1  
 PHONE: 604-984-0221

Client: ARCHER CATHRO & ASSOC. (1981) LTD.

BOX 4127  
 WHITEHORSE, YT  
 Y1A 3S9

Project: SQF-UNO  
 Comments:

Page: 13-A  
 Total Pages: 3  
 Certificate Date: 05-SEP-94  
 Invoice No.: 19424159  
 P.O. Number:  
 Account: F

## CERTIFICATE OF ANALYSIS A9424159

SAMPLE	PREP CODE		Ag	Al	As	Ba	Be	Bi	Ca	Cd	Co	Cr	Cu	Fe	Ga	Hg	K	La	Mg	Mn	Mo
			ppm	%	ppm	ppm	ppm	ppm	%	ppm	ppm	ppm	ppm	%	ppm	ppm	%	ppm	%	ppm	ppm
T8531	201	229	0.4	3.43	140	170	0.5	< 2	1.63	2.5	9	20	54	2.92	10	< 1	0.13	30	2.14	760	< 1
T8532	201	229	< 0.2	4.26	8	150	0.5	< 2	2.82	0.5	2	10	10	1.00	10	< 1	0.04	30	0.27	480	< 1
T8533	201	229	1.6	3.05	196	200	0.5	< 2	2.00	11.5	6	14	51	2.86	< 10	< 1	0.10	30	1.82	1425	< 2
T8534	201	229	< 0.2	4.65	14	200	0.5	< 2	2.39	< 0.5	4	17	22	1.88	< 10	< 1	0.07	30	2.54	540	< 1
T8535	201	229	0.2	3.98	36	140	0.5	< 2	3.14	< 0.5	9	15	40	2.17	< 10	2	0.10	30	1.33	1770	< 1
T8536	201	229	9.6	2.10	3070	190	0.5	48	0.66	19.0	9	8	75	5.77	< 10	< 1	0.23	40	0.38	500	1
T8537	201	229	1.6	1.53	696	220	< 0.5	20	0.12	6.0	7	6	49	6.73	< 10	< 1	0.37	40	0.28	275	10
T8538	201	229	0.2	2.48	86	530	< 0.5	8	0.38	1.5	7	17	18	3.07	< 10	< 1	0.15	30	0.51	445	3
T8539	201	229	< 0.2	1.88	24	210	< 0.5	< 2	0.10	1.0	6	21	17	2.95	< 10	< 1	0.11	20	0.34	270	3
T8540	201	229	1.2	2.02	190	350	< 0.5	< 2	0.19	1.0	8	27	26	3.44	< 10	1	0.19	20	0.63	350	8
T8541	201	229	< 0.2	2.69	120	540	1.0	< 2	0.48	2.0	12	18	26	3.66	< 10	< 1	0.09	20	0.55	740	4
T8542	201	229	0.4	1.44	64	200	< 0.5	2	2.51	1.0	4	7	25	1.49	< 10	4	0.03	10	0.09	1445	3
T8543	201	229	< 0.2	2.31	42	250	< 0.5	< 2	0.52	< 0.5	7	19	23	2.46	10	2	0.07	10	0.32	490	3
T8544	201	229	0.2	1.98	26	210	< 0.5	< 2	0.87	1.5	8	21	28	2.46	< 10	< 1	0.06	10	0.56	475	3
T8545	201	229	< 0.2	2.43	14	330	< 0.5	< 2	0.27	0.5	17	50	33	3.85	< 10	< 1	0.34	10	1.13	255	< 1
T8546	201	229	< 0.2	2.72	28	330	< 0.5	< 2	0.22	0.5	8	43	39	3.78	< 10	1	0.33	20	0.93	295	2
T8547	201	229	2.8	2.07	778	380	< 0.5	14	0.15	< 0.5	9	23	46	4.40	< 10	< 1	0.17	20	0.48	435	6
T5551	201	229	175.0	1.74	3770	70	1.0	56	3.05	>100.0	5	13	840	12.10	< 10	< 1	0.07	20	0.89	2010	3
T5554	201	229	5.6	1.25	3600	10	1.0	68	2.87	62.5	8	7	2970	14.70	< 10	< 1	0.02	10	0.89	4780	< 1
T5556	201	229	0.4	0.72	140	10	0.5	54	5.41	28.0	7	3	128	4.30	10	1	0.04	< 10	0.32	2240	< 1
T5563	201	229	12.2	3.21	244	150	0.5	22	1.11	49.5	37	< 1	338	8.86	10	2	0.28	80	0.51	4660	23
T5576	201	229	< 0.2	4.92	12	410	0.5	< 2	1.95	1.0	17	26	24	2.61	< 10	< 1	0.43	20	0.78	445	< 1

CERTIFICATION: *Hart Buchler*



# Chemex Labs Ltd.

Analytical Chemists \* Geochemists \* Registered Assayers  
 212 Brooksbank Ave., North Vancouver  
 British Columbia, Canada V7J 2C1  
 PHONE: 604-984-0221

o: ARCHER CATHRO & ASSOC. (1981) LTD.

BOX 4127  
 WHITEHORSE, YT  
 Y1A 3S9

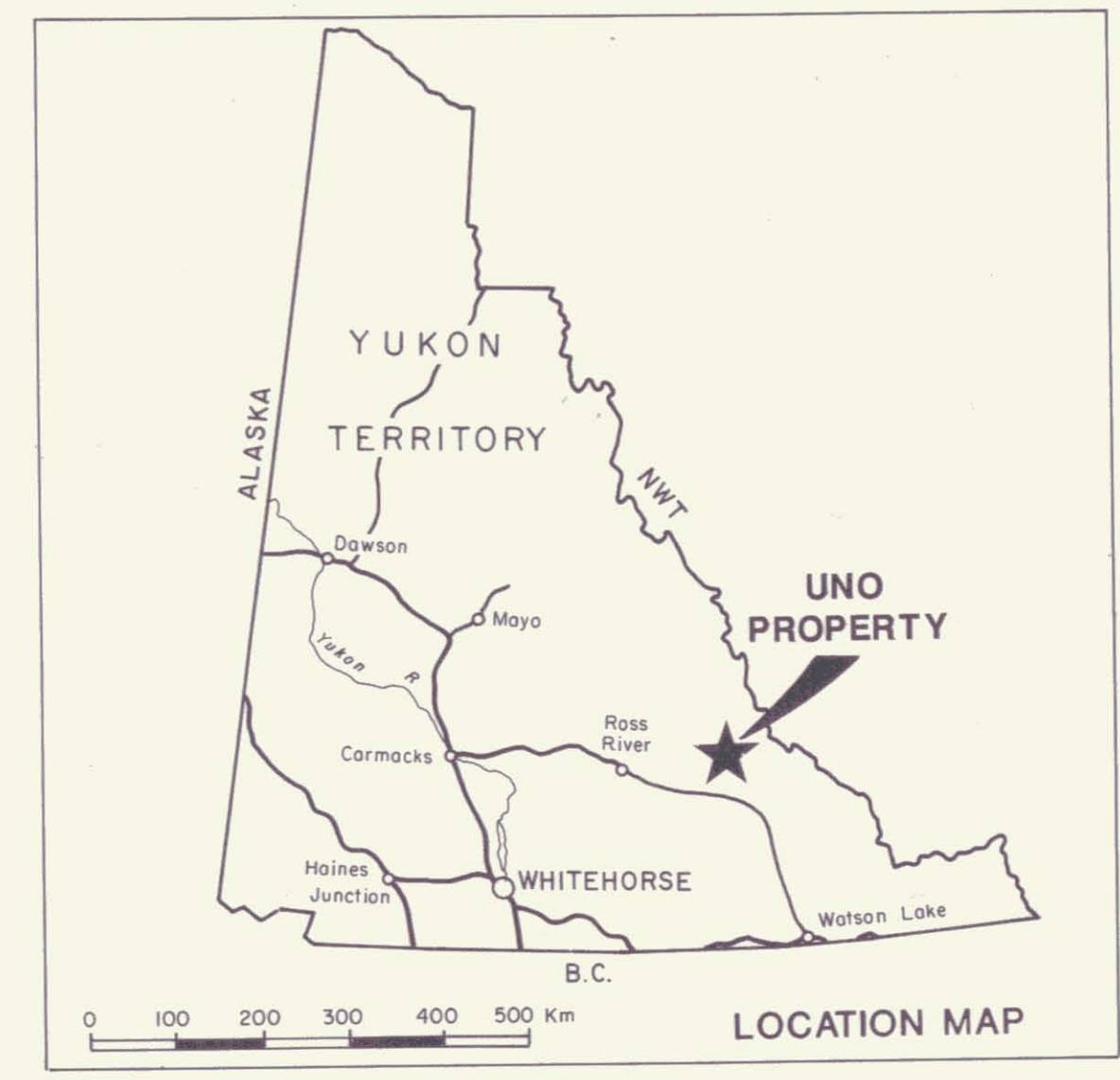
Project: SQF-UNO  
 Comments:

Page: 3-B  
 Total Pages: 3  
 Certificate Date: 05-SEP-94  
 Invoice No.: I9424159  
 P.O. Number:  
 Account: F

## CERTIFICATE OF ANALYSIS A9424159

SAMPLE	PREP CODE		Na	Ni	P	Pb	Sb	Sc	Sr	Ti	Tl	U	V	W	Zn
			%	ppm	ppm	ppm	ppm	ppm	ppm	%	ppm	ppm	ppm	ppm	ppm
T8531	201	229	0.09	16	1130	114	8	4	254	0.09	10	< 10	34	< 10	394
T8532	201	229	0.24	6	1370	32	4	1	242	0.06	< 10	< 10	17	< 10	86
T8533	201	229	0.07	11	1220	560	6	3	301	0.05	< 10	< 10	24	< 10	990
T8534	201	229	0.09	10	1070	20	8	3	413	0.08	< 10	< 10	21	< 10	110
T8535	201	229	0.07	20	820	52	6	4	305	0.07	< 10	< 10	12	< 10	98
T8536	201	229	0.02	2	790	466	12	6	35	0.01	< 10	< 10	44	< 10	978
T8537	201	229	0.02	3	760	128	< 2	4	25	0.03	< 10	< 10	27	< 10	348
T8538	201	229	0.01	15	900	44	2	4	54	0.08	< 10	< 10	45	< 10	302
T8539	201	229	< 0.01	14	1390	24	< 2	1	13	0.01	< 10	< 10	65	< 10	100
T8540	201	229	0.01	18	940	200	4	5	25	0.08	< 10	< 10	60	< 10	240
T8541	201	229	0.01	28	590	74	< 2	5	127	0.05	< 10	< 10	47	< 10	490
T8542	201	229	0.02	6	2660	86	2	1	96	0.01	< 10	< 10	19	< 10	66
T8543	201	229	0.01	14	1640	34	< 2	2	34	0.03	< 10	< 10	62	< 10	92
T8544	201	229	0.01	22	970	40	2	3	63	0.08	< 10	< 10	55	< 10	264
T8545	201	229	0.01	30	680	6	6	11	32	0.28	< 10	< 10	122	< 10	96
T8546	201	229	0.01	17	970	10	4	8	39	0.26	< 10	< 10	105	< 10	68
T8547	201	229	0.01	18	1080	310	6	4	34	0.06	< 10	< 10	68	< 10	334
T5551	201	229	0.04	3	680	>10000	106	3	132	0.03	< 10	< 10	9	< 10	7330
T5554	201	229	0.03	< 1	170	>10000	82	< 1	22	< 0.01	< 10	< 10	1425	< 10	>10000
T5556	201	229	0.01	6	790	2220	26	< 1	10	< 0.01	< 10	< 10	24	< 10	>10000
T5563	201	229	0.02	15	700	3740	14	4	316	< 0.01	< 10	< 10	15	< 10	2740
T5576	201	229	0.02	22	800	44	4	6	936	0.09	< 10	< 10	28	< 10	82

CERTIFICATION: Hartl Bechler



**LEGEND**

- 1979 Getty Mines soil sample location
- ⊗ 1979 Getty Mines stream sediment sample location
- 1994 Archer Cathro soil sample location
- 1994 Archer Cathro rock sample location
- △ ML mineral zone referred to in text
- outcrop
- - - geologic contact, inferred
- / — bedding orientation
- / — fracture orientation
- ~ ~ ~ recessive vein zone with orientation

**GEOLOGY**

**MID-CRETACEOUS**

- Ks Selwyn Plutonic Suite: grey to brown weathering, resistant, medium to coarse grained, biotite quartz monzonite

**CAMBRO-ORDOVICIAN**

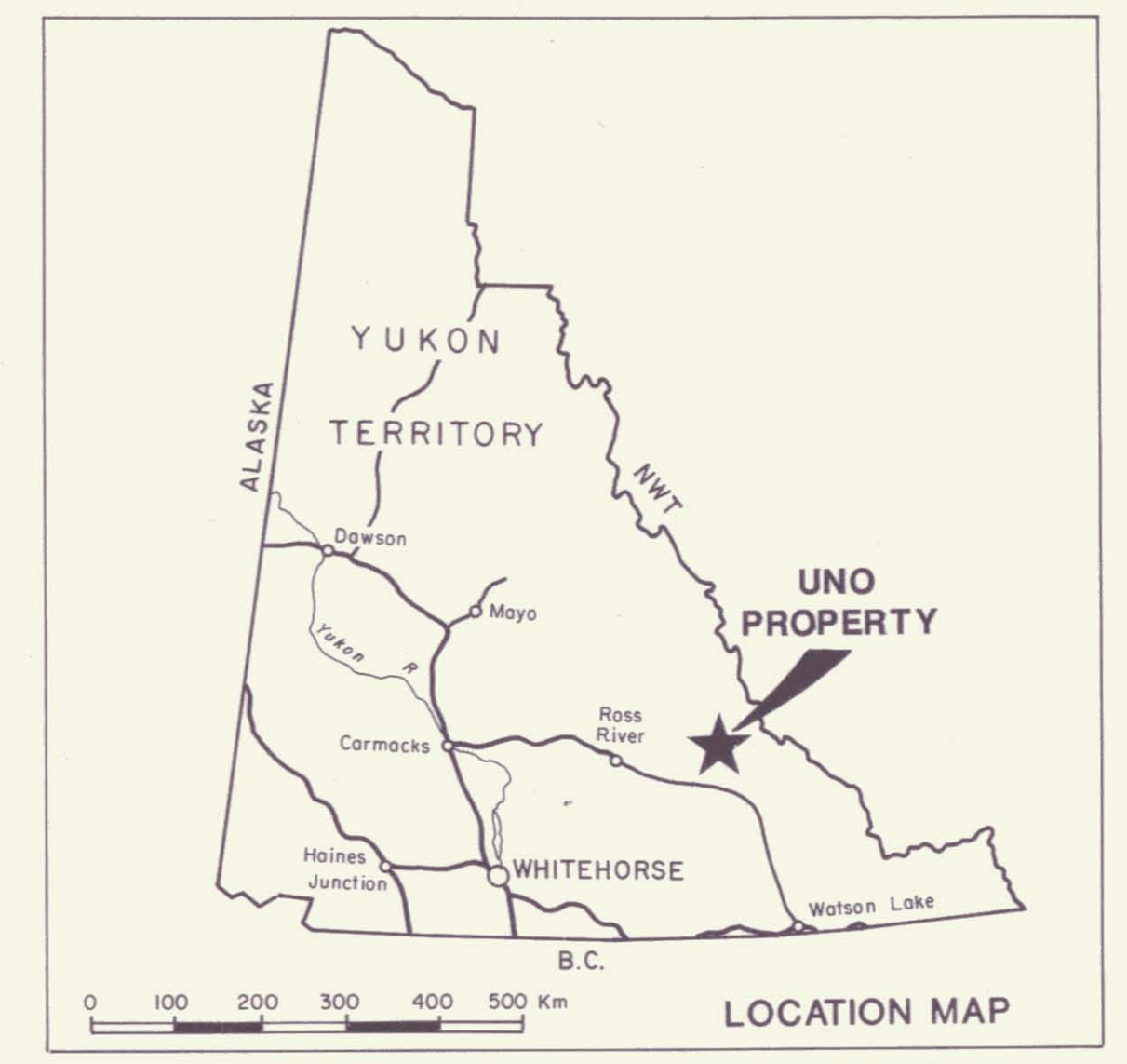
- Road River Group
- EO1 Thin to thick interbedded, black to maroon, rusty weathering pelitic hornfels; white to grey-blue, buff and rusty weathering quartzite; and grey to pale green, thinly laminated chert
- EO1a Thin bedded, strongly bleached, white to pale green calc-silicate hornfels with minor interbedded grey to pale green chert

Figure 4  
 ARCHER, CATHRO & ASSOCIATES (1981) LIMITED  
**GEOLOGY & MINERALIZATION**

UNO PROPERTY  
 CASH RESOURCES LTD. *Dwain*  
 SCALE 1:5000  
 0 50 100 200 300 400 500 Metres  
 0 100 500 1000 1500 Feet

8C 8830

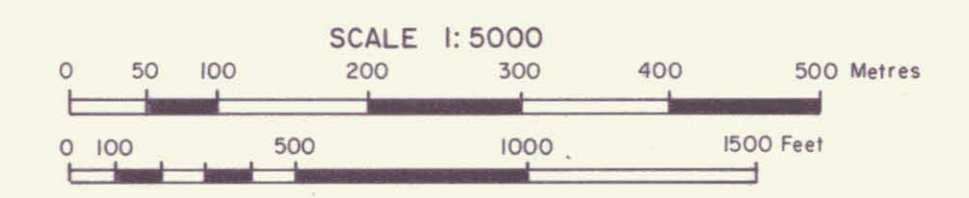
To accompany report dated March, 1995



- 75-30 1979 Getty Mines contour soil sample location
- ⊙ 75CL-28 1979 Getty Mines stream sediment sample location
- 75524 1994 Archer Cathro soil sample location
- 75552 1994 Archer Cathro rock sample location
- △ ML Mineral zone referred to in text
- ⊠ 1994 camp site

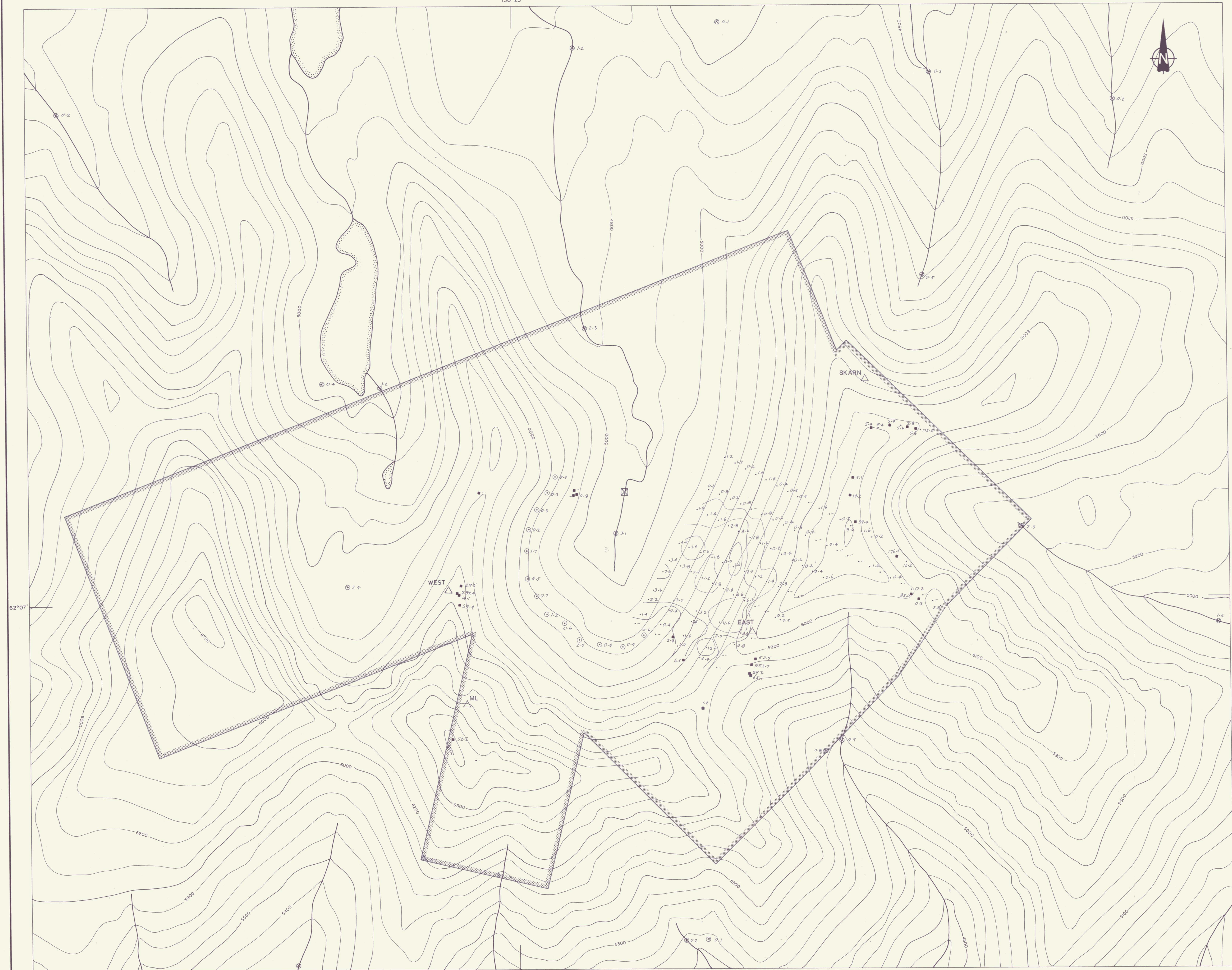
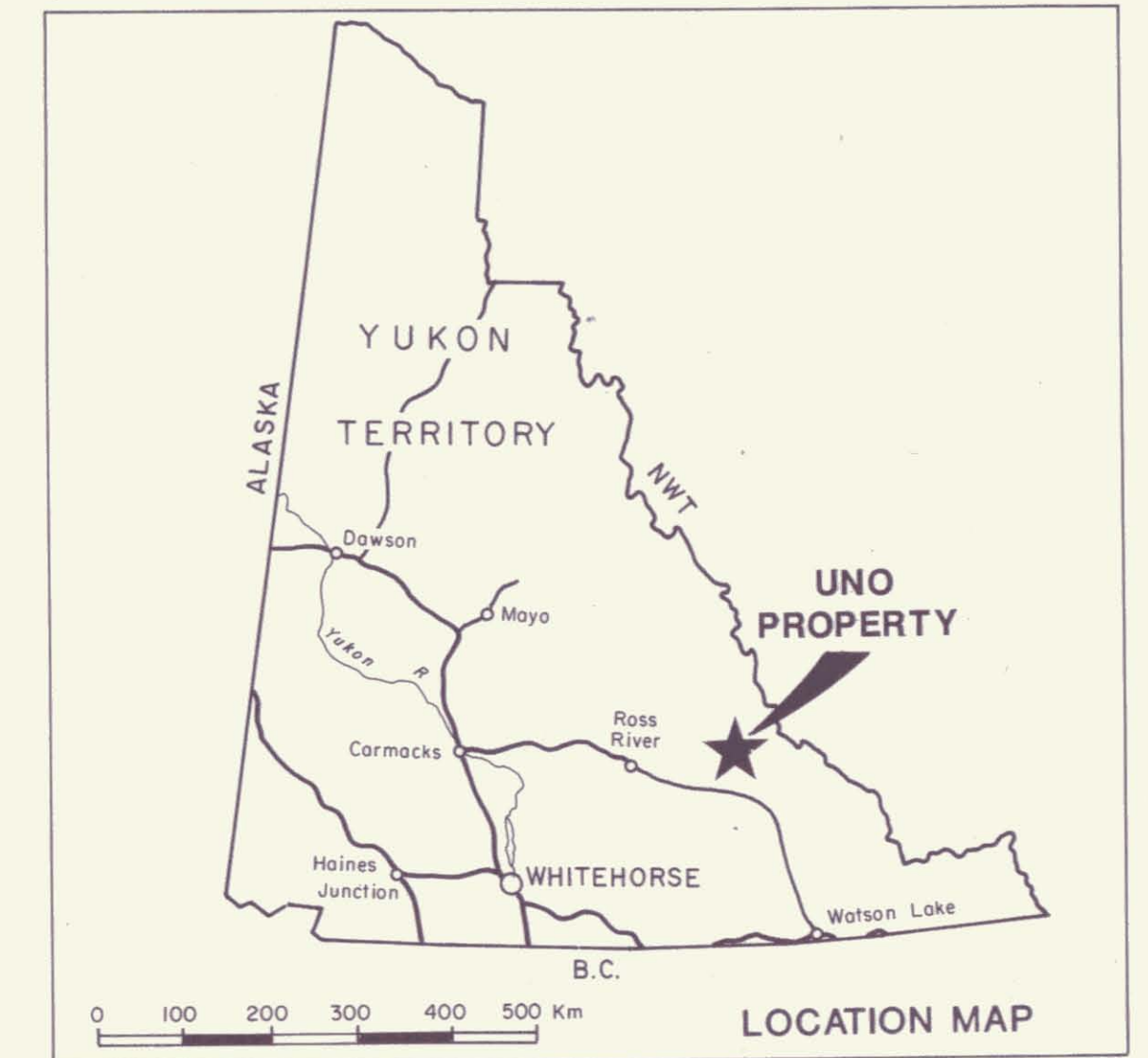
Figure 5  
 ARCHER, CATHRO & ASSOCIATES (1981) LIMITED  
**SAMPLE LOCATION**

UNO PROPERTY  
 CASH RESOURCES LTD. *Duct @*



0933-33

130°25'



- 1.7 1979 Getty Mines contour soil sample location with silver analysis in ppm
- 5.3 1979 Getty Mines stream sediment sample location with silver analysis in ppm
- 1.6 1994 Archer Cathro soil sample location with silver analysis in ppm
- 19.2 1994 Archer Cathro rock sample location with silver analysis in g/t
- △ ML mineral zone referred to in text
- ▭ property boundary
- ⊠ 1994 camp site

- ≥ 5 ppm Ag
- ≥ 2 ppm Ag < 5 ppm Ag
- ≥ 1 ppm Ag < 2 ppm Ag

0333-3

Figure 6

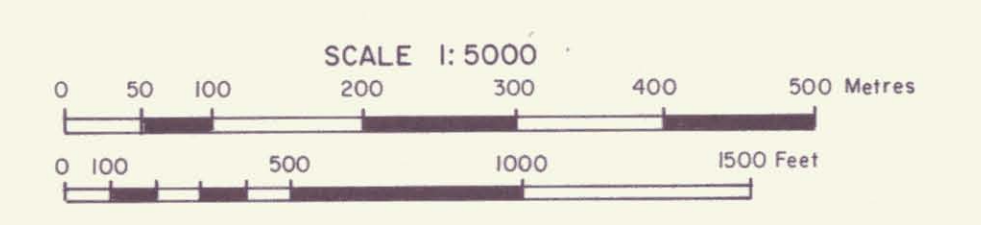
ARCHER, CATHRO & ASSOCIATES (1981) LIMITED

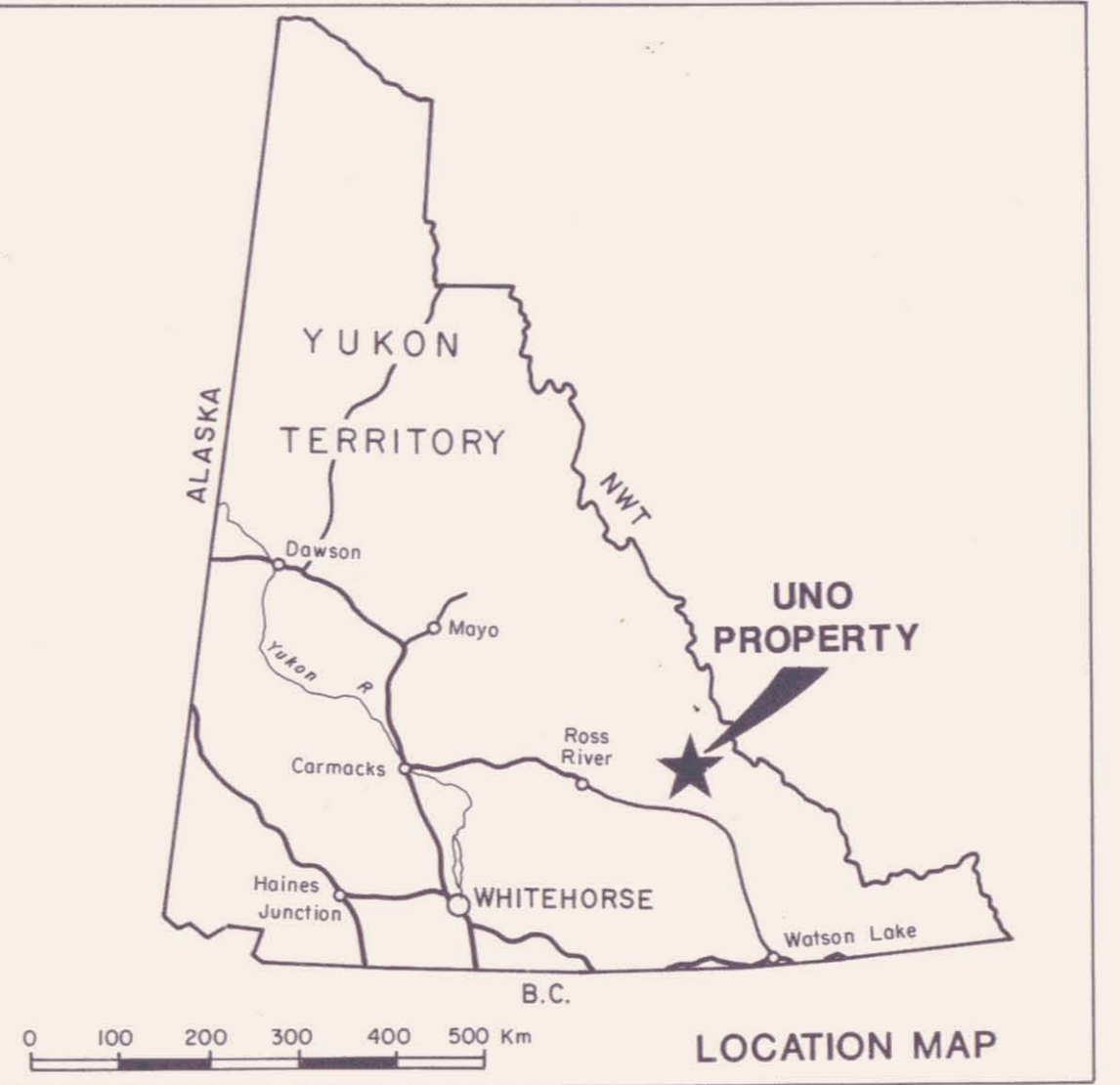
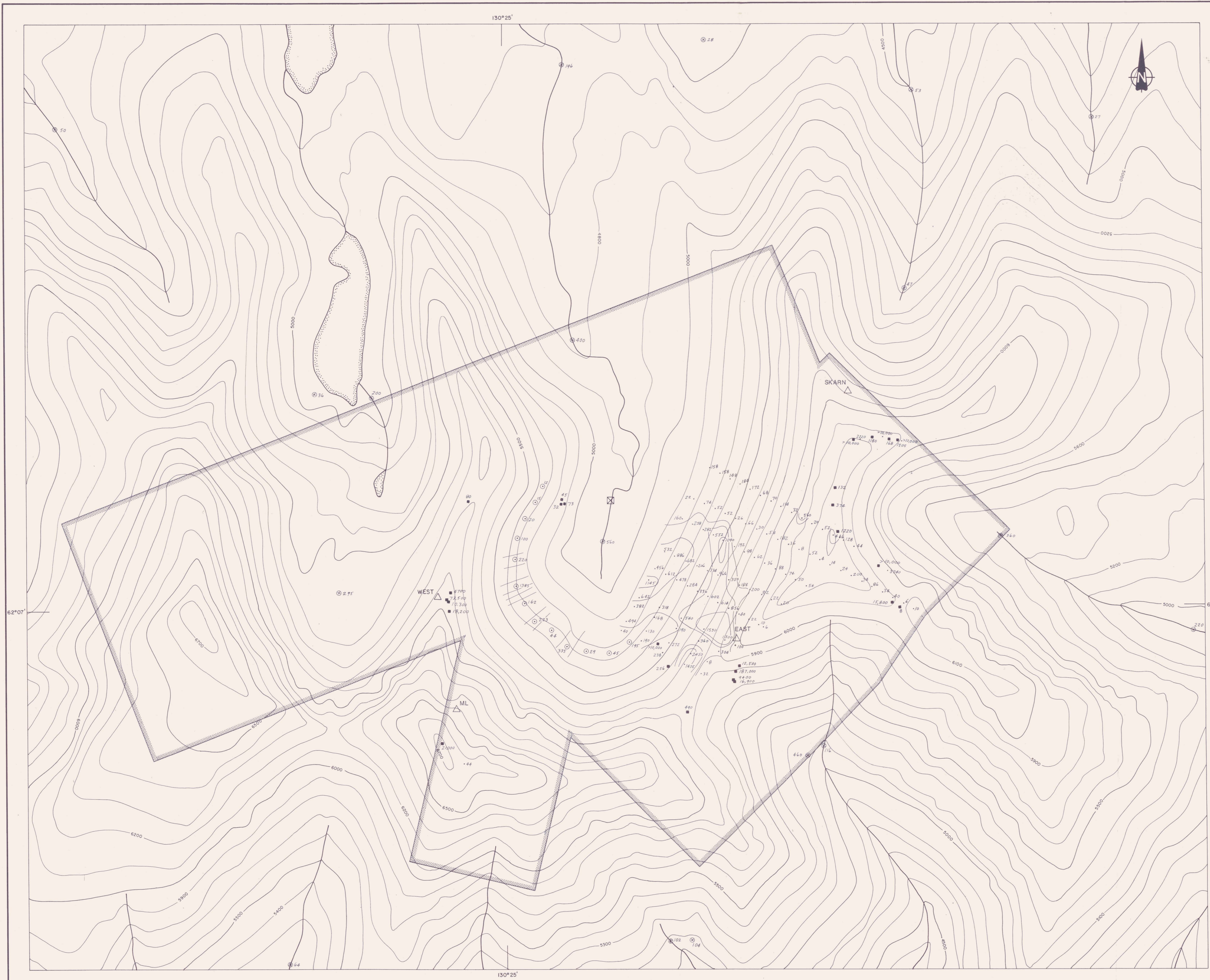
### SILVER GEOCHEMISTRY

UNO PROPERTY

CASH RESOURCES LTD.

DWG 3

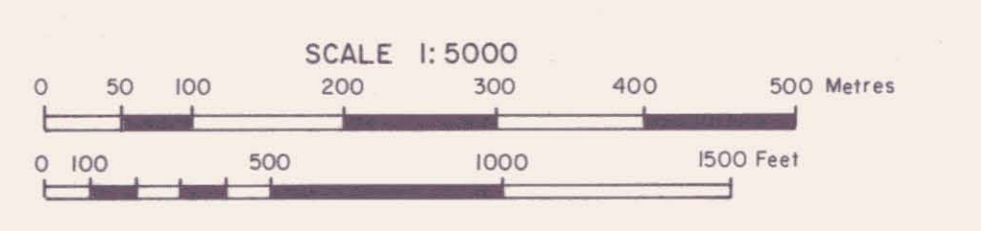




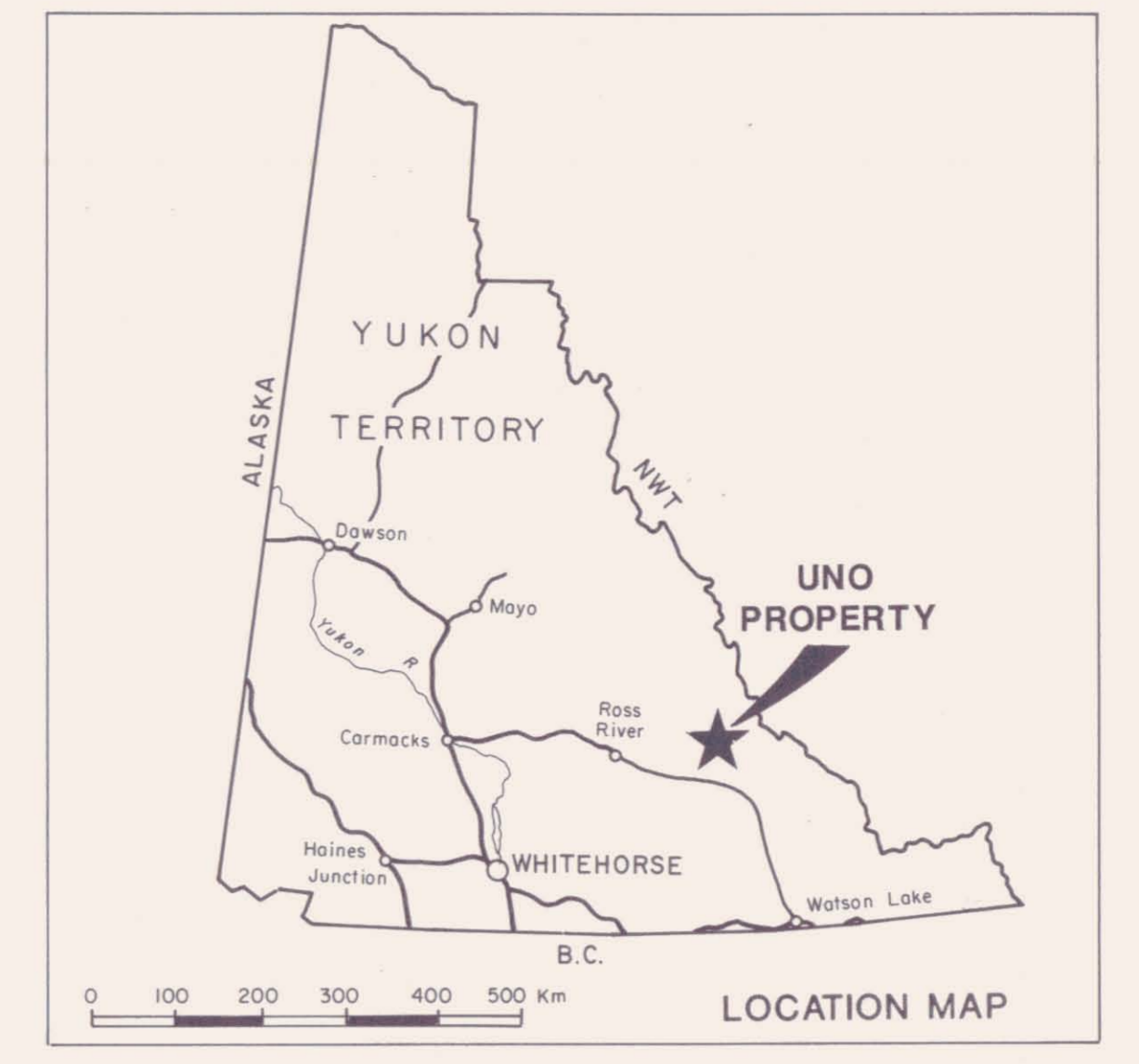
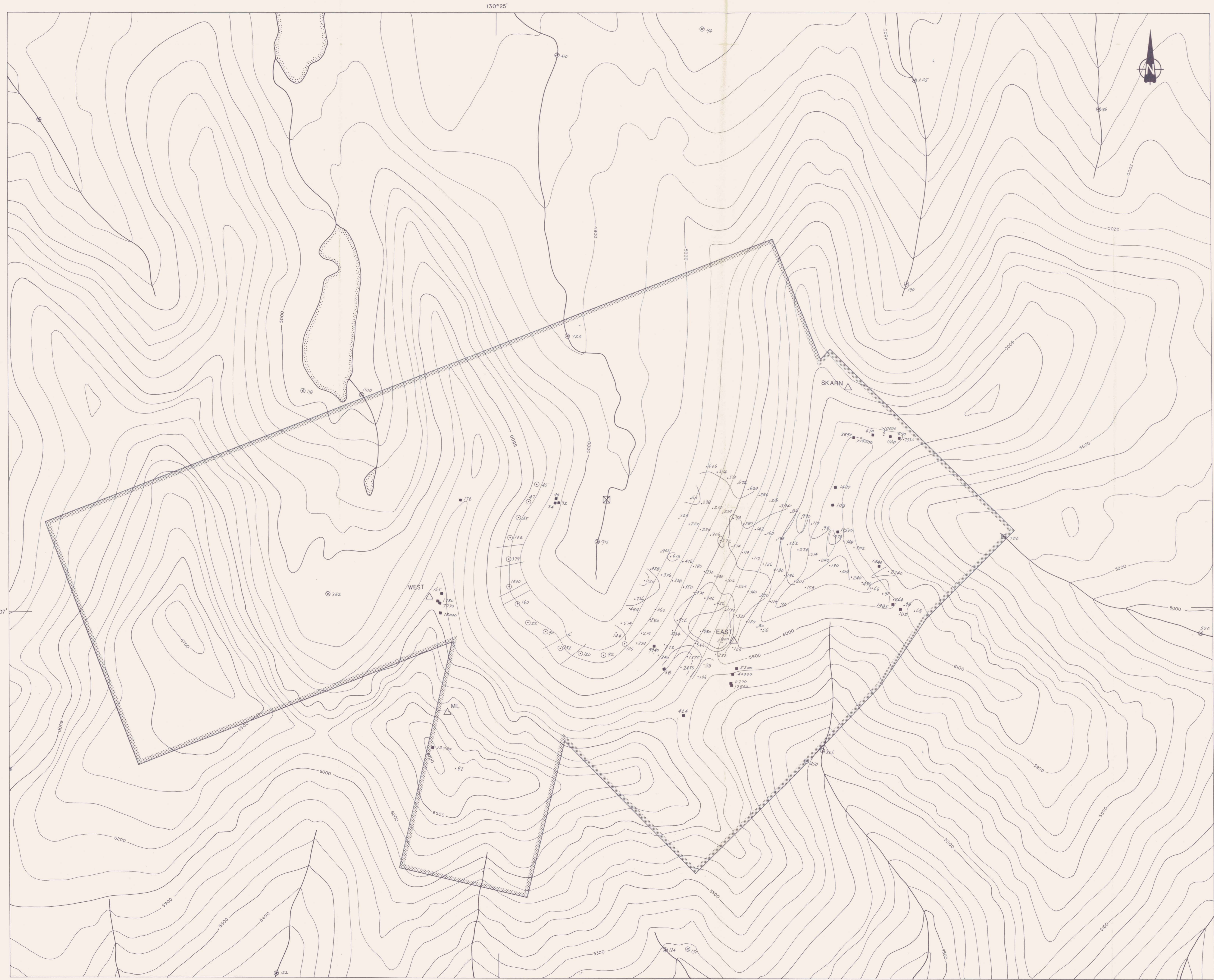
- 162 1979 Getty Mines contour soil sample location with lead analysis in ppm
- 164 1979 Getty Mines stream sediment sample location with lead analysis in ppm
- ▲ 182 1994 Archer Cathro soil sample location with lead analysis in ppm
- ▲ 149 1994 Archer Cathro rock sample location with lead analysis in ppm
- ▲ ML mineral zone referred to in text
- ▭ property boundary
- ⊗ 1994 camp site

- ≥ 1000 ppm Pb
- ≥ 500 ppm Pb < 1000 ppm Pb
- ≥ 200 ppm Pb < 500 ppm Pb

Figure 7  
 ARCHER, CATHRO & ASSOCIATES (1981) LIMITED  
**LEAD GEOCHEMISTRY**  
 UNO PROPERTY  
 CASH RESOURCES LTD. DWG 4



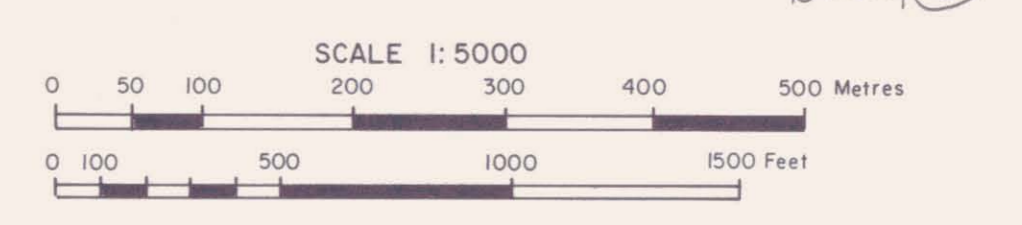
033303



- 7.79 1979 Getty Mines soil sample location with zinc analysis in ppm
- 300 1979 Getty Mines stream sediment sample location with zinc analysis in ppm
- 1.80 1994 Archer Cathro soil sample location with zinc analysis in ppm
- 1.25 1994 Archer Cathro rock sample location with zinc analysis in ppm
- △ ML mineral zone referred to in text
- ▭ property boundary
- ⊠ 1994 camp site

- ≥ 1000 ppm Zn
- ≥ 500 ppm Zn < 1000 ppm Zn
- ≥ 200 ppm Zn < 500 ppm Zn

Figure 8  
 ARCHER, CATHRO & ASSOCIATES (1981) LIMITED  
**ZINC GEOCHEMISTRY**  
 UNO PROPERTY  
 CASH RESOURCES LTD.



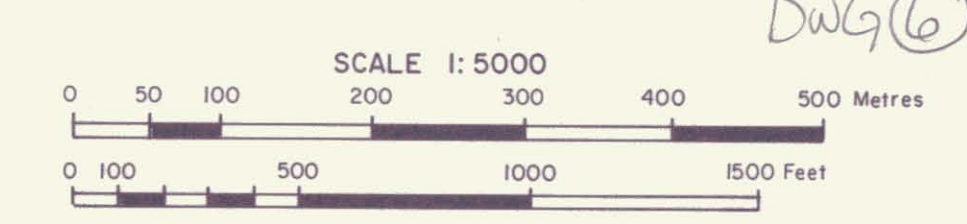
053303



- 23 1979 Getty Mines contour soil sample location with copper analysis in ppm
- 50 1979 Getty Mines stream sediment sample location with copper analysis in ppm
- 149 1994 Archer Cathro soil sample location with copper analysis in ppm
- 0.11 1994 Archer Cathro rock sample location with copper analysis in ppm
- △ ML mineral zone referred to in text
- ▭ property boundary
- ⊠ 1994 camp site

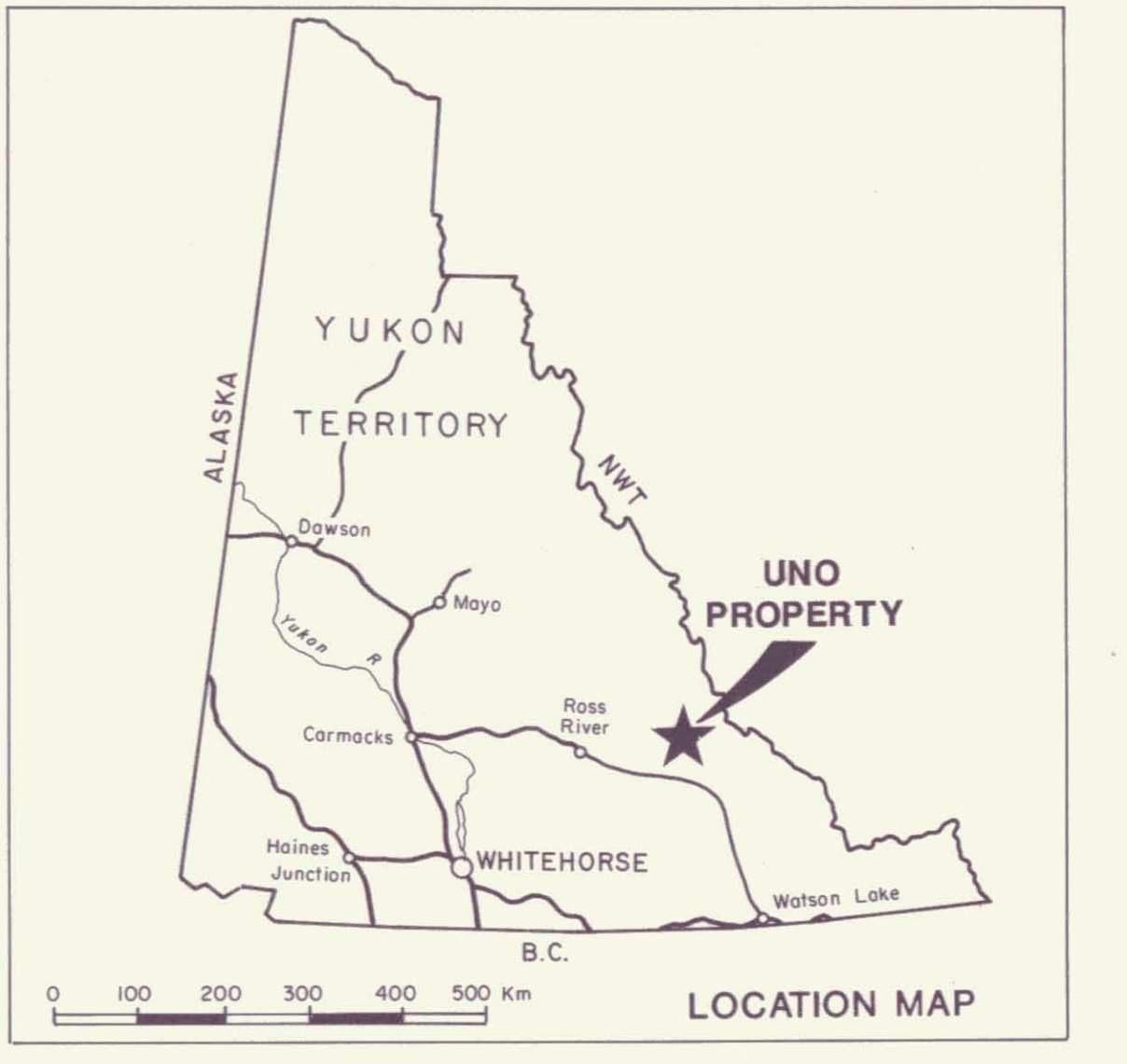
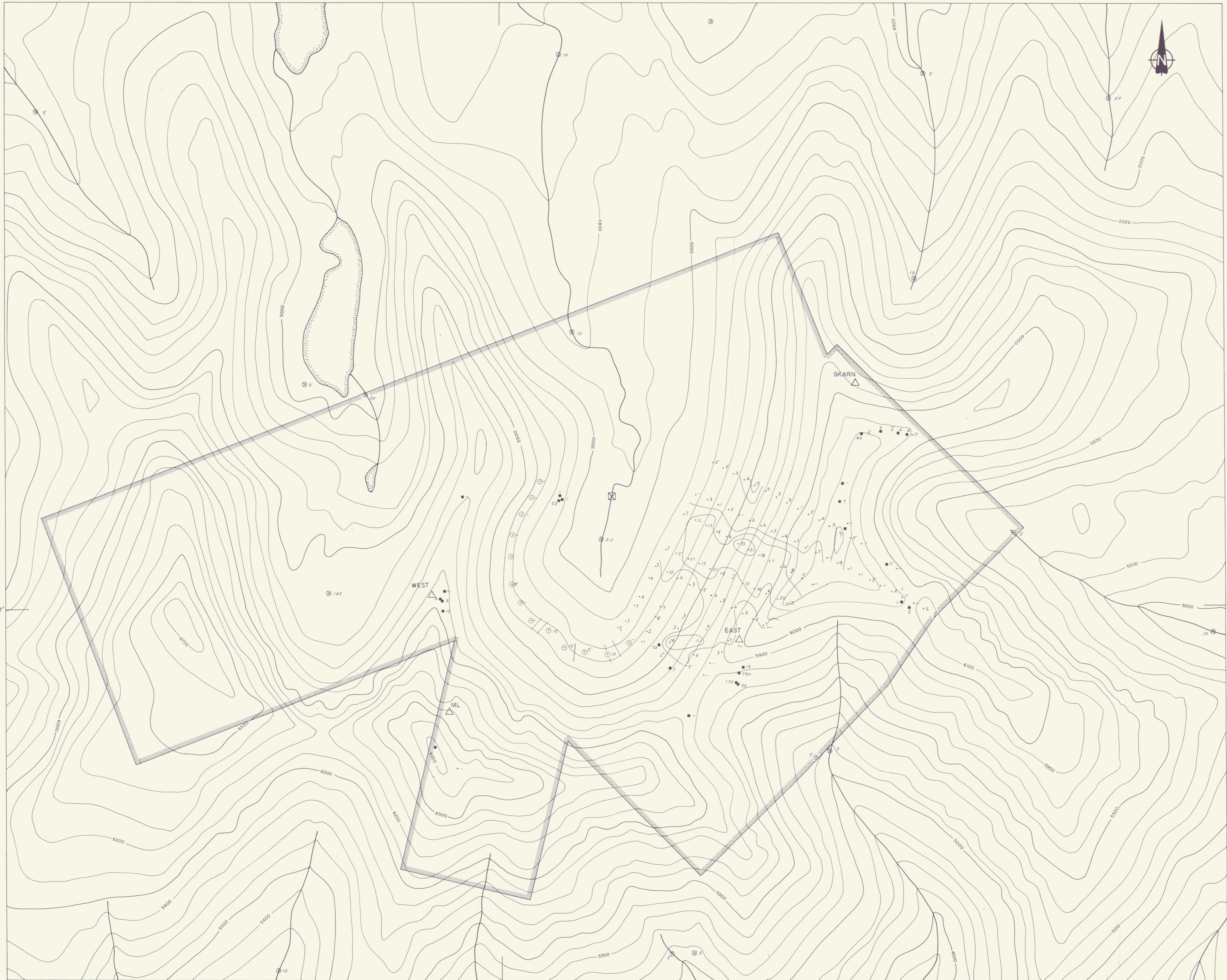
- ≥ 200 ppm Cu
- ≥ 100 ppm Cu < 200 ppm Cu
- ≥ 50 ppm Cu < 100 ppm Cu

Figure 9  
 ARCHER, CATHRO & ASSOCIATES (1981) LIMITED  
**COPPER GEOCHEMISTRY**  
 UNO PROPERTY  
 CASH RESOURCES LTD.



0333

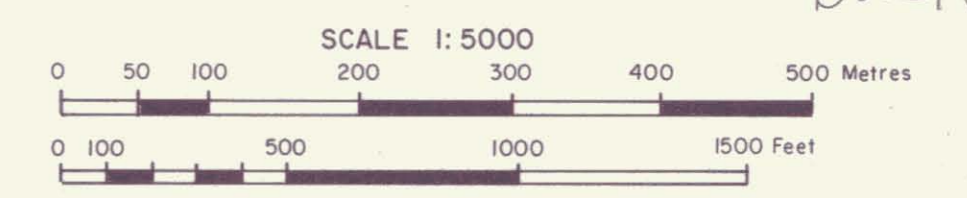
DWG 6



- /5 1979 Getty Mines contour soil sample location with gold analysis in ppb
- ⊗ 35 1979 Getty Mines stream sediment sample location with gold analysis in ppb
- 21 1994 Archer Cathro soil sample location with gold analysis in ppb
- 170 1994 Archer Cathro rock sample location with gold analysis in ppb
- △ ML mineral zone referred to in text
- ▨ property boundary
- ⊠ 1994 camp site

- ≥ 20 ppb Au
- ≥ 10 ppb Au < 20 ppb Au
- ≥ 5 ppb Au < 10 ppb Au

Figure 10  
 ARCHER, CATHRO & ASSOCIATES (1981) LIMITED  
**GOLD GEOCHEMISTRY**  
 UNO PROPERTY  
 CASH RESOURCES LTD.



03303

DWG 7

# ARCHER, CATHRO

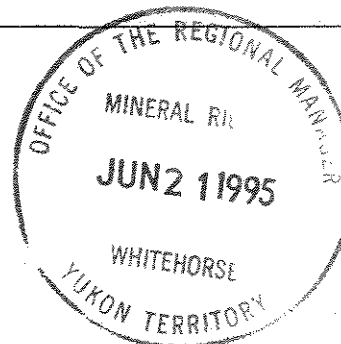
& ASSOCIATES LIMITED

CONSULTING GEOLOGICAL ENGINEERS

VANCOUVER, B.C. (604) 688-2568

Box 4127, WHITEHORSE, Y.T. Y1A 3S9 (403) 667-4415

1016 - 510 WEST HASTINGS STREET  
VANCOUVER, B.C. V6B 1L8



## AFFIDAVIT

I, Joan Mariacher, of Whitehorse, Yukon make oath and say:

That to the best of my knowledge the attached Statement of Expenditures for exploration work on the Uno 1-22 mineral claims on Claim Sheet 105J/1 is accurate.

  
Joan Mariacher

Sworn before me at Whitehorse, Yukon

this 6th day of

June, 1995



Notary, Yukon Territory

Statement of Expenditures  
 Uno 1-22 Mineral Claims  
June 6, 1995

Labour

a. Archer (geologist) - Nov, Dec 1994 - 4 hrs at \$55/hr	\$ 235.40	
- Jan-Mar 1995 - 6 hours at \$60/hr	385.20	
D. Eaton (geologist) - Nov, Dec 1994 - 30 hours at \$42/hr	1,348.20	
- Jan-Mar 1995 - 7 hours at \$50/hr	374.50	
B. Wengzynowski (geologist) - August 9-13 - 5 days,		
Oct, Nov - 5 1/2 days - total 10 1/2 days at \$262.50/day	2,949.19	
- Jan - Mar 1995 - 68 hours at \$40/hr	2,910.40	
J. Owerko (field ass't) - August 9-13 - 5 days at \$165/day	<u>882.75</u>	\$ 9,085.64

Expenses

2.5 hours Trans North Bell 206B at \$615/hr plus fuel	2,019.91	
Chemex Labs Ltd.	2,311.42	
Field room and board - 10 mandays at \$60/day	<u>642.00</u>	<u>4,973.33</u>
		<u>\$14,058.97</u>

Before Sep 6     \$4857.16  
 After Sep 6     \$9008.87

ACCOUNT NUMBER ARCHCAT  
INVOICE NUMBER 06714  
INVOICE DATE 190894  
A/C TYPE 206 AIRCRAFT REGISTRATION C FTND  
FLIGHT DATE 100894  
PURCHASE ORDER NO.

CHARTERER *Archer CATHALO & Assoc*  
Box 4127  
BILLING ADDRESS *Whitehorse YT Y1A 3S9*  
FUEL & OIL-X TINTA FUEL USED HRS/LITRES FROM  
X 205L Finhyson

FROM	HOURS	REMARKS - NO. OF PASS - FREIGHT Kg
Finhyson Airstrip		
to Sed and P. Peattie		
Mountains & return	1.8	
		Und

SUB	GL.	AMOUNT			
1603	502	1107.00	@		
1600	131	256.25	1.8	@ 615 <sup>00</sup>	1107.00
			HOLDING TIME:	@ / HR.	
0000	323	95.43	FUEL	@ / LITRE	
			FUEL 205L @ 1.25 / LITRE		256.25
			MEALS & LODGINGS		
			OTHER		
			OTHER		
SUB TOTAL					1363.25
GOODS & SERVICES TAX					95.43
REGISTRATION NO. R121483135					
<b>TOTAL</b>					<b>\$ 1458.68</b>

CARRIAGE SUBJECT TO TERMS OF PUBLISHED TARIFF.  
TARIFF AVAILABLE TO PUBLIC VIEW AT TRANS NORTH OFFICE.

**THIS IS YOUR ONLY INVOICE - PAY UPON RECEIPT**

NUMBER ARCHCAT  
INVOICE NUMBER 06212  
INVOICE DATE 240894  
A/C TYPE 206B AIRCRAFT REGISTRATION C FTMS  
FLIGHT DATE 140894  
PURCHASE ORDER NO.

CHARTERER *Archer CATHALO*  
Box 4127  
BILLING ADDRESS *Whitehorse, YT Y1A 3S9*  
FUEL & OIL-X TINTA FUEL USED HRS/LITRES FROM

FROM	HOURS	REMARKS - NO. OF PASS - FREIGHT Kg
to		
Mane Camp	1.5	Bill WENGZYNOSE
		561.27 Und/mucho

SUB	GL.	AMOUNT			
1609	502	922.50	1.5	@ 615 <sup>00</sup>	922.50
1600	131	126.54		@	
			HOLDING TIME:	@ / HR.	
0000	323	73.43	FUEL 171L @ .74 / LITRE		126.54
			FUEL	@ / LITRE	
			MEALS & LODGINGS		
			OTHER		
			OTHER		
SUB TOTAL					1049.04
GOODS & SERVICES TAX					73.43
REGISTRATION NO. R121483135					
<b>TOTAL</b>					<b>\$ 1122.47</b>

CARRIAGE SUBJECT TO TERMS OF PUBLISHED TARIFF.  
TARIFF AVAILABLE TO PUBLIC VIEW AT TRANS NORTH OFFICE.

**THIS IS YOUR ONLY INVOICE - PAY UPON RECEIPT**



# Chemex Labs Ltd.

Analytical Chemists \* Geochemists \* Registered Assayers  
212 Brooksbank Ave., North Vancouver  
British Columbia, Canada V7J 2C1  
PHONE: 604-984-0221

To: ARCHER CATHRO & ASSOC. (1981) LTD.

1016 - 510 W. HASTINGS ST.  
VANCOUVER, BC  
V6B 1L8

INVOICE NUMBER

I 9 4 1 7 9 1 2

## BILLING INFORMATION

Date: 17-JUN-94  
Project: SQ-F  
P.O. No.:  
Account: F

*78 mulo*  
*13 lno*

Comments:

Billing: For analysis performed on  
Certificate A9417912

Terms: Payment due on receipt of invoice  
1.25% per month (15% per annum)  
charged on overdue accounts

Please Remit Payments to:

**CHEMEX LABS LTD.**  
212 Brooksbank Ave.,  
North Vancouver, B.C.  
Canada V7J 2C1

# OF SAMPLES	ANALYSED FOR CODE - DESCRIPTION	UNIT PRICE	SAMPLE PRICE	AMOUNT
8	201 - Dry, sieve to -80 mesh ICP-32	1.10 6.25		
	100 - Au ppb FA+AA	7.95	15.30	122.40

Total Cost \$	122.40
Client Discount ( 25%) \$	<u>-30.60</u>
Net Cost \$	91.80
(Reg# R100938885 ) GST \$	<u>6.43</u>
<b>TOTAL PAYABLE (CDN) \$</b>	<b>98.23</b>

*lno - 11.47*  
*mulo - 80.33*



# Chemex Labs Ltd.

Analytical Chemists \* Geochemists \* Registered Assayers  
212 Brooksbank Ave., North Vancouver  
British Columbia, Canada V7J 2C1  
PHONE: 604-984-0221

To: ARCHER CATHRO & ASSOC. (1981) LTD.

BOX 4127  
WHITEHORSE, YT  
Y1A 3S9

INVOICE NUMBER

I 9 4 2 4 1 6 2

## BILLING INFORMATION

Date: 2-SEP-94  
Project: SQF-UNO  
P.O. No.:  
Account: F

Comments:

Billing: For analysis performed on  
Certificate A9424162

Terms: Payment due on receipt of invoice  
1.25% per month (15% per annum)  
charged on overdue accounts

Please Remit Payments to:

**CHEMEX LABS LTD.**  
212 Brooksbank Ave.,  
North Vancouver, B.C.  
Canada V7J 2C1

# OF SAMPLES	ANALYSED FOR CODE - DESCRIPTION	UNIT PRICE	SAMPLE PRICE	AMOUNT
14	208 - Assay ring to approx 150 mesh	2.50		
	226 - 0-5 lb crush and split	2.05		
	ICP-32 High grade scan	8.05		
	Ag, Pb, Zn assay package	18.00	30.60	428.40
1	208 - Assay ring to approx 150 mesh	2.50		
	226 - 0-5 lb crush and split	2.05		
	ICP-32 High grade scan	8.05		
	877 - Au oz/T FA+AA	9.50	22.10	22.10

Total Cost \$	450.50
Client Discount ( 25%) \$	<u>-112.63</u>
Net Cost \$	337.87
(Reg# R100938885 ) GST \$	<u>23.65</u>

**TOTAL PAYABLE (CDN) \$ 361.52**

*Handwritten signature and date: 11/14/94*



# Chemex Labs Ltd.

Analytical Chemists \* Geochemists \* Registered Assayers  
212 Brooksbank Ave., North Vancouver  
British Columbia, Canada V7J 2C1  
PHONE: 604-984-0221

To: ARCHER CATHRO & ASSOC. (1981) LTD.

BOX 4127  
WHITEHORSE, YT  
Y1A 3S9

INVOICE NUMBER

I 9 4 2 4 1 5 9

## BILLING INFORMATION

Date: 5-SEP-94  
Project: SQF-UNO  
P.O. No.:  
Account: F

Comments:

Billing: For analysis performed on  
Certificate A9424159

Terms: Payment due on receipt of invoice  
1.25% per month (15% per annum)  
charged on overdue accounts

Please Remit Payments to:

**CHEMEX LABS LTD.**  
212 Brooksbank Ave.,  
North Vancouver, B.C.  
Canada V7J 2C1

# OF SAMPLES	ANALYSED FOR CODE - DESCRIPTION	UNIT PRICE	SAMPLE PRICE	AMOUNT
102	201 - Dry, sieve to -80 mesh ICP-32	1.10 6.25	7.35	749.70
				Total Cost \$ 749.70
				Client Discount ( 25%) \$ <u>-187.43</u>
				Net Cost \$ 562.27
				(Reg# R100938885 ) GST \$ <u>39.36</u>
				<b>TOTAL PAYABLE (CDN) \$ 601.63</b>



# Chemex Labs Ltd.

Analytical Chemists \* Geochemists \* Registered Assayers  
212 Brooksbank Ave., North Vancouver  
British Columbia, Canada V7J 2C1  
PHONE: 604-984-0221

To: ARCHER CATHRO & ASSOC. (1981) LTD.

BOX 4127  
WHITEHORSE, YT  
Y1A 3S9

INVOICE NUMBER

I 9 4 2 4 1 6 3

## BILLING INFORMATION

Date: 9-SEP-94  
Project: SQF-UNO  
P.O. No.:  
Account: F

Comments:

Billing: For analysis performed on  
Certificate A9424163

Terms: Payment due on receipt of invoice  
1.25% per month (15% per annum)  
charged on overdue accounts

Please Remit Payments to:

**CHEMEX LABS LTD.**  
212 Brooksbank Ave.,  
North Vancouver, B.C.  
Canada V7J 2C1

# OF SAMPLES	ANALYSED FOR CODE - DESCRIPTION	UNIT PRICE	SAMPLE PRICE	AMOUNT
11	205 - Geochem ring to approx 150 mesh	2.50		
	226 - 0-5 lb crush and split	2.05		
	ICP-32	6.25	10.80	118.80
				Total Cost \$ 118.80
				Client Discount ( 25%) \$ -29.70
				Net Cost \$ 89.10
				(Reg# R100938885 ) GST \$ 6.24
				<b>TOTAL PAYABLE (CDN) \$ 95.34</b>



# Chemex Labs Ltd.

Analytical Chemists \* Geochemists \* Registered Assayers  
212 Brooksbank Ave., North Vancouver  
British Columbia, Canada V7J 2C1  
PHONE: 604-984-0221

To: ARCHER CATHRO & ASSOC. (1981) LTD.

BOX 4127  
WHITEHORSE, YT  
Y1A 3S9

INVOICE NUMBER

I 9 4 2 8 2 5 9

## BILLING INFORMATION

Date: 18-OCT-94  
Project: SQF-UNO  
P.O. No.:  
Account: F

Comments:

Billing: For analysis performed on  
Certificate A9428259

Terms: Payment due on receipt of invoice  
1.25% per month (15% per annum)  
charged on overdue accounts

Please Remit Payments to:

**CHEMEX LABS LTD.**  
212 Brooksbank Ave.,  
North Vancouver, B.C.  
Canada V7J 2C1

# OF SAMPLES	ANALYSED FOR CODE - DESCRIPTION	UNIT PRICE	SAMPLE PRICE	AMOUNT
117	244 - Pulp; prev. prepared at Chemex	0.00		
	101 - Au NAA ppb	8.50	8.50	994.50

Total Cost \$	994.50
Client Discount ( 25%) \$	-248.63
Net Cost \$	745.87
(Reg# R100938885 ) GST \$	52.21
<b>TOTAL PAYABLE (CDN) \$</b>	<b>798.08</b>

4540.37  
378.18  
-----  
4863.55  
Jan Outplay #22



# Chemex Labs Ltd.

Analytical Chemists \* Geochemists \* Registered Assayers  
212 Brooksbank Ave., North Vancouver  
British Columbia, Canada V7J 2C1  
PHONE: 604-984-0221

To: ARCHER CATHRO & ASSOC. (1981) LTD.

BOX 4127  
WHITEHORSE, YT  
Y1A 3S9

**INVOICE NUMBER**

**I 9 4 2 8 2 5 5**

## BILLING INFORMATION

Date: 10-NOV-94  
Project: SQF-UNO  
P.O. No.:  
Account: F

Comments:

Billing: For analysis performed on  
Certificate A9428255

Terms: Payment due on receipt of invoice  
1.25% per month (15% per annum)  
charged on overdue accounts

Please Remit Payments to:

**CHEMEX LABS LTD.**  
212 Brooksbank Ave.,  
North Vancouver, B.C.  
Canada V7J 2C1

# OF SAMPLES	ANALYSED FOR CODE - DESCRIPTION	UNIT PRICE	SAMPLE PRICE	AMOUNT
14	244 - Pulp; prev. prepared at Chemex	0.00		
	343 - Sn %	12.50		
	151 - Ta NAA ppm	2.00		
	191 - Nb ppm	2.00		
	288 - NAA encapsulation/irradiation	7.50		
	297 - Meta-borate fusion charge	6.00	30.00	420.00
1	244 - Pulp; prev. prepared at Chemex	0.00		
	343 - Sn %	12.50		
	151 - Ta NAA ppm	2.00		
	191 - Nb ppm	2.00		
	288 - NAA encapsulation/irradiation	7.50		
	297 - Meta-borate fusion charge	6.00		
	301 - Cu %	8.00	38.00	38.00

Total Cost \$	458.00
Client Discount ( 25%) \$	-114.50
Net Cost \$	343.50
(Reg# R100938885 ) GST \$	24.05
<b>TOTAL PAYABLE (CDN) \$</b>	<b>367.55</b>



# Chemex Labs Ltd.

Analytical Chemists \* Geochemists \* Registered Assayers  
212 Brooksbank Ave., North Vancouver  
British Columbia, Canada V7J 2C1  
PHONE: 604-984-0221

To: ARCHER CATHRO & ASSOC. (1981) LTD.

BOX 4127  
WHITEHORSE, YT  
Y1A 3S9

**INVOICE NUMBER** **I 9 4 3 1 2 3 7**

**BILLING INFORMATION**

Date: 12-DEC-94  
 Project: SQF-UNO  
 P.O. No.:  
 Account: F

Comments:

Billing: For analysis performed on  
 Certificate A9431237

Terms: Payment due on receipt of invoice  
 1.25% per month (15% per annum)  
 charged on overdue accounts

Please Remit Payments to:

**CHEMEX LABS LTD.**  
 212 Brooksbank Ave.,  
 North Vancouver, B.C.  
 Canada V7J 2C1

# OF SAMPLES	ANALYSED FOR CODE - DESCRIPTION	UNIT PRICE	SAMPLE PRICE	AMOUNT
11	244 - Pulp; prev. prepared at Chemex 101 - Au NAA ppb	0.00 8.50	8.50	93.50
Total Cost \$				93.50
Client Discount ( 25%) \$				-23.38
Net Cost \$				70.12
(Reg# R100938885 ) GST \$				4.91
<b>TOTAL PAYABLE (CDN) \$</b>				<b>75.03</b>

*E - 12/18/91*  
*9.50*  


---

*145.31*  
*[Signature]*  
*#844*

ARCHER, CATHRO & ASSOCIATES (1981) LIMITED

In Account With

Project —

SILVERQUEST-FIELD ACCOUNT

Date —

AUGUST 31, 1994

LABOUR			
Supervisory	A. ARCHER - 37 HRS AT 55/HR	1760.00	
Field	B. WENBYNOWSKI - 14 DAYS AT 262.50/DAY	3675.00	
	J. OWERKO - 13 DAYS AT 165/DAY	2145.00	
	D. EATON - 25 HRS AT 42/HR	1050.00	
	R. CARNE - 5 HRS AT 40/HR	210.00	
Secretarial	M. COOKE - 9 HRS AT 29.08/HR	261.72	
Accounting & Expediting	J. MARIACHEN - 39 1/2 HRS AT 37/HR	1461.50	
	A. BELLINI - 2 HRS AT 43.20/HR	86.40	10649.62
OTHER SERVICES			
Room & Board In Whitehorse	13 MANDAYS AT 60/DAY	780.00	
Field equipment from AC stock	315.65 + 22 MANDAYS AT 20/DAY	440.00	
Photocopies,	145 copies at 25¢/copy	36.25	
Rentals from AC	AUGUST 9-19 - SBX 11 AT 10/DAY	110.00	
AC HANDHELD	AUGUST 1-31 - 16 DAYS AT 3/DAY	48.00	
RENT + OFFICE SUPPORT	SEPTEMBER	250.00	
Blueprinting,	sq.ft. Ozalid at \$/ft, plus sq.ft. Dilar at \$ /ft.		
Drafting,	2 1/4 hrs at \$ 33 /hr.	82.50	
LODGING COURIER	7 AT 11/EA	77.00	1768.75
EXPENSES			
Petty Cash	14.35 02	14.35	
Telephone	2.76	2.76	
WHITE PAPER	62	395.56	
CORPORATE COURIER		8.70	
REGENA GENERAL-CL MAIL		16.00	
HOUGEN'S PHOTO		16.15	
HARWOOD'S OFFICE		14.78	
CALMACHA HOTEL		17.31	485.61
MANAGEMENT	6% - ON EXPENSES	29.14	
	- ON FIELD ACU	2621.08	
	- ON CORPORATE ACU	75.66	2725.88
			15629.86
ST (R100247667)	7% ON 15629.86		1094.09
GST Exempt			16723.95

ARCHER, CATHRO & ASSOCIATES (1981) LIMITED

In Account With

Project —

Date —

SILVERQUEST-FIELD ACCOUNT  
OCTOBER 31, 1994

LABOUR			
Supervisory	A. ARCHER - 65 HRS AT 55/HRL	3575.00	
Field	T. BECKER - 1 DAY AT 267.50/DAY	267.50	
	B. WENZYNOWSKI - 2 DAYS AT 267.50/DAY	525.00	
	D. EATON - 4 1/2 HRS AT 44/HRL	198.00	
Secretarial	M. COOKE - 22 HRS AT 29.08/HRL	639.76	
Accounting & Expediting	J. MARIACHER - 20 1/4 HRS AT 37/HRL	758.50	7692.76
<b>OTHER SERVICES</b>			
Room & Board In Whitehorse			
Field equipment from AC stock			
Photocopies, 338 copies at 25¢/copy		84.50	
Rentals from AC			
NOVEMBER RENT & OFFICE SUPPORT		250.00	
Blueprinting, 214 sq.ft. Ozalid at 30¢/ft, plus 3 sq.ft. Dilar at \$3.00/ft.		73.20	
Drafting, 55 1/4 hrs at \$33.20/hr.		1842.60	
Loomis Courier - 3 AT 11/EA		33.00	2283.30
<b>EXPENSES</b>			
Petty Cash			
Telephone 19.94		19.94	
SCOTIABANK - MINING JOURNAL		100.00	
CORPORATE COURIER		8.88	128.82
<b>MANAGEMENT</b> 6% - ON EXPENSES		7.73	
- ON FIELD A/C		349.57	
- ON CORPORATE A/C		123.29	480.59
			70585.47
<b>GST (R100247667)</b> 7% ON 10585.47			740.98
E = GST Exempt			11326.45



ARCHER, CATHRO & ASSOCIATES (1981) LIMITED

In Account With

Project —

SILVERQUEST - FIELD ACCOUNT

Date —

DECEMBER 31, 1994

LABOUR			
Supervisory	A. ARCHER - 20 HR AT 55/HR	1100.00	
Field	B. WENGZYNOWSKI - 5 1/2 DAYS AT 264.50	1443.75	
	D. EATON - 66 HR AT 44/HR	2772.00	
Secretarial	M. COOKE - 68 1/2 HR AT 30/HR	2055.00	
Accounting & Expediting	J. MARIACHEL - 17 1/2 HR AT 44.50/HR	778.75	
	- 3 3/4 HR VAN AT 37.50/HR	140.63	8255.13
<b>OTHER SERVICES</b>			
Room & Board in Whitehorse			
Field equipment from AC stock			
Photocopies, 510 copies at 25¢/copy		127.50	
Rentals from AC			
JANUARY RENT & OFFICE SUPPLY		250.00	
1994 PRO-RATED BANK CHARGES		137.93	
Blueprinting,	57 sq.ft. Ozalid at 30¢/ft, plus sq.ft. Dilar at \$ /ft.	17.10	
Drafting,	79 1/2 hrs at \$ 33.75/hr.	2683.13	3215.66
<b>EXPENSES</b>			
Petty Cash 87.00 CV		87.00	
Telephone 16.60		16.60	
OFFICE ESSENTIALS		20.30	
CHEMEX LABS - FAX		3.50	
AC81 MAILINGS - POSTAGE		25.68	203.08
<b>MANAGEMENT 6% - ON EXPENSES</b>		12.18	
- ON FIELD AC		36.68	
- ON CORPORATE AC		861.56	910.42
			12584.29
GST (R100247667) 7% ON 12584.29			880.90
E - GST Exempt			13465.19

ARCHER, CATHRO & ASSOCIATES (1981) LIMITED

In Account With

SILVERQUEST - FIELD ACCOUNT

JANUARY 31, 1995

Project —

Date —

LABOUR			
Field	A. ARCHER - 25 HRS AT 60/HR	1500.00	
	D. EATON - 25 HRS AT 50/HR	1250.00	
	B. WENZYNOWSKI - 8 HRS AT 40/HR	320.00	
Office	M. COOKE - 27 HRS AT 30/HR	810.00	
Accounting & Expediting	J. MARIACHEL - 27 1/4 HRS AT 37.50/HR	1021.88	4901.88
<b>OTHER SERVICES</b>			
	Room & Board in Whitehorse		
	Field equipment from AC stock: MAP POCKETS	37.50	
	Photocopies, 46 copies at 25¢/copy	11.50	
	Rentals from AC		
	Blueprinting, 26 sq.ft. Ozalid at 30¢/ft, plus sq.ft. Dilar at \$ /ft.	7.80	
	Drafting, 6 1/2 hrs at \$33.25/hr.	219.57	
	LOOMIS COURIER - 3 AT 12/EA	36.00	
	OFFICE RENT & SUPPLY	300.00	612.17
<b>EXPENSES</b>			
	Petty Cash 28.68 cv	28.68	
	Telephone 1.16 + 17.09	18.25	
	CORPORATE COURIER	18.73	
	AC&I MAILOUTS - POSTAGE	87.70	153.36
<b>MANAGEMENT</b>			
	6% - ON EXPENSES	9.20	
	- ON FIELD A/C	35.47	
	- ON CORPORATE A/C	226.28	270.95
			5938.36
<b>GST (R100247667) 7% ON 5938.36</b>			445.69
<b>E - GST Exempt</b>			6384.05

ARCHER, CATHRO & ASSOCIATES (1981) LIMITED

In Account With

Project —

SILVERQUEST - FIELD ACCOUNT

Date —

FEBRUARY 28, 1991

LABOUR

Field

A. ARCHER - 20 HRS AT 60/HR

1200.00

D. EATON - 24 HRS AT 50/HR

1200.00

B. WENIGZNOWSKI - 56 HRS AT 40/HR (VHO)

2240.00

Office M. COOKE - 19 HRS AT 30/HR

570.00

Accounting & Expediting J. MARIACHEL - 36 1/4 HRS AT 37.50/HR

1368.75

6578.75

OTHER SERVICES

Room & Board in Whitehorse

Field equipment from AC stock REPRO FILM - 3 AT 1.10 EA

3.30

Photocopies, 948 copies at 25¢/copy

237.00

Rentals from AC

MARCH OFFICE RENTAL & SUPPLY

300.00

Blueprinting, sq.ft. Ozalid at ¢/ft, plus sq.ft. Dilar at \$ /ft.

Drafting, hrs at \$ /hr.

LOONIS COURIER - 7 AT 14/EA

98.00

564.30

EXPENSES

Petty Cash

Telephone 23.81

23.81

HYDELY PRINTING

273.92

CORPORATE COURIERS

18.73

RECENEL GENERAL. CL MARK

4.00

FEBRUARY POSTAGE CHARGES

445.40

765.86

MANAGEMENT. 6% - ON EXPENSES

45.95

- ON FIELD A/C

14.00

- ON CORPORATE A/C - TO CANCEL ALL PREVIOUS CHARGES

(2927.80)

(2869.85)

5039.06

GST (R100247667) 7% ON 5039.06

352.73

E - GST Exempt

5391.79

ARCHER, CATHRO & ASSOCIATES (1981) LIMITED

In Account With

SILVERQUEST-FIELD ACCOUNT

MARCH 31, 1995

Project —

Date —

LABOUR			
Field	A. ARCHER - 33 HRS AT 60/HR	1980.00	
	D. EATON - 44 HRS AT 50/HR	2200.00	
	T. BECKER - 1 1/2 DAYS AT 265.50/DAY	398.25	
	B. WENGLYNOWSKI - 14 HRS AT 40/HR	560.00	
Office	M. COOKE - 29 1/4 HRS AT 30/HR	877.50	
Accounting & Expediting	J. MARIACHEL - 25 1/4 HRS AT 37.50/HR	946.88	6878.13
<b>OTHER SERVICES</b>			
	Room & Board in Whitehorse		
	Field equipment from AC stock		
	Photocopies, 120 copies at 25¢/copy	30.00	
	Rentals from AC		
	APRIL RENT & OFFICE SUPPORT	300.00	
	Blueprinting, sq.ft. Ozalid at ¢/ft, plus sq.ft. Dilar at \$ /ft.		
	Drafting, 5 1/4 hrs at \$33.75/hr.	185.63	
	LOOMIS COURIER - 1 AT 14/EA	14.00	527.63
<b>EXPENSES</b>			
	Petty Cash 19.65	19.65	
	Telephone 18.80	18.80	
	CORPORATE COURIERS	15.61	
	DOMINION BLUE	72.80	
	MARCH POSTAGE	152.48	279.24
<b>MANAGEMENT</b>			
	6% - ON EXPENSES	16.76	
	- ON FIELD A/C	4.11	20.87
			7705.97
<b>GST (R100247667)</b>			
	7% ON 7705.97		539.42
			8245.39

E - GST Exempt